

Lebanon Fire Risk Bulletin



CIVIL DEDEFENCE

Refer to cadast table condition.

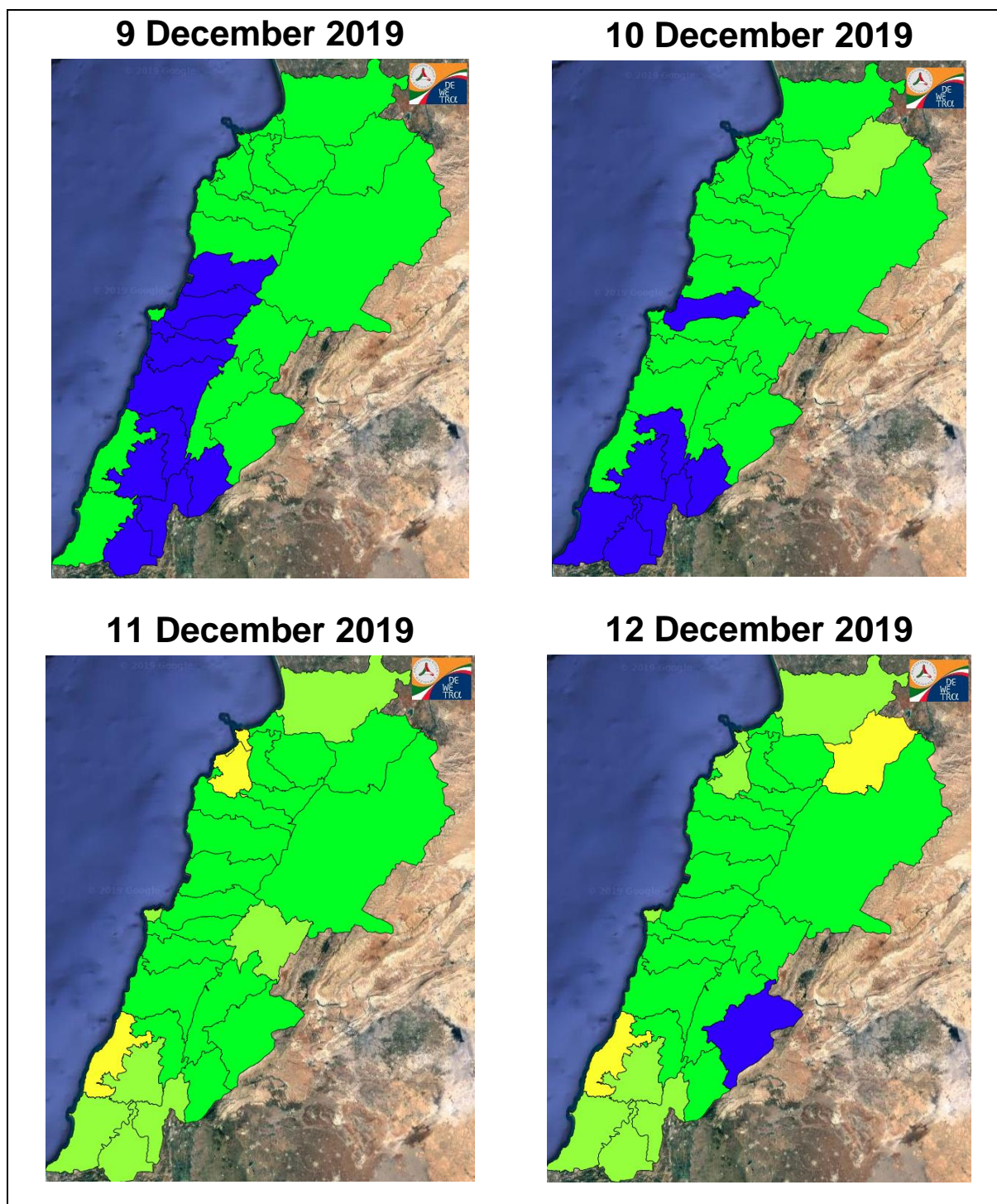
Please note that the indicated temperature is at 2 meters height from the ground.

General description of potential fire risk situation

Symbol	Level of risk	Meaning and actions
VL	Very low	Very low fire risk. Controlled burning operations can be hardly executed due to high fuel moisture content. Normally wildfires self-extinguish.
L	Low	Low fire risk. Controlled burning operations can be executed with a reasonable degree of safety.
ML	Medium low	Medium-low fire risk. Controlled burning operations can be executed in safety conditions. All the fires need to be extinguished.
M	Medium	Medium fire risk. Controlled burning operations would be avoided. All the fires need to be very well extinguished.
M	Medium high	Controlled burning is not recommended. Open flame will start fires. Cured grasslands and forest litter will burn readily. Spread is moderate in forests and fast in exposed areas. Patrolling and monitoring is suggested. Fight fires with direct attack and all available resources.
H	High	Ignition can occur easily with fast spread in grass, shrubs and forests. Fires will be very hot with crowning and short to medium spotting. Direct attack on the head may not be possible requiring indirect methods on flanks. Patrolling and monitoring the territory is highly suggested.
E	Extreme	Ignition can occur also from sparks. Fires will be extremely hot with fast rate of spread. Control may not be possible during day due to long range spotting and crowning. Suppression forces should limit efforts to limiting lateral spread. Damage potential total. Patrolling and monitoring the territory is highly suggested.

Beirut, 10 December 2019

FIRE RISK INDEX

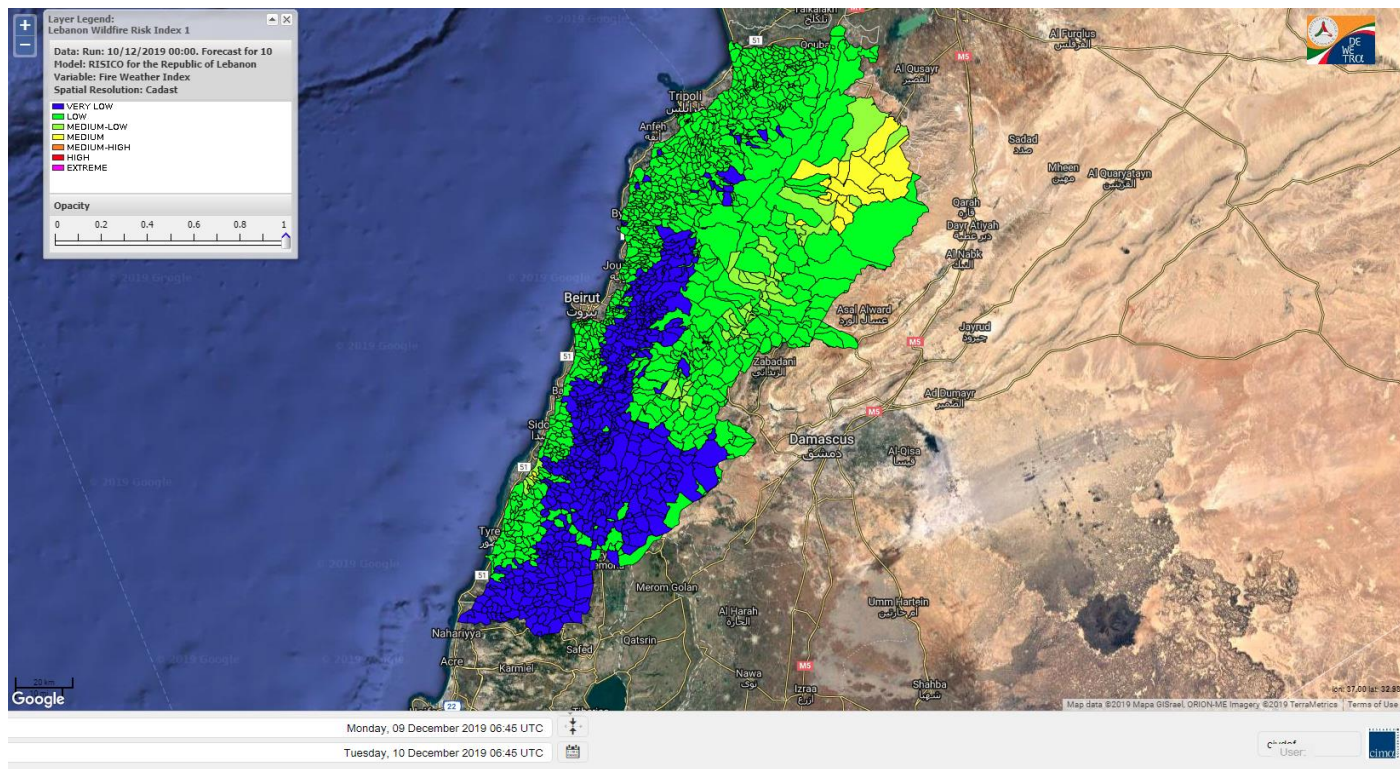


Layer Legend:
Lebanon Wildfire Risk Index 1

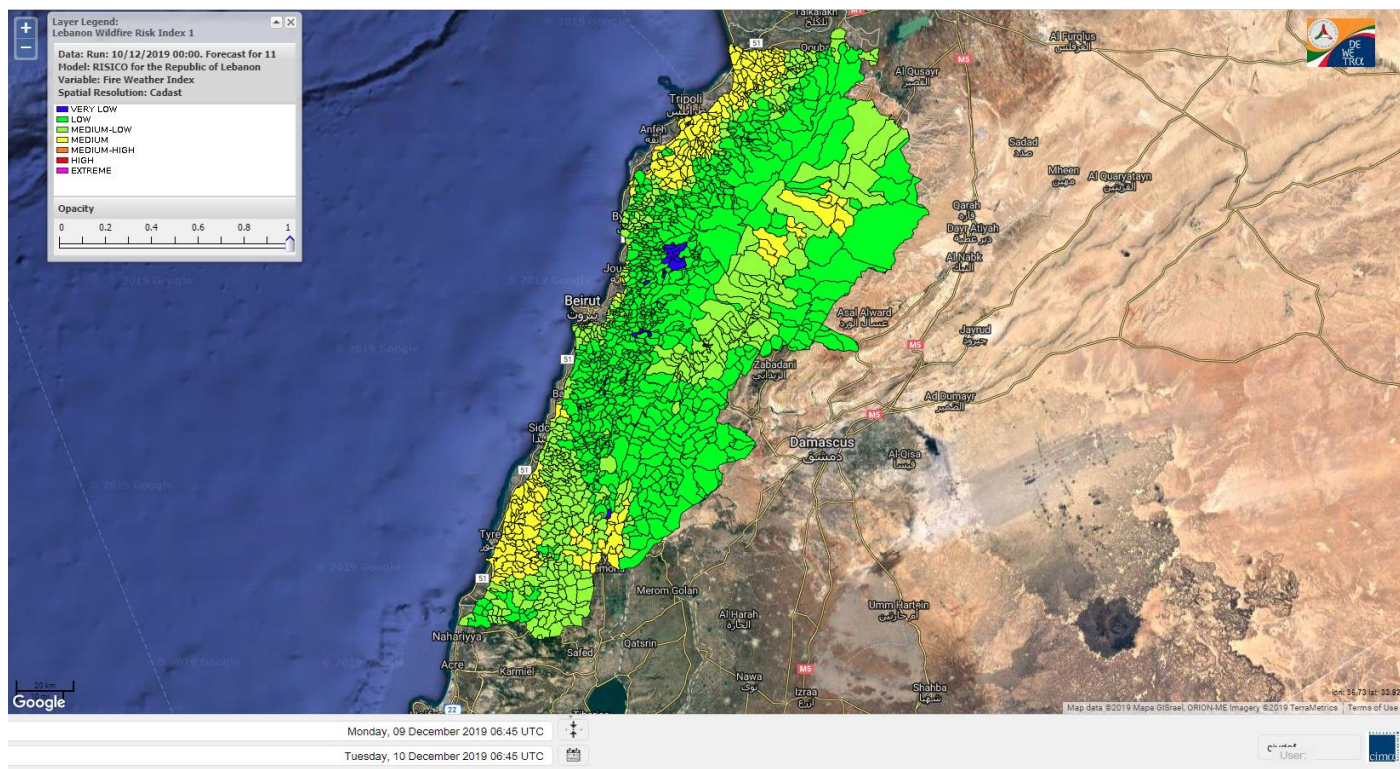
Data: Run: 10/12/2019 00:00. Forecast for 10
Model: RISICO for the Republic of Lebanon
Variable: Fire Weather Index
Spatial Resolution: Caza

- VERY LOW
- LOW
- MEDIUM-LOW
- MEDIUM
- MEDIUM-HIGH
- HIGH
- EXTREME

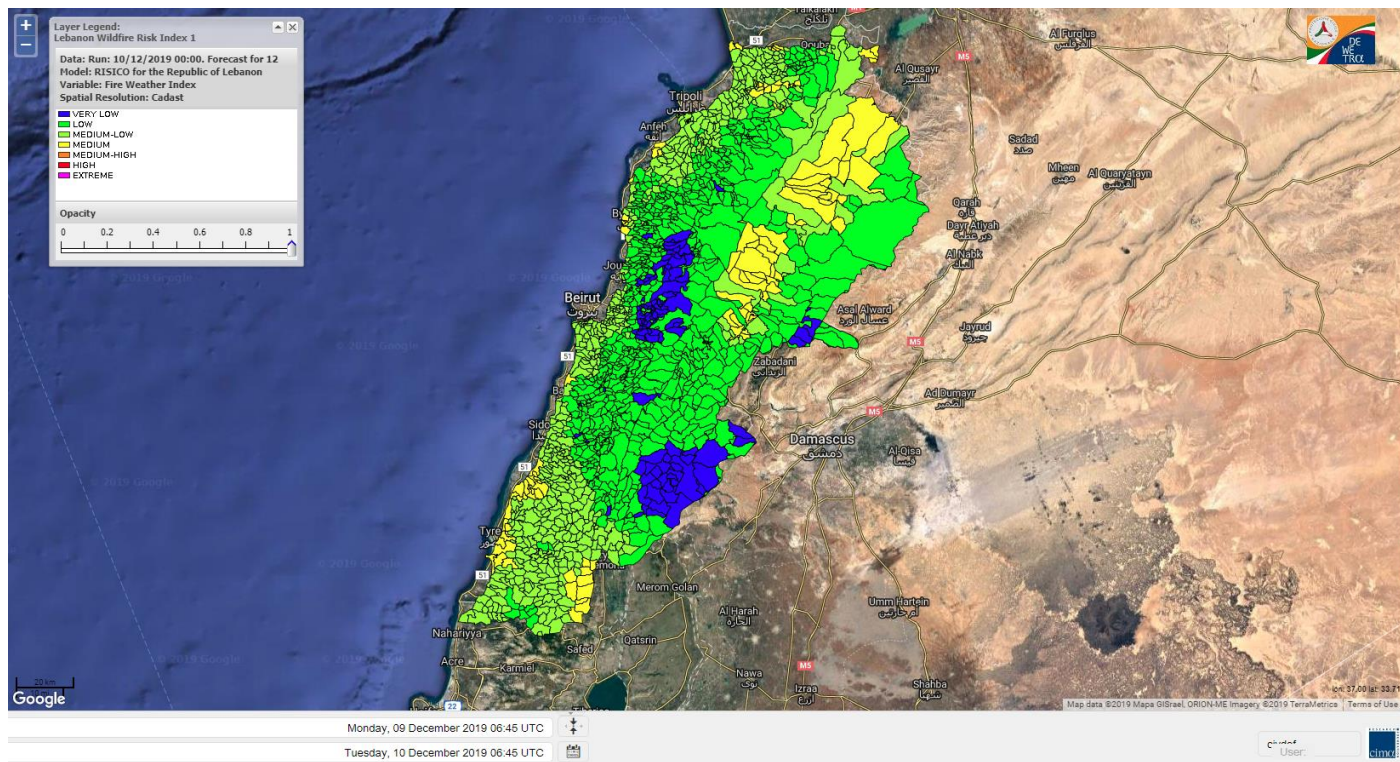
Lebanon for 10 December 2019



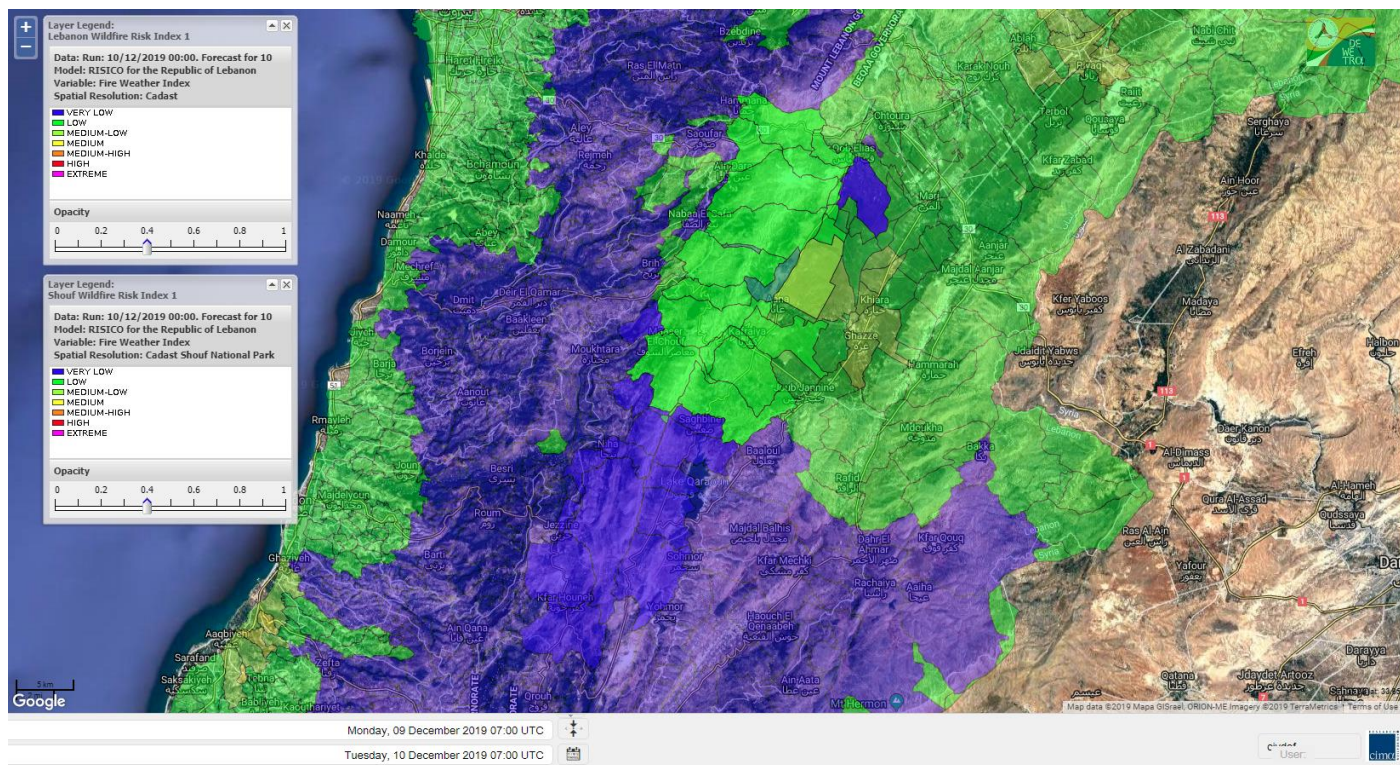
Lebanon for 11 December 2019



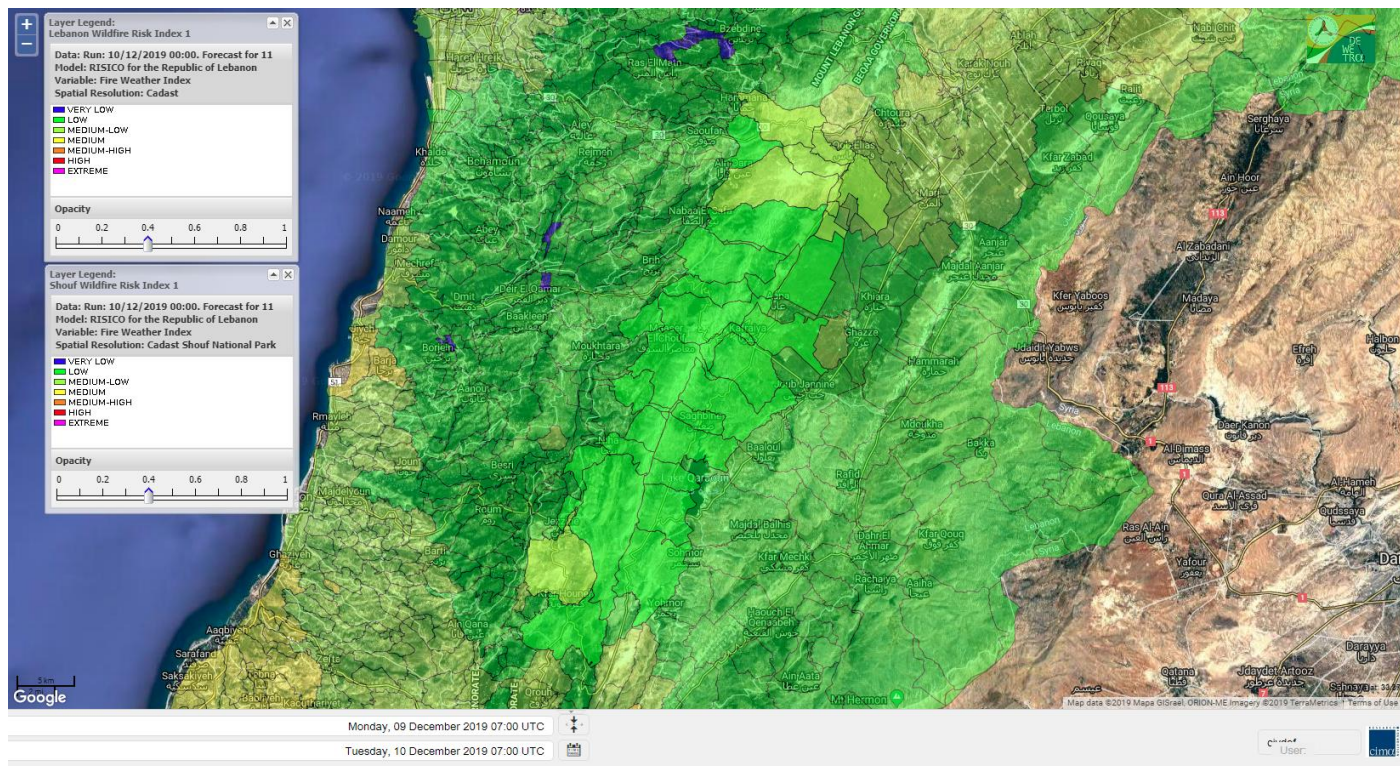
Lebanon for 12 December 2019



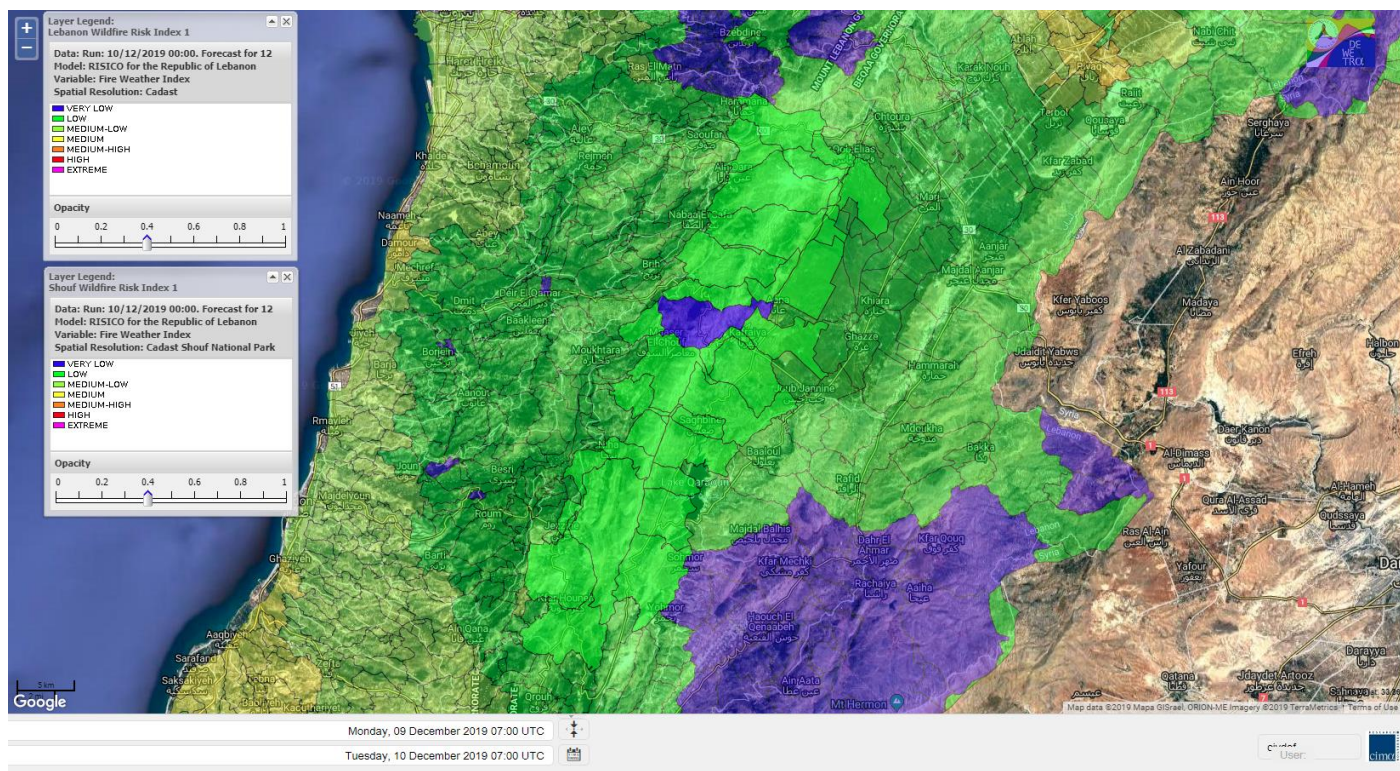
Shouf Biosphere Reserve Forecast for 10 December 2019



Shouf Biosphere Reserve Forecast for 11 December 2019



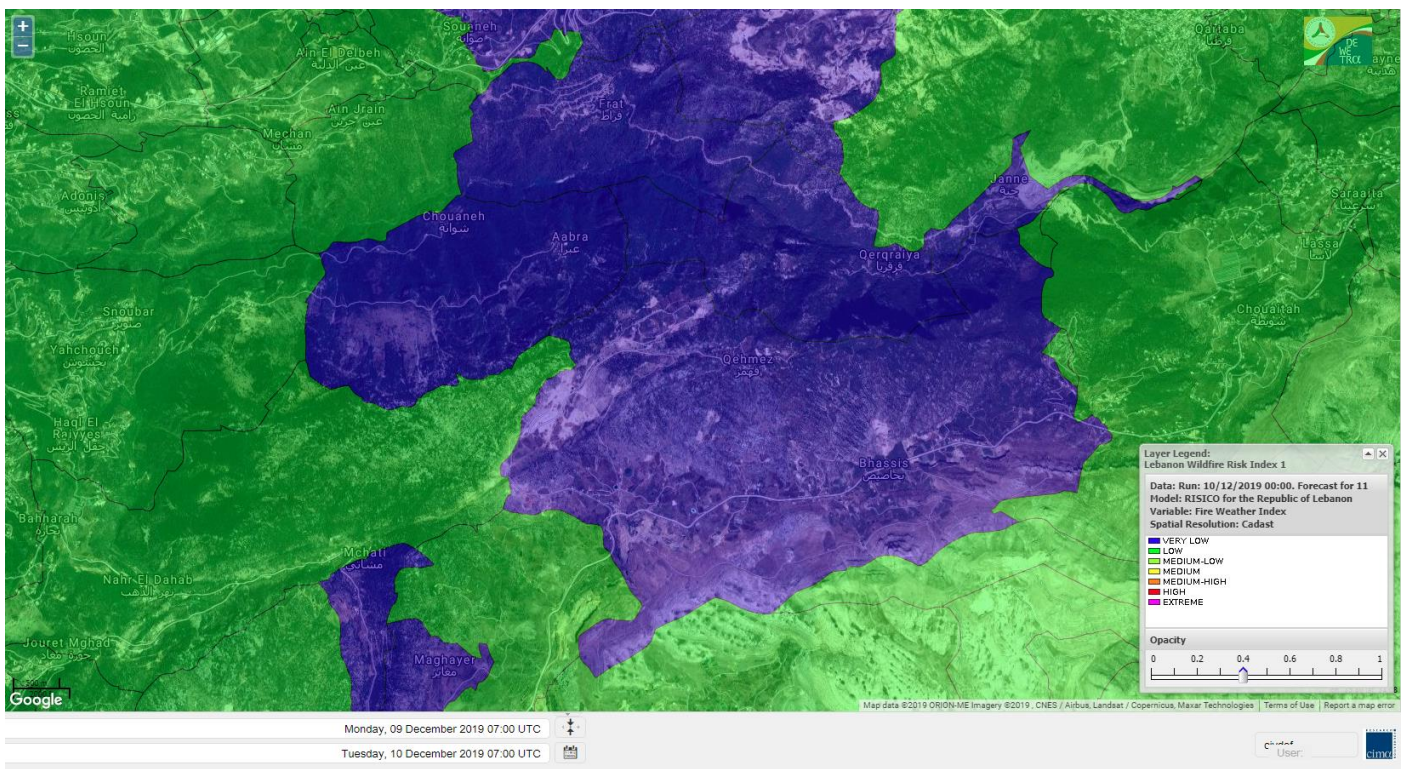
Shouf Biosphere Reserve Forecast for 12 December 2019



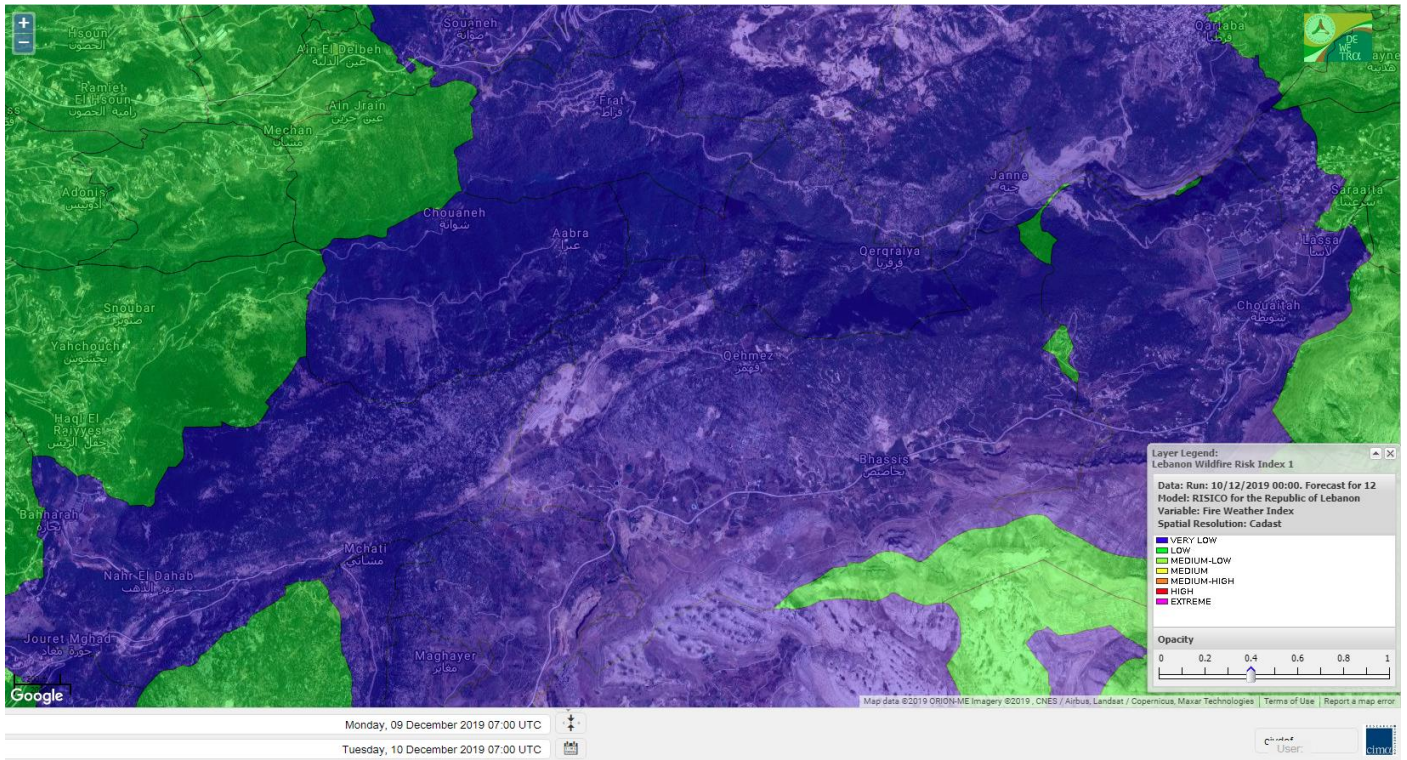
Jabal Moussa Reserve Forecast for 10 December 2019



Jabal Moussa Reserve Forecast for 11 December 2019



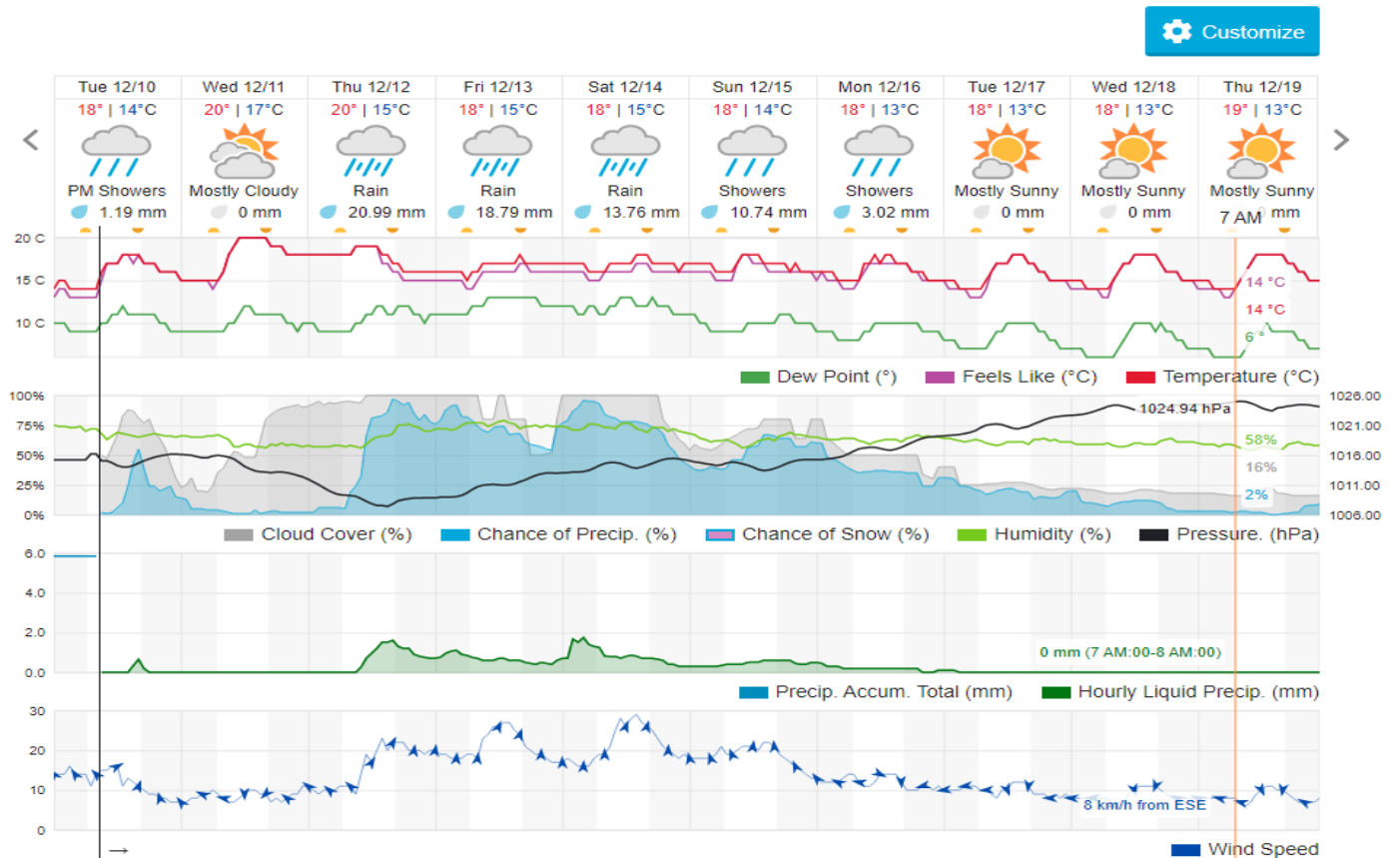
Jabal Moussa Reserve Forecast for 12 December 2019



Beirut, Beirut Governorate, Lebanon 10-Day Weather Forecast

17° ACHRAFIEH, RIZK STATION | CHANGE

TODAY HOURLY 10-DAY CALENDAR HISTORY WUNDERMAP



Nord

Koura

Municipality	10-Dec	11-Dec	12-Dec	Municipality	10-Dec	11-Dec	12-Dec	Municipality	10-Dec	11-Dec	12-Dec
Aaba	L	M	ML	Afsaddiq	L	M	ML	Ain Ekrine	L	M	ML
Amioun	L	M	ML	Anfeh	L	M	M	Badbhoun	L	M	ML
Barghoun	L	M	ML	Barsa	L	ML	ML	Batroumine	L	M	ML
Bdebba	L	M	ML	Bechmizine	L	M	ML	Bednayel El-Koura	L	ML	L
Bhabbouch El-Koura	L	M	L	Bkeftine	L	M	ML	Bnehran	L	ML	L
Bqaiia El-Koura	L	M	ML	Bsarma	L	M	ML	Btaaboura	L	M	ML
Bttram	L	M	ML	Btouratij	L	M	ML	Bziza	L	M	ML
Dar Beechtar	L	M	ML	Dar Chmezzine	L	M	ML	Deddeh	L	M	ML
Deir El-Balamand	L	L	ML	Fih	L	M	ML	Hraiche	L	M	M
Ijdaabrine	L	ML	L	Kaftoun	L	M	L	Kefraya El-Koura	L	M	ML
Kfarakka	L	M	ML	Kfarhata	L	ML	L	Kfarhazir	L	M	ML
Kfarkahel	L	M	ML	Kfarsaroun	L	M	ML	Kosba	L	M	ML
Mejdel el-Koura	L	ML	L	Nakhle	L	M	ML	Qalhat	L	L	ML
Ras Masqa	L	M	ML	Rechdibbine	L	ML	L	Zakroun	VL	ML	M
Zgharta El-Mtaouile	L	L	L								

Bcharre

Municipality	10-Dec	11-Dec	12-Dec	Municipality	10-Dec	11-Dec	12-Dec	Municipality	10-Dec	11-Dec	12-Dec
Aabdine	L	L	L	Bane	L	L	L	Barhelioun	L	L	L
Bazooune	L	L	L	Becharre	L	L	L	Beit Menzer	L	L	L
Billa	L	L	L	Blaouza	L	L	L	Bqaa Kafra	L	L	L
Bqerqacha	L	L	L	Breissat	L	L	L	Dimane	L	L	L
Hadath El Jobbeh	L	L	L	Hadchit	VL	VL	L	Hasroun	VL	L	L
Mazraat Aassaf	VL	L	L	Mazraat Bani Saab	L	L	L	Mchaa El-Jobbeh	L	L	L
Metrit	L	ML	L	Moghr El-Ahoual	L	L	L	Ouadi Qannoubine	VL	L	VL
Qanat	L	L	L	Qnayouer	VL	L	L	Tourza	L	L	L

Batroun

Municipality	10-Dec	11-Dec	12-Dec	Municipality	10-Dec	11-Dec	12-Dec	Municipality	10-Dec	11-Dec	12-Dec
Aabrine	L	L	L	Aalali	L	L	L	Aartziz	L	L	L
Abdelli	L	L	L	Ajdabra	L	L	L	Assia	L	L	L
Basbina	L	ML	L	Batroun	L	M	ML	Bcheleh	L	L	L
Bechtoudar	L	L	L	Beit Chlala	L	L	L	Beit Kassab	L	L	L
Bijdarfil	L	ML	ML	Bqesmaya	L	L	L	Chatine	L	L	L
Chebtin	L	L	L	Chekka	L	M	ML	Daael	L	L	L
Dahr Abi Yaghi	L	L	L	Daraya El-Batroun	L	ML	ML	Deir Billa	L	L	L
Deir Kfifane	L	ML	L	Deir Mar Youhanna EL	L	L	L	Deir Mar Youssef Jra	L	L	L
Douma	L	L	L	Douq	L	L	L	Eddeh El-Batroun	L	L	L
Ftahat El-Batroun	L	L	L	Ghouma	L	ML	L	Hadtoun	L	L	L
Hamat	L	L	L	Harbouna	L	L	L	Hardine	L	L	L
Helta	L	L	L	Hery	L	M	ML	Jebbla	L	L	L
Jrabta El-Batroun	L	L	L	Jrane El-Batroun	L	ML	ML	Kfar Aabida	L	ML	ML
Kfar Halda	L	L	L	Kfarb Shlaimane	L	L	L	Kfarhatna	L	L	L

Kfarhay	L	ML	ML	Kfarhelos	VL	L	L	Kfifane	L	ML	ML
Kfour El Arabi	L	L	L	Koubba	L	ML	ML	Kour	L	ML	L
Mar Mama	L	L	L	Masrah	L	L	L	Mehmarch	L	L	L
Mrah Chdid	L	L	L	Mrah El Ziyat	L	ML	L	Mrah El-Hajj	L	L	L
Nahle El-Batroun	L	L	L	Niha El-Batroun	L	L	L	Ouahj El-Hajjar	L	ML	L
Ouata Houb	L	L	L	Qatnaaoun	L	L	L	Racha	L	L	L
Rachana	L	L	L	Rachkida	L	L	L	Ram El-Batroun	L	L	L
Ras Nahhach	VL	L	L	Selaata	L	M	M	Sghar	L	ML	L
Smar Jbayl	L	ML	L	Sourat El-Batroun	L	L	L	Tannourine El-Faouqa	L	L	L
Tannourine Et-Tahta	L	L	L	Thoum	L	L	ML	Toula El-Batroun	L	L	L
Zan	L	L	L								

Zgharta

Municipality	10-Dec	11-Dec	12-Dec	Municipality	10-Dec	11-Dec	12-Dec	Municipality	10-Dec	11-Dec	12-Dec
Aachach	L	M	ML	Aalma	L	M	ML	Aarde	L	M	L
Aintourine	L	L	L	Arabet Qozhaya	L	L	L	Arde	L	M	ML
Arjis	L	L	L	Asnoun	L	M	ML	Ayto	L	L	L
Basloukit	VL	L	L	Bchannine	L	ML	L	Besebeel	L	M	ML
Bhairret Toula	VL	VL	VL	Bnachee	L	L	L	Boussit	L	M	ML
Danha	L	M	ML	Daraiya Zgharta	L	L	L	Deir Jdeide	L	M	ML
Ehden	VL	L	L	Halan	L	ML	ML	Hariq Zgharta	L	M	ML
Houakir	L	ML	ML	Hraiqis	L	M	ML	Iaal	L	M	L
Ijbaa	L	L	L	Karm Saddeh	L	L	L	Kfarchakhna	L	M	ML
Kfardlaqous	L	M	ML	Kfarfou	L	L	L	Kfarhata Zgharta	L	M	ML
Kfarhoura	L	M	L	Kfarsghab	VL	L	L	Kfaryachit	L	M	ML
Kfarzaina	L	M	ML	Khaldiye	L	M	ML	Mazraat Ajbeaa	L	M	ML
Mazraat Et-Teffah	L	L	L	Mazraat Jneid	VL	M	ML	Mejdlaya Zgharta	L	M	ML
Merh Kfarsghab	L	ML	L	Miryata	L	M	ML	Miziara	L	L	L
Mzraat Kefraya	L	ML	ML	Qorah Bach	L	M	ML	Rachiine	L	M	ML
Ras Kifa	L	L	L	Sakhra	L	M	ML	Sebhel Zgharta	L	L	L
Serhel	VL	L	L	Tallet Zgharta	L	M	ML	Toula Zgharta	L	L	L
Zgharta	L	M	ML								

Minieh-Denniye

Municipality	10-Dec	11-Dec	12-Dec	Municipality	10-Dec	11-Dec	12-Dec	Municipality	10-Dec	11-Dec	12-Dec
Aasaymout	VL	L	L	Aaymar	L	L	L	Aazki	VL	L	L
Ain El-Tineh-Miniyeh	VL	L	L	Assoun	VL	L	L	Bakhaaoun	VL	L	L
Bchennata	VL	L	L	Bechehhara	L	L	L	Beddawi	L	M	ML
Behouaita	L	L	L	Beit El Foqss	VL	L	L	Beit Haouik	VL	VL	ML
Beit Zoud	VL	L	L	Bekaasafrine	L	L	L	Borj El Yahoudiyeh	L	M	ML
Bqarsouna	VL	L	L	Btermaz	VL	L	L	Debaael	VL	L	L
Deir Ammar	L	M	ML	Deir Nbouh	L	ML	ML	Haouaret-Miniyeh	VL	L	L
Haql el Azimeh	VL	L	L	Harf El Siyad	VL	L	L	Hazmiye-Miniyeh	VL	L	L
Izal	L	L	L	Jarjour	L	L	L	Jayroun	VL	L	L
Kahf El-Malloul	L	L	L	Karm El-Moher	VL	L	L	Kfar Binine	VL	L	L
Kfarchalane	VL	L	L	Kfarhabou	L	ML	L	Kharroub-Miniyeh	VL	L	L
Mazraat El-Kreme	L	L	L	Mazraat Ketrane	VL	L	L	Merkebtta	L	M	ML

Minyeh	VL	M	ML	Mrah El Sfirat	VL	L	L	Mrah Sraj	VL	L	L
Mrebbine	L	L	L	Nabi Youcheaa	L	M	ML	Nemrine	VL	L	L
Qarhaiya	L	L	L	Qarne	L	L	L	Qarsita	VL	L	L
Qattineh-Miniyeh	VL	L	L	Qemmamine	VL	L	L	Qraine	VL	L	L
Raouda-Aadoua	L	ML	ML	Rihaniyet-Miniyeh	L	M	ML	Sfireh	VL	L	L
Sir Ed-Danniyeh	VL	L	L	Tarane	VL	L	L	Terbol-Miniyeh	L	M	ML
Zaghartaghriine	L	ML	L	Zouq Bhannine	L	M	ML				

Nabatiye

Nabatiye

Municipality	10-Dec	11-Dec	12-Dec	Municipality	10-Dec	11-Dec	12-Dec	Municipality	10-Dec	11-Dec	12-Dec
Aabba	VL	ML	ML	Aazzi	VL	ML	ML	Adchit El-Chqif	VL	ML	ML
Ain Bou Swar	VL	ML	ML	Ain Kana	VL	ML	ML	Ali El-Taher	VL	ML	ML
Ansar	L	M	ML	Arab Salim	VL	ML	ML	Arnoun	VL	ML	ML
Bfaroue	VL	ML	ML	Breyqaah	L	ML	ML	Charqiyeh	VL	ML	ML
Choukine	VL	ML	ML	Deir El Zahrani	VL	ML	ML	Doueir El-Nabatiyeh	VL	ML	ML
Habbouch El-Nabatiye	VL	ML	ML	Hamra El-Nabatiyeh	L	M	ML	Harouf El-Nabatiyeh	VL	ML	ML
Hmaile	VL	ML	ML	Houmin El Faouqa	VL	ML	ML	Houmin El Tahta	VL	ML	ML
Jarjough	VL	ML	ML	Jbaah El-Nabatiyeh	VL	L	L	Jebchit	VL	ML	ML
Kfar Djal El-Nabatiy	VL	ML	ML	Kfar Remmane	VL	ML	ML	Kfar Sir	VL	ML	ML
Kfar Tebnit	VL	M	ML	Kfarfila	VL	ML	ML	Kfour El-Nabatieh	VL	ML	ML
Mayfadoun	L	M	ML	Mazraat Bsaffour	VL	ML	ML	Mazraat Chalbaal	VL	ML	ML
Mazraat Dmoul	L	M	ML	Mazraat El Khreibeh	VL	ML	ML	Mazraat El-Bayad El-	VL	ML	ML
Mazraat Kfarjaouz	VL	ML	ML	Mazraat Qalaat Meiss	L	M	ML	Nabatiyeh El-Fawka	VL	ML	ML
Nabatiyeh Et-Tahta	VL	ML	ML	Namiriyeh	VL	ML	ML	Qaaqaiyet El Jisr	VL	ML	ML
Qossaibeh El-Nabatiy	VL	ML	ML	Roumine	VL	ML	ML	Sarba El-Nabatieh	VL	ML	ML
Sir El-Gharbiyeh	L	M	ML	Toul	VL	ML	ML	Yehmor El-Nabatiyeh	L	M	ML
Zaoutar El Charkiyeh	VL	M	ML	Zaoutar El-Gharbiyeh	VL	ML	ML	Zebdine El-Nabatiyeh	VL	ML	ML
Zefta	VL	ML	ML								

Hasbaiya

Municipality	10-Dec	11-Dec	12-Dec	Municipality	10-Dec	11-Dec	12-Dec	Municipality	10-Dec	11-Dec	12-Dec
Aain Jarfa	VL	L	VL	Abou Qamha	VL	ML	L	Ain Qania	VL	L	VL
Bourghos	VL	ML	L	Chebaa	VL	L	L	Chouaya Hasbaya	VL	L	VL
Dellafeh	VL	M	L	Fardiss Hasbaiya	VL	ML	L	Hasbaya	VL	L	L
Hbariyeh	VL	L	L	Kaoukaba Hasbaiya	VL	M	L	Kfar Chouba	VL	L	L
Kfar Hamam	VL	L	L	Kfeir El-Zait	VL	L	VL	Khalwat Hasbaya	VL	L	VL
Khreibet Hasbaiya	VL	ML	ML	Majidiyeh Hasbaiya	VL	ML	ML	Marj Ez-Zhour (Haouc	VL	L	VL
Meri	VL	ML	ML	Mimass	VL	L	VL	Rachaiya El-Fokhar	VL	L	L
Salaiyeb	VL	M	ML								

Marjayoun

Municipality	10-Dec	11-Dec	12-Dec	Municipality	10-Dec	11-Dec	12-Dec	Municipality	10-Dec	11-Dec	12-Dec
Aalmane Marjaayoun	VL	ML	ML	Aamra	VL	M	ML	Adayseh Marjaayoun	VL	M	M
Adchit El-Koussair	VL	M	ML	Ain Aarab Marjaayoun	VL	M	ML	Bani Haiyann	VL	ML	ML
Blatt Marjaayoun	VL	M	L	Blida	VL	ML	M	Borj El-Moulouk	VL	M	ML

Boueyda Marjaayoun	VL	ML	L	Deir Mimass	VL	ML	ML	Deir Siriane	VL	ML	ML
Dibbine	VL	M	L	Ebel El Saqi	VL	M	L	Houla	VL	ML	M
Houra	VL	M	ML	Kfar Kila	L	M	ML	Khiam Marjaayoun	VL	M	ML
Klayaa	VL	ML	ML	Majdel Selem	VL	ML	M	Marjaayoun	VL	M	ML
Markaba	VL	ML	M	Mays El-Jabal	VL	ML	M	Mazraat Doumiat	VL	M	ML
Mazraat Sarada	VL	M	ML	Mhaibib	VL	ML	M	Qabrikha	VL	ML	ML
Qantara	VL	ML	ML	Rab El-Thalathine	VL	M	M	Saouaneh Marjayoun	VL	ML	ML
Talloussa	VL	ML	ML	Taybeh Matjaayoun	VL	M	ML	Touline	VL	ML	ML

Bent Jbail

Municipality	10-Dec	11-Dec	12-Dec	Municipality	10-Dec	11-Dec	12-Dec	Municipality	10-Dec	11-Dec	12-Dec
Ain-Ebel	VL	ML	ML	Aitaroun	VL	ML	M	Aynata Bint Jbeil	VL	ML	ML
Ayta El-Chaeb	VL	ML	L	Ayta El-Jabal	VL	ML	ML	Beit Lif	VL	L	L
Beit Yahoun	VL	ML	ML	Bint Jbeil	VL	ML	ML	Borj Qalaway	VL	M	ML
Braachit	VL	ML	ML	Chakra	VL	ML	M	Debel	VL	ML	ML
Deir Antar	VL	ML	ML	Froun	VL	ML	ML	Ghandouriyeh Bint Jb	VL	ML	ML
Hanine	VL	ML	ML	Hariss	VL	ML	ML	Hdatha	VL	ML	ML
Jmeyjmeh	VL	ML	ML	Kafra Bint Jbeil	VL	L	ML	Kfar Dounine	VL	ML	ML
Khirbet Selm	VL	ML	ML	Kounine	VL	ML	ML	Maroun El Ras	VL	ML	ML
Qalaway	VL	ML	ML	Qaouzah	VL	L	L	Qatmoun	VL	ML	ML
Ramya Bint Jbeil	VL	L	L	Rchaf	VL	ML	ML	Rmeich	VL	ML	ML
Safad Al Battikh	VL	ML	ML	Salhaneh	VL	L	L	Serbine	VL	ML	ML
Sultanieh Bint Jbeil	VL	ML	ML	Tibnine	VL	ML	ML	Tiri	VL	ML	ML
Yaroun	VL	ML	ML	Yater	VL	ML	ML				

Mont Liban

Jbail

Municipality	10-Dec	11-Dec	12-Dec	Municipality	10-Dec	11-Dec	12-Dec	Municipality	10-Dec	11-Dec	12-Dec
Aabeydat	L	L	L	Aalita	L	L	L	Aamchit	L	ML	M
Aarab El-Lahib	VL	L	L	Aarasta	VL	L	VL	Adonis Jbeil	L	L	L
Afqa Jbeil	L	L	L	Ain El Delbeh Jbeil	VL	L	L	Ain El-Ghouayba	VL	L	VL
Ain Jrain	VL	L	L	Ain Kfah	L	ML	L	Almat El Chemaliyat	VL	VL	VL
Almat El-Jenoubiya	VL	VL	VL	Aqoura	L	L	L	Bayzoun	L	L	L
Bchille Jbeil	L	L	L	Bechtlida	L	L	VL	Behdaydat	L	L	L
Beit Habbaq	L	ML	L	Bejjeh	L	ML	L	Bekhaaz	L	L	ML
Berbara Jbeil	L	ML	ML	Bintael	L	L	L	Birket Hjoula	L	L	L
Blatt Jbeil	L	L	L	Boulhos	VL	VL	VL	Breyj Jbeil	L	L	L
Chamat	L	ML	ML	Chikhane	L	ML	M	Chmout	L	L	L
Eddeh Jbeil	L	L	L	Ehmej	VL	L	VL	Fatre	L	L	L
Ferhet	L	L	L	Fghal	L	L	L	Frat	VL	VL	VL
Ghabat	L	L	L	Ghalboun	L	ML	L	Gharzouz	L	ML	ML
Ghofrine	L	ML	ML	Habil	L	L	L	Halate	L	L	L
Haqel	L	L	L	Hbaline	L	ML	L	Hboub	L	L	L
Hdeine	L	L	L	Hema Er-Rehban	L	L	L	Hema Mar Maroun Aann	VL	VL	VL
Hjoula	L	L	L	Hosrayel	L	ML	ML	Hsarat	L	ML	L

Hsoun	L	L	L	Jaj	L	L	L	Janne	VL	VL	VL
Jbeil	L	ML	ML	Jeddeyl Jbeil	VL	ML	M	Jlisse	L	L	L
Jouret El-Qattine	L	L	L	Kfar Baal Annaya	L	L	L	Kfar Kidde	L	L	ML
Kfar Kouas	L	L	L	Kfar Mashoun	L	ML	L	Kfoun	L	L	L
Kharbe Jbeil	L	ML	L	Laqlouq	L	L	L	Lassa	VL	L	VL
Lehfed	L	L	L	Maad	L	ML	L	Mar Sarkis	VL	L	L
Mastita	L	ML	ML	Mayfouq	L	L	L	Mazraat El Siyad	VL	L	L
Mazraat El-Maaden	VL	VL	VL	Mechane	L	L	L	Mechmech Jbeil	VL	L	L
Mehrin	L	L	L	Mejdel El-Akoura	L	L	L	Mghayreh Jbeil	L	L	L
Mounsef	L	ML	M	Nahr Ibrahim	L	ML	ML	Qahmez	VL	VL	VL
Qartaba	VL	L	VL	Qartaboun	L	M	ML	Qattara Jbeil	L	L	L
Qorqraya	VL	VL	VL	Ramout	L	ML	L	Ras Osta	L	L	L
Rihane Jbeil	VL	ML	M	Sakiet El-Khayt	L	L	L	Saqi Richmaya	L	L	L
Sebrine	L	L	L	Seraita	L	L	L	Souane Jbeil	VL	L	VL
Tadmor	L	L	L	Tartej	L	L	L	Torzaiya	L	L	L
Yanouh Jbeil	L	L	L	Zibdine Jbeil	L	L	L				

El Metn

Municipality	10-Dec	11-Dec	12-Dec	Municipality	10-Dec	11-Dec	12-Dec	Municipality	10-Dec	11-Dec	12-Dec
Aain El-Qabu	VL	L	VL	Aain El-Qach	VL	L	L	Aain El-Teffaha	VL	L	VL
Aain el-Safssaf El-M	VL	L	VL	Abou Mizane	VL	L	VL	Ain Aar	L	ML	ML
Ain Alaq	VL	L	ML	Ain El-Kharroube	VL	L	L	Ain El-Sendianeh	VL	L	L
Ain El-Zeitoune	VL	L	VL	Ain Saadeh	VL	L	ML	Aintoura El-Matn	VL	L	VL
Amaret Chalhoub	L	ML	ML	Antelias	L	ML	ML	Atchaneh	VL	L	ML
Ayroun	VL	L	VL	Baabdat	VL	L	L	Baouchariyeh	L	ML	ML
Baskinta	VL	L	VL	Beit Chabab	VL	L	L	Beit El-Chaar	L	ML	ML
Beit El-Kekko	L	ML	ML	Beit Mery	VL	L	L	Bhersaf	VL	L	L
Bikfaya	VL	L	VL	Biyakout	L	ML	ML	Bnabil	VL	L	VL
Bourj Hammoud	L	ML	ML	Bqennaya	L	L	ML	Broummana El-Matn	VL	L	ML
Bsalim	L	L	ML	Bsifrine	VL	VL	VL	Bteghrine	VL	L	VL
Chaouiye	L	L	ML	Chouaya El-Matn	VL	L	L	Choueir	VL	L	VL
Chrine	VL	L	VL	Dahr El Sawan El-Mat	VL	L	L	Daychouniyeh	L	L	L
Dbayeh	L	ML	ML	Deir Chamra	VL	L	VL	Deir Mar Abda el Mch	VL	L	L
Deir Mar Roukouz	L	ML	ML	Deir Tamiche	VL	L	ML	Dik El-Mehdi	L	L	ML
Dikwaneh	L	ML	ML	Douar El-Matn	VL	L	VL	Fanar	L	L	ML
Fraike	VL	L	L	Haret El-Ballaneh	L	L	ML	Hbous	L	ML	ML
Himlaya	VL	L	VL	Jal El Did	L	ML	ML	Jdeideh El-Metn	L	ML	ML
Jouar El-Matn	VL	L	VL	Jouret El-Ballout	VL	L	ML	Kaaqour	VL	L	VL
Kfar Aaqab	VL	L	VL	Kfertay El-Matn	VL	L	VL	Khenchara	VL	L	VL
Khillet El-Mtain	VL	L	VL	Konnabat Broummana	VL	L	ML	Konnabat Salima	VL	VL	VL
Machraah El-Matn	VL	L	VL	Majdel Tarchich	VL	L	VL	Majzoub	L	L	ML
Mansouriyeh El-Metn	L	ML	ML	Mar Boutros Karm Et-	VL	L	VL	Mar Chaya et Mzekke	VL	L	ML
Mar Moussa Ed-Douar	VL	L	VL	Marjaba	VL	L	VL	Masqa	VL	L	L
Mayasse	VL	L	VL	Mazraat Deir Aoukar	L	ML	ML	Mazraat El-Hadirat	L	L	ML
Mazraat Yachouh	L	ML	ML	Mchikha	VL	L	L	Menqlet Mezher	L	ML	ML
Mhayseh Matn	VL	L	VL	Mkalles	L	ML	ML	Mrouj	VL	L	L

Mtain	L	L	L	Mtayleb	L	L	ML	Nabay	VL	L	ML
Naccache	L	ML	ML	Ouadi Chahine	VL	L	VL	Ouadi El-Karm El-Mat	VL	L	VL
Ouata El-Mrouj	VL	L	VL	Ouyoun El-Matn	VL	L	L	Qornet Chehwan	L	L	ML
Qornet El-Hamra	VL	L	ML	Roumieh	VL	L	ML	Sfeilet Bikfaya	VL	L	VL
Sinn El-Fil	L	ML	ML	Zabbougha	VL	L	VL	Zalqa	L	ML	ML
Zarououn	VL	L	VL	Zekrite	VL	L	ML	Zighrine El-Matn	VL	L	VL
Zouk El-Khrab	L	ML	ML								

Chouf

Municipality	10-Dec	11-Dec	12-Dec	Municipality	10-Dec	11-Dec	12-Dec	Municipality	10-Dec	11-Dec	12-Dec
Aalmane El-Chouf	L	ML	ML	Aammqi El-Chouf	VL	L	L	Ain Ouzein	VL	L	L
Ain Qani	VL	L	L	Ain Zhalta	L	L	L	Ainbal	VL	L	L
Amatour	VL	L	L	Anout	VL	L	L	Atrine	VL	L	L
Baadarane	VL	L	L	Baaqline	VL	L	L	Baasir	L	M	ML
Barja	L	ML	ML	Barouk	L	L	VL	Bater	VL	L	L
Batloun	VL	L	L	Bayqoun	L	ML	L	Bchetfine	VL	L	L
Beiteddine	VL	L	L	Benouati Ech-Chouf	VL	L	L	Berjein	VL	L	L
Bireh et Mtalleh	VL	L	L	Biret El-Chouf	VL	L	L	Bkechtine Ouel Mchei	VL	L	L
Bkifa El-Chouf	VL	L	L	Botme	VL	L	L	Bqaiaa Ech-Chouf	VL	L	L
Bsaba El-Chouf	VL	L	L	Chammis El-Chouf	L	ML	ML	Chehim	VL	L	L
Chemaarine	VL	L	L	Chourit	VL	L	L	Daher El-Chouf	L	L	ML
Dalhoun	L	L	L	Damour	L	ML	ML	Daraya El-Chouf	VL	L	L
Deir El-Moukhalles	VL	L	L	Deir Baba	VL	L	L	Deir Dourit	VL	L	L
Deir El-Qamar	VL	L	L	Deir Kouche	VL	L	L	Dibbieh	VL	L	L
Dmit	VL	L	L	Fouara Jaafar	VL	L	L	Fraidis El-Chouf	L	L	L
Ghabet Jaafar	VL	L	L	Gharife	VL	L	L	Haret Jandal	VL	L	L
Hasrout	VL	L	L	Jadra	L	ML	ML	Jahlieh	VL	L	L
Jbeih El-Chouf	VL	L	L	Jdeidet El-Chouf	VL	L	L	Jiyeh	L	M	ML
Jleiliyeh	VL	L	L	Jmailiyeh	L	ML	ML	Joun	L	L	ML
Kahlounie El-Chouf	VL	L	L	Ketermaya	L	ML	ML	Kfar Faqoud	VL	L	L
Kfar Hamal	VL	L	L	Kfar Him	VL	L	L	Kfar Katra	VL	L	L
Kfar Niss	VL	L	L	Kfar hay	VL	L	L	Kfarnabrakh	VL	L	L
Khirbet Bisri	VL	L	L	Knayse El-Chouf	VL	VL	VL	Maaniyeh	L	ML	ML
Maasser Beiteddine	VL	L	L	Maasser El-Chouf	L	L	L	Majdalouna	L	ML	ML
Majdel El-Meouch	VL	L	L	Mazboud	VL	L	L	Mazmoura	VL	L	L
Mazraat El Chouf	VL	L	L	Mazraat El Daher	VL	L	L	Mazraat El-Douair	VL	L	L
Mechref	VL	L	L	Mghairie	L	ML	L	Mghayrie El-Chouf	VL	L	L
Moukhtara	VL	L	L	Mrusti	VL	L	L	Mtolle	VL	L	L
Naameh	L	ML	M	Niha El-Chouf	VL	L	L	Ouadi Abou Youssef	VL	VL	VL
Ouadi Ed-Deir	VL	L	L	Ouadi El-Sit	VL	L	L	Ouadi bnehlav	VL	L	L
Qraibeh	VL	L	L	Qreiaa	VL	L	VL	Rmayle El-Chouf	L	ML	ML
Semqaniyeh	VL	L	L	Sibline	L	ML	ML	Sirjbeil	VL	L	L
Warhanieh	L	L	L	Werdaniyeh	L	ML	ML	Zaarourieh	VL	L	L

Baabda

Municipality	10-Dec	11-Dec	12-Dec	Municipality	10-Dec	11-Dec	12-Dec	Municipality	10-Dec	11-Dec	12-Dec
Abadiyeh	VL	L	L	Ain Mouaffaq	VL	L	L	Araiya	VL	L	L

Arbaniyeh	VL	VL	VL	Arsoun	VL	L	VL	Baabda	L	L	ML
Baalchmey	VL	L	L	Bmaryam	L	L	L	Bourj El-Brajneh	L	L	ML
Boutchay	L	L	ML	Bsaba Baabda	L	L	ML	Btekhney	VL	L	L
Btibyat	VL	L	L	Bzebdine	VL	L	VL	Chbeniyeh	VL	L	L
Chiyah	L	ML	ML	Chmeisset Baabda	VL	L	L	Chouit	VL	L	L
Deir El-harf	VL	L	L	Deir Khouna	VL	L	L	Dlaybeh	VL	VL	VL
Falougha	L	ML	L	Furn El-Chebbak	L	ML	ML	Hadath Beyrouth	L	L	ML
Halaliyeh Baabda	VL	L	L	Hammana	L	L	L	Haret El Sett	VL	L	L
Haret Hamze	VL	L	L	Haret Hreik	L	ML	ML	Hasbaiya El-Metn	VL	VL	VL
Jouar El-Hoz	VL	L	VL	Jouret Arsoun	VL	L	VL	Kfar Chima	L	L	ML
Kfar Selouane	VL	L	L	Khalouat Baabda	L	L	L	Kneisset Baabda	VL	L	L
Laylakeh	L	L	ML	Louayzeh Baabda	VL	L	L	Merdache	L	L	ML
Mzairaa Baabda	VL	L	L	Ouadi Chahrour El OI	L	L	L	Ouadi Chahrour El So	L	L	ML
Qalaa Baabda	VL	L	L	Qhraybe Baabda	VL	L	L	Qobbayaa	VL	L	L
Qornayel	VL	L	VL	Qortada	VL	L	L	Qrayeh Baabda	VL	L	L
Qsaibeh Baabda	VL	L	ML	Qtale Baabda	VL	L	L	Ras El Metn	VL	L	L
Ras El-Haref	L	L	L	Rouayset El-Ballout	VL	L	L	Salima Baabda	VL	L	VL
Tahouitat El Ghadir	L	L	ML	Tarchich	VL	L	VL	Zandouqa	VL	L	L

Aley

Municipality	10-Dec	11-Dec	12-Dec	Municipality	10-Dec	11-Dec	12-Dec	Municipality	10-Dec	11-Dec	12-Dec
Abey	VL	L	L	Aghmid	VL	L	L	Ain Dara	L	ML	L
Ain Drafil	L	L	L	Ain El Halazoun	VL	L	L	Ain El-Rmmaneh	VL	L	L
Ain Jedideh	VL	L	L	Ain Ksour	L	L	L	Ain Onoub	L	L	ML
Ain Traz	VL	L	L	Ainab	L	L	ML	Aley	VL	L	L
Aramoun	L	L	ML	Aytat	L	L	ML	Azouniyeh	VL	L	L
Baawerta	VL	L	L	Badghan Oua Wadi Bad	VL	L	L	Bassatine	L	L	ML
Bayssour	L	L	L	Bchamoun	L	L	ML	Bdadoun	VL	L	L
Behouara	VL	L	L	Bennay	VL	L	L	Bhamdoun El-Dayaa	VL	L	L
Bhamdoun El-Mhatta	VL	L	L	Bkhechtey	VL	L	L	Bleibel	L	L	ML
Bmakine	L	L	L	Bmehray	L	L	L	Bouzirid	VL	VL	L
Bserrine	VL	L	L	Bsous	VL	L	L	Btalloun	VL	L	L
Btater	VL	L	L	Chanay	L	L	L	Charoun	L	L	L
Chartoun	VL	L	L	Chemlane	L	L	ML	Choueifat El-Aamrous	L	L	ML
Choueifat El-Oumara	L	L	ML	Choueifat El-Quoubbe	L	L	ML	Dakkoun	VL	L	L
Deir Qoubel	L	L	ML	Dfoun	L	L	L	Douair El Remmaneh	VL	VL	L
Ghaboun	VL	L	L	Habramoun	VL	L	L	Homs Oua Hama	VL	L	L
Houmal	L	L	ML	Jisr El Qadi	VL	L	L	Kehaleh	VL	L	L
Keyfoun	L	L	L	Kfar Aamey	VL	L	L	Kommatyeh	VL	L	L
Maasrati	VL	L	L	Majdel Baana	L	L	L	Mansourieh et Ain El	VL	L	L
Mazraat El-Nahr	VL	L	L	Mchakhte	VL	L	L	Mecherfeh	VL	L	L
Mejdlaya	VL	L	L	Mrayjat	L	L	L	Ramiyeh	VL	L	L
Rechmaya	VL	L	L	Rejmeh	VL	L	L	Remhala	L	L	L
Rouayset El Neemane	VL	L	L	Saoufar	L	L	L	Selfaya	VL	L	L
Sirhmoul	L	L	ML	Souq El Ghareb	VL	L	L	Taazanieh	VL	L	L

Kesrouane

Municipality	10-Dec	11-Dec	12-Dec	Municipality	10-Dec	11-Dec	12-Dec	Municipality	10-Dec	11-Dec	12-Dec
Achkout	VL	L	L	Adma Oua Dafneh	L	ML	L	Ain Ed-Delbe Kesroua	VL	VL	VL
Ain El-Rihane	L	L	L	Aintoura Kesrouane	L	L	ML	Ajaltoun	VL	L	L
Akaybeh Kesrouane	L	M	ML	Aramoun Kesrouane	VL	L	L	Azra ouel Ozor	L	L	L
Ballouneh	VL	L	L	Batha	VL	L	L	Bekaatat Achkout	VL	L	L
Bekaatat Kanaan	VL	L	L	Bizhel	L	L	L	Bouar	L	ML	L
Bqaatouta	VL	L	VL	Bqaq Ed-Dine	L	ML	L	Bzommar	VL	L	L
Chahtoul	VL	L	L	Chnaniir	VL	L	L	Chouan	VL	VL	VL
Daraya Kesrouane	VL	L	L	Daroun	VL	L	L	Deir Baqlouch	VL	L	L
Diebta	VL	L	VL	Eghbeh	VL	VL	VL	Faraya	VL	L	VL
Fatka	L	L	L	Feytroun	VL	L	L	Ghazir	L	L	L
Ghbaleh Kesrouane	L	L	L	Ghedrass	L	L	L	Ghosta	VL	L	L
Ghyneh	L	L	L	Harharaya w Kattine	VL	L	L	Harissa Kesrouane	VL	L	L
Hayata	VL	L	VL	Hosein	L	L	L	Hrajel	VL	L	VL
Jdeideh Ghazir	VL	L	L	Jeita	L	L	L	Jounieh Ghadir	L	ML	ML
Jounieh Haret Sakhr	L	ML	ML	Jounieh Salel Alma	L	L	L	Jounieh Sarba	L	M	ML
Jouret Bedrane	L	L	L	Jouret Mhad	VL	L	VL	Jouret Termos	L	L	L
Kfar Debiane	VL	L	VL	Kfar Tay Kesrouane	VL	VL	VL	Kfar Yassine	L	M	ML
Kfour Kesrouane	VL	L	L	Kharayeb Nahr Ibrahi	L	L	L	Klayaat Kesrouane	VL	L	L
Maarab	VL	L	VL	Maaysra Kesrouane	L	L	L	Mayrouba	VL	L	VL
Mazraat Er-Ras	L	L	ML	Mazraat Mrah El-Mir	VL	L	VL	Mchaa El Ftouh	L	L	L
Mchaa Faraya	VL	L	L	Mchaa Kfar Dibiane	L	L	L	Mghaer	VL	VL	VL
Mradiyah	L	L	L	Nahr Ed-Dahab	VL	L	VL	Nammoura Kesrouane	L	L	L
Ouata El Jaouz	VL	L	L	Ouata Sillam	L	M	ML	Raachine	VL	L	VL
Rayfoun	VL	L	L	Safra Kesrouane	L	ML	ML	Shayle Kesrouane	L	L	L
Tabarja	L	ML	ML	Yahchouch	L	L	L	Zaaytreh	L	L	L
Zeytoun	L	L	L	Zouk Mikael	L	M	ML	Zouk Mosbeh	L	ML	ML

Baalbek_Hermel

Baalbek

Municipality	10-Dec	11-Dec	12-Dec	Municipality	10-Dec	11-Dec	12-Dec	Municipality	10-Dec	11-Dec	12-Dec
Aadous	ML	ML	ML	Aamchki	L	L	L	Aarsal	L	L	L
Ain Baalbek	ML	L	L	Ain Bourday	L	L	L	Ain El-Benye	L	L	VL
Ain El-Jaouz Baalbek	L	L	VL	Ain El-Siya Chadoura	L	L	L	Al Khodr Baalbek	L	ML	L
Al Nabi Chit	L	ML	L	Aynata Baalbek	L	L	L	Baalbek	L	L	L
Bachwat	L	L	L	Barqa	L	L	L	Bednayel Baalbak	L	ML	L
Beit Chama	ML	ML	M	Bijjaje	M	M	M	Bouday	L	ML	M
Brital	L	L	L	Btadi	ML	M	M	Chaat	ML	ML	ML
Chaibe	L	L	L	Chlifa	ML	M	M	Chmestar	L	ML	M
Dar El-Oussa	L	ML	M	Deir El-Ahmar	L	M	M	Deir Mar Maroun Baal	M	ML	ML
Douris	L	ML	L	Fakiha	M	ML	ML	Hadath Baalbek	ML	ML	M
Ham	L	L	VL	Haour Taala	L	L	L	Hizzine	ML	ML	M
Hlebta	L	L	M	Hosh Barada	ML	ML	M	Hosh El Dahab	ML	ML	M
Hosh El Snid	L	ML	L	Hosh El-Nabi	L	ML	ML	Hosh El-Rafiq	ML	ML	M
Hosh Tal Safiya	ML	ML	M	Hrebta	ML	M	M	laat	L	ML	ML

Jebaa	ML	ML	M	Jenta	L	L	L	Kfar Dabach	ML	ML	M
Kfar Dane	ML	ML	M	Khraibeh El-Hermel	M	M	M	Khreibet Baalbek	L	L	L
Kneisset Baalbek	L	ML	L	Labueh	M	M	ML	Maarboun	L	L	VL
Majdaloun	ML	ML	M	Maqneh	L	ML	L	Mazraat Beit Mcheik	ML	ML	M
Misraya	ML	ML	M	Moqraq	M	M	M	Nabha El-Damdoum	L	ML	ML
Nabi Chbay	L	L	VL	Nabi Osman	M	ML	L	Nahleh baalbek	L	L	L
Ouadi El-Oss	L	ML	M	Qaa Baayoun	M	L	L	Qaa Jouar Maqiye	ML	ML	ML
Qaa Ouadi El-Khanzir	M	ML	M	Qah Baalbek	M	ML	ML	Qarha Baalbek	M	M	M
Qsarnaba	ML	ML	M	Ram Baalbek	ML	M	M	Ras Baalbek El Sahl	M	ML	M
Ras Baalbek El-Charq	M	L	L	Riha	ML	M	ML	Saaide	ML	ML	M
Sbouba	M	M	M	Seriine El-Tahta	L	ML	ML	Slouqi	L	L	L
Taiba Baalbek	ML	ML	ML	Talia	ML	ML	ML	Taraiya	L	ML	ML
Temnin El-Fawqa	ML	ML	M	Temnin El-Tahta	ML	ML	M	Tfail	L	L	VL
Yahfoufa	L	L	L	Yammouneh	L	ML	M	Younine	L	L	L
Zboud	M	M	M								

Hermel

Municipality	10-Dec	11-Dec	12-Dec	Municipality	10-Dec	11-Dec	12-Dec	Municipality	10-Dec	11-Dec	12-Dec
Charbine El-Hermel	L	L	ML	Hermel Jbab	L	L	ML	Hermel	ML	ML	M
Maaysra El-Hermel	M	M	M	Michaa Mrajhine	L	L	ML	Ouadi Faara	L	L	M
Ras Baalbek - Ouadi	M	ML	M	Ras Baalbek El Gharb	M	ML	M	Zighrine	L	L	M

Akkar

Akkar

Municipality	10-Dec	11-Dec	12-Dec	Municipality	10-Dec	11-Dec	12-Dec	Municipality	10-Dec	11-Dec	12-Dec
Aain Tinta	L	ML	L	Aaiyat	L	L	M	Aakkar El-Aatiga	L	L	L
Aamar Akkar	L	M	ML	Aamar El Baykat	L	ML	L	Aamayer	L	L	ML
Aamriyet Akkar	L	ML	L	Aandqet	L	L	L	Aarmeh	L	M	ML
Aarqa	L	M	ML	Aawaynat	L	L	ML	Aayoun Akkar	L	L	ML
Abboudiye	L	M	M	Ain El-Zeit	L	ML	L	Ain Yaaqoub	L	L	ML
Akroum	L	L	ML	Aridet Cheikh Zennad	L	M	M	Baldehy w Mazraat Bal	L	ML	ML
Barcha	L	M	M	Bardeh	L	ML	L	Bebnine	L	M	ML
Beino	L	ML	ML	Beit Ayoub	L	ML	M	Beit El-Haouch	L	M	ML
Beit Mellat	L	ML	M	Beit Younes	L	L	ML	Berbara Akkar	L	ML	L
Berqayel	L	M	ML	Bezbin	L	L	L	Bireh Akkar	L	ML	L
Borj	L	ML	M	Bqerezla	L	ML	M	Bzal	L	L	L
Chane	L	L	L	Chaqdouf	L	L	M	Charbila	L	M	ML
Cheikh Mohammad	L	M	ML	Cheikh Taba Es-Sahl	L	M	ML	Cheikh Taba	L	M	M
Cheikh Zennad	L	M	ML	Cheikhlar	L	L	ML	Chir Hmairine	L	M	ML
Daghle	L	ML	L	Dahr Laissine	L	M	M	Darine	L	M	ML
Dawra	L	L	L	Dawsa w Baghdadi	L	ML	L	Dayret Nahr El-Kabir	L	ML	ML
Deir Dalloum	L	M	ML	Deir Jennine	L	ML	L	Denbou	L	L	ML
Dibbabiyyeh	L	ML	L	Douair Aadwiyeh	L	ML	L	Fassikine	L	ML	L
Fnaydek	L	L	ML	Fraydes Akkar	L	ML	L	Ghazayle	L	M	ML
Habchit	L	L	L	Hakour	L	M	ML	Halba	L	M	ML

Haouchab	L	M	ML	Hayssat	L	M	ML	Haytla	L	M	ML
Hayzouq	L	ML	ML	Hedd	L	M	ML	Hmaira Aakkar	L	ML	ML
Hmaiss Aakkar	L	M	ML	Hnaider	L	ML	M	Hokr Ed-Dahri	L	M	M
Hokr Etti	L	M	ML	Hokr Jouret Srar	L	M	M	Houaich	L	ML	ML
Hrar	L	ML	ML	Idbil	L	ML	M	Ilal	L	M	M
Janine	L	M	M	Jdeidet El-Joumeh	L	M	M	Jdeidet El-Kaiteh	L	ML	ML
Jebrayel	L	ML	M	Kafr	L	L	L	Kafr	L	ML	L
Karm Asfour	L	M	ML	Kfar Melki Aakkar	L	M	ML	Kfar Noun	L	ML	L
Kfarharra	L	M	ML	Khalsa	L	ML	ML	Kharnoubet Aakkar	L	M	M
Khirbet Daoud Aakkar	L	ML	L	Khirbet El Remmane	L	L	L	Khirbet Shar	L	ML	L
Khoreybet El-Jindi	L	M	ML	Khreibet Aakkar	L	ML	M	Kneisset Aakkar	L	M	ML
Kneisset Hnaider	L	ML	M	Knisse	L	M	ML	Kroum El-Aarab	L	ML	ML
Kwachra	L	ML	L	Kweykhat	L	M	ML	Machta Hammoud	L	ML	ML
Majdala	L	M	ML	Majdel Akkar	L	ML	L	Mar Touma	L	M	ML
Marlaya Melhem	L	M	ML	Mashha	L	M	ML	Massoudiye	L	M	ML
Mazraat Beit Ghattas	L	M	ML	Mazraat En-Nahriye	L	L	L	Mechmech	L	L	L
Memneh	L	L	L	Mhammara	L	M	ML	Mighraq Aakkar	L	M	ML
Minyara	L	M	ML	Moqayteh	L	M	ML	Mounjez	L	ML	L
Msalla	L	ML	L	Mzeihmeh	L	M	ML	Nfaiseh	L	M	ML
Noura Et-Tahta	L	ML	L	Ouadi El-Haour	L	M	ML	Ouadi El-Jamous	L	M	ML
Ouyoun El-Ghizlane	L	M	ML	Qaabarine	L	M	ML	Qabaait	L	L	L
Qachlaq	L	M	ML	Qantara Aakkar	L	ML	M	Qarha Aakkar	L	ML	M
Qarqaf	L	M	ML	Qboula	L	ML	M	Qleiaat Aakkar	L	M	ML
Qloud El-Baqie	L	M	ML	Qobaiyat Aakkar	L	L	L	Qobbat Chamrat	L	M	ML
Qorayat	L	ML	ML	Qornet Aakkar	L	L	ML	Qsair Aakkar	L	ML	L
Rahbe	L	ML	ML	Rihaniyet Aakkar	L	M	ML	Rmah	L	L	L
Rmoul	L	M	ML	Saadine	L	M	ML	Sadaqa	L	ML	M
Saidnaya	L	M	ML	Sammouniye	L	M	ML	Sayssouq	L	M	ML
Semmaqiye	L	M	M	Semmaqli	L	M	ML	Sfinet El-Dreib	L	ML	ML
Sfinet El-Qaitaa	L	L	ML	Sindyanet Zeidane	L	L	L	Souaisset Aakkar	L	M	ML
Srar	L	M	ML	Tal Abbas El Gharby	L	M	ML	Tal Abbas El-Charqy	L	M	ML
Tal Biret	L	M	ML	Tal Hmayra	L	M	ML	Tal Maayan Tal Kiri	L	M	ML
Tal Sibel	L	M	ML	Tallet Chattaha	L	ML	M	Tikrit	L	ML	ML
Tleil	L	M	ML	Tshea	L	L	L	Zawarib	L	M	M
Zouq El Hosniyeh	L	M	ML	Zouq El-Haddara	L	M	ML	Zouq El-Hbalsa	L	M	ML
Zouq El-Moqachrine	L	M	ML								

Sud

Sour

Municipality	10-Dec	11-Dec	12-Dec	Municipality	10-Dec	11-Dec	12-Dec	Municipality	10-Dec	11-Dec	12-Dec
Aaiyeh	VL	ML	ML	Aalma El-Chaab	VL	L	ML	Aaytit	VL	M	ML
Abbassiyeh Sour	L	M	M	Abou Chech	VL	ML	ML	Ain Abou Abdallah	L	M	M
Ain Baal	VL	M	ML	Arzoun	VL	ML	ML	Aziyeh	VL	L	ML
Baflaya	VL	M	ML	Barich	L	M	ML	Batouliyeh	VL	M	ML
Bayad	VL	ML	ML	Bazouriyeh	L	M	M	Bediass	L	M	ML

Bestiyat	VL	M	ML	Borj El Chemali	L	M	M	Borj En-Naqoura	VL	ML	ML
Borj Rahhal	L	M	ML	Boustane	VL	ML	ML	Btaychih	VL	ML	ML
Chaaitiye	VL	ML	ML	Chameh	VL	L	ML	Chehabiye	VL	ML	ML
Chehour	VL	L	L	Chihine	VL	ML	ML	Debaal Sour	L	M	ML
Deir Amess	VL	L	ML	Deir Kifa	VL	ML	ML	Deir Qanoun El-Ain	VL	M	ML
Deir Qanoun El-Naher	L	M	ML	Derdghaiya	VL	ML	ML	Dhayra	VL	ML	ML
Halloussiyeh	L	M	ML	Hamoul	VL	L	ML	Hanaouey	VL	ML	ML
Henniye	VL	M	ML	Hmairi Sour	VL	M	ML	Iskandarouna Sour	VL	L	ML
Jbal El Botom	VL	ML	ML	Jebbin	VL	ML	ML	Jennata	L	M	ML
Jijim	VL	L	ML	Jouaiya	VL	M	ML	Kneisset Sour	VL	M	ML
Maarake	L	M	ML	Maaroub	L	M	ML	Majadel	VL	ML	ML
Majdalzoun	VL	ML	ML	Mansouri Sour	VL	ML	ML	Marnba	VL	L	ML
Marouahine	VL	L	L	Mazraat El-Zalloutiy	VL	ML	ML	Mazraat Mechref	VL	ML	ML
Mazraat Tayr Semhat	VL	L	L	Mheilib	L	M	M	Neffakhiyeh	VL	ML	ML
Niha Sour	VL	ML	ML	Ouadi Jilo	VL	M	ML	Qana	VL	ML	ML
Qolaileh Sour	VL	ML	ML	Rechknany	VL	ML	ML	Rmadiyah	VL	ML	ML
Selha Sour	VL	ML	ML	Siddiqine	VL	ML	ML	Sour	L	M	M
Srifa	VL	ML	ML	Tayr Debbe	L	M	ML	Tayr Felsay	L	M	ML
Tayr Harfa	VL	ML	ML	Touayri	VL	L	ML	Toura	L	M	ML
Yanouh Sour	VL	M	ML	Yarine	VL	ML	ML	Zebqine	VL	L	L

Saida

Municipality	10-Dec	11-Dec	12-Dec	Municipality	10-Dec	11-Dec	12-Dec	Municipality	10-Dec	11-Dec	12-Dec
Aanqoun	VL	ML	ML	Aaqtanit	L	ML	ML	Aarab Ej-Jall	VL	ML	ML
Aarab Tabbaya	VL	ML	ML	Abra Saida	L	ML	ML	Adloun	L	M	M
Adousiyeh	ML	M	M	Ain-El-Deleb	L	ML	ML	Arzai	L	M	ML
Babliyah	L	M	ML	Barty	VL	ML	ML	Bissariyeh	ML	M	M
Bnaafoul	VL	ML	ML	Bqosta	L	ML	ML	Bramiy	L	ML	ML
Daoudiyeh	L	M	M	Dareb El-Sim	VL	ML	ML	Erkay	VL	ML	ML
Ghassanieh	L	M	ML	Ghazieh	ML	M	M	Hajjeh	VL	ML	ML
Haret Saida	L	ML	ML	Hartiyeh	L	M	ML	Hlaliye Saida	L	ML	ML
Insariyat	L	M	ML	Jazira Saida	L	M	M	Kafar Bit	VL	ML	ML
Kaoutariyet El-Siyad	VL	ML	ML	Kfar Chellal	VL	ML	ML	Kfar Hatta Saida	VL	ML	ML
Kfar Milke Saida	VL	ML	ML	Khartoum	L	M	ML	Khaziz	VL	ML	ML
Khirbet Ed-Douair Sa	L	M	M	Khirbet El-Bassal	L	M	M	Khrayeb Saida	L	M	ML
Loubieh	L	M	ML	Maghdouche	VL	ML	ML	Majdelyoun	L	ML	ML
Matariyet El-Choumar	L	M	ML	Matayriyeh	VL	M	ML	Mazraat 'Mseileh	ML	M	M
Mazraat 'Snaiber	M	M	M	Mazraat Aarab Soukka	VL	ML	ML	Mazraat Deir Taqla	VL	M	ML
Mazraat El Yahoudiye	L	M	M	Mazraat El-Housseini	M	M	M	Mazraat El-Mhaydaleh	L	M	ML
Mazraat El-Ouasta	L	M	M	Mazraat Jamjim	L	M	ML	Mazraat Kaoutariyet	L	M	ML
Mazraat Kfar Badda	L	M	ML	Mazraat Oussamiyat	L	M	ML	Mazraat Sari	L	M	ML
Mazraat Sinai	L	M	ML	Meemariyeh	L	M	ML	Merouaniyeh	L	M	M
Miyeh ou Miyeh	L	ML	ML	Najjariyeh	M	M	M	Qaaqiyat El-Snaouba	L	M	M
Qnarit	L	ML	ML	Qraiye Saida	L	ML	ML	Saida Ed-Dekermane	L	ML	ML
Saida El-Oustani	L	ML	ML	Saida El-Qadimeh	L	ML	ML	Saida Kefraya	L	ML	ML
Saksakiyeh	L	M	M	Salhieh Saida	L	ML	ML	Sarafand	L	M	M

Sfenta	VL	L	ML	Tafahta	L	M	M	Tanbourit	VL	ML	ML
Tebna	L	M	M	Zaghdraiya	VL	ML	ML	Zeita	VL	ML	ML
Zrariyeh	L	M	ML								

Jezzine

Municipality	10-Dec	11-Dec	12-Dec	Municipality	10-Dec	11-Dec	12-Dec	Municipality	10-Dec	11-Dec	12-Dec
Ain El-Mir (El Estab)	VL	ML	ML	Anane	VL	L	L	Aramta	VL	ML	L
Ariya	VL	L	L	Aychiyeh	VL	L	L	Azour	VL	L	L
Baba	VL	L	L	Bayssour Jezzine	VL	ML	ML	Benoueteh Jezzine	VL	L	L
Bhannine	VL	L	L	Bisri	VL	L	L	Bkassine	VL	L	L
Bouslaya	VL	L	L	Btedine El-Leqech	VL	L	L	Chbail	VL	L	L
Choualiq Jezzine	L	ML	ML	Dahr Ed-Deir	VL	L	L	Deir El Qattine	VL	L	L
Demachqiyeh	VL	ML	ML	Ghabbatiyeh	VL	L	L	Harf Jezzine	VL	L	L
Hassaniyeh	VL	ML	ML	Haytouleh	VL	ML	ML	Haytura	VL	L	L
Hidab	VL	L	L	Homsiyeh	VL	L	L	Jabal Toura	VL	L	L
Jarmaq	VL	ML	ML	Jensnaya	VL	ML	ML	Jernaya	VL	ML	ML
Jezzine	VL	ML	L	Karkha	L	ML	ML	Kfar Falous	VL	ML	L
Kfar Houna	VL	L	L	Kfar Jarrah	L	ML	ML	Lebaa	L	ML	ML
Louayzet Jezzine	VL	L	L	Machmouche	VL	L	L	Mahmoudiyeh Jezzine	VL	ML	ML
Maknounye Jezzine	VL	L	L	Maraat Ouazaiyeh	VL	ML	L	Mazraat Daraya	VL	L	L
Mazraat El-Aarqoub	VL	L	L	Mazraat El-Mathane	VL	L	VL	Mazraat El-Rahbane	VL	L	L
Mazraat Khallet Khaz	VL	L	L	Mazraat Louzid (Loua	VL	L	L	Mazraat Qrouh	VL	ML	L
Mazraat Tamra	VL	ML	ML	Mazraat Zighrine Jez	VL	L	L	Mazraat	VL	L	L
Mharbiyeh	VL	ML	ML	Midane Jezzine	VL	L	L	Mjeydel Jezzine	VL	ML	ML
Mlikh	VL	L	L	Mrah El-Hbasse	L	ML	ML	Ouadi Baanqoudaine	L	ML	ML
Ouadi El-Laymoun	VL	ML	ML	Ouardiyeh	VL	VL	VL	Qabaa Jezzine	VL	L	L
Qatrani	VL	L	L	Qaytouleh	VL	L	L	Qtaleh Jezzine	VL	L	L
Rihane Jezzine	VL	ML	L	Rimat	VL	L	L	Roum	VL	L	L
Roummanet	VL	ML	ML	Sabbah	VL	L	L	Saydoun	VL	L	L
Sfaray	VL	L	L	Snaya	VL	L	L	Sojoud	VL	L	ML
Srayri	VL	ML	L	Taaid	VL	L	L	Wadi Jezzine	VL	L	L
Zhalta	VL	L	L								

Bekaa

West Bekaa

Municipality	10-Dec	11-Dec	12-Dec	Municipality	10-Dec	11-Dec	12-Dec	Municipality	10-Dec	11-Dec	12-Dec
Aammiq BG	ML	L	L	Ain El Tineh BG	VL	L	L	Ain Zebdeh	VL	L	L
Ana	L	L	L	Aytanit	VL	L	L	Baaloul BG	VL	L	L
Bab Mareh	VL	L	L	Chouberqiye Aammiq	ML	L	L	Dakoue	L	L	L
Deir Ain El-Jaouze	VL	L	L	Deir Tahniche	L	L	L	Ghaza	ML	L	L
Harime El-Soughra	L	L	L	Hoch Harimeh	L	L	L	Jazira BG	ML	L	L
Jib Jennine	L	L	L	Kamed-El-Laouz	L	L	L	Kefraya BG	L	L	L
Khiara El Atika	ML	L	L	Khiara	ML	L	L	Khirbet Qanafar	L	L	L
Lala	VL	L	L	Lebbaya BG	VL	L	VL	Loussa	VL	ML	L
Machghara	VL	L	L	Manara (Hammara) BG	L	L	L	Mansoura BG	L	ML	L

Marej BG	L	ML	L	Maydoun	VL	ML	L	Ouaqf BG	ML	L	L
Qaraaoun	VL	L	L	Qelya	VL	ML	L	Raouda (Istabel)	L	ML	L
Saghbine	VL	L	L	Sohmor	VL	L	VL	Soltan Yacoub el Ara	L	L	L
Souairy	L	L	L	Sultan Yaacoub	L	L	L	Tal Znoun	L	L	L
Yehmor BG	VL	L	L	Zilaya	VL	L	L				

Zahle

Municipality	10-Dec	11-Dec	12-Dec	Municipality	10-Dec	11-Dec	12-Dec	Municipality	10-Dec	11-Dec	12-Dec
Aanjar (Haouch Mouss)	L	L	L	Ablah	ML	ML	ML	Ain Kfarzabad	L	L	L
Ali-El-Nahri	ML	ML	M	Bar Elias	L	ML	L	Bouarej	L	ML	L
Cheberqiyet Tabet	L	ML	L	Chtaura	L	ML	L	Deir El Ghazal	L	L	L
Delhamiyet Zahle	L	ML	L	Ferzol	L	ML	L	Haouch El-Ghanam	ML	ML	M
Haouch Es-Siyadeh	VL	ML	L	Haouch Hala	L	ML	ML	Haouch Mandara	L	ML	L
Haouch Qayssar	L	ML	L	Hezerta	L	L	L	Hosh Moussa	L	L	L
Jdita	L	ML	L	Kfarzabad	L	L	L	Ksara	L	ML	L
Majdel Aanjar	L	L	L	Makssi	L	ML	L	Massa	L	ML	L
Mazraat Er-Remtaniye	L	ML	L	Mrayjat Zahle	L	ML	L	Mzaraa Zahle	L	ML	L
Nabi Ayla	L	ML	ML	Nasriyet Rizk	L	ML	L	Nasriyet Zahle	L	ML	L
Niha Zahle	L	ML	ML	Ouadi Ed-Deloum	L	ML	L	Ouadi El-Arayech	L	ML	L
Qaa El Rim	L	ML	L	Qab Elias	VL	ML	L	Qousaya	L	L	L
Rhit	L	L	L	Riyak	L	ML	ML	Saadnayel	L	ML	L
Taal El-Akhdar	L	L	L	Taalbeya	L	ML	L	Taanayel	L	ML	L
Talamara	ML	ML	M	Tcheflik Edde Haouch	L	ML	L	Tcheflik Qiqano	L	ML	L
Terbol Zahle	L	L	L	Touaite Zahle	L	L	L	Zahle Aradi	L	ML	L
Zahle El-Berbara	L	ML	L	Zahle El-Maallaqa	L	ML	L	Zahle El-Midane	L	ML	L
Zahle Er-Rassiyeh	L	ML	L	Zahle Haouch El-Ouma	L	ML	L	Zahle Haouch El-Ouma	L	ML	L
Zahle Haouch Ez-Zara	L	ML	L	Zahle Maalaqa Aradi	L	ML	L	Zahle Mar Antonios	L	ML	L
Zahle Mar Elias	L	ML	L	Zahle Mar Gerios	L	ML	L	Zahle Saydet En-Naja	L	ML	L
Zebdoul	VL	ML	L								

Rachaiya

Municipality	10-Dec	11-Dec	12-Dec	Municipality	10-Dec	11-Dec	12-Dec	Municipality	10-Dec	11-Dec	12-Dec
Ain Arab Rachaiya	L	L	VL	Ain Ata	VL	L	VL	Ain Harche	VL	L	VL
Aqabe Rachaya	VL	L	VL	Ayha	VL	L	VL	Ayta El Fokhar	L	L	L
Bakifa Rachaya	VL	L	VL	Bakka	VL	L	VL	Beit Lahya	VL	L	VL
Bireh Rachaiya	L	L	VL	Daher El Ahmar	VL	L	VL	Deir El-Achayer	L	L	VL
Heloua Rachaiya	L	L	VL	Hoch El Qannabeh Rac	VL	L	VL	Kaoukaba Bou Arab	VL	L	VL
Kfar Danis	VL	L	VL	Kfar Mechki	VL	L	VL	Kfar Qouq	VL	L	VL
Kherbet Rouha	L	L	VL	Majdel Balhiss	VL	L	VL	Mdoukha	L	L	VL
Mhaydseh Rachaiya	VL	L	VL	Nabi Safa	VL	L	VL	Rachaiya	VL	L	VL
Rafid Rachaiya	VL	L	VL	Selsata (Mazraat Dei	L	L	VL	Tannoura	VL	L	VL
Yanta	L	L	VL								

Beyrouth

Beyrouth

Municipality	10-Dec	11-Dec	12-Dec	Municipality	10-Dec	11-Dec	12-Dec	Municipality	10-Dec	11-Dec	12-Dec
--------------	--------	--------	--------	--------------	--------	--------	--------	--------------	--------	--------	--------

Achrafieh	L	ML	ML	Ain el-Mreisse	L	ML	ML	Bachoura	L	ML	ML
Beirut Central Distr	L	ML	ML	Marfai	L	ML	ML	Mazraa	L	ML	ML
Medaouar	L	ML	ML	Minet el-Hosn	L	ML	ML	Mwssaitbeh	L	ML	ML
Ras Beirut	L	ML	ML	Rmeil	L	ML	ML	Saifi	L	ML	ML
Zqaq el-Blat	L	ML	ML								