

Lebanon Fire Risk Bulletin



CIVIL DEDEFENCE

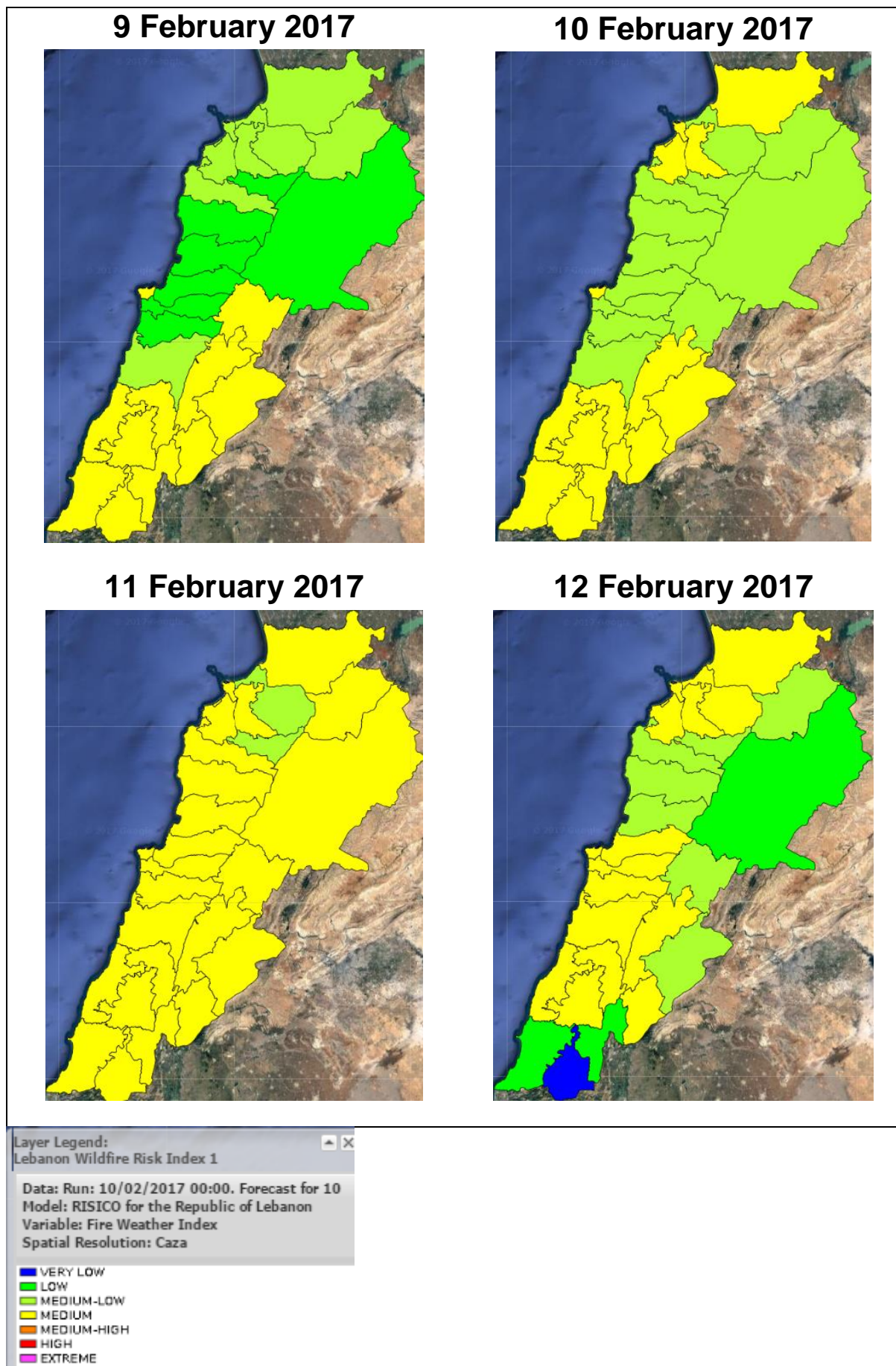
Refer to cadast condition.

General description of potential fire risk situation

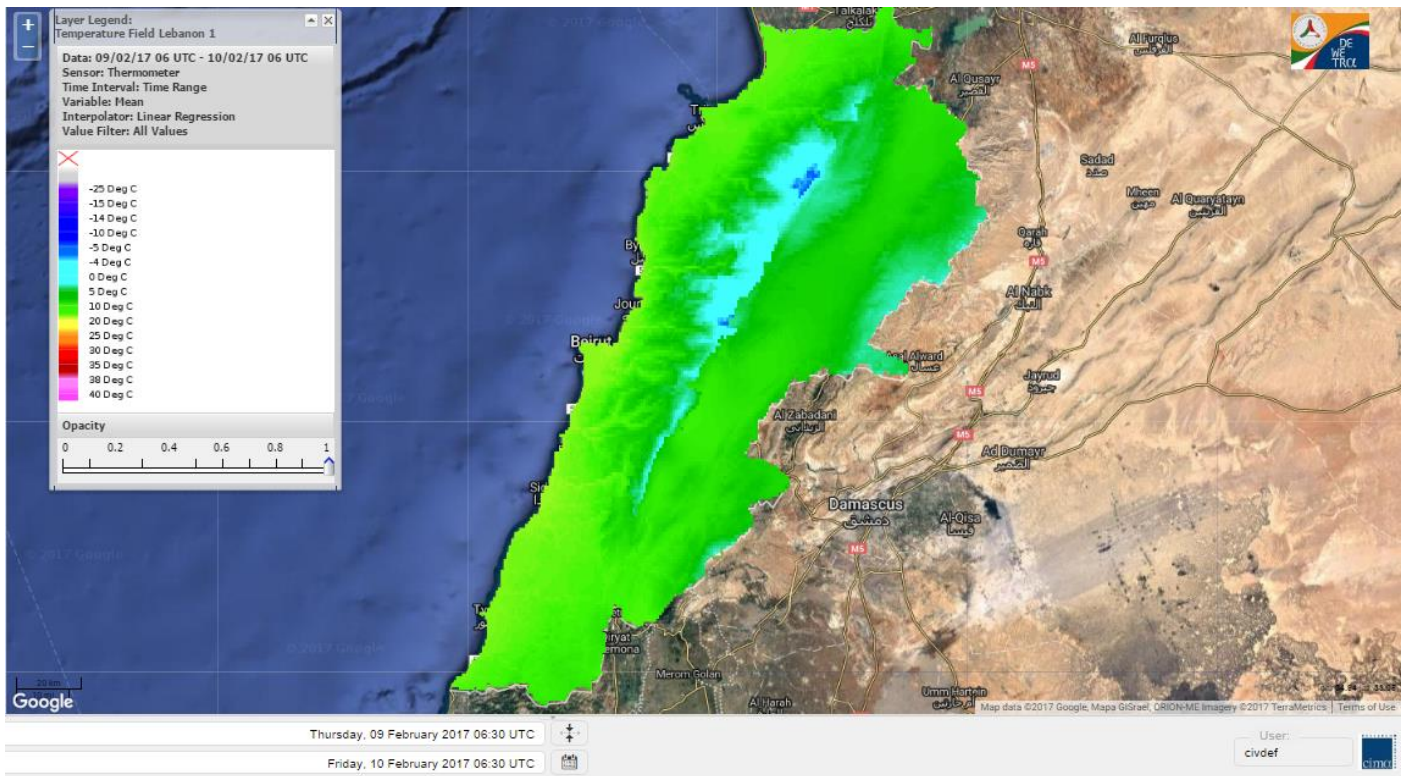
Symbol	Level of risk	Meaning and actions
VL	Very low	Very low fire risk. Controlled burning operations can be hardly executed due to high fuel moisture content. Normally wildfires self-extinguish.
L	Low	Low fire risk. Controlled burning operations can be executed with a reasonable degree of safety.
ML	Medium low	Medium-low fire risk. Controlled burning operations can be executed in safety conditions. All the fires need to be extinguished.
M	Medium	Medium fire risk. Controlled burning operations would be avoided. All the fires need to be very well extinguished.
M	Medium high	Controlled burning is not recommended. Open flame will start fires. Cured grasslands and forest litter will burn readily. Spread is moderate in forests and fast in exposed areas. Patrolling and monitoring is suggested. Fight fires with direct attack and all available resources.
H	High	Ignition can occur easily with fast spread in grass, shrubs and forests. Fires will be very hot with crowning and short to medium spotting. Direct attack on the head may not be possible requiring indirect methods on flanks. Patrolling and monitoring the territory is highly suggested.
E	Extreme	Ignition can occur also from sparks. Fires will be extremely hot with fast rate of spread. Control may not be possible during day due to long range spotting and crowning. Suppression forces should limit efforts to limiting lateral spread. Damage potential total. Patrolling and monitoring the territory is highly suggested.

Beirut, 10 February 2017

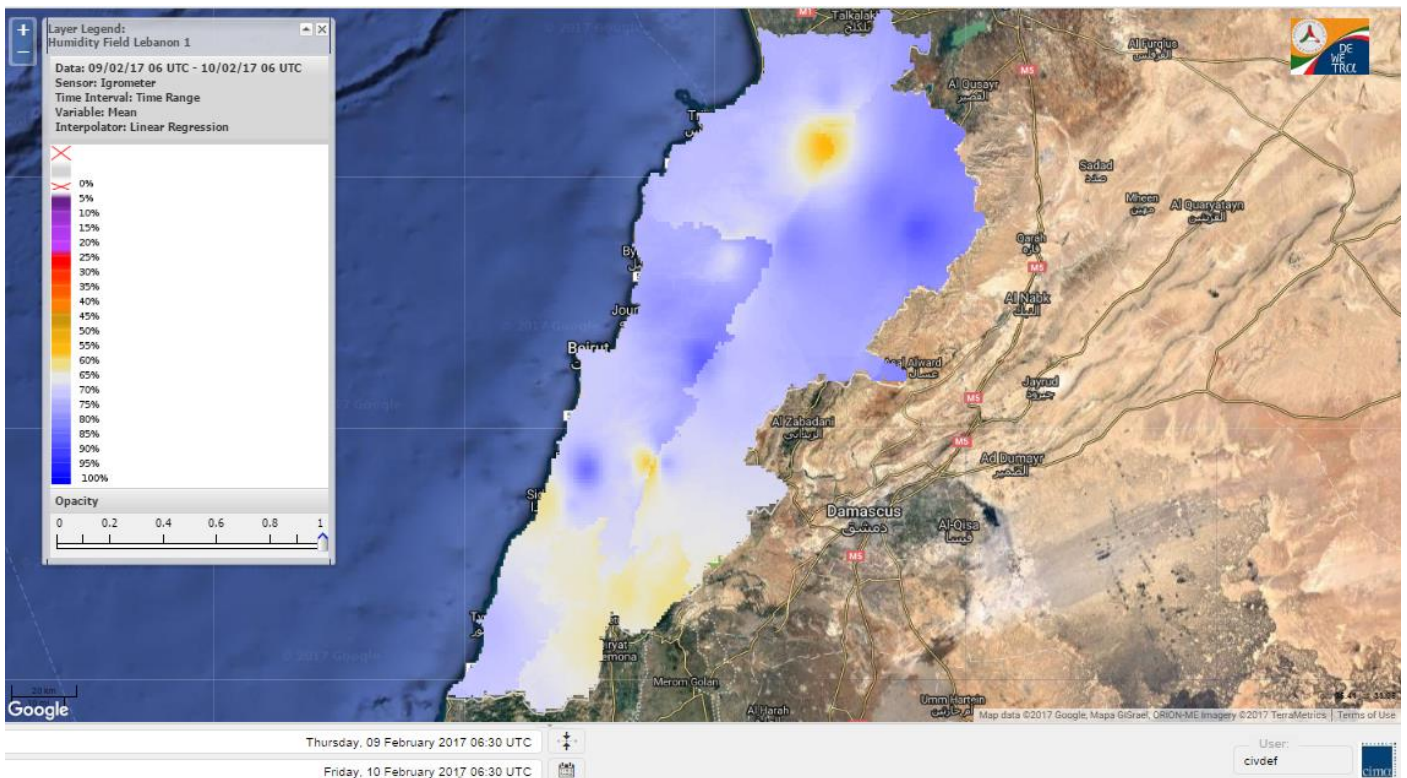
FIRE RISK INDEX



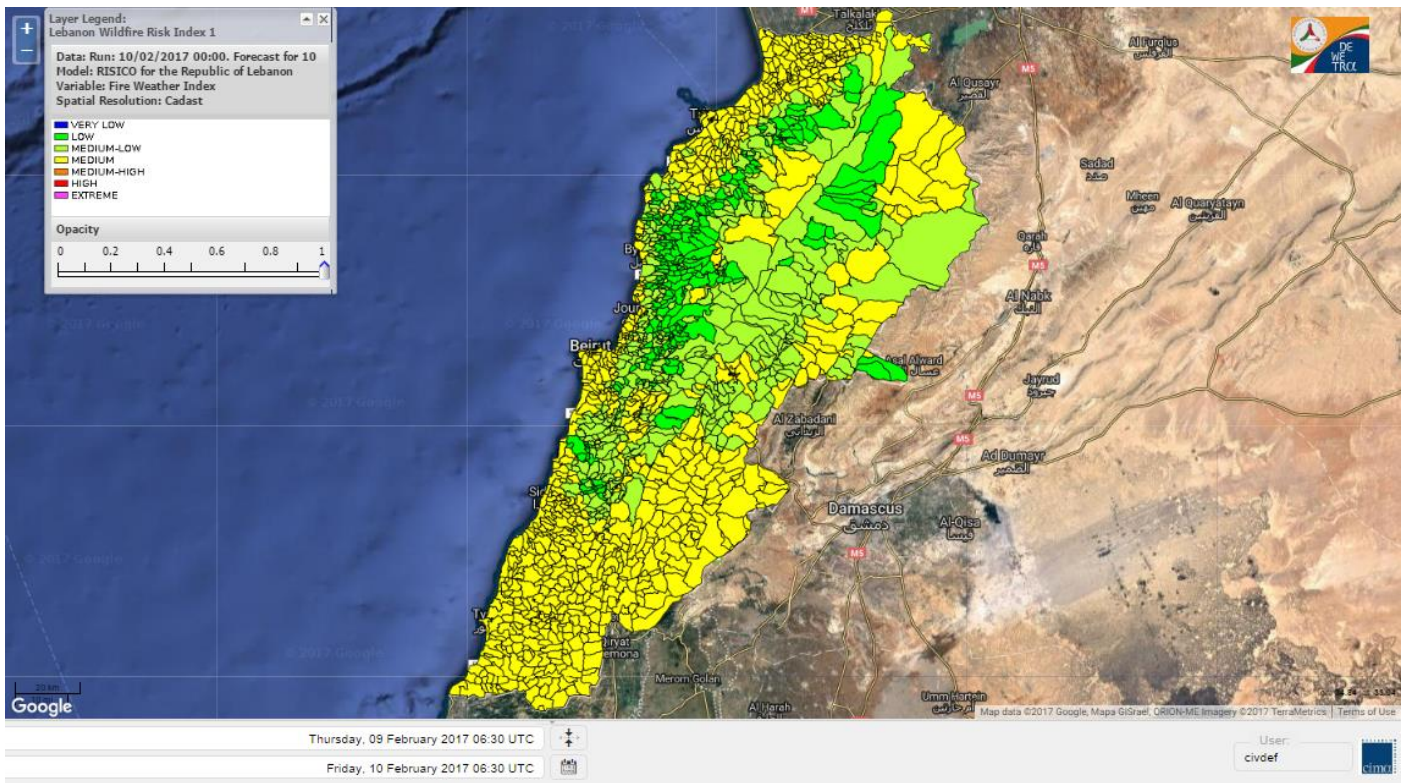
Lebanon temperature for 10 February 2017



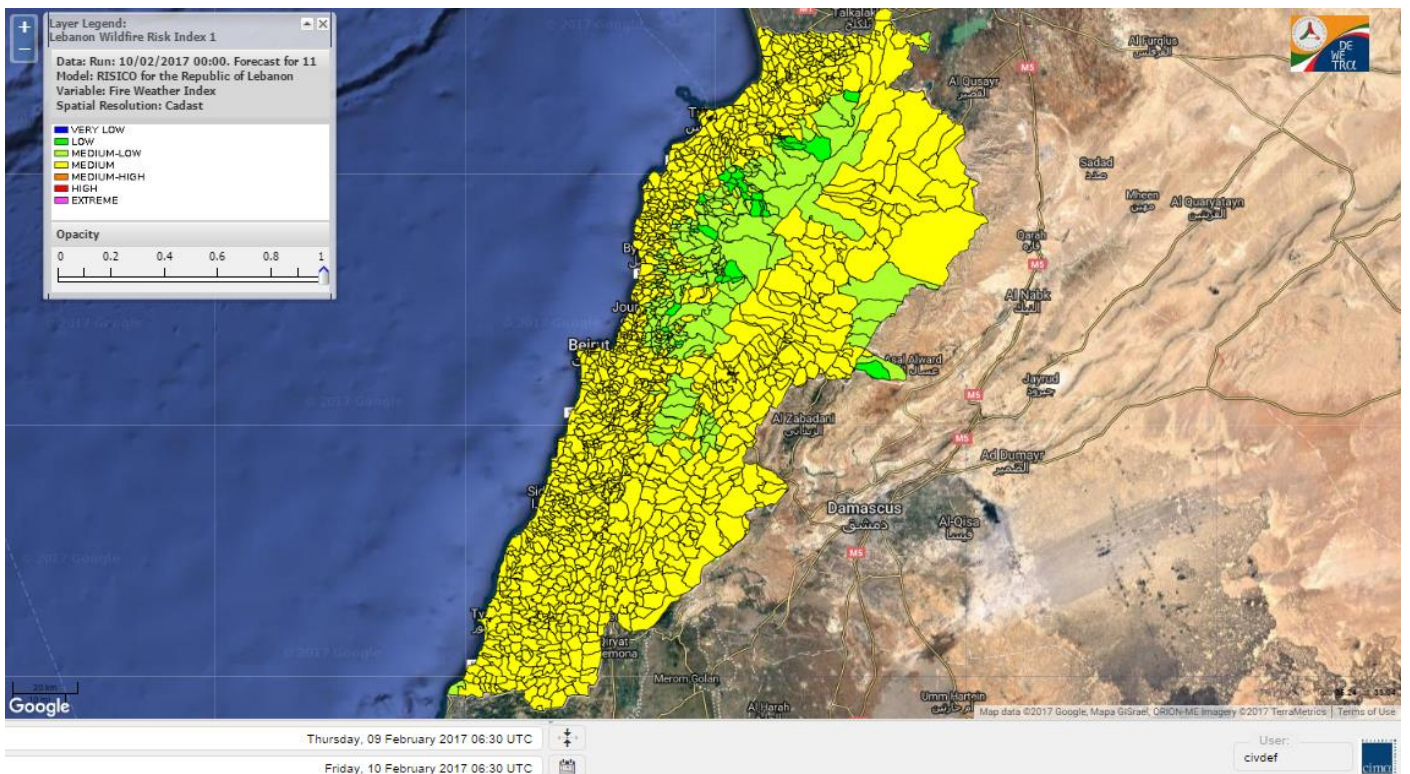
Lebanon humidity for 10 February 2017



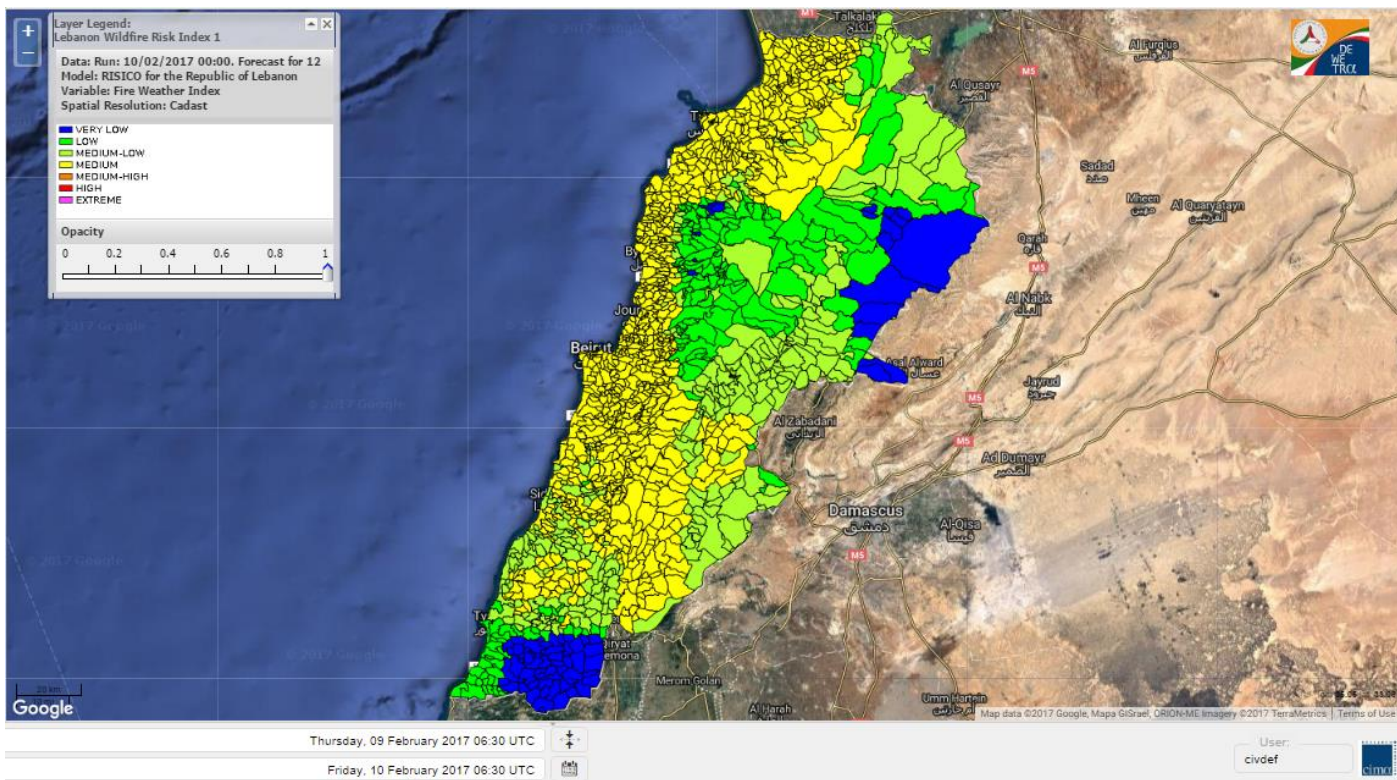
Lebanon for 10 February 2017



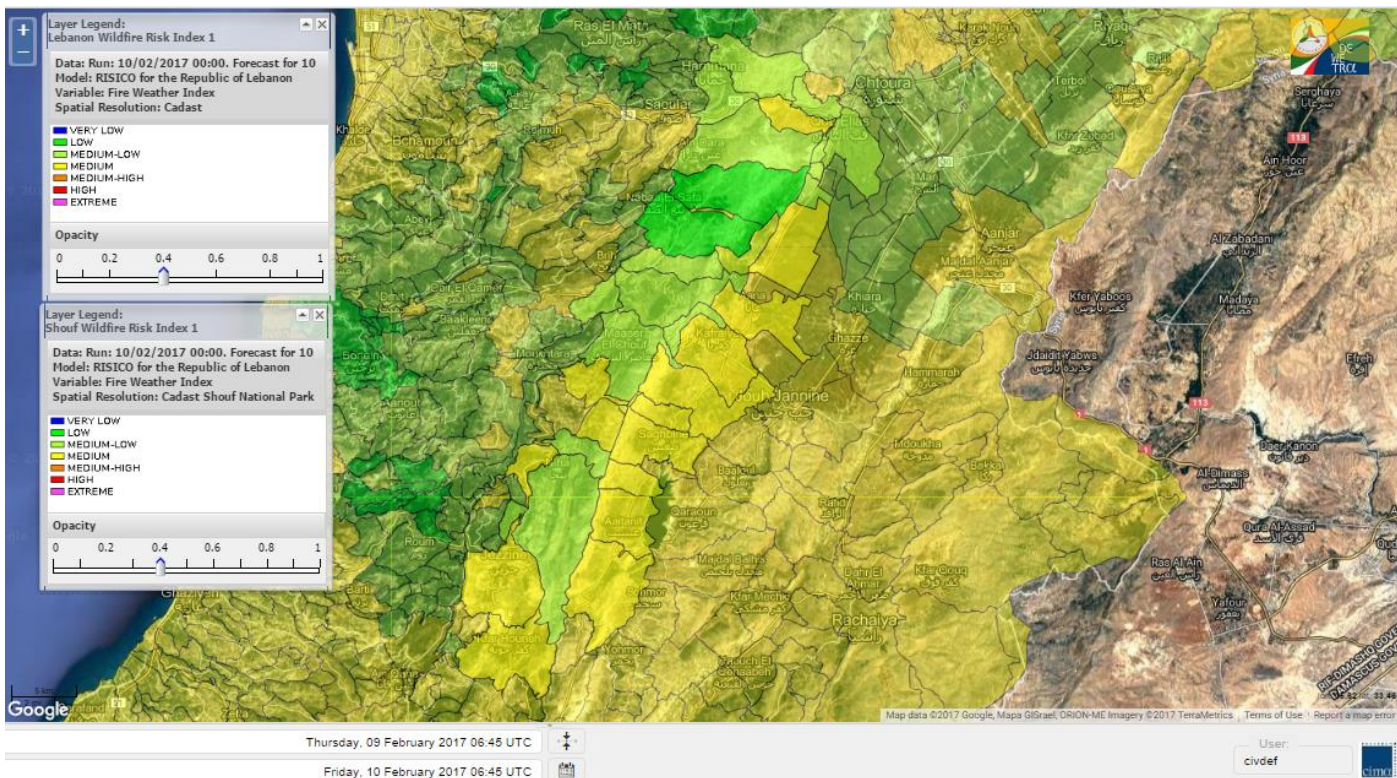
Lebanon for 11 February 2017



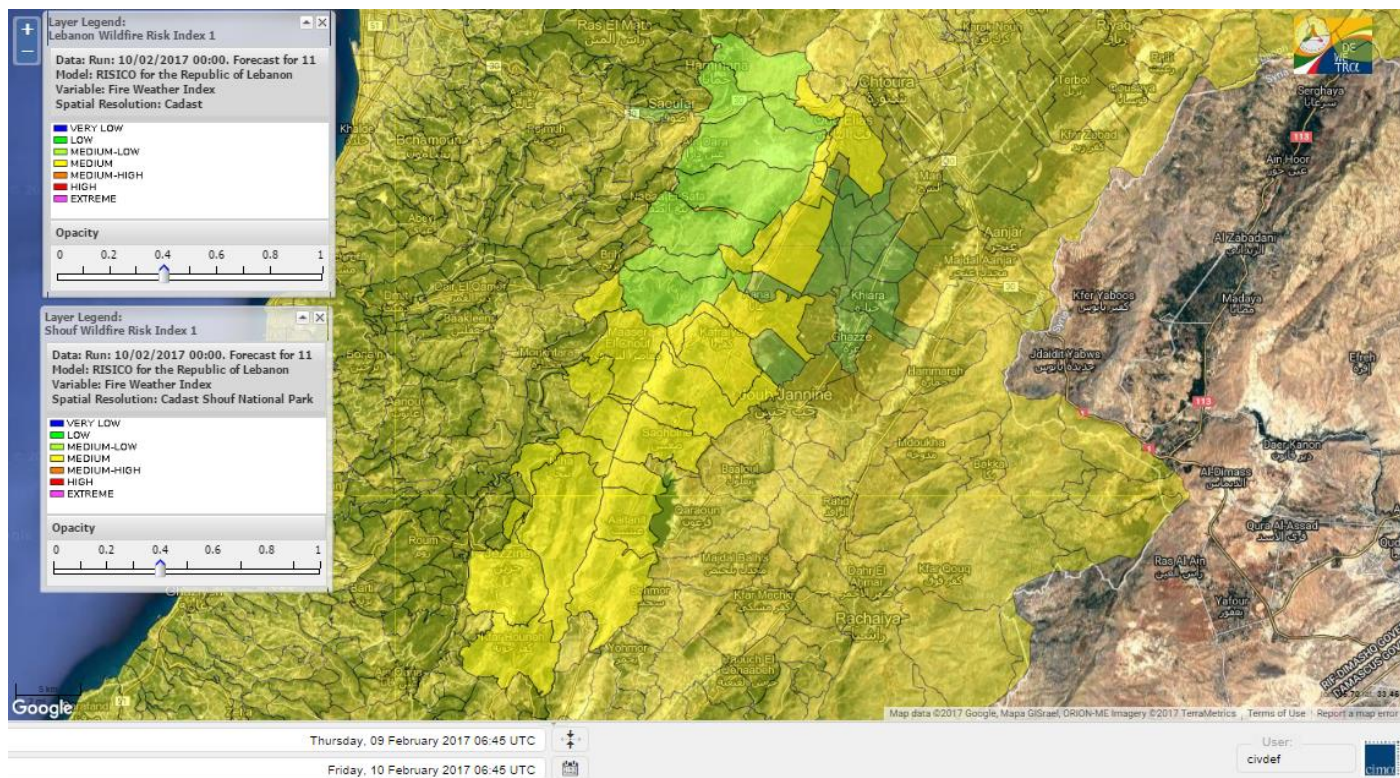
Lebanon for 12 February 2017



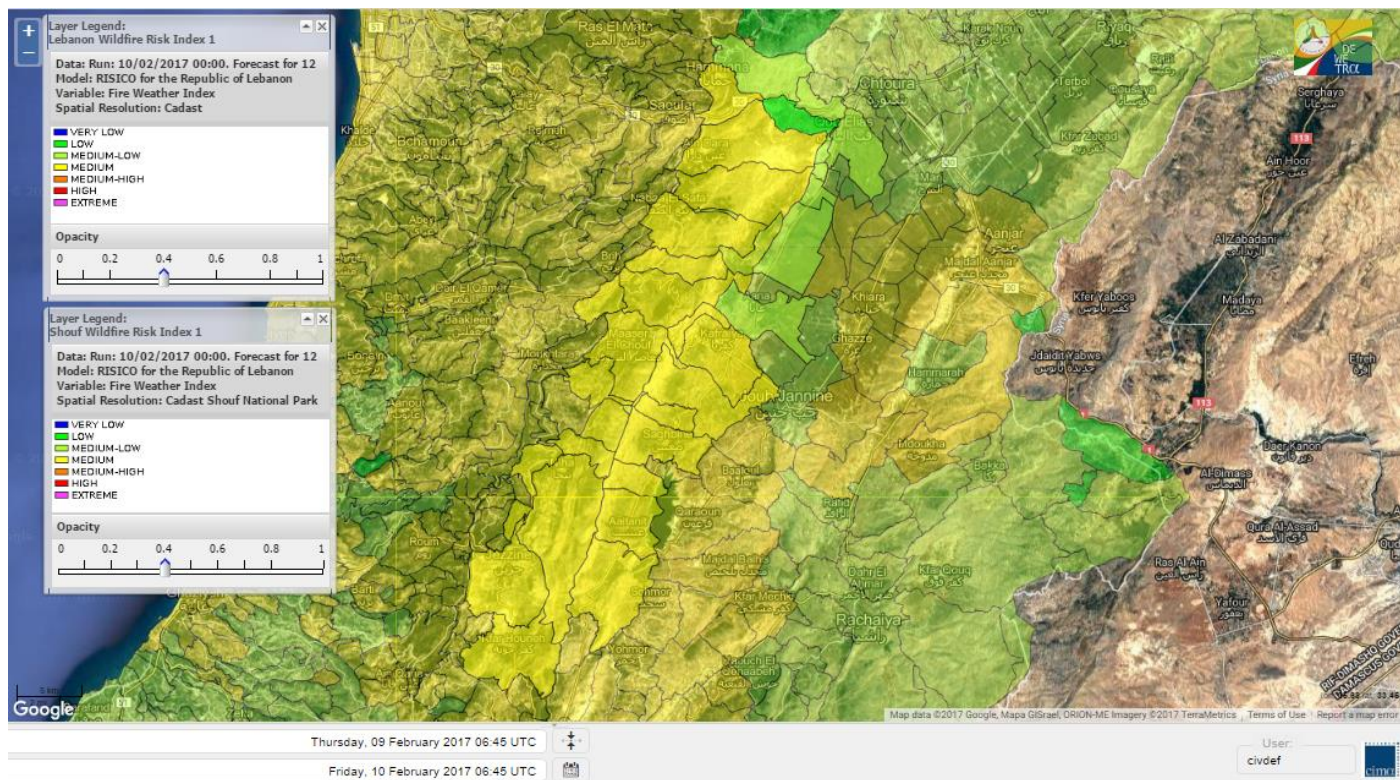
Shouf Biosphere Reserve Forecast for 10 February 2017



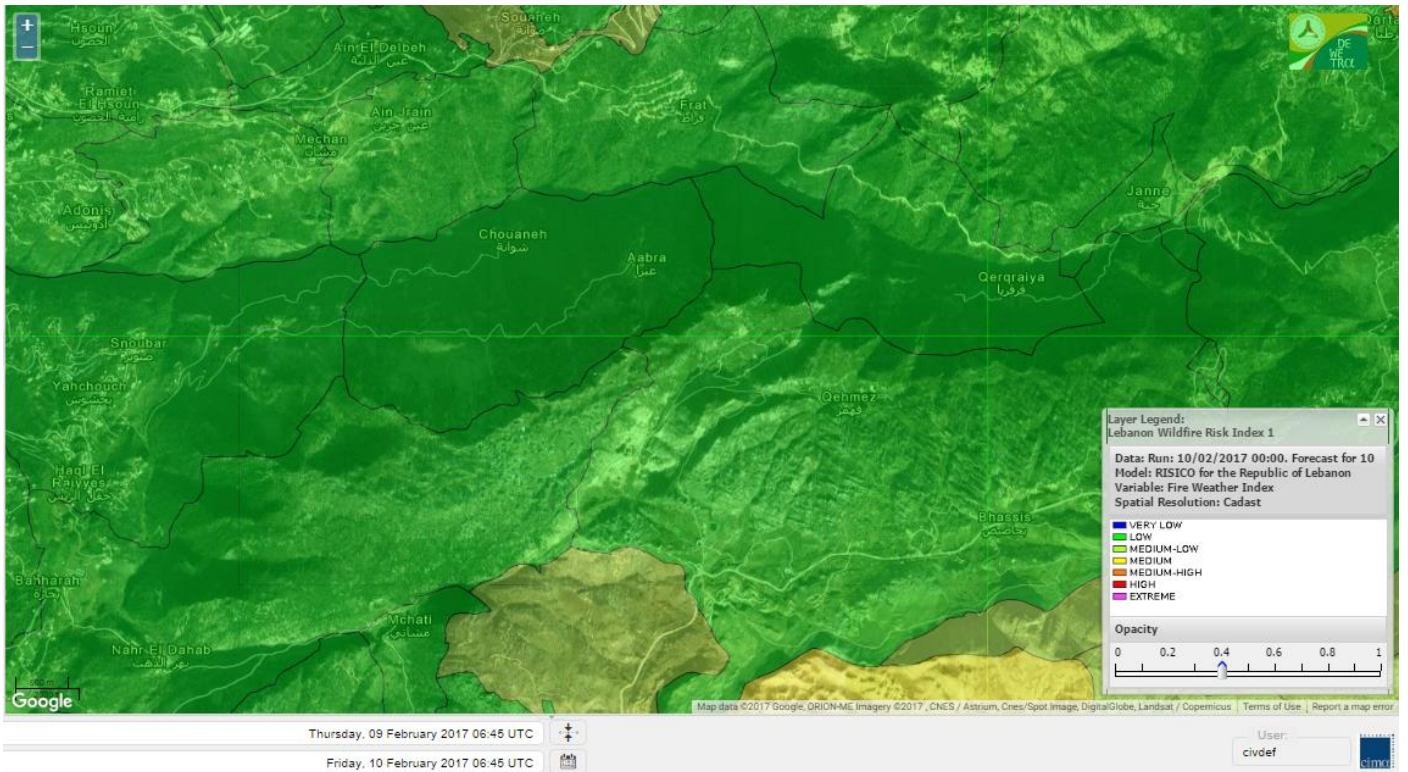
Shouf Biosphere Reserve Forecast for 11 February 2017



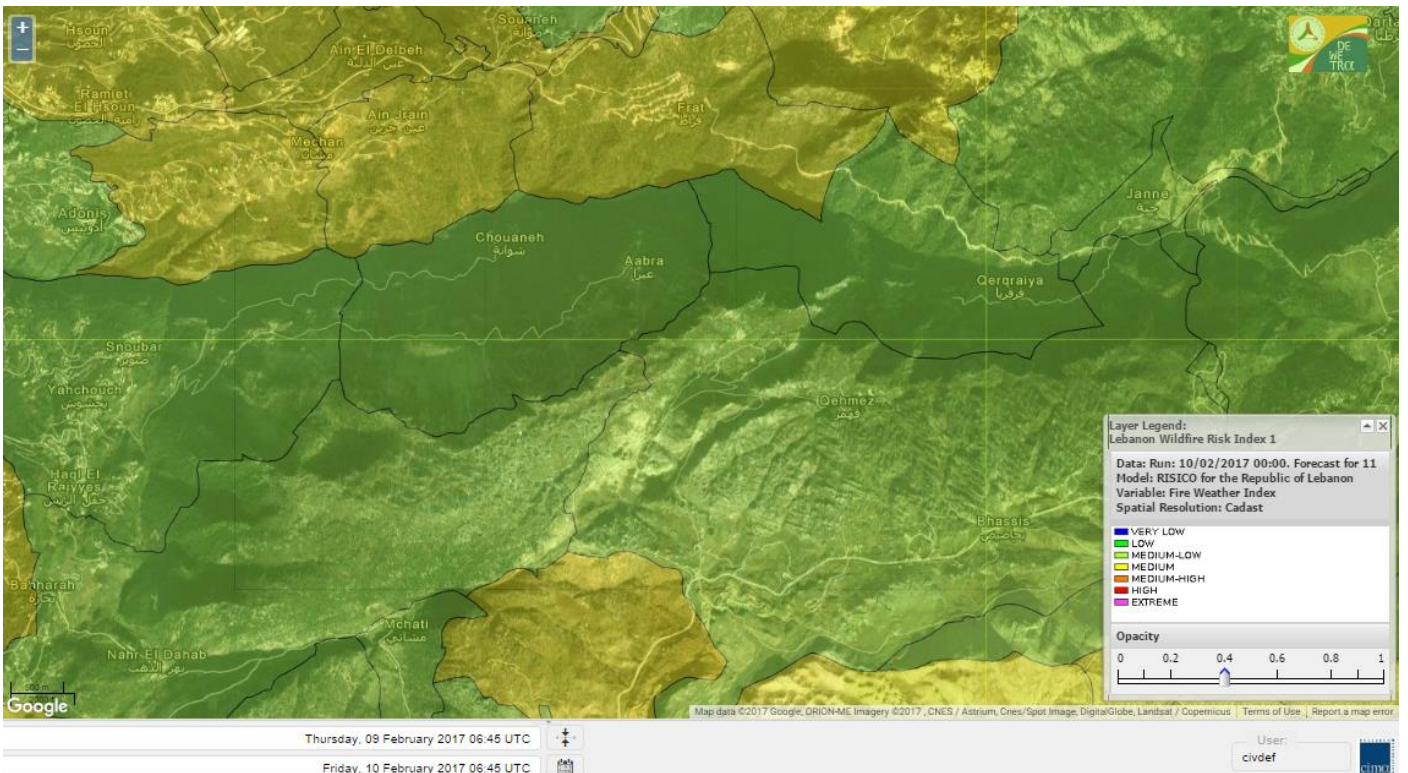
Shouf Biosphere Reserve Forecast for 12 February 2017



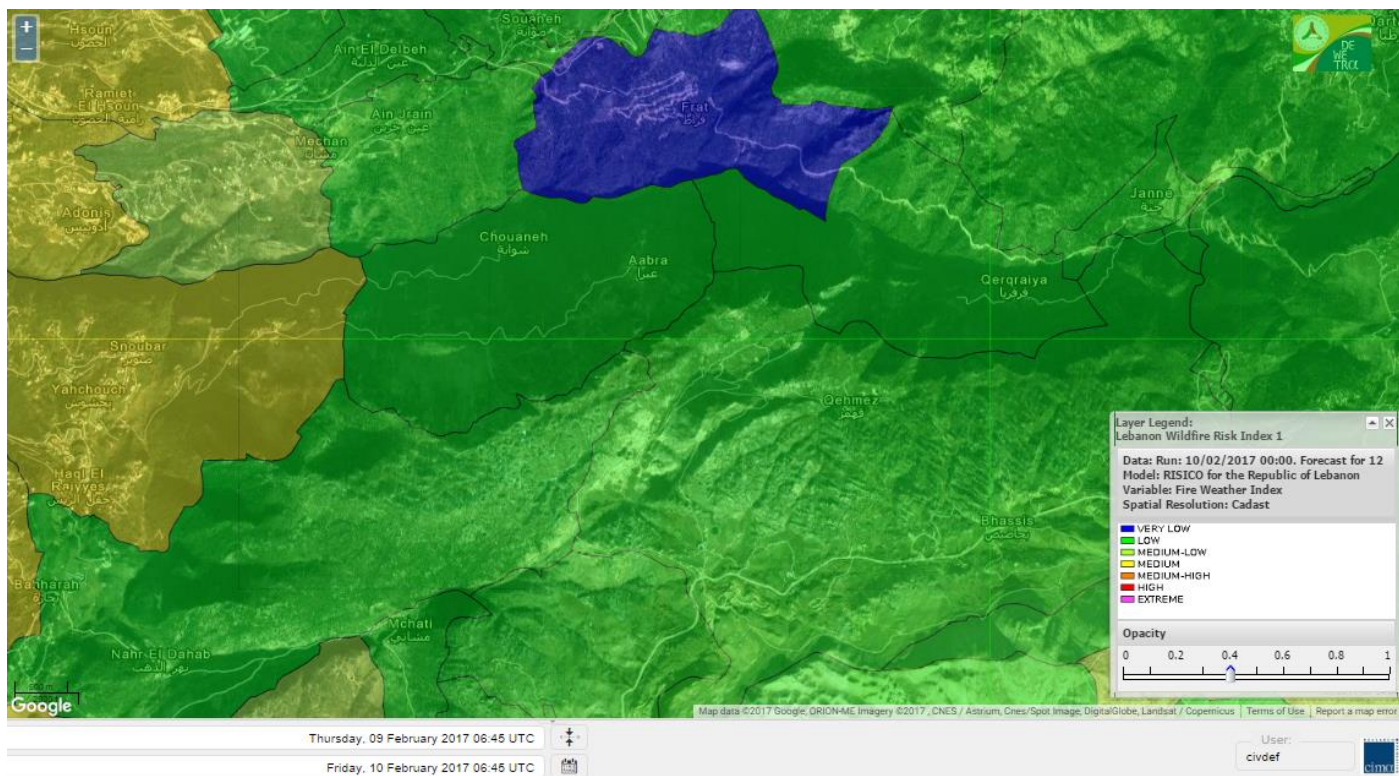
Jabal Moussa Reserve Forecast for 10 February 2017



Jabal Moussa Reserve Forecast for 11 February 2017



Jabal Moussa Reserve Forecast for 12 February 2017



Nord

Koura

Municipality	10-Feb	11-Feb	12-Feb	Municipality	10-Feb	11-Feb	12-Feb	Municipality	10-Feb	11-Feb	12-Feb
Aaba	M	M	M	Afsaddiq	M	M	M	Ain Ekrine	M	M	M
Amioun	M	M	M	Anfeh	M	M	M	Badbhoun	M	M	M
Barghoun	M	M	M	Barsa	M	M	M	Batroumine	M	M	M
Bdebba	M	M	M	Bechmizine	M	M	M	Bednaye El-Koura	ML	M	M
Bhabbouch El-Koura	ML	M	M	Bkeftine	M	M	M	Bnehran	ML	M	M
Bqaiia El-Koura	M	M	M	Bsarma	M	M	M	Btaaboura	M	M	M
Bttram	M	M	M	Btouratij	M	M	M	Bziza	M	M	M
Dar Beechtar	M	M	M	Dar Chmezzine	M	M	M	Deddeh	M	M	M
Deir El-Balamand	ML	M	M	Fih	M	M	M	Hraiche	M	M	M
Ijdaabrine	ML	M	M	Kaftoun	M	M	M	Kefraya El-Koura	M	M	M
Kfarakka	M	M	M	Kfarhata	ML	M	M	Kfarhazir	M	M	M
Kfarkahel	M	M	M	Kfarsaroun	M	M	M	Kosba	M	M	M
Mejdel el-Koura	ML	M	M	Nakhle	M	M	M	Qalhat	ML	M	M
Ras Masqa	M	M	M	Rechdibbine	M	M	M	Zakroun	M	M	M
Zgharta El-Mtaouile	L	ML	L								

Bcharre

Municipality	10-Feb	11-Feb	12-Feb	Municipality	10-Feb	11-Feb	12-Feb	Municipality	10-Feb	11-Feb	12-Feb
Aabdine	ML	ML	M	Bane	M	ML	M	Barhelioun	L	ML	ML
Bazouone	ML	L	L	Becharre	M	ML	M	Beit Menzer	L	M	M
Billa	ML	M	M	Blaouza	ML	M	M	Bqaa Kafra	M	ML	L
Bqerqacha	ML	L	L	Breissat	ML	ML	L	Dimane	ML	ML	L
Hadath El Jobbeh	ML	ML	L	Hadchit	ML	L	M	Hasroun	ML	L	L
Mazraat Aassaf	L	ML	VL	Mazraat Bani Saab	ML	ML	L	Mchaa El-Jobbeh	M	ML	L
Metrit	ML	ML	M	Moghr El-Ahoual	ML	M	M	Ouadi Qannoubine	L	L	L
Qanat	L	ML	ML	Qnayer	L	ML	ML	Tourza	ML	L	ML

Batroun

Municipality	10-Feb	11-Feb	12-Feb	Municipality	10-Feb	11-Feb	12-Feb	Municipality	10-Feb	11-Feb	12-Feb
Aabrine	L	M	M	Aalali	L	ML	L	Aartiz	L	ML	ML
Abdelli	L	M	M	Ajdabra	L	M	M	Assia	L	M	L
Basbina	ML	M	M	Batroun	M	M	M	Bcheleh	L	ML	L
Bechtoudar	L	ML	L	Beit Chlala	L	ML	L	Beit Kassab	L	ML	VL
Bijdarfil	ML	M	M	Bqesmaya	L	M	M	Chatine	ML	ML	L
Chebtin	L	M	ML	Chekka	M	M	M	Daael	L	M	L
Dahr Abi Yaghi	L	M	M	Daraya El-Batroun	ML	M	M	Deir Billa	L	L	L
Deir Kfifane	ML	M	M	Deir Mar Youhanna EL	L	ML	VL	Deir Mar Youssef Jra	L	M	M
Douma	ML	ML	L	Douq	L	ML	ML	Eddeh El-Batroun	ML	M	M
Ftihat El-Batroun	L	M	L	Ghouma	L	M	M	Hadtoun	L	ML	L
Hamat	ML	M	M	Harbouna	L	ML	M	Hardine	L	ML	VL
Helta	L	M	L	Hery	M	M	M	Jebba	L	ML	L
Jrabta El-Batroun	ML	M	M	Jrane El-Batroun	M	M	M	Kfar Aabida	ML	M	M
Kfar Halda	L	ML	VL	Kfarb Shlaimane	L	ML	L	Kfarhatna	L	M	M
Kfarhay	M	M	M	Kfarhelos	L	M	M	Kfifane	M	M	M

Kfour El Arabi	ML	ML	L	Koubba	ML	M	M	Kour	ML	M	M
Mar Mama	L	ML	L	Masrah	L	ML	ML	Mehmarch	ML	M	L
Mrah Chdid	ML	M	M	Mrah El Ziyat	ML	M	M	Mrah El-Hajj	L	ML	L
Nahle El-Batroun	L	M	L	Niha El-Batroun	ML	M	L	Ouajh El-Hajjar	ML	M	M
Ouata Houb	ML	ML	L	Qatnaaoun	ML	M	M	Racha	ML	ML	L
Rachana	L	M	M	Rachkida	ML	M	M	Ram El-Batroun	L	ML	L
Ras Nahhach	ML	M	M	Selaata	M	M	M	Sghar	L	M	M
Smar Jbayl	ML	M	M	Sourat El-Batroun	L	M	L	Tannourine El-Faouqa	M	ML	L
Tannourine Et-Tahta	ML	ML	L	Thoum	ML	M	M	Toula El-Batroun	L	M	M
Zan	L	M	ML								

Zgharta

Municipality	10-Feb	11-Feb	12-Feb	Municipality	10-Feb	11-Feb	12-Feb	Municipality	10-Feb	11-Feb	12-Feb
Aachach	M	M	M	Aalma	M	M	M	Aarde	M	M	M
Aintourine	ML	ML	M	Arabet Qozhaya	L	L	ML	Arde	M	M	M
Arjis	M	M	M	Asnoun	M	M	M	Ayto	L	L	ML
Basloukit	M	ML	M	Bchannine	M	M	M	Besebeel	M	M	M
Bhairret Toula	L	M	M	Bnachee	M	ML	M	Boussit	M	M	M
Danha	M	M	M	Daraiya Zgharta	M	M	M	Deir Jdeide	M	M	M
Ehden	ML	ML	M	Halan	M	M	M	Hariq Zgharta	M	M	M
Houakir	ML	M	M	Hraiqis	M	M	M	laal	M	M	M
Ijbaa	ML	ML	M	Karm Saddeh	L	L	ML	Kfarchakhna	M	M	M
Kfardlaqous	M	M	M	Kfarfou	M	M	M	Kfarhata Zgharta	M	M	M
Kfarhoura	ML	M	M	Kfarsghab	ML	ML	M	Kfaryachit	M	M	M
Kfarzaina	M	M	M	Khaldiye	M	M	M	Mazraat Ajbeaa	M	M	M
Mazraat Et-Teffah	L	ML	ML	Mazraat Jneid	M	M	M	Mejdlaiya Zgharta	M	M	M
Merh Kfarsghab	ML	M	M	Miryata	M	M	M	Miziara	ML	M	M
Mzraat Kefraya	M	M	M	Qorah Bach	M	M	M	Rachiine	M	M	M
Ras Kifa	ML	M	M	Sakhra	M	M	M	Sebhel Zgharta	M	ML	M
Serhel	L	L	L	Tallet Zgharta	M	M	M	Toula Zgharta	L	ML	M
Zgharta	M	M	M								

Minieh-Denniye

Municipality	10-Feb	11-Feb	12-Feb	Municipality	10-Feb	11-Feb	12-Feb	Municipality	10-Feb	11-Feb	12-Feb
Aasaymout	L	M	M	Aaymar	ML	M	M	Aazki	ML	M	M
Ain El-Tineh-Miniyeh	L	L	ML	Assoun	ML	M	M	Bakhaaoun	ML	M	M
Bchennata	M	ML	M	Bechehhara	L	M	M	Beddawi	M	M	M
Behouaita	L	ML	M	Beit El Foqss	L	L	ML	Beit Haouik	ML	M	M
Beit Zoud	L	M	M	Bekaasafrine	M	ML	M	Borj El Yahoudiyeh	M	M	M
Bqarsouna	L	L	ML	Btermaz	L	M	M	Debaael	L	M	M
Deir Ammar	M	M	M	Deir Nbouh	ML	M	M	Haouaret-Miniyeh	L	M	M
Haql el Azimeh	L	M	M	Harf El Siyad	L	ML	ML	Hazmiye-Miniyeh	L	L	ML
Izal	ML	M	M	Jarjour	L	M	ML	Jayroun	L	ML	ML
Kahf El-Malloul	L	M	M	Karm El-Moher	ML	M	M	Kfar Binine	L	M	M
Kfarchalane	ML	M	M	Kfarhabou	ML	M	M	Kharroub-Miniyeh	ML	M	M
Mazraat El-Kreme	L	M	ML	Mazraat Ketrane	L	ML	M	Merkebta	M	M	M
Minyeh	M	M	M	Mrah El Sfirat	L	M	M	Mrah Sraj	L	M	M
Mrebbine	ML	L	M	Nabi Youcheaa	M	M	M	Nemrine	ML	L	M

Qarhaiya	ML	M	M	Qarne	L	M	ML	Qarsita	L	L	ML
Qattineh-Miniyeh	L	ML	ML	Qemmamine	L	M	ML	Qraine	L	M	M
Raouda-Aadoua	M	M	M	Rihaniyet-Miniyeh	M	M	M	Sfireh	L	M	M
Sir Ed-Danniyeh	L	ML	M	Tarane	L	M	M	Terbol-Miniyeh	M	M	M
Zaghartaghriane	ML	M	M	Zouq Bhannine	M	M	M				

Nabatiye

Nabatiye

Municipality	10-Feb	11-Feb	12-Feb	Municipality	10-Feb	11-Feb	12-Feb	Municipality	10-Feb	11-Feb	12-Feb
Aabba	M	M	M	Aazzi	M	M	ML	Adchit El-Chqif	M	M	M
Ain Bou Swar	M	M	M	Ain Kana	M	M	M	Ali El-TaHER	M	M	ML
Ansar	M	M	M	Arab Salim	M	M	ML	Arnoun	M	M	ML
Bfaroue	M	M	ML	Breyqaah	M	M	M	Charqiyeh	M	M	ML
Choukine	M	M	M	Deir El Zahrani	M	M	ML	Doueir El-Nabatiyeh	M	M	M
Habbouch El-Nabatiye	M	M	M	Hamra El-Nabatiyeh	M	M	ML	Harouf El-Nabatiyeh	M	M	M
Hmaile	M	M	ML	Houmin El Faouqa	M	M	ML	Houmin El Tahta	M	M	ML
Jarjough	M	M	M	Jbaah El-Nabatiyeh	M	M	M	Jebchit	M	M	M
Kfar Djal El-Nabatiy	M	M	ML	Kfar Remmane	M	M	ML	Kfar Sir	M	M	ML
Kfar Tebnit	M	M	ML	Kfarfila	M	M	M	Kfour El-Nabatieh	M	M	M
Mayfadoun	M	M	M	Mazraat Bsaffour	M	M	ML	Mazraat Chalbaal	M	M	M
Mazraat Dmoul	M	M	M	Mazraat El Khreibeh	M	M	M	Mazraat El-Bayad El-	M	M	ML
Mazraat Kfarjaouz	M	M	M	Mazraat Qalaat Meiss	M	M	M	Nabatiyeh El-Fawka	M	M	ML
Nabatiyeh Et-Tahta	M	M	M	Namiriyyeh	M	M	M	Qaaqaaiyet El Jisr	M	M	ML
Qossaibeh El-Nabatiy	M	M	M	Roumine	M	M	ML	Sarba El-Nabatieh	M	M	ML
Sir El-Gharbiyeh	M	M	ML	Toul	M	M	ML	Yehmor El-Nabatiyeh	M	M	ML
Zaoutar El Charkiyeh	M	M	ML	Zaoutar El-Gharbiyeh	M	M	M	Zebdine El-Nabatiyeh	M	M	M
Zefta	M	M	ML								

Hasbaiya

Municipality	10-Feb	11-Feb	12-Feb	Municipality	10-Feb	11-Feb	12-Feb	Municipality	10-Feb	11-Feb	12-Feb
Ain Jarfa	M	M	M	Abou Qamha	M	M	M	Ain Qania	M	M	M
Bourghos	M	M	M	Chebaa	M	M	M	Chouaya Hasbaya	M	M	M
Dellafeh	M	M	M	Fardiss Hasbaiya	M	M	M	Hasbaya	M	M	M
Hbariyeh	M	M	M	Kaoukaba Hasbaiya	M	M	M	Kfar Chouba	M	M	M
Kfar Hamam	M	M	M	Kfeir El-Zait	M	M	M	Khalwat Hasbaya	M	M	M
Khreibet Hasbaiya	M	M	M	Majidiyeh Hasbaiya	M	M	M	Marj Ez-Zhour (Haouc	M	M	M
Meri	M	M	M	Mimass	M	M	M	Rachaiya El-Fokhar	M	M	M
Salaiyeb	M	M	M								

Marjayoun

Municipality	10-Feb	11-Feb	12-Feb	Municipality	10-Feb	11-Feb	12-Feb	Municipality	10-Feb	11-Feb	12-Feb
Aalmane Marjaayoun	M	M	ML	Aamra	M	M	M	Adayseh Marjaayoun	M	M	L
Adchit El-Koussair	M	M	ML	Ain Arab Marjaayoun	M	M	M	Bani Haiyann	M	M	L
Blatt Marjaayoun	M	M	M	Blida	M	M	VL	Borj El-Moulouk	M	M	ML
Boueyda Marjaayoun	M	M	ML	Deir Mimass	M	M	ML	Deir Siriane	M	M	ML
Dibbine	M	M	M	Ebel El Saqi	M	M	M	Houla	M	M	VL
Houra	M	M	ML	Kfar Kila	M	M	ML	Khiam Marjaayoun	M	M	M

Klayaa	M	M	ML	Majdel Selem	M	M	VL	Marjaayoun	M	M	M
Markaba	M	M	VL	Mays El-Jabal	M	M	VL	Mazraat Doumiat	M	M	ML
Mazraat Sarada	M	M	M	Mhaibib	M	M	VL	Qabrikha	M	M	L
Qantara	M	M	ML	Rab El-Thalathine	M	M	L	Saouaneh Marjayoun	M	M	VL
Talloussa	M	M	VL	Taybeh Matjaayoun	M	M	ML	Touline	M	M	L

Bent Jbail

Municipality	10-Feb	11-Feb	12-Feb	Municipality	10-Feb	11-Feb	12-Feb	Municipality	10-Feb	11-Feb	12-Feb
Ain-Ebel	M	M	VL	Aitaroun	M	M	VL	Aynata Bint Jbeil	M	M	VL
Ayta El-Chaeb	M	M	VL	Ayta El-Jabal	M	M	VL	Beit Lif	M	M	VL
Beit Yahoun	M	M	VL	Bint Jbeil	M	M	VL	Borj Qalaway	M	M	M
Braachit	M	M	VL	Chakra	M	M	VL	Debel	M	M	VL
Deir Antar	M	M	VL	Froun	M	M	ML	Ghandouriyeh Bint Jb	M	M	M
Hanine	M	M	VL	Hariss	M	M	VL	Hdatha	M	M	VL
Jmeymeh	M	M	VL	Kafra Bint Jbeil	M	M	VL	Kfar Dounine	M	M	VL
Khirbet Selm	M	M	VL	Kounine	M	M	VL	Maroun El Ras	M	M	VL
Qalaway	M	M	ML	Qaouzah	M	M	VL	Qatmoun	M	M	VL
Ramya Bint Jbeil	M	M	VL	Rchaf	M	M	VL	Rmeich	M	M	VL
Safad Al Battikh	M	M	VL	Salhaneh	M	M	VL	Serbine	M	M	VL
Sultanieh Bint Jbeil	M	M	VL	Tibnine	M	M	VL	Tiri	M	M	VL
Yaroun	M	M	VL	Yater	M	M	VL				

Mont Liban

Jbail

Municipality	10-Feb	11-Feb	12-Feb	Municipality	10-Feb	11-Feb	12-Feb	Municipality	10-Feb	11-Feb	12-Feb
Aabeydat	L	M	M	Aalita	L	ML	M	Aamchit	M	M	M
Aarab El-Lahib	ML	ML	ML	Aarasta	L	ML	L	Adonis Jbeil	L	ML	M
Afqa Jbeil	L	L	L	Ain El Delbeh Jbeil	L	M	L	Ain El-Ghouyba	L	L	L
Ain Jrain	L	M	L	Ain Kfah	ML	M	M	Almat El Chemaliyat	L	M	L
Almat El-Jenoubiya	L	ML	L	Aqoura	ML	ML	ML	Bayzoun	L	M	L
Bchille Jbeil	L	M	M	Bechtida	L	ML	M	Behdaydat	L	M	M
Beit Habbaq	ML	M	M	Bejjeh	L	M	M	Bekhaaz	ML	M	M
Berbara Jbeil	M	M	M	Bintael	L	M	M	Birket Hjoula	L	M	M
Blatt Jbeil	ML	M	M	Boulhos	L	M	L	Breyj Jbeil	L	ML	M
Chamat	ML	M	M	Chikhane	ML	M	M	Chmout	L	M	M
Eddeh Jbeil	ML	M	M	Ehmej	L	ML	L	Fatre	L	ML	M
Ferhet	ML	M	ML	Fghal	L	M	M	Frat	L	M	VL
Ghabat	ML	M	L	Ghalboun	L	M	M	Gharzouz	ML	M	M
Ghofrine	ML	M	M	Habil	L	ML	L	Halate	ML	M	M
Haqel	L	ML	ML	Hbaline	ML	M	M	Hboub	ML	M	M
Hdeine	ML	ML	L	Hema Er-Rehban	M	ML	L	Hema Mar Maroun Aann	M	ML	L
Hjoula	L	M	ML	Hosrayel	ML	M	M	Hsarat	ML	M	M
Hsoun	L	M	M	Jaj	L	ML	L	Janne	L	ML	L
Jbeil	M	M	M	Jeddeyel Jbeil	M	M	M	Jlisse	L	ML	M
Jouret El-Qattine	L	M	M	Kfar Baal Annaya	L	M	L	Kfar Kidde	ML	M	M
Kfar Kouas	L	ML	M	Kfar Mashoun	M	M	M	Kfoun	L	M	M

Kharbe Jbeil	ML	M	M	Laqlouq	M	ML	L	Lassa	L	ML	L
Lehfed	L	ML	L	Maad	ML	M	M	Mar Sarkis	M	ML	L
Mastita	M	M	M	Mayfouq	L	ML	L	Mazraat El Siyad	M	ML	L
Mazraat El-Maaden	L	M	VL	Mechane	L	M	ML	Mechmech Jbeil	L	ML	L
Mehrin	ML	M	M	Mejdel El-Akoura	L	L	L	Mghayreh Jbeil	ML	ML	L
Mounsef	M	M	M	Nahr Ibrahim	M	M	M	Qahmez	L	ML	L
Qartaba	L	ML	L	Qartaboun	M	M	M	Qattara Jbeil	L	L	VL
Qorqraya	L	ML	L	Ramout	ML	M	M	Ras Osta	L	ML	M
Rihane Jbeil	M	M	M	Sakiet El-Khayt	L	M	M	Saqi Richmaya	L	ML	L
Sebrine	L	ML	M	Seraita	L	ML	L	Souane Jbeil	ML	M	L
Tadmor	ML	ML	L	Tartej	L	L	L	Torzaiya	L	M	L
Yanouh Jbeil	L	ML	L	Zibidine Jbeil	L	ML	M				

El Metn

Municipality	10-Feb	11-Feb	12-Feb	Municipality	10-Feb	11-Feb	12-Feb	Municipality	10-Feb	11-Feb	12-Feb
Aain El-Qabu	L	ML	L	Aain El-Qach	ML	ML	M	Aain El-Teffaha	ML	M	M
Aain el-Safssaf El-M	L	ML	M	Abou Mizane	L	ML	M	Ain Aar	ML	M	M
Ain Alaq	ML	M	M	Ain El-Kharroube	ML	M	M	Ain El-Sendiane	ML	ML	M
Ain El-Zeitoune	L	ML	M	Ain Saadeh	ML	M	M	Aintoura El-Matn	ML	ML	L
Amaret Chalhoub	M	M	M	Antelias	M	M	M	Atchaneh	ML	M	M
Ayroun	ML	ML	M	Baabdat	L	M	M	Baouchariyeh	M	M	M
Baskinta	L	ML	L	Beit Chabab	ML	ML	M	Beit El-Chaar	M	M	M
Beit El-Kekko	M	M	M	Beit Mery	ML	M	M	Bhersaf	L	ML	M
Bikfaya	ML	ML	M	Biyakout	M	M	M	Bnabil	L	ML	M
Bourj Hammoud	M	M	M	Bqennaya	ML	M	M	Broummana El-Matn	ML	M	M
Bsalim	ML	M	M	Bsifrine	ML	M	M	Bteghrine	L	ML	L
Chaouiye	ML	M	M	Chouaya El-Matn	ML	ML	M	Choueir	L	ML	M
Chrine	L	ML	M	Dahr El Sawan El-Mat	ML	M	M	Daychouniyeh	M	M	M
Dbayeh	M	M	M	Deir Chamra	L	L	ML	Deir Mar Abda el Mch	ML	M	M
Deir Mar Roukouz	M	M	M	Deir Tamiche	ML	M	M	Dik El-Mehdi	ML	M	M
Dikwaneh	M	M	M	Douar El-Matn	L	ML	M	Fanar	M	M	M
Fraike	ML	M	M	Haret El-Ballaneh	M	M	M	Hbous	ML	M	M
Himlaya	ML	ML	M	Jal El Did	M	M	M	Jdeideh El-Metn	M	M	M
Jouar El-Matn	L	L	M	Jouret El-Ballout	ML	M	M	Kaaqour	ML	M	M
Kfar Aaqab	L	ML	ML	Kfertay El-Matn	L	M	L	Khenchara	L	ML	M
Khillet El-Mtain	L	M	M	Konnabat Broummana	ML	M	M	Konnabat Salima	L	M	M
Machraah El-Matn	L	M	L	Majdel Tarchich	ML	M	L	Majzoub	M	M	M
Mansouriyeh El-Metn	M	M	M	Mar Boutros Karm Et-	L	ML	M	Mar Chaya et Mzekke	ML	M	M
Mar Moussa Ed-Douar	L	ML	M	Marjaba	L	L	L	Masqa	ML	M	M
Mayasse	ML	ML	M	Mazraat Deir Aoukar	M	M	M	Mazraat El-Hadirat	ML	M	M
Mazraat Yachouh	M	M	M	Mchikha	ML	M	M	Menqlet Mezher	ML	M	M
Mhaydseh Matn	ML	ML	M	Mkalles	M	M	M	Mrouj	ML	ML	L
Mtain	ML	ML	L	Mtayleb	ML	M	M	Nabay	ML	M	M
Naccache	M	M	M	Ouadi Chahine	L	ML	M	Ouadi El-Karm El-Mat	L	M	L
Ouata El-Mrouj	L	M	M	Ouyoun El-Matn	L	M	M	Qornet Chehwan	ML	M	M
Qornet El-Hamra	ML	M	M	Roumieh	ML	M	M	Sfeilet Bikfaya	L	ML	M
Sinn El-Fil	M	M	M	Zabbougha	L	ML	ML	Zalqa	M	M	M

Zarouon	L	M	M	Zekrite	ML	M	M	Zighrine El-Matn	ML	ML	M
Zouk El-Khrab	M	M	M								

Chouf

Municipality	10-Feb	11-Feb	12-Feb	Municipality	10-Feb	11-Feb	12-Feb	Municipality	10-Feb	11-Feb	12-Feb
Aalmane El-Chouf	M	M	M	Aammq El-Chouf	ML	M	M	Ain Ouzein	ML	M	M
Ain Qani	ML	M	M	Ain Zhalta	L	ML	M	Ainbal	ML	M	M
Amateur	ML	M	M	Anout	ML	M	M	Atrine	ML	M	M
Baadarane	M	M	M	Baaqline	ML	M	M	Baasir	M	M	M
Barja	M	M	M	Barouk	ML	ML	M	Bater	M	M	M
Batloun	ML	M	M	Bayqoun	M	M	M	Bchetfine	ML	M	M
Beiteddine	ML	M	M	Benouati Ech-Chouf	L	M	M	Berjein	L	M	M
Bireh et Mtalleh	M	M	M	Biret El-Chouf	M	M	M	Bkechtine Ouel Mchei	L	M	ML
Bkifa El-Chouf	ML	M	M	Botme	ML	M	M	Bqaiaa Ech-Chouf	L	M	M
Bsaba El-Chouf	ML	M	M	Chammis El-Chouf	ML	M	M	Chehim	ML	M	ML
Chemaarine	L	M	ML	Chourit	ML	M	M	Daher El-Chouf	L	M	M
Dalhoun	ML	M	M	Damour	M	M	M	Daraya El-Chouf	L	M	ML
Deir El-Moukhalles	L	M	ML	Deir Baba	ML	M	M	Deir Dourit	ML	M	M
Deir El-Qamar	ML	M	M	Deir Kouche	ML	M	M	Dibbieh	L	M	M
Dmit	ML	M	M	Fouara Jaafar	M	M	M	Fraidis El-Chouf	ML	ML	M
Ghabet Jaafar	ML	M	M	Gharife	ML	M	M	Haret Jandal	M	M	M
Hasrout	ML	M	M	Jadra	M	M	ML	Jahlieh	ML	M	M
Jbeih El-Chouf	ML	M	M	Jdeidet El-Chouf	ML	M	M	Jiyeh	M	M	M
Jleilyeh	ML	M	M	Jmailiyeh	M	M	ML	Joun	ML	M	ML
Kahlounie El-Chouf	M	M	M	Ketermaya	M	M	M	Kfar Faqoud	ML	M	M
Kfar Hamal	M	M	M	Kfar Him	M	M	M	Kfar Katra	ML	M	M
Kfar Niss	M	M	M	Kfar hay	M	M	M	Kfarnabrakh	M	M	M
Khirbet Bisri	L	M	M	Knayse El-Chouf	ML	M	M	Maaniyeh	ML	M	M
Maasser Beiteddine	ML	M	M	Maasser El-Chouf	ML	M	M	Majdalouna	ML	M	M
Majdel El-Meouch	M	M	M	Mazboud	ML	M	M	Mazmoura	ML	M	M
Mazraat El Chouf	ML	M	M	Mazraat El Daher	L	M	M	Mazraat El-Douair	ML	M	M
Mechref	ML	M	M	Mghairie	M	M	M	Mghayrie El-Chouf	ML	M	M
Moukhtara	ML	M	M	Mrusti	M	M	M	Mtolle	ML	M	M
Naameh	M	M	M	Niha El-Chouf	ML	M	M	Ouadi Abou Youssef	L	M	ML
Ouadi Ed-Deir	M	M	M	Ouadi El-Sit	M	M	M	Ouadi bnehlay	ML	M	M
Qraibeh	M	M	M	Qreiaa	L	M	L	Rmayle El-Chouf	M	M	M
Semqaniyeh	M	M	M	Sibline	M	M	M	Sirjbeil	ML	M	M
Warhanieh	ML	M	M	Werdaniyeh	M	M	M	Zaarourieh	ML	M	M

Baabda

Municipality	10-Feb	11-Feb	12-Feb	Municipality	10-Feb	11-Feb	12-Feb	Municipality	10-Feb	11-Feb	12-Feb
Abadiyeh	ML	M	M	Ain Mouaffaq	ML	M	M	Araiya	ML	M	M
Arbaniyeh	L	M	M	Arsoun	ML	M	M	Baabda	M	M	M
Baalchmey	ML	M	M	Bmaryam	ML	M	M	Bourj El-Brajneh	M	M	M
Boutchay	M	M	M	Bsaba Baabda	M	M	M	Btekhney	ML	M	M
Btibyat	ML	M	M	Bzbeddine	L	M	M	Chbeniyeh	ML	M	M
Chiyah	M	M	M	Chmeisset Baabda	L	M	M	Chouit	L	M	M
Deir El-harf	ML	M	M	Deir Khouna	M	M	M	Dlaybeh	L	M	M

Falougha	ML	ML	ML	Furn El-Chebbak	M	M	M	Hadath Beyrouth	M	M	M
Halaliyeh Baabda	L	M	M	Hammana	ML	ML	M	Haret El Sett	ML	M	M
Haret Hamze	ML	M	M	Haret Hreik	M	M	M	Hasbaiya El-Metn	L	M	M
Jouar El-Hoz	L	M	L	Jouret Arsoun	L	M	M	Kfar Chima	M	M	M
Kfar Selouane	ML	M	L	Khalouat Baabda	ML	M	M	Kneisset Baabda	L	M	M
Laylakeh	M	M	M	Louayzeh Baabda	M	M	M	Merdache	M	M	M
Mzairaa Baabda	L	M	M	Ouadi Chahrour El Ol	M	M	M	Ouadi Chahrour El So	ML	M	M
Qalaa Baabda	ML	M	M	Qhraybe Baabda	ML	M	M	Qobbayaa	ML	M	M
Qornayel	L	M	M	Qortada	L	M	M	Qrayeh Baabda	ML	M	M
Qsaibeh Baabda	ML	M	M	Qtale Baabda	L	M	M	Ras El Metn	ML	M	M
Ras El-Haref	ML	M	M	Rouayset El-Ballout	ML	M	M	Salima Baabda	ML	M	M
Tahouitat El Ghadir	M	M	M	Tarchich	ML	M	L	Zandouqa	L	M	M

Aley

Municipality	10-Feb	11-Feb	12-Feb	Municipality	10-Feb	11-Feb	12-Feb	Municipality	10-Feb	11-Feb	12-Feb
Abey	ML	M	M	Aghmid	ML	M	M	Ain Dara	ML	ML	M
Ain Drafil	ML	M	M	Ain El Halazoun	M	M	M	Ain El-Rmmaneh	L	M	M
Ain Jedideh	M	M	M	Ain Ksour	ML	M	M	Ain Onoub	M	M	M
Ain Traz	ML	M	M	Ainab	ML	M	M	Aley	ML	M	M
Aramoun	M	M	M	Aytat	M	M	M	Azouniyeh	M	M	M
Baawerta	ML	M	M	Badghan Oua Wadi Bad	M	M	M	Bassatine	ML	M	M
Bayssour	M	M	M	Bchamoun	M	M	M	Bdadoun	ML	M	M
Behouara	ML	M	M	Bennay	ML	M	M	Bhamdoun El-Dayaa	M	M	M
Bhamdoun El-Mhatta	M	M	M	Bkhechey	M	M	M	Bleibel	M	M	M
Bmakine	M	M	M	Bmehray	L	ML	M	Bouzrid	ML	M	M
Bserrine	M	M	M	Bsous	L	M	M	Btalloun	M	M	M
Btater	M	M	M	Chanay	M	M	M	Charoun	M	M	M
Chartoun	ML	M	M	Chemlane	M	M	M	Choueifat El-Aamrous	M	M	M
Choueifat El-Oumara	M	M	M	Choueifat El-Quoubbe	M	M	M	Dakkoun	ML	M	M
Deir Qoubel	M	M	M	Dfoun	M	M	M	Douair El Remmaneh	L	M	M
Ghaboun	ML	M	M	Habramoun	ML	M	M	Homs Oua Hama	M	M	M
Houmal	M	M	M	Jisr El Qadi	ML	M	M	Kehaleh	L	M	M
Keyfoun	M	M	M	Kfar Aamey	ML	M	M	Kommatyeh	M	M	M
Maasrati	M	M	M	Majdel Baana	M	M	M	Mansourieh et Ain El	M	M	M
Mazraat El-Nahr	ML	M	M	Mchakhte	L	M	M	Mecherfeh	ML	M	M
Mejdaya	ML	M	M	Mrayjat	ML	M	M	Ramliyah	ML	M	M
Rechmaya	M	M	M	Rejmeh	ML	M	M	Remhala	ML	M	M
Rouaysset El Neemane	ML	M	M	Saoufar	M	ML	M	Selfaya	ML	M	M
Sirhmoul	ML	M	M	Souq El Ghareb	M	M	M	Taazanieh	M	M	M

Kesrouane

Municipality	10-Feb	11-Feb	12-Feb	Municipality	10-Feb	11-Feb	12-Feb	Municipality	10-Feb	11-Feb	12-Feb
Achkout	L	ML	M	Adma Oua Dafneh	M	M	M	Ain Ed-Delbe Kesroua	L	ML	L
Ain El-Rihane	ML	M	M	Aintoura Kesrouane	M	M	M	Ajaltoun	L	ML	M
Akaybeh Kesrouane	M	M	M	Aramoun Kesrouane	ML	ML	M	Azra ouel Ozor	L	ML	M
Ballouneh	L	ML	M	Batha	L	ML	M	Bekaatat Achkout	ML	ML	M
Bekaatat Kanaan	L	ML	L	Bizhel	ML	M	M	Bouar	M	M	M
Bqaatouta	ML	M	L	Bqaq Ed-Dine	M	M	M	Bzommar	ML	ML	M

Chahtoul	L	M	M	Chnaniir	ML	ML	M	Chouan	L	ML	L
Daraya Kesrouane	L	ML	M	Darououn	ML	M	M	Deir Baqlouch	ML	M	M
Dlebta	L	ML	M	Eghbeh	L	ML	ML	Faraya	ML	M	L
Fatka	ML	M	M	Feytroun	L	L	M	Ghazir	ML	M	M
Ghbaleh Kesrouane	L	M	M	Ghedrass	L	ML	M	Ghosta	ML	ML	M
Ghynéh	ML	M	M	Harharaya w Kattine	ML	M	M	Harissa Kesrouane	ML	M	M
Hayata	L	ML	M	Hosein	L	ML	M	Hrajel	M	M	L
Jdeideh Ghazir	ML	ML	M	Jeita	ML	M	M	Jounieh Ghadir	M	M	M
Jounieh Haret Sakhr	M	M	M	Jounieh Salel Alma	M	M	M	Jounieh Sarba	M	M	M
Jouret Bedrane	ML	M	M	Jouret Mhad	L	M	M	Jouret Termos	ML	M	M
Kfar Debiane	L	ML	L	Kfar Tay Kesrouane	L	ML	L	Kfar Yassine	M	M	M
Kfour Kesrouane	ML	M	M	Kharayeb Nahr Ibrahi	ML	M	M	Klayaat Kesrouane	L	ML	M
Maarab	L	ML	M	Maaysra Kesrouane	ML	M	M	Mayrouba	ML	M	L
Mazraat Er-Ras	M	M	M	Mazraat Mrah El-Mir	L	ML	M	Mchaa El Ftouh	ML	ML	L
Mchaa Faraya	ML	M	ML	Mchaa Kfar Dibiane	ML	ML	L	Mghaer	L	ML	L
Mradiyah	L	M	M	Nahr Ed-Dahab	L	ML	L	Nammoura Kesrouane	L	M	M
Ouata El Jaouz	L	ML	ML	Ouata Sillam	M	M	M	Raachine	L	ML	M
Rayfoun	ML	ML	M	Safra Kesrouane	M	M	M	Shayle Kesrouane	ML	M	M
Tabarja	M	M	M	Yahchouch	L	ML	M	Zaaytreh	L	M	M
Zeytoun	ML	M	M	Zouk Mikael	M	M	M	Zouk Mosbeh	M	M	M

Baalbek_Hermel

Baalbek

Municipality	10-Feb	11-Feb	12-Feb	Municipality	10-Feb	11-Feb	12-Feb	Municipality	10-Feb	11-Feb	12-Feb
Aadous	ML	M	ML	Aamchki	M	ML	VL	Aarsal	ML	M	VL
Ain Baalbek	M	M	VL	Ain Bourday	M	M	L	Ain El-Benye	ML	M	L
Ain El-Jaouz Baalbek	L	L	VL	Ain El-Siya Chadoura	M	ML	VL	Al Khodr Baalbek	M	M	ML
Al Nabi Chit	M	M	ML	Aynata Baalbek	ML	M	L	Baalbek	M	M	L
Bachwat	L	M	L	Barqa	L	M	L	Bednayel Baalbak	ML	M	ML
Beit Chama	ML	M	ML	Bijjaje	M	M	VL	Bouday	ML	M	L
Brital	M	M	ML	Btadi	ML	M	L	Chaat	ML	M	L
Chaibe	ML	ML	L	Chlifa	ML	M	ML	Chmestar	ML	M	L
Dar El-Oussa	L	M	L	Deir El-Ahmar	ML	M	L	Deir Mar Maroun Baal	M	M	ML
Douris	ML	M	ML	Fakiha	M	M	L	Hadath Baalbek	ML	M	L
Ham	ML	M	ML	Haour Taala	M	M	ML	Hizzine	ML	M	ML
Hlebta	L	M	ML	Hosh Barada	ML	M	ML	Hosh El Dahab	ML	M	ML
Hosh El Snid	ML	M	ML	Hosh El-Nabi	ML	M	ML	Hosh El-Rafiq	ML	M	ML
Hosh Tal Safiya	ML	M	ML	Hrebta	L	M	L	laat	ML	M	ML
Jebaa	ML	M	ML	Jenta	M	M	ML	Kfar Dabach	ML	M	ML
Kfar Dane	ML	M	ML	Khraibeh El-Hermel	L	M	VL	Khreibet Baalbek	M	M	ML
Kneisset Baalbek	ML	M	ML	Labueh	ML	M	VL	Maarboun	ML	M	ML
Majdaloun	ML	M	ML	Maqneh	M	M	ML	Mazraat Beit Mcheik	ML	M	ML
Misraya	ML	M	ML	Moqraq	ML	M	VL	Nabha El-Damdoum	ML	ML	L
Nabi Chbay	M	M	ML	Nabi Osman	M	M	VL	Nahleh baalbek	ML	ML	VL
Ouadi El-Oss	L	M	L	Qaa Baayoun	M	M	ML	Qaa Jouar Maqiye	M	M	ML
Qaa Ouadi El-Khanzir	M	M	ML	Qah Baalbek	M	M	ML	Qarha Baalbek	ML	M	L

Qsarnaba	ML	M	ML	Ram Baalbek	L	M	L	Ras Baalbek El Sahl	M	M	ML
Ras Baalbek El-Charq	M	M	L	Riha	ML	M	ML	Saaide	ML	M	ML
Sbouba	ML	M	VL	Seriine El-Tahta	ML	M	ML	Slouqi	ML	M	L
Taiba Baalbek	M	M	ML	Talia	ML	M	ML	Taraiya	ML	M	L
Temnin El Fawqa	ML	M	ML	Temnin El-Tahta	ML	M	ML	Tfail	L	ML	VL
Yahfoufa	M	M	ML	Yammouneh	ML	ML	L	Younine	M	M	L
Zboud	ML	M	L								

Hermel

Municipality	10-Feb	11-Feb	12-Feb	Municipality	10-Feb	11-Feb	12-Feb	Municipality	10-Feb	11-Feb	12-Feb
Charbine El-Hermel	L	M	L	Hermel Jbab	ML	ML	M	Hermel	M	M	ML
Maaysra El-Hermel	L	M	L	Michaa Mrajhine	ML	ML	M	Ouadi Faara	L	M	ML
Ras Baalbek - Ouadi	M	M	ML	Ras Baalbek El Gharb	L	M	ML	Zighrine	L	M	L

Akkar

Akkar

Municipality	10-Feb	11-Feb	12-Feb	Municipality	10-Feb	11-Feb	12-Feb	Municipality	10-Feb	11-Feb	12-Feb
Aain Tinta	M	M	M	Aaiyat	M	M	M	Aakkar El-Aatiqa	L	M	ML
Aamar Akkar	M	M	M	Aamar El Baykat	M	M	M	Aamayer	M	M	ML
Aamriyet Akkar	M	M	M	Aandqet	M	M	L	Aarmeh	M	M	M
Aarqa	M	M	M	Aawaynat	M	M	ML	Aayoun Akkar	M	M	M
Abboudiye	M	M	M	Ain El-Zeit	M	M	M	Ain Yaaqoub	M	M	M
Akroum	ML	M	ML	Aridet Cheikh Zennad	M	M	M	Baldeh w Mazraat Bal	M	M	M
Barcha	M	M	M	Bardeh	M	M	M	Bebnine	M	M	M
Beino	M	M	M	Beit Ayoub	M	M	M	Beit El-Haouch	M	M	M
Beit Mellat	M	M	M	Beit Younes	M	M	M	Berbara Akkar	M	M	M
Berqayel	M	M	M	Bezbina	ML	M	ML	Bireh Akkar	M	M	M
Borj	M	M	M	Bqerezla	M	M	M	Bzal	ML	M	M
Chane	ML	M	M	Chaqdouf	M	M	M	Charbila	M	M	M
Cheikh Mohammad	M	M	M	Cheikh Taba Es-Sahl	M	M	M	Cheikh Taba	M	M	M
Cheikh Zennad	M	M	M	Cheikhlar	M	M	ML	Chir Hmairine	M	M	M
Daghle	M	M	M	Dahr Laissine	M	M	M	Darine	M	M	M
Dawra	ML	M	M	Dawsa w Baghdadi	M	M	M	Dayret Nahr El-Kabir	M	M	ML
Deir Dalloum	M	M	M	Deir Jennine	M	M	M	Denbou	ML	M	M
Dibbabiyyeh	M	M	M	Douair Aadwiyeh	M	M	M	Fassikine	M	M	M
Fnaydek	ML	ML	M	Fraydes Akkar	M	M	M	Ghazayle	M	M	M
Habchit	L	M	M	Hakour	M	M	M	Halba	M	M	M
Haouchab	M	M	M	Hayssat	M	M	M	Haytla	M	M	M
Hayzouq	M	M	M	Hedd	M	M	M	Hmaira Akkar	M	M	M
Hmaiss Akkar	M	M	M	Hnaider	M	M	ML	Hokr Ed-Dahri	M	M	M
Hokr Etti	M	M	M	Hokr Jouret Srar	M	M	M	Houaich	M	M	M
Hrar	ML	M	M	Idbil	M	M	M	llat	M	M	M
Janine	M	M	M	Jdeidet El-Joumeh	M	M	M	Jdeidet El-Kaiteh	M	M	M
Jebraiel	M	M	M	Kafr	L	M	M	Kafr	M	M	M
Karm Asfour	M	M	M	Kfar Melki Akkar	M	M	M	Kfar Noun	M	M	M
Kfarharra	M	M	M	Khalsa	M	M	ML	Kharnoubet Akkar	M	M	M

Khirbet Daoud Aakkar	M	M	M	Khirbet El Remmane	M	M	ML	Khirbet Shar	M	M	M
Khoreybet El-Jindi	M	M	M	Khreibet Aakkar	M	M	M	Kneisset Aakkar	M	M	M
Kneisset Hnaider	M	ML	ML	Knisse	M	M	M	Kroum El-Aarab	M	M	M
Kwachra	M	M	M	Kweykhat	M	M	M	Machta Hammoud	M	M	ML
Majdala	M	M	M	Majdel Akkar	M	M	M	Mar Touma	M	M	M
Marlaya Melhem	M	M	M	Mashha	M	M	M	Massoudiye	M	M	M
Mazraat Beit Ghattas	M	M	M	Mazraat En-Nahriye	M	M	ML	Mechmech	L	ML	M
Memneh	M	M	M	Mhammara	M	M	M	Mighraq Aakkar	M	M	M
Minyara	M	M	M	Moqayteh	M	M	M	Mounjez	M	M	M
Msalla	M	M	M	Mzeihmeh	M	M	M	Nfaiseh	M	M	M
Noura Et-Tahta	M	M	M	Ouadi El-Haour	M	M	M	Ouadi El-Jamous	M	M	M
Ouyoun El-Ghizlane	M	M	M	Qaabarine	M	M	M	Qabaait	L	M	M
Qachlaq	M	M	M	Qantara Aakkar	M	M	M	Qarha Aakkar	ML	ML	ML
Qarqaf	M	M	M	Qboula	M	M	M	Qleiaat Aakkar	M	M	M
Qloud El-Baqie	M	M	M	Qobaiyat Aakkar	ML	M	L	Qobbat Chamrat	M	M	M
Qorayat	M	M	M	Qornet Aakkar	M	M	M	Qsair Aakkar	M	M	M
Rahbe	M	M	M	Rihaniyet Aakkar	M	M	M	Rmah	M	M	ML
Rmoul	M	M	M	Saadine	M	M	M	Sadaqa	M	M	M
Saidnaya	M	M	M	Sammouniye	M	M	M	Sayssouq	M	M	M
Semmaqiye	M	M	M	Semmaqli	M	M	M	Sfinet El-Dreib	M	M	M
Sfinet El-Qaitaa	ML	M	M	Sindyanet Zeidane	ML	M	M	Souaisset Aakkar	M	M	M
Srar	M	M	M	Tal Abbas El Gharby	M	M	M	Tal Abbas El-Chargy	M	M	M
Tal Biret	M	M	M	Tal Hmayra	M	M	M	Tal Maayan Tal Kiri	M	M	M
Tal Sibel	M	M	M	Tallet Chattaha	M	M	M	Tikrit	M	M	M
Tleil	M	M	M	Tshea	ML	M	M	Zawarib	M	M	M
Zouq El Hosniyeh	M	M	M	Zouq El-Haddara	M	M	M	Zouq El-Hbalsa	M	M	M
Zouq El-Moqachrine	M	M	M								

Sud

Sour

Municipality	10-Feb	11-Feb	12-Feb	Municipality	10-Feb	11-Feb	12-Feb	Municipality	10-Feb	11-Feb	12-Feb
Aaiyeh	M	M	VL	Aalma El-Chaab	M	M	L	Aaytit	M	M	VL
Abbassiyeh Sour	M	M	ML	Abou Chech	M	M	L	Ain Abou Abdallah	M	M	ML
Ain Baal	M	M	L	Arzoun	M	M	ML	Aziyeh	M	M	L
Baflaya	M	M	ML	Barich	M	M	ML	Batouliyeh	M	M	L
Bayad	M	M	VL	Bazouriyeh	M	M	L	Bediass	M	M	ML
Bestiyat	M	M	ML	Borj El Chemali	M	M	L	Borj En-Naqoura	M	ML	L
Borj Rahhal	M	M	ML	Boustane	M	M	L	Btaychiyeh	M	M	L
Chaaitiye	M	M	L	Chameh	M	M	L	Chehabiye	M	M	L
Chehour	M	M	L	Chihine	M	M	VL	Debaal Sour	M	M	L
Deir Amess	M	M	VL	Deir Kifa	M	M	ML	Deir Qanoun El-Ain	M	M	L
Deir Qanoun El-Naher	M	M	M	Derdghaiya	M	M	ML	Dhayra	M	M	L
Halloussiyeh	M	M	M	Hamoul	M	M	L	Hanaouey	M	M	VL
Henniye	M	M	L	Hmairi Sour	M	M	ML	Iskandarouna Sour	M	M	L
Jbal El Botom	M	M	VL	Jebbin	M	M	L	Jennata	M	M	ML
Jijim	M	M	L	Jouaiya	M	M	L	Kneisset Sour	M	M	VL

Maarake	M	M	ML	Maaroub	M	M	ML	Majadel	M	M	VL
Majdalzoun	M	M	L	Mansouri Sour	M	M	L	Marnba	M	M	L
Marouahine	M	M	VL	Mazraat El-Zalloutiy	M	M	L	Mazraat Mechref	M	M	VL
Mazraat Tayr Semhat	M	M	L	Mheilib	M	M	L	Neffakhiyeh	M	M	ML
Niha Sour	M	M	ML	Ouadi Jilo	M	M	L	Qana	M	M	VL
Qolaileh Sour	M	M	L	Rechknay	M	M	VL	Rmadiyah	M	M	VL
Selha Sour	M	M	ML	Siddiqine	M	M	VL	Sour	M	M	L
Srifa	M	M	ML	Tayr Debbe	M	M	ML	Tayr Felsay	M	M	ML
Tayr Harfa	M	M	L	Touayri	M	M	L	Toura	M	M	M
Yanouh Sour	M	M	ML	Yarine	M	M	L	Zebqine	M	M	VL

Saida

Municipality	10-Feb	11-Feb	12-Feb	Municipality	10-Feb	11-Feb	12-Feb	Municipality	10-Feb	11-Feb	12-Feb
Aanqoun	M	M	ML	Aaqtanit	M	M	M	Aarab Ej-Jall	M	M	ML
Aarab Tabbaya	M	M	ML	Abra Saida	M	M	M	Adloun	M	M	ML
Adousiyeh	M	M	ML	Ain-El-Deleb	M	M	ML	Arzai	M	M	M
Babliyah	M	M	ML	Barty	M	M	M	Bissariyeh	M	M	ML
Bnaafoul	M	M	ML	Bqosta	M	M	M	Bramiy	M	M	ML
Daoudiyeh	M	M	ML	Dareb El-Sim	M	M	M	Erkay	M	M	ML
Ghassanieh	M	M	M	Ghazieh	M	M	M	Hajjeh	M	M	M
Haret Saida	M	M	ML	Hartiyeh	M	M	M	Hlaliye Saida	M	M	ML
Insariyat	M	M	ML	Jazira Saida	M	M	M	Kafar Bit	M	M	M
Kaoutariyet El-Siyad	M	M	M	Kfar Chellal	M	M	M	Kfar Hatta Saida	M	M	M
Kfar Milke Saida	M	M	ML	Khartoum	M	M	M	Khaziz	M	M	ML
Khirbet Ed-Douair Sa	M	M	ML	Khirbet El-Bassal	M	M	ML	Khrayeb Saida	M	M	M
Loubieh	M	M	ML	Maghdouche	M	M	M	Majdelyoun	M	M	ML
Matariyet El-Choumar	M	M	M	Matayriyeh	M	M	M	Mazraat 'Mseileh	M	M	ML
Mazraat 'Snaiber	M	M	ML	Mazraat Aarab Soukka	M	M	ML	Mazraat Deir Taqla	M	M	ML
Mazraat El Yahoudiye	M	M	ML	Mazraat El-Housseini	M	M	ML	Mazraat El-Mhaydaleh	M	M	M
Mazraat El-Ouasta	M	M	ML	Mazraat Jamjim	M	M	ML	Mazraat Kaoutariyet	M	M	M
Mazraat Kfar Badda	M	M	ML	Mazraat Oussamiyat	M	M	M	Mazraat Sari	M	M	ML
Mazraat Sinai	M	M	ML	Meemariyeh	M	M	M	Merouaniyeh	M	M	ML
Miyeh ou Miyeh	M	M	M	Najjariyeh	M	M	ML	Qaaqiyat El-Snaouba	M	M	ML
Qnarit	M	M	M	Qraiye Saida	M	M	ML	Saida Ed-Dekermane	M	M	ML
Saida El-Oustani	M	M	ML	Saida El-Qadimeh	M	M	ML	Saida Kefraya	M	M	M
Saksakiyeh	M	M	ML	Salhieh Saida	M	M	M	Sarafand	M	M	ML
Sfenta	M	M	ML	Tafahta	M	M	ML	Tanbourit	M	M	M
Tebna	M	M	ML	Zaghdraiya	M	M	ML	Zeita	M	M	ML
Zrariyeh	M	M	M								

Jezzine

Municipality	10-Feb	11-Feb	12-Feb	Municipality	10-Feb	11-Feb	12-Feb	Municipality	10-Feb	11-Feb	12-Feb
Ain El-Mir (El Estab	M	M	M	Anane	ML	M	ML	Aramta	M	M	M
Ariya	ML	M	M	Aychiyeh	M	M	ML	Azour	L	M	M
Baba	ML	M	M	Bayssour Jezzine	M	M	M	Benoueteh Jezzine	M	M	M
Bhannine	ML	M	M	Bisri	L	M	ML	Bkassine	ML	M	M
Bouslaya	ML	M	ML	Btedine El-Leqech	ML	M	M	Chbail	M	M	M
Choualiq Jezzine	M	M	M	Dahr Ed-Deir	ML	M	ML	Deir El Qattine	ML	M	M

Demachqiyeh	M	M	ML	Ghabbatiyeh	M	M	M	Harf Jezzine	ML	M	M
Hassaniyeh	M	M	M	Haytouleh	M	M	ML	Haytura	ML	M	M
Hidab	ML	M	M	Homsiyeh	ML	M	M	Jabal Toura	M	M	M
Jarmaq	M	M	ML	Jensnaya	M	M	M	Jernaya	M	M	M
Jezzine	M	M	M	Karkha	ML	M	M	Kfar Falous	M	M	M
Kfar Houna	M	M	M	Kfar Jarrah	M	M	M	Lebaa	M	M	M
Louayzet Jezzine	M	M	M	Machmouche	ML	M	M	Mahmoudiyeh Jezzine	M	M	ML
Maknounye Jezzine	ML	M	M	Maraat Ouazaiyeh	M	M	ML	Mazraat Daraya	M	M	M
Mazraat El-Aarqoub	M	M	ML	Mazraat El-Mathane	L	M	ML	Mazraat El-Rahbane	ML	M	M
Mazraat Khallet Khaz	M	M	M	Mazraat Louzid (Loua	M	M	M	Mazraat Qrouh	M	M	ML
Mazraat Tamra	M	M	ML	Mazraat Zighrine Jez	M	M	ML	Mazraat	M	M	ML
Mharbiyeh	M	M	M	Midane Jezzine	ML	M	M	Mjeydel Jezzine	M	M	ML
Mlikh	M	M	M	Mrah El-Hbasse	M	M	M	Ouadi Baanquodaine	M	M	M
Ouadi El-Laymoun	M	M	M	Ouardiyeh	M	M	ML	Qabaa Jezzine	ML	M	M
Qatrani	M	M	M	Qaytouleh	ML	M	M	Qtaleh Jezzine	L	M	ML
Rihane Jezzine	M	M	M	Rimat	ML	M	M	Roum	ML	M	M
Roummanet	M	M	M	Sabbah	ML	M	M	Saydoun	ML	M	M
Sfaray	ML	M	ML	Snaya	ML	M	M	Sojoud	M	M	M
Srayri	M	M	M	Taaid	ML	M	ML	Wadi Jezzine	ML	M	M
Zhalta	ML	M	M								

Bekaa

West Bekaa

Municipality	10-Feb	11-Feb	12-Feb	Municipality	10-Feb	11-Feb	12-Feb	Municipality	10-Feb	11-Feb	12-Feb
Aammiq BG	M	M	ML	Ain El Tineh BG	M	M	M	Ain Zebdeh	M	M	M
Ana	M	M	ML	Aytanit	M	M	M	Baaloul BG	M	M	M
Bab Mareh	M	M	M	Chouberqiye Aammiq	M	ML	M	Dakoue	ML	M	M
Deir Ain El-Jaouze	M	M	M	Deir Tahniche	M	ML	ML	Ghaza	M	ML	M
Harime El-Soughra	ML	M	M	Hoch Harimeh	ML	ML	M	Jazira BG	ML	ML	M
Jib Jennine	M	M	ML	Kamed-El-Laouz	M	M	M	Kefraya BG	M	M	M
Khiara El Atika	ML	ML	M	Khiara	ML	ML	M	Khirbet Qanafar	M	M	M
Lala	M	M	M	Lebbaya BG	M	M	M	Loussa	M	M	M
Machghara	M	M	M	Manara (Hammara) BG	M	M	ML	Mansoura BG	M	M	ML
Marej BG	ML	M	ML	Maydoun	M	M	M	Ouaqf BG	ML	ML	M
Qaraaoun	M	M	M	Qelya	M	M	M	Raouda (Istabel)	ML	M	M
Saghbine	M	M	M	Sohmor	M	M	M	Soltan Yacoub el Ara	ML	ML	M
Souairy	ML	M	M	Sultan Yaacoub	M	M	M	Tal Znoun	M	ML	ML
Yehmor BG	M	M	M	Zilaya	M	M	M				

Zahle

Municipality	10-Feb	11-Feb	12-Feb	Municipality	10-Feb	11-Feb	12-Feb	Municipality	10-Feb	11-Feb	12-Feb
Aanjar (Haouch Mouss	M	M	M	Ablah	ML	M	ML	Ain Kfarzabad	ML	M	ML
Ali-El-Nahri	ML	M	ML	Bar Elias	ML	M	ML	Bouarej	M	M	ML
Cheberqiyet Tabet	ML	M	ML	Chtaura	ML	M	ML	Deir El Ghazal	M	M	ML
Delhamiyet Zahle	ML	M	ML	Ferzol	M	M	ML	Haouch El-Ghanam	ML	M	ML
Haouch Es-Siyadeh	ML	M	ML	Haouch Hala	ML	M	ML	Haouch Mandara	ML	M	ML

Haouch Qayssar	ML	ML	ML	Hezerta	M	M	ML	Hosh Moussa	ML	M	ML
Jdita	ML	M	ML	Kfarzabad	ML	M	ML	Ksara	ML	M	ML
Majdel Aanjar	M	M	M	Makssi	ML	M	ML	Massa	ML	M	ML
Mazraat Er-Remtaniye	ML	M	ML	Mrayjat Zahle	ML	M	ML	Mzaraa Zahle	ML	M	ML
Nabi Ayla	M	M	ML	Nasriyet Rizk	ML	M	ML	Nasriyet Zahle	ML	ML	ML
Niha Zahle	ML	M	ML	Ouadi Ed-Deloum	M	ML	L	Ouadi El-Arayech	M	M	ML
Qaa El Rim	ML	M	ML	Qab Elias	ML	M	ML	Qousaya	M	M	ML
Rhit	ML	M	ML	Riyak	ML	M	ML	Saadnayel	ML	M	ML
Taal El-Akhdar	ML	ML	M	Taalbeya	ML	M	ML	Taanayel	ML	M	ML
Talamara	ML	M	ML	Tcheflik Edde Haouch	ML	M	ML	Tcheflik Qiqano	ML	ML	ML
Terbol Zahle	ML	M	ML	Touaite Zahle	ML	M	ML	Zahle Aradi	M	M	ML
Zahle El-Berbara	M	M	ML	Zahle El-Maallaqa	M	M	ML	Zahle El-Midane	M	M	ML
Zahle Er-Rassiye	M	M	ML	Zahle Haouch El-Ouma	ML	M	ML	Zahle Haouch El-Ouma	M	M	ML
Zahle Haouch Ez-Zara	M	M	ML	Zahle Maalaga Aradi	M	M	ML	Zahle Mar Antonios	M	M	ML
Zahle Mar Elias	M	M	ML	Zahle Mar Gerios	M	M	ML	Zahle Saydet En-Naja	M	M	ML
Zebdoul	ML	M	ML								

Rachaiya

Municipality	10-Feb	11-Feb	12-Feb	Municipality	10-Feb	11-Feb	12-Feb	Municipality	10-Feb	11-Feb	12-Feb
Ain Arab Rachaiya	M	M	ML	Ain Ata	M	M	ML	Ain Harche	M	M	ML
Aqabe Rachaya	M	M	ML	Ayha	M	M	ML	Ayta El Fokhar	M	M	M
Bakifa Rachaya	M	M	ML	Bakka	M	M	ML	Beit Lahya	M	M	ML
Bireh Rachaiya	M	M	M	Daher El Ahmar	M	M	ML	Deir El-Achayer	M	M	ML
Heloua Rachaiya	M	M	L	Hoch El Qannabeh Rac	M	M	ML	Kaoukaba Bou Arab	M	M	ML
Kfar Danis	M	M	ML	Kfar Mechki	M	M	M	Kfar Qouq	M	M	ML
Kherbet Rouha	M	M	ML	Majdel Balhiss	M	M	M	Mdoukha	M	M	M
Mhaydseh Rachaiya	M	M	ML	Nabi Safa	M	M	M	Rachaiya	M	M	ML
Rafid Rachaiya	M	M	ML	Selsata (Mazraat Dei	M	M	L	Tannoura	M	M	ML
Yanta	M	M	ML								

Beyrouth

Beyrouth

Municipality	10-Feb	11-Feb	12-Feb	Municipality	10-Feb	11-Feb	12-Feb	Municipality	10-Feb	11-Feb	12-Feb
Achrafieh	M	M	M	Ain el-Mreisse	M	M	M	Bachoura	M	M	M
Beirut Central Distr	M	M	M	Marfai	M	M	M	Mazraa	M	M	M
Medaouar	M	M	M	Minet el-Hosn	M	M	M	Mwssaitbeh	M	M	M
Ras Beirut	M	M	M	Rmeil	M	M	M	Saifi	M	M	M
Zqaq el-Blat	M	M	M								



نشرة الطقس الصادرة عن دائرة التقديرات في مصلحة الأرصاد الجوية

النشرة: المسائية

الخميس: ٠٩ شباط ٢٠١٧

الحالة العامة: طقس مستقر يسيطر على الحوض الشرقي للمتوسط حتى ظهر يوم السبت المقبل حيث يتأثر تدريجياً بمنخفض جوي متمركز فوق تركيا يؤدي الى طقس ماطر.

الطقس المتوقع في لبنان:

الجمعة: قليل الغيوم مع ارتفاع محدود بدرجات الحرارة يتحول بعد الظهر إلى غائم جزئياً بسحب مرتفعة.
السبت: غائم جزئياً بسحب مرتفعة دون تعديل يذكر على درجات الحرارة نهاراً والتي تبدأ بالانخفاض التدريجي اعتباراً من فترة الظهرية ويتحول الطقس الى غائم مع تساقط أمطار متفرقة تشتد غزارتها أحياناً اعتباراً من المساء وتكون مترافقة ببرق ورعد كما تتساقط الثلوج على ارتفاع 1500 متر وما فوق.
الأحد: غائم جزئياً مع انخفاض اضافي بدرجات الحرارة وتساقط أمطار متفرقة أحياناً خاصة في المناطق الجبلية والداخلية وتتساقط الثلوج بشكل متفرق على ارتفاع 1200 متر وما فوق، كما يتوقع حدوث انفراجات خلال النهار.

السبت		الجمعة		الخميس		درجات الحرارة المتوقعة	
٩/١٨	٩/١٩	٨/١٩	٨/٢٠	٧/١٩	٧/١٩	صور	الساحل
١٣/١٩		١٢/٢٠		١٢/١٩		بيروت	
١٠/١٨		٩/٢٠		٩/١٩		طرابلس	
٧/١٠	٦/١٠	٦/١٢	٥/١٢	٦/١١	٥/١١	بيصور	الجبال
٦/٩		٥/١٢		٥/١١		قرطبا	
١-٣		٢-٦		٣-٥		الأرز	
٦/١٠	٥/١١	٤/١٢	٣/١٢	٣/١٢	٢/١٢	القرعون	الداخل
٨/١١		٦/١١		٦/١٠		مرجعيون	
٥/١٠		٣/١١		٢/١١		زحلة	

الرياح السطحية: شمالية الى شمالية شرقية، سرعتها بين ١٠ و ٣٠ كلم/س.

الانقشاع: جيد.

الرطوبة النسبية على الساحل: بين ٤٥ و ٦٥ %.

حال البحر: منخفض ارتفاع الموج.

الضغط الجوي: ١٠١٧ HPA

ساعة شروق الشمس: ٠٦:٢٧

حرارة سطح الماء: ١٧°م.

أي ما يعادل: ٧٦٣ ملم زئبق

ساعة غروب الشمس: ١٧:١٨