

Lebanon Fire Risk Bulletin



CIVIL DEDEFENCE

Refer to cadast table condition.

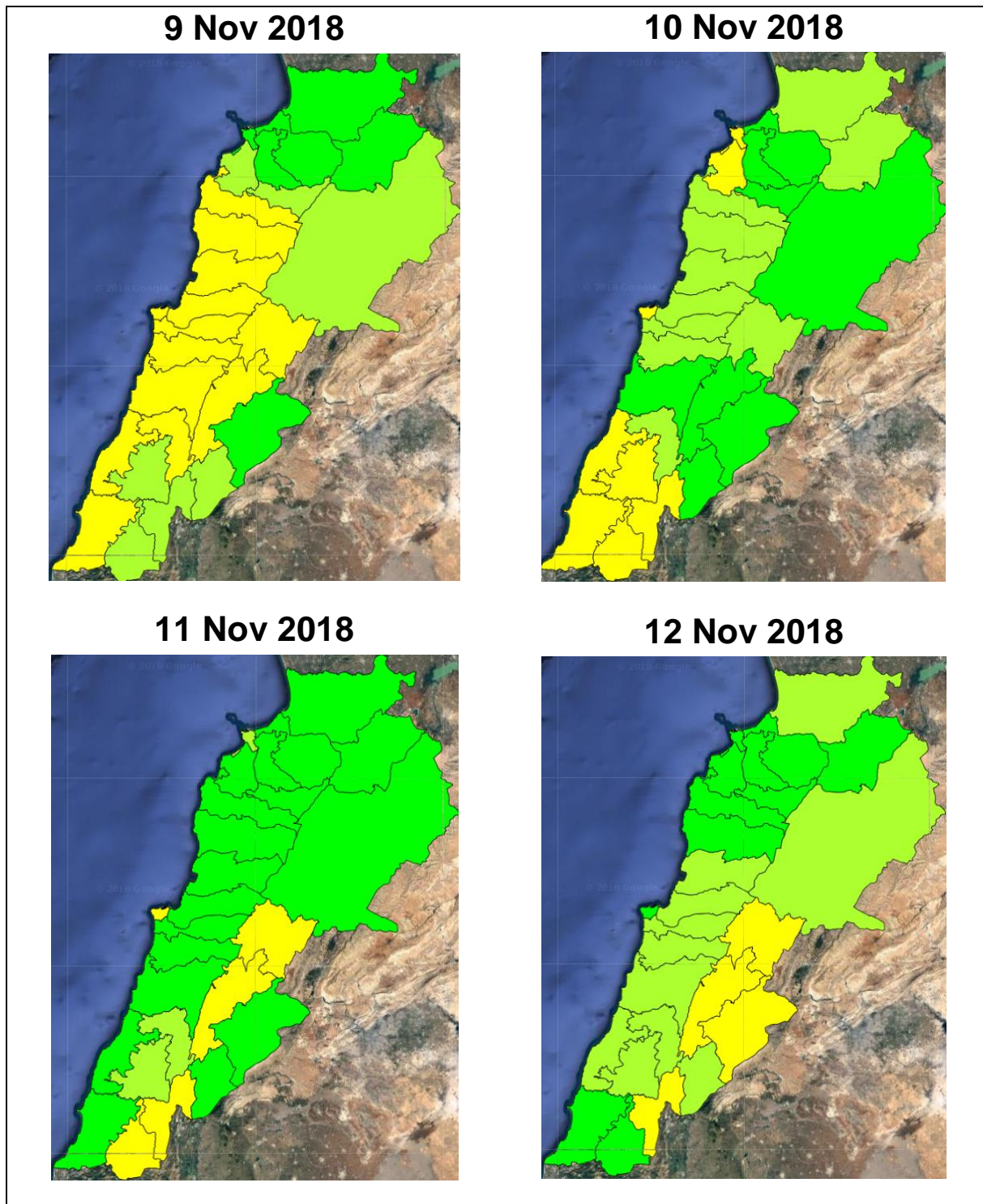
Please note that the indicated temperature is at 2 meters height from the ground.

General description of potential fire risk situation

Symbol	Level of risk	Meaning and actions
VL	Very low	Very low fire risk. Controlled burning operations can be hardly executed due to high fuel moisture content. Normally wildfires self-extinguish.
L	Low	Low fire risk. Controlled burning operations can be executed with a reasonable degree of safety.
ML	Medium low	Medium-low fire risk. Controlled burning operations can be executed in safety conditions. All the fires need to be extinguished.
M	Medium	Medium fire risk. Controlled burning operations would be avoided. All the fires need to be very well extinguished.
MH	Medium high	Controlled burning is not recommended. Open flame will start fires. Cured grasslands and forest litter will burn readily. Spread is moderate in forests and fast in exposed areas. Patrolling and monitoring is suggested. Fight fires with direct attack and all available resources.
H	High	Ignition can occur easily with fast spread in grass, shrubs and forests. Fires will be very hot with crowning and short to medium spotting. Direct attack on the head may not be possible requiring indirect methods on flanks. Patrolling and monitoring the territory is highly suggested.
E	Extreme	Ignition can occur also from sparks. Fires will be extremely hot with fast rate of spread. Control may not be possible during day due to long range spotting and crowning. Suppression forces should limit efforts to limiting lateral spread. Damage potential total. Patrolling and monitoring the territory is highly suggested.

Beirut, 10 November 2018

FIRE RISK INDEX

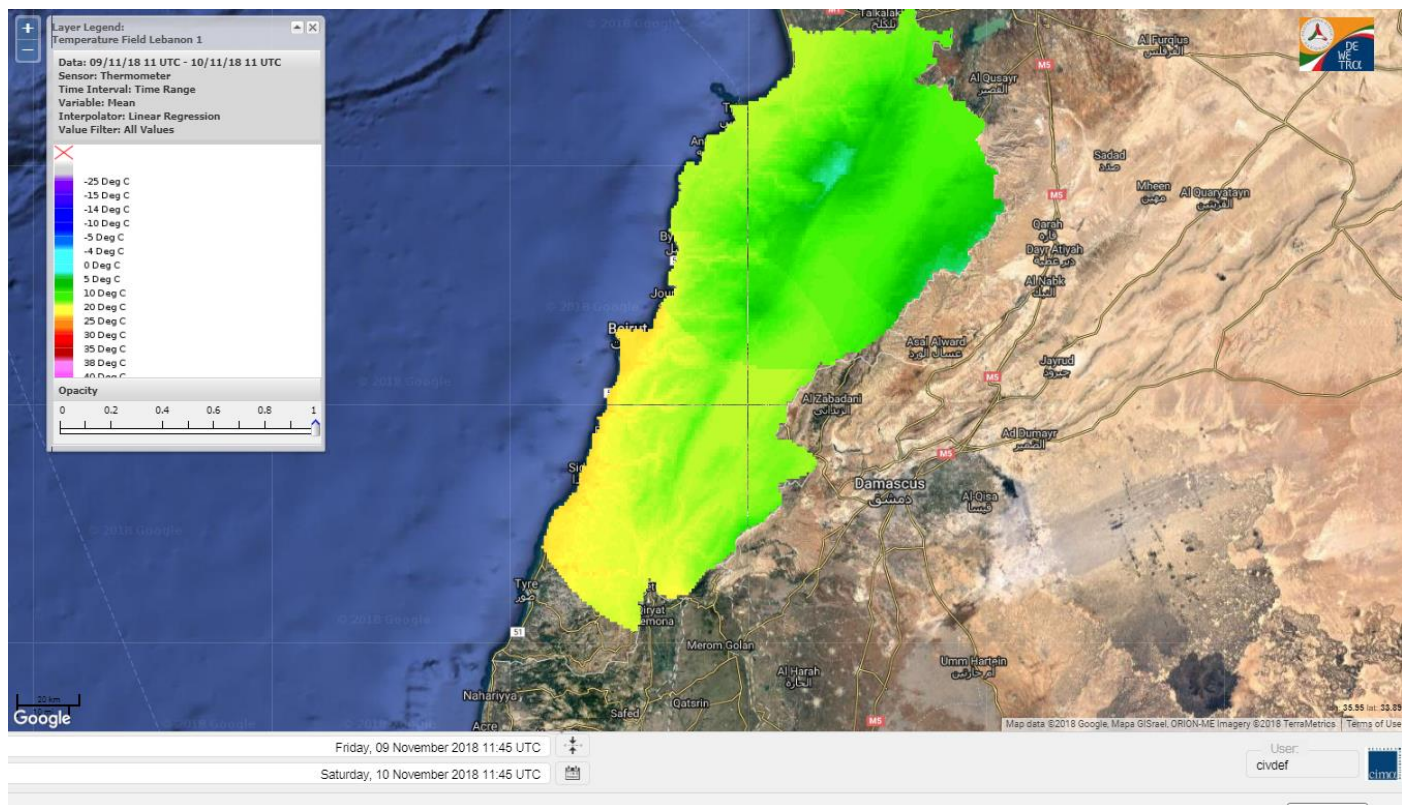


Layer Legend:
Lebanon Wildfire Risk Index 1

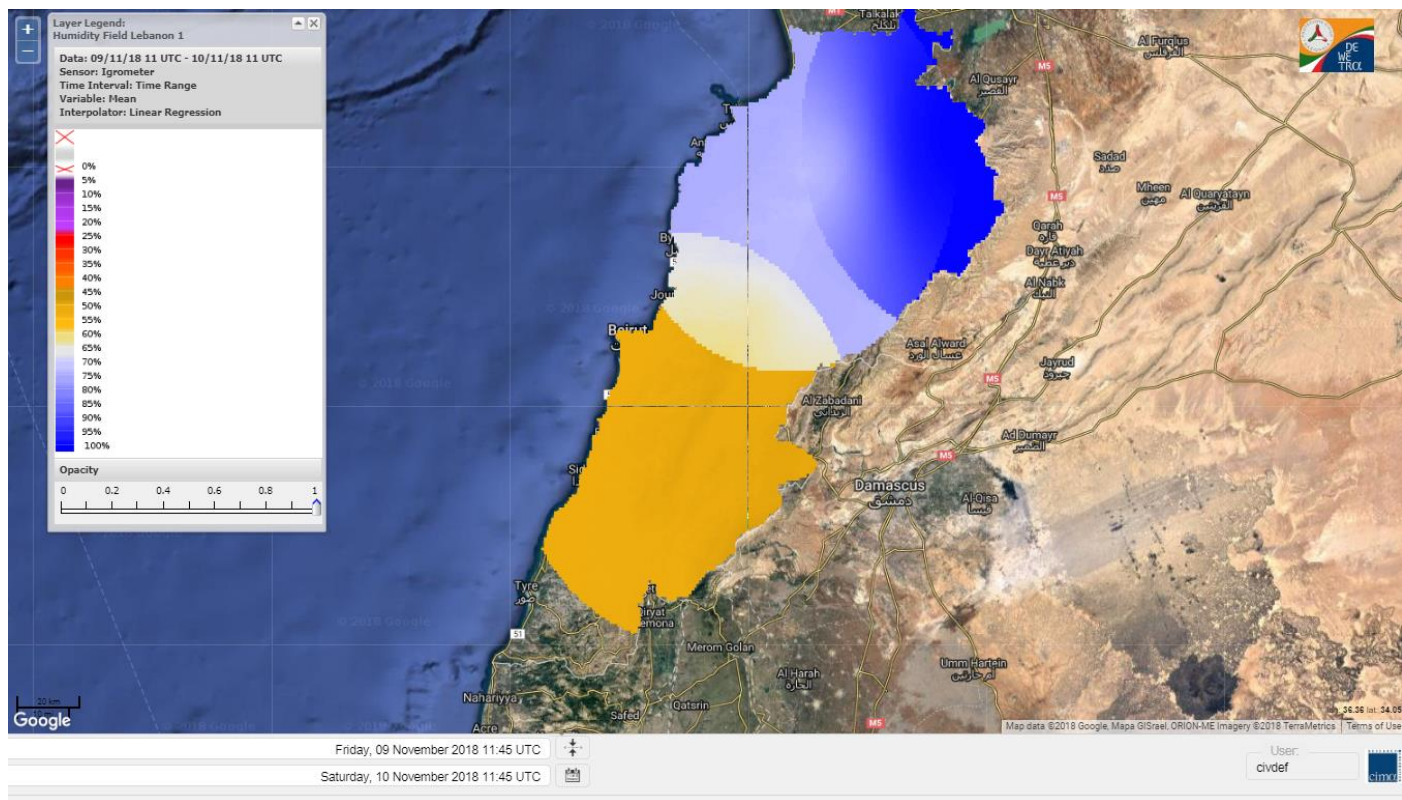
Data: Run: 10/11/2018 00:00. Forecast for 10
Model: RISICO for the Republic of Lebanon
Variable: Fire Weather Index
Spatial Resolution: Caza

- VERY LOW
- LOW
- MEDIUM-LOW
- MEDIUM
- MEDIUM-HIGH
- HIGH
- EXTREME

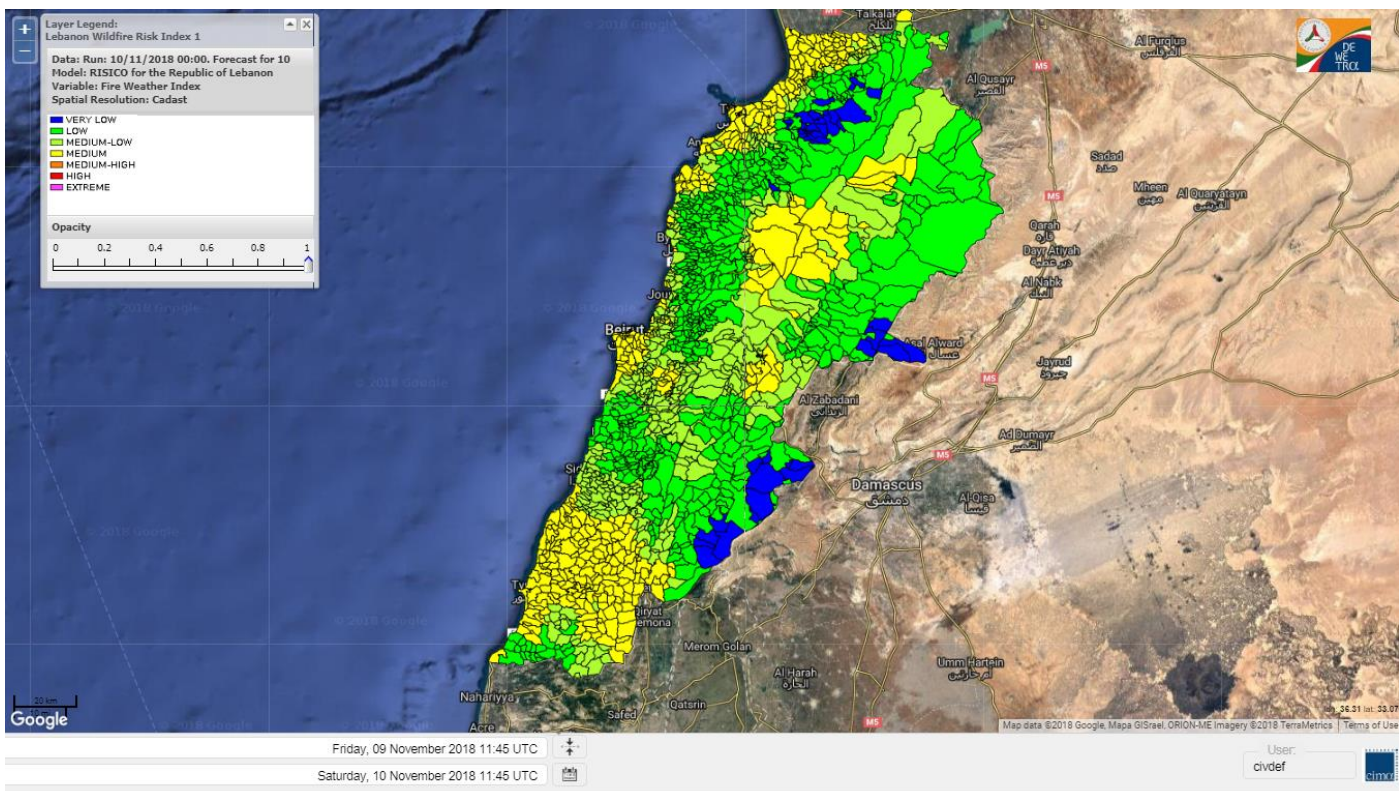
Lebanon temperature for 10 Nov 2018



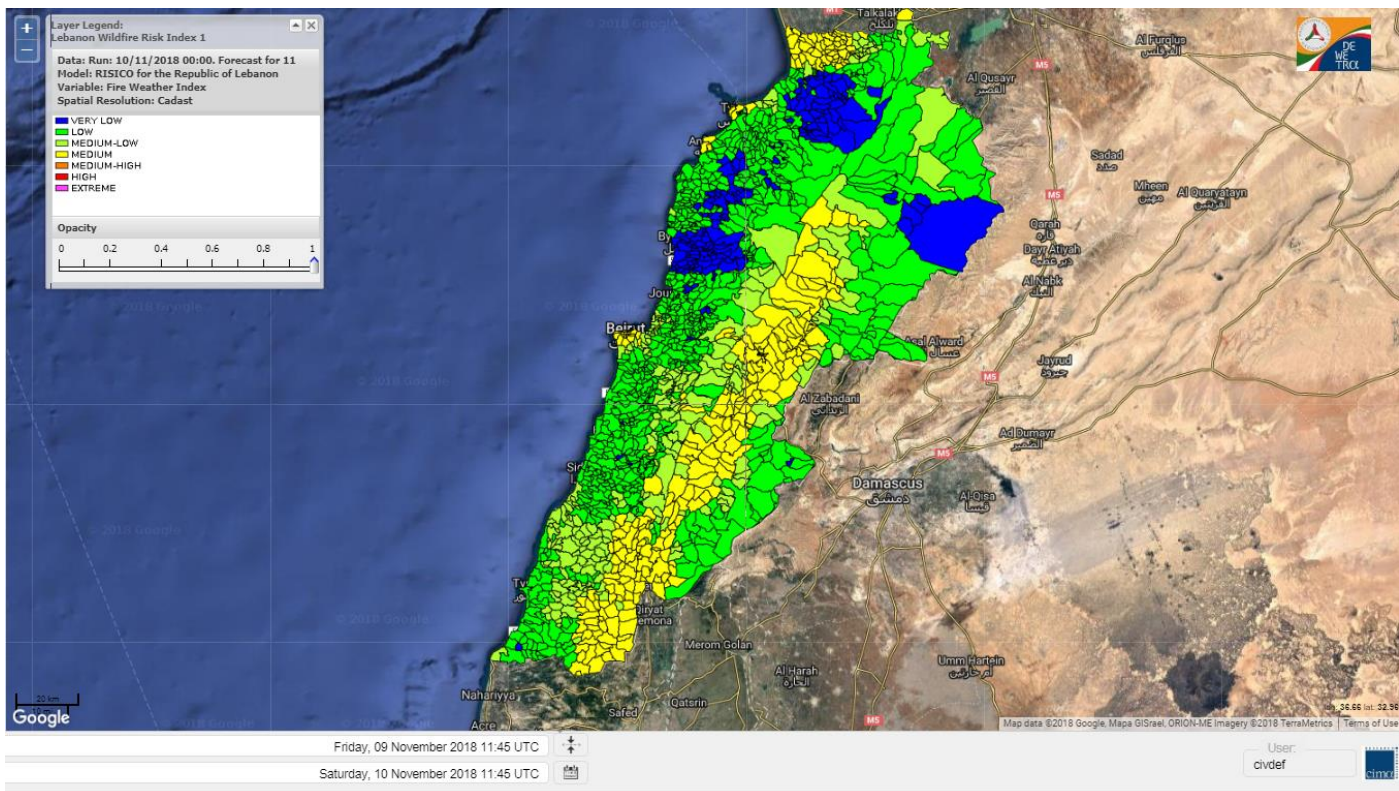
Lebanon humidity for 10 Nov 2018



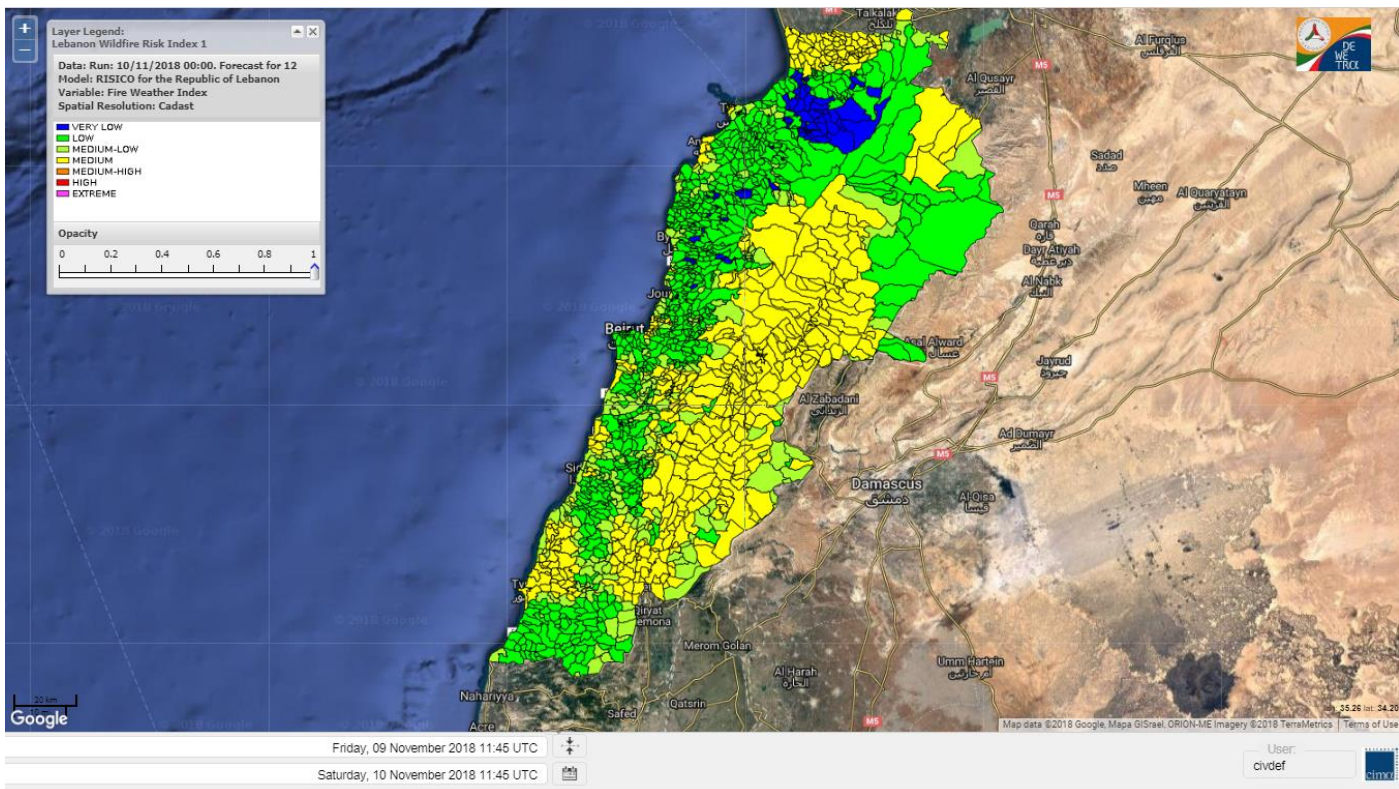
Lebanon for 10 Nov 2018



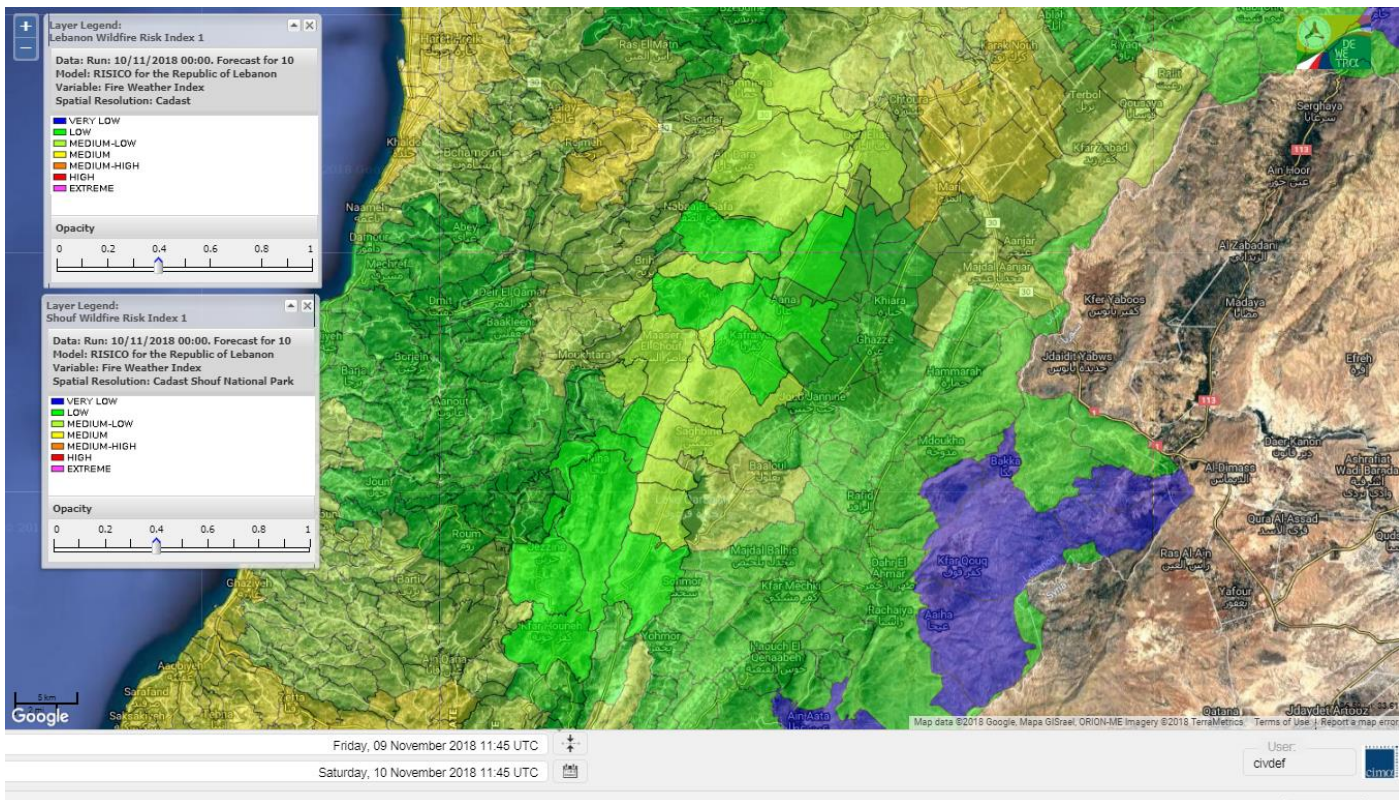
Lebanon for 11 Nov 2018



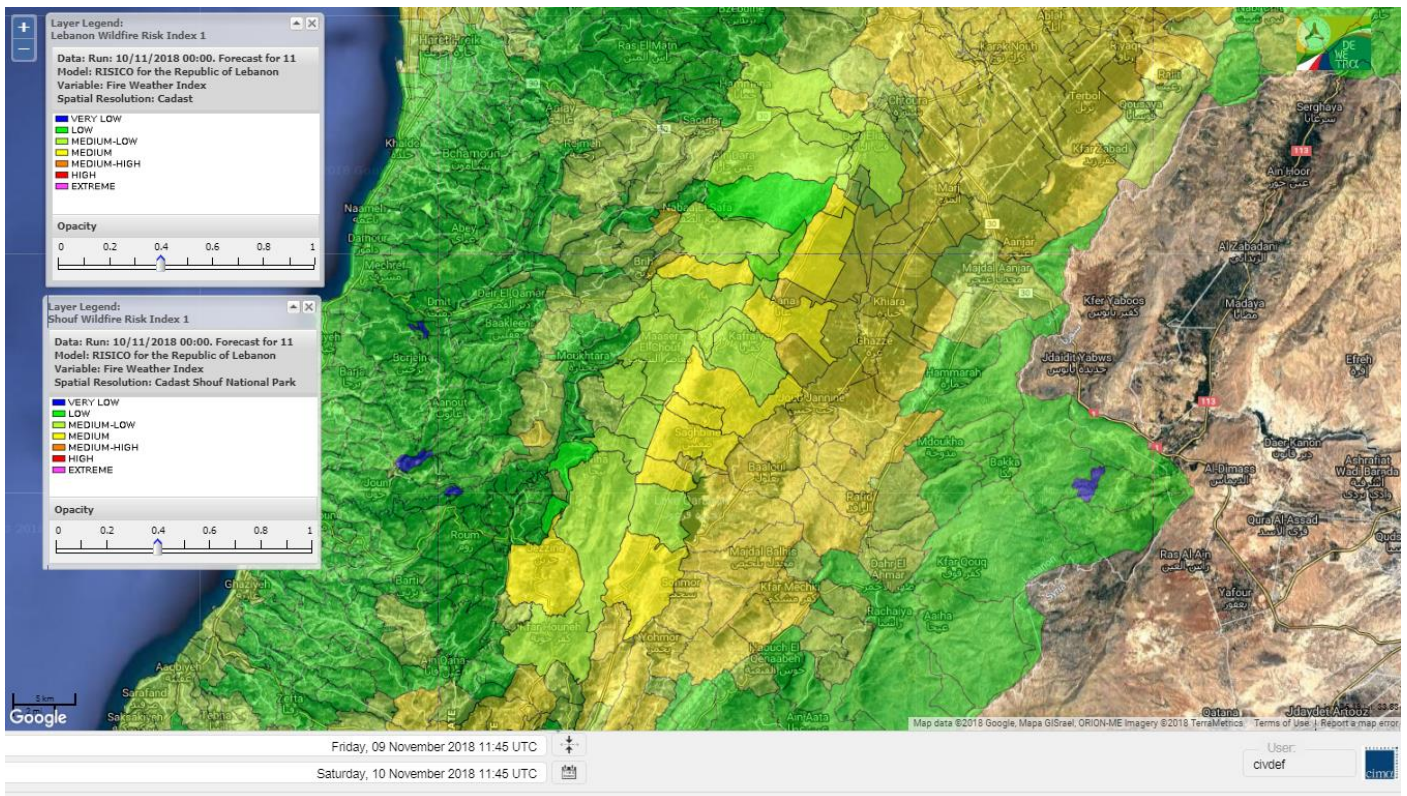
Lebanon for 12 Nov 2018



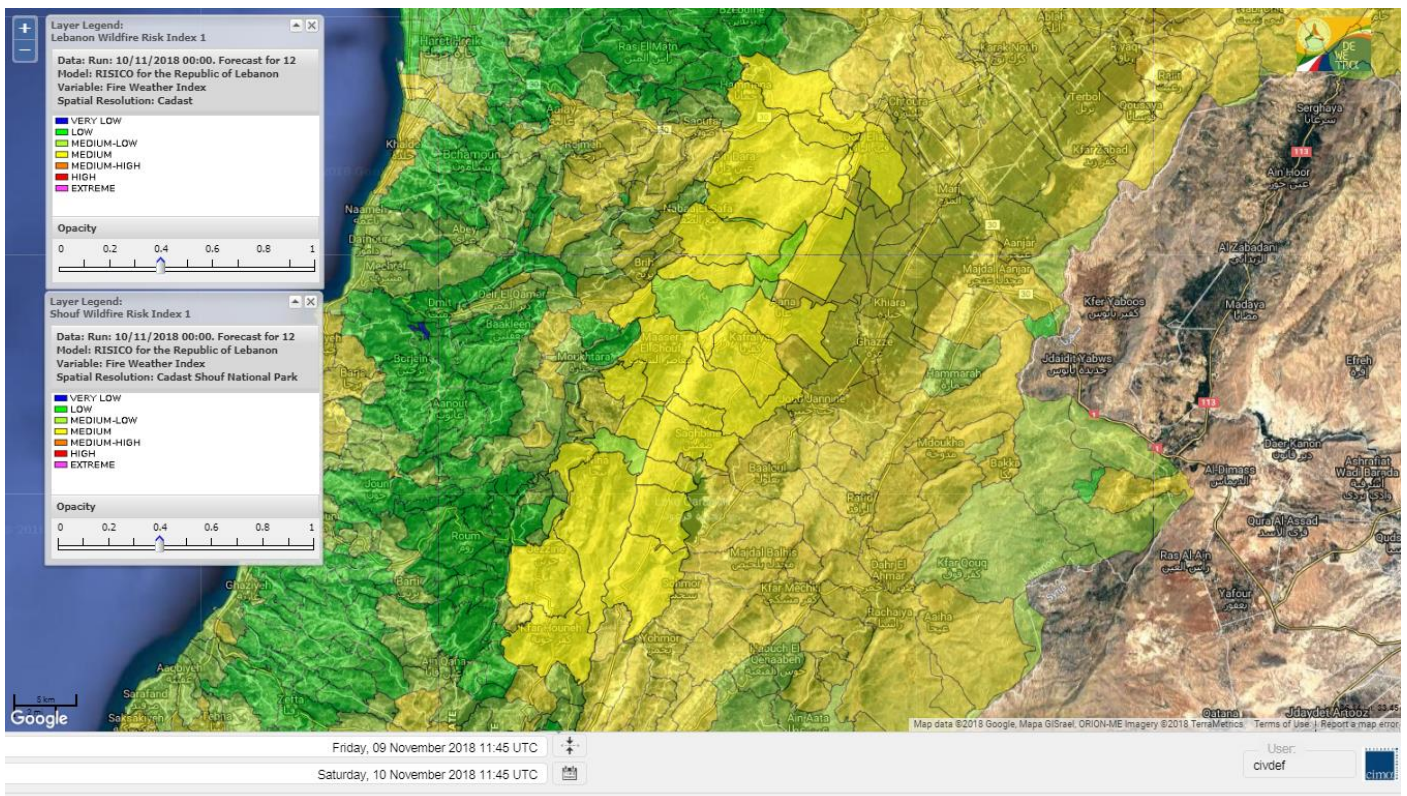
Shouf Biosphere Reserve Forecast for 10 Nov 2018



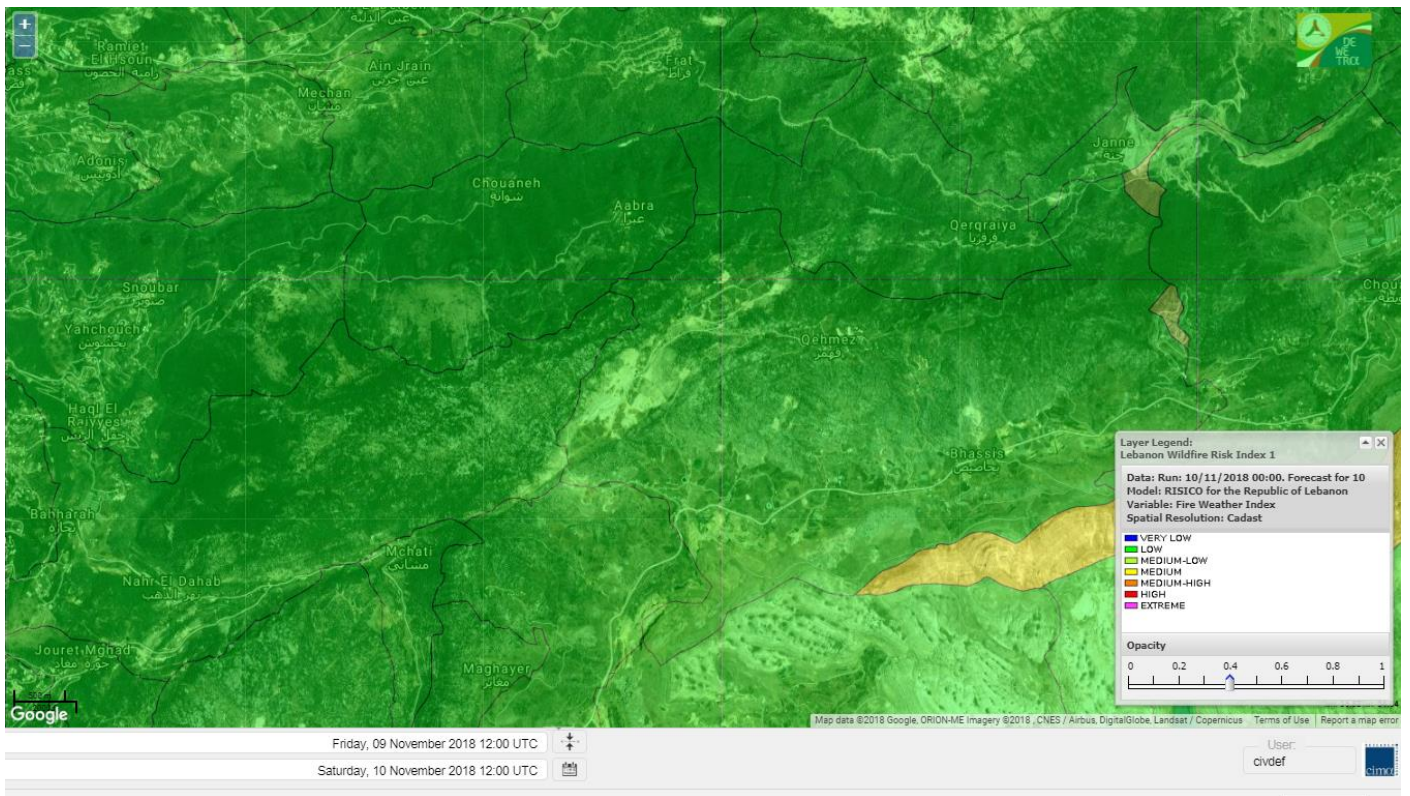
Shouf Biosphere Reserve Forecast for 11 Nov 2018



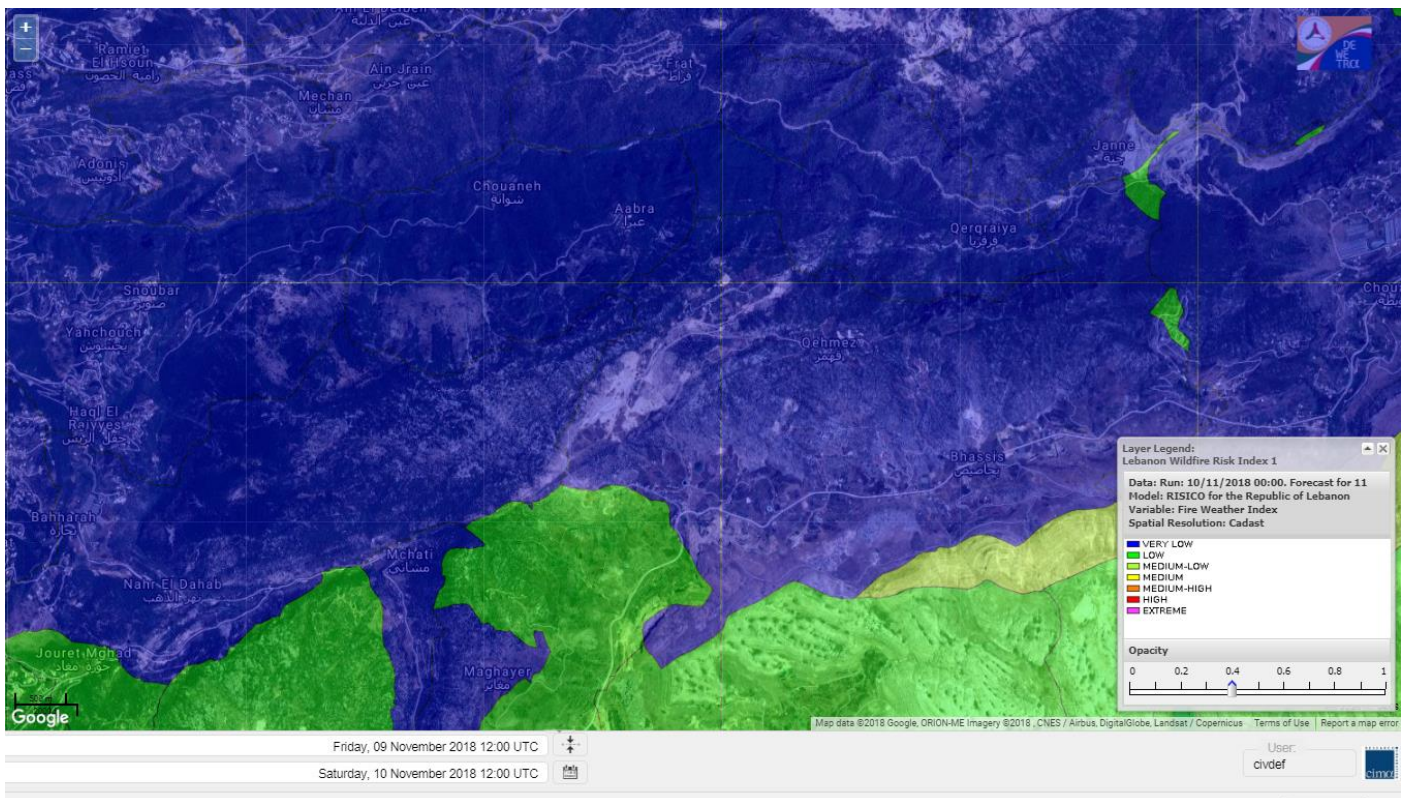
Shouf Biosphere Reserve Forecast for 12 Nov 2018



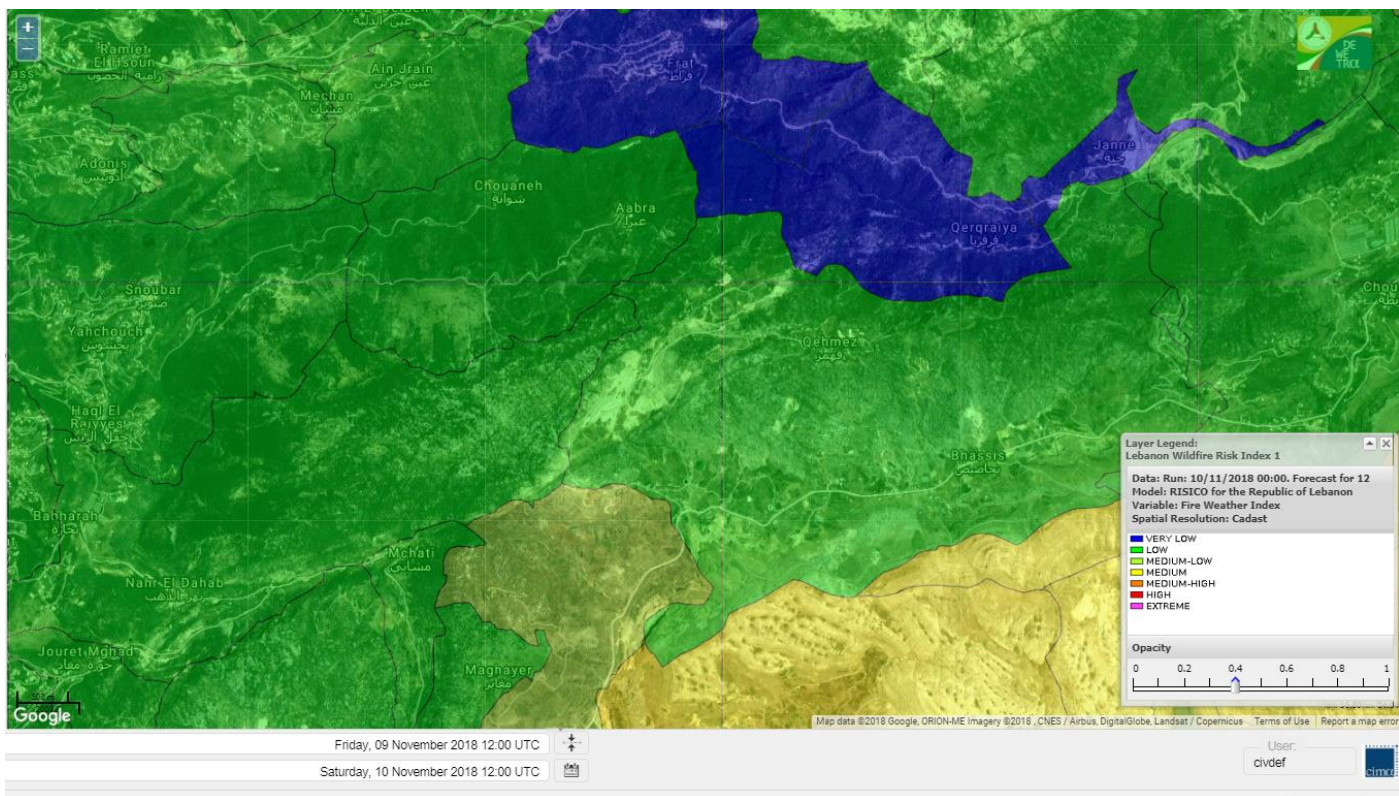
Jabal Moussa Reserve Forecast for 10 Nov 2018



Jabal Moussa Reserve Forecast for 11 Nov 2018



Jabal Moussa Reserve Forecast for 12 Nov 2018

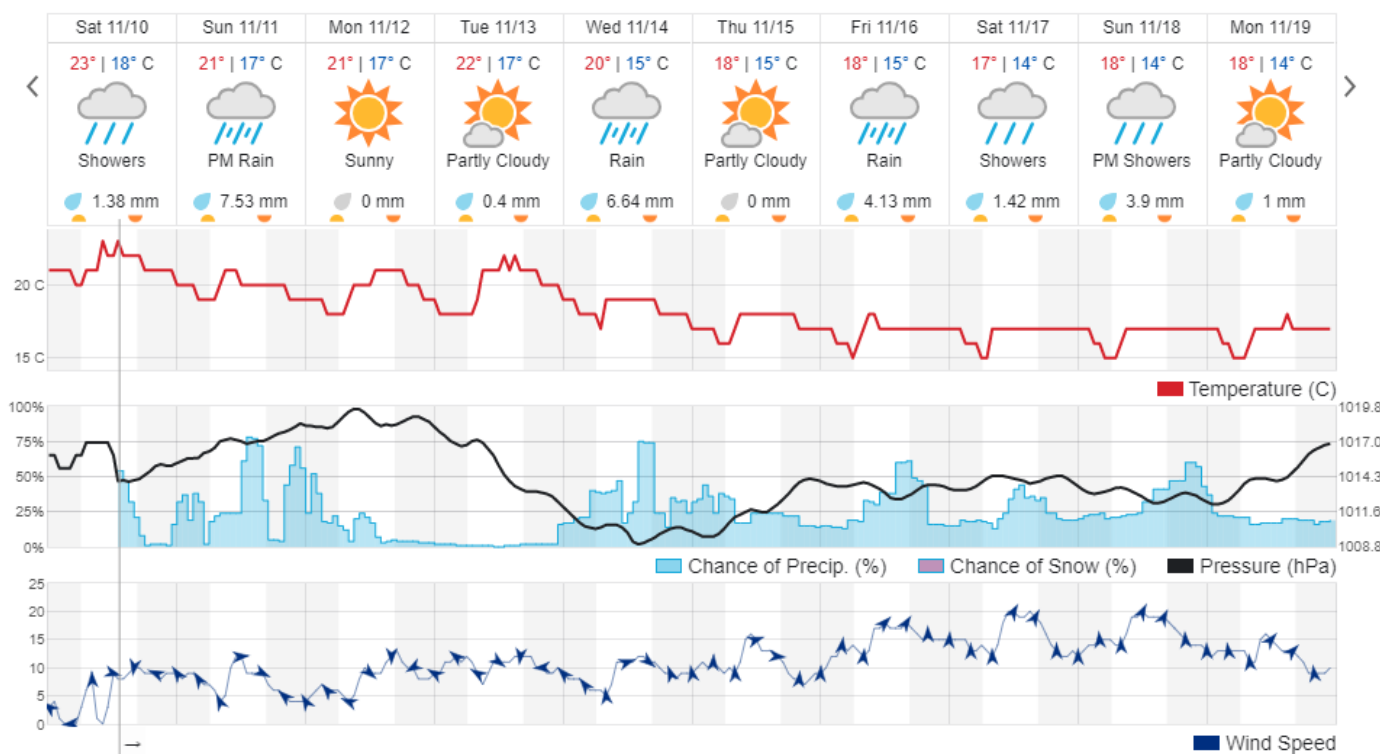


Beirut, Lebanon

23° ACHRAFIEH,RIZK STATION | REPORT | CHANGE

TODAY HOURLY 10-DAY CALENDAR HISTORY WUNDERMAP

Customize



Nord

Koura

Municipality	10-Nov	11-Nov	12-Nov	Municipality	10-Nov	11-Nov	12-Nov	Municipality	10-Nov	11-Nov	12-Nov
Aaba	ML	L	L	Afsaddiq	L	L	L	Ain Ekrine	L	L	L
Amioun	L	VL	L	Anfeh	M	M	M	Badbhoun	ML	L	ML
Barghoun	M	L	ML	Barsa	M	L	L	Batroumine	M	L	L
Bdebba	M	L	L	Bechmizine	L	VL	L	Bednayet El-Koura	M	L	ML
Bhabbouch El-Koura	L	L	L	Bkeftine	M	L	L	Bnehran	L	L	L
Bqaiia El-Koura	M	L	L	Bsarma	L	VL	L	Btaaboura	M	L	ML
Bterram	L	L	L	Btouratij	M	L	L	Bziza	L	VL	L
Dar Beechtar	L	L	L	Dar Chmezzine	L	L	L	Deddeh	M	L	L
Deir El-Balamand	ML	L	L	Fih	M	L	L	Hraiche	M	M	M
Ijdaabrine	M	L	L	Kaftoun	ML	L	L	Kefraya El-Koura	M	L	ML
Kfarakka	L	VL	L	Kfarhata	M	L	L	Kfarhazir	ML	L	ML
Kfarkahel	M	L	L	Kfarsaroun	L	VL	L	Kosba	L	VL	L
Mejdel el-Koura	L	L	L	Nakhle	M	L	L	Qalhat	ML	L	L
Ras Masqa	M	L	L	Rechdibbine	L	L	ML	Zakroun	M	M	M
Zgharta El-Mtaouile	L	VL	L								

Bcharre

Municipality	10-Nov	11-Nov	12-Nov	Municipality	10-Nov	11-Nov	12-Nov	Municipality	10-Nov	11-Nov	12-Nov
Aabdine	L	L	L	Bane	L	L	L	Barhelioun	L	L	L
Bazouone	ML	L	ML	Becharre	L	L	L	Beit Menzer	L	L	L
Billa	L	L	L	Blaouza	L	L	M	Bqaa Kafra	M	L	M
Bqerqacha	M	L	ML	Breissat	L	L	ML	Dimane	L	L	ML
Hadath El Jobbeh	ML	L	L	Hadchit	L	L	L	Hasroun	ML	L	ML
Mazraat Aassaf	L	VL	VL	Mazraat Bani Saab	L	L	L	Mchaa El-Jobbeh	M	L	M
Metrit	L	L	L	Moghr El-Ahoual	L	L	L	Ouadi Qannoubine	VL	VL	VL
Qanat	L	L	L	Qnayouer	L	VL	L	Tourza	L	L	L

Batroun

Municipality	10-Nov	11-Nov	12-Nov	Municipality	10-Nov	11-Nov	12-Nov	Municipality	10-Nov	11-Nov	12-Nov
Aabrine	M	L	L	Aalali	L	L	L	Aartziz	L	VL	VL
Abdelli	L	VL	L	Ajdabra	ML	L	L	Assia	L	VL	L
Basbina	ML	L	ML	Batroun	M	L	ML	Bcheleh	L	L	L
Bechtoudar	L	VL	L	Beit Chlala	L	VL	L	Beit Kassab	L	VL	VL
Bijdarfil	ML	L	ML	Bqesmaya	ML	L	L	Chatine	ML	L	L
Chebtin	L	VL	L	Chekka	ML	L	M	Daael	L	VL	L
Dahr Abi Yaghi	L	VL	L	Daraya El-Batroun	L	L	L	Deir Billa	L	VL	L
Deir Kfifane	L	L	L	Deir Mar Youhanna EL	L	VL	L	Deir Mar Youssef Jra	L	L	L
Douma	L	L	L	Douq	L	L	L	Eddeh El-Batroun	L	L	L
Ftahat El-Batroun	L	VL	L	Ghouma	L	L	L	Hadtoun	L	VL	L
Hamat	M	L	L	Harbouna	L	VL	L	Hardine	L	VL	VL
Helta	L	VL	VL	Hery	M	L	M	Jebbla	L	VL	L
Jrabta El-Batroun	L	L	L	Jrane El-Batroun	L	L	L	Kfar Aabida	ML	L	L
Kfar Halda	L	VL	L	Kfarb Shlaimane	L	VL	VL	Kfarhatna	L	L	L
Kfarhay	M	L	ML	Kfarhelos	M	L	L	Kfifane	L	L	L

Kfour El Arabi	ML	L	L	Koubba	M	L	ML	Kour	L	L	L
Mar Mama	L	VL	VL	Masrah	L	VL	L	Mehmarch	L	L	L
Mrah Chdid	L	L	L	Mrah El Ziyat	L	L	L	Mrah El-Hajj	L	VL	VL
Nahle El-Batroun	L	VL	L	Niha El-Batroun	ML	L	L	Ouahj El-Hajjar	M	L	L
Ouata Houb	ML	L	L	Qatnaaoun	M	L	L	Racha	L	L	L
Rachana	L	L	L	Rachkida	M	L	L	Ram El-Batroun	L	VL	L
Ras Nahhach	M	L	L	Selaata	M	L	ML	Sghar	L	L	L
Smar Jbayl	L	L	L	Sourat El-Batroun	L	VL	L	Tannourine El-Faouqa	M	L	M
Tannourine Et-Tahta	ML	L	L	Thoum	ML	L	L	Toula El-Batroun	L	L	L
Zan	L	VL	L								

Zgharta

Municipality	10-Nov	11-Nov	12-Nov	Municipality	10-Nov	11-Nov	12-Nov	Municipality	10-Nov	11-Nov	12-Nov
Aachach	M	L	L	Aalma	M	L	L	Aarde	ML	L	L
Aintourine	L	L	ML	Arabet Qozhaya	L	L	L	Arde	M	L	L
Arjis	L	L	L	Asnoun	ML	L	L	Ayto	L	L	L
Basloukit	L	L	L	Bchannine	ML	L	L	Besebeel	ML	L	L
Bhairret Toula	VL	VL	VL	Bnachee	L	L	L	Boussit	M	L	ML
Danha	M	L	L	Daraiya Zgharta	L	L	L	Deir Jdeide	ML	L	L
Ehden	L	L	L	Halan	ML	L	ML	Hariq Zgharta	ML	L	L
Houakir	L	L	L	Hraiqis	M	ML	L	laal	ML	L	L
Ijbaa	L	L	ML	Karm Saddeh	L	L	L	Kfarchakhna	M	L	L
Kfardlaqous	M	L	L	Kfarfou	L	L	L	Kfarhata Zgharta	ML	L	L
Kfarhoura	ML	L	L	Kfarsghab	L	L	L	Kfaryachit	ML	L	L
Kfarzaina	ML	L	L	Khaldiye	ML	L	L	Mazraat Ajbeaa	ML	L	L
Mazraat Et-Teffah	L	VL	L	Mazraat Jneid	ML	L	VL	Mejdlayia Zgharta	M	L	L
Merh Kfarsghab	L	L	L	Miryata	M	L	L	Miziara	L	L	L
Mzraat Kefraya	M	L	L	Qorah Bach	ML	L	L	Rachiine	M	L	L
Ras Kifa	L	L	L	Sakhra	ML	L	L	Sebhel Zgharta	L	L	L
Serhel	L	VL	L	Tallet Zgharta	ML	L	L	Toula Zgharta	L	L	L
Zgharta	M	L	L								

Minieh-Denniye

Municipality	10-Nov	11-Nov	12-Nov	Municipality	10-Nov	11-Nov	12-Nov	Municipality	10-Nov	11-Nov	12-Nov
Aasaymout	VL	VL	VL	Aaymar	L	L	L	Aazki	L	L	L
Ain El-Tineh-Miniyeh	VL	VL	VL	Assoun	L	L	L	Bakhaaoun	L	L	L
Bchennata	L	L	L	Bechehhara	L	L	L	Beddawi	M	M	ML
Behouaita	L	L	L	Beit El Foqss	VL	VL	VL	Beit Haouik	L	VL	VL
Beit Zoud	VL	L	VL	Bekaasafrine	L	L	L	Borj El Yahoudiyeh	M	ML	L
Bqarsouna	VL	VL	VL	Btermaz	VL	VL	VL	Debaael	VL	VL	VL
Deir Ammar	M	ML	L	Deir Nbouh	ML	L	L	Haouaret-Miniyeh	VL	VL	VL
Haql el Azimeh	VL	VL	VL	Harf El Siyad	VL	VL	VL	Hazmiye-Miniyeh	VL	VL	VL
Izal	L	L	L	Jarjour	L	VL	VL	Jayroun	VL	VL	VL
Kahf El-Malloul	L	L	L	Karm El-Moher	L	L	L	Kfar Binine	VL	VL	VL
Kfarchalane	L	L	VL	Kfarhabou	L	L	L	Kharroub-Miniyeh	L	L	L
Mazraat El-Kreme	L	VL	L	Mazraat Ketrane	L	L	L	Merkebtta	M	L	L
Minyeh	M	ML	L	Mrah El Sfirat	VL	VL	VL	Mrah Sraj	VL	VL	VL
Mrebbine	L	VL	VL	Nabi Youcheaa	M	ML	L	Nemrine	VL	VL	VL

Qarhaiya	L	VL	VL	Qarne	VL	VL	VL	Qarsita	VL	VL	VL
Qattineh-Miniyeh	VL	VL	VL	Qemmamine	VL	VL	VL	Qraine	VL	VL	VL
Raouda-Aadoua	ML	VL	VL	Rihaniyet-Miniyeh	M	L	L	Sfireh	VL	VL	VL
Sir Ed-Danniyeh	VL	VL	VL	Tarane	VL	VL	VL	Terbol-Miniyeh	M	ML	ML
Zaghartaghriane	ML	L	L	Zouq Bhannine	M	L	L				

Nabatiye

Nabatiye

Municipality	10-Nov	11-Nov	12-Nov	Municipality	10-Nov	11-Nov	12-Nov	Municipality	10-Nov	11-Nov	12-Nov
Aabba	M	ML	L	Aazzi	ML	L	L	Adchit El-Chqif	M	ML	ML
Ain Bou Swar	ML	L	ML	Ain Kana	ML	L	ML	Ali El-Taher	M	M	M
Ansar	M	ML	M	Arab Salim	M	M	M	Arnoun	M	M	M
Bfaroue	M	L	L	Breyqaah	M	ML	ML	Charqiyeh	M	ML	L
Choukine	M	ML	ML	Deir El Zahrani	M	ML	ML	Doueir El-Nabatiyeh	M	ML	L
Habbouch El-Nabatiye	M	M	M	Hamra El-Nabatiyeh	M	M	M	Harouf El-Nabatiyeh	M	ML	L
Hmaile	M	ML	ML	Houmin El Faouqa	M	M	M	Houmin El Tahta	ML	L	L
Jarjough	M	ML	ML	Jbaah El-Nabatiyeh	ML	L	L	Jebchit	M	ML	L
Kfar Djal El-Nabatiy	M	ML	ML	Kfar Remmane	M	M	M	Kfar Sir	M	ML	ML
Kfar Tebnit	M	M	M	Kfarfila	ML	ML	ML	Kfour El-Nabatieh	M	ML	ML
Mayfadoun	M	M	M	Mazraat Bsaffour	M	ML	L	Mazraat Chalbaal	M	ML	L
Mazraat Dmoul	M	ML	ML	Mazraat El Khreibeh	ML	L	L	Mazraat El-Bayad El-	M	M	M
Mazraat Kfarjaouz	M	M	M	Mazraat Qalaat Meiss	M	ML	ML	Nabatiyeh El-Fawka	M	M	M
Nabatiyeh Et-Tahta	M	M	M	Namiriyeh	M	ML	L	Qaaqaaiyet El Jisr	M	ML	ML
Qossaibeh El-Nabatiy	M	ML	ML	Roumine	ML	L	L	Sarba El-Nabatieh	ML	L	L
Sir El-Gharbiyeh	M	ML	M	Toul	M	ML	L	Yehmor El-Nabatiyeh	M	M	M
Zaoutar El Charkiyeh	M	M	M	Zaoutar El-Gharbiyeh	M	ML	ML	Zebdine El-Nabatiyeh	M	M	ML
Zefta	M	L	L								

Hasbaiya

Municipality	10-Nov	11-Nov	12-Nov	Municipality	10-Nov	11-Nov	12-Nov	Municipality	10-Nov	11-Nov	12-Nov
Ain Jarfa	L	L	ML	Abou Qamha	L	ML	M	Ain Qania	L	L	ML
Bourghos	ML	M	M	Chebaa	VL	L	M	Chouaya Hasbaya	VL	L	M
Dellafeh	ML	M	M	Fardiss Hasbaiya	L	ML	M	Hasbaya	L	L	M
Hbariyeh	L	L	ML	Kaoukaba Hasbaiya	ML	M	M	Kfar Chouba	L	L	ML
Kfar Hamam	L	L	ML	Kfeir El-Zait	L	L	ML	Khalwat Hasbaya	VL	L	L
Khreibet Hasbaiya	M	M	M	Majdiyeh Hasbaiya	ML	M	M	Marj Ez-Zhour (Haouc	L	ML	ML
Meri	M	M	M	Mimass	L	L	M	Rachaiya El-Fokhar	L	ML	ML
Salaiyeb	M	M	M								

Marjayoun

Municipality	10-Nov	11-Nov	12-Nov	Municipality	10-Nov	11-Nov	12-Nov	Municipality	10-Nov	11-Nov	12-Nov
Aalmane Marjaayoun	M	M	ML	Aamra	M	M	M	Adayseh Marjaayoun	M	M	M
Adchit El-Koussair	M	M	M	Ain Aarab Marjaayoun	M	M	M	Bani Haiyann	M	M	ML
Blatt Marjaayoun	ML	M	M	Blida	M	M	L	Borj El-Moulouk	M	M	M
Boueyda Marjaayoun	ML	M	M	Deir Mimass	M	M	M	Deir Siriane	M	M	M
Dibbine	ML	M	M	Ebel El Saqi	ML	M	M	Houla	M	M	ML
Houra	M	M	M	Kfar Kila	M	M	M	Khiam Marjaayoun	M	M	M

Klayaa	M	M	M	Majdel Selem	M	M	L	Marjaayoun	ML	M	M
Markaba	M	M	ML	Mays El-Jabal	M	M	ML	Mazraat Doumiat	M	M	M
Mazraat Sarada	M	M	M	Mhaibib	M	M	ML	Qabrikha	M	M	L
Qantara	M	M	ML	Rab El-Thalathine	M	M	M	Saouaneh Marjayoun	M	M	L
Talloussa	M	ML	L	Taybeh Matjaayoun	M	M	M	Touline	M	ML	L

Bent Jbail

Municipality	10-Nov	11-Nov	12-Nov	Municipality	10-Nov	11-Nov	12-Nov	Municipality	10-Nov	11-Nov	12-Nov
Ain-Ebel	ML	M	L	Aitaroun	M	M	L	Aynata Bint Jbeil	ML	M	L
Ayta El-Chaeb	L	L	L	Ayta El-Jabal	M	M	L	Beit Lif	L	L	L
Beit Yahoun	M	M	L	Bint Jbeil	ML	M	ML	Borj Qalaway	M	ML	ML
Braachit	M	M	L	Chakra	M	M	ML	Debel	ML	M	L
Deir Antar	M	M	L	Froun	M	ML	ML	Ghandouriyeh Bint Jb	M	ML	ML
Hanine	ML	M	L	Hariss	M	M	L	Hdatha	M	M	L
Jmeymeh	M	M	L	Kafra Bint Jbeil	L	L	L	Kfar Dounine	M	M	L
Khirbet Selm	ML	M	L	Kounine	M	M	L	Maroun El Ras	ML	M	ML
Qalaway	M	M	L	Qaouzah	L	L	L	Qatmoun	ML	M	ML
Ramya Bint Jbeil	L	L	L	Rchaf	ML	ML	L	Rmeich	ML	M	L
Safad Al Battikh	M	M	L	Salhaneh	L	L	L	Serbine	ML	M	L
Sultanieh Bint Jbeil	M	M	L	Tibnine	M	M	L	Tiri	ML	M	L
Yaroun	ML	M	ML	Yater	ML	L	L				

Mont Liban

Jbail

Municipality	10-Nov	11-Nov	12-Nov	Municipality	10-Nov	11-Nov	12-Nov	Municipality	10-Nov	11-Nov	12-Nov
Aabeydat	L	L	L	Aalita	L	VL	L	Aamchit	ML	L	ML
Aarab El-Lahib	ML	L	M	Aarasta	ML	L	L	Adonis Jbeil	L	VL	L
Afqa Jbeil	ML	L	L	Ain El Delbeh Jbeil	L	VL	L	Ain El-Ghouayba	L	VL	L
Ain Jrain	L	VL	L	Ain Kfah	L	L	L	Almat El Chemaliyat	L	VL	L
Almat El-Jenoubiya	L	VL	L	Aqoura	M	ML	M	Bayzoun	L	VL	L
Bchille Jbeil	L	VL	L	Bechtlida	L	VL	VL	Behdaydat	L	L	L
Beit Habbaq	L	L	L	Bejjeh	L	L	L	Bekhaaz	ML	L	L
Berbara Jbeil	ML	ML	L	Bintael	L	VL	L	Birket Hjoula	L	VL	L
Blatt Jbeil	L	VL	L	Boulhos	L	VL	L	Breyj Jbeil	L	VL	L
Chamat	L	L	L	Chikhane	ML	L	L	Chmout	L	L	L
Eddeh Jbeil	ML	VL	ML	Ehmej	L	VL	L	Fatre	L	VL	L
Ferhet	L	VL	L	Fghal	L	L	L	Frat	L	VL	VL
Ghabat	M	L	ML	Ghalboun	L	L	L	Gharzouz	L	L	L
Ghofrine	ML	L	L	Habil	L	VL	VL	Halate	ML	VL	L
Haqel	L	L	L	Hbaline	L	L	L	Hboub	L	VL	L
Hdeine	ML	L	ML	Hema Er-Rehban	ML	L	ML	Hema Mar Maroun Aann	L	L	ML
Hjoula	L	VL	L	Hosrayel	ML	L	L	Hsarat	L	L	L
Hsoun	L	VL	L	Jaj	L	L	L	Janne	L	VL	VL
Jbeil	ML	VL	ML	Jeddeyl Jbeil	ML	L	L	Jlisse	L	VL	L
Jouret El-Qattine	L	VL	L	Kfar Baal Annaya	L	VL	L	Kfar Kidde	ML	L	L
Kfar Kouas	L	VL	L	Kfar Mashoun	L	L	ML	Kfoun	L	L	L

Kharbe Jbeil	L	L	L	Laqlouq	ML	L	M	Lassa	L	VL	L
Lehfed	L	VL	L	Maad	L	L	L	Mar Sarkis	L	L	ML
Mastita	M	VL	ML	Mayfouq	L	VL	L	Mazraat El Siyad	ML	L	M
Mazraat El-Maaden	L	VL	L	Mechane	L	VL	L	Mechmech Jbeil	L	VL	L
Mehrin	L	VL	L	Mejdel El-Akoura	M	L	ML	Mghayreh Jbeil	M	L	ML
Mounsef	M	L	L	Nahr Ibrahim	ML	VL	ML	Qahmez	L	VL	L
Qartaba	L	VL	L	Qartaboun	M	VL	ML	Qattara Jbeil	L	VL	VL
Qorqraya	L	VL	VL	Ramout	L	L	L	Ras Osta	L	VL	L
Rihane Jbeil	M	L	L	Sakiet El-Khayt	L	L	L	Saqi Richmaya	L	L	L
Sebrine	L	VL	L	Seraita	ML	L	ML	Souane Jbeil	L	VL	L
Tadmor	M	L	ML	Tartej	L	L	L	Torzaiya	L	VL	L
Yanouh Jbeil	M	L	ML	Zibdine Jbeil	L	VL	L				

El Metn

Municipality	10-Nov	11-Nov	12-Nov	Municipality	10-Nov	11-Nov	12-Nov	Municipality	10-Nov	11-Nov	12-Nov
Aain El-Qabu	L	L	L	Aain El-Qach	L	L	ML	Aain El-Teffaha	L	L	ML
Aain el-Safssaf El-M	L	L	L	Abou Mizane	L	L	ML	Ain Aar	ML	ML	M
Ain Alaq	ML	L	L	Ain El-Kharroube	L	L	ML	Ain El-Sendiane	L	L	L
Ain El-Zeitoune	L	L	L	Ain Saadeh	ML	L	L	Aintoura El-Matn	ML	M	M
Amaret Chalhoub	M	ML	M	Antelias	M	ML	M	Atchaneh	ML	L	L
Ayroun	L	L	L	Baabdat	L	L	L	Baouchariyeh	M	ML	L
Baskinta	L	L	ML	Beit Chabab	L	L	L	Beit El-Chaar	M	ML	M
Beit El-Kekko	M	ML	M	Beit Mery	ML	L	L	Bhersaf	L	L	L
Bikfaya	L	L	L	Biyakout	M	ML	M	Bnabil	L	L	L
Bourj Hammoud	M	ML	L	Bqennaya	ML	L	ML	Broummana El-Matn	ML	L	L
Bsalim	ML	L	L	Bsifrine	L	VL	L	Bteghrine	L	L	L
Chaouiye	ML	L	ML	Chouaya El-Matn	L	L	ML	Choueir	L	L	L
Chrine	L	L	L	Dahr El Sawan El-Mat	L	L	L	Daychouniyeh	ML	ML	ML
Dbayeh	M	ML	M	Deir Chamra	L	L	L	Deir Mar Abda el Mch	ML	L	L
Deir Mar Roukouz	M	ML	L	Deir Tamiche	ML	L	L	Dik El-Mehdi	ML	L	ML
Dikwaneh	M	M	L	Douar El-Matn	L	L	L	Fanar	ML	ML	ML
Fraike	ML	L	L	Haret El-Ballaneh	ML	ML	ML	Hbous	ML	ML	ML
Himlaya	L	L	L	Jal El Did	M	ML	M	Jdeideh El-Metn	M	ML	M
Jouar El-Matn	L	L	L	Jouret El-Ballout	ML	L	L	Kaaqour	L	L	L
Kfar Aaqab	L	L	L	Kfertay El-Matn	L	L	L	Khenchara	L	L	L
Khillet El-Mtain	L	L	L	Konnabat Broummana	ML	L	L	Konnabat Salima	L	VL	L
Machraah El-Matn	L	L	L	Majdel Tarchich	ML	M	M	Majzoub	ML	ML	ML
Mansouriyeh El-Metn	M	ML	ML	Mar Boutros Karm Et-	L	L	L	Mar Chaya et Mzekke	ML	L	L
Mar Moussa Ed-Douar	L	L	L	Marjaba	L	L	ML	Masqa	L	L	L
Mayasse	L	L	L	Mazraat Deir Aoukar	ML	ML	M	Mazraat El-Hadirat	ML	ML	ML
Mazraat Yachouh	M	ML	M	Mchikha	L	L	ML	Menqlet Mezher	ML	ML	M
Mhaydseh Matn	L	L	L	Mkalles	M	ML	L	Mrouj	L	L	M
Mtain	ML	ML	M	Mtayleb	ML	ML	ML	Nabay	ML	L	L
Naccache	ML	ML	M	Ouadi Chahine	L	L	L	Ouadi El-Karm El-Mat	L	VL	L
Ouata El-Mrouj	L	L	ML	Ouyoun El-Matn	L	L	L	Qornet Chehwan	ML	L	ML
Qornet El-Hamra	ML	L	L	Roumieh	ML	L	L	Sfeilet Bikfaya	L	L	L
Sinn El-Fil	M	ML	L	Zabbougha	L	VL	L	Zalqa	M	ML	M

Zarouon	L	L	L	Zekrite	ML	L	L	Zighrine El-Matn	L	L	ML
Zouk El-Khrab	ML	ML	ML								

Chouf

Municipality	10-Nov	11-Nov	12-Nov	Municipality	10-Nov	11-Nov	12-Nov	Municipality	10-Nov	11-Nov	12-Nov
Aalmane El-Chouf	ML	L	ML	Aammiq El-Chouf	ML	L	L	Ain Ouzein	ML	L	L
Ain Qani	L	L	ML	Ain Zhalta	L	ML	M	Ainbal	L	L	L
Amatour	L	L	ML	Anout	L	L	L	Atrine	ML	L	ML
Baadarane	L	ML	M	Baaqline	L	L	L	Baasir	L	L	M
Barja	L	L	M	Barouk	L	ML	ML	Bater	L	L	M
Batloun	ML	ML	M	Bayqoun	L	M	M	Bchetfine	L	L	L
Beiteddine	ML	L	L	Benouati Ech-Chouf	L	L	L	Berjein	L	L	L
Bireh et Mtalleh	ML	ML	M	Biret El-Chouf	ML	ML	M	Bkechtine Ouel Mchei	L	L	L
Bkifa El-Chouf	L	L	ML	Botme	ML	L	L	Bqaiaa Ech-Chouf	L	L	L
Bsaba El-Chouf	L	L	ML	Chammis El-Chouf	L	L	ML	Chehim	L	L	L
Chemaarine	L	L	L	Chourit	ML	L	ML	Daher El-Chouf	L	L	L
Dalhoun	L	L	L	Damour	L	L	ML	Daraya El-Chouf	L	L	L
Deir El-Moukhalles	L	L	L	Deir Baba	L	L	L	Deir Dourit	L	L	L
Deir El-Qamar	L	L	ML	Deir Kouche	ML	L	L	Dibbieh	L	L	L
Dmit	L	L	L	Fouara Jaafar	ML	L	ML	Fraidis El-Chouf	ML	M	M
Ghabet Jaafar	L	L	L	Gharife	L	L	L	Haret Jandal	L	L	M
Hasrout	L	L	L	Jadra	L	L	M	Jahlieh	L	L	L
Jbeih El-Chouf	L	ML	ML	Jdeidet El-Chouf	ML	L	ML	Jiyeh	L	L	M
Jleilyeh	L	L	ML	Jmailiyeh	ML	L	ML	Joun	L	L	L
Kahlounie El-Chouf	ML	ML	M	Ketermaya	ML	L	ML	Kfar Faqoud	L	L	L
Kfar Hamal	ML	ML	M	Kfar Him	L	L	ML	Kfar Katra	ML	L	ML
Kfar Niss	ML	ML	M	Kfar hay	ML	L	ML	Kfarnabrakh	ML	ML	M
Khirbet Bisri	L	L	L	Knayse El-Chouf	L	L	L	Maaniyeh	L	L	ML
Maasser Beiteddine	ML	ML	ML	Maasser El-Chouf	ML	ML	M	Majdalouna	ML	L	ML
Majdel El-Meouch	ML	ML	ML	Mazboud	L	L	ML	Mazmoura	L	L	L
Mazraat El Chouf	L	ML	ML	Mazraat El Daher	L	L	L	Mazraat El-Douair	ML	L	L
Mechref	L	L	ML	Mghairie	L	L	ML	Mghayrie El-Chouf	L	L	L
Moukhtara	ML	L	ML	Mrusti	L	ML	M	Mtolle	L	L	L
Naameh	ML	L	ML	Niha El-Chouf	L	ML	M	Ouadi Abou Youssef	L	VL	VL
Ouadi Ed-Deir	L	L	ML	Ouadi El-Sit	ML	L	ML	Ouadi bnehlay	L	L	L
Qraibeh	ML	ML	M	Qreiaa	L	VL	L	Rmayle El-Chouf	ML	L	ML
Semqaniyeh	ML	ML	M	Sibline	ML	L	M	Sirjbeil	L	L	L
Warhanieh	ML	M	M	Werdaniyeh	ML	L	M	Zaarourieh	L	L	L

Baabda

Municipality	10-Nov	11-Nov	12-Nov	Municipality	10-Nov	11-Nov	12-Nov	Municipality	10-Nov	11-Nov	12-Nov
Abadiyeh	ML	L	ML	Ain Mouaffaq	ML	L	ML	Araiya	ML	L	L
Arbaniyeh	L	L	L	Arsoun	L	L	L	Baabda	M	L	L
Baalchmey	M	L	M	Bmaryam	ML	L	L	Bourj El-Brajneh	M	L	ML
Boutchay	ML	L	L	Bsaba Baabda	ML	L	ML	Btekhney	L	L	L
Btibyat	L	L	L	Bzebdine	L	L	L	Chbeniyeh	ML	L	ML
Chiyah	M	ML	L	Chmeisset Baabda	L	L	L	Chouit	ML	L	L
Deir El-harf	L	L	L	Deir Khouna	ML	L	ML	Dlaybeh	L	L	L

Falougha	ML	ML	M	Furn El-Chebbak	M	ML	L	Hadath Beyrouth	M	L	ML
Halaliyeh Baabda	ML	L	L	Hammana	ML	ML	M	Haret El Sett	ML	L	L
Haret Hamze	ML	L	L	Haret Hreik	M	ML	L	Hasbaiya El-Metn	L	L	L
Jouar El-Hoz	L	L	L	Jouret Arsoun	L	L	L	Kfar Chima	M	L	M
Kfar Selouane	ML	ML	ML	Khalouat Baabda	ML	ML	M	Kneisset Baabda	L	L	L
Laylakeh	M	L	ML	Louayzeh Baabda	ML	L	L	Merdache	ML	L	ML
Mzairaa Baabda	ML	L	L	Ouadi Chahrour El OI	ML	L	ML	Ouadi Chahrour El So	ML	L	L
Qalaa Baabda	ML	L	L	Qhraybe Baabda	ML	L	L	Qobbayaa	ML	L	ML
Qornayel	L	L	L	Qortada	L	L	L	Qrayeh Baabda	ML	L	ML
Qsaibeh Baabda	L	L	L	Qtale Baabda	ML	L	L	Ras El Metn	ML	L	L
Ras El-Haref	ML	ML	ML	Rouayset El-Ballout	ML	L	L	Salima Baabda	L	L	L
Tahouitat El Ghadir	M	L	M	Tarchich	ML	ML	M	Zandouqa	L	L	L

Aley

Municipality	10-Nov	11-Nov	12-Nov	Municipality	10-Nov	11-Nov	12-Nov	Municipality	10-Nov	11-Nov	12-Nov
Abey	L	L	ML	Aghmid	ML	L	ML	Ain Dara	ML	ML	M
Ain Drafil	L	L	L	Ain El Halazoun	M	ML	M	Ain El-Rmmaneh	ML	L	L
Ain Jedideh	M	ML	M	Ain Ksour	L	L	L	Ain Onoub	ML	L	L
Ain Traz	ML	L	ML	Ainab	ML	L	L	Aley	M	ML	M
Aramoun	ML	L	L	Aytat	ML	L	ML	Azouniyeh	ML	ML	M
Baawerta	L	L	ML	Badghan Oua Wadi Bad	ML	ML	M	Bassatine	ML	L	L
Bayssour	ML	L	ML	Bchamoun	ML	L	L	Bdadoun	ML	L	L
Behouara	ML	L	ML	Bennay	L	L	ML	Bhamdoun El-Dayaa	M	ML	M
Bhamdoun El-Mhatta	M	ML	M	Bkhechthey	M	ML	M	Bleibel	ML	L	L
Bmakine	M	L	M	Bmehray	ML	L	M	Bouzrid	L	L	L
Bserrine	M	ML	M	Bsous	ML	L	L	Btalloun	M	ML	M
Btater	M	ML	M	Chanay	M	ML	M	Charoun	ML	ML	M
Chartoun	ML	L	L	Chemlane	ML	L	L	Chouefat El-Aamrous	M	L	M
Chouefat El-Oumara	M	L	ML	Chouefat El-Quoubbe	M	L	M	Dakkoun	L	L	L
Deir Qoubel	ML	L	L	Dfoun	ML	L	ML	Douair El Remmaneh	ML	L	L
Ghaboun	ML	L	ML	Habramoun	ML	L	L	Homs Oua Hama	ML	L	ML
Houmal	ML	L	L	Jisr El Qadi	ML	L	ML	Kehaleh	ML	L	L
Keyfoun	ML	L	ML	Kfar Aamey	ML	L	ML	Kommatyeh	ML	L	ML
Maasrati	ML	L	ML	Majdel Baana	ML	ML	M	Mansourieh et Ain El	M	ML	M
Mazraat El-Nahr	ML	L	ML	Mchakhte	ML	L	L	Mecherfeh	ML	ML	M
Mejdaya	ML	L	ML	Mrayjat	ML	M	M	Ramliyah	ML	L	ML
Rechmaya	ML	ML	M	Rejmeh	ML	L	ML	Remhala	ML	L	ML
Rouaysset El Neemane	ML	L	ML	Saoufar	ML	ML	M	Selfaya	ML	L	L
Sirhmoul	ML	L	L	Souq El Ghareb	ML	L	ML	Taazanieh	M	ML	M

Kesrouane

Municipality	10-Nov	11-Nov	12-Nov	Municipality	10-Nov	11-Nov	12-Nov	Municipality	10-Nov	11-Nov	12-Nov
Achkout	L	L	L	Adma Oua Dafneh	ML	L	L	Ain Ed-Delbe Kesroua	L	VL	L
Ain El-Rihane	ML	L	L	Aintoura Kesrouane	ML	L	L	Ajaltoun	L	L	L
Akaybeh Kesrouane	ML	VL	M	Aramoun Kesrouane	L	L	L	Azra ouel Ozor	L	VL	L
Ballouneh	L	L	L	Batha	L	L	VL	Bekaatat Achkout	L	L	ML
Bekaatat Kanaan	L	L	L	Bizhel	L	VL	VL	Bouar	ML	L	L
Bqaatouta	L	L	ML	Bqaq Ed-Dine	ML	VL	ML	Bzommar	L	L	L

Chahtoul	L	L	L	Chnaniir	L	L	L	Chouan	L	VL	L
Daraya Kesrouane	L	L	L	Darououn	L	L	L	Deir Baqlouch	L	L	L
Dlebta	L	VL	L	Eghbeh	L	VL	VL	Faraya	L	L	M
Fatka	ML	L	L	Feytroun	L	L	L	Ghazir	ML	L	L
Ghbaleh Kesrouane	L	VL	L	Ghedrass	L	VL	L	Ghosta	L	L	L
Ghynéh	L	L	L	Harharaya w Kattine	L	L	L	Harissa Kesrouane	L	L	L
Hayata	L	L	L	Hosein	L	VL	L	Hrajel	L	L	M
Jdeideh Ghazir	L	L	L	Jeita	ML	L	L	Jounieh Ghadir	ML	L	L
Jounieh Haret Sakhr	ML	L	ML	Jounieh Salel Alma	ML	L	L	Jounieh Sarba	M	L	ML
Jouret Bedrane	L	VL	L	Jouret Mhad	L	L	L	Jouret Termos	L	L	ML
Kfar Debiane	L	L	L	Kfar Tay Kesrouane	L	VL	L	Kfar Yassine	M	L	ML
Kfour Kesrouane	L	L	L	Kharayeb Nahr Ibrahi	ML	VL	L	Klayaat Kesrouane	L	L	L
Maarab	L	VL	L	Maaysra Kesrouane	L	VL	L	Mayrouba	L	L	ML
Mazraat Er-Ras	ML	L	L	Mazraat Mrah El-Mir	L	L	L	Mchaa El Ftouh	M	ML	M
Mchaa Faraya	L	L	M	Mchaa Kfar Dibiane	ML	ML	M	Mghaer	L	VL	L
Mradiyah	L	VL	VL	Nahr Ed-Dahab	L	VL	L	Nammoura Kesrouane	L	VL	L
Ouata El Jaouz	L	L	L	Ouata Sillam	M	L	ML	Raachine	L	L	L
Rayfoun	L	L	L	Safra Kesrouane	ML	L	ML	Shayle Kesrouane	ML	L	L
Tabarja	ML	L	L	Yahchouch	L	VL	L	Zaaytreh	L	VL	L
Zeytoun	L	VL	L	Zouk Mikael	M	L	ML	Zouk Mosbeh	ML	L	ML

Baalbek_Hermel

Baalbek

Municipality	10-Nov	11-Nov	12-Nov	Municipality	10-Nov	11-Nov	12-Nov	Municipality	10-Nov	11-Nov	12-Nov
Aadous	L	ML	M	Aamchki	L	L	L	Aarsal	L	VL	L
Ain Baalbek	L	VL	VL	Ain Bourday	L	L	M	Ain El-Benye	VL	L	M
Ain El-Jaouz Baalbek	VL	L	L	Ain El-Siya Chadoura	L	L	L	Al Khodr Baalbek	L	L	M
Al Nabi Chit	L	L	M	Aynata Baalbek	M	M	M	Baalbek	L	L	M
Bachwat	M	ML	M	Barqa	M	M	M	Bednayel Baalbak	ML	M	M
Beit Chama	L	M	M	Bijjaje	L	VL	L	Bouday	M	M	M
Brital	L	L	M	Btadi	ML	ML	M	Chaat	ML	L	ML
Chaibe	VL	L	ML	Chlifa	M	M	M	Chmestar	ML	M	M
Dar El-Oussa	M	ML	M	Deir El-Ahmar	M	ML	M	Deir Mar Maroun Baal	ML	L	M
Douris	L	ML	M	Fakiha	L	L	L	Hadath Baalbek	L	M	M
Ham	VL	L	M	Haour Taala	L	L	M	Hizzine	L	ML	M
Hlebta	M	L	L	Hosh Barada	L	M	M	Hosh El Dahab	L	M	M
Hosh El Snid	L	ML	M	Hosh El-Nabi	L	ML	M	Hosh El-Rafiq	L	M	M
Hosh Tal Safiya	L	M	M	Hrebta	ML	L	ML	laat	ML	ML	M
Jebaa	ML	M	M	Jenta	L	L	M	Kfar Dabach	ML	M	M
Kfar Dane	ML	M	M	Khraibeh El-Hermel	L	VL	L	Khreibet Baalbek	L	L	M
Kneisset Baalbek	L	L	M	Labueh	L	VL	L	Maarboun	L	L	M
Majdaloun	L	M	M	Maqneh	L	L	M	Mazraat Beit Mcheik	M	M	M
Misraya	L	M	M	Moqraq	L	VL	L	Nabha El-Damdoum	ML	ML	M
Nabi Chbay	L	ML	M	Nabi Osman	L	VL	L	Nahleh baalbek	L	L	L
Ouadi El-Oss	ML	L	L	Qaa Baayoun	L	L	ML	Qaa Jouar Maqiye	L	L	M
Qaa Ouadi El-Khanzir	L	L	M	Qah Baalbek	L	L	M	Qarha Baalbek	M	M	M

Qsarnaba	L	M	M	Ram Baalbek	ML	M	M	Ras Baalbek El Sahl	L	ML	M
Ras Baalbek El-Charq	L	L	L	Riha	ML	ML	M	Saaide	L	M	M
Sbouba	L	VL	L	Seriine El-Tahta	L	M	M	Slouqi	M	ML	M
Taiba Baalbek	L	ML	M	Talia	L	ML	M	Taraiya	ML	M	M
Temnin El Fawqa	L	M	M	Temnin El-Tahta	L	M	M	Tfail	VL	L	L
Yahfoufa	L	ML	M	Yammouneh	M	M	M	Younine	L	L	L
Zboud	ML	L	L								

Hermel

Municipality	10-Nov	11-Nov	12-Nov	Municipality	10-Nov	11-Nov	12-Nov	Municipality	10-Nov	11-Nov	12-Nov
Charbine El-Hermel	L	L	L	Hermel Jbab	L	L	L	Hermel	ML	ML	M
Maaysra El-Hermel	M	L	L	Michaa Mrajhine	L	VL	VL	Ouadi Faara	M	L	L
Ras Baalbek - Ouadi	M	L	M	Ras Baalbek El Gharb	M	L	L	Zighrine	ML	L	L

Akkar

Akkar

Municipality	10-Nov	11-Nov	12-Nov	Municipality	10-Nov	11-Nov	12-Nov	Municipality	10-Nov	11-Nov	12-Nov
Aain Tinta	ML	ML	M	Aaiyat	L	L	L	Aakkar El-Aatiqa	L	L	L
Aamar Akkar	M	L	VL	Aamar El Baykat	M	M	M	Aamayer	L	ML	ML
Aamriyet Akkar	ML	ML	M	Aandqet	L	L	L	Aarmeh	M	M	M
Aarqa	M	ML	M	Aawaynat	L	L	ML	Aayoun Akkar	L	L	L
Abboudiye	M	M	M	Ain El-Zeit	M	ML	M	Ain Yaaqoub	L	L	L
Akroum	L	L	L	Aridet Cheikh Zennad	M	M	M	Baldeh w Mazraat Bal	M	M	M
Barcha	M	M	M	Bardeh	ML	ML	M	Bebnine	M	L	L
Beino	L	L	M	Beit Ayoub	L	VL	L	Beit El-Haouch	M	L	L
Beit Mellat	L	L	L	Beit Younes	L	VL	L	Berbara Akkar	ML	ML	M
Berqayel	ML	VL	VL	Bezbina	VL	L	VL	Bireh Akkar	ML	ML	M
Borj	L	L	L	Bqerezla	L	VL	L	Bzal	L	VL	VL
Chane	L	VL	L	Chaqdouf	L	L	L	Charbila	M	M	M
Cheikh Mohammad	M	M	M	Cheikh Taba Es-Sahl	M	M	M	Cheikh Taba	L	VL	L
Cheikh Zennad	M	M	M	Cheikhlar	L	L	ML	Chir Hmairine	M	M	M
Daghle	ML	ML	M	Dahr Laissine	L	L	L	Darine	M	M	M
Dawra	L	L	L	Dawsa w Baghdadi	ML	ML	M	Dayret Nahr El-Kabir	M	M	M
Deir Dalloum	M	L	VL	Deir Jennine	ML	ML	M	Denbou	L	VL	L
Dibbbiyeh	M	M	M	Douair Aadwiyeh	ML	ML	M	Fassikine	ML	ML	M
Fnaydek	L	L	L	Fraydes Akkar	ML	L	M	Ghazayle	M	M	M
Habchit	VL	VL	VL	Hakour	M	VL	L	Halba	M	M	M
Haouchab	M	M	M	Hayssat	M	M	M	Haytla	M	M	M
Hayzouq	M	M	M	Hedd	M	M	M	Hmaira Akkar	ML	VL	VL
Hmaiss Akkar	M	M	M	Hnaider	ML	ML	ML	Hokr Ed-Dahri	M	M	M
Hokr Etti	M	M	M	Hokr Jouret Srar	M	M	M	Houaich	L	VL	L
Hrar	L	VL	L	Idbil	L	VL	L	Ilal	L	VL	L
Janine	M	M	M	Jdeidet El-Joumeh	ML	L	L	Jdeidet El-Kaiteh	ML	VL	VL
Jebroyel	L	VL	L	Kafr	L	L	L	Kafr	M	ML	M
Karm Asfour	L	VL	L	Kfar Melki Akkar	M	M	M	Kfar Noun	ML	L	ML
Kfarharra	M	M	M	Khalsa	L	L	ML	Kharnoubet Akkar	M	M	M

Khirbet Daoud Aakkar	ML	ML	M	Khirbet El Remmane	L	L	ML	Khirbet Shar	ML	ML	M
Khoreybet El-Jindi	M	M	M	Khreibet Aakkar	L	VL	L	Kneisset Aakkar	M	M	M
Kneisset Hnaider	ML	ML	ML	Knisse	M	M	M	Kroum El-Aarab	M	M	M
Kwachra	M	ML	M	Kweykhath	M	M	M	Machta Hammoud	ML	ML	ML
Majdala	M	L	VL	Majdel Akkar	ML	ML	M	Mar Touma	M	VL	VL
Marlaya Melhem	M	L	L	Mashha	ML	L	ML	Massoudiye	M	M	M
Mazraat Beit Ghattas	M	L	L	Mazraat En-Nahriye	L	L	ML	Mechmech	VL	VL	VL
Memneh	VL	VL	VL	Mhammara	M	L	L	Mighraq Aakkar	M	M	M
Minyara	M	L	L	Moqayteh	M	M	M	Mounjez	ML	L	M
Msalla	M	M	M	Mzeihmeh	M	M	M	Nfaisch	ML	ML	M
Noura Et-Tahta	M	ML	M	Ouadi El-Haour	M	M	M	Ouadi El-Jamous	M	L	L
Ouyoun El-Ghizlane	ML	VL	VL	Qaabarine	M	M	M	Qabaait	L	VL	VL
Qachlaq	M	M	M	Qantara Aakkar	L	VL	L	Qarha Aakkar	L	ML	M
Qarqaf	M	VL	VL	Qboula	L	L	L	Qleiaat Aakkar	M	M	M
Qloud El-Baqie	ML	VL	L	Qobaiyat Aakkar	L	L	L	Qobbat Chamrat	M	L	L
Qorayat	L	VL	L	Qornet Aakkar	L	L	L	Qsair Aakkar	ML	ML	M
Rahbe	L	VL	L	Rihaniyet Aakkar	M	M	M	Rmah	L	L	ML
Rmoul	M	M	M	Saadine	M	M	M	Sadaqa	L	VL	L
Saidnaya	M	M	M	Sammouniye	M	M	M	Sayssoq	ML	L	L
Semmaqiye	M	M	M	Semmaqli	M	L	ML	Sfinet El-Dreib	M	M	M
Sfinet El-Qaitaa	L	VL	VL	Sindyanet Zeidane	L	L	M	Souaisset Aakkar	M	M	M
Srar	M	M	M	Tal Abbas El Gharby	M	M	M	Tal Abbas El-Chargy	M	M	M
Tal Biret	M	M	M	Tal Hmayra	M	M	M	Tal Maayan Tal Kiri	M	M	M
Tal Sibel	M	M	M	Tallet Chattaha	L	L	L	Tikrit	L	VL	L
Tleil	M	M	M	Tshea	L	L	L	Zawarib	L	VL	L
Zouq El Hosniyeh	ML	VL	VL	Zouq El-Haddara	M	L	L	Zouq El-Hbalsa	ML	VL	VL
Zouq El-Moqachrine	ML	VL	VL								

Sud

Sour

Municipality	10-Nov	11-Nov	12-Nov	Municipality	10-Nov	11-Nov	12-Nov	Municipality	10-Nov	11-Nov	12-Nov
Aaiyeh	ML	ML	L	Aalma El-Chaab	L	L	L	Aaytit	ML	ML	L
Abbassiyeh Sour	M	L	M	Abou Chech	L	L	L	Ain Abou Abdallah	M	L	M
Ain Baal	M	L	L	Arzoun	M	ML	ML	Aziyeh	M	L	L
Baflaya	M	ML	M	Barich	M	ML	M	Batouliyah	M	L	L
Bayad	ML	ML	L	Bazouriyeh	M	L	ML	Bediass	M	L	M
Bestiyat	M	ML	M	Borj El Chemali	M	L	M	Borj En-Naqoura	M	ML	ML
Borj Rahhal	M	L	M	Boustane	L	L	L	Btaychiyeh	L	L	L
Chaaitiye	M	L	L	Chameh	L	L	L	Chehabiye	M	M	L
Chehour	M	L	L	Chihine	L	L	L	Debaal Sour	M	ML	M
Deir Amess	ML	L	L	Deir Kifa	M	M	ML	Deir Qanoun El-Ain	M	L	L
Deir Qanoun El-Naher	M	L	M	Derdghaiya	M	ML	ML	Dhayra	L	L	L
Halloussiyeh	M	ML	M	Hamoul	L	L	L	Hanaouey	M	ML	L
Henniye	M	L	L	Hmairi Sour	M	L	M	Iskandarouna Sour	L	L	L
Jbal El Botom	ML	L	L	Jebbin	L	L	L	Jennata	M	ML	M
Jijim	L	VL	L	Jouaiya	M	ML	ML	Kneisset Sour	M	L	ML

Maarake	M	ML	M	Maaroub	M	ML	M	Majadel	M	M	L
Majdzoun	M	L	L	Mansouri Sour	M	L	L	Marnba	M	L	L
Marouahine	L	L	L	Mazraat El-Zalloutiy	L	L	L	Mazraat Mechref	ML	ML	L
Mazraat Tayr Semhat	M	L	L	Mheilib	M	L	M	Neffakhiyeh	M	ML	ML
Niha Sour	M	ML	ML	Ouadi Jilo	M	ML	ML	Qana	ML	ML	L
Qolaileh Sour	M	L	L	Rechknany	ML	L	L	Rmadiyeh	ML	ML	L
Selha Sour	M	ML	ML	Siddiqine	ML	ML	L	Sour	M	L	M
Srifa	M	ML	ML	Tayr Debbe	M	L	M	Tayr Felsay	M	L	M
Tayr Harfa	L	L	L	Touayri	M	L	L	Toura	M	ML	M
Yanouh Sour	M	ML	M	Yarine	L	L	L	Zebqine	L	L	L

Saida

Municipality	10-Nov	11-Nov	12-Nov	Municipality	10-Nov	11-Nov	12-Nov	Municipality	10-Nov	11-Nov	12-Nov
Aanqoun	ML	L	L	Aaqtanit	ML	L	L	Aarab Ej-Jall	ML	L	L
Aarab Tabbaya	ML	L	L	Abra Saida	ML	L	M	Adloun	M	L	ML
Adousiyeh	M	ML	ML	Ain-El-Deleb	ML	L	L	Arzai	M	ML	M
Babliyah	M	ML	M	Barty	ML	L	ML	Bissariyeh	M	ML	ML
Bnaafoul	ML	L	L	Bqosta	ML	L	ML	Bramiy	L	L	ML
Daoudiyeh	M	ML	M	Dareb El-Sim	ML	L	L	Erkay	ML	L	L
Ghassanieh	M	ML	M	Ghazieh	M	ML	ML	Hajeh	ML	L	L
Haret Saida	ML	L	M	Hartiyeh	M	ML	M	Hlaliye Saida	ML	L	ML
Insariyat	M	ML	M	Jazira Saida	M	ML	M	Kafar Bit	ML	L	L
Kaoutariyet El-Siyad	M	ML	L	Kfar Chellal	ML	L	L	Kfar Hatta Saida	ML	L	L
Kfar Milke Saida	ML	ML	ML	Khartoum	M	ML	ML	Khaziz	ML	L	L
Khirbet Ed-Douair Sa	M	L	M	Khirbet El-Bassal	M	ML	L	Khrayeb Saida	M	L	M
Loubieh	M	ML	M	Maghdouche	ML	L	L	Majdelyoun	ML	L	M
Matariyet El-Choumar	M	ML	M	Matayriyeh	ML	L	L	Mazraat 'Mseileh	M	ML	ML
Mazraat 'Snaiber	M	ML	ML	Mazraat Aarab Soukka	ML	L	L	Mazraat Deir Taqla	M	L	M
Mazraat El Yahoudiye	M	L	ML	Mazraat El-Housseini	M	ML	M	Mazraat El-Mhaydaleh	M	ML	M
Mazraat El-Ouasta	M	L	M	Mazraat Jamjim	M	L	ML	Mazraat Kaoutariyet	M	ML	M
Mazraat Kfar Badda	M	L	M	Mazraat Oussamiyat	M	ML	M	Mazraat Sari	M	ML	M
Mazraat Sinai	M	ML	ML	Meemariyeh	ML	L	L	Merouaniyeh	M	L	L
Miyeh ou Miyeh	ML	L	L	Najjariyeh	M	ML	ML	Qaaqiyat El-Snaouba	M	ML	M
Qnarit	ML	L	L	Qraiye Saida	ML	L	L	Saida Ed-Dekermane	ML	L	ML
Saida El-Oustani	ML	L	ML	Saida El-Qadimeh	ML	L	M	Saida Kefraya	L	L	L
Saksakiyeh	M	ML	M	Salhie Saida	ML	L	ML	Sarafand	M	ML	ML
Sfenta	ML	L	L	Tafahta	M	ML	ML	Tanbourit	ML	L	L
Tebna	M	ML	ML	Zaghdraiya	ML	L	L	Zeita	ML	L	L
Zrariyeh	M	ML	M								

Jezzine

Municipality	10-Nov	11-Nov	12-Nov	Municipality	10-Nov	11-Nov	12-Nov	Municipality	10-Nov	11-Nov	12-Nov
Ain El-Mir (El Estab	ML	L	L	Anane	L	L	L	Aramta	L	M	M
Ariya	L	L	ML	Aychiyeh	ML	M	ML	Azour	L	L	L
Baba	L	L	L	Bayssour Jezzine	ML	L	L	Benoueteh Jezzine	L	L	ML
Bhannine	L	ML	ML	Bisri	L	L	L	Bkassine	L	L	L
Bouslaya	ML	L	L	Btedine El-Leqech	L	L	L	Chbail	L	L	L
Choualiq Jezzine	ML	L	ML	Dahr Ed-Deir	ML	L	L	Deir El Qattine	ML	L	L

Demachqiyeh	M	M	M	Ghabbatiyeh	L	L	ML	Harf Jezzine	L	L	L
Hassaniyeh	ML	L	L	Haytouleh	ML	L	L	Haytura	ML	L	L
Hidab	ML	L	L	Homsiyeh	L	L	L	Jabal Toura	ML	ML	M
Jarmaq	M	M	M	Jensnaya	ML	L	L	Jernaya	ML	ML	ML
Jezzine	L	M	M	Karkha	L	L	L	Kfar Falous	ML	L	ML
Kfar Houna	L	ML	M	Kfar Jarrah	ML	L	ML	Lebaa	ML	L	ML
Louayzet Jezzine	ML	L	L	Machmouche	L	L	L	Mahmoudiyeh Jezzine	M	M	M
Maknounye Jezzine	ML	L	L	Maraat Ouazaiyeh	ML	ML	M	Mazraat Daraya	L	ML	ML
Mazraat El-Aarqoub	ML	M	ML	Mazraat El-Mathane	L	VL	L	Mazraat El-Rahbane	ML	L	L
Mazraat Khallet Khaz	L	ML	ML	Mazraat Louzid (Loua	L	L	L	Mazraat Qrouh	ML	M	M
Mazraat Tamra	M	M	M	Mazraat Zighrine Jez	ML	M	ML	Mazraat	ML	L	L
Mharbiyeh	ML	L	L	Midane Jezzine	L	L	L	Mjeydel Jezzine	ML	L	L
Mlikh	ML	L	L	Mrach El-Hbasse	ML	L	ML	Ouadi Baanqoudaine	ML	L	L
Ouadi El-Laymoun	ML	L	L	Ouardiyeh	L	L	L	Qabaa Jezzine	ML	L	L
Qatrani	L	ML	ML	Qaytouleh	ML	L	L	Qtaleh Jezzine	L	L	L
Rihane Jezzine	ML	M	ML	Rimat	ML	L	L	Roum	L	L	L
Roummanet	ML	ML	ML	Sabbah	L	L	L	Saydoun	ML	L	L
Sfaray	L	L	L	Snaya	ML	L	L	Sojoud	ML	M	ML
Srayri	ML	ML	M	Taaid	L	L	L	Wadi Jezzine	L	L	ML
Zhalta	ML	L	L								

Bekaa

West Bekaa

Municipality	10-Nov	11-Nov	12-Nov	Municipality	10-Nov	11-Nov	12-Nov	Municipality	10-Nov	11-Nov	12-Nov
Aammiq BG	L	M	M	Ain El Tineh BG	L	M	M	Ain Zebdeh	ML	M	M
Ana	L	M	M	Aytanit	ML	ML	M	Baaloul BG	ML	M	M
Bab Mareh	ML	M	M	Chouberqiye Aammiq	L	M	M	Dakoue	ML	M	M
Deir Ain El-Jaouze	ML	M	M	Deir Tahniche	L	M	M	Ghaza	L	M	M
Harime El-Soughra	ML	M	M	Hoch Harimeh	L	M	M	Jazira BG	L	M	M
Jib Jennine	L	M	M	Kamed-El-Laouz	L	M	M	Kefraya BG	L	ML	M
Khiara El Atika	L	M	M	Khiara	L	M	M	Khirbet Qanafar	ML	M	M
Lala	L	M	M	Lebbaya BG	L	M	M	Loussa	ML	M	M
Machghara	L	M	M	Manara (Hammar) BG	L	L	ML	Mansoura BG	L	M	M
Marej BG	M	M	M	Maydoun	L	M	M	Ouaqf BG	L	M	M
Qaraaoun	ML	M	M	Qelya	L	M	M	Raouda (Istabel)	ML	M	M
Saghbine	ML	M	M	Sohmor	L	M	M	Soltan Yacoub el Ara	ML	M	M
Souairy	L	ML	M	Sultan Yaacoub	L	M	M	Tal Znoub	L	M	M
Yehmor BG	L	M	M	Zilaya	L	ML	M				

Zahle

Municipality	10-Nov	11-Nov	12-Nov	Municipality	10-Nov	11-Nov	12-Nov	Municipality	10-Nov	11-Nov	12-Nov
Aanjar (Haouch Mouss	ML	M	M	Ablah	L	M	M	Ain Kfarzabad	ML	ML	M
Ali-El-Nahri	L	M	M	Bar Elias	M	M	M	Bouarej	ML	M	M
Cheberqiyet Tabet	M	M	M	Chtaura	ML	ML	M	Deir El Ghazal	ML	ML	M
Delhamiyet Zahle	M	M	M	Ferzol	ML	M	M	Haouch El-Ghanam	L	M	M
Haouch Es-Siyadeh	ML	ML	M	Haouch Hala	L	M	M	Haouch Mandara	ML	M	M

Haouch Qayssar	ML	ML	M	Hezerta	ML	M	M	Hosh Moussa	ML	M	M
Jdita	ML	ML	M	Kfarzabad	ML	M	M	Ksara	M	M	M
Majdel Aanjar	ML	ML	M	Makssi	ML	ML	M	Massa	L	M	M
Mazraat Er-Remtaniye	ML	ML	M	Mrayjat Zahle	ML	ML	M	Mzaraa Zahle	ML	ML	M
Nabi Ayla	ML	M	M	Nasriyet Rizk	L	ML	M	Nasriyet Zahle	ML	M	M
Niha Zahle	ML	M	M	Ouadi Ed-Deloum	ML	ML	M	Ouadi El-Arayech	ML	M	M
Qaa El Rim	ML	M	M	Qab Elias	ML	ML	M	Qousaya	ML	ML	M
Rhit	ML	M	M	Riyak	L	M	M	Saadnayel	M	M	M
Taal El-Akhdar	L	M	M	Taalbeya	M	M	M	Taanayel	M	M	M
Talamara	L	M	M	Tcheflik Edde Haouch	ML	M	M	Tcheflik Qiqano	ML	ML	M
Terbol Zahle	ML	M	M	Touaite Zahle	ML	M	M	Zahle Aradi	ML	M	M
Zahle El-Berbara	ML	M	M	Zahle El-Maallaqa	ML	M	M	Zahle El-Midane	ML	M	M
Zahle Er-Rassiye	ML	M	M	Zahle Haouch El-Ouma	M	M	M	Zahle Haouch El-Ouma	ML	M	M
Zahle Haouch Ez-Zara	ML	M	M	Zahle Maalqa Aradi	M	M	M	Zahle Mar Antonios	ML	M	M
Zahle Mar Elias	ML	M	M	Zahle Mar Gerios	ML	M	M	Zahle Saydet En-Naja	ML	M	M
Zebdoul	ML	ML	M								

Rachaiya

Municipality	10-Nov	11-Nov	12-Nov	Municipality	10-Nov	11-Nov	12-Nov	Municipality	10-Nov	11-Nov	12-Nov
Ain Arab Rachaiya	VL	L	M	Ain Ata	VL	L	ML	Ain Harche	L	L	M
Aqabe Rachaya	L	ML	M	Ayha	VL	L	M	Ayta El Fokhar	L	L	M
Bakifa Rachaya	L	ML	M	Bakka	VL	L	M	Beit Lahya	L	ML	M
Bireh Rachaiya	L	M	M	Daher El Ahmar	L	ML	M	Deir El-Achayer	VL	L	ML
Heloua Rachaiya	L	L	ML	Hoch El Qannabeh Rac	L	L	ML	Kaoukaba Bou Arab	L	ML	M
Kfar Danis	L	ML	M	Kfar Mechki	L	M	M	Kfar Qouq	VL	L	ML
Kherbet Rouha	L	ML	M	Majdel Balhiss	L	M	M	Mdoukha	L	L	M
Mhaydseh Rachaiya	L	M	M	Nabi Safa	L	M	M	Rachaiya	L	L	M
Rafid Rachaiya	L	M	M	Selsata (Mazraat Dei	VL	VL	L	Tannoura	L	ML	M
Yanta	L	L	ML								

Beyrouth

Beyrouth

Municipality	10-Nov	11-Nov	12-Nov	Municipality	10-Nov	11-Nov	12-Nov	Municipality	10-Nov	11-Nov	12-Nov
Achrafieh	M	M	L	Ain el-Mreisse	M	M	L	Bachoura	M	M	L
Beirut Central Distr	M	M	L	Marfai	M	M	L	Mazraa	M	M	L
Medaouar	M	M	L	Minet el-Hosn	M	M	L	Mwssaitbeh	M	M	L
Ras Beirut	M	M	L	Rmeil	M	M	L	Saifi	M	M	L
Zqaq el-Blat	M	M	L								