

Lebanon Fire Risk Bulletin



CIVIL DEDEFENCE

Refer to cadast table condition.

Please note that the indicated temperature is at 2 meters height from the ground.

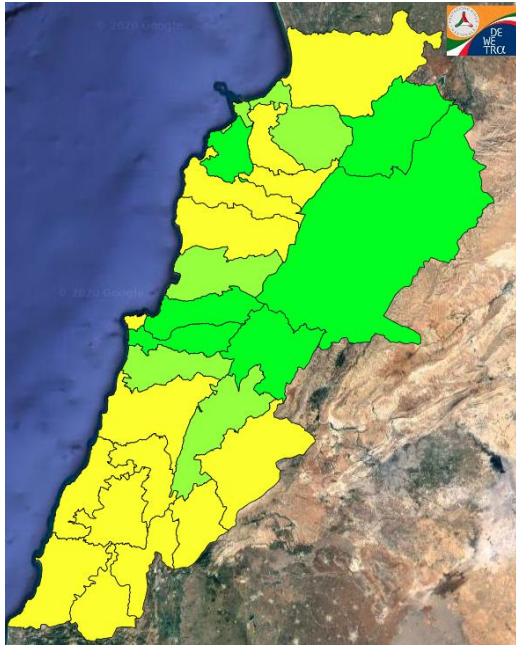
General description of potential fire risk situation

Symbol	Level of risk	Meaning and actions
VL	Very low	Very low fire risk. Controlled burning operations can be hardly executed due to high fuel moisture content. Normally wildfires self-extinguish.
L	Low	Low fire risk. Controlled burning operations can be executed with a reasonable degree of safety.
ML	Medium low	Medium-low fire risk. Controlled burning operations can be executed in safety conditions. All the fires need to be extinguished.
M	Medium	Medium fire risk. Controlled burning operations would be avoided. All the fires need to be very well extinguished.
M	Medium high	Controlled burning is not recommended. Open flame will start fires. Cured grasslands and forest litter will burn readily. Spread is moderate in forests and fast in exposed areas. Patrolling and monitoring is suggested. Fight fires with direct attack and all available resources.
H	High	Ignition can occur easily with fast spread in grass, shrubs and forests. Fires will be very hot with crowning and short to medium spotting. Direct attack on the head may not be possible requiring indirect methods on flanks. Patrolling and monitoring the territory is highly suggested.
E	Extreme	Ignition can occur also from sparks. Fires will be extremely hot with fast rate of spread. Control may not be possible during day due to long range spotting and crowning. Suppression forces should limit efforts to limiting lateral spread. Damage potential total. Patrolling and monitoring the territory is highly suggested.

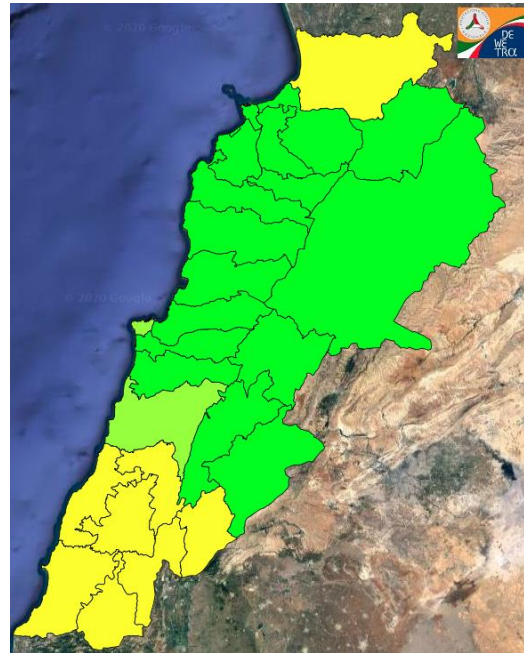
Beirut, 10 November 2020

FIRE RISK INDEX

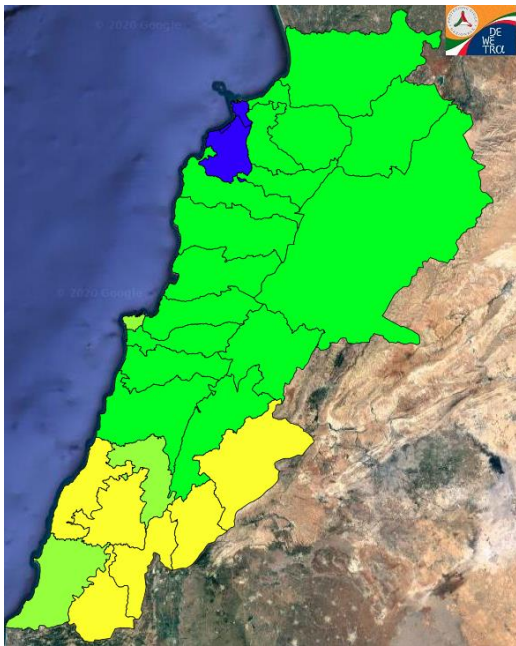
9 November 2020



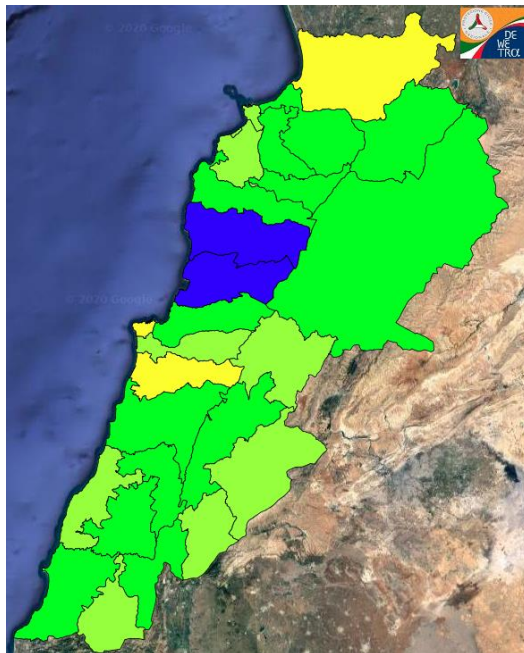
10 November 2020



11 November 2020



12 November 2020

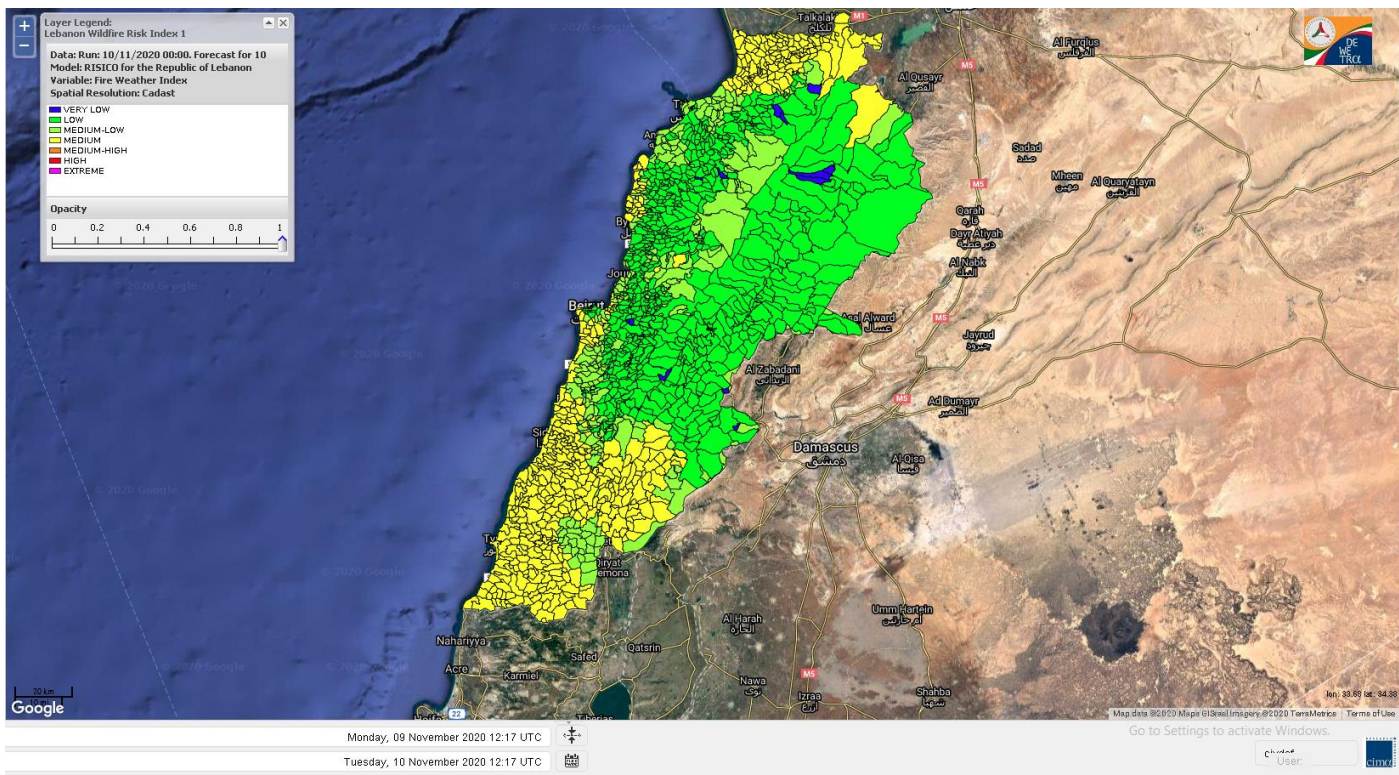


Layer Legend:
Lebanon Wildfire Risk Index 1

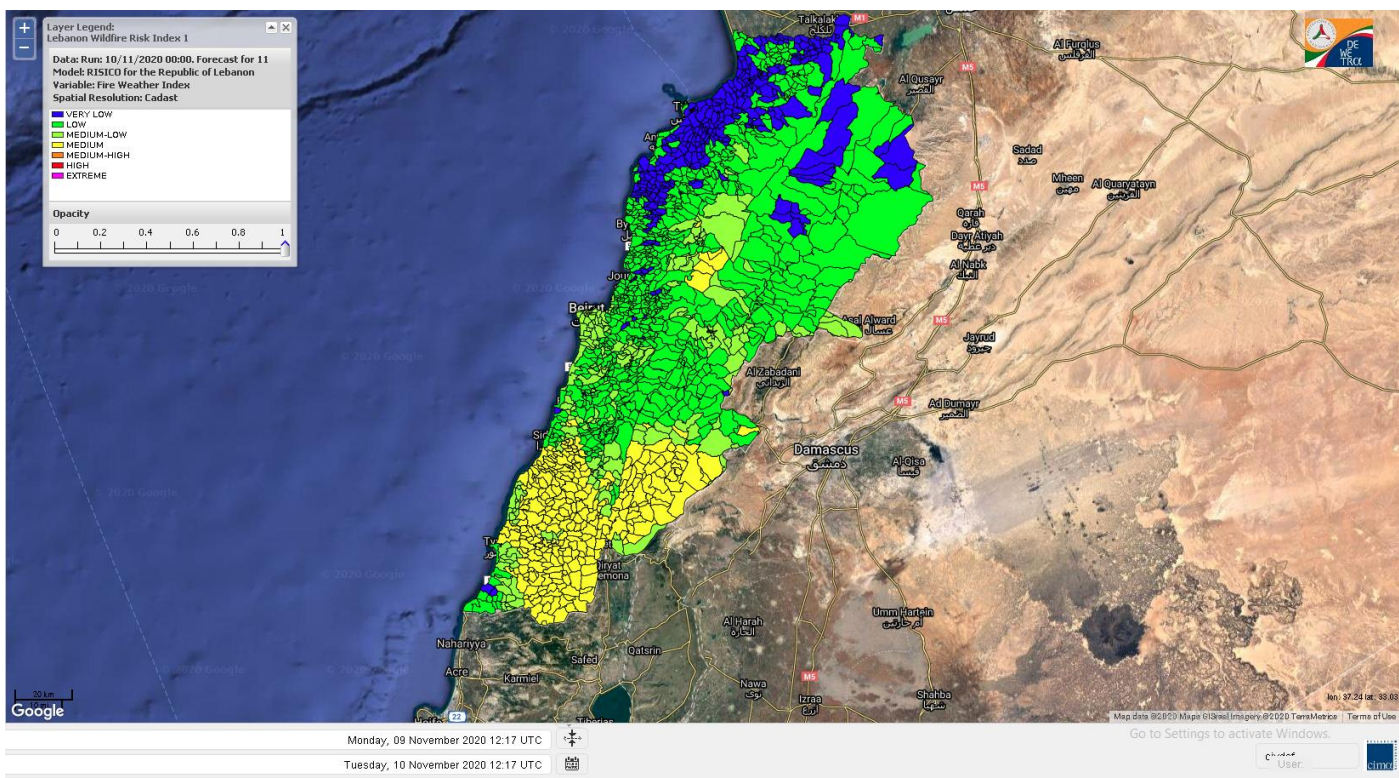
Data: Run: 10/11/2020 00:00. Forecast for 10
Model: RISICO for the Republic of Lebanon
Variable: Fire Weather Index
Spatial Resolution: Caza

- VERY LOW
- LOW
- MEDIUM-LOW
- MEDIUM
- MEDIUM-HIGH
- HIGH
- EXTREME

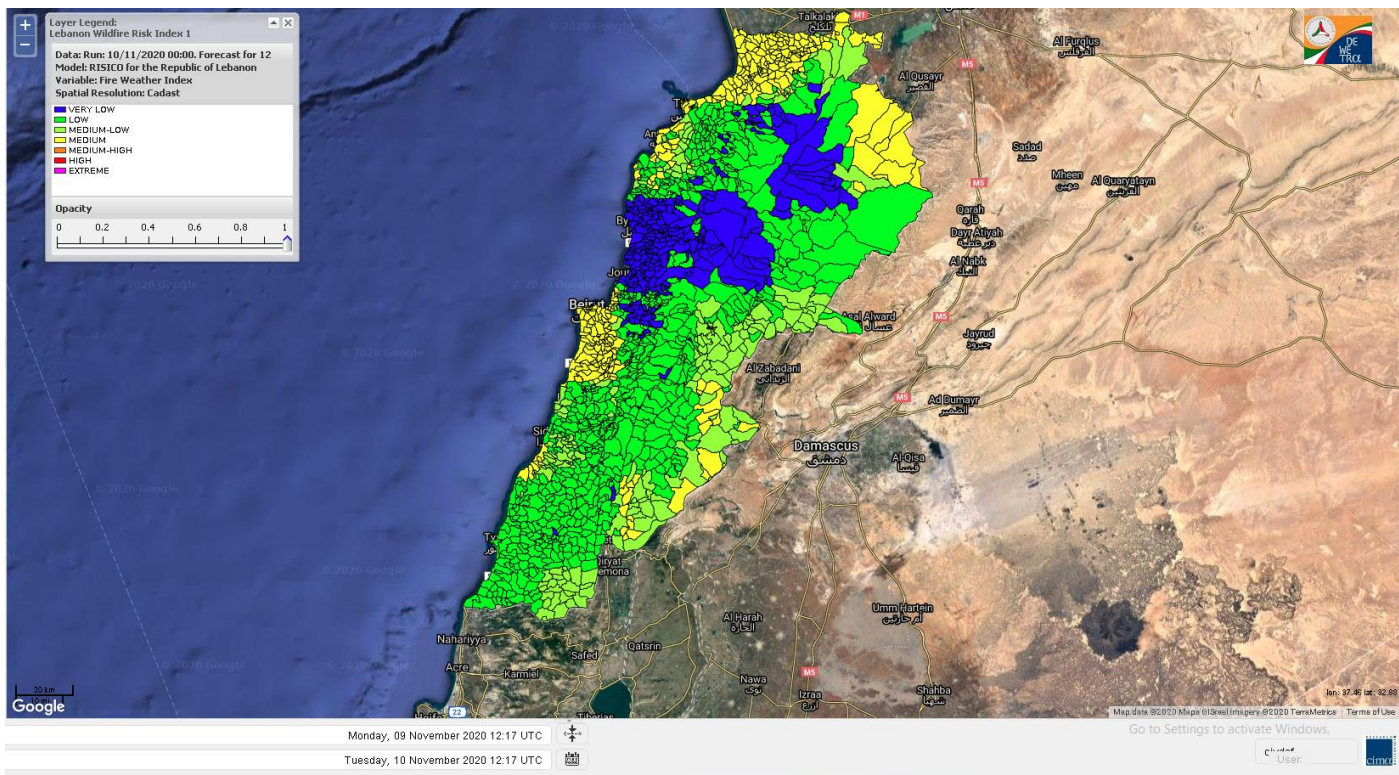
Lebanon for 10 November 2020



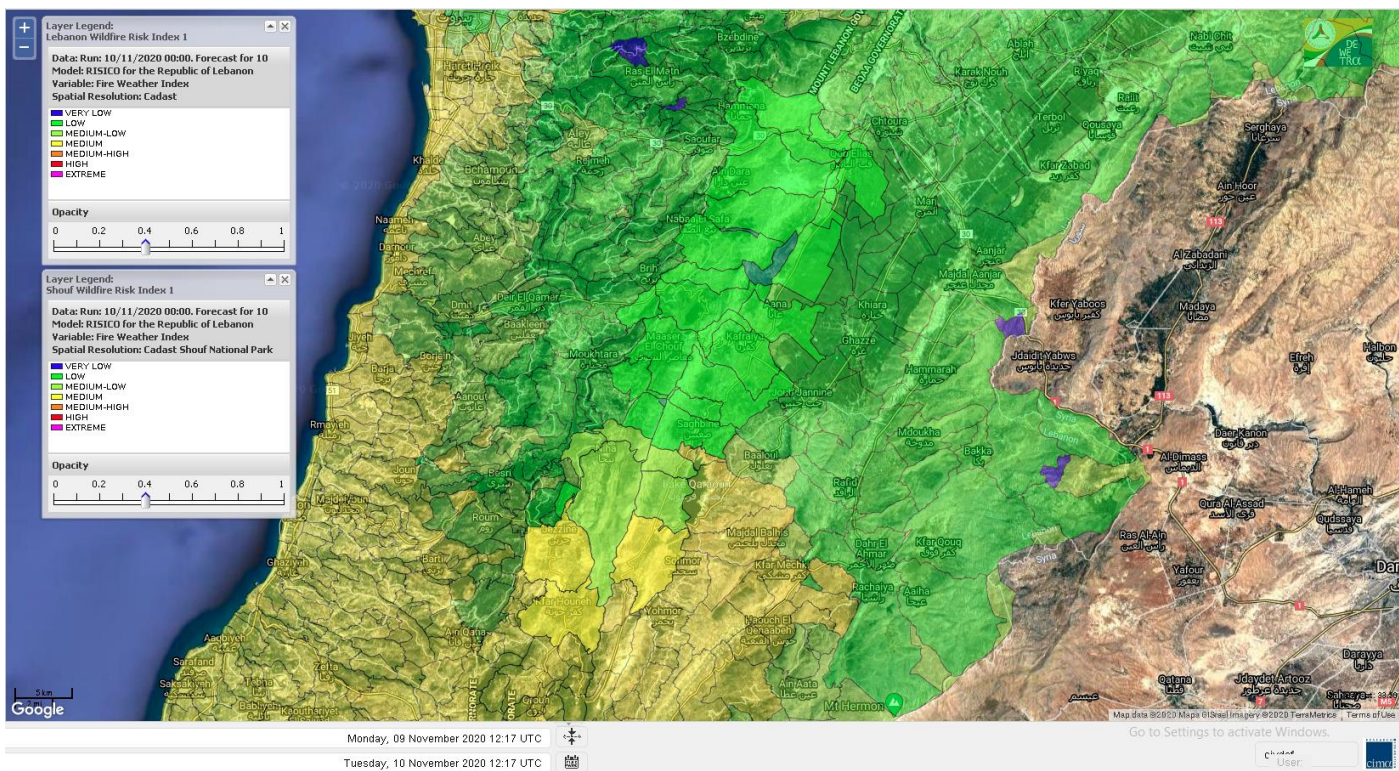
Lebanon for 11 November 2020



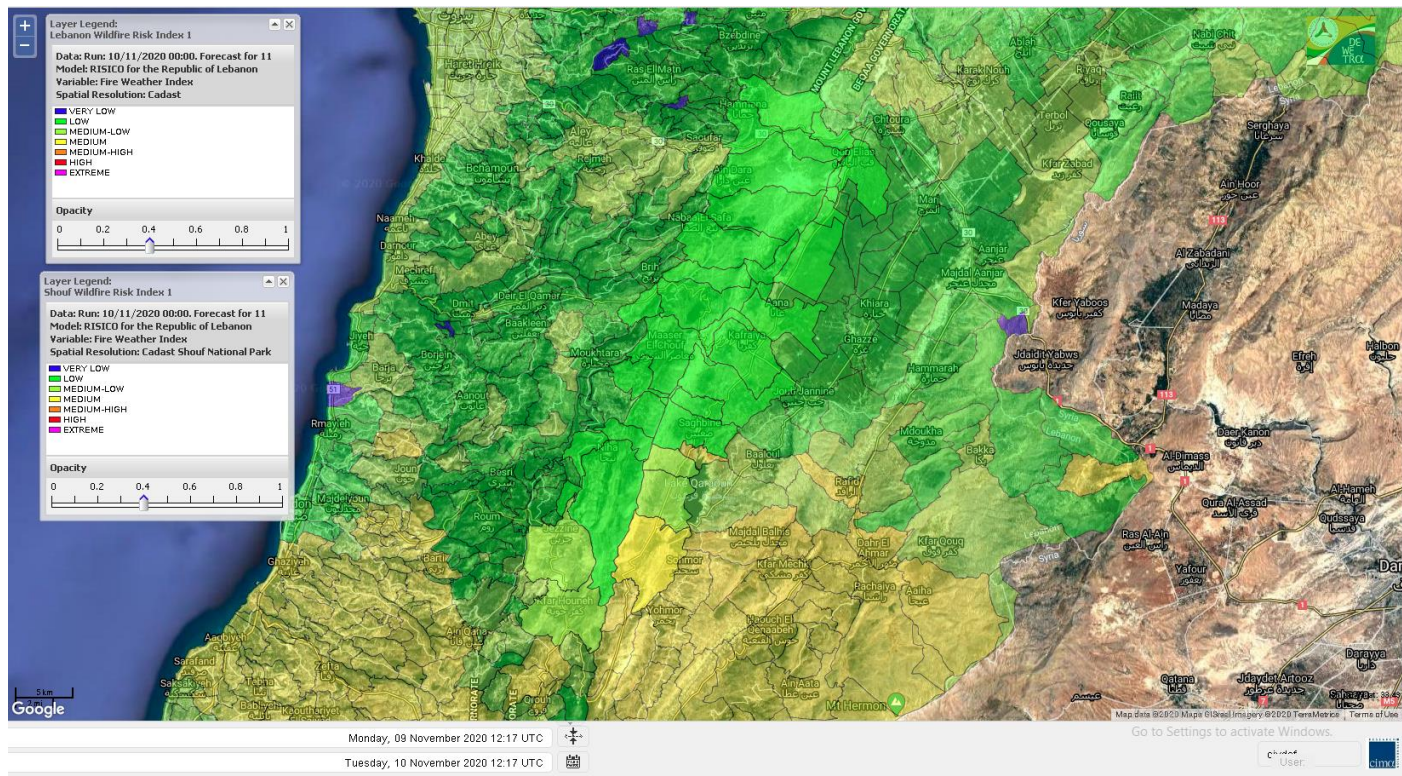
Lebanon for 12 November 2020



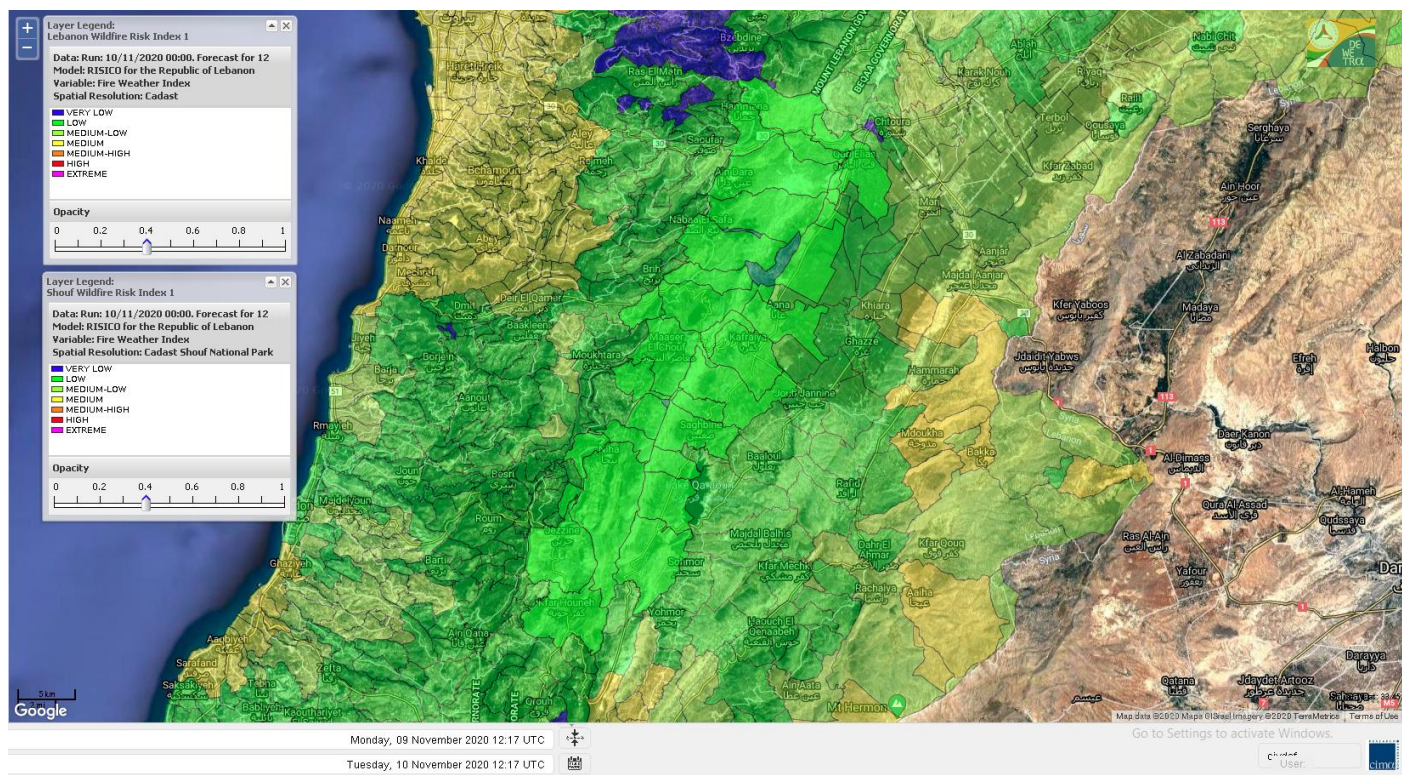
Shouf Biosphere Reserve Forecast for 10 November 2020



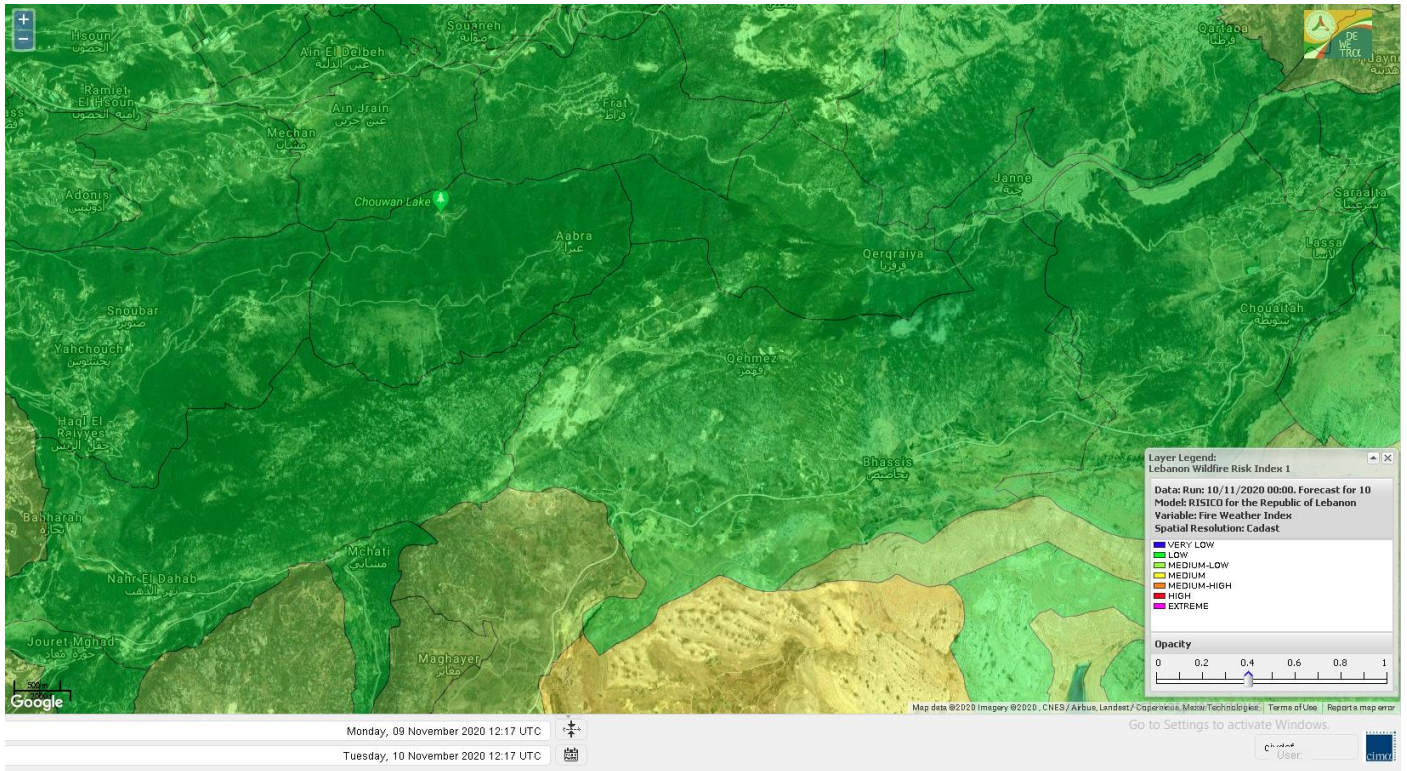
Shouf Biosphere Reserve Forecast for 11 November 2020



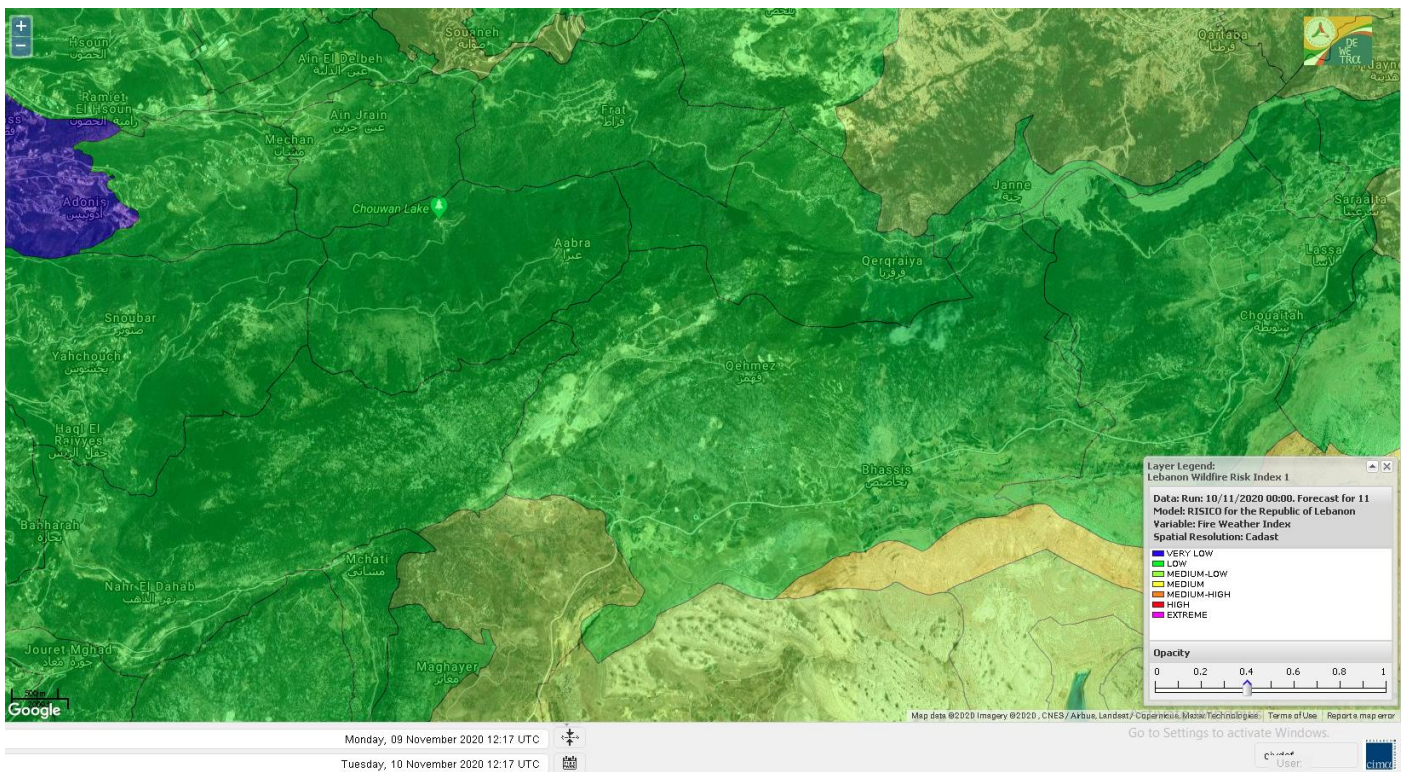
Shouf Biosphere Reserve Forecast for 12 November 2020



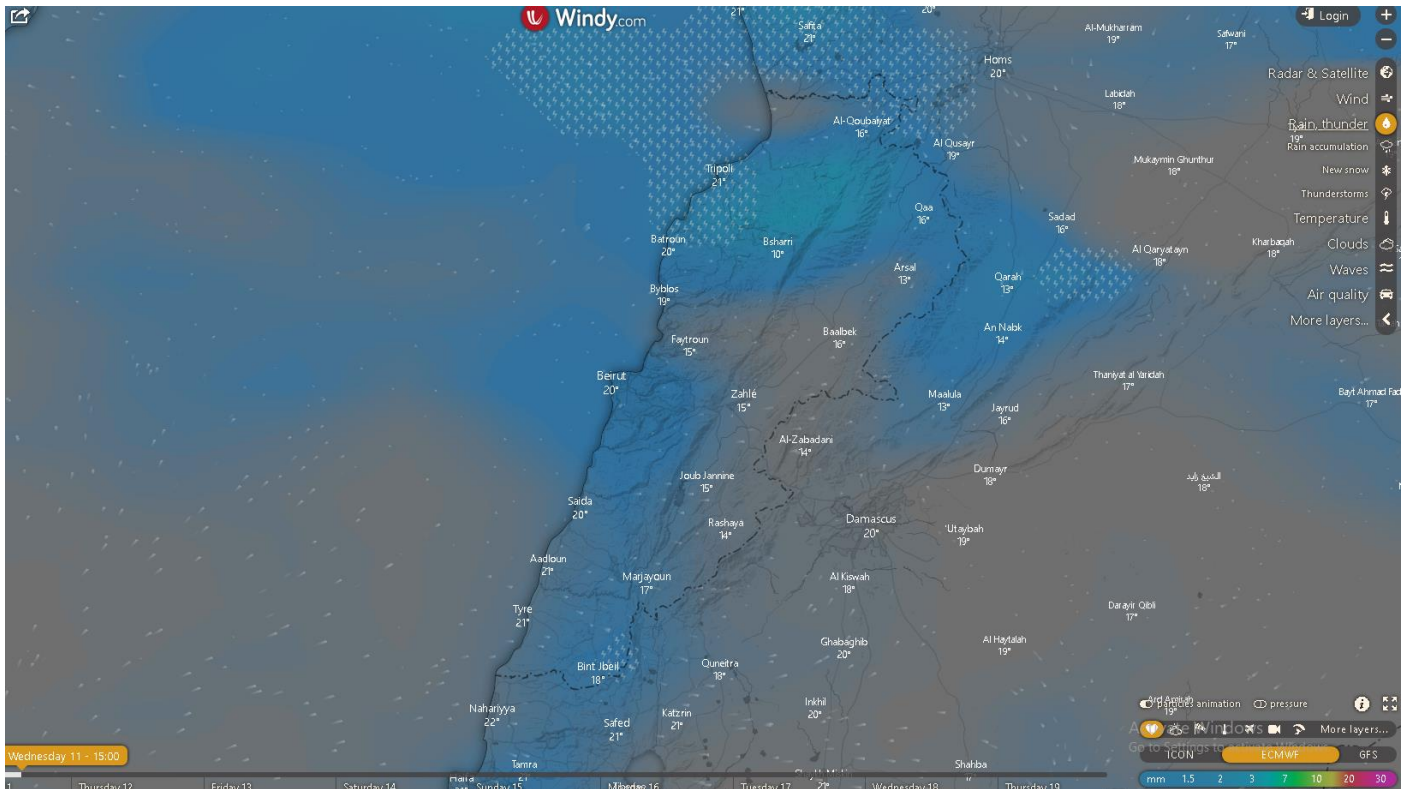
Jabal Moussa Reserve Forecast for 10 November 2020



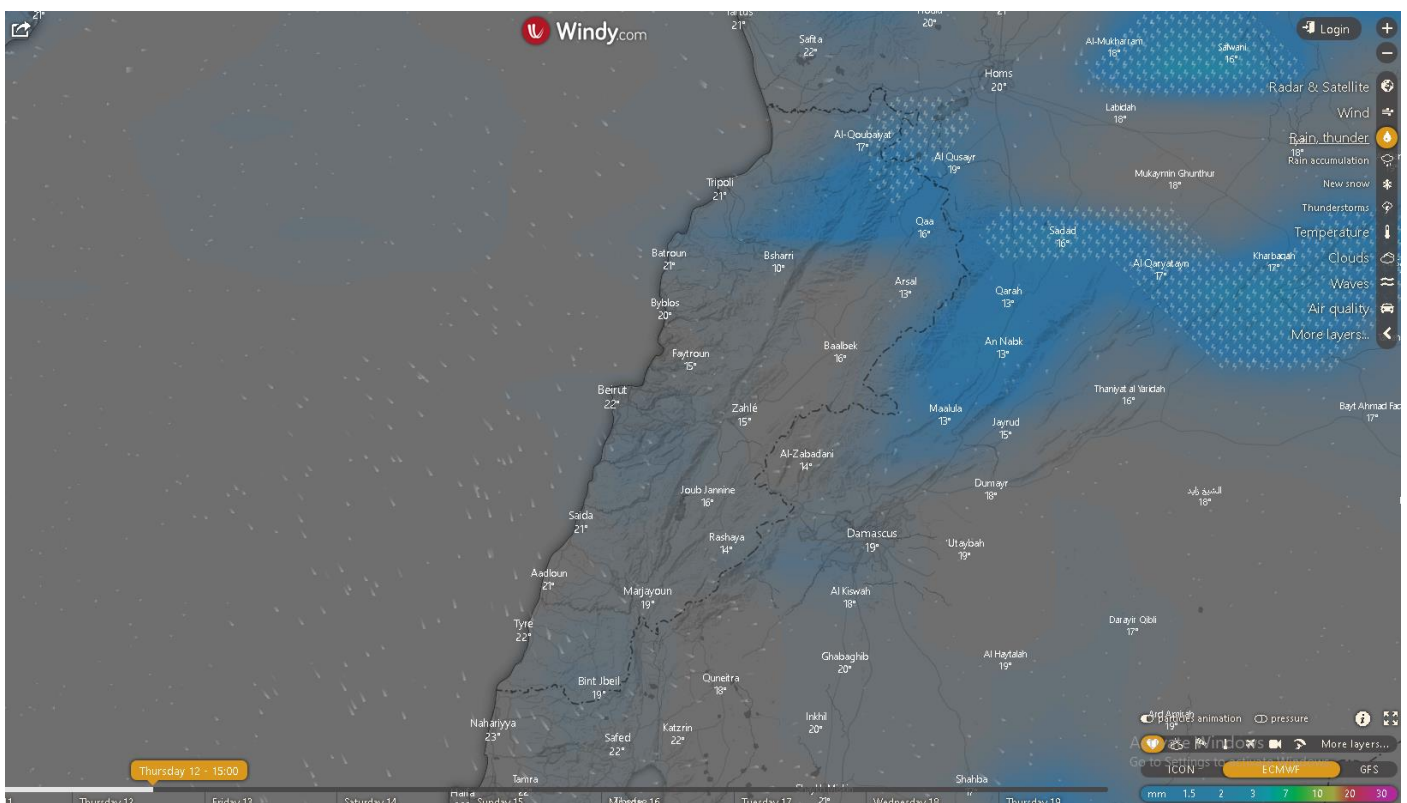
Jabal Moussa Reserve Forecast for 11 November 2020



Lebanon for 11 November 2020



Lebanon for 12 November 2020



Beirut, Beirut, Lebanon 10-Day Weather Forecast ★ 🏠

24° ACHRAFIEH,RIZK STATION | CHANGE ▾

TODAY

HOURLY

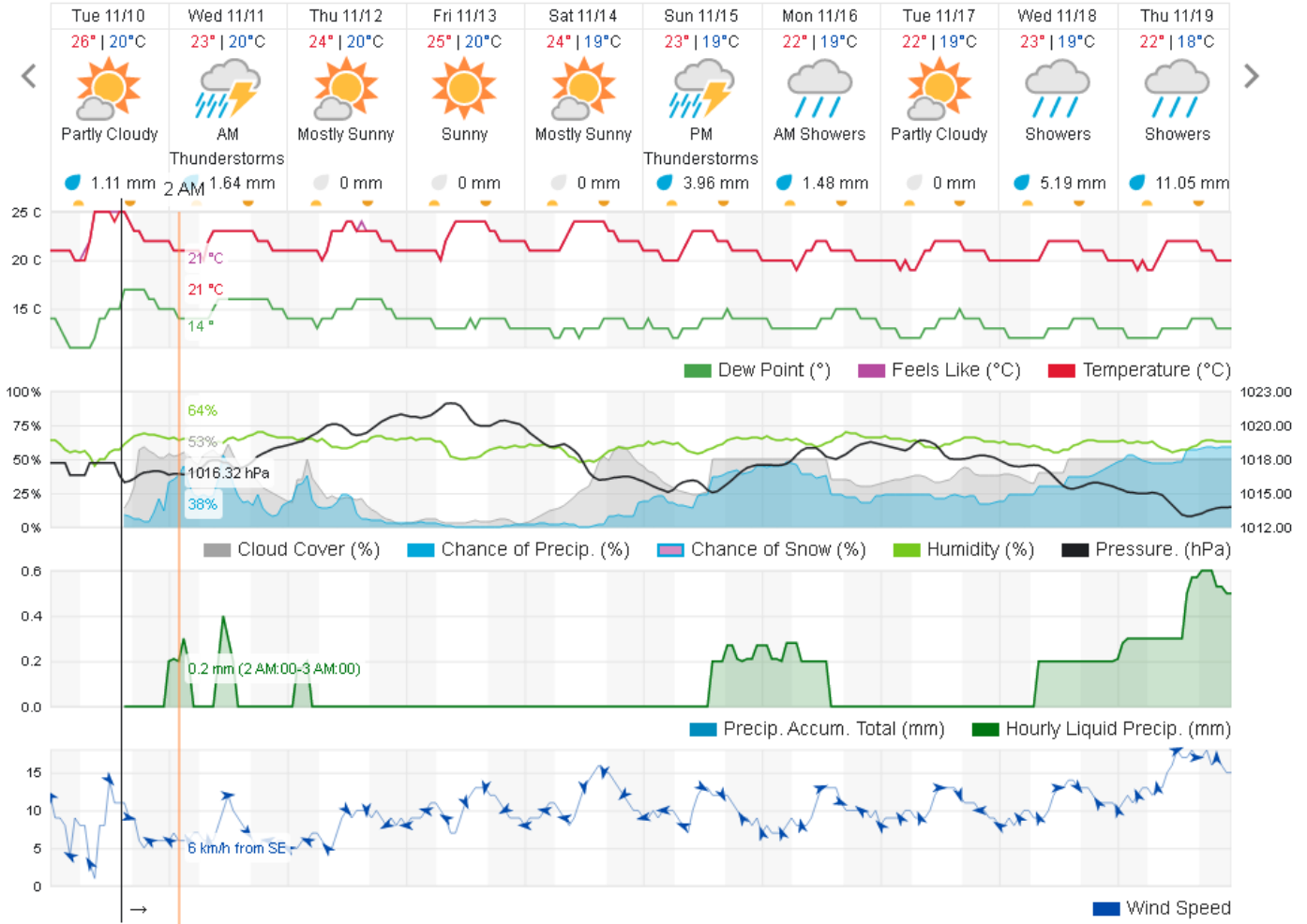
10-DAY

CALENDAR

HISTORY

WUNDERMAP

⚙️ Customize



Nord

Koura

Municipality	10-Nov	11-Nov	12-Nov	Municipality	10-Nov	11-Nov	12-Nov	Municipality	10-Nov	11-Nov	12-Nov
Aaba	L	VL	ML	Afsaddiq	ML	VL	M	Ain Ekrine	ML	VL	M
Amioun	ML	VL	ML	Anfeh	ML	L	M	Badbhoun	ML	VL	M
Barghoun	ML	VL	ML	Barsa	L	VL	ML	Batroumine	ML	VL	ML
Bdebba	L	VL	ML	Bechmizine	ML	VL	ML	Bednayel El-Koura	L	VL	ML
Bhabbouch El-Koura	L	L	M	Bkeftine	L	VL	L	Bnehran	L	L	L
Bqaiia El-Koura	L	VL	L	Bsarma	L	VL	L	Btaaboura	L	VL	ML
Bterram	ML	VL	ML	Btouratij	L	VL	ML	Bziza	L	L	ML
Dar Beechtar	L	L	ML	Dar Chmezzine	ML	VL	M	Deddeh	ML	VL	M
Deir El-Balamand	L	VL	L	Fih	ML	L	M	Hraiche	ML	L	M
Ijdaabrine	L	VL	ML	Kaftoun	L	L	ML	Kefraya El-Koura	ML	L	M
Kfarakka	L	VL	L	Kfarhata	L	VL	L	Kfarhazir	ML	VL	M

Kfarkahel	L	VL	L	Kfarsaroun	ML	VL	ML	Kosba	L	VL	L
Mejdel el-Koura	L	L	ML	Nakhle	L	VL	ML	Qalhat	L	VL	L
Ras Masqa	L	VL	ML	Rechdibbine	L	VL	L	Zakroun	ML	VL	ML
Zgharta El-Mtaouile	L	L	L								

Bcharre

Municipality	10-Nov	11-Nov	12-Nov	Municipality	10-Nov	11-Nov	12-Nov	Municipality	10-Nov	11-Nov	12-Nov
Aabdine	L	L	L	Bane	ML	ML	L	Barhelioun	L	L	L
Bazouone	ML	L	L	Becharre	ML	L	L	Beit Menzer	L	L	L
Billa	L	L	L	Blaouza	L	ML	L	Bqaa Kafra	ML	L	L
Bqerqacha	ML	L	L	Breissat	L	L	L	Dimane	L	L	L
Hadath El Jobbeh	L	L	L	Hadchit	L	L	L	Hasroun	ML	L	L
Mazraat Aassaf	VL	VL	VL	Mazraat Bani Saab	L	L	L	Mchaa El-Jobbeh	ML	ML	L
Metrit	L	L	ML	Moghr El-Ahoual	L	VL	L	Ouadi Qannoubine	VL	VL	VL
Qanat	L	L	L	Qnayouer	L	L	VL	Tourza	L	L	L

Batroun

Municipality	10-Nov	11-Nov	12-Nov	Municipality	10-Nov	11-Nov	12-Nov	Municipality	10-Nov	11-Nov	12-Nov
Aabrine	L	VL	L	Aalali	L	L	ML	Aartziz	L	VL	L
Abdelli	L	VL	L	Ajdabra	ML	VL	L	Assia	L	L	L
Basbina	ML	VL	M	Batroun	M	L	M	Bcheleh	L	L	L
Bechtoudar	L	L	L	Beit Chlala	L	L	L	Beit Kassab	L	VL	L
Bijdarfil	L	VL	M	Bqesmaya	L	L	L	Chatine	L	L	VL
Chebtin	L	VL	L	Chekka	ML	L	M	Daael	L	L	L
Dahr Abi Yaghi	L	VL	VL	Daraya El-Batroun	L	VL	ML	Deir Billa	L	L	L
Deir Kfifane	L	VL	M	Deir Mar Youhanna EL	L	L	L	Deir Mar Youssef Jra	L	VL	L
Douma	L	L	L	Douq	L	VL	L	Eddeh El-Batroun	M	VL	ML
Ftahat El-Batroun	L	VL	L	Ghouma	ML	VL	L	Hadtoun	L	L	VL
Hamat	M	VL	L	Harbouna	L	VL	L	Hardine	L	VL	VL
Helta	L	VL	L	Hery	ML	L	M	Jebbla	L	VL	L
Jrabta El-Batroun	L	VL	L	Jrane El-Batroun	L	VL	ML	Kfar Aabida	M	VL	ML
Kfar Halda	L	L	L	Kfarb Shlaimane	L	VL	L	Kfarhatna	L	VL	L
Kfarhay	L	VL	M	Kfarhelos	ML	VL	L	Kfifane	L	VL	ML
Kfour El Arabi	L	L	L	Koubba	M	VL	ML	Kour	L	VL	L
Mar Mama	L	VL	VL	Masrah	L	VL	VL	Mehmarch	L	L	L
Mrah Chdid	M	VL	L	Mrah El Ziyat	L	VL	L	Mrah El-Hajj	L	L	L
Nahle El-Batroun	L	VL	L	Niha El-Batroun	L	L	L	Ouahj El-Hajjar	M	VL	L
Ouata Houb	L	L	VL	Qatnaaoun	ML	VL	L	Racha	L	L	L
Rachana	M	VL	L	Rachkida	L	VL	L	Ram El-Batroun	L	L	VL
Ras Nahhach	L	VL	L	Selaata	M	L	M	Sghar	ML	L	L
Smar Jbayl	M	VL	L	Sourat El-Batroun	L	VL	L	Tannourine El-Faouqa	ML	ML	VL
Tannourine Et-Tahta	L	L	VL	Thoum	M	VL	L	Toula El-Batroun	L	VL	L
Zan	L	VL	L								

Zgharta

Municipality	10-Nov	11-Nov	12-Nov	Municipality	10-Nov	11-Nov	12-Nov	Municipality	10-Nov	11-Nov	12-Nov
Aachach	ML	VL	L	Aalma	ML	VL	L	Aarde	L	VL	L

Aintourine	L	L	L	Arabet Qozhaya	L	L	L	Arde	ML	VL	L
Arjis	L	VL	L	Asnoun	L	VL	L	Ayto	L	L	L
Basloukit	ML	L	L	Bchannine	L	VL	L	Besebeel	L	VL	L
Bhairret Toula	L	L	VL	Bnachee	L	L	L	Boussit	ML	VL	L
Danha	ML	VL	L	Daraiya Zgharta	L	VL	L	Deir Jdeide	L	VL	L
Ehden	ML	L	L	Halan	ML	VL	L	Hariq Zgharta	ML	VL	L
Houakir	L	VL	L	Hraiqis	ML	VL	M	Iaal	L	VL	L
Ijbaa	L	L	L	Karm Saddeh	L	VL	L	Kfarchakhna	L	VL	L
Kfardlaqous	ML	VL	L	Kfarfou	L	VL	L	Kfarhata Zgharta	ML	VL	L
Kfarhoura	L	VL	L	Kfarsghab	ML	L	L	Kfaryachit	L	VL	L
Kfarzaina	L	VL	L	Khaldiye	ML	VL	L	Mazraat Ajbeaa	L	VL	L
Mazraat Et-Teffah	L	L	VL	Mazraat Jneid	L	VL	L	Mejdlaya Zgharta	ML	VL	L
Merh Kfarsghab	L	L	L	Miryata	ML	VL	L	Miziara	L	L	L
Mzraat Kefraya	ML	VL	L	Qorah Bach	L	VL	L	Rachiine	ML	VL	L
Ras Kifa	L	VL	L	Sakhra	L	VL	L	Sebhel Zgharta	L	L	L
Serhel	L	L	VL	Tallet Zgharta	L	VL	L	Toula Zgharta	L	L	L
Zgharta	L	VL	L								

Minieh-Denniye

Municipality	10-Nov	11-Nov	12-Nov	Municipality	10-Nov	11-Nov	12-Nov	Municipality	10-Nov	11-Nov	12-Nov
Aasaymout	L	VL	VL	Aaymar	L	L	L	Aazki	ML	VL	L
Ain El-Tineh-Miniyeh	L	L	VL	Assoun	L	L	L	Bakhaaoun	L	L	L
Bchennata	ML	ML	L	Bechehhara	L	VL	VL	Beddawi	ML	VL	M
Behouaita	L	L	L	Beit El Foqss	L	L	L	Beit Haouik	L	L	L
Beit Zoud	L	L	L	Bekaasafrine	ML	L	L	Borj El Yahoudiyeh	ML	VL	M
Bqarsouna	L	L	VL	Btermaz	L	VL	VL	Debaael	L	VL	VL
Deir Ammar	ML	VL	M	Deir Nbouh	L	VL	L	Haouaret-Miniyeh	L	L	L
Haql el Azimeh	L	VL	VL	Harf El Siyad	L	VL	VL	Hazmiye-Miniyeh	L	VL	VL
Izal	L	L	L	Jarjour	L	VL	VL	Jayroun	L	VL	VL
Kahf El-Malloul	L	VL	VL	Karm El-Moher	L	L	L	Kfar Binine	L	L	L
Kfarchalane	L	VL	L	Kfarhabou	L	VL	L	Kharroub-Miniyeh	L	L	L
Mazraat El-Kreme	L	VL	VL	Mazraat Ketrane	L	L	L	Merkebt	ML	VL	M
Minyeh	ML	VL	M	Mrah El Sfirat	L	VL	VL	Mrah Sraj	L	VL	VL
Mrebbine	L	L	VL	Nabi Youcheaa	ML	VL	M	Nemrine	L	L	L
Qarhaiya	L	L	L	Qarne	VL	VL	VL	Qarsita	L	VL	VL
Qattineh-Miniyeh	L	VL	VL	Qemmamine	VL	VL	VL	Qraine	L	VL	VL
Raouda-Aadoua	ML	VL	M	Rihaniyet-Miniyeh	M	VL	M	Sfireh	L	VL	VL
Sir Ed-Danniyeh	L	L	L	Tarane	L	VL	VL	Terbol-Miniyeh	ML	VL	M
Zaghartaghrine	L	VL	L	Zouq Bhannine	M	VL	M				

Nabatiye

Nabatiye

Municipality	10-Nov	11-Nov	12-Nov	Municipality	10-Nov	11-Nov	12-Nov	Municipality	10-Nov	11-Nov	12-Nov
Aabba	M	M	L	Aazzi	M	M	L	Adchit El-Chqif	M	M	L
Ain Bou Swar	M	M	L	Ain Kana	M	M	L	Ali El-Taher	M	M	L

Ansar	M	M	L	Arab Salim	M	M	L	Arnoun	ML	M	L
Bfaroue	M	M	L	Breyqaah	M	M	L	Charqiyeh	M	M	L
Choukine	M	M	L	Deir El Zahrani	M	M	L	Doueir El-Nabatiyeh	M	M	L
Habbouch El-Nabatiye	M	M	L	Hamra El-Nabatiyeh	M	M	L	Harouf El-Nabatiyeh	M	M	L
Hmaile	M	M	L	Houmin El Faouqa	M	M	L	Houmin El Tahta	M	M	ML
Jarjough	M	ML	L	Jbaah El-Nabatiyeh	ML	ML	L	Jebchit	M	M	L
Kfar Djal El-Nabatiy	M	M	L	Kfar Remmane	M	M	L	Kfar Sir	M	M	L
Kfar Tebnit	M	M	L	Kfarfila	M	M	L	Kfour El-Nabatieh	M	M	L
Mayfadoun	M	M	L	Mazraat Bsaffour	M	M	L	Mazraat Chalbaal	M	M	L
Mazraat Dmoul	M	M	L	Mazraat El Khreibeh	M	M	ML	Mazraat El-Bayad El-	M	M	L
Mazraat Kfarjaouz	M	M	L	Mazraat Qalaat Meiss	M	M	L	Nabatiyeh El-Fawka	M	M	L
Nabatiyeh Et-Tahta	M	M	L	Namiriyeh	M	M	L	Qaaqaaiyet El Jisr	ML	M	L
Qossaibeh El-Nabatiy	M	M	L	Roumine	M	M	L	Sarba El-Nabatieh	M	M	L
Sir El-Gharbiyeh	M	M	L	Toul	M	M	L	Yehmor El-Nabatiyeh	ML	M	L
Zaoutar El Charkiyeh	ML	M	L	Zaoutar El-Gharbiyeh	ML	M	L	Zebdine El-Nabatiyeh	M	M	L
Zefta	M	M	L								

Hasbaila

Municipality	10-Nov	11-Nov	12-Nov	Municipality	10-Nov	11-Nov	12-Nov	Municipality	10-Nov	11-Nov	12-Nov
Aain Jarfa	M	M	ML	Abou Qamha	M	M	ML	Ain Qania	M	M	ML
Bourghos	M	M	M	Chebaa	M	M	ML	Chouaya Hasbaya	M	M	ML
Dellafeh	M	M	M	Fardiss Hasbaila	M	M	ML	Hasbaya	M	M	ML
Hbariyeh	M	M	ML	Kaoukaba Hasbaila	M	M	M	Kfar Chouba	M	M	ML
Kfar Hamam	M	M	ML	Kfeir El-Zait	M	M	L	Khalwat Hasbaya	ML	M	L
Khreibet Hasbaila	M	M	M	Majdiyeh Hasbaila	M	M	M	Marj Ez-Zhour (Haouc	M	M	L
Meri	M	M	M	Mimass	M	M	ML	Rachaiya El-Fokhar	M	M	ML
Salaiyeb	M	M	M								

Marjayoun

Municipality	10-Nov	11-Nov	12-Nov	Municipality	10-Nov	11-Nov	12-Nov	Municipality	10-Nov	11-Nov	12-Nov
Aalmane Marjaayoun	ML	M	L	Aamra	M	ML	ML	Adayseh Marjaayoun	ML	M	L
Adchit El-Koussair	ML	M	L	Ain Aarab Marjaayoun	M	M	M	Bani Haiyann	ML	M	L
Blatt Marjaayoun	M	M	ML	Blida	M	M	ML	Borj El-Moulouk	M	M	L
Boueyda Marjaayoun	M	ML	L	Deir Mimass	ML	M	L	Deir Siriane	ML	M	L
Dibbine	M	M	L	Ebel El Saqi	M	M	M	Houla	ML	M	L
Houra	M	M	L	Kfar Kila	ML	M	L	Khiam Marjaayoun	M	M	ML
Klayaa	M	M	L	Majdel Selem	ML	M	L	Marjaayoun	M	M	L
Markaba	ML	M	L	Mays El-Jabal	ML	M	ML	Mazraat Doumiat	M	M	L
Mazraat Sarada	M	ML	L	Mhaibib	ML	M	ML	Qabrikha	ML	M	L
Qantara	ML	M	L	Rab El-Thalathine	ML	M	L	Saouaneh Marjayoun	M	M	L
Talloussa	ML	M	L	Taybeh Matjaayoun	ML	M	L	Touline	ML	M	L

Bent Jbail

Municipality	10-Nov	11-Nov	12-Nov	Municipality	10-Nov	11-Nov	12-Nov	Municipality	10-Nov	11-Nov	12-Nov
Ain-Ebel	M	M	ML	Aitaroun	M	M	ML	Aynata Bint Jbeil	M	M	ML
Ayta El-Chaeb	M	M	L	Ayta El-Jabal	M	M	ML	Beit Lif	M	M	L
Beit Yahoun	M	M	ML	Bint Jbeil	M	M	ML	Borj Qalaway	M	M	L

Braachit	M	M	ML	Chakra	M	M	ML	Debel	M	M	ML
Deir Antar	M	M	L	Froun	ML	M	L	Ghandouriyeh Bint Jb	ML	M	L
Hanine	M	M	ML	Hariss	M	M	ML	Hdatha	M	M	ML
Jmeyjmeh	M	M	L	Kafra Bint Jbeil	M	M	L	Kfar Dounine	M	M	L
Khirbet Selm	M	M	L	Kounine	M	M	ML	Maroun El Ras	M	M	ML
Qalaway	M	M	L	Qaouzah	M	M	L	Qatmoun	M	M	ML
Ramya Bint Jbeil	M	M	L	Rchaf	M	M	ML	Rmeich	M	M	ML
Safad Al Battikh	M	M	ML	Salhaneh	M	M	L	Serbine	M	M	ML
Sultanieh Bint Jbeil	M	M	L	Tibnine	M	M	ML	Tiri	M	M	ML
Yaroun	M	M	ML	Yater	M	M	L				

Mont Liban

Jbail

Municipality	10- Nov	11- Nov	12- Nov	Municipality	10- Nov	11- Nov	12- Nov	Municipality	10- Nov	11- Nov	12- Nov
Aabeydat	L	VL	VL	Aalita	L	L	VL	Aamchit	M	L	VL
Aarab El-Lahib	ML	ML	VL	Aarasta	L	L	VL	Adonis Jbeil	L	VL	VL
Afqa Jbeil	L	L	VL	Ain El Delbeh Jbeil	L	L	VL	Ain El-Ghouayba	L	L	VL
Ain Jrain	L	L	VL	Ain Kfah	ML	VL	VL	Almat El Chemaliyat	L	L	VL
Almat El-Jenoubiya	L	L	VL	Aqoura	ML	ML	VL	Bayzoun	L	L	VL
Bchille Jbeil	L	L	VL	Bechtlida	L	VL	VL	Behdaydat	L	VL	VL
Beit Habbaq	L	L	VL	Bejjeh	L	VL	VL	Bekhaaz	M	L	VL
Berbara Jbeil	M	L	L	Bintael	L	L	VL	Birket Hjoula	L	VL	VL
Blatt Jbeil	L	L	VL	Boulhos	L	L	VL	Breyj Jbeil	L	VL	VL
Chamat	L	L	VL	Chikhane	M	L	VL	Chmout	ML	VL	VL
Eddeh Jbeil	ML	L	VL	Ehmej	L	ML	VL	Fatre	L	VL	VL
Ferhet	L	L	VL	Fghal	ML	VL	L	Frat	L	L	VL
Ghabat	L	ML	VL	Ghalboun	L	VL	VL	Gharzouz	M	L	VL
Ghofrine	M	L	VL	Habil	L	VL	VL	Halate	L	L	VL
Haqel	L	VL	VL	Hbaline	M	L	VL	Hboub	L	L	VL
Hdeine	ML	ML	VL	Hema Er-Rehban	ML	ML	VL	Hema Mar Maroun Aann	ML	L	L
Hjoula	L	L	VL	Hosrayel	M	L	VL	Hsarat	M	L	VL
Hsoun	L	L	VL	Jaj	L	L	L	Janne	L	L	VL
Jbeil	ML	L	VL	Jeddeyeh Jbeil	ML	L	VL	Jlisse	L	VL	VL
Jouret El-Qattine	L	L	VL	Kfar Baal Annaya	L	L	VL	Kfar Kidde	M	L	L
Kfar Kouas	L	L	VL	Kfar Mashoun	M	L	VL	Kfoun	L	VL	VL
Kharbe Jbeil	L	L	VL	Laqlouq	ML	M	L	Lassa	L	L	VL
Lehfed	L	L	VL	Maad	M	L	VL	Mar Sarkis	ML	ML	L
Mastita	L	L	VL	Mayfouq	L	L	VL	Mazraat El Siyad	ML	ML	L
Mazraat El-Maaden	L	L	VL	Mechane	L	L	VL	Mechmech Jbeil	L	L	VL
Mehrin	L	L	VL	Mejdel El-Akoura	L	L	VL	Mghayreh Jbeil	L	ML	VL
Mounsef	M	L	VL	Nahr Ibrahim	L	L	VL	Qahmez	L	L	VL
Qartaba	L	ML	VL	Qartaboun	ML	L	VL	Qattara Jbeil	L	L	VL
Qorqraya	L	L	VL	Ramout	L	L	VL	Ras Osta	L	L	VL
Rihane Jbeil	M	L	VL	Sakiet El-Khayt	L	VL	VL	Saqi Richmaya	L	L	VL
Sebrine	L	L	VL	Seraita	L	L	VL	Souane Jbeil	L	ML	VL

Tadmor	L	ML	VL	Tartej	L	L	VL	Torzaiya	L	L	VL
Yanouh Jbeil	L	ML	VL	Zibidine Jbeil	L	L	VL				

El Metn

Municipality	10-Nov	11-Nov	12-Nov	Municipality	10-Nov	11-Nov	12-Nov	Municipality	10-Nov	11-Nov	12-Nov
Aain El-Qabu	L	L	VL	Aain El-Qach	L	L	L	Aain El-Teffaha	L	L	L
Aain el-Safssaf El-M	L	L	L	Abou Mizane	L	L	L	Ain Aar	L	L	L
Ain Alaq	L	L	L	Ain El-Kharroube	ML	L	L	Ain El-Sendianeh	L	L	L
Ain El-Zeitoune	L	L	VL	Ain Saadeh	L	L	M	Aintoura El-Matn	ML	ML	L
Amaret Chalhoub	M	ML	M	Antelias	M	ML	M	Atchaneh	L	L	VL
Ayroun	L	L	L	Baabdat	L	L	VL	Baouchariyeh	ML	ML	M
Baskinta	ML	L	L	Beit Chabab	L	L	L	Beit El-Chaar	M	L	L
Beit El-Kekko	ML	ML	L	Beit Mery	L	L	ML	Bhersaf	L	L	VL
Bikfaya	L	L	L	Biyakout	M	L	M	Bnabil	L	L	VL
Bourj Hammoud	L	ML	M	Bqennaya	ML	L	M	Broummana El-Matn	L	L	L
Bsalim	L	L	L	Bsifrine	L	L	VL	Bteghrine	L	L	L
Chaouiye	L	L	L	Chouaya El-Matn	L	L	L	Choueir	L	L	L
Chrine	L	L	VL	Dahr El Sawan El-Mat	L	L	VL	Daychouniyeh	ML	ML	M
Dbayeh	M	ML	M	Deir Chamra	L	VL	VL	Deir Mar Abda el Mch	L	L	VL
Deir Mar Roukouz	M	ML	M	Deir Tamiche	L	L	L	Dik El-Mehdi	ML	L	L
Dikwaneh	ML	ML	M	Douar El-Matn	L	L	L	Fanar	ML	L	M
Fraike	L	L	L	Haret El-Ballaneh	ML	L	M	Hbous	L	L	L
Himlaya	L	L	L	Jal El Did	M	ML	M	Jdeideh El-Metn	M	L	M
Jouar El-Matn	L	L	L	Jouret El-Ballout	L	L	VL	Kaaqour	L	L	VL
Kfar Aaqab	L	L	VL	Kfertay El-Matn	ML	L	VL	Khenchara	L	L	L
Khillet El-Mtain	L	L	VL	Konnabat Broummana	L	L	L	Konnabat Salima	L	VL	VL
Machraah El-Matn	ML	L	L	Majdel Tarchich	ML	ML	L	Majzoub	ML	L	M
Mansouriyeh El-Metn	ML	ML	M	Mar Boutros Karm Et-	L	L	VL	Mar Chaya et Mzekke	L	L	VL
Mar Moussa Ed-Douar	L	L	VL	Marjaba	L	L	L	Masqa	L	L	VL
Mayasse	L	L	VL	Mazraat Deir Aoukar	ML	L	M	Mazraat El-Hadirat	ML	L	L
Mazraat Yachouh	ML	L	L	Mchikha	ML	L	L	Menqlet Mezher	ML	L	M
Mhaydseh Matn	L	L	L	Mkalles	M	ML	M	Mrouj	ML	L	L
Mtain	L	L	L	Mtayleb	ML	L	L	Nabay	L	L	VL
Naccache	ML	L	M	Ouadi Chahine	L	L	VL	Ouadi El-Karm El-Mat	L	L	VL
Ouata El-Mrouj	L	L	L	Ouyoun El-Matn	L	VL	VL	Qornet Chehwan	L	L	L
Qornet El-Hamra	L	L	L	Roumieh	L	L	L	Sfeilet Bikfaya	L	L	VL
Sinn El-Fil	ML	ML	M	Zabbougha	L	VL	VL	Zalqa	M	ML	M
Zarououn	L	L	VL	Zekrite	L	L	L	Zighrine El-Matn	L	L	L
Zouk El-Khrab	ML	L	M								

Chouf

Municipality	10-Nov	11-Nov	12-Nov	Municipality	10-Nov	11-Nov	12-Nov	Municipality	10-Nov	11-Nov	12-Nov
Aalmane El-Chouf	M	L	L	Aammq El-Chouf	L	L	M	Ain Ouzein	L	L	L
Ain Qani	L	L	L	Ain Zhalta	L	L	L	Ainbal	L	L	L
Amatour	L	L	L	Anout	ML	L	L	Atrine	L	L	L
Baadarane	L	L	L	Baaqline	ML	L	L	Baasir	M	ML	L
Barja	M	ML	ML	Barouk	L	L	L	Bater	ML	L	L

Batloun	L	L	L	Bayqoun	L	ML	ML	Bchetfine	ML	L	M
Beiteddine	L	L	L	Benouati Ech-Chouf	L	L	L	Berjein	M	L	L
Bireh et Mtalleh	L	L	L	Biret El-Chouf	L	L	L	Bkechtine Ouel Mchei	L	L	L
Bkifa El-Chouf	M	ML	L	Botme	L	L	L	Bqaiaa Ech-Chouf	ML	L	L
Bsaba El-Chouf	ML	L	L	Chammis El-Chouf	M	ML	L	Chehim	M	L	L
Chemaarine	L	L	L	Chourit	L	L	L	Daher El-Chouf	ML	L	L
Dalhoun	M	L	L	Damour	M	ML	M	Daraya El-Chouf	ML	L	L
Deir El-Moukhalles	ML	L	L	Deir Baba	ML	L	ML	Deir Dourit	ML	L	L
Deir El-Qamar	L	L	ML	Deir Kouche	L	L	M	Dibbieh	ML	L	L
Dmit	ML	L	L	Fouara Jaafar	L	L	L	Fraidis El-Chouf	L	L	L
Ghabet Jaafar	ML	L	L	Gharife	L	L	L	Haret Jandal	L	L	L
Hasrout	ML	ML	L	Jadra	M	VL	ML	Jahlieh	ML	L	L
Jbeih El-Chouf	ML	L	L	Jdeidet El-Chouf	L	L	L	Jiyeh	M	L	ML
Jleilyeh	M	ML	L	Jmailiyeh	M	ML	L	Joun	M	ML	L
Kahlounie El-Chouf	L	ML	ML	Ketermaya	M	ML	L	Kfar Faqoud	ML	L	M
Kfar Hamal	ML	ML	M	Kfar Him	ML	ML	L	Kfar Katra	L	L	M
Kfar Niss	L	L	L	Kfar hay	L	L	L	Kfarnabrakh	L	L	L
Khirbet Bisri	ML	L	L	Knayse El-Chouf	L	L	M	Maaniyeh	M	ML	L
Maasser Beiteddine	L	L	L	Maasser El-Chouf	L	L	L	Majdalouna	M	M	L
Majdel El-Meouch	L	L	L	Mazboud	M	ML	L	Mazmoura	M	ML	L
Mazraat El Chouf	L	L	L	Mazraat El Daher	ML	L	L	Mazraat El-Douair	L	L	L
Mechref	ML	L	M	Mghairie	M	M	L	Mghayrie El-Chouf	ML	L	L
Moukhtara	L	L	L	Mrusti	L	L	L	Mtolle	ML	ML	L
Naameh	M	ML	M	Niha El-Chouf	ML	L	L	Ouadi Abou Youssef	L	VL	VL
Ouadi Ed-Deir	ML	ML	L	Ouadi El-Sit	L	L	L	Ouadi bnehlay	L	L	L
Qraibeh	L	L	L	Qreiaa	ML	L	L	Rmayle El-Chouf	M	L	L
Semqaniyeh	L	ML	ML	Sibline	M	L	ML	Sirjbeil	ML	L	L
Warhanieh	L	L	L	Werdaniyeh	M	L	ML	Zaarourieh	ML	ML	L

Baabda

Municipality	10-Nov	11-Nov	12-Nov	Municipality	10-Nov	11-Nov	12-Nov	Municipality	10-Nov	11-Nov	12-Nov
Abadiyeh	L	L	L	Ain Mouaffaq	L	L	L	Araiya	L	L	M
Arbaniyeh	L	L	VL	Arsoun	L	L	VL	Baabda	M	ML	M
Baalchmey	L	ML	L	Bmaryam	L	L	L	Bourj El-Brajneh	M	ML	M
Boutchay	ML	L	M	Bsaba Baabda	M	ML	M	Btekhney	L	L	L
Btibyat	L	L	VL	Bzebdine	L	L	L	Chbeniyeh	L	L	L
Chiyah	M	ML	M	Chmeisset Baabda	VL	VL	VL	Chouit	L	L	L
Deir El-harf	L	L	L	Deir Khouna	L	L	L	Dlaybeh	L	L	VL
Falougha	L	L	L	Furn El-Chebbak	M	ML	M	Hadath Beyrouth	M	ML	M
Halaliyeh Baabda	L	L	VL	Hammana	L	L	L	Haret El Sett	L	L	M
Haret Hamze	L	L	L	Haret Hreik	M	ML	M	Hasbaiya El-Metn	L	L	VL
Jouar El-Hoz	L	L	L	Jouret Arsoun	L	L	VL	Kfar Chima	M	ML	M
Kfar Selouane	L	L	L	Khalouat Baabda	L	L	L	Kneisset Baabda	L	L	VL
Laylakeh	M	ML	M	Louayzeh Baabda	ML	L	M	Merdache	M	ML	M
Mzairaa Baabda	L	L	VL	Ouadi Chahrour El OI	ML	L	M	Ouadi Chahrour El So	ML	L	M
Qalaa Baabda	L	L	L	Qhraybe Baabda	L	L	L	Qobbayaa	L	L	L

Qornayel	L	L	VL	Qortada	L	VL	VL	Qrayeh Baabda	L	L	L
Qsaibeh Baabda	VL	L	VL	Qtale Baabda	L	L	VL	Ras El Metn	L	L	L
Ras El-Haref	L	L	L	Rouayset El-Ballout	L	L	L	Salima Baabda	L	L	VL
Tahouitat El Ghadir	M	ML	M	Tarchich	L	L	L	Zandouqa	VL	VL	VL

Aley

Municipality	10-Nov	11-Nov	12-Nov	Municipality	10-Nov	11-Nov	12-Nov	Municipality	10-Nov	11-Nov	12-Nov
Abey	ML	ML	M	Aghmid	L	L	L	Ain Dara	L	L	L
Ain Drafil	ML	L	M	Ain El Halazoun	L	ML	L	Ain El-Rmmaneh	L	L	M
Ain Jedideh	L	ML	L	Ain Ksour	ML	L	M	Ain Onoub	ML	L	M
Ain Traz	L	L	M	Ainab	ML	L	M	Aley	ML	ML	M
Aramoun	ML	L	M	Aytat	ML	ML	M	Azouniyeh	L	L	L
Baawerta	ML	L	M	Badghan Oua Wadi Bad	L	L	L	Bassatine	ML	ML	M
Bayssour	L	L	M	Bchamoun	ML	L	M	Bdadoun	L	L	M
Behouara	L	L	M	Bennay	ML	ML	M	Bhamdoun El-Dayaa	L	ML	L
Bhamdoun El-Mhatta	L	ML	L	Bkhechtey	L	ML	L	Bleibel	ML	L	M
Bmaknine	L	ML	M	Bmehray	L	L	L	Bouzrid	L	L	M
Bserrine	ML	ML	L	Bsous	L	L	M	Btalloun	L	ML	L
Btater	L	ML	L	Chanay	L	ML	L	Charoun	L	ML	L
Chartoun	L	L	M	Chemlane	ML	L	M	Chouefat El-Aamrous	M	ML	M
Chouefat El-Oumara	M	ML	M	Chouefat El-Quoubbe	M	ML	M	Dakkoun	ML	L	M
Deir Qoubel	ML	L	M	Dfoun	ML	ML	M	Douair El Remmaneh	L	L	M
Ghaboun	L	L	M	Habramoun	L	L	L	Homs Oua Hama	L	ML	L
Houmal	ML	L	M	Jisr El Qadi	L	L	M	Kehaleh	L	L	M
Keyfoun	L	ML	M	Kfar Aamey	L	L	M	Kommatyeh	L	L	M
Maasrati	L	L	L	Majdel Baana	L	ML	L	Mansourieh et Ain El	L	ML	L
Mazraat El-Nahr	L	L	L	Mchakhte	L	L	L	Mecherfeh	L	L	L
Mejdaya	L	L	M	Mrayjat	L	L	L	Ramiyeh	L	L	L
Rechmaya	L	L	M	Rejmech	L	L	L	Remhala	ML	ML	M
Rouayset El Neemane	L	L	M	Saoufar	L	ML	L	Selfaya	L	L	M
Sirhmoul	ML	L	M	Souq El Ghareb	L	L	M	Taazanieh	L	ML	L

Kesrouane

Municipality	10-Nov	11-Nov	12-Nov	Municipality	10-Nov	11-Nov	12-Nov	Municipality	10-Nov	11-Nov	12-Nov
Achkout	ML	L	VL	Adma Oua Dafneh	L	L	VL	Ain Ed-Delbe Kesroua	L	L	VL
Ain El-Rihane	L	L	VL	Aintoura Kesrouane	ML	L	VL	Ajaltoun	L	L	VL
Akaybeh Kesrouane	ML	L	VL	Aramoun Kesrouane	L	L	VL	Azra ouel Ozor	L	L	VL
Ballouneh	L	L	VL	Batha	L	VL	VL	Bekaatat Achkout	M	L	VL
Bekaatat Kanaan	ML	L	VL	Bizhel	L	VL	VL	Bouar	L	L	VL
Bqaatouta	ML	ML	L	Bqaq Ed-Dine	L	L	VL	Bzommar	L	L	VL
Chahtoul	ML	L	VL	Chnaniir	L	VL	VL	Chouan	L	L	VL
Daraya Kesrouane	ML	L	VL	Daroun	L	L	VL	Deir Baqlouch	L	VL	VL
Dlebta	L	VL	VL	Eghbeh	L	VL	VL	Faraya	ML	ML	L
Fatka	L	L	VL	Feytroun	ML	L	VL	Ghazir	L	L	VL
Ghbaleh Kesrouane	ML	L	VL	Ghedrass	L	L	VL	Ghosta	L	L	VL
Ghyneh	ML	L	VL	Harharaya w Kattine	ML	L	VL	Harissa Kesrouane	L	VL	VL
Hayata	L	L	VL	Hosein	L	L	VL	Hrajel	M	ML	L

Jdeideh Ghazir	L	L	VL	Jeita	L	L	VL	Jounieh Ghadir	ML	L	VL
Jounieh Haret Sakhr	ML	L	VL	Jounieh Salel Alma	ML	L	VL	Jounieh Sarba	ML	L	VL
Jouret Bedrane	L	L	VL	Jouret Mhad	L	L	VL	Jouret Termos	L	L	VL
Kfar Debiane	ML	L	VL	Kfar Tay Kesrouane	L	L	VL	Kfar Yassine	ML	L	VL
Kfour Kesrouane	L	L	VL	Kharayeb Nahr Ibrahi	L	L	VL	Klayaat Kesrouane	L	L	VL
Maarab	L	VL	VL	Maaysra Kesrouane	L	L	VL	Mayrouba	ML	ML	L
Mazraat Er-Ras	ML	L	L	Mazraat Mrah El-Mir	L	L	VL	Mchaa El Ftouh	ML	M	VL
Mchaa Faraya	L	ML	VL	Mchaa Kfar Dibiane	L	M	VL	Mghaer	ML	L	VL
Mradiyah	L	L	VL	Nahr Ed-Dahab	L	L	VL	Nammoura Kesrouane	L	L	VL
Ouata El Jaouz	ML	L	VL	Ouata Sillam	ML	L	VL	Raachine	L	L	VL
Rayfoun	ML	L	VL	Safra Kesrouane	L	L	VL	Shayle Kesrouane	L	L	VL
Tabarja	L	L	VL	Yahchouch	L	L	VL	Zaaytreh	L	L	VL
Zeytoun	L	L	VL	Zouk Mikael	ML	L	VL	Zouk Mosbeh	ML	L	L

Baalbek_Hermel

Baalbek

Municipality	10-Nov	11-Nov	12-Nov	Municipality	10-Nov	11-Nov	12-Nov	Municipality	10-Nov	11-Nov	12-Nov
Aadous	L	L	L	Aamchki	L	L	L	Aarsal	L	L	L
Ain Baalbek	L	L	M	Ain Bourday	L	L	L	Ain El-Benye	L	L	ML
Ain El-Jaouz Baalbek	L	ML	ML	Ain El-Siya Chadoura	L	L	L	Al Khodr Baalbek	L	L	L
Al Nabi Chit	L	L	L	Aynata Baalbek	L	L	L	Baalbek	L	L	L
Bachwat	L	VL	VL	Barqa	L	VL	VL	Bednayel Baalbak	L	ML	L
Beit Chama	L	L	L	Bijjaje	L	L	L	Bouday	L	L	VL
Brital	L	L	ML	Btadi	L	L	L	Chaat	L	L	L
Chaibe	L	L	ML	Chlifa	L	L	L	Chmestar	L	L	VL
Dar El-Oussa	L	L	VL	Deir El-Ahmar	L	L	L	Deir Mar Maroun Baal	ML	L	M
Douris	L	L	L	Fakiha	L	L	ML	Hadath Baalbek	L	L	VL
Ham	L	L	ML	Haour Taala	L	L	ML	Hizzine	L	L	VL
Hlebta	VL	VL	VL	Hosh Barada	L	L	L	Hosh El Dahab	L	L	L
Hosh El Snid	L	L	L	Hosh El-Nabi	L	L	L	Hosh El-Rafiq	L	L	L
Hosh Tal Safiya	L	L	L	Hrebta	L	L	VL	laat	L	L	L
Jebaa	L	ML	VL	Jenta	L	L	ML	Kfar Dabach	L	L	L
Kfar Dane	L	L	VL	Khraibeh El-Hermel	L	L	VL	Khreibet Baalbek	L	L	ML
Kneisset Baalbek	L	VL	L	Labueh	L	L	VL	Maarboun	L	ML	ML
Majdaloun	L	L	L	Maqneh	L	L	L	Mazraat Beit Mcheik	L	ML	VL
Misraya	L	L	L	Moqraq	L	L	L	Nabha El-Damdoum	L	L	VL
Nabi Chbay	L	L	ML	Nabi Osman	L	L	ML	Nahleh baalbek	L	L	L
Ouadi El-Oss	VL	VL	VL	Qaa Baayoun	L	VL	M	Qaa Jouar Maqiye	L	L	M
Qaa Ouadi El-Khanzir	ML	L	M	Qah Baalbek	L	VL	M	Qarha Baalbek	L	L	L
Qsarnaba	L	L	L	Ram Baalbek	L	VL	L	Ras Baalbek El Sahl	L	L	M
Ras Baalbek El-Charq	L	VL	M	Riha	L	VL	L	Saaide	L	L	VL
Sbouba	L	L	VL	Seriine El-Tahta	L	L	ML	Slouqi	L	ML	L
Taiba Baalbek	L	L	L	Talia	L	L	L	Taraiya	L	L	VL
Temnin El Fawqa	L	L	L	Temnin El-Tahta	L	L	L	Tfail	L	ML	L
Yahfoufa	L	ML	ML	Yammouneh	L	L	VL	Younine	L	L	L

Zboud	L	L	VL								
-------	---	---	----	--	--	--	--	--	--	--	--

Hermel

Municipality	10-Nov	11-Nov	12-Nov	Municipality	10-Nov	11-Nov	12-Nov	Municipality	10-Nov	11-Nov	12-Nov
Charbine El-Hermel	L	VL	L	Hermel Jbab	L	L	VL	Hermel	M	L	M
Maaysra El-Hermel	VL	VL	VL	Michaa Mrajhine	L	L	VL	Ouadi Faara	L	VL	VL
Ras Baalbek - Ouadi	L	L	L	Ras Baalbek El Gharb	L	VL	VL	Zighrine	L	VL	L

Akkar

Akkar

Municipality	10-Nov	11-Nov	12-Nov	Municipality	10-Nov	11-Nov	12-Nov	Municipality	10-Nov	11-Nov	12-Nov
Aain Tinta	M	VL	M	Aaiyat	M	L	M	Aakkar El-Aatiqa	ML	L	L
Aamar Aakkar	M	VL	M	Aamar El Baykat	M	L	M	Aamayer	M	L	M
Aamriyet Aakkar	M	VL	M	Aandqet	M	L	ML	Aarmeh	M	VL	M
Aarqa	M	VL	M	Aawaynat	M	VL	M	Aayoun Aakkar	M	L	M
Abbouidiye	M	VL	M	Ain El-Zeit	M	L	M	Ain Yaaqoub	ML	L	ML
Akroum	M	L	ML	Aridet Cheikh Zennad	M	L	M	Baldeb w Mazraat Bal	M	L	M
Barcha	M	VL	M	Bardeh	M	VL	M	Bebnine	M	VL	M
Beino	M	L	M	Beit Ayoub	ML	L	M	Beit El-Haouch	M	VL	M
Beit Mellat	M	L	M	Beit Younes	L	L	ML	Berbara Aakkar	M	VL	M
Berqayel	M	VL	M	Bezbina	L	L	L	Bireh Aakkar	M	VL	M
Borj	M	L	M	Bqerezla	M	VL	M	Bzal	L	L	M
Chane	M	VL	L	Chaqdouf	M	L	M	Charbila	M	L	M
Cheikh Mohammad	M	L	M	Cheikh Taba Es-Sahl	M	L	M	Cheikh Taba	M	VL	M
Cheikh Zennad	M	L	M	Cheikhlar	M	VL	M	Chir Hmairine	M	VL	M
Daghle	M	VL	M	Dahr Laissine	M	VL	M	Darine	M	L	M
Dawra	ML	L	L	Dawsa w Baghdadi	M	VL	M	Dayret Nahr El-Kabir	M	VL	M
Deir Dalloum	M	VL	M	Deir Jennine	M	VL	M	Denbou	M	VL	M
Dibbbiyeh	M	VL	M	Douair Aadwiyeh	M	VL	M	Fassikine	M	VL	M
Fnaydek	L	L	L	Fraydes Aakkar	M	VL	M	Ghazayle	M	L	M
Habchit	L	VL	ML	Hakour	M	VL	M	Halba	M	L	M
Haouchab	M	L	M	Hayssat	M	VL	M	Haytla	M	L	M
Hayzouq	M	VL	M	Hedd	M	L	M	Hmaira Aakkar	M	VL	M
Hmaiss Aakkar	M	L	M	Hnaider	M	L	M	Hokr Ed-Dahri	M	L	M
Hokr Etti	M	L	M	Hokr Jouret Srar	M	VL	M	Houaich	M	VL	M
Hrar	L	L	ML	Idbil	M	VL	M	Ilal	M	L	M
Janine	M	VL	M	Jdeidet El-Joumeh	M	VL	M	Jdeidet El-Kaiteh	ML	VL	M
Jebrayel	M	L	M	Kafr	ML	VL	VL	Kafr	M	VL	M
Karm Asfour	M	VL	M	Kfar Melki Aakkar	M	VL	M	Kfar Noun	M	VL	ML
Kfarharra	M	L	M	Khalsa	M	VL	M	Kharnoubet Aakkar	M	VL	M
Khirbet Daoud Aakkar	M	VL	M	Khirbet El Remmane	M	VL	M	Khirbet Shar	M	VL	M
Khoreybet El-Jindi	M	L	M	Khreibet Aakkar	ML	L	M	Kneisset Aakkar	M	L	M
Kneisset Hnaider	M	L	M	Knisse	M	L	M	Kroum El-Aarab	M	L	M
Kwachra	M	VL	M	Kweykhat	M	L	M	Machta Hammoud	M	VL	M
Majdala	M	VL	M	Majdel Akkar	M	VL	M	Mar Touma	M	VL	M

Marlaya Melhem	M	VL	M	Mashha	M	VL	M	Massoudiye	M	L	M
Mazraat Beit Ghattas	M	VL	M	Mazraat En-Nahriye	M	VL	M	Mechmech	L	VL	L
Memneh	L	L	L	Mhammara	M	VL	M	Mighraq Aakkar	M	L	M
Minyara	M	VL	M	Moqayteh	M	VL	M	Mounjez	M	VL	M
Msalla	M	L	M	Mzeihmeh	M	L	M	Nfaisch	M	VL	M
Noura Et-Tahta	M	VL	M	Ouadi El-Haour	M	L	M	Ouadi El-Jamous	M	VL	M
Ouyoun El-Ghizlane	ML	VL	M	Qaabarine	M	VL	M	Qabaait	L	L	L
Qachlaq	M	VL	M	Qantara Aakkar	M	VL	M	Qarha Aakkar	M	VL	M
Qarqaf	M	VL	M	Qboula	M	L	M	Qleiaat Aakkar	M	VL	M
Qloud El-Baqie	M	VL	M	Qobaiyat Aakkar	M	VL	ML	Qobbat Chamrat	M	VL	M
Qorayat	M	VL	ML	Qornet Aakkar	ML	L	M	Qsair Aakkar	M	VL	M
Rahbe	M	L	M	Rihaniyet Aakkar	M	L	M	Rmah	M	VL	M
Rmoul	M	VL	M	Saadine	M	L	M	Sadaqa	ML	L	M
Saidnaya	M	L	M	Sammouniye	M	L	M	Sayssoq	M	VL	M
Semmaqiye	M	L	M	Semmaqli	M	VL	M	Sfinet El-Dreib	M	L	M
Sfinet El-Qaitaa	L	VL	ML	Sindyanet Zeidane	M	VL	ML	Souaisset Aakkar	M	VL	M
Srar	M	VL	M	Tal Abbas El Gharby	M	L	M	Tal Abbas El-Charqy	M	VL	M
Tal Biret	M	VL	M	Tal Hmayra	M	VL	M	Tal Maayan Tal Kiri	M	VL	M
Tal Sibel	M	VL	M	Tallet Chattaha	M	L	M	Tikrit	M	L	M
Tleil	M	L	M	Tshea	ML	L	ML	Zawarib	M	VL	M
Zouq El Hosniyeh	M	VL	M	Zouq El-Haddara	M	VL	M	Zouq El-Hbalsa	M	VL	M
Zouq El-Moqachrine	M	VL	M								

Sud

Sour

Municipality	10-Nov	11-Nov	12-Nov	Municipality	10-Nov	11-Nov	12-Nov	Municipality	10-Nov	11-Nov	12-Nov
Aaiyeh	M	M	L	Aalma El-Chaab	M	L	L	Aaytit	M	M	L
Abbassiyeh Sour	M	M	L	Abou Chech	M	L	L	Ain Abou Abdallah	M	M	L
Ain Baal	M	ML	L	Arzoun	M	M	L	Aziyeh	M	ML	L
Baflaya	M	M	L	Barich	M	M	L	Batouliyah	M	ML	L
Bayad	M	M	L	Bazouriyeh	M	ML	L	Bediass	M	M	L
Bestiyat	M	M	L	Borj El Chemali	M	ML	L	Borj En-Naqoura	M	L	L
Borj Rahhal	M	M	L	Boustane	M	ML	L	Btaychiyeh	M	L	L
Chaaitiye	M	M	L	Chameh	M	VL	L	Chehabiye	M	M	L
Chehour	M	ML	L	Chihine	M	ML	L	Debaal Sour	M	M	L
Deir Amess	M	M	L	Deir Kifa	M	M	L	Deir Qanoun El-Ain	M	ML	L
Deir Qanoun El-Naher	M	M	L	Derdghaiya	M	M	L	Dhayra	M	L	L
Halloussiyeh	M	M	L	Hamoul	M	L	L	Hanaouey	M	ML	L
Henniye	M	L	L	Hmairi Sour	M	M	L	Iskandarouna Sour	M	VL	L
Jbal El Botom	M	M	L	Jebbin	M	ML	L	Jennata	M	M	L
Jijim	M	L	L	Jouaiya	M	M	L	Kneisset Sour	M	ML	L
Maarake	M	M	L	Maaroub	M	M	L	Majadel	M	M	L
Majdalzoun	M	ML	L	Mansouri Sour	M	L	L	Marnba	ML	ML	L
Marouahine	M	ML	L	Mazraat El-Zalloutiy	M	ML	L	Mazraat Mechref	M	M	L
Mazraat Tayr Semhat	M	ML	VL	Mheilib	M	M	L	Neffakhiyeh	M	M	L

Niha Sour	M	M	L	Ouadi Jilo	M	M	L	Qana	M	M	L
Qolaileh Sour	M	L	L	Rechknany	M	M	L	Rmadiyah	M	M	L
Selha Sour	M	M	L	Siddiqine	M	M	L	Sour	M	L	L
Srifa	M	M	L	Tayr Debbe	M	M	L	Tayr Felsay	M	M	L
Tayr Harfa	M	L	L	Touayri	ML	M	L	Toura	M	M	L
Yanouh Sour	M	M	L	Yarine	M	ML	L	Zebqine	M	ML	L

Saida

Municipality	10-Nov	11-Nov	12-Nov	Municipality	10-Nov	11-Nov	12-Nov	Municipality	10-Nov	11-Nov	12-Nov
Aanqoun	M	M	ML	Aaqtanit	M	M	ML	Aarab Ej-Jall	M	M	ML
Aarab Tabbaya	M	M	ML	Abra Saida	M	L	L	Adloun	M	ML	L
Adousiyeh	M	M	M	Ain-El-Deleb	M	L	L	Arzai	M	M	L
Babliyah	M	M	L	Barty	M	M	L	Bissariyah	M	M	M
Bnaafoul	M	M	ML	Bqosta	M	L	L	Bramiy	M	L	L
Daoudiyeh	M	M	L	Dareb El-Sim	M	M	ML	Erkay	M	M	L
Ghassanieh	M	M	L	Ghazieh	M	M	M	Hajjeh	M	M	ML
Haret Saida	M	L	ML	Hartiyeh	M	ML	L	Hlaliye Saida	M	L	L
Insariyat	M	ML	L	Jazira Saida	M	M	L	Kafar Bit	M	M	ML
Kaoutariyet El-Siyad	M	M	L	Kfar Chellal	M	M	L	Kfar Hatta Saida	M	M	ML
Kfar Milke Saida	M	M	ML	Khartoum	M	M	L	Khaziz	M	M	L
Khirbet Ed-Douair Sa	M	M	L	Khirbet El-Bassal	M	M	ML	Khrayeb Saida	M	M	L
Loubieh	M	ML	L	Maghdouche	M	M	L	Majdelyoun	M	L	ML
Matariyet El-Choumar	M	ML	L	Matayriyah	M	M	L	Mazraat 'Mseileh	M	M	M
Mazraat 'Snaiber	M	M	M	Mazraat Aarab Soukka	M	M	ML	Mazraat Deir Taqla	M	M	ML
Mazraat El Yahoudiye	M	ML	L	Mazraat El-Housseini	M	M	M	Mazraat El-Mhaydaleh	M	M	L
Mazraat El-Ouasta	M	ML	L	Mazraat Jamjim	M	ML	L	Mazraat Kaoutariyet	M	M	L
Mazraat Kfar Badda	M	ML	L	Mazraat Oussamiyat	M	M	L	Mazraat Sari	M	ML	L
Mazraat Sinai	M	M	L	Meemariyah	M	M	ML	Merouaniyah	M	M	ML
Miyeh ou Miyeh	M	L	L	Najjariyah	M	M	M	Qaaqiyat El-Snaouba	M	M	L
Qnarit	M	M	ML	Qraiye Saida	M	ML	ML	Saida Ed-Dekermane	M	L	L
Saida El-Oustani	M	L	L	Saida El-Qadimeh	M	L	ML	Saida Kefraya	M	M	L
Saksakiyah	M	ML	L	Salhie Saida	M	ML	L	Sarafand	M	M	M
Sfenta	M	ML	L	Tafahta	M	M	L	Tanbourit	M	M	L
Tebna	M	M	ML	Zaghdraiya	M	M	L	Zeita	M	M	ML
Zrariyah	M	M	L								

Jezzine

Municipality	10-Nov	11-Nov	12-Nov	Municipality	10-Nov	11-Nov	12-Nov	Municipality	10-Nov	11-Nov	12-Nov
Ain El-Mir (El Estab	M	M	ML	Anane	M	L	L	Aramta	M	M	L
Ariya	L	L	L	Aychiyeh	M	ML	L	Azour	ML	L	L
Baba	ML	L	L	Baysour Jezzine	M	M	ML	Benoueteh Jezzine	ML	L	L
Bhannine	ML	L	L	Bisri	L	L	L	Bkassine	L	L	L
Bouslaya	M	L	L	Btedine El-Leqech	ML	L	L	Chbail	M	L	L
Choualiq Jezzine	M	M	L	Dahr Ed-Deir	M	L	L	Deir El Qattine	ML	L	L
Demachqiyeh	M	M	L	Ghabbatiyah	L	L	L	Harf Jezzine	L	L	L
Hassaniyah	M	M	L	Haytoulah	M	M	L	Haytura	ML	ML	L
Hidab	M	ML	L	Homsiyah	ML	L	L	Jabal Toura	M	ML	L

Jarmaq	M	M	L	Jensnaya	M	M	ML	Jernaya	M	M	L
Jezzine	M	ML	L	Karkha	M	ML	L	Kfar Falous	M	M	L
Kfar Houna	M	ML	L	Kfar Jarrah	M	M	ML	Lebaa	M	M	ML
Louayzet Jezzine	M	ML	L	Machmouche	L	L	L	Mahmoudiyeh Jezzine	M	M	L
Maknounye Jezzine	M	L	L	Maraat Ouazaiyeh	M	M	L	Mazraat Daraya	M	ML	L
Mazraat El-Aarqoub	ML	ML	L	Mazraat El-Mathane	L	L	L	Mazraat El-Rahbane	M	L	L
Mazraat Khallet Khaz	M	ML	L	Mazraat Louzid (Loua	M	L	VL	Mazraat Qrouh	M	M	L
Mazraat Tamra	M	M	L	Mazraat Zighrine Jez	M	ML	L	Mazraat	M	L	L
Mharbiyeh	M	M	ML	Midane Jezzine	L	L	L	Mjeydel Jezzine	M	M	ML
Mlikh	M	ML	L	Mras El-Hbasse	M	M	ML	Ouadi Baanqoudaine	M	M	ML
Ouadi El-Laymoun	M	M	ML	Ouardiyeh	M	L	VL	Qabaa Jezzine	ML	L	L
Qatrani	M	ML	L	Qaytouleh	ML	L	L	Qtaleh Jezzine	ML	L	L
Rihane Jezzine	M	M	L	Rimat	M	L	L	Roum	ML	L	L
Roummanet	M	ML	L	Sabbah	ML	L	L	Saydoun	M	L	L
Sfaray	ML	L	L	Snaya	ML	L	L	Sojoud	M	ML	L
Srayri	M	M	M	Taaid	ML	L	L	Wadi Jezzine	L	L	L
Zhalta	ML	L	L								

Bekaa

West Bekaa

Municipality	10-Nov	11-Nov	12-Nov	Municipality	10-Nov	11-Nov	12-Nov	Municipality	10-Nov	11-Nov	12-Nov
Aammiq BG	L	L	L	Ain El Tineh BG	M	M	L	Ain Zebdeh	L	L	L
Ana	L	L	L	Aytanit	ML	ML	L	Baaloul BG	ML	ML	L
Bab Mareh	ML	ML	L	Chouberqiye Aammiq	L	L	L	Dakoue	L	L	M
Deir Ain El-Jaouze	M	M	L	Deir Tahniche	L	L	L	Ghaza	L	L	L
Harime El-Soughra	L	L	ML	Hoch Harimeh	L	L	ML	Jazira BG	L	L	L
Jib Jennine	L	L	L	Kamed-El-Laouz	L	L	L	Kefraya BG	L	L	L
Khiara El Atika	L	L	L	Khiara	L	L	ML	Khirbet Qanafar	L	L	L
Lala	L	L	L	Lebbaya BG	M	M	L	Loussa	M	M	ML
Machghara	M	M	L	Manara (Hammara) BG	L	L	ML	Mansoura BG	L	L	L
Marej BG	L	L	ML	Maydoun	M	M	L	Ouaqf BG	L	L	L
Qaraaoun	M	ML	L	Qelya	M	M	M	Raouda (Istabel)	L	L	ML
Saghbine	L	L	L	Sohmor	M	M	L	Soltan Yacoub el Ara	L	L	M
Souairy	L	L	M	Sultan Yaacoub	L	L	L	Tal Znoub	L	L	L
Yehmor BG	M	M	L	Zilaya	M	M	L				

Zahle

Municipality	10-Nov	11-Nov	12-Nov	Municipality	10-Nov	11-Nov	12-Nov	Municipality	10-Nov	11-Nov	12-Nov
Aanjar (Haouch Mouss	L	L	ML	Ablah	L	L	L	Ain Kfarzabad	L	ML	ML
Ali-El-Nahri	L	ML	ML	Bar Elias	L	L	ML	Bouarej	L	L	L
Cheberqiyet Tabet	L	L	ML	Chtaura	L	ML	ML	Deir El Ghazal	L	L	L
Delhamiyet Zahle	L	ML	ML	Ferzol	L	L	L	Haouch El-Ghanam	L	L	ML
Haouch Es-Siyadeh	L	L	L	Haouch Hala	L	ML	ML	Haouch Mandara	L	L	ML
Haouch Qayssar	L	L	L	Hezerta	L	L	ML	Hosh Moussa	L	ML	ML
Jdita	L	L	L	Kfarzabad	L	ML	ML	Ksara	L	ML	ML

Majdel Aanjar	L	L	ML	Makssi	L	L	L	Massa	L	L	ML
Mazraat Er-Remtaniye	L	L	L	Mrayjat Zahle	L	L	L	Mzaraa Zahle	L	L	L
Nabi Ayla	L	L	L	Nasriyet Rizk	L	L	ML	Nasriyet Zahle	L	L	L
Niha Zahle	L	L	L	Ouadi Ed-Deloum	L	L	L	Ouadi El-Arayech	L	L	L
Qaa El Rim	L	L	ML	Qab Elias	L	L	L	Qousaya	L	L	ML
Rhit	L	L	ML	Riyak	L	ML	ML	Saadnayel	L	ML	ML
Taal El-Akhdar	L	L	L	Taalbeya	L	L	ML	Taanayel	L	L	ML
Talamara	L	ML	ML	Tcheflik Edde Haouch	L	L	L	Tcheflik Qiqano	L	L	L
Terbol Zahle	L	ML	ML	Touaite Zahle	L	ML	L	Zahle Aradi	L	ML	ML
Zahle El-Berbara	L	ML	ML	Zahle El-Maallaqa	L	ML	ML	Zahle El-Midane	L	ML	ML
Zahle Er-Rassiye	L	ML	ML	Zahle Haouch El-Ouma	L	ML	ML	Zahle Haouch El-Ouma	L	ML	ML
Zahle Haouch Ez-Zara	L	ML	ML	Zahle Maalaqa Aradi	L	ML	ML	Zahle Mar Antonios	L	ML	ML
Zahle Mar Elias	L	ML	ML	Zahle Mar Gerios	L	ML	ML	Zahle Saydet En-Naja	L	ML	ML
Zebdoul	L	L	VL								

Rachaiya

Municipality	10-Nov	11-Nov	12-Nov	Municipality	10-Nov	11-Nov	12-Nov	Municipality	10-Nov	11-Nov	12-Nov
Ain Arab Rachaiya	L	L	M	Ain Ata	ML	M	ML	Ain Harche	ML	M	L
Aqabe Rachaya	M	M	L	Ayha	L	M	M	Ayta El Fokhar	L	L	M
Bakifa Rachaya	M	M	L	Bakka	L	ML	M	Beit Lahya	M	M	L
Bireh Rachaiya	L	ML	L	Daher El Ahmar	L	M	L	Deir El-Achayer	L	L	ML
Heloua Rachaiya	L	L	ML	Hoch El Qannabeh Rac	M	M	L	Kaoukaba Bou Arab	ML	M	L
Kfar Danis	L	L	ML	Kfar Mechki	M	M	L	Kfar Qouq	L	ML	ML
Kherbet Rouha	L	ML	L	Majdel Balhiss	M	M	L	Mdoukha	L	L	M
Mhaydseh Rachaiya	L	ML	L	Nabi Safa	M	M	L	Rachaiya	L	M	ML
Rafid Rachaiya	L	M	L	Selsata (Mazraat Dei	VL	L	L	Tannoura	ML	M	L
Yanta	L	L	ML								

Beyrouth

Beyrouth

Municipality	10-Nov	11-Nov	12-Nov	Municipality	10-Nov	11-Nov	12-Nov	Municipality	10-Nov	11-Nov	12-Nov
Achrafieh	L	ML	M	Ain el-Mreisse	M	ML	M	Bachoura	L	ML	M
Beirut Central Distr	L	ML	M	Marfai	L	ML	M	Mazraa	ML	ML	M
Medaouar	L	ML	M	Minet el-Hosn	L	ML	M	Mwssaitbeh	M	ML	M
Ras Beirut	M	ML	M	Rmeil	L	ML	M	Saifi	L	ML	M
Zqaq el-Blat	L	ML	M								