

Lebanon Fire Risk Bulletin



CIVIL DEDEFENCE

Refer to cadast table condition.

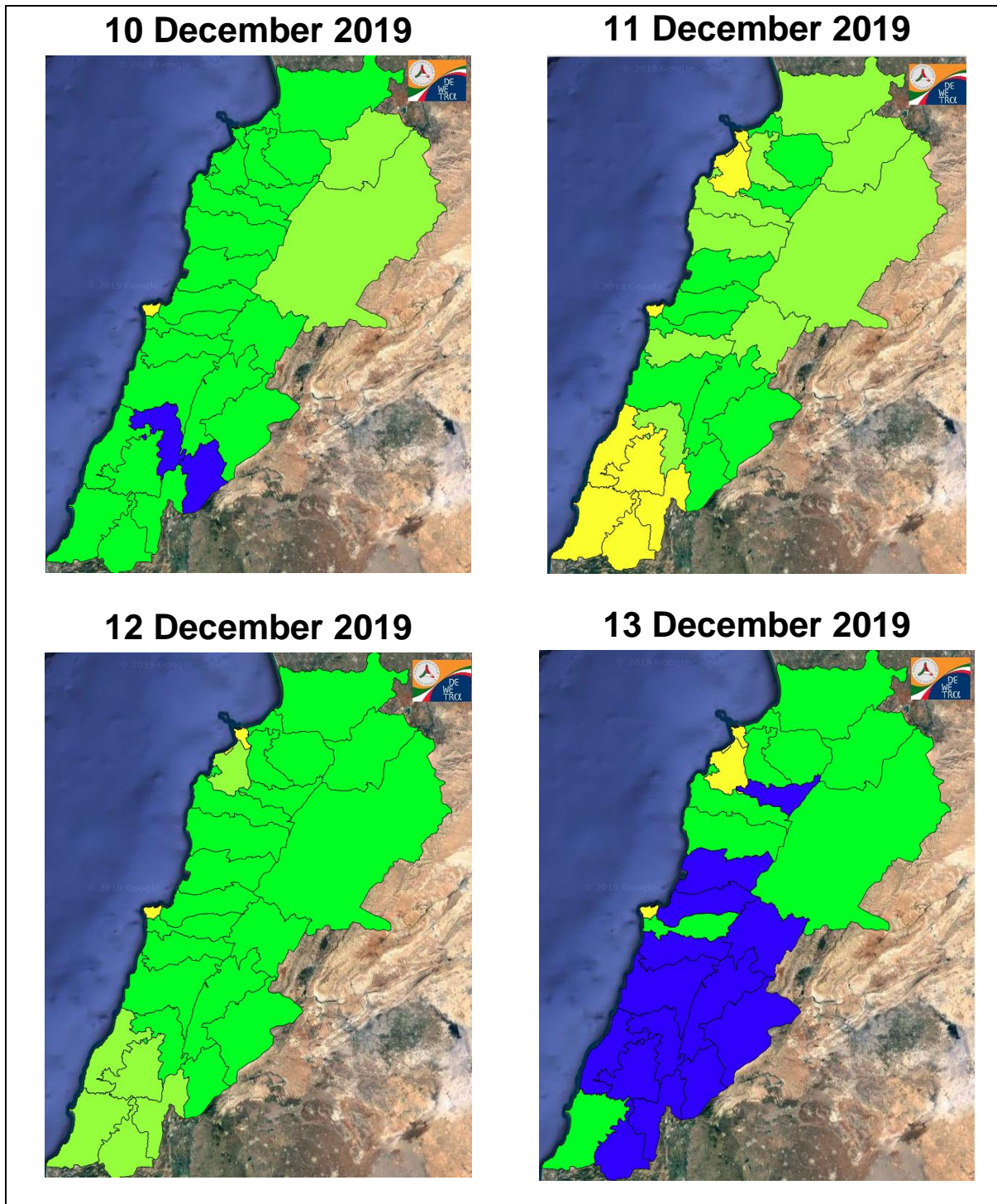
Please note that the indicated temperature is at 2 meters height from the ground.

General description of potential fire risk situation

Symbol	Level of risk	Meaning and actions
VL	Very low	Very low fire risk. Controlled burning operations can be hardly executed due to high fuel moisture content. Normally wildfires self-extinguish.
L	Low	Low fire risk. Controlled burning operations can be executed with a reasonable degree of safety.
ML	Medium low	Medium-low fire risk. Controlled burning operations can be executed in safety conditions. All the fires need to be extinguished.
M	Medium	Medium fire risk. Controlled burning operations would be avoided. All the fires need to be very well extinguished.
M	Medium high	Controlled burning is not recommended. Open flame will start fires. Cured grasslands and forest litter will burn readily. Spread is moderate in forests and fast in exposed areas. Patrolling and monitoring is suggested. Fight fires with direct attack and all available resources.
H	High	Ignition can occur easily with fast spread in grass, shrubs and forests. Fires will be very hot with crowning and short to medium spotting. Direct attack on the head may not be possible requiring indirect methods on flanks. Patrolling and monitoring the territory is highly suggested.
E	Extreme	Ignition can occur also from sparks. Fires will be extremely hot with fast rate of spread. Control may not be possible during day due to long range spotting and crowning. Suppression forces should limit efforts to limiting lateral spread. Damage potential total. Patrolling and monitoring the territory is highly suggested.

Beirut, 11 December 2019

FIRE RISK INDEX

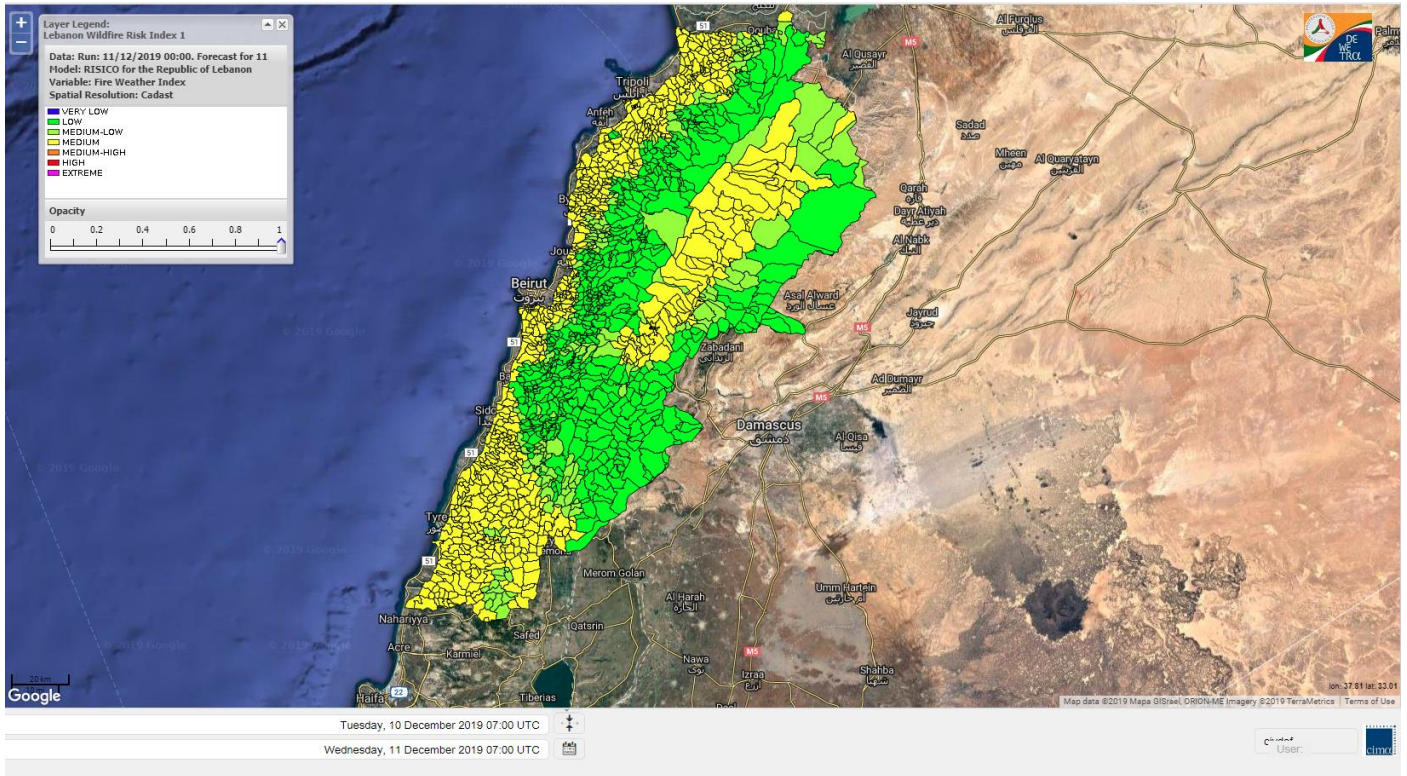


Layer Legend:
Lebanon Wildfire Risk Index 1

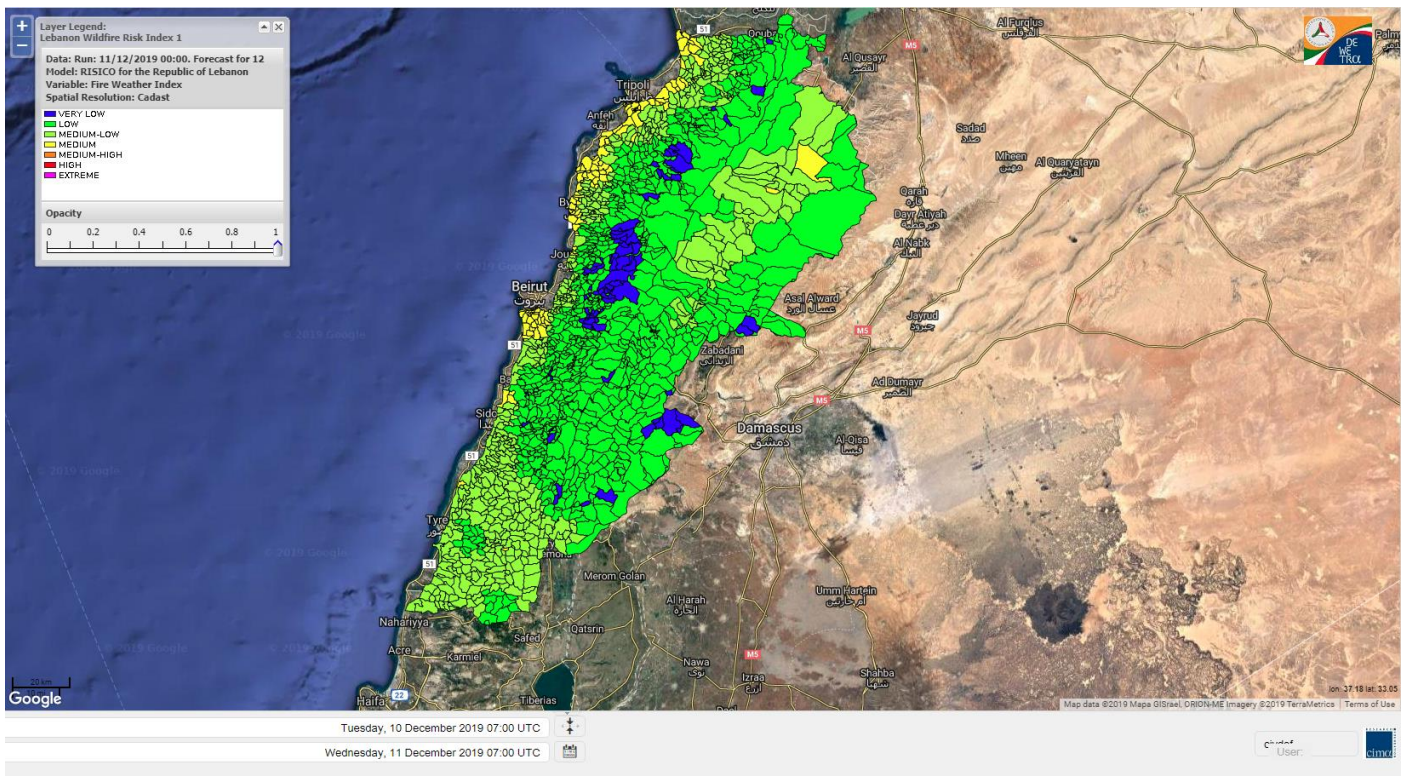
Data: Run: 11/12/2019 00:00. Forecast for 11
Model: RISICO for the Republic of Lebanon
Variable: Fire Weather Index
Spatial Resolution: Caza

- VERY LOW
- LOW
- MEDIUM-LOW
- MEDIUM
- MEDIUM-HIGH
- HIGH
- EXTREME

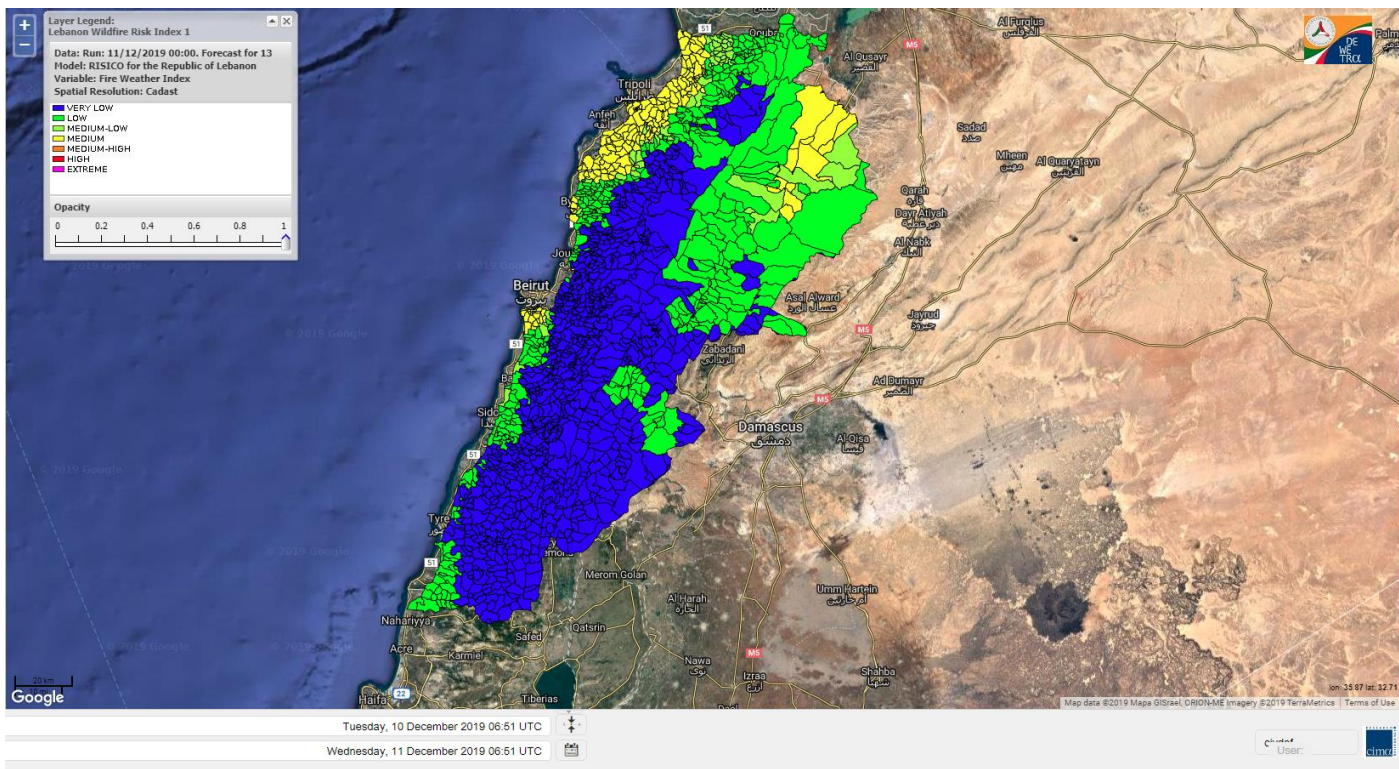
Lebanon for 11 December 2019



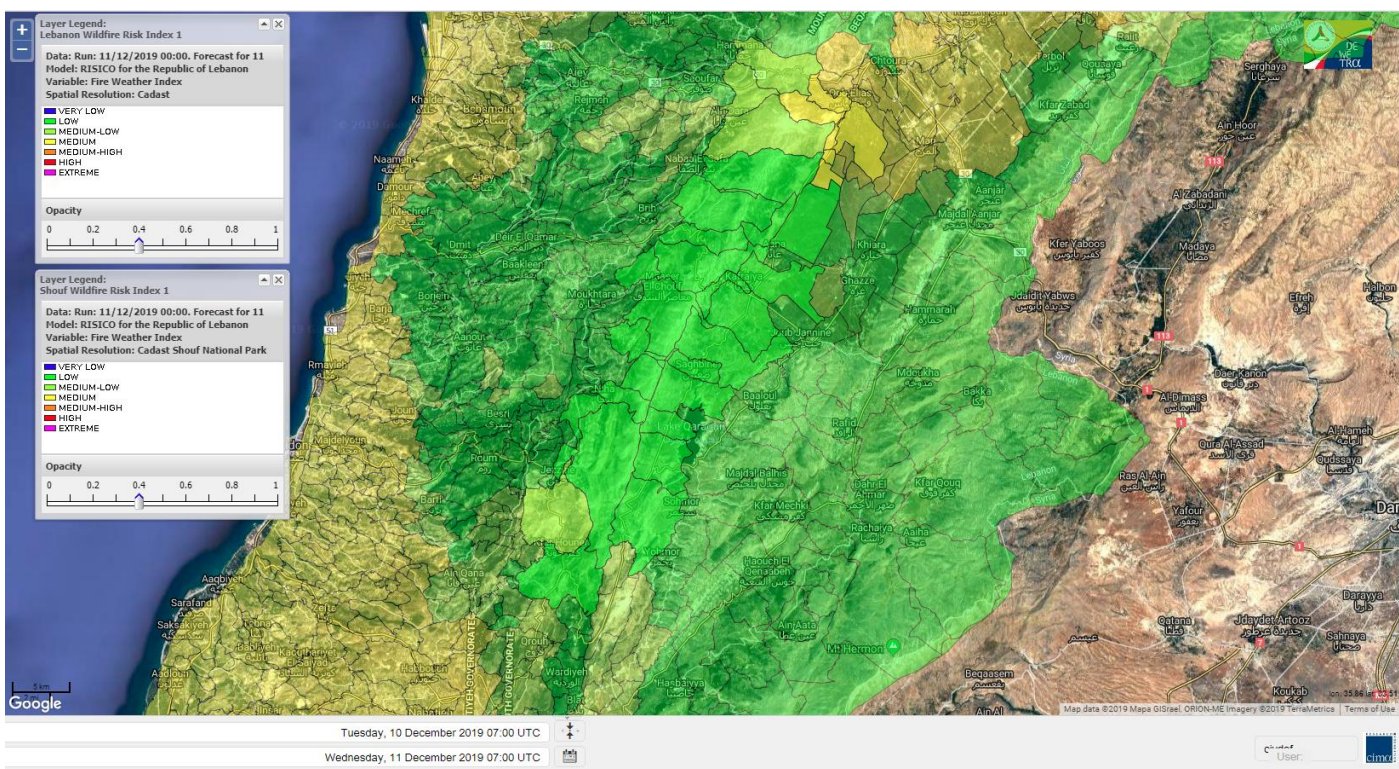
Lebanon for 12 December 2019



Lebanon for 13 December 2019



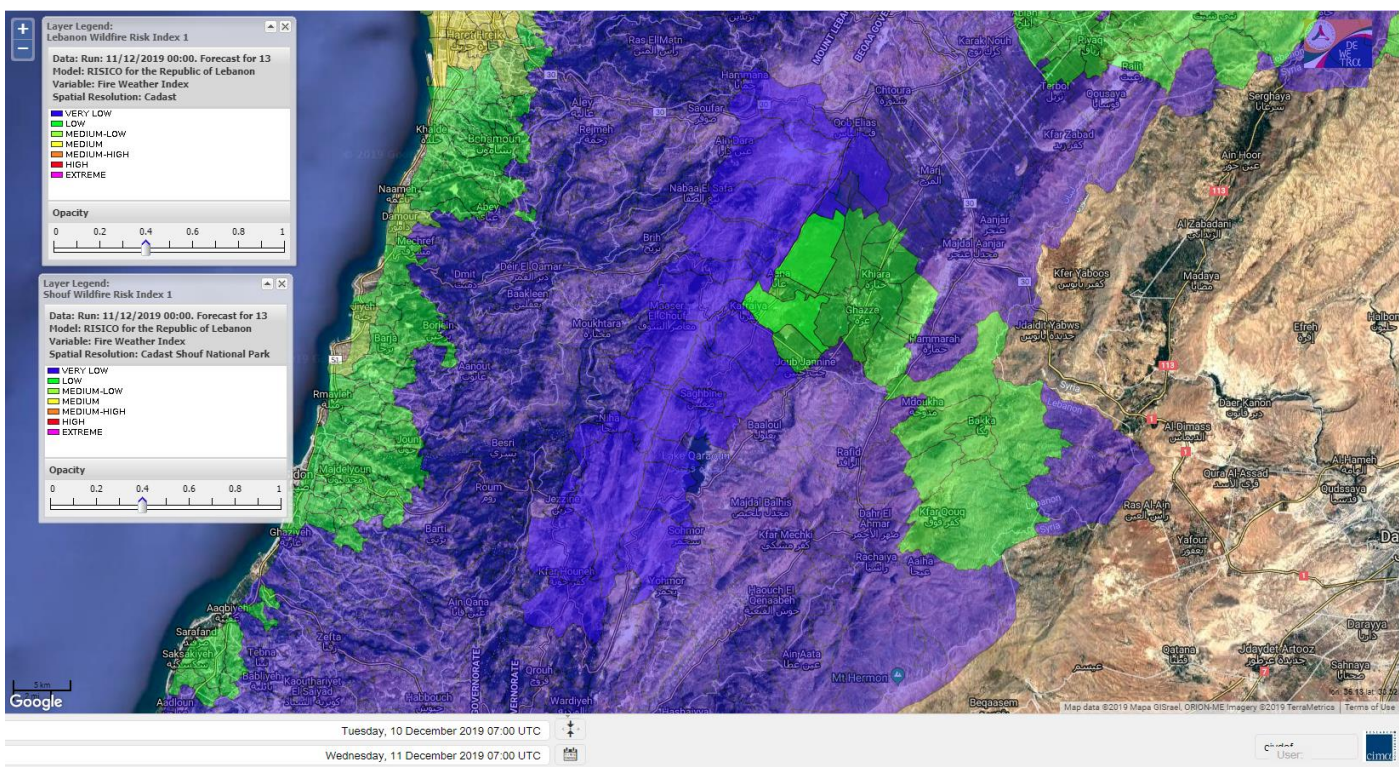
Shouf Biosphere Reserve Forecast for 11 December 2019



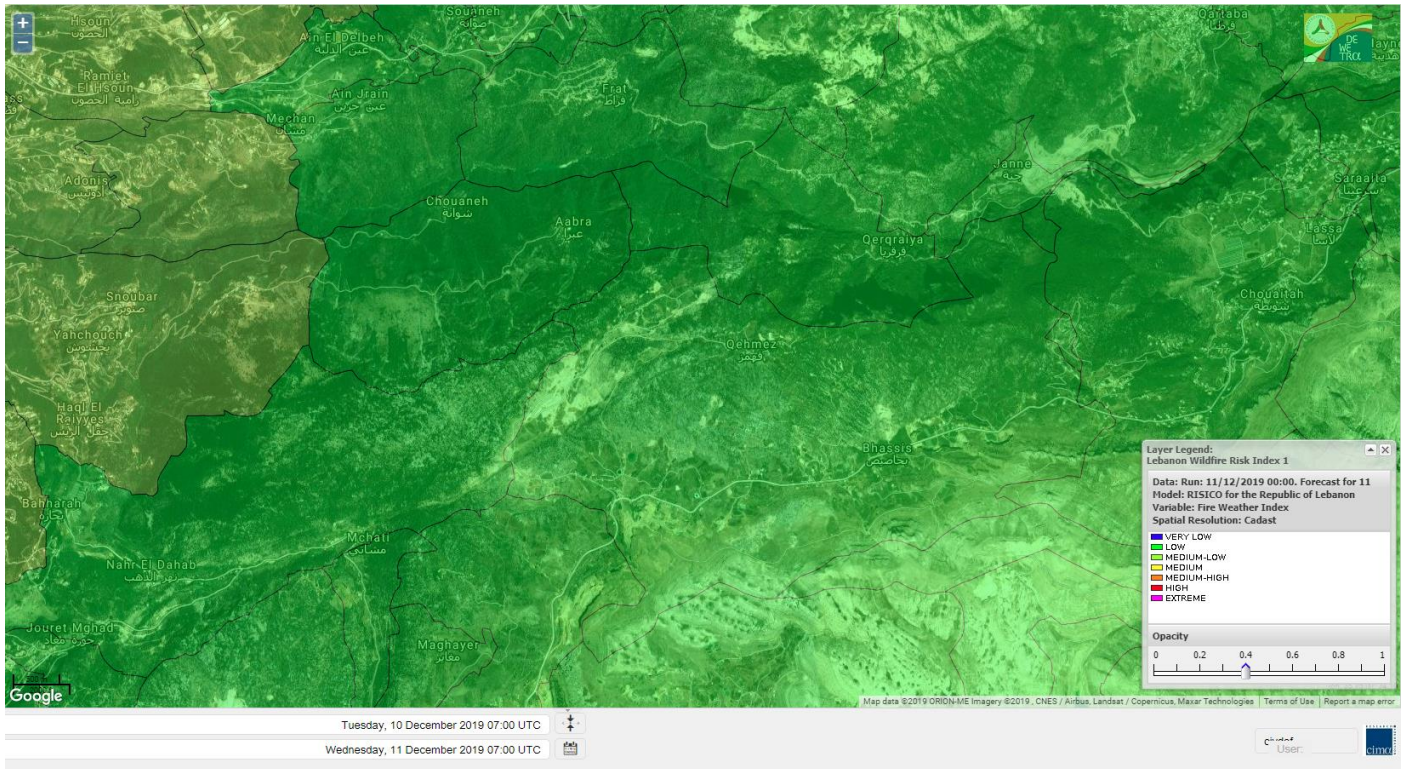
Shouf Biosphere Reserve Forecast for 12 December 2019



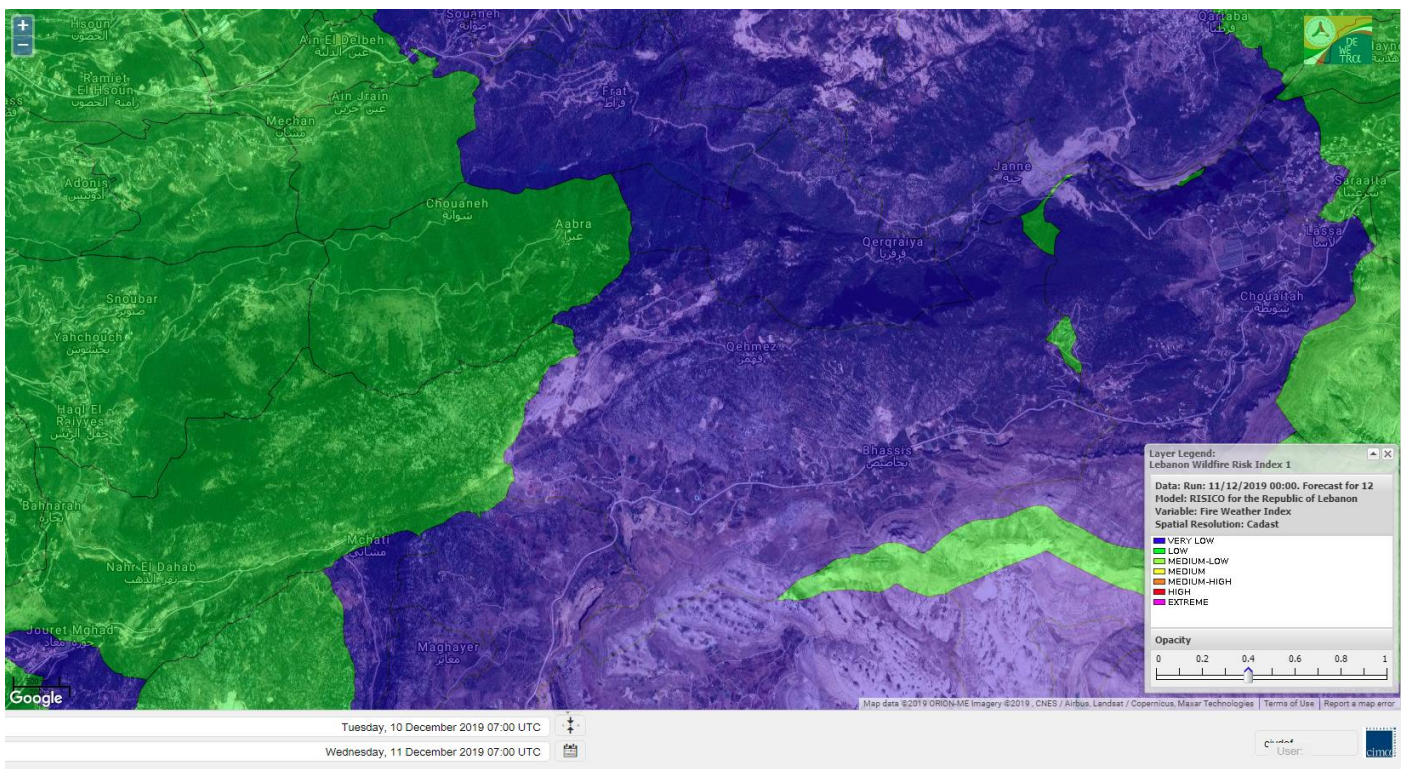
Shouf Biosphere Reserve Forecast for 13 December 2019



Jabal Moussa Reserve Forecast for 11 December 2019



Jabal Moussa Reserve Forecast for 12 December 2019



Jabal Moussa Reserve Forecast for 13 December 2019

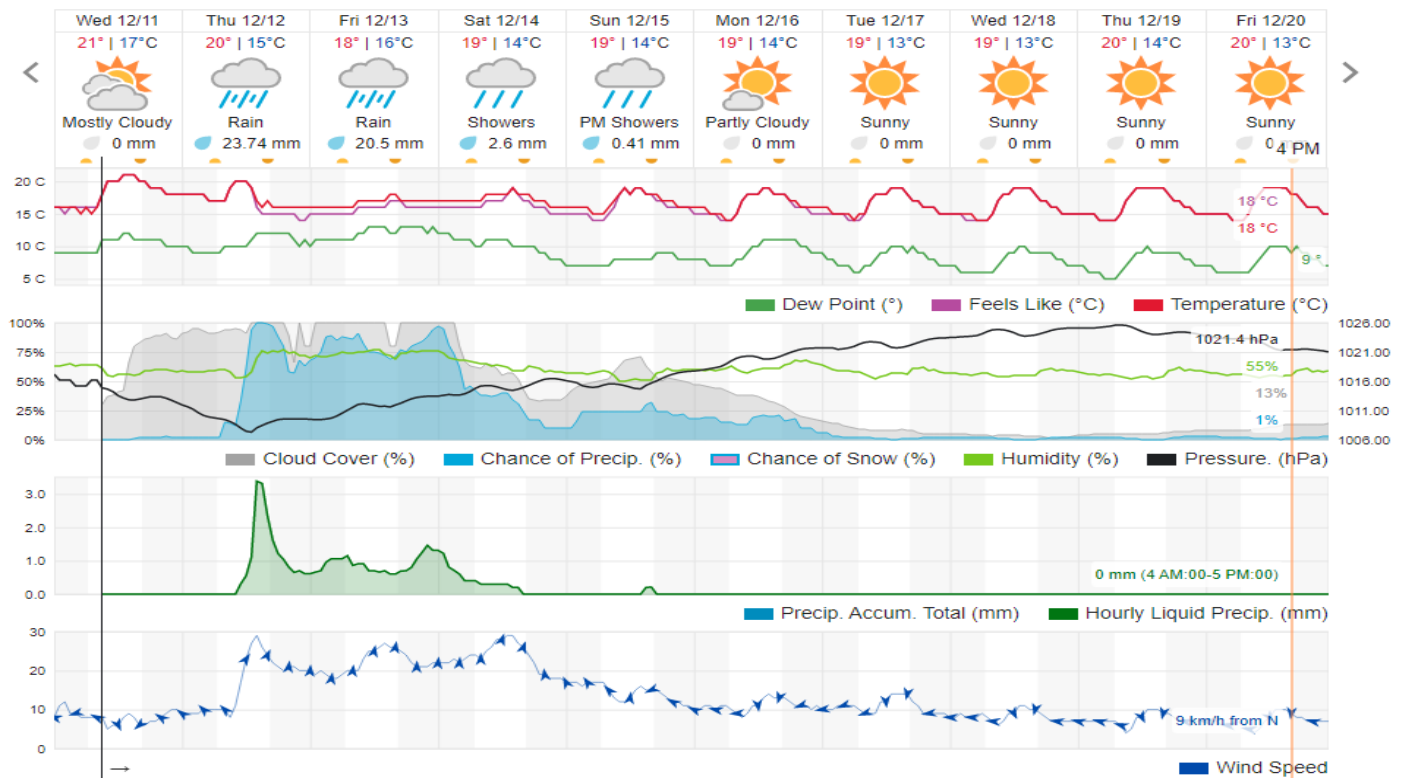


Beirut, Beirut Governorate, Lebanon 10-Day Weather Forecast

20° ACHRAFIEH, RIZK STATION | CHANGE

TODAY HOURLY 10-DAY CALENDAR HISTORY WUNDERMAP

Customize



Nord

Koura

Municipality	11-Dec	12-Dec	13-Dec	Municipality	11-Dec	12-Dec	13-Dec	Municipality	11-Dec	12-Dec	13-Dec
Aaba	M	ML	M	Afsaddiq	M	L	M	Ain Ekrine	M	L	M
Amioun	M	L	M	Anfeh	M	M	M	Badbhoun	M	ML	M
Barghoun	M	M	M	Barsa	M	ML	M	Batroumine	M	ML	M
Bdebba	M	ML	M	Bechmizine	M	L	M	Bednayel El-Koura	M	M	M
Bhabbouch El-Koura	M	L	ML	Bkeftine	M	ML	M	Bnehran	M	L	L
Bqaiia El-Koura	M	ML	M	Bsarma	M	L	M	Btaaboura	M	M	M
Bterram	M	L	M	Btouratij	M	M	M	Bziza	M	L	M
Dar Beechtar	M	L	M	Dar Chmezzine	M	L	M	Deddeh	M	M	M
Deir El-Balamand	L	ML	M	Fih	M	ML	M	Hraiche	M	M	M
Ijdaabrine	M	M	M	Kaftoun	M	ML	M	Kefraya El-Koura	M	M	M
Kfarakka	M	L	ML	Kfarhata	M	M	M	Kfarhazir	M	ML	M
Kfarkahel	M	ML	M	Kfarsaroun	M	L	ML	Kosba	M	L	ML
Mejdel el-Koura	M	L	ML	Nakhle	M	ML	M	Qalhat	L	ML	M
Ras Masqa	M	M	M	Rechdibbine	M	L	ML	Zakroun	M	M	M
Zgharta El-Mtaouile	M	L	L								

Bcharre

Municipality	11-Dec	12-Dec	13-Dec	Municipality	11-Dec	12-Dec	13-Dec	Municipality	11-Dec	12-Dec	13-Dec
Aabdine	L	L	VL	Bane	L	L	VL	Barhelioun	L	L	L
Bazooune	L	L	VL	Becharre	L	L	VL	Beit Menzer	L	L	VL
Billa	L	L	VL	Blaouza	L	L	VL	Bqaa Kafra	L	L	VL
Bqerqacha	L	L	VL	Breissat	L	L	VL	Dimane	L	L	VL
Hadath El Jobbeh	L	L	VL	Hadchit	L	VL	VL	Hasroun	L	L	VL
Mazraat Aassaf	L	L	VL	Mazraat Bani Saab	L	L	VL	Mchaa El-Jobbeh	L	L	VL
Metrit	M	L	ML	Moghr El-Ahoual	L	L	VL	Ouadi Qannoubine	L	VL	VL
Qanat	L	L	VL	Qnayouer	L	VL	VL	Tourza	L	L	VL

Batroun

Municipality	11-Dec	12-Dec	13-Dec	Municipality	11-Dec	12-Dec	13-Dec	Municipality	11-Dec	12-Dec	13-Dec
Aabrine	M	M	M	Aalali	L	L	VL	Aartziz	M	ML	L
Abdelli	M	ML	L	Ajdabra	M	ML	ML	Assia	L	L	VL
Basbina	M	M	L	Batroun	M	M	M	Bcheleh	L	L	VL
Bechtoudar	L	L	VL	Beit Chlala	L	L	VL	Beit Kassab	ML	L	L
Bijdarfil	M	M	M	Bqesmaya	M	ML	M	Chatine	L	L	VL
Chebtein	M	ML	L	Chekka	M	M	M	Daael	L	L	L
Dahr Abi Yaghi	M	ML	L	Daraya El-Batroun	M	ML	L	Deir Billa	ML	L	L
Deir Kfifane	M	ML	L	Deir Mar Youhanna EL	L	L	VL	Deir Mar Youssef Jra	M	ML	L
Douma	L	L	VL	Douq	M	ML	L	Eddeh El-Batroun	M	ML	L
Ftahat El-Batroun	ML	L	L	Ghouma	M	ML	L	Hadtoun	L	L	VL
Hamat	M	M	M	Harbouna	M	ML	L	Hardine	L	L	VL
Helta	L	L	L	Hery	M	M	M	Jebbla	ML	L	L
Jrabta El-Batroun	M	ML	L	Jrane El-Batroun	M	ML	L	Kfar Aabida	M	M	L
Kfar Halda	L	L	VL	Kfarb Shlaimane	L	L	L	Kfarhatna	M	ML	L

Kfarhay	M	M	M	Kfarhelos	M	M	M	Kfifane	M	M	L
Kfour El Arabi	L	L	VL	Koubba	M	M	M	Kour	M	ML	L
Mar Mama	M	ML	L	Masrah	M	ML	L	Mehmarch	M	L	L
Mrah Chdid	M	ML	L	Mrah El Ziyat	M	ML	L	Mrah El-Hajj	L	L	VL
Nahle El-Batroun	L	L	VL	Niha El-Batroun	L	L	VL	Oujh El-Hajjar	M	M	M
Ouata Houb	L	L	VL	Qatnaaoun	M	M	M	Racha	ML	L	VL
Rachana	M	ML	L	Rachkida	M	M	M	Ram El-Batroun	L	L	VL
Ras Nahhach	M	M	M	Selaata	M	M	M	Sghar	M	ML	L
Smar Jbayl	M	ML	L	Sourat El-Batroun	M	ML	L	Tannourine El-Faouqa	L	L	VL
Tannourine Et-Tahta	L	VL	VL	Thoum	M	M	L	Toula El-Batroun	M	ML	L
Zan	M	L	L								

Zgharta

Municipality	11-Dec	12-Dec	13-Dec	Municipality	11-Dec	12-Dec	13-Dec	Municipality	11-Dec	12-Dec	13-Dec
Aachach	M	ML	M	Aalma	M	ML	M	Aarde	M	ML	M
Aintourine	L	L	VL	Arabet Qozhaya	L	L	VL	Arde	M	ML	M
Arjis	L	L	L	Asnoun	M	ML	M	Ayto	L	L	VL
Basloukit	L	L	VL	Bchannine	M	L	ML	Besebeel	M	ML	M
Bhairret Toula	VL	VL	VL	Bnachee	L	L	L	Boussit	M	ML	M
Danha	M	ML	M	Daraiya Zgharta	ML	L	L	Deir Jdeide	M	ML	M
Ehden	L	VL	VL	Halan	M	ML	M	Hariq Zgharta	M	ML	M
Houakir	M	L	L	Hraiqis	M	M	M	Iaal	M	L	ML
Ijbaa	L	L	VL	Karm Saddeh	L	L	VL	Kfarchakhna	M	ML	M
Kfardlaqous	M	ML	M	Kfarfou	L	L	VL	Kfarhata Zgharta	M	ML	M
Kfarhoura	M	ML	ML	Kfarsghab	L	VL	VL	Kfaryachit	M	ML	M
Kfarzaina	M	ML	M	Khaldiye	M	ML	M	Mazraat Ajbeaa	M	ML	M
Mazraat Et-Teffah	L	VL	VL	Mazraat Jneid	M	ML	M	Mejdlaya Zgharta	M	ML	M
Merh Kfarsghab	ML	L	L	Miryata	M	ML	M	Miziara	L	L	L
Mzraat Kefraya	M	ML	M	Qorah Bach	M	ML	M	Rachiine	M	ML	M
Ras Kifa	L	L	L	Sakhra	M	ML	ML	Sebhel Zgharta	L	L	VL
Serhel	L	VL	VL	Tallet Zgharta	M	ML	ML	Toula Zgharta	L	VL	VL
Zgharta	M	ML	M								

Minieh-Denniye

Municipality	11-Dec	12-Dec	13-Dec	Municipality	11-Dec	12-Dec	13-Dec	Municipality	11-Dec	12-Dec	13-Dec
Aasaymout	L	VL	VL	Aaymar	L	L	L	Aazki	ML	L	L
Ain El-Tineh-Miniyeh	L	L	L	Assoun	L	L	L	Bakhaaoun	L	L	L
Bchennata	L	VL	VL	Bechehhara	M	L	L	Beddawi	M	M	M
Behouaita	L	VL	VL	Beit El Foqss	L	L	L	Beit Haouik	L	L	VL
Beit Zoud	L	L	L	Bekaasafrine	L	L	L	Borj El Yahoudiyeh	M	M	M
Bqarsouna	L	L	L	Btermaz	L	L	L	Debaael	L	L	L
Deir Ammar	M	M	M	Deir Nbouh	M	ML	ML	Haouaret-Miniyeh	L	L	VL
Haql el Azimeh	L	L	L	Harf El Siyad	L	L	L	Hazmiye-Miniyeh	L	L	L
Izal	ML	L	L	Jarjour	M	L	L	Jayroun	L	L	VL
Kahf El-Malloul	ML	L	L	Karm El-Moher	L	L	L	Kfar Binine	L	L	L
Kfarchalane	ML	L	L	Kfarhabou	ML	L	L	Kharroub-Miniyeh	ML	L	L
Mazraat El-Kreme	ML	L	L	Mazraat Ketrane	L	L	L	Merkebta	M	ML	M

Minyeh	M	M	M	Mrah El Sfirat	L	L	L	Mrah Sraj	L	L	L
Mrebbine	L	L	VL	Nabi Youcheaa	M	M	M	Nemrine	L	L	L
Qarhaiya	L	L	L	Qarne	L	L	VL	Qarsita	L	L	VL
Qattineh-Miniyeh	L	L	VL	Qemmamine	L	VL	VL	Qraine	L	L	L
Raouda-Aadoua	M	ML	M	Rihaniyet-Miniyeh	M	M	M	Sfireh	L	L	L
Sir Ed-Danniyeh	L	L	L	Tarane	L	L	L	Terbol-Miniyeh	M	M	M
Zaghartaghriine	M	L	ML	Zouq Bhannine	M	M	M				

Nabatiye

Nabatiye

Municipality	11-Dec	12-Dec	13-Dec	Municipality	11-Dec	12-Dec	13-Dec	Municipality	11-Dec	12-Dec	13-Dec
Aabba	M	ML	VL	Aazzi	M	ML	VL	Adchit El-Chqif	M	ML	VL
Ain Bou Swar	ML	L	VL	Ain Kana	ML	L	VL	Ali El-Taher	M	ML	VL
Ansar	M	ML	VL	Arab Salim	M	ML	VL	Arnoun	M	ML	VL
Bfaroue	M	ML	VL	Breyqaah	M	ML	VL	Charqiyeh	M	ML	VL
Choukine	M	ML	VL	Deir El Zahrani	M	ML	VL	Doueir El-Nabatiyeh	M	ML	VL
Habbouch El-Nabatiye	M	ML	VL	Hamra El-Nabatiyeh	M	ML	VL	Harouf El-Nabatiyeh	M	ML	VL
Hmaile	M	ML	VL	Houmin El Faouqa	M	ML	VL	Houmin El Tahta	M	ML	VL
Jarjough	M	L	VL	Jbaah El-Nabatiyeh	ML	L	VL	Jebchit	M	ML	VL
Kfar Djal El-Nabatiy	M	ML	VL	Kfar Remmane	M	ML	VL	Kfar Sir	M	ML	VL
Kfar Tebnit	M	ML	VL	Kfarfila	ML	L	VL	Kfour El-Nabatieh	M	ML	VL
Mayfadoun	M	ML	VL	Mazraat Bsaffour	M	ML	VL	Mazraat Chalbaal	M	ML	VL
Mazraat Dmoul	M	ML	VL	Mazraat El Khreibeh	M	ML	VL	Mazraat El-Bayad El-	M	ML	VL
Mazraat Kfarjaouz	M	ML	VL	Mazraat Qalaat Meiss	M	ML	VL	Nabatiyeh El-Fawka	M	ML	VL
Nabatiyeh Et-Tahta	M	ML	VL	Namiriyeh	M	ML	VL	Qaaqaiyet El Jisr	M	ML	VL
Qossaibeh El-Nabatiy	M	ML	VL	Roumine	M	ML	VL	Sarba El-Nabatieh	M	L	VL
Sir El-Gharbiyeh	M	ML	VL	Toul	M	ML	VL	Yehmor El-Nabatiyeh	M	ML	VL
Zaoutar El Charkiyeh	M	ML	VL	Zaoutar El-Gharbiyeh	M	ML	VL	Zebdine El-Nabatiyeh	M	ML	VL
Zefta	M	ML	VL								

Hasbaiya

Municipality	11-Dec	12-Dec	13-Dec	Municipality	11-Dec	12-Dec	13-Dec	Municipality	11-Dec	12-Dec	13-Dec
Aain Jarfa	L	VL	VL	Abou Qamha	ML	L	VL	Ain Qania	L	L	VL
Bourghos	ML	L	VL	Chebaa	L	L	VL	Chouaya Hasbaya	L	L	VL
Dellafeh	ML	L	VL	Fardiss Hasbaiya	ML	L	VL	Hasbaya	L	L	VL
Hbariyeh	L	L	VL	Kaoukaba Hasbaiya	ML	L	VL	Kfar Chouba	L	L	VL
Kfar Hamam	L	L	VL	Kfeir El-Zait	L	L	VL	Khalwat Hasbaya	L	VL	VL
Khreibet Hasbaiya	M	ML	VL	Majidiyeh Hasbaiya	M	ML	VL	Marj Ez-Zhour (Haouc	L	L	VL
Meri	M	ML	VL	Mimass	L	L	VL	Rachaiya El-Fokhar	ML	L	VL
Salaiyeb	M	ML	VL								

Marjayoun

Municipality	11-Dec	12-Dec	13-Dec	Municipality	11-Dec	12-Dec	13-Dec	Municipality	11-Dec	12-Dec	13-Dec
Aalmane Marjaayoun	M	ML	VL	Aamra	M	ML	VL	Adayseh Marjaayoun	M	ML	VL
Adchit El-Koussair	M	ML	VL	Ain Aarab Marjaayoun	M	ML	VL	Bani Haiyann	M	ML	VL
Blatt Marjaayoun	ML	L	VL	Blida	M	ML	VL	Borj El-Moulouk	M	ML	VL

Boueyda Marjaayoun	ML	L	VL	Deir Mimass	M	ML	VL	Deir Siriane	M	ML	VL
Dibbine	ML	L	VL	Ebel El Saqi	ML	L	VL	Houla	M	ML	VL
Houra	M	ML	VL	Kfar Kila	M	ML	VL	Khiam Marjaayoun	M	ML	VL
Klayaa	M	ML	VL	Majdel Selem	M	ML	VL	Marjaayoun	M	L	VL
Markaba	M	ML	VL	Mays El-Jabal	M	ML	VL	Mazraat Doumiat	M	ML	VL
Mazraat Sarada	M	ML	VL	Mhaibib	M	ML	VL	Qabrikha	M	ML	VL
Qantara	M	ML	VL	Rab El-Thalathine	M	ML	VL	Saouaneh Marjayoun	M	ML	VL
Talloussa	M	ML	VL	Taybeh Matjaayoun	M	ML	VL	Touline	M	ML	VL

Bent Jbail

Municipality	11-Dec	12-Dec	13-Dec	Municipality	11-Dec	12-Dec	13-Dec	Municipality	11-Dec	12-Dec	13-Dec
Ain-Ebel	ML	L	VL	Aitaroun	M	ML	VL	Aynata Bint Jbeil	ML	L	VL
Ayta El-Chaeb	M	ML	VL	Ayta El-Jabal	ML	ML	VL	Beit Lif	M	ML	VL
Beit Yahoun	M	ML	VL	Bint Jbeil	ML	L	VL	Borj Qalaway	M	M	VL
Braachit	ML	ML	VL	Chakra	M	ML	VL	Debel	ML	L	VL
Deir Antar	M	ML	VL	Froun	M	ML	VL	Ghandouriyeh Bint Jb	M	ML	VL
Hanine	ML	L	VL	Hariss	M	ML	VL	Hdatha	ML	ML	VL
Jmeyjmeh	M	ML	VL	Kafra Bint Jbeil	M	ML	VL	Kfar Dounine	M	ML	VL
Khirbet Selm	M	ML	VL	Kounine	M	ML	VL	Maroun El Ras	M	L	VL
Qalaway	M	ML	VL	Qaouzah	M	ML	VL	Qatmoun	M	L	VL
Ramya Bint Jbeil	M	ML	VL	Rchaf	ML	L	VL	Rmeich	M	L	VL
Safad Al Battikh	ML	ML	VL	Salhaneh	M	ML	VL	Serbine	M	ML	VL
Sultanieh Bint Jbeil	M	ML	VL	Tibnine	ML	ML	VL	Tiri	ML	L	VL
Yaroun	ML	L	VL	Yater	M	ML	VL				

Mont Liban

Jbail

Municipality	11-Dec	12-Dec	13-Dec	Municipality	11-Dec	12-Dec	13-Dec	Municipality	11-Dec	12-Dec	13-Dec
Aabeydat	M	ML	L	Aalita	ML	L	VL	Aamchit	M	M	M
Aarab El-Lahib	L	L	VL	Aarasta	L	L	VL	Adonis Jbeil	ML	L	VL
Afqa Jbeil	L	L	VL	Ain El Delbeh Jbeil	L	L	VL	Ain El-Ghouayba	L	VL	VL
Ain Jrain	L	L	VL	Ain Kfah	M	ML	L	Almat El Chemaliyat	L	VL	VL
Almat El-Jenoubiya	L	VL	VL	Aqoura	ML	L	VL	Bayzoun	ML	L	VL
Bchille Jbeil	ML	L	VL	Bechtlida	ML	L	VL	Behdaydat	M	ML	L
Beit Habbaq	M	ML	L	Bejeh	M	ML	L	Bekhaaz	M	M	L
Berbara Jbeil	M	M	M	Bintael	ML	ML	L	Birket Hjoula	M	ML	L
Blatt Jbeil	M	L	VL	Boulhos	L	VL	VL	Breyj Jbeil	ML	L	VL
Chamat	M	ML	L	Chikhane	M	M	M	Chmout	M	ML	L
Eddeh Jbeil	M	M	L	Ehmej	L	VL	VL	Fatre	ML	L	VL
Ferhet	ML	L	VL	Fghal	M	M	L	Frat	L	VL	VL
Ghabat	L	L	VL	Ghalboun	M	ML	L	Gharzouz	M	ML	L
Ghofrine	M	M	L	Habil	M	ML	VL	Halate	M	ML	L
Haqel	M	ML	L	Hbaline	M	ML	L	Hboub	M	L	L
Hdeine	L	L	VL	Hema Er-Rehban	L	L	VL	Hema Mar Maroun Aann	L	VL	VL
Hjoula	ML	L	L	Hosrayel	M	M	ML	Hsarat	M	ML	L

Hsoun	ML	L	VL	Jaj	L	L	VL	Janne	L	VL	VL
Jbeil	M	M	L	Jeddeyl Jbeil	M	M	M	Jlisse	ML	L	VL
Jouret El-Qattine	ML	L	VL	Kfar Baal Annaya	ML	L	VL	Kfar Kidde	M	M	ML
Kfar Kouas	ML	L	VL	Kfar Mashoun	M	ML	L	Kfoun	M	ML	L
Kharbe Jbeil	M	ML	L	Laqlouq	L	L	VL	Lassa	L	VL	VL
Lehfed	L	L	VL	Maad	M	ML	L	Mar Sarkis	L	L	VL
Mastita	M	M	L	Mayfouq	ML	L	VL	Mazraat El Siyad	L	L	VL
Mazraat El-Maaden	L	VL	VL	Mechane	ML	L	VL	Mechmech Jbeil	L	L	VL
Mehrin	M	L	VL	Mejdel El-Akoura	L	L	VL	Mghayreh Jbeil	L	L	VL
Mounsef	M	M	M	Nahr Ibrahim	M	M	L	Qahmez	L	VL	VL
Qartaba	L	VL	VL	Qartaboun	M	M	L	Qattara Jbeil	L	L	VL
Qorqraya	L	VL	VL	Ramout	M	ML	L	Ras Osta	ML	L	VL
Rihane Jbeil	M	M	M	Sakiet El-Khayt	M	ML	L	Saqi Richmaya	L	L	VL
Sebrine	ML	L	VL	Seraita	L	L	VL	Souane Jbeil	L	VL	VL
Tadmor	L	L	VL	Tartej	L	L	VL	Torzaiya	ML	L	VL
Yanouh Jbeil	L	L	VL	Zibdine Jbeil	ML	L	VL				

El Metn

Municipality	11-Dec	12-Dec	13-Dec	Municipality	11-Dec	12-Dec	13-Dec	Municipality	11-Dec	12-Dec	13-Dec
Aain El-Qabu	L	VL	VL	Aain El-Qach	L	L	VL	Aain El-Teffaha	L	L	VL
Aain el-Safssaf El-M	L	L	VL	Abou Mizane	L	L	VL	Ain Aar	M	ML	VL
Ain Alaq	M	L	VL	Ain El-Kharroube	L	L	VL	Ain El-Sendianeh	L	L	VL
Ain El-Zeitoune	L	VL	VL	Ain Saadeh	M	L	VL	Aintoura El-Matn	L	L	VL
Amaret Chalhoub	M	ML	VL	Antelias	M	ML	VL	Atchaneh	M	L	VL
Ayroun	L	L	VL	Baabdat	L	L	VL	Baouchariyeh	M	M	ML
Baskinta	L	VL	VL	Beit Chabab	L	L	VL	Beit El-Chaar	M	ML	VL
Beit El-Kekko	M	ML	VL	Beit Mery	ML	L	VL	Bhersaf	L	L	VL
Bikfaya	L	L	VL	Biyakout	M	ML	VL	Bnabil	L	VL	VL
Bourj Hammoud	M	M	M	Bqennaya	M	ML	VL	Broummana El-Matn	M	L	VL
Bsalim	M	L	VL	Bsifrine	L	VL	VL	Bteghrine	L	VL	VL
Chaouiye	M	L	VL	Chouaya El-Matn	L	L	VL	Choueir	L	L	VL
Chrine	L	L	VL	Dahr El Sawan El-Mat	L	L	VL	Daychouniyeh	ML	L	VL
Dbayeh	M	ML	VL	Deir Chamra	L	VL	VL	Deir Mar Abda el Mch	M	ML	VL
Deir Mar Roukouz	M	M	L	Deir Tamiche	M	ML	VL	Dik El-Mehdi	M	ML	VL
Dikwaneh	M	M	M	Douar El-Matn	L	L	VL	Fanar	M	ML	VL
Fraike	ML	L	VL	Haret El-Ballaneh	M	ML	VL	Hbous	M	ML	VL
Himlaya	L	L	VL	Jal El Did	M	ML	VL	Jdeideh El-Metn	M	ML	L
Jouar El-Matn	L	L	VL	Jouret El-Ballout	M	L	VL	Kaaqour	L	VL	VL
Kfar Aaqab	L	VL	VL	Kfertay El-Matn	L	VL	VL	Khenchara	L	L	VL
Khillet El-Mtain	L	VL	VL	Konnabat Broummana	M	L	VL	Konnabat Salima	L	VL	VL
Machraah El-Matn	L	L	VL	Majdel Tarchich	L	L	VL	Majzoub	M	ML	VL
Mansouriyeh El-Metn	M	ML	L	Mar Boutros Karm Et-	L	VL	VL	Mar Chaya et Mzekke	M	L	VL
Mar Moussa Ed-Douar	L	VL	VL	Marjaba	L	L	VL	Masqa	ML	L	VL
Mayasse	L	L	VL	Mazraat Deir Aoukar	M	ML	VL	Mazraat El-Hadirat	M	ML	VL
Mazraat Yachouh	M	ML	VL	Mchikha	L	L	VL	Menqlet Mezher	M	ML	VL
Mhayseh Matn	L	L	VL	Mkalles	M	M	ML	Mrouj	L	L	VL

Mtain	L	L	VL	Mtayleb	M	ML	VL	Nabay	M	L	VL
Naccache	M	ML	VL	Ouadi Chahine	L	VL	VL	Ouadi El-Karm El-Mat	L	VL	VL
Ouata El-Mrouj	L	L	VL	Ouyoun El-Matn	L	L	VL	Qornet Chehwan	M	ML	VL
Qornet El-Hamra	M	ML	VL	Roumieh	M	L	VL	Sfeilet Bikfaya	L	VL	VL
Sinn El-Fil	M	M	M	Zabbougha	L	VL	VL	Zalqa	M	ML	VL
Zarououn	L	VL	VL	Zekrite	M	ML	VL	Zighrine El-Matn	L	L	VL
Zouk El-Khrab	M	ML	VL								

Chouf

Municipality	11-Dec	12-Dec	13-Dec	Municipality	11-Dec	12-Dec	13-Dec	Municipality	11-Dec	12-Dec	13-Dec
Aalmane El-Chouf	M	ML	L	Aammiq El-Chouf	L	L	VL	Ain Ouzein	L	L	VL
Ain Qani	L	L	VL	Ain Zhalta	L	L	VL	Ainbal	L	L	VL
Amatour	L	L	VL	Anout	L	L	VL	Atrine	L	L	VL
Baadarane	L	L	VL	Baaqline	L	L	VL	Baasir	M	M	L
Barja	M	ML	L	Barouk	L	L	VL	Bater	L	L	VL
Batloun	L	L	VL	Bayqoun	ML	L	VL	Bchetfine	L	L	VL
Beiteddine	L	L	VL	Benouati Ech-Chouf	L	L	VL	Berjein	L	L	VL
Bireh et Mtalleh	L	L	VL	Biret El-Chouf	L	L	VL	Bkechtine Ouel Mchei	L	L	VL
Bkifa El-Chouf	L	L	VL	Botme	L	L	VL	Bqaiaa Ech-Chouf	L	L	VL
Bsaba El-Chouf	L	L	VL	Chammis El-Chouf	M	ML	L	Chehim	L	L	VL
Chemaarine	L	L	VL	Chourit	L	L	VL	Daher El-Chouf	M	M	L
Dalhoun	ML	L	VL	Damour	M	ML	L	Daraya El-Chouf	L	L	VL
Deir El-Moukhalles	L	L	VL	Deir Baba	L	L	VL	Deir Dourit	L	L	VL
Deir El-Qamar	L	L	VL	Deir Kouche	L	L	VL	Dibbieh	L	L	L
Dmit	L	L	VL	Fouara Jaafar	L	L	VL	Fraidis El-Chouf	L	L	VL
Ghabet Jaafar	L	L	VL	Gharife	L	L	VL	Haret Jandal	L	L	VL
Hasrout	ML	L	VL	Jadra	M	ML	L	Jahlieh	L	L	VL
Jbeih El-Chouf	L	L	VL	Jdeidet El-Chouf	L	L	VL	Jiyeh	M	M	ML
Jleiliyeh	L	L	VL	Jmailiyeh	M	ML	L	Joun	M	L	L
Kahlounie El-Chouf	L	L	VL	Ketermaya	M	ML	L	Kfar Faqoud	L	L	VL
Kfar Hamal	L	L	VL	Kfar Him	L	L	VL	Kfar Katra	L	L	VL
Kfar Niss	L	L	VL	Kfar hay	L	L	VL	Kfarnabrakh	L	L	VL
Khirbet Bisri	L	L	VL	Knayse El-Chouf	L	VL	VL	Maaniyeh	M	ML	L
Maasser Beiteddine	L	L	VL	Maasser El-Chouf	L	L	VL	Majdalouna	M	ML	L
Majdel El-Meouch	L	L	VL	Mazboud	ML	L	VL	Mazmoura	L	L	VL
Mazraat El Chouf	L	L	VL	Mazraat El Daher	L	L	VL	Mazraat El-Douair	L	L	VL
Mechref	L	L	VL	Mghairie	M	L	L	Mghayrie El-Chouf	L	L	VL
Moukhtara	L	L	VL	Mrusti	L	L	VL	Mtolle	ML	L	VL
Naameh	M	ML	ML	Niha El-Chouf	L	L	VL	Ouadi Abou Youssef	L	VL	VL
Ouadi Ed-Deir	L	L	VL	Ouadi El-Sit	L	L	VL	Ouadi bnehlay	L	L	VL
Qraibeh	L	L	VL	Qreiaa	L	VL	VL	Rmayle El-Chouf	M	ML	L
Semqaniyeh	L	L	VL	Sibline	M	ML	L	Sirjbeil	L	L	VL
Warhanieh	L	L	VL	Werdaniyeh	M	ML	L	Zaarourieh	L	L	VL

Baabda

Municipality	11-Dec	12-Dec	13-Dec	Municipality	11-Dec	12-Dec	13-Dec	Municipality	11-Dec	12-Dec	13-Dec
Abadiyeh	L	L	VL	Ain Mouaffaq	L	L	VL	Araiya	L	L	VL

Arbaniyeh	L	VL	VL	Arsoun	L	VL	VL	Baabda	M	M	ML
Baalchmey	L	L	VL	Bmaryam	L	L	VL	Bourj El-Brajneh	M	M	L
Boutchay	M	ML	L	Bsaba Baabda	M	ML	L	Btekhney	L	L	VL
Btibyat	L	L	VL	Bzebdine	L	L	VL	Chbeniyeh	L	L	VL
Chiyah	M	M	M	Chmeisset Baabda	L	L	VL	Chouit	L	L	VL
Deir El-harf	L	L	VL	Deir Khouna	L	L	VL	Dlaybeh	L	VL	VL
Falougha	ML	L	VL	Furn El-Chebbak	M	M	M	Hadath Beyrouth	M	M	L
Halaliyeh Baabda	L	L	VL	Hammana	ML	L	VL	Haret El Sett	L	L	VL
Haret Hamze	L	L	VL	Haret Hreik	M	M	M	Hasbaiya El-Metn	L	VL	VL
Jouar El-Hoz	L	L	VL	Jouret Arsoun	L	VL	VL	Kfar Chima	M	ML	L
Kfar Selouane	L	L	VL	Khalouat Baabda	L	L	VL	Kneisset Baabda	L	L	VL
Laylakeh	M	M	L	Louayzeh Baabda	L	L	VL	Merdache	M	ML	L
Mzairaa Baabda	L	L	VL	Ouadi Chahrour El OI	L	L	VL	Ouadi Chahrour El So	ML	ML	L
Qalaa Baabda	L	L	VL	Qhraybe Baabda	L	L	VL	Qobbayaa	L	L	VL
Qornayel	L	VL	VL	Qortada	ML	L	VL	Qrayeh Baabda	L	L	VL
Qsaibeh Baabda	ML	L	VL	Qtale Baabda	L	L	VL	Ras El Metn	L	L	VL
Ras El-Haref	L	L	VL	Rouayset El-Ballout	L	L	VL	Salima Baabda	L	VL	VL
Tahouitat El Ghadir	M	M	L	Tarchich	L	L	VL	Zandouqa	ML	L	VL

Aley

Municipality	11-Dec	12-Dec	13-Dec	Municipality	11-Dec	12-Dec	13-Dec	Municipality	11-Dec	12-Dec	13-Dec
Abey	L	L	VL	Aghmid	L	L	VL	Ain Dara	ML	L	VL
Ain Drafil	ML	L	L	Ain El Halazoun	L	L	VL	Ain El-Rmmaneh	L	L	VL
Ain Jedideh	L	L	VL	Ain Ksour	L	L	VL	Ain Onoub	M	ML	L
Ain Traz	L	L	VL	Ainab	M	ML	L	Aley	L	L	VL
Aramoun	M	ML	L	Aytat	M	ML	VL	Azouniyeh	L	L	VL
Baawerta	L	L	VL	Badghan Oua Wadi Bad	L	L	VL	Bassatine	M	ML	L
Bayssour	ML	L	VL	Bchamoun	M	ML	L	Bdadoun	L	L	VL
Behouara	L	L	VL	Bennay	L	L	VL	Bhamdoun El-Dayaa	ML	L	VL
Bhamdoun El-Mhatta	ML	L	VL	Bkhechtey	L	L	VL	Bleibel	M	ML	L
Bmakine	L	L	VL	Bmehray	L	L	VL	Bouzirid	L	VL	VL
Bserrine	L	L	VL	Bsous	L	L	VL	Btalloun	ML	L	VL
Btater	L	L	VL	Chanay	ML	L	VL	Charoun	ML	L	VL
Chartoun	L	L	VL	Chemlane	M	ML	VL	Chouefat El-Aamrous	M	ML	L
Chouefat El-Oumara	M	ML	L	Chouefat El-Quoubbe	M	ML	L	Dakkoun	L	L	VL
Deir Qoubel	M	ML	L	Dfoun	ML	L	L	Douair El Remmaneh	L	L	VL
Ghaboun	L	L	VL	Habramoun	L	L	VL	Homs Oua Hama	L	L	VL
Houmal	M	ML	VL	Jisr El Qadi	L	L	VL	Kehaleh	L	L	VL
Keyfoun	ML	L	VL	Kfar Aamey	L	L	VL	Kommatyeh	L	L	VL
Maasrati	L	L	VL	Majdel Baana	ML	L	VL	Mansourieh et Ain El	ML	L	VL
Mazraat El-Nahr	L	L	VL	Mchakhte	L	L	VL	Mecherfeh	L	L	VL
Mejdlaya	L	L	VL	Mrayjat	L	L	VL	Ramiyeh	L	L	VL
Rechmaya	L	L	VL	Rejmeh	L	L	VL	Remhala	L	L	VL
Rouayset El Neemane	L	L	VL	Saoufar	ML	L	VL	Selfaya	L	VL	VL
Sirhmoul	M	ML	L	Souq El Ghareb	L	L	VL	Taazanieh	ML	L	VL

Kesrouane

Municipality	11-Dec	12-Dec	13-Dec	Municipality	11-Dec	12-Dec	13-Dec	Municipality	11-Dec	12-Dec	13-Dec
Achkout	L	L	VL	Adma Oua Dafneh	M	ML	VL	Ain Ed-Delbe Kesroua	L	VL	VL
Ain El-Rihane	M	L	VL	Aintoura Kesrouane	M	ML	VL	Ajaltoun	L	L	VL
Akaybeh Kesrouane	M	M	L	Aramoun Kesrouane	L	L	VL	Azra ouel Ozor	ML	L	VL
Ballouneh	L	L	VL	Batha	ML	L	VL	Bekaatat Achkout	L	L	VL
Bekaatat Kanaan	L	VL	VL	Bizhel	ML	L	VL	Bouar	M	ML	L
Bqaatouta	L	VL	VL	Bqaq Ed-Dine	M	M	L	Bzommar	L	L	VL
Chahtoul	L	L	VL	Chnaniir	L	L	VL	Chouan	L	L	VL
Daraya Kesrouane	L	L	VL	Daroun	ML	L	VL	Deir Baqlouch	M	L	VL
Diebta	L	VL	VL	Eghbeh	L	VL	VL	Faraya	L	VL	VL
Fatka	L	L	VL	Feytroun	L	L	VL	Ghazir	ML	L	VL
Ghbaleh Kesrouane	ML	L	VL	Ghedrass	L	L	VL	Ghosta	L	L	VL
Ghyneh	L	L	VL	Harharaya w Kattine	L	L	VL	Harissa Kesrouane	M	L	VL
Hayata	L	VL	VL	Hosein	L	L	VL	Hrajel	L	VL	VL
Jdeideh Ghazir	L	L	VL	Jeita	M	ML	VL	Jounieh Ghadir	M	ML	VL
Jounieh Haret Sakhr	M	ML	VL	Jounieh Salel Alma	M	ML	VL	Jounieh Sarba	M	ML	L
Jouret Bedrane	M	L	VL	Jouret Mhad	L	VL	VL	Jouret Termos	L	L	VL
Kfar Debiane	L	VL	VL	Kfar Tay Kesrouane	L	VL	VL	Kfar Yassine	M	ML	VL
Kfour Kesrouane	L	L	VL	Kharayeb Nahr Ibrahi	M	ML	L	Klayaat Kesrouane	L	L	VL
Maarab	L	VL	VL	Maaysra Kesrouane	M	L	VL	Mayrouba	L	VL	VL
Mazraat Er-Ras	M	ML	VL	Mazraat Mrah El-Mir	L	VL	VL	Mchaa El Ftouh	L	L	VL
Mchaa Faraya	L	VL	VL	Mchaa Kfar Dibiane	L	L	VL	Mghaer	L	VL	VL
Mradiyah	ML	L	VL	Nahr Ed-Dahab	L	L	VL	Nammoura Kesrouane	ML	L	VL
Ouata El Jaouz	L	L	VL	Ouata Sillam	M	ML	VL	Raachine	L	VL	VL
Rayfoun	L	L	VL	Safra Kesrouane	M	ML	L	Shayle Kesrouane	ML	L	VL
Tabarja	M	ML	VL	Yahchouch	ML	L	VL	Zaaytreh	ML	L	VL
Zeytoun	M	L	L	Zouk Mikael	M	ML	VL	Zouk Mosbeh	M	ML	VL

Baalbek_Hermel

Baalbek

Municipality	11-Dec	12-Dec	13-Dec	Municipality	11-Dec	12-Dec	13-Dec	Municipality	11-Dec	12-Dec	13-Dec
Aadous	M	ML	L	Aamchki	L	L	L	Aarsal	L	L	L
Ain Baalbek	ML	ML	L	Ain Bourday	ML	L	VL	Ain El-Benye	L	L	VL
Ain El-Jaouz Baalbek	L	L	L	Ain El-Siya Chadoura	L	L	L	Al Khodr Baalbek	ML	L	L
Al Nabi Chit	ML	L	L	Aynata Baalbek	M	L	L	Baalbek	ML	L	VL
Bachwat	M	L	L	Barqa	M	L	L	Bednayel Baalbak	M	L	VL
Beit Chama	M	ML	L	Bijjaje	M	ML	M	Bouday	M	ML	L
Brital	L	L	L	Btadi	M	ML	L	Chaat	M	ML	ML
Chaibe	L	L	L	Chlifa	M	ML	L	Chmestar	M	L	VL
Dar El-Oussa	M	ML	L	Deir El-Ahmar	M	ML	L	Deir Mar Maroun Baal	ML	ML	M
Douris	ML	L	L	Fakiha	M	ML	ML	Hadath Baalbek	M	ML	L
Ham	L	VL	VL	Haour Taala	L	L	L	Hizzine	M	ML	L
Hlebta	M	ML	L	Hosh Barada	M	ML	L	Hosh El Dahab	M	ML	L
Hosh El Snid	ML	L	L	Hosh El-Nabi	ML	L	L	Hosh El-Rafiq	M	ML	L
Hosh Tal Safiya	M	ML	L	Hrebta	M	ML	ML	laat	M	ML	L

Jebaa	M	ML	VL	Jenta	L	L	VL	Kfar Dabach	M	L	L
Kfar Dane	M	ML	L	Khraibeh El-Hermel	M	ML	L	Khreibet Baalbek	L	L	L
Kneisset Baalbek	M	ML	L	Labueh	M	ML	M	Maarboun	L	VL	VL
Majdaloun	M	ML	L	Maqneh	M	ML	L	Mazraat Beit Mcheik	M	ML	L
Misraya	M	ML	L	Moqraq	M	ML	M	Nabha El-Damdoum	M	ML	L
Nabi Chbay	L	L	VL	Nabi Osman	M	ML	ML	Nahleh baalbek	L	L	L
Ouadi El-Oss	M	ML	L	Qaa Baayoun	ML	L	ML	Qaa Jouar Maqiye	M	L	M
Qaa Ouadi El-Khanzir	ML	ML	M	Qah Baalbek	ML	ML	M	Qarha Baalbek	M	ML	ML
Qsarnaba	M	ML	L	Ram Baalbek	M	ML	L	Ras Baalbek El Sahl	ML	M	M
Ras Baalbek El-Charq	L	L	ML	Riha	M	ML	L	Saaide	M	ML	L
Sbouba	M	M	M	Seriine El-Tahta	ML	L	L	Slouqi	ML	L	VL
Taiba Baalbek	ML	L	L	Talia	ML	L	L	Taraiya	M	L	L
Temnin El-Fawqa	M	ML	L	Temnin El-Tahta	M	ML	L	Tfail	L	L	L
Yahfoufa	L	L	L	Yammouneh	M	L	L	Younine	ML	L	L
Zboud	M	ML	M								

Hermel

Municipality	11-Dec	12-Dec	13-Dec	Municipality	11-Dec	12-Dec	13-Dec	Municipality	11-Dec	12-Dec	13-Dec
Charbine El-Hermel	L	L	L	Hermel Jbab	ML	L	L	Hermel	ML	ML	M
Maaysra El-Hermel	M	ML	ML	Michaa Mrajhine	L	L	VL	Ouadi Faara	M	ML	L
Ras Baalbek - Ouadi	M	ML	M	Ras Baalbek El Gharb	M	ML	L	Zighrine	M	L	L

Akkar

Akkar

Municipality	11-Dec	12-Dec	13-Dec	Municipality	11-Dec	12-Dec	13-Dec	Municipality	11-Dec	12-Dec	13-Dec
Aain Tinta	M	L	L	Aaiyat	ML	L	L	Aakkar El-Aatiga	L	L	L
Aamar Akkar	M	ML	M	Aamar El Baykat	M	L	L	Aamayer	L	L	L
Aamriyet Akkar	ML	L	L	Aandqet	L	L	L	Aarmeh	M	L	L
Aarqa	M	ML	M	Aawaynat	ML	L	L	Aayoun Akkar	ML	ML	L
Abboudiye	M	M	L	Ain El-Zeit	ML	L	L	Ain Yaaqoub	L	L	L
Akroum	L	L	L	Aridet Cheikh Zennad	M	M	M	Baldehy w Mazraat Bal	M	ML	ML
Barcha	M	ML	ML	Bardeh	ML	L	L	Bebnine	M	M	M
Beino	ML	L	L	Beit Ayoub	M	ML	L	Beit El-Haouch	M	ML	M
Beit Mellat	M	ML	L	Beit Younes	ML	L	L	Berbara Akkar	ML	L	L
Berqayel	M	ML	M	Bezbinia	L	L	VL	Bireh Akkar	ML	L	L
Borj	ML	ML	L	Bqerezla	M	ML	ML	Bzal	ML	ML	ML
Chane	M	L	L	Chaqdouf	ML	ML	L	Charbila	M	ML	ML
Cheikh Mohammad	M	ML	ML	Cheikh Taba Es-Sahl	M	ML	M	Cheikh Taba	M	ML	L
Cheikh Zennad	M	M	M	Cheikhlar	L	VL	L	Chir Hmairine	M	ML	ML
Daghle	ML	L	L	Dahr Laissine	M	ML	L	Darine	M	ML	ML
Dawra	L	L	L	Dawsa w Baghdadi	ML	L	L	Dayret Nahr El-Kabir	M	L	L
Deir Dalloum	M	ML	M	Deir Jennine	ML	L	L	Denbou	M	L	L
Dibbbiyeh	M	L	L	Douair Aadwiyeh	ML	L	L	Fassikine	ML	L	L
Fnaydek	L	L	VL	Fraydes Akkar	ML	L	L	Ghazayle	M	ML	ML
Habchit	ML	L	L	Hakour	M	ML	M	Halba	M	ML	L

Haouchab	M	ML	ML	Haysat	M	ML	M	Haytla	M	ML	ML
Hayzouq	M	ML	L	Hedd	M	ML	L	Hmaira Aakkar	M	ML	M
Hmaiss Aakkar	M	ML	ML	Hnaider	ML	L	L	Hokr Ed-Dahri	M	M	M
Hokr Etti	M	ML	ML	Hokr Jouret Srar	M	M	L	Houaich	M	ML	L
Hrar	M	ML	L	Idbil	M	ML	L	Ilal	M	ML	L
Janine	M	ML	ML	Jdeidet El-JoumeH	M	ML	ML	Jdeidet El-Kaiteh	M	ML	M
Jebrayel	M	ML	L	Kafr	M	ML	L	Kafr	ML	L	L
Karm Asfour	M	ML	L	Kfar Melki Aakkar	M	ML	M	Kfar Noun	M	L	L
Kfarharra	M	ML	ML	Khalsa	ML	L	L	Kharnoubet Aakkar	M	ML	ML
Khirbet Daoud Aakkar	ML	L	L	Khirbet El Remmane	L	L	L	Khirbet Shar	ML	L	L
Khoreybet El-Jindi	M	ML	ML	Khreibet Aakkar	M	ML	L	Kneisset Aakkar	M	M	M
Kneisset Hnaider	ML	L	L	Knisse	M	ML	ML	Kroum El-Aarab	M	ML	ML
Kwachra	ML	L	L	Kweykhata	M	ML	ML	Machta Hammoud	ML	L	L
Majdala	M	ML	M	Majdel Akkar	ML	L	L	Mar Touma	M	ML	M
Marlaya Melhem	M	ML	M	Mashha	M	ML	L	Massoudiye	M	M	M
Mazraat Beit Ghattas	M	ML	M	Mazraat En-Nahriye	L	L	L	Mechmech	L	L	VL
Memneh	L	L	VL	Mhammara	M	M	M	Mighraq Aakkar	M	M	M
Minyara	M	ML	M	Moqayteh	M	M	M	Mounjez	ML	L	L
Msalla	ML	L	L	Mzeihmeh	M	ML	ML	Nfaisch	M	ML	L
Noura Et-Tahta	ML	L	L	Ouadi El-Haour	M	ML	ML	Ouadi El-Jamous	M	M	M
Ouyoun El-Ghizlane	M	ML	M	Qaabarine	M	ML	M	Qabaait	ML	ML	L
Qachlaq	M	ML	ML	Qantara Aakkar	M	ML	L	Qarha Aakkar	ML	L	L
Qarqaf	M	ML	M	Qboula	ML	ML	L	Qleiaat Aakkar	M	M	M
Qloud El-Baqie	M	ML	M	Qobaiyat Aakkar	L	L	L	Qobbat Chamrat	M	ML	M
Qorayat	ML	L	L	Qornet Aakkar	L	L	L	Qsair Aakkar	ML	L	L
Rahbe	M	L	L	Rihaniyet Aakkar	M	ML	ML	Rmah	L	L	L
Rmoul	M	ML	M	Saadine	M	ML	ML	Sadaqa	M	ML	L
Saidnaya	M	ML	ML	Sammouniye	M	M	M	Sayssouq	M	ML	M
Semmaqiye	M	M	M	Semmaqli	M	ML	M	Sfinet El-Dreib	M	L	L
Sfinet El-Qaitaa	M	ML	ML	Sindyanet Zeidane	ML	L	L	Souaisset Aakkar	M	ML	ML
Srar	M	ML	ML	Tal Abbas El Gharby	M	ML	M	Tal Abbas El-Charqy	M	ML	L
Tal Biret	M	ML	M	Tal Hmayra	M	ML	ML	Tal Maayan Tal Kiri	M	M	M
Tal Sibel	M	M	M	Tallet Chattaha	ML	ML	L	Tikrit	ML	L	L
Tleil	M	ML	ML	Tshea	L	L	L	Zawarib	M	ML	L
Zouq El Hosniyeh	M	ML	M	Zouq El-Haddara	M	M	M	Zouq El-Hbalsa	M	ML	M
Zouq El-Moqachrine	M	ML	M								

Sud

Sour

Municipality	11-Dec	12-Dec	13-Dec	Municipality	11-Dec	12-Dec	13-Dec	Municipality	11-Dec	12-Dec	13-Dec
Aaiyeh	M	ML	VL	Aalma El-Chaab	M	ML	L	Aaytit	M	ML	VL
Abbassiyeh Sour	M	ML	VL	Abou Chech	M	ML	L	Ain Abou Abdallah	M	ML	VL
Ain Baal	M	ML	L	Arzoun	M	ML	VL	Aziyeh	M	ML	L
Baflaya	M	ML	VL	Barich	M	L	VL	Batouliyeh	M	ML	L
Bayad	M	ML	VL	Bazouriyeh	M	ML	VL	Bediass	M	L	VL

Bestiyat	M	L	VL	Borj El Chemali	M	ML	L	Borj En-Naqoura	M	ML	L
Borj Rahhal	M	L	VL	Boustane	M	ML	L	Btaychih	M	ML	L
Chaaitiye	M	ML	L	Chameh	M	ML	L	Chehabiye	M	ML	VL
Chehour	ML	ML	VL	Chihine	M	ML	L	Debaal Sour	M	L	VL
Deir Amess	M	ML	VL	Deir Kifa	M	ML	VL	Deir Qanoun El-Ain	M	ML	L
Deir Qanoun El-Naher	M	L	VL	Derdghaiya	M	ML	VL	Dhayra	M	ML	L
Halloussiyeh	M	L	VL	Hamoul	M	ML	L	Hanaouey	M	ML	VL
Henniye	M	ML	L	Hmairi Sour	M	L	VL	Iskandarouna Sour	M	ML	L
Jbal El Botom	M	ML	VL	Jebbin	M	ML	L	Jennata	M	L	VL
Jijim	M	ML	L	Jouaiya	M	ML	VL	Kneisset Sour	M	ML	L
Maarake	M	L	VL	Maaroub	M	L	VL	Majadel	M	ML	VL
Majdalzoun	M	ML	L	Mansouri Sour	M	ML	L	Marnba	ML	ML	VL
Marouahine	M	ML	VL	Mazraat El-Zalloutiy	M	ML	L	Mazraat Mechref	M	ML	VL
Mazraat Tayr Semhat	ML	ML	VL	Mheilib	M	ML	VL	Neffakhiyeh	M	ML	VL
Niha Sour	M	ML	VL	Ouadi Jilo	M	L	VL	Qana	M	ML	VL
Qolaileh Sour	M	ML	L	Rechknany	M	ML	VL	Rmadiyah	M	ML	VL
Selha Sour	M	ML	VL	Siddiqine	M	ML	VL	Sour	M	ML	L
Srifa	M	ML	VL	Tayr Debbe	M	L	VL	Tayr Felsay	M	L	VL
Tayr Harfa	M	ML	L	Touayri	ML	ML	VL	Toura	M	L	VL
Yanouh Sour	M	L	VL	Yarine	M	ML	L	Zebqine	M	ML	VL

Saida

Municipality	11-Dec	12-Dec	13-Dec	Municipality	11-Dec	12-Dec	13-Dec	Municipality	11-Dec	12-Dec	13-Dec
Aanqoun	M	ML	VL	Aaqtanit	M	ML	VL	Aarab Ej-Jall	M	ML	VL
Aarab Tabbaya	M	ML	VL	Abra Saida	M	ML	L	Adloun	M	ML	VL
Adousiyeh	M	ML	VL	Ain-El-Deleb	M	ML	L	Arzai	M	L	VL
Babliyah	M	ML	VL	Barty	ML	L	VL	Bissariyeh	M	ML	VL
Bnaafoul	M	ML	VL	Bqosta	M	ML	L	Bramiy --	M	ML	L
Daoudiyeh	M	ML	VL	Dareb El-Sim	M	ML	VL	Erkay	M	ML	VL
Ghassanieh	M	ML	VL	Ghazieh	M	ML	VL	Hajjeh	M	ML	VL
Haret Saida	M	ML	L	Hartiyeh	M	ML	VL	Hlaliye Saida	M	ML	L
Insariyat	M	ML	VL	Jazira Saida	M	ML	L	Kafar Bit	M	ML	VL
Kaoutariyet El-Siyad	M	ML	VL	Kfar Chellal	M	ML	VL	Kfar Hatta Saida	M	ML	VL
Kfar Milke Saida	M	L	VL	Khartoum	M	ML	VL	Khaziz	M	ML	VL
Khirbet Ed-Douair Sa	M	ML	VL	Khirbet El-Bassal	M	ML	VL	Khrayeb Saida	M	ML	VL
Loubieh	M	ML	VL	Maghdouche	M	ML	VL	Majdelyoun	M	ML	L
Matariyet El-Choumar	M	L	VL	Matayriyeh	M	ML	VL	Mazraat 'Mseileh	M	ML	VL
Mazraat 'Snaiber	M	ML	VL	Mazraat Aarab Soukka	M	ML	VL	Mazraat Deir Taqla	M	ML	VL
Mazraat El Yahoudiye	M	ML	L	Mazraat El-Housseini	M	ML	VL	Mazraat El-Mhaydaleh	M	ML	VL
Mazraat El-Ouasta	M	ML	L	Mazraat Jamjim	M	ML	VL	Mazraat Kaoutariyet	M	ML	VL
Mazraat Kfar Badda	M	ML	VL	Mazraat Oussamiyat	M	ML	VL	Mazraat Sari	M	ML	VL
Mazraat Sinai	M	ML	VL	Meemariyeh	M	ML	VL	Merouaniyeh	M	ML	VL
Miyeh ou Miyeh	M	ML	L	Najjariyeh	M	ML	VL	Qaaqiyat El-Snaouba	M	ML	VL
Qnarit	M	ML	VL	Qraiye Saida	M	ML	L	Saida Ed-Dekermane	M	ML	L
Saida El-Oustani	M	ML	L	Saida El-Qadimeh	M	ML	L	Saida Kefraya	M	ML	L
Saksakiyeh	M	M	VL	Salhieh Saida	M	ML	L	Sarafand	M	ML	VL

Sfenta	ML	L	VL	Tafahta	M	ML	VL	Tanbourit	M	ML	VL
Tebna	M	ML	VL	Zaghdraiya	M	ML	VL	Zeita	M	ML	VL
Zrariyeh	M	ML	VL								

Jezzine

Municipality	11-Dec	12-Dec	13-Dec	Municipality	11-Dec	12-Dec	13-Dec	Municipality	11-Dec	12-Dec	13-Dec
Ain El-Mir (El Estab)	M	ML	VL	Anane	L	L	VL	Aramta	ML	L	VL
Ariya	L	L	VL	Aychiyeh	ML	L	VL	Azour	L	L	VL
Baba	L	L	VL	Baysour Jezzine	M	ML	VL	Benoueteh Jezzine	L	L	VL
Bhannine	L	L	VL	Bisri	L	L	VL	Bkassine	L	VL	VL
Bouslaya	L	L	VL	Btedine El-Leqech	L	L	VL	Chbail	L	VL	VL
Choualiq Jezzine	M	ML	L	Dahr Ed-Deir	L	L	VL	Deir El Qattine	ML	L	VL
Demachqiyeh	M	ML	VL	Ghabbatiyeh	L	L	VL	Harf Jezzine	L	L	VL
Hassaniyeh	M	ML	VL	Haytouleh	ML	L	VL	Haytura	ML	L	VL
Hidab	ML	L	VL	Homsiyeh	L	L	VL	Jabal Toura	ML	L	VL
Jarmaq	M	ML	VL	Jensnaya	M	ML	VL	Jernaya	M	L	VL
Jezzine	ML	L	VL	Karkha	M	ML	L	Kfar Falous	ML	L	VL
Kfar Houna	L	L	VL	Kfar Jarrah	M	ML	L	Lebaa	M	ML	L
Louayzet Jezzine	ML	L	VL	Machmouche	L	VL	VL	Mahmoudiyeh Jezzine	M	L	VL
Maknounye Jezzine	ML	L	VL	Maraat Ouazaiyeh	ML	L	VL	Mazraat Daraya	L	L	VL
Mazraat El-Aarqoub	ML	L	VL	Mazraat El-Mathane	L	L	VL	Mazraat El-Rahbane	L	L	VL
Mazraat Khallet Khaz	L	L	VL	Mazraat Louzid (Loua	L	L	VL	Mazraat Qrouh	ML	L	VL
Mazraat Tamra	M	ML	VL	Mazraat Zighrine Jez	ML	L	VL	Mazraat	L	L	VL
Mharbiyeh	M	ML	VL	Midane Jezzine	L	L	VL	Mjeydel Jezzine	M	ML	VL
Mlikh	ML	L	VL	Mrah El-Hbasse	M	L	VL	Ouadi Baanqoudaine	M	ML	VL
Ouadi El-Laymoun	M	L	VL	Ouardiyeh	L	VL	VL	Qabaa Jezzine	ML	L	VL
Qatrani	L	L	VL	Qaytouleh	ML	L	VL	Qtaleh Jezzine	L	L	VL
Rihane Jezzine	ML	L	VL	Rimat	L	L	VL	Roum	L	L	VL
Roummanet	ML	L	VL	Sabbah	L	L	VL	Saydoun	L	L	VL
Sfaray	L	L	VL	Snaya	ML	L	VL	Sojoud	ML	L	VL
Srayri	ML	L	VL	Taaid	L	L	VL	Wadi Jezzine	L	L	VL
Zhalta	ML	L	VL								

Bekaa

West Bekaa

Municipality	11-Dec	12-Dec	13-Dec	Municipality	11-Dec	12-Dec	13-Dec	Municipality	11-Dec	12-Dec	13-Dec
Aammiq BG	L	L	L	Ain El Tineh BG	ML	L	VL	Ain Zebdeh	L	L	VL
Ana	L	L	L	Aytanit	L	L	VL	Baaloul BG	L	L	VL
Bab Mareh	L	L	VL	Chouberqiye Aammiq	L	L	L	Dakoue	L	L	L
Deir Ain El-Jaouze	L	L	VL	Deir Tahniche	L	L	L	Ghaza	L	L	L
Harime El-Soughra	L	L	VL	Hoch Harimeh	L	L	L	Jazira BG	L	L	L
Jib Jennine	L	L	VL	Kamed-El-Laouz	L	L	VL	Kefraya BG	L	L	VL
Khiara El Atika	L	L	L	Khiara	L	L	L	Khirbet Qanafar	L	L	VL
Lala	L	L	VL	Lebbaya BG	L	L	VL	Loussa	ML	L	VL
Machghara	L	L	VL	Manara (Hammara) BG	L	L	VL	Mansoura BG	ML	L	L

Marej BG	M	L	VL	Maydoun	ML	L	VL	Ouaqf BG	ML	L	L
Qaraaoun	L	L	VL	Qelya	ML	L	VL	Raouda (Istabel)	ML	L	VL
Saghbine	L	L	VL	Sohmor	L	L	VL	Soltan Yacoub el Ara	L	L	L
Souairy	L	L	VL	Sultan Yaacoub	L	L	L	Tal Znoun	L	L	L
Yehmor BG	L	L	VL	Zilaya	L	L	VL				

Zahle

Municipality	11-Dec	12-Dec	13-Dec	Municipality	11-Dec	12-Dec	13-Dec	Municipality	11-Dec	12-Dec	13-Dec
Aanjar (Haouch Mouss)	L	L	VL	Ablah	M	ML	L	Ain Kfarzabad	L	L	VL
Ali-El-Nahri	M	ML	L	Bar Elias	M	L	VL	Bouarej	M	L	VL
Cheberqiyet Tabet	M	L	VL	Chtaura	M	L	VL	Deir El Ghazal	L	L	VL
Delhamiyet Zahle	ML	L	VL	Ferzol	M	L	VL	Haouch El-Ghanam	M	ML	L
Haouch Es-Siyadeh	M	L	VL	Haouch Hala	ML	L	L	Haouch Mandara	M	L	VL
Haouch Qayssar	M	L	VL	Hezerta	ML	L	VL	Hosh Moussa	L	L	VL
Jdita	M	L	VL	Kfarzabad	L	L	VL	Ksara	M	L	VL
Majdel Aanjar	L	L	VL	Makssi	M	L	VL	Massa	ML	L	L
Mazraat Er-Remtaniye	M	L	VL	Mrayjat Zahle	M	L	VL	Mzaraa Zahle	M	L	VL
Nabi Ayla	M	L	L	Nasriyet Rizk	ML	L	L	Nasriyet Zahle	M	L	VL
Niha Zahle	M	L	L	Ouadi Ed-Deloum	M	L	VL	Ouadi El-Arayech	M	L	VL
Qaa El Rim	M	L	VL	Qab Elias	M	L	VL	Qousaya	L	L	VL
Rhit	L	L	VL	Riyak	ML	L	L	Saadnayel	M	L	VL
Taal El-Akhdar	ML	L	L	Taalbeya	M	L	VL	Taanayel	M	L	VL
Talamara	M	ML	L	Tcheflik Edde Haouch	M	L	VL	Tcheflik Qiqano	M	L	VL
Terbol Zahle	L	L	VL	Touaite Zahle	L	L	VL	Zahle Aradi	M	L	VL
Zahle El-Berbara	M	L	VL	Zahle El-Maallaqa	M	L	VL	Zahle El-Midane	M	L	VL
Zahle Er-Rassiyeh	M	L	VL	Zahle Haouch El-Ouma	M	L	VL	Zahle Haouch El-Ouma	M	L	VL
Zahle Haouch Ez-Zara	M	L	VL	Zahle Maalaqa Aradi	M	L	VL	Zahle Mar Antonios	M	L	VL
Zahle Mar Elias	M	L	VL	Zahle Mar Gerios	M	L	VL	Zahle Saydet En-Naja	M	L	VL
Zebdoul	M	L	VL								

Rachaiya

Municipality	11-Dec	12-Dec	13-Dec	Municipality	11-Dec	12-Dec	13-Dec	Municipality	11-Dec	12-Dec	13-Dec
Ain Arab Rachaiya	L	VL	L	Ain Ata	L	L	VL	Ain Harche	L	L	VL
Aqabe Rachaya	L	L	VL	Ayha	L	L	VL	Ayta El Fokhar	L	L	L
Bakifa Rachaya	L	L	VL	Bakka	L	VL	L	Beit Lahya	L	L	VL
Bireh Rachaiya	L	L	VL	Daher El Ahmar	L	L	VL	Deir El-Achayer	L	L	VL
Heloua Rachaiya	L	VL	VL	Hoch El Qannabeh Rac	L	L	VL	Kaoukaba Bou Arab	L	L	VL
Kfar Danis	L	L	VL	Kfar Mechki	L	L	VL	Kfar Qouq	L	L	L
Kherbet Rouha	L	L	VL	Majdel Balhiss	L	L	VL	Mdoukha	L	L	L
Mhaydseh Rachaiya	L	L	VL	Nabi Safa	L	L	VL	Rachaiya	L	L	VL
Rafid Rachaiya	L	L	VL	Selsata (Mazraat Dei	L	VL	VL	Tannoura	L	L	VL
Yanta	L	VL	L								

Beyrouth

Beyrouth

Municipality	11-Dec	12-Dec	13-Dec	Municipality	11-Dec	12-Dec	13-Dec	Municipality	11-Dec	12-Dec	13-Dec
--------------	--------	--------	--------	--------------	--------	--------	--------	--------------	--------	--------	--------

Achrafieh	M	M	M	Ain el-Mreisse	M	M	M	Bachoura	M	M	M
Beirut Central Distr	M	M	M	Marfai	M	M	M	Mazraa	M	M	M
Medaouar	M	M	M	Minet el-Hosn	M	M	M	Mwssaitbeh	M	M	M
Ras Beirut	M	M	M	Rmeil	M	M	M	Saifi	M	M	M
Zqaq el-Blat	M	M	M								