

# Lebanon Fire Risk Bulletin



CIVIL DEDEFENCE

**Refer to cadast table condition.**

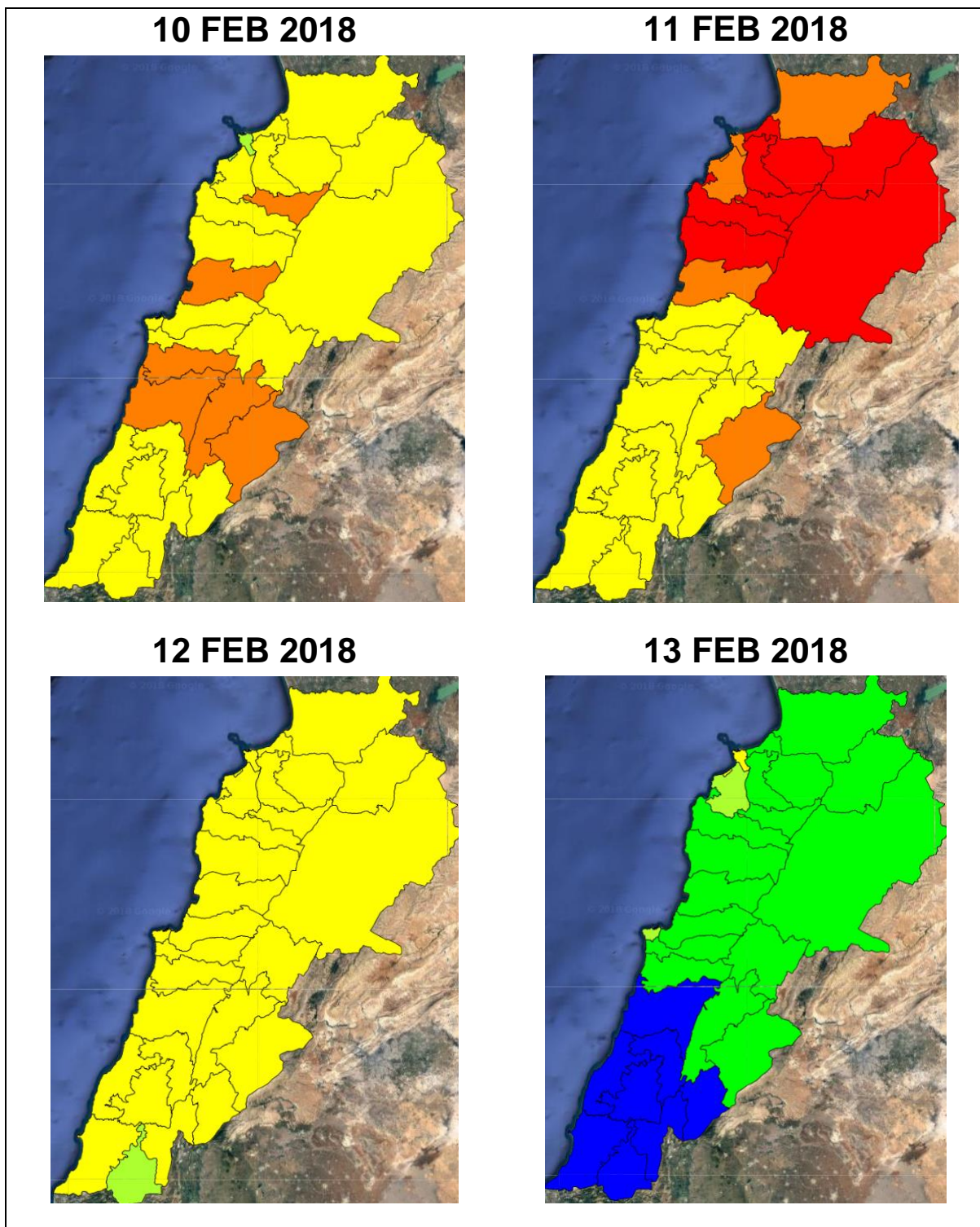
**Please note that the indicated temperature is at 2 meters height from the ground.**

General description of potential fire risk situation

Symbol	Level of risk	Meaning and actions
VL	Very low	Very low fire risk. Controlled burning operations can be hardly executed due to high fuel moisture content. Normally wildfires self-extinguish.
L	Low	Low fire risk. Controlled burning operations can be executed with a reasonable degree of safety.
ML	Medium low	Medium-low fire risk. Controlled burning operations can be executed in safety conditions. All the fires need to be extinguished.
M	Medium	Medium fire risk. Controlled burning operations would be avoided. All the fires need to be very well extinguished.
MH	Medium high	Controlled burning is not recommended. Open flame will start fires. Cured grasslands and forest litter will burn readily. Spread is moderate in forests and fast in exposed areas. Patrolling and monitoring is suggested. Fight fires with direct attack and all available resources.
H	High	Ignition can occur easily with fast spread in grass, shrubs and forests. Fires will be very hot with crowning and short to medium spotting. Direct attack on the head may not be possible requiring indirect methods on flanks. Patrolling and monitoring the territory is highly suggested.
E	Extreme	Ignition can occur also from sparks. Fires will be extremely hot with fast rate of spread. Control may not be possible during day due to long range spotting and crowning. Suppression forces should limit efforts to limiting lateral spread. Damage potential total. Patrolling and monitoring the territory is highly suggested.

**Beirut, 11 February 2018**

# FIRE RISK INDEX

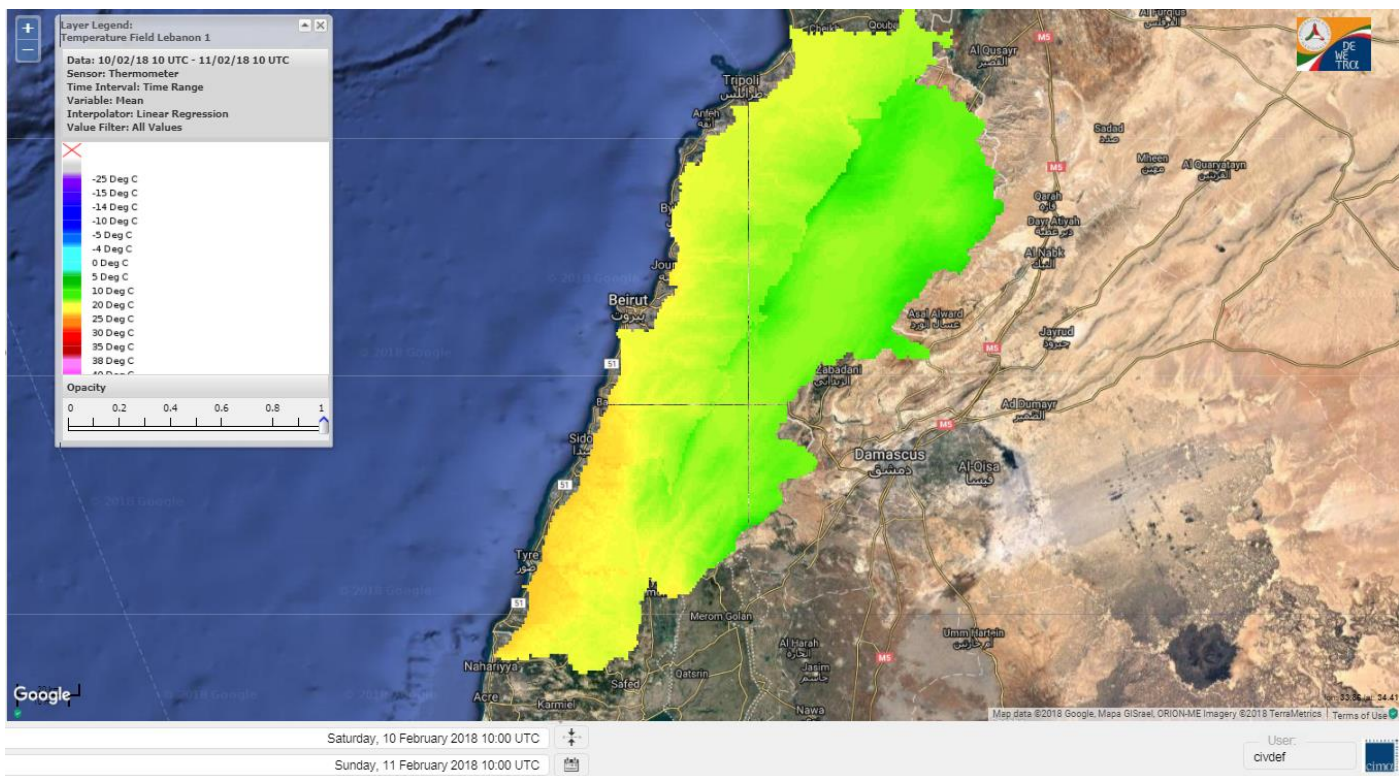


Layer Legend:  
Lebanon Wildfire Risk Index 1

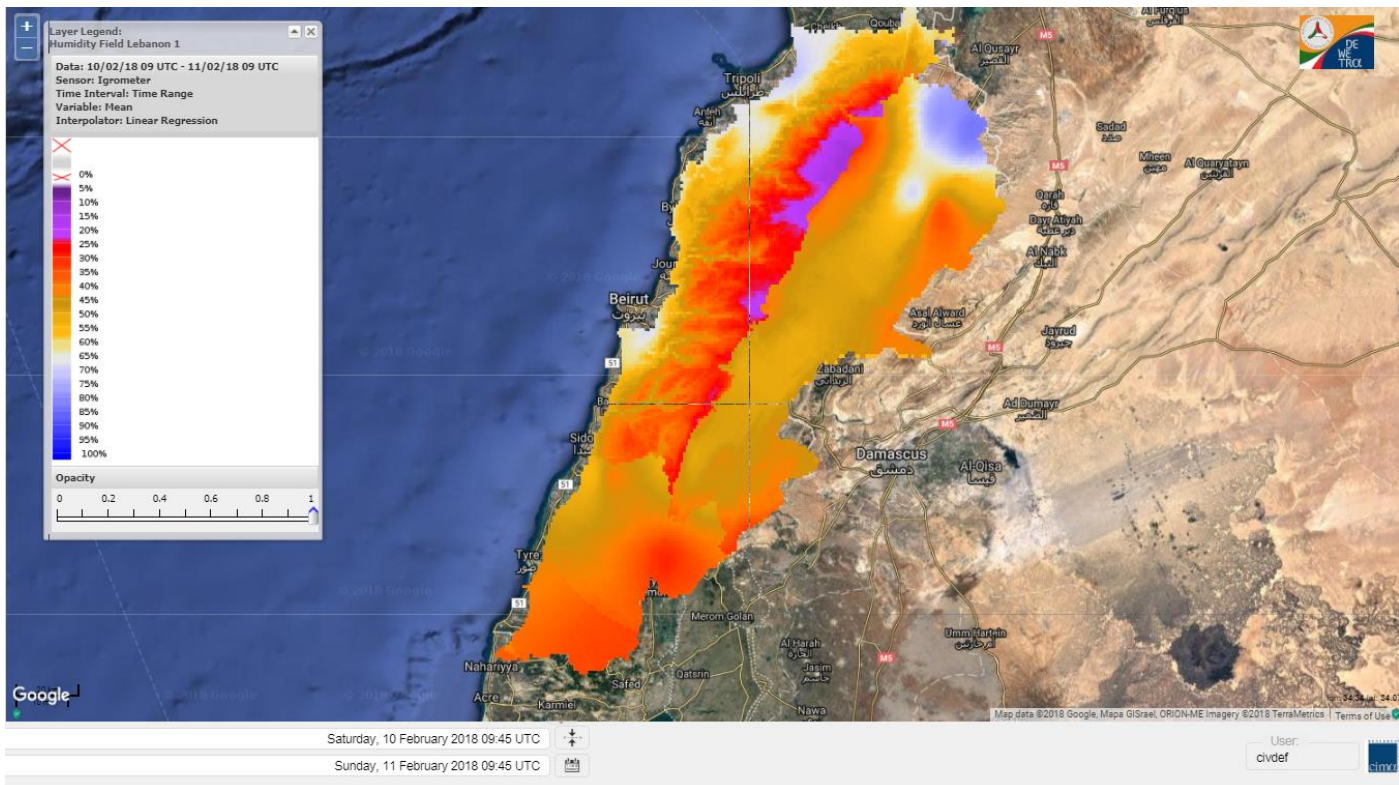
Data: Run: 11/02/2018 00:00. Forecast for 11  
Model: RISICO for the Republic of Lebanon  
Variable: Fire Weather Index  
Spatial Resolution: Caza

- VERY LOW
- LOW
- MEDIUM-LOW
- MEDIUM
- MEDIUM-HIGH
- HIGH
- EXTREME

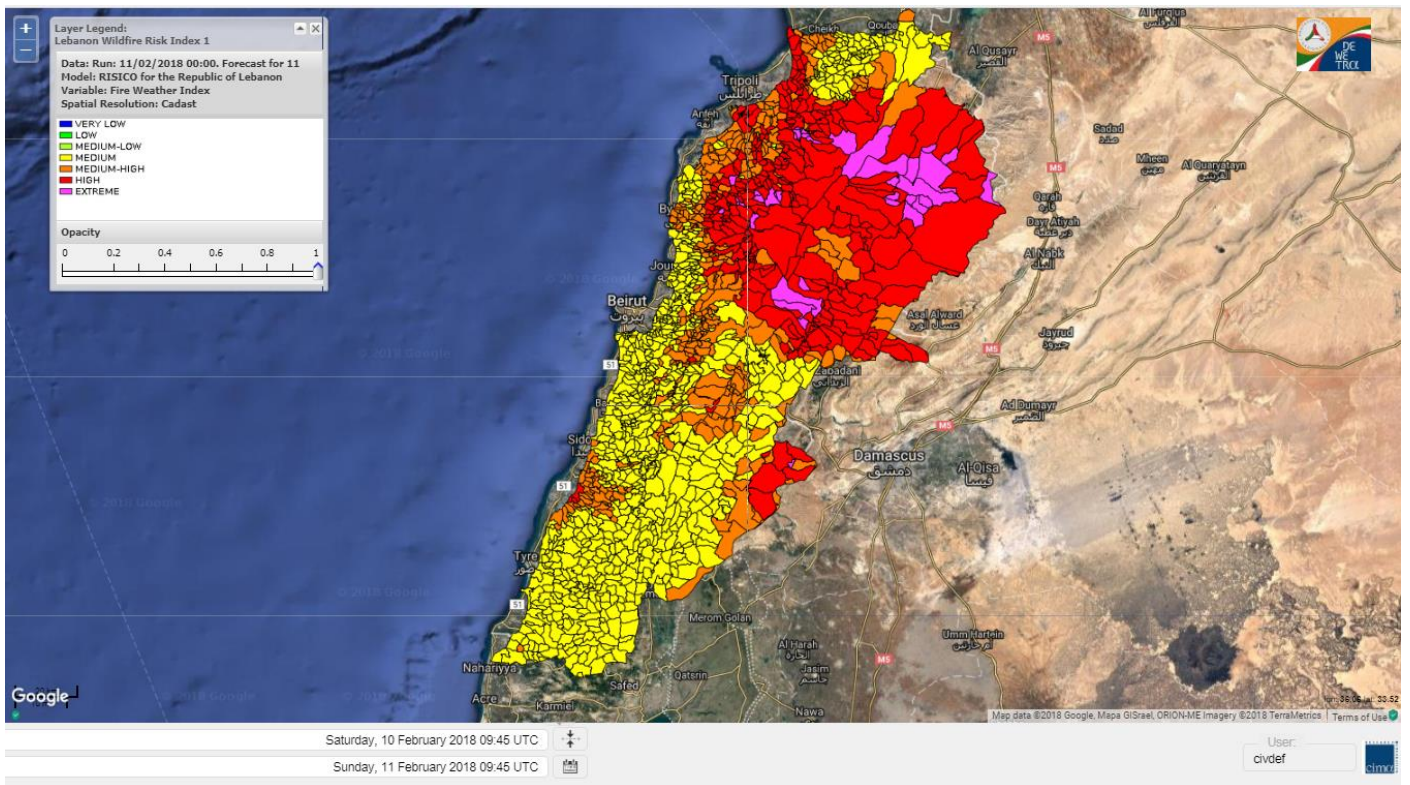
# Lebanon temperature for 11 FEB 2018



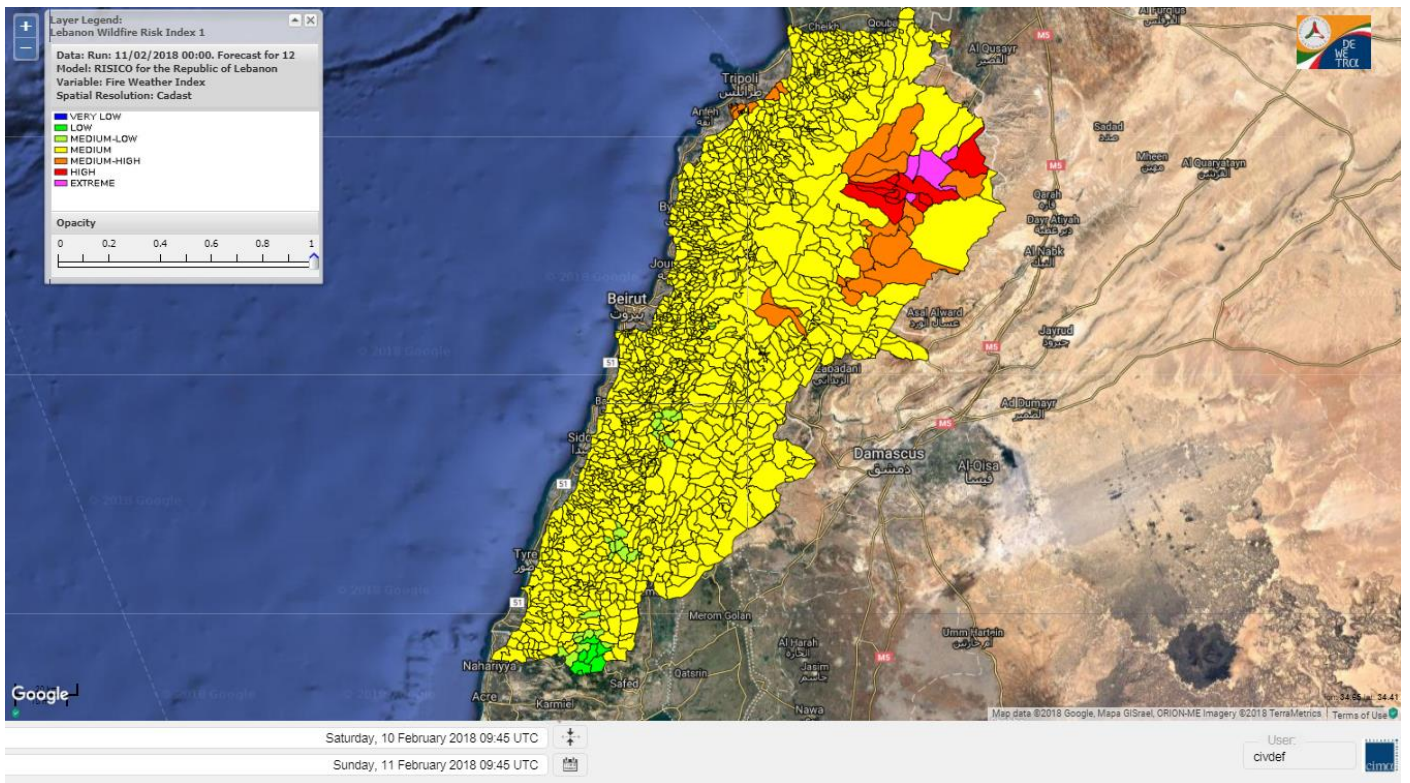
# Lebanon humidity for 11 FEB 2018



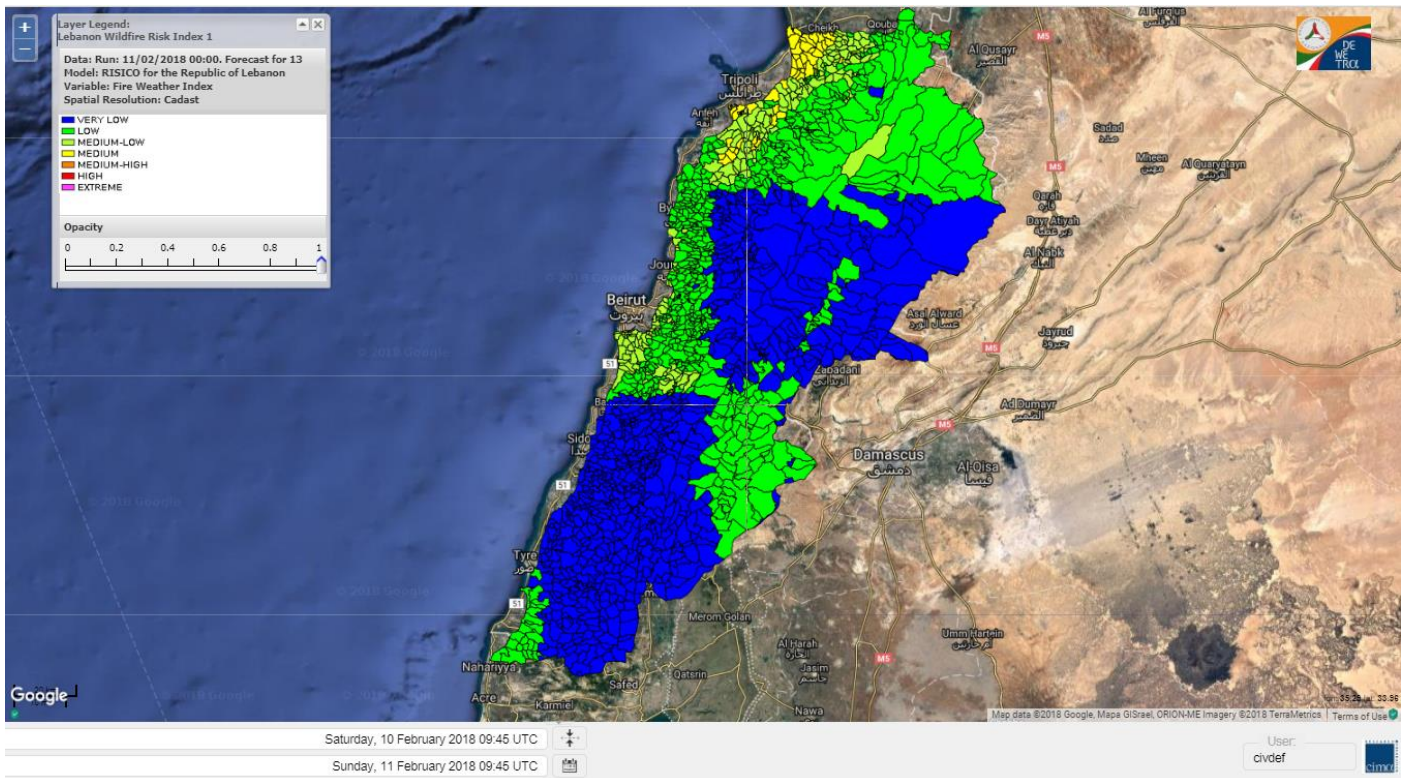
# Lebanon for 11 FEB 2018



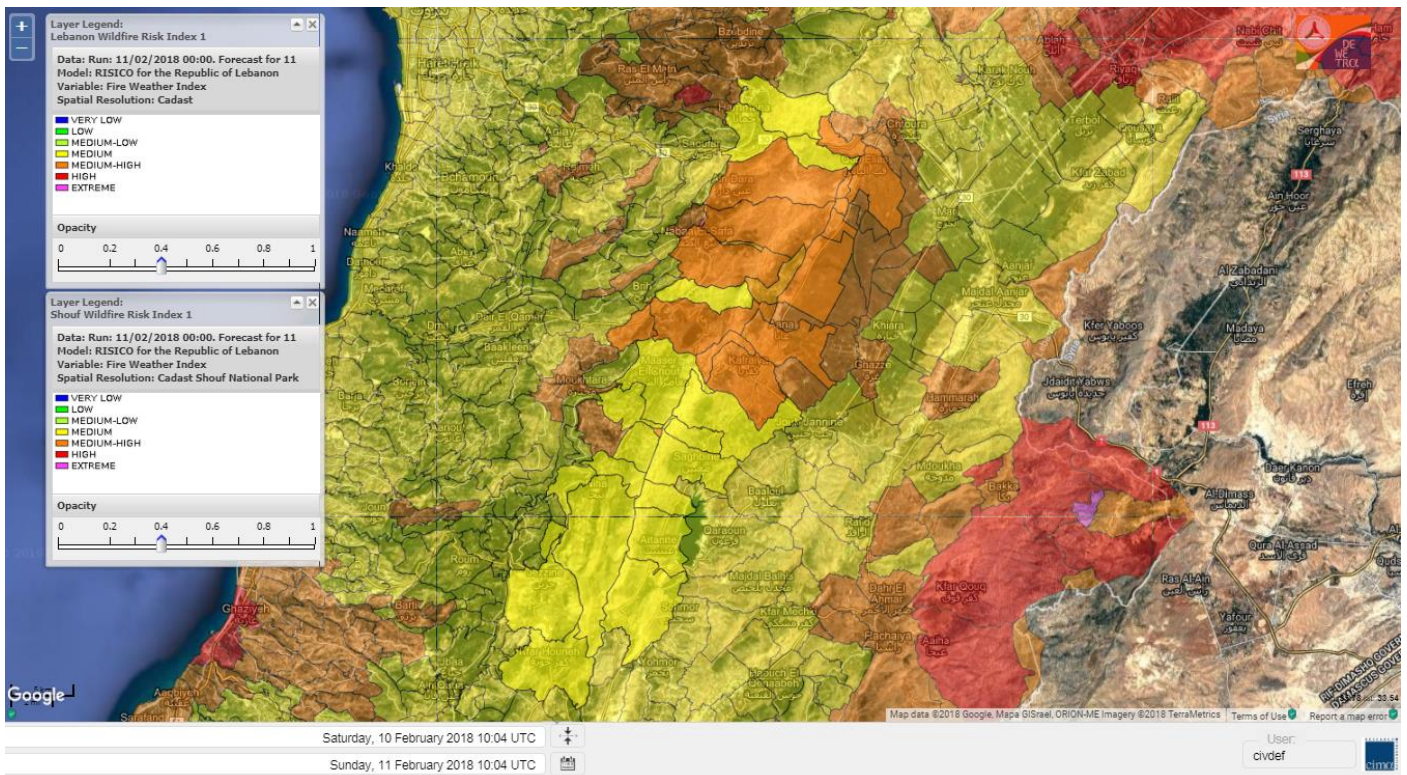
# Lebanon for 12 FEB 2018



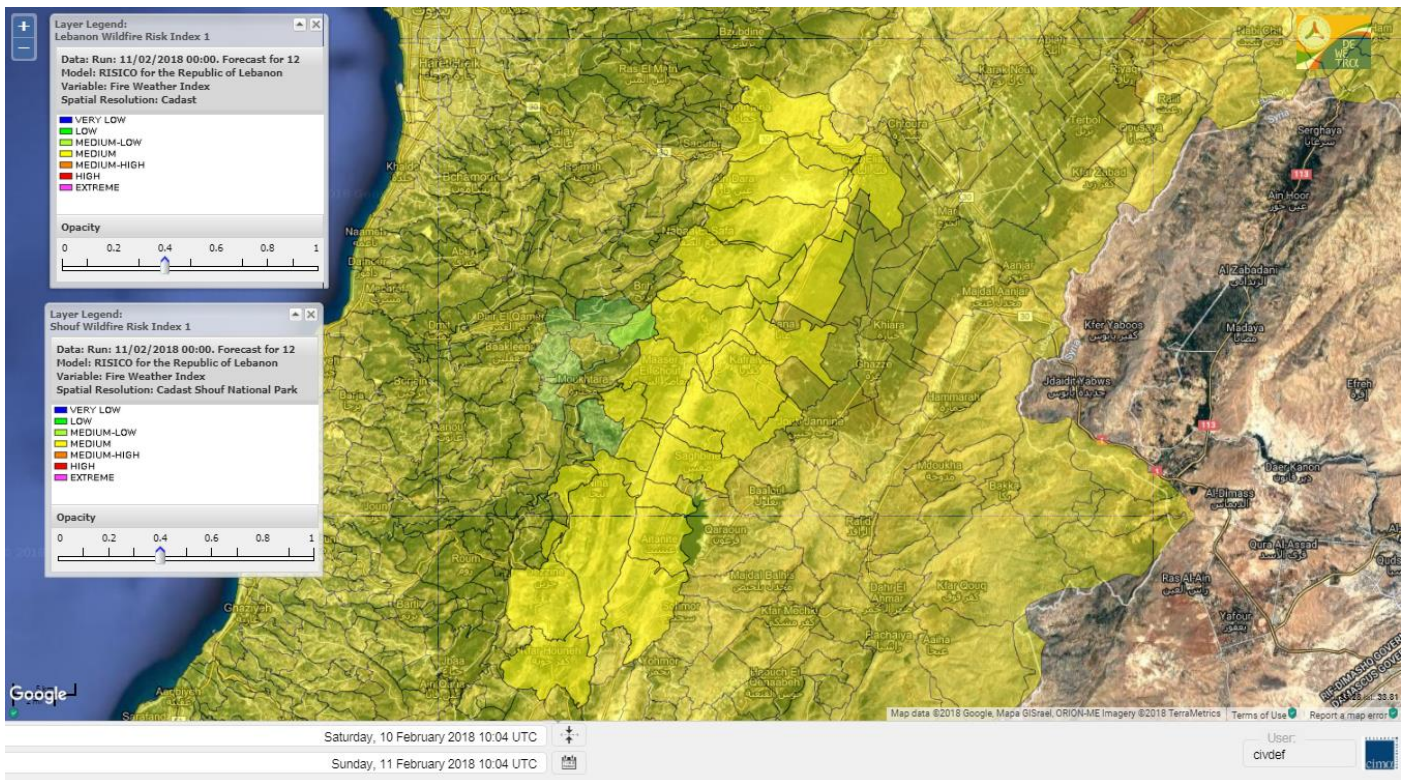
# Lebanon for 13 FEB 2018



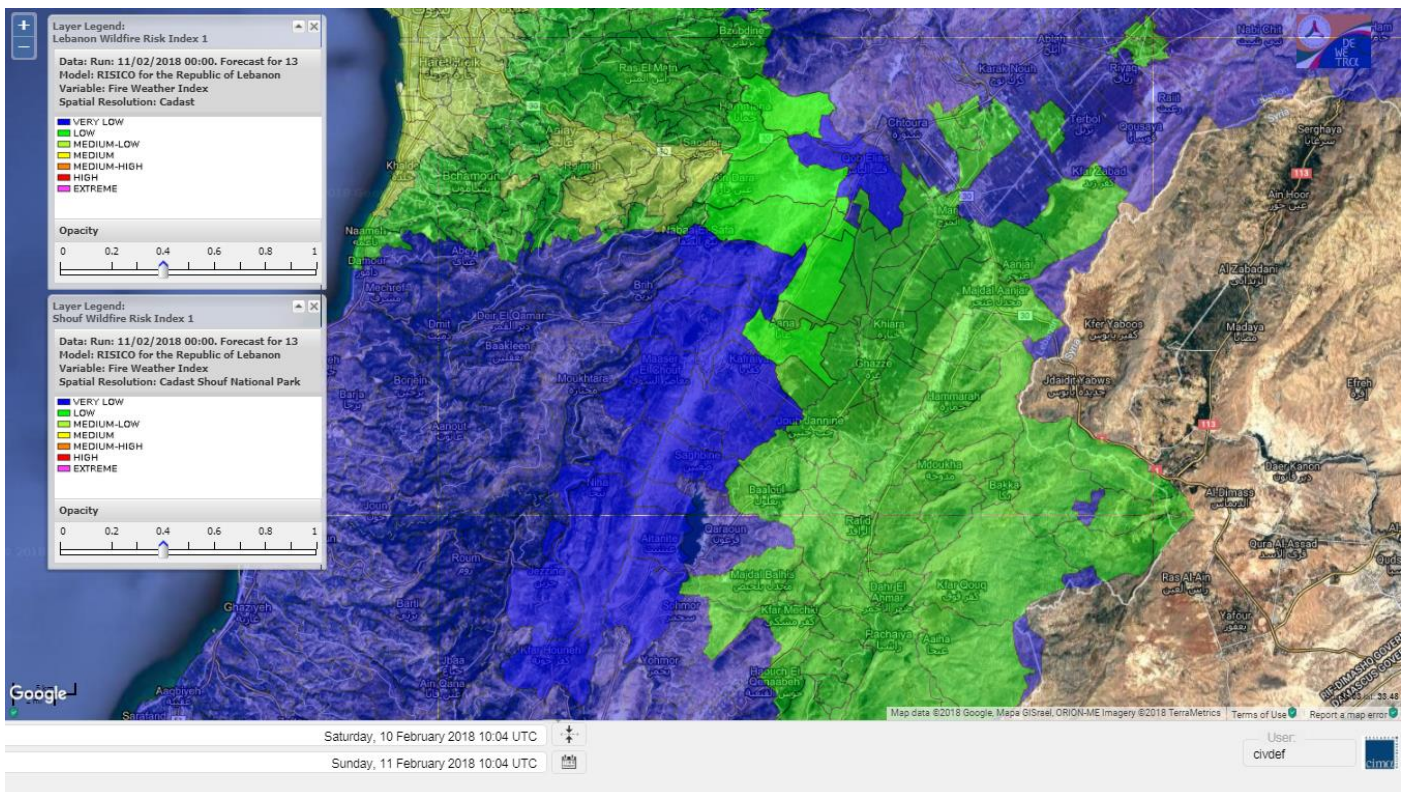
# Shouf Biosphere Reserve Forecast for 11 FEB 2018



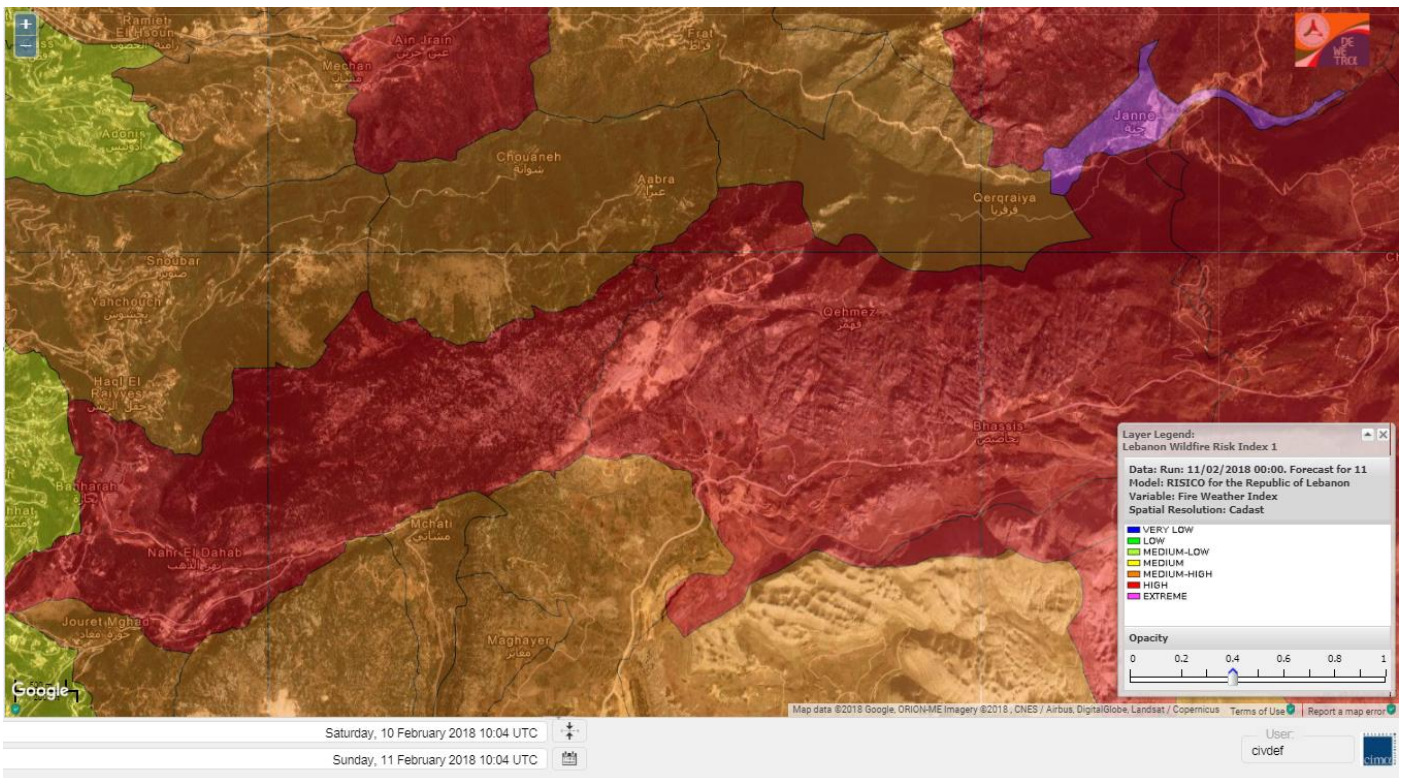
# Shouf Biosphere Reserve Forecast for 12 FEB 2018



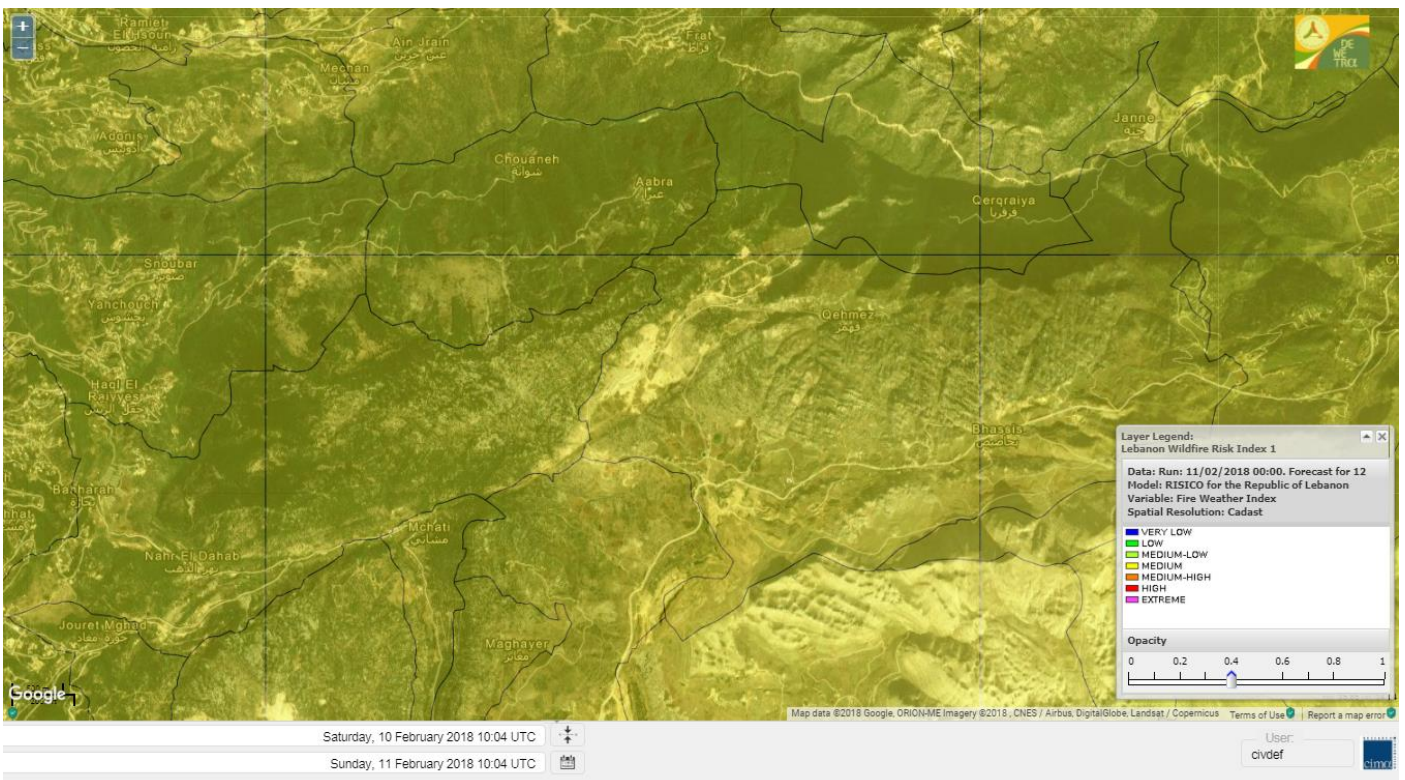
# Shouf Biosphere Reserve Forecast for 13 FEB 2018



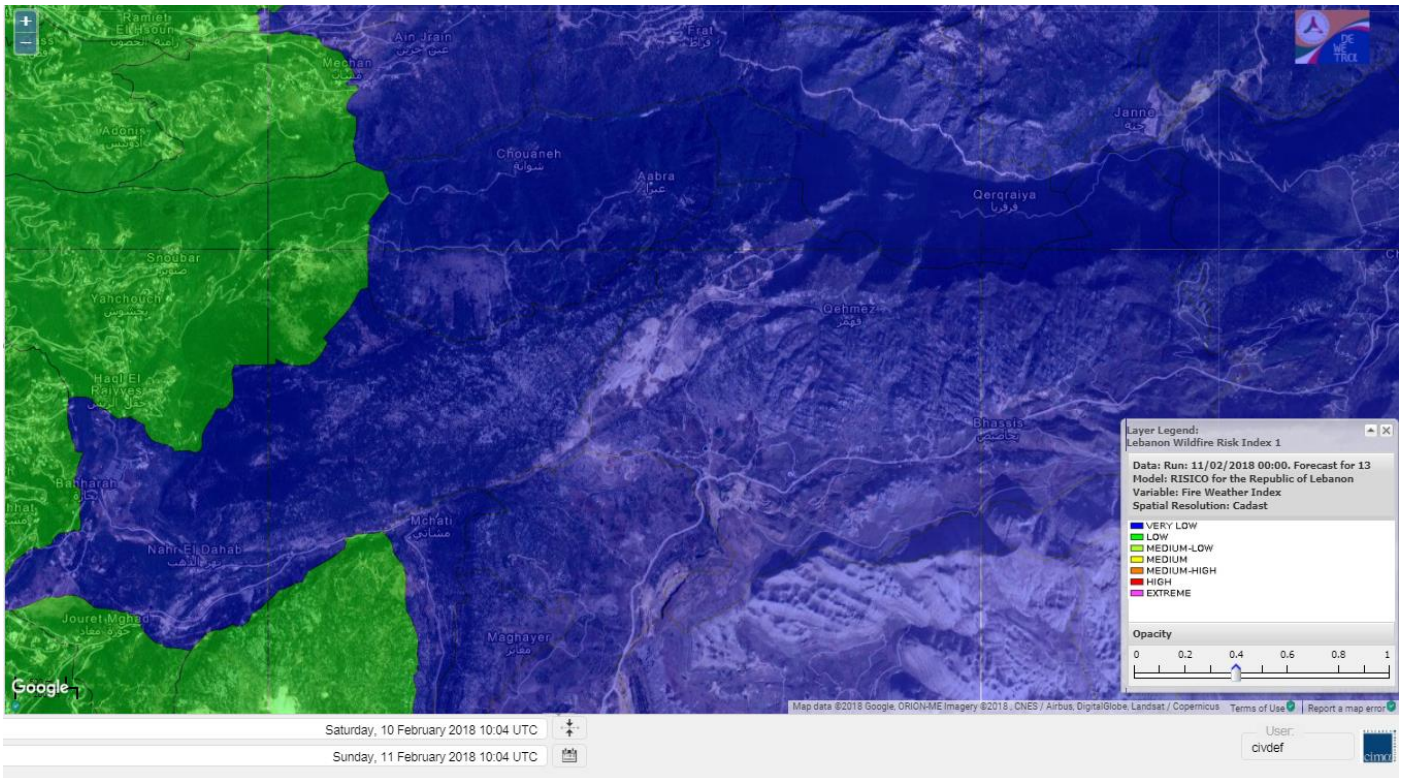
## Jabal Moussa Reserve Forecast for 11 FEB 2018



## Jabal Moussa Reserve Forecast for 12 FEB 2018



# Jabal Moussa Reserve Forecast for 13 FEB 2018





## Nord

### Koura

Municipality	11-Feb	12-Feb	13-Feb	Municipality	11-Feb	12-Feb	13-Feb	Municipality	11-Feb	12-Feb	13-Feb
Aaba	H	M	M	Afsaddiq	MH	M	M	Ain Ekriane	M	M	L
Amioun	H	M	ML	Anfeh	MH	M	L	Badbhoun	MH	M	L
Barghoun	MH	M	L	Barsa	MH	M	ML	Batroumine	MH	M	M
Bdebba	MH	M	M	Bechmizzine	MH	M	M	Bednaye El-Koura	MH	M	L
Bhabbouch El-Koura	H	M	L	Bkeftine	MH	M	ML	Bnehran	H	M	L
Bqaiia El-Koura	MH	M	ML	Bsarma	H	M	ML	Btaaboura	H	M	ML
Bterram	MH	M	M	Btouratij	MH	M	M	Bziza	E	M	ML
Dar Beechtar	H	M	ML	Dar Chmezzine	MH	M	ML	Deddeh	MH	M	ML
Deir El-Balamand	M	M	L	Fih	MH	M	ML	Hraiche	MH	M	L
Ijdaabrine	MH	M	L	Kaftoun	H	M	ML	Kefraya El-Koura	MH	M	L
Kfarakka	H	M	ML	Kfarhata	MH	M	L	Kfarhazir	MH	M	ML
Kfarkahel	MH	M	ML	Kfarsaroun	H	M	ML	Kosba	MH	M	ML
Mejdel el-Koura	MH	M	L	Nakhle	MH	M	ML	Qalhat	M	M	L
Ras Masqa	MH	M	ML	Rechdibbine	MH	M	ML	Zakroun	MH	M	L
Zgharta El-Mtaouile	H	M	L								

### Bcharre

Municipality	11-Feb	12-Feb	13-Feb	Municipality	11-Feb	12-Feb	13-Feb	Municipality	11-Feb	12-Feb	13-Feb
Aabdine	H	M	L	Bane	H	M	L	Barhelioun	H	M	L
Bazooune	H	M	VL	Becharre	H	M	L	Beit Menzer	H	M	L
Billa	H	M	L	Blaouza	MH	M	L	Bqaa Kafra	H	M	VL
Bqerqacha	H	M	VL	Breissat	E	M	VL	Dimane	E	M	VL
Hadath El Jobbeh	E	M	VL	Hadchit	H	M	L	Hasroun	H	M	VL
Mazraat Aassaf	H	M	VL	Mazraat Bani Saab	E	M	VL	Mchaa El-Jobbeh	H	M	VL
Metrit	H	M	L	Moghr El-Ahoual	MH	M	L	Ouadi Qannoubine	H	M	VL
Qanat	H	M	L	Qnayer	H	M	L	Tourza	H	M	L

### Batroun

Municipality	11-Feb	12-Feb	13-Feb	Municipality	11-Feb	12-Feb	13-Feb	Municipality	11-Feb	12-Feb	13-Feb
Aabrine	M	M	L	Aalali	H	M	VL	Aartiz	MH	M	VL
Abdelli	MH	M	L	Ajdabra	M	M	L	Assia	H	M	VL
Basbina	M	M	L	Batroun	M	M	L	Bcheleh	H	M	VL
Bechtoudar	H	M	VL	Beit Chlala	E	M	VL	Beit Kassab	H	M	VL
Bijdarfil	M	M	L	Bqesmaya	H	M	L	Chatine	E	M	VL
Chebtin	H	M	L	Chekka	MH	M	L	Daael	H	M	VL
Dahr Abi Yaghi	MH	M	L	Daraya El-Batroun	MH	M	L	Deir Billa	H	M	L
Deir Kfifane	MH	M	L	Deir Mar Youhanna EL	E	M	VL	Deir Mar Youssef Jra	MH	M	L
Douma	H	M	VL	Douq	H	M	L	Eddeh El-Batroun	M	M	L
Ftihat El-Batroun	H	M	VL	Ghouma	M	M	L	Hadtoun	H	M	VL
Hamat	M	M	L	Harbouna	MH	M	L	Hardine	H	M	VL
Helta	H	M	VL	Hery	MH	M	L	Jebbla	MH	M	VL
Jrabta El-Batroun	MH	M	L	Jrane El-Batroun	M	M	L	Kfar Aabida	M	M	L
Kfar Halda	H	M	VL	Kfarb Shlaimane	MH	M	VL	Kfarhatna	H	M	L
Kfarhay	MH	M	L	Kfarhelos	M	M	L	Kfifane	M	M	L

Kfour El Arabi	H	M	VL	Koubba	M	M	L	Kour	MH	M	L
Mar Mama	H	M	VL	Masrah	H	M	L	Mehmarch	H	M	VL
Mrah Chdid	MH	M	L	Mrah El Ziyat	MH	M	L	Mrah El-Hajj	H	M	VL
Nahle El-Batroun	H	M	VL	Niha El-Batroun	E	M	VL	Ouajh El-Hajjar	M	M	L
Ouata Houb	H	M	VL	Qatnaaoun	M	M	L	Racha	E	M	VL
Rachana	MH	M	L	Rachkida	M	M	L	Ram El-Batroun	H	M	VL
Ras Nahhach	M	M	L	Selaata	M	M	L	Sghar	M	M	L
Smar Jbayl	M	M	L	Sourat El-Batroun	H	M	VL	Tannourine El-Faouqa	H	M	VL
Tannourine Et-Tahta	H	M	VL	Thoum	MH	M	L	Toula El-Batroun	MH	M	L
Zan	H	M	L								

## Zgharta

Municipality	11-Feb	12-Feb	13-Feb	Municipality	11-Feb	12-Feb	13-Feb	Municipality	11-Feb	12-Feb	13-Feb
Aachach	MH	M	M	Aalma	MH	M	ML	Aarde	MH	M	ML
Aintourine	MH	M	L	Arabet Qozhaya	H	M	L	Arde	MH	M	ML
Arjis	H	M	ML	Asnoun	MH	M	ML	Ayto	H	M	L
Basloukit	H	M	L	Bchannine	MH	M	ML	Besebeel	H	M	M
Bhairret Toula	E	M	L	Bnachee	H	M	L	Boussit	MH	M	ML
Danha	MH	M	ML	Daraiya Zgharta	MH	M	ML	Deir Jdeide	H	M	M
Ehden	H	M	L	Halan	MH	M	M	Hariq Zgharta	H	M	ML
Houakir	M	M	L	Hraiqis	M	M	L	laal	MH	M	L
Ijbaa	H	M	L	Karm Saddeh	MH	M	L	Kfarchakhna	MH	M	ML
Kfardlaqous	H	M	ML	Kfarfou	H	M	ML	Kfarhata Zgharta	H	M	ML
Kfarhoura	MH	M	ML	Kfarsghab	H	M	L	Kfaryachit	H	M	ML
Kfarzaina	H	M	M	Khaldiye	MH	M	ML	Mazraat Ajbeaa	H	M	ML
Mazraat Et-Teffah	H	M	L	Mazraat Jneid	MH	M	ML	Mejdlaiya Zgharta	H	M	ML
Merh Kfarsghab	MH	M	L	Miryata	MH	M	ML	Miziara	MH	M	L
Mzraat Kefraya	H	M	ML	Qorah Bach	H	M	ML	Rachiine	H	M	ML
Ras Kifa	MH	M	L	Sakhra	MH	M	L	Sebhel Zgharta	H	M	L
Serhel	H	M	L	Tallet Zgharta	MH	M	ML	Toula Zgharta	H	M	L
Zgharta	MH	M	ML								

## Minieh-Denniye

Municipality	11-Feb	12-Feb	13-Feb	Municipality	11-Feb	12-Feb	13-Feb	Municipality	11-Feb	12-Feb	13-Feb
Aasaymout	H	M	L	Aaymar	H	M	L	Aazki	H	M	L
Ain El-Tineh-Miniyeh	MH	M	L	Assoun	E	M	L	Bakhaaoun	H	M	L
Bchennata	H	M	L	Bechehhara	M	M	L	Beddawi	H	MH	M
Behouaita	H	M	L	Beit El Foqss	H	M	L	Beit Haouik	E	M	L
Beit Zoud	H	M	L	Bekaasafrine	H	M	L	Borj El Yahoudiyeh	MH	M	L
Bqarsouna	E	M	L	Btermaz	H	M	L	Debaael	H	M	L
Deir Ammar	MH	M	ML	Deir Nbouh	MH	M	L	Haouaret-Miniyeh	H	M	L
Haql el Azimeh	E	M	L	Harf El Siyad	H	M	L	Hazmiye-Miniyeh	H	M	L
Izal	H	M	L	Jarjour	M	M	L	Jayroun	H	M	L
Kahf El-Malloul	MH	M	L	Karm El-Moher	H	M	L	Kfar Binine	H	M	L
Kfarchalane	H	M	L	Kfarhabou	H	M	L	Kharroub-Miniyeh	E	M	L
Mazraat El-Kreme	H	M	L	Mazraat Ketrane	E	M	L	Merkebta	H	M	ML
Minyeh	MH	MH	M	Mrah El Sfirat	MH	M	L	Mrah Sraj	H	M	L
Mrebbine	E	M	L	Nabi Youcheaa	MH	M	L	Nemrine	H	M	L

Qarhaiya	H	M	L	Qarne	H	M	L	Qarsita	H	M	L
Qattineh-Miniyeh	E	M	L	Qemmamine	H	M	L	Qraine	H	M	L
Raouda-Aadoua	H	M	ML	Rihaniyet-Miniyeh	H	M	ML	Sfireh	H	M	L
Sir Ed-Danniyeh	E	M	L	Tarane	MH	M	L	Terbol-Miniyeh	MH	M	M
Zaghartaghriine	MH	M	L	Zouq Bhannine	H	MH	ML				

## Nabatiye

### Nabatiye

Municipality	11-Feb	12-Feb	13-Feb	Municipality	11-Feb	12-Feb	13-Feb	Municipality	11-Feb	12-Feb	13-Feb
Aabba	M	M	VL	Aazzi	M	M	VL	Adchit El-Chqif	M	M	VL
Ain Bou Swar	M	M	VL	Ain Kana	M	M	VL	Ali El-TaHER	M	M	VL
Ansar	M	M	VL	Arab Salim	M	M	VL	Arnoun	M	M	VL
Bfaroue	M	M	VL	Breyqaah	M	M	VL	Chargiyeh	M	M	VL
Choukine	M	ML	VL	Deir El Zahrani	M	M	VL	Doueir El-Nabatiyeh	M	M	VL
Habbouch El-Nabatiye	M	ML	VL	Hamra El-Nabatiyeh	M	M	VL	Harouf El-Nabatiyeh	M	M	VL
Hmaile	MH	M	VL	Houmin El Faouqa	M	M	VL	Houmin El Tahta	MH	M	VL
Jarjough	M	M	VL	Jbaah El-Nabatiyeh	M	M	VL	Jebchit	M	M	VL
Kfar Djal El-Nabatiy	M	M	VL	Kfar Remmane	M	M	VL	Kfar Sir	M	M	VL
Kfar Tebnit	M	ML	VL	Kfarfila	M	M	VL	Kfour El-Nabatieh	M	M	VL
Mayfadoun	M	M	VL	Mazraat Bsaffour	M	M	VL	Mazraat Chalbaal	M	M	VL
Mazraat Dmoul	M	M	VL	Mazraat El Khreibeh	MH	M	VL	Mazraat El-Bayad El-	M	ML	VL
Mazraat Kfarjaouz	M	ML	VL	Mazraat Qalaat Meiss	M	M	VL	Nabatiyeh El-Fawka	M	ML	VL
Nabatiyeh Et-Tahta	M	ML	VL	Namiriyyeh	M	M	VL	Qaaqaaiyet El Jisr	M	M	VL
Qossaibeh El-Nabatiy	M	M	VL	Roumine	MH	M	VL	Sarba El-Nabatieh	M	M	VL
Sir El-Gharbiyeh	M	M	VL	Toul	M	ML	VL	Yehmor El-Nabatiyeh	M	M	VL
Zaoutar El Charkiyeh	M	M	VL	Zaoutar El-Gharbiyeh	M	M	VL	Zebdine El-Nabatiyeh	M	ML	VL
Zefta	M	M	VL								

### Hasbaiya

Municipality	11-Feb	12-Feb	13-Feb	Municipality	11-Feb	12-Feb	13-Feb	Municipality	11-Feb	12-Feb	13-Feb
Ain Jarfa	M	M	VL	Abou Qamha	M	M	VL	Ain Qania	M	M	VL
Bourghos	M	M	VL	Chebaa	M	M	VL	Chouaya Hasbaya	M	M	VL
Dellafeh	M	M	VL	Fardiss Hasbaiya	M	M	VL	Hasbaya	M	M	VL
Hbariyeh	M	M	VL	Kaoukaba Hasbaiya	M	M	VL	Kfar Chouba	M	M	VL
Kfar Hamam	M	M	VL	Kfeir El-Zait	M	M	VL	Khalwat Hasbaya	M	M	VL
Khreibet Hasbaiya	M	M	VL	Majidiyeh Hasbaiya	M	M	VL	Marj Ez-Zhour (Haouc	M	M	VL
Meri	M	M	VL	Mimass	M	M	VL	Rachaiya El-Fokhar	M	M	VL
Salaiyeb	M	M	VL								

### Marjayoun

Municipality	11-Feb	12-Feb	13-Feb	Municipality	11-Feb	12-Feb	13-Feb	Municipality	11-Feb	12-Feb	13-Feb
Aalmane Marjaayoun	M	M	VL	Aamra	M	M	VL	Adayseh Marjaayoun	M	M	VL
Adchit El-Koussair	M	M	VL	Ain Arab Marjaayoun	M	M	VL	Bani Haiyann	M	M	VL
Blatt Marjaayoun	M	M	VL	Blida	M	M	VL	Borj El-Moulouk	M	M	VL
Boueyda Marjaayoun	M	M	VL	Deir Mimass	M	M	VL	Deir Siriane	M	M	VL
Dibbine	M	M	VL	Ebel El Saqi	M	M	VL	Houla	M	M	VL
Houra	M	M	VL	Kfar Kila	M	M	VL	Khiam Marjaayoun	M	M	VL

Klayaa	M	M	VL	Majdel Selem	M	M	VL	Marjaayoun	M	M	VL
Markaba	M	M	VL	Mays El-Jabal	M	M	VL	Mazraat Doumiat	M	ML	VL
Mazraat Sarada	M	M	VL	Mhaibib	M	M	VL	Qabrikha	M	M	VL
Qantara	M	M	VL	Rab El-Thalathine	M	M	VL	Saouaneh Marjayoun	M	M	VL
Talloussa	M	M	VL	Taybeh Matjaayoun	M	M	VL	Touline	M	M	VL

## Bent Jbail

Municipality	11-Feb	12-Feb	13-Feb	Municipality	11-Feb	12-Feb	13-Feb	Municipality	11-Feb	12-Feb	13-Feb
Ain-Ebel	M	L	VL	Aitaroun	M	M	VL	Aynata Bint Jbeil	M	ML	VL
Ayta El-Chaeb	M	ML	VL	Ayta El-Jabal	M	M	VL	Beit Lif	M	M	VL
Beit Yahoun	M	ML	VL	Bint Jbeil	M	L	VL	Borj Qalaway	M	M	VL
Braachit	M	M	VL	Chakra	M	M	VL	Debel	M	ML	VL
Deir Antar	M	M	VL	Froun	M	M	VL	Ghandouriyeh Bint Jb	M	M	VL
Hanine	M	L	VL	Hariss	M	M	VL	Hdatha	M	ML	VL
Jmeymeh	M	M	VL	Kafra Bint Jbeil	M	M	VL	Kfar Dounine	M	M	VL
Khirbet Selm	M	M	VL	Kounine	M	M	VL	Maroun El Ras	M	M	VL
Qalaway	M	M	VL	Qaouzah	M	M	VL	Qatmoun	M	L	VL
Ramya Bint Jbeil	M	ML	VL	Rchaf	M	ML	VL	Rmeich	M	L	VL
Safad Al Battikh	M	M	VL	Salhaneh	M	M	VL	Serbine	M	ML	VL
Sultanieh Bint Jbeil	M	ML	VL	Tibnine	M	M	VL	Tiri	M	L	VL
Yaroun	M	L	VL	Yater	M	M	VL				

## Mont Liban

### Jbail

Municipality	11-Feb	12-Feb	13-Feb	Municipality	11-Feb	12-Feb	13-Feb	Municipality	11-Feb	12-Feb	13-Feb
Aabeydat	MH	M	L	Aalita	M	M	L	Aamchit	M	M	ML
Aarab El-Lahib	H	M	VL	Aarasta	H	M	VL	Adonis Jbeil	M	M	L
Afqa Jbeil	H	M	VL	Ain El Delbeh Jbeil	MH	M	VL	Ain El-Ghouyba	H	M	VL
Ain Jrain	H	M	VL	Ain Kfah	MH	M	L	Almat El Chemaliyat	MH	M	VL
Almat El-Jenoubiya	H	M	VL	Aqoura	H	M	VL	Bayzoun	MH	M	L
Bchille Jbeil	MH	M	L	Bechtida	M	M	L	Behdaydat	M	M	L
Beit Habbaq	MH	M	L	Bejjeh	MH	M	L	Bekhaaz	MH	M	L
Berbara Jbeil	MH	M	L	Bintael	M	M	L	Birket Hjoula	MH	M	L
Blatt Jbeil	M	M	L	Boulhos	MH	M	VL	Breyj Jbeil	M	M	L
Chamat	MH	M	L	Chikhane	MH	M	L	Chmout	MH	M	L
Eddeh Jbeil	M	M	L	Ehmej	H	M	VL	Fatre	M	M	L
Ferhet	H	M	L	Fghal	MH	M	L	Frat	MH	M	VL
Ghabat	H	M	VL	Ghalboun	MH	M	L	Gharzouz	MH	M	L
Ghofrine	MH	M	L	Habil	H	M	L	Halate	M	M	L
Haqel	H	M	L	Hbaline	M	M	L	Hboub	M	M	L
Hdeine	H	M	VL	Hema Er-Rehban	H	M	VL	Hema Mar Maroun Aann	M	M	VL
Hjoula	MH	M	L	Hosrayel	MH	M	L	Hsarat	M	M	L
Hsoun	MH	M	L	Jaj	H	M	VL	Janne	E	M	VL
Jbeil	M	M	ML	Jeddeyel Jbeil	MH	M	L	Jlisse	M	M	L
Jouret El-Qattine	MH	M	L	Kfar Baal Annaya	MH	M	L	Kfar Kidde	MH	M	L
Kfar Kouas	M	M	L	Kfar Mashoun	M	M	ML	Kfoun	M	M	L

Kharbe Jbeil	H	M	L	Laqlouq	H	M	VL	Lassa	H	M	VL
Lehfed	H	M	VL	Maad	MH	M	L	Mar Sarkis	H	M	VL
Mastita	M	M	ML	Mayfouq	H	M	VL	Mazraat El Siyad	H	M	VL
Mazraat El-Maaden	MH	M	VL	Mechane	MH	M	L	Mechmech Jbeil	H	M	VL
Mehrin	M	M	L	Mejdel El-Akoura	MH	M	VL	Mghayreh Jbeil	H	M	VL
Mounsef	MH	M	L	Nahr Ibrahim	M	M	ML	Qahmez	H	M	VL
Qartaba	H	M	VL	Qartaboun	M	M	ML	Qattara Jbeil	H	M	VL
Qorqraya	MH	M	VL	Ramout	MH	M	L	Ras Osta	MH	M	L
Rihane Jbeil	M	M	L	Sakiet El-Khayt	MH	M	L	Saqi Richmaya	H	M	VL
Sebrine	MH	M	L	Seraita	H	M	VL	Souane Jbeil	M	M	VL
Tadmor	H	M	VL	Tartej	H	M	VL	Torzaiya	H	M	L
Yanouh Jbeil	H	M	VL	Zibidine Jbeil	M	M	L				

## El Metn

Municipality	11-Feb	12-Feb	13-Feb	Municipality	11-Feb	12-Feb	13-Feb	Municipality	11-Feb	12-Feb	13-Feb
Aain El-Qabu	MH	M	VL	Aain El-Qach	M	M	L	Aain El-Teffaha	MH	M	L
Aain el-Safssaf El-M	MH	M	L	Abou Mizane	MH	M	L	Ain Aar	M	M	ML
Ain Alaq	M	M	L	Ain El-Kharroube	M	M	L	Ain El-Sendiane	MH	M	L
Ain El-Zeitoune	MH	M	L	Ain Saadeh	M	M	L	Aintoura El-Matn	M	M	VL
Amaret Chalhoub	M	M	ML	Antelias	M	M	ML	Atchaneh	M	M	L
Ayroun	M	M	L	Baabdat	MH	M	L	Baouchariyeh	M	M	ML
Baskinta	M	M	VL	Beit Chabab	MH	M	L	Beit El-Charar	M	M	ML
Beit El-Kekko	M	M	ML	Beit Mery	M	M	L	Bhersaf	M	M	L
Bikfaya	M	M	L	Biyakout	M	M	ML	Bnabil	MH	M	L
Bourj Hammoud	M	M	ML	Bqennaya	M	M	L	Broummana El-Matn	M	M	L
Bsalim	M	M	L	Bsifrine	MH	M	L	Bteghrine	MH	M	L
Chaouiye	M	M	L	Chouaya El-Matn	M	M	L	Choueir	MH	M	L
Chrine	MH	M	L	Dahr El Sawan El-Mat	M	M	L	Daychouniyeh	M	M	L
Dbayeh	M	M	ML	Deir Chamra	MH	M	L	Deir Mar Abda el Mch	M	M	L
Deir Mar Roukouz	M	M	ML	Deir Tamiche	M	M	L	Dik El-Mehdi	M	M	L
Dikwaneh	M	M	ML	Douar El-Matn	MH	M	L	Fanar	M	M	L
Fraike	M	M	L	Haret El-Ballaneh	M	M	L	Hbous	M	M	ML
Himlaya	M	M	L	Jal El Did	M	M	ML	Jdeideh El-Metn	M	M	ML
Jouar El-Matn	MH	M	L	Jouret El-Ballout	M	M	L	Kaaqour	MH	M	L
Kfar Aaqab	MH	M	L	Kfertay El-Matn	M	M	VL	Khenchara	MH	M	L
Khillet El-Mtain	MH	M	L	Konnabat Broummana	M	M	L	Konnabat Salima	MH	M	L
Machraah El-Matn	M	M	VL	Majdel Tarchich	M	M	VL	Majzoub	M	M	L
Mansouriyeh El-Metn	M	M	L	Mar Boutros Karm Et-	MH	M	L	Mar Chaya et Mzekke	M	M	L
Mar Moussa Ed-Douar	MH	M	L	Marjaba	MH	ML	L	Masqa	M	M	L
Mayasse	MH	M	L	Mazraat Deir Aoukar	M	M	ML	Mazraat El-Hadirat	M	M	L
Mazraat Yachouh	M	M	ML	Mchikha	M	M	L	Menqlet Mezher	M	M	ML
Mhaydseh Matn	M	M	L	Mkalles	M	M	ML	Mrouj	M	ML	L
Mtain	MH	M	VL	Mtaylor	M	M	L	Nabay	M	M	L
Naccache	M	M	ML	Ouadi Chahine	MH	M	L	Ouadi El-Karm El-Mat	MH	M	L
Ouata El-Mrouj	M	M	L	Ouyoun El-Matn	MH	M	L	Qornet Chehwan	M	M	L
Qornet El-Hamra	M	M	L	Roumieh	M	M	L	Sfeilet Bikfaya	MH	M	L
Sinn El-Fil	M	M	ML	Zabbougha	MH	M	L	Zalqa	M	M	ML

Zarouon	MH	M	L	Zekrite	M	M	L	Zighrine El-Matn	M	M	L
Zouk El-Khrab	M	M	ML								

## Chouf

Municipality	11-Feb	12-Feb	13-Feb	Municipality	11-Feb	12-Feb	13-Feb	Municipality	11-Feb	12-Feb	13-Feb
Aalmane El-Chouf	MH	M	VL	Aammq El-Chouf	M	M	VL	Ain Ouzein	MH	M	VL
Ain Qani	M	M	VL	Ain Zhalta	MH	M	VL	Ainbal	M	M	VL
Amatour	M	M	VL	Anout	M	M	VL	Atrine	M	M	VL
Baadarane	MH	ML	VL	Baaqline	M	M	VL	Baasir	M	M	VL
Barja	M	M	VL	Barouk	MH	M	VL	Bater	M	M	VL
Batloun	MH	ML	VL	Bayqoun	M	M	VL	Bchetfine	M	M	VL
Beiteddine	M	M	VL	Benouati Ech-Chouf	M	M	VL	Berjein	M	M	VL
Bireh et Mtalleh	M	M	VL	Biret El-Chouf	MH	M	VL	Bkechtine Ouel Mchei	M	M	VL
Bkifa El-Chouf	M	M	VL	Botme	M	M	VL	Bqaiaa Ech-Chouf	M	M	VL
Bsaba El-Chouf	M	M	VL	Chammis El-Chouf	M	M	VL	Chehim	M	M	VL
Chemaarine	M	M	VL	Chourit	M	M	VL	Daher El-Chouf	M	M	VL
Dalhoun	M	M	VL	Damour	M	M	VL	Daraya El-Chouf	M	M	VL
Deir El-Moukhalles	MH	M	VL	Deir Baba	M	M	VL	Deir Dourit	M	M	VL
Deir El-Qamar	M	M	VL	Deir Kouche	M	M	VL	Dibbieh	M	M	VL
Dmit	M	M	VL	Fouara Jaafar	M	M	VL	Fraidis El-Chouf	M	M	VL
Ghabet Jaafar	M	M	VL	Gharife	M	M	VL	Haret Jandal	M	M	VL
Hasrout	M	M	VL	Jadra	MH	M	VL	Jahlieh	M	M	VL
Jbeih El-Chouf	M	M	VL	Jdeidet El-Chouf	MH	ML	VL	Jiyeh	M	M	VL
Jleilyeh	M	M	VL	Jmailiyeh	M	M	VL	Joun	M	M	VL
Kahlounie El-Chouf	MH	ML	VL	Ketermaya	M	M	VL	Kfar Faqoud	M	M	VL
Kfar Hamal	M	M	VL	Kfar Him	M	M	VL	Kfar Katra	M	M	VL
Kfar Niss	M	M	VL	Kfar hay	MH	M	VL	Kfarnabrakh	M	ML	VL
Khirbet Bisri	MH	M	VL	Knayse El-Chouf	M	M	VL	Maaniyeh	M	M	VL
Maasser Beiteddine	M	ML	VL	Maasser El-Chouf	M	M	VL	Majdalouna	M	M	VL
Majdel El-Meouch	M	M	VL	Mazboud	M	M	VL	Mazmoura	M	M	VL
Mazraat El Chouf	M	M	VL	Mazraat El Daher	M	M	VL	Mazraat El-Douair	M	M	VL
Mechref	M	M	VL	Mghairie	M	M	VL	Mghayrie El-Chouf	M	M	VL
Moukhtara	MH	M	VL	Mrusti	M	M	VL	Mtolle	M	M	VL
Naameh	M	M	L	Niha El-Chouf	M	M	VL	Ouadi Abou Youssef	M	M	VL
Ouadi Ed-Deir	M	M	VL	Ouadi El-Sit	MH	M	VL	Ouadi bnehlay	M	M	VL
Qraibeh	M	M	VL	Qreiaa	M	M	VL	Rmayle El-Chouf	MH	M	VL
Semqaniyeh	M	ML	VL	Sibline	M	M	VL	Sirjbeil	M	M	VL
Warhanieh	M	M	VL	Werdaniyeh	M	M	VL	Zaarourieh	M	M	VL

## Baabda

Municipality	11-Feb	12-Feb	13-Feb	Municipality	11-Feb	12-Feb	13-Feb	Municipality	11-Feb	12-Feb	13-Feb
Abadiyeh	M	M	L	Ain Mouaffaq	M	M	L	Araiya	M	M	L
Arbaniyeh	MH	M	L	Arsoun	MH	M	L	Baabda	M	M	ML
Baalchmey	M	M	ML	Bmaryam	MH	M	L	Bourj El-Brajneh	M	M	ML
Boutchay	M	M	L	Bsaba Baabda	M	M	L	Btekhney	MH	M	L
Btibyat	H	M	L	Bzbedine	MH	M	L	Chbeniyeh	M	M	L
Chiyah	M	M	ML	Chmeisset Baabda	MH	M	L	Chouit	MH	M	L
Deir El-harf	MH	M	L	Deir Khouna	MH	M	L	Dlaybeh	MH	M	L

Falougha	M	M	L	Furn El-Chebbak	M	M	ML	Hadath Beyrouth	M	M	ML
Halaliyeh Baabda	MH	M	L	Hammana	M	M	L	Haret El Sett	M	M	L
Haret Hamze	M	M	L	Haret Hreik	M	M	ML	Hasbaiya El-Metn	MH	M	L
Jouar El-Hoz	MH	M	VL	Jouret Arsoun	MH	M	L	Kfar Chima	M	M	ML
Kfar Selouane	M	M	VL	Khalouat Baabda	M	M	L	Kneisset Baabda	MH	M	L
Laylakeh	M	M	ML	Louayzeh Baabda	M	M	L	Merdache	M	M	ML
Mzairaa Baabda	MH	M	L	Ouadi Chahrour El Ol	M	M	L	Ouadi Chahrour El So	M	M	L
Qalaa Baabda	MH	M	L	Qhraybe Baabda	MH	M	L	Qobbayaa	M	M	L
Qornayel	MH	M	L	Qortada	MH	M	L	Qrayeh Baabda	M	M	L
Qsaibeh Baabda	M	M	L	Qtale Baabda	MH	M	L	Ras El Metn	MH	M	L
Ras El-Haref	M	M	L	Rouayset El-Ballout	MH	M	L	Salima Baabda	MH	M	L
Tahouitat El Ghadir	M	M	ML	Tarchich	M	M	VL	Zandouqa	MH	M	L

## Aley

Municipality	11-Feb	12-Feb	13-Feb	Municipality	11-Feb	12-Feb	13-Feb	Municipality	11-Feb	12-Feb	13-Feb
Abey	M	M	VL	Aghmid	MH	M	L	Ain Dara	MH	M	L
Ain Drafil	M	M	L	Ain El Halazoun	MH	M	ML	Ain El-Rmmaneh	MH	M	L
Ain Jedideh	M	M	ML	Ain Ksour	M	M	L	Ain Onoub	M	M	L
Ain Traz	M	M	VL	Ainab	M	M	L	Aley	M	M	ML
Aramoun	M	M	L	Aytat	M	M	L	Azouniyeh	M	M	L
Baawerta	M	M	VL	Badghan Oua Wadi Bad	M	M	ML	Bassatine	M	M	L
Bayssour	M	M	L	Bchamoun	M	M	L	Bdadoun	M	M	L
Behouara	MH	M	L	Bennay	M	M	VL	Bhamdoun El-Dayaa	M	M	ML
Bhamdoun El-Mhatta	M	M	ML	Bkhechey	MH	M	ML	Bleibel	M	M	L
Bmakine	M	M	ML	Bmehray	MH	M	L	Bouzrid	M	M	VL
Bserrine	MH	M	ML	Bsous	M	M	L	Btalloun	M	M	ML
Btater	M	M	ML	Chanay	MH	M	ML	Charoun	M	M	ML
Chartoun	M	M	L	Chemlane	M	M	L	Choueifat El-Aamrous	M	M	ML
Choueifat El-Oumara	M	M	ML	Choueifat El-Quoubbe	M	M	ML	Dakkoun	M	M	VL
Deir Qoubel	M	M	L	Dfoun	M	M	L	Douair El Remmaneh	M	M	L
Ghaboun	MH	M	L	Habramoun	MH	M	L	Homs Oua Hama	M	M	L
Houmal	M	M	L	Jisr El Qadi	M	M	VL	Kehaleh	M	M	L
Keyfoun	M	M	ML	Kfar Aamey	M	M	L	Kommatyeh	M	M	L
Maasrati	MH	M	L	Majdel Baana	M	M	ML	Mansourieh et Ain El	M	M	ML
Mazraat El-Nahr	MH	M	L	Mchakhte	H	M	L	Mecherfeh	M	M	L
Mejdlaya	M	M	L	Mrayjat	M	M	VL	Ramliyah	M	M	VL
Rechmaya	MH	M	VL	Rejmeh	MH	M	L	Remhala	M	M	L
Rouaysset El Neemane	M	M	L	Saoufar	M	M	ML	Selfaya	M	M	VL
Sirhmoul	M	M	L	Souq El Ghareb	M	M	L	Taazanieh	M	M	ML

## Kesrouane

Municipality	11-Feb	12-Feb	13-Feb	Municipality	11-Feb	12-Feb	13-Feb	Municipality	11-Feb	12-Feb	13-Feb
Achkout	M	M	L	Adma Oua Dafneh	M	M	L	Ain Ed-Delbe Kesroua	MH	M	VL
Ain El-Rihane	M	M	L	Aintoura Kesrouane	M	M	L	Ajaltoun	M	M	L
Akaybeh Kesrouane	M	M	ML	Aramoun Kesrouane	M	M	L	Azra ouel Ozor	M	M	L
Ballouneh	MH	M	L	Batha	M	M	VL	Bekaatat Achkout	M	M	L
Bekaatat Kanaan	MH	M	VL	Bizhel	M	M	L	Bouar	M	M	L
Bqaatouta	M	M	VL	Bqaq Ed-Dine	M	M	L	Bzommar	M	M	L

Chahtoul	M	M	L	Chnaniir	M	M	L	Chouan	MH	M	VL
Daraya Kesrouane	MH	M	L	Darououn	M	M	L	Deir Baqlouch	M	M	L
Dlebta	M	M	L	Eghbeh	MH	M	VL	Faraya	MH	M	VL
Fatka	M	M	L	Feytroun	MH	M	L	Ghazir	M	M	L
Ghbaleh Kesrouane	M	M	L	Ghedrass	M	M	L	Ghosta	M	M	L
Ghynéh	M	M	L	Harharaya w Kattine	M	M	L	Harissa Kesrouane	M	M	L
Hayata	M	M	L	Hosein	M	M	L	Hrajel	MH	M	VL
Jdeideh Ghazir	M	M	L	Jeita	M	M	L	Jounieh Ghadir	M	M	L
Jounieh Haret Sakhr	M	M	ML	Jounieh Salel Alma	M	M	L	Jounieh Sarba	M	M	ML
Jouret Bedrane	M	M	L	Jouret Mhad	MH	M	L	Jouret Termos	M	M	L
Kfar Debiane	MH	M	VL	Kfar Tay Kesrouane	MH	M	VL	Kfar Yassine	M	M	ML
Kfour Kesrouane	M	M	L	Kharayeb Nahr Ibrahi	M	M	L	Klayaat Kesrouane	MH	M	L
Maarab	M	M	L	Maaysra Kesrouane	M	M	L	Mayrouba	MH	M	VL
Mazraat Er-Ras	M	M	L	Mazraat Mrah El-Mir	MH	M	L	Mchaa El Ftouh	H	M	VL
Mchaa Faraya	H	M	VL	Mchaa Kfar Dibiane	H	M	VL	Mghaer	MH	M	VL
Mradiyah	M	M	L	Nahr Ed-Dahab	H	M	VL	Nammoura Kesrouane	M	M	L
Ouata El Jaouz	MH	M	L	Ouata Sillam	M	M	ML	Raachine	MH	M	L
Rayfoun	M	M	L	Safra Kesrouane	M	M	L	Shayle Kesrouane	M	M	L
Tabarja	M	M	L	Yahchouch	MH	M	L	Zaaytreh	M	M	L
Zeytoun	M	M	L	Zouk Mikael	M	M	ML	Zouk Mosbeh	M	M	ML

## Baalbek\_Hermel

### Baalbek

Municipality	11-Feb	12-Feb	13-Feb	Municipality	11-Feb	12-Feb	13-Feb	Municipality	11-Feb	12-Feb	13-Feb
Aadous	H	MH	VL	Aamchki	H	M	VL	Aarsal	H	M	VL
Ain Baalbek	E	H	VL	Ain Bourday	H	M	VL	Ain El-Benye	H	M	VL
Ain El-Jaouz Baalbek	H	M	VL	Ain El-Siya Chadoura	MH	M	VL	Al Khodr Baalbek	H	M	VL
Al Nabi Chit	H	M	VL	Aynata Baalbek	H	M	VL	Baalbek	H	MH	VL
Bachwat	H	M	VL	Barqa	H	M	VL	Bednayel Baalbak	H	MH	VL
Beit Chama	E	M	VL	Bijjaje	E	E	VL	Bouday	H	M	VL
Brital	H	M	VL	Btadi	MH	M	VL	Chaat	H	MH	VL
Chaibe	MH	M	VL	Chlifa	MH	M	VL	Chmestar	E	M	VL
Dar El-Oussa	MH	M	VL	Deir El-Ahmar	MH	M	VL	Deir Mar Maroun Baal	E	M	L
Douris	H	MH	VL	Fakiha	E	H	L	Hadath Baalbek	H	M	VL
Ham	H	M	VL	Haour Taala	H	M	VL	Hizzine	H	M	VL
Hlebta	H	H	L	Hosh Barada	H	M	VL	Hosh El Dahab	H	M	VL
Hosh El Snid	H	M	VL	Hosh El-Nabi	H	M	VL	Hosh El-Rafiq	H	M	VL
Hosh Tal Safiya	H	MH	VL	Hrebta	H	H	VL	laat	MH	M	VL
Jebaa	E	M	VL	Jenta	MH	M	VL	Kfar Dabach	H	M	VL
Kfar Dane	H	M	VL	Khraibeh El-Hermel	E	H	VL	Khreibet Baalbek	H	M	VL
Kneisset Baalbek	H	M	VL	Labueh	E	MH	VL	Maarboun	H	M	VL
Majdaloun	H	M	VL	Maqneh	H	MH	VL	Mazraat Beit Mcheik	H	M	VL
Misraya	H	M	VL	Moqraq	H	MH	VL	Nabha El-Damdoum	H	M	L
Nabi Chbay	H	M	VL	Nabi Osman	E	H	VL	Nahleh baalbek	H	MH	VL
Ouadi El-Oss	H	H	L	Qaa Baayoun	H	H	L	Qaa Jouar Maqiye	H	M	L
Qaa Ouadi El-Khanzir	H	M	L	Qah Baalbek	E	E	L	Qarha Baalbek	H	MH	VL



Qsarnaba	H	M	VL	Ram Baalbek	H	M	VL	Ras Baalbek El Sahl	E	E	L
Ras Baalbek El-Charq	H	MH	L	Riha	H	M	VL	Saaide	H	M	VL
Sbouba	E	H	VL	Seriine El-Tahta	H	M	VL	Slouqi	H	MH	VL
Taiba Baalbek	H	M	VL	Talia	H	M	VL	Taraiya	E	M	VL
Temnin El Fawqa	H	M	VL	Temnin El-Tahta	H	M	VL	Tfail	H	M	VL
Yahfoufa	MH	M	VL	Yammouneh	H	M	VL	Younine	H	MH	VL
Zboud	H	H	L								

## Hermel

Municipality	11-Feb	12-Feb	13-Feb	Municipality	11-Feb	12-Feb	13-Feb	Municipality	11-Feb	12-Feb	13-Feb
Charbine El-Hermel	MH	M	L	Hermel Jbab	E	MH	ML	Hermel	H	M	L
Maaysra El-Hermel	E	H	L	Michaa Mrjhine	H	M	L	Ouadi Faara	H	MH	L
Ras Baalbek - Ouadi	E	E	L	Ras Baalbek El Gharb	E	MH	L	Zighrine	H	MH	L

## Akkar

### Akkar

Municipality	11-Feb	12-Feb	13-Feb	Municipality	11-Feb	12-Feb	13-Feb	Municipality	11-Feb	12-Feb	13-Feb
Aain Tinta	M	M	ML	Aaiyat	M	M	L	Aakkar El-Aatiqa	MH	M	L
Aamar Akkar	H	M	M	Aamar El Baykat	M	M	ML	Aamayer	M	M	L
Aamriyet Akkar	M	M	ML	Aandqet	M	M	L	Aarmeh	M	M	L
Aarqa	MH	M	M	Aawaynat	M	M	L	Aayoun Akkar	M	M	ML
Abboudiye	M	M	ML	Ain El-Zeit	M	M	ML	Ain Yaaqoub	MH	M	L
Akroum	M	M	L	Aridet Cheikh Zennad	H	M	M	Baldeh w Mazraat Bal	M	M	ML
Barcha	M	M	ML	Bardeh	M	M	L	Bebnine	H	M	ML
Beino	M	M	L	Beit Ayoub	M	M	M	Beit El-Haouch	MH	M	ML
Beit Mellat	M	M	ML	Beit Younes	M	M	L	Berbara Akkar	M	M	ML
Berqayel	H	M	ML	Bezbina	MH	M	L	Bireh Akkar	M	M	L
Borj	M	M	ML	Bqerezla	M	M	ML	Bzal	H	M	L
Chane	M	M	L	Chaqdouf	MH	M	L	Charbila	M	M	ML
Cheikh Mohammad	M	M	ML	Cheikh Taba Es-Sahl	MH	M	M	Cheikh Taba	M	M	ML
Cheikh Zennad	MH	M	M	Cheikhlar	M	M	L	Chir Hmairine	MH	M	M
Daghle	M	M	L	Dahr Laissine	M	M	ML	Darine	MH	M	M
Dawra	M	M	L	Dawsa w Baghdadi	M	M	ML	Dayret Nahr El-Kabir	MH	M	L
Deir Dalloum	H	M	M	Deir Jennine	M	M	ML	Denbou	M	M	L
Dibbabiyyeh	M	M	ML	Douair Aadwiyeh	M	M	ML	Fassikine	M	M	L
Fnaydek	H	M	L	Fraydes Akkar	M	M	L	Ghazayle	M	M	ML
Habchit	MH	M	L	Hakour	M	M	L	Halba	M	M	ML
Haouchab	M	M	ML	Hayssat	MH	M	M	Haytla	M	M	ML
Hayzouq	M	M	L	Hedd	M	M	ML	Hmaira Akkar	MH	M	ML
Hmaiss Akkar	M	M	ML	Hnaider	M	M	L	Hokr Ed-Dahri	MH	M	M
Hokr Etti	M	M	ML	Hokr Jouret Srar	MH	M	M	Houaich	M	M	L
Hrar	H	M	L	Idbil	M	M	L	Ilal	M	M	ML
Janine	M	M	ML	Jdeidet El-Joumeh	M	M	ML	Jdeidet El-Kaiteh	H	M	ML
Jebroyel	M	M	ML	Kafr	MH	M	L	Kafr	M	M	ML
Karm Asfour	M	M	L	Kfar Melki Akkar	H	M	M	Kfar Noun	M	M	L
Kfarharra	M	M	M	Khalsa	M	M	L	Kharnoubet Akkar	M	M	ML

Khirbet Daoud Aakkar	M	M	L	Khirbet El Remmane	M	M	L	Khirbet Shar	M	M	ML
Khoreybet El-Jindi	M	M	ML	Khreibet Aakkar	M	M	L	Kneisset Aakkar	MH	M	M
Kneisset Hnaider	M	M	L	Knisse	M	M	ML	Kroum El-Aarab	M	M	L
Kwachra	M	M	ML	Kweykhat	M	M	ML	Machta Hammoud	M	M	L
Majdala	MH	M	ML	Majdel Akkar	M	M	ML	Mar Touma	H	M	ML
Marlaya Melhem	H	M	M	Mashha	M	M	ML	Massoudiye	MH	M	M
Mazraat Beit Ghattas	M	M	ML	Mazraat En-Nahriye	M	M	L	Mechmech	H	M	L
Memneh	MH	M	L	Mhammara	H	M	M	Mighraq Aakkar	MH	M	M
Minyara	M	M	ML	Moqayteh	H	M	M	Mounjez	M	M	L
Msalla	M	M	ML	Mzeihmeh	M	M	ML	Nfaiseh	M	M	L
Noura Et-Tahta	M	M	ML	Ouadi El-Haour	M	M	ML	Ouadi El-Jamous	H	M	ML
Ouyoun El-Ghizlane	H	M	ML	Qaabarine	H	M	M	Qabaait	H	M	L
Qachlaq	M	M	ML	Qantara Aakkar	M	M	ML	Qarha Aakkar	M	M	L
Qarqaf	H	M	ML	Qboula	M	M	ML	Qleiaat Aakkar	H	M	M
Qloud El-Baqie	M	M	L	Qobaiyat Aakkar	MH	M	L	Qobbat Chamrat	H	M	M
Qorayat	M	M	L	Qornet Aakkar	M	M	ML	Qsair Aakkar	M	M	L
Rahbe	M	M	L	Rihaniyet Aakkar	M	M	ML	Rmah	M	M	L
Rmoul	H	M	M	Saadine	MH	M	M	Sadaqa	H	M	ML
Saidnaya	M	M	ML	Sammouniye	MH	M	M	Sayssouq	M	M	L
Semmaqiye	MH	M	M	Semmaqli	H	M	M	Sfinet El-Dreib	M	M	ML
Sfinet El-Qaitaa	H	M	L	Sindyanet Zeidane	M	M	ML	Souaisset Aakkar	M	M	ML
Srar	M	M	ML	Tal Abbas El Gharby	M	M	M	Tal Abbas El-Chargy	MH	M	M
Tal Biret	MH	M	M	Tal Hmayra	MH	M	M	Tal Maayan Tal Kiri	MH	M	M
Tal Sibel	H	M	M	Tallet Chattaha	M	M	L	Tikrit	M	M	ML
Tleil	M	M	ML	Tshea	MH	M	L	Zawarib	M	M	L
Zouq El Hosniyeh	MH	M	L	Zouq El-Haddara	MH	M	L	Zouq El-Hbalsa	MH	M	L
Zouq El-Moqachrine	H	M	ML								

## Sud

### Sour

Municipality	11-Feb	12-Feb	13-Feb	Municipality	11-Feb	12-Feb	13-Feb	Municipality	11-Feb	12-Feb	13-Feb
Aaiyeh	M	M	VL	Aalma El-Chaab	M	M	L	Aaytit	M	M	VL
Abbassiyeh Sour	M	M	VL	Abou Chech	M	M	L	Ain Abou Abdallah	M	M	VL
Ain Baal	M	M	L	Arzoun	M	M	VL	Aziyeh	M	M	L
Baflaya	M	M	VL	Barich	M	M	VL	Batouliyah	M	M	L
Bayad	M	M	VL	Bazouriyeh	M	M	VL	Bediass	M	M	VL
Bestiyat	M	M	VL	Borj El Chemali	M	M	L	Borj En-Naqoura	M	M	L
Borj Rahhal	M	M	VL	Boustane	M	M	VL	Btaychiyah	M	M	L
Chaaitiye	M	M	VL	Chameh	M	M	L	Chehabiye	M	M	VL
Chehour	M	M	VL	Chihine	M	M	VL	Debaal Sour	M	M	VL
Deir Amess	M	M	VL	Deir Kifa	M	M	VL	Deir Qanoun El-Ain	M	M	L
Deir Qanoun El-Naher	M	M	VL	Derdghaiya	M	M	VL	Dhayra	M	M	L
Halloussiyeh	M	M	VL	Hamoul	M	M	L	Hanaouey	M	M	VL
Henniye	M	M	L	Hmairi Sour	M	M	VL	Iskandarouna Sour	M	M	L
Jbal El Botom	M	M	VL	Jebbin	M	M	L	Jennata	M	M	VL
Jijim	MH	M	L	Jouaiya	M	M	VL	Kneisset Sour	M	M	VL

Maarake	M	M	VL	Maaroub	M	M	VL	Majadel	M	M	VL
Majdalzoun	M	M	L	Mansouri Sour	M	M	L	Marnba	M	M	VL
Marouahine	M	M	VL	Mazraat El-Zalloutiy	M	M	L	Mazraat Mechref	M	M	VL
Mazraat Tayr Semhat	M	M	VL	Mheilib	M	M	L	Neffakhiyeh	M	M	VL
Niha Sour	M	M	VL	Ouadi Jilo	M	M	VL	Qana	M	M	VL
Qolaieh Sour	M	M	L	Rechknany	M	M	VL	Rmadiyah	M	M	VL
Selha Sour	M	M	VL	Siddiqine	M	M	VL	Sour	M	M	L
Srifa	M	M	VL	Tayr Debbe	M	M	VL	Tayr Felsay	M	M	VL
Tayr Harfa	M	M	L	Touayri	M	M	VL	Toura	M	M	VL
Yanouh Sour	M	M	VL	Yarine	M	M	L	Zebqine	M	M	VL

## Saida

Municipality	11-Feb	12-Feb	13-Feb	Municipality	11-Feb	12-Feb	13-Feb	Municipality	11-Feb	12-Feb	13-Feb
Aanqoun	MH	M	VL	Aaqtanit	MH	M	VL	Aarab Ej-Jall	MH	M	VL
Aarab Tabbaya	MH	M	VL	Abra Saida	MH	M	VL	Adloun	M	M	VL
Adousiyeh	MH	M	VL	Ain-El-Deleb	MH	M	VL	Arzai	M	M	VL
Babliyah	M	M	VL	Barty	MH	M	VL	Bissariyeh	MH	M	VL
Bnaafoul	MH	M	VL	Bqosta	M	M	VL	Bramiy	MH	M	VL
Daoudiyeh	MH	M	VL	Dareb El-Sim	MH	M	VL	Erkay	MH	M	VL
Ghassanieh	M	M	VL	Ghazieh	H	M	VL	Hajjeh	M	M	VL
Haret Saida	MH	M	VL	Hartiyeh	M	M	VL	Hlaliye Saida	MH	M	VL
Insariyat	M	M	VL	Jazira Saida	M	M	VL	Kafar Bit	MH	M	VL
Kaoutariyet El-Siyad	M	M	VL	Kfar Chellal	MH	M	VL	Kfar Hatta Saida	MH	M	VL
Kfar Milke Saida	MH	M	VL	Khartoum	M	M	VL	Khaziz	M	M	VL
Khirbet Ed-Douair Sa	M	M	VL	Khirbet El-Bassal	MH	M	VL	Khrayeb Saida	M	M	VL
Loubieh	M	M	VL	Maghdouche	MH	M	VL	Majdelyoun	MH	M	VL
Matariyet El-Choumar	M	M	VL	Matayriyeh	MH	M	VL	Mazraat 'Mseileh	MH	M	VL
Mazraat 'Snaiber	M	M	VL	Mazraat Aarab Soukka	MH	M	VL	Mazraat Deir Taqla	M	M	VL
Mazraat El Yahoudiye	M	M	VL	Mazraat El-Housseini	H	M	VL	Mazraat El-Mhaydaleh	M	M	VL
Mazraat El-Ouasta	M	M	VL	Mazraat Jamjim	M	M	VL	Mazraat Kaoutariyet	M	M	VL
Mazraat Kfar Badda	M	M	VL	Mazraat Oussamiyat	M	M	VL	Mazraat Sari	M	M	VL
Mazraat Sinai	M	M	VL	Meemariyeh	MH	M	VL	Merouaniyeh	M	M	VL
Miyeh ou Miyeh	MH	M	VL	Najjariyeh	MH	M	VL	Qaaqiyat El-Snaouba	M	M	VL
Qnarit	MH	M	VL	Qraiye Saida	MH	M	VL	Saida Ed-Dekermane	MH	M	VL
Saida El-Oustani	MH	M	VL	Saida El-Qadimeh	MH	M	VL	Saida Kefraya	M	M	VL
Saksakiyeh	M	M	VL	Salhie Saida	M	M	VL	Sarafand	MH	M	VL
Sfenta	M	M	VL	Tafahta	M	M	VL	Tanbourit	MH	M	VL
Tebna	M	M	VL	Zaghdraiya	MH	M	VL	Zeita	MH	M	VL
Zrariyeh	M	M	VL								

## Jezzine

Municipality	11-Feb	12-Feb	13-Feb	Municipality	11-Feb	12-Feb	13-Feb	Municipality	11-Feb	12-Feb	13-Feb
Ain El-Mir (El Estab	M	M	VL	Anane	M	M	VL	Aramta	M	M	VL
Ariya	M	M	VL	Aychiyeh	M	M	VL	Azour	M	M	VL
Baba	M	M	VL	Bayssour Jezzine	M	M	VL	Benoueteh Jezzine	M	M	VL
Bhannine	M	M	VL	Bisri	M	M	VL	Bkassine	M	M	VL
Bouslaya	M	M	VL	Btedine El-Leqech	M	M	VL	Chbail	M	M	VL
Choualiq Jezzine	M	M	VL	Dahr Ed-Deir	MH	M	VL	Deir El Qattine	M	M	VL

Demachqiyeh	M	M	VL	Ghabbatiyeh	M	M	VL	Harf Jezzine	M	M	VL
Hassaniyeh	MH	M	VL	Haytoupleh	M	M	VL	Haytura	M	M	VL
Hidab	M	M	VL	Homsiyeh	M	M	VL	Jabal Toura	M	M	VL
Jarmaq	M	M	VL	Jensnaya	M	M	VL	Jernaya	M	M	VL
Jezzine	M	M	VL	Karkha	M	M	VL	Kfar Falous	M	M	VL
Kfar Houna	M	M	VL	Kfar Jarrah	MH	M	VL	Lebaa	M	M	VL
Louayzet Jezzine	M	M	VL	Machmouche	M	M	VL	Mahmoudiyeh Jezzine	M	M	VL
Maknounye Jezzine	M	M	VL	Maraat Ouzaïyeh	M	M	VL	Mazraat Daraya	M	M	VL
Mazraat El-Aarqoub	M	M	VL	Mazraat El-Mathane	MH	M	VL	Mazraat El-Rahbane	M	M	VL
Mazraat Khallet Khaz	M	M	VL	Mazraat Louzid (Loua	M	M	VL	Mazraat Qrouh	M	M	VL
Mazraat Tamra	M	ML	VL	Mazraat Zighrine Jez	M	M	VL	Mazraat	M	M	VL
Mharbiyeh	M	M	VL	Midane Jezzine	M	M	VL	Mjeydel Jezzine	MH	M	VL
Mlikh	M	M	VL	Mrah El-Hbasse	M	M	VL	Ouadi Baanquodaine	M	M	VL
Ouadi El-Laymoun	MH	M	VL	Ouardiyeh	M	M	VL	Qabaa Jezzine	M	M	VL
Qatrani	M	M	VL	Qaytoupleh	M	M	VL	Qtaleh Jezzine	M	M	VL
Rihane Jezzine	M	M	VL	Rimat	M	M	VL	Roum	M	M	VL
Roummanet	M	M	VL	Sabbah	M	M	VL	Saydoun	MH	M	VL
Sfaray	M	M	VL	Snaya	M	M	VL	Sojoud	M	M	VL
Srayri	M	M	VL	Taaid	M	M	VL	Wadi Jezzine	M	M	VL
Zhalta	M	M	VL								

## Bekaa

### West Bekaa

Municipality	11-Feb	12-Feb	13-Feb	Municipality	11-Feb	12-Feb	13-Feb	Municipality	11-Feb	12-Feb	13-Feb
Aammiq BG	MH	M	L	Ain El Tineh BG	M	M	VL	Ain Zebdeh	M	M	VL
Ana	MH	M	L	Aytanit	M	M	VL	Baaloul BG	M	M	L
Bab Mareh	M	M	VL	Chouberqiye Aammiq	MH	M	L	Dakoue	M	M	L
Deir Ain El-Jaouze	M	M	VL	Deir Tahniche	MH	M	L	Ghaza	MH	M	L
Harime El-Soughra	MH	M	L	Hoch Harimeh	M	M	L	Jazira BG	MH	M	L
Jib Jennine	M	M	L	Kamed-El-Laouz	M	M	L	Kefraya BG	MH	M	VL
Khiara El Atika	MH	M	L	Khiara	M	M	L	Khirbet Qanafar	M	M	VL
Lala	M	M	L	Lebbaya BG	M	M	VL	Loussa	M	M	VL
Machghara	M	M	VL	Manara (Hammara) BG	MH	M	L	Mansoura BG	MH	M	L
Marej BG	M	M	L	Maydoun	M	M	VL	Ouaqf BG	MH	M	L
Qaraaoun	M	M	VL	Qelya	M	M	VL	Raouda (Istabel)	M	M	L
Saghbine	M	M	VL	Sohmor	M	M	VL	Soltan Yacoub el Ara	M	M	L
Souairy	M	M	L	Sultan Yaacoub	M	M	L	Tal Znoun	MH	M	L
Yehmor BG	M	M	VL	Zilaya	M	M	VL				

### Zahle

Municipality	11-Feb	12-Feb	13-Feb	Municipality	11-Feb	12-Feb	13-Feb	Municipality	11-Feb	12-Feb	13-Feb
Aanjar (Haouch Mouss	M	M	L	Ablah	H	M	VL	Ain Kfarzabad	M	M	VL
Ali-El-Nahri	H	M	VL	Bar Elias	M	M	VL	Bouarej	MH	M	VL
Cheberqiyet Tabet	M	M	VL	Chtaura	M	M	VL	Deir El Ghazal	M	M	VL
Delhamiyet Zahle	M	M	VL	Ferzol	MH	M	VL	Haouch El-Ghanam	H	M	VL
Haouch Es-Siyadeh	MH	M	VL	Haouch Hala	H	M	VL	Haouch Mandara	MH	M	VL

Haouch Qayssar	MH	M	VL	Hezerta	M	M	VL	Hosh Moussa	M	M	VL
Jdita	MH	M	VL	Kfarzabad	M	M	L	Ksara	M	M	VL
Majdel Aanjar	M	M	L	Makssi	MH	M	VL	Massa	MH	M	VL
Mazraat Er-Remtaniye	M	M	VL	Mrayjat Zahle	MH	M	VL	Mzaraa Zahle	MH	M	VL
Nabi Ayla	MH	M	VL	Nasriyet Rizk	H	M	VL	Nasriyet Zahle	MH	M	L
Niha Zahle	MH	M	VL	Ouadi Ed-Deloum	M	M	VL	Ouadi El-Arayech	M	M	VL
Qaa El Rim	MH	M	VL	Qab Elias	MH	M	VL	Qousaya	M	M	VL
Rhit	MH	M	VL	Riyak	H	M	VL	Saadnayel	M	M	VL
Taal El-Akhdar	MH	M	L	Taalbeya	M	M	VL	Taanayel	M	M	VL
Talamara	H	M	VL	Tcheflik Edde Haouch	MH	M	L	Tcheflik Qiqano	MH	M	L
Terbol Zahle	M	M	VL	Touaite Zahle	M	M	VL	Zahle Aradi	M	M	VL
Zahle El-Berbara	M	M	VL	Zahle El-Maallaqa	M	M	VL	Zahle El-Midane	M	M	VL
Zahle Er-Rassiye	MH	M	VL	Zahle Haouch El-Ouma	M	M	VL	Zahle Haouch El-Ouma	M	M	VL
Zahle Haouch Ez-Zara	M	M	VL	Zahle Maalaga Aradi	M	M	VL	Zahle Mar Antonios	MH	M	VL
Zahle Mar Elias	M	M	VL	Zahle Mar Gerios	M	M	VL	Zahle Saydet En-Naja	MH	M	VL
Zebdoul	MH	M	VL								

## Rachaiya

Municipality	11-Feb	12-Feb	13-Feb	Municipality	11-Feb	12-Feb	13-Feb	Municipality	11-Feb	12-Feb	13-Feb
Ain Arab Rachaiya	MH	M	L	Ain Ata	MH	M	L	Ain Harche	M	M	L
Aqabe Rachaya	MH	M	L	Ayha	H	M	L	Ayta El Fokhar	M	M	L
Bakifa Rachaya	M	M	L	Bakka	MH	M	L	Beit Lahya	M	M	L
Bireh Rachaiya	M	M	L	Daheer El Ahmar	MH	M	L	Deir El-Achayer	H	M	L
Heloua Rachaiya	H	M	L	Hoch El Qannabeh Rac	M	M	L	Kaoukaba Bou Arab	M	M	L
Kfar Danis	M	M	L	Kfar Mechki	M	M	L	Kfar Qouq	H	M	L
Kherbet Rouha	MH	M	L	Majdel Balhiss	M	M	L	Mdoukha	M	M	L
Mhaydseh Rachaiya	M	M	L	Nabi Safa	M	M	VL	Rachaiya	MH	M	L
Rafid Rachaiya	M	M	L	Selsata (Mazraat Dei	E	M	VL	Tannoura	M	M	L
Yanta	H	M	L								

## Beyrouth

### Beyrouth

Municipality	11-Feb	12-Feb	13-Feb	Municipality	11-Feb	12-Feb	13-Feb	Municipality	11-Feb	12-Feb	13-Feb
Achrafieh	M	M	ML	Ain el-Mreisse	M	M	ML	Bachoura	M	M	ML
Beirut Central Distr	M	M	ML	Marfai	M	M	ML	Mazraa	M	M	ML
Medaouar	M	M	ML	Minet el-Hosn	M	M	ML	Mwssaitbeh	M	M	ML
Ras Beirut	M	M	ML	Rmeil	M	M	ML	Saifi	M	M	ML
Zqaq el-Blat	M	M	ML								