

# Lebanon Fire Risk Bulletin



CIVIL DEDEFENCE

**Refer to cadast table condition.**

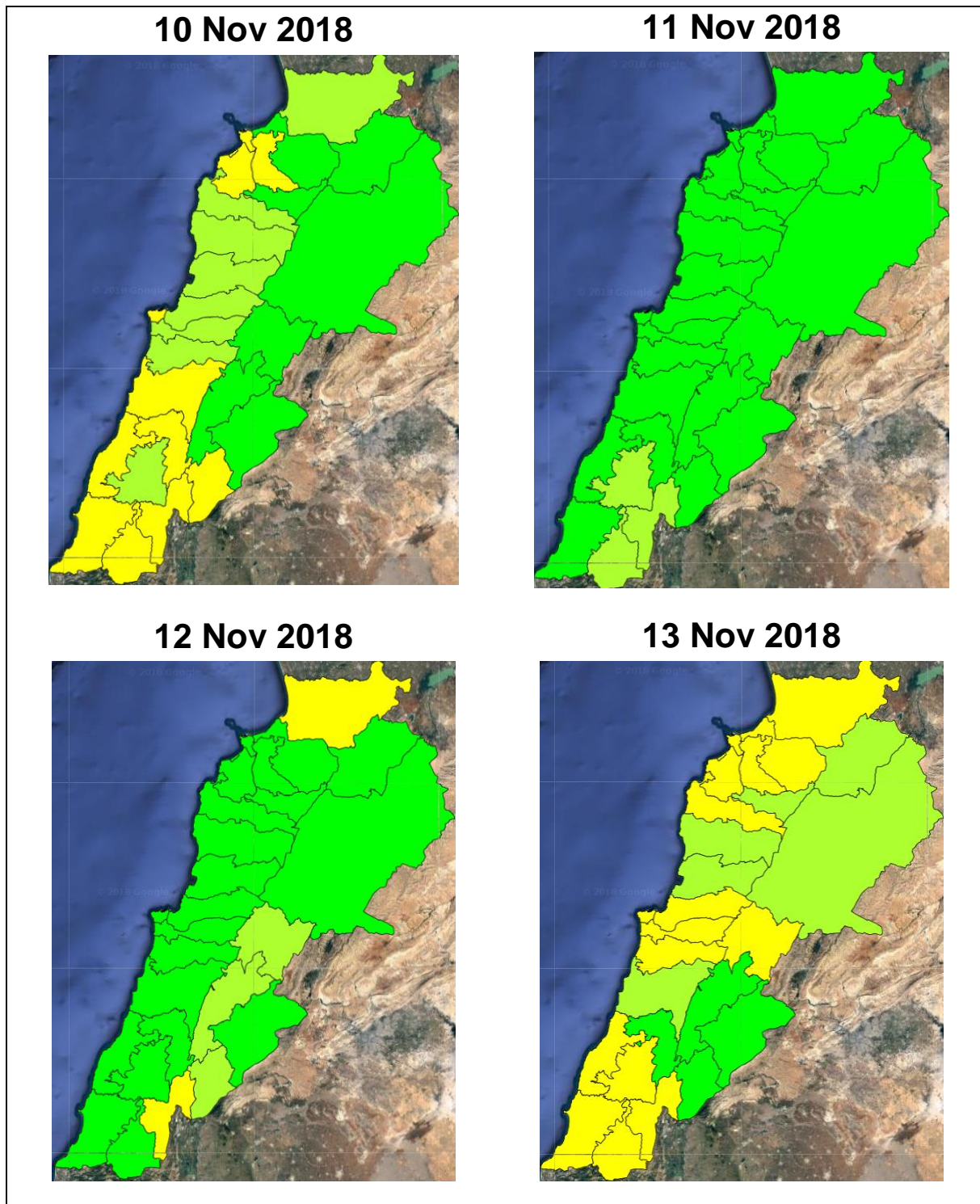
**Please note that the indicated temperature is at 2 meters height from the ground.**

General description of potential fire risk situation

Symbol	Level of risk	Meaning and actions
VL	Very low	Very low fire risk. Controlled burning operations can be hardly executed due to high fuel moisture content. Normally wildfires self-extinguish.
L	Low	Low fire risk. Controlled burning operations can be executed with a reasonable degree of safety.
ML	Medium low	Medium-low fire risk. Controlled burning operations can be executed in safety conditions. All the fires need to be extinguished.
M	Medium	Medium fire risk. Controlled burning operations would be avoided. All the fires need to be very well extinguished.
MH	Medium high	Controlled burning is not recommended. Open flame will start fires. Cured grasslands and forest litter will burn readily. Spread is moderate in forests and fast in exposed areas. Patrolling and monitoring is suggested. Fight fires with direct attack and all available resources.
H	High	Ignition can occur easily with fast spread in grass, shrubs and forests. Fires will be very hot with crowning and short to medium spotting. Direct attack on the head may not be possible requiring indirect methods on flanks. Patrolling and monitoring the territory is highly suggested.
E	Extreme	Ignition can occur also from sparks. Fires will be extremely hot with fast rate of spread. Control may not be possible during day due to long range spotting and crowning. Suppression forces should limit efforts to limiting lateral spread. Damage potential total. Patrolling and monitoring the territory is highly suggested.

**Beirut, 11 November 2018**

# FIRE RISK INDEX



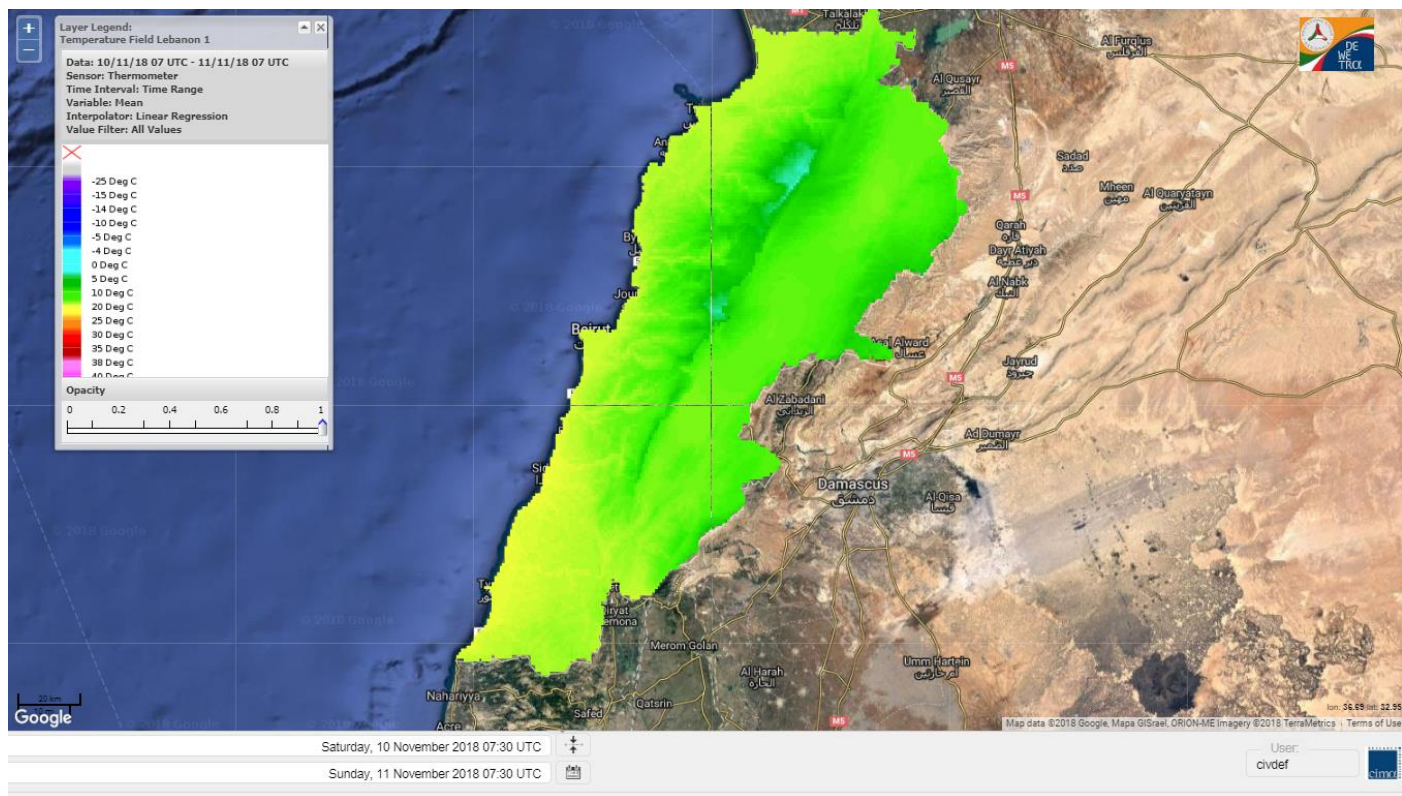
Layer Legend:  
Lebanon Wildfire Risk Index 1

Data: Run: 11/11/2018 00:00. Forecast for 11  
Model: RISICO for the Republic of Lebanon  
Variable: Fire Weather Index  
Spatial Resolution: Caza

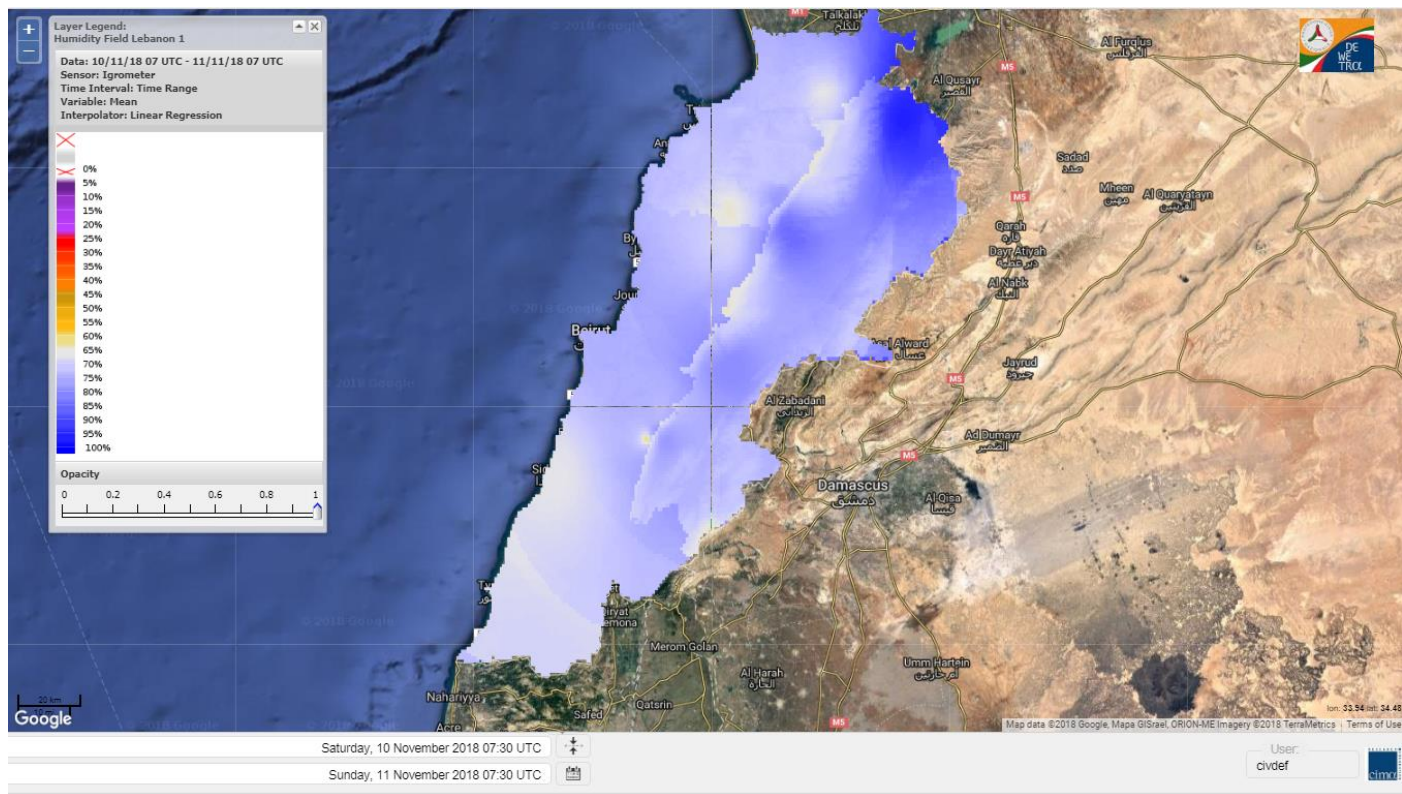
- VERY LOW
- LOW
- MEDIUM-LOW
- MEDIUM
- MEDIUM-HIGH
- HIGH
- EXTREME



# Lebanon temperature for 11 Nov 2018

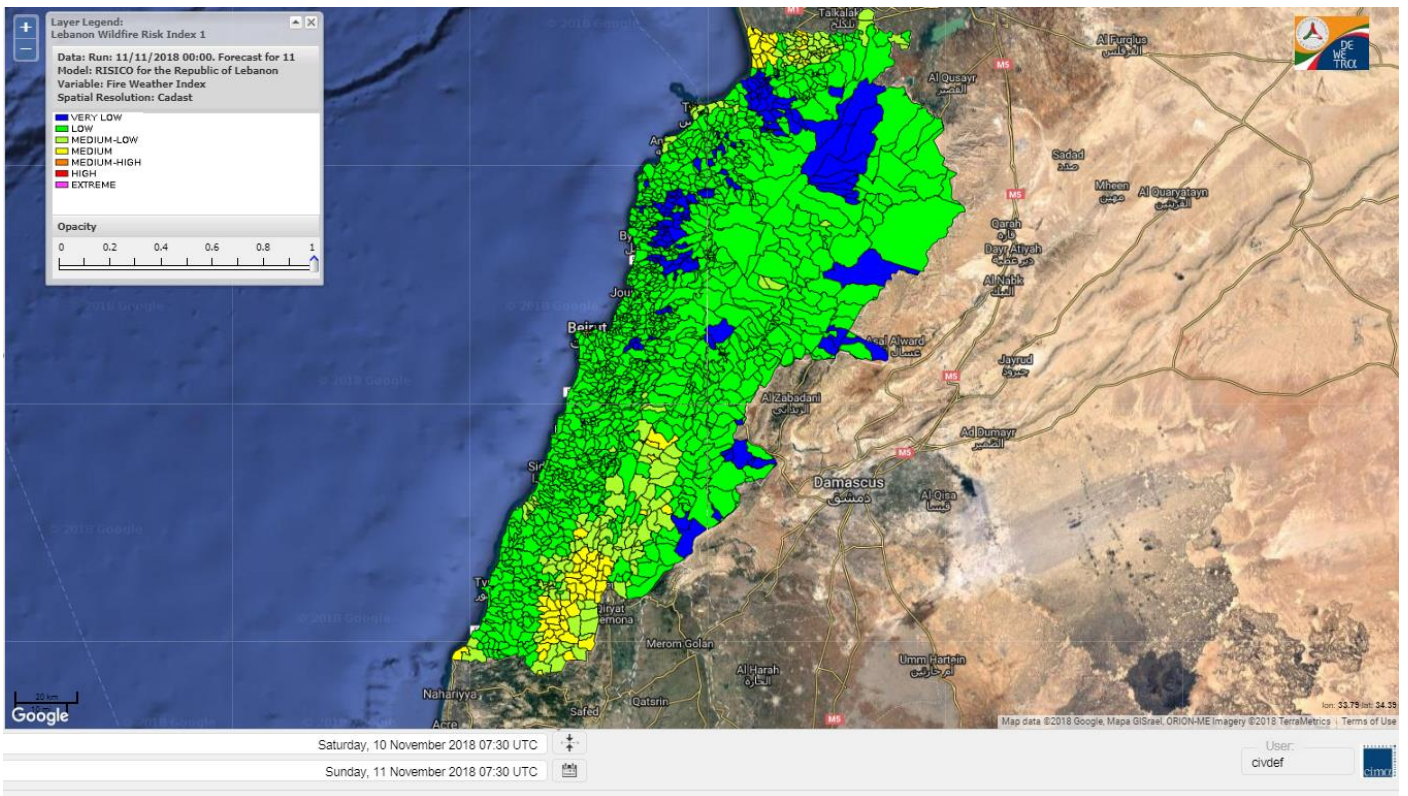


# Lebanon humidity for 11 Nov 2018

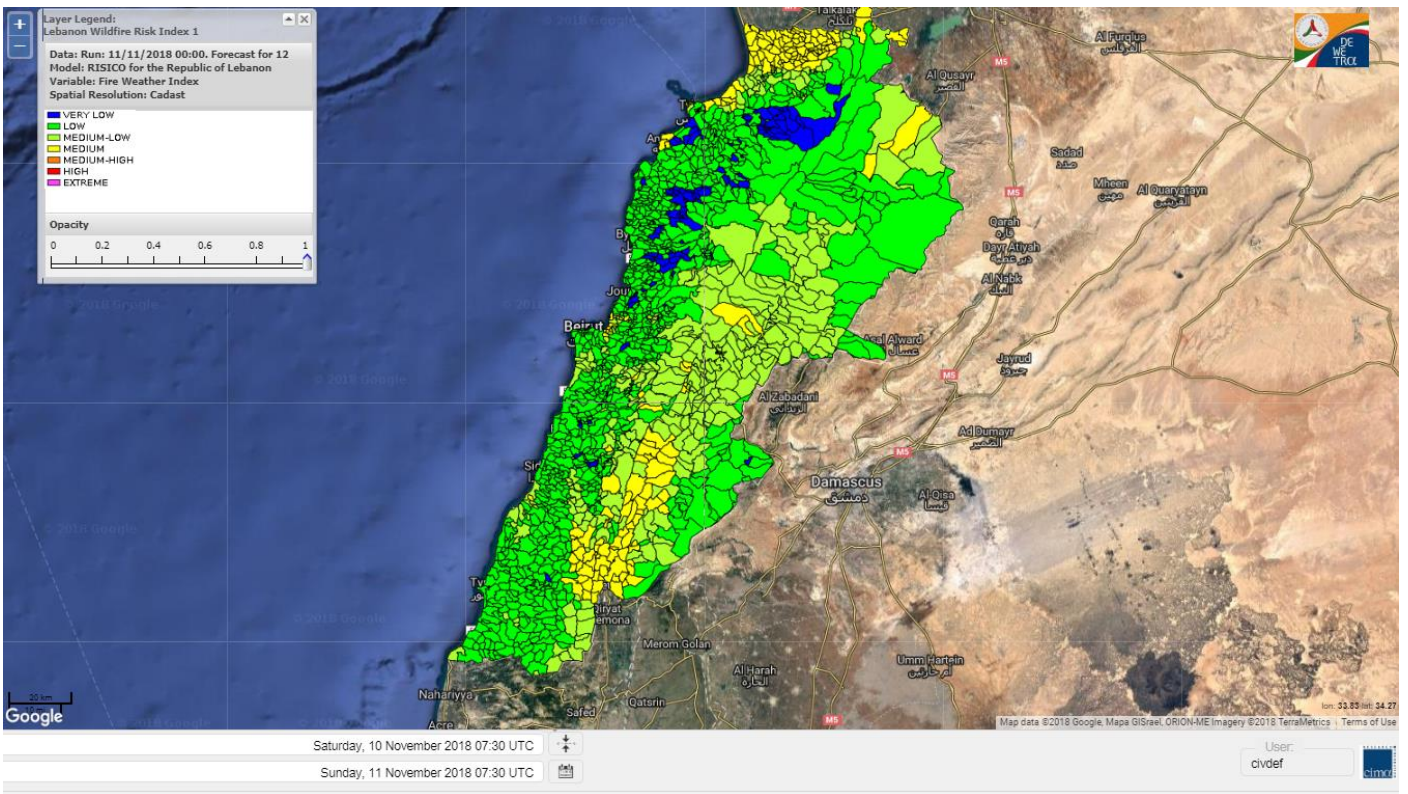




# Lebanon for 11 Nov 2018

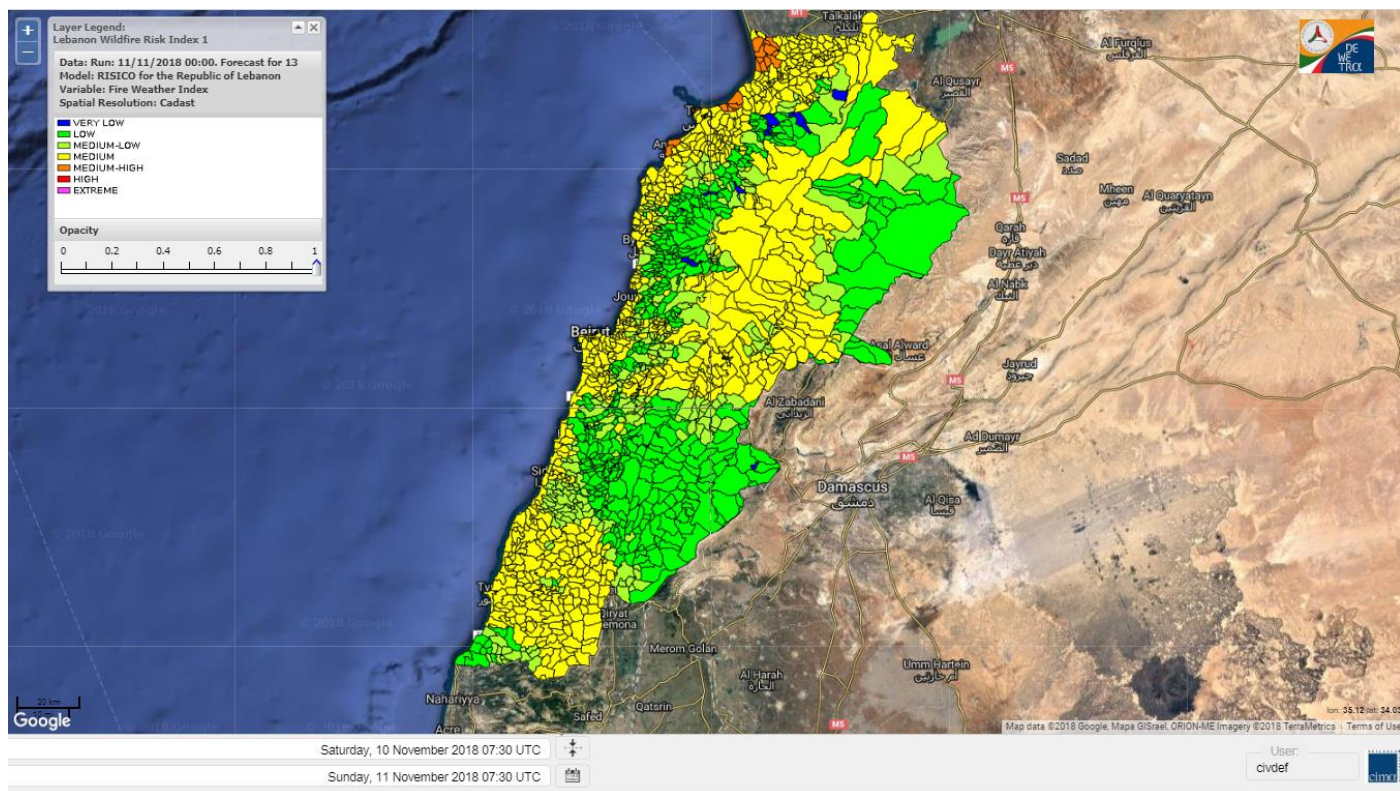


# Lebanon for 12 Nov 2018

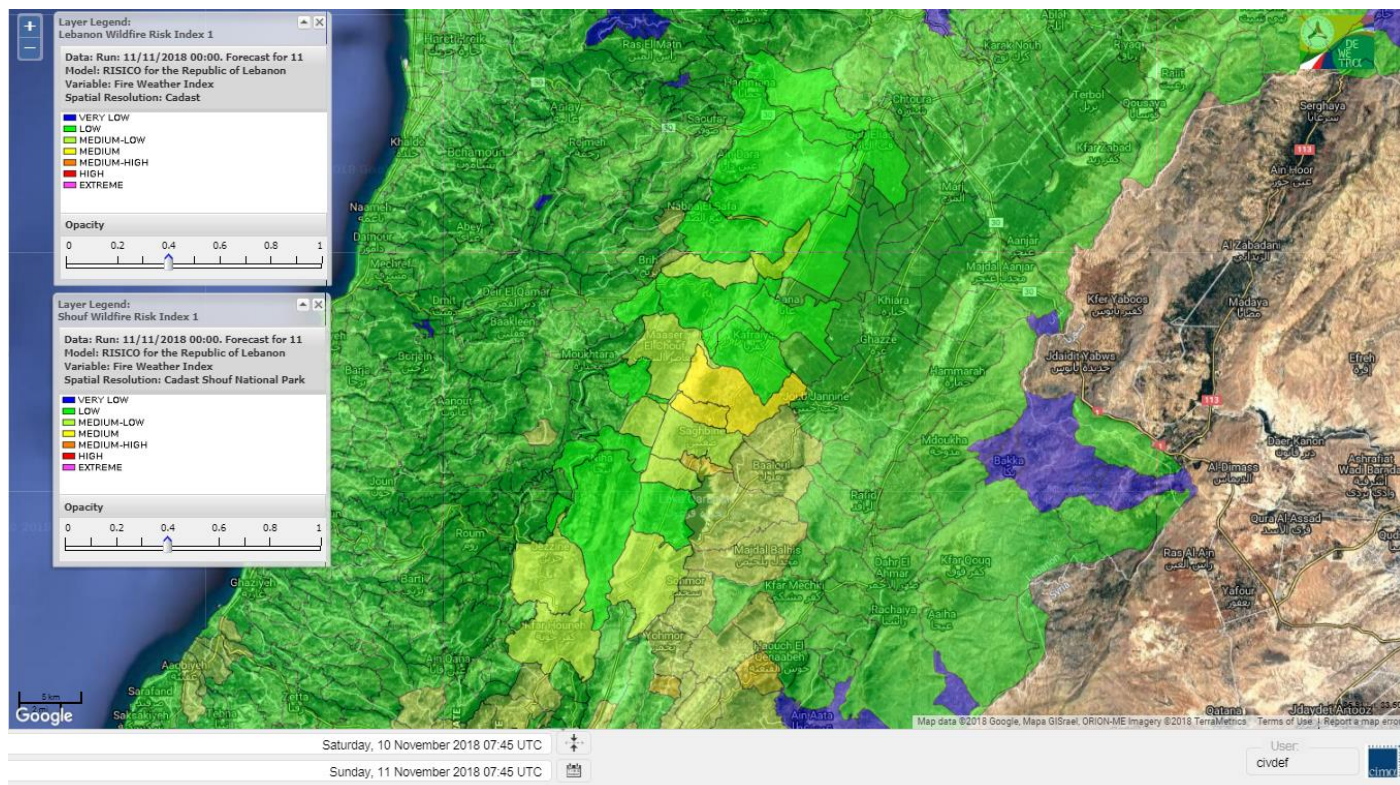




# Lebanon for 13 Nov 2018

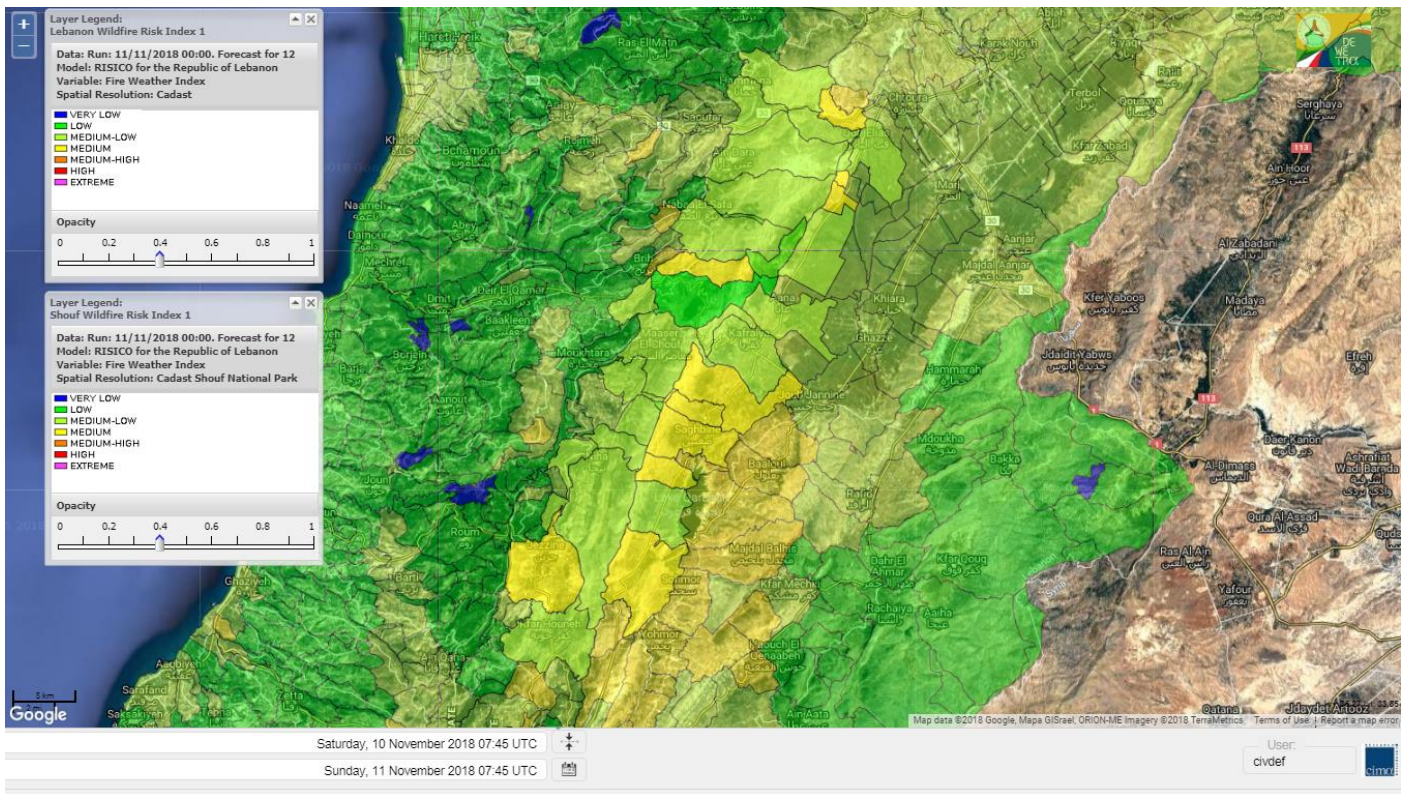


# Shouf Biosphere Reserve Forecast for 11 Nov 2018

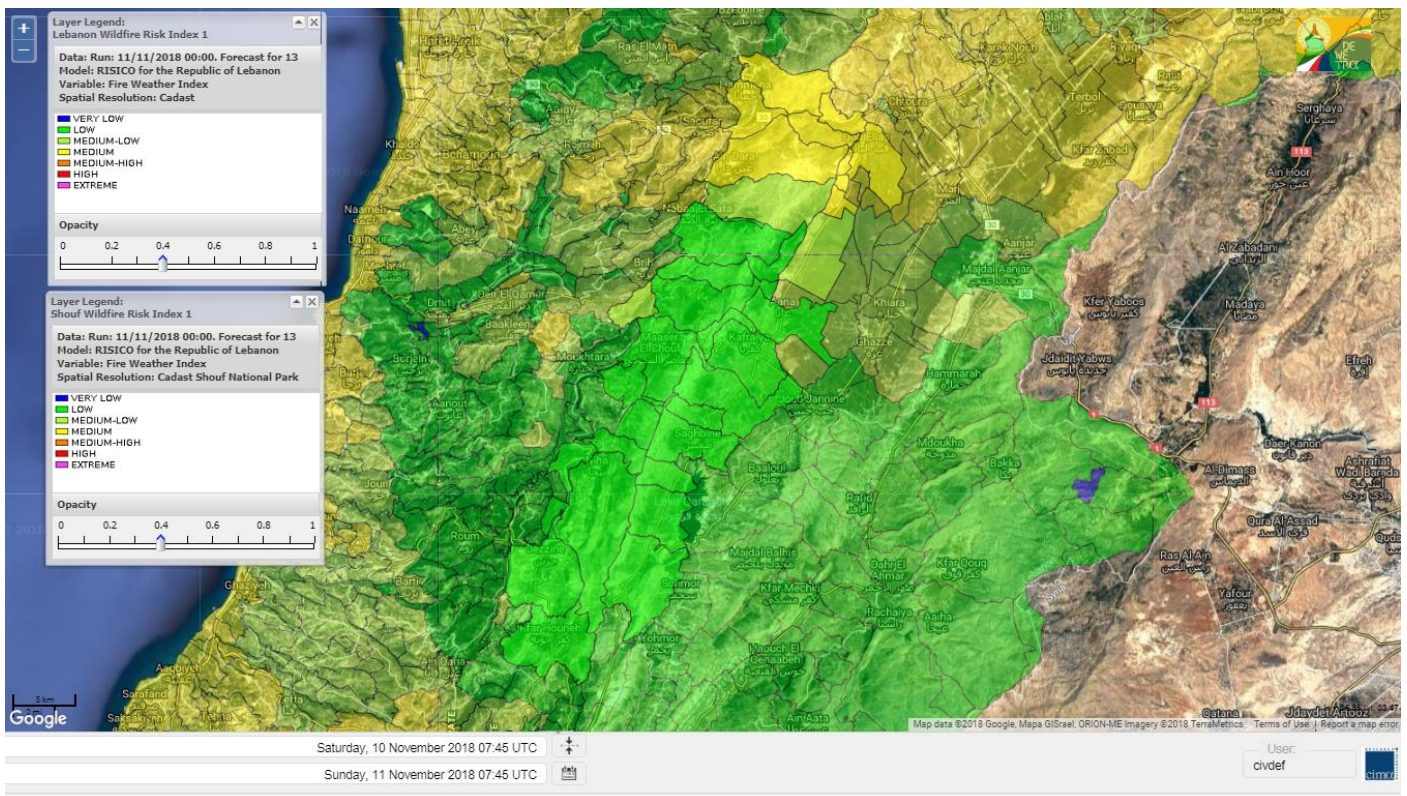




# Shouf Biosphere Reserve Forecast for 12 Nov 2018

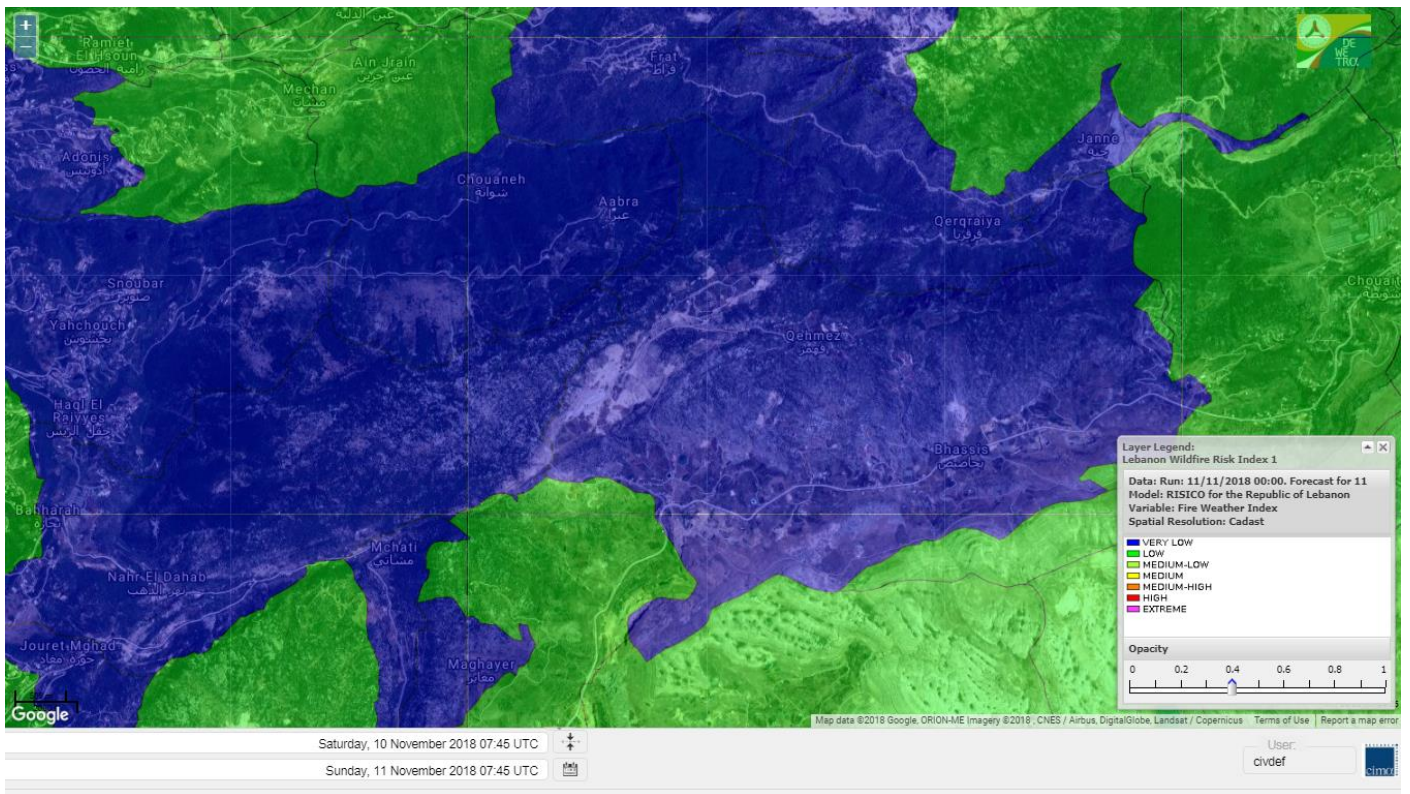


# Shouf Biosphere Reserve Forecast for 13 Nov 2018

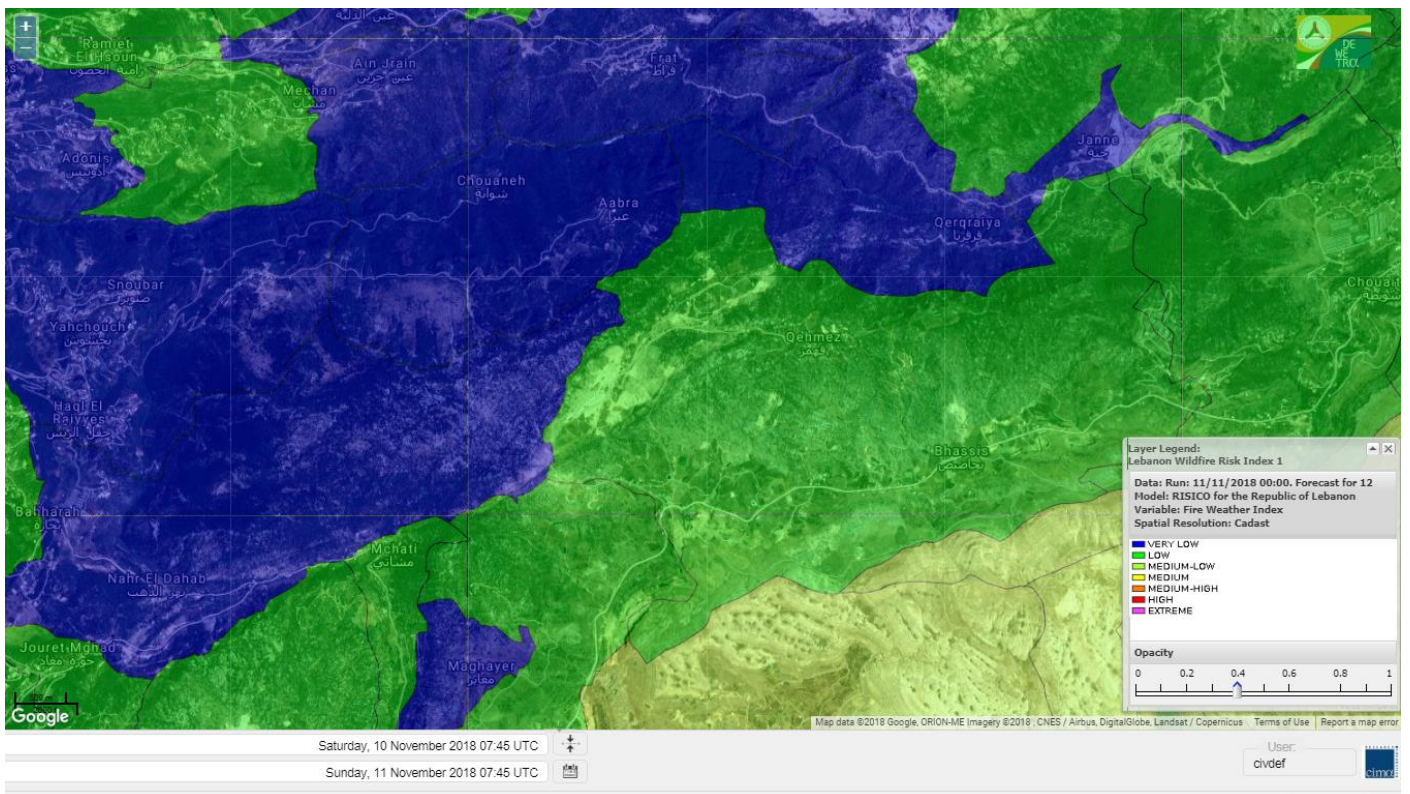




# Jabal Moussa Reserve Forecast for 11 Nov 2018

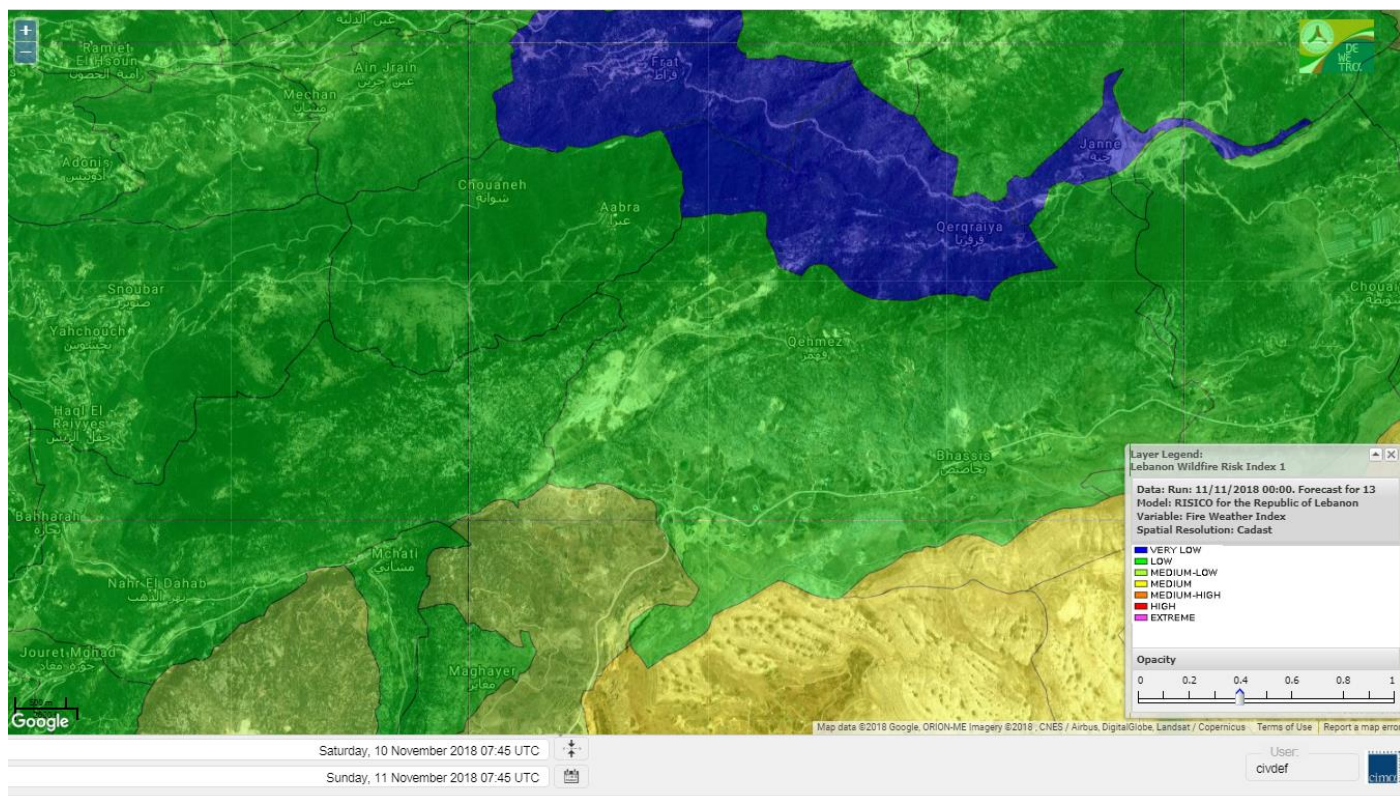


# Jabal Moussa Reserve Forecast for 12 Nov 2018





# Jabal Moussa Reserve Forecast for 13 Nov 2018

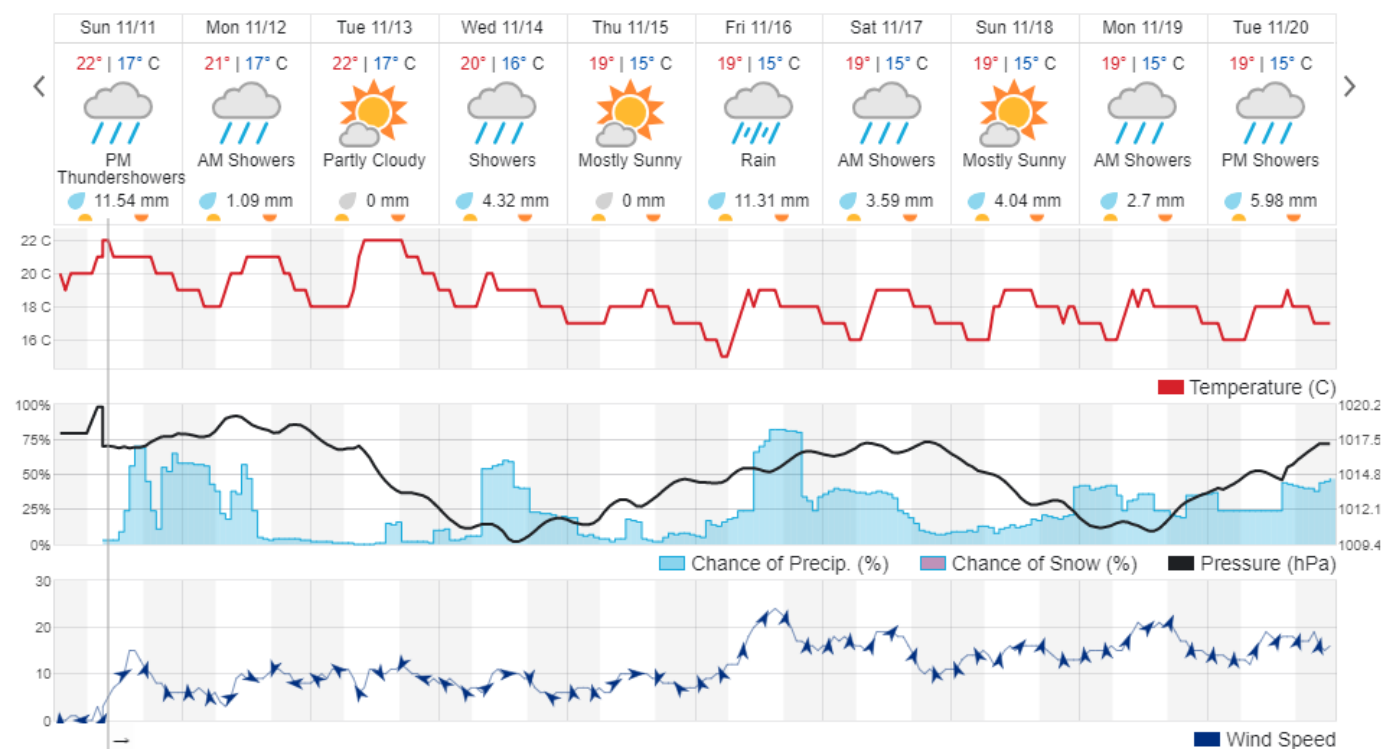


## Beirut, Lebanon

22° ACHRAFIEH,RIZK STATION | REPORT | CHANGE

TODAY HOURLY 10-DAY CALENDAR HISTORY WUNDERMAP

Customize





## Nord

### Koura

Municipality	11-Nov	12-Nov	13-Nov	Municipality	11-Nov	12-Nov	13-Nov	Municipality	11-Nov	12-Nov	13-Nov
Aaba	L	L	M	Afsaddiq	L	L	M	Ain Ekriane	L	L	M
Amioun	L	L	ML	Anfeh	ML	M	MH	Badbhoun	L	L	M
Barghoun	L	L	M	Barsa	L	VL	M	Batroumine	L	VL	M
Bdebba	L	L	M	Bechmizine	L	L	ML	Bednayet El-Koura	L	L	M
Bhabbouch El-Koura	L	L	ML	Bkeftine	L	L	M	Bnehran	L	L	ML
Bqaiia El-Koura	L	VL	M	Bsarma	L	L	ML	Btaaboura	L	L	M
Bterram	L	L	M	Btouratij	L	L	M	Bziza	L	L	ML
Dar Beechtar	L	L	ML	Dar Chmezzine	L	L	M	Deddeh	L	L	M
Deir El-Balamand	L	VL	M	Fih	L	L	M	Hraiche	ML	M	MH
Ijdaabrine	L	L	M	Kaftoun	L	L	M	Kefraya El-Koura	L	L	M
Kfarakka	VL	L	ML	Kfarhata	L	L	M	Kfarhazir	L	L	M
Kfarkahel	L	L	M	Kfarsaroun	L	L	ML	Kosba	L	L	ML
Mejdel el-Koura	L	L	L	Nakhle	L	VL	M	Qalhat	L	VL	M
Ras Masqa	L	VL	M	Rechdibbine	L	L	M	Zakroun	L	M	M
Zgharta El-Mtaouile	L	L	L								

### Bcharre

Municipality	11-Nov	12-Nov	13-Nov	Municipality	11-Nov	12-Nov	13-Nov	Municipality	11-Nov	12-Nov	13-Nov
Aabdine	L	L	ML	Bane	L	L	ML	Barhelioun	L	L	L
Bazouone	L	L	M	Becharre	L	L	M	Beit Menzer	L	L	ML
Billa	L	L	ML	Blaouza	L	L	M	Bqaa Kafra	L	L	M
Bqerqacha	L	L	M	Breissat	L	L	ML	Dimane	L	L	ML
Hadath El Jobbeh	L	L	ML	Hadchit	L	VL	ML	Hasroun	L	L	M
Mazraat Aassaf	VL	VL	VL	Mazraat Bani Saab	L	L	L	Mchaa El-Jobbeh	L	ML	M
Metrit	L	L	L	Moghr El-Ahoual	L	L	ML	Ouadi Qannoubine	VL	VL	VL
Qanat	L	L	L	Qnayouer	VL	VL	L	Tourza	L	L	L

### Batroun

Municipality	11-Nov	12-Nov	13-Nov	Municipality	11-Nov	12-Nov	13-Nov	Municipality	11-Nov	12-Nov	13-Nov
Aabrine	L	L	M	Aalali	L	L	L	Aartziz	VL	VL	L
Abdelli	VL	L	L	Ajdabra	L	L	M	Assia	VL	VL	L
Basbina	L	L	M	Batroun	L	L	M	Bcheleh	L	L	L
Bechtoudar	VL	VL	L	Beit Chlala	L	VL	L	Beit Kassab	VL	VL	VL
Bijdarfil	L	L	M	Bqesmaya	L	L	M	Chatine	L	L	ML
Chebtin	VL	L	L	Chekka	L	L	M	Daael	L	VL	L
Dahr Abi Yaghi	VL	L	L	Daraya El-Batroun	L	L	M	Deir Billa	L	L	L
Deir Kfifane	L	L	M	Deir Mar Youhanna EL	VL	VL	L	Deir Mar Youssef Jra	VL	L	L
Douma	L	L	L	Douq	VL	L	L	Eddeh El-Batroun	L	L	M
Ftahat El-Batroun	VL	VL	L	Ghouma	L	L	ML	Hadtoun	VL	VL	L
Hamat	L	L	M	Harbouna	VL	L	L	Hardine	VL	VL	L
Helta	VL	VL	L	Hery	L	L	M	Jebbla	VL	VL	L
Jrabta El-Batroun	L	L	ML	Jrane El-Batroun	L	L	M	Kfar Aabida	L	L	M
Kfar Halda	L	VL	L	Kfarb Shlaimane	VL	VL	L	Kfarhatna	VL	L	L
Kfarhay	L	L	M	Kfarhelos	VL	VL	M	Kfifane	L	L	M



Kfour El Arabi	L	L	L	Koubba	L	L	M	Kour	L	L	M
Mar Mama	VL	VL	L	Masrah	VL	L	L	Mehmarch	L	L	L
Mrah Chdid	L	L	ML	Mrah El Ziyat	VL	L	ML	Mrah El-Hajj	VL	VL	VL
Nahle El-Batroun	VL	VL	L	Niha El-Batroun	L	L	ML	Ouahj El-Hajjar	L	L	M
Ouata Houb	L	L	L	Qatnaaoun	L	L	M	Racha	L	L	L
Rachana	L	L	ML	Rachkida	L	L	M	Ram El-Batroun	VL	VL	L
Ras Nahhach	L	L	M	Selaata	L	L	M	Sghar	L	L	M
Smar Jbayl	L	L	M	Sourat El-Batroun	VL	VL	L	Tannourine El-Faouqa	L	L	M
Tannourine Et-Tahta	L	L	L	Thoum	L	L	M	Toula El-Batroun	VL	L	ML
Zan	VL	L	L								

## Zgharta

Municipality	11-Nov	12-Nov	13-Nov	Municipality	11-Nov	12-Nov	13-Nov	Municipality	11-Nov	12-Nov	13-Nov
Aachach	L	L	M	Aalma	L	L	M	Aarde	L	L	M
Aintourine	L	L	ML	Arabet Qozhaya	L	L	L	Arde	L	L	M
Arjis	VL	L	M	Asnoun	VL	L	M	Ayto	L	L	L
Basloukit	L	L	M	Bchannine	L	L	M	Besebeel	L	L	M
Bhairret Toula	L	VL	L	Bnachee	L	L	M	Boussit	L	ML	M
Danha	L	L	M	Daraiya Zgharta	L	L	M	Deir Jdeide	L	L	M
Ehden	L	L	ML	Halan	L	L	M	Hariq Zgharta	VL	L	M
Houakir	L	L	M	Hraiqis	ML	M	MH	laal	L	L	M
Ijbaa	L	L	ML	Karm Saddeh	L	L	L	Kfarchakhna	L	L	M
Kfardlaqous	L	L	M	Kfarfou	L	L	ML	Kfarhata Zgharta	L	L	M
Kfarhoura	L	L	M	Kfarsghab	L	VL	ML	Kfaryachit	VL	L	M
Kfarzaina	L	L	M	Khaldiye	L	L	M	Mazraat Ajbeaa	L	L	M
Mazraat Et-Teffah	L	VL	L	Mazraat Jneid	VL	VL	M	Mejdlayia Zgharta	L	L	M
Merh Kfarsghab	VL	L	M	Miryata	L	L	M	Miziara	L	L	L
Mzraat Kefraya	L	ML	M	Qorah Bach	L	L	M	Rachiine	L	L	M
Ras Kifa	VL	L	ML	Sakhra	L	L	M	Sebhel Zgharta	L	L	ML
Serhel	VL	VL	L	Tallet Zgharta	L	L	M	Toula Zgharta	L	L	L
Zgharta	L	L	M								

## Minieh-Denniye

Municipality	11-Nov	12-Nov	13-Nov	Municipality	11-Nov	12-Nov	13-Nov	Municipality	11-Nov	12-Nov	13-Nov
Aasaymout	VL	VL	VL	Aaymar	L	L	L	Aazki	L	L	L
Ain El-Tineh-Miniyeh	L	VL	L	Assoun	L	L	L	Bakhaaoun	L	L	L
Bchennata	L	L	M	Bechehhara	VL	L	L	Beddawi	ML	M	M
Behouaita	L	L	L	Beit El Foqss	L	VL	L	Beit Haouik	L	VL	ML
Beit Zoud	L	VL	L	Bekaasafrine	L	L	M	Borj El Yahoudiyeh	ML	M	MH
Bqarsouna	L	VL	L	Btermaz	VL	VL	VL	Debaael	VL	VL	L
Deir Ammar	ML	M	MH	Deir Nbouh	L	L	M	Haouaret-Miniyeh	L	VL	L
Haql el Azimeh	VL	VL	L	Harf El Siyad	VL	VL	L	Hazmiye-Miniyeh	L	VL	L
Izal	L	L	ML	Jarjour	VL	VL	L	Jayroun	VL	VL	L
Kahf El-Malloul	L	L	M	Karm El-Moher	L	L	L	Kfar Binine	L	VL	L
Kfarchalane	L	VL	L	Kfarhabou	L	L	M	Kharroub-Miniyeh	L	L	L
Mazraat El-Kreme	VL	VL	L	Mazraat Ketrane	L	L	L	Merkebta	L	ML	M
Minyeh	L	M	MH	Mrah El Sfirat	VL	VL	L	Mrah Sraj	L	VL	L
Mrebbine	L	VL	L	Nabi Youcheaa	L	M	MH	Nemrine	L	VL	L



Qarhaiya	L	VL	L	Qarne	VL	VL	VL	Qarsita	VL	VL	L
Qattineh-Miniyeh	VL	VL	VL	Qemmamine	VL	VL	VL	Qraine	VL	VL	L
Raouda-Aadoua	VL	L	M	Rihaniyet-Miniyeh	VL	ML	M	Sfireh	VL	VL	L
Sir Ed-Danniyeh	L	VL	L	Tarane	VL	VL	VL	Terbol-Miniyeh	ML	M	M
Zaghartaghriine	L	L	M	Zouq Bhannine	L	M	M				

## Nabatiye

### Nabatiye

Municipality	11-Nov	12-Nov	13-Nov	Municipality	11-Nov	12-Nov	13-Nov	Municipality	11-Nov	12-Nov	13-Nov
Aabba	L	L	M	Aazzi	L	L	ML	Adchit El-Chqif	ML	L	M
Ain Bou Swar	L	ML	ML	Ain Kana	L	ML	ML	Ali El-Taher	ML	ML	M
Ansar	L	L	M	Arab Salim	ML	ML	M	Arnoun	M	M	M
Bfaroue	L	L	ML	Breyqaah	ML	L	M	Charqiyeh	L	L	M
Choukine	ML	L	M	Deir El Zahrani	L	L	M	Doueir El-Nabatiyeh	L	L	M
Habbouch El-Nabatiye	M	M	M	Hamra El-Nabatiyeh	M	M	M	Harouf El-Nabatiyeh	L	L	M
Hmaile	L	L	ML	Houmin El Faouqa	ML	ML	M	Houmin El Tahta	L	L	ML
Jarjough	L	ML	ML	Jbaah El-Nabatiyeh	L	L	L	Jebchit	L	L	M
Kfar Djal El-Nabatiy	ML	L	M	Kfar Remmane	ML	M	M	Kfar Sir	ML	L	M
Kfar Tebnit	M	M	M	Kfarfila	L	ML	ML	Kfour El-Nabatieh	L	L	M
Mayfadoun	M	M	M	Mazraat Bsaffour	L	L	ML	Mazraat Chalbaal	L	L	ML
Mazraat Dmoul	L	L	M	Mazraat El Khreibeh	L	L	ML	Mazraat El-Bayad El-	ML	M	M
Mazraat Kfarjaouz	M	M	M	Mazraat Qalaat Meiss	L	L	M	Nabatiyeh El-Fawka	M	M	M
Nabatiyeh Et-Tahta	ML	M	M	Namiriyeh	L	L	M	Qaaqaaiyet El Jisr	ML	L	M
Qossaibeh El-Nabatiy	ML	L	M	Roumine	L	L	ML	Sarba El-Nabatieh	L	ML	ML
Sir El-Gharbiyeh	L	L	M	Toul	L	L	M	Yehmor El-Nabatiyeh	M	M	M
Zaoutar El Charkiyeh	M	M	M	Zaoutar El-Gharbiyeh	ML	L	M	Zebdine El-Nabatiyeh	ML	L	M
Zefta	L	L	ML								

### Hasbaiya

Municipality	11-Nov	12-Nov	13-Nov	Municipality	11-Nov	12-Nov	13-Nov	Municipality	11-Nov	12-Nov	13-Nov
Ain Jarfa	L	L	L	Abou Qamha	ML	M	L	Ain Qania	L	ML	L
Bourghos	ML	M	ML	Chebaa	L	ML	L	Chouaya Hasbaya	L	ML	L
Dellafeh	ML	M	L	Fardiss Hasbaiya	ML	M	L	Hasbaya	ML	ML	L
Hbariyeh	L	ML	L	Kaoukaba Hasbaiya	ML	M	L	Kfar Chouba	L	L	L
Kfar Hamam	L	ML	L	Kfeir El-Zait	ML	ML	L	Khalwat Hasbaya	L	L	L
Khreibet Hasbaiya	ML	M	ML	Majidiyeh Hasbaiya	L	M	ML	Marj Ez-Zhour (Haouc	M	M	L
Meri	ML	M	ML	Mimass	ML	ML	L	Rachaiya El-Fokhar	ML	ML	L
Salaiyeb	ML	M	ML								

### Marjayoun

Municipality	11-Nov	12-Nov	13-Nov	Municipality	11-Nov	12-Nov	13-Nov	Municipality	11-Nov	12-Nov	13-Nov
Aalmane Marjaayoun	M	L	M	Aamra	ML	M	ML	Adayseh Marjaayoun	M	M	M
Adchit El-Koussair	M	M	M	Ain Aarab Marjaayoun	L	M	ML	Bani Haiyann	M	ML	M
Blatt Marjaayoun	ML	M	L	Blida	M	ML	M	Borj El-Moulouk	M	M	M
Boueyda Marjaayoun	ML	M	ML	Deir Mimass	M	M	M	Deir Siriane	M	M	M
Dibbine	ML	M	L	Ebel El Saqi	ML	M	L	Houla	ML	ML	M
Houra	M	M	M	Kfar Kila	M	M	M	Khiam Marjaayoun	L	M	ML



Klayaa	M	M	M	Majdel Selem	M	ML	M	Marjaayoun	ML	M	L
Markaba	ML	ML	M	Mays El-Jabal	ML	ML	M	Mazraat Doumiat	M	M	M
Mazraat Sarada	L	M	ML	Mhaibib	ML	ML	M	Qabrikha	M	L	M
Qantara	M	L	M	Rab El-Thalathine	M	M	M	Saouaneh Marjayoun	M	L	M
Talloussa	ML	L	M	Taybeh Matjaayoun	M	M	M	Touline	ML	L	M

## Bent Jbail

Municipality	11-Nov	12-Nov	13-Nov	Municipality	11-Nov	12-Nov	13-Nov	Municipality	11-Nov	12-Nov	13-Nov
Ain-Ebel	ML	L	M	Aitaroun	ML	ML	M	Aynata Bint Jbeil	ML	L	M
Ayta El-Chaeb	L	L	ML	Ayta El-Jabal	M	L	M	Beit Lif	L	L	ML
Beit Yahoun	M	L	M	Bint Jbeil	ML	ML	M	Borj Qalaway	L	L	M
Braachit	M	L	M	Chakra	ML	ML	M	Debel	M	L	M
Deir Antar	M	L	M	Froun	ML	L	M	Ghandouriyeh Bint Jb	ML	L	M
Hanine	M	L	M	Hariss	M	L	M	Hdatha	M	L	M
Jmeymeh	M	L	M	Kafra Bint Jbeil	L	L	M	Kfar Dounine	M	L	M
Khirbet Selm	M	L	M	Kounine	M	L	M	Maroun El Ras	M	ML	M
Qalaway	ML	L	M	Qaouzah	L	L	ML	Qatmoun	M	ML	M
Ramya Bint Jbeil	L	L	ML	Rchaf	ML	L	M	Rmeich	ML	L	M
Safad Al Battikh	M	L	M	Salhaneh	L	L	ML	Serbine	ML	L	M
Sultanieh Bint Jbeil	M	L	M	Tibnine	M	L	M	Tiri	M	L	M
Yaroun	ML	ML	M	Yater	L	L	M				

## Mont Liban

### Jbail

Municipality	11-Nov	12-Nov	13-Nov	Municipality	11-Nov	12-Nov	13-Nov	Municipality	11-Nov	12-Nov	13-Nov
Aabeydat	VL	L	L	Aalita	L	L	L	Aamchit	L	L	M
Aarab El-Lahib	L	L	M	Aarasta	L	VL	L	Adonis Jbeil	VL	VL	L
Afqa Jbeil	L	L	L	Ain El Delbeh Jbeil	L	VL	L	Ain El-Ghouayba	L	L	L
Ain Jrain	L	VL	L	Ain Kfah	L	L	M	Almat El Chemaliyat	VL	L	L
Almat El-Jenoubiya	L	L	L	Aqoura	L	ML	M	Bayzoun	L	L	L
Bchille Jbeil	L	L	L	Bechtlida	VL	VL	L	Behdaydat	L	L	ML
Beit Habbaq	L	L	M	Bejjeh	L	L	ML	Bekhaaz	L	L	M
Berbara Jbeil	L	L	M	Bintael	L	L	L	Birket Hjoula	VL	VL	L
Blatt Jbeil	L	L	ML	Boulhos	VL	VL	L	Breyj Jbeil	VL	L	L
Chamat	L	L	M	Chikhane	L	L	M	Chmout	VL	L	L
Eddeh Jbeil	L	L	M	Ehmej	L	L	L	Fatre	VL	VL	L
Ferhet	L	L	L	Fghal	VL	L	ML	Frat	VL	VL	VL
Ghabat	L	L	ML	Ghalboun	L	L	ML	Gharzouz	L	L	M
Ghofrine	L	L	M	Habil	VL	VL	L	Halate	L	L	ML
Haqel	VL	L	L	Hbaline	L	L	M	Hboub	L	L	ML
Hdeine	L	L	ML	Hema Er-Rehban	L	L	M	Hema Mar Maroun Aann	L	L	ML
Hjoula	VL	L	L	Hosrayel	L	L	M	Hsarat	L	L	M
Hsoun	L	L	L	Jaj	L	VL	L	Janne	VL	VL	VL
Jbeil	L	L	M	Jeddeyl Jbeil	L	L	M	Jlisse	VL	L	L
Jouret El-Qattine	L	L	L	Kfar Baal Annaya	VL	L	L	Kfar Kidde	L	L	M
Kfar Kouas	L	L	L	Kfar Mashoun	L	L	M	Kfoun	VL	L	L



Kharbe Jbeil	L	L	M	Laqlouq	L	L	M	Lassa	L	L	L
Lehfed	VL	VL	L	Maad	L	L	M	Mar Sarkis	L	L	ML
Mastita	L	L	M	Mayfouq	VL	VL	L	Mazraat El Siyad	L	L	ML
Mazraat El-Maaden	VL	VL	L	Mechane	L	L	L	Mechmech Jbeil	VL	L	L
Mehrin	L	L	ML	Mejdel El-Akoura	L	L	ML	Mghayreh Jbeil	L	L	M
Mounsef	L	L	M	Nahr Ibrahim	L	L	M	Qahmez	VL	L	L
Qartaba	L	L	L	Qartaboun	L	L	M	Qattara Jbeil	VL	VL	L
Qorqraya	VL	VL	VL	Ramout	L	L	M	Ras Osta	VL	L	L
Rihane Jbeil	L	L	M	Sakiet El-Khayt	VL	L	ML	Saqi Richmaya	L	L	L
Sebrine	VL	L	L	Seraita	L	L	ML	Souane Jbeil	L	L	L
Tadmor	L	L	ML	Tartej	L	L	L	Torzaiya	L	L	L
Yanouh Jbeil	L	L	ML	Zibdine Jbeil	L	L	L				

## El Metn

Municipality	11-Nov	12-Nov	13-Nov	Municipality	11-Nov	12-Nov	13-Nov	Municipality	11-Nov	12-Nov	13-Nov
Aain El-Qabu	L	L	L	Aain El-Qach	L	L	M	Aain El-Teffaha	L	ML	M
Aain el-Safsaf El-M	L	L	ML	Abou Mizane	L	ML	M	Ain Aar	L	ML	M
Ain Alaq	L	L	M	Ain El-Kharroube	L	ML	M	Ain El-Sendianeh	L	L	M
Ain El-Zeitoune	L	L	ML	Ain Saadeh	L	L	M	Aintoura El-Matn	L	ML	M
Amaret Chalhoub	L	M	M	Antelias	L	M	M	Atchaneh	L	L	ML
Ayroun	L	L	M	Baabdat	L	L	ML	Baouchariyeh	L	L	M
Baskinta	L	L	ML	Beit Chabab	L	L	M	Beit El-Chaar	L	M	M
Beit El-Kekko	L	M	M	Beit Mery	L	L	M	Bhersaf	L	L	ML
Bikfaya	L	L	M	Biyakout	L	M	M	Bnabil	L	L	ML
Bourj Hammoud	L	L	M	Bqennaya	L	ML	M	Broummana El-Matn	L	L	M
Bsalim	L	L	M	Bsifrine	VL	L	ML	Bteghrine	L	L	L
Chaouiye	L	L	M	Chouaya El-Matn	L	ML	M	Choueir	L	L	M
Chrine	L	L	L	Dahr El Sawan El-Mat	L	L	M	Daychouniyeh	L	ML	M
Dbayeh	L	M	M	Deir Chamra	VL	L	L	Deir Mar Abda el Mch	L	L	ML
Deir Mar Roukouz	L	L	M	Deir Tamiche	L	L	M	Dik El-Mehdi	L	ML	M
Dikwaneh	L	L	M	Douar El-Matn	L	L	M	Fanar	L	ML	M
Fraike	L	L	ML	Haret El-Ballaneh	L	ML	M	Hbous	L	ML	M
Himlaya	L	L	M	Jal El Did	L	M	M	Jdeideh El-Metn	L	M	M
Jouar El-Matn	L	L	ML	Jouret El-Ballout	L	L	ML	Kaaqour	L	L	ML
Kfar Aaqab	L	L	L	Kfertay El-Matn	L	L	ML	Khenchara	L	L	M
Khillet El-Mtain	L	L	ML	Konnabat Broummana	L	L	M	Konnabat Salima	VL	L	L
Machraah El-Matn	L	L	L	Majdel Tarchich	L	ML	M	Majzoub	L	ML	M
Mansouriyeh El-Metn	L	ML	M	Mar Boutros Karm Et-	L	L	ML	Mar Chaya et Mzekke	L	L	ML
Mar Moussa Ed-Douar	L	L	ML	Marjaba	L	L	ML	Masqa	VL	L	L
Mayasse	L	L	ML	Mazraat Deir Aoukar	L	ML	M	Mazraat El-Hadirat	L	ML	M
Mazraat Yachouh	L	M	M	Mchikha	L	ML	M	Menqlet Mezher	L	ML	M
Mhaydseh Matn	L	L	M	Mkalles	L	L	M	Mrouj	L	ML	M
Mtain	L	ML	M	Mtayleb	L	ML	M	Nabay	L	L	ML
Naccache	L	ML	M	Ouadi Chahine	L	L	ML	Ouadi El-Karm El-Mat	VL	L	L
Ouata El-Mrouj	L	ML	M	Ouyoun El-Matn	VL	L	L	Qornet Chehwan	L	L	M
Qornet El-Hamra	L	L	ML	Roumieh	L	L	M	Sfeilet Bikfaya	L	L	ML
Sinn El-Fil	L	L	M	Zabbougha	VL	L	L	Zalqa	L	M	M

Zarouon	L	L	ML	Zekrite	L	L	ML	Zighrine El-Matn	L	ML	M
Zouk El-Khrab	L	L	M								

## Chouf

Municipality	11-Nov	12-Nov	13-Nov	Municipality	11-Nov	12-Nov	13-Nov	Municipality	11-Nov	12-Nov	13-Nov
Aalmane El-Chouf	L	L	M	Aammiq El-Chouf	L	L	L	Ain Ouzein	L	L	L
Ain Qani	L	L	L	Ain Zhalta	L	ML	L	Ainbal	L	L	L
Amatour	L	L	L	Anout	L	L	L	Atrine	L	L	L
Baadarane	L	ML	L	Baaqline	L	L	ML	Baasir	L	L	M
Barja	L	L	M	Barouk	L	L	L	Bater	L	ML	L
Batloun	L	ML	ML	Bayqoun	ML	M	ML	Bchetfine	L	L	L
Beiteddine	L	L	L	Benouati Ech-Chouf	L	L	L	Berjein	L	L	L
Bireh et Mtalleh	L	L	ML	Biret El-Chouf	L	ML	ML	Bkechtine Ouel Mchei	L	VL	L
Bkifa El-Chouf	L	L	L	Botme	L	L	L	Bqaiaa Ech-Chouf	L	L	L
Bsaba El-Chouf	L	L	L	Chammis El-Chouf	L	L	ML	Chehim	L	L	L
Chemaarine	L	L	L	Chourit	L	L	L	Daher El-Chouf	L	L	ML
Dalhoun	L	L	ML	Damour	L	L	M	Daraya El-Chouf	L	L	L
Deir El-Moukhalles	L	L	L	Deir Baba	L	L	L	Deir Dourit	L	L	L
Deir El-Qamar	L	L	ML	Deir Kouche	L	L	L	Dibbieh	L	L	L
Dmit	L	L	L	Fouara Jaafar	L	L	L	Fraidis El-Chouf	ML	M	L
Ghabet Jaafar	L	L	ML	Gharife	L	L	L	Haret Jandal	L	ML	L
Hasrout	L	L	L	Jadra	L	L	M	Jahlieh	L	L	L
Jbeih El-Chouf	L	ML	L	Jdeidet El-Chouf	L	L	ML	Jiyeh	L	L	M
Jleilyeh	L	L	L	Jmailiyeh	L	L	ML	Joun	L	L	ML
Kahlounie El-Chouf	L	ML	ML	Ketermaya	L	L	M	Kfar Faqoud	L	L	L
Kfar Hamal	L	ML	M	Kfar Him	L	L	ML	Kfar Katra	L	L	L
Kfar Niss	L	ML	ML	Kfar hay	L	L	ML	Kfarnabrakh	L	L	ML
Khirbet Bisri	L	L	L	Knayse El-Chouf	L	L	L	Maaniyeh	L	L	ML
Maasser Beiteddine	L	L	ML	Maasser El-Chouf	ML	ML	L	Majdalouna	L	L	ML
Majdel El-Meouch	L	L	ML	Mazboud	L	L	L	Mazmoura	L	L	L
Mazraat El Chouf	L	ML	L	Mazraat El Daher	L	L	L	Mazraat El-Douair	L	L	L
Mechref	L	L	L	Mghairie	L	L	ML	Mghayrie El-Chouf	L	L	L
Moukhtara	L	L	L	Mrusti	ML	ML	L	Mtolle	L	L	L
Naameh	L	L	M	Niha El-Chouf	L	ML	L	Ouadi Abou Youssef	VL	VL	VL
Ouadi Ed-Deir	L	L	M	Ouadi El-Sit	L	L	ML	Ouadi bnehlay	L	VL	L
Qraibeh	L	ML	L	Qreiaa	L	VL	L	Rmayle El-Chouf	L	L	M
Semqaniyeh	L	ML	M	Sibline	L	L	M	Sirjbeil	L	L	ML
Warhanieh	ML	M	ML	Werdaniyeh	L	L	M	Zaarourieh	L	L	L

## Baabda

Municipality	11-Nov	12-Nov	13-Nov	Municipality	11-Nov	12-Nov	13-Nov	Municipality	11-Nov	12-Nov	13-Nov
Abadiyeh	L	L	L	Ain Mouaffaq	L	L	L	Araiya	L	L	L
Arbaniyeh	L	L	L	Arsoun	L	L	ML	Baabda	L	L	M
Baalchmey	L	L	ML	Bmaryam	L	L	ML	Bourj El-Brajneh	L	ML	M
Boutchay	L	L	M	Bsaba Baabda	L	L	M	Btekhney	L	L	ML
Btibyat	L	L	ML	Bzebdine	L	L	ML	Chbeniyeh	L	ML	M
Chiyah	L	L	M	Chmeisset Baabda	VL	L	L	Chouit	L	L	L
Deir El-harf	L	L	M	Deir Khouna	L	L	M	Dlaybeh	L	L	ML



Falougha	L	ML	M	Furn El-Chebbak	L	L	M	Hadath Beyrouth	L	ML	M
Halaliyeh Baabda	L	L	L	Hammana	L	ML	M	Haret El Sett	L	L	L
Haret Hamze	L	L	ML	Haret Hreik	L	L	M	Hasbaiya El-Metn	L	L	ML
Jouar El-Hoz	L	L	L	Jouret Arsoun	L	L	ML	Kfar Chima	L	ML	M
Kfar Selouane	L	ML	ML	Khalouat Baabda	L	ML	M	Kneisset Baabda	VL	L	L
Laylakeh	L	ML	M	Louayzeh Baabda	L	L	M	Merdache	L	L	M
Mzairaa Baabda	L	L	L	Ouadi Chahrour El Ol	L	L	M	Ouadi Chahrour El So	L	L	M
Qalaa Baabda	L	L	ML	Qhraybe Baabda	L	L	M	Qobbayaa	L	ML	M
Qornayel	L	L	ML	Qortada	VL	VL	L	Qrayeh Baabda	L	ML	M
Qsaibeh Baabda	VL	L	L	Qtale Baabda	L	L	ML	Ras El Metn	L	L	ML
Ras El-Haref	L	ML	M	Rouayset El-Ballout	L	L	L	Salima Baabda	L	L	ML
Tahouitat El Ghadir	L	ML	M	Tarchich	L	ML	ML	Zandouqa	VL	VL	L

## Aley

Municipality	11-Nov	12-Nov	13-Nov	Municipality	11-Nov	12-Nov	13-Nov	Municipality	11-Nov	12-Nov	13-Nov
Abey	L	L	ML	Aghmid	L	L	M	Ain Dara	L	ML	M
Ain Drafil	L	L	L	Ain El Halazoun	L	L	M	Ain El-Rmmaneh	L	L	L
Ain Jedideh	L	ML	ML	Ain Ksour	L	L	ML	Ain Onoub	L	L	M
Ain Traz	L	L	L	Ainab	L	L	M	Aley	L	ML	ML
Aramoun	L	L	M	Aytat	L	L	M	Azouniyeh	L	ML	M
Baawerta	L	L	L	Badghan Oua Wadi Bad	L	ML	M	Bassatine	L	L	M
Bayssour	L	L	M	Bchamoun	L	L	M	Bdadoun	L	L	ML
Behouara	L	L	ML	Bennay	L	L	ML	Bhamdoun El-Dayaa	L	ML	M
Bhamdoun El-Mhatta	L	ML	M	Bkhechthey	L	ML	ML	Bleibel	L	L	M
Bmakine	L	ML	M	Bmehray	L	ML	ML	Bouzrid	L	VL	L
Bserrine	L	ML	M	Bsous	L	L	L	Btalloun	L	ML	M
Btater	L	ML	M	Chanay	L	M	M	Charoun	L	ML	M
Chartoun	L	L	L	Chemlane	L	L	M	Chouefat El-Aamrous	L	ML	M
Chouefat El-Oumara	L	ML	M	Chouefat El-Quoubbe	L	ML	M	Dakkoun	L	L	L
Deir Qoubel	L	L	M	Dfoun	L	L	M	Douair El Remmaneh	VL	L	L
Ghaboun	L	L	ML	Habramoun	L	L	L	Homs Oua Hama	L	L	M
Houmal	L	L	M	Jisr El Qadi	L	L	L	Kehaleh	L	L	L
Keyfoun	L	ML	M	Kfar Aamey	L	L	ML	Kommatyeh	L	L	ML
Maasrati	L	L	ML	Majdel Baana	L	ML	M	Mansourieh et Ain El	L	ML	M
Mazraat El-Nahr	L	L	ML	Mchakhte	L	L	M	Mecherfeh	L	L	M
Mejdaya	L	L	ML	Mrayjat	ML	M	ML	Ramliyah	L	L	ML
Rechmaya	L	L	ML	Rejmeh	L	L	ML	Remhala	L	L	M
Rouaysset El Neemane	L	L	ML	Saoufar	L	ML	M	Selfaya	L	L	L
Sirhmoul	L	L	M	Souq El Ghareb	L	L	ML	Taazanieh	L	ML	M

## Kesrouane

Municipality	11-Nov	12-Nov	13-Nov	Municipality	11-Nov	12-Nov	13-Nov	Municipality	11-Nov	12-Nov	13-Nov
Achkout	L	L	ML	Adma Oua Dafneh	L	L	M	Ain Ed-Delbe Kesroua	VL	L	L
Ain El-Rihane	L	VL	L	Aintoura Kesrouane	L	L	M	Ajaltoun	L	L	L
Akaybeh Kesrouane	L	L	M	Aramoun Kesrouane	L	L	L	Azra ouel Ozor	L	L	L
Ballouneh	L	L	L	Batha	L	VL	L	Bekaatat Achkout	L	L	M
Bekaatat Kanaan	L	L	L	Bizhel	VL	VL	L	Bouar	L	L	M
Bqaatouta	L	L	ML	Bqaq Ed-Dine	L	L	M	Bzommar	L	L	ML

Chahtoul	L	L	L	Chnaniir	L	L	L	Chouan	VL	VL	L
Daraya Kesrouane	L	L	L	Darououn	L	VL	L	Deir Baqlouch	L	VL	L
Dlebta	L	L	L	Eghbeh	L	VL	L	Faraya	L	ML	M
Fatka	L	L	M	Feytroun	L	L	L	Ghazir	L	L	ML
Ghbaleh Kesrouane	L	L	L	Ghedrass	L	L	L	Ghosta	L	L	L
Ghynéh	L	L	M	Harharaya w Kattine	L	L	L	Harissa Kesrouane	L	VL	L
Hayata	L	L	L	Hosein	L	L	L	Hrajel	L	ML	M
Jdeideh Ghazir	L	L	ML	Jeita	L	L	ML	Jounieh Ghadir	L	L	M
Jounieh Haret Sakhr	L	L	M	Jounieh Salel Alma	L	L	M	Jounieh Sarba	L	L	M
Jouret Bedrane	L	L	L	Jouret Mhad	VL	L	L	Jouret Termos	L	L	M
Kfar Debiane	L	L	ML	Kfar Tay Kesrouane	VL	VL	L	Kfar Yassine	L	L	M
Kfour Kesrouane	L	L	ML	Kharayeb Nahr Ibrahi	L	L	L	Klayaat Kesrouane	L	L	L
Maarab	L	VL	L	Maaysra Kesrouane	L	L	L	Mayrouba	L	L	ML
Mazraat Er-Ras	L	L	M	Mazraat Mrah El-Mir	L	L	L	Mchaa El Ftouh	L	ML	M
Mchaa Faraya	L	ML	M	Mchaa Kfar Dibiane	L	ML	M	Mghaer	VL	VL	L
Mradiyah	VL	VL	L	Nahr Ed-Dahab	VL	VL	L	Nammoura Kesrouane	L	L	L
Ouata El Jaouz	L	L	ML	Ouata Sillam	L	L	M	Raachine	L	L	L
Rayfoun	L	L	ML	Safra Kesrouane	L	L	M	Shayle Kesrouane	L	L	ML
Tabarja	L	L	M	Yahchouch	VL	VL	L	Zaaytreh	L	L	L
Zeytoun	L	L	ML	Zouk Mikael	L	L	M	Zouk Mosbeh	L	L	M

## Baalbek\_Hermel

### Baalbek

Municipality	11-Nov	12-Nov	13-Nov	Municipality	11-Nov	12-Nov	13-Nov	Municipality	11-Nov	12-Nov	13-Nov
Aadous	L	ML	M	Aamchki	L	L	L	Aarsal	L	L	L
Ain Baalbek	L	L	L	Ain Bourday	L	ML	ML	Ain El-Benye	VL	ML	ML
Ain El-Jaouz Baalbek	L	L	L	Ain El-Siya Chadoura	L	L	L	Al Khodr Baalbek	L	ML	M
Al Nabi Chit	L	ML	M	Aynata Baalbek	L	ML	M	Baalbek	L	ML	ML
Bachwat	L	L	M	Barqa	L	L	M	Bednayel Baalbak	L	M	M
Beit Chama	L	ML	ML	Bijjaje	L	L	L	Bouday	L	L	M
Brital	L	ML	M	Btadi	L	ML	M	Chaat	L	ML	ML
Chaibe	L	L	L	Chlifa	L	ML	M	Chmestar	L	ML	M
Dar El-Oussa	L	L	M	Deir El-Ahmar	L	ML	M	Deir Mar Maroun Baal	L	M	M
Douris	L	ML	ML	Fakiha	L	L	L	Hadath Baalbek	L	ML	M
Ham	VL	ML	M	Haour Taala	L	ML	M	Hizzine	L	ML	M
Hlebta	VL	L	L	Hosh Barada	L	ML	M	Hosh El Dahab	L	ML	M
Hosh El Snid	L	ML	M	Hosh El-Nabi	L	ML	M	Hosh El-Rafiq	L	ML	ML
Hosh Tal Safiya	L	ML	M	Hrebta	L	L	ML	laat	L	ML	M
Jebaa	ML	ML	M	Jenta	L	ML	M	Kfar Dabach	L	ML	M
Kfar Dane	ML	ML	M	Khraibeh El-Hermel	VL	L	L	Khreibet Baalbek	L	ML	M
Kneisset Baalbek	L	ML	ML	Labueh	L	L	L	Maarboun	L	ML	M
Majdaloun	L	ML	M	Maqneh	L	ML	ML	Mazraat Beit Mcheik	L	ML	M
Misraya	L	ML	M	Moqraq	L	L	L	Nabha El-Damdoum	L	L	M
Nabi Chbay	L	ML	M	Nabi Osman	L	L	L	Nahleh baalbek	VL	L	L
Ouadi El-Oss	VL	L	L	Qaa Baayoun	L	ML	ML	Qaa Jouar Maqiye	L	ML	M
Qaa Ouadi El-Khanzir	L	M	M	Qah Baalbek	L	ML	ML	Qarha Baalbek	ML	ML	M



Qsarnaba	L	ML	ML	Ram Baalbek	L	ML	M	Ras Baalbek El Sahl	L	ML	ML
Ras Baalbek El-Charq	L	L	L	Riha	L	ML	M	Saaide	L	ML	M
Sbouba	VL	L	L	Seriine El-Tahta	L	ML	M	Slouqi	L	ML	M
Taiba Baalbek	L	ML	M	Talia	L	ML	M	Taraiya	L	ML	M
Temnin El Fawqa	L	M	ML	Temnin El-Tahta	L	ML	ML	Tfail	VL	L	L
Yahfoufa	L	ML	M	Yammouneh	L	ML	M	Younine	L	L	L
Zboud	L	L	L								

## Hermel

Municipality	11-Nov	12-Nov	13-Nov	Municipality	11-Nov	12-Nov	13-Nov	Municipality	11-Nov	12-Nov	13-Nov
Charbine El-Hermel	VL	L	L	Hermel Jbab	VL	L	M	Hermel	L	ML	M
Maaysra El-Hermel	VL	L	ML	Michaa Mrajhine	VL	VL	ML	Ouadi Faara	VL	L	L
Ras Baalbek - Ouadi	L	M	M	Ras Baalbek El Gharb	VL	L	M	Zighrine	VL	L	L

## Akkar

### Akkar

Municipality	11-Nov	12-Nov	13-Nov	Municipality	11-Nov	12-Nov	13-Nov	Municipality	11-Nov	12-Nov	13-Nov
Aain Tinta	ML	M	M	Aaiyat	L	ML	M	Aakkar El-Aatiqa	L	L	ML
Aamar Akkar	VL	ML	M	Aamar El Baykat	ML	M	M	Aamayer	L	ML	M
Aamriyet Akkar	ML	M	M	Aandqet	L	L	M	Aarmeh	ML	M	M
Aarqa	L	M	M	Aawaynat	L	ML	M	Aayoun Akkar	L	L	M
Abboudiye	M	M	M	Ain El-Zeit	ML	M	M	Ain Yaaqoub	L	L	ML
Akroum	L	L	M	Aridet Cheikh Zennad	M	M	M	Baldeh w Mazraat Bal	M	M	M
Barcha	ML	M	M	Bardeh	ML	M	M	Bebnine	VL	ML	M
Beino	L	M	M	Beit Ayoub	L	ML	M	Beit El-Haouch	VL	ML	M
Beit Mellat	L	ML	M	Beit Younes	L	L	M	Berbara Akkar	ML	M	M
Berqayel	VL	ML	M	Bezbina	L	L	L	Bireh Akkar	ML	M	M
Borj	L	ML	M	Bqerezla	L	ML	M	Bzal	VL	L	M
Chane	L	L	ML	Chaqdouf	L	L	M	Charbila	ML	M	M
Cheikh Mohammad	ML	M	M	Cheikh Taba Es-Sahl	ML	M	M	Cheikh Taba	L	ML	M
Cheikh Zennad	M	M	MH	Cheikhlar	L	ML	M	Chir Hmairine	ML	M	M
Daghle	ML	M	M	Dahr Laissine	L	M	M	Darine	ML	M	M
Dawra	L	ML	M	Dawsa w Baghdadi	ML	M	M	Dayret Nahr El-Kabir	ML	M	M
Deir Dalloum	VL	ML	M	Deir Jennine	ML	M	M	Denbou	L	L	M
Dibbbiyeh	ML	M	M	Douair Aadwiyeh	ML	M	M	Fassikine	ML	M	M
Fnaydek	L	L	ML	Fraydes Akkar	L	M	M	Ghazayle	ML	M	M
Habchit	VL	L	ML	Hakour	L	ML	M	Halba	L	M	M
Haouchab	ML	M	M	Hayssat	M	M	MH	Haytla	ML	M	M
Hayzouq	ML	M	M	Hedd	ML	M	M	Hmaira Akkar	VL	L	M
Hmaiss Akkar	M	M	M	Hnaider	ML	M	M	Hokr Ed-Dahri	M	M	M
Hokr Etti	M	M	M	Hokr Jouret Srar	ML	M	M	Houaich	L	L	M
Hrar	L	L	M	Idbil	L	ML	M	Ilal	L	ML	M
Janine	M	M	M	Jdeidet El-Joumeh	L	M	M	Jdeidet El-Kaiteh	VL	L	M
Jebroyel	L	ML	M	Kafr	VL	L	ML	Kafr	ML	M	M
Karm Asfour	VL	L	M	Kfar Melki Akkar	M	M	MH	Kfar Noun	L	M	M
Kfarharra	ML	M	M	Khalsa	L	M	M	Kharnoubet Akkar	M	M	M

Khirbet Daoud Aakkar	ML	M	M	Khirbet El Remmane	L	ML	M	Khirbet Shar	ML	M	M
Khoreybet El-Jindi	ML	M	M	Khreibet Aakkar	L	ML	M	Kneisset Aakkar	M	M	MH
Kneisset Hnaider	ML	M	M	Knisse	ML	M	M	Kroum El-Aarab	ML	M	M
Kwachra	ML	M	M	Kweykhata	L	M	M	Machta Hammoud	ML	M	M
Majdala	VL	ML	M	Majdel Akkar	ML	M	M	Mar Touma	VL	ML	M
Marlaya Melhem	L	ML	M	Mashha	L	M	M	Massoudiye	M	M	MH
Mazraat Beit Ghattas	L	ML	M	Mazraat En-Nahriye	L	ML	M	Mechmech	L	L	L
Memneh	L	L	L	Mhammara	VL	ML	M	Mighraq Aakkar	M	M	MH
Minyara	L	ML	M	Moqayteh	M	M	MH	Mounjez	L	M	M
Msalla	ML	M	M	Mzeihmeh	M	M	M	Nfaisch	L	M	M
Noura Et-Tahta	ML	M	M	Ouadi El-Haour	ML	M	M	Ouadi El-Jamous	VL	ML	M
Ouyoun El-Ghizlane	VL	L	M	Qaabarine	M	M	MH	Qabaait	VL	L	ML
Qachlaq	M	M	M	Qantara Aakkar	L	L	M	Qarha Aakkar	L	M	M
Qarqaf	VL	ML	M	Qboula	L	ML	M	Qleiaat Aakkar	M	M	MH
Qloud El-Baqie	L	ML	M	Qobaiyat Aakkar	L	L	M	Qobbat Chamrat	L	M	M
Qorayat	L	L	M	Qornet Aakkar	L	L	M	Qsair Aakkar	ML	M	M
Rahbe	L	ML	M	Rihaniyet Aakkar	ML	M	M	Rmah	L	ML	M
Rmoul	M	M	MH	Saadine	L	M	M	Sadaqa	L	ML	M
Saidnaya	M	M	M	Sammouniye	M	M	MH	Sayssoq	L	ML	M
Semmaqiye	M	M	M	Semmaqli	L	M	M	Sfinet El-Dreib	ML	M	M
Sfinet El-Qaitaa	VL	L	M	Sindyanet Zeidane	L	M	M	Souaisset Aakkar	ML	M	M
Srar	ML	M	M	Tal Abbas El Gharby	ML	M	M	Tal Abbas El-Chargy	L	M	M
Tal Biret	M	M	M	Tal Hmayra	L	M	M	Tal Maayan Tal Kiri	M	M	MH
Tal Sibel	M	M	MH	Tallet Chattaha	L	ML	M	Tikrit	L	ML	M
Tleil	M	M	M	Tshea	L	L	ML	Zawarib	VL	L	M
Zouq El Hosniyeh	VL	L	M	Zouq El-Haddara	VL	ML	M	Zouq El-Hbalsa	VL	ML	M
Zouq El-Moqachrine	VL	ML	M								

## Sud

### Sour

Municipality	11-Nov	12-Nov	13-Nov	Municipality	11-Nov	12-Nov	13-Nov	Municipality	11-Nov	12-Nov	13-Nov
Aaiyeh	L	ML	M	Aalma El-Chaab	ML	L	L	Aaytit	L	L	M
Abbassiyeh Sour	L	L	M	Abou Chech	L	L	L	Ain Abou Abdallah	L	L	M
Ain Baal	L	L	M	Arzoun	ML	L	M	Aziyeh	L	L	L
Baflaya	L	L	M	Barich	L	L	M	Batouliyeh	L	L	M
Bayad	L	L	M	Bazouriyeh	L	L	M	Bediass	L	L	M
Bestiyat	L	L	M	Borj El Chemali	L	L	M	Borj En-Naqoura	M	ML	L
Borj Rahhal	L	L	M	Boustane	L	L	ML	Btaychiyeh	L	L	ML
Chaaitiye	L	L	M	Chameh	L	L	L	Chehabiye	M	L	M
Chehour	L	L	ML	Chihine	L	L	ML	Debaal Sour	L	L	M
Deir Amess	L	L	M	Deir Kifa	ML	L	M	Deir Qanoun El-Ain	L	L	M
Deir Qanoun El-Naher	L	L	M	Derdghaiya	ML	L	M	Dhayra	L	L	L
Halloussiyeh	L	L	M	Hamoul	ML	L	L	Hanaouey	L	L	M
Henniye	L	L	M	Hmairi Sour	L	L	M	Iskandarouna Sour	L	L	L
Jbal El Botom	L	L	M	Jebbin	L	L	ML	Jennata	L	L	M
Jijim	L	L	L	Jouaiya	L	L	M	Kneisset Sour	L	L	M



Maarake	L	L	M	Maaroub	L	L	M	Majadel	ML	L	M
Majdalzoun	L	L	ML	Mansouri Sour	L	L	ML	Marnba	L	L	ML
Marouahine	L	L	ML	Mazraat El-Zalloutiy	L	L	ML	Mazraat Mechref	L	L	M
Mazraat Tayr Semhat	L	VL	L	Mheilib	L	L	M	Neffakhiyeh	ML	L	M
Niha Sour	ML	L	M	Ouadi Jilo	L	L	M	Qana	L	L	M
Qolaileh Sour	L	L	M	Rechknany	L	L	M	Rmadiyeh	L	ML	M
Selha Sour	ML	L	M	Siddiqine	L	ML	M	Sour	L	L	M
Srifa	ML	L	M	Tayr Debbe	L	L	M	Tayr Felsay	L	L	M
Tayr Harfa	L	L	ML	Touayri	L	L	ML	Toura	L	L	M
Yanouh Sour	L	L	M	Yarine	L	L	ML	Zebqine	L	L	L

## Saida

Municipality	11-Nov	12-Nov	13-Nov	Municipality	11-Nov	12-Nov	13-Nov	Municipality	11-Nov	12-Nov	13-Nov
Aanqoun	L	L	ML	Aaqtanit	L	L	ML	Aarab Ej-Jall	L	L	ML
Aarab Tabbaya	L	L	ML	Abra Saida	L	L	M	Adloun	L	L	M
Adousiyeh	ML	L	M	Ain-El-Deleb	L	L	ML	Arzai	L	L	M
Babliyeh	L	ML	M	Barty	L	ML	ML	Bissariyeh	ML	ML	M
Bnaafoul	L	L	ML	Bqosta	L	L	M	Bramiy	L	L	M
Daoudiyeh	L	ML	M	Dareb El-Sim	L	L	ML	Erkay	L	L	ML
Ghassanieh	L	L	M	Ghazieh	L	ML	M	Hajjeh	L	L	ML
Haret Saida	L	L	M	Hartiyeh	L	L	M	Hlaliye Saida	L	L	M
Insariyat	L	L	M	Jazira Saida	L	L	M	Kafar Bit	L	L	ML
Kaoutariyet El-Siyad	L	L	M	Kfar Chellal	L	ML	ML	Kfar Hatta Saida	L	L	ML
Kfar Milke Saida	L	ML	ML	Khartoum	L	L	M	Khaziz	L	L	ML
Khirbet Ed-Douair Sa	L	L	M	Khirbet El-Bassal	L	ML	M	Khrayeb Saida	L	L	M
Loubieh	L	L	M	Maghdouche	L	L	ML	Majdelyoun	L	L	M
Matariyet El-Choumar	L	L	M	Matayriyeh	L	L	ML	Mazraat 'Mseileh	ML	ML	M
Mazraat 'Snaiber	ML	ML	M	Mazraat Aarab Soukka	L	L	ML	Mazraat Deir Taqla	L	L	M
Mazraat El Yahoudiye	L	L	M	Mazraat El-Housseini	ML	M	M	Mazraat El-Mhaydaleh	L	L	M
Mazraat El-Ouasta	L	L	M	Mazraat Jamjim	L	L	M	Mazraat Kaoutariyet	L	L	M
Mazraat Kfar Badda	L	L	M	Mazraat Oussamiyat	L	ML	M	Mazraat Sari	L	L	M
Mazraat Sinai	L	L	M	Meemariyeh	L	L	ML	Merouaniyeh	L	L	M
Miyeh ou Miyeh	L	L	ML	Najjariyeh	ML	ML	M	Qaaqiyat El-Snaouba	L	L	M
Qnarit	L	L	ML	Qraiye Saida	L	L	ML	Saida Ed-Dekermane	L	L	M
Saida El-Oustani	L	L	M	Saida El-Qadimeh	L	L	M	Saida Kefraya	L	L	ML
Saksakiyeh	L	L	M	Salhie Saida	L	L	M	Sarafand	L	ML	M
Sfenta	L	L	L	Tafahta	L	L	M	Tanbourit	L	L	ML
Tebna	L	ML	M	Zaghdraiya	L	L	ML	Zeita	L	L	ML
Zrariyeh	L	L	M								

## Jezzine

Municipality	11-Nov	12-Nov	13-Nov	Municipality	11-Nov	12-Nov	13-Nov	Municipality	11-Nov	12-Nov	13-Nov
Ain El-Mir (El Estab	L	ML	ML	Anane	L	L	L	Aramta	ML	M	L
Ariya	L	ML	L	Aychiyeh	ML	ML	L	Azour	L	L	L
Baba	L	L	L	Bayssour Jezzine	L	L	ML	Benoueteh Jezzine	L	ML	L
Bhannine	L	ML	L	Bisri	L	VL	L	Bkassine	L	L	L
Bouslaya	L	L	L	Btedine El-Leqech	L	L	L	Chbail	L	L	L
Choualiq Jezzine	L	L	M	Dahr Ed-Deir	L	L	L	Deir El Qattine	L	L	L

Demachqiyeh	ML	M	M	Ghabbatiyeh	L	L	L	Harf Jezzine	L	L	L
Hassaniyeh	L	L	ML	Haytouleh	L	ML	L	Haytura	L	L	L
Hidab	L	L	L	Homsiyeh	L	L	L	Jabal Toura	L	ML	L
Jarmaq	ML	ML	M	Jensnaya	L	L	ML	Jernaya	L	ML	ML
Jezzine	ML	M	L	Karkha	L	L	ML	Kfar Falous	L	ML	ML
Kfar Houna	ML	ML	L	Kfar Jarrah	L	L	M	Lebaa	L	L	M
Louayzet Jezzine	L	L	L	Machmouche	L	L	L	Mahmoudiyeh Jezzine	ML	M	M
Maknounye Jezzine	L	L	L	Maraat Ouazaiyeh	L	ML	L	Mazraat Daraya	L	ML	L
Mazraat El-Aarqoub	ML	L	ML	Mazraat El-Mathane	L	VL	L	Mazraat El-Rahbane	L	L	L
Mazraat Khallet Khaz	L	ML	L	Mazraat Louzid (Loua	L	L	L	Mazraat Qrouh	L	M	L
Mazraat Tamra	ML	M	M	Mazraat Zighrine Jez	ML	L	ML	Mazraat	L	L	L
Mharbiyeh	L	L	ML	Midane Jezzine	L	L	L	Mjeydel Jezzine	L	L	ML
Mlikh	L	L	L	Mrach El-Hbasse	L	L	ML	Ouadi Baanqoudaine	L	L	ML
Ouadi El-Laymoun	L	ML	ML	Ouardiyeh	L	L	L	Qabaa Jezzine	L	L	L
Qatrani	L	ML	L	Qaytouleh	L	L	L	Qtaleh Jezzine	L	L	L
Rihane Jezzine	ML	ML	ML	Rimat	L	L	L	Roum	L	L	L
Roummanet	L	ML	ML	Sabbah	L	L	L	Saydoun	L	L	L
Sfaray	L	L	L	Snaya	L	L	L	Sojoud	ML	ML	ML
Srayri	ML	ML	L	Taaïd	L	L	L	Wadi Jezzine	L	L	L
Zhalta	L	L	L								

## Bekaa

### West Bekaa

Municipality	11-Nov	12-Nov	13-Nov	Municipality	11-Nov	12-Nov	13-Nov	Municipality	11-Nov	12-Nov	13-Nov
Aammiq BG	L	ML	ML	Ain El Tineh BG	L	M	L	Ain Zebdeh	M	M	L
Ana	L	ML	L	Aytanit	L	ML	L	Baaloul BG	ML	M	L
Bab Mareh	ML	M	L	Chouberqiye Aammiq	L	ML	ML	Dakoue	L	ML	ML
Deir Ain El-Jaouze	M	M	L	Deir Tahniche	L	ML	ML	Ghaza	L	ML	ML
Harime El-Soughra	L	ML	ML	Hoch Harimeh	L	ML	ML	Jazira BG	L	ML	ML
Jib Jennine	L	ML	L	Kamed-El-Laouz	L	ML	L	Kefraya BG	L	ML	L
Khiara El Atika	L	ML	ML	Khiara	L	ML	ML	Khirbet Qanafar	M	M	L
Lala	ML	M	L	Lebbaya BG	ML	M	L	Loussa	L	M	L
Machghara	ML	M	L	Manara (Hammar) BG	L	L	L	Mansoura BG	L	ML	ML
Marej BG	L	ML	M	Maydoun	L	M	L	Ouaqf BG	L	ML	ML
Qaraaoun	ML	M	L	Qelya	L	M	L	Raouda (Istabel)	L	ML	ML
Saghbine	ML	M	L	Sohmor	ML	M	L	Soltan Yacoub el Ara	L	ML	ML
Souairy	L	ML	ML	Sultan Yaacoub	L	ML	ML	Tal Znoub	L	ML	ML
Yehmor BG	ML	M	L	Zilaya	M	M	L				

### Zahle

Municipality	11-Nov	12-Nov	13-Nov	Municipality	11-Nov	12-Nov	13-Nov	Municipality	11-Nov	12-Nov	13-Nov
Aanjar (Haouch Mouss	L	ML	ML	Ablah	L	ML	ML	Ain Kfarzabad	L	ML	M
Ali-El-Nahri	L	ML	ML	Bar Elias	L	ML	M	Bouarej	L	M	M
Cheberqiyet Tabet	L	ML	M	Chtaura	L	ML	M	Deir El Ghazal	L	ML	M
Delhamiyet Zahle	L	ML	M	Ferzol	L	ML	M	Haouch El-Ghanam	L	ML	ML
Haouch Es-Siyadeh	L	ML	M	Haouch Hala	L	ML	M	Haouch Mandara	L	ML	M



Haouch Qayssar	L	ML	M	Hezerta	VL	ML	M	Hosh Moussa	L	ML	M
Jdita	L	ML	M	Kfarzabad	L	ML	M	Ksara	L	ML	M
Majdel Aanjar	L	ML	L	Makssi	L	ML	M	Massa	L	ML	M
Mazraat Er-Remtaniye	L	ML	M	Mrayjat Zahle	L	M	M	Mzaraa Zahle	L	M	M
Nabi Ayla	L	ML	M	Nasriyet Rizk	L	ML	M	Nasriyet Zahle	L	ML	M
Niha Zahle	L	ML	M	Ouadi Ed-Deloum	L	ML	M	Ouadi El-Arayech	L	ML	M
Qaa El Rim	VL	ML	M	Qab Elias	L	ML	M	Qousaya	L	ML	M
Rhit	L	ML	M	Riyak	L	ML	M	Saadnayel	L	ML	M
Taal El-Akhdar	L	ML	ML	Taalbeya	L	ML	M	Taanayel	L	ML	M
Talamara	L	ML	ML	Tcheflik Edde Haouch	L	M	M	Tcheflik Qiqano	L	ML	M
Terbol Zahle	L	ML	M	Touaite Zahle	L	ML	M	Zahle Aradi	L	ML	M
Zahle El-Berbara	L	ML	M	Zahle El-Maallaqa	L	ML	M	Zahle El-Midane	L	ML	M
Zahle Er-Rassiye	L	ML	M	Zahle Haouch El-Ouma	L	ML	M	Zahle Haouch El-Ouma	L	ML	M
Zahle Haouch Ez-Zara	L	ML	M	Zahle Maalqa Aradi	L	ML	M	Zahle Mar Antonios	L	ML	M
Zahle Mar Elias	L	ML	M	Zahle Mar Gerios	L	ML	M	Zahle Saydet En-Naja	L	ML	M
Zebdoul	L	ML	ML								

## Rachaiya

Municipality	11-Nov	12-Nov	13-Nov	Municipality	11-Nov	12-Nov	13-Nov	Municipality	11-Nov	12-Nov	13-Nov
Ain Arab Rachaiya	L	L	L	Ain Ata	VL	L	L	Ain Harche	L	L	L
Aqabe Rachaya	L	L	L	Ayha	L	L	L	Ayta El Fokhar	L	L	L
Bakifa Rachaya	L	L	L	Bakka	VL	L	L	Beit Lahya	L	L	L
Bireh Rachaiya	L	ML	L	Daher El Ahmar	L	L	L	Deir El-Achayer	L	L	L
Heloua Rachaiya	L	L	L	Hoch El Qannabeh Rac	L	L	L	Kaoukaba Bou Arab	L	L	L
Kfar Danis	L	L	L	Kfar Mechki	L	ML	L	Kfar Qouq	L	L	L
Kherbet Rouha	L	ML	L	Majdel Balhiss	ML	M	L	Mdoukha	L	L	L
Mhaydseh Rachaiya	L	ML	L	Nabi Safa	ML	M	L	Rachaiya	L	L	L
Rafid Rachaiya	L	ML	L	Selsata (Mazraat Dei	VL	VL	VL	Tannoura	L	L	L
Yanta	VL	L	L								

## Beyrouth

### Beyrouth

Municipality	11-Nov	12-Nov	13-Nov	Municipality	11-Nov	12-Nov	13-Nov	Municipality	11-Nov	12-Nov	13-Nov
Achrafieh	L	L	M	Ain el-Mreisse	L	L	M	Bachoura	L	L	M
Beirut Central Distr	ML	L	M	Marfai	ML	L	M	Mazraa	L	L	M
Medaouar	L	L	M	Minet el-Hosn	ML	L	M	Mwssaitbeh	L	L	M
Ras Beirut	L	L	M	Rmeil	L	L	M	Saifi	ML	L	M
Zqaq el-Blat	ML	L	M								