

Lebanon Fire Risk Bulletin



CIVIL DEDEFENCE

Refer to cadast table condition.

Please note that the indicated temperature is at 2 meters height from the ground.

General description of potential fire risk situation

Symbol	Level of risk	Meaning and actions
VL	Very low	Very low fire risk. Controlled burning operations can be hardly executed due to high fuel moisture content. Normally wildfires self-extinguish.
L	Low	Low fire risk. Controlled burning operations can be executed with a reasonable degree of safety.
ML	Medium low	Medium-low fire risk. Controlled burning operations can be executed in safety conditions. All the fires need to be extinguished.
M	Medium	Medium fire risk. Controlled burning operations would be avoided. All the fires need to be very well extinguished.
M	Medium high	Controlled burning is not recommended. Open flame will start fires. Cured grasslands and forest litter will burn readily. Spread is moderate in forests and fast in exposed areas. Patrolling and monitoring is suggested. Fight fires with direct attack and all available resources.
H	High	Ignition can occur easily with fast spread in grass, shrubs and forests. Fires will be very hot with crowning and short to medium spotting. Direct attack on the head may not be possible requiring indirect methods on flanks. Patrolling and monitoring the territory is highly suggested.
E	Extreme	Ignition can occur also from sparks. Fires will be extremely hot with fast rate of spread. Control may not be possible during day due to long range spotting and crowning. Suppression forces should limit efforts to limiting lateral spread. Damage potential total. Patrolling and monitoring the territory is highly suggested.

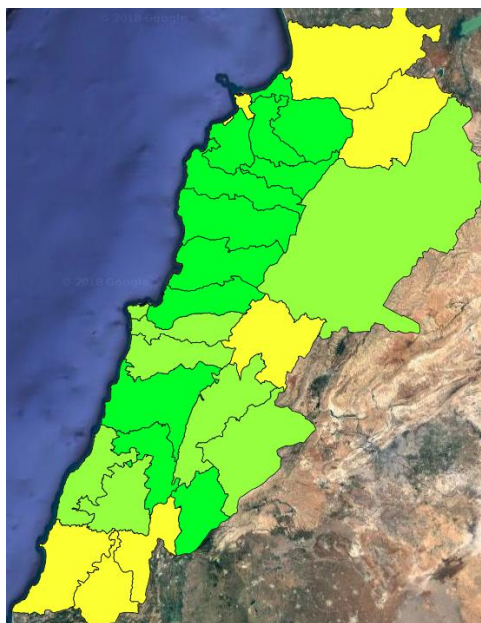
Beirut, 11 October 2018

FIRE RISK INDEX

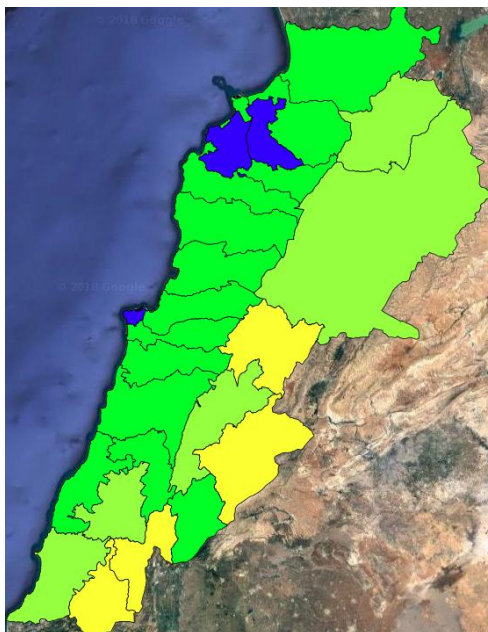
10 OCT 2018



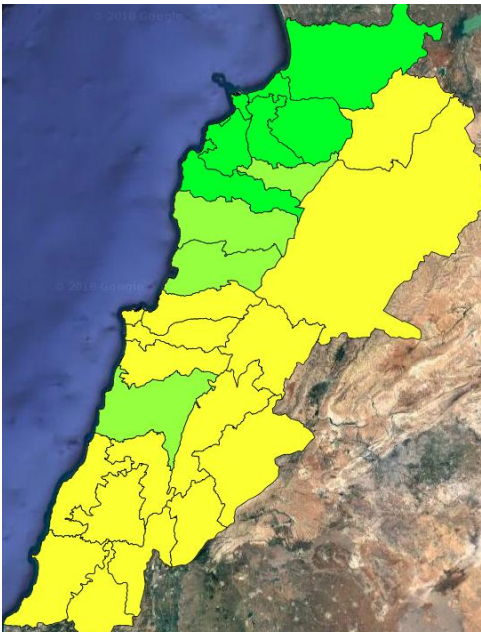
11 OCT 2018



12 OCT 2018



13 OCT 2018



Layer Legend:

Lebanon Wildfire Risk Index 1

Data: Run: 11/10/2018 00:00. Forecast for 11

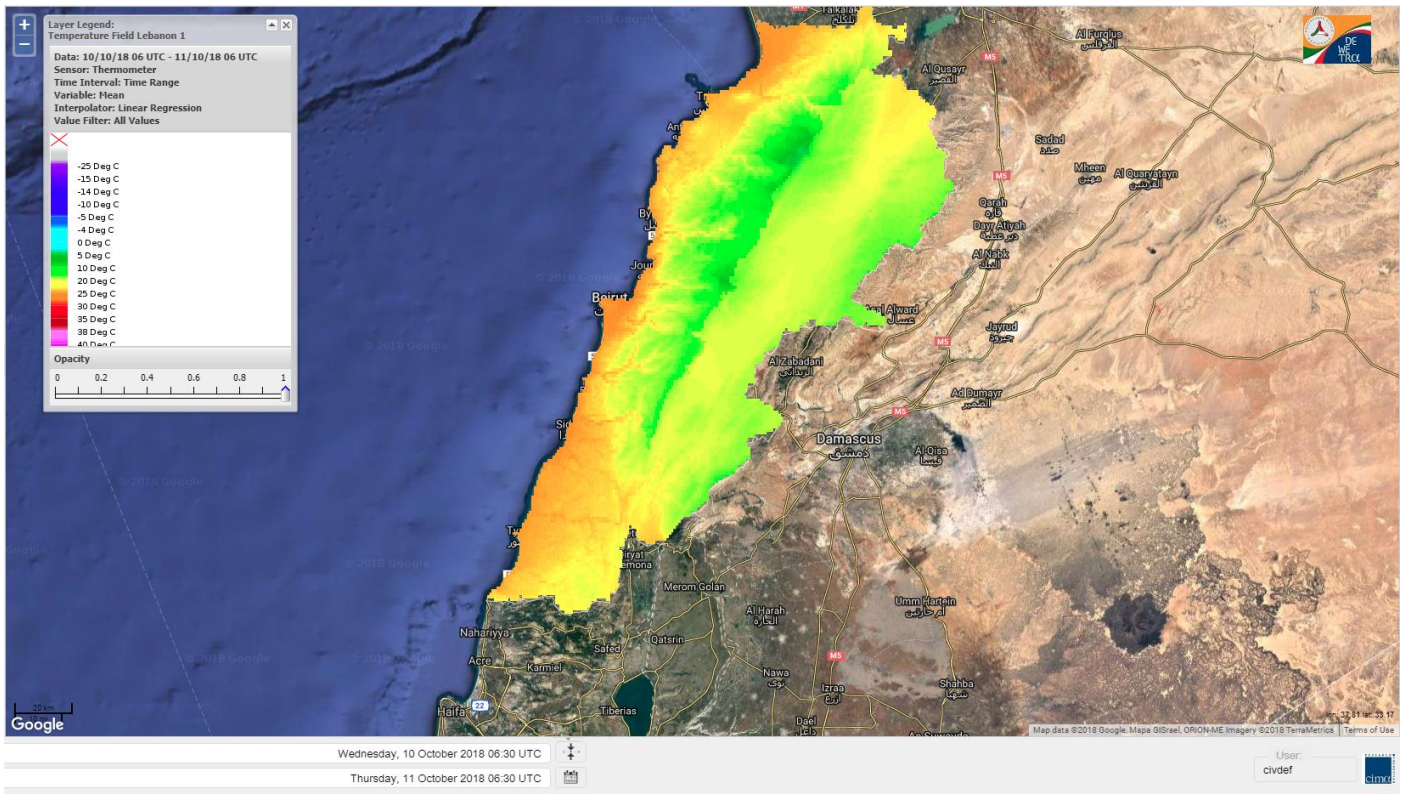
Model: RISICO for the Republic of Lebanon

Variable: Fire Weather Index

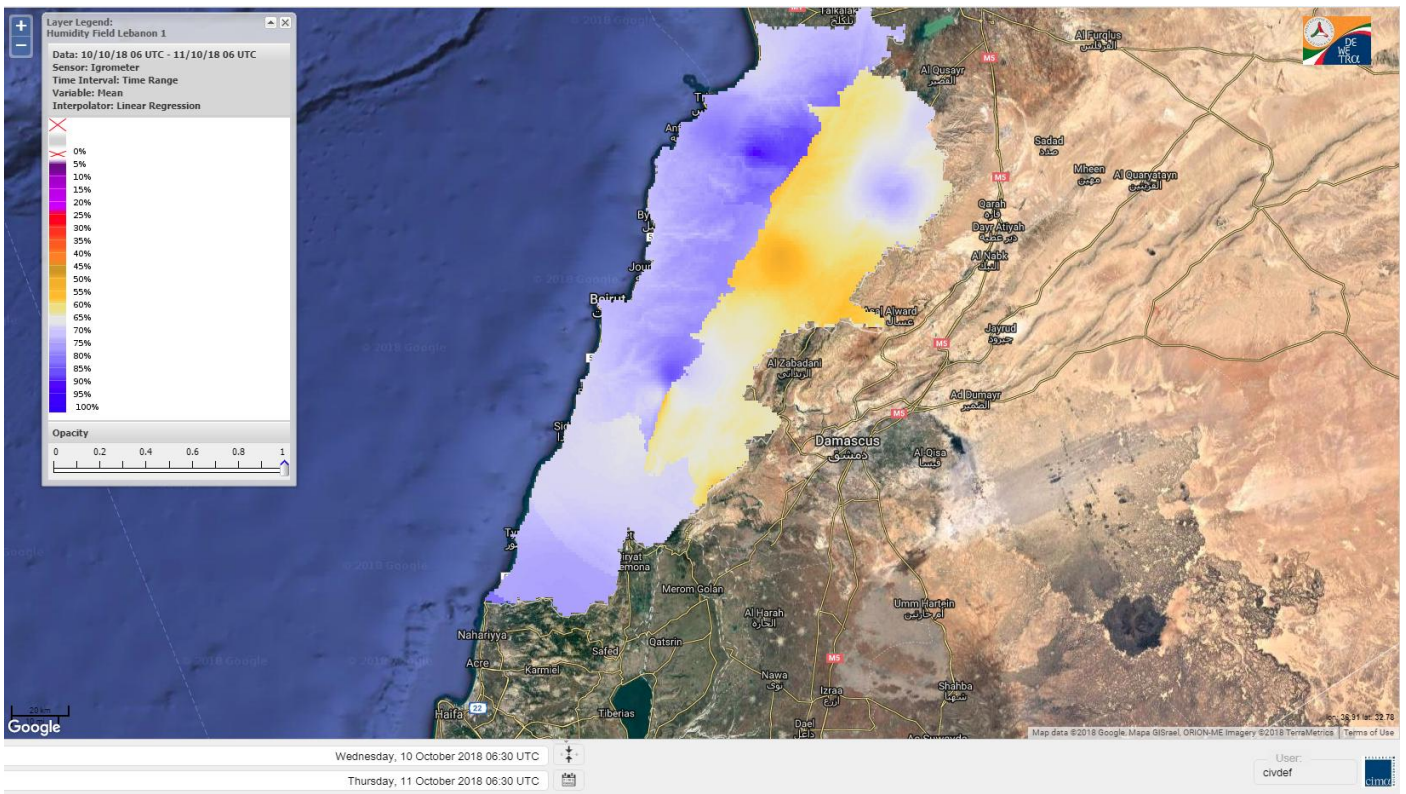
Spatial Resolution: Caza

- VERY LOW
- LOW
- MEDIUM-LOW
- MEDIUM
- MEDIUM-HIGH
- HIGH
- EXTREME

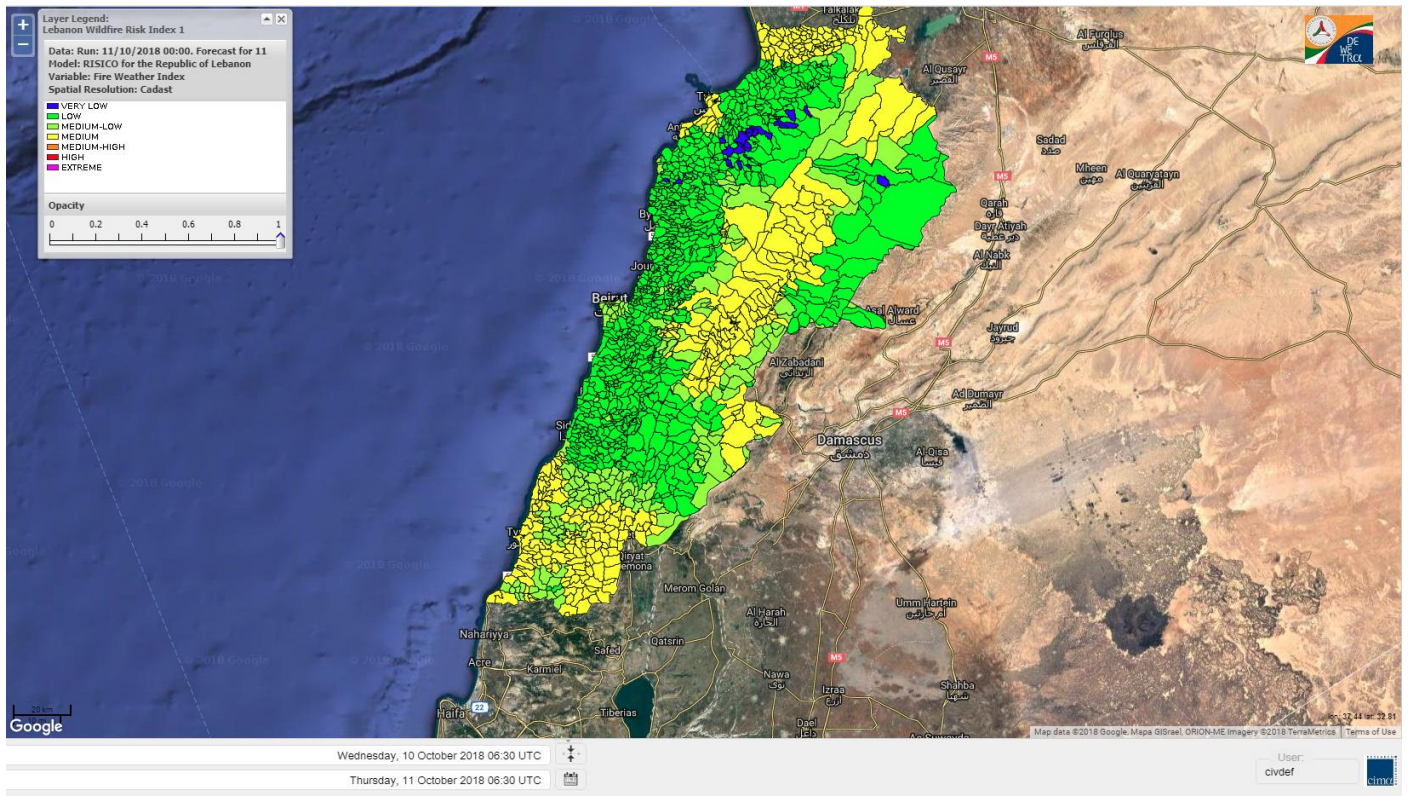
Lebanon temperature for Lebanon 11 OCT 2018



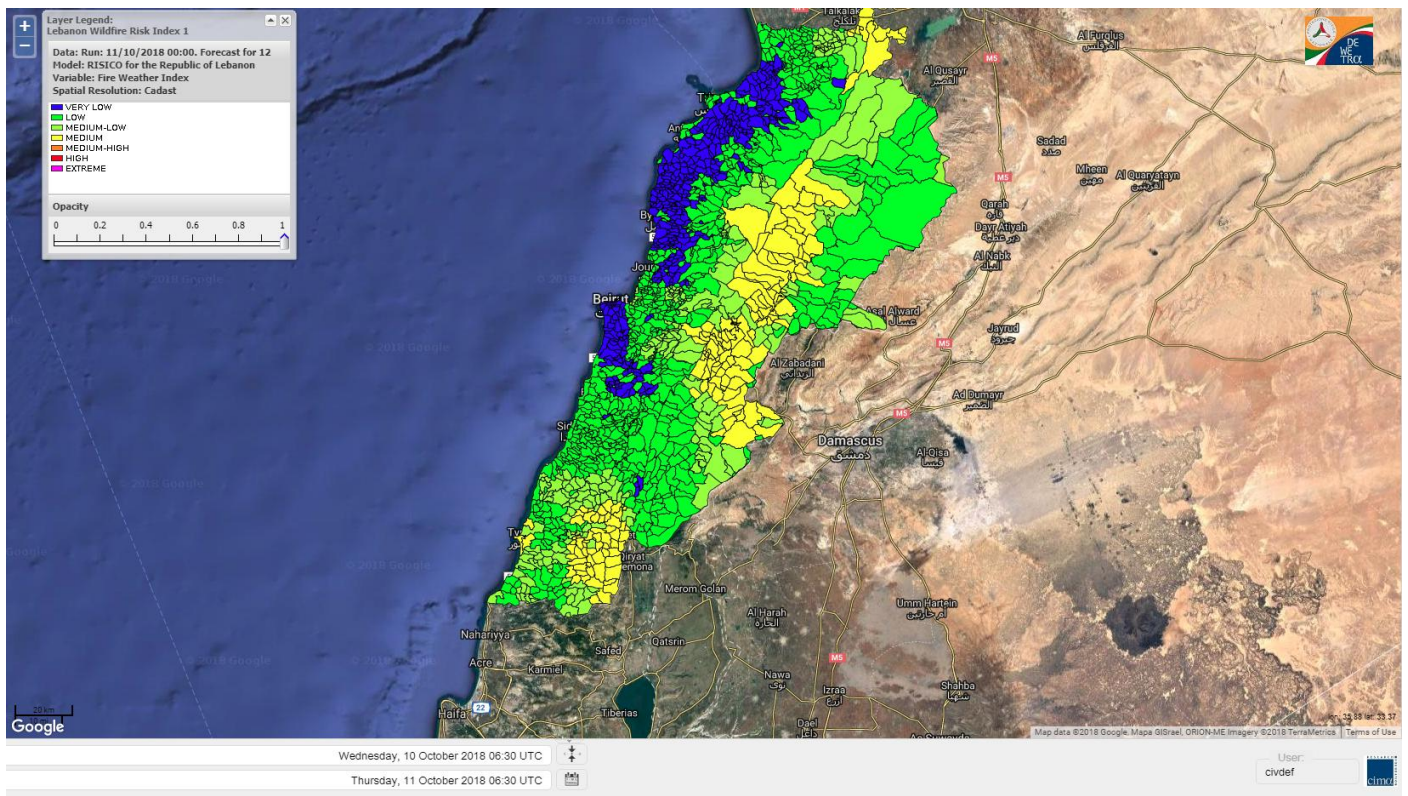
Lebanon humidity for Lebanon 11 OCT 2018



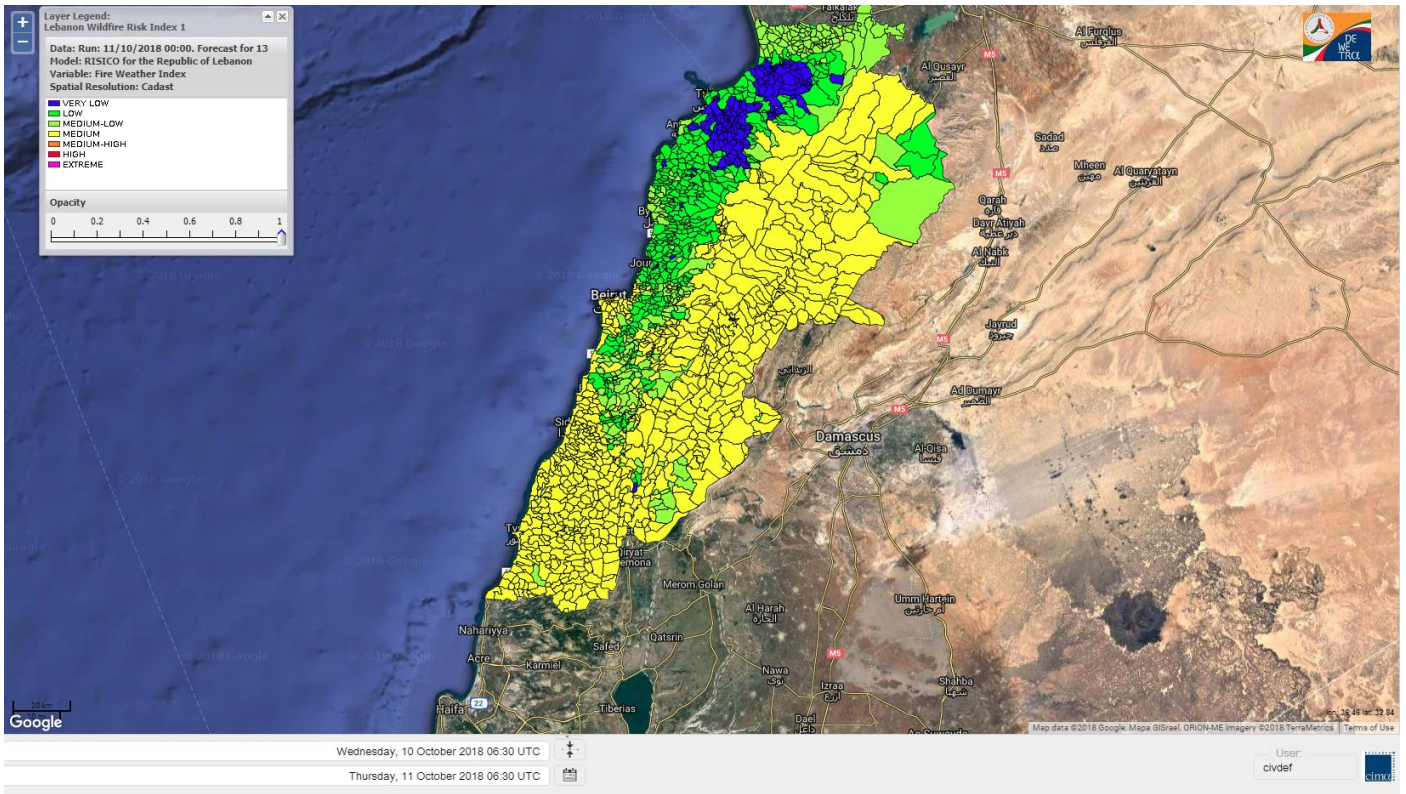
Lebanon for 11 OCT 2018



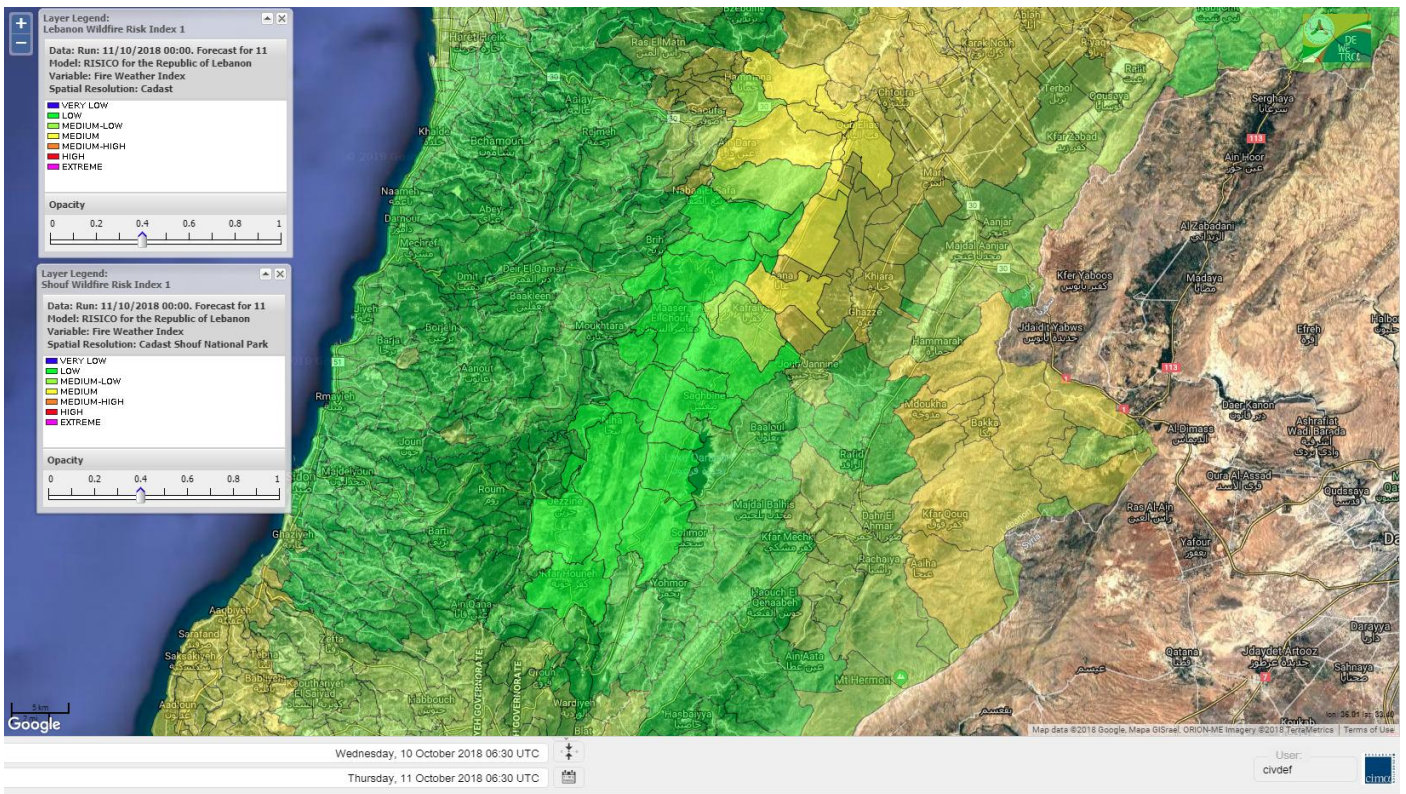
Lebanon for 12 OCT 2018



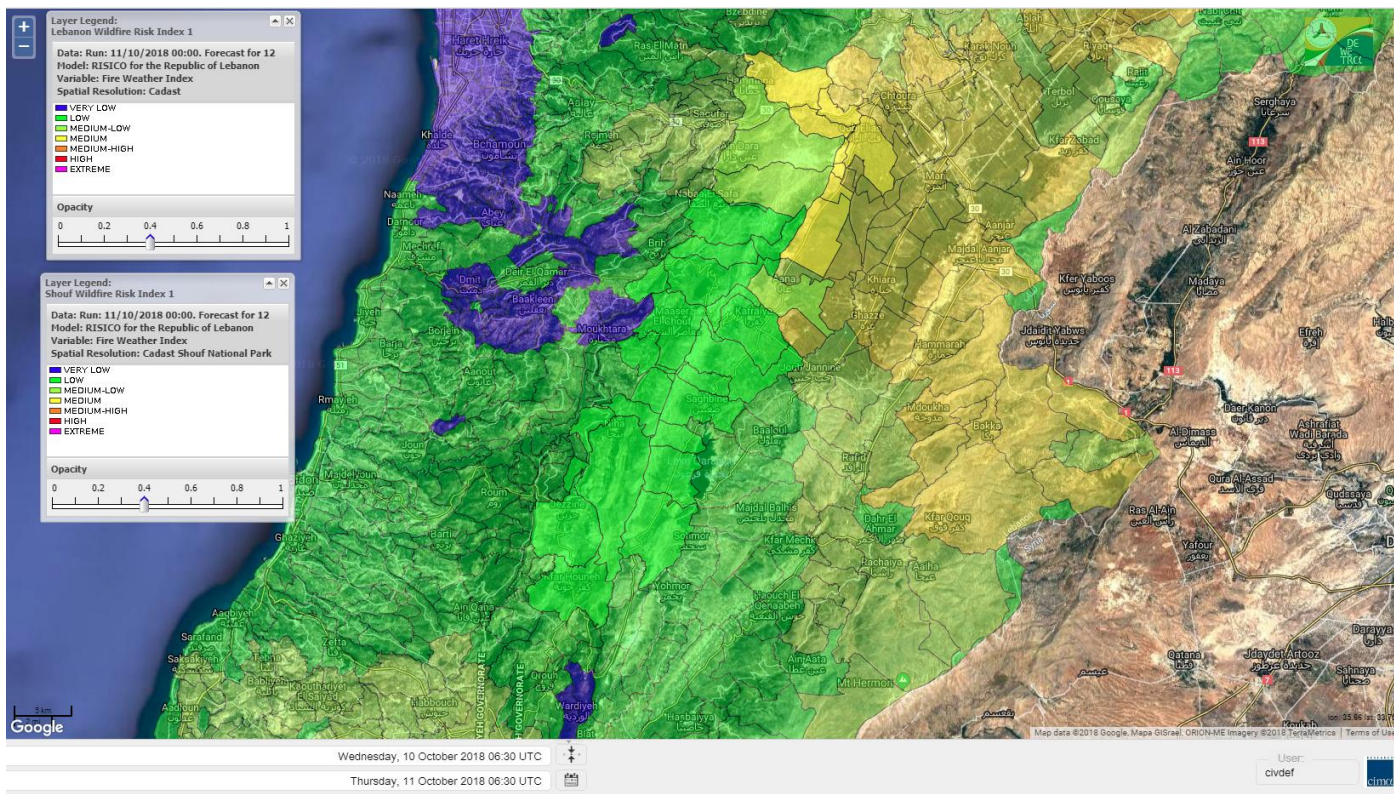
Lebanon for 13 OCT 2018



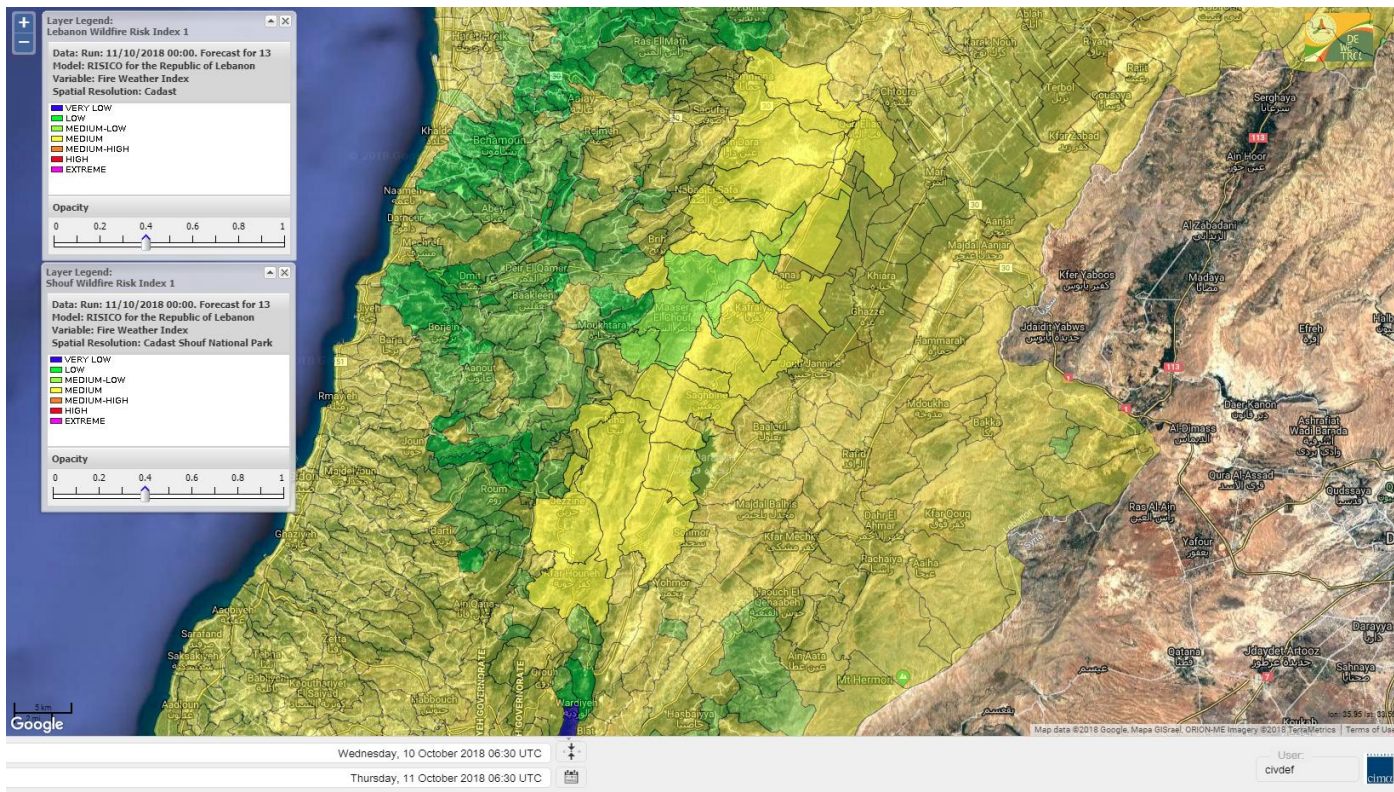
Shouf Biosphere Reserve Forecast for 11 OCT 2018



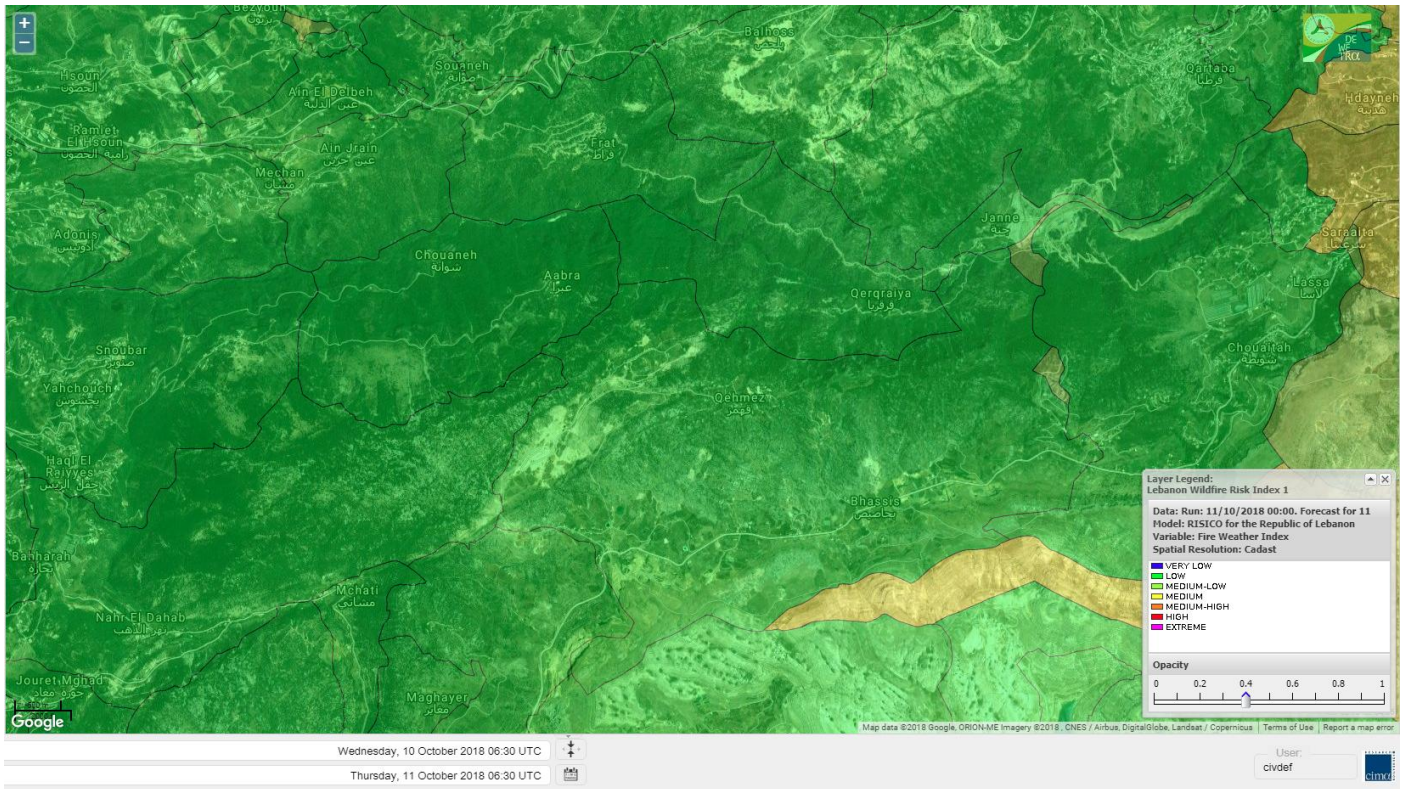
Shouf Biosphere Reserve Forecast for 12 OCT 2018



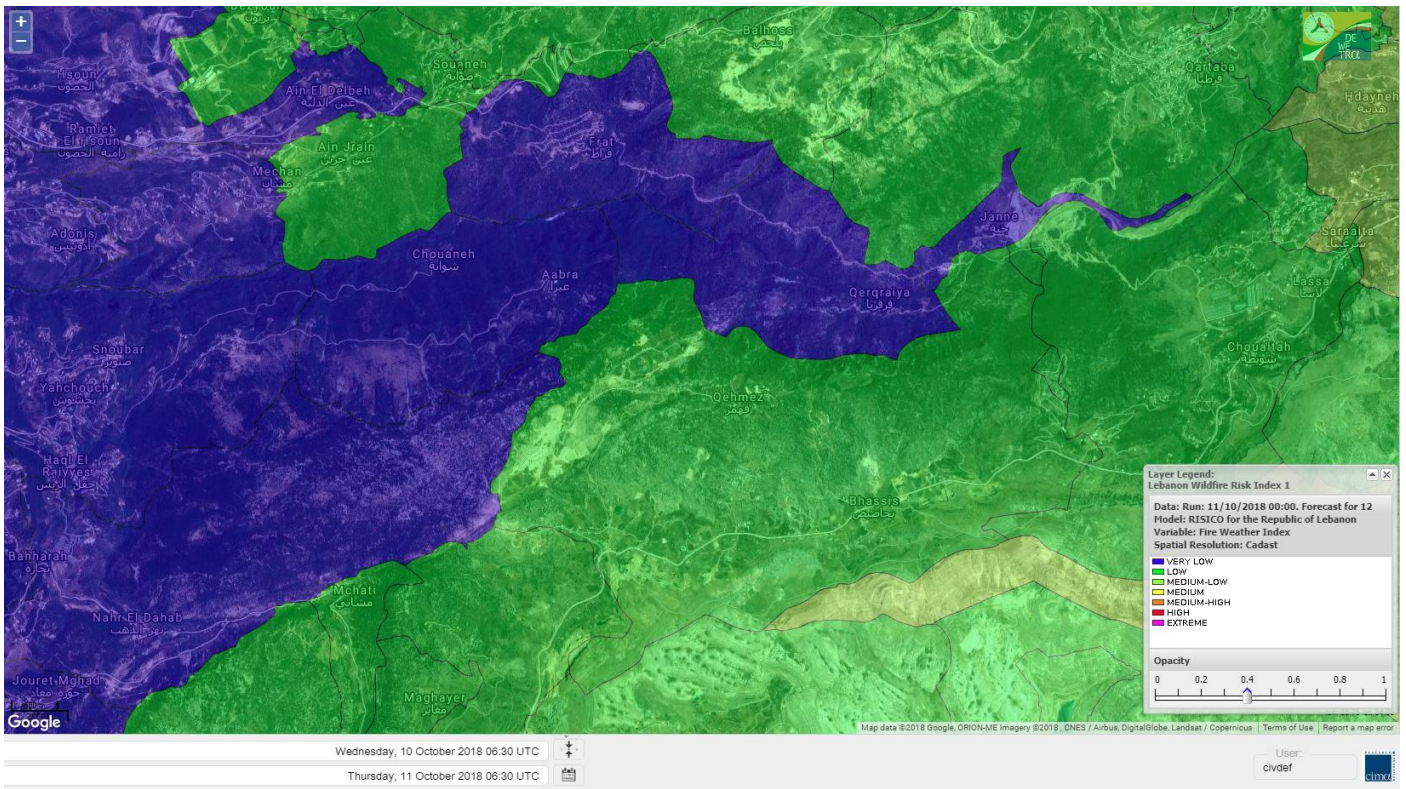
Shouf Biosphere Reserve Forecast for 13 OCT 2018



Jabal Moussa Reserve Forecast for 11 OCT 2018



Jabal Moussa Reserve Forecast for 12 OCT 2018



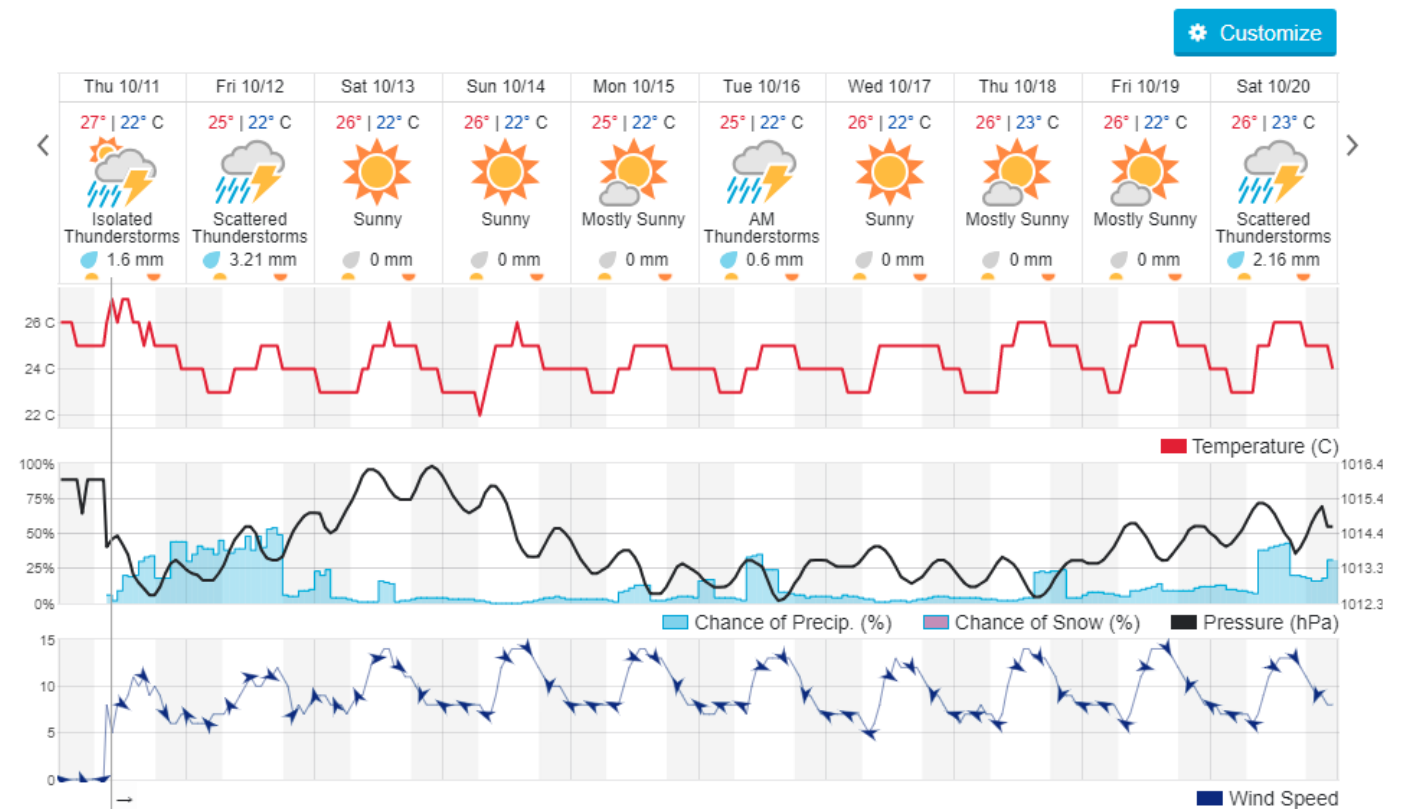
Jabal Moussa Reserve Forecast for 13 OCT 2018



Beirut, Lebanon

27° ACHRAFIEH, RIZK STATION | REPORT | CHANGE

TODAY HOURLY **10-DAY** CALENDAR HISTORY WUNDERMAP



Nord

Koura

Municipality	11-Oct	12-Oct	13-Oct	Municipality	11-Oct	12-Oct	13-Oct	Municipality	11-Oct	12-Oct	13-Oct
Aaba	L	VL	VL	Afsaddiq	L	VL	L	Ain Ekrine	L	VL	L
Amioun	L	VL	L	Anfeh	M	L	ML	Badbhoun	L	VL	L
Barghoun	L	VL	L	Barsa	M	VL	VL	Batroumine	ML	VL	VL
Bdebba	ML	VL	VL	Bechmizine	L	VL	L	Bednayel El-Koura	L	VL	L
Bhabbouch El-Koura	L	VL	L	Bkeftine	ML	VL	VL	Bnehran	L	VL	L
Bqaiaa El-Koura	ML	VL	VL	Bsarma	L	VL	VL	Btaaboura	L	VL	L
Bterram	L	VL	L	Btouratij	M	VL	L	Bziza	L	VL	L
Dar Beehtar	L	VL	L	Dar Chmezzine	L	VL	L	Deddeh	M	VL	L
Deir El-Balamand	L	VL	VL	Fih	L	L	L	Hraiche	M	L	ML
Ijdaabrine	L	VL	L	Kaftoun	L	VL	L	Kefraya El-Koura	L	VL	L
Kfarakka	L	VL	VL	Kfarhata	L	VL	L	Kfarhazir	L	VL	L
Kfarkahel	ML	VL	VL	Kfarsaroun	L	VL	L	Kosba	L	VL	VL
Mejdel el-Koura	L	VL	L	Nakhle	M	VL	VL	Qalhat	L	VL	VL
Ras Masqa	M	VL	VL	Rechdibbine	L	L	L	Zakroun	M	L	L
Zgharta El-Mtaouile	L	VL	VL								

Bcharre

Municipality	11-Oct	12-Oct	13-Oct	Municipality	11-Oct	12-Oct	13-Oct	Municipality	11-Oct	12-Oct	13-Oct
Aabdine	VL	L	VL	Bane	L	L	L	Barhelioun	L	L	VL
Bazouone	L	ML	M	Becharre	L	L	M	Beit Menzer	L	L	VL
Billa	VL	L	VL	Blaouza	VL	L	VL	Bqaa Kafra	L	ML	M
Bqerqacha	L	ML	M	Breissat	L	L	ML	Dimane	L	L	ML
Hadath El Jobbeh	L	L	L	Hadchit	L	L	ML	Hasroun	L	ML	M
Mazraat Aassaf	L	VL	VL	Mazraat Bani Saab	ML	L	L	Mchaa El-Jobbeh	ML	ML	M
Metrit	L	VL	L	Moghr El-Ahoual	L	L	L	Ouadi Qannoubine	L	VL	VL
Qanat	L	L	L	Qnayouer	VL	VL	VL	Tourza	L	L	VL

Batroun

Municipality	11-Oct	12-Oct	13-Oct	Municipality	11-Oct	12-Oct	13-Oct	Municipality	11-Oct	12-Oct	13-Oct
Aabrine	L	VL	L	Aalali	L	L	L	Aartiz	L	VL	L
Abdelli	L	VL	L	Ajdabra	L	VL	L	Assia	L	L	L
Basbina	L	VL	ML	Batroun	ML	VL	L	Bcheleh	L	L	L
Bechtoudar	L	L	L	Beit Chlala	L	L	L	Beit Kassab	L	VL	VL
Bijdarfil	L	VL	L	Bqesmaya	L	VL	L	Chatine	ML	L	L
Chebtein	L	VL	L	Chekka	L	VL	L	Daael	L	L	L
Dahr Abi Yaghi	L	VL	L	Daraya El-Batroun	L	VL	L	Deir Billa	L	VL	L
Deir Kfifane	VL	VL	ML	Deir Mar Youhanna EL	L	VL	L	Deir Mar Youssef Jra	L	VL	L
Douma	L	L	L	Douq	L	VL	L	Eddeh El-Batroun	L	VL	L
Ftatah El-Batroun	L	VL	L	Ghouma	L	VL	L	Hadtoun	L	L	L
Hamat	L	VL	L	Harbouna	VL	VL	L	Hardine	L	VL	L
Helta	L	VL	L	Hery	L	L	L	Jebbla	L	VL	VL
Jrabta El-Batroun	L	VL	L	Jrane El-Batroun	L	VL	ML	Kfar Aabida	L	VL	L
Kfar Halda	L	VL	L	Kfarb Shlaimane	L	VL	VL	Kfarhatna	L	VL	L
Kfarhay	L	VL	L	Kfarhelos	L	VL	VL	Kfifane	L	VL	L

Kfour El Arabi	ML	L	L	Koubba	ML	VL	L	Kour	L	VL	L
Mar Mama	L	VL	L	Masrah	L	VL	L	Mehmarch	L	L	L
Mrah Chdid	VL	VL	L	Mrah El Ziyat	L	VL	L	Mrah El-Hajj	L	VL	VL
Nahle El-Batroun	L	VL	L	Niha El-Batroun	ML	L	ML	Ouahj El-Hajjar	L	VL	L
Ouata Houb	ML	L	L	Qatnaaoun	L	VL	L	Racha	L	L	L
Rachana	L	VL	L	Rachkida	L	VL	L	Ram El-Batroun	L	VL	L
Ras Nahnach	L	VL	L	Selaata	ML	L	L	Sghar	L	VL	L
Smar Jbayl	L	VL	L	Sourat El-Batroun	L	VL	L	Tannourine El-Faouqa	ML	ML	M
Tannourine Et-Tahta	ML	L	L	Thoum	L	VL	L	Toula El-Batroun	L	VL	L
Zan	L	VL	L								

Zgharta

Municipality	11-Oct	12-Oct	13-Oct	Municipality	11-Oct	12-Oct	13-Oct	Municipality	11-Oct	12-Oct	13-Oct
Aachach	L	VL	VL	Aalma	L	VL	VL	Aarde	L	VL	VL
Aintourine	VL	L	L	Arabet Qozhaya	L	L	VL	Arde	L	VL	VL
Arjis	L	VL	VL	Asnoun	L	VL	VL	Ayto	VL	L	VL
Basloukit	L	L	ML	Bchannine	L	VL	VL	Besebeel	L	VL	VL
Bhairret Toula	L	VL	L	Bnachee	L	L	VL	Boussit	L	L	L
Danha	L	VL	VL	Daraiya Zgharta	VL	VL	VL	Deir Jdeide	L	VL	VL
Ehden	L	L	ML	Halan	L	L	L	Hariq Zgharta	L	VL	VL
Houakir	L	VL	VL	Hraiqis	L	VL	L	Iaal	L	VL	VL
Ijbaa	VL	L	VL	Karm Saddeh	VL	L	VL	Kfarchakhna	L	VL	VL
Kfardlaqous	L	VL	VL	Kfarfou	L	L	VL	Kfarhata Zgharta	L	VL	VL
Kfarhoura	L	VL	VL	Kfarsghab	L	L	L	Kfaryachit	L	VL	VL
Kfarzaina	L	VL	VL	Khaldiye	L	VL	VL	Mazraat Ajbeaa	L	VL	VL
Mazraat Et-Teffah	VL	VL	VL	Mazraat Jneid	L	VL	VL	Mejdlaia Zgharta	L	VL	L
Merh Kfarsghab	L	VL	VL	Miryata	L	VL	VL	Miziara	VL	VL	VL
Mzraat Kefraya	L	VL	L	Qorah Bach	L	VL	VL	Rachiine	L	VL	VL
Ras Kifa	L	L	VL	Sakhra	L	VL	VL	Sebhel Zgharta	L	L	VL
Serhel	L	VL	VL	Tallet Zgharta	L	VL	VL	Toula Zgharta	L	L	L
Zgharta	L	VL	VL								

Minieh-Denniye

Municipality	11-Oct	12-Oct	13-Oct	Municipality	11-Oct	12-Oct	13-Oct	Municipality	11-Oct	12-Oct	13-Oct
Aasaymout	L	VL	VL	Aaymar	VL	L	L	Aazki	L	VL	L
Ain El-Tineh-Miniyeh	L	VL	VL	Assoun	L	VL	L	Bakhaaoun	L	VL	L
Bchennata	L	L	M	Bechehhara	L	VL	VL	Beddawi	L	L	L
Behouaita	L	L	L	Beit El Foqss	L	VL	L	Beit Haouik	L	L	ML
Beit Zoud	L	VL	VL	Bekaasafrine	L	L	M	Borj El Yahoudiyeh	L	VL	L
Bqarsouna	VL	VL	L	Btermaz	L	VL	VL	Debaael	L	VL	L
Deir Ammar	L	L	L	Deir Nbouh	L	VL	VL	Haouaret-Miniyeh	L	L	L
Haql el Azimeh	L	VL	VL	Harf El Siyad	L	VL	VL	Hazmiye-Miniyeh	L	VL	VL
Izal	L	VL	L	Jarjour	VL	VL	VL	Jayroun	L	VL	L
Kahf El-Malloul	VL	VL	VL	Karm El-Moher	VL	L	L	Kfar Binine	VL	L	L
Kfarchalane	L	VL	VL	Kfarhabou	L	VL	VL	Kharroub-Miniyeh	L	L	L
Mazraat El-Kreme	VL	VL	VL	Mazraat Ketrane	L	VL	L	Merkebta	L	VL	L
Minyeh	L	VL	L	Mrah El Sfirat	L	VL	VL	Mrah Sraj	L	VL	VL
Mrebbine	L	L	L	Nabi Youcheaa	L	VL	L	Nemrine	VL	L	L

Qarhaiya	L	L	L	Qarne	L	VL	VL	Qarsita	L	VL	L
Qattineh-Miniyeh	L	VL	VL	Qemmamine	VL	VL	VL	Qraine	L	VL	VL
Raouda-Aadoua	L	VL	VL	Rihaniyet-Miniyeh	L	VL	VL	Sfireh	L	VL	VL
Sir Ed-Danniyeh	L	VL	VL	Tarane	L	VL	VL	Terbol-Miniyeh	L	L	L
Zaghartaghriine	VL	VL	VL	Zouq Bhannine	L	VL	L				

Nabatiye

Nabatiye

Municipality	11-Oct	12-Oct	13-Oct	Municipality	11-Oct	12-Oct	13-Oct	Municipality	11-Oct	12-Oct	13-Oct
Aabba	ML	ML	M	Aazzi	L	L	M	Adchit El-Chqif	M	M	M
Ain Bou Swar	L	L	M	Ain Kana	L	L	M	Ali El-TaHER	ML	ML	M
Ansar	M	ML	M	Arab Salim	ML	ML	M	Arnoun	M	M	M
Bfaroue	ML	L	M	Breyqaah	M	ML	M	Charqiyeh	ML	ML	M
Choukine	M	ML	M	Deir El Zahrani	ML	ML	M	Doueur El-Nabatiyeh	ML	ML	M
Habbouch El-Nabatiye	ML	ML	M	Hamra El-Nabatiyeh	M	M	M	Harouf El-Nabatiyeh	ML	ML	M
Hmaile	ML	L	M	Houmin El Faouqa	ML	ML	M	Houmin El Tahta	L	L	M
Jarjough	ML	L	M	Jbaah El-Nabatiyeh	L	L	M	Jebchit	ML	ML	M
Kfar Djal El-Nabatiy	M	M	M	Kfar Remmane	ML	ML	M	Kfar Sir	M	M	M
Kfar Tebnit	M	M	M	Kfarfila	L	L	M	Kfour El-Nabatieh	ML	ML	M
Mayfadoun	M	M	M	Mazraat Bsaffour	ML	L	M	Mazraat Chalbaal	ML	ML	M
Mazraat Dmoul	ML	ML	M	Mazraat El Khreibeh	L	L	M	Mazraat El-Bayad El-	ML	ML	M
Mazraat Kfarjaouz	ML	ML	M	Mazraat Qalaat Meiss	ML	ML	M	Nabatiyeh El-Fawka	M	M	M
Nabatiyeh Et-Tahta	ML	ML	M	Namiriyeh	ML	ML	M	Qaaqaaiyet El Jisr	M	M	M
Qossaibeh El-Nabatiy	M	M	M	Roumine	L	L	M	Sarba El-Nabatieh	L	L	M
Sir El-Gharbiyeh	M	ML	M	Toul	ML	ML	M	Yehmor El-Nabatiyeh	M	M	M
Zaoutar El Charqiyeh	M	M	M	Zaoutar El-Gharbiyeh	M	M	M	Zebdine El-Nabatiyeh	ML	ML	M
Zefta	ML	L	M								

Hasbaiya

Municipality	11-Oct	12-Oct	13-Oct	Municipality	11-Oct	12-Oct	13-Oct	Municipality	11-Oct	12-Oct	13-Oct
Aain Jarfa	L	L	ML	Abou Qamha	L	L	ML	Ain Qania	L	L	ML
Bourghos	ML	L	M	Chebaa	L	L	M	Chouaya Hasbaya	L	L	M
Dellafeh	L	L	M	Fardiss Hasbaiya	L	L	M	Hasbaya	L	L	M
Hbariyeh	L	L	ML	Kaoukaba Hasbaiya	ML	L	M	Kfar Chouba	ML	L	ML
Kfar Hamam	ML	L	ML	Kfeir El-Zait	L	L	ML	Khalwat Hasbaya	L	L	ML
Khreibet Hasbaiya	M	L	M	Majidiyeh Hasbaiya	M	L	M	Marj Ez-Zhour (Haouc	L	L	ML
Meri	M	L	M	Mimass	L	L	M	Rachaiya El-Fokhar	ML	L	ML
Salaiyeb	M	L	M								

Marjayoun

Municipality	11-Oct	12-Oct	13-Oct	Municipality	11-Oct	12-Oct	13-Oct	Municipality	11-Oct	12-Oct	13-Oct
Aalmane Marjaayoun	M	ML	M	Aamra	M	L	M	Adayseh Marjaayoun	M	M	M
Adchit El-Koussair	M	M	M	Ain Aarab Marjaayoun	M	L	M	Bani Haiyann	M	M	M
Blatt Marjaayoun	ML	L	M	Blida	M	M	M	Borj El-Moulouk	M	ML	M
Boueyda Marjaayoun	ML	L	M	Deir Mimass	M	M	M	Deir Siriane	M	M	M
Dibbine	ML	L	M	Ebel El Saqi	ML	L	M	Houla	M	M	M
Houra	M	M	M	Kfar Kila	M	M	M	Khiam Marjaayoun	M	L	M

Klayaa	M	ML	M	Majdel Selem	M	M	M	Marjaayoun	ML	L	M
Markaba	M	M	M	Mays El-Jabal	M	M	M	Mazraat Doumiat	M	M	M
Mazraat Sarada	M	L	M	Mhaibib	M	M	M	Qabrikha	M	M	M
Qantara	M	M	M	Rab El-Thalathine	M	M	M	Saouaneh Marjayoun	M	M	M
Talloussa	M	M	M	Taybeh Matjaayoun	M	M	M	Touline	M	ML	M

Bent Jbail

Municipality	11-Oct	12-Oct	13-Oct	Municipality	11-Oct	12-Oct	13-Oct	Municipality	11-Oct	12-Oct	13-Oct
Ain-Ebel	M	ML	M	Aitaroun	M	M	M	Aynata Bint Jbeil	M	ML	M
Ayta El-Chaeb	ML	L	M	Ayta El-Jabal	M	M	M	Beit Lif	L	L	M
Beit Yahoun	M	M	M	Bint Jbeil	M	ML	M	Borj Qalaway	M	M	M
Braachit	M	M	M	Chakra	M	M	M	Debel	M	ML	M
Deir Antar	M	M	M	Froun	M	ML	M	Ghandouriyeh Bint Jb	M	M	M
Hanine	M	ML	M	Hariss	M	M	M	Hdatha	M	M	M
Jmeyjme	M	M	M	Kafra Bint Jbeil	ML	L	M	Kfar Dounine	M	M	M
Khirbet Selm	M	M	M	Kounine	M	M	M	Maroun El Ras	M	M	M
Qalaway	M	M	M	Qaouzah	ML	L	M	Qatmoun	M	ML	M
Ramya Bint Jbeil	ML	L	M	Rchaf	M	L	M	Rmeich	M	ML	M
Safad Al Battikh	M	M	M	Salhaneh	L	L	M	Serbine	M	ML	M
Sultanieh Bint Jbeil	M	M	M	Tibnine	M	M	M	Tiri	M	ML	M
Yaroun	M	ML	M	Yater	ML	L	M				

Mont Liban

Jbail

Municipality	11-Oct	12-Oct	13-Oct	Municipality	11-Oct	12-Oct	13-Oct	Municipality	11-Oct	12-Oct	13-Oct
Aabeydat	L	VL	L	Aalita	L	VL	L	Aamchit	L	VL	ML
Aarab El-Lahib	ML	ML	M	Aarasta	M	L	M	Adonis Jbeil	L	VL	L
Afqa Jbeil	ML	L	M	Ain El Delbeh Jbeil	L	VL	L	Ain El-Ghouayba	L	L	L
Ain Jrain	L	L	L	Ain Kfah	L	VL	L	Almat El Chemaliyat	L	L	L
Almat El-Jenoubiya	L	L	L	Aqoura	M	M	M	Bayzoun	L	L	L
Bchille Jbeil	L	VL	L	Bechtlida	L	VL	L	Behdaydat	L	VL	L
Beit Habbaq	L	VL	L	Bejjeh	L	VL	L	Bekhaaz	L	VL	L
Berbara Jbeil	L	VL	ML	Bintael	L	VL	L	Birket Hjoula	L	VL	L
Blatt Jbeil	L	VL	ML	Boulhos	L	L	L	Breyj Jbeil	L	VL	L
Chamat	L	VL	ML	Chikhane	L	VL	ML	Chmout	L	VL	L
Eddeh Jbeil	L	L	ML	Ehmej	L	L	L	Fatre	L	VL	L
Ferhet	L	L	ML	Fghal	L	VL	L	Frat	L	VL	L
Ghabat	M	ML	M	Ghalboun	L	VL	L	Gharzouz	L	VL	ML
Ghofrine	L	VL	ML	Habil	L	VL	VL	Halate	L	VL	L
Haqel	L	VL	L	Hbaline	L	VL	L	Hboub	L	L	ML
Hdeine	M	ML	M	Hema Er-Rehban	L	L	M	Hema Mar Maroun Aann	VL	L	M
Hjoula	L	VL	L	Hosrayel	L	VL	ML	Hsarat	L	VL	L
Hsoun	L	VL	L	Jaj	L	L	L	Janne	L	VL	L
Jbeil	L	VL	ML	Jeddeyel Jbeil	L	VL	ML	Jlisse	L	VL	L
Jouret El-Qattine	L	VL	L	Kfar Baal Annaya	L	VL	L	Kfar Kidde	L	VL	L
Kfar Kouas	L	VL	L	Kfar Mashoun	L	VL	ML	Kfoun	L	VL	L

Kharbe Jbeil	L	VL	L	Laqlouq	L	ML	M	Lassa	L	L	L
Lehfed	L	VL	L	Maad	L	VL	ML	Mar Sarkis	L	L	M
Mastita	L	VL	ML	Mayfouq	L	L	L	Mazraat El Siyad	L	L	M
Mazraat El-Maaden	L	VL	L	Mechane	L	VL	L	Mechmech Jbeil	L	L	L
Mehrin	L	L	ML	Mejdel El-Akoura	ML	ML	M	Mghayreh Jbeil	M	ML	M
Mounsef	L	VL	ML	Nahr Ibrahim	L	VL	ML	Qahmez	L	L	L
Qartaba	L	L	L	Qartaboun	L	VL	ML	Qattara Jbeil	L	VL	L
Qorqraya	L	VL	L	Ramout	L	VL	L	Ras Osta	L	VL	L
Rihane Jbeil	L	VL	ML	Sakiet El-Khayt	L	VL	L	Saqi Richmaya	L	L	L
Sebrine	L	VL	L	Seraita	M	ML	M	Souane Jbeil	L	L	L
Tadmor	M	ML	M	Tartej	L	L	L	Torzaiya	L	L	L
Yanouh Jbeil	M	ML	M	Zibidine Jbeil	L	VL	L				

El Metn

Municipality	11-Oct	12-Oct	13-Oct	Municipality	11-Oct	12-Oct	13-Oct	Municipality	11-Oct	12-Oct	13-Oct
Aain El-Qabu	ML	L	ML	Aain El-Qach	L	ML	ML	Aain El-Teffaha	ML	ML	ML
Aain el-Safssaf El-M	L	L	L	Abou Mizane	ML	ML	ML	Ain Aar	L	L	M
Ain Alaq	L	L	L	Ain El-Kharroube	ML	ML	M	Ain El-Sendianeh	L	ML	ML
Ain El-Zeitoune	L	L	ML	Ain Saadeh	L	L	L	Aintoura El-Matn	ML	ML	M
Amaret Chalhoub	L	ML	M	Antelias	L	ML	M	Atchaneh	L	L	L
Ayroun	L	ML	ML	Baabdat	L	L	L	Baouchariyeh	ML	L	M
Baskinta	ML	L	M	Beit Chabab	ML	L	ML	Beit El-Chaar	L	L	M
Beit El-Kekko	L	ML	M	Beit Mery	L	L	L	Bhersaf	L	L	L
Bikfaya	L	ML	ML	Biyakout	L	L	M	Bnabil	L	L	ML
Bourj Hammoud	ML	VL	M	Bqennaya	L	L	ML	Broummana El-Matn	L	L	L
Bsalim	L	L	L	Bsifrine	ML	L	ML	Bteghrine	L	L	ML
Chaouiye	L	L	ML	Chouaya El-Matn	L	ML	ML	Choueir	L	ML	ML
Chrine	L	ML	L	Dahr El Sawan El-Mat	L	L	L	Daychouniyeh	L	L	ML
Dbayeh	L	ML	M	Deir Chamra	L	L	L	Deir Mar Abda el Mch	L	L	L
Deir Mar Roukouz	L	L	M	Deir Tamiche	L	L	L	Dik El-Mehdi	L	L	ML
Dikwaneh	ML	VL	M	Douar El-Matn	L	L	ML	Fanar	L	L	ML
Fraike	L	L	L	Haret El-Ballaneh	L	L	ML	Hbous	L	L	ML
Himlaya	ML	ML	ML	Jal El Did	L	ML	M	Jdeideh El-Metn	L	L	M
Jouar El-Matn	L	L	L	Jouret El-Ballout	L	L	L	Kaaqour	ML	L	ML
Kfar Aaqab	L	L	L	Kfertay El-Matn	L	L	L	Khenchara	L	ML	ML
Khillat El-Mtain	L	L	ML	Konnabat Broummana	L	L	L	Konnabat Salima	ML	L	L
Machraah El-Matn	L	L	ML	Majdel Tarchich	ML	ML	M	Majzoub	L	L	ML
Mansouriyeh El-Metn	L	L	M	Mar Boutros Karm Et-	ML	ML	ML	Mar Chaya et Mzekke	L	L	L
Mar Moussa Ed-Douar	L	L	L	Marjaba	L	L	ML	Masqa	L	L	L
Mayasse	ML	ML	ML	Mazraat Deir Aoukar	L	L	M	Mazraat El-Hadirat	L	L	ML
Mazraat Yachouh	L	L	M	Mchikha	L	ML	ML	Menqlet Mezher	L	L	M
Mhaydseh Matn	L	ML	ML	Mkalles	ML	VL	M	Mrouj	L	ML	M
Mtain	M	ML	M	Mtayleb	L	L	ML	Nabay	L	L	L
Naccache	L	L	M	Ouadi Chahine	L	L	ML	Ouadi El-Karm El-Mat	L	VL	L
Ouata El-Mrouj	L	ML	ML	Ouyoun El-Matn	L	L	L	Qornet Chehwan	L	L	ML
Qornet El-Hamra	L	L	L	Roumieh	L	L	L	Sfeilet Bikfaya	ML	L	ML
Sinn El-Fil	ML	VL	M	Zabbougha	L	VL	L	Zalqa	L	ML	M

Zarououn	L	L	ML	Zekrite	L	L	L	Zighrine El-Matn	L	ML	ML
Zouk El-Khrab	L	L	ML								

Chouf

Municipality	11-Oct	12-Oct	13-Oct	Municipality	11-Oct	12-Oct	13-Oct	Municipality	11-Oct	12-Oct	13-Oct
Aalmane El-Chouf	L	L	M	Aammiq El-Chouf	L	VL	L	Ain Ouzein	L	VL	L
Ain Qani	L	L	ML	Ain Zhalta	L	L	M	Ainbal	L	VL	ML
Amatour	L	L	ML	Anout	L	L	ML	Atrine	L	VL	ML
Baadarane	L	L	M	Baaqline	L	VL	ML	Baasir	L	L	M
Barja	L	L	M	Barouk	L	L	ML	Bater	L	L	M
Batloun	L	L	M	Bayqoun	L	L	M	Bchetfine	L	VL	ML
Beiteddine	L	VL	L	Benouati Ech-Chouf	L	L	ML	Berjein	L	L	ML
Bireh et Mtalleh	L	L	M	Biret El-Chouf	L	L	M	Bkechtine Ouel Mchei	L	VL	L
Bkifa El-Chouf	ML	L	M	Botme	L	VL	L	Bqaiaa Ech-Chouf	L	VL	L
Bsaba El-Chouf	L	L	ML	Chammis El-Chouf	ML	L	M	Chehim	L	L	ML
Chemaarine	L	VL	L	Chourit	L	VL	ML	Daher El-Chouf	L	L	L
Dalhoun	L	L	M	Damour	L	L	M	Daraya El-Chouf	L	L	L
Deir El-Moukhalles	L	L	L	Deir Baba	L	VL	ML	Deir Dourit	L	VL	ML
Deir El-Qamar	L	L	ML	Deir Kouche	L	VL	L	Dibbieh	L	L	L
Dmit	L	VL	L	Fouara Jaafar	L	VL	L	Fraidis El-Chouf	L	L	M
Ghabet Jaafar	L	VL	ML	Gharife	L	L	ML	Haret Jandal	L	L	M
Hasrout	L	L	M	Jadra	L	L	M	Jahlieh	L	VL	ML
Jbeih El-Chouf	L	L	M	Jdeidet El-Chouf	L	VL	ML	Jiyeh	L	L	M
Jleilyeh	L	L	M	Jmailiyeh	L	L	M	Joun	L	L	M
Kahlounie El-Chouf	L	L	M	Ketermaya	L	L	M	Kfar Faqoud	L	L	ML
Kfar Hamal	L	L	M	Kfar Him	L	VL	ML	Kfar Katra	L	VL	ML
Kfar Niss	L	L	M	Kfar hay	L	L	ML	Kfarnabrakh	L	L	ML
Khirbet Bisri	L	L	L	Knayse El-Chouf	L	VL	L	Maaniyeh	L	L	M
Maasser Beiteddine	L	VL	ML	Maasser El-Chouf	L	L	ML	Majdalouna	L	L	M
Majdel El-Meouch	L	VL	ML	Mazboud	L	L	M	Mazmoura	L	L	ML
Mazraat El Chouf	L	L	ML	Mazraat El Daher	L	L	ML	Mazraat El-Douair	L	VL	L
Mechref	L	L	ML	Mghairie	L	L	M	Mghayrie El-Chouf	L	L	L
Moukhtara	L	VL	ML	Mrusti	L	L	M	Mtolle	L	L	M
Naameh	L	L	M	Niha El-Chouf	L	L	M	Ouadi Abou Yousef	L	VL	L
Ouadi Ed-Deir	L	VL	M	Ouadi El-Sit	L	VL	ML	Ouadi bnehlay	L	VL	L
Qraibeh	L	L	ML	Qreiaa	L	VL	L	Rmayle El-Chouf	L	L	M
Semqaniyeh	L	L	M	Sibline	L	L	M	Sirjbeil	L	VL	ML
Warhanieh	L	L	M	Werdaniyeh	L	L	M	Zaarourieh	L	L	ML

Baabda

Municipality	11-Oct	12-Oct	13-Oct	Municipality	11-Oct	12-Oct	13-Oct	Municipality	11-Oct	12-Oct	13-Oct
Abadiyeh	L	L	ML	Ain Mouaffaq	L	L	ML	Araiya	L	L	L
Arbaniyeh	ML	L	L	Arsoun	L	L	ML	Baabda	L	VL	ML
Baalchmey	L	L	M	Bmaryam	M	ML	M	Bourj El-Brajneh	L	VL	M
Boutchay	L	VL	ML	Bsaba Baabda	L	VL	ML	Btekhney	M	ML	M
Btibyat	M	L	M	Bzbeddine	L	ML	ML	Chbeniyeh	M	ML	M
Chiyah	ML	VL	M	Chmeisset Baabda	M	L	ML	Chouit	L	L	L
Deir El-harf	ML	ML	ML	Deir Khouna	M	L	ML	Dlaybeh	ML	L	ML

Falougha	M	M	M	Furn El-Chebbak	ML	VL	M	Hadath Beyrouth	L	VL	M
Halaliyeh Baabda	L	L	L	Hammana	ML	ML	M	Haret El Sett	L	L	L
Haret Hamze	ML	L	ML	Haret Hreik	ML	VL	M	Hasbaiya El-Metn	L	L	ML
Jouar El-Hoz	L	L	ML	Jouret Arsoun	L	L	L	Kfar Chima	L	VL	M
Kfar Selouane	M	L	M	Khalouat Baabda	M	ML	M	Kneisset Baabda	L	L	L
Laylakeh	L	VL	M	Louayzeh Baabda	L	L	ML	Merdache	L	VL	ML
Mzairaa Baabda	L	L	L	Ouadi Chahrour El Ol	L	L	ML	Ouadi Chahrour El So	L	VL	L
Qalaa Baabda	M	ML	M	Qhraybe Baabda	M	ML	M	Qobbayaa	M	ML	M
Qornayel	L	L	L	Qortada	L	VL	L	Qrayeh Baabda	ML	ML	M
Qsaibeh Baabda	L	L	L	Qtale Baabda	M	ML	M	Ras El Metn	ML	L	ML
Ras El-Haref	M	ML	M	Rouayset El-Ballout	L	L	L	Salima Baabda	ML	L	ML
Tahouitat El Ghadir	L	VL	M	Tarchich	ML	L	M	Zandouqa	L	VL	L

Aley

Municipality	11-Oct	12-Oct	13-Oct	Municipality	11-Oct	12-Oct	13-Oct	Municipality	11-Oct	12-Oct	13-Oct
Abey	L	VL	ML	Aghmid	M	ML	M	Ain Dara	M	ML	M
Ain Drafil	L	VL	L	Ain El Halazoun	L	L	M	Ain El-Rmmaneh	L	L	L
Ain Jedideh	L	L	M	Ain Ksour	L	VL	ML	Ain Onoub	L	VL	L
Ain Traz	L	VL	ML	Ainab	L	VL	L	Aley	L	L	M
Aramoun	L	VL	L	Aytat	L	VL	ML	Azouniyeh	ML	ML	M
Baawerta	L	VL	ML	Badghan Oua Wadi Bad	ML	ML	M	Bassatine	L	VL	ML
Bayssour	L	L	ML	Bchamoun	L	VL	L	Bdadoun	L	L	L
Behouara	L	L	ML	Bennay	L	VL	ML	Bhamdoun El-Dayaa	L	ML	M
Bhamdoun El-Mhatta	L	ML	M	Bkhechtey	L	L	M	Bleibel	L	VL	L
Bmakine	L	L	M	Bmehray	ML	ML	M	Bouzrid	L	VL	L
Bserrine	L	ML	M	Bsous	L	L	L	Btalloun	L	ML	M
Btater	L	ML	M	Chanay	L	ML	M	Charoun	ML	ML	M
Chartoun	L	L	L	Chemlane	L	VL	L	Choueifat El-Aamrous	L	VL	M
Choueifat El-Oumara	L	VL	ML	Choueifat El-Quoubbe	L	VL	M	Dakkoun	L	L	ML
Deir Qoubel	L	VL	L	Dfoun	L	L	ML	Douair El Remmaneh	L	L	L
Ghaboun	L	L	ML	Habramoun	L	L	L	Homs Oua Hama	L	L	M
Houmal	L	VL	L	Jisr El Qadi	L	L	ML	Kehaleh	L	L	L
Keyfoun	L	L	ML	Kfar Aamey	L	L	ML	Kommatyeh	L	L	ML
Maasrati	L	L	ML	Majdel Baana	ML	ML	M	Mansourieh et Ain El	L	ML	M
Mazraat El-Nahr	L	L	ML	Mchakhte	ML	ML	M	Mecherfeh	L	L	M
Mejdlaya	L	L	ML	Mrayjat	L	L	M	Ramliyah	L	L	ML
Rechmaya	L	L	M	Rejmeh	L	L	ML	Remhala	L	VL	ML
Rouaysset El Neemane	L	L	ML	Saoufar	ML	ML	M	Selfaya	L	VL	L
Sirhmoul	L	VL	L	Souq El Ghareb	L	L	ML	Taazanieh	L	ML	M

Kesrouane

Municipality	11-Oct	12-Oct	13-Oct	Municipality	11-Oct	12-Oct	13-Oct	Municipality	11-Oct	12-Oct	13-Oct
Achkout	L	VL	L	Adma Oua Dafneh	L	L	L	Ain Ed-Delbe Kesroua	L	L	L
Ain El-Rihane	L	VL	L	Aintoura Kesrouane	L	L	L	Ajaltoun	L	VL	L
Akaybeh Kesrouane	L	VL	ML	Aramoun Kesrouane	L	VL	L	Azra ouel Ozor	L	VL	L
Ballouneh	L	L	L	Batha	L	VL	VL	Bekaatat Achkout	L	L	ML
Bekaatat Kanaan	L	L	L	Bizhel	L	VL	L	Bouar	L	VL	L
Bqaatouta	L	L	ML	Bqaq Ed-Dine	L	VL	L	Bzommar	L	L	L

Chahtoul	L	VL	L	Chnaniir	L	VL	L	Chouan	L	VL	L
Daraya Kesrouane	L	VL	L	Darououn	L	VL	L	Deir Baqlouch	L	VL	VL
Dlebta	L	VL	L	Eghbeh	L	VL	VL	Faraya	L	L	M
Fatka	L	L	L	Feytroun	L	VL	L	Ghazir	L	L	L
Ghbaleh Kesrouane	L	VL	L	Ghedrass	L	VL	L	Ghosta	L	VL	L
Ghynéh	L	L	ML	Harharaya w Kattine	L	VL	L	Harissa Kesrouane	L	VL	VL
Hayata	L	VL	L	Hosein	L	VL	L	Hrajel	L	L	M
Jdeideh Ghazir	L	VL	L	Jeita	L	L	L	Jounieh Ghadir	L	L	L
Jounieh Haret Sakhr	L	L	L	Jounieh Salel Alma	L	L	L	Jounieh Sarba	L	L	L
Jouret Bedrane	L	VL	L	Jouret Mhad	L	VL	L	Jouret Termos	L	L	ML
Kfar Debiane	L	L	ML	Kfar Tay Kesrouane	L	VL	L	Kfar Yassine	L	L	L
Kfour Kesrouane	L	L	L	Kharayeb Nahr Ibrahi	L	VL	L	Klayaat Kesrouane	L	VL	L
Maarab	L	VL	L	Maaysra Kesrouane	L	VL	L	Mayrouba	L	L	ML
Mazraat Er-Ras	L	L	L	Mazraat Mrah El-Mir	L	VL	L	Mchaa El Ftouh	M	ML	M
Mchaa Faraya	L	L	M	Mchaa Kfar Dibiane	ML	ML	M	Mghaer	L	L	L
Mradiyeh	L	VL	L	Nahr Ed-Dahab	L	VL	L	Nammoura Kesrouane	L	VL	L
Ouata El Jaouz	L	L	L	Ouata Sillam	L	L	L	Raachine	L	VL	L
Rayfoun	L	VL	L	Safra Kesrouane	L	L	L	Shayle Kesrouane	L	VL	L
Tabarja	L	L	L	Yahchouch	L	VL	L	Zaaytreh	L	VL	L
Zeytoun	L	VL	L	Zouk Mikael	L	L	L	Zouk Mosbeh	L	L	L

Baalbek_Hermel

Baalbek

Municipality	11- Oct	12- Oct	13- Oct	Municipality	11- Oct	12- Oct	13- Oct	Municipality	11- Oct	12- Oct	13- Oct
Aadous	M	M	M	Aamchki	L	L	M	Aarsal	L	L	ML
Ain Baalbek	VL	L	L	Ain Bourday	L	L	M	Ain El-Benye	L	L	M
Ain El-Jaouz Baalbek	L	ML	M	Ain El-Siya Chadoura	L	ML	M	Al Khodr Baalbek	L	L	M
Al Nabi Chit	L	L	M	Aynata Baalbek	M	M	M	Baalbek	L	L	M
Bachwat	M	M	M	Barqa	M	M	M	Bednayel Baalbak	M	M	M
Beit Chama	M	M	M	Bijjaje	L	L	M	Bouday	M	M	M
Brital	L	L	M	Btadi	M	M	M	Chaat	ML	ML	M
Chaibe	L	L	M	Chlifa	M	M	M	Chmestar	M	M	M
Dar El-Oussa	M	M	M	Deir El-Ahmar	M	M	M	Deir Mar Maroun Baal	M	ML	M
Douris	M	ML	M	Fakiha	L	L	M	Hadath Baalbek	M	M	M
Ham	L	L	M	Haour Taala	L	L	M	Hizzine	M	M	M
Hlebta	L	L	M	Hosh Barada	M	M	M	Hosh El Dahab	M	M	M
Hosh El Snid	L	ML	M	Hosh El-Nabi	M	M	M	Hosh El-Rafiq	M	M	M
Hosh Tal Safiya	M	M	M	Hrebta	ML	ML	M	laat	M	M	M
Jebaa	M	M	M	Jenta	L	L	M	Kfar Dabach	M	M	M
Kfar Dane	M	M	M	Khraibeh El-Hermel	L	L	M	Khreibet Baalbek	L	L	M
Kneisset Baalbek	M	ML	M	Labueh	L	L	M	Maarboun	L	L	M
Majdaloun	M	M	M	Maqneh	M	L	M	Mazraat Beit Mcheik	M	M	M
Misraya	M	M	M	Mograq	L	L	M	Nabha El-Damdoum	M	M	M
Nabi Chbay	L	L	M	Nabi Osman	L	L	ML	Nahleh baalbek	L	L	M
Ouadi El-Oss	L	L	M	Qaa Baayoun	L	L	L	Qaa Jouar Maqiye	M	L	M
Qaa Ouadi El-Khanzir	M	L	M	Qah Baalbek	ML	L	L	Qarha Baalbek	M	M	M

Qsarnaba	M	M	M	Ram Baalbek	M	M	M	Ras Baalbek El Sahl	ML	L	ML
Ras Baalbek El-Charq	L	L	L	Riha	M	ML	M	Saaide	M	M	M
Sbouba	L	L	M	Seriine El-Tahta	ML	M	M	Slouqi	M	M	M
Taiba Baalbek	M	M	M	Talia	M	ML	M	Taraiya	M	M	M
Temnin El Fawqa	M	M	M	Temnin El-Tahta	M	M	M	Tfail	L	ML	M
Yahfoufa	L	L	M	Yammouneh	M	M	M	Younine	L	L	M
Zboud	L	L	M								

Hermel

Municipality	11-Oct	12-Oct	13-Oct	Municipality	11-Oct	12-Oct	13-Oct	Municipality	11-Oct	12-Oct	13-Oct
Charbine El-Hermel	ML	ML	M	Hermel Jbab	ML	ML	M	Hermel	M	ML	M
Maaysra El-Hermel	L	L	M	Michaa Mrajhine	ML	L	ML	Ouadi Faara	L	L	M
Ras Baalbek - Ouadi	M	ML	M	Ras Baalbek El Gharb	ML	ML	M	Zighrine	M	ML	M

Akkar

Akkar

Municipality	11-Oct	12-Oct	13-Oct	Municipality	11-Oct	12-Oct	13-Oct	Municipality	11-Oct	12-Oct	13-Oct
Aain Tinta	M	ML	ML	Aaiyat	L	L	ML	Aakkar El-Aatiqa	L	L	L
Aamar Akkar	L	VL	VL	Aamar El Baykat	M	ML	ML	Aamayer	M	M	ML
Aamriyet Akkar	M	ML	ML	Aandqet	M	ML	ML	Aarmeh	M	L	L
Aarqa	M	VL	L	Aawaynat	M	M	ML	Aayoun Akkar	L	L	L
Abboudiye	M	L	ML	Ain El-Zeit	M	ML	ML	Ain Yaaqoub	L	L	L
Akroum	M	M	ML	Aridet Cheikh Zennad	M	L	ML	Baldeh w Mazraat Bal	M	L	ML
Barcha	M	L	ML	Bardeh	M	ML	M	Bebnine	L	VL	VL
Beino	ML	L	L	Beit Ayoub	VL	L	VL	Beit El-Haouch	L	VL	VL
Beit Mellat	L	L	L	Beit Younes	L	L	VL	Berbara Akkar	M	ML	ML
Berqayel	L	VL	VL	Bezbina	L	L	L	Bireh Akkar	M	ML	ML
Borj	L	L	ML	Bqerezla	L	L	VL	Bzal	L	VL	VL
Chane	L	L	VL	Chaqdouf	L	L	ML	Charbila	M	L	ML
Cheikh Mohammad	M	L	ML	Cheikh Taba Es-Sahl	M	L	ML	Cheikh Taba	L	L	VL
Cheikh Zennad	M	L	ML	Cheikhlar	M	M	ML	Chir Hmairine	M	L	ML
Daghle	M	ML	ML	Dahr Laissine	L	L	L	Darine	M	L	ML
Dawra	ML	L	L	Dawsa w Baghdadi	M	ML	ML	Dayret Nahr El-Kabir	M	M	ML
Deir Dalloum	L	VL	VL	Deir Jennine	M	ML	ML	Denbou	L	L	VL
Dibbabiyyeh	M	ML	ML	Douair Aadwiyeh	M	ML	ML	Fassikine	M	ML	ML
Fnaydek	L	L	L	Fraydes Akkar	M	ML	ML	Ghazayle	M	L	ML
Habchit	L	L	VL	Hakour	L	VL	VL	Halba	M	L	L
Haouchab	M	L	ML	Hayssat	M	VL	ML	Haytla	M	L	ML
Hayzouq	M	L	ML	Hedd	M	L	ML	Hmaira Akkar	L	VL	VL
Hmaiss Akkar	M	L	ML	Hnaider	M	M	ML	Hokr Ed-Dahri	M	L	ML
Hokr Etti	M	L	ML	Hokr Jouret Srar	M	L	ML	Houaich	L	L	VL
Hrar	L	L	VL	Idbil	L	L	VL	Ilat	L	L	VL
Janine	M	L	ML	Jdeidet El-Joumeh	L	L	L	Jdeidet El-Kaiteh	L	VL	VL
Jebayel	L	L	VL	Kafr	L	VL	L	Kafr	M	ML	ML
Karm Asfour	L	L	VL	Kfar Melki Akkar	M	L	ML	Kfar Noun	M	L	ML
Kfarharra	M	L	ML	Khalsa	M	M	ML	Kharnoubet Akkar	M	L	ML

Khirbet Daoud Aakkar	M	ML	ML	Khirbet El Remmane	M	M	ML	Khirbet Shar	M	ML	ML
Khoreybet El-Jindi	M	L	ML	Khreibet Aakkar	L	L	VL	Kneisset Aakkar	M	L	ML
Kneisset Hnaider	M	M	ML	Knisse	M	L	ML	Kroum El-Aarab	M	L	ML
Kwachra	M	ML	ML	Kweykhat	M	L	ML	Machta Hammoud	M	M	ML
Majdala	L	VL	VL	Majdel Akkar	M	ML	ML	Mar Touma	L	VL	VL
Marlaya Melhem	L	VL	L	Mashha	M	L	L	Massoudiye	M	L	ML
Mazraat Beit Ghattas	L	VL	VL	Mazraat En-Nahriye	M	ML	ML	Mechmech	L	L	L
Memneh	L	L	L	Mhammara	L	VL	VL	Mighraq Aakkar	M	L	ML
Minyara	L	VL	L	Moqayteh	M	L	ML	Mounjez	M	ML	ML
Msalla	M	ML	ML	Mzeihmeh	M	L	ML	Nfaiseh	M	L	L
Noura Et-Tahta	M	ML	ML	Ouadi El-Haour	M	L	ML	Ouadi El-Jamous	L	VL	VL
Ouyoun El-Ghizlane	L	VL	VL	Qaabarine	M	L	ML	Qabaait	L	L	VL
Qachlaq	M	L	ML	Qantara Aakkar	L	L	VL	Qarha Aakkar	M	M	ML
Qarqaf	L	VL	VL	Qboula	L	L	ML	Qleiaat Aakkar	M	L	ML
Qloud El-Baqie	L	VL	VL	Qobaiyat Aakkar	ML	ML	ML	Qobbat Chamrat	L	VL	L
Qorayat	L	L	VL	Qornet Aakkar	L	L	L	Qsair Aakkar	M	ML	ML
Rahbe	L	L	VL	Rihaniyet Aakkar	M	L	ML	Rmah	M	ML	ML
Rmoul	M	L	ML	Saadine	M	L	ML	Sadaqa	L	L	VL
Saidnaya	M	L	ML	Sammouniye	M	L	ML	Sayssouq	L	L	VL
Semmaqiye	M	L	ML	Semmaqli	ML	VL	L	Sfinet El-Dreib	M	ML	ML
Sfinet El-Qaitaa	L	VL	VL	Sindyanet Zeidane	M	ML	ML	Souaisset Aakkar	M	L	ML
Srar	M	L	ML	Tal Abbas El Gharby	M	L	ML	Tal Abbas El-Charqy	M	L	ML
Tal Biret	M	L	ML	Tal Hmayra	M	L	ML	Tal Maayan Tal Kiri	M	L	ML
Tal Sibel	M	L	ML	Tallet Chattaha	L	L	ML	Tikrit	L	L	L
Tleil	M	L	ML	Tshea	L	L	L	Zawarib	L	L	VL
Zouq El Hosniyeh	L	VL	VL	Zouq El-Haddara	L	VL	VL	Zouq El-Hbalsa	L	VL	VL
Zouq El-Mogachrine	L	VL	VL								

Sud

Sour

Municipality	11-Oct	12-Oct	13-Oct	Municipality	11-Oct	12-Oct	13-Oct	Municipality	11-Oct	12-Oct	13-Oct
Aaiyeh	M	ML	M	Aalma El-Chaab	M	L	M	Aaytit	M	ML	M
Abbassiyeh Sour	M	ML	M	Abou Chech	ML	ML	M	Ain Abou Abdallah	M	L	M
Ain Baal	M	ML	M	Arzoun	M	M	M	Aziyeh	M	L	M
Baflaya	M	ML	M	Barich	ML	L	M	Batouliyah	M	ML	M
Bayad	M	ML	M	Bazouriyeh	M	L	M	Bediass	ML	L	M
Bestiyat	ML	L	M	Borj El Chemali	M	M	M	Borj En-Naqoura	M	ML	M
Borj Rahhal	ML	L	M	Boustane	M	ML	M	Btaychiyah	ML	ML	M
Chaaitiye	M	ML	M	Chameh	ML	L	M	Chehabiye	M	M	M
Chehour	ML	L	M	Chihine	ML	L	M	Debaal Sour	ML	L	M
Deir Amess	ML	L	M	Deir Kifa	M	M	M	Deir Qanoun El-Ain	M	ML	M
Deir Qanoun El-Naher	ML	L	M	Derdghaiya	M	ML	M	Dhayra	ML	ML	M
Halloussiyeh	ML	L	M	Hamoul	ML	L	M	Hanaouey	M	ML	M
Henniye	M	ML	M	Hmairi Sour	ML	L	M	Iskandarouna Sour	M	L	M
Jbal El Botom	ML	L	M	Jebbin	M	ML	M	Jennata	ML	L	M
Jijim	ML	L	M	Jouaiya	M	ML	M	Kneisset Sour	M	ML	M

Maarake	ML	L	M	Maaroub	ML	L	M	Majadel	M	ML	M
Majdalzoun	M	ML	M	Mansouri Sour	M	ML	M	Marnba	ML	L	M
Marouahine	ML	L	M	Mazraat El-Zalloutiy	M	ML	M	Mazraat Mechref	M	ML	M
Mazraat Tayr Semhat	ML	L	M	Mheilib	M	M	M	Neffakhiyeh	M	M	M
Niha Sour	M	M	M	Ouadi Jilo	M	L	M	Qana	M	ML	M
Qolaileh Sour	M	ML	M	Rechknayan	M	L	M	Rmadiyah	M	ML	M
Selha Sour	M	M	M	Siddiqine	M	ML	M	Sour	M	M	M
Srifa	M	ML	M	Tayr Debbe	ML	L	M	Tayr Felsay	ML	L	M
Tayr Harfa	ML	ML	M	Touayri	ML	ML	M	Toura	ML	L	M
Yanouh Sour	ML	L	M	Yarine	M	ML	M	Zebqine	ML	L	ML

Saida

Municipality	11-Oct	12-Oct	13-Oct	Municipality	11-Oct	12-Oct	13-Oct	Municipality	11-Oct	12-Oct	13-Oct
Aanqoun	L	L	M	Aaqtanit	L	L	M	Aarab Ej-Jall	L	L	M
Aarab Tabbaya	L	L	M	Abra Saida	L	L	M	Adloun	M	L	M
Adousiyeh	M	L	M	Ain-El-Deleb	L	L	M	Arzai	ML	L	M
Babliyah	M	ML	M	Barty	L	L	M	Bissariyeh	M	L	M
Bnaafoul	L	L	M	Bqosta	L	L	M	Bramiy	L	L	M
Daoudiyeh	M	ML	M	Dareb El-Sim	L	L	M	Erkay	L	L	M
Ghassanieh	M	ML	M	Ghazieh	ML	L	M	Hajjeh	L	L	M
Haret Saida	L	L	M	Hartiyeh	M	ML	M	Hlaliye Saida	L	L	M
Insariyat	M	ML	M	Jazira Saida	M	L	M	Kafar Bit	L	L	M
Kaoutariyet El-Siyad	ML	ML	M	Kfar Chellal	L	L	M	Kfar Hatta Saida	L	L	M
Kfar Milke Saida	L	L	M	Khartoum	ML	ML	M	Khaziz	L	L	M
Khirbet Ed-Douair Sa	M	L	M	Khirbet El-Bassal	ML	L	M	Khrayeb Saida	M	L	M
Loubieh	M	ML	M	Maghdouche	L	L	M	Majdelyoun	L	L	M
Matariyet El-Choumar	ML	L	M	Matayriyeh	L	L	M	Mazraat 'Mseileh	M	L	M
Mazraat 'Snaiber	M	L	M	Mazraat Aarab Soukka	L	L	M	Mazraat Deir Taqla	M	L	M
Mazraat El Yahoudiye	M	L	M	Mazraat El-Housseini	M	L	M	Mazraat El-Mhaydaleh	M	ML	M
Mazraat El-Ouasta	M	L	M	Mazraat Jamjim	M	L	M	Mazraat Kaoutariyet	M	ML	M
Mazraat Kfar Badda	M	L	M	Mazraat Oussamiyat	M	ML	M	Mazraat Sari	M	ML	M
Mazraat Sinai	M	ML	M	Meemariyeh	L	L	M	Merouaniyeh	ML	L	M
Miyeh ou Miyeh	L	L	M	Najjariyeh	M	L	M	Qaaqaiyat El-Snaouba	M	ML	M
Qnarit	L	L	M	Qraiye Saida	L	L	M	Saida Ed-Dekermane	L	L	M
Saida El-Oustani	L	L	M	Saida El-Qadimeh	L	L	M	Saida Kefraya	L	L	M
Saksakiyeh	M	ML	M	Salhigh Saida	L	L	M	Sarafand	M	L	M
Sfenta	L	L	M	Tafahta	ML	ML	M	Tanbourit	L	L	M
Tebna	M	L	M	Zaghdraiya	L	L	M	Zeita	L	L	M
Zrariyeh	ML	L	M								

Jezzine

Municipality	11-Oct	12-Oct	13-Oct	Municipality	11-Oct	12-Oct	13-Oct	Municipality	11-Oct	12-Oct	13-Oct
Ain El-Mir (El Estab)	L	L	M	Anane	L	L	ML	Aramta	L	L	M
Ariya	L	L	M	Aychiyeh	ML	L	M	Azour	L	L	L
Baba	L	L	L	Bayssour Jezzine	L	L	M	Benoueteh Jezzine	L	L	M
Bhannine	L	L	M	Bisri	L	L	L	Bkassine	L	L	ML
Bouslaya	L	L	L	Btedine El-Leqech	L	L	L	Chbail	L	VL	L
Choualiq Jezzine	L	L	M	Dahr Ed-Deir	L	L	ML	Deir El Qattine	L	L	ML

Demachqiyeh	ML	ML	M	Ghabbatiyeh	L	L	M	Harf Jezzine	L	L	L
Hassaniyeh	L	L	M	Haytouleh	L	L	M	Haytura	L	L	ML
Hidab	L	L	ML	Homsiyeh	L	L	ML	Jabal Toura	L	L	M
Jarmaq	ML	ML	M	Jensnaya	L	L	M	Jernaya	L	L	M
Jezzine	L	L	M	Karkha	L	L	M	Kfar Falous	L	L	M
Kfar Houna	L	L	M	Kfar Jarrah	L	L	M	Lebaa	L	L	M
Louayzet Jezzine	L	L	M	Machmouche	L	L	ML	Mahmoudiyeh Jezzine	ML	ML	M
Maknounye Jezzine	L	L	ML	Maraat Ouazaiyeh	ML	L	M	Mazraat Daraya	L	L	ML
Mazraat El-Aarqoub	ML	L	M	Mazraat El-Mathane	L	L	L	Mazraat El-Rahbane	L	L	ML
Mazraat Khallet Khaz	L	L	ML	Mazraat Louzid (Loua	ML	VL	L	Mazraat Qrouh	L	L	M
Mazraat Tamra	ML	ML	M	Mazraat Zighrine Jez	ML	L	M	Mazraat	L	L	ML
Mharbiyeh	L	L	M	Midane Jezzine	L	L	ML	Mjeydel Jezzine	L	L	M
Mlikh	L	L	M	Mrah El-Hbasse	L	L	M	Ouadi Baanqoudaine	L	L	M
Ouadi El-Laymoun	L	L	M	Ouardiyeh	ML	VL	VL	Qabaa Jezzine	L	L	M
Qatrani	L	L	ML	Qaytouleh	L	L	M	Qtaleh Jezzine	L	L	L
Rihane Jezzine	ML	L	M	Rimat	L	L	ML	Roum	L	L	ML
Roummanet	L	L	M	Sabbah	L	L	ML	Saydoun	L	L	ML
Sfaray	L	L	ML	Snaya	L	L	ML	Sojoud	ML	L	M
Srayri	L	L	M	Taaid	L	L	ML	Wadi Jezzine	L	L	ML
Zhalta	L	L	ML								

Bekaa

West Bekaa

Municipality	11-Oct	12-Oct	13-Oct	Municipality	11-Oct	12-Oct	13-Oct	Municipality	11-Oct	12-Oct	13-Oct
Aammq BG	M	M	M	Ain El Tineh BG	L	L	M	Ain Zebdeh	L	L	M
Ana	M	ML	M	Aytanit	L	L	M	Baaloul BG	L	L	M
Bab Mareh	L	L	M	Chouberqiye Aammq	M	M	M	Dakoue	ML	M	M
Deir Ain El-Jaouze	L	L	M	Deir Tahniche	M	ML	M	Ghaza	M	M	M
Harime El-Soughra	ML	M	M	Hoch Harimeh	M	M	M	Jazira BG	M	M	M
Jib Jennine	ML	ML	M	Kamed-El-Laouz	L	ML	M	Kefraya BG	ML	L	M
Khiara El Atika	M	M	M	Khiara	M	M	M	Khirbet Qanafar	L	L	M
Lala	L	L	M	Lebbaya BG	L	L	M	Loussa	L	L	M
Machghara	L	L	M	Manara (Hammara) BG	ML	M	M	Mansoura BG	M	M	M
Marej BG	M	M	M	Maydoun	L	L	M	Ouaqf BG	M	M	M
Qaraaoun	L	L	M	Qelya	L	L	M	Raouda (Istabel)	M	M	M
Saghbine	L	L	M	Sohmor	L	L	M	Soltan Yacoub el Ara	L	M	M
Souairy	ML	M	M	Sultan Yaacoub	ML	M	M	Tal Znouh	M	M	M
Yehmor BG	L	L	M	Zilaya	L	L	ML				

Zahle

Municipality	11-Oct	12-Oct	13-Oct	Municipality	11-Oct	12-Oct	13-Oct	Municipality	11-Oct	12-Oct	13-Oct
Aanjar (Haouch Mouss	ML	M	M	Ablah	M	M	M	Ain Kfarzabad	ML	ML	M
Ali-El-Nahri	M	M	M	Bar Elias	M	M	M	Bouarej	M	M	M
Cheberqiyet Tabet	M	M	M	Chtaura	M	M	M	Deir El Ghazal	ML	L	M
Delhamiyet Zahle	M	M	M	Ferzol	M	ML	M	Haouch El-Ghanam	M	M	M
Haouch Es-Siyadeh	M	M	M	Haouch Hala	M	M	M	Haouch Mandara	M	M	M

Haouch Qayssar	M	M	M	Hezerta	M	ML	M	Hosh Moussa	ML	ML	M
Jdita	M	M	M	Kfarzabad	ML	M	M	Ksara	M	M	M
Majdel Aanjar	ML	M	M	Makssi	M	M	M	Massa	M	M	M
Mazraat Er-Remtaniye	M	M	M	Mrayjat Zahle	M	M	M	Mzaraa Zahle	M	M	M
Nabi Ayla	M	M	M	Nasriyet Rizk	ML	ML	M	Nasriyet Zahle	M	M	M
Niha Zahle	M	M	M	Ouadi Ed-Deloum	M	M	M	Ouadi El-Arayech	M	ML	M
Qaa El Rim	M	ML	M	Qab Elias	M	M	M	Qousaya	ML	ML	M
Rhit	ML	ML	M	Riyak	M	M	M	Saadnayel	M	M	M
Taal El-Akhdar	M	M	M	Taalbeya	M	M	M	Taanayel	M	M	M
Talamara	M	M	M	Tcheflik Edde Haouch	M	M	M	Tcheflik Qiqano	M	M	M
Terbol Zahle	ML	ML	M	Touaite Zahle	M	ML	M	Zahle Aradi	M	M	M
Zahle El-Berbara	M	ML	M	Zahle El-Maallaqa	M	M	M	Zahle El-Midane	M	M	M
Zahle Er-Rassiye	M	ML	M	Zahle Haouch El-Ouma	M	M	M	Zahle Haouch El-Ouma	M	M	M
Zahle Haouch Ez-Zara	M	M	M	Zahle Maalaqa Aradi	M	M	M	Zahle Mar Antonios	M	ML	M
Zahle Mar Elias	M	M	M	Zahle Mar Gerios	M	M	M	Zahle Saydet En-Naja	M	M	M
Zebdoul	M	M	M								

Rachaiya

Municipality	11-Oct	12-Oct	13-Oct	Municipality	11-Oct	12-Oct	13-Oct	Municipality	11-Oct	12-Oct	13-Oct
Ain Arab Rachaiya	M	M	M	Ain Ata	L	L	M	Ain Harche	ML	ML	M
Aqabe Rachaya	ML	ML	M	Ayha	M	ML	M	Ayta El Fokhar	M	M	M
Bakifa Rachaya	ML	ML	M	Bakka	M	M	M	Beit Lahya	ML	ML	M
Bireh Rachaiya	L	ML	M	Daher El Ahmar	ML	L	M	Deir El-Achayer	M	M	M
Heloua Rachaiya	M	M	M	Hoch El Qannabeh Rac	L	L	M	Kaoukaba Bou Arab	ML	ML	M
Kfar Danis	ML	M	M	Kfar Mechki	L	L	M	Kfar Qouq	M	M	M
Kherbet Rouha	L	ML	M	Majdel Balhiss	L	L	M	Mdoukha	M	M	M
Mhaydseh Rachaiya	ML	ML	M	Nabi Safa	L	L	M	Rachaiya	ML	ML	M
Rafid Rachaiya	L	ML	M	Selsata (Mazraat Dei	M	ML	ML	Tannoura	ML	ML	M
Yanta	M	M	M								

Beyrouth

Beyrouth

Municipality	11-Oct	12-Oct	13-Oct	Municipality	11-Oct	12-Oct	13-Oct	Municipality	11-Oct	12-Oct	13-Oct
Achrafieh	ML	VL	M	Ain el-Mreisse	ML	VL	M	Bachoura	ML	VL	M
Beirut Central Distr	ML	VL	M	Marfai	ML	VL	M	Mazraa	ML	VL	M
Medaouar	ML	VL	M	Minet el-Hosn	ML	VL	M	Mwssaitbeh	ML	VL	M
Ras Beirut	ML	VL	M	Rmeil	ML	VL	M	Saifi	ML	VL	M
Zqaq el-Blat	ML	VL	M								