

Lebanon Fire Risk Bulletin



CIVIL DEDEFENCE

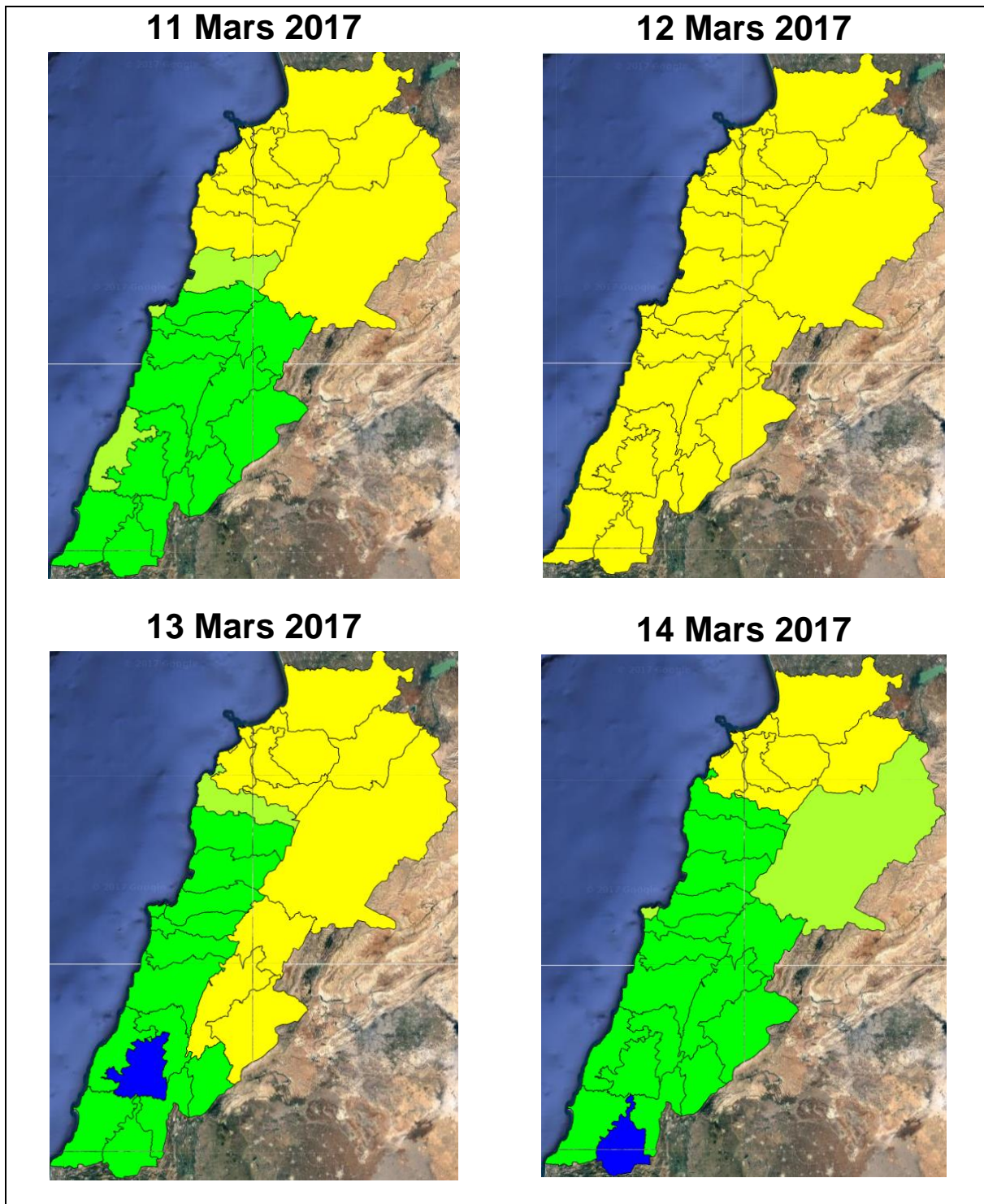
Refer to cadast condition.

General description of potential fire risk situation

Symbol	Level of risk	Meaning and actions
VL	Very low	Very low fire risk. Controlled burning operations can be hardly executed due to high fuel moisture content. Normally wildfires self-extinguish.
L	Low	Low fire risk. Controlled burning operations can be executed with a reasonable degree of safety.
ML	Medium low	Medium-low fire risk. Controlled burning operations can be executed in safety conditions. All the fires need to be extinguished.
M	Medium	Medium fire risk. Controlled burning operations would be avoided. All the fires need to be very well extinguished.
M	Medium high	Controlled burning is not recommended. Open flame will start fires. Cured grasslands and forest litter will burn readily. Spread is moderate in forests and fast in exposed areas. Patrolling and monitoring is suggested. Fight fires with direct attack and all available resources.
H	High	Ignition can occur easily with fast spread in grass, shrubs and forests. Fires will be very hot with crowning and short to medium spotting. Direct attack on the head may not be possible requiring indirect methods on flanks. Patrolling and monitoring the territory is highly suggested.
E	Extreme	Ignition can occur also from sparks. Fires will be extremely hot with fast rate of spread. Control may not be possible during day due to long range spotting and crowning. Suppression forces should limit efforts to limiting lateral spread. Damage potential total. Patrolling and monitoring the territory is highly suggested.

Beirut, 12 March 2017

FIRE RISK INDEX

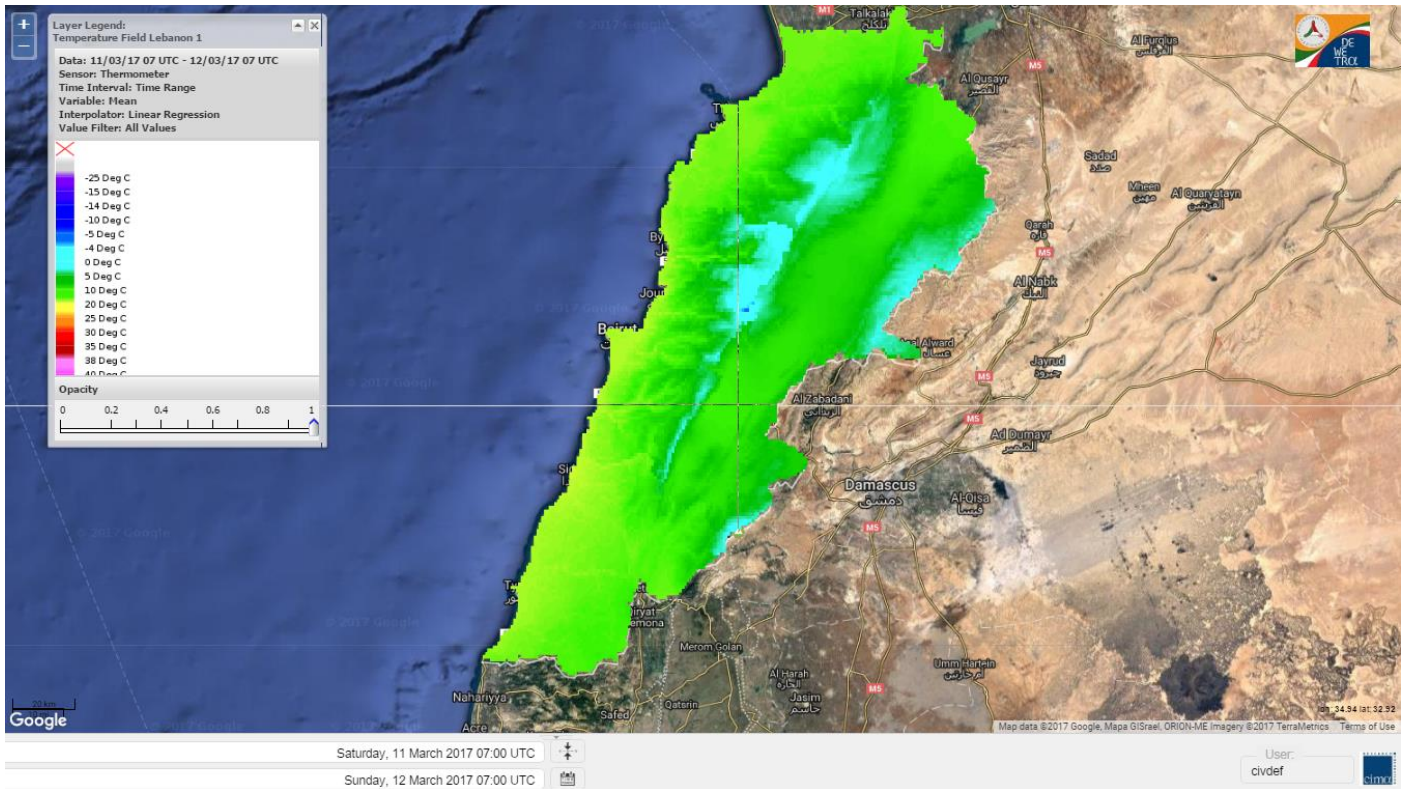


Layer Legend:
Lebanon Wildfire Risk Index 1

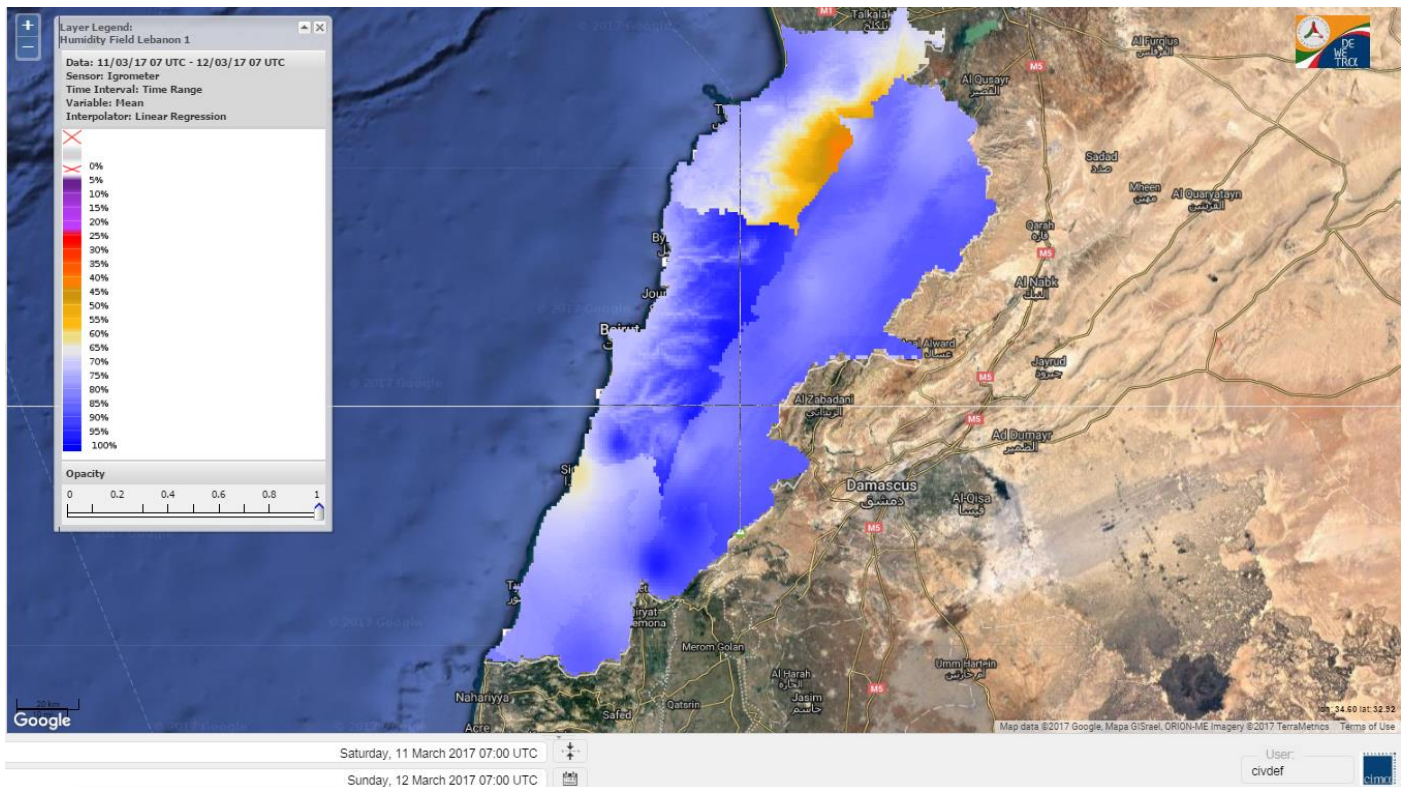
Data: Run: 12/03/2017 00:00. Forecast for 12
Model: RISICO for the Republic of Lebanon
Variable: Fire Weather Index
Spatial Resolution: Caza

- VERY LOW
- LOW
- MEDIUM-LOW
- MEDIUM
- MEDIUM-HIGH
- HIGH
- EXTREME

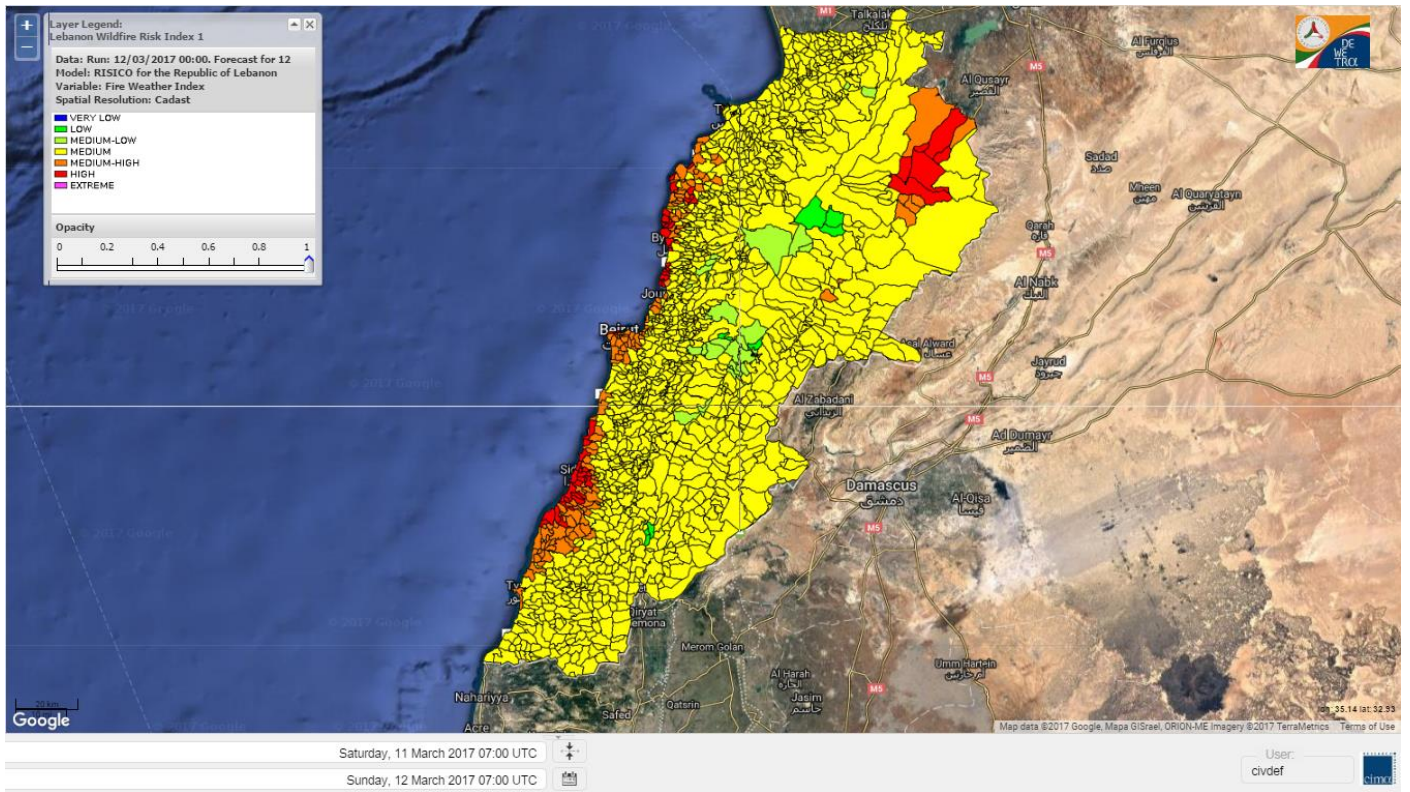
Lebanon temperature for 12 Mars 2017



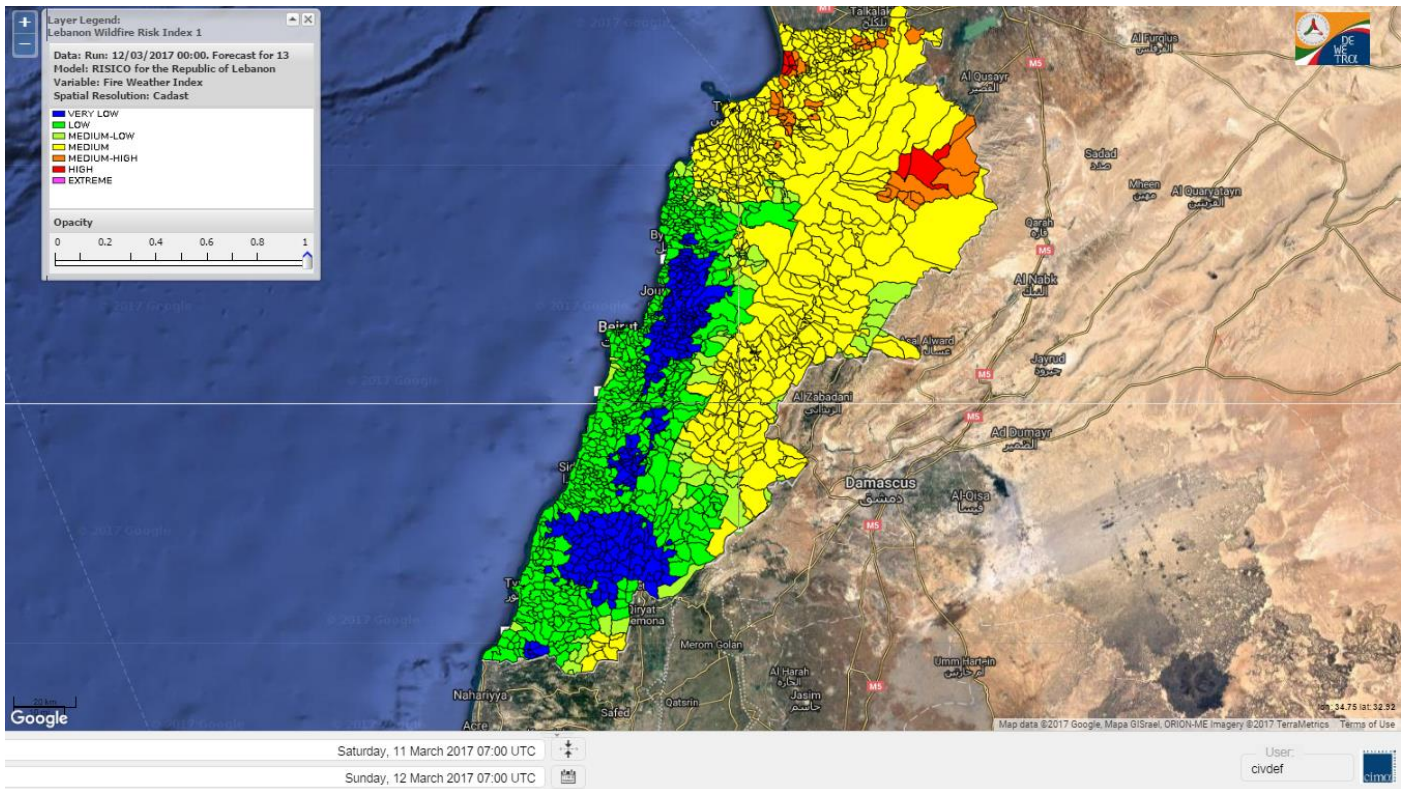
Lebanon humidity for 12 Mars 2017



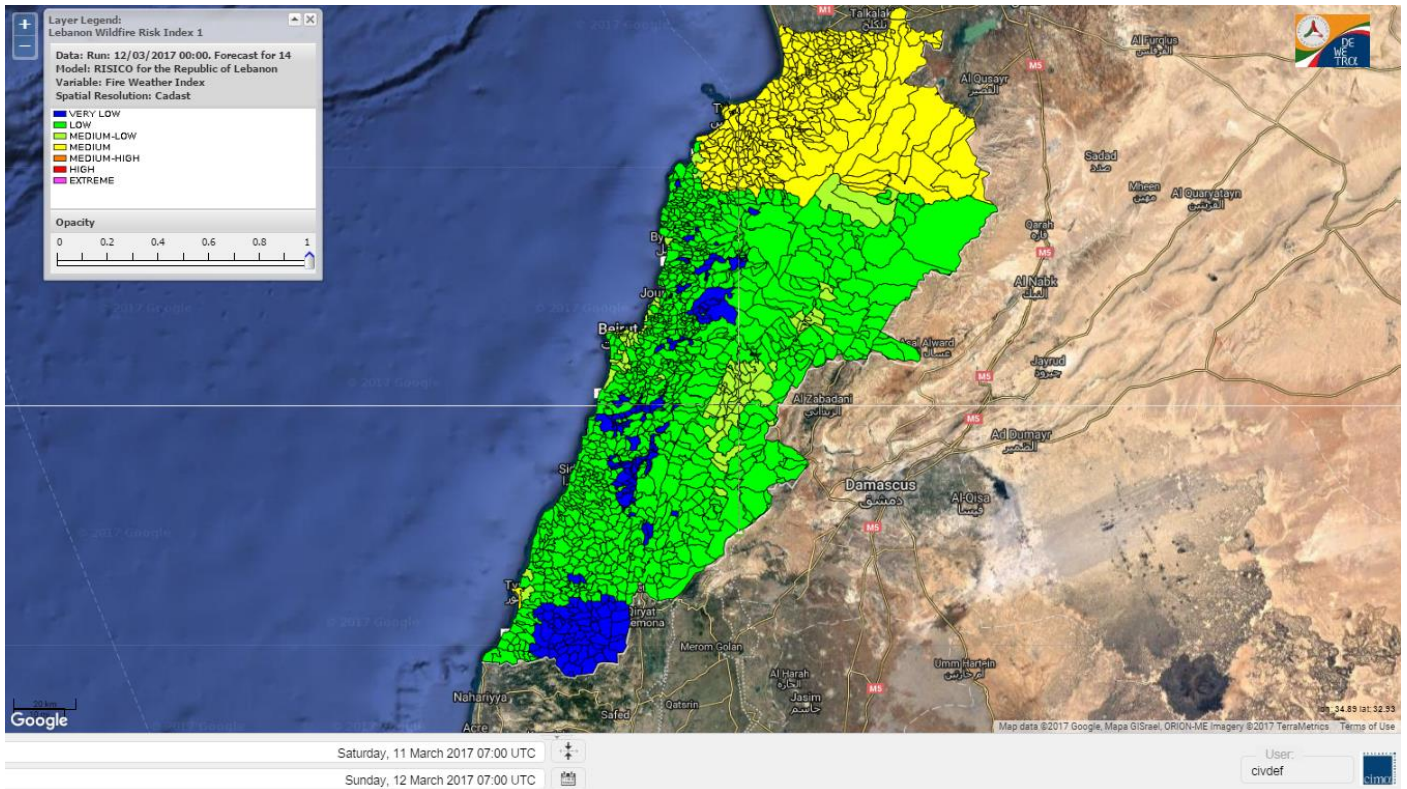
Lebanon for 12 Mars 2017



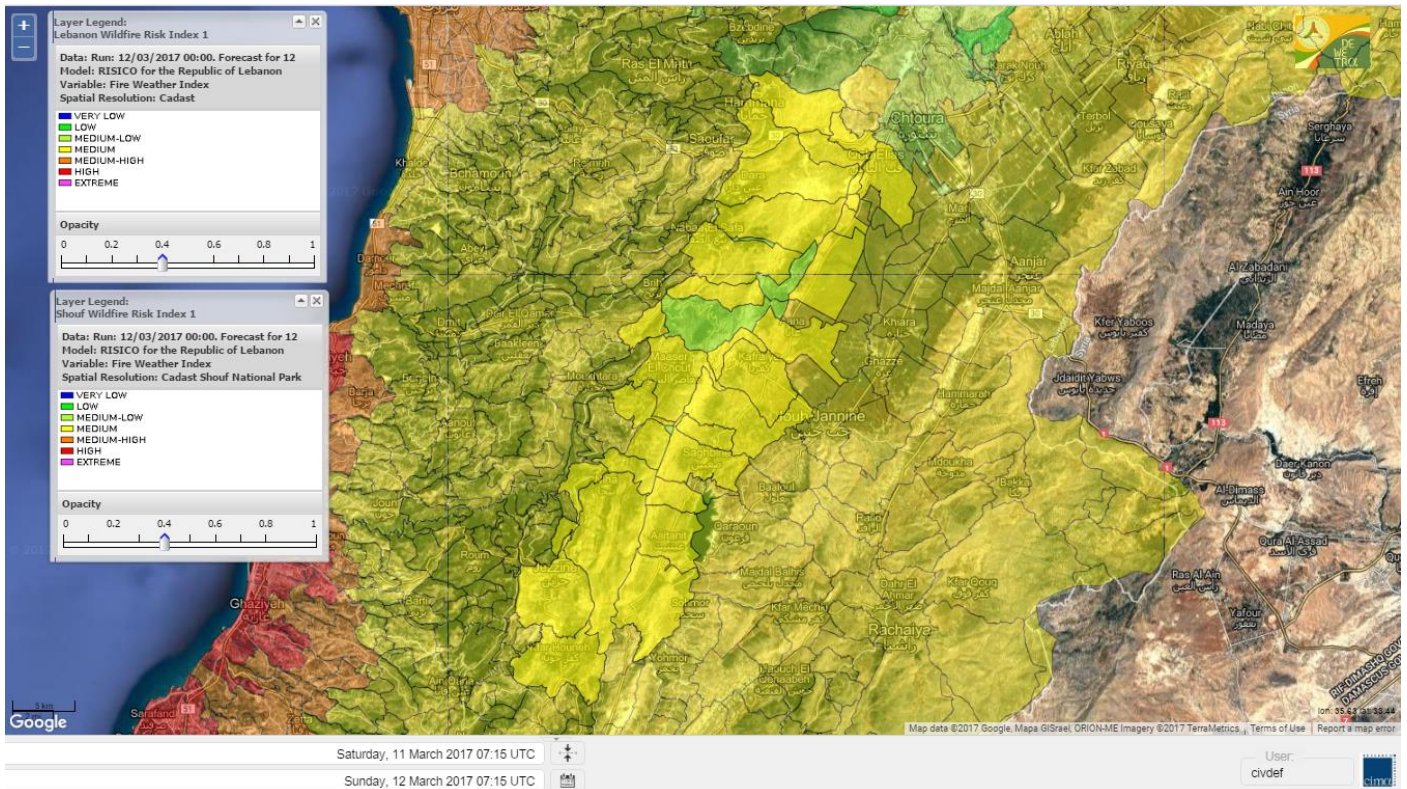
Lebanon for 13 Mars 2017



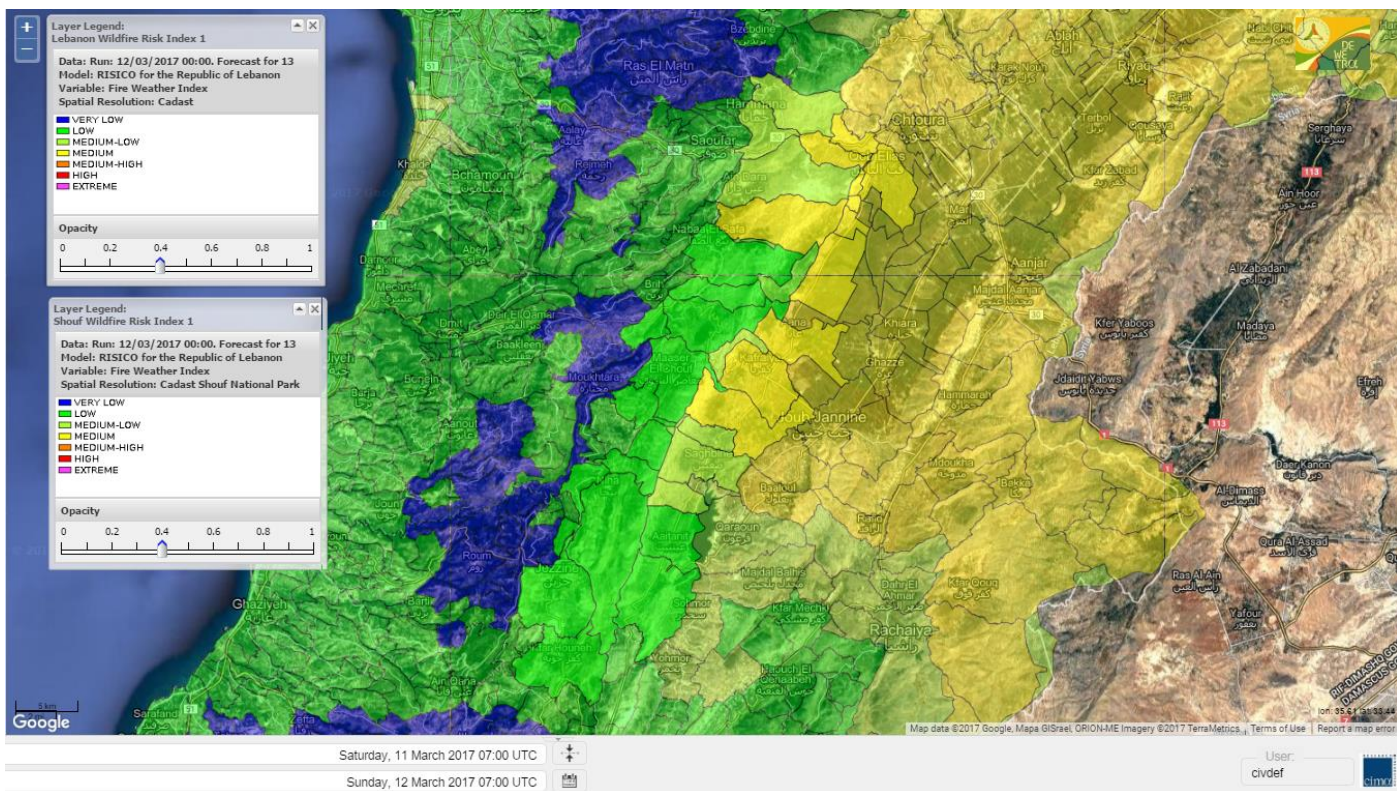
Lebanon for 14 Mars 2017



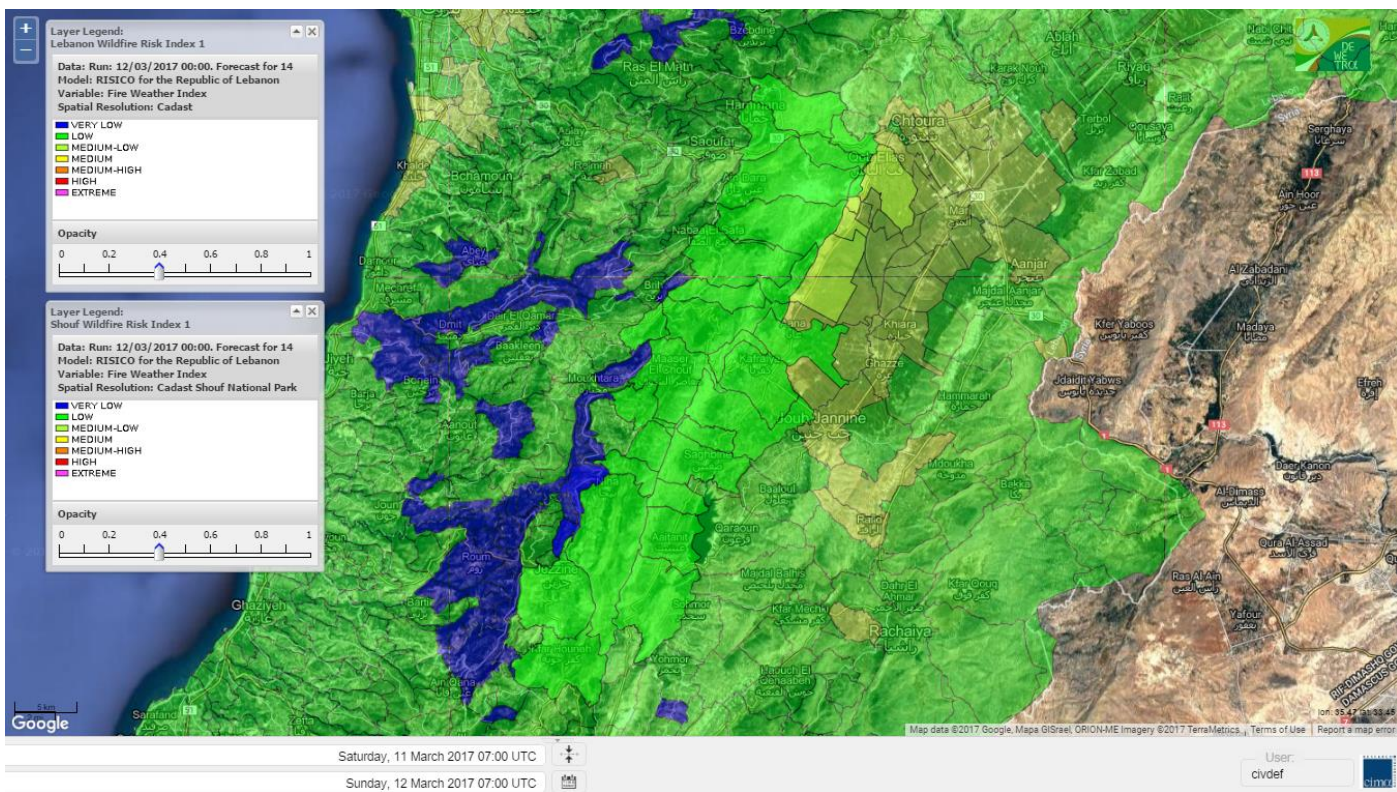
Shouf Biosphere Reserve Forecast for 12 Mars 2017



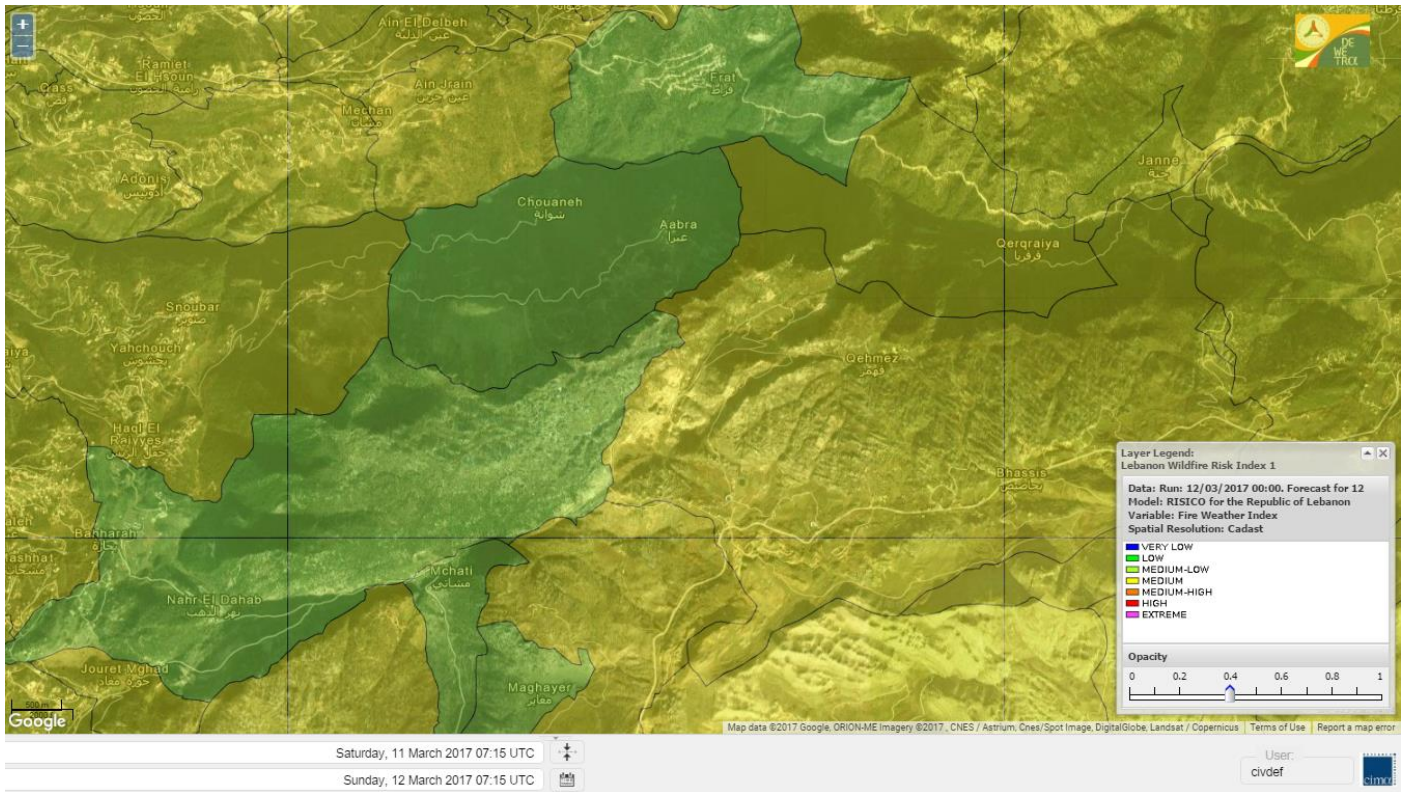
Shouf Biosphere Reserve Forecast for 13 Mars 2017



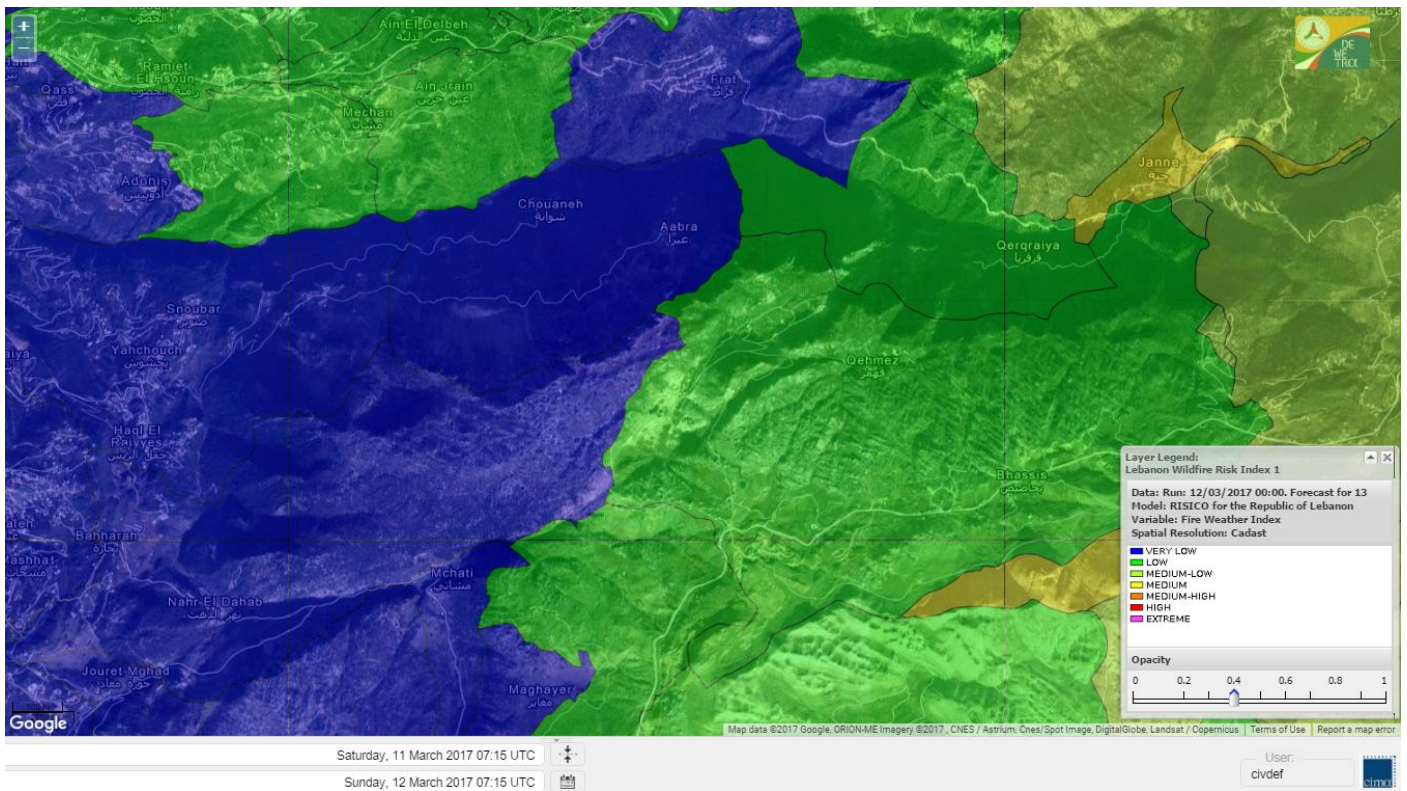
Shouf Biosphere Reserve Forecast for 14 Mars 2017



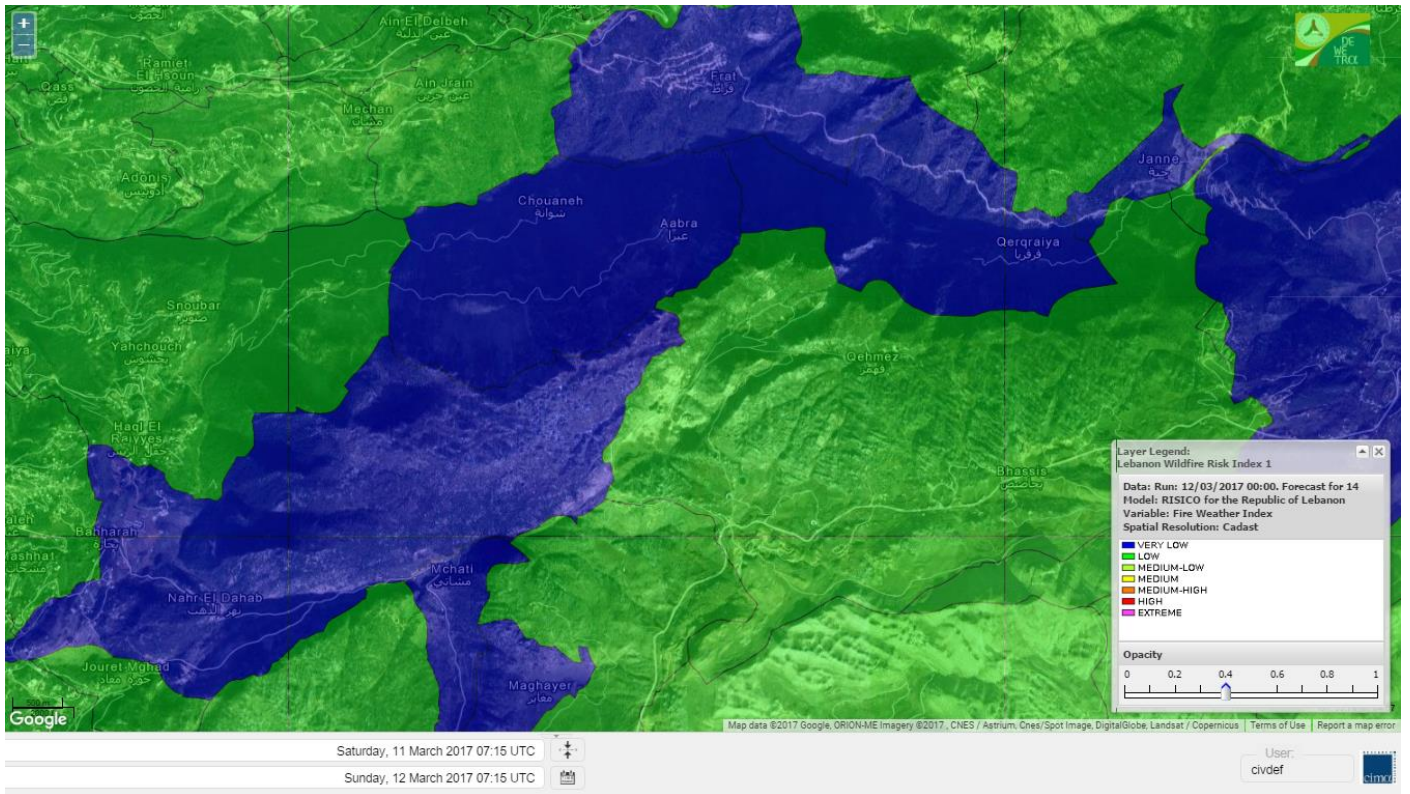
Jabal Moussa Reserve Forecast for 13 Mars 2017



Jabal Moussa Reserve Forecast for 14 Mars 2017



Jabal Moussa Reserve Forecast for 14 Mars 2017



Nord

Koura

Municipality	12-Mar	13-Mar	14-Mar	Municipality	12-Mar	13-Mar	14-Mar	Municipality	12-Mar	13-Mar	14-Mar
Aaba	M	M	M	Afsaddiq	MH	M	M	Ain Ekriane	M	M	M
Amioun	MH	M	M	Anfeh	MH	M	L	Badbhoun	M	M	M
Barghoun	M	M	M	Barsa	M	M	M	Batroumine	M	M	M
Bdebba	M	M	M	Bechmizzine	MH	M	M	Bednayeil El-Koura	MH	M	L
Bhabbouch El-Koura	M	M	M	Bkeftine	M	M	M	Bnehran	M	M	M
Bqaiia El-Koura	M	M	M	Bsarma	M	M	M	Btaaboura	MH	M	M
Bttram	M	M	M	Btouratij	M	M	M	Bziza	M	M	M
Dar Beechtar	MH	M	M	Dar Chmezzine	MH	M	M	Deddeh	M	M	M
Deir El-Balamand	M	M	M	Fih	MH	M	M	Hraiche	MH	M	M
Ijdaabrine	M	M	L	Kaftoun	MH	M	M	Kefraya El-Koura	MH	ML	L
Kfarakka	M	M	M	Kfarhata	MH	M	ML	Kfarhazir	MH	M	M
Kfarkahel	M	M	M	Kfarsaroun	M	M	M	Kosba	M	M	M
Mejdel el-Koura	M	M	M	Nakhle	M	M	M	Qalhat	M	M	M
Ras Masqa	M	M	M	Rechdibbine	M	M	M	Zakroun	M	M	M
Zgharta El-Mtaouile	M	M	M								

Bcharre

Municipality	12-Mar	13-Mar	14-Mar	Municipality	12-Mar	13-Mar	14-Mar	Municipality	12-Mar	13-Mar	14-Mar
Aabdine	M	M	M	Bane	M	M	M	Barhelioun	M	M	M
Bazooune	M	ML	L	Becharre	M	M	M	Beit Menzer	M	M	M
Billa	M	M	M	Blaouza	M	L	M	Bqaa Kafra	M	ML	L
Bqerqacha	M	ML	L	Breissat	M	M	L	Dimane	M	M	L
Hadath El Jobbeh	M	M	L	Hadchit	M	ML	M	Hasroun	M	ML	L
Mazraat Aassaf	M	M	M	Mazraat Bani Saab	M	M	L	Mchaa El-Jobbeh	M	L	L
Metrit	M	M	M	Moghr El-Ahoual	M	M	M	Ouadi Qannoubine	M	ML	M
Qanat	M	M	M	Qnayouer	M	M	M	Tourza	M	M	M

Batroun

Municipality	12-Mar	13-Mar	14-Mar	Municipality	12-Mar	13-Mar	14-Mar	Municipality	12-Mar	13-Mar	14-Mar
Aabrine	MH	L	L	Aalali	M	L	L	Aartiz	M	ML	L
Abdelli	M	L	L	Ajdabra	MH	L	L	Assia	M	ML	L
Basbina	MH	L	L	Batroun	H	L	L	Bcheleh	M	ML	L
Bechtoudar	M	M	L	Beit Chlala	M	M	L	Beit Kassab	M	M	ML
Bijdarfil	H	L	L	Bqesmaya	M	ML	M	Chatine	M	L	L
Chebtin	M	ML	L	Chekka	MH	M	ML	Daael	M	ML	L
Dahr Abi Yaghi	M	L	L	Daraya El-Batroun	MH	ML	L	Deir Billa	M	M	M
Deir Kfifane	H	L	L	Deir Mar Youhanna EL	M	M	L	Deir Mar Youssef Jra	M	L	L
Douma	M	ML	L	Douq	M	L	L	Eddeh El-Batroun	MH	L	L
Ftahat El-Batroun	M	ML	L	Ghouma	M	L	L	Hadtoun	M	L	L
Hamat	MH	ML	L	Harbouna	M	ML	L	Hardine	M	M	L
Helta	M	ML	L	Hery	H	L	L	Jebbla	M	ML	L
Jrabta El-Batroun	MH	L	L	Jrane El-Batroun	H	ML	L	Kfar Aabida	MH	L	L
Kfar Halda	M	ML	L	Kfarb Shlaimane	M	ML	L	Kfarhatna	M	ML	L
Kfarhay	MH	M	L	Kfarhelos	M	L	VL	Kfifane	H	ML	L

Kfour El Arabi	M	M	L	Koubba	MH	L	L	Kour	M	ML	L
Mar Mama	M	L	L	Masrah	M	L	L	Mehmarch	M	L	L
Mrah Chdid	MH	L	L	Mrah El Ziyat	MH	ML	L	Mrah El-Hajj	M	L	L
Nahle El-Batroun	M	M	L	Niha El-Batroun	M	M	L	Ouajh El-Hajjar	MH	ML	L
Ouata Houb	M	L	VL	Qatnaaoun	MH	L	L	Racha	M	L	L
Rachana	MH	L	L	Rachkida	MH	L	L	Ram El-Batroun	M	L	L
Ras Nakhach	M	ML	L	Selaata	H	L	L	Sghar	M	L	L
Smar Jbayl	MH	L	L	Sourat El-Batroun	M	ML	L	Tannourine El-Faouqa	M	L	L
Tannourine Et-Tahta	M	L	L	Thoum	MH	L	L	Toula El-Batroun	M	L	L
Zan	M	ML	L								

Zgharta

Municipality	12-Mar	13-Mar	14-Mar	Municipality	12-Mar	13-Mar	14-Mar	Municipality	12-Mar	13-Mar	14-Mar
Aachach	M	M	M	Aalma	M	M	M	Aarde	M	M	M
Aintourine	M	M	M	Arabet Qozhaya	M	M	M	Arde	M	M	M
Arjis	M	M	M	Asnoun	M	M	M	Ayto	M	M	M
Basloukit	M	M	M	Bchannine	M	M	M	Besebeel	M	M	M
Bhairret Toula	M	M	M	Bnachee	M	M	M	Boussit	M	M	M
Danha	M	M	M	Daraiya Zgharta	M	M	M	Deir Jdeide	M	M	M
Ehden	M	M	M	Halan	M	MH	M	Hariq Zgharta	M	M	M
Houakir	M	M	M	Hraiqis	M	M	M	Iaal	M	M	M
Ijbaa	M	M	M	Karm Saddeh	M	M	M	Kfarchakhna	M	M	M
Kfardlaqous	M	M	M	Kfarfou	M	M	M	Kfarhata Zgharta	M	M	M
Kfarhoura	M	M	M	Kfarsghab	M	M	M	Kfaryachit	M	M	M
Kfarzaina	M	M	M	Khaldiye	M	M	M	Mazraat Ajbeaa	M	M	M
Mazraat Et-Teffah	M	M	M	Mazraat Jneid	M	M	M	Mejdlaiya Zgharta	M	M	M
Merh Kfarsghab	M	M	M	Miryata	M	M	M	Miziara	M	M	M
Mzraat Kefraya	M	MH	M	Qorah Bach	M	M	M	Rachiine	M	M	M
Ras Kifa	M	M	M	Sakhra	M	M	M	Sebhel Zgharta	M	M	M
Serhel	M	M	M	Tallet Zgharta	M	M	M	Toula Zgharta	M	M	M
Zgharta	M	M	M								

Minieh-Denniye

Municipality	12-Mar	13-Mar	14-Mar	Municipality	12-Mar	13-Mar	14-Mar	Municipality	12-Mar	13-Mar	14-Mar
Aasaymout	M	M	M	Aaymar	M	MH	M	Aazki	M	MH	M
Ain El-Tineh-Miniyeh	M	M	M	Assoun	M	MH	M	Bakhaaoun	M	MH	M
Bchennata	M	M	M	Bechehhara	M	M	M	Beddawi	M	M	M
Behouaita	M	M	M	Beit El Foqss	M	M	M	Beit Haouik	M	MH	M
Beit Zoud	M	MH	M	Bekaasafrine	M	M	M	Borj El Yahoudiyeh	M	M	M
Bqarsouna	M	M	M	Btermaz	M	M	M	Debaael	M	M	M
Deir Ammar	M	M	M	Deir Nbouh	M	M	M	Haouaret-Miniyeh	M	MH	M
Haql el Azimeh	M	MH	M	Harf El Siyad	M	MH	M	Hazmiye-Miniyeh	M	M	M
Izal	M	M	M	Jarjour	M	M	M	Jayroun	M	M	M
Kahf El-Malloul	M	M	M	Karm El-Moher	M	M	M	Kfar Binine	M	M	M
Kfarchalane	M	MH	M	Kfarhabou	M	M	M	Kharroub-Miniyeh	M	MH	M
Mazraat El-Kreme	M	M	M	Mazraat Ketrane	M	MH	M	Merkebtta	M	MH	M
Minyeh	M	M	M	Mrah El Sfirat	M	M	M	Mrah Sraj	M	MH	M
Mrebbine	M	M	M	Nabi Youcheaa	M	M	M	Nemrine	M	M	M

Qarhaiya	M	MH	M	Qarne	M	M	M	Qarsita	M	M	M
Qattineh-Miniyeh	M	M	M	Qemmamine	M	M	M	Qraine	M	M	M
Raouda-Aadoua	M	MH	M	Rihaniyet-Miniyeh	M	M	M	Sfireh	M	M	M
Sir Ed-Danniyeh	M	M	M	Tarane	M	M	M	Terbol-Miniyeh	M	M	M
Zaghartaghriine	M	M	M	Zouq Bhannine	M	M	M				

Nabatiye

Nabatiye

Municipality	12-Mar	13-Mar	14-Mar	Municipality	12-Mar	13-Mar	14-Mar	Municipality	12-Mar	13-Mar	14-Mar
Aabba	M	VL	L	Aazzi	M	VL	L	Adchit El-Chqif	M	VL	L
Ain Bou Swar	M	L	VL	Ain Kana	M	L	L	Ali El-Taher	M	VL	L
Ansar	M	L	L	Arab Salim	M	VL	L	Arnoun	M	VL	L
Bfaroue	M	VL	L	Breyqaah	M	VL	L	Charqiyeh	M	VL	L
Choukine	M	VL	L	Deir El Zahrani	M	VL	L	Doueir El-Nabatiyeh	M	VL	L
Habbouch El-Nabatiye	M	VL	L	Hamra El-Nabatiyeh	M	VL	L	Harouf El-Nabatiyeh	M	VL	L
Hmaile	M	VL	L	Houmin El Faouqa	M	VL	L	Houmin El Tahta	M	L	L
Jarjough	M	VL	L	Jbaah El-Nabatiyeh	M	L	VL	Jebchit	M	VL	L
Kfar Djal El-Nabatiy	M	VL	L	Kfar Remmane	M	VL	L	Kfar Sir	M	VL	L
Kfar Tebnit	M	VL	L	Kfarfila	M	L	L	Kfour El-Nabatieh	M	VL	L
Mayfadoun	M	VL	L	Mazraat Bsaffour	M	VL	L	Mazraat Chalbaal	M	VL	L
Mazraat Dmoul	M	VL	L	Mazraat El Khreibeh	M	L	L	Mazraat El-Bayad El-	M	VL	L
Mazraat Kfarjaouz	M	VL	L	Mazraat Qalaat Meiss	M	VL	L	Nabatiyeh El-Fawka	M	VL	L
Nabatiyeh Et-Tahta	M	VL	L	Namiriyeh	M	VL	L	Qaaqaaiyet El Jisr	M	VL	L
Qossaibeh El-Nabatiy	M	VL	L	Roumine	M	L	L	Sarba El-Nabatieh	M	L	L
Sir El-Gharbiyeh	M	VL	L	Toul	M	VL	L	Yehmor El-Nabatiyeh	M	VL	L
Zaoutar El Charkiyeh	M	VL	L	Zaoutar El-Gharbiyeh	M	VL	L	Zebdine El-Nabatiyeh	M	VL	L
Zefta	M	VL	L								

Hasbaiya

Municipality	12-Mar	13-Mar	14-Mar	Municipality	12-Mar	13-Mar	14-Mar	Municipality	12-Mar	13-Mar	14-Mar
Aain Jarfa	M	L	L	Abou Qamha	M	VL	L	Ain Qania	M	L	L
Bourghos	M	L	L	Chebaa	M	L	L	Chouaya Hasbaya	M	L	L
Dellafeh	M	L	L	Fardiss Hasbaiya	M	L	L	Hasbaya	M	L	L
Hbariyeh	M	L	L	Kaoukaba Hasbaiya	M	L	L	Kfar Chouba	M	L	L
Kfar Hamam	M	L	L	Kfeir El-Zait	M	L	L	Khalwat Hasbaya	M	L	L
Khreibet Hasbaiya	M	VL	L	Majidiyeh Hasbaiya	M	VL	L	Marj Ez-Zhour (Haouc	M	L	L
Meri	M	VL	L	Mimass	M	L	L	Rachaiya El-Fokhar	M	VL	L
Salaiyeb	M	VL	L								

Marjayoun

Municipality	12-Mar	13-Mar	14-Mar	Municipality	12-Mar	13-Mar	14-Mar	Municipality	12-Mar	13-Mar	14-Mar
Aalmane Marjaayoun	M	VL	L	Aamra	M	VL	L	Adayseh Marjaayoun	M	L	L
Adchit El-Koussair	M	VL	L	Ain Aarab Marjaayoun	M	VL	L	Bani Haiyann	M	VL	VL
Blatt Marjaayoun	M	VL	L	Blida	M	M	VL	Borj El-Moulouk	M	VL	L
Boueyda Marjaayoun	M	VL	L	Deir Mimass	M	VL	L	Deir Siriane	M	VL	L
Dibbine	M	VL	L	Ebel El Saqi	M	VL	L	Houla	M	L	VL
Houra	M	VL	L	Kfar Kila	M	L	L	Khiam Marjaayoun	M	VL	L

Klayaa	M	VL	L	Majdel Selem	M	L	VL	Marjaayoun	M	VL	L
Markaba	M	L	VL	Mays El-Jabal	M	ML	VL	Mazraat Doumiat	M	VL	L
Mazraat Sarada	M	VL	L	Mhaibib	M	M	VL	Qabrikha	M	VL	VL
Qantara	M	VL	L	Rab El-Thalathine	M	L	L	Saouaneh Marjayoun	M	VL	VL
Taloussa	M	VL	VL	Taybeh Matjaayoun	M	L	L	Touline	M	VL	L

Bent Jbail

Municipality	12-Mar	13-Mar	14-Mar	Municipality	12-Mar	13-Mar	14-Mar	Municipality	12-Mar	13-Mar	14-Mar
Ain-Ebel	M	ML	VL	Aitaroun	M	M	VL	Aynata Bint Jbeil	M	M	VL
Ayta El-Chaeb	M	L	VL	Ayta El-Jabal	M	L	VL	Beit Lif	M	L	VL
Beit Yahoun	M	L	VL	Bint Jbeil	M	M	VL	Borj Qalaway	M	L	L
Braachit	M	L	VL	Chakra	M	ML	VL	Debel	M	L	VL
Deir Antar	M	L	VL	Froun	M	VL	L	Ghandouriyeh Bint Jb	M	L	L
Hanine	M	ML	VL	Hariss	M	L	VL	Hdatha	M	L	VL
Jmeymeh	M	L	VL	Kafra Bint Jbeil	M	L	VL	Kfar Dounine	M	L	VL
Khirbet Selm	M	L	VL	Kounine	M	M	VL	Maroun El Ras	M	M	VL
Qalaway	M	VL	L	Qaouzah	M	L	VL	Qatmoun	M	ML	VL
Ramya Bint Jbeil	M	L	VL	Rchaf	M	L	VL	Rmeich	M	ML	VL
Safad Al Battikh	M	L	VL	Salhaneh	M	L	VL	Serbine	M	L	VL
Sultanieh Bint Jbeil	M	L	VL	Tibnine	M	L	VL	Tiri	M	ML	VL
Yaroun	M	M	VL	Yater	M	L	VL				

Mont Liban

Jbail

Municipality	12-Mar	13-Mar	14-Mar	Municipality	12-Mar	13-Mar	14-Mar	Municipality	12-Mar	13-Mar	14-Mar
Aabeydat	M	L	L	Aalita	M	VL	L	Aamchit	H	L	L
Aarab El-Lahib	M	L	L	Aarasta	M	L	VL	Adonis Jbeil	M	VL	L
Afqa Jbeil	M	ML	L	Ain El Delbeh Jbeil	M	L	L	Ain El-Ghouyba	M	L	VL
Ain Jrain	M	L	L	Ain Kfah	MH	L	L	Almat El Chemaliyat	M	L	L
Almat El-Jenoubiya	M	L	L	Aqoura	M	M	L	Bayzoun	M	L	L
Bchille Jbeil	M	L	L	Bechtlida	M	VL	VL	Behdaydat	M	L	L
Beit Habbaq	M	L	L	Bejjeh	M	L	L	Bekhaaz	MH	L	L
Berbara Jbeil	H	L	L	Bintael	M	L	L	Birket Hjoula	M	L	L
Blatt Jbeil	M	L	L	Boulhos	M	L	L	Breyj Jbeil	M	VL	L
Chamat	MH	L	L	Chikhane	H	L	L	Chmout	M	L	L
Eddeh Jbeil	MH	L	L	Ehmej	M	L	L	Fatre	M	VL	L
Ferhet	M	L	L	Fghal	M	L	L	Frat	ML	VL	VL
Ghabat	M	ML	VL	Ghalboun	M	L	L	Gharzouz	MH	L	L
Ghofrine	MH	L	L	Habil	M	L	VL	Halate	M	L	L
Haqel	M	L	L	Hbaline	MH	L	L	Hboub	M	L	L
Hdeine	M	ML	L	Hema Er-Rehban	M	M	L	Hema Mar Maroun Aann	M	M	VL
Hjoula	M	L	L	Hosrayel	H	L	L	Hsarat	MH	L	L
Hsoun	M	L	L	Jaj	M	L	L	Janne	M	M	VL
Jbeil	H	L	ML	Jeddeyeh Jbeil	H	L	L	Jlisse	M	VL	L
Jouret El-Qattine	M	L	L	Kfar Baal Annaya	M	L	L	Kfar Kidde	MH	L	L
Kfar Kouas	M	VL	L	Kfar Mashoun	MH	L	L	Kfoun	M	L	L

Kharbe Jbeil	M	L	L	Laqlouq	M	M	L	Lassa	M	ML	VL
Lehfed	M	L	L	Maad	MH	L	L	Mar Sarkis	M	M	L
Mastita	H	L	L	Mayfouq	M	L	L	Mazraat El Siyad	M	M	L
Mazraat El-Maaden	ML	VL	VL	Mechane	M	L	L	Mechmech Jbeil	M	L	L
Mehrin	MH	L	L	Mejdel El-Akoura	M	ML	L	Mghayreh Jbeil	M	M	L
Mounsef	H	L	L	Nahr Ibrahim	H	L	L	Qahmez	M	L	L
Qartaba	M	ML	L	Qartaboun	H	L	ML	Qattara Jbeil	M	L	L
Qorqraya	M	L	VL	Ramout	MH	ML	L	Ras Osta	M	VL	L
Rihane Jbeil	H	L	L	Sakiet El-Khayt	M	L	L	Saqi Richmaya	M	L	L
Sebrine	M	VL	L	Seraita	M	ML	L	Souane Jbeil	M	L	L
Tadmor	M	ML	L	Tartej	M	L	L	Torzaiya	M	L	L
Yanouh Jbeil	M	M	L	Zibdine Jbeil	M	VL	L				

El Metn

Municipality	12-Mar	13-Mar	14-Mar	Municipality	12-Mar	13-Mar	14-Mar	Municipality	12-Mar	13-Mar	14-Mar
Aain El-Qabu	ML	VL	VL	Aain El-Qach	M	VL	L	Aain El-Teffaha	M	VL	L
Aain el-Safssaf El-M	M	VL	L	Abou Mizane	M	VL	L	Ain Aar	M	L	L
Ain Alaq	M	VL	L	Ain El-Kharroube	M	VL	L	Ain El-Sendianeh	M	VL	L
Ain El-Zeitoune	M	VL	L	Ain Saadeh	M	L	L	Aintoura El-Matn	M	L	L
Amaret Chalhoub	MH	L	ML	Antelias	MH	L	ML	Atchaneh	M	VL	L
Ayroun	M	VL	L	Baabdat	M	VL	L	Baouchariyeh	MH	L	ML
Baskinta	M	L	VL	Beit Chabab	M	VL	L	Beit El-Chaar	M	L	L
Beit El-Kekko	MH	L	ML	Beit Mery	M	VL	L	Bhersaf	M	VL	L
Bikfaya	M	VL	L	Biyakout	M	L	L	Bnabil	M	VL	L
Bourj Hammoud	MH	L	ML	Bqennaya	M	L	L	Broummana El-Matn	M	VL	L
Bsalim	M	VL	L	Bsifrine	ML	VL	VL	Bteghrine	M	VL	VL
Chaouiye	M	VL	L	Chouaya El-Matn	M	VL	L	Choueir	M	VL	L
Chrine	M	VL	L	Dahr El Sawan El-Mat	M	VL	L	Daychouniyeh	M	L	L
Dbayeh	MH	L	ML	Deir Chamra	M	VL	VL	Deir Mar Abda el Mch	M	VL	L
Deir Mar Roukouz	MH	L	L	Deir Tamiche	M	VL	L	Dik El-Mehdi	M	L	L
Dikwaneh	MH	L	ML	Douar El-Matn	M	VL	L	Fanar	M	L	L
Fraike	M	VL	L	Haret El-Ballaneh	M	L	L	Hbous	M	L	L
Himlaya	M	VL	L	Jal El Did	MH	L	ML	Jdeideh El-Metn	MH	L	L
Jouar El-Matn	M	VL	L	Jouret El-Ballout	M	VL	L	Kaaqour	M	VL	L
Kfar Aaqab	M	VL	VL	Kfertay El-Matn	M	VL	VL	Khenchara	M	VL	L
Khillet El-Mtain	M	VL	L	Konnabat Broummana	M	VL	L	Konnabat Salima	ML	VL	VL
Machraah El-Matn	M	VL	L	Majdel Tarchich	ML	ML	L	Majzoub	M	L	L
Mansouriyeh El-Metn	MH	L	L	Mar Boutros Karm Et-	M	VL	L	Mar Chaya et Mzekke	M	VL	L
Mar Moussa Ed-Douar	M	VL	L	Marjaba	M	VL	L	Masqa	M	VL	L
Mayasse	M	VL	L	Mazraat Deir Aoukar	M	L	L	Mazraat El-Hadirat	M	L	L
Mazraat Yachouh	M	L	L	Mchikha	M	L	L	Menqlet Mezher	M	L	L
Mhaydseh Matn	M	VL	L	Mkalles	MH	L	L	Mrouj	M	VL	L
Mtain	M	L	L	Mtayleb	M	L	L	Nabay	M	VL	L
Naccache	M	L	L	Ouadi Chahine	M	VL	L	Ouadi El-Karm El-Mat	M	VL	VL
Ouata El-Mrouj	M	VL	L	Ouyoun El-Matn	M	VL	VL	Qornet Chehwan	M	VL	L
Qornet El-Hamra	M	VL	L	Roumieh	M	VL	L	Sfeilet Bikfaya	M	VL	L
Sinn El-Fil	MH	L	ML	Zabbougha	M	VL	VL	Zalqa	MH	L	ML

Zarououn	M	VL	L	Zekrite	M	VL	L	Zighrine El-Matn	M	VL	L
Zouk El-Khrab	M	L	ML								

Chouf

Municipality	12-Mar	13-Mar	14-Mar	Municipality	12-Mar	13-Mar	14-Mar	Municipality	12-Mar	13-Mar	14-Mar
Aalmane El-Chouf	MH	L	L	Aammq El-Chouf	M	L	VL	Ain Ouzein	M	VL	L
Ain Qani	M	VL	VL	Ain Zhalta	M	L	L	Ainbal	M	L	L
Amatour	M	VL	VL	Anout	M	L	L	Atrine	M	L	L
Baadarane	M	L	L	Baaqline	M	L	L	Baasir	M	L	L
Barja	M	L	L	Barouk	ML	L	L	Bater	M	L	VL
Batloun	M	L	L	Bayqoun	M	L	L	Bchetfine	M	L	VL
Beiteddine	M	VL	VL	Benouati Ech-Chouf	M	L	VL	Berjein	M	L	L
Bireh et Mtalleh	M	L	L	Biret El-Chouf	M	L	L	Bkechtine Ouel Mchei	M	L	VL
Bkifa El-Chouf	M	L	L	Botme	M	VL	VL	Bqaiaa Ech-Chouf	M	L	VL
Bsaba El-Chouf	M	VL	L	Chammis El-Chouf	M	L	L	Chehim	M	L	L
Chemaarine	M	L	VL	Chourit	M	VL	VL	Daher El-Chouf	M	L	L
Dalhoun	M	L	L	Damour	M	L	L	Daraya El-Chouf	M	L	L
Deir El-Moukhalles	M	VL	VL	Deir Baba	M	L	VL	Deir Dourit	M	L	VL
Deir El-Qamar	M	L	L	Deir Kouche	M	L	VL	Dibbieh	M	L	VL
Dmit	M	L	VL	Fouara Jaafar	M	VL	VL	Fraidis El-Chouf	M	L	L
Ghabet Jaafar	M	L	VL	Gharife	M	VL	VL	Haret Jandal	M	L	VL
Hasrout	M	VL	L	Jadra	MH	L	L	Jahlieh	M	L	VL
Jbeih El-Chouf	M	L	L	Jdeidet El-Chouf	M	VL	L	Jiyeh	H	L	L
Jleilyeh	M	VL	L	Jmailiyeh	M	L	L	Joun	M	L	L
Kahlounie El-Chouf	M	L	L	Ketermaya	M	L	L	Kfar Faqoud	M	L	VL
Kfar Hamal	M	L	VL	Kfar Him	M	L	L	Kfar Katra	M	L	VL
Kfar Niss	M	L	L	Kfar hay	M	L	L	Kfarnabrakh	M	VL	L
Khirbet Bisri	M	VL	VL	Knayse El-Chouf	M	L	VL	Maaniyeh	M	L	L
Maasser Beiteddine	M	VL	L	Maasser El-Chouf	M	L	L	Majdalouna	M	L	L
Majdel El-Meouch	M	L	VL	Mazboud	M	L	L	Mazmoura	M	L	L
Mazraat El Chouf	M	L	L	Mazraat El Daher	M	VL	L	Mazraat El-Douair	M	VL	VL
Mechref	M	L	L	Mghairie	M	L	L	Mghayrie El-Chouf	M	L	VL
Moukhtara	M	VL	L	Mrusti	M	L	L	Mtolle	M	VL	L
Naameh	M	L	L	Niha El-Chouf	M	L	L	Ouadi Abou Youssef	M	L	VL
Ouadi Ed-Deir	M	L	L	Ouadi El-Sit	M	L	L	Ouadi bnehlay	M	L	VL
Qraibeh	M	L	L	Qreiaa	M	VL	VL	Rmayle El-Chouf	MH	L	L
Semqaniyeh	M	L	L	Sibline	M	L	L	Sirjbeil	M	L	L
Warhanieh	M	L	VL	Werdaniyeh	M	L	L	Zaarourieh	M	VL	L

Baabda

Municipality	12-Mar	13-Mar	14-Mar	Municipality	12-Mar	13-Mar	14-Mar	Municipality	12-Mar	13-Mar	14-Mar
Abadiyeh	M	VL	L	Ain Mouaffaq	M	VL	L	Araiya	M	L	L
Arbaniyeh	M	VL	VL	Arsoun	M	VL	L	Baabda	M	L	L
Baalchmey	M	VL	L	Bmaryam	M	L	L	Bourj El-Brajneh	MH	L	L
Boutchay	M	L	L	Bsaba Baabda	M	L	L	Btekhney	M	VL	L
Btibyat	M	VL	L	Bzebdine	M	L	L	Chbeniyeh	M	L	L
Chiyah	MH	L	L	Chmeisset Baabda	ML	VL	L	Chouit	M	VL	L
Deir El-harf	M	VL	L	Deir Khouna	M	L	L	Dlaybeh	ML	VL	VL

Falougha	M	ML	L	Furn El-Chebbak	MH	L	ML	Hadath Beyrouth	MH	L	ML
Halaliyeh Baabda	M	VL	L	Hammana	M	ML	L	Haret El Sett	M	L	L
Haret Hamze	M	L	L	Haret Hreik	MH	L	ML	Hasbaiya El-Metn	ML	VL	VL
Jouar El-Hoz	ML	L	L	Jouret Arsoun	M	VL	L	Kfar Chima	M	L	ML
Kfar Selouane	M	L	L	Khalouat Baabda	M	L	L	Kneisset Baabda	M	VL	VL
Laylakeh	MH	L	ML	Louayzeh Baabda	M	L	L	Merdache	M	L	L
Mzairaa Baabda	M	VL	L	Ouadi Chahrour El Ol	M	L	L	Ouadi Chahrour El So	M	L	L
Qalaa Baabda	M	L	L	Qhraybe Baabda	M	L	L	Qobbayaa	M	L	L
Qornayel	ML	VL	L	Qortada	M	VL	VL	Qrayeh Baabda	M	L	L
Qsaibeh Baabda	M	VL	L	Qtale Baabda	M	L	L	Ras El Metn	M	VL	L
Ras El-Haref	M	L	L	Rouayset El-Ballout	M	VL	L	Salima Baabda	M	VL	L
Tahouitat El Ghadir	MH	ML	ML	Tarchich	ML	ML	L	Zandouqa	M	VL	VL

Aley

Municipality	12-Mar	13-Mar	14-Mar	Municipality	12-Mar	13-Mar	14-Mar	Municipality	12-Mar	13-Mar	14-Mar
Abey	M	L	VL	Aghmid	M	L	L	Ain Dara	M	ML	L
Ain Drafil	M	L	L	Ain El Halazoun	M	L	L	Ain El-Rmmaneh	M	VL	L
Ain Jedideh	M	VL	L	Ain Ksour	M	L	L	Ain Onoub	M	L	L
Ain Traz	M	L	L	Ainab	M	L	L	Aley	M	VL	L
Aramoun	M	L	L	Aytat	M	L	L	Azouniyeh	M	L	L
Baawerta	M	L	L	Badghan Oua Wadi Bad	M	L	L	Bassatine	M	L	L
Bayssour	M	L	L	Bchamoun	M	L	L	Bdadoun	M	L	L
Behouara	M	VL	L	Bennay	M	L	L	Bhamdoun El-Dayaa	M	L	L
Bhamdoun El-Mhatta	M	L	L	Bkhechtey	M	VL	L	Bleibel	M	L	L
Bmakine	M	L	L	Bmehray	M	M	L	Bouzrid	M	L	VL
Bserrine	M	L	L	Bsous	M	L	L	Btalloun	M	VL	ML
Btater	M	L	L	Chanay	M	L	L	Charoun	M	L	L
Chartoun	M	VL	L	Chemlane	M	L	L	Chouefat El-Aamrous	M	L	ML
Chouefat El-Oumara	M	ML	L	Chouefat El-Quoubbe	M	ML	ML	Dakkoun	M	L	VL
Deir Qoubel	M	L	L	Dfoun	M	L	L	Douair El Remmaneh	M	VL	L
Ghaboun	M	VL	L	Habramoun	M	VL	L	Homs Oua Hama	M	L	L
Houmal	M	L	L	Jisr El Qadi	M	L	L	Kehaleh	M	VL	L
Keyfoun	M	L	L	Kfar Aamey	M	VL	L	Kommatyeh	M	L	L
Maasrati	M	L	L	Majdel Baana	M	L	L	Mansourieh et Ain El	M	VL	L
Mazraat El-Nahr	M	VL	L	Mchakhte	M	L	L	Mecherfeh	M	L	L
Mejdlaya	M	L	L	Mrayjat	M	L	L	Ramliyah	M	L	L
Rechmaya	M	L	L	Rejmeh	M	VL	L	Remhala	M	L	L
Rouaysset El Neemane	M	L	L	Saoufar	M	L	L	Selfaya	M	L	VL
Sirhmoul	M	L	L	Souq El Ghareb	M	L	L	Taazanieh	M	VL	ML

Kesrouane

Municipality	12-Mar	13-Mar	14-Mar	Municipality	12-Mar	13-Mar	14-Mar	Municipality	12-Mar	13-Mar	14-Mar
Achkout	M	VL	L	Adma Oua Dafneh	MH	L	L	Ain Ed-Delbe Kesroua	M	VL	VL
Ain El-Rihane	M	VL	L	Aintoura Kesrouane	M	L	L	Ajaltoun	M	VL	L
Akaybeh Kesrouane	H	L	L	Aramoun Kesrouane	M	VL	L	Azra ouel Ozor	M	VL	L
Ballouneh	M	VL	L	Batha	M	VL	VL	Bekaatat Achkout	M	VL	L
Bekaatat Kanaan	M	VL	VL	Bizhel	M	VL	VL	Bouar	H	L	L
Bqaatouta	M	VL	VL	Bqaq Ed-Dine	H	L	L	Bzommar	M	VL	L

Chahtoul	M	VL	L	Chnaniir	M	VL	L	Chouan	ML	VL	VL
Daraya Kesrouane	M	VL	L	Daroun	M	VL	L	Deir Baqlouch	M	VL	L
Dlebta	M	VL	VL	Eghbeh	M	VL	VL	Faraya	M	L	L
Fatka	M	VL	L	Feytroun	M	VL	L	Ghazir	M	VL	L
Ghbaleh Kesrouane	M	VL	L	Ghedrass	M	VL	L	Ghosta	M	VL	L
Ghyneh	M	VL	L	Harharaya w Kattine	M	VL	L	Harissa Kesrouane	M	VL	L
Hayata	M	VL	L	Hosein	M	VL	L	Hrajel	M	L	L
Jdeideh Ghazir	M	VL	L	Jeita	M	VL	L	Jounieh Ghadir	M	L	L
Jounieh Haret Sakhr	MH	L	L	Jounieh Salel Alma	M	L	L	Jounieh Sarba	MH	L	ML
Jouret Bedrane	M	VL	L	Jouret Mhad	M	VL	L	Jouret Termos	M	VL	L
Kfar Debiane	M	VL	VL	Kfar Tay Kesrouane	M	VL	VL	Kfar Yassine	H	L	L
Kfour Kesrouane	M	VL	L	Kharayeb Nahr Ibrahi	M	VL	L	Klayaat Kesrouane	M	VL	L
Maarab	M	VL	VL	Maaysra Kesrouane	M	VL	L	Mayrouba	M	L	L
Mazraat Er-Ras	M	L	L	Mazraat Mrah El-Mir	M	VL	L	Mchaa El Ftouh	M	M	L
Mchaa Faraya	M	ML	L	Mchaa Kfar Dibiane	M	L	L	Mghaer	M	VL	VL
Mradiyah	M	VL	VL	Nahr Ed-Dahab	ML	VL	VL	Nammoura Kesrouane	M	VL	L
Ouata El Jaouz	M	VL	L	Ouata Sillam	H	L	L	Raachine	M	VL	L
Rayfoun	M	VL	L	Safra Kesrouane	H	L	L	Shayle Kesrouane	M	VL	L
Tabarja	H	L	L	Yahchouch	M	VL	L	Zaaytneh	M	VL	L
Zeytoun	M	VL	L	Zouk Mikael	MH	L	ML	Zouk Mosbeh	MH	L	L

Baalbek_Hermel

Baalbek

Municipality	12-Mar	13-Mar	14-Mar	Municipality	12-Mar	13-Mar	14-Mar	Municipality	12-Mar	13-Mar	14-Mar
Aadous	M	M	L	Aamchki	M	ML	L	Aarsal	M	M	L
Ain Baalbek	H	MH	L	Ain Bourday	M	M	L	Ain El-Benye	M	ML	L
Ain El-Jaouz Baalbek	M	M	L	Ain El-Siya Chadoura	M	ML	L	Al Khodr Baalbek	M	M	ML
Al Nabi Chit	M	M	L	Aynata Baalbek	L	M	L	Baalbek	M	M	L
Bachwat	L	M	L	Barqa	L	M	L	Bednayeel Baalbak	M	M	L
Beit Chama	M	M	ML	Bijjaje	H	MH	L	Bouday	M	M	L
Brital	M	M	L	Btadi	M	M	L	Chaat	M	M	L
Chaibe	M	ML	L	Chlifa	M	M	L	Chmestar	M	M	L
Dar El-Oussa	ML	M	L	Deir El-Ahmar	M	M	L	Deir Mar Maroun Baal	H	M	M
Douris	M	M	L	Fakiha	H	MH	M	Hadath Baalbek	M	M	L
Ham	M	ML	L	Haour Taala	M	M	L	Hizzine	M	M	L
Hlebta	M	M	M	Hosh Barada	M	M	ML	Hosh El Dahab	M	M	L
Hosh El Snid	M	M	ML	Hosh El-Nabi	M	M	ML	Hosh El-Rafiq	M	M	ML
Hosh Tal Safiya	M	M	L	Hrebta	M	M	ML	laat	M	M	L
Jebaa	M	M	L	Jenta	M	M	L	Kfar Dabach	M	M	ML
Kfar Dane	M	M	L	Khraibeh El-Hermel	MH	MH	L	Khreibet Baalbek	M	M	L
Kneisset Baalbek	M	M	L	Labueh	MH	M	L	Maarboun	M	M	L
Majdaloun	M	M	ML	Maqneh	M	M	L	Mazraat Beit Mcheik	ML	M	L
Misraya	M	M	ML	Moqraq	M	M	L	Nabha El-Damdoum	M	M	ML
Nabi Chbay	M	M	L	Nabi Osman	MH	MH	L	Nahleh baalbek	M	M	L
Ouadi El-Oss	M	M	M	Qaa Baayoun	MH	MH	M	Qaa Jouar Maqiye	MH	MH	M
Qaa Ouadi El-Khanzir	H	M	M	Qah Baalbek	H	H	M	Qarha Baalbek	M	M	L

Qsarnaba	M	M	L	Ram Baalbek	M	M	L	Ras Baalbek El Sahl	H	H	M
Ras Baalbek El-Charq	M	MH	M	Riha	M	M	L	Saaide	M	M	L
Sbouba	MH	MH	L	Seriine El-Tahta	M	M	L	Slouqi	M	M	L
Taiba Baalbek	M	M	L	Talia	M	M	ML	Taraiya	M	M	L
Temnin El Fawqa	M	M	L	Temnin El-Tahta	M	M	L	Tfail	M	M	L
Yahfoufa	M	M	L	Yammouneh	ML	M	L	Younine	M	M	L
Zboud	MH	MH	ML								

Hermel

Municipality	12-Mar	13-Mar	14-Mar	Municipality	12-Mar	13-Mar	14-Mar	Municipality	12-Mar	13-Mar	14-Mar
Charbine El-Hermel	M	M	M	Hermel Jbab	M	M	M	Hermel	MH	M	M
Maaysra El-Hermel	M	M	M	Michaa Mrajhine	M	M	M	Ouadi Faara	M	M	M
Ras Baalbek - Ouadi	H	H	M	Ras Baalbek El Gharb	M	M	M	Zighrine	M	M	M

Akkar

Akkar

Municipality	12-Mar	13-Mar	14-Mar	Municipality	12-Mar	13-Mar	14-Mar	Municipality	12-Mar	13-Mar	14-Mar
Aain Tinta	M	M	M	Aaiyat	M	M	M	Aakkar El-Aatiqa	M	M	M
Aamar Akkar	M	MH	M	Aamar El Baykat	M	M	M	Aamayer	M	MH	M
Aamriyet Akkar	M	MH	M	Aandqet	M	M	M	Aarmeh	M	M	M
Aarqa	M	MH	M	Aawaynat	M	MH	M	Aayoun Akkar	M	M	M
Abboudiye	M	M	M	Ain El-Zeit	M	MH	M	Ain Yaaqoub	M	M	M
Akroum	M	M	M	Aridet Cheikh Zennad	M	M	M	Baldeh w Mazraat Bal	M	M	M
Barcha	M	M	M	Bardeh	M	MH	M	Bebnine	M	MH	M
Beino	M	M	M	Beit Ayoub	M	M	M	Beit El-Haouch	M	M	M
Beit Mellat	M	M	M	Beit Younes	M	M	M	Berbara Akkar	M	M	M
Berqayel	M	M	M	Bezbina	M	M	M	Bireh Akkar	M	MH	M
Borj	M	M	M	Bqerezla	M	M	M	Bzal	M	M	M
Chane	M	M	M	Chaqdouf	M	M	M	Charbila	M	M	M
Cheikh Mohammad	M	M	M	Cheikh Taba Es-Sahl	M	MH	M	Cheikh Taba	M	M	M
Cheikh Zennad	M	M	M	Cheikhlar	M	MH	M	Chir Hmairine	M	M	M
Daghle	M	M	M	Dahr Laissine	M	M	M	Darine	M	M	M
Dawra	M	M	M	Dawsa w Baghdadi	M	M	M	Dayret Nahr El-Kabir	M	M	M
Deir Dalloum	M	MH	M	Deir Jennine	M	M	M	Denbou	M	M	M
Dibbbiyeh	M	M	M	Douair Aadwiyeh	M	M	M	Fassikine	M	M	M
Fnaydek	M	M	M	Fraydes Akkar	M	M	M	Ghazayle	M	M	M
Habchit	M	M	M	Hakour	M	M	M	Halba	M	M	M
Haouchab	M	M	M	Hayssat	M	M	M	Haytla	M	M	M
Hayzouq	M	M	M	Hedd	M	M	M	Hmaira Akkar	M	M	M
Hmaiss Akkar	M	M	M	Hnaider	M	M	M	Hokr Ed-Dahri	M	M	M
Hokr Etti	M	M	M	Hokr Jouret Srar	M	M	M	Houaich	M	M	M
Hrar	M	M	M	Idbil	M	M	M	Ilal	M	M	M
Janine	M	M	M	Jdeidet El-Joumeh	M	M	M	Jdeidet El-Kaiteh	M	M	M
Jebrayel	M	M	M	Kafr	M	L	L	Kafr	M	MH	M
Karm Asfour	M	M	M	Kfar Melki Akkar	M	MH	M	Kfar Noun	M	M	M
Kfarharra	M	M	M	Khalsa	M	MH	M	Kharnoubet Akkar	M	M	M

Khirbet Daoud Aakkar	M	M	M	Khirbet El Remmane	M	M	M	Khirbet Shar	M	M	M
Khoreybet El-Jindi	M	M	M	Khreibet Aakkar	M	M	M	Kneisset Aakkar	M	M	M
Kneisset Hnaider	M	M	M	Knisse	M	M	M	Kroum El-Aarab	M	M	M
Kwachra	M	MH	M	Kweykhata	M	M	M	Machta Hammoud	M	M	M
Majdala	M	M	M	Majdel Akkar	M	M	M	Mar Touma	M	M	M
Marlaya Melhem	M	MH	M	Mashha	M	M	M	Massoudiye	M	M	M
Mazraat Beit Ghattas	M	M	M	Mazraat En-Nahriye	M	MH	M	Mechmech	M	M	M
Memneh	ML	M	M	Mhammara	M	M	M	Mighraq Aakkar	M	M	M
Minyara	M	M	M	Moqayteh	M	MH	M	Mounjez	M	M	M
Msalla	M	M	M	Mzeihmeh	M	M	M	Nfaiseh	M	M	M
Noura Et-Tahta	M	M	M	Ouadi El-Haour	M	M	M	Ouadi El-Jamous	M	M	M
Ouyoun El-Ghizlane	M	MH	M	Qaabarine	M	MH	M	Qabaait	M	MH	M
Qachlaq	M	M	M	Qantara Aakkar	M	M	M	Qarha Aakkar	M	M	M
Qarqaf	M	M	M	Qboula	M	M	M	Qleiaat Aakkar	M	M	M
Qloud El-Baqie	M	M	M	Qobaiyat Aakkar	M	M	M	Qobbat Chamrat	M	MH	M
Qorayat	M	M	M	Qornet Aakkar	M	M	M	Qsair Aakkar	M	MH	M
Rahbe	M	M	M	Rihaniyet Aakkar	M	M	M	Rmah	M	M	M
Rmoul	M	MH	M	Saadine	M	M	M	Sadaqa	M	M	M
Saidnaya	M	M	M	Sammouniye	M	M	M	Sayssouq	M	M	M
Semmaqiye	M	M	M	Semmaqli	M	MH	M	Sfinet El-Dreib	M	M	M
Sfinet El-Qaitaa	M	M	M	Sindyant Zeidane	M	M	M	Souaisset Aakkar	M	M	M
Srar	M	M	M	Tal Abbas El Gharby	M	M	M	Tal Abbas El-Charqy	M	M	M
Tal Biret	M	M	M	Tal Hmayra	M	M	M	Tal Maayan Tal Kiri	M	M	M
Tal Sibel	M	MH	M	Tallet Chattaha	M	M	M	Tikrit	M	M	M
Tleil	M	M	M	Tshea	M	M	M	Zawarib	M	M	M
Zouq El Hosniyeh	M	M	M	Zouq El-Haddara	M	M	M	Zouq El-Hbalsa	M	M	M
Zouq El-Moqachrine	M	MH	M								

Sud

Sour

Municipality	12-Mar	13-Mar	14-Mar	Municipality	12-Mar	13-Mar	14-Mar	Municipality	12-Mar	13-Mar	14-Mar
Aaiyeh	M	L	VL	Aalma El-Chaab	M	L	L	Aaytit	M	L	VL
Abbassiyeh Sour	M	L	L	Abou Chech	M	L	L	Ain Abou Abdallah	M	L	L
Ain Baal	M	L	L	Arzoun	M	VL	L	Aziyeh	M	L	L
Baflaya	M	L	L	Barich	M	L	L	Batouliyeh	M	L	L
Bayad	M	L	VL	Bazouriyeh	M	L	L	Bediass	M	VL	L
Bestiyat	M	VL	L	Borj El Chemali	MH	L	ML	Borj En-Naqoura	M	L	L
Borj Rahhal	M	L	L	Boustane	M	VL	L	Btaychiyeh	M	L	L
Chaaitiye	M	L	L	Chameh	M	L	L	Chehabiye	M	L	VL
Chhour	M	VL	VL	Chihine	M	VL	VL	Debaal Sour	M	L	L
Deir Amess	M	L	VL	Deir Kifa	M	L	L	Deir Qanoun El-Ain	M	L	L
Deir Qanoun El-Naher	M	L	L	Derdghaiya	M	L	L	Dhayra	M	L	L
Halloussiyeh	M	L	L	Hamoul	M	L	L	Hanaouey	M	L	VL
Henniye	M	L	L	Hmairi Sour	M	VL	L	Iskandarouna Sour	M	L	L
Jbal El Botom	M	L	VL	Jebbin	M	VL	L	Jennata	M	VL	L
Jijim	M	L	L	Jouaiya	M	L	L	Kneisset Sour	M	L	VL

Maarake	M	L	L	Maaroub	M	L	L	Majadel	M	L	VL
Majdalzoun	M	L	L	Mansouri Sour	M	ML	L	Marnba	M	VL	L
Marouahine	M	VL	VL	Mazraat El-Zalloutiy	M	VL	L	Mazraat Mechref	M	L	VL
Mazraat Tayr Semhat	M	VL	VL	Mheilib	MH	L	ML	Neffakhiyeh	M	L	L
Niha Sour	M	L	L	Ouadi Jilo	M	L	L	Qana	M	L	VL
Qolaileh Sour	M	L	L	Rechknay	M	L	VL	Rmadiyah	M	L	VL
Selha Sour	M	L	L	Siddiqine	M	L	VL	Sour	MH	L	M
Srifa	M	VL	L	Tayr Debbe	M	L	L	Tayr Felsay	M	VL	L
Tayr Harfa	M	L	L	Touayri	M	VL	L	Toura	M	L	L
Yanouh Sour	M	L	L	Yarine	M	VL	L	Zebqine	M	L	VL

Saida

Municipality	12-Mar	13-Mar	14-Mar	Municipality	12-Mar	13-Mar	14-Mar	Municipality	12-Mar	13-Mar	14-Mar
Aanqoun	M	L	L	Aaqtanit	MH	L	L	Aarab Ej-Jall	M	L	L
Aarab Tabbaya	M	L	L	Abra Saida	MH	L	L	Adloun	MH	L	L
Adousiyeh	MH	L	L	Ain-El-Deleb	MH	L	L	Arzai	M	L	L
Babliyah	MH	VL	L	Barty	M	L	L	Bissariyeh	MH	L	L
Bnaafoul	MH	L	L	Bqosta	MH	L	L	Bramiy	MH	L	L
Daoudiyeh	MH	VL	L	Dareb El-Sim	MH	L	L	Erkay	M	L	L
Ghassanieh	MH	VL	L	Ghazieh	MH	L	L	Hajjeh	M	L	L
Haret Saida	MH	L	L	Hartiyeh	M	L	L	Hlaliye Saida	MH	L	L
Insariyat	MH	L	L	Jazira Saida	M	L	L	Kafar Bit	M	L	L
Kaoutariyet El-Siyad	M	VL	L	Kfar Chellal	M	L	L	Kfar Hatta Saida	M	L	L
Kfar Milke Saida	M	L	L	Khartoum	M	VL	L	Khaziz	M	L	L
Khribet Ed-Douair Sa	MH	VL	L	Khribet El-Bassal	MH	L	L	Khrayeb Saida	M	L	L
Loubieh	MH	L	L	Maghdouche	MH	L	L	Majdelyoun	MH	L	L
Matariyet El-Choumar	M	L	L	Matayriyeh	MH	L	L	Mazraat 'Mseileh	MH	L	L
Mazraat 'Snaiber	MH	VL	L	Mazraat Aarab Soukka	M	L	L	Mazraat Deir Taqla	M	VL	L
Mazraat El Yahoudiye	MH	L	L	Mazraat El-Housseini	MH	L	L	Mazraat El-Mhaydaleh	M	L	L
Mazraat El-Ouasta	MH	L	L	Mazraat Jamjim	M	L	L	Mazraat Kaoutariyet	M	L	L
Mazraat Kfar Badda	MH	L	L	Mazraat Oussamiyat	M	L	L	Mazraat Sari	MH	L	L
Mazraat Sinai	M	VL	L	Meemariyeh	MH	L	L	Merouaniyeh	MH	L	L
Miyeh ou Miyeh	MH	L	L	Najjariyeh	MH	L	L	Qaaqiyat El-Snaouba	MH	VL	L
Qnarit	MH	L	L	Qraiyeh Saida	MH	L	L	Saida Ed-Dekermane	MH	L	L
Saida El-Oustani	MH	L	L	Saida El-Qadimeh	MH	L	L	Saida Kefraya	M	L	L
Saksakiyeh	MH	L	L	Salhieh Saida	MH	L	L	Sarafand	MH	L	L
Sfenta	M	L	L	Tafahta	MH	VL	L	Tanbourit	M	L	L
Tebna	M	VL	L	Zaghdraiya	M	L	L	Zeita	MH	L	L
Zrariyeh	M	L	L								

Jezzine

Municipality	12-Mar	13-Mar	14-Mar	Municipality	12-Mar	13-Mar	14-Mar	Municipality	12-Mar	13-Mar	14-Mar
Ain El-Mir (El Estab	M	L	L	Anane	M	VL	L	Aramta	M	L	L
Ariya	M	L	VL	Aychiyeh	M	VL	L	Azour	M	VL	VL
Baba	M	VL	VL	Bayssour Jezzine	M	L	L	Benoueteh Jezzine	M	L	L
Bhannine	M	L	VL	Bisri	M	VL	VL	Bkassine	M	VL	L
Bouslaya	M	VL	VL	Btedine El-Leqech	M	VL	VL	Chbail	L	VL	VL
Choualiq Jezzine	M	L	L	Dahr Ed-Deir	M	VL	VL	Deir El Qattine	M	VL	VL

Demachqiyeh	M	VL	L	Ghabbatiyeh	M	L	L	Harf Jezzine	M	VL	VL
Hassaniyeh	M	L	L	Haytouleh	M	L	L	Haytura	M	VL	VL
Hidab	M	VL	L	Homsiyeh	M	VL	VL	Jabal Toura	M	L	L
Jarmaq	M	VL	L	Jensnaya	M	L	L	Jernaya	M	L	L
Jezzine	M	L	L	Karkha	M	L	L	Kfar Falous	M	L	L
Kfar Houna	M	L	L	Kfar Jarrah	MH	L	L	Lebaa	M	L	L
Louayzet Jezzine	M	L	L	Machmouche	M	VL	VL	Mahmoudiyeh Jezzine	M	VL	L
Maknounye Jezzine	M	VL	VL	Maraat Ouazaiyeh	M	VL	L	Mazraat Daraya	M	L	L
Mazraat El-Aarqoub	M	VL	L	Mazraat El-Mathane	M	VL	VL	Mazraat El-Rahbane	M	L	VL
Mazraat Khallet Khaz	M	L	VL	Mazraat Louzid (Loua	L	VL	VL	Mazraat Qrouh	M	VL	L
Mazraat Tamra	M	VL	L	Mazraat Zighrine Jez	M	VL	L	Mazraat	M	VL	VL
Mharbiyeh	M	L	L	Midane Jezzine	M	VL	VL	Mjeydel Jezzine	M	L	L
Mlikh	M	L	L	Mrah El-Hbasse	M	L	L	Ouadi Baanquodaine	M	L	L
Ouadi El-Laymoun	M	L	L	Ouardiyeh	L	VL	VL	Qabaa Jezzine	M	VL	VL
Qatrani	M	L	L	Qaytouleh	M	VL	VL	Qtaleh Jezzine	M	VL	VL
Rihane Jezzine	M	VL	L	Rimat	M	VL	VL	Roum	M	VL	VL
Roummanet	M	L	L	Sabbah	M	VL	L	Saydoun	M	L	L
Sfaray	M	L	L	Snaya	M	L	VL	Sojoud	M	VL	L
Srayri	M	L	L	Taaid	M	VL	VL	Wadi Jezzine	M	VL	L
Zhalta	M	VL	VL								

Bekaa

West Bekaa

Municipality	12-Mar	13-Mar	14-Mar	Municipality	12-Mar	13-Mar	14-Mar	Municipality	12-Mar	13-Mar	14-Mar
Aammiq BG	M	M	ML	Ain El Tineh BG	M	L	L	Ain Zebdeh	M	ML	L
Ana	M	M	L	Aytanit	M	L	L	Baaloul BG	M	M	L
Bab Mareh	M	ML	L	Chouberqiye Aammiq	M	M	ML	Dakoue	M	M	L
Deir Ain El-Jaouze	M	ML	L	Deir Tahniche	M	M	ML	Ghaza	M	M	ML
Harime El-Soughra	M	M	ML	Hoch Harimeh	M	M	ML	Jazira BG	M	M	ML
Jib Jennine	M	M	ML	Kamed-El-Laouz	M	M	L	Kefraya BG	M	M	L
Khiara El Atika	M	M	ML	Khiara	M	M	ML	Khirbet Qanafar	M	M	L
Lala	M	M	L	Lebbaya BG	M	ML	L	Loussa	M	L	L
Machghara	M	L	L	Manara (Hammar) BG	M	M	L	Mansoura BG	M	M	ML
Marej BG	M	M	ML	Maydoun	M	L	L	Ouaqf BG	M	M	ML
Qaraaoun	M	ML	L	Qelya	M	L	L	Raouda (Istabel)	M	M	ML
Saghbine	M	ML	L	Sohmor	M	ML	L	Soltan Yacoub el Ara	M	M	L
Souairy	M	M	L	Sultan Yaacoub	M	M	L	Tal Znoun	M	M	ML
Yehmor BG	M	ML	L	Zilaya	M	L	VL				

Zahle

Municipality	12-Mar	13-Mar	14-Mar	Municipality	12-Mar	13-Mar	14-Mar	Municipality	12-Mar	13-Mar	14-Mar
Aanjar (Haouch Mouss	M	M	ML	Ablah	M	M	L	Ain Kfarzabad	M	M	L
Ali-El-Nahri	M	M	L	Bar Elias	M	M	ML	Bouarej	ML	M	L
Cheberqiyet Tabet	ML	M	ML	Chtaura	ML	M	ML	Deir El Ghazal	M	M	L
Delhamiyet Zahle	M	M	ML	Ferzol	M	M	L	Haouch El-Ghanam	M	M	L
Haouch Es-Siyadeh	M	M	ML	Haouch Hala	M	M	L	Haouch Mandara	M	M	ML

Haouch Qayssar	M	M	ML	Hezerta	ML	M	L	Hosh Moussa	M	M	L
Jdita	ML	M	ML	Kfarzabad	M	M	L	Ksara	M	M	ML
Majdel Aanjar	M	M	L	Makssi	ML	M	ML	Massa	M	M	L
Mazraat Er-Remtaniye	ML	M	L	Mrayjat Zahle	M	M	L	Mzaraa Zahle	M	M	ML
Nabi Ayla	M	M	L	Nasriyet Rizk	M	M	L	Nasriyet Zahle	M	M	ML
Niha Zahle	M	M	L	Ouadi Ed-Deloum	M	M	L	Ouadi El-Arayech	L	M	L
Qaa El Rim	ML	M	L	Qab Elias	M	M	ML	Qousaya	M	M	L
Rhit	M	M	L	Riyak	M	M	L	Saadnayel	M	M	ML
Taal El-Akhdar	M	M	ML	Taalbeya	ML	M	ML	Taanayel	M	M	ML
Talamara	M	M	L	Tcheflik Edde Haouch	M	M	ML	Tcheflik Qiqano	M	M	ML
Terbol Zahle	M	M	L	Touaite Zahle	ML	M	L	Zahle Aradi	ML	M	L
Zahle El-Berbara	ML	M	L	Zahle El-Maallaqa	ML	M	L	Zahle El-Midane	ML	M	L
Zahle Er-Rassiye	ML	M	L	Zahle Haouch El-Ouma	M	M	ML	Zahle Haouch El-Ouma	M	M	L
Zahle Haouch Ez-Zara	ML	M	L	Zahle Maallaqa Aradi	M	M	L	Zahle Mar Antonios	ML	M	L
Zahle Mar Elias	ML	M	L	Zahle Mar Gerios	L	M	L	Zahle Saydet En-Naja	L	M	L
Zebdoul	L	M	L								

Rachaiya

Municipality	12-Mar	13-Mar	14-Mar	Municipality	12-Mar	13-Mar	14-Mar	Municipality	12-Mar	13-Mar	14-Mar
Ain Arab Rachaiya	M	M	L	Ain Ata	M	L	L	Ain Harche	M	L	L
Aqabe Rachaya	M	ML	ML	Ayha	M	M	L	Ayta El Fokhar	M	M	L
Bakifa Rachaya	M	L	L	Bakka	M	M	L	Beit Lahya	M	L	L
Bireh Rachaiya	M	M	ML	Daher El Ahmar	M	ML	L	Deir El-Achayer	M	M	L
Heloua Rachaiya	M	M	L	Hoch El Qannabeh Rac	M	L	L	Kaoukaba Bou Arab	M	ML	L
Kfar Danis	M	ML	L	Kfar Mechki	M	L	L	Kfar Qouq	M	M	L
Kherbet Rouha	M	M	L	Majdel Balhiss	M	ML	L	Mdoukha	M	M	L
Mhaydseh Rachaiya	M	ML	L	Nabi Safa	M	L	L	Rachaiya	M	ML	L
Rafid Rachaiya	M	M	ML	Selsata (Mazraat Dei	M	M	L	Tannoura	M	L	L
Yanta	M	M	L								

Beyrouth

Beyrouth

Municipality	12-Mar	13-Mar	14-Mar	Municipality	12-Mar	13-Mar	14-Mar	Municipality	12-Mar	13-Mar	14-Mar
Achrafieh	MH	L	ML	Ain el-Mreisse	H	L	ML	Bachoura	MH	L	L
Beirut Central Distr	H	L	ML	Marfai	MH	L	ML	Mazraa	MH	L	L
Medaouar	MH	L	ML	Minet el-Hosn	H	L	ML	Mwssaitbeh	MH	L	L
Ras Beirut	MH	L	L	Rmeil	MH	L	ML	Saifi	MH	L	ML
Zqaq el-Blat	MH	L	L								



نشرة الطقس الصادرة عن دائرة التقديرات في مصلحة الأرصاد الجوية

النشرة: المسائية

السبت: ١١ آذار ٢٠١٧

الحالة العامة: منخفض جوي متمركز فوق البحر المتوسط يؤدي الى طقس متقلب وماطر خلال الأيام القادمة تتخلله انفراجات .

الطقس المتوقع في لبنان:

الأحد: غائم جزئياً مع رياح ناشطة وارتفاع بدرجات الحرارة خلال النهار التي تعود للانخفاض التدريجي بعد الظهر فيتحول الطقس الى غائم مع أمطار تشتد غزارتها أحياناً وتكون مصحوبة ببرق ورعد، وتتساقط الثلوج على ارتفاع ١٦٠٠ متر وما فوق اعتباراً من الفترة المسائية.

الاثنين: غائم جزئياً الى غائم أحياناً مع انخفاض اضافي بدرجات الحرارة وأمطار متفرقة تكون غزيرة أحياناً خلال الفترة الصباحية كما تنشط الرياح وتتساقط الثلوج على ارتفاع ١٥٠٠ م وما فوق.

الثلاثاء: غائم جزئياً مع انخفاض طفيف بدرجات الحرارة وتتساقط أمطار خفيفة ومتفرقة أحياناً وتتساقط بعض الثلوج الخفيفة والمتفرقة على ارتفاع ١٤٠٠ متر وما فوق. يتخلل هذا النهار انفراجات واسعة .

الإثنين		الأحد		السبت		درجات الحرارة المتوقعة	
١٧/١١	١٧/٩	٢٢/١٤	٢٢/١١	١٩/١٣	١٩/١٠	صور	الساحل
١٧/١٠		٢٢/١٢		١٩/١٠		بيروت	
١٧/٩		٢٢/١١		١٩/١٠		طرابلس	
٩/٤	١٠/٤	١٤/٧	١٤/٦	١١/٦	١١/٥	بيصور	الجبال
١٠/٤		١٣/٦		١١/٥		قرطبا	
٣/١-		٨/١		٥/٠		الأرز	
١٢/٧	١٢/٧	١٥/٨	١٦/٨	١٢/٨	١٣/٨	القرعون	الداخل
١٢/٧		١٦/١٠		١٣/٨		مرجعون	
١٢/٧		١٤/٩		١١/٨		زحلة	

الرياح السطحية: جنوبية الى جنوبية غربية سرعتها بين ٢٠ و ٥٥ كم/س.

الانقشاع: متوسط، يسوء أحياناً.

الرطوبة النسبية على الساحل: بين ٣٥ و ٧٥ %.

حالة البحر: متوسط ارتفاع الموج الى مائج.

الضغط الجوي: ١٠١٠ HPA

ساعة شروق الشمس: ٥:٥٣

حرارة سطح الماء: ١٧°م.

أي ما يعادل: ٧٥٨ ملم زئبق

ساعة غروب الشمس: ١٧:٤٣