

# Lebanon Fire Risk Bulletin



CIVIL DEDEFENCE

**Refer to cadast table condition.**

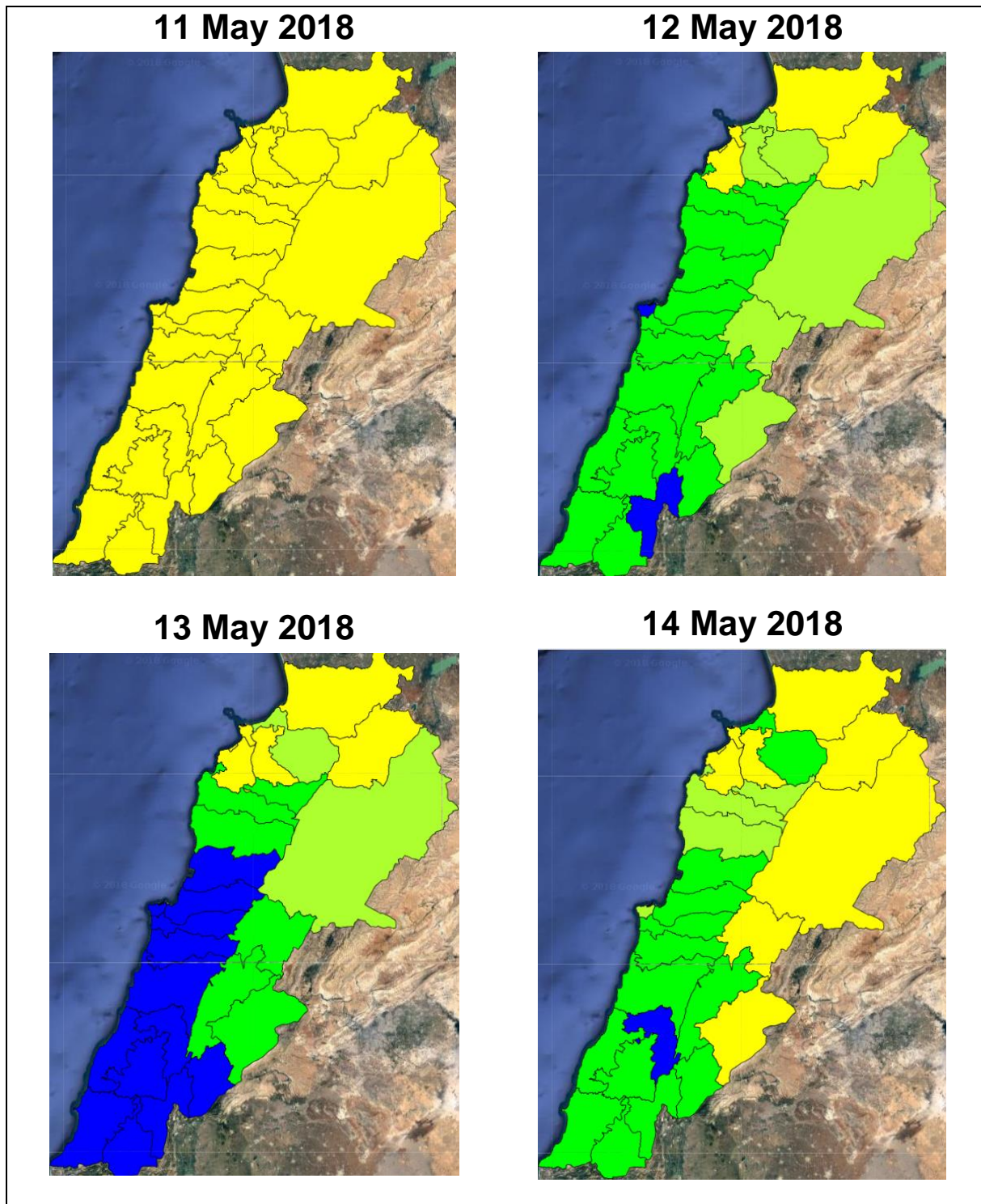
**Please note that the indicated temperature is at 2 meters height from the ground.**

General description of potential fire risk situation

Symbol	Level of risk	Meaning and actions
VL	Very low	Very low fire risk. Controlled burning operations can be hardly executed due to high fuel moisture content. Normally wildfires self-extinguish.
L	Low	Low fire risk. Controlled burning operations can be executed with a reasonable degree of safety.
ML	Medium low	Medium-low fire risk. Controlled burning operations can be executed in safety conditions. All the fires need to be extinguished.
M	Medium	Medium fire risk. Controlled burning operations would be avoided. All the fires need to be very well extinguished.
M	Medium high	Controlled burning is not recommended. Open flame will start fires. Cured grasslands and forest litter will burn readily. Spread is moderate in forests and fast in exposed areas. Patrolling and monitoring is suggested. Fight fires with direct attack and all available resources.
H	High	Ignition can occur easily with fast spread in grass, shrubs and forests. Fires will be very hot with crowning and short to medium spotting. Direct attack on the head may not be possible requiring indirect methods on flanks. Patrolling and monitoring the territory is highly suggested.
E	Extreme	Ignition can occur also from sparks. Fires will be extremely hot with fast rate of spread. Control may not be possible during day due to long range spotting and crowning. Suppression forces should limit efforts to limiting lateral spread. Damage potential total. Patrolling and monitoring the territory is highly suggested.

**Beirut, 12 May 2018**

# FIRE RISK INDEX

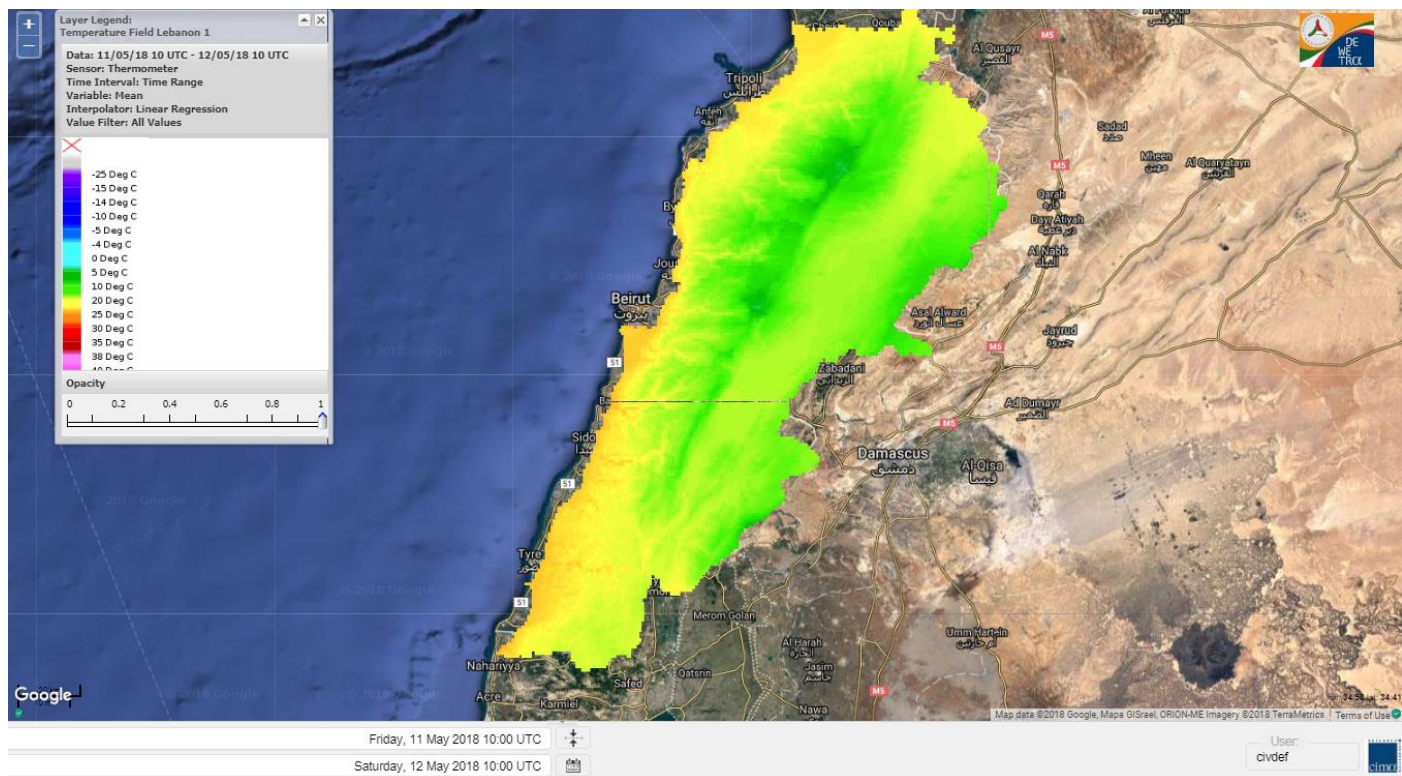


Layer Legend:  
Lebanon Wildfire Risk Index 1

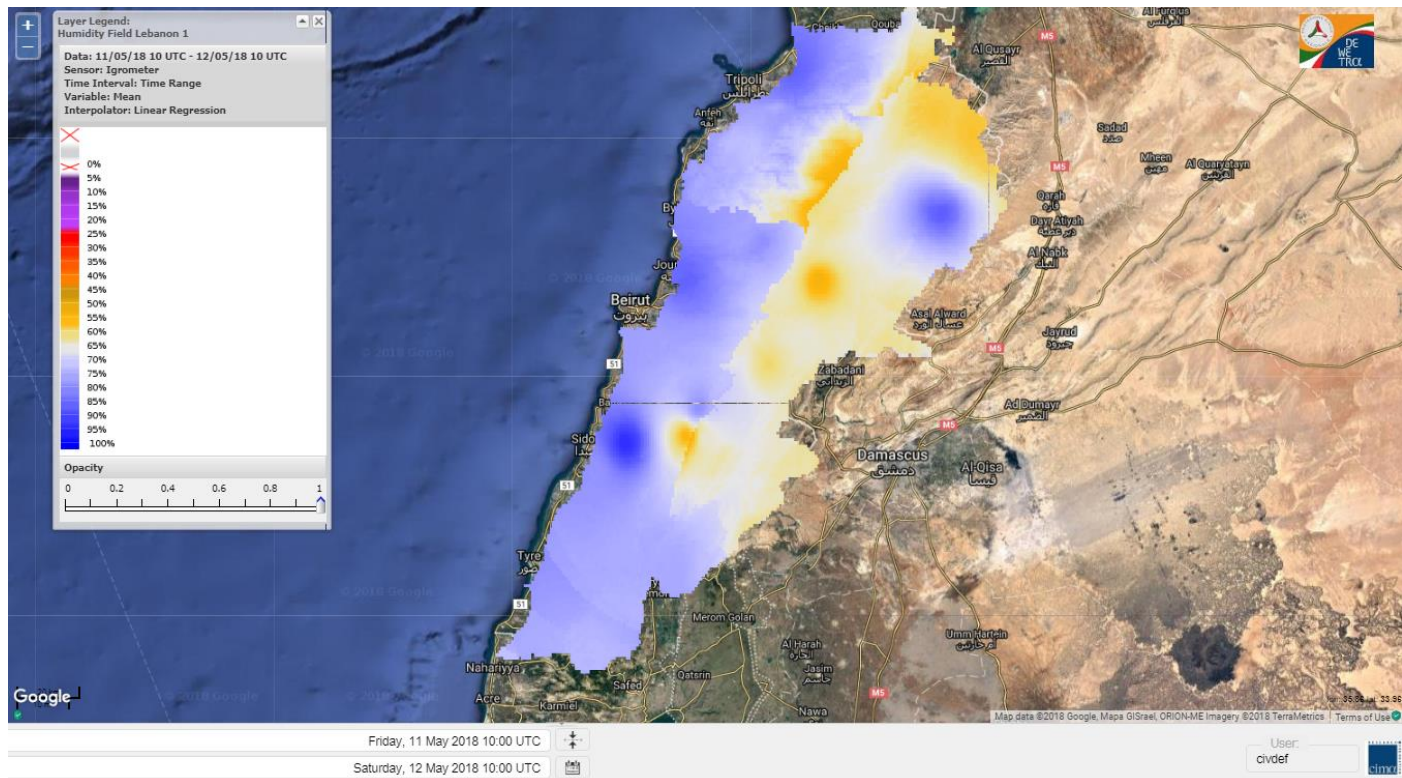
Data: Run: 12/05/2018 00:00. Forecast for 12  
Model: RISICO for the Republic of Lebanon  
Variable: Fire Weather Index  
Spatial Resolution: Caza

- VERY LOW
- LOW
- MEDIUM-LOW
- MEDIUM
- MEDIUM-HIGH
- HIGH
- EXTREME

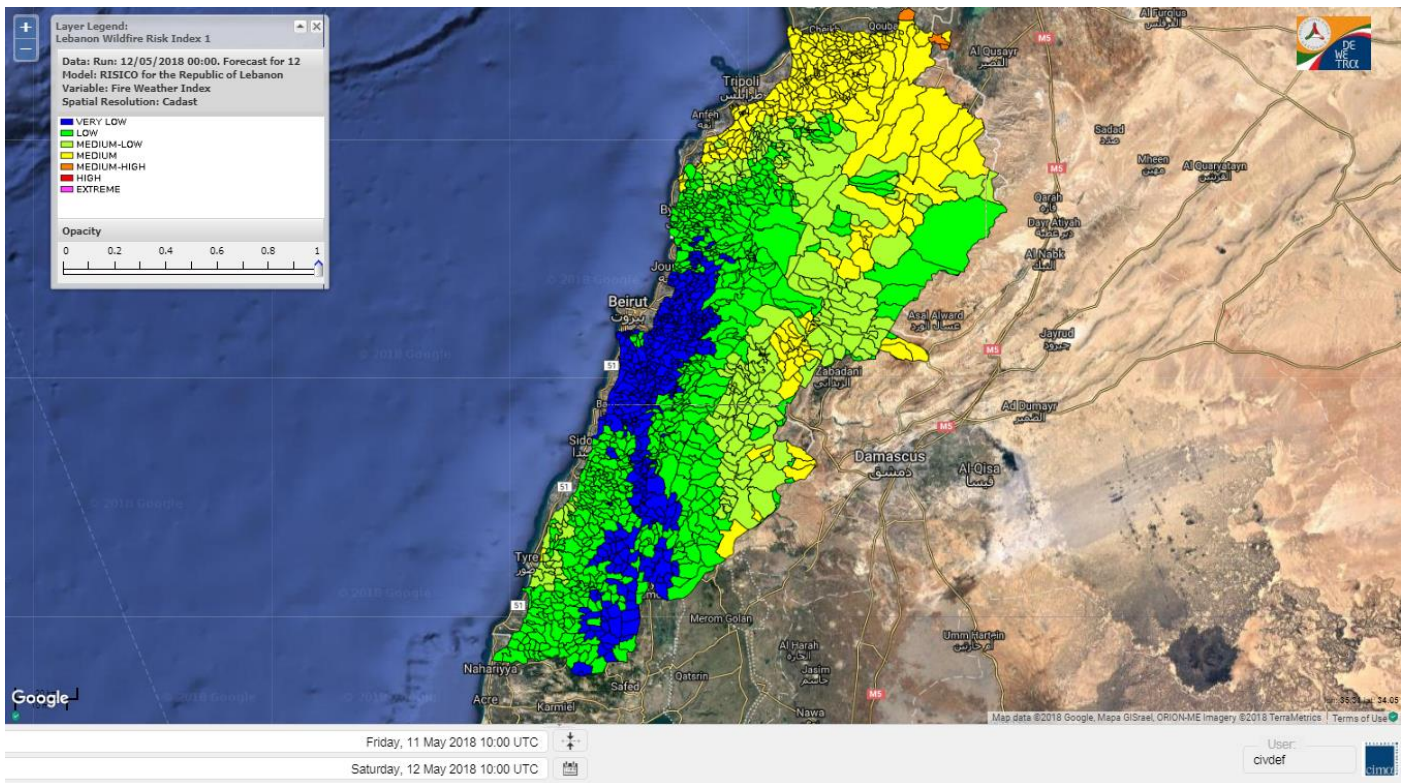
# Lebanon temperature for 12 May 2018



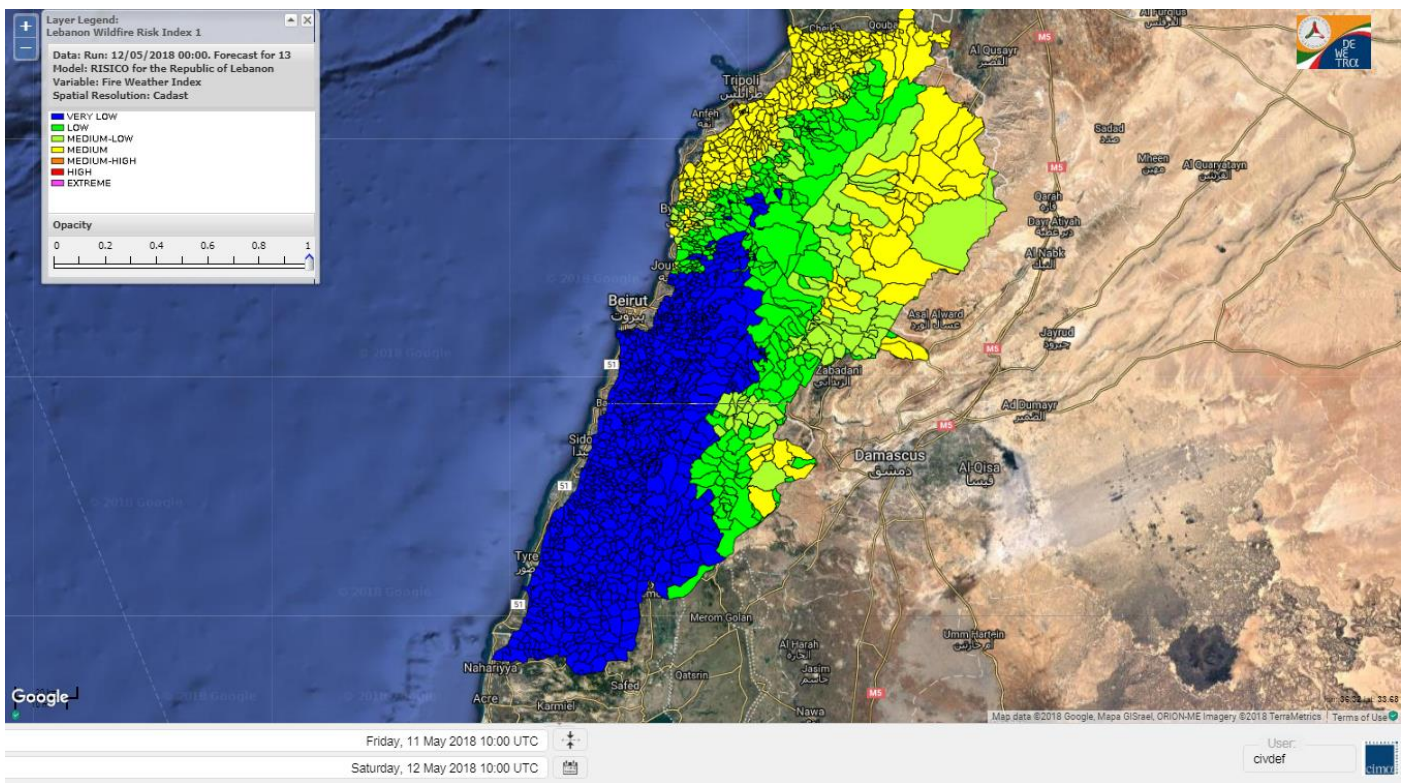
# Lebanon humidity for 12 May 2018



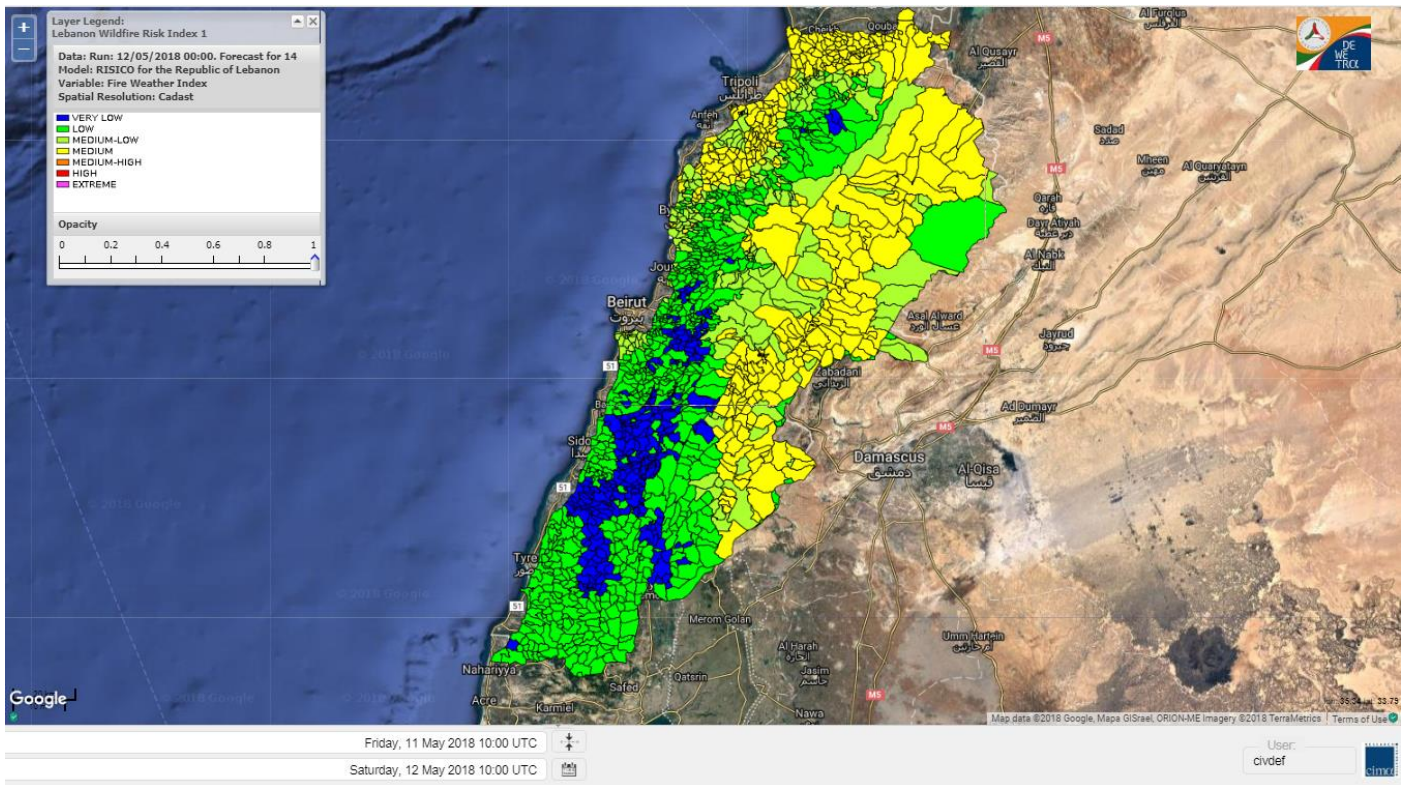
# Lebanon for 12 May 2018



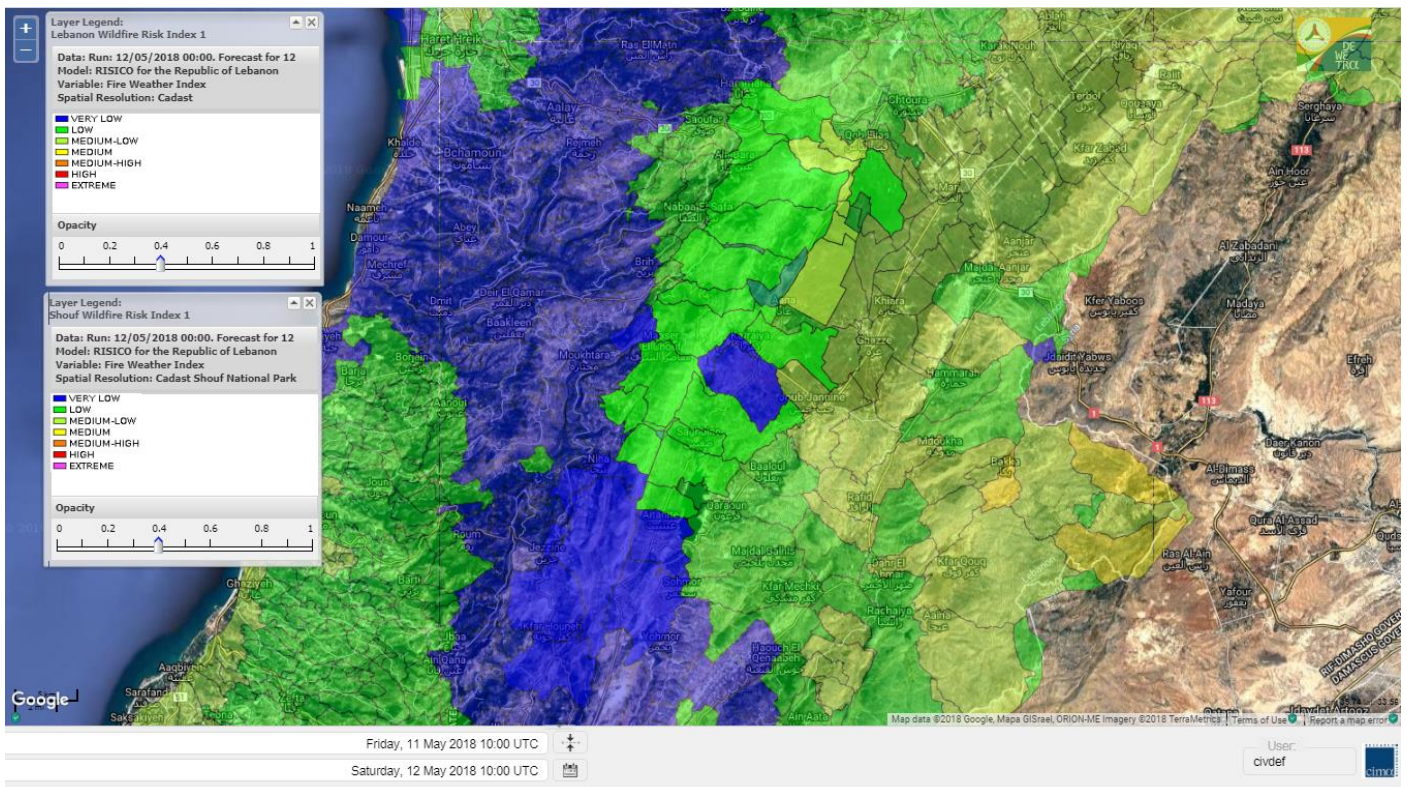
# Lebanon for 13 May 2018



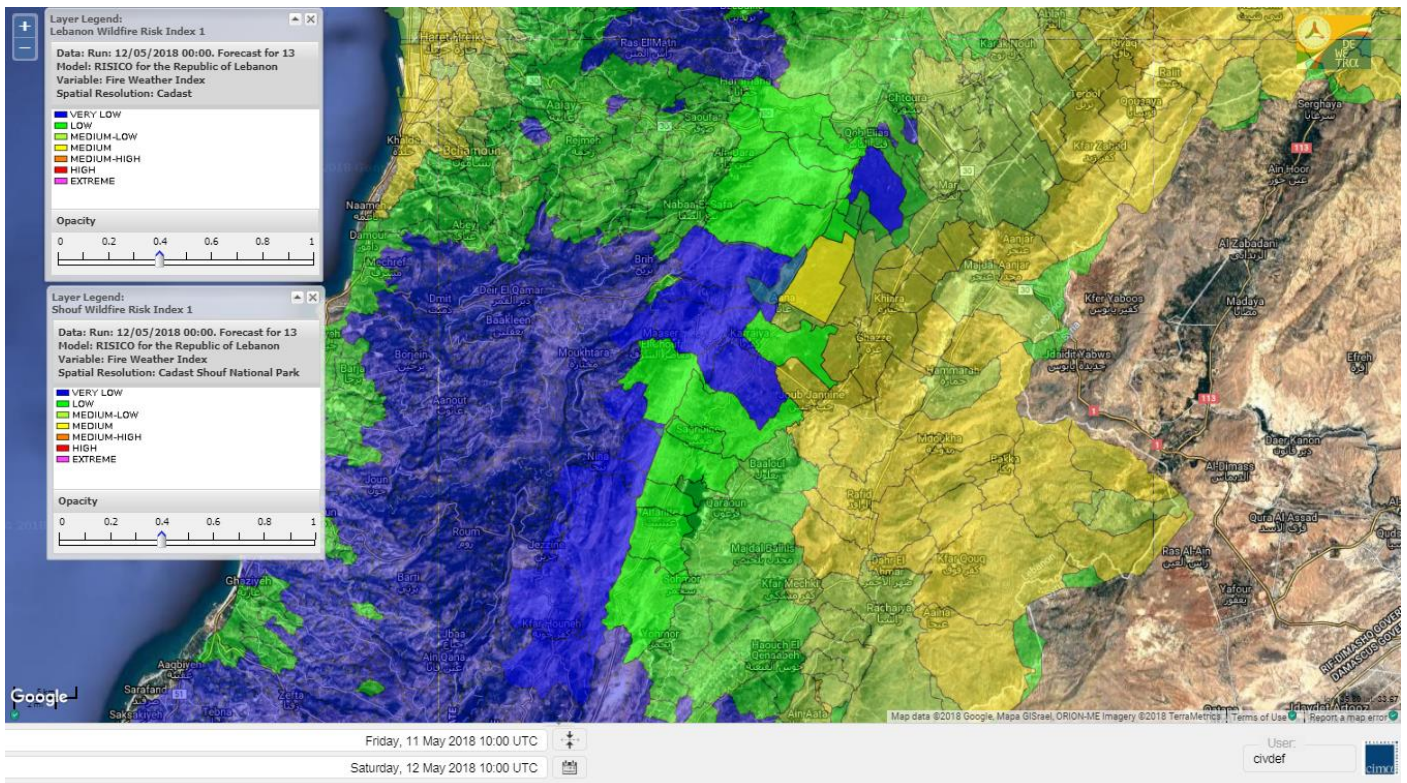
# Lebanon for 14 May 2018



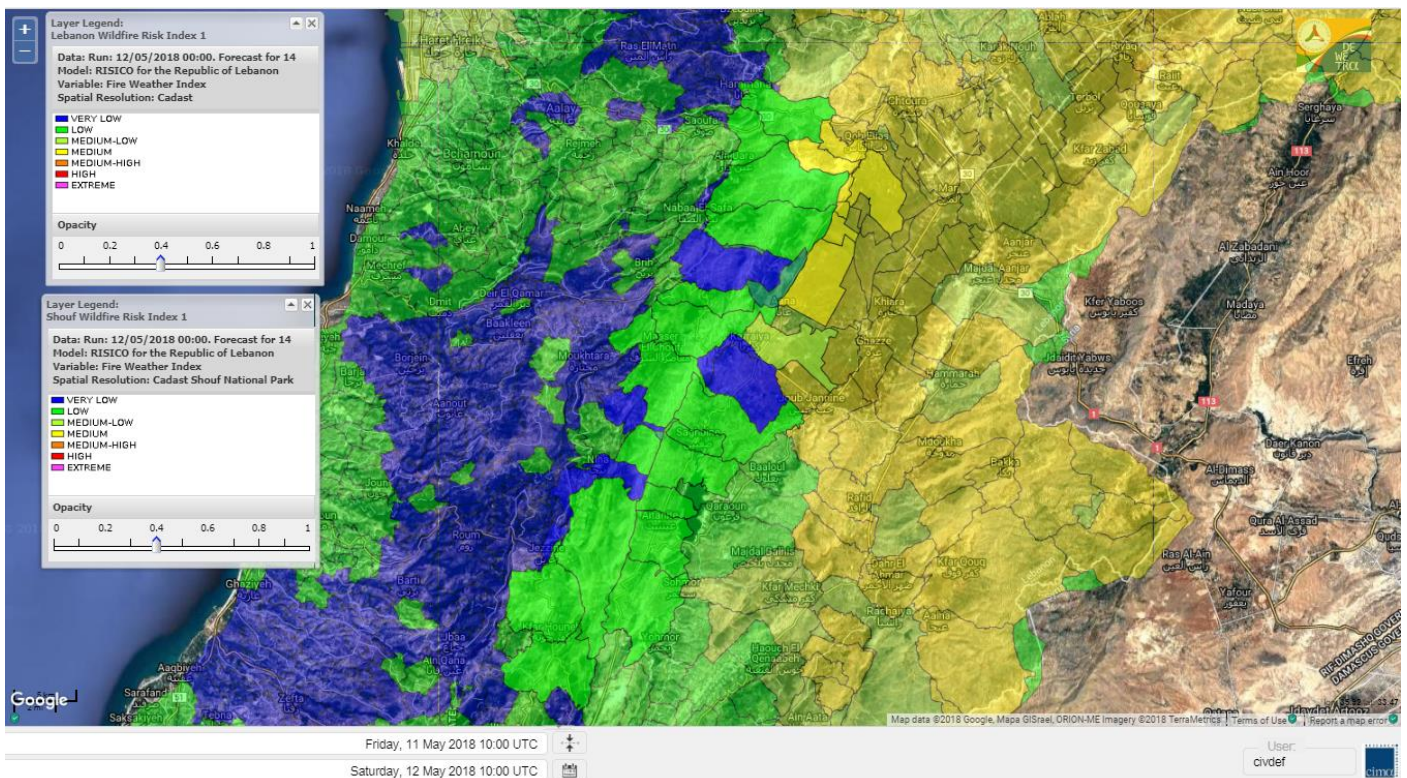
# Shouf Biosphere Reserve Forecast for 12 May 2018



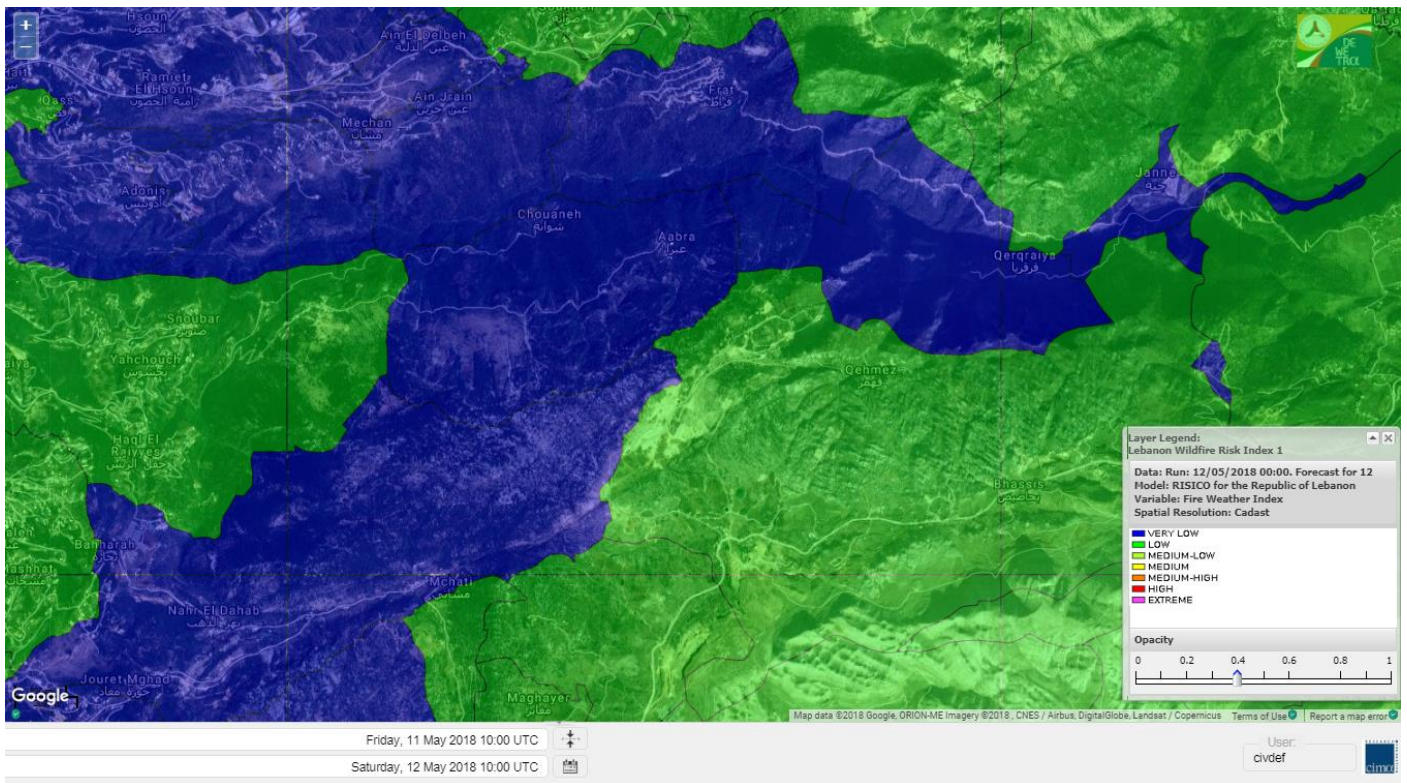
# Shouf Biosphere Reserve Forecast for 13 May 2018



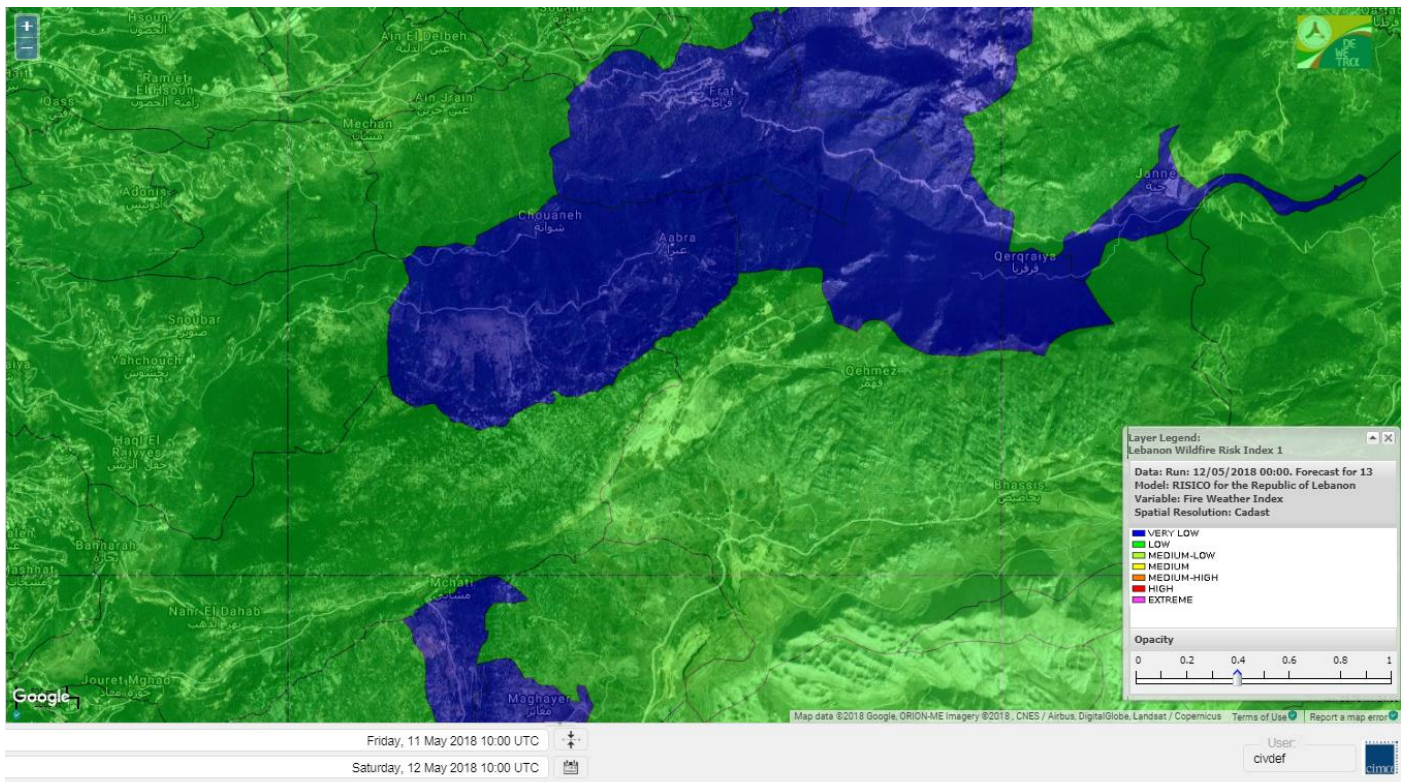
# Shouf Biosphere Reserve Forecast for 14 May 2018



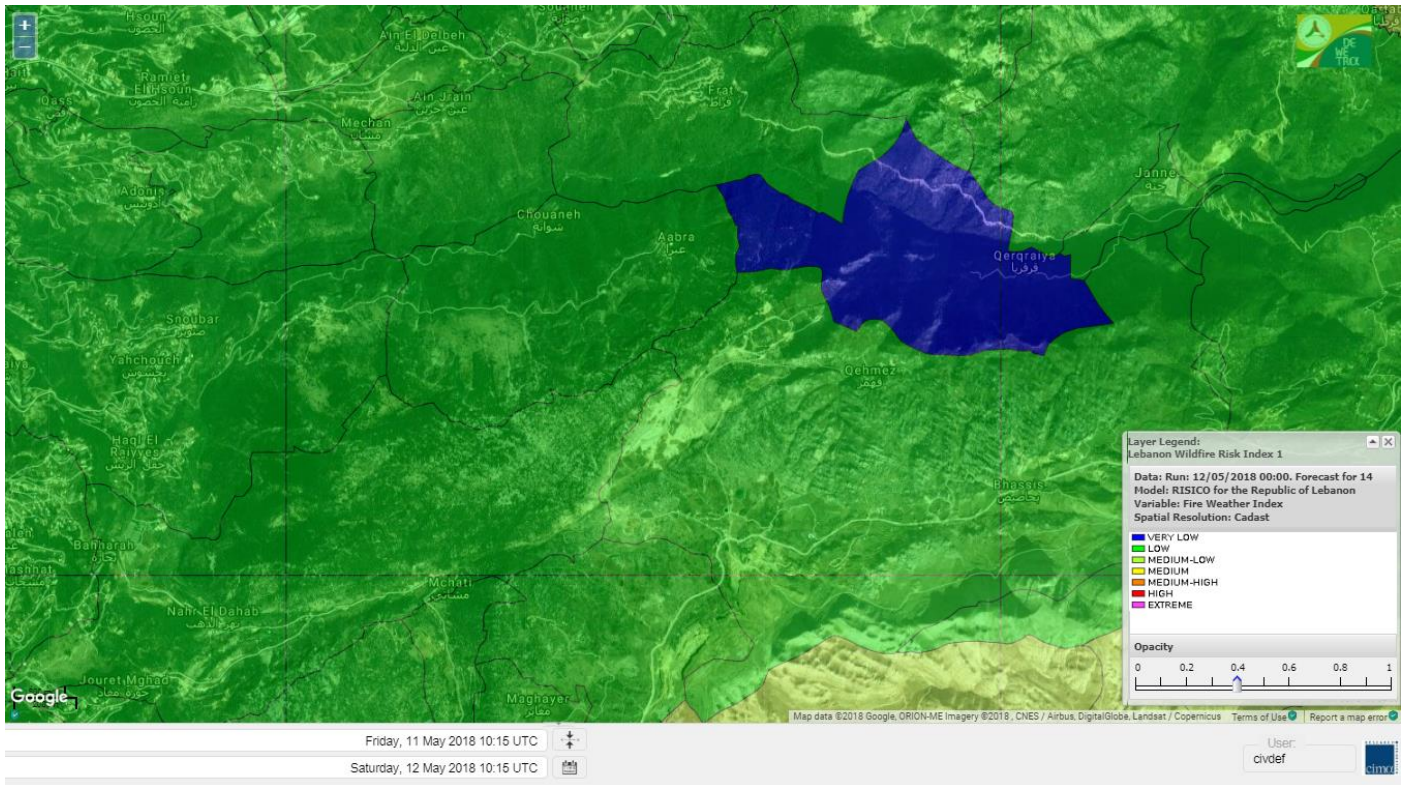
## Jabal Moussa Reserve Forecast for 12 May 2018



## Jabal Moussa Reserve Forecast for 13 May 2018



# Jabal Moussa Reserve Forecast for 14 May 2018





## Nord

### Koura

Municipality	12-May	13-May	14-May	Municipality	12-May	13-May	14-May	Municipality	12-May	13-May	14-May
Aaba	M	M	M	Afsaddiq	M	M	M	Ain Ekriane	ML	M	M
Amioun	ML	M	M	Anfeh	M	M	M	Badbhoun	M	M	M
Barghoun	M	M	M	Barsa	M	M	ML	Batroumine	M	M	ML
Bdebba	M	M	M	Bechmizine	ML	M	M	Bednaye El-Koura	ML	M	M
Bhabbouch El-Koura	ML	M	M	Bkeftine	M	M	M	Bnehran	L	M	M
Bqaiia El-Koura	M	M	ML	Bsarma	M	M	M	Btaaboura	ML	M	M
Bterram	M	M	M	Btouratij	M	M	ML	Bziza	ML	M	M
Dar Beechtar	ML	M	M	Dar Chmezzine	ML	M	M	Deddeh	M	M	ML
Deir El-Balamand	ML	M	ML	Fih	M	M	M	Hraiche	M	M	M
Ijdaabrine	ML	M	M	Kaftoun	ML	M	M	Kefraya El-Koura	ML	M	M
Kfarakka	ML	M	M	Kfarhata	ML	M	M	Kfarhazir	ML	M	M
Kfarkahel	M	M	ML	Kfarsaroun	ML	M	M	Kosba	ML	M	M
Mejdel el-Koura	L	ML	ML	Nakhle	M	M	ML	Qalhat	ML	M	ML
Ras Masqa	M	M	ML	Rechdibbine	ML	M	M	Zakroun	M	M	M
Zgharta El-Mtaouile	L	ML	ML								

### Bcharre

Municipality	12-May	13-May	14-May	Municipality	12-May	13-May	14-May	Municipality	12-May	13-May	14-May
Aabdine	L	ML	ML	Bane	ML	ML	ML	Barhelioun	L	L	L
Bazouone	L	L	ML	Becharre	ML	L	ML	Beit Menzer	L	L	ML
Billa	L	L	ML	Blaouza	M	M	M	Bqaa Kafra	ML	L	M
Bqerqacha	L	L	ML	Breissat	L	VL	ML	Dimane	L	VL	ML
Hadath El Jobbeh	L	L	ML	Hadchit	L	L	L	Hasroun	L	L	ML
Mazraat Aassaf	L	L	L	Mazraat Bani Saab	L	L	L	Mchaa El-Jobbeh	ML	L	M
Metrit	L	ML	ML	Moghr El-Ahoual	L	L	ML	Ouadi Qannoubine	L	L	L
Qanat	L	L	L	Qnayouer	L	L	L	Tourza	L	L	ML

### Batroun

Municipality	12-May	13-May	14-May	Municipality	12-May	13-May	14-May	Municipality	12-May	13-May	14-May
Aabrine	L	M	ML	Aalali	L	L	L	Aartziz	L	ML	L
Abdelli	L	ML	L	Ajdabra	L	M	L	Assia	L	L	L
Basbina	L	M	M	Batroun	M	M	M	Bcheleh	L	L	L
Bechtoudar	L	L	L	Beit Chlala	L	L	L	Beit Kassab	L	L	L
Bijdarfil	ML	M	M	Bqesmaya	L	M	ML	Chatine	L	VL	L
Chebtin	L	ML	L	Chekka	M	M	M	Daael	L	L	L
Dahr Abi Yaghi	L	ML	L	Daraya El-Batroun	L	M	M	Deir Billa	L	L	L
Deir Kfifane	L	M	ML	Deir Mar Youhanna EL	L	VL	L	Deir Mar Youssef Jra	L	ML	L
Douma	L	L	L	Douq	L	ML	L	Eddeh El-Batroun	L	M	ML
Ftahat El-Batroun	L	L	L	Ghouma	L	ML	ML	Hadtoun	L	L	L
Hamat	L	M	ML	Harbouna	L	ML	L	Hardine	L	L	L
Helta	L	L	L	Hery	M	M	M	Jebbla	L	L	L
Jrabta El-Batroun	L	ML	ML	Jrane El-Batroun	L	M	M	Kfar Aabida	L	M	ML
Kfar Halda	L	L	L	Kfarb Shlaimane	L	L	L	Kfarhatna	L	M	L
Kfarhay	ML	M	M	Kfarhelos	L	ML	ML	Kfifane	L	M	M

Kfour El Arabi	L	VL	ML	Koubba	M	M	M	Kour	L	M	ML
Mar Mama	L	L	L	Masrah	L	L	L	Mehmarch	L	L	ML
Mrah Chdid	L	ML	L	Mrah El Ziyat	L	ML	ML	Mrah El-Hajj	L	VL	L
Nahle El-Batroun	L	VL	L	Niha El-Batroun	L	VL	L	Ouahj El-Hajjar	ML	M	ML
Ouata Houb	L	VL	L	Qatnaaoun	L	M	ML	Racha	L	L	ML
Rachana	L	ML	L	Rachkida	L	M	ML	Ram El-Batroun	L	L	L
Ras Nahhach	L	M	ML	Selaata	M	M	M	Sghar	L	ML	ML
Smar Jbayl	L	ML	ML	Sourat El-Batroun	L	L	L	Tannourine El-Faouqa	L	L	M
Tannourine Et-Tahta	L	VL	L	Thoum	L	ML	ML	Toula El-Batroun	L	ML	L
Zan	L	L	ML								

## Zgharta

Municipality	12-May	13-May	14-May	Municipality	12-May	13-May	14-May	Municipality	12-May	13-May	14-May
Aachach	M	M	M	Aalma	M	M	M	Aarde	ML	M	M
Aintourine	ML	ML	M	Arabet Qozhaya	L	L	L	Arde	ML	M	M
Arjis	ML	M	M	Asnoun	ML	M	M	Ayto	L	L	ML
Basloukit	M	ML	L	Bchannine	M	M	M	Besebeel	ML	M	M
Bhairret Toula	ML	L	L	Bnachee	ML	M	M	Boussit	M	M	M
Danha	ML	M	M	Daraiya Zgharta	ML	M	M	Deir Jdeide	ML	M	M
Ehden	ML	ML	L	Halan	M	M	M	Hariq Zgharta	ML	M	M
Houakir	L	M	M	Hraiqis	M	M	M	laal	ML	M	M
Ijbaa	ML	ML	M	Karm Saddeh	L	L	ML	Kfarchakhna	M	M	M
Kfardlaqous	ML	M	M	Kfarfou	ML	M	M	Kfarhata Zgharta	ML	M	M
Kfarhoura	ML	M	M	Kfarsghab	ML	L	L	Kfaryachit	ML	M	M
Kfarzaina	ML	M	M	Khaldiye	ML	M	M	Mazraat Ajbeaa	ML	M	M
Mazraat Et-Teffah	ML	L	M	Mazraat Jneid	ML	M	M	Mejdlayia Zgharta	M	M	M
Merh Kfarsghab	ML	M	M	Miryata	ML	M	M	Miziara	L	ML	ML
Mzraat Kefraya	M	M	M	Qorah Bach	ML	M	M	Rachiine	ML	M	M
Ras Kifa	L	ML	M	Sakhra	ML	M	M	Sebhel Zgharta	L	ML	M
Serhel	L	L	L	Tallet Zgharta	ML	M	M	Toula Zgharta	ML	L	ML
Zgharta	ML	M	M								

## Minieh-Denniye

Municipality	12-May	13-May	14-May	Municipality	12-May	13-May	14-May	Municipality	12-May	13-May	14-May
Aasaymout	M	L	L	Aaymar	ML	L	L	Aazki	M	M	L
Ain El-Tineh-Miniyeh	ML	L	L	Assoun	L	L	L	Bakhaaoun	ML	L	L
Bchennata	ML	ML	L	Bechehhara	L	M	M	Beddawi	M	M	M
Behouaita	L	L	L	Beit El Foqss	ML	L	L	Beit Haouik	L	L	L
Beit Zoud	L	L	L	Bekaasafrine	ML	L	L	Borj El Yahoudiyeh	M	M	M
Bqarsouna	L	L	L	Btermaz	M	L	L	Debaael	ML	L	L
Deir Ammar	M	M	M	Deir Nbouh	ML	M	M	Haouaret-Miniyeh	L	L	L
Haql el Azimeh	L	L	L	Harf El Siyad	ML	L	L	Hazmiye-Miniyeh	ML	L	L
Izal	ML	ML	L	Jarjour	L	M	M	Jayroun	L	L	VL
Kahf El-Malloul	ML	M	ML	Karm El-Moher	ML	L	L	Kfar Binine	L	L	L
Kfarchalane	ML	ML	L	Kfarhabou	ML	ML	ML	Kharroub-Miniyeh	ML	ML	L
Mazraat El-Kreme	L	ML	ML	Mazraat Ketrane	L	L	L	Merkebtta	M	M	M
Minyeh	M	M	M	Mrah El Sfirat	ML	L	L	Mrah Sraj	L	L	L
Mrebbine	ML	L	L	Nabi Youcheaa	M	M	M	Nemrine	L	L	L

Qarhaiya	M	L	L	Qarne	M	L	VL	Qarsita	L	L	L
Qattineh-Miniyeh	L	L	VL	Qemmamine	ML	L	VL	Qraine	L	L	L
Raouda-Aadoua	M	M	ML	Rihaniyet-Miniyeh	M	M	M	Sfireh	ML	L	L
Sir Ed-Danniyeh	ML	L	L	Tarane	ML	L	L	Terbol-Miniyeh	M	M	M
Zaghartaghriane	ML	M	M	Zouq Bhannine	M	M	M				

## Nabatiye

### Nabatiye

Municipality	12-May	13-May	14-May	Municipality	12-May	13-May	14-May	Municipality	12-May	13-May	14-May
Aabba	L	VL	VL	Aazzi	L	VL	VL	Adchit El-Chqif	VL	VL	VL
Ain Bou Swar	VL	VL	L	Ain Kana	L	VL	VL	Ali El-Taher	L	VL	L
Ansar	L	VL	L	Arab Salim	L	VL	L	Arnoun	L	VL	L
Bfaroue	L	VL	VL	Breyqaah	L	VL	VL	Charqiyeh	L	VL	VL
Choukine	VL	VL	L	Deir El Zahrani	L	VL	L	Doueir El-Nabatiyeh	L	VL	VL
Habbouch El-Nabatiye	VL	VL	L	Hamra El-Nabatiyeh	VL	VL	L	Harouf El-Nabatiyeh	VL	VL	VL
Hmaile	L	VL	L	Houmin El Fououqa	L	VL	L	Houmin El Tahta	L	VL	VL
Jarjough	L	VL	L	Jbaah El-Nabatiyeh	VL	VL	VL	Jebchit	VL	VL	VL
Kfar Djal El-Nabatiy	VL	VL	VL	Kfar Remmane	VL	VL	L	Kfar Sir	L	VL	VL
Kfar Tebnit	VL	VL	L	Kfarfila	L	VL	L	Kfour El-Nabatieh	VL	VL	L
Mayfadoun	VL	VL	L	Mazraat Bsaffour	L	VL	VL	Mazraat Chalbaal	L	VL	VL
Mazraat Dmoul	L	VL	L	Mazraat El Khreibeh	L	VL	VL	Mazraat El-Bayad El-	VL	VL	L
Mazraat Kfarjaouz	VL	VL	L	Mazraat Qalaat Meiss	L	VL	L	Nabatiyeh El-Fawka	VL	VL	L
Nabatiyeh Et-Tahta	VL	VL	L	Namiriyeh	L	VL	VL	Qaaqaaiyet El Jisr	L	VL	VL
Qossaibeh El-Nabatiy	VL	VL	VL	Roumine	L	VL	VL	Sarba El-Nabatieh	L	VL	VL
Sir El-Gharbiyeh	L	VL	L	Toul	VL	VL	VL	Yehmor El-Nabatiyeh	VL	VL	L
Zaoutar El Charkiyeh	VL	VL	L	Zaoutar El-Gharbiyeh	VL	VL	VL	Zebdine El-Nabatiyeh	VL	VL	L
Zefta	L	VL	VL								

### Hasbaiya

Municipality	12-May	13-May	14-May	Municipality	12-May	13-May	14-May	Municipality	12-May	13-May	14-May
Ain Jarfa	L	VL	VL	Abou Qamha	L	VL	VL	Ain Qania	L	VL	L
Bourghos	L	VL	L	Chebaa	L	VL	L	Chouaya Hasbaya	L	VL	L
Dellafeh	VL	VL	L	Fardiss Hasbaiya	L	VL	L	Hasbaya	L	VL	L
Hbariyeh	L	VL	L	Kaoukaba Hasbaiya	L	VL	L	Kfar Chouba	L	VL	L
Kfar Hamam	L	VL	VL	Kfeir El-Zait	L	VL	L	Khalwat Hasbaya	L	VL	L
Khreibet Hasbaiya	VL	VL	L	Majidiyeh Hasbaiya	L	VL	L	Marj Ez-Zhour (Haouc	L	VL	L
Meri	VL	VL	L	Mimass	L	VL	L	Rachaiya El-Fokhar	L	VL	L
Salaiyeb	VL	VL	VL								

### Marjayoun

Municipality	12-May	13-May	14-May	Municipality	12-May	13-May	14-May	Municipality	12-May	13-May	14-May
Aalmane Marjaayoun	L	VL	VL	Aamra	VL	VL	L	Adayseh Marjaayoun	L	VL	L
Adchit El-Koussair	VL	VL	L	Ain Aarab Marjaayoun	VL	VL	VL	Bani Haiyann	L	VL	L
Blatt Marjaayoun	VL	VL	VL	Blida	L	VL	L	Borj El-Moulouk	VL	VL	L
Boueyda Marjaayoun	L	VL	L	Deir Mimass	L	VL	L	Deir Siriane	L	VL	L
Dibbine	VL	VL	L	Ebel El Saqi	VL	VL	VL	Houla	VL	VL	L
Houra	VL	VL	L	Kfar Kila	L	VL	L	Khiam Marjaayoun	VL	VL	VL

Klayaa	VL	VL	L	Majdel Selem	VL	VL	L	Marjaayoun	VL	VL	VL
Markaba	VL	VL	L	Mays El-Jabal	VL	VL	L	Mazraat Doumiat	VL	VL	L
Mazraat Sarada	VL	VL	VL	Mhaibib	VL	VL	L	Qabrikha	L	VL	L
Qantara	L	VL	L	Rab El-Thalathine	VL	VL	L	Saouaneh Marjayoun	VL	VL	L
Talloussa	L	VL	L	Taybeh Matjaayoun	VL	VL	L	Touline	L	VL	L

## Bent Jbail

Municipality	12-May	13-May	14-May	Municipality	12-May	13-May	14-May	Municipality	12-May	13-May	14-May
Ain-Ebel	L	VL	L	Aitaroun	L	VL	L	Aynata Bint Jbeil	VL	VL	L
Ayta El-Chaeb	L	VL	L	Ayta El-Jabal	VL	VL	L	Beit Lif	L	VL	L
Beit Yahoun	VL	VL	L	Bint Jbeil	VL	VL	L	Borj Qalaway	VL	VL	VL
Braachit	VL	VL	L	Chakra	VL	VL	L	Debel	L	VL	L
Deir Antar	VL	VL	L	Froun	L	VL	VL	Ghandouriyeh Bint Jb	L	VL	VL
Hanine	L	VL	L	Hariss	VL	VL	L	Hdatha	VL	VL	L
Jmeymeh	VL	VL	L	Kafra Bint Jbeil	L	VL	L	Kfar Dounine	L	VL	L
Khirbet Selm	L	VL	L	Kounine	VL	VL	L	Maroun El Ras	VL	VL	L
Qalaway	VL	VL	L	Qaouzah	L	VL	L	Qatmoun	VL	VL	L
Ramya Bint Jbeil	L	VL	L	Rchaf	L	VL	L	Rmeich	VL	VL	L
Safad Al Battikh	VL	VL	L	Salhaneh	L	VL	L	Serbine	L	VL	L
Sultanieh Bint Jbeil	VL	VL	L	Tibnine	L	VL	L	Tiri	L	VL	L
Yaroun	L	VL	L	Yater	L	VL	L				

## Mont Liban

### Jbail

Municipality	12-May	13-May	14-May	Municipality	12-May	13-May	14-May	Municipality	12-May	13-May	14-May
Aabeydat	L	ML	L	Aalita	VL	L	L	Aamchit	L	M	ML
Aarab El-Lahib	L	VL	M	Aarasta	VL	VL	L	Adonis Jbeil	VL	VL	L
Afqa Jbeil	L	L	L	Ain El Delbeh Jbeil	L	VL	L	Ain El-Ghouayba	L	VL	L
Ain Jrain	L	VL	L	Ain Kfah	L	M	ML	Almat El Chemaliyat	L	VL	L
Almat El-Jenoubiya	L	VL	L	Aqoura	L	L	M	Bayzoun	L	L	L
Bchille Jbeil	L	L	L	Bechtlida	VL	L	L	Behdaydat	L	ML	ML
Beit Habbaq	L	M	ML	Bejjeh	L	ML	ML	Bekhaaz	L	ML	ML
Berbara Jbeil	L	ML	ML	Bintael	L	L	L	Birket Hjoula	L	L	L
Blatt Jbeil	L	L	ML	Boulhos	L	VL	L	Breyj Jbeil	VL	L	L
Chamat	L	M	M	Chikhane	L	ML	ML	Chmout	L	L	L
Eddeh Jbeil	L	ML	ML	Ehmej	L	VL	L	Fatre	VL	VL	L
Ferhet	L	L	ML	Fghal	L	L	L	Frat	VL	VL	L
Ghabat	L	L	ML	Ghalboun	L	ML	ML	Gharzouz	L	M	ML
Ghofrine	L	ML	ML	Habil	VL	L	L	Halate	L	L	L
Haqel	L	ML	L	Hbaine	L	M	ML	Hboub	L	L	ML
Hdeine	L	L	ML	Hema Er-Rehban	L	L	M	Hema Mar Maroun Aann	L	VL	M
Hjoula	L	L	L	Hosrayel	L	ML	ML	Hsarat	L	M	ML
Hsoun	L	L	L	Jaj	L	L	ML	Janne	VL	VL	L
Jbeil	L	ML	ML	Jeddeyl Jbeil	L	M	M	Jlisse	VL	L	L
Jouret El-Qattine	L	L	L	Kfar Baal Annaya	VL	VL	L	Kfar Kidde	L	L	ML
Kfar Kouas	L	L	L	Kfar Mashoun	L	M	M	Kfoun	L	ML	L

Kharbe Jbeil	L	ML	ML	Laqlouq	L	L	M	Lassa	L	VL	L
Lehfed	L	L	L	Maad	L	M	ML	Mar Sarkis	L	VL	ML
Mastita	VL	ML	ML	Mayfouq	L	L	L	Mazraat El Siyad	L	L	M
Mazraat El-Maaden	L	VL	L	Mechane	L	L	L	Mechmech Jbeil	L	L	L
Mehrin	L	L	ML	Mejdel El-Akoura	L	L	ML	Mghayreh Jbeil	L	L	ML
Mounsef	L	ML	ML	Nahr Ibrahim	L	ML	ML	Qahmez	L	VL	L
Qartaba	L	VL	L	Qartaboun	VL	ML	ML	Qattara Jbeil	L	VL	L
Qorqraya	VL	VL	VL	Ramout	L	M	ML	Ras Osta	L	L	L
Rihane Jbeil	L	ML	M	Sakiet El-Khayt	L	ML	L	Saqi Richmaya	L	L	L
Sebrine	L	L	L	Seraita	L	L	ML	Souane Jbeil	L	VL	L
Tadmor	L	L	ML	Tartej	L	L	ML	Torzaiya	L	L	L
Yanouh Jbeil	L	L	ML	Zibdine Jbeil	VL	L	L				

## El Metn

Municipality	12-May	13-May	14-May	Municipality	12-May	13-May	14-May	Municipality	12-May	13-May	14-May
Aain El-Qabu	VL	VL	L	Aain El-Qach	VL	VL	L	Aain El-Teffaha	VL	VL	L
Aain el-Safssaf El-M	VL	VL	VL	Abou Mizane	VL	VL	L	Ain Aar	VL	VL	L
Ain Alaq	VL	VL	L	Ain El-Kharroube	VL	VL	L	Ain El-Sendianeh	VL	VL	L
Ain El-Zeitoune	VL	VL	VL	Ain Saadeh	VL	VL	L	Aintoura El-Matn	L	VL	M
Amaret Chalhoub	VL	VL	L	Antelias	VL	VL	L	Atchaneh	VL	VL	VL
Ayroun	VL	VL	L	Baabdat	VL	VL	VL	Baouchariyeh	VL	VL	ML
Baskinta	L	VL	ML	Beit Chabab	VL	VL	L	Beit El-Chaar	VL	VL	L
Beit El-Kekko	VL	VL	L	Beit Mery	VL	VL	L	Bhersaf	VL	VL	VL
Bikfaya	VL	VL	L	Biyakout	VL	VL	L	Bnabil	VL	VL	VL
Bourj Hammoud	L	VL	ML	Bqennaya	VL	VL	L	Broummana El-Matn	VL	VL	L
Bsalim	VL	VL	L	Bsifrine	VL	VL	VL	Bteghrine	VL	VL	L
Chaouiye	VL	VL	L	Chouaya El-Matn	VL	VL	L	Choueir	VL	VL	VL
Chrine	VL	VL	L	Dahr El Sawan El-Mat	VL	VL	VL	Daychouniyeh	VL	VL	L
Dbayeh	VL	VL	L	Deir Chamra	VL	VL	VL	Deir Mar Abda el Mch	VL	VL	L
Deir Mar Roukouz	VL	VL	L	Deir Tamiche	VL	VL	L	Dik El-Mehdi	VL	VL	L
Dikwaneh	L	VL	ML	Douar El-Matn	VL	VL	L	Fanar	VL	VL	L
Fraike	VL	VL	VL	Haret El-Ballaneh	VL	VL	L	Hbous	VL	VL	L
Himlaya	VL	VL	L	Jal El Did	VL	VL	L	Jdeideh El-Metn	VL	VL	L
Jouar El-Matn	VL	VL	L	Jouret El-Ballout	VL	VL	VL	Kaaqour	VL	VL	VL
Kfar Aaqab	VL	VL	VL	Kfertay El-Matn	L	VL	L	Khenchara	VL	VL	VL
Khillet El-Mtain	VL	VL	VL	Konnabat Broummana	VL	VL	L	Konnabat Salima	VL	VL	VL
Machraah El-Matn	VL	VL	L	Majdel Tarchich	L	VL	M	Majzoub	VL	VL	L
Mansouriyeh El-Metn	VL	VL	L	Mar Boutros Karm Et-	VL	VL	L	Mar Chaya et Mzekke	VL	VL	VL
Mar Moussa Ed-Douar	VL	VL	VL	Marjaba	VL	VL	L	Masqa	VL	VL	VL
Mayasse	VL	VL	L	Mazraat Deir Aoukar	VL	VL	L	Mazraat El-Hadirat	VL	VL	L
Mazraat Yachouh	VL	VL	L	Mchikha	VL	VL	L	Menqlet Mezher	VL	VL	L
Mhaydseh Matn	VL	VL	L	Mkalles	VL	VL	ML	Mrouj	L	VL	L
Mtain	L	VL	ML	Mtayleb	VL	VL	L	Nabay	VL	VL	VL
Naccache	VL	VL	L	Ouadi Chahine	VL	VL	VL	Ouadi El-Karm El-Mat	VL	VL	VL
Ouata El-Mrouj	VL	VL	L	Ouyoun El-Matn	VL	VL	VL	Qornet Chehwan	VL	VL	L
Qornet El-Hamra	VL	VL	VL	Roumieh	VL	VL	L	Sfeilet Bikfaya	VL	VL	L
Sinn El-Fil	L	VL	ML	Zabbougha	VL	VL	VL	Zalqa	VL	VL	L

Zarouon	VL	VL	VL	Zekrite	VL	VL	VL	Zighrine El-Matn	VL	VL	L
Zouk El-Khrab	VL	VL	L								

## Chouf

Municipality	12-May	13-May	14-May	Municipality	12-May	13-May	14-May	Municipality	12-May	13-May	14-May
Aalmane El-Chouf	L	VL	L	Aammiq El-Chouf	VL	VL	VL	Ain Ouzein	L	VL	VL
Ain Qani	VL	VL	VL	Ain Zhalta	L	VL	VL	Ainbal	VL	VL	VL
Amatour	L	VL	VL	Anout	L	VL	VL	Atrine	L	VL	VL
Baadarane	L	VL	L	Baaqline	VL	VL	VL	Baasir	L	VL	L
Barja	L	VL	L	Barouk	L	VL	L	Bater	L	VL	VL
Batloun	L	VL	L	Bayqoun	L	VL	L	Bchetfine	VL	VL	VL
Beiteddine	L	VL	VL	Benouati Ech-Chouf	VL	VL	VL	Berjein	L	VL	VL
Bireh et Mtalleh	L	VL	VL	Biret El-Chouf	L	VL	L	Bkechtine Ouel Mchei	L	VL	VL
Bkifa El-Chouf	L	VL	L	Botme	L	VL	VL	Bqaiaa Ech-Chouf	VL	VL	VL
Bsaba El-Chouf	VL	VL	VL	Chammis El-Chouf	L	VL	L	Chehim	L	VL	VL
Chemaarine	VL	VL	VL	Chourit	VL	VL	VL	Daher El-Chouf	VL	VL	VL
Dalhoun	L	VL	L	Damour	VL	VL	L	Daraya El-Chouf	L	VL	VL
Deir El-Moukhalles	L	VL	VL	Deir Baba	VL	VL	VL	Deir Dourit	VL	VL	VL
Deir El-Qamar	VL	VL	VL	Deir Kouche	VL	VL	VL	Dibbieh	VL	VL	VL
Dmit	VL	VL	VL	Fouara Jaafar	VL	VL	VL	Fraidis El-Chouf	L	VL	L
Ghabet Jaafar	VL	VL	VL	Gharife	VL	VL	VL	Haret Jandal	L	VL	L
Hasrout	VL	VL	VL	Jadra	L	VL	L	Jahlieh	VL	VL	VL
Jbeih El-Chouf	L	VL	VL	Jdeidet El-Chouf	L	VL	VL	Jiyeh	VL	VL	L
Jleilyeh	VL	VL	L	Jmailiyeh	L	VL	L	Joun	L	VL	L
Kahlounie El-Chouf	L	VL	L	Ketermaya	VL	VL	L	Kfar Faqoud	VL	VL	VL
Kfar Hamal	L	VL	L	Kfar Him	VL	VL	L	Kfar Katra	L	VL	VL
Kfar Niss	L	VL	L	Kfar hay	VL	VL	VL	Kfarnabrakh	L	VL	VL
Khirbet Bisri	VL	VL	VL	Knayse El-Chouf	VL	VL	VL	Maaniyeh	L	VL	L
Maasser Beiteddine	L	VL	VL	Maasser El-Chouf	L	VL	L	Majdalouna	L	VL	L
Majdel El-Meouch	L	VL	VL	Mazboud	L	VL	VL	Mazmoura	L	VL	VL
Mazraat El Chouf	L	VL	VL	Mazraat El Daher	VL	VL	VL	Mazraat El-Douair	VL	VL	VL
Mechref	VL	VL	L	Mghairie	VL	VL	L	Mghayrie El-Chouf	VL	VL	VL
Moukhtara	L	VL	VL	Mrusti	L	VL	L	Mtolle	VL	VL	VL
Naameh	VL	VL	L	Niha El-Chouf	L	VL	L	Ouadi Abou Youssef	VL	VL	VL
Ouadi Ed-Deir	VL	VL	VL	Ouadi El-Sit	L	VL	VL	Ouadi bnehlay	VL	VL	VL
Qraibeh	L	VL	VL	Qreiaa	L	VL	VL	Rmayle El-Chouf	L	VL	L
Semqaniyeh	L	VL	L	Sibline	L	VL	L	Sirjbeil	VL	VL	VL
Warhanieh	L	VL	L	Werdaniyeh	L	VL	L	Zaarourieh	L	VL	VL

## Baabda

Municipality	12-May	13-May	14-May	Municipality	12-May	13-May	14-May	Municipality	12-May	13-May	14-May
Abadiyeh	VL	VL	L	Ain Mouaffaq	VL	VL	L	Araiya	VL	VL	VL
Arbaniyeh	VL	VL	VL	Arsoun	VL	VL	VL	Baabda	VL	VL	L
Baalchmey	VL	VL	L	Bmaryam	L	VL	L	Bourj El-Brajneh	VL	VL	L
Boutchay	VL	VL	L	Bsaba Baabda	VL	VL	L	Btekhney	L	VL	VL
Btibyat	L	VL	VL	Bzebdine	VL	VL	L	Chbeniyeh	L	VL	L
Chiyah	VL	VL	ML	Chmeisset Baabda	VL	VL	VL	Chouit	VL	VL	VL
Deir El-harf	VL	VL	VL	Deir Khouna	L	VL	L	Dlaybeh	VL	VL	VL

Falougha	L	VL	L	Furn El-Chebbak	L	VL	ML	Hadath Beyrouth	VL	VL	L
Halaliyeh Baabda	VL	VL	VL	Hammana	L	VL	L	Haret El Sett	VL	VL	VL
Haret Hamze	VL	VL	L	Haret Hreik	VL	VL	ML	Hasbaiya El-Metn	VL	VL	VL
Jouar El-Hoz	VL	VL	L	Jouret Arsoum	VL	VL	VL	Kfar Chima	VL	VL	L
Kfar Selouane	L	VL	ML	Khalouat Baabda	L	VL	L	Kneisset Baabda	VL	VL	VL
Laylakeh	VL	VL	L	Louayzeh Baabda	VL	VL	L	Merdache	VL	VL	L
Mzairaa Baabda	VL	VL	VL	Ouadi Chahrour El OI	VL	VL	L	Ouadi Chahrour El So	VL	VL	L
Qalaa Baabda	L	VL	VL	Qhraybe Baabda	L	VL	VL	Qobbayaa	L	VL	L
Qornayel	VL	VL	VL	Qortada	VL	VL	VL	Qrayeh Baabda	L	VL	L
Qsaibeh Baabda	VL	VL	VL	Qtale Baabda	L	VL	VL	Ras El Metn	VL	VL	L
Ras El-Haref	L	VL	L	Rouayset El-Ballout	VL	VL	VL	Salima Baabda	VL	VL	VL
Tahouitat El Ghadir	VL	VL	L	Tarchich	L	VL	ML	Zandouqa	VL	VL	VL

## Aley

Municipality	12-May	13-May	14-May	Municipality	12-May	13-May	14-May	Municipality	12-May	13-May	14-May
Abey	VL	VL	L	Aghmid	L	VL	L	Ain Dara	L	VL	L
Ain Drafil	VL	VL	VL	Ain El Halazoun	VL	VL	L	Ain El-Rmmaneh	VL	VL	VL
Ain Jedideh	VL	VL	L	Ain Ksour	VL	VL	L	Ain Onoub	VL	VL	L
Ain Traz	VL	VL	VL	Ainab	VL	VL	L	Aley	VL	VL	L
Aramoun	VL	VL	L	Aytat	VL	VL	L	Azouniyeh	L	VL	VL
Baawerta	VL	VL	L	Badghan Oua Wadi Bad	L	VL	L	Bassatine	VL	VL	L
Bayssour	VL	VL	L	Bchamoun	VL	VL	L	Bdadoun	VL	VL	L
Behouara	VL	VL	L	Bennay	VL	VL	L	Bhamdoun El-Dayaa	VL	VL	L
Bhamdoun El-Mhatta	L	VL	L	Bkhechthey	VL	VL	L	Bleibel	VL	VL	L
Bmakine	VL	VL	L	Bmehray	L	VL	L	Bouzrid	VL	VL	VL
Bserrine	VL	VL	L	Bsous	VL	VL	VL	Btalloun	VL	VL	L
Btater	VL	VL	L	Chanay	L	VL	L	Charoun	L	VL	L
Chartoun	VL	VL	VL	Chemlane	VL	VL	L	Chouefat El-Aamrous	VL	VL	L
Chouefat El-Oumara	VL	VL	L	Chouefat El-Quoubbe	VL	VL	L	Dakkoun	VL	VL	VL
Deir Qoubel	VL	VL	L	Dfoun	VL	VL	L	Douair El Remmaneh	VL	VL	VL
Ghaboun	VL	VL	L	Habramoun	VL	VL	VL	Homs Oua Hama	VL	VL	L
Houmal	VL	VL	L	Jisr El Qadi	VL	VL	VL	Kehaleh	VL	VL	L
Keyfoun	VL	VL	L	Kfar Aamey	VL	VL	L	Kommatyeh	VL	VL	L
Maasrati	VL	VL	L	Majdel Baana	L	VL	L	Mansourieh et Ain El	VL	VL	L
Mazraat El-Nahr	VL	VL	L	Mchakhte	L	VL	VL	Mecherfeh	VL	VL	L
Mejdaya	VL	VL	L	Mrayjat	L	VL	L	Ramliyah	L	VL	VL
Rechmaya	L	VL	L	Rejmeh	VL	VL	L	Remhala	VL	VL	L
Rouaysset El Neemane	VL	VL	L	Saoufar	L	VL	L	Selfaya	VL	VL	VL
Sirhmoul	VL	VL	L	Souq El Ghareb	VL	VL	L	Taazanieh	VL	VL	L

## Kesrouane

Municipality	12-May	13-May	14-May	Municipality	12-May	13-May	14-May	Municipality	12-May	13-May	14-May
Achkout	VL	VL	L	Adma Oua Dafneh	VL	VL	L	Ain Ed-Delbe Kesroua	L	VL	L
Ain El-Rihane	VL	VL	L	Aintoura Kesrouane	VL	VL	L	Ajaltoun	VL	VL	L
Akaybeh Kesrouane	L	ML	ML	Aramoun Kesrouane	VL	VL	L	Azra ouel Ozor	VL	L	L
Ballouneh	VL	VL	L	Batha	VL	VL	VL	Bekaatat Achkout	VL	VL	L
Bekaatat Kanaan	L	VL	L	Bizhel	VL	VL	L	Bouar	VL	L	L
Bqaatouta	L	VL	L	Bqaq Ed-Dine	L	ML	L	Bzommar	VL	VL	L

Chahtoul	VL	VL	L	Chnaniir	VL	VL	VL	Chouan	L	VL	L
Daraya Kesrouane	VL	VL	L	Darououn	VL	VL	L	Deir Baqlouch	VL	VL	VL
Dlebta	VL	VL	VL	Eghbeh	VL	VL	VL	Faraya	L	VL	ML
Fatka	VL	VL	L	Feytroun	VL	VL	L	Ghazir	VL	VL	L
Ghbaleh Kesrouane	L	L	L	Ghedrass	VL	L	L	Ghosta	VL	VL	VL
Ghyneh	VL	VL	L	Harharaya w Kattine	VL	VL	L	Harissa Kesrouane	VL	VL	L
Hayata	VL	VL	VL	Hosein	L	L	L	Hrajel	L	VL	ML
Jdeideh Ghazir	VL	VL	L	Jeita	VL	VL	L	Jounieh Ghadir	VL	VL	L
Jounieh Haret Sakhr	VL	VL	L	Jounieh Salel Alma	VL	VL	L	Jounieh Sarba	VL	VL	ML
Jouret Bedrane	L	L	L	Jouret Mhad	VL	VL	L	Jouret Termos	VL	L	L
Kfar Debiane	L	VL	L	Kfar Tay Kesrouane	VL	VL	L	Kfar Yassine	VL	VL	ML
Kfour Kesrouane	VL	VL	L	Kharayeb Nahr Ibrahi	VL	L	L	Klayaat Kesrouane	VL	VL	L
Maarab	VL	VL	VL	Maaysra Kesrouane	L	L	L	Mayrouba	L	VL	ML
Mazraat Er-Ras	VL	VL	L	Mazraat Mrah El-Mir	VL	VL	VL	Mchaa El Ftouh	L	L	ML
Mchaa Faraya	L	VL	ML	Mchaa Kfar Dibiane	L	VL	ML	Mghaer	VL	VL	L
Mradiyeh	VL	L	L	Nahr Ed-Dahab	VL	VL	L	Nammoura Kesrouane	L	L	L
Ouata El Jaouz	VL	VL	L	Ouata Sillam	VL	VL	ML	Raachine	VL	VL	L
Rayfoun	VL	VL	L	Safra Kesrouane	VL	VL	L	Shayle Kesrouane	VL	VL	L
Tabarja	VL	VL	L	Yahchouch	VL	VL	L	Zaaytreh	VL	L	L
Zeytoun	L	L	L	Zouk Mikael	VL	VL	L	Zouk Mosbeh	VL	VL	L

## Baalbek\_Hermel

### Baalbek

Municipality	12-May	13-May	14-May	Municipality	12-May	13-May	14-May	Municipality	12-May	13-May	14-May
Aadous	ML	M	M	Aamchki	L	M	ML	Aarsal	L	ML	L
Ain Baalbek	ML	M	ML	Ain Bourday	ML	ML	M	Ain El-Benye	ML	ML	M
Ain El-Jaouz Baalbek	M	M	ML	Ain El-Siya Chadoura	L	ML	ML	Al Khodr Baalbek	ML	ML	M
Al Nabi Chit	ML	ML	M	Aynata Baalbek	ML	ML	M	Baalbek	ML	ML	M
Bachwat	L	L	M	Barqa	L	ML	ML	Bednayel Baalbak	ML	L	M
Beit Chama	M	L	M	Bijjaje	M	M	M	Bouday	ML	L	ML
Brital	ML	ML	M	Btadi	ML	ML	M	Chaat	M	M	M
Chaibe	ML	ML	ML	Chlifa	M	ML	M	Chmestar	L	L	ML
Dar El-Oussa	L	L	ML	Deir El-Ahmar	ML	ML	M	Deir Mar Maroun Baal	M	M	M
Douris	ML	M	M	Fakiha	M	M	M	Hadath Baalbek	ML	ML	ML
Ham	ML	ML	M	Haour Taala	ML	ML	M	Hizzine	ML	M	M
Hlebta	L	ML	M	Hosh Barada	ML	M	M	Hosh El Dahab	ML	M	M
Hosh El Snid	ML	ML	M	Hosh El-Nabi	ML	ML	M	Hosh El-Rafiq	M	ML	M
Hosh Tal Safiya	ML	M	M	Hrebta	M	M	M	laat	M	ML	M
Jebaa	ML	L	M	Jenta	ML	ML	M	Kfar Dabach	M	L	M
Kfar Dane	ML	ML	M	Khraibeh El-Hermel	ML	M	M	Khreibet Baalbek	ML	ML	M
Kneisset Baalbek	M	M	M	Labueh	M	M	M	Maarboun	ML	ML	M
Majdaloun	ML	M	M	Maqneh	M	M	M	Mazraat Beit Mcheik	ML	L	M
Misraya	M	ML	M	Moqraq	M	M	M	Nabha El-Damdoum	ML	ML	M
Nabi Chbay	ML	ML	M	Nabi Osman	ML	M	ML	Nahleh baalbek	L	M	ML
Ouadi El-Oss	L	ML	ML	Qaa Baayoun	M	M	M	Qaa Jouar Maqiye	M	M	M
Qaa Ouadi El-Khanzir	M	M	M	Qah Baalbek	M	M	M	Qarha Baalbek	M	M	M



Qsarnaba	M	L	M	Ram Baalbek	ML	M	M	Ras Baalbek El Sahl	M	M	M
Ras Baalbek El-Charq	ML	M	M	Riha	M	M	M	Saaide	ML	ML	M
Sbouba	M	M	M	Seriine El-Tahta	ML	ML	M	Slouqi	L	L	ML
Taiba Baalbek	ML	M	M	Talia	ML	M	M	Taraiya	L	L	ML
Temnin El Fawqa	M	L	M	Temnin El-Tahta	M	ML	M	Tfail	M	M	ML
Yahfoufa	ML	ML	M	Yammouneh	ML	L	ML	Younine	ML	M	M
Zboud	M	M	M								

## Hermel

Municipality	12-May	13-May	14-May	Municipality	12-May	13-May	14-May	Municipality	12-May	13-May	14-May
Charbine El-Hermel	M	L	ML	Hermel Jbab	M	ML	ML	Hermel	M	M	M
Maaysra El-Hermel	ML	M	M	Michaa Mrajhine	M	L	L	Ouadi Faara	L	ML	M
Ras Baalbek - Ouadi	M	M	M	Ras Baalbek El Gharb	ML	M	M	Zighrine	M	ML	M

## Akkar

### Akkar

Municipality	12-May	13-May	14-May	Municipality	12-May	13-May	14-May	Municipality	12-May	13-May	14-May
Aain Tinta	M	M	M	Aaiyat	M	M	M	Aakkar El-Aatiqa	M	L	ML
Aamar Akkar	M	M	ML	Aamar El Baykat	M	M	M	Aamayer	M	M	M
Aamriyet Akkar	M	M	M	Aandqet	M	M	M	Aarmeh	M	M	M
Aarqa	M	M	M	Aawaynat	M	M	M	Aayoun Akkar	M	ML	M
Abboudiye	M	M	M	Ain El-Zeit	M	M	M	Ain Yaaqoub	M	L	ML
Akroum	M	M	M	Aridet Cheikh Zennad	M	M	M	Baldeh w Mazraat Bal	M	M	M
Barcha	M	M	M	Bardeh	M	M	M	Bebnine	M	M	M
Beino	M	M	M	Beit Ayoub	M	M	ML	Beit El-Haouch	M	M	ML
Beit Mellat	M	M	M	Beit Younes	M	ML	L	Berbara Akkar	M	M	M
Berqayel	M	M	ML	Bezbina	M	L	L	Bireh Akkar	M	M	M
Borj	M	M	M	Bqerezla	M	M	ML	Bzal	M	M	ML
Chane	M	ML	L	Chaqdouf	M	ML	M	Charbila	M	M	M
Cheikh Mohammad	M	M	M	Cheikh Taba Es-Sahl	M	M	M	Cheikh Taba	M	M	ML
Cheikh Zennad	M	M	M	Cheikhlar	M	M	M	Chir Hmairine	M	M	M
Daghle	M	M	M	Dahr Laissine	M	M	ML	Darine	M	M	M
Dawra	M	ML	M	Dawsa w Baghdadi	M	M	M	Dayret Nahr El-Kabir	MH	M	M
Deir Dalloum	M	M	ML	Deir Jennine	M	M	M	Denbou	M	ML	L
Dibbabiyyeh	M	M	M	Douair Aadwiyeh	M	M	M	Fassikine	M	M	M
Fnaydek	M	L	ML	Fraydes Akkar	M	M	M	Ghazayle	M	M	M
Habchit	M	ML	L	Hakour	M	M	ML	Halba	M	M	M
Haouchab	M	M	M	Hayssat	M	M	M	Haytla	M	M	M
Hayzouq	M	M	M	Hedd	M	M	M	Hmaira Akkar	M	M	ML
Hmaiss Akkar	M	M	M	Hnaider	MH	M	M	Hokr Ed-Dahri	M	M	M
Hokr Etti	M	M	M	Hokr Jouret Srar	M	M	M	Houaich	M	ML	L
Hrar	M	M	L	Idbil	M	M	L	Ilal	M	M	ML
Janine	M	M	M	Jdeidet El-Joumeh	M	M	ML	Jdeidet El-Kaiteh	M	M	ML
Jebraïel	M	M	ML	Kafr	L	M	ML	Kafr	M	M	M
Karm Asfour	M	M	ML	Kfar Melki Akkar	M	M	M	Kfar Noun	M	M	M
Kfarharra	M	M	M	Khalsa	M	M	M	Kharnoubet Akkar	M	M	M

Khirbet Daoud Aakkar	M	M	M	Khirbet El Remmane	M	M	M	Khirbet Shar	M	M	M
Khoreybet El-Jindi	M	M	M	Khreibet Aakkar	M	M	ML	Kneisset Aakkar	M	M	M
Kneisset Hnaider	MH	M	M	Knisse	M	M	M	Kroum El-Aarab	M	M	M
Kwachra	M	M	M	Kweykhat	M	M	M	Machta Hammoud	M	M	M
Majdala	M	M	ML	Majdel Akkar	M	M	M	Mar Touma	M	M	ML
Marlaya Melhem	M	M	M	Mashha	M	M	M	Massoudiye	M	M	M
Mazraat Beit Ghattas	M	M	ML	Mazraat En-Nahriye	M	M	M	Mechmech	M	L	L
Memneh	M	L	L	Mhammara	M	M	M	Mighraq Aakkar	M	M	M
Minyara	M	M	ML	Moqayteh	M	M	M	Mounjez	M	M	M
Msalla	M	M	M	Mzeihmeh	M	M	M	Nfaisheh	M	M	M
Noura Et-Tahta	M	M	M	Ouadi El-Haour	M	M	M	Ouadi El-Jamous	M	M	M
Ouyoun El-Ghizlane	M	M	ML	Qaabarine	M	M	M	Qabaait	M	M	L
Qachlaq	M	M	M	Qantara Aakkar	M	M	ML	Qarha Aakkar	M	M	M
Qarqaf	M	M	ML	Qboula	M	M	M	Qleiaat Aakkar	M	M	M
Qloud El-Baqie	M	M	ML	Qobaiyat Aakkar	M	M	M	Qobbat Chamrat	M	M	M
Qorayat	M	ML	L	Qornet Aakkar	M	ML	M	Qsair Aakkar	M	M	M
Rahbe	M	M	ML	Rihaniyet Aakkar	M	M	M	Rmah	M	M	M
Rmoul	M	M	M	Saadine	M	M	M	Sadaqa	M	M	ML
Saidnaya	M	M	M	Sammouniye	M	M	M	Sayssoq	M	M	ML
Semmaqiye	M	M	M	Semmaqli	M	M	M	Sfinet El-Dreib	M	M	M
Sfinet El-Qaitaa	M	M	ML	Sindyanet Zeidane	M	M	M	Souaisset Aakkar	M	M	M
Srar	M	M	M	Tal Abbas El Gharby	M	M	M	Tal Abbas El-Charqy	M	M	M
Tal Biret	M	M	M	Tal Hmayra	M	M	M	Tal Maayan Tal Kiri	M	M	M
Tal Sibel	M	M	M	Tallet Chattaha	M	M	M	Tikrit	M	ML	ML
Tleil	M	M	M	Tshea	M	L	ML	Zawarib	M	M	ML
Zouq El Hosniyeh	M	M	ML	Zouq El-Haddara	M	M	ML	Zouq El-Hbalsa	M	M	ML
Zouq El-Moqachrine	M	M	ML								

## Sud

### Sour

Municipality	12-May	13-May	14-May	Municipality	12-May	13-May	14-May	Municipality	12-May	13-May	14-May
Aaiyeh	L	VL	L	Aalma El-Chaab	L	VL	L	Aaytit	L	VL	L
Abbassiyeh Sour	ML	VL	L	Abou Chech	L	VL	L	Ain Abou Abdallah	ML	VL	L
Ain Baal	L	VL	L	Arzoun	L	VL	VL	Aziyeh	L	VL	L
Baflaya	L	VL	L	Barich	L	VL	L	Batouliyeh	L	VL	L
Bayad	L	VL	L	Bazouriyeh	L	VL	L	Bediass	ML	VL	L
Bestiyat	L	VL	L	Borj El Chemali	L	VL	L	Borj En-Naqoura	L	VL	L
Borj Rahhal	ML	VL	L	Boustane	L	VL	L	Btaychiyeh	L	VL	L
Chaaitiye	L	VL	L	Chameh	L	VL	L	Chehabiye	L	VL	L
Chehour	L	VL	VL	Chihine	L	VL	L	Debaal Sour	L	VL	L
Deir Amess	L	VL	L	Deir Kifa	VL	VL	L	Deir Qanoun El-Ain	L	VL	L
Deir Qanoun El-Naher	ML	VL	L	Derdghaiya	L	VL	VL	Dhayra	L	VL	L
Halloussiyeh	L	VL	L	Hamoul	L	VL	VL	Hanaouey	L	VL	L
Henniye	L	VL	L	Hmairi Sour	L	VL	L	Iskandarouna Sour	L	VL	L
Jbal El Botom	L	VL	L	Jebbin	L	VL	L	Jennata	ML	VL	L
Jijim	L	VL	L	Jouaiya	L	VL	L	Kneisset Sour	L	VL	L

Maarake	L	VL	L	Maaroub	L	VL	L	Majadel	L	VL	L
Majdzoun	L	VL	L	Mansouri Sour	L	VL	L	Marnba	L	VL	VL
Marouahine	L	VL	L	Mazraat El-Zalloutiy	L	VL	L	Mazraat Mechref	L	VL	L
Mazraat Tayr Semhat	L	VL	VL	Mheilib	ML	VL	L	Neffakhiyeh	L	VL	VL
Niha Sour	L	VL	VL	Ouadi Jilo	L	VL	L	Qana	L	VL	L
Qolaileh Sour	L	VL	L	Rechknayan	L	VL	L	Rmadiyeh	L	VL	L
Selha Sour	L	VL	VL	Siddiqine	L	VL	L	Sour	L	VL	L
Srifa	L	VL	VL	Tayr Debbe	ML	VL	L	Tayr Felsay	L	VL	L
Tayr Harfa	L	VL	L	Touayri	L	VL	VL	Toura	L	VL	L
Yanouh Sour	L	VL	L	Yarine	L	VL	L	Zebqine	L	VL	L

## Saida

Municipality	12-May	13-May	14-May	Municipality	12-May	13-May	14-May	Municipality	12-May	13-May	14-May
Aanqoun	L	VL	VL	Aaqtanit	L	VL	VL	Aarab Ej-Jall	VL	VL	VL
Aarab Tabbaya	L	VL	VL	Abra Saida	L	VL	L	Adloun	ML	VL	L
Adousiyeh	ML	VL	VL	Ain-El-Deleb	L	VL	L	Arzai	ML	VL	L
Babliyah	ML	VL	L	Barty	L	VL	L	Bissariyeh	ML	VL	L
Bnaafoul	L	VL	VL	Bqosta	L	VL	L	Bramiy  --	L	VL	L
Daoudiyeh	ML	VL	L	Dareb El-Sim	L	VL	VL	Erkay	L	VL	VL
Ghassanieh	L	VL	L	Ghazieh	L	VL	VL	Hajjeh	L	VL	VL
Haret Saida	L	VL	L	Hartiyeh	L	VL	L	Hlaliye Saida	L	VL	L
Insariyat	L	VL	L	Jazira Saida	ML	VL	L	Kafar Bit	L	VL	VL
Kaoutariyet El-Siyad	L	VL	VL	Kfar Chellal	L	VL	VL	Kfar Hatta Saida	L	VL	VL
Kfar Milke Saida	L	VL	VL	Khartoum	L	VL	L	Khaziz	L	VL	VL
Khirbet Ed-Douair Sa	ML	VL	L	Khirbet El-Bassal	L	VL	VL	Khrayeb Saida	ML	VL	L
Loubieh	ML	VL	L	Maghdouche	L	VL	VL	Majdelyoun	L	VL	L
Matariyet El-Choumar	ML	VL	L	Matayriyeh	L	VL	VL	Mazraat 'Mseileh	L	VL	VL
Mazraat 'Snaiber	L	VL	VL	Mazraat Aarab Soukka	VL	VL	VL	Mazraat Deir Taqla	ML	VL	L
Mazraat El Yahoudiye	M	VL	L	Mazraat El-Housseini	ML	VL	VL	Mazraat El-Mhaydaleh	L	VL	L
Mazraat El-Ouasta	ML	VL	L	Mazraat Jamjim	L	VL	L	Mazraat Kaoutariyet	L	VL	L
Mazraat Kfar Badda	L	VL	L	Mazraat Oussamiyat	L	VL	L	Mazraat Sari	L	VL	L
Mazraat Sinai	L	VL	L	Meemariyeh	L	VL	VL	Merouaniyeh	L	VL	VL
Miyeh ou Miyeh	L	VL	VL	Najjariyeh	ML	VL	VL	Qaaqiyat El-Snaouba	L	VL	L
Qnarit	L	VL	VL	Qraiye Saida	L	VL	L	Saida Ed-Dekermane	L	VL	L
Saida El-Oustani	L	VL	L	Saida El-Qadimeh	L	VL	L	Saida Kefraya	L	VL	L
Saksakiyeh	L	VL	L	Salhie Saida	L	VL	L	Sarafand	ML	VL	L
Sfenta	L	VL	VL	Tafahta	L	VL	L	Tanbourit	L	VL	VL
Tebna	L	VL	L	Zaghdraiya	L	VL	VL	Zeita	L	VL	VL
Zrariyeh	L	VL	L								

## Jezzine

Municipality	12-May	13-May	14-May	Municipality	12-May	13-May	14-May	Municipality	12-May	13-May	14-May
Ain El-Mir (El Estab	L	VL	VL	Anane	L	VL	VL	Aramta	VL	VL	L
Ariya	L	VL	VL	Aychiyeh	L	VL	VL	Azour	VL	VL	VL
Baba	VL	VL	VL	Bayssour Jezzine	L	VL	VL	Benoueteh Jezzine	L	VL	VL
Bhannine	L	VL	VL	Bisri	VL	VL	VL	Bkassine	VL	VL	VL
Bouslaya	L	VL	VL	Btedine El-Leqech	VL	VL	VL	Chbail	L	VL	VL
Choualiq Jezzine	L	VL	L	Dahr Ed-Deir	L	VL	VL	Deir El Qattine	VL	VL	VL

Demachqiyeh	L	VL	L	Ghabbatiyeh	VL	VL	VL	Harf Jezzine	VL	VL	VL
Hassaniyeh	L	VL	VL	Haytouleh	L	VL	VL	Haytura	VL	VL	VL
Hidab	VL	VL	VL	Homsiyeh	VL	VL	VL	Jabal Toura	VL	VL	L
Jarmaq	L	VL	L	Jensnaya	L	VL	VL	Jernaya	L	VL	L
Jezzine	VL	VL	L	Karkha	L	VL	L	Kfar Falous	L	VL	VL
Kfar Houna	VL	VL	L	Kfar Jarrah	L	VL	L	Lebaa	L	VL	L
Louayzet Jezzine	VL	VL	VL	Machmouche	VL	VL	VL	Mahmoudiyeh Jezzine	L	VL	L
Maknounye Jezzine	VL	VL	VL	Maraat Ouazaiyeh	L	VL	VL	Mazraat Daraya	VL	VL	VL
Mazraat El-Aarqoub	L	VL	L	Mazraat El-Mathane	L	VL	VL	Mazraat El-Rahbane	VL	VL	VL
Mazraat Khallet Khaz	L	VL	VL	Mazraat Louzid (Loua	L	VL	VL	Mazraat Qrouh	VL	VL	VL
Mazraat Tamra	VL	VL	L	Mazraat Zighrine Jez	L	VL	VL	Mazraat	VL	VL	VL
Mharbiyeh	L	VL	VL	Midane Jezzine	VL	VL	VL	Mjeydel Jezzine	L	VL	VL
Mlikh	VL	VL	VL	Mrah El-Hbasse	L	VL	L	Ouadi Baanqoudaine	L	VL	VL
Ouadi El-Laymoun	L	VL	VL	Ouardiyeh	L	VL	VL	Qabaa Jezzine	VL	VL	VL
Qatrani	VL	VL	VL	Qaytouleh	VL	VL	VL	Qtaleh Jezzine	L	VL	VL
Rihane Jezzine	VL	VL	L	Rimat	L	VL	VL	Roum	VL	VL	VL
Roummanet	VL	VL	L	Sabbah	L	VL	VL	Saydoun	L	VL	VL
Sfaray	L	VL	VL	Snaya	VL	VL	VL	Sojoud	L	VL	L
Srayri	VL	VL	L	Taaid	VL	VL	VL	Wadi Jezzine	VL	VL	VL
Zhalta	VL	VL	VL								

## Bekaa

### West Bekaa

Municipality	12-May	13-May	14-May	Municipality	12-May	13-May	14-May	Municipality	12-May	13-May	14-May
Aammq BG	ML	ML	M	Ain El Tineh BG	VL	VL	L	Ain Zebdeh	L	VL	L
Ana	ML	L	ML	Aytanit	L	VL	L	Baaloul BG	L	L	L
Bab Mareh	L	VL	L	Chouberqiye Aammq	ML	ML	M	Dakoue	ML	ML	M
Deir Ain El-Jaouze	L	VL	L	Deir Tahniche	ML	L	ML	Ghaza	ML	ML	M
Harime El-Soughra	ML	ML	M	Hoch Harimeh	ML	ML	M	Jazira BG	ML	ML	M
Jib Jennine	ML	L	M	Kamed-El-Laouz	ML	L	M	Kefraya BG	L	VL	VL
Khiara El Atika	ML	ML	M	Khiara	ML	ML	M	Khirbet Qanafar	L	VL	L
Lala	L	L	L	Lebbaya BG	L	VL	L	Loussa	VL	VL	L
Machghara	L	VL	L	Manara (Hamara) BG	L	L	ML	Mansoura BG	ML	ML	M
Marej BG	ML	L	M	Maydoun	VL	VL	L	Ouaqf BG	ML	ML	M
Qaraaoun	L	L	L	Qelya	L	VL	L	Raouda (Istabel)	ML	L	M
Saghbine	L	VL	L	Sohmor	L	VL	L	Soltan Yacoub el Ara	ML	ML	M
Souairy	ML	ML	M	Sultan Yaacoub	ML	L	M	Tal Znoun	ML	ML	M
Yehmor BG	L	VL	L	Zilaya	L	VL	L				

### Zahle

Municipality	12-May	13-May	14-May	Municipality	12-May	13-May	14-May	Municipality	12-May	13-May	14-May
Aanjar (Haouch Mouss	ML	L	M	Ablah	M	L	M	Ain Kfarzabad	M	L	ML
Ali-El-Nahri	M	ML	M	Bar Elias	ML	L	M	Bouarej	ML	VL	M
Cheberqiyet Tabet	ML	VL	M	Chtaura	ML	VL	M	Deir El Ghazal	ML	L	ML
Delhamiyet Zahle	M	L	M	Ferzol	M	L	ML	Haouch El-Ghanam	M	ML	M
Haouch Es-Siyadeh	ML	VL	M	Haouch Hala	M	ML	M	Haouch Mandara	ML	VL	M

Haouch Qayssar	ML	VL	M	Hezerta	ML	VL	ML	Hosh Moussa	M	L	M
Jdita	ML	VL	M	Kfarzabad	M	L	M	Ksara	ML	VL	M
Majdel Aanjar	ML	ML	ML	Makssi	ML	VL	M	Massa	M	ML	M
Mazraat Er-Remtaniye	ML	VL	M	Mrayjat Zahle	ML	VL	M	Mzaraa Zahle	ML	VL	M
Nabi Ayla	M	L	M	Nasriyet Rizk	ML	ML	M	Nasriyet Zahle	ML	L	M
Niha Zahle	M	L	M	Ouadi Ed-Deloum	ML	VL	M	Ouadi El-Arayech	ML	L	ML
Qaa El Rim	ML	L	ML	Qab Elias	ML	VL	M	Qousaya	ML	L	M
Rhit	M	L	M	Riyak	M	ML	M	Saadnayel	ML	VL	M
Taal El-Akhdar	ML	ML	M	Taalbeya	ML	VL	M	Taanayel	ML	VL	M
Talamara	M	ML	M	Tcheflik Edde Haouch	ML	VL	M	Tcheflik Qiqano	ML	VL	M
Terbol Zahle	M	L	M	Touaite Zahle	L	VL	M	Zahle Aradi	ML	VL	M
Zahle El-Berbara	M	VL	ML	Zahle El-Maallaqa	M	VL	M	Zahle El-Midane	M	VL	M
Zahle Er-Rassiye	M	VL	ML	Zahle Haouch El-Ouma	ML	VL	M	Zahle Haouch El-Ouma	ML	VL	M
Zahle Haouch Ez-Zara	ML	VL	M	Zahle Maalaqa Aradi	ML	L	M	Zahle Mar Antonios	M	VL	ML
Zahle Mar Elias	ML	VL	M	Zahle Mar Gerios	ML	VL	M	Zahle Saydet En-Naja	ML	VL	M
Zebdoul	ML	VL	ML								

## Rachaiya

Municipality	12-May	13-May	14-May	Municipality	12-May	13-May	14-May	Municipality	12-May	13-May	14-May
Ain Arab Rachaiya	ML	M	M	Ain Ata	L	L	ML	Ain Harche	ML	L	ML
Aqabe Rachaya	ML	L	M	Ayha	ML	M	M	Ayta El Fokhar	ML	ML	M
Bakifa Rachaya	ML	L	M	Bakka	M	M	M	Beit Lahya	ML	L	M
Bireh Rachaiya	ML	L	M	Daher El Ahmar	ML	L	M	Deir El-Achayer	M	M	M
Heloua Rachaiya	M	M	M	Hoch El Qannabeh Rac	L	L	ML	Kaoukaba Bou Arab	ML	L	ML
Kfar Danis	ML	L	M	Kfar Mechki	L	L	ML	Kfar Qouq	ML	ML	M
Kherbet Rouha	ML	L	ML	Majdel Balhiss	L	L	ML	Mdoukha	M	M	M
Mhaydseh Rachaiya	ML	L	M	Nabi Safa	L	VL	L	Rachaiya	ML	L	ML
Rafid Rachaiya	ML	L	M	Selsata (Mazraat Dei	L	ML	ML	Tannoura	ML	L	M
Yanta	ML	M	M								

## Beyrouth

### Beyrouth

Municipality	12-May	13-May	14-May	Municipality	12-May	13-May	14-May	Municipality	12-May	13-May	14-May
Achrafieh	L	VL	ML	Ain el-Mreisse	VL	VL	ML	Bachoura	VL	VL	ML
Beirut Central Distr	VL	VL	ML	Marfai	VL	VL	ML	Mazraa	VL	VL	ML
Medaouar	VL	VL	ML	Minet el-Hosn	VL	VL	ML	Mwssaitbeh	VL	VL	ML
Ras Beirut	VL	VL	ML	Rmeil	L	VL	ML	Saifi	VL	VL	ML
Zqaq el-Blat	VL	VL	ML								