

Lebanon Fire Risk Bulletin



CIVIL DEDEFENCE

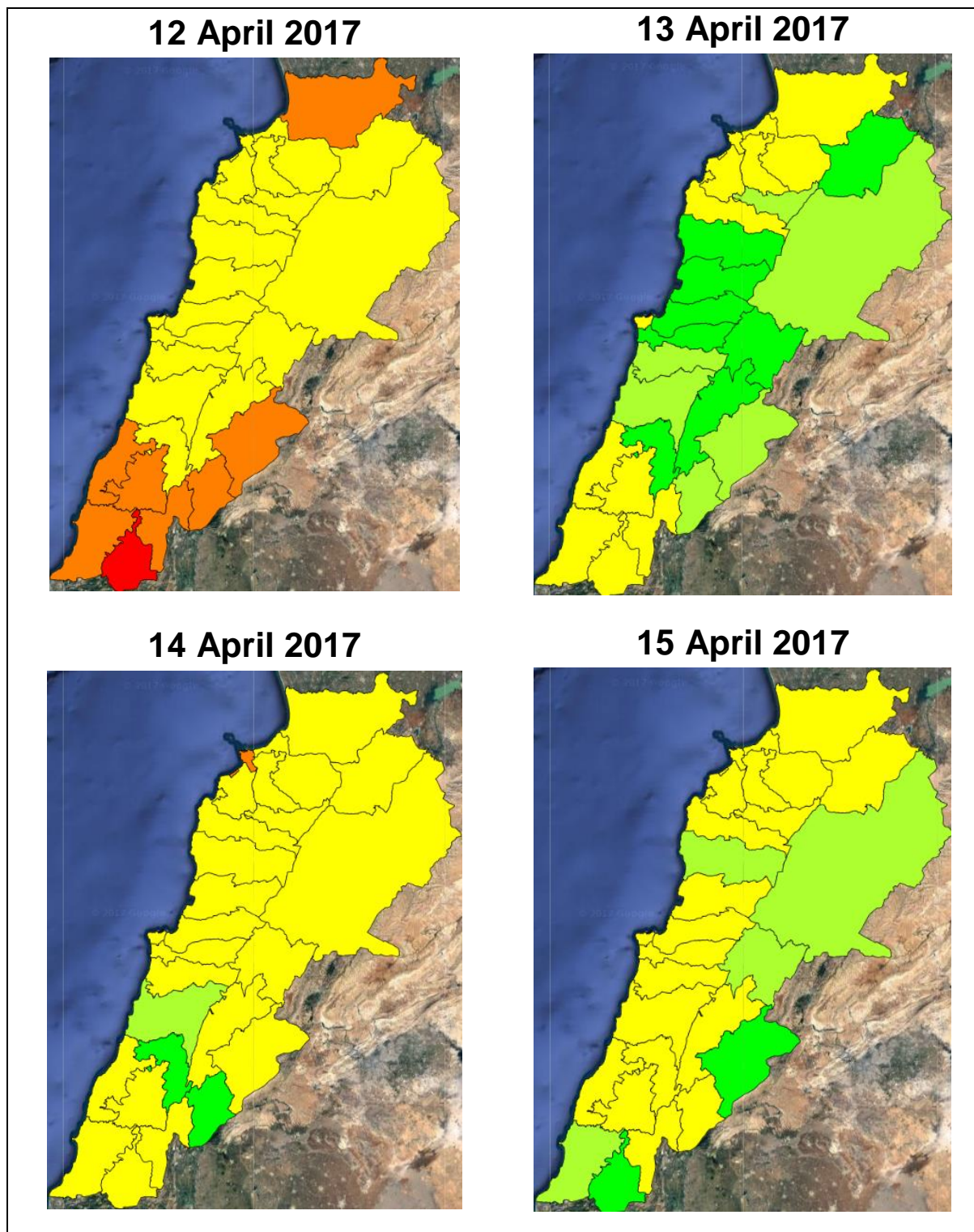
Refer to cadast condition.

General description of potential fire risk situation

Symbol	Level of risk	Meaning and actions
VL	Very low	Very low fire risk. Controlled burning operations can be hardly executed due to high fuel moisture content. Normally wildfires self-extinguish.
L	Low	Low fire risk. Controlled burning operations can be executed with a reasonable degree of safety.
ML	Medium low	Medium-low fire risk. Controlled burning operations can be executed in safety conditions. All the fires need to be extinguished.
M	Medium	Medium fire risk. Controlled burning operations would be avoided. All the fires need to be very well extinguished.
M	Medium high	Controlled burning is not recommended. Open flame will start fires. Cured grasslands and forest litter will burn readily. Spread is moderate in forests and fast in exposed areas. Patrolling and monitoring is suggested. Fight fires with direct attack and all available resources.
H	High	Ignition can occur easily with fast spread in grass, shrubs and forests. Fires will be very hot with crowning and short to medium spotting. Direct attack on the head may not be possible requiring indirect methods on flanks. Patrolling and monitoring the territory is highly suggested.
E	Extreme	Ignition can occur also from sparks. Fires will be extremely hot with fast rate of spread. Control may not be possible during day due to long range spotting and crowning. Suppression forces should limit efforts to limiting lateral spread. Damage potential total. Patrolling and monitoring the territory is highly suggested.

Beirut, 13 April 2017

FIRE RISK INDEX

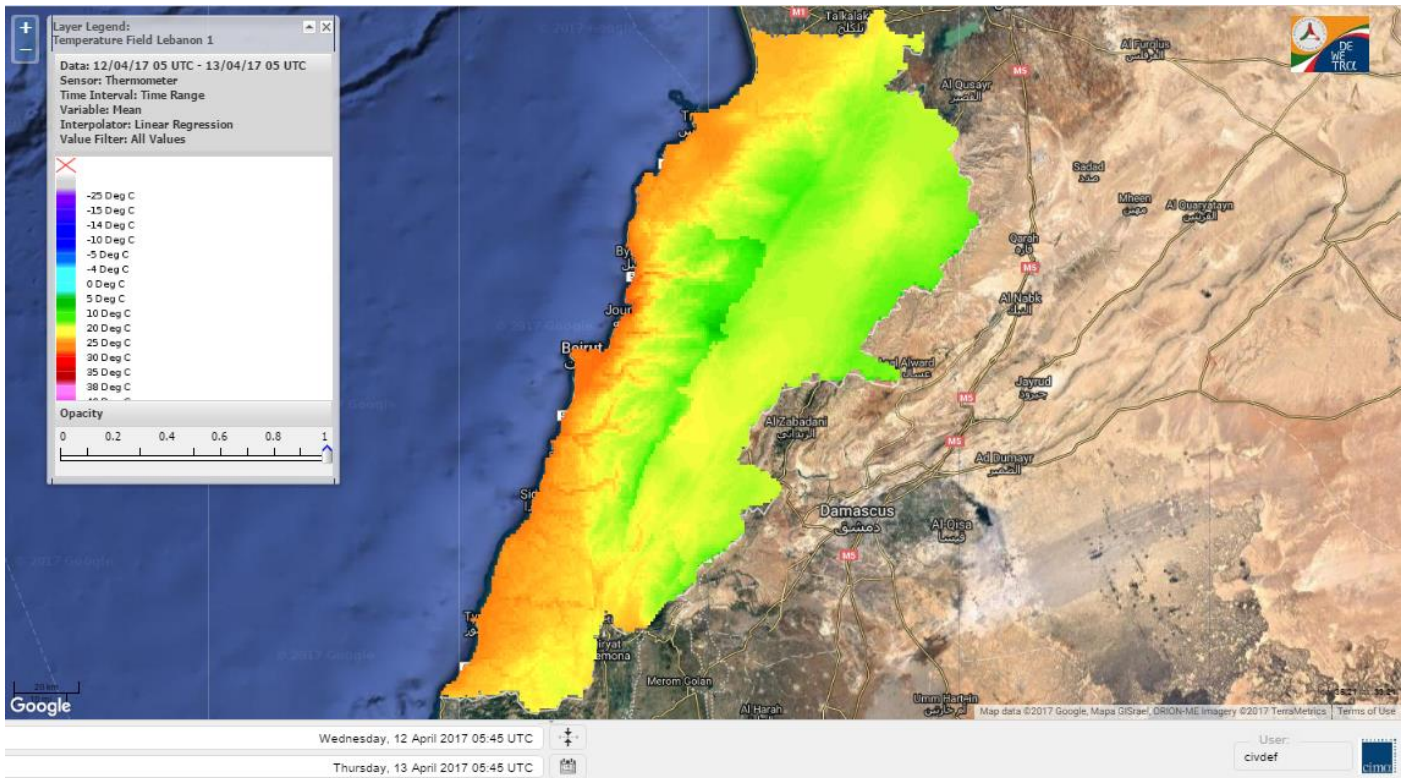


Layer Legend:
Lebanon Wildfire Risk Index 1

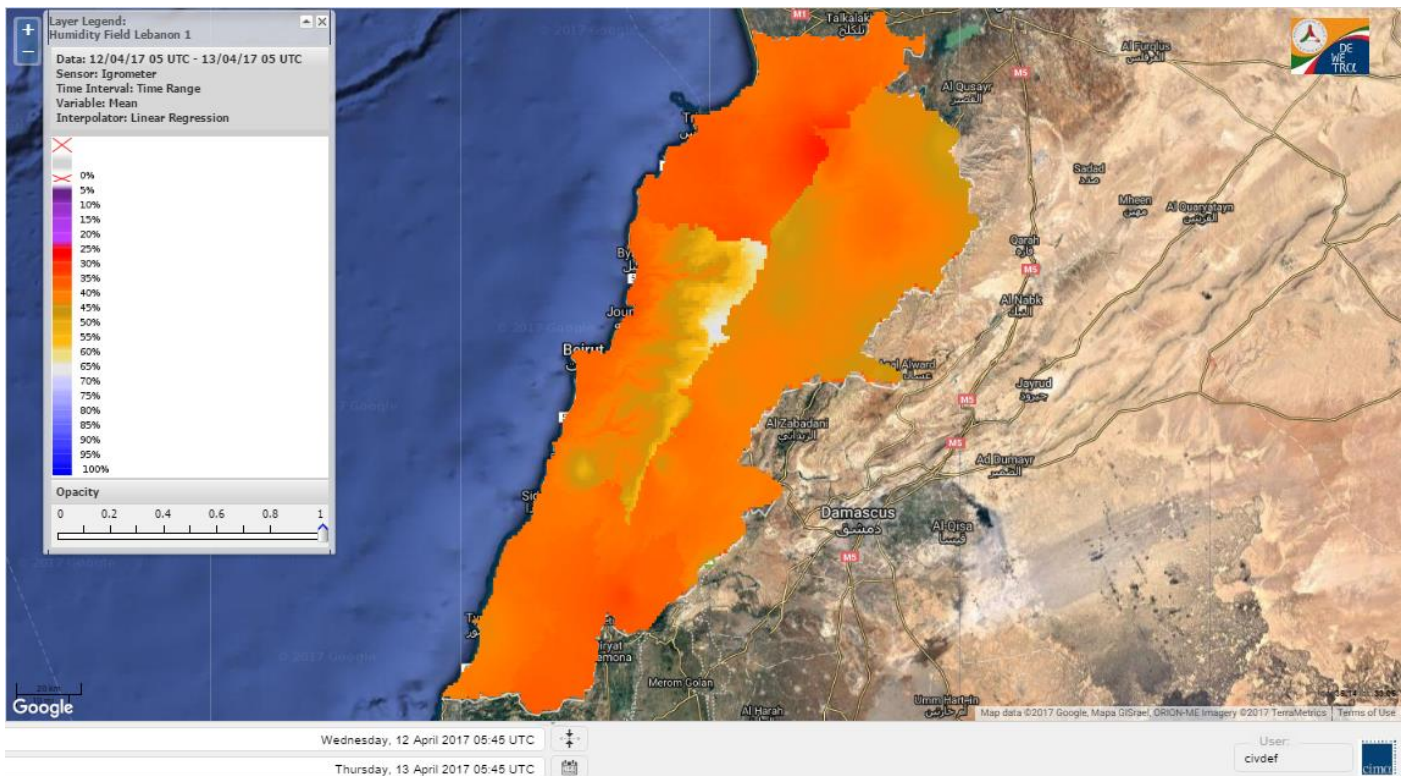
Data: Run: 13/04/2017 00:00. Forecast for 13
Model: RISICO for the Republic of Lebanon
Variable: Fire Weather Index
Spatial Resolution: Caza

- VERY LOW
- LOW
- MEDIUM-LOW
- MEDIUM
- MEDIUM-HIGH
- HIGH
- EXTREME

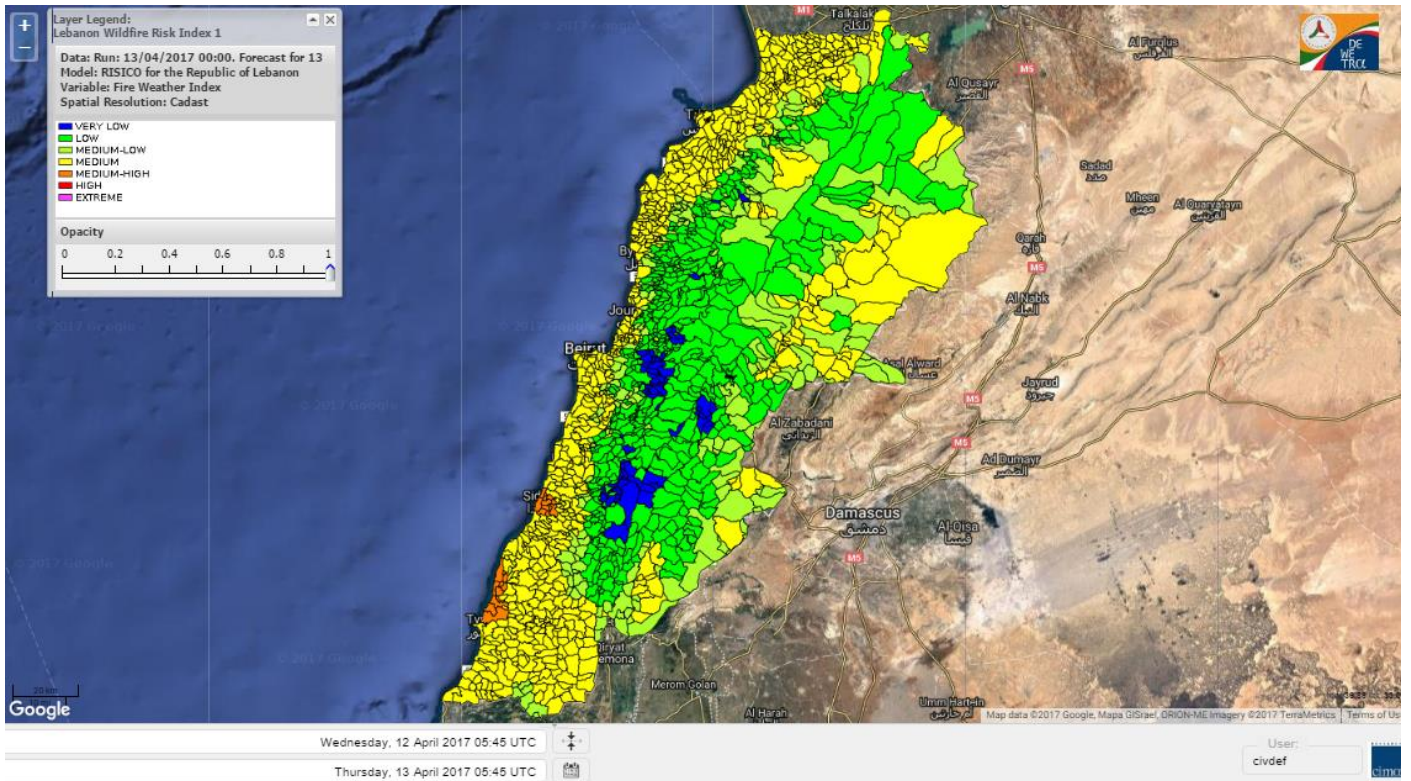
Lebanon temperature for 13 April 2017



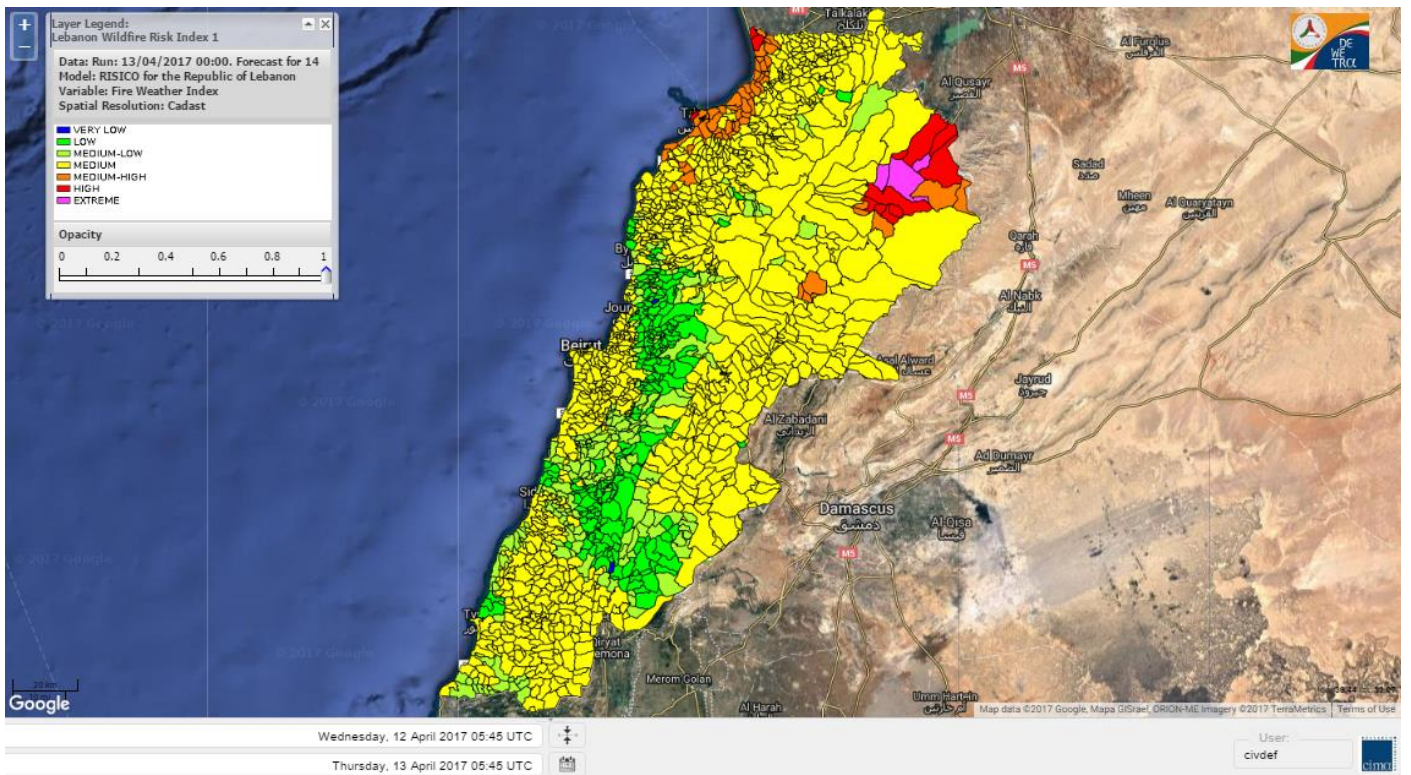
Lebanon humidity for 13 April 2017



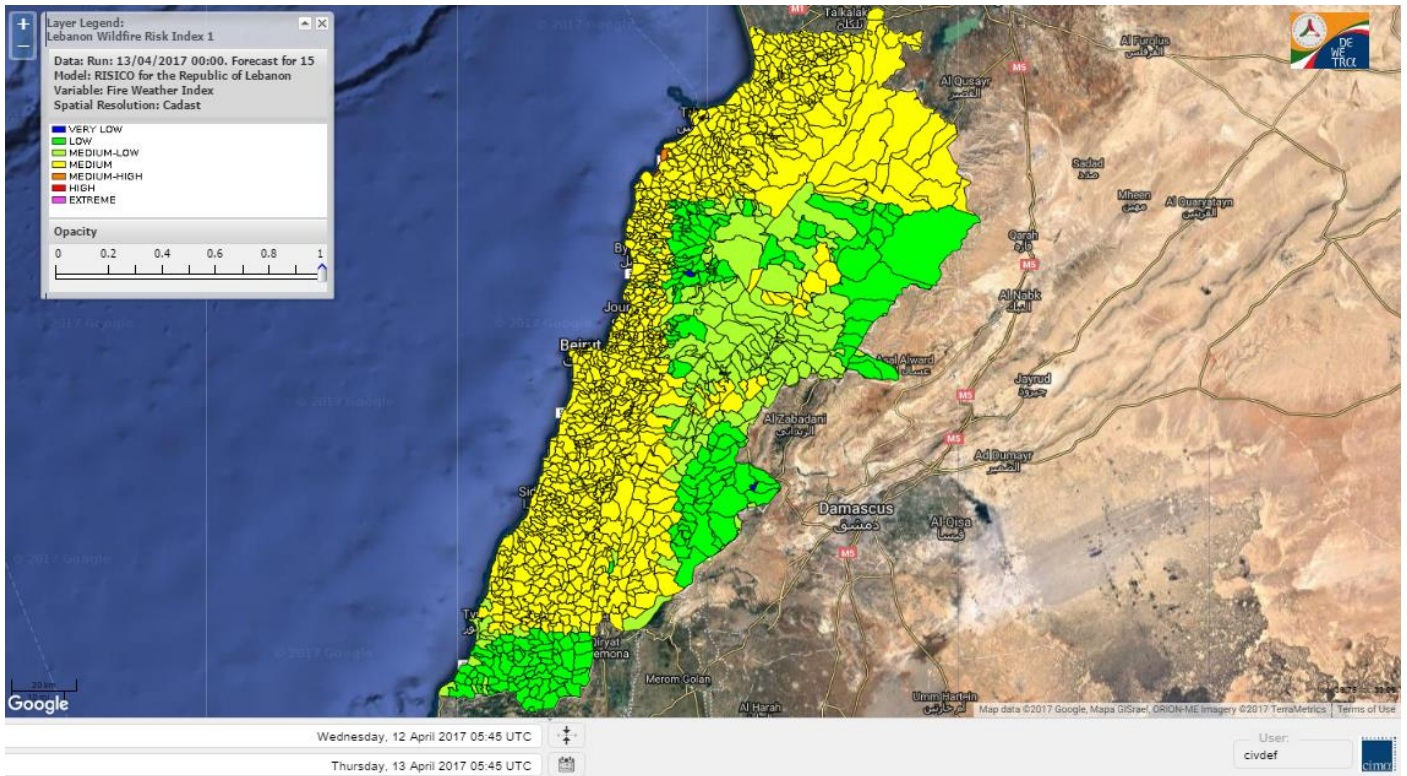
Lebanon for 13 April 2017



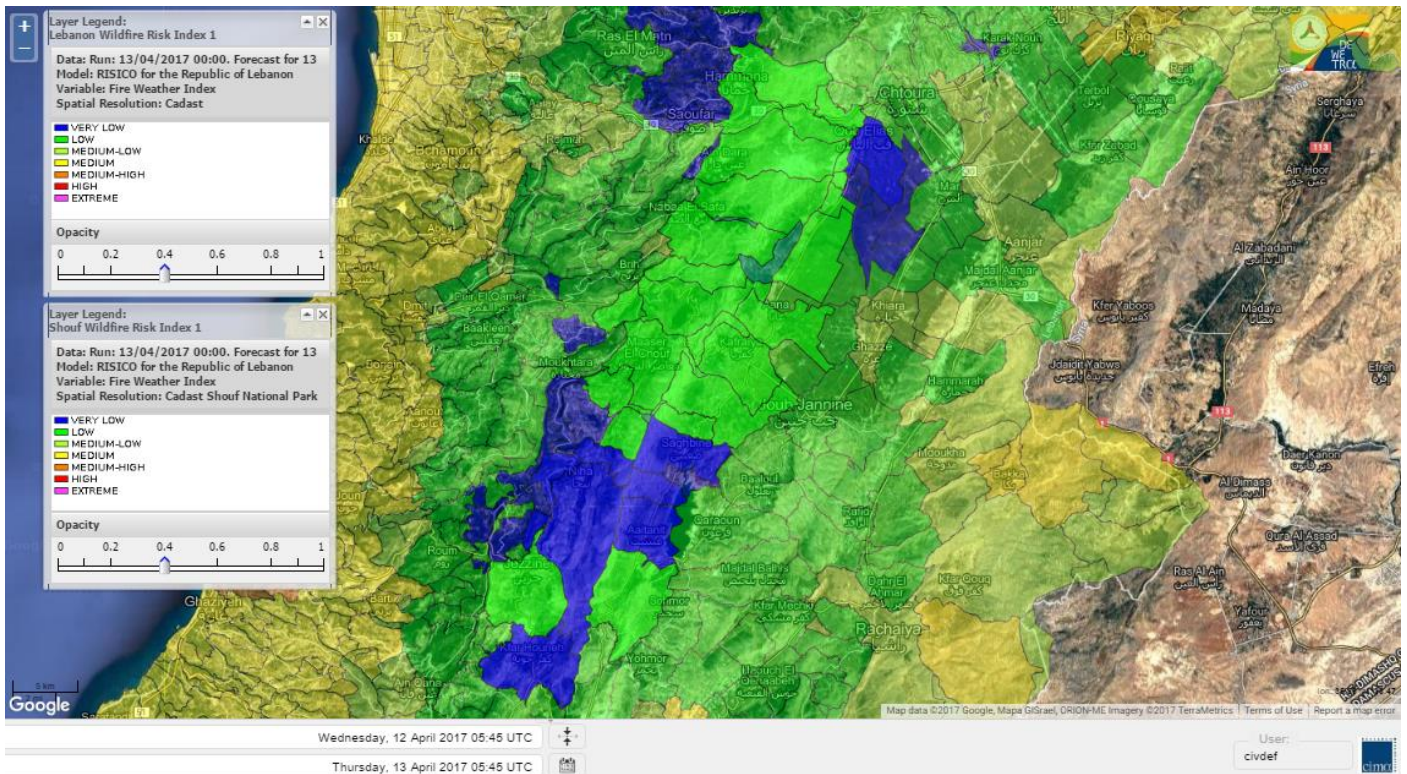
Lebanon for 14 April 2017



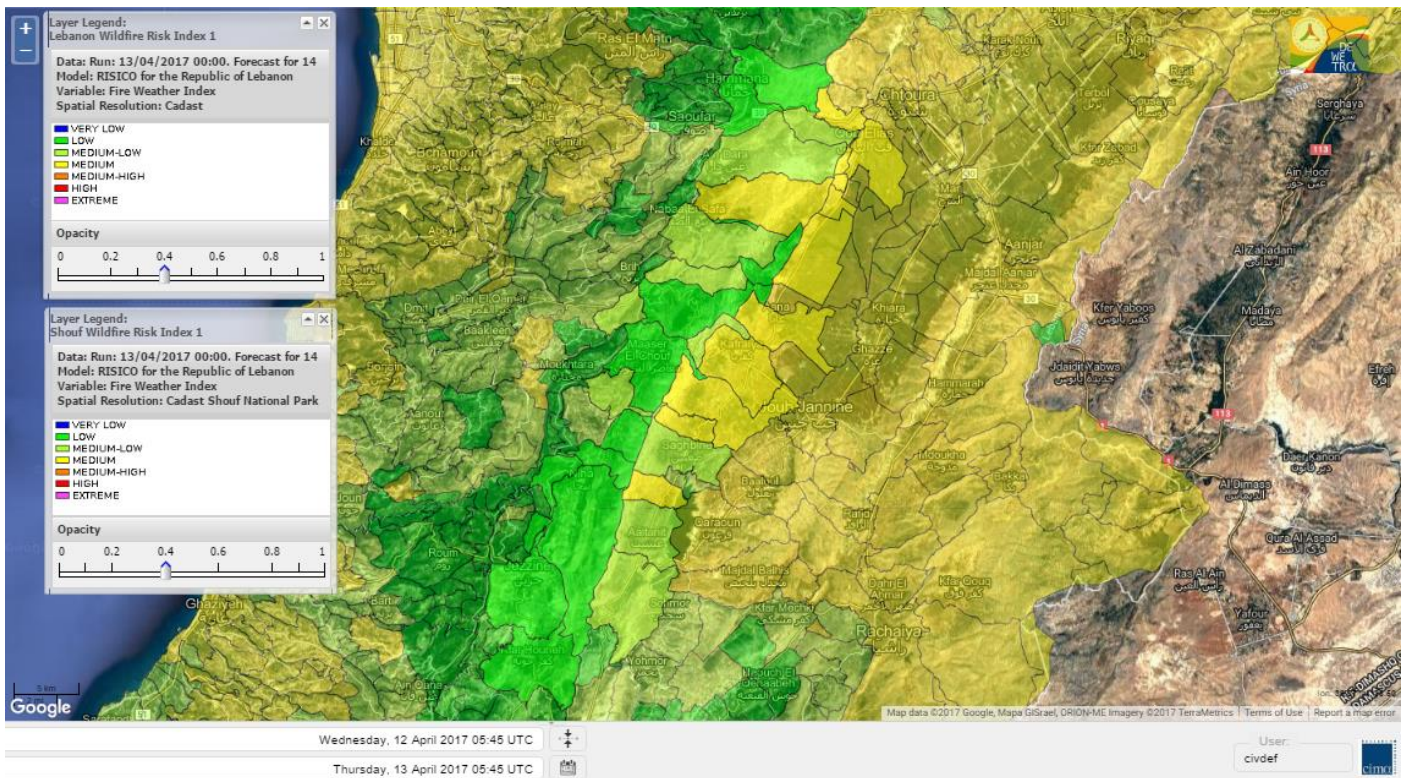
Lebanon for 15 April 2017



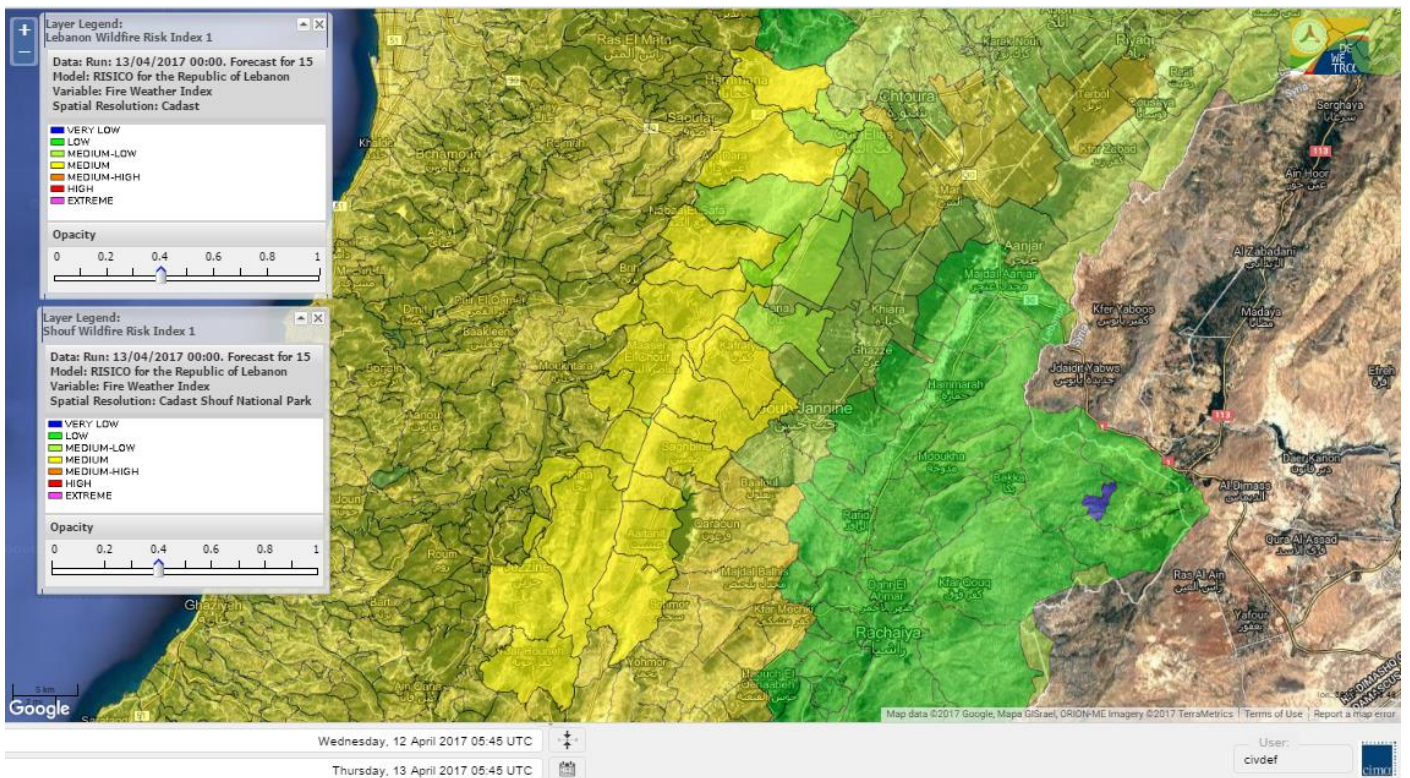
Shouf Biosphere Reserve Forecast for 13 April 2017



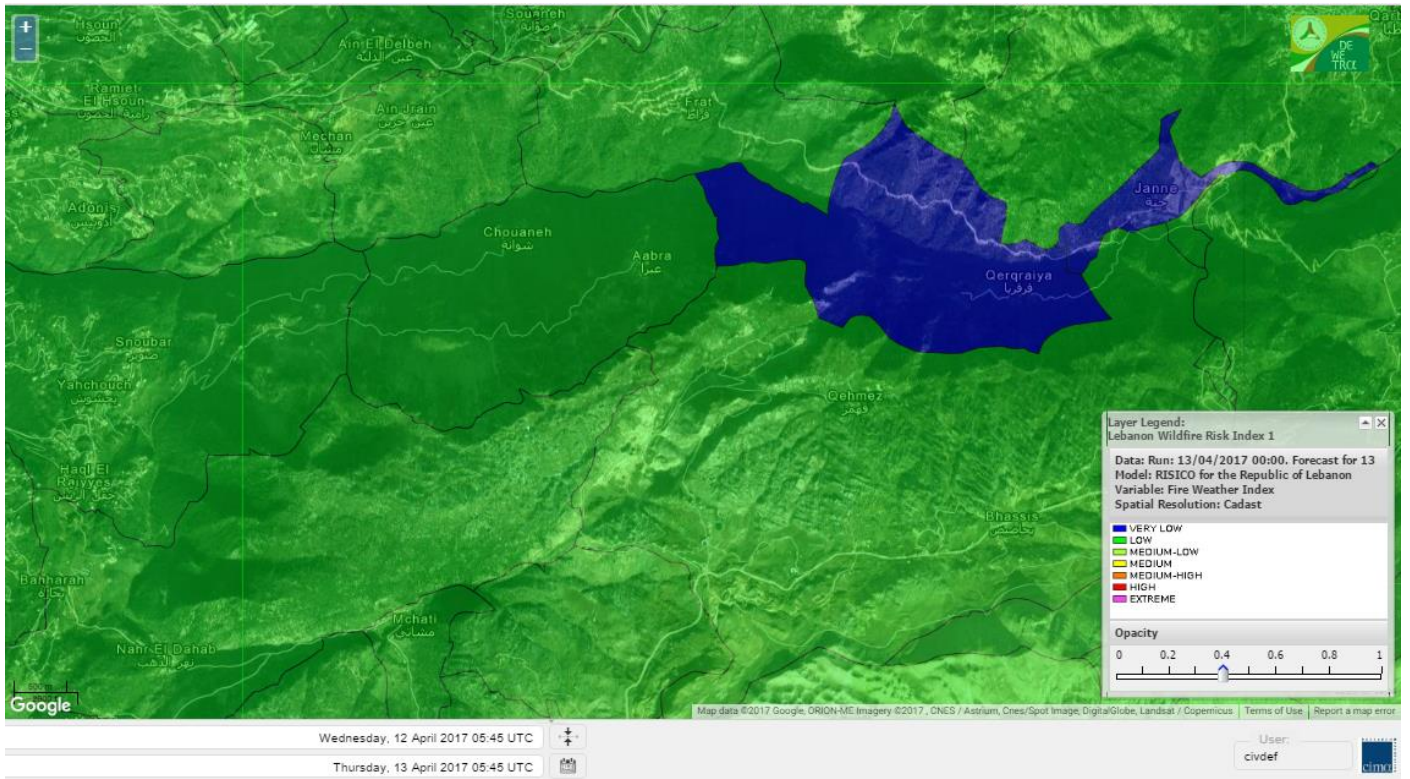
Shouf Biosphere Reserve Forecast for 14 April 2017



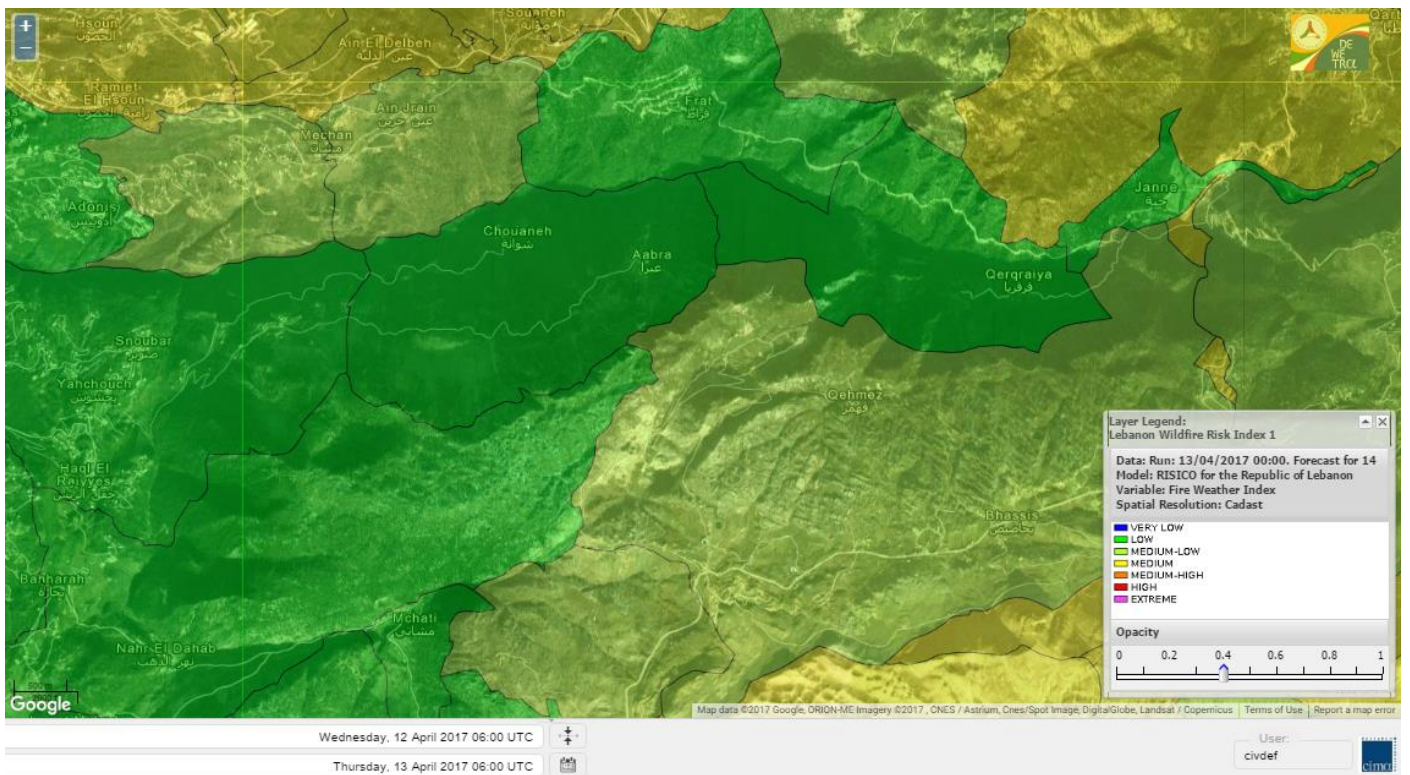
Shouf Biosphere Reserve Forecast for 15 April 2017



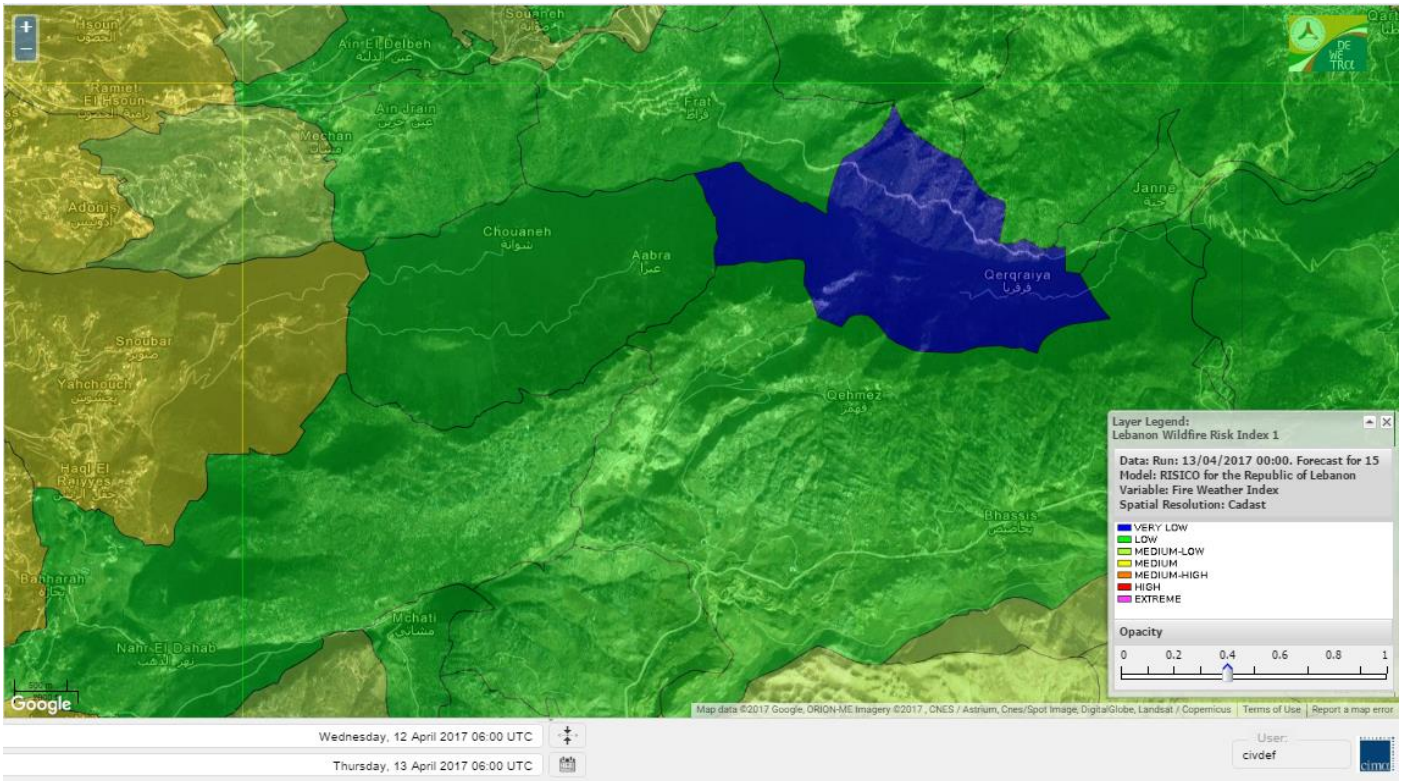
Jabal Moussa Reserve Forecast for 13 April 2017



Jabal Moussa Reserve Forecast for 14 April 2017



Jabal Moussa Reserve Forecast for 15 April 2017



Nord

Koura

Municipality	13-Apr	14-Apr	15-Apr	Municipality	13-Apr	14-Apr	15-Apr	Municipality	13-Apr	14-Apr	15-Apr
Aaba	M	M	M	Afsaddiq	M	MH	M	Ain Ekriane	M	M	M
Amioun	M	MH	M	Anfeh	M	MH	MH	Badbhoun	M	M	M
Barghoun	M	MH	M	Barsa	M	M	M	Batroumine	M	MH	M
Bdebba	M	M	M	Bechmizine	M	MH	M	Bednayeil El-Koura	M	M	M
Bhabbouch El-Koura	M	M	M	Bkeftine	M	M	M	Bnehran	ML	M	M
Bqaiia El-Koura	M	M	M	Bsarma	M	M	M	Btaaboura	M	MH	M
Bttram	M	M	M	Btouratij	M	M	M	Bziza	M	M	M
Dar Beehtar	M	M	M	Dar Chmezzine	M	M	M	Deddeh	M	M	M
Deir El-Balamand	M	M	M	Fih	M	M	M	Hraiche	M	MH	M
Ijdaabrine	M	M	M	Kaftoun	M	M	M	Kefraya El-Koura	M	M	M
Kfarakka	M	M	M	Kfarhata	M	M	M	Kfarhazir	M	M	M
Kfarkahel	M	M	M	Kfarsaroun	M	M	M	Kosba	M	M	M
Mejdel el-Koura	M	M	M	Nakhle	M	M	M	Qalhat	M	M	M
Ras Masqa	M	MH	M	Rechdibbine	M	M	M	Zakroun	M	M	M
Zgharta El-Mtaouile	L	M	M								

Bcharre

Municipality	13-Apr	14-Apr	15-Apr	Municipality	13-Apr	14-Apr	15-Apr	Municipality	13-Apr	14-Apr	15-Apr
Aabdine	L	M	M	Bane	ML	M	M	Barhelioun	L	M	M
Bazooune	M	ML	ML	Becharre	ML	M	M	Beit Menzer	L	M	M
Billa	ML	M	M	Blaouza	ML	M	M	Bqaa Kafra	M	ML	ML
Bqerqacha	M	ML	ML	Breissat	ML	M	ML	Dimane	ML	M	ML
Hadath El Jobbeh	ML	M	ML	Hadchit	ML	ML	M	Hasroun	M	ML	L
Mazraat Aassaf	VL	M	ML	Mazraat Bani Saab	ML	M	ML	Mchaa El-Jobbeh	ML	M	ML
Metrit	ML	M	M	Moghr El-Ahoual	ML	M	M	Ouadi Qannoubine	VL	L	ML
Qanat	L	M	M	Qnayer	L	ML	M	Tourza	L	M	M

Batroun

Municipality	13-Apr	14-Apr	15-Apr	Municipality	13-Apr	14-Apr	15-Apr	Municipality	13-Apr	14-Apr	15-Apr
Aabrine	M	M	M	Aalali	ML	M	L	Aartiz	ML	M	M
Abdelli	M	M	M	Ajdabra	M	M	M	Assia	ML	M	L
Basbina	M	M	M	Batroun	M	M	M	Bcheleh	L	M	L
Bechtouadar	L	M	L	Beit Chlala	L	M	L	Beit Kassab	L	M	ML
Bijdarfil	M	M	M	Bqesmaya	ML	M	M	Chatine	L	M	L
Chebtin	ML	M	M	Chekka	M	M	M	Daael	ML	M	L
Dahr Abi Yaghi	ML	M	M	Daraya El-Batroun	M	M	M	Deir Billa	L	M	M
Deir Kfifane	M	M	M	Deir Mar Youhanna EL	L	M	L	Deir Mar Youssef Jra	M	M	M
Douma	L	M	L	Douq	L	M	M	Eddeh El-Batroun	M	M	M
Ftahat El-Batroun	ML	M	L	Ghouma	M	M	M	Hadtoun	L	M	L
Hamat	M	M	M	Harbouna	ML	M	M	Hardine	L	M	L
Helta	ML	M	L	Hery	M	M	MH	Jebba	ML	M	ML
Jrabta El-Batroun	M	M	M	Jrane El-Batroun	M	M	M	Kfar Aabida	M	M	M
Kfar Halda	L	M	L	Kfarb Shlaimane	ML	M	L	Kfarhatna	ML	M	M
Kfarhay	M	M	M	Kfarhelos	M	M	M	Kfifane	M	M	M

Kfour El Arabi	ML	M	ML	Koubba	M	M	M	Kour	M	M	M
Mar Mama	L	M	L	Masrah	L	M	M	Mehmarch	ML	M	ML
Mrah Chdid	M	M	M	Mrah El Ziyat	M	M	M	Mrah El-Hajj	L	M	L
Nahle El-Batroun	ML	M	L	Niha El-Batroun	ML	M	ML	Ouajh El-Hajjar	M	M	M
Ouata Houb	L	L	L	Qatnaaoun	M	M	M	Racha	ML	M	L
Rachana	M	M	M	Rachkida	M	M	M	Ram El-Batroun	L	M	L
Ras Nahhach	M	M	M	Selaata	M	M	M	Sghar	M	M	M
Smar Jbayl	M	M	M	Sourat El-Batroun	ML	M	L	Tannourine El-Faouqa	ML	M	ML
Tannourine Et-Tahta	L	ML	L	Thoum	M	ML	M	Toula El-Batroun	M	M	M
Zan	ML	M	ML								

Zgharta

Municipality	13-Apr	14-Apr	15-Apr	Municipality	13-Apr	14-Apr	15-Apr	Municipality	13-Apr	14-Apr	15-Apr
Aachach	M	MH	M	Aalma	M	M	M	Aarde	M	MH	M
Aintourine	L	M	M	Arabet Qozhaya	L	M	M	Arde	M	MH	M
Arjis	M	M	M	Asnoun	M	M	M	Ayto	L	M	M
Basloukit	L	M	M	Bchannine	M	M	M	Besebeel	M	M	M
Bhairret Toula	L	M	M	Bnachee	M	M	M	Boussit	M	M	M
Danha	M	M	M	Daraiya Zgharta	M	M	M	Deir Jdeide	M	M	M
Ehden	ML	M	M	Halan	M	MH	M	Hariq Zgharta	M	M	M
Houakir	M	M	M	Hraiqis	M	M	M	laal	M	M	M
Ijbaa	L	M	M	Karm Saddeh	L	M	M	Kfarchakhna	M	M	M
Kfardlaqous	M	MH	M	Kfarfou	M	M	M	Kfarhata Zgharta	M	M	M
Kfarhoura	M	M	M	Kfarsghab	ML	M	M	Kfaryachit	M	M	M
Kfarzaina	M	M	M	Khaldiye	M	M	M	Mazraat Ajbeaa	M	M	M
Mazraat Et-Teffah	L	M	M	Mazraat Jneid	M	M	M	Mejdlaiya Zgharta	M	MH	M
Merh Kfarsghab	M	M	M	Miryata	M	MH	M	Miziara	ML	M	M
Mzraat Kefraya	M	MH	M	Qorah Bach	M	M	M	Rachiine	M	MH	M
Ras Kifa	M	M	M	Sakhra	M	M	M	Sebhel Zgharta	ML	M	M
Serhel	L	ML	M	Tallet Zgharta	M	M	M	Toula Zgharta	L	M	M
Zgharta	M	MH	M								

Minieh-Denniye

Municipality	13-Apr	14-Apr	15-Apr	Municipality	13-Apr	14-Apr	15-Apr	Municipality	13-Apr	14-Apr	15-Apr
Aasaymout	L	M	M	Aaymar	L	M	M	Aazki	M	M	M
Ain El-Tineh-Miniyeh	ML	M	M	Assoun	ML	M	M	Bakhaaoun	M	M	M
Bchennata	ML	M	M	Bechehhara	ML	M	M	Beddawi	M	MH	M
Behouaita	L	M	M	Beit El Foqss	ML	M	M	Beit Haouik	M	M	M
Beit Zoud	ML	M	M	Bekaasafrine	M	M	M	Borj El Yahoudiyeh	M	M	M
Bqarsouna	ML	M	M	Btermaz	ML	M	M	Debaael	L	M	M
Deir Ammar	M	MH	M	Deir Nbouh	M	M	M	Haouaret-Miniyeh	ML	M	M
Haql el Azimeh	ML	M	M	Harf El Siyad	ML	M	M	Hazmiye-Miniyeh	ML	M	M
Izal	ML	M	M	Jarjour	L	M	M	Jayroun	L	M	M
Kahf El-Malloul	L	M	M	Karm El-Moher	L	M	M	Kfar Binine	L	M	M
Kfarchalane	M	M	M	Kfarhabou	M	M	M	Kharroub-Miniyeh	M	M	M
Mazraat El-Kreme	L	M	M	Mazraat Ketrane	L	M	M	Merkebta	M	MH	M
Minyeh	M	MH	M	Mrah El Sfirat	L	M	M	Mrah Sraj	ML	M	M
Mrebbine	ML	M	M	Nabi Youcheaa	M	MH	M	Nemrine	ML	M	M

Qarhaiya	ML	M	M	Qarne	L	ML	M	Qarsita	L	M	M
Qattineh-Miniyeh	L	M	M	Qemmamine	L	ML	M	Qraïne	L	M	M
Raouda-Aadoua	M	MH	M	Rihaniyet-Miniyeh	M	MH	M	Sfireh	L	M	M
Sir Ed-Danniyeh	L	M	M	Tarane	ML	M	M	Terbol-Miniyeh	M	MH	M
Zaghartaghriine	ML	M	M	Zouq Bhannine	M	MH	M				

Nabatiye

Nabatiye

Municipality	13-Apr	14-Apr	15-Apr	Municipality	13-Apr	14-Apr	15-Apr	Municipality	13-Apr	14-Apr	15-Apr
Aabba	M	M	M	Aazzi	M	ML	M	Adchit El-Chqif	M	M	M
Ain Bou Swar	L	L	M	Ain Kana	ML	ML	M	Ali El-Taher	L	ML	M
Ansar	M	M	M	Arab Salim	L	L	M	Arnoun	L	M	M
Bfaroue	M	M	M	Breyqaah	M	M	M	Charqiyeh	M	M	M
Choukine	ML	M	M	Deir El Zahrani	ML	ML	M	Doueir El-Nabatiyeh	M	M	M
Habbouch El-Nabatiye	ML	M	M	Hamra El-Nabatiyeh	M	M	M	Harouf El-Nabatiyeh	M	M	M
Hmaile	ML	L	M	Houmin El Faouqa	ML	ML	M	Houmin El Tahta	M	M	M
Jarjough	L	L	M	Jbaah El-Nabatiyeh	L	L	M	Jebchit	M	M	M
Kfar Djal El-Nabatiy	M	M	M	Kfar Remmane	L	ML	M	Kfar Sir	M	M	M
Kfar Tebnit	L	M	M	Kfarfila	ML	ML	M	Kfour El-Nabatieh	ML	M	M
Mayfadoun	ML	M	M	Mazraat Bsaffour	M	M	M	Mazraat Chalbaal	M	M	M
Mazraat Dmoul	M	M	M	Mazraat El Khreibeh	M	M	M	Mazraat El-Bayad El-	ML	ML	M
Mazraat Kfarjaouz	ML	M	M	Mazraat Qalaat Meiss	M	M	M	Nabatiyeh El-Fawka	ML	M	M
Nabatiyeh Et-Tahta	ML	M	M	Namiriyeh	M	M	M	Qaaqaaiyet El Jisr	M	M	M
Qossaibeh El-Nabatiy	M	M	M	Roumine	M	M	M	Sarba El-Nabatieh	ML	ML	M
Sir El-Gharbiyeh	M	M	M	Toul	ML	M	M	Yehmor El-Nabatiyeh	M	M	M
Zaoutar El Charkiyeh	M	M	M	Zaoutar El-Gharbiyeh	M	M	M	Zebdine El-Nabatiyeh	ML	M	M
Zefta	M	M	M								

Hasbaiya

Municipality	13-Apr	14-Apr	15-Apr	Municipality	13-Apr	14-Apr	15-Apr	Municipality	13-Apr	14-Apr	15-Apr
Aain Jarfa	M	L	M	Abou Qamha	M	L	M	Ain Qania	ML	L	M
Bourghos	L	ML	M	Chebaa	ML	ML	M	Chouaya Hasbaya	L	L	M
Dellafeh	L	ML	M	Fardiss Hasbaiya	M	L	M	Hasbaya	M	L	M
Hbariyeh	M	L	M	Kaoukaba Hasbaiya	ML	L	M	Kfar Chouba	M	L	M
Kfar Hamam	M	L	M	Kfeir El-Zait	L	L	M	Khalwat Hasbaya	L	L	ML
Khreibet Hasbaiya	ML	ML	M	Majidiyeh Hasbaiya	M	ML	M	Marj Ez-Zhour (Haouc	L	L	M
Meri	ML	ML	M	Mimass	M	L	M	Rachaiya El-Fokhar	M	L	M
Salaiyeb	ML	M	M								

Marjayoun

Municipality	13-Apr	14-Apr	15-Apr	Municipality	13-Apr	14-Apr	15-Apr	Municipality	13-Apr	14-Apr	15-Apr
Aalmane Marjaayoun	M	M	M	Aamra	ML	M	M	Adayseh Marjaayoun	ML	M	M
Adchit El-Koussair	M	M	M	Ain Arab Marjaayoun	ML	M	M	Bani Haiyann	M	M	ML
Blatt Marjaayoun	L	L	M	Blida	M	M	L	Borj El-Moulouk	ML	M	M
Boueyda Marjaayoun	L	ML	M	Deir Mimass	ML	M	M	Deir Siriane	M	M	M
Dibbine	L	L	M	Ebel El Saqi	ML	L	M	Houla	M	M	L
Houra	M	M	M	Kfar Kila	ML	M	M	Khiam Marjaayoun	ML	M	M

Klayaa	L	M	M	Majdel Selem	M	M	L	Marjaayoun	L	ML	M
Markaba	M	M	L	Mays El-Jabal	M	M	L	Mazraat Doumiat	L	M	M
Mazraat Sarada	ML	M	M	Mhaibib	M	M	L	Qabrikha	M	M	M
Qantara	M	M	M	Rab El-Thalathine	M	M	M	Saouaneh Marjayoun	M	M	L
Taloussa	M	M	L	Taybeh Matjaayoun	M	M	M	Touline	M	M	M

Bent Jbail

Municipality	13-Apr	14-Apr	15-Apr	Municipality	13-Apr	14-Apr	15-Apr	Municipality	13-Apr	14-Apr	15-Apr
Ain-Ebel	M	M	L	Aitaroun	M	M	L	Aynata Bint Jbeil	M	M	L
Ayta El-Chaeb	ML	ML	L	Ayta El-Jabal	M	M	L	Beit Lif	ML	ML	L
Beit Yahoun	M	M	L	Bint Jbeil	M	M	L	Borj Qalaway	M	M	M
Braachit	M	M	L	Chakra	M	M	L	Debel	M	M	L
Deir Antar	M	M	L	Froun	M	M	M	Ghandouriyeh Bint Jb	M	M	M
Hanine	M	M	L	Hariss	M	M	L	Hdatha	M	M	L
Jmeyjmeh	M	M	L	Kafra Bint Jbeil	M	M	L	Kfar Dounine	M	M	L
Khirbet Selm	M	M	L	Kounine	M	M	L	Maroun El Ras	M	M	L
Qalaway	M	M	M	Qaouzah	ML	ML	L	Qatmoun	ML	M	L
Ramya Bint Jbeil	ML	ML	L	Rchaf	M	M	L	Rmeich	ML	M	L
Safad Al Battikh	M	M	L	Salhaneh	ML	ML	L	Serbine	M	M	L
Sultanieh Bint Jbeil	M	M	L	Tibnine	M	M	L	Tiri	M	M	L
Yaroun	M	M	L	Yater	M	M	L				

Mont Liban

Jbail

Municipality	13-Apr	14-Apr	15-Apr	Municipality	13-Apr	14-Apr	15-Apr	Municipality	13-Apr	14-Apr	15-Apr
Aabeydat	ML	M	M	Aalita	L	ML	M	Aamchit	M	L	M
Aarab El-Lahib	L	M	ML	Aarasta	L	L	L	Adonis Jbeil	L	L	M
Afqa Jbeil	L	ML	L	Ain El Delbeh Jbeil	L	M	L	Ain El-Ghouyba	L	ML	L
Ain Jrain	L	ML	L	Ain Kfah	M	M	M	Almat El Chemaliyat	L	M	L
Almat El-Jenoubiya	L	M	L	Aqoura	L	M	ML	Bayzoun	L	M	ML
Bchille Jbeil	L	ML	M	Bechtlida	L	L	ML	Behdaydat	M	M	M
Beit Habbaq	M	M	M	Bejjeh	M	M	M	Bekhaaz	M	M	M
Berbara Jbeil	M	L	M	Bintael	L	ML	M	Birket Hjoula	L	ML	M
Blatt Jbeil	ML	M	M	Boulhos	L	ML	L	Breyj Jbeil	L	L	M
Chamat	M	M	M	Chikhane	M	L	M	Chmout	M	M	M
Eddeh Jbeil	M	M	M	Ehmej	L	M	L	Fatre	L	L	M
Ferhet	ML	M	M	Fghal	M	ML	M	Frat	L	L	L
Ghabat	ML	M	L	Ghalboun	M	M	M	Gharzouz	M	M	M
Ghofrine	M	M	M	Habil	L	ML	M	Halate	M	ML	M
Haqel	L	M	M	Hbaline	M	M	M	Hboub	ML	M	M
Hdeine	L	M	L	Hema Er-Rehban	L	M	ML	Hema Mar Maroun Aann	L	M	ML
Hjoula	L	M	M	Hosrayel	M	M	M	Hsarat	M	M	M
Hsoun	L	M	M	Jaj	L	M	L	Janne	VL	L	L
Jbeil	M	ML	M	Jeddeyel Jbeil	M	L	M	Jlisse	L	L	M
Jouret El-Qattine	L	ML	M	Kfar Baal Annaya	L	M	M	Kfar Kidde	M	L	M
Kfar Kouas	L	ML	M	Kfar Mashoun	M	M	M	Kfoun	ML	M	M

Kharbe Jbeil	ML	M	M	Laqlouq	ML	M	ML	Lassa	L	ML	L
Lehfed	L	M	L	Maad	M	M	M	Mar Sarkis	L	M	ML
Mastita	M	ML	M	Mayfouq	L	M	L	Mazraat El Siyad	L	M	ML
Mazraat El-Maaden	L	ML	L	Mechane	L	ML	ML	Mechmech Jbeil	L	M	L
Mehrin	ML	M	M	Mejdel El-Akoura	L	M	L	Mghayreh Jbeil	ML	M	L
Mounsef	M	L	M	Nahr Ibrahim	M	M	M	Qahmez	L	ML	L
Qartaba	L	M	L	Qartaboun	M	M	M	Qattara Jbeil	L	M	L
Qorqraya	VL	L	VL	Ramout	M	M	M	Ras Osta	L	ML	M
Rihane Jbeil	M	L	M	Sakiet El-Khayt	M	M	M	Saqi Richmaya	L	M	L
Sebrine	L	L	M	Seraita	L	M	L	Souane Jbeil	L	M	ML
Tadmor	L	M	ML	Tartej	L	M	L	Torzaiya	L	M	ML
Yanouh Jbeil	L	M	L	Zibidine Jbeil	L	ML	M				

El Metn

Municipality	13-Apr	14-Apr	15-Apr	Municipality	13-Apr	14-Apr	15-Apr	Municipality	13-Apr	14-Apr	15-Apr
Aain El-Qabu	VL	L	L	Aain El-Qach	L	L	M	Aain El-Teffaha	L	L	M
Aain el-Safssaf El-M	L	L	M	Abou Mizane	L	L	M	Ain Aar	M	M	M
Ain Alaq	L	M	M	Ain El-Kharroube	ML	L	M	Ain El-Sendiane	L	L	M
Ain El-Zeitoune	L	L	M	Ain Saadeh	ML	M	M	Aintoura El-Matn	L	L	ML
Amaret Chalhoub	M	M	M	Antelias	M	M	M	Atchaneh	L	M	M
Ayroun	L	L	M	Baabdat	VL	L	M	Baouchariyeh	M	M	M
Baskinta	L	L	L	Beit Chabab	L	L	M	Beit El-Char	M	M	M
Beit El-Kekko	M	M	M	Beit Mery	ML	M	M	Bhersaf	L	L	M
Bikfaya	L	L	M	Biyakout	M	M	M	Bnabil	L	L	M
Bourj Hammoud	M	M	M	Bqennaya	M	M	M	Broummana El-Matn	L	M	M
Bsalim	L	M	M	Bsifrine	VL	L	M	Bteghrine	VL	L	L
Chaouiye	ML	M	M	Chouaya El-Matn	L	ML	M	Choueir	L	L	M
Chrine	L	L	M	Dahr El Sawan El-Mat	VL	ML	M	Daychouniyeh	M	M	M
Dbayeh	M	M	M	Deir Chamra	L	L	ML	Deir Mar Abda el Mch	M	M	M
Deir Mar Roukouz	M	M	M	Deir Tamiche	M	M	M	Dik El-Mehdi	M	M	M
Dikwaneh	M	M	M	Douar El-Matn	L	L	M	Fanar	M	M	M
Fraike	ML	M	M	Haret El-Ballaneh	M	M	M	Hbous	M	M	M
Himlaya	L	L	M	Jal El Did	M	M	M	Jdeideh El-Metn	M	M	M
Jouar El-Matn	L	L	M	Jouret El-Ballout	L	M	M	Kaaqour	VL	L	M
Kfar Aaqab	VL	L	ML	Kfertay El-Matn	L	L	L	Khenchara	L	L	M
Khillet El-Mtain	L	L	M	Konnabat Broummana	L	M	M	Konnabat Salima	VL	L	M
Machraah El-Matn	L	L	L	Majdel Tarchich	L	ML	ML	Majzoub	M	M	M
Mansouriyeh El-Metn	M	M	M	Mar Boutros Karm Et-	L	L	M	Mar Chaya et Mzekke	L	M	M
Mar Moussa Ed-Douar	VL	L	M	Marjaba	L	L	L	Masqa	L	M	M
Mayasse	L	L	M	Mazraat Deir Aoukar	M	M	M	Mazraat El-Hadirat	M	M	M
Mazraat Yachouh	M	M	M	Mchikha	L	L	M	Menqlet Mezher	M	M	M
Mhaydseh Matn	L	L	M	Mkalles	M	M	M	Mrouj	L	L	ML
Mtain	L	ML	ML	Mtayleb	M	M	M	Nabay	L	M	M
Naccache	M	M	M	Ouadi Chahine	L	L	M	Ouadi El-Karm El-Mat	VL	L	ML
Ouata El-Mrouj	L	L	M	Ouyoun El-Matn	L	ML	M	Qornet Chehwan	ML	M	M
Qornet El-Hamra	M	M	M	Roumieh	ML	M	M	Sfeilet Bikfaya	L	L	M
Sinn El-Fil	M	M	M	Zabbougha	VL	L	M	Zalqa	M	M	M

Zarouon	L	L	M	Zekrite	M	M	M	Zighrine El-Matn	L	ML	M
Zouk El-Khrab	M	M	M								

Chouf

Municipality	13-Apr	14-Apr	15-Apr	Municipality	13-Apr	14-Apr	15-Apr	Municipality	13-Apr	14-Apr	15-Apr
Aalmane El-Chouf	M	L	M	Aammq El-Chouf	L	ML	M	Ain Ouzein	VL	L	M
Ain Qani	VL	L	M	Ain Zhalta	L	ML	M	Ainbal	L	ML	M
Amatour	VL	L	M	Anout	M	ML	M	Atrine	L	ML	M
Baadarane	VL	ML	M	Baaqline	L	ML	M	Baasir	M	M	M
Barja	M	ML	M	Barouk	L	L	M	Bater	VL	L	M
Batloun	L	ML	M	Bayqoun	L	ML	M	Bchetfine	L	ML	M
Beiteddine	L	ML	M	Benouati Ech-Chouf	ML	ML	M	Berjein	M	M	M
Bireh et Mtalleh	L	ML	M	Biret El-Chouf	L	ML	M	Bkechtine Ouel Mchei	M	ML	M
Bkifa El-Chouf	M	M	M	Botme	L	L	M	Bqaiaa Ech-Chouf	M	ML	M
Bsaba El-Chouf	L	ML	M	Chammis El-Chouf	M	M	M	Chehim	M	ML	M
Chemaarine	M	ML	M	Chourit	L	L	M	Daher El-Chouf	M	M	M
Dalhoun	M	ML	M	Damour	M	M	M	Daraya El-Chouf	M	ML	M
Deir El-Moukhalles	M	L	M	Deir Baba	ML	ML	M	Deir Dourit	L	ML	M
Deir El-Qamar	L	ML	M	Deir Kouche	ML	M	M	Dibbieh	M	M	M
Dmit	M	ML	M	Fouara Jaafar	L	ML	M	Fraidis El-Chouf	L	ML	M
Ghabet Jaafar	ML	ML	M	Gharife	L	L	M	Haret Jandal	VL	L	M
Hasrout	L	ML	M	Jadra	M	L	M	Jahlieh	M	ML	M
Jbeih El-Chouf	VL	L	M	Jdeidet El-Chouf	L	ML	M	Jiyeh	M	ML	M
Jleilyeh	L	ML	M	Jmailiyeh	M	L	M	Joun	M	ML	M
Kahlounie El-Chouf	L	M	M	Ketermaya	M	M	M	Kfar Faqoud	L	ML	M
Kfar Hamal	M	M	M	Kfar Him	ML	ML	M	Kfar Katra	L	ML	M
Kfar Niss	L	ML	M	Kfar hay	L	ML	M	Kfarnabrakh	L	ML	M
Khirbet Bisri	L	L	M	Knayse El-Chouf	ML	M	M	Maaniyeh	M	ML	M
Maasser Beiteddine	L	ML	M	Maasser El-Chouf	L	L	M	Majdalouna	M	ML	M
Majdel El-Meouch	L	ML	M	Mazboud	M	ML	M	Mazmoura	M	ML	M
Mazraat El Chouf	L	ML	M	Mazraat El Daher	L	ML	M	Mazraat El-Douair	VL	ML	M
Mechref	M	M	M	Mghairie	M	M	M	Mghayrie El-Chouf	M	ML	M
Moukhtara	L	L	M	Mrusti	L	L	M	Mtolle	L	ML	M
Naameh	M	M	M	Niha El-Chouf	VL	L	M	Ouadi Abou Youssef	M	ML	ML
Ouadi Ed-Deir	ML	ML	M	Ouadi El-Sit	L	ML	M	Ouadi bnehlay	L	L	M
Qraibeh	L	ML	M	Qreiaa	M	L	ML	Rmayle El-Chouf	M	L	M
Semqaniyeh	L	M	M	Sibline	M	L	M	Sirjbeil	M	ML	M
Warhanieh	L	L	M	Werdaniyeh	M	L	M	Zaarourieh	ML	ML	M

Baabda

Municipality	13-Apr	14-Apr	15-Apr	Municipality	13-Apr	14-Apr	15-Apr	Municipality	13-Apr	14-Apr	15-Apr
Abadiyeh	L	M	M	Ain Mouaffaq	L	M	M	Araiya	ML	M	M
Arbaniyeh	VL	L	M	Arsoun	VL	L	M	Baabda	M	M	M
Baalchmey	ML	M	M	Bmaryam	VL	L	M	Bourj El-Brajneh	M	M	M
Boutchay	M	M	M	Bsaba Baabda	M	M	M	Btekhney	VL	L	M
Btibyat	VL	L	M	Bzbeddine	L	L	M	Chbeniyeh	VL	L	M
Chiyah	M	M	M	Chmeisset Baabda	VL	L	M	Chouit	L	M	M
Deir El-harf	VL	ML	M	Deir Khouna	VL	L	M	Dlaybeh	VL	L	M

Falougha	L	L	M	Furn El-Chebbak	M	M	M	Hadath Beyrouth	M	M	M
Halaliyeh Baabda	L	M	M	Hammana	L	L	M	Haret El Sett	ML	M	M
Haret Hamze	L	ML	M	Haret Hreik	M	M	M	Hasbaiya El-Metn	VL	L	M
Jouar El-Hoz	L	L	L	Jouret Arsoun	VL	L	M	Kfar Chima	M	M	M
Kfar Selouane	L	L	L	Khalouat Baabda	VL	L	M	Kneisset Baabda	VL	L	M
Laylakeh	M	M	M	Louayzeh Baabda	M	M	M	Merdache	M	M	M
Mzairaa Baabda	L	M	M	Ouadi Chahrour El Ol	M	M	M	Ouadi Chahrour El So	ML	M	M
Qalaa Baabda	VL	L	M	Qhraybe Baabda	VL	L	M	Qobbayaa	VL	L	M
Qornayel	VL	L	M	Qortada	L	M	M	Qrayeh Baabda	VL	L	M
Qsaibeh Baabda	L	M	M	Qtale Baabda	VL	L	M	Ras El Metn	L	M	M
Ras El-Haref	VL	L	M	Rouayset El-Ballout	L	M	M	Salima Baabda	VL	L	M
Tahouitat El Ghadir	M	M	M	Tarchich	L	L	ML	Zandouqa	L	M	M

Aley

Municipality	13-Apr	14-Apr	15-Apr	Municipality	13-Apr	14-Apr	15-Apr	Municipality	13-Apr	14-Apr	15-Apr
Abey	M	M	M	Aghmid	L	L	M	Ain Dara	L	ML	M
Ain Drafil	M	M	M	Ain El Halazoun	L	M	M	Ain El-Rmmaneh	L	M	M
Ain Jedideh	ML	M	M	Ain Ksour	ML	M	M	Ain Onoub	M	M	M
Ain Traz	L	ML	M	Ainab	ML	M	M	Aley	ML	M	M
Aramoun	M	M	M	Aytat	M	M	M	Azouniyeh	VL	L	M
Baawerta	M	M	M	Badghan Oua Wadi Bad	L	ML	M	Bassatine	ML	M	M
Bayssour	M	M	M	Bchamoun	M	M	M	Bdadoun	ML	M	M
Behouara	ML	M	M	Bennay	M	M	M	Bhamdoun El-Dayaa	ML	M	M
Bhamdoun El-Mhatta	L	M	M	Bkhechthey	ML	M	M	Bleibel	M	M	M
Bmakine	M	M	M	Bmehray	L	M	ML	Bouzrid	L	L	M
Bserrine	L	M	M	Bsous	L	M	M	Btalloun	ML	M	M
Btater	L	M	M	Chanay	L	M	M	Charoun	L	ML	M
Chartoun	L	ML	M	Chemlane	M	M	M	Choueifat El-Aamrous	M	M	M
Choueifat El-Oumara	M	M	M	Choueifat El-Quoubbe	M	M	M	Dakkoun	M	M	M
Deir Qoubel	M	M	M	Dfoun	M	M	M	Douair El Remmaneh	L	ML	M
Ghaboun	ML	M	M	Habramoun	L	ML	M	Homs Oua Hama	L	ML	M
Houmal	ML	M	M	Jisr El Qadi	M	M	M	Kehaleh	L	M	M
Keyfoun	M	M	M	Kfar Aamey	L	ML	M	Kommatyeh	ML	M	M
Maasrati	L	ML	M	Majdel Baana	L	ML	M	Mansourieh et Ain El	ML	M	M
Mazraat El-Nahr	L	ML	M	Mchakhte	L	ML	M	Mecherfeh	L	L	M
Mejdlaya	M	M	M	Mrayjat	L	ML	M	Ramliyah	L	L	M
Rechmaya	L	ML	M	Rejmeh	L	M	M	Remhala	M	M	M
Rouaysset El Neemane	L	ML	M	Saoufar	VL	L	M	Selfaya	ML	M	M
Sirhmoul	M	M	M	Souq El Ghareb	M	M	M	Taazanieh	L	M	M

Kesrouane

Municipality	13-Apr	14-Apr	15-Apr	Municipality	13-Apr	14-Apr	15-Apr	Municipality	13-Apr	14-Apr	15-Apr
Achkout	L	L	M	Adma Oua Dafneh	M	M	M	Ain Ed-Delbe Kesroua	L	L	L
Ain El-Rihane	ML	M	M	Aintoura Kesrouane	M	M	M	Ajaltoun	L	L	M
Akaybeh Kesrouane	M	M	M	Aramoun Kesrouane	L	L	M	Azra ouel Ozor	L	L	M
Ballouneh	ML	L	M	Batha	L	L	M	Bekaatat Achkout	L	L	M
Bekaatat Kanaan	L	L	L	Bizhel	L	L	M	Bouar	M	ML	M
Bqaatouta	L	L	L	Bqaq Ed-Dine	M	M	M	Bzommar	L	L	M

Chahtoul	L	L	M	Chnaniir	ML	L	M	Chouan	L	L	L
Daraya Kesrouane	L	L	M	Daroun	L	L	M	Deir Baqlouch	L	L	M
Dlebta	L	L	M	Eghbeh	L	VL	ML	Faraya	L	ML	ML
Fatka	ML	ML	M	Feytroun	L	L	M	Ghazir	M	ML	M
Ghbaleh Kesrouane	L	L	M	Ghedrass	L	L	ML	Ghosta	L	L	M
Ghyneh	L	ML	M	Harharaya w Kattine	L	L	M	Harissa Kesrouane	ML	ML	M
Hayata	L	L	M	Hosein	L	L	ML	Hrajel	L	M	ML
Jdeideh Ghazir	ML	L	M	Jeita	M	M	M	Jounieh Ghadir	M	M	M
Jounieh Haret Sakhr	M	M	M	Jounieh Salel Alma	M	M	M	Jounieh Sarba	M	M	M
Jouret Bedrane	L	ML	M	Jouret Mhad	L	L	M	Jouret Termos	L	M	M
Kfar Debiane	L	L	ML	Kfar Tay Kesrouane	VL	L	ML	Kfar Yassine	M	M	M
Kfour Kesrouane	ML	L	M	Kharayeb Nahr Ibrahi	ML	L	M	Klayaat Kesrouane	L	L	M
Maarab	L	L	M	Maaysra Kesrouane	L	L	M	Mayrouba	L	ML	L
Mazraat Er-Ras	M	M	M	Mazraat Mrah El-Mir	L	L	M	Mchaa El Ftouh	L	M	ML
Mchaa Faraya	L	M	ML	Mchaa Kfar Dibiane	L	M	ML	Mghaer	L	L	L
Mradiyah	L	L	M	Nahr Ed-Dahab	L	L	L	Nammoura Kesrouane	L	L	M
Ouata El Jaouz	L	L	ML	Ouata Sillam	M	M	M	Raachine	L	L	M
Rayfoun	L	L	M	Safra Kesrouane	M	M	M	Shayle Kesrouane	ML	ML	M
Tabarja	M	ML	M	Yahchouch	L	L	M	Zaaytreh	L	L	M
Zeytoun	ML	ML	M	Zouk Mikael	M	M	M	Zouk Mosbeh	M	M	M

Baalbek_Hermel

Baalbek

Municipality	13-Apr	14-Apr	15-Apr	Municipality	13-Apr	14-Apr	15-Apr	Municipality	13-Apr	14-Apr	15-Apr
Aadous	M	MH	ML	Aamchki	M	M	L	Aarsal	M	M	L
Ain Baalbek	ML	H	L	Ain Bourday	L	M	ML	Ain El-Benye	M	M	L
Ain El-Jaouz Baalbek	ML	M	L	Ain El-Siya Chadoura	ML	M	L	Al Khodr Baalbek	ML	M	ML
Al Nabi Chit	ML	M	ML	Aynata Baalbek	L	M	ML	Baalbek	ML	M	ML
Bachwat	L	M	L	Barqa	L	ML	L	Bednayel Baalbak	L	M	ML
Beit Chama	ML	M	ML	Bijjaje	M	H	L	Bouday	L	M	ML
Brital	ML	M	ML	Btadi	L	M	L	Chaat	M	M	L
Chaibe	ML	M	L	Chlifa	ML	M	ML	Chmestar	ML	M	ML
Dar El-Oussa	L	ML	L	Deir El-Ahmar	L	M	ML	Deir Mar Maroun Baal	L	H	M
Douris	M	M	ML	Fakiha	ML	H	M	Hadath Baalbek	ML	M	ML
Ham	M	M	ML	Haour Taala	M	M	ML	Hizzine	M	M	ML
Hlebta	L	M	M	Hosh Barada	M	M	M	Hosh El Dahab	M	MH	M
Hosh El Snid	M	M	ML	Hosh El-Nabi	M	M	ML	Hosh El-Rafiq	M	M	ML
Hosh Tal Safiya	M	MH	M	Hrebta	ML	M	L	laat	M	MH	M
Jebaa	ML	M	M	Jenta	ML	M	ML	Kfar Dabach	M	M	ML
Kfar Dane	M	M	M	Khraibeh El-Hermel	M	MH	L	Khreibet Baalbek	M	M	ML
Kneisset Baalbek	ML	M	M	Labueh	M	MH	L	Maarboun	M	M	ML
Majdaloun	M	M	M	Maqneh	M	M	M	Mazraat Beit Mcheik	L	M	M
Misraya	M	M	ML	Moqraq	M	M	L	Nabha El-Damdoum	L	M	ML
Nabi Chbay	ML	M	ML	Nabi Osman	M	H	L	Nahleh baalbek	M	M	L
Ouadi El-Oss	L	M	ML	Qaa Baayoun	ML	H	M	Qaa Jouar Maqiye	M	H	M
Qaa Ouadi El-Khanzir	M	H	M	Qah Baalbek	ML	E	M	Qarha Baalbek	L	M	ML

Qsarnaba	ML	M	ML	Ram Baalbek	L	M	L	Ras Baalbek El Sahl	L	E	M
Ras Baalbek El-Charq	L	MH	M	Riha	ML	M	ML	Saaide	ML	M	M
Sbouba	M	MH	L	Seriine El-Tahta	M	M	ML	Slouqi	L	M	ML
Taiba Baalbek	M	M	ML	Talia	M	M	ML	Taraiya	ML	M	ML
Temnin El Fawqa	ML	M	ML	Temnin El-Tahta	ML	M	ML	Tfail	ML	M	L
Yahfoufa	ML	M	ML	Yammouneh	L	M	L	Younine	M	M	L
Zboud	M	H	ML								

Hermel

Municipality	13-Apr	14-Apr	15-Apr	Municipality	13-Apr	14-Apr	15-Apr	Municipality	13-Apr	14-Apr	15-Apr
Charbine El-Hermel	L	ML	M	Hermel Jbab	L	M	M	Hermel	L	M	M
Maaysra El-Hermel	L	M	M	Michaa Mrajhine	L	M	M	Ouadi Faara	L	M	M
Ras Baalbek - Ouadi	L	E	M	Ras Baalbek El Gharb	ML	M	M	Zighrine	L	M	M

Akkar

Akkar

Municipality	13-Apr	14-Apr	15-Apr	Municipality	13-Apr	14-Apr	15-Apr	Municipality	13-Apr	14-Apr	15-Apr
Aain Tinta	M	M	M	Aaiyat	M	M	M	Aakkar El-Aatiqa	M	M	M
Aamar Akkar	M	MH	M	Aamar El Baykat	M	M	M	Aamayer	ML	M	M
Aamriyet Akkar	M	M	M	Aandqet	M	M	M	Aarmeh	M	M	M
Aarqa	M	M	M	Aawaynat	M	M	M	Aayoun Akkar	M	M	M
Abboudiye	M	M	M	Ain El-Zeit	M	M	M	Ain Yaaqoub	M	M	M
Akroum	L	M	M	Aridet Cheikh Zennad	M	H	M	Baldeh w Mazraat Bal	M	M	M
Barcha	M	M	M	Bardeh	M	M	M	Bebnine	M	MH	M
Beino	M	M	M	Beit Ayoub	M	M	M	Beit El-Haouch	M	M	M
Beit Mellat	M	M	M	Beit Younes	ML	M	M	Berbara Akkar	M	M	M
Berqayel	M	M	M	Bezbina	ML	M	M	Bireh Akkar	M	M	M
Borj	M	M	M	Bqerezla	M	M	M	Bzal	ML	M	M
Chane	M	M	M	Chaqdouf	M	M	M	Charbila	M	M	M
Cheikh Mohammad	M	M	M	Cheikh Taba Es-Sahl	M	M	M	Cheikh Taba	M	M	M
Cheikh Zennad	M	MH	M	Cheikhlar	M	M	M	Chir Hmairine	M	M	M
Daghle	M	M	M	Dahr Laissine	M	M	M	Darine	M	M	M
Dawra	M	M	M	Dawsa w Baghdadi	M	M	M	Dayret Nahr El-Kabir	M	M	M
Deir Dalloum	M	MH	M	Deir Jennine	M	M	M	Denbou	ML	M	M
Dibbabiyyeh	M	M	M	Douair Aadwiyeh	M	M	M	Fassikine	M	M	M
Fnaydek	L	M	M	Fraydes Akkar	M	M	M	Ghazayle	M	M	M
Habchit	ML	M	M	Hakour	M	M	M	Halba	M	M	M
Haouchab	M	M	M	Hayssat	M	M	M	Haytla	M	M	M
Hayzouq	M	M	M	Hedd	M	M	M	Hmaira Akkar	M	M	M
Hmaiss Akkar	M	M	M	Hnaider	M	M	M	Hokr Ed-Dahri	M	MH	M
Hokr Etti	M	M	M	Hokr Jouret Srar	M	M	M	Houaich	M	M	M
Hrar	M	M	M	Idbil	M	M	M	Ilal	M	M	M
Janine	M	M	M	Jdeidet El-JoumeH	M	M	M	Jdeidet El-Kaiteh	M	M	M
Jebrayel	M	M	M	Kafr	M	M	M	Kafr	M	M	M
Karm Asfour	M	M	M	Kfar Melki Akkar	M	MH	M	Kfar Noun	M	M	M
Kfarharra	M	M	M	Khalsa	M	M	M	Kharnoubet Akkar	M	M	M

Khirbet Daoud Aakkar	M	M	M	Khirbet El Remmane	M	M	M	Khirbet Shar	M	M	M
Khoreybet El-Jindi	M	M	M	Khreibet Aakkar	M	M	M	Kneisset Aakkar	M	MH	M
Kneisset Hnaider	M	M	M	Knisse	M	M	M	Kroum El-Aarab	M	M	M
Kwachra	M	M	M	Kweykhat	M	M	M	Machta Hammoud	M	M	M
Majdala	M	M	M	Majdel Akkar	M	M	M	Mar Touma	M	M	M
Marlaya Melhem	M	MH	M	Mashha	M	M	M	Massoudiye	M	MH	M
Mazraat Beit Ghattas	M	M	M	Mazraat En-Nahriye	M	M	M	Mechmech	L	M	M
Memneh	L	L	M	Mhammara	M	MH	M	Mighraq Aakkar	M	MH	M
Minyara	M	M	M	Moqayteh	M	MH	M	Mounjez	M	M	M
Msalla	M	M	M	Mzeihmeh	M	M	M	Nfaiseh	M	M	M
Noura Et-Tahta	M	M	M	Ouadi El-Haour	M	M	M	Ouadi El-Jamous	M	MH	M
Ouyoun El-Ghizlane	M	M	M	Qaabarine	M	MH	M	Qabaait	ML	M	M
Qachlaq	M	M	M	Qantara Aakkar	M	M	M	Qarha Aakkar	ML	M	M
Qarqaf	M	M	M	Qboula	M	M	M	Qleiaat Aakkar	M	MH	M
Qloud El-Baqie	M	M	M	Qobaiyat Aakkar	ML	M	M	Qobbat Chamrat	M	MH	M
Qorayat	ML	M	M	Qornet Aakkar	M	M	M	Qsair Aakkar	M	M	M
Rahbe	M	M	M	Rihaniyet Aakkar	M	M	M	Rmah	M	M	M
Rmoul	M	MH	M	Saadine	M	M	M	Sadaqa	M	M	M
Saidnaya	M	M	M	Sammouniye	M	M	M	Sayssouq	M	M	M
Semmaqiye	M	MH	M	Semmaqli	M	MH	M	Sfinet El-Dreib	M	M	M
Sfinet El-Qaitaa	M	M	M	Sindyanet Zeidane	M	M	M	Souaisset Aakkar	M	M	M
Srar	M	M	M	Tal Abbas El Gharby	M	M	M	Tal Abbas El-Charqy	M	M	M
Tal Biret	M	M	M	Tal Hmayra	M	M	M	Tal Maayan Tal Kiri	M	MH	M
Tal Sibel	M	MH	M	Tallet Chattaha	M	M	M	Tikrit	M	M	M
Tleil	M	M	M	Tshea	L	M	M	Zawarib	M	M	M
Zouq El Hosniyeh	M	M	M	Zouq El-Haddara	M	M	M	Zouq El-Hbalsa	M	M	M
Zouq El-Moqachrine	M	M	M								

Sud

Sour

Municipality	13-Apr	14-Apr	15-Apr	Municipality	13-Apr	14-Apr	15-Apr	Municipality	13-Apr	14-Apr	15-Apr
Aaiyeh	M	M	L	Aalma El-Chaab	M	ML	L	Aaytit	M	M	L
Abbassiyeh Sour	MH	L	M	Abou Chech	M	ML	L	Ain Abou Abdallah	MH	L	M
Ain Baal	M	M	ML	Arzoun	M	M	M	Aziyeh	M	ML	L
Baflaya	M	M	M	Barich	M	M	M	Batouliyeh	M	M	ML
Bayad	M	M	L	Bazouriyeh	M	M	M	Bediass	M	M	M
Bestiyat	M	M	M	Borj El Chemali	M	M	ML	Borj En-Naqoura	M	M	ML
Borj Rahhal	M	ML	M	Boustane	M	ML	L	Btaychiyeh	M	ML	ML
Chaaitiye	M	M	L	Chameh	M	M	L	Chehabiye	M	M	L
Chehour	M	M	M	Chihine	M	M	L	Debaal Sour	M	M	M
Deir Amess	M	M	L	Deir Kifa	M	M	M	Deir Qanoun El-Ain	M	M	ML
Deir Qanoun El-Naher	M	M	M	Derdghaiya	M	M	M	Dhayra	M	ML	L
Halloussiyeh	M	M	M	Hamoul	M	ML	L	Hanaouey	M	M	L
Henniye	M	M	L	Hmairi Sour	M	M	M	Iskandarouna Sour	M	M	L
Jbal El Botom	M	M	L	Jebbin	M	M	ML	Jennata	M	M	M
Jijim	M	ML	L	Jouaiya	M	M	ML	Kneisset Sour	M	M	L

Maarake	M	M	M	Maaroub	M	M	M	Majadel	M	M	L
Majdalzoun	M	M	L	Mansouri Sour	M	M	ML	Marnba	M	M	M
Marouahine	M	ML	L	Mazraat El-Zalloutiy	M	M	L	Mazraat Mechref	M	M	L
Mazraat Tayr Semhat	M	M	M	Mheilib	MH	L	ML	Neffakhiyeh	M	M	M
Niha Sour	M	M	M	Ouadi Jilo	M	M	M	Qana	M	M	L
Qolaileh Sour	M	M	L	Rechknany	M	M	L	Rmadiyah	M	M	L
Selha Sour	M	M	M	Siddiqine	M	M	L	Sour	M	M	ML
Srifa	M	M	M	Tayr Debbe	M	ML	M	Tayr Felsay	M	M	M
Tayr Harfa	M	M	L	Touayri	M	M	M	Toura	M	M	M
Yanouh Sour	M	M	M	Yarine	M	ML	ML	Zebqine	M	ML	L

Saida

Municipality	13-Apr	14-Apr	15-Apr	Municipality	13-Apr	14-Apr	15-Apr	Municipality	13-Apr	14-Apr	15-Apr
Aanqoun	M	M	M	Aaqtanit	M	M	M	Aarab Ej-Jall	M	M	M
Aarab Tabbaya	M	M	M	Abra Saida	MH	M	M	Adloun	MH	ML	M
Adousiyeh	M	ML	M	Ain-El-Deleb	MH	ML	M	Arzai	M	M	M
Babliyah	M	M	M	Barty	M	ML	M	Bissariyeh	M	ML	M
Bnaafoul	M	M	M	Bqosta	M	ML	M	Bramiy	MH	ML	M
Daoudiyeh	M	M	M	Dareb El-Sim	MH	M	M	Erkay	M	M	M
Ghassanieh	M	M	M	Ghazieh	M	M	M	Hajjeh	M	M	M
Haret Saida	MH	M	M	Hartiyeh	MH	M	M	Hlaliye Saida	MH	M	M
Insariyat	M	ML	M	Jazira Saida	MH	ML	M	Kafar Bit	M	ML	M
Kaoutariyet El-Siyad	M	M	M	Kfar Chellal	M	ML	M	Kfar Hatta Saida	M	ML	M
Kfar Milke Saida	M	M	M	Khartoum	M	M	M	Khaziz	M	M	M
Khirbet Ed-Douair Sa	M	ML	M	Khirbet El-Bassal	M	M	M	Khrayeb Saida	M	M	M
Loubieh	M	M	M	Maghdouche	M	M	M	Majdelyoun	MH	M	M
Matariyet El-Choumar	M	M	M	Matayriyeh	M	M	M	Mazraat 'Mseileh	M	M	M
Mazraat 'Snaiber	M	ML	M	Mazraat Aarab Soukka	M	M	M	Mazraat Deir Taqla	M	M	M
Mazraat El Yahoudiye	MH	ML	M	Mazraat El-Housseini	M	ML	M	Mazraat El-Mhaydaleh	M	M	M
Mazraat El-Ouasta	MH	ML	M	Mazraat Jamjim	MH	M	M	Mazraat Kaoutariyet	M	M	M
Mazraat Kfar Badda	MH	M	M	Mazraat Oussamiyat	M	M	M	Mazraat Sari	MH	M	M
Mazraat Sinai	M	M	M	Meemariyeh	M	M	M	Merouaniyeh	M	M	M
Miyeh ou Miyeh	MH	M	M	Najjariyeh	M	ML	M	Qaaqiyat El-Snaouba	M	M	M
Qnarit	M	M	M	Qraiye Saida	MH	ML	M	Saida Ed-Dekermane	MH	M	M
Saida El-Oustani	MH	ML	M	Saida El-Qadimeh	MH	M	M	Saida Kefraya	M	ML	M
Saksakiyeh	M	ML	M	Salhie Saida	M	M	M	Sarafand	M	ML	M
Sfenta	ML	ML	M	Tafahta	M	M	M	Tanbourit	M	M	M
Tebna	M	ML	M	Zaghdraiya	MH	ML	M	Zeita	M	M	M
Zrariyeh	M	M	M								

Jezzine

Municipality	13-Apr	14-Apr	15-Apr	Municipality	13-Apr	14-Apr	15-Apr	Municipality	13-Apr	14-Apr	15-Apr
Ain El-Mir (El Estab	M	M	M	Anane	ML	L	M	Aramta	L	L	M
Ariya	VL	L	M	Aychiyeh	L	L	M	Azour	L	L	M
Baba	L	L	M	Bayssour Jezzine	M	M	M	Benoueteh Jezzine	L	ML	M
Bhannine	VL	L	M	Bisri	L	L	M	Bkassine	VL	L	M
Bouslaya	L	L	M	Btedine El-Leqech	VL	L	M	Chbail	L	L	ML
Choualiq Jezzine	M	ML	M	Dahr Ed-Deir	ML	L	M	Deir El Qattine	L	L	M

Demachqiyeh	L	M	M	Ghabbatiyeh	VL	L	M	Harf Jezzine	VL	L	M
Hassaniyeh	M	ML	M	Haytouleh	M	ML	M	Haytura	L	L	M
Hidab	L	L	M	Homsiyeh	L	L	M	Jabal Toura	L	L	M
Jarmaq	L	M	M	Jensnaya	M	ML	M	Jernaya	M	ML	M
Jezzine	L	L	M	Karkha	M	ML	M	Kfar Falous	M	ML	M
Kfar Houna	VL	L	M	Kfar Jarrah	M	M	M	Lebaa	M	M	M
Louayzet Jezzine	L	L	M	Machmouche	VL	L	M	Mahmoudiyeh Jezzine	L	M	M
Maknounye Jezzine	L	L	M	Maraat Ouzaïyeh	L	M	M	Mazraat Daraya	L	L	M
Mazraat El-Aarqoub	L	L	M	Mazraat El-Mathane	L	L	M	Mazraat El-Rahbane	L	L	M
Mazraat Khallet Khaz	L	L	M	Mazraat Louzid (Loua	L	L	M	Mazraat Qrouh	L	L	M
Mazraat Tamra	L	M	M	Mazraat Zighrine Jez	L	L	M	Mazraat	L	L	M
Mharbiyeh	M	ML	M	Midane Jezzine	L	L	M	Mjeydel Jezzine	M	ML	M
Mlikh	L	L	M	Mrah El-Hbasse	M	M	M	Ouadi Baanqoudaine	M	M	M
Ouadi El-Laymoun	M	ML	M	Ouardiyeh	L	VL	L	Qabaa Jezzine	VL	L	M
Qatrani	L	L	M	Qaytouleh	L	L	M	Qtaleh Jezzine	ML	L	M
Rihane Jezzine	L	L	M	Rimat	M	L	M	Roum	L	L	M
Roummanet	L	L	M	Sabbah	L	L	M	Saydoun	L	L	M
Sfaray	ML	L	M	Snaya	L	L	M	Sojoud	L	L	M
Srayri	L	ML	M	Taaid	L	L	M	Wadi Jezzine	L	L	M
Zhalta	L	L	M								

Bekaa

West Bekaa

Municipality	13-Apr	14-Apr	15-Apr	Municipality	13-Apr	14-Apr	15-Apr	Municipality	13-Apr	14-Apr	15-Apr
Aammiq BG	L	M	ML	Ain El Tineh BG	L	L	M	Ain Zebdeh	L	M	M
Ana	L	M	ML	Aytanit	VL	ML	M	Baaloul BG	L	M	M
Bab Mareh	VL	M	M	Chouberqiye Aammiq	L	M	ML	Dakoue	ML	M	L
Deir Ain El-Jaouze	VL	ML	M	Deir Tahniche	L	M	ML	Ghaza	ML	M	ML
Harime El-Soughra	L	M	ML	Hoch Harimeh	L	M	ML	Jazira BG	VL	M	ML
Jib Jennine	L	M	ML	Kamed-El-Laouz	L	M	L	Kefraya BG	L	M	M
Khiara El Atika	L	M	ML	Khiara	ML	M	ML	Khirbet Qanafar	L	M	M
Lala	L	M	ML	Lebbaya BG	L	ML	M	Loussa	L	ML	M
Machghara	L	ML	M	Manara (Hammara) BG	L	M	L	Mansoura BG	L	M	ML
Marej BG	L	M	M	Maydoun	L	ML	M	Ouaqf BG	VL	M	ML
Qaraaoun	L	M	M	Qelya	ML	L	M	Raouda (Istabel)	L	M	ML
Saghbine	VL	ML	M	Sohmor	L	ML	M	Soltan Yacoub el Ara	ML	M	L
Souairy	ML	M	L	Sultan Yaacoub	L	M	L	Tal Znoun	L	M	ML
Yehmor BG	L	ML	M	Zilaya	ML	L	M				

Zahle

Municipality	13-Apr	14-Apr	15-Apr	Municipality	13-Apr	14-Apr	15-Apr	Municipality	13-Apr	14-Apr	15-Apr
Aanjar (Haouch Mouss)	ML	M	ML	Ablah	ML	M	ML	Ain Kfarzabad	L	M	ML
Ali-El-Nahri	M	M	ML	Bar Elias	ML	M	M	Bouarej	L	M	ML
Cheberqiyet Tabet	L	M	M	Chtaura	L	M	ML	Deir El Ghazal	L	M	ML
Delhamiyet Zahle	L	M	M	Ferzol	L	M	ML	Haouch El-Ghanam	M	M	ML
Haouch Es-Siyadeh	VL	M	M	Haouch Hala	M	M	ML	Haouch Mandara	VL	M	M

Haouch Qayssar	VL	M	M	Hezerta	L	ML	ML	Hosh Moussa	L	M	M
Jdita	L	M	ML	Kfarzabad	L	M	ML	Ksara	ML	M	M
Majdel Aanjar	L	M	L	Makssi	L	M	M	Massa	ML	M	ML
Mazraat Er-Remtaniye	L	M	ML	Mrayjat Zahle	L	M	ML	Mzaraa Zahle	L	M	ML
Nabi Ayla	ML	M	ML	Nasriyet Rizk	ML	M	ML	Nasriyet Zahle	VL	M	M
Niha Zahle	L	M	ML	Ouadi Ed-Deloum	L	ML	ML	Ouadi El-Arayech	L	M	ML
Qaa El Rim	L	M	ML	Qab Elias	VL	M	ML	Qousaya	L	M	ML
Rhit	ML	M	ML	Riyak	M	M	ML	Saadnayel	ML	M	M
Taal El-Akhdar	VL	M	ML	Taalbeya	L	M	ML	Taanayel	L	M	M
Talamara	M	M	ML	Tcheflik Edde Haouch	L	M	ML	Tcheflik Qiqano	VL	M	M
Terbol Zahle	L	M	M	Touaite Zahle	L	M	ML	Zahle Aradi	L	M	ML
Zahle El-Berbara	VL	M	ML	Zahle El-Maallaqa	VL	M	ML	Zahle El-Midane	VL	M	ML
Zahle Er-Rassiye	VL	M	ML	Zahle Haouch El-Ouma	ML	M	M	Zahle Haouch El-Ouma	L	M	ML
Zahle Haouch Ez-Zara	VL	M	ML	Zahle Maalaaqa Aradi	L	M	ML	Zahle Mar Antonios	VL	M	ML
Zahle Mar Elias	VL	M	ML	Zahle Mar Gerios	VL	M	ML	Zahle Saydet En-Naja	VL	M	ML
Zebdoul	L	M	ML								

Rachaiya

Municipality	13-Apr	14-Apr	15-Apr	Municipality	13-Apr	14-Apr	15-Apr	Municipality	13-Apr	14-Apr	15-Apr
Ain Arab Rachaiya	ML	M	L	Ain Ata	L	ML	L	Ain Harche	L	ML	L
Aqabe Rachaya	L	ML	L	Ayha	M	M	L	Ayta El Fokhar	ML	M	L
Bakifa Rachaya	L	ML	L	Bakka	M	M	L	Beit Lahya	L	ML	L
Bireh Rachaiya	L	M	L	Daher El Ahmar	L	M	L	Deir El-Achayer	ML	M	L
Heloua Rachaiya	M	M	L	Hoch El Qannabeh Rac	L	L	L	Kaoukaba Bou Arab	L	M	L
Kfar Danis	L	M	L	Kfar Mechki	L	ML	M	Kfar Qouq	ML	M	L
Kherbet Rouha	L	M	L	Majdel Balhiss	L	M	M	Mdoukha	ML	M	L
Mhaydseh Rachaiya	L	M	L	Nabi Safa	L	L	M	Rachaiya	ML	M	L
Rafid Rachaiya	L	M	L	Selsata (Mazraat Dei	ML	M	VL	Tannoura	L	ML	L
Yanta	M	M	L								

Beyrouth

Beyrouth

Municipality	13-Apr	14-Apr	15-Apr	Municipality	13-Apr	14-Apr	15-Apr	Municipality	13-Apr	14-Apr	15-Apr
Achrafieh	M	M	M	Ain el-Mreisse	M	M	M	Bachoura	M	M	M
Beirut Central Distr	M	M	M	Marfai	M	M	M	Mazraa	M	M	M
Medaouar	M	M	M	Minet el-Hosn	M	M	M	Mwssaitbeh	M	M	M
Ras Beirut	M	M	M	Rmeil	M	M	M	Saifi	M	M	M
Zqaq el-Blat	M	M	M								



نشرة الطقس الصادرة عن دائرة التقديرات في مصلحة الأرصاد الجوية

النشرة: المسائية

الأربعاء: ١٢ نيسان ٢٠١٧

الحالة العامة: تنحسر الكتل الهوائية الدافئة تدريجياً عن الحوض الشرقي للمتوسط بدءاً من فجر الخميس ليسيتر منخفض جوي ماطر يستمر حتى مساء السبت.

الطقس المتوقع في لبنان:

الخميس: غائم إجمالاً مع انخفاض ملحوظ بدرجات الحرارة. تتساقط الامطار غزيرة أحياناً مع برق ورعد ورياح ناشطة. تنحسر الامطار و الرياح ليلاً.

الجمعة: غائم جزئياً الى غائم مع انخفاض إضافي بدرجات الحرارة وتساقط امطار متفرقة كما تنشط الرياح من حين لآخر.
السبت: غائم جزئياً الى غائم أحياناً دون تعديل يذكر بدرجات الحرارة مع تساقط امطار متفرقة مصحوبة برياح ناشطة نسبياً، كما تشهد انقراجات واسعة نهاراً، يتحسن الطقس تدريجياً بدءاً من المساء.

الجمعة		الخميس		الأربعاء		درجات الحرارة المتوقعة	
١٩/١٤	٢٠/١٤	٢٢/١٦	٢٣/١٦	٣٠/١٦	٣١/١٦	صور	الساحل
٢٠/١٥		٢٣/١٧		٣١/١٧		بيروت	
١٩/١٤		٢٢/١٦		٢٧/١٦		طرابلس	
١٦/١٠	١٦/٩	٢٢/١٥	٢٢/١٤	٢٦/١٧	٢٦/١٦	بيصور	الجبال
١٥/٩		٢١/١٤		٢٤/١٦		قرطبا	
٨/٥		١٣/١٠		١٨/١١		الأرز	
١٧/١٠	١٧/٨	٢٠/١٤	٢٤/١٠	٢٢/١٦	٢٤/١٢	مرجعيون	الداخل
١٦/٨		٢٤/١٠		٢٤/١٢		زحلة	

الرياح السطحية: جنوبية شرقية ليلاً ناشطة أحياناً، وجنوبية غربية نهاراً سرعتها بين ١٥ و ٤٥ كم/س، تشتد لتصل الى ٦٥ كم/س.

الانقيشاع: متوسط، يسوء أحياناً بسبب الغبار.

الرطوبة النسبية على الساحل:

بين ٢٥% و ٦٥%

حرارة سطح الماء: ١٩°م.

أي ما يعادل: ٧٥٥ ملم زئبق

ساعة غروب الشمس: ١٩:٠٦

حال البحر: متوسط.

الضغط الجوي: ١٠٠٦ HPA

ساعة شروق الشمس: ٠٦:١٣