

# Lebanon Fire Risk Bulletin



CIVIL DEDEFENCE

**Refer to cadast table condition.**

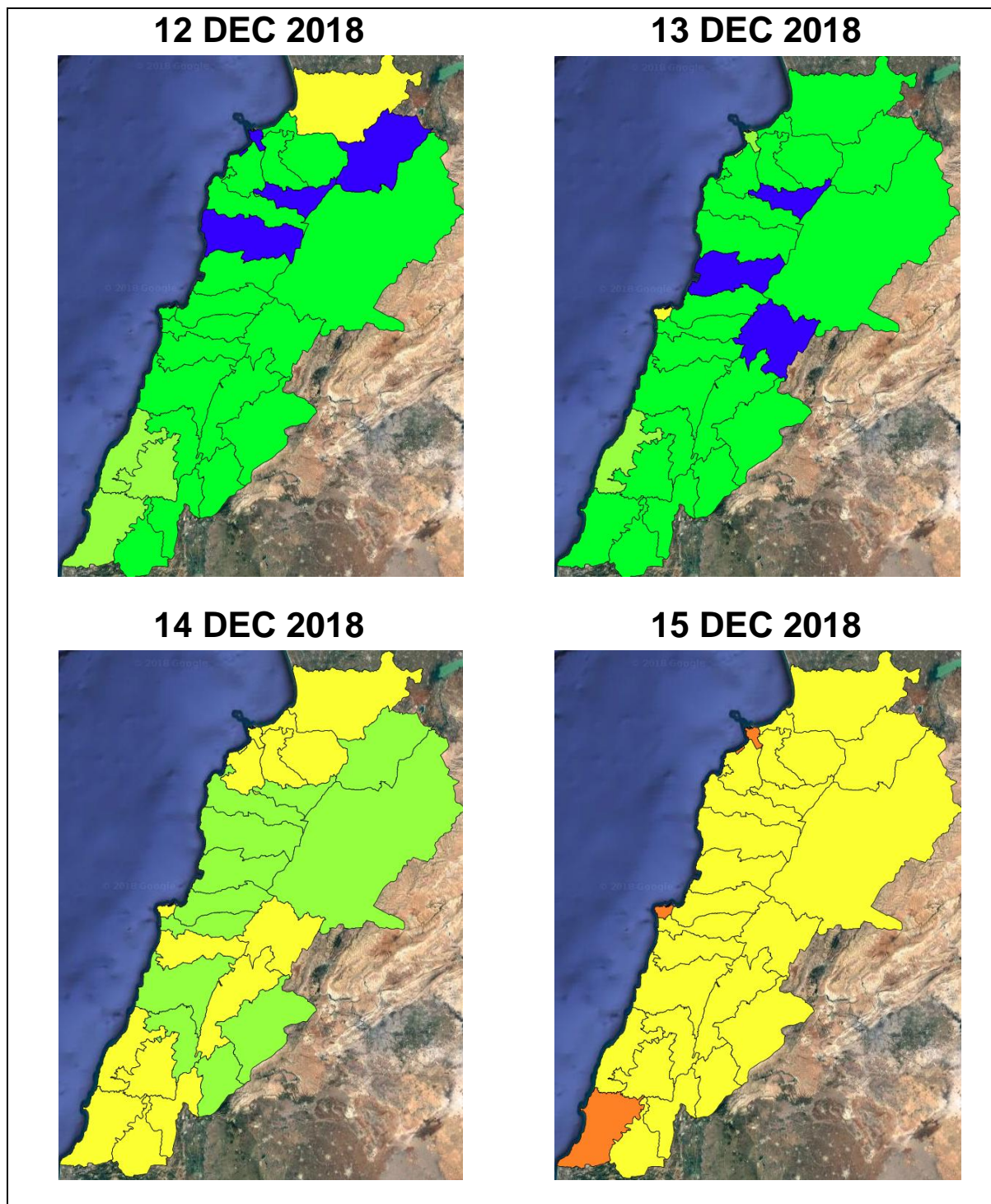
**Please note that the indicated temperature is at 2 meters height from the ground.**

General description of potential fire risk situation

Symbol	Level of risk	Meaning and actions
VL	<b>Very low</b>	Very low fire risk. Controlled burning operations can be hardly executed due to high fuel moisture content. Normally wildfires self-extinguish.
L	<b>Low</b>	Low fire risk. Controlled burning operations can be executed with a reasonable degree of safety.
ML	<b>Medium low</b>	Medium-low fire risk. Controlled burning operations can be executed in safety conditions. All the fires need to be extinguished.
M	<b>Medium</b>	Medium fire risk. Controlled burning operations would be avoided. All the fires need to be very well extinguished.
M	<b>Medium high</b>	Controlled burning is not recommended. Open flame will start fires. Cured grasslands and forest litter will burn readily. Spread is moderate in forests and fast in exposed areas. Patrolling and monitoring is suggested. Fight fires with direct attack and all available resources.
H	<b>High</b>	Ignition can occur easily with fast spread in grass, shrubs and forests. Fires will be very hot with crowning and short to medium spotting. Direct attack on the head may not be possible requiring indirect methods on flanks. Patrolling and monitoring the territory is highly suggested.
E	<b>Extreme</b>	Ignition can occur also from sparks. Fires will be extremely hot with fast rate of spread. Control may not be possible during day due to long range spotting and crowning. Suppression forces should limit efforts to limiting lateral spread. Damage potential total. Patrolling and monitoring the territory is highly suggested.

**Beirut, 13 December 2018**

# FIRE RISK INDEX

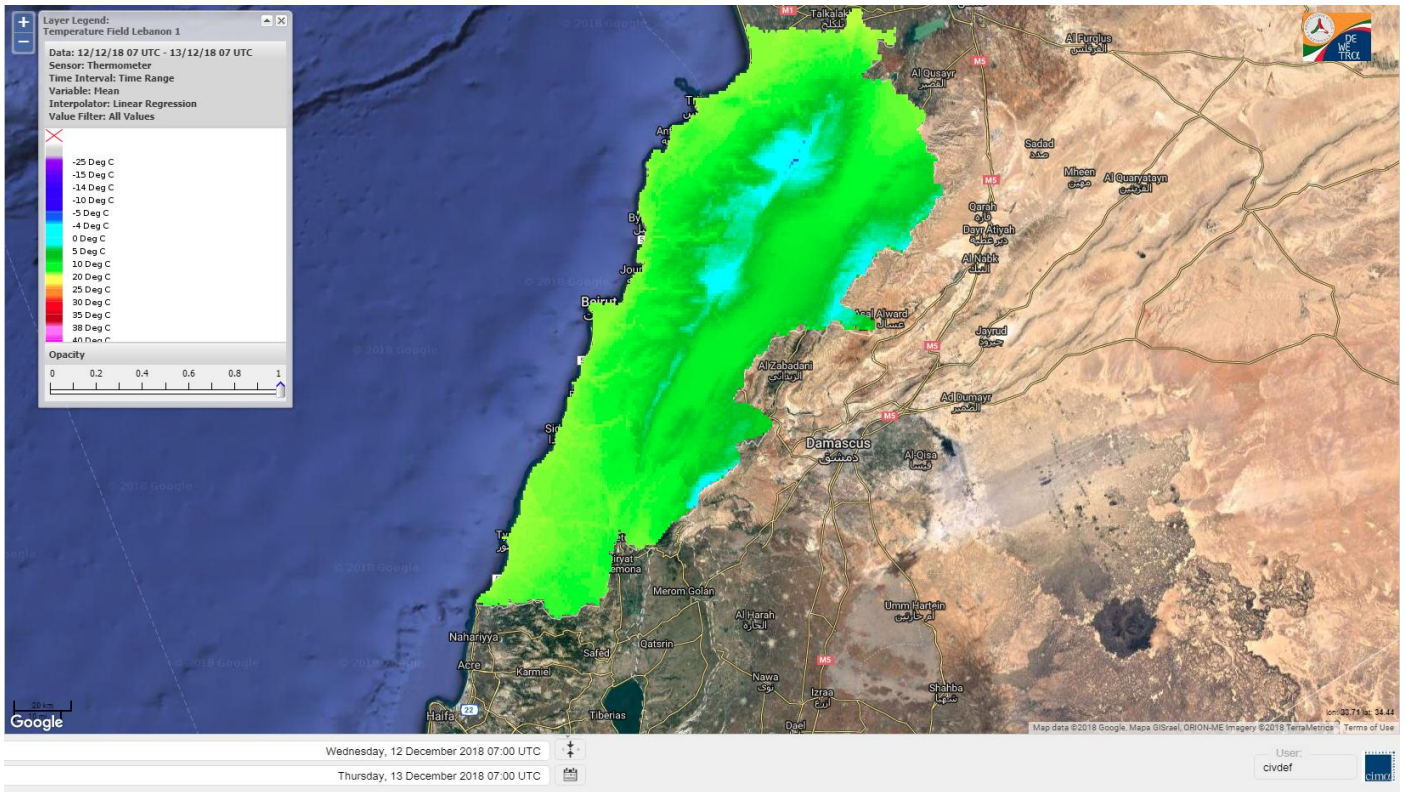


**Layer Legend:**  
Lebanon Wildfire Risk Index 1

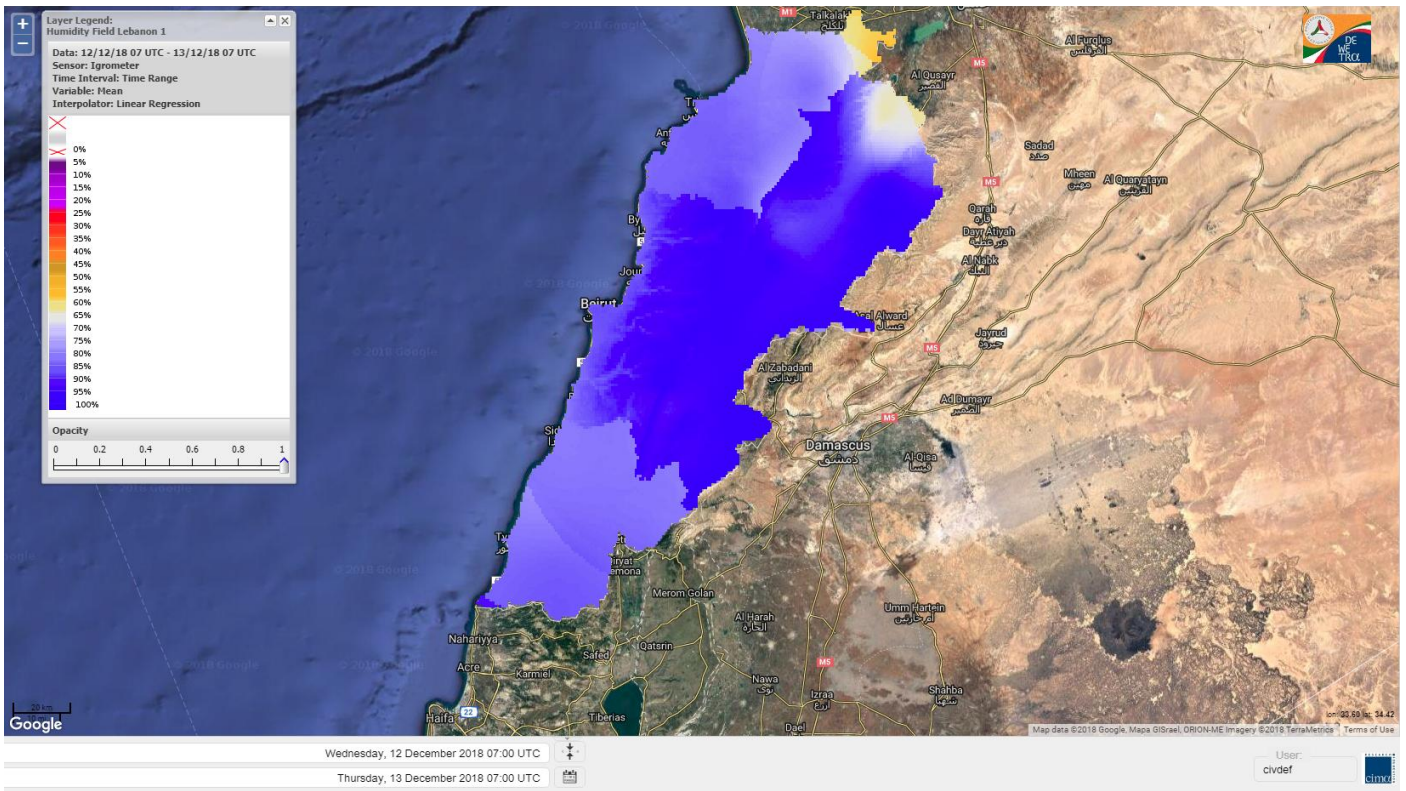
Data: Run: 13/12/2018 00:00. Forecast for 13  
Model: RISICO for the Republic of Lebanon  
Variable: Fire Weather Index  
Spatial Resolution: Caza

- VERY LOW
- LOW
- MEDIUM-LOW
- MEDIUM
- MEDIUM-HIGH
- HIGH
- EXTREME

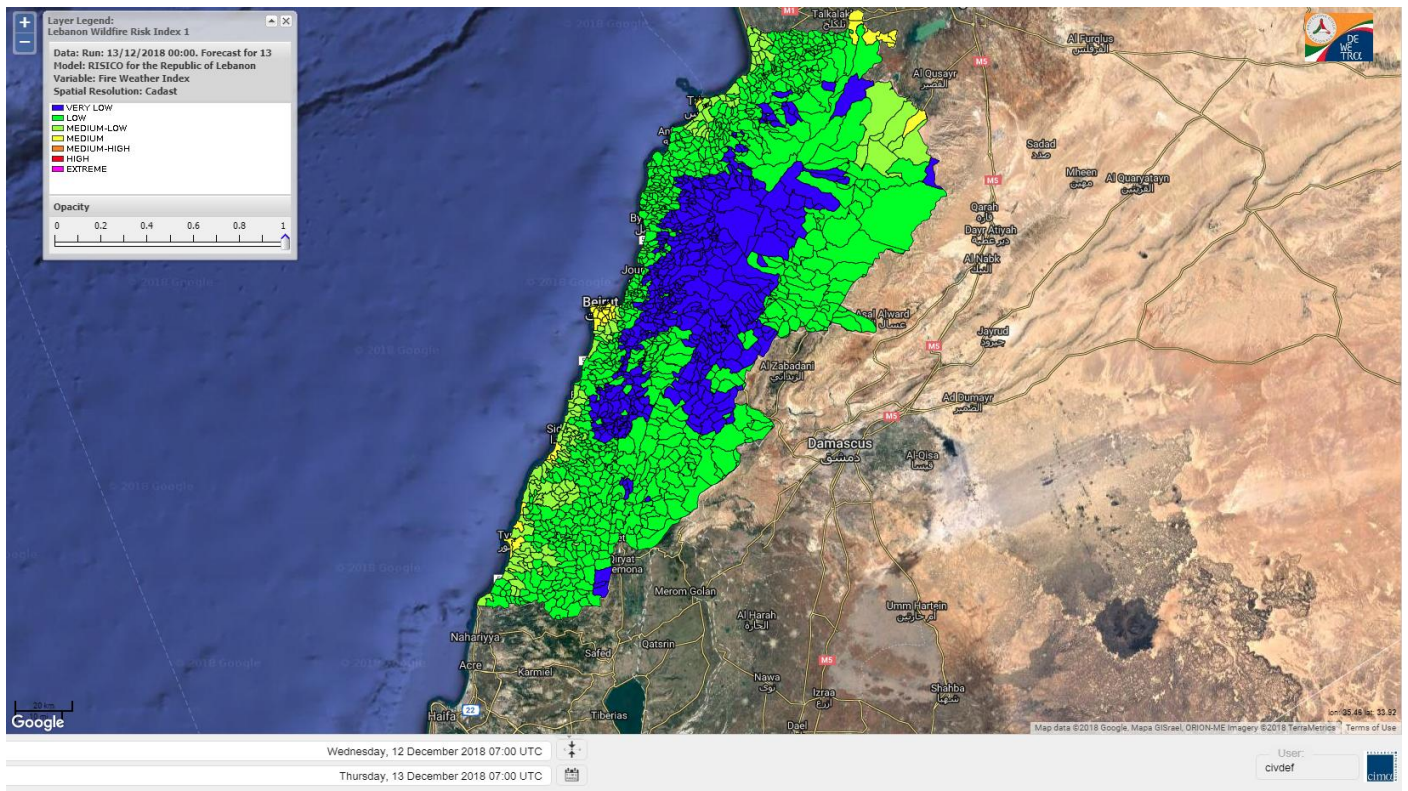
# Lebanon temperature for Lebanon 13 DEC 2018



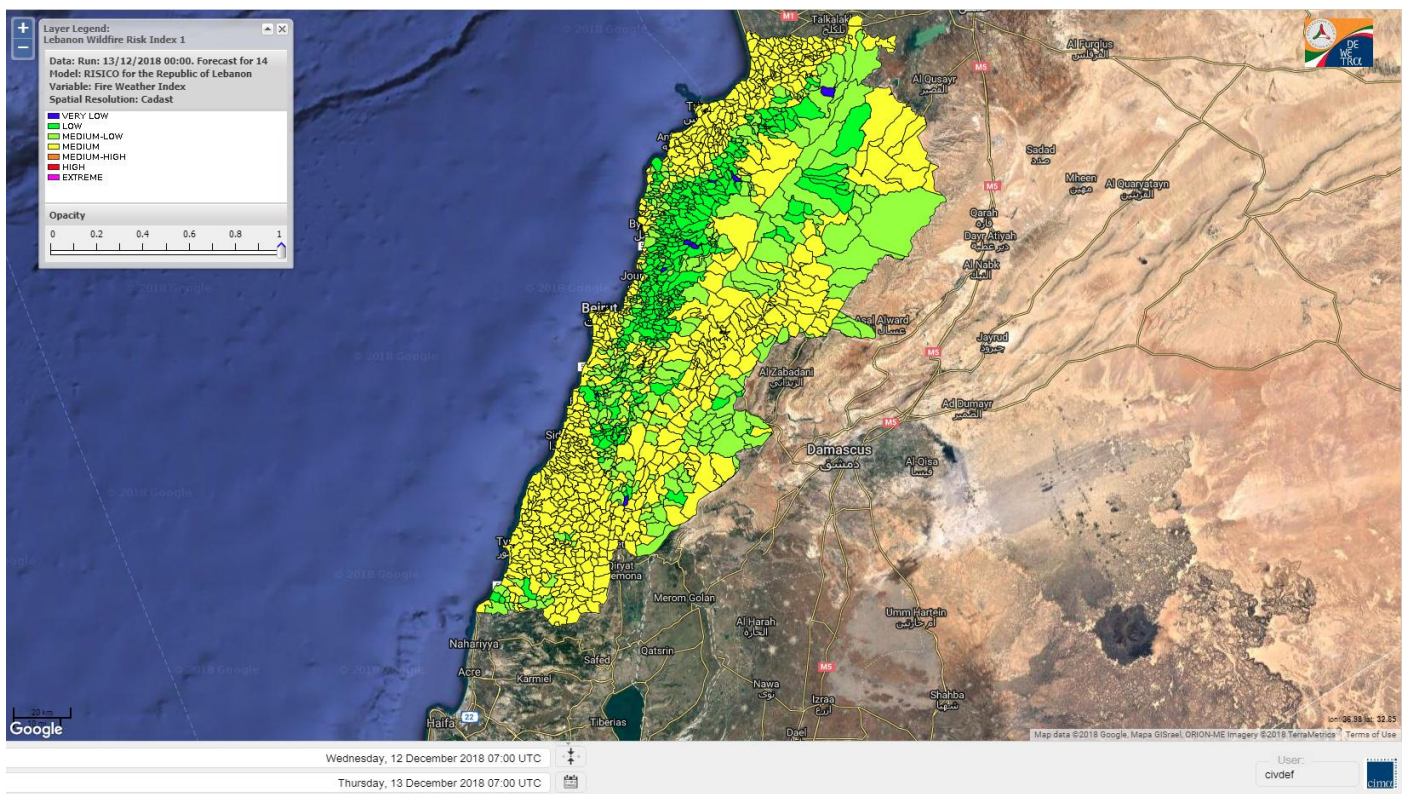
# Lebanon humidity for Lebanon 13 DEC 2018



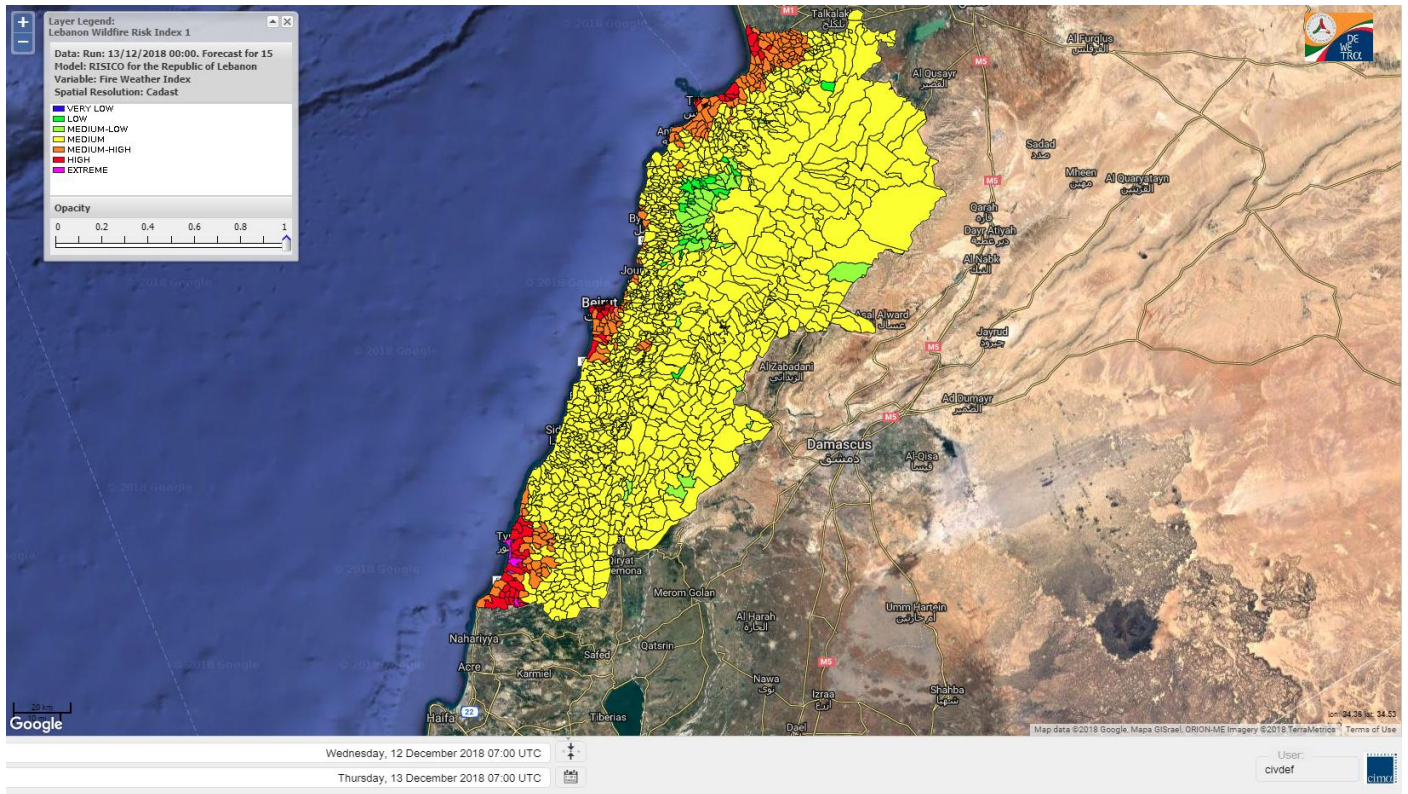
# Lebanon for 13 DEC 2018



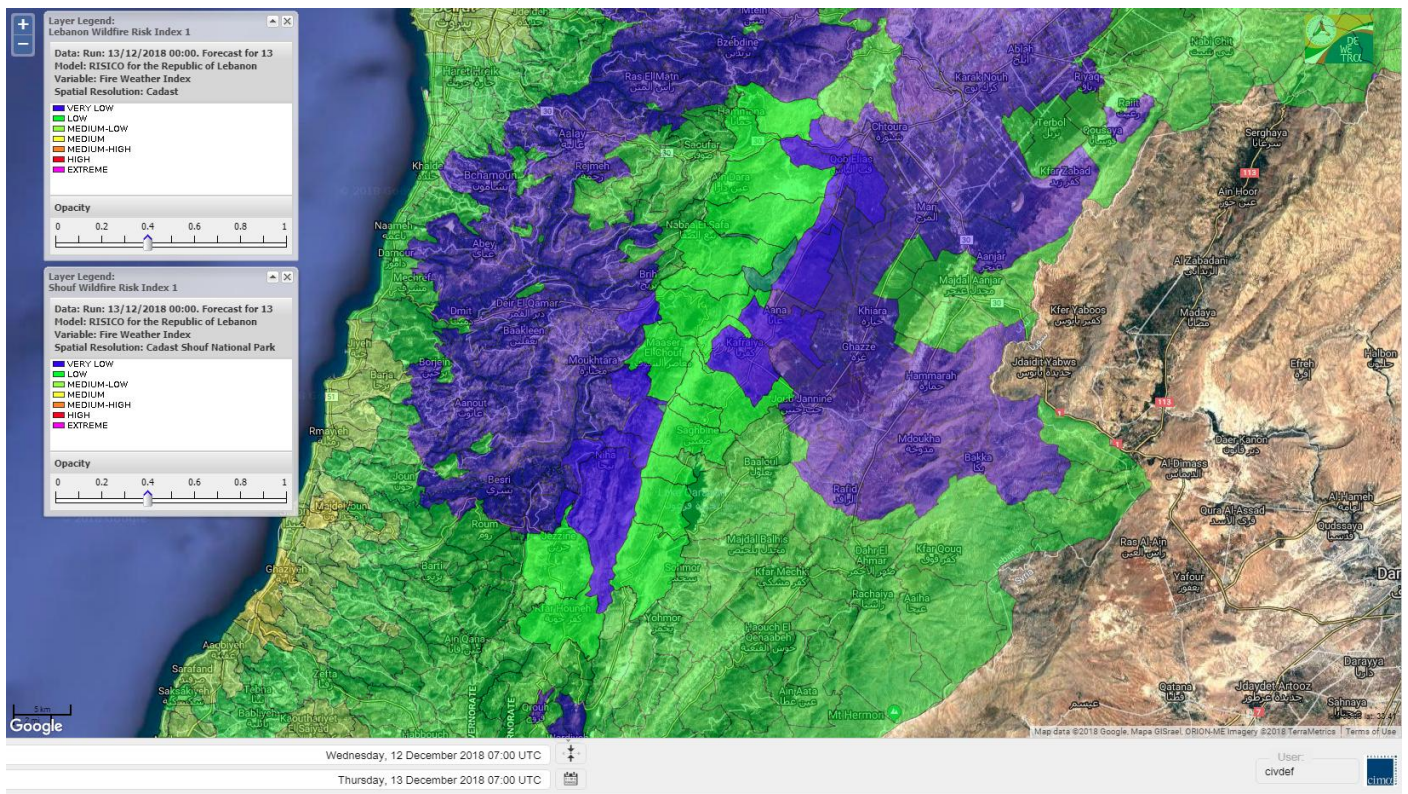
# Lebanon for 14 DEC 2018



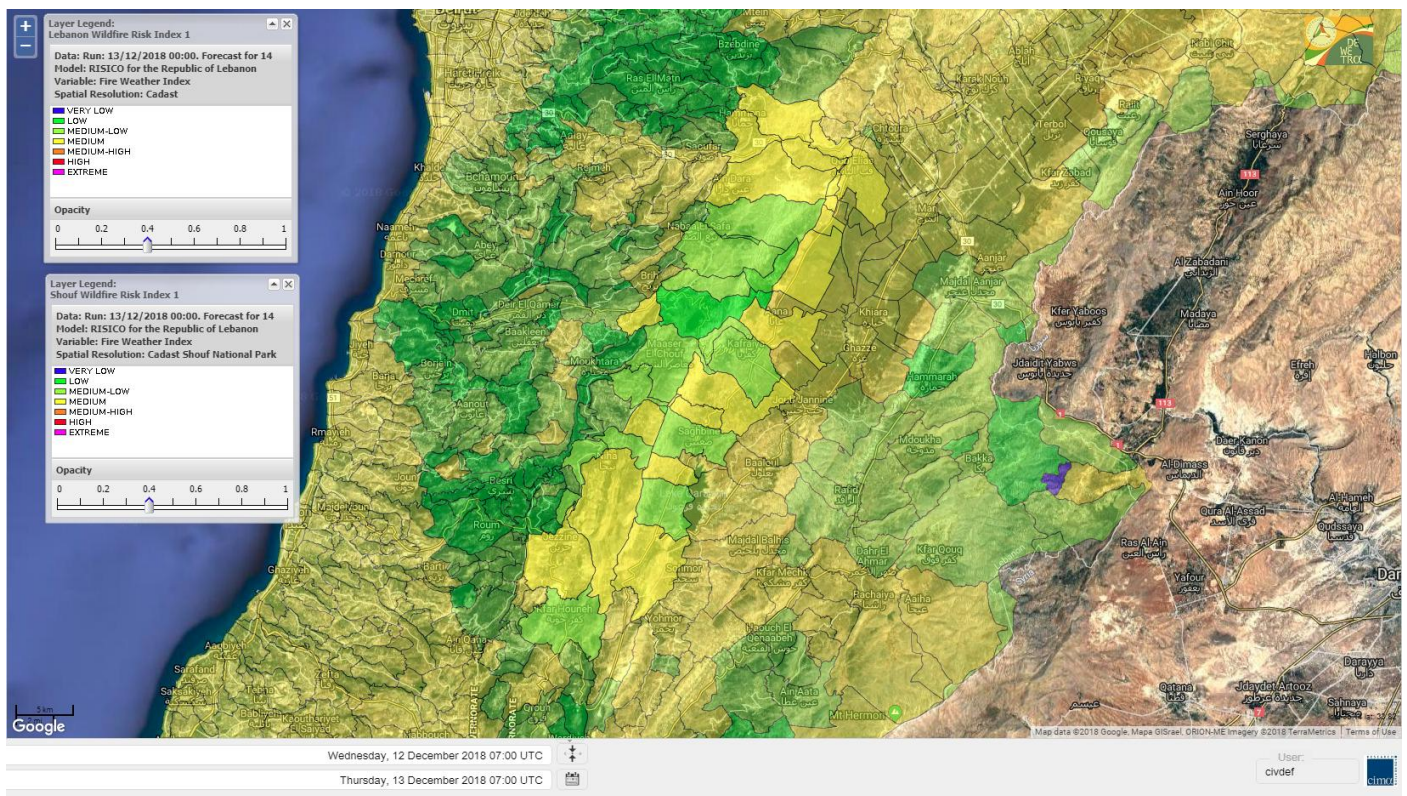
# Lebanon for 15 DEC 2018



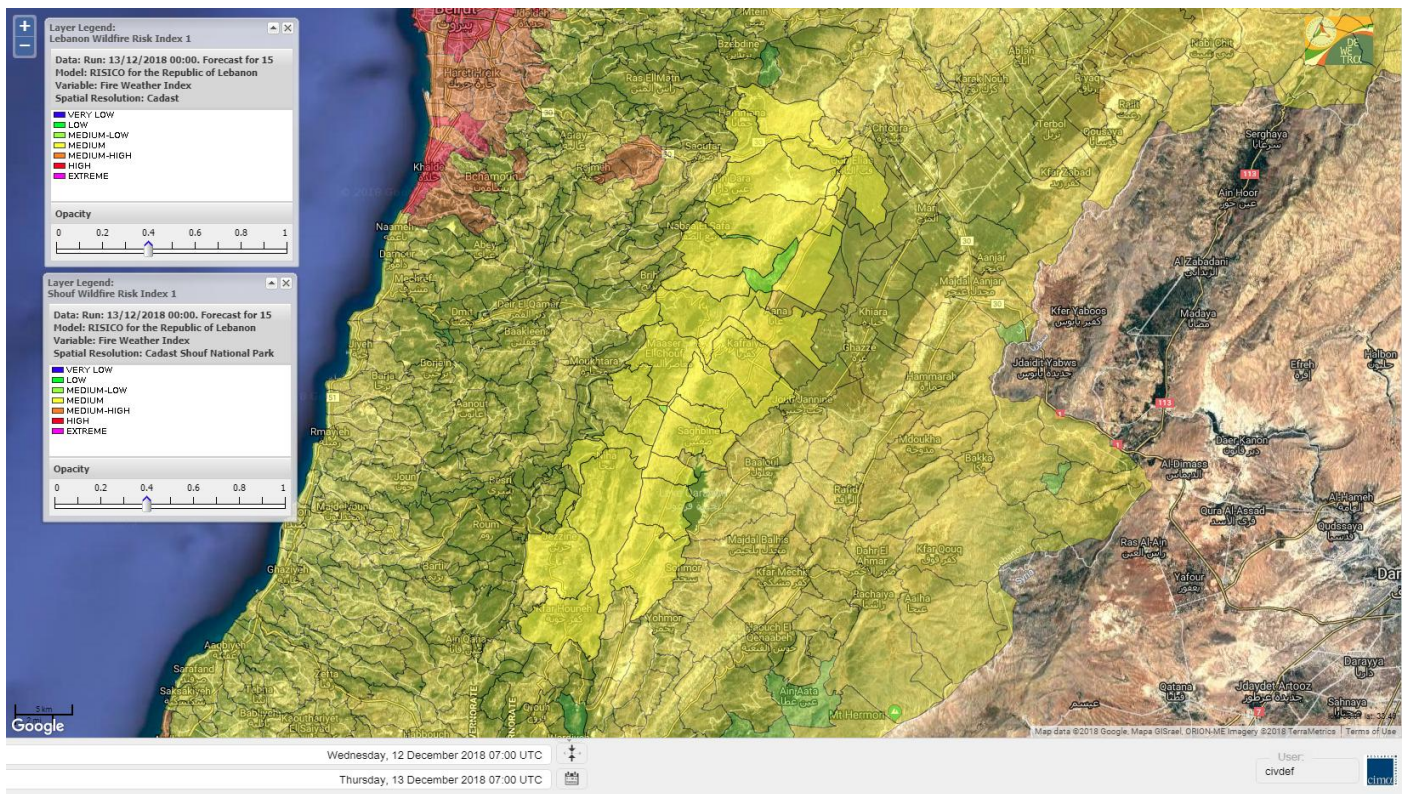
# Shouf Biosphere Reserve Forecast for 13 DEC 2018



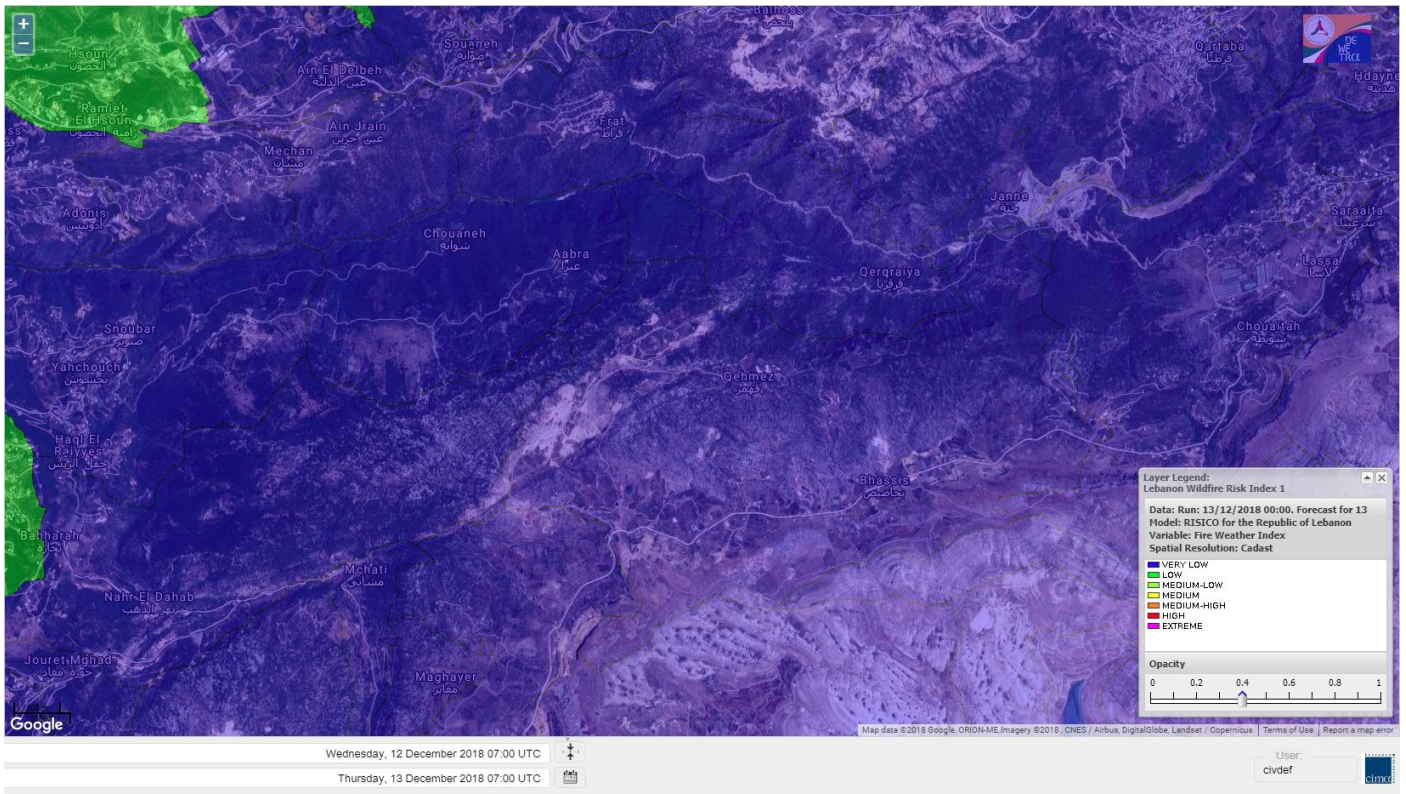
# Shouf Biosphere Reserve Forecast for 14 DEC 2018



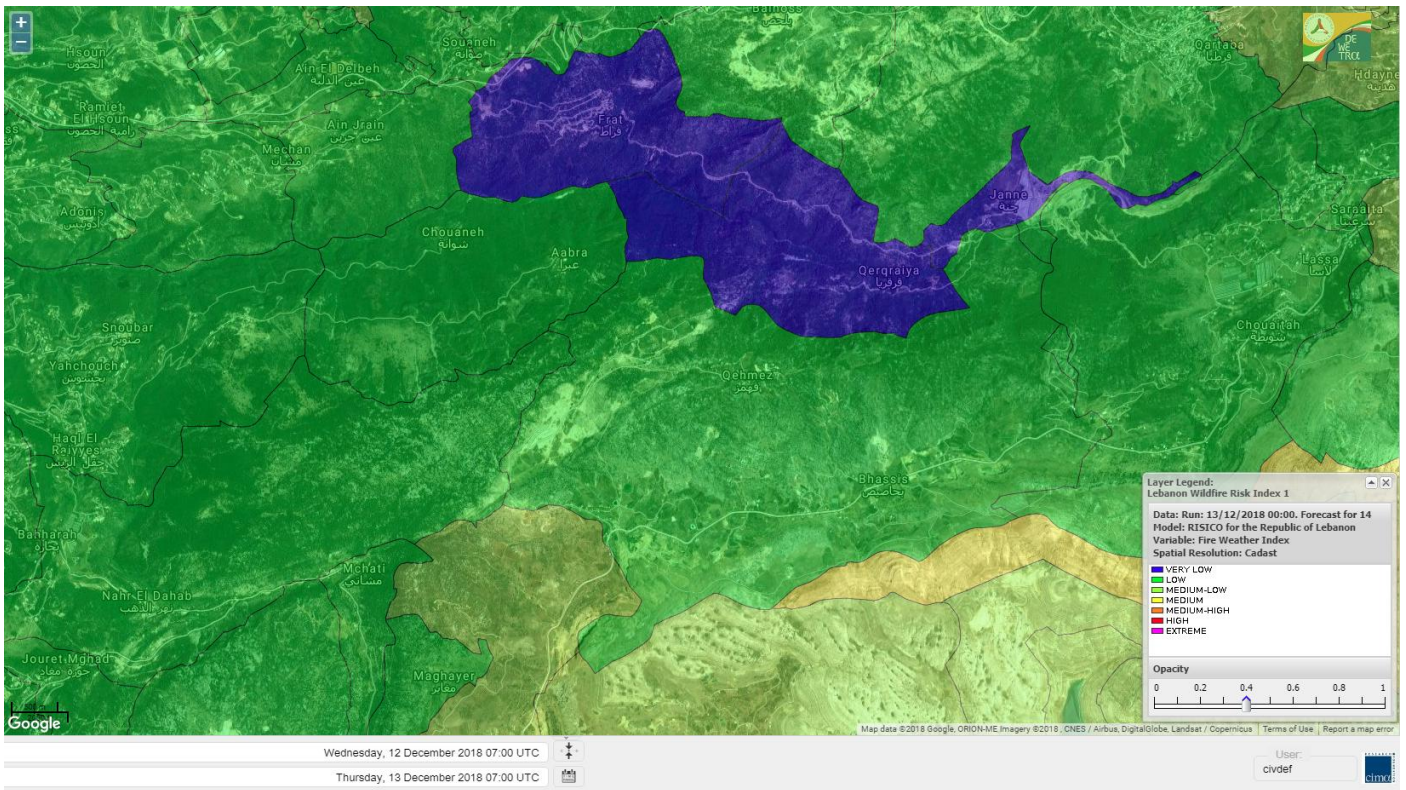
# Shouf Biosphere Reserve Forecast for 15 DEC 2018



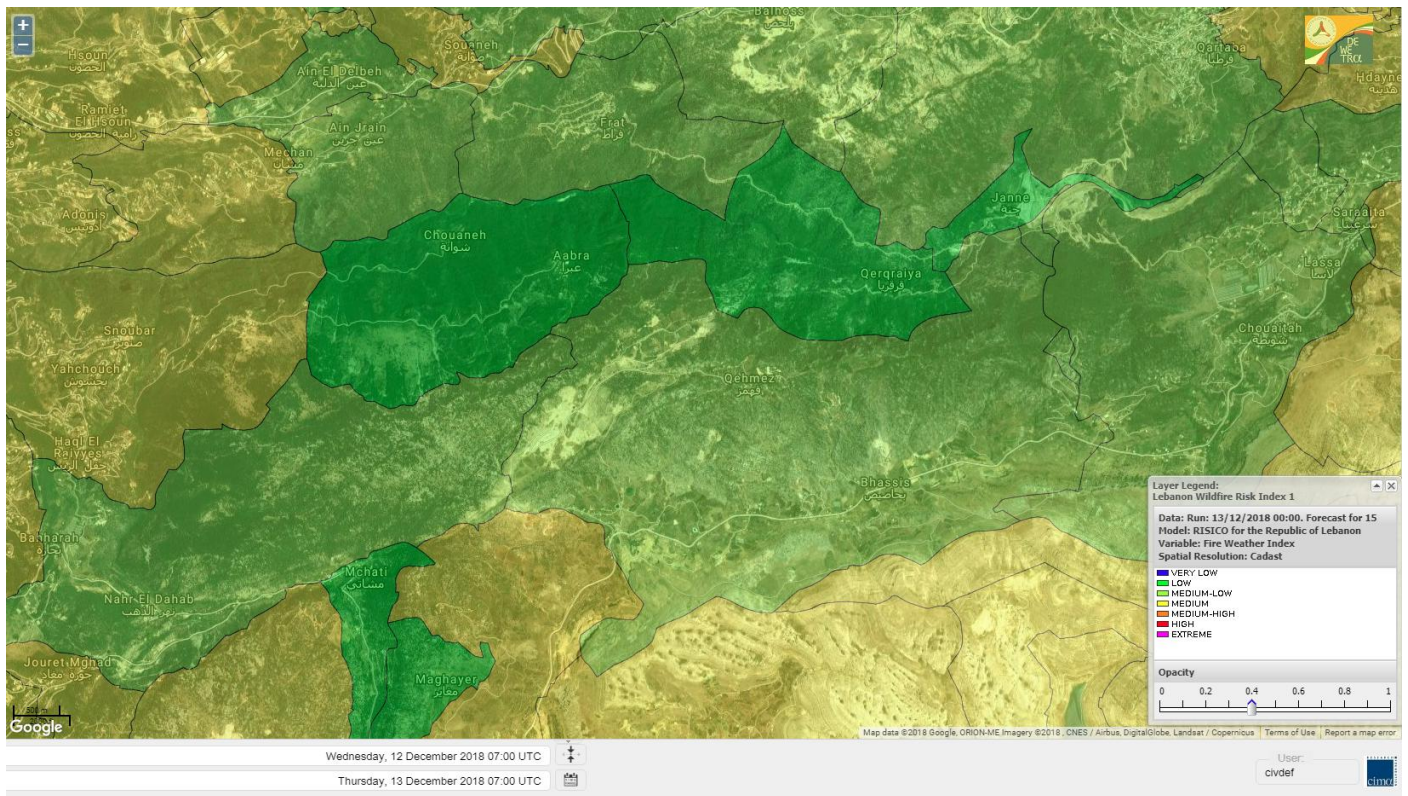
# Jabal Moussa Reserve Forecast for 13 DEC 2018



# Jabal Moussa Reserve Forecast for 14 DEC 2018



# Jabal Moussa Reserve Forecast for 15 DEC 2018

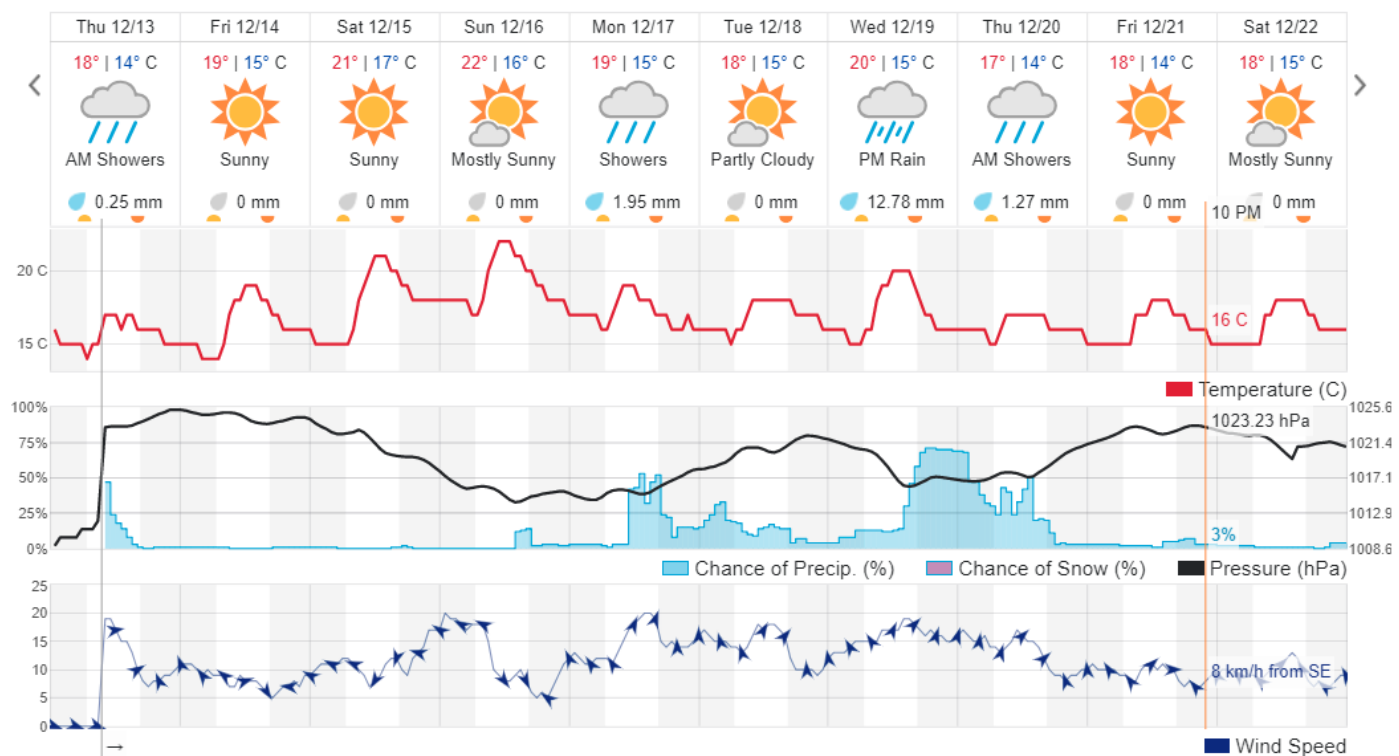


## Beirut, Lebanon

17° ACHRAFIEH, RIZK STATION | REPORT | CHANGE

TODAY HOURLY 10-DAY CALENDAR HISTORY WUNDERMAP

Customize





## Nord

### Koura

Municipality	13-Dec	14-Dec	15-Dec	Municipality	13-Dec	14-Dec	15-Dec	Municipality	13-Dec	14-Dec	15-Dec
Aaba	L	M	M	Afsaddiq	L	M	M	Ain Ekrine	L	M	M
Amioun	L	M	M	Anfeh	L	M	MH	Badbhoun	L	M	MH
Barghoun	L	M	M	Barsa	L	M	MH	Batroumine	ML	M	MH
Bdebba	L	M	MH	Bechmizzine	L	M	M	Bednayet El-Koura	L	ML	M
Bhabbouch El-Koura	L	M	M	Bkeftine	L	M	MH	Bnehran	L	ML	M
Bqaiaa El-Koura	ML	M	MH	Bsarma	L	M	M	Btaaboura	L	M	MH
Bterram	L	M	M	Btouratij	ML	M	MH	Bziza	L	M	M
Dar Beehtar	L	M	M	Dar Chmezzine	L	M	M	Deddeh	ML	M	MH
Deir El-Balamand	L	M	M	Fih	L	M	M	Hraiche	L	M	MH
Ijdaabrine	L	ML	M	Kaftoun	L	M	M	Kefraya El-Koura	L	M	M
Kfarakka	L	M	M	Kfarhata	L	M	M	Kfarhazir	L	M	M
Kfarkahel	ML	M	MH	Kfarsaroun	L	M	M	Kosba	L	M	M
Mejdel el-Koura	L	ML	M	Nakhle	ML	M	MH	Qalhat	L	M	M
Ras Masqa	ML	M	MH	Rechdibbine	L	M	M	Zakroun	L	M	MH
Zgharta El-Mtaouile	L	L	M								

### Bcharre

Municipality	13-Dec	14-Dec	15-Dec	Municipality	13-Dec	14-Dec	15-Dec	Municipality	13-Dec	14-Dec	15-Dec
Aabdine	L	ML	M	Bane	VL	M	M	Barhelioun	L	L	M
Bazouone	VL	ML	M	Becharre	L	M	M	Beit Menzer	L	L	M
Billa	L	ML	M	Blaouza	L	M	M	Bqaa Kafra	VL	M	M
Bqerqacha	VL	ML	M	Breissat	VL	L	ML	Dimane	VL	L	ML
Hadath El Jobbeh	VL	L	ML	Hadchit	VL	ML	M	Hasroun	VL	ML	M
Mazraat Aassaf	VL	VL	L	Mazraat Bani Saab	VL	L	ML	Mchaa El-Jobbeh	VL	M	M
Metrit	L	ML	M	Moghr El-Ahoual	L	ML	M	Ouadi Qannoubine	VL	VL	L
Qanat	VL	L	ML	Qnayouer	VL	L	ML	Tourza	L	L	M

### Batroun

Municipality	13-Dec	14-Dec	15-Dec	Municipality	13-Dec	14-Dec	15-Dec	Municipality	13-Dec	14-Dec	15-Dec
Aabrine	L	L	M	Aalali	VL	L	ML	Aartziz	VL	L	M
Abdelli	L	L	M	Ajdabra	L	L	M	Assia	VL	L	L
Basbina	L	M	M	Batroun	L	M	M	Bcheleh	VL	L	ML
Bechtoudar	VL	L	L	Beit Chlala	VL	L	L	Beit Kassab	VL	L	ML
Bijdarfil	L	M	M	Bqesmaya	L	ML	M	Chatine	VL	L	ML
Chebtin	L	L	M	Chekka	L	M	M	Daael	VL	L	ML
Dahr Abi Yaghi	L	L	M	Daraya El-Batroun	L	M	M	Deir Billa	L	L	M
Deir Kfifane	L	ML	M	Deir Mar Youhanna EL	VL	L	L	Deir Mar Youssef Jra	L	L	M
Douma	VL	L	ML	Douq	L	L	M	Eddeh El-Batroun	L	ML	M
Ftihat El-Batroun	VL	L	ML	Ghouma	L	ML	M	Hadtoun	VL	L	ML
Hamat	L	L	M	Harbouna	VL	L	M	Hardine	VL	L	L
Helta	VL	L	ML	Hery	L	M	M	Jebbla	VL	L	M
Jrabta El-Batroun	L	ML	M	Jrane El-Batroun	L	M	M	Kfar Aabida	L	ML	M
Kfar Halda	VL	L	L	Kfarb Shlaimane	VL	L	L	Kfarhatna	L	L	M
Kfarhay	L	M	M	Kfarhelos	L	L	M	Kfifane	L	M	M

Kfour El Arabi	VL	L	ML	Koubba	L	M	M	Kour	L	ML	M
Mar Mama	VL	L	M	Masrah	L	L	M	Mehmarch	VL	L	M
Mrah Chdid	L	L	M	Mrah El Ziyat	L	ML	M	Mrah El-Hajj	VL	L	L
Nahle El-Batroun	VL	L	ML	Niha El-Batroun	VL	L	ML	Ouahj El-Hajjar	L	ML	M
Ouata Houb	VL	L	ML	Qatnaaoun	L	ML	M	Racha	VL	L	ML
Rachana	L	ML	M	Rachkida	L	ML	M	Ram El-Batroun	VL	L	L
Ras Nakhach	L	ML	M	Selaata	L	M	M	Sghar	L	ML	M
Smar Jbayl	L	ML	M	Sourat El-Batroun	VL	L	M	Tannourine El-Faouqa	VL	ML	M
Tannourine Et-Tahta	VL	L	L	Thoum	L	ML	M	Toula El-Batroun	L	L	M
Zan	VL	L	M								

## Zgharta

Municipality	13-Dec	14-Dec	15-Dec	Municipality	13-Dec	14-Dec	15-Dec	Municipality	13-Dec	14-Dec	15-Dec
Aachach	L	M	M	Aalma	L	M	M	Aarde	L	M	M
Aintourine	L	ML	M	Arabet Qozhaya	VL	L	ML	Arde	L	M	M
Arjis	L	M	M	Asnoun	L	M	M	Ayto	VL	L	M
Basloukit	L	M	M	Bchannine	L	M	M	Besebeel	L	M	M
Bhairat Toula	VL	L	M	Bnachee	L	M	M	Boussit	ML	M	MH
Danha	L	M	M	Daraiya Zgharta	L	M	M	Deir Jdeide	L	M	M
Ehden	L	M	M	Halan	L	M	M	Hariq Zgharta	L	M	M
Houakir	L	ML	M	Hraiqis	L	M	H	Iaal	L	M	M
Ijbaa	L	ML	M	Karm Saddeh	L	L	M	Kfarchakhna	L	M	M
Kfardlaqous	L	M	M	Kfarfou	L	M	M	Kfarhata Zgharta	L	M	M
Kfarhoura	L	M	M	Kfarsghab	VL	M	M	Kfaryachit	L	M	M
Kfarzaina	L	M	M	Khaldiye	L	M	M	Mazraat Ajbeaa	L	M	M
Mazraat Et-Teffah	VL	L	M	Mazraat Jneid	L	M	M	Mejdlaya Zgharta	L	M	MH
Merh Kfarsghab	L	M	M	Miryata	L	M	MH	Miziara	L	L	M
Mzraat Kefraya	L	M	MH	Qorah Bach	L	M	M	Rachiine	L	M	MH
Ras Kifa	L	ML	M	Sakhra	L	M	M	Sebhel Zgharta	L	ML	M
Serhel	VL	L	L	Tallet Zgharta	L	M	M	Toula Zgharta	VL	L	M
Zgharta	L	M	M								

## Minieh-Denniye

Municipality	13-Dec	14-Dec	15-Dec	Municipality	13-Dec	14-Dec	15-Dec	Municipality	13-Dec	14-Dec	15-Dec
Aasaymout	VL	L	M	Aaymar	L	ML	M	Aazki	L	M	M
Ain El-Tineh-Miniyeh	L	L	M	Assoun	L	ML	M	Bakhaaoun	L	ML	M
Bchennata	L	M	M	Bechehhara	VL	L	M	Beddawi	ML	M	MH
Behouaita	L	L	M	Beit El Foqss	L	L	M	Beit Haouik	L	ML	M
Beit Zoud	L	L	M	Bekaasafrine	L	M	M	Borj El Yahoudiyeh	ML	M	MH
Bqarsouna	L	L	M	Btermaz	VL	L	M	Debaael	L	L	M
Deir Ammar	ML	M	H	Deir Nbouh	L	ML	M	Haouaret-Miniyeh	L	L	M
Haql el Azimeh	VL	L	M	Harf El Siyad	L	L	M	Hazmiye-Miniyeh	VL	L	M
Izal	L	ML	M	Jarjour	VL	L	M	Jayroun	VL	L	M
Kahf El-Malloul	L	L	M	Karm El-Moher	L	ML	M	Kfar Binine	L	L	M
Kfarchalane	L	ML	M	Kfarhabou	L	M	M	Kharroub-Miniyeh	L	ML	M
Mazraat El-Kreme	VL	L	M	Mazraat Ketrane	L	L	M	Merkebtta	L	M	MH
Minyeh	ML	M	MH	Mrah El Sfirat	VL	L	M	Mrah Sraj	L	L	M
Mrebbine	L	ML	M	Nabi Youcheaa	L	M	MH	Nemrine	L	ML	M

Qarhaiya	L	ML	M	Qarne	VL	L	M	Qarsita	VL	L	M
Qattineh-Miniyeh	VL	L	ML	Qemmamine	VL	L	M	Qraine	VL	L	M
Raouda-Aadoua	L	M	M	Rihaniyet-Miniyeh	L	M	MH	Sfireh	VL	L	M
Sir Ed-Danniyeh	L	L	M	Tarane	VL	L	M	Terbol-Miniyeh	ML	M	MH
Zaghartaghriine	L	ML	M	Zouq Bhannine	L	M	MH				

## Nabatiye

### Nabatiye

Municipality	13-Dec	14-Dec	15-Dec	Municipality	13-Dec	14-Dec	15-Dec	Municipality	13-Dec	14-Dec	15-Dec
Aabba	L	M	M	Aazzi	L	M	M	Adchit El-Chqif	L	M	M
Ain Bou Swar	L	M	M	Ain Kana	L	M	M	Ali El-Taher	L	M	M
Ansar	ML	M	M	Arab Salim	L	M	M	Arnoun	L	M	M
Bfaroue	L	M	M	Breyqaah	L	M	M	Charqiyeh	ML	M	M
Choukine	L	M	M	Deir El Zahrani	L	M	M	Doueir El-Nabatiyeh	ML	M	M
Habbouch El-Nabatiye	L	M	M	Hamra El-Nabatiyeh	L	M	M	Harouf El-Nabatiyeh	L	M	M
Hmaile	L	M	M	Houmin El Faouqa	L	M	M	Houmin El Tahta	L	M	M
Jarjough	L	M	M	Jbaah El-Nabatiyeh	L	ML	M	Jebchit	L	M	M
Kfar Djal El-Nabatiy	L	M	M	Kfar Remmane	L	M	M	Kfar Sir	L	M	M
Kfar Tebnit	L	M	M	Kfarfila	L	M	M	Kfour El-Nabatieh	L	M	M
Mayfadoun	L	M	M	Mazraat Bsaffour	ML	M	M	Mazraat Chalbaal	ML	M	M
Mazraat Dmoul	ML	M	M	Mazraat El Khreibeh	L	M	M	Mazraat El-Bayad El-	L	M	M
Mazraat Kfarjaouz	L	M	M	Mazraat Qalaat Meiss	ML	M	M	Nabatiyeh El-Fawka	L	M	M
Nabatiyeh Et-Tahta	L	M	M	Namiriyeh	ML	M	M	Qaaqaaiyet El Jisr	L	M	M
Qossaibeh El-Nabatiy	L	M	M	Roumine	L	M	M	Sarba El-Nabatieh	L	M	M
Sir El-Gharbiyeh	L	M	M	Toul	L	M	M	Yehmor El-Nabatiyeh	L	M	M
Zaoutar El Charkiyeh	L	M	M	Zaoutar El-Gharbiyeh	L	M	M	Zebdine El-Nabatiyeh	L	M	M
Zefta	L	M	M								

### Hasbaiya

Municipality	13-Dec	14-Dec	15-Dec	Municipality	13-Dec	14-Dec	15-Dec	Municipality	13-Dec	14-Dec	15-Dec
Aain Jarfa	L	ML	M	Abou Qamha	VL	ML	M	Ain Qania	L	ML	M
Bourghos	L	M	M	Chebaa	L	M	M	Chouaya Hasbaya	L	ML	M
Dellafeh	L	M	M	Fardiss Hasbaiya	L	M	M	Hasbaya	L	M	M
Hbariyeh	L	ML	M	Kaoukaba Hasbaiya	L	M	M	Kfar Chouba	L	ML	M
Kfar Hamam	L	ML	M	Kfeir El-Zait	L	ML	M	Khalwat Hasbaya	L	L	ML
Khreibet Hasbaiya	L	M	M	Majidiyeh Hasbaiya	L	M	M	Marj Ez-Zhour (Haouc	L	ML	M
Meri	L	M	M	Mimass	L	M	M	Rachaiya El-Fokhar	L	ML	M
Salaiyeb	L	M	M								

### Marjayoun

Municipality	13-Dec	14-Dec	15-Dec	Municipality	13-Dec	14-Dec	15-Dec	Municipality	13-Dec	14-Dec	15-Dec
Aalmane Marjaayoun	L	M	M	Aamra	L	M	M	Adayseh Marjaayoun	L	M	M
Adchit El-Koussair	L	M	M	Ain Aarab Marjaayoun	L	M	M	Bani Haiyann	L	M	M
Blatt Marjaayoun	L	M	M	Blida	VL	M	M	Borj El-Moulouk	L	M	M
Boueyda Marjaayoun	L	M	M	Deir Mimass	L	M	M	Deir Siriane	L	M	M
Dibbine	L	M	M	Ebel El Saqi	L	M	M	Houla	L	M	M
Houra	L	M	M	Kfar Kila	L	M	M	Khiam Marjaayoun	L	M	M

Klayaa	L	M	M	Majdel Selem	L	M	M	Marjaayoun	L	M	M
Markaba	L	M	M	Mays El-Jabal	VL	M	M	Mazraat Doumiat	L	M	M
Mazraat Sarada	L	M	M	Mhaibib	VL	M	M	Qabrikha	L	M	M
Qantara	L	M	M	Rab El-Thalathine	L	M	M	Saouaneh Marjayoun	L	M	M
Talloussa	L	M	M	Taybeh Matjaayoun	L	M	M	Touline	L	M	M

## Bent Jbail

Municipality	13-Dec	14-Dec	15-Dec	Municipality	13-Dec	14-Dec	15-Dec	Municipality	13-Dec	14-Dec	15-Dec
Ain-Ebel	L	M	M	Aitaroun	L	M	M	Aynata Bint Jbeil	L	M	M
Ayta El-Chaeb	L	M	M	Ayta El-Jabal	L	M	M	Beit Lif	L	ML	M
Beit Yahoun	L	M	M	Bint Jbeil	L	M	M	Borj Qalaway	ML	M	M
Braachit	L	M	M	Chakra	L	M	M	Debel	L	M	M
Deir Antar	L	M	M	Froun	L	M	M	Ghandouriyeh Bint Jb	L	M	M
Hanine	L	M	M	Hariss	L	M	M	Hdatha	L	M	M
Jmeyjmech	L	M	M	Kafra Bint Jbeil	L	ML	M	Kfar Dounine	L	M	M
Khirbet Selm	L	M	M	Kounine	L	M	M	Maroun El Ras	L	M	M
Qalaway	L	M	M	Qaouzah	L	ML	M	Qatmoun	L	M	M
Ramya Bint Jbeil	L	ML	M	Rchaf	L	M	M	Rmeich	L	M	M
Safad Al Battikh	L	M	M	Salhaneh	L	ML	M	Serbine	L	M	M
Sultanieh Bint Jbeil	L	M	M	Tibnine	L	M	M	Tiri	L	M	M
Yaroun	L	M	M	Yater	L	M	M				

## Mont Liban

### Jbail

Municipality	13-Dec	14-Dec	15-Dec	Municipality	13-Dec	14-Dec	15-Dec	Municipality	13-Dec	14-Dec	15-Dec
Aabeydat	L	L	M	Aalita	VL	L	M	Aamchit	L	M	MH
Aarab El-Lahib	VL	ML	M	Aarasta	VL	L	M	Adonis Jbeil	VL	L	M
Afqa Jbeil	VL	L	ML	Ain El Delbeh Jbeil	VL	L	ML	Ain El-Ghouayba	VL	L	ML
Ain Jrain	VL	L	ML	Ain Kfah	L	ML	M	Almat El Chemaliyat	VL	L	ML
Almat El-Jenoubiya	VL	L	ML	Aqoura	VL	M	M	Bayzoun	VL	L	M
Bchille Jbeil	L	L	M	Bechtida	VL	L	M	Behdaydat	L	ML	M
Beit Habbaq	L	ML	M	Bejjeh	L	ML	M	Bekhaaz	L	ML	M
Berbara Jbeil	L	M	M	Bintael	L	L	M	Birket Hjoula	VL	L	M
Blatt Jbeil	L	ML	M	Boulhos	VL	L	ML	Breyj Jbeil	VL	L	M
Chamat	L	M	M	Chikhane	L	M	M	Chmout	L	L	M
Eddeh Jbeil	L	M	M	Ehmej	VL	L	ML	Fatre	VL	L	M
Ferhet	L	ML	M	Fghal	L	L	M	Frat	VL	VL	ML
Ghabat	VL	ML	M	Ghalboun	L	ML	M	Gharzouz	L	M	M
Ghofrine	L	ML	M	Habil	VL	L	M	Halate	L	ML	M
Haqel	L	L	M	Hbaline	L	ML	M	Hboub	L	ML	M
Hdeine	VL	ML	M	Hema Er-Rehban	VL	ML	M	Hema Mar Maroun Aann	VL	ML	M
Hjoula	VL	L	M	Hosrayel	L	M	M	Hsarat	L	ML	M
Hsoun	L	L	M	Jaj	VL	L	ML	Janne	VL	VL	L
Jbeil	L	M	MH	Jeddeyeh Jbeil	L	M	MH	Jlisse	VL	L	M
Jouret El-Qattine	L	L	M	Kfar Baal Annaya	VL	L	M	Kfar Kidde	L	M	M
Kfar Kouas	L	L	M	Kfar Mashoun	L	M	M	Kfoun	L	L	M

Kharbe Jbeil	L	ML	M	Laqlouq	VL	M	M	Lassa	VL	L	ML
Lehfed	VL	L	L	Maad	L	ML	M	Mar Sarkis	VL	ML	M
Mastita	L	M	M	Mayfouq	VL	L	ML	Mazraat El Siyad	VL	ML	M
Mazraat El-Maaden	VL	L	ML	Mechane	VL	L	M	Mechmech Jbeil	VL	L	ML
Mehrin	L	ML	M	Mejdel El-Akoura	VL	ML	M	Mghayreh Jbeil	VL	ML	M
Mounsef	L	M	M	Nahr Ibrahim	L	M	MH	Qahmez	VL	L	ML
Qartaba	VL	L	ML	Qartaboun	L	M	MH	Qattara Jbeil	VL	L	L
Qorqraya	VL	VL	L	Ramout	L	ML	M	Ras Osta	VL	L	M
Rihane Jbeil	L	M	MH	Sakiet El-Khayt	L	L	M	Saqi Richmaya	VL	L	ML
Sebrine	VL	L	M	Seraita	VL	L	M	Souane Jbeil	VL	L	M
Tadmor	VL	ML	M	Tartej	VL	L	ML	Torzaiya	VL	L	M
Yanouh Jbeil	VL	ML	M	Zibdine Jbeil	VL	L	M				

## El Metn

Municipality	13-Dec	14-Dec	15-Dec	Municipality	13-Dec	14-Dec	15-Dec	Municipality	13-Dec	14-Dec	15-Dec
Aain El-Qabu	VL	L	ML	Aain El-Qach	L	L	M	Aain El-Teffaha	VL	ML	M
Aain el-Safssaf El-M	VL	L	M	Abou Mizane	VL	L	M	Ain Aar	L	M	M
Ain Alaq	L	L	M	Ain El-Kharroube	VL	ML	M	Ain El-Sendianeh	VL	L	M
Ain El-Zeitoune	VL	L	M	Ain Saadeh	L	ML	M	Aintoura El-Matn	VL	M	M
Amaret Chalhoub	ML	M	H	Antelias	L	M	MH	Atchaneh	VL	L	M
Ayroun	VL	L	M	Baabdat	VL	L	M	Baouchariyeh	ML	M	MH
Baskinta	VL	ML	M	Beit Chabab	VL	L	M	Beit El-Chaar	L	M	M
Beit El-Kekko	L	M	MH	Beit Mery	L	L	M	Bhersaf	VL	L	M
Bikfaya	VL	L	M	Biyakout	L	M	MH	Bnabil	VL	L	M
Bourj Hammoud	M	M	MH	Bqennaya	L	ML	M	Broummana El-Matn	L	L	M
Bsalim	L	ML	M	Bsifrine	VL	L	M	Btegrine	VL	L	M
Chaouiye	L	ML	M	Chouaya El-Matn	L	ML	M	Choueir	VL	L	M
Chrine	VL	L	M	Dahr El Sawan El-Mat	VL	L	M	Daychouniyeh	L	ML	M
Dbayeh	L	M	MH	Deir Chamra	VL	L	M	Deir Mar Abda el Mch	L	L	M
Deir Mar Roukouz	ML	M	MH	Deir Tamiche	L	ML	M	Dik El-Mehdi	L	ML	M
Dikwaneh	M	M	MH	Douar El-Matn	VL	L	M	Fanar	L	ML	M
Fraike	VL	L	M	Haret El-Ballaneh	L	ML	M	Hbous	L	M	M
Himlaya	VL	L	M	Jal El Did	L	M	MH	Jdeideh El-Metn	L	M	MH
Jouar El-Matn	VL	L	M	Jouret El-Ballout	VL	L	M	Kaaqour	VL	L	M
Kfar Aaqab	VL	L	M	Kfertay El-Matn	VL	L	M	Khenchara	VL	L	M
Khillet El-Mtain	VL	L	M	Konnabat Broummana	L	L	M	Konnabat Salima	VL	L	M
Machraah El-Matn	VL	L	M	Majdel Tarchich	VL	M	M	Majzoub	L	M	M
Mansouriyeh El-Metn	L	M	MH	Mar Boutros Karm Et-	VL	L	M	Mar Chaya et Mzekke	VL	L	M
Mar Moussa Ed-Douar	VL	L	M	Marjaba	VL	L	M	Masqa	VL	L	M
Mayasse	VL	L	M	Mazraat Deir Aoukar	L	M	M	Mazraat El-Hadirat	L	ML	M
Mazraat Yachouh	L	M	M	Mchikha	L	ML	M	Menqlet Mezher	L	M	M
Mhaydseh Matn	VL	L	M	Mkalles	ML	M	MH	Mrouj	VL	ML	M
Mtain	VL	M	M	Mtayleb	L	ML	M	Nabay	VL	L	M
Naccache	L	M	M	Ouadi Chahine	VL	L	M	Ouadi El-Karm El-Mat	VL	L	M
Ouata El-Mrouj	VL	ML	M	Ouyoun El-Matn	VL	L	M	Qornet Chehwan	L	ML	M
Qornet El-Hamra	L	L	M	Roumieh	L	ML	M	Sfeilet Bikfaya	VL	L	M
Sinn El-Fil	M	M	MH	Zabbougha	VL	L	M	Zalqa	L	M	MH

Zarououn	VL	L	M	Zekrite	L	L	M	Zighrine El-Matn	VL	ML	M
Zouk El-Khrab	L	M	M								

## Chouf

Municipality	13-Dec	14-Dec	15-Dec	Municipality	13-Dec	14-Dec	15-Dec	Municipality	13-Dec	14-Dec	15-Dec
Aalmane El-Chouf	L	M	M	Aammqi El-Chouf	VL	L	M	Ain Ouzein	VL	L	M
Ain Qani	VL	L	M	Ain Zhalta	L	ML	M	Ainbal	VL	L	M
Amatour	VL	L	M	Anout	VL	ML	M	Atrine	VL	ML	M
Baadarane	VL	ML	M	Baaqline	VL	ML	M	Baasir	ML	M	M
Barja	ML	M	M	Barouk	L	L	M	Bater	VL	ML	M
Batloun	L	M	M	Bayqoun	L	M	M	Bchetfine	VL	L	M
Beiteddine	VL	L	M	Benouati Ech-Chouf	L	ML	M	Berjein	VL	ML	M
Bireh et Mtalleh	VL	M	M	Biret El-Chouf	L	M	M	Bkechtine Ouel Mchei	VL	L	M
Bkifa El-Chouf	L	M	M	Botme	VL	L	M	Bqaiia Ech-Chouf	L	L	M
Bsaba El-Chouf	VL	ML	M	Chammis El-Chouf	L	M	M	Chehim	VL	ML	M
Chemaarine	VL	L	M	Chourit	VL	L	M	Daher El-Chouf	L	ML	M
Dalhoun	L	M	M	Damour	L	M	M	Daraya El-Chouf	VL	L	M
Deir El-Moukhalles	VL	L	M	Deir Baba	L	ML	M	Deir Dourit	VL	ML	M
Deir El-Qamar	L	ML	M	Deir Kouche	VL	L	M	Dibbieh	L	L	M
Dmit	L	L	M	Fouara Jaafar	VL	L	M	Fraidis El-Chouf	L	ML	M
Ghabet Jaafar	VL	ML	M	Gharife	VL	L	M	Haret Jandal	VL	ML	M
Hasrout	VL	ML	M	Jadra	ML	M	M	Jahlieh	VL	ML	M
Jbeih El-Chouf	VL	ML	M	Jdeidet El-Chouf	VL	ML	M	Jiyeh	ML	M	M
Jleilyeh	VL	M	M	Jmailiyeh	L	M	M	Joun	L	M	M
Kahlounie El-Chouf	VL	M	M	Ketermaya	L	M	M	Kfar Faqoud	L	ML	M
Kfar Hamal	L	M	M	Kfar Him	VL	ML	M	Kfar Katra	VL	ML	M
Kfar Niss	L	ML	M	Kfar hay	VL	ML	M	Kfarnabrakh	VL	ML	M
Khirbet Bisri	VL	L	M	Knayse El-Chouf	VL	L	M	Maaniyeh	L	M	M
Maasser Beiteddine	VL	ML	M	Maasser El-Chouf	L	ML	M	Majdalouna	L	M	M
Majdel El-Meouch	VL	ML	M	Mazboud	VL	ML	M	Mazmoura	VL	ML	M
Mazraat El Chouf	VL	ML	M	Mazraat El Daher	VL	L	M	Mazraat El-Douair	VL	L	M
Mechref	L	ML	M	Mghairie	L	M	M	Mghayrie El-Chouf	L	L	M
Moukhtara	VL	ML	M	Mrusti	VL	M	M	Mtolle	VL	ML	M
Naameh	L	M	M	Niha El-Chouf	L	M	M	Ouadi Abou Youssef	VL	VL	ML
Ouadi Ed-Deir	VL	M	M	Ouadi El-Sit	VL	ML	M	Ouadi bnehlay	VL	L	M
Qraibeh	VL	ML	M	Qreiaa	VL	L	M	Rmayle El-Chouf	ML	M	M
Semqaniyeh	L	M	M	Sibline	ML	M	M	Sirjbeil	L	ML	M
Warhanieh	L	M	M	Werdaniyeh	ML	M	M	Zaarourieh	VL	ML	M

## Baabda

Municipality	13-Dec	14-Dec	15-Dec	Municipality	13-Dec	14-Dec	15-Dec	Municipality	13-Dec	14-Dec	15-Dec
Abadiyeh	VL	ML	M	Ain Mouaffaq	VL	ML	M	Araiya	VL	L	M
Arbaniyeh	VL	L	M	Arsoun	VL	L	M	Baabda	ML	M	MH
Baalchmey	VL	M	M	Bmaryam	L	L	M	Bourj El-Brajneh	ML	M	MH
Boutchay	L	M	MH	Bsaba Baabda	L	M	MH	Btekhney	VL	L	M
Btibyat	VL	L	M	Bzabdine	VL	L	M	Chbeniyeh	L	ML	M
Chiyah	M	M	MH	Chmeisset Baabda	VL	L	M	Chouit	VL	L	M
Deir El-harf	VL	L	M	Deir Khouna	L	ML	M	Dlaybeh	VL	L	M

Falougha	L	M	M	Furn El-Chebbak	M	M	MH	Hadath Beyrouth	ML	M	MH
Halaliyeh Baabda	VL	L	M	Hammana	L	M	M	Haret El Sett	L	L	M
Haret Hamze	VL	L	M	Haret Hreik	M	M	MH	Hasbaiya El-Metn	VL	L	M
Jouar El-Hoz	VL	L	ML	Jouret Arsoun	VL	L	M	Kfar Chima	ML	M	MH
Kfar Selouane	VL	ML	M	Khalouat Baabda	L	M	M	Kneisset Baabda	VL	L	M
Laylakeh	ML	M	MH	Louayzeh Baabda	L	ML	M	Merdache	L	M	MH
Mzairaa Baabda	VL	L	M	Ouadi Chahrour El OI	L	ML	M	Ouadi Chahrour El So	L	ML	M
Qalaa Baabda	L	L	M	Qhraybe Baabda	L	L	M	Qobbayaa	L	ML	M
Qornayel	VL	L	M	Qortada	VL	L	M	Qrayeh Baabda	L	ML	M
Qsaibeh Baabda	VL	L	M	Qtale Baabda	VL	L	M	Ras El Metn	VL	L	M
Ras El-Haref	L	ML	M	Rouayset El-Ballout	VL	L	M	Salima Baabda	VL	L	M
Tahouitat El Ghadir	ML	M	MH	Tarchich	VL	ML	M	Zandouqa	VL	L	M

## Aley

Municipality	13-Dec	14-Dec	15-Dec	Municipality	13-Dec	14-Dec	15-Dec	Municipality	13-Dec	14-Dec	15-Dec
Abey	L	ML	M	Aghmid	L	ML	M	Ain Dara	L	M	M
Ain Drafil	L	ML	M	Ain El Halazoun	L	M	M	Ain El-Rmmaneh	VL	L	M
Ain Jedideh	VL	M	M	Ain Ksour	L	ML	M	Ain Onoub	L	ML	M
Ain Traz	VL	ML	M	Ainab	L	ML	M	Aley	VL	M	M
Aramoun	L	M	MH	Aytat	L	M	MH	Azouniyeh	L	M	M
Baawerta	L	ML	M	Badghan Oua Wadi Bad	L	M	M	Bassatine	L	M	MH
Bayssour	L	ML	M	Bchamoun	L	M	MH	Bdadoun	VL	L	M
Behouara	VL	ML	M	Bennay	L	ML	M	Bhamdoun El-Dayaa	L	M	MH
Bhamdoun El-Mhatta	L	M	MH	Bkhechthey	VL	M	M	Bleibel	L	ML	M
Bmakine	L	M	M	Bmehray	L	ML	M	Bouzrid	VL	L	M
Bserrine	L	M	M	Bsous	VL	L	M	Btalloun	VL	M	MH
Btater	L	M	M	Chanay	L	M	MH	Charoun	L	M	M
Chartoun	VL	L	M	Chemlane	L	ML	M	Choueifat El-Aamrous	ML	M	H
Choueifat El-Oumara	L	M	MH	Choueifat El-Quoubbe	ML	M	H	Dakkoun	L	ML	M
Deir Qoubel	L	ML	M	Dfoun	L	M	M	Douair El Remmaneh	VL	L	M
Ghaboun	VL	ML	M	Habramoun	VL	L	M	Homs Oua Hama	L	ML	M
Houmal	L	ML	M	Jisr El Qadi	L	ML	M	Kehaleh	VL	L	M
Keyfoun	L	M	M	Kfar Aamey	VL	ML	M	Kommatyeh	VL	ML	M
Maasrati	VL	ML	M	Majdel Baana	L	M	M	Mansourieh et Ain El	L	M	M
Mazraat El-Nahr	VL	ML	M	Mchakhte	L	L	M	Mecherfeh	L	M	M
Mejdaya	VL	ML	M	Mrayjat	L	M	M	Ramliyah	L	ML	M
Rechmaya	L	ML	M	Rejmeh	VL	ML	M	Remhala	L	ML	M
Rouayset El Neemane	L	ML	M	Saoufar	L	M	M	Selfaya	VL	L	M
Sirhmoul	L	ML	M	Souq El Ghareb	VL	ML	M	Taazanieh	VL	M	MH

## Kesrouane

Municipality	13-Dec	14-Dec	15-Dec	Municipality	13-Dec	14-Dec	15-Dec	Municipality	13-Dec	14-Dec	15-Dec
Achkout	VL	L	M	Adma Oua Dafneh	L	ML	M	Ain Ed-Delbe Kesroua	VL	L	L
Ain El-Rihane	VL	L	M	Aintoura Kesrouane	L	ML	M	Ajaltoun	VL	L	M
Akaybeh Kesrouane	ML	M	MH	Aramoun Kesrouane	VL	L	M	Azra ouel Ozor	VL	L	M
Ballouneh	VL	L	M	Batha	VL	L	M	Bekaatat Achkout	VL	ML	M
Bekaatat Kanaan	VL	L	ML	Bizhel	VL	L	M	Bouar	L	ML	M
Bqaatouta	VL	L	M	Bqaq Ed-Dine	L	M	M	Bzommar	VL	L	M

Chahtoul	VL	L	M	Chnaniir	VL	L	M	Chouan	VL	L	L
Daraya Kesrouane	VL	L	M	Darououn	VL	L	M	Deir Baqlouch	VL	L	M
Dlebta	VL	L	M	Eghbeh	VL	VL	L	Faraya	VL	ML	M
Fatka	L	L	M	Feytroun	VL	L	M	Ghazir	L	L	M
Ghbaleh Kesrouane	L	L	M	Ghedrass	VL	L	M	Ghosta	VL	L	M
Ghynéh	L	ML	M	Harharaya w Kattine	VL	L	M	Harissa Kesrouane	VL	L	M
Hayata	VL	L	M	Hosein	VL	L	M	Hrajel	VL	ML	M
Jdeideh Ghazir	VL	L	M	Jeita	L	L	M	Jounieh Ghadir	L	ML	M
Jounieh Haret Sakhr	L	M	M	Jounieh Salel Alma	L	ML	M	Jounieh Sarba	L	M	MH
Jouret Bedrane	L	L	M	Jouret Mhad	VL	L	M	Jouret Termos	L	ML	M
Kfar Debiane	VL	L	M	Kfar Tay Kesrouane	VL	L	M	Kfar Yassine	L	M	MH
Kfour Kesrouane	L	L	M	Kharayeb Nahr Ibrahi	L	L	M	Klayaat Kesrouane	VL	L	M
Maarab	VL	L	M	Maaysra Kesrouane	L	L	M	Mayrouba	VL	ML	M
Mazraat Er-Ras	L	ML	M	Mazraat Mrah El-Mir	VL	L	M	Mchaa El Ftouh	VL	M	M
Mchaa Faraya	VL	ML	M	Mchaa Kfar Dibiane	VL	M	M	Mghaer	VL	L	L
Mradiyah	VL	L	M	Nahr Ed-Dahab	VL	L	ML	Nammoura Kesrouane	L	L	M
Ouata El Jaouz	VL	L	M	Ouata Sillam	L	M	MH	Raachine	VL	L	M
Rayfoun	VL	L	M	Safra Kesrouane	L	M	M	Shayle Kesrouane	L	L	M
Tabarja	L	ML	M	Yahchouch	VL	L	M	Zaaytreh	VL	L	M
Zeytoun	L	ML	M	Zouk Mikael	L	M	MH	Zouk Mosbeh	L	M	M

## Baalbek\_Hermel

### Baalbek

Municipality	13-Dec	14-Dec	15-Dec	Municipality	13-Dec	14-Dec	15-Dec	Municipality	13-Dec	14-Dec	15-Dec
Aadous	L	M	M	Aamchki	L	ML	ML	Aarsal	L	ML	M
Ain Baalbek	L	ML	M	Ain Bourday	L	M	M	Ain El-Benye	L	M	M
Ain El-Jaouz Baalbek	L	ML	M	Ain El-Siya Chadoura	L	ML	M	Al Khodr Baalbek	L	M	M
Al Nabi Chit	L	M	M	Aynata Baalbek	VL	ML	M	Baalbek	L	M	M
Bachwat	VL	L	M	Barqa	VL	L	M	Bednayel Baalbak	VL	M	M
Beit Chama	VL	M	M	Bijjaje	L	ML	M	Bouday	VL	ML	M
Brital	L	M	M	Btadi	VL	L	M	Chaat	L	M	M
Chaibe	L	M	M	Chlifa	VL	ML	M	Chmestar	VL	ML	M
Dar El-Oussa	VL	L	M	Deir El-Ahmar	VL	ML	M	Deir Mar Maroun Baal	ML	M	M
Douris	L	M	M	Fakiha	L	M	M	Hadath Baalbek	L	ML	M
Ham	L	M	M	Haour Taala	L	M	M	Hizzine	L	M	M
Hlebta	VL	L	M	Hosh Barada	L	M	M	Hosh El Dahab	VL	M	M
Hosh El Snid	L	M	M	Hosh El-Nabi	L	M	M	Hosh El-Rafiq	L	M	M
Hosh Tal Safiya	L	M	M	Hrebta	L	L	M	laat	L	M	M
Jebaa	VL	M	M	Jenta	L	ML	M	Kfar Dabach	VL	M	M
Kfar Dane	L	M	M	Khraibeh El-Hermel	VL	L	M	Khreibet Baalbek	L	M	M
Kneisset Baalbek	L	M	M	Labueh	L	ML	M	Maarboun	L	M	M
Majdaloun	L	M	M	Maqneh	L	M	M	Mazraat Beit Mcheik	VL	M	M
Misraya	L	M	M	Moqraq	L	ML	M	Nabha El-Damdoum	VL	ML	M
Nabi Chbay	L	M	M	Nabi Osman	L	ML	M	Nahleh baalbek	L	ML	M
Ouadi El-Oss	VL	L	M	Qaa Baayoun	ML	M	M	Qaa Jouar Maqiye	M	M	M
Qaa Ouadi El-Khanzir	ML	M	M	Qah Baalbek	ML	M	M	Qarha Baalbek	VL	ML	M



Qsarnaba	VL	M	M	Ram Baalbek	VL	L	M	Ras Baalbek El Sahl	ML	M	M
Ras Baalbek El-Charq	L	M	M	Riha	L	ML	M	Saaide	L	M	M
Sbouba	L	L	M	Seriine El-Tahta	L	M	M	Slouqi	VL	ML	M
Taiba Baalbek	L	M	M	Talia	L	M	M	Taraiya	VL	ML	M
Temnin El Fawqa	VL	M	M	Temnin El-Tahta	VL	M	M	Tfail	L	ML	M
Yahfoufa	L	M	M	Yammouneh	VL	ML	M	Younine	L	ML	M
Zboud	L	ML	M								

## Hermel

Municipality	13-Dec	14-Dec	15-Dec	Municipality	13-Dec	14-Dec	15-Dec	Municipality	13-Dec	14-Dec	15-Dec
Charbine El-Hermel	VL	ML	M	Hermel Jbab	L	ML	M	Hermel	ML	M	M
Maaysra El-Hermel	L	ML	M	Michaa Mrjhine	L	ML	M	Ouadi Faara	L	L	M
Ras Baalbek - Ouadi	ML	M	M	Ras Baalbek El Gharb	L	ML	M	Zighrine	L	L	M

## Akkar

### Akkar

Municipality	13-Dec	14-Dec	15-Dec	Municipality	13-Dec	14-Dec	15-Dec	Municipality	13-Dec	14-Dec	15-Dec
Aain Tinta	L	M	M	Aaiyat	L	M	M	Aakkar El-Aatiqa	L	ML	M
Aamar Akkar	L	M	MH	Aamar El Baykat	L	M	MH	Aamayer	M	M	M
Aamriyet Akkar	L	M	M	Aandqet	L	ML	M	Aarmeh	L	M	M
Aarqa	L	M	MH	Aawaynat	L	M	M	Aayoun Akkar	L	M	M
Abboudiye	L	M	MH	Ain El-Zeit	L	M	M	Ain Yaaqoub	L	ML	M
Akroum	L	ML	M	Aridet Cheikh Zennad	ML	M	H	Baldeb w Mazraat Bal	L	M	MH
Barcha	L	M	MH	Bardeh	L	M	M	Bebnine	L	M	MH
Beino	L	M	M	Beit Ayoub	L	M	M	Beit El-Haouch	L	M	MH
Beit Mellat	L	M	M	Beit Younes	L	ML	M	Berbara Akkar	L	M	M
Berqayel	L	M	MH	Bezbina	L	L	M	Bireh Akkar	L	M	M
Borj	L	M	M	Bqerezla	L	M	M	Bzal	L	M	M
Chane	L	ML	M	Chaqdouf	L	M	M	Charbila	L	M	MH
Cheikh Mohammad	L	M	MH	Cheikh Taba Es-Sahl	L	M	MH	Cheikh Taba	L	M	M
Cheikh Zennad	ML	M	MH	Cheikhlar	L	M	M	Chir Hmairine	L	M	MH
Daghle	L	M	M	Dahr Laissine	L	M	M	Darine	L	M	MH
Dawra	L	ML	M	Dawsa w Baghdadi	L	M	M	Dayret Nahr El-Kabir	M	M	M
Deir Dalloum	L	M	MH	Deir Jennine	L	M	M	Denbou	L	ML	M
Dibbabiyyeh	L	M	M	Douair Aadwiyeh	L	M	M	Fassikine	L	M	M
Fnaydek	L	ML	M	Fraydes Akkar	L	M	M	Ghazayle	L	M	MH
Habchit	VL	L	M	Hakour	L	M	MH	Halba	L	M	MH
Haouchab	L	M	MH	Hayssat	L	M	MH	Haytla	L	M	MH
Hayzouq	L	M	MH	Hedd	L	M	MH	Hmaira Akkar	L	M	M
Hmaiss Akkar	L	M	MH	Hnaider	M	M	M	Hokr Ed-Dahri	ML	M	MH
Hokr Etti	L	M	MH	Hokr Jouret Srar	L	M	MH	Houaich	L	M	M
Hrar	L	M	M	Idbil	L	M	M	Ilfat	L	M	M
Janine	L	M	MH	Jdeidet El-Joumeh	L	M	MH	Jdeidet El-Kaiteh	L	M	M
Jebayel	L	M	M	Kafr	L	ML	M	Kafr	L	M	M
Karm Asfour	L	M	M	Kfar Melki Akkar	ML	M	MH	Kfar Noun	L	M	M
Kfarharra	L	M	MH	Khalsa	L	M	M	Kharnoubet Akkar	L	M	MH

Khirbet Daoud Aakkar	L	M	M	Khirbet El Remmane	L	M	M	Khirbet Shar	L	M	M
Khoreybet El-Jindi	L	M	MH	Khreibet Aakkar	L	M	M	Kneisset Aakkar	ML	M	MH
Kneisset Hnaider	M	M	M	Knisse	L	M	MH	Kroum El-Aarab	L	M	MH
Kwachra	L	M	M	Kweykhat	L	M	MH	Machta Hammoud	M	M	M
Majdala	L	M	MH	Majdel Akkar	L	M	M	Mar Touma	L	M	MH
Marlaya Melhem	L	M	MH	Mashha	L	M	MH	Massouidiye	ML	M	MH
Mazraat Beit Ghattas	L	M	MH	Mazraat En-Nahriye	L	M	M	Mechmech	L	L	M
Memneh	L	L	ML	Mhammara	ML	M	MH	Mighraq Aakkar	ML	M	MH
Minyara	L	M	MH	Moqayteh	ML	M	MH	Mounjez	L	M	M
Msalla	L	M	MH	Mzeihmeh	L	M	MH	Nfaiseh	L	M	MH
Noura Et-Tahta	L	M	M	Ouadi El-Haour	L	M	MH	Ouadi El-Jamous	L	M	MH
Ouyoun El-Ghizlane	L	M	M	Qaabarine	ML	M	MH	Qabaait	L	ML	M
Qachlaq	L	M	MH	Qantara Aakkar	L	M	M	Qarha Aakkar	M	M	M
Qarqaf	L	M	MH	Qboula	L	M	M	Qleiaat Aakkar	ML	M	MH
Qloud El-Baqie	L	M	MH	Qobaiyat Aakkar	L	ML	M	Qobbat Chamrat	ML	M	MH
Qorayat	L	ML	M	Qornet Aakkar	L	M	M	Qsair Aakkar	L	M	M
Rahbe	L	M	M	Rihaniyet Aakkar	L	M	MH	Rmah	L	M	M
Rmoul	ML	M	MH	Saadine	L	M	MH	Sadaqa	L	M	M
Saidnaya	L	M	MH	Sammouniye	ML	M	MH	Saysouq	L	M	M
Semmaqiye	ML	M	MH	Semmaqli	ML	M	MH	Sfinet El-Dreib	L	M	MH
Sfinet El-Qaitaa	L	M	M	Sindyanet Zeidane	L	M	M	Souaisset Aakkar	L	M	MH
Srar	L	M	MH	Tal Abbas El Gharby	L	M	MH	Tal Abbas El-Charqy	L	M	MH
Tal Biret	L	M	MH	Tal Hmayra	L	M	MH	Tal Maayan Tal Kiri	ML	M	MH
Tal Sibel	ML	M	MH	Tallet Chattaha	L	M	M	Tikrit	L	M	M
Tleil	L	M	MH	Tshea	L	ML	M	Zawarib	L	M	M
Zouq El Hosniyeh	L	M	M	Zouq El-Haddara	L	M	MH	Zouq El-Hbalsa	L	M	M
Zouq El-Mogachrine	L	M	M								

## Sud

### Sour

Municipality	13-Dec	14-Dec	15-Dec	Municipality	13-Dec	14-Dec	15-Dec	Municipality	13-Dec	14-Dec	15-Dec
Aaiyeh	ML	M	MH	Aalma El-Chaab	L	ML	H	Aaytit	ML	M	M
Abbassiyeh Sour	ML	M	H	Abou Chech	L	ML	H	Ain Abou Abdallah	ML	M	H
Ain Baal	ML	M	H	Arzoun	L	M	M	Aziyeh	L	ML	MH
Baflaya	L	M	M	Barich	L	M	MH	Batouliyah	ML	M	H
Bayad	L	M	MH	Bazouriyeh	ML	M	MH	Bediass	L	M	M
Bestiyat	L	M	M	Borj El Chemali	M	M	H	Borj En-Naqoura	ML	M	MH
Borj Rahhal	L	M	MH	Boustane	L	M	H	Btaychiyeh	L	ML	H
Chaaitiye	ML	M	H	Chameh	L	ML	H	Chehabiye	L	M	M
Chehour	L	ML	M	Chihine	L	ML	MH	Debaal Sour	L	M	MH
Deir Amess	L	M	M	Deir Kifa	L	M	M	Deir Qanoun El-Ain	ML	M	E
Deir Qanoun El-Naher	L	M	MH	Derdghaiya	L	M	M	Dhayra	L	ML	H
Halloussiyeh	L	M	MH	Hamoul	L	L	MH	Hanaouey	ML	M	MH
Henniye	M	M	E	Hmairi Sour	L	M	M	Iskandarouna Sour	L	ML	MH
Jbal El Botom	L	M	MH	Jebbin	ML	M	H	Jennata	L	M	MH
Jijim	L	L	H	Jouaiya	ML	M	M	Kneisset Sour	ML	M	MH

Maarake	L	M	MH	Maaroub	L	M	MH	Majadel	L	M	M
Majdalzoun	ML	M	H	Mansouri Sour	ML	M	H	Marnba	L	ML	M
Marouahine	L	ML	M	Mazraat El-Zalloutiy	L	M	H	Mazraat Mechref	ML	M	MH
Mazraat Tayr Semhat	L	L	M	Mheilib	M	M	H	Neffakhiyeh	L	M	M
Niha Sour	L	M	M	Ouadi Jilo	L	M	M	Qana	L	M	MH
Qolaileh Sour	ML	M	H	Rechknanay	L	M	MH	Rmadiyah	ML	M	MH
Selha Sour	L	M	M	Siddiqine	ML	M	MH	Sour	M	M	E
Srifa	L	M	M	Tayr Debbe	L	M	MH	Tayr Felsay	L	M	M
Tayr Harfa	ML	M	H	Touayri	L	ML	M	Toura	L	M	MH
Yanouh Sour	L	M	MH	Yarine	L	M	E	Zebqine	L	L	M

## Saida

Municipality	13-Dec	14-Dec	15-Dec	Municipality	13-Dec	14-Dec	15-Dec	Municipality	13-Dec	14-Dec	15-Dec
Aanqoun	L	M	M	Aaqtanit	ML	M	M	Aarab Ej-Jall	ML	M	M
Aarab Tabbaya	ML	M	M	Abra Saida	ML	M	M	Adloun	ML	M	MH
Adousiyeh	ML	M	M	Ain-El-Deleb	ML	M	M	Arzai	L	M	M
Babliyah	ML	M	M	Barty	L	M	M	Bissariyeh	ML	M	M
Bnaafoul	L	M	M	Bqosta	ML	M	M	Bramiy	L	M	M
Daoudiyeh	ML	M	M	Dareb El-Sim	ML	M	M	Erkay	L	M	M
Ghassanieh	ML	M	M	Ghazieh	M	M	M	Hajjeh	L	M	M
Haret Saida	ML	M	M	Hartiyeh	L	M	M	Hlaliye Saida	ML	M	M
Insariyat	ML	M	M	Jazira Saida	ML	M	MH	Kafar Bit	L	M	M
Kaoutariyet El-Siyad	ML	M	M	Kfar Chellal	L	M	M	Kfar Hatta Saida	L	M	M
Kfar Milke Saida	L	M	M	Khartoum	ML	M	M	Khaziz	L	M	M
Khirbet Ed-Douair Sa	L	M	M	Khirbet El-Bassal	ML	M	M	Khrayeb Saida	L	M	M
Loubieh	ML	M	M	Maghdouche	ML	M	M	Majdelyoun	ML	M	M
Matariyet El-Choumar	L	M	M	Matayriyeh	L	M	M	Mazraat 'Mseileh	ML	M	M
Mazraat 'Snaiber	ML	M	M	Mazraat Aarab Soukka	ML	M	M	Mazraat Deir Taqla	L	M	M
Mazraat El Yahoudiye	M	M	MH	Mazraat El-Housseini	M	M	M	Mazraat El-Mhaydaleh	ML	M	M
Mazraat El-Ouasta	ML	M	MH	Mazraat Jamjim	L	M	M	Mazraat Kaoutariyet	ML	M	M
Mazraat Kfar Badda	L	M	M	Mazraat Oussamiyat	ML	M	M	Mazraat Sari	L	M	M
Mazraat Sinai	ML	M	M	Meemariyeh	L	M	M	Merouaniyeh	L	M	M
Miyeh ou Miyeh	ML	M	M	Najjariyeh	M	M	M	Qaaqaiyat El-Snaouba	L	M	M
Qnarit	ML	M	M	Qraiye Saida	ML	M	M	Saida Ed-Dekermane	ML	M	M
Saida El-Oustani	ML	M	M	Saida El-Qadimeh	M	M	M	Saida Kefraya	L	M	M
Saksakiyeh	ML	M	M	Salhie Saida	ML	M	M	Sarafand	ML	M	M
Sfenta	L	ML	M	Tafahta	L	M	M	Tanbourit	L	M	M
Tebna	L	M	M	Zaghdraiya	L	M	M	Zeita	ML	M	M
Zrariyeh	L	M	M								

## Jezzine

Municipality	13-Dec	14-Dec	15-Dec	Municipality	13-Dec	14-Dec	15-Dec	Municipality	13-Dec	14-Dec	15-Dec
Ain El-Mir (El Estab)	L	M	M	Anane	VL	L	M	Aramta	L	M	M
Ariya	VL	ML	M	Aychiyeh	L	ML	M	Azour	VL	L	M
Baba	VL	L	M	Bayssour Jezzine	L	M	M	Benoueteh Jezzine	VL	ML	M
Bhannine	VL	ML	M	Bisri	VL	L	M	Bkassine	VL	L	M
Bouslaya	L	L	M	Btedine El-Leqech	VL	L	M	Chbail	VL	L	ML
Choualiq Jezzine	L	M	M	Dahr Ed-Deir	L	ML	M	Deir El Qattine	L	ML	M

Demachqiyeh	L	M	M	Ghabbatiyeh	VL	L	M	Harf Jezzine	VL	L	M
Hassaniyeh	L	M	M	Haytouleh	L	M	M	Haytura	L	ML	M
Hidab	L	ML	M	Homsiyeh	VL	L	M	Jabal Toura	L	M	M
Jarmaq	L	M	M	Jensnaya	L	M	M	Jernaya	L	M	M
Jezzine	L	M	M	Karkha	L	M	M	Kfar Falous	L	M	M
Kfar Houna	L	ML	M	Kfar Jarrah	ML	M	M	Lebaa	ML	M	M
Louayzet Jezzine	L	M	M	Machmouche	VL	L	M	Mahmoudiyeh Jezzine	L	M	M
Maknounye Jezzine	L	ML	M	Maraat Ouazaiyeh	L	ML	M	Mazraat Daraya	L	ML	M
Mazraat El-Aarqoub	L	ML	M	Mazraat El-Mathane	VL	L	M	Mazraat El-Rahbane	L	ML	M
Mazraat Khallet Khaz	VL	ML	M	Mazraat Louzid (Loua	VL	L	M	Mazraat Qrouh	VL	ML	M
Mazraat Tamra	L	M	M	Mazraat Zighrine Jez	L	ML	M	Mazraat	L	ML	M
Mharbiyeh	L	M	M	Midane Jezzine	VL	L	M	Mjeydel Jezzine	L	M	M
Mlikh	L	ML	M	Mrah El-Hbasse	L	M	M	Ouadi Baanqoudaine	ML	M	M
Ouadi El-Laymoun	L	M	M	Ouardiyeh	VL	VL	ML	Qabaa Jezzine	L	ML	M
Qatrani	L	ML	M	Qaytouleh	L	ML	M	Qtaleh Jezzine	VL	L	M
Rihane Jezzine	L	M	M	Rimat	L	ML	M	Roum	VL	L	M
Roummanet	L	M	M	Sabbah	VL	L	M	Saydoun	L	ML	M
Sfaray	VL	L	M	Snaya	L	ML	M	Sojoud	L	ML	M
Srayri	L	ML	M	Taaid	VL	L	M	Wadi Jezzine	VL	L	M
Zhalta	L	ML	M								

## Bekaa

### West Bekaa

Municipality	13-Dec	14-Dec	15-Dec	Municipality	13-Dec	14-Dec	15-Dec	Municipality	13-Dec	14-Dec	15-Dec
Aammiq BG	VL	M	M	Ain El Tineh BG	L	M	M	Ain Zebdeh	L	M	M
Ana	VL	M	M	Aytanit	L	ML	M	Baaloul BG	L	M	M
Bab Mareh	L	M	M	Chouberqiye Aammiq	VL	M	M	Dakoue	L	M	M
Deir Ain El-Jaouze	L	M	M	Deir Tahniche	VL	M	M	Ghaza	VL	M	M
Harime El-Soughra	L	M	M	Hoch Harimeh	L	M	M	Jazira BG	VL	M	M
Jib Jennine	VL	M	M	Kamed-El-Laouz	VL	ML	M	Kefraya BG	VL	ML	M
Khiara El Atika	VL	M	M	Khiara	VL	M	M	Khirbet Qanafar	L	M	M
Lala	L	M	M	Lebbaya BG	L	M	M	Loussa	L	M	M
Machghara	L	M	M	Manara (Hammara) BG	VL	L	M	Mansoura BG	VL	M	M
Marej BG	VL	M	M	Maydoun	L	M	M	Ouaqf BG	VL	M	M
Qaraaoun	L	M	M	Qelya	L	M	M	Raouda (Istabel)	VL	M	M
Saghbine	L	ML	M	Sohmor	L	M	M	Soltan Yacoub el Ara	L	M	M
Souairy	L	ML	M	Sultan Yaacoub	VL	M	M	Tal Znoun	VL	M	M
Yehmor BG	L	M	M	Zilaya	L	ML	M				

### Zahle

Municipality	13-Dec	14-Dec	15-Dec	Municipality	13-Dec	14-Dec	15-Dec	Municipality	13-Dec	14-Dec	15-Dec
Aanjar (Haouch Mouss	VL	M	M	Ablah	VL	M	M	Ain Kfarzabad	VL	ML	M
Ali-El-Nahri	VL	M	M	Bar Elias	VL	M	M	Bouarej	VL	M	M
Cheberqiyet Tabet	VL	M	M	Chtaura	VL	M	M	Deir El Ghazal	VL	ML	M
Delhamiyet Zahle	L	M	M	Ferzol	VL	M	M	Haouch El-Ghanam	VL	M	M
Haouch Es-Siyadeh	VL	M	M	Haouch Hala	VL	M	M	Haouch Mandara	VL	M	M

Haouch Qayssar	VL	M	M	Hezerta	VL	M	M	Hosh Moussa	VL	M	M
Jdita	VL	M	M	Kfarzabad	VL	M	M	Ksara	VL	M	M
Majdel Aanjar	L	ML	M	Makssi	VL	M	M	Massa	L	M	M
Mazraat Er-Remtaniye	VL	M	M	Mrayjat Zahle	VL	M	M	Mzaraa Zahle	VL	M	M
Nabi Ayla	VL	M	M	Nasriyet Rizk	L	M	M	Nasriyet Zahle	VL	M	M
Niha Zahle	VL	M	M	Ouadi Ed-Deloum	VL	M	M	Ouadi El-Arayech	VL	M	M
Qaa El Rim	VL	M	M	Qab Elias	VL	M	M	Qousaya	VL	ML	M
Rhit	VL	M	M	Riyak	VL	M	M	Saadnayel	VL	M	M
Taal El-Akhdar	VL	M	M	Taalbeya	VL	M	M	Taanayel	VL	M	M
Talamara	VL	M	M	Tcheflik Edde Haouch	VL	M	M	Tcheflik Qiqano	VL	M	M
Terbol Zahle	L	M	M	Touaite Zahle	VL	M	M	Zahle Aradi	VL	M	M
Zahle El-Berbara	VL	M	M	Zahle El-Maallaqa	VL	M	M	Zahle El-Midane	VL	M	M
Zahle Er-Rassiye	VL	M	M	Zahle Haouch El-Ouma	VL	M	M	Zahle Haouch El-Ouma	VL	M	M
Zahle Haouch Ez-Zara	VL	M	M	Zahle Maalaqa Aradi	VL	M	M	Zahle Mar Antonios	VL	M	M
Zahle Mar Elias	VL	M	M	Zahle Mar Gerios	VL	M	M	Zahle Saydet En-Naja	VL	M	M
Zebdoul	VL	ML	M								

## Rachaiya

Municipality	13-Dec	14-Dec	15-Dec	Municipality	13-Dec	14-Dec	15-Dec	Municipality	13-Dec	14-Dec	15-Dec
Ain Arab Rachaiya	VL	ML	M	Ain Ata	L	ML	ML	Ain Harche	L	ML	M
Aqabe Rachaya	L	M	M	Ayha	L	M	M	Ayta El Fokhar	VL	ML	M
Bakifa Rachaya	L	M	M	Bakka	VL	ML	M	Beit Lahya	L	M	M
Bireh Rachaiya	VL	ML	M	Daher El Ahmar	L	ML	M	Deir El-Achayer	L	ML	M
Heloua Rachaiya	L	ML	M	Hoch El Qannabeh Rac	L	ML	M	Kaoukaba Bou Arab	L	ML	M
Kfar Danis	L	ML	M	Kfar Mechki	L	M	M	Kfar Qouq	L	ML	M
Kherbet Rouha	VL	ML	M	Majdel Balhiss	L	M	M	Mdoukha	VL	ML	M
Mhaydseh Rachaiya	L	ML	M	Nabi Safa	L	M	M	Rachaiya	L	M	M
Rafid Rachaiya	VL	ML	M	Selsata (Mazraat Dei	L	L	ML	Tannoura	L	M	M
Yanta	L	ML	M								

## Beyrouth

### Beyrouth

Municipality	13-Dec	14-Dec	15-Dec	Municipality	13-Dec	14-Dec	15-Dec	Municipality	13-Dec	14-Dec	15-Dec
Achrafieh	M	M	MH	Ain el-Mreisse	M	M	H	Bachoura	M	M	MH
Beirut Central Distr	M	M	MH	Marfai	M	M	MH	Mazraa	M	M	MH
Medaouar	M	M	MH	Minet el-Hosn	M	M	MH	Mwssaitbeh	M	M	MH
Ras Beirut	M	M	H	Rmeil	M	M	MH	Saifi	M	M	MH
Zqaq el-Blat	M	M	MH								