

# Lebanon Fire Risk Bulletin



CIVIL DEDEFENCE

**Refer to cadast table condition.**

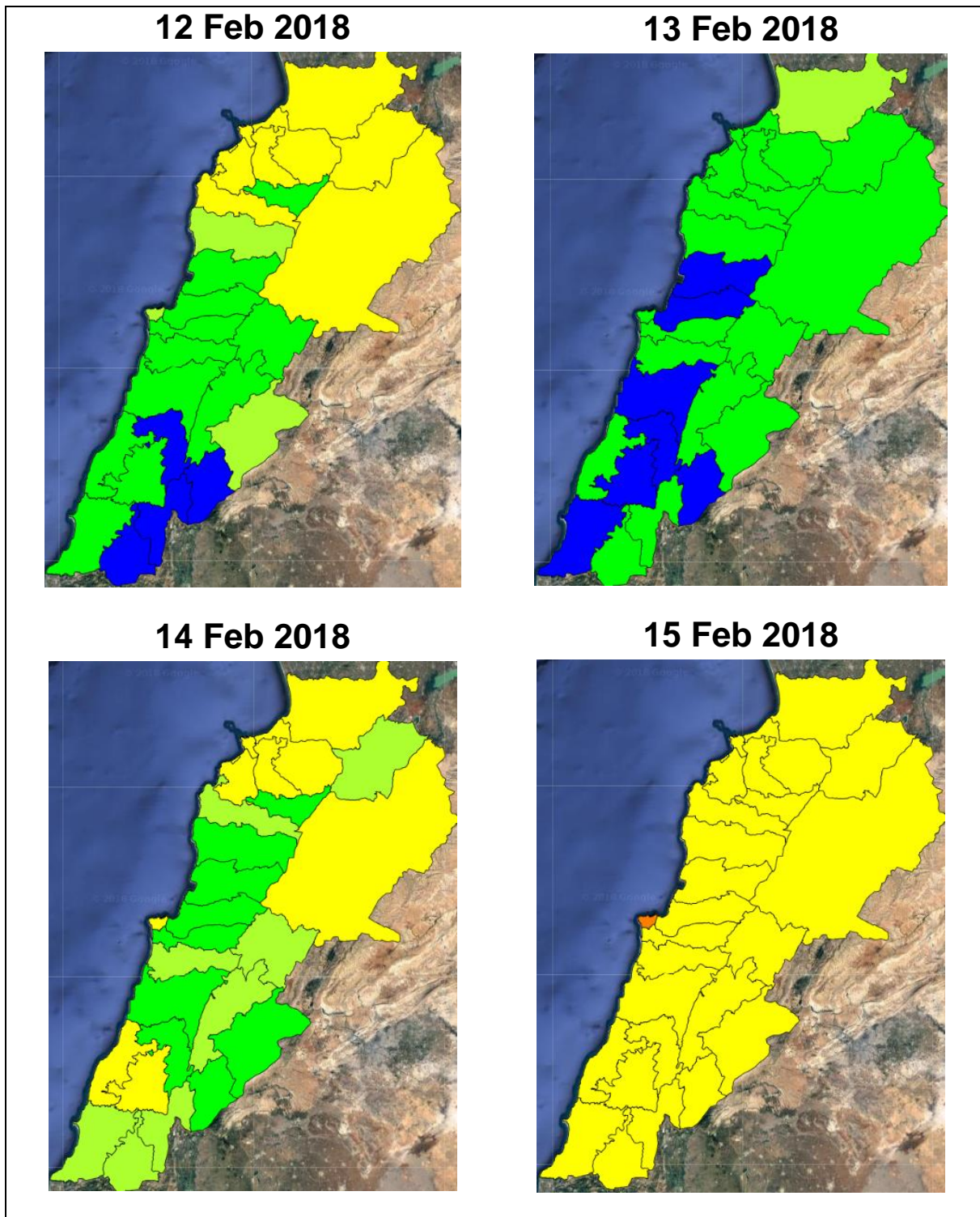
**Please note that the indicated temperature is at 2 meters height from the ground.**

General description of potential fire risk situation

Symbol	Level of risk	Meaning and actions
VL	Very low	Very low fire risk. Controlled burning operations can be hardly executed due to high fuel moisture content. Normally wildfires self-extinguish.
L	Low	Low fire risk. Controlled burning operations can be executed with a reasonable degree of safety.
ML	Medium low	Medium-low fire risk. Controlled burning operations can be executed in safety conditions. All the fires need to be extinguished.
M	Medium	Medium fire risk. Controlled burning operations would be avoided. All the fires need to be very well extinguished.
M	Medium high	Controlled burning is not recommended. Open flame will start fires. Cured grasslands and forest litter will burn readily. Spread is moderate in forests and fast in exposed areas. Patrolling and monitoring is suggested. Fight fires with direct attack and all available resources.
H	High	Ignition can occur easily with fast spread in grass, shrubs and forests. Fires will be very hot with crowning and short to medium spotting. Direct attack on the head may not be possible requiring indirect methods on flanks. Patrolling and monitoring the territory is highly suggested.
E	Extreme	Ignition can occur also from sparks. Fires will be extremely hot with fast rate of spread. Control may not be possible during day due to long range spotting and crowning. Suppression forces should limit efforts to limiting lateral spread. Damage potential total. Patrolling and monitoring the territory is highly suggested.

**Beirut, 13 February 2018**

# FIRE RISK INDEX



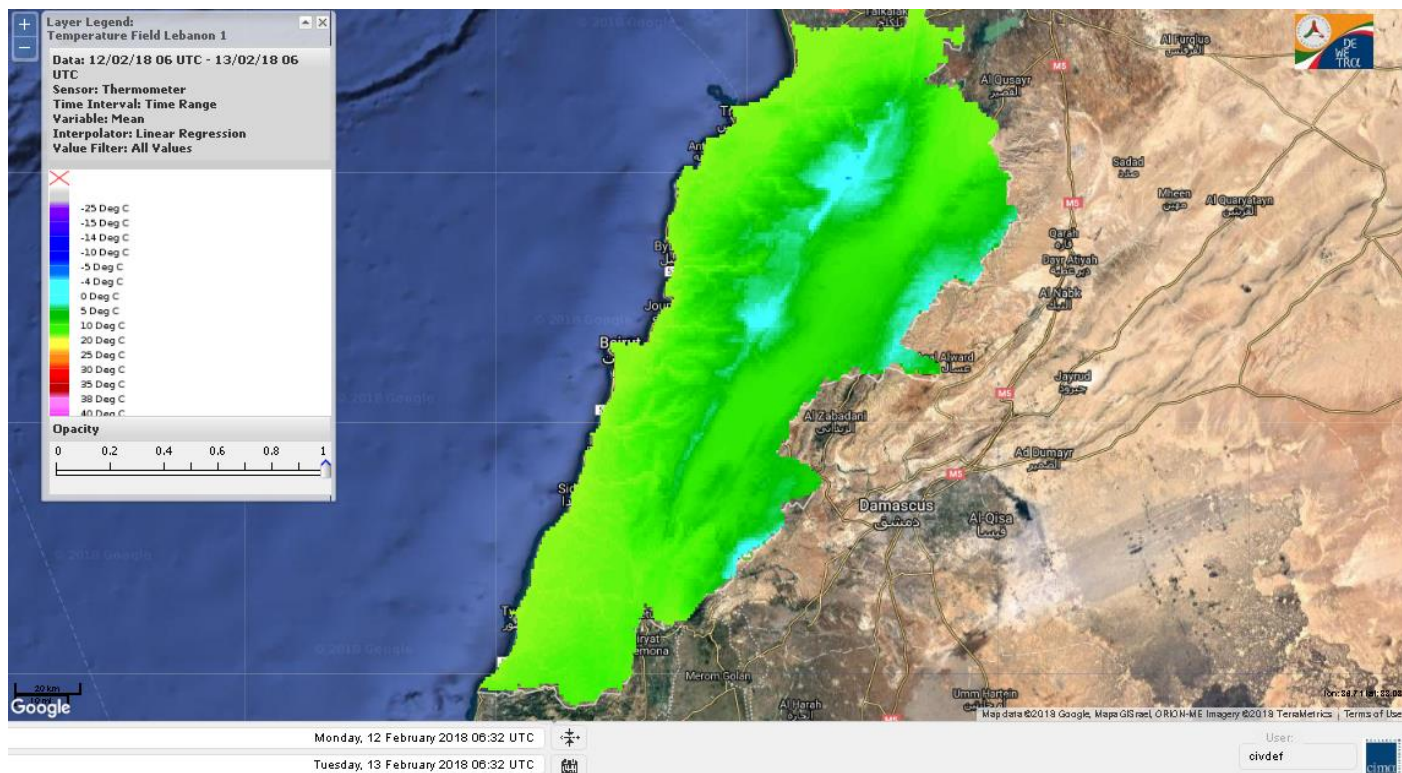
**Layer Legend:**  
Lebanon Wildfire Risk Index 1

Data: Run: 13/02/2018 00:00. Forecast for 13  
Model: RISICO for the Republic of Lebanon  
Variable: Fire Weather Index  
Spatial Resolution: Caza

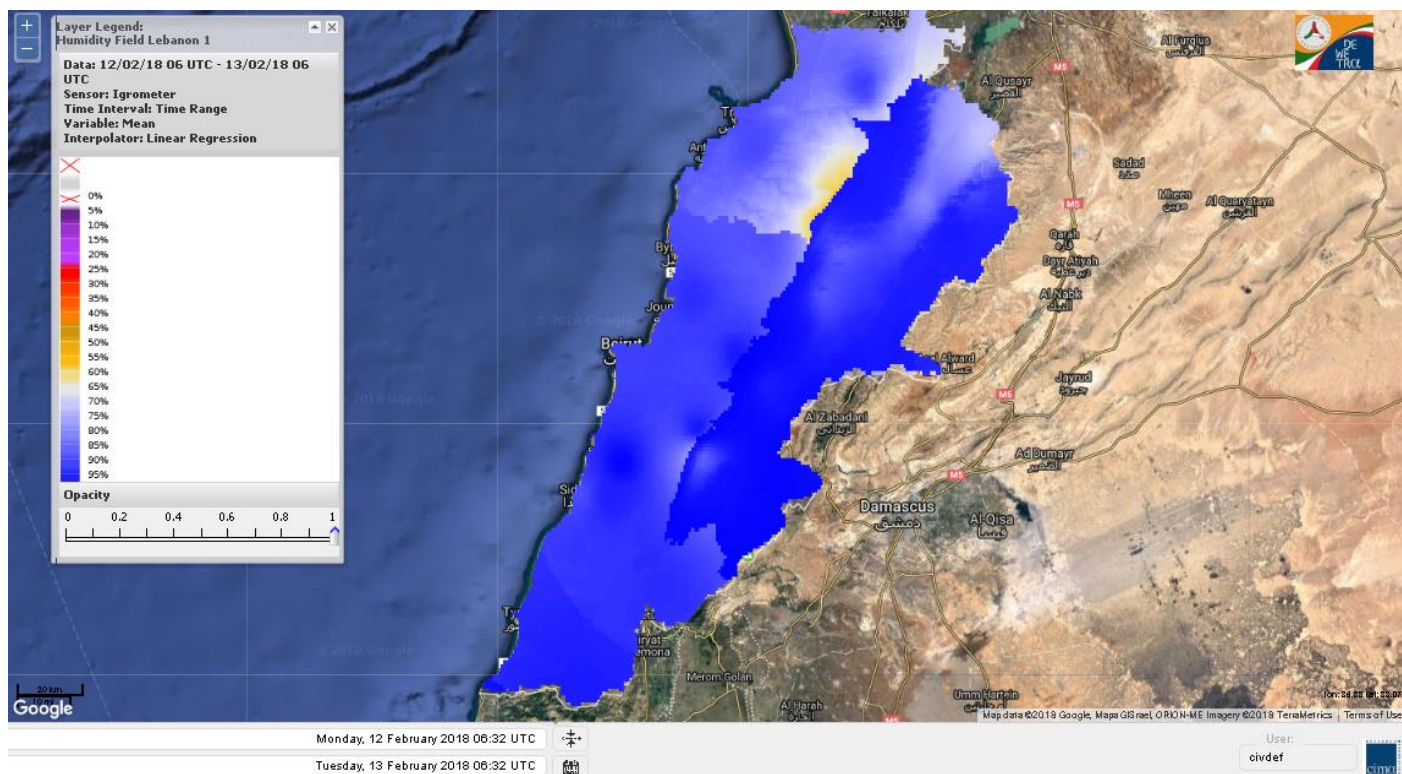
- VERY LOW
- LOW
- MEDIUM-LOW
- MEDIUM
- MEDIUM-HIGH
- HIGH
- EXTREME



# Lebanon temperature for Lebanon 13 Feb 2018

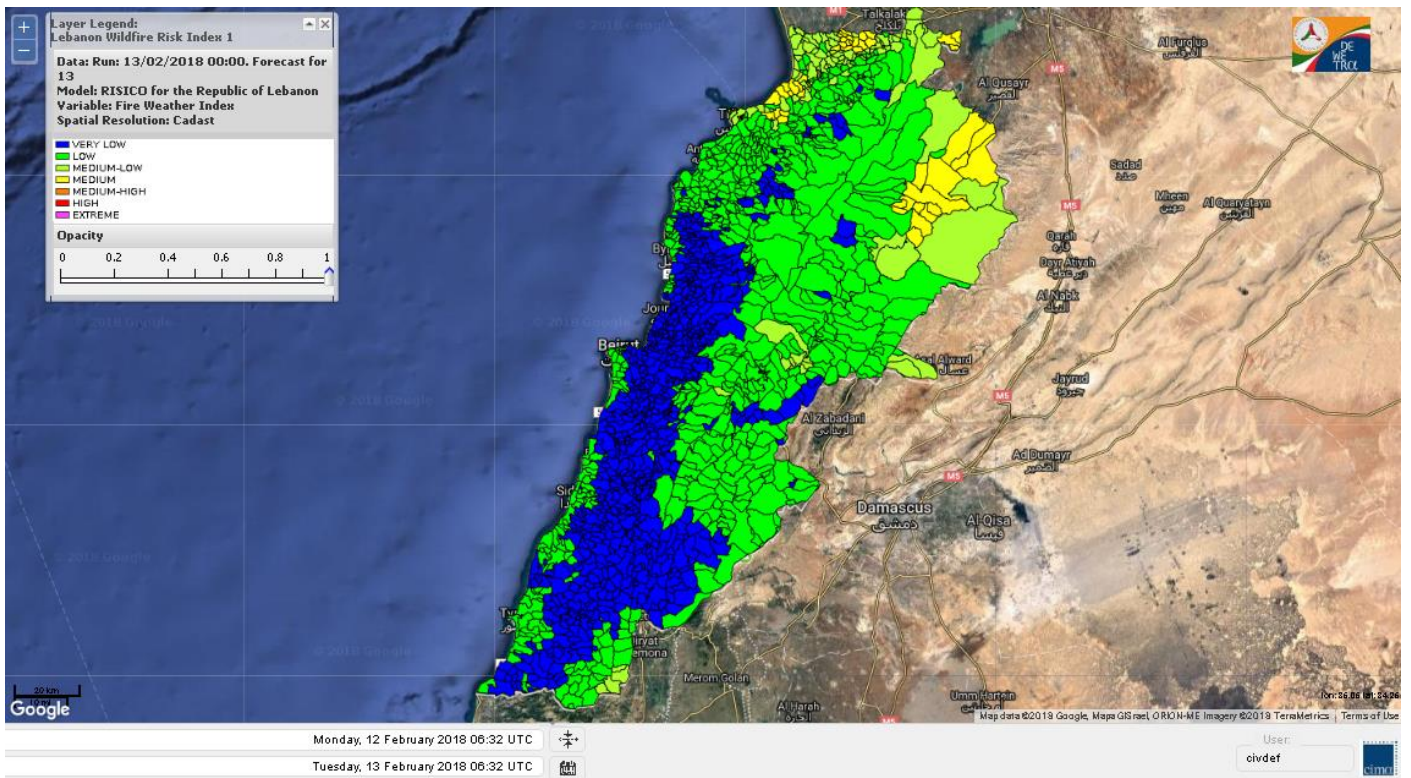


# Lebanon humidity for Lebanon 13 Feb 2018

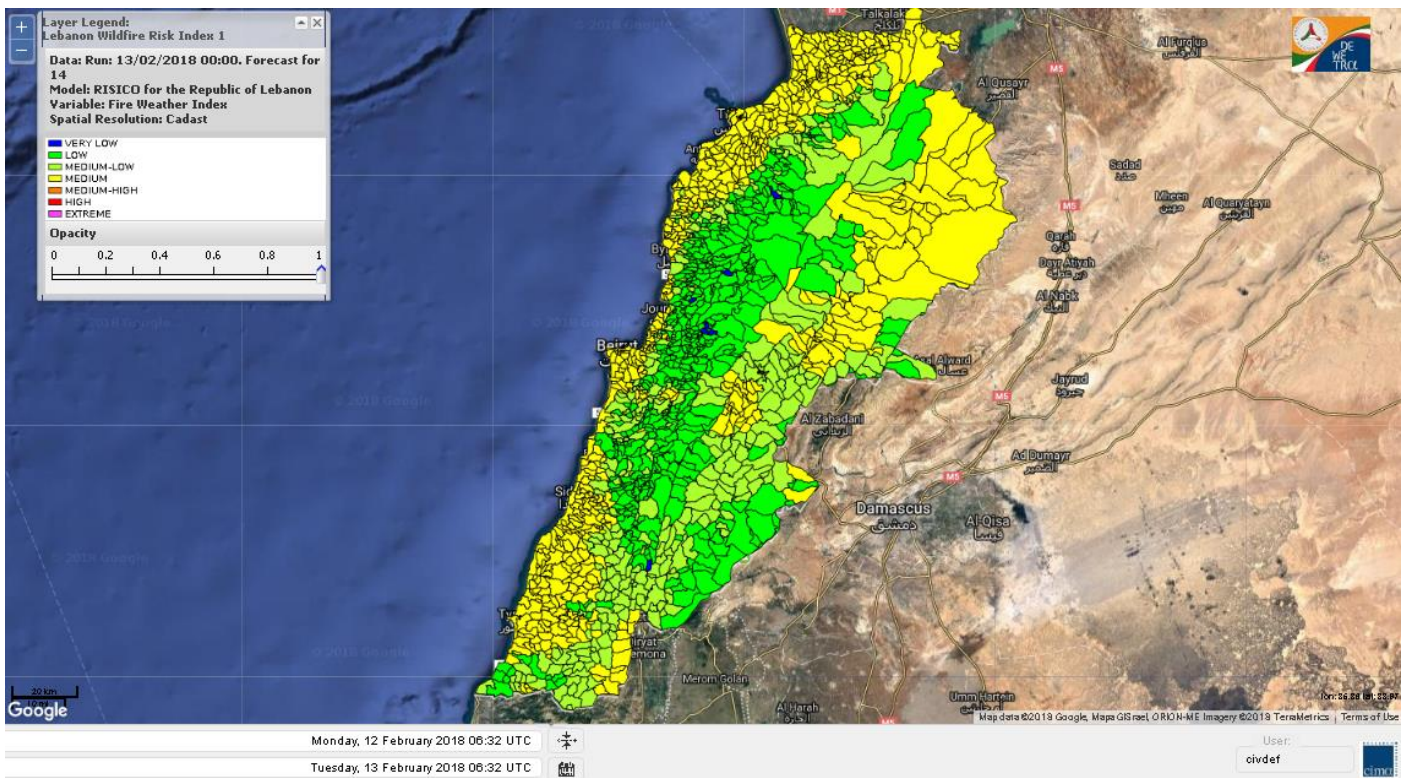




# Lebanon for 13 Feb 2018

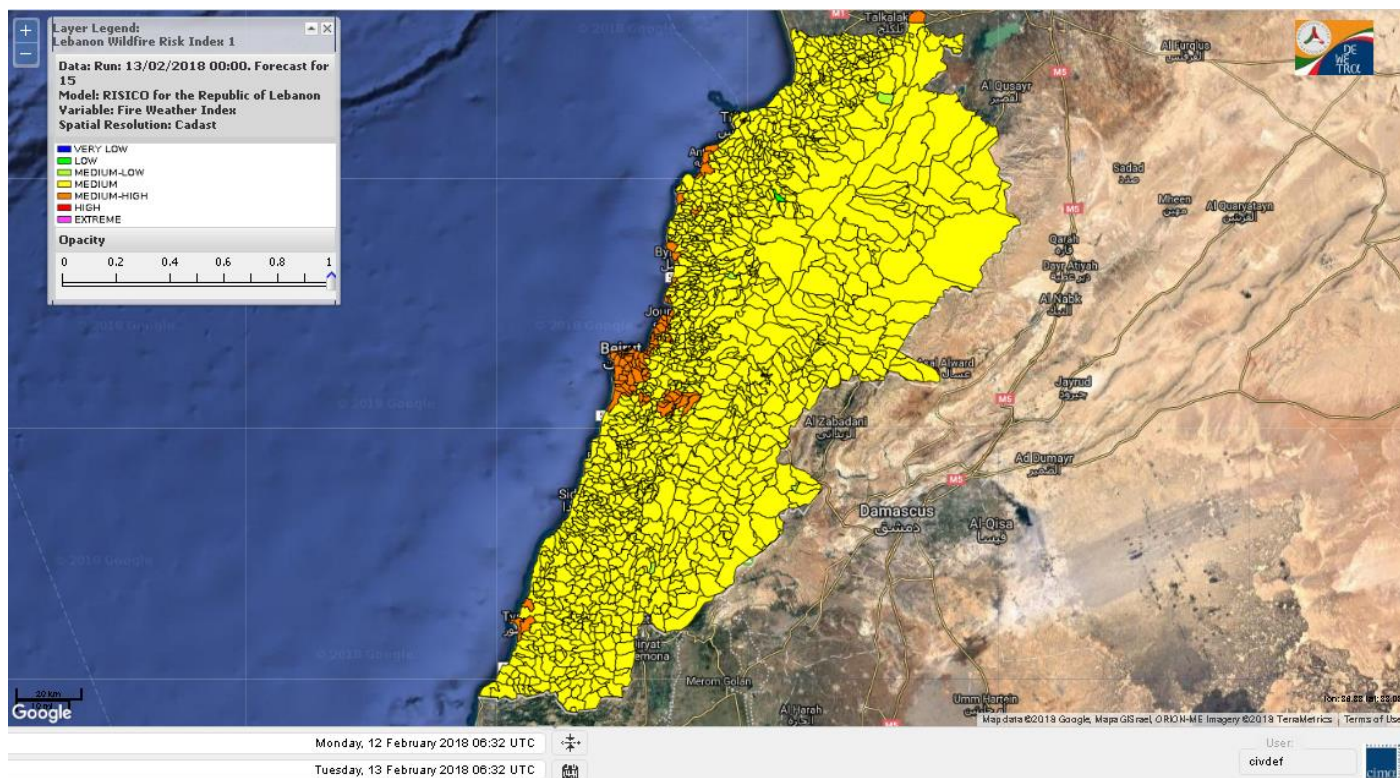


# Lebanon for 14 Feb 2018

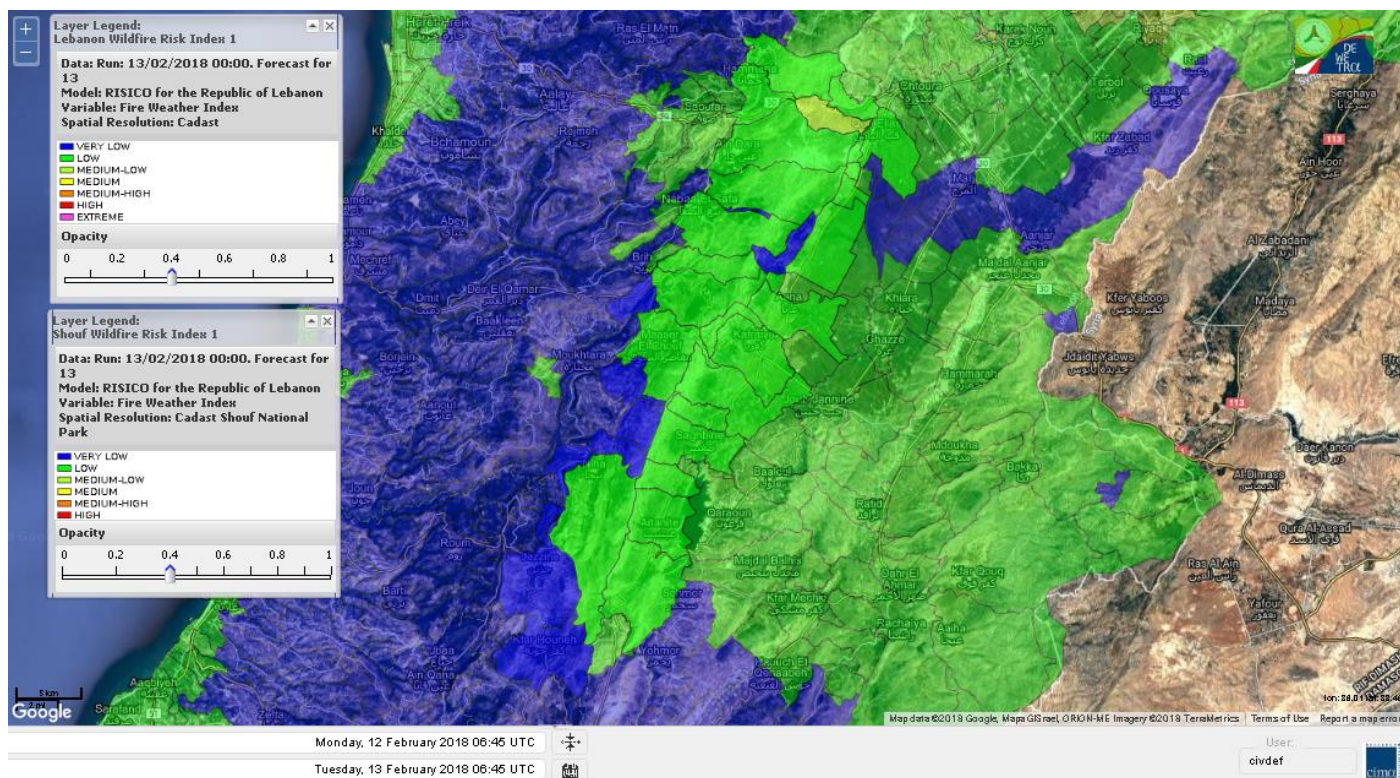




# Lebanon for 15 Feb 2018

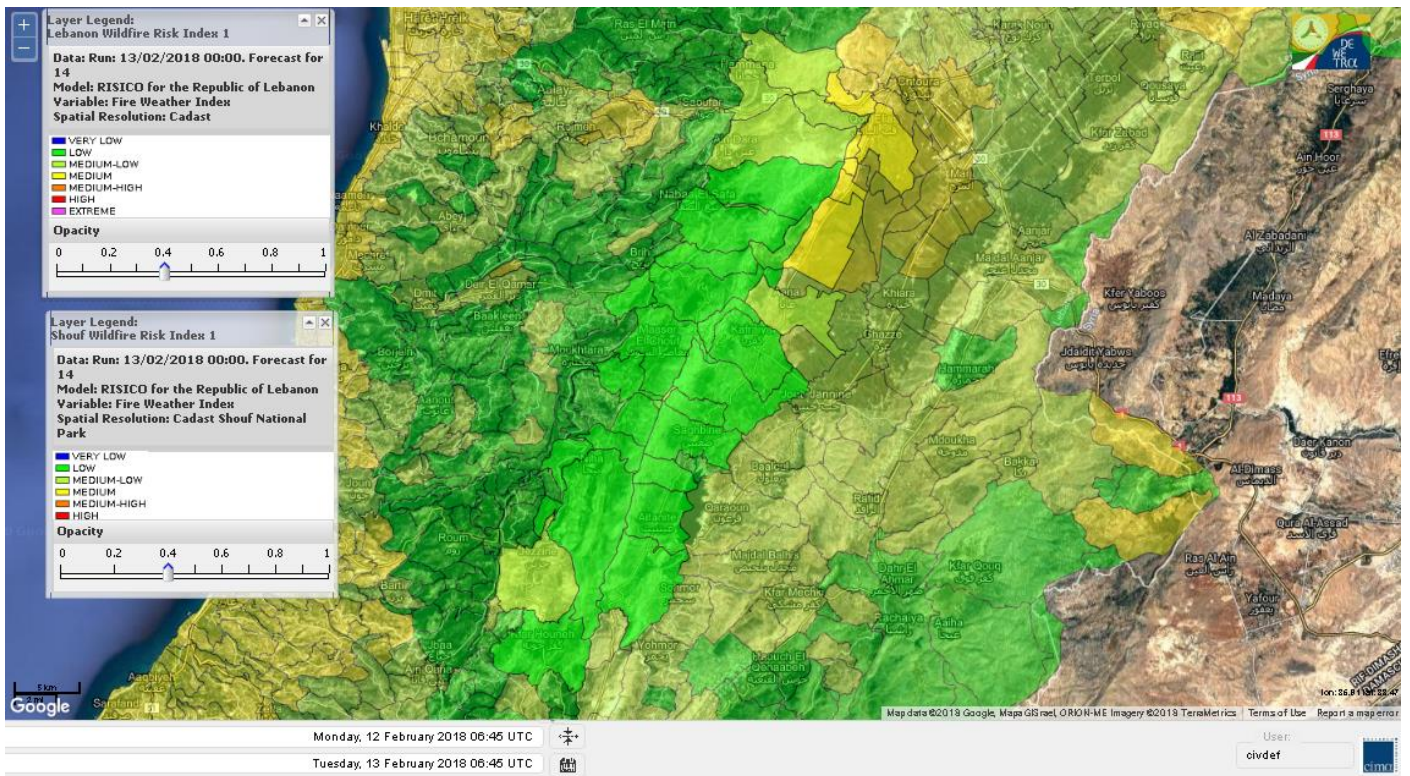


# Shouf Biosphere Reserve Forecast for 13 Feb 2018

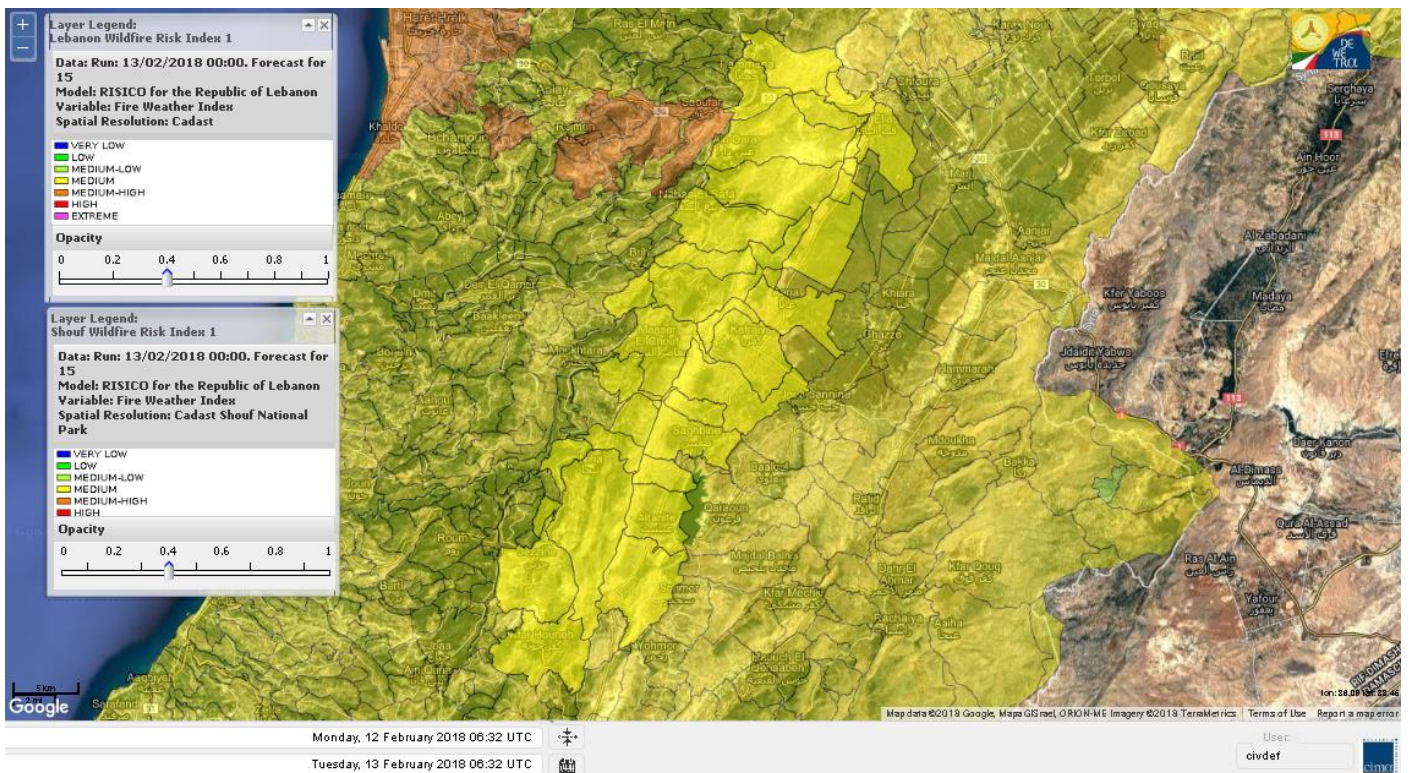




# Shouf Biosphere Reserve Forecast for 14 Feb 2018

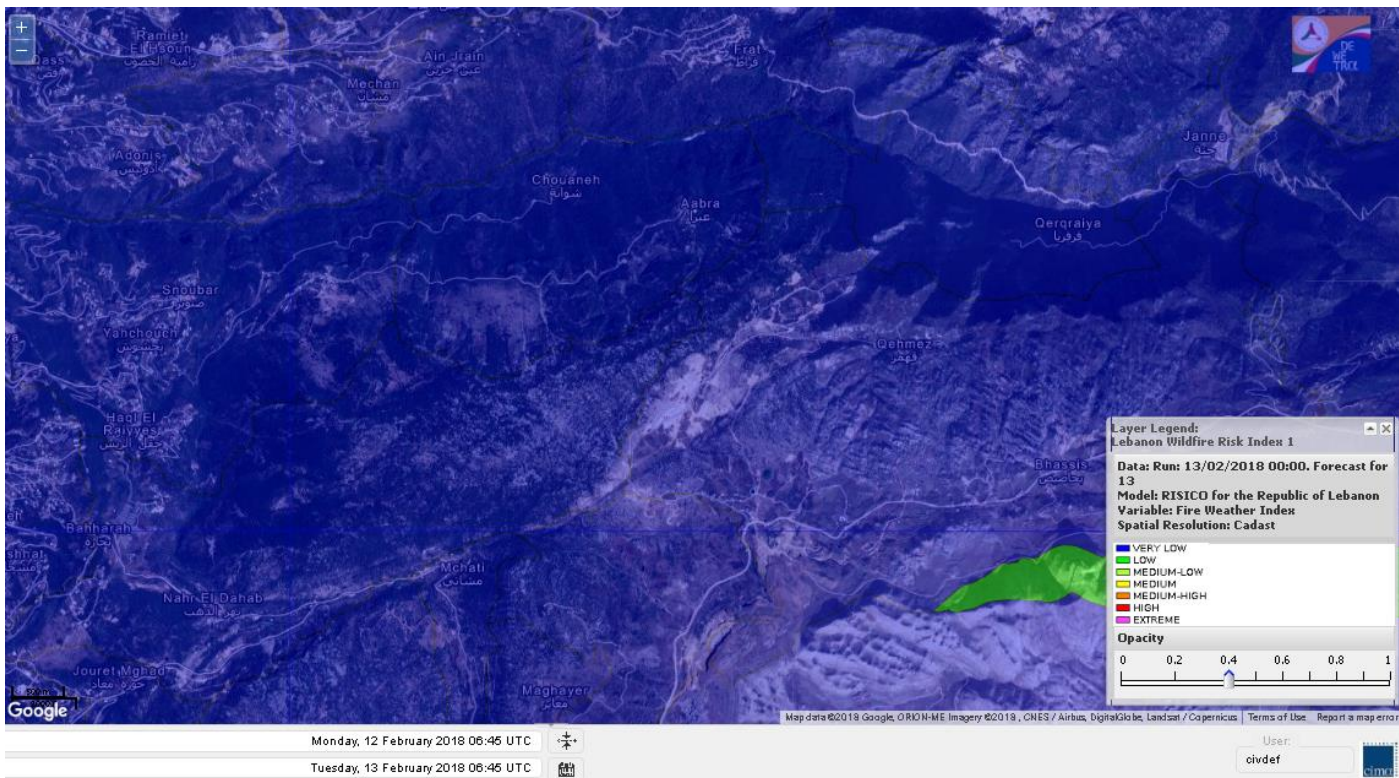


# Shouf Biosphere Reserve Forecast for 15 Feb 2018

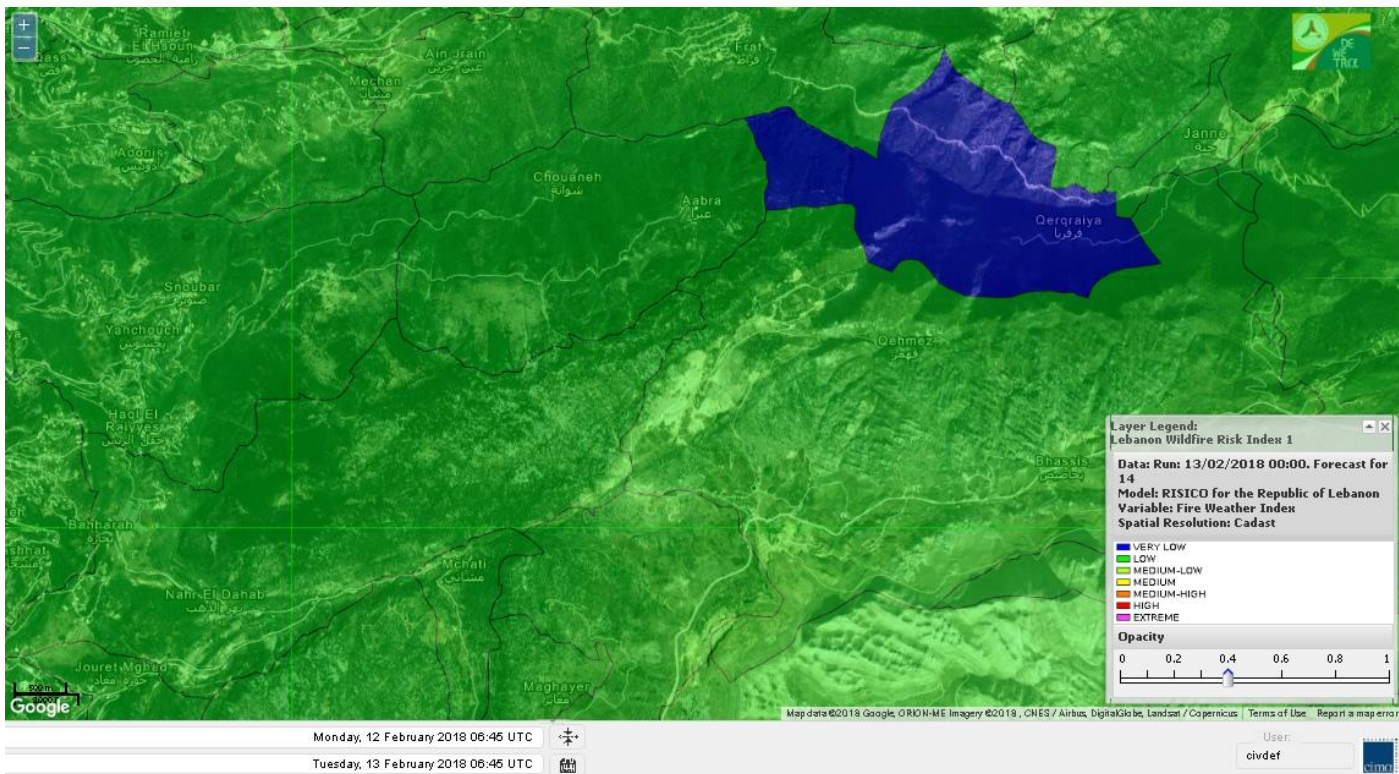




# Jabal Moussa Reserve Forecast for 13 Feb 2018

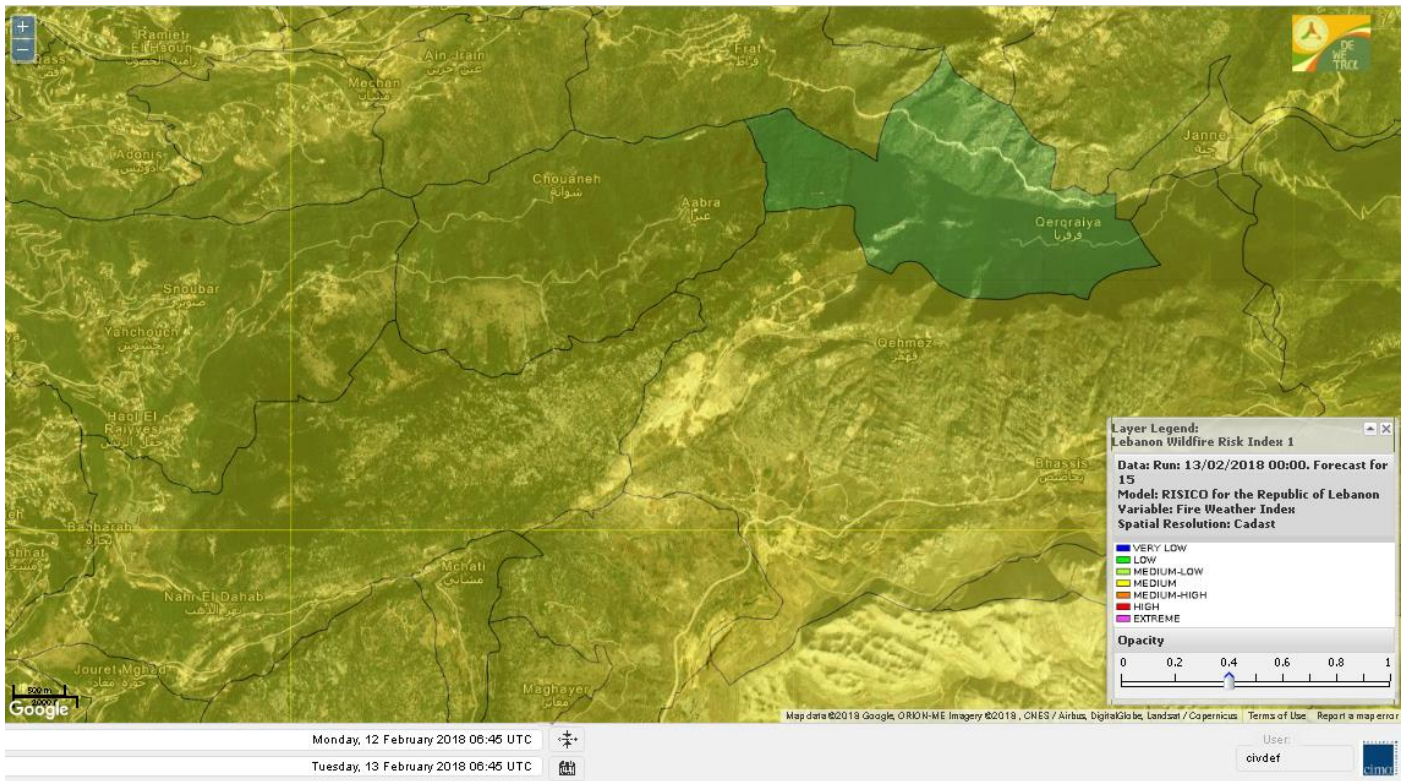


# Jabal Moussa Reserve Forecast for 14 Feb 2018





# Jabal Moussa Reserve Forecast for 15 Feb 2018





## Nord

### Koura

Municipality	13-Feb	14-Feb	15-Feb	Municipality	13-Feb	14-Feb	15-Feb	Municipality	13-Feb	14-Feb	15-Feb
Aaba	L	M	M	Afsaddiq	L	M	M	Ain Ekrine	L	M	M
Amioun	L	M	M	Anfeh	L	M	MH	Badbhoun	L	M	M
Barghoun	L	M	M	Barsa	L	M	M	Batroumine	L	M	M
Bdebba	L	M	M	Bechmizine	L	M	M	Bednayel El-Koura	L	M	M
Bhabbouch El-Koura	L	M	M	Bkeftine	L	M	M	Bnehran	L	ML	M
Bqaiia El-Koura	L	M	M	Bsarma	L	M	M	Btaaboura	L	M	M
Bttram	L	M	M	Btouratij	L	M	M	Bziza	L	M	M
Dar Beechtar	L	M	M	Dar Chmezzine	L	M	M	Deddeh	L	M	M
Deir El-Balamand	L	M	M	Fih	L	M	M	Hraiche	L	M	MH
Ijdaabrine	L	M	M	Kaftoun	L	M	M	Kefraya El-Koura	L	M	M
Kfarakka	L	M	M	Kfarhata	L	M	M	Kfarhazir	L	M	M
Kfarkahel	L	M	M	Kfarsaroun	L	M	M	Kosba	L	M	M
Mejdel el-Koura	L	M	M	Nakhle	L	M	M	Qalhat	L	M	M
Ras Masqa	L	M	M	Rechdibbine	L	M	M	Zakroun	L	M	M
Zgharta El-Mtaouile	L	L	M								

### Bcharre

Municipality	13-Feb	14-Feb	15-Feb	Municipality	13-Feb	14-Feb	15-Feb	Municipality	13-Feb	14-Feb	15-Feb
Aabdine	L	ML	M	Bane	VL	L	M	Barhelioun	L	L	M
Bazouone	L	L	M	Becharre	L	L	M	Beit Menzer	VL	L	M
Billa	L	L	M	Blaouza	VL	ML	M	Bqaa Kafra	L	L	M
Bqerqacha	L	L	M	Breissat	VL	L	M	Dimane	L	L	M
Hadath El Jobbeh	L	L	M	Hadchit	VL	L	M	Hasroun	L	L	M
Mazraat Aassaf	VL	L	M	Mazraat Bani Saab	L	L	M	Mchaa El-Jobbeh	L	L	M
Metrit	L	ML	M	Moghr El-Ahoual	L	ML	M	Ouadi Qannoubine	VL	VL	L
Qanat	VL	L	M	Qnayer	VL	L	M	Tourza	VL	L	M

### Batroun

Municipality	13-Feb	14-Feb	15-Feb	Municipality	13-Feb	14-Feb	15-Feb	Municipality	13-Feb	14-Feb	15-Feb
Aabrine	L	M	M	Aalali	L	ML	M	Aartiz	VL	ML	M
Abdelli	VL	L	M	Ajdabra	L	M	M	Assia	L	ML	M
Basbina	L	M	M	Batroun	L	M	MH	Bcheleh	L	L	M
Bechtoudar	L	ML	M	Beit Chlala	L	L	M	Beit Kassab	VL	L	M
Bijdarfil	L	M	M	Bqesmaya	L	M	M	Chatine	L	L	M
Chebtin	L	ML	M	Chekka	L	M	MH	Daael	L	ML	M
Dahr Abi Yaghi	VL	L	M	Daraya El-Batroun	VL	M	M	Deir Billa	L	L	M
Deir Kfifane	L	M	M	Deir Mar Youhanna EL	L	L	M	Deir Mar Youssef Jra	VL	ML	M
Douma	L	L	M	Douq	L	L	M	Eddeh El-Batroun	L	M	M
Ftahat El-Batroun	VL	ML	M	Ghouma	VL	M	M	Hadtoun	L	ML	M
Hamat	L	M	M	Harbouna	VL	ML	M	Hardine	VL	L	M
Helta	L	ML	M	Hery	L	M	MH	Jebbla	VL	ML	M
Jrabta El-Batroun	VL	ML	M	Jrane El-Batroun	L	M	MH	Kfar Aabida	L	M	M
Kfar Halda	L	L	M	Kfarb Shlaimane	VL	ML	M	Kfarhatna	L	M	M
Kfarhay	L	M	M	Kfarhelos	VL	ML	M	Kfifane	L	M	MH



Kfour El Arabi	L	L	M	Koubba	L	M	M	Kour	L	M	M
Mar Mama	VL	L	M	Masrah	VL	L	M	Mehmarch	L	ML	M
Mrah Chdid	L	M	M	Mrah El Ziyat	L	M	M	Mrah El-Hajj	VL	L	M
Nahle El-Batroun	L	ML	M	Niha El-Batroun	L	L	M	Ouajh El-Hajjar	L	M	M
Ouata Houb	L	L	M	Qatnaaoun	L	M	M	Racha	L	ML	M
Rachana	VL	ML	M	Rachkida	L	M	M	Ram El-Batroun	L	L	M
Ras Nahhach	L	M	M	Selaata	L	M	M	Sghar	VL	ML	M
Smar Jbayl	L	M	M	Sourat El-Batroun	L	ML	M	Tannourine El-Faouqa	L	L	M
Tannourine Et-Tahta	VL	L	M	Thoum	L	M	M	Toula El-Batroun	VL	ML	M
Zan	L	M	M								

## Zgharta

Municipality	13-Feb	14-Feb	15-Feb	Municipality	13-Feb	14-Feb	15-Feb	Municipality	13-Feb	14-Feb	15-Feb
Aachach	ML	M	M	Aalma	L	M	M	Aarde	L	M	M
Aintourine	L	ML	M	Arabet Qozhaya	VL	L	M	Arde	L	M	M
Arjis	L	M	M	Asnoun	L	M	M	Ayto	VL	L	M
Basloukit	L	L	M	Bchannine	L	M	M	Besebeel	L	M	M
Bhairret Toula	L	L	M	Bnachee	L	M	M	Boussit	M	M	M
Danha	L	M	M	Daraiya Zgharta	L	M	M	Deir Jdeide	L	M	M
Ehden	L	L	M	Halan	M	M	M	Hariq Zgharta	L	M	M
Houakir	L	ML	M	Hraiqis	ML	M	M	laal	L	M	M
Ijbaa	L	ML	M	Karm Saddeh	L	L	M	Kfarchakhna	L	M	M
Kfardlaqous	L	M	M	Kfarfou	L	M	M	Kfarhata Zgharta	L	M	M
Kfarhoura	L	M	M	Kfarsghab	VL	L	M	Kfaryachit	L	M	M
Kfarzaina	L	M	M	Khaldiye	L	M	M	Mazraat Ajbeaa	L	M	M
Mazraat Et-Teffah	VL	L	M	Mazraat Jneid	L	M	M	Mejdlaiya Zgharta	L	M	M
Merh Kfarsghab	L	M	M	Miryata	L	M	M	Miziara	L	L	M
Mzraat Kefraya	M	M	M	Qorah Bach	L	M	M	Rachiine	L	M	M
Ras Kifa	L	M	M	Sakhra	L	M	M	Sebhel Zgharta	L	ML	M
Serhel	VL	L	M	Tallet Zgharta	L	M	M	Toula Zgharta	L	L	M
Zgharta	L	M	M								

## Minieh-Denniye

Municipality	13-Feb	14-Feb	15-Feb	Municipality	13-Feb	14-Feb	15-Feb	Municipality	13-Feb	14-Feb	15-Feb
Aasaymout	VL	L	M	Aaymar	L	ML	M	Aazki	L	M	M
Ain El-Tineh-Miniyeh	L	L	M	Assoun	L	ML	M	Bakhaaoun	L	M	M
Bchennata	L	L	M	Bechehhara	VL	L	M	Beddawi	ML	M	M
Behouaita	L	L	M	Beit El Foqss	L	L	M	Beit Haouik	L	M	M
Beit Zoud	L	ML	M	Bekaasafrine	L	ML	M	Borj El Yahoudiyeh	ML	M	M
Bqarsouna	L	L	M	Btermaz	L	ML	M	Debaael	VL	L	M
Deir Ammar	ML	M	M	Deir Nbouh	L	ML	M	Haouaret-Miniyeh	L	ML	M
Haql el Azimeh	L	L	M	Harf El Siyad	L	ML	M	Hazmiye-Miniyeh	L	L	M
Izal	L	ML	M	Jarjour	VL	L	M	Jayroun	VL	L	M
Kahf El-Malloul	L	L	M	Karm El-Moher	L	ML	M	Kfar Binine	L	ML	M
Kfarchalane	L	M	M	Kfarhabou	L	M	M	Kharroub-Miniyeh	L	M	M
Mazraat El-Kreme	VL	L	M	Mazraat Ketrane	L	ML	M	Merkebta	ML	M	M
Minyeh	M	M	M	Mrah El Sfirat	VL	L	M	Mrah Sraj	L	M	M
Mrebbine	L	M	M	Nabi Youcheaa	L	M	M	Nemrine	L	ML	M



Qarhaiya	L	M	M	Qarne	VL	L	M	Qarsita	L	L	M
Qattineh-Miniyeh	VL	L	M	Qemmamine	VL	L	M	Qraine	VL	L	M
Raouda-Aadoua	L	M	M	Rihaniyet-Miniyeh	M	M	M	Sfireh	L	L	M
Sir Ed-Danniyeh	L	ML	M	Tarane	VL	ML	M	Terbol-Miniyeh	M	M	M
Zaghartaghriane	L	ML	M	Zouq Bhannine	M	M	M				

## Nabatiye

### Nabatiye

Municipality	13-Feb	14-Feb	15-Feb	Municipality	13-Feb	14-Feb	15-Feb	Municipality	13-Feb	14-Feb	15-Feb
Aabba	VL	M	M	Aazzi	VL	ML	M	Adchit El-Chqif	VL	M	M
Ain Bou Swar	VL	ML	M	Ain Kana	VL	ML	M	Ali El-TaHER	VL	ML	M
Ansar	VL	M	M	Arab Salim	VL	ML	M	Arnoun	VL	ML	M
Bfaroue	VL	ML	M	Breyqaah	VL	M	M	Charqiyeh	VL	M	M
Choukine	VL	ML	M	Deir El Zahrani	VL	ML	M	Doueir El-Nabatiyeh	VL	M	M
Habbouch El-Nabatiye	VL	ML	M	Hamra El-Nabatiyeh	VL	ML	M	Harouf El-Nabatiyeh	VL	M	M
Hmaile	VL	ML	M	Houmin El Faouqa	VL	ML	M	Houmin El Tahta	VL	M	M
Jarjough	VL	L	M	Jbaah El-Nabatiyeh	VL	L	M	Jebchit	VL	M	M
Kfar Djal El-Nabatiy	VL	M	M	Kfar Remmane	VL	ML	M	Kfar Sir	VL	M	M
Kfar Tebnit	VL	ML	M	Kfarfila	VL	ML	M	Kfour El-Nabatieh	VL	M	M
Mayfadoun	VL	ML	M	Mazraat Bsaffour	VL	M	M	Mazraat Chalbaal	VL	M	M
Mazraat Dmoul	L	M	M	Mazraat El Khreibeh	VL	M	M	Mazraat El-Bayad El-	VL	ML	M
Mazraat Kfarjaouz	VL	ML	M	Mazraat Qalaat Meiss	L	M	M	Nabatiyeh El-Fawka	VL	ML	M
Nabatiyeh Et-Tahta	VL	ML	M	Namiriyyeh	VL	M	M	Qaaqaaiyet El Jisr	VL	M	M
Qossaibeh El-Nabatiy	VL	M	M	Roumine	VL	ML	M	Sarba El-Nabatieh	VL	ML	M
Sir El-Gharbiyeh	VL	M	M	Toul	VL	ML	M	Yehmor El-Nabatiyeh	VL	ML	M
Zaoutar El Charkiyeh	VL	ML	M	Zaoutar El-Gharbiyeh	VL	ML	M	Zebdine El-Nabatiyeh	VL	ML	M
Zefta	VL	M	M								

### Hasbaiya

Municipality	13-Feb	14-Feb	15-Feb	Municipality	13-Feb	14-Feb	15-Feb	Municipality	13-Feb	14-Feb	15-Feb
Ain Jarfa	VL	L	M	Abou Qamha	VL	ML	M	Ain Qania	VL	L	M
Bourghos	VL	ML	M	Chebaa	L	L	M	Chouaya Hasbaya	L	L	M
Dellafeh	VL	ML	M	Fardiss Hasbaiya	VL	ML	M	Hasbaya	VL	ML	M
Hbariyeh	VL	L	M	Kaoukaba Hasbaiya	VL	ML	M	Kfar Chouba	VL	L	M
Kfar Hamam	VL	L	M	Kfeir El-Zait	VL	L	M	Khalwat Hasbaya	VL	L	M
Khreibet Hasbaiya	VL	ML	M	Majidiyeh Hasbaiya	VL	ML	M	Marj Ez-Zhour (Haouc	VL	L	M
Meri	VL	ML	M	Mimass	VL	ML	M	Rachaiya El-Fokhar	VL	L	M
Salaiyeb	VL	ML	M								

### Marjayoun

Municipality	13-Feb	14-Feb	15-Feb	Municipality	13-Feb	14-Feb	15-Feb	Municipality	13-Feb	14-Feb	15-Feb
Aalmane Marjaayoun	VL	L	M	Aamra	VL	ML	M	Adayseh Marjaayoun	L	M	M
Adchit El-Koussair	VL	ML	M	Ain Arab Marjaayoun	VL	ML	M	Bani Haiyann	VL	ML	M
Blatt Marjaayoun	VL	ML	M	Blida	ML	M	M	Borj El-Moulouk	VL	ML	M
Boueyda Marjaayoun	VL	ML	M	Deir Mimass	VL	ML	M	Deir Siriane	VL	ML	M
Dibbine	VL	ML	M	Ebel El Saqi	VL	ML	M	Houla	L	M	M
Houra	VL	ML	M	Kfar Kila	L	M	M	Khiam Marjaayoun	VL	ML	M



Klayaa	VL	ML	M	Majdel Selem	L	ML	M	Marjaayoun	VL	ML	M
Markaba	L	M	M	Mays El-Jabal	L	M	M	Mazraat Doumiat	VL	ML	M
Mazraat Sarada	VL	ML	M	Mhaibib	ML	M	M	Qabrikha	L	ML	M
Qantara	VL	ML	M	Rab El-Thalathine	L	M	M	Saouaneh Marjayoun	L	M	M
Talloussa	VL	ML	M	Taybeh Matjaayoun	L	ML	M	Touline	VL	ML	M

## Bent Jbail

Municipality	13-Feb	14-Feb	15-Feb	Municipality	13-Feb	14-Feb	15-Feb	Municipality	13-Feb	14-Feb	15-Feb
Ain-Ebel	L	ML	M	Aitaroun	ML	M	M	Aynata Bint Jbeil	L	M	M
Ayta El-Chaeb	L	ML	M	Ayta El-Jabal	VL	ML	M	Beit Lif	VL	L	M
Beit Yahoun	L	ML	M	Bint Jbeil	L	ML	M	Borj Qalaway	VL	M	M
Braachit	L	ML	M	Chakra	L	ML	M	Debel	L	ML	M
Deir Antar	VL	M	M	Froun	VL	ML	M	Ghandouriyeh Bint Jb	VL	M	M
Hanine	L	ML	M	Hariss	VL	ML	M	Hdatha	L	ML	M
Jmeymeh	L	ML	M	Kafra Bint Jbeil	VL	ML	M	Kfar Dounine	VL	M	M
Khirbet Selm	VL	ML	M	Kounine	L	M	M	Maroun El Ras	ML	M	M
Qalaway	VL	M	M	Qaouzah	VL	L	M	Qatmoun	L	ML	M
Ramya Bint Jbeil	VL	L	M	Rchaf	L	ML	M	Rmeich	L	ML	M
Safad Al Battikh	VL	ML	M	Salhaneh	VL	L	M	Serbine	L	ML	M
Sultanieh Bint Jbeil	VL	ML	M	Tibnine	VL	ML	M	Tiri	L	ML	M
Yaroun	L	ML	M	Yater	VL	ML	M				

## Mont Liban

### Jbail

Municipality	13-Feb	14-Feb	15-Feb	Municipality	13-Feb	14-Feb	15-Feb	Municipality	13-Feb	14-Feb	15-Feb
Aabeydat	VL	L	M	Aalita	VL	L	M	Aamchit	L	M	MH
Aarab El-Lahib	L	L	M	Aarasta	VL	L	M	Adonis Jbeil	VL	L	M
Afqa Jbeil	L	L	M	Ain El Delbeh Jbeil	VL	L	M	Ain El-Ghouyba	VL	L	M
Ain Jrain	VL	L	M	Ain Kfah	VL	M	M	Almat El Chemaliyat	VL	L	M
Almat El-Jenoubiya	VL	L	M	Aqoura	L	L	M	Bayzoun	VL	L	M
Bchille Jbeil	VL	L	M	Bechtida	VL	L	M	Behdaydat	VL	ML	M
Beit Habbaq	VL	M	M	Bejjeh	VL	ML	M	Bekhaaz	VL	M	M
Berbara Jbeil	L	M	M	Bintael	VL	L	M	Birket Hjoula	VL	L	M
Blatt Jbeil	VL	ML	M	Boulhos	VL	L	M	Breyj Jbeil	VL	L	M
Chamat	VL	M	M	Chikhane	L	M	M	Chmout	VL	L	M
Eddeh Jbeil	L	M	M	Ehmej	VL	L	M	Fatre	VL	L	M
Ferhet	VL	ML	M	Fghal	VL	ML	M	Frat	VL	L	M
Ghabat	VL	L	M	Ghalboun	VL	ML	M	Gharzouz	VL	M	M
Ghofrine	L	M	M	Habil	VL	L	M	Halate	VL	ML	M
Haqel	VL	L	M	Hbaline	VL	M	M	Hboub	VL	ML	M
Hdeine	VL	L	M	Hema Er-Rehban	L	L	M	Hema Mar Maroun Aann	VL	L	M
Hjoula	VL	L	M	Hosrayel	L	M	M	Hsarat	VL	M	M
Hsoun	VL	L	M	Jaj	L	L	M	Janne	VL	L	M
Jbeil	L	M	MH	Jeddeyel Jbeil	L	M	M	Jlisse	VL	L	M
Jouret El-Qattine	VL	L	M	Kfar Baal Annaya	VL	L	M	Kfar Kidde	L	M	M
Kfar Kouas	VL	L	M	Kfar Mashoun	VL	M	M	Kfoun	VL	L	M

Kharbe Jbeil	L	ML	M	Laqlouq	L	L	M	Lassa	VL	L	M
Lehfed	VL	L	M	Maad	VL	M	M	Mar Sarkis	L	L	M
Mastita	L	M	M	Mayfouq	L	L	M	Mazraat El Siyad	L	L	M
Mazraat El-Maaden	VL	L	M	Mechane	VL	L	M	Mechmech Jbeil	VL	L	M
Mehrin	L	ML	M	Mejdel El-Akoura	L	L	M	Mghayreh Jbeil	L	L	M
Mounsef	L	M	M	Nahr Ibrahim	L	M	MH	Qahmez	VL	L	M
Qartaba	VL	L	M	Qartaboun	L	M	MH	Qattara Jbeil	VL	L	M
Qorqraya	VL	VL	ML	Ramout	VL	M	M	Ras Osta	VL	L	M
Rihane Jbeil	L	M	M	Sakiet El-Khayt	VL	ML	M	Saqi Richmaya	L	L	M
Sebrine	VL	L	M	Seraita	VL	L	M	Souane Jbeil	VL	L	M
Tadmor	L	L	M	Tartej	L	L	M	Torzaiya	VL	L	M
Yanouh Jbeil	L	L	M	Zibidine Jbeil	VL	L	M				

## El Metn

Municipality	13-Feb	14-Feb	15-Feb	Municipality	13-Feb	14-Feb	15-Feb	Municipality	13-Feb	14-Feb	15-Feb
Aain El-Qabu	VL	VL	M	Aain El-Qach	VL	L	M	Aain El-Teffaha	VL	L	M
Aain el-Safssaf El-M	VL	L	M	Abou Mizane	VL	L	M	Ain Aar	VL	M	MH
Ain Alaq	VL	L	M	Ain El-Kharroube	VL	L	M	Ain El-Sendiane	VL	L	M
Ain El-Zeitoune	VL	L	M	Ain Saadeh	VL	ML	M	Aintoura El-Matn	L	L	M
Amaret Chalhoub	VL	M	MH	Antelias	VL	M	MH	Atchaneh	VL	L	M
Ayroun	VL	L	M	Baabdat	VL	L	M	Baouchariyeh	VL	M	MH
Baskinta	VL	L	M	Beit Chabab	VL	L	M	Beit El-Charar	VL	M	MH
Beit El-Kekko	VL	M	MH	Beit Mery	VL	ML	M	Bhersaf	VL	L	M
Bikfaya	VL	L	M	Biyakout	VL	M	MH	Bnabil	VL	L	M
Bourj Hammoud	VL	M	MH	Bqennaya	VL	ML	M	Broummana El-Matn	VL	L	M
Bsalim	VL	ML	M	Bsifrine	VL	L	M	Bteghrine	VL	L	M
Chaouiye	VL	ML	M	Chouaya El-Matn	VL	L	M	Choueir	VL	L	M
Chrine	VL	L	M	Dahr El Sawan El-Mat	VL	L	M	Daychouniyeh	VL	M	MH
Dbayeh	VL	M	MH	Deir Chamra	VL	L	M	Deir Mar Abda el Mch	VL	L	M
Deir Mar Roukouz	VL	M	MH	Deir Tamiche	VL	ML	M	Dik El-Mehdi	VL	ML	M
Dikwaneh	VL	M	MH	Douar El-Matn	VL	L	M	Fanar	VL	M	M
Fraike	VL	L	M	Haret El-Ballaneh	VL	M	MH	Hbous	VL	M	MH
Himlaya	VL	L	M	Jal El Did	VL	M	MH	Jdeideh El-Metn	VL	M	MH
Jouar El-Matn	VL	L	M	Jouret El-Ballout	VL	L	M	Kaaqour	VL	L	M
Kfar Aaqab	VL	VL	M	Kfertay El-Matn	VL	L	M	Khenchara	VL	L	M
Khillet El-Mtain	VL	L	M	Konnabat Broummana	VL	L	M	Konnabat Salima	VL	L	M
Machraah El-Matn	VL	L	M	Majdel Tarchich	L	L	M	Majzoub	VL	M	M
Mansouriyeh El-Metn	VL	M	MH	Mar Boutros Karm Et-	VL	L	M	Mar Chaya et Mzekke	VL	L	M
Mar Moussa Ed-Douar	VL	L	M	Marjaba	VL	L	M	Masqa	VL	L	M
Mayasse	VL	L	M	Mazraat Deir Aoukar	VL	M	MH	Mazraat El-Hadirat	VL	ML	M
Mazraat Yachouh	VL	M	MH	Mchikha	L	L	M	Menqlet Mezher	VL	M	M
Mhaydseh Matn	VL	L	M	Mkalles	VL	M	MH	Mrouj	VL	L	M
Mtain	L	L	M	Mtayleb	VL	ML	M	Nabay	VL	L	M
Naccache	VL	M	MH	Ouadi Chahine	VL	L	M	Ouadi El-Karm El-Mat	VL	VL	M
Ouata El-Mrouj	VL	L	M	Ouyoun El-Matn	VL	L	M	Qornet Chehwan	VL	ML	M
Qornet El-Hamra	VL	L	M	Roumieh	VL	ML	M	Sfeilet Bikfaya	VL	L	M
Sinn El-Fil	VL	M	MH	Zabbougha	VL	L	M	Zalqa	VL	M	MH



Zarouon	VL	L	M	Zekrite	VL	L	M	Zighrine El-Matn	VL	L	M
Zouk El-Khrab	VL	M	MH								

## Chouf

Municipality	13-Feb	14-Feb	15-Feb	Municipality	13-Feb	14-Feb	15-Feb	Municipality	13-Feb	14-Feb	15-Feb
Aalmane El-Chouf	L	M	M	Aammq El-Chouf	VL	L	M	Ain Ouzein	VL	L	M
Ain Qani	VL	L	M	Ain Zhalta	L	L	M	Ainbal	VL	L	M
Amatour	VL	L	M	Anout	VL	L	M	Atrine	VL	L	M
Baadarane	VL	L	M	Baaqline	VL	L	M	Baasir	VL	M	M
Barja	L	M	M	Barouk	L	L	M	Bater	VL	L	M
Batloun	VL	L	M	Bayqoun	VL	ML	M	Bchetfine	VL	L	M
Beiteddine	VL	L	M	Benouati Ech-Chouf	VL	L	M	Berjein	VL	L	M
Bireh et Mtalleh	VL	L	M	Biret El-Chouf	L	ML	M	Bkechtine Ouel Mchei	VL	L	M
Bkifa El-Chouf	VL	ML	M	Botme	VL	L	M	Bqaiaa Ech-Chouf	VL	L	M
Bsaba El-Chouf	VL	L	M	Chammis El-Chouf	VL	M	M	Chehim	VL	ML	M
Chemaarine	VL	L	M	Chourit	VL	L	M	Daher El-Chouf	VL	L	M
Dalhoun	VL	ML	M	Damour	VL	M	M	Daraya El-Chouf	VL	L	M
Deir El-Moukhalles	VL	L	M	Deir Baba	VL	L	M	Deir Dourit	VL	L	M
Deir El-Qamar	VL	ML	M	Deir Kouche	VL	L	M	Dibbieh	VL	L	M
Dmit	VL	ML	M	Fouara Jaafar	VL	L	M	Fraidis El-Chouf	L	L	M
Ghabet Jaafar	VL	L	M	Gharife	VL	L	M	Haret Jandal	VL	L	M
Hasrout	VL	ML	M	Jadra	L	M	M	Jahlieh	VL	L	M
Jbeih El-Chouf	VL	L	M	Jdeidet El-Chouf	VL	L	M	Jiyeh	L	M	M
Jleilyeh	VL	ML	M	Jmailiyeh	L	M	M	Joun	VL	ML	M
Kahlounie El-Chouf	L	ML	M	Ketermaya	VL	M	M	Kfar Faqoud	VL	L	M
Kfar Hamal	VL	M	M	Kfar Him	VL	ML	M	Kfar Katra	VL	L	M
Kfar Niss	VL	L	M	Kfar hay	VL	L	M	Kfarnabrakh	VL	L	M
Khirbet Bisri	VL	L	M	Knayse El-Chouf	VL	L	M	Maaniyeh	VL	M	M
Maasser Beiteddine	VL	L	M	Maasser El-Chouf	L	L	M	Majdalouna	VL	ML	M
Majdel El-Meouch	VL	L	M	Mazboud	VL	ML	M	Mazmoura	VL	ML	M
Mazraat El Chouf	VL	L	M	Mazraat El Daher	VL	L	M	Mazraat El-Douair	VL	L	M
Mechref	VL	ML	M	Mghairie	VL	M	M	Mghayrie El-Chouf	VL	L	M
Moukhtara	VL	L	M	Mrusti	VL	L	M	Mtolle	VL	ML	M
Naameh	VL	M	M	Niha El-Chouf	L	L	M	Ouadi Abou Youssef	VL	L	M
Ouadi Ed-Deir	VL	ML	M	Ouadi El-Sit	VL	L	M	Ouadi bnehlay	VL	L	M
Qraibeh	VL	L	M	Qreiaa	VL	L	M	Rmayle El-Chouf	L	M	M
Semqaniyeh	VL	ML	M	Sibline	L	M	M	Sirjbeil	VL	ML	M
Warhanieh	L	L	M	Werdaniyeh	L	M	M	Zaarourieh	VL	ML	M

## Baabda

Municipality	13-Feb	14-Feb	15-Feb	Municipality	13-Feb	14-Feb	15-Feb	Municipality	13-Feb	14-Feb	15-Feb
Abadiyeh	VL	L	M	Ain Mouaffaq	VL	L	M	Araiya	VL	L	M
Arbaniyeh	VL	L	M	Arsoun	VL	L	M	Baabda	VL	M	MH
Baalchmey	VL	ML	M	Bmaryam	VL	L	M	Bourj El-Brajneh	L	M	MH
Boutchay	VL	ML	M	Bsaba Baabda	VL	M	MH	Btekhney	VL	L	M
Btibyat	VL	L	M	Bzbeddine	VL	L	M	Chbeniyeh	L	L	M
Chiyah	L	M	MH	Chmeisset Baabda	VL	L	M	Chouit	VL	L	M
Deir El-harf	VL	L	M	Deir Khouna	VL	L	M	Dlaybeh	VL	L	M

Falougha	L	ML	M	Furn El-Chebbak	VL	M	MH	Hadath Beyrouth	VL	M	MH
Halaliyeh Baabda	VL	L	M	Hammana	L	ML	M	Haret El Sett	VL	L	M
Haret Hamze	VL	L	M	Haret Hreik	L	M	MH	Hasbaiya El-Metn	VL	L	M
Jouar El-Hoz	VL	L	M	Jouret Arsoun	VL	L	M	Kfar Chima	VL	M	MH
Kfar Selouane	L	L	M	Khalouat Baabda	L	L	M	Kneisset Baabda	VL	L	M
Laylakeh	VL	M	MH	Louayzeh Baabda	VL	M	MH	Merdache	VL	M	MH
Mzairaa Baabda	VL	L	M	Ouadi Chahrour El Ol	VL	ML	M	Ouadi Chahrour El So	VL	ML	M
Qalaa Baabda	VL	L	M	Qhraybe Baabda	VL	L	M	Qobbayaa	L	L	M
Qornayel	VL	L	M	Qortada	VL	L	M	Qrayeh Baabda	VL	L	M
Qsaibeh Baabda	VL	L	M	Qtale Baabda	VL	L	M	Ras El Metn	VL	L	M
Ras El-Haref	L	L	M	Rouayset El-Ballout	VL	L	M	Salima Baabda	VL	L	M
Tahouitat El Ghadir	L	M	MH	Tarchich	L	L	M	Zandouqa	VL	L	M

## Aley

Municipality	13-Feb	14-Feb	15-Feb	Municipality	13-Feb	14-Feb	15-Feb	Municipality	13-Feb	14-Feb	15-Feb
Abey	VL	ML	M	Aghmid	VL	L	M	Ain Dara	L	ML	M
Ain Drafil	VL	L	M	Ain El Halazoun	VL	ML	M	Ain El-Rmmaneh	VL	L	M
Ain Jedideh	VL	ML	MH	Ain Ksour	VL	L	M	Ain Onoub	VL	ML	M
Ain Traz	VL	L	M	Ainab	VL	L	M	Aley	VL	ML	M
Aramoun	VL	ML	M	Aytat	VL	M	MH	Azouniyeh	L	L	M
Baawerta	VL	ML	M	Badghan Oua Wadi Bad	L	L	M	Bassatine	VL	ML	M
Bayssour	VL	ML	M	Bchamoun	VL	ML	M	Bdadoun	VL	ML	M
Behouara	VL	ML	M	Bennay	VL	ML	M	Bhamdoun El-Dayaa	VL	M	MH
Bhamdoun El-Mhatta	L	M	MH	Bkhechtey	VL	ML	MH	Bleibel	VL	ML	M
Bmakine	VL	M	MH	Bmehray	L	L	M	Bouzrid	VL	L	M
Bserrine	VL	ML	MH	Bsous	VL	L	M	Btalloun	VL	M	MH
Btater	VL	ML	MH	Chanay	L	M	MH	Charoun	L	L	MH
Chartoun	VL	L	M	Chemlane	VL	ML	M	Choueifat El-Aamrous	L	M	MH
Choueifat El-Oumara	L	M	MH	Choueifat El-Quoubbe	L	M	MH	Dakkoun	VL	L	M
Deir Qoubel	VL	ML	M	Dfoun	VL	ML	M	Douair El Remmaneh	VL	L	M
Ghaboun	VL	ML	M	Habramoun	VL	L	M	Homs Oua Hama	VL	L	M
Houmal	VL	ML	M	Jisr El Qadi	VL	L	M	Kehaleh	VL	L	M
Keyfoun	VL	M	MH	Kfar Aamey	VL	L	M	Kommatyeh	VL	M	M
Maasrati	VL	L	M	Majdel Baana	L	ML	MH	Mansourieh et Ain El	VL	ML	MH
Mazraat El-Nahr	VL	L	M	Mchakhte	L	L	M	Mecherfeh	VL	L	M
Mejdlaya	VL	ML	M	Mrayjat	L	L	M	Ramliyah	VL	L	M
Rechmaya	VL	L	M	Rejmeh	VL	ML	M	Remhala	VL	ML	M
Rouaysset El Neemane	VL	L	M	Saoufar	L	ML	MH	Selfaya	VL	L	M
Sirhmoul	VL	L	M	Souq El Ghareb	VL	M	MH	Taazanieh	VL	M	MH

## Kesrouane

Municipality	13-Feb	14-Feb	15-Feb	Municipality	13-Feb	14-Feb	15-Feb	Municipality	13-Feb	14-Feb	15-Feb
Achkout	VL	L	M	Adma Oua Dafneh	VL	M	M	Ain Ed-Delbe Kesroua	VL	L	M
Ain El-Rihane	VL	L	M	Aintoura Kesrouane	VL	ML	MH	Ajaltoun	VL	L	M
Akaybeh Kesrouane	L	M	MH	Aramoun Kesrouane	VL	L	M	Azra ouel Ozor	VL	L	M
Ballouneh	VL	L	M	Batha	VL	L	M	Bekaatat Achkout	VL	L	M
Bekaatat Kanaan	VL	L	M	Bizhel	VL	L	M	Bouar	L	M	M
Bqaatouta	VL	L	M	Bqaq Ed-Dine	L	M	M	Bzommar	VL	L	M



Chahtoul	VL	L	M	Chnaniir	VL	L	M	Chouan	VL	L	M
Daraya Kesrouane	VL	L	M	Darououn	VL	L	M	Deir Baqlouch	VL	L	M
Dlebta	VL	L	M	Eghbeh	VL	VL	M	Faraya	VL	L	M
Fatka	VL	ML	M	Feytroun	VL	L	M	Ghazir	VL	L	M
Ghbaleh Kesrouane	VL	L	M	Ghedrass	VL	L	M	Ghosta	VL	L	M
Ghyneh	VL	ML	M	Harharaya w Kattine	VL	L	M	Harissa Kesrouane	VL	ML	M
Hayata	VL	L	M	Hosein	VL	L	M	Hrajel	VL	L	M
Jdeideh Ghazir	VL	L	M	Jeita	VL	ML	M	Jounieh Ghadir	VL	M	MH
Jounieh Haret Sakhr	VL	M	MH	Jounieh Salel Alma	VL	ML	M	Jounieh Sarba	VL	M	MH
Jouret Bedrane	VL	L	M	Jouret Mhad	VL	L	M	Jouret Termos	VL	ML	M
Kfar Debiane	VL	L	M	Kfar Tay Kesrouane	VL	VL	M	Kfar Yassine	VL	M	MH
Kfour Kesrouane	VL	L	M	Kharayeb Nahr Ibrahi	VL	L	M	Klayaat Kesrouane	VL	L	M
Maarab	VL	L	M	Maaysra Kesrouane	VL	L	M	Mayrouba	VL	L	M
Mazraat Er-Ras	VL	M	MH	Mazraat Mrah El-Mir	VL	L	M	Mchaa El Ftouh	L	L	M
Mchaa Faraya	VL	L	M	Mchaa Kfar Dibiane	L	L	M	Mghaer	VL	L	M
Mradiyah	VL	L	M	Nahr Ed-Dahab	VL	L	M	Nammoura Kesrouane	VL	L	M
Ouata El Jaouz	VL	L	M	Ouata Sillam	VL	M	MH	Raachine	VL	L	M
Rayfoun	VL	L	M	Safra Kesrouane	L	M	M	Shayle Kesrouane	VL	L	M
Tabarja	VL	M	MH	Yahchouch	VL	L	M	Zaaytreh	VL	L	M
Zeytoun	VL	ML	M	Zouk Mikael	VL	M	MH	Zouk Mosbeh	VL	M	MH

## Baalbek\_Hermel

### Baalbek

Municipality	13-Feb	14-Feb	15-Feb	Municipality	13-Feb	14-Feb	15-Feb	Municipality	13-Feb	14-Feb	15-Feb
Aadous	L	M	M	Aamchki	L	ML	M	Aarsal	ML	M	M
Ain Baalbek	M	M	M	Ain Bourday	L	M	M	Ain El-Benye	L	ML	M
Ain El-Jaouz Baalbek	ML	L	M	Ain El-Siya Chadoura	L	L	M	Al Khodr Baalbek	L	M	M
Al Nabi Chit	L	M	M	Aynata Baalbek	L	ML	M	Baalbek	L	M	M
Bachwat	VL	L	M	Barqa	VL	L	M	Bednayel Baalbak	ML	M	M
Beit Chama	L	M	M	Bijjaje	M	M	M	Bouday	L	L	M
Brital	L	M	M	Btadi	L	L	M	Chaat	ML	M	M
Chaibe	L	L	M	Chlifa	L	ML	M	Chmestar	L	ML	M
Dar El-Oussa	L	L	M	Deir El-Ahmar	L	L	M	Deir Mar Maroun Baal	L	M	M
Douris	L	M	M	Fakiha	M	M	M	Hadath Baalbek	L	ML	M
Ham	L	ML	M	Haour Taala	L	M	M	Hizzine	L	M	M
Hlebta	L	M	M	Hosh Barada	L	M	M	Hosh El Dahab	L	M	M
Hosh El Snid	L	M	M	Hosh El-Nabi	L	M	M	Hosh El-Rafiq	L	M	M
Hosh Tal Safiya	L	M	M	Hrebta	L	M	M	laat	L	ML	M
Jebaa	L	M	M	Jenta	L	ML	M	Kfar Dabach	L	M	M
Kfar Dane	L	M	M	Khraibeh El-Hermel	M	M	M	Khreibet Baalbek	L	ML	M
Kneisset Baalbek	L	M	M	Labueh	M	M	M	Maarboun	L	ML	M
Majdaloun	L	M	M	Maqneh	L	M	M	Mazraat Beit Mcheik	L	M	M
Misraya	L	M	M	Moqraq	M	M	M	Nabha El-Damdoum	L	M	M
Nabi Chbay	L	ML	M	Nabi Osman	M	M	M	Nahleh baalbek	L	M	M
Ouadi El-Oss	L	M	M	Qaa Baayoun	M	M	M	Qaa Jouar Maqiye	M	M	M
Qaa Ouadi El-Khanzir	M	M	M	Qah Baalbek	M	M	M	Qarha Baalbek	L	M	M

Qsarnaba	L	M	M	Ram Baalbek	L	L	M	Ras Baalbek El Sahl	M	M	M
Ras Baalbek El-Charq	ML	M	M	Riha	L	M	M	Saaide	VL	ML	M
Sbouba	M	M	M	Seriine El-Tahta	L	M	M	Slouqi	L	ML	M
Taiba Baalbek	L	M	M	Talia	L	M	M	Taraiya	L	ML	M
Temnin El Fawqa	L	ML	M	Temnin El-Tahta	ML	ML	M	Tfail	ML	ML	M
Yahfoufa	L	ML	M	Yammouneh	L	L	M	Younine	ML	M	M
Zboud	M	M	M								

## Hermel

Municipality	13-Feb	14-Feb	15-Feb	Municipality	13-Feb	14-Feb	15-Feb	Municipality	13-Feb	14-Feb	15-Feb
Charbine El-Hermel	L	L	M	Hermel Jbab	L	ML	M	Hermel	ML	M	M
Maaysra El-Hermel	L	M	M	Michaa Mrajhine	L	ML	M	Ouadi Faara	L	ML	M
Ras Baalbek - Ouadi	M	M	M	Ras Baalbek El Gharb	L	ML	M	Zighrine	L	L	M

## Akkar

### Akkar

Municipality	13-Feb	14-Feb	15-Feb	Municipality	13-Feb	14-Feb	15-Feb	Municipality	13-Feb	14-Feb	15-Feb
Aain Tinta	ML	M	M	Aaiyat	L	M	M	Aakkar El-Aatiqa	L	ML	M
Aamar Akkar	ML	M	M	Aamar El Baykat	M	M	M	Aamayer	ML	M	M
Aamriyet Akkar	ML	M	M	Aandqet	L	M	M	Aarmeh	ML	M	M
Aarqa	ML	M	M	Aawaynat	ML	M	M	Aayoun Akkar	L	M	M
Abboudiye	M	M	M	Ain El-Zeit	ML	M	M	Ain Yaaqoub	L	M	M
Akroum	ML	M	M	Aridet Cheikh Zennad	ML	M	M	Baldeh w Mazraat Bal	ML	M	M
Barcha	M	M	M	Bardeh	ML	M	M	Bebnine	M	M	M
Beino	L	M	M	Beit Ayoub	L	M	M	Beit El-Haouch	ML	M	M
Beit Mellat	L	M	M	Beit Younes	L	ML	M	Berbara Akkar	ML	M	M
Berqayel	ML	M	M	Bezbina	L	M	M	Bireh Akkar	ML	M	M
Borj	L	M	M	Bqerezla	L	M	M	Bzal	L	M	M
Chane	L	ML	M	Chaqdouf	L	M	M	Charbila	ML	M	M
Cheikh Mohammad	ML	M	M	Cheikh Taba Es-Sahl	ML	M	M	Cheikh Taba	L	M	M
Cheikh Zennad	ML	M	M	Cheikhlar	ML	M	M	Chir Hmairine	ML	M	M
Daghle	L	M	M	Dahr Laissine	ML	M	M	Darine	ML	M	M
Dawra	L	M	M	Dawsa w Baghdadi	M	M	M	Dayret Nahr El-Kabir	ML	M	MH
Deir Dalloum	M	M	M	Deir Jennine	L	M	M	Denbou	L	M	M
Dibbabiyyeh	M	M	M	Douair Aadwiyeh	ML	M	M	Fassikine	L	M	M
Fnaydek	L	ML	M	Fraydes Akkar	ML	M	M	Ghazayle	M	M	M
Habchit	L	ML	M	Hakour	L	M	M	Halba	ML	M	M
Haouchab	ML	M	M	Hayssat	ML	M	M	Haytla	M	M	M
Hayzouq	L	M	M	Hedd	L	M	M	Hmaira Akkar	L	M	M
Hmaiss Akkar	ML	M	M	Hnaider	M	M	M	Hokr Ed-Dahri	ML	M	M
Hokr Etti	ML	M	M	Hokr Jouret Srar	ML	M	M	Houaich	L	M	M
Hrar	L	ML	M	Idbil	L	M	M	llat	ML	M	M
Janine	M	M	M	Jdeidet El-Joumeh	ML	M	M	Jdeidet El-Kaiteh	L	M	M
Jebraiel	L	M	M	Kafr	VL	ML	M	Kafr	ML	M	M
Karm Asfour	L	M	M	Kfar Melki Akkar	L	M	M	Kfar Noun	L	M	M
Kfarharra	ML	M	M	Khalsa	ML	M	M	Kharnoubet Akkar	M	M	M



Khirbet Daoud Aakkar	L	M	M	Khirbet El Remmane	ML	M	M	Khirbet Shar	L	M	M
Khoreybet El-Jindi	ML	M	M	Khreibet Aakkar	L	M	M	Kneisset Aakkar	ML	M	M
Kneisset Hnaider	M	M	M	Knisse	ML	M	M	Kroum El-Aarab	ML	M	M
Kwachra	M	M	M	Kweykhat	ML	M	M	Machta Hammoud	ML	M	M
Majdala	ML	M	M	Majdel Akkar	L	M	M	Mar Touma	ML	M	M
Marlaya Melhem	L	M	M	Mashha	L	M	M	Massoudiye	ML	M	M
Mazraat Beit Ghattas	ML	M	M	Mazraat En-Nahriye	ML	M	M	Mechmech	L	L	M
Memneh	VL	L	M	Mhammara	M	M	M	Mighraq Aakkar	ML	M	M
Minyara	ML	M	M	Moqayteh	ML	M	M	Mounjez	ML	M	M
Msalla	M	M	M	Mzeihmeh	M	M	M	Nfaiseh	L	M	M
Noura Et-Tahta	M	M	M	Ouadi El-Haour	M	M	M	Ouadi El-Jamous	M	M	M
Ouyoun El-Ghizlane	ML	M	M	Qaabarine	L	M	M	Qabaait	L	M	M
Qachlaq	M	M	M	Qantara Aakkar	L	M	M	Qarha Aakkar	M	M	M
Qarqaf	M	M	M	Qboula	L	M	M	Qleiaat Aakkar	ML	M	M
Qloud El-Baqie	L	M	M	Qobaiyat Aakkar	L	M	M	Qobbat Chamrat	ML	M	M
Qorayat	L	ML	M	Qornet Aakkar	L	M	M	Qsair Aakkar	ML	M	M
Rahbe	L	M	M	Rihaniyet Aakkar	ML	M	M	Rmah	ML	M	M
Rmoul	ML	M	M	Saadine	ML	M	M	Sadaqa	ML	M	M
Saidnaya	ML	M	M	Sammouniye	ML	M	M	Sayssoq	L	M	M
Semmaqiye	ML	M	M	Semmaqli	ML	M	M	Sfinet El-Dreib	ML	M	M
Sfinet El-Qaitaa	L	M	M	Sindyanet Zeidane	L	M	M	Souaisset Aakkar	L	M	M
Srar	M	M	M	Tal Abbas El Gharby	ML	M	M	Tal Abbas El-Chargy	L	M	M
Tal Biret	ML	M	M	Tal Hmayra	ML	M	M	Tal Maayan Tal Kiri	ML	M	M
Tal Sibel	ML	M	M	Tallet Chattaha	ML	M	M	Tikrit	L	M	M
Tleil	M	M	M	Tshea	L	ML	M	Zawarib	L	M	M
Zouq El Hosniyeh	L	M	M	Zouq El-Haddara	M	M	M	Zouq El-Hbalsa	ML	M	M
Zouq El-Moqachrine	ML	M	M								

## Sud

### Sour

Municipality	13-Feb	14-Feb	15-Feb	Municipality	13-Feb	14-Feb	15-Feb	Municipality	13-Feb	14-Feb	15-Feb
Aaiyeh	VL	M	M	Aalma El-Chaab	VL	L	M	Aaytit	L	M	M
Abbassiyeh Sour	L	M	M	Abou Chech	VL	ML	M	Ain Abou Abdallah	L	M	M
Ain Baal	L	M	M	Arzoun	VL	M	M	Aziyeh	VL	L	M
Baflaya	VL	M	M	Barich	VL	M	M	Batouliyeh	L	M	M
Bayad	VL	M	M	Bazouriyeh	L	M	M	Bediass	VL	M	M
Bestiyat	VL	M	M	Borj El Chemali	L	M	MH	Borj En-Naqoura	L	ML	M
Borj Rahhal	L	M	M	Boustane	VL	M	M	Btaychiyeh	VL	ML	M
Chaaitiye	VL	M	M	Chameh	VL	L	M	Chehabiye	VL	M	M
Chehour	VL	L	M	Chihine	VL	ML	M	Debaal Sour	VL	M	M
Deir Amess	VL	ML	M	Deir Kifa	VL	M	M	Deir Qanoun El-Ain	L	M	M
Deir Qanoun El-Naher	VL	M	M	Derdghaiya	VL	M	M	Dhayra	VL	ML	M
Halloussiyeh	VL	M	M	Hamoul	VL	L	M	Hanaouey	L	M	M
Henniye	L	M	M	Hmairi Sour	VL	M	M	Iskandarouna Sour	VL	L	M
Jbal El Botom	VL	ML	M	Jebbin	L	ML	M	Jennata	VL	M	M
Jijim	VL	L	M	Jouaiya	VL	M	M	Kneisset Sour	VL	M	M

Maarake	VL	M	M	Maaroub	VL	M	M	Majadel	VL	M	M
Majdalzoun	VL	ML	M	Mansouri Sour	L	M	M	Marnba	VL	L	M
Marouahine	VL	ML	M	Mazraat El-Zalloutiy	L	M	M	Mazraat Mechref	VL	M	M
Mazraat Tayr Semhat	VL	L	M	Mheilib	L	M	MH	Neffakhiyeh	VL	M	M
Niha Sour	VL	M	M	Ouadi Jilo	L	M	M	Qana	VL	M	M
Qolaileh Sour	L	M	M	Rechknany	VL	ML	M	Rmadiyah	L	M	M
Selha Sour	VL	M	M	Siddiqine	VL	M	M	Sour	L	M	MH
Srifa	VL	ML	M	Tayr Debbe	L	M	M	Tayr Felsay	VL	M	M
Tayr Harfa	VL	ML	M	Touayri	VL	L	M	Toura	VL	M	M
Yanouh Sour	VL	M	M	Yarine	L	M	M	Zebqine	VL	L	M

## Saida

Municipality	13-Feb	14-Feb	15-Feb	Municipality	13-Feb	14-Feb	15-Feb	Municipality	13-Feb	14-Feb	15-Feb
Aanqoun	VL	M	M	Aaqtanit	VL	M	M	Aarab Ej-Jall	VL	M	M
Aarab Tabbaya	VL	M	M	Abra Saida	L	M	M	Adloun	VL	M	M
Adousiyeh	L	M	M	Ain-El-Deleb	L	M	M	Arzai	L	M	M
Babliyah	L	M	M	Barty	VL	ML	M	Bissariyeh	L	M	M
Bnaafoul	VL	M	M	Bqosta	L	M	M	Bramiy	VL	M	M
Daoudiyeh	L	M	M	Dareb El-Sim	L	M	M	Erkay	VL	M	M
Ghassanieh	L	M	M	Ghazieh	L	M	M	Hajjeh	VL	M	M
Haret Saida	L	M	M	Hartiyeh	VL	M	M	Hlaliye Saida	L	M	M
Insariyat	L	M	M	Jazira Saida	L	M	M	Kafar Bit	VL	M	M
Kaoutariyet El-Siyad	VL	M	M	Kfar Chellal	VL	ML	M	Kfar Hatta Saida	VL	M	M
Kfar Milke Saida	VL	M	M	Khartoum	L	M	M	Khaziz	VL	M	M
Khirbet Ed-Douair Sa	L	M	M	Khirbet El-Bassal	VL	M	M	Khrayeb Saida	VL	M	M
Loubieh	L	M	M	Maghdouche	VL	M	M	Majdelyoun	L	M	M
Matariyet El-Choumar	L	M	M	Matayriyeh	VL	M	M	Mazraat 'Mseileh	L	M	M
Mazraat 'Snaiber	L	M	M	Mazraat Aarab Soukka	VL	M	M	Mazraat Deir Taqla	VL	M	M
Mazraat El Yahoudiye	VL	M	M	Mazraat El-Housseini	L	M	M	Mazraat El-Mhaydaleh	L	M	M
Mazraat El-Ouasta	VL	M	M	Mazraat Jamjim	VL	M	M	Mazraat Kaoutariyet	VL	M	M
Mazraat Kfar Badda	VL	M	M	Mazraat Oussamiyat	L	M	M	Mazraat Sari	VL	M	M
Mazraat Sinai	VL	M	M	Meemariyeh	VL	M	M	Merouaniyeh	VL	M	M
Miyeh ou Miyeh	L	M	M	Najjariyeh	L	M	M	Qaaqiyat El-Snaouba	L	M	M
Qnarit	VL	M	M	Qraiye Saida	L	M	M	Saida Ed-Dekermane	L	M	M
Saida El-Oustani	L	M	M	Saida El-Qadimeh	L	M	M	Saida Kefraya	L	M	M
Saksakiyeh	L	M	M	Salhieh Saida	L	M	M	Sarafand	L	M	M
Sfenta	VL	L	M	Tafahta	L	M	M	Tanbourit	VL	M	M
Tebna	L	M	M	Zaghdraiya	VL	M	M	Zeita	VL	M	M
Zrariyeh	VL	M	M								

## Jezzine

Municipality	13-Feb	14-Feb	15-Feb	Municipality	13-Feb	14-Feb	15-Feb	Municipality	13-Feb	14-Feb	15-Feb
Ain El-Mir (El Estab	VL	M	M	Anane	VL	L	M	Aramta	VL	ML	M
Ariya	VL	L	M	Aychiyeh	VL	L	M	Azour	VL	L	M
Baba	VL	L	M	Bayssour Jezzine	VL	M	M	Benoueteh Jezzine	VL	L	M
Bhannine	VL	L	M	Bisri	VL	L	M	Bkassine	VL	L	M
Bouslaya	VL	L	M	Btedine El-Leqech	VL	L	M	Chbail	VL	L	M
Choualiq Jezzine	VL	M	M	Dahr Ed-Deir	VL	L	M	Deir El Qattine	VL	L	M

Demachqiyeh	VL	ML	M	Ghabbatiyeh	VL	L	M	Harf Jezzine	VL	L	M
Hassaniyeh	VL	ML	M	Haytouleh	VL	ML	M	Haytura	VL	L	M
Hidab	VL	L	M	Homsiyeh	VL	L	M	Jabal Toura	VL	L	M
Jarmaq	VL	ML	M	Jensnaya	L	M	M	Jernaya	VL	M	M
Jezzine	VL	ML	M	Karkha	VL	ML	M	Kfar Falous	VL	M	M
Kfar Houna	VL	L	M	Kfar Jarrah	L	M	M	Lebaa	VL	M	M
Louayzet Jezzine	VL	L	M	Machmouche	VL	L	M	Mahmoudiyeh Jezzine	VL	ML	M
Maknounye Jezzine	VL	L	M	Maraat Ouzaïyeh	VL	L	M	Mazraat Daraya	VL	L	M
Mazraat El-Aarqoub	VL	L	M	Mazraat El-Mathane	VL	L	M	Mazraat El-Rahbane	VL	L	M
Mazraat Khallet Khaz	VL	L	M	Mazraat Louzid (Loua	VL	L	M	Mazraat Qrouh	VL	ML	M
Mazraat Tamra	VL	ML	M	Mazraat Zighrine Jez	VL	L	M	Mazraat	VL	L	M
Mharbiyeh	VL	M	M	Midane Jezzine	VL	L	M	Mjeydel Jezzine	VL	M	M
Mlikh	VL	L	M	Mrah El-Hbasse	VL	M	M	Ouadi Baanquodaine	VL	M	M
Ouadi El-Laymoun	VL	M	M	Ouardiyeh	VL	VL	ML	Qabaa Jezzine	VL	L	M
Qatrani	VL	L	M	Qaytouleh	VL	L	M	Qtaleh Jezzine	VL	L	M
Rihane Jezzine	VL	L	M	Rimat	VL	L	M	Roum	VL	L	M
Roummanet	VL	ML	M	Sabbah	VL	L	M	Saydoun	VL	L	M
Sfaray	VL	L	M	Snaya	VL	L	M	Sojoud	VL	L	M
Srayri	VL	ML	M	Taaid	VL	L	M	Wadi Jezzine	VL	L	M
Zhalta	VL	L	M								

## Bekaa

### West Bekaa

Municipality	13-Feb	14-Feb	15-Feb	Municipality	13-Feb	14-Feb	15-Feb	Municipality	13-Feb	14-Feb	15-Feb
Aammiq BG	L	M	M	Ain El Tineh BG	L	ML	M	Ain Zebdeh	L	L	M
Ana	L	ML	M	Aytanit	L	L	M	Baaloul BG	L	ML	M
Bab Mareh	L	L	M	Chouberqiye Aammiq	L	M	M	Dakoue	L	ML	M
Deir Ain El-Jaouze	L	L	M	Deir Tahniche	L	ML	M	Ghaza	L	ML	M
Harime El-Soughra	VL	M	M	Hoch Harimeh	L	M	M	Jazira BG	VL	M	M
Jib Jennine	L	ML	M	Kamed-El-Laouz	L	ML	M	Kefraya BG	L	L	M
Khiara El Atika	L	ML	M	Khiara	L	ML	M	Khirbet Qanafar	L	L	M
Lala	L	ML	M	Lebbaya BG	VL	L	M	Loussa	VL	ML	M
Machghara	L	L	M	Manara (Hammara) BG	L	L	M	Mansoura BG	L	ML	M
Marej BG	VL	M	M	Maydoun	VL	ML	M	Ouaqf BG	VL	M	M
Qaraaoun	L	ML	M	Qelya	VL	ML	M	Raouda (Istabel)	VL	M	M
Saghbine	L	L	M	Sohmor	VL	ML	M	Soltan Yacoub el Ara	L	ML	M
Souairy	L	ML	M	Sultan Yaacoub	L	ML	M	Tal Znoub	L	ML	M
Yehmor BG	VL	ML	M	Zilaya	VL	L	M				

### Zahle

Municipality	13-Feb	14-Feb	15-Feb	Municipality	13-Feb	14-Feb	15-Feb	Municipality	13-Feb	14-Feb	15-Feb
Aanjar (Haouch Mouss)	VL	ML	M	Ablah	ML	ML	M	Ain Kfarzabad	VL	ML	M
Ali-El-Nahri	ML	M	M	Bar Elias	L	ML	M	Bouarej	L	M	M
Cheberqiyet Tabet	L	M	M	Chtaura	L	M	M	Deir El Ghazal	VL	ML	M
Delhamiyet Zahle	L	ML	M	Ferzol	L	ML	M	Haouch El-Ghanam	ML	M	M
Haouch Es-Siyadeh	VL	M	M	Haouch Hala	L	ML	M	Haouch Mandara	L	M	M



Haouch Qayssar	L	M	M	Hezerta	L	ML	M	Hosh Moussa	L	ML	M
Jdita	L	M	M	Kfarzabad	VL	ML	M	Ksara	L	ML	M
Majdel Aanjar	L	ML	M	Makssi	L	M	M	Massa	L	M	M
Mazraat Er-Remtaniye	L	M	M	Mrayjat Zahle	L	M	M	Mzaraa Zahle	L	M	M
Nabi Ayla	ML	ML	M	Nasriyet Rizk	L	M	M	Nasriyet Zahle	VL	M	M
Niha Zahle	L	ML	M	Ouadi Ed-Deloum	ML	ML	M	Ouadi El-Arayech	L	ML	M
Qaa El Rim	L	ML	M	Qab Elias	L	M	M	Qousaya	VL	ML	M
Rhit	L	ML	M	Riyak	ML	ML	M	Saadnayel	L	M	M
Taal El-Akhdar	VL	M	M	Taalbeya	L	M	M	Taanayel	L	M	M
Talamara	ML	ML	M	Tcheflik Edde Haouch	L	M	M	Tcheflik Qiqano	VL	M	M
Terbol Zahle	L	ML	M	Touaite Zahle	L	ML	M	Zahle Aradi	L	ML	M
Zahle El-Berbara	ML	ML	M	Zahle El-Maallaqa	L	ML	M	Zahle El-Midane	ML	ML	M
Zahle Er-Rassiye	ML	ML	M	Zahle Haouch El-Ouma	L	ML	M	Zahle Haouch El-Ouma	L	ML	M
Zahle Haouch Ez-Zara	L	ML	M	Zahle Maalaga Aradi	L	ML	M	Zahle Mar Antonios	ML	ML	M
Zahle Mar Elias	L	ML	M	Zahle Mar Gerios	L	ML	M	Zahle Saydet En-Naja	ML	ML	M
Zebdoul	L	M	M								

## Rachaiya

Municipality	13-Feb	14-Feb	15-Feb	Municipality	13-Feb	14-Feb	15-Feb	Municipality	13-Feb	14-Feb	15-Feb
Ain Arab Rachaiya	L	ML	M	Ain Ata	VL	L	M	Ain Harche	VL	L	M
Aqabe Rachaya	L	ML	M	Ayha	L	L	M	Ayta El Fokhar	L	ML	M
Bakifa Rachaya	L	L	M	Bakka	L	ML	M	Beit Lahya	L	ML	M
Bireh Rachaiya	L	ML	M	Daher El Ahmar	L	L	M	Deir El-Achayer	L	M	M
Heloua Rachaiya	L	M	M	Hoch El Qannabeh Rac	L	L	M	Kaoukaba Bou Arab	L	ML	M
Kfar Danis	L	ML	M	Kfar Mechki	L	ML	M	Kfar Qouq	L	L	M
Kherbet Rouha	L	ML	M	Majdel Balhiss	L	ML	M	Mdoukha	L	ML	M
Mhaydseh Rachaiya	L	ML	M	Nabi Safa	L	ML	M	Rachaiya	L	L	M
Rafid Rachaiya	L	ML	M	Selsata (Mazraat Dei	VL	L	ML	Tannoura	L	ML	M
Yanta	L	ML	M								

## Beyrouth

### Beyrouth

Municipality	13-Feb	14-Feb	15-Feb	Municipality	13-Feb	14-Feb	15-Feb	Municipality	13-Feb	14-Feb	15-Feb
Achrafieh	VL	M	MH	Ain el-Mreisse	L	M	MH	Bachoura	L	M	MH
Beirut Central Distr	L	M	MH	Marfai	L	M	MH	Mazraa	L	M	MH
Medaouar	VL	M	MH	Minet el-Hosn	L	M	MH	Mwssaitbeh	L	M	MH
Ras Beirut	L	M	MH	Rmeil	VL	M	MH	Saifi	L	M	MH
Zqaq el-Blat	L	M	MH								