

Lebanon Fire Risk Bulletin



CIVIL DEDEFENCE

Refer to cadast table condition.

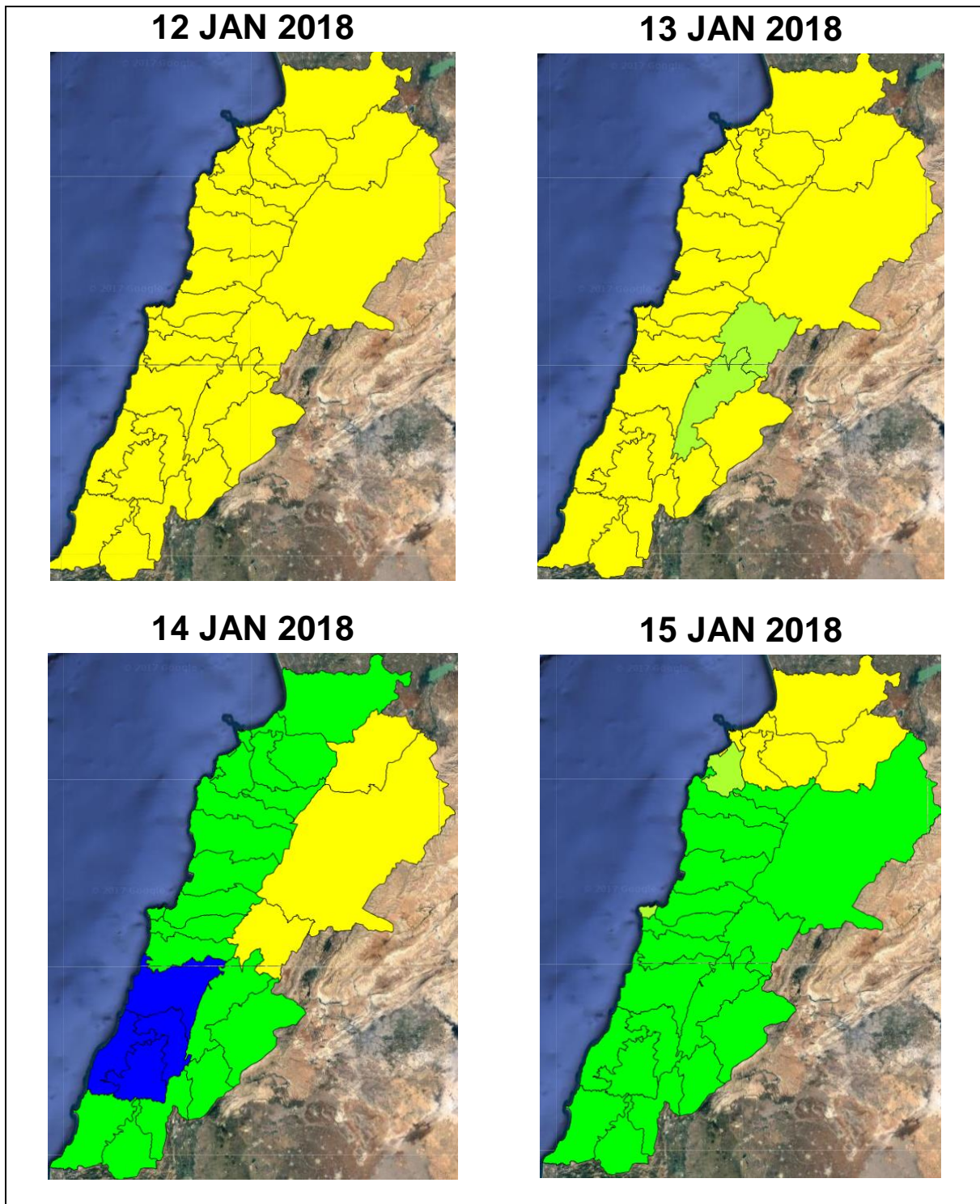
Please note that the indicated temperature is at 2 meters height from the ground.

General description of potential fire risk situation

Symbol	Level of risk	Meaning and actions
VL	Very low	Very low fire risk. Controlled burning operations can be hardly executed due to high fuel moisture content. Normally wildfires self-extinguish.
L	Low	Low fire risk. Controlled burning operations can be executed with a reasonable degree of safety.
ML	Medium low	Medium-low fire risk. Controlled burning operations can be executed in safety conditions. All the fires need to be extinguished.
M	Medium	Medium fire risk. Controlled burning operations would be avoided. All the fires need to be very well extinguished.
MH	Medium high	Controlled burning is not recommended. Open flame will start fires. Cured grasslands and forest litter will burn readily. Spread is moderate in forests and fast in exposed areas. Patrolling and monitoring is suggested. Fight fires with direct attack and all available resources.
H	High	Ignition can occur easily with fast spread in grass, shrubs and forests. Fires will be very hot with crowning and short to medium spotting. Direct attack on the head may not be possible requiring indirect methods on flanks. Patrolling and monitoring the territory is highly suggested.
E	Extreme	Ignition can occur also from sparks. Fires will be extremely hot with fast rate of spread. Control may not be possible during day due to long range spotting and crowning. Suppression forces should limit efforts to limiting lateral spread. Damage potential total. Patrolling and monitoring the territory is highly suggested.

Beirut, 13 January 2018

FIRE RISK INDEX

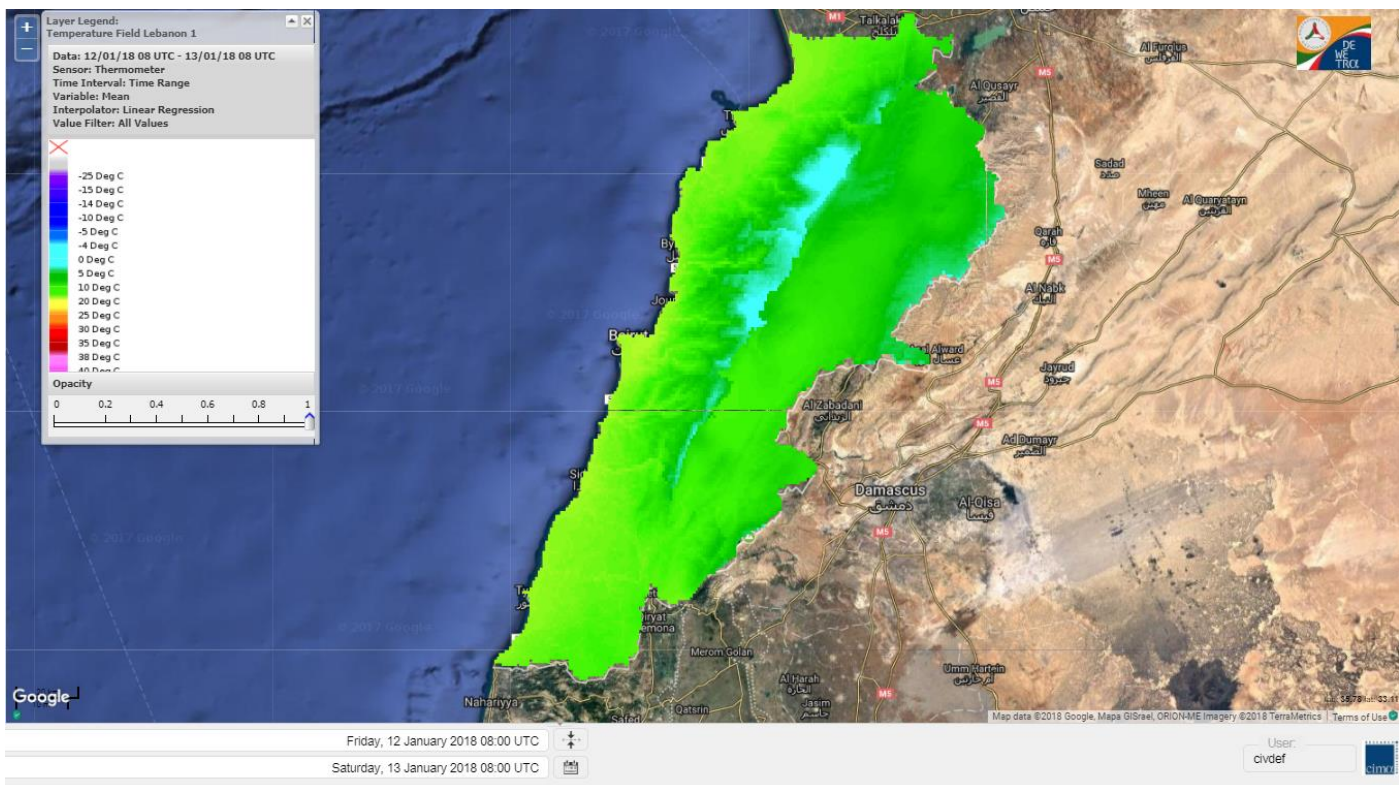


Layer Legend:
Lebanon Wildfire Risk Index 1

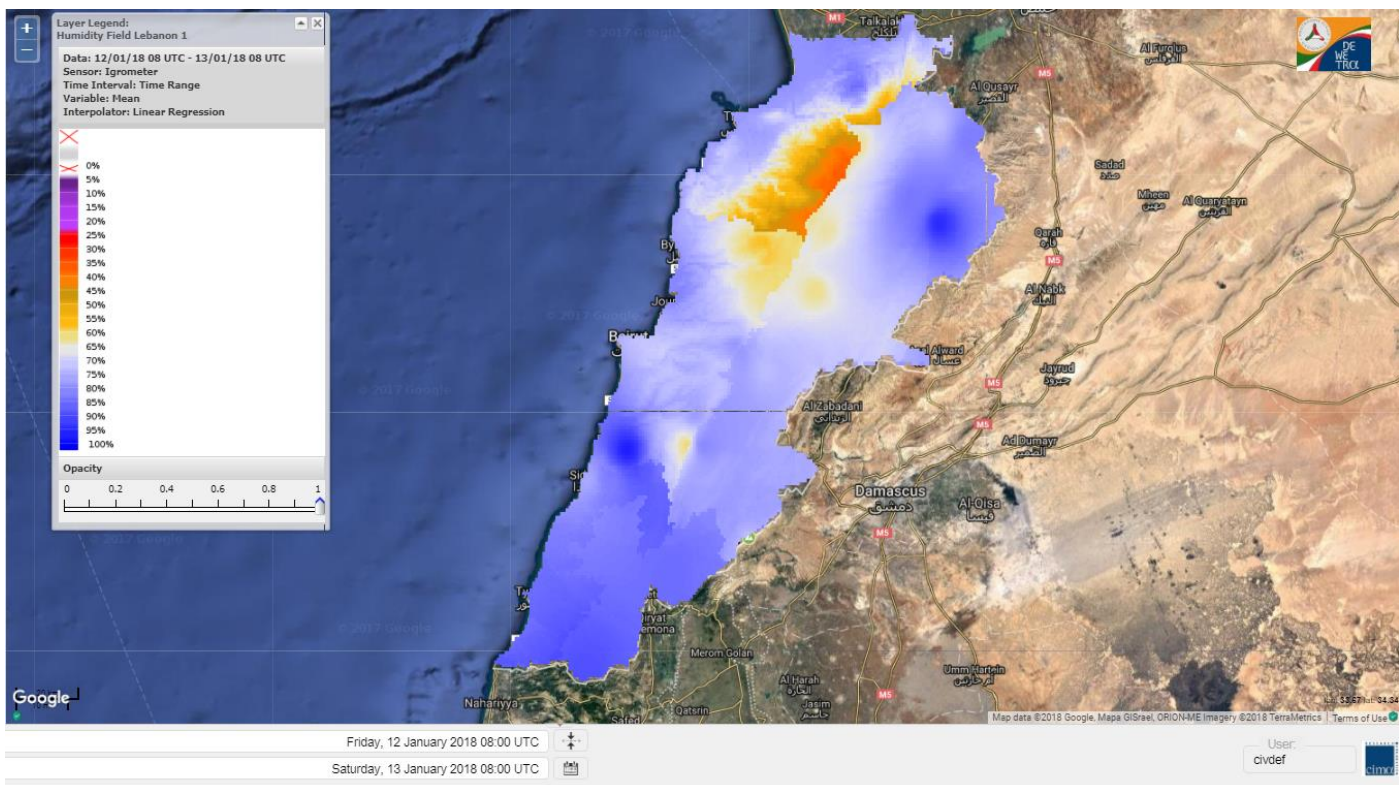
Data: Run: 13/01/2018 00:00. Forecast for 13
Model: RISICO for the Republic of Lebanon
Variable: Fire Weather Index
Spatial Resolution: Caza

- VERY LOW
- LOW
- MEDIUM-LOW
- MEDIUM
- MEDIUM-HIGH
- HIGH
- EXTREME

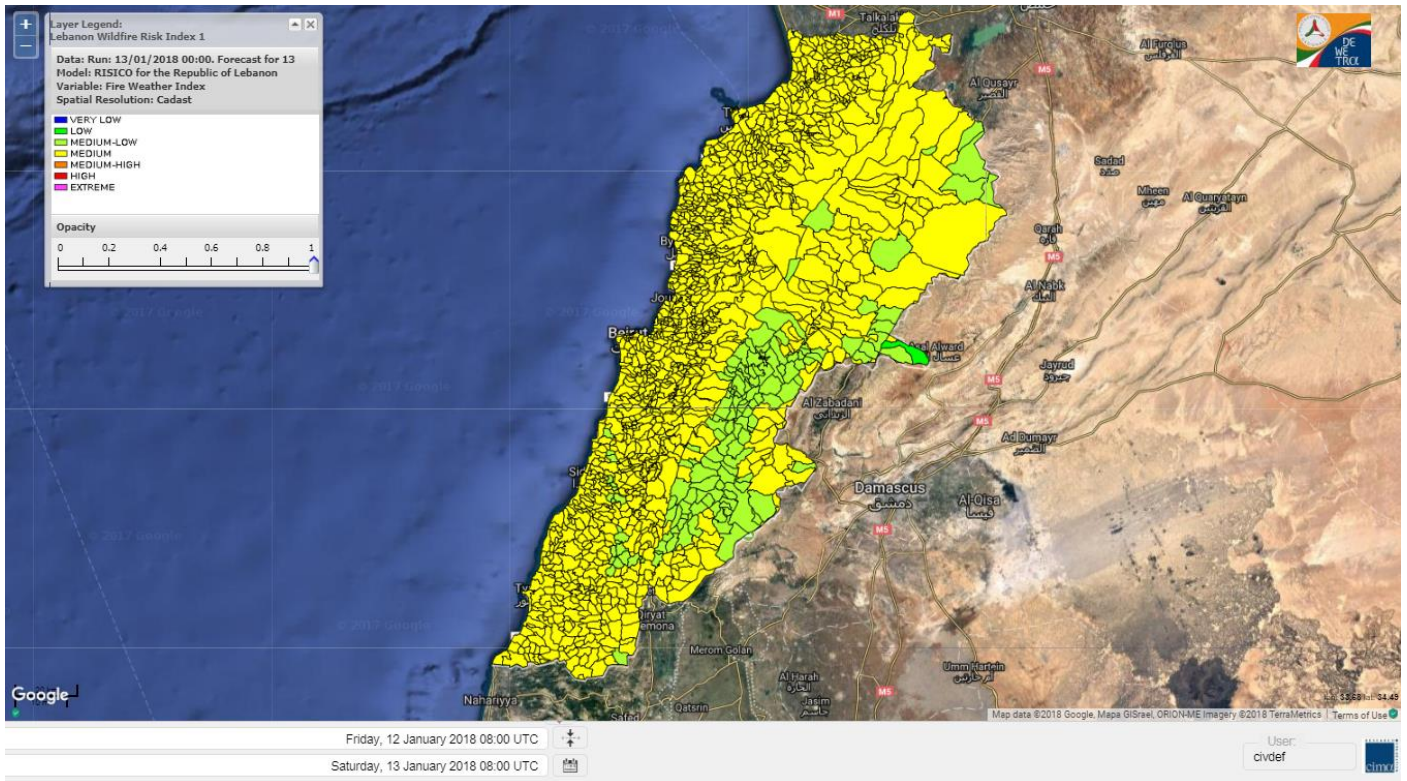
Lebanon temperature for 13 JAN 2018



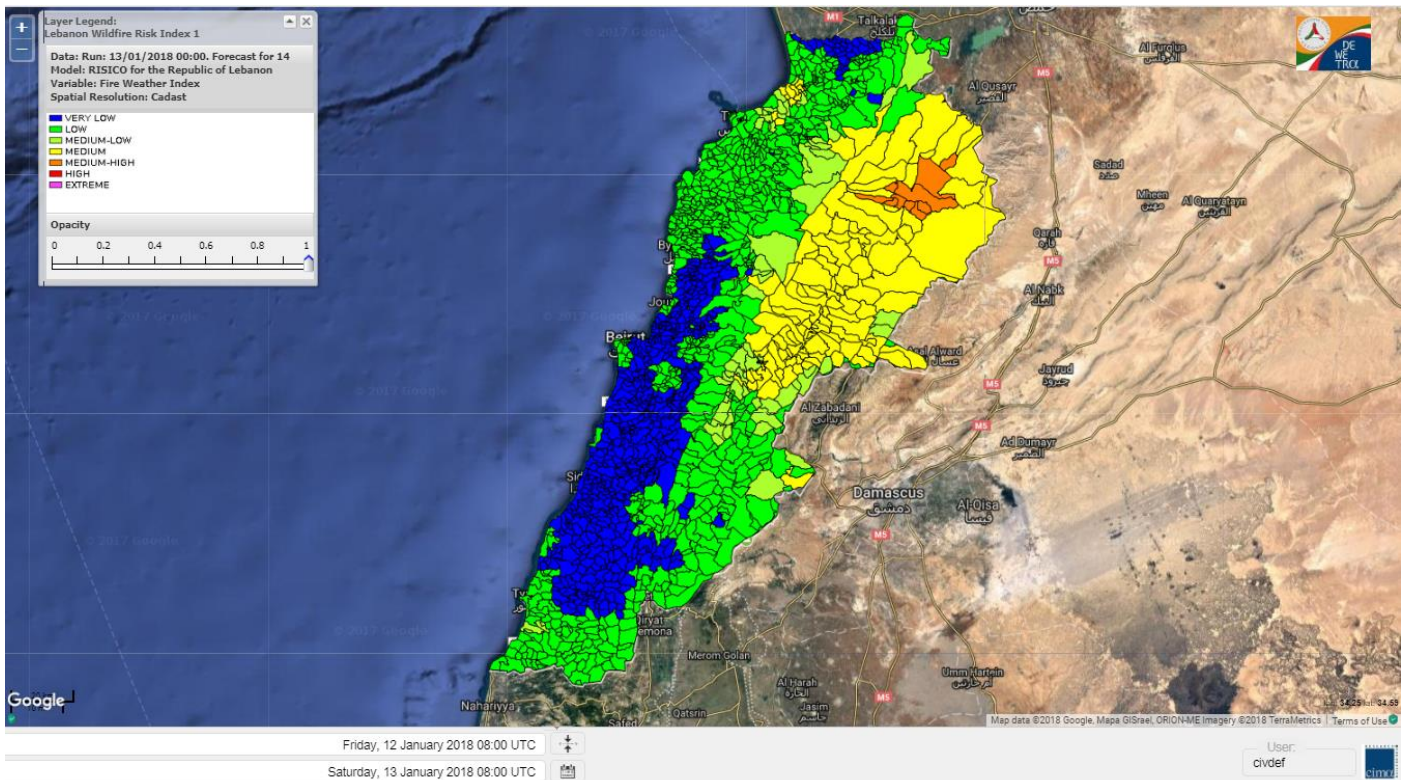
Lebanon humidity for 13 JAN 2018



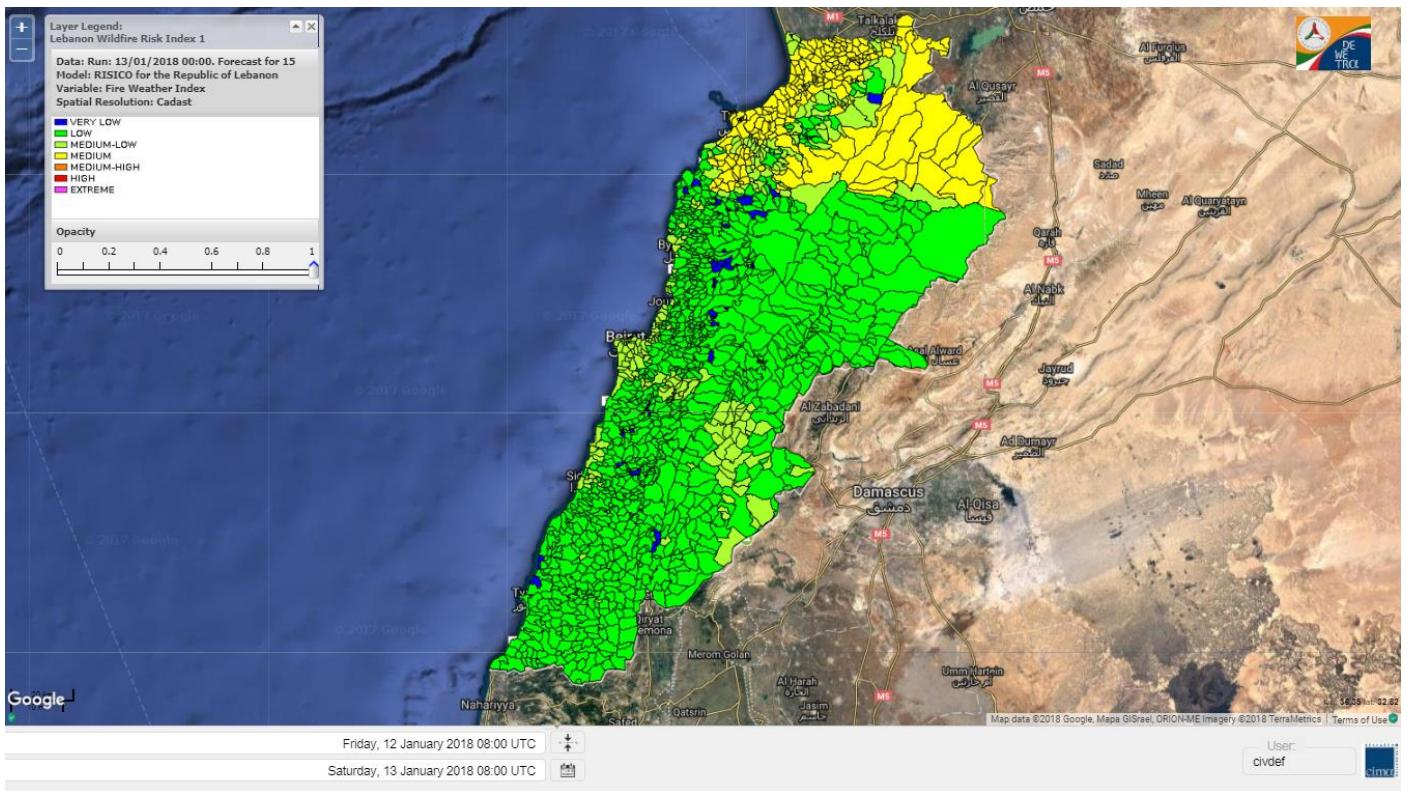
Lebanon for 13 JAN 2018



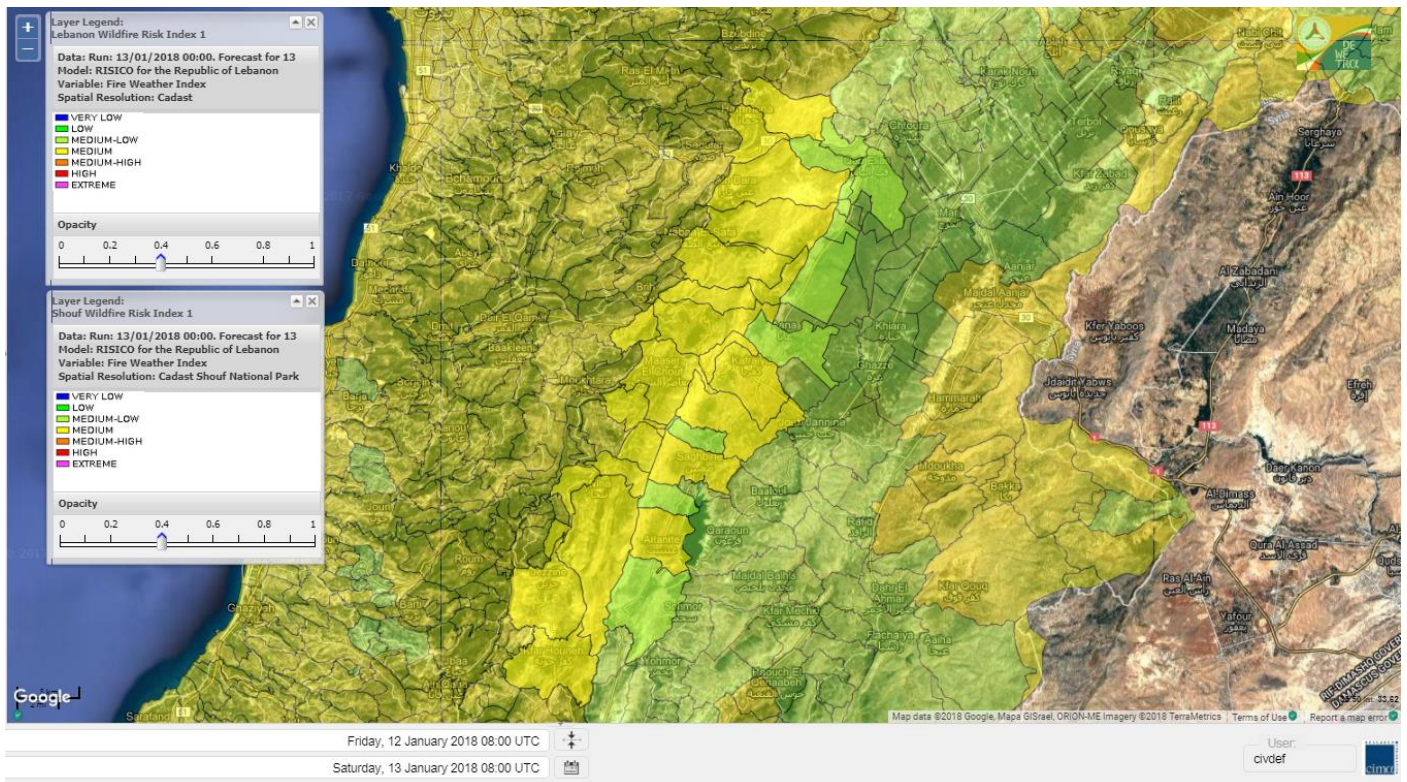
Lebanon for 14 JAN 2018



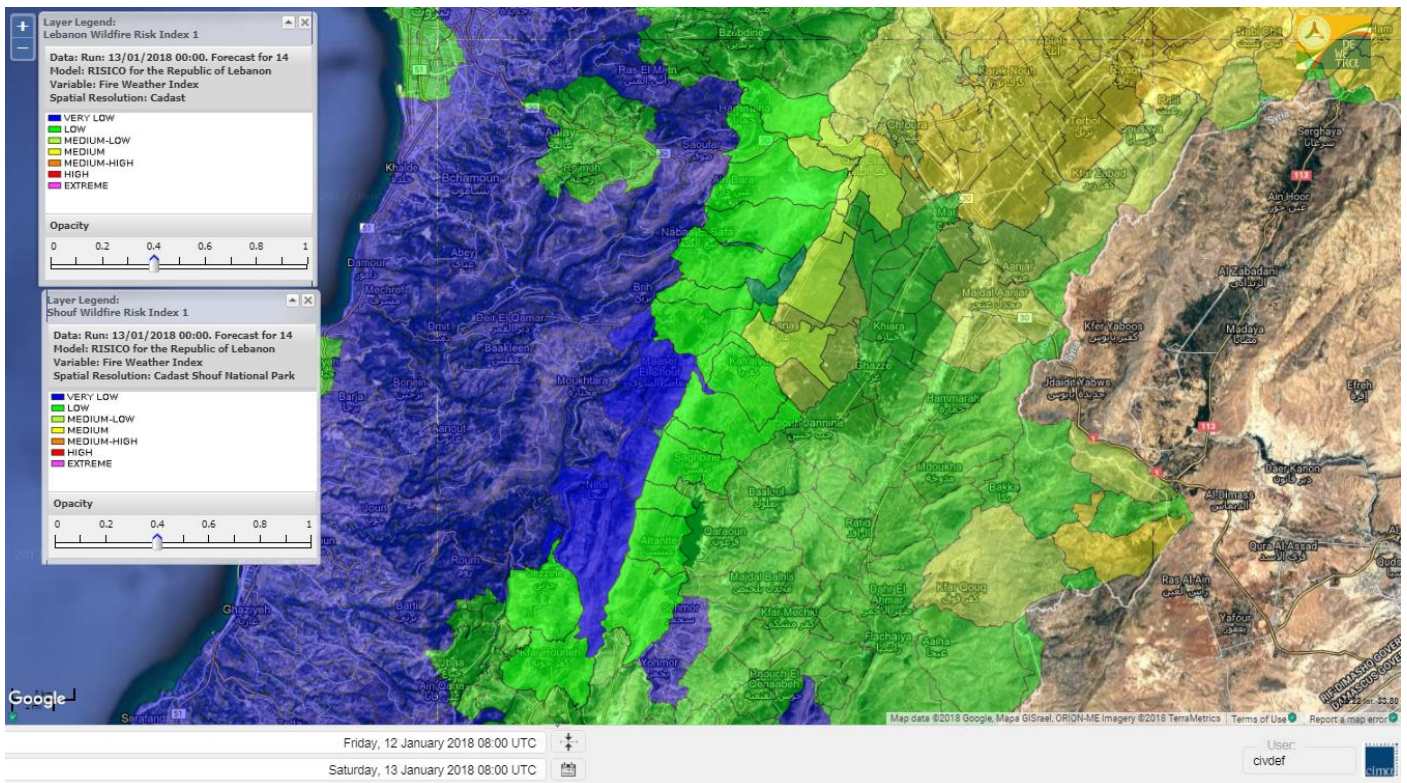
Lebanon for 15 JAN 2018



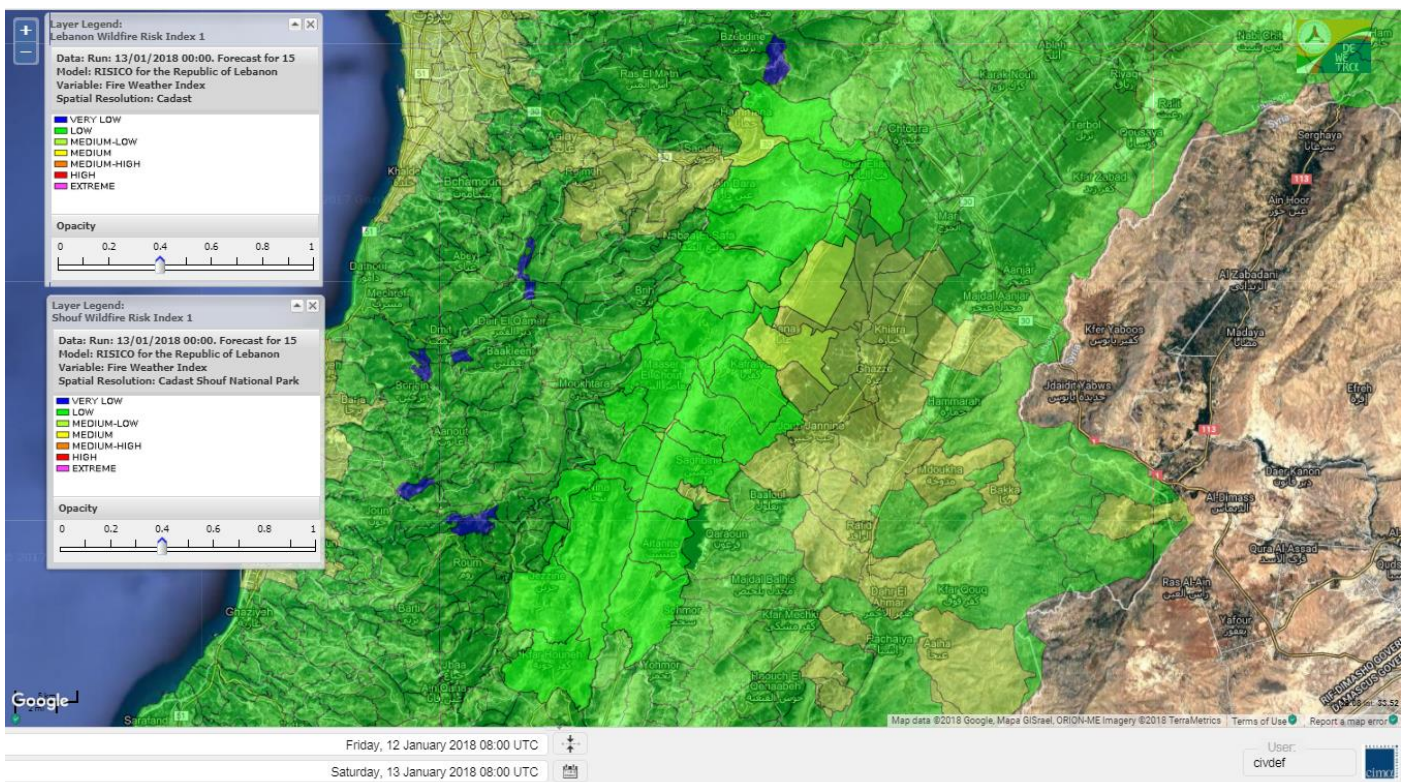
Shouf Biosphere Reserve Forecast for 13 JAN 2018



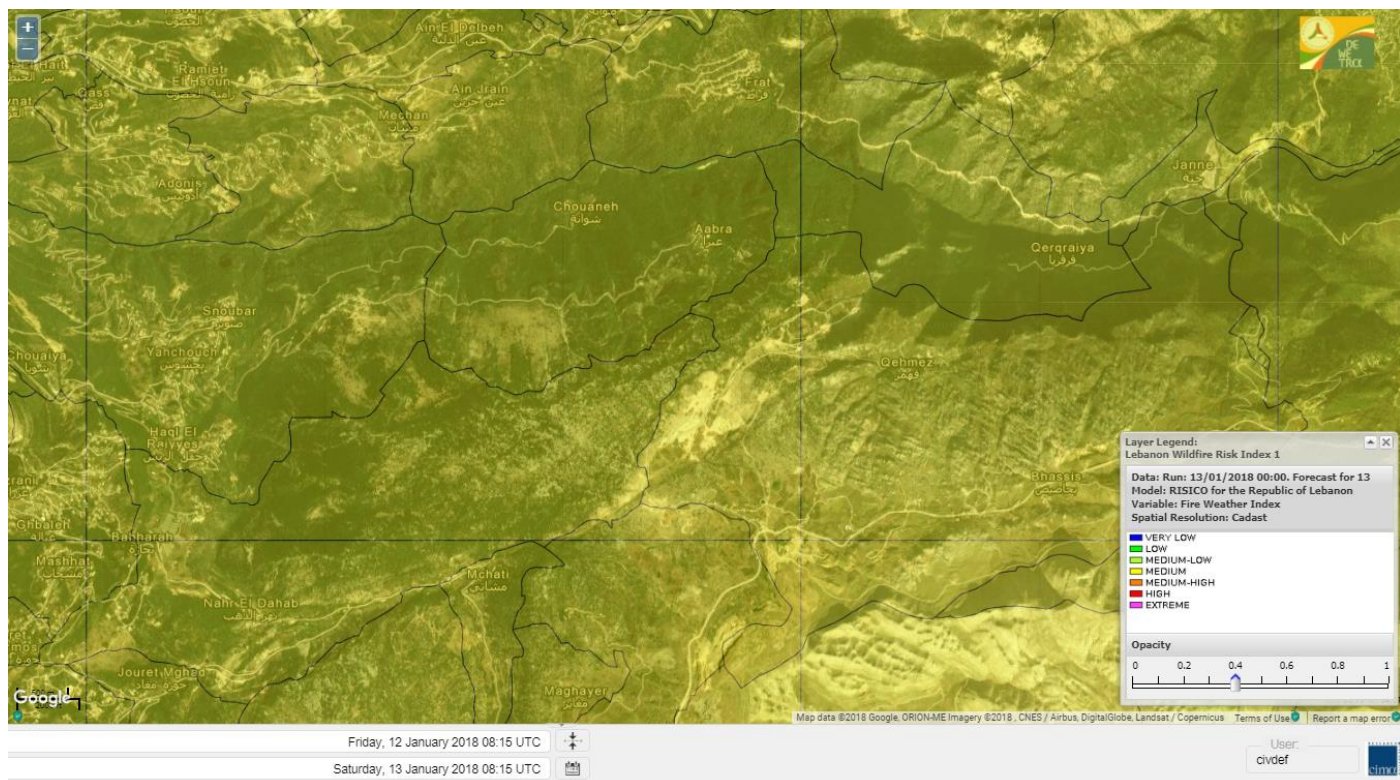
Shouf Biosphere Reserve Forecast for 14 JAN 2018



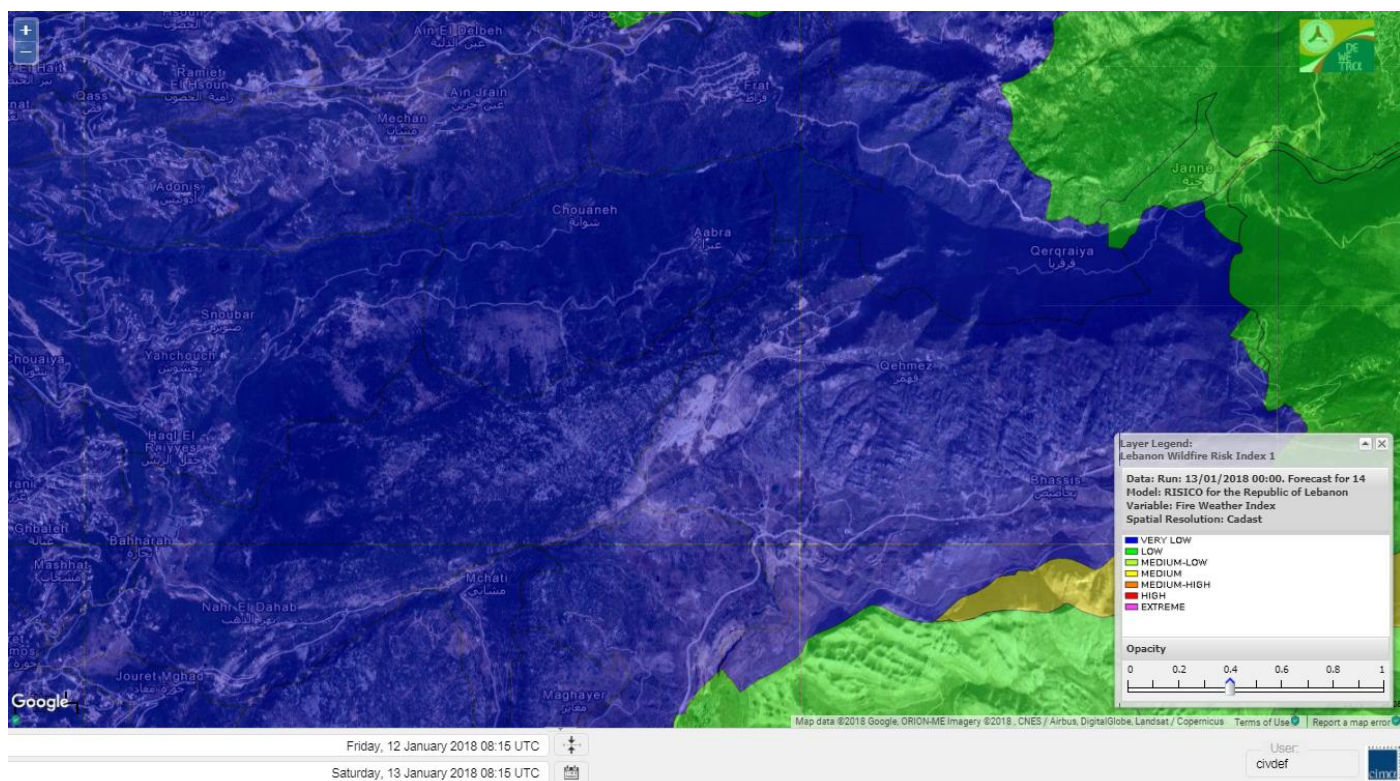
Shouf Biosphere Reserve Forecast for 15 JAN 2018



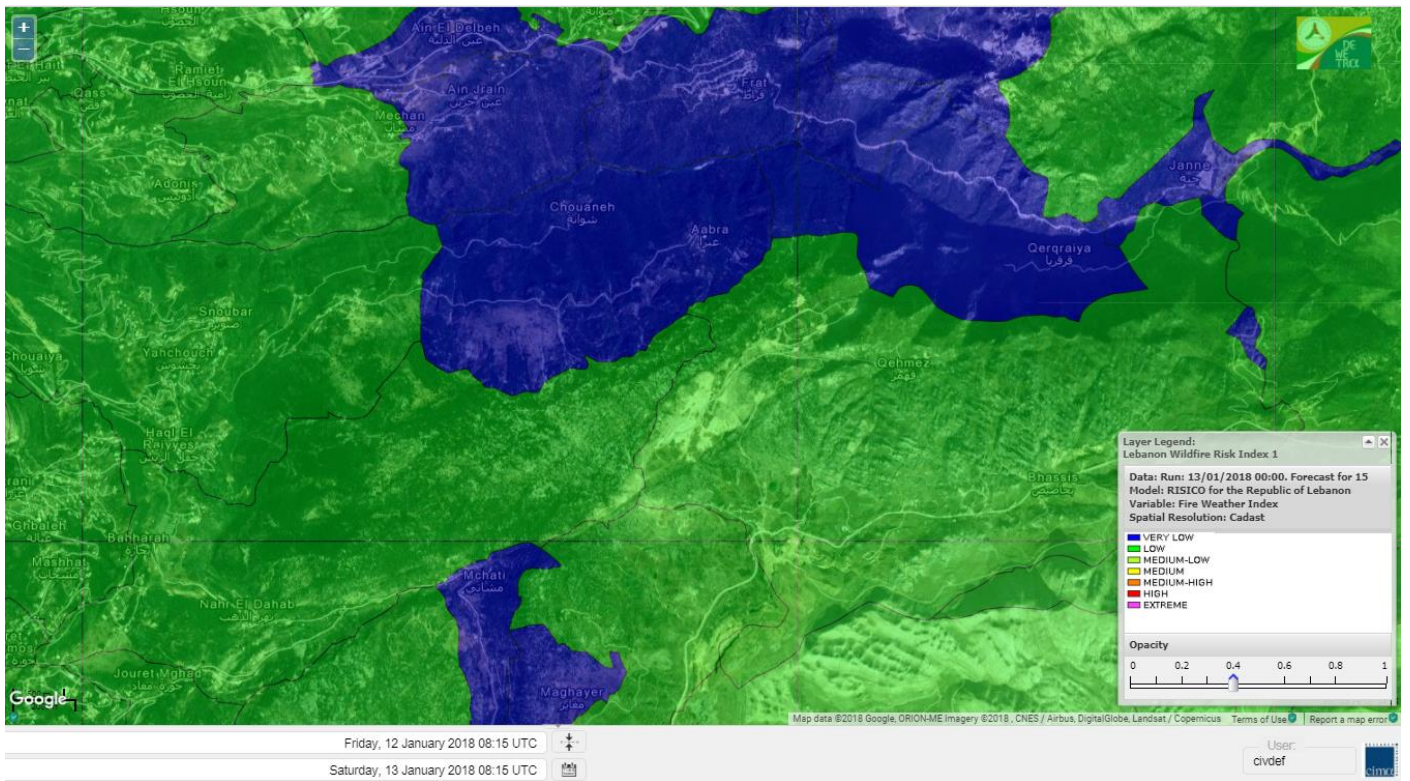
Jabal Moussa Reserve Forecast for 13 JAN 2018



Jabal Moussa Reserve Forecast for 14 JAN 2018



Jabal Moussa Reserve Forecast for 15 JAN 2018



Nord

Koura

Municipality	13-Jan	14-Jan	15-Jan	Municipality	13-Jan	14-Jan	15-Jan	Municipality	13-Jan	14-Jan	15-Jan
Aaba	M	L	M	Afsaddiq	M	L	M	Ain Ekrine	M	L	M
Amioun	M	L	M	Anfeh	M	L	L	Badbhoun	M	L	M
Barghoun	M	L	M	Barsa	M	L	ML	Batroumine	M	L	M
Bdebba	M	L	M	Bechmizine	M	L	M	Bednaye El-Koura	M	L	L
Bhabbouch El-Koura	M	L	M	Bkeftine	M	L	ML	Bnehran	M	L	ML
Bqaiia El-Koura	M	L	ML	Bsarma	M	L	M	Btaaboura	M	L	M
Bterram	M	L	M	Btouratij	M	L	M	Bziza	M	L	M
Dar Beehtar	M	L	M	Dar Chmezzine	M	L	M	Deddeh	M	L	M
Deir El-Balamand	M	L	ML	Fih	M	L	M	Hraiche	M	L	ML
Ijdaabrine	M	L	L	Kaftoun	M	L	M	Kefraya El-Koura	M	L	L
Kfarakka	M	L	M	Kfarhata	M	L	L	Kfarhazir	M	L	ML
Kfarkahel	M	L	M	Kfarsaroun	M	L	M	Kosba	M	L	M
Mejdel el-Koura	M	L	ML	Nakhle	M	L	ML	Qalhat	M	L	L
Ras Masqa	M	L	M	Rechdibbine	M	L	M	Zakroun	M	L	ML
Zgharta El-Mtaouile	M	L	L								

Bcharre

Municipality	13-Jan	14-Jan	15-Jan	Municipality	13-Jan	14-Jan	15-Jan	Municipality	13-Jan	14-Jan	15-Jan
Aabdine	M	L	ML	Bane	M	L	M	Barhelioun	M	L	L
Bazooune	M	L	L	Becharre	M	ML	ML	Beit Menzer	M	L	ML
Billa	M	L	ML	Blaouza	M	L	M	Bqaa Kafra	M	L	L
Bqerqacha	M	L	L	Breissat	M	L	L	Dimane	M	L	L
Hadath El Jobbeh	M	L	L	Hadchit	M	L	ML	Hasroun	M	L	L
Mazraat Aassaf	M	L	VL	Mazraat Bani Saab	M	L	L	Mchaa El-Jobbeh	M	L	L
Metrit	M	L	ML	Moghr El-Ahoual	M	L	ML	Ouadi Qannoubine	M	L	VL
Qanat	M	L	L	Qnayer	M	L	L	Tourza	M	L	ML

Batroun

Municipality	13-Jan	14-Jan	15-Jan	Municipality	13-Jan	14-Jan	15-Jan	Municipality	13-Jan	14-Jan	15-Jan
Aabrine	M	L	L	Aalali	M	L	L	Aartiz	M	L	L
Abdelli	M	L	L	Ajdabra	M	L	L	Assia	M	L	L
Basbina	M	L	ML	Batroun	M	L	L	Bcheleh	M	L	L
Bechtoudar	M	L	L	Beit Chlala	M	L	L	Beit Kassab	M	L	VL
Bijdarfil	M	L	L	Bqesmaya	M	L	L	Chatine	M	L	L
Chebtin	M	L	L	Chekka	M	L	L	Daael	M	L	L
Dahr Abi Yaghi	M	L	L	Daraya El-Batroun	M	L	ML	Deir Billa	M	L	L
Deir Kfifane	M	L	ML	Deir Mar Youhanna EL	M	L	VL	Deir Mar Youssef Jra	M	L	L
Douma	M	L	L	Douq	M	L	L	Eddeh El-Batroun	M	L	L
Ftihat El-Batroun	M	L	VL	Ghouma	M	L	L	Hadtoun	M	L	L
Hamat	M	L	L	Harbouna	M	L	L	Hardine	M	L	VL
Helta	M	L	VL	Hery	M	L	L	Jebbla	M	L	L
Jrabta El-Batroun	M	L	L	Jrane El-Batroun	M	L	ML	Kfar Aabida	M	L	L
Kfar Halda	M	L	L	Kfarb Shlaimane	M	L	VL	Kfarhatna	M	L	L
Kfarhay	M	L	L	Kfarhelos	M	L	VL	Kfifane	M	L	ML

Kfour El Arabi	M	L	L	Koubba	M	L	L	Kour	M	L	L
Mar Mama	M	L	L	Masrah	M	L	L	Mehmarch	M	L	L
Mrah Chdid	M	L	L	Mrah El Ziyat	M	L	L	Mrah El-Hajj	M	L	VL
Nahle El-Batroun	M	L	VL	Niha El-Batroun	M	L	L	Ouajh El-Hajjar	M	L	L
Ouata Houb	M	L	L	Qatnaaoun	M	L	L	Racha	M	L	L
Rachana	M	L	L	Rachkida	M	L	L	Ram El-Batroun	M	L	L
Ras Nahhach	M	L	VL	Selaata	M	L	L	Sghar	M	L	L
Smar Jbayl	M	L	L	Sourat El-Batroun	M	L	L	Tannourine El-Faouqa	M	L	L
Tannourine Et-Tahta	M	L	VL	Thoum	M	L	L	Toula El-Batroun	M	L	L
Zan	M	L	L								

Zgharta

Municipality	13-Jan	14-Jan	15-Jan	Municipality	13-Jan	14-Jan	15-Jan	Municipality	13-Jan	14-Jan	15-Jan
Aachach	M	ML	M	Aalma	M	ML	M	Aarde	M	L	M
Aintourine	M	L	M	Arabet Qozhaya	M	L	L	Arde	M	L	M
Arjis	M	L	ML	Asnoun	M	L	ML	Ayto	M	L	ML
Basloukit	M	L	M	Bchannine	M	L	M	Besebeel	M	L	M
Bhairret Toula	M	L	ML	Bnachee	M	L	ML	Boussit	M	ML	M
Danha	M	L	M	Daraiya Zgharta	M	L	M	Deir Jdeide	M	L	ML
Ehden	M	L	M	Halan	M	M	M	Hariq Zgharta	M	L	ML
Houakir	M	L	L	Hraiqis	M	L	M	laal	M	L	ML
Ijbaa	M	L	M	Karm Saddeh	M	L	ML	Kfarchakhna	M	L	M
Kfardlaqous	M	L	M	Kfarfou	M	L	M	Kfarhata Zgharta	M	L	M
Kfarhoura	M	L	ML	Kfarsghab	M	L	ML	Kfaryachit	M	L	ML
Kfarzaina	M	L	ML	Khaldiye	M	L	ML	Mazraat Ajbeaa	M	L	ML
Mazraat Et-Teffah	M	L	ML	Mazraat Jneid	M	L	ML	Mejdlaiya Zgharta	M	L	M
Merh Kfarsghab	M	L	ML	Miryata	M	ML	M	Miziara	M	L	L
Mzraat Kefraya	M	ML	M	Qorah Bach	M	L	ML	Rachiine	M	L	M
Ras Kifa	M	L	ML	Sakhra	M	L	ML	Sebhel Zgharta	M	L	M
Serhel	M	L	L	Tallet Zgharta	M	L	ML	Toula Zgharta	M	L	ML
Zgharta	M	L	M								

Minieh-Denniye

Municipality	13-Jan	14-Jan	15-Jan	Municipality	13-Jan	14-Jan	15-Jan	Municipality	13-Jan	14-Jan	15-Jan
Aasaymout	M	L	L	Aaymar	M	L	ML	Aazki	M	L	M
Ain El-Tineh-Miniyeh	M	L	L	Assoun	M	L	ML	Bakhaaoun	M	L	ML
Bchennata	M	L	M	Bechehhara	M	L	L	Beddawi	M	L	M
Behouaita	M	L	ML	Beit El Foqss	M	ML	L	Beit Haouik	M	L	ML
Beit Zoud	M	L	ML	Bekaasafrine	M	ML	M	Borj El Yahoudiyeh	M	ML	M
Bqarsouna	M	ML	L	Btermaz	M	L	L	Debaael	M	L	L
Deir Ammar	M	ML	M	Deir Nbouh	M	L	ML	Haouaret-Miniyeh	M	L	ML
Haql el Azimeh	M	L	L	Harf El Siyad	M	L	L	Hazmiye-Miniyeh	M	L	L
Izal	M	L	M	Jarjour	M	VL	L	Jayroun	M	ML	ML
Kahf El-Malloul	M	L	L	Karm El-Moher	M	L	ML	Kfar Binine	M	L	ML
Kfarchalane	M	L	ML	Kfarhabou	M	L	M	Kharroub-Miniyeh	M	L	M
Mazraat El-Kreme	M	L	L	Mazraat Ketrane	M	L	ML	Merkebta	M	ML	M
Minyeh	M	L	M	Mrah El Sfirat	M	L	L	Mrah Sraj	M	L	L
Mrebbine	M	M	M	Nabi Youcheaa	M	ML	M	Nemrine	M	ML	ML

Qarhaiya	M	L	ML	Qarne	M	L	L	Qarsita	M	ML	L
Qattineh-Miniyeh	M	L	L	Qemmamine	M	L	ML	Qraine	M	L	L
Raouda-Aadoua	M	ML	M	Rihaniyet-Miniyeh	M	M	M	Sfireh	M	L	L
Sir Ed-Danniyeh	M	L	L	Tarane	M	L	L	Terbol-Miniyeh	M	M	M
Zaghartaghriane	M	L	ML	Zouq Bhannine	M	ML	M				

Nabatiye

Nabatiye

Municipality	13-Jan	14-Jan	15-Jan	Municipality	13-Jan	14-Jan	15-Jan	Municipality	13-Jan	14-Jan	15-Jan
Aabba	M	VL	L	Aazzi	M	VL	L	Adchit El-Chqif	M	VL	L
Ain Bou Swar	M	L	L	Ain Kana	M	VL	L	Ali El-TaHER	M	VL	L
Ansar	M	VL	L	Arab Salim	M	VL	L	Arnoun	M	L	L
Bfaroue	M	VL	L	Breyqaah	M	VL	L	Charqiyeh	M	VL	L
Choukine	ML	VL	L	Deir El Zahrani	M	VL	L	Doueir El-Nabatiyeh	M	VL	L
Habbouch El-Nabatiye	ML	VL	L	Hamra El-Nabatiyeh	M	VL	L	Harouf El-Nabatiyeh	M	VL	L
Hmaile	M	VL	L	Houmin El Faouqa	M	VL	L	Houmin El Tahta	M	VL	L
Jarjough	M	VL	L	Jbaah El-Nabatiyeh	M	L	L	Jebchit	M	VL	L
Kfar Djal El-Nabatiy	M	VL	L	Kfar Remmane	M	VL	L	Kfar Sir	M	VL	L
Kfar Tebnit	ML	VL	L	Kfarfila	M	VL	L	Kfour El-Nabatieh	M	VL	L
Mayfadoun	ML	VL	L	Mazraat Bsaffour	M	VL	L	Mazraat Chalbaal	M	VL	L
Mazraat Dmoul	M	VL	ML	Mazraat El Khreibeh	M	VL	L	Mazraat El-Bayad El-	ML	VL	L
Mazraat Kfarjaouz	ML	VL	L	Mazraat Qalaat Meiss	M	VL	L	Nabatiyeh El-Fawka	ML	VL	L
Nabatiyeh Et-Tahta	ML	VL	L	Namiriyyeh	M	VL	L	Qaaqaaiyet El Jisr	M	VL	L
Qossaibeh El-Nabatiy	M	VL	L	Roumine	M	VL	L	Sarba El-Nabatieh	M	VL	L
Sir El-Gharbiyeh	M	VL	L	Toul	M	VL	L	Yehmor El-Nabatiyeh	M	VL	L
Zaoutar El Charkiyeh	M	VL	L	Zaoutar El-Gharbiyeh	ML	VL	L	Zebdine El-Nabatiyeh	ML	VL	L
Zefta	M	VL	L								

Hasbaiya

Municipality	13-Jan	14-Jan	15-Jan	Municipality	13-Jan	14-Jan	15-Jan	Municipality	13-Jan	14-Jan	15-Jan
Ain Jarfa	M	L	L	Abou Qamha	M	VL	L	Ain Qania	M	L	L
Bourghos	ML	VL	ML	Chebaa	M	L	L	Chouaya Hasbaya	M	L	L
Dellafeh	ML	L	L	Fardiss Hasbaiya	M	VL	L	Hasbaya	ML	L	L
Hbariyeh	M	L	L	Kaoukaba Hasbaiya	ML	VL	L	Kfar Chouba	M	L	L
Kfar Hamam	M	L	L	Kfeir El-Zait	M	L	L	Khalwat Hasbaya	M	L	L
Khreibet Hasbaiya	M	L	L	Majidiyeh Hasbaiya	M	L	L	Marj Ez-Zhour (Haouc	M	L	L
Meri	M	L	L	Mimass	ML	L	L	Rachaiya El-Fokhar	M	VL	L
Salaiyeb	M	L	L								

Marjayoun

Municipality	13-Jan	14-Jan	15-Jan	Municipality	13-Jan	14-Jan	15-Jan	Municipality	13-Jan	14-Jan	15-Jan
Aalmane Marjaayoun	M	VL	L	Aamra	M	L	L	Adayseh Marjaayoun	M	L	L
Adchit El-Koussair	M	VL	L	Ain Arab Marjaayoun	M	L	L	Bani Haiyann	M	VL	L
Blatt Marjaayoun	ML	VL	L	Blida	M	L	L	Borj El-Moulouk	M	L	L
Boueyda Marjaayoun	M	VL	L	Deir Mimass	M	L	L	Deir Siriane	M	VL	L
Dibbine	ML	VL	L	Ebel El Saqi	M	VL	L	Houla	M	L	L
Houra	M	L	L	Kfar Kila	M	L	L	Khiam Marjaayoun	M	L	L

Klayaa	M	L	L	Majdel Selem	M	L	L	Marjaayoun	ML	VL	L
Markaba	M	L	L	Mays El-Jabal	M	L	L	Mazraat Doumiat	ML	VL	L
Mazraat Sarada	M	L	L	Mhaibib	M	L	L	Qabrikha	M	VL	L
Qantara	M	VL	L	Rab El-Thalathine	M	L	L	Saouaneh Marjayoun	M	VL	L
Talloussa	M	VL	L	Taybeh Matjaayoun	M	L	L	Touline	M	VL	L

Bent Jbail

Municipality	13-Jan	14-Jan	15-Jan	Municipality	13-Jan	14-Jan	15-Jan	Municipality	13-Jan	14-Jan	15-Jan
Ain-Ebel	M	L	L	Aitaroun	ML	L	L	Aynata Bint Jbeil	M	L	L
Ayta El-Chaeb	M	L	L	Ayta El-Jabal	M	L	L	Beit Lif	M	L	L
Beit Yahoun	M	L	L	Bint Jbeil	M	L	L	Borj Qalaway	M	VL	ML
Braachit	M	L	L	Chakra	M	L	L	Debel	M	L	L
Deir Antar	M	L	L	Froun	M	VL	L	Ghandouriyeh Bint Jb	M	VL	L
Hanine	M	L	L	Hariss	M	L	L	Hdatha	M	L	L
Jmeymeh	M	L	L	Kafra Bint Jbeil	M	L	L	Kfar Dounine	M	L	L
Khirbet Selm	M	VL	L	Kounine	M	L	L	Maroun El Ras	M	L	L
Qalaway	M	VL	L	Qaouzah	M	L	L	Qatmoun	M	L	L
Ramya Bint Jbeil	M	L	L	Rchaf	M	L	L	Rmeich	M	L	L
Safad Al Battikh	M	L	L	Salhaneh	M	L	L	Serbine	M	L	L
Sultanieh Bint Jbeil	M	L	L	Tibnine	M	L	L	Tiri	M	L	L
Yaroun	M	L	L	Yater	M	L	L				

Mont Liban

Jbail

Municipality	13-Jan	14-Jan	15-Jan	Municipality	13-Jan	14-Jan	15-Jan	Municipality	13-Jan	14-Jan	15-Jan
Aabeydat	M	L	L	Aalita	M	VL	L	Aamchit	M	L	ML
Aarab El-Lahib	M	ML	L	Aarasta	M	L	VL	Adonis Jbeil	M	VL	L
Afqa Jbeil	M	ML	L	Ain El Delbeh Jbeil	M	VL	VL	Ain El-Ghouyba	M	L	L
Ain Jrain	M	VL	VL	Ain Kfah	M	L	L	Almat El Chemaliyat	M	VL	L
Almat El-Jenoubiya	M	L	L	Aqoura	M	ML	L	Bayzoun	M	VL	L
Bchille Jbeil	M	L	L	Bechtida	M	L	L	Behdaydat	M	L	L
Beit Habbaq	M	L	L	Bejjeh	M	L	L	Bekhaaz	M	L	L
Berbara Jbeil	M	L	L	Bintael	M	L	L	Birket Hjoula	M	L	L
Blatt Jbeil	M	L	L	Boulhos	M	VL	VL	Breyj Jbeil	M	L	L
Chamat	M	L	ML	Chikhane	M	L	L	Chmout	M	L	L
Eddeh Jbeil	M	L	ML	Ehmej	M	L	L	Fatre	M	VL	L
Ferhet	M	VL	L	Fghal	M	L	L	Frat	M	VL	VL
Ghabat	M	L	L	Ghalboun	M	L	L	Gharzouz	M	L	ML
Ghofrine	M	L	L	Habil	M	VL	L	Halate	M	L	L
Haqel	M	L	L	Hbaline	M	L	L	Hboub	M	L	L
Hdeine	M	L	L	Hema Er-Rehban	M	L	L	Hema Mar Maroun Aann	M	L	L
Hjoula	M	VL	L	Hosrayel	M	L	L	Hsarat	M	L	L
Hsoun	M	VL	L	Jaj	M	L	L	Janne	M	L	VL
Jbeil	M	L	ML	Jeddeyel Jbeil	M	L	L	Jlisse	M	L	L
Jouret El-Qattine	M	L	L	Kfar Baal Annaya	M	VL	L	Kfar Kidde	M	L	L
Kfar Kouas	M	L	L	Kfar Mashoun	M	L	ML	Kfoun	M	L	L

Kharbe Jbeil	M	L	L	Laqlouq	M	L	L	Lassa	M	L	L
Lehfed	M	L	L	Maad	M	L	L	Mar Sarkis	M	L	L
Mastita	M	L	ML	Mayfouq	M	L	L	Mazraat El Siyad	M	L	L
Mazraat El-Maaden	M	VL	VL	Mechane	M	VL	L	Mechmech Jbeil	M	VL	L
Mehrin	M	L	ML	Mejdel El-Akoura	M	ML	L	Mghayreh Jbeil	M	L	L
Mounsef	M	L	L	Nahr Ibrahim	M	L	ML	Qahmez	M	VL	L
Qartaba	M	L	L	Qartaboun	M	L	ML	Qattara Jbeil	M	L	VL
Qorqraya	M	VL	VL	Ramout	M	L	L	Ras Osta	M	L	L
Rihane Jbeil	M	L	ML	Sakiet El-Khayt	M	L	L	Saqi Richmaya	M	L	L
Sebrine	M	L	L	Seraita	M	L	L	Souane Jbeil	M	VL	L
Tadmor	M	L	L	Tartej	M	L	L	Torzaiya	M	VL	L
Yanouh Jbeil	M	L	L	Zibidine Jbeil	M	VL	L				

El Metn

Municipality	13-Jan	14-Jan	15-Jan	Municipality	13-Jan	14-Jan	15-Jan	Municipality	13-Jan	14-Jan	15-Jan
Aain El-Qabu	M	VL	VL	Aain El-Qach	M	VL	L	Aain El-Teffaha	M	VL	L
Aain el-Safssaf El-M	M	VL	L	Abou Mizane	M	VL	L	Ain Aar	M	VL	ML
Ain Alaq	M	VL	L	Ain El-Kharroube	M	L	L	Ain El-Sendiane	M	L	L
Ain El-Zeitoune	M	L	L	Ain Saadeh	M	VL	L	Aintoura El-Matn	M	L	L
Amaret Chalhoub	M	VL	ML	Antelias	M	VL	ML	Atchaneh	M	VL	L
Ayroun	M	L	L	Baabdat	M	L	L	Baouchariyeh	M	VL	ML
Baskinta	M	L	L	Beit Chabab	M	VL	L	Beit El-Chaar	M	VL	ML
Beit El-Kekko	M	VL	ML	Beit Mery	M	VL	L	Bhersaf	M	VL	L
Bikfaya	M	VL	L	Biyakout	M	VL	ML	Bnabil	M	L	L
Bourj Hammoud	M	VL	ML	Bqennaya	M	VL	ML	Broummana El-Matn	M	VL	L
Bsalim	M	VL	L	Bsifrine	M	L	L	Bteghrine	M	VL	L
Chaouiye	M	VL	L	Chouaya El-Matn	M	VL	L	Choueir	M	VL	L
Chrine	M	VL	L	Dahr El Sawan El-Mat	M	VL	L	Daychouniyeh	M	VL	ML
Dbayeh	M	VL	ML	Deir Chamra	M	VL	L	Deir Mar Abda el Mch	M	VL	L
Deir Mar Roukouz	M	VL	ML	Deir Tamiche	M	VL	L	Dik El-Mehdi	M	VL	L
Dikwaneh	M	VL	ML	Douar El-Matn	M	L	L	Fanar	M	VL	L
Fraike	M	VL	L	Haret El-Ballaneh	M	VL	ML	Hbous	M	VL	ML
Himlaya	M	VL	L	Jal El Did	M	VL	ML	Jdeideh El-Metn	M	VL	ML
Jouar El-Matn	M	VL	L	Jouret El-Ballout	M	VL	L	Kaaqour	M	L	L
Kfar Aaqab	M	VL	L	Kfertay El-Matn	M	VL	VL	Khenchara	M	VL	L
Khillet El-Mtain	M	L	L	Konnabat Broummana	M	VL	L	Konnabat Salima	M	L	L
Machraah El-Matn	M	L	L	Majdel Tarchich	M	L	L	Majzoub	M	VL	ML
Mansouriyeh El-Metn	M	VL	ML	Mar Boutros Karm Et-	M	VL	L	Mar Chaya et Mzekke	M	VL	L
Mar Moussa Ed-Douar	M	L	L	Marjaba	M	L	L	Masqa	M	VL	L
Mayasse	M	VL	L	Mazraat Deir Aoukar	M	VL	ML	Mazraat El-Hadirat	M	VL	L
Mazraat Yachouh	M	VL	ML	Mchikha	M	L	L	Menqlet Mezher	M	VL	ML
Mhaydseh Matn	M	VL	L	Mkalles	M	VL	ML	Mrouj	M	L	L
Mtain	M	L	L	Mtayleb	M	VL	L	Nabay	M	VL	L
Naccache	M	VL	ML	Ouadi Chahine	M	VL	L	Ouadi El-Karm El-Mat	M	VL	L
Ouata El-Mrouj	M	L	L	Ouyoun El-Matn	M	VL	L	Qornet Chehwan	M	VL	L
Qornet El-Hamra	M	VL	L	Roumieh	M	VL	L	Sfeilet Bikfaya	M	VL	L
Sinn El-Fil	M	VL	ML	Zabbougha	M	VL	L	Zalqa	M	VL	ML

Zarouon	M	L	L	Zekrite	M	VL	L	Zighrine El-Matn	M	VL	L
Zouk El-Khrab	M	VL	ML								

Chouf

Municipality	13-Jan	14-Jan	15-Jan	Municipality	13-Jan	14-Jan	15-Jan	Municipality	13-Jan	14-Jan	15-Jan
Aalmane El-Chouf	M	VL	L	Aammq El-Chouf	M	VL	L	Ain Ouzein	M	VL	L
Ain Qani	M	VL	L	Ain Zhalta	M	L	L	Ainbal	M	VL	L
Amatour	M	VL	L	Anout	M	VL	L	Atrine	M	VL	L
Baadarane	M	VL	L	Baaqline	M	VL	L	Baasir	ML	VL	L
Barja	M	VL	ML	Barouk	M	L	L	Bater	M	VL	L
Batloun	M	VL	L	Bayqoun	M	VL	L	Bchetfine	M	VL	L
Beiteddine	M	VL	L	Benouati Ech-Chouf	M	VL	L	Berjein	M	VL	L
Bireh et Mtalleh	M	VL	L	Biret El-Chouf	M	VL	L	Bkechtine Ouel Mchei	M	VL	VL
Bkifa El-Chouf	M	VL	L	Botme	M	VL	L	Bqaiaa Ech-Chouf	M	VL	L
Bsaba El-Chouf	M	VL	L	Chammis El-Chouf	M	VL	L	Chehim	M	VL	L
Chemaarine	M	VL	L	Chourit	M	VL	L	Daher El-Chouf	M	VL	L
Dalhoun	M	VL	L	Damour	M	VL	L	Daraya El-Chouf	M	VL	L
Deir El-Moukhalles	M	VL	L	Deir Baba	M	VL	L	Deir Dourit	M	VL	L
Deir El-Qamar	M	VL	L	Deir Kouche	M	VL	L	Dibbieh	M	VL	L
Dmit	M	VL	L	Fouara Jaafar	M	VL	L	Fraidis El-Chouf	M	L	L
Ghabet Jaafar	M	VL	L	Gharife	M	VL	L	Haret Jandal	M	VL	L
Hasrout	M	VL	L	Jadra	M	VL	ML	Jahlieh	M	VL	L
Jbeih El-Chouf	M	VL	L	Jdeidet El-Chouf	M	VL	L	Jiyeh	M	L	ML
Jleilyeh	M	VL	L	Jmailiyeh	M	VL	L	Joun	M	VL	L
Kahlounie El-Chouf	M	VL	L	Ketermaya	ML	VL	L	Kfar Faqoud	M	VL	L
Kfar Hamal	M	VL	L	Kfar Him	M	VL	L	Kfar Katra	M	VL	L
Kfar Niss	M	VL	L	Kfar hay	M	VL	L	Kfarnabrakh	M	VL	L
Khirbet Bisri	M	VL	L	Knayse El-Chouf	M	VL	VL	Maaniyeh	M	VL	L
Maasser Beiteddine	M	VL	L	Maasser El-Chouf	M	VL	L	Majdalouna	M	VL	L
Majdel El-Meouch	M	VL	L	Mazboud	M	VL	L	Mazmoura	M	VL	L
Mazraat El Chouf	M	VL	L	Mazraat El Daher	M	VL	L	Mazraat El-Douair	M	VL	L
Mechref	M	VL	L	Mghairie	ML	VL	L	Mghayrie El-Chouf	M	VL	L
Moukhtara	M	VL	L	Mrusti	M	VL	L	Mtolle	M	VL	L
Naameh	M	VL	L	Niha El-Chouf	M	VL	L	Ouadi Abou Youssef	M	VL	VL
Ouadi Ed-Deir	M	VL	L	Ouadi El-Sit	M	VL	L	Ouadi bnehlay	M	VL	VL
Qraibeh	M	VL	L	Qreiaa	M	VL	VL	Rmayle El-Chouf	M	VL	ML
Semqaniyeh	M	VL	L	Sibline	M	VL	ML	Sirjbeil	M	VL	L
Warhanieh	M	VL	L	Werdaniyeh	M	VL	ML	Zaarourieh	M	VL	L

Baabda

Municipality	13-Jan	14-Jan	15-Jan	Municipality	13-Jan	14-Jan	15-Jan	Municipality	13-Jan	14-Jan	15-Jan
Abadiyeh	M	L	L	Ain Mouaffaq	M	L	L	Araiya	M	L	L
Arbaniyeh	M	L	L	Arsoun	M	L	L	Baabda	M	VL	ML
Baalchmey	M	L	ML	Bmaryam	M	VL	L	Bourj El-Brajneh	M	L	ML
Boutchay	M	VL	L	Bsaba Baabda	M	VL	ML	Btekhney	M	VL	L
Btibyat	M	VL	L	Bzbeddine	M	L	L	Chbeniyeh	M	VL	L
Chiyah	M	L	ML	Chmeisset Baabda	M	VL	L	Chouit	M	L	L
Deir El-harf	M	L	L	Deir Khouna	M	VL	L	Dlaybeh	M	L	L

Falougha	M	L	L	Furn El-Chebbak	M	VL	ML	Hadath Beyrouth	M	VL	ML
Halaliyeh Baabda	M	L	L	Hammana	M	L	ML	Haret El Sett	M	VL	L
Haret Hamze	M	L	L	Haret Hreik	M	L	ML	Hasbaiya El-Metn	M	L	L
Jouar El-Hoz	M	L	VL	Jouret Arsoun	M	L	L	Kfar Chima	M	VL	ML
Kfar Selouane	M	L	L	Khalouat Baabda	M	L	ML	Kneisset Baabda	M	L	L
Laylakeh	M	VL	ML	Louayzeh Baabda	M	VL	L	Merdache	M	VL	ML
Mzairaa Baabda	M	L	L	Ouadi Chahrour El Ol	M	VL	L	Ouadi Chahrour El So	M	VL	L
Qalaa Baabda	M	VL	L	Qhraybe Baabda	M	VL	L	Qobbayaa	M	VL	L
Qornayel	M	L	L	Qortada	M	VL	L	Qrayeh Baabda	M	VL	L
Qsaibeh Baabda	M	VL	L	Qtale Baabda	M	VL	L	Ras El Metn	M	VL	L
Ras El-Haref	M	VL	L	Rouayset El-Ballout	M	L	L	Salima Baabda	M	L	L
Tahouitat El Ghadir	M	VL	ML	Tarchich	M	L	L	Zandouqa	M	VL	L

Aley

Municipality	13-Jan	14-Jan	15-Jan	Municipality	13-Jan	14-Jan	15-Jan	Municipality	13-Jan	14-Jan	15-Jan
Abey	M	VL	L	Aghmid	M	VL	L	Ain Dara	M	L	L
Ain Drafil	M	VL	L	Ain El Halazoun	M	VL	ML	Ain El-Rmmaneh	M	VL	L
Ain Jedideh	M	L	ML	Ain Ksour	M	VL	L	Ain Onoub	M	VL	L
Ain Traz	M	VL	L	Ainab	M	VL	L	Aley	M	L	ML
Aramoun	M	VL	L	Aytat	M	VL	ML	Azouniyeh	M	VL	ML
Baawerta	M	VL	L	Badghan Oua Wadi Bad	M	VL	ML	Bassatine	M	VL	L
Bayssour	M	VL	L	Bchamoun	M	VL	L	Bdadoun	M	VL	L
Behouara	M	L	L	Bennay	M	VL	L	Bhamdoun El-Dayaa	M	L	ML
Bhamdoun El-Mhatta	M	L	ML	Bkhechthey	M	L	ML	Bleibel	M	VL	L
Bmakine	M	VL	ML	Bmehray	M	L	L	Bouzrid	M	VL	VL
Bserrine	M	VL	ML	Bsous	M	VL	L	Btalloun	M	L	ML
Btater	M	VL	ML	Chanay	M	L	ML	Charoun	M	VL	ML
Chartoun	M	VL	L	Chemlane	M	VL	L	Choueifat El-Aamrous	M	VL	ML
Choueifat El-Oumara	M	VL	ML	Choueifat El-Quoubbe	M	VL	ML	Dakkoun	M	VL	L
Deir Qoubel	M	VL	L	Dfoun	M	VL	L	Douair El Remmaneh	M	VL	L
Ghaboun	M	L	L	Habramoun	M	VL	L	Homs Oua Hama	M	VL	ML
Houmal	M	VL	L	Jisr El Qadi	M	VL	L	Kehaleh	M	VL	L
Keyfoun	M	VL	ML	Kfar Aamey	M	VL	L	Kommatyeh	M	VL	L
Maasrati	M	VL	L	Majdel Baana	M	VL	ML	Mansourieh et Ain El	M	L	ML
Mazraat El-Nahr	M	VL	L	Mchakhte	M	VL	L	Mecherfeh	M	VL	ML
Mejdlaya	M	VL	L	Mrayjat	M	VL	L	Ramliyah	M	VL	L
Rechmaya	M	VL	L	Rejmeh	M	L	L	Remhala	M	VL	L
Rouaysset El Neemane	M	VL	L	Saoufar	M	VL	ML	Selfaya	M	VL	VL
Sirhmoul	M	VL	L	Souq El Ghareb	M	VL	ML	Taazanieh	M	L	ML

Kesrouane

Municipality	13-Jan	14-Jan	15-Jan	Municipality	13-Jan	14-Jan	15-Jan	Municipality	13-Jan	14-Jan	15-Jan
Achkout	M	VL	L	Adma Oua Dafneh	M	L	L	Ain Ed-Delbe Kesroua	M	VL	VL
Ain El-Rihane	M	VL	L	Aintoura Kesrouane	M	VL	L	Ajaltoun	M	VL	L
Akaybeh Kesrouane	M	L	ML	Aramoun Kesrouane	M	VL	L	Azra ouel Ozor	M	VL	L
Ballouneh	M	VL	L	Batha	M	VL	L	Bekaatat Achkout	M	VL	L
Bekaatat Kanaan	M	VL	VL	Bizhel	M	VL	L	Bouar	M	L	L
Bqaatouta	M	VL	L	Bqaq Ed-Dine	M	L	L	Bzommar	M	VL	L

Chahtoul	M	VL	L	Chnaniir	M	VL	L	Chouan	M	VL	VL
Daraya Kesrouane	M	VL	L	Darououn	M	VL	L	Deir Baqlouch	M	VL	L
Dlebta	M	VL	L	Eghbeh	M	VL	L	Faraya	M	L	L
Fatka	M	VL	L	Feytroun	M	VL	L	Ghazir	M	VL	L
Ghbaleh Kesrouane	M	VL	L	Ghedrass	M	VL	L	Ghosta	M	VL	L
Ghynéh	M	VL	L	Harharaya w Kattine	M	VL	L	Harissa Kesrouane	M	VL	L
Hayata	M	VL	L	Hosein	M	VL	L	Hrajel	M	L	L
Jdeideh Ghazir	M	VL	L	Jeita	M	VL	L	Jounieh Ghadir	M	L	L
Jounieh Haret Sakhr	M	L	ML	Jounieh Salel Alma	M	L	L	Jounieh Sarba	M	L	ML
Jouret Bedrane	M	VL	L	Jouret Mhad	M	VL	L	Jouret Termos	M	VL	L
Kfar Debiane	M	L	L	Kfar Tay Kesrouane	M	VL	L	Kfar Yassine	M	L	ML
Kfour Kesrouane	M	VL	L	Kharayeb Nahr Ibrahi	M	VL	L	Klayaat Kesrouane	M	VL	L
Maarab	M	VL	L	Maaysra Kesrouane	M	VL	L	Mayrouba	M	VL	L
Mazraat Er-Ras	M	VL	L	Mazraat Mrah El-Mir	M	VL	L	Mchaa El Ftouh	M	M	L
Mchaa Faraya	M	L	L	Mchaa Kfar Dibiane	M	L	L	Mghaer	M	VL	VL
Mradiyah	M	VL	L	Nahr Ed-Dahab	M	VL	L	Nammoura Kesrouane	M	VL	L
Ouata El Jaouz	M	VL	L	Ouata Sillam	M	L	ML	Raachine	M	VL	L
Rayfoun	M	VL	L	Safra Kesrouane	M	L	ML	Shayle Kesrouane	M	VL	L
Tabarja	M	L	ML	Yahchouch	M	VL	L	Zaaytreh	M	VL	L
Zeytoun	M	VL	L	Zouk Mikael	M	L	ML	Zouk Mosbeh	M	VL	ML

Baalbek_Hermel

Baalbek

Municipality	13-Jan	14-Jan	15-Jan	Municipality	13-Jan	14-Jan	15-Jan	Municipality	13-Jan	14-Jan	15-Jan
Aadous	M	M	L	Aamchki	M	M	L	Aarsal	M	M	L
Ain Baalbek	M	MH	L	Ain Bourday	ML	M	L	Ain El-Benye	ML	M	L
Ain El-Jaouz Baalbek	ML	M	L	Ain El-Siya Chadoura	ML	ML	L	Al Khodr Baalbek	M	M	L
Al Nabi Chit	M	M	L	Aynata Baalbek	ML	M	L	Baalbek	M	M	L
Bachwat	M	M	L	Barqa	M	M	L	Bednayel Baalbak	ML	M	L
Beit Chama	M	M	L	Bijjaje	M	MH	L	Bouday	M	M	L
Brital	M	M	L	Btadi	M	M	L	Chaat	M	M	L
Chaibe	ML	ML	L	Chlifa	M	M	L	Chmestar	M	M	L
Dar El-Oussa	M	M	L	Deir El-Ahmar	M	M	L	Deir Mar Maroun Baal	ML	M	M
Douris	M	M	L	Fakiha	M	MH	ML	Hadath Baalbek	M	M	L
Ham	ML	M	L	Haour Taala	M	M	L	Hizzine	M	M	L
Hlebta	M	M	M	Hosh Barada	M	M	L	Hosh El Dahab	M	M	L
Hosh El Snid	M	M	L	Hosh El-Nabi	M	M	L	Hosh El-Rafiq	M	M	L
Hosh Tal Safiya	M	M	L	Hrebta	M	M	L	laat	M	M	L
Jebaa	M	M	L	Jenta	M	ML	L	Kfar Dabach	M	M	L
Kfar Dane	M	M	L	Khraibeh El-Hermel	M	MH	L	Khreibet Baalbek	ML	M	L
Kneisset Baalbek	M	M	L	Labueh	M	M	L	Maarboun	ML	M	L
Majdaloun	M	M	L	Maqneh	M	M	L	Mazraat Beit Mcheik	ML	M	L
Misraya	M	M	L	Moqraq	M	M	L	Nabha El-Damdoum	M	M	L
Nabi Chbay	M	ML	L	Nabi Osman	M	MH	L	Nahleh baalbek	M	M	L
Ouadi El-Oss	M	MH	L	Qaa Baayoun	ML	M	M	Qaa Jouar Maqiye	ML	M	M
Qaa Ouadi El-Khanzir	M	M	M	Qah Baalbek	M	MH	M	Qarha Baalbek	M	M	L

Qsarnaba	M	M	L	Ram Baalbek	M	M	L	Ras Baalbek El Sahl	M	MH	M
Ras Baalbek El-Charq	ML	M	M	Riha	M	M	L	Saaide	M	M	L
Sbouba	M	M	L	Seriine El-Tahta	M	M	L	Slouqi	M	M	L
Taiba Baalbek	M	M	L	Talia	M	M	L	Taraiya	M	M	L
Temnin El Fawqa	M	M	L	Temnin El-Tahta	M	M	L	Tfail	L	M	L
Yahfoufa	M	M	L	Yammouneh	M	M	L	Younine	ML	M	L
Zboud	M	MH	L								

Hermel

Municipality	13-Jan	14-Jan	15-Jan	Municipality	13-Jan	14-Jan	15-Jan	Municipality	13-Jan	14-Jan	15-Jan
Charbine El-Hermel	M	L	M	Hermel Jbab	M	M	M	Hermel	M	M	M
Maaysra El-Hermel	M	MH	M	Michaa Mrajhine	M	M	M	Ouadi Faara	M	M	M
Ras Baalbek - Ouadi	M	M	M	Ras Baalbek El Gharb	M	M	M	Zighrine	M	M	M

Akkar

Akkar

Municipality	13-Jan	14-Jan	15-Jan	Municipality	13-Jan	14-Jan	15-Jan	Municipality	13-Jan	14-Jan	15-Jan
Aain Tinta	M	L	M	Aaiyat	M	L	M	Aakkar El-Aatiqa	M	L	L
Aamar Akkar	M	ML	M	Aamar El Baykat	M	VL	M	Aamayer	M	L	M
Aamriyet Akkar	M	VL	M	Aandqet	M	L	ML	Aarmeh	M	VL	M
Aarqa	M	L	M	Aawaynat	M	L	M	Aayoun Akkar	M	L	M
Abboudiye	M	VL	M	Ain El-Zeit	M	L	M	Ain Yaaqoub	M	L	ML
Akroum	M	ML	M	Aridet Cheikh Zennad	M	VL	ML	Baldeh w Mazraat Bal	M	VL	M
Barcha	M	VL	M	Bardeh	M	L	M	Bebnine	M	M	M
Beino	M	L	M	Beit Ayoub	M	L	M	Beit El-Haouch	M	M	M
Beit Mellat	M	L	M	Beit Younes	M	L	ML	Berbara Akkar	M	L	M
Berqayel	M	ML	M	Bezbina	M	L	L	Bireh Akkar	M	L	M
Borj	M	L	M	Bqerezla	M	L	M	Bzal	M	L	ML
Chane	M	L	ML	Chaqdouf	M	L	M	Charbila	M	VL	M
Cheikh Mohammad	M	VL	M	Cheikh Taba Es-Sahl	M	L	M	Cheikh Taba	M	L	M
Cheikh Zennad	M	L	ML	Cheikhlar	M	L	M	Chir Hmairine	M	VL	M
Daghle	M	L	M	Dahr Laissine	M	VL	M	Darine	M	VL	M
Dawra	M	L	ML	Dawsa w Baghdadi	M	VL	M	Dayret Nahr El-Kabir	M	L	M
Deir Dalloum	M	M	M	Deir Jennine	M	L	M	Denbou	M	L	ML
Dibbabiyyeh	M	VL	M	Douair Aadwiyeh	M	VL	M	Fassikine	M	L	M
Fnaydek	M	L	ML	Fraydes Akkar	M	VL	ML	Ghazayle	M	VL	M
Habchit	M	L	L	Hakour	M	L	M	Halba	M	L	M
Haouchab	M	L	M	Hayssat	M	L	M	Haytla	M	VL	M
Hayzouq	M	VL	M	Hedd	M	VL	M	Hmaira Akkar	M	L	M
Hmaiss Akkar	M	VL	M	Hnaider	M	L	M	Hokr Ed-Dahri	M	VL	ML
Hokr Etti	M	L	M	Hokr Jouret Srar	M	VL	M	Houaich	M	L	ML
Hrar	M	L	M	Idbil	M	L	M	llat	M	L	M
Janine	M	VL	M	Jdeidet El-Joumeh	M	L	M	Jdeidet El-Kaiteh	M	L	M
Jebroyel	M	L	M	Kafr	M	L	L	Kafr	M	L	M
Karm Asfour	M	L	M	Kfar Melki Akkar	M	L	M	Kfar Noun	M	VL	ML
Kfarharra	M	VL	M	Khalsa	M	L	M	Kharnoubet Akkar	M	VL	M

Khirbet Daoud Aakkar	M	L	M	Khirbet El Remmane	M	L	M	Khirbet Shar	M	L	M
Khoreybet El-Jindi	M	L	M	Khreibet Aakkar	M	L	M	Kneisset Aakkar	M	VL	ML
Kneisset Hnaider	M	L	M	Knisse	M	VL	M	Kroum El-Aarab	M	VL	M
Kwachra	M	VL	M	Kweykhat	M	L	M	Machta Hammoud	M	L	M
Majdala	M	ML	M	Majdel Akkar	M	L	M	Mar Touma	M	M	M
Marlaya Melhem	M	L	M	Mashha	M	L	M	Massoudiye	M	VL	M
Mazraat Beit Ghattas	M	L	M	Mazraat En-Nahriye	M	L	M	Mechmech	M	L	ML
Memneh	M	VL	L	Mhammara	M	M	M	Mighraq Aakkar	M	VL	ML
Minyara	M	L	M	Moqayteh	M	L	M	Mounjez	M	VL	ML
Msalla	M	VL	M	Mzeihmeh	M	VL	M	Nfaiseh	M	L	M
Noura Et-Tahta	M	VL	M	Ouadi El-Haour	M	VL	M	Ouadi El-Jamous	M	M	M
Ouyoun El-Ghizlane	M	ML	M	Qaabarine	M	L	M	Qabaait	M	L	ML
Qachlaq	M	VL	M	Qantara Aakkar	M	L	M	Qarha Aakkar	M	L	M
Qarqaf	M	M	M	Qboula	M	L	M	Qleiaat Aakkar	M	L	M
Qloud El-Baqie	M	L	M	Qobaiyat Aakkar	M	L	ML	Qobbat Chamrat	M	L	M
Qorayat	M	L	ML	Qornet Aakkar	M	L	M	Qsair Aakkar	M	VL	M
Rahbe	M	L	M	Rihaniyet Aakkar	M	L	M	Rmah	M	L	M
Rmoul	M	L	M	Saadine	M	L	M	Sadaqa	M	L	M
Saidnaya	M	VL	M	Sammouniye	M	L	M	Sayssouq	M	L	M
Semmaqiye	M	VL	ML	Semmaqli	M	L	M	Sfinet El-Dreib	M	VL	M
Sfinet El-Qaitaa	M	L	ML	Sindyanet Zeidane	M	L	ML	Souaisset Aakkar	M	L	M
Srar	M	VL	M	Tal Abbas El Gharby	M	L	M	Tal Abbas El-Chargy	M	L	M
Tal Biret	M	VL	M	Tal Hmayra	M	VL	M	Tal Maayan Tal Kiri	M	L	M
Tal Sibel	M	L	M	Tallet Chattaha	M	VL	M	Tikrit	M	L	M
Tleil	M	VL	M	Tshea	M	L	ML	Zawarib	M	L	M
Zouq El Hosniyeh	M	L	M	Zouq El-Haddara	M	ML	M	Zouq El-Hbalsa	M	L	M
Zouq El-Moqachrine	M	M	M								

Sud

Sour

Municipality	13-Jan	14-Jan	15-Jan	Municipality	13-Jan	14-Jan	15-Jan	Municipality	13-Jan	14-Jan	15-Jan
Aaiyeh	M	L	L	Aalma El-Chaab	M	L	L	Aaytit	M	L	L
Abbassiyeh Sour	M	L	L	Abou Chech	M	L	L	Ain Abou Abdallah	M	L	L
Ain Baal	M	L	L	Arzoun	M	VL	L	Aziyeh	M	L	L
Baflaya	M	VL	L	Barich	M	VL	L	Batouliyeh	M	L	L
Bayad	M	L	L	Bazouriyeh	M	L	L	Bediass	M	VL	L
Bestiyat	M	VL	L	Borj El Chemali	M	L	L	Borj En-Naqoura	M	L	L
Borj Rahhal	M	L	L	Boustane	M	L	L	Btaychiyeh	M	L	L
Chaaitiye	M	ML	L	Chameh	M	L	L	Chehabiye	M	VL	L
Chehour	M	VL	L	Chihine	M	L	L	Debaal Sour	M	VL	L
Deir Amess	M	L	L	Deir Kifa	M	VL	L	Deir Qanoun El-Ain	M	L	L
Deir Qanoun El-Naher	M	VL	L	Derdghaiya	M	VL	L	Dhayra	M	L	L
Halloussiyeh	M	VL	L	Hamoul	M	L	L	Hanaouey	M	L	L
Henniye	M	ML	L	Hmairi Sour	M	VL	L	Iskandarouna Sour	M	L	L
Jbal El Botom	M	L	L	Jebbin	M	L	L	Jennata	M	VL	L
Jijim	M	L	L	Jouaiya	M	VL	L	Kneisset Sour	M	ML	L

Maarake	M	VL	L	Maaroub	M	VL	L	Majadel	M	VL	L
Majdalzoun	M	L	L	Mansouri Sour	M	L	L	Marnba	M	VL	L
Marouahine	M	L	L	Mazraat El-Zalloutiy	M	L	L	Mazraat Mechref	M	L	L
Mazraat Tayr Semhat	M	VL	L	Mheilib	M	L	VL	Neffakhiyeh	M	VL	L
Niha Sour	M	VL	L	Ouadi Jilo	M	L	L	Qana	M	L	L
Qolaileh Sour	M	ML	L	Rechknay	M	L	L	Rmadiyah	M	L	L
Selha Sour	M	VL	L	Siddiqine	M	L	L	Sour	M	L	L
Srifa	M	VL	L	Tayr Debbe	M	L	L	Tayr Felsay	M	VL	L
Tayr Harfa	M	L	L	Touayri	M	VL	L	Toura	M	VL	L
Yanouh Sour	M	VL	L	Yarine	M	L	L	Zebqine	M	L	L

Saida

Municipality	13-Jan	14-Jan	15-Jan	Municipality	13-Jan	14-Jan	15-Jan	Municipality	13-Jan	14-Jan	15-Jan
Aanqoun	M	VL	L	Aaqtanit	M	VL	L	Aarab Ej-Jall	M	VL	L
Aarab Tabbaya	M	VL	L	Abra Saida	M	VL	ML	Adloun	M	L	L
Adousiyeh	M	VL	L	Ain-El-Deleb	M	VL	L	Arzai	M	L	L
Babliyah	M	VL	L	Barty	M	VL	L	Bissariyeh	M	VL	L
Bnaafoul	M	VL	L	Bqosta	M	VL	ML	Bramiy	M	VL	L
Daoudiyeh	M	VL	L	Dareb El-Sim	M	VL	L	Erkay	M	VL	L
Ghassanieh	M	VL	L	Ghazieh	M	VL	L	Hajjeh	M	VL	L
Haret Saida	M	VL	ML	Hartiyeh	M	VL	L	Hlaliye Saida	M	VL	ML
Insariyat	M	L	L	Jazira Saida	M	L	L	Kafar Bit	ML	VL	L
Kaoutariyet El-Siyad	M	VL	L	Kfar Chellal	M	VL	L	Kfar Hatta Saida	ML	VL	L
Kfar Milke Saida	ML	VL	L	Khartoum	M	VL	L	Khaziz	M	VL	L
Khirbet Ed-Douair Sa	M	VL	L	Khirbet El-Bassal	M	VL	L	Khrayeb Saida	M	VL	L
Loubieh	M	L	L	Maghdouche	M	VL	L	Majdelyoun	M	VL	ML
Matariyet El-Choumar	M	L	L	Matayriyeh	M	VL	L	Mazraat 'Mseileh	M	VL	L
Mazraat 'Snaiber	M	VL	L	Mazraat Aarab Soukka	ML	VL	L	Mazraat Deir Taqla	M	VL	L
Mazraat El Yahoudiye	M	VL	VL	Mazraat El-Housseini	M	VL	L	Mazraat El-Mhaydaleh	M	VL	L
Mazraat El-Ouasta	M	VL	L	Mazraat Jamjim	M	VL	L	Mazraat Kaoutariyet	M	VL	L
Mazraat Kfar Badda	M	VL	L	Mazraat Oussamiyat	M	VL	L	Mazraat Sari	M	VL	L
Mazraat Sinai	M	VL	L	Meemariyeh	M	VL	L	Merouaniyeh	M	VL	L
Miyeh ou Miyeh	M	VL	ML	Najjariyeh	M	VL	L	Qaaqiyat El-Snaouba	M	VL	L
Qnarit	M	VL	L	Qraiye Saida	M	VL	L	Saida Ed-Dekermane	M	VL	ML
Saida El-Oustani	M	VL	L	Saida El-Qadimeh	M	VL	ML	Saida Kefraya	M	VL	L
Saksakiyeh	M	L	L	Salhie Saida	M	VL	L	Sarafand	M	VL	L
Sfenta	M	VL	L	Tafahta	M	VL	L	Tanbourit	M	VL	L
Tebna	M	VL	L	Zaghdraiya	M	VL	L	Zeita	M	VL	L
Zrariyeh	M	VL	L								

Jezzine

Municipality	13-Jan	14-Jan	15-Jan	Municipality	13-Jan	14-Jan	15-Jan	Municipality	13-Jan	14-Jan	15-Jan
Ain El-Mir (El Estab	ML	VL	L	Anane	M	VL	L	Aramta	M	L	L
Ariya	M	VL	L	Aychiyeh	M	VL	L	Azour	M	VL	L
Baba	M	VL	L	Bayssour Jezzine	ML	VL	L	Benoueteh Jezzine	M	VL	L
Bhannine	M	VL	L	Bisri	M	VL	VL	Bkassine	M	VL	L
Bouslaya	M	VL	L	Btedine El-Leqech	M	VL	L	Chbail	M	L	VL
Choualiq Jezzine	M	VL	L	Dahr Ed-Deir	M	VL	L	Deir El Qattine	M	VL	L

Demachqiyeh	M	VL	L	Ghabbatiyeh	M	VL	L	Harf Jezzine	M	VL	L
Hassaniyeh	M	VL	L	Haytouleh	M	VL	L	Haytura	M	L	L
Hidab	M	L	L	Homsiyeh	M	VL	L	Jabal Toura	M	L	L
Jarmaq	M	VL	L	Jensnaya	M	VL	L	Jernaya	M	VL	L
Jezzine	M	L	L	Karkha	M	VL	L	Kfar Falous	M	VL	L
Kfar Houna	M	L	L	Kfar Jarrah	M	VL	ML	Lebaa	ML	VL	L
Louayzet Jezzine	M	L	L	Machmouche	M	VL	L	Mahmoudiyeh Jezzine	M	VL	L
Maknounye Jezzine	M	L	L	Maraat Ouzaïyeh	M	VL	L	Mazraat Daraya	M	L	L
Mazraat El-Aarqoub	M	VL	L	Mazraat El-Mathane	M	VL	VL	Mazraat El-Rahbane	M	L	L
Mazraat Khallet Khaz	M	VL	L	Mazraat Louzid (Loua	M	VL	L	Mazraat Qrouh	M	L	L
Mazraat Tamra	ML	VL	L	Mazraat Zighrine Jez	M	VL	L	Mazraat	M	VL	L
Mharbiyeh	M	VL	L	Midane Jezzine	M	VL	L	Mjeydel Jezzine	M	VL	L
Mlikh	M	L	L	Mrah El-Hbasse	ML	VL	L	Ouadi Baanquodaine	ML	VL	L
Ouadi El-Laymoun	ML	VL	L	Ouardiyeh	M	VL	VL	Qabaa Jezzine	M	VL	L
Qatrani	M	L	L	Qaytouleh	M	VL	L	Qtaleh Jezzine	M	VL	L
Rihane Jezzine	M	L	L	Rimat	M	VL	L	Roum	M	VL	L
Roummanet	M	L	L	Sabbah	M	VL	L	Saydoun	M	VL	L
Sfaray	M	VL	L	Snaya	M	L	L	Sojoud	M	L	L
Srayri	M	L	L	Taaid	M	VL	VL	Wadi Jezzine	M	VL	L
Zhalta	M	L	L								

Bekaa

West Bekaa

Municipality	13-Jan	14-Jan	15-Jan	Municipality	13-Jan	14-Jan	15-Jan	Municipality	13-Jan	14-Jan	15-Jan
Aammîq BG	ML	ML	ML	Ain El Tineh BG	ML	L	L	Ain Zebdeh	ML	L	L
Ana	ML	ML	ML	Aytanit	M	L	L	Baaloul BG	ML	L	L
Bab Mareh	ML	L	L	Chouberqiye Aammîq	ML	ML	ML	Dakoue	ML	L	ML
Deir Ain El-Jaouze	ML	L	ML	Deir Tahniche	ML	ML	ML	Ghaza	ML	L	ML
Harime El-Soughra	ML	L	ML	Hoch Harimeh	ML	L	ML	Jazira BG	ML	L	ML
Jib Jennine	ML	L	ML	Kamed-El-Laouz	ML	L	ML	Kefraya BG	M	L	L
Khiara El Atika	ML	L	ML	Khiara	ML	L	ML	Khirbet Qanafar	M	L	L
Lala	ML	L	ML	Lebbaya BG	ML	L	L	Loussa	ML	L	L
Machghara	ML	L	L	Manara (Hammara) BG	M	L	L	Mansoura BG	ML	ML	ML
Marej BG	ML	L	L	Maydoun	ML	L	L	Ouaqf BG	ML	L	ML
Qaraaoun	ML	L	L	Qelya	ML	L	L	Raouda (Istabel)	ML	ML	L
Saghbine	M	L	L	Sohmor	ML	VL	L	Soltan Yacoub el Ara	ML	L	ML
Souairy	M	ML	ML	Sultan Yaacoub	ML	L	ML	Tal Znoun	ML	ML	ML
Yehmor BG	ML	VL	L	Zilaya	ML	L	L				

Zahle

Municipality	13-Jan	14-Jan	15-Jan	Municipality	13-Jan	14-Jan	15-Jan	Municipality	13-Jan	14-Jan	15-Jan
Aanjar (Haouch Mouss	ML	ML	L	Ablah	M	M	L	Ain Kfarzabad	ML	ML	L
Ali-El-Nahri	ML	M	L	Bar Elias	ML	M	L	Bouarej	ML	ML	L
Cheberqiyet Tabet	ML	ML	L	Chtaura	ML	ML	L	Deir El Ghazal	M	ML	L
Delhamiyet Zahle	ML	M	L	Ferzol	ML	M	L	Haouch El-Ghanam	ML	M	L
Haouch Es-Siyadeh	ML	L	L	Haouch Hala	ML	M	L	Haouch Mandara	ML	ML	L

Haouch Qayssar	ML	L	L	Hezerta	ML	ML	L	Hosh Moussa	ML	M	L
Jdita	ML	ML	L	Kfarzabad	ML	ML	L	Ksara	ML	M	L
Majdel Aanjar	M	ML	L	Makssi	ML	M	L	Massa	ML	M	L
Mazraat Er-Remtaniye	ML	ML	L	Mrayjat Zahle	ML	ML	L	Mzaraa Zahle	ML	ML	L
Nabi Ayla	M	M	L	Nasriyet Rizk	ML	M	L	Nasriyet Zahle	ML	L	L
Niha Zahle	ML	M	L	Ouadi Ed-Deloum	ML	ML	L	Ouadi El-Arayech	ML	M	L
Qaa El Rim	ML	M	L	Qab Elias	ML	ML	L	Qousaya	M	ML	L
Rhit	ML	M	L	Riyak	ML	M	L	Saadnayel	ML	M	L
Taal El-Akhdar	ML	L	ML	Taalbeya	ML	M	L	Taanayel	ML	M	L
Talamara	ML	M	L	Tcheflik Edde Haouch	ML	ML	L	Tcheflik Qiqano	ML	L	L
Terbol Zahle	ML	M	L	Touaite Zahle	ML	ML	L	Zahle Aradi	ML	ML	L
Zahle El-Berbara	ML	ML	L	Zahle El-Maallaqa	ML	M	L	Zahle El-Midane	ML	M	L
Zahle Er-Rassiye	ML	M	L	Zahle Haouch El-Ouma	ML	M	L	Zahle Haouch El-Ouma	ML	M	L
Zahle Haouch Ez-Zara	ML	ML	L	Zahle Maalaga Aradi	ML	M	L	Zahle Mar Antonios	ML	M	L
Zahle Mar Elias	ML	M	L	Zahle Mar Gerios	ML	M	L	Zahle Saydet En-Naja	ML	M	L
Zebdoul	ML	ML	L								

Rachaiya

Municipality	13-Jan	14-Jan	15-Jan	Municipality	13-Jan	14-Jan	15-Jan	Municipality	13-Jan	14-Jan	15-Jan
Ain Arab Rachaiya	M	L	L	Ain Ata	ML	L	L	Ain Harche	ML	VL	L
Aqabe Rachaya	ML	L	ML	Ayha	ML	L	ML	Ayta El Fokhar	M	L	L
Bakifa Rachaya	ML	L	L	Bakka	M	L	ML	Beit Lahya	ML	L	ML
Bireh Rachaiya	ML	L	ML	Daheer El Ahmar	ML	L	ML	Deir El-Achayer	M	M	L
Heloua Rachaiya	M	ML	L	Hoch El Qannabeh Rac	ML	L	L	Kaoukaba Bou Arab	ML	L	L
Kfar Danis	ML	L	ML	Kfar Mechki	ML	L	L	Kfar Qouq	M	ML	L
Kherbet Rouha	M	L	L	Majdel Balhiss	ML	L	L	Mdoukha	M	L	ML
Mhaydseh Rachaiya	ML	L	ML	Nabi Safa	ML	L	L	Rachaiya	ML	L	L
Rafid Rachaiya	ML	L	ML	Selsata (Mazraat Dei	M	M	L	Tannoura	ML	L	ML
Yanta	M	L	L								

Beyrouth

Beyrouth

Municipality	13-Jan	14-Jan	15-Jan	Municipality	13-Jan	14-Jan	15-Jan	Municipality	13-Jan	14-Jan	15-Jan
Achrafieh	M	VL	ML	Ain el-Mreisse	M	L	ML	Bachoura	M	L	ML
Beirut Central Distr	M	L	ML	Marfai	M	L	ML	Mazraa	M	L	ML
Medaouar	M	VL	ML	Minet el-Hosn	M	L	ML	Mwssaitbeh	M	L	ML
Ras Beirut	M	L	ML	Rmeil	M	VL	ML	Saifi	M	L	ML
Zqaq el-Blat	M	L	ML								