

# Lebanon Fire Risk Bulletin



CIVIL DEDEFENCE

**Refer to cadast table condition.**

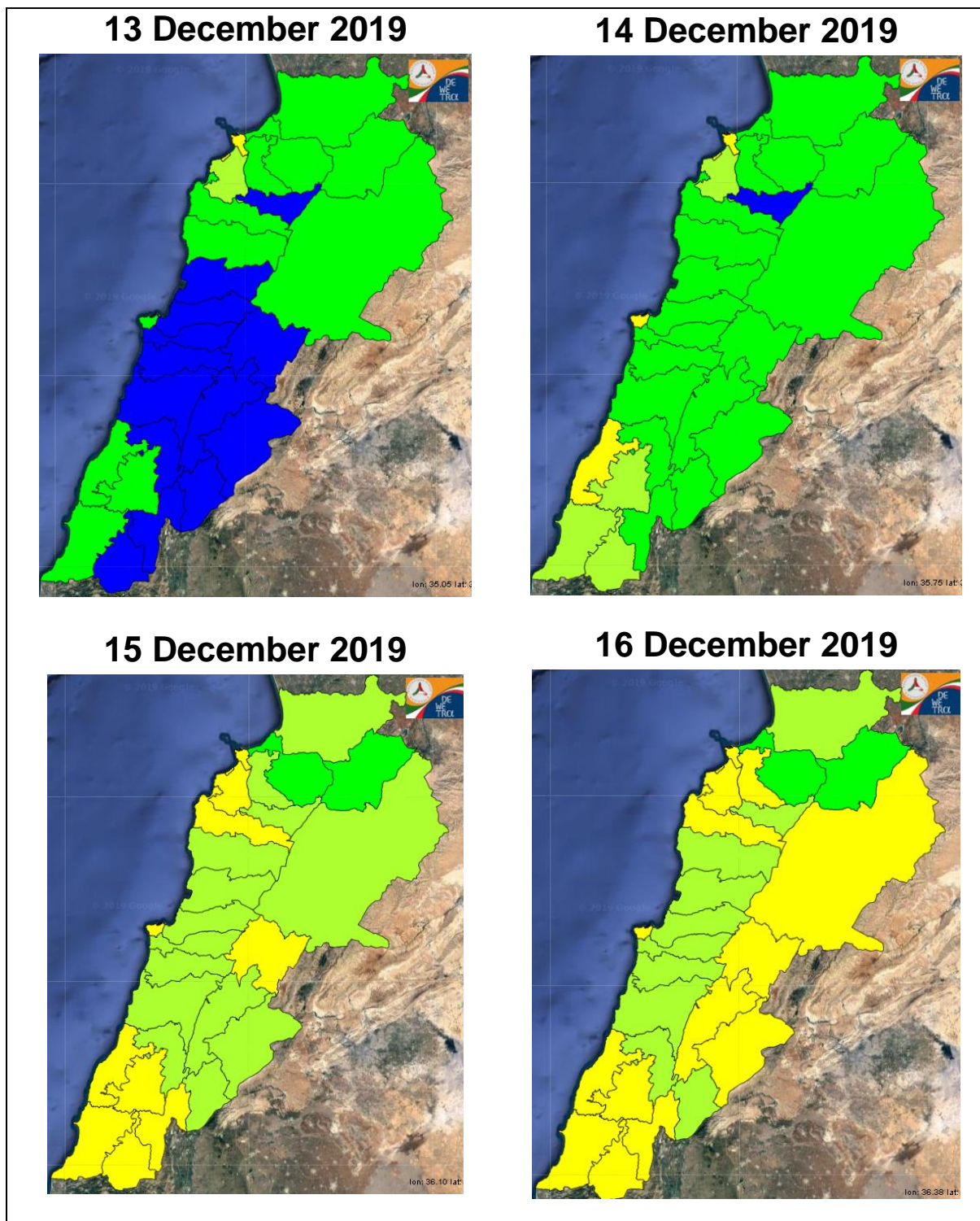
**Please note that the indicated temperature is at 2 meters height from the ground.**

General description of potential fire risk situation

Symbol	Level of risk	Meaning and actions
VL	Very low	Very low fire risk. Controlled burning operations can be hardly executed due to high fuel moisture content. Normally wildfires self-extinguish.
L	Low	Low fire risk. Controlled burning operations can be executed with a reasonable degree of safety.
ML	Medium low	Medium-low fire risk. Controlled burning operations can be executed in safety conditions. All the fires need to be extinguished.
M	Medium	Medium fire risk. Controlled burning operations would be avoided. All the fires need to be very well extinguished.
M	Medium high	Controlled burning is not recommended. Open flame will start fires. Cured grasslands and forest litter will burn readily. Spread is moderate in forests and fast in exposed areas. Patrolling and monitoring is suggested. Fight fires with direct attack and all available resources.
H	High	Ignition can occur easily with fast spread in grass, shrubs and forests. Fires will be very hot with crowning and short to medium spotting. Direct attack on the head may not be possible requiring indirect methods on flanks. Patrolling and monitoring the territory is highly suggested.
E	Extreme	Ignition can occur also from sparks. Fires will be extremely hot with fast rate of spread. Control may not be possible during day due to long range spotting and crowning. Suppression forces should limit efforts to limiting lateral spread. Damage potential total. Patrolling and monitoring the territory is highly suggested.

**Beirut, 14 December 2019**

# FIRE RISK INDEX

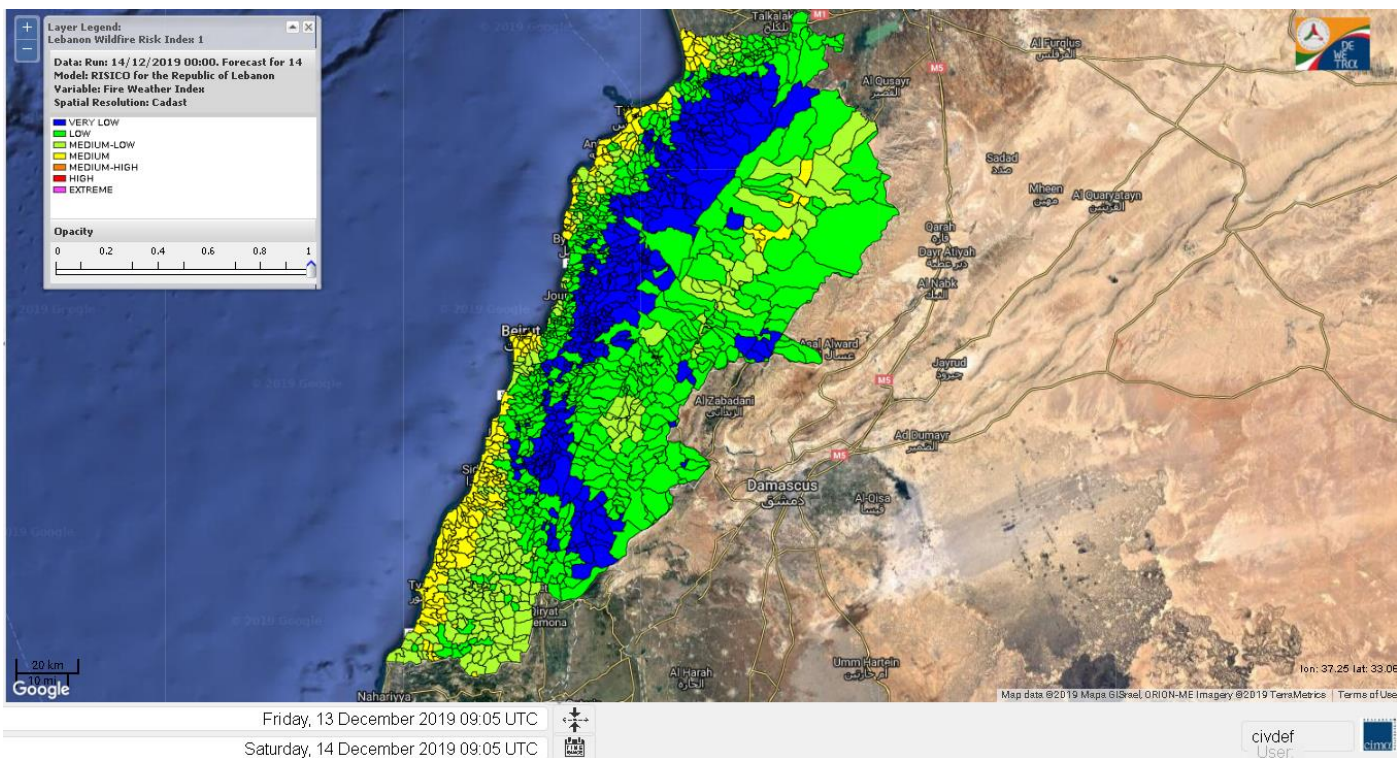


**Layer Legend:**  
**Lebanon Wildfire Risk Index 1**

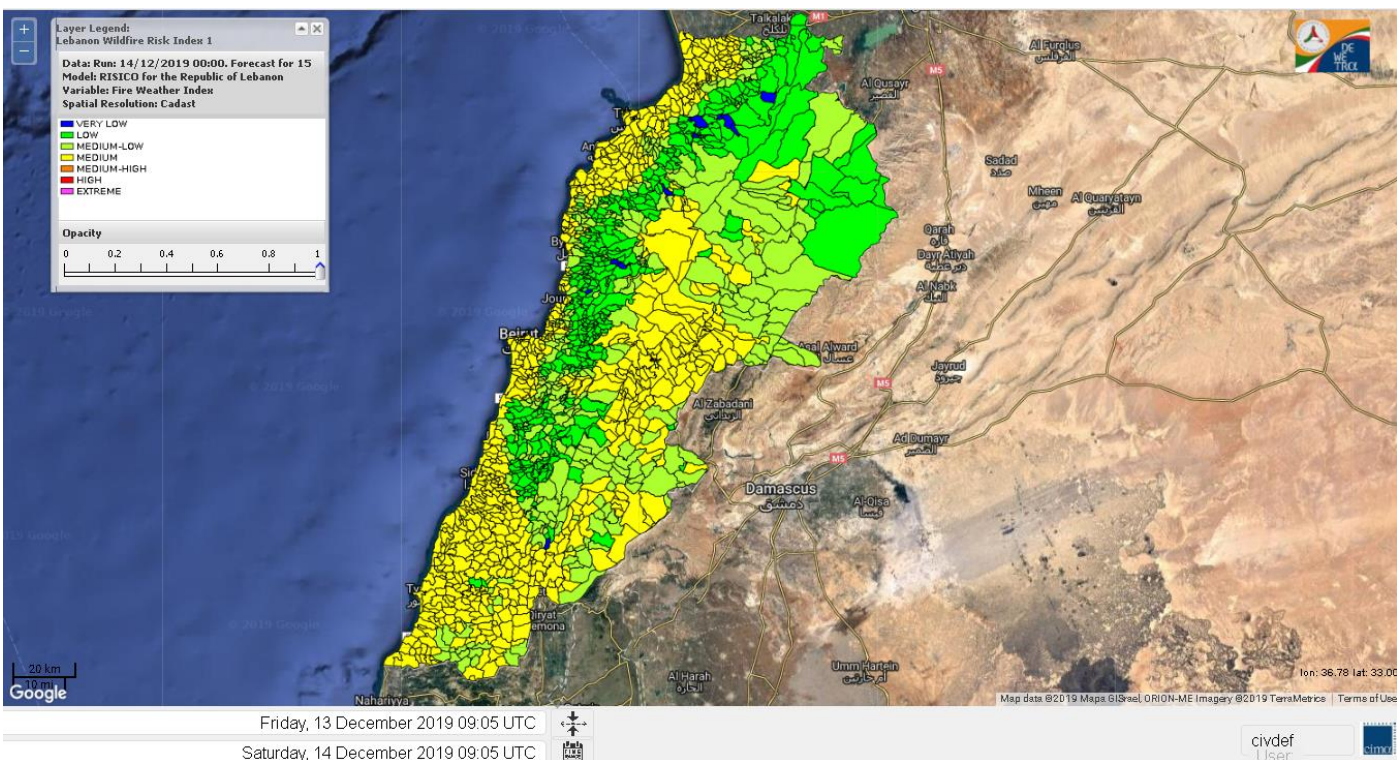
**Data: Run: 14/12/2019 00:00. Forecast for 14**  
**Model: RISICO for the Republic of Lebanon**  
**Variable: Fire Weather Index**  
**Spatial Resolution: Caza**

- VERY LOW
- LOW
- MEDIUM-LOW
- MEDIUM
- MEDIUM-HIGH
- HIGH
- EXTREME

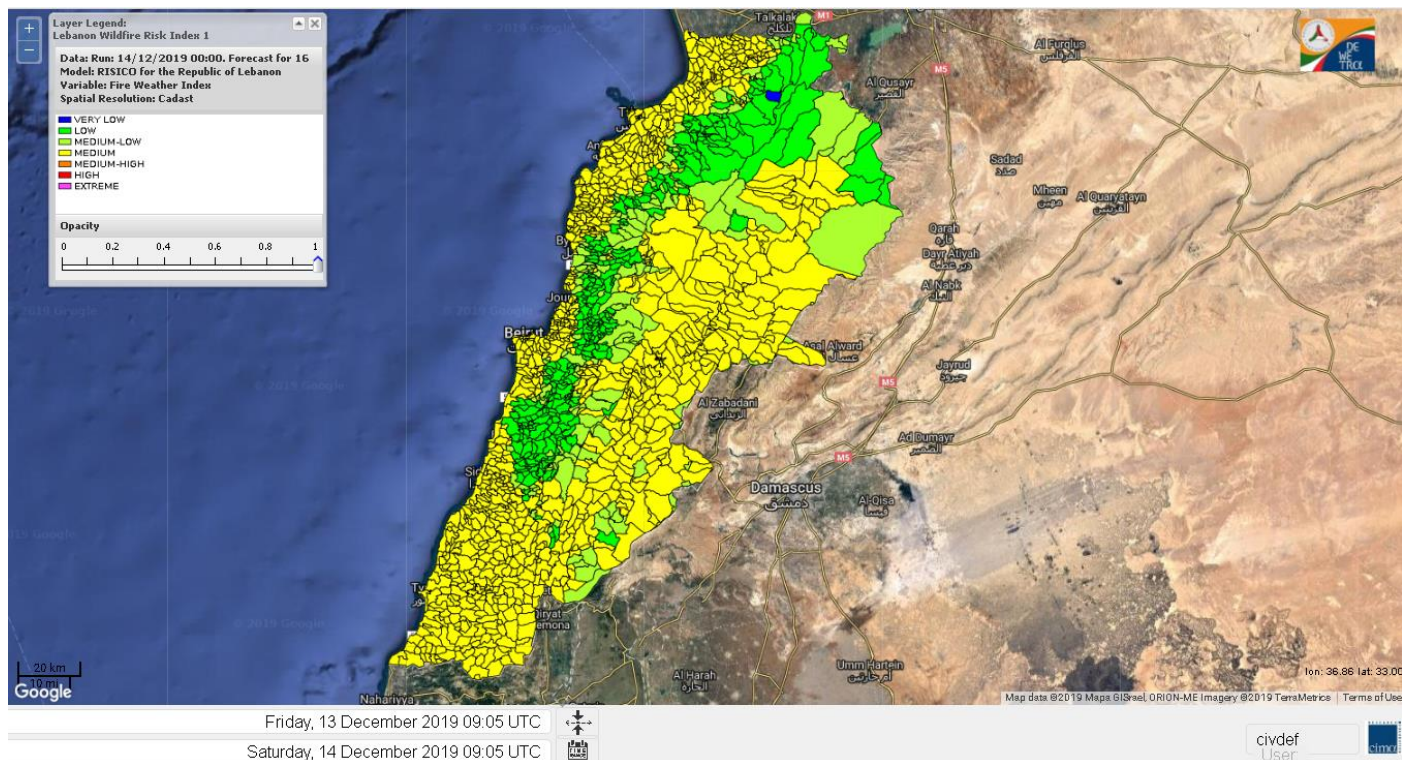
# Lebanon for 14 December 2019



# Lebanon for 15 December 2019



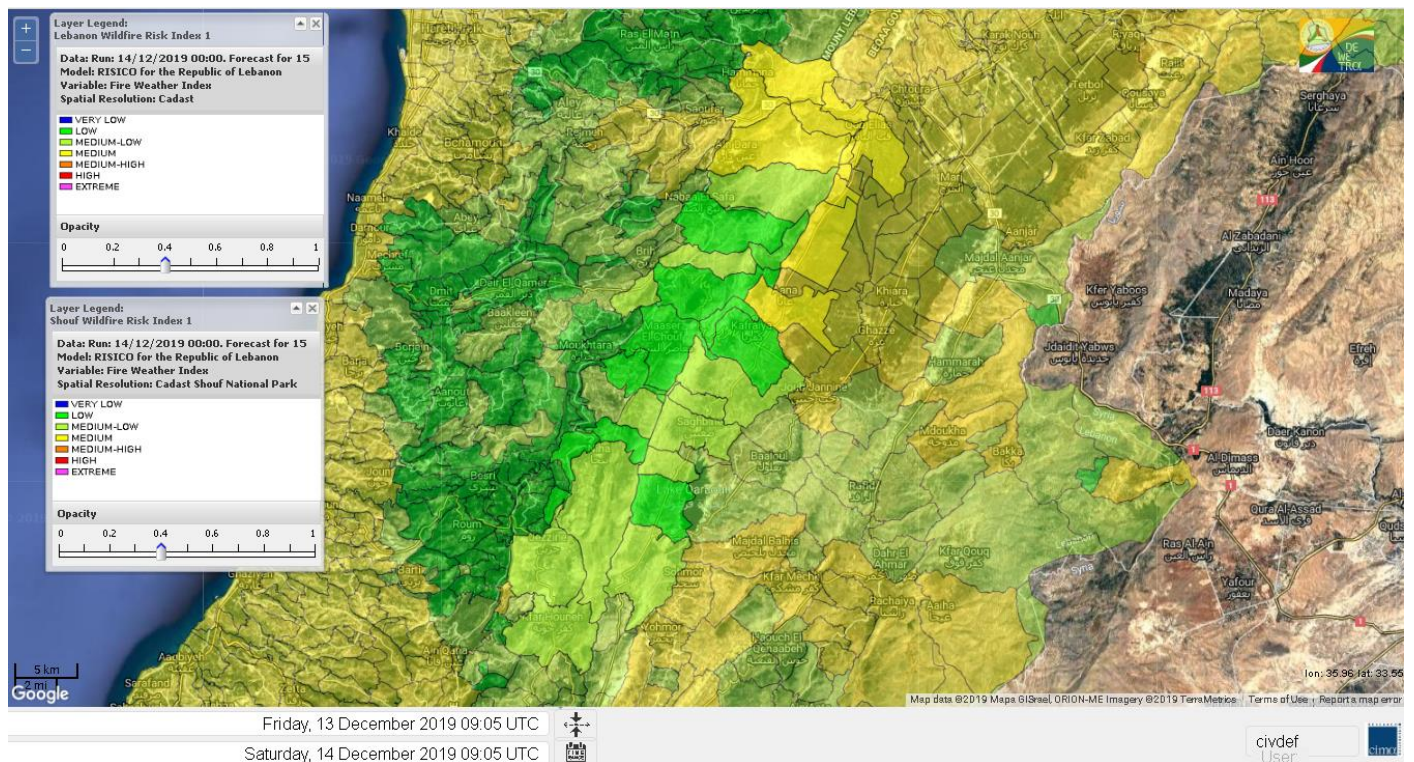
# Lebanon for 16 December 2019



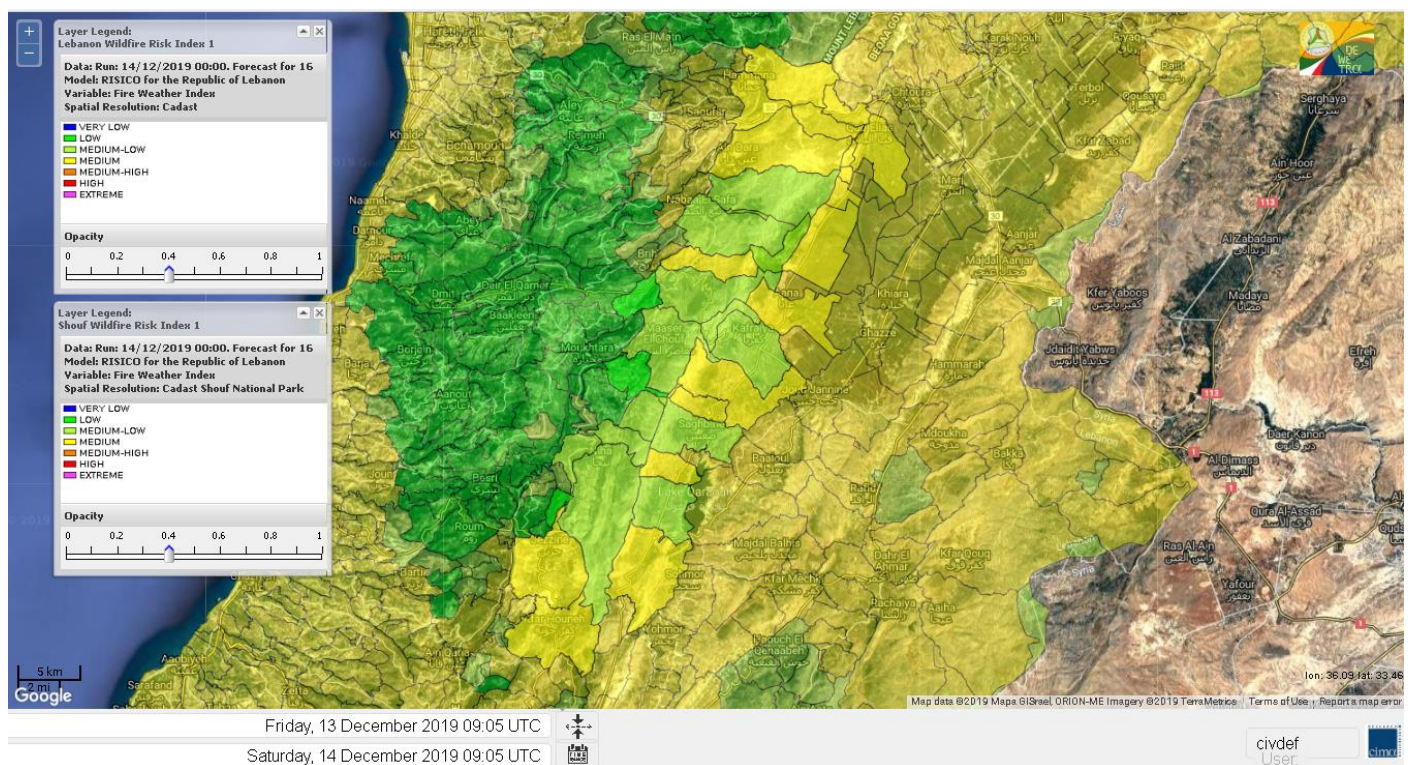
# Shouf Biosphere Reserve Forecast for 14 December 2019



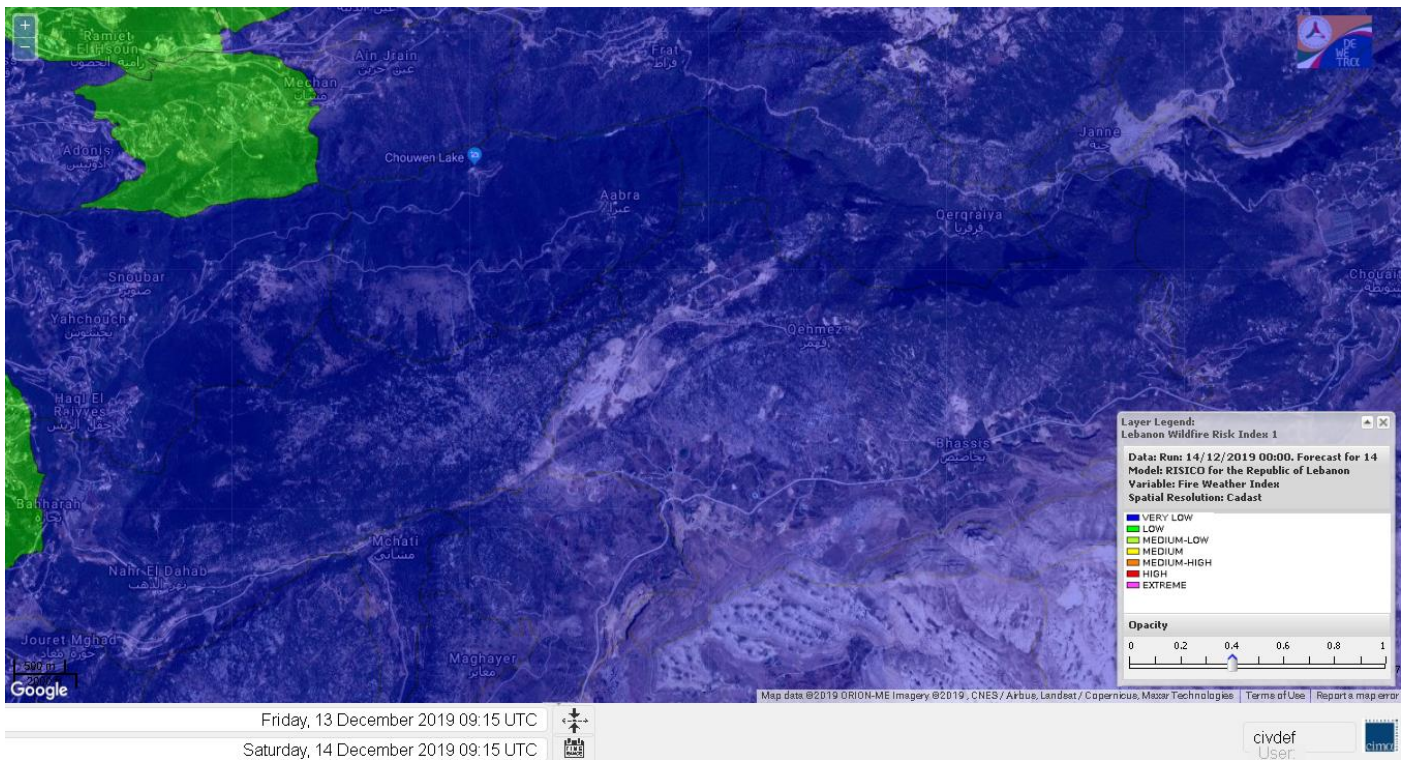
# Shouf Biosphere Reserve Forecast for 15 December 2019



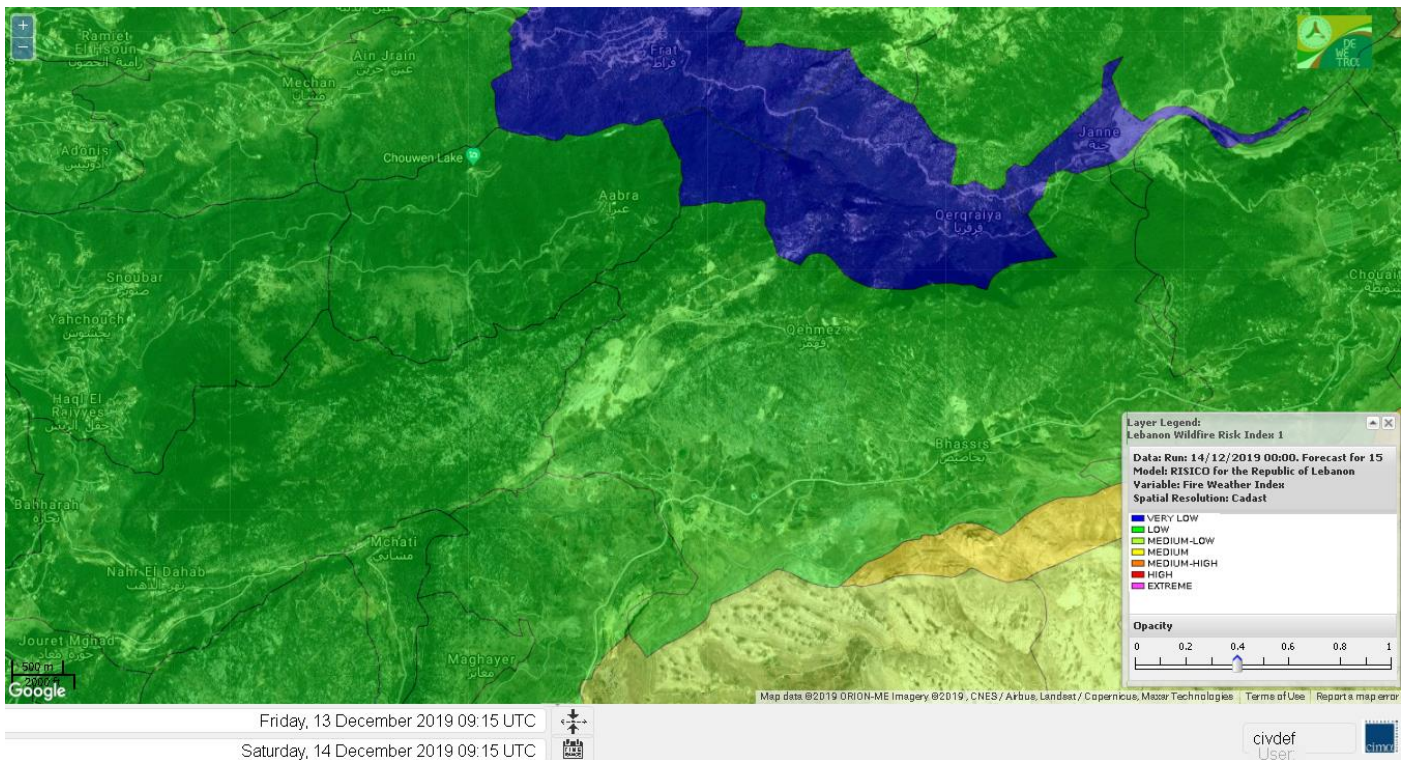
# Shouf Biosphere Reserve Forecast for 16 December 2019



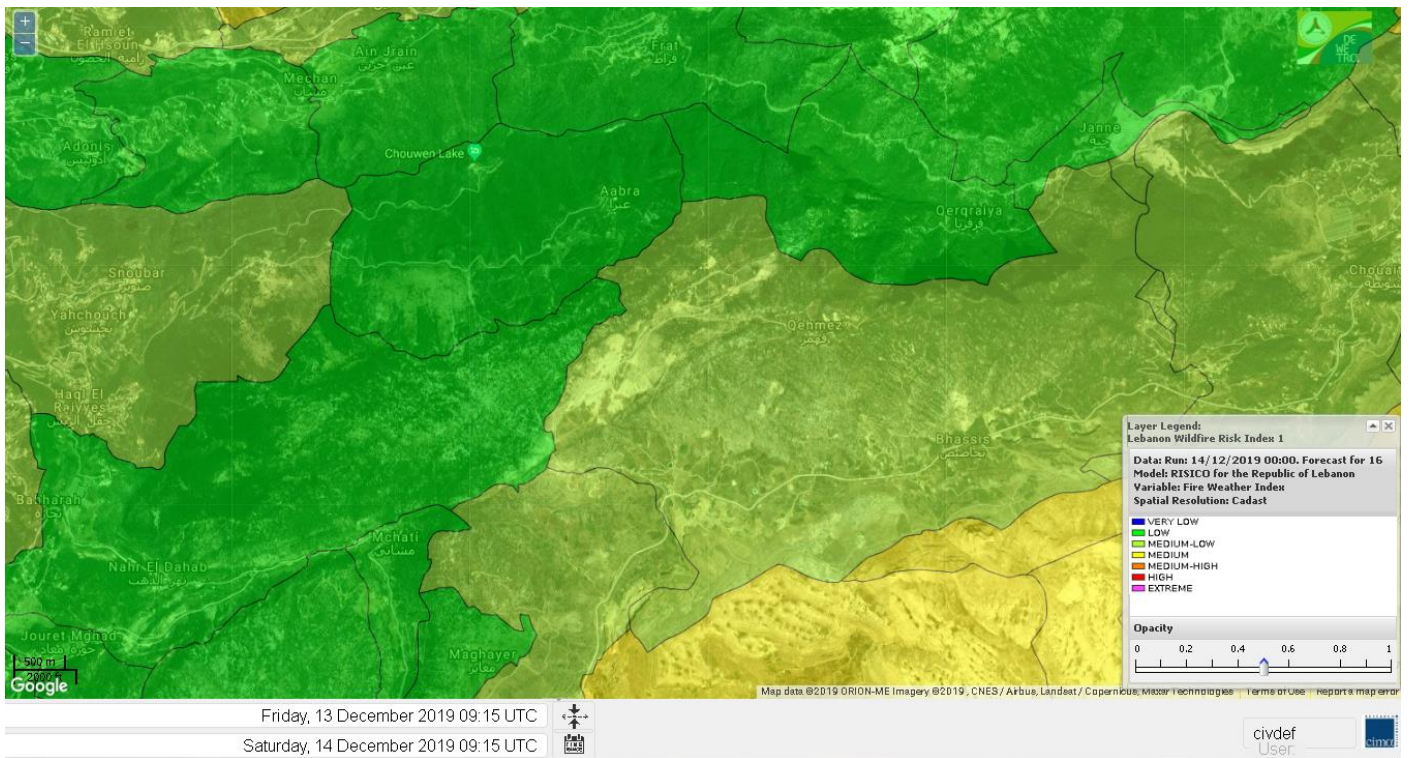
## Jabal Moussa Reserve Forecast for 14 December 2019



## Jabal Moussa Reserve Forecast for 15 December 2019



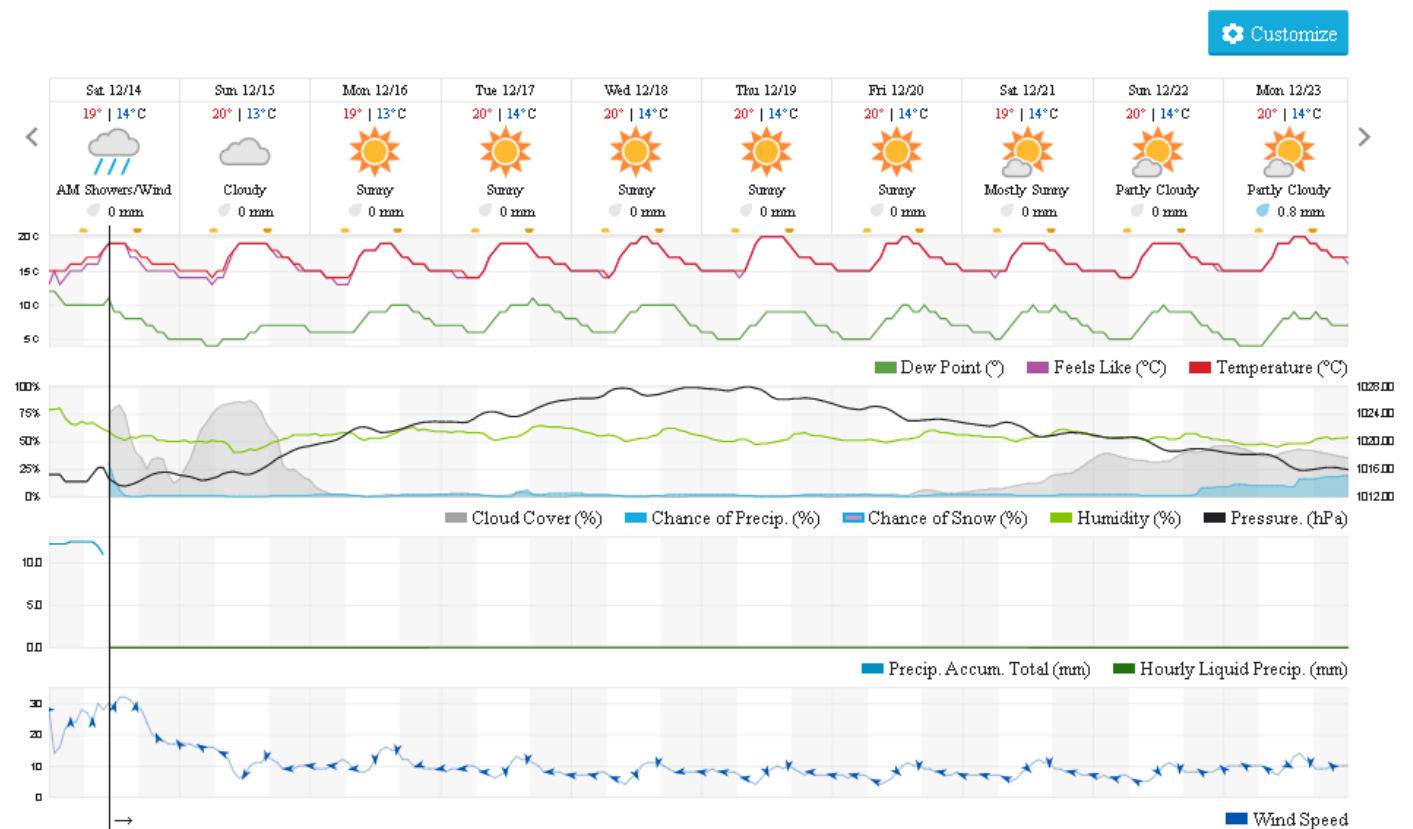
# Jabal Moussa Reserve Forecast for 16 December 2019



## Beirut, Beirut Governorate, Lebanon 10-Day Weather Forecast

18° ACHRAFIEH,RIZK STATION | CHANGE

TODAY HOURLY 10-DAY CALENDAR HISTORY WUNDERMAP



## Nord

### Koura

Municipality	14-Dec	15-Dec	16-Dec	Municipality	14-Dec	15-Dec	16-Dec	Municipality	14-Dec	15-Dec	16-Dec
Aaba	ML	M	M	Afsaddiq	ML	M	M	Ain Ekriane	ML	M	M
Amioun	L	M	M	Anfeh	M	M	M	Badbhoun	M	M	M
Barghoun	M	M	M	Barsa	ML	M	M	Batroumine	M	M	M
Bdebba	ML	M	M	Bechmizzine	L	M	M	Bednayet El-Koura	ML	M	M
Bhabbouch El-Koura	L	M	M	Bkeftine	L	M	M	Bnehran	L	ML	M
Bqaiiaa El-Koura	ML	M	M	Bsarma	L	M	M	Btaaboura	ML	M	M
Bttram	ML	M	M	Btouratij	M	M	M	Bziza	L	M	M
Dar Beechtar	L	M	M	Dar Chmezzine	ML	M	M	Deddeh	M	M	M
Deir El-Balamand	L	M	M	Fih	ML	M	M	Hraiche	M	M	M
Ijdaabrine	ML	M	M	Kaftoun	ML	M	M	Kefraya El-Koura	M	M	M
Kfarakka	L	M	M	Kfarhata	ML	M	M	Kfarhazir	ML	M	M
Kfarkahel	ML	M	M	Kfarsaroun	L	M	M	Kosba	L	M	M
Mejdel el-Koura	L	ML	M	Nakhle	M	M	M	Qalhat	L	M	M
Ras Masqa	M	M	M	Rechdibbine	L	M	M	Zakroun	M	M	M
Zgharta El-Mtaouile	L	L	M								

### Bcharre

Municipality	14-Dec	15-Dec	16-Dec	Municipality	14-Dec	15-Dec	16-Dec	Municipality	14-Dec	15-Dec	16-Dec
Aabdine	VL	ML	ML	Bane	VL	M	ML	Barhelioun	L	L	L
Bazooune	VL	M	M	Becharre	VL	ML	ML	Beit Menzer	VL	L	ML
Billa	VL	L	L	Blaouza	VL	M	M	Bqaa Kafra	VL	M	M
Bqerqacha	VL	M	M	Breissat	VL	ML	ML	Dimane	VL	ML	ML
Hadath El Jobbeh	VL	ML	ML	Hadchit	VL	L	L	Hasroun	VL	M	M
Mazraat Aassaf	VL	L	L	Mazraat Bani Saab	VL	L	ML	Mchaa El-Jobbeh	VL	M	M
Metrit	L	ML	M	Moghr El-Ahoual	L	L	ML	Ouadi Qannoubine	VL	VL	L
Qanat	VL	L	L	Qnayouer	VL	L	L	Tourza	VL	L	L

### Batroun

Municipality	14-Dec	15-Dec	16-Dec	Municipality	14-Dec	15-Dec	16-Dec	Municipality	14-Dec	15-Dec	16-Dec
Aabrine	ML	M	M	Aalali	VL	ML	ML	Aartziz	L	L	M
Abdelli	L	L	M	Ajdabra	L	ML	M	Assia	VL	L	L
Basbina	ML	M	M	Batroun	M	M	M	Bcheleh	VL	ML	ML
Bechtoudar	VL	L	L	Beit Chlala	VL	L	L	Beit Kassab	VL	L	ML
Bijdarfil	ML	M	M	Bqesmaya	L	M	M	Chatine	VL	ML	ML
Chebtin	L	L	M	Chekka	M	M	M	Daael	VL	L	L
Dahr Abi Yaghi	L	L	M	Daraya El-Batroun	ML	M	M	Deir Billa	L	L	ML
Deir Kfifane	ML	ML	M	Deir Mar Youhanna EL	VL	L	L	Deir Mar Youssef Jra	L	L	M
Douma	VL	ML	ML	Douq	L	L	M	Edeh El-Batroun	L	ML	M
Ftihat El-Batroun	L	L	ML	Ghouma	L	ML	M	Hadtoun	VL	L	ML
Hamat	ML	M	M	Harbouna	L	L	M	Hardine	VL	L	L
Helta	VL	L	ML	Hery	M	M	M	Jebbla	L	L	ML
Jrabta El-Batroun	L	ML	M	Jrane El-Batroun	ML	M	M	Kfar Aabida	M	M	M
Kfar Halda	VL	L	L	Kfarb Shlaimane	VL	L	L	Kfarhatna	L	L	M
Kfarhay	M	M	M	Kfarhelos	L	M	M	Kfifane	ML	M	M



Kfour El Arabi	VL	L	ML	Koubba	M	M	M	Kour	L	ML	M
Mar Mama	L	L	M	Masrah	L	L	M	Mehmarch	L	ML	M
Mrah Chdid	L	L	M	Mrah El Ziyat	L	ML	M	Mrah El-Hajj	VL	L	L
Nahle El-Batroun	VL	ML	ML	Niha El-Batroun	VL	L	ML	Ouahj El-Hajjar	ML	M	M
Ouata Houb	VL	L	ML	Qatnaaoun	ML	M	M	Racha	VL	ML	ML
Rachana	L	ML	M	Rachkida	ML	M	M	Ram El-Batroun	VL	L	L
Ras Nahhach	ML	M	M	Selaata	M	M	M	Sghar	L	ML	M
Smar Jbayl	L	ML	M	Sourat El-Batroun	L	L	M	Tannourine El-Faouqa	VL	M	M
Tannourine Et-Tahta	VL	L	L	Thoum	M	M	M	Toula El-Batroun	L	L	M
Zan	L	ML	M								

## Zgharta

Municipality	14-Dec	15-Dec	16-Dec	Municipality	14-Dec	15-Dec	16-Dec	Municipality	14-Dec	15-Dec	16-Dec
Aachach	L	M	M	Aalma	L	M	M	Aarde	L	ML	M
Aintourine	L	ML	ML	Arabet Qozhaya	VL	L	L	Arde	L	M	M
Arjis	L	M	M	Asnoun	VL	ML	M	Ayto	VL	L	ML
Basloukit	VL	ML	ML	Bchannine	L	M	M	Besebeel	VL	ML	M
Bhairret Toula	VL	L	L	Bnachee	L	M	M	Boussit	L	M	M
Danha	L	M	M	Daraiya Zgharta	L	M	M	Deir Jdeide	VL	ML	M
Ehden	VL	ML	L	Halan	L	ML	M	Hariq Zgharta	VL	ML	M
Houakir	VL	L	ML	Hraiqis	M	M	M	laal	VL	ML	M
Ijbaa	VL	ML	M	Karm Saddeh	VL	L	L	Kfarchakhna	L	M	M
Kfardlaqous	L	M	M	Kfarfou	L	M	M	Kfarhata Zgharta	VL	ML	M
Kfarhoura	VL	ML	M	Kfarsghab	VL	ML	L	Kfaryachit	L	ML	M
Kfarzaina	VL	ML	M	Khaldiye	VL	ML	M	Mazraat Ajbeaa	VL	ML	M
Mazraat Et-Teffah	VL	L	M	Mazraat Jneid	VL	ML	M	Mejdlaya Zgharta	L	M	M
Merh Kfarsghab	VL	ML	M	Miryata	L	M	M	Miziara	VL	L	ML
Mzraat Kefraya	L	M	M	Qorah Bach	VL	ML	M	Rachiine	L	M	M
Ras Kifa	L	M	M	Sakhra	VL	ML	M	Sebhel Zgharta	L	ML	M
Serhel	VL	L	L	Tallet Zgharta	VL	ML	M	Toula Zgharta	VL	L	L
Zgharta	VL	M	M								

## Minieh-Denniye

Municipality	14-Dec	15-Dec	16-Dec	Municipality	14-Dec	15-Dec	16-Dec	Municipality	14-Dec	15-Dec	16-Dec
Aasaymout	VL	VL	L	Aaymar	VL	L	L	Aazki	VL	L	L
Ain El-Tineh-Miniyeh	VL	L	L	Assoun	VL	L	L	Bakhaaoun	VL	L	L
Bchennata	VL	ML	L	Bechehhara	VL	L	L	Beddawi	M	M	M
Behouaita	VL	L	L	Beit El Foqss	VL	L	L	Beit Haouik	VL	L	L
Beit Zoud	VL	L	L	Bekaasafrine	VL	ML	L	Borj El Yahoudiyeh	M	M	M
Bqarsouna	VL	L	L	Btermaz	VL	VL	L	Debaael	VL	L	L
Deir Ammar	M	M	M	Deir Nbouh	L	ML	ML	Haouaret-Miniyeh	VL	L	L
Haql el Azimeh	VL	L	L	Harf El Siyad	VL	VL	L	Hazmiye-Miniyeh	VL	L	L
Izal	VL	L	L	Jarjour	VL	L	L	Jayroun	VL	L	L
Kahf El-Malloul	VL	L	L	Karm El-Moher	VL	L	L	Kfar Binine	VL	L	L
Kfarchalane	VL	L	L	Kfarhabou	VL	L	ML	Kharroub-Miniyeh	VL	L	L
Mazraat El-Kreme	VL	L	L	Mazraat Ketrane	VL	L	L	Merkebtta	L	M	M
Minyeh	M	M	M	Mrah El Sfirat	VL	L	L	Mrah Sraj	VL	L	L
Mrebbine	VL	L	L	Nabi Youcheaa	M	M	M	Nemrine	VL	L	L

Qarhaiya	VL	L	L	Qarne	VL	VL	L	Qarsita	VL	L	L
Qattineh-Miniyeh	VL	VL	L	Qemmamine	VL	VL	L	Qraine	VL	L	L
Raouda-Aadoua	VL	M	M	Rihaniyet-Miniyeh	L	M	M	Sfireh	VL	L	L
Sir Ed-Danniyeh	VL	L	L	Tarane	VL	L	L	Terbol-Miniyeh	ML	M	M
Zaghartaghriine	L	L	ML	Zouq Bhannine	ML	M	M				

## Nabatiye

### Nabatiye

Municipality	14-Dec	15-Dec	16-Dec	Municipality	14-Dec	15-Dec	16-Dec	Municipality	14-Dec	15-Dec	16-Dec
Aabba	ML	M	M	Aazzi	ML	M	M	Adchit El-Chqif	ML	M	M
Ain Bou Swar	L	M	M	Ain Kana	L	M	M	Ali El-TaHER	L	M	M
Ansar	M	M	M	Arab Salim	L	M	M	Arnoun	L	M	M
Bfaroue	ML	M	M	Breyqaah	ML	M	M	Charqiyeh	ML	M	M
Choukine	ML	M	M	Deir El Zahrani	ML	M	M	Doueir El-Nabatiyeh	ML	M	M
Habbouch El-Nabatiye	ML	M	M	Hamra El-Nabatiyeh	ML	M	M	Harouf El-Nabatiyeh	ML	M	M
Hmaile	L	M	M	Houmin El Faouqa	L	M	M	Houmin El Tahta	M	M	M
Jarjough	L	M	M	Jbaah El-Nabatiyeh	L	ML	M	Jebchit	ML	M	M
Kfar Djal El-Nabatiy	ML	M	M	Kfar Remmane	L	M	M	Kfar Sir	ML	M	M
Kfar Tebnit	ML	M	M	Kfarfila	L	M	M	Kfour El-Nabatieh	ML	M	M
Mayfadoun	ML	M	M	Mazraat Bsaffour	ML	M	M	Mazraat Chalbaal	ML	M	M
Mazraat Dmoul	ML	M	M	Mazraat El Khreibeh	ML	M	M	Mazraat El-Bayad El-	ML	M	M
Mazraat Kfarjaouz	ML	M	M	Mazraat Qalaat Meiss	M	M	M	Nabatiyeh El-Fawka	ML	M	M
Nabatiyeh Et-Tahta	ML	M	M	Namiriyeh	ML	M	M	Qaaqaaiyet El Jisr	ML	M	M
Qossaibeh El-Nabatiy	ML	M	M	Roumine	ML	M	M	Sarba El-Nabatieh	L	M	M
Sir El-Gharbiyeh	ML	M	M	Toul	ML	M	M	Yehmor El-Nabatiyeh	ML	M	M
Zaoutar El Charkiyeh	ML	M	M	Zaoutar El-Gharbiyeh	ML	M	M	Zebdine El-Nabatiyeh	ML	M	M
Zefta	ML	M	M								

### Hasbaiya

Municipality	14-Dec	15-Dec	16-Dec	Municipality	14-Dec	15-Dec	16-Dec	Municipality	14-Dec	15-Dec	16-Dec
Ain Jarfa	VL	ML	M	Abou Qamha	VL	ML	M	Ain Qania	VL	ML	M
Bourghos	L	M	M	Chebaa	VL	M	M	Chouaya Hasbaya	VL	ML	M
Dellafeh	L	M	M	Fardiss Hasbaiya	VL	M	M	Hasbaya	VL	M	M
Hbariyeh	VL	ML	ML	Kaoukaba Hasbaiya	L	M	M	Kfar Chouba	VL	ML	ML
Kfar Hamam	L	ML	ML	Kfeir El-Zait	VL	ML	ML	Khalwat Hasbaya	VL	L	L
Khreibet Hasbaiya	L	M	M	Majidiyeh Hasbaiya	L	M	M	Marj Ez-Zhour (Haouc	VL	ML	ML
Meri	L	M	M	Mimass	VL	M	M	Rachaiya El-Fokhar	L	ML	ML
Salaiyeb	L	M	M								

### Marjayoun

Municipality	14-Dec	15-Dec	16-Dec	Municipality	14-Dec	15-Dec	16-Dec	Municipality	14-Dec	15-Dec	16-Dec
Aalmane Marjaayoun	L	ML	M	Aamra	L	M	M	Adayseh Marjaayoun	ML	M	M
Adchit El-Koussair	ML	M	M	Ain Aarab Marjaayoun	L	M	M	Bani Haiyann	ML	M	M
Blatt Marjaayoun	VL	M	M	Blida	ML	ML	M	Borj El-Moulouk	L	M	M
Boueyda Marjaayoun	L	M	M	Deir Mimass	L	M	M	Deir Siriane	L	M	M
Dibbine	VL	M	M	Ebel El Saqi	L	M	M	Houla	ML	M	M
Houra	L	M	M	Kfar Kila	ML	M	M	Khiam Marjaayoun	L	M	M

Klayaa	L	M	M	Majdel Selem	ML	M	M	Marjaayoun	L	M	M
Markaba	ML	M	M	Mays El-Jabal	ML	M	M	Mazraat Doumiat	ML	M	M
Mazraat Sarada	L	M	M	Mhaibib	ML	M	M	Qabrikha	L	M	M
Qantara	ML	M	M	Rab El-Thalathine	ML	M	M	Saouaneh Marjayoun	ML	M	M
Talloussa	L	M	M	Taybeh Matjaayoun	ML	M	M	Touline	ML	ML	M

## Bent Jbail

Municipality	14-Dec	15-Dec	16-Dec	Municipality	14-Dec	15-Dec	16-Dec	Municipality	14-Dec	15-Dec	16-Dec
Ain-Ebel	ML	M	M	Aitaroun	ML	ML	M	Aynata Bint Jbeil	ML	M	M
Ayta El-Chaeb	ML	ML	M	Ayta El-Jabal	ML	M	M	Beit Lif	L	ML	M
Beit Yahoun	ML	M	M	Bint Jbeil	ML	M	M	Borj Qalaway	ML	M	M
Braachit	ML	M	M	Chakra	ML	M	M	Debel	ML	ML	M
Deir Antar	ML	M	M	Froun	ML	M	M	Ghandouriyeh Bint Jb	ML	M	M
Hanine	ML	ML	M	Hariss	ML	M	M	Hdatha	ML	M	M
Jmeymeh	ML	M	M	Kafra Bint Jbeil	L	ML	M	Kfar Dounine	ML	M	M
Khirbet Selm	ML	ML	M	Kounine	ML	M	M	Maroun El Ras	ML	M	M
Qalaway	ML	M	M	Qaouzah	L	ML	M	Qatmoun	M	M	M
Ramya Bint Jbeil	L	ML	M	Rchaf	L	ML	M	Rmeich	ML	M	M
Safad Al Battikh	ML	M	M	Salhaneh	L	ML	M	Serbine	ML	M	M
Sultanieh Bint Jbeil	ML	M	M	Tibnine	ML	M	M	Tiri	L	ML	M
Yaroun	ML	M	M	Yater	ML	M	M				

## Mont Liban

### Jbail

Municipality	14-Dec	15-Dec	16-Dec	Municipality	14-Dec	15-Dec	16-Dec	Municipality	14-Dec	15-Dec	16-Dec
Aabeydat	L	L	M	Aalita	VL	L	L	Aamchit	M	M	M
Aarab El-Lahib	VL	M	M	Aarasta	VL	L	ML	Adonis Jbeil	VL	L	L
Afqa Jbeil	VL	L	ML	Ain El Delbeh Jbeil	VL	L	ML	Ain El-Ghouayba	VL	L	ML
Ain Jrain	VL	L	L	Ain Kfah	L	ML	M	Almat El Chemaliyat	VL	L	L
Almat El-Jenoubiya	VL	L	L	Aqoura	L	M	M	Bayzoun	L	L	M
Bchille Jbeil	L	L	L	Bechtlida	VL	L	L	Behdaydat	L	ML	M
Beit Habbaq	L	ML	M	Bejjeh	L	ML	M	Bekhaaz	ML	M	M
Berbara Jbeil	M	M	M	Bintael	L	L	L	Birket Hjoula	L	L	ML
Blatt Jbeil	L	ML	ML	Boulhos	VL	L	L	Breyj Jbeil	VL	L	L
Chamat	ML	M	M	Chikhane	M	M	M	Chmout	L	L	M
Eddeh Jbeil	L	ML	M	Ehmej	VL	L	ML	Fatre	VL	L	L
Ferhet	L	ML	M	Fghal	L	ML	M	Frat	VL	VL	L
Ghabat	VL	ML	M	Ghalboun	L	ML	M	Gharzouz	ML	M	M
Ghofrine	ML	M	M	Habil	L	L	M	Halate	L	ML	ML
Haqel	L	L	M	Hbaline	L	ML	M	Hboub	L	ML	ML
Hdeine	VL	ML	M	Hema Er-Rehban	L	M	M	Hema Mar Maroun Aann	VL	ML	M
Hjoula	L	L	L	Hosrayel	M	M	M	Hsarat	L	ML	M
Hsoun	L	L	ML	Jaj	VL	ML	ML	Janne	VL	VL	L
Jbeil	L	M	M	Jeddeyl Jbeil	M	M	M	Jlisse	VL	L	L
Jouret El-Qattine	L	L	L	Kfar Baal Annaya	VL	L	L	Kfar Kidde	M	M	M
Kfar Kouas	L	L	L	Kfar Mashoun	L	M	M	Kfoun	L	L	M

Kharbe Jbeil	L	ML	M	Laqlouq	L	M	M	Lassa	VL	L	ML
Lehfed	VL	L	L	Maad	ML	ML	M	Mar Sarkis	VL	ML	M
Mastita	L	M	M	Mayfouq	L	L	ML	Mazraat El Siyad	VL	ML	M
Mazraat El-Maaden	VL	L	L	Mechane	L	L	L	Mechmech Jbeil	VL	L	ML
Mehrin	L	ML	ML	Mejdel El-Akoura	VL	ML	M	Mghayreh Jbeil	VL	M	M
Mounsef	M	M	M	Nahr Ibrahim	L	M	M	Qahmez	VL	L	ML
Qartaba	VL	L	L	Qartaboun	L	M	M	Qattara Jbeil	VL	L	L
Qorqraya	VL	VL	L	Ramout	L	ML	M	Ras Osta	L	L	L
Rihane Jbeil	M	M	M	Sakiet El-Khayt	L	L	M	Saqi Richmaya	VL	L	ML
Sebrine	L	L	L	Seraita	VL	ML	ML	Souane Jbeil	VL	L	ML
Tadmor	VL	ML	M	Tartej	L	ML	ML	Torzaiya	L	L	ML
Yanouh Jbeil	VL	ML	M	Zibdine Jbeil	VL	L	L				

## El Metn

Municipality	14-Dec	15-Dec	16-Dec	Municipality	14-Dec	15-Dec	16-Dec	Municipality	14-Dec	15-Dec	16-Dec
Aain El-Qabu	VL	L	L	Aain El-Qach	VL	L	L	Aain El-Teffaha	VL	L	L
Aain el-Safssaf El-M	VL	L	L	Abou Mizane	VL	L	L	Ain Aar	L	M	M
Ain Alaq	L	ML	M	Ain El-Kharroube	VL	L	L	Ain El-Sendianeh	VL	L	L
Ain El-Zeitoune	VL	L	L	Ain Saadeh	L	M	M	Aintoura El-Matn	VL	M	ML
Amaret Chalhoub	L	M	M	Antelias	L	M	M	Atchaneh	L	ML	M
Ayroun	VL	L	L	Baabdat	VL	L	L	Baouchariyeh	M	M	M
Baskinta	VL	ML	ML	Beit Chabab	VL	L	L	Beit El-Chaar	L	M	M
Beit El-Kekko	L	M	M	Beit Mery	L	ML	M	Bhersaf	VL	L	L
Bikfaya	VL	L	L	Biyakout	L	M	M	Bnabil	VL	L	L
Bourj Hammoud	M	M	M	Bqennaya	L	ML	M	Broummana El-Matn	L	ML	M
Bsalim	L	M	M	Bsifrine	VL	L	L	Bteghrine	VL	L	L
Chaouiye	L	ML	M	Chouaya El-Matn	VL	L	L	Choueir	VL	L	L
Chrine	VL	L	L	Dahr El Sawan El-Mat	VL	L	ML	Daychouniyeh	L	ML	ML
Dbayeh	ML	M	M	Deir Chamra	VL	L	L	Deir Mar Abda el Mch	L	L	M
Deir Mar Roukouz	ML	M	M	Deir Tamiche	L	ML	M	Dik El-Mehdi	L	ML	M
Dikwaneh	M	M	M	Douar El-Matn	VL	L	L	Fanar	L	M	M
Fraike	L	L	M	Haret El-Ballaneh	L	M	M	Hbous	L	M	M
Himlaya	VL	L	L	Jal El Did	L	M	M	Jdeideh El-Metn	L	M	M
Jouar El-Matn	VL	L	L	Jouret El-Ballout	L	ML	M	Kaaqour	VL	L	L
Kfar Aaqab	VL	L	L	Kfertay El-Matn	VL	L	ML	Khenchara	VL	L	L
Khillet El-Mtain	VL	L	L	Konnabat Broummana	L	ML	M	Konnabat Salima	VL	L	L
Machraah El-Matn	VL	L	L	Majdel Tarchich	VL	M	ML	Majzoub	L	M	M
Mansouriyeh El-Metn	L	M	M	Mar Boutros Karm Et-	VL	L	L	Mar Chaya et Mzekke	L	ML	M
Mar Moussa Ed-Douar	VL	L	L	Marjaba	VL	L	L	Masqa	VL	ML	M
Mayasse	VL	L	L	Mazraat Deir Aoukar	L	M	M	Mazraat El-Hadirat	L	M	M
Mazraat Yachouh	L	M	M	Mchikha	VL	L	L	Menqlet Mezher	L	M	M
Mhaydseh Matn	VL	L	L	Mkalles	M	M	M	Mrouj	VL	ML	L
Mtain	L	M	ML	Mtayleb	L	M	M	Nabay	L	ML	M
Naccache	L	M	M	Ouadi Chahine	VL	L	L	Ouadi El-Karm El-Mat	VL	L	L
Ouata El-Mrouj	VL	L	L	Ouyoun El-Matn	VL	L	L	Qornet Chehwan	L	M	M
Qornet El-Hamra	L	ML	M	Roumieh	L	ML	M	Sfeilet Bikfaya	VL	L	L
Sinn El-Fil	M	M	M	Zabbougha	VL	L	L	Zalqa	L	M	M

Zarouon	VL	L	L	Zekrite	L	ML	M	Zighrine El-Matn	VL	L	L
Zouk El-Khrab	L	M	M								

## Chouf

Municipality	14-Dec	15-Dec	16-Dec	Municipality	14-Dec	15-Dec	16-Dec	Municipality	14-Dec	15-Dec	16-Dec
Aalmane El-Chouf	M	M	M	Aammqi El-Chouf	VL	L	L	Ain Ouzein	VL	L	L
Ain Qani	VL	L	L	Ain Zhalta	L	L	ML	Ainbal	L	L	L
Amatour	VL	L	L	Anout	L	L	L	Atrine	VL	L	L
Baadarane	VL	ML	L	Baaqline	L	ML	L	Baasir	M	M	M
Barja	M	M	M	Barouk	L	L	ML	Bater	VL	L	ML
Batloun	L	ML	L	Bayqoun	VL	ML	ML	Bchetfine	L	L	L
Beiteddine	VL	L	L	Benouati Ech-Chouf	L	L	L	Berjein	L	L	L
Bireh et Mtalleh	VL	ML	ML	Biret El-Chouf	L	ML	ML	Bkechtine Ouel Mchei	VL	L	L
Bkifa El-Chouf	L	L	L	Botme	VL	L	L	Bqaiaa Ech-Chouf	L	L	L
Bsaba El-Chouf	VL	ML	L	Chammis El-Chouf	ML	M	M	Chehim	VL	L	L
Chemaarine	L	L	L	Chourit	VL	L	L	Daher El-Chouf	ML	M	M
Dalhoun	L	ML	ML	Damour	M	M	M	Daraya El-Chouf	L	L	L
Deir El-Moukhalles	VL	L	L	Deir Baba	L	L	L	Deir Dourit	L	L	L
Deir El-Qamar	L	L	L	Deir Kouche	L	L	L	Dibbieh	L	ML	L
Dmit	L	L	L	Fouara Jaafar	VL	L	L	Fraidis El-Chouf	L	ML	M
Ghabet Jaafar	L	L	L	Gharife	VL	L	L	Haret Jandal	VL	L	ML
Hasrout	L	ML	L	Jadra	M	M	M	Jahlieh	L	L	L
Jbeih El-Chouf	VL	L	ML	Jdeidet El-Chouf	VL	L	L	Jiyeh	M	M	M
Jleilyeh	L	ML	L	Jmailiyeh	ML	M	M	Joun	L	M	M
Kahlounie El-Chouf	VL	ML	L	Ketermaya	M	M	M	Kfar Faqoud	L	L	L
Kfar Hamal	L	ML	L	Kfar Him	L	ML	L	Kfar Katra	VL	L	L
Kfar Niss	L	L	L	Kfar hay	VL	ML	L	Kfarnabrakh	VL	ML	L
Khirbet Bisri	VL	L	L	Knayse El-Chouf	VL	L	L	Maaniyeh	ML	M	M
Maasser Beiteddine	VL	L	L	Maasser El-Chouf	L	L	ML	Majdalouna	ML	M	M
Majdel El-Meouch	VL	ML	L	Mazboud	VL	ML	L	Mazmoura	L	L	L
Mazraat El Chouf	VL	L	L	Mazraat El Daher	VL	L	L	Mazraat El-Douair	VL	L	L
Mechref	L	L	L	Mghairie	ML	M	M	Mghayrie El-Chouf	L	L	L
Moukhtara	VL	L	L	Mrusti	L	ML	ML	Mtolle	L	ML	L
Naameh	M	M	M	Niha El-Chouf	VL	ML	ML	Ouadi Abou Youssef	VL	L	L
Ouadi Ed-Deir	L	M	ML	Ouadi El-Sit	VL	L	L	Ouadi bnehlay	VL	L	L
Qraibeh	VL	L	L	Qreiaa	VL	L	L	Rmayle El-Chouf	M	M	M
Semqaniyeh	VL	ML	L	Sibline	M	M	M	Sirjbeil	L	L	L
Warhanieh	L	ML	M	Werdaniyeh	M	M	M	Zaarourieh	L	ML	L

## Baabda

Municipality	14-Dec	15-Dec	16-Dec	Municipality	14-Dec	15-Dec	16-Dec	Municipality	14-Dec	15-Dec	16-Dec
Abadiyeh	VL	L	L	Ain Mouaffaq	VL	L	L	Araiya	VL	L	L
Arbaniyeh	VL	L	L	Arsoun	VL	L	L	Baabda	ML	M	M
Baalchmey	VL	ML	L	Bmaryam	L	L	M	Bourj El-Brajneh	ML	M	M
Boutchay	L	M	M	Bsaba Baabda	L	M	M	Btekhney	VL	L	ML
Btibyat	VL	L	M	Bzebdine	VL	L	L	Chbeniyeh	L	ML	M
Chiyah	M	M	M	Chmeisset Baabda	VL	L	ML	Chouit	VL	L	L
Deir El-harf	VL	L	L	Deir Khouna	L	L	ML	Dlaybeh	VL	L	L

Falougha	L	M	M	Furn El-Chebbak	M	M	M	Hadath Beyrouth	ML	M	M
Halaliyeh Baabda	VL	L	L	Hammana	L	M	M	Haret El Sett	VL	L	L
Haret Hamze	L	L	ML	Haret Hreik	M	M	M	Hasbaiya El-Metn	VL	L	L
Jouar El-Hoz	VL	L	L	Jouret Arsoun	VL	L	L	Kfar Chima	ML	M	M
Kfar Selouane	L	ML	ML	Khalouat Baabda	L	ML	M	Kneisset Baabda	VL	L	L
Laylakeh	ML	M	M	Louayzeh Baabda	L	ML	ML	Merdache	L	M	M
Mzairaa Baabda	VL	L	L	Ouadi Chahrour El OI	L	ML	ML	Ouadi Chahrour El So	L	M	M
Qalaa Baabda	L	L	M	Qhraybe Baabda	L	L	M	Qobbayaa	L	ML	M
Qornayel	VL	L	L	Qortada	VL	L	ML	Qrayeh Baabda	L	ML	M
Qsaibeh Baabda	VL	ML	M	Qtale Baabda	VL	L	M	Ras El Metn	L	L	ML
Ras El-Haref	L	ML	M	Rouayset El-Ballout	VL	L	L	Salima Baabda	VL	L	L
Tahouitat El Ghadir	ML	M	M	Tarchich	VL	ML	ML	Zandouqa	VL	L	ML

## Aley

Municipality	14-Dec	15-Dec	16-Dec	Municipality	14-Dec	15-Dec	16-Dec	Municipality	14-Dec	15-Dec	16-Dec
Abey	L	ML	L	Aghmid	L	ML	M	Ain Dara	L	M	M
Ain Drafil	L	M	M	Ain El Halazoun	L	ML	ML	Ain El-Rmmaneh	VL	L	L
Ain Jedideh	VL	ML	L	Ain Ksour	L	ML	ML	Ain Onoub	L	M	M
Ain Traz	VL	L	L	Ainab	L	M	M	Aley	L	ML	L
Aramoun	L	M	M	Aytat	L	M	M	Azouniyeh	L	M	M
Baawerta	L	L	L	Badghan Oua Wadi Bad	L	M	M	Bassatine	L	M	M
Bayssour	L	ML	ML	Bchamoun	L	M	M	Bdadoun	L	ML	ML
Behouara	L	ML	L	Bennay	L	ML	L	Bhamdoun El-Dayaa	L	M	L
Bhamdoun El-Mhatta	L	M	ML	Bkhechthey	VL	ML	L	Bleibel	L	M	M
Bmakine	L	ML	L	Bmehray	L	ML	ML	Bouzrid	VL	L	L
Bserrine	L	ML	L	Bsous	VL	L	L	Btalloun	L	M	L
Btater	L	ML	L	Chanay	L	M	ML	Charoun	L	M	M
Chartoun	VL	L	L	Chemlane	L	M	M	Choueifat El-Aamrous	ML	M	M
Choueifat El-Oumara	ML	M	M	Choueifat El-Quoubbe	ML	M	M	Dakkoun	L	L	L
Deir Qoubel	L	M	M	Dfoun	L	M	ML	Douair El Remmaneh	VL	L	L
Ghaboun	VL	ML	L	Habramoun	VL	L	L	Homs Oua Hama	L	ML	ML
Houmal	L	M	M	Jisr El Qadi	L	L	L	Kehaleh	VL	L	L
Keyfoun	L	M	ML	Kfar Aamey	L	ML	L	Kommatyeh	VL	ML	L
Maasrati	VL	ML	L	Majdel Baana	L	M	M	Mansourieh et Ain El	L	ML	L
Mazraat El-Nahr	VL	L	L	Mchakhte	L	L	M	Mecherfeh	L	ML	ML
Mejdaya	VL	ML	L	Mrayjat	L	ML	M	Ramliyah	L	L	L
Rechmaya	L	ML	L	Rejmeh	VL	ML	L	Remhala	L	ML	ML
Rouaysset El Neemane	L	ML	L	Saoufar	L	M	M	Selfaya	VL	L	L
Sirhmoul	L	M	M	Souq El Ghareb	L	ML	L	Taazanieh	VL	M	L

## Kesrouane

Municipality	14-Dec	15-Dec	16-Dec	Municipality	14-Dec	15-Dec	16-Dec	Municipality	14-Dec	15-Dec	16-Dec
Achkout	VL	L	L	Adma Oua Dafneh	L	M	M	Ain Ed-Delbe Kesroua	VL	L	L
Ain El-Rihane	L	ML	M	Aintoura Kesrouane	L	M	M	Ajaltoun	VL	L	L
Akaybeh Kesrouane	L	M	M	Aramoun Kesrouane	VL	L	L	Azra ouel Ozor	VL	L	ML
Ballouneh	VL	L	L	Batha	VL	L	ML	Bekaatat Achkout	VL	ML	ML
Bekaatat Kanaan	VL	L	L	Bizhel	VL	L	ML	Bouar	L	ML	M
Bqaatouta	VL	L	ML	Bqaq Ed-Dine	L	ML	M	Bzommar	VL	L	L

Chahtoul	VL	L	L	Chnaniir	VL	L	L	Chouan	VL	L	L
Daraya Kesrouane	VL	L	L	Darououn	L	L	M	Deir Baqlouch	VL	ML	M
Dlebta	VL	L	L	Eghbeh	VL	VL	L	Faraya	VL	ML	M
Fatka	L	L	ML	Feytroun	VL	L	L	Ghazir	L	ML	ML
Ghbaleh Kesrouane	L	L	ML	Ghedrass	VL	L	L	Ghosta	VL	L	L
Ghynéh	VL	L	L	Harharaya w Kattine	VL	L	L	Harissa Kesrouane	L	ML	M
Hayata	VL	L	L	Hosein	VL	L	L	Hrajel	VL	ML	M
Jdeideh Ghazir	VL	L	L	Jeita	L	ML	M	Jounieh Ghadir	L	M	M
Jounieh Haret Sakhr	L	M	M	Jounieh Salel Alma	L	M	M	Jounieh Sarba	ML	M	M
Jouret Bedrane	L	L	M	Jouret Mhad	VL	L	L	Jouret Termos	VL	L	L
Kfar Debiane	VL	L	ML	Kfar Tay Kesrouane	VL	L	L	Kfar Yassine	ML	M	M
Kfour Kesrouane	VL	L	L	Kharayeb Nahr Ibrahi	L	L	M	Klayaat Kesrouane	VL	L	L
Maarab	VL	L	L	Maaysra Kesrouane	L	L	ML	Mayrouba	VL	L	ML
Mazraat Er-Ras	L	M	M	Mazraat Mrah El-Mir	VL	L	L	Mchaa El Ftouh	VL	M	M
Mchaa Faraya	VL	ML	M	Mchaa Kfar Dibiane	VL	M	M	Mghaer	VL	L	L
Mradiyah	VL	L	ML	Nahr Ed-Dahab	VL	L	L	Nammoura Kesrouane	L	L	ML
Ouata El Jaouz	VL	L	L	Ouata Sillam	ML	M	M	Raachine	VL	L	L
Rayfoun	VL	L	L	Safra Kesrouane	ML	M	M	Shayle Kesrouane	L	ML	ML
Tabarja	L	M	M	Yahchouch	VL	L	ML	Zaaytreh	VL	L	ML
Zeytoun	L	ML	ML	Zouk Mikael	ML	M	M	Zouk Mosbeh	ML	M	M

## Baalbek\_Hermel

### Baalbek

Municipality	14-Dec	15-Dec	16-Dec	Municipality	14-Dec	15-Dec	16-Dec	Municipality	14-Dec	15-Dec	16-Dec
Aadous	ML	ML	M	Aamchki	L	ML	M	Aarsal	L	L	ML
Ain Baalbek	L	L	M	Ain Bourday	L	ML	M	Ain El-Benye	VL	ML	M
Ain El-Jaouz Baalbek	L	ML	M	Ain El-Siya Chadoura	L	ML	M	Al Khodr Baalbek	L	M	M
Al Nabi Chit	L	M	M	Aynata Baalbek	L	ML	ML	Baalbek	L	ML	M
Bachwat	L	L	ML	Barqa	VL	L	L	Bednayel Baalbak	L	M	M
Beit Chama	L	M	M	Bijjaje	M	ML	M	Bouday	L	ML	M
Brital	L	ML	M	Btadi	L	M	M	Chaat	M	ML	M
Chaibe	L	ML	M	Chlifa	ML	M	M	Chmestar	L	M	M
Dar El-Oussa	L	L	M	Deir El-Ahmar	L	ML	M	Deir Mar Maroun Baal	ML	ML	ML
Douris	L	ML	M	Fakiha	ML	L	M	Hadath Baalbek	ML	ML	M
Ham	VL	ML	M	Haour Taala	L	M	M	Hizzine	ML	M	M
Hlebta	L	ML	M	Hosh Barada	ML	ML	M	Hosh El Dahab	ML	ML	M
Hosh El Snid	L	M	M	Hosh El-Nabi	L	M	M	Hosh El-Rafiq	ML	M	M
Hosh Tal Safiya	ML	ML	M	Hrebta	ML	ML	M	laat	ML	M	M
Jebaa	ML	M	M	Jenta	L	M	M	Kfar Dabach	ML	M	M
Kfar Dane	ML	M	M	Khraibeh El-Hermel	L	ML	M	Khreibet Baalbek	VL	M	M
Kneisset Baalbek	ML	ML	M	Labueh	ML	ML	M	Maarboun	VL	ML	M
Majdaloun	ML	ML	M	Maqneh	ML	ML	M	Mazraat Beit Mcheik	L	M	M
Misraya	L	M	M	Moqraq	ML	ML	M	Nabha El-Damdoum	L	ML	ML
Nabi Chbay	L	ML	M	Nabi Osman	L	L	M	Nahleh baalbek	L	ML	M
Ouadi El-Oss	L	ML	M	Qaa Baayoun	L	L	L	Qaa Jouar Maqiye	ML	L	L
Qaa Ouadi El-Khanzir	ML	ML	ML	Qah Baalbek	ML	L	ML	Qarha Baalbek	M	ML	M

Qsarnaba	L	M	M	Ram Baalbek	ML	M	M	Ras Baalbek El Sahl	ML	L	M
Ras Baalbek El-Charq	L	L	L	Riha	M	M	M	Saaide	ML	M	M
Sbouba	M	ML	M	Seriine El-Tahta	L	M	M	Slouqi	L	M	M
Taiba Baalbek	ML	ML	M	Talia	L	M	M	Taraiya	L	M	M
Temnin El Fawqa	L	M	M	Temnin El-Tahta	L	M	M	Tfail	L	ML	M
Yahfoufa	L	M	M	Yammouneh	L	M	M	Younine	L	ML	M
Zboud	M	M	M								

## Hermel

Municipality	14-Dec	15-Dec	16-Dec	Municipality	14-Dec	15-Dec	16-Dec	Municipality	14-Dec	15-Dec	16-Dec
Charbine El-Hermel	VL	L	L	Hermel Jbab	L	L	L	Hermel	L	ML	ML
Maaysra El-Hermel	ML	M	M	Michaa Mrjihine	VL	L	L	Ouadi Faara	L	ML	M
Ras Baalbek - Ouadi	M	ML	M	Ras Baalbek El Gharb	ML	M	M	Zighrine	L	L	L

## Akkar

### Akkar

Municipality	14-Dec	15-Dec	16-Dec	Municipality	14-Dec	15-Dec	16-Dec	Municipality	14-Dec	15-Dec	16-Dec
Aain Tinta	L	ML	M	Aaiyat	VL	ML	ML	Aakkar El-Aatiqa	VL	L	L
Aamar Akkar	VL	M	M	Aamar El Baykat	L	ML	M	Aamayer	L	L	L
Aamriyet Akkar	L	ML	M	Aandqet	L	L	L	Aarmeh	L	ML	M
Aarqa	L	M	M	Aawaynat	L	L	ML	Aayoun Akkar	VL	L	ML
Abboudiye	ML	M	M	Ain El-Zeit	L	ML	M	Ain Yaaqoub	VL	L	L
Akroum	L	L	L	Aridet Cheikh Zennad	M	M	M	Baldeh w Mazraat Bal	L	M	M
Barcha	ML	M	M	Bardeh	L	ML	M	Bebnine	L	M	M
Beino	L	ML	ML	Beit Ayoub	VL	ML	M	Beit El-Haouch	L	M	M
Beit Mellat	VL	ML	M	Beit Younes	VL	L	ML	Berbara Akkar	L	ML	M
Berqayel	L	M	M	Bezbina	VL	L	L	Bireh Akkar	L	ML	M
Borj	VL	ML	ML	Bqerezla	VL	ML	M	Bzal	VL	L	M
Chane	VL	L	L	Chaqdouf	VL	L	ML	Charbila	L	M	M
Cheikh Mohammad	ML	M	M	Cheikh Taba Es-Sahl	ML	M	M	Cheikh Taba	VL	M	M
Cheikh Zennad	M	M	M	Cheikhlar	L	L	ML	Chir Hmairine	ML	M	M
Daghle	L	ML	M	Dahr Laissine	L	M	M	Darine	ML	M	M
Dawra	L	L	L	Dawsa w Baghdadi	L	ML	M	Dayret Nahr El-Kabir	L	L	ML
Deir Dalloum	L	M	M	Deir Jennine	L	ML	M	Denbou	VL	L	ML
Dibbabiyyeh	L	ML	M	Douair Aadwiyeh	L	ML	M	Fassikine	L	ML	M
Fnaydek	VL	L	L	Fraydes Akkar	L	L	ML	Ghazayle	ML	M	M
Habchit	VL	L	L	Hakour	L	M	M	Halba	L	M	M
Haouchab	ML	M	M	Hayssat	M	M	M	Haytla	ML	M	M
Hayzouq	L	M	M	Hedd	L	M	M	Hmaira Akkar	L	M	M
Hmaiss Akkar	ML	M	M	Hnaider	VL	ML	ML	Hokr Ed-Dahri	M	M	M
Hokr Etti	ML	M	M	Hokr Jouret Srar	ML	M	M	Houaich	VL	L	ML
Hrar	VL	L	ML	Idbil	VL	ML	M	Ilfat	VL	ML	M
Janine	ML	M	M	Jdeidet El-Joumeh	L	M	M	Jdeidet El-Kaiteh	VL	M	M
Jebrayel	VL	ML	M	Kafr	L	ML	M	Kafr	L	ML	M
Karm Asfour	VL	ML	M	Kfar Melki Akkar	M	M	M	Kfar Noun	L	L	ML
Kfarharra	ML	M	M	Khalsa	L	L	ML	Kharnoubet Akkar	ML	M	M



Khirbet Daoud Aakkar	L	ML	M	Khirbet El Remmane	L	L	L	Khirbet Shar	L	ML	M
Khoreybet El-Jindi	ML	M	M	Khreibet Aakkar	VL	L	M	Kneisset Aakkar	M	M	M
Kneisset Hnaider	VL	ML	ML	Knisse	ML	M	M	Kroum El-Aarab	ML	M	M
Kwachra	L	ML	M	Kweykhath	ML	M	M	Machta Hammoud	L	L	L
Majdala	L	M	M	Majdel Akkar	L	ML	M	Mar Touma	L	M	M
Marlaya Melhem	L	M	M	Mashha	L	M	M	Massoudiye	M	M	M
Mazraat Beit Ghattas	L	M	M	Mazraat En-Nahriye	L	L	L	Mechmech	VL	L	L
Memneh	VL	L	L	Mhammara	L	M	M	Mighraq Aakkar	M	M	M
Minyara	L	M	M	Moqayteh	M	M	M	Mounjez	L	ML	ML
Msalla	L	ML	M	Mzeihmeh	ML	M	M	Nfaisch	L	M	M
Noura Et-Tahta	L	L	M	Ouadi El-Haour	ML	M	M	Ouadi El-Jamous	L	M	M
Ouyoun El-Ghizlane	L	M	M	Qaabarine	M	M	M	Qabaait	VL	L	ML
Qachlaq	ML	M	M	Qantara Aakkar	VL	ML	M	Qarha Aakkar	L	ML	ML
Qarqaf	L	M	M	Qboula	VL	ML	ML	Qleiaat Aakkar	M	M	M
Qloud El-Baqie	L	M	M	Qobaiyat Aakkar	L	L	L	Qobbat Chamrat	L	M	M
Qorayat	VL	L	ML	Qornet Aakkar	VL	L	ML	Qsair Aakkar	L	ML	ML
Rahbe	VL	L	M	Rihaniyet Aakkar	L	M	M	Rmah	L	L	ML
Rmoul	M	M	M	Saadine	ML	M	M	Sadaqa	VL	ML	M
Saidnaya	ML	M	M	Sammouniye	M	M	M	Sayssoq	L	M	M
Semmaqiye	M	M	M	Semmaqli	L	M	M	Sfinet El-Dreib	L	M	M
Sfinet El-Qaitaa	VL	ML	M	Sindyanet Zeidane	L	L	ML	Souaisset Aakkar	L	M	M
Srar	ML	M	M	Tal Abbas El Gharby	ML	M	M	Tal Abbas El-Chargy	L	M	M
Tal Biret	ML	M	M	Tal Hmayra	ML	M	M	Tal Maayan Tal Kiri	M	M	M
Tal Sibel	M	M	M	Tallet Chattaha	VL	ML	ML	Tikrit	VL	L	M
Tleil	ML	M	M	Tshea	VL	L	L	Zawarib	VL	M	M
Zouq El Hosniyeh	L	M	M	Zouq El-Haddara	L	M	M	Zouq El-Hbalsa	L	M	M
Zouq El-Moqachrine	L	M	M								

## Sud

### Sour

Municipality	14-Dec	15-Dec	16-Dec	Municipality	14-Dec	15-Dec	16-Dec	Municipality	14-Dec	15-Dec	16-Dec
Aaiyeh	M	M	M	Aalma El-Chaab	ML	M	M	Aaytit	ML	M	M
Abbassiyeh Sour	M	M	M	Abou Chech	ML	M	M	Ain Abou Abdallah	M	M	M
Ain Baal	M	M	M	Arzoun	ML	M	M	Aziyeh	ML	M	M
Baflaya	ML	M	M	Barich	ML	M	M	Batouliyeh	M	M	M
Bayad	ML	M	M	Bazouriyeh	M	M	M	Bediass	ML	M	M
Bestiyat	ML	M	M	Borj El Chemali	M	M	M	Borj En-Naqoura	ML	M	M
Borj Rahhal	ML	M	M	Boustane	M	M	M	Btaychiyeh	ML	M	M
Chaaitiye	M	M	M	Chameh	ML	M	M	Chehabiye	ML	M	M
Chehour	L	L	M	Chihine	ML	M	M	Debaal Sour	ML	M	M
Deir Amess	ML	ML	M	Deir Kifa	ML	M	M	Deir Qanoun El-Ain	M	M	M
Deir Qanoun El-Naher	ML	M	M	Derdghaiya	ML	M	M	Dhayra	ML	M	M
Halloussiyeh	ML	M	M	Hamoul	ML	M	M	Hanaouey	M	M	M
Henniye	M	M	M	Hmairi Sour	ML	M	M	Iskandarouna Sour	ML	M	M
Jbal El Botom	ML	ML	M	Jebbin	M	M	M	Jennata	ML	M	M
Jijim	L	M	M	Jouaiya	ML	M	M	Kneisset Sour	M	M	M

Maarake	ML	M	M	Maaroub	ML	M	M	Majadel	ML	M	M
Majdalzoun	ML	M	M	Mansouri Sour	M	M	M	Marnba	L	ML	M
Marouahine	L	ML	M	Mazraat El-Zalloutiy	M	M	M	Mazraat Mechref	ML	M	M
Mazraat Tayr Semhat	L	L	M	Mheilib	M	M	M	Neffakhiyeh	ML	M	M
Niha Sour	ML	M	M	Ouadi Jilo	ML	M	M	Qana	ML	M	M
Qolaileh Sour	M	M	M	Rechknany	ML	M	M	Rmadiyeh	M	M	M
Selha Sour	ML	M	M	Siddiqine	ML	M	M	Sour	M	M	M
Srifa	ML	M	M	Tayr Debbe	ML	M	M	Tayr Felsay	ML	M	M
Tayr Harfa	M	M	M	Touayri	L	ML	M	Toura	ML	M	M
Yanouh Sour	ML	M	M	Yarine	M	M	M	Zebqine	L	ML	M

## Saida

Municipality	14-Dec	15-Dec	16-Dec	Municipality	14-Dec	15-Dec	16-Dec	Municipality	14-Dec	15-Dec	16-Dec
Aanqoun	M	M	M	Aaqtanit	M	M	M	Aarab Ej-Jall	M	M	M
Aarab Tabbaya	M	M	M	Abra Saida	M	M	M	Adloun	M	M	M
Adousiyeh	M	M	M	Ain-El-Deleb	M	M	M	Arzai	M	M	M
Babliyah	M	M	M	Barty	L	M	M	Bissariyeh	M	M	M
Bnaafoul	M	M	M	Bqosta	M	M	M	Bramiy --	M	M	M
Daoudiyeh	M	M	M	Dareb El-Sim	M	M	M	Erkay	M	M	M
Ghassanieh	M	M	M	Ghazieh	M	M	M	Hajjeh	ML	M	M
Haret Saida	M	M	M	Hartiyeh	M	M	M	Hlaliye Saida	M	M	M
Insariyat	M	M	M	Jazira Saida	M	M	M	Kafar Bit	ML	M	M
Kaoutariyet El-Siyad	ML	M	M	Kfar Chellal	L	M	M	Kfar Hatta Saida	ML	M	M
Kfar Milke Saida	L	M	M	Khartoum	M	M	M	Khaziz	ML	M	M
Khirbet Ed-Douair Sa	M	M	M	Khirbet El-Bassal	M	M	M	Khrayeb Saida	M	M	M
Loubieh	M	M	M	Maghdouche	ML	M	M	Majdelyoun	M	M	M
Matariyet El-Choumar	M	M	M	Matayriyeh	ML	M	M	Mazraat 'Mseileh	M	M	M
Mazraat 'Snaiber	M	M	M	Mazraat Aarab Soukka	M	M	M	Mazraat Deir Taqla	M	M	M
Mazraat El Yahoudiye	M	M	M	Mazraat El-Housseini	M	M	M	Mazraat El-Mhaydaleh	M	M	M
Mazraat El-Ouasta	M	M	M	Mazraat Jamjim	M	M	M	Mazraat Kaoutariyet	M	M	M
Mazraat Kfar Badda	M	M	M	Mazraat Oussamiyat	M	M	M	Mazraat Sari	M	M	M
Mazraat Sinai	M	M	M	Meemariyeh	M	M	M	Merouaniyeh	M	M	M
Miyeh ou Miyeh	M	M	M	Najjariyeh	M	M	M	Qaaqiyat El-Snaouba	M	M	M
Qnarit	M	M	M	Qraiye Saida	M	M	M	Saida Ed-Dekermane	M	M	M
Saida El-Oustani	M	M	M	Saida El-Qadimeh	M	M	M	Saida Kefraya	ML	M	M
Saksakiyeh	M	M	M	Salhie Saida	M	M	M	Sarafand	M	M	M
Sfenta	L	ML	M	Tafahta	M	M	M	Tanbourit	ML	M	M
Tebna	M	M	M	Zaghdraiya	ML	M	M	Zeita	ML	M	M
Zrariyeh	M	M	M								

## Jezzine

Municipality	14-Dec	15-Dec	16-Dec	Municipality	14-Dec	15-Dec	16-Dec	Municipality	14-Dec	15-Dec	16-Dec
Ain El-Mir (El Estab	ML	M	M	Anane	L	L	L	Aramta	L	ML	M
Ariya	VL	L	L	Aychiyeh	L	ML	M	Azour	VL	L	L
Baba	VL	L	L	Bayssour Jezzine	M	M	M	Benoueteh Jezzine	VL	L	ML
Bhannine	VL	L	ML	Bisri	VL	L	L	Bkassine	VL	L	L
Bouslaya	L	L	L	Btedine El-Leqech	VL	L	L	Chbail	VL	L	L
Choualiq Jezzine	M	M	M	Dahr Ed-Deir	L	ML	L	Deir El Qattine	L	L	ML

Demachqiyeh	ML	M	M	Ghabbatiyeh	VL	L	ML	Harf Jezzine	VL	L	L
Hassaniyeh	ML	M	M	Haytouleh	L	ML	M	Haytura	L	L	M
Hidab	L	ML	ML	Homsiyeh	VL	L	ML	Jabal Toura	L	ML	M
Jarmaq	L	M	M	Jensnaya	M	M	M	Jernaya	L	M	M
Jezzine	VL	ML	M	Karkha	ML	M	M	Kfar Falous	L	ML	ML
Kfar Houna	L	ML	M	Kfar Jarrah	M	M	M	Lebaa	M	M	M
Louayzet Jezzine	L	ML	ML	Machmouche	VL	L	L	Mahmoudiyeh Jezzine	L	M	M
Maknounye Jezzine	L	L	ML	Maraat Ouazaiyeh	L	ML	M	Mazraat Daraya	VL	ML	M
Mazraat El-Aarqoub	L	ML	M	Mazraat El-Mathane	VL	L	L	Mazraat El-Rahbane	L	L	ML
Mazraat Khallet Khaz	L	ML	ML	Mazraat Louzid (Loua	VL	L	L	Mazraat Qrouh	VL	ML	M
Mazraat Tamra	ML	M	M	Mazraat Zighrine Jez	L	ML	M	Mazraat	L	L	L
Mharbiyeh	M	M	M	Midane Jezzine	VL	L	L	Mjeydel Jezzine	ML	M	M
Mlikh	L	ML	M	Mrach El-Hbasse	ML	M	M	Ouadi Baanqoudaine	M	M	M
Ouadi El-Laymoun	L	M	M	Ouardiyeh	VL	VL	L	Qabaa Jezzine	L	L	M
Qatrani	L	ML	ML	Qaytouleh	L	L	M	Qtaleh Jezzine	VL	L	L
Rihane Jezzine	L	ML	M	Rimat	L	L	ML	Roum	L	L	L
Roummanet	L	M	M	Sabbah	VL	L	L	Saydoun	L	L	L
Sfaray	VL	L	L	Snaya	VL	L	ML	Sojoud	L	ML	M
Srayri	L	ML	M	Taaïd	VL	L	L	Wadi Jezzine	VL	L	L
Zhalta	VL	L	M								

## Bekaa

### West Bekaa

Municipality	14-Dec	15-Dec	16-Dec	Municipality	14-Dec	15-Dec	16-Dec	Municipality	14-Dec	15-Dec	16-Dec
Aammiq BG	ML	M	M	Ain El Tineh BG	VL	ML	M	Ain Zebdeh	L	ML	M
Ana	ML	M	M	Aytanit	L	L	ML	Baaloul BG	L	ML	M
Bab Mareh	L	ML	M	Chouberqiye Aammiq	ML	M	M	Dakoue	L	M	M
Deir Ain El-Jaouze	L	ML	M	Deir Tahniche	ML	M	M	Ghaza	ML	M	M
Harime El-Soughra	L	M	M	Hoch Harimeh	ML	M	M	Jazira BG	ML	M	M
Jib Jennine	ML	M	M	Kamed-El-Laouz	L	ML	M	Kefraya BG	L	L	ML
Khiara El Atika	ML	M	M	Khiara	ML	M	M	Khirbet Qanafar	L	ML	M
Lala	L	ML	M	Lebbaya BG	VL	M	M	Loussa	L	M	M
Machghara	VL	ML	M	Manara (Hammar) BG	L	ML	M	Mansoura BG	ML	M	M
Marej BG	L	M	M	Maydoun	L	ML	M	Ouaqf BG	ML	M	M
Qaraaoun	L	ML	M	Qelya	VL	M	M	Raouda (Istabel)	L	M	M
Saghbine	L	ML	ML	Sohmor	VL	M	M	Soltan Yacoub el Ara	L	M	M
Souairy	L	M	M	Sultan Yaacoub	ML	M	M	Tal Znoun	ML	M	M
Yehmor BG	VL	M	M	Zilaya	VL	ML	M				

### Zahle

Municipality	14-Dec	15-Dec	16-Dec	Municipality	14-Dec	15-Dec	16-Dec	Municipality	14-Dec	15-Dec	16-Dec
Aanjar (Haouch Mouss	L	M	M	Ablah	L	M	M	Ain Kfarzabad	VL	M	M
Ali-El-Nahri	ML	M	M	Bar Elias	L	M	M	Bouarej	L	M	M
Cheberqiyet Tabet	L	M	M	Chtaura	L	M	M	Deir El Ghazal	L	M	M
Delhamiyet Zahle	L	M	M	Ferzol	L	M	M	Haouch El-Ghanam	ML	M	M
Haouch Es-Siyadeh	L	M	M	Haouch Hala	L	M	M	Haouch Mandara	L	M	M

Haouch Qayssar	L	M	M	Hezerta	L	M	M	Hosh Moussa	L	M	M
Jdita	L	M	M	Kfarzabad	L	M	M	Ksara	L	M	M
Majdel Aanjar	L	ML	M	Makssi	L	M	M	Massa	L	M	M
Mazraat Er-Remtaniye	L	M	M	Mrayjat Zahle	L	M	M	Mzaraa Zahle	L	M	M
Nabi Ayla	L	M	M	Nasriyet Rizk	L	M	M	Nasriyet Zahle	L	M	M
Niha Zahle	L	M	M	Ouadi Ed-Deloum	L	M	M	Ouadi El-Arayech	L	M	M
Qaa El Rim	ML	M	M	Qab Elias	L	M	M	Qousaya	L	M	M
Rhit	L	M	M	Riyak	ML	M	M	Saadnayel	L	M	M
Taal El-Akhdar	ML	M	M	Taalbeya	L	M	M	Taanayel	L	M	M
Talamara	ML	M	M	Tcheflik Edde Haouch	L	M	M	Tcheflik Qiqano	L	M	M
Terbol Zahle	VL	M	M	Touaite Zahle	L	M	M	Zahle Aradi	L	M	M
Zahle El-Berbara	ML	M	M	Zahle El-Maallaqa	ML	M	M	Zahle El-Midane	ML	M	M
Zahle Er-Rassiye	ML	M	M	Zahle Haouch El-Ouma	L	M	M	Zahle Haouch El-Ouma	L	M	M
Zahle Haouch Ez-Zara	ML	M	M	Zahle Maalqa Aradi	L	M	M	Zahle Mar Antonios	ML	M	M
Zahle Mar Elias	L	M	M	Zahle Mar Gerios	L	M	M	Zahle Saydet En-Naja	L	M	M
Zebdoul	L	M	M								

## Rachaiya

Municipality	14-Dec	15-Dec	16-Dec	Municipality	14-Dec	15-Dec	16-Dec	Municipality	14-Dec	15-Dec	16-Dec
Ain Arab Rachaiya	L	ML	M	Ain Ata	VL	ML	ML	Ain Harche	L	ML	ML
Aqabe Rachaya	L	M	M	Ayha	L	M	M	Ayta El Fokhar	L	M	M
Bakifa Rachaya	L	M	M	Bakka	L	M	M	Beit Lahya	L	M	M
Bireh Rachaiya	L	ML	M	Daher El Ahmar	L	ML	M	Deir El-Achayer	L	ML	M
Heloua Rachaiya	L	ML	M	Hoch El Qannabeh Rac	L	ML	ML	Kaoukaba Bou Arab	L	ML	M
Kfar Danis	L	ML	M	Kfar Mechki	L	M	M	Kfar Qouq	L	ML	M
Kherbet Rouha	L	ML	ML	Majdel Balhiss	L	M	M	Mdoukha	L	M	M
Mhaydseh Rachaiya	L	ML	M	Nabi Safa	VL	ML	M	Rachaiya	L	M	M
Rafid Rachaiya	L	ML	M	Selsata (Mazraat Dei	VL	L	ML	Tannoura	L	M	M
Yanta	L	ML	M								

## Beyrouth

### Beyrouth

Municipality	14-Dec	15-Dec	16-Dec	Municipality	14-Dec	15-Dec	16-Dec	Municipality	14-Dec	15-Dec	16-Dec
Achrafieh	M	M	M	Ain el-Mreisse	M	M	M	Bachoura	M	M	M
Beirut Central Distr	M	M	M	Marfai	M	M	M	Mazraa	M	M	M
Medaouar	M	M	M	Minet el-Hosn	M	M	M	Mwssaitbeh	M	M	M
Ras Beirut	M	M	M	Rmeil	M	M	M	Saifi	M	M	M
Zqaq el-Blat	M	M	M								