

# Lebanon Fire Risk Bulletin



CIVIL DEDEFENCE

**Refer to cadast table condition.**

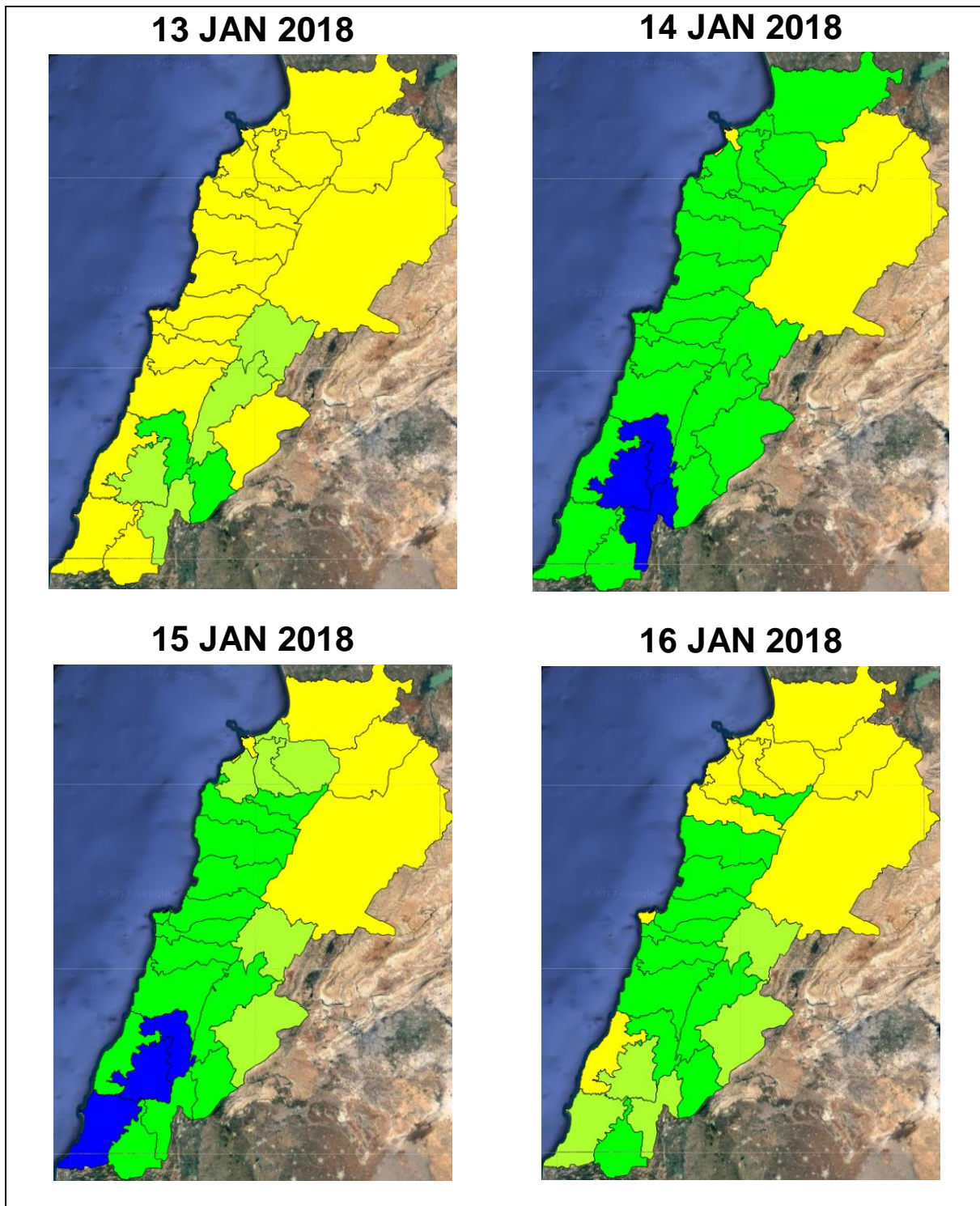
**Please note that the indicated temperature is at 2 meters height from the ground.**

General description of potential fire risk situation

Symbol	Level of risk	Meaning and actions
VL	Very low	Very low fire risk. Controlled burning operations can be hardly executed due to high fuel moisture content. Normally wildfires self-extinguish.
L	Low	Low fire risk. Controlled burning operations can be executed with a reasonable degree of safety.
ML	Medium low	Medium-low fire risk. Controlled burning operations can be executed in safety conditions. All the fires need to be extinguished.
M	Medium	Medium fire risk. Controlled burning operations would be avoided. All the fires need to be very well extinguished.
MH	Medium high	Controlled burning is not recommended. Open flame will start fires. Cured grasslands and forest litter will burn readily. Spread is moderate in forests and fast in exposed areas. Patrolling and monitoring is suggested. Fight fires with direct attack and all available resources.
H	High	Ignition can occur easily with fast spread in grass, shrubs and forests. Fires will be very hot with crowning and short to medium spotting. Direct attack on the head may not be possible requiring indirect methods on flanks. Patrolling and monitoring the territory is highly suggested.
E	Extreme	Ignition can occur also from sparks. Fires will be extremely hot with fast rate of spread. Control may not be possible during day due to long range spotting and crowning. Suppression forces should limit efforts to limiting lateral spread. Damage potential total. Patrolling and monitoring the territory is highly suggested.

**Beirut, 14 January 2018**

# FIRE RISK INDEX



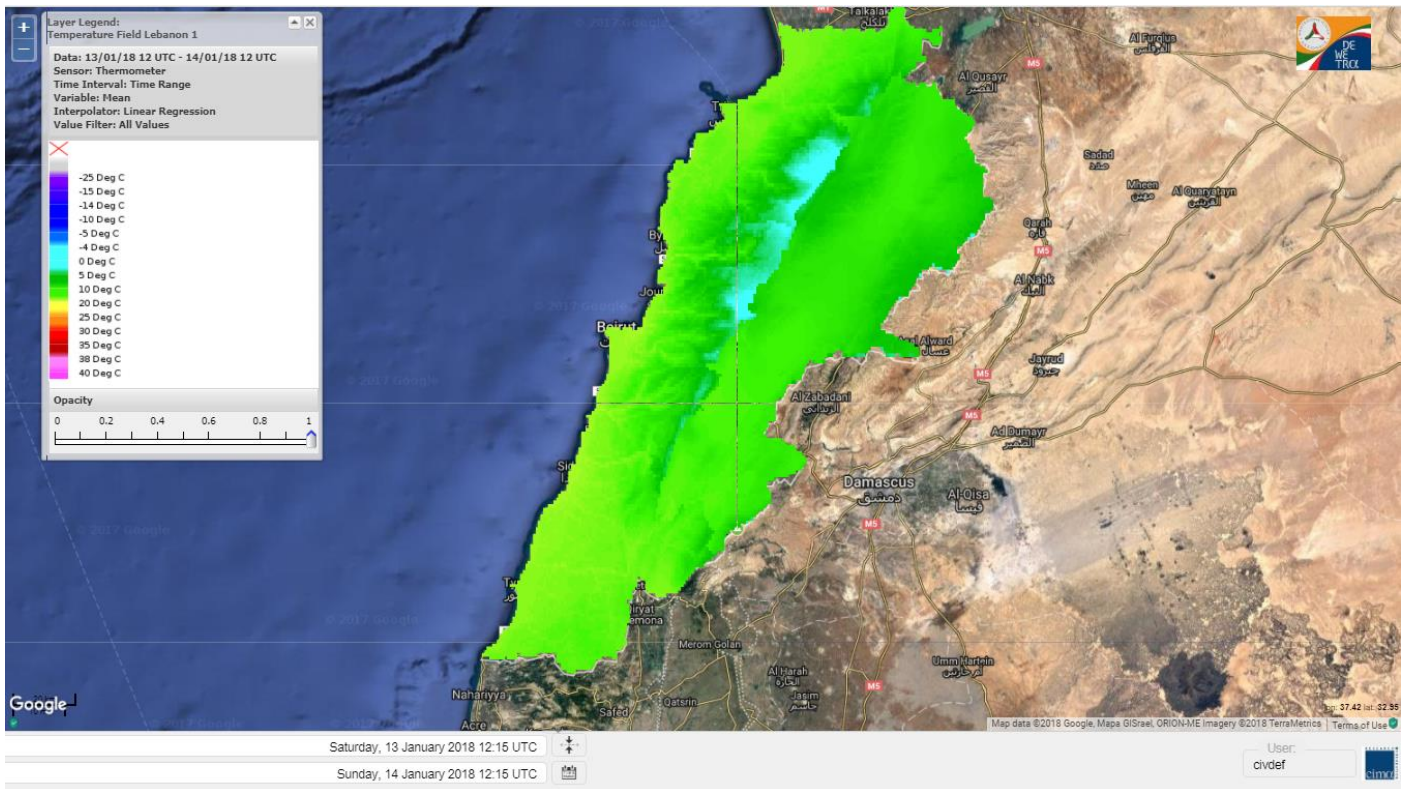
Layer Legend:  
Lebanon Wildfire Risk Index 1

Data: Run: 14/01/2018 00:00. Forecast for 14  
Model: RISICO for the Republic of Lebanon  
Variable: Fire Weather Index  
Spatial Resolution: Caza

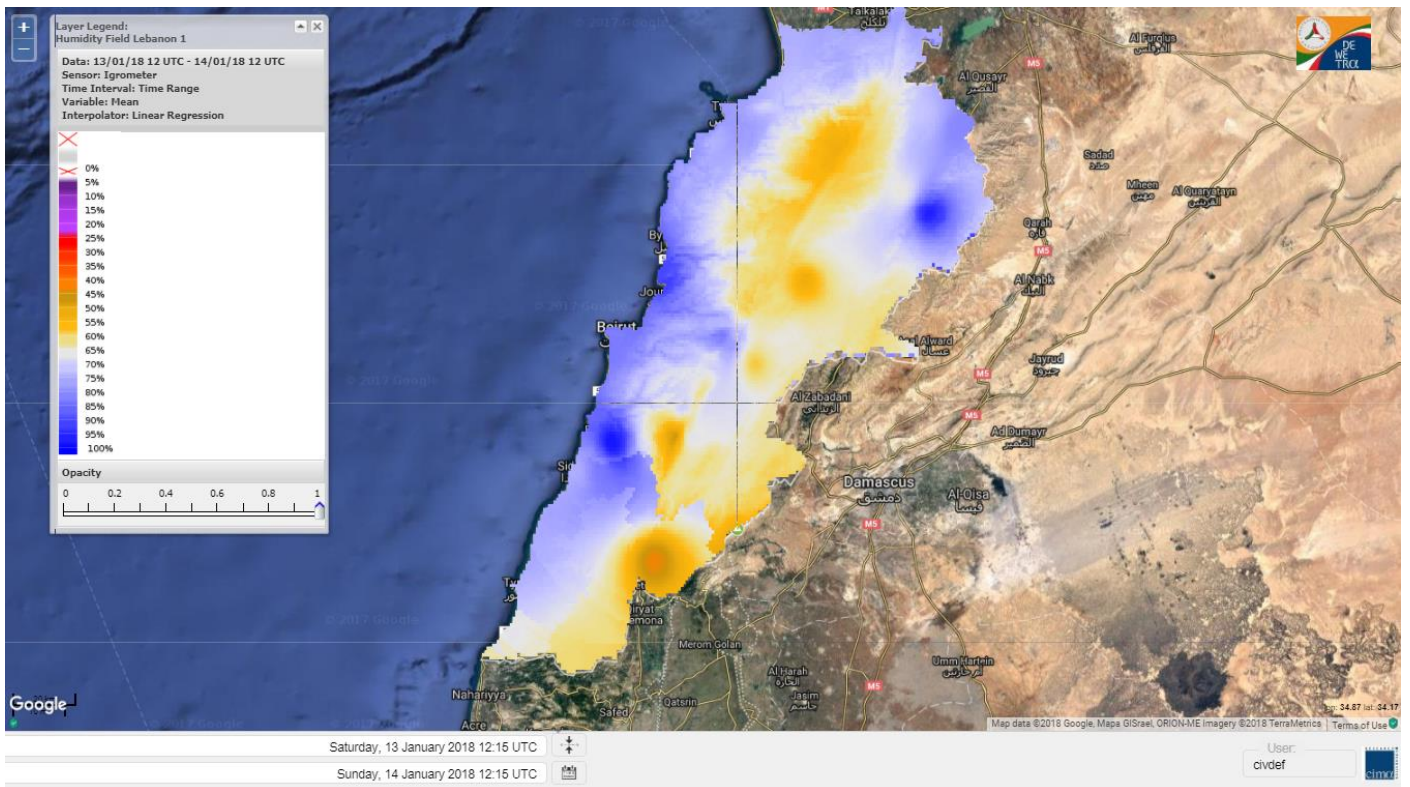
- VERY LOW
- LOW
- MEDIUM-LOW
- MEDIUM
- MEDIUM-HIGH
- HIGH
- EXTREME



# Lebanon temperature for 14 JAN 2018

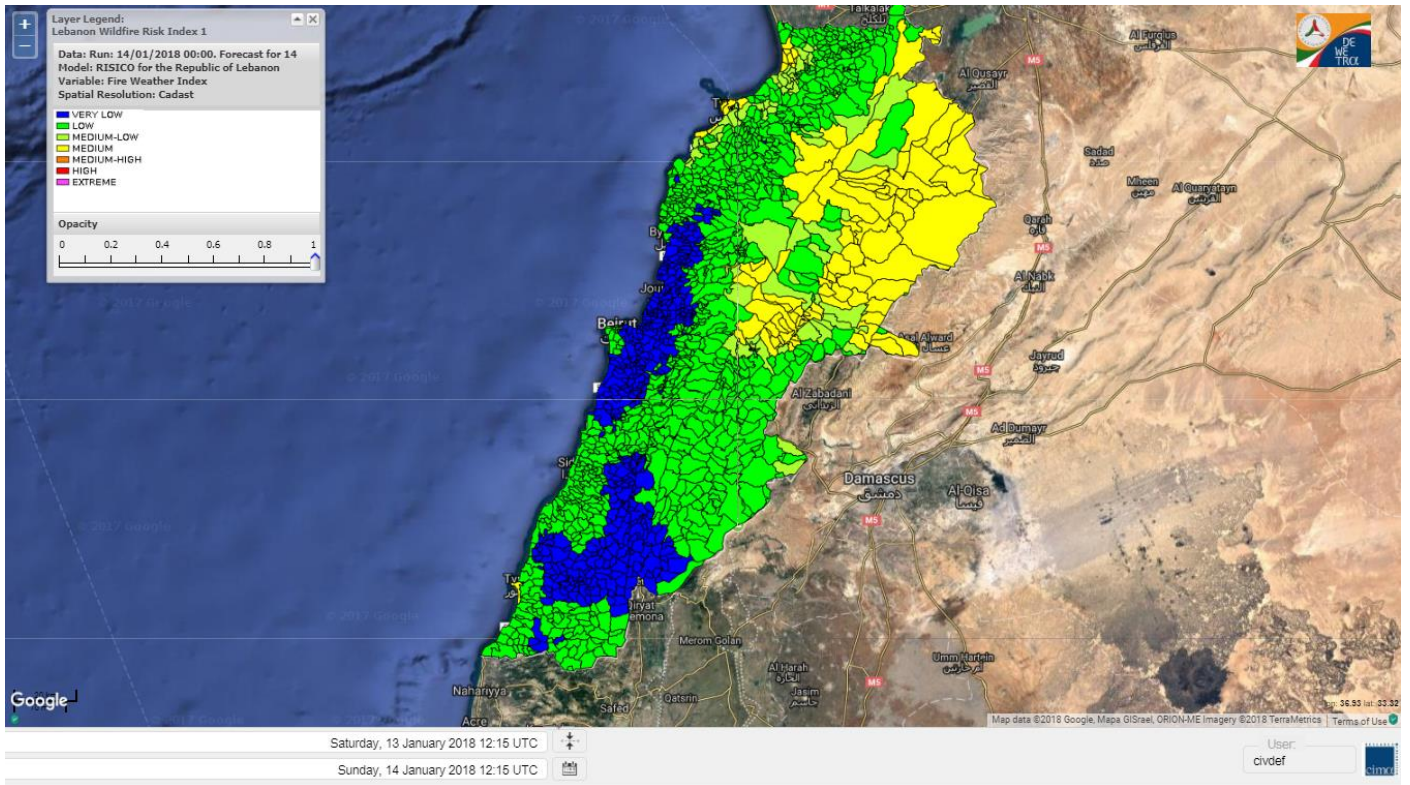


# Lebanon humidity for 14 JAN 2018

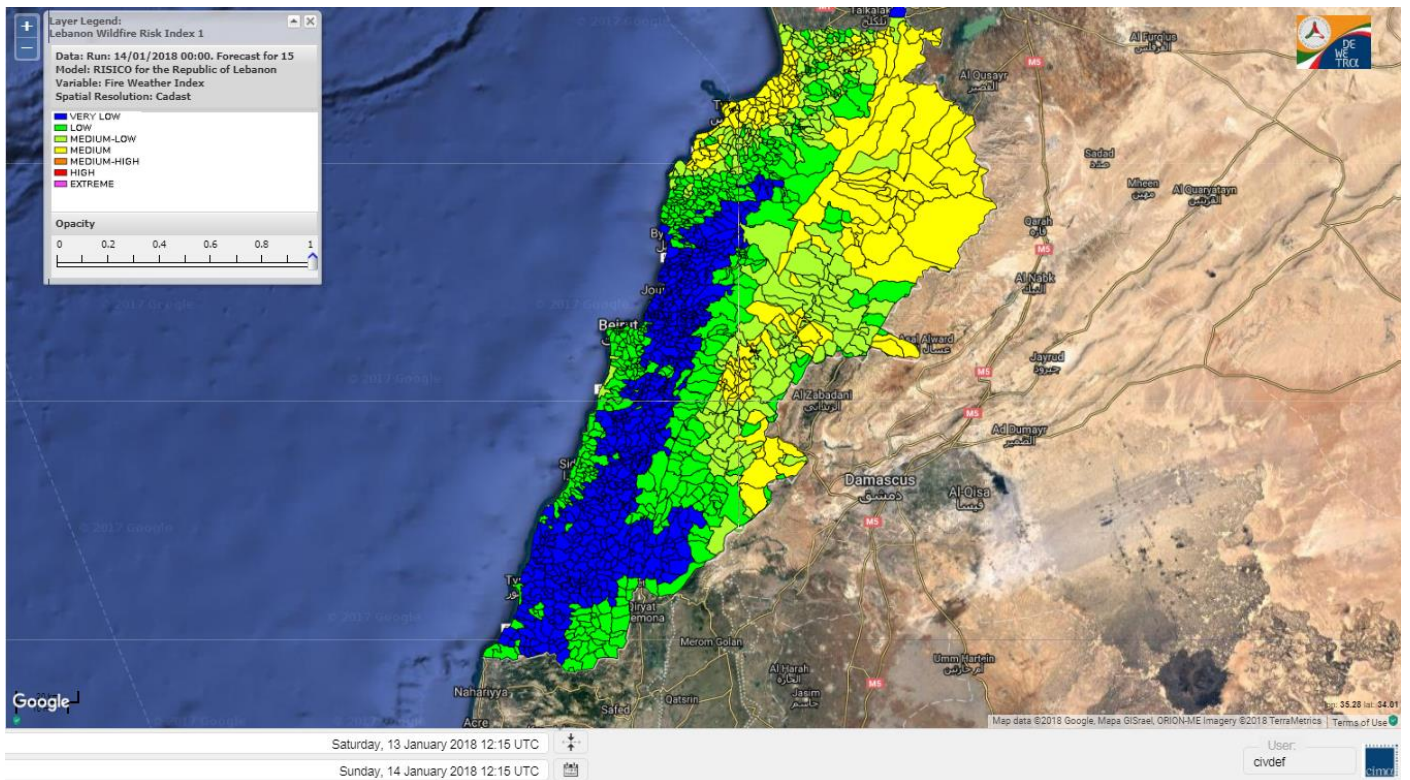




# Lebanon for 14 JAN 2018

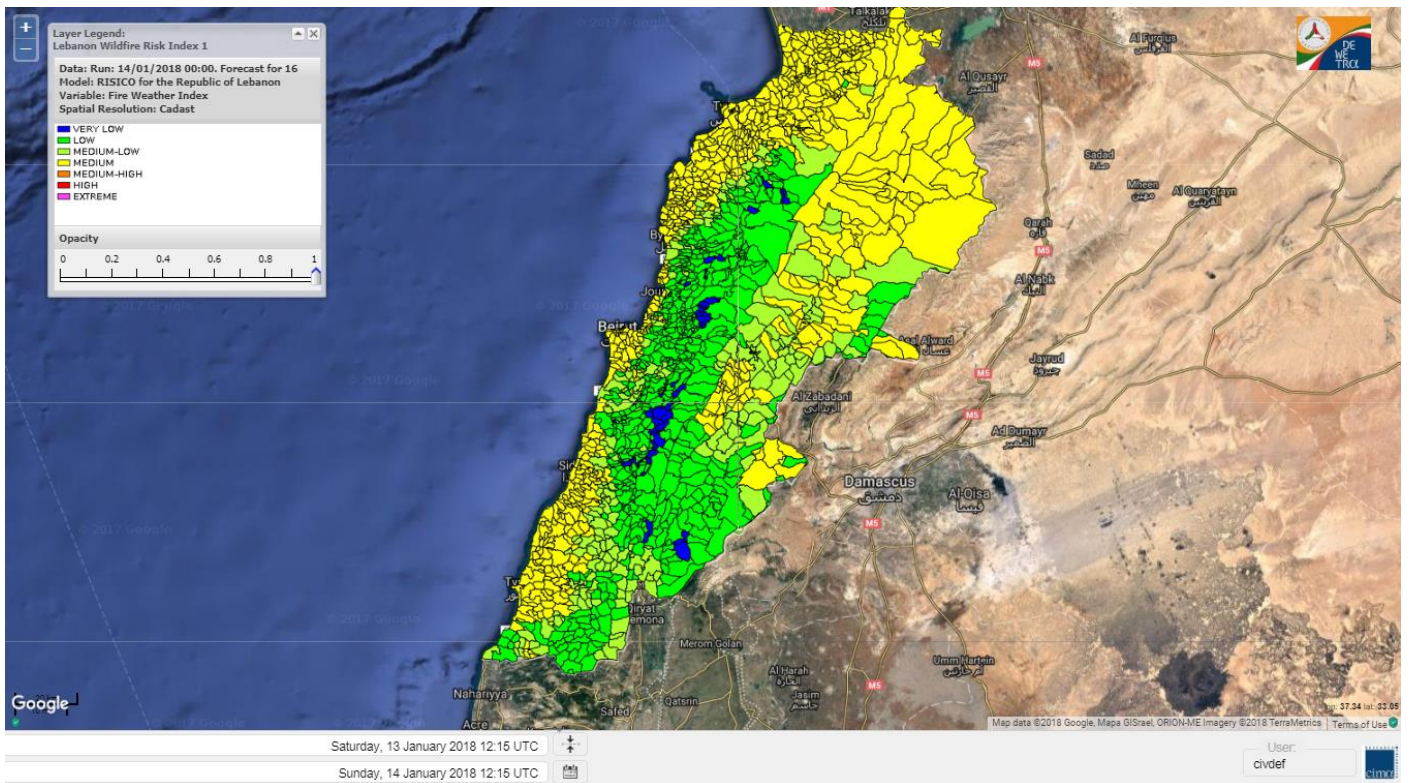


# Lebanon for 15 JAN 2018

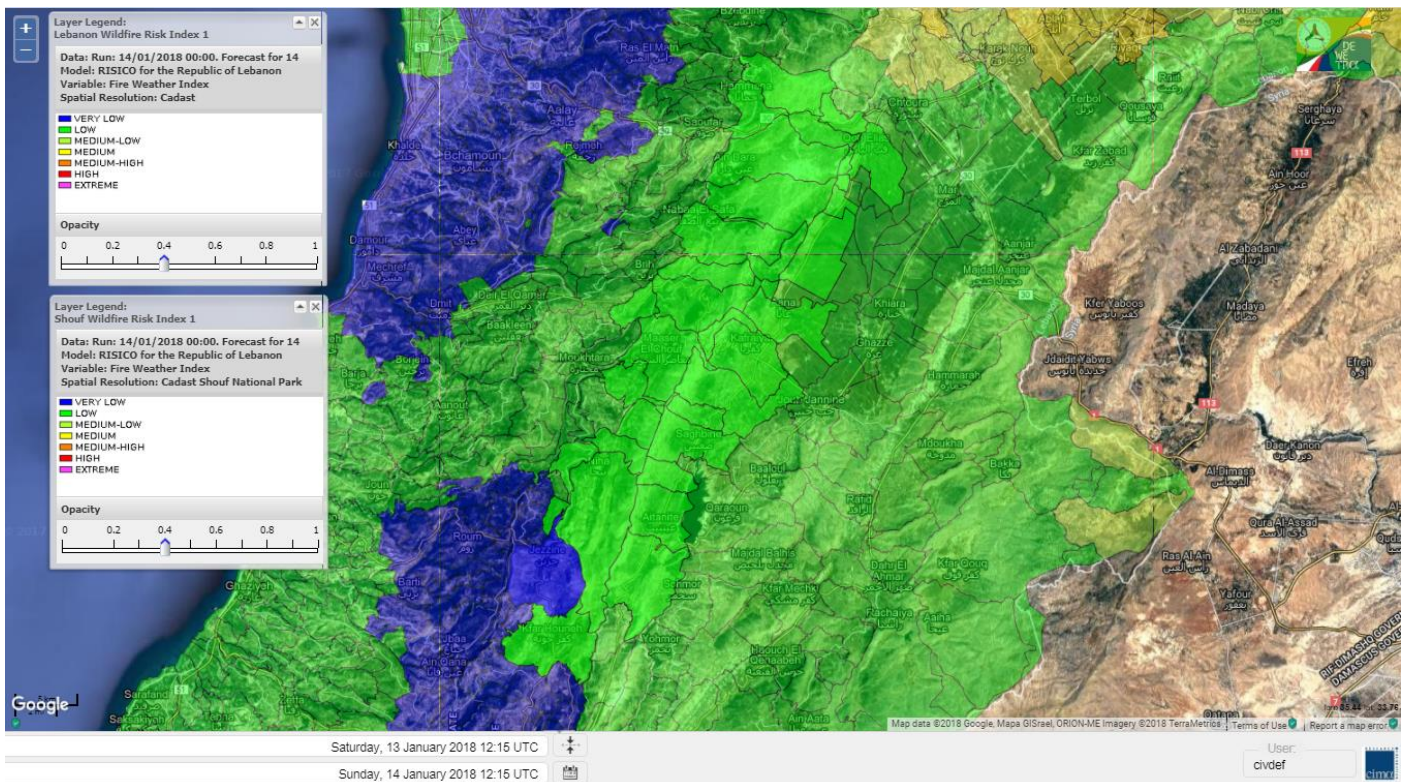




# Lebanon for 16 JAN 2018

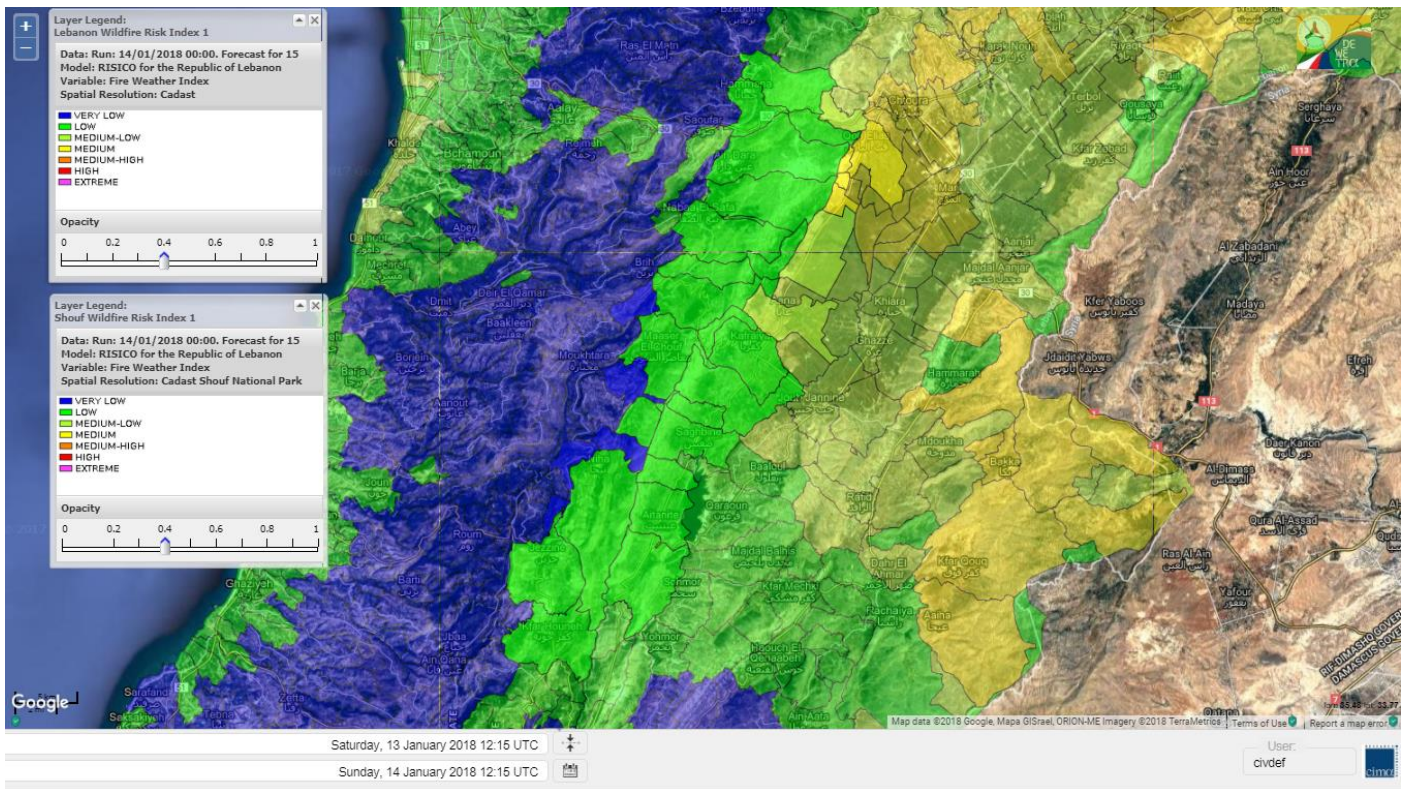


# Shouf Biosphere Reserve Forecast for 14 JAN 2018

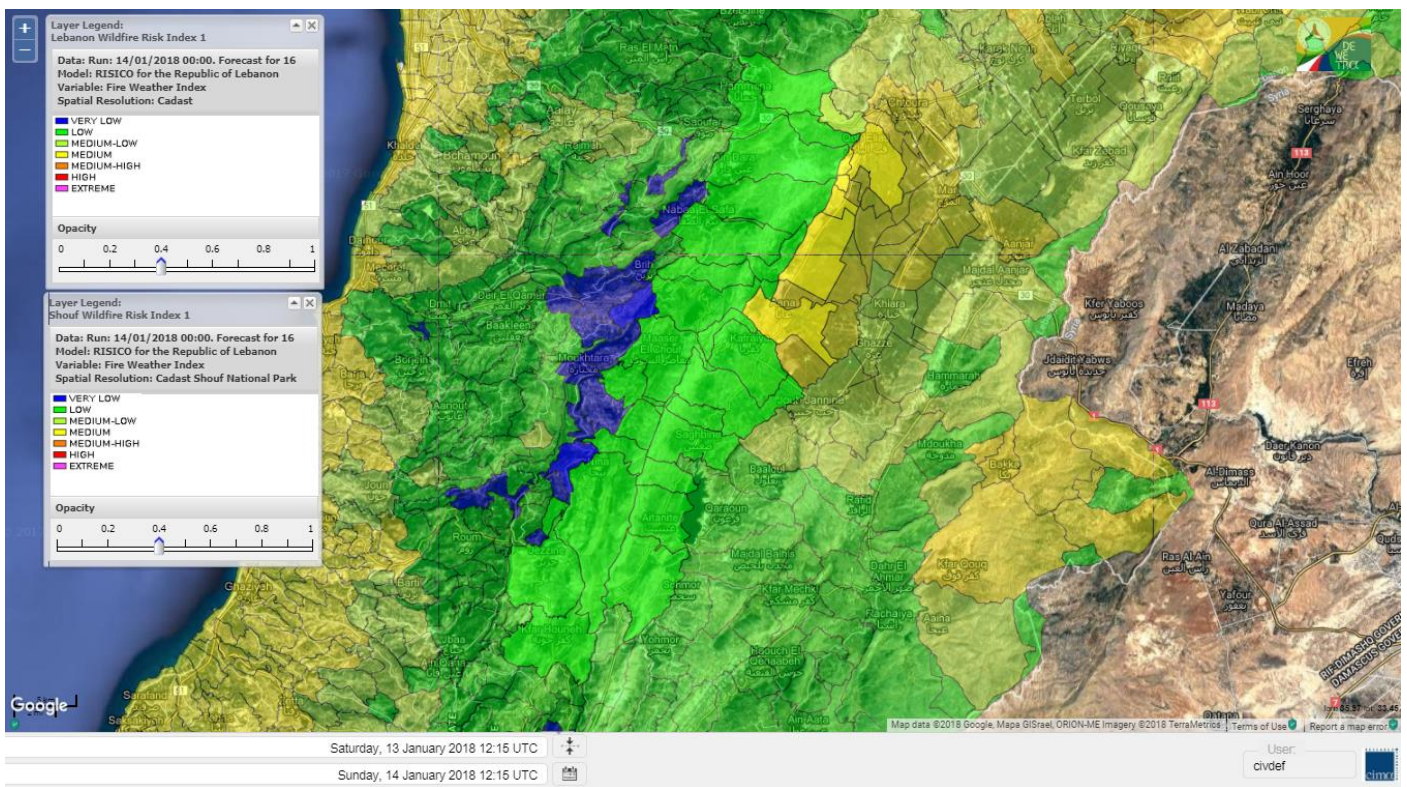




# Shouf Biosphere Reserve Forecast for 15 JAN 2018

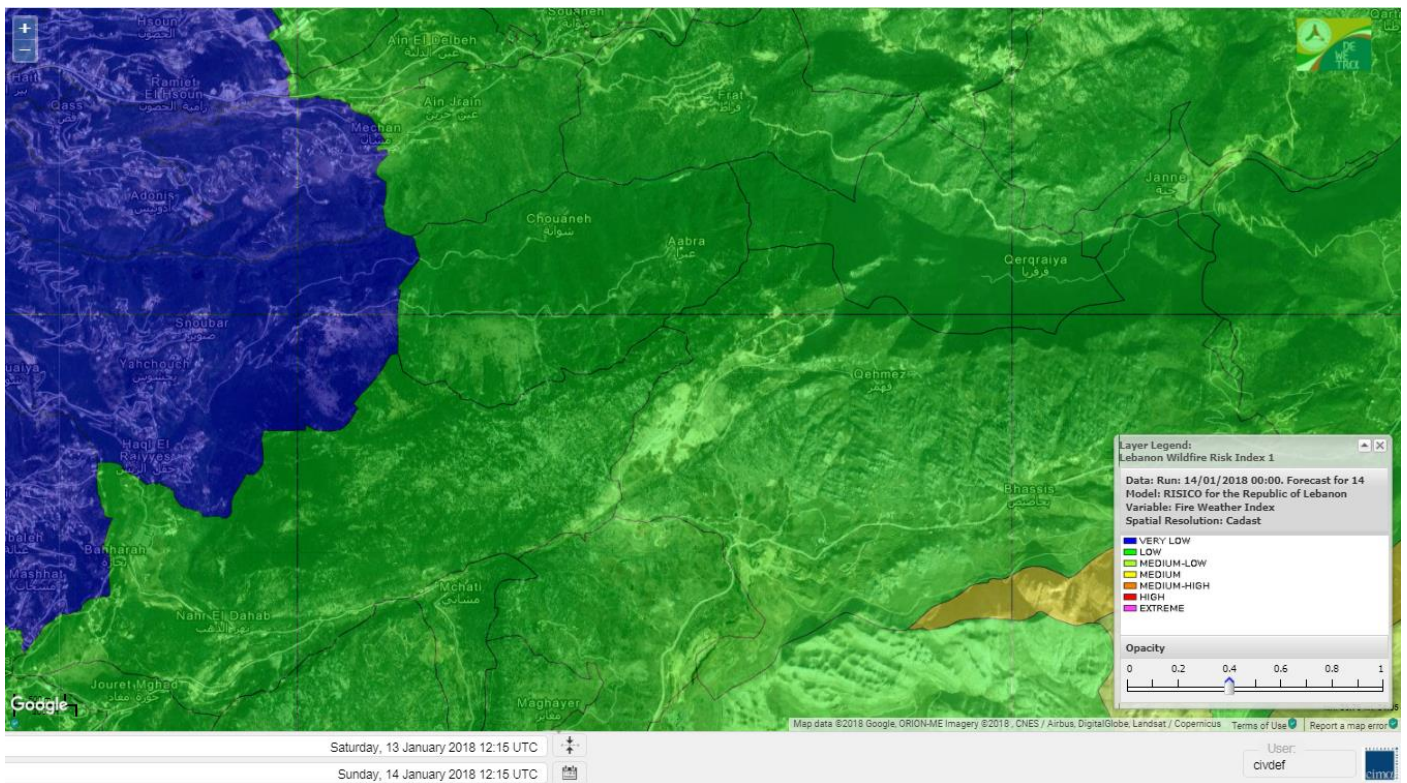


# Shouf Biosphere Reserve Forecast for 16 JAN 2018

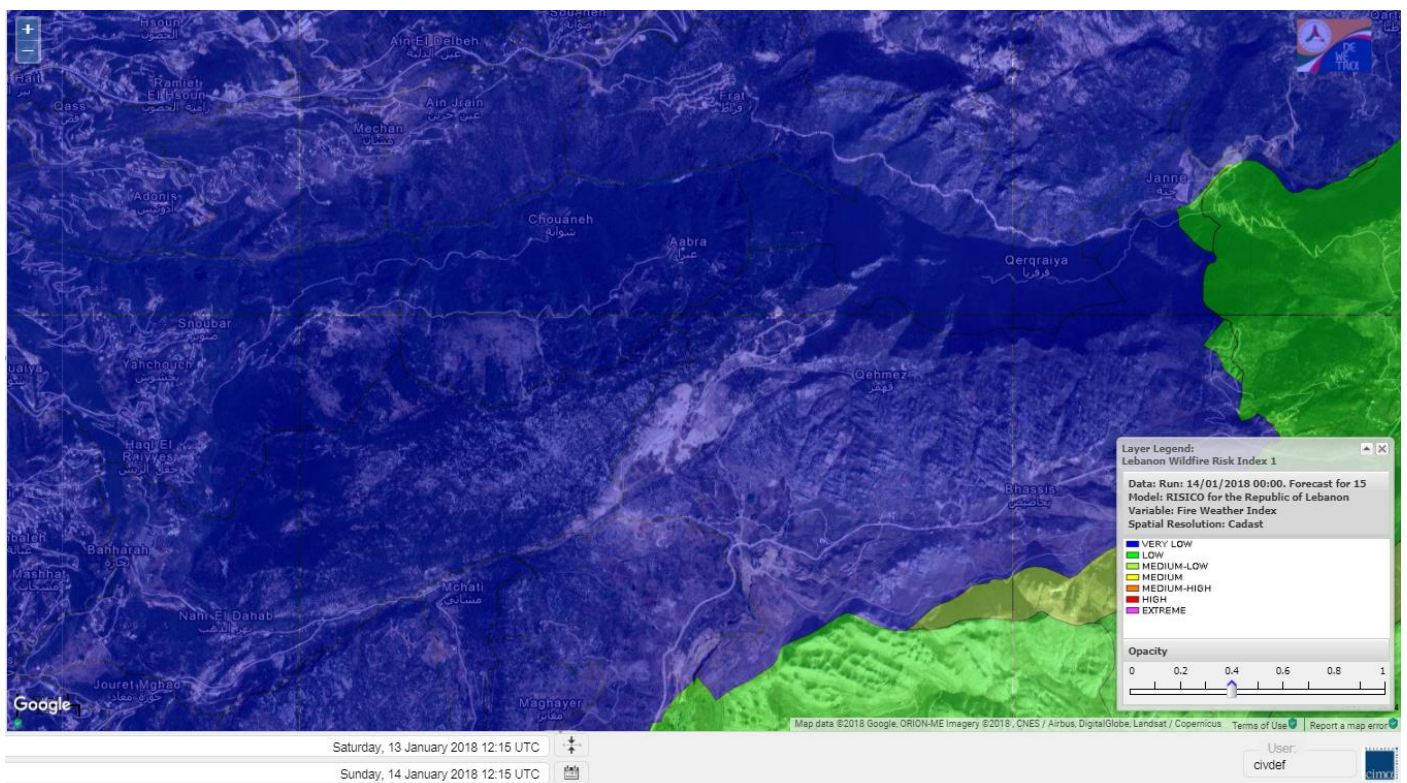




# Jabal Moussa Reserve Forecast for 14 JAN 2018

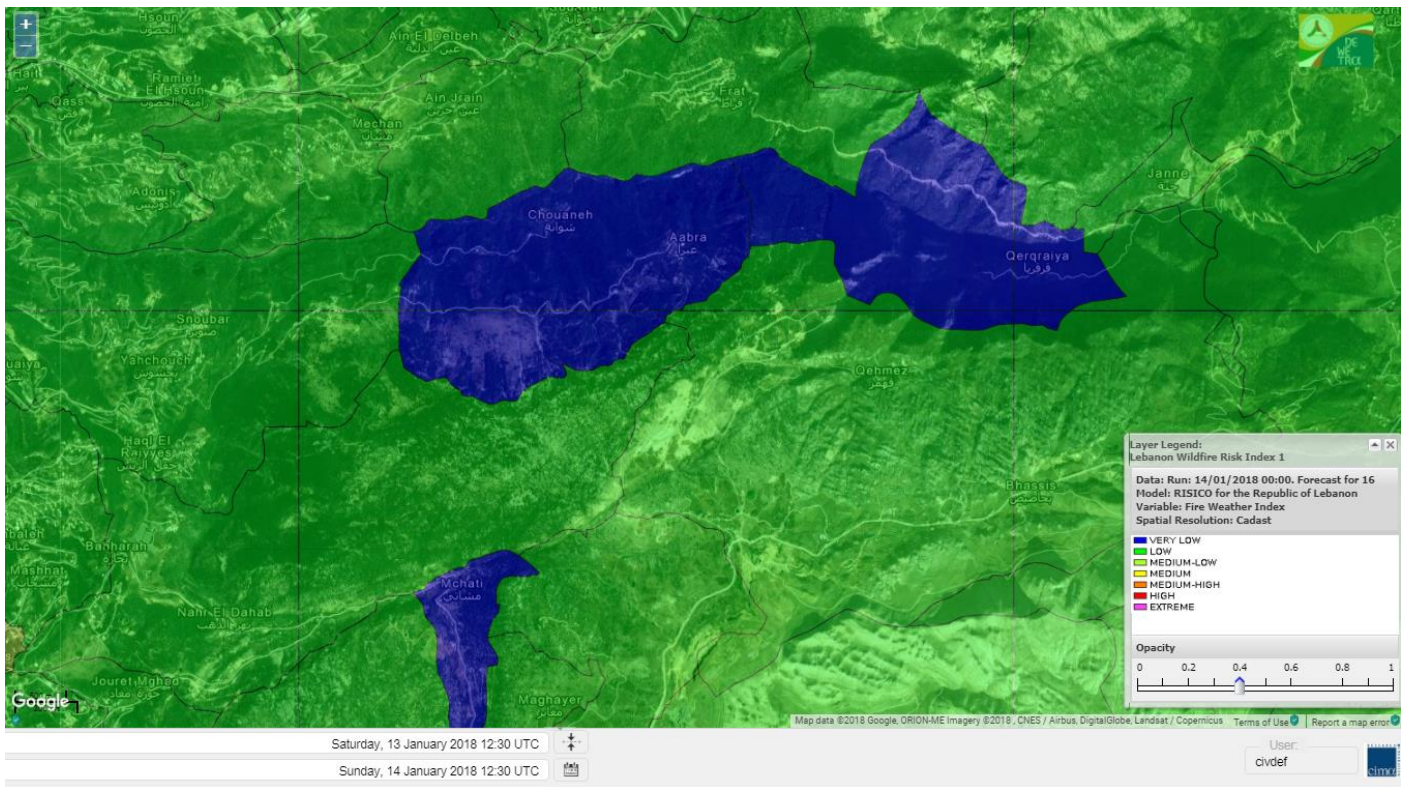


# Jabal Moussa Reserve Forecast for 15 JAN 2018





# Jabal Moussa Reserve Forecast for 16 JAN 2018





## Nord

### Koura

Municipality	14-Jan	15-Jan	16-Jan	Municipality	14-Jan	15-Jan	16-Jan	Municipality	14-Jan	15-Jan	16-Jan
Aaba	L	ML	M	Afsaddiq	L	M	M	Ain Ekrine	L	ML	M
Amioun	L	ML	M	Anfeh	ML	M	M	Badbhoun	L	M	M
Barghoun	ML	M	M	Barsa	L	ML	M	Batroumine	ML	M	M
Bdebba	L	ML	M	Bechmizine	L	M	M	Bednayel El-Koura	L	M	M
Bhabbouch El-Koura	L	L	M	Bkeftine	L	ML	M	Bnehran	L	L	M
Bqaiia El-Koura	L	ML	M	Bsarma	L	ML	M	Btaaboura	L	ML	M
Bterram	L	ML	M	Btouratij	L	ML	M	Bziza	L	L	M
Dar Beechtar	L	L	M	Dar Chmezzine	L	ML	M	Deddeh	ML	ML	M
Deir El-Balamand	L	L	M	Fih	ML	M	M	Hraiche	M	M	M
Ijdaabrine	L	L	M	Kaftoun	L	L	M	Kefraya El-Koura	ML	M	M
Kfarakka	L	L	M	Kfarhata	L	ML	M	Kfarhazir	L	M	M
Kfarkahel	L	ML	M	Kfarsaroun	L	ML	M	Kosba	L	ML	M
Mejdel el-Koura	L	L	M	Nakhle	L	ML	M	Qalhat	L	L	M
Ras Masqa	ML	M	M	Rechdibbine	L	ML	M	Zakroun	ML	ML	M
Zgharta El-Mtaouile	L	L	ML								

### Bcharre

Municipality	14-Jan	15-Jan	16-Jan	Municipality	14-Jan	15-Jan	16-Jan	Municipality	14-Jan	15-Jan	16-Jan
Aabdine	L	L	ML	Bane	L	L	L	Barhelioun	L	L	ML
Bazouone	L	L	VL	Becharre	M	L	L	Beit Menzer	L	VL	L
Billa	L	L	L	Blaouza	L	VL	ML	Bqaa Kafra	L	L	L
Bqerqacha	L	L	VL	Breissat	L	VL	L	Dimane	L	VL	L
Hadath El Jobbeh	L	VL	L	Hadchit	L	VL	L	Hasroun	L	L	L
Mazraat Aassaf	L	VL	L	Mazraat Bani Saab	L	L	ML	Mchaa El-Jobbeh	ML	L	L
Metrit	L	L	ML	Moghr El-Ahoual	L	L	M	Ouadi Qannoubine	L	VL	VL
Qanat	L	VL	L	Qnayer	L	VL	L	Tourza	L	L	L

### Batroun

Municipality	14-Jan	15-Jan	16-Jan	Municipality	14-Jan	15-Jan	16-Jan	Municipality	14-Jan	15-Jan	16-Jan
Aabrine	L	L	M	Aalali	L	L	ML	Aartiz	L	L	M
Abdelli	L	L	M	Ajdabra	L	L	M	Assia	L	L	M
Basbina	L	ML	M	Batroun	L	ML	M	Bcheleh	L	VL	L
Bechtoudar	L	L	ML	Beit Chlala	L	L	L	Beit Kassab	L	L	L
Bijdarfil	L	ML	M	Bqesmaya	L	L	M	Chatine	L	VL	L
Chebtin	L	L	ML	Chekka	ML	M	M	Daael	L	L	M
Dahr Abi Yaghi	L	L	M	Daraya El-Batroun	L	L	M	Deir Billa	L	L	ML
Deir Kfifane	L	L	M	Deir Mar Youhanna EL	L	L	L	Deir Mar Youssef Jra	L	L	M
Douma	L	VL	L	Douq	VL	L	ML	Eddeh El-Batroun	L	L	M
Ftahat El-Batroun	L	L	M	Ghouma	L	L	M	Hadtoun	L	L	ML
Hamat	L	ML	M	Harbouna	L	L	M	Hardine	L	L	L
Helta	L	L	M	Hery	ML	M	M	Jebbla	L	L	M
Jrabta El-Batroun	L	L	M	Jrane El-Batroun	L	ML	M	Kfar Aabida	L	L	M
Kfar Halda	L	L	ML	Kfarb Shlaimane	L	L	M	Kfarhatna	L	L	M
Kfarhay	L	L	M	Kfarhelos	VL	L	M	Kfifane	L	ML	M



Kfour El Arabi	L	L	L	Koubba	L	L	M	Kour	L	L	M
Mar Mama	VL	VL	ML	Masrah	VL	VL	ML	Mehmarch	L	L	M
Mrah Chdid	L	L	M	Mrah El Ziyat	L	L	M	Mrah El-Hajj	VL	VL	ML
Nahle El-Batroun	L	L	ML	Niha El-Batroun	L	L	L	Ouajh El-Hajjar	L	ML	M
Ouata Houb	L	VL	VL	Qatnaaoun	L	L	M	Racha	L	L	M
Rachana	L	L	M	Rachkida	L	L	M	Ram El-Batroun	VL	VL	ML
Ras Nahhach	L	ML	M	Selaata	L	ML	M	Sghar	L	L	M
Smar Jbayl	L	L	M	Sourat El-Batroun	L	L	M	Tannourine El-Faouqa	L	L	L
Tannourine Et-Tahta	L	VL	L	Thoum	L	L	M	Toula El-Batroun	L	L	M
Zan	L	L	M								

## Zgharta

Municipality	14-Jan	15-Jan	16-Jan	Municipality	14-Jan	15-Jan	16-Jan	Municipality	14-Jan	15-Jan	16-Jan
Aachach	ML	M	M	Aalma	L	M	M	Aarde	L	M	M
Aintourine	L	L	M	Arabet Qozhaya	L	L	L	Arde	L	M	M
Arjis	L	ML	M	Asnoun	L	ML	M	Ayto	L	L	ML
Basloukit	L	L	L	Bchannine	L	ML	M	Besebeel	L	ML	M
Bhairret Toula	L	L	L	Bnachee	L	L	M	Boussit	ML	M	M
Danha	L	ML	M	Daraiya Zgharta	L	L	M	Deir Jdeide	L	ML	M
Ehden	L	L	L	Halan	ML	M	M	Hariq Zgharta	L	ML	M
Houakir	L	L	M	Hraiqis	L	M	M	laal	L	ML	M
Ijbaa	L	L	M	Karm Saddeh	L	L	ML	Kfarchakhna	L	ML	M
Kfardlaqous	L	M	M	Kfarfou	L	L	M	Kfarhata Zgharta	L	ML	M
Kfarhoura	L	L	M	Kfarsghab	L	L	L	Kfaryachit	L	ML	M
Kfarzaina	L	ML	M	Khaldiye	L	ML	M	Mazraat Ajbeaa	L	ML	M
Mazraat Et-Teffah	L	L	ML	Mazraat Jneid	L	ML	M	Mejdlaiya Zgharta	ML	M	M
Merh Kfarsghab	L	L	M	Miryata	L	M	M	Miziara	L	L	ML
Mzraat Kefraya	ML	M	M	Qorah Bach	L	ML	M	Rachiine	L	M	M
Ras Kifa	L	L	M	Sakhra	L	ML	M	Sebhel Zgharta	L	L	M
Serhel	L	L	L	Tallet Zgharta	L	L	M	Toula Zgharta	L	L	L
Zgharta	L	ML	M								

## Minieh-Denniye

Municipality	14-Jan	15-Jan	16-Jan	Municipality	14-Jan	15-Jan	16-Jan	Municipality	14-Jan	15-Jan	16-Jan
Aasaymout	L	L	M	Aaymar	L	L	M	Aazki	L	M	M
Ain El-Tineh-Miniyeh	L	L	M	Assoun	L	ML	M	Bakhaaoun	L	ML	M
Bchennata	L	L	L	Bechehhara	L	L	ML	Beddawi	M	M	M
Behouaita	L	L	L	Beit El Foqss	L	L	M	Beit Haouik	L	M	M
Beit Zoud	L	ML	M	Bekaasafrine	M	L	ML	Borj El Yahoudiyeh	L	M	M
Bqarsouna	L	ML	M	Btermaz	L	ML	M	Debaael	L	L	M
Deir Ammar	L	M	M	Deir Nbouh	L	L	M	Haouaret-Miniyeh	L	ML	M
Haql el Azimeh	L	L	M	Harf El Siyad	L	L	M	Hazmiye-Miniyeh	L	L	M
Izal	L	ML	M	Jarjour	VL	L	ML	Jayroun	L	ML	M
Kahf El-Malloul	L	L	M	Karm El-Moher	L	L	M	Kfar Binine	L	ML	M
Kfarchalane	L	M	M	Kfarhabou	L	M	M	Kharroub-Miniyeh	L	ML	M
Mazraat El-Kreme	L	L	ML	Mazraat Ketrane	L	L	M	Merkebta	L	M	M
Minyeh	L	M	M	Mrah El Sfirat	L	L	ML	Mrah Sraj	L	ML	M
Mrebbine	M	M	M	Nabi Youcheaa	L	M	M	Nemrine	ML	ML	M



Qarhaiya	L	ML	M	Qarne	L	ML	M	Qarsita	L	ML	M
Qattineh-Miniyeh	L	L	M	Qemmamine	L	ML	M	Qraine	L	L	ML
Raouda-Aadoua	L	M	M	Rihaniyet-Miniyeh	ML	M	M	Sfireh	L	ML	M
Sir Ed-Danniyeh	L	L	M	Tarane	L	L	M	Terbol-Miniyeh	ML	M	M
Zaghartaghriine	L	L	M	Zouq Bhannine	L	M	M				

## Nabatiye

### Nabatiye

Municipality	14-Jan	15-Jan	16-Jan	Municipality	14-Jan	15-Jan	16-Jan	Municipality	14-Jan	15-Jan	16-Jan
Aabba	L	VL	ML	Aazzi	L	VL	ML	Adchit El-Chqif	VL	VL	M
Ain Bou Swar	VL	VL	L	Ain Kana	VL	VL	L	Ali El-Taher	VL	VL	L
Ansar	VL	VL	M	Arab Salim	VL	VL	L	Arnoun	VL	VL	L
Bfaroue	L	VL	ML	Breyqaah	VL	VL	M	Charqiyeh	L	VL	M
Choukine	VL	VL	ML	Deir El Zahrani	L	VL	ML	Doueir El-Nabatiyeh	L	VL	ML
Habbouch El-Nabatiye	VL	VL	ML	Hamra El-Nabatiyeh	VL	VL	ML	Harouf El-Nabatiyeh	VL	VL	ML
Hmaile	L	VL	L	Houmin El Faouqa	VL	VL	ML	Houmin El Tahta	L	VL	M
Jarjough	VL	VL	L	Jbaah El-Nabatiyeh	VL	VL	L	Jebchit	VL	VL	ML
Kfar Djal El-Nabatiy	VL	VL	ML	Kfar Remmane	VL	VL	L	Kfar Sir	VL	VL	M
Kfar Tebnit	VL	VL	ML	Kfarfila	VL	VL	ML	Kfour El-Nabatieh	L	VL	ML
Mayfadoun	VL	VL	ML	Mazraat Bsaffour	L	VL	ML	Mazraat Chalbaal	L	VL	ML
Mazraat Dmoul	L	VL	M	Mazraat El Khreibeh	L	VL	ML	Mazraat El-Bayad El-	VL	VL	ML
Mazraat Kfarjaouz	VL	VL	ML	Mazraat Qalaat Meiss	VL	VL	ML	Nabatiyeh El-Fawka	VL	VL	ML
Nabatiyeh Et-Tahta	VL	VL	ML	Namiriyyeh	L	VL	M	Qaaqaaiyet El Jisr	VL	VL	ML
Qossaibeh El-Nabatiy	VL	VL	M	Roumine	L	VL	ML	Sarba El-Nabatieh	L	VL	ML
Sir El-Gharbiyeh	VL	VL	M	Toul	L	VL	ML	Yehmor El-Nabatiyeh	VL	VL	ML
Zaoutar El Charkiyeh	VL	VL	ML	Zaoutar El-Gharbiyeh	VL	VL	ML	Zebdine El-Nabatiyeh	VL	VL	ML
Zefta	L	VL	M								

### Hasbaiya

Municipality	14-Jan	15-Jan	16-Jan	Municipality	14-Jan	15-Jan	16-Jan	Municipality	14-Jan	15-Jan	16-Jan
Ain Jarfa	L	VL	VL	Abou Qamha	VL	VL	L	Ain Qania	L	VL	VL
Bourghos	VL	L	L	Chebaa	L	L	L	Chouaya Hasbaya	L	L	L
Dellafeh	L	L	L	Fardiss Hasbaiya	VL	VL	L	Hasbaya	L	VL	L
Hbariyeh	L	VL	VL	Kaoukaba Hasbaiya	VL	VL	L	Kfar Chouba	VL	VL	L
Kfar Hamam	VL	VL	L	Kfeir El-Zait	L	VL	L	Khalwat Hasbaya	L	L	L
Khreibet Hasbaiya	VL	VL	L	Majidiyeh Hasbaiya	VL	VL	L	Marj Ez-Zhour (Haouc	L	L	L
Meri	VL	VL	L	Mimass	L	VL	L	Rachaiya El-Fokhar	VL	VL	L
Salaiyeb	VL	VL	ML								

### Marjayoun

Municipality	14-Jan	15-Jan	16-Jan	Municipality	14-Jan	15-Jan	16-Jan	Municipality	14-Jan	15-Jan	16-Jan
Aalmane Marjaayoun	VL	VL	L	Aamra	VL	L	ML	Adayseh Marjaayoun	VL	L	ML
Adchit El-Koussair	VL	VL	L	Ain Arab Marjaayoun	VL	VL	ML	Bani Haiyann	VL	VL	L
Blatt Marjaayoun	VL	VL	L	Blida	L	L	ML	Borj El-Moulouk	VL	VL	ML
Boueyda Marjaayoun	VL	VL	L	Deir Mimass	VL	VL	L	Deir Siriane	VL	VL	L
Dibbine	VL	VL	ML	Ebel El Saqi	VL	VL	L	Houla	VL	L	L
Houra	VL	VL	L	Kfar Kila	VL	L	ML	Khiam Marjaayoun	VL	VL	ML



Klayaa	VL	VL	ML	Majdel Selem	L	L	L	Marjaayoun	VL	VL	ML
Markaba	VL	L	ML	Mays El-Jabal	L	L	ML	Mazraat Doumiat	VL	VL	ML
Mazraat Sarada	VL	VL	ML	Mhaibib	L	L	ML	Qabrikha	VL	VL	L
Qantara	VL	VL	L	Rab El-Thalathine	VL	L	ML	Saouaneh Marjayoun	VL	VL	ML
Talloussa	VL	VL	L	Taybeh Matjaayoun	VL	L	ML	Touline	VL	VL	L

## Bent Jbail

Municipality	14-Jan	15-Jan	16-Jan	Municipality	14-Jan	15-Jan	16-Jan	Municipality	14-Jan	15-Jan	16-Jan
Ain-Ebel	L	L	L	Aitaroun	L	L	ML	Aynata Bint Jbeil	L	L	L
Ayta El-Chaeb	L	VL	L	Ayta El-Jabal	L	L	L	Beit Lif	VL	VL	L
Beit Yahoun	L	L	L	Bint Jbeil	L	L	L	Borj Qalaway	VL	VL	ML
Braachit	L	L	L	Chakra	L	L	L	Debel	L	L	L
Deir Antar	L	L	ML	Froun	VL	VL	ML	Ghandouriyeh Bint Jb	VL	VL	ML
Hanine	L	L	L	Hariss	L	L	L	Hdatha	L	L	L
Jmeymeh	L	L	L	Kafra Bint Jbeil	L	VL	L	Kfar Dounine	VL	VL	ML
Khirbet Selm	VL	VL	ML	Kounine	L	L	L	Maroun El Ras	L	L	ML
Qalaway	VL	VL	ML	Qaouzah	L	VL	L	Qatmoun	L	L	L
Ramya Bint Jbeil	L	VL	L	Rchaf	L	L	L	Rmeich	L	L	L
Safad Al Battikh	L	L	L	Salhaneh	L	VL	L	Serbine	L	L	L
Sultanieh Bint Jbeil	L	L	L	Tibnine	L	L	L	Tiri	L	L	L
Yaroun	L	L	L	Yater	L	VL	L				

## Mont Liban

### Jbail

Municipality	14-Jan	15-Jan	16-Jan	Municipality	14-Jan	15-Jan	16-Jan	Municipality	14-Jan	15-Jan	16-Jan
Aabeydat	L	L	M	Aalita	VL	VL	L	Aamchit	L	VL	M
Aarab El-Lahib	L	L	L	Aarasta	L	L	L	Adonis Jbeil	VL	VL	L
Afqa Jbeil	L	L	L	Ain El Delbeh Jbeil	L	VL	L	Ain El-Ghouyba	L	L	L
Ain Jrain	L	VL	L	Ain Kfah	L	L	M	Almat El Chemaliyat	L	VL	L
Almat El-Jenoubiya	L	VL	L	Aqoura	ML	ML	L	Bayzoun	L	VL	L
Bchille Jbeil	VL	L	ML	Bechtida	VL	VL	L	Behdaydat	VL	L	ML
Beit Habbaq	L	L	M	Bejjeh	L	L	M	Bekhaaz	L	L	M
Berbara Jbeil	L	L	M	Bintael	VL	VL	ML	Birket Hjoula	VL	VL	L
Blatt Jbeil	VL	L	ML	Boulhos	L	VL	L	Breyj Jbeil	VL	VL	L
Chamat	L	L	M	Chikhane	L	L	M	Chmout	L	L	M
Eddeh Jbeil	VL	L	M	Ehmej	L	VL	L	Fatre	VL	VL	L
Ferhet	L	VL	ML	Fghal	L	L	M	Frat	L	VL	L
Ghabat	L	L	L	Ghalboun	L	L	M	Gharzouz	L	L	M
Ghofrine	L	L	M	Habil	VL	VL	L	Halate	VL	VL	ML
Haqel	VL	L	ML	Hbaline	L	L	M	Hboub	VL	L	ML
Hdeine	L	L	L	Hema Er-Rehban	L	VL	L	Hema Mar Maroun Aann	L	VL	L
Hjoula	VL	VL	L	Hosrayel	L	L	M	Hsarat	L	L	M
Hsoun	VL	VL	L	Jaj	L	VL	L	Janne	L	VL	L
Jbeil	L	VL	M	Jeddeyel Jbeil	L	L	M	Jlisse	VL	VL	L
Jouret El-Qattine	VL	L	ML	Kfar Baal Annaya	VL	VL	L	Kfar Kidde	L	L	M
Kfar Kouas	VL	L	L	Kfar Mashoun	VL	L	M	Kfoun	VL	L	ML



Kharbe Jbeil	L	L	M	Laqlouq	L	VL	L	Lassa	L	L	L
Lehfed	VL	VL	ML	Maad	L	L	M	Mar Sarkis	L	L	L
Mastita	VL	VL	M	Mayfouq	VL	L	ML	Mazraat El Siyad	L	VL	L
Mazraat El-Maaden	L	VL	L	Mechane	VL	VL	L	Mechmech Jbeil	L	VL	L
Mehrin	VL	L	M	Mejdel El-Akoura	L	L	L	Mghayreh Jbeil	L	VL	L
Mounsef	L	L	M	Nahr Ibrahim	VL	VL	M	Qahmez	L	VL	L
Qartaba	L	VL	L	Qartaboun	L	VL	M	Qattara Jbeil	VL	VL	L
Qorqraya	L	VL	VL	Ramout	L	L	M	Ras Osta	VL	VL	L
Rihane Jbeil	L	L	M	Sakiet El-Khayt	L	L	M	Saqi Richmaya	L	VL	L
Sebrine	VL	L	L	Seraita	L	L	L	Souane Jbeil	L	VL	L
Tadmor	L	VL	L	Tartej	L	VL	L	Torzaiya	L	VL	L
Yanouh Jbeil	L	L	L	Zibidine Jbeil	VL	VL	L				

## El Metn

Municipality	14-Jan	15-Jan	16-Jan	Municipality	14-Jan	15-Jan	16-Jan	Municipality	14-Jan	15-Jan	16-Jan
Aain El-Qabu	L	VL	VL	Aain El-Qach	VL	VL	L	Aain El-Teffaha	VL	VL	L
Aain el-Safssaf El-M	VL	VL	L	Abou Mizane	VL	VL	L	Ain Aar	VL	VL	M
Ain Alaq	VL	VL	L	Ain El-Kharroube	VL	VL	L	Ain El-Sendiane	L	VL	L
Ain El-Zeitoune	L	VL	L	Ain Saadeh	VL	L	ML	Aintoura El-Matn	L	L	L
Amaret Chalhoub	VL	L	M	Antelias	VL	L	M	Atchaneh	VL	VL	L
Ayroun	VL	VL	L	Baabdat	L	VL	L	Baouchariyeh	VL	L	M
Baskinta	L	L	L	Beit Chabab	VL	VL	L	Beit El-Chaar	VL	VL	M
Beit El-Kekko	VL	VL	M	Beit Mery	VL	VL	L	Bhersaf	VL	VL	L
Bikfaya	VL	VL	L	Biyakout	VL	L	M	Bnabil	L	VL	L
Bourj Hammoud	VL	L	M	Bqennaya	VL	L	ML	Broummana El-Matn	VL	VL	L
Bsalim	VL	VL	L	Bsifrine	VL	VL	L	Bteghrine	L	VL	VL
Chaouiye	VL	VL	L	Chouaya El-Matn	VL	VL	L	Choueir	VL	VL	L
Chrine	VL	VL	L	Dahr El Sawan El-Mat	VL	VL	L	Daychouniyeh	VL	L	M
Dbayeh	VL	VL	M	Deir Chamra	VL	VL	L	Deir Mar Abda el Mch	VL	VL	L
Deir Mar Roukouz	VL	L	M	Deir Tamiche	VL	VL	L	Dik El-Mehdi	VL	VL	ML
Dikwaneh	VL	L	M	Douar El-Matn	L	VL	L	Fanar	VL	L	M
Fraike	VL	VL	L	Haret El-Ballaneh	VL	VL	ML	Hbous	VL	VL	M
Himlaya	VL	VL	L	Jal El Did	VL	L	M	Jdeideh El-Metn	VL	L	M
Jouar El-Matn	VL	VL	L	Jouret El-Ballout	VL	VL	L	Kaaqour	L	VL	L
Kfar Aaqab	L	VL	VL	Kfertay El-Matn	L	VL	VL	Khenchara	L	VL	L
Khillet El-Mtain	L	VL	L	Konnabat Broummana	VL	VL	L	Konnabat Salima	L	VL	L
Machraah El-Matn	L	VL	VL	Majdel Tarchich	L	L	L	Majzoub	VL	VL	ML
Mansouriyeh El-Metn	VL	L	M	Mar Boutros Karm Et-	VL	VL	L	Mar Chaya et Mzekke	VL	VL	L
Mar Moussa Ed-Douar	L	VL	L	Marjaba	L	VL	VL	Masqa	VL	VL	L
Mayasse	VL	VL	L	Mazraat Deir Aoukar	VL	VL	M	Mazraat El-Hadirat	VL	VL	ML
Mazraat Yachouh	VL	VL	M	Mchikha	L	L	L	Menqlet Mezher	VL	VL	M
Mhaydseh Matn	VL	VL	L	Mkalles	VL	L	M	Mrouj	L	VL	VL
Mtain	L	L	L	Mtayleb	VL	VL	ML	Nabay	VL	VL	L
Naccache	VL	VL	M	Ouadi Chahine	VL	VL	L	Ouadi El-Karm El-Mat	L	VL	VL
Ouata El-Mrouj	L	VL	L	Ouyoun El-Matn	VL	VL	L	Qornet Chehwan	VL	VL	ML
Qornet El-Hamra	VL	VL	L	Roumieh	VL	VL	L	Sfeilet Bikfaya	VL	VL	L
Sinn El-Fil	VL	L	M	Zabbougha	VL	VL	L	Zalqa	VL	L	M

Zarouon	L	VL	L	Zekrite	VL	VL	L	Zighrine El-Matn	VL	VL	L
Zouk El-Khrab	VL	VL	M								

## Chouf

Municipality	14-Jan	15-Jan	16-Jan	Municipality	14-Jan	15-Jan	16-Jan	Municipality	14-Jan	15-Jan	16-Jan
Aalmane El-Chouf	L	L	M	Aammq El-Chouf	L	VL	L	Ain Ouzein	L	VL	VL
Ain Qani	L	VL	VL	Ain Zhalta	L	L	L	Ainbal	L	VL	L
Amatour	L	VL	L	Anout	L	VL	L	Atrine	L	VL	L
Baadarane	L	VL	VL	Baaqline	L	VL	L	Baasir	L	L	M
Barja	L	L	M	Barouk	L	L	L	Bater	L	VL	VL
Batloun	L	VL	VL	Bayqoun	L	VL	ML	Bchetfine	VL	VL	L
Beiteddine	L	VL	L	Benouati Ech-Chouf	VL	VL	L	Berjein	L	VL	L
Bireh et Mtalleh	L	VL	VL	Biret El-Chouf	L	VL	L	Bkechtine Ouel Mchei	L	VL	L
Bkifa El-Chouf	L	L	ML	Botme	L	VL	VL	Bqaiaa Ech-Chouf	VL	VL	L
Bsaba El-Chouf	L	VL	L	Chammis El-Chouf	VL	L	M	Chehim	L	VL	ML
Chemaarine	VL	VL	L	Chourit	VL	VL	VL	Daher El-Chouf	VL	VL	L
Dalhoun	L	VL	ML	Damour	VL	L	M	Daraya El-Chouf	L	VL	L
Deir El-Moukhalles	L	VL	L	Deir Baba	VL	VL	L	Deir Dourit	L	VL	L
Deir El-Qamar	L	VL	L	Deir Kouche	VL	VL	L	Dibbieh	VL	VL	L
Dmit	VL	VL	L	Fouara Jaafar	L	VL	VL	Fraidis El-Chouf	L	L	L
Ghabet Jaafar	VL	VL	L	Gharife	L	VL	L	Haret Jandal	L	VL	VL
Hasrout	L	VL	L	Jadra	L	L	M	Jahlieh	L	VL	L
Jbeih El-Chouf	L	VL	L	Jdeidet El-Chouf	L	VL	L	Jiyeh	L	L	M
Jleilyeh	L	VL	L	Jmailiyeh	L	L	M	Joun	L	L	ML
Kahlounie El-Chouf	L	VL	L	Ketermaya	L	VL	M	Kfar Faqoud	L	VL	L
Kfar Hamal	L	L	ML	Kfar Him	L	VL	L	Kfar Katra	L	VL	L
Kfar Niss	L	VL	L	Kfar hay	L	VL	VL	Kfarnabrakh	L	VL	VL
Khirbet Bisri	VL	VL	L	Knayse El-Chouf	VL	VL	L	Maaniyeh	L	VL	M
Maasser Beiteddine	L	VL	VL	Maasser El-Chouf	L	L	L	Majdalouna	L	VL	ML
Majdel El-Meouch	L	VL	L	Mazboud	L	VL	ML	Mazmoura	L	VL	ML
Mazraat El Chouf	L	VL	L	Mazraat El Daher	L	VL	L	Mazraat El-Douair	L	VL	VL
Mechref	VL	L	ML	Mghairie	L	VL	M	Mghayrie El-Chouf	VL	VL	L
Moukhtara	L	VL	VL	Mrusti	L	L	L	Mtolle	L	VL	L
Naameh	VL	ML	ML	Niha El-Chouf	L	L	L	Ouadi Abou Youssef	VL	VL	VL
Ouadi Ed-Deir	L	VL	L	Ouadi El-Sit	L	VL	VL	Ouadi bnehlay	L	VL	L
Qraibeh	L	VL	L	Qreiaa	L	VL	L	Rmayle El-Chouf	L	L	M
Semqaniyeh	L	VL	L	Sibline	L	L	M	Sirjbeil	VL	VL	L
Warhanieh	L	VL	VL	Werdaniyeh	L	L	M	Zaarourieh	L	VL	L

## Baabda

Municipality	14-Jan	15-Jan	16-Jan	Municipality	14-Jan	15-Jan	16-Jan	Municipality	14-Jan	15-Jan	16-Jan
Abadiyeh	VL	VL	L	Ain Mouaffaq	VL	VL	L	Araiya	VL	VL	L
Arbaniyeh	VL	VL	L	Arsoun	L	VL	L	Baabda	VL	L	M
Baalchmey	VL	VL	ML	Bmaryam	L	VL	L	Bourj El-Brajneh	L	L	M
Boutchay	VL	L	ML	Bsaba Baabda	VL	L	M	Btekhney	L	VL	L
Btibyat	L	VL	L	Bzebdine	L	VL	L	Chbeniyeh	L	VL	L
Chiyah	L	L	M	Chmeisset Baabda	L	VL	L	Chouit	VL	VL	L
Deir El-harf	L	VL	L	Deir Khouna	L	VL	L	Dlaybeh	L	VL	L



Falougha	L	L	L	Furn El-Chebbak	VL	L	M	Hadath Beyrouth	VL	L	M
Halaliyeh Baabda	VL	VL	L	Hammana	L	L	L	Haret El Sett	VL	L	L
Haret Hamze	L	VL	L	Haret Hreik	L	L	M	Hasbaiya El-Metn	L	VL	L
Jouar El-Hoz	L	L	L	Jouret Arsoun	L	VL	L	Kfar Chima	VL	L	M
Kfar Selouane	L	L	L	Khalouat Baabda	L	VL	L	Kneisset Baabda	VL	VL	L
Laylakeh	VL	L	M	Louayzeh Baabda	VL	L	ML	Merdache	VL	L	M
Mzairaa Baabda	VL	VL	L	Ouadi Chahrour El Ol	VL	L	ML	Ouadi Chahrour El So	VL	L	L
Qalaa Baabda	L	VL	L	Qhraybe Baabda	L	VL	L	Qobbayaa	L	VL	L
Qornayel	L	VL	L	Qortada	VL	VL	L	Qrayeh Baabda	L	VL	L
Qsaibeh Baabda	VL	VL	L	Qtale Baabda	L	VL	L	Ras El Metn	VL	VL	L
Ras El-Haref	L	VL	L	Rouayset El-Ballout	VL	VL	L	Salima Baabda	L	VL	L
Tahouitat El Ghadir	VL	ML	M	Tarchich	L	L	L	Zandouqa	VL	VL	L

## Aley

Municipality	14-Jan	15-Jan	16-Jan	Municipality	14-Jan	15-Jan	16-Jan	Municipality	14-Jan	15-Jan	16-Jan
Abey	VL	VL	ML	Aghmid	L	VL	VL	Ain Dara	L	L	L
Ain Drafil	VL	L	L	Ain El Halazoun	L	VL	L	Ain El-Rmmaneh	VL	VL	L
Ain Jedideh	L	VL	ML	Ain Ksour	VL	VL	L	Ain Onoub	VL	L	ML
Ain Traz	VL	VL	L	Ainab	VL	VL	L	Aley	VL	L	ML
Aramoun	VL	L	ML	Aytat	VL	L	M	Azouniyeh	L	VL	L
Baawerta	VL	L	L	Badghan Oua Wadi Bad	L	VL	VL	Bassatine	VL	VL	ML
Bayssour	VL	VL	ML	Bchamoun	VL	L	ML	Bdadoun	VL	L	L
Behouara	L	VL	L	Bennay	VL	VL	ML	Bhamdoun El-Dayaa	VL	L	ML
Bhamdoun El-Mhatta	L	L	L	Bkhechey	L	VL	ML	Bleibel	VL	L	L
Bmakine	VL	L	M	Bmehray	L	L	L	Bouzrid	VL	VL	L
Bserrine	L	VL	L	Bsous	VL	VL	L	Btalloun	VL	L	ML
Btater	L	VL	L	Chanay	L	L	L	Charoun	L	L	L
Chartoun	VL	VL	L	Chemlane	VL	L	ML	Chouifat El-Aamrous	VL	L	M
Chouifat El-Oumara	VL	L	M	Chouifat El-Quoubbe	VL	ML	M	Dakkoun	VL	L	L
Deir Qoubel	VL	L	L	Dfoun	VL	L	ML	Douair El Remmaneh	VL	VL	L
Ghaboun	VL	VL	L	Habramoun	L	VL	VL	Homs Oua Hama	L	VL	L
Houmal	VL	L	ML	Jisr El Qadi	VL	VL	L	Kehaleh	VL	VL	L
Keyfoun	VL	L	M	Kfar Aamey	VL	VL	L	Kommatyeh	VL	L	ML
Maasrati	L	VL	L	Majdel Baana	L	VL	L	Mansourieh et Ain El	L	VL	L
Mazraat El-Nahr	L	VL	VL	Mchakhte	L	L	VL	Mecherfeh	L	VL	L
Mejdlaya	VL	VL	ML	Mrayjat	L	L	VL	Ramliyah	L	VL	L
Rechmaya	L	VL	L	Rejmeh	VL	VL	L	Remhala	VL	VL	ML
Rouaysset El Neemane	L	VL	L	Saoufar	L	VL	L	Selfaya	VL	VL	L
Sirhmoul	VL	VL	L	Souq El Ghareb	VL	L	ML	Taazanieh	VL	VL	ML

## Kesrouane

Municipality	14-Jan	15-Jan	16-Jan	Municipality	14-Jan	15-Jan	16-Jan	Municipality	14-Jan	15-Jan	16-Jan
Achkout	VL	VL	L	Adma Oua Dafneh	VL	VL	M	Ain Ed-Delbe Kesroua	L	VL	VL
Ain El-Rihane	VL	VL	L	Aintoura Kesrouane	VL	VL	ML	Ajaltoun	VL	VL	L
Akaybeh Kesrouane	VL	VL	M	Aramoun Kesrouane	VL	VL	L	Azra ouel Ozor	VL	VL	L
Ballouneh	VL	VL	L	Batha	VL	VL	L	Bekaatat Achkout	L	VL	L
Bekaatat Kanaan	L	VL	VL	Bizhel	VL	VL	L	Bouar	VL	VL	M
Bqaatouta	L	VL	VL	Bqaq Ed-Dine	VL	VL	M	Bzommar	VL	VL	L

Chahtoul	L	VL	L	Chnaniir	VL	VL	L	Chouan	L	VL	VL
Daraya Kesrouane	VL	VL	L	Darououn	VL	VL	L	Deir Baqlouch	VL	VL	L
Dlebta	VL	VL	L	Eghbeh	VL	VL	VL	Faraya	L	L	L
Fatka	VL	VL	ML	Feytroun	L	VL	L	Ghazir	VL	VL	L
Ghbaleh Kesrouane	VL	VL	L	Ghedrass	VL	VL	L	Ghosta	VL	VL	L
Ghyneh	L	VL	ML	Harharaya w Kattine	VL	VL	L	Harissa Kesrouane	VL	VL	L
Hayata	L	VL	L	Hosein	VL	VL	L	Hrajel	L	L	L
Jdeideh Ghazir	VL	VL	L	Jeita	VL	VL	L	Jounieh Ghadir	VL	VL	ML
Jounieh Haret Sakhr	VL	VL	M	Jounieh Salel Alma	VL	VL	ML	Jounieh Sarba	VL	VL	M
Jouret Bedrane	VL	VL	L	Jouret Mhad	L	VL	L	Jouret Termos	L	VL	ML
Kfar Debiane	L	VL	L	Kfar Tay Kesrouane	L	VL	VL	Kfar Yassine	VL	VL	M
Kfour Kesrouane	VL	VL	L	Kharayeb Nahr Ibrahi	VL	VL	ML	Klayaat Kesrouane	VL	VL	L
Maarab	VL	VL	L	Maaysra Kesrouane	VL	VL	L	Mayrouba	L	VL	L
Mazraat Er-Ras	VL	VL	ML	Mazraat Mrah El-Mir	VL	VL	L	Mchaa El Ftouh	M	ML	L
Mchaa Faraya	ML	L	L	Mchaa Kfar Dibiane	ML	L	L	Mghaer	L	VL	L
Mradiyah	VL	VL	L	Nahr Ed-Dahab	L	VL	L	Nammoura Kesrouane	VL	VL	L
Ouata El Jaouz	L	VL	L	Ouata Sillam	VL	VL	M	Raachine	L	VL	L
Rayfoun	VL	VL	L	Safra Kesrouane	VL	VL	M	Shayle Kesrouane	VL	VL	L
Tabarja	VL	VL	M	Yahchouch	VL	VL	L	Zaaytreh	VL	VL	L
Zeytoun	VL	VL	ML	Zouk Mikael	VL	VL	M	Zouk Mosbeh	VL	VL	M

## Baalbek\_Hermel

### Baalbek

Municipality	14-Jan	15-Jan	16-Jan	Municipality	14-Jan	15-Jan	16-Jan	Municipality	14-Jan	15-Jan	16-Jan
Aadous	M	ML	M	Aamchki	M	L	L	Aarsal	M	M	M
Ain Baalbek	M	M	M	Ain Bourday	M	L	ML	Ain El-Benye	M	ML	L
Ain El-Jaouz Baalbek	M	M	M	Ain El-Siya Chadoura	M	ML	L	Al Khodr Baalbek	ML	ML	M
Al Nabi Chit	ML	M	M	Aynata Baalbek	M	M	M	Baalbek	M	ML	M
Bachwat	L	L	ML	Barqa	L	L	ML	Bednayel Baalbak	M	M	ML
Beit Chama	M	M	M	Bijjaje	M	M	M	Bouday	L	ML	ML
Brital	ML	ML	M	Btadi	L	M	M	Chaat	M	M	M
Chaibe	M	L	L	Chlifa	ML	ML	M	Chmestar	M	ML	M
Dar El-Oussa	L	ML	M	Deir El-Ahmar	ML	ML	M	Deir Mar Maroun Baal	M	M	M
Douris	M	ML	M	Fakiha	M	M	M	Hadath Baalbek	L	ML	M
Ham	M	ML	L	Haour Taala	ML	ML	M	Hizzine	ML	ML	ML
Hlebta	M	M	M	Hosh Barada	M	ML	M	Hosh El Dahab	M	ML	M
Hosh El Snid	M	ML	ML	Hosh El-Nabi	M	ML	ML	Hosh El-Rafiq	M	M	M
Hosh Tal Safiya	M	ML	M	Hrebta	M	M	M	laat	M	ML	ML
Jebaa	ML	M	M	Jenta	L	ML	ML	Kfar Dabach	M	M	M
Kfar Dane	L	ML	M	Khraibeh El-Hermel	M	M	M	Khreibet Baalbek	L	ML	ML
Kneisset Baalbek	M	M	M	Labueh	M	M	M	Maarboun	ML	ML	ML
Majdaloun	M	ML	M	Maqneh	M	M	M	Mazraat Beit Mcheik	M	M	M
Misraya	M	ML	M	Moqraq	M	M	M	Nabha El-Damdoum	M	M	M
Nabi Chbay	ML	L	L	Nabi Osman	M	M	M	Nahleh baalbek	M	M	ML
Ouadi El-Oss	M	M	M	Qaa Baayoun	M	M	M	Qaa Jouar Maqiye	M	M	M
Qaa Ouadi El-Khanzir	M	M	M	Qah Baalbek	M	M	M	Qarha Baalbek	M	M	M



Qsarnaba	M	ML	M	Ram Baalbek	ML	L	M	Ras Baalbek El Sahl	M	M	M
Ras Baalbek El-Charq	M	M	M	Riha	M	M	M	Saaide	L	ML	ML
Sbouba	M	M	M	Seriine El-Tahta	ML	M	M	Slouqi	M	ML	ML
Taiba Baalbek	M	ML	M	Talia	M	ML	ML	Taraiya	ML	ML	ML
Temnin El Fawqa	M	M	M	Temnin El-Tahta	M	ML	ML	Tfail	M	M	M
Yahfoufa	L	ML	ML	Yammouneh	ML	M	ML	Younine	M	M	M
Zboud	M	M	M								

## Hermel

Municipality	14-Jan	15-Jan	16-Jan	Municipality	14-Jan	15-Jan	16-Jan	Municipality	14-Jan	15-Jan	16-Jan
Charbine El-Hermel	ML	M	M	Hermel Jbab	M	M	M	Hermel	M	M	M
Maaysra El-Hermel	M	M	M	Michaa Mrajhine	ML	M	M	Ouadi Faara	M	M	M
Ras Baalbek - Ouadi	M	M	M	Ras Baalbek El Gharb	ML	ML	M	Zighrine	L	M	M

## Akkar

### Akkar

Municipality	14-Jan	15-Jan	16-Jan	Municipality	14-Jan	15-Jan	16-Jan	Municipality	14-Jan	15-Jan	16-Jan
Aain Tinta	L	M	M	Aaiyat	L	M	M	Aakkar El-Aatiqa	L	ML	M
Aamar Akkar	ML	M	M	Aamar El Baykat	L	L	M	Aamayer	L	M	M
Aamriyet Akkar	L	ML	M	Aandqet	L	M	M	Aarmeh	L	L	M
Aarqa	ML	ML	M	Aawaynat	L	M	M	Aayoun Akkar	L	ML	M
Abboudiye	L	L	M	Ain El-Zeit	L	M	M	Ain Yaaqoub	L	ML	M
Akroum	M	M	M	Aridet Cheikh Zennad	L	ML	M	Baldeh w Mazraat Bal	L	ML	M
Barcha	L	ML	M	Bardeh	L	M	M	Bebnine	ML	M	M
Beino	L	ML	M	Beit Ayoub	L	M	M	Beit El-Haouch	ML	M	M
Beit Mellat	L	ML	M	Beit Younes	L	L	M	Berbara Akkar	L	M	M
Berqayel	ML	M	M	Bezbina	L	L	M	Bireh Akkar	L	M	M
Borj	L	ML	M	Bqerezla	L	ML	M	Bzal	L	ML	M
Chane	L	L	M	Chaqdouf	ML	M	M	Charbila	L	ML	M
Cheikh Mohammad	L	L	M	Cheikh Taba Es-Sahl	ML	ML	M	Cheikh Taba	L	L	M
Cheikh Zennad	L	ML	M	Cheikhlar	L	M	M	Chir Hmairine	L	ML	M
Daghle	L	M	M	Dahr Laissine	L	ML	M	Darine	L	ML	M
Dawra	L	ML	M	Dawsa w Baghdadi	L	ML	M	Dayret Nahr El-Kabir	L	VL	M
Deir Dalloum	ML	M	M	Deir Jennine	L	ML	M	Denbou	L	L	M
Dibbabiyyeh	L	ML	M	Douair Aadwiyeh	L	M	M	Fassikine	L	M	M
Fnaydek	L	L	M	Fraydes Akkar	L	ML	M	Ghazayle	L	ML	M
Habchit	L	L	M	Hakour	L	ML	M	Halba	ML	ML	M
Haouchab	L	L	M	Hayssat	L	ML	M	Haytla	L	L	M
Hayzouq	L	ML	M	Hedd	L	ML	M	Hmaira Akkar	L	ML	M
Hmaiss Akkar	L	M	M	Hnaider	M	M	M	Hokr Ed-Dahri	L	ML	M
Hokr Etti	L	ML	M	Hokr Jouret Srar	L	L	M	Houaich	L	L	M
Hrar	L	ML	M	Idbil	L	L	M	llat	L	ML	M
Janine	L	ML	M	Jdeidet El-Joumeh	ML	L	M	Jdeidet El-Kaiteh	L	M	M
Jebraïel	L	ML	M	Kafr	L	L	M	Kafr	L	M	M
Karm Asfour	L	L	M	Kfar Melki Akkar	M	M	M	Kfar Noun	L	L	M
Kfarharra	L	M	M	Khalsa	L	M	M	Kharnoubet Akkar	L	ML	M

Khirbet Daoud Aakkar	L	M	M	Khirbet El Remmane	L	M	M	Khirbet Shar	L	M	M
Khoreybet El-Jindi	L	ML	M	Khreibet Aakkar	L	ML	M	Kneisset Aakkar	L	ML	M
Kneisset Hnaider	M	M	M	Knisse	L	M	M	Kroum El-Aarab	L	L	M
Kwachra	L	M	M	Kweykhat	ML	ML	M	Machta Hammoud	L	ML	M
Majdala	ML	M	M	Majdel Akkar	L	M	M	Mar Touma	ML	M	M
Marlaya Melhem	M	M	M	Mashha	L	L	M	Massoudiye	L	ML	M
Mazraat Beit Ghattas	L	ML	M	Mazraat En-Nahriye	L	M	M	Mechmech	L	L	M
Memneh	L	L	L	Mhammara	ML	M	M	Mighraq Aakkar	L	ML	M
Minyara	L	L	M	Moqayteh	M	M	M	Mounjez	L	ML	M
Msalla	L	ML	M	Mzeihmeh	L	ML	M	Nfaiseh	L	L	M
Noura Et-Tahta	L	L	M	Ouadi El-Haour	L	L	M	Ouadi El-Jamous	ML	M	M
Ouyoun El-Ghizlane	ML	M	M	Qaabarine	M	M	M	Qabaait	L	ML	M
Qachlaq	L	L	M	Qantara Aakkar	L	ML	M	Qarha Aakkar	M	M	M
Qarqaf	ML	M	M	Qboula	L	ML	M	Qleiaat Aakkar	M	M	M
Qloud El-Baqie	L	ML	M	Qobaiyat Aakkar	L	M	M	Qobbat Chamrat	M	M	M
Qorayat	L	L	M	Qornet Aakkar	L	ML	M	Qsair Aakkar	L	ML	M
Rahbe	L	ML	M	Rihaniyet Aakkar	L	ML	M	Rmah	L	ML	M
Rmoul	M	M	M	Saadine	L	ML	M	Sadaqa	ML	ML	M
Saidnaya	L	M	M	Sammouniye	ML	ML	M	Sayssoq	L	L	M
Semmaqiye	L	ML	M	Semmaqli	M	M	M	Sfinet El-Dreib	L	M	M
Sfinet El-Qaitaa	L	M	M	Sindyanet Zeidane	L	M	M	Souaisset Aakkar	L	ML	M
Srar	L	L	M	Tal Abbas El Gharby	ML	ML	M	Tal Abbas El-Chargy	L	L	M
Tal Biret	L	L	M	Tal Hmayra	L	ML	M	Tal Maayan Tal Kiri	L	ML	M
Tal Sibel	M	M	M	Tallet Chattaha	L	ML	M	Tikrit	L	ML	M
Tleil	L	ML	M	Tshea	L	L	M	Zawarib	L	L	M
Zouq El Hosniyeh	L	ML	M	Zouq El-Haddara	ML	M	M	Zouq El-Hbalsa	L	ML	M
Zouq El-Moqachrine	ML	M	M								

## Sud

### Sour

Municipality	14-Jan	15-Jan	16-Jan	Municipality	14-Jan	15-Jan	16-Jan	Municipality	14-Jan	15-Jan	16-Jan
Aaiyeh	L	VL	M	Aalma El-Chaab	L	L	L	Aaytit	VL	VL	M
Abbassiyeh Sour	L	VL	M	Abou Chech	L	L	ML	Ain Abou Abdallah	L	VL	M
Ain Baal	L	VL	M	Arzoun	VL	VL	ML	Aziyeh	L	VL	L
Baflaya	VL	VL	M	Barich	VL	VL	M	Batouliyeh	L	VL	M
Bayad	L	VL	ML	Bazouriyeh	L	VL	M	Bediass	VL	VL	M
Bestiyat	VL	VL	M	Borj El Chemali	L	VL	M	Borj En-Naqoura	L	L	ML
Borj Rahhal	VL	VL	M	Boustane	L	VL	M	Btaychiyeh	L	L	ML
Chaaitiye	L	L	M	Chameh	L	VL	L	Chehabiye	VL	VL	ML
Chehour	VL	VL	L	Chihine	VL	VL	ML	Debaal Sour	VL	VL	M
Deir Amess	L	VL	ML	Deir Kifa	VL	VL	ML	Deir Qanoun El-Ain	L	VL	M
Deir Qanoun El-Naher	VL	VL	M	Derdghaiya	VL	VL	ML	Dhayra	L	VL	ML
Halloussiyeh	VL	VL	M	Hamoul	L	VL	L	Hanaouey	L	L	M
Henniye	L	VL	M	Hmairi Sour	VL	VL	M	Iskandarouna Sour	L	VL	L
Jbal El Botom	L	VL	ML	Jebbin	L	VL	M	Jennata	VL	VL	M
Jijim	L	VL	L	Jouaiya	VL	VL	M	Kneisset Sour	L	L	M



Maarake	VL	VL	M	Maaroub	VL	VL	M	Majadel	VL	VL	M
Majdalzoun	L	VL	ML	Mansouri Sour	L	L	M	Marnba	VL	VL	L
Marouahine	VL	VL	ML	Mazraat El-Zalloutiy	L	VL	M	Mazraat Mechref	L	VL	M
Mazraat Tayr Semhat	VL	VL	L	Mheilib	L	VL	M	Neffakhiyeh	VL	VL	ML
Niha Sour	VL	VL	ML	Ouadi Jilo	VL	VL	M	Qana	L	VL	M
Qolaileh Sour	L	VL	M	Rechknany	L	VL	ML	Rmadiyah	L	L	M
Selha Sour	VL	VL	ML	Siddiqine	L	VL	ML	Sour	M	L	M
Srifa	VL	VL	ML	Tayr Debbe	L	VL	M	Tayr Felsay	VL	VL	M
Tayr Harfa	L	VL	ML	Touayri	VL	VL	L	Toura	VL	VL	M
Yanouh Sour	VL	VL	M	Yarine	L	VL	M	Zebqine	VL	VL	L

## Saida

Municipality	14-Jan	15-Jan	16-Jan	Municipality	14-Jan	15-Jan	16-Jan	Municipality	14-Jan	15-Jan	16-Jan
Aanqoun	L	VL	M	Aaqtanit	L	L	M	Aarab Ej-Jall	L	VL	ML
Aarab Tabbaya	L	VL	M	Abra Saida	L	L	M	Adloun	L	VL	M
Adousiyeh	L	L	M	Ain-El-Deleb	L	L	M	Arzai	VL	VL	M
Babliyah	L	VL	M	Barty	VL	VL	ML	Bissariyeh	L	L	M
Bnaafoul	L	VL	M	Bqosta	L	L	M	Bramiy	L	L	M
Daoudiyeh	L	VL	M	Dareb El-Sim	L	L	M	Erkay	L	VL	M
Ghassanieh	L	L	M	Ghazieh	L	L	M	Hajjeh	L	VL	M
Haret Saida	L	L	M	Hartiyeh	VL	VL	M	Hlaliye Saida	L	L	M
Insariyat	L	VL	M	Jazira Saida	VL	VL	M	Kafar Bit	VL	VL	ML
Kaoutariyet El-Siyad	L	VL	M	Kfar Chellal	VL	VL	ML	Kfar Hatta Saida	L	VL	ML
Kfar Milke Saida	VL	VL	ML	Khartoum	L	VL	M	Khaziz	L	VL	M
Khirbet Ed-Douair Sa	L	VL	M	Khirbet El-Bassal	L	L	M	Khrayeb Saida	VL	VL	M
Loubieh	L	L	M	Maghdouche	L	L	M	Majdelyoun	L	L	M
Matariyet El-Choumar	VL	VL	M	Matayriyeh	L	L	M	Mazraat 'Mseileh	L	L	M
Mazraat 'Snaiber	L	VL	M	Mazraat Aarab Soukka	L	VL	ML	Mazraat Deir Taqla	VL	VL	M
Mazraat El Yahoudiye	L	VL	M	Mazraat El-Housseini	L	L	M	Mazraat El-Mhaydaleh	VL	VL	M
Mazraat El-Ouasta	VL	VL	M	Mazraat Jamjim	VL	VL	M	Mazraat Kaoutariyet	VL	VL	M
Mazraat Kfar Badda	VL	VL	M	Mazraat Oussamiyat	VL	VL	M	Mazraat Sari	VL	VL	M
Mazraat Sinai	L	VL	M	Meemariyeh	L	VL	M	Merouaniyeh	L	VL	M
Miyeh ou Miyeh	L	L	M	Najjariyeh	L	L	M	Qaaqiyat El-Snaouba	L	VL	M
Qnarit	L	L	M	Qraiye Saida	L	L	M	Saida Ed-Dekermane	L	L	M
Saida El-Oustani	L	L	M	Saida El-Qadimeh	L	L	M	Saida Kefraya	L	L	ML
Saksakiyeh	L	L	M	Salhieh Saida	L	L	M	Sarafand	L	VL	M
Sfenta	VL	VL	L	Tafahta	L	VL	M	Tanbourit	L	VL	M
Tebna	L	VL	M	Zaghdraiya	L	L	M	Zeita	L	VL	M
Zrariyeh	VL	VL	M								

## Jezzine

Municipality	14-Jan	15-Jan	16-Jan	Municipality	14-Jan	15-Jan	16-Jan	Municipality	14-Jan	15-Jan	16-Jan
Ain El-Mir (El Estab	L	VL	M	Anane	VL	VL	L	Aramta	VL	L	L
Ariya	L	VL	L	Aychiyeh	VL	VL	L	Azour	VL	VL	L
Baba	VL	VL	L	Bayssour Jezzine	L	VL	M	Benoueteh Jezzine	VL	VL	L
Bhannine	L	VL	VL	Bisri	VL	VL	VL	Bkassine	VL	VL	L
Bouslaya	VL	VL	L	Btedine El-Leqech	VL	VL	L	Chbail	VL	VL	VL
Choualiq Jezzine	L	L	M	Dahr Ed-Deir	VL	VL	L	Deir El Qattine	VL	VL	L

Demachqiyeh	VL	VL	ML	Ghabbatiyeh	VL	VL	L	Harf Jezzine	VL	VL	VL
Hassaniyeh	L	VL	ML	Haytoupleh	L	VL	ML	Haytura	VL	VL	L
Hidab	VL	VL	L	Homsiyeh	VL	VL	L	Jabal Toura	VL	VL	L
Jarmaq	VL	VL	L	Jensnaya	L	L	M	Jernaya	L	VL	ML
Jezzine	VL	L	L	Karkha	L	VL	ML	Kfar Falous	VL	VL	M
Kfar Houna	L	L	L	Kfar Jarrah	L	L	M	Lebaa	L	VL	M
Louayzet Jezzine	VL	VL	L	Machmouche	VL	VL	VL	Mahmoudiyeh Jezzine	VL	VL	L
Maknounye Jezzine	VL	VL	L	Maraat Ouzaïyeh	VL	VL	L	Mazraat Daraya	VL	L	L
Mazraat El-Aarqoub	VL	VL	L	Mazraat El-Mathane	VL	VL	VL	Mazraat El-Rahbane	VL	VL	L
Mazraat Khallet Khaz	VL	VL	L	Mazraat Louzid (Loua	VL	VL	L	Mazraat Qrouh	VL	VL	L
Mazraat Tamra	VL	VL	ML	Mazraat Zighrine Jez	VL	VL	L	Mazraat	VL	VL	L
Mharbiyeh	L	VL	M	Midane Jezzine	VL	VL	L	Mjeydel Jezzine	L	VL	M
Mlikh	VL	VL	L	Mrah El-Hbasse	L	VL	M	Ouadi Baanqoudaine	L	L	M
Ouadi El-Laymoun	L	VL	ML	Ouardiyeh	VL	VL	VL	Qabaa Jezzine	VL	VL	L
Qatrani	VL	L	L	Qaytoupleh	VL	VL	L	Qtaleh Jezzine	L	VL	L
Rihane Jezzine	VL	L	L	Rimat	VL	VL	L	Roum	VL	VL	L
Roummanet	VL	VL	L	Sabbah	VL	VL	VL	Saydoun	VL	VL	L
Sfaray	VL	VL	L	Snaya	VL	VL	L	Sojoud	VL	L	L
Srayri	L	L	L	Taaid	VL	VL	VL	Wadi Jezzine	VL	VL	VL
Zhalta	VL	VL	L								

## Bekaa

### West Bekaa

Municipality	14-Jan	15-Jan	16-Jan	Municipality	14-Jan	15-Jan	16-Jan	Municipality	14-Jan	15-Jan	16-Jan
Aammiq BG	L	ML	M	Ain El Tineh BG	L	L	L	Ain Zebdeh	L	L	L
Ana	L	ML	M	Aytanit	L	L	L	Baaloul BG	L	L	L
Bab Mareh	L	L	L	Chouberqiye Aammiq	L	ML	M	Dakoue	L	ML	ML
Deir Ain El-Jaouze	L	L	L	Deir Tahniche	L	ML	M	Ghaza	L	ML	ML
Harime El-Soughra	L	M	M	Hoch Harimeh	L	ML	M	Jazira BG	L	M	M
Jib Jennine	L	ML	ML	Kamed-El-Laouz	L	ML	ML	Kefraya BG	L	L	L
Khiara El Atika	L	ML	ML	Khiara	L	ML	ML	Khirbet Qanafar	L	L	L
Lala	L	ML	ML	Lebbaya BG	L	L	L	Loussa	L	L	L
Machghara	L	L	L	Manara (Hammara) BG	L	L	L	Mansoura BG	L	ML	M
Marej BG	L	M	M	Maydoun	L	L	L	Ouaqf BG	L	M	M
Qaraaoun	L	L	L	Qelya	L	VL	L	Raouda (Istabel)	L	M	M
Saghbine	L	L	L	Sohmor	L	L	L	Soltan Yacoub el Ara	L	ML	ML
Souairy	L	M	ML	Sultan Yaacoub	L	ML	ML	Tal Znoun	L	ML	M
Yehmor BG	L	L	L	Zilaya	L	VL	L				

### Zahle

Municipality	14-Jan	15-Jan	16-Jan	Municipality	14-Jan	15-Jan	16-Jan	Municipality	14-Jan	15-Jan	16-Jan
Aanjar (Haouch Mouss	L	ML	M	Ablah	M	ML	ML	Ain Kfarzabad	L	ML	ML
Ali-El-Nahri	M	ML	M	Bar Elias	L	ML	ML	Bouarej	L	ML	ML
Cheberqiyet Tabet	L	M	M	Chtaura	L	M	M	Deir El Ghazal	L	L	ML
Delhamiyet Zahle	L	ML	ML	Ferzol	M	M	M	Haouch El-Ghanam	M	ML	ML
Haouch Es-Siyadeh	L	M	M	Haouch Hala	ML	ML	ML	Haouch Mandara	L	M	M



Haouch Qayssar	L	M	M	Hezerta	M	ML	L	Hosh Moussa	L	ML	ML
Jdita	L	M	M	Kfarzabad	L	ML	ML	Ksara	L	ML	ML
Majdel Aanjar	L	ML	ML	Makssi	L	M	M	Massa	L	M	M
Mazraat Er-Remtaniye	L	ML	ML	Mrayjat Zahle	L	ML	ML	Mzaraa Zahle	L	M	M
Nabi Ayla	M	ML	ML	Nasriyet Rizk	L	M	M	Nasriyet Zahle	L	M	M
Niha Zahle	M	ML	ML	Ouadi Ed-Deloum	L	L	L	Ouadi El-Arayech	ML	M	ML
Qaa El Rim	M	ML	ML	Qab Elias	L	M	M	Qousaya	L	L	ML
Rhit	L	ML	ML	Riyak	M	ML	ML	Saadnayel	L	M	M
Taal El-Akhdar	L	M	M	Taalbeya	L	M	M	Taanayel	L	M	M
Talamara	M	ML	ML	Tcheflik Edde Haouch	L	M	M	Tcheflik Qiqano	L	M	M
Terbol Zahle	L	ML	ML	Touaite Zahle	ML	ML	ML	Zahle Aradi	ML	M	ML
Zahle El-Berbara	L	M	ML	Zahle El-Maallaqa	ML	M	ML	Zahle El-Midane	ML	M	ML
Zahle Er-Rassiye	ML	M	ML	Zahle Haouch El-Ouma	L	ML	ML	Zahle Haouch El-Ouma	L	ML	ML
Zahle Haouch Ez-Zara	ML	M	ML	Zahle Maalaga Aradi	ML	ML	ML	Zahle Mar Antonios	ML	M	ML
Zahle Mar Elias	ML	M	ML	Zahle Mar Gerios	ML	M	ML	Zahle Saydet En-Naja	M	M	M
Zebdoul	L	M	M								

## Rachaiya

Municipality	14-Jan	15-Jan	16-Jan	Municipality	14-Jan	15-Jan	16-Jan	Municipality	14-Jan	15-Jan	16-Jan
Ain Arab Rachaiya	L	ML	ML	Ain Ata	L	L	L	Ain Harche	L	L	L
Aqabe Rachaya	L	L	L	Ayha	L	M	ML	Ayta El Fokhar	L	M	ML
Bakifa Rachaya	L	L	L	Bakka	L	M	M	Beit Lahya	L	L	L
Bireh Rachaiya	L	ML	ML	Daheer El Ahmar	L	ML	L	Deir El-Achayer	ML	M	M
Heloua Rachaiya	ML	M	M	Hoch El Qannabeh Rac	L	L	L	Kaoukaba Bou Arab	L	L	L
Kfar Danis	L	L	L	Kfar Mechki	L	L	L	Kfar Qouq	L	M	M
Kherbet Rouha	L	ML	L	Majdel Balhiss	L	L	L	Mdoukha	L	ML	L
Mhaydseh Rachaiya	L	ML	L	Nabi Safa	L	L	L	Rachaiya	L	L	L
Rafid Rachaiya	L	ML	L	Selsata (Mazraat Dei	L	ML	M	Tannoura	L	L	L
Yanta	L	M	M								

## Beyrouth

### Beyrouth

Municipality	14-Jan	15-Jan	16-Jan	Municipality	14-Jan	15-Jan	16-Jan	Municipality	14-Jan	15-Jan	16-Jan
Achrafieh	VL	L	M	Ain el-Mreisse	L	L	M	Bachoura	L	L	M
Beirut Central Distr	L	L	M	Marfai	L	L	M	Mazraa	L	L	M
Medaouar	VL	L	M	Minet el-Hosn	L	L	M	Mwssaitbeh	L	L	M
Ras Beirut	L	L	M	Rmeil	VL	L	M	Saifi	L	L	M
Zqaq el-Blat	L	L	M								