

# Lebanon Fire Risk Bulletin



CIVIL DEDEFENCE

**Refer to cadast table condition.**

**Please note that the indicated temperature is at 2 meters height from the ground.**

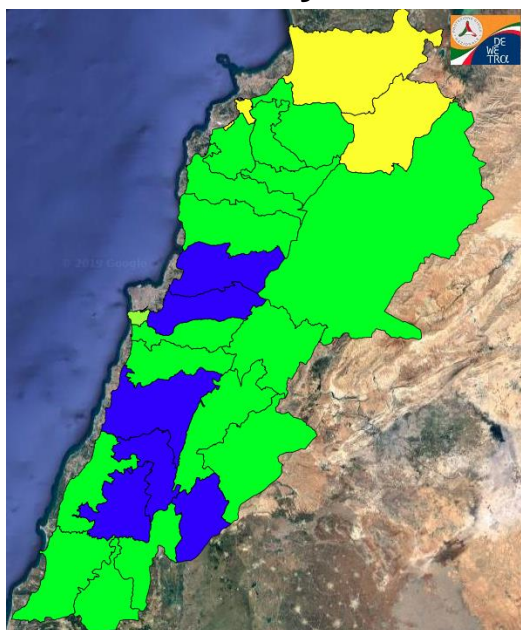
General description of potential fire risk situation

Symbol	Level of risk	Meaning and actions
VL	Very low	Very low fire risk. Controlled burning operations can be hardly executed due to high fuel moisture content. Normally wildfires self-extinguish.
L	Low	Low fire risk. Controlled burning operations can be executed with a reasonable degree of safety.
ML	Medium low	Medium-low fire risk. Controlled burning operations can be executed in safety conditions. All the fires need to be extinguished.
M	Medium	Medium fire risk. Controlled burning operations would be avoided. All the fires need to be very well extinguished.
M	Medium high	Controlled burning is not recommended. Open flame will start fires. Cured grasslands and forest litter will burn readily. Spread is moderate in forests and fast in exposed areas. Patrolling and monitoring is suggested. Fight fires with direct attack and all available resources.
H	High	Ignition can occur easily with fast spread in grass, shrubs and forests. Fires will be very hot with crowning and short to medium spotting. Direct attack on the head may not be possible requiring indirect methods on flanks. Patrolling and monitoring the territory is highly suggested.
E	Extreme	Ignition can occur also from sparks. Fires will be extremely hot with fast rate of spread. Control may not be possible during day due to long range spotting and crowning. Suppression forces should limit efforts to limiting lateral spread. Damage potential total. Patrolling and monitoring the territory is highly suggested.

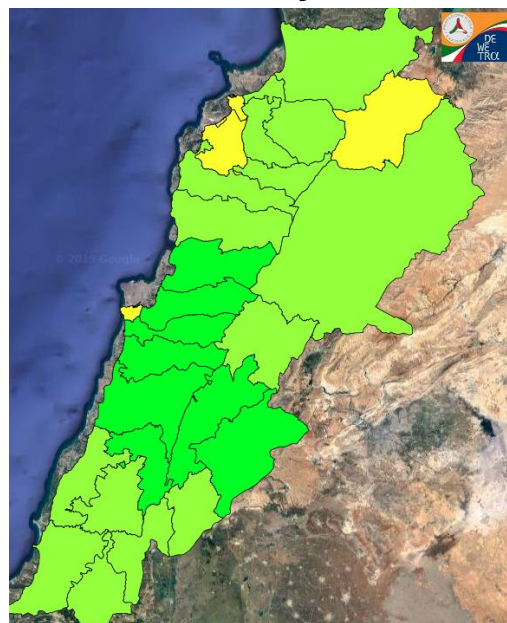
**Beirut, 14 January 2020**

# FIRE RISK INDEX

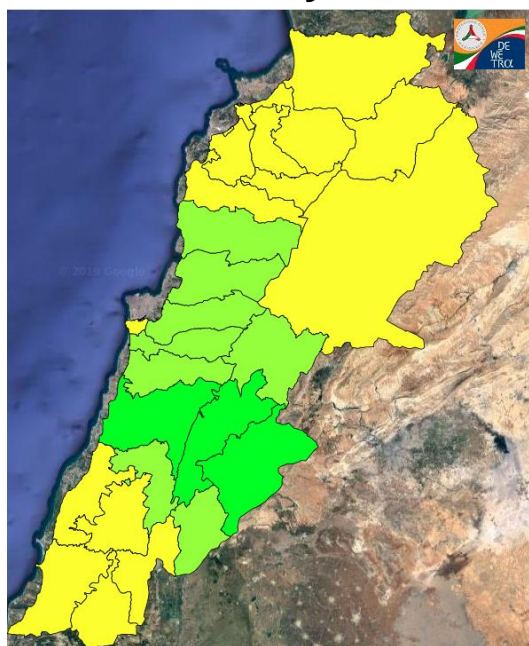
13 January 2020



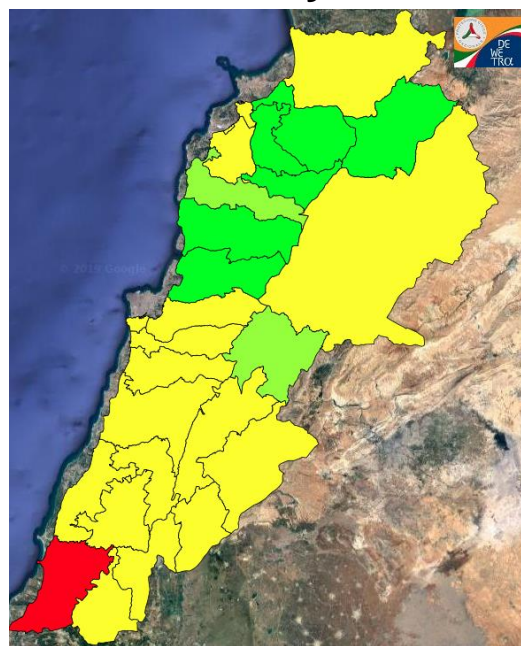
14 January 2020



15 January 2020



16 January 2020



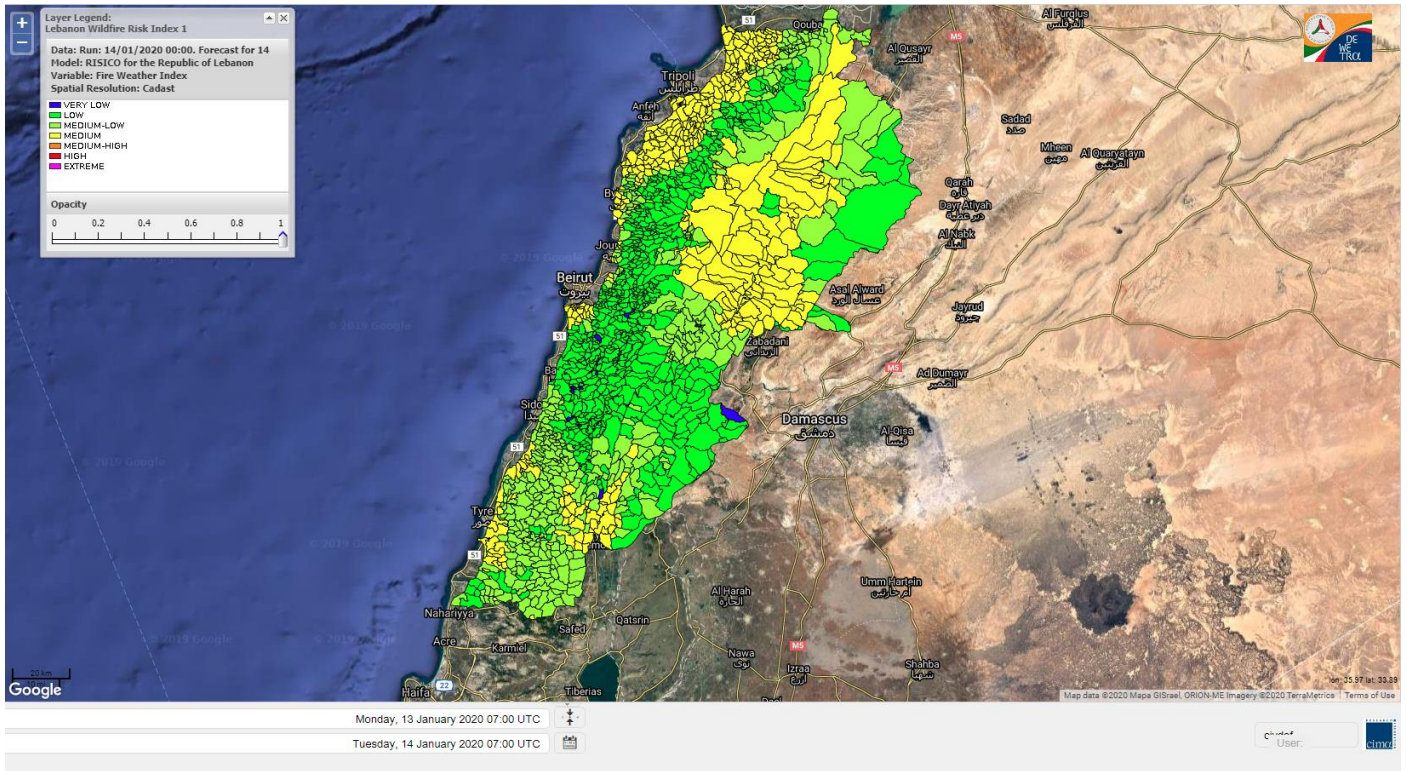
Layer Legend:  
Lebanon Wildfire Risk Index 1

Data: Run: 14/01/2020 00:00. Forecast for 14  
Model: RISICO for the Republic of Lebanon  
Variable: Fire Weather Index  
Spatial Resolution: Caza

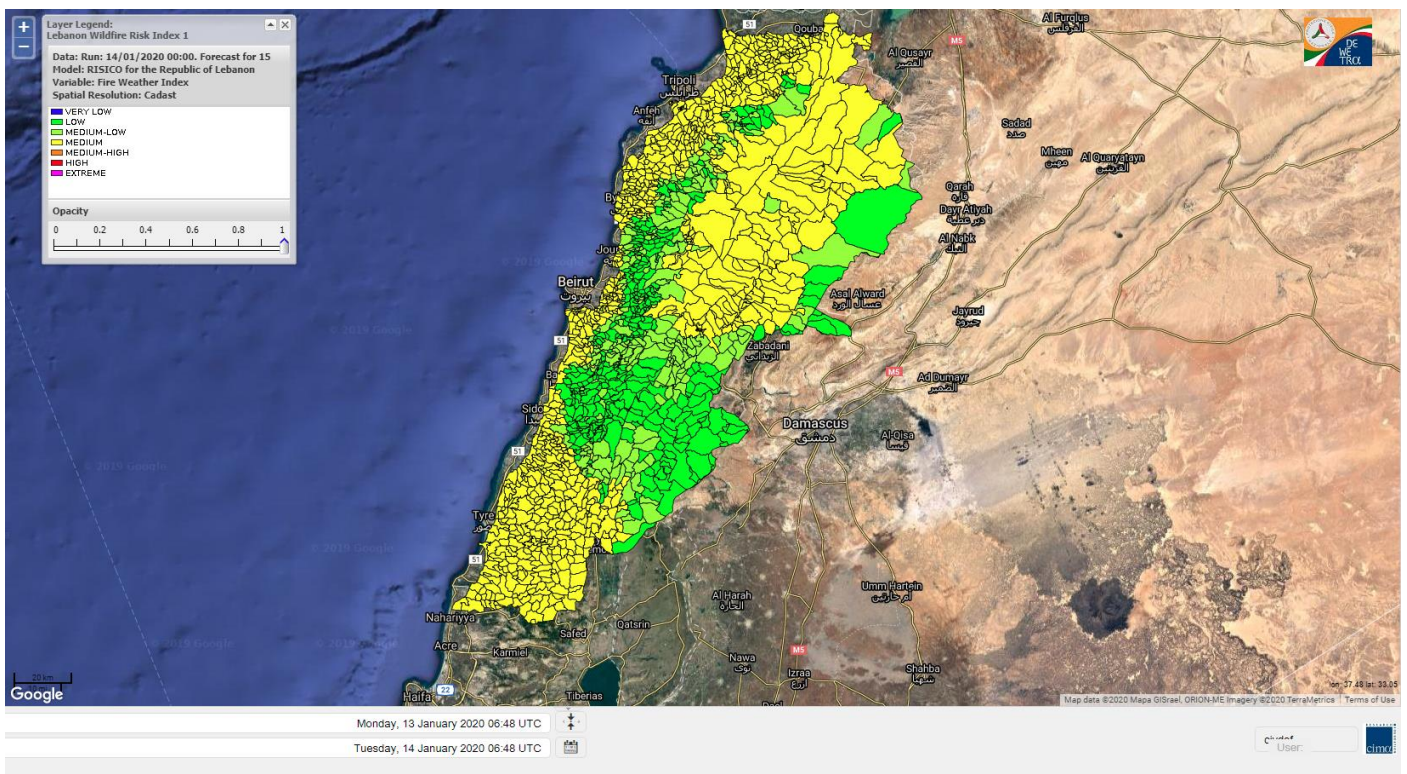
- VERY LOW
- LOW
- MEDIUM-LOW
- MEDIUM
- MEDIUM-HIGH
- HIGH
- EXTREME



# Lebanon for 14 January 2020

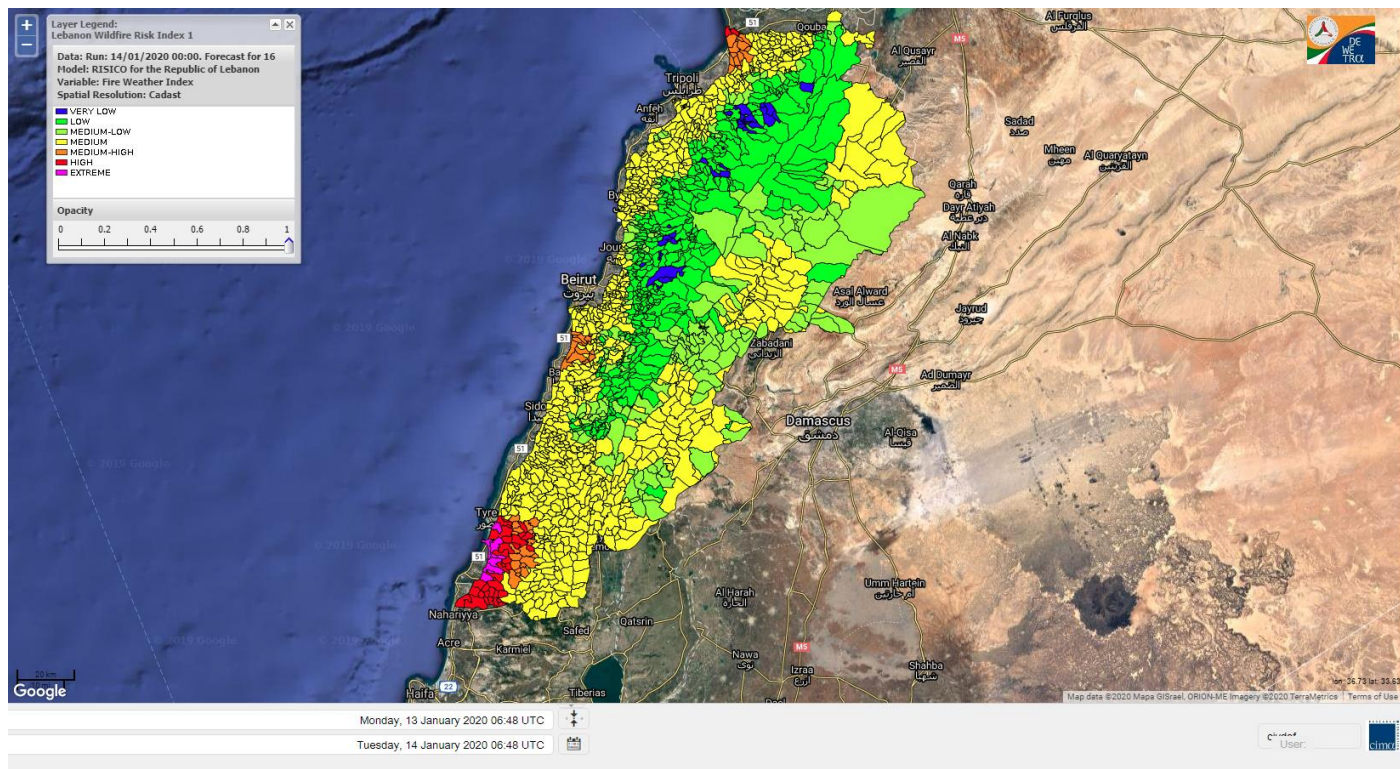


# Lebanon for 15 January 2020

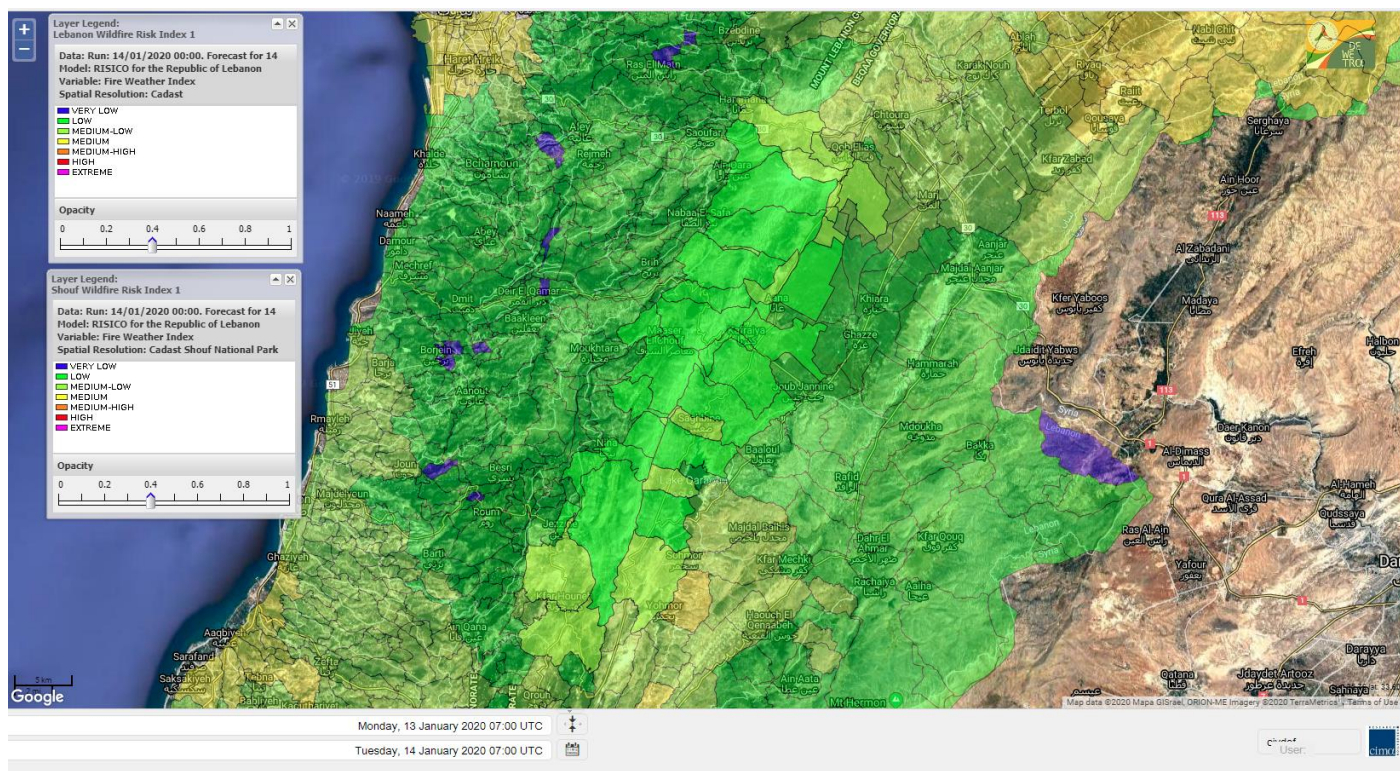




# Lebanon for 16 January 2020

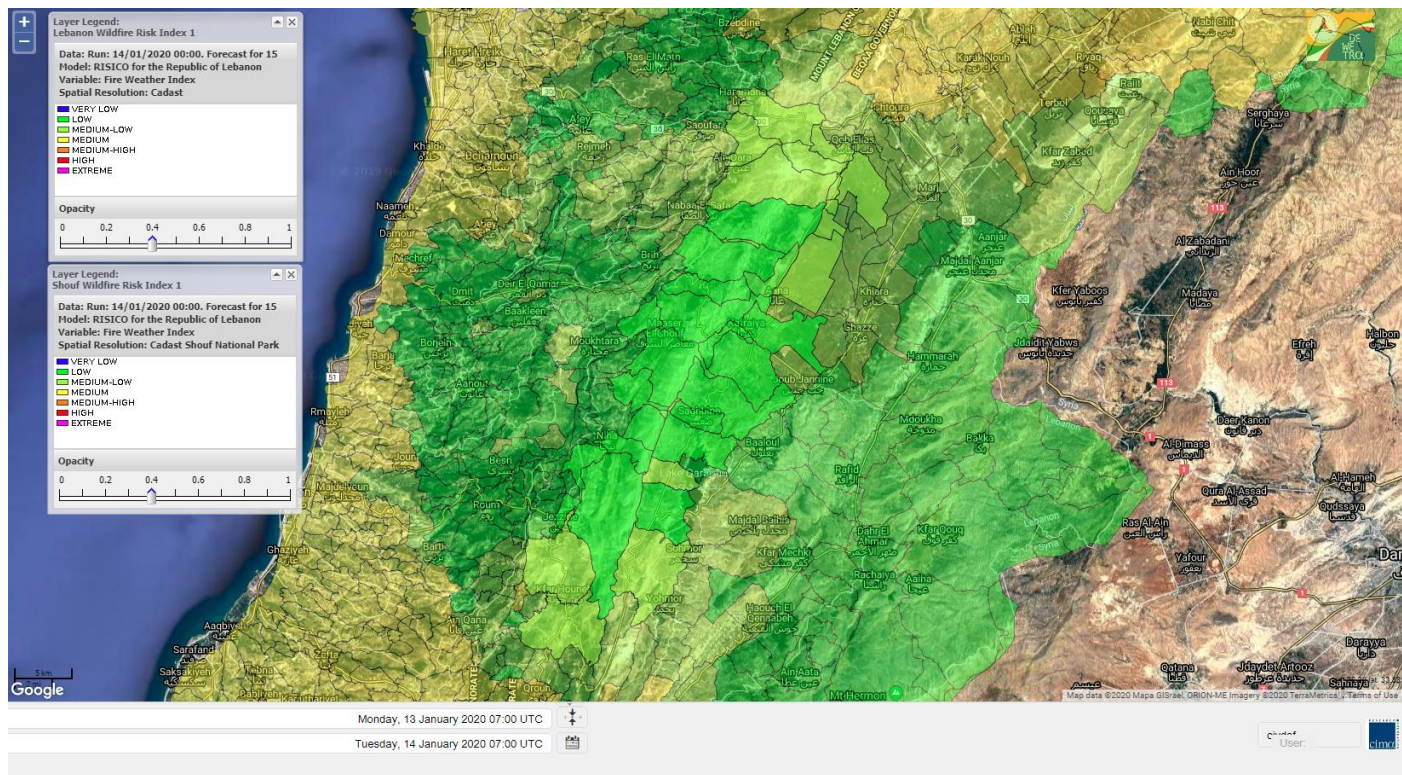


# Shouf Biosphere Reserve Forecast for 14 January 2020

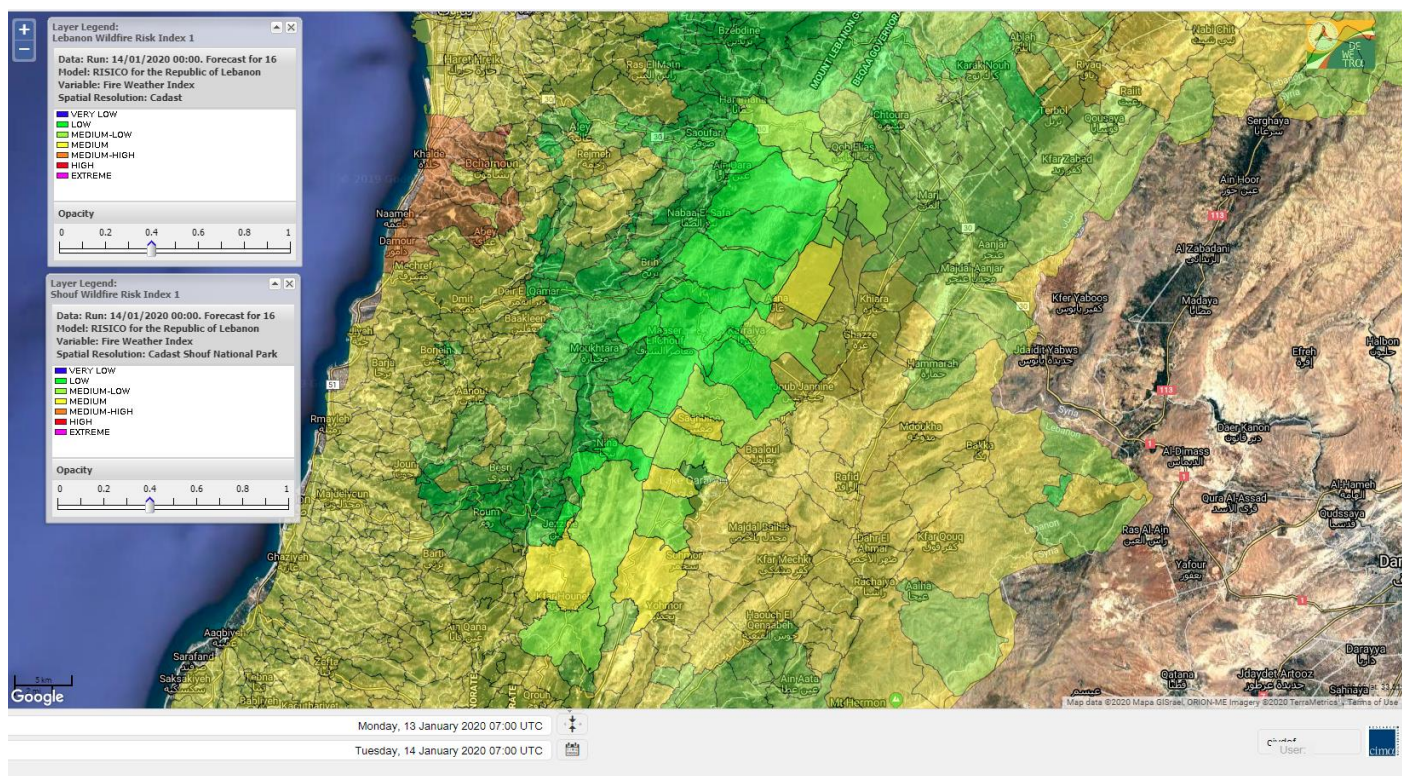




# Shouf Biosphere Reserve Forecast for 15 January 2020

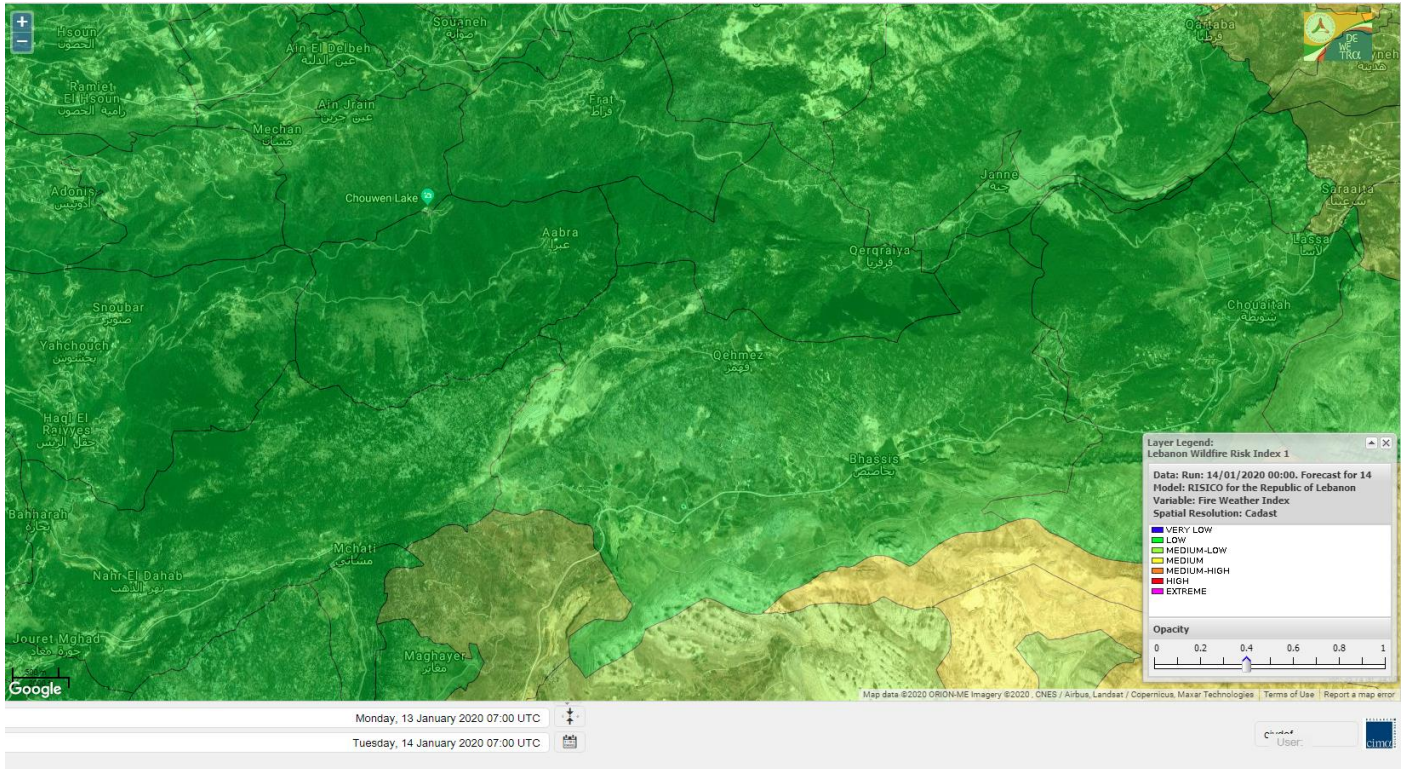


# Shouf Biosphere Reserve Forecast for 16 January 2020

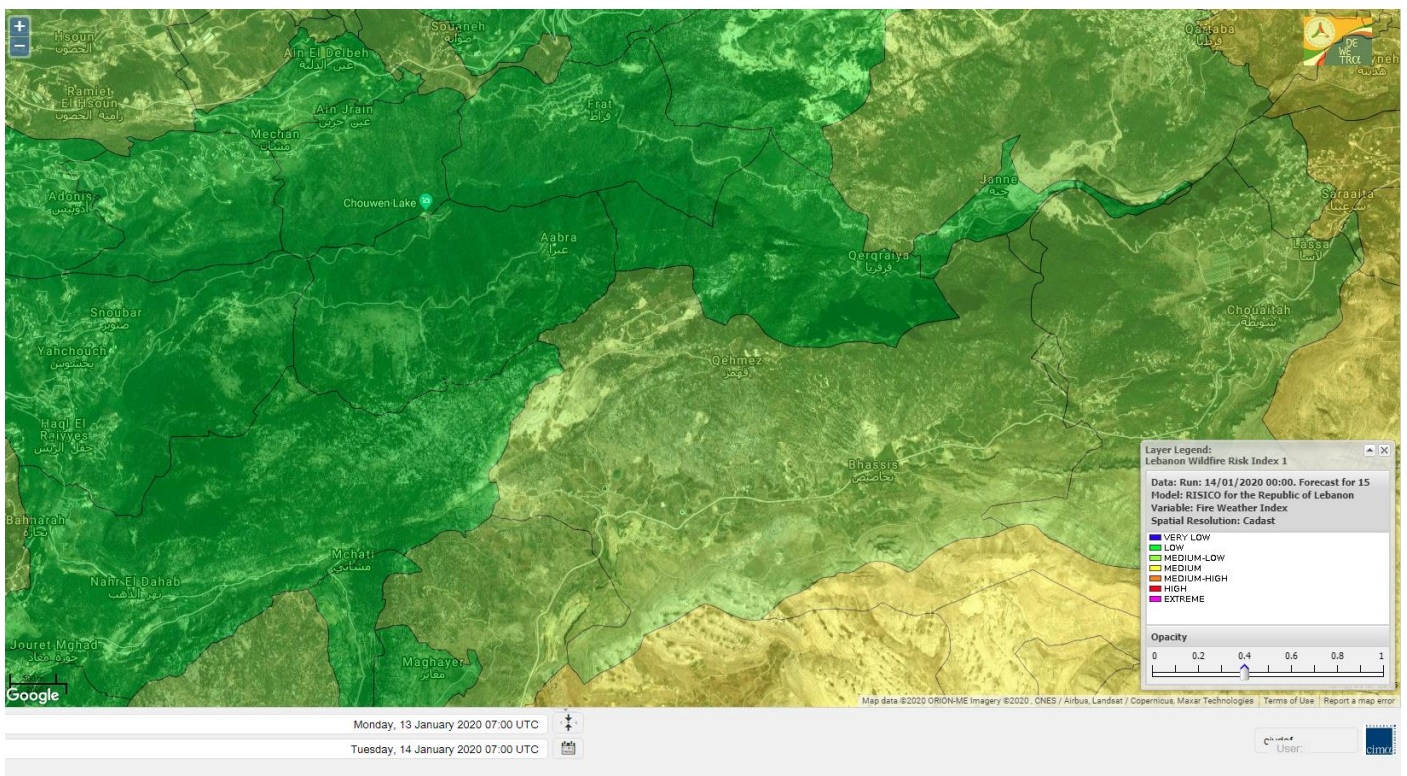




# Jabal Moussa Reserve Forecast for 14 January 2020

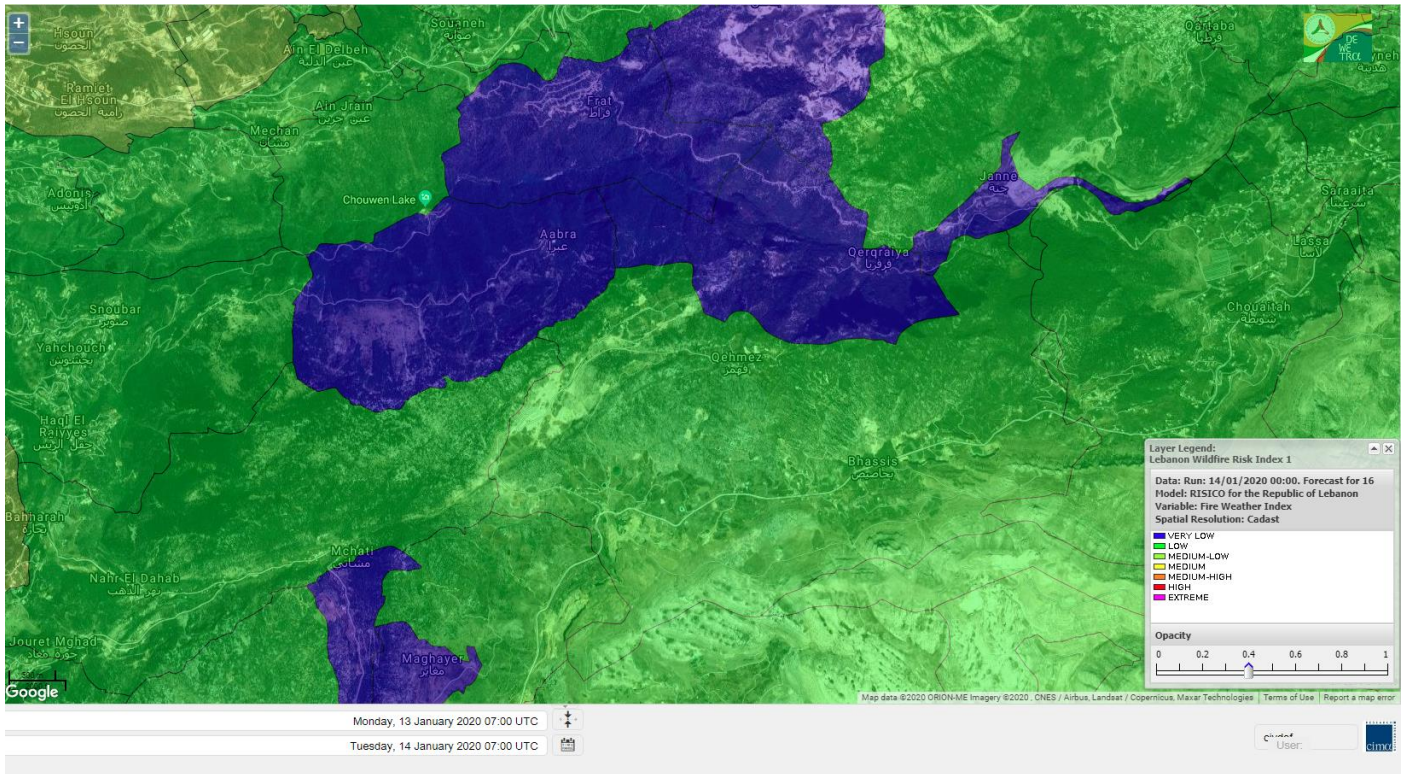


# Jabal Moussa Reserve Forecast for 15 January 2020





# Jabal Moussa Reserve Forecast for 16 January 2020

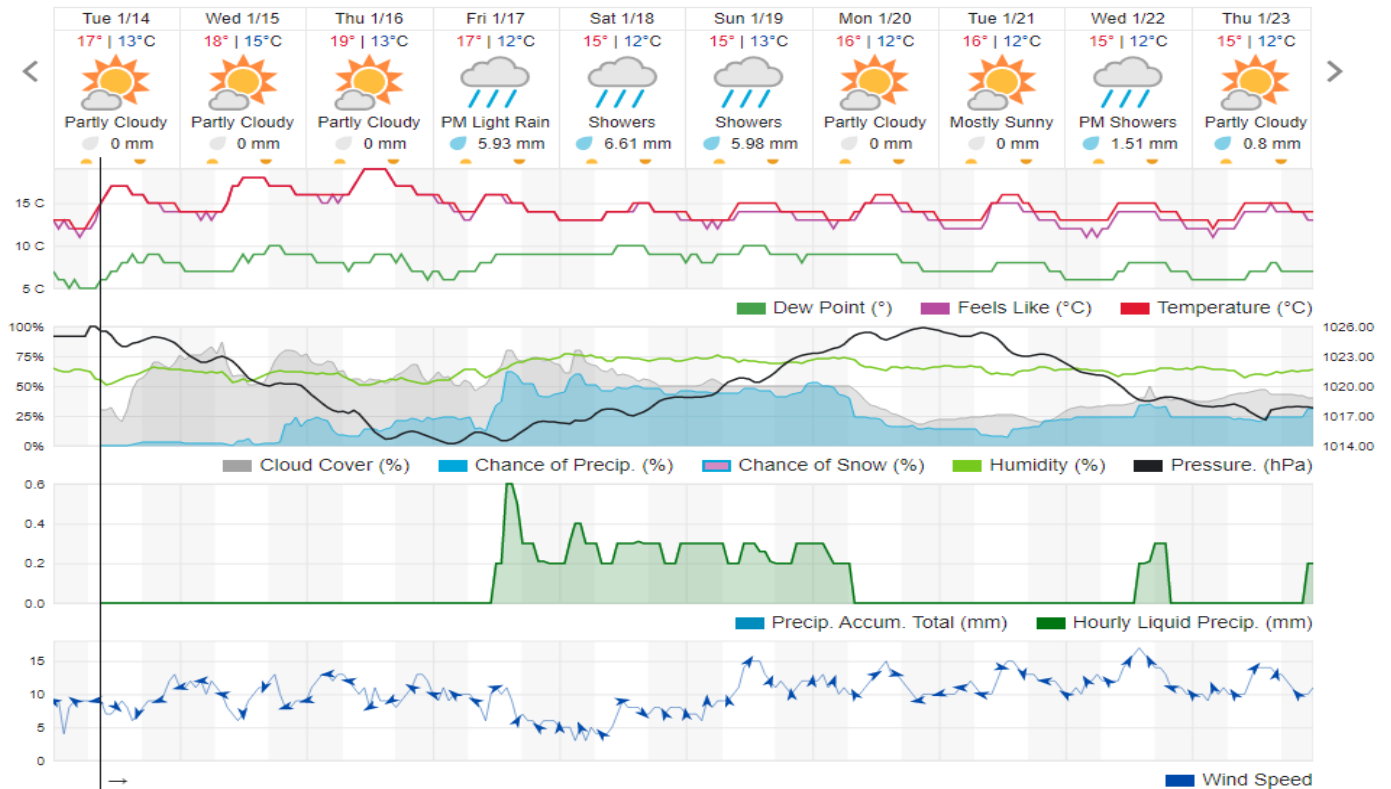


## Beirut, Beirut Governorate, Lebanon 10-Day Weather Forecast

15° ACHRAFIEH, RIZK STATION | CHANGE

TODAY HOURLY 10-DAY CALENDAR HISTORY WUNDERMAP

Customize



## Nord

### Koura

Municipality	14-Jan	15-Jan	16-Jan	Municipality	14-Jan	15-Jan	16-Jan	Municipality	14-Jan	15-Jan	16-Jan
Aaba	M	M	M	Afsaddiq	M	M	M	Ain Ekrine	M	M	M
Amioun	M	M	M	Anfeh	M	M	M	Badbhoun	M	M	M
Barghoun	M	M	M	Barsa	M	M	M	Batroumine	M	M	M
Bdebba	M	M	M	Bechmizine	M	M	M	Bednayet El-Koura	M	M	M
Bhabbouch El-Koura	M	M	M	Bkeftine	M	M	M	Bnehran	ML	M	M
Bqaiia El-Koura	M	M	M	Bsarma	M	M	M	Btaaboura	M	M	M
Bttram	M	M	M	Btouratij	M	M	M	Bziza	M	M	M
Dar Beechtar	M	M	M	Dar Chmezzine	M	M	M	Deddeh	M	M	M
Deir El-Balamand	M	M	ML	Fih	M	M	M	Hraiche	M	M	M
Ijdaabrine	M	M	M	Kaftoun	M	M	M	Kefraya El-Koura	M	M	M
Kfarakka	M	M	M	Kfarhata	M	M	M	Kfarhazir	M	M	M
Kfarkahel	M	M	M	Kfarsaroun	M	M	M	Kosba	M	M	M
Mejdel el-Koura	ML	M	M	Nakhle	M	M	M	Qalhat	M	M	ML
Ras Masqa	M	M	M	Rechdibbine	M	M	M	Zakroun	M	M	ML
Zgharta El-Mtaouile	L	M	M								

### Bcharre

Municipality	14-Jan	15-Jan	16-Jan	Municipality	14-Jan	15-Jan	16-Jan	Municipality	14-Jan	15-Jan	16-Jan
Aabdine	L	ML	L	Bane	M	M	L	Barhelioun	L	ML	L
Bazooune	M	M	L	Becharre	M	M	L	Beit Menzer	L	ML	L
Billa	L	ML	L	Blaouza	ML	M	L	Bqaa Kafra	M	M	L
Bqerqacha	M	M	L	Breissat	ML	ML	L	Dimane	ML	ML	L
Hadath El Jobbeh	L	ML	L	Hadchit	ML	ML	VL	Hasroun	M	M	L
Mazraat Aassaf	L	L	L	Mazraat Bani Saab	L	ML	L	Mchaa El-Jobbeh	M	M	ML
Metrit	ML	M	M	Moghr El-Ahoual	L	ML	L	Ouadi Qannoubine	L	L	VL
Qanat	L	ML	L	Qnayer	L	L	L	Tourza	L	ML	L

### Batroun

Municipality	14-Jan	15-Jan	16-Jan	Municipality	14-Jan	15-Jan	16-Jan	Municipality	14-Jan	15-Jan	16-Jan
Aabrine	M	M	M	Aalali	L	ML	L	Aartz	L	M	M
Abdelli	L	M	M	Ajdabra	ML	M	M	Assia	L	L	L
Basbina	M	M	M	Batroun	M	M	M	Bcheleh	L	ML	L
Bechtoudar	L	L	L	Beit Chlala	L	L	L	Beit Kassab	L	ML	L
Bijdarfil	M	M	M	Bqesmaya	ML	M	M	Chatine	L	L	L
Chebtin	L	M	M	Chekka	M	M	M	Daael	L	ML	L
Dahr Abi Yaghi	L	M	M	Daraya El-Batroun	ML	M	M	Deir Billa	L	ML	ML
Deir Kfifane	ML	M	M	Deir Mar Youhanna EL	L	L	L	Deir Mar Youssef Jra	L	M	M
Douma	L	ML	L	Douq	L	M	M	Eddeh El-Batroun	ML	M	M
Ftahat El-Batroun	L	ML	ML	Ghouma	ML	M	M	Hadtoun	L	ML	L
Hamat	M	M	M	Harbouna	L	M	M	Hardine	L	L	L
Helta	L	ML	L	Hery	M	M	M	Jebbla	L	ML	L
Jrabta El-Batroun	ML	M	M	Jrane El-Batroun	M	M	M	Kfar Aabida	ML	M	M
Kfar Halda	L	ML	L	Kfarb Shlaimane	L	L	L	Kfarhatna	L	M	M



Kfarhay	M	M	M	Kfarhelos	M	M	M	Kfifane	M	M	M
Kfour El Arabi	L	ML	L	Koubba	M	M	M	Kour	ML	M	M
Mar Mama	L	M	M	Masrah	L	M	M	Mehmarch	L	M	ML
Mrah Chdid	L	M	M	Mrah El Ziyat	ML	M	M	Mrah El-Hajj	L	L	L
Nahle El-Batroun	L	ML	L	Niha El-Batroun	L	ML	L	Oujh El-Hajjar	M	M	M
Ouata Houb	L	L	L	Qatnaaoun	M	M	M	Racha	L	ML	L
Rachana	L	M	M	Rachkida	M	M	M	Ram El-Batroun	L	L	L
Ras Nahhach	M	M	M	Selaata	M	M	M	Sghar	ML	M	M
Smar Jbayl	ML	M	M	Sourat El-Batroun	L	M	ML	Tannourine El-Faouqa	M	M	L
Tannourine Et-Tahta	L	L	L	Thoum	M	M	M	Toula El-Batroun	L	M	M
Zan	L	M	ML								

## Zgharta

Municipality	14-Jan	15-Jan	16-Jan	Municipality	14-Jan	15-Jan	16-Jan	Municipality	14-Jan	15-Jan	16-Jan
Aachach	M	M	M	Aalma	M	M	M	Aarde	M	M	M
Aintourine	ML	M	L	Arabet Qozhaya	L	ML	L	Arde	M	M	M
Arjis	M	M	L	Asnoun	M	M	M	Ayto	L	ML	L
Basloukit	M	M	L	Bchannine	M	M	ML	Besebeel	M	M	M
Bhairet Toula	L	ML	VL	Bnachee	M	M	L	Boussit	M	M	M
Danha	M	M	M	Daraiya Zgharta	M	M	L	Deir Jdeide	M	M	M
Ehden	ML	M	L	Halan	M	M	ML	Hariq Zgharta	M	M	M
Houakir	ML	M	ML	Hraiqis	M	M	M	Iaal	M	M	M
Ijbaa	L	M	L	Karm Saddeh	L	ML	L	Kfarchakhna	M	M	M
Kfardlaqous	M	M	M	Kfarfou	M	M	L	Kfarhata Zgharta	M	M	M
Kfarhoura	M	M	M	Kfarsghab	ML	M	VL	Kfaryachit	M	M	M
Kfarzaina	M	M	M	Khaldiye	M	M	M	Mazraat Ajbeaa	M	M	M
Mazraat Et-Teffah	L	M	L	Mazraat Jneid	M	M	M	Mejdlaia Zgharta	M	M	M
Merh Kfarsghab	M	M	ML	Miryata	M	M	M	Miziara	L	ML	L
Mzraat Kefraya	M	M	M	Qorah Bach	M	M	M	Rachiine	M	M	M
Ras Kifa	M	M	L	Sakhra	M	M	M	Sebhel Zgharta	ML	M	L
Serhel	L	L	VL	Tallet Zgharta	M	M	M	Toula Zgharta	L	ML	L
Zgharta	M	M	M								

## Minieh-Denniye

Municipality	14-Jan	15-Jan	16-Jan	Municipality	14-Jan	15-Jan	16-Jan	Municipality	14-Jan	15-Jan	16-Jan
Aasaymout	L	L	VL	Aaymar	L	ML	L	Aazki	L	M	L
Ain El-Tineh-Miniyeh	L	L	VL	Assoun	L	ML	L	Bakhaaoun	L	ML	L
Bchennata	M	M	L	Bechehhara	L	M	L	Beddawi	M	M	M
Behouaita	L	ML	L	Beit El Foqss	L	ML	L	Beit Haouik	ML	ML	L
Beit Zoud	L	ML	L	Bekaasafrine	ML	M	L	Borj El Yahoudiyeh	M	M	M
Bqarsouna	L	L	VL	Btermaz	L	L	VL	Debaael	L	L	L
Deir Ammar	M	M	M	Deir Nbouh	ML	M	ML	Haouaret-Miniyeh	L	ML	L
Haql el Azimeh	L	L	VL	Harf El Siyad	L	L	VL	Hazmiye-Miniyeh	L	L	VL
Izal	L	M	L	Jarjour	L	M	L	Jayroun	L	L	VL
Kahf El-Malloul	L	M	L	Karm El-Moher	L	ML	L	Kfar Binine	L	L	L
Kfarchalane	L	ML	L	Kfarhabou	ML	M	L	Kharroub-Miniyeh	L	M	L
Mazraat El-Kreme	L	ML	L	Mazraat Ketrane	L	ML	L	Merkebta	M	M	M



Minyeh	M	M	M	Mrah El Sfirat	L	L	VL	Mrah Sraj	L	L	VL
Mrebbine	ML	M	L	Nabi Youcheaa	M	M	M	Nemrine	L	ML	L
Qarhaiya	L	ML	L	Qarne	L	L	VL	Qarsita	L	L	VL
Qattineh-Miniyeh	L	L	VL	Qemmamine	L	L	VL	Qraine	L	L	VL
Raouda-Aadoua	M	M	ML	Rihaniyet-Miniyeh	M	M	M	Sfireh	L	L	VL
Sir Ed-Danniyeh	L	ML	VL	Tarane	L	ML	VL	Terbol-Miniyeh	M	M	M
Zaghartaghriine	ML	M	ML	Zouq Bhannine	M	M	M				

## Nabatiye

### Nabatiye

Municipality	14-Jan	15-Jan	16-Jan	Municipality	14-Jan	15-Jan	16-Jan	Municipality	14-Jan	15-Jan	16-Jan
Aabba	ML	M	M	Aazzi	ML	M	M	Adchit El-Chqif	ML	M	M
Ain Bou Swar	ML	M	M	Ain Kana	ML	M	M	Ali El-Taher	ML	M	M
Ansar	ML	M	M	Arab Salim	ML	M	M	Arnoun	ML	M	M
Bfaroue	ML	M	M	Breyqaah	ML	M	M	Charqiyeh	ML	M	M
Choukine	ML	M	M	Deir El Zahrani	ML	M	M	Doueir El-Nabatiyeh	ML	M	M
Habbouch El-Nabatiye	M	M	M	Hamra El-Nabatiyeh	M	M	M	Harouf El-Nabatiyeh	ML	M	M
Hmaile	ML	M	M	Houmin El Faouqa	ML	M	M	Houmin El Tahta	ML	M	M
Jarjough	ML	M	M	Jbaah El-Nabatiyeh	L	ML	M	Jebchit	ML	M	M
Kfar Djal El-Nabatiy	ML	M	M	Kfar Remmane	ML	M	M	Kfar Sir	ML	M	M
Kfar Tebnit	M	M	M	Kfarfila	ML	M	M	Kfour El-Nabatieh	ML	M	M
Mayfadoun	M	M	M	Mazraat Bsaffour	ML	M	M	Mazraat Chalbaal	ML	M	M
Mazraat Dmoul	ML	M	M	Mazraat El Khreibeh	ML	M	M	Mazraat El-Bayad El-	M	M	M
Mazraat Kfarjaouz	M	M	M	Mazraat Qalaat Meiss	ML	M	M	Nabatiyeh El-Fawka	M	M	M
Nabatiyeh Et-Tahta	M	M	M	Namiriyeh	ML	M	M	Qaaqaaiyet El Jisr	ML	M	M
Qossaibeh El-Nabatiy	ML	M	M	Roumine	ML	M	M	Sarba El-Nabatieh	ML	M	M
Sir El-Gharbiyeh	ML	M	MH	Toul	ML	M	M	Yehmor El-Nabatiyeh	M	M	M
Zaoutar El Charkiyeh	M	M	M	Zaoutar El-Gharbiyeh	ML	M	M	Zebdine El-Nabatiyeh	M	M	M
Zefta	ML	M	M								

### Hasbaiya

Municipality	14-Jan	15-Jan	16-Jan	Municipality	14-Jan	15-Jan	16-Jan	Municipality	14-Jan	15-Jan	16-Jan
Aain Jarfa	L	L	ML	Abou Qamha	ML	M	M	Ain Qania	L	L	ML
Bourghos	M	M	M	Chebaa	ML	ML	ML	Chouaya Hasbaya	ML	ML	ML
Dellafeh	M	M	M	Fardiss Hasbaiya	ML	M	M	Hasbaya	ML	ML	ML
Hbariyeh	L	L	ML	Kaoukaba Hasbaiya	M	M	M	Kfar Chouba	L	ML	M
Kfar Hamam	L	ML	M	Kfeir El-Zait	L	L	ML	Khalwat Hasbaya	L	L	L
Khreibet Hasbaiya	M	M	M	Majidiyeh Hasbaiya	ML	M	M	Marj Ez-Zhour (Haouc	L	L	ML
Meri	M	M	M	Mimass	ML	ML	ML	Rachaiya El-Fokhar	ML	ML	M
Salaiyeb	M	M	M								

### Marjayoun

Municipality	14-Jan	15-Jan	16-Jan	Municipality	14-Jan	15-Jan	16-Jan	Municipality	14-Jan	15-Jan	16-Jan
Aalmane Marjaayoun	ML	M	M	Aamra	M	M	M	Adayseh Marjaayoun	M	M	M
Adchit El-Koussair	M	M	M	Ain Aarab Marjaayoun	M	M	M	Bani Haiyann	ML	M	M
Blatt Marjaayoun	M	M	M	Blida	ML	M	M	Borj El-Moulouk	M	M	M



Boueyda Marjaayoun	ML	M	M	Deir Mimass	ML	M	M	Deir Siriane	ML	M	M
Dibbine	M	M	M	Ebel El Saqi	M	M	M	Houla	ML	M	M
Houra	M	M	M	Kfar Kila	M	M	M	Khiam Marjaayoun	M	M	M
Klayaa	M	M	M	Majdel Selem	ML	M	M	Marjaayoun	M	M	M
Markaba	ML	M	M	Mays El-Jabal	ML	M	M	Mazraat Doumiat	M	M	M
Mazraat Sarada	M	M	M	Mhaibib	ML	M	M	Qabrikha	ML	M	M
Qantara	ML	M	M	Rab El-Thalathine	M	M	M	Saouaneh Marjayoun	ML	M	M
Talloussa	ML	M	M	Taybeh Matjaayoun	M	M	M	Touline	ML	M	M

## Bent Jbail

Municipality	14-Jan	15-Jan	16-Jan	Municipality	14-Jan	15-Jan	16-Jan	Municipality	14-Jan	15-Jan	16-Jan
Ain-Ebel	ML	M	M	Aitaroun	ML	M	M	Aynata Bint Jbeil	ML	M	M
Ayta El-Chaeb	ML	M	M	Ayta El-Jabal	ML	M	M	Beit Lif	ML	M	M
Beit Yahoun	ML	M	M	Bint Jbeil	ML	M	M	Borj Qalaway	M	M	M
Braachit	ML	M	M	Chakra	ML	M	M	Debel	ML	M	M
Deir Antar	ML	M	M	Froun	ML	M	M	Ghandouriyeh Bint Jb	ML	M	M
Hanine	ML	M	M	Hariss	ML	M	M	Hdatha	ML	M	M
Jmeyjmeh	ML	M	M	Kafra Bint Jbeil	L	M	M	Kfar Dounine	ML	M	M
Khirbet Selm	ML	M	M	Kounine	ML	M	M	Maroun El Ras	ML	M	M
Qalaway	ML	M	M	Qaouzah	L	M	M	Qatmoun	M	M	M
Ramya Bint Jbeil	ML	M	M	Rchaf	ML	M	M	Rmeich	ML	M	M
Safad Al Battikh	ML	M	M	Salhaneh	L	M	M	Serbine	ML	M	M
Sultanieh Bint Jbeil	ML	M	M	Tibnine	ML	M	M	Tiri	ML	M	M
Yaroun	ML	M	M	Yater	ML	M	M				

## Mont Liban

### Jbail

Municipality	14-Jan	15-Jan	16-Jan	Municipality	14-Jan	15-Jan	16-Jan	Municipality	14-Jan	15-Jan	16-Jan
Aabeydat	L	M	M	Aalita	L	L	L	Aamchit	M	M	M
Aarab El-Lahib	ML	M	L	Aarasta	L	M	L	Adonis Jbeil	L	L	L
Afqa Jbeil	L	ML	L	Ain El Delbeh Jbeil	L	L	L	Ain El-Ghouyba	L	ML	L
Ain Jrain	L	L	L	Ain Kfah	ML	M	M	Almat El Chemaliyat	L	L	L
Almat El-Jenoubiya	L	L	L	Aqoura	M	M	ML	Bayzoun	L	ML	ML
Bchille Jbeil	L	L	L	Bechtlida	L	L	L	Behdaydat	L	M	M
Beit Habbaq	ML	M	M	Bejjeh	ML	M	M	Bekhaaz	M	M	M
Berbara Jbeil	M	M	M	Bintael	L	L	L	Birket Hjoula	L	ML	L
Blatt Jbeil	L	ML	ML	Boulhos	L	L	VL	Breyj Jbeil	L	L	L
Chamat	M	M	M	Chikhane	M	M	M	Chmout	L	M	M
Eddeh Jbeil	ML	M	M	Ehmej	L	ML	L	Fatre	L	L	L
Ferhet	L	ML	ML	Fghal	ML	M	M	Frat	L	L	VL
Ghabat	ML	M	L	Ghalboun	ML	M	M	Gharzouz	M	M	M
Ghofrine	ML	M	M	Habil	L	M	ML	Halate	ML	ML	ML
Haqel	L	M	M	Hbaline	ML	M	M	Hboub	L	ML	ML
Hdeine	ML	M	L	Hema Er-Rehban	M	M	L	Hema Mar Maroun Aann	M	M	L
Hjoula	L	L	L	Hosrayel	M	M	M	Hsarat	ML	M	M



Hsoun	L	ML	ML	Jaj	L	ML	L	Janne	L	L	VL
Jbeil	M	M	M	Jeddeyel Jbeil	M	M	M	Jlisse	L	L	L
Jouret El-Qattine	L	L	L	Kfar Baal Annaya	L	L	L	Kfar Kidde	M	M	M
Kfar Kouas	L	L	L	Kfar Mashoun	ML	M	M	Kfoun	L	M	M
Kharbe Jbeil	ML	M	M	Laqlouq	M	M	L	Lassa	L	ML	L
Lehfed	L	L	L	Maad	ML	M	M	Mar Sarkis	ML	M	L
Mastita	M	M	M	Mayfouq	L	ML	L	Mazraat El Siyad	M	M	L
Mazraat El-Maaden	L	L	VL	Mechane	L	L	L	Mechmech Jbeil	L	ML	L
Mehrin	L	ML	ML	Mejdel El-Akoura	ML	M	L	Mghayreh Jbeil	ML	M	L
Mounsef	M	M	M	Nahr Ibrahim	M	M	M	Qahmez	L	ML	L
Qartaba	L	ML	L	Qartaboun	M	M	M	Qattara Jbeil	L	L	L
Qorqraya	L	L	VL	Ramout	ML	M	M	Ras Osta	L	L	L
Rihane Jbeil	M	M	M	Sakiet El-Khayt	L	M	M	Saqi Richmaya	L	ML	L
Sebrine	L	L	L	Seraita	ML	M	L	Souane Jbeil	L	ML	L
Tadmor	ML	M	L	Tartej	L	ML	L	Torzaiya	L	ML	L
Yanouh Jbeil	ML	M	L	Zibidine Jbeil	L	L	L				

## El Metn

Municipality	14-Jan	15-Jan	16-Jan	Municipality	14-Jan	15-Jan	16-Jan	Municipality	14-Jan	15-Jan	16-Jan
Aain El-Qabu	L	L	L	Aain El-Qach	L	L	L	Aain El-Teffaha	L	L	L
Aain el-Safssaf El-M	L	L	L	Abou Mizane	L	L	L	Ain Aar	L	M	M
Ain Alaq	L	M	M	Ain El-Kharroube	L	L	L	Ain El-Sendianeh	L	L	L
Ain El-Zeitoune	L	L	L	Ain Saadeh	L	M	M	Aintoura El-Matn	ML	M	L
Amaret Chalhoub	L	M	M	Antelias	L	M	M	Atchaneh	L	ML	M
Ayroun	L	L	L	Baabdat	L	L	L	Baouchariyeh	M	M	M
Baskinta	L	ML	L	Beit Chabab	L	L	L	Beit El-Chaar	L	M	M
Beit El-Kekko	L	M	M	Beit Mery	L	ML	M	Bhersaf	L	L	ML
Bikfaya	L	L	L	Biyakout	L	M	M	Bnabil	L	L	L
Bourj Hammoud	M	M	M	Bqennaya	L	ML	M	Broummana El-Matn	L	ML	M
Bsalim	L	M	M	Bsifrine	L	L	L	Bteghrine	L	L	L
Chaouiye	L	M	M	Chouaya El-Matn	L	ML	L	Choueir	L	L	L
Chrine	L	L	L	Dahr El Sawan El-Mat	L	ML	M	Daychouniyeh	L	ML	M
Dbayeh	L	M	M	Deir Chamra	L	L	L	Deir Mar Abda el Mch	L	M	M
Deir Mar Roukouz	ML	M	M	Deir Tamiche	L	M	M	Dik El-Mehdi	L	M	M
Dikwaneh	M	M	M	Douar El-Matn	L	L	L	Fanar	L	M	M
Fraike	L	ML	M	Haret El-Ballaneh	L	M	M	Hbous	L	M	M
Himlaya	L	L	L	Jal El Did	L	M	M	Jdeideh El-Metn	L	M	M
Jouar El-Matn	L	L	L	Jouret El-Ballout	L	M	M	Kaaqour	L	L	L
Kfar Aaqab	L	L	L	Kfertay El-Matn	L	ML	VL	Khenchara	L	L	L
Khillet El-Mtain	L	L	L	Konnabat Broummana	L	M	M	Konnabat Salima	VL	L	L
Machraah El-Matn	L	L	L	Majdel Tarchich	ML	M	L	Majzoub	L	M	M
Mansouriyeh El-Metn	L	M	M	Mar Boutros Karm Et-	L	L	L	Mar Chaya et Mzekke	L	M	M
Mar Moussa Ed-Douar	L	L	L	Marjaba	L	L	L	Masqa	L	ML	M
Mayasse	L	L	L	Mazraat Deir Aoukar	L	M	M	Mazraat El-Hadirat	L	M	M
Mazraat Yachouh	L	M	M	Mchikha	L	ML	L	Menqlet Mezher	L	M	M
Mhayseh Matn	L	L	L	Mkalles	M	M	M	Mrouj	L	M	L

Mtain	ML	M	L	Mtayleb	L	M	M	Nabay	L	M	M
Naccache	L	M	M	Ouadi Chahine	L	L	L	Ouadi El-Karm El-Mat	L	L	L
Ouata El-Mrouj	L	L	L	Ouyoun El-Matn	L	L	M	Qornet Chehwan	L	M	M
Qornet El-Hamra	L	M	M	Roumieh	L	M	M	Sfeilet Bikfaya	L	L	L
Sinn El-Fil	M	M	M	Zabbougha	L	L	L	Zalqa	L	M	M
Zarououn	L	L	L	Zekrite	L	M	M	Zighrine El-Matn	L	ML	L
Zouk El-Khrab	L	M	M								

## Chouf

Municipality	14-Jan	15-Jan	16-Jan	Municipality	14-Jan	15-Jan	16-Jan	Municipality	14-Jan	15-Jan	16-Jan
Aalmane El-Chouf	ML	M	M	Aammq El-Chouf	L	L	L	Ain Ouzein	L	L	L
Ain Qani	L	L	L	Ain Zhalta	L	L	L	Ainbal	L	L	M
Amatour	L	L	L	Anout	L	L	ML	Atrine	L	L	L
Baadarane	L	L	ML	Baaqline	L	L	M	Baasir	ML	M	M
Barja	ML	M	M	Barouk	L	L	L	Bater	L	L	L
Batloun	L	L	L	Bayqoun	L	ML	ML	Bchetfine	L	L	M
Beiteddine	L	L	L	Benouati Ech-Chouf	L	L	M	Berjein	L	L	M
Bireh et Mtalleh	L	L	L	Biret El-Chouf	L	L	L	Bkechtine Ouel Mchei	VL	L	ML
Bkifa El-Chouf	L	L	M	Botme	L	L	L	Bqaiaa Ech-Chouf	L	L	M
Bsaba El-Chouf	L	L	ML	Chammis El-Chouf	ML	M	M	Chehim	L	L	M
Chemaarine	VL	L	ML	Chourit	L	L	L	Daher El-Chouf	L	M	M
Dalhoun	L	ML	M	Damour	L	M	M	Daraya El-Chouf	L	L	M
Deir El-Moukhalles	L	L	L	Deir Baba	L	L	M	Deir Dourit	L	L	M
Deir El-Qamar	L	L	M	Deir Kouche	L	L	L	Dibbieh	L	L	M
Dmit	L	L	M	Fouara Jaafar	L	L	L	Fraidis El-Chouf	L	L	L
Ghabet Jaafar	L	L	M	Gharife	L	L	ML	Haret Jandal	L	L	L
Hasrout	L	L	M	Jadra	ML	M	M	Jahlieh	L	L	M
Jbeih El-Chouf	L	L	L	Jdeidet El-Chouf	L	L	L	Jiyeh	ML	M	M
Jleilyeh	L	L	M	Jmailiyeh	ML	M	M	Joun	L	ML	M
Kahlounie El-Chouf	L	ML	ML	Ketermaya	ML	M	M	Kfar Faqoud	L	L	M
Kfar Hamal	L	ML	M	Kfar Him	L	ML	M	Kfar Katra	L	L	L
Kfar Niss	L	L	ML	Kfar hay	L	L	ML	Kfarnabrakh	L	L	L
Khirbet Bisri	L	L	L	Knayse El-Chouf	VL	L	L	Maaniyeh	ML	M	M
Maasser Beiteddine	L	L	L	Maasser El-Chouf	L	L	L	Majdalouna	ML	M	M
Majdel El-Meouch	L	L	L	Mazboud	L	L	ML	Mazmoura	L	L	ML
Mazraat El Chouf	L	L	ML	Mazraat El Daher	L	L	ML	Mazraat El-Douair	L	L	L
Mechref	L	L	M	Mghairie	ML	M	M	Mghayrie El-Chouf	L	L	M
Moukhtara	L	L	L	Mrusti	L	L	ML	Mtolle	L	ML	ML
Naameh	L	M	MH	Niha El-Chouf	L	L	ML	Ouadi Abou Youssef	VL	L	L
Ouadi Ed-Deir	L	ML	M	Ouadi El-Sit	L	L	L	Ouadi bnehlay	VL	L	M
Qraibeh	L	L	L	Qreiaa	VL	L	L	Rmayle El-Chouf	ML	M	M
Semqaniyeh	L	ML	L	Sibline	ML	M	M	Sirjbeil	L	L	M
Warhanieh	L	L	L	Werdaniyeh	ML	M	M	Zaarourieh	L	L	ML

## Baabda

Municipality	14-Jan	15-Jan	16-Jan	Municipality	14-Jan	15-Jan	16-Jan	Municipality	14-Jan	15-Jan	16-Jan
Abadiyeh	L	L	ML	Ain Mouaffaq	L	L	ML	Araiya	L	L	ML



Arbaniyeh	VL	L	L	Arsoun	L	L	L	Baabda	ML	M	M
Baalchmey	L	ML	ML	Bmaryam	L	L	L	Bourj El-Brajneh	L	M	M
Boutchay	L	M	MH	Bsaba Baabda	L	M	MH	Btekhney	L	L	L
Btibyat	L	L	L	Bzbedine	L	L	L	Chbeniyeh	L	ML	L
Chiyah	M	M	M	Chmeisset Baabda	L	L	L	Chouit	L	L	L
Deir El-harf	L	L	L	Deir Khouna	L	L	ML	Dlaybeh	L	L	L
Falougha	ML	ML	ML	Furn El-Chebbak	M	M	M	Hadath Beyrouth	L	M	M
Halaliyeh Baabda	L	L	L	Hammana	L	ML	L	Haret El Sett	L	L	M
Haret Hamze	L	L	L	Haret Hreik	M	M	M	Hasbaiya El-Metn	L	L	L
Jouar El-Hoz	L	L	L	Jouret Arsoun	L	L	L	Kfar Chima	L	M	MH
Kfar Selouane	L	ML	L	Khalouat Baabda	L	ML	ML	Kneisset Baabda	L	L	ML
Laylakeh	L	M	M	Louayzeh Baabda	L	L	M	Merdache	L	M	H
Mzairaa Baabda	L	L	L	Ouadi Chahrour El Ol	L	ML	M	Ouadi Chahrour El So	L	ML	M
Qalaa Baabda	L	ML	L	Qhraybe Baabda	L	L	L	Qobbayaa	L	ML	L
Qornayel	L	L	L	Qortada	L	L	M	Qrayeh Baabda	L	ML	L
Qsaibeh Baabda	L	ML	M	Qtale Baabda	L	L	L	Ras El Metn	L	ML	M
Ras El-Haref	L	ML	L	Rouayset El-Ballout	L	L	L	Salima Baabda	L	L	L
Tahouitat El Ghadir	L	M	MH	Tarchich	L	ML	L	Zandouqa	L	L	M

## Aley

Municipality	14-Jan	15-Jan	16-Jan	Municipality	14-Jan	15-Jan	16-Jan	Municipality	14-Jan	15-Jan	16-Jan
Abey	L	L	M	Aghmid	L	ML	L	Ain Dara	L	ML	L
Ain Drafil	L	ML	M	Ain El Halazoun	L	ML	ML	Ain El-Rmmaneh	VL	L	L
Ain Jedideh	L	ML	M	Ain Ksour	L	ML	M	Ain Onoub	L	M	M
Ain Traz	L	L	L	Ainab	L	M	MH	Aley	L	ML	M
Aramoun	L	M	MH	Aytat	L	M	M	Azouniyeh	L	ML	L
Baawerta	L	L	M	Badghan Oua Wadi Bad	L	ML	L	Bassatine	L	M	MH
Bayssour	L	ML	M	Bchamoun	L	M	MH	Bdadoun	L	L	M
Behouara	L	ML	ML	Bennay	L	L	M	Bhamdoun El-Dayaa	L	ML	M
Bhamdoun El-Mhatta	L	ML	M	Bkhechthey	L	ML	M	Bleibel	L	M	M
Bmaknine	L	ML	M	Bmehray	L	L	L	Bouzrid	VL	L	L
Bserrine	L	ML	ML	Bsous	VL	L	L	Btalloun	L	ML	M
Btater	L	ML	M	Chanay	L	ML	ML	Charoun	L	ML	L
Chartoun	L	L	ML	Chemlane	L	ML	MH	Choueifat El-Aamrous	L	M	MH
Choueifat El-Oumara	L	M	MH	Choueifat El-Quoubbe	L	M	MH	Dakkoun	L	L	M
Deir Qoubel	L	M	M	Dfoun	L	M	M	Douair El Remmaneh	VL	L	L
Ghaboun	L	L	ML	Habramoun	L	L	L	Homs Oua Hama	L	ML	ML
Houmal	L	ML	M	Jisr El Qadi	L	L	M	Kehaleh	L	L	ML
Keyfoun	L	ML	M	Kfar Aamey	L	L	ML	Kommatyeh	L	ML	ML
Maasrati	L	L	L	Majdel Baana	L	ML	ML	Mansourieh et Ain El	L	ML	M
Mazraat El-Nahr	L	L	ML	Mchakhte	L	L	L	Mecherfeh	L	ML	ML
Mejdlaya	L	ML	L	Mrayjat	L	ML	L	Ramliyah	L	L	L
Rechmaya	L	L	ML	Rejmeh	L	L	ML	Remhala	L	ML	M
Rouayset El Neemane	L	L	M	Saoufar	L	ML	L	Selfaya	L	L	L
Sirhmoul	L	M	M	Souq El Ghareb	L	ML	M	Taazanieh	L	ML	ML

## Kesrouane

Municipality	14-Jan	15-Jan	16-Jan	Municipality	14-Jan	15-Jan	16-Jan	Municipality	14-Jan	15-Jan	16-Jan
Achkout	L	L	L	Adma Oua Dafneh	ML	M	M	Ain Ed-Delbe Kesroua	L	L	VL
Ain El-Rihane	L	M	M	Aintoura Kesrouane	L	M	M	Ajaltoun	L	L	L
Akaybeh Kesrouane	M	M	M	Aramoun Kesrouane	L	L	L	Azra ouel Ozor	L	ML	L
Ballouneh	L	L	L	Batha	L	ML	ML	Bekaatat Achkout	L	ML	L
Bekaatat Kanaan	L	L	L	Bizhel	L	L	L	Bouar	ML	M	M
Bqaatouta	L	ML	VL	Bqaq Ed-Dine	ML	M	M	Bzommar	L	ML	L
Chahtoul	L	L	L	Chnaniir	L	L	L	Chouan	L	L	VL
Daraya Kesrouane	L	L	L	Darououn	L	ML	M	Deir Baqlouch	L	M	M
Diebta	L	L	L	Eghbeh	L	L	VL	Faraya	ML	M	L
Fatka	L	ML	ML	Feytroun	L	L	L	Ghazir	L	ML	M
Ghbaleh Kesrouane	L	ML	ML	Ghedrass	L	L	L	Ghosta	L	L	L
Ghyneh	L	ML	L	Harharaya w Kattine	L	L	L	Harissa Kesrouane	L	M	M
Hayata	L	L	L	Hosein	L	L	L	Hrajel	ML	M	L
Jdeideh Ghazir	L	L	L	Jeita	L	M	M	Jounieh Ghadir	ML	M	M
Jounieh Haret Sakhr	ML	M	M	Jounieh Salel Alma	ML	M	M	Jounieh Sarba	M	M	M
Jouret Bedrane	L	ML	ML	Jouret Mhad	L	L	L	Jouret Termos	L	ML	L
Kfar Debiane	L	ML	VL	Kfar Tay Kesrouane	L	L	VL	Kfar Yassine	M	M	M
Kfour Kesrouane	L	ML	L	Kharayeb Nahr Ibrahi	L	M	ML	Klayaat Kesrouane	L	L	L
Maarab	L	L	L	Maaysra Kesrouane	L	ML	ML	Mayrouba	ML	ML	L
Mazraat Er-Ras	L	M	M	Mazraat Mrah El-Mir	L	L	L	Mchaa El Ftouh	M	M	L
Mchaa Faraya	M	M	L	Mchaa Kfar Dibiane	M	M	L	Mghaer	L	L	VL
Mradiyah	L	L	L	Nahr Ed-Dahab	L	L	L	Nammoura Kesrouane	L	ML	ML
Ouata El Jaouz	L	ML	L	Ouata Sillam	M	M	M	Raachine	L	L	L
Rayfoun	L	L	L	Safra Kesrouane	ML	M	M	Shayle Kesrouane	L	ML	M
Tabarja	ML	M	M	Yahchouch	L	L	L	Zaaytreh	L	L	L
Zeytoun	L	ML	ML	Zouk Mikael	M	M	M	Zouk Mosbeh	ML	M	M

## Baalbek\_Hermel

### Baalbek

Municipality	14-Jan	15-Jan	16-Jan	Municipality	14-Jan	15-Jan	16-Jan	Municipality	14-Jan	15-Jan	16-Jan
Aadous	M	M	M	Aamchki	L	L	L	Aarsal	L	L	ML
Ain Baalbek	ML	M	M	Ain Bourday	M	M	M	Ain El-Benye	M	ML	ML
Ain El-Jaouz Baalbek	ML	L	ML	Ain El-Siya Chadoura	ML	L	ML	Al Khodr Baalbek	M	M	M
Al Nabi Chit	M	M	M	Aynata Baalbek	M	M	ML	Baalbek	M	M	M
Bachwat	L	M	L	Barqa	L	ML	L	Bednayel Baalbak	M	M	ML
Beit Chama	M	M	M	Bijjaje	M	M	ML	Bouday	M	M	ML
Brital	M	M	M	Btadi	M	M	ML	Chaat	M	M	ML
Chaibe	M	L	ML	Chlifa	M	M	M	Chmestar	M	M	ML
Dar El-Oussa	M	M	L	Deir El-Ahmar	M	M	ML	Deir Mar Maroun Baal	ML	M	M
Douris	M	M	M	Fakiha	ML	M	M	Hadath Baalbek	M	M	M
Ham	M	ML	ML	Haour Taala	M	M	M	Hizzine	M	M	M
Hlebta	M	M	L	Hosh Barada	M	M	M	Hosh El Dahab	M	M	M
Hosh El Snid	M	M	M	Hosh El-Nabi	M	M	M	Hosh El-Rafiq	M	M	M
Hosh Tal Safiya	M	M	M	Hrebta	M	M	L	laat	M	M	M



Jebaa	M	M	M	Jenta	M	L	ML	Kfar Dabach	M	M	M
Kfar Dane	M	M	M	Khraibeh El-Hermel	M	M	ML	Khreibet Baalbek	M	M	M
Kneisset Baalbek	M	M	ML	Labueh	M	M	M	Maarboun	M	L	ML
Majdaloun	M	M	M	Maqneh	M	M	ML	Mazraat Beit Mcheik	M	M	ML
Misraya	M	M	M	Moqraq	ML	M	ML	Nabha El-Damdoum	M	M	L
Nabi Chbay	M	ML	ML	Nabi Osman	ML	M	M	Nahleh baalbek	L	ML	ML
Ouadi El-Oss	M	M	L	Qaa Baayoun	L	M	M	Qaa Jouar Maqiye	ML	L	M
Qaa Ouadi El-Khanzir	ML	ML	M	Qah Baalbek	ML	M	M	Qarha Baalbek	M	M	ML
Qsarnaba	M	M	M	Ram Baalbek	M	M	L	Ras Baalbek El Sahl	ML	M	M
Ras Baalbek El-Charq	L	M	M	Riha	M	M	ML	Saaide	M	M	M
Sbouba	M	M	ML	Seriine El-Tahta	M	M	M	Slouqi	M	M	L
Taiba Baalbek	M	M	M	Talia	M	M	M	Taraiya	M	M	M
Temnin El Fawqa	M	M	M	Temnin El-Tahta	M	M	M	Tfail	L	L	ML
Yahfoufa	M	M	M	Yammouneh	M	M	ML	Younine	ML	M	ML
Zboud	M	M	ML								

## Hermel

Municipality	14-Jan	15-Jan	16-Jan	Municipality	14-Jan	15-Jan	16-Jan	Municipality	14-Jan	15-Jan	16-Jan
Charbine El-Hermel	M	M	L	Hermel Jbab	M	M	L	Hermel	ML	M	M
Maaysra El-Hermel	M	M	L	Michaa Mrajhine	ML	M	L	Ouadi Faara	M	M	L
Ras Baalbek - Ouadi	M	M	M	Ras Baalbek El Gharb	M	M	L	Zighrine	M	M	L

## Akkar

### Akkar

Municipality	14-Jan	15-Jan	16-Jan	Municipality	14-Jan	15-Jan	16-Jan	Municipality	14-Jan	15-Jan	16-Jan
Aain Tinta	ML	M	M	Aaiyat	L	M	M	Aakkar El-Aatiga	L	M	L
Aamar Akkar	M	M	M	Aamar El Baykat	M	M	M	Aamayer	ML	M	M
Aamriyet Akkar	ML	M	M	Aandqet	ML	M	L	Aarmeh	M	M	M
Aarqa	M	M	M	Aawaynat	ML	M	L	Aayoun Akkar	L	M	M
Abboudiye	M	M	M	Ain El-Zeit	ML	M	M	Ain Yaaqoub	L	M	L
Akroum	M	M	L	Aridet Cheikh Zennad	M	M	H	Baldehy w Mazraat Bal	M	M	M
Barcha	M	M	M	Bardeh	ML	M	M	Bebnine	M	M	M
Beino	ML	M	M	Beit Ayoub	ML	M	ML	Beit El-Haouch	M	M	M
Beit Mellat	ML	M	M	Beit Younes	L	M	L	Berbara Akkar	ML	M	M
Berqayel	M	M	M	Bezbina	L	L	L	Bireh Akkar	ML	M	M
Borj	L	M	M	Bqerezla	M	M	ML	Bzal	M	M	ML
Chane	L	M	L	Chaqdouf	L	M	M	Charbila	M	M	M
Cheikh Mohammad	M	M	M	Cheikh Taba Es-Sahl	M	M	M	Cheikh Taba	ML	M	M
Cheikh Zennad	M	M	MH	Cheikhlar	ML	M	L	Chir Hmairine	M	M	M
Daghle	ML	M	M	Dahr Laissine	ML	M	M	Darine	M	M	M
Dawra	ML	M	ML	Dawsa w Baghdadi	ML	M	M	Dayret Nahr El-Kabir	ML	M	M
Deir Dalloum	M	M	M	Deir Jennine	ML	M	M	Denbou	L	M	L
Dibbabiyyeh	ML	M	M	Douair Aadwiyeh	ML	M	M	Fassikine	ML	M	M
Fnaydek	L	ML	L	Fraydes Akkar	ML	M	M	Ghazayle	M	M	M
Habchit	L	M	L	Hakour	M	M	M	Halba	M	M	M

Haouchab	M	M	M	Hayssat	M	M	MH	Haytla	M	M	M
Hayzouq	M	M	M	Hedd	M	M	M	Hmaira Aakkar	M	M	M
Hmaiss Aakkar	M	M	M	Hnaider	ML	M	M	Hokr Ed-Dahri	M	M	H
Hokr Etti	M	M	M	Hokr Jouret Srar	M	M	M	Houaich	L	M	L
Hrar	ML	M	L	Idbil	ML	M	M	llat	ML	M	ML
Janine	M	M	M	Jdeidet El-Joumeh	M	M	M	Jdeidet El-Kaiteh	M	M	ML
Jebrayel	ML	M	M	Kafr	ML	M	M	Kafr	ML	M	M
Karm Asfour	M	M	ML	Kfar Melki Aakkar	M	M	MH	Kfar Noun	ML	M	M
Kfarharra	M	M	M	Khalsa	ML	M	ML	Kharnoubet Aakkar	M	M	M
Khirbet Daoud Aakkar	ML	M	M	Khirbet El Remmane	ML	M	L	Khirbet Shar	ML	M	M
Khoreybet El-Jindi	M	M	M	Khreibet Aakkar	ML	M	L	Kneisset Aakkar	M	M	MH
Kneisset Hnaider	ML	M	M	Knisse	M	M	M	Kroum El-Aarab	M	M	M
Kwachra	ML	M	M	Kweykhat	M	M	M	Machta Hammoud	ML	M	ML
Majdala	M	M	M	Majdel Akkar	ML	M	M	Mar Touma	M	M	M
Marlaya Melhem	M	M	MH	Mashha	M	M	M	Massoudiye	M	M	MH
Mazraat Beit Ghattas	M	M	M	Mazraat En-Nahriye	ML	M	L	Mechmech	L	ML	L
Memneh	L	L	L	Mhammara	M	M	M	Mighraq Aakkar	M	M	MH
Minyara	M	M	M	Moqayteh	M	M	MH	Mounjez	ML	M	M
Msalla	ML	M	M	Mzeihmeh	M	M	M	Nfaisch	M	M	M
Noura Et-Tahta	ML	M	M	Ouadi El-Haour	M	M	M	Ouadi El-Jamous	M	M	M
Ouyoun El-Ghizlane	M	M	M	Qaabarine	M	M	MH	Qabaait	ML	M	L
Qachlaq	M	M	M	Qantara Aakkar	ML	M	L	Qarha Aakkar	ML	M	M
Qarqaf	M	M	M	Qboula	L	M	M	Qleiaat Aakkar	M	M	MH
Qloud El-Baqie	M	M	M	Qobaiyat Aakkar	ML	M	L	Qobbat Chamrat	M	M	MH
Qorayat	ML	M	L	Qornet Aakkar	L	M	L	Qsair Aakkar	ML	M	M
Rahbe	ML	M	L	Rihaniyet Aakkar	M	M	M	Rmah	ML	M	ML
Rmoul	M	M	MH	Saadine	M	M	M	Sadaqa	ML	M	L
Saidnaya	M	M	M	Sammouniye	M	M	MH	Sayssouq	M	M	M
Semmaqiye	M	M	H	Semmaqli	M	M	MH	Sfinet El-Dreib	M	M	M
Sfinet El-Qaitaa	M	M	ML	Sindyanet Zeidane	ML	M	M	Souaisset Aakkar	M	M	M
Srar	M	M	M	Tal Abbas El Gharby	M	M	M	Tal Abbas El-Charqy	M	M	M
Tal Biret	M	M	M	Tal Hmayra	M	M	M	Tal Maayan Tal Kiri	M	M	MH
Tal Sibel	M	M	MH	Tallet Chattaha	ML	M	M	Tikrit	ML	M	ML
Tleil	M	M	M	Tshea	L	L	L	Zawarib	ML	M	M
Zouq El Hosniyeh	M	M	M	Zouq El-Haddara	M	M	M	Zouq El-Hbalsa	M	M	M
Zouq El-Moqachrine	M	M	M								

## Sud

### Sour

Municipality	14-Jan	15-Jan	16-Jan	Municipality	14-Jan	15-Jan	16-Jan	Municipality	14-Jan	15-Jan	16-Jan
Aaiyeh	ML	M	MH	Aalma El-Chaab	L	M	H	Aaytit	ML	M	MH
Abbassiyeh Sour	M	M	H	Abou Chech	ML	M	H	Ain Abou Abdallah	M	M	H
Ain Baal	M	M	H	Arzoun	ML	M	M	Aziyeh	L	M	H
Baflaya	ML	M	M	Barich	ML	M	MH	Batouliyeh	M	M	E
Bayad	ML	M	MH	Bazouriyeh	M	M	H	Bediass	ML	M	MH



Bestiyat	ML	M	MH	Borj El Chemali	M	M	E	Borj En-Naqoura	ML	M	H
Borj Rahhal	ML	M	H	Boustane	ML	M	H	Btaychiyeh	ML	M	H
Chaaitiye	M	M	H	Chameh	L	M	H	Chehabiye	ML	M	M
Chehour	L	M	M	Chihine	ML	M	H	Debaal Sour	ML	M	H
Deir Amess	ML	M	M	Deir Kifa	ML	M	M	Deir Qanoun El-Ain	M	M	E
Deir Qanoun El-Naher	ML	M	MH	Derdghaiya	ML	M	M	Dhayra	ML	M	H
Halloussiyeh	ML	M	H	Hamoul	L	M	H	Hanaouey	M	M	H
Henniye	M	M	E	Hmairi Sour	ML	M	MH	Iskandarouna Sour	L	M	H
Jbal El Botom	ML	M	MH	Jebbin	ML	M	H	Jennata	ML	M	H
Jijim	L	M	H	Jouaiya	ML	M	MH	Kneisset Sour	M	M	H
Maarake	ML	M	H	Maaroub	ML	M	H	Majadel	ML	M	MH
Majdzoun	ML	M	H	Mansouri Sour	ML	M	E	Marnba	L	M	M
Marouahine	ML	M	M	Mazraat El-Zalloutiy	M	M	H	Mazraat Mechref	ML	M	MH
Mazraat Tayr Semhat	L	M	M	Mheilib	M	M	E	Neffakhiyeh	ML	M	M
Niha Sour	ML	M	M	Ouadi Jilo	ML	M	MH	Qana	ML	M	MH
Qolaileh Sour	ML	M	E	Rechknany	ML	M	MH	Rmadiyah	M	M	H
Selha Sour	ML	M	M	Siddiqine	ML	M	MH	Sour	M	M	E
Srifa	ML	M	M	Tayr Debbe	ML	M	H	Tayr Felsay	ML	M	MH
Tayr Harfa	ML	M	H	Touayri	L	M	M	Toura	ML	M	MH
Yanouh Sour	ML	M	H	Yarine	ML	M	H	Zebqine	L	M	M

## Saida

Municipality	14-Jan	15-Jan	16-Jan	Municipality	14-Jan	15-Jan	16-Jan	Municipality	14-Jan	15-Jan	16-Jan
Aanqoun	ML	M	M	Aaqtanit	ML	M	M	Aarab Ej-Jall	ML	M	M
Aarab Tabbaya	ML	M	M	Abra Saida	ML	M	M	Adloun	M	M	M
Adousiyeh	M	M	M	Ain-El-Deleb	ML	M	M	Arzai	ML	M	MH
Babliyah	ML	M	M	Barty	ML	M	M	Bissariyeh	M	M	M
Bnaafoul	ML	M	M	Bqosta	ML	M	M	Bramiy	ML	M	M
Daoudiyeh	ML	M	M	Dareb El-Sim	ML	M	M	Erkay	ML	M	M
Ghassanieh	ML	M	M	Ghazieh	M	M	M	Hajjeh	ML	M	M
Haret Saida	ML	M	M	Hartiyeh	ML	M	M	Hlaliye Saida	ML	M	M
Insariyat	ML	M	M	Jazira Saida	ML	M	H	Kafar Bit	ML	M	M
Kaoutariyet El-Siyad	ML	M	M	Kfar Chellal	ML	M	M	Kfar Hatta Saida	ML	M	M
Kfar Milke Saida	ML	M	M	Khartoum	ML	M	M	Khaziz	ML	M	M
Khirbet Ed-Douair Sa	ML	M	M	Khirbet El-Bassal	M	M	M	Khrayeb Saida	ML	M	M
Loubieh	ML	M	M	Maghdouche	ML	M	M	Majdelyoun	ML	M	M
Matariyet El-Choumar	ML	M	M	Matayriyeh	ML	M	M	Mazraat 'Mseileh	M	M	M
Mazraat 'Snaiber	M	M	M	Mazraat Aarab Soukka	ML	M	M	Mazraat Deir Taqla	ML	M	M
Mazraat El Yahoudiye	M	M	M	Mazraat El-Housseini	M	M	M	Mazraat El-Mhaydaleh	M	M	M
Mazraat El-Ouasta	M	M	M	Mazraat Jamjim	ML	M	M	Mazraat Kaoutariyet	ML	M	M
Mazraat Kfar Badda	ML	M	M	Mazraat Oussamiyat	M	M	M	Mazraat Sari	ML	M	M
Mazraat Sinai	ML	M	M	Meemariyeh	ML	M	M	Merouaniyeh	M	M	M
Miyeh ou Miyeh	ML	M	M	Najjariyeh	M	M	M	Qaaqiyat El-Snaouba	ML	M	M
Qnarit	ML	M	M	Qraiye Saida	ML	M	M	Saida Ed-Dekermane	ML	M	M
Saida El-Oustani	ML	M	M	Saida El-Qadimeh	ML	M	M	Saida Kefraya	ML	M	M
Saksakiyeh	ML	M	M	Salhieh Saida	ML	M	M	Sarafand	M	M	M

Sfenta	L	M	M	Tafahta	ML	M	M	Tanbourit	ML	M	M
Tebna	ML	M	M	Zaghdraiya	ML	M	M	Zeita	ML	M	M
Zrariyeh	ML	M	M								

## Jezzine

Municipality	14-Jan	15-Jan	16-Jan	Municipality	14-Jan	15-Jan	16-Jan	Municipality	14-Jan	15-Jan	16-Jan
Ain El-Mir (El Estab)	ML	M	M	Anane	L	L	ML	Aramta	ML	ML	M
Ariya	L	L	L	Aychiyeh	ML	M	M	Azour	L	L	L
Baba	L	L	L	Bayssour Jezzine	ML	M	M	Benoueteh Jezzine	L	L	L
Bhannine	L	L	ML	Bisri	L	L	L	Bkassine	L	L	L
Bouslaya	L	L	M	Btedine El-Leqech	L	L	L	Chbail	L	L	M
Chouliq Jezzine	ML	M	M	Dahr Ed-Deir	L	L	M	Deir El Qattine	L	ML	M
Demachqiyeh	M	M	M	Ghabbatiyeh	L	L	L	Harf Jezzine	L	L	L
Hassaniyeh	ML	M	M	Haytouleh	L	M	M	Haytura	L	ML	M
Hidab	L	ML	M	Homsiyeh	L	L	ML	Jabal Toura	ML	ML	M
Jarmaq	ML	M	M	Jensnaya	ML	M	M	Jernaya	ML	M	M
Jezzine	ML	ML	M	Karkha	L	M	M	Kfar Falous	L	ML	M
Kfar Houna	ML	ML	ML	Kfar Jarrah	ML	M	M	Lebaa	ML	M	M
Louayzet Jezzine	L	ML	M	Machmouche	L	L	L	Mahmoudiyeh Jezzine	ML	M	M
Maknounye Jezzine	L	ML	M	Maraat Ouazaiyeh	ML	M	M	Mazraat Daraya	L	ML	ML
Mazraat El-Aarqoub	L	M	M	Mazraat El-Mathane	VL	L	L	Mazraat El-Rahbane	L	L	M
Mazraat Khallet Khaz	L	ML	M	Mazraat Louzid (Loua	L	L	M	Mazraat Qrouh	ML	M	M
Mazraat Tamra	M	M	M	Mazraat Zighrine Jez	L	M	M	Mazraat	L	L	M
Mharbiyeh	ML	M	M	Midane Jezzine	L	L	L	Mjeydel Jezzine	ML	M	M
Mlikh	L	ML	M	Mrah El-Hbasse	ML	M	M	Ouadi Baanqoudaine	ML	M	M
Ouadi El-Laymoun	ML	M	M	Ouardiyeh	VL	L	M	Qabaa Jezzine	L	ML	M
Qatrani	ML	ML	M	Qaytouleh	L	ML	M	Qtaleh Jezzine	L	L	L
Rihane Jezzine	ML	M	M	Rimat	L	L	M	Roum	L	L	ML
Roummanet	ML	M	M	Sabbah	L	L	L	Saydoun	L	L	M
Sfaray	L	L	ML	Snaya	L	ML	M	Sojoud	L	M	M
Srayri	ML	M	M	Taaid	L	L	L	Wadi Jezzine	L	L	L
Zhalta	L	ML	M								

## Bekaa

### West Bekaa

Municipality	14-Jan	15-Jan	16-Jan	Municipality	14-Jan	15-Jan	16-Jan	Municipality	14-Jan	15-Jan	16-Jan
Aammiq BG	L	ML	M	Ain El Tineh BG	ML	ML	ML	Ain Zebdeh	ML	L	M
Ana	L	L	ML	Aytanit	L	L	ML	Baaloul BG	L	L	M
Bab Mareh	ML	ML	M	Chouberqiye Aammiq	L	ML	M	Dakoue	L	L	M
Deir Ain El-Jaouze	L	L	ML	Deir Tahniche	L	ML	M	Ghaza	L	ML	M
Harime El-Soughra	L	L	ML	Hoch Harimeh	L	ML	M	Jazira BG	L	ML	M
Jib Jennine	L	L	M	Kamed-El-Laouz	L	L	M	Kefraya BG	L	L	L
Khiara El Atika	L	ML	M	Khiara	L	ML	M	Khirbet Qanafar	L	L	ML
Lala	L	L	M	Lebbaya BG	ML	ML	M	Loussa	ML	ML	M
Machghara	ML	ML	M	Manara (Hammara) BG	L	L	ML	Mansoura BG	L	ML	M

Marej BG	ML	ML	ML	Maydoun	ML	ML	M	Ouaqf BG	L	ML	ML
Qaraaoun	ML	ML	M	Qelya	M	M	M	Raouda (Istabel)	L	L	ML
Saghbine	L	L	ML	Sohmor	M	ML	M	Soltan Yacoub el Ara	L	L	M
Souairy	L	L	ML	Sultan Yaacoub	L	L	M	Tal Znoub	L	ML	M
Yehmor BG	ML	ML	M	Zilaya	ML	ML	ML				

## Zahle

Municipality	14-Jan	15-Jan	16-Jan	Municipality	14-Jan	15-Jan	16-Jan	Municipality	14-Jan	15-Jan	16-Jan
Aanjar (Haouch Mouss	L	L	ML	Ablah	M	M	M	Ain Kfarzabad	ML	ML	ML
Ali-El-Nahri	M	M	M	Bar Elias	ML	ML	ML	Bouarej	ML	ML	ML
Cheberqiyet Tabet	ML	ML	ML	Chtaura	ML	ML	ML	Deir El Ghazal	ML	ML	ML
Delhamiyet Zahle	ML	ML	ML	Ferzol	ML	M	L	Haouch El-Ghanam	M	M	M
Haouch Es-Siyadeh	ML	ML	ML	Haouch Hala	M	M	M	Haouch Mandara	ML	ML	ML
Haouch Qayssar	ML	ML	ML	Hezerta	ML	M	L	Hosh Moussa	M	ML	ML
Jdita	ML	ML	ML	Kfarzabad	ML	ML	ML	Ksara	ML	ML	ML
Majdel Aanjar	L	L	ML	Makssi	ML	ML	ML	Massa	M	ML	M
Mazraat Er-Remtaniye	ML	ML	ML	Mrayjat Zahle	ML	ML	ML	Mzaraa Zahle	ML	ML	ML
Nabi Ayla	M	M	ML	Nasriyet Rizk	M	M	M	Nasriyet Zahle	ML	ML	ML
Niha Zahle	ML	M	ML	Ouadi Ed-Deloum	ML	ML	ML	Ouadi El-Arayech	ML	M	L
Qaa El Rim	ML	M	ML	Qab Elias	ML	ML	ML	Qousaya	ML	ML	ML
Rhit	M	ML	ML	Riyak	M	M	M	Saadnayel	ML	ML	ML
Taal El-Akhdar	L	ML	M	Taalbeya	ML	ML	ML	Taanayel	ML	ML	ML
Talamara	M	M	M	Tcheflik Edde Haouch	ML	ML	ML	Tcheflik Qiqano	ML	ML	ML
Terbol Zahle	ML	ML	ML	Touaite Zahle	ML	M	L	Zahle Aradi	ML	M	ML
Zahle El-Berbara	ML	M	ML	Zahle El-Maallaqa	ML	M	ML	Zahle El-Midane	ML	M	ML
Zahle Er-Rassiyeh	ML	M	ML	Zahle Haouch El-Ouma	ML	ML	ML	Zahle Haouch El-Ouma	ML	M	ML
Zahle Haouch Ez-Zara	ML	M	ML	Zahle Maallaqa Aradi	ML	M	ML	Zahle Mar Antonios	ML	M	ML
Zahle Mar Elias	ML	M	ML	Zahle Mar Gerios	ML	M	ML	Zahle Saydet En-Naja	ML	M	ML
Zebdoul	L	ML	L								

## Rachaiya

Municipality	14-Jan	15-Jan	16-Jan	Municipality	14-Jan	15-Jan	16-Jan	Municipality	14-Jan	15-Jan	16-Jan
Ain Arab Rachaiya	L	L	M	Ain Ata	L	L	ML	Ain Harche	L	L	ML
Aqabe Rachaya	ML	L	M	Ayha	L	L	ML	Ayta El Fokhar	L	L	M
Bakifa Rachaya	L	L	M	Bakka	VL	L	M	Beit Lahya	ML	L	M
Bireh Rachaiya	L	L	M	Daher El Ahmar	L	L	M	Deir El-Achayer	L	L	ML
Heloua Rachaiya	VL	L	ML	Hoch El Qannabeh Rac	L	L	ML	Kaoukaba Bou Arab	L	L	M
Kfar Danis	L	L	M	Kfar Mechki	ML	L	M	Kfar Qouq	L	L	M
Kherbet Rouha	L	L	M	Majdel Balhiss	ML	ML	M	Mdoukha	L	L	M
Mhaydseh Rachaiya	L	L	M	Nabi Safa	ML	ML	M	Rachaiya	L	L	M
Rafid Rachaiya	L	L	M	Selsata (Mazraat Dei	VL	L	L	Tannoura	ML	L	M
Yanta	VL	L	M								

## Beyrouth

### Beyrouth

Municipality	14-Jan	15-Jan	16-Jan	Municipality	14-Jan	15-Jan	16-Jan	Municipality	14-Jan	15-Jan	16-Jan
--------------	--------	--------	--------	--------------	--------	--------	--------	--------------	--------	--------	--------



Achrafieh	M	M	M	Ain el-Mreisse	M	M	M	Bachoura	M	M	M
Beirut Central Distr	M	M	M	Marfai	M	M	M	Mazraa	M	M	M
Medaouar	M	M	M	Minet el-Hosn	M	M	M	Mwssaitbeh	M	M	M
Ras Beirut	M	M	M	Rmeil	M	M	M	Saifi	M	M	M
Zqaq el-Blat	M	M	M								