

Lebanon Fire Risk Bulletin

Refer to cadast condition.



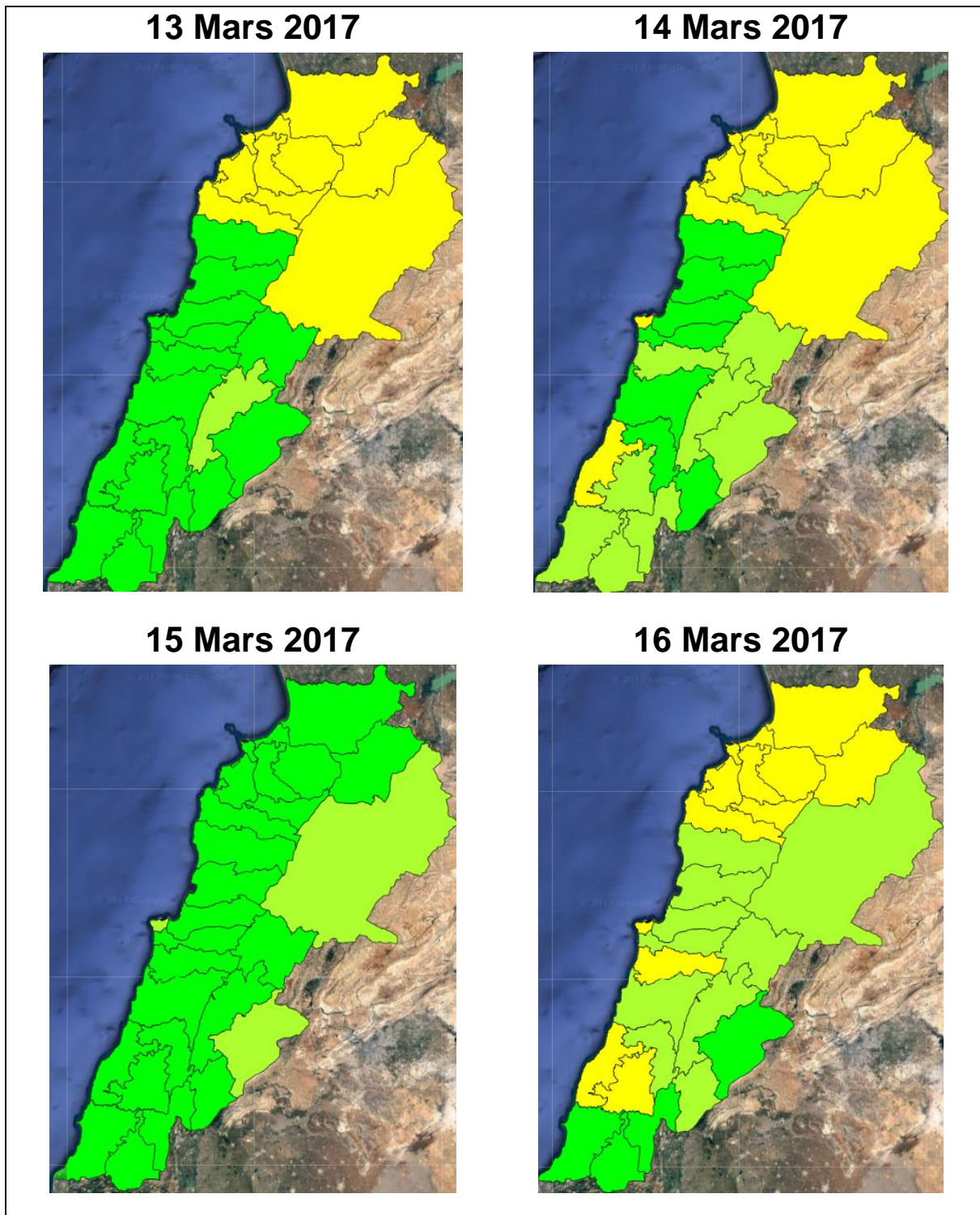
CIVIL DEDEFENCE

General description of potential fire risk situation

Symbol	Level of risk	Meaning and actions
VL	Very low	Very low fire risk. Controlled burning operations can be hardly executed due to high fuel moisture content. Normally wildfires self-extinguish.
L	Low	Low fire risk. Controlled burning operations can be executed with a reasonable degree of safety.
ML	Medium low	Medium-low fire risk. Controlled burning operations can be executed in safety conditions. All the fires need to be extinguished.
M	Medium	Medium fire risk. Controlled burning operations would be avoided. All the fires need to be very well extinguished.
M	Medium high	Controlled burning is not recommended. Open flame will start fires. Cured grasslands and forest litter will burn readily. Spread is moderate in forests and fast in exposed areas. Patrolling and monitoring is suggested. Fight fires with direct attack and all available resources.
H	High	Ignition can occur easily with fast spread in grass, shrubs and forests. Fires will be very hot with crowning and short to medium spotting. Direct attack on the head may not be possible requiring indirect methods on flanks. Patrolling and monitoring the territory is highly suggested.
E	Extreme	Ignition can occur also from sparks. Fires will be extremely hot with fast rate of spread. Control may not be possible during day due to long range spotting and crowning. Suppression forces should limit efforts to limiting lateral spread. Damage potential total. Patrolling and monitoring the territory is highly suggested.

Beirut, 14 March 2017

FIRE RISK INDEX

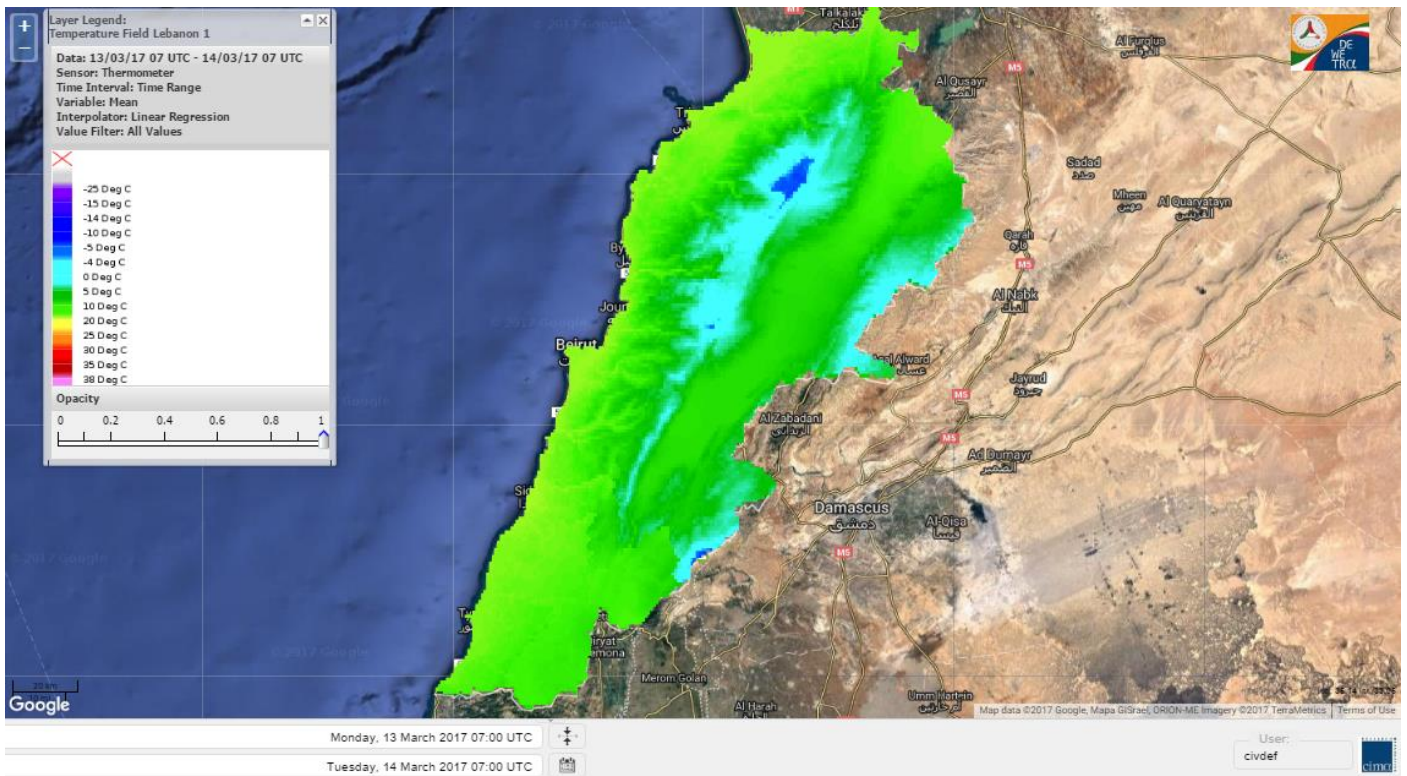


Layer Legend:
Lebanon Wildfire Risk Index 1

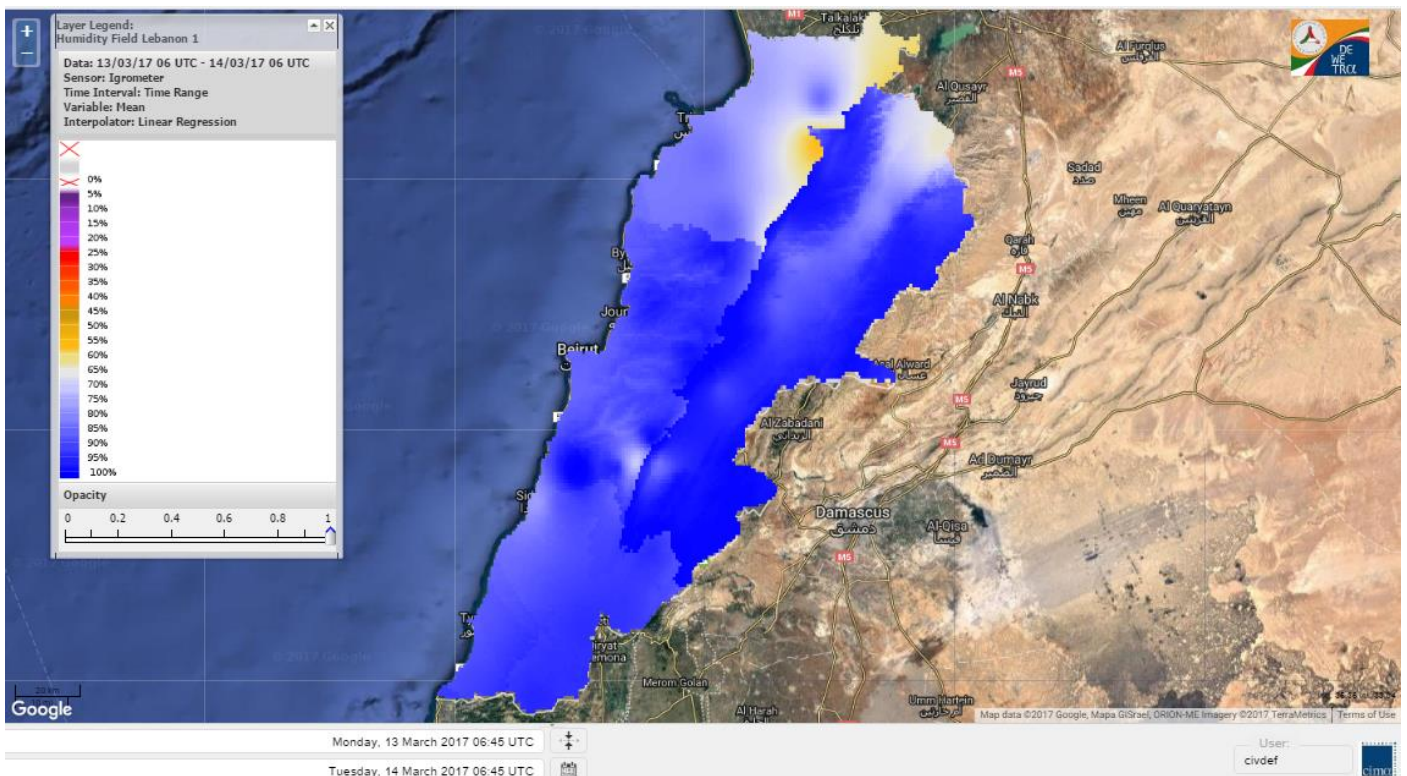
Data: Run: 14/03/2017 00:00. Forecast for 14
Model: RISICO for the Republic of Lebanon
Variable: Fire Weather Index
Spatial Resolution: Caza

- VERY LOW
- LOW
- MEDIUM-LOW
- MEDIUM
- MEDIUM-HIGH
- HIGH
- EXTREME

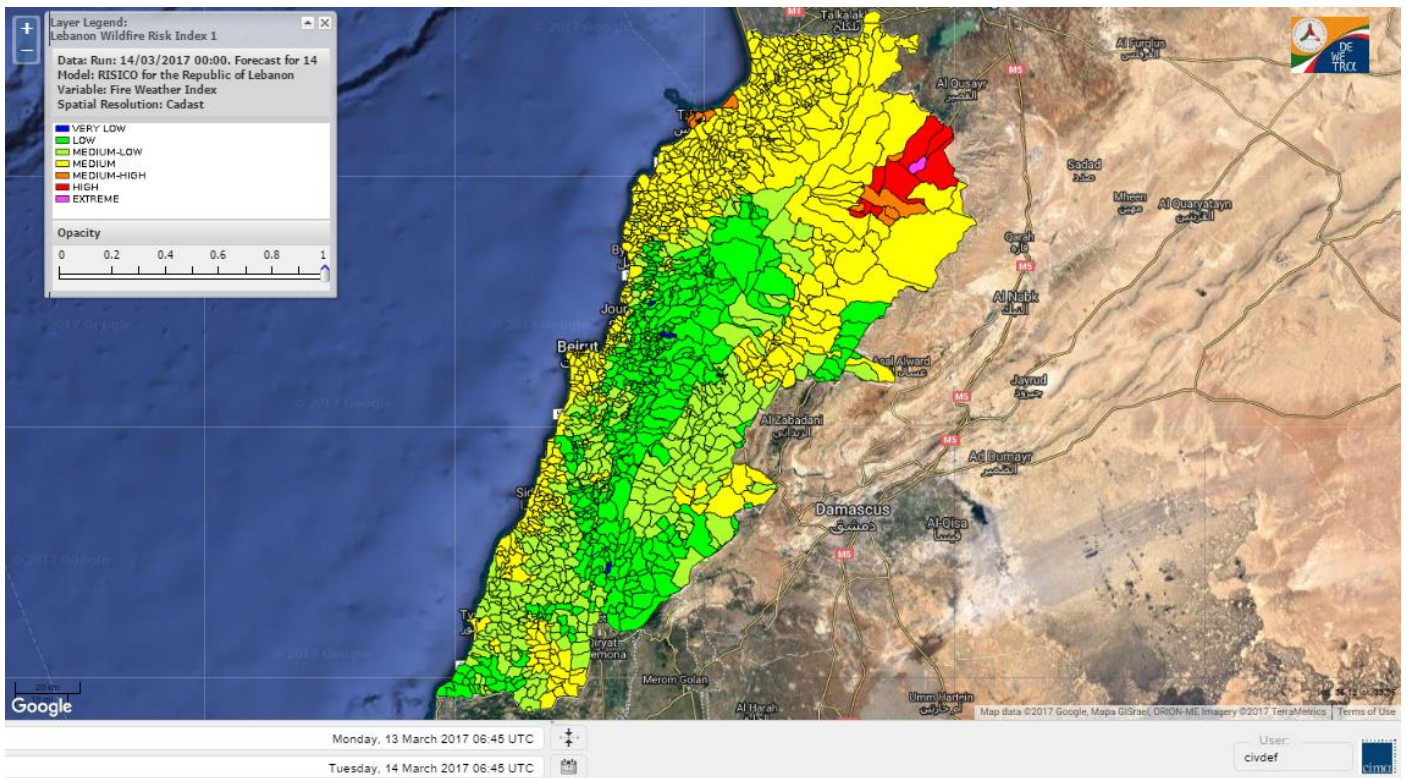
Lebanon temperature for 14 Mars 2017



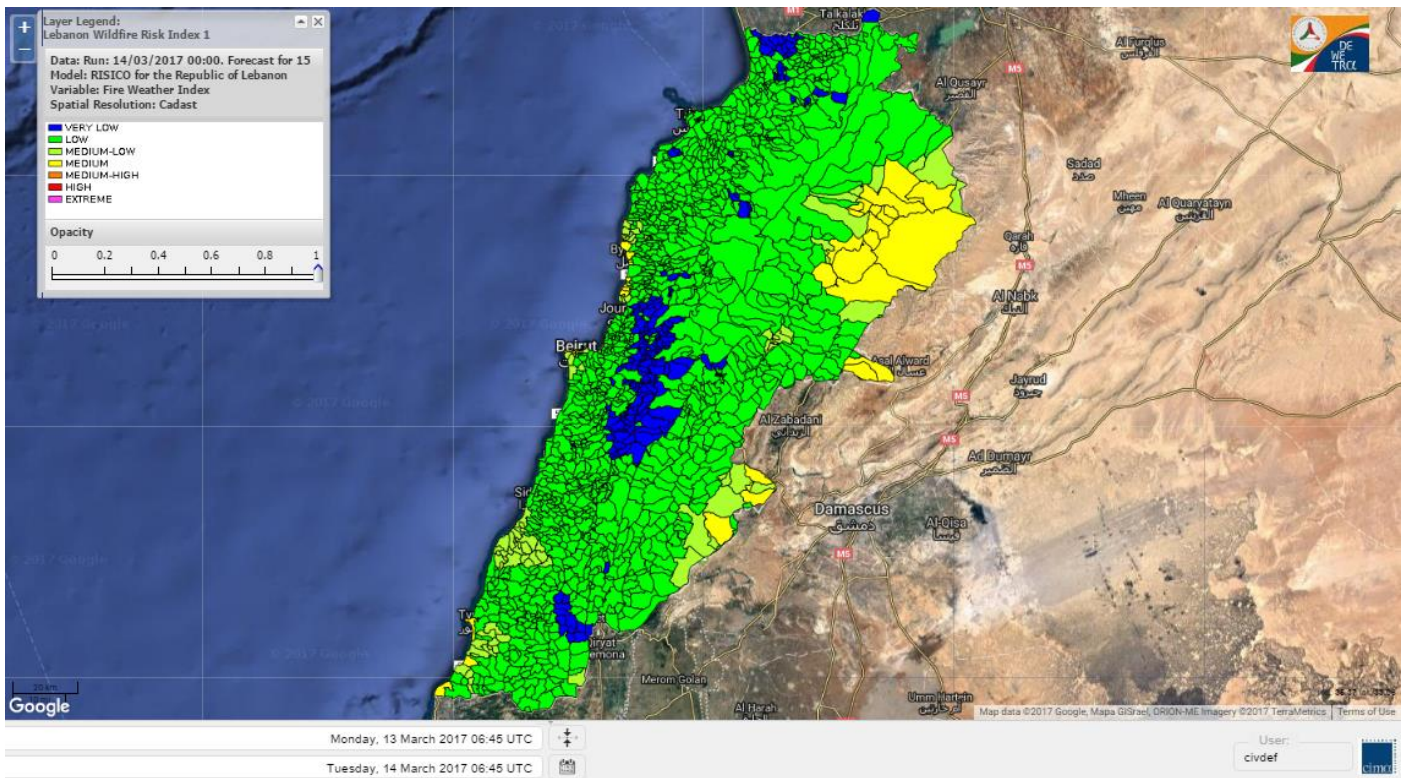
Lebanon humidity for 14 Mars 2017



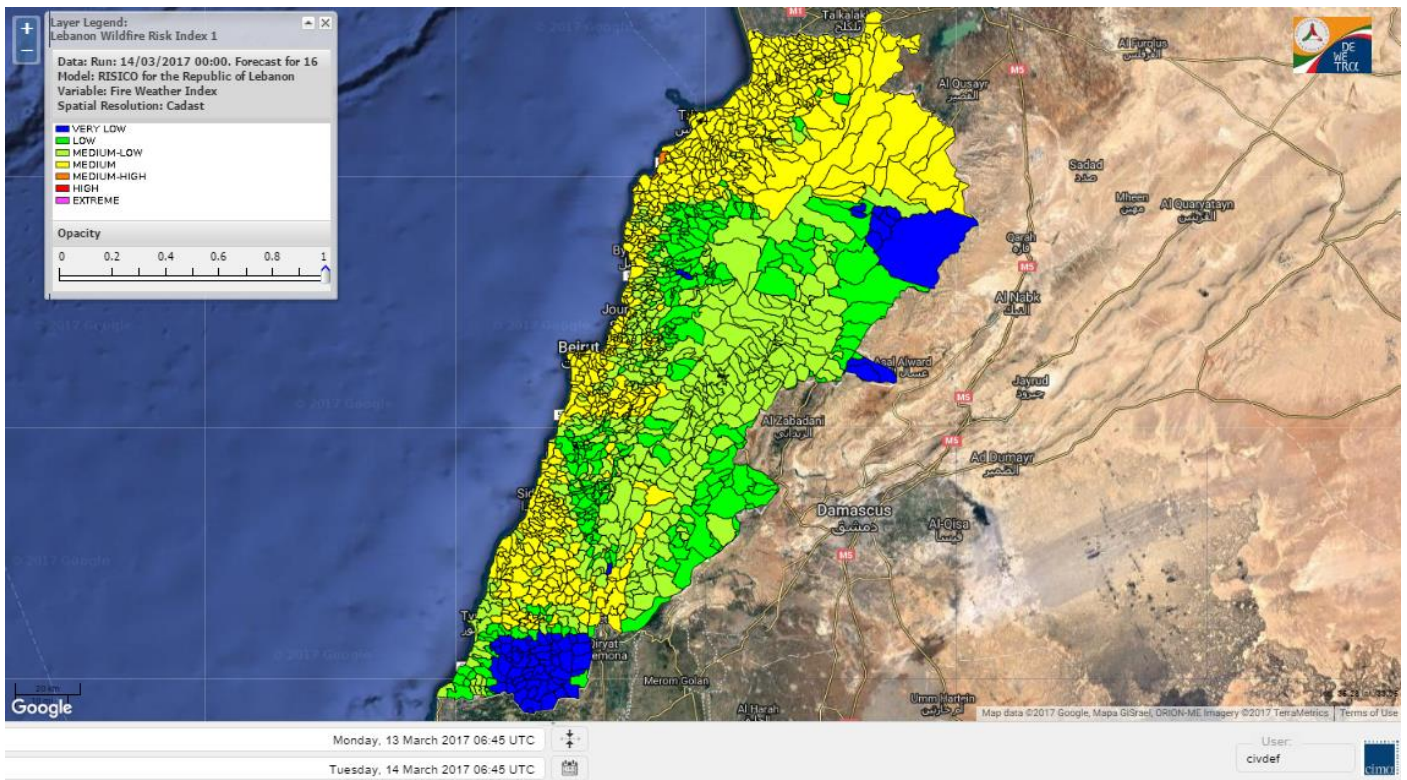
Lebanon for 14 Mars 2017



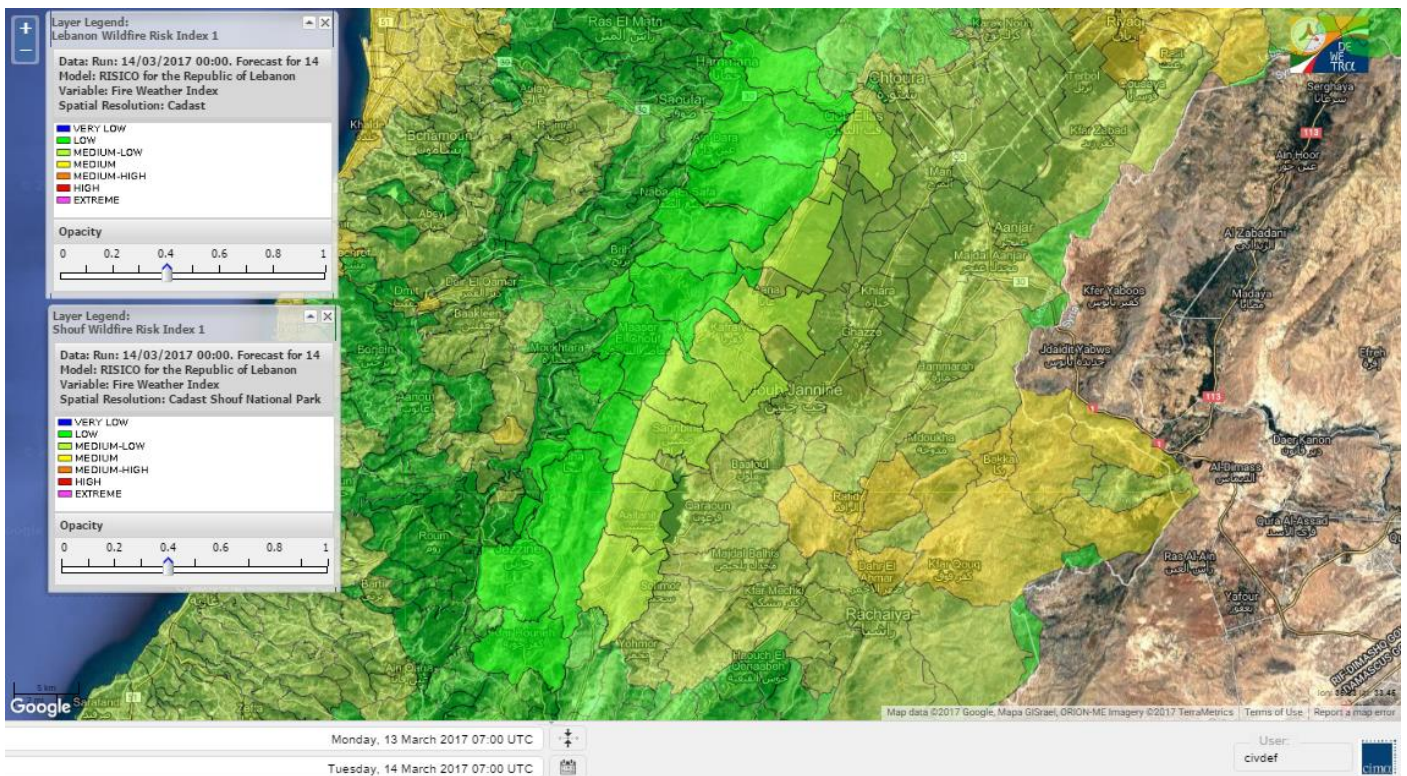
Lebanon for 15 Mars 2017



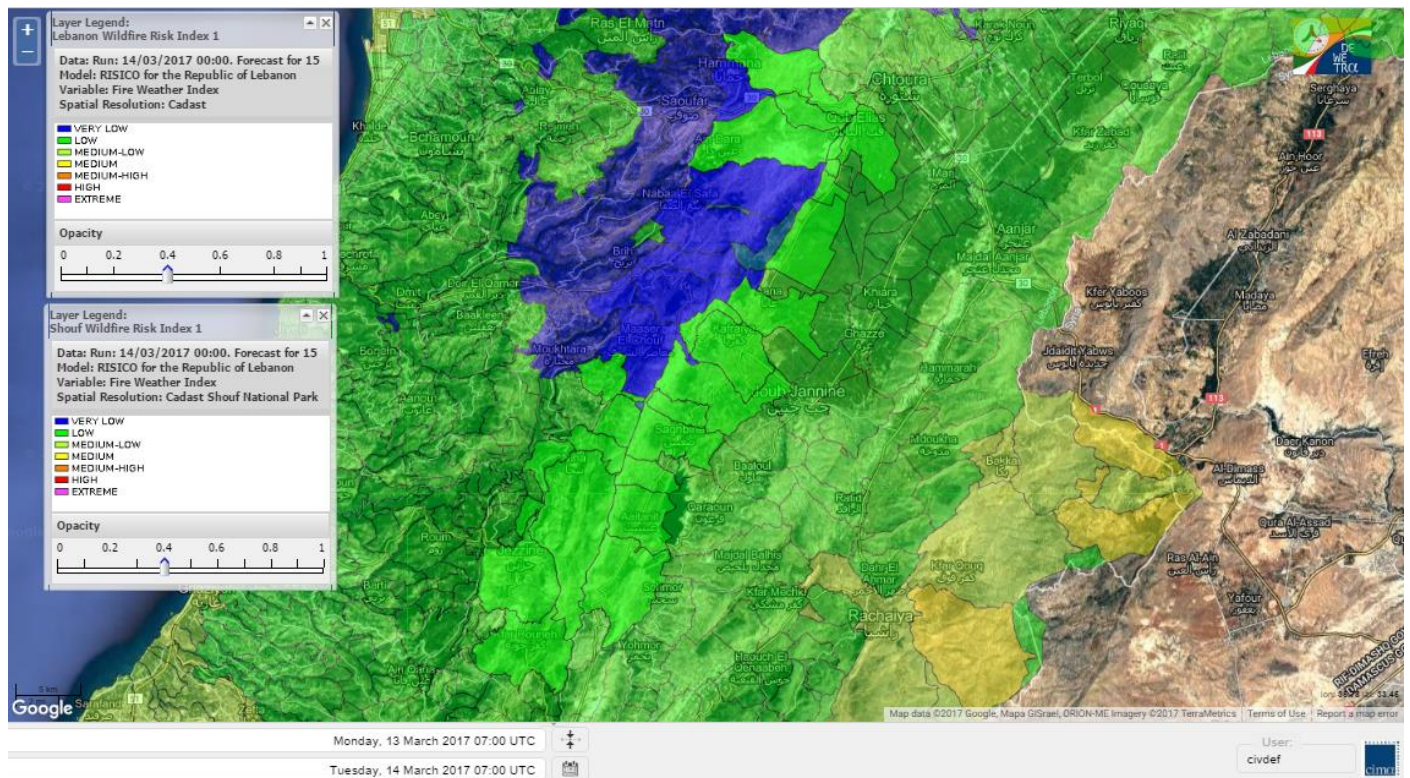
Lebanon for 16 Mars 2017



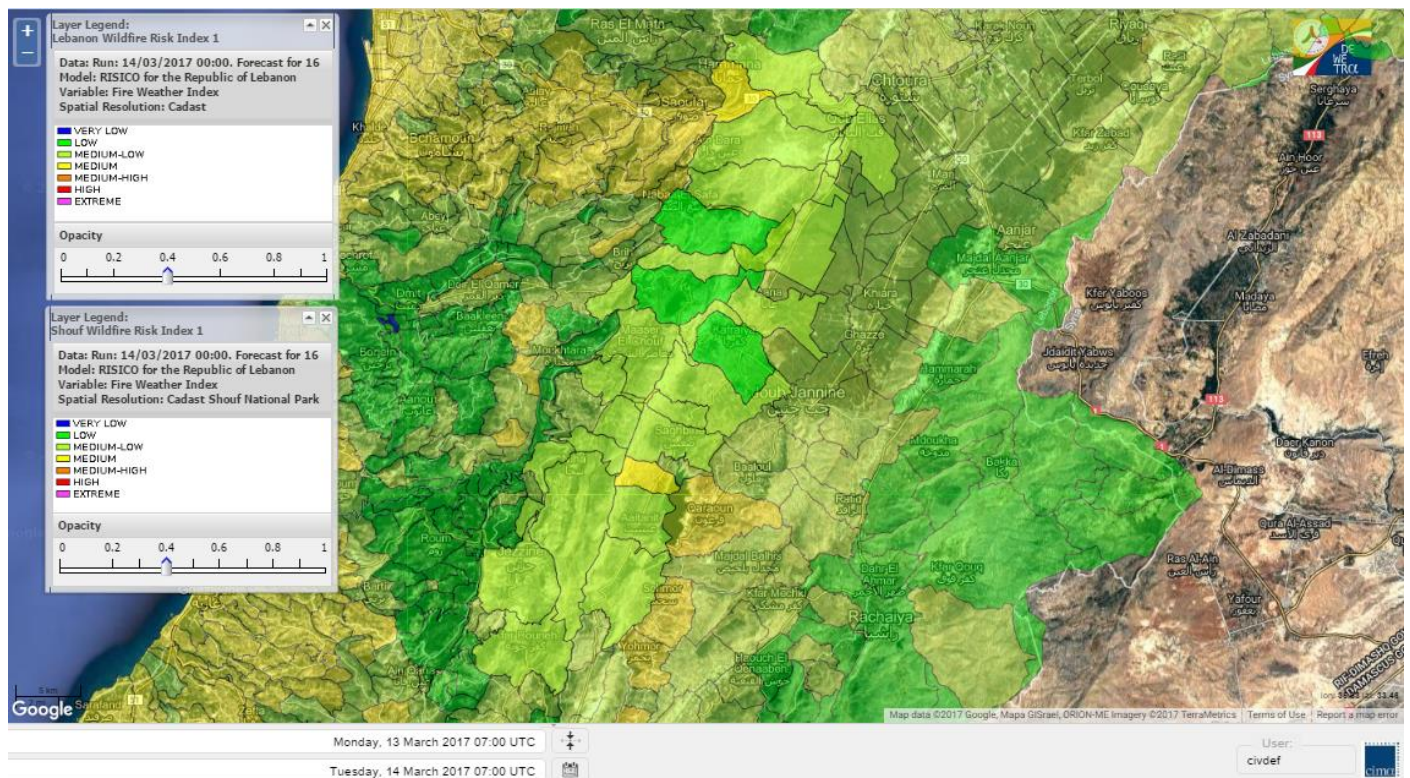
Shouf Biosphere Reserve Forecast for 14 Mars 2017



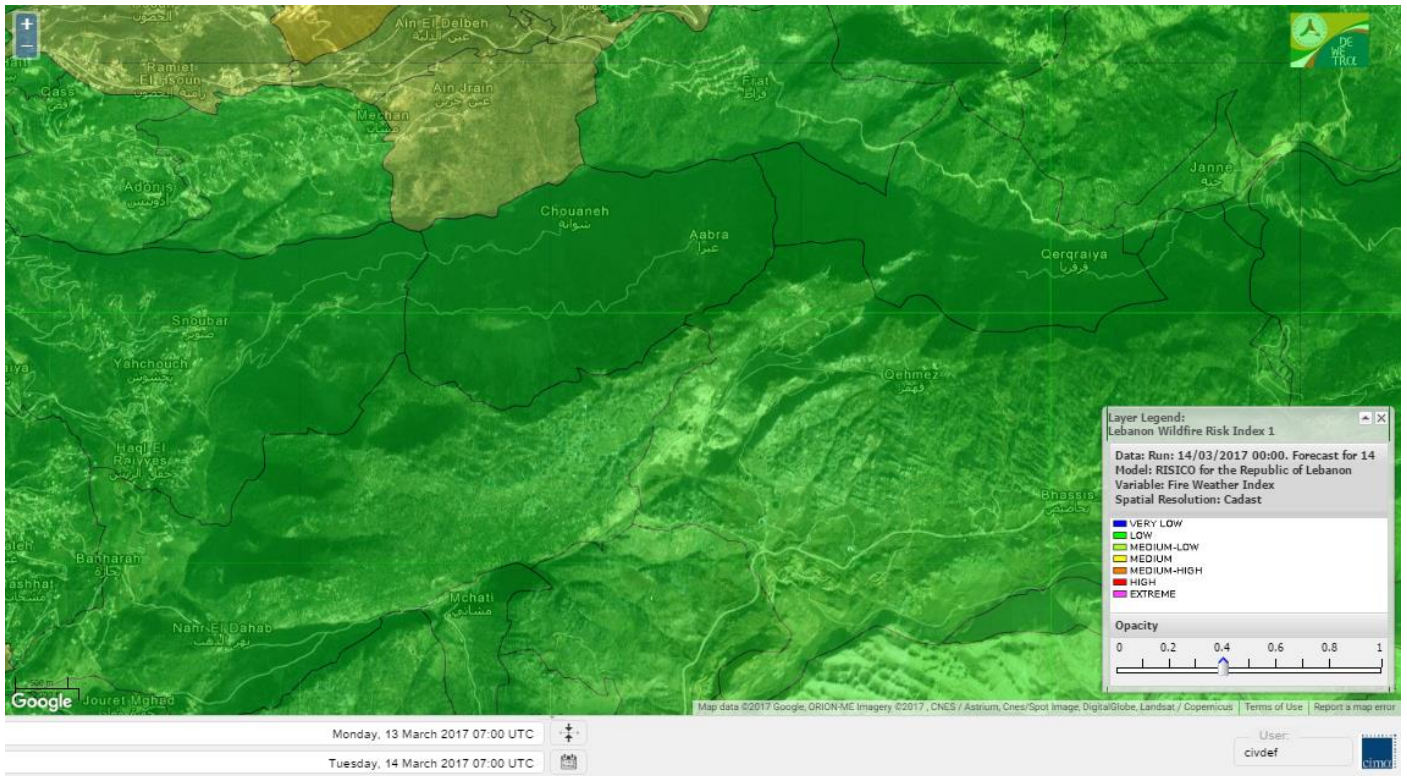
Shouf Biosphere Reserve Forecast for 15 Mars 2017



Shouf Biosphere Reserve Forecast for 16 Mars 2017



Jabal Moussa Reserve Forecast for 14 Mars 2017



Jabal Moussa Reserve Forecast for 15 Mars 2017



Jabal Moussa Reserve Forecast for 16 Mars 2017



Nord

Koura

Municipality	14-Mar	15-Mar	16-Mar	Municipality	14-Mar	15-Mar	16-Mar	Municipality	14-Mar	15-Mar	16-Mar
Aaba	M	L	M	Afsaddiq	M	L	M	Ain Ekriane	M	L	M
Amioun	M	L	M	Anfeh	M	L	MH	Badbhoun	M	L	M
Barghoun	M	L	M	Barsa	M	L	M	Batroumine	M	L	M
Bdebba	M	L	M	Bechmizzine	M	L	M	Bednaye El-Koura	M	L	M
Bhabbouch El-Koura	M	L	M	Bkeftine	M	L	M	Bnehran	M	L	M
Bqaiia El-Koura	M	L	M	Bsarma	M	L	M	Btaaboura	M	L	M
Bttram	M	L	M	Btouratij	M	L	M	Bziza	M	L	M
Dar Beechtar	M	L	M	Dar Chmezzine	M	L	M	Deddeh	M	L	M
Deir El-Balamand	M	VL	M	Fih	M	L	M	Hraiche	M	L	M
Ijdaabrine	M	L	M	Kaftoun	M	L	M	Kefraya El-Koura	M	L	M
Kfarakka	M	L	M	Kfarhata	M	L	M	Kfarhazir	M	L	M
Kfarkahel	M	L	M	Kfarsaroun	M	L	M	Kosba	M	L	M
Mejdel el-Koura	M	L	M	Nakhle	M	L	M	Qalhat	M	VL	M
Ras Masqa	M	L	M	Rechdibbine	M	L	M	Zakroun	M	L	M
Zgharta El-Mtaouile	M	L	M								

Bcharre

Municipality	14-Mar	15-Mar	16-Mar	Municipality	14-Mar	15-Mar	16-Mar	Municipality	14-Mar	15-Mar	16-Mar
Aabdine	M	L	M	Bane	ML	L	M	Barhelioun	M	L	M
Bazouone	L	VL	L	Becharre	ML	L	M	Beit Menzer	M	L	M
Billa	M	L	M	Blaouza	M	VL	M	Bqaa Kafra	L	L	ML
Bqerqacha	L	L	L	Breissat	M	L	L	Dimane	ML	L	L
Hadath El Jobbeh	ML	L	L	Hadchit	L	L	M	Hasroun	L	VL	L
Mazraat Aassaf	M	L	L	Mazraat Bani Saab	M	L	L	Mchaa El-Jobbeh	L	L	ML
Metrit	M	L	M	Moghr El-Ahoual	M	L	M	Ouadi Qannoubine	ML	VL	L
Qanat	ML	L	ML	Qnayouer	M	L	ML	Tourza	M	L	M

Batroun

Municipality	14-Mar	15-Mar	16-Mar	Municipality	14-Mar	15-Mar	16-Mar	Municipality	14-Mar	15-Mar	16-Mar
Aabrine	M	L	M	Aalali	M	L	L	Aartiz	M	L	L
Abdelli	M	L	ML	Ajdabra	M	L	M	Assia	M	L	L
Basbina	M	L	M	Batroun	M	L	M	Bcheleh	M	L	L
Bechtoudar	M	L	L	Beit Chlala	M	L	L	Beit Kassab	M	L	L
Bijdarfil	M	L	M	Bqesmaya	M	L	M	Chatine	ML	L	L
Chebtin	M	L	ML	Chekka	M	L	M	Daael	M	L	L
Dahr Abi Yaghi	ML	L	ML	Daraya El-Batroun	M	L	M	Deir Billa	M	L	ML
Deir Kfifane	M	L	M	Deir Mar Youhanna EL	M	L	L	Deir Mar Youssef Jra	M	L	ML
Douma	M	L	L	Douq	M	L	ML	Eddeh El-Batroun	M	L	ML
Ftahat El-Batroun	M	L	L	Ghouma	M	L	ML	Hadtoun	M	L	L
Hamat	M	L	M	Harbouna	M	L	ML	Hardine	M	L	L
Helta	M	L	L	Hery	MH	L	MH	Jebbla	M	L	L
Jrabta El-Batroun	M	L	ML	Jrane El-Batroun	M	L	M	Kfar Aabida	M	L	M
Kfar Halda	M	L	L	Kfarb Shlaimane	M	L	L	Kfarhatna	M	L	ML
Kfarhay	M	L	M	Kfarhelos	M	L	M	Kfifane	M	L	M

Kfour El Arabi	M	L	L	Koubba	M	L	M	Kour	M	L	M
Mar Mama	M	L	L	Masrah	ML	L	ML	Mehmarch	M	L	L
Mrah Chdid	M	L	ML	Mrah El Ziyat	M	L	M	Mrah El-Hajj	M	L	L
Nahle El-Batroun	M	L	L	Niha El-Batroun	M	L	L	Ouajh El-Hajjar	M	L	M
Ouata Houb	L	L	L	Qatnaaoun	M	L	M	Racha	M	L	L
Rachana	M	L	ML	Rachkida	M	L	M	Ram El-Batroun	M	L	L
Ras Nahhach	M	L	M	Selaata	M	L	M	Sghar	M	L	ML
Smar Jbayl	M	L	ML	Sourat El-Batroun	M	L	L	Tannourine El-Faouqa	L	L	ML
Tannourine Et-Tahta	L	L	L	Thoum	M	L	M	Toula El-Batroun	M	L	ML
Zan	M	L	L								

Zgharta

Municipality	14-Mar	15-Mar	16-Mar	Municipality	14-Mar	15-Mar	16-Mar	Municipality	14-Mar	15-Mar	16-Mar
Aachach	M	L	M	Aalma	M	L	M	Aarde	M	L	M
Aintourine	M	L	M	Arabet Qozhaya	M	L	M	Arde	M	L	M
Arjis	M	L	M	Asnoun	M	L	M	Ayto	M	L	M
Basloukit	M	L	M	Bchannine	M	L	M	Besebeel	M	L	M
Bhairret Toula	M	L	M	Bnachee	M	L	M	Boussit	M	L	M
Danha	M	L	M	Daraiya Zgharta	M	L	M	Deir Jdeide	M	L	M
Ehden	M	L	M	Halan	M	L	M	Hariq Zgharta	M	L	M
Houakir	M	L	M	Hraiqis	M	L	M	laal	M	L	M
Ijbaa	M	L	M	Karm Saddeh	M	L	M	Kfarchakhna	M	L	M
Kfardlaqous	M	L	M	Kfarfou	M	L	M	Kfarhata Zgharta	M	L	M
Kfarhoura	M	L	M	Kfarsghab	M	L	M	Kfaryachit	M	L	M
Kfarzaina	M	L	M	Khaldiye	M	L	M	Mazraat Ajbeaa	M	L	M
Mazraat Et-Teffah	M	L	M	Mazraat Jneid	M	L	M	Mejdlaiya Zgharta	M	L	M
Merh Kfarsghab	M	L	M	Miryata	M	L	M	Miziara	M	L	M
Mzraat Kefraya	M	L	M	Qorah Bach	M	L	M	Rachiine	M	L	M
Ras Kifa	M	L	M	Sakhra	M	L	M	Sebhel Zgharta	M	L	M
Serhel	M	L	L	Tallet Zgharta	M	L	M	Toula Zgharta	M	L	M
Zgharta	M	L	M								

Minieh-Denniye

Municipality	14-Mar	15-Mar	16-Mar	Municipality	14-Mar	15-Mar	16-Mar	Municipality	14-Mar	15-Mar	16-Mar
Aasaymout	M	L	ML	Aaymar	M	L	M	Aazki	M	L	M
Ain El-Tineh-Miniyeh	M	L	M	Assoun	M	L	M	Bakhaaoun	M	L	M
Bchennata	M	L	M	Bechehhara	M	VL	ML	Beddawi	MH	L	M
Behouaita	M	L	M	Beit El Foqss	M	L	M	Beit Haouik	M	L	M
Beit Zoud	M	L	M	Bekaasafrine	M	L	M	Borj El Yahoudiyeh	M	L	M
Bqarsouna	M	L	M	Btermaz	M	L	M	Debaael	M	L	M
Deir Ammar	M	L	M	Deir Nbouh	M	L	M	Haouaret-Miniyeh	M	L	M
Haql el Azimeh	M	L	M	Harf El Siyad	M	L	ML	Hazmiye-Miniyeh	M	L	M
Izal	M	L	M	Jarjour	M	VL	ML	Jayroun	M	L	ML
Kahf El-Malloul	M	L	M	Karm El-Moher	M	L	M	Kfar Binine	M	L	M
Kfarchalane	M	L	M	Kfarhabou	M	L	M	Kharroub-Miniyeh	M	L	M
Mazraat El-Kreme	M	L	ML	Mazraat Ketrane	M	L	M	Merkebtta	M	L	M
Minyeh	MH	L	M	Mrah El Sfirat	M	L	ML	Mrah Sraj	M	L	M
Mrebbine	M	L	M	Nabi Youcheaa	M	L	M	Nemrine	M	L	M

Qarhaiya	M	L	M	Qarne	M	L	L	Qarsita	M	L	ML
Qattineh-Miniyeh	M	L	ML	Qemmamine	M	L	ML	Qraïne	M	L	M
Raouda-Aadoua	M	L	M	Rihaniyet-Miniyeh	M	L	M	Sfireh	M	L	M
Sir Ed-Danniyeh	M	L	M	Tarane	M	L	M	Terbol-Miniyeh	M	L	M
Zaghartaghriine	M	L	M	Zouq Bhannine	M	L	M				

Nabatiye

Nabatiye

Municipality	14-Mar	15-Mar	16-Mar	Municipality	14-Mar	15-Mar	16-Mar	Municipality	14-Mar	15-Mar	16-Mar
Aabba	ML	L	M	Aazzi	ML	L	ML	Adchit El-Chqif	ML	L	M
Ain Bou Swar	L	L	ML	Ain Kana	ML	L	ML	Ali El-Taher	L	L	ML
Ansar	M	L	M	Arab Salim	L	L	ML	Arnoun	L	L	ML
Bfaroue	ML	L	ML	Breyqaah	ML	L	M	Charqiyeh	ML	ML	M
Choukine	ML	L	M	Deir El Zahrani	ML	L	M	Doueir El-Nabatiyeh	ML	L	M
Habbouch El-Nabatiye	ML	L	M	Hamra El-Nabatiyeh	ML	L	M	Harouf El-Nabatiyeh	ML	L	M
Hmaile	L	L	ML	Houmin El Faouqa	ML	L	M	Houmin El Tahta	ML	L	M
Jarjough	L	L	ML	Jbaah El-Nabatiyeh	L	L	L	Jebchit	ML	L	M
Kfar Djal El-Nabatiy	ML	L	M	Kfar Remmane	L	L	ML	Kfar Sir	ML	L	M
Kfar Tebnit	ML	L	M	Kfarfila	ML	L	ML	Kfour El-Nabatieh	ML	L	M
Mayfadoun	ML	L	M	Mazraat Bsaffour	ML	L	ML	Mazraat Chalbaal	ML	L	ML
Mazraat Dmoul	M	L	M	Mazraat El Khreibeh	ML	L	M	Mazraat El-Bayad El-	ML	L	M
Mazraat Kfarjaouz	ML	L	M	Mazraat Qalaat Meiss	ML	L	ML	Nabatiyeh El-Fawka	ML	L	M
Nabatiyeh Et-Tahta	ML	L	M	Namiriyeh	ML	ML	M	Qaaqaaiyet El Jisr	ML	L	M
Qossaibeh El-Nabatiy	ML	L	M	Roumine	ML	L	M	Sarba El-Nabatieh	ML	L	ML
Sir El-Gharbiyeh	ML	L	M	Toul	ML	L	M	Yehmor El-Nabatiyeh	ML	L	M
Zaoutar El Charkiyeh	ML	VL	M	Zaoutar El-Gharbiyeh	ML	VL	M	Zebdine El-Nabatiyeh	ML	L	M
Zefta	ML	ML	M								

Hasbaiya

Municipality	14-Mar	15-Mar	16-Mar	Municipality	14-Mar	15-Mar	16-Mar	Municipality	14-Mar	15-Mar	16-Mar
Ain Jarfa	L	L	ML	Abou Qamha	L	L	ML	Ain Qania	L	L	ML
Bourghos	L	L	ML	Chebaa	L	L	ML	Chouaya Hasbaya	L	L	ML
Dellafeh	L	L	M	Fardiss Hasbaiya	L	L	ML	Hasbaya	L	L	ML
Hbariyeh	L	L	ML	Kaoukaba Hasbaiya	L	L	M	Kfar Chouba	L	L	ML
Kfar Hamam	L	L	ML	Kfeir El-Zait	L	L	ML	Khalwat Hasbaya	L	L	L
Khreibet Hasbaiya	L	L	ML	Majidiyeh Hasbaiya	L	L	ML	Marj Ez-Zhour (Haouc	L	L	ML
Meri	L	L	ML	Mimass	L	L	ML	Rachaiya El-Fokhar	L	L	ML
Salaiyeb	L	L	M								

Marjayoun

Municipality	14-Mar	15-Mar	16-Mar	Municipality	14-Mar	15-Mar	16-Mar	Municipality	14-Mar	15-Mar	16-Mar
Aalmane Marjaayoun	L	VL	ML	Aamra	L	L	M	Adayseh Marjaayoun	ML	VL	L
Adchit El-Koussair	ML	VL	ML	Ain Aarab Marjaayoun	L	L	M	Bani Haiyann	L	VL	L
Blatt Marjaayoun	L	L	M	Blida	M	ML	L	Borj El-Moulouk	ML	L	M
Boueyda Marjaayoun	L	L	ML	Deir Mimass	L	L	ML	Deir Siriane	L	L	ML
Dibbine	L	L	M	Ebel El Saqi	L	L	M	Houla	ML	L	VL
Houra	ML	L	M	Kfar Kila	ML	L	M	Khiam Marjaayoun	L	L	M

Klayaa	ML	L	M	Majdel Selem	ML	L	VL	Marjaayoun	L	L	M
Markaba	ML	VL	VL	Mays El-Jabal	ML	L	VL	Mazraat Doumiat	ML	L	M
Mazraat Sarada	L	L	M	Mhaibib	M	L	VL	Qabrikha	L	VL	L
Qantara	L	VL	ML	Rab El-Thalathine	ML	VL	ML	Saouaneh Marjayoun	ML	L	VL
Talloussa	L	VL	VL	Taybeh Matjaayoun	ML	L	M	Touline	ML	L	L

Bent Jbail

Municipality	14-Mar	15-Mar	16-Mar	Municipality	14-Mar	15-Mar	16-Mar	Municipality	14-Mar	15-Mar	16-Mar
Ain-Ebel	ML	L	VL	Aitaroun	M	L	VL	Aynata Bint Jbeil	M	L	VL
Ayta El-Chaeb	ML	L	VL	Ayta El-Jabal	M	L	VL	Beit Lif	L	L	VL
Beit Yahoun	M	L	VL	Bint Jbeil	M	L	VL	Borj Qalaway	M	L	M
Braachit	M	L	VL	Chakra	M	L	VL	Debel	ML	L	VL
Deir Antar	M	L	VL	Froun	L	L	ML	Ghandouriyeh Bint Jb	ML	L	M
Hanine	ML	L	VL	Hariss	M	L	VL	Hdatha	M	L	VL
Jmeymeh	M	L	VL	Kafra Bint Jbeil	L	L	VL	Kfar Dounine	M	L	VL
Khirbet Selm	ML	L	VL	Kounine	M	L	VL	Maroun El Ras	M	L	VL
Qalaway	M	L	L	Qaouzah	L	L	VL	Qatmoun	ML	L	VL
Ramya Bint Jbeil	L	L	VL	Rchaf	ML	L	VL	Rmeich	ML	L	VL
Safad Al Battikh	M	L	VL	Salhaneh	L	L	VL	Serbine	ML	L	VL
Sultanieh Bint Jbeil	M	L	VL	Tibnine	M	L	VL	Tiri	ML	L	VL
Yaroun	M	L	VL	Yater	ML	L	VL				

Mont Liban

Jbail

Municipality	14-Mar	15-Mar	16-Mar	Municipality	14-Mar	15-Mar	16-Mar	Municipality	14-Mar	15-Mar	16-Mar
Aabeydat	ML	L	ML	Aalita	L	L	ML	Aamchit	M	M	M
Aarab El-Lahib	L	L	ML	Aarasta	L	L	L	Adonis Jbeil	L	L	ML
Afqa Jbeil	L	L	L	Ain El Delbeh Jbeil	ML	L	L	Ain El-Ghouayba	L	L	L
Ain Jrain	ML	L	L	Ain Kfah	M	L	M	Almat El Chemaliyat	ML	L	L
Almat El-Jenoubiya	L	L	L	Aqoura	L	L	ML	Bayzoun	M	L	L
Bchille Jbeil	L	L	ML	Bechtida	L	L	L	Behdaydat	ML	L	M
Beit Habbaq	M	L	M	Bejjeh	M	L	M	Bekhaaz	M	L	ML
Berbara Jbeil	M	ML	M	Bintael	L	L	ML	Birket Hjoula	L	L	L
Blatt Jbeil	ML	L	M	Boulhos	L	L	L	Breyj Jbeil	L	L	L
Chamat	M	ML	M	Chikhane	M	ML	M	Chmout	ML	L	ML
Eddeh Jbeil	M	L	M	Ehmej	L	L	L	Fatre	L	L	ML
Ferhet	M	L	ML	Fghal	ML	L	ML	Frat	L	L	VL
Ghabat	L	L	L	Ghalboun	M	L	M	Gharzouz	M	ML	M
Ghofrine	M	ML	M	Habil	L	L	L	Halate	M	L	M
Haqel	M	L	L	Hbaline	M	L	M	Hboub	ML	L	M
Hdeine	L	L	L	Hema Er-Rehban	ML	L	ML	Hema Mar Maroun Aann	L	L	ML
Hjoula	ML	L	ML	Hosrayel	M	ML	M	Hsarat	M	L	M
Hsoun	ML	L	ML	Jaj	ML	L	L	Janne	L	L	L
Jbeil	M	M	M	Jeddeyel Jbeil	M	ML	M	Jlisse	L	L	ML
Jouret El-Qattine	L	L	ML	Kfar Baal Annaya	ML	L	L	Kfar Kidde	M	ML	ML
Kfar Kouas	L	L	ML	Kfar Mashoun	M	L	M	Kfoun	L	L	ML

Kharbe Jbeil	M	L	ML	Laqlouq	L	L	ML	Lassa	L	L	L
Lehfed	M	L	L	Maad	M	ML	M	Mar Sarkis	L	L	ML
Mastita	M	M	M	Mayfouq	M	L	L	Mazraat El Siyad	L	L	ML
Mazraat El-Maaden	L	L	L	Mechane	L	VL	L	Mechmech Jbeil	ML	L	L
Mehrin	ML	L	M	Mejdel El-Akoura	L	L	L	Mghayreh Jbeil	L	L	L
Mounsef	M	ML	M	Nahr Ibrahim	M	M	M	Qahmez	L	L	L
Qartaba	L	L	L	Qartaboun	M	M	M	Qattara Jbeil	ML	L	L
Qorqraya	L	VL	VL	Ramout	M	L	M	Ras Osta	L	L	ML
Rihane Jbeil	M	ML	M	Sakiet El-Khayt	ML	L	ML	Saqi Richmaya	M	L	L
Sebrine	L	L	ML	Seraita	L	L	L	Souane Jbeil	M	L	L
Tadmor	L	L	L	Tartej	ML	L	L	Torzaiya	M	L	L
Yanouh Jbeil	L	L	L	Zibdine Jbeil	L	L	ML				

El Metn

Municipality	14-Mar	15-Mar	16-Mar	Municipality	14-Mar	15-Mar	16-Mar	Municipality	14-Mar	15-Mar	16-Mar
Aain El-Qabu	VL	VL	L	Aain El-Qach	L	VL	M	Aain El-Teffaha	L	L	ML
Aain el-Safsaf El-M	L	VL	ML	Abou Mizane	L	L	ML	Ain Aar	ML	L	M
Ain Alaq	L	L	ML	Ain El-Kharroube	ML	L	M	Ain El-Sendiane	L	VL	ML
Ain El-Zeitoune	L	VL	ML	Ain Saadeh	ML	L	M	Aintoura El-Matn	L	L	ML
Amaret Chalhoub	M	ML	M	Antelias	M	L	M	Atchaneh	L	L	ML
Ayroun	L	L	M	Baabdat	L	VL	ML	Baouchariyeh	M	L	M
Baskinta	L	L	L	Beit Chabab	L	L	ML	Beit El-Charar	M	L	M
Beit El-Kekko	M	L	M	Beit Mery	L	L	ML	Bhersaf	L	VL	ML
Bikfaya	L	VL	M	Biyakout	M	L	M	Bnabil	L	VL	ML
Bourj Hammoud	M	L	M	Bqennaya	ML	L	M	Broummana El-Matn	L	L	ML
Bsalim	ML	L	M	Bsifrine	L	VL	L	Bteghrine	L	VL	L
Chaouiye	L	L	M	Chouaya El-Matn	L	L	M	Choueir	L	VL	ML
Chrine	L	VL	ML	Dahr El Sawan El-Mat	L	L	ML	Daychouniyeh	M	L	M
Dbayeh	M	L	M	Deir Chamra	L	VL	L	Deir Mar Abda el Mch	ML	L	ML
Deir Mar Roukouz	M	L	M	Deir Tamiche	ML	L	ML	Dik El-Mehdi	ML	L	M
Dikwaneh	M	L	M	Douar El-Matn	L	VL	ML	Fanar	M	L	M
Fraike	L	L	ML	Haret El-Ballaneh	ML	L	M	Hbous	ML	L	M
Himlaya	L	VL	ML	Jal El Did	M	L	M	Jdeideh El-Metn	M	L	M
Jouar El-Matn	L	VL	ML	Jouret El-Ballout	L	L	ML	Kaaqour	L	VL	ML
Kfar Aaqab	VL	VL	L	Kfertay El-Matn	L	VL	L	Khenchara	L	VL	ML
Khillet El-Mtain	L	VL	ML	Konnabat Broummana	L	L	ML	Konnabat Salima	L	VL	L
Machraah El-Matn	L	VL	L	Majdel Tarchich	L	L	ML	Majzoub	ML	L	M
Mansouriyeh El-Metn	M	L	M	Mar Boutros Karm Et-	L	VL	ML	Mar Chaya et Mzekke	L	L	ML
Mar Moussa Ed-Douar	L	VL	ML	Marjaba	L	VL	L	Masqa	L	L	ML
Mayasse	L	VL	ML	Mazraat Deir Aoukar	M	L	M	Mazraat El-Hadirat	ML	L	M
Mazraat Yachouh	M	L	M	Mchikha	L	VL	ML	Menqlet Mezher	ML	L	M
Mhaydseh Matn	L	VL	M	Mkalles	M	L	M	Mrouj	L	VL	ML
Mtain	L	L	ML	Mtayleb	ML	L	M	Nabay	L	L	ML
Naccache	M	L	M	Ouadi Chahine	L	VL	ML	Ouadi El-Karm El-Mat	L	VL	L
Ouata El-Mrouj	L	VL	M	Ouyoun El-Matn	L	VL	ML	Qornet Chehwan	ML	L	M
Qornet El-Hamra	ML	L	ML	Roumieh	L	L	ML	Sfeilet Bikfaya	L	VL	ML
Sinn El-Fil	M	L	M	Zabbougha	L	VL	ML	Zalqa	M	L	M

Zarouon	L	VL	ML	Zekrite	ML	L	ML	Zighrine El-Matn	L	L	M
Zouk El-Khrab	M	L	M								

Chouf

Municipality	14-Mar	15-Mar	16-Mar	Municipality	14-Mar	15-Mar	16-Mar	Municipality	14-Mar	15-Mar	16-Mar
Aalmane El-Chouf	M	L	M	Aammiq El-Chouf	L	VL	L	Ain Ouzein	L	VL	L
Ain Qani	L	VL	L	Ain Zhalta	L	VL	L	Ainbal	ML	L	L
Amatour	L	L	L	Anout	ML	L	L	Atrine	ML	L	L
Baadarane	L	L	ML	Baaqline	ML	L	L	Baasir	M	L	M
Barja	M	L	M	Barouk	L	VL	L	Bater	L	L	ML
Batloun	L	VL	ML	Bayqoun	M	L	M	Bchetfine	L	L	L
Beiteddine	L	L	L	Benouati Ech-Chouf	ML	L	L	Berjein	L	L	L
Bireh et Mtalleh	L	VL	ML	Biret El-Chouf	ML	VL	M	Bkechtine Ouel Mchei	L	L	L
Bkifa El-Chouf	ML	L	ML	Botme	L	VL	L	Bqaiaa Ech-Chouf	L	L	L
Bsaba El-Chouf	M	L	ML	Chammis El-Chouf	ML	L	ML	Chehim	L	L	L
Chemaarine	L	L	L	Chourit	L	VL	L	Daher El-Chouf	ML	L	L
Dalhoun	ML	L	ML	Damour	M	L	ML	Daraya El-Chouf	L	L	L
Deir El-Moukhalles	L	L	L	Deir Baba	ML	L	L	Deir Dourit	ML	L	L
Deir El-Qamar	ML	L	ML	Deir Kouche	ML	L	L	Dibbieh	L	L	L
Dmit	L	L	L	Fouara Jaafar	L	VL	L	Fraidis El-Chouf	L	VL	ML
Ghabet Jaafar	ML	L	L	Gharife	ML	L	L	Haret Jandal	L	L	ML
Hasrout	ML	L	ML	Jadra	M	L	M	Jahlieh	L	L	L
Jbeih El-Chouf	L	L	ML	Jdeidet El-Chouf	L	VL	ML	Jiyeh	M	L	M
Jleilyeh	ML	L	ML	Jmailiyeh	ML	L	ML	Joun	ML	L	ML
Kahlounie El-Chouf	ML	L	M	Ketermaya	M	L	M	Kfar Faqoud	ML	L	L
Kfar Hamal	ML	L	M	Kfar Him	M	L	ML	Kfar Katra	L	L	L
Kfar Niss	L	VL	ML	Kfar hay	L	VL	ML	Kfarnabrakh	L	VL	ML
Khirbet Bisri	L	L	L	Knayse El-Chouf	L	L	L	Maaniyeh	ML	L	ML
Maasser Beiteddine	L	VL	ML	Maasser El-Chouf	L	VL	ML	Majdalouna	ML	L	ML
Majdel El-Meouch	L	VL	ML	Mazboud	ML	L	ML	Mazmoura	L	L	L
Mazraat El Chouf	ML	L	ML	Mazraat El Daher	ML	L	L	Mazraat El-Douair	L	VL	L
Mechref	ML	L	L	Mghairie	M	L	M	Mghayrie El-Chouf	L	L	L
Moukhtara	L	VL	ML	Mrusti	L	L	ML	Mtolle	ML	L	ML
Naameh	M	L	M	Niha El-Chouf	L	L	ML	Ouadi Abou Youssef	L	VL	VL
Ouadi Ed-Deir	M	L	ML	Ouadi El-Sit	L	VL	ML	Ouadi bnehlay	L	L	L
Qraibeh	L	L	ML	Qreiaa	L	L	L	Rmayle El-Chouf	M	L	M
Semqaniyeh	ML	L	M	Sibline	M	L	M	Sirjbeil	ML	L	L
Warhanieh	L	VL	ML	Werdaniyeh	M	L	M	Zaarourieh	ML	L	ML

Baabda

Municipality	14-Mar	15-Mar	16-Mar	Municipality	14-Mar	15-Mar	16-Mar	Municipality	14-Mar	15-Mar	16-Mar
Abadiyeh	L	L	M	Ain Mouaffaq	ML	L	M	Araiya	L	L	ML
Arbaniyeh	L	VL	L	Arsoun	L	VL	ML	Baabda	M	L	M
Baalchmey	ML	L	M	Bmaryam	L	VL	ML	Bourj El-Brajneh	M	L	M
Boutchay	M	L	M	Bsaba Baabda	M	L	M	Btekhney	L	VL	ML
Btibyat	L	VL	ML	Bzebdine	L	VL	ML	Chbeniyeh	L	VL	M
Chiyah	M	ML	M	Chmeisset Baabda	L	VL	ML	Chouit	L	VL	ML
Deir El-harf	L	VL	ML	Deir Khouna	L	VL	ML	Dlaybeh	L	VL	ML

Falougha	L	L	ML	Furn El-Chebbak	M	L	M	Hadath Beyrouth	M	L	M
Halaliyeh Baabda	L	VL	ML	Hammana	L	VL	M	Haret El Sett	ML	L	ML
Haret Hamze	L	VL	ML	Haret Hreik	M	L	M	Hasbaiya El-Metn	L	VL	ML
Jouar El-Hoz	L	VL	L	Jouret Arsoun	L	VL	ML	Kfar Chima	M	L	M
Kfar Selouane	L	VL	L	Khalouat Baabda	L	VL	M	Kneisset Baabda	L	VL	ML
Laylakeh	M	L	M	Louayzeh Baabda	M	L	M	Merdache	M	L	M
Mzairaa Baabda	L	VL	ML	Ouadi Chahrour El Ol	ML	L	M	Ouadi Chahrour El So	ML	L	ML
Qalaa Baabda	L	VL	ML	Qhraybe Baabda	L	VL	ML	Qobbayaa	L	VL	M
Qornayel	L	VL	ML	Qortada	L	VL	L	Qrayeh Baabda	L	VL	M
Qsaibeh Baabda	L	VL	ML	Qtale Baabda	L	VL	ML	Ras El Metn	L	L	ML
Ras El-Haref	L	VL	M	Rouayset El-Ballout	L	VL	ML	Salima Baabda	L	VL	ML
Tahouitat El Ghadir	M	L	M	Tarchich	L	VL	L	Zandouqa	L	VL	ML

Aley

Municipality	14-Mar	15-Mar	16-Mar	Municipality	14-Mar	15-Mar	16-Mar	Municipality	14-Mar	15-Mar	16-Mar
Abey	ML	L	ML	Aghmid	L	VL	M	Ain Dara	L	L	ML
Ain Drafil	L	L	ML	Ain El Halazoun	ML	VL	M	Ain El-Rmmaneh	L	VL	ML
Ain Jedideh	ML	L	M	Ain Ksour	L	L	ML	Ain Onoub	ML	L	M
Ain Traz	L	L	L	Ainab	L	L	M	Aley	ML	L	M
Aramoun	ML	L	M	Aytat	M	L	M	Azouniyeh	L	VL	M
Baawerta	ML	L	ML	Badghan Oua Wadi Bad	L	VL	M	Bassatine	ML	L	M
Bayssour	ML	L	M	Bchamoun	ML	L	M	Bdadoun	ML	L	M
Behouara	ML	L	M	Bennay	ML	L	ML	Bhamdoun El-Dayaa	ML	L	M
Bhamdoun El-Mhatta	L	L	M	Bkhechtey	ML	L	M	Bleibel	ML	L	ML
Bmakine	M	L	M	Bmehray	L	VL	ML	Bouzrid	L	L	L
Bserrine	M	VL	M	Bsous	L	L	ML	Btalloun	ML	L	M
Btater	ML	L	M	Chanay	ML	L	M	Charoun	L	VL	M
Chartoun	L	L	ML	Chemlane	ML	L	M	Chouefat El-Aamrous	M	L	M
Chouefat El-Oumara	M	L	M	Chouefat El-Quoubbe	M	L	M	Dakkoun	ML	L	L
Deir Qoubel	M	L	ML	Dfoun	M	L	M	Douair El Remmaneh	L	L	ML
Ghaboun	ML	L	M	Habramoun	L	VL	ML	Homs Oua Hama	L	VL	M
Houmal	ML	L	M	Jisr El Qadi	M	L	L	Kehaleh	L	L	ML
Keyfoun	M	L	M	Kfar Aamey	L	VL	M	Kommatyeh	ML	L	M
Maasrati	ML	VL	ML	Majdel Baana	L	VL	M	Mansourieh et Ain El	ML	L	M
Mazraat El-Nahr	L	VL	M	Mchakhte	L	VL	ML	Mecherfeh	L	VL	M
Mejdaya	ML	L	M	Mrayjat	L	VL	ML	Ramliyah	L	VL	ML
Rechmaya	ML	VL	ML	Rejmeh	ML	L	M	Remhala	ML	L	ML
Rouaysset El Neemane	L	VL	M	Saoufar	L	VL	M	Selfaya	L	L	L
Sirhmoul	ML	L	M	Souq El Ghareb	M	L	M	Taazanieh	ML	L	M

Kesrouane

Municipality	14-Mar	15-Mar	16-Mar	Municipality	14-Mar	15-Mar	16-Mar	Municipality	14-Mar	15-Mar	16-Mar
Achkout	L	VL	ML	Adma Oua Dafneh	M	ML	M	Ain Ed-Delbe Kesroua	L	VL	L
Ain El-Rihane	ML	L	ML	Aintoura Kesrouane	M	L	M	Ajaltoun	L	VL	ML
Akaybeh Kesrouane	M	M	M	Aramoun Kesrouane	L	L	ML	Azra ouel Ozor	L	L	ML
Ballouneh	L	VL	ML	Batha	L	VL	ML	Bekaatat Achkout	L	VL	M
Bekaatat Kanaan	L	VL	L	Bizhel	L	L	ML	Bouar	M	M	M
Bqaatouta	L	VL	L	Bqaq Ed-Dine	M	ML	M	Bzommar	L	L	M

Chahtoul	L	L	ML	Chnaniir	L	VL	ML	Chouan	L	VL	L
Daraya Kesrouane	L	VL	ML	Daroun	L	L	ML	Deir Baqlouch	L	L	ML
Dlebta	L	VL	ML	Eghbeh	VL	VL	L	Faraya	L	L	ML
Fatka	ML	L	ML	Feytroun	L	VL	ML	Ghazir	ML	L	M
Ghbaleh Kesrouane	ML	L	ML	Ghedrass	L	L	ML	Ghosta	L	VL	ML
Ghynéh	M	L	M	Harharaya w Kattine	ML	L	ML	Harissa Kesrouane	L	L	ML
Hayata	L	VL	ML	Hosein	L	L	L	Hrajel	L	L	ML
Jdeideh Ghazir	L	L	ML	Jeita	ML	L	ML	Jounieh Ghadir	M	L	M
Jounieh Haret Sakhr	M	L	M	Jounieh Salel Alma	ML	L	M	Jounieh Sarba	M	L	M
Jouret Bedrane	ML	L	ML	Jouret Mhad	L	L	ML	Jouret Termos	ML	L	M
Kfar Debiane	L	L	L	Kfar Tay Kesrouane	L	VL	L	Kfar Yassine	M	ML	M
Kfour Kesrouane	ML	L	ML	Kharayeb Nahr Ibrahi	ML	L	ML	Klayaat Kesrouane	L	VL	ML
Maarab	L	VL	ML	Maaysra Kesrouane	ML	L	ML	Mayrouba	L	L	L
Mazraat Er-Ras	ML	L	M	Mazraat Mrah El-Mir	L	VL	ML	Mchaa El Ftouh	L	L	ML
Mchaa Faraya	L	L	ML	Mchaa Kfar Dibiane	L	L	ML	Mghaer	L	VL	L
Mradiyah	L	L	ML	Nahr Ed-Dahab	L	L	L	Nammoura Kesrouane	L	L	ML
Ouata El Jaouz	L	L	L	Ouata Sillam	M	ML	M	Raachine	L	VL	ML
Rayfoun	L	L	ML	Safra Kesrouane	M	M	M	Shayle Kesrouane	L	L	ML
Tabarja	M	M	M	Yahchouch	L	L	L	Zaaytreh	L	L	ML
Zeytoun	ML	L	ML	Zouk Mikael	M	L	M	Zouk Mosbeh	M	L	M

Baalbek_Hermel

Baalbek

Municipality	14-Mar	15-Mar	16-Mar	Municipality	14-Mar	15-Mar	16-Mar	Municipality	14-Mar	15-Mar	16-Mar
Aadous	M	L	ML	Aamchki	L	ML	L	Aarsal	M	M	VL
Ain Baalbek	MH	M	VL	Ain Bourday	M	L	ML	Ain El-Benye	L	L	L
Ain El-Jaouz Baalbek	ML	M	VL	Ain El-Siya Chadoura	L	L	L	Al Khodr Baalbek	M	L	ML
Al Nabi Chit	M	L	ML	Aynata Baalbek	ML	L	ML	Baalbek	M	L	ML
Bachwat	M	L	L	Barqa	ML	L	L	Bednayel Baalbak	ML	L	ML
Beit Chama	M	L	ML	Bijjaje	H	M	VL	Bouday	L	L	L
Brital	M	L	ML	Btadi	ML	L	L	Chaat	M	M	L
Chaibe	L	L	L	Chlifa	M	L	ML	Chmestar	ML	L	ML
Dar El-Oussa	L	L	L	Deir El-Ahmar	ML	L	L	Deir Mar Maroun Baal	MH	L	M
Douris	M	L	ML	Fakiha	MH	M	ML	Hadath Baalbek	L	L	ML
Ham	L	L	ML	Haour Taala	M	L	ML	Hizzine	M	L	ML
Hlebta	M	ML	M	Hosh Barada	M	L	ML	Hosh El Dahab	M	L	ML
Hosh El Snid	M	ML	ML	Hosh El-Nabi	M	ML	ML	Hosh El-Rafiq	M	ML	ML
Hosh Tal Safiya	M	L	ML	Hrebta	M	ML	L	laat	M	L	ML
Jebaa	L	L	ML	Jenta	M	L	ML	Kfar Dabach	M	ML	ML
Kfar Dane	ML	L	ML	Khraibeh El-Hermel	MH	M	VL	Khreibet Baalbek	ML	L	ML
Kneisset Baalbek	M	L	ML	Labueh	M	M	VL	Maarboun	L	L	ML
Majdaloun	M	L	ML	Maqneh	M	M	ML	Mazraat Beit Mcheik	L	L	ML
Misraya	M	ML	ML	Moqraq	M	M	VL	Nabha El-Damdoum	M	L	ML
Nabi Chbay	ML	L	ML	Nabi Osman	MH	M	VL	Nahleh baalbek	M	M	L
Ouadi El-Oss	M	L	L	Qaa Baayoun	H	ML	M	Qaa Jouar Maqiye	H	L	M
Qaa Ouadi El-Khanzir	H	L	M	Qah Baalbek	E	ML	M	Qarha Baalbek	M	L	ML

Qsarnaba	M	L	ML	Ram Baalbek	M	L	L	Ras Baalbek El Sahl	H	M	M
Ras Baalbek El-Charq	M	M	M	Riha	M	ML	ML	Saaide	ML	L	ML
Sbouba	H	M	VL	Seriine El-Tahta	M	L	ML	Slouqi	L	L	ML
Taiba Baalbek	M	L	ML	Talia	M	ML	ML	Taraiya	ML	L	ML
Temnin El Fawqa	M	L	ML	Temnin El-Tahta	M	L	ML	Tfail	M	M	VL
Yahfoufa	ML	L	ML	Yammouneh	L	L	L	Younine	M	M	L
Zboud	H	M	L								

Hermel

Municipality	14-Mar	15-Mar	16-Mar	Municipality	14-Mar	15-Mar	16-Mar	Municipality	14-Mar	15-Mar	16-Mar
Charbine El-Hermel	M	L	M	Hermel Jbab	M	L	M	Hermel	M	L	M
Maaysra El-Hermel	M	ML	M	Michaa Mrajhine	M	L	M	Ouadi Faara	M	L	M
Ras Baalbek - Ouadi	H	ML	M	Ras Baalbek El Gharb	M	L	M	Zighrine	M	L	M

Akkar

Akkar

Municipality	14-Mar	15-Mar	16-Mar	Municipality	14-Mar	15-Mar	16-Mar	Municipality	14-Mar	15-Mar	16-Mar
Aain Tinta	M	L	M	Aaiyat	M	L	M	Aakkar El-Aatiqa	M	L	M
Aamar Akkar	M	L	M	Aamar El Baykat	M	L	M	Aamayer	M	L	M
Aamriyet Akkar	M	L	M	Aandqet	M	L	M	Aarmeh	M	L	M
Aarqa	M	L	M	Aawaynat	M	L	M	Aayoun Akkar	M	L	M
Abboudiye	M	L	M	Ain El-Zeit	M	L	M	Ain Yaaqoub	M	L	M
Akroum	M	L	M	Aridet Cheikh Zennad	M	VL	M	Baldeh w Mazraat Bal	M	L	M
Barcha	M	VL	M	Bardeh	M	L	M	Bebnine	M	L	M
Beino	M	L	M	Beit Ayoub	M	L	M	Beit El-Haouch	M	L	M
Beit Mellat	M	L	M	Beit Younes	M	VL	M	Berbara Akkar	M	L	M
Berqayel	M	L	M	Bezbina	M	L	M	Bireh Akkar	M	L	M
Borj	M	L	M	Bqerezla	M	L	M	Bzal	M	L	M
Chane	M	VL	M	Chaqdouf	M	L	M	Charbila	M	L	M
Cheikh Mohammad	M	VL	M	Cheikh Taba Es-Sahl	M	L	M	Cheikh Taba	M	VL	M
Cheikh Zennad	M	VL	M	Cheikhlar	M	L	M	Chir Hmairine	M	VL	M
Daghle	M	L	M	Dahr Laissine	M	L	M	Darine	M	VL	M
Dawra	M	L	M	Dawsa w Baghdadi	M	L	M	Dayret Nahr El-Kabir	M	VL	M
Deir Dalloum	M	L	M	Deir Jennine	M	L	M	Denbou	M	L	M
Dibbabiyyeh	M	L	M	Douair Aadwiyeh	M	L	M	Fassikine	M	L	M
Fnaydek	M	L	M	Fraydes Akkar	M	L	M	Ghazayle	M	VL	M
Habchit	M	L	M	Hakour	M	L	M	Halba	M	VL	M
Haouchab	M	VL	M	Hayssat	M	VL	M	Haytla	M	L	M
Hayzouq	M	L	M	Hedd	M	L	M	Hmaira Akkar	M	L	M
Hmaiss Akkar	M	L	M	Hnaider	M	L	M	Hokr Ed-Dahri	M	VL	M
Hokr Etti	M	L	M	Hokr Jouret Srar	M	L	M	Houaich	M	L	M
Hrar	M	L	M	Idbil	M	VL	M	llat	M	L	M
Janine	M	L	M	Jdeidet El-Joumeh	M	VL	M	Jdeidet El-Kaiteh	M	L	M
Jebraïel	M	L	M	Kafr	ML	L	M	Kafr	M	L	M
Karm Asfour	M	L	M	Kfar Melki Akkar	M	L	M	Kfar Noun	M	L	M
Kfarharra	M	L	M	Khalsa	M	L	M	Kharnoubet Akkar	M	VL	M

Khirbet Daoud Aakkar	M	L	M	Khirbet El Remmane	M	L	M	Khirbet Shar	M	L	M
Khoreybet El-Jindi	M	L	M	Khreibet Aakkar	M	L	M	Kneisset Aakkar	M	VL	M
Kneisset Hnaider	M	L	M	Knisse	M	L	M	Kroum El-Aarab	M	VL	M
Kwachra	M	L	M	Kweykhata	M	VL	M	Machta Hammoud	M	L	M
Majdala	M	L	M	Majdel Akkar	M	L	M	Mar Touma	M	L	M
Marlaya Melhem	M	L	M	Mashha	M	L	M	Massoudiye	M	VL	M
Mazraat Beit Ghattas	M	L	M	Mazraat En-Nahriye	M	L	M	Mechmech	M	L	M
Memneh	M	VL	L	Mhammara	M	L	M	Mighraq Aakkar	M	VL	M
Minyara	M	VL	M	Moqayteh	M	L	M	Mounjez	M	L	M
Msalla	M	L	M	Mzeihmeh	M	L	M	Nfaiseh	M	L	M
Noura Et-Tahta	M	L	M	Ouadi El-Haour	M	L	M	Ouadi El-Jamous	M	L	M
Ouyoun El-Ghizlane	M	L	M	Qaabarine	M	L	M	Qabaait	M	L	M
Qachlaq	M	L	M	Qantara Aakkar	M	L	M	Qarha Aakkar	M	L	M
Qarqaf	M	L	M	Qboula	M	L	M	Qleiaat Aakkar	M	L	M
Qloud El-Baqie	M	L	M	Qobaiyat Aakkar	M	L	M	Qobbat Chamrat	M	L	M
Qorayat	M	VL	M	Qornet Aakkar	M	L	M	Qsair Aakkar	M	L	M
Rahbe	M	L	M	Rihaniyet Aakkar	M	L	M	Rmah	M	L	M
Rmoul	M	L	M	Saadine	M	VL	M	Sadaqa	M	L	M
Saidnaya	M	L	M	Sammouniye	M	L	M	Saysouq	M	L	M
Semmaqiye	M	VL	M	Semmaqli	M	L	M	Sfinet El-Dreib	M	L	M
Sfinet El-Qaitaa	M	L	M	Sindyant Zeidane	M	L	M	Souaisset Aakkar	M	L	M
Srar	M	L	M	Tal Abbas El Gharby	M	L	M	Tal Abbas El-Charqy	M	VL	M
Tal Biret	M	VL	M	Tal Hmayra	M	VL	M	Tal Maayan Tal Kiri	M	VL	M
Tal Sibel	M	L	M	Tallet Chattaha	M	L	M	Tikrit	M	L	M
Tleil	M	L	M	Tshea	M	VL	M	Zawarib	M	VL	M
Zouq El Hosniyeh	M	L	M	Zouq El-Haddara	M	L	M	Zouq El-Hbalsa	M	L	M
Zouq El-Moqachrine	M	L	M								

Sud

Sour

Municipality	14-Mar	15-Mar	16-Mar	Municipality	14-Mar	15-Mar	16-Mar	Municipality	14-Mar	15-Mar	16-Mar
Aaiyeh	ML	L	VL	Aalma El-Chaab	L	L	L	Aaytit	ML	ML	VL
Abbassiyeh Sour	ML	L	ML	Abou Chech	L	ML	ML	Ain Abou Abdallah	ML	L	ML
Ain Baal	ML	ML	L	Arzoun	ML	L	M	Aziyeh	L	L	L
Baflaya	M	L	M	Barich	ML	L	M	Batouliyah	ML	L	L
Bayad	ML	L	VL	Bazouriyeh	ML	ML	L	Bediass	ML	L	ML
Bestiyat	ML	L	M	Borj El Chemali	M	L	ML	Borj En-Naqoura	L	M	ML
Borj Rahhal	ML	L	M	Boustane	ML	L	L	Btaychiyeh	L	ML	ML
Chaaitiye	ML	ML	L	Chameh	L	ML	L	Chehabiye	M	L	L
Chehour	L	L	L	Chihine	L	L	L	Debaal Sour	ML	L	ML
Deir Amess	L	L	VL	Deir Kifa	M	L	ML	Deir Qanoun El-Ain	ML	ML	ML
Deir Qanoun El-Naher	ML	L	M	Derdghaiya	ML	L	M	Dhayra	L	L	ML
Halloussiyeh	ML	L	M	Hamoul	L	L	L	Hanaouey	M	ML	VL
Henniye	M	ML	ML	Hmairi Sour	ML	L	ML	Iskandarouna Sour	L	ML	L
Jbal El Botom	ML	L	VL	Jebbin	ML	L	ML	Jennata	ML	L	M
Jijim	L	L	L	Jouaiya	ML	L	L	Kneisset Sour	ML	ML	VL

Maarake	ML	L	M	Maaroub	ML	L	M	Majadel	M	L	VL
Majdalzoun	L	L	L	Mansouri Sour	ML	M	ML	Marnba	L	L	L
Marouahine	L	L	VL	Mazraat El-Zalloutiy	ML	L	L	Mazraat Mechref	ML	L	VL
Mazraat Tayr Semhat	L	L	L	Mheilib	ML	L	ML	Neffakhiyeh	M	L	M
Niha Sour	ML	L	M	Ouadi Jilo	ML	L	L	Qana	ML	L	VL
Qolaileh Sour	ML	ML	ML	Rechknay	ML	L	VL	Rmadiyah	M	ML	VL
Selha Sour	M	L	M	Siddiqine	ML	L	VL	Sour	M	M	ML
Srifa	L	L	ML	Tayr Debbe	ML	L	M	Tayr Felsay	ML	L	ML
Tayr Harfa	ML	L	ML	Touayri	L	L	L	Toura	ML	L	M
Yanouh Sour	ML	L	M	Yarine	ML	L	ML	Zebqine	L	L	VL

Saida

Municipality	14-Mar	15-Mar	16-Mar	Municipality	14-Mar	15-Mar	16-Mar	Municipality	14-Mar	15-Mar	16-Mar
Aanqoun	ML	L	M	Aaqtanit	M	L	M	Aarab Ej-Jall	ML	L	M
Aarab Tabbaya	ML	L	M	Abra Saida	M	L	M	Adloun	ML	L	M
Adousiyeh	ML	ML	ML	Ain-El-Deleb	M	L	M	Arzai	ML	L	M
Babliyah	M	ML	M	Barty	ML	L	ML	Bissariyeh	M	ML	M
Bnaafoul	M	L	M	Bqosta	M	L	M	Bramiy	M	L	M
Daoudiyeh	M	ML	M	Dareb El-Sim	M	L	M	Erkay	ML	L	M
Ghassanieh	M	ML	M	Ghazieh	M	ML	M	Hajjeh	M	L	M
Haret Saida	M	L	M	Hartiyeh	ML	L	M	Hlaliye Saida	M	L	M
Insariyat	M	ML	M	Jazira Saida	ML	L	M	Kafar Bit	ML	L	M
Kaoutariyet El-Siyad	ML	ML	M	Kfar Chellal	ML	L	ML	Kfar Hatta Saida	ML	L	M
Kfar Milke Saida	ML	L	M	Khartoum	ML	ML	M	Khaziz	ML	L	M
Khirbet Ed-Douair Sa	M	ML	M	Khirbet El-Bassal	M	L	M	Khrayeb Saida	ML	L	M
Loubieh	M	ML	M	Maghdouche	M	L	M	Majdelyoun	M	L	M
Matariyet El-Choumar	ML	L	M	Matayriyeh	M	L	M	Mazraat 'Mseileh	M	ML	M
Mazraat 'Snaiber	M	ML	M	Mazraat Aarab Soukka	ML	L	M	Mazraat Deir Taqla	ML	ML	M
Mazraat El Yahoudiye	ML	L	ML	Mazraat El-Housseini	M	ML	M	Mazraat El-Mhaydaleh	M	L	M
Mazraat El-Ouasta	ML	L	ML	Mazraat Jamjim	ML	L	ML	Mazraat Kaoutariyet	M	L	M
Mazraat Kfar Badda	ML	L	M	Mazraat Oussamiyat	M	L	M	Mazraat Sari	ML	L	M
Mazraat Sinai	ML	L	M	Meemariyeh	M	L	M	Merouaniyeh	ML	ML	M
Miyeh ou Miyeh	M	L	M	Najjariyeh	M	ML	M	Qaaqiyat El-Snaouba	M	ML	M
Qnarit	M	L	M	Qraiye Saida	M	L	M	Saida Ed-Dekermane	M	L	M
Saida El-Oustani	M	L	M	Saida El-Qadimeh	M	L	M	Saida Kefraya	ML	L	ML
Saksakiyeh	M	ML	M	Salhieh Saida	M	L	M	Sarafand	M	ML	M
Sfenta	L	L	ML	Tafahta	ML	ML	M	Tanbourit	ML	L	M
Tebna	ML	ML	ML	Zaghdraiya	M	L	ML	Zeita	ML	L	M
Zrariyeh	ML	L	M								

Jezzine

Municipality	14-Mar	15-Mar	16-Mar	Municipality	14-Mar	15-Mar	16-Mar	Municipality	14-Mar	15-Mar	16-Mar
Ain El-Mir (El Estab	M	L	M	Anane	L	L	L	Aramta	L	L	ML
Ariya	L	L	ML	Aychiyeh	L	L	ML	Azour	L	L	L
Baba	L	L	L	Bayssour Jezzine	M	L	M	Benoueteh Jezzine	ML	L	ML
Bhannine	L	L	ML	Bisri	L	L	L	Bkassine	L	L	L
Bouslaya	L	L	L	Btedine El-Leqech	L	L	L	Chbail	L	L	L
Choualiq Jezzine	M	L	M	Dahr Ed-Deir	L	L	L	Deir El Qattine	L	L	L

Demachqiyeh	L	L	M	Ghabbatiyeh	ML	L	L	Harf Jezzine	L	L	L
Hassaniyeh	ML	L	M	Haytouleh	ML	L	ML	Haytura	L	L	L
Hidab	L	L	ML	Homsiyeh	L	L	L	Jabal Toura	L	L	ML
Jarmaq	L	L	ML	Jensnaya	M	L	M	Jernaya	ML	L	M
Jezzine	L	L	ML	Karkha	ML	L	ML	Kfar Falous	ML	L	ML
Kfar Houna	L	L	ML	Kfar Jarrah	M	L	M	Lebaa	M	L	M
Louayzet Jezzine	L	L	L	Machmouche	L	L	L	Mahmoudiyeh Jezzine	L	L	ML
Maknounye Jezzine	L	L	L	Maraat Ouazaiyeh	L	L	ML	Mazraat Daraya	L	L	ML
Mazraat El-Aarqoub	L	L	L	Mazraat El-Mathane	L	L	L	Mazraat El-Rahbane	L	L	L
Mazraat Khamlet Khaz	L	L	L	Mazraat Louzid (Loua	L	L	L	Mazraat Qrouh	L	L	ML
Mazraat Tamra	ML	L	M	Mazraat Zighrine Jez	L	L	L	Mazraat	L	L	L
Mharbiyeh	M	L	M	Midane Jezzine	ML	L	L	Mjeydel Jezzine	ML	L	M
Mlikh	L	L	L	Mrah El-Hbasse	M	L	M	Ouadi Baanqoudaine	M	L	M
Ouadi El-Laymoun	ML	L	M	Ouardiyeh	VL	VL	VL	Qabaa Jezzine	L	L	L
Qatrani	L	L	L	Qaytouleh	L	L	L	Qtaleh Jezzine	L	L	L
Rihane Jezzine	L	L	ML	Rimat	L	L	L	Roum	L	L	L
Roummanet	ML	L	ML	Sabbah	L	L	L	Saydoun	L	L	L
Sfaray	L	L	L	Snaya	L	L	L	Sojoud	L	L	L
Srayri	L	L	ML	Taaid	L	L	L	Wadi Jezzine	L	L	L
Zhalta	L	L	L								

Bekaa

West Bekaa

Municipality	14-Mar	15-Mar	16-Mar	Municipality	14-Mar	15-Mar	16-Mar	Municipality	14-Mar	15-Mar	16-Mar
Aammiq BG	ML	L	ML	Ain El Tineh BG	L	L	ML	Ain Zebdeh	ML	L	ML
Ana	ML	L	ML	Aytanit	ML	L	ML	Baaloul BG	ML	L	ML
Bab Mareh	ML	L	M	Chouberqiye Aammiq	ML	L	ML	Dakoue	ML	L	ML
Deir Ain El-Jaouze	ML	L	ML	Deir Tahniche	ML	L	ML	Ghaza	ML	L	ML
Harime El-Soughra	ML	L	ML	Hoch Harimeh	ML	L	ML	Jazira BG	ML	L	ML
Jib Jennine	ML	L	ML	Kamed-El-Laouz	ML	L	ML	Kefraya BG	L	L	L
Khiara El Atika	ML	L	ML	Khiara	ML	L	ML	Khirbet Qanafar	ML	L	ML
Lala	ML	L	ML	Lebbaya BG	ML	L	ML	Loussa	L	L	ML
Machghara	ML	L	ML	Manara (Hammar) BG	ML	L	L	Mansoura BG	ML	L	ML
Marej BG	ML	L	ML	Maydoun	L	L	ML	Ouaqf BG	ML	L	ML
Qaraaoun	ML	L	M	Qelya	L	L	M	Raouda (Istabel)	ML	L	ML
Saghbine	ML	L	ML	Sohmor	ML	L	M	Soltan Yacoub el Ara	ML	L	ML
Souairy	ML	L	ML	Sultan Yaacoub	ML	L	ML	Tal Znoun	ML	L	ML
Yehmor BG	ML	L	M	Zilaya	L	L	ML				

Zahle

Municipality	14-Mar	15-Mar	16-Mar	Municipality	14-Mar	15-Mar	16-Mar	Municipality	14-Mar	15-Mar	16-Mar
Aanjar (Haouch Mouss	ML	L	ML	Ablah	M	L	ML	Ain Kfarzabad	ML	L	ML
Ali-El-Nahri	M	L	ML	Bar Elias	ML	L	ML	Bouarej	L	L	ML
Cheberqiyet Tabet	ML	L	ML	Chtaura	ML	L	ML	Deir El Ghazal	ML	L	ML
Delhamiyet Zahle	ML	L	ML	Ferzol	ML	L	ML	Haouch El-Ghanam	M	L	ML
Haouch Es-Siyadeh	ML	L	ML	Haouch Hala	M	L	ML	Haouch Mandara	ML	L	ML

Haouch Qayssar	ML	L	ML	Hezerta	L	VL	ML	Hosh Moussa	M	L	ML
Jdita	ML	L	ML	Kfarzabad	ML	L	ML	Ksara	ML	L	ML
Majdel Aanjar	ML	L	L	Makssi	ML	L	ML	Massa	M	L	ML
Mazraat Er-Remtaniye	L	L	ML	Mrayjat Zahle	L	L	ML	Mzaraa Zahle	ML	L	ML
Nabi Ayla	M	L	ML	Nasriyet Rizk	M	L	ML	Nasriyet Zahle	ML	L	ML
Niha Zahle	M	L	ML	Ouadi Ed-Deloum	L	L	ML	Ouadi El-Arayech	ML	VL	ML
Qaa El Rim	L	L	ML	Qab Elias	ML	L	ML	Qousaya	ML	L	ML
Rhit	M	L	ML	Riyak	M	L	ML	Saadnayel	ML	L	ML
Taal El-Akhdar	ML	L	ML	Taalbeya	ML	L	ML	Taanayel	ML	L	ML
Talamara	M	L	ML	Tcheflik Edde Haouch	ML	L	ML	Tcheflik Qiqano	ML	L	ML
Terbol Zahle	ML	L	ML	Touaite Zahle	L	L	ML	Zahle Aradi	L	L	ML
Zahle El-Berbara	L	VL	ML	Zahle El-Maallaqa	ML	VL	ML	Zahle El-Midane	ML	VL	ML
Zahle Er-Rassiye	ML	VL	ML	Zahle Haouch El-Ouma	ML	L	ML	Zahle Haouch El-Ouma	ML	L	ML
Zahle Haouch Ez-Zara	ML	VL	ML	Zahle Maalaaqa Aradi	ML	L	ML	Zahle Mar Antonios	ML	VL	ML
Zahle Mar Elias	ML	VL	ML	Zahle Mar Gerios	ML	VL	ML	Zahle Saydet En-Naja	ML	VL	ML
Zebdoul	L	L	ML								

Rachaiya

Municipality	14-Mar	15-Mar	16-Mar	Municipality	14-Mar	15-Mar	16-Mar	Municipality	14-Mar	15-Mar	16-Mar
Ain Arab Rachaiya	ML	L	L	Ain Ata	L	L	L	Ain Harche	L	L	L
Aqabe Rachaya	ML	L	ML	Ayha	ML	M	ML	Ayta El Fokhar	ML	L	L
Bakifa Rachaya	ML	L	L	Bakka	M	ML	L	Beit Lahya	ML	L	ML
Bireh Rachaiya	ML	L	ML	Daher El Ahmar	M	L	L	Deir El-Achayer	M	M	L
Heloua Rachaiya	M	M	L	Hoch El Qannabeh Rac	L	L	L	Kaoukaba Bou Arab	ML	L	ML
Kfar Danis	ML	L	L	Kfar Mechki	ML	L	ML	Kfar Qouq	M	ML	L
Kherbet Rouha	M	L	L	Majdel Balhiss	ML	L	ML	Mdoukha	ML	L	L
Mhaydseh Rachaiya	M	L	ML	Nabi Safa	L	L	ML	Rachaiya	L	ML	L
Rafid Rachaiya	M	L	ML	Selsata (Mazraat Dei	ML	M	L	Tannoura	ML	L	ML
Yanta	M	ML	L								

Beyrouth

Beyrouth

Municipality	14-Mar	15-Mar	16-Mar	Municipality	14-Mar	15-Mar	16-Mar	Municipality	14-Mar	15-Mar	16-Mar
Achrafieh	M	L	M	Ain el-Mreisse	M	M	M	Bachoura	M	ML	M
Beirut Central Distr	M	M	M	Marfai	M	ML	M	Mazraa	M	L	M
Medaouar	M	ML	M	Minet el-Hosn	M	M	M	Mwssaitbeh	M	ML	M
Ras Beirut	M	ML	M	Rmeil	M	L	M	Saifi	M	L	M
Zqaq el-Blat	M	ML	M								



نشرة الطقس الصادرة عن دائرة التقديرات في مصلحة الأرصاد الجوية

النشرة: المسائية

الإثنين: ١٣ آذار ٢٠١٧

الحالة العامة: طقس متقلب على الحوض الشرقي للمتوسط بسبب المنخفض الجوي المتمركز فوق اليونان وتركيا، ويشند تأثيره يوم الأربعاء **الطقس المتوقع في لبنان:**

الثلاثاء: غائم جزئياً دون تعديل يذكر بدرجات الحرارة وأمطار متفرقة مع انفراجات واسعة
الأربعاء: غائم جزئياً إلى غائم مع انخفاض درجات الحرارة وأمطار غزيرة مترافقة بعواصف رعدية أحياناً، كما تنشط الرياح وتتساقط الثلوج على ارتفاع ١٣٠٠م وما فوق
الخميس: غائم جزئياً إلى غائم أحياناً مع أمطار متفرقة من حين لآخر، كما ترتفع درجات الحرارة بشكلٍ محدود

الأربعاء		الثلاثاء		الإثنين		درجات الحرارة المتوقعة	
١٧/١١	١٧/١١	١٩/١٣	١٩/١٣	١٩/١٣	١٩/١٣	صور	الساحل
١٧/١٢		١٩/١٤		١٩/١٤		بيروت	
١٦/١١		١٨/١٣		١٨/١٣		طرابلس	
٩/٤	٩/٣	١١/٦	١١/٥	١١/٧	١١/٦	بيصور	الجبال
٨/٣		١٠/٥		١٠/٦		قرطبا	
١/٢-		٢/١-		٢/٠		الأرز	
١٠/٦	١٠/٤	١٢/٨	١٢/٦	١٣/٩	١٣/٧	مرجعيون	الداخل
١٠/٤		١٢/٦		١٣/٧		زحلة	

الرياح السطحية: جنوبية غربية، سرعتها بين ١٥ و ٤٠ كلم/س

الانقشاع: متوسط، يسوء أحياناً

الرطوبة النسبية على الساحل: ٦٠ و ٨٥ %.

حال البحر: متوسط ارتفاع الموج إلى مائج

الضغط الجوي: ١٠٢٠ HPA

ساعة شروق الشمس: ٥:٥٣

حرارة سطح الماء: ١٧°م.

أي ما يعادل: ٧٦٥ ملم زئبق

ساعة غروب الشمس: ١٧:٤٣