

Lebanon Fire Risk Bulletin



CIVIL DEDEFENCE

Refer to cadast table condition.

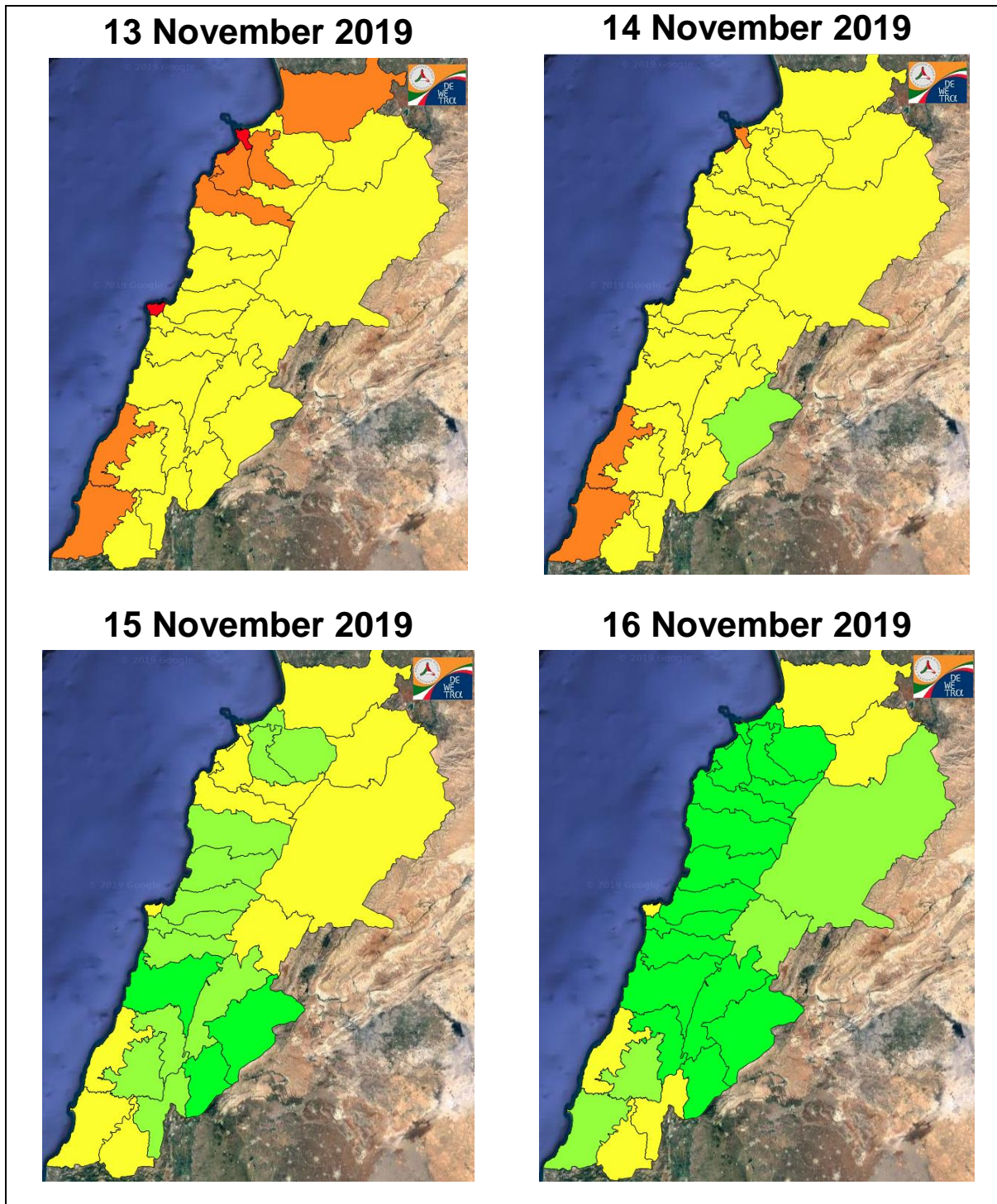
Please note that the indicated temperature is at 2 meters height from the ground.

General description of potential fire risk situation

Symbol	Level of risk	Meaning and actions
VL	Very low	Very low fire risk. Controlled burning operations can be hardly executed due to high fuel moisture content. Normally wildfires self-extinguish.
L	Low	Low fire risk. Controlled burning operations can be executed with a reasonable degree of safety.
ML	Medium low	Medium-low fire risk. Controlled burning operations can be executed in safety conditions. All the fires need to be extinguished.
M	Medium	Medium fire risk. Controlled burning operations would be avoided. All the fires need to be very well extinguished.
M	Medium high	Controlled burning is not recommended. Open flame will start fires. Cured grasslands and forest litter will burn readily. Spread is moderate in forests and fast in exposed areas. Patrolling and monitoring is suggested. Fight fires with direct attack and all available resources.
H	High	Ignition can occur easily with fast spread in grass, shrubs and forests. Fires will be very hot with crowning and short to medium spotting. Direct attack on the head may not be possible requiring indirect methods on flanks. Patrolling and monitoring the territory is highly suggested.
E	Extreme	Ignition can occur also from sparks. Fires will be extremely hot with fast rate of spread. Control may not be possible during day due to long range spotting and crowning. Suppression forces should limit efforts to limiting lateral spread. Damage potential total. Patrolling and monitoring the territory is highly suggested.

Beirut, 14 November 2019

FIRE RISK INDEX

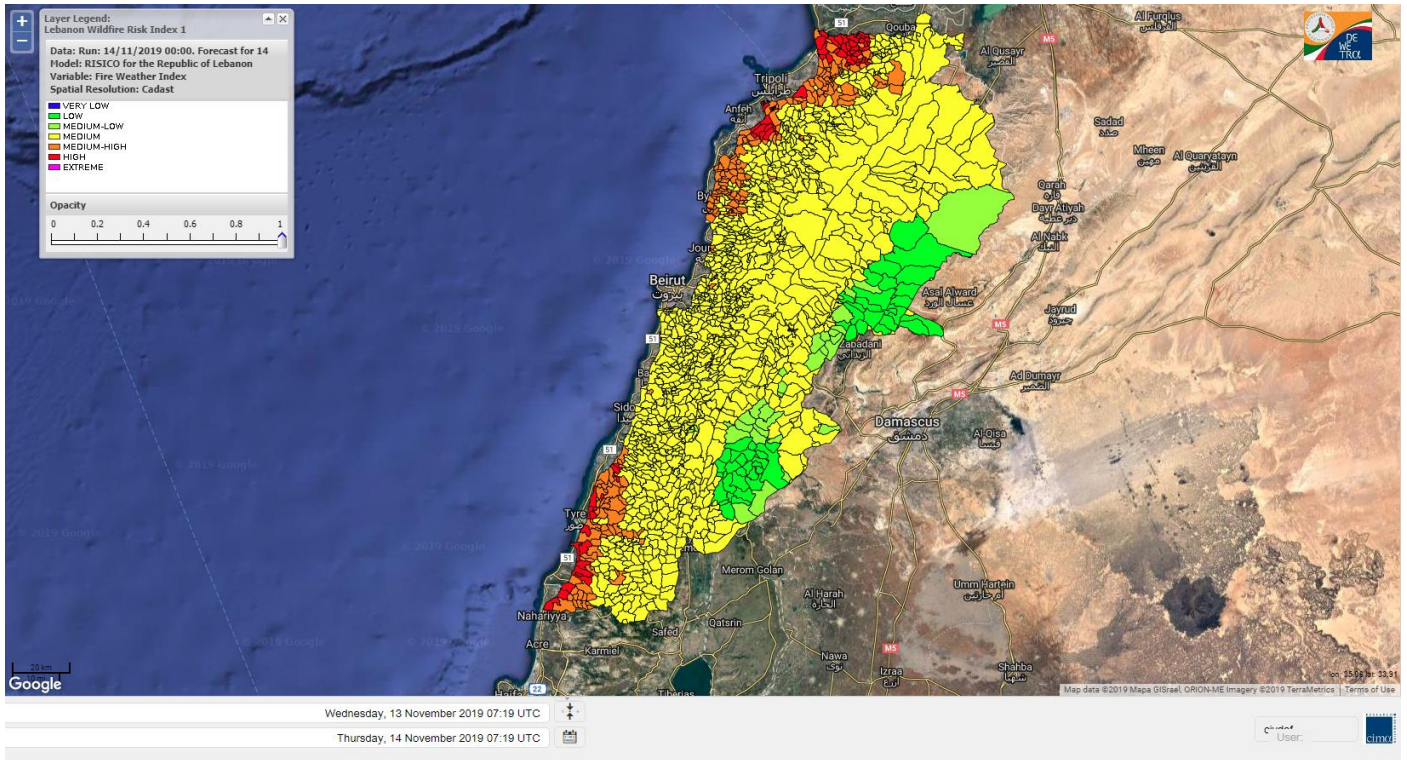


Layer Legend:
Lebanon Wildfire Risk Index 1

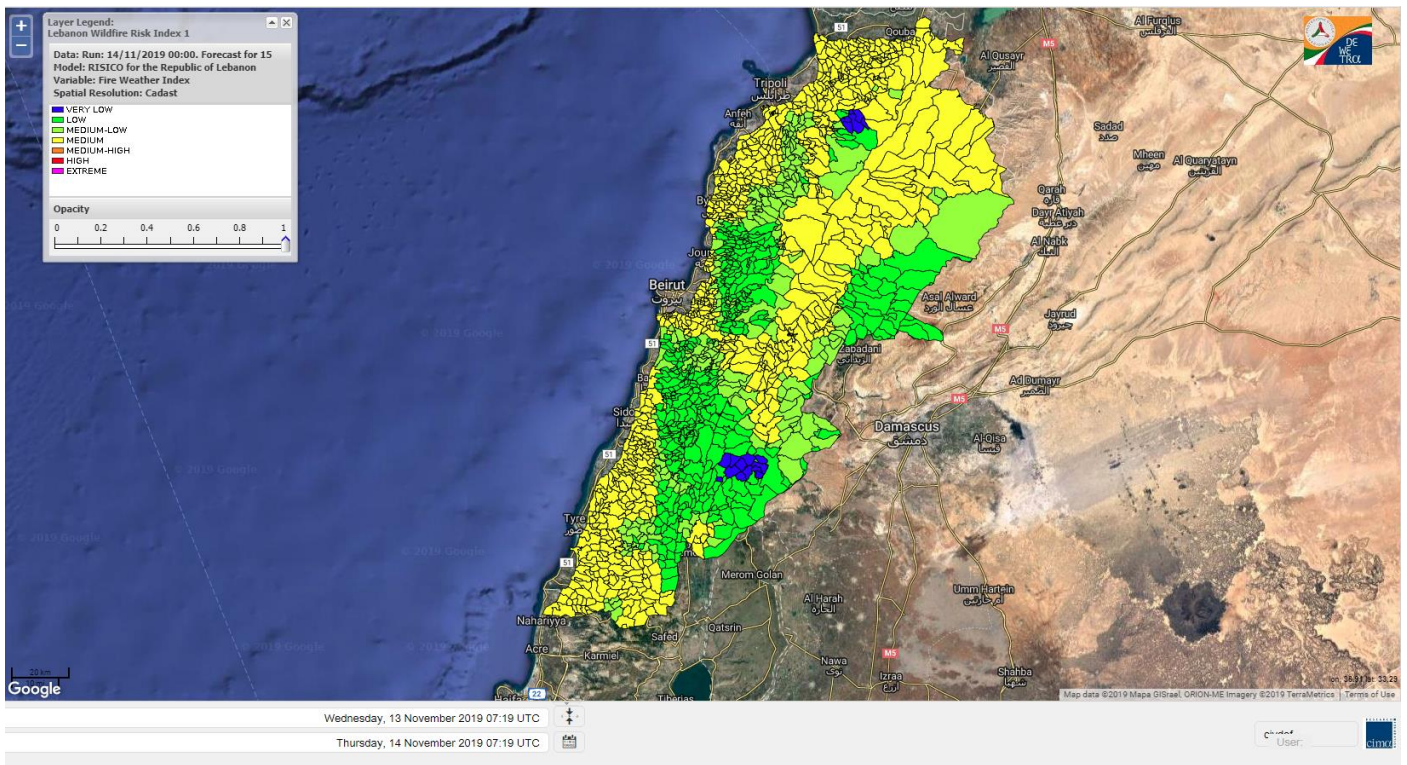
Data: Run: 14/11/2019 00:00. Forecast for 14
Model: RISICO for the Republic of Lebanon
Variable: Fire Weather Index
Spatial Resolution: Caza

- VERY LOW
- LOW
- MEDIUM-LOW
- MEDIUM
- MEDIUM-HIGH
- HIGH
- EXTREME

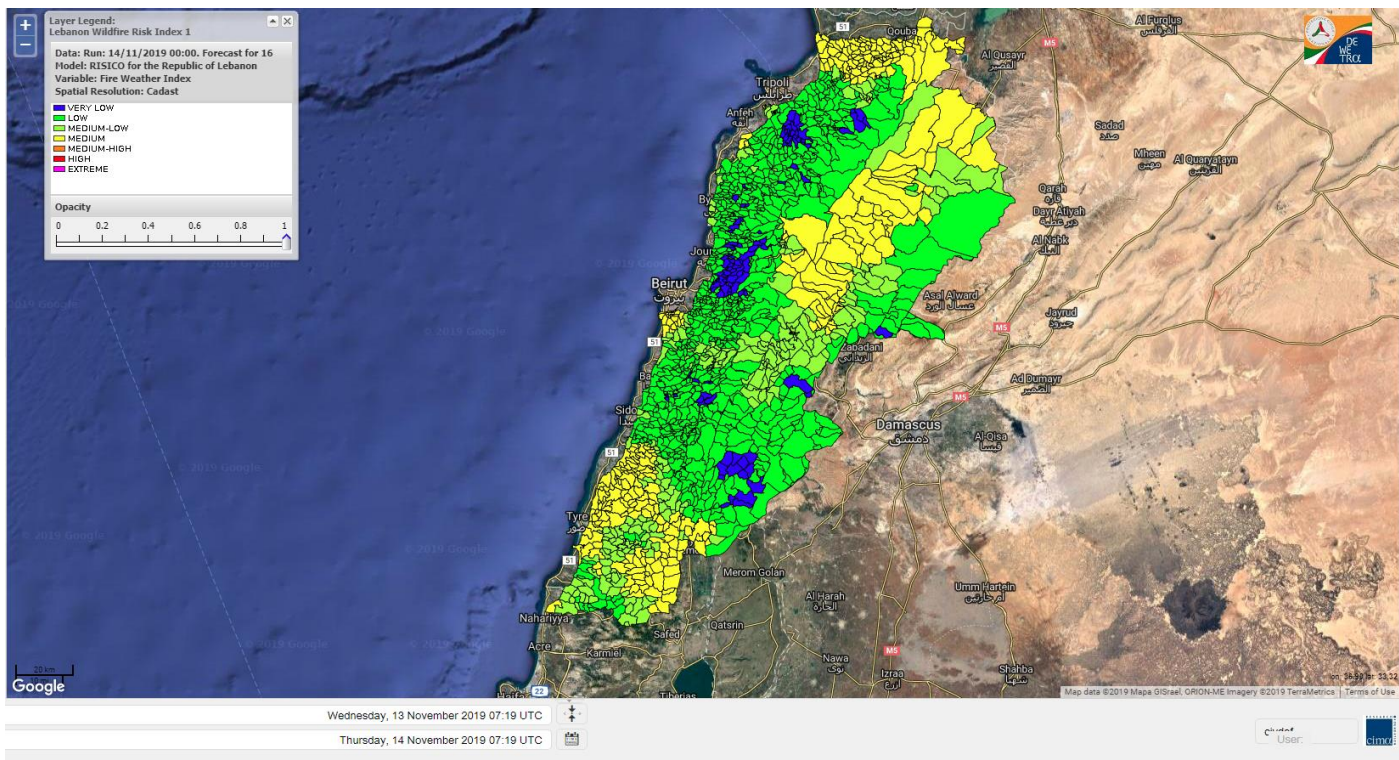
Lebanon for 14 November 2019



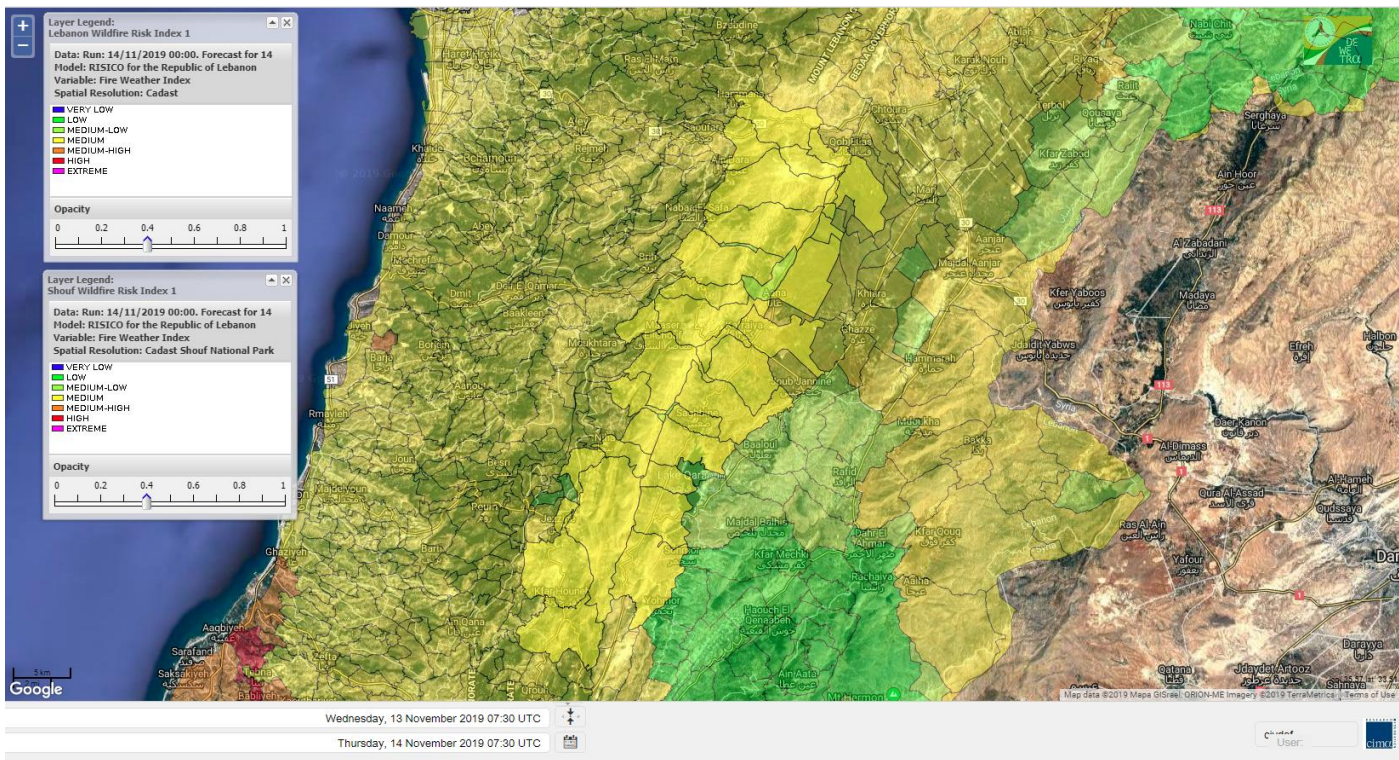
Lebanon for 15 November 2019



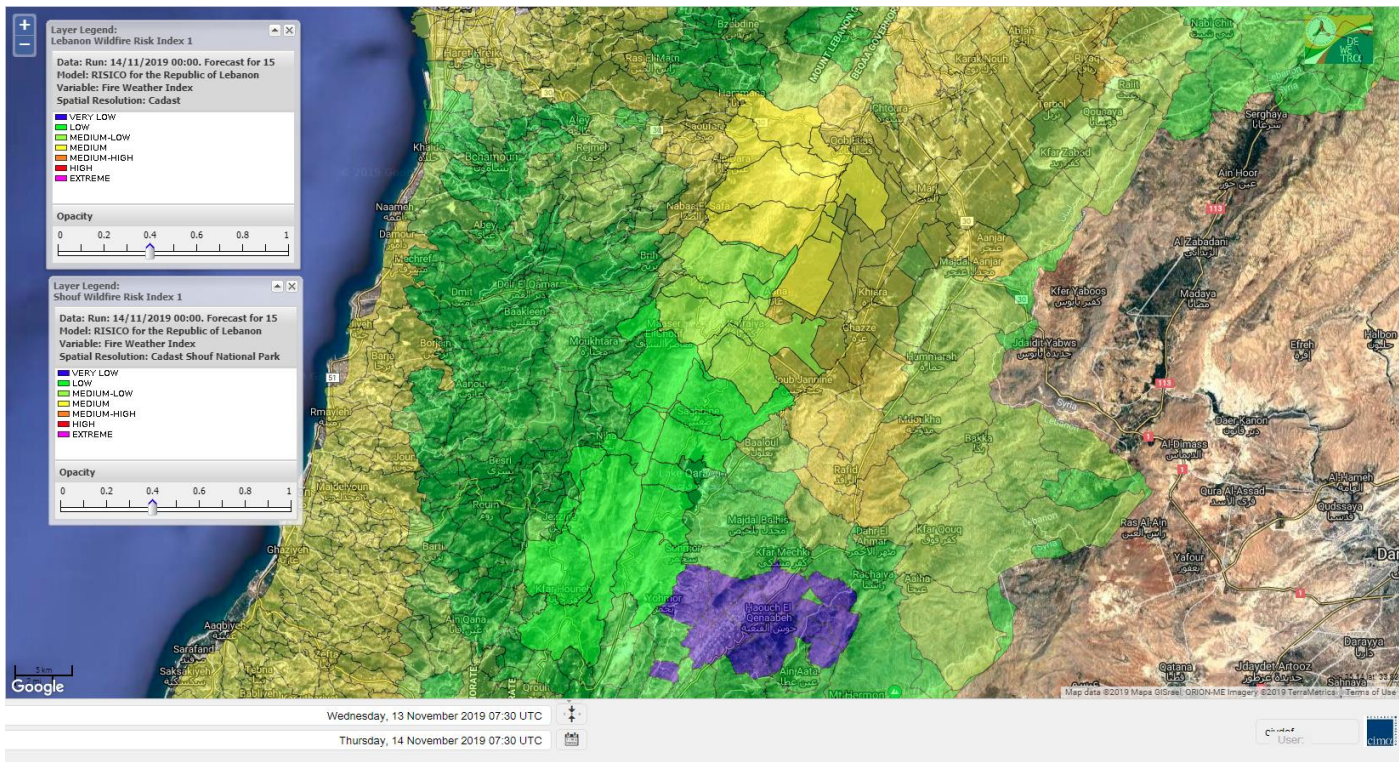
Lebanon for 16 November 2019



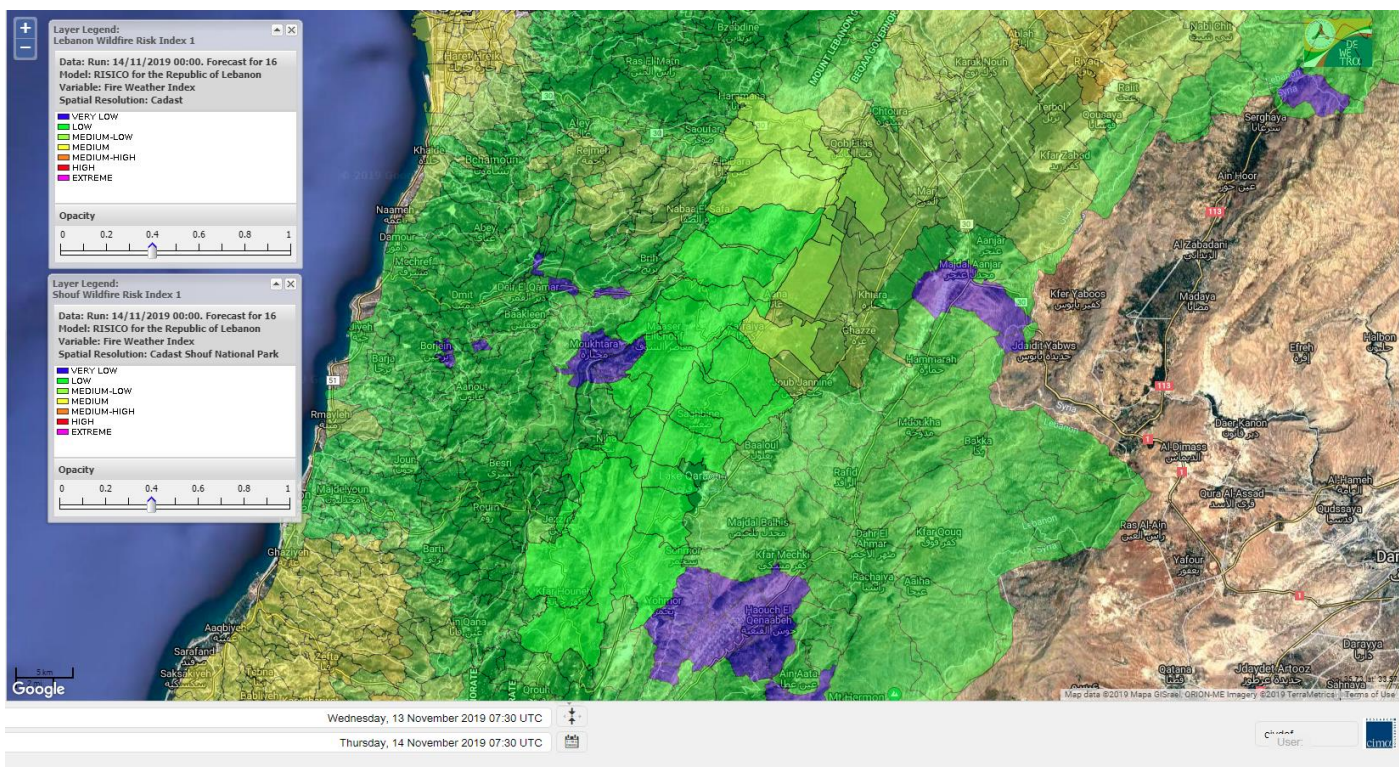
Shouf Biosphere Reserve Forecast for 14 November 2019



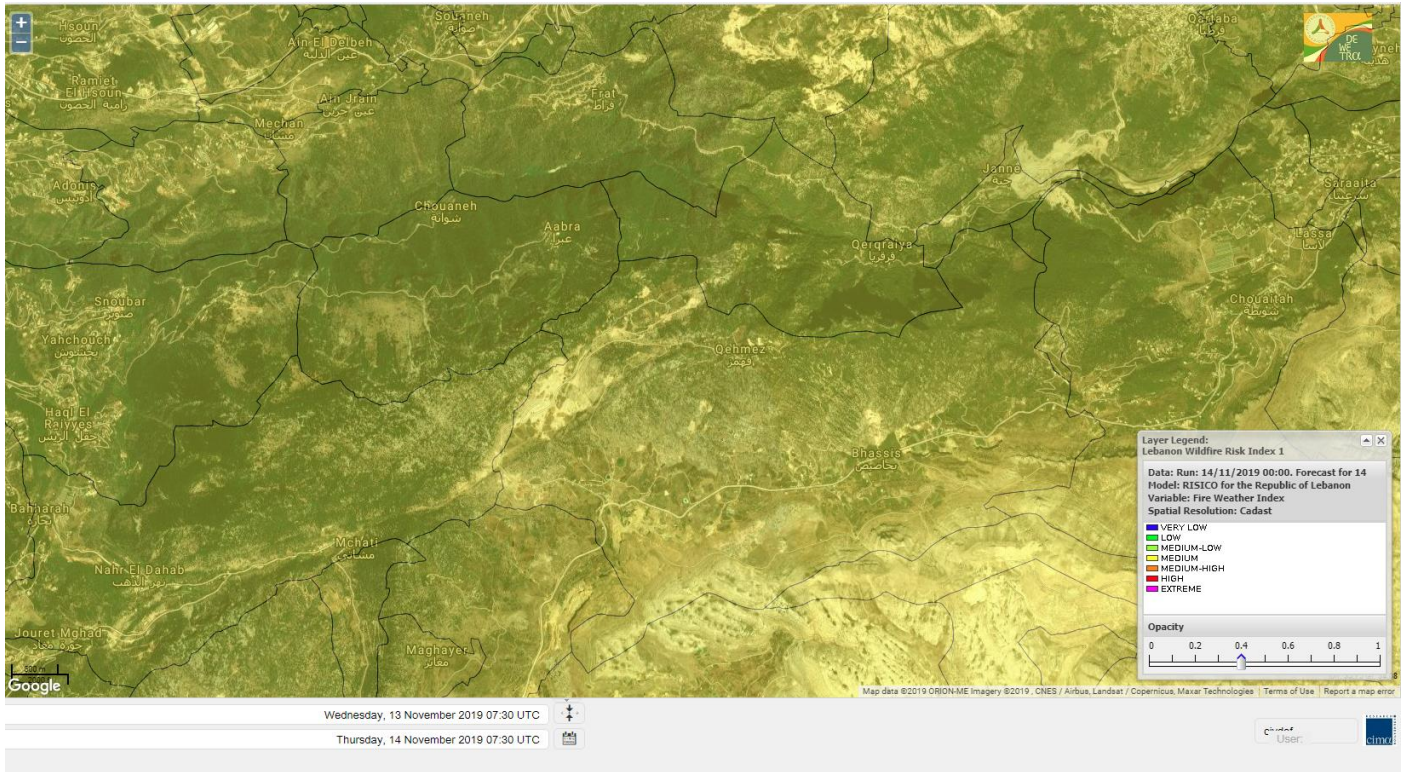
Shouf Biosphere Reserve Forecast for 15 November 2019



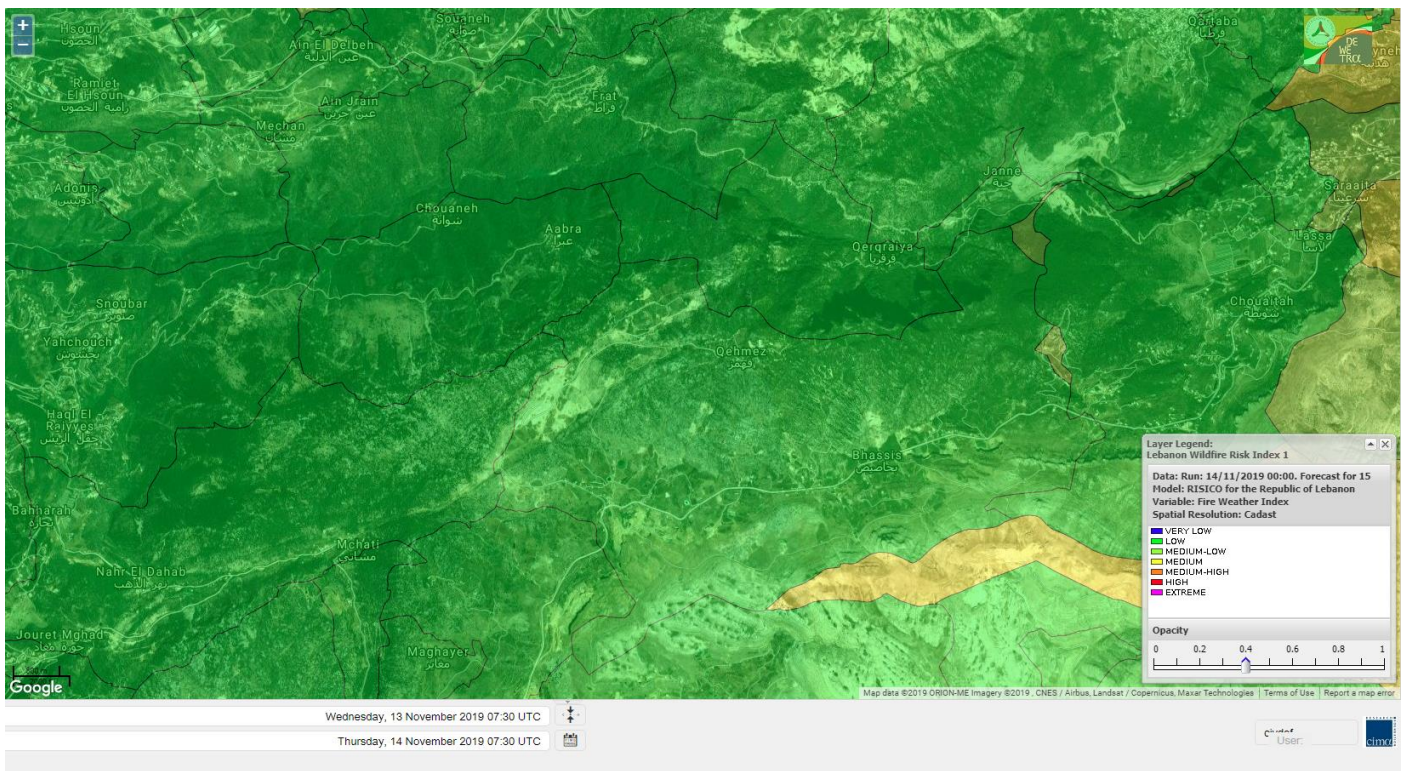
Shouf Biosphere Reserve Forecast for 16 November 2019



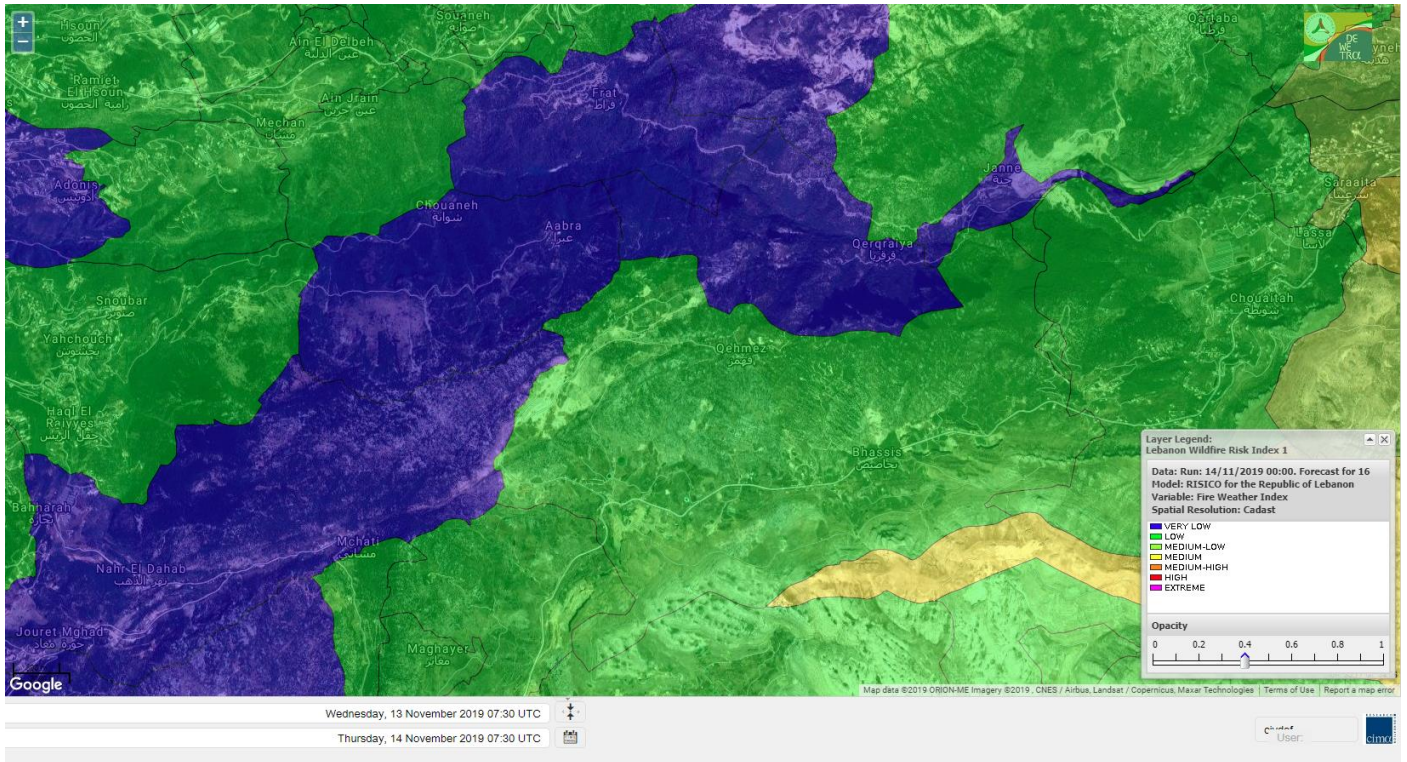
Jabal Moussa Reserve Forecast for 14 November 2019



Jabal Moussa Reserve Forecast for 15 November 2019



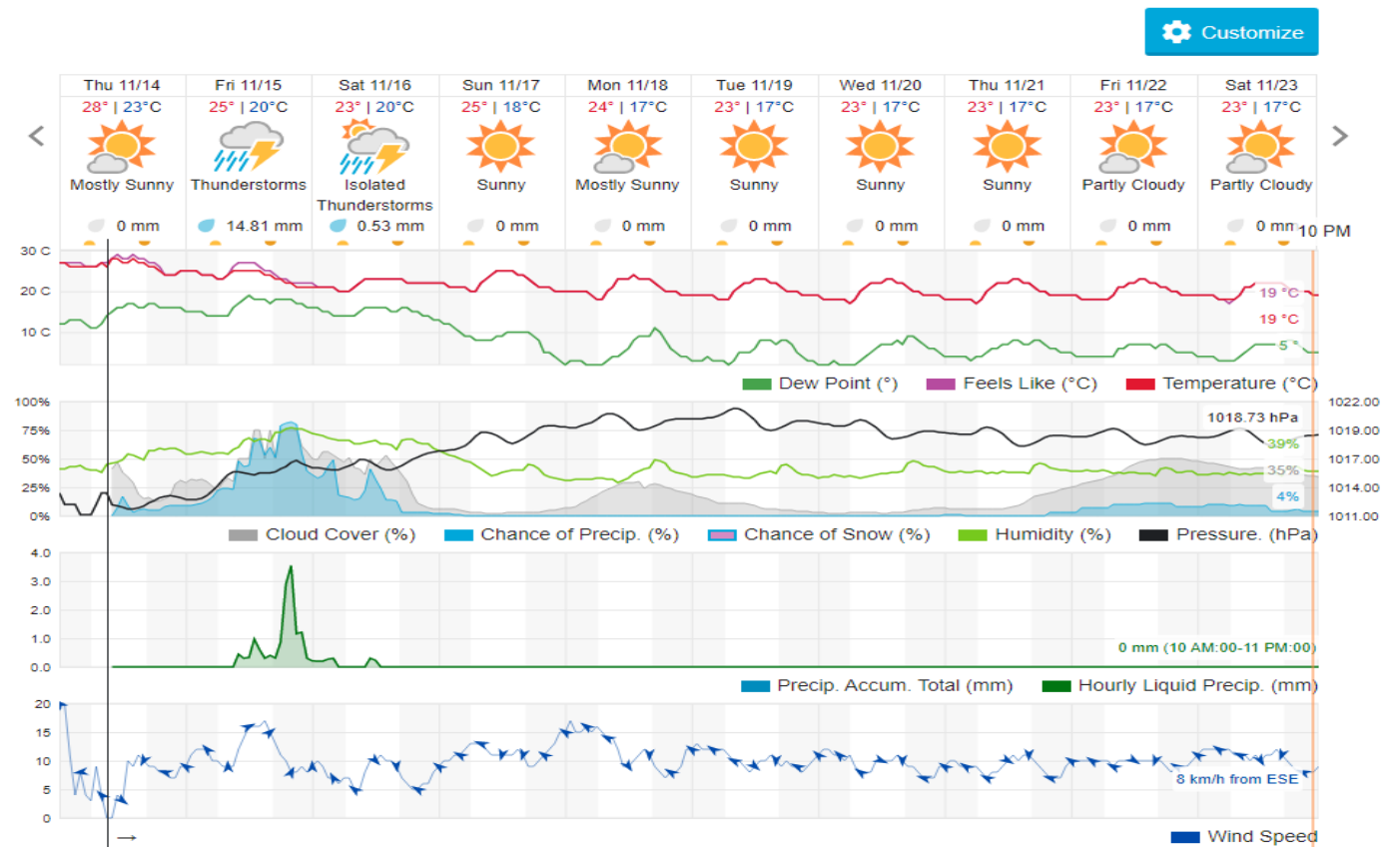
Jabal Moussa Reserve Forecast for 16 November 2019



Beirut, Beirut Governorate, Lebanon 10-Day Weather Forecast

28° ACHRAFIEH, RIZK STATION | CHANGE

TODAY HOURLY 10-DAY CALENDAR HISTORY WUNDERMAP



Nord

Koura

Municipality	14-Nov	15-Nov	16-Nov	Municipality	14-Nov	15-Nov	16-Nov	Municipality	14-Nov	15-Nov	16-Nov
Aaba	M	M	L	Afsaddiq	M	M	L	Ain Ekrine	M	M	ML
Amioun	M	M	L	Anfeh	MH	M	M	Badbhoun	M	M	ML
Barghoun	MH	M	L	Barsa	H	M	L	Batroumine	MH	M	L
Bdebba	MH	M	L	Bechmizine	M	M	L	Bednayel El-Koura	MH	M	L
Bhabbouch El-Koura	M	M	L	Bkeftine	MH	M	L	Bnehran	M	M	L
Bqaiia El-Koura	MH	M	L	Bsarma	M	M	L	Btaaboura	M	M	L
Bttram	M	M	L	Btouratij	MH	M	L	Bziza	M	M	L
Dar Beehtar	M	M	L	Dar Chmezzine	M	M	ML	Deddeh	H	M	L
Deir El-Balamand	MH	M	L	Fih	MH	M	L	Hraiche	MH	M	M
Ijdaabrine	MH	M	L	Kaftoun	M	M	L	Kefraya El-Koura	MH	M	L
Kfarakka	M	M	L	Kfarhata	MH	M	L	Kfarhazir	M	M	L
Kfarkahel	MH	M	L	Kfarsaroun	M	M	L	Kosba	M	M	L
Mejdel el-Koura	M	M	L	Nakhle	MH	M	L	Qalhat	MH	M	L
Ras Masqa	H	M	L	Rechdibbine	M	M	L	Zakroun	MH	M	M
Zgharta El-Mtaouile	MH	M	L								

Bcharre

Municipality	14-Nov	15-Nov	16-Nov	Municipality	14-Nov	15-Nov	16-Nov	Municipality	14-Nov	15-Nov	16-Nov
Aabdine	M	ML	L	Bane	M	M	L	Barhelioun	M	ML	L
Bazooune	M	M	L	Becharre	M	ML	L	Beit Menzer	M	ML	L
Billa	M	ML	L	Blaouza	M	ML	L	Bqaa Kafra	M	M	L
Bqerqacha	M	M	L	Breissat	M	ML	L	Dimane	M	ML	L
Hadath El Jobbeh	M	ML	L	Hadchit	M	M	L	Hasroun	M	M	L
Mazraat Aassaf	M	ML	VL	Mazraat Bani Saab	M	ML	L	Mchaa El-Jobbeh	M	M	L
Metrit	M	M	L	Moghr El-Ahoual	M	ML	L	Ouadi Qannoubine	M	L	VL
Qanat	M	ML	L	Qnayouer	M	ML	L	Tourza	M	ML	L

Batroun

Municipality	14-Nov	15-Nov	16-Nov	Municipality	14-Nov	15-Nov	16-Nov	Municipality	14-Nov	15-Nov	16-Nov
Aabrine	MH	M	L	Aalali	M	ML	L	Aartz	MH	M	VL
Abdelli	MH	M	VL	Ajdabra	MH	M	L	Assia	M	ML	L
Basbina	M	M	L	Batroun	MH	M	ML	Bcheleh	M	ML	L
Bechtoudar	M	ML	L	Beit Chlala	M	ML	L	Beit Kassab	M	M	L
Bijdarfil	MH	M	L	Bqesmaya	MH	M	L	Chatine	M	ML	L
Chebtin	MH	M	L	Chekka	MH	M	ML	Daael	M	ML	L
Dahr Abi Yaghi	MH	M	L	Daraya El-Batroun	M	M	L	Deir Billa	M	M	L
Deir Kfifane	M	M	L	Deir Mar Youhanna EL	M	ML	L	Deir Mar Youssef Jra	MH	M	L
Douma	M	ML	L	Douq	MH	M	L	Eddeh El-Batroun	MH	M	L
Ftahat El-Batroun	M	M	L	Ghouma	MH	M	L	Hadtoun	M	ML	L
Hamat	MH	M	L	Harbouna	MH	M	VL	Hardine	M	ML	L
Helta	M	ML	L	Hery	MH	M	ML	Jebbla	M	M	L
Jrabta El-Batroun	MH	M	L	Jrane El-Batroun	M	M	L	Kfar Aabida	MH	M	L
Kfar Halda	M	ML	L	Kfarb Shlaimane	M	ML	L	Kfarhatna	MH	M	L

Kfarhay	MH	M	L	Kfarhelos	MH	M	L	Kfifane	M	M	L
Kfour El Arabi	M	ML	L	Koubba	MH	M	L	Kour	MH	M	L
Mar Mama	MH	M	VL	Masrah	MH	M	VL	Mehmarch	M	M	L
Mrah Chdid	MH	M	L	Mrah El Ziyat	MH	M	L	Mrah El-Hajj	M	ML	L
Nahle El-Batroun	M	ML	L	Niha El-Batroun	M	ML	L	Ouahj El-Hajjar	MH	M	L
Ouata Houb	M	ML	L	Qatnaaoun	MH	M	L	Racha	M	ML	L
Rachana	MH	M	L	Rachkida	MH	M	L	Ram El-Batroun	M	ML	L
Ras Nahhach	MH	M	L	Selaata	MH	M	ML	Sghar	M	M	L
Smar Jbayl	MH	M	L	Sourat El-Batroun	M	M	L	Tannourine El-Faouqa	M	M	L
Tannourine Et-Tahta	M	ML	L	Thoum	MH	M	L	Toula El-Batroun	MH	M	L
Zan	M	M	L								

Zgharta

Municipality	14-Nov	15-Nov	16-Nov	Municipality	14-Nov	15-Nov	16-Nov	Municipality	14-Nov	15-Nov	16-Nov
Aachach	M	ML	L	Aalma	M	ML	VL	Aarde	M	M	VL
Aintourine	M	ML	L	Arabet Qozhaya	M	ML	L	Arde	M	ML	VL
Arjis	M	ML	L	Asnoun	M	ML	VL	Ayto	M	ML	L
Basloukit	M	M	L	Bchannine	M	M	L	Besebeel	M	ML	VL
Bhairret Toula	M	M	L	Bnachee	M	ML	L	Boussit	M	M	L
Danha	M	ML	L	Daraiya Zgharta	M	M	L	Deir Jdeide	M	ML	VL
Ehden	M	M	L	Halan	M	ML	L	Hariq Zgharta	M	ML	VL
Houakir	MH	M	VL	Hraiqis	MH	M	L	Iaal	M	ML	VL
Ijbaa	M	ML	L	Karm Saddeh	M	ML	L	Kfarchakhna	MH	M	L
Kfardlaqous	M	ML	VL	Kfarfou	M	ML	L	Kfarhata Zgharta	M	ML	VL
Kfarhoura	M	M	VL	Kfarsghab	M	M	L	Kfaryachit	M	ML	VL
Kfarzaina	M	ML	VL	Khaldiye	M	ML	VL	Mazraat Ajbeaa	M	ML	VL
Mazraat Et-Teffah	M	ML	L	Mazraat Jneid	M	ML	VL	Mejdlaya Zgharta	M	M	L
Merh Kfarsghab	M	ML	L	Miryata	M	ML	L	Miziara	M	ML	L
Mzraat Kefraya	M	M	L	Qorah Bach	M	ML	VL	Rachiine	M	ML	VL
Ras Kifa	M	M	L	Sakhra	M	ML	VL	Sebhel Zgharta	M	ML	L
Serhel	M	ML	VL	Tallet Zgharta	M	ML	VL	Toula Zgharta	M	M	L
Zgharta	M	ML	VL								

Minieh-Denniye

Municipality	14-Nov	15-Nov	16-Nov	Municipality	14-Nov	15-Nov	16-Nov	Municipality	14-Nov	15-Nov	16-Nov
Aasaymout	M	VL	VL	Aaymar	M	M	L	Aazki	M	M	L
Ain El-Tineh-Miniyeh	M	M	L	Assoun	M	M	L	Bakhaaoun	M	M	L
Bchennata	M	M	L	Bechehhara	MH	M	VL	Beddawi	MH	M	L
Behouaita	M	M	L	Beit El Foqss	M	ML	L	Beit Haouik	M	VL	L
Beit Zoud	M	M	L	Bekaasafrine	M	ML	L	Borj El Yahoudiyeh	MH	M	L
Bqarsouna	M	ML	L	Btermaz	M	M	L	Debaael	M	L	L
Deir Ammar	MH	M	L	Deir Nbouh	M	M	VL	Haouaret-Miniyeh	M	VL	L
Haql el Azimeh	M	M	L	Harf El Siyad	M	M	L	Hazmiye-Miniyeh	M	M	L
Izal	M	M	L	Jarjour	MH	M	VL	Jayroun	M	VL	VL
Kahf El-Malloul	M	M	VL	Karm El-Moher	M	M	L	Kfar Binine	M	VL	L
Kfarchalane	M	M	L	Kfarhabou	M	ML	L	Kharroub-Miniyeh	M	M	L
Mazraat El-Kreme	MH	M	VL	Mazraat Ketrane	M	M	L	Merkebtta	MH	M	L

Minyeh	MH	M	L	Mrah El Sfirat	M	M	L	Mrah Sraj	M	M	L
Mrebbine	M	L	L	Nabi Youcheaa	MH	M	L	Nemrine	M	L	L
Qarhaiya	M	L	L	Qarne	M	VL	VL	Qarsita	M	L	VL
Qattineh-Miniyeh	M	M	L	Qemmamine	M	VL	VL	Qraine	M	M	L
Raouda-Aadoua	MH	M	L	Rihaniyet-Miniyeh	M	M	L	Sfireh	M	ML	L
Sir Ed-Danniyeh	M	M	L	Tarane	M	M	L	Terbol-Miniyeh	MH	M	L
Zaghartaghriine	M	M	L	Zouq Bhannine	MH	M	L				

Nabatiye

Nabatiye

Municipality	14-Nov	15-Nov	16-Nov	Municipality	14-Nov	15-Nov	16-Nov	Municipality	14-Nov	15-Nov	16-Nov
Aabba	M	M	M	Aazzi	M	M	ML	Adchit El-Chqif	M	ML	ML
Ain Bou Swar	M	ML	L	Ain Kana	M	ML	L	Ali El-Taher	M	L	ML
Ansar	MH	M	M	Arab Salim	M	L	ML	Arnoun	M	L	M
Bfaroue	M	M	ML	Breyqaah	M	ML	ML	Charqiyeh	M	M	M
Choukine	M	ML	M	Deir El Zahrani	M	M	M	Doueir El-Nabatiyeh	M	M	M
Habbouch El-Nabatiye	M	L	ML	Hamra El-Nabatiyeh	M	L	M	Harouf El-Nabatiyeh	M	M	M
Hmaile	M	ML	ML	Houmin El Faouqa	M	L	ML	Houmin El Tahta	M	M	M
Jarjough	M	ML	L	Jbaah El-Nabatiyeh	M	L	L	Jebchit	M	M	M
Kfar Djal El-Nabatiy	M	ML	ML	Kfar Remmane	M	L	ML	Kfar Sir	M	ML	ML
Kfar Tebnit	M	L	M	Kfarfila	M	ML	ML	Kfour El-Nabatieh	M	M	M
Mayfadoun	M	L	M	Mazraat Bsaffour	M	M	M	Mazraat Chalbaal	M	M	M
Mazraat Dmoul	M	M	M	Mazraat El Khreibeh	M	M	M	Mazraat El-Bayad El-	M	L	ML
Mazraat Kfarjaouz	M	L	ML	Mazraat Qalaat Meiss	MH	M	M	Nabatiyeh El-Fawka	M	L	ML
Nabatiyeh Et-Tahta	M	L	ML	Namiriyeh	M	M	M	Qaaqaiyet El Jisr	M	ML	ML
Qossaibeh El-Nabatiy	M	ML	ML	Roumine	M	M	M	Sarba El-Nabatieh	M	ML	ML
Sir El-Gharbiyeh	M	ML	ML	Toul	M	M	M	Yehmor El-Nabatiyeh	M	L	M
Zaoutar El Charkiyeh	M	L	M	Zaoutar El-Gharbiyeh	M	ML	ML	Zebdine El-Nabatiyeh	M	M	M
Zefta	M	M	M								

Hasbaiya

Municipality	14-Nov	15-Nov	16-Nov	Municipality	14-Nov	15-Nov	16-Nov	Municipality	14-Nov	15-Nov	16-Nov
Aain Jarfa	L	L	VL	Abou Qamha	M	L	L	Ain Qania	L	L	VL
Bourghos	M	L	L	Chebaa	ML	L	L	Chouaya Hasbaya	L	L	VL
Dellafeh	M	L	L	Fardiss Hasbaiya	M	L	L	Hasbaya	L	L	L
Hbariyeh	L	L	L	Kaoukaba Hasbaiya	M	L	L	Kfar Chouba	M	L	L
Kfar Hamam	M	ML	L	Kfeir El-Zait	L	L	L	Khalwat Hasbaya	L	L	VL
Khreibet Hasbaiya	M	M	M	Majidiyeh Hasbaiya	M	ML	ML	Marj Ez-Zhour (Haouc	L	VL	VL
Meri	M	M	M	Mimass	L	L	L	Rachaiya El-Fokhar	M	L	L
Salaiyeb	M	M	M								

Marjayoun

Municipality	14-Nov	15-Nov	16-Nov	Municipality	14-Nov	15-Nov	16-Nov	Municipality	14-Nov	15-Nov	16-Nov
Aalmane Marjaayoun	M	ML	ML	Aamra	M	M	M	Adayseh Marjaayoun	M	L	M
Adchit El-Koussair	M	L	M	Ain Aarab Marjaayoun	M	M	M	Bani Haiyann	M	L	M
Blatt Marjaayoun	M	L	L	Blida	M	M	M	Borj El-Moulouk	M	ML	M

Boueyda Marjaayoun	M	L	L	Deir Mimass	M	L	ML	Deir Siriane	M	L	M
Dibbine	M	L	L	Ebel El Saqi	M	ML	L	Houla	M	L	M
Houra	M	L	ML	Kfar Kila	M	L	M	Khiam Marjaayoun	M	M	M
Klayaa	M	ML	M	Majdel Selem	M	M	M	Marjaayoun	M	ML	L
Markaba	M	L	M	Mays El-Jabal	M	L	M	Mazraat Doumiat	M	L	M
Mazraat Sarada	M	M	M	Mhaibib	M	M	M	Qabrikha	M	ML	M
Qantara	M	ML	ML	Rab El-Thalathine	M	L	M	Saouaneh Marjayoun	M	M	M
Talloussa	M	L	M	Taybeh Matjaayoun	M	L	M	Touline	M	M	ML

Bent Jbail

Municipality	14-Nov	15-Nov	16-Nov	Municipality	14-Nov	15-Nov	16-Nov	Municipality	14-Nov	15-Nov	16-Nov
Ain-Ebel	M	M	ML	Aitaroun	M	M	M	Aynata Bint Jbeil	M	M	ML
Ayta El-Chaeb	M	ML	L	Ayta El-Jabal	M	M	M	Beit Lif	M	ML	L
Beit Yahoun	M	M	M	Bint Jbeil	M	M	ML	Borj Qalaway	M	M	M
Braachit	M	M	M	Chakra	M	M	M	Debel	M	M	ML
Deir Antar	M	M	M	Froun	M	ML	ML	Ghandouriyeh Bint Jb	M	ML	ML
Hanine	M	M	ML	Hariss	M	M	M	Hdatha	M	M	M
Jmeyjmeh	M	M	M	Kafra Bint Jbeil	MH	M	ML	Kfar Dounine	M	M	M
Khirbet Selm	M	M	M	Kounine	M	M	M	Maroun El Ras	M	M	M
Qalaway	M	M	M	Qaouzah	M	ML	L	Qatmoun	M	M	ML
Ramya Bint Jbeil	M	ML	L	Rchaf	M	M	ML	Rmeich	M	M	ML
Safad Al Battikh	M	M	M	Salhaneh	M	ML	L	Serbine	M	M	M
Sultanieh Bint Jbeil	M	M	M	Tibnine	M	M	M	Tiri	M	M	M
Yaroun	M	M	ML	Yater	M	M	ML				

Mont Liban

Jbail

Municipality	14-Nov	15-Nov	16-Nov	Municipality	14-Nov	15-Nov	16-Nov	Municipality	14-Nov	15-Nov	16-Nov
Aabeydat	MH	M	L	Aalita	M	L	L	Aamchit	MH	M	ML
Aarab El-Lahib	M	ML	L	Aarasta	M	ML	ML	Adonis Jbeil	M	L	VL
Afqa Jbeil	M	M	ML	Ain El Delbeh Jbeil	M	L	L	Ain El-Ghouayba	M	L	L
Ain Jrain	M	L	L	Ain Kfah	M	M	L	Almat El Chemaliyat	M	L	L
Almat El-Jenoubiya	M	L	L	Aqoura	M	M	M	Bayzoun	M	L	L
Bchille Jbeil	M	L	L	Bechtlida	M	L	VL	Behdaydat	M	M	L
Beit Habbaq	MH	M	L	Bejjeh	MH	M	L	Bekhaaz	MH	M	L
Berbara Jbeil	MH	M	ML	Bintael	M	L	L	Birket Hjoula	M	ML	VL
Blatt Jbeil	M	L	L	Boulhos	M	L	VL	Breyj Jbeil	M	L	VL
Chamat	M	M	L	Chikhane	MH	M	ML	Chmout	MH	M	L
Eddeh Jbeil	M	ML	L	Ehmej	M	L	L	Fatre	M	L	VL
Ferhet	M	L	L	Fghal	MH	M	L	Frat	M	L	VL
Ghabat	M	M	M	Ghalboun	MH	M	L	Gharzouz	M	M	L
Ghofrine	MH	M	L	Habil	MH	M	VL	Halate	M	ML	L
Haqel	MH	M	L	Hbaline	M	M	L	Hboub	M	L	L
Hdeine	M	M	ML	Hema Er-Rehban	M	ML	L	Hema Mar Maroun Aann	M	L	L
Hjoula	M	L	L	Hosrayel	MH	M	L	Hsarat	M	M	L

Hsoun	M	L	L	Jaj	M	ML	L	Janne	M	L	VL
Jbeil	M	M	L	Jeddeyl Jbeil	MH	M	ML	Jlisse	M	L	L
Jouret El-Qattine	M	L	L	Kfar Baal Annaya	M	L	L	Kfar Kidde	MH	M	L
Kfar Kouas	M	L	L	Kfar Mashoun	M	ML	L	Kfoun	MH	M	L
Kharbe Jbeil	M	M	L	Laqlouq	M	ML	ML	Lassa	M	L	L
Lehfed	M	ML	L	Maad	M	M	L	Mar Sarkis	M	L	L
Mastita	M	M	L	Mayfouq	M	ML	L	Mazraat El Siyad	M	ML	L
Mazraat El-Maaden	M	L	VL	Mechane	M	L	L	Mechmech Jbeil	M	ML	L
Mehrin	M	L	L	Mejdel El-Akoura	M	M	ML	Mghayreh Jbeil	M	M	M
Mounsef	MH	M	ML	Nahr Ibrahim	MH	M	L	Qahmez	M	L	L
Qartaba	M	L	L	Qartaboun	M	M	L	Qattara Jbeil	M	ML	L
Qorqraya	M	L	VL	Ramout	MH	M	L	Ras Osta	M	L	L
Rihane Jbeil	MH	M	ML	Sakiet El-Khayt	MH	M	L	Saqi Richmaya	M	ML	L
Sebrine	M	L	L	Seraita	M	ML	ML	Souane Jbeil	M	L	L
Tadmor	M	M	M	Tartej	M	ML	L	Torzaiya	M	L	L
Yanouh Jbeil	M	M	M	Zibdine Jbeil	M	L	L				

El Metn

Municipality	14-Nov	15-Nov	16-Nov	Municipality	14-Nov	15-Nov	16-Nov	Municipality	14-Nov	15-Nov	16-Nov
Aain El-Qabu	M	L	L	Aain El-Qach	M	L	L	Aain El-Teffaha	M	ML	L
Aain el-Safssaf El-M	M	L	L	Abou Mizane	M	ML	L	Ain Aar	M	M	L
Ain Alaq	M	M	L	Ain El-Kharroube	M	ML	L	Ain El-Sendianeh	M	L	L
Ain El-Zeitoune	M	L	L	Ain Saadeh	M	M	L	Aintoura El-Matn	M	L	L
Amaret Chalhoub	M	M	L	Antelias	M	M	L	Atchaneh	M	M	L
Ayroun	M	ML	L	Baabdat	M	ML	L	Baouchariyeh	M	M	ML
Baskinta	M	L	L	Beit Chabab	M	ML	L	Beit El-Chaar	M	M	L
Beit El-Kekko	M	M	L	Beit Mery	M	M	L	Bhersaf	M	ML	L
Bikfaya	M	L	L	Biyakout	M	M	L	Bnabil	M	L	L
Bourj Hammoud	M	M	M	Bqennaya	M	M	L	Broummana El-Matn	M	M	L
Bsalim	M	M	L	Bsifrine	M	L	L	Bteghrine	M	L	L
Chaouiye	M	M	L	Chouaya El-Matn	M	ML	L	Choueir	M	L	L
Chrine	M	L	L	Dahr El Sawan El-Mat	M	M	L	Daychouniyeh	M	M	L
Dbayeh	M	M	L	Deir Chamra	M	L	L	Deir Mar Abda el Mch	M	M	L
Deir Mar Roukouz	M	M	ML	Deir Tamiche	M	M	L	Dik El-Mehdi	M	M	L
Dikwaneh	M	M	M	Douar El-Matn	M	L	L	Fanar	M	M	L
Fraike	M	M	L	Haret El-Ballaneh	M	M	L	Hbous	M	M	L
Himlaya	M	L	L	Jal El Did	M	M	L	Jdeideh El-Metn	M	M	L
Jouar El-Matn	M	L	L	Jouret El-Ballout	M	M	L	Kaaqour	M	L	L
Kfar Aaqab	M	L	L	Kfertay El-Matn	M	L	L	Khenchara	M	L	L
Khillet El-Mtain	M	L	L	Konnabat Broummana	M	M	L	Konnabat Salima	M	L	L
Machraah El-Matn	M	L	L	Majdel Tarchich	M	L	L	Majzoub	M	M	L
Mansouriyeh El-Metn	M	M	L	Mar Boutros Karm Et-	M	L	L	Mar Chaya et Mzekke	M	M	L
Mar Moussa Ed-Douar	M	L	L	Marjaba	M	L	L	Masqa	M	M	L
Mayasse	M	L	L	Mazraat Deir Aoukar	M	M	L	Mazraat El-Hadirat	M	M	L
Mazraat Yachouh	M	M	L	Mchikha	M	ML	L	Menqlet Mezher	M	M	L
Mhayseh Matn	M	L	L	Mkalles	M	M	ML	Mrouj	M	ML	L

Mtain	M	ML	L	Mtayleb	M	M	L	Nabay	M	M	L
Naccache	M	M	L	Ouadi Chahine	M	L	L	Ouadi El-Karm El-Mat	M	L	VL
Ouata El-Mrouj	M	ML	L	Ouyoun El-Matn	M	M	L	Qornet Chehwan	M	M	L
Qornet El-Hamra	M	M	L	Roumieh	M	M	L	Sfeilet Bikfaya	M	L	L
Sinn El-Fil	M	M	M	Zabbougha	M	L	VL	Zalqa	M	M	L
Zarououn	M	L	L	Zekrite	M	M	L	Zighrine El-Matn	M	ML	L
Zouk El-Khrab	M	M	L								

Chouf

Municipality	14-Nov	15-Nov	16-Nov	Municipality	14-Nov	15-Nov	16-Nov	Municipality	14-Nov	15-Nov	16-Nov
Aalmane El-Chouf	M	M	L	Aammq El-Chouf	M	L	VL	Ain Ouzein	M	L	VL
Ain Qani	M	L	L	Ain Zhalta	M	ML	L	Ainbal	M	L	L
Amatour	M	L	L	Anout	M	L	L	Atrine	M	L	L
Baadarane	M	L	L	Baaqline	M	L	L	Baasir	M	M	L
Barja	M	M	L	Barouk	M	ML	L	Bater	M	L	L
Batloun	M	L	L	Bayqoun	M	L	L	Bchetfine	M	L	L
Beiteddine	M	L	VL	Benouati Ech-Chouf	M	L	L	Berjein	M	L	L
Bireh et Mtalleh	M	L	L	Biret El-Chouf	M	L	L	Bkechtine Ouel Mchei	M	L	VL
Bkifa El-Chouf	M	L	L	Botme	M	L	VL	Bqaiaa Ech-Chouf	M	L	L
Bsaba El-Chouf	M	L	L	Chammis El-Chouf	M	M	L	Chehim	M	L	L
Chemaarine	M	L	L	Chourit	M	L	L	Daher El-Chouf	MH	M	L
Dalhoun	M	ML	L	Damour	M	M	L	Daraya El-Chouf	M	L	L
Deir El-Moukhalles	M	L	L	Deir Baba	M	L	L	Deir Dourit	M	L	L
Deir El-Qamar	M	L	L	Deir Kouche	M	L	L	Dibbieh	M	M	L
Dmit	M	L	L	Fouara Jaafar	M	L	VL	Fraidis El-Chouf	M	ML	L
Ghabet Jaafar	M	L	L	Gharife	M	L	L	Haret Jandal	M	L	L
Hasrout	M	L	L	Jadra	M	M	ML	Jahlieh	M	L	L
Jbeih El-Chouf	M	L	L	Jdeidet El-Chouf	M	L	VL	Jiyeh	M	M	L
Jleiliyeh	M	L	L	Jmailiyeh	M	M	L	Joun	M	M	L
Kahlounie El-Chouf	M	L	L	Ketermaya	M	M	L	Kfar Faqoud	M	L	L
Kfar Hamal	M	L	L	Kfar Him	M	L	L	Kfar Katra	M	L	VL
Kfar Niss	M	L	L	Kfar hay	M	L	L	Kfarnabrakh	M	L	VL
Khirbet Bisri	M	L	L	Knayse El-Chouf	M	L	VL	Maaniyeh	M	M	L
Maasser Beiteddine	M	L	VL	Maasser El-Chouf	M	L	L	Majdalouna	M	M	L
Majdel El-Meouch	M	L	VL	Mazboud	M	L	L	Mazmoura	M	L	L
Mazraat El Chouf	M	L	L	Mazraat El Daher	M	L	L	Mazraat El-Douair	M	L	VL
Mechref	M	L	L	Mghairie	M	M	L	Mghayrie El-Chouf	M	L	L
Moukhtara	M	L	VL	Mrusti	M	L	L	Mtolle	M	L	L
Naameh	M	M	L	Niha El-Chouf	M	L	L	Ouadi Abou Youssef	M	L	VL
Ouadi Ed-Deir	M	L	L	Ouadi El-Sit	M	L	VL	Ouadi bnehlav	M	L	VL
Qraibeh	M	L	L	Qreiaa	M	L	L	Rmayle El-Chouf	M	M	L
Semqaniyeh	M	L	VL	Sibline	M	M	ML	Sirjbeil	M	L	L
Warhanieh	M	ML	L	Werdaniyeh	M	M	L	Zaarourieh	M	L	L

Baabda

Municipality	14-Nov	15-Nov	16-Nov	Municipality	14-Nov	15-Nov	16-Nov	Municipality	14-Nov	15-Nov	16-Nov
Abadiyeh	M	ML	L	Ain Mouaffaq	M	L	L	Araiya	M	L	L

Arbaniyeh	M	L	L	Arsoun	M	L	L	Baabda	M	ML	ML
Baalchmey	M	ML	ML	Bmaryam	M	M	L	Bourj El-Brajneh	M	L	ML
Boutchay	M	L	L	Bsaba Baabda	M	ML	L	Btekhney	M	M	L
Btibyat	M	M	L	Bzebdine	M	L	L	Chbeniyeh	M	M	L
Chiyah	M	ML	M	Chmeisset Baabda	M	M	L	Chouit	M	L	L
Deir El-harf	M	ML	L	Deir Khouna	M	ML	L	Dlaybeh	M	L	L
Falougha	M	M	ML	Furn El-Chebbak	M	M	M	Hadath Beyrouth	M	ML	ML
Halaliyeh Baabda	M	L	L	Hammana	M	M	ML	Haret El Sett	M	L	L
Haret Hamze	M	ML	L	Haret Hreik	M	M	M	Hasbaiya El-Metn	M	L	L
Jouar El-Hoz	M	L	L	Jouret Arsoun	M	L	L	Kfar Chima	M	ML	L
Kfar Selouane	M	ML	L	Khalouat Baabda	M	M	L	Kneisset Baabda	M	ML	L
Laylakeh	M	L	ML	Louayzeh Baabda	M	ML	L	Merdache	M	L	L
Mzairaa Baabda	M	L	L	Ouadi Chahrour El OI	M	L	L	Ouadi Chahrour El So	M	L	L
Qalaa Baabda	M	M	L	Qhraybe Baabda	M	M	L	Qobbayaa	M	M	L
Qornayel	M	L	L	Qortada	M	M	L	Qrayeh Baabda	M	M	L
Qsaibeh Baabda	M	M	L	Qtale Baabda	M	M	L	Ras El Metn	M	M	L
Ras El-Haref	M	M	L	Rouayset El-Ballout	M	L	L	Salima Baabda	M	L	L
Tahouitat El Ghadir	M	L	ML	Tarchich	M	L	L	Zandouqa	M	M	L

Aley

Municipality	14-Nov	15-Nov	16-Nov	Municipality	14-Nov	15-Nov	16-Nov	Municipality	14-Nov	15-Nov	16-Nov
Abey	M	L	L	Aghmid	M	M	L	Ain Dara	M	M	ML
Ain Drafil	M	L	L	Ain El Halazoun	M	ML	ML	Ain El-Rmmaneh	M	L	L
Ain Jedideh	M	ML	ML	Ain Ksour	M	L	L	Ain Onoub	M	L	L
Ain Traz	M	L	VL	Ainab	M	L	L	Aley	M	ML	ML
Aramoun	M	ML	L	Aytat	M	L	L	Azouniyeh	M	M	L
Baawerta	M	L	L	Badghan Oua Wadi Bad	M	ML	ML	Bassatine	M	L	L
Bayssour	M	ML	L	Bchamoun	M	L	L	Bdadoun	M	L	L
Behouara	M	ML	ML	Bennay	M	L	L	Bhamdoun El-Dayaa	M	ML	ML
Bhamdoun El-Mhatta	M	ML	ML	Bkhechtey	M	ML	ML	Bleibel	M	L	L
Bmaknine	M	ML	ML	Bmehray	M	M	L	Bouzrid	M	L	L
Bserrine	M	ML	ML	Bsous	M	L	L	Btalloun	M	ML	ML
Btater	M	ML	ML	Chanay	M	ML	ML	Charoun	M	M	ML
Chartoun	M	L	L	Chemlane	M	L	L	Choueifat El-Aamrous	M	L	ML
Choueifat El-Oumara	M	L	L	Choueifat El-Quoubbe	M	ML	ML	Dakkoun	M	L	L
Deir Qoubel	M	L	L	Dfoun	M	ML	L	Douair El Remmaneh	M	L	L
Ghaboun	M	ML	L	Habramoun	M	L	L	Homs Oua Hama	M	L	ML
Houmal	M	L	L	Jisr El Qadi	M	L	L	Kehaleh	M	L	L
Keyfoun	M	L	ML	Kfar Aamey	M	ML	L	Kommatyeh	M	ML	ML
Maasrati	M	L	L	Majdel Baana	M	ML	ML	Mansourieh et Ain El	M	ML	ML
Mazraat El-Nahr	M	L	L	Mchakhte	M	M	L	Mecherfeh	M	ML	ML
Mejdlaya	M	L	ML	Mrayjat	M	ML	L	Ramliyeh	M	L	L
Rechmaya	M	L	L	Rejmech	M	ML	L	Remhala	M	L	L
Rouayset El Neemane	M	ML	L	Saoufar	M	M	ML	Selfaya	M	L	VL
Sirhmoul	M	L	L	Souq El Ghareb	M	ML	L	Taazanieh	M	ML	ML

Kesrouane

Municipality	14-Nov	15-Nov	16-Nov	Municipality	14-Nov	15-Nov	16-Nov	Municipality	14-Nov	15-Nov	16-Nov
Achkout	M	L	VL	Adma Oua Dafneh	M	M	L	Ain Ed-Delbe Kesroua	M	L	L
Ain El-Rihane	MH	M	VL	Aintoura Kesrouane	M	M	L	Ajaltoun	M	L	VL
Akaybeh Kesrouane	M	M	L	Aramoun Kesrouane	M	L	VL	Azra ouel Ozor	M	L	L
Ballouneh	M	ML	VL	Batha	M	ML	VL	Bekaatat Achkout	M	L	VL
Bekaatat Kanaan	M	L	L	Bizhel	M	L	VL	Bouar	M	M	L
Bqaatouta	M	L	L	Bqaq Ed-Dine	MH	M	L	Bzommar	M	L	VL
Chahtoul	M	L	VL	Chnaniir	M	ML	VL	Chouan	M	L	VL
Daraya Kesrouane	M	L	VL	Daroun	M	ML	VL	Deir Baqlouch	MH	M	VL
Diebta	M	L	VL	Eghbeh	M	L	VL	Faraya	M	L	L
Fatka	M	ML	L	Feytroun	M	L	VL	Ghazir	M	ML	L
Ghbaleh Kesrouane	M	L	L	Ghedrass	M	L	VL	Ghosta	M	L	VL
Ghyneh	M	L	VL	Harharaya w Kattine	M	L	VL	Harissa Kesrouane	MH	M	VL
Hayata	M	L	VL	Hosein	M	L	VL	Hrajel	M	L	L
Jdeideh Ghazir	M	L	VL	Jeita	M	M	L	Jounieh Ghadir	M	M	L
Jounieh Haret Sakhr	M	M	L	Jounieh Salel Alma	M	M	L	Jounieh Sarba	M	M	L
Jouret Bedrane	M	L	L	Jouret Mhad	M	L	VL	Jouret Termos	M	L	L
Kfar Debiane	M	L	L	Kfar Tay Kesrouane	M	L	VL	Kfar Yassine	M	M	L
Kfour Kesrouane	M	L	VL	Kharayeb Nahr Ibrahi	M	M	L	Klayaat Kesrouane	M	L	VL
Maarab	M	L	VL	Maaysra Kesrouane	M	L	L	Mayrouba	M	L	L
Mazraat Er-Ras	M	M	L	Mazraat Mrah El-Mir	M	L	VL	Mchaa El Ftouh	M	M	M
Mchaa Faraya	M	L	L	Mchaa Kfar Dibiane	M	ML	ML	Mghaer	M	L	L
Mradiyah	M	L	VL	Nahr Ed-Dahab	M	L	VL	Nammoura Kesrouane	M	ML	L
Ouata El Jaouz	M	L	VL	Ouata Sillam	M	M	L	Raachine	M	L	VL
Rayfoun	M	L	VL	Safra Kesrouane	M	M	L	Shayle Kesrouane	M	M	L
Tabarja	M	M	L	Yahchouch	M	L	L	Zaaytreh	M	L	L
Zeytoun	M	ML	L	Zouk Mikael	M	M	L	Zouk Mosbeh	M	M	L

Baalbek_Hermel

Baalbek

Municipality	14-Nov	15-Nov	16-Nov	Municipality	14-Nov	15-Nov	16-Nov	Municipality	14-Nov	15-Nov	16-Nov
Aadous	M	L	ML	Aamchki	VL	L	L	Aarsal	ML	ML	L
Ain Baalbek	M	ML	ML	Ain Bourday	L	L	ML	Ain El-Benye	L	L	L
Ain El-Jaouz Baalbek	L	L	VL	Ain El-Siya Chadoura	L	L	L	Al Khodr Baalbek	L	L	ML
Al Nabi Chit	L	L	ML	Aynata Baalbek	M	M	M	Baalbek	L	L	ML
Bachwat	M	M	M	Barqa	M	M	M	Bednayel Baalbak	M	M	M
Beit Chama	M	M	M	Bijjaje	M	M	M	Bouday	M	M	M
Brital	L	L	L	Btadi	M	M	M	Chaat	M	M	M
Chaibe	L	L	L	Chlifa	M	M	M	Chmestar	M	M	M
Dar El-Oussa	M	M	M	Deir El-Ahmar	M	M	M	Deir Mar Maroun Baal	M	M	M
Douris	L	L	ML	Fakiha	M	M	ML	Hadath Baalbek	M	M	M
Ham	L	L	L	Haour Taala	L	L	L	Hizzine	M	L	ML
Hlebta	M	M	M	Hosh Barada	M	L	ML	Hosh El Dahab	M	ML	M
Hosh El Snid	L	L	ML	Hosh El-Nabi	ML	ML	M	Hosh El-Rafiq	M	M	M
Hosh Tal Safiya	M	L	ML	Hrebta	M	M	M	laat	M	ML	M

Jebaa	M	M	M	Jenta	L	L	L	Kfar Dabach	M	M	M
Kfar Dane	M	M	M	Khraibeh El-Hermel	M	M	L	Khreibet Baalbek	L	L	L
Kneisset Baalbek	M	M	M	Labueh	M	M	ML	Maarboun	L	L	VL
Majdaloun	M	L	ML	Maqneh	M	M	M	Mazraat Beit Mcheik	M	M	M
Misraya	M	M	M	Moqraq	M	M	M	Nabha El-Damdoum	M	M	M
Nabi Chbay	L	VL	L	Nabi Osman	M	ML	ML	Nahleh baalbek	L	L	L
Ouadi El-Oss	M	M	M	Qaa Baayoun	M	M	M	Qaa Jouar Maqiye	M	M	ML
Qaa Ouadi El-Khanzir	M	M	M	Qah Baalbek	M	M	M	Qarha Baalbek	M	M	M
Qsarnaba	M	M	M	Ram Baalbek	M	M	M	Ras Baalbek El Sahl	M	M	ML
Ras Baalbek El-Charq	M	M	ML	Riha	M	M	M	Saaide	M	ML	ML
Sbouba	M	M	ML	Seriine El-Tahta	ML	ML	ML	Slouqi	M	M	M
Taiba Baalbek	ML	L	ML	Talia	ML	L	ML	Taraiya	M	M	M
Temnin El Fawqa	M	M	M	Temnin El-Tahta	M	M	M	Tfail	L	L	VL
Yahfoufa	L	L	L	Yammouneh	M	M	M	Younine	L	ML	L
Zboud	M	M	M								

Hermel

Municipality	14-Nov	15-Nov	16-Nov	Municipality	14-Nov	15-Nov	16-Nov	Municipality	14-Nov	15-Nov	16-Nov
Charbine El-Hermel	M	M	ML	Hermel Jbab	M	M	ML	Hermel	M	M	M
Maaysra El-Hermel	M	M	M	Michaa Mrajhine	M	M	L	Ouadi Faara	M	M	M
Ras Baalbek - Ouadi	M	M	M	Ras Baalbek El Gharb	M	M	M	Zighrine	M	M	M

Akkar

Akkar

Municipality	14-Nov	15-Nov	16-Nov	Municipality	14-Nov	15-Nov	16-Nov	Municipality	14-Nov	15-Nov	16-Nov
Aain Tinta	M	M	M	Aaiyat	M	M	ML	Aakkar El-Aatiga	MH	M	L
Aamar Akkar	MH	M	L	Aamar El Baykat	M	M	M	Aamayer	M	M	M
Aamriyet Akkar	M	M	M	Aandqet	M	M	M	Aarmeh	MH	M	M
Aarqa	MH	M	ML	Aawaynat	M	M	M	Aayoun Akkar	M	M	ML
Abboudiye	MH	M	M	Ain El-Zeit	M	M	M	Ain Yaaqoub	M	M	L
Akroum	M	M	M	Aridet Cheikh Zennad	MH	M	M	Baldehy w Mazraat Bal	MH	M	M
Barcha	MH	M	M	Bardeh	M	M	M	Bebnine	MH	M	L
Beino	M	M	M	Beit Ayoub	M	M	M	Beit El-Haouch	MH	M	L
Beit Mellat	M	M	M	Beit Younes	M	M	ML	Berbara Akkar	M	M	M
Berqayel	MH	M	L	Bezina	MH	M	L	Bireh Akkar	M	M	M
Borj	M	M	M	Bqerezla	M	M	L	Bzal	MH	M	L
Chane	MH	M	L	Chaqdouf	M	M	ML	Charbila	MH	M	M
Cheikh Mohammad	MH	M	M	Cheikh Taba Es-Sahl	MH	M	M	Cheikh Taba	M	M	M
Cheikh Zennad	MH	M	M	Cheikhlar	M	M	M	Chir Hmairine	H	M	M
Daghle	M	M	M	Dahr Laissine	M	M	M	Darine	MH	M	M
Dawra	M	M	M	Dawsa w Baghdadi	M	M	M	Dayret Nahr El-Kabir	M	M	M
Deir Dalloum	MH	M	L	Deir Jennine	M	M	M	Denbou	MH	M	ML
Dibbabiye	M	M	M	Douair Aadwiyeh	M	M	M	Fassikine	M	M	M
Fnaydek	M	M	L	Fraydes Akkar	M	M	M	Ghazayle	MH	M	M
Habchit	MH	M	L	Hakour	MH	M	L	Halba	MH	M	M

Haouchab	H	M	M	Hayssat	MH	M	M	Haytla	MH	M	M
Hayzouq	MH	M	M	Hedd	MH	M	M	Hmaira Aakkar	MH	M	L
Hmaiss Aakkar	MH	M	M	Hnaider	M	M	M	Hokr Ed-Dahri	MH	M	M
Hokr Etti	MH	M	M	Hokr Jouret Srar	H	M	M	Houaich	M	M	ML
Hrar	M	M	ML	Idbil	M	M	M	Ilal	M	M	M
Janine	MH	M	M	Jdeidet El-Joumeh	M	M	M	Jdeidet El-Kaiteh	MH	M	L
Jebrayel	M	M	M	Kafr	MH	M	L	Kafr	M	M	M
Karm Asfour	M	M	ML	Kfar Melki Aakkar	MH	M	M	Kfar Noun	M	M	M
Kfarharra	MH	M	M	Khalsa	M	M	M	Kharnoubet Aakkar	MH	M	M
Khirbet Daoud Aakkar	M	M	M	Khirbet El Remmane	M	M	M	Khirbet Shar	M	M	M
Khoreybet El-Jindi	MH	M	M	Khreibet Aakkar	M	M	ML	Kneisset Aakkar	MH	M	M
Kneisset Hnaider	M	M	M	Knisse	MH	M	M	Kroum El-Aarab	MH	M	M
Kwachra	M	M	M	Kweykhat	H	M	M	Machta Hammoud	M	M	M
Majdala	MH	M	L	Majdel Akkar	M	M	M	Mar Touma	MH	M	L
Marlaya Melhem	MH	M	L	Mashha	MH	M	M	Massoudiye	MH	M	M
Mazraat Beit Ghattas	M	M	L	Mazraat En-Nahriye	M	M	M	Mechmech	M	M	L
Memneh	MH	ML	L	Mhammara	MH	M	L	Mighraq Aakkar	MH	M	M
Minyara	MH	M	L	Moqayteh	MH	M	M	Mounjez	M	M	M
Msalla	M	M	M	Mzeihmeh	MH	M	M	Nfaiseh	MH	M	M
Noura Et-Tahta	M	M	M	Ouadi El-Haour	MH	M	M	Ouadi El-Jamous	MH	M	L
Ouyoun El-Ghizlane	MH	M	L	Qaabarine	MH	M	M	Qabaait	MH	M	L
Qachlaq	MH	M	M	Qantara Aakkar	M	M	M	Qarha Aakkar	M	M	M
Qarqaf	MH	M	L	Qboula	M	M	M	Qleiaat Aakkar	MH	M	M
Qloud El-Baqie	MH	M	L	Qobaiyat Aakkar	M	M	M	Qobbat Chamrat	MH	M	L
Qorayat	M	M	ML	Qornet Aakkar	M	M	L	Qsair Aakkar	M	M	M
Rahbe	M	M	ML	Rihaniyet Aakkar	MH	M	M	Rmah	M	M	M
Rmoul	MH	M	M	Saadine	MH	M	M	Sadaqa	M	M	M
Saidnaya	MH	M	M	Sammouniye	MH	M	M	Sayssouq	M	M	L
Semmaqiye	MH	M	M	Semmaqli	MH	M	ML	Sfinet El-Dreib	MH	M	M
Sfinet El-Qaitaa	M	M	L	Sindyanet Zeidane	M	M	M	Souaisset Aakkar	MH	M	M
Srar	MH	M	M	Tal Abbas El Gharby	MH	M	M	Tal Abbas El-Charqy	MH	M	M
Tal Biret	MH	M	M	Tal Hmayra	MH	M	M	Tal Maayan Tal Kiri	MH	M	M
Tal Sibel	MH	M	M	Tallet Chattaha	M	M	M	Tikrit	M	M	ML
Tleil	MH	M	M	Tshea	MH	M	L	Zawarib	M	M	M
Zouq El Hosniyeh	MH	M	L	Zouq El-Haddara	MH	M	L	Zouq El-Hbalsa	MH	M	L
Zouq El-Moqachrine	MH	M	L								

Sud

Sour

Municipality	14- Nov	15- Nov	16- Nov	Municipality	14- Nov	15- Nov	16- Nov	Municipality	14- Nov	15- Nov	16- Nov
Aaiyeh	M	M	ML	Aalma El-Chaab	MH	M	ML	Aaytit	M	M	ML
Abbassiyeh Sour	MH	M	M	Abou Chech	MH	M	L	Ain Abou Abdallah	MH	M	M
Ain Baal	MH	M	ML	Arzoun	M	ML	ML	Aziyeh	MH	M	ML
Baflaya	M	ML	ML	Barich	M	M	ML	Batouliyeh	MH	M	L
Bayad	M	M	ML	Bazouriyeh	MH	M	M	Bediass	MH	M	ML

Bestiyat	M	M	ML	Borj El Chemali	MH	M	M	Borj En-Naqoura	MH	M	M
Borj Rahhal	MH	M	ML	Boustane	MH	M	L	Btaychih	MH	M	ML
Chaaitiye	MH	M	ML	Chameh	MH	M	ML	Chehabiye	M	M	M
Chehour	MH	ML	L	Chihine	MH	M	ML	Debaal Sour	M	M	ML
Deir Amess	MH	M	ML	Deir Kifa	M	M	M	Deir Qanoun El-Ain	MH	M	L
Deir Qanoun El-Naher	MH	M	ML	Derdghaiya	M	ML	ML	Dhayra	MH	M	L
Halloussiyeh	MH	M	ML	Hamoul	H	M	ML	Hanaouey	M	M	M
Henniye	MH	M	L	Hmairi Sour	MH	M	ML	Iskandarouna Sour	H	M	ML
Jbal El Botom	M	M	ML	Jebbin	MH	M	ML	Jennata	M	M	ML
Jijim	MH	M	ML	Jouaiya	M	M	ML	Kneisset Sour	MH	M	ML
Maarake	M	M	ML	Maaroub	M	M	ML	Majadel	M	M	M
Majdalzoun	MH	M	ML	Mansouri Sour	MH	M	ML	Marnba	MH	ML	L
Marouahine	M	M	L	Mazraat El-Zalloutiy	MH	M	L	Mazraat Mechref	M	M	M
Mazraat Tayr Semhat	MH	L	L	Mheilib	MH	M	M	Neffakhiyeh	M	ML	ML
Niha Sour	M	ML	ML	Ouadi Jilo	M	M	ML	Qana	M	M	ML
Qolaileh Sour	MH	M	L	Rechknany	M	M	ML	Rmadiyah	M	M	M
Selha Sour	M	ML	ML	Siddiqine	M	M	ML	Sour	H	M	M
Srifa	M	ML	ML	Tayr Debbe	MH	M	M	Tayr Felsay	MH	M	ML
Tayr Harfa	MH	M	ML	Touayri	MH	L	L	Toura	MH	M	ML
Yanouh Sour	M	M	ML	Yarine	MH	M	L	Zebqine	M	M	L

Saida

Municipality	14-Nov	15-Nov	16-Nov	Municipality	14-Nov	15-Nov	16-Nov	Municipality	14-Nov	15-Nov	16-Nov
Aanqoun	M	M	M	Aaqtanit	M	M	M	Aarab Ej-Jall	M	M	M
Aarab Tabbaya	M	M	M	Abra Saida	M	M	L	Adloun	H	M	M
Adousiyeh	MH	M	M	Ain-El-Deleb	M	M	ML	Arzai	M	M	M
Babliyah	MH	M	M	Barty	M	ML	L	Bissariyeh	MH	M	M
Bnaafoul	M	M	M	Bqosta	M	M	L	Bramiy	M	M	L
Daoudiyeh	MH	M	M	Dareb El-Sim	M	M	M	Erkay	M	M	M
Ghassanieh	MH	M	M	Ghazieh	MH	M	M	Hajeh	M	M	M
Haret Saida	M	M	L	Hartiyeh	MH	M	M	Hlaliye Saida	M	M	L
Insariyat	MH	M	M	Jazira Saida	MH	M	M	Kafar Bit	M	M	ML
Kaoutariyet El-Siyad	M	M	M	Kfar Chellal	M	ML	ML	Kfar Hatta Saida	M	M	M
Kfar Milke Saida	M	ML	ML	Khartoum	M	M	M	Khaziz	M	M	M
Khirbet Ed-Douair Sa	MH	M	M	Khirbet El-Bassal	M	M	M	Khrayeb Saida	MH	M	M
Loubieh	MH	M	M	Maghdouche	M	M	M	Majdelyoun	M	M	L
Matariyet El-Choumar	M	M	M	Matayriyeh	M	M	M	Mazraat 'Mseileh	MH	M	M
Mazraat 'Snaiber	MH	M	M	Mazraat Aarab Soukka	M	M	M	Mazraat Deir Taqla	MH	M	M
Mazraat El Yahoudiye	H	M	M	Mazraat El-Housseini	MH	M	M	Mazraat El-Mhaydaleh	MH	M	M
Mazraat El-Ouasta	H	M	M	Mazraat Jamjim	MH	M	M	Mazraat Kaoutariyet	MH	M	M
Mazraat Kfar Badda	H	M	M	Mazraat Oussamiyat	MH	M	M	Mazraat Sari	MH	M	M
Mazraat Sinai	MH	M	M	Meemariyeh	M	M	M	Merouaniyeh	M	M	M
Miyeh ou Miyeh	M	M	M	Najjariyeh	H	M	M	Qaaqiyat El-Snaouba	MH	M	M
Qnarit	M	M	M	Qraiye Saida	M	M	M	Saida Ed-Dekermane	M	M	ML
Saida El-Oustani	M	M	L	Saida El-Qadimeh	M	M	ML	Saida Kefraya	M	M	L
Saksakiyeh	MH	M	M	Salhieh Saida	M	M	L	Sarafand	MH	M	M

Sfenta	M	L	L	Tafahta	MH	M	M	Tanbourit	M	M	M
Tebna	MH	M	M	Zaghdraiya	M	M	M	Zeita	M	M	M
Zrariyeh	MH	M	M								

Jezzine

Municipality	14-Nov	15-Nov	16-Nov	Municipality	14-Nov	15-Nov	16-Nov	Municipality	14-Nov	15-Nov	16-Nov
Ain El-Mir (El Estab)	M	M	ML	Anane	M	L	L	Aramta	M	L	L
Ariya	M	L	L	Aychiyeh	M	L	L	Azour	M	L	L
Baba	M	L	L	Bayssour Jezzine	M	M	M	Benoueteh Jezzine	ML	L	L
Bhannine	ML	L	L	Bisri	M	L	L	Bkassine	M	L	L
Bouslaya	M	L	L	Btedine El-Leqech	M	L	L	Chbail	M	L	L
Chouliq Jezzine	M	M	L	Dahr Ed-Deir	M	ML	L	Deir El Qattine	M	L	L
Demachqiyeh	M	L	ML	Ghabbatiyeh	M	L	L	Harf Jezzine	M	L	L
Hassaniyeh	M	M	ML	Haytouleh	M	ML	L	Haytura	M	L	L
Hidab	M	L	L	Homsiyeh	M	L	L	Jabal Toura	M	L	L
Jarmaq	M	L	ML	Jensnaya	M	M	M	Jernaya	M	ML	ML
Jezzine	M	L	L	Karkha	M	M	L	Kfar Falous	M	ML	L
Kfar Houna	M	L	L	Kfar Jarrah	M	M	ML	Lebaa	M	M	ML
Louayzet Jezzine	M	ML	L	Machmouche	M	L	L	Mahmoudiyeh Jezzine	M	L	ML
Maknounye Jezzine	M	L	L	Maraat Ouazaiyeh	M	L	L	Mazraat Daraya	M	L	L
Mazraat El-Aarqoub	M	L	L	Mazraat El-Mathane	M	L	L	Mazraat El-Rahbane	M	L	L
Mazraat Khallet Khaz	M	L	L	Mazraat Louzid (Loua	M	L	L	Mazraat Qrouh	M	L	L
Mazraat Tamra	M	L	ML	Mazraat Zighrine Jez	M	ML	L	Mazraat	M	L	L
Mharbiyeh	M	M	M	Midane Jezzine	M	L	L	Mjeydel Jezzine	M	M	M
Mlikh	M	L	L	Mrah El-Hbasse	M	M	ML	Ouadi Baanqoudaine	M	M	M
Ouadi El-Laymoun	M	M	ML	Ouardiyeh	M	L	L	Qabaa Jezzine	M	L	L
Qatrani	M	L	L	Qaytouleh	M	L	L	Qtaleh Jezzine	M	L	L
Rihane Jezzine	M	ML	L	Rimat	M	L	L	Roum	M	L	L
Roummanet	M	ML	L	Sabbah	M	L	L	Saydoun	M	L	L
Sfaray	M	L	L	Snaya	M	L	L	Sojoud	M	ML	L
Srayri	M	L	L	Taaid	M	L	L	Wadi Jezzine	M	L	L
Zhalta	M	L	L								

Bekaa

West Bekaa

Municipality	14-Nov	15-Nov	16-Nov	Municipality	14-Nov	15-Nov	16-Nov	Municipality	14-Nov	15-Nov	16-Nov
Aammiq BG	M	M	ML	Ain El Tineh BG	M	L	L	Ain Zebdeh	M	L	L
Ana	M	ML	ML	Aytanit	M	L	L	Baaloul BG	ML	L	L
Bab Mareh	M	L	L	Chouberqiye Aammiq	M	M	ML	Dakoue	ML	ML	L
Deir Ain El-Jaouze	ML	L	L	Deir Tahniche	M	M	ML	Ghaza	M	M	ML
Harime El-Soughra	ML	ML	L	Hoch Harimeh	M	M	L	Jazira BG	M	M	ML
Jib Jennine	ML	M	L	Kamed-El-Laouz	ML	M	L	Kefraya BG	M	ML	L
Khiara El Atika	M	M	ML	Khiara	M	M	ML	Khirbet Qanafar	M	L	L
Lala	ML	ML	L	Lebbaya BG	L	VL	VL	Loussa	M	L	L
Machghara	M	L	L	Manara (Hammara) BG	M	ML	L	Mansoura BG	M	M	ML

Marej BG	M	M	ML	Maydoun	M	L	L	Ouaqf BG	M	M	ML
Qaraaoun	ML	L	L	Qelya	M	L	L	Raouda (Istabel)	M	M	L
Saghbine	M	L	L	Sohmor	L	VL	VL	Soltan Yacoub el Ara	ML	ML	L
Souairy	M	ML	L	Sultan Yaacoub	M	M	L	Tal Znoub	M	M	ML
Yehmor BG	L	L	VL	Zilaya	L	VL	VL				

Zahle

Municipality	14-Nov	15-Nov	16-Nov	Municipality	14-Nov	15-Nov	16-Nov	Municipality	14-Nov	15-Nov	16-Nov
Aanjar (Haouch Mouss)	M	M	L	Ablah	M	M	M	Ain Kfarzabad	ML	ML	ML
Ali-El-Nahri	M	M	M	Bar Elias	M	M	ML	Bouarej	M	M	ML
Cheberqiyet Tabet	M	M	ML	Chtaura	M	M	ML	Deir El Ghazal	ML	ML	L
Delhamiyet Zahle	M	M	ML	Ferzol	M	M	ML	Haouch El-Ghanam	M	M	M
Haouch Es-Siyadeh	M	M	ML	Haouch Hala	M	M	ML	Haouch Mandara	M	M	ML
Haouch Qayssar	M	M	ML	Hezerta	M	M	ML	Hosh Moussa	ML	ML	ML
Jdita	M	M	ML	Kfarzabad	ML	ML	ML	Ksara	M	M	ML
Majdel Aanjar	M	ML	VL	Makssi	M	M	ML	Massa	ML	ML	ML
Mazraat Er-Remtaniye	M	M	ML	Mrayjat Zahle	M	M	ML	Mzaraa Zahle	M	M	ML
Nabi Ayla	M	M	M	Nasriyet Rizk	L	ML	ML	Nasriyet Zahle	M	M	ML
Niha Zahle	M	M	ML	Ouadi Ed-Deloum	M	M	ML	Ouadi El-Arayech	M	M	ML
Qaa El Rim	M	M	ML	Qab Elias	M	M	ML	Qousaya	ML	ML	L
Rhit	ML	ML	ML	Riyak	M	M	M	Saadnayel	M	M	ML
Taal El-Akhdar	M	M	ML	Taalbeya	M	M	ML	Taanayel	M	M	ML
Talamara	M	M	M	Tcheflik Edde Haouch	M	M	ML	Tcheflik Qiqano	M	M	ML
Terbol Zahle	ML	ML	ML	Touaite Zahle	M	ML	L	Zahle Aradi	M	M	ML
Zahle El-Berbara	M	M	ML	Zahle El-Maallaqa	M	M	ML	Zahle El-Midane	M	M	ML
Zahle Er-Rassiyeh	M	M	ML	Zahle Haouch El-Ouma	M	M	ML	Zahle Haouch El-Ouma	M	M	ML
Zahle Haouch Ez-Zara	M	M	ML	Zahle Maalaqa Aradi	M	M	ML	Zahle Mar Antonios	M	M	ML
Zahle Mar Elias	M	M	ML	Zahle Mar Gerios	M	M	ML	Zahle Saydet En-Naja	M	M	ML
Zebdoul	M	M	ML								

Rachaiya

Municipality	14-Nov	15-Nov	16-Nov	Municipality	14-Nov	15-Nov	16-Nov	Municipality	14-Nov	15-Nov	16-Nov
Ain Arab Rachaiya	M	ML	L	Ain Ata	L	L	VL	Ain Harche	L	L	L
Aqabe Rachaya	L	VL	L	Ayha	M	ML	L	Ayta El Fokhar	M	ML	L
Bakifa Rachaya	L	VL	L	Bakka	M	ML	L	Beit Lahya	L	VL	L
Bireh Rachaiya	ML	M	L	Daher El Ahmar	L	L	L	Deir El-Achayer	M	ML	L
Heloua Rachaiya	M	ML	L	Hoch El Qannabeh Rac	L	VL	VL	Kaoukaba Bou Arab	L	L	L
Kfar Danis	ML	ML	L	Kfar Mechki	L	VL	VL	Kfar Qouq	M	ML	L
Kherbet Rouha	M	M	L	Majdel Balhiss	L	L	L	Mdoukha	M	ML	L
Mhaydseh Rachaiya	ML	ML	L	Nabi Safa	L	VL	VL	Rachaiya	L	L	L
Rafid Rachaiya	ML	M	L	Selsata (Mazraat Dei	M	L	L	Tannoura	L	VL	L
Yanta	M	ML	L								

Beyrouth

Beyrouth

Municipality	14-Nov	15-Nov	16-Nov	Municipality	14-Nov	15-Nov	16-Nov	Municipality	14-Nov	15-Nov	16-Nov
--------------	--------	--------	--------	--------------	--------	--------	--------	--------------	--------	--------	--------

Achrafieh	M	M	M	Ain el-Mreisse	M	M	M	Bachoura	M	M	M
Beirut Central Distr	M	M	M	Marfai	M	M	M	Mazraa	M	M	M
Medaouar	M	M	M	Minet el-Hosn	M	M	M	Mwssaitbeh	M	M	M
Ras Beirut	M	M	M	Rmeil	M	M	M	Saifi	M	M	M
Zqaq el-Blat	M	M	M								