

# Lebanon Fire Risk Bulletin



CIVIL DEDEFENCE

**Refer to cadast table condition.**

**Please note that the indicated temperature is at 2 meters height from the ground.**

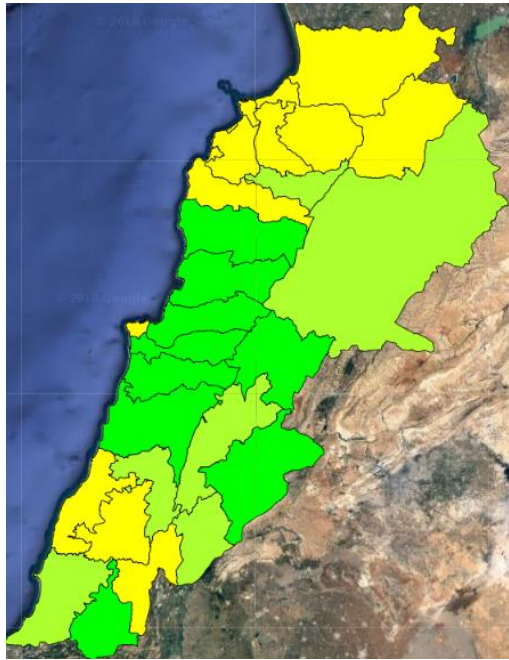
General description of potential fire risk situation

Symbol	Level of risk	Meaning and actions
VL	Very low	Very low fire risk. Controlled burning operations can be hardly executed due to high fuel moisture content. Normally wildfires self-extinguish.
L	Low	Low fire risk. Controlled burning operations can be executed with a reasonable degree of safety.
ML	Medium low	Medium-low fire risk. Controlled burning operations can be executed in safety conditions. All the fires need to be extinguished.
M	Medium	Medium fire risk. Controlled burning operations would be avoided. All the fires need to be very well extinguished.
M	Medium high	Controlled burning is not recommended. Open flame will start fires. Cured grasslands and forest litter will burn readily. Spread is moderate in forests and fast in exposed areas. Patrolling and monitoring is suggested. Fight fires with direct attack and all available resources.
H	High	Ignition can occur easily with fast spread in grass, shrubs and forests. Fires will be very hot with crowning and short to medium spotting. Direct attack on the head may not be possible requiring indirect methods on flanks. Patrolling and monitoring the territory is highly suggested.
E	Extreme	Ignition can occur also from sparks. Fires will be extremely hot with fast rate of spread. Control may not be possible during day due to long range spotting and crowning. Suppression forces should limit efforts to limiting lateral spread. Damage potential total. Patrolling and monitoring the territory is highly suggested.

**Beirut, 15 February 2018**

# FIRE RISK INDEX

14 Feb 2018



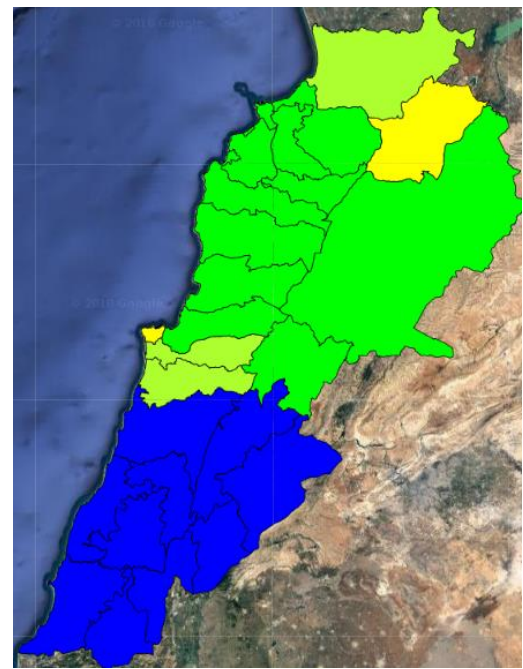
15 Feb 2018



16 Feb 2018



17 Feb 2018



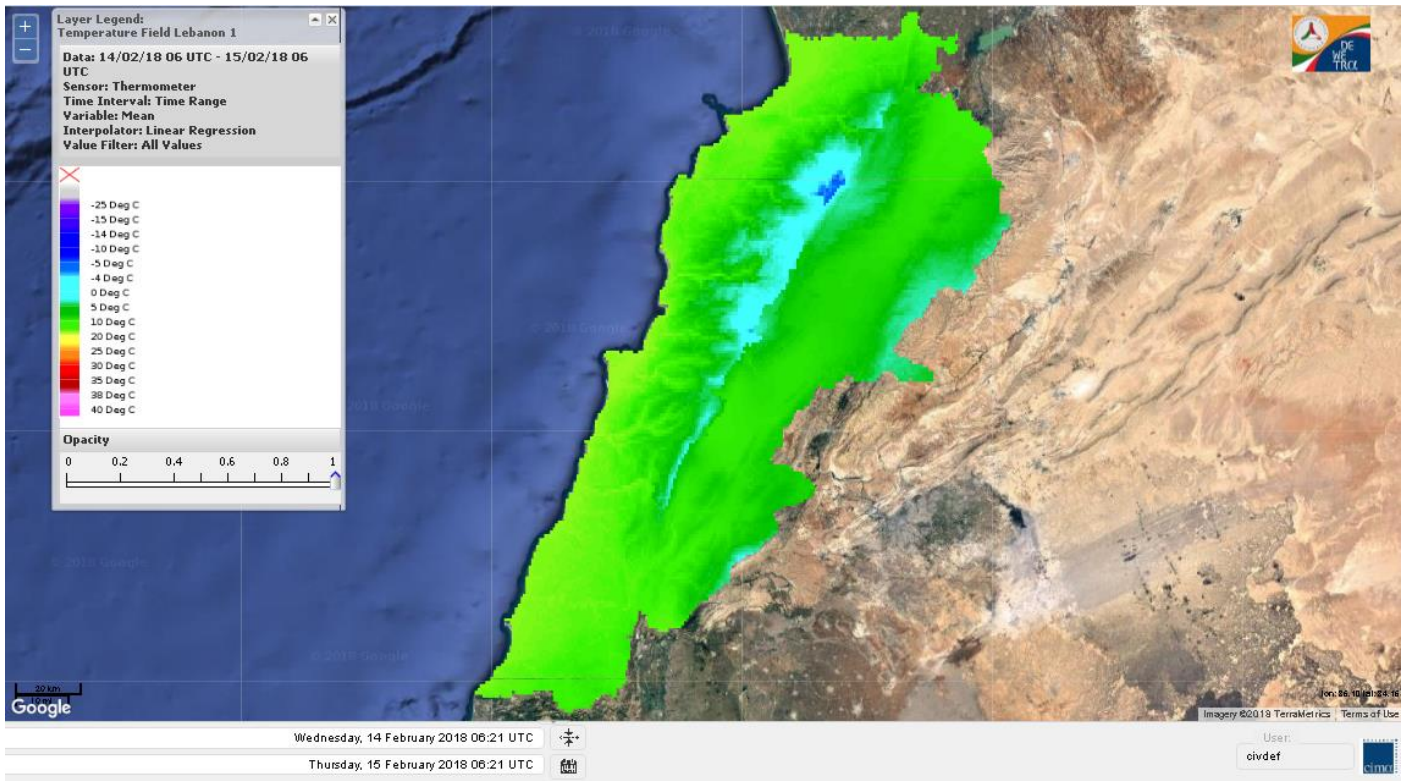
Layer Legend:  
Lebanon Wildfire Risk Index 1

Data: Run: 15/02/2018 00:00. Forecast for 15  
Model: RISICO for the Republic of Lebanon  
Variable: Fire Weather Index  
Spatial Resolution: Caza

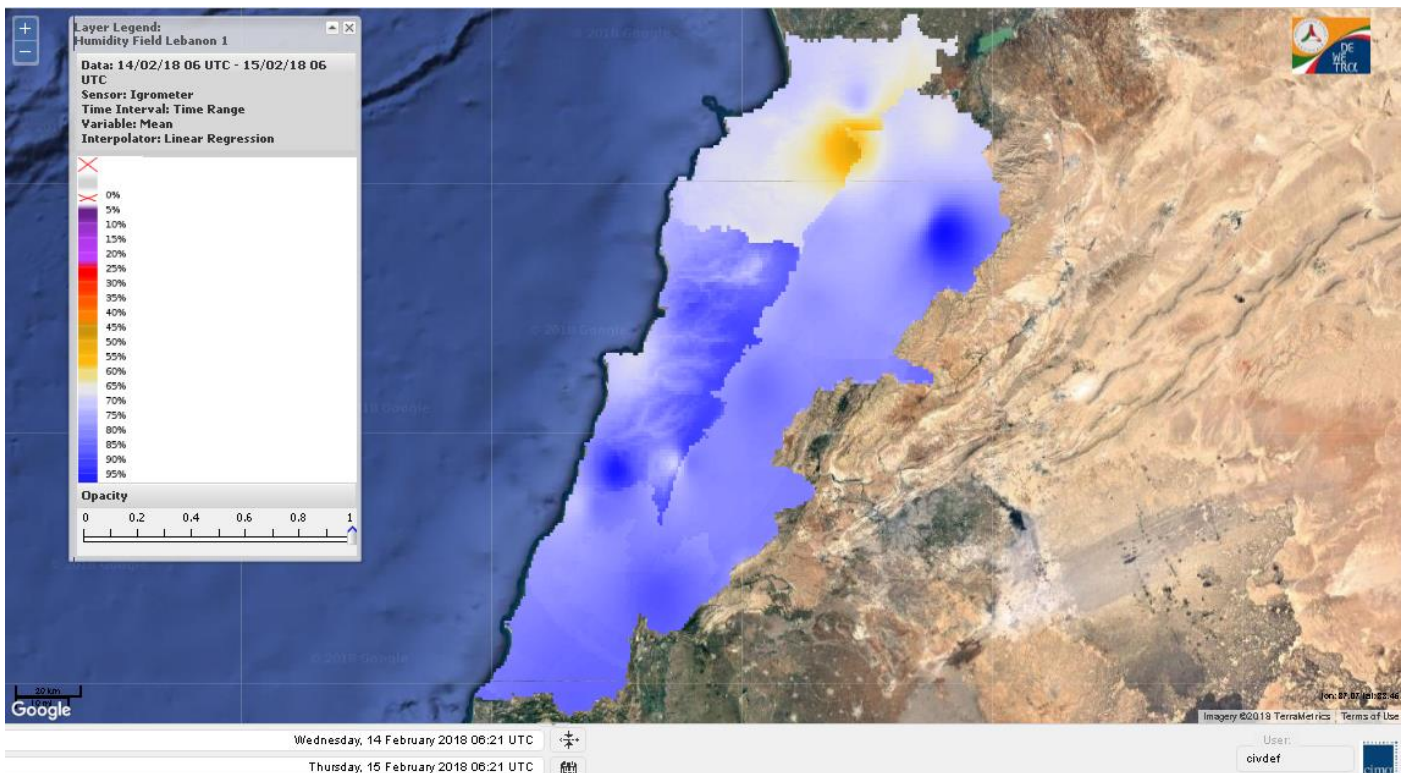
- VERY LOW
- LOW
- MEDIUM-LOW
- MEDIUM
- MEDIUM-HIGH
- HIGH
- EXTREME



## Lebanon temperature for Lebanon 15 Feb 2018

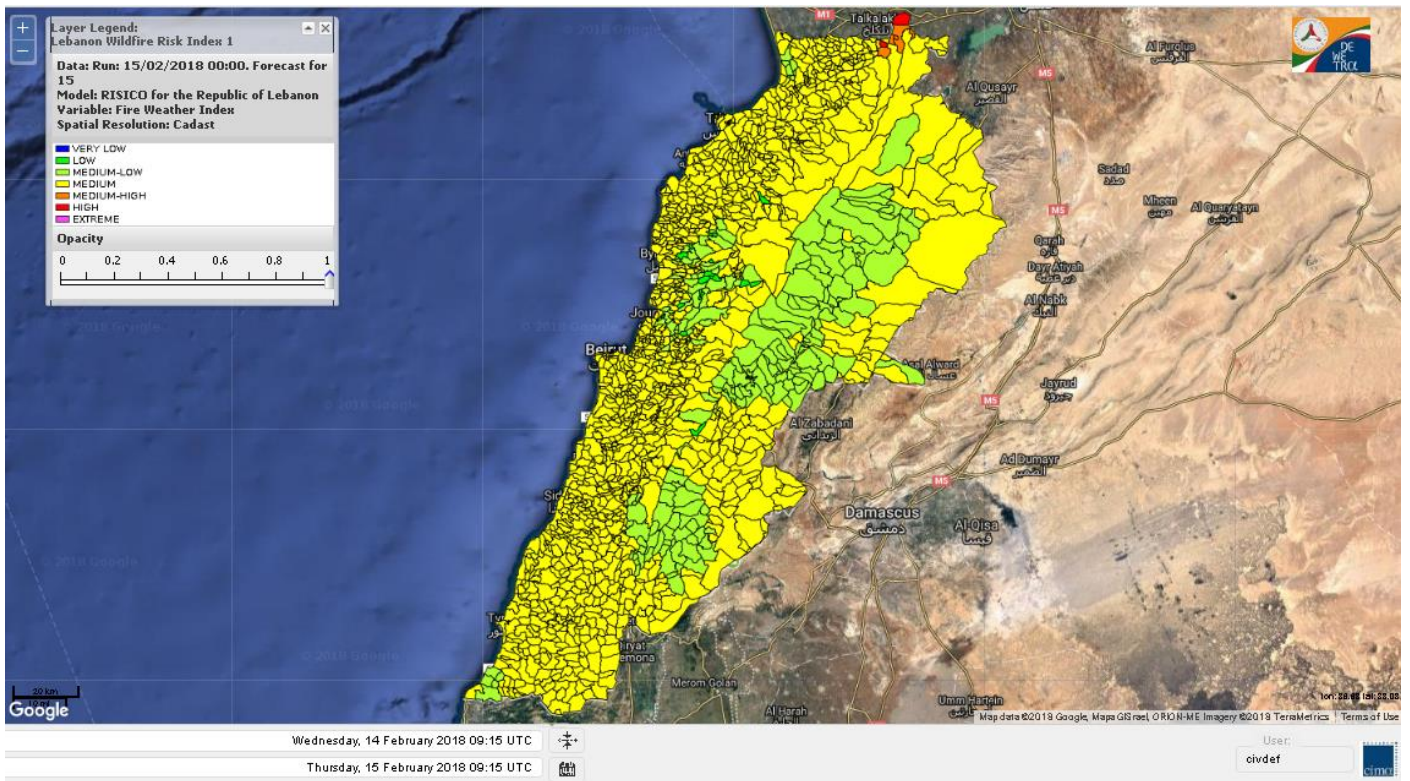


## Lebanon humidity for Lebanon 15 Feb 2018

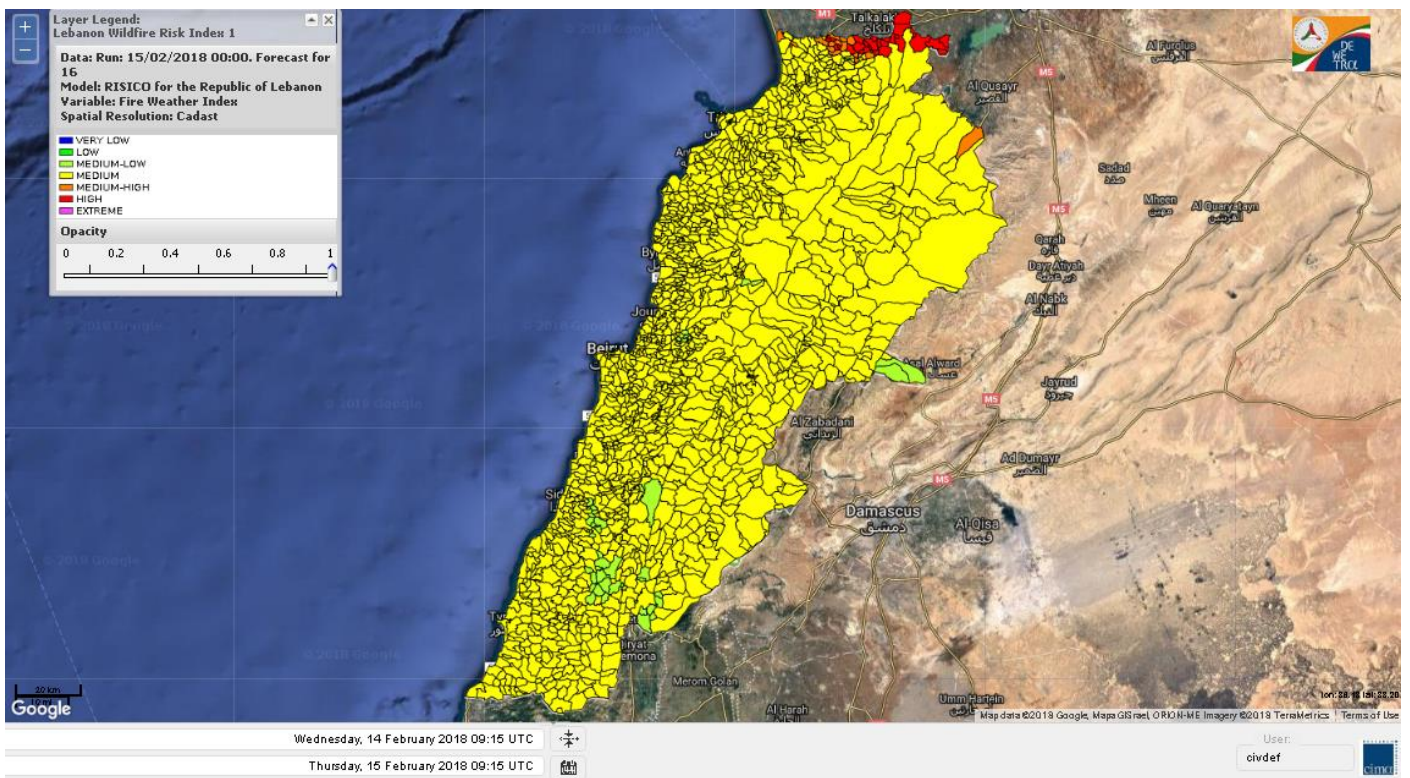




# Lebanon for 15 Feb 2018

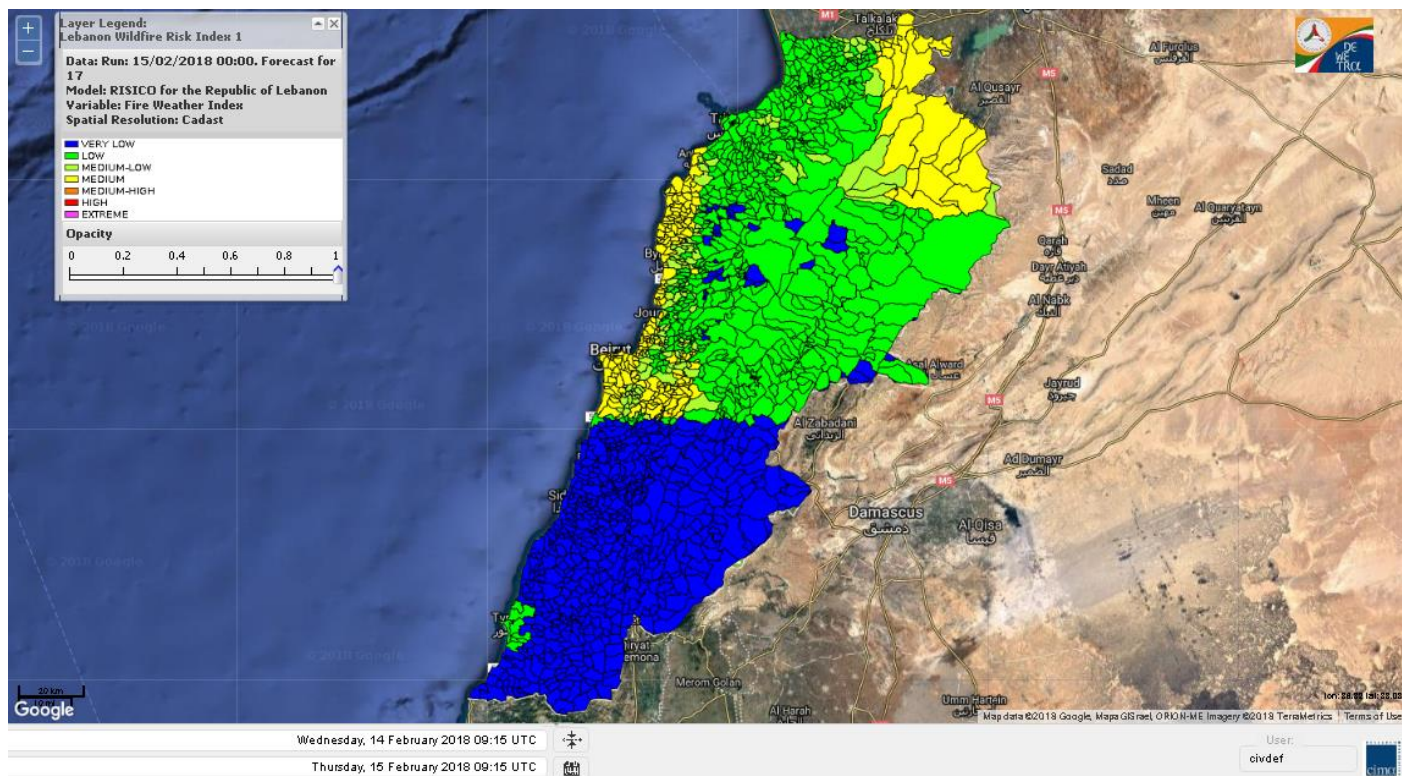


# Lebanon for 16 Feb 2018

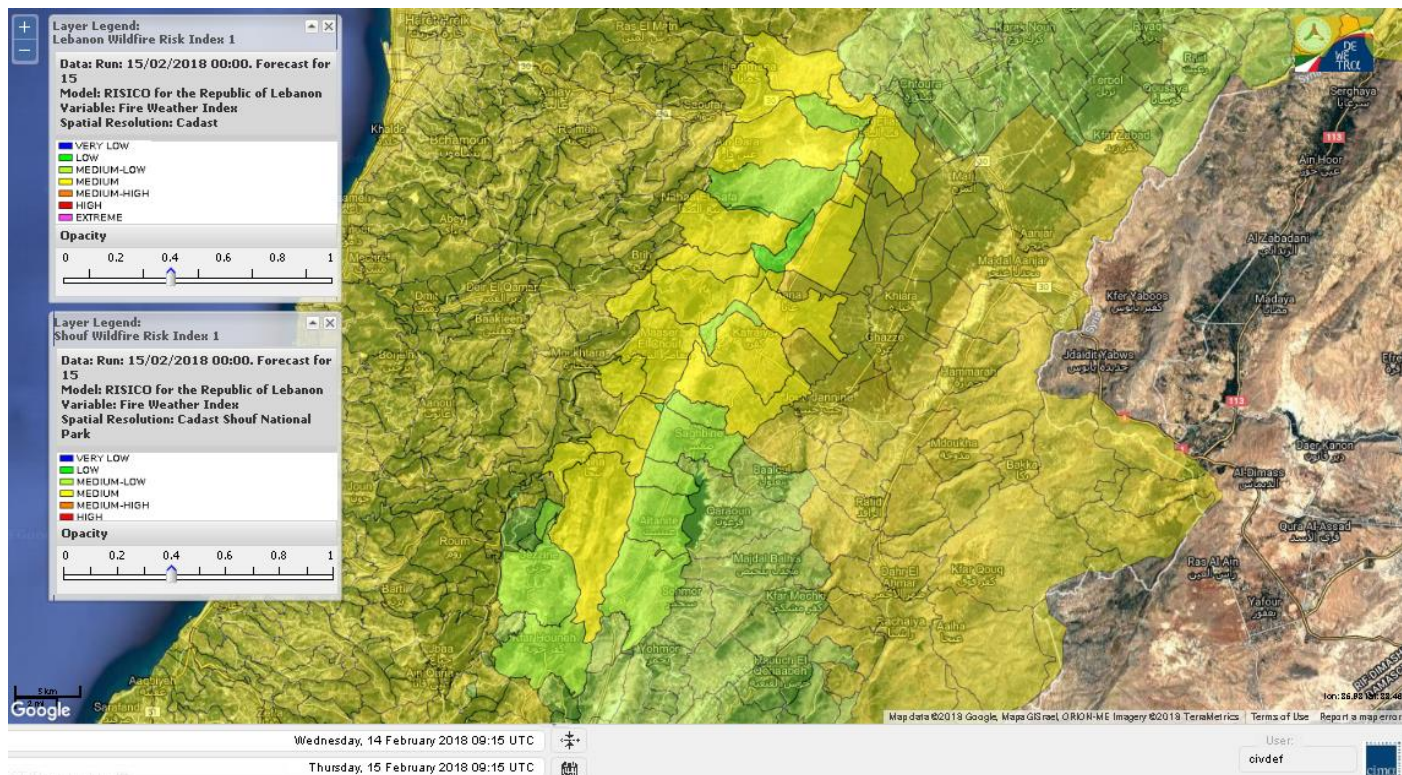




# Lebanon for 17 Feb 2018

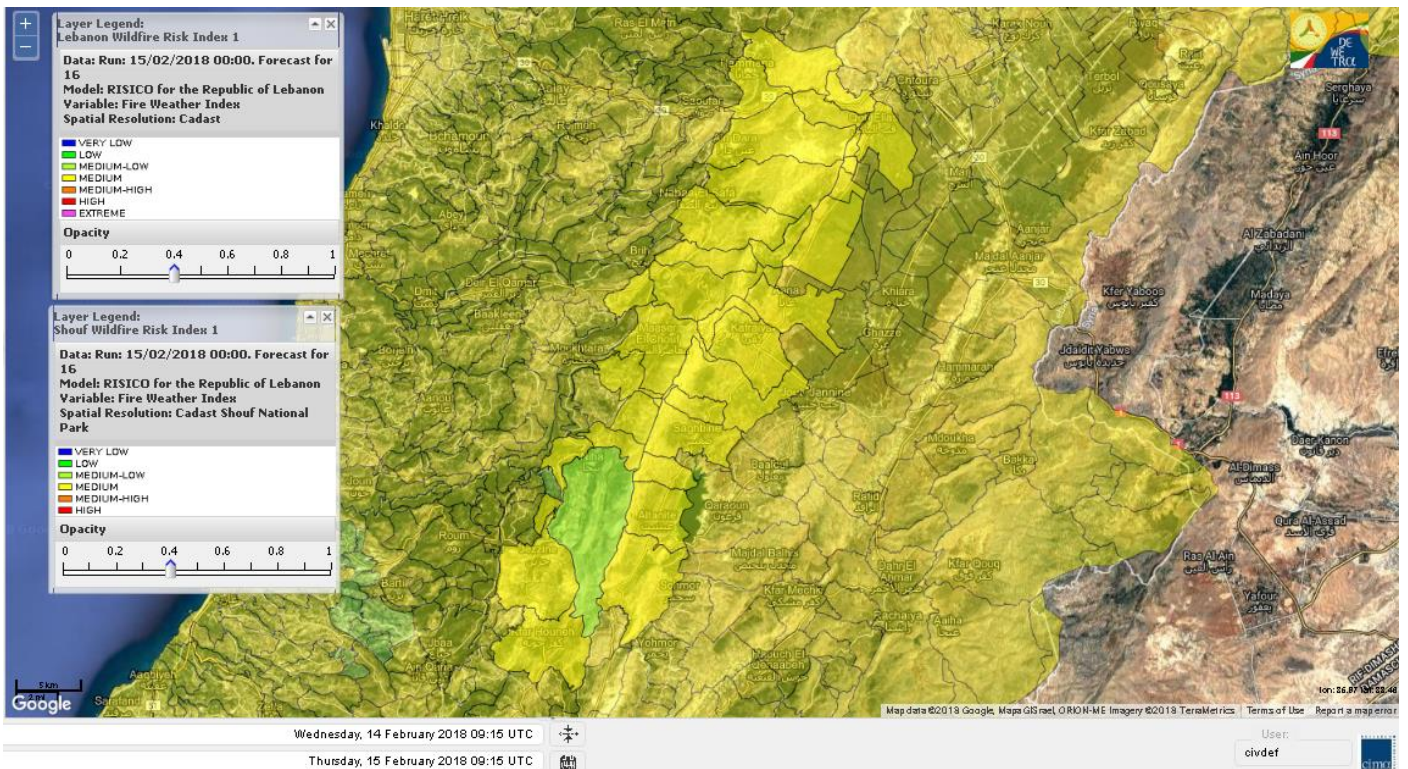


# Shouf Biosphere Reserve Forecast for 15 Feb 2018

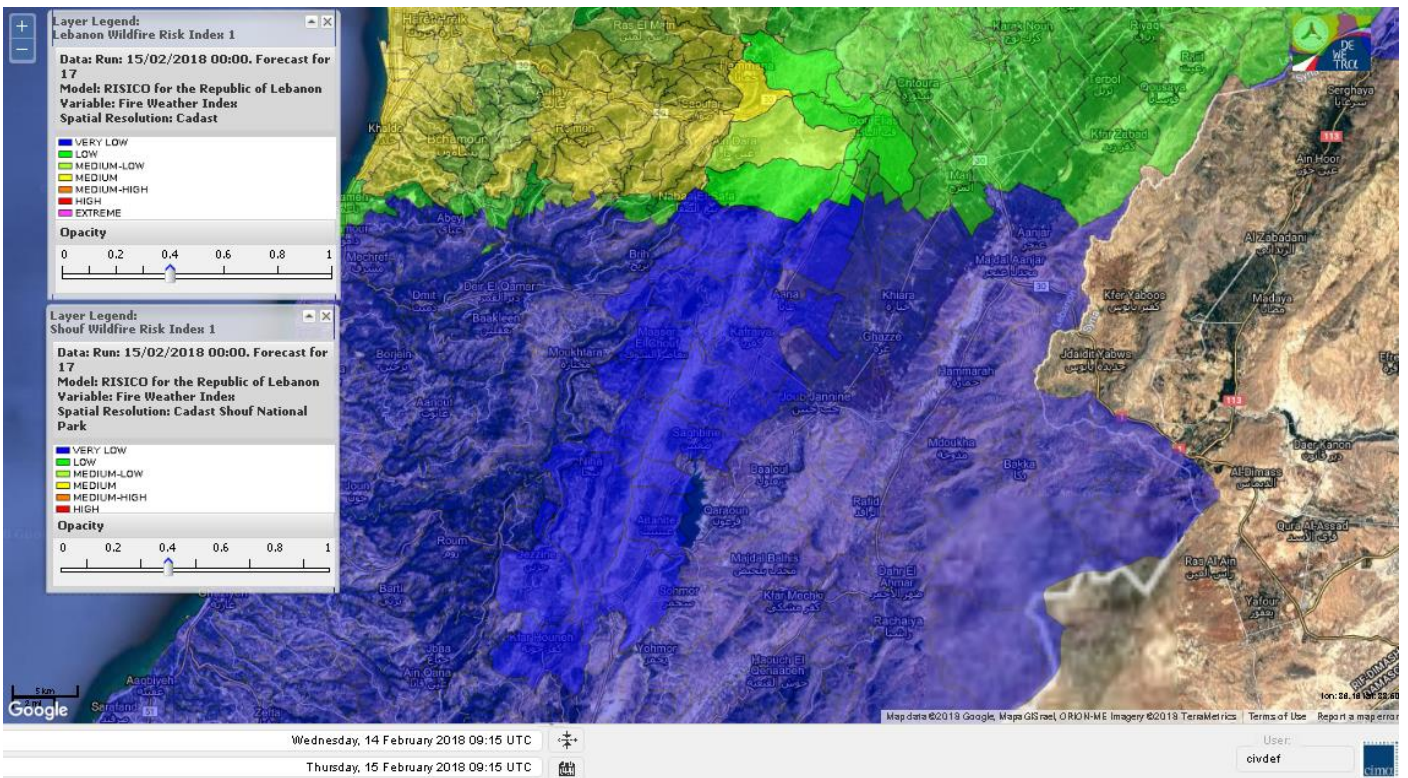




# Shouf Biosphere Reserve Forecast for 16 Feb 2018

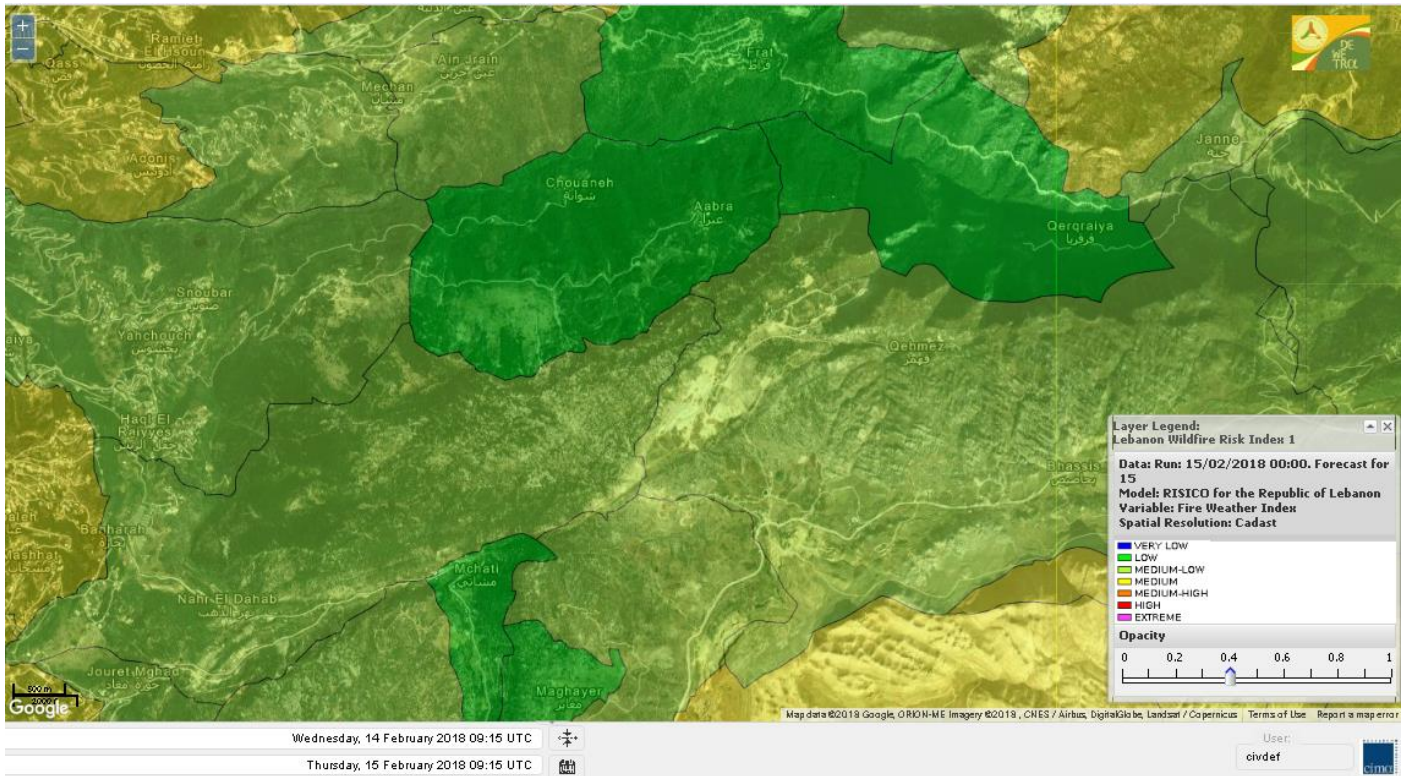


# Shouf Biosphere Reserve Forecast for 17 Feb 2018

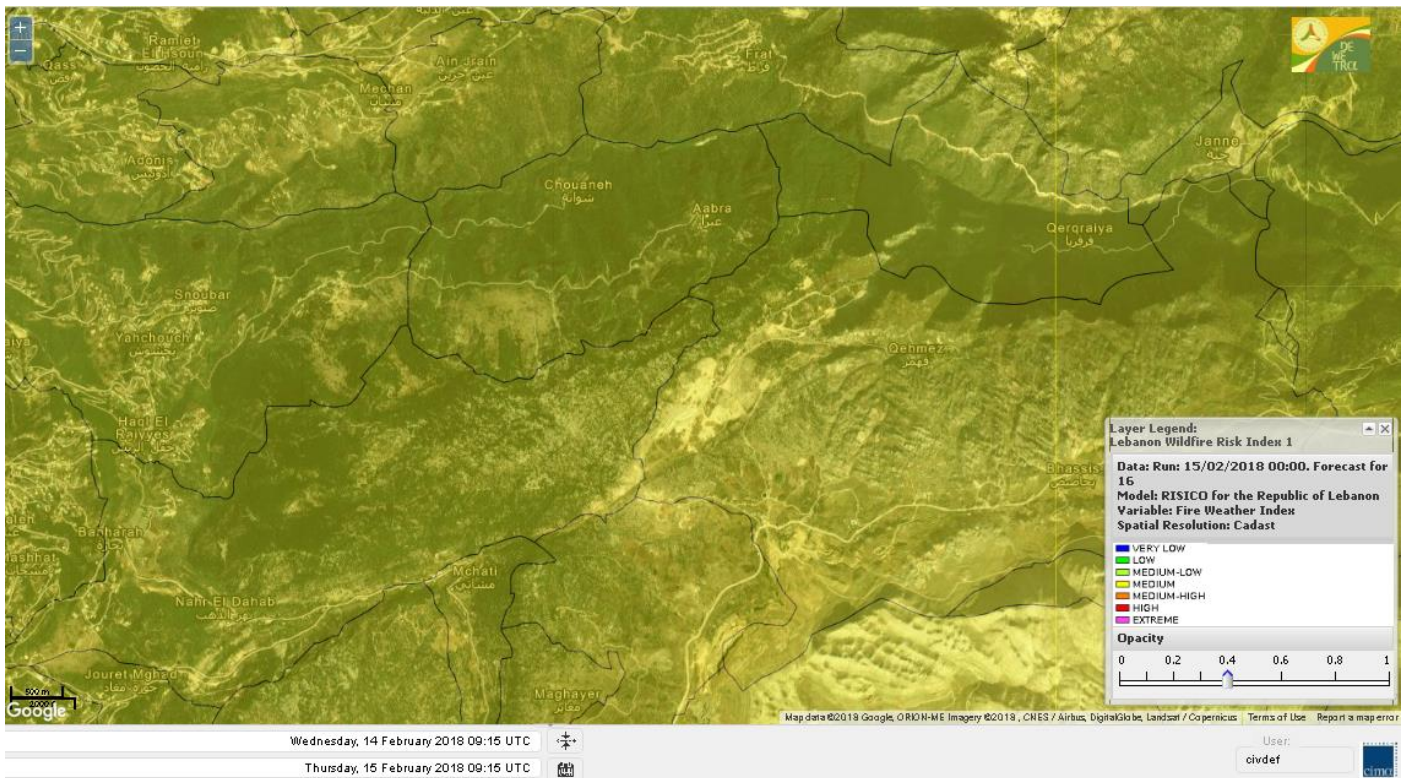




## Jabal Moussa Reserve Forecast for 15 Feb 2018

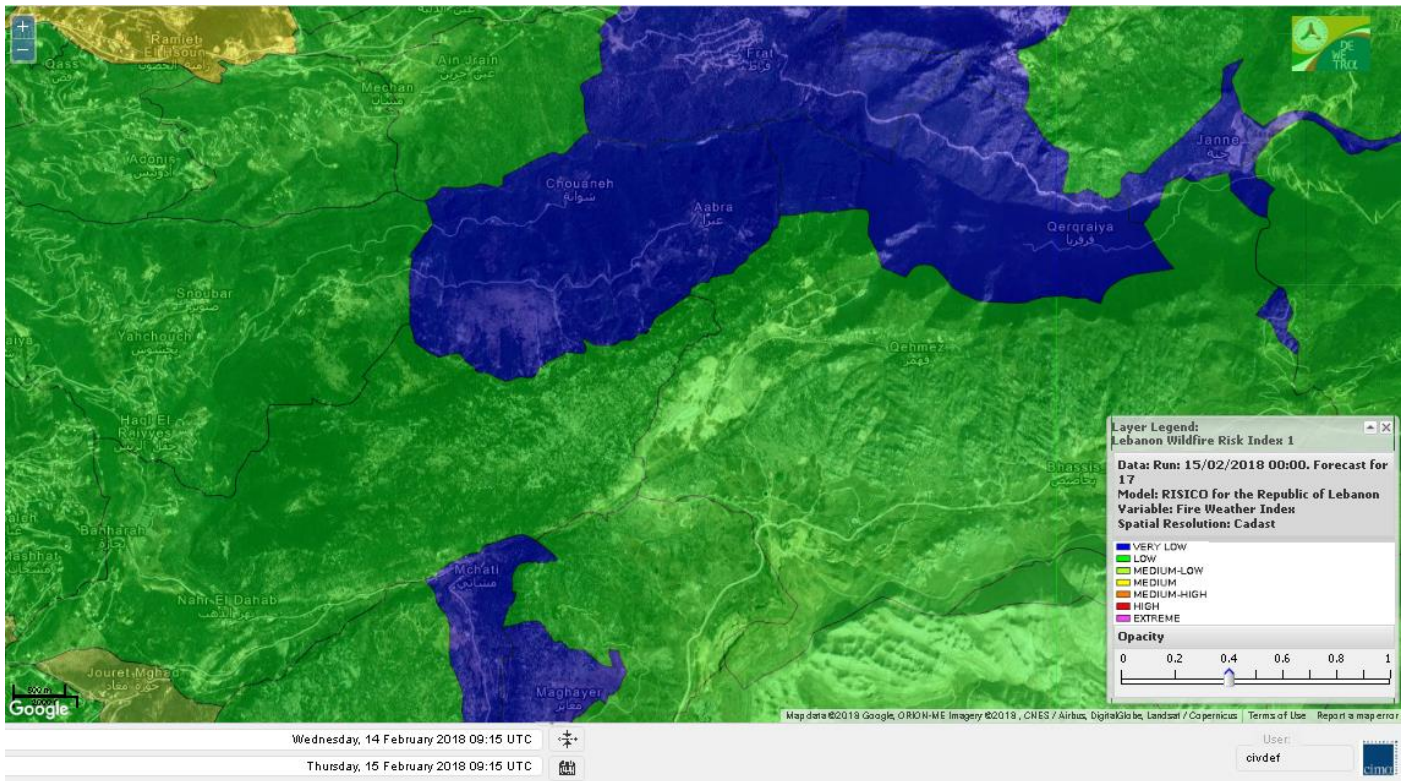


## Jabal Moussa Reserve Forecast for 16 Feb 2018





# Jabal Moussa Reserve Forecast for 17 Feb 2018





## Nord

### Koura

Municipality	15-Feb	16-Feb	17-Feb	Municipality	15-Feb	16-Feb	17-Feb	Municipality	15-Feb	16-Feb	17-Feb
Aaba	M	M	L	Afsaddiq	M	M	L	Ain Ekryne	M	M	L
Amioun	M	M	L	Anfeh	M	M	M	Badbhoun	M	M	ML
Barghoun	M	M	ML	Barsa	M	M	L	Batroumine	M	M	L
Bdebba	M	M	L	Bechmizzine	M	M	L	Bednayel El-Koura	M	M	M
Bhabbouch El-Koura	M	M	L	Bkeftine	M	M	L	Bnehran	M	M	L
Bqaiia El-Koura	M	M	L	Bsarma	M	M	L	Btaaboura	M	M	L
Bttram	M	M	L	Btouratij	M	M	L	Bziza	M	M	L
Dar Beechtar	M	M	L	Dar Chmezzine	M	M	L	Deddeh	M	M	L
Deir El-Balamand	M	M	L	Fih	M	M	ML	Hraiche	M	M	M
Ijdaabrine	M	M	M	Kaftoun	M	M	L	Kefraya El-Koura	M	M	M
Kfarakka	M	M	L	Kfarhata	M	M	M	Kfarhazir	M	M	ML
Kfarkahel	M	M	L	Kfarsaroun	M	M	L	Kosba	M	M	L
Mejdel el-Koura	M	M	L	Nakhle	M	M	L	Qalhat	M	M	L
Ras Masqa	M	M	L	Rechdibbine	M	M	L	Zakroun	M	M	ML
Zgharta El-Mtaouile	M	M	L								

### Bcharre

Municipality	15-Feb	16-Feb	17-Feb	Municipality	15-Feb	16-Feb	17-Feb	Municipality	15-Feb	16-Feb	17-Feb
Aabdine	M	M	L	Bane	M	M	L	Barhelioun	M	M	L
Bazooune	M	M	L	Becharre	M	M	L	Beit Menzer	M	M	L
Billa	M	M	L	Blaouza	M	M	L	Bqaa Kafra	M	M	L
Bqerqacha	M	M	L	Breissat	M	M	L	Dimane	M	M	L
Hadath El Jobbeh	M	M	L	Hadchit	M	M	L	Hasroun	M	M	L
Mazraat Aassaf	M	M	L	Mazraat Bani Saab	M	M	L	Mchaa El-Jobbeh	M	M	VL
Metrit	M	M	L	Moghr El-Ahoual	M	M	L	Ouadi Qannoubine	L	M	L
Qanat	M	M	L	Qnayer	M	M	L	Tourza	M	M	L

### Batroun

Municipality	15-Feb	16-Feb	17-Feb	Municipality	15-Feb	16-Feb	17-Feb	Municipality	15-Feb	16-Feb	17-Feb
Aabrine	M	M	M	Aalali	M	M	L	Aartiz	M	M	L
Abdelli	M	M	M	Ajdabra	M	M	M	Assia	M	M	L
Basbina	M	M	M	Batroun	M	M	M	Bcheleh	ML	M	L
Bechtoudar	M	M	L	Beit Chlala	M	M	VL	Beit Kassab	M	M	VL
Bijdarfil	M	M	M	Bqesmaya	M	M	L	Chatine	M	M	L
Chebtin	M	M	L	Chekka	M	M	M	Daael	M	M	VL
Dahr Abi Yaghi	M	M	ML	Daraya El-Batroun	M	M	M	Deir Billa	M	M	L
Deir Kfifane	M	M	M	Deir Mar Youhanna EL	M	M	VL	Deir Mar Youssef Jra	M	M	M
Douma	M	M	L	Douq	M	M	ML	Eddeh El-Batroun	M	M	M
Ftihat El-Batroun	M	M	VL	Ghouma	M	M	M	Hadtoun	M	M	VL
Hamat	M	M	M	Harbouna	M	M	ML	Hardine	M	M	VL
Helta	M	M	VL	Hery	M	M	M	Jebbla	M	M	L
Jrabta El-Batroun	M	M	M	Jrane El-Batroun	M	M	M	Kfar Aabida	M	M	M
Kfar Halda	M	M	VL	Kfarb Shlaimane	M	M	VL	Kfarhatna	M	M	ML
Kfarhay	M	M	M	Kfarhelos	M	M	M	Kfifane	M	M	M



Kfour El Arabi	M	M	L	Koubba	M	M	M	Kour	M	M	M
Mar Mama	M	M	L	Masrah	M	M	ML	Mehmarch	M	M	L
Mrah Chdid	M	M	M	Mrah El Ziyat	M	M	M	Mrah El-Hajj	M	M	VL
Nahle El-Batroun	M	M	VL	Niha El-Batroun	M	M	L	Ouajh El-Hajjar	M	M	M
Ouata Houb	M	M	VL	Qatnaaoun	M	M	M	Racha	M	M	L
Rachana	M	M	M	Rachkida	M	M	M	Ram El-Batroun	ML	M	VL
Ras Nahhach	M	M	M	Selaata	M	M	M	Sghar	M	M	M
Smar Jbayl	M	M	M	Sourat El-Batroun	M	M	L	Tannourine El-Faouqa	M	M	L
Tannourine Et-Tahta	M	M	L	Thoum	M	M	M	Toula El-Batroun	M	M	M
Zan	M	M	L								

## Zgharta

Municipality	15-Feb	16-Feb	17-Feb	Municipality	15-Feb	16-Feb	17-Feb	Municipality	15-Feb	16-Feb	17-Feb
Aachach	M	M	L	Aalma	M	M	L	Aarde	M	M	L
Aintourine	M	M	L	Arabet Qozhaya	M	M	L	Arde	M	M	L
Arjis	M	M	L	Asnoun	M	M	L	Ayto	M	M	L
Basloukit	M	M	ML	Bchannine	M	M	L	Besebeel	M	M	L
Bhairret Toula	M	M	L	Bnachee	M	M	L	Boussit	M	M	ML
Danha	M	M	L	Daraiya Zgharta	M	M	L	Deir Jdeide	M	M	L
Ehden	M	M	L	Halan	M	M	ML	Hariq Zgharta	M	M	L
Houakir	M	M	L	Hraiqis	M	M	L	laal	M	M	L
Ijbaa	M	M	L	Karm Saddeh	M	M	L	Kfarchakhna	M	M	L
Kfardlaqous	M	M	L	Kfarfou	M	M	L	Kfarhata Zgharta	M	M	L
Kfarhoura	M	M	L	Kfarsghab	M	M	L	Kfaryachit	M	M	L
Kfarzaina	M	M	L	Khaldiye	M	M	L	Mazraat Ajbeaa	M	M	L
Mazraat Et-Teffah	M	M	L	Mazraat Jneid	M	M	L	Mejdlaiya Zgharta	M	M	L
Merh Kfarsghab	M	M	L	Miryata	M	M	L	Miziara	M	M	L
Mzraat Kefraya	M	M	ML	Qorah Bach	M	M	L	Rachiine	M	M	L
Ras Kifa	M	M	L	Sakhra	M	M	L	Sebhel Zgharta	M	M	L
Serhel	M	M	L	Tallet Zgharta	M	M	L	Toula Zgharta	M	M	L
Zgharta	M	M	L								

## Minieh-Denniye

Municipality	15-Feb	16-Feb	17-Feb	Municipality	15-Feb	16-Feb	17-Feb	Municipality	15-Feb	16-Feb	17-Feb
Aasaymout	M	M	L	Aaymar	M	M	ML	Aazki	M	M	L
Ain El-Tineh-Miniyeh	M	M	L	Assoun	M	M	L	Bakhaaoun	M	M	L
Bchennata	M	M	ML	Bechehhara	M	M	L	Beddawi	M	M	L
Behouaita	M	M	L	Beit El Foqss	M	M	L	Beit Haouik	M	M	L
Beit Zoud	M	M	L	Bekaasafrine	M	M	L	Borj El Yahoudiyeh	M	M	L
Bqarsouna	M	M	L	Btermaz	M	M	L	Debaael	M	M	L
Deir Ammar	M	M	L	Deir Nbouh	M	M	L	Haouaret-Miniyeh	M	M	L
Haql el Azimeh	M	M	L	Harf El Siyad	M	M	L	Hazmiye-Miniyeh	M	M	L
Izal	M	M	L	Jarjour	M	M	L	Jayroun	M	M	L
Kahf El-Malloul	M	M	L	Karm El-Moher	M	M	L	Kfar Binine	M	M	L
Kfarchalane	M	M	L	Kfarhabou	M	M	L	Kharroub-Miniyeh	M	M	L
Mazraat El-Kreme	M	M	L	Mazraat Ketrane	M	M	L	Merkebta	M	M	L
Minyeh	M	M	L	Mrah El Sfirat	M	M	L	Mrah Sraj	M	M	L
Mrebbine	M	M	L	Nabi Youcheaa	M	M	L	Nemrine	M	M	L



Qarhaiya	M	M	L	Qarne	M	M	L	Qarsita	M	M	L
Qattineh-Miniyeh	M	M	L	Qemmamine	M	M	L	Qraine	M	M	L
Raouda-Aadoua	M	M	L	Rihaniyet-Miniyeh	M	M	L	Sfireh	M	M	L
Sir Ed-Danniyeh	M	M	L	Tarane	M	M	L	Terbol-Miniyeh	M	M	ML
Zaghartaghriane	M	M	L	Zouq Bhannine	M	M	L				

## Nabatiye

### Nabatiye

Municipality	15-Feb	16-Feb	17-Feb	Municipality	15-Feb	16-Feb	17-Feb	Municipality	15-Feb	16-Feb	17-Feb
Aabba	M	M	VL	Aazzi	M	M	VL	Adchit El-Chqif	M	M	VL
Ain Bou Swar	M	M	VL	Ain Kana	M	M	VL	Ali El-TaHER	M	M	VL
Ansar	M	M	VL	Arab Salim	M	M	VL	Arnoun	M	M	VL
Bfaroue	M	M	VL	Breyqaah	M	M	VL	Chargiyeh	M	M	VL
Choukine	M	ML	VL	Deir El Zahrani	M	M	VL	Doueir El-Nabatiyeh	M	M	VL
Habbouch El-Nabatiye	M	ML	VL	Hamra El-Nabatiyeh	M	ML	VL	Harouf El-Nabatiyeh	M	M	VL
Hmaile	M	M	VL	Houmin El Faouqa	M	M	VL	Houmin El Tahta	M	M	VL
Jarjough	M	M	VL	Jbaah El-Nabatiyeh	M	M	VL	Jebchit	M	M	VL
Kfar Djal El-Nabatiy	M	M	VL	Kfar Remmane	M	ML	VL	Kfar Sir	M	M	VL
Kfar Tebnit	M	ML	VL	Kfarfila	M	M	VL	Kfour El-Nabatieh	M	M	VL
Mayfadoun	M	ML	VL	Mazraat Bsaffour	M	M	VL	Mazraat Chalbaal	M	M	VL
Mazraat Dmoul	M	M	VL	Mazraat El Khreibeh	M	ML	VL	Mazraat El-Bayad El-	M	ML	VL
Mazraat Kfarjaouz	M	ML	VL	Mazraat Qalaat Meiss	M	M	VL	Nabatiyeh El-Fawka	M	ML	VL
Nabatiyeh Et-Tahta	M	ML	VL	Namiriyyeh	M	M	VL	Qaaqaaiyet El Jisr	M	M	VL
Qossaibeh El-Nabatiy	M	M	VL	Roumine	M	M	VL	Sarba El-Nabatieh	M	M	VL
Sir El-Gharbiyeh	M	M	VL	Toul	M	ML	VL	Yehmor El-Nabatiyeh	M	M	VL
Zaoutar El Charkiyeh	M	M	VL	Zaoutar El-Gharbiyeh	M	ML	VL	Zebdine El-Nabatiyeh	M	ML	VL
Zefta	M	M	VL								

### Hasbaiya

Municipality	15-Feb	16-Feb	17-Feb	Municipality	15-Feb	16-Feb	17-Feb	Municipality	15-Feb	16-Feb	17-Feb
Ain Jarfa	ML	M	VL	Abou Qamha	M	M	VL	Ain Qania	ML	M	VL
Bourghos	M	M	VL	Chebaa	M	M	VL	Chouaya Hasbaya	M	M	VL
Dellafeh	M	M	VL	Fardiss Hasbaiya	M	M	VL	Hasbaya	ML	M	VL
Hbariyeh	ML	M	VL	Kaoukaba Hasbaiya	M	M	VL	Kfar Chouba	M	M	VL
Kfar Hamam	M	M	VL	Kfeir El-Zait	ML	M	VL	Khalwat Hasbaya	ML	M	VL
Khreibet Hasbaiya	M	ML	VL	Majidiyeh Hasbaiya	M	M	VL	Marj Ez-Zhour (Haouc	ML	M	VL
Meri	M	ML	VL	Mimass	ML	M	VL	Rachaiya El-Fokhar	M	M	VL
Salaiyeb	M	ML	VL								

### Marjayoun

Municipality	15-Feb	16-Feb	17-Feb	Municipality	15-Feb	16-Feb	17-Feb	Municipality	15-Feb	16-Feb	17-Feb
Aalmane Marjaayoun	M	M	VL	Aamra	M	ML	VL	Adayseh Marjaayoun	M	M	VL
Adchit El-Koussair	M	M	VL	Ain Arab Marjaayoun	M	ML	VL	Bani Haiyann	M	M	VL
Blatt Marjaayoun	M	ML	VL	Blida	M	M	VL	Borj El-Moulouk	M	M	VL
Boueyda Marjaayoun	M	M	VL	Deir Mimass	M	M	VL	Deir Siriane	M	M	VL
Dibbine	M	ML	VL	Ebel El Saqi	M	M	VL	Houla	M	M	VL
Houra	M	M	VL	Kfar Kila	M	M	VL	Khiam Marjaayoun	M	M	VL



Klayaa	M	M	VL	Majdel Selem	M	M	VL	Marjaayoun	M	M	VL
Markaba	M	M	VL	Mays El-Jabal	M	M	VL	Mazraat Doumiat	M	ML	VL
Mazraat Sarada	M	ML	VL	Mhaibib	M	M	VL	Qabrikha	M	M	VL
Qantara	M	M	VL	Rab El-Thalathine	M	M	VL	Saouaneh Marjayoun	M	M	VL
Talloussa	M	M	VL	Taybeh Matjaayoun	M	M	VL	Touline	M	M	VL

## Bent Jbail

Municipality	15-Feb	16-Feb	17-Feb	Municipality	15-Feb	16-Feb	17-Feb	Municipality	15-Feb	16-Feb	17-Feb
Ain-Ebel	M	M	VL	Aitaroun	M	M	VL	Aynata Bint Jbeil	M	M	VL
Ayta El-Chaeb	M	M	VL	Ayta El-Jabal	M	M	VL	Beit Lif	M	M	VL
Beit Yahoun	M	M	VL	Bint Jbeil	M	M	VL	Borj Qalaway	M	M	VL
Braachit	M	M	VL	Chakra	M	M	VL	Debel	M	M	VL
Deir Antar	M	M	VL	Froun	M	M	VL	Ghandouriyeh Bint Jb	M	M	VL
Hanine	M	M	VL	Hariss	M	M	VL	Hdatha	M	M	VL
Jmeymeh	M	M	VL	Kafra Bint Jbeil	M	M	VL	Kfar Dounine	M	M	VL
Khirbet Selm	M	M	VL	Kounine	M	M	VL	Maroun El Ras	M	M	VL
Qalaway	M	M	VL	Qaouzah	M	M	VL	Qatmoun	M	M	VL
Ramya Bint Jbeil	M	M	VL	Rchaf	M	M	VL	Rmeich	M	M	VL
Safad Al Battikh	M	M	VL	Salhaneh	M	M	VL	Serbine	M	M	VL
Sultanieh Bint Jbeil	M	M	VL	Tibnine	M	M	VL	Tiri	M	M	VL
Yaroun	M	M	VL	Yater	M	M	VL				

## Mont Liban

### Jbail

Municipality	15-Feb	16-Feb	17-Feb	Municipality	15-Feb	16-Feb	17-Feb	Municipality	15-Feb	16-Feb	17-Feb
Aabeydat	M	M	ML	Aalita	ML	M	L	Aamchit	M	M	M
Aarab El-Lahib	M	M	L	Aarasta	ML	M	VL	Adonis Jbeil	M	M	L
Afqa Jbeil	L	ML	VL	Ain El Delbeh Jbeil	ML	M	L	Ain El-Ghouyba	ML	M	L
Ain Jrain	ML	M	L	Ain Kfah	M	M	M	Almat El Chemaliyat	ML	M	L
Almat El-Jenoubiya	ML	M	L	Aqoura	M	M	L	Bayzoun	M	M	L
Bchille Jbeil	M	M	ML	Bechtida	L	M	L	Behdaydat	M	M	ML
Beit Habbaq	M	M	M	Bejjeh	M	M	M	Bekhaaz	M	M	M
Berbara Jbeil	M	M	M	Bintael	M	M	ML	Birket Hjoula	ML	M	ML
Blatt Jbeil	M	M	ML	Boulhos	ML	M	VL	Breyj Jbeil	ML	M	ML
Chamat	M	M	M	Chikhane	M	M	M	Chmout	M	M	M
Eddeh Jbeil	M	M	M	Ehmej	M	M	L	Fatre	M	M	L
Ferhet	M	M	L	Fghal	M	M	M	Frat	L	M	VL
Ghabat	M	M	L	Ghalboun	M	M	M	Gharzouz	M	M	M
Ghofrine	M	M	M	Habil	L	M	L	Halate	M	M	M
Haqel	M	M	L	Hbaline	M	M	M	Hboub	M	M	ML
Hdeine	M	M	L	Hema Er-Rehban	M	M	L	Hema Mar Maroun Aann	M	M	L
Hjoula	ML	M	ML	Hosrayel	M	M	M	Hsarat	M	M	M
Hsoun	M	M	M	Jaj	ML	M	L	Janne	ML	M	VL
Jbeil	M	M	M	Jeddeyel Jbeil	M	M	M	Jlisse	ML	M	ML
Jouret El-Qattine	M	M	ML	Kfar Baal Annaya	ML	M	L	Kfar Kidde	M	M	M
Kfar Kouas	M	M	ML	Kfar Mashoun	M	M	ML	Kfoun	M	M	ML

Kharbe Jbeil	M	M	ML	Laqlouq	M	M	L	Lassa	ML	M	L
Lehfed	ML	M	VL	Maad	M	M	M	Mar Sarkis	M	M	L
Mastita	M	M	M	Mayfouq	M	M	L	Mazraat El Siyad	M	M	L
Mazraat El-Maaden	L	M	VL	Mechane	ML	M	L	Mechmech Jbeil	ML	M	L
Mehrin	M	M	ML	Mejdel El-Akoura	ML	M	VL	Mghayreh Jbeil	M	M	L
Mounsef	M	M	M	Nahr Ibrahim	M	M	M	Qahmez	ML	M	L
Qartaba	M	M	L	Qartaboun	M	M	M	Qattara Jbeil	L	M	VL
Qorqraya	L	M	VL	Ramout	M	M	M	Ras Osta	ML	M	ML
Rihane Jbeil	M	M	M	Sakiet El-Khayt	M	M	ML	Saqi Richmaya	M	M	L
Sebrine	M	M	ML	Seraita	M	M	L	Souane Jbeil	M	M	L
Tadmor	M	M	L	Tartej	ML	M	L	Torzaiya	M	M	L
Yanouh Jbeil	M	M	L	Zibidine Jbeil	M	M	L				

## El Metn

Municipality	15-Feb	16-Feb	17-Feb	Municipality	15-Feb	16-Feb	17-Feb	Municipality	15-Feb	16-Feb	17-Feb
Aain El-Qabu	M	M	VL	Aain El-Qach	M	M	ML	Aain El-Teffaha	M	M	ML
Aain el-Safssaf El-M	ML	M	L	Abou Mizane	M	ML	L	Ain Aar	M	M	M
Ain Alaq	M	M	ML	Ain El-Kharroube	M	ML	ML	Ain El-Sendiane	M	M	M
Ain El-Zeitoune	M	M	M	Ain Saadeh	M	M	ML	Aintoura El-Matn	M	M	L
Amaret Chalhoub	M	M	M	Antelias	M	M	M	Atchaneh	M	M	ML
Ayroun	M	M	ML	Baabdat	M	M	M	Baouchariyeh	M	M	M
Baskinta	M	M	L	Beit Chabab	M	M	L	Beit El-Chaar	M	M	M
Beit El-Kekko	M	M	M	Beit Mery	M	M	ML	Bhersaf	ML	M	L
Bikfaya	M	M	L	Biyakout	M	M	M	Bnabil	M	M	M
Bourj Hammoud	M	M	M	Bqennaya	M	M	ML	Broummana El-Matn	M	M	L
Bsalim	M	M	ML	Bsifrine	M	M	ML	Bteghrine	ML	M	L
Chaouiye	M	M	ML	Chouaya El-Matn	M	ML	ML	Choueir	M	M	L
Chrine	ML	M	L	Dahr El Sawan El-Mat	M	M	ML	Daychouniyeh	M	M	M
Dbayeh	M	M	M	Deir Chamra	L	ML	L	Deir Mar Abda el Mch	M	M	ML
Deir Mar Roukouz	M	M	M	Deir Tamiche	M	M	ML	Dik El-Mehdi	M	M	M
Dikwaneh	M	M	M	Douar El-Matn	M	M	ML	Fanar	M	M	M
Fraike	M	M	ML	Haret El-Ballaneh	M	M	M	Hbous	M	M	M
Himlaya	M	M	L	Jal El Did	M	M	M	Jdeideh El-Metn	M	M	M
Jouar El-Matn	ML	M	L	Jouret El-Ballout	M	M	L	Kaaqour	M	M	M
Kfar Aaqab	M	M	L	Kfertay El-Matn	M	M	VL	Khenchara	M	M	ML
Khillet El-Mtain	M	M	M	Konnabat Broummana	M	M	L	Konnabat Salima	M	M	ML
Machraah El-Matn	M	M	L	Majdel Tarchich	M	M	L	Majzoub	M	M	ML
Mansouriyeh El-Metn	M	M	M	Mar Boutros Karm Et-	ML	M	L	Mar Chaya et Mzekke	M	M	L
Mar Moussa Ed-Douar	M	M	ML	Marjaba	M	M	L	Masqa	M	M	L
Mayasse	M	M	L	Mazraat Deir Aoukar	M	M	M	Mazraat El-Hadirat	M	M	M
Mazraat Yachouh	M	M	M	Mchikha	M	M	M	Menqlet Mezher	M	M	M
Mhaydseh Matn	M	M	ML	Mkalles	M	M	M	Mrouj	M	M	L
Mtain	M	M	L	Mtayleb	M	M	M	Nabay	M	M	L
Naccache	M	M	M	Ouadi Chahine	ML	M	L	Ouadi El-Karm El-Mat	M	M	L
Ouata El-Mrouj	M	M	M	Ouyoun El-Matn	ML	M	L	Qornet Chehwan	M	M	ML
Qornet El-Hamra	M	M	ML	Roumieh	M	M	ML	Sfeilet Bikfaya	ML	M	L
Sinn El-Fil	M	M	M	Zabbougha	ML	M	L	Zalqa	M	M	M



Zarouon	M	M	M	Zekrite	M	M	ML	Zighrine El-Matn	M	M	ML
Zouk El-Khrab	M	M	M								

## Chouf

Municipality	15-Feb	16-Feb	17-Feb	Municipality	15-Feb	16-Feb	17-Feb	Municipality	15-Feb	16-Feb	17-Feb
Aalmane El-Chouf	M	M	VL	Aammq El-Chouf	M	M	VL	Ain Ouzein	M	M	VL
Ain Qani	M	M	VL	Ain Zhalta	M	M	VL	Ainbal	M	M	VL
Amatour	M	M	VL	Anout	M	M	VL	Atrine	M	M	VL
Baadarane	M	M	VL	Baaqline	M	M	VL	Baasir	M	M	VL
Barja	M	M	VL	Barouk	M	M	VL	Bater	M	M	VL
Batloun	M	M	VL	Bayqoun	M	M	VL	Bchetfine	M	M	VL
Beiteddine	M	M	VL	Benouati Ech-Chouf	M	M	VL	Berjein	M	M	VL
Bireh et Mtalleh	M	M	VL	Biret El-Chouf	M	M	VL	Bkechtine Ouel Mchei	M	M	VL
Bkifa El-Chouf	M	M	VL	Botme	M	M	VL	Bqaiaa Ech-Chouf	M	M	VL
Bsaba El-Chouf	M	M	VL	Chammis El-Chouf	M	M	VL	Chehim	M	M	VL
Chemaarine	M	M	VL	Chourit	M	M	VL	Daher El-Chouf	M	M	VL
Dalhoun	M	M	VL	Damour	M	M	VL	Daraya El-Chouf	M	M	VL
Deir El-Moukhalles	M	M	VL	Deir Baba	M	M	VL	Deir Dourit	M	M	VL
Deir El-Qamar	M	M	VL	Deir Kouche	M	M	VL	Dibbieh	M	M	VL
Dmit	M	M	VL	Fouara Jaafar	M	M	VL	Fraidis El-Chouf	M	M	VL
Ghabet Jaafar	M	M	VL	Gharife	M	M	VL	Haret Jandal	M	M	VL
Hasrout	M	M	VL	Jadra	M	M	VL	Jahlieh	M	M	VL
Jbeih El-Chouf	M	M	VL	Jdeidet El-Chouf	M	M	VL	Jiyeh	M	M	VL
Jleilyeh	M	M	VL	Jmailiyeh	M	M	VL	Joun	M	M	VL
Kahlounie El-Chouf	M	M	VL	Ketermaya	M	M	VL	Kfar Faqoud	M	M	VL
Kfar Hamal	M	M	VL	Kfar Him	M	M	VL	Kfar Katra	M	M	VL
Kfar Niss	M	M	VL	Kfar hay	M	M	L	Kfarnabrakh	M	M	VL
Khirbet Bisri	M	M	VL	Knayse El-Chouf	M	M	VL	Maaniyeh	M	M	VL
Maasser Beiteddine	M	M	VL	Maasser El-Chouf	M	M	VL	Majdalouna	M	M	VL
Majdel El-Meouch	M	M	VL	Mazboud	M	M	VL	Mazmoura	M	M	VL
Mazraat El Chouf	M	M	VL	Mazraat El Daher	M	M	VL	Mazraat El-Douair	M	M	VL
Mechref	M	M	VL	Mghairie	M	M	VL	Mghayrie El-Chouf	M	M	VL
Moukhtara	M	M	VL	Mrusti	M	M	VL	Mtolle	M	M	VL
Naameh	M	M	L	Niha El-Chouf	M	ML	VL	Ouadi Abou Youssef	M	M	VL
Ouadi Ed-Deir	M	M	VL	Ouadi El-Sit	M	M	VL	Ouadi bnehlay	M	M	VL
Qraibeh	M	M	VL	Qreiaa	M	M	VL	Rmayle El-Chouf	M	M	VL
Semqaniyeh	M	M	VL	Sibline	M	M	VL	Sirjbeil	M	M	VL
Warhanieh	M	M	VL	Werdaniyeh	M	M	VL	Zaarourieh	M	M	VL

## Baabda

Municipality	15-Feb	16-Feb	17-Feb	Municipality	15-Feb	16-Feb	17-Feb	Municipality	15-Feb	16-Feb	17-Feb
Abadiyeh	M	M	M	Ain Mouaffaq	M	M	M	Araiya	M	M	M
Arbaniyeh	M	M	ML	Arsoun	M	M	M	Baabda	M	M	M
Baalchmey	M	M	M	Bmaryam	M	M	M	Bourj El-Brajneh	M	M	M
Boutchay	M	M	ML	Bsaba Baabda	M	M	M	Btekhney	M	M	M
Btibyat	M	M	M	Bzbeddine	M	M	M	Chbeniyeh	M	M	M
Chiyah	M	M	M	Chmeisset Baabda	M	M	M	Chouit	M	M	M
Deir El-harf	M	M	M	Deir Khouna	M	M	M	Dlaybeh	M	M	M

Falougha	M	M	L	Furn El-Chebbak	M	M	M	Hadath Beyrouth	M	M	M
Halaliyeh Baabda	M	M	M	Hammana	M	M	M	Haret El Sett	M	M	ML
Haret Hamze	M	M	M	Haret Hreik	M	M	M	Hasbaiya El-Metn	M	M	ML
Jouar El-Hoz	M	M	L	Jouret Arsoun	M	M	M	Kfar Chima	M	M	M
Kfar Selouane	M	M	L	Khalouat Baabda	M	M	M	Kneisset Baabda	M	M	ML
Laylakeh	M	M	ML	Louayzeh Baabda	M	M	M	Merdache	M	M	ML
Mzairaa Baabda	M	M	M	Ouadi Chahrour El Ol	M	M	ML	Ouadi Chahrour El So	M	M	ML
Qalaa Baabda	M	M	M	Qhraybe Baabda	M	M	M	Qobbayaa	M	M	M
Qornayel	M	M	ML	Qortada	M	M	L	Qrayeh Baabda	M	M	M
Qsaibeh Baabda	M	M	L	Qtale Baabda	M	M	M	Ras El Metn	M	M	ML
Ras El-Haref	M	M	M	Rouayset El-Ballout	M	M	M	Salima Baabda	M	M	ML
Tahouitat El Ghadir	M	M	M	Tarchich	M	M	L	Zandouqa	M	M	L

## Aley

Municipality	15-Feb	16-Feb	17-Feb	Municipality	15-Feb	16-Feb	17-Feb	Municipality	15-Feb	16-Feb	17-Feb
Abey	M	M	VL	Aghmid	M	M	M	Ain Dara	M	M	ML
Ain Drafil	M	M	L	Ain El Halazoun	M	M	M	Ain El-Rmmaneh	M	M	ML
Ain Jedideh	M	M	M	Ain Ksour	M	M	L	Ain Onoub	M	M	ML
Ain Traz	M	M	VL	Ainab	M	M	ML	Aley	M	M	M
Aramoun	M	M	M	Aytat	M	M	ML	Azouniyeh	M	M	M
Baawerta	M	M	VL	Badghan Oua Wadi Bad	M	M	M	Bassatine	M	M	ML
Bayssour	M	M	M	Bchamoun	M	M	M	Bdadoun	M	M	ML
Behouara	M	M	M	Bennay	M	M	VL	Bhamdoun El-Dayaa	M	M	M
Bhamdoun El-Mhatta	M	M	M	Bkhechtey	M	M	M	Bleibel	M	M	ML
Bmakine	M	M	ML	Bmehray	ML	M	L	Bouzrid	M	M	L
Bserrine	M	M	M	Bsous	M	M	ML	Btalloun	M	M	M
Btater	M	M	M	Chanay	M	M	M	Charoun	M	M	M
Chartoun	M	M	L	Chemlane	M	M	ML	Choueifat El-Aamrous	M	M	M
Choueifat El-Oumara	M	M	M	Choueifat El-Quoubbe	M	M	M	Dakkoun	M	M	VL
Deir Qoubel	M	M	M	Dfoun	M	M	L	Douair El Remmaneh	M	M	L
Ghaboun	M	M	M	Habramoun	M	M	M	Homs Oua Hama	M	M	M
Houmal	M	M	ML	Jisr El Qadi	M	M	VL	Kehaleh	M	M	ML
Keyfoun	M	M	ML	Kfar Aamey	M	M	M	Kommatyeh	M	M	ML
Maasrati	M	M	ML	Majdel Baana	M	M	M	Mansourieh et Ain El	M	M	M
Mazraat El-Nahr	M	M	M	Mchakhte	M	M	M	Mecherfeh	M	M	M
Mejdlaya	M	M	ML	Mrayjat	M	M	L	Ramliyah	M	M	L
Rechmaya	M	M	VL	Rejmeh	M	M	M	Remhala	M	M	L
Rouaysset El Neemane	M	M	ML	Saoufar	M	M	M	Selfaya	M	M	VL
Sirhmoul	M	M	ML	Souq El Ghareb	M	M	ML	Taazanieh	M	M	M

## Kesrouane

Municipality	15-Feb	16-Feb	17-Feb	Municipality	15-Feb	16-Feb	17-Feb	Municipality	15-Feb	16-Feb	17-Feb
Achkout	M	M	L	Adma Oua Dafneh	M	M	M	Ain Ed-Delbe Kesroua	L	M	VL
Ain El-Rihane	M	M	ML	Aintoura Kesrouane	M	M	M	Ajaltoun	ML	M	L
Akaybeh Kesrouane	M	M	M	Aramoun Kesrouane	M	M	L	Azra ouel Ozor	M	M	L
Ballouneh	M	M	L	Batha	L	M	L	Bekaatat Achkout	M	M	ML
Bekaatat Kanaan	M	M	L	Bizhel	ML	M	L	Bouar	M	M	M
Bqaatouta	ML	M	L	Bqaq Ed-Dine	M	M	M	Bzommar	M	M	ML



Chahtoul	M	M	L	Chnaniir	ML	M	L	Chouan	L	M	VL
Daraya Kesrouane	ML	M	L	Darououn	ML	M	L	Deir Baqlouch	ML	M	L
Dlebta	M	M	L	Eghbeh	L	M	L	Faraya	M	M	L
Fatka	M	M	ML	Feytroun	ML	M	L	Ghazir	M	M	ML
Ghbaleh Kesrouane	M	M	L	Ghedrass	M	M	L	Ghosta	ML	M	L
Ghynéh	M	M	ML	Harharaya w Kattine	M	M	L	Harissa Kesrouane	ML	M	L
Hayata	ML	M	L	Hosein	ML	M	L	Hrajel	M	M	L
Jdeideh Ghazir	M	M	L	Jeita	M	M	ML	Jounieh Ghadir	M	M	ML
Jounieh Haret Sakhr	M	M	M	Jounieh Salel Alma	M	M	ML	Jounieh Sarba	M	M	M
Jouret Bedrane	M	M	ML	Jouret Mhad	ML	M	ML	Jouret Termos	M	M	ML
Kfar Debiane	ML	M	L	Kfar Tay Kesrouane	M	M	L	Kfar Yassine	M	M	M
Kfour Kesrouane	M	M	ML	Kharayeb Nahr Ibrahi	ML	M	ML	Klayaat Kesrouane	ML	M	L
Maarab	ML	M	L	Maaysra Kesrouane	M	M	ML	Mayrouba	ML	M	L
Mazraat Er-Ras	M	M	M	Mazraat Mrah El-Mir	ML	M	L	Mchaa El Ftouh	M	M	L
Mchaa Faraya	M	M	L	Mchaa Kfar Dibiane	M	M	L	Mghaer	L	M	VL
Mradiyah	M	M	L	Nahr Ed-Dahab	ML	M	L	Nammoura Kesrouane	M	M	L
Ouata El Jaouz	ML	M	L	Ouata Sillam	M	M	M	Raachine	ML	M	L
Rayfoun	M	M	L	Safra Kesrouane	M	M	M	Shayle Kesrouane	M	M	ML
Tabarja	M	M	M	Yahchouch	ML	M	L	Zaaytreh	M	M	L
Zeytoun	M	M	ML	Zouk Mikael	M	M	M	Zouk Mosbeh	M	M	M

## Baalbek\_Hermel

### Baalbek

Municipality	15-Feb	16-Feb	17-Feb	Municipality	15-Feb	16-Feb	17-Feb	Municipality	15-Feb	16-Feb	17-Feb
Aadous	ML	M	L	Aamchki	M	M	L	Aarsal	M	M	L
Ain Baalbek	M	M	L	Ain Bourday	M	M	L	Ain El-Benye	M	M	L
Ain El-Jaouz Baalbek	M	ML	L	Ain El-Siya Chadoura	M	M	L	Al Khodr Baalbek	M	M	L
Al Nabi Chit	ML	M	L	Aynata Baalbek	ML	M	L	Baalbek	ML	M	L
Bachwat	ML	M	VL	Barqa	ML	M	VL	Bednayel Baalbak	ML	M	L
Beit Chama	M	M	L	Bijjaje	ML	M	L	Bouday	ML	M	L
Brital	M	M	L	Btadi	ML	M	L	Chaat	ML	M	L
Chaibe	M	M	L	Chlifa	ML	M	L	Chmestar	ML	M	L
Dar El-Oussa	ML	M	VL	Deir El-Ahmar	ML	M	L	Deir Mar Maroun Baal	ML	M	M
Douris	ML	M	L	Fakiha	M	M	M	Hadath Baalbek	ML	M	L
Ham	M	M	VL	Haour Taala	M	M	L	Hizzine	ML	M	L
Hlebta	ML	M	ML	Hosh Barada	ML	M	L	Hosh El Dahab	ML	M	L
Hosh El Snid	ML	M	L	Hosh El-Nabi	ML	M	L	Hosh El-Rafiq	ML	M	L
Hosh Tal Safiya	ML	M	L	Hrebta	ML	M	L	laat	ML	M	L
Jebaa	ML	M	L	Jenta	ML	M	L	Kfar Dabach	M	M	L
Kfar Dane	ML	M	L	Khraibeh El-Hermel	ML	M	L	Khreibet Baalbek	ML	M	L
Kneisset Baalbek	ML	M	L	Labueh	ML	M	L	Maarboun	M	M	VL
Majdaloun	ML	M	L	Maqneh	ML	M	L	Mazraat Beit Mcheik	M	M	L
Misraya	ML	M	L	Moqraq	ML	M	L	Nabha El-Damdoum	ML	M	L
Nabi Chbay	M	M	L	Nabi Osman	ML	M	L	Nahleh baalbek	M	M	L
Ouadi El-Oss	ML	M	L	Qaa Baayoun	M	M	M	Qaa Jouar Maqiye	M	MH	M
Qaa Ouadi El-Khanzir	M	M	M	Qah Baalbek	M	M	M	Qarha Baalbek	ML	M	L

Qsarnaba	ML	M	L	Ram Baalbek	M	M	L	Ras Baalbek El Sahl	M	M	M
Ras Baalbek El-Charq	M	M	M	Riha	ML	M	L	Saaide	ML	M	L
Sbouba	ML	M	L	Seriine El-Tahta	ML	M	L	Slouqi	ML	M	L
Taiba Baalbek	M	M	L	Talia	ML	M	L	Taraiya	ML	M	L
Temnin El Fawqa	ML	M	L	Temnin El-Tahta	ML	M	L	Tfail	ML	ML	L
Yahfoufa	ML	M	L	Yammouneh	ML	M	L	Younine	ML	M	L
Zboud	ML	M	L								

## Hermel

Municipality	15-Feb	16-Feb	17-Feb	Municipality	15-Feb	16-Feb	17-Feb	Municipality	15-Feb	16-Feb	17-Feb
Charbine El-Hermel	M	M	M	Hermel Jbab	M	M	ML	Hermel	M	M	M
Maaysra El-Hermel	ML	M	M	Michaa Mrajhine	M	M	L	Ouadi Faara	ML	M	ML
Ras Baalbek - Ouadi	M	M	M	Ras Baalbek El Gharb	M	M	ML	Zighrine	ML	M	M

## Akkar

### Akkar

Municipality	15-Feb	16-Feb	17-Feb	Municipality	15-Feb	16-Feb	17-Feb	Municipality	15-Feb	16-Feb	17-Feb
Aain Tinta	M	M	L	Aaiyat	M	M	L	Aakkar El-Aatiqa	M	M	ML
Aamar Akkar	M	M	L	Aamar El Baykat	M	MH	ML	Aamayer	M	H	M
Aamriyet Akkar	M	H	L	Aandqet	M	M	M	Aarmeh	M	MH	ML
Aarqa	M	M	L	Aawaynat	MH	H	M	Aayoun Akkar	M	M	L
Abboudiye	M	H	L	Ain El-Zeit	M	MH	ML	Ain Yaaqoub	M	M	L
Akroum	M	M	M	Aridet Cheikh Zennad	M	MH	L	Baldeh w Mazraat Bal	M	M	L
Barcha	M	H	L	Bardeh	M	H	M	Bebnine	M	M	L
Beino	M	M	L	Beit Ayoub	M	M	L	Beit El-Haouch	M	M	L
Beit Mellat	M	M	L	Beit Younes	M	M	L	Berbara Akkar	M	M	L
Berqayel	M	M	L	Bezbina	M	M	L	Bireh Akkar	M	MH	L
Borj	M	M	L	Bqerezla	M	M	L	Bzal	M	M	L
Chane	M	M	L	Chaqdouf	M	M	ML	Charbila	M	M	L
Cheikh Mohammad	M	M	L	Cheikh Taba Es-Sahl	M	M	L	Cheikh Taba	M	M	L
Cheikh Zennad	M	M	L	Cheikhlar	H	H	M	Chir Hmairine	M	MH	L
Daghle	M	M	L	Dahr Laissine	M	M	L	Darine	M	M	L
Dawra	M	M	L	Dawsa w Baghdadi	M	H	L	Dayret Nahr El-Kabir	H	H	M
Deir Dalloum	M	M	L	Deir Jennine	M	M	L	Denbou	M	M	L
Dibbabiyyeh	M	H	ML	Douair Aadwiyeh	M	M	L	Fassikine	M	MH	L
Fnaydek	M	M	L	Fraydes Akkar	M	H	L	Ghazayle	M	M	L
Habchit	M	M	L	Hakour	M	M	L	Halba	M	M	L
Haouchab	M	M	L	Hayssat	M	M	L	Haytla	M	MH	L
Hayzouq	M	M	L	Hedd	M	M	L	Hmaira Akkar	M	M	L
Hmaiss Akkar	M	M	L	Hnaider	M	H	M	Hokr Ed-Dahri	M	M	L
Hokr Etti	M	M	L	Hokr Jouret Srar	M	M	L	Houaich	M	M	L
Hrar	M	M	L	Idbil	M	M	L	Ilal	M	M	L
Janine	M	MH	ML	Jdeidet El-Joumeh	M	M	L	Jdeidet El-Kaiteh	M	M	L
Jebraïel	M	M	L	Kafr	M	M	ML	Kafr	M	MH	L
Karm Asfour	M	M	L	Kfar Melki Akkar	ML	M	L	Kfar Noun	M	H	M
Kfarharra	M	M	L	Khalsa	MH	H	M	Kharnoubet Akkar	M	H	L



Khirbet Daoud Aakkar	M	M	L	Khirbet El Remmane	M	H	M	Khirbet Shar	M	M	L
Khoreybet El-Jindi	M	M	L	Khreibet Aakkar	M	M	L	Kneisset Aakkar	M	MH	L
Kneisset Hnaider	M	H	M	Knisse	M	M	L	Kroum El-Aarab	M	M	L
Kwachra	M	H	ML	Kweykhat	M	M	L	Machta Hammoud	MH	H	M
Majdala	M	M	L	Majdel Akkar	M	M	L	Mar Touma	M	M	L
Marlaya Melhem	ML	M	L	Mashha	M	M	L	Massoudiye	M	M	L
Mazraat Beit Ghattas	M	M	L	Mazraat En-Nahriye	MH	H	M	Mechmech	M	M	L
Memneh	M	M	L	Mhammara	M	M	L	Mighraq Aakkar	M	MH	L
Minyara	M	M	L	Moqayteh	M	M	L	Mounjez	M	H	ML
Msalla	M	M	ML	Mzeihmeh	M	H	L	Nfaiseh	M	M	L
Noura Et-Tahta	M	MH	ML	Ouadi El-Haour	M	H	L	Ouadi El-Jamous	M	M	L
Ouyoun El-Ghizlane	M	M	L	Qaabarine	ML	M	L	Qabaait	M	M	L
Qachlaq	M	MH	L	Qantara Aakkar	M	M	L	Qarha Aakkar	M	H	M
Qarqaf	M	M	L	Qboula	M	M	L	Qleiaat Aakkar	ML	M	L
Qloud El-Baqie	M	M	L	Qobaiyat Aakkar	M	M	M	Qobbat Chamrat	M	M	L
Qorayat	M	M	L	Qornet Aakkar	M	M	L	Qsair Aakkar	M	H	L
Rahbe	M	M	L	Rihaniyet Aakkar	M	M	L	Rmah	M	H	M
Rmoul	ML	M	L	Saadine	M	M	L	Sadaqa	M	M	ML
Saidnaya	M	M	L	Sammouniye	M	M	L	Sayssouq	M	M	ML
Semmaqiye	M	M	L	Semmaqli	ML	M	L	Sfinet El-Dreib	M	M	L
Sfinet El-Qaitaa	M	M	L	Sindyanet Zeidane	M	M	L	Souaisset Aakkar	M	M	L
Srar	M	MH	L	Tal Abbas El Gharby	M	M	L	Tal Abbas El-Chargy	M	M	L
Tal Biret	M	M	L	Tal Hmayra	M	M	L	Tal Maayan Tal Kiri	M	M	L
Tal Sibel	ML	M	L	Tallet Chattaha	M	M	L	Tikrit	M	M	L
Tleil	M	MH	L	Tshea	M	M	L	Zawarib	M	M	L
Zouq El Hosniyeh	M	M	L	Zouq El-Haddara	M	M	L	Zouq El-Hbalsa	M	M	L
Zouq El-Moqachrine	M	M	L								

## Sud

### Sour

Municipality	15-Feb	16-Feb	17-Feb	Municipality	15-Feb	16-Feb	17-Feb	Municipality	15-Feb	16-Feb	17-Feb
Aaiyeh	M	M	VL	Aalma El-Chaab	ML	M	VL	Aaytit	M	M	VL
Abbassiyeh Sour	M	M	L	Abou Chech	M	M	VL	Ain Abou Abdallah	M	M	VL
Ain Baal	M	M	L	Arzoun	M	M	VL	Aziyeh	M	M	VL
Baflaya	M	M	VL	Barich	M	M	VL	Batouliyeh	M	M	L
Bayad	M	M	VL	Bazouriyeh	M	M	VL	Bediass	M	M	VL
Bestiyat	M	M	VL	Borj El Chemali	M	M	L	Borj En-Naqoura	M	M	VL
Borj Rahhal	M	M	VL	Boustane	M	M	VL	Btaychiyeh	M	M	VL
Chaaitiye	M	M	VL	Chameh	ML	M	VL	Chehabiye	M	M	VL
Chehour	M	M	VL	Chihine	M	M	VL	Debaal Sour	M	M	VL
Deir Amess	M	M	VL	Deir Kifa	M	M	VL	Deir Qanoun El-Ain	M	M	L
Deir Qanoun El-Naher	M	M	VL	Derdghaiya	M	M	VL	Dhayra	M	M	VL
Halloussiyeh	M	M	VL	Hamoul	ML	M	VL	Hanaouey	M	M	VL
Henniye	M	M	VL	Hmairi Sour	M	M	VL	Iskandarouna Sour	ML	M	VL
Jbal El Botom	M	M	VL	Jebbin	M	M	VL	Jennata	M	M	VL
Jijim	ML	M	VL	Jouaiya	M	M	VL	Kneisset Sour	M	M	VL

Maarake	M	M	VL	Maaroub	M	M	VL	Majadel	M	M	VL
Majdalzoun	M	M	VL	Mansouri Sour	M	M	VL	Marnba	M	M	VL
Marouahine	M	M	VL	Mazraat El-Zalloutiy	M	M	VL	Mazraat Mechref	M	M	VL
Mazraat Tayr Semhat	M	M	VL	Mheilib	M	M	L	Neffakhiyeh	M	M	VL
Niha Sour	M	M	VL	Ouadi Jilo	M	M	VL	Qana	M	M	VL
Qolaileh Sour	M	M	VL	Rechknany	M	M	VL	Rmadiyah	M	M	VL
Selha Sour	M	M	VL	Siddiqine	M	M	VL	Sour	M	M	L
Srifa	M	M	VL	Tayr Debbe	M	M	VL	Tayr Felsay	M	M	VL
Tayr Harfa	M	M	VL	Touayri	M	M	VL	Toura	M	M	VL
Yanouh Sour	M	M	VL	Yarine	M	M	VL	Zebqine	M	M	VL

## Saida

Municipality	15-Feb	16-Feb	17-Feb	Municipality	15-Feb	16-Feb	17-Feb	Municipality	15-Feb	16-Feb	17-Feb
Aanqoun	M	M	VL	Aaqtanit	M	M	VL	Aarab Ej-Jall	M	ML	VL
Aarab Tabbaya	M	M	VL	Abra Saida	M	M	VL	Adloun	M	M	VL
Adousiyeh	M	M	VL	Ain-El-Deleb	M	M	VL	Arzai	M	M	VL
Babliyah	M	M	VL	Barty	M	M	VL	Bissariyeh	M	M	VL
Bnaafoul	M	M	VL	Bqosta	M	M	VL	Bramiy	M	M	VL
Daoudiyeh	M	M	VL	Dareb El-Sim	M	M	VL	Erkay	M	M	VL
Ghassanieh	M	M	VL	Ghazieh	M	M	VL	Hajjeh	M	M	VL
Haret Saida	M	M	VL	Hartiyeh	M	M	VL	Hlaliye Saida	M	M	VL
Insariyat	M	M	VL	Jazira Saida	M	M	VL	Kafar Bit	M	ML	VL
Kaoutariyet El-Siyad	M	M	VL	Kfar Chellal	M	ML	VL	Kfar Hatta Saida	M	ML	VL
Kfar Milke Saida	M	ML	VL	Khartoum	M	M	VL	Khaziz	M	M	VL
Khirbet Ed-Douair Sa	M	M	VL	Khirbet El-Bassal	M	M	VL	Khrayeb Saida	M	M	VL
Loubieh	M	M	VL	Maghdouche	M	M	VL	Majdelyoun	M	M	VL
Matariyet El-Choumar	M	M	VL	Matayriyeh	M	M	VL	Mazraat 'Mseileh	M	M	VL
Mazraat 'Snaiber	M	M	VL	Mazraat Aarab Soukka	M	ML	VL	Mazraat Deir Taqla	M	M	VL
Mazraat El Yahoudiye	M	M	VL	Mazraat El-Housseini	M	M	VL	Mazraat El-Mhaydaleh	M	M	VL
Mazraat El-Ouasta	M	M	VL	Mazraat Jamjim	M	M	VL	Mazraat Kaoutariyet	M	M	VL
Mazraat Kfar Badda	M	M	VL	Mazraat Oussamiyat	M	M	VL	Mazraat Sari	M	M	VL
Mazraat Sinai	M	M	VL	Meemariyeh	M	M	VL	Merouaniyeh	M	M	VL
Miyeh ou Miyeh	M	M	VL	Najjariyeh	M	M	VL	Qaaqiyat El-Snaouba	M	M	VL
Qnarit	M	M	VL	Qraiye Saida	M	M	VL	Saida Ed-Dekermane	M	M	VL
Saida El-Oustani	M	M	VL	Saida El-Qadimeh	M	M	VL	Saida Kefraya	M	M	VL
Saksakiyeh	M	M	VL	Salhie Saida	M	M	VL	Sarafand	M	M	VL
Sfenta	M	M	VL	Tafahta	M	M	VL	Tanbourit	M	M	VL
Tebna	M	M	VL	Zaghdraiya	M	M	VL	Zeita	M	M	VL
Zrariyeh	M	M	VL								

## Jezzine

Municipality	15-Feb	16-Feb	17-Feb	Municipality	15-Feb	16-Feb	17-Feb	Municipality	15-Feb	16-Feb	17-Feb
Ain El-Mir (El Estab	M	ML	VL	Anane	M	M	VL	Aramta	M	M	VL
Ariya	ML	M	VL	Aychiyeh	M	M	VL	Azour	M	M	VL
Baba	M	M	VL	Bayssour Jezzine	M	ML	VL	Benoueteh Jezzine	M	M	VL
Bhannine	M	ML	VL	Bisri	M	M	VL	Bkassine	ML	M	VL
Bouslaya	M	M	VL	Btedine El-Leqech	M	M	VL	Chbail	ML	M	VL
Choualiq Jezzine	M	M	VL	Dahr Ed-Deir	M	M	VL	Deir El Qattine	M	M	VL

Demachqiyeh	M	M	VL	Ghabbatiyeh	M	M	VL	Harf Jezzine	M	M	VL
Hassaniyeh	M	ML	VL	Haytoupleh	M	M	VL	Haytura	M	M	VL
Hidab	M	M	VL	Homsiyeh	M	M	VL	Jabal Toura	ML	M	VL
Jarmaq	M	M	VL	Jensnaya	M	M	VL	Jernaya	M	ML	VL
Jezzine	ML	M	VL	Karkha	M	M	VL	Kfar Falous	M	M	VL
Kfar Houna	ML	M	VL	Kfar Jarrah	M	M	VL	Lebaa	M	ML	VL
Louayzet Jezzine	M	M	VL	Machmouche	ML	M	VL	Mahmoudiyeh Jezzine	M	M	VL
Maknounye Jezzine	M	M	VL	Maraat Ouzaïyeh	M	M	VL	Mazraat Daraya	ML	M	VL
Mazraat El-Aarqoub	M	M	VL	Mazraat El-Mathane	M	M	VL	Mazraat El-Rahbane	M	M	VL
Mazraat Khallet Khaz	ML	M	VL	Mazraat Louzid (Loua	ML	M	VL	Mazraat Qrouh	ML	M	VL
Mazraat Tamra	M	ML	VL	Mazraat Zighrine Jez	M	M	VL	Mazraat	M	M	VL
Mharbiyeh	M	M	VL	Midane Jezzine	M	M	VL	Mjeydel Jezzine	M	M	VL
Mlikh	M	M	VL	Mrah El-Hbasse	M	ML	VL	Ouadi Baanquodaine	M	M	VL
Ouadi El-Laymoun	M	ML	VL	Ouardiyeh	ML	M	VL	Qabaa Jezzine	M	M	VL
Qatrani	ML	M	VL	Qaytoupleh	M	M	VL	Qtaleh Jezzine	M	M	VL
Rihane Jezzine	M	M	VL	Rimat	M	M	VL	Roum	M	M	VL
Roummanet	M	M	VL	Sabbah	ML	M	VL	Saydoun	M	M	VL
Sfaray	M	M	VL	Snaya	M	M	VL	Sojoud	M	M	VL
Srayri	ML	M	VL	Taaid	M	M	VL	Wadi Jezzine	ML	M	VL
Zhalta	M	M	VL								

## Bekaa

### West Bekaa

Municipality	15-Feb	16-Feb	17-Feb	Municipality	15-Feb	16-Feb	17-Feb	Municipality	15-Feb	16-Feb	17-Feb
Aammiq BG	M	M	VL	Ain El Tineh BG	ML	M	VL	Ain Zebdeh	ML	M	VL
Ana	M	M	VL	Aytanit	ML	M	VL	Baaloul BG	ML	M	VL
Bab Mareh	ML	M	VL	Chouberqiye Aammiq	M	M	VL	Dakoue	M	M	VL
Deir Ain El-Jaouze	ML	M	VL	Deir Tahniche	M	M	VL	Ghaza	M	M	VL
Harime El-Soughra	M	M	VL	Hoch Harimeh	M	M	VL	Jazira BG	M	M	VL
Jib Jennine	M	M	VL	Kamed-El-Laouz	M	M	VL	Kefraya BG	M	M	VL
Khiara El Atika	M	M	VL	Khiara	M	M	VL	Khirbet Qanafar	M	M	VL
Lala	M	M	VL	Lebbaya BG	ML	M	VL	Loussa	ML	M	VL
Machghara	ML	M	VL	Manara (Hammara) BG	M	M	VL	Mansoura BG	M	M	VL
Marej BG	M	M	L	Maydoun	ML	M	VL	Ouaqf BG	M	M	VL
Qaraaoun	ML	M	VL	Qelya	ML	M	VL	Raouda (Istabel)	M	M	L
Saghbine	ML	M	VL	Sohmor	ML	M	VL	Soltan Yacoub el Ara	M	M	VL
Souairy	M	M	VL	Sultan Yaacoub	M	M	VL	Tal Znoun	M	M	VL
Yehmor BG	ML	M	VL	Zilaya	ML	M	VL				

### Zahle

Municipality	15-Feb	16-Feb	17-Feb	Municipality	15-Feb	16-Feb	17-Feb	Municipality	15-Feb	16-Feb	17-Feb
Aanjar (Haouch Mouss	M	M	VL	Ablah	ML	M	L	Ain Kfarzabad	ML	M	L
Ali-El-Nahri	ML	M	L	Bar Elias	M	M	L	Bouarej	ML	M	L
Cheberqiyet Tabet	M	M	L	Chtaura	ML	M	L	Deir El Ghazal	ML	M	L
Delhamiyet Zahle	ML	M	L	Ferzol	ML	M	L	Haouch El-Ghanam	ML	M	L
Haouch Es-Siyadeh	M	M	L	Haouch Hala	ML	M	L	Haouch Mandara	M	M	L



Haouch Qayssar	M	M	L	Hezerta	ML	M	L	Hosh Moussa	ML	M	L
Jdita	ML	M	L	Kfarzabad	M	M	L	Ksara	ML	M	L
Majdel Aanjar	M	M	VL	Makssi	ML	M	L	Massa	ML	M	L
Mazraat Er-Remtaniye	ML	M	L	Mrayjat Zahle	M	M	L	Mzaraa Zahle	ML	M	L
Nabi Ayla	ML	M	L	Nasriyet Rizk	ML	M	L	Nasriyet Zahle	M	M	L
Niha Zahle	ML	M	L	Ouadi Ed-Deloum	ML	M	L	Ouadi El-Arayech	ML	M	L
Qaa El Rim	ML	M	L	Qab Elias	M	M	L	Qousaya	ML	M	L
Rhit	ML	M	L	Riyak	ML	M	L	Saadnayel	ML	M	L
Taal El-Akhdar	M	M	VL	Taalbeya	ML	M	L	Taanayel	ML	M	L
Talamara	ML	M	L	Tcheflik Edde Haouch	M	M	L	Tcheflik Qiqano	M	M	L
Terbol Zahle	ML	M	L	Touaite Zahle	ML	M	L	Zahle Aradi	ML	M	L
Zahle El-Berbara	ML	M	L	Zahle El-Maallaqa	ML	M	L	Zahle El-Midane	ML	M	L
Zahle Er-Rassiye	ML	M	L	Zahle Haouch El-Ouma	ML	M	L	Zahle Haouch El-Ouma	ML	M	L
Zahle Haouch Ez-Zara	ML	M	L	Zahle Maalaga Aradi	ML	M	L	Zahle Mar Antonios	ML	M	L
Zahle Mar Elias	ML	M	L	Zahle Mar Gerios	ML	M	L	Zahle Saydet En-Naja	ML	M	L
Zebdoul	ML	M	L								

## Rachaiya

Municipality	15-Feb	16-Feb	17-Feb	Municipality	15-Feb	16-Feb	17-Feb	Municipality	15-Feb	16-Feb	17-Feb
Ain Arab Rachaiya	M	M	VL	Ain Ata	ML	M	VL	Ain Harche	ML	M	VL
Aqabe Rachaya	M	M	VL	Ayha	M	M	VL	Ayta El Fokhar	M	M	VL
Bakifa Rachaya	M	M	VL	Bakka	M	M	VL	Beit Lahya	ML	M	VL
Bireh Rachaiya	M	M	VL	Daher El Ahmar	M	M	VL	Deir El-Achayer	M	M	VL
Heloua Rachaiya	M	M	VL	Hoch El Qannabeh Rac	ML	M	VL	Kaoukaba Bou Arab	ML	M	VL
Kfar Danis	M	M	VL	Kfar Mechki	ML	M	VL	Kfar Qouq	M	M	VL
Kherbet Rouha	M	M	VL	Majdel Balhiss	ML	M	VL	Mdoukha	M	M	VL
Mhaydseh Rachaiya	M	M	VL	Nabi Safa	ML	M	VL	Rachaiya	M	M	VL
Rafid Rachaiya	M	M	VL	Selsata (Mazraat Dei	M	M	VL	Tannoura	M	M	VL
Yanta	M	M	VL								

## Beyrouth

### Beyrouth

Municipality	15-Feb	16-Feb	17-Feb	Municipality	15-Feb	16-Feb	17-Feb	Municipality	15-Feb	16-Feb	17-Feb
Achrafieh	M	M	M	Ain el-Mreisse	M	M	M	Bachoura	M	M	M
Beirut Central Distr	M	M	M	Marfai	M	M	M	Mazraa	M	M	M
Medaouar	M	M	M	Minet el-Hosn	M	M	M	Mwssaitbeh	M	M	M
Ras Beirut	M	M	M	Rmeil	M	M	M	Saifi	M	M	M
Zqaq el-Blat	M	M	M								