

# Lebanon Fire Risk Bulletin



CIVIL DEDEFENCE

**Refer to cadast table condition.**

**Please note that the indicated temperature is at 2 meters height from the ground.**

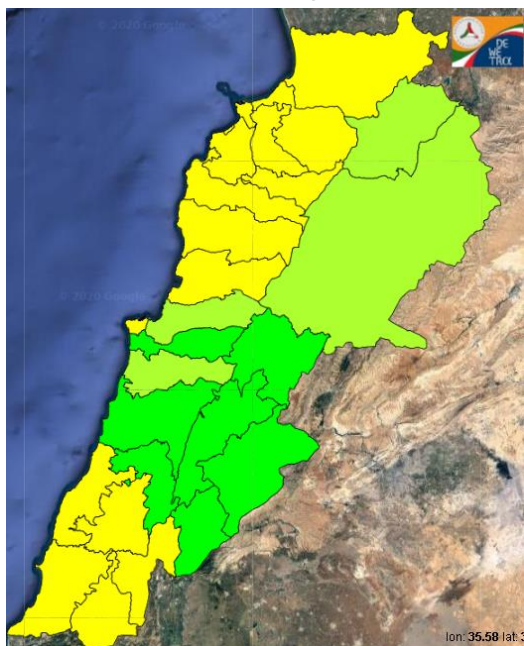
General description of potential fire risk situation

Symbol	Level of risk	Meaning and actions
VL	Very low	Very low fire risk. Controlled burning operations can be hardly executed due to high fuel moisture content. Normally wildfires self-extinguish.
L	Low	Low fire risk. Controlled burning operations can be executed with a reasonable degree of safety.
ML	Medium low	Medium-low fire risk. Controlled burning operations can be executed in safety conditions. All the fires need to be extinguished.
M	Medium	Medium fire risk. Controlled burning operations would be avoided. All the fires need to be very well extinguished.
M	Medium high	Controlled burning is not recommended. Open flame will start fires. Cured grasslands and forest litter will burn readily. Spread is moderate in forests and fast in exposed areas. Patrolling and monitoring is suggested. Fight fires with direct attack and all available resources.
H	High	Ignition can occur easily with fast spread in grass, shrubs and forests. Fires will be very hot with crowning and short to medium spotting. Direct attack on the head may not be possible requiring indirect methods on flanks. Patrolling and monitoring the territory is highly suggested.
E	Extreme	Ignition can occur also from sparks. Fires will be extremely hot with fast rate of spread. Control may not be possible during day due to long range spotting and crowning. Suppression forces should limit efforts to limiting lateral spread. Damage potential total. Patrolling and monitoring the territory is highly suggested.

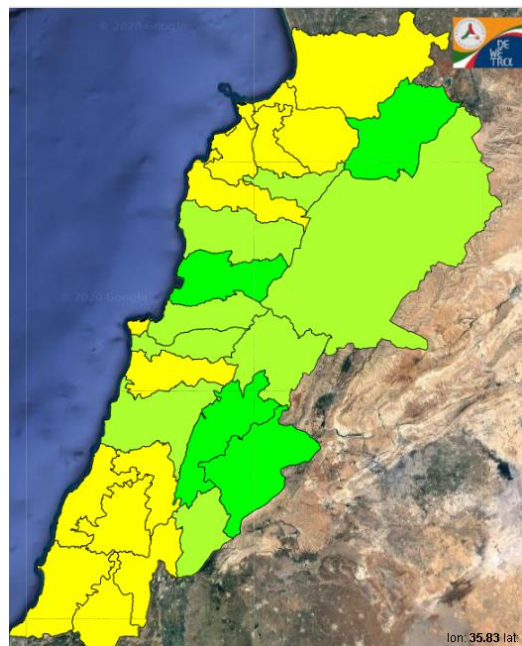
Beirut, 15 February 2020

# FIRE RISK INDEX

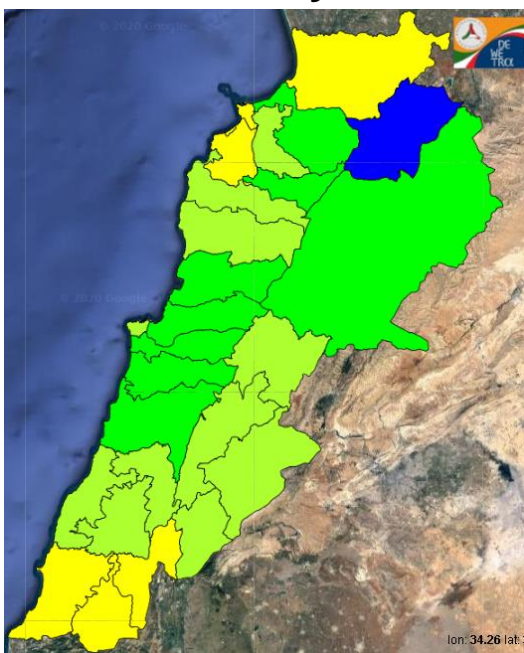
## 14 February 2020



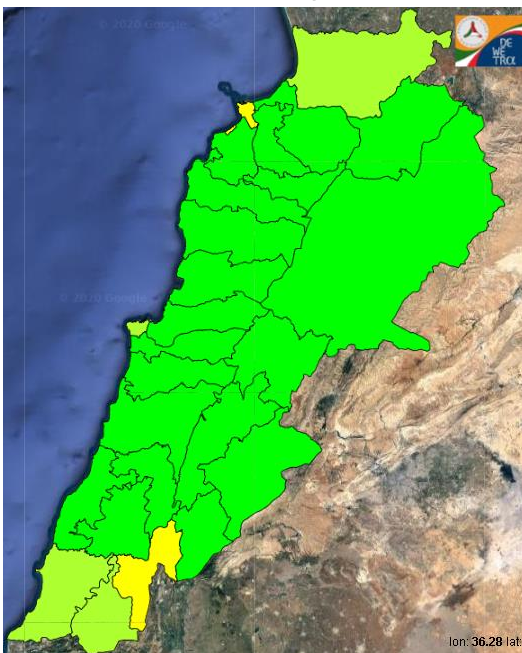
## 15 February 2020



## 16 February 2020



## 17 February 2020

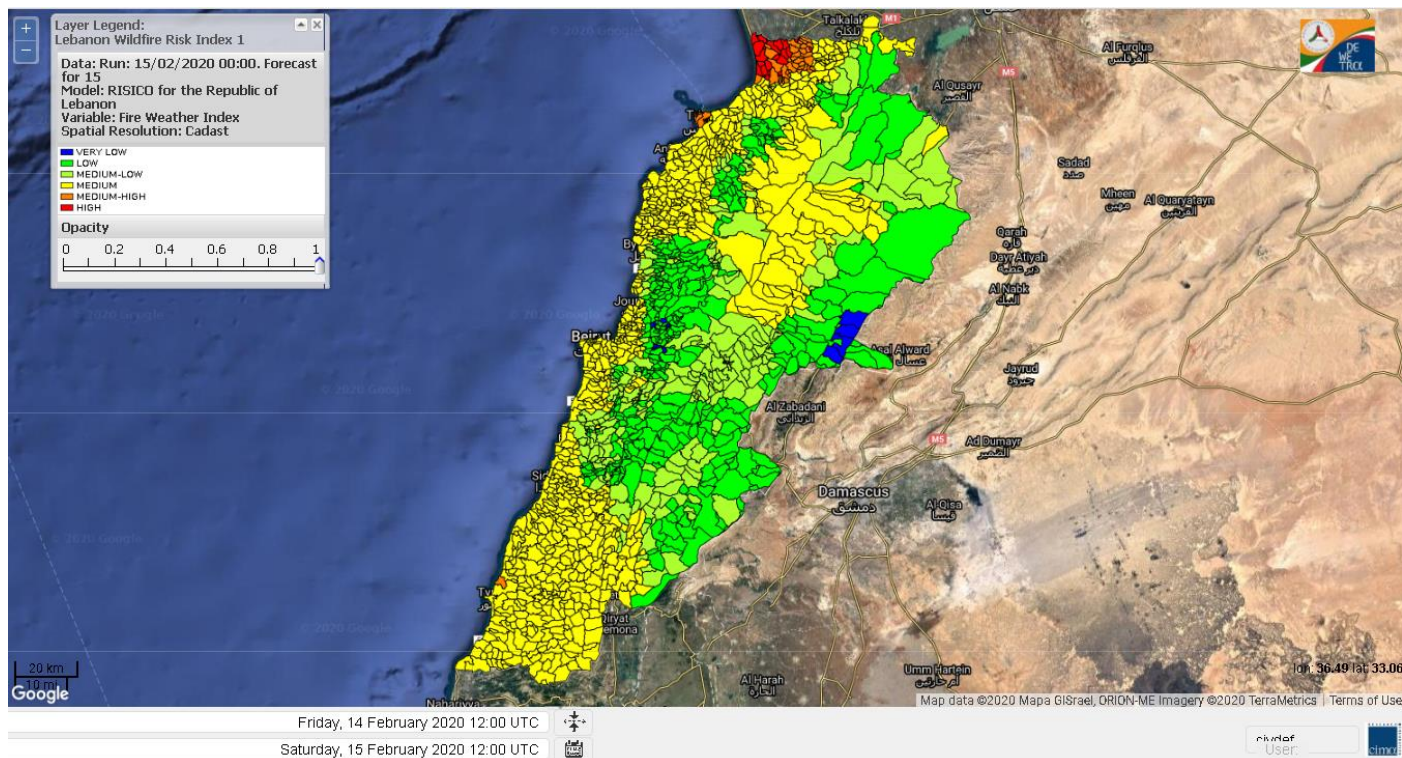


Layer Legend: Lebanon Wildfire Risk Index 1

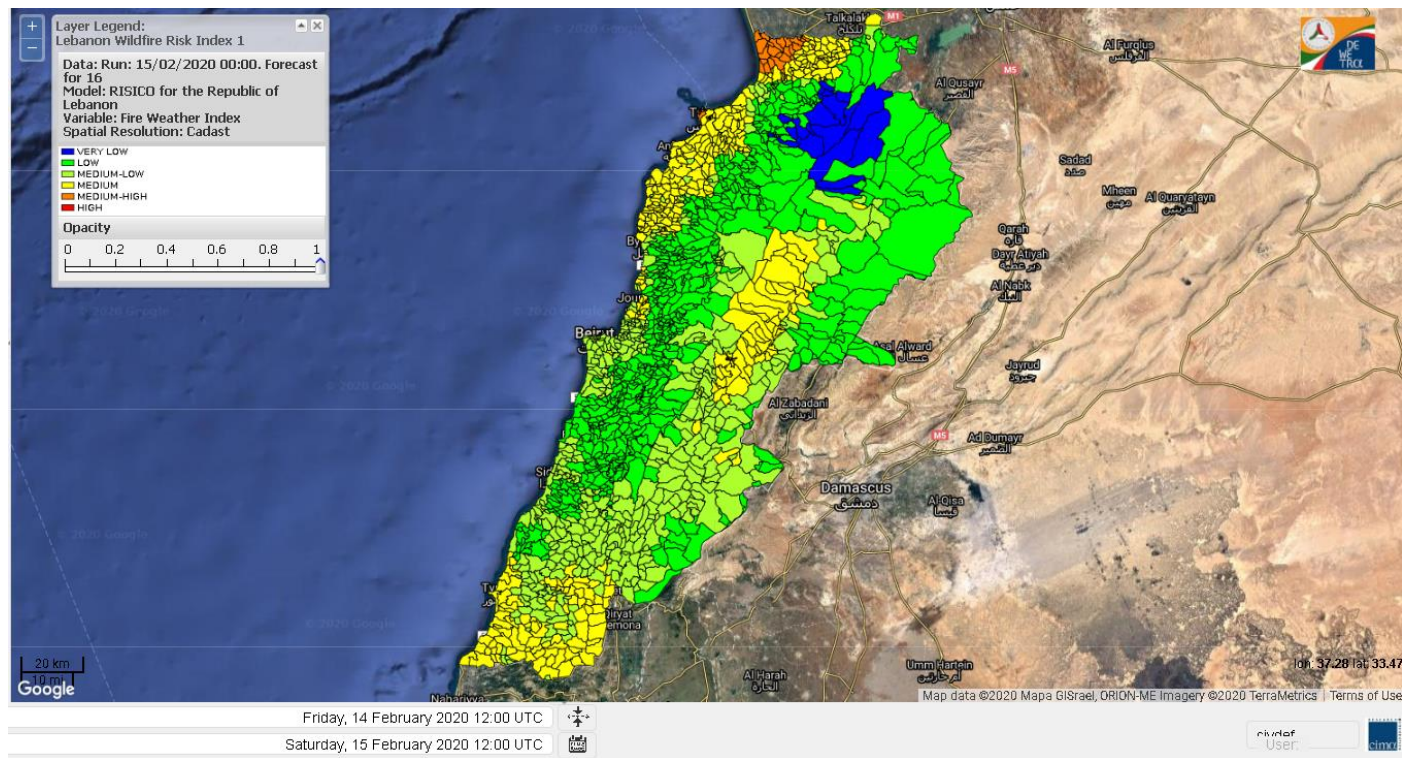
Data: Run: 15/02/2020 00:00. Forecast for 15  
Model: RISICO for the Republic of Lebanon  
Variable: Fire Weather Index  
Spatial Resolution: Caza

- VERY LOW
- LOW
- MEDIUM-LOW
- MEDIUM
- MEDIUM-HIGH
- HIGH
- EXTREME

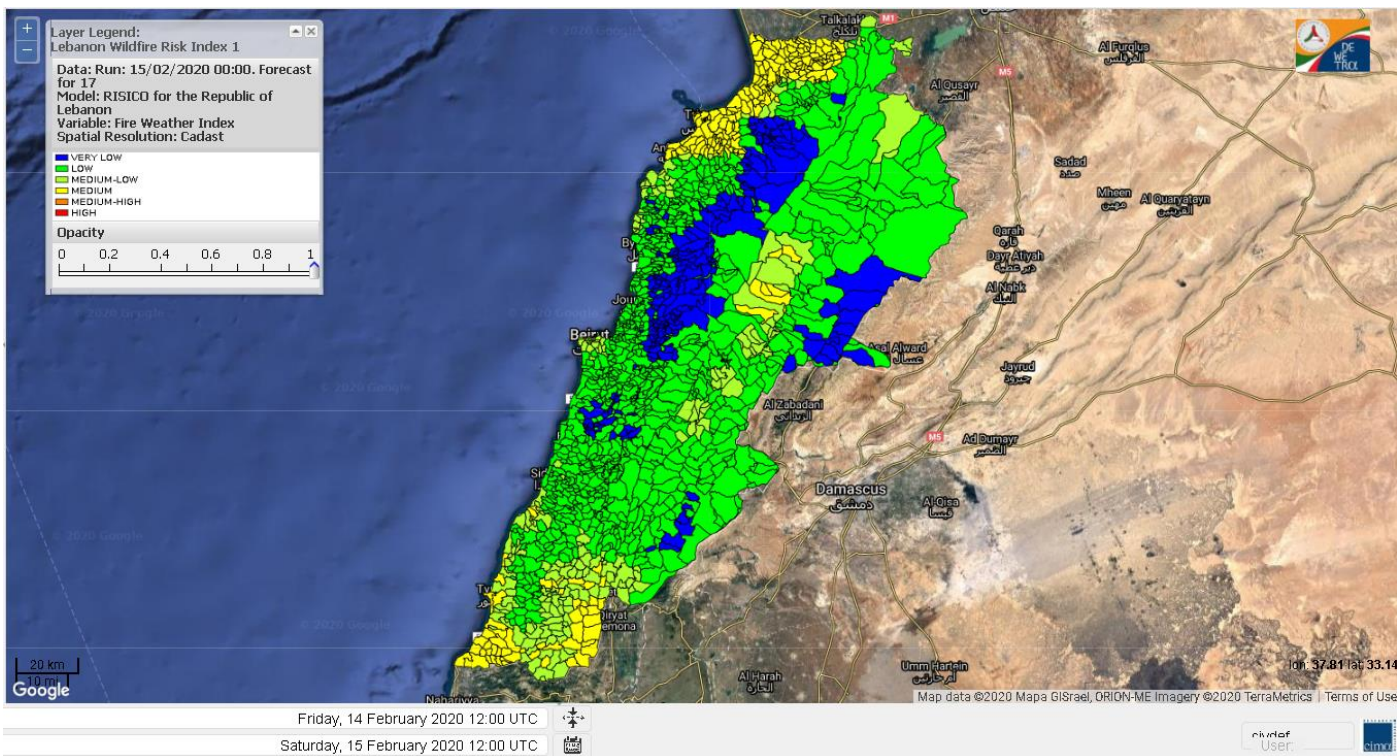
# Lebanon for 15 February 2020



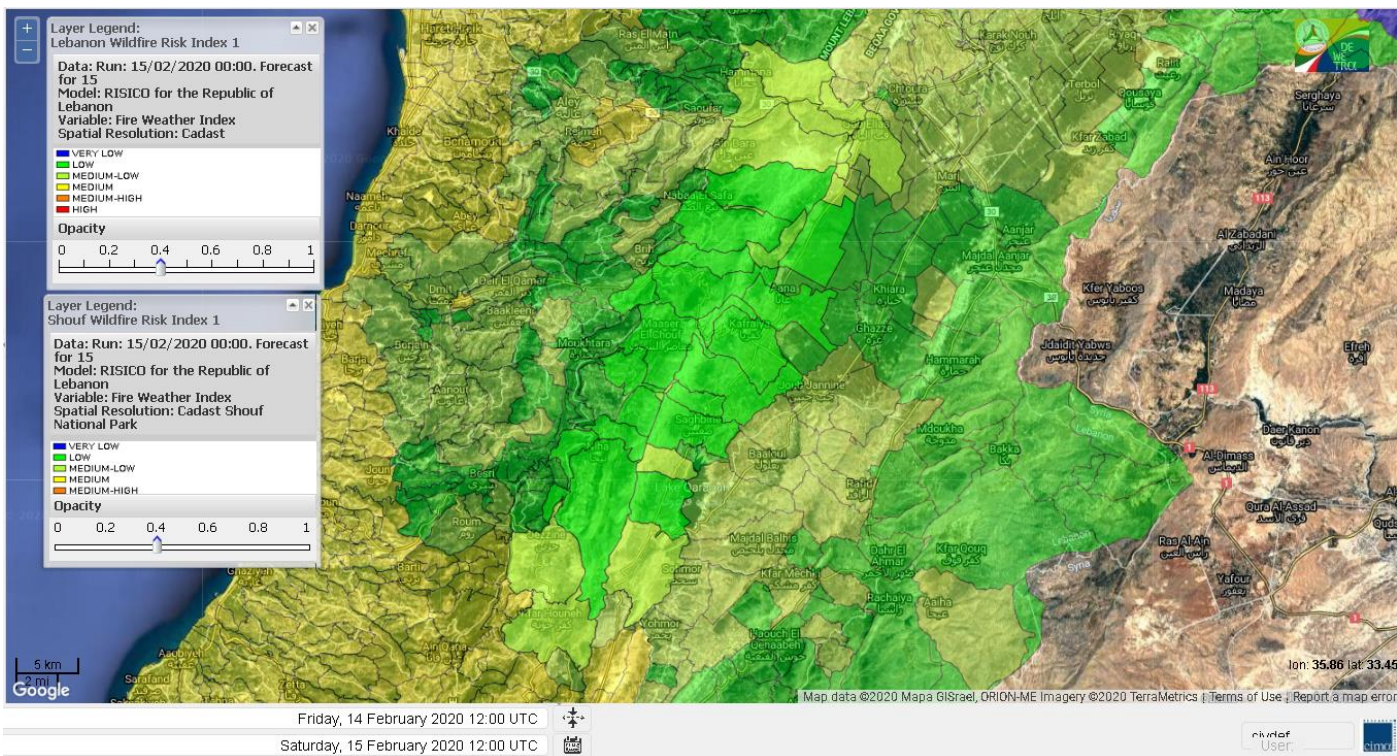
# Lebanon for 16 February 2020



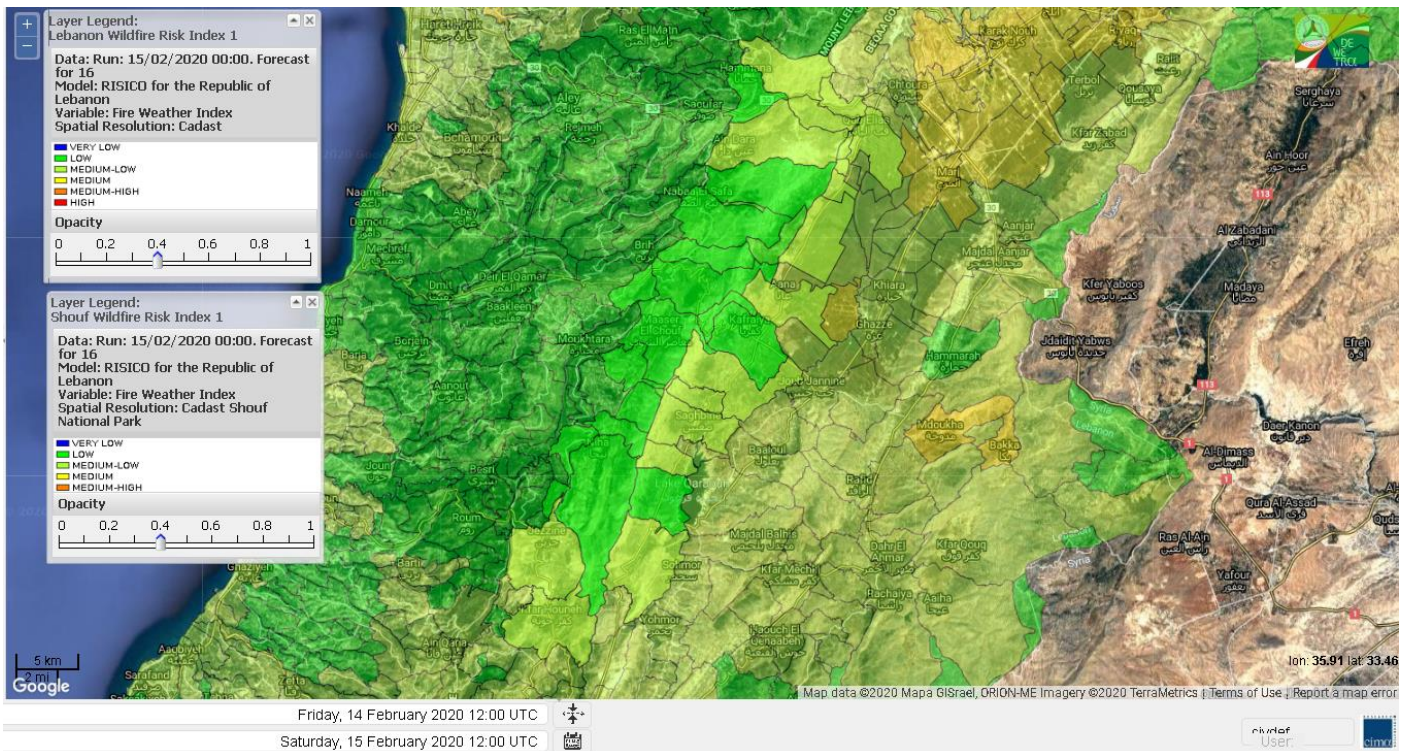
# Lebanon for 17 February 2020



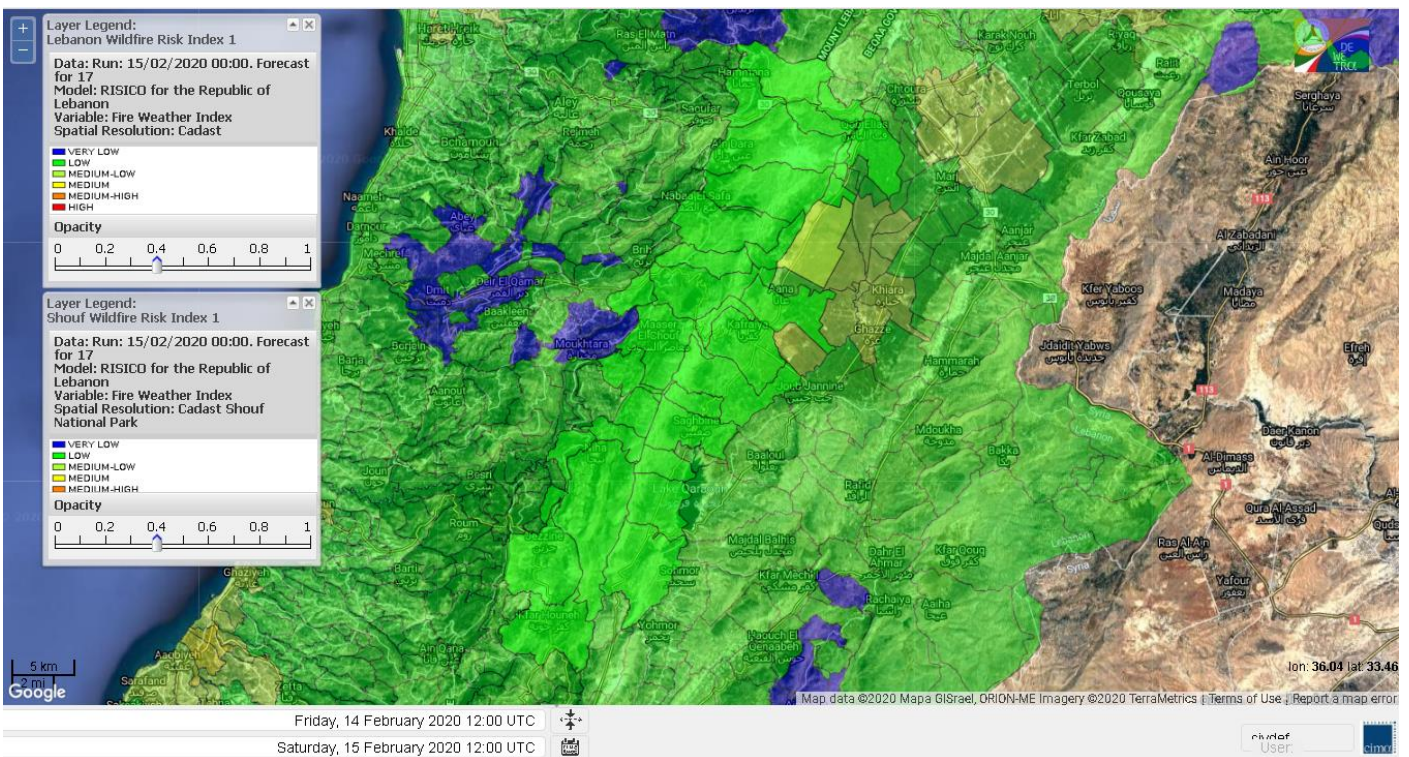
# Shouf Biosphere Reserve Forecast for 15 February 2020



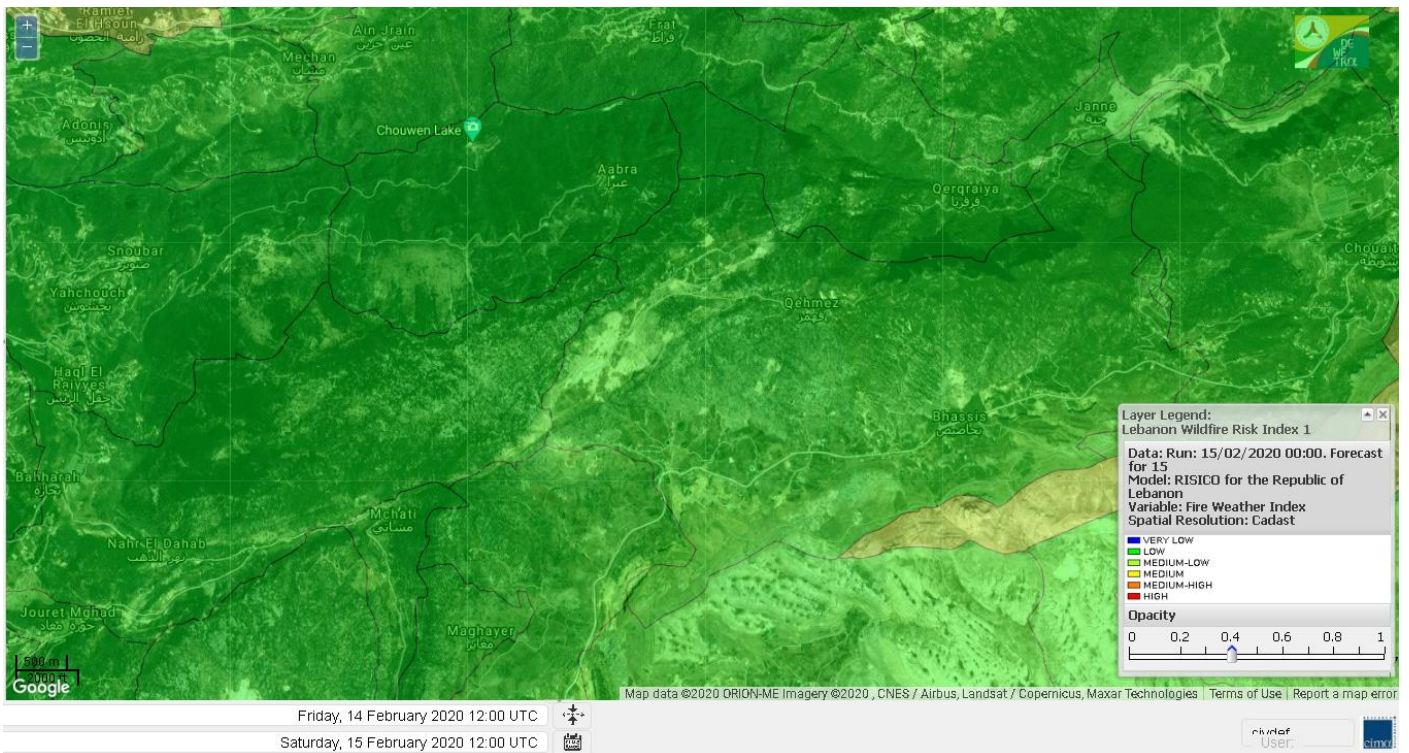
# Shouf Biosphere Reserve Forecast for 16 February 2020



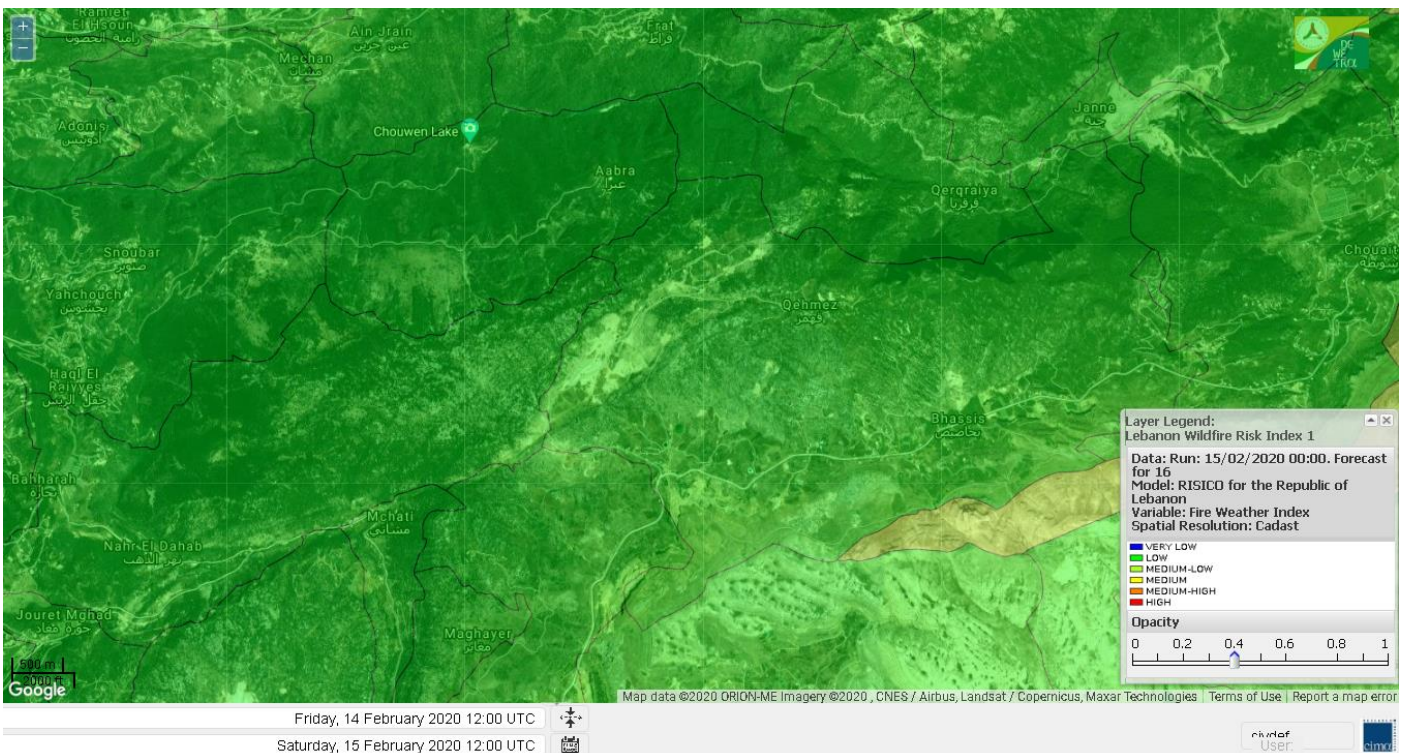
# Shouf Biosphere Reserve Forecast for 17 February 2020



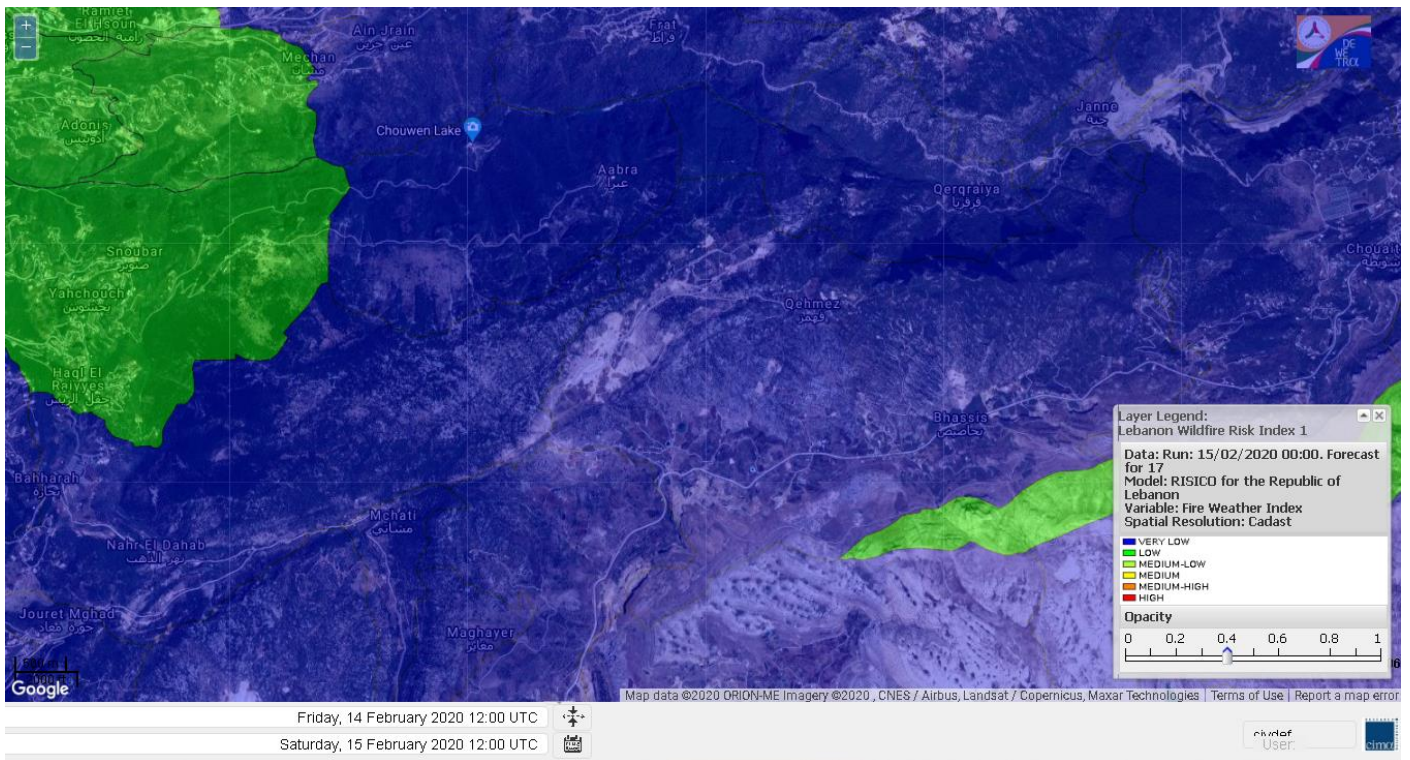
# Jabal Moussa Reserve Forecast for 15 February 2020



# Jabal Moussa Reserve Forecast for 16 February 2020



# Jabal Moussa Reserve Forecast for 17 February 2020

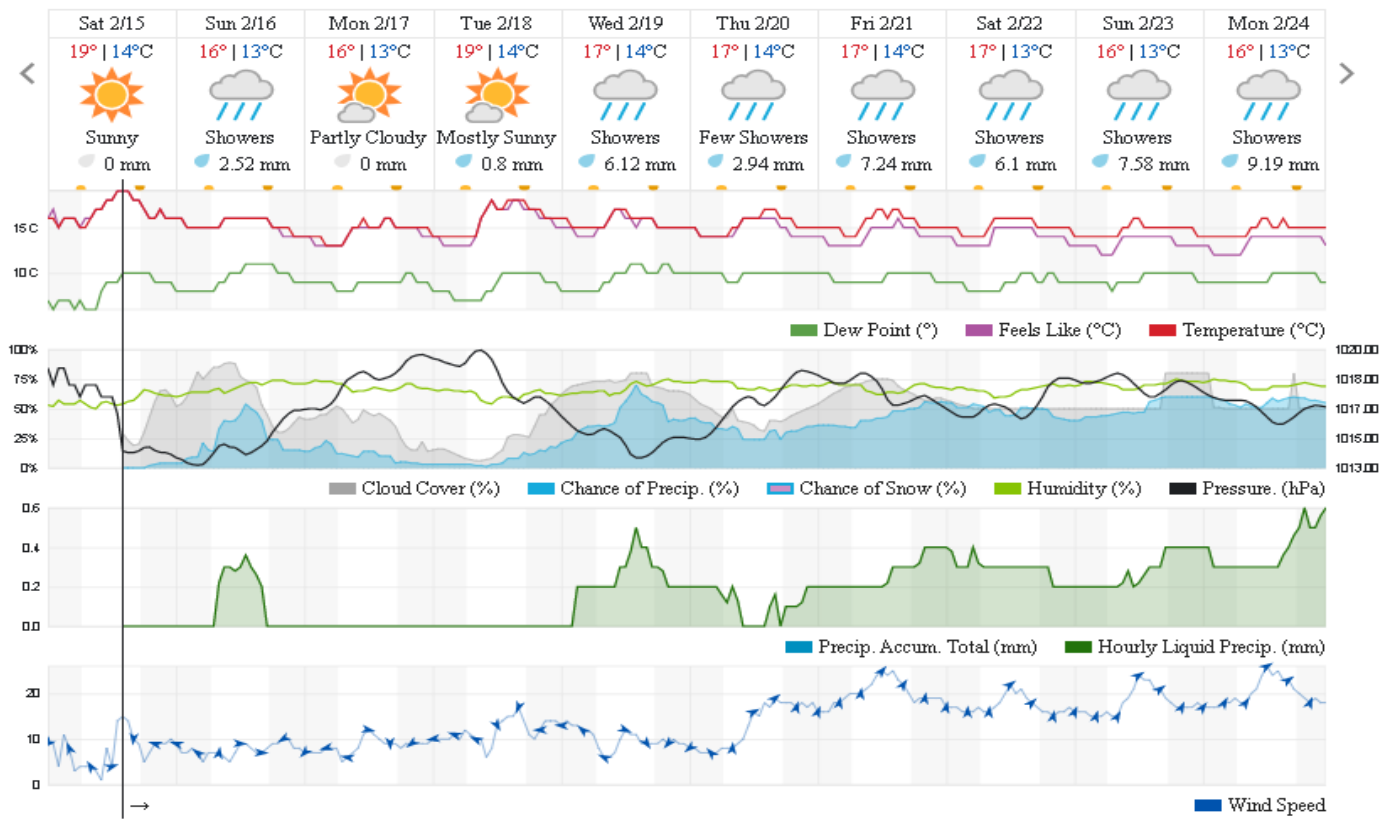


## Beirut, Beirut Governorate, Lebanon 10-Day Weather Forecast

19° ACHRAFIEH,RIZK STATION | CHANGE

TODAY    HOURLY    **10-DAY**    CALENDAR    HISTORY    WUNDERMAP

Customize



## Nord

### Koura

Municipality	15-Feb	16-Feb	17-Feb	Municipality	15-Feb	16-Feb	17-Feb	Municipality	15-Feb	16-Feb	17-Feb
Aaba	M	M	L	Afsaddiq	M	ML	L	Ain Ekriane	M	ML	L
Amioun	M	M	L	Anfeh	M	M	M	Badbhoun	M	M	L
Barghoun	M	M	L	Barsa	M	M	M	Batroumine	M	M	M
Bdebba	M	M	M	Bechmizzine	M	M	L	Bednaye El-Koura	M	M	ML
Bhabbouch El-Koura	M	M	L	Bkeftine	M	M	M	Bnehran	M	ML	L
Bqaiia El-Koura	M	M	M	Bsarma	M	M	L	Btaaboura	M	M	L
Bttram	M	M	L	Btouratij	M	M	M	Bziza	M	M	L
Dar Beehtar	M	M	L	Dar Chmezzine	M	ML	L	Deddeh	M	M	M
Deir El-Balamand	M	M	M	Fih	M	M	ML	Hraiche	M	M	M
Ijdaabrine	M	M	ML	Kaftoun	M	M	L	Kefraya El-Koura	M	M	ML
Kfarakka	M	M	L	Kfarhata	M	M	ML	Kfarhazir	M	M	L
Kfarkahel	M	M	M	Kfarsaroun	M	M	L	Kosba	M	M	L
Mejdel el-Koura	M	M	L	Nakhle	M	M	M	Qalhat	M	M	M
Ras Masqa	M	M	M	Rechdibbine	M	ML	L	Zakroun	M	M	M
Zgharta El-Mtaouile	M	M	L								

### Bcharre

Municipality	15-Feb	16-Feb	17-Feb	Municipality	15-Feb	16-Feb	17-Feb	Municipality	15-Feb	16-Feb	17-Feb
Aabdine	L	L	VL	Bane	M	L	VL	Barhelioun	L	L	L
Bazooune	M	L	VL	Becharre	M	L	VL	Beit Menzer	L	L	VL
Billa	L	L	VL	Blaouza	ML	L	VL	Bqaa Kafra	M	L	VL
Bqerqacha	M	L	VL	Breissat	L	L	VL	Dimane	L	L	VL
Hadath El Jobbeh	L	L	VL	Hadchit	ML	L	VL	Hasroun	M	L	VL
Mazraat Aassaf	L	L	L	Mazraat Bani Saab	L	L	VL	Mchaa El-Jobbeh	M	L	VL
Metrit	M	M	L	Moghr El-Ahoual	L	L	VL	Ouadi Qannoubine	L	L	VL
Qanat	L	L	VL	Qnayer	L	L	VL	Tourza	L	L	VL

### Batroun

Municipality	15-Feb	16-Feb	17-Feb	Municipality	15-Feb	16-Feb	17-Feb	Municipality	15-Feb	16-Feb	17-Feb
Aabrine	M	M	ML	Aalali	M	L	VL	Aartiz	M	M	VL
Abdelli	M	M	VL	Ajdabra	M	M	L	Assia	M	L	VL
Basbina	M	ML	L	Batroun	M	M	ML	Bcheleh	M	L	VL
Bechtoudar	M	L	VL	Beit Chlala	M	L	VL	Beit Kassab	M	M	L
Bijdarfil	M	M	L	Bqesmaya	M	M	L	Chatine	L	L	VL
Chebtin	M	M	VL	Chekka	M	M	ML	Daael	M	L	L
Dahr Abi Yaghi	M	M	VL	Daraya El-Batroun	M	M	VL	Deir Billa	M	M	L
Deir Kfifane	M	M	VL	Deir Mar Youhanna EL	M	L	VL	Deir Mar Youssef Jra	M	M	VL
Douma	M	L	VL	Douq	M	M	VL	Eddeh El-Batroun	M	M	VL
Ftihat El-Batroun	M	ML	VL	Ghouma	M	M	VL	Hadtoun	M	L	VL
Hamat	M	M	ML	Harbouna	M	M	VL	Hardine	M	L	L
Helta	M	L	L	Hery	M	M	ML	Jebbla	M	ML	L
Jrabta El-Batroun	M	M	VL	Jrane El-Batroun	M	M	VL	Kfar Aabida	M	M	L
Kfar Halda	M	L	VL	Kfarb Shlaimane	M	L	VL	Kfarhatna	M	M	VL
Kfarhay	M	M	ML	Kfarhelos	M	M	L	Kfifane	M	M	VL



Kfour El Arabi	ML	L	VL	Koubba	M	M	ML	Kour	M	M	L
Mar Mama	M	M	VL	Masrah	M	M	VL	Mehmarch	M	ML	VL
Mrah Chdid	M	M	VL	Mrah El Ziyat	M	M	VL	Mrah El-Hajj	M	L	VL
Nahle El-Batroun	M	L	VL	Niha El-Batroun	ML	L	VL	Ouahj El-Hajjar	M	M	ML
Ouata Houb	L	L	VL	Qatnaaoun	M	M	ML	Racha	M	L	VL
Rachana	M	M	L	Rachkida	M	M	ML	Ram El-Batroun	M	L	VL
Ras Nahhach	M	M	L	Selaata	M	M	ML	Sghar	M	M	VL
Smar Jbayl	M	M	L	Sourat El-Batroun	M	ML	L	Tannourine El-Faouqa	ML	L	VL
Tannourine Et-Tahta	ML	L	VL	Thoum	M	M	ML	Toula El-Batroun	M	M	VL
Zan	M	M	VL								

## Zgharta

Municipality	15-Feb	16-Feb	17-Feb	Municipality	15-Feb	16-Feb	17-Feb	Municipality	15-Feb	16-Feb	17-Feb
Aachach	M	M	M	Aalma	M	M	M	Aarde	M	M	M
Aintourine	ML	L	VL	Arabet Qozhaya	L	L	VL	Arde	M	M	M
Arjis	ML	L	L	Asnoun	M	M	M	Ayto	L	L	VL
Basloukit	M	L	VL	Bchannine	M	M	ML	Besebeel	M	M	M
Bhairret Toula	M	L	VL	Bnachee	ML	L	L	Boussit	M	M	M
Danha	M	M	M	Daraiya Zgharta	M	L	L	Deir Jdeide	M	M	M
Ehden	M	L	VL	Halan	ML	M	L	Hariq Zgharta	M	M	M
Houakir	M	M	M	Hraiqis	M	M	M	laal	M	M	M
Ijbaa	L	L	VL	Karm Saddeh	L	L	VL	Kfarchakhna	M	M	M
Kfardlaqous	M	M	M	Kfarfou	ML	L	VL	Kfarhata Zgharta	M	M	M
Kfarhoura	M	M	M	Kfarsghab	M	L	VL	Kfaryachit	M	M	M
Kfarzaina	M	M	M	Khaldiye	M	M	M	Mazraat Ajbeaa	M	M	M
Mazraat Et-Teffah	L	L	VL	Mazraat Jneid	M	M	M	Mejdlaiya Zgharta	M	M	M
Merh Kfarsghab	ML	ML	L	Miryata	M	M	M	Miziara	L	L	L
Mzraat Kefraya	ML	ML	ML	Qorah Bach	M	M	M	Rachiine	M	M	M
Ras Kifa	ML	L	L	Sakhra	M	M	M	Sebhel Zgharta	ML	L	VL
Serhel	L	L	VL	Tallet Zgharta	M	M	M	Toula Zgharta	ML	L	VL
Zgharta	M	M	M								

## Minieh-Denniye

Municipality	15-Feb	16-Feb	17-Feb	Municipality	15-Feb	16-Feb	17-Feb	Municipality	15-Feb	16-Feb	17-Feb
Aasaymout	M	L	L	Aaymar	L	L	VL	Aazki	L	L	VL
Ain El-Tineh-Miniyeh	L	L	VL	Assoun	L	L	VL	Bakhaaoun	L	L	VL
Bchennata	M	L	VL	Bechehhara	M	M	M	Beddawi	M	M	M
Behouaita	ML	L	VL	Beit El Foqss	L	L	VL	Beit Haouik	M	VL	VL
Beit Zoud	L	L	VL	Bekaasafrine	M	L	VL	Borj El Yahoudiyeh	M	M	M
Bqarsouna	L	L	VL	Btermaz	L	L	VL	Debaael	ML	VL	VL
Deir Ammar	M	M	M	Deir Nbouh	M	M	M	Haouaret-Miniyeh	M	L	VL
Haql el Azimeh	L	L	VL	Harf El Siyad	L	L	VL	Hazmiye-Miniyeh	L	L	VL
Izal	L	L	L	Jarjour	M	M	M	Jayroun	M	VL	VL
Kahf El-Malloul	ML	ML	ML	Karm El-Moher	L	L	VL	Kfar Binine	M	VL	VL
Kfarchalane	L	L	VL	Kfarhabou	ML	ML	L	Kharroub-Miniyeh	L	L	VL
Mazraat El-Kreme	ML	ML	ML	Mazraat Ketrane	L	L	VL	Merkebta	M	ML	M
Minyeh	M	M	M	Mrah El Sfirat	L	L	VL	Mrah Sraj	L	L	VL
Mrebbine	M	VL	VL	Nabi Youcheaa	M	M	M	Nemrine	M	VL	VL

Qarhaiya	M	L	L	Qarne	M	L	L	Qarsita	M	L	VL
Qattineh-Miniyeh	L	VL	VL	Qemmamine	M	VL	VL	Qraine	L	L	VL
Raouda-Aadoua	M	L	M	Rihaniyet-Miniyeh	M	ML	M	Sfireh	L	L	VL
Sir Ed-Danniyeh	L	L	VL	Tarane	L	L	VL	Terbol-Miniyeh	M	M	M
Zaghartaghriane	M	M	M	Zouq Bhannine	M	M	M				

## Nabatiye

### Nabatiye

Municipality	15-Feb	16-Feb	17-Feb	Municipality	15-Feb	16-Feb	17-Feb	Municipality	15-Feb	16-Feb	17-Feb
Aabba	M	ML	L	Aazzi	M	ML	L	Adchit El-Chqif	M	ML	ML
Ain Bou Swar	M	ML	L	Ain Kana	M	ML	L	Ali El-TaHER	M	ML	L
Ansar	M	L	L	Arab Salim	M	ML	L	Arnoun	M	M	M
Bfaroue	M	ML	L	Breyqaah	M	ML	ML	Chargiyeh	M	ML	L
Choukine	M	ML	ML	Deir El Zahrani	M	ML	L	Doueir El-Nabatiyeh	M	ML	L
Habbouch El-Nabatiye	M	ML	ML	Hamra El-Nabatiyeh	M	ML	ML	Harouf El-Nabatiyeh	M	ML	L
Hmaile	M	ML	L	Houmin El Faouqa	M	ML	L	Houmin El Tahta	M	L	L
Jarjough	M	ML	L	Jbaah El-Nabatiyeh	M	ML	L	Jebchit	M	ML	L
Kfar Djal El-Nabatiy	M	ML	ML	Kfar Remmane	M	ML	L	Kfar Sir	M	ML	ML
Kfar Tebnit	M	ML	ML	Kfarfila	M	ML	L	Kfour El-Nabatieh	M	ML	L
Mayfadoun	M	ML	ML	Mazraat Bsaffour	M	ML	L	Mazraat Chalbaal	M	ML	L
Mazraat Dmoul	M	ML	L	Mazraat El Khreibeh	M	L	L	Mazraat El-Bayad El-	M	ML	ML
Mazraat Kfarjaouz	M	ML	ML	Mazraat Qalaat Meiss	M	L	L	Nabatiyeh El-Fawka	M	ML	ML
Nabatiyeh Et-Tahta	M	ML	ML	Namiriyyeh	M	ML	L	Qaaqaaiyet El Jisr	M	M	ML
Qossaibeh El-Nabatiy	M	ML	ML	Roumine	M	L	L	Sarba El-Nabatieh	M	ML	L
Sir El-Gharbiyeh	M	ML	L	Toul	M	ML	L	Yehmor El-Nabatiyeh	M	ML	ML
Zaoutar El Charkiyeh	M	ML	ML	Zaoutar El-Gharbiyeh	M	ML	ML	Zebdine El-Nabatiyeh	M	ML	L
Zefta	M	ML	L								

### Hasbaiya

Municipality	15-Feb	16-Feb	17-Feb	Municipality	15-Feb	16-Feb	17-Feb	Municipality	15-Feb	16-Feb	17-Feb
Ain Jarfa	L	L	VL	Abou Qamha	M	ML	L	Ain Qania	L	L	VL
Bourghos	M	ML	L	Chebaa	ML	L	L	Chouaya Hasbaya	L	L	VL
Dellafeh	M	ML	L	Fardiss Hasbaiya	ML	ML	L	Hasbaya	ML	ML	L
Hbariyeh	L	L	L	Kaoukaba Hasbaiya	M	ML	L	Kfar Chouba	ML	ML	L
Kfar Hamam	ML	ML	L	Kfeir El-Zait	L	L	L	Khalwat Hasbaya	L	L	VL
Khreibet Hasbaiya	M	ML	ML	Majidiyeh Hasbaiya	M	ML	ML	Marj Ez-Zhour (Haouc	L	ML	L
Meri	M	ML	ML	Mimass	L	ML	L	Rachaiya El-Fokhar	M	ML	L
Salaiyeb	M	ML	ML								

### Marjayoun

Municipality	15-Feb	16-Feb	17-Feb	Municipality	15-Feb	16-Feb	17-Feb	Municipality	15-Feb	16-Feb	17-Feb
Aalmane Marjaayoun	M	M	M	Aamra	M	ML	ML	Adayseh Marjaayoun	M	M	M
Adchit El-Koussair	M	M	ML	Ain Arab Marjaayoun	M	ML	ML	Bani Haiyann	M	M	M
Blatt Marjaayoun	M	ML	L	Blida	M	M	M	Borj El-Moulouk	M	ML	ML
Boueyda Marjaayoun	M	ML	L	Deir Mimass	M	M	M	Deir Siriane	M	M	M
Dibbine	M	ML	L	Ebel El Saqi	M	ML	L	Houla	M	M	M
Houra	M	M	ML	Kfar Kila	M	M	ML	Khiam Marjaayoun	M	ML	ML

Klayaa	M	ML	ML	Majdel Selem	M	M	M	Marjaayoun	M	ML	ML
Markaba	M	M	M	Mays El-Jabal	M	M	M	Mazraat Doumiat	M	ML	ML
Mazraat Sarada	M	ML	ML	Mhaibib	M	M	M	Qabrikha	M	M	M
Qantara	M	M	ML	Rab El-Thalathine	M	M	M	Saouaneh Marjayoun	M	ML	ML
Talloussa	M	M	M	Taybeh Matjaayoun	M	ML	ML	Touline	M	M	ML

## Bent Jbail

Municipality	15-Feb	16-Feb	17-Feb	Municipality	15-Feb	16-Feb	17-Feb	Municipality	15-Feb	16-Feb	17-Feb
Ain-Ebel	M	M	ML	Aitaroun	M	M	M	Aynata Bint Jbeil	M	M	ML
Ayta El-Chaeb	M	M	ML	Ayta El-Jabal	M	ML	ML	Beit Lif	M	M	ML
Beit Yahoun	M	ML	ML	Bint Jbeil	M	M	ML	Borj Qalaway	M	ML	ML
Braachit	M	ML	ML	Chakra	M	M	M	Debel	M	M	ML
Deir Antar	M	ML	ML	Froun	M	M	ML	Ghandouriyeh Bint Jb	M	M	ML
Hanine	M	M	M	Hariss	M	ML	ML	Hdatha	M	M	ML
Jmeymeh	M	ML	ML	Kafra Bint Jbeil	M	M	ML	Kfar Dounine	M	ML	ML
Khirbet Selm	M	M	ML	Kounine	M	M	M	Maroun El Ras	M	M	M
Qalaway	M	ML	ML	Qaouzah	M	M	M	Qatmoun	M	ML	ML
Ramya Bint Jbeil	M	M	ML	Rchaf	M	M	M	Rmeich	M	M	ML
Safad Al Battikh	M	ML	ML	Salhaneh	M	M	M	Serbine	M	ML	ML
Sultanieh Bint Jbeil	M	ML	ML	Tibnine	M	M	ML	Tiri	M	M	M
Yaroun	M	M	ML	Yater	M	M	ML				

## Mont Liban

### Jbail

Municipality	15-Feb	16-Feb	17-Feb	Municipality	15-Feb	16-Feb	17-Feb	Municipality	15-Feb	16-Feb	17-Feb
Aabeydat	M	M	VL	Aalita	L	L	VL	Aamchit	M	M	L
Aarab El-Lahib	L	L	VL	Aarasta	L	ML	VL	Adonis Jbeil	L	L	VL
Afqa Jbeil	L	L	VL	Ain El Delbeh Jbeil	L	L	VL	Ain El-Ghouyba	L	L	VL
Ain Jrain	L	L	VL	Ain Kfah	M	M	VL	Almat El Chemaliyat	L	L	VL
Almat El-Jenoubiya	L	L	VL	Aqoura	M	ML	L	Bayzoun	ML	L	VL
Bchille Jbeil	L	L	VL	Bechtlida	L	L	VL	Behdaydat	M	ML	VL
Beit Habbaq	M	M	VL	Bejjeh	M	M	VL	Bekhaaz	M	M	ML
Berbara Jbeil	M	M	ML	Bintael	L	L	VL	Birket Hjoula	ML	L	VL
Blatt Jbeil	ML	L	L	Boulhos	L	L	VL	Breyj Jbeil	L	L	VL
Chamat	M	ML	VL	Chikhane	M	M	ML	Chmout	M	M	L
Eddeh Jbeil	M	ML	L	Ehmej	L	L	VL	Fatre	L	L	VL
Ferhet	ML	L	VL	Fghal	M	M	L	Frat	L	L	VL
Ghabat	ML	ML	VL	Ghalboun	M	M	VL	Gharzouz	M	M	L
Ghofrine	M	M	L	Habil	M	M	VL	Halate	ML	ML	L
Haqel	M	M	VL	Hbaline	M	ML	VL	Hboub	ML	L	L
Hdeine	ML	ML	VL	Hema Er-Rehban	M	L	VL	Hema Mar Maroun Aann	ML	L	VL
Hjoula	L	L	VL	Hosrayel	M	M	L	Hsarat	M	M	VL
Hsoun	ML	L	VL	Jaj	M	L	VL	Janne	L	L	VL
Jbeil	M	ML	L	Jeddeyel Jbeil	M	M	ML	Jlisse	L	L	VL
Jouret El-Qattine	L	L	VL	Kfar Baal Annaya	L	L	VL	Kfar Kidde	M	M	ML
Kfar Kouas	L	L	VL	Kfar Mashoun	M	ML	VL	Kfoun	M	M	VL

Kharbe Jbeil	M	M	VL	Laqlouq	ML	L	VL	Lassa	L	L	VL
Lehfed	M	L	VL	Maad	M	M	VL	Mar Sarkis	ML	L	VL
Mastita	M	ML	L	Mayfouq	M	ML	VL	Mazraat El Siyad	ML	L	VL
Mazraat El-Maaden	L	L	VL	Mechane	L	L	VL	Mechmech Jbeil	L	L	VL
Mehrin	ML	L	VL	Mejdel El-Akoura	ML	ML	VL	Mghayreh Jbeil	ML	ML	VL
Mounsef	M	M	ML	Nahr Ibrahim	M	M	L	Qahmez	L	L	VL
Qartaba	L	L	VL	Qartaboun	M	M	L	Qattara Jbeil	M	L	VL
Qorqraya	L	L	VL	Ramout	M	M	VL	Ras Osta	L	L	VL
Rihane Jbeil	M	M	ML	Sakiet El-Khayt	M	M	VL	Saqi Richmaya	M	L	VL
Sebrine	L	L	VL	Seraita	L	ML	VL	Souane Jbeil	L	L	VL
Tadmor	ML	ML	VL	Tartej	M	L	VL	Torzaiya	L	L	VL
Yanouh Jbeil	ML	ML	VL	Zibidine Jbeil	L	L	VL				

## El Metn

Municipality	15-Feb	16-Feb	17-Feb	Municipality	15-Feb	16-Feb	17-Feb	Municipality	15-Feb	16-Feb	17-Feb
Aain El-Qabu	L	L	VL	Aain El-Qach	L	L	VL	Aain El-Teffaha	L	L	VL
Aain el-Safssaf El-M	L	L	VL	Abou Mizane	L	L	VL	Ain Aar	M	ML	VL
Ain Alaq	M	ML	VL	Ain El-Kharroube	L	L	VL	Ain El-Sendiane	L	L	VL
Ain El-Zeitoune	L	L	VL	Ain Saadeh	M	ML	L	Aintoura El-Matn	ML	ML	VL
Amaret Chalhoub	M	ML	VL	Antelias	M	ML	L	Atchaneh	M	ML	L
Ayroun	L	L	VL	Baabdat	L	L	VL	Baouchariyeh	M	ML	L
Baskinta	L	L	VL	Beit Chabab	L	L	L	Beit El-Chaar	M	ML	L
Beit El-Kekko	M	ML	VL	Beit Mery	M	ML	L	Bhersaf	L	L	L
Bikfaya	L	L	VL	Biyakout	M	ML	VL	Bnabil	L	L	VL
Bourj Hammoud	M	ML	ML	Bqennaya	M	ML	L	Broummana El-Matn	M	ML	L
Bsalim	M	ML	L	Bsifrine	VL	L	VL	Bteghrine	L	L	VL
Chaouiye	M	ML	L	Chouaya El-Matn	L	L	VL	Choueir	L	L	VL
Chrine	VL	L	VL	Dahr El Sawan El-Mat	ML	L	L	Daychouniyeh	M	L	L
Dbayeh	M	ML	L	Deir Chamra	VL	L	VL	Deir Mar Abda el Mch	M	ML	L
Deir Mar Roukouz	M	ML	L	Deir Tamiche	M	ML	L	Dik El-Mehdi	M	ML	L
Dikwaneh	M	ML	ML	Douar El-Matn	L	L	VL	Fanar	M	ML	L
Fraike	M	ML	L	Haret El-Ballaneh	M	ML	L	Hbous	M	ML	VL
Himlaya	L	L	VL	Jal El Did	M	ML	L	Jdeideh El-Metn	M	ML	L
Jouar El-Matn	L	L	VL	Jouret El-Ballout	M	ML	VL	Kaaqour	L	L	VL
Kfar Aaqab	L	L	VL	Kfertay El-Matn	L	L	VL	Khenchara	L	L	VL
Khillet El-Mtain	L	L	VL	Konnabat Broummana	M	ML	L	Konnabat Salima	VL	L	VL
Machraah El-Matn	L	L	VL	Majdel Tarchich	ML	ML	VL	Majzoub	M	ML	L
Mansouriyeh El-Metn	M	ML	L	Mar Boutros Karm Et-	VL	L	VL	Mar Chaya et Mzekke	M	ML	L
Mar Moussa Ed-Douar	L	L	VL	Marjaba	L	L	VL	Masqa	M	ML	L
Mayasse	VL	L	VL	Mazraat Deir Aoukar	M	ML	L	Mazraat El-Hadirat	M	ML	L
Mazraat Yachouh	M	ML	L	Mchikha	L	L	VL	Menqlet Mezher	M	ML	L
Mhaydseh Matn	L	L	VL	Mkalles	M	M	ML	Mrouj	L	L	VL
Mtain	ML	ML	L	Mtayleb	M	ML	L	Nabay	M	ML	L
Naccache	M	ML	L	Ouadi Chahine	VL	L	VL	Ouadi El-Karm El-Mat	L	L	VL
Ouata El-Mrouj	L	L	VL	Ouyoun El-Matn	M	ML	L	Qornet Chehwan	M	ML	L
Qornet El-Hamra	M	ML	L	Roumieh	M	ML	L	Sfeilet Bikfaya	L	L	VL
Sinn El-Fil	M	ML	ML	Zabbougha	L	L	VL	Zalqa	M	ML	L

Zarouon	L	L	VL	Zekrite	M	ML	L	Zighrine El-Matn	L	L	VL
Zouk El-Khrab	M	ML	L								

## Chouf

Municipality	15-Feb	16-Feb	17-Feb	Municipality	15-Feb	16-Feb	17-Feb	Municipality	15-Feb	16-Feb	17-Feb
Aalmane El-Chouf	M	ML	ML	Aammq El-Chouf	L	L	VL	Ain Ouzein	L	L	VL
Ain Qani	L	L	L	Ain Zhalta	L	L	L	Ainbal	ML	L	L
Amatour	L	L	L	Anout	ML	L	L	Atrine	L	L	VL
Baadarane	L	L	L	Baaqline	ML	L	L	Baasir	M	L	L
Barja	M	ML	L	Barouk	L	L	L	Bater	L	L	L
Batloun	L	L	L	Bayqoun	ML	L	L	Bchetfine	ML	L	VL
Beiteddine	L	L	VL	Benouati Ech-Chouf	ML	L	VL	Berjein	ML	L	L
Bireh et Mtalleh	ML	L	L	Biret El-Chouf	ML	L	L	Bkechtine Ouel Mchei	L	L	VL
Bkifa El-Chouf	L	L	L	Botme	L	L	VL	Bqaiaa Ech-Chouf	ML	L	VL
Bsaba El-Chouf	ML	L	L	Chammis El-Chouf	M	L	L	Chehim	ML	L	L
Chemaarine	L	L	VL	Chourit	L	L	VL	Daher El-Chouf	M	L	L
Dalhoun	M	L	L	Damour	M	L	L	Daraya El-Chouf	ML	L	L
Deir El-Moukhalles	L	L	L	Deir Baba	ML	L	VL	Deir Dourit	ML	L	VL
Deir El-Qamar	ML	L	VL	Deir Kouche	L	L	VL	Dibbieh	ML	L	L
Dmit	ML	L	VL	Fouara Jaafar	L	L	VL	Fraidis El-Chouf	L	L	L
Ghabet Jaafar	ML	L	VL	Gharife	ML	L	L	Haret Jandal	L	L	L
Hasrout	ML	L	L	Jadra	M	ML	L	Jahlieh	ML	L	VL
Jbeih El-Chouf	L	L	L	Jdeidet El-Chouf	L	L	VL	Jiyeh	M	L	L
Jleilyeh	ML	L	L	Jmailiyeh	M	ML	L	Joun	M	L	L
Kahlounie El-Chouf	ML	L	L	Ketermaya	M	ML	L	Kfar Faqoud	ML	L	VL
Kfar Hamal	ML	L	VL	Kfar Him	M	L	VL	Kfar Katra	L	L	VL
Kfar Niss	ML	L	L	Kfar hay	ML	L	VL	Kfarnabrakh	L	L	VL
Khirbet Bisri	L	L	L	Knayse El-Chouf	L	L	VL	Maaniyeh	M	ML	L
Maasser Beiteddine	L	L	VL	Maasser El-Chouf	L	L	L	Majdalouna	M	ML	L
Majdel El-Meouch	L	L	VL	Mazboud	ML	L	L	Mazmoura	ML	L	L
Mazraat El Chouf	L	L	L	Mazraat El Daher	ML	L	L	Mazraat El-Douair	L	L	VL
Mechref	ML	L	L	Mghairie	M	ML	L	Mghayrie El-Chouf	ML	L	VL
Moukhtara	L	L	VL	Mrusti	L	L	L	Mtolle	ML	L	L
Naameh	M	L	L	Niha El-Chouf	L	L	L	Ouadi Abou Youssef	L	L	VL
Ouadi Ed-Deir	M	L	VL	Ouadi El-Sit	L	L	VL	Ouadi bnehlay	L	L	VL
Qraibeh	L	L	L	Qreiaa	L	L	L	Rmayle El-Chouf	M	ML	L
Semqaniyeh	ML	L	VL	Sibline	M	ML	L	Sirjbeil	ML	L	VL
Warhanieh	L	L	L	Werdaniyeh	M	ML	L	Zaarourieh	ML	L	L

## Baabda

Municipality	15-Feb	16-Feb	17-Feb	Municipality	15-Feb	16-Feb	17-Feb	Municipality	15-Feb	16-Feb	17-Feb
Abadiyeh	ML	L	L	Ain Mouaffaq	L	L	VL	Araiya	L	L	L
Arbaniyeh	L	L	VL	Arsoun	L	L	VL	Baabda	M	ML	L
Baalchmey	ML	L	L	Bmaryam	L	L	VL	Bourj El-Brajneh	M	ML	L
Boutchay	M	ML	L	Bsaba Baabda	M	ML	L	Btekhney	L	L	VL
Btibyat	L	L	VL	Bzbedine	L	L	VL	Chbeniyeh	L	L	VL
Chiyah	M	ML	L	Chmeisset Baabda	L	L	VL	Chouit	L	L	L
Deir El-harf	L	L	VL	Deir Khouna	L	L	L	Dlaybeh	VL	L	VL

Falougha	ML	ML	L	Furn El-Chebbak	M	ML	ML	Hadath Beyrouth	M	ML	L
Halaliyeh Baabda	L	L	VL	Hammana	ML	L	L	Haret El Sett	ML	L	VL
Haret Hamze	L	L	L	Haret Hreik	M	ML	ML	Hasbaiya El-Metn	VL	L	VL
Jouar El-Hoz	L	L	VL	Jouret Arsoun	L	L	VL	Kfar Chima	M	ML	L
Kfar Selouane	L	L	L	Khalouat Baabda	ML	L	VL	Kneisset Baabda	L	L	L
Laylakeh	M	ML	L	Louayzeh Baabda	ML	L	L	Merdache	M	ML	L
Mzairaa Baabda	L	L	L	Ouadi Chahrour El Ol	ML	L	L	Ouadi Chahrour El So	M	L	L
Qalaa Baabda	L	L	VL	Qhraybe Baabda	L	L	VL	Qobbayaa	L	L	VL
Qornayel	L	L	VL	Qortada	M	ML	VL	Qrayeh Baabda	L	L	VL
Qsaibeh Baabda	M	ML	L	Qtale Baabda	L	L	VL	Ras El Metn	ML	L	L
Ras El-Haref	L	L	VL	Rouayset El-Ballout	L	L	L	Salima Baabda	L	L	VL
Tahouitat El Ghadir	M	ML	L	Tarchich	L	L	VL	Zandouqa	M	ML	L

## Aley

Municipality	15-Feb	16-Feb	17-Feb	Municipality	15-Feb	16-Feb	17-Feb	Municipality	15-Feb	16-Feb	17-Feb
Abey	M	L	VL	Aghmid	L	L	VL	Ain Dara	ML	ML	L
Ain Drafil	M	L	L	Ain El Halazoun	ML	L	L	Ain El-Rmmaneh	L	L	L
Ain Jedideh	M	L	L	Ain Ksour	M	L	L	Ain Onoub	M	ML	L
Ain Traz	L	L	VL	Ainab	M	ML	L	Aley	ML	L	L
Aramoun	M	ML	L	Aytat	M	ML	L	Azouniyeh	ML	L	VL
Baawerta	M	L	L	Badghan Oua Wadi Bad	ML	L	L	Bassatine	M	ML	L
Bayssour	ML	L	L	Bchamoun	M	ML	L	Bdadoun	ML	L	L
Behouara	ML	L	L	Bennay	M	L	VL	Bhamdoun El-Dayaa	M	L	L
Bhamdoun El-Mhatta	M	L	L	Bkhechtey	ML	L	L	Bleibel	M	L	L
Bmakine	ML	L	L	Bmehray	L	L	L	Bouzrid	L	L	VL
Bserrine	ML	L	L	Bsous	L	L	L	Btalloun	M	L	L
Btater	ML	L	L	Chanay	ML	L	L	Charoun	ML	L	VL
Chartoun	L	L	VL	Chemlane	M	ML	L	Choueifat El-Aamrous	M	ML	L
Choueifat El-Oumara	M	ML	L	Choueifat El-Quoubbe	M	ML	L	Dakkoun	M	L	VL
Deir Qoubel	M	L	L	Dfoun	M	L	L	Douair El Remmaneh	L	L	VL
Ghaboun	ML	L	L	Habramoun	L	L	VL	Homs Oua Hama	ML	L	L
Houmal	M	ML	L	Jisr El Qadi	ML	L	VL	Kehaleh	L	L	L
Keyfoun	M	L	L	Kfar Aamey	ML	L	L	Kommatyeh	ML	L	L
Maasrati	ML	L	L	Majdel Baana	ML	L	L	Mansourieh et Ain El	M	L	L
Mazraat El-Nahr	ML	L	L	Mchakhte	L	L	VL	Mecherfeh	ML	L	L
Mejdaya	ML	L	VL	Mrayjat	ML	L	L	Ramliyah	L	L	L
Rechmaya	ML	L	L	Rejmeh	ML	L	L	Remhala	M	L	L
Rouaysset El Neemane	ML	L	L	Saoufar	ML	L	VL	Selfaya	L	L	VL
Sirhmoul	M	ML	L	Souq El Ghareb	ML	L	L	Taazanieh	M	L	L

## Kesrouane

Municipality	15-Feb	16-Feb	17-Feb	Municipality	15-Feb	16-Feb	17-Feb	Municipality	15-Feb	16-Feb	17-Feb
Achkout	L	L	VL	Adma Oua Dafneh	M	M	L	Ain Ed-Delbe Kesroua	L	L	VL
Ain El-Rihane	M	M	L	Aintoura Kesrouane	M	M	L	Ajaltoun	L	L	VL
Akaybeh Kesrouane	M	ML	L	Aramoun Kesrouane	L	L	VL	Azra ouel Ozor	L	L	VL
Ballouneh	L	L	L	Batha	ML	ML	L	Bekaatat Achkout	L	L	VL
Bekaatat Kanaan	L	L	VL	Bizhel	L	L	VL	Bouar	M	M	L
Bqaatouta	L	L	VL	Bqaq Ed-Dine	M	M	L	Bzommar	L	L	VL

Chahtoul	L	L	VL	Chnaniir	L	L	L	Chouan	L	L	VL
Daraya Kesrouane	L	L	VL	Darououn	M	M	L	Deir Baqlouch	M	M	L
Dlebta	L	L	VL	Eghbeh	L	L	VL	Faraya	L	L	VL
Fatka	ML	ML	L	Feytroun	L	L	VL	Ghazir	ML	L	L
Ghbaleh Kesrouane	L	L	VL	Ghedrass	L	L	VL	Ghosta	L	L	L
Ghynéh	L	L	VL	Harharaya w Kattine	L	L	VL	Harissa Kesrouane	M	M	L
Hayata	L	L	VL	Hosein	L	L	VL	Hrajel	L	L	VL
Jdeideh Ghazir	L	L	VL	Jeita	M	M	L	Jounieh Ghadir	M	M	L
Jounieh Haret Sakhr	M	M	L	Jounieh Salel Alma	M	M	L	Jounieh Sarba	M	ML	L
Jouret Bedrane	ML	L	VL	Jouret Mhad	L	L	VL	Jouret Termos	L	L	VL
Kfar Debiane	L	L	VL	Kfar Tay Kesrouane	L	L	VL	Kfar Yassine	M	ML	L
Kfour Kesrouane	L	L	VL	Kharayeb Nahr Ibrahi	ML	ML	L	Klayaat Kesrouane	L	L	VL
Maarab	L	L	VL	Maaysra Kesrouane	ML	L	L	Mayrouba	L	L	VL
Mazraat Er-Ras	M	M	L	Mazraat Mrah El-Mir	L	L	VL	Mchaa El Ftouh	ML	ML	L
Mchaa Faraya	L	L	VL	Mchaa Kfar Dibiane	L	L	VL	Mghaer	L	L	VL
Mradiyah	L	L	VL	Nahr Ed-Dahab	L	L	VL	Nammoura Kesrouane	ML	L	L
Ouata El Jaouz	L	L	VL	Ouata Sillam	M	ML	VL	Raachine	L	L	VL
Rayfoun	L	L	VL	Safra Kesrouane	M	M	L	Shayle Kesrouane	ML	ML	L
Tabarja	M	M	L	Yahchouch	L	L	VL	Zaaytreh	L	L	VL
Zeytoun	ML	ML	L	Zouk Mikael	M	ML	L	Zouk Mosbeh	M	M	L

## Baalbek\_Hermel

### Baalbek

Municipality	15-Feb	16-Feb	17-Feb	Municipality	15-Feb	16-Feb	17-Feb	Municipality	15-Feb	16-Feb	17-Feb
Aadous	ML	M	L	Aamchki	VL	L	VL	Aarsal	L	L	L
Ain Baalbek	L	L	VL	Ain Bourday	VL	VL	VL	Ain El-Benye	VL	VL	VL
Ain El-Jaouz Baalbek	L	L	VL	Ain El-Siya Chadoura	VL	L	VL	Al Khodr Baalbek	L	L	VL
Al Nabi Chit	L	L	VL	Aynata Baalbek	M	L	VL	Baalbek	L	L	L
Bachwat	M	ML	L	Barqa	M	L	L	Bednayel Baalbak	ML	M	L
Beit Chama	ML	M	ML	Bijjaje	M	ML	L	Bouday	M	M	ML
Brital	L	L	L	Btadi	M	M	M	Chaat	ML	ML	L
Chaibe	VL	L	VL	Chlifa	M	M	ML	Chmestar	M	M	M
Dar El-Oussa	M	M	M	Deir El-Ahmar	M	M	ML	Deir Mar Maroun Baal	L	L	ML
Douris	L	L	L	Fakiha	ML	L	L	Hadath Baalbek	M	M	M
Ham	VL	L	VL	Haour Taala	L	L	VL	Hizzine	M	M	L
Hlebta	M	VL	L	Hosh Barada	M	M	L	Hosh El Dahab	M	M	L
Hosh El Snid	L	ML	L	Hosh El-Nabi	L	ML	L	Hosh El-Rafiq	ML	M	ML
Hosh Tal Safiya	M	M	L	Hrebta	M	ML	L	laat	ML	ML	L
Jebaa	M	M	M	Jenta	L	L	VL	Kfar Dabach	M	M	ML
Kfar Dane	M	M	M	Khraibeh El-Hermel	M	ML	L	Khreibet Baalbek	L	L	VL
Kneisset Baalbek	ML	ML	L	Labueh	M	ML	L	Maarboun	VL	L	VL
Majdaloun	M	M	L	Maqneh	ML	ML	L	Mazraat Beit Mcheik	M	M	ML
Misraya	ML	M	ML	Moqraq	M	ML	L	Nabha El-Damdoum	M	L	L
Nabi Chbay	VL	L	VL	Nabi Osman	ML	L	L	Nahleh baalbek	L	L	VL
Ouadi El-Oss	M	L	L	Qaa Baayoun	ML	L	L	Qaa Jouar Maqiye	M	L	L
Qaa Ouadi El-Khanzir	ML	L	L	Qah Baalbek	ML	L	L	Qarha Baalbek	M	ML	L

Qsarnaba	ML	M	ML	Ram Baalbek	M	M	L	Ras Baalbek El Sahl	ML	L	L
Ras Baalbek El-Charq	ML	L	L	Riha	M	ML	L	Saaide	M	M	ML
Sbouba	M	M	L	Seriine El-Tahta	L	ML	L	Slouqi	M	M	L
Taiba Baalbek	ML	ML	L	Talia	L	M	L	Taraiya	M	M	ML
Temnin El Fawqa	ML	M	ML	Temnin El-Tahta	ML	M	ML	Tfail	L	L	L
Yahfoufa	L	L	L	Yammouneh	M	M	ML	Younine	L	L	L
Zboud	M	L	L								

## Hermel

Municipality	15-Feb	16-Feb	17-Feb	Municipality	15-Feb	16-Feb	17-Feb	Municipality	15-Feb	16-Feb	17-Feb
Charbine El-Hermel	L	VL	L	Hermel Jbab	ML	VL	L	Hermel	L	L	ML
Maaysra El-Hermel	L	VL	L	Michaa Mrajhine	ML	VL	L	Ouadi Faara	M	VL	L
Ras Baalbek - Ouadi	ML	L	L	Ras Baalbek El Gharb	ML	L	L	Zighrine	L	VL	L

## Akkar

### Akkar

Municipality	15-Feb	16-Feb	17-Feb	Municipality	15-Feb	16-Feb	17-Feb	Municipality	15-Feb	16-Feb	17-Feb
Aain Tinta	M	M	M	Aaiyat	M	M	M	Aakkar El-Aatiqa	ML	L	L
Aamar Akkar	M	M	M	Aamar El Baykat	M	M	M	Aamayer	M	L	L
Aamriyet Akkar	M	M	M	Aandqet	L	L	L	Aarmeh	M	M	M
Aarqa	MH	M	M	Aawaynat	M	L	ML	Aayoun Akkar	M	ML	ML
Abboudiye	MH	MH	M	Ain El-Zeit	M	M	M	Ain Yaaqoub	ML	L	L
Akroum	L	L	L	Aridet Cheikh Zennad	H	MH	M	Baldeh w Mazraat Bal	MH	M	M
Barcha	MH	MH	M	Bardeh	M	M	M	Bebnine	M	ML	M
Beino	M	M	M	Beit Ayoub	M	L	L	Beit El-Haouch	M	ML	M
Beit Mellat	M	M	M	Beit Younes	M	L	L	Berbara Akkar	M	M	M
Berqayel	M	L	M	Bezbina	L	VL	L	Bireh Akkar	M	M	M
Borj	M	M	M	Bqerezla	M	L	ML	Bzal	M	L	ML
Chane	M	L	L	Chaqdouf	M	M	ML	Charbila	MH	M	M
Cheikh Mohammad	MH	M	M	Cheikh Taba Es-Sahl	MH	MH	M	Cheikh Taba	MH	M	ML
Cheikh Zennad	MH	MH	M	Cheikhlar	ML	L	ML	Chir Hmairine	MH	MH	M
Daghle	M	M	M	Dahr Laissine	M	M	M	Darine	MH	MH	M
Dawra	M	M	M	Dawsa w Baghdadi	M	M	M	Dayret Nahr El-Kabir	M	M	ML
Deir Dalloum	M	M	M	Deir Jennine	M	M	M	Denbou	M	L	L
Dibbabiyyeh	M	M	M	Douair Aadwiyeh	M	M	M	Fassikine	M	M	M
Fnaydek	L	VL	L	Fraydes Akkar	M	M	M	Ghazayle	MH	M	M
Habchit	M	L	L	Hakour	M	M	M	Halba	MH	M	M
Haouchab	MH	M	M	Hayssat	MH	MH	M	Haytla	MH	M	M
Hayzouq	M	M	M	Hedd	MH	M	M	Hmaira Akkar	M	L	M
Hmaiss Akkar	MH	M	M	Hnaider	M	L	ML	Hokr Ed-Dahri	MH	MH	M
Hokr Etti	MH	M	M	Hokr Jouret Srar	H	MH	M	Houaich	M	L	L
Hrar	M	L	L	Idbil	M	M	ML	Ilal	M	L	L
Janine	MH	M	M	Jdeidet El-Joumeh	MH	M	M	Jdeidet El-Kaiteh	M	L	M
Jebayel	M	ML	ML	Kafr	M	M	VL	Kafr	M	M	M
Karm Asfour	M	ML	ML	Kfar Melki Akkar	MH	MH	M	Kfar Noun	M	M	M
Kfarharra	MH	M	M	Khalsa	M	ML	ML	Kharnoubet Akkar	MH	MH	M



Khirbet Daoud Aakkar	M	M	M	Khirbet El Remmane	M	L	L	Khirbet Shar	M	M	M
Khoreybet El-Jindi	MH	M	M	Khreibet Aakkar	M	L	L	Kneisset Aakkar	MH	MH	M
Kneisset Hnaider	M	L	ML	Knisse	MH	M	M	Kroum El-Aarab	MH	M	M
Kwachra	M	M	M	Kweykhat	MH	MH	M	Machta Hammoud	M	ML	L
Majdala	M	ML	M	Majdel Akkar	M	M	M	Mar Touma	M	L	M
Marlaya Melhem	MH	M	M	Mashha	M	M	M	Massoudiye	MH	MH	M
Mazraat Beit Ghattas	M	ML	M	Mazraat En-Nahriye	ML	L	L	Mechmech	M	VL	L
Memneh	L	VL	L	Mhammara	M	ML	M	Mighraq Aakkar	MH	MH	M
Minyara	MH	M	M	Moqayteh	MH	MH	M	Mounjez	M	M	M
Msalla	M	M	M	Mzeihmeh	MH	M	M	Nfaiseh	MH	M	M
Noura Et-Tahta	M	M	M	Ouadi El-Haour	MH	MH	M	Ouadi El-Jamous	M	ML	M
Ouyoun El-Ghizlane	M	L	M	Qaabarine	MH	MH	M	Qabaait	M	L	L
Qachlaq	MH	M	M	Qantara Aakkar	M	L	L	Qarha Aakkar	M	L	ML
Qarqaf	M	ML	M	Qboula	M	M	M	Qleiaat Aakkar	MH	MH	M
Qloud El-Baqie	M	L	M	Qobaiyat Aakkar	ML	L	L	Qobbat Chamrat	MH	M	M
Qorayat	M	L	L	Qornet Aakkar	ML	L	L	Qsair Aakkar	M	M	M
Rahbe	M	L	L	Rihaniyet Aakkar	MH	M	M	Rmah	M	ML	ML
Rmoul	MH	MH	M	Saadine	MH	MH	M	Sadaqa	M	L	L
Saidnaya	MH	M	M	Sammouniye	MH	MH	M	SaysSouq	M	ML	M
Semmaqiye	MH	MH	M	Semmaqli	MH	M	M	Sfinet El-Dreib	M	M	M
Sfinet El-Qaitaa	M	L	ML	Sindyanet Zeidane	M	M	M	Souaisset Aakkar	MH	M	M
Srar	MH	M	M	Tal Abbas El Gharby	MH	MH	M	Tal Abbas El-Chargy	MH	MH	M
Tal Biret	MH	MH	M	Tal Hmayra	MH	MH	M	Tal Maayan Tal Kiri	MH	MH	M
Tal Sibel	MH	MH	M	Tallet Chattaha	M	M	M	Tikrit	M	L	L
Tleil	MH	M	M	Tshea	L	VL	L	Zawarib	MH	M	ML
Zouq El Hosniyeh	M	L	M	Zouq El-Haddara	M	ML	M	Zouq El-Hbalsa	M	L	M
Zouq El-Moqachrine	M	L	M								

## Sud

### Sour

Municipality	15-Feb	16-Feb	17-Feb	Municipality	15-Feb	16-Feb	17-Feb	Municipality	15-Feb	16-Feb	17-Feb
Aaiyeh	M	ML	L	Aalma El-Chaab	M	M	M	Aaytit	M	ML	L
Abbassiyeh Sour	M	M	ML	Abou Chech	M	M	M	Ain Abou Abdallah	M	M	ML
Ain Baal	M	M	ML	Arzoun	M	M	ML	Aziyeh	M	M	M
Baflaya	M	ML	ML	Barich	M	ML	L	Batouliyah	M	M	ML
Bayad	M	M	L	Bazouriyeh	M	M	ML	Bediass	M	ML	L
Bestiyat	M	ML	L	Borj El Chemali	M	M	M	Borj En-Naqoura	M	M	M
Borj Rahhal	M	ML	L	Boustane	M	ML	M	Btaychiyeh	M	M	M
Chaaitiye	M	M	ML	Chameh	M	M	M	Chehabiye	M	M	ML
Chehour	M	M	M	Chihine	M	M	M	Debaal Sour	M	ML	L
Deir Amess	M	M	ML	Deir Kifa	M	ML	ML	Deir Qanoun El-Ain	M	M	ML
Deir Qanoun El-Naher	M	ML	L	Derdghaiya	M	ML	ML	Dhayra	M	M	M
Halloussiyeh	M	ML	L	Hamoul	M	M	M	Hanaouey	M	ML	L
Henniye	M	M	ML	Hmairi Sour	M	M	L	Iskandarouna Sour	M	M	M
Jbal El Botom	M	M	ML	Jebbin	M	ML	M	Jennata	M	ML	L
Jijim	M	M	M	Jouaiya	M	ML	L	Kneisset Sour	M	M	ML

Maarake	M	ML	L	Maaroub	M	ML	L	Majadel	M	ML	ML
Majdalzoun	M	M	M	Mansouri Sour	M	M	M	Marnba	M	M	M
Marouahine	M	M	M	Mazraat El-Zalloutiy	M	ML	M	Mazraat Mechref	M	ML	L
Mazraat Tayr Semhat	M	M	M	Mheilib	MH	M	M	Neffakhiyeh	M	ML	ML
Niha Sour	M	ML	ML	Ouadi Jilo	M	ML	L	Qana	M	M	L
Qolaileh Sour	M	M	M	Rechknany	M	M	ML	Rmadiyah	M	ML	L
Selha Sour	M	M	ML	Siddiqine	M	M	L	Sour	M	M	M
Srifa	M	M	ML	Tayr Debbe	M	ML	ML	Tayr Felsay	M	ML	L
Tayr Harfa	M	M	M	Touayri	M	M	M	Toura	M	ML	L
Yanouh Sour	M	ML	L	Yarine	M	ML	M	Zebqine	M	M	M

## Saida

Municipality	15-Feb	16-Feb	17-Feb	Municipality	15-Feb	16-Feb	17-Feb	Municipality	15-Feb	16-Feb	17-Feb
Aanqoun	M	L	L	Aaqtanit	M	L	L	Aarab Ej-Jall	M	L	L
Aarab Tabbaya	M	L	L	Abra Saida	M	ML	L	Adloun	M	ML	ML
Adousiyeh	M	ML	M	Ain-El-Deleb	M	L	L	Arzai	M	ML	L
Babliyah	M	L	L	Barty	M	ML	L	Bissariyeh	M	ML	ML
Bnaafoul	M	L	L	Bqosta	M	ML	L	Bramiy	M	ML	ML
Daoudiyeh	M	L	L	Dareb El-Sim	M	L	L	Erkay	M	L	L
Ghassanieh	M	L	L	Ghazieh	M	ML	ML	Hajjeh	M	L	L
Haret Saida	M	ML	L	Hartiyeh	M	L	ML	Hlaliye Saida	M	ML	L
Insariyat	M	L	L	Jazira Saida	M	M	ML	Kafar Bit	M	L	L
Kaoutariyet El-Siyad	M	ML	L	Kfar Chellal	M	ML	L	Kfar Hatta Saida	M	L	L
Kfar Milke Saida	M	ML	L	Khartoum	M	ML	L	Khaziz	M	L	L
Khirbet Ed-Douair Sa	M	L	ML	Khirbet El-Bassal	M	ML	ML	Khrayeb Saida	M	ML	L
Loubieh	M	L	L	Maghdouche	M	L	L	Majdelyoun	M	ML	L
Matariyet El-Choumar	M	ML	L	Matayriyeh	M	L	L	Mazraat 'Mseileh	M	ML	ML
Mazraat 'Snaiber	M	ML	M	Mazraat Aarab Soukka	M	L	L	Mazraat Deir Taqla	M	L	ML
Mazraat El Yahoudiye	M	M	M	Mazraat El-Housseini	M	ML	ML	Mazraat El-Mhaydaleh	M	L	ML
Mazraat El-Ouasta	M	M	ML	Mazraat Jamjim	M	L	ML	Mazraat Kaoutariyet	M	L	ML
Mazraat Kfar Badda	M	L	ML	Mazraat Oussamiyat	M	L	L	Mazraat Sari	M	L	ML
Mazraat Sinai	M	L	L	Meemariyeh	M	L	L	Merouaniyeh	M	ML	ML
Miyeh ou Miyeh	M	L	L	Najjariyeh	M	ML	M	Qaaqaiyat El-Snaouba	M	L	ML
Qnarit	M	L	L	Qraiye Saida	M	L	L	Saida Ed-Dekermane	M	ML	L
Saida El-Oustani	M	ML	L	Saida El-Qadimeh	M	ML	L	Saida Kefraya	M	ML	L
Saksakiyeh	M	L	L	Salhieh Saida	M	ML	ML	Sarafand	M	ML	ML
Sfenta	M	ML	L	Tafahta	M	ML	L	Tanbourit	M	L	L
Tebna	M	ML	ML	Zaghdraiya	M	L	L	Zeita	M	L	L
Zrariyeh	M	ML	L								

## Jezzine

Municipality	15-Feb	16-Feb	17-Feb	Municipality	15-Feb	16-Feb	17-Feb	Municipality	15-Feb	16-Feb	17-Feb
Ain El-Mir (El Estab	M	L	L	Anane	L	L	L	Aramta	M	ML	L
Ariya	L	L	L	Aychiyeh	M	ML	L	Azour	ML	L	L
Baba	L	L	L	Bayssour Jezzine	M	L	L	Benoueteh Jezzine	L	L	L
Bhannine	L	L	L	Bisri	L	L	L	Bkassine	L	L	L
Bouslaya	M	L	L	Btedine El-Leqech	ML	L	L	Chbail	ML	ML	L
Choualiq Jezzine	M	ML	L	Dahr Ed-Deir	M	ML	L	Deir El Qattine	M	L	L

Demachqiyeh	M	ML	ML	Ghabbatiyeh	L	L	L	Harf Jezzine	L	L	L
Hassaniyeh	M	L	L	Haytoupleh	M	ML	L	Haytura	M	L	L
Hidab	M	ML	L	Homsiyeh	ML	L	L	Jabal Toura	M	ML	L
Jarmaq	M	ML	L	Jensnaya	M	L	L	Jernaya	M	ML	L
Jezzine	ML	ML	L	Karkha	M	ML	L	Kfar Falous	M	L	L
Kfar Houna	ML	ML	L	Kfar Jarrah	M	ML	L	Lebaa	M	ML	L
Louayzet Jezzine	M	ML	L	Machmouche	L	L	VL	Mahmoudiyeh Jezzine	M	ML	L
Maknounye Jezzine	M	L	L	Maraat Ouzaïyeh	M	ML	L	Mazraat Daraya	ML	ML	L
Mazraat El-Aarqoub	M	ML	L	Mazraat El-Mathane	L	L	L	Mazraat El-Rahbane	M	L	L
Mazraat Khallet Khaz	M	ML	L	Mazraat Louzid (Loua	ML	ML	L	Mazraat Qrouh	M	ML	L
Mazraat Tamra	M	ML	ML	Mazraat Zighrine Jez	M	ML	L	Mazraat	M	L	L
Mharbiyeh	M	L	L	Midane Jezzine	L	L	L	Mjeydel Jezzine	M	L	L
Mlikh	M	ML	L	Mrah El-Hbasse	M	L	L	Ouadi Baanqoudaine	M	L	L
Ouadi El-Laymoun	M	ML	L	Ouardiyeh	ML	ML	L	Qabaa Jezzine	M	L	L
Qatrani	M	ML	L	Qaytoupleh	M	L	L	Qtaleh Jezzine	L	L	L
Rihane Jezzine	M	ML	L	Rimat	M	L	L	Roum	ML	L	L
Roummanet	M	ML	L	Sabbah	L	L	L	Saydoun	M	ML	L
Sfaray	L	L	L	Snaya	M	L	L	Sojoud	M	ML	L
Srayri	M	ML	L	Taaid	L	L	L	Wadi Jezzine	L	L	L
Zhalta	M	L	L								

## Bekaa

### West Bekaa

Municipality	15-Feb	16-Feb	17-Feb	Municipality	15-Feb	16-Feb	17-Feb	Municipality	15-Feb	16-Feb	17-Feb
Aammiq BG	L	ML	ML	Ain El Tineh BG	ML	ML	L	Ain Zebdeh	L	ML	L
Ana	L	ML	L	Aytanit	L	L	L	Baaloul BG	ML	ML	L
Bab Mareh	ML	ML	L	Chouberqiye Aammiq	L	ML	ML	Dakoue	ML	ML	L
Deir Ain El-Jaouze	L	ML	L	Deir Tahniche	L	ML	L	Ghaza	L	ML	ML
Harime El-Soughra	L	ML	L	Hoch Harimeh	L	ML	L	Jazira BG	L	ML	ML
Jib Jennine	ML	ML	L	Kamed-El-Laouz	ML	ML	L	Kefraya BG	L	L	L
Khiara El Atika	L	ML	ML	Khiara	L	ML	ML	Khirbet Qanafar	L	ML	L
Lala	ML	ML	L	Lebbaya BG	ML	ML	L	Loussa	M	ML	L
Machghara	ML	ML	L	Manara (Hammara) BG	L	L	L	Mansoura BG	L	M	ML
Marej BG	ML	M	L	Maydoun	M	ML	L	Ouaqf BG	L	ML	ML
Qaraaoun	ML	ML	L	Qelya	ML	ML	L	Raouda (Istabel)	L	M	L
Saghbine	L	ML	L	Sohmor	ML	ML	L	Soltan Yacoub el Ara	ML	ML	L
Souairy	L	ML	L	Sultan Yaacoub	L	ML	L	Tal Znoun	L	ML	ML
Yehmor BG	ML	ML	L	Zilaya	L	ML	L				

### Zahle

Municipality	15-Feb	16-Feb	17-Feb	Municipality	15-Feb	16-Feb	17-Feb	Municipality	15-Feb	16-Feb	17-Feb
Aanjar (Haouch Mouss	L	ML	L	Ablah	ML	M	ML	Ain Kfarzabad	L	ML	L
Ali-El-Nahri	ML	M	ML	Bar Elias	ML	M	ML	Bouarej	ML	ML	L
Cheberqiyet Tabet	ML	M	ML	Chtaura	ML	ML	L	Deir El Ghazal	L	ML	L
Delhamiyet Zahle	ML	M	L	Ferzol	ML	M	L	Haouch El-Ghanam	ML	M	ML
Haouch Es-Siyadeh	ML	ML	L	Haouch Hala	ML	M	L	Haouch Mandara	ML	M	L

Haouch Qayssar	ML	ML	L	Hezerta	ML	ML	L	Hosh Moussa	ML	ML	L
Jdita	ML	ML	L	Kfarzabad	ML	ML	L	Ksara	ML	M	ML
Majdel Aanjar	L	ML	L	Makssi	ML	ML	L	Massa	L	ML	L
Mazraat Er-Remtaniye	ML	ML	L	Mrayjat Zahle	ML	ML	L	Mzaraa Zahle	ML	ML	L
Nabi Ayla	ML	M	ML	Nasriyet Rizk	L	ML	L	Nasriyet Zahle	ML	ML	L
Niha Zahle	ML	M	ML	Ouadi Ed-Deloum	ML	ML	L	Ouadi El-Arayech	ML	ML	L
Qaa El Rim	ML	ML	L	Qab Elias	ML	ML	L	Qousaya	L	ML	L
Rhit	ML	ML	L	Riyak	ML	M	L	Saadnayel	ML	M	ML
Taal El-Akhdar	L	ML	ML	Taalbeya	ML	M	ML	Taanayel	ML	M	ML
Talamara	ML	M	ML	Tcheflik Edde Haouch	ML	ML	L	Tcheflik Qiqano	ML	ML	L
Terbol Zahle	ML	ML	L	Touaite Zahle	ML	ML	L	Zahle Aradi	ML	M	L
Zahle El-Berbara	ML	ML	L	Zahle El-Maallaqa	ML	M	L	Zahle El-Midane	ML	M	L
Zahle Er-Rassiye	ML	ML	L	Zahle Haouch El-Ouma	ML	M	ML	Zahle Haouch El-Ouma	ML	M	L
Zahle Haouch Ez-Zara	ML	M	L	Zahle Maalaga Aradi	ML	M	L	Zahle Mar Antonios	ML	ML	L
Zahle Mar Elias	ML	M	L	Zahle Mar Gerios	ML	M	L	Zahle Saydet En-Naja	ML	M	L
Zebdoul	L	ML	L								

## Rachaiya

Municipality	15-Feb	16-Feb	17-Feb	Municipality	15-Feb	16-Feb	17-Feb	Municipality	15-Feb	16-Feb	17-Feb
Ain Arab Rachaiya	L	ML	L	Ain Ata	L	L	VL	Ain Harche	L	ML	VL
Aqabe Rachaya	ML	ML	VL	Ayha	ML	ML	L	Ayta El Fokhar	L	ML	L
Bakifa Rachaya	L	ML	VL	Bakka	L	M	VL	Beit Lahya	ML	ML	VL
Bireh Rachaiya	ML	ML	L	Daheer El Ahmar	L	ML	L	Deir El-Achayer	L	ML	L
Heloua Rachaiya	L	L	L	Hoch El Qannabeh Rac	L	ML	L	Kaoukaba Bou Arab	L	ML	L
Kfar Danis	L	ML	L	Kfar Mechki	ML	ML	L	Kfar Qouq	L	ML	L
Kherbet Rouha	L	ML	L	Majdel Balhiss	ML	ML	L	Mdoukha	L	M	L
Mhaydseh Rachaiya	ML	ML	L	Nabi Safa	L	ML	L	Rachaiya	L	ML	L
Rafid Rachaiya	ML	ML	L	Selsata (Mazraat Dei	L	L	L	Tannoura	ML	ML	VL
Yanta	L	ML	L								

## Beyrouth

### Beyrouth

Municipality	15-Feb	16-Feb	17-Feb	Municipality	15-Feb	16-Feb	17-Feb	Municipality	15-Feb	16-Feb	17-Feb
Achrafieh	M	ML	ML	Ain el-Mreisse	M	ML	ML	Bachoura	M	ML	ML
Beirut Central Distr	M	ML	ML	Marfai	M	ML	ML	Mazraa	M	ML	ML
Medaouar	M	ML	ML	Minet el-Hosn	M	ML	ML	Mwssaitbeh	M	ML	ML
Ras Beirut	M	ML	ML	Rmeil	M	ML	ML	Saifi	M	ML	ML
Zqaq el-Blat	M	ML	ML								