

Lebanon Fire Risk Bulletin



CIVIL DEDEFENCE

Refer to cadast table condition.

Please note that the indicated temperature is at 2 meters height from the ground.

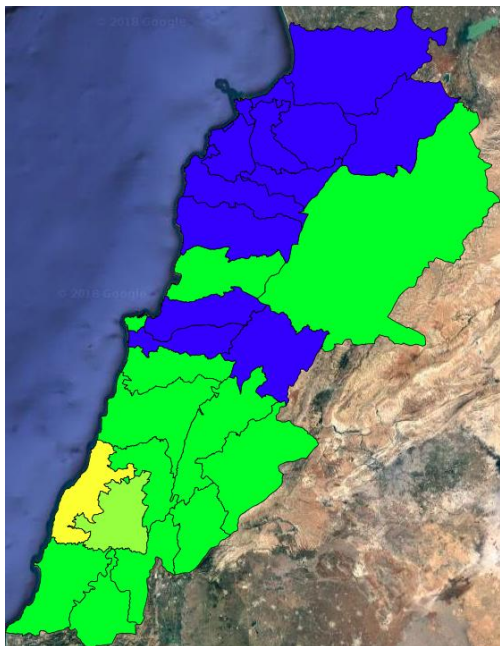
General description of potential fire risk situation

Symbol	Level of risk	Meaning and actions
VL	Very low	Very low fire risk. Controlled burning operations can be hardly executed due to high fuel moisture content. Normally wildfires self-extinguish.
L	Low	Low fire risk. Controlled burning operations can be executed with a reasonable degree of safety.
ML	Medium low	Medium-low fire risk. Controlled burning operations can be executed in safety conditions. All the fires need to be extinguished.
M	Medium	Medium fire risk. Controlled burning operations would be avoided. All the fires need to be very well extinguished.
M	Medium high	Controlled burning is not recommended. Open flame will start fires. Cured grasslands and forest litter will burn readily. Spread is moderate in forests and fast in exposed areas. Patrolling and monitoring is suggested. Fight fires with direct attack and all available resources.
H	High	Ignition can occur easily with fast spread in grass, shrubs and forests. Fires will be very hot with crowning and short to medium spotting. Direct attack on the head may not be possible requiring indirect methods on flanks. Patrolling and monitoring the territory is highly suggested.
E	Extreme	Ignition can occur also from sparks. Fires will be extremely hot with fast rate of spread. Control may not be possible during day due to long range spotting and crowning. Suppression forces should limit efforts to limiting lateral spread. Damage potential total. Patrolling and monitoring the territory is highly suggested.

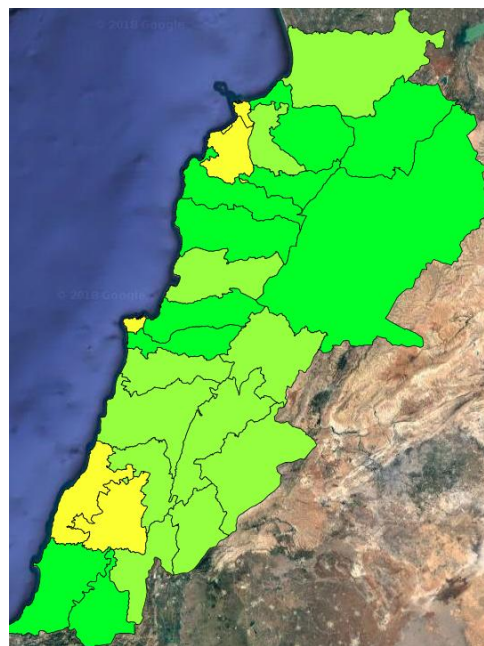
Beirut, 15 November 2018

FIRE RISK INDEX

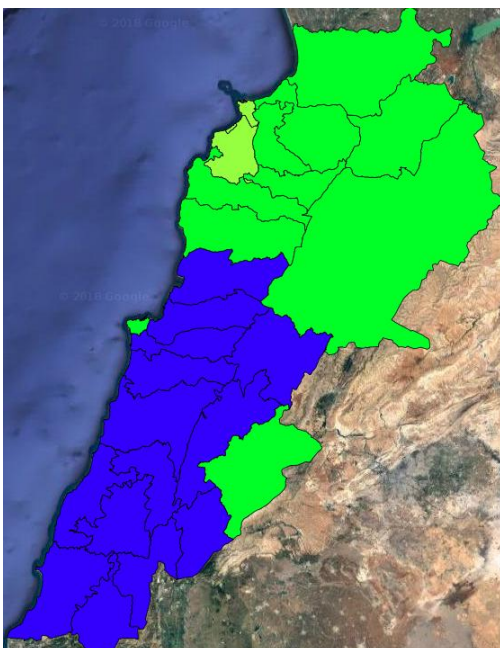
14 NOV 2018



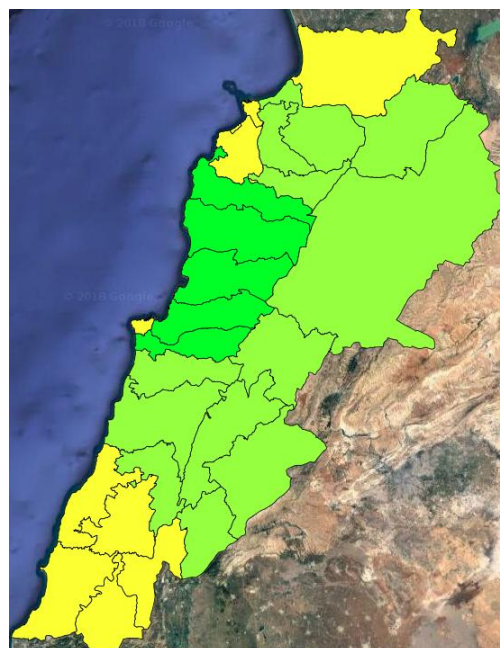
15 NOV 2018



16 NOV 2018



17 NOV 2018

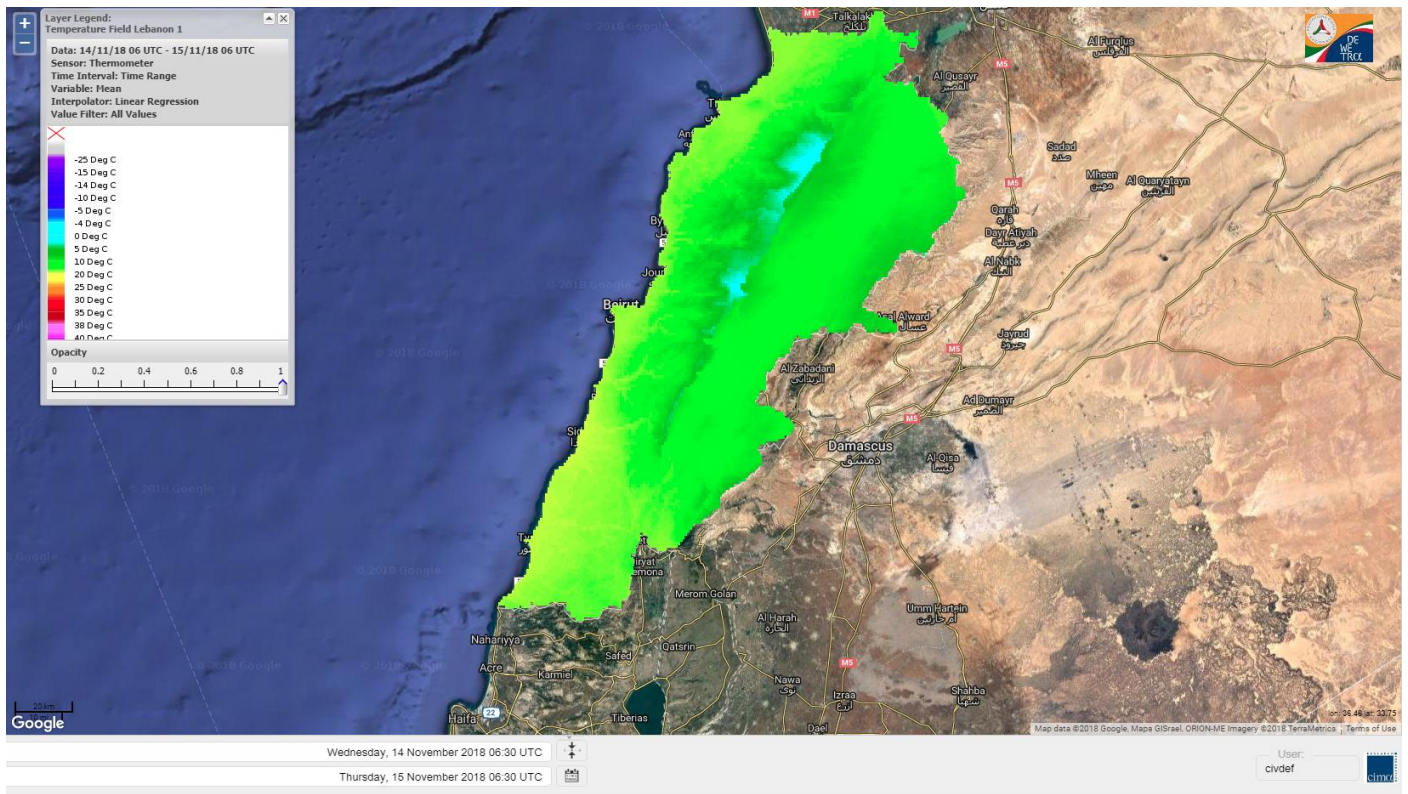


Layer Legend:
Lebanon Wildfire Risk Index 1

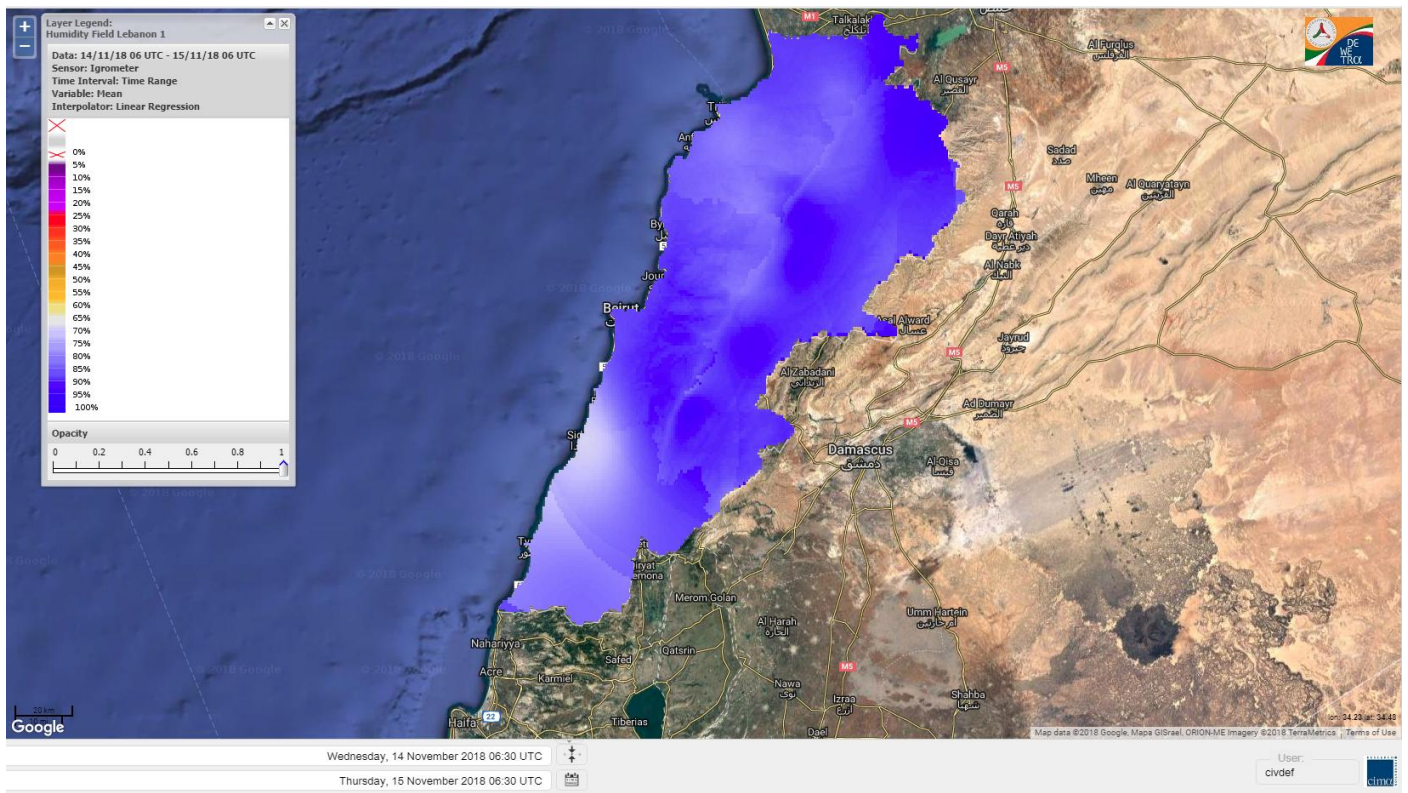
Data: Run: 15/11/2018 00:00. Forecast for 15
Model: RISICO for the Republic of Lebanon
Variable: Fire Weather Index
Spatial Resolution: Caza

- VERY LOW
- LOW
- MEDIUM-LOW
- MEDIUM
- MEDIUM-HIGH
- HIGH
- EXTREME

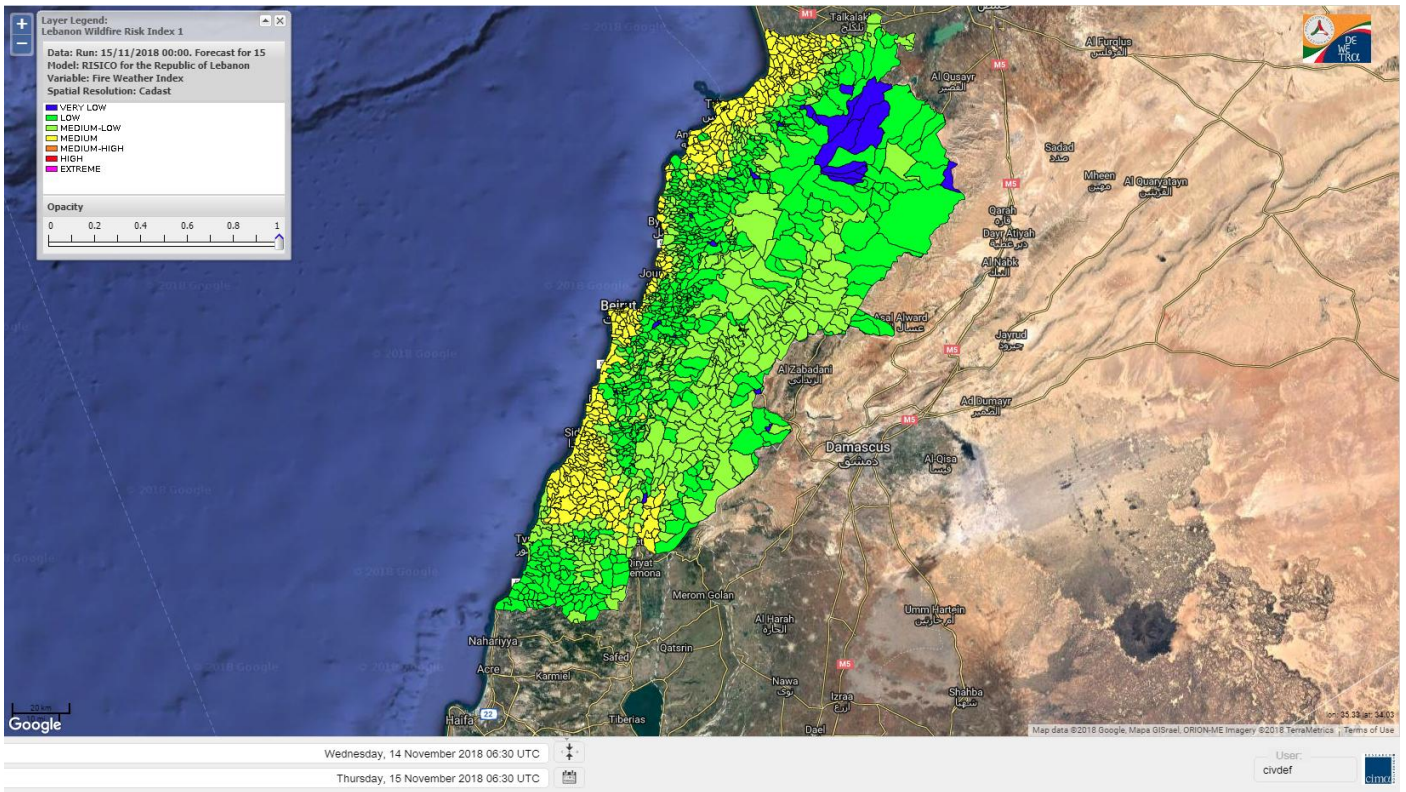
Lebanon temperature for Lebanon 15 NOV 2018



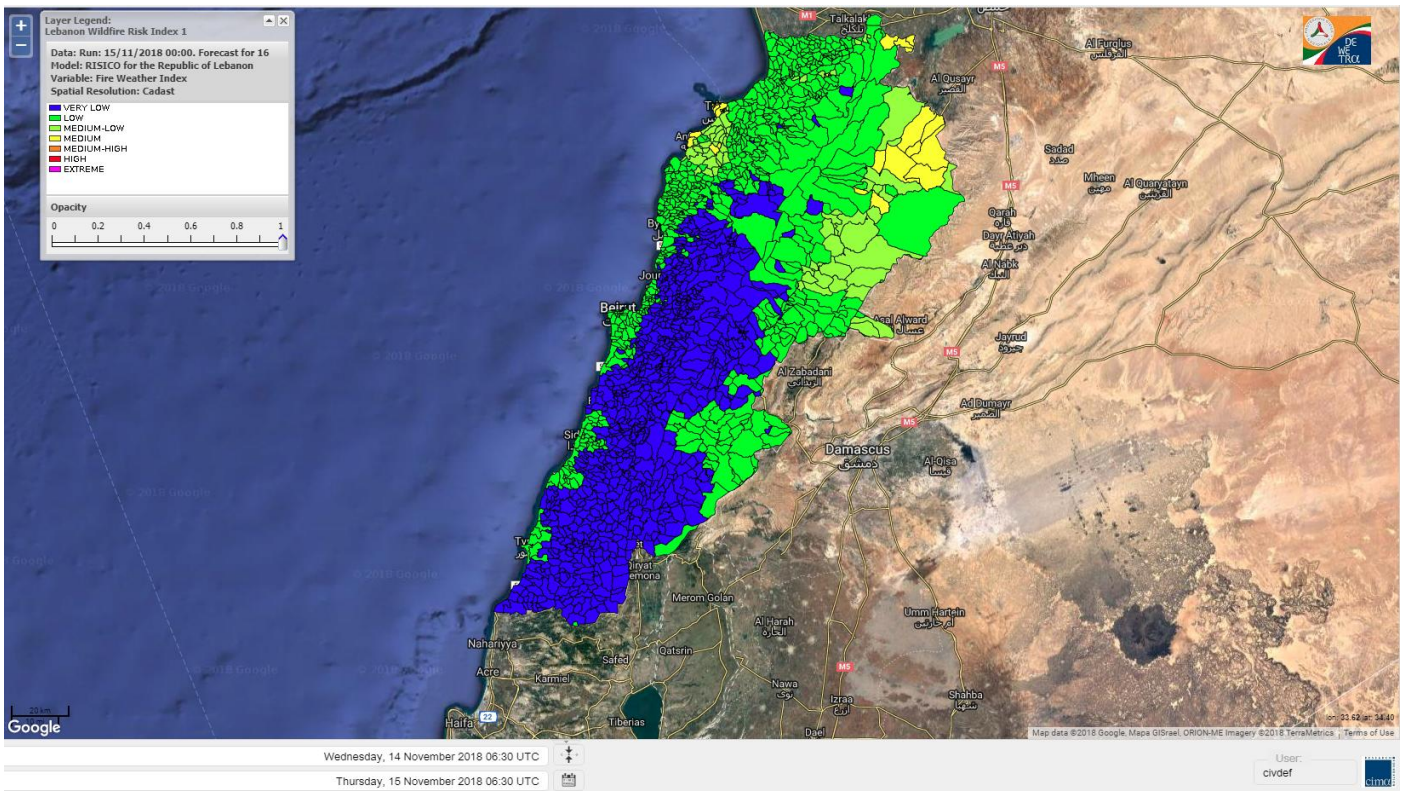
Lebanon humidity for Lebanon 15 NOV 2018



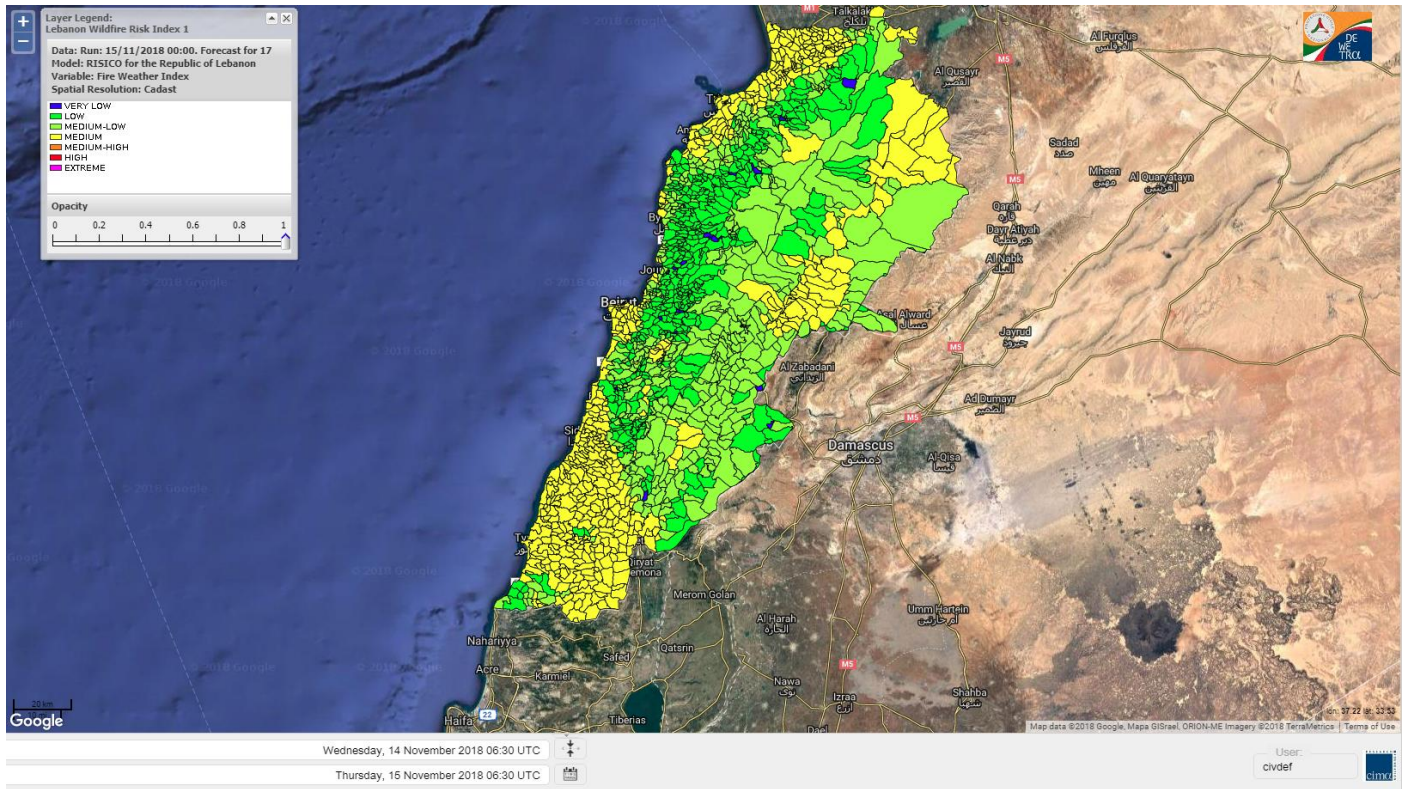
Lebanon for 15 NOV 2018



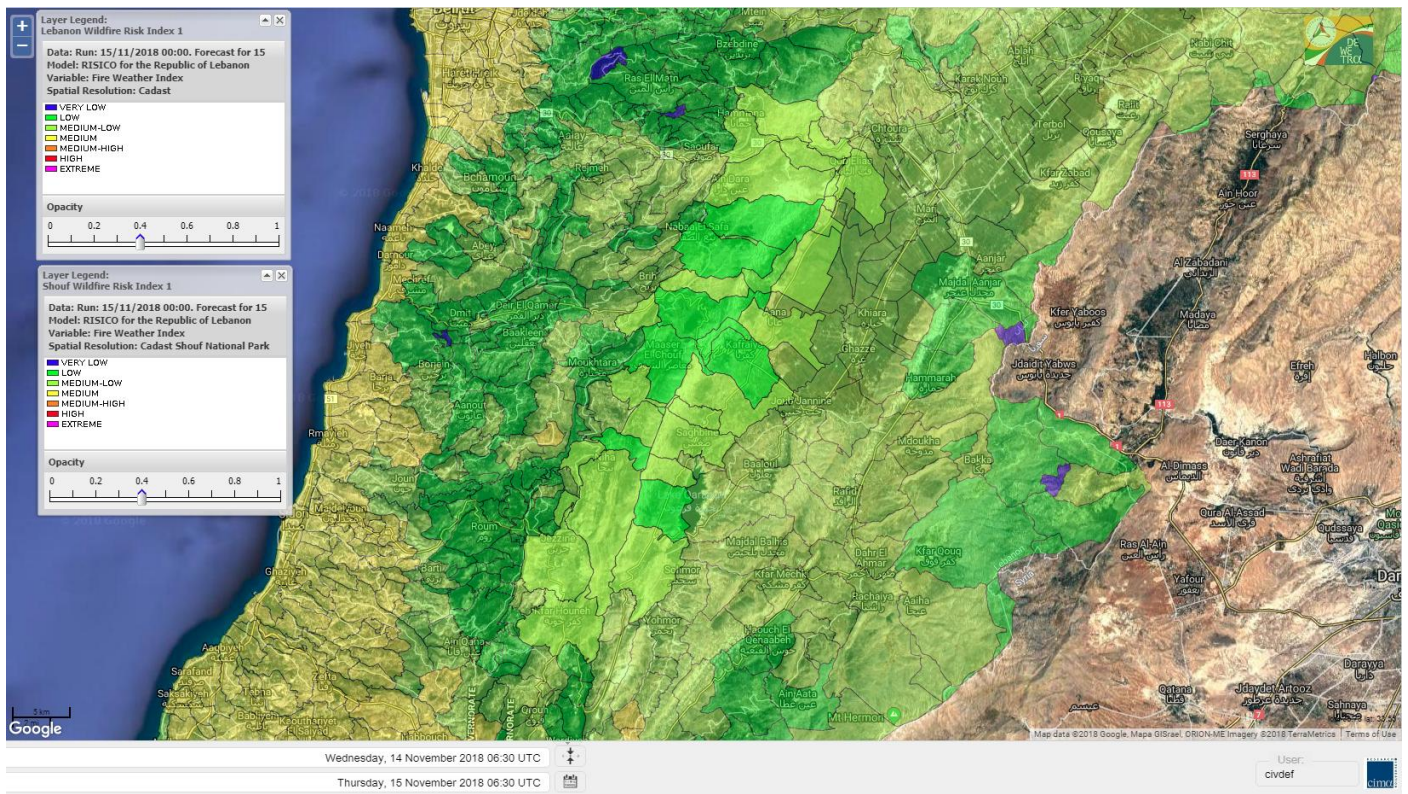
Lebanon for 16 NOV 2018



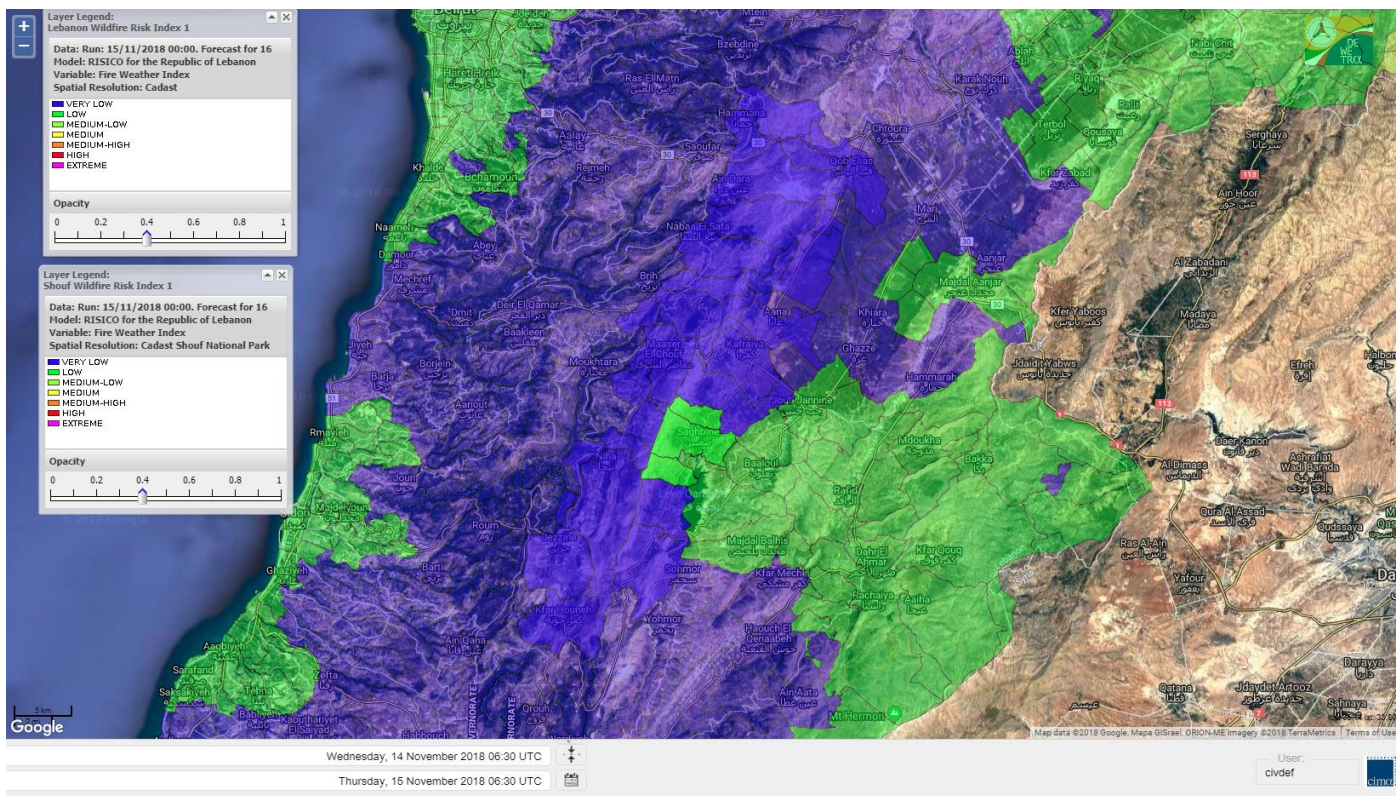
Lebanon for 17 NOV 2018



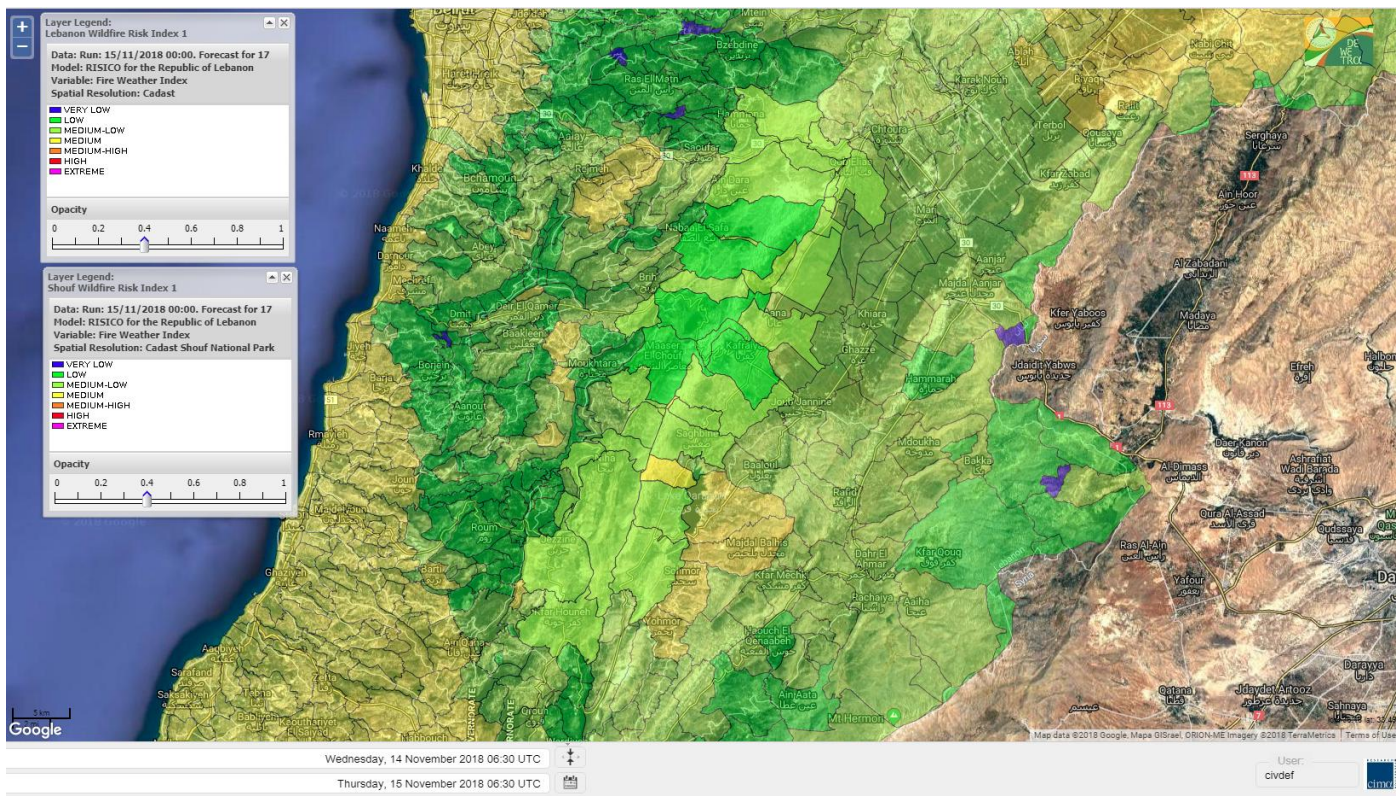
Shouf Biosphere Reserve Forecast for 15 NOV 2018



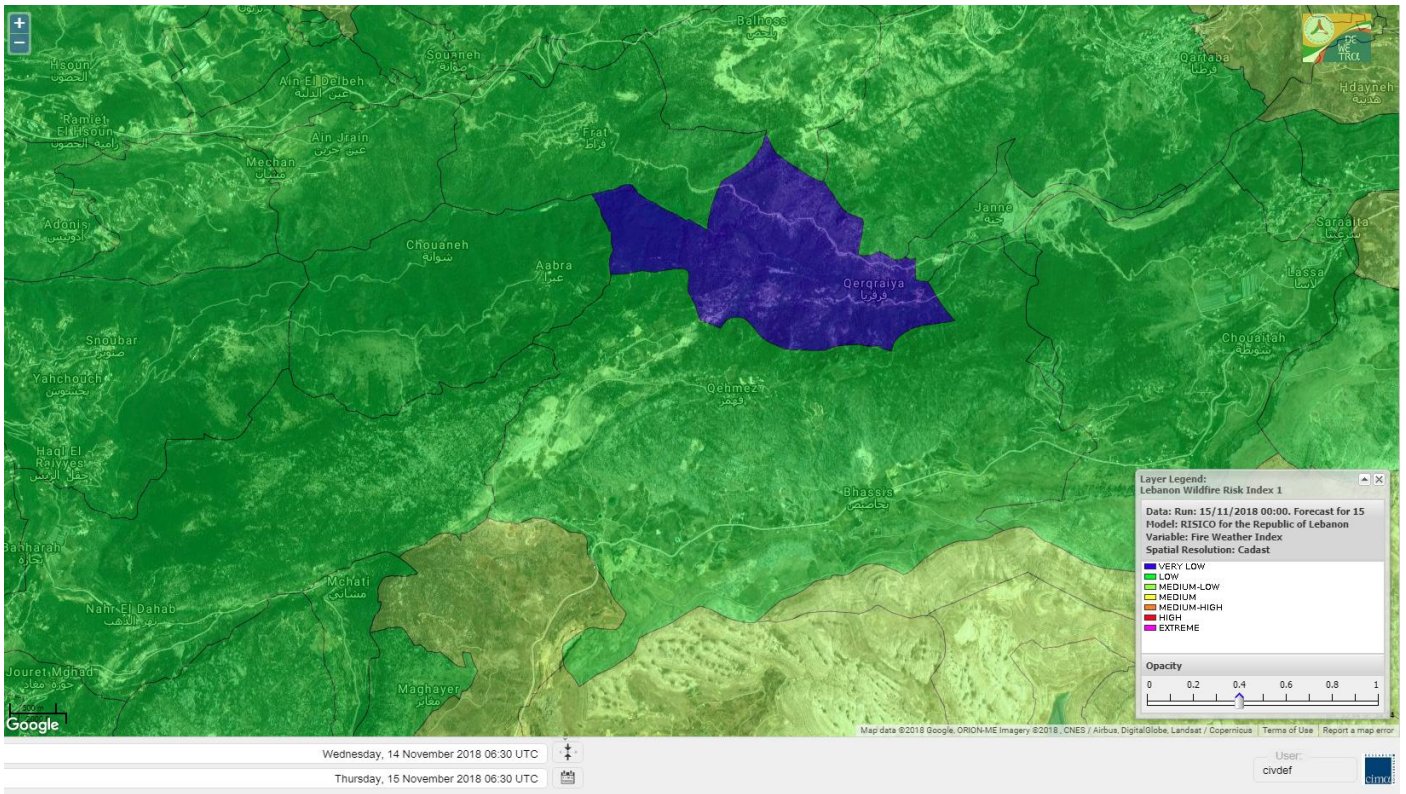
Shouf Biosphere Reserve Forecast for 16 NOV 2018



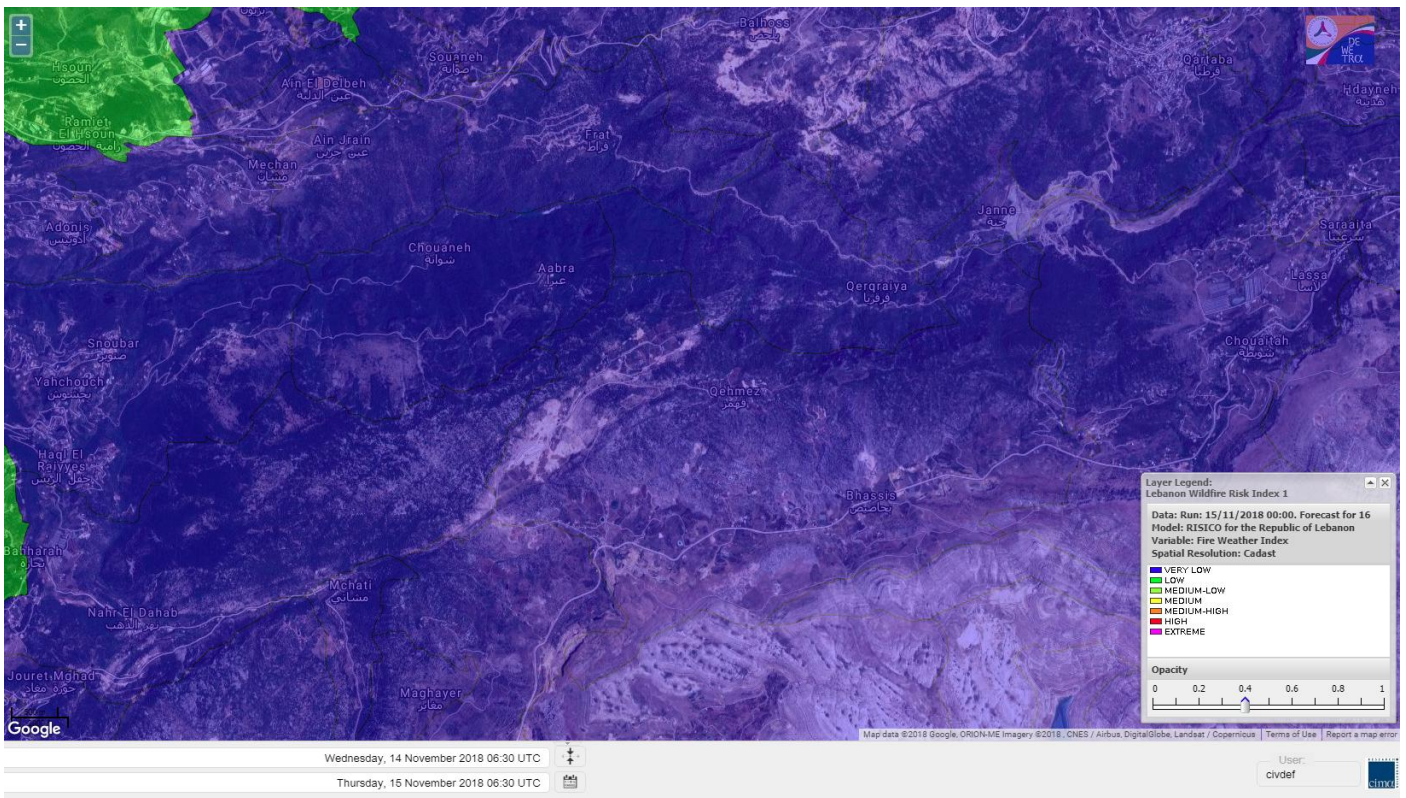
Shouf Biosphere Reserve Forecast for 17 NOV 2018



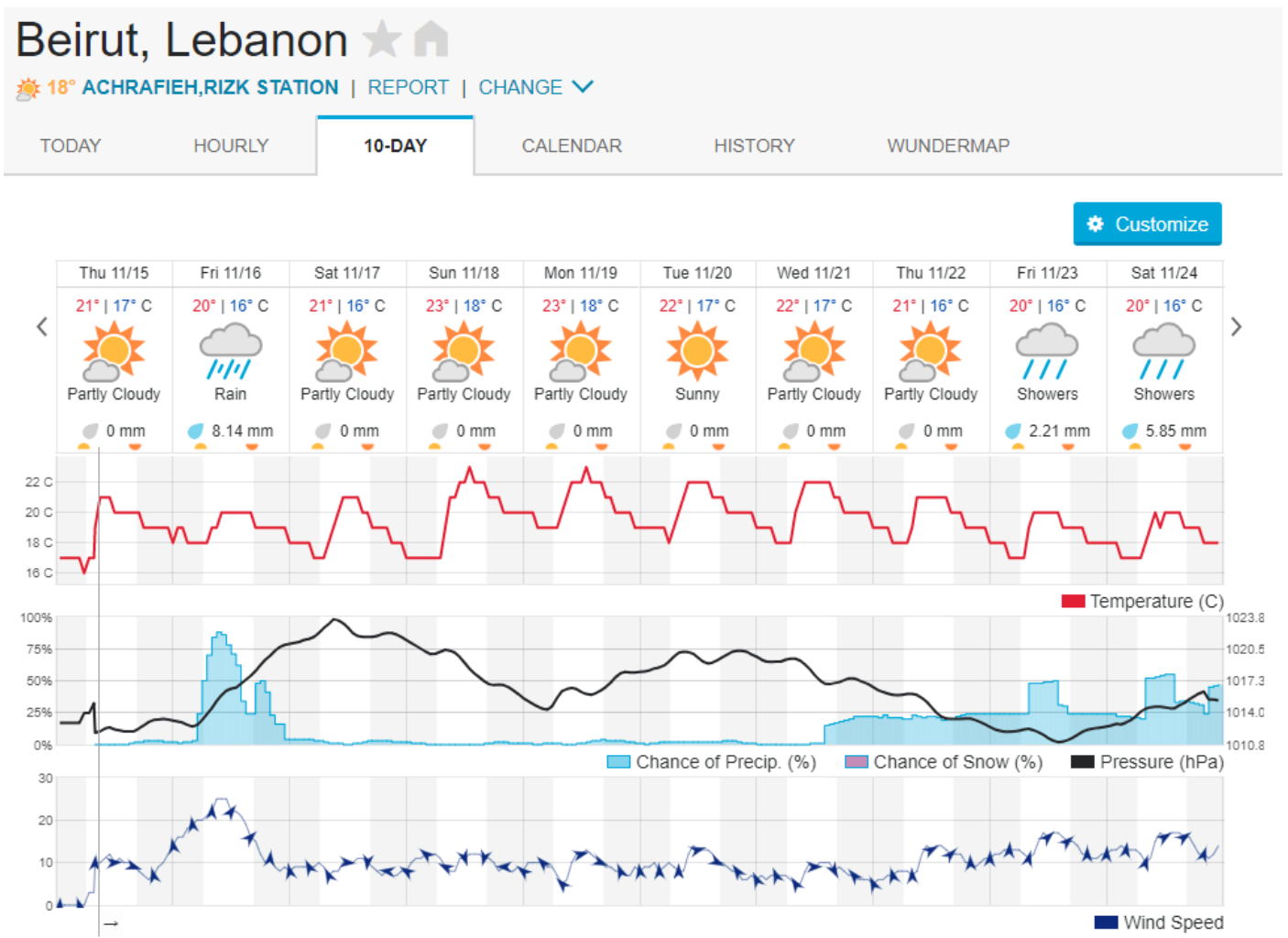
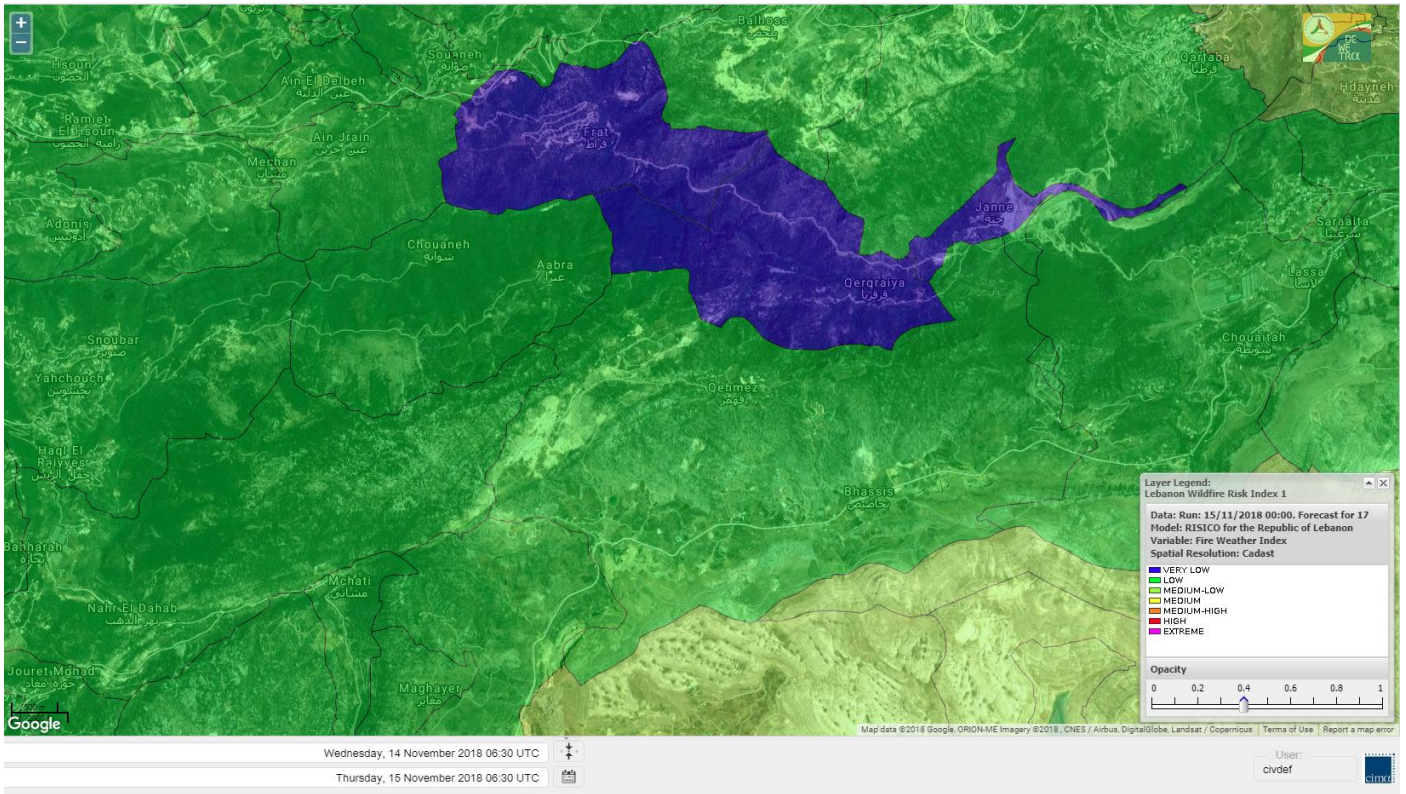
Jabal Moussa Reserve Forecast for 15 NOV 2018



Jabal Moussa Reserve Forecast for 16 NOV 2018



Jabal Moussa Reserve Forecast for 17 NOV 2018



Nord

Koura

Municipality	15-Nov	16-Nov	17-Nov	Municipality	15-Nov	16-Nov	17-Nov	Municipality	15-Nov	16-Nov	17-Nov
Aaba	M	M	M	Afsaddiq	M	ML	M	Ain Ekrine	M	L	M
Amioun	M	ML	ML	Anfeh	M	M	M	Badbhoun	M	ML	M
Barghoun	M	ML	M	Barsa	M	ML	M	Batroumine	M	ML	M
Bdebba	M	ML	M	Bechmizine	M	ML	ML	Bednayet El-Koura	ML	L	ML
Bhabbouch El-Koura	M	L	ML	Bkeftine	M	ML	M	Bnehran	ML	L	ML
Bqaiaa El-Koura	M	ML	M	Bsarma	M	ML	ML	Btaaboura	M	ML	ML
Bterram	M	M	M	Btouratij	M	ML	M	Bziza	M	ML	ML
Dar Beehtar	M	ML	ML	Dar Chmezzine	M	L	M	Deddeh	M	ML	M
Deir El-Balamand	L	L	ML	Fih	M	ML	M	Hraiche	M	M	M
Ijdaabrine	ML	L	ML	Kaftoun	M	L	ML	Kefraya El-Koura	M	L	M
Kfarakka	ML	ML	ML	Kfarhata	ML	L	ML	Kfarhazir	M	ML	M
Kfarkahel	M	ML	M	Kfarsaroun	ML	ML	ML	Kosba	M	ML	ML
Mejdel el-Koura	ML	L	ML	Nakhle	M	ML	M	Qalhat	L	L	ML
Ras Masqa	M	ML	M	Rechdibbine	M	L	ML	Zakroun	M	ML	M
Zgharta El-Mtaouile	L	L	L								

Bcharre

Municipality	15-Nov	16-Nov	17-Nov	Municipality	15-Nov	16-Nov	17-Nov	Municipality	15-Nov	16-Nov	17-Nov
Aabdine	L	L	L	Bane	ML	L	ML	Barhelioun	L	L	L
Bazouone	L	VL	ML	Becharre	L	L	ML	Beit Menzer	L	L	L
Billa	L	L	L	Blaouza	ML	L	ML	Bqaa Kafra	ML	VL	ML
Bqerqacha	L	VL	ML	Breissat	L	L	L	Dimane	L	L	L
Hadath El Jobbeh	L	L	L	Hadchit	L	L	L	Hasroun	L	VL	ML
Mazraat Aassaf	VL	VL	VL	Mazraat Bani Saab	L	L	L	Mchaa El-Jobbeh	ML	VL	ML
Metrit	ML	L	L	Moghr El-Ahoual	L	L	L	Ouadi Qannoubine	VL	VL	VL
Qanat	L	L	L	Qnayouer	L	L	L	Tourza	L	L	L

Batroun

Municipality	15-Nov	16-Nov	17-Nov	Municipality	15-Nov	16-Nov	17-Nov	Municipality	15-Nov	16-Nov	17-Nov
Aabrine	L	L	L	Aalali	L	L	L	Aartiz	L	L	L
Abdelli	L	L	L	Ajdabra	L	L	L	Assia	L	L	L
Basbina	ML	L	ML	Batroun	M	L	M	Bcheleh	L	L	L
Bechtoudar	L	L	L	Beit Chlala	L	L	L	Beit Kassab	L	VL	L
Bijdarfil	ML	L	ML	Bqesmaya	L	L	L	Chatine	L	VL	L
Chebtin	L	L	L	Chekka	M	ML	M	Daael	L	L	L
Dahr Abi Yaghi	L	L	L	Daraya El-Batroun	ML	L	ML	Deir Billa	L	L	L
Deir Kfifane	ML	L	ML	Deir Mar Youhanna EL	L	L	L	Deir Mar Youssef Jra	L	L	L
Douma	L	L	L	Douq	L	L	L	Eddeh El-Batroun	L	L	ML
Ftihat El-Batroun	L	L	L	Ghouma	L	L	L	Hadtoun	L	VL	L
Hamat	L	L	L	Harbouna	L	L	L	Hardine	L	VL	L
Helta	L	L	L	Hery	M	ML	M	Jebbla	L	L	L
Jrabta El-Batroun	L	L	L	Jrane El-Batroun	ML	L	ML	Kfar Aabida	ML	L	ML
Kfar Halda	L	VL	L	Kfarb Shlaimane	L	L	L	Kfarhatna	L	L	L
Kfarhay	M	L	ML	Kfarhelos	L	L	L	Kfifane	ML	L	ML

Kfour El Arabi	L	VL	L	Koubba	M	L	ML	Kour	L	L	L
Mar Mama	L	VL	L	Masrah	L	L	L	Mehmarch	L	L	L
Mrah Chdid	L	L	L	Mrah El Ziyat	L	L	L	Mrah El-Hajj	L	VL	L
Nahle El-Batroun	L	VL	L	Niha El-Batroun	L	L	L	Ouahj El-Hajjar	ML	L	L
Ouata Houb	L	VL	L	Qatnaaoun	L	L	L	Racha	L	L	L
Rachana	L	L	L	Rachkida	ML	L	L	Ram El-Batroun	L	VL	L
Ras Nakhach	L	L	L	Selaata	M	L	M	Sghar	L	L	L
Smar Jbayl	L	L	L	Sourat El-Batroun	L	L	L	Tannourine El-Faouqa	ML	VL	ML
Tannourine Et-Tahta	L	VL	L	Thoum	ML	L	ML	Toula El-Batroun	L	L	L
Zan	L	L	L								

Zgharta

Municipality	15-Nov	16-Nov	17-Nov	Municipality	15-Nov	16-Nov	17-Nov	Municipality	15-Nov	16-Nov	17-Nov
Aachach	M	L	M	Aalma	M	L	ML	Aarde	ML	L	ML
Aintourine	ML	L	ML	Arabet Qozhaya	L	L	L	Arde	M	L	ML
Arjis	ML	L	ML	Asnoun	ML	L	ML	Ayto	L	L	L
Basloukit	ML	L	ML	Bchannine	M	L	M	Besebeel	ML	L	ML
Bhairret Toula	L	L	L	Bnachee	ML	L	ML	Boussit	M	L	M
Danha	M	L	ML	Daraiya Zgharta	ML	L	ML	Deir Jdeide	ML	L	ML
Ehden	ML	L	ML	Halan	M	L	M	Hariq Zgharta	ML	L	ML
Houakir	L	L	L	Hraiqis	M	L	M	Iaal	ML	L	ML
Ijbaa	L	L	L	Karm Saddeh	L	L	L	Kfarchakhna	M	L	M
Kfardlaqous	M	L	ML	Kfarfou	ML	L	L	Kfarhata Zgharta	ML	L	ML
Kfarhoura	ML	L	L	Kfarsghab	ML	L	ML	Kfaryachit	ML	L	ML
Kfarzaina	ML	L	ML	Khaldiye	ML	L	ML	Mazraat Ajbeaa	ML	L	ML
Mazraat Et-Teffah	L	L	L	Mazraat Jneid	ML	L	ML	Mejdlaya Zgharta	M	L	M
Merh Kfarsghab	ML	L	L	Miryata	M	L	ML	Miziara	L	L	L
Mzraat Kefraya	M	L	M	Qorah Bach	ML	L	ML	Rachiine	M	L	ML
Ras Kifa	ML	L	L	Sakhra	ML	L	ML	Sebhel Zgharta	ML	L	L
Serhel	L	L	L	Tallet Zgharta	ML	L	ML	Toula Zgharta	L	L	L
Zgharta	M	L	ML								

Minieh-Denniye

Municipality	15-Nov	16-Nov	17-Nov	Municipality	15-Nov	16-Nov	17-Nov	Municipality	15-Nov	16-Nov	17-Nov
Aasaymout	VL	L	L	Aaymar	L	L	L	Aazki	ML	L	ML
Ain El-Tineh-Miniyeh	L	L	L	Assoun	L	L	L	Bakhaaoun	L	L	L
Bchennata	ML	L	ML	Bechehhara	L	L	L	Beddawi	M	L	M
Behouaita	L	L	L	Beit El Foqss	L	L	L	Beit Haouik	ML	L	ML
Beit Zoud	L	L	L	Bekaasafrine	L	L	M	Borj El Yahoudiyeh	M	L	M
Bqarsouna	L	L	L	Btermaz	L	L	L	Debaael	L	L	L
Deir Ammar	M	L	M	Deir Nbouh	ML	L	L	Haouaret-Miniyeh	L	L	L
Haql el Azimeh	L	L	L	Harf El Siyad	L	L	L	Hazmiye-Miniyeh	L	L	L
Izal	ML	L	ML	Jarjour	L	VL	L	Jayroun	L	L	L
Kahf El-Malloul	L	L	L	Karm El-Moher	L	L	L	Kfar Binine	L	L	L
Kfarchalane	ML	L	L	Kfarhabou	ML	L	ML	Kharroub-Miniyeh	ML	L	ML
Mazraat El-Kreme	L	L	L	Mazraat Ketrane	L	L	L	Merkebtta	M	L	M
Minyeh	M	L	M	Mrah El Sfirat	L	L	L	Mrah Sraj	L	L	L
Mrebbine	L	L	ML	Nabi Youcheaa	M	L	M	Nemrine	L	L	L

Qarhaiya	L	L	L	Qarne	VL	L	L	Qarsita	L	L	L
Qattineh-Miniyeh	VL	VL	VL	Qemmamine	VL	VL	L	Qraine	L	L	L
Raouda-Aadoua	M	L	ML	Rihaniyet-Miniyeh	M	L	M	Sfireh	L	L	L
Sir Ed-Danniyeh	L	L	L	Tarane	L	L	L	Terbol-Miniyeh	M	L	M
Zaghartaghriine	ML	L	L	Zouq Bhannine	M	L	M				

Nabatiye

Nabatiye

Municipality	15-Nov	16-Nov	17-Nov	Municipality	15-Nov	16-Nov	17-Nov	Municipality	15-Nov	16-Nov	17-Nov
Aabba	M	VL	M	Aazzi	M	VL	M	Adchit El-Chqif	M	VL	M
Ain Bou Swar	ML	VL	M	Ain Kana	ML	VL	M	Ali El-Taher	ML	VL	M
Ansar	M	VL	M	Arab Salim	ML	VL	M	Arnoun	ML	VL	M
Bfaroue	M	VL	M	Breyqaah	M	VL	M	Charqiyeh	M	VL	M
Choukine	M	VL	M	Deir El Zahrani	M	VL	M	Doueir El-Nabatiyeh	M	VL	M
Habbouch El-Nabatiye	M	VL	M	Hamra El-Nabatiyeh	M	VL	M	Harouf El-Nabatiyeh	M	VL	M
Hmaile	ML	VL	M	Houmin El Faouqa	M	VL	M	Houmin El Tahta	M	VL	M
Jarjough	ML	VL	ML	Jbaah El-Nabatiyeh	L	VL	ML	Jebchit	M	VL	M
Kfar Djal El-Nabatiy	ML	VL	M	Kfar Remmane	M	VL	M	Kfar Sir	ML	VL	M
Kfar Tebnit	M	VL	M	Kfarfila	ML	VL	M	Kfour El-Nabatieh	M	VL	M
Mayfadoun	M	VL	M	Mazraat Bsaffour	M	VL	M	Mazraat Chalbaal	M	VL	M
Mazraat Dmoul	M	VL	M	Mazraat El Khreibeh	M	VL	M	Mazraat El-Bayad El-	M	VL	M
Mazraat Kfarjaouz	M	VL	M	Mazraat Qalaat Meiss	M	VL	M	Nabatiyeh El-Fawka	M	VL	M
Nabatiyeh Et-Tahta	M	VL	M	Namiriyeh	M	VL	M	Qaaqaaiyet El Jisr	ML	VL	M
Qossaibeh El-Nabatiy	ML	VL	M	Roumine	M	VL	M	Sarba El-Nabatieh	ML	VL	M
Sir El-Gharbiyeh	ML	VL	M	Toul	M	VL	M	Yehmor El-Nabatiyeh	M	VL	M
Zaoutar El Charkiyeh	M	VL	M	Zaoutar El-Gharbiyeh	ML	VL	M	Zebdine El-Nabatiyeh	M	VL	M
Zefta	M	VL	M								

Hasbaiya

Municipality	15-Nov	16-Nov	17-Nov	Municipality	15-Nov	16-Nov	17-Nov	Municipality	15-Nov	16-Nov	17-Nov
Aain Jarfa	L	VL	L	Abou Qamha	ML	VL	ML	Ain Qania	L	VL	L
Bourghos	ML	VL	ML	Chebaa	ML	VL	ML	Chouaya Hasbaya	ML	VL	ML
Dellafeh	M	VL	ML	Fardiss Hasbaiya	ML	VL	ML	Hasbaya	ML	VL	ML
Hbariyeh	L	VL	L	Kaoukaba Hasbaiya	M	VL	ML	Kfar Chouba	L	VL	L
Kfar Hamam	ML	VL	L	Kfeir El-Zait	L	VL	L	Khalwat Hasbaya	L	VL	L
Khreibet Hasbaiya	ML	VL	M	Majidiyeh Hasbaiya	ML	VL	ML	Marj Ez-Zhour (Haouc	L	VL	ML
Meri	ML	VL	ML	Mimass	ML	VL	ML	Rachaiya El-Fokhar	ML	VL	ML
Salaiyeb	M	VL	M								

Marjayoun

Municipality	15-Nov	16-Nov	17-Nov	Municipality	15-Nov	16-Nov	17-Nov	Municipality	15-Nov	16-Nov	17-Nov
Aalmane Marjaayoun	L	VL	M	Aamra	M	VL	M	Adayseh Marjaayoun	ML	VL	M
Adchit El-Koussair	ML	VL	M	Ain Aarab Marjaayoun	M	VL	M	Bani Haiyann	L	VL	M
Blatt Marjaayoun	M	VL	ML	Blida	ML	VL	M	Borj El-Moulouk	M	VL	M
Boueyda Marjaayoun	ML	VL	ML	Deir Mimass	ML	VL	M	Deir Siriane	ML	VL	M
Dibbine	M	VL	ML	Ebel El Saqi	M	VL	ML	Houla	L	VL	M
Houra	ML	VL	M	Kfar Kila	ML	VL	M	Khiam Marjaayoun	M	VL	M

Klayaa	ML	VL	M	Majdel Selem	L	VL	M	Marjaayoun	M	VL	ML
Markaba	L	VL	M	Mays El-Jabal	L	VL	M	Mazraat Doumiat	M	VL	M
Mazraat Sarada	M	VL	M	Mhaibib	ML	VL	M	Qabrikha	ML	VL	M
Qantara	ML	VL	M	Rab El-Thalathine	ML	VL	M	Saouaneh Marjayoun	ML	VL	M
Talloussa	L	VL	M	Taybeh Matjaayoun	M	VL	M	Touline	ML	VL	M

Bent Jbail

Municipality	15-Nov	16-Nov	17-Nov	Municipality	15-Nov	16-Nov	17-Nov	Municipality	15-Nov	16-Nov	17-Nov
Ain-Ebel	L	VL	M	Aitaroun	ML	VL	M	Aynata Bint Jbeil	L	VL	M
Ayta El-Chaeb	L	VL	M	Ayta El-Jabal	ML	VL	M	Beit Lif	L	VL	ML
Beit Yahoun	ML	VL	M	Bint Jbeil	L	VL	M	Borj Qalaway	M	VL	M
Braachit	ML	VL	M	Chakra	L	VL	M	Debel	L	VL	M
Deir Antar	ML	VL	M	Froun	L	VL	M	Ghandouriyeh Bint Jb	ML	VL	M
Hanine	L	VL	M	Hariss	ML	VL	M	Hdatha	L	VL	M
Jmeyjmech	ML	VL	M	Kafra Bint Jbeil	L	VL	M	Kfar Dounine	ML	VL	M
Khirbet Selm	ML	VL	M	Kounine	L	VL	M	Maroun El Ras	L	VL	M
Qalaway	ML	VL	M	Qaouzah	L	VL	M	Qatmoun	ML	L	M
Ramya Bint Jbeil	L	VL	M	Rchaf	L	VL	M	Rmeich	ML	VL	M
Safad Al Battikh	ML	VL	M	Salhaneh	L	VL	ML	Serbine	L	VL	M
Sultanieh Bint Jbeil	ML	VL	M	Tibnine	L	VL	M	Tiri	L	VL	M
Yaroun	L	VL	M	Yater	L	VL	M				

Mont Liban

Jbail

Municipality	15-Nov	16-Nov	17-Nov	Municipality	15-Nov	16-Nov	17-Nov	Municipality	15-Nov	16-Nov	17-Nov
Aabeydat	L	L	L	Aalita	L	VL	L	Aamchit	M	L	M
Aarab El-Lahib	ML	VL	ML	Aarasta	L	VL	L	Adonis Jbeil	L	VL	L
Afqa Jbeil	L	VL	L	Ain El Delbeh Jbeil	L	VL	L	Ain El-Ghouayba	L	VL	L
Ain Jrain	L	VL	L	Ain Kfah	ML	L	ML	Almat El Chemaliyat	L	VL	L
Almat El-Jenoubiya	L	VL	L	Aqoura	ML	L	ML	Bayzoun	L	VL	L
Bchille Jbeil	L	L	L	Bechtida	L	VL	L	Behdaydat	L	L	L
Beit Habbaq	ML	L	ML	Bejjeh	L	L	L	Bekhaaz	ML	L	ML
Berbara Jbeil	M	L	M	Bintael	L	L	L	Birket Hjoula	L	VL	L
Blatt Jbeil	ML	L	L	Boulhos	L	VL	L	Breyj Jbeil	L	VL	L
Chamat	ML	L	ML	Chikhane	ML	L	M	Chmout	L	L	L
Eddeh Jbeil	ML	L	ML	Ehmej	L	VL	L	Fatre	L	VL	L
Ferhet	ML	L	L	Fghal	L	L	L	Frat	L	VL	VL
Ghabat	ML	VL	L	Ghalboun	L	L	L	Gharzouz	ML	L	ML
Ghofrine	ML	L	ML	Habil	VL	VL	L	Halate	ML	L	L
Haqel	L	L	L	Hbaline	ML	L	ML	Hboub	ML	L	L
Hdeine	ML	VL	ML	Hema Er-Rehban	ML	L	ML	Hema Mar Maroun Aann	ML	VL	ML
Hjoula	L	VL	L	Hosrayel	ML	L	ML	Hsarat	ML	L	ML
Hsoun	L	L	L	Jaj	L	L	L	Janne	L	VL	VL
Jbeil	M	L	ML	Jeddey Jbeil	M	L	M	Jlisse	L	VL	L
Jouret El-Qattine	L	L	L	Kfar Baal Annaya	L	VL	L	Kfar Kidde	ML	L	ML
Kfar Kouas	L	L	L	Kfar Mashoun	ML	L	ML	Kfoun	L	L	L

Kharbe Jbeil	L	L	ML	Laqlouq	M	L	ML	Lassa	L	VL	L
Lehfed	L	VL	L	Maad	ML	L	ML	Mar Sarkis	ML	VL	ML
Mastita	M	L	ML	Mayfouq	L	L	L	Mazraat El Siyad	ML	VL	ML
Mazraat El-Maaden	L	VL	L	Mechane	L	VL	L	Mechmech Jbeil	L	VL	L
Mehrin	ML	L	ML	Mejdel El-Akoura	L	VL	L	Mghayreh Jbeil	ML	VL	ML
Mounsef	M	L	M	Nahr Ibrahim	M	L	ML	Qahmez	L	VL	L
Qartaba	L	VL	L	Qartaboun	M	L	M	Qattara Jbeil	L	VL	L
Qorqraya	VL	VL	VL	Ramout	L	L	L	Ras Osta	L	VL	L
Rihane Jbeil	M	L	ML	Sakiet El-Khayt	L	L	L	Saqi Richmaya	L	VL	L
Sebrine	L	VL	L	Seraita	L	VL	L	Souane Jbeil	L	VL	L
Tadmor	ML	VL	ML	Tartej	L	L	L	Torzaiya	L	VL	L
Yanouh Jbeil	L	VL	L	Zibdine Jbeil	L	VL	L				

El Metn

Municipality	15-Nov	16-Nov	17-Nov	Municipality	15-Nov	16-Nov	17-Nov	Municipality	15-Nov	16-Nov	17-Nov
Aain El-Qabu	L	VL	L	Aain El-Qach	L	VL	L	Aain El-Teffaha	L	VL	L
Aain el-Safssaf El-M	L	VL	L	Abou Mizane	L	VL	L	Ain Aar	ML	L	ML
Ain Alaq	L	VL	L	Ain El-Kharroube	ML	VL	L	Ain El-Sendianeh	L	VL	L
Ain El-Zeitoune	L	VL	L	Ain Saadeh	L	VL	L	Aintoura El-Matn	ML	VL	ML
Amaret Chalhoub	M	L	M	Antelias	M	L	M	Atchaneh	L	VL	L
Ayroun	L	VL	L	Baabdat	L	VL	L	Baouchariyeh	M	L	M
Baskinta	L	VL	L	Beit Chabab	L	VL	L	Beit El-Chaar	ML	L	ML
Beit El-Kekko	M	L	M	Beit Mery	L	VL	L	Bhersaf	L	VL	L
Bikfaya	L	VL	L	Biyakout	ML	L	ML	Bnabil	L	VL	L
Bourj Hammoud	M	L	M	Bqennaya	ML	L	ML	Broummana El-Matn	L	VL	L
Bsalim	L	VL	L	Bsifrine	L	VL	VL	Btegrine	L	VL	L
Chaouiye	L	L	L	Chouaya El-Matn	L	VL	L	Choueir	L	VL	L
Chrine	L	VL	L	Dahr El Sawan El-Mat	L	VL	L	Daychouniyeh	ML	VL	ML
Dbayeh	M	L	M	Deir Chamra	L	VL	L	Deir Mar Abda el Mch	L	VL	L
Deir Mar Roukouz	M	L	M	Deir Tamiche	L	L	L	Dik El-Mehdi	ML	L	ML
Dikwaneh	M	L	M	Douar El-Matn	L	VL	L	Fanar	ML	L	ML
Fraike	L	VL	L	Haret El-Ballaneh	ML	L	ML	Hbous	ML	L	ML
Himlaya	L	VL	L	Jal El Did	M	L	M	Jdeideh El-Metn	M	L	M
Jouar El-Matn	L	VL	L	Jouret El-Ballout	L	VL	L	Kaaqour	L	VL	L
Kfar Aaqab	L	VL	L	Kfertay El-Matn	L	VL	L	Khenchara	L	VL	L
Khillet El-Mtain	L	VL	L	Konnabat Broummana	L	VL	L	Konnabat Salima	L	VL	VL
Machraah El-Matn	L	VL	L	Majdel Tarchich	ML	VL	ML	Majzoub	ML	L	ML
Mansouriyeh El-Metn	M	L	M	Mar Boutros Karm Et-	L	VL	L	Mar Chaya et Mzekke	L	VL	L
Mar Moussa Ed-Douar	L	VL	L	Marjaba	L	VL	L	Masqa	L	VL	L
Mayasse	L	VL	L	Mazraat Deir Aoukar	ML	L	ML	Mazraat El-Hadirat	ML	L	ML
Mazraat Yachouh	ML	L	ML	Mchikha	L	VL	L	Menqlet Mezher	ML	L	ML
Mhaydseh Matn	L	VL	L	Mkalles	M	L	M	Mrouj	ML	VL	ML
Mtain	ML	VL	ML	Mtayleb	ML	L	ML	Nabay	L	VL	L
Naccache	ML	L	ML	Ouadi Chahine	L	VL	L	Ouadi El-Karm El-Mat	L	VL	L
Ouata El-Mrouj	L	VL	L	Ouyoun El-Matn	L	VL	L	Qornet Chehwan	L	VL	L
Qornet El-Hamra	L	VL	L	Roumieh	L	VL	L	Sfeilet Bikfaya	L	VL	L
Sinn El-Fil	M	L	M	Zabbougha	L	VL	L	Zalqa	M	L	M

Zarououn	L	VL	L	Zekrite	L	VL	L	Zighrine El-Matn	L	VL	L
Zouk El-Khrab	M	L	ML								

Chouf

Municipality	15-Nov	16-Nov	17-Nov	Municipality	15-Nov	16-Nov	17-Nov	Municipality	15-Nov	16-Nov	17-Nov
Aalmane El-Chouf	M	L	M	Aammqi El-Chouf	L	VL	L	Ain Ouzein	L	VL	L
Ain Qani	L	VL	L	Ain Zhalta	L	VL	L	Ainbal	L	VL	L
Amateur	L	VL	L	Anout	L	VL	L	Atrine	L	VL	L
Baadarane	ML	VL	ML	Baaqline	L	VL	ML	Baasir	M	VL	M
Barja	M	VL	M	Barouk	L	VL	L	Bater	ML	VL	ML
Batloun	ML	VL	ML	Bayqoun	M	VL	M	Bchetfine	L	VL	L
Beiteddine	L	VL	L	Benouati Ech-Chouf	L	VL	L	Berjein	ML	VL	L
Bireh et Mtalleh	ML	VL	ML	Biret El-Chouf	ML	VL	ML	Bkechtine Ouel Mchei	L	VL	L
Bkifa El-Chouf	ML	VL	ML	Botme	L	VL	L	Bqaiaa Ech-Chouf	L	VL	L
Bsaba El-Chouf	ML	VL	ML	Chammis El-Chouf	M	VL	M	Chehim	ML	VL	L
Chemaarine	L	VL	L	Chourit	L	VL	L	Daher El-Chouf	ML	VL	ML
Dalhoun	M	VL	M	Damour	M	VL	M	Daraya El-Chouf	L	VL	L
Deir El-Moukhalles	L	VL	L	Deir Baba	L	VL	L	Deir Dourit	L	VL	ML
Deir El-Qamar	L	VL	ML	Deir Kouche	L	VL	L	Dibbieh	L	VL	L
Dmit	L	VL	L	Fouara Jaafar	L	VL	L	Fraidis El-Chouf	ML	VL	ML
Ghabet Jaafar	L	VL	L	Gharife	L	VL	L	Haret Jandal	ML	VL	ML
Hasrout	ML	VL	ML	Jadra	M	VL	M	Jahlieh	L	VL	L
Jbeih El-Chouf	L	VL	ML	Jdeidet El-Chouf	L	VL	ML	Jiyeh	M	VL	M
Jleilyeh	ML	VL	ML	Jmailiyeh	M	L	M	Joun	ML	VL	M
Kahlounie El-Chouf	ML	VL	M	Ketermaya	M	L	M	Kfar Faqoud	L	VL	L
Kfar Hamal	ML	VL	M	Kfar Him	ML	VL	ML	Kfar Katra	L	VL	L
Kfar Niss	ML	VL	ML	Kfar hay	L	VL	ML	Kfarnabrakh	ML	VL	ML
Khirbet Bisri	L	VL	L	Knayse El-Chouf	L	VL	L	Maaniyeh	M	L	M
Maasser Beiteddine	L	VL	ML	Maasser El-Chouf	L	VL	L	Majdalouna	ML	L	M
Majdel El-Meouch	ML	VL	ML	Mazboud	M	VL	ML	Mazmoura	ML	VL	L
Mazraat El Chouf	ML	VL	ML	Mazraat El Daher	L	VL	L	Mazraat El-Douair	L	VL	L
Mechref	L	VL	ML	Mghairie	M	L	M	Mghayrie El-Chouf	L	VL	L
Moukhtara	L	VL	L	Mrusti	ML	VL	ML	Mtolle	L	VL	ML
Naameh	M	L	M	Niha El-Chouf	ML	VL	ML	Ouadi Abou Yousef	VL	VL	VL
Ouadi Ed-Deir	ML	VL	ML	Ouadi El-Sit	L	VL	ML	Ouadi bnehlay	L	VL	L
Qraibeh	ML	VL	ML	Qreiaa	L	VL	L	Rmayle El-Chouf	M	L	M
Semqaniyeh	ML	VL	M	Sibline	M	L	M	Sirjbeil	L	VL	ML
Warhanieh	ML	VL	ML	Werdaniyeh	M	L	M	Zaarourieh	ML	VL	ML

Baabda

Municipality	15-Nov	16-Nov	17-Nov	Municipality	15-Nov	16-Nov	17-Nov	Municipality	15-Nov	16-Nov	17-Nov
Abadiyeh	L	VL	L	Ain Mouaffaq	L	VL	L	Araiya	L	VL	L
Arbaniyeh	L	VL	L	Arsoun	L	VL	L	Baabda	M	L	M
Baalchmey	ML	VL	ML	Bmaryam	L	VL	L	Bourj El-Brajneh	M	L	M
Boutchay	ML	L	ML	Bsaba Baabda	M	L	ML	Btekhney	L	VL	L
Btibyat	L	VL	L	Bzebdine	L	VL	L	Chbeniyeh	L	VL	L
Chiyah	M	L	M	Chmeisset Baabda	VL	VL	VL	Chouit	L	VL	L
Deir El-harf	L	VL	L	Deir Khouna	L	VL	L	Dlaybeh	L	VL	L

Falougha	ML	VL	ML	Furn El-Chebbak	M	L	M	Hadath Beyrouth	M	L	M
Halaliyeh Baabda	L	VL	L	Hammana	ML	VL	ML	Haret El Sett	L	VL	L
Haret Hamze	L	VL	L	Haret Hreik	M	L	M	Hasbaiya El-Metn	L	VL	L
Jouar El-Hoz	L	VL	L	Jouret Arsoun	L	VL	L	Kfar Chima	M	L	M
Kfar Selouane	L	VL	L	Khalouat Baabda	ML	VL	ML	Kneisset Baabda	L	VL	L
Laylakeh	M	L	M	Louayzeh Baabda	ML	VL	ML	Merdache	ML	L	ML
Mzairaa Baabda	L	VL	L	Ouadi Chahrour El Ol	ML	VL	ML	Ouadi Chahrour El So	L	VL	L
Qalaa Baabda	L	VL	L	Qhraybe Baabda	L	VL	L	Qobbayaa	L	VL	L
Qornayel	L	VL	L	Qortada	VL	VL	L	Qrayeh Baabda	L	VL	L
Qsaibeh Baabda	L	VL	L	Qtale Baabda	L	VL	L	Ras El Metn	L	VL	L
Ras El-Haref	L	VL	ML	Rouayset El-Ballout	L	VL	L	Salima Baabda	L	VL	L
Tahouitat El Ghadir	M	L	M	Tarchich	L	VL	ML	Zandouqa	VL	VL	VL

Aley

Municipality	15-Nov	16-Nov	17-Nov	Municipality	15-Nov	16-Nov	17-Nov	Municipality	15-Nov	16-Nov	17-Nov
Abey	ML	VL	ML	Aghmid	L	VL	L	Ain Dara	ML	VL	ML
Ain Drafil	L	VL	L	Ain El Halazoun	ML	VL	ML	Ain El-Rmmaneh	L	VL	L
Ain Jedideh	ML	VL	ML	Ain Ksour	L	VL	L	Ain Onoub	L	L	L
Ain Traz	L	VL	L	Ainab	L	VL	L	Aley	ML	VL	ML
Aramoun	M	L	ML	Aytat	ML	L	ML	Azouniyeh	ML	VL	ML
Baawerta	L	VL	ML	Badghan Oua Wadi Bad	ML	VL	ML	Bassatine	ML	L	ML
Bayssour	ML	VL	ML	Bchamoun	ML	L	ML	Bdadoun	L	VL	L
Behouara	L	VL	ML	Bennay	ML	VL	ML	Bhamdoun El-Dayaa	ML	VL	M
Bhamdoun El-Mhatta	ML	VL	M	Bkhechthey	ML	VL	ML	Bleibel	L	VL	L
Bmakine	ML	VL	ML	Bmehray	L	VL	L	Bouzrid	L	VL	L
Bserrine	ML	VL	M	Bsous	L	VL	L	Btalloun	ML	VL	M
Btater	ML	VL	M	Chanay	ML	VL	M	Charoun	ML	VL	ML
Chartoun	L	VL	L	Chemlane	L	L	L	Choueifat El-Aamrous	M	L	M
Choueifat El-Oumara	ML	L	ML	Choueifat El-Quoubbe	M	L	M	Dakkoun	L	VL	L
Deir Qoubel	L	VL	L	Dfoun	M	VL	M	Douair El Remmaneh	L	VL	L
Ghaboun	L	VL	ML	Habramoun	L	VL	L	Homs Oua Hama	ML	VL	ML
Houmal	L	L	L	Jisr El Qadi	L	VL	L	Kehaleh	L	VL	L
Keyfoun	ML	VL	ML	Kfar Aamey	L	VL	ML	Kommatyeh	L	VL	ML
Maasrati	ML	VL	ML	Majdel Baana	ML	VL	ML	Mansourieh et Ain El	ML	VL	M
Mazraat El-Nahr	L	VL	L	Mchakhte	L	VL	L	Mecherfeh	ML	VL	ML
Mejdlaya	L	VL	ML	Mrayjat	ML	VL	ML	Ramliyah	L	VL	L
Rechmaya	ML	VL	ML	Rejmeh	L	VL	ML	Remhala	ML	VL	ML
Rouayset El Neemane	L	VL	ML	Saoufar	ML	VL	ML	Selfaya	L	VL	L
Sirhmoul	L	VL	L	Souq El Ghareb	L	VL	ML	Taazanieh	ML	VL	M

Kesrouane

Municipality	15-Nov	16-Nov	17-Nov	Municipality	15-Nov	16-Nov	17-Nov	Municipality	15-Nov	16-Nov	17-Nov
Achkout	L	VL	L	Adma Oua Dafneh	M	L	ML	Ain Ed-Delbe Kesroua	L	VL	L
Ain El-Rihane	L	VL	L	Aintoura Kesrouane	ML	L	ML	Ajaltoun	L	VL	L
Akaybeh Kesrouane	M	L	M	Aramoun Kesrouane	ML	VL	L	Azra ouel Ozor	ML	VL	L
Ballouneh	L	VL	L	Batha	ML	VL	VL	Bekaatat Achkout	ML	VL	L
Bekaatat Kanaan	L	VL	L	Bizhel	L	VL	L	Bouar	M	L	ML
Bqaatouta	L	VL	L	Bqaq Ed-Dine	M	L	ML	Bzommar	ML	VL	L

Chahtoul	L	VL	L	Chnaniir	M	VL	L	Chouan	L	VL	L
Daraya Kesrouane	L	VL	L	Darououn	L	VL	L	Deir Baqlouch	ML	VL	L
Dlebta	ML	VL	L	Eghbeh	L	VL	VL	Faraya	ML	VL	ML
Fatka	M	VL	L	Feytroun	L	VL	L	Ghazir	M	VL	L
Ghbaleh Kesrouane	L	L	L	Ghedrass	ML	VL	L	Ghosta	ML	VL	L
Ghynéh	ML	VL	L	Harharaya w Kattine	ML	VL	L	Harissa Kesrouane	ML	VL	L
Hayata	L	VL	L	Hosein	L	VL	L	Hrajel	ML	VL	ML
Jdeideh Ghazir	ML	VL	L	Jeita	L	VL	L	Jounieh Ghadir	ML	VL	ML
Jounieh Haret Sakhr	M	VL	ML	Jounieh Salel Alma	M	VL	ML	Jounieh Sarba	M	L	M
Jouret Bedrane	ML	L	L	Jouret Mhad	L	VL	L	Jouret Termos	ML	VL	L
Kfar Debiane	L	VL	L	Kfar Tay Kesrouane	L	VL	L	Kfar Yassine	M	VL	M
Kfour Kesrouane	ML	VL	L	Kharayeb Nahr Ibrahi	ML	L	L	Klayaat Kesrouane	L	VL	L
Maarab	ML	VL	VL	Maaysra Kesrouane	ML	L	L	Mayrouba	ML	VL	L
Mazraat Er-Ras	ML	L	ML	Mazraat Mrah El-Mir	L	VL	L	Mchaa El Ftouh	ML	VL	ML
Mchaa Faraya	ML	VL	ML	Mchaa Kfar Dibiane	ML	VL	ML	Mghaer	L	VL	L
Mradiyeh	ML	VL	L	Nahr Ed-Dahab	L	VL	L	Nammoura Kesrouane	ML	L	L
Ouata El Jaouz	L	VL	L	Ouata Sillam	M	L	M	Raachine	L	VL	L
Rayfoun	L	VL	L	Safra Kesrouane	M	L	ML	Shayle Kesrouane	L	VL	L
Tabarja	M	L	ML	Yahchouch	L	VL	L	Zaaytreh	ML	VL	L
Zeytoun	ML	L	L	Zouk Mikael	M	L	M	Zouk Mosbeh	M	L	ML

Baalbek_Hermel

Baalbek

Municipality	15- Nov	16- Nov	17- Nov	Municipality	15- Nov	16- Nov	17- Nov	Municipality	15- Nov	16- Nov	17- Nov
Aadous	ML	ML	M	Aamchki	L	ML	ML	Aarsal	L	L	ML
Ain Baalbek	L	L	ML	Ain Bourday	ML	ML	M	Ain El-Benye	ML	L	ML
Ain El-Jaouz Baalbek	L	ML	ML	Ain El-Siya Chadoura	L	ML	ML	Al Khodr Baalbek	ML	L	M
Al Nabi Chit	ML	L	M	Aynata Baalbek	L	L	ML	Baalbek	ML	ML	M
Bachwat	L	L	L	Barqa	L	VL	L	Bednayel Baalbak	ML	VL	M
Beit Chama	ML	L	ML	Bijjaje	L	ML	M	Bouday	L	L	L
Brital	ML	L	M	Btadi	L	L	L	Chaat	ML	ML	M
Chaibe	ML	L	ML	Chlifa	ML	L	ML	Chmestar	L	VL	ML
Dar El-Oussa	L	VL	L	Deir El-Ahmar	L	L	L	Deir Mar Maroun Baal	L	ML	M
Douris	ML	ML	M	Fakiha	L	ML	M	Hadath Baalbek	L	L	ML
Ham	ML	L	ML	Haour Taala	ML	L	M	Hizzine	ML	ML	M
Hlebta	VL	L	L	Hosh Barada	ML	ML	M	Hosh El Dahab	ML	L	M
Hosh El Snid	ML	L	M	Hosh El-Nabi	ML	L	M	Hosh El-Rafiq	ML	L	M
Hosh Tal Safiya	ML	ML	M	Hrebta	L	L	ML	laat	ML	L	ML
Jebaa	L	VL	ML	Jenta	ML	L	ML	Kfar Dabach	ML	VL	ML
Kfar Dane	ML	L	M	Khraibeh El-Hermel	L	L	L	Khreibet Baalbek	ML	L	M
Kneisset Baalbek	ML	ML	M	Labueh	L	M	M	Maarboun	ML	L	ML
Majdaloun	ML	ML	M	Maqneh	ML	ML	M	Mazraat Beit Mcheik	ML	L	ML
Misraya	ML	L	M	Moqraq	L	ML	M	Nabha El-Damdoum	L	L	ML
Nabi Chbay	ML	L	M	Nabi Osman	L	ML	ML	Nahleh baalbek	L	ML	ML
Ouadi El-Oss	VL	L	L	Qaa Baayoun	L	M	M	Qaa Jouar Maqiye	L	M	M
Qaa Ouadi El-Khanzir	L	M	M	Qah Baalbek	L	M	M	Qarha Baalbek	ML	ML	ML

Qsarnaba	ML	L	M	Ram Baalbek	L	L	ML	Ras Baalbek El Sahl	ML	M	M
Ras Baalbek El-Charq	L	M	M	Riha	ML	ML	ML	Saaide	ML	L	M
Sboubba	L	M	ML	Seriine El-Tahta	ML	L	M	Slouqi	ML	VL	ML
Taiba Baalbek	ML	ML	M	Talia	ML	L	M	Taraiya	ML	L	ML
Temnin El Fawqa	ML	L	M	Temnin El-Tahta	ML	L	M	Tfail	L	ML	ML
Yahfoufa	ML	L	M	Yammouneh	L	L	ML	Younine	L	ML	ML
Zboud	L	ML	M								

Hermel

Municipality	15-Nov	16-Nov	17-Nov	Municipality	15-Nov	16-Nov	17-Nov	Municipality	15-Nov	16-Nov	17-Nov
Charbine El-Hermel	VL	L	L	Hermel Jbab	VL	L	ML	Hermel	L	ML	M
Maaysra El-Hermel	VL	L	ML	Michaa Mrajhine	VL	L	L	Ouadi Faara	VL	L	L
Ras Baalbek - Ouadi	L	M	M	Ras Baalbek El Gharb	L	L	ML	Zighrine	VL	L	L

Akkar

Akkar

Municipality	15-Nov	16-Nov	17-Nov	Municipality	15-Nov	16-Nov	17-Nov	Municipality	15-Nov	16-Nov	17-Nov
Aain Tinta	ML	L	M	Aaiyat	L	ML	ML	Aakkar El-Aatiqa	L	L	L
Aamar Akkar	M	L	M	Aamar El Baykat	M	L	M	Aamayer	L	M	M
Aamriyet Akkar	ML	L	M	Aandqet	L	L	L	Aarmeh	M	L	M
Aarqa	M	L	M	Aawaynat	ML	ML	ML	Aayoun Akkar	L	ML	ML
Abboudiye	M	L	M	Ain El-Zeit	M	L	M	Ain Yaaqoub	L	L	L
Akroum	L	L	ML	Aridet Cheikh Zennad	M	L	M	Baldeh w Mazraat Bal	M	L	M
Barcha	M	L	M	Bardeh	ML	L	M	Bebnine	M	L	M
Beino	ML	L	M	Beit Ayoub	ML	ML	M	Beit El-Haouch	M	L	M
Beit Mellat	ML	ML	M	Beit Younes	L	L	ML	Berbara Akkar	ML	L	M
Berqayel	M	L	M	Bezbina	L	L	L	Bireh Akkar	ML	L	M
Borj	L	M	M	Bqerezla	M	L	M	Bzal	ML	L	L
Chane	L	L	L	Chaqdouf	L	ML	M	Charbila	M	L	M
Cheikh Mohammad	M	L	M	Cheikh Taba Es-Sahl	M	L	M	Cheikh Taba	M	L	M
Cheikh Zennad	M	L	M	Cheikhlar	ML	ML	M	Chir Hmairine	M	L	M
Daghle	ML	L	M	Dahr Laissine	M	L	M	Darine	M	L	M
Dawra	L	L	L	Dawsa w Baghdadi	ML	L	M	Dayret Nahr El-Kabir	ML	L	M
Deir Dalloum	M	L	M	Deir Jennine	ML	L	M	Denbou	ML	L	L
Dibbabiyyeh	M	L	M	Douair Aadwiyeh	ML	L	M	Fassikine	ML	L	M
Fnaydek	L	L	L	Fraydes Akkar	ML	L	ML	Ghazayle	M	L	M
Habchit	L	L	L	Hakour	M	L	M	Halba	M	L	M
Haouchab	M	L	M	Hayssat	M	L	M	Haytla	M	L	M
Hayzouq	M	L	M	Hedd	M	L	M	Hmaira Akkar	M	L	M
Hmaiss Akkar	M	L	M	Hnaider	ML	M	M	Hokr Ed-Dahri	M	L	M
Hokr Etti	M	L	M	Hokr Jouret Srar	M	L	M	Houaich	ML	L	ML
Hrar	ML	L	ML	Idbil	M	L	ML	Ilal	M	ML	M
Janine	M	L	M	Jdeidet El-Joumeh	M	L	M	Jdeidet El-Kaiteh	M	L	M
Jebayel	M	L	M	Kafr	L	L	L	Kafr	ML	L	M
Karm Asfour	M	L	M	Kfar Melki Akkar	M	L	M	Kfar Noun	ML	L	ML
Kfarharra	M	L	M	Khalsa	ML	ML	M	Kharnoubet Akkar	M	L	M

Khirbet Daoud Aakkar	ML	L	M	Khirbet El Remmane	ML	L	ML	Khirbet Shar	ML	L	M
Khoreybet El-Jindi	M	L	M	Khreibet Aakkar	ML	L	ML	Kneisset Aakkar	M	L	M
Kneisset Hnaider	ML	M	M	Knisse	M	L	M	Kroum El-Aarab	M	L	M
Kwachra	M	L	M	Kweykhat	M	L	M	Machta Hammoud	ML	L	ML
Majdala	M	L	M	Majdel Akkar	ML	L	M	Mar Touma	M	L	M
Marlaya Melhem	M	L	M	Mashha	M	L	M	Massouidiye	M	L	M
Mazraat Beit Ghattas	M	L	M	Mazraat En-Nahriye	ML	L	ML	Mechmech	L	L	L
Memneh	L	L	L	Mhammara	M	L	M	Mighraq Aakkar	M	L	M
Minyara	M	L	M	Moqayteh	M	L	M	Mounjez	ML	L	ML
Msalla	M	L	M	Mzeihmeh	M	L	M	Nfaiseh	M	L	M
Noura Et-Tahta	M	L	M	Ouadi El-Haour	M	L	M	Ouadi El-Jamous	M	L	M
Ouyoun El-Ghizlane	M	L	M	Qaabarine	M	L	M	Qabaait	L	L	L
Qachlaq	M	L	M	Qantara Aakkar	M	ML	M	Qarha Aakkar	ML	M	M
Qarqaf	M	L	M	Qboula	L	M	M	Qleiaat Aakkar	M	L	M
Qloud El-Baqie	M	L	M	Qobaiyat Aakkar	L	L	L	Qobbat Chamrat	M	L	M
Qorayat	ML	L	ML	Qornet Aakkar	L	L	ML	Qsair Aakkar	ML	L	M
Rahbe	ML	L	ML	Rihaniyet Aakkar	M	L	M	Rmah	ML	L	ML
Rmoul	M	L	M	Saadine	M	L	M	Sadaqa	ML	L	M
Saidnaya	M	L	M	Sammouniye	M	L	M	Sayssouq	M	L	M
Semmaqiye	M	L	M	Semmaqli	M	L	M	Sfinet El-Dreib	M	L	M
Sfinet El-Qaitaa	ML	L	ML	Sindyanet Zeidane	L	L	ML	Souaisset Aakkar	M	L	M
Srar	M	L	M	Tal Abbas El Gharby	M	L	M	Tal Abbas El-Charqy	M	L	M
Tal Biret	M	L	M	Tal Hmayra	M	L	M	Tal Maayan Tal Kiri	M	L	M
Tal Sibel	M	L	M	Tallet Chattaha	L	M	M	Tikrit	ML	L	ML
Tleil	M	L	M	Tshea	L	L	L	Zawarib	M	ML	M
Zouq El Hosniyeh	M	L	M	Zouq El-Haddara	M	L	M	Zouq El-Hbalsa	M	L	M
Zouq El-Moqachrine	M	L	M								

Sud

Sour

Municipality	15-Nov	16-Nov	17-Nov	Municipality	15-Nov	16-Nov	17-Nov	Municipality	15-Nov	16-Nov	17-Nov
Aaiyeh	L	VL	M	Aalma El-Chaab	L	VL	L	Aaytit	L	VL	M
Abbassiyeh Sour	ML	L	M	Abou Chech	L	VL	ML	Ain Abou Abdallah	ML	L	M
Ain Baal	L	L	M	Arzoun	ML	VL	M	Aziyeh	L	VL	L
Baflaya	ML	VL	M	Barich	ML	VL	M	Batouliyah	L	VL	M
Bayad	L	VL	M	Bazouriyeh	L	VL	M	Bediass	ML	VL	M
Bestiyat	ML	VL	M	Borj El Chemali	L	L	M	Borj En-Naqoura	L	VL	ML
Borj Rahhal	ML	VL	M	Boustane	L	VL	M	Btaychiyeh	L	VL	ML
Chaaitiye	L	VL	M	Chameh	L	VL	L	Chehabiye	ML	VL	M
Chehour	L	VL	L	Chihine	L	VL	ML	Debaal Sour	ML	VL	M
Deir Amess	L	VL	M	Deir Kifa	ML	VL	M	Deir Qanoun El-Ain	L	VL	M
Deir Qanoun El-Naher	ML	VL	M	Derdghaiya	ML	VL	M	Dhayra	L	VL	ML
Halloussiyeh	ML	VL	M	Hamoul	L	VL	L	Hanaouey	L	VL	M
Henniye	L	VL	M	Hmairi Sour	ML	VL	M	Iskandarouna Sour	L	VL	L
Jbal El Botom	L	VL	M	Jebbin	L	VL	M	Jennata	ML	VL	M
Jijim	L	VL	L	Jouaiya	L	VL	M	Kneisset Sour	L	VL	M

Maarake	ML	VL	M	Maaroub	ML	VL	M	Majadel	L	VL	M
Majdalzoun	L	VL	ML	Mansouri Sour	L	VL	M	Marnba	L	VL	ML
Marouahine	L	VL	ML	Mazraat El-Zalloutiy	L	VL	M	Mazraat Mechref	L	VL	M
Mazraat Tayr Semhat	L	VL	L	Mheilib	ML	L	M	Neffakhiyeh	ML	VL	M
Niha Sour	ML	VL	M	Ouadi Jilo	L	VL	M	Qana	L	VL	M
Qolaileh Sour	L	VL	M	Rechknanay	L	VL	M	Rmadiyeh	L	VL	M
Selha Sour	ML	VL	M	Siddiqine	L	VL	M	Sour	ML	L	M
Srifa	L	VL	M	Tayr Debbe	L	VL	M	Tayr Felsay	ML	VL	M
Tayr Harfa	L	VL	ML	Touayri	L	VL	ML	Toura	ML	VL	M
Yanouh Sour	ML	VL	M	Yarine	L	VL	M	Zebqine	L	VL	L

Saida

Municipality	15-Nov	16-Nov	17-Nov	Municipality	15-Nov	16-Nov	17-Nov	Municipality	15-Nov	16-Nov	17-Nov
Aanqoun	M	VL	M	Aaqtanit	M	VL	M	Aarab Ej-Jall	M	VL	M
Aarab Tabbaya	M	VL	M	Abra Saida	M	L	M	Adloun	ML	VL	M
Adousiyeh	M	L	M	Ain-El-Deleb	M	L	M	Arzai	M	VL	M
Babliyeh	M	VL	M	Barty	ML	VL	M	Bissariyeh	M	L	M
Bnaafoul	M	VL	M	Bqosta	M	L	M	Bramiy	M	L	M
Daoudiyeh	M	VL	M	Dareb El-Sim	M	L	M	Erkay	M	VL	M
Ghassanieh	M	VL	M	Ghazieh	M	L	M	Hajjeh	M	VL	M
Haret Saida	M	L	M	Hartiyeh	M	VL	M	Hlaliye Saida	M	L	M
Insariyat	M	VL	M	Jazira Saida	M	VL	M	Kafar Bit	M	VL	M
Kaoutariyet El-Siyad	M	VL	M	Kfar Chellal	ML	VL	M	Kfar Hatta Saida	M	VL	M
Kfar Milke Saida	ML	VL	M	Khartoum	M	VL	M	Khaziz	M	VL	M
Khirbet Ed-Douair Sa	M	L	M	Khirbet El-Bassal	M	L	M	Khrayeb Saida	M	VL	M
Loubieh	M	VL	M	Maghdouche	M	VL	M	Majdelyoun	M	L	M
Matariyet El-Choumar	M	VL	M	Matayriyeh	M	VL	M	Mazraat 'Mseileh	M	L	M
Mazraat 'Snaiber	M	L	M	Mazraat Aarab Soukka	M	VL	M	Mazraat Deir Taqla	M	VL	M
Mazraat El Yahouidiye	ML	L	M	Mazraat El-Housseini	M	L	M	Mazraat El-Mhaydaleh	M	VL	M
Mazraat El-Ouasta	ML	VL	M	Mazraat Jamjim	ML	VL	M	Mazraat Kaoutariyet	M	VL	M
Mazraat Kfar Badda	ML	VL	M	Mazraat Oussamiyat	M	VL	M	Mazraat Sari	M	VL	M
Mazraat Sinai	M	VL	M	Meemariyeh	M	VL	M	Merouaniyeh	M	L	M
Miyeh ou Miyeh	M	L	M	Najjariyeh	M	L	M	Qaaqaiyat El-Snaouba	M	L	M
Qnarit	M	VL	M	Qraiye Saida	M	L	M	Saida Ed-Dekermane	M	L	M
Saida El-Oustani	M	L	M	Saida El-Qadimeh	M	L	M	Saida Kefraya	M	VL	M
Saksakiyeh	M	L	M	Salhie Saida	M	L	M	Sarafand	M	L	M
Sfenta	L	VL	ML	Tafahta	M	L	M	Tanbourit	M	VL	M
Tebna	M	L	M	Zaghdraiya	M	VL	M	Zeita	M	VL	M
Zrariyeh	M	VL	M								

Jezzine

Municipality	15-Nov	16-Nov	17-Nov	Municipality	15-Nov	16-Nov	17-Nov	Municipality	15-Nov	16-Nov	17-Nov
Ain El-Mir (El Estab	M	L	M	Anane	L	VL	L	Aramta	ML	VL	ML
Ariya	ML	VL	ML	Aychiyeh	ML	VL	ML	Azour	L	VL	L
Baba	L	VL	L	Bayssour Jezzine	M	L	M	Benoueteh Jezzine	ML	VL	L
Bhannine	ML	VL	ML	Bisri	L	VL	L	Bkassine	L	VL	L
Bouslaya	L	VL	L	Btedine El-Leqech	L	VL	L	Chbail	L	VL	L
Choualiq Jezzine	M	L	M	Dahr Ed-Deir	L	VL	ML	Deir El Qattine	L	VL	L

Demachqiyeh	M	VL	M	Ghabbatiyeh	L	VL	L	Harf Jezzine	L	VL	L
Hassaniyeh	M	VL	M	Haytouleh	ML	VL	ML	Haytura	L	VL	L
Hidab	L	VL	ML	Homsiyeh	L	VL	L	Jabal Toura	ML	VL	ML
Jarmaq	ML	VL	M	Jensnaya	M	L	M	Jernaya	ML	VL	M
Jezzine	ML	VL	ML	Karkha	ML	VL	M	Kfar Falous	ML	VL	ML
Kfar Houna	ML	VL	ML	Kfar Jarrah	M	L	M	Lebaa	M	L	M
Louayzet Jezzine	L	VL	ML	Machmouche	L	VL	L	Mahmoudiyeh Jezzine	M	VL	M
Maknounye Jezzine	L	VL	L	Maraat Ouazaiyeh	ML	VL	ML	Mazraat Daraya	L	VL	L
Mazraat El-Aarqoub	L	VL	ML	Mazraat El-Mathane	L	VL	L	Mazraat El-Rahbane	L	VL	ML
Mazraat Khallet Khaz	L	VL	L	Mazraat Louzid (Loua	L	VL	L	Mazraat Qrouh	ML	VL	ML
Mazraat Tamra	M	VL	M	Mazraat Zighrine Jez	ML	VL	ML	Mazraat	L	VL	ML
Mharbiyeh	M	VL	M	Midane Jezzine	L	VL	L	Mjeydel Jezzine	M	VL	M
Mlikh	L	VL	ML	Mrah El-Hbasse	M	L	M	Ouadi Baanqoudaine	M	L	M
Ouadi El-Laymoun	M	VL	M	Ouardiyeh	VL	VL	VL	Qabaa Jezzine	L	VL	L
Qatrani	L	VL	L	Qaytouleh	L	VL	L	Qtaleh Jezzine	L	VL	L
Rihane Jezzine	ML	VL	ML	Rimat	L	VL	ML	Roum	L	VL	L
Roummanet	ML	VL	M	Sabbah	L	VL	L	Saydoun	L	VL	ML
Sfaray	L	VL	L	Snaya	L	VL	L	Sojoud	ML	VL	ML
Srayri	ML	VL	ML	Taaid	L	VL	L	Wadi Jezzine	L	VL	L
Zhalta	L	VL	L								

Bekaa

West Bekaa

Municipality	15-Nov	16-Nov	17-Nov	Municipality	15-Nov	16-Nov	17-Nov	Municipality	15-Nov	16-Nov	17-Nov
Aammiq BG	ML	VL	ML	Ain El Tineh BG	ML	VL	ML	Ain Zebdeh	ML	L	ML
Ana	ML	VL	ML	Aytanit	L	VL	ML	Baaloul BG	ML	L	ML
Bab Mareh	ML	L	M	Chouberqiye Aammiq	ML	VL	ML	Dakoue	ML	L	ML
Deir Ain El-Jaouze	ML	L	ML	Deir Tahniche	ML	VL	ML	Ghaza	ML	VL	ML
Harime El-Soughra	ML	L	ML	Hoch Harimeh	ML	L	ML	Jazira BG	ML	VL	ML
Jib Jennine	ML	L	ML	Kamed-El-Laouz	ML	L	ML	Kefraya BG	L	VL	L
Khiara El Atika	ML	VL	ML	Khiara	ML	VL	ML	Khirbet Qanafar	ML	VL	ML
Lala	ML	L	ML	Lebbaya BG	ML	VL	ML	Loussa	ML	VL	ML
Machghara	ML	VL	ML	Manara (Hammara) BG	L	VL	L	Mansoura BG	ML	VL	ML
Marej BG	ML	VL	ML	Maydoun	ML	VL	ML	Ouaqf BG	ML	VL	ML
Qaraaoun	ML	L	M	Qelya	ML	VL	ML	Raouda (Istabel)	ML	VL	ML
Saghbine	ML	L	ML	Sohmor	ML	VL	M	Soltan Yacoub el Ara	ML	VL	ML
Souairy	L	VL	ML	Sultan Yaacoub	ML	VL	ML	Tal Znoun	ML	VL	ML
Yehmor BG	ML	VL	M	Zilaya	ML	VL	ML				

Zahle

Municipality	15-Nov	16-Nov	17-Nov	Municipality	15-Nov	16-Nov	17-Nov	Municipality	15-Nov	16-Nov	17-Nov
Aanjar (Haouch Mouss	ML	VL	ML	Ablah	ML	L	M	Ain Kfarzabad	ML	L	ML
Ali-El-Nahri	ML	L	M	Bar Elias	ML	VL	ML	Bouarej	ML	VL	ML
Cheberqiyet Tabet	ML	VL	ML	Chtaura	ML	VL	ML	Deir El Ghazal	ML	L	ML
Delhamiyet Zahle	ML	L	ML	Ferzol	ML	VL	ML	Haouch El-Ghanam	ML	L	M
Haouch Es-Siyadeh	ML	VL	ML	Haouch Hala	ML	L	M	Haouch Mandara	ML	VL	ML

Haouch Qayssar	ML	VL	ML	Hezerta	L	VL	ML	Hosh Moussa	ML	L	M
Jdita	ML	VL	ML	Kfarzabad	ML	VL	ML	Ksara	ML	VL	ML
Majdel Aanjar	L	L	ML	Makssi	ML	VL	ML	Massa	ML	L	M
Mazraat Er-Remtaniye	ML	VL	ML	Mrayjat Zahle	ML	VL	ML	Mzaraa Zahle	ML	VL	ML
Nabi Ayla	ML	L	ML	Nasriyet Rizk	ML	L	M	Nasriyet Zahle	ML	VL	ML
Niha Zahle	ML	L	ML	Ouadi Ed-Deloum	ML	VL	ML	Ouadi El-Arayech	L	VL	ML
Qaa El Rim	ML	VL	ML	Qab Elias	ML	VL	ML	Qousaya	ML	L	ML
Rhit	ML	L	M	Riyak	ML	L	M	Saadnayel	ML	VL	ML
Taal El-Akhdar	ML	VL	ML	Taalbeya	ML	VL	ML	Taanayel	ML	VL	ML
Talamara	ML	L	M	Tcheflik Edde Haouch	ML	VL	ML	Tcheflik Qiqano	ML	VL	ML
Terbol Zahle	ML	L	ML	Touaite Zahle	ML	VL	ML	Zahle Aradi	ML	VL	ML
Zahle El-Berbara	ML	VL	ML	Zahle El-Maallaqa	ML	VL	ML	Zahle El-Midane	ML	VL	ML
Zahle Er-Rassiyeh	ML	VL	ML	Zahle Haouch El-Ouma	ML	VL	ML	Zahle Haouch El-Ouma	ML	VL	ML
Zahle Haouch Ez-Zara	ML	VL	ML	Zahle Maallaqa Aradi	ML	VL	ML	Zahle Mar Antonios	ML	VL	ML
Zahle Mar Elias	ML	VL	ML	Zahle Mar Gerios	ML	VL	ML	Zahle Saydet En-Naja	ML	VL	ML
Zebdoul	ML	VL	ML								

Rachaiya

Municipality	15-Nov	16-Nov	17-Nov	Municipality	15-Nov	16-Nov	17-Nov	Municipality	15-Nov	16-Nov	17-Nov
Ain Arab Rachaiya	ML	L	ML	Ain Ata	L	VL	L	Ain Harche	ML	VL	ML
Aqabe Rachaya	ML	L	ML	Ayha	ML	L	ML	Ayta El Fokhar	ML	L	ML
Bakifa Rachaya	ML	L	ML	Bakka	ML	L	ML	Beit Lahya	ML	L	ML
Bireh Rachaiya	ML	L	ML	Daher El Ahmar	ML	L	ML	Deir El-Achayer	L	L	L
Heloua Rachaiya	L	L	L	Hoch El Qannabeh Rac	L	VL	L	Kaoukaba Bou Arab	ML	L	ML
Kfar Danis	ML	L	ML	Kfar Mechki	ML	VL	ML	Kfar Qouq	L	L	L
Kherbet Rouha	ML	L	ML	Majdel Balhiss	ML	L	M	Mdoukha	ML	L	ML
Mhaydseh Rachaiya	ML	L	ML	Nabi Safa	ML	VL	ML	Rachaiya	ML	L	ML
Rafid Rachaiya	ML	L	ML	Selsata (Mazraat Dei	VL	VL	VL	Tannoura	ML	VL	ML
Yanta	L	L	L								

Beyrouth

Beyrouth

Municipality	15-Nov	16-Nov	17-Nov	Municipality	15-Nov	16-Nov	17-Nov	Municipality	15-Nov	16-Nov	17-Nov
Achrafieh	M	L	M	Ain el-Mreisse	M	L	M	Bachoura	M	L	M
Beirut Central Distr	M	L	M	Marfai	M	L	M	Mazraa	M	L	M
Medaouar	M	L	M	Minet el-Hosn	M	L	M	Mwssaitbeh	M	L	M
Ras Beirut	M	L	M	Rmeil	M	L	M	Saifi	M	L	M
Zqaq el-Blat	M	L	M								