

Lebanon Fire Risk Bulletin



CIVIL DEDEFENCE

Refer to cadast table condition.

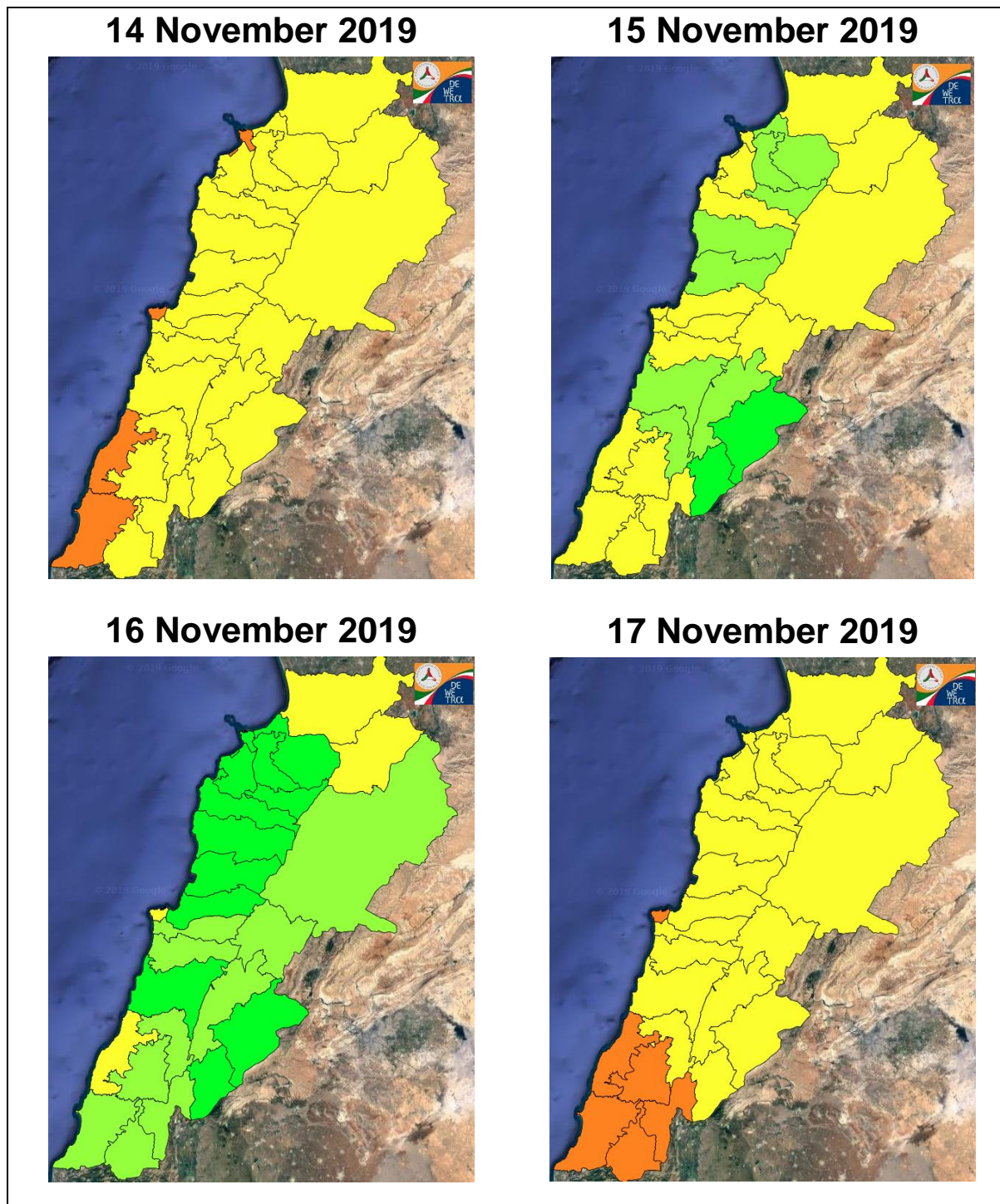
Please note that the indicated temperature is at 2 meters height from the ground.

General description of potential fire risk situation

Symbol	Level of risk	Meaning and actions
VL	Very low	Very low fire risk. Controlled burning operations can be hardly executed due to high fuel moisture content. Normally wildfires self-extinguish.
L	Low	Low fire risk. Controlled burning operations can be executed with a reasonable degree of safety.
ML	Medium low	Medium-low fire risk. Controlled burning operations can be executed in safety conditions. All the fires need to be extinguished.
M	Medium	Medium fire risk. Controlled burning operations would be avoided. All the fires need to be very well extinguished.
M	Medium high	Controlled burning is not recommended. Open flame will start fires. Cured grasslands and forest litter will burn readily. Spread is moderate in forests and fast in exposed areas. Patrolling and monitoring is suggested. Fight fires with direct attack and all available resources.
H	High	Ignition can occur easily with fast spread in grass, shrubs and forests. Fires will be very hot with crowning and short to medium spotting. Direct attack on the head may not be possible requiring indirect methods on flanks. Patrolling and monitoring the territory is highly suggested.
E	Extreme	Ignition can occur also from sparks. Fires will be extremely hot with fast rate of spread. Control may not be possible during day due to long range spotting and crowning. Suppression forces should limit efforts to limiting lateral spread. Damage potential total. Patrolling and monitoring the territory is highly suggested.

Beirut, 15 November 2019

FIRE RISK INDEX

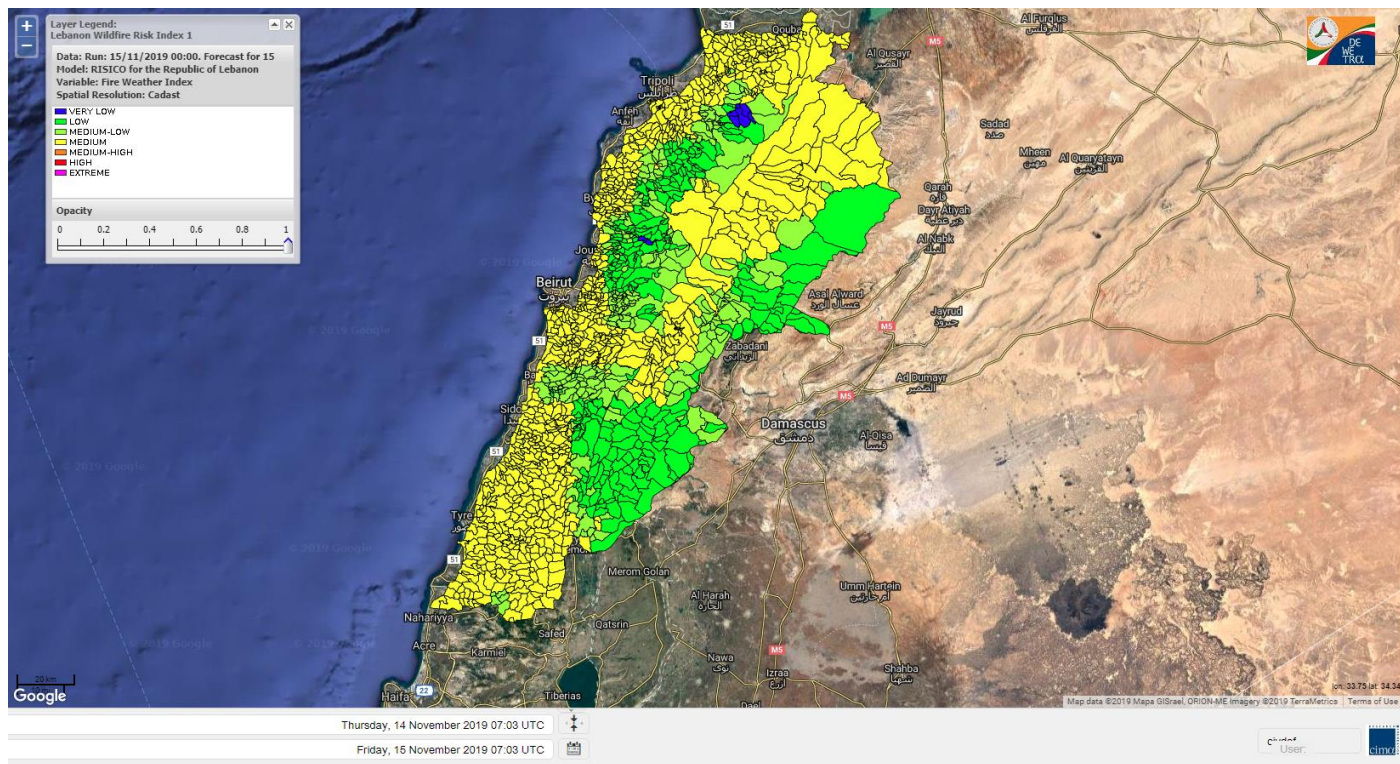


Layer Legend:
Lebanon Wildfire Risk Index 1

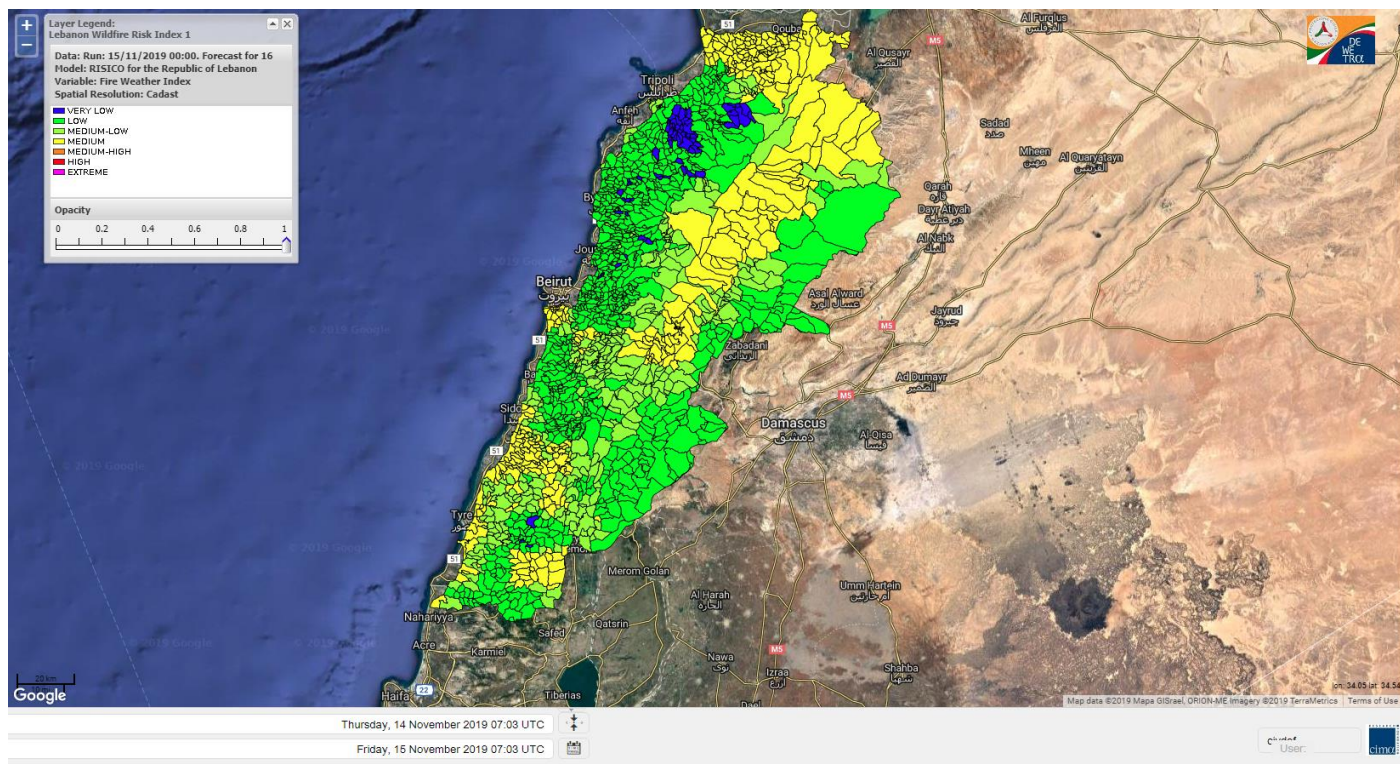
Data: Run: 15/11/2019 00:00. Forecast for 15
Model: RISICO for the Republic of Lebanon
Variable: Fire Weather Index
Spatial Resolution: Caza

- VERY LOW
- LOW
- MEDIUM-LOW
- MEDIUM
- MEDIUM-HIGH
- HIGH
- EXTREME

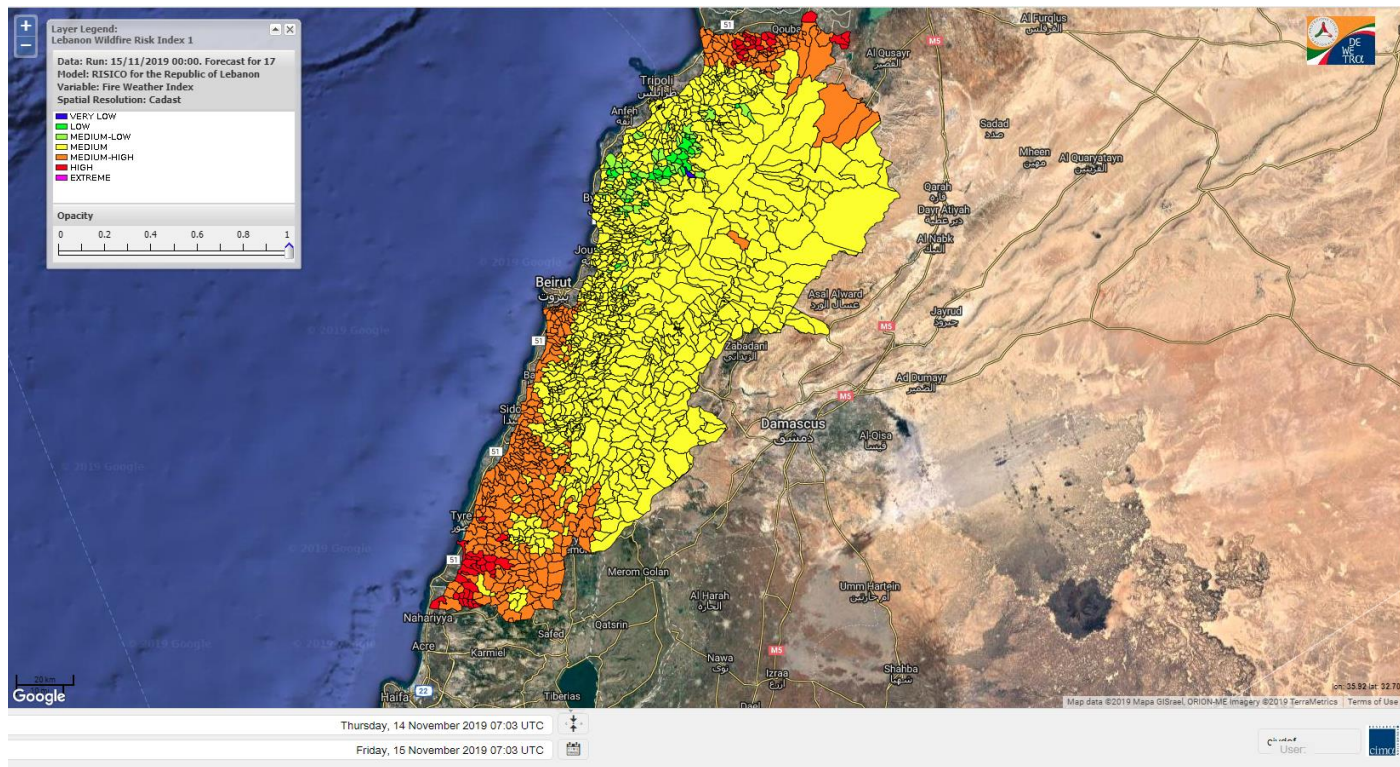
Lebanon for 15 November 2019



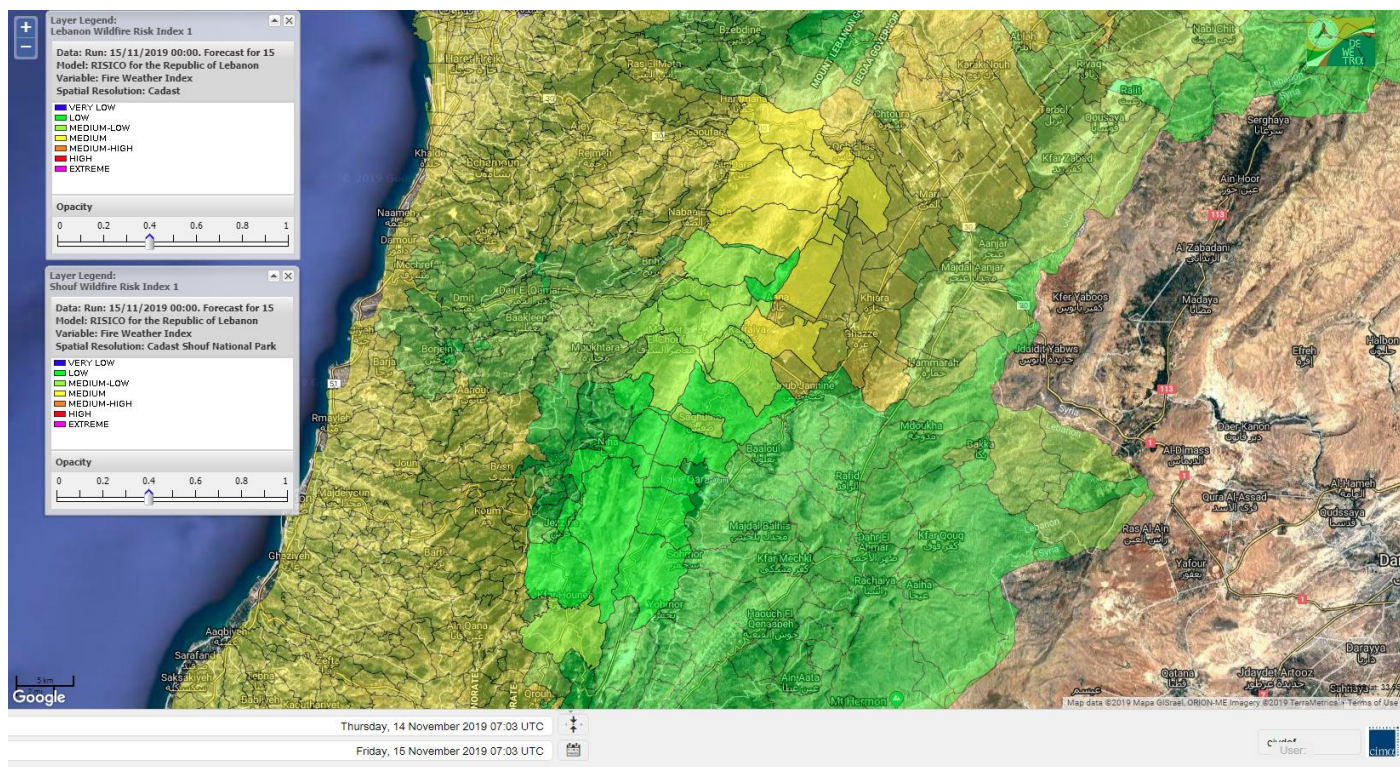
Lebanon for 16 November 2019



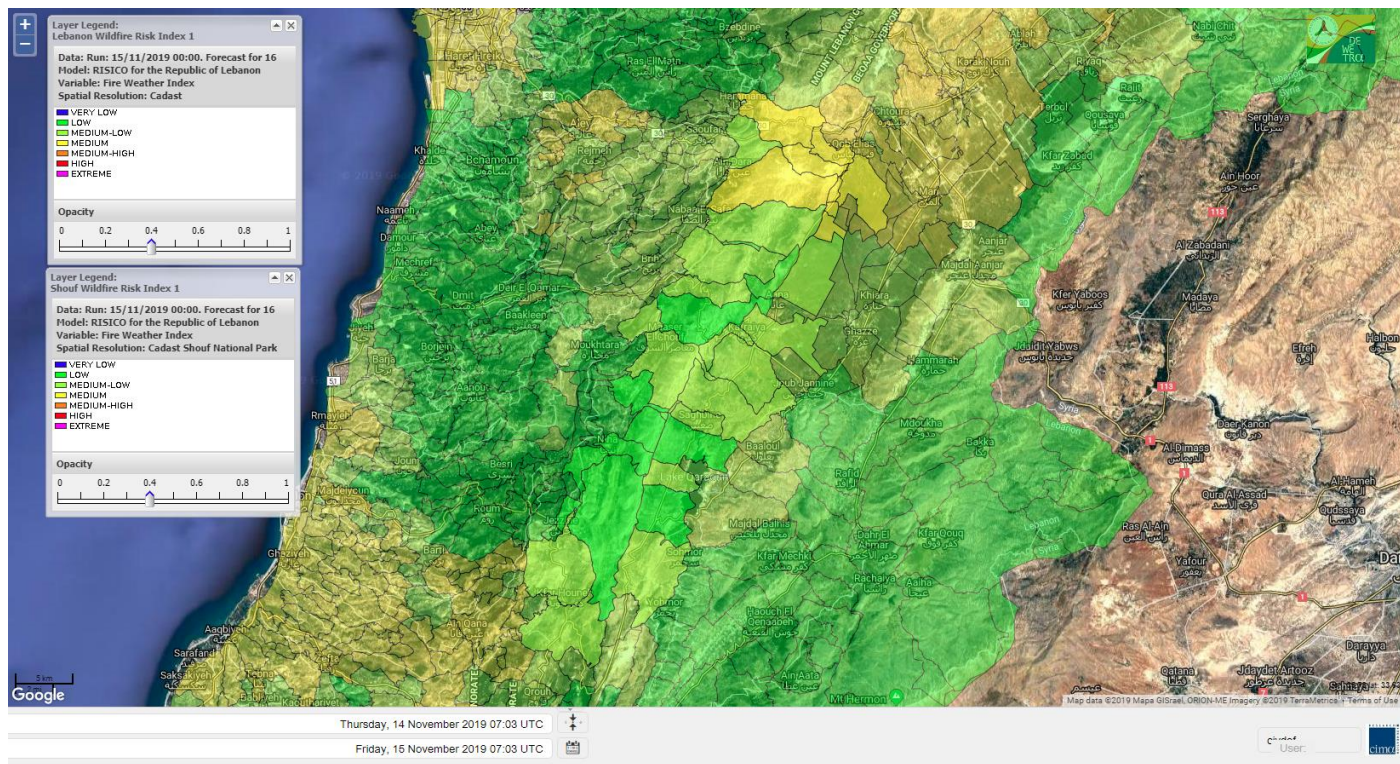
Lebanon for 17 November 2019



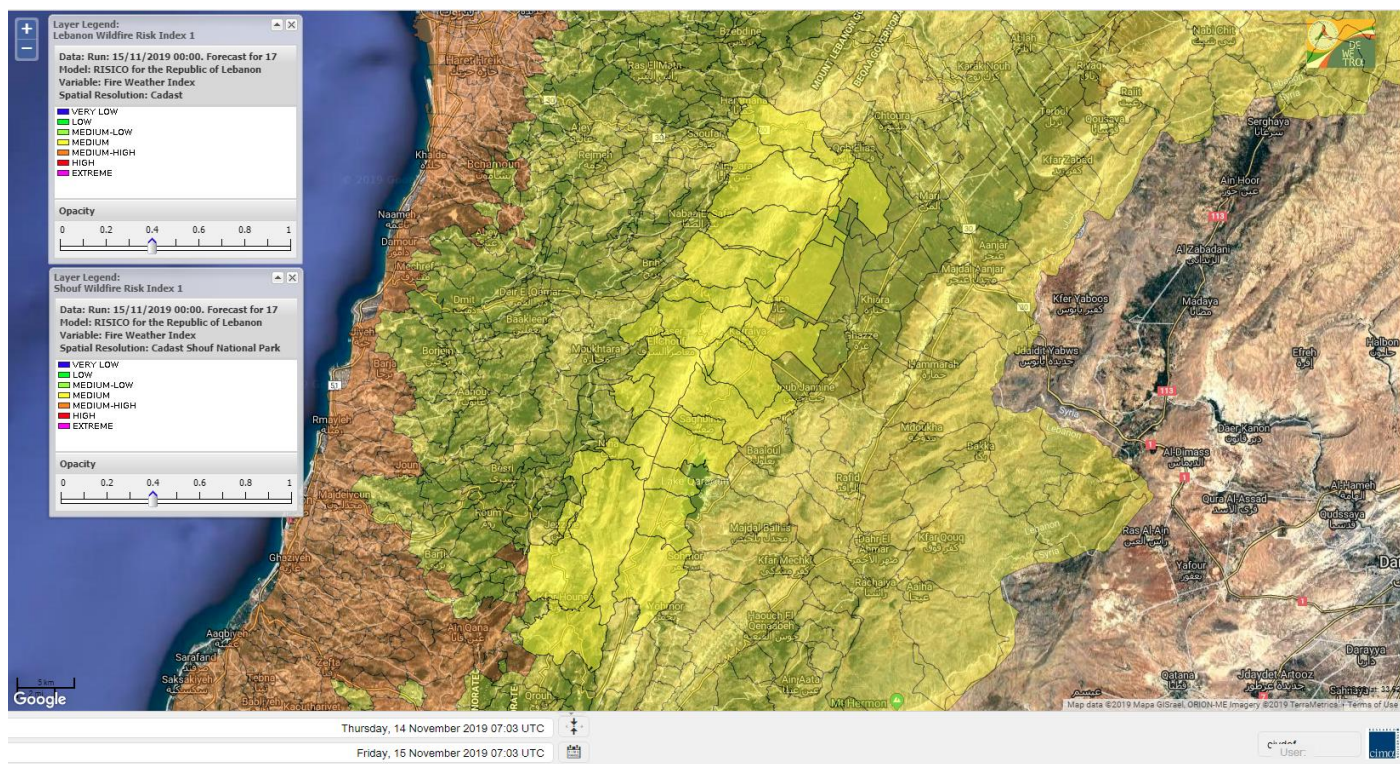
Shouf Biosphere Reserve Forecast for 15 November 2019



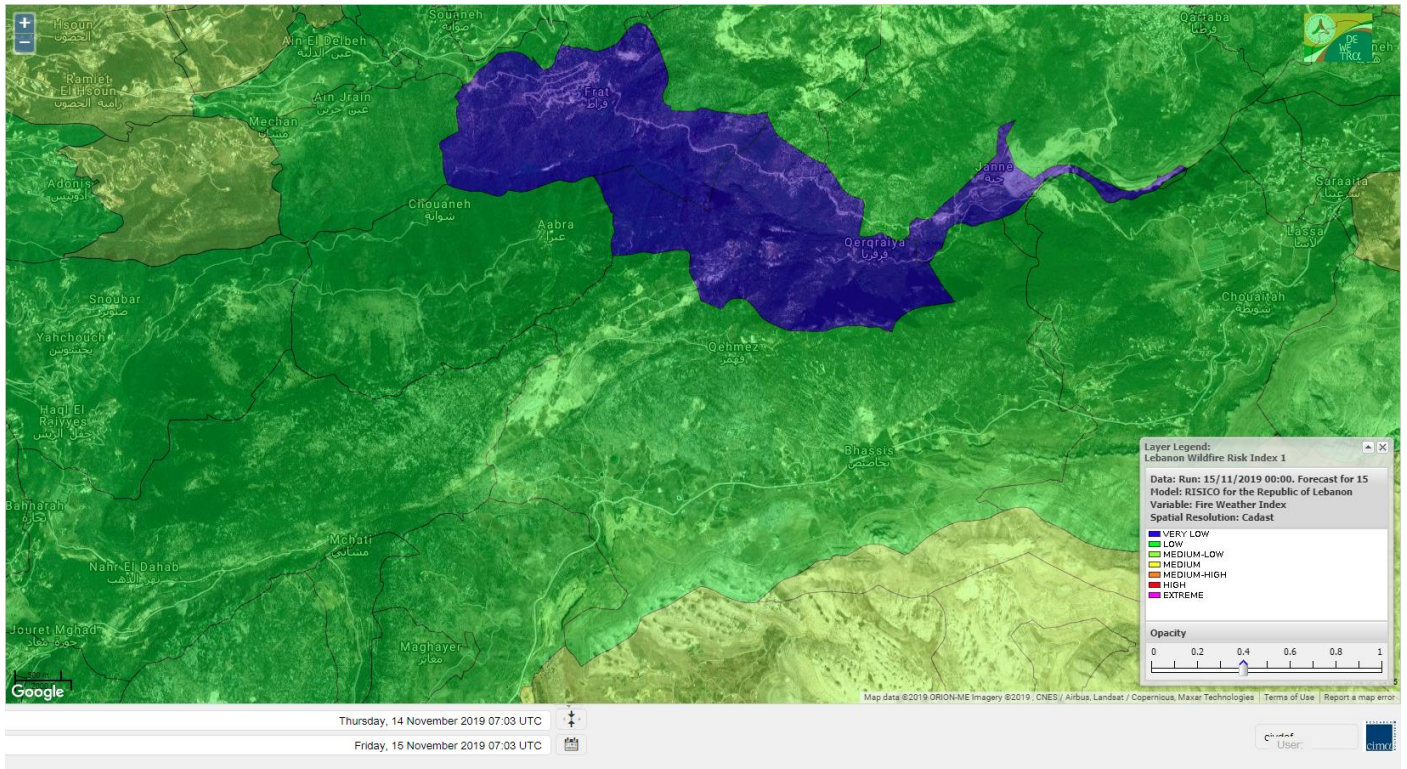
Shouf Biosphere Reserve Forecast for 16 November 2019



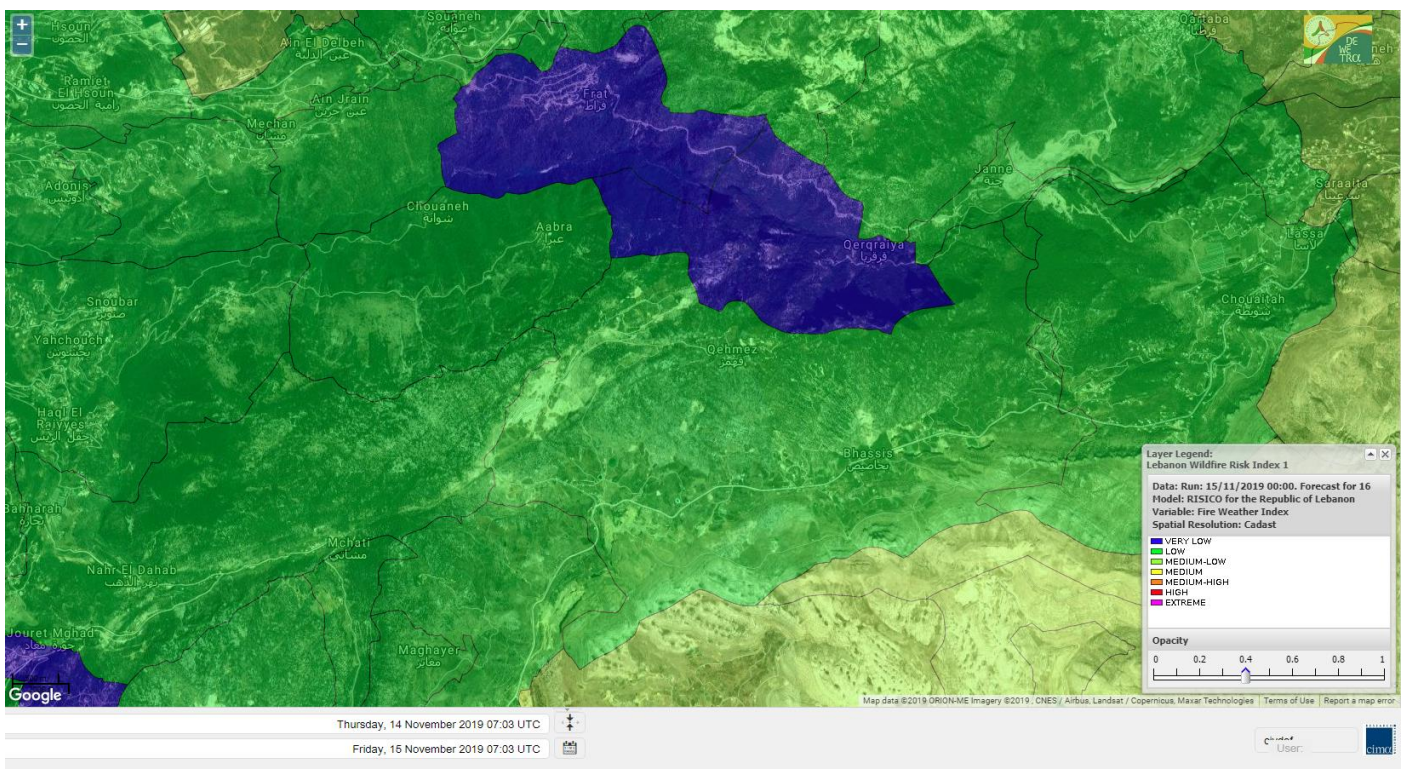
Shouf Biosphere Reserve Forecast for 17 November 2019



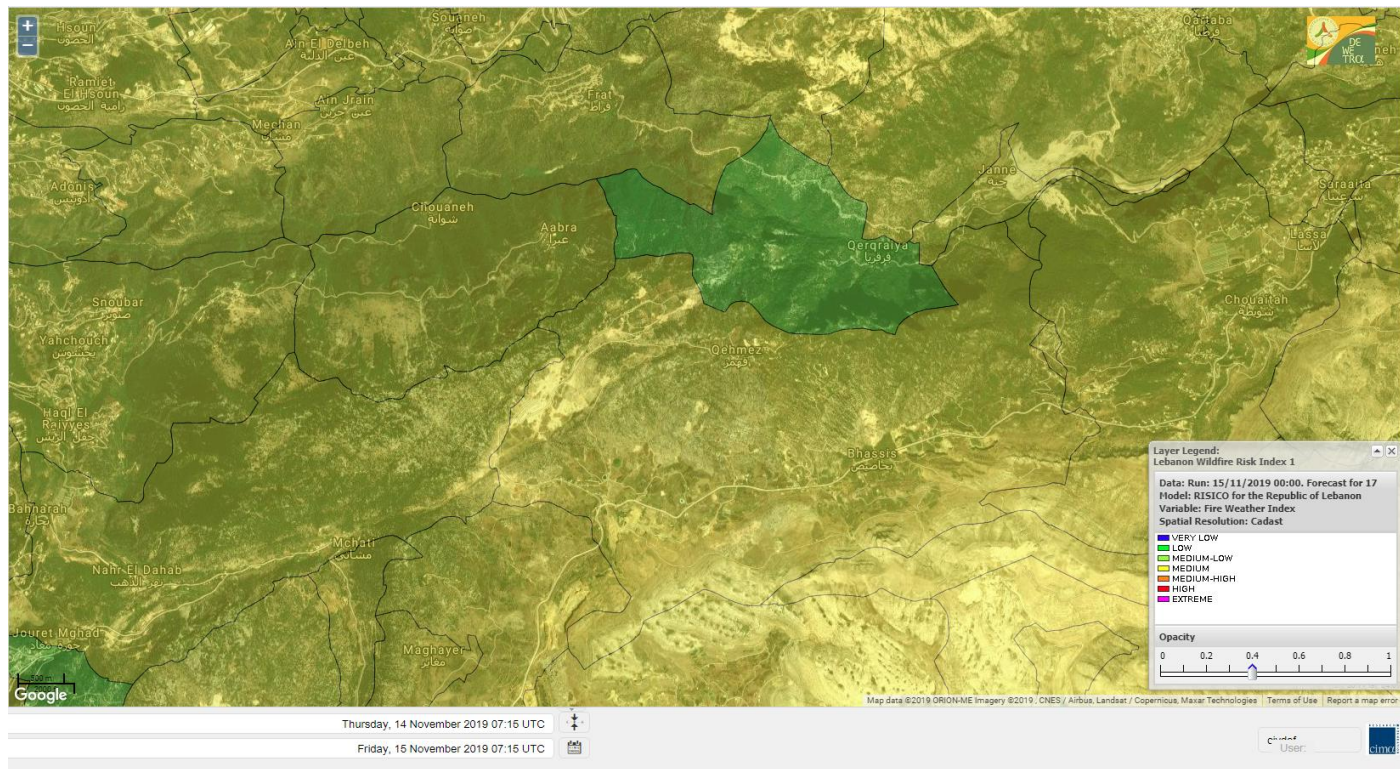
Jabal Moussa Reserve Forecast for 15 November 2019



Jabal Moussa Reserve Forecast for 16 November 2019



Jabal Moussa Reserve Forecast for 17 November 2019

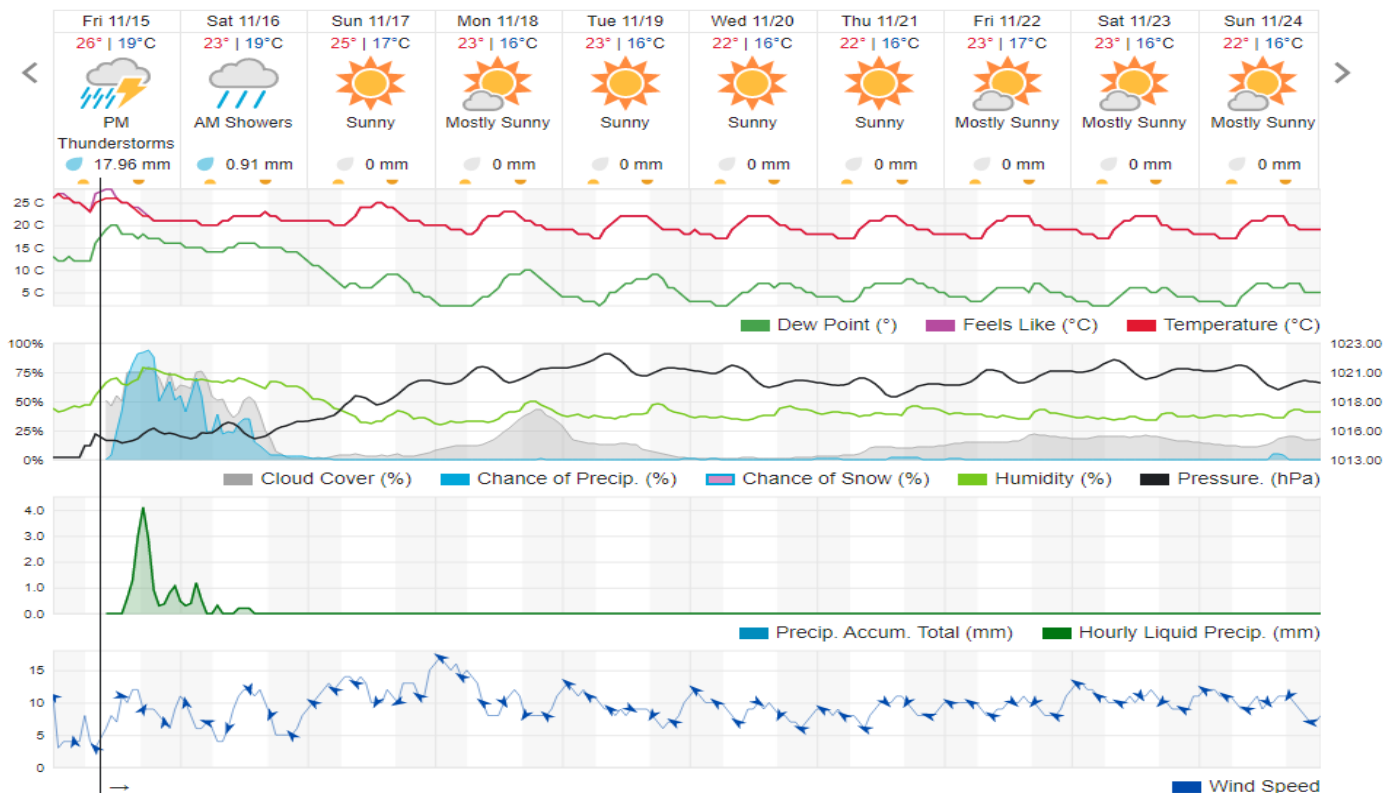


Beirut, Beirut Governorate, Lebanon 10-Day Weather Forecast

27° STATION | CHANGE

TODAY HOURLY 10-DAY CALENDAR HISTORY WUNDERMAP

Customize



Nord

Koura

Municipality	15-Nov	16-Nov	17-Nov	Municipality	15-Nov	16-Nov	17-Nov	Municipality	15-Nov	16-Nov	17-Nov
Aaba	M	L	M	Afsaddiq	M	L	M	Ain Ekrine	M	L	M
Amioun	ML	L	M	Anfeh	M	ML	M	Badbhoun	M	L	M
Barghoun	M	L	M	Barsa	M	L	M	Batroumine	M	L	M
Bdebba	M	L	M	Bechmizine	ML	L	M	Bednayel El-Koura	M	L	ML
Bhabbouch El-Koura	M	L	ML	Bkeftine	M	L	M	Bnehran	ML	L	ML
Bqaiia El-Koura	M	L	M	Bsarma	ML	L	M	Btaaboura	M	L	M
Bterram	M	L	M	Btouratij	M	L	M	Bziza	ML	L	M
Dar Beechtar	ML	L	M	Dar Chmezzine	M	L	M	Deddeh	M	L	M
Deir El-Balamand	M	L	ML	Fih	M	L	M	Hraiche	M	ML	M
Ijdaabrine	M	L	ML	Kaftoun	M	L	ML	Kefraya El-Koura	M	L	M
Kfarakka	ML	VL	ML	Kfarhata	M	L	ML	Kfarhazir	M	L	M
Kfarkahel	M	L	M	Kfarsaroun	ML	L	ML	Kosba	ML	L	ML
Mejdel el-Koura	ML	L	ML	Nakhle	M	L	M	Qalhat	M	L	ML
Ras Masqa	M	L	M	Rechdibbine	ML	L	M	Zakroun	M	L	M
Zgharta El-Mtaouile	ML	VL	L								

Bcharre

Municipality	15-Nov	16-Nov	17-Nov	Municipality	15-Nov	16-Nov	17-Nov	Municipality	15-Nov	16-Nov	17-Nov
Aabdine	L	L	ML	Bane	L	L	M	Barhelioun	L	L	L
Bazooune	M	ML	M	Becharre	ML	L	M	Beit Menzer	L	L	ML
Billa	L	L	ML	Blaouza	L	L	M	Bqaa Kafra	M	ML	M
Bqerqacha	M	ML	M	Breissat	L	L	M	Dimane	ML	L	M
Hadath El Jobbeh	L	L	M	Hadchit	L	VL	ML	Hasroun	M	ML	M
Mazraat Aassaf	L	VL	L	Mazraat Bani Saab	L	L	M	Mchaa El-Jobbeh	M	ML	M
Metrit	ML	L	L	Moghr El-Ahoual	L	L	ML	Ouadi Qannoubine	L	VL	VL
Qanat	L	L	M	Qnayouer	L	VL	L	Tourza	L	L	ML

Batroun

Municipality	15-Nov	16-Nov	17-Nov	Municipality	15-Nov	16-Nov	17-Nov	Municipality	15-Nov	16-Nov	17-Nov
Aabrine	M	L	L	Aalali	ML	L	M	Aartziz	M	VL	L
Abdelli	M	VL	ML	Ajdabra	M	L	ML	Assia	L	L	M
Basbina	M	L	M	Batroun	M	L	M	Bcheleh	ML	L	M
Bechtoudar	L	L	M	Beit Chlala	ML	L	M	Beit Kassab	L	VL	L
Bijdarfil	M	L	M	Bqesmaya	M	L	L	Chatine	L	L	M
Chebtin	M	L	ML	Chekka	M	L	M	Daael	ML	L	M
Dahr Abi Yaghi	M	VL	ML	Daraya El-Batroun	M	L	M	Deir Billa	ML	L	L
Deir Kfifane	M	L	M	Deir Mar Youhanna EL	L	L	ML	Deir Mar Youssef Jra	M	L	ML
Douma	L	L	M	Douq	M	L	ML	Eddeh El-Batroun	M	L	M
Ftihat El-Batroun	ML	L	ML	Ghouma	M	L	M	Hadtoun	L	L	M
Hamat	M	L	ML	Harbouna	M	VL	L	Hardine	L	L	ML
Helta	L	L	ML	Hery	M	ML	M	Jebbla	ML	VL	L
Jrabta El-Batroun	M	L	M	Jrane El-Batroun	M	L	M	Kfar Aabida	M	L	M
Kfar Halda	L	L	M	Kfarb Shlaimane	L	L	ML	Kfarhatna	M	VL	ML

Kfarhay	M	L	M	Kfarhelos	M	L	L	Kfifane	M	L	M
Kfour El Arabi	L	L	M	Koubba	M	L	M	Kour	M	L	M
Mar Mama	M	VL	L	Masrah	M	VL	L	Mehmarch	ML	L	M
Mrah Chdid	M	L	ML	Mrah El Ziyat	M	L	M	Mrah El-Hajj	L	L	L
Nahle El-Batroun	L	L	ML	Niha El-Batroun	L	L	M	Oujh El-Hajjar	M	L	ML
Ouata Houb	L	L	M	Qatnaaoun	M	L	ML	Racha	ML	L	M
Rachana	M	L	M	Rachkida	M	L	ML	Ram El-Batroun	L	L	ML
Ras Nahhach	M	L	ML	Selaata	M	ML	M	Sghar	M	L	M
Smar Jbayl	M	L	M	Sourat El-Batroun	M	L	ML	Tannourine El-Faouqa	M	ML	M
Tannourine Et-Tahta	L	L	M	Thoum	M	L	M	Toula El-Batroun	M	L	ML
Zan	M	L	ML								

Zgharta

Municipality	15-Nov	16-Nov	17-Nov	Municipality	15-Nov	16-Nov	17-Nov	Municipality	15-Nov	16-Nov	17-Nov
Aachach	M	VL	M	Aalma	M	VL	M	Aarde	M	VL	M
Aintourine	L	L	M	Arabet Qozhaya	L	L	L	Arde	M	VL	M
Arjis	L	VL	M	Asnoun	M	VL	M	Ayto	L	L	L
Basloukit	L	L	M	Bchannine	M	L	M	Besebeel	M	VL	M
Bhairret Toula	L	VL	L	Bnachee	L	L	M	Boussit	M	L	M
Danha	M	VL	M	Daraiya Zgharta	L	L	M	Deir Jdeide	M	VL	M
Ehden	L	L	M	Halan	M	L	M	Hariq Zgharta	M	VL	M
Houakir	M	VL	L	Hraiqis	M	L	M	Iaal	M	VL	M
Ijbaa	L	L	ML	Karm Saddeh	L	L	L	Kfarchakhna	M	L	M
Kfardlaqous	M	VL	M	Kfarfou	L	L	M	Kfarhata Zgharta	M	VL	M
Kfarhoura	M	VL	ML	Kfarsghab	L	L	M	Kfaryachit	M	VL	M
Kfarzaina	M	VL	M	Khaldiye	M	VL	M	Mazraat Ajbeaa	M	VL	M
Mazraat Et-Teffah	L	VL	L	Mazraat Jneid	M	VL	M	Mejdlaya Zgharta	M	L	M
Merh Kfarsghab	ML	VL	ML	Miryata	M	VL	M	Miziara	L	VL	L
Mzraat Kefraya	M	L	M	Qorah Bach	M	VL	M	Rachiine	M	VL	M
Ras Kifa	L	L	M	Sakhra	M	VL	ML	Sebhel Zgharta	L	L	ML
Serhel	L	VL	L	Tallet Zgharta	M	VL	ML	Toula Zgharta	L	VL	ML
Zgharta	M	VL	M								

Minieh-Denniye

Municipality	15-Nov	16-Nov	17-Nov	Municipality	15-Nov	16-Nov	17-Nov	Municipality	15-Nov	16-Nov	17-Nov
Aasaymout	VL	VL	L	Aaymar	ML	L	M	Aazki	ML	L	M
Ain El-Tineh-Miniyeh	ML	L	M	Assoun	ML	L	M	Bakhaaoun	ML	L	ML
Bchennata	L	L	M	Bechehhara	ML	VL	L	Beddawi	M	L	M
Behouaita	L	VL	ML	Beit El Foqss	ML	L	M	Beit Haouik	VL	VL	M
Beit Zoud	ML	L	M	Bekaasafrine	ML	L	M	Borj El Yahoudiyeh	M	L	M
Bqarsouna	L	L	M	Btermaz	ML	L	M	Debaael	L	VL	M
Deir Ammar	M	L	M	Deir Nbouh	M	VL	ML	Haouaret-Miniyeh	VL	VL	M
Haql el Azimeh	ML	L	M	Harf El Siyad	ML	L	ML	Hazmiye-Miniyeh	ML	L	M
Izal	ML	L	M	Jarjour	ML	VL	L	Jayroun	VL	VL	M
Kahf El-Malloul	ML	VL	L	Karm El-Moher	ML	L	M	Kfar Binine	VL	VL	M
Kfarchalane	ML	L	ML	Kfarhabou	M	L	M	Kharroub-Miniyeh	ML	L	M
Mazraat El-Kreme	ML	VL	ML	Mazraat Ketrane	ML	L	M	Merkebt	M	L	M

Minyeh	M	L	M	Mrah El Sfirat	ML	L	M	Mrah Sraj	ML	L	M
Mrebbine	L	L	M	Nabi Youcheaa	M	L	M	Nemrine	L	L	M
Qarhaiya	L	VL	M	Qarne	VL	VL	ML	Qarsita	L	VL	M
Qattineh-Miniyeh	ML	L	M	Qemmamine	VL	VL	ML	Qraine	ML	L	M
Raouda-Aadoua	M	L	M	Rihaniyet-Miniyeh	M	L	M	Sfireh	L	L	M
Sir Ed-Danniyeh	ML	L	M	Tarane	ML	L	M	Terbol-Miniyeh	M	L	M
Zaghartaghriine	M	VL	ML	Zouq Bhannine	M	L	M				

Nabatiye

Nabatiye

Municipality	15-Nov	16-Nov	17-Nov	Municipality	15-Nov	16-Nov	17-Nov	Municipality	15-Nov	16-Nov	17-Nov
Aabba	M	ML	MH	Aazzi	M	ML	MH	Adchit El-Chqif	M	L	MH
Ain Bou Swar	M	M	MH	Ain Kana	M	M	MH	Ali El-Taher	M	M	M
Ansar	M	ML	MH	Arab Salim	M	M	M	Arnoun	M	ML	M
Bfaroue	M	L	M	Breyqaah	M	L	M	Charqiyeh	M	ML	MH
Choukine	M	L	MH	Deir El Zahrani	M	ML	MH	Doueir El-Nabatiyeh	M	ML	MH
Habbouch El-Nabatiye	M	M	MH	Hamra El-Nabatiyeh	M	L	MH	Harouf El-Nabatiyeh	M	ML	MH
Hmaile	M	ML	M	Houmin El Faouqa	M	M	MH	Houmin El Tahta	M	M	MH
Jarjough	M	ML	M	Jbaah El-Nabatiyeh	M	M	MH	Jebchit	M	ML	MH
Kfar Djal El-Nabatiy	M	L	M	Kfar Remmane	M	M	MH	Kfar Sir	M	VL	M
Kfar Tebnit	M	ML	MH	Kfarfila	M	M	MH	Kfour El-Nabatieh	M	ML	MH
Mayfadoun	M	ML	MH	Mazraat Bsaffour	M	ML	M	Mazraat Chalbaal	M	ML	M
Mazraat Dmoul	M	M	MH	Mazraat El Khreibeh	M	M	MH	Mazraat El-Bayad El-	M	M	MH
Mazraat Kfarjaouz	M	M	MH	Mazraat Qalaat Meiss	M	M	MH	Nabatiyeh El-Fawka	M	M	MH
Nabatiyeh Et-Tahta	M	M	MH	Namiriyeh	M	ML	MH	Qaaqaiyet El Jisr	M	VL	M
Qossaibeh El-Nabatiy	M	VL	M	Roumine	M	M	MH	Sarba El-Nabatieh	M	M	MH
Sir El-Gharbiyeh	M	L	MH	Toul	M	ML	MH	Yehmor El-Nabatiyeh	M	L	MH
Zaoutar El Charkiyeh	M	L	MH	Zaoutar El-Gharbiyeh	M	L	M	Zebdine El-Nabatiyeh	M	M	MH
Zefta	M	ML	MH								

Hasbaiya

Municipality	15-Nov	16-Nov	17-Nov	Municipality	15-Nov	16-Nov	17-Nov	Municipality	15-Nov	16-Nov	17-Nov
Aain Jarfa	L	L	M	Abou Qamha	L	L	M	Ain Qania	L	L	M
Bourghos	ML	L	MH	Chebaa	L	L	M	Chouaya Hasbaya	L	L	M
Dellafeh	L	ML	MH	Fardiss Hasbaiya	L	L	M	Hasbaya	L	L	M
Hbariyeh	L	L	M	Kaoukaba Hasbaiya	L	ML	MH	Kfar Chouba	L	L	M
Kfar Hamam	ML	L	M	Kfeir El-Zait	L	L	M	Khalwat Hasbaya	L	L	M
Khreibet Hasbaiya	M	M	MH	Majidiyeh Hasbaiya	ML	ML	M	Marj Ez-Zhour (Haouc	L	L	M
Meri	M	ML	MH	Mimass	L	L	M	Rachaiya El-Fokhar	L	L	M
Salaiyeb	ML	ML	MH								

Marjayoun

Municipality	15-Nov	16-Nov	17-Nov	Municipality	15-Nov	16-Nov	17-Nov	Municipality	15-Nov	16-Nov	17-Nov
Aalmane Marjaayoun	M	L	M	Aamra	M	ML	MH	Adayseh Marjaayoun	M	M	MH
Adchit El-Koussair	M	L	M	Ain Aarab Marjaayoun	ML	ML	MH	Bani Haiyann	M	M	MH
Blatt Marjaayoun	L	ML	MH	Blida	M	ML	MH	Borj El-Moulouk	M	ML	MH

Boueyda Marjaayoun	ML	ML	M	Deir Mimass	M	L	M	Deir Siriane	M	L	M
Dibbine	L	ML	MH	Ebel El Saqi	L	ML	MH	Houla	M	M	MH
Houra	M	ML	MH	Kfar Kila	M	L	MH	Khiam Marjaayoun	ML	ML	MH
Klayaa	M	ML	MH	Majdel Selem	M	M	MH	Marjaayoun	ML	ML	MH
Markaba	M	M	MH	Mays El-Jabal	M	M	MH	Mazraat Doumiat	M	ML	MH
Mazraat Sarada	ML	ML	MH	Mhaibib	M	M	MH	Qabrikha	M	ML	M
Qantara	M	L	M	Rab El-Thalathine	M	ML	MH	Saouaneh Marjayoun	M	M	MH
Talloussa	M	M	MH	Taybeh Matjaayoun	M	L	MH	Touline	M	L	M

Bent Jbail

Municipality	15-Nov	16-Nov	17-Nov	Municipality	15-Nov	16-Nov	17-Nov	Municipality	15-Nov	16-Nov	17-Nov
Ain-Ebel	M	L	M	Aitaroun	M	ML	MH	Aynata Bint Jbeil	M	L	MH
Ayta El-Chaeb	ML	L	MH	Ayta El-Jabal	M	M	MH	Beit Lif	ML	L	MH
Beit Yahoun	M	M	MH	Bint Jbeil	M	L	MH	Borj Qalaway	M	VL	MH
Braachit	M	M	MH	Chakra	M	M	MH	Debel	M	L	M
Deir Antar	M	M	MH	Froun	M	VL	M	Ghandouriyeh Bint Jb	M	VL	M
Hanine	M	L	M	Hariss	M	M	MH	Hdatha	M	M	MH
Jmeyjmeh	M	M	MH	Kafra Bint Jbeil	M	L	MH	Kfar Dounine	M	M	MH
Khirbet Selm	M	M	MH	Kounine	M	ML	MH	Maroun El Ras	M	L	MH
Qalaway	M	L	MH	Qaouzah	ML	L	MH	Qatmoun	M	L	MH
Ramya Bint Jbeil	ML	L	MH	Rchaf	M	L	MH	Rmeich	M	L	MH
Safad Al Battikh	M	M	MH	Salhaneh	ML	L	M	Serbine	M	ML	MH
Sultanieh Bint Jbeil	M	M	MH	Tibnine	M	M	MH	Tiri	M	L	M
Yaroun	M	L	MH	Yater	M	L	MH				

Mont Liban

Jbail

Municipality	15-Nov	16-Nov	17-Nov	Municipality	15-Nov	16-Nov	17-Nov	Municipality	15-Nov	16-Nov	17-Nov
Aabeydat	M	L	ML	Aalita	L	L	M	Aamchit	M	L	M
Aarab El-Lahib	ML	ML	M	Aarasta	L	ML	M	Adonis Jbeil	L	L	M
Afqa Jbeil	L	L	M	Ain El Delbeh Jbeil	L	L	M	Ain El-Ghouayba	L	L	M
Ain Jrain	L	L	M	Ain Kfah	M	L	M	Almat El Chemaliyat	L	L	M
Almat El-Jenoubiya	L	L	M	Aqoura	M	M	M	Bayzoun	ML	ML	M
Bchille Jbeil	ML	L	M	Bechtlida	L	L	M	Behdaydat	M	L	M
Beit Habbaq	M	L	M	Bejjeh	M	L	M	Bekhaaz	M	L	M
Berbara Jbeil	M	L	M	Bintael	ML	L	M	Birket Hjoula	ML	L	M
Blatt Jbeil	ML	L	M	Boulhos	L	L	M	Breyj Jbeil	L	L	M
Chamat	M	L	M	Chikhane	M	L	M	Chmout	M	L	ML
Eddeh Jbeil	M	L	M	Ehmej	L	L	M	Fatre	L	L	M
Ferhet	L	ML	M	Fghal	M	L	ML	Frat	VL	VL	M
Ghabat	ML	ML	M	Ghalboun	M	L	M	Gharzouz	M	L	M
Ghofrine	M	L	M	Habil	ML	VL	L	Halate	M	L	M
Haqel	M	L	ML	Hbaline	M	L	M	Hboub	ML	L	M
Hdeine	L	ML	M	Hema Er-Rehban	ML	ML	M	Hema Mar Maroun Aann	L	L	M
Hjoula	ML	L	M	Hosrayel	M	L	M	Hsarat	M	L	M

Hsoun	ML	L	M	Jaj	ML	L	M	Janne	VL	L	M
Jbeil	M	L	M	Jeddeyl Jbeil	M	L	M	Jlisse	L	L	M
Jouret El-Qattine	ML	L	M	Kfar Baal Annaya	L	L	M	Kfar Kidde	M	L	M
Kfar Kouas	ML	L	M	Kfar Mashoun	M	L	M	Kfoun	M	VL	ML
Kharbe Jbeil	M	L	M	Laqlouq	L	ML	M	Lassa	L	L	M
Lehfed	L	L	ML	Maad	M	L	M	Mar Sarkis	L	ML	M
Mastita	M	L	M	Mayfouq	ML	L	M	Mazraat El Siyad	L	ML	M
Mazraat El-Maaden	L	L	M	Mechane	ML	L	M	Mechmech Jbeil	L	L	M
Mehrin	ML	ML	M	Mejdel El-Akoura	ML	ML	M	Mghayreh Jbeil	ML	ML	M
Mounsef	M	L	M	Nahr Ibrahim	M	L	M	Qahmez	L	L	M
Qartaba	L	L	M	Qartaboun	M	L	M	Qattara Jbeil	L	L	L
Qorqraya	VL	VL	ML	Ramout	M	L	M	Ras Osta	L	L	M
Rihane Jbeil	M	L	M	Sakiet El-Khayt	M	L	ML	Saqi Richmaya	L	L	M
Sebrine	L	L	M	Seraita	L	ML	M	Souane Jbeil	L	L	M
Tadmor	ML	ML	M	Tartej	ML	L	M	Torzaiya	L	L	M
Yanouh Jbeil	ML	ML	M	Zibdine Jbeil	L	L	M				

El Metn

Municipality	15-Nov	16-Nov	17-Nov	Municipality	15-Nov	16-Nov	17-Nov	Municipality	15-Nov	16-Nov	17-Nov
Aain El-Qabu	ML	L	M	Aain El-Qach	ML	L	M	Aain El-Teffaha	ML	L	M
Aain el-Safssaf El-M	ML	L	M	Abou Mizane	ML	L	M	Ain Aar	M	L	M
Ain Alaq	M	L	M	Ain El-Kharroube	ML	L	M	Ain El-Sendianeh	ML	L	M
Ain El-Zeitoune	ML	L	M	Ain Saadeh	M	L	M	Aintoura El-Matn	L	ML	M
Amaret Chalhoub	M	L	MH	Antelias	M	L	MH	Atchaneh	M	L	M
Ayroun	ML	L	M	Baabdat	M	L	M	Baouchariyeh	M	ML	MH
Baskinta	L	L	M	Beit Chabab	M	L	M	Beit El-Chaar	M	L	M
Beit El-Kekko	M	L	MH	Beit Mery	M	L	M	Bhersaf	M	L	M
Bikfaya	ML	L	M	Biyakout	M	L	MH	Bnabil	ML	L	M
Bourj Hammoud	M	M	MH	Bqennaya	M	L	M	Broummana El-Matn	M	L	M
Bsalim	M	L	M	Bsifrine	ML	L	M	Bteghrine	ML	L	M
Chaouiye	M	L	M	Chouaya El-Matn	ML	L	M	Choueir	ML	L	M
Chrine	ML	L	M	Dahr El Sawan El-Mat	M	L	M	Daychouniyeh	M	ML	M
Dbayeh	M	L	M	Deir Chamra	L	L	M	Deir Mar Abda el Mch	M	L	M
Deir Mar Roukouz	M	ML	MH	Deir Tamiche	M	L	M	Dik El-Mehdi	M	L	M
Dikwaneh	M	M	MH	Douar El-Matn	ML	L	M	Fanar	M	L	M
Fraike	M	L	M	Haret El-Ballaneh	M	L	M	Hbous	M	L	M
Himlaya	ML	L	M	Jal El Did	M	L	MH	Jdeideh El-Metn	M	L	MH
Jouar El-Matn	ML	L	M	Jouret El-Ballout	M	L	M	Kaaqour	ML	L	M
Kfar Aaqab	ML	L	M	Kfertay El-Matn	L	L	M	Khenchara	ML	L	M
Khillet El-Mtain	ML	L	M	Konnabat Broummana	M	L	M	Konnabat Salima	ML	L	M
Machraah El-Matn	ML	L	M	Majdel Tarchich	L	ML	M	Majzoub	M	L	M
Mansouriyeh El-Metn	M	L	M	Mar Boutros Karm Et-	ML	L	M	Mar Chaya et Mzekke	M	L	M
Mar Moussa Ed-Douar	ML	L	M	Marjaba	ML	L	M	Masqa	M	L	M
Mayasse	ML	L	M	Mazraat Deir Aoukar	M	L	M	Mazraat El-Hadirat	M	L	M
Mazraat Yachouh	M	L	M	Mchikha	ML	L	M	Menqlet Mezher	M	L	M
Mhayseh Matn	ML	L	M	Mkalles	M	M	MH	Mrouj	ML	ML	M

Mtain	ML	ML	M	Mtayleb	M	L	M	Nabay	M	L	M
Naccache	M	L	M	Ouadi Chahine	ML	L	M	Ouadi El-Karm El-Mat	L	L	M
Ouata El-Mrouj	ML	L	M	Ouyoun El-Matn	M	L	M	Qornet Chehwan	M	L	M
Qornet El-Hamra	M	L	M	Roumieh	M	L	M	Sfeilet Bikfaya	ML	L	M
Sinn El-Fil	M	M	MH	Zabbougha	L	L	ML	Zalqa	M	L	MH
Zarououn	ML	L	M	Zekrite	M	L	M	Zighrine El-Matn	ML	L	M
Zouk El-Khrab	M	L	M								

Chouf

Municipality	15-Nov	16-Nov	17-Nov	Municipality	15-Nov	16-Nov	17-Nov	Municipality	15-Nov	16-Nov	17-Nov
Aalmane El-Chouf	M	ML	MH	Aammq El-Chouf	ML	L	M	Ain Ouzein	ML	L	M
Ain Qani	L	L	M	Ain Zhalta	ML	ML	M	Ainbal	ML	L	M
Amatour	L	L	M	Anout	M	L	M	Atrine	ML	L	M
Baadarane	L	L	M	Baaqline	ML	L	M	Baasir	M	ML	MH
Barja	M	ML	MH	Barouk	ML	L	M	Bater	L	L	M
Batloun	ML	ML	M	Bayqoun	L	ML	M	Bchetfine	ML	L	M
Beiteddine	ML	L	M	Benouati Ech-Chouf	ML	L	M	Berjein	ML	L	M
Bireh et Mtalleh	ML	ML	M	Biret El-Chouf	ML	ML	M	Bkechtine Ouel Mchei	L	L	M
Bkifa El-Chouf	M	L	M	Botme	ML	L	M	Bqaiaa Ech-Chouf	ML	L	M
Bsaba El-Chouf	M	L	M	Chammis El-Chouf	M	ML	MH	Chehim	M	L	M
Chemaarine	L	L	M	Chourit	ML	L	M	Daher El-Chouf	M	L	M
Dalhoun	M	L	M	Damour	M	L	MH	Daraya El-Chouf	M	L	M
Deir El-Moukhalles	M	L	M	Deir Baba	ML	L	M	Deir Dourit	ML	L	M
Deir El-Qamar	ML	L	M	Deir Kouche	ML	L	M	Dibbieh	ML	L	M
Dmit	ML	L	M	Fouara Jaafar	ML	ML	M	Fraidis El-Chouf	ML	ML	M
Ghabet Jaafar	ML	L	M	Gharife	M	L	M	Haret Jandal	L	L	M
Hasrout	M	L	M	Jadra	M	M	MH	Jahlieh	ML	L	M
Jbeih El-Chouf	L	L	M	Jdeidet El-Chouf	ML	L	M	Jiyeh	M	ML	MH
Jleiliyeh	M	L	M	Jmailiyeh	M	ML	MH	Joun	M	L	M
Kahlounie El-Chouf	L	ML	M	Ketermaya	M	ML	MH	Kfar Faqoud	ML	L	M
Kfar Hamal	ML	ML	M	Kfar Him	ML	L	M	Kfar Katra	ML	L	M
Kfar Niss	ML	ML	M	Kfar hay	M	ML	M	Kfarnabrakh	ML	ML	M
Khirbet Bisri	M	L	M	Knayse El-Chouf	L	L	M	Maaniyeh	M	ML	MH
Maasser Beiteddine	ML	L	M	Maasser El-Chouf	ML	ML	M	Majdalouna	M	ML	MH
Majdel El-Meouch	ML	ML	M	Mazboud	M	L	M	Mazmoura	M	L	M
Mazraat El Chouf	L	L	M	Mazraat El Daher	M	L	M	Mazraat El-Douair	ML	L	M
Mechref	ML	L	M	Mghairie	M	ML	MH	Mghayrie El-Chouf	ML	L	M
Moukhtara	ML	L	M	Mrusti	L	L	M	Mtolle	M	L	M
Naameh	M	L	MH	Niha El-Chouf	L	L	M	Ouadi Abou Youssef	L	L	M
Ouadi Ed-Deir	ML	L	M	Ouadi El-Sit	ML	ML	M	Ouadi bnehlav	L	L	M
Qraibeh	L	L	M	Qreiaa	M	L	M	Rmayle El-Chouf	M	M	MH
Semqaniyeh	ML	ML	M	Sibline	M	M	MH	Sirjbeil	ML	L	M
Warhanieh	ML	ML	M	Werdaniyeh	M	M	MH	Zaarourieh	M	L	M

Baabda

Municipality	15-Nov	16-Nov	17-Nov	Municipality	15-Nov	16-Nov	17-Nov	Municipality	15-Nov	16-Nov	17-Nov
Abadiyeh	M	M	M	Ain Mouaffaq	M	ML	M	Araiya	M	M	M

Arbaniyeh	ML	L	M	Arsoun	ML	L	M	Baabda	M	ML	MH
Baalchmey	M	ML	M	Bmaryam	M	ML	M	Bourj El-Brajneh	M	L	MH
Boutchay	M	L	MH	Bsaba Baabda	M	L	MH	Btekhney	M	ML	M
Btibyat	M	ML	M	Bzebdine	ML	L	M	Chbeniyeh	M	ML	M
Chiyah	M	M	MH	Chmeisset Baabda	M	ML	M	Chouit	M	M	M
Deir El-harf	M	L	M	Deir Khouna	M	ML	M	Dlaybeh	ML	L	M
Falougha	M	M	M	Furn El-Chebbak	M	M	MH	Hadath Beyrouth	M	ML	MH
Halaliyeh Baabda	M	M	M	Hammana	M	ML	M	Haret El Sett	M	ML	M
Haret Hamze	M	ML	M	Haret Hreik	M	M	MH	Hasbaiya El-Metn	ML	L	M
Jouar El-Hoz	ML	L	M	Jouret Arsoun	ML	L	M	Kfar Chima	M	L	MH
Kfar Selouane	ML	ML	M	Khalouat Baabda	M	ML	M	Kneisset Baabda	M	L	M
Laylakeh	M	L	MH	Louayzeh Baabda	M	ML	M	Merdache	M	L	MH
Mzairaa Baabda	M	M	M	Ouadi Chahrour El OI	M	ML	M	Ouadi Chahrour El So	M	L	M
Qalaa Baabda	M	ML	M	Qhraybe Baabda	M	ML	M	Qobbayaa	M	ML	M
Qornayel	ML	L	M	Qortada	M	L	M	Qrayeh Baabda	M	ML	M
Qsaibeh Baabda	M	L	M	Qtale Baabda	M	ML	M	Ras El Metn	M	L	M
Ras El-Haref	M	ML	M	Rouayset El-Ballout	M	M	M	Salima Baabda	ML	L	M
Tahouitat El Ghadir	M	L	MH	Tarchich	L	ML	M	Zandouqa	M	L	M

Aley

Municipality	15-Nov	16-Nov	17-Nov	Municipality	15-Nov	16-Nov	17-Nov	Municipality	15-Nov	16-Nov	17-Nov
Abey	ML	L	M	Aghmid	M	ML	M	Ain Dara	M	M	M
Ain Drafil	M	L	M	Ain El Halazoun	M	ML	M	Ain El-Rmmaneh	M	M	M
Ain Jedideh	M	ML	M	Ain Ksour	M	L	M	Ain Onoub	M	L	M
Ain Traz	ML	ML	M	Ainab	M	L	MH	Aley	M	ML	M
Aramoun	M	L	MH	Aytat	M	L	MH	Azouniyeh	M	ML	M
Baawerta	ML	L	M	Badghan Oua Wadi Bad	M	ML	M	Bassatine	M	L	M
Bayssour	M	ML	M	Bchamoun	M	L	MH	Bdadoun	M	ML	M
Behouara	M	M	M	Bennay	ML	L	M	Bhamdoun El-Dayaa	M	ML	M
Bhamdoun El-Mhatta	M	ML	M	Bkhechtey	M	ML	M	Bleibel	M	L	M
Bmakine	M	ML	M	Bmehray	M	ML	M	Bouzrid	ML	L	M
Bserrine	M	ML	M	Bsous	M	M	M	Btalloun	M	ML	M
Btater	M	ML	M	Chanay	M	ML	M	Charoun	M	ML	M
Chartoun	M	ML	M	Chemlane	M	L	M	Choueifat El-Aamrous	M	L	MH
Choueifat El-Oumara	M	L	MH	Choueifat El-Quoubbe	M	L	MH	Dakkoun	ML	L	M
Deir Qoubel	M	L	MH	Dfoun	M	L	MH	Douair El Remmaneh	M	M	M
Ghaboun	M	M	M	Habramoun	M	M	M	Homs Oua Hama	M	ML	M
Houmal	M	L	M	Jisr El Qadi	ML	L	M	Kehaleh	M	M	M
Keyfoun	M	ML	M	Kfar Aamey	M	ML	M	Kommatyeh	M	M	M
Maasrati	M	ML	M	Majdel Baana	M	ML	M	Mansourieh et Ain El	M	ML	M
Mazraat El-Nahr	M	M	M	Mchakhte	M	ML	M	Mecherfeh	M	ML	M
Mejdaya	M	M	M	Mrayjat	ML	ML	M	Ramliyah	M	ML	M
Rechmaya	ML	ML	M	Rejmeh	M	M	M	Remhala	M	L	M
Rouayset El Neemane	M	ML	M	Saoufar	M	ML	M	Selfaya	L	L	M
Sirhmoul	M	L	M	Souq El Ghareb	M	ML	M	Taazanieh	M	ML	M

Kesrouane

Municipality	15-Nov	16-Nov	17-Nov	Municipality	15-Nov	16-Nov	17-Nov	Municipality	15-Nov	16-Nov	17-Nov
Achkout	L	L	M	Adma Oua Dafneh	M	L	M	Ain Ed-Delbe Kesroua	L	L	M
Ain El-Rihane	M	L	M	Aintoura Kesrouane	M	L	M	Ajaltoun	L	L	M
Akaybeh Kesrouane	M	L	M	Aramoun Kesrouane	L	L	M	Azra ouel Ozor	L	L	M
Ballouneh	ML	L	M	Batha	M	VL	ML	Bekaatat Achkout	ML	L	M
Bekaatat Kanaan	L	L	M	Bizhel	L	L	M	Bouar	M	L	M
Bqaatouta	L	L	M	Bqaq Ed-Dine	M	L	ML	Bzommar	L	L	M
Chahtoul	L	L	M	Chnaniir	ML	L	M	Chouan	L	L	M
Daraya Kesrouane	L	L	M	Daroun	M	L	M	Deir Baqlouch	M	VL	M
Diebta	L	L	M	Eghbeh	L	VL	L	Faraya	ML	ML	M
Fatka	M	L	M	Feytroun	L	L	M	Ghazir	M	L	M
Ghbaleh Kesrouane	L	L	M	Ghedrass	L	L	M	Ghosta	L	L	M
Ghyneh	ML	L	M	Harharaya w Kattine	L	L	M	Harissa Kesrouane	M	VL	M
Hayata	L	L	M	Hosein	L	L	M	Hrajel	ML	ML	M
Jdeideh Ghazir	L	L	M	Jeita	M	L	M	Jounieh Ghadir	M	L	M
Jounieh Haret Sakhr	M	L	M	Jounieh Salel Alma	M	L	M	Jounieh Sarba	M	L	M
Jouret Bedrane	ML	ML	M	Jouret Mhad	L	VL	ML	Jouret Termos	ML	L	M
Kfar Debiane	L	L	M	Kfar Tay Kesrouane	L	L	M	Kfar Yassine	M	L	M
Kfour Kesrouane	L	L	M	Kharayeb Nahr Ibrahi	M	L	M	Klayaat Kesrouane	L	L	M
Maarab	L	L	ML	Maaysra Kesrouane	ML	L	M	Mayrouba	L	L	M
Mazraat Er-Ras	M	L	M	Mazraat Mrah El-Mir	L	L	M	Mchaa El Ftouh	ML	ML	M
Mchaa Faraya	ML	ML	M	Mchaa Kfar Dibiane	ML	ML	M	Mghaer	L	L	M
Mradiyah	L	L	M	Nahr Ed-Dahab	L	L	M	Nammoura Kesrouane	ML	L	M
Ouata El Jaouz	L	L	M	Ouata Sillam	M	L	M	Raachine	L	L	ML
Rayfoun	L	L	M	Safra Kesrouane	M	L	M	Shayle Kesrouane	M	L	M
Tabarja	M	L	M	Yahchouch	L	L	M	Zaaytreh	L	L	M
Zeytoun	M	L	M	Zouk Mikael	M	L	M	Zouk Mosbeh	M	L	M

Baalbek_Hermel

Baalbek

Municipality	15-Nov	16-Nov	17-Nov	Municipality	15-Nov	16-Nov	17-Nov	Municipality	15-Nov	16-Nov	17-Nov
Aadous	L	ML	M	Aamchki	L	L	M	Aarsal	L	L	M
Ain Baalbek	ML	L	M	Ain Bourday	ML	ML	M	Ain El-Benye	L	L	M
Ain El-Jaouz Baalbek	L	L	M	Ain El-Siya Chadoura	L	L	M	Al Khodr Baalbek	ML	L	M
Al Nabi Chit	ML	L	M	Aynata Baalbek	M	M	M	Baalbek	ML	ML	M
Bachwat	M	M	M	Barqa	M	M	M	Bednayel Baalbak	M	M	M
Beit Chama	ML	ML	M	Bijjaje	M	M	M	Bouday	M	M	M
Brital	L	L	M	Btadi	M	M	M	Chaat	M	M	M
Chaibe	L	L	M	Chlifa	M	M	MH	Chmestar	M	M	M
Dar El-Oussa	M	M	M	Deir El-Ahmar	M	M	M	Deir Mar Maroun Baal	M	M	MH
Douris	ML	ML	M	Fakiha	M	ML	M	Hadath Baalbek	ML	M	M
Ham	L	L	M	Haour Taala	L	L	M	Hizzine	L	ML	M
Hlebta	M	M	M	Hosh Barada	L	ML	M	Hosh El Dahab	ML	M	M
Hosh El Snid	ML	ML	M	Hosh El-Nabi	ML	ML	M	Hosh El-Rafiq	ML	ML	M
Hosh Tal Safiya	L	ML	M	Hrebta	M	M	M	laat	M	M	M

Jebaa	M	M	M	Jenta	L	L	M	Kfar Dabach	ML	ML	M
Kfar Dane	M	M	M	Khraibeh El-Hermel	M	M	M	Khreibet Baalbek	L	L	M
Kneisset Baalbek	M	M	M	Labueh	M	ML	M	Maarboun	L	L	M
Majdaloun	L	ML	M	Maqneh	M	M	M	Mazraat Beit Mcheik	M	M	M
Misraya	ML	ML	M	Moqraq	M	M	M	Nabha El-Damdoum	M	M	M
Nabi Chbay	L	L	M	Nabi Osman	M	L	M	Nahleh baalbek	L	L	M
Ouadi El-Oss	M	M	M	Qaa Baayoun	M	M	M	Qaa Jouar Maqiye	M	M	MH
Qaa Ouadi El-Khanzir	M	M	MH	Qah Baalbek	M	M	M	Qarha Baalbek	M	M	M
Qsarnaba	ML	ML	M	Ram Baalbek	M	M	M	Ras Baalbek El Sahl	M	M	M
Ras Baalbek El-Charq	M	ML	M	Riha	M	M	M	Saaide	ML	M	M
Sbouba	M	M	M	Seriine El-Tahta	ML	ML	M	Slouqi	ML	ML	M
Taiba Baalbek	L	ML	M	Talia	L	ML	M	Taraiya	M	M	M
Temnin El Fawqa	ML	ML	M	Temnin El-Tahta	ML	ML	M	Tfail	L	L	M
Yahfoufa	L	L	M	Yammouneh	M	M	M	Younine	ML	L	M
Zboud	M	M	M								

Hermel

Municipality	15-Nov	16-Nov	17-Nov	Municipality	15-Nov	16-Nov	17-Nov	Municipality	15-Nov	16-Nov	17-Nov
Charbine El-Hermel	M	M	M	Hermel Jbab	M	ML	M	Hermel	M	M	MH
Maaysra El-Hermel	M	M	M	Michaa Mrajhine	ML	ML	M	Ouadi Faara	M	M	M
Ras Baalbek - Ouadi	M	M	M	Ras Baalbek El Gharb	M	M	M	Zighrine	M	M	M

Akkar

Akkar

Municipality	15-Nov	16-Nov	17-Nov	Municipality	15-Nov	16-Nov	17-Nov	Municipality	15-Nov	16-Nov	17-Nov
Aain Tinta	M	M	MH	Aaiyat	M	M	MH	Aakkar El-Aatiga	M	M	M
Aamar Akkar	M	L	M	Aamar El Baykat	M	M	H	Aamayer	M	M	MH
Aamriyet Akkar	M	M	MH	Aandqet	M	M	MH	Aarmeh	M	M	MH
Aarqa	M	L	M	Aawaynat	M	M	MH	Aayoun Akkar	M	M	MH
Abboudiye	M	M	MH	Ain El-Zeit	M	M	H	Ain Yaaqoub	M	M	MH
Akroum	M	M	MH	Aridet Cheikh Zennad	M	M	MH	Baldehy w Mazraat Bal	M	M	MH
Barcha	M	M	MH	Bardeh	M	M	MH	Bebnine	M	L	M
Beino	M	M	MH	Beit Ayoub	M	M	M	Beit El-Haouch	M	L	M
Beit Mellat	M	M	M	Beit Younes	M	ML	M	Berbara Akkar	M	M	MH
Berqayel	M	L	M	Bezbin	M	M	M	Bireh Akkar	M	M	MH
Borj	M	M	MH	Bqerezla	M	L	M	Bzal	M	L	M
Chane	ML	ML	M	Chaqdouf	M	M	MH	Charbila	M	M	MH
Cheikh Mohammad	M	M	MH	Cheikh Taba Es-Sahl	M	M	MH	Cheikh Taba	ML	M	M
Cheikh Zennad	M	M	MH	Cheikhlar	M	M	MH	Chir Hmairine	M	M	MH
Daghle	M	M	MH	Dahr Laissine	M	M	M	Darine	M	M	MH
Dawra	M	M	MH	Dawsa w Baghdadi	M	M	MH	Dayret Nahr El-Kabir	M	M	H
Deir Dalloum	M	L	M	Deir Jennine	M	M	MH	Denbou	ML	ML	M
Dibbabiye	M	M	H	Douair Aadwiyeh	M	M	MH	Fassikine	M	M	MH
Fnaydek	M	M	M	Fraydes Akkar	M	M	MH	Ghazayle	M	M	MH
Habchit	ML	ML	M	Hakour	M	L	M	Halba	M	M	MH

Haouchab	M	M	H	Hayssat	M	M	MH	Haytla	M	M	MH
Hayzouq	M	M	MH	Hedd	M	M	MH	Hmaira Aakkar	M	L	M
Hmaiss Aakkar	M	M	MH	Hnaider	M	M	H	Hokr Ed-Dahri	M	M	MH
Hokr Etti	M	M	MH	Hokr Jouret Srar	M	M	MH	Houaich	ML	ML	M
Hrar	M	M	M	Idbil	M	M	M	Ilal	M	M	M
Janine	M	M	MH	Jdeidet El-Joumeh	M	M	M	Jdeidet El-Kaiteh	M	L	M
Jebrayel	M	M	M	Kafr	M	L	M	Kafr	M	M	H
Karm Asfour	M	ML	M	Kfar Melki Aakkar	M	M	MH	Kfar Noun	M	M	MH
Kfarharra	M	M	MH	Khalsa	M	M	MH	Kharnoubet Aakkar	M	M	MH
Khirbet Daoud Aakkar	M	M	MH	Khirbet El Remmane	M	M	MH	Khirbet Shar	M	M	MH
Khoreybet El-Jindi	M	M	MH	Khreibet Aakkar	M	M	M	Kneisset Aakkar	M	M	MH
Kneisset Hnaider	M	M	H	Knisse	M	M	MH	Kroum El-Aarab	M	M	MH
Kwachra	M	M	H	Kweykhath	M	M	MH	Machta Hammoud	M	M	MH
Majdala	M	L	M	Majdel Akkar	M	M	MH	Mar Touma	M	L	M
Marlaya Melhem	M	L	M	Mashha	M	M	M	Massoudiye	M	M	MH
Mazraat Beit Ghattas	M	L	M	Mazraat En-Nahriye	M	M	MH	Mechmech	ML	L	M
Memneh	M	M	M	Mhammara	M	L	M	Mighraq Aakkar	M	M	MH
Minyara	M	L	M	Moqayteh	M	M	MH	Mounjez	M	M	MH
Msalla	M	M	H	Mzeihmeh	M	M	MH	Nfaiseh	M	M	MH
Noura Et-Tahta	M	M	H	Ouadi El-Haour	M	M	MH	Ouadi El-Jamous	M	L	M
Ouyoun El-Ghizlane	M	L	M	Qaabarine	M	M	MH	Qabaait	ML	L	M
Qachlaq	M	M	MH	Qantara Aakkar	M	M	M	Qarha Aakkar	M	M	H
Qarqaf	M	L	M	Qboula	M	M	MH	Qleiaat Aakkar	M	M	MH
Qloud El-Baqie	M	L	M	Qobaiyat Aakkar	M	M	M	Qobbat Chamrat	M	L	M
Qorayat	M	ML	M	Qornet Aakkar	M	M	M	Qsair Aakkar	M	M	MH
Rahbe	M	ML	M	Rihaniyet Aakkar	M	M	MH	Rmah	M	M	MH
Rmoul	M	M	MH	Saadine	M	M	MH	Sadaqa	M	M	M
Saidnaya	M	M	MH	Sammouniye	M	M	MH	Sayssoouq	M	L	M
Semmaqiye	M	M	MH	Semmaqli	M	L	M	Sfinet El-Dreib	M	M	MH
Sfinet El-Qaitaa	M	L	M	Sindyanet Zeidane	M	M	MH	Souaisset Aakkar	M	M	MH
Srar	M	M	MH	Tal Abbas El Gharby	M	M	MH	Tal Abbas El-Charqy	M	M	MH
Tal Biret	M	M	MH	Tal Hmayra	M	M	MH	Tal Maayan Tal Kiri	M	M	MH
Tal Sibel	M	M	MH	Tallet Chattaha	M	M	MH	Tikrit	M	M	M
Tleil	M	M	MH	Tshea	M	M	M	Zawarib	ML	M	M
Zouq El Hosniyeh	M	L	M	Zouq El-Haddara	M	L	M	Zouq El-Hbalsa	M	L	M
Zouq El-Moqachrine	M	L	M								

Sud

Sour

Municipality	15-Nov	16-Nov	17-Nov	Municipality	15-Nov	16-Nov	17-Nov	Municipality	15-Nov	16-Nov	17-Nov
Aaiyeh	M	L	H	Aalma El-Chaab	M	ML	MH	Aaytit	M	L	H
Abbassiyeh Sour	M	M	MH	Abou Chech	M	L	H	Ain Abou Abdallah	M	M	MH
Ain Baal	M	ML	H	Arzoun	M	VL	M	Aziyeh	M	ML	MH
Baflaya	M	L	MH	Barich	M	ML	MH	Batouliyeh	M	ML	H
Bayad	M	L	MH	Bazouriyeh	M	ML	MH	Bediass	M	ML	MH

Bestiyat	M	ML	MH	Borj El Chemali	M	M	MH	Borj En-Naqoura	M	M	H
Borj Rahhal	M	ML	MH	Boustane	M	L	H	Btaychih	M	L	H
Chaaitiye	M	ML	H	Chameh	M	L	MH	Chehabiye	M	M	MH
Chehour	M	L	M	Chihine	M	L	MH	Debaal Sour	M	L	MH
Deir Amess	M	L	MH	Deir Kifa	M	L	MH	Deir Qanoun El-Ain	M	ML	H
Deir Qanoun El-Naher	M	ML	MH	Derdghaiya	M	L	M	Dhayra	M	L	H
Halloussiyeh	M	ML	MH	Hamoul	M	L	MH	Hanaouey	M	ML	H
Henniye	M	M	H	Hmairi Sour	M	ML	MH	Iskandarouna Sour	M	ML	MH
Jbal El Botom	M	L	MH	Jebbin	M	L	H	Jennata	M	ML	MH
Jijim	M	L	H	Jouaiya	M	L	MH	Kneisset Sour	M	M	H
Maarake	M	ML	MH	Maaroub	M	ML	H	Majadel	M	ML	MH
Majdalzoun	M	ML	H	Mansouri Sour	M	M	H	Marnba	M	VL	M
Marouahine	M	L	MH	Mazraat El-Zalloutiy	M	L	H	Mazraat Mechref	M	L	H
Mazraat Tayr Semhat	M	VL	M	Mheilib	M	M	MH	Neffakhiyeh	M	VL	M
Niha Sour	M	VL	M	Ouadi Jilo	M	L	MH	Qana	M	L	H
Qolaileh Sour	M	M	H	Rechknany	M	L	MH	Rmadiyah	M	L	H
Selha Sour	M	L	M	Siddiqine	M	L	H	Sour	M	M	H
Srifa	M	VL	M	Tayr Debbe	M	ML	MH	Tayr Felsay	M	ML	MH
Tayr Harfa	M	L	H	Touayri	M	VL	M	Toura	M	ML	MH
Yanouh Sour	M	ML	MH	Yarine	M	L	H	Zebqine	M	L	M

Saida

Municipality	15-Nov	16-Nov	17-Nov	Municipality	15-Nov	16-Nov	17-Nov	Municipality	15-Nov	16-Nov	17-Nov
Aanqoun	M	M	MH	Aaqtanit	M	M	MH	Aarab Ej-Jall	M	M	MH
Aarab Tabbaya	M	M	MH	Abra Saida	M	M	MH	Adloun	M	M	MH
Adousiyeh	M	M	MH	Ain-El-Deleb	M	M	MH	Arzai	M	ML	MH
Babliyah	M	ML	MH	Barty	M	M	MH	Bissariyeh	M	M	MH
Bnaafoul	M	M	MH	Bqosta	M	M	MH	Bramiy	M	ML	MH
Daoudiyeh	M	ML	MH	Dareb El-Sim	M	M	MH	Erkay	M	M	MH
Ghassanieh	M	M	MH	Ghazieh	M	M	MH	Hajjeh	M	M	MH
Haret Saida	M	M	MH	Hartiyeh	M	ML	MH	Hlaliye Saida	M	M	MH
Insariyat	M	ML	MH	Jazira Saida	M	M	MH	Kafar Bit	M	M	MH
Kaoutariyet El-Siyad	M	M	MH	Kfar Chellal	M	ML	MH	Kfar Hatta Saida	M	M	MH
Kfar Milke Saida	M	ML	MH	Khartoum	M	ML	MH	Khaziz	M	M	MH
Khirbet Ed-Douair Sa	M	M	MH	Khirbet El-Bassal	M	M	MH	Khrayeb Saida	M	ML	MH
Loubieh	M	ML	MH	Maghdouche	M	M	MH	Majdelyoun	M	M	MH
Matariyet El-Choumar	M	ML	H	Matayriyeh	M	M	MH	Mazraat 'Mseileh	M	M	MH
Mazraat 'Snaiber	M	M	MH	Mazraat Aarab Soukka	M	M	MH	Mazraat Deir Taqla	M	M	MH
Mazraat El Yahoudiye	M	M	MH	Mazraat El-Housseini	M	M	MH	Mazraat El-Mhaydaleh	M	M	MH
Mazraat El-Ouasta	M	M	MH	Mazraat Jamjim	M	M	MH	Mazraat Kaoutariyet	M	M	MH
Mazraat Kfar Badda	M	M	MH	Mazraat Oussamiyat	M	ML	MH	Mazraat Sari	M	ML	MH
Mazraat Sinai	M	ML	MH	Meemariyeh	M	M	MH	Merouaniyeh	M	M	MH
Miyeh ou Miyeh	M	M	MH	Najjariyeh	M	M	MH	Qaaqiyat El-Snaouba	M	ML	MH
Qnarit	M	M	MH	Qraiye Saida	M	M	MH	Saida Ed-Dekermane	M	M	MH
Saida El-Oustani	M	M	MH	Saida El-Qadimeh	M	M	MH	Saida Kefraya	M	ML	MH
Saksakiyeh	M	ML	MH	Salhieh Saida	M	ML	MH	Sarafand	M	M	MH

Sfenta	M	M	M	Tafahta	M	ML	MH	Tanbourit	M	M	MH
Tebna	M	M	MH	Zaghdraiya	M	M	MH	Zeita	M	M	MH
Zrariyeh	M	ML	MH								

Jezzine

Municipality	15-Nov	16-Nov	17-Nov	Municipality	15-Nov	16-Nov	17-Nov	Municipality	15-Nov	16-Nov	17-Nov
Ain El-Mir (El Estab)	M	M	MH	Anane	M	L	M	Aramta	ML	ML	M
Ariya	L	L	M	Aychiyeh	ML	ML	M	Azour	M	L	M
Baba	M	L	M	Bayssour Jezzine	M	M	MH	Benoueteh Jezzine	L	L	M
Bhannine	L	L	M	Bisri	M	L	M	Bkassine	L	L	M
Bouslaya	M	M	M	Btedine El-Leqech	M	L	M	Chbail	L	L	M
Choualiq Jezzine	M	ML	MH	Dahr Ed-Deir	M	M	M	Deir El Qattine	M	M	M
Demachqiyeh	M	M	MH	Ghabbatiyeh	L	L	M	Harf Jezzine	M	L	M
Hassaniyeh	M	M	MH	Haytouleh	M	ML	MH	Haytura	M	ML	M
Hidab	M	M	M	Homsiyeh	M	L	M	Jabal Toura	ML	ML	M
Jarmaq	M	M	M	Jensnaya	M	M	MH	Jernaya	M	M	MH
Jezzine	L	ML	M	Karkha	M	ML	M	Kfar Falous	M	ML	M
Kfar Houna	ML	ML	M	Kfar Jarrah	M	M	MH	Lebaa	M	M	MH
Louayzet Jezzine	M	M	MH	Machmouche	L	L	M	Mahmoudiyeh Jezzine	M	ML	MH
Maknounye Jezzine	M	M	M	Maraat Ouazaiyeh	L	L	M	Mazraat Daraya	L	ML	M
Mazraat El-Aarqoub	M	ML	M	Mazraat El-Mathane	M	L	M	Mazraat El-Rahbane	M	M	M
Mazraat Khallet Khaz	L	L	M	Mazraat Louzid (Loua	L	L	M	Mazraat Qrouh	L	L	M
Mazraat Tamra	M	M	MH	Mazraat Zighrine Jez	M	ML	M	Mazraat	M	M	M
Mharbiyeh	M	M	MH	Midane Jezzine	ML	L	M	Mjeydel Jezzine	M	M	MH
Mlikh	M	M	MH	Mrah El-Hbasse	M	ML	MH	Ouadi Baanqoudaine	M	M	MH
Ouadi El-Laymoun	M	ML	MH	Ouardiyeh	L	L	M	Qabaa Jezzine	M	ML	M
Qatrani	L	L	M	Qaytouleh	M	M	MH	Qtaleh Jezzine	M	L	M
Rihane Jezzine	M	ML	M	Rimat	M	M	M	Roum	M	L	M
Roummanet	M	M	MH	Sabbah	L	L	M	Saydoun	M	M	M
Sfaray	M	L	M	Snaya	M	M	M	Sojoud	M	ML	M
Srayri	L	L	M	Taaid	M	L	M	Wadi Jezzine	L	L	M
Zhalta	M	ML	M								

Bekaa

West Bekaa

Municipality	15-Nov	16-Nov	17-Nov	Municipality	15-Nov	16-Nov	17-Nov	Municipality	15-Nov	16-Nov	17-Nov
Aammiq BG	M	ML	M	Ain El Tineh BG	L	ML	M	Ain Zebdeh	ML	ML	M
Ana	M	ML	M	Aytanit	L	L	M	Baaloul BG	L	ML	M
Bab Mareh	L	ML	M	Chouberqiye Aammiq	M	ML	M	Dakoue	ML	ML	M
Deir Ain El-Jaouze	L	ML	M	Deir Tahniche	M	ML	M	Ghaza	M	ML	M
Harime El-Soughra	ML	ML	M	Hoch Harimeh	M	ML	M	Jazira BG	M	ML	M
Jib Jennine	L	L	M	Kamed-El-Laouz	L	L	M	Kefraya BG	ML	ML	M
Khiara El Atika	M	ML	M	Khiara	M	ML	M	Khirbet Qanafar	L	ML	M
Lala	L	ML	M	Lebbaya BG	L	L	M	Loussa	L	ML	M
Machghara	L	ML	M	Manara (Hammara) BG	ML	L	M	Mansoura BG	M	ML	M

Marej BG	M	M	M	Maydoun	L	ML	M	Ouaqf BG	M	ML	M
Qaraaoun	L	ML	M	Qelya	L	L	M	Raouda (Istabel)	M	M	M
Saghbine	ML	L	M	Sohmor	L	L	M	Soltan Yacoub el Ara	ML	ML	M
Souairy	ML	ML	M	Sultan Yaacoub	M	ML	M	Tal Znoub	M	ML	M
Yehmor BG	L	L	M	Zilaya	L	L	M				

Zahle

Municipality	15-Nov	16-Nov	17-Nov	Municipality	15-Nov	16-Nov	17-Nov	Municipality	15-Nov	16-Nov	17-Nov
Aanjar (Haouch Mouss)	ML	ML	M	Ablah	ML	ML	M	Ain Kfarzabad	ML	L	M
Ali-El-Nahri	ML	ML	M	Bar Elias	M	M	M	Bouarej	M	M	M
Cheberqiyet Tabet	M	M	M	Chtaura	M	M	M	Deir El Ghazal	ML	L	M
Delhamiyet Zahle	M	ML	M	Ferzol	M	M	M	Haouch El-Ghanam	ML	ML	M
Haouch Es-Siyadeh	M	M	M	Haouch Hala	ML	L	M	Haouch Mandara	M	M	M
Haouch Qayssar	M	M	M	Hezerta	M	M	M	Hosh Moussa	ML	L	M
Jdita	M	M	M	Kfarzabad	ML	L	M	Ksara	M	M	M
Majdel Aanjar	ML	ML	M	Makssi	M	M	M	Massa	L	L	M
Mazraat Er-Remtaniye	M	M	M	Mrayjat Zahle	M	M	M	Mzaraa Zahle	M	M	M
Nabi Ayla	ML	ML	M	Nasriyet Rizk	ML	ML	M	Nasriyet Zahle	M	M	M
Niha Zahle	M	M	M	Ouadi Ed-Deloum	M	M	M	Ouadi El-Arayech	M	M	M
Qaa El Rim	M	M	M	Qab Elias	M	M	M	Qousaya	ML	L	M
Rhit	ML	L	M	Riyak	ML	L	M	Saadnayel	M	M	M
Taal El-Akhdar	M	ML	M	Taalbeya	M	M	M	Taanayel	M	M	M
Talamara	ML	ML	M	Tcheflik Edde Haouch	M	M	M	Tcheflik Qiqano	M	M	M
Terbol Zahle	ML	L	M	Touaite Zahle	ML	ML	M	Zahle Aradi	M	M	M
Zahle El-Berbara	M	M	M	Zahle El-Maallaqa	M	M	M	Zahle El-Midane	M	M	M
Zahle Er-Rassiyeh	M	M	M	Zahle Haouch El-Ouma	M	M	M	Zahle Haouch El-Ouma	M	M	M
Zahle Haouch Ez-Zara	M	M	M	Zahle Maalaqa Aradi	M	M	M	Zahle Mar Antonios	M	M	M
Zahle Mar Elias	M	M	M	Zahle Mar Gerios	M	M	M	Zahle Saydet En-Naja	M	M	M
Zebdoul	M	M	M								

Rachaiya

Municipality	15-Nov	16-Nov	17-Nov	Municipality	15-Nov	16-Nov	17-Nov	Municipality	15-Nov	16-Nov	17-Nov
Ain Arab Rachaiya	L	L	M	Ain Ata	L	L	M	Ain Harche	L	L	M
Aqabe Rachaya	L	L	M	Ayha	L	L	M	Ayta El Fokhar	L	L	M
Bakifa Rachaya	L	L	M	Bakka	L	L	M	Beit Lahya	L	L	M
Bireh Rachaiya	L	L	M	Daher El Ahmar	L	L	M	Deir El-Achayer	ML	L	M
Heloua Rachaiya	ML	L	M	Hoch El Qannabeh Rac	L	L	M	Kaoukaba Bou Arab	L	L	M
Kfar Danis	L	L	M	Kfar Mechki	L	L	M	Kfar Qouq	L	L	M
Kherbet Rouha	L	L	M	Majdel Balhiss	L	L	M	Mdoukha	L	L	M
Mhaydseh Rachaiya	L	L	M	Nabi Safa	L	L	M	Rachaiya	L	L	M
Rafid Rachaiya	L	L	M	Selsata (Mazraat Dei	ML	L	M	Tannoura	L	L	M
Yanta	ML	L	M								

Beyrouth

Beyrouth

Municipality	15-Nov	16-Nov	17-Nov	Municipality	15-Nov	16-Nov	17-Nov	Municipality	15-Nov	16-Nov	17-Nov
--------------	--------	--------	--------	--------------	--------	--------	--------	--------------	--------	--------	--------

Achrafieh	M	M	MH	Ain el-Mreisse	M	M	MH	Bachoura	M	M	MH
Beirut Central Distr	M	M	MH	Marfai	M	M	MH	Mazraa	M	M	MH
Medaouar	M	M	MH	Minet el-Hosn	M	M	MH	Mwssaitbeh	M	M	MH
Ras Beirut	M	M	MH	Rmeil	M	M	MH	Saifi	M	M	MH
Zqaq el-Blat	M	M	MH								