

Lebanon Fire Risk Bulletin



CIVIL DEDEFENCE

Refer to cadast table condition.

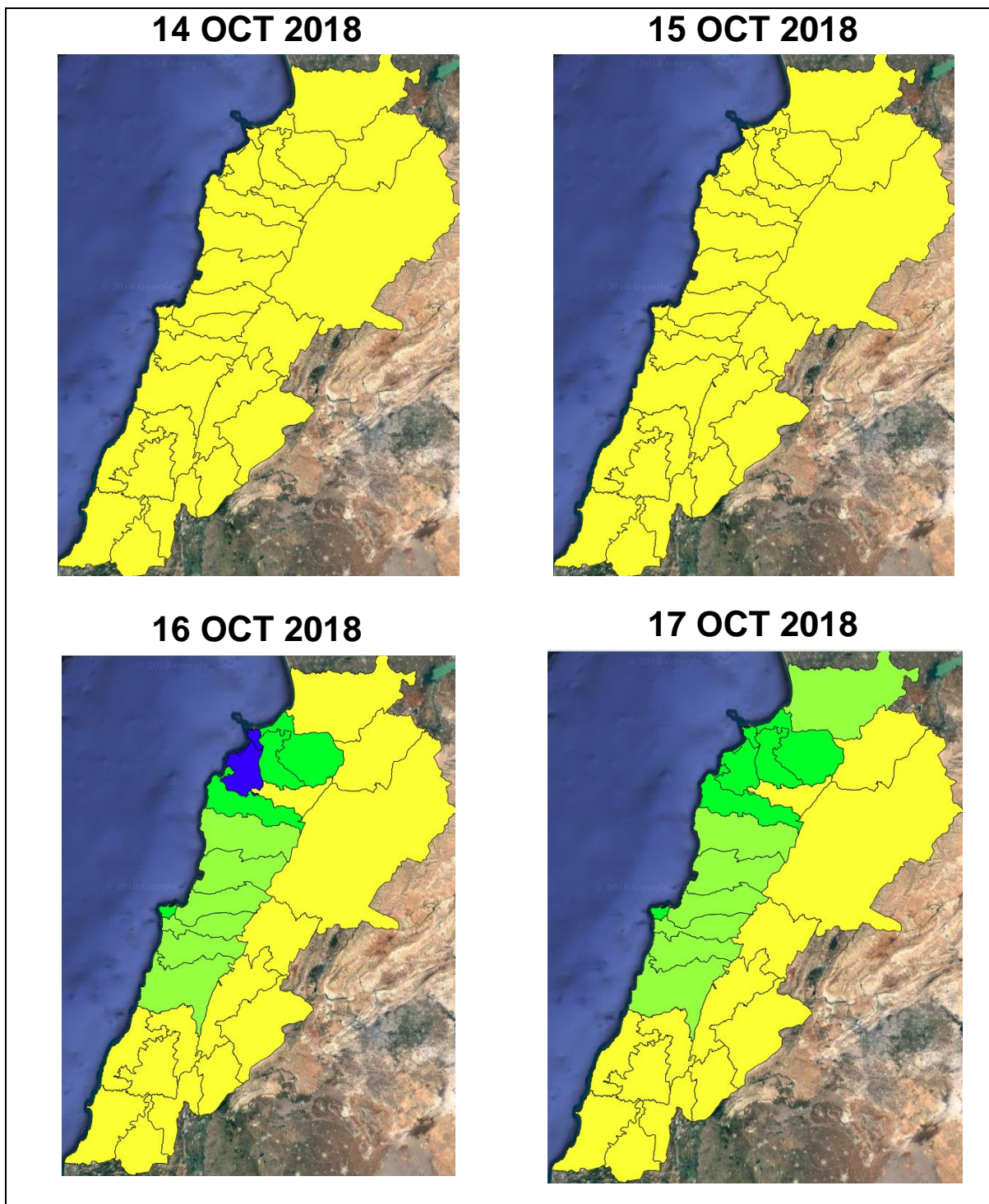
Please note that the indicated temperature is at 2 meters height from the ground.

General description of potential fire risk situation

Symbol	Level of risk	Meaning and actions
VL	Very low	Very low fire risk. Controlled burning operations can be hardly executed due to high fuel moisture content. Normally wildfires self-extinguish.
L	Low	Low fire risk. Controlled burning operations can be executed with a reasonable degree of safety.
ML	Medium low	Medium-low fire risk. Controlled burning operations can be executed in safety conditions. All the fires need to be extinguished.
M	Medium	Medium fire risk. Controlled burning operations would be avoided. All the fires need to be very well extinguished.
M	Medium high	Controlled burning is not recommended. Open flame will start fires. Cured grasslands and forest litter will burn readily. Spread is moderate in forests and fast in exposed areas. Patrolling and monitoring is suggested. Fight fires with direct attack and all available resources.
H	High	Ignition can occur easily with fast spread in grass, shrubs and forests. Fires will be very hot with crowning and short to medium spotting. Direct attack on the head may not be possible requiring indirect methods on flanks. Patrolling and monitoring the territory is highly suggested.
E	Extreme	Ignition can occur also from sparks. Fires will be extremely hot with fast rate of spread. Control may not be possible during day due to long range spotting and crowning. Suppression forces should limit efforts to limiting lateral spread. Damage potential total. Patrolling and monitoring the territory is highly suggested.

Beirut, 15 October 2018

FIRE RISK INDEX

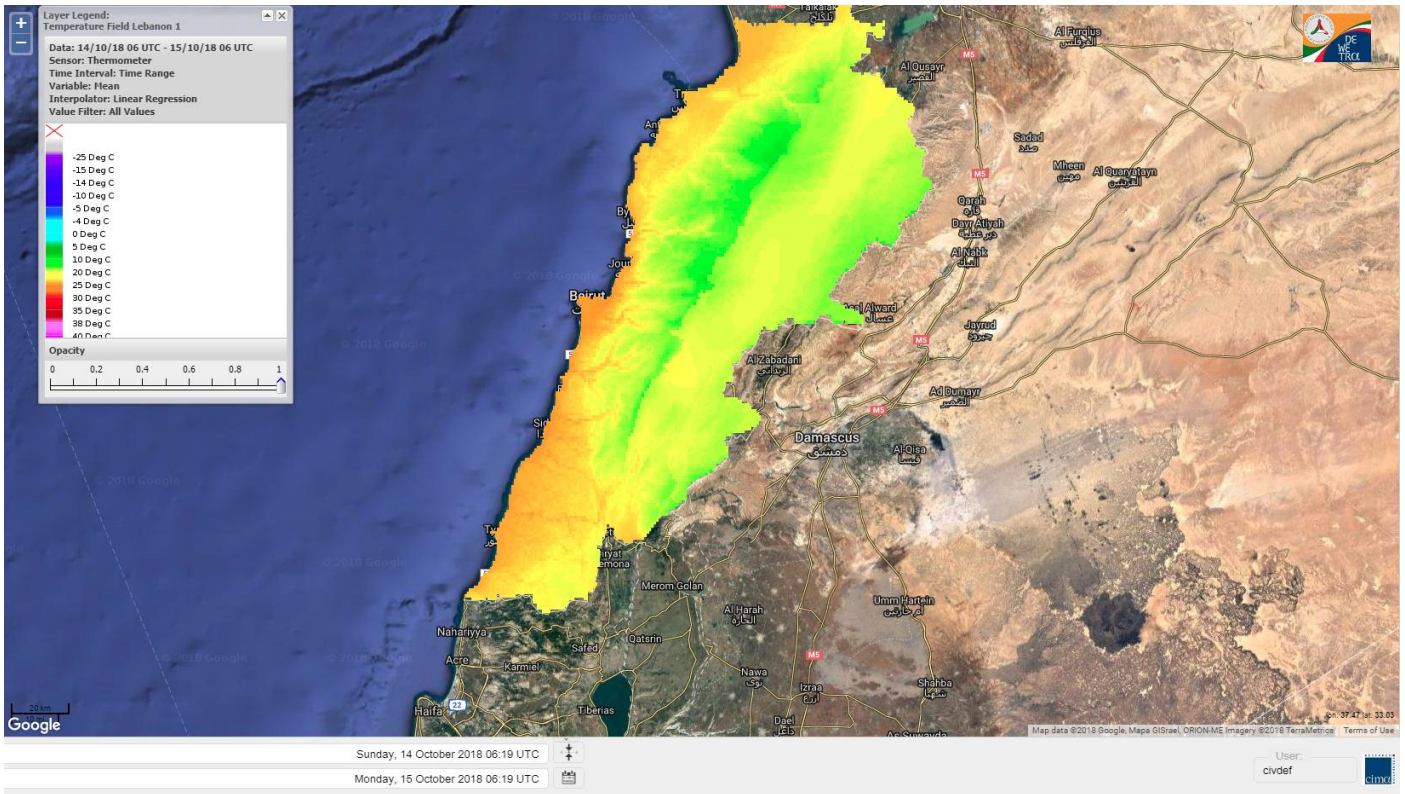


Layer Legend:
Lebanon Wildfire Risk Index 1

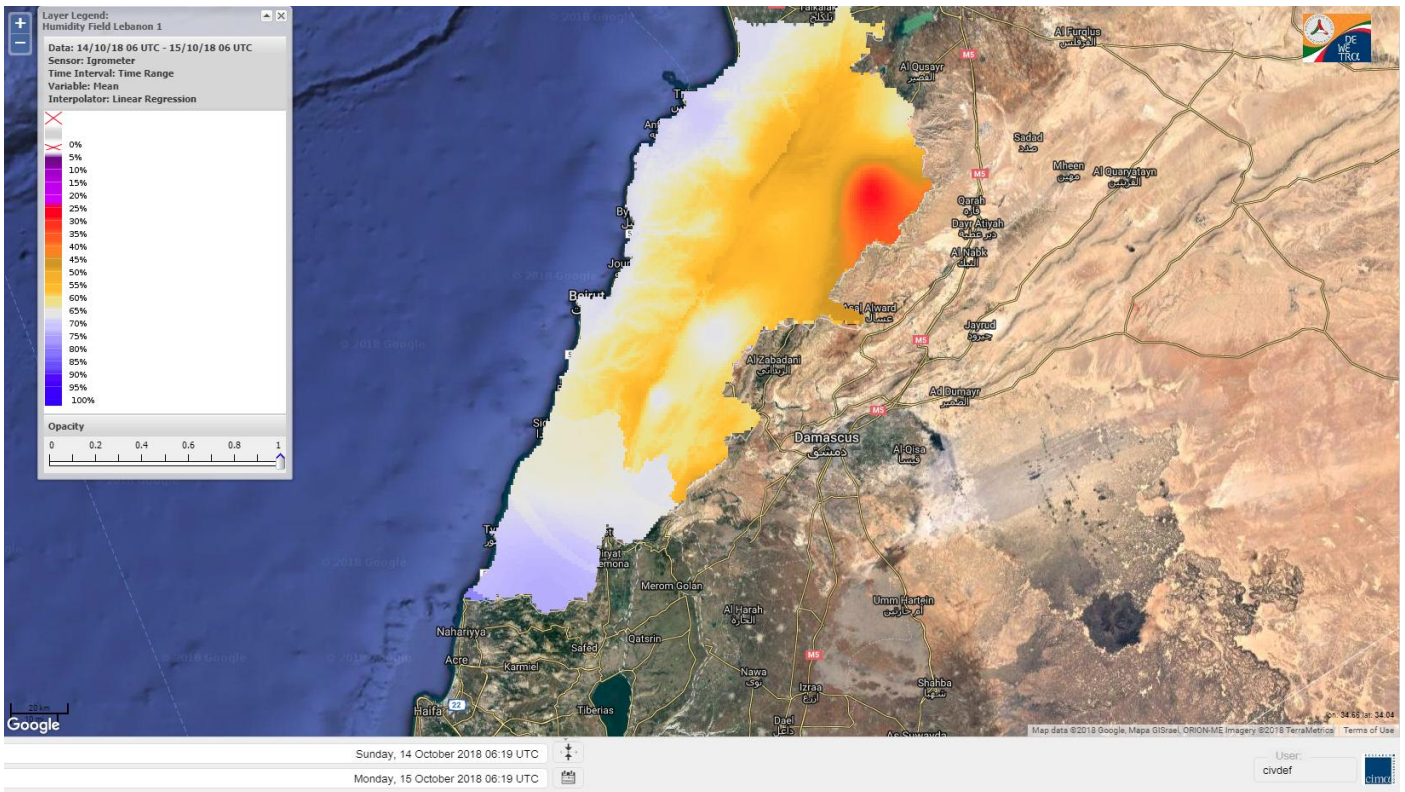
Data: Run: 15/10/2018 00:00. Forecast for 15
Model: RISICO for the Republic of Lebanon
Variable: Fire Weather Index
Spatial Resolution: Caza

- VERY LOW
- LOW
- MEDIUM-LOW
- MEDIUM
- MEDIUM-HIGH
- HIGH
- EXTREME

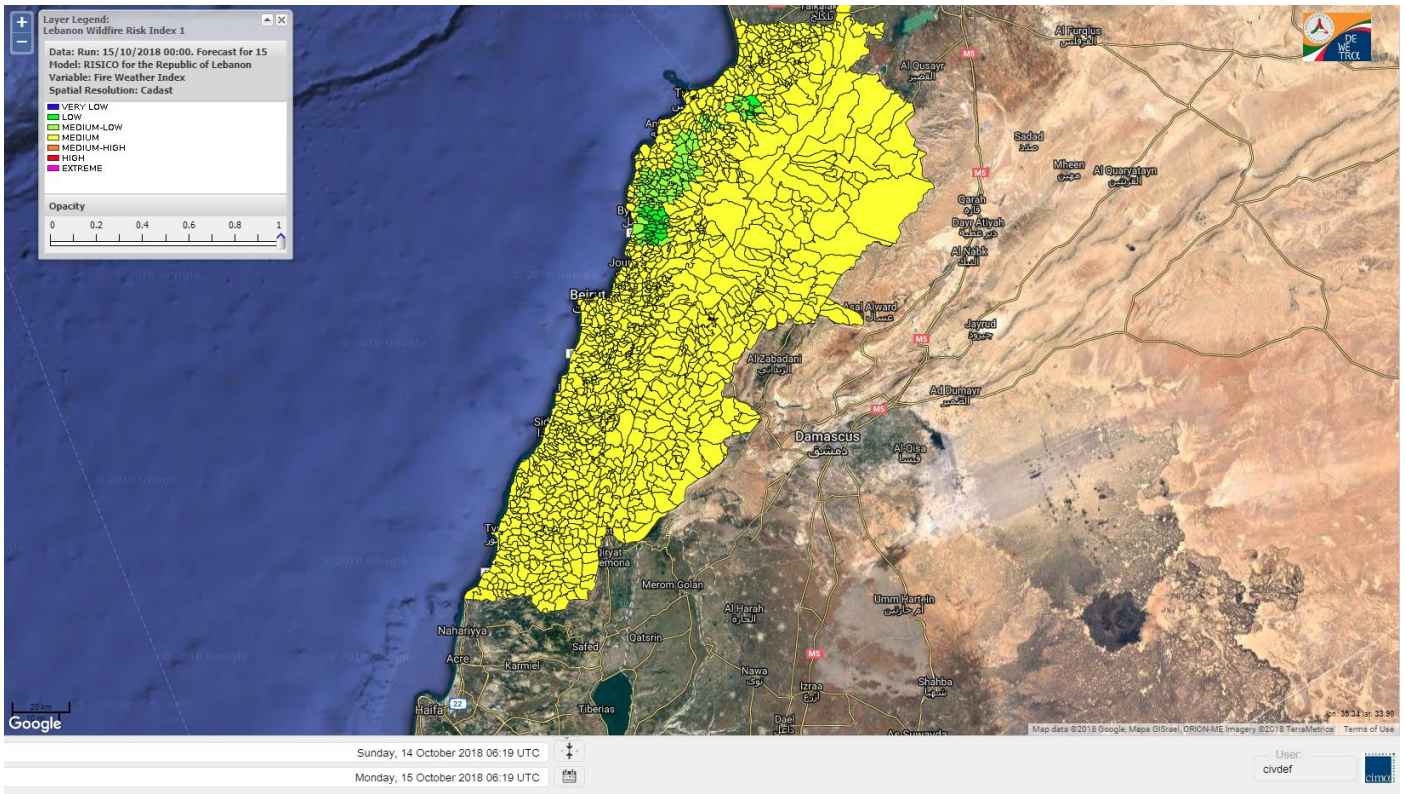
Lebanon temperature for Lebanon 15 OCT 2018



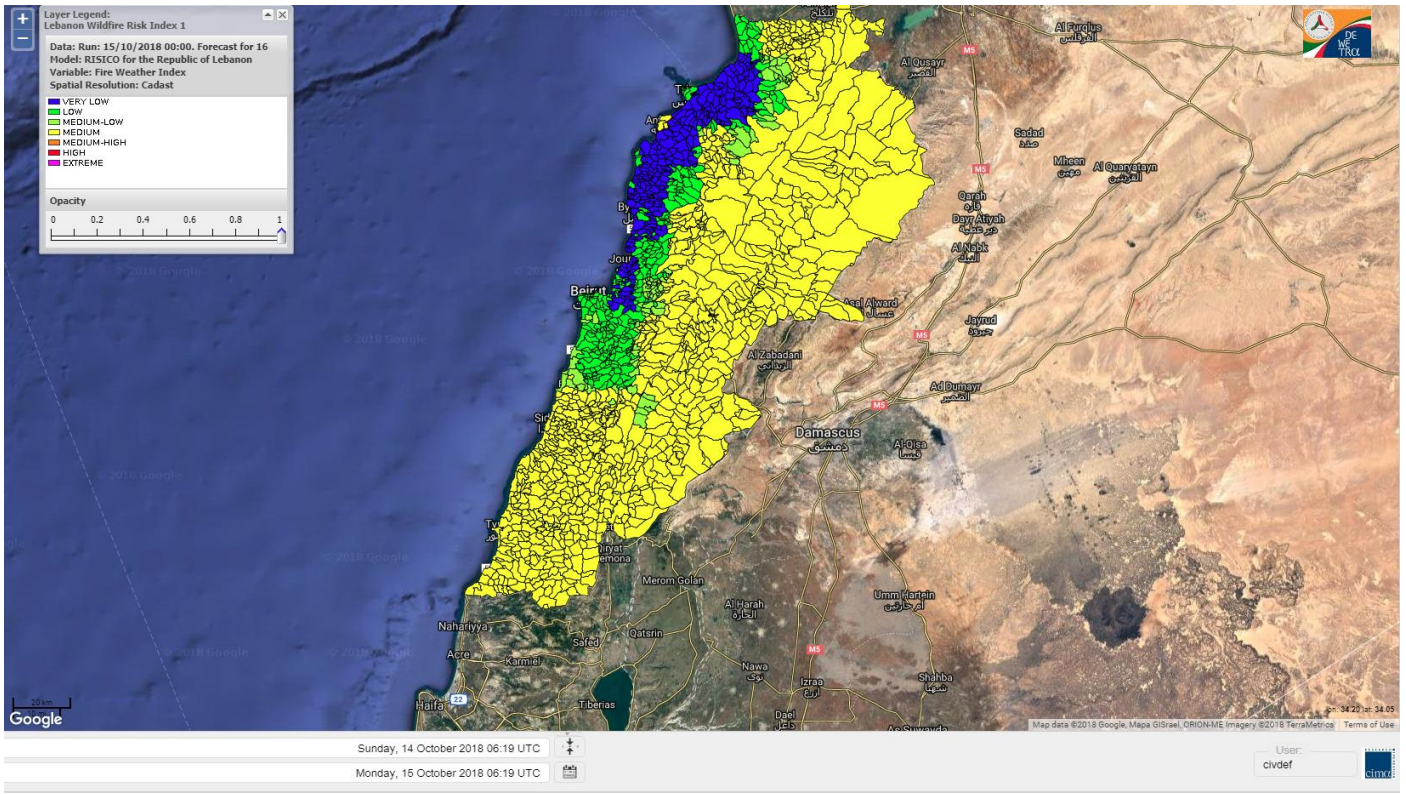
Lebanon humidity for Lebanon 15 OCT 2018



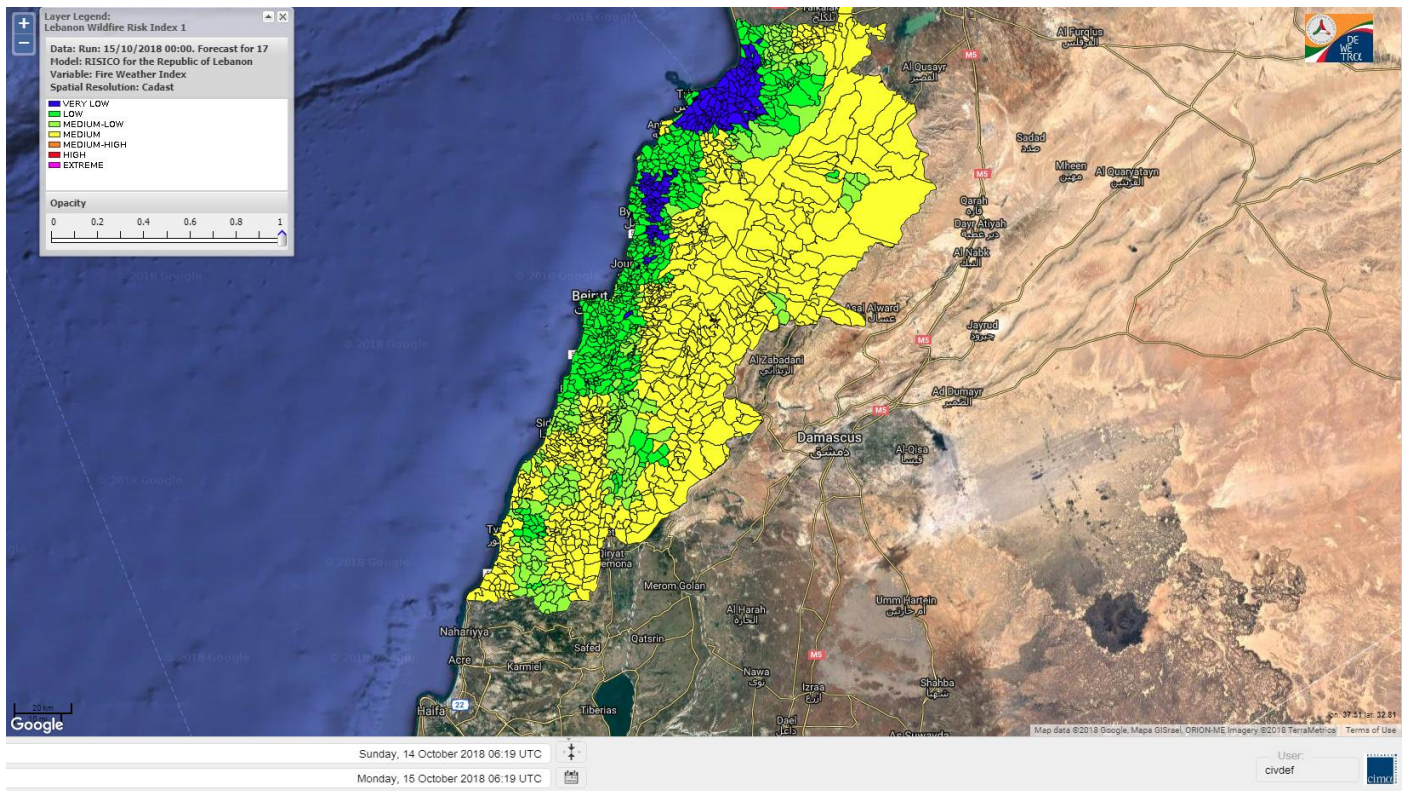
Lebanon for 15 OCT 2018



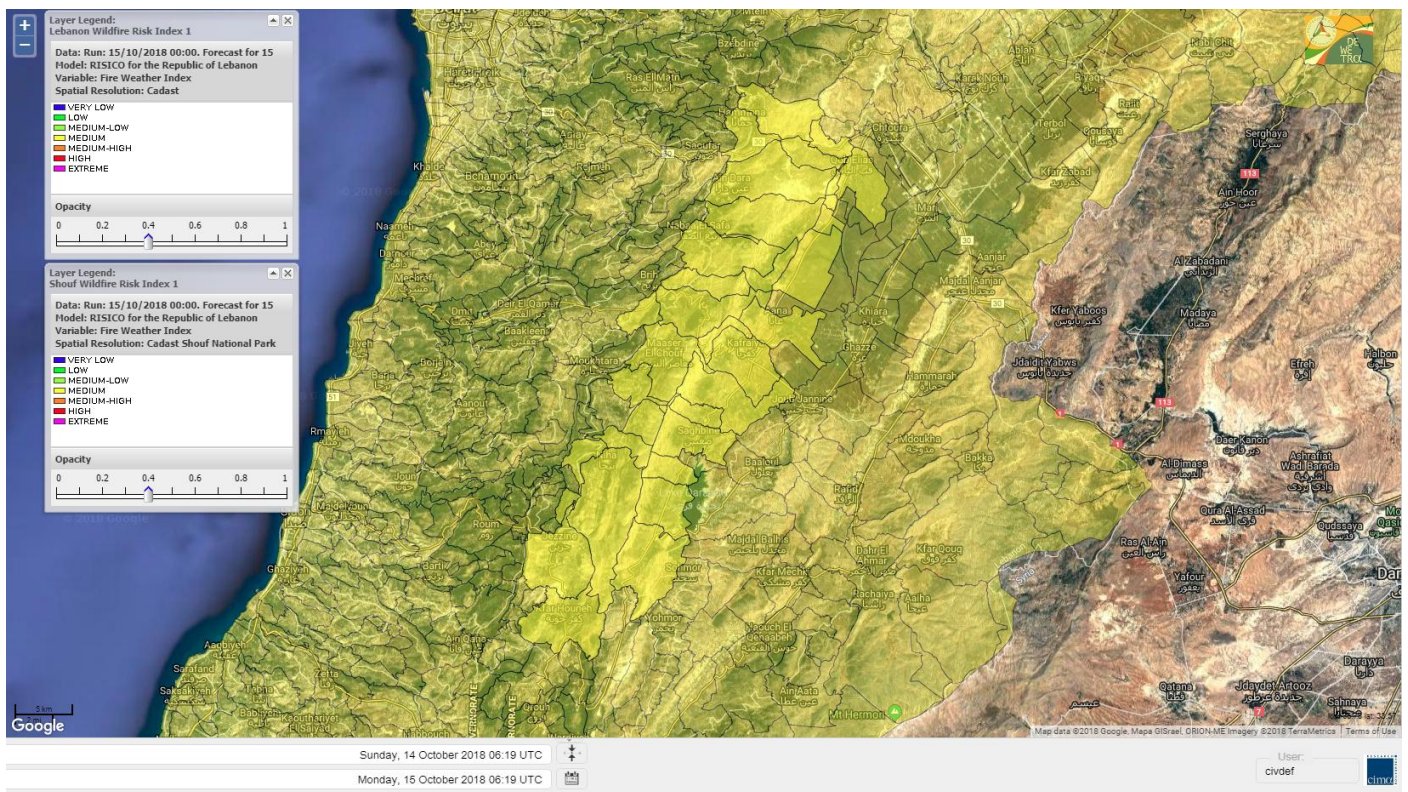
Lebanon for 16 OCT 2018



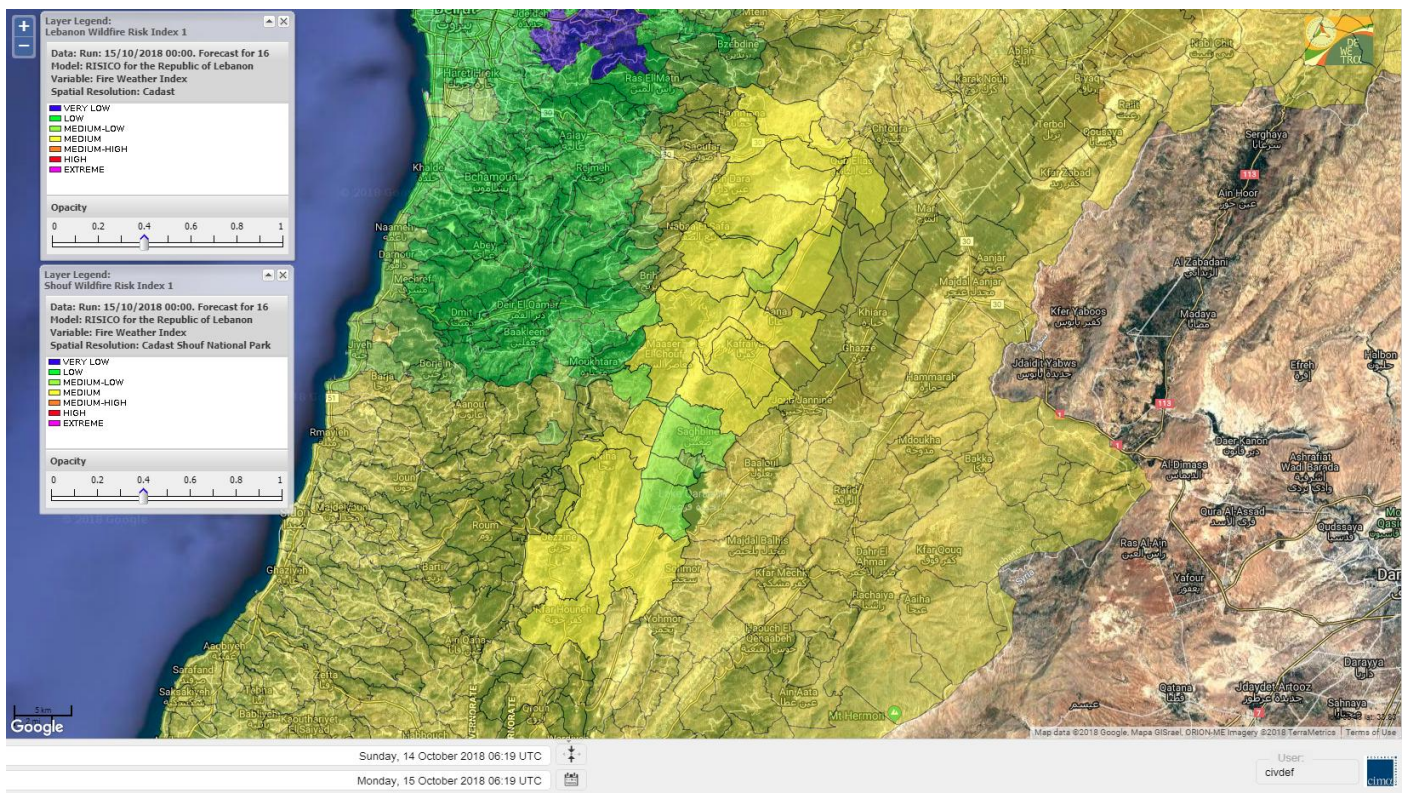
Lebanon for 17 OCT 2018



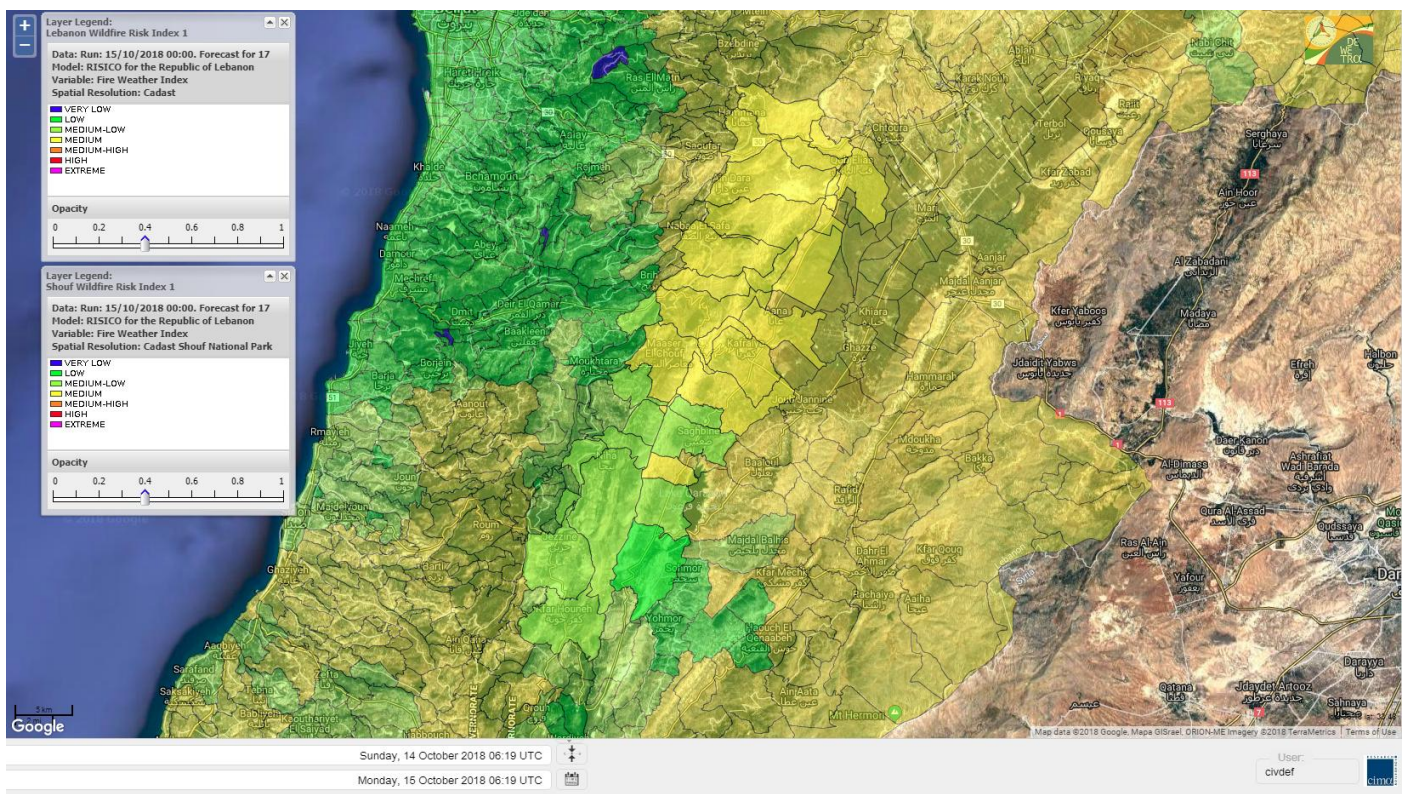
Shouf Biosphere Reserve Forecast for 15 OCT 2018



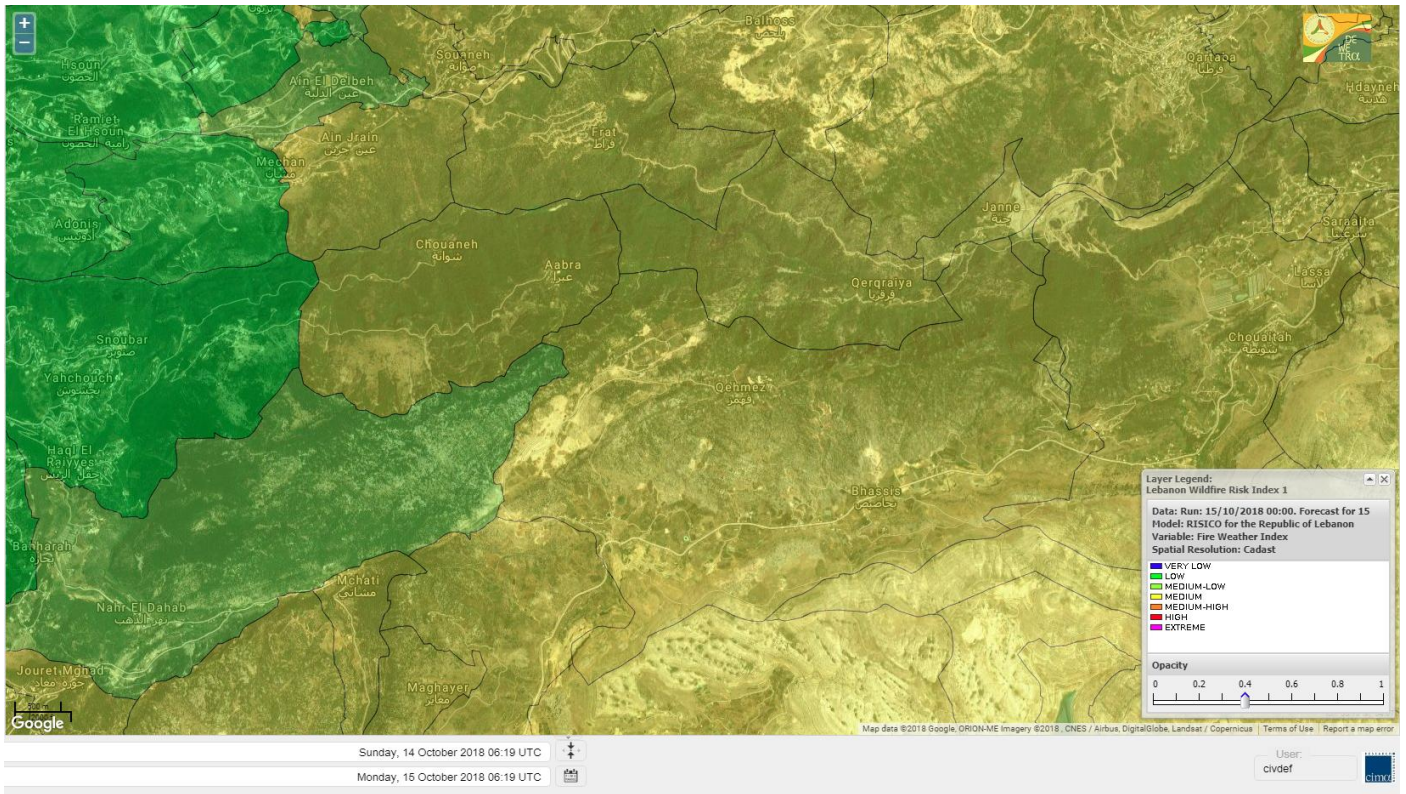
Shouf Biosphere Reserve Forecast for 16 OCT 2018



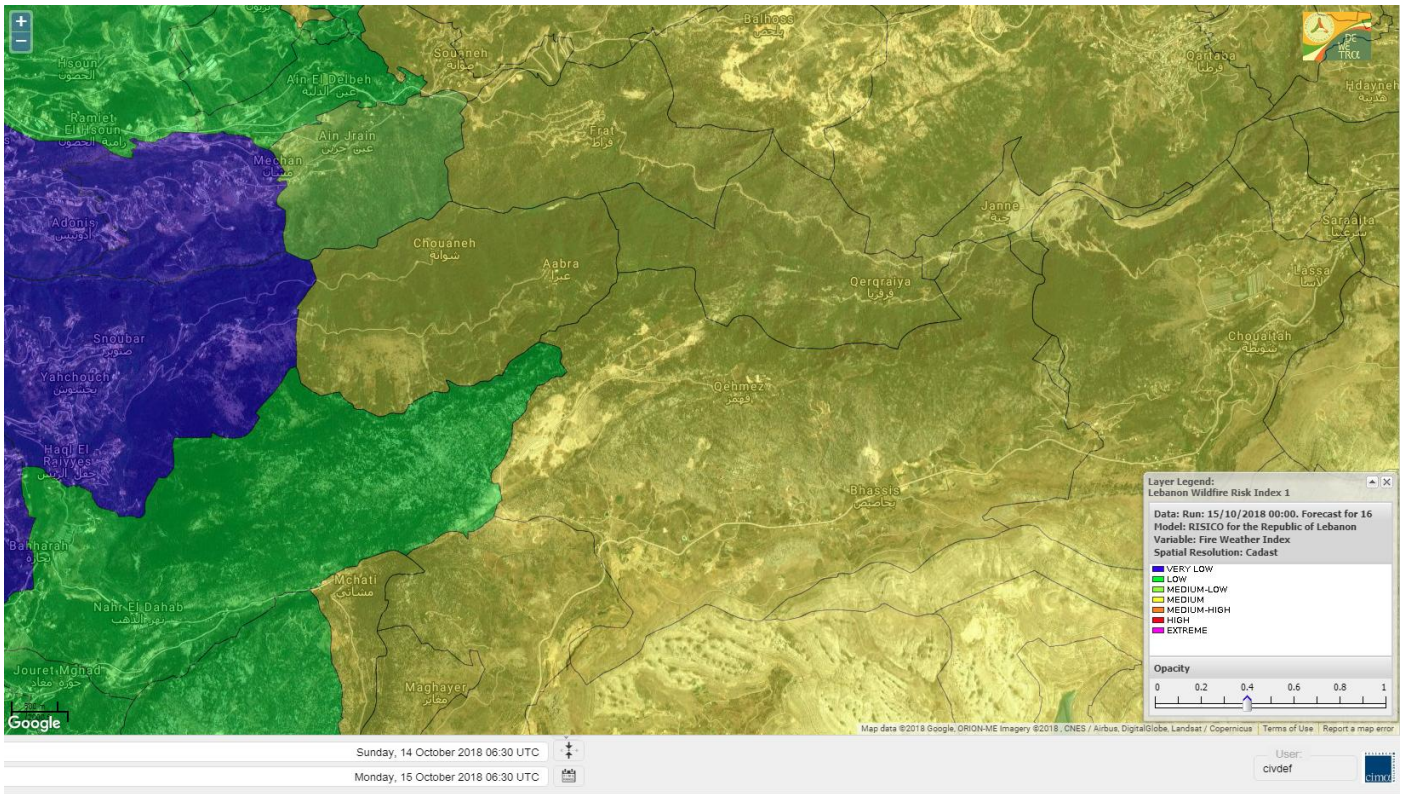
Shouf Biosphere Reserve Forecast for 17 OCT 2018



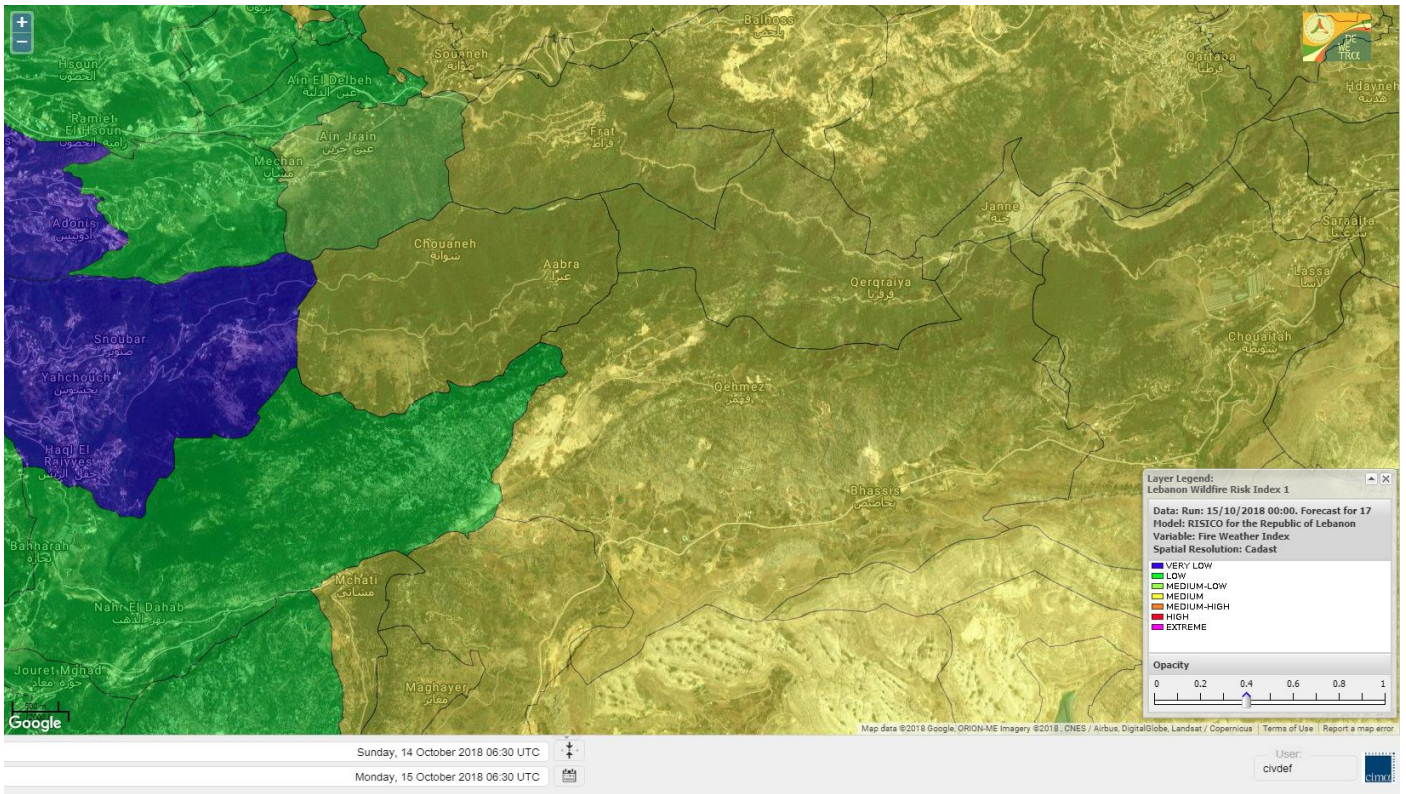
Jabal Moussa Reserve Forecast for 15 OCT 2018



Jabal Moussa Reserve Forecast for 16 OCT 2018



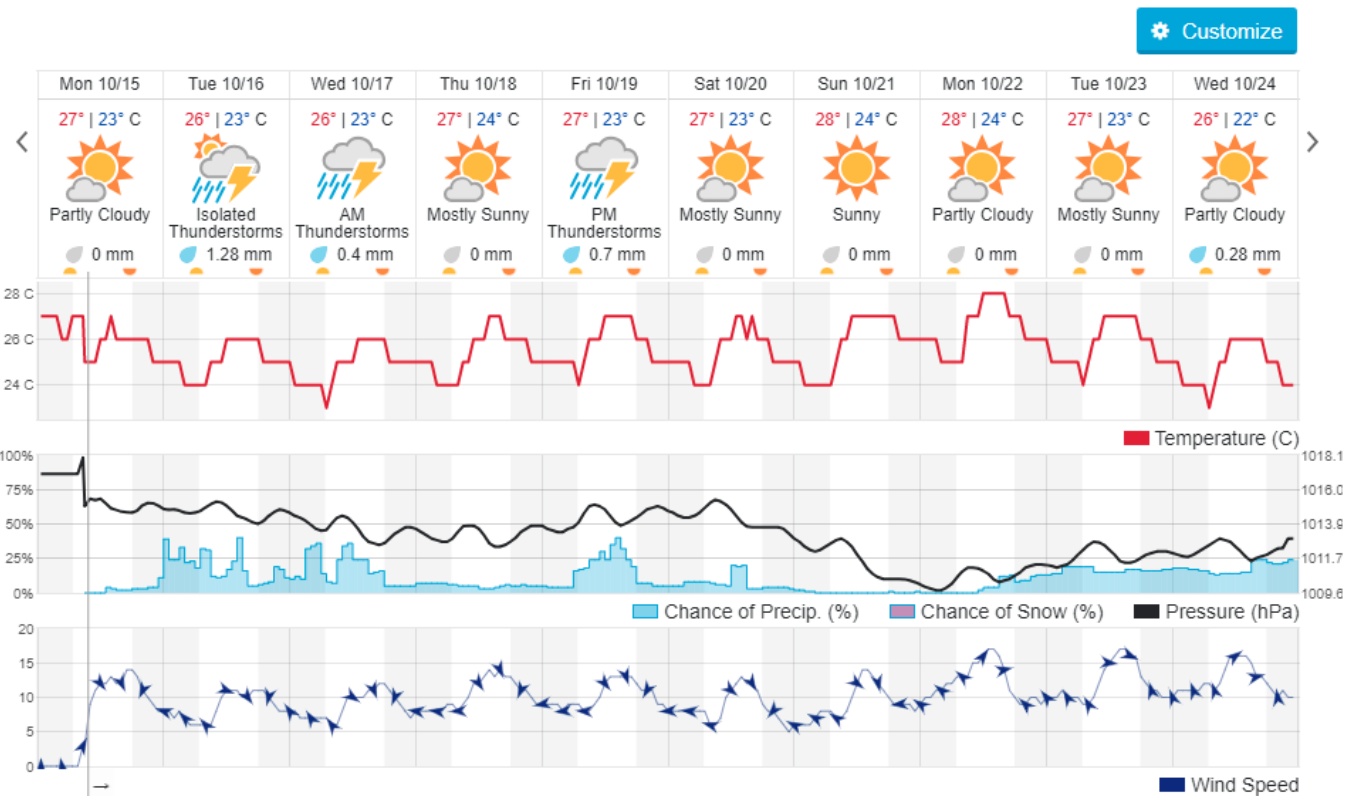
Jabal Moussa Reserve Forecast for 17 OCT 2018



Beirut, Lebanon

27° ACHRAFIEH,RIZK STATION | REPORT | CHANGE

TODAY HOURLY **10-DAY** CALENDAR HISTORY WUNDERMAP



Nord

Koura

Municipality	15-Oct	16-Oct	17-Oct	Municipality	15-Oct	16-Oct	17-Oct	Municipality	15-Oct	16-Oct	17-Oct
Aaba	ML	VL	L	Afsaddiq	ML	VL	L	Ain Ekrine	M	VL	L
Amioun	ML	VL	L	Anfeh	M	M	M	Badbhoun	M	VL	L
Barghoun	M	VL	L	Barsa	M	VL	VL	Batroumine	M	VL	VL
Bdebba	M	VL	L	Bechmizine	ML	VL	L	Bednayel El-Koura	M	VL	L
Bhabbouch El-Koura	M	VL	L	Bkeftine	M	VL	VL	Bnehran	M	L	L
Bqaiia El-Koura	M	VL	VL	Bsarma	ML	VL	L	Btaaboura	M	VL	L
Bttram	ML	VL	L	Btouratij	M	VL	VL	Bziza	ML	VL	L
Dar Beehtar	ML	VL	L	Dar Chmezzine	M	VL	L	Deddeh	M	VL	VL
Deir El-Balamand	M	VL	VL	Fih	M	VL	L	Hraiche	M	M	M
Ijdaabrine	M	VL	L	Kaftoun	M	VL	L	Kefraya El-Koura	M	VL	L
Kfarakka	ML	VL	L	Kfarhata	M	VL	L	Kfarhazir	M	VL	L
Kfarkahel	M	VL	VL	Kfarsaroun	ML	VL	L	Kosba	ML	VL	L
Mejdel el-Koura	ML	VL	L	Nakhle	M	VL	VL	Qalhat	M	VL	L
Ras Masqa	M	VL	VL	Rechdibbine	M	L	L	Zakroun	M	M	M
Zgharta El-Mtaouile	ML	VL	L								

Bcharre

Municipality	15-Oct	16-Oct	17-Oct	Municipality	15-Oct	16-Oct	17-Oct	Municipality	15-Oct	16-Oct	17-Oct
Aabdine	M	M	M	Bane	M	M	M	Barhelioun	M	M	M
Bazouone	M	M	M	Becharre	M	M	M	Beit Menzer	M	M	M
Billa	M	M	M	Blaouza	M	M	M	Bqaa Kafra	M	M	M
Bqerqacha	M	M	M	Breissat	M	M	M	Dimane	M	M	M
Hadath El Jobbeh	M	M	M	Hadchit	M	ML	ML	Hasroun	M	M	M
Mazraat Aassaf	M	ML	ML	Mazraat Bani Saab	M	M	M	Mchaa El-Jobbeh	M	M	M
Metrit	ML	VL	L	Moghr El-Ahoual	M	M	M	Ouadi Qannoubine	M	M	M
Qanat	M	M	M	Qnayouer	M	M	M	Tourza	M	M	M

Batroun

Municipality	15-Oct	16-Oct	17-Oct	Municipality	15-Oct	16-Oct	17-Oct	Municipality	15-Oct	16-Oct	17-Oct
Aabrine	M	VL	L	Aalali	ML	L	L	Aartiz	ML	VL	VL
Abdelli	ML	VL	VL	Ajdabra	ML	VL	L	Assia	ML	L	L
Basbina	ML	VL	L	Batroun	M	L	L	Bcheleh	ML	L	L
Bechtoudar	ML	L	L	Beit Chlala	ML	L	L	Beit Kassab	ML	VL	VL
Bijdarfil	M	VL	L	Bqesmaya	M	VL	L	Chatine	M	M	M
Chebtein	ML	VL	VL	Chekka	M	VL	L	Daael	ML	L	L
Dahr Abi Yaghi	ML	VL	VL	Daraya El-Batroun	ML	VL	VL	Deir Billa	ML	VL	L
Deir Kfifane	ML	VL	L	Deir Mar Youhanna EL	ML	L	L	Deir Mar Youssef Jra	ML	VL	VL
Douma	M	L	L	Douq	ML	VL	VL	Eddeh El-Batroun	ML	VL	VL
Ftihat El-Batroun	ML	VL	VL	Ghouma	ML	VL	VL	Hadtoun	ML	L	L
Hamat	M	VL	L	Harbouna	L	VL	VL	Hardine	ML	L	L
Helta	ML	L	VL	Hery	M	VL	L	Jebila	ML	VL	VL
Jrabta El-Batroun	ML	VL	VL	Jrane El-Batroun	ML	VL	VL	Kfar Aabida	M	VL	L
Kfar Halda	ML	L	L	Kfarb Shlaimane	ML	VL	VL	Kfarhatna	ML	VL	VL
Kfarhay	M	VL	L	Kfarhelos	M	VL	L	Kfifane	ML	VL	VL

Kfour El Arabi	M	M	ML	Koubba	M	L	L	Kour	ML	VL	L
Mar Mama	ML	VL	VL	Masrah	ML	VL	VL	Mehmarch	M	L	L
Mrah Chdid	ML	VL	VL	Mrah El Ziyat	ML	VL	VL	Mrah El-Hajj	ML	VL	VL
Nahle El-Batroun	ML	L	L	Niha El-Batroun	M	M	M	Oujah El-Hajjar	M	VL	L
Ouata Houb	M	M	M	Qatnaaoun	M	VL	L	Racha	ML	L	L
Rachana	ML	VL	VL	Rachkida	M	VL	L	Ram El-Batroun	ML	L	L
Ras Nabhach	M	VL	L	Selaata	M	L	ML	Sghar	ML	VL	VL
Smar Jbayl	ML	VL	VL	Sourat El-Batroun	ML	VL	L	Tannourine El-Faouqa	M	M	M
Tannourine Et-Tahta	M	M	M	Thoum	M	VL	L	Toula El-Batroun	ML	VL	VL
Zan	ML	VL	VL								

Zgharta

Municipality	15-Oct	16-Oct	17-Oct	Municipality	15-Oct	16-Oct	17-Oct	Municipality	15-Oct	16-Oct	17-Oct
Aachach	M	VL	VL	Aalma	M	VL	VL	Aarde	M	VL	VL
Aintourine	M	M	M	Arabet Qozhaya	M	M	M	Arde	M	VL	VL
Arjis	M	M	M	Asnoun	ML	VL	VL	Ayto	M	M	M
Basloukit	M	ML	M	Bchannine	M	L	L	Besebeel	ML	VL	VL
Bhairret Toula	M	ML	ML	Bnachee	M	M	M	Boussit	M	VL	VL
Danha	M	VL	VL	Daraiya Zgharta	M	ML	M	Deir Jdeide	ML	VL	VL
Ehden	M	ML	ML	Halan	M	VL	VL	Hariq Zgharta	ML	VL	VL
Houakir	M	VL	VL	Hraiqis	M	VL	VL	laal	M	L	L
Ijbaa	M	M	M	Karm Saddeh	M	M	M	Kfarchakhna	M	VL	VL
Kfardlaqous	M	VL	VL	Kfarfou	M	M	M	Kfarhata Zgharta	M	VL	VL
Kfarhoura	ML	VL	VL	Kfarsghab	M	ML	M	Kfaryachit	ML	L	L
Kfarzaina	ML	VL	VL	Khaldiye	ML	VL	VL	Mazraat Ajbeaa	ML	VL	VL
Mazraat Et-Teffah	M	M	M	Mazraat Jneid	ML	VL	VL	Mejdlaiya Zgharta	M	VL	VL
Merh Kfarsghab	M	L	L	Miryata	M	VL	VL	Miziara	M	M	M
Mzraat Kefraya	M	VL	VL	Qorah Bach	ML	VL	VL	Rachiine	M	VL	VL
Ras Kifa	M	M	M	Sakhra	ML	VL	VL	Sebhel Zgharta	M	M	M
Serhel	M	M	M	Tallet Zgharta	ML	VL	VL	Toula Zgharta	M	M	ML
Zgharta	M	VL	VL								

Minieh-Denniye

Municipality	15-Oct	16-Oct	17-Oct	Municipality	15-Oct	16-Oct	17-Oct	Municipality	15-Oct	16-Oct	17-Oct
Aasaymout	M	L	L	Aaymar	M	L	L	Aazki	ML	VL	VL
Ain El-Tineh-Miniyeh	ML	VL	VL	Assoun	ML	VL	VL	Bakhaaoun	ML	VL	VL
Bchennata	M	ML	ML	Bechehhara	ML	VL	VL	Beddawi	M	VL	VL
Behouaita	M	ML	ML	Beit El Foqss	ML	L	VL	Beit Haouik	M	M	L
Beit Zoud	ML	VL	VL	Bekaasafrine	M	M	ML	Borj El Yahoudiyeh	M	VL	VL
Bqarsouna	ML	L	L	Btermaz	L	VL	VL	Debaael	M	L	L
Deir Ammar	M	VL	VL	Deir Nbouh	M	VL	VL	Haouaret-Miniyeh	M	ML	L
Haql el Azimeh	ML	VL	VL	Harf El Siyad	ML	VL	VL	Hazmiye-Miniyeh	ML	VL	VL
Izal	M	VL	VL	Jarjour	ML	VL	VL	Jayroun	M	L	L
Kahf El-Malloul	M	L	L	Karm El-Moher	M	L	L	Kfar Binine	M	ML	L
Kfarchalane	ML	VL	VL	Kfarhabou	ML	VL	VL	Kharroub-Miniyeh	M	VL	L
Mazraat El-Kreme	ML	VL	VL	Mazraat Ketrane	ML	VL	VL	Merkebta	M	VL	VL
Minyeh	M	VL	VL	Mrah El Sfirat	L	VL	VL	Mrah Sraj	ML	VL	VL
Mrebbine	M	M	L	Nabi Youcheaa	M	VL	VL	Nemrine	M	ML	L

Qarhaiya	M	ML	L	Qarne	M	L	L	Qarsita	M	L	L
Qattineh-Miniyeh	L	VL	VL	Qemmamine	M	L	L	Qraine	L	VL	VL
Raouda-Aadoua	M	VL	VL	Rihaniyet-Miniyeh	M	VL	VL	Sfireh	ML	L	VL
Sir Ed-Danniyeh	ML	VL	VL	Tarane	L	VL	VL	Terbol-Miniyeh	M	VL	VL
Zaghartaghriane	M	VL	VL	Zouq Bhannine	M	VL	VL				

Nabatiye

Nabatiye

Municipality	15-Oct	16-Oct	17-Oct	Municipality	15-Oct	16-Oct	17-Oct	Municipality	15-Oct	16-Oct	17-Oct
Aabba	M	M	ML	Aazzi	M	M	ML	Adchit El-Chqif	M	M	M
Ain Bou Swar	M	M	M	Ain Kana	M	M	M	Ali El-TaHER	M	M	M
Ansar	M	M	M	Arab Salim	M	M	M	Arnoun	M	M	M
Bfaroue	M	M	ML	Breyqaah	M	M	M	Charqiyeh	M	M	ML
Choukine	M	M	M	Deir El Zahrani	M	M	ML	Doueur El-Nabatiyeh	M	M	ML
Habbouch El-Nabatiye	M	M	M	Hamra El-Nabatiyeh	M	M	M	Harouf El-Nabatiyeh	M	M	ML
Hmaile	M	M	M	Houmin El Faouqa	M	M	M	Houmin El Tahta	M	M	M
Jarjough	M	M	M	Jbaah El-Nabatiyeh	M	M	M	Jebchit	M	M	ML
Kfar Djal El-Nabatiy	M	M	M	Kfar Remmane	M	M	M	Kfar Sir	M	M	M
Kfar Tebnit	M	M	M	Kfarfila	M	M	M	Kfour El-Nabatieh	M	M	ML
Mayfadoun	M	M	M	Mazraat Bsaffour	M	M	ML	Mazraat Chalbaal	M	M	ML
Mazraat Dmoul	M	M	ML	Mazraat El Khreibeh	M	M	M	Mazraat El-Bayad El-	M	M	M
Mazraat Kfarjaouz	M	M	M	Mazraat Qalaat Meiss	M	M	ML	Nabatiyeh El-Fawka	M	M	M
Nabatiyeh Et-Tahta	M	M	M	Namiriyeh	M	M	ML	Qaaqaaiyet El Jisr	M	M	M
Qossaibeh El-Nabatiy	M	M	M	Roumine	M	M	M	Sarba El-Nabatieh	M	M	M
Sir El-Gharbiyeh	M	M	ML	Toul	M	M	ML	Yehmor El-Nabatiyeh	M	M	M
Zaoutar El Charqiyeh	M	M	M	Zaoutar El-Gharbiyeh	M	M	M	Zebdine El-Nabatiyeh	M	M	ML
Zefta	M	M	ML								

Hasbaiya

Municipality	15-Oct	16-Oct	17-Oct	Municipality	15-Oct	16-Oct	17-Oct	Municipality	15-Oct	16-Oct	17-Oct
Aain Jarfa	M	M	M	Abou Qamha	M	M	ML	Ain Qania	M	M	M
Bourghos	M	M	ML	Chebaa	M	M	M	Chouaya Hasbaya	M	M	M
Dellafeh	M	M	ML	Fardiss Hasbaiya	M	M	ML	Hasbaya	M	M	M
Hbariyeh	M	M	M	Kaoukaba Hasbaiya	M	M	ML	Kfar Chouba	M	M	M
Kfar Hamam	M	M	M	Kfeir El-Zait	M	M	M	Khalwat Hasbaya	M	M	M
Khreibet Hasbaiya	M	M	M	Majidiyeh Hasbaiya	M	M	M	Marj Ez-Zhour (Haouc	M	M	L
Meri	M	M	M	Mimass	M	M	M	Rachaiya El-Fokhar	M	M	M
Salaiyeb	M	M	M								

Marjayoun

Municipality	15-Oct	16-Oct	17-Oct	Municipality	15-Oct	16-Oct	17-Oct	Municipality	15-Oct	16-Oct	17-Oct
Aalmane Marjaayoun	M	M	M	Aamra	M	M	M	Adayseh Marjaayoun	M	M	M
Adchit El-Koussair	M	M	M	Ain Aarab Marjaayoun	M	M	M	Bani Haiyann	M	M	M
Blatt Marjaayoun	M	M	ML	Blida	M	M	M	Borj El-Moulouk	M	M	M
Boueyda Marjaayoun	M	M	ML	Deir Mimass	M	M	M	Deir Siriane	M	M	M
Dibbine	M	M	ML	Ebel El Saqi	M	M	ML	Houla	M	M	M
Houra	M	M	M	Kfar Kila	M	M	M	Khiam Marjaayoun	M	M	M

Klayaa	M	M	M	Majdel Selem	M	M	M	Marjaayoun	M	M	M
Markaba	M	M	M	Mays El-Jabal	M	M	M	Mazraat Doumiat	M	M	M
Mazraat Sarada	M	M	M	Mhaibib	M	M	M	Qabrikha	M	M	M
Qantara	M	M	M	Rab El-Thalathine	M	M	M	Saouaneh Marjayoun	M	M	M
Talloussa	M	M	M	Taybeh Matjaayoun	M	M	M	Touline	M	M	M

Bent Jbail

Municipality	15-Oct	16-Oct	17-Oct	Municipality	15-Oct	16-Oct	17-Oct	Municipality	15-Oct	16-Oct	17-Oct
Ain-Ebel	M	M	ML	Aitaroun	M	M	M	Aynata Bint Jbeil	M	M	M
Ayta El-Chaeb	M	M	ML	Ayta El-Jabal	M	M	M	Beit Lif	M	M	L
Beit Yahoun	M	M	M	Bint Jbeil	M	M	ML	Borj Qalaway	M	M	M
Braachit	M	M	M	Chakra	M	M	M	Debel	M	M	ML
Deir Antar	M	M	M	Froun	M	M	M	Ghandouriyeh Bint Jb	M	M	M
Hanine	M	M	ML	Hariss	M	M	M	Hdatha	M	M	M
Jmeyjme	M	M	M	Kafra Bint Jbeil	M	M	ML	Kfar Dounine	M	M	M
Khirbet Selm	M	M	M	Kounine	M	M	M	Maroun El Ras	M	M	M
Qalaway	M	M	M	Qaouzah	M	M	ML	Qatmoun	M	M	ML
Ramya Bint Jbeil	M	M	ML	Rchaf	M	M	ML	Rmeich	M	M	ML
Safad Al Battikh	M	M	M	Salhaneh	M	M	L	Serbine	M	M	M
Sultanieh Bint Jbeil	M	M	M	Tibnine	M	M	M	Tiri	M	M	ML
Yaroun	M	M	ML	Yater	M	M	ML				

Mont Liban

Jbail

Municipality	15-Oct	16-Oct	17-Oct	Municipality	15-Oct	16-Oct	17-Oct	Municipality	15-Oct	16-Oct	17-Oct
Aabeydat	ML	VL	VL	Aalita	L	VL	VL	Aamchit	M	VL	L
Aarab El-Lahib	M	M	M	Aarasta	M	M	M	Adonis Jbeil	L	VL	VL
Afqa Jbeil	M	M	M	Ain El Delbeh Jbeil	ML	L	L	Ain El-Ghouayba	M	M	M
Ain Jrain	M	ML	ML	Ain Kfah	ML	VL	VL	Almat El Chemaliyat	M	M	M
Almat El-Jenoubiya	M	M	M	Aqoura	M	M	M	Bayzoun	L	L	L
Bchille Jbeil	L	VL	L	Bechtida	L	VL	VL	Behdaydat	ML	VL	VL
Beit Habbaq	ML	VL	VL	Bejjeh	ML	VL	VL	Bekhaaz	M	VL	L
Berbara Jbeil	M	L	L	Bintael	L	VL	VL	Birket Hjoula	ML	VL	VL
Blatt Jbeil	ML	L	L	Boulhos	M	M	M	Breyj Jbeil	L	VL	VL
Chamat	ML	VL	VL	Chikhane	M	VL	L	Chmout	ML	VL	VL
Eddeh Jbeil	ML	VL	L	Ehmej	M	M	M	Fatre	L	VL	VL
Ferhet	ML	L	L	Fghal	ML	VL	VL	Frat	M	M	M
Ghabat	M	M	M	Ghalboun	ML	VL	VL	Gharzouz	ML	VL	L
Ghofrine	M	VL	L	Habil	ML	VL	VL	Halate	ML	VL	L
Haqel	ML	VL	VL	Hbaline	ML	VL	VL	Hboub	L	L	L
Hdeine	M	M	M	Hema Er-Rehban	M	M	M	Hema Mar Maroun Aann	M	M	M
Hjoula	L	VL	L	Hosrayel	M	VL	L	Hsarat	ML	VL	VL
Hsoun	L	L	L	Jaj	M	L	L	Janne	M	M	M
Jbeil	M	VL	L	Jeddeyl Jbeil	M	VL	L	Jlisse	L	VL	VL
Jouret El-Qattine	L	L	L	Kfar Baal Annaya	L	L	L	Kfar Kidde	M	VL	L
Kfar Kouas	L	L	L	Kfar Mashoun	ML	VL	L	Kfoun	ML	VL	VL

Kharbe Jbeil	ML	VL	L	Laqlouq	M	M	M	Lassa	M	M	M
Lehfed	ML	L	L	Maad	ML	VL	VL	Mar Sarkis	M	M	M
Mastita	M	VL	L	Mayfouq	ML	L	L	Mazraat El Siyad	M	M	M
Mazraat El-Maaden	M	M	M	Mechane	L	VL	L	Mechmech Jbeil	M	L	ML
Mehrin	L	L	L	Mejdel El-Akoura	M	M	M	Mghayreh Jbeil	M	M	M
Mounsef	M	VL	L	Nahr Ibrahim	M	VL	L	Qahmez	M	M	M
Qartaba	M	M	M	Qartaboun	M	VL	L	Qattara Jbeil	ML	L	L
Qorqraya	M	M	M	Ramout	ML	VL	VL	Ras Osta	L	VL	VL
Rihane Jbeil	M	VL	L	Sakiet El-Khayt	ML	VL	VL	Saqi Richmaya	M	L	L
Sebrine	L	VL	VL	Seraita	M	M	M	Souane Jbeil	M	M	M
Tadmor	M	M	M	Tartej	M	L	L	Torzaiya	ML	L	L
Yanouh Jbeil	M	M	M	Zibidine Jbeil	L	VL	VL				

El Metn

Municipality	15-Oct	16-Oct	17-Oct	Municipality	15-Oct	16-Oct	17-Oct	Municipality	15-Oct	16-Oct	17-Oct
Aain El-Qabu	M	M	M	Aain El-Qach	M	ML	M	Aain El-Teffaha	M	ML	M
Aain el-Safssaf El-M	M	ML	M	Abou Mizane	M	ML	M	Ain Aar	M	VL	L
Ain Alaq	M	L	L	Ain El-Kharroube	M	ML	M	Ain El-Sendianeh	M	ML	M
Ain El-Zeitoune	M	ML	M	Ain Saadeh	M	VL	L	Aintoura El-Matn	M	M	M
Amaret Chalhoub	M	VL	ML	Antelias	M	L	ML	Atchaneh	M	VL	L
Ayroun	M	ML	M	Baabdat	M	L	M	Baouchariyeh	M	L	L
Baskinta	M	M	M	Beit Chabab	M	L	M	Beit El-Chaar	M	L	L
Beit El-Kekko	M	VL	ML	Beit Mery	M	L	L	Bhersaf	M	L	ML
Bikfaya	M	ML	M	Biyakout	M	VL	L	Bnabil	M	ML	M
Bourj Hammoud	M	L	L	Bqennaya	M	VL	L	Broummana El-Matn	M	VL	L
Bsalim	M	VL	L	Bsifrine	M	L	M	Bteghrine	M	M	M
Chaouiye	M	L	L	Chouaya El-Matn	M	ML	M	Choueir	M	ML	M
Chrine	M	ML	M	Dahr El Sawan El-Mat	M	L	ML	Daychouniyeh	M	L	L
Dbayeh	M	L	ML	Deir Chamra	M	L	L	Deir Mar Abda el Mch	M	L	L
Deir Mar Roukouz	M	L	L	Deir Tamiche	M	L	L	Dik El-Mehdi	M	VL	L
Dikwaneh	M	L	L	Douar El-Matn	M	ML	M	Fanar	M	VL	L
Fraike	M	L	L	Haret El-Ballaneh	M	L	L	Hbous	M	VL	L
Himlaya	M	ML	M	Jal El Did	M	VL	ML	Jdeideh El-Metn	M	L	L
Jouar El-Matn	M	ML	M	Jouret El-Ballout	M	VL	L	Kaaqour	M	ML	M
Kfar Aaqab	M	ML	ML	Kfertay El-Matn	M	ML	ML	Khenchara	M	ML	M
Khillat El-Mtain	M	ML	M	Konnabat Broummana	M	VL	L	Konnabat Salima	M	L	M
Machraah El-Matn	M	M	M	Majdel Tarchich	M	M	M	Majzoub	M	L	L
Mansouriyeh El-Metn	M	L	L	Mar Boutros Karm Et-	M	ML	M	Mar Chaya et Mzekke	M	VL	L
Mar Moussa Ed-Douar	M	ML	M	Marjaba	M	M	M	Masqa	M	VL	L
Mayasse	M	ML	M	Mazraat Deir Aoukar	M	L	L	Mazraat El-Hadirat	M	L	L
Mazraat Yachouh	M	L	L	Mchikha	M	ML	M	Menqlet Mezher	M	L	L
Mhaydseh Matn	M	ML	M	Mkalles	M	L	L	Mrouj	M	M	M
Mtain	M	M	M	Mtayleb	M	L	L	Nabay	M	VL	L
Naccache	M	VL	L	Ouadi Chahine	M	ML	M	Ouadi El-Karm El-Mat	M	L	L
Ouata El-Mrouj	M	ML	M	Ouyoun El-Matn	M	L	L	Qornet Chehwan	M	VL	L
Qornet El-Hamra	M	VL	L	Roumieh	M	VL	L	Sfeilet Bikfaya	M	ML	ML
Sinn El-Fil	M	L	L	Zabbougha	M	L	L	Zalqa	M	L	ML

Zarououn	M	ML	M	Zekrite	M	VL	L	Zighrine El-Matn	M	ML	M
Zouk El-Khrab	M	L	L								

Chouf

Municipality	15-Oct	16-Oct	17-Oct	Municipality	15-Oct	16-Oct	17-Oct	Municipality	15-Oct	16-Oct	17-Oct
Aalmane El-Chouf	M	M	ML	Aammiq El-Chouf	M	L	L	Ain Ouzein	M	L	L
Ain Qani	M	ML	L	Ain Zhalta	M	M	M	Ainbal	M	L	L
Amatour	M	M	ML	Anout	M	M	M	Atrine	M	L	L
Baadarane	M	M	ML	Baaqline	M	L	L	Baasir	M	ML	L
Barja	M	M	L	Barouk	M	M	M	Bater	M	M	ML
Batloun	M	ML	ML	Bayqoun	M	ML	ML	Bchetfine	M	L	L
Beiteddine	M	L	L	Benouati Ech-Chouf	M	L	L	Berjein	M	ML	L
Bireh et Mtalleh	M	ML	L	Biret El-Chouf	M	ML	ML	Bkechtine Ouel Mchei	M	L	L
Bkifa El-Chouf	M	M	M	Botme	M	L	L	Bqaiaa Ech-Chouf	M	L	L
Bsaba El-Chouf	M	M	M	Chammis El-Chouf	M	M	ML	Chehim	M	M	M
Chemaarine	M	L	L	Chourit	M	L	L	Daher El-Chouf	M	M	L
Dalhoun	M	M	ML	Damour	M	ML	L	Daraya El-Chouf	M	ML	ML
Deir El-Moukhalles	M	M	M	Deir Baba	M	L	L	Deir Dourit	M	L	L
Deir El-Qamar	M	L	L	Deir Kouche	M	L	L	Dibbieh	M	ML	L
Dmit	M	L	L	Fouara Jaafar	M	L	L	Fraidis El-Chouf	M	M	M
Ghabet Jaafar	M	L	L	Gharife	M	M	M	Haret Jandal	M	M	ML
Hasrout	M	M	M	Jadra	M	M	L	Jahlieh	M	L	L
Jbeih El-Chouf	M	M	ML	Jdeidet El-Chouf	M	L	L	Jiyeh	M	ML	L
Jleilyeh	M	M	M	Jmailiyeh	M	M	ML	Joun	M	M	ML
Kahlounie El-Chouf	M	ML	ML	Ketermaya	M	M	ML	Kfar Faqoud	M	L	L
Kfar Hamal	M	L	L	Kfar Him	M	L	L	Kfar Katra	M	L	L
Kfar Niss	M	L	L	Kfar hay	M	L	L	Kfarnabrakh	M	L	L
Khirbet Bisri	M	M	M	Knayse El-Chouf	M	L	L	Maaniyeh	M	M	L
Maasser Beiteddine	M	L	L	Maasser El-Chouf	M	M	M	Majdalouna	M	M	L
Majdel El-Meouch	M	L	L	Mazboud	M	M	M	Mazmoura	M	M	M
Mazraat El Chouf	M	M	ML	Mazraat El Daher	M	M	M	Mazraat El-Douair	M	L	L
Mechref	M	L	L	Mghairie	M	M	ML	Mghayrie El-Chouf	M	L	L
Moukhtara	M	L	L	Mrusti	M	M	ML	Mtolle	M	M	M
Naameh	M	ML	L	Niha El-Chouf	M	M	ML	Ouadi Abou Youssef	M	L	VL
Ouadi Ed-Deir	M	L	L	Ouadi El-Sit	M	L	L	Ouadi bnehlay	M	L	L
Qraibeh	M	ML	ML	Qreiaa	M	M	M	Rmayle El-Chouf	M	M	ML
Semqaniyeh	M	L	ML	Sibline	M	M	ML	Sirjbeil	M	L	L
Warhanieh	M	M	M	Werdaniyeh	M	M	ML	Zaarourieh	M	M	M

Baabda

Municipality	15-Oct	16-Oct	17-Oct	Municipality	15-Oct	16-Oct	17-Oct	Municipality	15-Oct	16-Oct	17-Oct
Abadiyeh	M	L	L	Ain Mouaffaq	M	L	L	Araiya	M	L	L
Arbaniyeh	M	ML	M	Arsoun	M	ML	M	Baabda	M	L	L
Baalchmey	M	L	L	Bmaryam	M	M	M	Bourj El-Brajneh	M	ML	L
Boutchay	M	L	L	Bsaba Baabda	M	L	L	Btekhney	M	M	M
Btibyat	M	M	M	Bzbeddine	M	ML	M	Chbeniyeh	M	M	M
Chiyah	M	L	L	Chmeisset Baabda	M	M	M	Chouit	M	L	L
Deir El-harf	M	ML	M	Deir Khouna	M	ML	ML	Dlaybeh	M	L	M

Falougha	M	M	M	Furn El-Chebbak	M	L	L	Hadath Beyrouth	M	ML	L
Halaliyeh Baabda	M	L	L	Hammana	M	M	M	Haret El Sett	M	L	L
Haret Hamze	M	ML	ML	Haret Hreik	M	L	L	Hasbaiya El-Metn	M	L	M
Jouar El-Hoz	M	M	M	Jouret Arsoun	M	ML	M	Kfar Chima	M	L	L
Kfar Selouane	M	M	M	Khalouat Baabda	M	M	M	Kneisset Baabda	M	L	ML
Laylakeh	M	ML	L	Louayzeh Baabda	M	L	L	Merdache	M	L	L
Mzairaa Baabda	M	L	L	Ouadi Chahrour El Ol	M	L	L	Ouadi Chahrour El So	M	L	L
Qalaa Baabda	M	M	M	Qhraybe Baabda	M	M	M	Qobbayaa	M	M	M
Qornayel	M	ML	M	Qortada	M	VL	VL	Qrayeh Baabda	M	M	M
Qsaibeh Baabda	M	VL	L	Qtale Baabda	M	M	M	Ras El Metn	M	L	L
Ras El-Haref	M	M	M	Rouayset El-Ballout	M	L	L	Salima Baabda	M	ML	M
Tahouitat El Ghadir	M	ML	L	Tarchich	M	M	M	Zandouqa	M	VL	VL

Aley

Municipality	15-Oct	16-Oct	17-Oct	Municipality	15-Oct	16-Oct	17-Oct	Municipality	15-Oct	16-Oct	17-Oct
Abey	M	L	L	Aghmid	M	M	M	Ain Dara	M	M	M
Ain Drafil	M	L	L	Ain El Halazoun	M	L	L	Ain El-Rmmaneh	M	L	L
Ain Jedideh	M	L	L	Ain Ksour	M	L	L	Ain Onoub	M	L	L
Ain Traz	M	L	L	Ainab	M	L	L	Aley	M	L	L
Aramoun	M	L	L	Aytat	M	L	L	Azouniyeh	M	M	M
Baawerta	M	L	L	Badghan Oua Wadi Bad	M	M	M	Bassatine	M	L	L
Bayssour	M	L	L	Bchamoun	M	L	L	Bdadoun	M	L	L
Behouara	M	L	L	Bennay	M	L	L	Bhamdoun El-Dayaa	M	L	ML
Bhamdoun El-Mhatta	M	ML	ML	Bkhechtey	M	L	L	Bleibel	M	L	L
Bmakine	M	L	L	Bmehray	M	M	M	Bouzrid	M	L	VL
Bserrine	M	L	ML	Bsous	M	L	L	Btalloun	M	L	ML
Btater	M	L	ML	Chanay	M	ML	ML	Charoun	M	M	M
Chartoun	M	L	L	Chemlane	M	L	L	Choueifat El-Aamrous	M	L	L
Choueifat El-Oumara	M	L	L	Choueifat El-Quoubbe	M	L	L	Dakkoun	M	L	L
Deir Qoubel	M	L	L	Dfoun	M	L	L	Douair El Remmaneh	M	L	L
Ghaboun	M	L	L	Habramoun	M	L	L	Homs Oua Hama	M	L	L
Houmal	M	L	L	Jisr El Qadi	M	L	L	Kehaleh	M	L	L
Keyfoun	M	L	L	Kfar Aamey	M	L	L	Kommatyeh	M	L	L
Maasrati	M	L	L	Majdel Baana	M	M	M	Mansourieh et Ain El	M	L	ML
Mazraat El-Nahr	M	L	L	Mchakhte	M	M	M	Mecherfeh	M	ML	ML
Mejdlaya	M	L	L	Mrayjat	M	M	M	Ramliyah	M	ML	L
Rechmaya	M	L	L	Rejmeh	M	L	L	Remhala	M	L	L
Rouaysset El Neemane	M	L	L	Saoufar	M	M	M	Selfaya	M	L	L
Sirhmoul	M	L	L	Souq El Ghareb	M	L	L	Taazanieh	M	L	ML

Kesrouane

Municipality	15-Oct	16-Oct	17-Oct	Municipality	15-Oct	16-Oct	17-Oct	Municipality	15-Oct	16-Oct	17-Oct
Achkout	M	L	L	Adma Oua Dafneh	M	VL	L	Ain Ed-Delbe Kesroua	M	M	M
Ain El-Rihane	M	VL	L	Aintoura Kesrouane	M	VL	L	Ajaltoun	M	L	L
Akaybeh Kesrouane	M	VL	L	Aramoun Kesrouane	M	L	L	Azra ouel Ozor	L	VL	VL
Ballouneh	M	L	L	Batha	M	VL	VL	Bekaatat Achkout	M	L	L
Bekaatat Kanaan	M	ML	L	Bizhel	L	VL	VL	Bouar	M	VL	L
Bqaatouta	M	M	M	Bqaq Ed-Dine	M	VL	L	Bzommar	M	L	L

Chahtoul	M	L	L	Chnaniir	M	L	L	Chouan	M	M	M
Daraya Kesrouane	M	L	L	Darououn	M	VL	L	Deir Baqlouch	M	VL	VL
Dlebta	M	L	VL	Eghbeh	M	L	VL	Faraya	M	M	M
Fatka	M	L	L	Feytroun	M	L	L	Ghazir	M	L	L
Ghbaleh Kesrouane	L	VL	L	Ghedrass	ML	L	L	Ghosta	M	L	L
Ghynéh	M	L	L	Harharaya w Kattine	M	L	L	Harissa Kesrouane	M	VL	L
Hayata	M	L	L	Hosein	L	VL	VL	Hrajel	M	M	M
Jdeideh Ghazir	M	L	L	Jeita	M	VL	L	Jounieh Ghadir	M	VL	L
Jounieh Haret Sakhr	M	VL	L	Jounieh Salel Alma	M	VL	L	Jounieh Sarba	M	VL	L
Jouret Bedrane	L	L	L	Jouret Mhad	M	L	L	Jouret Termos	M	L	L
Kfar Debiane	M	M	M	Kfar Tay Kesrouane	M	L	L	Kfar Yassine	M	VL	L
Kfour Kesrouane	M	L	L	Kharayeb Nahr Ibrahi	ML	VL	VL	Klayaat Kesrouane	M	L	L
Maarab	M	L	VL	Maaysra Kesrouane	ML	VL	L	Mayrouba	M	M	M
Mazraat Er-Ras	M	VL	L	Mazraat Mrah El-Mir	M	L	L	Mchaa El Ftouh	M	M	M
Mchaa Faraya	M	M	M	Mchaa Kfar Dibiane	M	M	M	Mghaer	M	M	M
Mradiyah	L	VL	VL	Nahr Ed-Dahab	ML	L	L	Nammoura Kesrouane	ML	VL	L
Ouata El Jaouz	M	L	L	Ouata Sillam	M	VL	L	Raachine	M	L	L
Rayfoun	M	L	L	Safra Kesrouane	M	VL	L	Shayle Kesrouane	M	L	L
Tabarja	M	VL	L	Yahchouch	L	VL	VL	Zaaytreh	L	VL	VL
Zeytoun	ML	L	L	Zouk Mikael	M	VL	L	Zouk Mosbeh	M	VL	L

Baalbek_Hermel

Baalbek

Municipality	15-Oct	16-Oct	17-Oct	Municipality	15-Oct	16-Oct	17-Oct	Municipality	15-Oct	16-Oct	17-Oct
Aadous	M	M	M	Aamchki	M	M	M	Aarsal	M	M	M
Ain Baalbek	M	M	ML	Ain Bourday	M	M	M	Ain El-Benye	M	M	M
Ain El-Jaouz Baalbek	M	M	M	Ain El-Siya Chadoura	M	M	M	Al Khodr Baalbek	M	M	ML
Al Nabi Chit	M	M	ML	Aynata Baalbek	M	M	M	Baalbek	M	M	M
Bachwat	M	M	M	Barqa	M	M	M	Bednayel Baalbak	M	M	M
Beit Chama	M	M	M	Bijjaje	M	M	ML	Bouday	M	M	M
Brital	M	M	M	Btadi	M	M	M	Chaat	M	M	M
Chaibe	M	M	M	Chlifa	M	M	M	Chmestar	M	M	M
Dar El-Oussa	M	M	M	Deir El-Ahmar	M	M	M	Deir Mar Maroun Baal	M	M	M
Douris	M	M	M	Fakiha	M	M	M	Hadath Baalbek	M	M	M
Ham	M	M	M	Haour Taala	M	M	M	Hizzine	M	M	M
Hlebta	M	M	M	Hosh Barada	M	M	M	Hosh El Dahab	M	M	M
Hosh El Snid	M	M	M	Hosh El-Nabi	M	M	M	Hosh El-Rafiq	M	M	M
Hosh Tal Safiya	M	M	M	Hrebta	M	M	M	laat	M	M	M
Jebaa	M	M	M	Jenta	M	M	M	Kfar Dabach	M	M	M
Kfar Dane	M	M	M	Khraibeh El-Hermel	M	M	L	Khreibet Baalbek	M	M	M
Kneisset Baalbek	M	M	M	Labueh	M	M	ML	Maarboun	M	M	M
Majdaloun	M	M	M	Maqneh	M	M	M	Mazraat Beit Mcheik	M	M	M
Misraya	M	M	M	Mograq	M	M	ML	Nabha El-Damdoum	M	M	M
Nabi Chbay	M	M	M	Nabi Osman	M	M	ML	Nahleh baalbek	M	M	M
Ouadi El-Oss	M	M	M	Qaa Baayoun	M	M	M	Qaa Jouar Maqiye	M	M	M
Qaa Ouadi El-Khanzir	M	M	M	Qah Baalbek	M	M	M	Qarha Baalbek	M	M	M

Qsarnaba	M	M	M	Ram Baalbek	M	M	M	Ras Baalbek El Sahl	M	M	M
Ras Baalbek El-Charq	M	M	M	Riha	M	M	M	Saaide	M	M	M
Sbouba	M	M	ML	Seriine El-Tahta	M	M	M	Slouqi	M	M	M
Taiba Baalbek	M	M	M	Talia	M	M	M	Taraiya	M	M	M
Temnin El Fawqa	M	M	M	Temnin El-Tahta	M	M	M	Tfail	M	M	M
Yahfoufa	M	M	ML	Yammouneh	M	M	M	Younine	M	M	M
Zboud	M	M	M								

Hermel

Municipality	15-Oct	16-Oct	17-Oct	Municipality	15-Oct	16-Oct	17-Oct	Municipality	15-Oct	16-Oct	17-Oct
Charbine El-Hermel	M	M	M	Hermel Jbab	M	M	M	Hermel	M	M	M
Maaysra El-Hermel	M	M	M	Michaa Mrajhine	M	M	ML	Ouadi Faara	M	M	M
Ras Baalbek - Ouadi	M	M	M	Ras Baalbek El Gharb	M	M	M	Zighrine	M	M	M

Akkar

Akkar

Municipality	15-Oct	16-Oct	17-Oct	Municipality	15-Oct	16-Oct	17-Oct	Municipality	15-Oct	16-Oct	17-Oct
Aain Tinta	M	M	M	Aaiyat	M	M	ML	Aakkar El-Aatiqa	M	M	ML
Aamar Aakkar	M	VL	VL	Aamar El Baykat	M	M	M	Aamayer	M	M	M
Aamriyet Aakkar	M	M	M	Aandqet	M	M	M	Aarmeh	M	M	ML
Aarqa	M	L	VL	Aawaynat	M	M	M	Aayoun Aakkar	M	M	L
Abboudiye	M	M	ML	Ain El-Zeit	M	M	M	Ain Yaaqoub	M	M	L
Akroum	M	M	M	Aridet Cheikh Zennad	M	L	L	Baldeh w Mazraat Bal	M	M	ML
Barcha	M	M	ML	Bardeh	M	M	M	Bebnine	M	VL	VL
Beino	M	M	ML	Beit Ayoub	M	ML	ML	Beit El-Haouch	M	VL	VL
Beit Mellat	M	M	ML	Beit Younes	M	ML	L	Berbara Aakkar	M	M	M
Berqayel	M	VL	VL	Bezbina	M	M	L	Bireh Aakkar	M	M	M
Borj	M	M	L	Bqerezla	M	L	L	Bzal	M	VL	VL
Chane	M	ML	L	Chaqdouf	M	M	L	Charbila	M	M	ML
Cheikh Mohammad	M	M	ML	Cheikh Taba Es-Sahl	M	M	L	Cheikh Taba	M	ML	L
Cheikh Zennad	M	L	L	Cheikhlar	M	M	M	Chir Hmairine	M	M	ML
Daghle	M	M	M	Dahr Laissine	M	ML	ML	Darine	M	M	ML
Dawra	M	M	ML	Dawsa w Baghdadi	M	M	M	Dayret Nahr El-Kabir	M	M	M
Deir Dalloum	M	VL	VL	Deir Jennine	M	M	M	Denbou	M	ML	L
Dibbabiyyeh	M	M	M	Douair Aadwiyeh	M	M	M	Fassikine	M	M	M
Fnaydek	M	M	L	Fraydes Aakkar	M	M	M	Ghazayle	M	M	ML
Habchit	M	L	L	Hakour	M	VL	VL	Halba	M	M	ML
Haouchab	M	M	ML	Hayssat	M	L	VL	Haytla	M	M	ML
Hayzouq	M	M	ML	Hedd	M	M	ML	Hmaira Aakkar	M	VL	VL
Hmaiss Aakkar	M	M	ML	Hnaider	M	M	M	Hokr Ed-Dahri	M	L	L
Hokr Etti	M	M	ML	Hokr Jouret Srar	M	M	ML	Houaich	M	ML	L
Hrar	M	ML	L	Idbil	M	ML	L	Ilal	M	ML	ML
Janine	M	M	ML	Jdeidet El-Joumeh	M	L	L	Jdeidet El-Kaiteh	M	VL	VL
Jebayel	M	ML	ML	Kafr	ML	VL	VL	Kafr	M	M	M
Karm Asfour	M	L	L	Kfar Melki Aakkar	M	L	VL	Kfar Noun	M	M	M
Kfarharra	M	M	ML	Khalsa	M	M	M	Kharnoubet Aakkar	M	M	ML

Khirbet Daoud Aakkar	M	M	M	Khirbet El Remmane	M	M	M	Khirbet Shar	M	M	M
Khoreybet El-Jindi	M	M	ML	Khreibet Aakkar	M	ML	L	Kneisset Aakkar	M	L	L
Kneisset Hnaider	M	M	M	Knisse	M	M	ML	Kroum El-Aarab	M	M	ML
Kwachra	M	M	M	Kweykhat	M	M	ML	Machta Hammoud	M	M	M
Majdala	M	VL	VL	Majdel Akkar	M	M	M	Mar Touma	M	VL	VL
Marlaya Melhem	M	VL	VL	Mashha	M	M	ML	Massoudiye	M	L	L
Mazraat Beit Ghattas	M	VL	VL	Mazraat En-Nahriye	M	M	M	Mechmech	M	M	L
Memneh	M	M	L	Mhammara	M	VL	VL	Mighraq Aakkar	M	L	L
Minyara	M	L	L	Moqayteh	M	L	L	Mounjez	M	M	M
Msalla	M	M	M	Mzeihmeh	M	M	ML	Nfaiseh	M	M	ML
Noura Et-Tahta	M	M	M	Ouadi El-Haour	M	M	ML	Ouadi El-Jamous	M	VL	VL
Ouyoun El-Ghizlane	M	VL	VL	Qaabarine	M	L	VL	Qabaait	M	L	L
Qachlaq	M	M	ML	Qantara Aakkar	M	ML	ML	Qarha Aakkar	M	M	M
Qarqaf	M	VL	VL	Qboula	M	M	L	Qleiaat Aakkar	M	L	L
Qloud El-Baqie	M	VL	VL	Qobaiyat Aakkar	M	M	M	Qobbat Chamrat	M	VL	VL
Qorayat	M	ML	L	Qornet Aakkar	M	M	L	Qsair Aakkar	M	M	M
Rahbe	M	ML	L	Rihaniyet Aakkar	M	M	ML	Rmah	M	M	M
Rmoul	M	L	VL	Saadine	M	M	ML	Sadaqa	M	ML	ML
Saidnaya	M	M	ML	Sammouniye	M	L	L	Sayssouq	M	L	L
Semmaqiye	M	L	L	Semmaqli	M	L	VL	Sfinet El-Dreib	M	M	ML
Sfinet El-Qaitaa	M	VL	VL	Sindyanet Zeidane	M	M	M	Souaisset Aakkar	M	M	ML
Srar	M	M	ML	Tal Abbas El Gharby	M	M	L	Tal Abbas El-Charqy	M	M	ML
Tal Biret	M	ML	L	Tal Hmayra	M	M	ML	Tal Maayan Tal Kiri	M	L	L
Tal Sibel	M	L	L	Tallet Chattaha	M	M	ML	Tikrit	M	M	ML
Tleil	M	M	ML	Tshea	M	M	L	Zawarib	M	ML	L
Zouq El Hosniyeh	M	VL	VL	Zouq El-Haddara	M	VL	VL	Zouq El-Hbalsa	M	VL	VL
Zouq El-Mogachrine	M	VL	VL								

Sud

Sour

Municipality	15-Oct	16-Oct	17-Oct	Municipality	15-Oct	16-Oct	17-Oct	Municipality	15-Oct	16-Oct	17-Oct
Aaiyeh	M	M	ML	Aalma El-Chaab	M	M	M	Aaytit	M	M	ML
Abbassiyeh Sour	M	M	M	Abou Chech	M	M	M	Ain Abou Abdallah	M	M	ML
Ain Baal	M	M	M	Arzoun	M	M	M	Aziyeh	M	M	M
Baflaya	M	M	M	Barich	M	M	L	Batouliyah	M	M	M
Bayad	M	M	ML	Bazouriyeh	M	M	ML	Bediass	M	M	L
Bestiyat	M	M	L	Borj El Chemali	M	M	M	Borj En-Naqoura	M	M	M
Borj Rahhal	M	M	L	Boustane	M	M	M	Btaychiyah	M	M	M
Chaaitiye	M	M	M	Chameh	M	M	M	Chehabiye	M	M	M
Chehour	M	M	M	Chihine	M	M	M	Debaal Sour	M	M	ML
Deir Amess	M	M	ML	Deir Kifa	M	M	M	Deir Qanoun El-Ain	M	M	M
Deir Qanoun El-Naher	M	M	L	Derdghaiya	M	M	M	Dhayra	M	M	M
Halloussiyeh	M	M	L	Hamoul	M	M	M	Hanaouey	M	M	M
Henniye	M	M	M	Hmairi Sour	M	M	L	Iskandarouna Sour	M	M	M
Jbal El Botom	M	M	ML	Jebbin	M	M	M	Jennata	M	M	L
Jijim	M	M	M	Jouaiya	M	M	ML	Kneisset Sour	M	M	M

Maarake	M	M	L	Maaroub	M	M	L	Majadel	M	M	M
Majdalzoun	M	M	M	Mansouri Sour	M	M	M	Marnba	M	M	M
Marouahine	M	M	ML	Mazraat El-Zalloutiy	M	M	M	Mazraat Mechref	M	M	ML
Mazraat Tayr Semhat	M	M	M	Mheilib	M	M	M	Neffakhiyeh	M	M	M
Niha Sour	M	M	M	Ouadi Jilo	M	M	ML	Qana	M	M	ML
Qolaileh Sour	M	M	M	Rechknayan	M	M	ML	Rmadiyah	M	M	ML
Selha Sour	M	M	M	Siddiqine	M	M	ML	Sour	M	M	M
Srifa	M	M	M	Tayr Debbe	M	M	L	Tayr Felsay	M	M	L
Tayr Harfa	M	M	M	Touayri	M	M	M	Toura	M	M	L
Yanouh Sour	M	M	L	Yarine	M	M	M	Zebqine	M	M	ML

Saida

Municipality	15-Oct	16-Oct	17-Oct	Municipality	15-Oct	16-Oct	17-Oct	Municipality	15-Oct	16-Oct	17-Oct
Aanqoun	M	M	M	Aaqtanit	M	M	M	Aarab Ej-Jall	M	M	M
Aarab Tabbaya	M	M	M	Abra Saida	M	M	ML	Adloun	M	M	M
Adousiyeh	M	M	ML	Ain-El-Deleb	M	M	M	Arzai	M	M	L
Babliyah	M	M	M	Barty	M	M	M	Bissariyeh	M	M	M
Bnaafoul	M	M	M	Bqosta	M	M	ML	Bramiy	M	M	L
Daoudiyeh	M	M	M	Dareb El-Sim	M	M	M	Erkay	M	M	M
Ghassanieh	M	M	M	Ghazieh	M	M	M	Hajjeh	M	M	M
Haret Saida	M	M	ML	Hartiyeh	M	M	M	Hlaliye Saida	M	M	ML
Insariyat	M	M	M	Jazira Saida	M	M	ML	Kafar Bit	M	M	M
Kaoutariyet El-Siyad	M	M	ML	Kfar Chellal	M	M	M	Kfar Hatta Saida	M	M	M
Kfar Milke Saida	M	M	M	Khartoum	M	M	ML	Khaziz	M	M	M
Khirbet Ed-Douair Sa	M	M	M	Khirbet El-Bassal	M	M	M	Khrayeb Saida	M	M	ML
Loubieh	M	M	M	Maghdouche	M	M	M	Majdelyoun	M	M	ML
Matariyet El-Choumar	M	M	L	Matayriyeh	M	M	M	Mazraat 'Mseileh	M	M	ML
Mazraat 'Snaiber	M	M	ML	Mazraat Aarab Soukka	M	M	M	Mazraat Deir Taqla	M	M	M
Mazraat El Yahoudiye	M	M	M	Mazraat El-Housseini	M	M	ML	Mazraat El-Mhaydaleh	M	M	M
Mazraat El-Ouasta	M	M	M	Mazraat Jamjim	M	M	ML	Mazraat Kaoutariyet	M	M	M
Mazraat Kfar Badda	M	M	M	Mazraat Oussamiyat	M	M	M	Mazraat Sari	M	M	M
Mazraat Sinai	M	M	ML	Meemariyeh	M	M	M	Merouaniyeh	M	M	M
Miyeh ou Miyeh	M	M	M	Najjariyeh	M	M	ML	Qaaqaiyat El-Snaouba	M	M	M
Qnarit	M	M	M	Qraiye Saida	M	M	M	Saida Ed-Dekermane	M	M	ML
Saida El-Oustani	M	M	ML	Saida El-Qadimeh	M	M	ML	Saida Kefraya	M	M	L
Saksakiyeh	M	M	M	Salhigh Saida	M	M	ML	Sarafand	M	M	ML
Sfenta	M	M	M	Tafahta	M	M	ML	Tanbourit	M	M	M
Tebna	M	M	ML	Zaghdraiya	M	M	M	Zeita	M	M	M
Zrariyeh	M	M	ML								

Jezzine

Municipality	15-Oct	16-Oct	17-Oct	Municipality	15-Oct	16-Oct	17-Oct	Municipality	15-Oct	16-Oct	17-Oct
Ain El-Mir (El Estab	M	M	M	Anane	M	M	M	Aramta	M	M	ML
Ariya	M	M	ML	Aychiyeh	M	M	ML	Azour	M	M	M
Baba	M	M	M	Bayssour Jezzine	M	M	M	Benoueteh Jezzine	M	M	ML
Bhannine	M	M	ML	Bisri	M	M	M	Bkassine	M	M	ML
Bouslaya	M	M	M	Btedine El-Leqech	M	M	M	Chbail	M	M	L
Choualiq Jezzine	M	M	ML	Dahr Ed-Deir	M	M	M	Deir El Qattine	M	M	M

Demachqiyeh	M	M	M	Ghabbatiyeh	M	M	ML	Harf Jezzine	M	M	M
Hassaniyeh	M	M	M	Haytouleh	M	M	M	Haytura	M	M	M
Hidab	M	M	M	Homsiyeh	M	M	M	Jabal Toura	M	M	ML
Jarmaq	M	M	M	Jensnaya	M	M	M	Jernaya	M	M	M
Jezzine	M	M	ML	Karkha	M	M	ML	Kfar Falous	M	M	M
Kfar Houna	M	M	ML	Kfar Jarrah	M	M	ML	Lebaa	M	M	ML
Louayzet Jezzine	M	M	M	Machmouche	M	M	L	Mahmoudiyeh Jezzine	M	M	M
Maknounye Jezzine	M	M	M	Maraat Ouazaiyeh	M	M	ML	Mazraat Daraya	M	M	ML
Mazraat El-Aarqoub	M	M	M	Mazraat El-Mathane	M	M	M	Mazraat El-Rahbane	M	M	M
Mazraat Khallet Khaz	M	M	L	Mazraat Louzid (Loua	M	M	L	Mazraat Qrouh	M	M	ML
Mazraat Tamra	M	M	M	Mazraat Zighrine Jez	M	M	M	Mazraat	M	M	M
Mharbiyeh	M	M	M	Midane Jezzine	M	M	ML	Mjeydel Jezzine	M	M	M
Mlikh	M	M	M	Mrah El-Hbasse	M	M	M	Ouadi Baanqoudaine	M	M	M
Ouadi El-Laymoun	M	M	M	Ouardiyeh	M	M	L	Qabaa Jezzine	M	M	M
Qatrani	M	M	ML	Qaytouleh	M	M	M	Qtaleh Jezzine	M	M	M
Rihane Jezzine	M	M	M	Rimat	M	M	M	Roum	M	M	M
Roummanet	M	M	M	Sabbah	M	M	ML	Saydoun	M	M	M
Sfaray	M	M	M	Snaya	M	M	M	Sojoud	M	M	M
Srayri	M	M	ML	Taaid	M	M	M	Wadi Jezzine	M	M	ML
Zhalta	M	M	M								

Bekaa

West Bekaa

Municipality	15-Oct	16-Oct	17-Oct	Municipality	15-Oct	16-Oct	17-Oct	Municipality	15-Oct	16-Oct	17-Oct
Aammiq BG	M	M	M	Ain El Tineh BG	M	M	ML	Ain Zebdeh	M	ML	ML
Ana	M	M	M	Aytanit	M	ML	ML	Baaloul BG	M	M	M
Bab Mareh	M	ML	M	Chouberqiye Aammiq	M	M	M	Dakoue	M	M	M
Deir Ain El-Jaouze	M	ML	M	Deir Tahniche	M	M	M	Ghaza	M	M	M
Harime El-Soughra	M	M	M	Hoch Harimeh	M	M	M	Jazira BG	M	M	M
Jib Jennine	M	M	M	Kamed-El-Laouz	M	M	M	Kefraya BG	M	M	M
Khiara El Atika	M	M	M	Khiara	M	M	M	Khirbet Qanafar	M	M	M
Lala	M	M	M	Lebbaya BG	M	M	L	Loussa	M	M	ML
Machghara	M	M	L	Manara (Hammara) BG	M	M	M	Mansoura BG	M	M	M
Marej BG	M	M	M	Maydoun	M	M	ML	Ouaqf BG	M	M	M
Qaraaoun	M	M	M	Qelya	M	M	ML	Raouda (Istabel)	M	M	M
Saghbine	M	ML	ML	Sohmor	M	M	L	Soltan Yacoub el Ara	M	M	M
Souairy	M	M	M	Sultan Yaacoub	M	M	M	Tal Znoub	M	M	M
Yehmor BG	M	M	L	Zilaya	M	M	L				

Zahle

Municipality	15-Oct	16-Oct	17-Oct	Municipality	15-Oct	16-Oct	17-Oct	Municipality	15-Oct	16-Oct	17-Oct
Aanjar (Haouch Mouss	M	M	M	Ablah	M	M	M	Ain Kfarzabad	M	M	M
Ali-El-Nahri	M	M	M	Bar Elias	M	M	M	Bouarej	M	M	M
Cheberqiyet Tabet	M	M	M	Chtaura	M	M	M	Deir El Ghazal	M	M	M
Delhamiyet Zahle	M	M	M	Ferzol	M	M	M	Haouch El-Ghanam	M	M	M
Haouch Es-Siyadeh	M	M	M	Haouch Hala	M	M	M	Haouch Mandara	M	M	M

Haouch Qayssar	M	M	M	Hezerta	M	M	M	Hosh Moussa	M	M	M
Jdita	M	M	M	Kfarzabad	M	M	M	Ksara	M	M	M
Majdel Aanjar	M	M	M	Makssi	M	M	M	Massa	M	M	M
Mazraat Er-Remtaniye	M	M	M	Mrayjat Zahle	M	M	M	Mzaraa Zahle	M	M	M
Nabi Ayla	M	M	M	Nasriyet Rizk	M	M	M	Nasriyet Zahle	M	M	M
Niha Zahle	M	M	M	Ouadi Ed-Deloum	M	M	M	Ouadi El-Arayech	M	M	M
Qaa El Rim	M	M	M	Qab Elias	M	M	M	Qousaya	M	M	M
Rhit	M	M	M	Riyak	M	M	M	Saadnayel	M	M	M
Taal El-Akhdar	M	M	M	Taalbeya	M	M	M	Taanayel	M	M	M
Talamara	M	M	M	Tcheflik Edde Haouch	M	M	M	Tcheflik Qiqano	M	M	M
Terbol Zahle	M	M	M	Touaite Zahle	M	M	M	Zahle Aradi	M	M	M
Zahle El-Berbara	M	M	M	Zahle El-Maallaqa	M	M	M	Zahle El-Midane	M	M	M
Zahle Er-Rassiye	M	M	M	Zahle Haouch El-Ouma	M	M	M	Zahle Haouch El-Ouma	M	M	M
Zahle Haouch Ez-Zara	M	M	M	Zahle Maalaqa Aradi	M	M	M	Zahle Mar Antonios	M	M	M
Zahle Mar Elias	M	M	M	Zahle Mar Gerios	M	M	M	Zahle Saydet En-Naja	M	M	M
Zebdoul	M	M	M								

Rachaiya

Municipality	15-Oct	16-Oct	17-Oct	Municipality	15-Oct	16-Oct	17-Oct	Municipality	15-Oct	16-Oct	17-Oct
Ain Arab Rachaiya	M	M	M	Ain Ata	M	M	M	Ain Harche	M	M	M
Aqabe Rachaya	M	M	M	Ayha	M	M	M	Ayta El Fokhar	M	M	M
Bakifa Rachaya	M	M	M	Bakka	M	M	M	Beit Lahya	M	M	M
Bireh Rachaiya	M	M	M	Daher El Ahmar	M	M	M	Deir El-Achayer	M	M	M
Heloua Rachaiya	M	M	M	Hoch El Qannabeh Rac	M	M	M	Kaoukaba Bou Arab	M	M	M
Kfar Danis	M	M	M	Kfar Mechki	M	M	M	Kfar Qouq	M	M	M
Kherbet Rouha	M	M	M	Majdel Balhiss	M	M	ML	Mdoukha	M	M	M
Mhaydseh Rachaiya	M	M	M	Nabi Safa	M	M	L	Rachaiya	M	M	M
Rafid Rachaiya	M	M	M	Selsata (Mazraat Dei	M	M	M	Tannoura	M	M	M
Yanta	M	M	M								

Beyrouth

Beyrouth

Municipality	15-Oct	16-Oct	17-Oct	Municipality	15-Oct	16-Oct	17-Oct	Municipality	15-Oct	16-Oct	17-Oct
Achrafieh	M	L	L	Ain el-Mreisse	M	L	L	Bachoura	M	L	L
Beirut Central Distr	M	L	L	Marfai	M	L	L	Mazraa	M	L	L
Medaouar	M	L	L	Minet el-Hosn	M	L	L	Mwssaitbeh	M	L	L
Ras Beirut	M	L	L	Rmeil	M	L	L	Saifi	M	L	L
Zqaq el-Blat	M	L	L								