

# Lebanon Fire Risk Bulletin



CIVIL DEDEFENCE

**Refer to cadast table condition.**

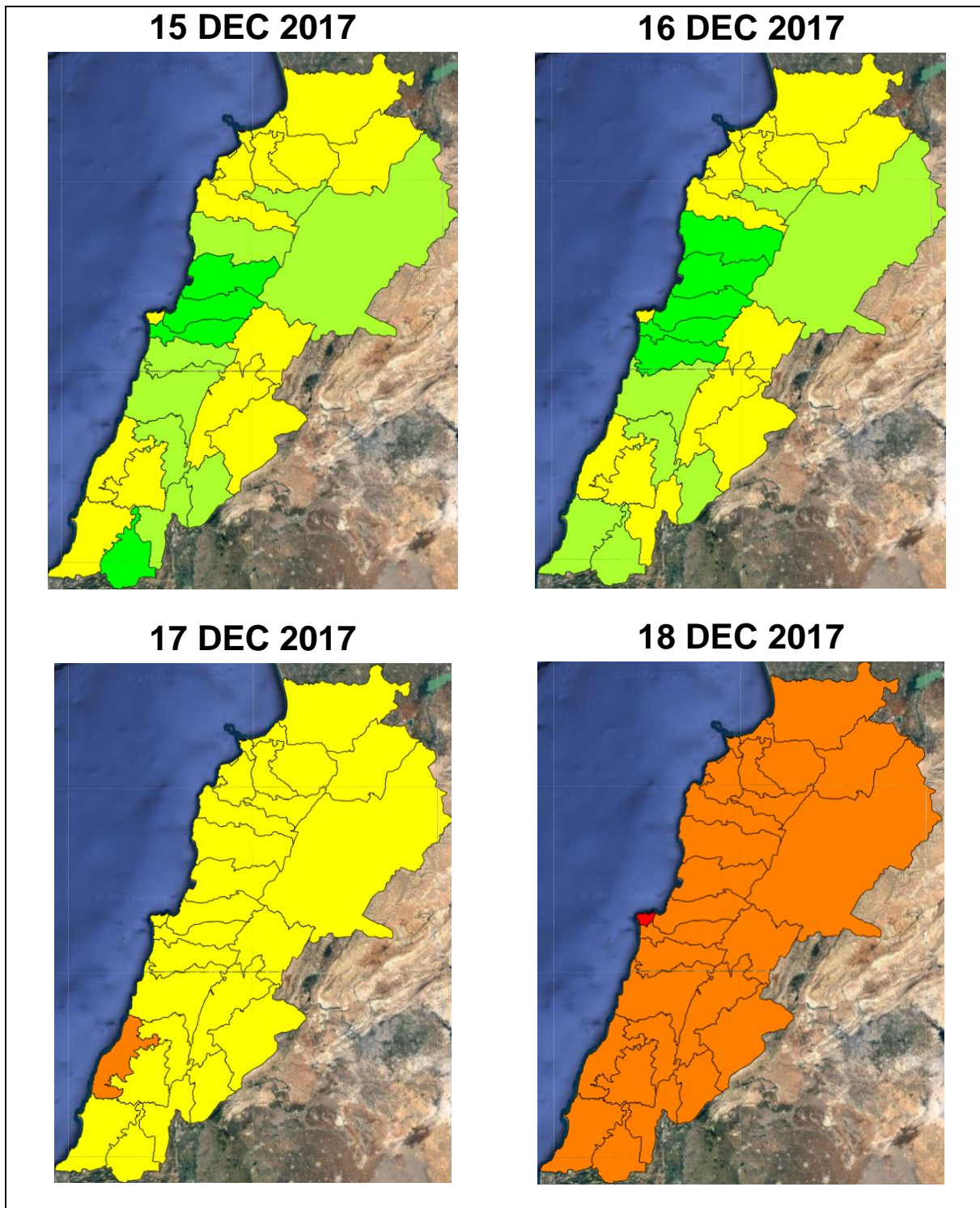
**Please note that the indicated temperature is at 2 meters height from the ground.**

General description of potential fire risk situation

Symbol	Level of risk	Meaning and actions
VL	Very low	Very low fire risk. Controlled burning operations can be hardly executed due to high fuel moisture content. Normally wildfires self-extinguish.
L	Low	Low fire risk. Controlled burning operations can be executed with a reasonable degree of safety.
ML	Medium low	Medium-low fire risk. Controlled burning operations can be executed in safety conditions. All the fires need to be extinguished.
M	Medium	Medium fire risk. Controlled burning operations would be avoided. All the fires need to be very well extinguished.
M	Medium high	Controlled burning is not recommended. Open flame will start fires. Cured grasslands and forest litter will burn readily. Spread is moderate in forests and fast in exposed areas. Patrolling and monitoring is suggested. Fight fires with direct attack and all available resources.
H	High	Ignition can occur easily with fast spread in grass, shrubs and forests. Fires will be very hot with crowning and short to medium spotting. Direct attack on the head may not be possible requiring indirect methods on flanks. Patrolling and monitoring the territory is highly suggested.
E	Extreme	Ignition can occur also from sparks. Fires will be extremely hot with fast rate of spread. Control may not be possible during day due to long range spotting and crowning. Suppression forces should limit efforts to limiting lateral spread. Damage potential total. Patrolling and monitoring the territory is highly suggested.

**Beirut, 16 December 2017**

# FIRE RISK INDEX

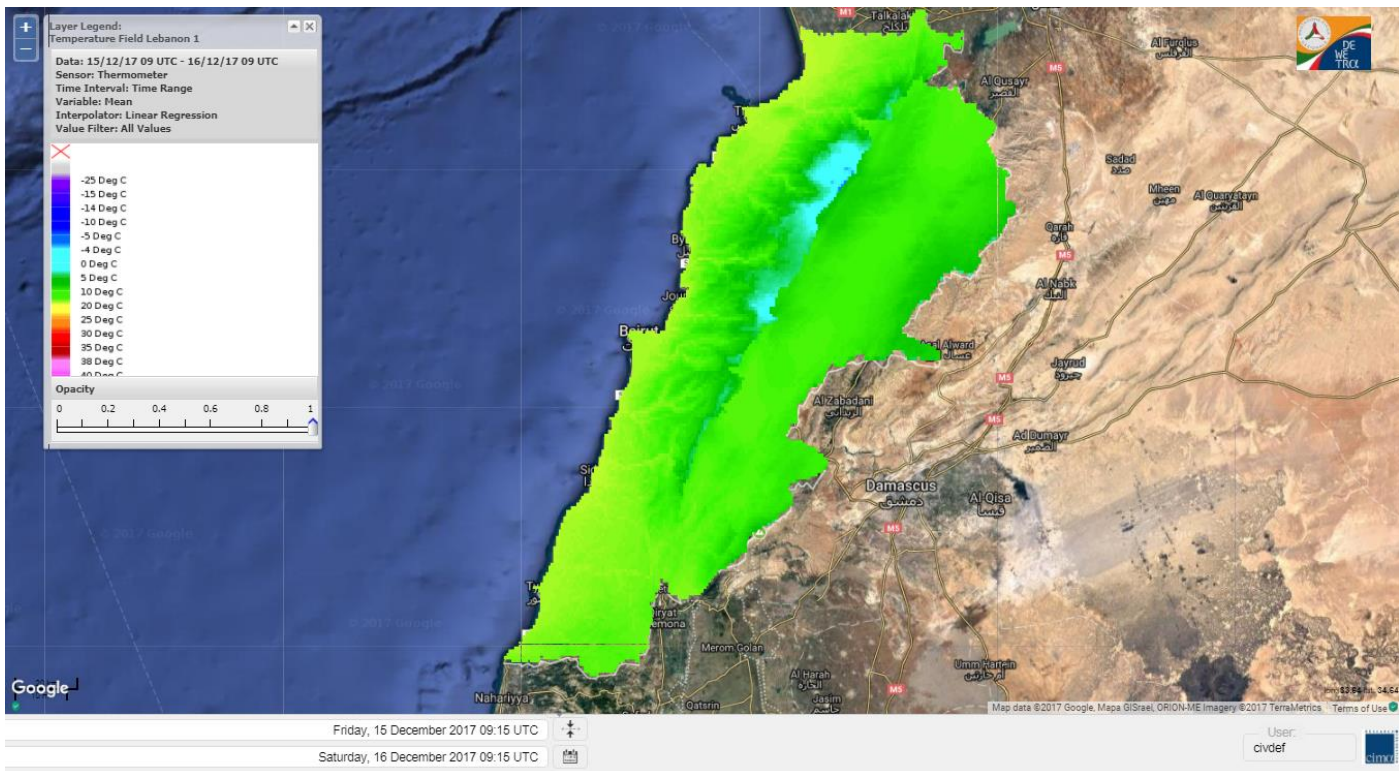


Layer Legend:  
Lebanon Wildfire Risk Index 1

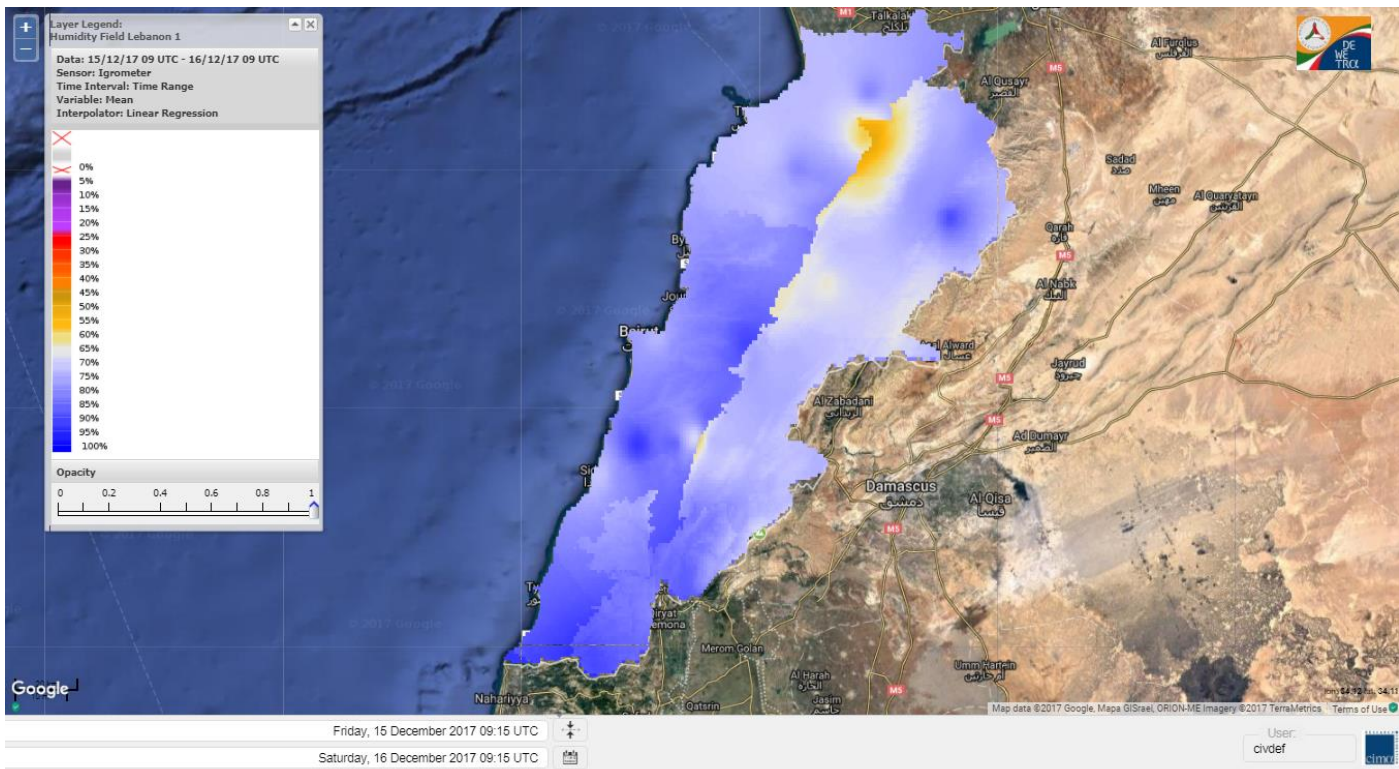
Data: Run: 16/12/2017 00:00. Forecast for 16  
Model: RISICO for the Republic of Lebanon  
Variable: Fire Weather Index  
Spatial Resolution: Caza

- VERY LOW
- LOW
- MEDIUM-LOW
- MEDIUM
- MEDIUM-HIGH
- HIGH
- EXTREME

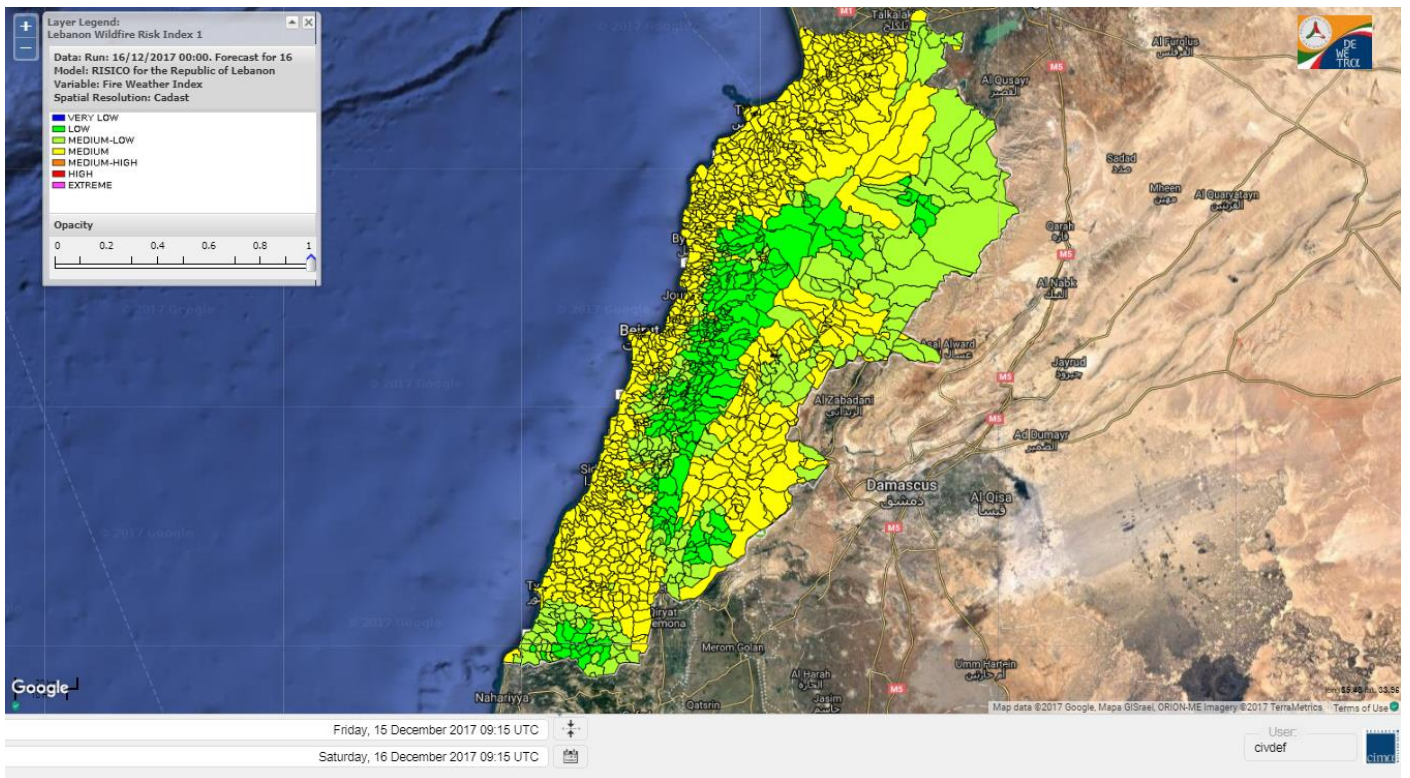
# Lebanon temperature for 16 DEC 2017



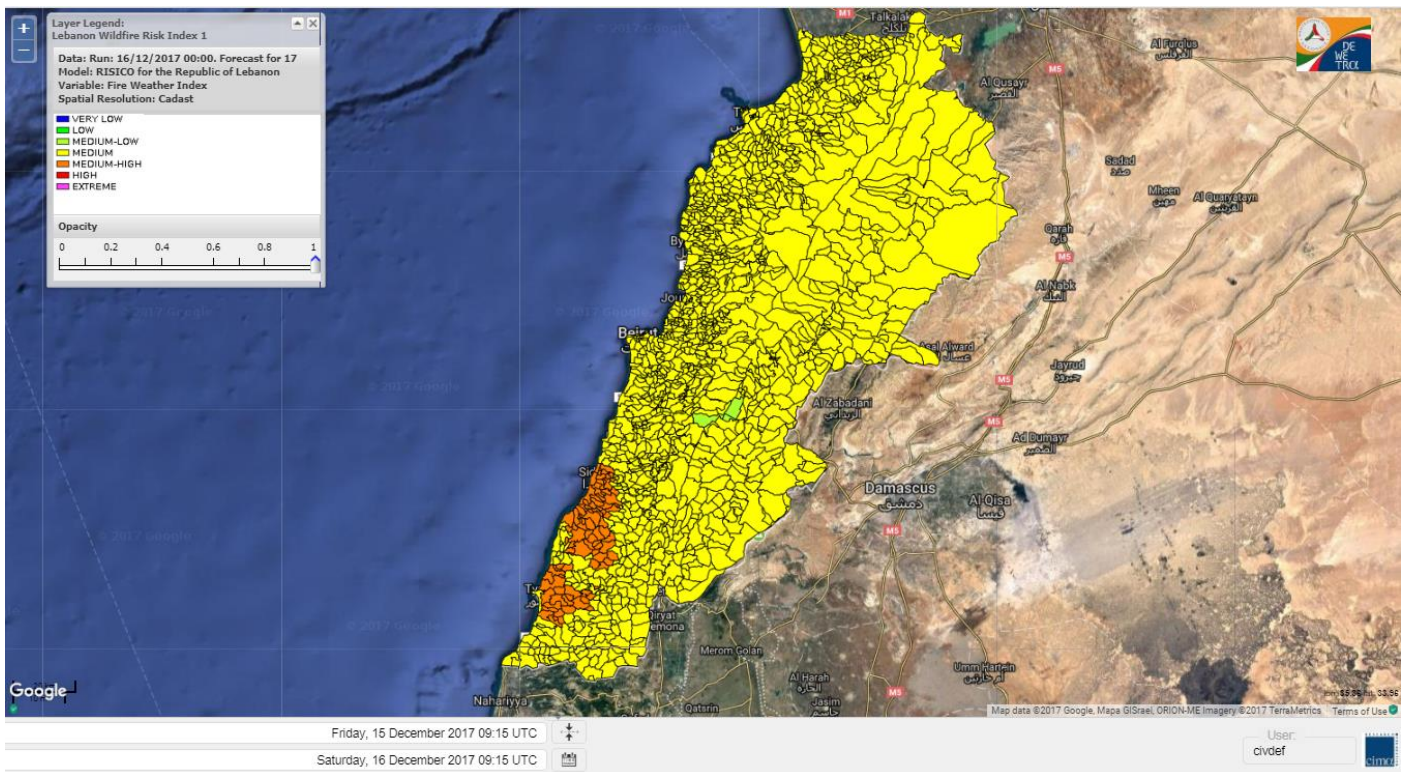
# Lebanon humidity for 16 DEC 2017



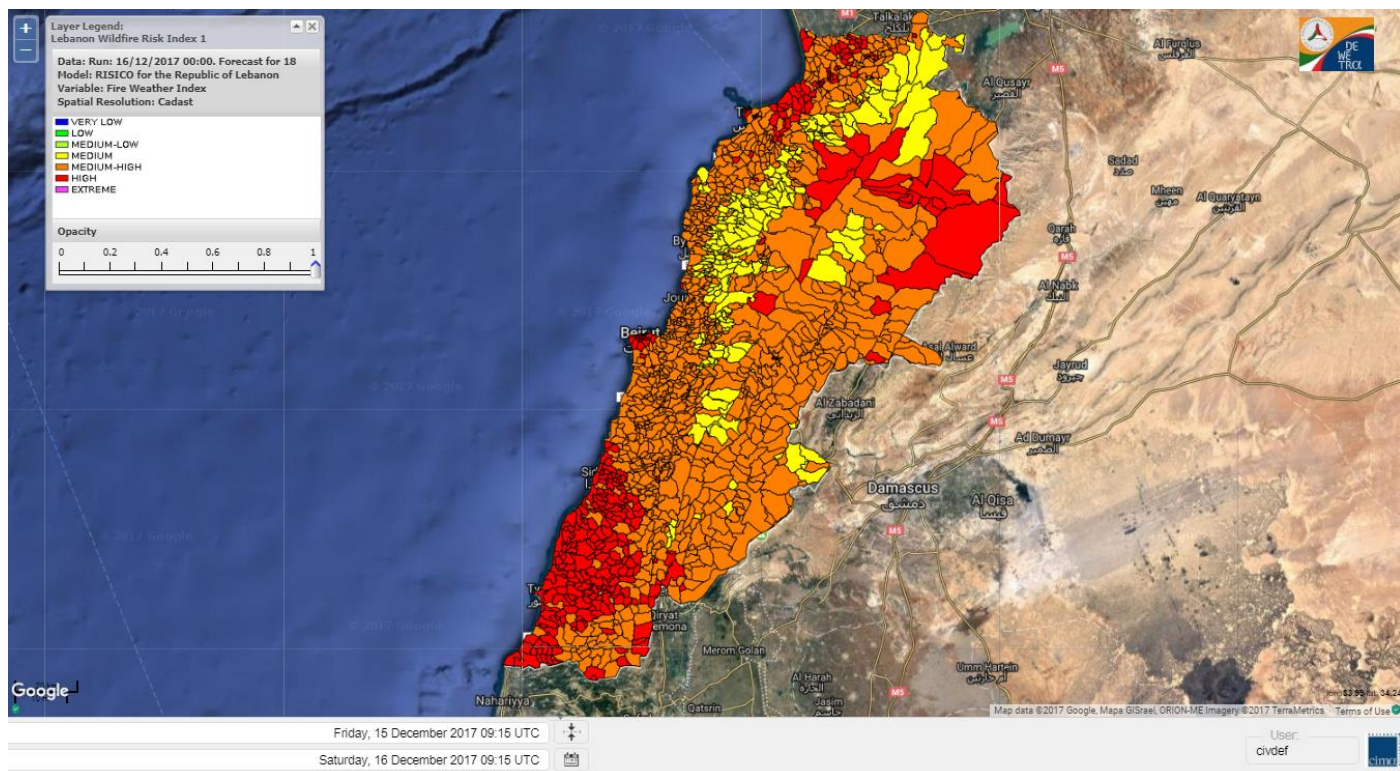
# Lebanon for 16 DEC 2017



# Lebanon for 17 DEC 2017



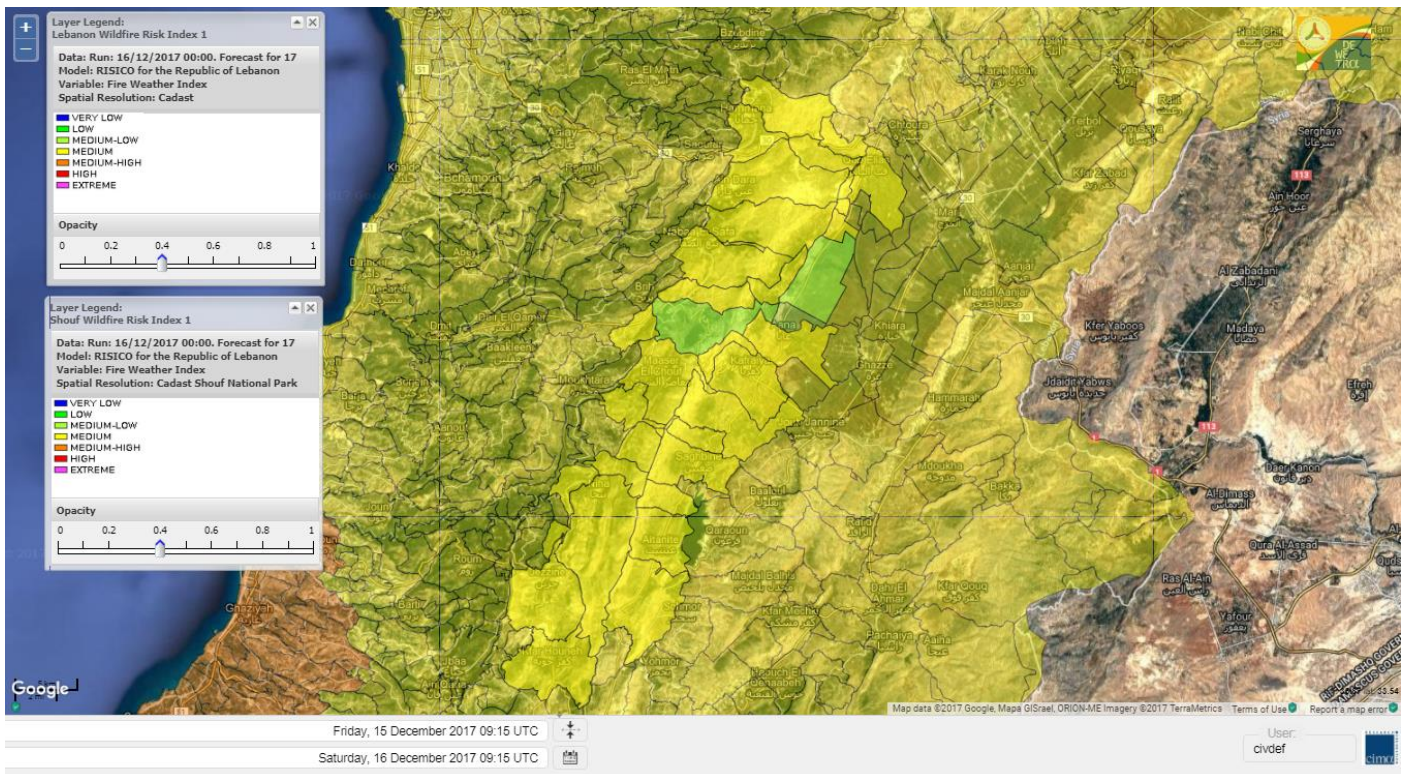
# Lebanon for 18 DEC 2017



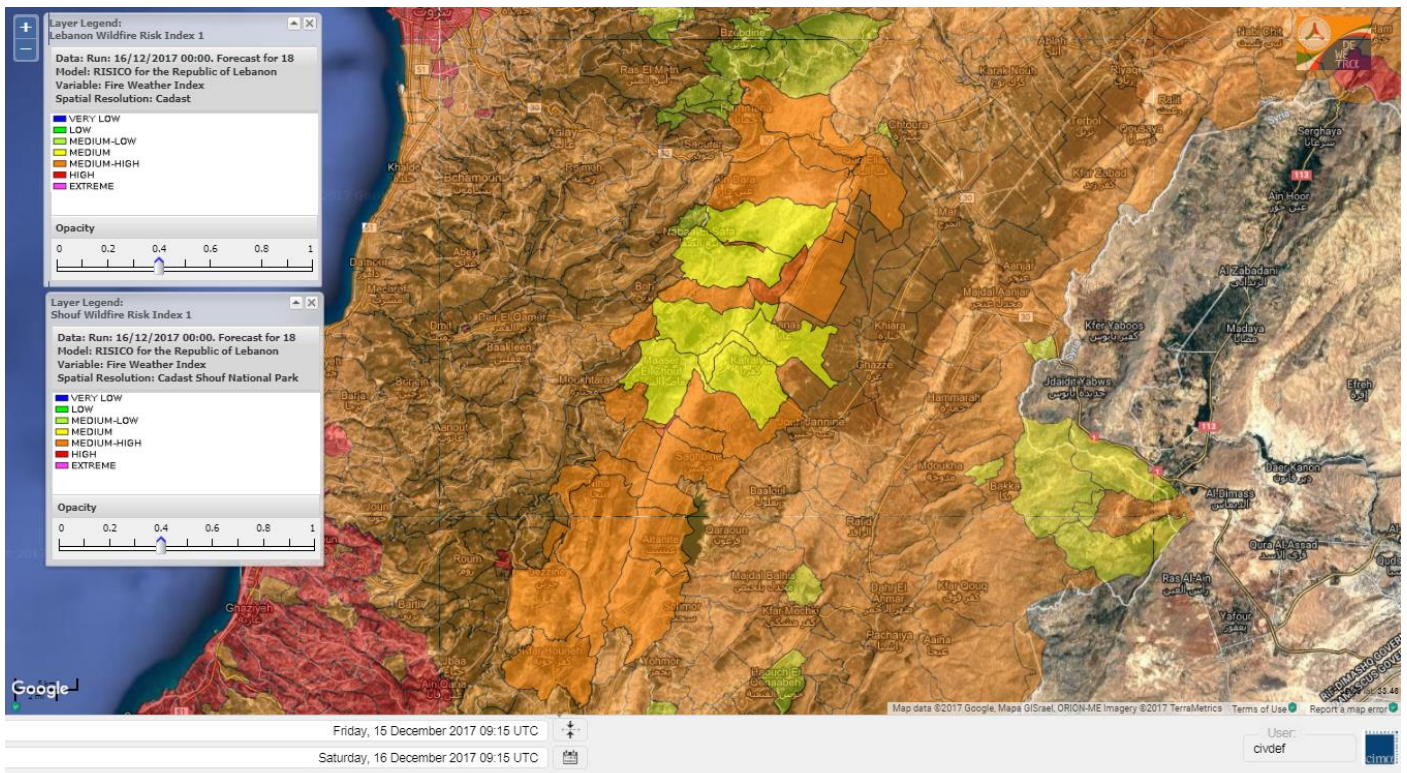
# Shouf Biosphere Reserve Forecast for 16 DEC 2017



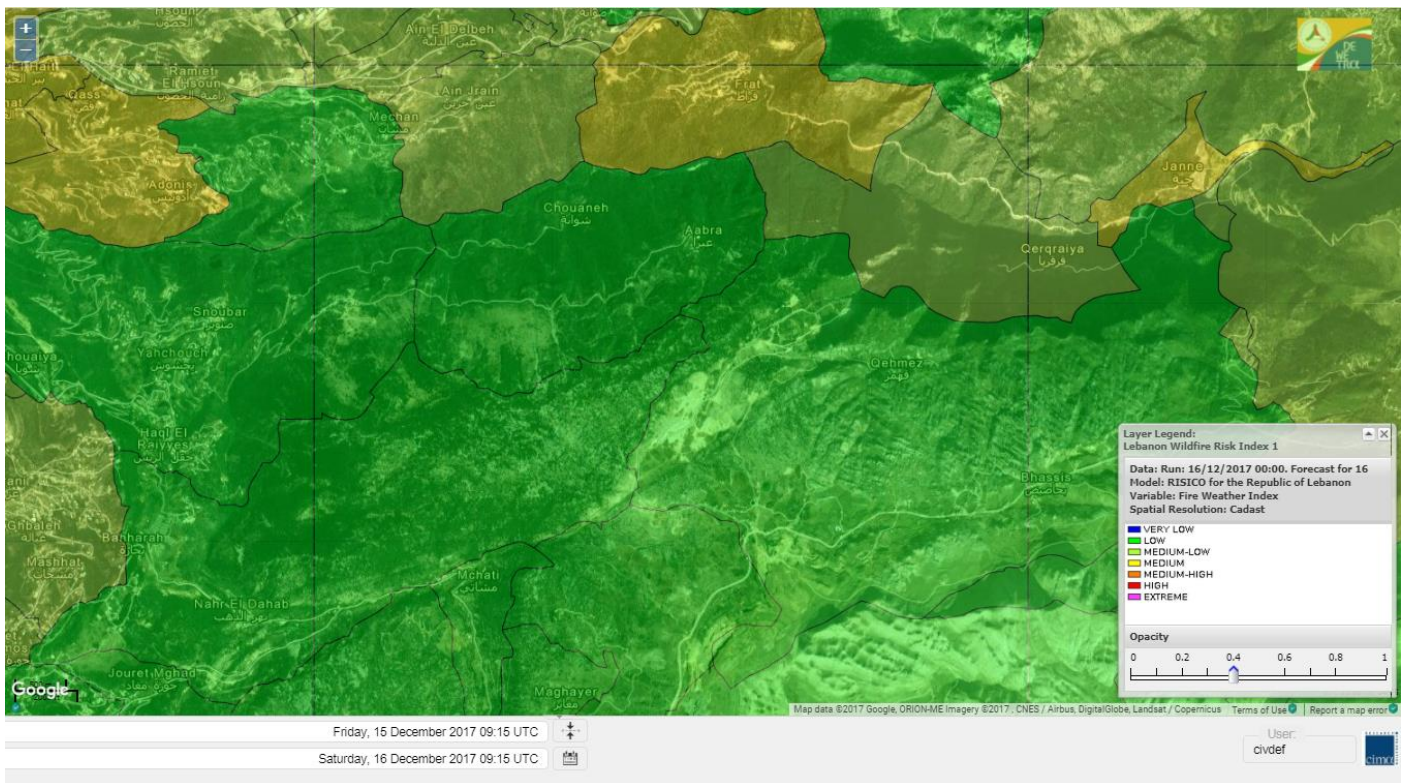
# Shouf Biosphere Reserve Forecast for 17 DEC 2017



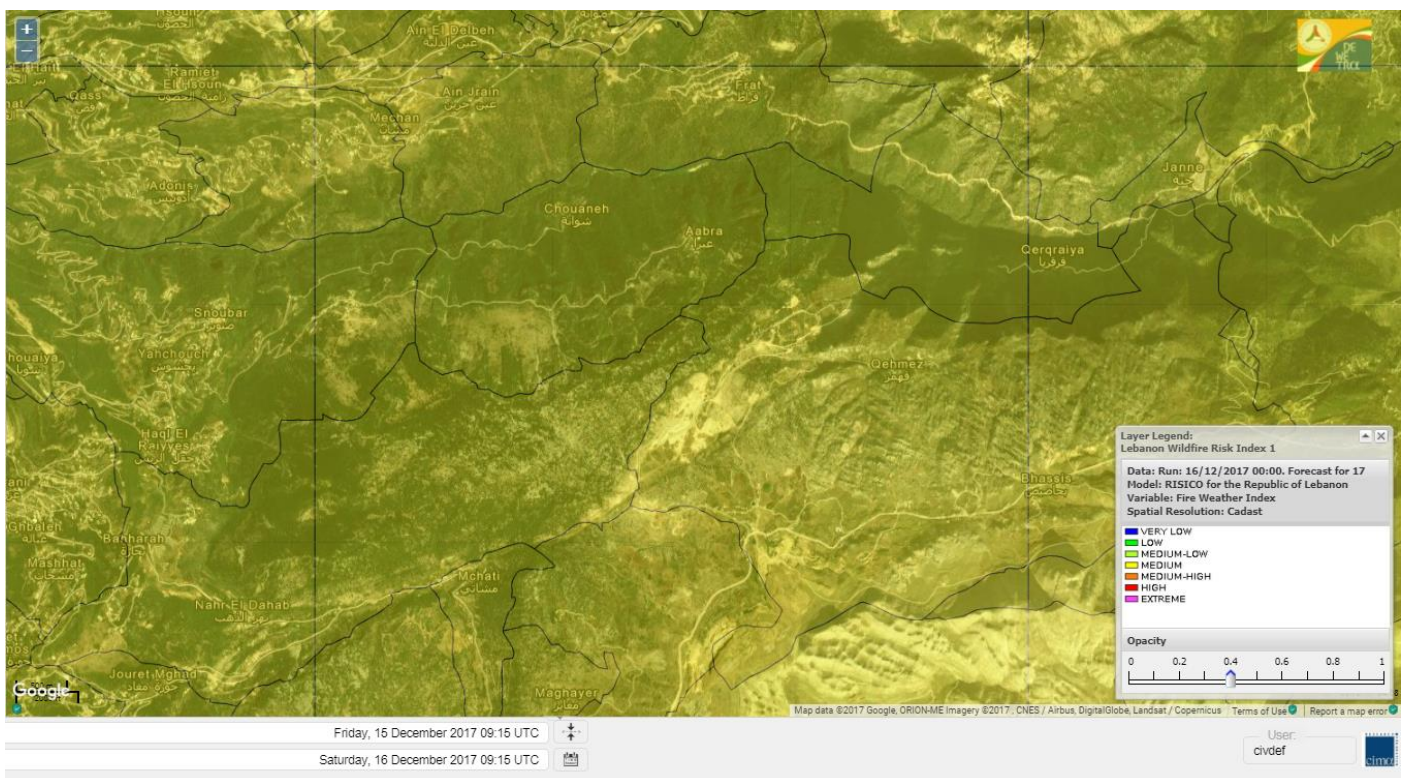
# Shouf Biosphere Reserve Forecast for 18 DEC 2017



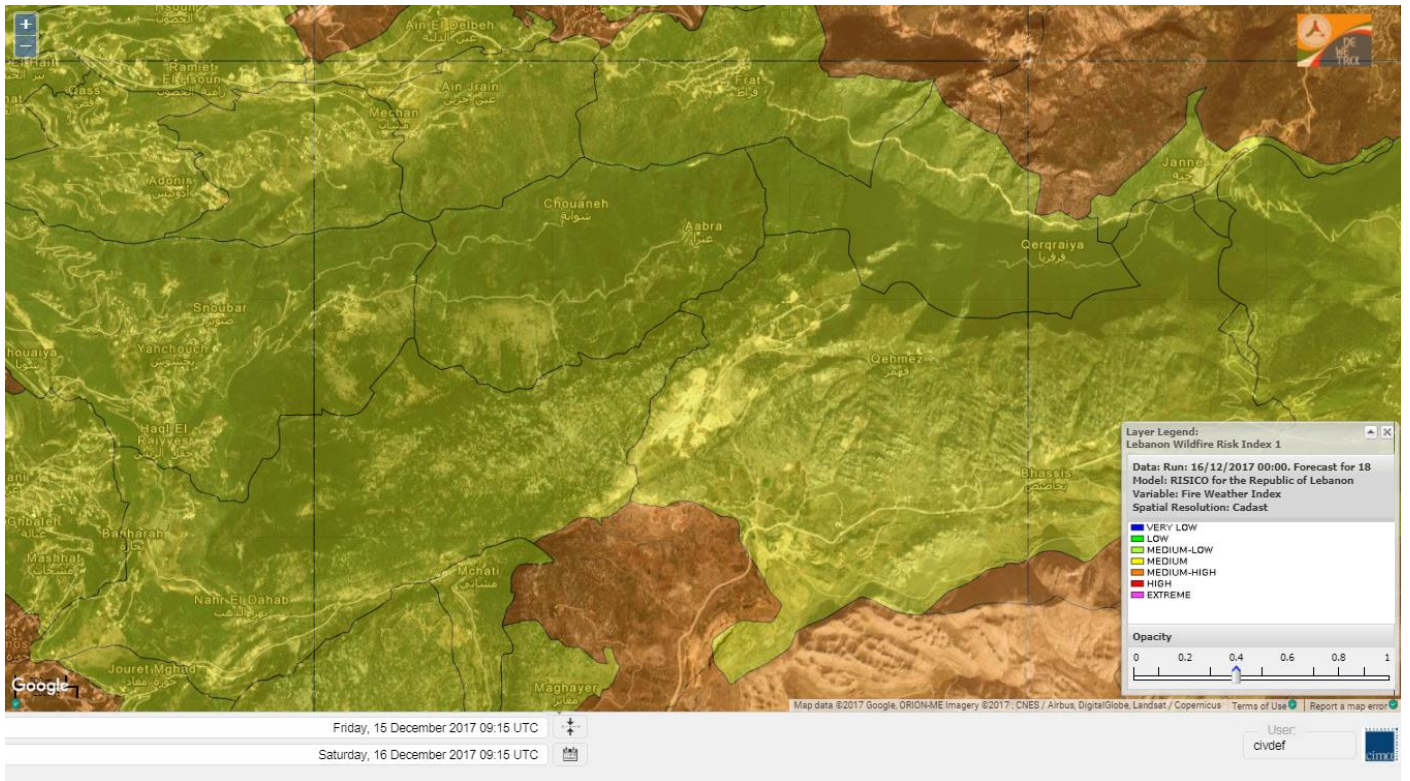
## Jabal Moussa Reserve Forecast for 16 DEC 2017



## Jabal Moussa Reserve Forecast for 17 DEC 2017



# Jabal Moussa Reserve Forecast for 18 DEC 2017





## Nord

### Koura

Municipality	16-Dec	17-Dec	18-Dec	Municipality	16-Dec	17-Dec	18-Dec	Municipality	16-Dec	17-Dec	18-Dec
Aaba	M	M	MH	Afsaddiq	M	M	MH	Ain Ekriane	M	M	MH
Amioun	M	M	MH	Anfeh	M	M	MH	Badbhoun	M	M	MH
Barghoun	M	M	MH	Barsa	M	M	MH	Batroumine	M	M	MH
Bdebba	M	M	MH	Bechmizine	M	M	MH	Bednaye El-Koura	M	M	MH
Bhabbouch El-Koura	M	M	MH	Bkeftine	M	M	MH	Bnehran	M	M	MH
Bqaiia El-Koura	M	M	MH	Bsarma	M	M	MH	Btaaboura	M	M	MH
Bterram	M	M	MH	Btouratij	M	M	MH	Bziza	M	M	MH
Dar Beechtar	M	M	MH	Dar Chmezzine	M	M	MH	Deddeh	M	M	MH
Deir El-Balamand	M	M	MH	Fih	M	M	MH	Hraiche	M	M	MH
Ijdaabrine	M	M	MH	Kaftoun	M	M	MH	Kefraya El-Koura	M	M	MH
Kfarakka	M	M	MH	Kfarhata	M	M	MH	Kfarhazir	M	M	MH
Kfarkahel	M	M	MH	Kfarsaroun	M	M	MH	Kosba	M	M	MH
Mejdel el-Koura	M	M	MH	Nakhle	M	M	MH	Qalhat	M	M	MH
Ras Masqa	M	M	MH	Rechdibbine	M	M	MH	Zakroun	M	M	MH
Zgharta El-Mtaouile	M	M	MH								

### Bcharre

Municipality	16-Dec	17-Dec	18-Dec	Municipality	16-Dec	17-Dec	18-Dec	Municipality	16-Dec	17-Dec	18-Dec
Aabdine	M	M	MH	Bane	M	M	MH	Barhelioun	M	M	MH
Bazouone	ML	M	MH	Becharre	ML	M	MH	Beit Menzer	M	M	MH
Billa	M	M	MH	Blaouza	M	M	MH	Bqaa Kafra	L	M	MH
Bqerqacha	L	M	MH	Breissat	M	M	MH	Dimane	M	M	MH
Hadath El Jobbeh	M	M	M	Hadchit	M	M	MH	Hasroun	ML	M	MH
Mazraat Aassaf	M	M	M	Mazraat Bani Saab	M	M	M	Mchaa El-Jobbeh	L	M	MH
Metrit	M	M	MH	Moghr El-Ahoual	M	M	MH	Ouadi Qannoubine	M	M	M
Qanat	M	M	M	Qnayouer	M	M	M	Tourza	M	M	MH

### Batroun

Municipality	16-Dec	17-Dec	18-Dec	Municipality	16-Dec	17-Dec	18-Dec	Municipality	16-Dec	17-Dec	18-Dec
Aabrine	M	M	MH	Aalali	M	M	M	Aartziz	M	M	M
Abdelli	M	M	MH	Ajdabra	M	M	MH	Assia	M	M	M
Basbina	M	M	MH	Batroun	M	M	MH	Bcheleh	M	M	M
Bechtoudar	M	M	M	Beit Chlala	M	M	M	Beit Kassab	M	M	M
Bijdarfil	M	M	MH	Bqesmaya	M	M	MH	Chatine	M	M	M
Chebtin	M	M	MH	Chekka	M	M	MH	Daael	M	M	M
Dahr Abi Yaghi	M	M	MH	Daraya El-Batroun	M	M	MH	Deir Billa	M	M	MH
Deir Kfifane	M	M	MH	Deir Mar Youhanna EL	M	M	M	Deir Mar Youssef Jra	M	M	MH
Douma	M	M	M	Douq	M	M	M	Eddeh El-Batroun	M	M	MH
Ftihat El-Batroun	M	M	M	Ghouma	M	M	MH	Hadtoun	M	M	M
Hamat	M	M	MH	Harbouna	M	M	MH	Hardine	M	M	M
Helta	M	M	M	Hery	M	M	MH	Jebbla	M	M	M
Jrabta El-Batroun	M	M	MH	Jrane El-Batroun	M	M	MH	Kfar Aabida	M	M	MH
Kfar Halda	M	M	M	Kfarb Shlaimane	M	M	M	Kfarhatna	M	M	MH
Kfarhay	M	M	MH	Kfarhelos	M	M	MH	Kfifane	M	M	MH

Kfour El Arabi	M	M	M	Koubba	M	M	MH	Kour	M	M	MH
Mar Mama	M	M	M	Masrah	M	M	MH	Mehmarch	M	M	MH
Mrah Chdid	M	M	MH	Mrah El Ziyat	M	M	MH	Mrah El-Hajj	M	M	M
Nahle El-Batroun	M	M	M	Niha El-Batroun	M	M	M	Oujah El-Hajjar	M	M	MH
Ouata Houb	M	M	M	Qatnaaoun	M	M	MH	Racha	M	M	M
Rachana	M	M	MH	Rachkida	M	M	MH	Ram El-Batroun	ML	M	M
Ras Nahhach	M	M	MH	Selaata	M	M	MH	Sghar	M	M	MH
Smar Jbayl	M	M	MH	Sourat El-Batroun	M	M	M	Tannourine El-Faouqa	L	M	MH
Tannourine Et-Tahta	M	M	M	Thoum	M	M	MH	Toula El-Batroun	M	M	MH
Zan	M	M	MH								

## Zgharta

Municipality	16-Dec	17-Dec	18-Dec	Municipality	16-Dec	17-Dec	18-Dec	Municipality	16-Dec	17-Dec	18-Dec
Aachach	M	M	MH	Aalma	M	M	MH	Aarde	M	M	MH
Aintourine	M	M	MH	Arabet Qozhaya	M	M	M	Arde	M	M	MH
Arjis	M	M	MH	Asnoun	M	M	MH	Ayto	M	M	MH
Basloukit	M	M	MH	Bchannine	M	M	MH	Besebeel	M	M	MH
Bhairret Toula	M	M	MH	Bnachee	M	M	MH	Boussit	M	M	H
Danha	M	M	MH	Daraiya Zgharta	M	M	MH	Deir Jdeide	M	M	MH
Ehden	M	M	MH	Halan	M	M	MH	Hariq Zgharta	M	M	H
Houakir	M	M	MH	Hraiqis	M	M	H	laal	M	M	MH
Ijbaa	M	M	MH	Karm Saddeh	M	M	MH	Kfarchakhna	M	M	MH
Kfardlaqous	M	M	MH	Kfarfou	M	M	MH	Kfarhata Zgharta	M	M	MH
Kfarhoura	M	M	MH	Kfarsghab	M	M	MH	Kfaryachit	M	M	MH
Kfarzaina	M	M	MH	Khaldiye	M	M	MH	Mazraat Ajbeaa	M	M	MH
Mazraat Et-Teffah	M	M	MH	Mazraat Jneid	M	M	MH	Mejdlaya Zgharta	M	M	MH
Merh Kfarsghab	M	M	MH	Miryata	M	M	MH	Miziara	M	M	MH
Mzraat Kefraya	M	M	MH	Qorah Bach	M	M	MH	Rachiine	M	M	MH
Ras Kifa	M	M	MH	Sakhra	M	M	MH	Sebhel Zgharta	M	M	MH
Serhel	M	M	M	Tallet Zgharta	M	M	MH	Toula Zgharta	M	M	MH
Zgharta	M	M	MH								

## Minieh-Denniye

Municipality	16-Dec	17-Dec	18-Dec	Municipality	16-Dec	17-Dec	18-Dec	Municipality	16-Dec	17-Dec	18-Dec
Aasaymout	M	M	M	Aaymar	M	M	MH	Aazki	M	M	MH
Ain El-Tineh-Miniyeh	M	M	MH	Assoun	M	M	MH	Bakhaaoun	M	M	MH
Bchennata	M	M	MH	Bechehhara	M	M	MH	Beddawi	M	M	MH
Behouaita	M	M	MH	Beit El Foqss	M	M	MH	Beit Haouik	M	M	MH
Beit Zoud	M	M	MH	Bekaasafrine	M	M	MH	Borj El Yahoudiyeh	M	M	MH
Bqarsouna	M	M	MH	Btermaz	M	M	MH	Debaael	M	M	MH
Deir Ammar	M	M	H	Deir Nbouh	M	M	MH	Haouaret-Miniyeh	M	M	MH
Haql el Azimeh	M	M	MH	Harf El Siyad	M	M	M	Hazmiye-Miniyeh	M	M	MH
Izal	M	M	MH	Jarjour	M	M	M	Jayroun	M	M	MH
Kahf El-Malloul	M	M	MH	Karm El-Moher	M	M	MH	Kfar Binine	M	M	MH
Kfarchalane	M	M	MH	Kfarhabou	M	M	MH	Kharroub-Miniyeh	M	M	MH
Mazraat El-Kreme	M	M	MH	Mazraat Ketrane	M	M	MH	Merkebtta	M	M	MH
Minyeh	M	M	MH	Mrah El Sfirat	M	M	MH	Mrah Sraj	M	M	MH
Mrebbine	M	M	MH	Nabi Youcheaa	M	M	MH	Nemrine	M	M	MH

Qarhaiya	M	M	MH	Qarne	M	M	M	Qarsita	M	M	MH
Qattineh-Miniyeh	M	M	M	Qemmamine	M	M	M	Qraine	M	M	MH
Raouda-Aadoua	M	M	MH	Rihaniyet-Miniyeh	M	M	H	Sfireh	M	M	MH
Sir Ed-Danniyeh	M	M	MH	Tarane	M	M	MH	Terbol-Miniyeh	M	M	MH
Zaghartaghriane	M	M	MH	Zouq Bhannine	M	M	MH				

## Nabatiye

### Nabatiye

Municipality	16-Dec	17-Dec	18-Dec	Municipality	16-Dec	17-Dec	18-Dec	Municipality	16-Dec	17-Dec	18-Dec
Aabba	M	H	MH	Aazzi	M	M	MH	Adchit El-Chqif	M	H	MH
Ain Bou Swar	M	M	MH	Ain Kana	M	M	MH	Ali El-TaHER	M	M	MH
Ansar	M	M	MH	Arab Salim	M	M	MH	Arnoun	M	M	MH
Bfaroue	M	MH	H	Breyqaah	M	MH	MH	Charqiyeh	M	MH	MH
Choukine	M	M	MH	Deir El Zahrani	M	M	MH	Doueir El-Nabatiyeh	M	H	MH
Habbouch El-Nabatiye	M	M	MH	Hamra El-Nabatiyeh	M	M	MH	Harouf El-Nabatiyeh	M	MH	MH
Hmaile	M	M	MH	Houmin El Faouqa	M	M	H	Houmin El Tahta	M	MH	MH
Jarjough	M	M	MH	Jbaah El-Nabatiyeh	M	M	MH	Jebchit	M	MH	MH
Kfar Djal El-Nabatiy	M	MH	MH	Kfar Remmane	M	M	MH	Kfar Sir	M	MH	MH
Kfar Tebnit	M	M	MH	Kfarfila	M	M	MH	Kfour El-Nabatieh	M	M	H
Mayfadoun	M	M	MH	Mazraat Bsaffour	M	MH	MH	Mazraat Chalbaal	M	MH	MH
Mazraat Dmoul	M	MH	MH	Mazraat El Khreibeh	M	M	MH	Mazraat El-Bayad El-	M	M	MH
Mazraat Kfarjaouz	M	M	MH	Mazraat Qalaat Meiss	M	MH	MH	Nabatiyeh El-Fawka	M	M	MH
Nabatiyeh Et-Tahta	M	M	MH	Namiriyeh	M	MH	MH	Qaaqaaiyet El Jisr	M	MH	MH
Qossaibeh El-Nabatiy	M	MH	MH	Roumine	M	M	MH	Sarba El-Nabatieh	M	M	MH
Sir El-Gharbiyeh	M	MH	MH	Toul	M	M	MH	Yehmor El-Nabatiyeh	M	M	MH
Zaoutar El Charkiyeh	M	M	MH	Zaoutar El-Gharbiyeh	M	M	MH	Zebdine El-Nabatiyeh	M	M	MH
Zefta	M	MH	H								

### Hasbaiya

Municipality	16-Dec	17-Dec	18-Dec	Municipality	16-Dec	17-Dec	18-Dec	Municipality	16-Dec	17-Dec	18-Dec
Ain Jarfa	ML	M	MH	Abou Qamha	ML	M	MH	Ain Qania	ML	M	MH
Bourghos	ML	M	MH	Chebaa	ML	M	MH	Chouaya Hasbaya	ML	M	MH
Dellafeh	ML	M	MH	Fardiss Hasbaiya	ML	M	MH	Hasbaya	ML	M	MH
Hbariyeh	ML	M	MH	Kaoukaba Hasbaiya	ML	M	MH	Kfar Chouba	ML	M	MH
Kfar Hamam	ML	M	MH	Kfeir El-Zait	ML	M	MH	Khalwat Hasbaya	ML	M	MH
Khreibet Hasbaiya	ML	M	MH	Majdiyyeh Hasbaiya	ML	M	MH	Marj Ez-Zhour (Haouc	M	M	MH
Meri	ML	M	MH	Mimass	ML	M	MH	Rachaiya El-Fokhar	ML	M	MH
Salaiyeb	ML	M	H								

### Marjayoun

Municipality	16-Dec	17-Dec	18-Dec	Municipality	16-Dec	17-Dec	18-Dec	Municipality	16-Dec	17-Dec	18-Dec
Aalmane Marjaayoun	M	M	MH	Aamra	ML	M	MH	Adayseh Marjaayoun	M	M	H
Adchit El-Koussair	M	M	MH	Ain Aarab Marjaayoun	ML	M	MH	Bani Haiyann	M	M	MH
Blatt Marjaayoun	ML	M	MH	Blida	M	M	MH	Borj El-Moulouk	M	M	MH
Boueyda Marjaayoun	M	M	MH	Deir Mimass	M	M	MH	Deir Siriane	M	M	MH
Dibbine	ML	M	MH	Ebel El Saqi	ML	M	MH	Houla	M	M	MH
Houra	M	M	MH	Kfar Kila	M	M	MH	Khiam Marjaayoun	ML	M	MH

Klayaa	M	M	MH	Majdel Selem	M	M	MH	Marjaayoun	ML	M	MH
Markaba	M	M	MH	Mays El-Jabal	M	M	MH	Mazraat Doumiat	M	M	MH
Mazraat Sarada	ML	M	MH	Mhaibib	M	M	MH	Qabrikha	M	M	MH
Qantara	M	M	MH	Rab El-Thalathine	M	M	H	Saouaneh Marjayoun	M	M	MH
Talloussa	M	M	MH	Taybeh Matjaayoun	M	M	MH	Touline	M	M	MH

## Bent Jbail

Municipality	16-Dec	17-Dec	18-Dec	Municipality	16-Dec	17-Dec	18-Dec	Municipality	16-Dec	17-Dec	18-Dec
Ain-Ebel	ML	M	MH	Aitaroun	ML	M	MH	Aynata Bint Jbeil	ML	M	MH
Ayta El-Chaeb	L	M	MH	Ayta El-Jabal	ML	MH	MH	Beit Lif	L	M	MH
Beit Yahoun	ML	M	MH	Bint Jbeil	ML	M	MH	Borj Qalaway	M	MH	MH
Braachit	M	M	MH	Chakra	M	M	MH	Debel	L	M	MH
Deir Antar	M	MH	MH	Froun	M	MH	MH	Ghandouriyeh Bint Jb	M	M	MH
Hanine	ML	M	MH	Hariss	ML	M	MH	Hdatha	ML	M	MH
Jmeymeh	M	M	MH	Kafra Bint Jbeil	ML	M	MH	Kfar Dounine	M	MH	H
Khirbet Selm	M	M	H	Kounine	ML	M	MH	Maroun El Ras	ML	M	MH
Qalaway	M	M	MH	Qaouzah	L	M	MH	Qatmoun	ML	M	MH
Ramya Bint Jbeil	L	M	MH	Rchaf	L	M	MH	Rmeich	ML	M	MH
Safad Al Battikh	M	M	MH	Salhaneh	L	M	MH	Serbine	ML	M	MH
Sultanieh Bint Jbeil	M	M	MH	Tibnine	ML	M	MH	Tiri	ML	M	MH
Yaroun	ML	M	MH	Yater	ML	M	MH				

## Mont Liban

### Jbail

Municipality	16-Dec	17-Dec	18-Dec	Municipality	16-Dec	17-Dec	18-Dec	Municipality	16-Dec	17-Dec	18-Dec
Aabeydat	M	M	MH	Aalita	M	M	MH	Aamchit	M	M	MH
Aarab El-Lahib	L	M	MH	Aarasta	L	M	MH	Adonis Jbeil	M	M	MH
Afqa Jbeil	L	M	M	Ain El Delbeh Jbeil	M	M	MH	Ain El-Ghouayba	M	M	MH
Ain Jrain	M	M	MH	Ain Kfah	M	M	MH	Almat El Chemaliyat	L	M	MH
Almat El-Jenoubiya	L	M	M	Aqoura	L	M	MH	Bayzoun	M	M	MH
Bchille Jbeil	M	M	MH	Bechtlida	M	M	M	Behdaydat	M	M	MH
Beit Habbaq	M	M	MH	Bejjeh	M	M	MH	Bekhaaz	M	M	MH
Berbara Jbeil	M	M	MH	Bintael	M	M	MH	Birket Hjoula	M	M	MH
Blatt Jbeil	M	M	MH	Boulhos	ML	M	MH	Breyj Jbeil	M	M	MH
Chamat	M	M	MH	Chikhane	M	M	MH	Chmout	M	M	MH
Eddeh Jbeil	M	M	MH	Ehmej	L	M	M	Fatre	M	M	MH
Ferhet	ML	M	MH	Fghal	M	M	MH	Frat	M	M	M
Ghabat	M	M	MH	Ghalboun	M	M	MH	Gharzouz	M	M	MH
Ghofrine	M	M	MH	Habil	ML	M	M	Halate	M	M	MH
Haqel	M	M	M	Hbaline	M	M	MH	Hboub	M	M	MH
Hdeine	M	M	MH	Hema Er-Rehban	L	M	MH	Hema Mar Maroun Aann	L	M	MH
Hjoula	L	M	M	Hosrayel	M	M	MH	Hsarat	M	M	MH
Hsoun	M	M	MH	Jaj	L	M	M	Janne	M	M	M
Jbeil	M	M	MH	Jeddeyl Jbeil	M	M	MH	Jlisse	M	M	MH
Jouret El-Qattine	M	M	MH	Kfar Baal Annaya	ML	M	MH	Kfar Kidde	M	M	MH
Kfar Kouas	M	M	MH	Kfar Mashoun	M	M	MH	Kfoun	M	M	MH

Kharbe Jbeil	M	M	M	Laqlouq	L	M	MH	Lassa	ML	M	MH
Lehfed	M	M	M	Maad	M	M	MH	Mar Sarkis	ML	M	MH
Mastita	M	M	MH	Mayfouq	M	M	M	Mazraat El Siyad	L	M	MH
Mazraat El-Maaden	L	M	M	Mechane	M	M	MH	Mechmech Jbeil	L	M	M
Mehrin	M	M	MH	Mejdel El-Akoura	L	M	MH	Mghayreh Jbeil	M	M	MH
Mounsef	M	M	MH	Nahr Ibrahim	M	M	MH	Qahmez	L	M	M
Qartaba	ML	M	MH	Qartaboun	M	M	MH	Qattara Jbeil	L	M	M
Qorqraya	ML	M	M	Ramout	M	M	MH	Ras Osta	M	M	MH
Rihane Jbeil	M	M	MH	Sakiet El-Khayt	M	M	MH	Saqi Richmaya	L	M	M
Sebrine	M	M	MH	Seraita	M	M	MH	Souane Jbeil	M	M	MH
Tadmor	M	M	MH	Tartej	L	M	M	Torzaiya	ML	M	MH
Yanouh Jbeil	M	M	MH	Zibidine Jbeil	M	M	MH				

## El Metn

Municipality	16-Dec	17-Dec	18-Dec	Municipality	16-Dec	17-Dec	18-Dec	Municipality	16-Dec	17-Dec	18-Dec
Aain El-Qabu	L	M	M	Aain El-Qach	L	M	MH	Aain El-Teffaha	M	M	MH
Aain el-Safsaf El-M	L	M	MH	Abou Mizane	M	M	MH	Ain Aar	ML	M	MH
Ain Alaq	ML	M	MH	Ain El-Kharroube	ML	M	MH	Ain El-Sendianeh	L	M	MH
Ain El-Zeitoune	L	M	MH	Ain Saadeh	M	M	MH	Aintoura El-Matn	L	M	MH
Amaret Chalhoub	M	M	MH	Antelias	M	M	MH	Atchaneh	ML	M	MH
Ayroun	L	M	MH	Baabdat	ML	M	MH	Baouchariyeh	M	M	MH
Baskinta	L	M	MH	Beit Chabab	M	M	MH	Beit El-Chaar	M	M	MH
Beit El-Kekko	ML	M	MH	Beit Mery	M	M	MH	Bhersaf	ML	M	MH
Bikfaya	L	M	MH	Biyakout	M	M	MH	Bnabil	L	M	MH
Bourj Hammoud	M	M	MH	Bqennaya	M	M	MH	Broummana El-Matn	M	M	MH
Bsalim	M	M	MH	Bsifrine	M	M	MH	Bteghrine	L	M	M
Chaouiye	ML	M	MH	Chouaya El-Matn	ML	M	MH	Choueir	L	M	MH
Chrine	M	M	MH	Dahr El Sawan El-Mat	ML	M	MH	Daychouniyeh	M	M	MH
Dbayeh	M	M	MH	Deir Chamra	M	M	MH	Deir Mar Abda el Mch	M	M	MH
Deir Mar Roukouz	M	M	MH	Deir Tamiche	M	M	MH	Dik El-Mehdi	M	M	MH
Dikwaneh	M	M	MH	Douar El-Matn	L	M	MH	Fanar	M	M	MH
Fraike	M	M	MH	Haret El-Ballaneh	M	M	MH	Hbous	ML	M	MH
Himlaya	ML	M	MH	Jal El Did	M	M	MH	Jdeideh El-Metn	M	M	MH
Jouar El-Matn	L	M	MH	Jouret El-Ballout	M	M	MH	Kaaqour	ML	M	MH
Kfar Aaqab	L	M	MH	Kfertay El-Matn	L	M	MH	Khenchara	L	M	MH
Khillet El-Mtain	L	M	MH	Konnabat Broummana	M	M	MH	Konnabat Salima	M	M	MH
Machraah El-Matn	L	M	MH	Majdel Tarchich	L	M	MH	Majzoub	M	M	MH
Mansouriyeh El-Metn	M	M	MH	Mar Boutros Karm Et-	M	M	MH	Mar Chaya et Mzekke	ML	M	MH
Mar Moussa Ed-Douar	L	M	MH	Marjaba	L	M	M	Masqa	ML	M	MH
Mayasse	M	M	MH	Mazraat Deir Aoukar	M	M	MH	Mazraat El-Hadirat	M	M	MH
Mazraat Yachouh	M	M	MH	Mchikha	L	M	MH	Menqlet Mezher	M	M	MH
Mhaydseh Matn	L	M	MH	Mkalles	M	M	MH	Mrouj	L	M	MH
Mtain	L	M	MH	Mtayleb	M	M	MH	Nabay	M	M	MH
Naccache	M	M	MH	Ouadi Chahine	ML	M	MH	Ouadi El-Karm El-Mat	L	M	MH
Ouata El-Mrouj	L	M	MH	Ouyoun El-Matn	ML	M	MH	Qornet Chehwan	M	M	MH
Qornet El-Hamra	M	M	MH	Roumieh	M	M	MH	Sfeilet Bikfaya	ML	M	MH
Sinn El-Fil	M	M	MH	Zabbougha	L	M	MH	Zalqa	M	M	MH

Zarouon	L	M	MH	Zekrite	M	M	MH	Zighrine El-Matn	L	M	MH
Zouk El-Khrab	M	M	MH								

## Chouf

Municipality	16-Dec	17-Dec	18-Dec	Municipality	16-Dec	17-Dec	18-Dec	Municipality	16-Dec	17-Dec	18-Dec
Aalmane El-Chouf	M	M	MH	Aammqi El-Chouf	M	M	MH	Ain Ouzein	ML	M	MH
Ain Qani	M	M	MH	Ain Zhalta	L	M	MH	Ainbal	ML	M	MH
Amatour	M	M	MH	Anout	ML	M	MH	Atrine	ML	M	MH
Baadarane	ML	M	MH	Baaqline	ML	M	MH	Baasir	M	M	MH
Barja	M	M	MH	Barouk	L	ML	M	Bater	ML	M	MH
Batloun	L	M	MH	Bayqoun	ML	M	MH	Bchetfine	M	M	MH
Beiteddine	L	M	MH	Benouati Ech-Chouf	M	M	MH	Berjein	M	M	MH
Bireh et Mtalleh	L	M	MH	Biret El-Chouf	L	M	MH	Bkechtine Ouel Mchei	M	M	MH
Bkifa El-Chouf	M	M	MH	Botme	M	M	MH	Bqaiaa Ech-Chouf	M	M	MH
Bsaba El-Chouf	ML	M	MH	Chammis El-Chouf	M	M	MH	Chehim	M	M	MH
Chemaarine	M	M	MH	Chourit	ML	M	MH	Daher El-Chouf	M	M	MH
Dalhoun	M	M	MH	Damour	M	M	MH	Daraya El-Chouf	M	M	MH
Deir El-Moukhalles	M	M	MH	Deir Baba	M	M	MH	Deir Dourit	ML	M	MH
Deir El-Qamar	ML	M	MH	Deir Kouche	M	M	MH	Dibbieh	M	M	MH
Dmit	M	M	MH	Fouara Jaafar	L	M	MH	Fraidis El-Chouf	L	M	MH
Ghabet Jaafar	M	M	MH	Gharife	ML	M	MH	Haret Jandal	M	M	MH
Hasrout	ML	M	MH	Jadra	M	M	MH	Jahlieh	M	M	MH
Jbeih El-Chouf	ML	M	MH	Jdeidet El-Chouf	ML	M	MH	Jiyeh	M	M	MH
Jleilyeh	ML	M	MH	Jmailiyeh	M	M	MH	Joun	M	M	MH
Kahlounie El-Chouf	ML	M	MH	Ketermaya	M	M	MH	Kfar Faqoud	M	M	MH
Kfar Hamal	ML	M	MH	Kfar Him	M	M	MH	Kfar Katra	ML	M	MH
Kfar Niss	ML	M	MH	Kfar hay	ML	M	MH	Kfarnabrakh	ML	M	MH
Khirbet Bisri	M	M	MH	Knayse El-Chouf	M	M	MH	Maaniyeh	M	M	MH
Maasser Beiteddine	ML	M	MH	Maasser El-Chouf	L	M	MH	Majdalouna	M	M	MH
Majdel El-Meouch	ML	M	MH	Mazboud	M	M	MH	Mazmoura	ML	M	MH
Mazraat El Chouf	ML	M	MH	Mazraat El Daher	M	M	MH	Mazraat El-Douair	M	M	MH
Mechref	M	M	MH	Mghairie	M	M	MH	Mghayrie El-Chouf	M	M	MH
Moukhtara	M	M	MH	Mrusti	ML	M	MH	Mtolle	ML	M	MH
Naameh	M	M	MH	Niha El-Chouf	L	M	MH	Ouadi Abou Youssef	M	M	MH
Ouadi Ed-Deir	M	M	MH	Ouadi El-Sit	ML	M	MH	Ouadi bnehlay	M	M	MH
Qraibeh	ML	M	MH	Qreiaa	M	M	MH	Rmayle El-Chouf	M	M	MH
Semqaniyeh	ML	M	MH	Sibline	M	M	MH	Sirjbeil	M	M	MH
Warhanieh	L	M	MH	Werdaniyeh	M	M	MH	Zaarourieh	ML	M	MH

## Baabda

Municipality	16-Dec	17-Dec	18-Dec	Municipality	16-Dec	17-Dec	18-Dec	Municipality	16-Dec	17-Dec	18-Dec
Abadiyeh	M	M	MH	Ain Mouaffaq	ML	M	MH	Araiya	M	M	MH
Arbaniyeh	ML	M	MH	Arsoun	L	M	MH	Baabda	M	M	MH
Baalchmey	ML	M	MH	Bmaryam	L	M	MH	Bourj El-Brajneh	M	M	MH
Boutchay	M	M	MH	Bsaba Baabda	M	M	MH	Btekhney	L	M	MH
Btibyat	L	M	MH	Bzebdine	L	M	MH	Chbeniyeh	L	M	MH
Chiyah	M	M	MH	Chmeisset Baabda	L	M	MH	Chouit	M	M	MH
Deir El-harf	L	M	MH	Deir Khouna	ML	M	MH	Dlaybeh	M	M	MH

Falougha	L	M	MH	Furn El-Chebbak	M	M	MH	Hadath Beyrouth	M	M	MH
Halaliyeh Baabda	ML	M	MH	Hammana	L	M	MH	Haret El Sett	M	M	MH
Haret Hamze	ML	M	MH	Haret Hreik	M	M	MH	Hasbaiya El-Metn	L	M	MH
Jouar El-Hoz	L	M	M	Jouret Arsoun	L	M	MH	Kfar Chima	M	M	H
Kfar Selouane	L	M	M	Khalouat Baabda	L	M	MH	Kneisset Baabda	ML	M	MH
Laylakeh	M	M	MH	Louayzeh Baabda	M	M	MH	Merdache	M	M	MH
Mzairaa Baabda	ML	M	MH	Ouadi Chahrour El Ol	M	M	MH	Ouadi Chahrour El So	M	M	MH
Qalaa Baabda	L	M	MH	Qhraybe Baabda	L	M	MH	Qobbayaa	L	M	MH
Qornayel	L	M	MH	Qortada	M	M	MH	Qrayeh Baabda	L	M	MH
Qsaibeh Baabda	M	M	MH	Qtale Baabda	L	M	MH	Ras El Metn	ML	M	MH
Ras El-Haref	L	M	MH	Rouayset El-Ballout	ML	M	MH	Salima Baabda	ML	M	MH
Tahouitat El Ghadir	M	M	MH	Tarchich	L	M	M	Zandouqa	M	M	MH

## Aley

Municipality	16-Dec	17-Dec	18-Dec	Municipality	16-Dec	17-Dec	18-Dec	Municipality	16-Dec	17-Dec	18-Dec
Abey	M	M	MH	Aghmid	L	M	MH	Ain Dara	L	M	MH
Ain Drafil	M	M	MH	Ain El Halazoun	ML	M	MH	Ain El-Rmmaneh	M	M	MH
Ain Jedideh	ML	M	MH	Ain Ksour	ML	M	MH	Ain Onoub	M	M	MH
Ain Traz	M	M	MH	Ainab	ML	M	MH	Aley	ML	M	MH
Aramoun	M	M	MH	Aytat	M	M	MH	Azouniyeh	L	M	MH
Baawerta	M	M	MH	Badghan Oua Wadi Bad	L	M	MH	Bassatine	M	M	MH
Bayssour	M	M	MH	Bchamoun	M	M	MH	Bdadoun	M	M	MH
Behouara	ML	M	MH	Bennay	M	M	MH	Bhamdoun El-Dayaa	ML	M	MH
Bhamdoun El-Mhatta	ML	M	MH	Bkhechthey	ML	M	MH	Bleibel	M	M	MH
Bmakine	M	M	MH	Bmehray	L	M	M	Bouzrid	M	M	MH
Bserrine	ML	M	MH	Bsous	M	M	MH	Btalloun	ML	M	MH
Btater	ML	M	MH	Chanay	ML	M	MH	Charoun	L	M	MH
Chartoun	ML	M	MH	Chemlane	M	M	MH	Choueifat El-Aamrous	M	M	MH
Choueifat El-Oumara	M	M	MH	Choueifat El-Quoubbe	M	M	MH	Dakkoun	M	M	MH
Deir Qoubel	M	M	MH	Dfoun	ML	M	MH	Douair El Remmaneh	ML	M	MH
Ghaboun	M	M	MH	Habramoun	ML	M	MH	Homs Oua Hama	ML	M	MH
Houmal	M	M	MH	Jisr El Qadi	M	M	MH	Kehaleh	M	M	MH
Keyfoun	M	M	MH	Kfar Aamey	ML	M	MH	Kommatyeh	M	M	MH
Maasrati	ML	M	MH	Majdel Baana	L	M	MH	Mansourieh et Ain El	ML	M	MH
Mazraat El-Nahr	ML	M	MH	Mchakhte	L	M	MH	Mecherfeh	L	M	MH
Mejdaya	M	M	MH	Mrayjat	L	M	MH	Ramliyah	L	M	MH
Rechmaya	ML	M	MH	Rejmeh	ML	M	MH	Remhala	M	M	MH
Rouaysset El Neemane	ML	M	MH	Saoufar	L	M	MH	Selfaya	M	M	MH
Sirhmoul	M	M	MH	Souq El Ghareb	M	M	MH	Taazanieh	ML	M	MH

## Kesrouane

Municipality	16-Dec	17-Dec	18-Dec	Municipality	16-Dec	17-Dec	18-Dec	Municipality	16-Dec	17-Dec	18-Dec
Achkout	L	M	MH	Adma Oua Dafneh	M	M	MH	Ain Ed-Delbe Kesroua	L	M	M
Ain El-Rihane	M	M	MH	Aintoura Kesrouane	M	M	MH	Ajaltoun	M	M	MH
Akaybeh Kesrouane	M	M	MH	Aramoun Kesrouane	M	M	MH	Azra ouel Ozor	ML	M	MH
Ballouneh	M	M	MH	Batha	M	M	MH	Bekaatat Achkout	L	M	MH
Bekaatat Kanaan	L	M	M	Bizhel	M	M	MH	Bouar	M	M	MH
Bqaatouta	L	M	MH	Bqaq Ed-Dine	M	M	MH	Bzommar	M	M	MH

Chahtoul	L	M	MH	Chnaniir	M	M	MH	Chouan	ML	M	M
Daraya Kesrouane	ML	M	MH	Darououn	M	M	MH	Deir Baqlouch	M	M	MH
Dlebta	ML	M	MH	Eghbeh	L	M	M	Faraya	L	M	MH
Fatka	M	M	MH	Feytroun	L	M	M	Ghazir	M	M	MH
Ghbaleh Kesrouane	ML	M	MH	Ghedrass	M	M	M	Ghosta	M	M	MH
Ghynéh	ML	M	MH	Harharaya w Kattine	ML	M	MH	Harissa Kesrouane	M	M	H
Hayata	L	M	MH	Hosein	ML	M	M	Hrajel	L	M	MH
Jdeideh Ghazir	M	M	MH	Jeita	M	M	MH	Jounieh Ghadir	M	M	MH
Jounieh Haret Sakhr	M	M	MH	Jounieh Salel Alma	M	M	MH	Jounieh Sarba	M	M	MH
Jouret Bedrane	ML	M	MH	Jouret Mhad	L	M	MH	Jouret Termos	ML	M	MH
Kfar Debiane	L	M	MH	Kfar Tay Kesrouane	L	M	MH	Kfar Yassine	M	M	MH
Kfour Kesrouane	M	M	MH	Kharayeb Nahr Ibrahi	M	M	MH	Klayaat Kesrouane	ML	M	MH
Maarab	M	M	MH	Maaysra Kesrouane	M	M	MH	Mayrouba	L	M	MH
Mazraat Er-Ras	M	M	MH	Mazraat Mrah El-Mir	ML	M	MH	Mchaa El Ftouh	L	M	MH
Mchaa Faraya	L	M	MH	Mchaa Kfar Dibiane	L	M	MH	Mghaer	L	M	M
Mradiyah	M	M	MH	Nahr Ed-Dahab	L	M	M	Nammoura Kesrouane	M	M	MH
Ouata El Jaouz	L	M	M	Ouata Sillam	M	M	MH	Raachine	L	M	MH
Rayfoun	ML	M	MH	Safra Kesrouane	M	M	MH	Shayle Kesrouane	M	M	MH
Tabarja	M	M	MH	Yahchouch	ML	M	MH	Zaaytreh	M	M	MH
Zeytoun	M	M	MH	Zouk Mikael	M	M	MH	Zouk Mosbeh	M	M	MH

## Baalbek\_Hermel

### Baalbek

Municipality	16-Dec	17-Dec	18-Dec	Municipality	16-Dec	17-Dec	18-Dec	Municipality	16-Dec	17-Dec	18-Dec
Aadous	M	M	MH	Aamchki	M	M	M	Aarsal	M	M	MH
Ain Baalbek	ML	M	M	Ain Bourday	M	M	MH	Ain El-Benye	M	M	MH
Ain El-Jaouz Baalbek	ML	M	MH	Ain El-Siya Chadoura	M	M	M	Al Khodr Baalbek	M	M	MH
Al Nabi Chit	M	M	MH	Aynata Baalbek	ML	M	MH	Baalbek	M	M	MH
Bachwat	M	M	M	Barqa	M	M	M	Bednayel Baalbak	ML	M	MH
Beit Chama	M	M	MH	Bijjaje	ML	M	M	Bouday	M	M	M
Brital	M	M	MH	Btadi	ML	M	MH	Chaat	M	M	M
Chaibe	M	M	MH	Chlifa	M	M	MH	Chmestar	M	M	MH
Dar El-Oussa	M	M	M	Deir El-Ahmar	ML	M	M	Deir Mar Maroun Baal	ML	M	MH
Douris	M	M	MH	Fakiha	ML	M	MH	Hadath Baalbek	M	M	MH
Ham	M	M	MH	Haour Taala	M	M	MH	Hizzine	M	M	MH
Hlebta	M	M	MH	Hosh Barada	M	M	MH	Hosh El Dahab	M	M	MH
Hosh El Snid	M	M	MH	Hosh El-Nabi	M	M	MH	Hosh El-Rafiq	M	M	MH
Hosh Tal Safiya	M	M	MH	Hrebta	M	M	M	laat	M	M	MH
Jebaa	M	M	MH	Jenta	M	M	MH	Kfar Dabach	M	M	MH
Kfar Dane	M	M	MH	Khraibeh El-Hermel	ML	M	M	Khreibet Baalbek	M	M	MH
Kneisset Baalbek	M	M	MH	Labueh	ML	M	M	Maarboun	M	M	MH
Majdaloun	M	M	MH	Maqneh	M	M	MH	Mazraat Beit Mcheik	M	M	MH
Misraya	M	M	MH	Moqraq	ML	M	M	Nabha El-Damdoum	M	M	MH
Nabi Chbay	M	M	MH	Nabi Osman	ML	M	MH	Nahleh baalbek	M	M	MH
Ouadi El-Oss	M	M	M	Qaa Baayoun	ML	M	MH	Qaa Jouar Maqiye	ML	M	MH
Qaa Ouadi El-Khanzir	M	M	MH	Qah Baalbek	ML	M	MH	Qarha Baalbek	M	M	M



Qsarnaba	M	M	MH	Ram Baalbek	M	M	MH	Ras Baalbek El Sahl	ML	M	MH
Ras Baalbek El-Charq	ML	M	MH	Riha	M	M	MH	Saaide	M	M	MH
Sbouba	ML	M	M	Seriine El-Tahta	M	M	MH	Slouqi	M	M	MH
Taiba Baalbek	M	M	MH	Talia	M	M	MH	Taraiya	M	M	MH
Temnin El Fawqa	M	M	MH	Temnin El-Tahta	M	M	MH	Tfail	ML	M	MH
Yahfoufa	M	M	MH	Yammouneh	ML	M	MH	Younine	M	M	MH
Zboud	ML	M	M								

## Hermel

Municipality	16-Dec	17-Dec	18-Dec	Municipality	16-Dec	17-Dec	18-Dec	Municipality	16-Dec	17-Dec	18-Dec
Charbine El-Hermel	M	M	MH	Hermel Jbab	M	M	MH	Hermel	M	M	MH
Maaysra El-Hermel	ML	M	M	Michaa Mrajhine	M	M	MH	Ouadi Faara	M	M	MH
Ras Baalbek - Ouadi	M	M	MH	Ras Baalbek El Gharb	M	M	MH	Zighrine	M	M	MH

## Akkar

### Akkar

Municipality	16-Dec	17-Dec	18-Dec	Municipality	16-Dec	17-Dec	18-Dec	Municipality	16-Dec	17-Dec	18-Dec
Aain Tinta	M	M	MH	Aaiyat	M	M	MH	Aakkar El-Aatiqa	M	M	M
Aamar Akkar	M	M	MH	Aamar El Baykat	M	M	MH	Aamayer	M	M	MH
Aamriyet Akkar	M	M	MH	Aandqet	M	M	MH	Aarmeh	M	M	H
Aarqa	M	M	MH	Aawaynat	M	M	MH	Aayoun Akkar	M	M	MH
Abbdouiyeh	M	M	MH	Ain El-Zeit	M	M	MH	Ain Yaaqoub	M	M	MH
Akroum	ML	M	M	Aridet Cheikh Zennad	M	M	H	Baldech w Mazraat Bal	M	M	MH
Barcha	M	M	MH	Bardeh	M	M	MH	Bebnine	M	M	MH
Beino	M	M	MH	Beit Ayoub	M	M	MH	Beit El-Haouch	M	M	H
Beit Mellat	M	M	MH	Beit Younes	M	M	MH	Berbara Akkar	M	M	MH
Berqayel	M	M	MH	Bezbinah	M	M	M	Bireh Akkar	M	M	MH
Borj	M	M	H	Bqerezla	M	M	MH	Bzal	M	M	MH
Chane	M	M	MH	Chaqdouf	M	M	H	Charbila	M	M	MH
Cheikh Mohammad	M	M	MH	Cheikh Taba Es-Sahl	M	M	MH	Cheikh Taba	M	M	H
Cheikh Zennad	M	M	MH	Cheikhlar	M	M	MH	Chir Hmairine	M	M	MH
Daghle	M	M	MH	Dahr Laissine	M	M	MH	Darine	M	M	MH
Dawra	M	M	MH	Dawsa w Baghdadi	M	M	MH	Dayret Nahr El-Kabir	M	M	MH
Deir Dalloum	M	M	MH	Deir Jennine	M	M	MH	Denbou	M	M	MH
Dibbbiyeh	M	M	MH	Douair Aadwiyeh	M	M	MH	Fassikine	M	M	MH
Fnaydek	M	M	MH	Fraydes Akkar	M	M	MH	Ghazayle	M	M	MH
Habchit	M	M	MH	Hakour	M	M	MH	Halba	M	M	MH
Haouchab	M	M	H	Hayssat	M	M	MH	Haytla	M	M	MH
Hayzouq	M	M	MH	Hedd	M	M	MH	Hmaira Akkar	M	M	MH
Hmaiss Akkar	M	M	MH	Hnaider	M	M	MH	Hokr Ed-Dahri	M	M	MH
Hokr Etti	M	M	MH	Hokr Jouret Srar	M	M	MH	Houaich	M	M	MH
Hrar	M	M	MH	Idbil	M	M	MH	Ilal	M	M	MH
Janine	M	M	MH	Jdeidet El-Joumeh	M	M	H	Jdeidet El-Kaiteh	M	M	MH
Jebayel	M	M	MH	Kafr	M	M	MH	Kafr	M	M	MH
Karm Asfour	M	M	MH	Kfar Melki Akkar	M	M	MH	Kfar Noun	M	M	MH
Kfarharra	M	M	MH	Khalsa	ML	M	MH	Kharnoubet Akkar	M	M	MH

Khirbet Daoud Aakkar	M	M	MH	Khirbet El Remmane	M	M	MH	Khirbet Shar	M	M	MH
Khoreybet El-Jindi	M	M	MH	Khreibet Aakkar	M	M	MH	Kneisset Aakkar	M	M	MH
Kneisset Hnaider	M	M	M	Knisse	M	M	MH	Kroum El-Aarab	M	M	MH
Kwachra	M	M	MH	Kweykhath	M	M	MH	Machta Hammoud	M	M	MH
Majdala	M	M	MH	Majdel Akkar	M	M	MH	Mar Touma	M	M	MH
Marlaya Melhem	M	M	MH	Mashha	M	M	MH	Massoudiye	M	M	MH
Mazraat Beit Ghattas	M	M	MH	Mazraat En-Nahriye	M	M	MH	Mechmech	M	M	MH
Memneh	M	M	M	Mhammara	M	M	MH	Mighraq Aakkar	M	M	MH
Minyara	M	M	MH	Moqayteh	M	M	MH	Mounjez	M	M	MH
Msalla	M	M	MH	Mzeihmeh	M	M	MH	Nfaiseh	M	M	MH
Noura Et-Tahta	M	M	MH	Ouadi El-Haour	M	M	MH	Ouadi El-Jamous	M	M	MH
Ouyoun El-Ghizlane	M	M	MH	Qaabarine	M	M	MH	Qabaait	M	M	MH
Qachlaq	M	M	MH	Qantara Aakkar	M	M	MH	Qarha Aakkar	ML	M	M
Qarqaf	M	M	MH	Qboula	M	M	MH	Qleiaat Aakkar	M	M	MH
Qloud El-Baqie	M	M	MH	Qobaiyat Aakkar	M	M	M	Qobbat Chamrat	M	M	MH
Qorayat	M	M	MH	Qornet Aakkar	M	M	MH	Qsair Aakkar	M	M	MH
Rahbe	M	M	MH	Rihaniyet Aakkar	M	M	MH	Rmah	M	M	MH
Rmoul	M	M	MH	Saadine	M	M	MH	Sadaqa	M	M	MH
Saidnaya	M	M	MH	Sammouniye	M	M	MH	Sayssoq	M	M	MH
Semmaqiye	M	M	MH	Semmaqli	M	M	MH	Sfinet El-Dreib	M	M	MH
Sfinet El-Qaitaa	M	M	MH	Sindyanet Zeidane	M	M	MH	Souaisset Aakkar	M	M	MH
Srar	M	M	MH	Tal Abbas El Gharby	M	M	MH	Tal Abbas El-Chargy	M	M	MH
Tal Biret	M	M	MH	Tal Hmayra	M	M	MH	Tal Maayan Tal Kiri	M	M	MH
Tal Sibel	M	M	MH	Tallet Chattaha	M	M	MH	Tikrit	M	M	MH
Tleil	M	M	MH	Tshea	M	M	M	Zawarib	M	M	MH
Zouq El Hosniyeh	M	M	MH	Zouq El-Haddara	M	M	MH	Zouq El-Hbalsa	M	M	MH
Zouq El-Moqachrine	M	M	H								

## Sud

### Sour

Municipality	16-Dec	17-Dec	18-Dec	Municipality	16-Dec	17-Dec	18-Dec	Municipality	16-Dec	17-Dec	18-Dec
Aaiyeh	ML	M	MH	Aalma El-Chaab	ML	M	MH	Aaytit	M	MH	MH
Abbassiyeh Sour	M	MH	MH	Abou Chech	ML	M	MH	Ain Abou Abdallah	M	MH	MH
Ain Baal	ML	MH	MH	Arzoun	M	MH	MH	Aziyeh	ML	M	MH
Baflaya	M	MH	MH	Barich	M	MH	MH	Batouliyeh	ML	MH	MH
Bayad	ML	M	MH	Bazouriyeh	M	MH	MH	Bediass	M	M	MH
Bestiyat	M	MH	H	Borj El Chemali	M	MH	MH	Borj En-Naqoura	M	M	MH
Borj Rahhal	M	MH	MH	Boustane	ML	M	MH	Btaychiyeh	ML	M	MH
Chaaitiye	ML	MH	MH	Chameh	ML	M	MH	Chehabiye	M	MH	MH
Chhour	M	M	H	Chihine	ML	M	MH	Debaal Sour	M	MH	MH
Deir Amess	ML	M	MH	Deir Kifa	M	MH	MH	Deir Qanoun El-Ain	ML	MH	MH
Deir Qanoun El-Naher	M	M	MH	Derdghaiya	M	MH	MH	Dhayra	ML	M	MH
Halloussiyeh	M	M	MH	Hamoul	ML	M	MH	Hanaouey	ML	MH	MH
Henniye	ML	M	MH	Hmairi Sour	M	M	MH	Iskandarouna Sour	ML	M	H
Jbal El Botom	ML	M	MH	Jebbin	ML	M	MH	Jennata	M	M	H
Jijim	ML	M	MH	Jouaiya	M	MH	MH	Kneisset Sour	ML	MH	H

Maarake	M	MH	MH	Maaroub	M	M	H	Majadel	M	MH	MH
Majdalzoun	ML	M	MH	Mansouri Sour	ML	M	MH	Marnba	M	M	MH
Marouahine	L	M	MH	Mazraat El-Zalloutiy	ML	M	MH	Mazraat Mechref	M	M	MH
Mazraat Tayr Semhat	M	M	MH	Mheilib	M	MH	MH	Neffakhiyeh	M	MH	MH
Niha Sour	M	MH	H	Ouadi Jilo	M	MH	MH	Qana	ML	M	MH
Qolaileh Sour	ML	M	MH	Rechknany	ML	M	MH	Rmadiyeh	ML	MH	MH
Selha Sour	M	MH	MH	Siddiqine	ML	M	MH	Sour	M	M	H
Srifa	M	MH	MH	Tayr Debbe	M	MH	H	Tayr Felsay	M	M	MH
Tayr Harfa	ML	M	MH	Touayri	ML	M	MH	Toura	M	M	MH
Yanouh Sour	M	MH	MH	Yarine	ML	M	MH	Zebqine	ML	M	MH

## Saida

Municipality	16-Dec	17-Dec	18-Dec	Municipality	16-Dec	17-Dec	18-Dec	Municipality	16-Dec	17-Dec	18-Dec
Aanqoun	M	MH	MH	Aaqtanit	M	MH	MH	Aarab Ej-Jall	M	M	MH
Aarab Tabbaya	M	MH	MH	Abra Saida	M	MH	MH	Adloun	M	M	MH
Adousiyeh	M	MH	MH	Ain-El-Deleb	M	MH	MH	Arzai	M	MH	MH
Babliyeh	M	MH	MH	Barty	M	M	MH	Bissariyeh	M	MH	MH
Bnaafoul	M	MH	MH	Bqosta	M	MH	MH	Bramiy --	M	MH	H
Daoudiyeh	M	MH	MH	Dareb El-Sim	M	MH	MH	Erkay	M	MH	MH
Ghassanieh	M	MH	H	Ghazieh	M	MH	MH	Hajjeh	M	MH	MH
Haret Saida	M	MH	MH	Hartiyeh	M	M	MH	Hlaliye Saida	M	MH	MH
Insariyat	M	M	MH	Jazira Saida	M	MH	MH	Kafar Bit	M	M	MH
Kaoutariyet El-Siyad	M	MH	MH	Kfar Chellal	M	M	MH	Kfar Hatta Saida	M	M	MH
Kfar Milke Saida	M	M	MH	Khartoum	M	MH	MH	Khaziz	M	MH	MH
Khirbet Ed-Douair Sa	M	MH	MH	Khirbet El-Bassal	M	MH	MH	Khrayeb Saida	M	M	MH
Loubieh	M	M	MH	Maghdouche	M	MH	MH	Majdelyoun	M	MH	H
Matariyet El-Choumar	M	MH	H	Matayriyeh	M	MH	H	Mazraat 'Mseileh	M	MH	MH
Mazraat 'Snaiber	M	MH	MH	Mazraat Aarab Soukka	M	M	MH	Mazraat Deir Taqla	M	M	MH
Mazraat El Yahoudiye	M	M	MH	Mazraat El-Housseini	M	MH	MH	Mazraat El-Mhaydaleh	M	M	MH
Mazraat El-Ouasta	M	M	MH	Mazraat Jamjim	M	M	H	Mazraat Kaoutariyet	M	M	H
Mazraat Kfar Badda	M	M	H	Mazraat Oussamiyat	M	M	MH	Mazraat Sari	M	M	MH
Mazraat Sinai	M	MH	MH	Meemariyeh	M	MH	MH	Merouaniyeh	M	MH	MH
Miyeh ou Miyeh	M	MH	MH	Najjariyeh	M	MH	H	Qaaqaiyat El-Snaouba	M	MH	MH
Qnarit	M	MH	MH	Qraiye Saida	M	MH	MH	Saida Ed-Dekermane	M	MH	MH
Saida El-Oustani	M	MH	MH	Saida El-Qadimeh	M	MH	MH	Saida Kefraya	M	M	MH
Saksakiyeh	M	M	MH	Salhie Saida	M	MH	H	Sarafand	M	MH	MH
Sfenta	M	M	MH	Tafahta	M	MH	H	Tanbourit	M	MH	MH
Tebna	M	MH	MH	Zaghdraiya	M	MH	MH	Zeita	M	MH	MH
Zrariyeh	M	M	MH								

## Jezzine

Municipality	16-Dec	17-Dec	18-Dec	Municipality	16-Dec	17-Dec	18-Dec	Municipality	16-Dec	17-Dec	18-Dec
Ain El-Mir (El Estab	M	M	MH	Anane	M	M	MH	Aramta	ML	M	MH
Ariya	ML	M	MH	Aychiyeh	ML	M	MH	Azour	ML	M	MH
Baba	ML	M	MH	Baysour Jezzine	M	M	MH	Benoueteh Jezzine	M	M	MH
Bhannine	ML	M	MH	Bisri	M	M	MH	Bkassine	ML	M	MH
Bouslaya	M	M	MH	Btedine El-Leqech	ML	M	MH	Chbail	L	M	M
Choualiq Jezzine	M	M	MH	Dahr Ed-Deir	M	M	MH	Deir El Qattine	ML	M	MH

Demachqiyeh	ML	M	MH	Ghabbatiyeh	M	M	MH	Harf Jezzine	M	M	MH
Hassaniyeh	M	M	H	Haytouleh	M	M	MH	Haytura	ML	M	MH
Hidab	ML	M	MH	Homsiyeh	ML	M	MH	Jabal Toura	ML	M	MH
Jarmaq	ML	M	MH	Jensnaya	M	M	MH	Jernaya	M	M	MH
Jezzine	ML	M	MH	Karkha	M	M	MH	Kfar Falous	M	M	MH
Kfar Houna	ML	M	MH	Kfar Jarrah	M	MH	MH	Lebaa	M	M	MH
Louayzet Jezzine	ML	M	MH	Machmouche	ML	M	MH	Mahmoudiyeh Jezzine	ML	M	MH
Maknounye Jezzine	ML	M	MH	Maraat Ouazaiyeh	M	M	MH	Mazraat Daraya	L	M	MH
Mazraat El-Aarqoub	ML	M	MH	Mazraat El-Mathane	M	M	MH	Mazraat El-Rahbane	ML	M	MH
Mazraat Khallet Khaz	L	M	MH	Mazraat Louzid (Loua	L	M	MH	Mazraat Qrouh	ML	M	MH
Mazraat Tamra	ML	M	MH	Mazraat Zighrine Jez	ML	M	MH	Mazraat	ML	M	MH
Mharbiyeh	M	M	MH	Midane Jezzine	ML	M	MH	Mjeydel Jezzine	M	MH	MH
Mlikh	ML	M	MH	Mrach El-Hbasse	M	M	MH	Ouadi Baanqoudaine	M	M	MH
Ouadi El-Laymoun	M	M	MH	Ouardiyeh	ML	M	M	Qabaa Jezzine	ML	M	MH
Qatrani	L	M	MH	Qaytouleh	ML	M	MH	Qtaleh Jezzine	M	M	MH
Rihane Jezzine	ML	M	MH	Rimat	M	M	MH	Roum	ML	M	MH
Roummanet	ML	M	MH	Sabbah	ML	M	MH	Saydoun	ML	M	MH
Sfaray	M	M	MH	Snaya	ML	M	MH	Sojoud	M	M	MH
Srayri	ML	M	MH	Taaid	M	M	MH	Wadi Jezzine	ML	M	MH
Zhalta	M	M	MH								

## Bekaa

### West Bekaa

Municipality	16-Dec	17-Dec	18-Dec	Municipality	16-Dec	17-Dec	18-Dec	Municipality	16-Dec	17-Dec	18-Dec
Aammiq BG	M	M	MH	Ain El Tineh BG	M	M	MH	Ain Zebdeh	M	M	MH
Ana	M	M	MH	Aytanit	M	M	MH	Baaloul BG	M	M	MH
Bab Mareh	M	M	MH	Chouberqiye Aammiq	M	M	MH	Dakoue	M	M	MH
Deir Ain El-Jaouze	M	M	MH	Deir Tahniche	M	M	MH	Ghaza	M	M	MH
Harime El-Soughra	M	M	MH	Hoch Harimeh	M	M	MH	Jazira BG	M	M	MH
Jib Jennine	M	M	MH	Kamed-El-Laouz	M	M	MH	Kefraya BG	M	M	MH
Khiara El Atika	M	M	MH	Khiara	M	M	MH	Khirbet Qanafar	ML	M	MH
Lala	M	M	MH	Lebbaya BG	M	M	MH	Loussa	M	M	MH
Machghara	M	M	MH	Manara (Hammar) BG	M	M	MH	Mansoura BG	M	M	MH
Marej BG	ML	M	MH	Maydoun	M	M	MH	Ouaqf BG	M	M	MH
Qaraaoun	M	M	MH	Qelya	M	M	MH	Raouda (Istabel)	ML	M	MH
Saghbine	M	M	MH	Sohmor	M	M	MH	Soltan Yacoub el Ara	M	M	MH
Souairy	M	M	MH	Sultan Yaacoub	M	M	MH	Tal Znoun	M	M	MH
Yehmor BG	M	M	MH	Zilaya	ML	M	MH				

### Zahle

Municipality	16-Dec	17-Dec	18-Dec	Municipality	16-Dec	17-Dec	18-Dec	Municipality	16-Dec	17-Dec	18-Dec
Aanjar (Haouch Mouss	ML	M	MH	Ablah	M	M	MH	Ain Kfarzabad	M	M	MH
Ali-El-Nahri	M	M	MH	Bar Elias	ML	M	MH	Bouarej	M	M	MH
Cheberqiyet Tabet	ML	M	MH	Chtaura	M	M	MH	Deir El Ghazal	M	M	MH
Delhamiyet Zahle	ML	M	MH	Ferzol	M	M	MH	Haouch El-Ghanam	M	M	MH
Haouch Es-Siyadeh	M	M	MH	Haouch Hala	M	M	MH	Haouch Mandara	M	M	MH

Haouch Qayssar	M	M	MH	Hezerta	ML	M	MH	Hosh Moussa	M	M	MH
Jdita	M	M	MH	Kfarzabad	M	M	MH	Ksara	ML	M	MH
Majdel Aanjar	M	M	MH	Makssi	M	M	MH	Massa	M	M	MH
Mazraat Er-Remtaniye	M	M	MH	Mrayjat Zahle	ML	M	MH	Mzaraa Zahle	M	M	MH
Nabi Ayla	M	M	MH	Nasriyet Rizk	M	M	MH	Nasriyet Zahle	M	M	MH
Niha Zahle	M	M	MH	Ouadi Ed-Deloum	ML	M	MH	Ouadi El-Arayech	M	M	MH
Qaa El Rim	M	M	MH	Qab Elias	M	M	MH	Qousaya	M	M	MH
Rhit	M	M	MH	Riyak	M	M	MH	Saadnayel	ML	M	MH
Taal El-Akhdar	M	M	MH	Taalbeya	ML	M	MH	Taanayel	ML	M	MH
Talamara	M	M	MH	Tcheflik Edde Haouch	M	M	MH	Tcheflik Qiqano	M	M	MH
Terbol Zahle	M	M	MH	Touaite Zahle	M	M	MH	Zahle Aradi	ML	M	MH
Zahle El-Berbara	M	M	MH	Zahle El-Maallaqa	ML	M	MH	Zahle El-Midane	ML	M	MH
Zahle Er-Rassiye	M	M	H	Zahle Haouch El-Ouma	ML	M	MH	Zahle Haouch El-Ouma	ML	M	MH
Zahle Haouch Ez-Zara	ML	M	MH	Zahle Maalqa Aradi	M	M	MH	Zahle Mar Antonios	ML	M	MH
Zahle Mar Elias	M	M	MH	Zahle Mar Gerios	M	M	MH	Zahle Saydet En-Naja	M	M	MH
Zebdoul	M	M	M								

## Rachaiya

Municipality	16-Dec	17-Dec	18-Dec	Municipality	16-Dec	17-Dec	18-Dec	Municipality	16-Dec	17-Dec	18-Dec
Ain Arab Rachaiya	M	M	MH	Ain Ata	M	M	MH	Ain Harche	M	M	MH
Aqabe Rachaya	M	M	MH	Ayha	M	M	MH	Ayta El Fokhar	M	M	MH
Bakifa Rachaya	M	M	MH	Bakka	M	M	MH	Beit Lahya	M	M	MH
Bireh Rachaiya	M	M	MH	Daher El Ahmar	M	M	MH	Deir El-Achayer	M	M	MH
Heloua Rachaiya	M	M	M	Hoch El Qannabeh Rac	M	M	MH	Kaoukaba Bou Arab	M	M	MH
Kfar Danis	M	M	MH	Kfar Mechki	M	M	MH	Kfar Qouq	M	M	MH
Kherbet Rouha	M	M	MH	Majdel Balhiss	M	M	MH	Mdoukha	M	M	MH
Mhaydseh Rachaiya	M	M	MH	Nabi Safa	M	M	MH	Rachaiya	M	M	MH
Rafid Rachaiya	M	M	MH	Selsata (Mazraat Dei	M	M	M	Tannoura	M	M	MH
Yanta	M	M	MH								

## Beyrouth

### Beyrouth

Municipality	16-Dec	17-Dec	18-Dec	Municipality	16-Dec	17-Dec	18-Dec	Municipality	16-Dec	17-Dec	18-Dec
Achrafieh	M	M	MH	Ain el-Mreisse	M	M	H	Bachoura	M	M	MH
Beirut Central Distr	M	M	MH	Marfai	M	M	MH	Mazraa	M	M	MH
Medaouar	M	M	MH	Minet el-Hosn	M	M	MH	Mwssaitbeh	M	M	MH
Ras Beirut	M	M	H	Rmeil	M	M	MH	Saifi	M	M	MH
Zqaq el-Blat	M	M	MH								