

Lebanon Fire Risk Bulletin



CIVIL DEDEFENCE

Refer to cadast table condition.

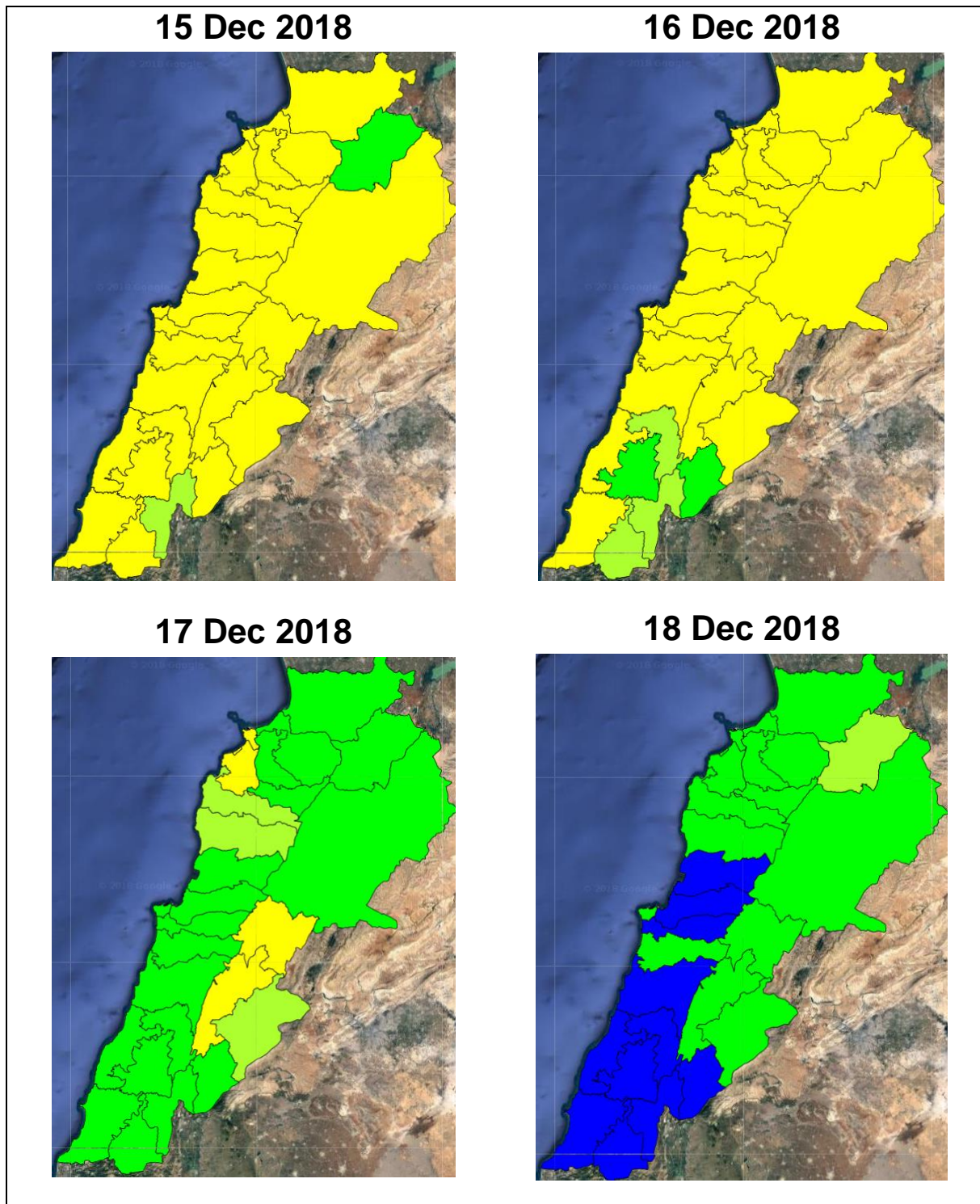
Please note that the indicated temperature is at 2 meters height from the ground.

General description of potential fire risk situation

Symbol	Level of risk	Meaning and actions
VL	Very low	Very low fire risk. Controlled burning operations can be hardly executed due to high fuel moisture content. Normally wildfires self-extinguish.
L	Low	Low fire risk. Controlled burning operations can be executed with a reasonable degree of safety.
ML	Medium low	Medium-low fire risk. Controlled burning operations can be executed in safety conditions. All the fires need to be extinguished.
M	Medium	Medium fire risk. Controlled burning operations would be avoided. All the fires need to be very well extinguished.
MH	Medium high	Controlled burning is not recommended. Open flame will start fires. Cured grasslands and forest litter will burn readily. Spread is moderate in forests and fast in exposed areas. Patrolling and monitoring is suggested. Fight fires with direct attack and all available resources.
H	High	Ignition can occur easily with fast spread in grass, shrubs and forests. Fires will be very hot with crowning and short to medium spotting. Direct attack on the head may not be possible requiring indirect methods on flanks. Patrolling and monitoring the territory is highly suggested.
E	Extreme	Ignition can occur also from sparks. Fires will be extremely hot with fast rate of spread. Control may not be possible during day due to long range spotting and crowning. Suppression forces should limit efforts to limiting lateral spread. Damage potential total. Patrolling and monitoring the territory is highly suggested.

Beirut, 16 December 2018

FIRE RISK INDEX

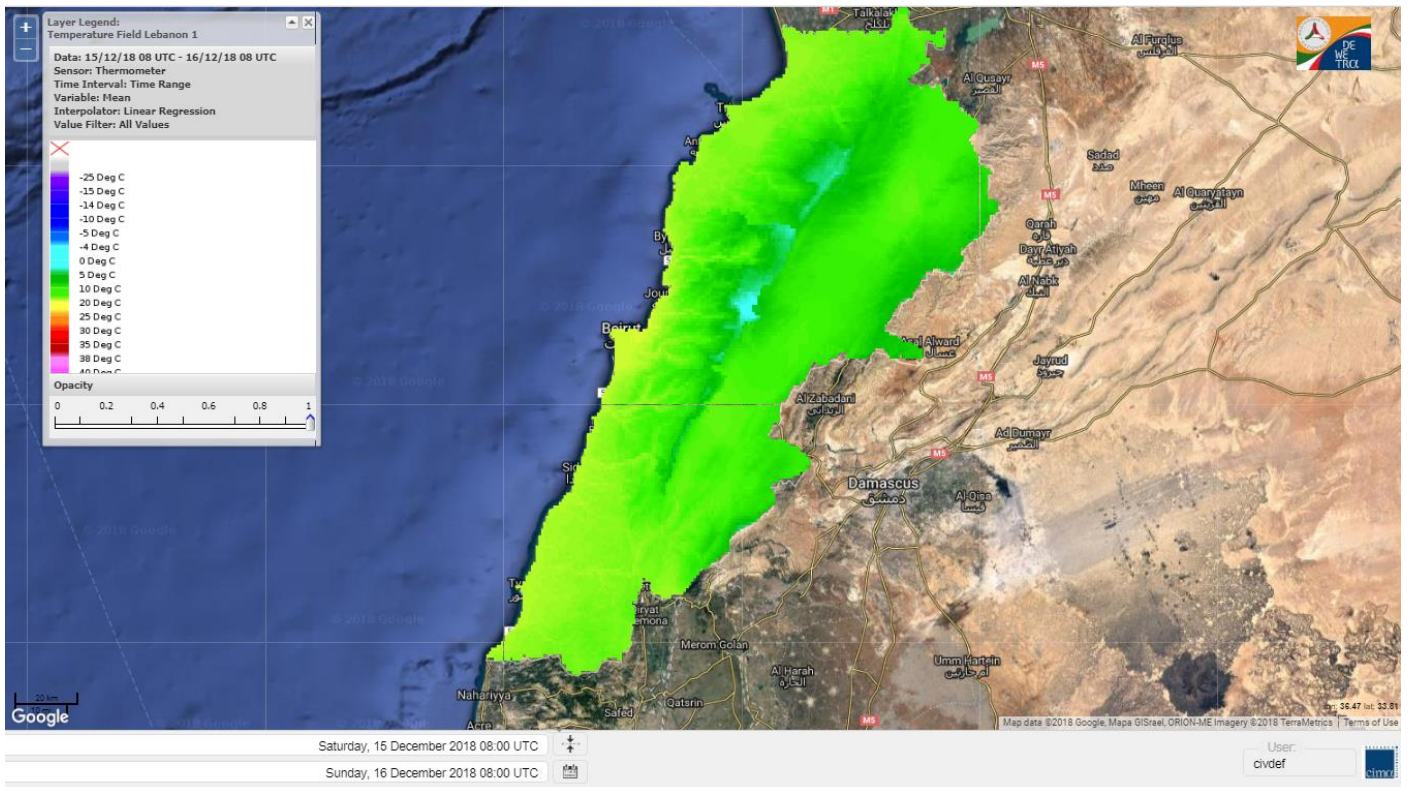


Layer Legend:
Lebanon Wildfire Risk Index 1

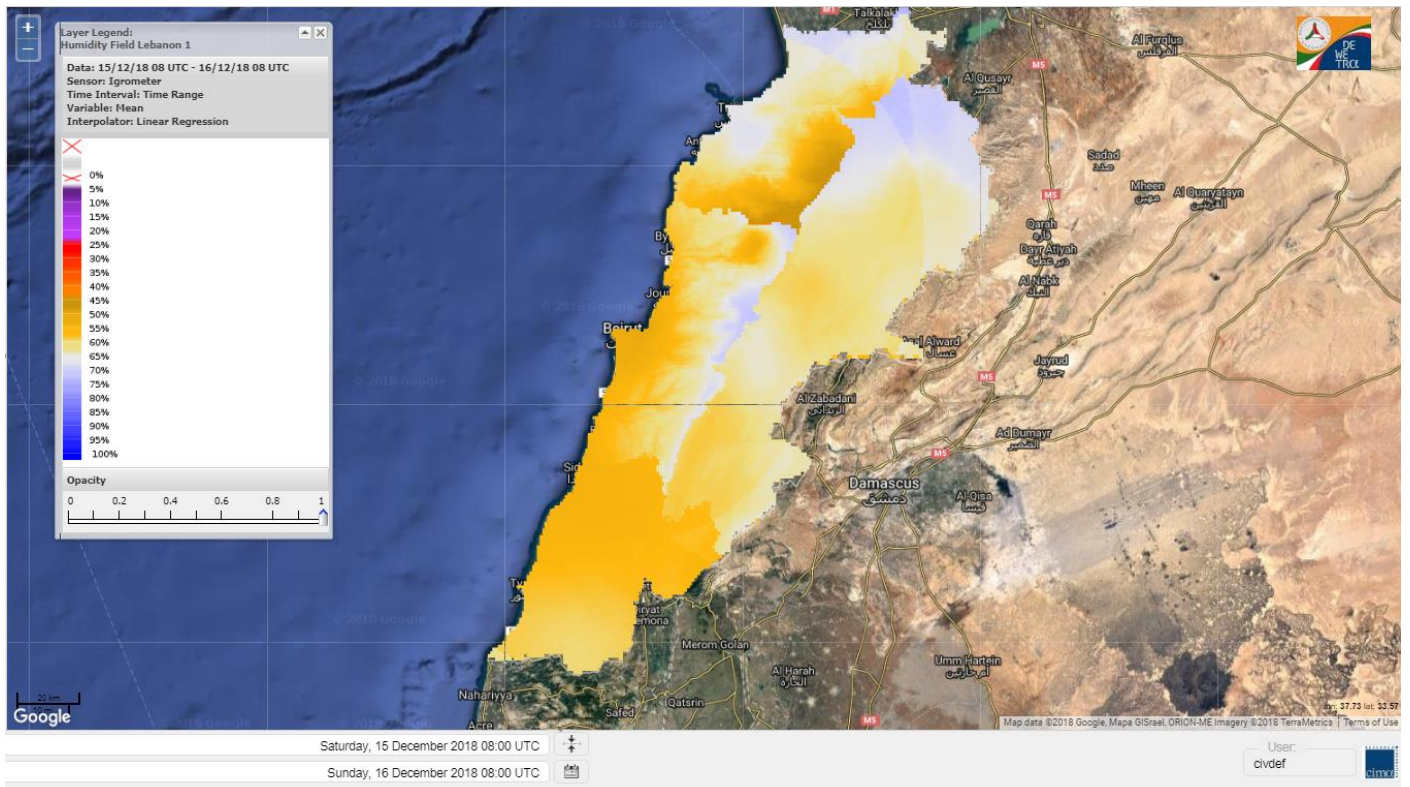
Data: Run: 16/12/2018 00:00. Forecast for 16
Model: RISICO for the Republic of Lebanon
Variable: Fire Weather Index
Spatial Resolution: Caza

- VERY LOW
- LOW
- MEDIUM-LOW
- MEDIUM
- MEDIUM-HIGH
- HIGH
- EXTREME

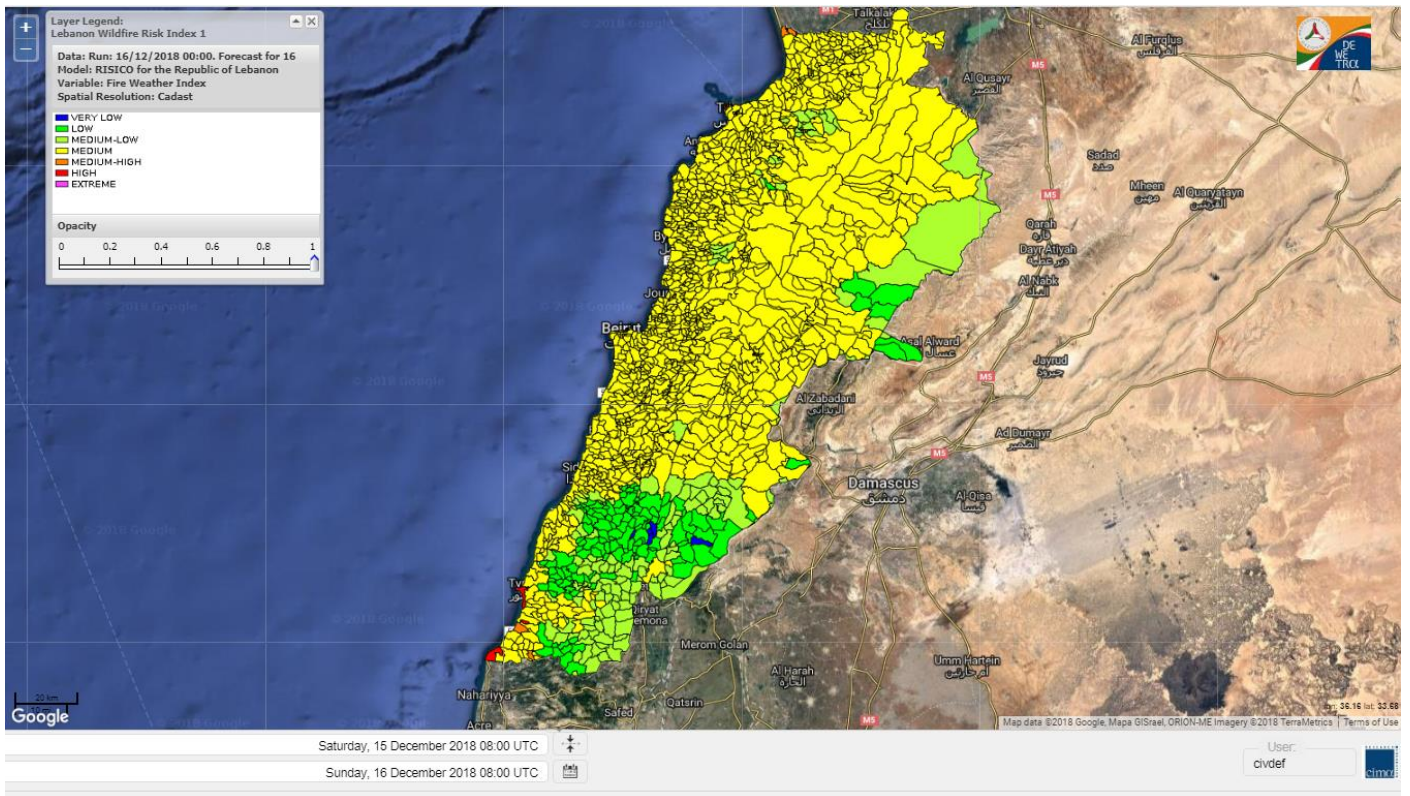
Lebanon temperature for 16 Dec 2018



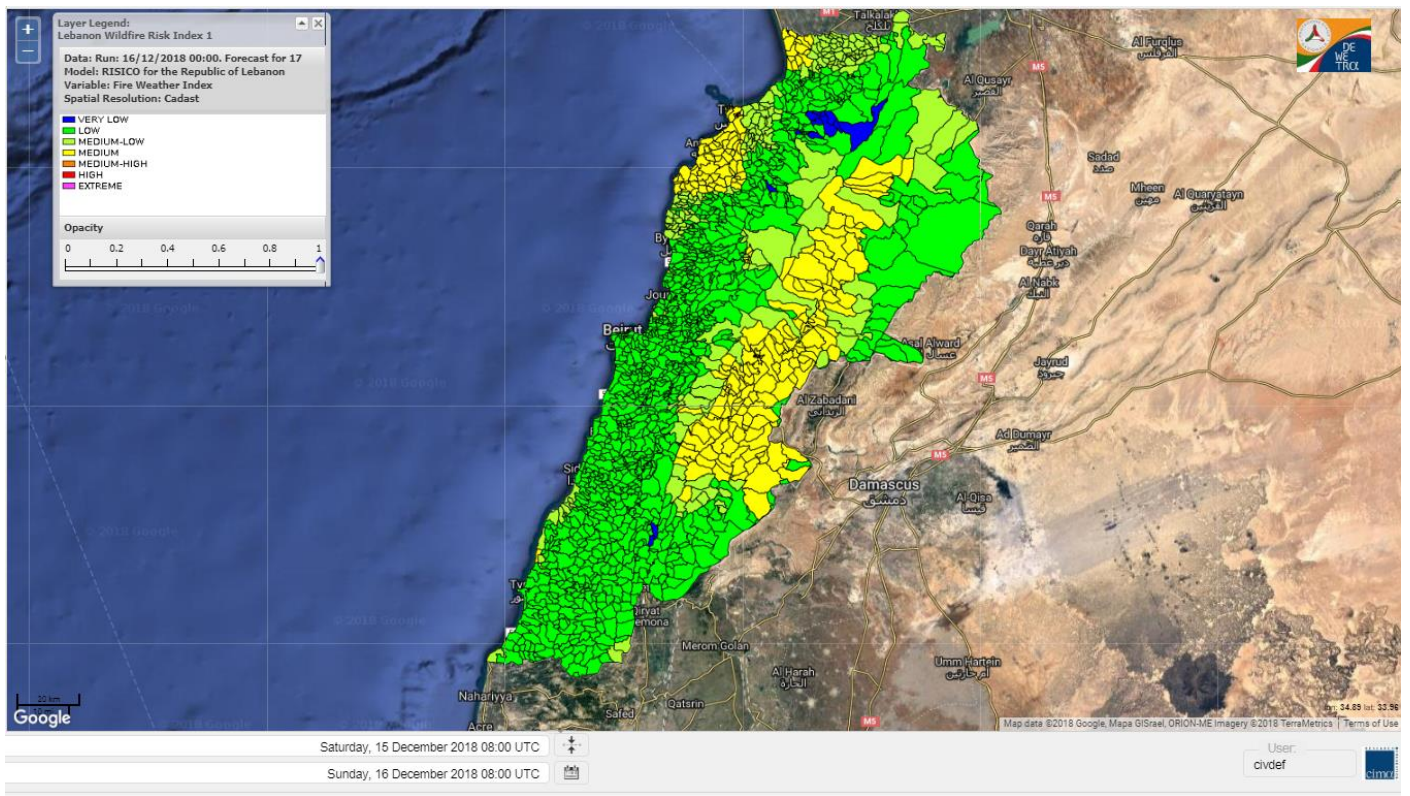
Lebanon humidity for 16 Dec 2018



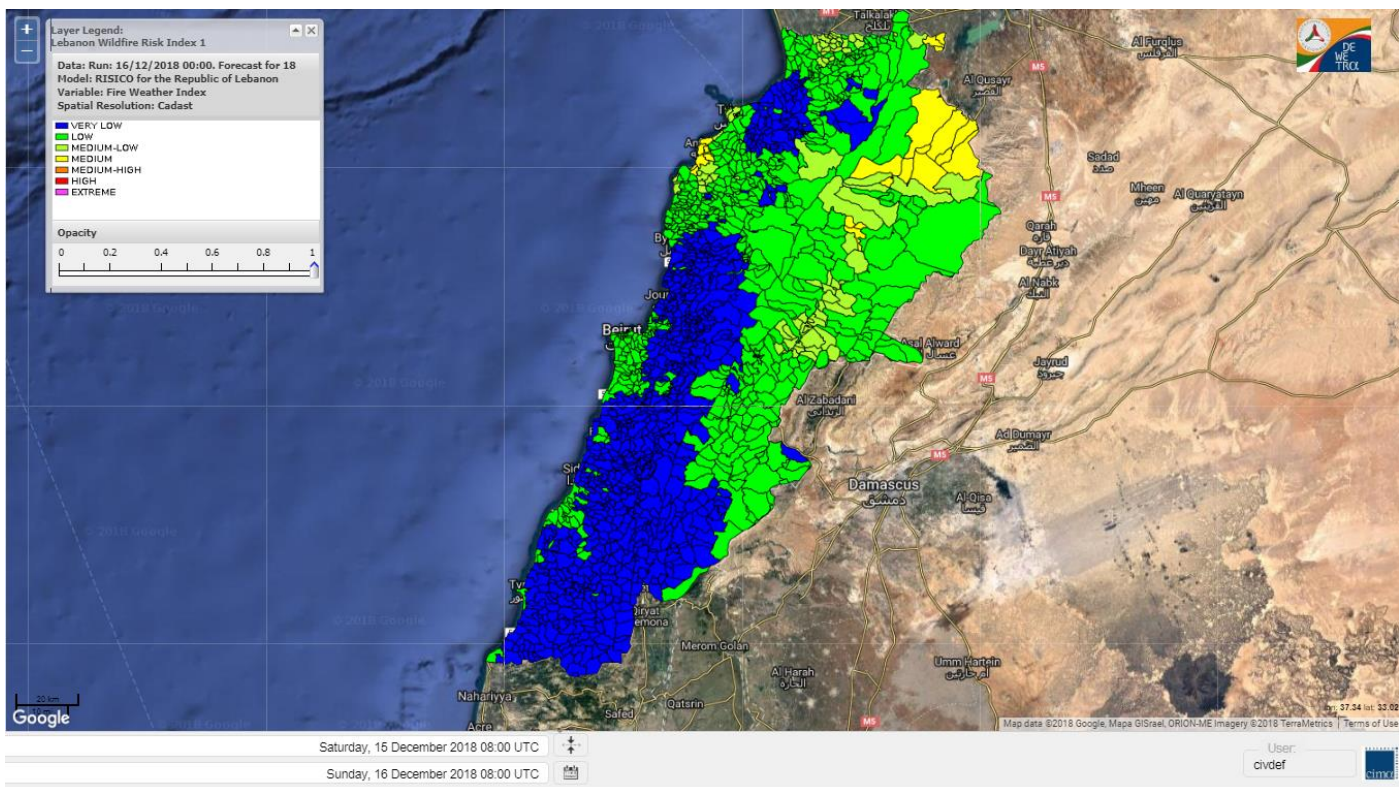
Lebanon for 16 Dec 2018



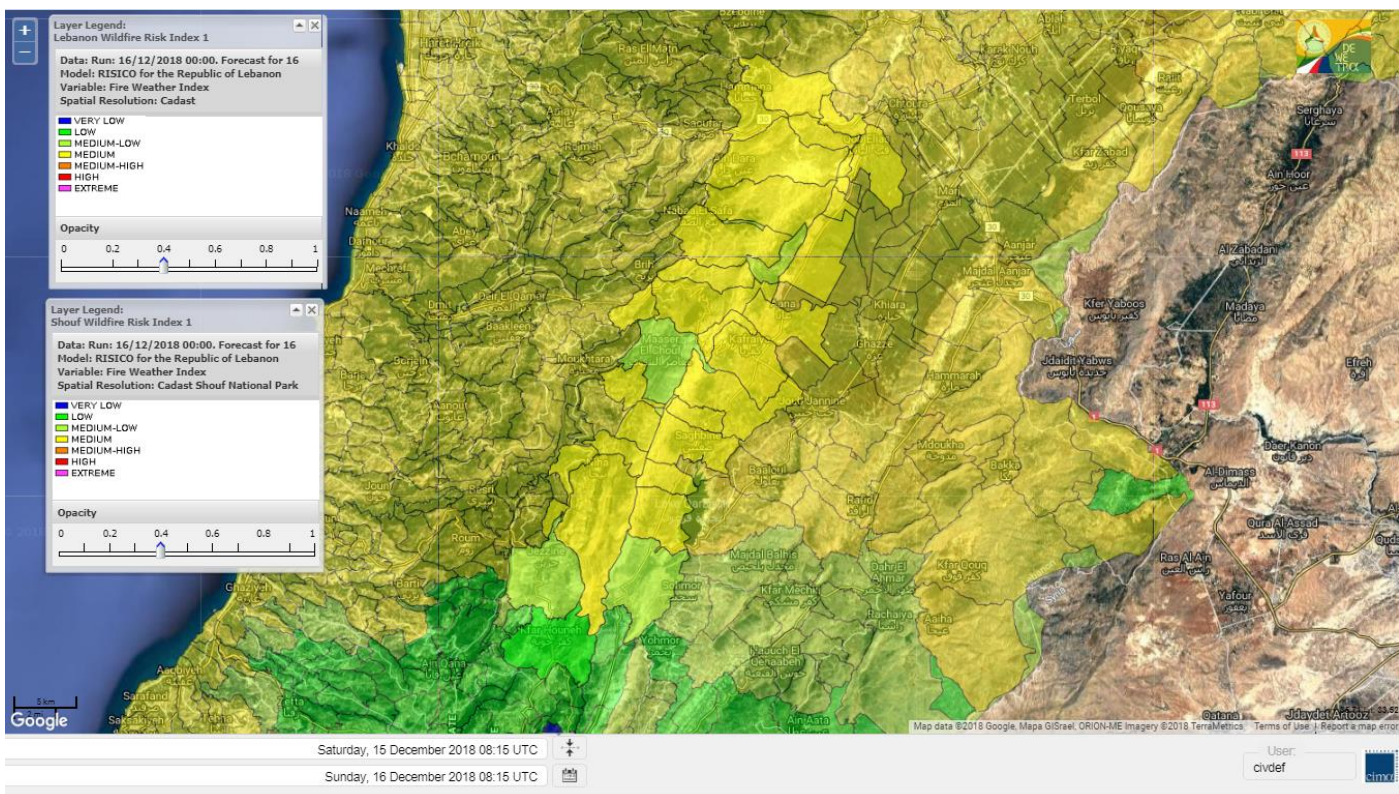
Lebanon for 17 Dec 2018



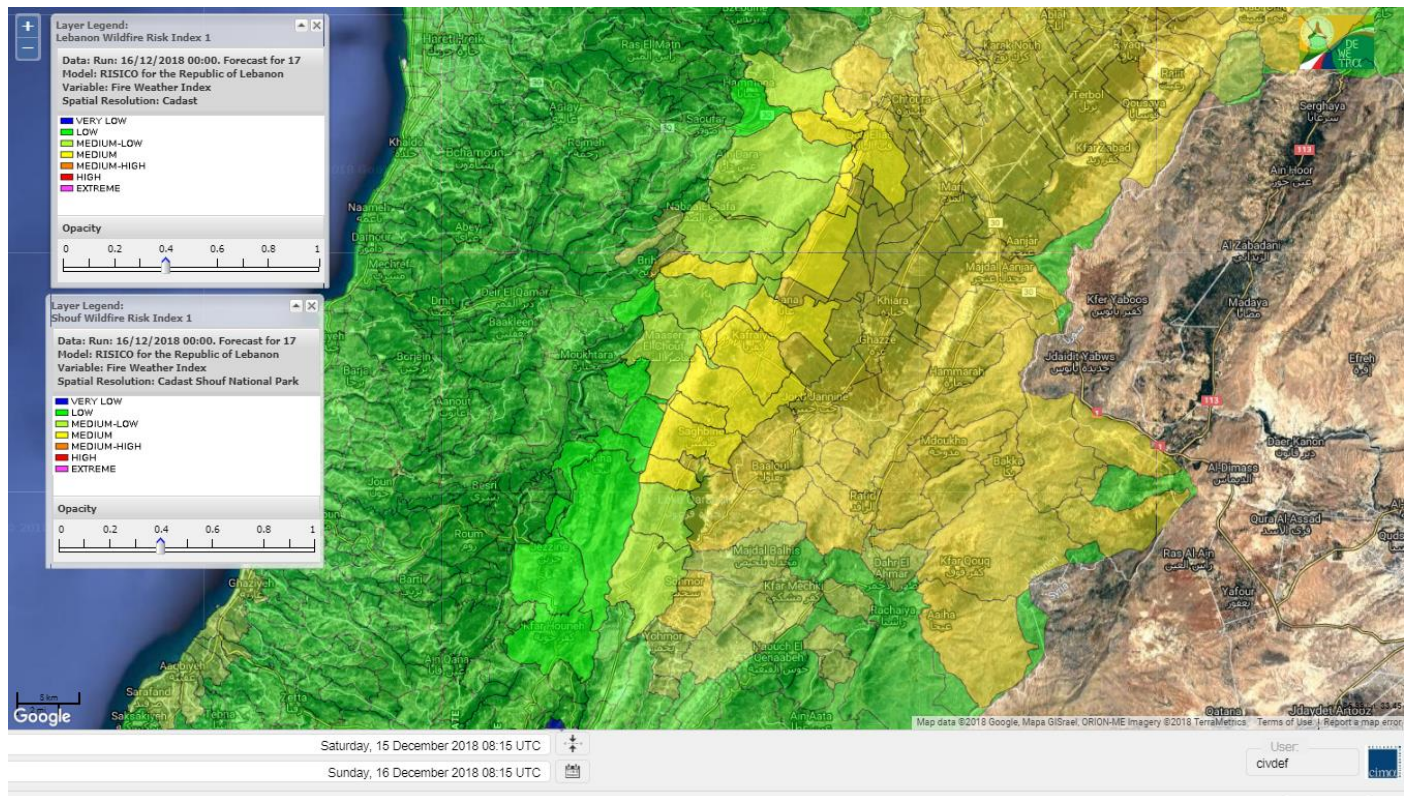
Lebanon for 18 Dec 2018



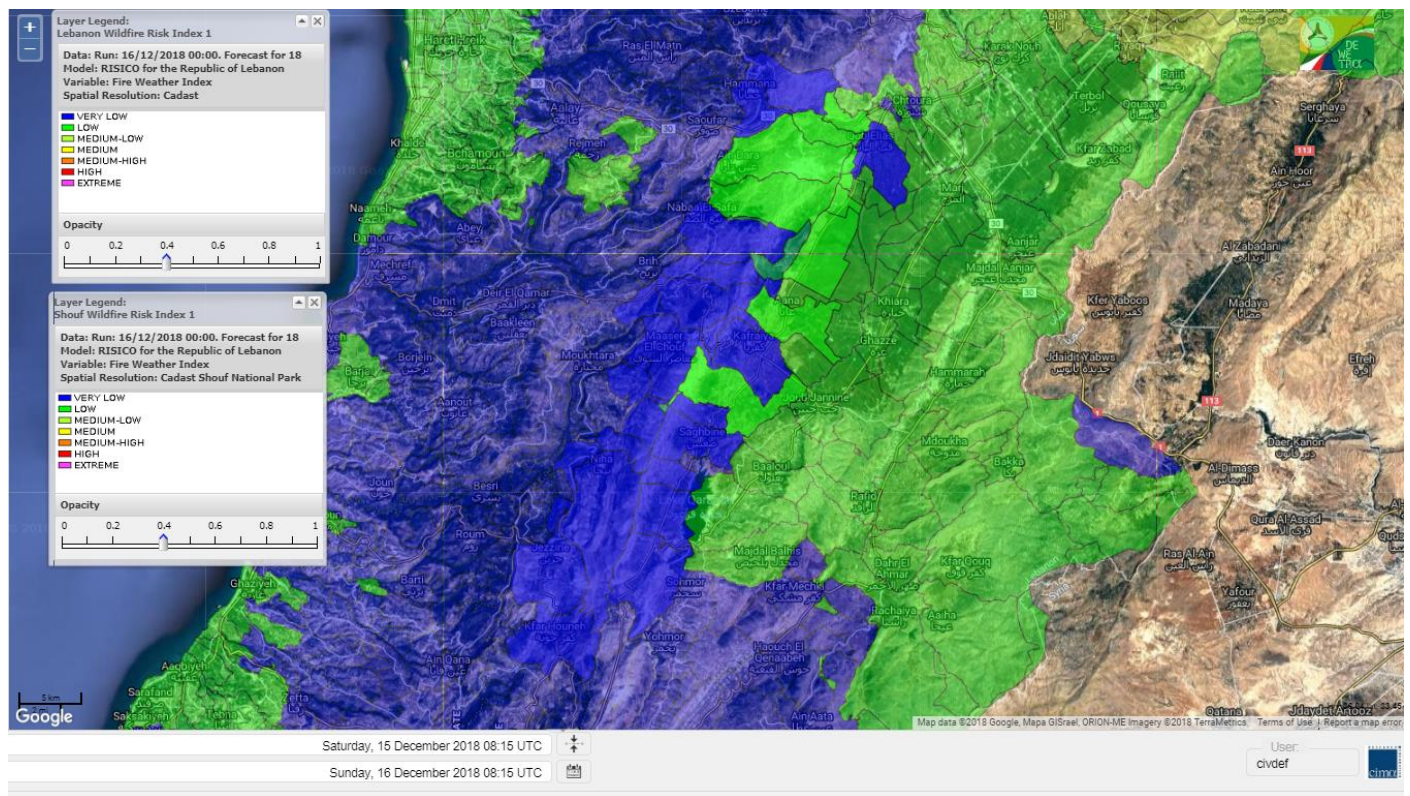
Shouf Biosphere Reserve Forecast for 16 Dec 2018



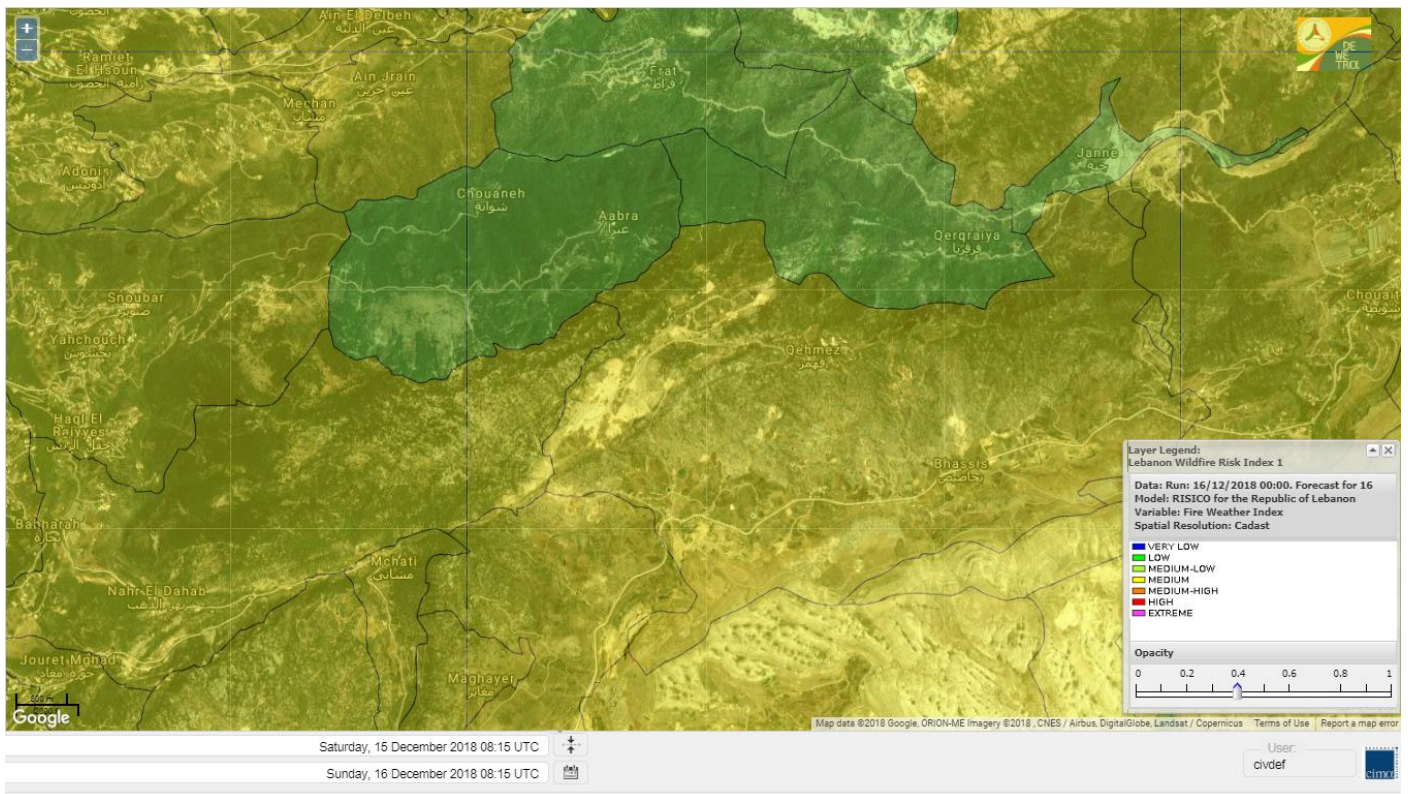
Shouf Biosphere Reserve Forecast for 17 Dec 2018



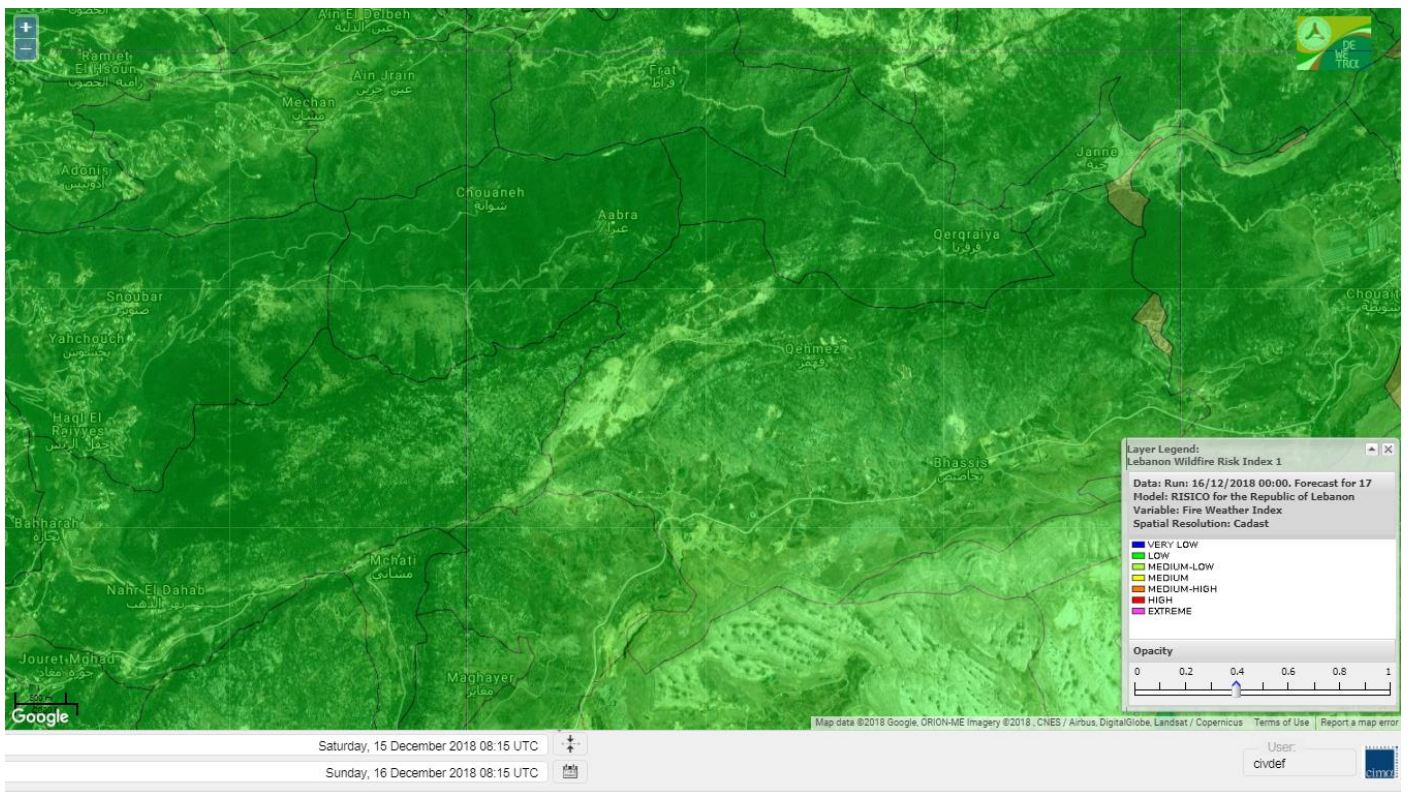
Shouf Biosphere Reserve Forecast for 18 Dec 2018



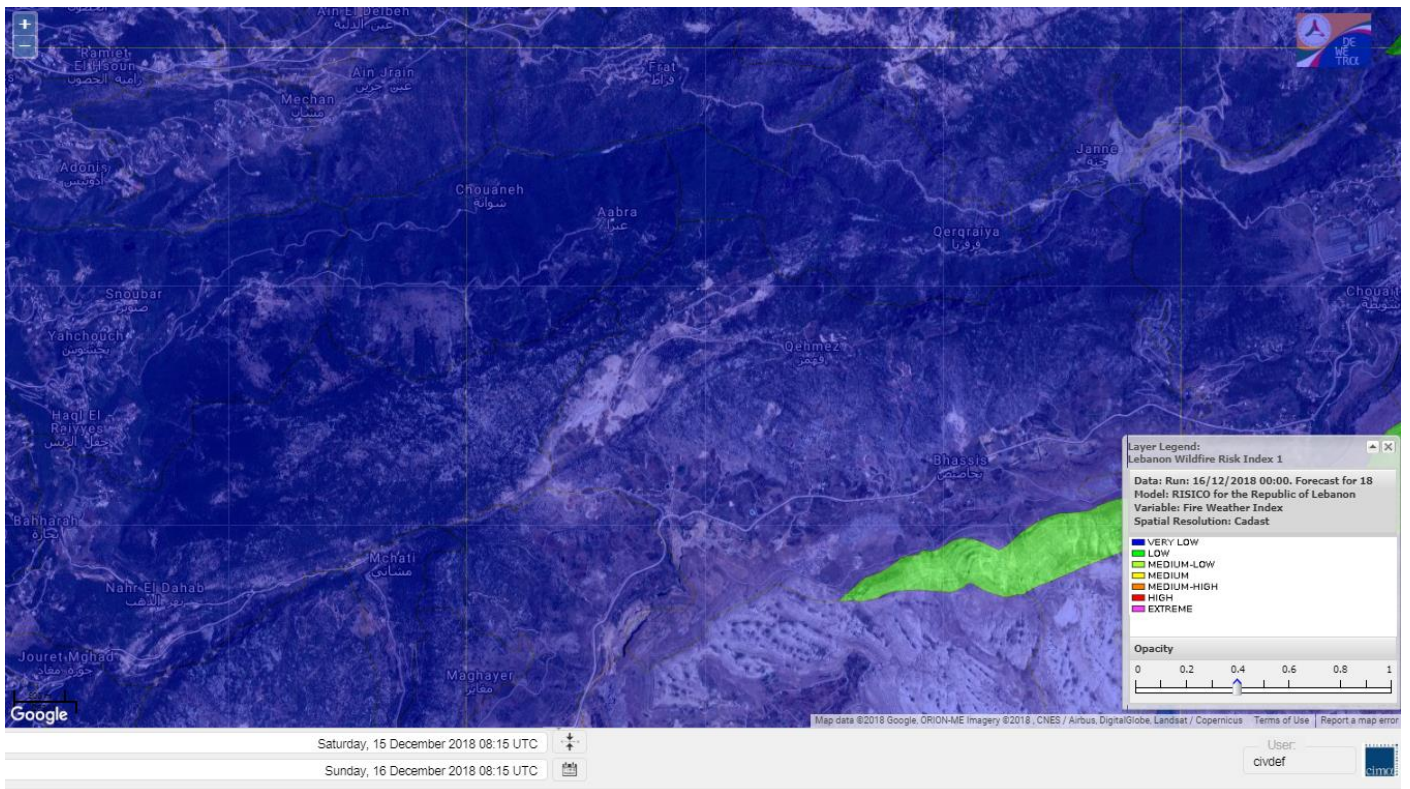
Jabal Moussa Reserve Forecast for 16 Dec 2018



Jabal Moussa Reserve Forecast for 17 Dec 2018



Jabal Moussa Reserve Forecast for 18 Dec 2018

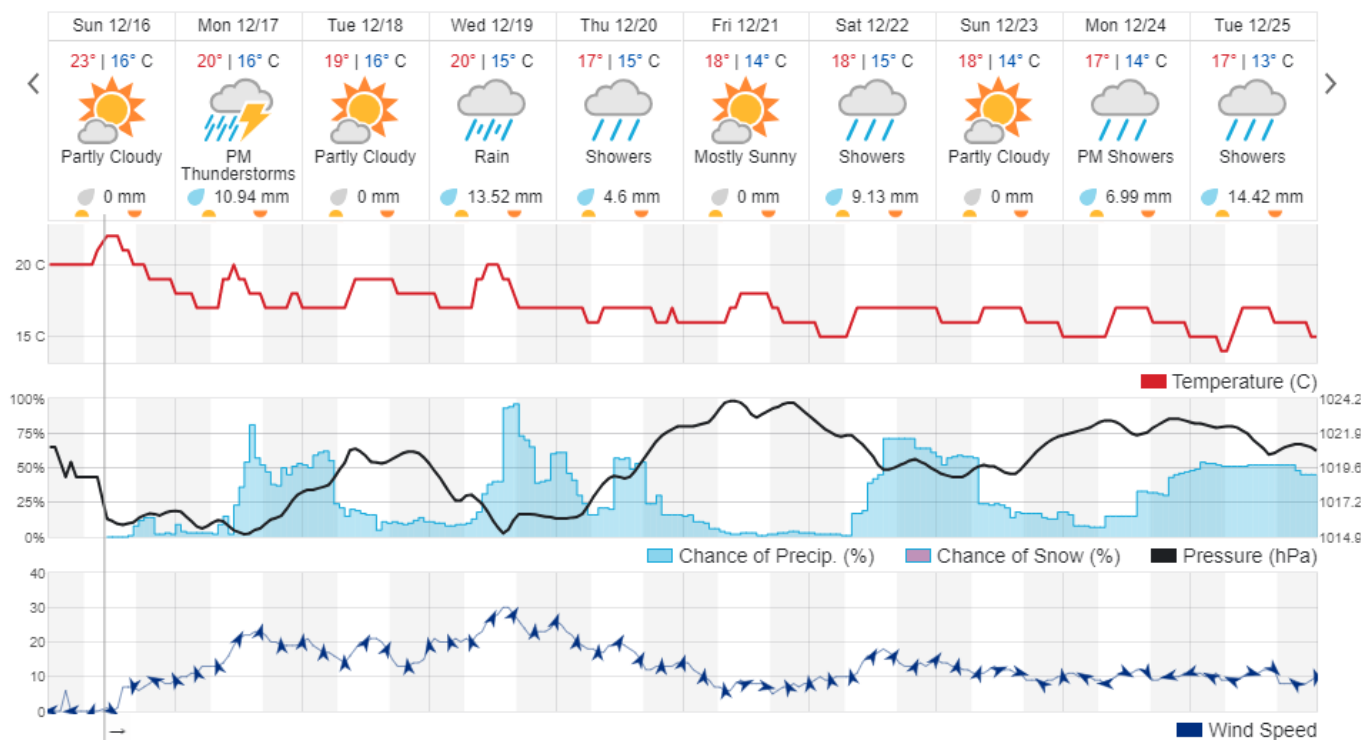


Beirut, Lebanon

22° ACHRAFIEH, RIZK STATION | REPORT | CHANGE

TODAY HOURLY 10-DAY CALENDAR HISTORY WUNDERMAP

Customize



Nord

Koura

Municipality	16-Dec	17-Dec	18-Dec	Municipality	16-Dec	17-Dec	18-Dec	Municipality	16-Dec	17-Dec	18-Dec
Aaba	M	M	L	Afsaddiq	M	M	L	Ain Ekriane	M	M	ML
Amioun	M	M	L	Anfeh	M	M	M	Badbhoun	M	M	M
Barghoun	M	M	ML	Barsa	M	M	L	Batroumine	M	M	L
Bdebba	M	M	L	Bechmizine	M	M	L	Bednayel El-Koura	M	M	ML
Bhabbouch El-Koura	M	M	L	Bkeftine	M	M	L	Bnehran	M	M	L
Bqaiia El-Koura	M	M	L	Bsarma	M	M	L	Btaaboura	M	M	ML
Bterram	M	M	L	Btouratij	M	M	L	Bziza	M	M	L
Dar Beechtar	M	M	L	Dar Chmezzine	M	M	ML	Deddeh	M	M	L
Deir El-Balamand	M	M	L	Fih	M	M	L	Hraiche	M	M	M
Ijdaabrine	M	M	ML	Kaftoun	M	M	L	Kefraya El-Koura	M	M	M
Kfarakka	M	M	L	Kfarhata	M	M	ML	Kfarhazir	M	M	ML
Kfarkahel	M	M	L	Kfarsaroun	M	M	L	Kosba	M	M	L
Mejdel el-Koura	M	M	L	Nakhle	M	M	L	Qalhat	M	M	L
Ras Masqa	M	M	L	Rechdibbine	M	M	L	Zakroun	M	M	M
Zgharta El-Mtaouile	M	ML	L								

Bcharre

Municipality	16-Dec	17-Dec	18-Dec	Municipality	16-Dec	17-Dec	18-Dec	Municipality	16-Dec	17-Dec	18-Dec
Aabdine	M	L	L	Bane	M	L	L	Barhelioun	M	L	L
Bazouone	M	L	L	Becharre	M	ML	L	Beit Menzer	M	L	L
Billa	M	L	L	Blaouza	M	L	L	Bqaa Kafra	M	L	L
Bqerqacha	M	L	L	Breissat	M	L	L	Dimane	M	L	VL
Hadath El Jobbeh	M	L	VL	Hadchit	ML	L	VL	Hasroun	M	L	L
Mazraat Aassaf	ML	L	VL	Mazraat Bani Saab	M	L	L	Mchaa El-Jobbeh	M	L	L
Metrit	M	M	L	Moghr El-Ahoual	M	L	L	Ouadi Qannoubine	L	VL	VL
Qanat	M	L	L	Qnayouer	ML	L	L	Tourza	M	L	L

Batroun

Municipality	16-Dec	17-Dec	18-Dec	Municipality	16-Dec	17-Dec	18-Dec	Municipality	16-Dec	17-Dec	18-Dec
Aabrine	M	M	L	Aalali	M	L	L	Aartziz	M	ML	VL
Abdelli	M	L	L	Ajdabra	M	ML	L	Assia	M	L	L
Basbina	M	ML	L	Batroun	M	M	ML	Bcheleh	M	L	L
Bechtoudar	M	L	L	Beit Chlala	M	L	L	Beit Kassab	M	L	L
Bijdarfil	M	M	L	Bqesmaya	M	M	L	Chatine	M	L	L
Chebtin	M	L	L	Chekka	M	M	M	Daael	M	L	L
Dahr Abi Yaghi	M	L	L	Daraya El-Batroun	M	ML	L	Deir Billa	M	ML	L
Deir Kfifane	M	ML	L	Deir Mar Youhanna EL	M	L	L	Deir Mar Youssef Jra	M	L	L
Douma	M	L	L	Douq	M	L	L	Eddeh El-Batroun	M	ML	L
Ftihat El-Batroun	M	L	VL	Ghouma	M	ML	L	Hadtoun	M	L	L
Hamat	M	M	L	Harbouna	M	ML	L	Hardine	M	L	L
Helta	M	L	L	Hery	M	M	M	Jebbla	M	ML	L
Jrabta El-Batroun	M	ML	L	Jrane El-Batroun	M	ML	L	Kfar Aabida	M	ML	L
Kfar Halda	M	L	L	Kfarb Shlaimane	M	L	L	Kfarhatna	M	ML	L
Kfarhay	M	M	ML	Kfarhelos	M	M	L	Kfifane	M	ML	L

Kfour El Arabi	M	L	L	Koubba	M	M	ML	Kour	M	ML	L
Mar Mama	M	L	VL	Masrah	M	L	L	Mehmarch	M	L	L
Mrah Chdid	M	ML	L	Mrah El Ziyat	M	L	L	Mrah El-Hajj	M	L	L
Nahle El-Batroun	M	L	L	Niha El-Batroun	M	L	L	Ouahj El-Hajjar	M	M	L
Ouata Houb	M	L	L	Qatnaaoun	M	M	L	Racha	M	L	L
Rachana	M	ML	L	Rachkida	M	M	L	Ram El-Batroun	M	L	L
Ras Nahhach	M	M	L	Selaata	M	M	ML	Sghar	M	ML	L
Smar Jbayl	M	ML	L	Sourat El-Batroun	M	L	VL	Tannourine El-Faouqa	M	L	L
Tannourine Et-Tahta	M	L	L	Thoum	M	ML	L	Toula El-Batroun	M	L	L
Zan	M	L	L								

Zgharta

Municipality	16-Dec	17-Dec	18-Dec	Municipality	16-Dec	17-Dec	18-Dec	Municipality	16-Dec	17-Dec	18-Dec
Aachach	M	ML	VL	Aalma	M	ML	VL	Aarde	M	ML	VL
Aintourine	M	L	L	Arabet Qozhaya	M	L	L	Arde	M	ML	VL
Arjis	M	L	L	Asnoun	M	ML	VL	Ayto	M	L	L
Basloukit	M	L	L	Bchannine	M	M	L	Besebeel	M	ML	VL
Bhairret Toula	ML	L	VL	Bnachee	M	L	L	Boussit	M	ML	VL
Danha	M	ML	VL	Daraiya Zgharta	M	ML	L	Deir Jdeide	M	ML	VL
Ehden	M	L	L	Halan	M	ML	VL	Hariq Zgharta	M	ML	VL
Houakir	M	ML	VL	Hraiqis	M	ML	L	laal	M	L	VL
Ijbaa	M	L	L	Karm Saddeh	M	L	L	Kfarchakhna	M	ML	L
Kfardlaqous	M	ML	VL	Kfarfou	M	L	L	Kfarhata Zgharta	M	ML	VL
Kfarhoura	M	ML	VL	Kfarsghab	M	L	L	Kfaryachit	M	ML	VL
Kfarzaina	M	ML	VL	Khaldiye	M	ML	VL	Mazraat Ajbeaa	M	ML	VL
Mazraat Et-Teffah	ML	L	L	Mazraat Jneid	M	ML	VL	Mejdlaya Zgharta	M	ML	L
Merh Kfarsghab	M	L	VL	Miryata	M	ML	VL	Miziara	M	L	L
Mzraat Kefraya	M	ML	L	Qorah Bach	M	ML	VL	Rachiine	M	ML	VL
Ras Kifa	M	L	L	Sakhra	M	ML	VL	Sebhel Zgharta	M	L	L
Serhel	ML	L	VL	Tallet Zgharta	M	ML	VL	Toula Zgharta	ML	L	L
Zgharta	M	ML	VL								

Minieh-Denniye

Municipality	16-Dec	17-Dec	18-Dec	Municipality	16-Dec	17-Dec	18-Dec	Municipality	16-Dec	17-Dec	18-Dec
Aasaymout	ML	VL	VL	Aaymar	M	L	VL	Aazki	M	L	VL
Ain El-Tineh-Miniyeh	ML	L	VL	Assoun	M	L	VL	Bakhaaoun	M	L	VL
Bchennata	M	L	L	Bechehhara	M	ML	VL	Beddawi	M	ML	L
Behouaita	M	L	L	Beit El Foqss	M	L	L	Beit Haouik	M	VL	ML
Beit Zoud	M	L	VL	Bekaasafrine	M	ML	ML	Borj El Yahoudiyeh	M	ML	VL
Bqarsouna	M	L	L	Btermaz	ML	L	VL	Debaael	ML	VL	L
Deir Ammar	M	ML	VL	Deir Nbouh	M	ML	VL	Haouaret-Miniyeh	M	VL	L
Haql el Azimeh	ML	L	VL	Harf El Siyad	ML	L	VL	Hazmiye-Miniyeh	ML	L	VL
Izal	M	L	VL	Jarjour	M	ML	VL	Jayroun	ML	VL	L
Kahf El-Malloul	M	L	VL	Karm El-Moher	M	L	VL	Kfar Binine	M	L	L
Kfarchalane	M	L	VL	Kfarhabou	M	L	VL	Kharroub-Miniyeh	M	L	VL
Mazraat El-Kreme	M	L	VL	Mazraat Ketrane	M	L	VL	Merkebtta	M	L	VL
Minyeh	M	ML	VL	Mrah El Sfirat	ML	L	VL	Mrah Sraj	ML	L	VL
Mrebbine	M	L	L	Nabi Youcheaa	M	ML	VL	Nemrine	M	L	L

Qarhaiya	M	VL	L	Qarne	ML	VL	VL	Qarsita	ML	VL	L
Qattineh-Miniyeh	ML	VL	VL	Qemmamine	ML	VL	VL	Qraine	ML	L	VL
Raouda-Aadoua	M	L	VL	Rihaniyet-Miniyeh	M	L	VL	Sfireh	ML	L	VL
Sir Ed-Danniyeh	ML	L	VL	Tarane	ML	L	VL	Terbol-Miniyeh	M	ML	VL
Zaghartaghriine	M	ML	VL	Zouq Bhannine	M	ML	VL				

Nabatiye

Nabatiye

Municipality	16-Dec	17-Dec	18-Dec	Municipality	16-Dec	17-Dec	18-Dec	Municipality	16-Dec	17-Dec	18-Dec
Aabba	L	L	L	Aazzi	L	L	VL	Adchit El-Chqif	ML	L	VL
Ain Bou Swar	L	L	VL	Ain Kana	L	L	VL	Ali El-Taher	L	L	VL
Ansar	M	L	VL	Arab Salim	L	L	VL	Arnoun	ML	L	VL
Bfaroue	L	L	VL	Breyqaah	ML	L	VL	Charqiyeh	ML	L	VL
Choukine	L	L	VL	Deir El Zahrani	L	L	VL	Doueir El-Nabatiyeh	L	L	VL
Habbouch El-Nabatiye	L	L	VL	Hamra El-Nabatiyeh	ML	L	VL	Harouf El-Nabatiyeh	L	L	VL
Hmaile	L	L	VL	Houmin El Faouqa	L	L	VL	Houmin El Tahta	L	L	VL
Jarjough	L	L	VL	Jbaah El-Nabatiyeh	L	L	VL	Jebchit	L	L	VL
Kfar Djal El-Nabatiy	ML	L	VL	Kfar Remmane	L	L	VL	Kfar Sir	ML	L	VL
Kfar Tebnit	L	L	VL	Kfarfila	L	L	VL	Kfour El-Nabatieh	L	L	VL
Mayfadoun	ML	L	VL	Mazraat Bsaffour	L	L	VL	Mazraat Chalbaal	L	L	L
Mazraat Dmoul	L	L	L	Mazraat El Khreibeh	L	L	VL	Mazraat El-Bayad El-	L	L	VL
Mazraat Kfarjaouz	L	L	VL	Mazraat Qalaat Meiss	ML	L	VL	Nabatiyeh El-Fawka	L	L	VL
Nabatiyeh Et-Tahta	L	L	VL	Namiriyeh	L	L	VL	Qaaqaaiyet El Jisr	ML	L	VL
Qossaibeh El-Nabatiy	ML	L	VL	Roumine	L	L	VL	Sarba El-Nabatieh	L	L	VL
Sir El-Gharbiyeh	L	L	VL	Toul	L	L	VL	Yehmor El-Nabatiyeh	ML	L	VL
Zaoutar El Charkiyeh	ML	L	VL	Zaoutar El-Gharbiyeh	ML	L	VL	Zebdine El-Nabatiyeh	L	L	VL
Zefta	L	L	VL								

Hasbaiya

Municipality	16-Dec	17-Dec	18-Dec	Municipality	16-Dec	17-Dec	18-Dec	Municipality	16-Dec	17-Dec	18-Dec
Ain Jarfa	L	L	VL	Abou Qamha	ML	L	VL	Ain Qania	L	L	VL
Bourghos	ML	L	VL	Chebaa	L	L	VL	Chouaya Hasbaya	VL	L	VL
Dellafeh	ML	L	VL	Fardiss Hasbaiya	ML	L	VL	Hasbaya	L	L	VL
Hbariyeh	L	L	VL	Kaoukaba Hasbaiya	ML	L	VL	Kfar Chouba	L	L	VL
Kfar Hamam	L	L	VL	Kfeir El-Zait	L	L	VL	Khalwat Hasbaya	L	L	VL
Khreibet Hasbaiya	M	L	VL	Majidiyeh Hasbaiya	ML	L	VL	Marj Ez-Zhour (Haouc	ML	L	VL
Meri	ML	L	VL	Mimass	L	L	VL	Rachaiya El-Fokhar	ML	L	VL
Salaiyeb	ML	L	VL								

Marjayoun

Municipality	16-Dec	17-Dec	18-Dec	Municipality	16-Dec	17-Dec	18-Dec	Municipality	16-Dec	17-Dec	18-Dec
Aalmane Marjaayoun	L	L	VL	Aamra	ML	L	VL	Adayseh Marjaayoun	ML	L	VL
Adchit El-Koussair	ML	L	VL	Ain Aarab Marjaayoun	ML	L	VL	Bani Haiyann	ML	L	VL
Blatt Marjaayoun	L	L	VL	Blida	ML	ML	VL	Borj El-Moulouk	ML	L	VL
Boueyda Marjaayoun	L	L	VL	Deir Mimass	L	L	VL	Deir Siriane	ML	L	VL
Dibbine	L	L	VL	Ebel El Saqi	ML	L	VL	Houla	ML	L	VL
Houra	ML	L	VL	Kfar Kila	ML	L	VL	Khiam Marjaayoun	M	L	VL

Klayaa	ML	L	VL	Majdel Selem	ML	L	VL	Marjaayoun	L	L	VL
Markaba	ML	L	VL	Mays El-Jabal	ML	L	VL	Mazraat Doumiat	L	L	VL
Mazraat Sarada	ML	L	VL	Mhaibib	ML	L	VL	Qabrikha	ML	L	VL
Qantara	ML	L	VL	Rab El-Thalathine	ML	L	VL	Saouaneh Marjayoun	M	L	VL
Talloussa	ML	L	VL	Taybeh Matjaayoun	ML	L	VL	Touline	ML	L	VL

Bent Jbail

Municipality	16-Dec	17-Dec	18-Dec	Municipality	16-Dec	17-Dec	18-Dec	Municipality	16-Dec	17-Dec	18-Dec
Ain-Ebel	ML	L	VL	Aitaroun	ML	ML	VL	Aynata Bint Jbeil	ML	L	VL
Ayta El-Chaeb	L	L	VL	Ayta El-Jabal	ML	L	VL	Beit Lif	L	L	VL
Beit Yahoun	ML	L	VL	Bint Jbeil	ML	L	VL	Borj Qalaway	M	L	L
Braachit	ML	L	VL	Chakra	ML	L	VL	Debel	L	L	VL
Deir Antar	M	L	VL	Froun	ML	L	VL	Ghandouriyeh Bint Jb	ML	L	VL
Hanine	ML	L	VL	Hariss	M	L	VL	Hdatha	ML	L	VL
Jmeymeh	ML	L	VL	Kafra Bint Jbeil	ML	L	VL	Kfar Dounine	M	L	VL
Khirbet Selm	ML	L	VL	Kounine	ML	L	VL	Maroun El Ras	ML	L	VL
Qalaway	M	L	VL	Qaouzah	L	L	VL	Qatmoun	ML	L	VL
Ramya Bint Jbeil	L	L	VL	Rchaf	L	L	VL	Rmeich	L	L	VL
Safad Al Battikh	ML	L	VL	Salhaneh	L	L	VL	Serbine	ML	L	VL
Sultanieh Bint Jbeil	M	L	VL	Tibnine	ML	L	VL	Tiri	ML	L	VL
Yaroun	ML	L	VL	Yater	ML	L	VL				

Mont Liban

Jbail

Municipality	16-Dec	17-Dec	18-Dec	Municipality	16-Dec	17-Dec	18-Dec	Municipality	16-Dec	17-Dec	18-Dec
Aabeydat	M	L	L	Aalita	M	L	VL	Aamchit	M	ML	L
Aarab El-Lahib	M	ML	VL	Aarasta	M	M	VL	Adonis Jbeil	M	L	VL
Afqa Jbeil	M	ML	L	Ain El Delbeh Jbeil	M	L	VL	Ain El-Ghouayba	M	L	VL
Ain Jrain	M	L	VL	Ain Kfah	M	ML	L	Almat El Chemaliyat	ML	L	VL
Almat El-Jenoubiya	ML	L	VL	Aqoura	M	ML	L	Bayzoun	M	L	VL
Bchille Jbeil	M	L	VL	Bechtlida	M	L	VL	Behdaydat	M	L	L
Beit Habbaq	M	ML	L	Bejjeh	M	ML	L	Bekhaaz	M	ML	L
Berbara Jbeil	M	ML	L	Bintael	M	L	VL	Birket Hjoula	M	L	VL
Blatt Jbeil	M	L	VL	Boulhos	ML	L	VL	Breyj Jbeil	M	L	VL
Chamat	M	ML	L	Chikhane	M	ML	L	Chmout	M	L	L
Eddeh Jbeil	M	ML	L	Ehmej	M	L	VL	Fatre	M	L	VL
Ferhet	M	L	VL	Fghal	M	L	L	Frat	ML	L	VL
Ghabat	M	M	L	Ghalboun	M	L	L	Gharzouz	M	ML	L
Ghofrine	M	ML	L	Habil	M	L	VL	Halate	M	L	VL
Haqel	M	L	L	Hbaline	M	ML	L	Hboub	M	L	VL
Hdeine	M	ML	L	Hema Er-Rehban	M	ML	VL	Hema Mar Maroun Aann	M	L	VL
Hjoula	M	L	VL	Hosrayel	M	ML	L	Hsarat	M	ML	L
Hsoun	M	L	VL	Jaj	M	L	L	Janne	ML	L	VL
Jbeil	M	L	L	Jeddeyl Jbeil	M	ML	L	Jlisse	M	L	VL
Jouret El-Qattine	M	L	VL	Kfar Baal Annaya	M	L	VL	Kfar Kidde	M	ML	L
Kfar Kouas	M	ML	VL	Kfar Mashoun	M	ML	L	Kfoun	M	L	L

Kharbe Jbeil	M	ML	L	Laqlouq	M	ML	L	Lassa	M	L	VL
Lehfed	M	L	VL	Maad	M	ML	L	Mar Sarkis	M	L	VL
Mastita	M	L	VL	Mayfouq	M	L	L	Mazraat El Siyad	M	L	L
Mazraat El-Maaden	ML	L	VL	Mechane	M	L	VL	Mechmech Jbeil	M	L	VL
Mehrin	M	L	L	Mejdel El-Akoura	M	ML	L	Mghayreh Jbeil	M	M	L
Mounsef	M	ML	L	Nahr Ibrahim	M	L	VL	Qahmez	M	L	VL
Qartaba	M	L	VL	Qartaboun	M	L	VL	Qattara Jbeil	M	L	VL
Qorqraya	ML	L	VL	Ramout	M	ML	L	Ras Osta	M	L	VL
Rihane Jbeil	M	ML	L	Sakiet El-Khayt	M	L	L	Saqi Richmaya	M	L	L
Sebrine	M	L	VL	Seraita	M	M	L	Souane Jbeil	M	L	VL
Tadmor	M	ML	L	Tartej	M	L	L	Torzaiya	M	L	VL
Yanouh Jbeil	M	M	L	Zibidine Jbeil	M	L	VL				

El Metn

Municipality	16-Dec	17-Dec	18-Dec	Municipality	16-Dec	17-Dec	18-Dec	Municipality	16-Dec	17-Dec	18-Dec
Aain El-Qabu	M	L	VL	Aain El-Qach	M	L	VL	Aain El-Teffaha	M	L	VL
Aain el-Safssaf El-M	M	L	VL	Abou Mizane	M	L	VL	Ain Aar	M	L	L
Ain Alaq	M	L	VL	Ain El-Kharroube	M	L	VL	Ain El-Sendianeh	M	L	VL
Ain El-Zeitoune	M	L	VL	Ain Saadeh	M	L	VL	Aintoura El-Matn	M	L	VL
Amaret Chalhoub	M	L	L	Antelias	M	L	L	Atchaneh	M	L	VL
Ayroun	M	L	VL	Baabdat	M	L	VL	Baouchariyeh	M	L	L
Baskinta	M	L	VL	Beit Chabab	M	L	VL	Beit El-Chaar	M	L	L
Beit El-Kekko	M	L	L	Beit Mery	M	L	VL	Bhersaf	M	L	VL
Bikfaya	M	L	VL	Biyakout	M	L	L	Bnabil	M	L	VL
Bourj Hammoud	M	L	L	Bqennaya	M	L	L	Broummana El-Matn	M	L	VL
Bsalim	M	L	VL	Bsifrine	M	L	VL	Bteghrine	M	L	VL
Chaouiye	M	L	VL	Chouaya El-Matn	M	L	VL	Choueir	M	L	VL
Chrine	M	L	VL	Dahr El Sawan El-Mat	M	L	VL	Daychouniyeh	M	L	L
Dbayeh	M	L	L	Deir Chamra	M	L	VL	Deir Mar Abda el Mch	M	L	VL
Deir Mar Roukouz	M	L	L	Deir Tamiche	M	L	VL	Dik El-Mehdi	M	L	VL
Dikwaneh	M	L	L	Douar El-Matn	M	L	VL	Fanar	M	L	L
Fraike	M	L	VL	Haret El-Ballaneh	M	L	L	Hbous	M	L	L
Himlaya	M	L	VL	Jal El Did	M	L	L	Jdeideh El-Metn	M	L	L
Jouar El-Matn	M	L	VL	Jouret El-Ballout	M	L	VL	Kaaqour	M	L	VL
Kfar Aaqab	M	L	VL	Kfertay El-Matn	M	L	VL	Khenchara	M	L	VL
Khillet El-Mtain	M	L	VL	Konnabat Broummana	M	L	VL	Konnabat Salima	M	L	VL
Machraah El-Matn	M	L	VL	Majdel Tarchich	M	L	VL	Majzoub	M	L	L
Mansouriyeh El-Metn	M	L	L	Mar Boutros Karm Et-	M	L	VL	Mar Chaya et Mzekke	M	L	VL
Mar Moussa Ed-Douar	M	L	VL	Marjaba	M	L	VL	Masqa	M	L	VL
Mayasse	M	L	VL	Mazraat Deir Aoukar	M	L	VL	Mazraat El-Hadirat	M	L	VL
Mazraat Yachouh	M	L	L	Mchikha	M	L	VL	Menqlet Mezher	M	L	L
Mhaydseh Matn	M	L	VL	Mkalles	M	L	L	Mrouj	M	L	VL
Mtain	M	ML	VL	Mtayleb	M	L	L	Nabay	M	L	VL
Naccache	M	L	L	Ouadi Chahine	M	L	VL	Ouadi El-Karm El-Mat	M	L	VL
Ouata El-Mrouj	M	L	VL	Ouyoun El-Matn	M	L	VL	Qornet Chehwan	M	L	L
Qornet El-Hamra	M	L	VL	Roumieh	M	L	VL	Sfeilet Bikfaya	M	L	VL
Sinn El-Fil	M	L	L	Zabbougha	M	L	VL	Zalqa	M	L	L

Zarouon	M	L	VL	Zekrite	M	L	VL	Zighrine El-Matn	M	L	VL
Zouk El-Khrab	M	ML	L								

Chouf

Municipality	16-Dec	17-Dec	18-Dec	Municipality	16-Dec	17-Dec	18-Dec	Municipality	16-Dec	17-Dec	18-Dec
Aalmane El-Chouf	M	L	VL	Aammqi El-Chouf	M	L	VL	Ain Ouzein	M	L	VL
Ain Qani	M	L	VL	Ain Zhalta	M	ML	VL	Ainbal	M	L	VL
Amatour	M	L	VL	Anout	M	L	VL	Atrine	M	L	VL
Baadarane	M	L	VL	Baaqline	M	L	VL	Baasir	M	L	L
Barja	M	L	L	Barouk	M	ML	VL	Bater	M	L	VL
Batloun	M	L	VL	Bayqoun	M	L	VL	Bchetfine	M	L	VL
Beiteddine	M	L	VL	Benouati Ech-Chouf	M	L	VL	Berjein	M	L	VL
Bireh et Mtalleh	M	L	VL	Biret El-Chouf	M	ML	VL	Bkechtine Ouel Mchei	M	L	VL
Bkifa El-Chouf	M	L	VL	Botme	M	L	VL	Bqaiaa Ech-Chouf	M	L	VL
Bsaba El-Chouf	M	L	VL	Chammis El-Chouf	M	L	L	Chehim	M	L	VL
Chemaarine	M	L	VL	Chourit	M	L	VL	Daher El-Chouf	M	L	VL
Dalhoun	M	L	VL	Damour	M	L	VL	Daraya El-Chouf	M	L	VL
Deir El-Moukhalles	M	L	VL	Deir Baba	M	L	VL	Deir Dourit	M	L	VL
Deir El-Qamar	M	L	VL	Deir Kouche	M	L	VL	Dibbieh	M	L	VL
Dmit	M	L	VL	Fouara Jaafar	M	L	VL	Fraidis El-Chouf	M	M	VL
Ghabet Jaafar	M	L	VL	Gharife	M	L	VL	Haret Jandal	M	L	VL
Hasrout	M	L	VL	Jadra	M	L	VL	Jahlieh	M	L	VL
Jbeih El-Chouf	M	L	VL	Jdeidet El-Chouf	M	L	VL	Jiyeh	M	L	VL
Jleilyeh	M	L	VL	Jmailiyeh	M	L	VL	Joun	M	L	VL
Kahlounie El-Chouf	M	L	VL	Ketermaya	M	L	VL	Kfar Faqoud	M	L	VL
Kfar Hamal	M	L	VL	Kfar Him	M	L	VL	Kfar Katra	M	L	VL
Kfar Niss	M	L	VL	Kfar hay	M	L	VL	Kfarnabrakh	M	L	VL
Khirbet Bisri	M	L	VL	Knayse El-Chouf	M	L	VL	Maaniyeh	M	L	VL
Maasser Beiteddine	M	L	VL	Maasser El-Chouf	ML	ML	VL	Majdalouna	M	L	VL
Majdel El-Meouch	M	L	VL	Mazboud	M	L	VL	Mazmoura	M	L	VL
Mazraat El Chouf	M	L	VL	Mazraat El Daher	M	L	VL	Mazraat El-Douair	M	L	VL
Mechref	M	L	VL	Mghairie	M	L	VL	Mghayrie El-Chouf	M	L	VL
Moukhtara	M	L	VL	Mrusti	M	L	VL	Mtolle	M	L	VL
Naameh	M	L	L	Niha El-Chouf	M	L	VL	Ouadi Abou Youssef	M	L	VL
Ouadi Ed-Deir	M	L	VL	Ouadi El-Sit	M	L	VL	Ouadi bnehlay	M	L	VL
Qraibeh	M	L	VL	Qreiaa	M	L	VL	Rmayle El-Chouf	M	L	VL
Semqaniyeh	M	L	VL	Sibline	M	L	VL	Sirjbeil	M	L	VL
Warhanieh	M	M	VL	Werdaniyeh	M	L	VL	Zaarourieh	M	L	VL

Baabda

Municipality	16-Dec	17-Dec	18-Dec	Municipality	16-Dec	17-Dec	18-Dec	Municipality	16-Dec	17-Dec	18-Dec
Abadiyeh	M	L	VL	Ain Mouaffaq	M	L	VL	Araiya	M	L	VL
Arbaniyeh	M	L	VL	Arsoun	M	L	VL	Baabda	M	L	L
Baalchmey	M	L	VL	Bmaryam	M	L	VL	Bourj El-Brajneh	M	L	L
Boutchay	M	L	L	Bsaba Baabda	M	L	L	Btekhney	M	L	VL
Btibyat	M	L	VL	Bzebdine	M	L	VL	Chbeniyeh	M	L	VL
Chiyah	M	L	L	Chmeisset Baabda	M	L	VL	Chouit	M	L	VL
Deir El-harf	M	L	VL	Deir Khouna	M	L	VL	Dlaybeh	M	L	VL

Falougha	M	ML	VL	Furn El-Chebbak	M	L	L	Hadath Beyrouth	M	L	L
Halaliyeh Baabda	M	L	VL	Hammana	M	L	VL	Haret El Sett	M	L	VL
Haret Hamze	M	L	VL	Haret Hreik	M	L	L	Hasbaiya El-Metn	M	L	VL
Jouar El-Hoz	M	L	VL	Jouret Arsoun	M	L	VL	Kfar Chima	M	L	L
Kfar Selouane	M	ML	VL	Khalouat Baabda	M	L	VL	Kneisset Baabda	M	L	VL
Laylakeh	M	L	L	Louayzeh Baabda	M	L	L	Merdache	M	L	L
Mzairaa Baabda	M	L	VL	Ouadi Chahrour El Ol	M	L	L	Ouadi Chahrour El So	M	L	L
Qalaa Baabda	M	L	VL	Qhraybe Baabda	M	L	VL	Qobbayaa	M	L	VL
Qornayel	M	L	VL	Qortada	M	L	VL	Qrayeh Baabda	M	L	VL
Qsaibeh Baabda	M	L	VL	Qtale Baabda	M	L	VL	Ras El Metn	M	L	VL
Ras El-Haref	M	L	VL	Rouayset El-Ballout	M	L	VL	Salima Baabda	M	L	VL
Tahouitat El Ghadir	M	L	L	Tarchich	M	L	VL	Zandouqa	M	L	VL

Aley

Municipality	16-Dec	17-Dec	18-Dec	Municipality	16-Dec	17-Dec	18-Dec	Municipality	16-Dec	17-Dec	18-Dec
Abey	M	L	VL	Aghmid	M	L	VL	Ain Dara	M	ML	L
Ain Drafil	M	L	VL	Ain El Halazoun	M	L	L	Ain El-Rmmaneh	M	L	VL
Ain Jedideh	M	L	VL	Ain Ksour	M	L	VL	Ain Onoub	M	L	L
Ain Traz	M	L	VL	Ainab	M	L	L	Aley	M	L	VL
Aramoun	M	L	L	Aytat	M	L	L	Azouniyeh	M	L	VL
Baawerta	M	L	VL	Badghan Oua Wadi Bad	M	L	VL	Bassatine	M	L	L
Bayssour	M	L	L	Bchamoun	M	L	L	Bdadoun	M	L	VL
Behouara	M	L	VL	Bennay	M	L	VL	Bhamdoun El-Dayaa	M	L	L
Bhamdoun El-Mhatta	M	L	VL	Bkhechthey	M	L	VL	Bleibel	M	L	L
Bmakine	M	L	L	Bmehray	M	ML	L	Bouzrid	M	L	VL
Bserrine	M	L	L	Bsous	M	L	VL	Btalloun	M	L	VL
Btater	M	L	L	Chanay	M	L	VL	Charoun	M	L	VL
Chartoun	M	L	VL	Chemlane	M	L	L	Chouefat El-Aamrous	M	L	L
Chouefat El-Oumara	M	L	L	Chouefat El-Quoubbe	M	L	L	Dakkoun	M	L	VL
Deir Qoubel	M	L	L	Dfoun	M	L	L	Douair El Remmaneh	M	L	VL
Ghaboun	M	L	VL	Habramoun	M	L	VL	Homs Oua Hama	M	L	L
Houmal	M	L	L	Jisr El Qadi	M	L	VL	Kehaleh	M	L	VL
Keyfoun	M	L	L	Kfar Aamey	M	L	VL	Kommatyeh	M	L	VL
Maasrati	M	L	VL	Majdel Baana	M	L	VL	Mansourieh et Ain El	M	L	L
Mazraat El-Nahr	M	L	VL	Mchakhte	M	L	VL	Mecherfeh	M	L	VL
Mejdaya	M	L	VL	Mrayjat	M	ML	VL	Ramliyah	M	L	VL
Rechmaya	M	L	VL	Rejmeh	M	L	VL	Remhala	M	L	VL
Rouaysset El Neemane	M	L	VL	Saoufar	M	L	VL	Selfaya	M	L	VL
Sirhmoul	M	L	L	Souq El Ghareb	M	L	VL	Taazanieh	M	L	VL

Kesrouane

Municipality	16-Dec	17-Dec	18-Dec	Municipality	16-Dec	17-Dec	18-Dec	Municipality	16-Dec	17-Dec	18-Dec
Achkout	M	L	VL	Adma Oua Dafneh	M	L	VL	Ain Ed-Delbe Kesroua	M	L	VL
Ain El-Rihane	M	L	VL	Aintoura Kesrouane	M	L	VL	Ajaltoun	M	L	VL
Akaybeh Kesrouane	M	ML	VL	Aramoun Kesrouane	M	L	VL	Azra ouel Ozor	M	L	VL
Ballouneh	M	L	VL	Batha	M	L	VL	Bekaatat Achkout	M	L	VL
Bekaatat Kanaan	M	L	VL	Bizhel	M	L	VL	Bouar	M	L	VL
Bqaatouta	M	L	VL	Bqaq Ed-Dine	M	L	VL	Bzommar	M	L	VL

Chahtoul	M	L	VL	Chnaniir	M	L	VL	Chouan	ML	L	VL
Daraya Kesrouane	M	L	VL	Darououn	M	L	VL	Deir Baqlouch	M	L	VL
Dlebta	M	L	VL	Eghbeh	M	L	VL	Faraya	M	L	VL
Fatka	M	L	VL	Feytroun	M	L	VL	Ghazir	M	L	VL
Ghbaleh Kesrouane	M	L	VL	Ghedrass	M	L	VL	Ghosta	M	L	VL
Ghyneh	M	L	VL	Harharaya w Kattine	M	L	VL	Harissa Kesrouane	M	L	VL
Hayata	M	L	VL	Hosein	M	L	VL	Hrajel	M	L	VL
Jdeideh Ghazir	M	L	VL	Jeita	M	L	VL	Jounieh Ghadir	M	L	VL
Jounieh Haret Sakhr	M	L	VL	Jounieh Salel Alma	M	L	VL	Jounieh Sarba	M	L	VL
Jouret Bedrane	M	L	VL	Jouret Mhad	M	L	VL	Jouret Termos	M	L	VL
Kfar Debiane	M	L	VL	Kfar Tay Kesrouane	M	L	VL	Kfar Yassine	M	L	VL
Kfour Kesrouane	M	L	VL	Kharayeb Nahr Ibrahi	M	L	VL	Klayaat Kesrouane	M	L	VL
Maarab	M	L	VL	Maaysra Kesrouane	M	L	VL	Mayrouba	M	L	VL
Mazraat Er-Ras	M	ML	VL	Mazraat Mrah El-Mir	M	L	VL	Mchaa El Ftouh	M	L	L
Mchaa Faraya	M	L	VL	Mchaa Kfar Dibiane	M	L	VL	Mghaer	M	L	VL
Mradiyah	M	L	VL	Nahr Ed-Dahab	M	L	VL	Nammoura Kesrouane	M	L	VL
Ouata El Jaouz	M	L	VL	Ouata Sillam	M	L	VL	Raachine	M	L	VL
Rayfoun	M	L	VL	Safra Kesrouane	M	L	VL	Shayle Kesrouane	M	L	VL
Tabarja	M	L	VL	Yahchouch	M	L	VL	Zaaytreh	M	L	VL
Zeytoun	M	L	L	Zouk Mikael	M	L	VL	Zouk Mosbeh	M	L	VL

Baalbek_Hermel

Baalbek

Municipality	16-Dec	17-Dec	18-Dec	Municipality	16-Dec	17-Dec	18-Dec	Municipality	16-Dec	17-Dec	18-Dec
Aadous	M	M	ML	Aamchki	L	L	L	Aarsal	ML	L	L
Ain Baalbek	M	L	L	Ain Bourday	L	ML	L	Ain El-Benye	M	L	L
Ain El-Jaouz Baalbek	L	L	L	Ain El-Siya Chadoura	L	L	L	Al Khodr Baalbek	M	M	L
Al Nabi Chit	M	M	ML	Aynata Baalbek	M	ML	L	Baalbek	L	ML	L
Bachwat	M	M	L	Barqa	M	M	L	Bednayel Baalbak	M	ML	L
Beit Chama	M	M	ML	Bijjaje	M	L	L	Bouday	M	M	L
Brital	M	ML	L	Btadi	M	M	L	Chaat	M	L	L
Chaibe	ML	L	L	Chlifa	M	M	L	Chmestar	M	M	L
Dar El-Oussa	M	M	L	Deir El-Ahmar	M	M	L	Deir Mar Maroun Baal	M	ML	M
Douris	ML	M	ML	Fakiha	M	L	ML	Hadath Baalbek	M	M	L
Ham	M	L	L	Haour Taala	M	ML	L	Hizzine	M	M	ML
Hlebta	M	M	ML	Hosh Barada	M	M	ML	Hosh El Dahab	M	M	ML
Hosh El Snid	M	M	ML	Hosh El-Nabi	M	M	ML	Hosh El-Rafiq	M	M	ML
Hosh Tal Safiya	M	M	ML	Hrebta	M	ML	ML	laat	M	M	L
Jebaa	M	M	L	Jenta	M	ML	L	Kfar Dabach	M	M	ML
Kfar Dane	M	M	L	Khraibeh El-Hermel	M	L	L	Khreibet Baalbek	M	ML	L
Kneisset Baalbek	M	M	ML	Labueh	M	L	L	Maarboun	M	L	L
Majdaloun	M	M	ML	Maqneh	M	M	ML	Mazraat Beit Mcheik	M	M	L
Misraya	M	M	ML	Moqraq	M	L	L	Nabha El-Damdoum	M	M	ML
Nabi Chbay	M	L	L	Nabi Osman	M	L	L	Nahleh baalbek	ML	L	L
Ouadi El-Oss	M	M	L	Qaa Baayoun	ML	L	M	Qaa Jouar Maqiye	M	ML	M
Qaa Ouadi El-Khanzir	M	ML	M	Qah Baalbek	M	L	M	Qarha Baalbek	M	M	M

Qsarnaba	M	M	ML	Ram Baalbek	M	M	M	Ras Baalbek El Sahl	M	ML	M
Ras Baalbek El-Charq	M	L	ML	Riha	M	M	M	Saaide	M	M	ML
Sbouba	M	L	L	Seriine El-Tahta	M	M	ML	Slouqi	M	L	L
Taiba Baalbek	M	M	ML	Talia	M	M	ML	Taraiya	M	ML	L
Temnin El Fawqa	M	M	ML	Temnin El-Tahta	M	M	ML	Tfail	L	VL	L
Yahfoufa	M	M	ML	Yammouneh	M	ML	L	Younine	M	L	L
Zboud	M	L	L								

Hermel

Municipality	16-Dec	17-Dec	18-Dec	Municipality	16-Dec	17-Dec	18-Dec	Municipality	16-Dec	17-Dec	18-Dec
Charbine El-Hermel	M	L	L	Hermel Jbab	M	L	L	Hermel	M	ML	M
Maaysra El-Hermel	M	M	M	Michaa Mrjihine	M	VL	VL	Ouadi Faara	M	M	ML
Ras Baalbek - Ouadi	M	M	M	Ras Baalbek El Gharb	M	M	M	Zighrine	M	L	L

Akkar

Akkar

Municipality	16-Dec	17-Dec	18-Dec	Municipality	16-Dec	17-Dec	18-Dec	Municipality	16-Dec	17-Dec	18-Dec
Aain Tinta	M	ML	L	Aaiyat	M	L	L	Aakkar El-Aatiqa	M	L	L
Aamar Akkar	M	L	VL	Aamar El Baykat	M	ML	ML	Aamayer	M	ML	ML
Aamriyet Akkar	M	ML	L	Aandqet	M	L	L	Aarmeh	M	ML	L
Aarqa	M	ML	L	Aawaynat	M	L	L	Aayoun Akkar	M	L	L
Abboudiye	MH	ML	ML	Ain El-Zeit	M	ML	L	Ain Yaaqoub	M	L	L
Akroum	M	L	L	Aridet Cheikh Zennad	MH	M	L	Baldeh w Mazraat Bal	M	ML	L
Barcha	M	ML	ML	Bardeh	M	ML	L	Bebnine	M	L	VL
Beino	M	ML	L	Beit Ayoub	M	L	L	Beit El-Haouch	M	L	VL
Beit Mellat	M	L	L	Beit Younes	M	L	L	Berbara Akkar	M	ML	L
Berqayel	M	L	VL	Bezbina	M	L	VL	Bireh Akkar	M	ML	L
Borj	M	L	L	Bqerezla	M	L	L	Bzal	M	L	VL
Chane	M	L	L	Chaqdouf	M	L	L	Charbila	M	ML	L
Cheikh Mohammad	M	ML	L	Cheikh Taba Es-Sahl	M	ML	L	Cheikh Taba	M	L	L
Cheikh Zennad	M	M	L	Cheikhlar	M	L	L	Chir Hmairine	M	ML	ML
Daghle	M	ML	L	Dahr Laissine	M	L	L	Darine	M	ML	ML
Dawra	M	L	L	Dawsa w Baghdadi	M	ML	L	Dayret Nahr El-Kabir	M	ML	L
Deir Dalloum	M	L	VL	Deir Jennine	M	ML	L	Denbou	M	L	L
Dibbbiyeh	M	ML	ML	Douair Aadwiyeh	M	ML	L	Fassikine	M	ML	L
Fnaydek	M	L	L	Fraydes Akkar	M	ML	L	Ghazayle	M	ML	ML
Habchit	M	L	L	Hakour	M	L	VL	Halba	M	ML	L
Haouchab	M	ML	ML	Hayssat	M	M	L	Haytla	M	ML	ML
Hayzouq	M	ML	L	Hedd	M	ML	L	Hmaira Akkar	M	L	VL
Hmaiss Akkar	M	ML	ML	Hnaider	M	ML	M	Hokr Ed-Dahri	MH	M	L
Hokr Etti	M	ML	ML	Hokr Jouret Srar	M	ML	ML	Houaich	M	L	L
Hrar	M	L	L	Idbil	M	L	L	Ilal	M	L	L
Janine	M	ML	ML	Jdeidet El-Joumeh	M	L	L	Jdeidet El-Kaiteh	M	L	VL
Jebayel	M	L	L	Kafr	M	L	L	Kafr	M	ML	L
Karm Asfour	M	L	L	Kfar Melki Akkar	M	M	L	Kfar Noun	M	ML	L
Kfarharra	M	ML	L	Khalsa	M	L	ML	Kharnoubet Akkar	M	ML	ML

Khirbet Daoud Aakkar	M	ML	L	Khirbet El Remmane	M	L	L	Khirbet Shar	M	ML	L
Khoreybet El-Jindi	M	ML	ML	Khreibet Aakkar	M	L	L	Kneisset Aakkar	M	M	L
Kneisset Hnaider	M	ML	M	Knisse	M	ML	L	Kroum El-Aarab	M	ML	L
Kwachra	M	ML	ML	Kweykhath	M	ML	L	Machta Hammoud	M	ML	L
Majdala	M	L	VL	Majdel Akkar	M	ML	L	Mar Touma	M	L	VL
Marlaya Melhem	M	L	VL	Mashha	M	L	L	Massoudiye	M	M	L
Mazraat Beit Ghattas	M	L	L	Mazraat En-Nahriye	M	ML	L	Mechmech	M	L	VL
Memneh	M	L	VL	Mhammara	M	L	VL	Mighraq Aakkar	M	M	L
Minyara	M	L	L	Moqayteh	M	M	L	Mounjez	M	ML	L
Msalla	M	ML	ML	Mzeihmeh	M	ML	ML	Nfaisch	M	ML	L
Noura Et-Tahta	M	ML	ML	Ouadi El-Haour	M	ML	L	Ouadi El-Jamous	M	L	VL
Ouyoun El-Ghizlane	M	L	VL	Qaabarine	M	M	L	Qabaait	M	L	L
Qachlaq	M	ML	ML	Qantara Aakkar	M	L	L	Qarha Aakkar	M	ML	M
Qarqaf	M	L	VL	Qboula	M	L	L	Qleiaat Aakkar	M	M	L
Qloud El-Baqie	M	L	L	Qobaiyat Aakkar	M	L	L	Qobbat Chamrat	M	L	L
Qorayat	M	L	L	Qornet Aakkar	M	L	L	Qsair Aakkar	M	ML	L
Rahbe	M	L	L	Rihaniyet Aakkar	M	ML	L	Rmah	M	ML	L
Rmoul	M	M	L	Saadine	M	ML	ML	Sadaqa	M	L	L
Saidnaya	M	ML	ML	Sammouniye	M	M	L	Sayssoq	M	L	L
Semmaqiye	MH	M	L	Semmaqli	M	ML	L	Sfinet El-Dreib	M	ML	L
Sfinet El-Qaitaa	M	L	VL	Sindyanet Zeidane	M	ML	L	Souaisset Aakkar	M	ML	L
Srar	M	ML	ML	Tal Abbas El Gharby	M	ML	L	Tal Abbas El-Chargy	M	ML	L
Tal Biret	M	M	L	Tal Hmayra	M	ML	ML	Tal Maayan Tal Kiri	M	M	L
Tal Sibel	M	M	L	Tallet Chattaha	M	L	L	Tikrit	M	L	L
Tleil	M	ML	ML	Tshea	M	L	L	Zawarib	M	L	L
Zouq El Hosniyeh	M	L	VL	Zouq El-Haddara	M	L	VL	Zouq El-Hbalsa	M	L	VL
Zouq El-Moqachrine	M	L	VL								

Sud

Sour

Municipality	16-Dec	17-Dec	18-Dec	Municipality	16-Dec	17-Dec	18-Dec	Municipality	16-Dec	17-Dec	18-Dec
Aaiyeh	M	L	VL	Aalma El-Chaab	M	L	VL	Aaytit	M	L	VL
Abbassiyeh Sour	M	L	VL	Abou Chech	M	L	VL	Ain Abou Abdallah	M	L	VL
Ain Baal	M	L	VL	Arzoun	ML	L	VL	Aziyeh	M	L	VL
Baflaya	L	L	VL	Barich	L	L	VL	Batouliyeh	M	L	VL
Bayad	M	L	VL	Bazouriyeh	M	L	VL	Bediass	L	L	VL
Bestiyat	L	L	VL	Borj El Chemali	M	L	VL	Borj En-Naqoura	H	ML	L
Borj Rahhal	L	L	VL	Boustane	M	L	VL	Btaychiyeh	M	L	VL
Chaaitiye	M	L	VL	Chameh	M	L	VL	Chehabiye	ML	L	VL
Chehour	L	L	VL	Chihine	M	L	VL	Debaal Sour	L	L	VL
Deir Amess	ML	L	VL	Deir Kifa	M	L	VL	Deir Qanoun El-Ain	M	L	VL
Deir Qanoun El-Naher	L	L	VL	Derdghaiya	ML	L	VL	Dhayra	M	L	VL
Halloussiyeh	L	L	VL	Hamoul	M	L	VL	Hanaouey	M	L	VL
Henniye	H	L	VL	Hmairi Sour	L	L	VL	Iskandarouna Sour	M	L	VL
Jbal El Botom	ML	L	VL	Jebbin	M	L	VL	Jennata	L	L	VL
Jijim	M	L	VL	Jouaiya	M	L	VL	Kneisset Sour	M	L	VL

Maarake	L	L	VL	Maaroub	L	L	VL	Majadel	M	L	VL
Majdalzoun	M	L	VL	Mansouri Sour	MH	L	VL	Marnba	L	L	VL
Marouahine	L	L	VL	Mazraat El-Zalloutiy	M	L	VL	Mazraat Mechref	M	L	VL
Mazraat Tayr Semhat	L	L	VL	Mheilib	M	L	VL	Neffakhiyeh	ML	L	VL
Niha Sour	ML	L	VL	Ouadi Jilo	ML	L	VL	Qana	M	L	VL
Qolaileh Sour	M	L	VL	Rechknany	M	L	VL	Rmadiyeh	M	L	VL
Selha Sour	ML	L	VL	Siddiqine	M	L	VL	Sour	H	L	L
Srifa	ML	L	VL	Tayr Debbe	L	L	VL	Tayr Felsay	L	L	VL
Tayr Harfa	M	L	VL	Touayri	L	L	VL	Toura	L	L	VL
Yanouh Sour	L	L	VL	Yarine	MH	L	VL	Zebqine	L	L	VL

Saida

Municipality	16-Dec	17-Dec	18-Dec	Municipality	16-Dec	17-Dec	18-Dec	Municipality	16-Dec	17-Dec	18-Dec
Aanqoun	ML	L	VL	Aaqtanit	ML	L	L	Aarab Ej-Jall	L	L	VL
Aarab Tabbaya	ML	L	VL	Abra Saida	M	L	L	Adloun	M	ML	VL
Adousiyeh	M	ML	L	Ain-El-Deleb	M	L	VL	Arzai	L	L	VL
Babliyah	M	L	VL	Barty	M	L	VL	Bissariyeh	M	ML	L
Bnaafoul	L	L	VL	Bqosta	M	L	VL	Bramiy	M	L	VL
Daoudiyeh	M	L	VL	Dareb El-Sim	M	L	VL	Erkay	L	L	VL
Ghassanieh	M	L	VL	Ghazieh	M	ML	L	Hajjeh	L	L	VL
Haret Saida	M	L	VL	Hartiyeh	M	L	VL	Hlaliye Saida	M	L	VL
Insariyat	M	L	VL	Jazira Saida	ML	ML	VL	Kafar Bit	M	L	VL
Kaoutariyet El-Siyad	ML	L	L	Kfar Chellal	M	L	VL	Kfar Hatta Saida	M	L	VL
Kfar Milke Saida	M	L	VL	Khartoum	ML	L	VL	Khaziz	L	L	VL
Khirbet Ed-Douair Sa	M	L	L	Khirbet El-Bassal	M	L	VL	Khrayeb Saida	ML	L	VL
Loubieh	M	L	VL	Maghdouche	M	L	L	Majdelyoun	M	L	VL
Matariyet El-Choumar	L	L	VL	Matayriyeh	M	L	L	Mazraat 'Mseileh	M	ML	L
Mazraat 'Snaiber	M	ML	L	Mazraat Aarab Soukka	L	L	VL	Mazraat Deir Taqla	M	L	VL
Mazraat El Yahoudiye	M	M	L	Mazraat El-Housseini	M	ML	L	Mazraat El-Mhaydaleh	M	L	L
Mazraat El-Ouasta	M	ML	L	Mazraat Jamjim	M	L	VL	Mazraat Kaoutariyet	M	L	VL
Mazraat Kfar Badda	M	L	VL	Mazraat Oussamiyat	M	L	VL	Mazraat Sari	M	L	VL
Mazraat Sinai	M	L	VL	Meemariyeh	ML	L	VL	Merouaniyeh	ML	L	L
Miyeh ou Miyeh	M	L	VL	Najjariyeh	M	ML	L	Qaaqaiyat El-Snaouba	M	L	L
Qnarit	M	L	VL	Qraiye Saida	M	L	VL	Saida Ed-Dekermane	M	L	VL
Saida El-Oustani	M	L	VL	Saida El-Qadimeh	M	L	VL	Saida Kefraya	M	L	L
Saksakiyeh	M	L	L	Salhie Saida	M	L	L	Sarafand	M	ML	L
Sfenta	ML	L	VL	Tafahta	M	L	L	Tanbourit	M	L	VL
Tebna	M	L	L	Zaghdraiya	M	L	VL	Zeita	ML	L	VL
Zrariyeh	L	L	VL								

Jezzine

Municipality	16-Dec	17-Dec	18-Dec	Municipality	16-Dec	17-Dec	18-Dec	Municipality	16-Dec	17-Dec	18-Dec
Ain El-Mir (El Estab	M	L	VL	Anane	M	L	VL	Aramta	L	L	VL
Ariya	M	L	VL	Aychiyeh	L	L	VL	Azour	M	L	VL
Baba	M	L	VL	Baysour Jezzine	M	L	VL	Benoueteh Jezzine	M	L	VL
Bhannine	M	L	VL	Bisri	M	L	VL	Bkassine	M	L	VL
Bouslaya	L	L	VL	Btedine El-Leqech	M	L	VL	Chbail	VL	VL	VL
Choualiq Jezzine	M	L	VL	Dahr Ed-Deir	ML	L	VL	Deir El Qattine	M	L	VL

Demachqiyeh	L	L	VL	Ghabbatiyeh	M	L	VL	Harf Jezzine	M	L	VL
Hassaniyeh	M	L	L	Haytouleh	M	L	VL	Haytura	L	L	VL
Hidab	L	L	VL	Homsiyeh	M	L	VL	Jabal Toura	L	L	VL
Jarmaq	L	L	VL	Jensnaya	M	L	VL	Jernaya	ML	L	VL
Jezzine	ML	L	VL	Karkha	M	L	VL	Kfar Falous	M	L	VL
Kfar Houna	L	L	VL	Kfar Jarrah	M	L	VL	Lebaa	M	L	VL
Louayzet Jezzine	L	L	VL	Machmouche	M	L	VL	Mahmoudiyeh Jezzine	L	L	VL
Maknounye Jezzine	L	L	VL	Maraat Ouazaiyeh	L	L	VL	Mazraat Daraya	L	L	VL
Mazraat El-Aarqoub	VL	L	VL	Mazraat El-Mathane	M	L	VL	Mazraat El-Rahbane	L	L	VL
Mazraat Khallet Khaz	L	L	VL	Mazraat Louzid (Loua	VL	L	VL	Mazraat Qrouh	L	L	VL
Mazraat Tamra	L	L	VL	Mazraat Zighrine Jez	L	L	VL	Mazraat	L	L	VL
Mharbiyeh	M	L	VL	Midane Jezzine	M	L	VL	Mjeydel Jezzine	M	L	VL
Mlikh	L	L	VL	Mrach El-Hbasse	M	L	VL	Ouadi Baanqoudaine	M	L	VL
Ouadi El-Laymoun	M	L	VL	Ouardiyeh	VL	VL	VL	Qabaa Jezzine	M	L	VL
Qatrani	L	L	VL	Qaytouleh	M	L	VL	Qtaleh Jezzine	M	L	VL
Rihane Jezzine	L	L	VL	Rimat	M	L	VL	Roum	M	L	VL
Roummanet	ML	L	VL	Sabbah	M	L	VL	Saydoun	L	L	VL
Sfaray	M	L	VL	Snaya	L	L	VL	Sojoud	L	L	VL
Srayri	L	L	VL	Taaid	M	L	VL	Wadi Jezzine	M	L	VL
Zhalta	L	L	VL								

Bekaa

West Bekaa

Municipality	16-Dec	17-Dec	18-Dec	Municipality	16-Dec	17-Dec	18-Dec	Municipality	16-Dec	17-Dec	18-Dec
Aammiq BG	M	M	L	Ain El Tineh BG	L	L	VL	Ain Zebdeh	M	M	VL
Ana	M	M	L	Aytanit	M	ML	VL	Baaloul BG	M	M	L
Bab Mareh	M	M	VL	Chouberqiye Aammiq	M	M	L	Dakoue	M	M	L
Deir Ain El-Jaouze	M	M	VL	Deir Tahniche	M	M	L	Ghaza	M	M	L
Harime El-Soughra	M	M	L	Hoch Harimeh	M	M	L	Jazira BG	M	M	L
Jib Jennine	M	M	L	Kamed-El-Laouz	M	M	L	Kefraya BG	M	M	VL
Khiara El Atika	M	M	L	Khiara	M	M	L	Khirbet Qanafar	M	M	L
Lala	M	M	L	Lebbaya BG	ML	ML	VL	Loussa	ML	L	VL
Machghara	ML	ML	VL	Manara (Hammar) BG	M	M	L	Mansoura BG	M	M	L
Marej BG	M	M	L	Maydoun	L	L	VL	Ouaqf BG	M	M	L
Qaraaoun	M	M	L	Qelya	ML	L	VL	Raouda (Istabel)	M	M	L
Saghbine	M	M	VL	Sohmor	ML	M	VL	Soltan Yacoub el Ara	M	M	L
Souairy	M	M	L	Sultan Yaacoub	M	M	L	Tal Znoun	M	M	L
Yehmor BG	L	ML	VL	Zilaya	ML	ML	VL				

Zahle

Municipality	16-Dec	17-Dec	18-Dec	Municipality	16-Dec	17-Dec	18-Dec	Municipality	16-Dec	17-Dec	18-Dec
Aanjar (Haouch Mouss	M	M	L	Ablah	M	M	ML	Ain Kfarzabad	M	M	L
Ali-El-Nahri	M	M	ML	Bar Elias	M	M	L	Bouarej	M	M	L
Cheberqiyet Tabet	M	M	L	Chtaura	M	M	VL	Deir El Ghazal	M	M	L
Delhamiyet Zahle	M	M	L	Ferzol	M	M	L	Haouch El-Ghanam	M	M	ML
Haouch Es-Siyadeh	M	M	VL	Haouch Hala	M	M	L	Haouch Mandara	M	M	L

Haouch Qayssar	M	M	L	Hezerta	M	M	L	Hosh Moussa	M	M	L
Jdita	M	M	L	Kfarzabad	M	M	L	Ksara	M	M	L
Majdel Aanjar	M	M	L	Makssi	M	M	L	Massa	M	M	ML
Mazraat Er-Remtaniye	M	M	VL	Mrayjat Zahle	M	M	L	Mzaraa Zahle	M	M	L
Nabi Ayla	M	M	L	Nasriyet Rizk	M	M	ML	Nasriyet Zahle	M	M	L
Niha Zahle	M	M	L	Ouadi Ed-Deloum	M	M	L	Ouadi El-Arayech	M	M	L
Qaa El Rim	M	M	L	Qab Elias	M	M	VL	Qousaya	M	M	L
Rhit	M	M	L	Riyak	M	M	ML	Saadnayel	M	M	L
Taal El-Akhdar	M	M	L	Taalbeya	M	M	L	Taanayel	M	M	L
Talamara	M	M	ML	Tcheflik Edde Haouch	M	M	L	Tcheflik Qiqano	M	M	L
Terbol Zahle	M	M	L	Touaite Zahle	M	ML	VL	Zahle Aradi	M	M	L
Zahle El-Berbara	M	M	L	Zahle El-Maallaqa	M	M	L	Zahle El-Midane	M	M	L
Zahle Er-Rassiye	M	M	L	Zahle Haouch El-Ouma	M	M	L	Zahle Haouch El-Ouma	M	M	L
Zahle Haouch Ez-Zara	M	M	L	Zahle Maalaqa Aradi	M	M	L	Zahle Mar Antonios	M	M	L
Zahle Mar Elias	M	M	L	Zahle Mar Gerios	M	M	L	Zahle Saydet En-Naja	M	M	L
Zebdoul	M	M	VL								

Rachaiya

Municipality	16-Dec	17-Dec	18-Dec	Municipality	16-Dec	17-Dec	18-Dec	Municipality	16-Dec	17-Dec	18-Dec
Ain Arab Rachaiya	M	M	L	Ain Ata	L	L	VL	Ain Harche	ML	L	VL
Aqabe Rachaya	ML	ML	VL	Ayha	M	M	L	Ayta El Fokhar	M	M	L
Bakifa Rachaya	ML	L	VL	Bakka	M	M	VL	Beit Lahya	ML	ML	VL
Bireh Rachaiya	M	M	L	Daher El Ahmar	ML	ML	L	Deir El-Achayer	M	M	L
Heloua Rachaiya	M	M	VL	Hoch El Qannabeh Rac	ML	L	VL	Kaoukaba Bou Arab	ML	L	VL
Kfar Danis	M	M	L	Kfar Mechki	ML	ML	VL	Kfar Qouq	M	M	L
Kherbet Rouha	M	M	L	Majdel Balhiss	ML	ML	L	Mdoukha	M	M	L
Mhaydseh Rachaiya	M	M	L	Nabi Safa	ML	ML	VL	Rachaiya	ML	L	L
Rafid Rachaiya	M	M	L	Selsata (Mazraat Dei	M	M	VL	Tannoura	ML	ML	VL
Yanta	M	M	VL								

Beyrouth

Beyrouth

Municipality	16-Dec	17-Dec	18-Dec	Municipality	16-Dec	17-Dec	18-Dec	Municipality	16-Dec	17-Dec	18-Dec
Achrafieh	M	L	L	Ain el-Mreisse	M	L	L	Bachoura	M	L	L
Beirut Central Distr	M	L	L	Marfai	M	L	L	Mazraa	M	L	L
Medaouar	M	L	L	Minet el-Hosn	M	L	L	Mwssaitbeh	M	L	L
Ras Beirut	M	L	L	Rmeil	M	L	L	Saifi	M	L	L
Zqaq el-Blat	M	L	L								