

Lebanon Fire Risk Bulletin



CIVIL DEDEFENCE

Refer to cadast table condition.

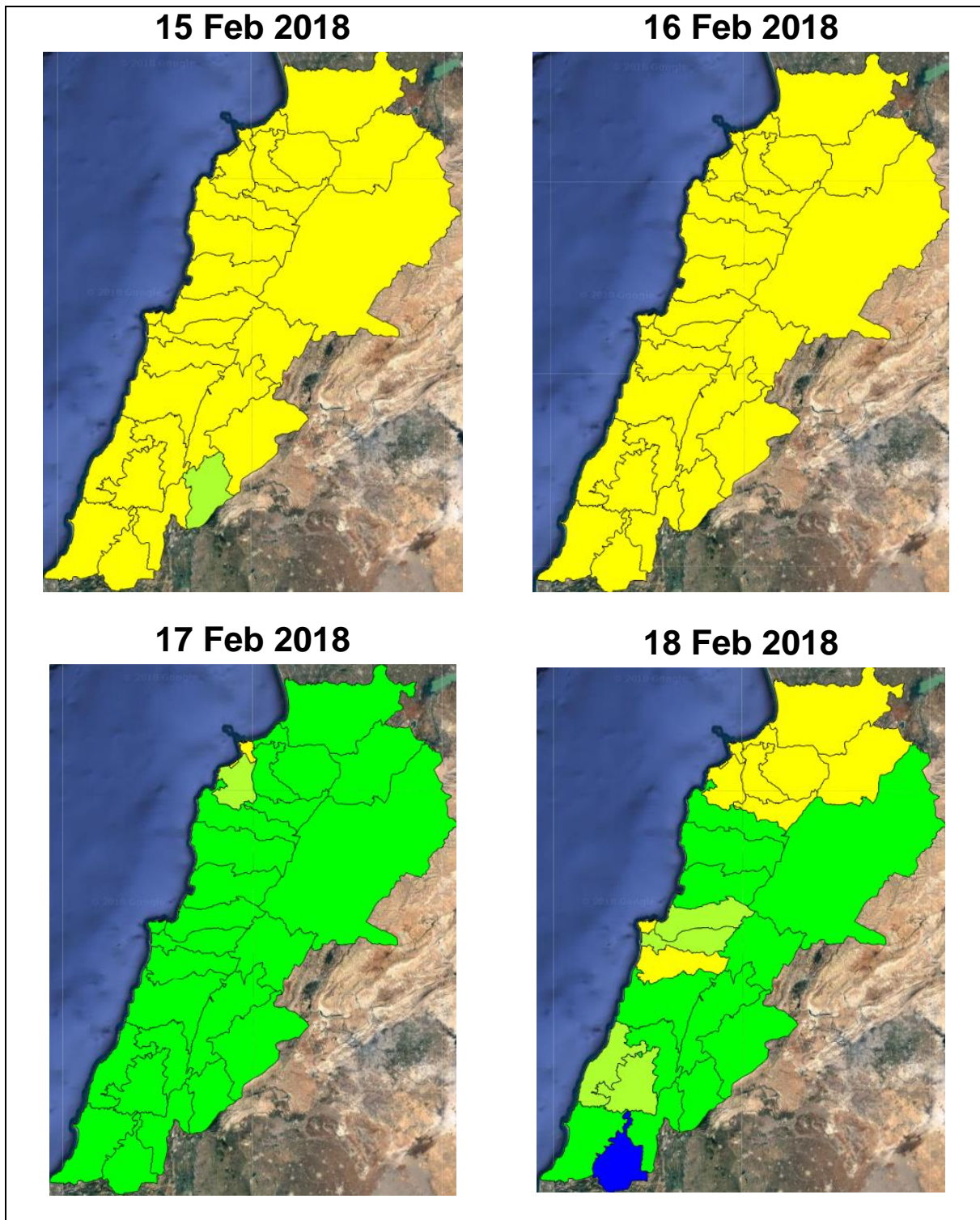
Please note that the indicated temperature is at 2 meters height from the ground.

General description of potential fire risk situation

Symbol	Level of risk	Meaning and actions
VL	Very low	Very low fire risk. Controlled burning operations can be hardly executed due to high fuel moisture content. Normally wildfires self-extinguish.
L	Low	Low fire risk. Controlled burning operations can be executed with a reasonable degree of safety.
ML	Medium low	Medium-low fire risk. Controlled burning operations can be executed in safety conditions. All the fires need to be extinguished.
M	Medium	Medium fire risk. Controlled burning operations would be avoided. All the fires need to be very well extinguished.
M	Medium high	Controlled burning is not recommended. Open flame will start fires. Cured grasslands and forest litter will burn readily. Spread is moderate in forests and fast in exposed areas. Patrolling and monitoring is suggested. Fight fires with direct attack and all available resources.
H	High	Ignition can occur easily with fast spread in grass, shrubs and forests. Fires will be very hot with crowning and short to medium spotting. Direct attack on the head may not be possible requiring indirect methods on flanks. Patrolling and monitoring the territory is highly suggested.
E	Extreme	Ignition can occur also from sparks. Fires will be extremely hot with fast rate of spread. Control may not be possible during day due to long range spotting and crowning. Suppression forces should limit efforts to limiting lateral spread. Damage potential total. Patrolling and monitoring the territory is highly suggested.

Beirut, 16 February 2018

FIRE RISK INDEX

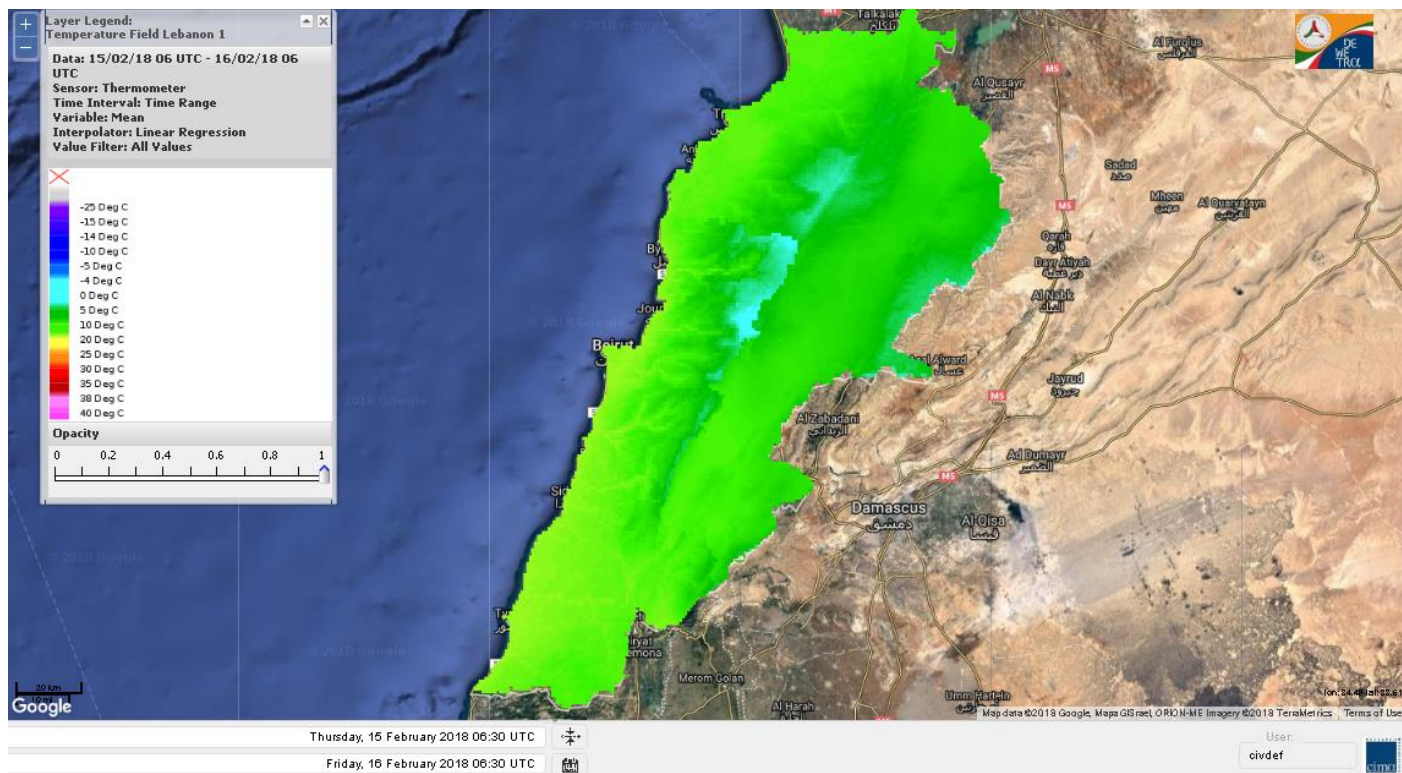


Layer Legend:
Lebanon Wildfire Risk Index 1

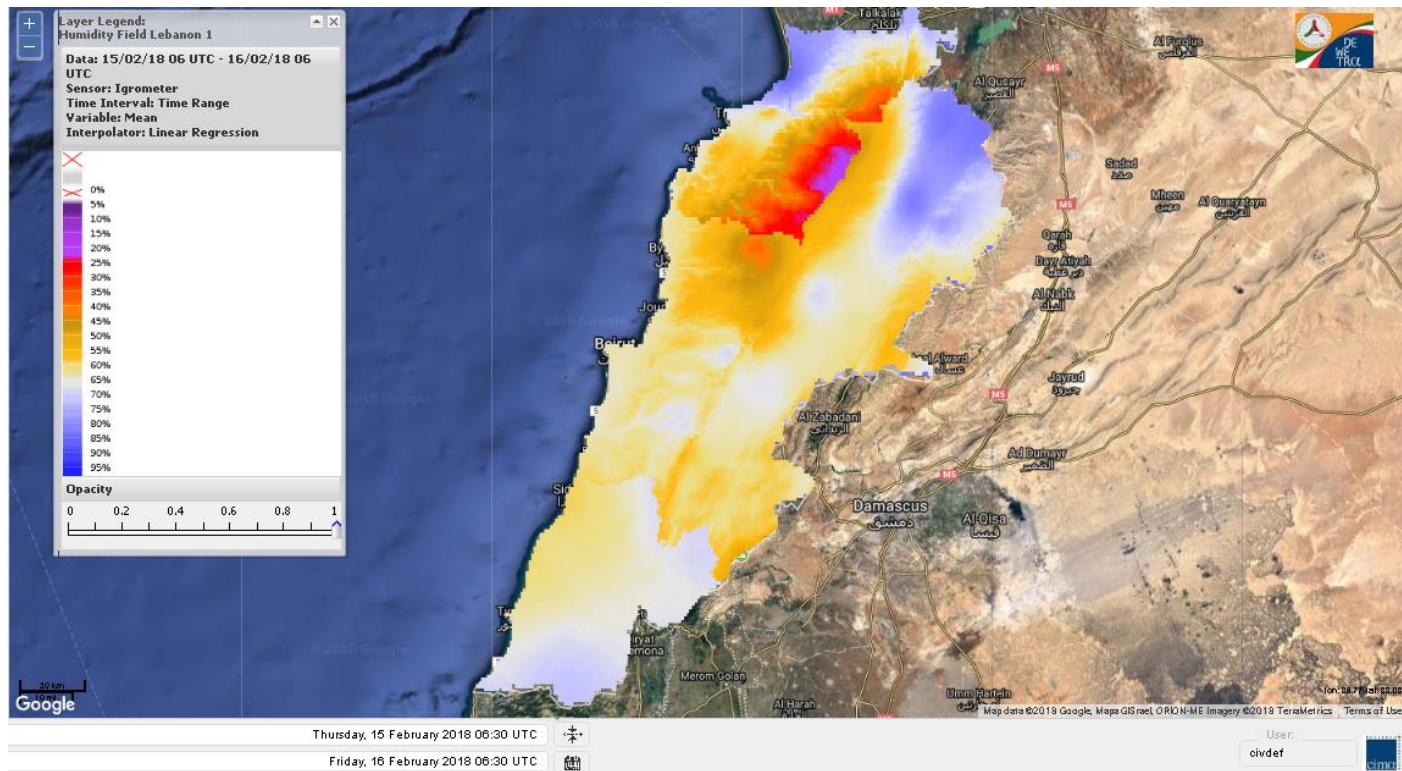
Data: Run: 16/02/2018 00:00. Forecast for 16
Model: RISICO for the Republic of Lebanon
Variable: Fire Weather Index
Spatial Resolution: Caza

- VERY LOW
- LOW
- MEDIUM-LOW
- MEDIUM
- MEDIUM-HIGH
- HIGH
- EXTREME

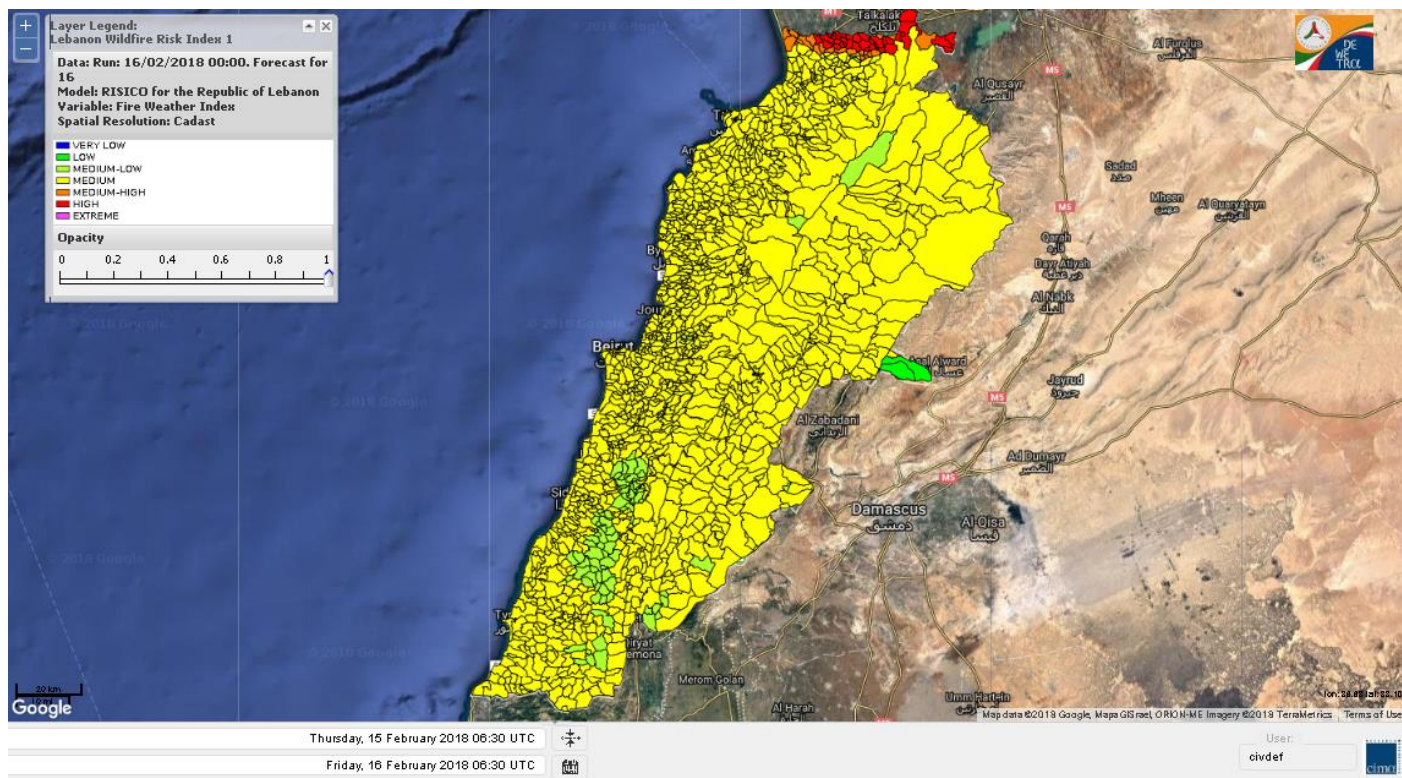
Lebanon temperature for Lebanon 16 Feb 2018



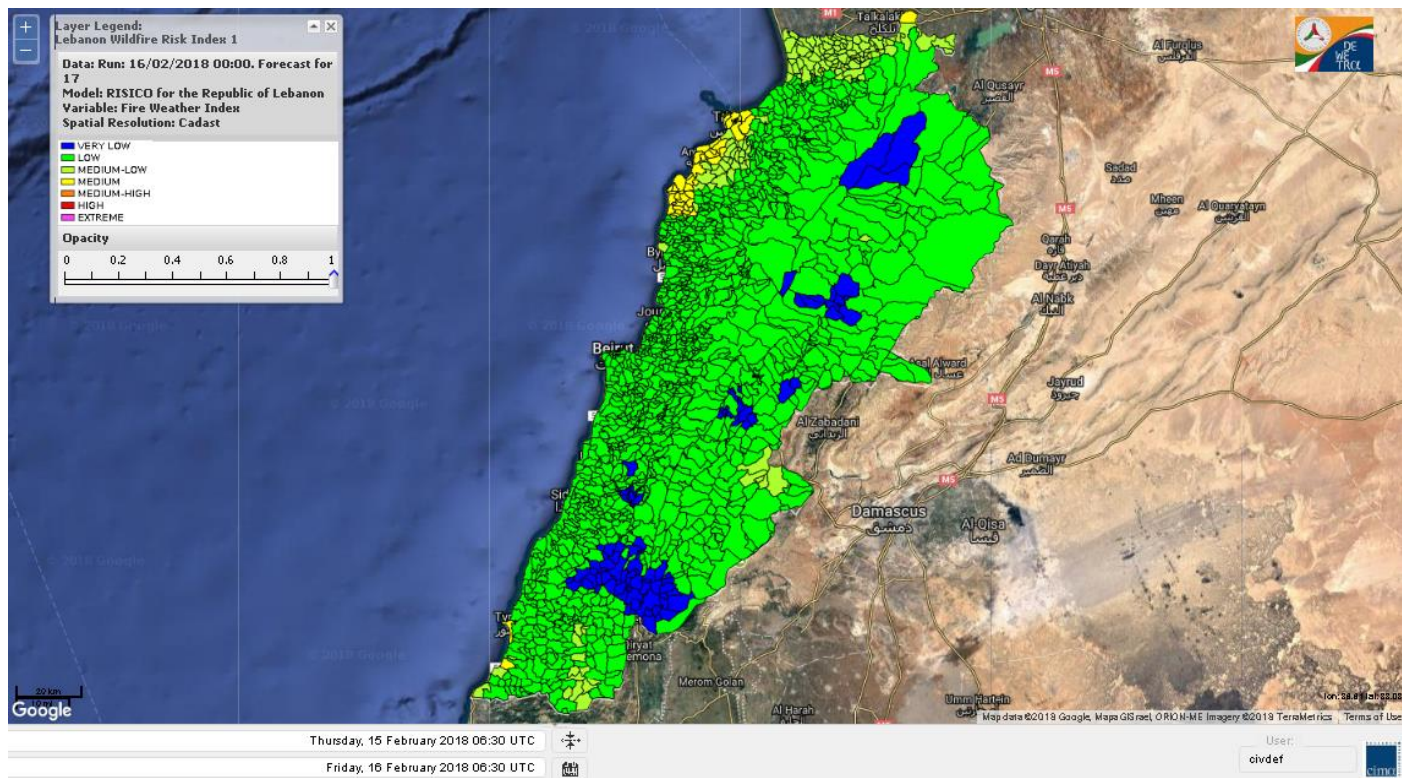
Lebanon humidity for Lebanon 16 Feb 2018



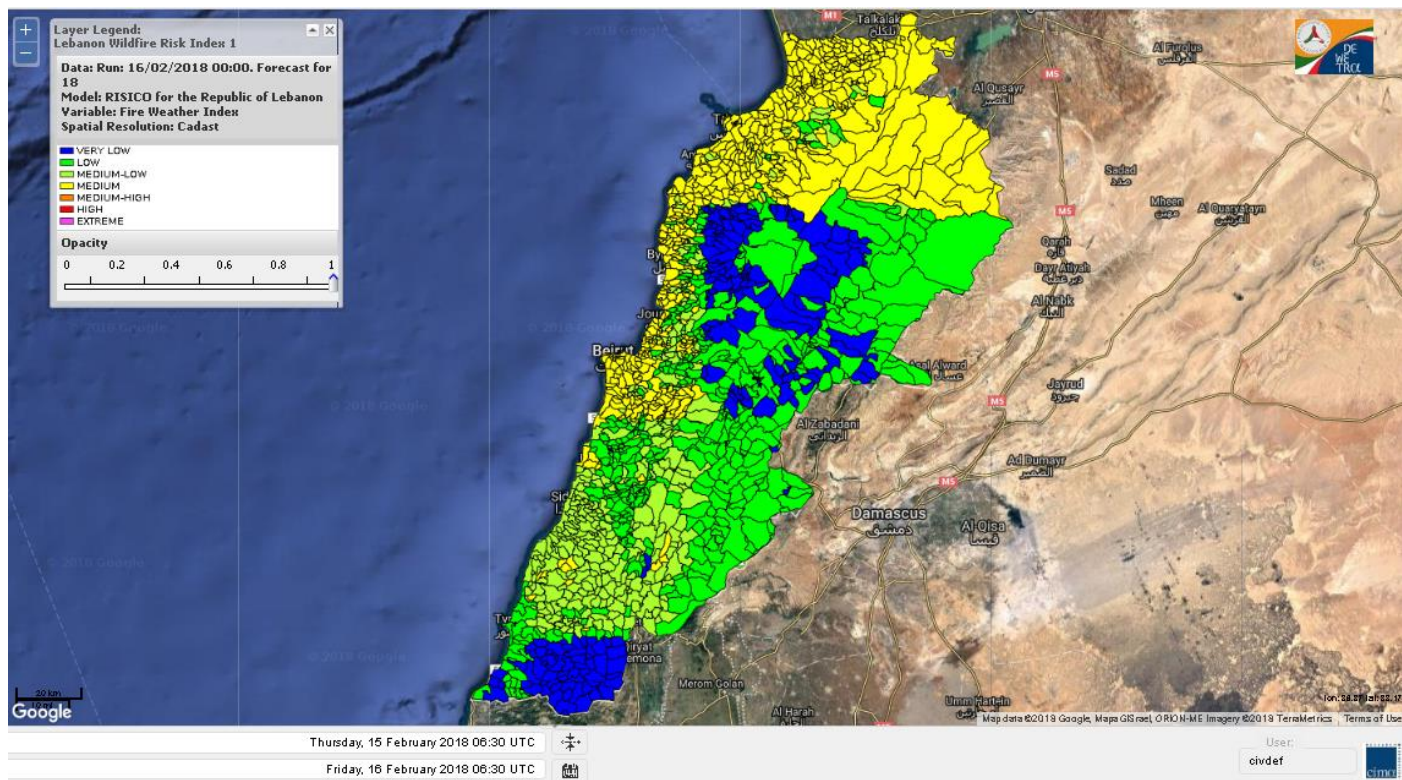
Lebanon for 16 Feb 2018



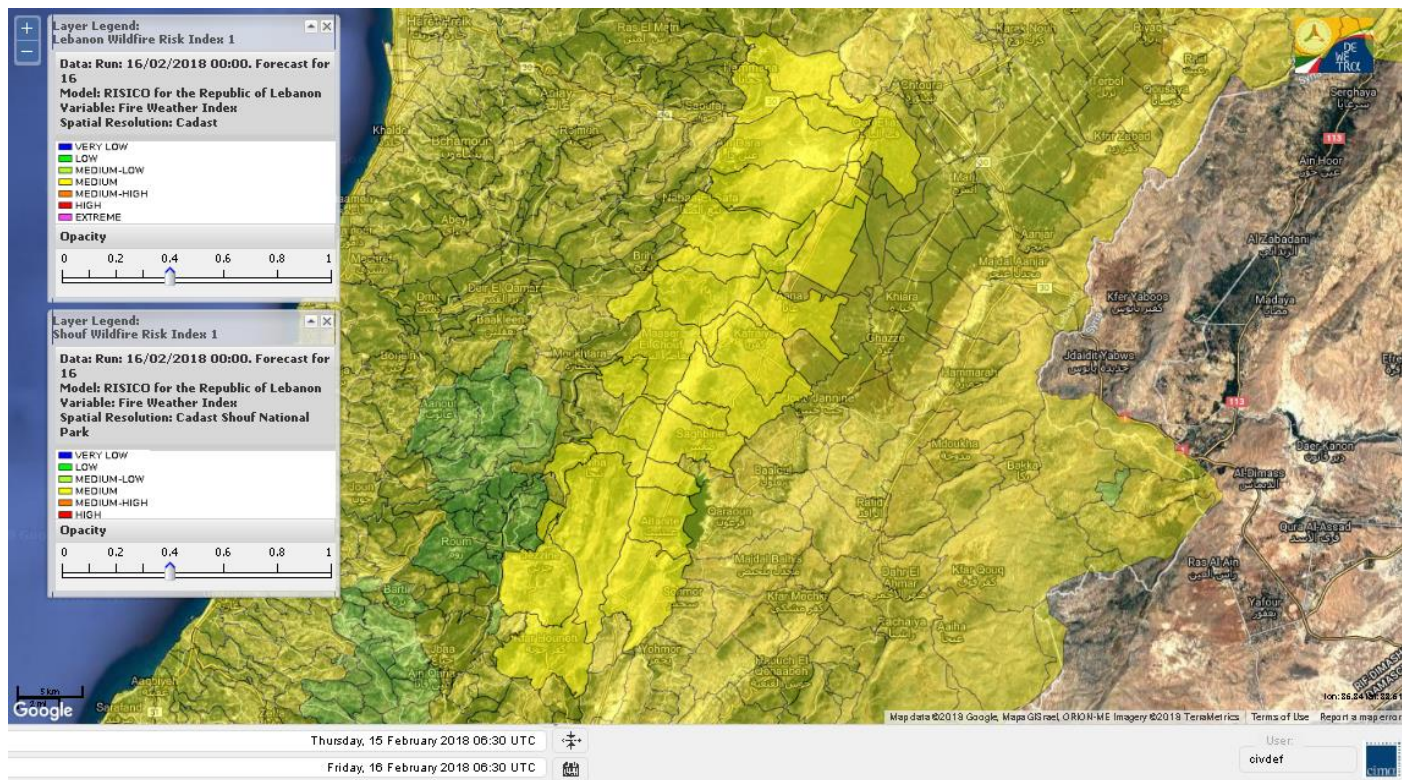
Lebanon for 17 Feb 2018



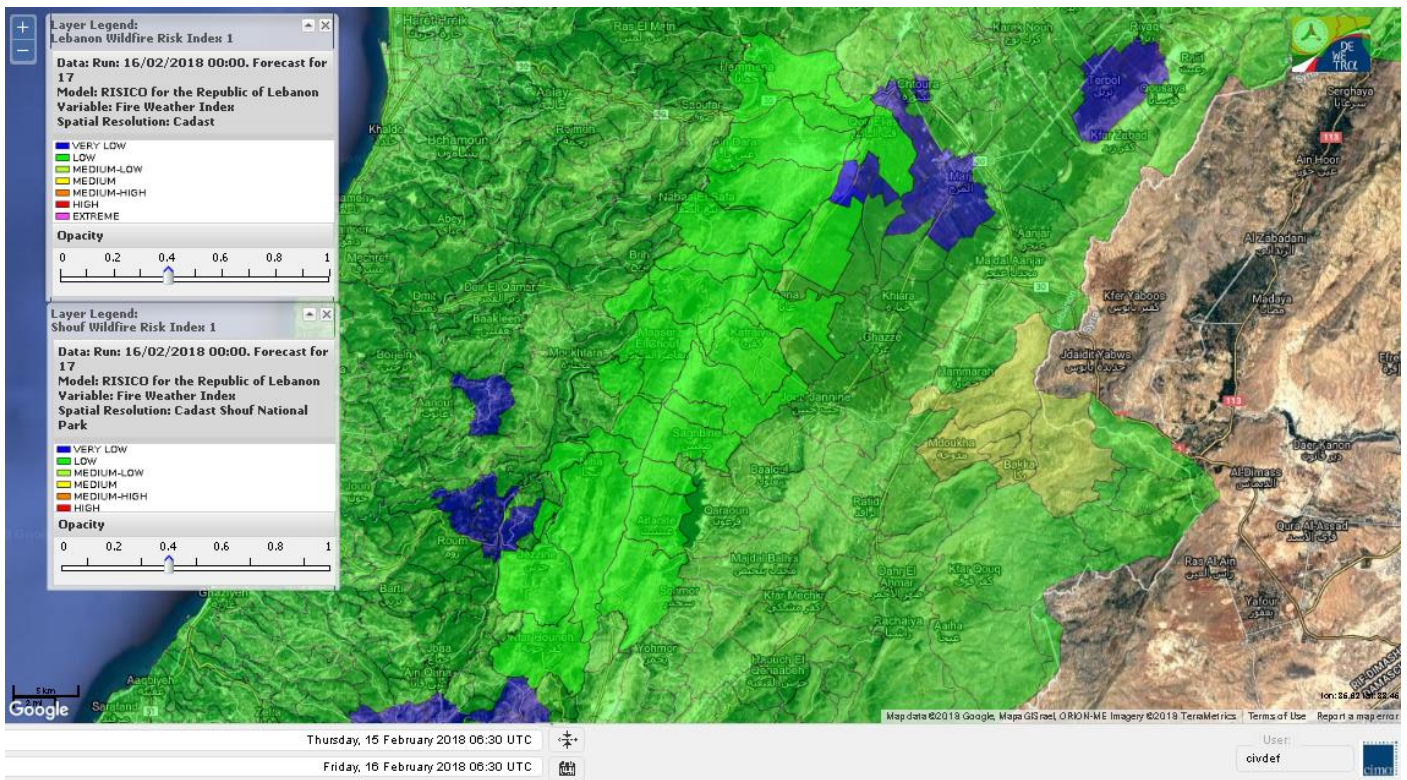
Lebanon for 18 Feb 2018



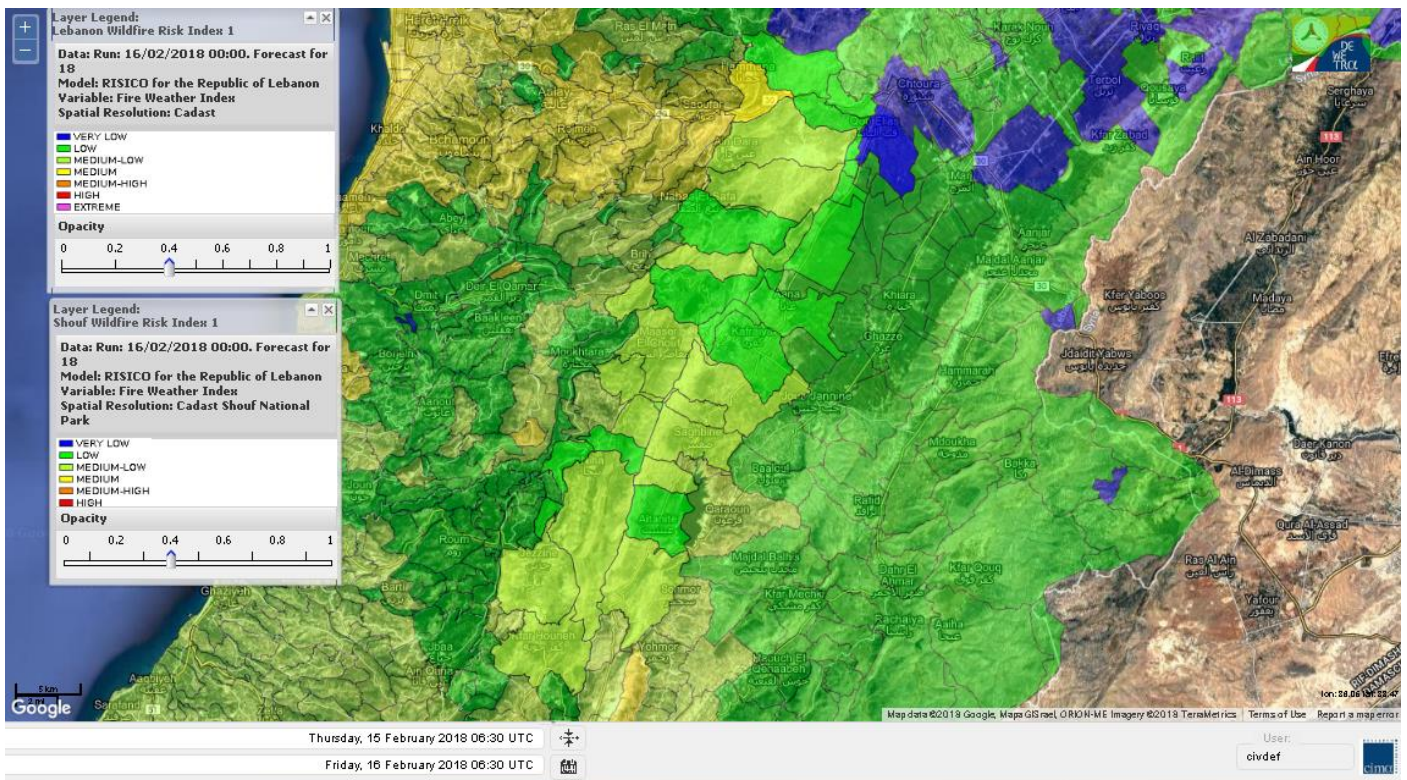
Shouf Biosphere Reserve Forecast for 16 Feb 2018



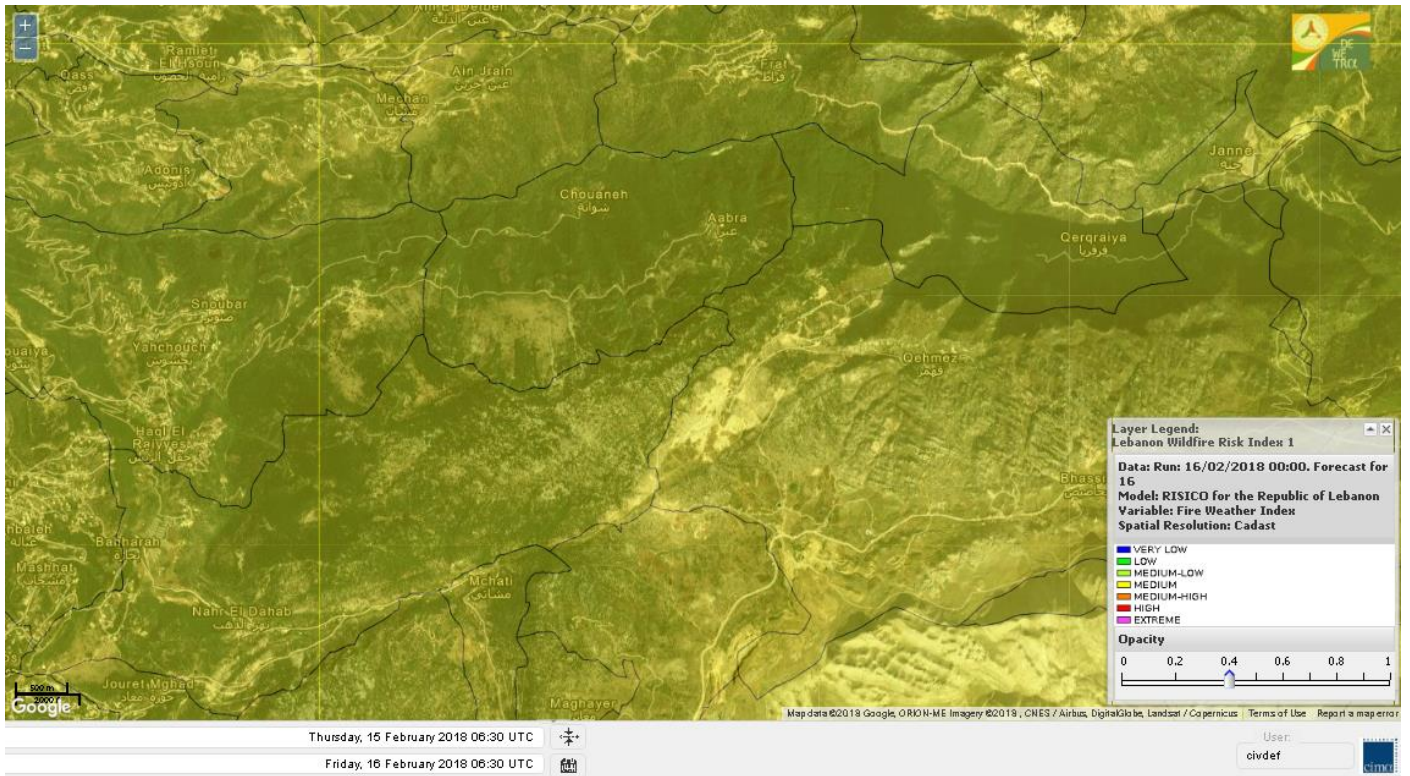
Shouf Biosphere Reserve Forecast for 17 Feb 2018



Shouf Biosphere Reserve Forecast for 18 Feb 2018



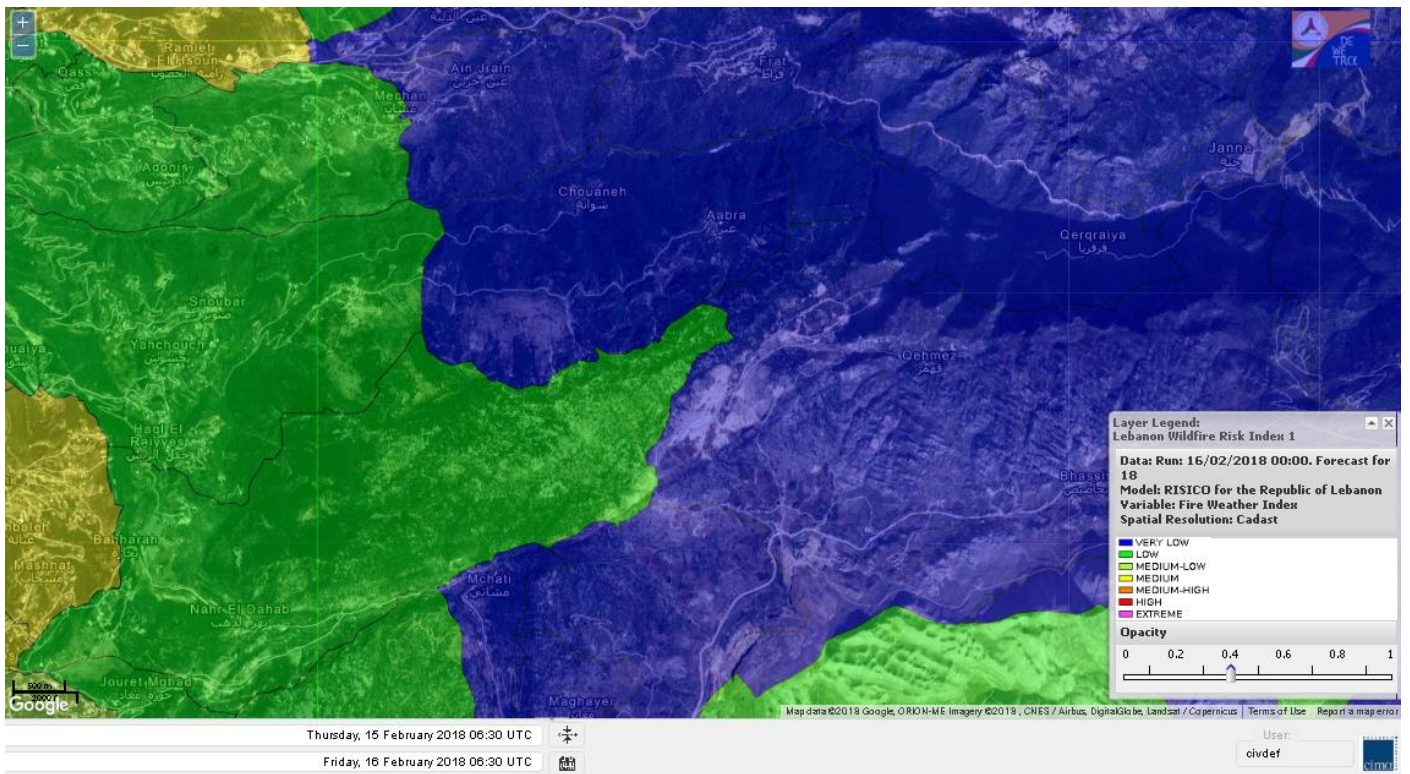
Jabal Moussa Reserve Forecast for 16 Feb 2018



Jabal Moussa Reserve Forecast for 17 Feb 2018



Jabal Moussa Reserve Forecast for 18 Feb 2018



Nord

Koura

Municipality	16-Feb	17-Feb	18-Feb	Municipality	16-Feb	17-Feb	18-Feb	Municipality	16-Feb	17-Feb	18-Feb
Aaba	M	ML	M	Afsaddiq	M	ML	M	Ain Ekriane	M	L	M
Amioun	M	ML	M	Anfeh	M	M	M	Badbhoun	M	ML	M
Barghoun	M	ML	M	Barsa	M	ML	M	Batroumine	M	M	M
Bdebba	M	ML	M	Bechmizzine	M	ML	M	Bednayel El-Koura	M	M	M
Bhabbouch El-Koura	M	L	M	Bkeftine	M	ML	M	Bnehran	M	L	M
Bqaiiaa El-Koura	M	ML	M	Bsarma	M	ML	M	Btaaboura	M	L	M
Bterram	M	ML	M	Btouratij	M	ML	M	Bziza	M	L	M
Dar Beechtar	M	L	M	Dar Chmezzine	M	ML	M	Deddeh	M	M	M
Deir El-Balamand	M	M	M	Fih	M	M	M	Hraiche	M	M	M
Ijdaabrine	M	L	M	Kaftoun	M	L	M	Kefraya El-Koura	M	M	M
Kfarakka	M	ML	M	Kfarhata	M	ML	M	Kfarhazir	M	ML	M
Kfarkahel	M	ML	M	Kfarsaroun	M	L	M	Kosba	M	L	M
Mejdel el-Koura	M	L	M	Nakhle	M	ML	M	Qalhat	M	M	ML
Ras Masqa	M	ML	M	Rechdibbine	M	L	M	Zakroun	M	M	M
Zgharta El-Mtaouile	M	L	ML								

Bcharre

Municipality	16-Feb	17-Feb	18-Feb	Municipality	16-Feb	17-Feb	18-Feb	Municipality	16-Feb	17-Feb	18-Feb
Aabdine	M	L	M	Bane	M	L	M	Barhelioun	M	L	M
Bazouone	M	L	VL	Becharre	M	L	M	Beit Menzer	M	L	M
Billa	M	L	M	Blaouza	M	L	M	Bqaa Kafra	M	L	VL
Bqerqacha	M	L	VL	Breissat	M	L	VL	Dimane	M	L	VL
Hadath El Jobbeh	M	L	L	Hadchit	M	L	M	Hasroun	M	L	VL
Mazraat Aassaf	M	L	VL	Mazraat Bani Saab	M	L	L	Mchaa El-Jobbeh	ML	L	VL
Metrit	M	L	M	Moghr El-Ahoual	M	L	M	Ouadi Qannoubine	M	L	L
Qanat	M	L	L	Qnayer	M	L	ML	Tourza	M	L	M

Batroun

Municipality	16-Feb	17-Feb	18-Feb	Municipality	16-Feb	17-Feb	18-Feb	Municipality	16-Feb	17-Feb	18-Feb
Aabrine	M	M	M	Aalali	M	L	VL	Aartiz	M	L	L
Abdelli	M	L	L	Ajdabra	M	M	ML	Assia	M	L	VL
Basbina	M	M	M	Batroun	M	M	M	Bcheleh	M	L	VL
Bechtoudar	M	L	VL	Beit Chlala	M	L	VL	Beit Kassab	M	L	VL
Bijdarfil	M	M	M	Bqesmaya	M	L	M	Chatine	M	L	VL
Chebtin	M	L	L	Chekka	M	M	M	Daael	M	L	VL
Dahr Abi Yaghi	M	L	L	Daraya El-Batroun	M	L	M	Deir Billa	M	L	ML
Deir Kfifane	M	M	M	Deir Mar Youhanna EL	M	L	VL	Deir Mar Youssef Jra	M	L	ML
Douma	M	L	VL	Douq	M	L	L	Eddeh El-Batroun	M	M	M
Ftihat El-Batroun	M	L	VL	Ghouma	M	L	M	Hadtoun	M	L	VL
Hamat	M	M	M	Harbouna	M	L	L	Hardine	M	L	VL
Helta	M	L	VL	Hery	M	M	M	Jebbla	M	L	L
Jrabta El-Batroun	M	L	M	Jrane El-Batroun	M	M	M	Kfar Aabida	M	M	M
Kfar Halda	M	L	VL	Kfarb Shlaimane	M	L	VL	Kfarhatna	M	L	L
Kfarhay	M	L	M	Kfarhelos	M	M	ML	Kfifane	M	M	M

Kfour El Arabi	M	L	VL	Koubba	M	M	M	Kour	M	ML	M
Mar Mama	M	L	VL	Masrah	M	L	L	Mehmarch	M	L	VL
Mrah Chdid	M	M	M	Mrah El Ziyat	M	ML	ML	Mrah El-Hajj	M	L	VL
Nahle El-Batroun	M	L	VL	Niha El-Batroun	M	L	VL	Ouajh El-Hajjar	M	M	M
Ouata Houb	M	L	VL	Qatnaaoun	M	M	M	Racha	M	L	VL
Rachana	M	ML	M	Rachkida	M	M	M	Ram El-Batroun	M	L	VL
Ras Nahhach	M	M	M	Selaata	M	M	M	Sghar	M	L	M
Smar Jbayl	M	M	M	Sourat El-Batroun	M	L	VL	Tannourine El-Faouqa	M	L	L
Tannourine Et-Tahta	M	L	VL	Thoum	M	L	M	Toula El-Batroun	M	L	ML
Zan	M	L	L								

Zgharta

Municipality	16-Feb	17-Feb	18-Feb	Municipality	16-Feb	17-Feb	18-Feb	Municipality	16-Feb	17-Feb	18-Feb
Aachach	M	L	M	Aalma	M	L	M	Aarde	M	ML	M
Aintourine	M	L	M	Arabet Qozhaya	M	L	M	Arde	M	L	M
Arjis	M	ML	M	Asnoun	M	L	ML	Ayto	M	L	M
Basloukit	M	L	M	Bchannine	M	ML	M	Besebeel	M	ML	M
Bhairret Toula	M	L	ML	Bnachee	M	L	M	Boussit	M	ML	M
Danha	M	L	M	Daraiya Zgharta	M	ML	M	Deir Jdeide	M	L	M
Ehden	M	L	M	Halan	M	L	M	Hariq Zgharta	M	L	M
Houakir	M	L	M	Hraiqis	M	L	M	laal	M	L	M
Ijbaa	M	L	M	Karm Saddeh	M	L	M	Kfarchakhna	M	ML	M
Kfardlaqous	M	L	M	Kfarfou	M	L	M	Kfarhata Zgharta	M	L	M
Kfarhoura	M	ML	M	Kfarsghab	M	L	M	Kfaryachit	M	L	M
Kfarzaina	M	ML	M	Khaldiye	M	L	M	Mazraat Ajbeaa	M	ML	M
Mazraat Et-Teffah	M	L	ML	Mazraat Jneid	M	L	ML	Mejdlaiya Zgharta	M	M	M
Merh Kfarsghab	M	L	ML	Miryata	M	L	M	Miziara	M	L	M
Mzraat Kefraya	M	L	M	Qorah Bach	M	L	M	Rachiine	M	L	M
Ras Kifa	M	L	M	Sakhra	M	L	ML	Sebhel Zgharta	M	L	M
Serhel	M	L	L	Tallet Zgharta	M	ML	M	Toula Zgharta	M	L	M
Zgharta	M	L	M								

Minieh-Denniye

Municipality	16-Feb	17-Feb	18-Feb	Municipality	16-Feb	17-Feb	18-Feb	Municipality	16-Feb	17-Feb	18-Feb
Aasaymout	M	L	L	Aaymar	M	L	M	Aazki	M	L	M
Ain El-Tineh-Miniyeh	M	L	M	Assoun	M	L	M	Bakhaaoun	M	L	M
Bchennata	M	L	M	Bechehhara	M	L	L	Beddawi	M	M	M
Behouaita	M	L	M	Beit El Foqss	M	L	M	Beit Haouik	M	L	M
Beit Zoud	M	L	M	Bekaasafrine	M	L	M	Borj El Yahoudiyeh	M	L	M
Bqarsouna	M	L	M	Btermaz	M	L	L	Debaael	M	L	L
Deir Ammar	M	L	M	Deir Nbouh	M	L	M	Haouaret-Miniyeh	M	L	M
Haql el Azimeh	M	L	ML	Harf El Siyad	M	L	ML	Hazmiye-Miniyeh	M	L	ML
Izal	M	L	M	Jarjour	M	L	L	Jayroun	M	L	ML
Kahf El-Malloul	M	L	M	Karm El-Moher	M	L	M	Kfar Binine	M	L	M
Kfarchalane	M	L	M	Kfarhabou	M	L	M	Kharroub-Miniyeh	M	L	M
Mazraat El-Kreme	M	L	L	Mazraat Ketrane	M	L	M	Merkebta	M	L	M
Minyeh	M	L	M	Mrah El Sfirat	M	L	L	Mrah Sraj	M	L	ML
Mrebbine	M	L	M	Nabi Youcheaa	M	L	M	Nemrine	M	L	M

Qarhaiya	M	L	M	Qarne	M	L	L	Qarsita	M	L	L
Qattineh-Miniyeh	M	L	L	Qemmamine	M	L	L	Qraine	M	L	ML
Raouda-Aadoua	M	L	M	Rihaniyet-Miniyeh	M	L	M	Sfireh	M	L	ML
Sir Ed-Danniyeh	M	L	M	Tarane	M	L	ML	Terbol-Miniyeh	M	L	M
Zaghartaghriane	M	L	M	Zouq Bhannine	M	L	M				

Nabatiye

Nabatiye

Municipality	16-Feb	17-Feb	18-Feb	Municipality	16-Feb	17-Feb	18-Feb	Municipality	16-Feb	17-Feb	18-Feb
Aabba	M	VL	ML	Aazzi	ML	L	ML	Adchit El-Chqif	M	L	ML
Ain Bou Swar	M	L	ML	Ain Kana	ML	L	ML	Ali El-Taher	M	VL	ML
Ansar	M	L	ML	Arab Salim	ML	VL	ML	Arnoun	M	VL	ML
Bfaroue	M	L	ML	Breyqaah	M	L	ML	Charqiyeh	ML	L	ML
Choukine	ML	VL	ML	Deir El Zahrani	ML	L	ML	Doueir El-Nabatiyeh	ML	VL	ML
Habbouch El-Nabatiye	ML	VL	ML	Hamra El-Nabatiyeh	ML	L	ML	Harouf El-Nabatiyeh	ML	VL	ML
Hmaile	ML	VL	ML	Houmin El Faouqa	ML	VL	ML	Houmin El Tahta	M	L	ML
Jarjough	M	VL	ML	Jbaah El-Nabatiyeh	M	L	L	Jebchit	ML	VL	ML
Kfar Djal El-Nabatiy	M	L	ML	Kfar Remmane	M	VL	ML	Kfar Sir	M	L	ML
Kfar Tebnit	M	VL	ML	Kfarfila	ML	L	ML	Kfour El-Nabatieh	ML	VL	ML
Mayfadoun	ML	L	ML	Mazraat Bsaffour	M	L	ML	Mazraat Chalbaal	M	L	ML
Mazraat Dmoul	ML	VL	M	Mazraat El Khreibeh	ML	L	ML	Mazraat El-Bayad El-	ML	VL	ML
Mazraat Kfarjaouz	ML	VL	ML	Mazraat Qalaat Meiss	M	L	ML	Nabatiyeh El-Fawka	ML	VL	ML
Nabatiyeh Et-Tahta	ML	VL	ML	Namiriyyeh	ML	L	ML	Qaaqaaiyet El Jisr	M	L	ML
Qossaibeh El-Nabatiy	M	L	ML	Roumine	ML	L	ML	Sarba El-Nabatieh	ML	L	ML
Sir El-Gharbiyeh	M	L	ML	Toul	ML	VL	ML	Yehmor El-Nabatiyeh	M	L	ML
Zaoutar El Charkiyeh	ML	L	ML	Zaoutar El-Gharbiyeh	ML	L	ML	Zebdine El-Nabatiyeh	ML	VL	ML
Zefta	M	L	ML								

Hasbaiya

Municipality	16-Feb	17-Feb	18-Feb	Municipality	16-Feb	17-Feb	18-Feb	Municipality	16-Feb	17-Feb	18-Feb
Ain Jarfa	M	L	L	Abou Qamha	M	VL	ML	Ain Qania	M	L	L
Bourghos	M	L	M	Chebaa	M	L	L	Chouaya Hasbaya	M	L	L
Dellafeh	M	L	M	Fardiss Hasbaiya	M	VL	ML	Hasbaya	M	L	ML
Hbariyeh	M	L	L	Kaoukaba Hasbaiya	M	VL	ML	Kfar Chouba	M	VL	L
Kfar Hamam	M	VL	L	Kfeir El-Zait	M	L	L	Khalwat Hasbaya	ML	L	L
Khreibet Hasbaiya	ML	VL	ML	Majidiyeh Hasbaiya	M	VL	ML	Marj Ez-Zhour (Haouc	M	L	L
Meri	ML	VL	ML	Mimass	M	L	ML	Rachaiya El-Fokhar	M	VL	L
Salaiyeb	ML	VL	ML								

Marjayoun

Municipality	16-Feb	17-Feb	18-Feb	Municipality	16-Feb	17-Feb	18-Feb	Municipality	16-Feb	17-Feb	18-Feb
Aalmane Marjaayoun	M	L	L	Aamra	ML	VL	ML	Adayseh Marjaayoun	M	L	L
Adchit El-Koussair	ML	L	ML	Ain Arab Marjaayoun	ML	VL	ML	Bani Haiyann	M	L	L
Blatt Marjaayoun	M	VL	ML	Blida	M	L	VL	Borj El-Moulouk	M	VL	ML
Boueyda Marjaayoun	M	VL	ML	Deir Mimass	M	VL	L	Deir Siriane	M	L	ML
Dibbine	M	VL	ML	Ebel El Saqi	M	VL	ML	Houla	M	L	VL
Houra	M	VL	ML	Kfar Kila	M	L	ML	Khiam Marjaayoun	M	VL	ML

Klayaa	M	VL	ML	Majdel Selem	ML	L	VL	Marjaayoun	M	VL	ML
Markaba	M	L	VL	Mays El-Jabal	M	L	VL	Mazraat Doumiat	M	VL	ML
Mazraat Sarada	ML	VL	ML	Mhaibib	M	L	VL	Qabrikha	M	L	L
Qantara	M	L	ML	Rab El-Thalathine	M	L	L	Saouaneh Marjayoun	M	L	VL
Talloussa	M	L	VL	Taybeh Matjaayoun	M	L	ML	Touline	M	L	L

Bent Jbail

Municipality	16-Feb	17-Feb	18-Feb	Municipality	16-Feb	17-Feb	18-Feb	Municipality	16-Feb	17-Feb	18-Feb
Ain-Ebel	M	ML	VL	Aitaroun	M	L	VL	Aynata Bint Jbeil	M	ML	VL
Ayta El-Chaeb	M	L	VL	Ayta El-Jabal	ML	L	VL	Beit Lif	M	L	VL
Beit Yahoun	M	ML	VL	Bint Jbeil	M	ML	VL	Borj Qalaway	M	ML	M
Braachit	ML	L	VL	Chakra	ML	L	VL	Debel	M	L	VL
Deir Antar	M	L	VL	Froun	M	L	ML	Ghandouriyeh Bint Jb	M	L	ML
Hanine	M	ML	VL	Hariss	M	L	VL	Hdatha	M	ML	VL
Jmeymeh	M	L	VL	Kafra Bint Jbeil	M	L	VL	Kfar Dounine	M	ML	VL
Khirbet Selm	M	L	VL	Kounine	M	L	VL	Maroun El Ras	M	L	VL
Qalaway	M	ML	L	Qaouzah	M	L	VL	Qatmoun	M	L	VL
Ramya Bint Jbeil	M	L	VL	Rchaf	M	L	VL	Rmeich	M	L	VL
Safad Al Battikh	ML	L	VL	Salhaneh	M	L	VL	Serbine	M	L	VL
Sultanieh Bint Jbeil	ML	L	VL	Tibnine	M	ML	VL	Tiri	M	ML	VL
Yaroun	M	ML	VL	Yater	M	L	VL				

Mont Liban

Jbail

Municipality	16-Feb	17-Feb	18-Feb	Municipality	16-Feb	17-Feb	18-Feb	Municipality	16-Feb	17-Feb	18-Feb
Aabeydat	M	L	ML	Aalita	M	L	ML	Aamchit	M	ML	M
Aarab El-Lahib	M	L	VL	Aarasta	M	L	VL	Adonis Jbeil	M	L	L
Afqa Jbeil	M	L	VL	Ain El Delbeh Jbeil	M	L	VL	Ain El-Ghouyba	M	L	VL
Ain Jrain	M	L	VL	Ain Kfah	M	L	M	Almat El Chemaliyat	M	L	VL
Almat El-Jenoubiya	M	L	VL	Aqoura	M	L	L	Bayzoun	M	L	L
Bchille Jbeil	M	L	M	Bechtida	M	L	L	Behdaydat	M	L	ML
Beit Habbaq	M	L	M	Bejjeh	M	L	M	Bekhaaz	M	L	M
Berbara Jbeil	M	L	M	Bintael	M	L	ML	Birket Hjoula	M	L	L
Blatt Jbeil	M	L	M	Boulhos	M	L	VL	Breyj Jbeil	M	L	L
Chamat	M	L	M	Chikhane	M	L	M	Chmout	M	L	ML
Eddeh Jbeil	M	L	M	Ehmej	M	L	VL	Fatre	M	L	L
Ferhet	M	L	L	Fghal	M	L	L	Frat	M	L	VL
Ghabat	M	L	VL	Ghalboun	M	L	M	Gharzouz	M	L	M
Ghofrine	M	L	M	Habil	M	L	L	Halate	M	L	M
Haqel	M	L	L	Hbaline	M	L	M	Hboub	M	L	M
Hdeine	M	L	VL	Hema Er-Rehban	M	L	VL	Hema Mar Maroun Aann	M	L	VL
Hjoula	M	L	ML	Hosrayel	M	L	M	Hsarat	M	L	M
Hsoun	M	L	M	Jaj	M	L	VL	Janne	M	L	VL
Jbeil	M	L	M	Jeddeyel Jbeil	M	L	M	Jlisse	M	L	L
Jouret El-Qattine	M	L	M	Kfar Baal Annaya	M	L	L	Kfar Kidde	M	L	M
Kfar Kouas	M	L	M	Kfar Mashoun	M	L	M	Kfoun	M	L	ML

Kharbe Jbeil	M	L	M	Laqlouq	M	L	L	Lassa	M	L	VL
Lehfed	M	L	VL	Maad	M	L	M	Mar Sarkis	M	L	L
Mastita	M	L	M	Mayfouq	M	L	VL	Mazraat El Siyad	M	L	L
Mazraat El-Maaden	M	L	VL	Mechane	M	L	L	Mechmech Jbeil	M	L	VL
Mehrin	M	L	M	Mejdel El-Akoura	M	L	VL	Mghayreh Jbeil	M	L	VL
Mounsef	M	L	M	Nahr Ibrahim	M	L	M	Qahmez	M	L	VL
Qartaba	M	L	VL	Qartaboun	M	L	M	Qattara Jbeil	M	L	VL
Qorqraya	M	L	VL	Ramout	M	L	M	Ras Osta	M	L	ML
Rihane Jbeil	M	L	M	Sakiet El-Khayt	M	L	ML	Saqi Richmaya	M	L	VL
Sebrine	M	L	ML	Seraita	M	L	VL	Souane Jbeil	M	L	VL
Tadmor	M	L	VL	Tartej	M	L	VL	Torzaiya	M	L	L
Yanouh Jbeil	M	L	VL	Zibidine Jbeil	M	L	ML				

El Metn

Municipality	16-Feb	17-Feb	18-Feb	Municipality	16-Feb	17-Feb	18-Feb	Municipality	16-Feb	17-Feb	18-Feb
Aain El-Qabu	M	L	VL	Aain El-Qach	M	L	M	Aain El-Teffaha	M	L	M
Aain el-Safssaf El-M	M	L	ML	Abou Mizane	M	L	M	Ain Aar	M	L	M
Ain Alaq	M	L	M	Ain El-Kharroube	ML	L	M	Ain El-Sendiane	M	L	M
Ain El-Zeitoune	M	L	L	Ain Saadeh	M	L	M	Aintoura El-Matn	M	L	L
Amaret Chalhoub	M	L	M	Antelias	M	L	M	Atchaneh	M	L	L
Ayroun	M	L	M	Baabdat	M	L	ML	Baouchariyeh	M	L	M
Baskinta	M	L	VL	Beit Chabab	M	L	ML	Beit El-Charar	M	L	M
Beit El-Kekko	M	L	M	Beit Mery	M	L	M	Bhersaf	M	L	ML
Bikfaya	M	L	M	Biyakout	M	L	M	Bnabil	M	L	ML
Bourj Hammoud	M	L	M	Bqennaya	M	L	M	Broummana El-Matn	M	L	M
Bsalim	M	L	M	Bsifrine	M	L	L	Bteghrine	M	L	L
Chaouiye	M	L	M	Chouaya El-Matn	ML	L	M	Choueir	M	L	M
Chrine	M	L	ML	Dahr El Sawan El-Mat	M	L	ML	Daychouniyeh	M	L	M
Dbayeh	M	L	M	Deir Chamra	M	L	L	Deir Mar Abda el Mch	M	L	ML
Deir Mar Roukouz	M	L	M	Deir Tamiche	M	L	ML	Dik El-Mehdi	M	L	M
Dikwaneh	M	L	M	Douar El-Matn	M	L	M	Fanar	M	L	M
Fraike	M	L	ML	Haret El-Ballaneh	M	L	M	Hbous	M	L	M
Himlaya	M	L	M	Jal El Did	M	L	M	Jdeideh El-Metn	M	L	M
Jouar El-Matn	M	L	ML	Jouret El-Ballout	M	L	ML	Kaaqour	M	L	L
Kfar Aaqab	M	L	L	Kfertay El-Matn	M	L	VL	Khenchara	M	L	ML
Khillet El-Mtain	M	L	L	Konnabat Broummana	M	L	ML	Konnabat Salima	M	L	L
Machraah El-Matn	M	L	L	Majdel Tarchich	M	L	L	Majzoub	M	L	M
Mansouriyeh El-Metn	M	L	M	Mar Boutros Karm Et-	M	L	L	Mar Chaya et Mzekke	M	L	ML
Mar Moussa Ed-Douar	M	L	ML	Marjaba	M	L	L	Masqa	M	L	L
Mayasse	M	L	ML	Mazraat Deir Aoukar	M	L	M	Mazraat El-Hadirat	M	L	M
Mazraat Yachouh	M	L	M	Mchikha	M	L	M	Menqlet Mezher	M	L	M
Mhaydseh Matn	M	L	M	Mkalles	M	L	M	Mrouj	M	L	L
Mtain	M	L	L	Mtaylor	M	L	M	Nabay	M	L	L
Naccache	M	L	M	Ouadi Chahine	M	L	L	Ouadi El-Karm El-Mat	M	L	L
Ouata El-Mrouj	M	L	M	Ouyoun El-Matn	M	L	L	Qornet Chehwan	M	L	M
Qornet El-Hamra	M	L	ML	Roumieh	M	L	M	Sfeilet Bikfaya	M	L	ML
Sinn El-Fil	M	L	M	Zabbougha	M	L	L	Zalqa	M	L	M

Zarouon	M	L	L	Zekrite	M	L	ML	Zighrine El-Matn	M	L	M
Zouk El-Khrab	M	L	M								

Chouf

Municipality	16-Feb	17-Feb	18-Feb	Municipality	16-Feb	17-Feb	18-Feb	Municipality	16-Feb	17-Feb	18-Feb
Aalmane El-Chouf	M	L	ML	Aammq El-Chouf	M	L	L	Ain Ouzein	M	L	L
Ain Qani	M	L	L	Ain Zhalta	M	L	L	Ainbal	ML	L	L
Amatour	M	L	L	Anout	ML	L	L	Atrine	M	L	L
Baadarane	M	L	ML	Baaqline	M	L	L	Baasir	M	L	M
Barja	M	L	M	Barouk	M	L	L	Bater	M	L	L
Batloun	M	L	ML	Bayqoun	ML	L	M	Bchetfine	M	L	L
Beiteddine	M	L	L	Benouati Ech-Chouf	M	L	L	Berjein	M	L	L
Bireh et Mtalleh	M	L	ML	Biret El-Chouf	M	L	ML	Bkechtine Ouel Mchei	M	L	L
Bkifa El-Chouf	M	L	ML	Botme	M	L	L	Bqaiaa Ech-Chouf	M	L	L
Bsaba El-Chouf	ML	L	L	Chammis El-Chouf	M	L	M	Chehim	M	L	L
Chemaarine	M	L	L	Chourit	M	L	L	Daher El-Chouf	M	L	L
Dalhoun	M	L	L	Damour	M	L	ML	Daraya El-Chouf	M	L	L
Deir El-Moukhalles	M	L	L	Deir Baba	M	L	L	Deir Dourit	M	L	L
Deir El-Qamar	M	L	L	Deir Kouche	M	L	L	Dibbieh	M	L	L
Dmit	M	L	L	Fouara Jaafar	M	L	L	Fraidis El-Chouf	M	L	ML
Ghabet Jaafar	M	L	L	Gharife	ML	VL	L	Haret Jandal	M	L	ML
Hasrout	ML	L	ML	Jadra	M	L	ML	Jahlieh	M	L	L
Jbeih El-Chouf	M	L	L	Jdeidet El-Chouf	M	L	L	Jiyeh	M	L	M
Jleilyeh	ML	L	ML	Jmailiyeh	M	L	ML	Joun	M	L	L
Kahlounie El-Chouf	M	L	ML	Ketermaya	M	L	ML	Kfar Faqoud	M	L	L
Kfar Hamal	M	L	M	Kfar Him	M	L	L	Kfar Katra	M	L	L
Kfar Niss	M	L	ML	Kfar hay	M	L	L	Kfarnabrakh	M	L	ML
Khirbet Bisri	ML	L	L	Knayse El-Chouf	M	L	L	Maaniyeh	M	L	ML
Maasser Beiteddine	M	L	L	Maasser El-Chouf	M	L	ML	Majdalouna	M	L	L
Majdel El-Meouch	M	L	ML	Mazboud	M	L	ML	Mazmoura	M	L	L
Mazraat El Chouf	ML	L	ML	Mazraat El Daher	ML	L	L	Mazraat El-Douair	M	L	L
Mechref	M	L	L	Mghairie	M	L	ML	Mghayrie El-Chouf	M	L	L
Moukhtara	M	L	L	Mrusti	M	L	ML	Mtolle	ML	L	ML
Naameh	M	L	M	Niha El-Chouf	M	L	ML	Ouadi Abou Youssef	M	L	VL
Ouadi Ed-Deir	M	L	ML	Ouadi El-Sit	M	L	L	Ouadi bnehlay	M	L	L
Qraibeh	M	L	ML	Qreiaa	M	L	L	Rmayle El-Chouf	M	L	ML
Semqaniyeh	M	L	ML	Sibline	M	L	ML	Sirjbeil	M	L	L
Warhanieh	M	L	ML	Werdaniyeh	M	L	ML	Zaarourieh	ML	L	L

Baabda

Municipality	16-Feb	17-Feb	18-Feb	Municipality	16-Feb	17-Feb	18-Feb	Municipality	16-Feb	17-Feb	18-Feb
Abadiyeh	M	L	M	Ain Mouaffaq	M	L	M	Araiya	M	L	M
Arbaniyeh	M	L	L	Arsoun	M	L	L	Baabda	M	L	M
Baalchmey	M	L	M	Bmaryam	M	L	ML	Bourj El-Brajneh	M	L	M
Boutchay	M	L	M	Bsaba Baabda	M	L	M	Btekhney	M	L	L
Btibyat	M	L	L	Bzbeddine	M	L	ML	Chbeniyeh	M	L	M
Chiyah	M	L	M	Chmeisset Baabda	M	L	L	Chouit	M	L	L
Deir El-harf	M	L	ML	Deir Khouna	M	L	M	Dlaybeh	M	L	L

Falougha	M	L	L	Furn El-Chebbak	M	L	M	Hadath Beyrouth	M	L	M
Halaliyeh Baabda	M	L	L	Hammana	M	L	M	Haret El Sett	M	L	ML
Haret Hamze	M	L	M	Haret Hreik	M	L	M	Hasbaiya El-Metn	M	L	L
Jouar El-Hoz	M	L	VL	Jouret Arsoun	M	L	ML	Kfar Chima	M	L	M
Kfar Selouane	M	L	VL	Khalouat Baabda	M	ML	M	Kneisset Baabda	M	L	L
Laylakeh	M	L	M	Louayzeh Baabda	M	L	M	Merdache	M	L	M
Mzairaa Baabda	M	L	L	Ouadi Chahrour El Ol	M	L	M	Ouadi Chahrour El So	M	L	ML
Qalaa Baabda	M	L	ML	Qhraybe Baabda	M	L	M	Qobbayaa	M	L	M
Qornayel	M	L	L	Qortada	M	L	L	Qrayeh Baabda	M	L	M
Qsaibeh Baabda	M	L	L	Qtale Baabda	M	L	ML	Ras El Metn	M	L	ML
Ras El-Haref	M	L	M	Rouayset El-Ballout	M	L	ML	Salima Baabda	M	L	L
Tahouitat El Ghadir	M	L	M	Tarchich	M	L	L	Zandouqa	M	L	L

Aley

Municipality	16-Feb	17-Feb	18-Feb	Municipality	16-Feb	17-Feb	18-Feb	Municipality	16-Feb	17-Feb	18-Feb
Abey	M	L	L	Aghmid	M	L	M	Ain Dara	M	L	ML
Ain Drafil	M	L	L	Ain El Halazoun	M	L	M	Ain El-Rmmaneh	M	L	L
Ain Jedideh	M	L	M	Ain Ksour	M	L	L	Ain Onoub	M	L	M
Ain Traz	M	L	L	Ainab	M	L	M	Aley	M	L	M
Aramoun	M	L	M	Aytat	M	L	M	Azouniyeh	M	L	M
Baawerta	M	L	L	Badghan Oua Wadi Bad	M	L	M	Bassatine	M	L	M
Bayssour	M	L	M	Bchamoun	M	L	M	Bdadoun	M	L	ML
Behouara	M	L	M	Bennay	M	L	L	Bhamdoun El-Dayaa	M	L	M
Bhamdoun El-Mhatta	M	L	M	Bkhechtey	M	L	M	Bleibel	M	L	ML
Bmakine	M	L	M	Bmehray	M	L	ML	Bouzrid	M	L	L
Bserrine	M	L	M	Bsous	M	L	L	Btalloun	M	L	M
Btater	M	L	M	Chanay	M	L	M	Charoun	M	L	M
Chartoun	M	L	L	Chemlane	M	L	M	Choueifat El-Aamrous	M	L	M
Choueifat El-Oumara	M	L	M	Choueifat El-Quoubbe	M	L	M	Dakkoun	M	L	L
Deir Qoubel	M	L	M	Dfoun	M	L	M	Douair El Remmaneh	M	L	L
Ghaboun	M	L	M	Habramoun	M	L	ML	Homs Oua Hama	M	L	M
Houmal	M	L	M	Jisr El Qadi	M	L	L	Kehaleh	M	L	ML
Keyfoun	M	L	M	Kfar Aamey	M	L	M	Kommatyeh	M	L	M
Maasrati	M	L	M	Majdel Baana	M	L	M	Mansourieh et Ain El	M	L	M
Mazraat El-Nahr	M	L	ML	Mchakhte	M	L	M	Mecherfeh	M	L	M
Mejdlaya	M	L	M	Mrayjat	M	L	ML	Ramliyah	M	L	ML
Rechmaya	M	L	ML	Rejmeh	M	L	M	Remhala	M	L	ML
Rouaysset El Neemane	M	L	M	Saoufar	M	L	M	Selfaya	M	L	L
Sirhmoul	M	L	ML	Souq El Ghareb	M	L	M	Taazanieh	M	L	M

Kesrouane

Municipality	16-Feb	17-Feb	18-Feb	Municipality	16-Feb	17-Feb	18-Feb	Municipality	16-Feb	17-Feb	18-Feb
Achkout	M	L	ML	Adma Oua Dafneh	M	L	M	Ain Ed-Delbe Kesroua	M	L	VL
Ain El-Rihane	M	L	ML	Aintoura Kesrouane	M	L	M	Ajaltoun	M	L	ML
Akaybeh Kesrouane	M	L	M	Aramoun Kesrouane	M	L	ML	Azra ouel Ozor	M	L	ML
Ballouneh	M	L	ML	Batha	M	L	L	Bekaatat Achkout	M	L	M
Bekaatat Kanaan	M	L	VL	Bizhel	M	L	L	Bouar	M	L	M
Bqaatouta	M	L	VL	Bqaq Ed-Dine	M	L	M	Bzommar	M	L	M

Chahtoul	M	L	ML	Chnaniir	M	L	L	Chouan	M	L	VL
Daraya Kesrouane	M	L	ML	Darououn	M	L	L	Deir Baqlouch	M	L	L
Dlebta	M	L	L	Eghbeh	M	L	L	Faraya	M	L	L
Fatka	M	L	M	Feytroun	M	L	ML	Ghazir	M	L	M
Ghbaleh Kesrouane	M	L	M	Ghedrass	M	L	ML	Ghosta	M	L	L
Ghynéh	M	L	M	Harharaya w Kattine	M	L	ML	Harissa Kesrouane	M	L	L
Hayata	M	L	L	Hosein	M	L	L	Hrajel	M	L	L
Jdeideh Ghazir	M	L	ML	Jeita	M	L	M	Jounieh Ghadir	M	L	M
Jounieh Haret Sakhr	M	L	M	Jounieh Salel Alma	M	L	M	Jounieh Sarba	M	L	M
Jouret Bedrane	M	L	M	Jouret Mhad	M	L	L	Jouret Termos	M	L	M
Kfar Debiane	M	L	L	Kfar Tay Kesrouane	M	L	L	Kfar Yassine	M	L	M
Kfour Kesrouane	M	L	M	Kharayeb Nahr Ibrahi	M	L	ML	Klayaat Kesrouane	M	L	ML
Maarab	M	L	L	Maaysra Kesrouane	M	L	M	Mayrouba	M	L	VL
Mazraat Er-Ras	M	L	M	Mazraat Mrah El-Mir	M	L	L	Mchaa El Ftouh	M	L	VL
Mchaa Faraya	M	L	VL	Mchaa Kfar Dibiane	M	L	VL	Mghaer	M	L	VL
Mradiyah	M	L	L	Nahr Ed-Dahab	M	L	L	Nammoura Kesrouane	M	L	ML
Ouata El Jaouz	M	L	L	Ouata Sillam	M	L	M	Raachine	M	L	L
Rayfoun	M	L	M	Safra Kesrouane	M	L	M	Shayle Kesrouane	M	L	M
Tabarja	M	L	M	Yahchouch	M	L	L	Zaaytreh	M	L	ML
Zeytoun	M	L	M	Zouk Mikael	M	L	M	Zouk Mosbeh	M	L	M

Baalbek_Hermel

Baalbek

Municipality	16-Feb	17-Feb	18-Feb	Municipality	16-Feb	17-Feb	18-Feb	Municipality	16-Feb	17-Feb	18-Feb
Aadous	M	VL	VL	Aamchki	M	L	L	Aarsal	M	L	L
Ain Baalbek	M	L	L	Ain Bourday	M	L	L	Ain El-Benye	M	L	L
Ain El-Jaouz Baalbek	L	L	L	Ain El-Siya Chadoura	M	L	L	Al Khodr Baalbek	M	L	VL
Al Nabi Chit	M	L	VL	Aynata Baalbek	M	L	VL	Baalbek	M	L	L
Bachwat	M	L	VL	Barqa	M	L	VL	Bednayel Baalbak	M	L	L
Beit Chama	M	L	L	Bijjaje	M	L	L	Bouday	M	L	VL
Brital	M	L	VL	Btadi	M	L	VL	Chaat	M	L	L
Chaibe	M	L	L	Chlifa	M	L	VL	Chmestar	M	L	VL
Dar El-Oussa	M	L	VL	Deir El-Ahmar	M	L	VL	Deir Mar Maroun Baal	M	L	M
Douris	M	VL	L	Fakiha	M	L	M	Hadath Baalbek	M	L	VL
Ham	M	L	VL	Haour Taala	M	L	VL	Hizzine	M	L	L
Hlebta	M	L	M	Hosh Barada	M	VL	VL	Hosh El Dahab	M	VL	VL
Hosh El Snid	M	L	VL	Hosh El-Nabi	M	L	VL	Hosh El-Rafiq	M	L	L
Hosh Tal Safiya	M	VL	L	Hrebta	M	L	L	laat	M	VL	VL
Jebaa	M	VL	VL	Jenta	M	L	L	Kfar Dabach	M	L	L
Kfar Dane	M	VL	L	Khraibeh El-Hermel	M	L	L	Khreibet Baalbek	M	L	L
Kneisset Baalbek	M	L	VL	Labueh	M	L	L	Maarboun	M	L	VL
Majdaloun	M	VL	VL	Maqneh	M	L	L	Mazraat Beit Mcheik	M	VL	L
Misraya	M	L	L	Moqraq	M	L	L	Nabha El-Damdoum	M	L	L
Nabi Chbay	M	L	L	Nabi Osman	M	L	L	Nahleh baalbek	M	L	L
Ouadi El-Oss	M	L	L	Qaa Baayoun	M	L	M	Qaa Jouar Maqiye	M	L	M
Qaa Ouadi El-Khanzir	M	L	M	Qah Baalbek	M	L	M	Qarha Baalbek	M	ML	VL

Qsarnaba	M	L	VL	Ram Baalbek	M	L	VL	Ras Baalbek El Sahl	M	L	M
Ras Baalbek El-Charq	M	L	M	Riha	M	L	VL	Saaide	M	VL	VL
Sbouba	M	L	L	Seriine El-Tahta	M	L	VL	Slouqi	M	L	L
Taiba Baalbek	M	L	VL	Talia	M	L	VL	Taraiya	M	L	VL
Temnin El Fawqa	M	L	L	Temnin El-Tahta	M	L	VL	Tfail	L	L	L
Yahfoufa	M	L	L	Yammouneh	M	L	L	Younine	M	L	L
Zboud	M	L	ML								

Hermel

Municipality	16-Feb	17-Feb	18-Feb	Municipality	16-Feb	17-Feb	18-Feb	Municipality	16-Feb	17-Feb	18-Feb
Charbine El-Hermel	M	L	M	Hermel Jbab	ML	VL	M	Hermel	M	L	M
Maaysra El-Hermel	M	L	M	Michaa Mrajhine	M	L	M	Ouadi Faara	M	L	M
Ras Baalbek - Ouadi	M	L	M	Ras Baalbek El Gharb	M	VL	M	Zighrine	M	VL	M

Akkar

Akkar

Municipality	16-Feb	17-Feb	18-Feb	Municipality	16-Feb	17-Feb	18-Feb	Municipality	16-Feb	17-Feb	18-Feb
Aain Tinta	M	ML	M	Aaiyat	M	ML	M	Aakkar El-Aatiqa	M	L	M
Aamar Akkar	M	L	M	Aamar El Baykat	H	ML	M	Aamayer	MH	ML	M
Aamriyet Akkar	H	ML	M	Aandqet	M	L	M	Aarmeh	H	ML	M
Aarqa	M	ML	M	Aawaynat	H	ML	M	Aayoun Akkar	M	L	M
Abboudiye	H	ML	M	Ain El-Zeit	MH	ML	M	Ain Yaaqoub	M	L	M
Akroum	M	L	M	Aridet Cheikh Zennad	MH	ML	M	Baldeh w Mazraat Bal	M	ML	M
Barcha	H	ML	M	Bardeh	H	ML	M	Bebnine	M	L	M
Beino	M	ML	M	Beit Ayoub	M	L	M	Beit El-Haouch	M	L	M
Beit Mellat	M	ML	M	Beit Younes	M	L	M	Berbara Akkar	M	ML	M
Berqayel	M	L	M	Bezbina	M	L	ML	Bireh Akkar	MH	ML	M
Borj	M	ML	M	Bqerezla	M	L	M	Bzal	M	L	M
Chane	M	L	M	Chaqdouf	M	ML	M	Charbila	M	ML	M
Cheikh Mohammad	M	ML	M	Cheikh Taba Es-Sahl	M	ML	M	Cheikh Taba	M	L	M
Cheikh Zennad	MH	ML	M	Cheikhlar	H	ML	M	Chir Hmairine	H	ML	M
Daghle	MH	ML	M	Dahr Laissine	M	ML	M	Darine	H	ML	M
Dawra	M	L	M	Dawsa w Baghdadi	H	ML	M	Dayret Nahr El-Kabir	H	M	M
Deir Dalloum	M	L	M	Deir Jennine	M	ML	M	Denbou	M	L	M
Dibbabiyyeh	H	ML	M	Douair Aadwiyeh	M	ML	M	Fassikine	MH	ML	M
Fnaydek	M	L	M	Fraydes Akkar	H	ML	M	Ghazayle	MH	ML	M
Habchit	M	L	ML	Hakour	M	L	M	Halba	M	ML	M
Haouchab	M	ML	M	Hayssat	M	ML	M	Haytla	H	ML	M
Hayzouq	M	ML	M	Hedd	M	ML	M	Hmaira Akkar	M	L	M
Hmaiss Akkar	M	ML	M	Hnaider	H	ML	M	Hokr Ed-Dahri	MH	ML	M
Hokr Etti	M	ML	M	Hokr Jouret Srar	H	ML	M	Houaich	M	L	M
Hrar	M	L	M	Idbil	M	L	M	llat	M	L	M
Janine	H	ML	M	Jdeidet El-Joumeh	M	ML	M	Jdeidet El-Kaiteh	M	L	M
Jebraiel	M	L	M	Kafr	M	L	ML	Kafr	MH	ML	M
Karm Asfour	M	L	M	Kfar Melki Akkar	M	ML	M	Kfar Noun	MH	ML	M
Kfarharra	M	ML	M	Khalsa	H	ML	M	Kharnoubet Akkar	H	ML	M

Khirbet Daoud Aakkar	MH	ML	M	Khirbet El Remmane	MH	ML	M	Khirbet Shar	M	ML	M
Khoreybet El-Jindi	M	ML	M	Khreibet Aakkar	M	L	M	Kneisset Aakkar	MH	ML	M
Kneisset Hnaider	H	ML	M	Knisse	M	ML	M	Kroum El-Aarab	M	ML	M
Kwachra	H	ML	M	Kweykhat	M	ML	M	Machta Hammoud	H	ML	M
Majdala	M	L	M	Majdel Akkar	M	ML	M	Mar Touma	M	L	M
Marlaya Melhem	M	ML	M	Mashha	M	L	M	Massoudiye	MH	ML	M
Mazraat Beit Ghattas	M	L	M	Mazraat En-Nahriye	H	ML	M	Mechmech	M	L	M
Memneh	M	L	L	Mhammara	M	L	M	Mighraq Aakkar	MH	ML	M
Minyara	M	L	M	Moqayteh	M	ML	M	Mounjez	H	ML	M
Msalla	MH	ML	M	Mzeihmeh	H	ML	M	Nfaiseh	M	ML	M
Noura Et-Tahta	H	ML	M	Ouadi El-Haour	H	ML	M	Ouadi El-Jamous	M	L	M
Ouyoun El-Ghizlane	M	L	M	Qaabarine	M	ML	M	Qabaait	M	L	ML
Qachlaq	H	ML	M	Qantara Aakkar	M	L	M	Qarha Aakkar	H	ML	M
Qarqaf	M	L	M	Qboula	M	L	M	Qleiaat Aakkar	M	ML	M
Qloud El-Baqie	M	L	M	Qobaiyat Aakkar	M	L	M	Qobbat Chamrat	M	ML	M
Qorayat	M	L	M	Qornet Aakkar	M	L	M	Qsair Aakkar	H	ML	M
Rahbe	M	L	M	Rihaniyet Aakkar	M	ML	M	Rmah	H	ML	M
Rmoul	M	ML	M	Saadine	MH	ML	M	Sadaqa	M	L	M
Saidnaya	M	ML	M	Sammouniye	M	ML	M	Sayssoq	M	L	M
Semmaqiye	MH	ML	M	Semmaqli	M	ML	M	Sfinet El-Dreib	M	ML	M
Sfinet El-Qaitaa	M	L	M	Sindyanet Zeidane	M	L	M	Souaisset Aakkar	M	ML	M
Srar	H	ML	M	Tal Abbas El Gharby	M	ML	M	Tal Abbas El-Chargy	MH	ML	M
Tal Biret	MH	ML	M	Tal Hmayra	H	ML	M	Tal Maayan Tal Kiri	M	ML	M
Tal Sibel	M	ML	M	Tallet Chattaha	M	ML	M	Tikrit	M	L	M
Tleil	MH	ML	M	Tshea	M	L	M	Zawarib	M	L	M
Zouq El Hosniyeh	M	L	M	Zouq El-Haddara	M	L	M	Zouq El-Hbalsa	M	L	M
Zouq El-Moqachrine	M	L	M								

Sud

Sour

Municipality	16-Feb	17-Feb	18-Feb	Municipality	16-Feb	17-Feb	18-Feb	Municipality	16-Feb	17-Feb	18-Feb
Aaiyeh	M	L	VL	Aalma El-Chaab	M	L	VL	Aaytit	M	L	VL
Abbassiyeh Sour	M	L	L	Abou Chech	M	L	L	Ain Abou Abdallah	M	L	L
Ain Baal	M	L	L	Arzoun	M	L	ML	Aziyeh	M	L	VL
Baflaya	M	L	ML	Barich	M	L	ML	Batouliyah	M	L	L
Bayad	M	L	VL	Bazouriyeh	M	L	L	Bediass	M	L	ML
Bestiyat	M	L	ML	Borj El Chemali	M	L	L	Borj En-Naqoura	M	ML	L
Borj Rahhal	M	L	ML	Boustane	M	L	L	Btaychiyeh	M	L	L
Chaaitiye	M	L	L	Chameh	M	L	L	Chehabiye	M	L	L
Chehour	M	L	L	Chihine	M	L	VL	Debaal Sour	M	L	L
Deir Amess	M	L	VL	Deir Kifa	M	ML	ML	Deir Qanoun El-Ain	M	L	L
Deir Qanoun El-Naher	M	L	ML	Derdghaiya	M	L	ML	Dhayra	M	L	L
Halloussiyeh	M	L	ML	Hamoul	M	L	VL	Hanaouey	M	L	VL
Henniye	M	ML	L	Hmairi Sour	M	L	ML	Iskandarouna Sour	M	ML	VL
Jbal El Botom	M	L	VL	Jebbin	M	L	L	Jennata	M	L	ML
Jijim	M	L	VL	Jouaiya	M	L	L	Kneisset Sour	M	L	VL

Maarake	M	L	ML	Maaroub	M	L	ML	Majadel	M	L	VL
Majdalzoun	M	L	L	Mansouri Sour	M	M	L	Marnba	M	L	L
Marouahine	M	L	VL	Mazraat El-Zalloutiy	M	L	L	Mazraat Mechref	M	L	VL
Mazraat Tayr Semhat	M	L	L	Mheilib	M	L	L	Neffakhiyeh	M	L	ML
Niha Sour	M	L	ML	Ouadi Jilo	M	L	L	Qana	M	L	VL
Qolaileh Sour	M	L	L	Rechknay	M	L	VL	Rmadiyah	M	L	VL
Selha Sour	M	L	ML	Siddiqine	M	L	VL	Sour	M	M	L
Srifa	M	L	ML	Tayr Debbe	M	L	ML	Tayr Felsay	M	L	ML
Tayr Harfa	M	L	L	Touayri	M	L	L	Toura	M	L	ML
Yanouh Sour	M	L	ML	Yarine	M	L	L	Zebqine	M	L	VL

Saida

Municipality	16-Feb	17-Feb	18-Feb	Municipality	16-Feb	17-Feb	18-Feb	Municipality	16-Feb	17-Feb	18-Feb
Aanqoun	M	L	ML	Aaqtanit	M	L	ML	Aarab Ej-Jall	ML	L	ML
Aarab Tabbaya	M	L	ML	Abra Saida	M	L	ML	Adloun	M	L	ML
Adousiyeh	M	L	ML	Ain-El-Deleb	M	L	ML	Arzai	M	L	ML
Babliyah	M	L	ML	Barty	ML	L	ML	Bissariyeh	M	L	ML
Bnaafoul	M	L	ML	Bqosta	M	L	ML	Bramiy	M	L	ML
Daoudiyeh	M	L	ML	Dareb El-Sim	M	L	ML	Erkay	M	L	ML
Ghassanieh	M	L	M	Ghazieh	M	L	ML	Hajjeh	M	L	ML
Haret Saida	M	L	ML	Hartiyeh	M	L	ML	Hlaliye Saida	M	L	ML
Insariyat	M	L	ML	Jazira Saida	M	L	ML	Kafar Bit	ML	L	ML
Kaoutariyet El-Siyad	ML	L	M	Kfar Chellal	ML	L	ML	Kfar Hatta Saida	ML	L	ML
Kfar Milke Saida	ML	L	ML	Khartoum	M	L	M	Khaziz	M	L	ML
Khirbet Ed-Douair Sa	M	L	ML	Khirbet El-Bassal	M	L	ML	Khrayeb Saida	M	L	ML
Loubieh	M	L	ML	Maghdouche	M	L	ML	Majdelyoun	M	L	ML
Matariyet El-Choumar	M	L	M	Matayriyeh	M	L	ML	Mazraat 'Mseileh	M	L	ML
Mazraat 'Snaiber	M	L	ML	Mazraat Aarab Soukka	ML	L	ML	Mazraat Deir Taqla	M	L	ML
Mazraat El Yahoudiye	M	L	L	Mazraat El-Housseini	M	L	ML	Mazraat El-Mhaydaleh	M	L	M
Mazraat El-Ouasta	M	L	ML	Mazraat Jamjim	M	L	ML	Mazraat Kaoutariyet	M	L	ML
Mazraat Kfar Badda	M	L	ML	Mazraat Oussamiyat	M	L	M	Mazraat Sari	M	L	ML
Mazraat Sinai	M	L	ML	Meemariyeh	M	L	ML	Merouaniyeh	M	L	ML
Miyeh ou Miyeh	M	L	ML	Najjariyeh	M	L	ML	Qaaqiyat El-Snaouba	M	L	ML
Qnarit	M	L	ML	Qraiye Saida	M	L	ML	Saida Ed-Dekermane	M	L	ML
Saida El-Oustani	M	L	ML	Saida El-Qadimeh	M	L	ML	Saida Kefraya	M	L	ML
Saksakiyeh	M	L	ML	Salhie Saida	M	L	ML	Sarafand	M	L	ML
Sfenta	M	L	L	Tafahta	M	L	ML	Tanbourit	M	L	ML
Tebna	M	L	ML	Zaghdraiya	M	L	ML	Zeita	M	L	ML
Zrariyeh	M	L	ML								

Jezzine

Municipality	16-Feb	17-Feb	18-Feb	Municipality	16-Feb	17-Feb	18-Feb	Municipality	16-Feb	17-Feb	18-Feb
Ain El-Mir (El Estab	M	L	ML	Anane	M	L	L	Aramta	M	VL	ML
Ariya	M	L	L	Aychiyeh	M	VL	L	Azour	ML	VL	L
Baba	ML	VL	L	Bayssour Jezzine	M	L	ML	Benoueteh Jezzine	ML	L	L
Bhannine	M	L	L	Bisri	ML	VL	L	Bkassine	ML	VL	L
Bouslaya	M	L	L	Btedine El-Leqech	ML	VL	L	Chbail	M	L	VL
Choualiq Jezzine	M	L	ML	Dahr Ed-Deir	M	L	L	Deir El Qattine	ML	L	L

Demachqiyeh	M	VL	ML	Ghabbatiyeh	ML	L	L	Harf Jezzine	ML	VL	L
Hassaniyeh	ML	L	ML	Haytouleh	M	L	L	Haytura	M	L	L
Hidab	M	L	L	Homsiyeh	ML	VL	L	Jabal Toura	M	L	ML
Jarmaq	M	VL	ML	Jensnaya	M	L	ML	Jernaya	ML	L	ML
Jezzine	M	L	ML	Karkha	M	L	L	Kfar Falous	M	L	ML
Kfar Houna	M	L	ML	Kfar Jarrah	M	L	ML	Lebaa	M	L	ML
Louayzet Jezzine	M	L	L	Machmouche	ML	VL	L	Mahmoudiyeh Jezzine	M	VL	ML
Maknounye Jezzine	M	L	L	Maraat Ouzaïyeh	M	VL	L	Mazraat Daraya	M	L	L
Mazraat El-Aarqoub	M	L	L	Mazraat El-Mathane	ML	VL	L	Mazraat El-Rahbane	M	L	L
Mazraat Khallet Khaz	M	L	L	Mazraat Louzid (Loua	M	L	L	Mazraat Qrouh	M	VL	ML
Mazraat Tamra	M	VL	ML	Mazraat Zighrine Jez	M	L	L	Mazraat	M	L	L
Mharbiyeh	M	L	ML	Midane Jezzine	ML	L	L	Mjeydel Jezzine	M	L	ML
Mlikh	M	L	L	Mrah El-Hbasse	M	L	ML	Ouadi Baanquodaine	M	L	ML
Ouadi El-Laymoun	ML	L	ML	Ouardiyeh	M	L	VL	Qabaa Jezzine	ML	VL	L
Qatrani	M	L	L	Qaytouleh	ML	L	L	Qtaleh Jezzine	M	L	L
Rihane Jezzine	M	VL	ML	Rimat	M	L	L	Roum	ML	L	L
Roummanet	ML	L	ML	Sabbah	ML	L	L	Saydoun	M	L	L
Sfaray	M	L	L	Snaya	M	L	L	Sojoud	M	L	L
Srayri	M	L	ML	Taaid	ML	L	L	Wadi Jezzine	ML	L	L
Zhalta	M	L	L								

Bekaa

West Bekaa

Municipality	16-Feb	17-Feb	18-Feb	Municipality	16-Feb	17-Feb	18-Feb	Municipality	16-Feb	17-Feb	18-Feb
Aammiq BG	M	L	L	Ain El Tineh BG	M	L	ML	Ain Zebdeh	M	L	ML
Ana	M	L	L	Aytanit	M	L	L	Baaloul BG	M	L	L
Bab Mareh	M	L	ML	Chouberqiye Aammiq	M	L	L	Dakoue	M	L	L
Deir Ain El-Jaouze	M	L	ML	Deir Tahniche	M	L	L	Ghaza	M	L	L
Harime El-Soughra	M	VL	L	Hoch Harimeh	M	L	L	Jazira BG	M	L	L
Jib Jennine	M	L	L	Kamed-El-Laouz	M	L	L	Kefraya BG	M	L	L
Khiara El Atika	M	L	L	Khiara	M	L	L	Khirbet Qanafar	M	L	ML
Lala	M	L	L	Lebbaya BG	M	L	ML	Loussa	M	L	M
Machghara	M	L	ML	Manara (Hammara) BG	M	L	L	Mansoura BG	M	L	L
Marej BG	M	VL	L	Maydoun	M	L	ML	Ouaqf BG	M	VL	L
Qaraaoun	M	L	ML	Qelya	M	L	ML	Raouda (Istabel)	M	VL	L
Saghbine	M	L	ML	Sohmor	M	L	ML	Soltan Yacoub el Ara	M	L	L
Souairy	M	L	L	Sultan Yaacoub	M	L	L	Tal Znoun	M	L	L
Yehmor BG	M	L	ML	Zilaya	M	L	ML				

Zahle

Municipality	16-Feb	17-Feb	18-Feb	Municipality	16-Feb	17-Feb	18-Feb	Municipality	16-Feb	17-Feb	18-Feb
Aanjar (Haouch Mouss	M	L	L	Ablah	M	L	VL	Ain Kfarzabad	M	L	VL
Ali-El-Nahri	M	L	VL	Bar Elias	M	L	VL	Bouarej	M	L	L
Cheberqiyet Tabet	M	VL	VL	Chtaura	M	VL	VL	Deir El Ghazal	M	L	VL
Delhamiyet Zahle	M	L	VL	Ferzol	M	L	VL	Haouch El-Ghanam	M	L	VL
Haouch Es-Siyadeh	M	VL	VL	Haouch Hala	M	L	VL	Haouch Mandara	M	VL	VL

Haouch Qayssar	M	VL	L	Hezerta	M	L	L	Hosh Moussa	M	VL	L
Jdita	M	L	VL	Kfarzabad	M	L	L	Ksara	M	L	VL
Majdel Aanjar	M	L	L	Makssi	M	VL	VL	Massa	M	L	VL
Mazraat Er-Remtaniye	M	L	L	Mrayjat Zahle	M	L	L	Mzaraa Zahle	M	VL	L
Nabi Ayla	M	L	VL	Nasriyet Rizk	M	L	VL	Nasriyet Zahle	M	VL	L
Niha Zahle	M	L	L	Ouadi Ed-Deloum	M	L	L	Ouadi El-Arayech	M	L	L
Qaa El Rim	M	L	L	Qab Elias	M	L	VL	Qousaya	M	L	L
Rhit	M	L	VL	Riyak	M	L	VL	Saadnayel	M	L	VL
Taal El-Akhdar	M	L	L	Taalbeya	M	L	VL	Taanayel	M	L	VL
Talamara	M	L	VL	Tcheflik Edde Haouch	M	VL	L	Tcheflik Qiqano	M	VL	L
Terbol Zahle	M	VL	VL	Touaite Zahle	M	L	L	Zahle Aradi	M	L	L
Zahle El-Berbara	M	L	VL	Zahle El-Maallaqa	M	L	VL	Zahle El-Midane	M	L	VL
Zahle Er-Rassiye	M	L	VL	Zahle Haouch El-Ouma	M	L	VL	Zahle Haouch El-Ouma	M	L	VL
Zahle Haouch Ez-Zara	M	L	VL	Zahle Maalaga Aradi	M	L	L	Zahle Mar Antonios	M	L	VL
Zahle Mar Elias	M	L	VL	Zahle Mar Gerios	M	L	VL	Zahle Saydet En-Naja	M	L	VL
Zebdoul	M	VL	VL								

Rachaiya

Municipality	16-Feb	17-Feb	18-Feb	Municipality	16-Feb	17-Feb	18-Feb	Municipality	16-Feb	17-Feb	18-Feb
Ain Arab Rachaiya	M	L	L	Ain Ata	M	L	L	Ain Harche	M	L	L
Aqabe Rachaya	M	L	L	Ayha	M	L	L	Ayta El Fokhar	M	ML	L
Bakifa Rachaya	M	L	L	Bakka	M	ML	L	Beit Lahya	M	L	L
Bireh Rachaiya	M	L	L	Daher El Ahmar	M	L	L	Deir El-Achayer	M	L	L
Heloua Rachaiya	M	L	L	Hoch El Qannabeh Rac	M	L	L	Kaoukaba Bou Arab	M	L	L
Kfar Danis	M	L	L	Kfar Mechki	M	L	L	Kfar Qouq	M	L	L
Kherbet Rouha	M	L	L	Majdel Balhiss	M	L	L	Mdoukha	M	ML	L
Mhaydseh Rachaiya	M	L	L	Nabi Safa	M	L	L	Rachaiya	M	L	L
Rafid Rachaiya	M	L	L	Selsata (Mazraat Dei	ML	L	VL	Tannoura	M	L	L
Yanta	M	ML	L								

Beyrouth

Beyrouth

Municipality	16-Feb	17-Feb	18-Feb	Municipality	16-Feb	17-Feb	18-Feb	Municipality	16-Feb	17-Feb	18-Feb
Achrafieh	M	L	M	Ain el-Mreisse	M	L	M	Bachoura	M	L	M
Beirut Central Distr	M	L	M	Marfai	M	L	M	Mazraa	M	L	M
Medaouar	M	L	M	Minet el-Hosn	M	L	M	Mwssaitbeh	M	L	M
Ras Beirut	M	L	M	Rmeil	M	L	M	Saifi	M	L	M
Zqaq el-Blat	M	L	M								