

# Lebanon Fire Risk Bulletin



CIVIL DEDEFENCE

**Refer to cadast table condition.**

**Please note that the indicated temperature is at 2 meters height from the ground.**

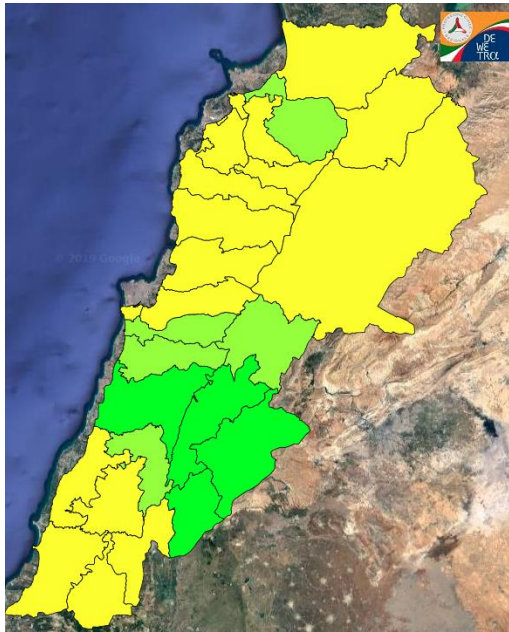
General description of potential fire risk situation

Symbol	Level of risk	Meaning and actions
VL	Very low	Very low fire risk. Controlled burning operations can be hardly executed due to high fuel moisture content. Normally wildfires self-extinguish.
L	Low	Low fire risk. Controlled burning operations can be executed with a reasonable degree of safety.
ML	Medium low	Medium-low fire risk. Controlled burning operations can be executed in safety conditions. All the fires need to be extinguished.
M	Medium	Medium fire risk. Controlled burning operations would be avoided. All the fires need to be very well extinguished.
M	Medium high	Controlled burning is not recommended. Open flame will start fires. Cured grasslands and forest litter will burn readily. Spread is moderate in forests and fast in exposed areas. Patrolling and monitoring is suggested. Fight fires with direct attack and all available resources.
H	High	Ignition can occur easily with fast spread in grass, shrubs and forests. Fires will be very hot with crowning and short to medium spotting. Direct attack on the head may not be possible requiring indirect methods on flanks. Patrolling and monitoring the territory is highly suggested.
E	Extreme	Ignition can occur also from sparks. Fires will be extremely hot with fast rate of spread. Control may not be possible during day due to long range spotting and crowning. Suppression forces should limit efforts to limiting lateral spread. Damage potential total. Patrolling and monitoring the territory is highly suggested.

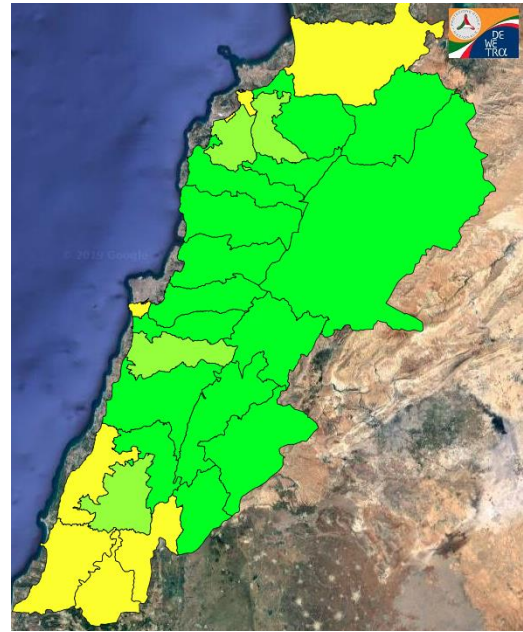
**Beirut, 16 January 2020**

# FIRE RISK INDEX

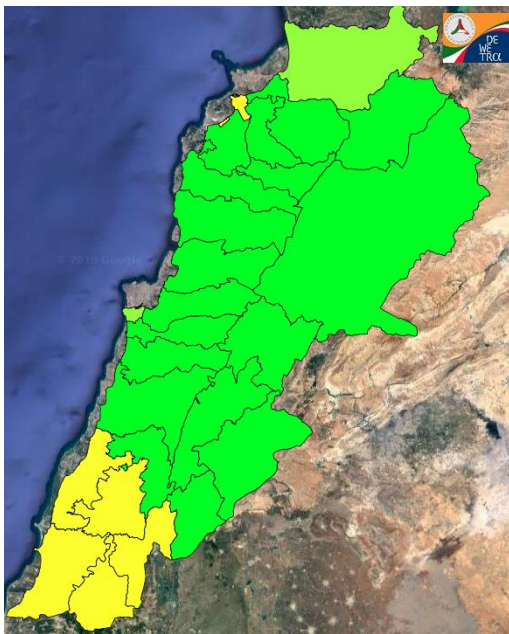
15 January 2020



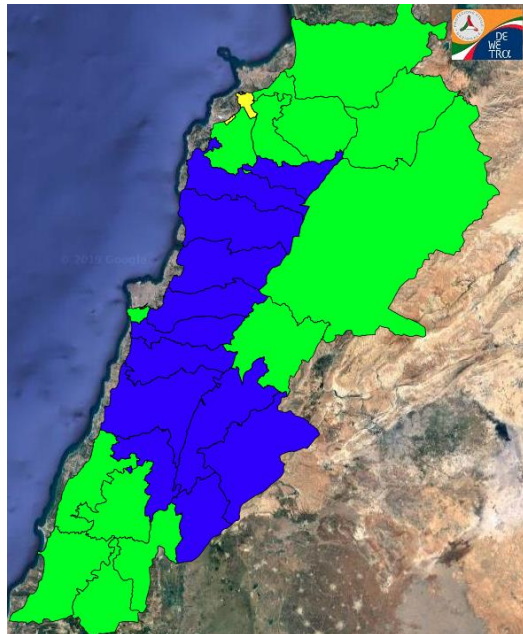
16 January 2020



17 January 2020



18 January 2020



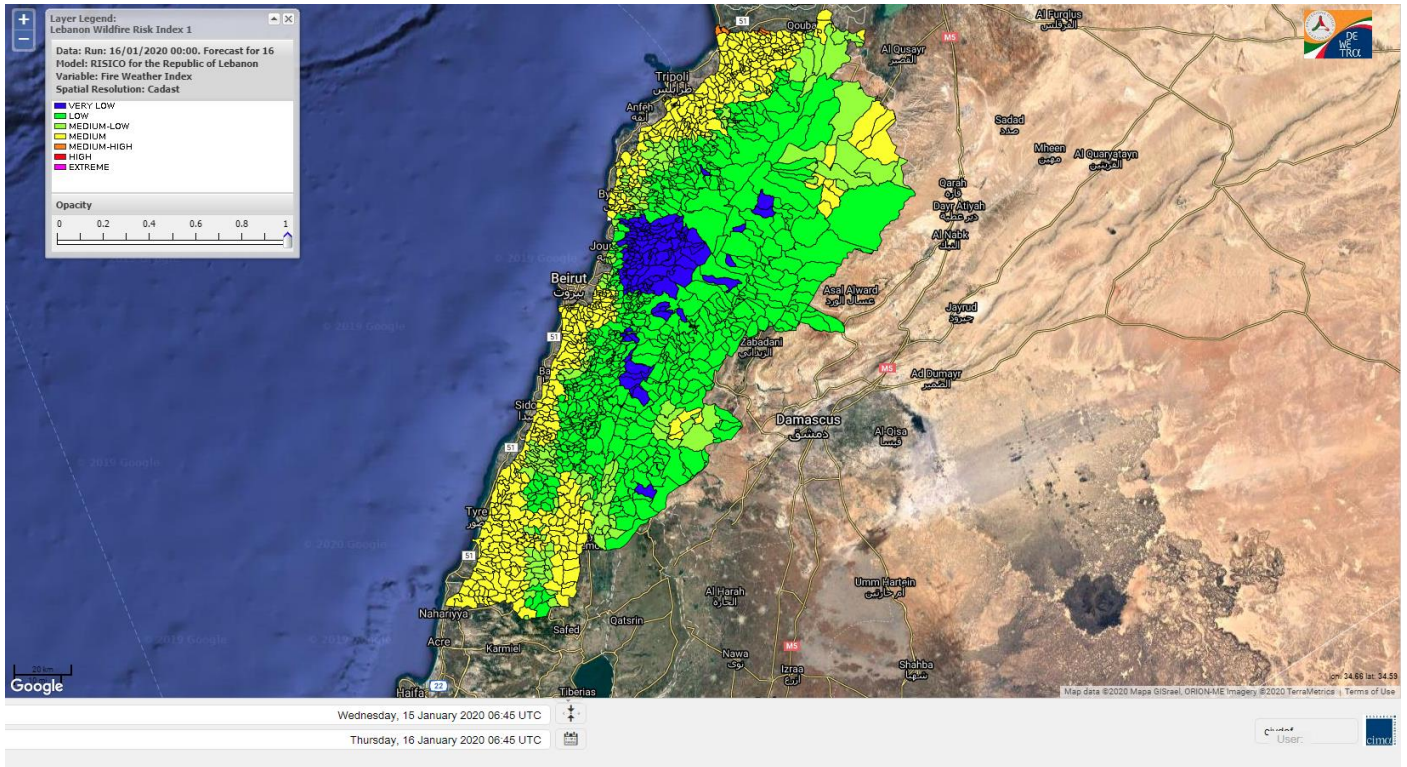
Layer Legend:  
Lebanon Wildfire Risk Index 1

Data: Run: 16/01/2020 00:00. Forecast for 16  
Model: RISICO for the Republic of Lebanon  
Variable: Fire Weather Index  
Spatial Resolution: Caza

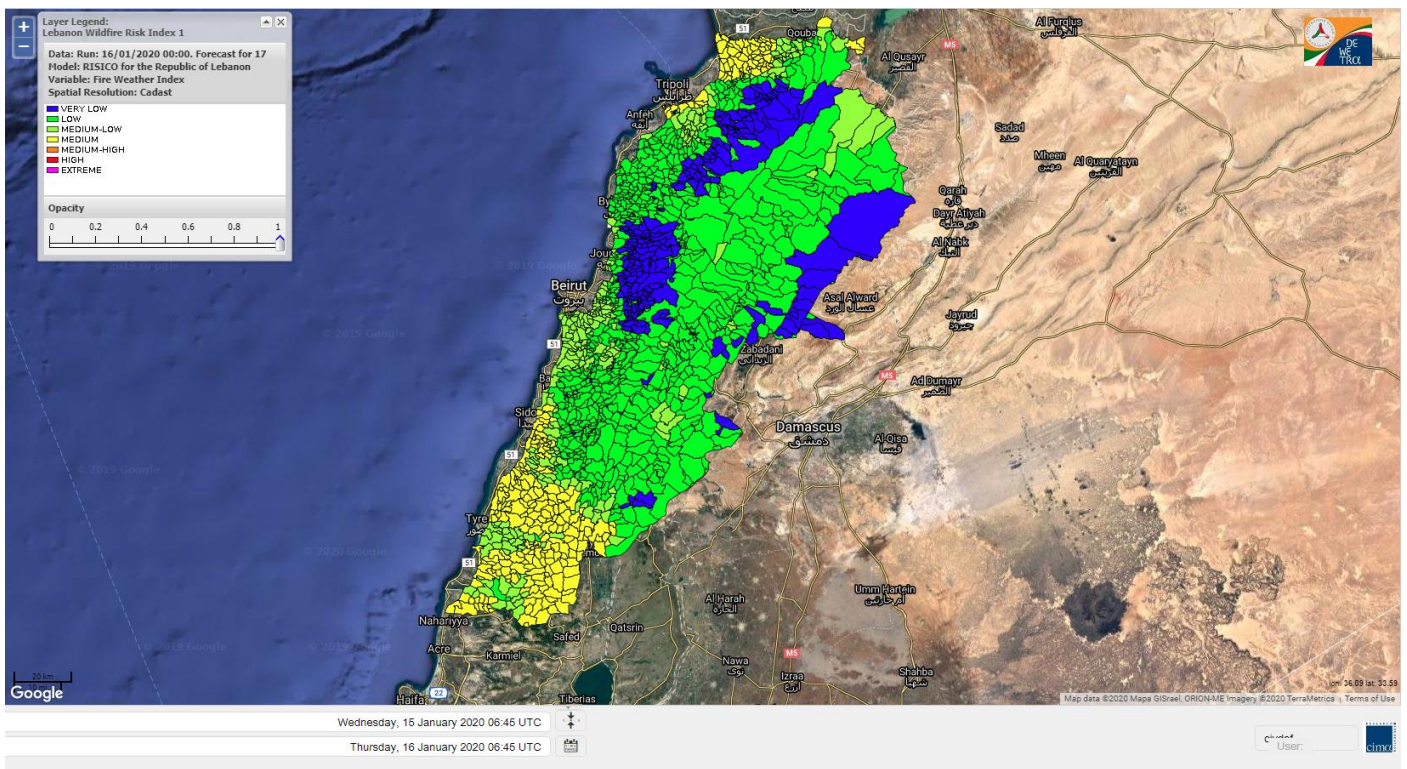
- VERY LOW
- LOW
- MEDIUM-LOW
- MEDIUM
- MEDIUM-HIGH
- HIGH
- EXTREME



# Lebanon for 16 January 2020

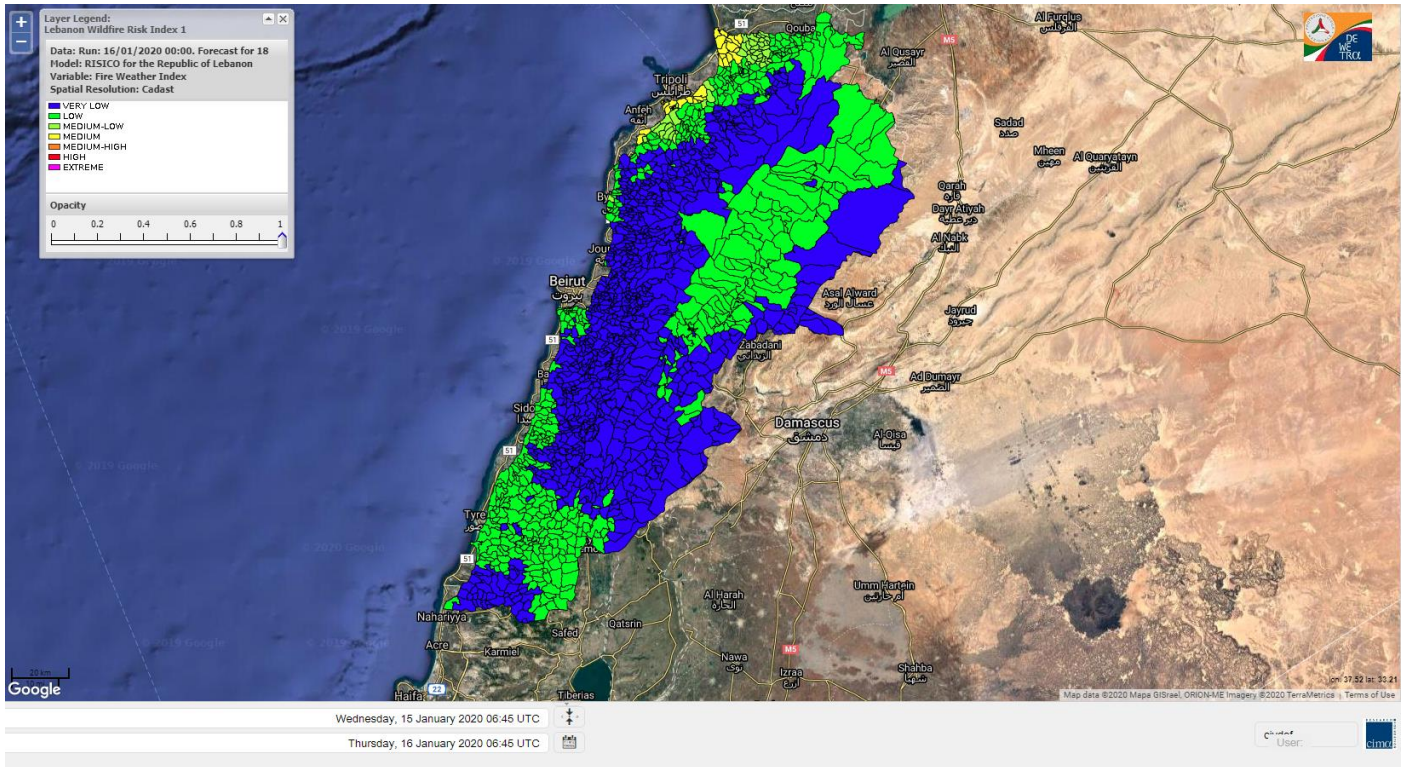


# Lebanon for 17 January 2020

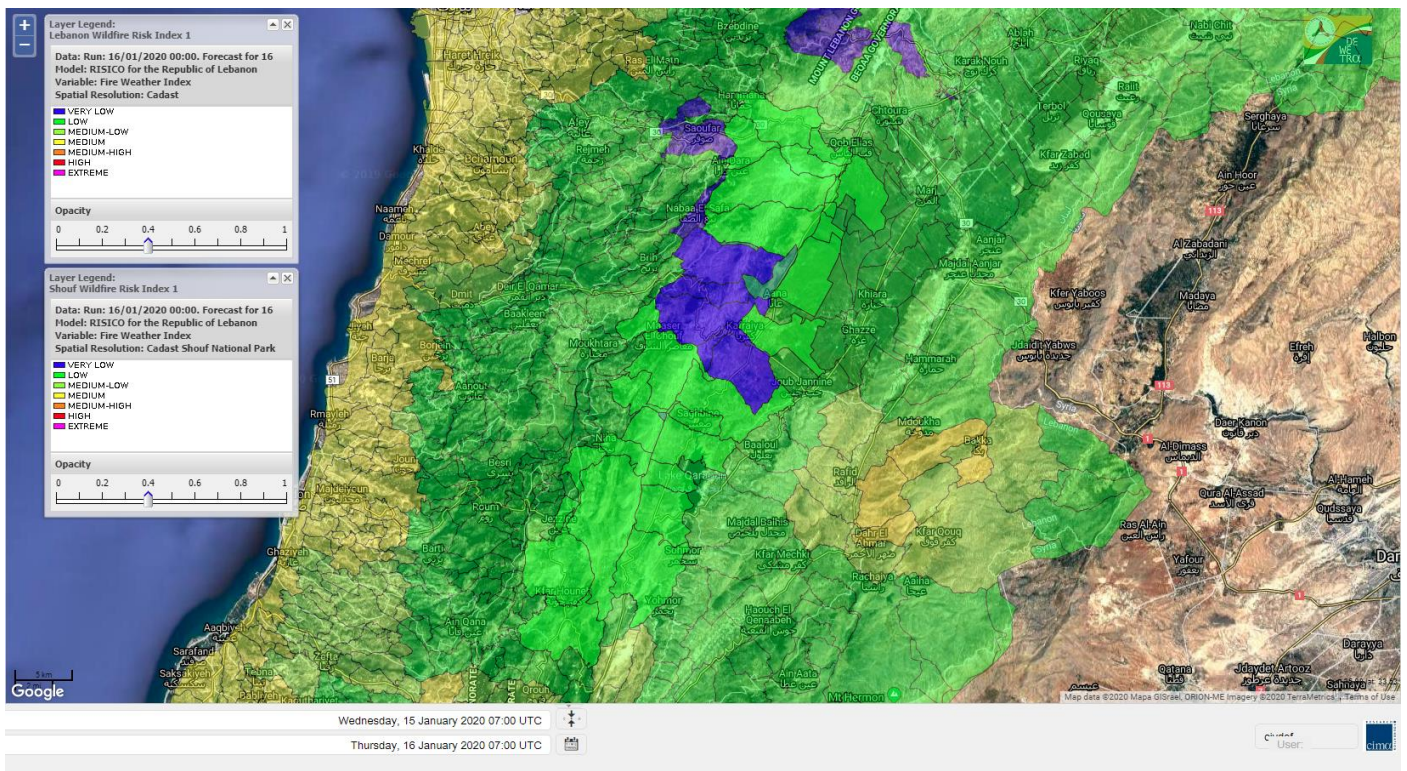




# Lebanon for 18 January 2020

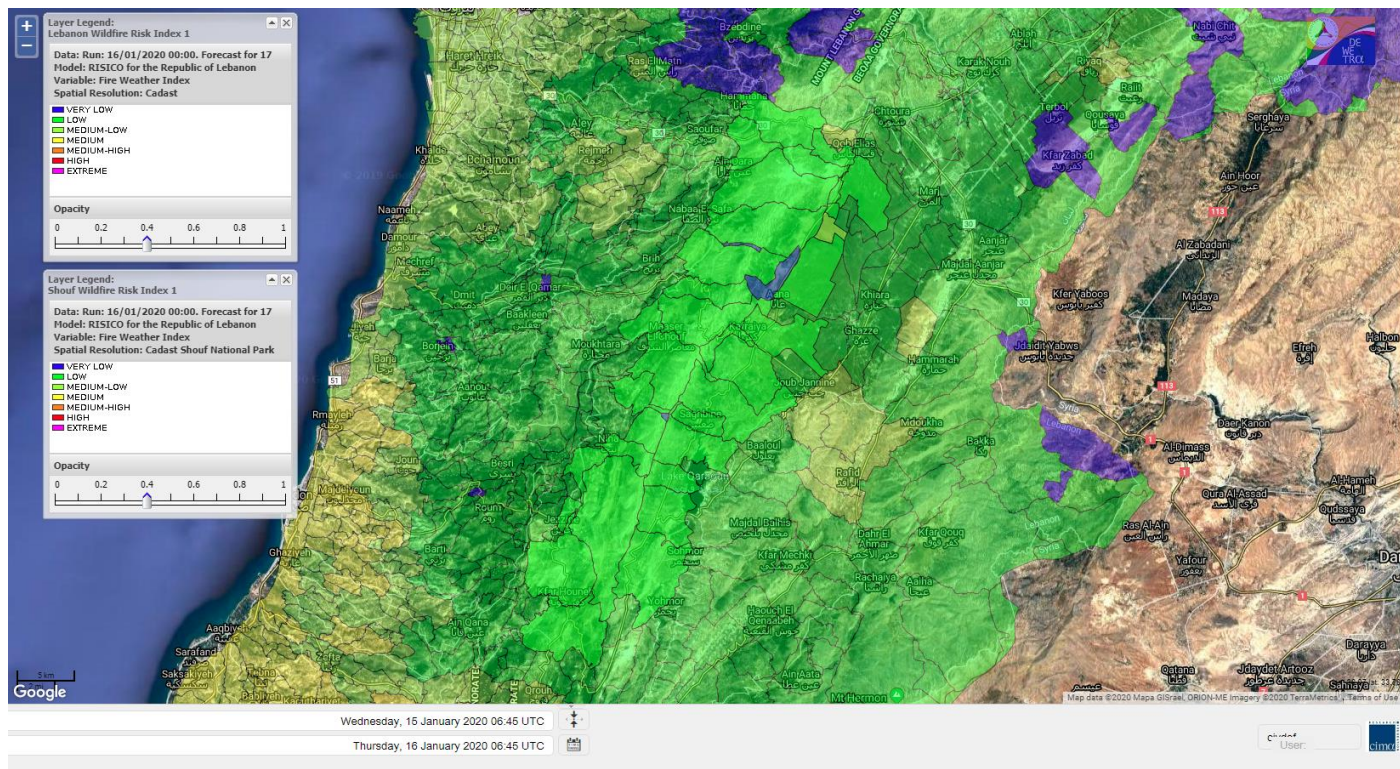


# Shouf Biosphere Reserve Forecast for 16 January 2020

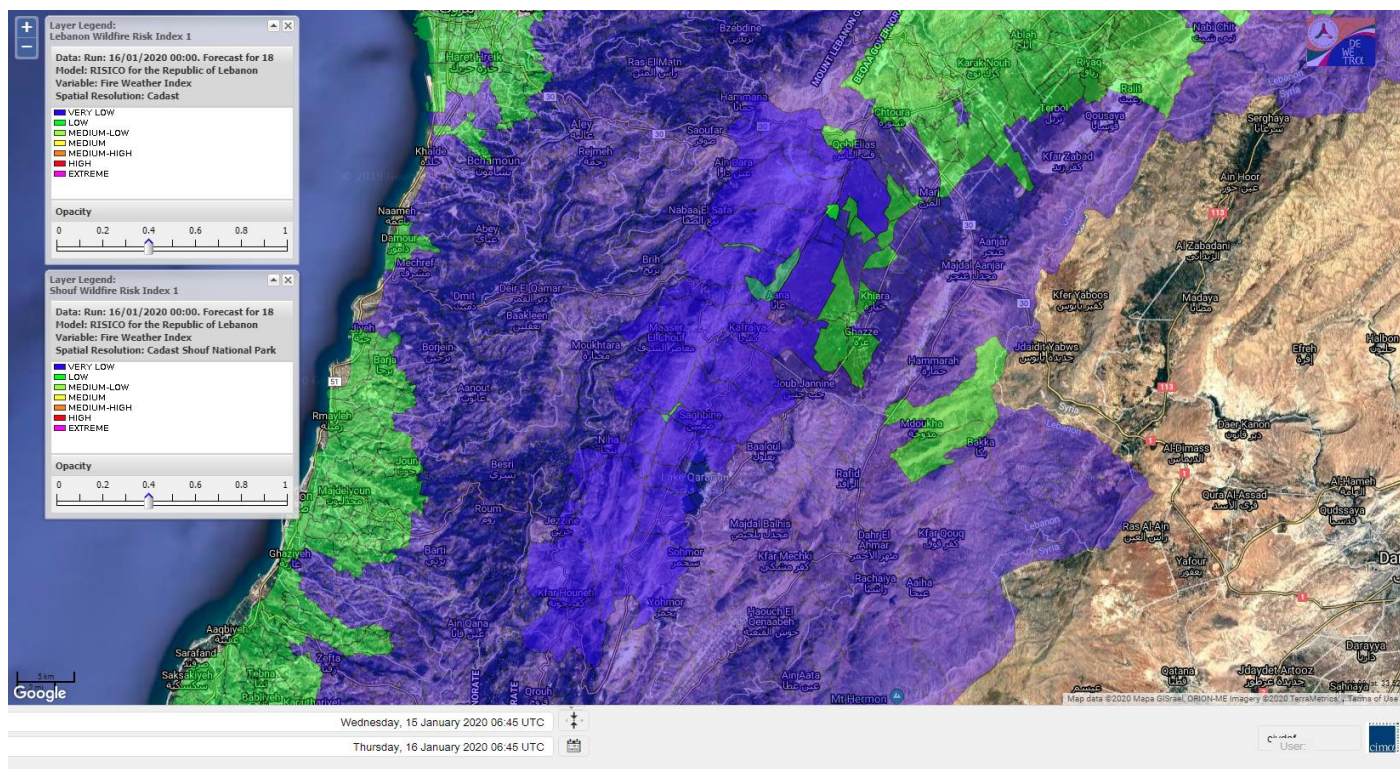




# Shouf Biosphere Reserve Forecast for 17 January 2020

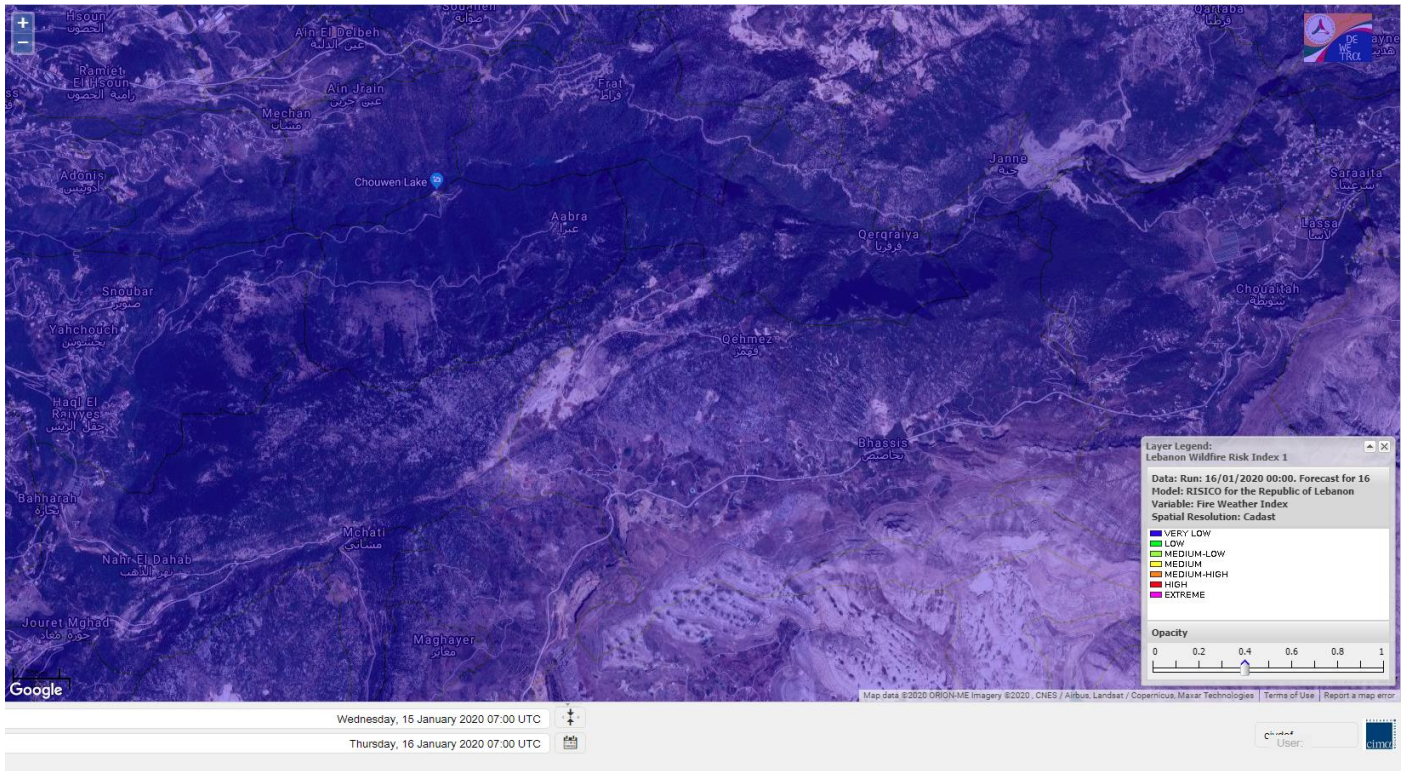


# Shouf Biosphere Reserve Forecast for 18 January 2020

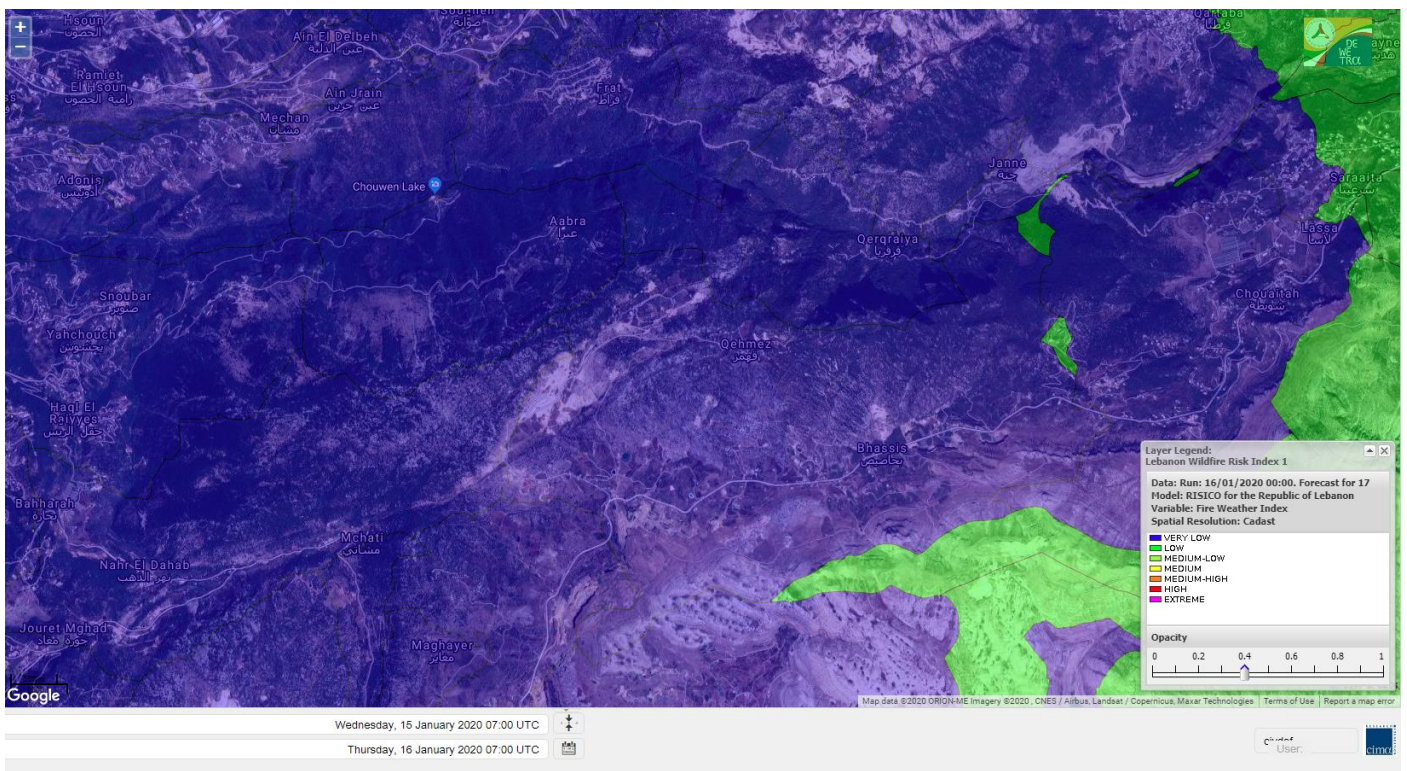




# Jabal Moussa Reserve Forecast for 16 January 2020

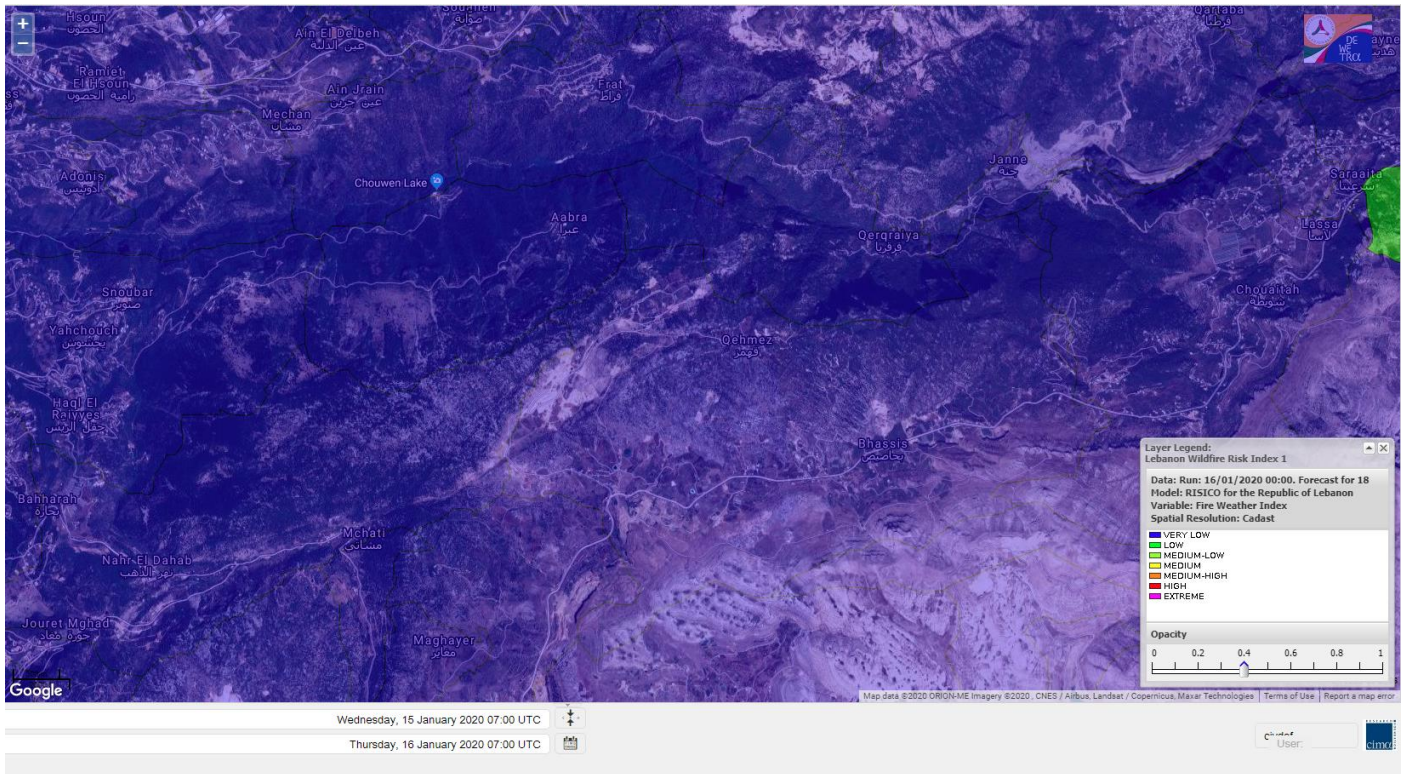


# Jabal Moussa Reserve Forecast for 17 January 2020

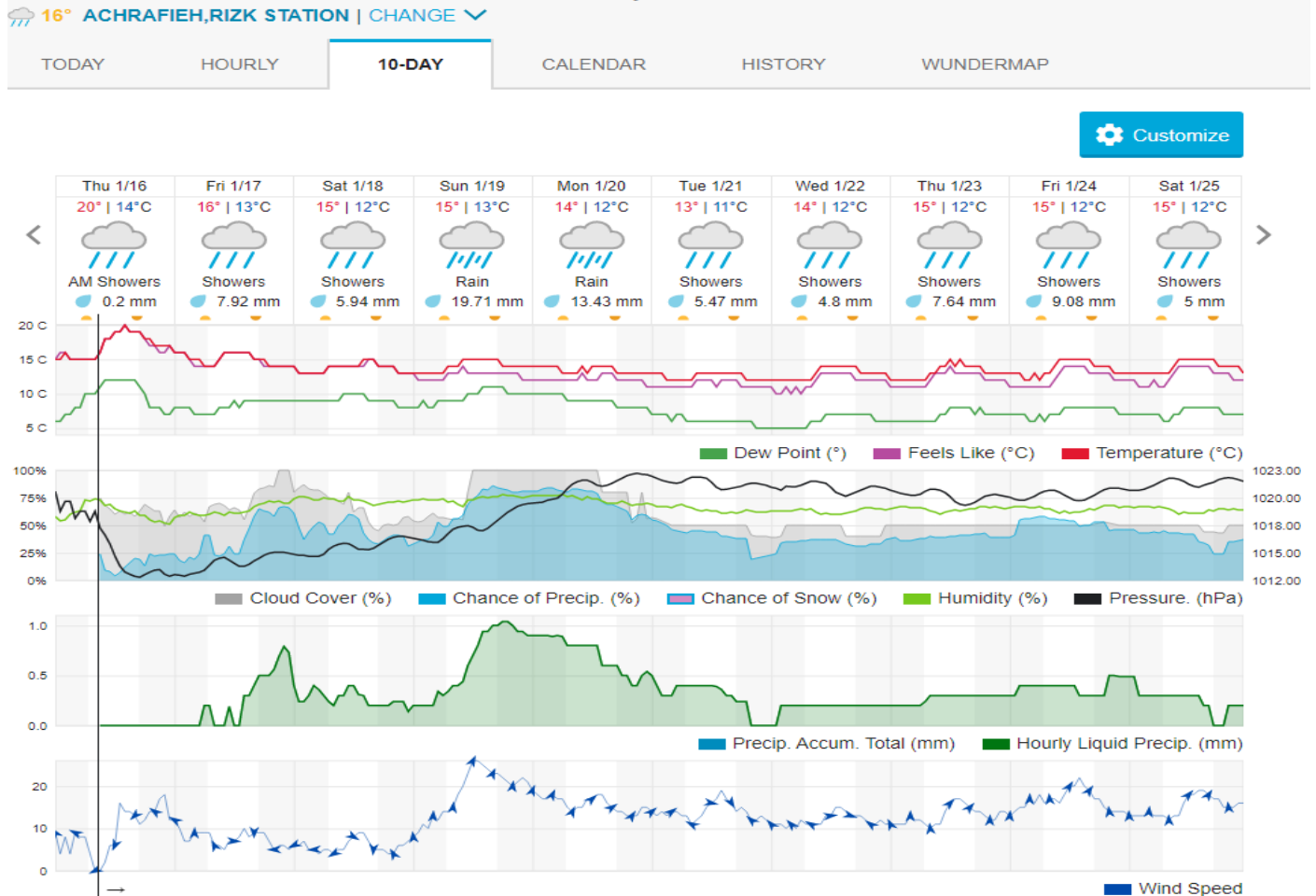




# Jabal Moussa Reserve Forecast for 18 January 2020



## Beirut, Beirut Governorate, Lebanon 10-Day Weather Forecast



## Nord

### Koura

Municipality	16-Jan	17-Jan	18-Jan	Municipality	16-Jan	17-Jan	18-Jan	Municipality	16-Jan	17-Jan	18-Jan
Aaba	ML	L	L	Afsaddiq	ML	L	VL	Ain Ekriine	ML	L	VL
Amioun	ML	L	VL	Anfeh	M	L	M	Badbhoun	ML	L	L
Barghoun	ML	L	L	Barsa	M	L	ML	Batroumine	M	L	ML
Bdebba	M	L	L	Bechmizine	ML	L	VL	Bednaye El-Koura	M	L	VL
Bhabbouch El-Koura	ML	L	VL	Bkeftine	M	L	L	Bnehran	L	L	VL
Bqaiia El-Koura	M	L	ML	Bsarma	ML	L	L	Btaaboura	ML	L	L
Bttram	ML	L	L	Btouratij	M	L	ML	Bziza	ML	L	VL
Dar Beechtar	ML	L	VL	Dar Chmezzine	ML	L	VL	Deddeh	M	L	ML
Deir El-Balamand	M	L	L	Fih	M	L	L	Hraiche	M	ML	M
Ijdaabrine	M	L	L	Kaftoun	ML	L	L	Kefraya El-Koura	M	L	L
Kfarakka	ML	L	VL	Kfarhata	M	L	VL	Kfarhazir	ML	L	VL
Kfarkahel	M	L	ML	Kfarsaroun	ML	L	VL	Kosba	ML	L	VL
Mejdel el-Koura	L	L	VL	Nakhle	M	L	ML	Qalhat	M	L	L
Ras Masqa	M	L	ML	Rechdibbine	L	L	VL	Zakroun	M	L	ML
Zgharta El-Mtaouile	L	L	VL								

### Bcharre

Municipality	16-Jan	17-Jan	18-Jan	Municipality	16-Jan	17-Jan	18-Jan	Municipality	16-Jan	17-Jan	18-Jan
Aabdine	L	VL	VL	Bane	L	L	VL	Barhelioun	L	VL	VL
Bazooune	L	L	VL	Becharre	L	L	VL	Beit Menzer	L	VL	VL
Billa	L	VL	VL	Blaouza	L	VL	VL	Bqaa Kafra	L	L	VL
Bqerqacha	L	L	VL	Breissat	L	L	VL	Dimane	L	L	VL
Hadath El Jobbeh	L	VL	VL	Hadchit	L	VL	VL	Hasroun	L	L	VL
Mazraat Aassaf	L	VL	VL	Mazraat Bani Saab	L	L	VL	Mchaa El-Jobbeh	L	L	VL
Metrit	L	L	VL	Moghr El-Ahoual	L	VL	VL	Ouadi Qannoubine	VL	VL	VL
Qanat	L	VL	VL	Qnayer	L	VL	VL	Tourza	L	VL	VL

### Batroun

Municipality	16-Jan	17-Jan	18-Jan	Municipality	16-Jan	17-Jan	18-Jan	Municipality	16-Jan	17-Jan	18-Jan
Aabrine	M	L	VL	Aalali	L	L	VL	Aartz	ML	L	VL
Abdelli	ML	L	VL	Ajdabra	ML	L	VL	Assia	L	L	VL
Basbina	M	L	VL	Batroun	M	L	L	Bcheleh	L	L	VL
Bechtoudar	L	L	VL	Beit Chlala	L	L	VL	Beit Kassab	L	VL	VL
Bijdarfil	M	L	L	Bqesmaya	ML	L	VL	Chatine	L	L	VL
Chebtin	ML	L	VL	Chekka	M	L	L	Daael	L	L	VL
Dahr Abi Yaghi	ML	L	VL	Daraya El-Batroun	M	L	VL	Deir Billa	L	L	VL
Deir Kfifane	M	L	VL	Deir Mar Youhanna EL	L	L	VL	Deir Mar Youssef Jra	ML	L	VL
Douma	L	L	VL	Douq	ML	L	VL	Eddeh El-Batroun	ML	L	VL
Ftahat El-Batroun	ML	L	VL	Ghouma	ML	L	VL	Hadtoun	L	L	VL
Hamat	M	L	VL	Harbouna	ML	L	VL	Hardine	L	VL	VL
Helta	L	VL	VL	Hery	M	L	L	Jebbla	L	VL	VL
Jrabta El-Batroun	ML	L	VL	Jrane El-Batroun	M	L	VL	Kfar Aabida	M	L	L
Kfar Halda	L	L	VL	Kfarb Shlaimane	L	VL	VL	Kfarhatna	ML	L	VL



Kfarhay	M	L	L	Kfarhelos	ML	L	VL	Kfifane	M	L	VL
Kfour El Arabi	L	L	VL	Koubba	M	L	L	Kour	ML	L	VL
Mar Mama	ML	L	VL	Masrah	ML	L	VL	Mehmarch	L	L	VL
Mrah Chdid	ML	L	VL	Mrah El Ziyat	M	L	VL	Mrah El-Hajj	L	VL	VL
Nahle El-Batroun	L	L	VL	Niha El-Batroun	L	L	VL	Oujh El-Hajjar	M	L	VL
Ouata Houb	L	L	VL	Qatnaaoun	M	L	VL	Racha	L	L	VL
Rachana	ML	L	L	Rachkida	M	L	VL	Ram El-Batroun	L	L	VL
Ras Nahhach	ML	L	VL	Selaata	M	L	L	Sghar	ML	L	VL
Smar Jbayl	M	L	VL	Sourat El-Batroun	L	L	VL	Tannourine El-Faouqa	L	L	VL
Tannourine Et-Tahta	L	L	VL	Thoum	M	L	L	Toula El-Batroun	ML	L	VL
Zan	ML	L	VL								

## Zgharta

Municipality	16-Jan	17-Jan	18-Jan	Municipality	16-Jan	17-Jan	18-Jan	Municipality	16-Jan	17-Jan	18-Jan
Aachach	M	ML	L	Aalma	M	ML	L	Aarde	M	ML	L
Aintourine	L	L	VL	Arabet Qozhaya	L	VL	VL	Arde	M	ML	L
Arjis	L	L	VL	Asnoun	M	ML	L	Ayto	L	VL	VL
Basloukit	L	VL	VL	Bchannine	ML	L	L	Besebeel	M	ML	L
Bhairret Toula	L	VL	VL	Bnachee	L	L	VL	Boussit	M	ML	L
Danha	M	ML	L	Daraiya Zgharta	L	L	VL	Deir Jdeide	M	ML	L
Ehden	L	VL	VL	Halan	M	L	L	Hariq Zgharta	M	ML	L
Houakir	M	L	L	Hraiqis	M	M	M	Iaal	M	L	L
Ijbaa	L	VL	VL	Karm Saddeh	L	VL	VL	Kfarchakhna	M	L	L
Kfardlaqous	M	ML	L	Kfarfou	L	L	VL	Kfarhata Zgharta	M	ML	L
Kfarhoura	M	ML	L	Kfarsghab	L	VL	VL	Kfaryachit	M	ML	L
Kfarzaina	M	ML	L	Khaldiye	M	ML	L	Mazraat Ajbeaa	M	ML	L
Mazraat Et-Teffah	L	VL	VL	Mazraat Jneid	M	ML	VL	Mejdlaiya Zgharta	M	ML	L
Merh Kfarsghab	ML	L	VL	Miryata	M	ML	L	Miziara	L	L	VL
Mzraat Kefraya	M	L	L	Qorah Bach	M	ML	L	Rachiine	M	ML	L
Ras Kifa	L	L	VL	Sakhra	M	ML	L	Sebhel Zgharta	L	L	VL
Serhel	L	VL	VL	Tallet Zgharta	M	ML	L	Toula Zgharta	L	VL	VL
Zgharta	M	ML	L								

## Minieh-Denniye

Municipality	16-Jan	17-Jan	18-Jan	Municipality	16-Jan	17-Jan	18-Jan	Municipality	16-Jan	17-Jan	18-Jan
Aasaymout	L	VL	VL	Aaymar	ML	VL	VL	Aazki	M	VL	VL
Ain El-Tineh-Miniyeh	L	VL	VL	Assoun	ML	VL	VL	Bakhaaoun	ML	VL	VL
Bchennata	L	VL	VL	Bechehhara	M	L	L	Beddawi	M	M	M
Behouaita	L	VL	VL	Beit El Foqss	L	VL	VL	Beit Haouik	L	VL	VL
Beit Zoud	L	VL	VL	Bekaasafrine	L	VL	VL	Borj El Yahoudiyeh	M	M	M
Bqarsouna	L	VL	VL	Btermaz	L	VL	VL	Debaael	L	VL	VL
Deir Ammar	M	M	M	Deir Nbouh	M	L	L	Haouaret-Miniyeh	L	VL	VL
Haql el Azimeh	L	VL	VL	Harf El Siyad	L	VL	VL	Hazmiye-Miniyeh	L	VL	VL
Izal	M	L	VL	Jarjour	M	L	L	Jayroun	L	VL	VL
Kahf El-Malloul	ML	L	L	Karm El-Moher	L	VL	VL	Kfar Binine	L	VL	VL
Kfarchalane	ML	VL	VL	Kfarhabou	M	L	VL	Kharroub-Miniyeh	M	VL	VL
Mazraat El-Kreme	ML	L	VL	Mazraat Ketrane	ML	VL	VL	Merkebta	M	ML	ML



Minyeh	M	M	M	Mrah El Sfirat	L	VL	VL	Mrah Sraj	L	VL	VL
Mrebbine	L	VL	VL	Nabi Youcheaa	M	M	M	Nemrine	L	VL	VL
Qarhaiya	L	VL	VL	Qarne	L	VL	VL	Qarsita	L	VL	VL
Qattineh-Miniyeh	L	VL	VL	Qemmamine	L	VL	VL	Qraine	L	VL	VL
Raouda-Aadoua	M	L	L	Rihaniyet-Miniyeh	M	L	L	Sfireh	L	VL	VL
Sir Ed-Danniyeh	ML	VL	VL	Tarane	L	VL	VL	Terbol-Miniyeh	M	ML	ML
Zaghartaghrine	M	L	L	Zouq Bhannine	M	ML	ML				

## Nabatiye

### Nabatiye

Municipality	16-Jan	17-Jan	18-Jan	Municipality	16-Jan	17-Jan	18-Jan	Municipality	16-Jan	17-Jan	18-Jan
Aabba	L	M	L	Aazzi	ML	ML	VL	Adchit El-Chqif	M	M	L
Ain Bou Swar	L	L	VL	Ain Kana	L	L	VL	Ali El-Taher	M	ML	VL
Ansar	M	M	L	Arab Salim	M	M	VL	Arnoun	M	M	L
Bfaroue	L	ML	VL	Breyqaah	M	M	L	Charqiyeh	L	M	L
Choukine	ML	M	L	Deir El Zahrani	L	M	VL	Doueir El-Nabatiyeh	L	M	L
Habbouch El-Nabatiye	M	M	VL	Hamra El-Nabatiyeh	M	M	L	Harouf El-Nabatiyeh	L	M	L
Hmaile	ML	ML	VL	Houmin El Faouqa	M	ML	VL	Houmin El Tahta	ML	M	VL
Jarjough	ML	ML	VL	Jbaah El-Nabatiyeh	L	L	VL	Jebchit	L	M	L
Kfar Djal El-Nabatiy	M	M	L	Kfar Remmane	M	M	VL	Kfar Sir	M	M	L
Kfar Tebnit	M	M	L	Kfarfila	L	L	VL	Kfour El-Nabatieh	L	M	L
Mayfadoun	M	M	L	Mazraat Bsaffour	L	M	VL	Mazraat Chalbaal	L	M	L
Mazraat Dmoul	L	M	L	Mazraat El Khreibeh	ML	ML	VL	Mazraat El-Bayad El-Nabatiyeh El-Fawka	M	M	VL
Mazraat Kfarjaouz	M	M	VL	Mazraat Qalaat Meiss	ML	M	L	Nabatiyeh El-Fawka	M	M	L
Nabatiyeh Et-Tahta	M	M	VL	Namiriyeh	L	M	L	Qaaqaaiyet El Jisr	M	M	L
Qossaibeh El-Nabatiy	M	M	L	Roumine	ML	ML	VL	Sarba El-Nabatieh	L	L	VL
Sir El-Gharbiyeh	M	M	L	Toul	L	M	L	Yehmor El-Nabatiyeh	M	M	L
Zaoutar El Charkiyeh	M	M	L	Zaoutar El-Gharbiyeh	M	M	L	Zebdine El-Nabatiyeh	ML	M	L
Zefta	L	M	VL								

### Hasbaiya

Municipality	16-Jan	17-Jan	18-Jan	Municipality	16-Jan	17-Jan	18-Jan	Municipality	16-Jan	17-Jan	18-Jan
Aain Jarfa	L	VL	VL	Abou Qamha	L	L	VL	Ain Qania	L	VL	VL
Bourghos	ML	L	VL	Chebaa	L	L	VL	Chouaya Hasbaya	L	VL	VL
Dellafeh	ML	ML	VL	Fardiss Hasbaiya	L	L	VL	Hasbaya	L	L	VL
Hbariyeh	L	L	VL	Kaoukaba Hasbaiya	ML	ML	VL	Kfar Chouba	L	L	VL
Kfar Hamam	L	L	VL	Kfeir El-Zait	L	L	VL	Khalwat Hasbaya	VL	VL	VL
Khreibet Hasbaiya	ML	M	VL	Majidiyeh Hasbaiya	ML	ML	VL	Marj Ez-Zhour (Haouc)	L	L	VL
Meri	ML	M	VL	Mimass	L	L	VL	Rachaiya El-Fokhar	L	L	VL
Salaiyeb	ML	M	VL								

### Marjayoun

Municipality	16-Jan	17-Jan	18-Jan	Municipality	16-Jan	17-Jan	18-Jan	Municipality	16-Jan	17-Jan	18-Jan
Aalmane Marjaayoun	M	ML	L	Aamra	ML	M	L	Adayseh Marjaayoun	M	M	L
Adchit El-Koussair	M	M	L	Ain Aarab Marjaayoun	ML	M	VL	Bani Haiyann	M	M	L
Blatt Marjaayoun	ML	ML	VL	Blida	M	M	L	Borj El-Moulouk	M	M	L



Boueyda Marjaayoun	ML	ML	VL	Deir Mimass	M	M	L	Deir Siriane	M	M	L
Dibbine	ML	ML	VL	Ebel El Saqi	ML	ML	VL	Houla	M	M	L
Houra	M	M	L	Kfar Kila	M	M	L	Khiam Marjaayoun	ML	M	VL
Klayaa	M	M	L	Majdel Selem	M	M	L	Marjaayoun	ML	ML	VL
Markaba	M	M	L	Mays El-Jabal	M	M	L	Mazraat Doumiat	M	M	L
Mazraat Sarada	ML	M	VL	Mhaibib	M	M	L	Qabrikha	M	M	L
Qantara	M	M	L	Rab El-Thalathine	M	M	L	Saouaneh Marjayoun	ML	M	L
Talloussa	M	M	L	Taybeh Matjaayoun	M	M	L	Touline	ML	M	L

## Bent Jbail

Municipality	16-Jan	17-Jan	18-Jan	Municipality	16-Jan	17-Jan	18-Jan	Municipality	16-Jan	17-Jan	18-Jan
Ain-Ebel	L	M	VL	Aitaroun	M	M	L	Aynata Bint Jbeil	ML	M	L
Ayta El-Chaeb	M	ML	VL	Ayta El-Jabal	ML	M	L	Beit Lif	M	ML	VL
Beit Yahoun	ML	M	L	Bint Jbeil	L	M	VL	Borj Qalaway	M	M	L
Braachit	ML	M	L	Chakra	M	M	L	Debel	ML	M	VL
Deir Antar	ML	M	L	Froun	M	M	L	Ghandouriyeh Bint Jb	M	M	L
Hanine	L	M	VL	Hariss	ML	M	L	Hdatha	ML	M	L
Jmeyjmeh	ML	M	L	Kafra Bint Jbeil	M	ML	VL	Kfar Dounine	ML	M	L
Khirbet Selm	ML	M	L	Kounine	M	M	L	Maroun El Ras	ML	M	L
Qalaway	M	M	L	Qaouzah	M	ML	VL	Qatmoun	ML	M	VL
Ramya Bint Jbeil	M	ML	VL	Rchaf	M	ML	VL	Rmeich	M	M	VL
Safad Al Battikh	ML	M	L	Salhaneh	M	L	VL	Serbine	M	M	VL
Sultanieh Bint Jbeil	ML	M	L	Tibnine	ML	M	L	Tiri	L	M	VL
Yaroun	L	M	VL	Yater	M	ML	VL				

## Mont Liban

### Jbail

Municipality	16-Jan	17-Jan	18-Jan	Municipality	16-Jan	17-Jan	18-Jan	Municipality	16-Jan	17-Jan	18-Jan
Aabeydat	ML	L	VL	Aalita	VL	VL	VL	Aamchit	M	ML	L
Aarab El-Lahib	L	VL	VL	Aarasta	VL	L	VL	Adonis Jbeil	VL	VL	VL
Afqa Jbeil	VL	L	VL	Ain El Delbeh Jbeil	VL	VL	VL	Ain El-Ghouayba	VL	VL	VL
Ain Jrain	VL	VL	VL	Ain Kfah	M	L	VL	Almat El Chemaliyat	VL	VL	VL
Almat El-Jenoubiya	VL	VL	VL	Aqoura	L	L	L	Bayzoun	VL	VL	VL
Bchille Jbeil	VL	VL	VL	Bechtlida	VL	VL	VL	Behdaydat	ML	L	VL
Beit Habbaq	M	L	VL	Bejjeh	ML	L	VL	Bekhaaz	M	L	L
Berbara Jbeil	M	L	ML	Bintael	L	VL	VL	Birket Hjoula	L	L	VL
Blatt Jbeil	L	L	VL	Boulhos	VL	VL	VL	Breyj Jbeil	VL	VL	VL
Chamat	M	L	VL	Chikhane	M	L	L	Chmout	ML	L	VL
Eddeh Jbeil	L	L	L	Ehmej	VL	VL	VL	Fatre	VL	VL	VL
Ferhet	VL	VL	VL	Fghal	M	L	L	Frat	VL	VL	VL
Ghabat	VL	L	VL	Ghalboun	M	L	VL	Gharzouz	M	L	L
Ghofrine	M	L	L	Habil	L	L	VL	Halate	L	L	VL
Haqel	ML	L	VL	Hbaline	M	L	VL	Hboub	VL	VL	VL
Hdeine	VL	L	VL	Hema Er-Rehban	L	L	VL	Hema Mar Maroun Aann	VL	VL	VL
Hjoula	VL	VL	VL	Hosrayel	M	L	L	Hsarat	M	L	VL



Hsoun	VL	VL	VL	Jaj	L	L	VL	Janne	VL	VL	VL
Jbeil	ML	ML	VL	Jeddeyel Jbeil	M	ML	L	Jlisse	VL	VL	VL
Jouret El-Qattine	VL	VL	VL	Kfar Baal Annaya	VL	VL	VL	Kfar Kidde	M	L	L
Kfar Kouas	VL	VL	VL	Kfar Mashoun	ML	L	VL	Kfoun	ML	L	VL
Kharbe Jbeil	M	L	VL	Laqlouq	VL	L	VL	Lassa	VL	VL	VL
Lehfed	L	L	VL	Maad	M	L	VL	Mar Sarkis	VL	L	VL
Mastita	ML	ML	VL	Mayfouq	L	L	VL	Mazraat El Siyad	VL	L	VL
Mazraat El-Maaden	VL	VL	VL	Mechane	VL	VL	VL	Mechmech Jbeil	L	VL	VL
Mehrin	VL	VL	VL	Mejdel El-Akoura	VL	L	VL	Mghayreh Jbeil	VL	L	VL
Mounsef	M	L	L	Nahr Ibrahim	ML	ML	VL	Qahmez	VL	VL	VL
Qartaba	VL	VL	VL	Qartaboun	ML	ML	VL	Qattara Jbeil	L	VL	VL
Qorqraya	VL	VL	VL	Ramout	M	L	VL	Ras Osta	VL	VL	VL
Rihane Jbeil	M	ML	ML	Sakiet El-Khayt	ML	L	VL	Saqi Richmaya	L	L	VL
Sebrine	VL	VL	VL	Seraita	VL	L	VL	Souane Jbeil	VL	VL	VL
Tadmor	VL	L	VL	Tartej	L	L	VL	Torzaiya	VL	VL	VL
Yanouh Jbeil	VL	L	VL	Zibidine Jbeil	VL	VL	VL				

## El Metn

Municipality	16-Jan	17-Jan	18-Jan	Municipality	16-Jan	17-Jan	18-Jan	Municipality	16-Jan	17-Jan	18-Jan
Aain El-Qabu	VL	VL	VL	Aain El-Qach	L	L	VL	Aain El-Teffaha	L	VL	VL
Aain el-Safssaf El-M	L	VL	VL	Abou Mizane	L	VL	VL	Ain Aar	M	ML	VL
Ain Alaq	M	ML	VL	Ain El-Kharroube	L	VL	VL	Ain El-Sendianeh	L	VL	VL
Ain El-Zeitoune	L	VL	VL	Ain Saadeh	M	ML	VL	Aintoura El-Matn	VL	VL	VL
Amaret Chalhoub	M	ML	VL	Antelias	M	ML	VL	Atchaneh	M	ML	VL
Ayroun	L	VL	VL	Baabdat	L	L	VL	Baouchariyeh	M	ML	L
Baskinta	VL	VL	VL	Beit Chabab	L	L	VL	Beit El-Chaar	M	ML	VL
Beit El-Kekko	M	ML	VL	Beit Mery	M	L	VL	Bhersaf	L	L	VL
Bikfaya	L	VL	VL	Biyakout	M	ML	VL	Bnabil	L	VL	VL
Bourj Hammoud	M	ML	VL	Bqennaya	M	ML	VL	Broummana El-Matn	M	ML	VL
Bsalim	M	ML	VL	Bsifrine	L	VL	VL	Bteghrine	L	VL	VL
Chaouiye	M	L	VL	Chouaya El-Matn	L	L	VL	Choueir	L	VL	VL
Chrine	VL	VL	VL	Dahr El Sawan El-Mat	ML	L	VL	Daychouniyeh	M	ML	VL
Dbayeh	M	ML	VL	Deir Chamra	VL	VL	VL	Deir Mar Abda el Mch	M	L	VL
Deir Mar Roukouz	M	ML	L	Deir Tamiche	M	L	VL	Dik El-Mehdi	M	ML	VL
Dikwaneh	M	ML	L	Douar El-Matn	L	VL	VL	Fanar	M	ML	VL
Fraike	ML	L	VL	Haret El-Ballaneh	M	ML	VL	Hbous	M	ML	VL
Himlaya	VL	VL	VL	Jal El Did	M	ML	VL	Jdeideh El-Metn	M	ML	VL
Jouar El-Matn	L	VL	VL	Jouret El-Ballout	M	ML	VL	Kaaqour	L	VL	VL
Kfar Aaqab	VL	VL	VL	Kfertay El-Matn	VL	VL	VL	Khenchara	L	VL	VL
Khillet El-Mtain	L	VL	VL	Konnabat Broummana	M	ML	VL	Konnabat Salima	L	VL	VL
Machraah El-Matn	VL	VL	VL	Majdel Tarchich	VL	VL	VL	Majzoub	M	ML	VL
Mansouriyeh El-Metn	M	ML	L	Mar Boutros Karm Et-	VL	VL	VL	Mar Chaya et Mzekke	M	ML	VL
Mar Moussa Ed-Douar	L	VL	VL	Marjaba	L	VL	VL	Masqa	M	L	VL
Mayasse	VL	VL	VL	Mazraat Deir Aoukar	M	ML	VL	Mazraat El-Hadirat	M	ML	VL
Mazraat Yachouh	M	ML	VL	Mchikha	L	L	VL	Menqlet Mezher	M	ML	VL
Mhayseh Matn	L	VL	VL	Mkalles	M	ML	L	Mrouj	L	L	VL

Mtain	L	L	VL	Mtayleb	M	ML	VL	Nabay	M	ML	VL
Naccache	M	ML	VL	Ouadi Chahine	VL	VL	VL	Ouadi El-Karm El-Mat	VL	VL	VL
Ouata El-Mrouj	L	VL	VL	Ouyoun El-Matn	M	L	VL	Qornet Chehwan	M	ML	VL
Qornet El-Hamra	M	L	VL	Roumieh	M	ML	VL	Sfeilet Bikfaya	VL	VL	VL
Sinn El-Fil	M	ML	L	Zabbougha	VL	VL	VL	Zalqa	M	ML	VL
Zarououn	L	VL	VL	Zekrite	M	L	VL	Zighrine El-Matn	L	VL	VL
Zouk El-Khrab	M	ML	VL								

## Chouf

Municipality	16-Jan	17-Jan	18-Jan	Municipality	16-Jan	17-Jan	18-Jan	Municipality	16-Jan	17-Jan	18-Jan
Aalmane El-Chouf	M	M	L	Aammq El-Chouf	L	L	VL	Ain Ouzein	L	L	VL
Ain Qani	L	L	VL	Ain Zhalta	VL	L	VL	Ainbal	L	L	VL
Amatour	L	L	VL	Anout	L	L	VL	Atrine	L	L	VL
Baadarane	L	L	VL	Baaqline	L	L	VL	Baasir	M	ML	L
Barja	M	M	L	Barouk	VL	L	VL	Bater	L	L	VL
Batloun	L	L	VL	Bayqoun	L	L	VL	Bchetfine	L	L	VL
Beiteddine	L	L	VL	Benouati Ech-Chouf	L	L	VL	Berjein	L	L	VL
Bireh et Mtalleh	L	L	VL	Biret El-Chouf	L	L	VL	Bkechtine Ouel Mchei	L	L	VL
Bkifa El-Chouf	L	L	VL	Botme	L	L	VL	Bqaiia Ech-Chouf	L	L	VL
Bsaba El-Chouf	L	L	VL	Chammis El-Chouf	M	ML	L	Chehim	L	L	VL
Chemaarine	L	L	VL	Chourit	L	L	VL	Daher El-Chouf	M	ML	L
Dalhoun	ML	L	VL	Damour	M	ML	VL	Daraya El-Chouf	L	L	VL
Deir El-Moukhalles	L	L	VL	Deir Baba	L	L	VL	Deir Dourit	L	L	VL
Deir El-Qamar	L	L	VL	Deir Kouche	L	L	VL	Dibbieh	M	L	VL
Dmit	L	L	VL	Fouara Jaafar	L	L	VL	Fraidis El-Chouf	VL	L	VL
Ghabet Jaafar	L	L	VL	Gharife	L	L	VL	Haret Jandal	L	L	VL
Hasrout	L	L	VL	Jadra	M	M	L	Jahlieh	L	L	VL
Jbeih El-Chouf	L	L	VL	Jdeidet El-Chouf	L	L	VL	Jiyeh	M	ML	L
Jleilyeh	L	L	VL	Jmailiyeh	M	M	L	Joun	M	ML	L
Kahlounie El-Chouf	L	L	VL	Ketermaya	M	M	L	Kfar Faqoud	L	L	VL
Kfar Hamal	L	L	VL	Kfar Him	L	L	VL	Kfar Katra	L	L	VL
Kfar Niss	L	L	VL	Kfar hay	L	L	VL	Kfarnabrakh	L	L	VL
Khirbet Bisri	L	L	VL	Knayse El-Chouf	L	VL	VL	Maaniyeh	M	ML	L
Maasser Beiteddine	L	L	VL	Maasser El-Chouf	L	L	VL	Majdalouna	M	ML	L
Majdel El-Meouch	L	L	VL	Mazboud	L	L	VL	Mazmoura	L	L	VL
Mazraat El Chouf	L	L	VL	Mazraat El Daher	L	L	VL	Mazraat El-Douair	L	L	VL
Mechref	ML	L	VL	Mghairie	M	ML	L	Mghayrie El-Chouf	L	L	VL
Moukhtara	L	L	VL	Mrusti	L	L	VL	Mtolle	L	L	VL
Naameh	M	ML	L	Niha El-Chouf	L	L	VL	Ouadi Abou Youssef	L	VL	VL
Ouadi Ed-Deir	L	L	VL	Ouadi El-Sit	L	L	VL	Ouadi bnehlay	L	L	VL
Qraibeh	L	L	VL	Qreiaa	L	L	VL	Rmayle El-Chouf	M	M	L
Semqaniyeh	L	L	VL	Sibline	M	M	L	Sirjbeil	L	L	VL
Warhanieh	L	L	VL	Werdaniyeh	M	M	L	Zaarourieh	L	L	VL

## Baabda

Municipality	16-Jan	17-Jan	18-Jan	Municipality	16-Jan	17-Jan	18-Jan	Municipality	16-Jan	17-Jan	18-Jan
Abadiyeh	L	L	VL	Ain Mouaffaq	L	L	VL	Araiya	L	L	VL



Arbaniyeh	L	VL	VL	Arsoun	L	VL	VL	Baabda	M	ML	L
Baalchmey	L	ML	VL	Bmaryam	L	L	VL	Bourj El-Brajneh	M	ML	VL
Boutchay	M	ML	VL	Bsaba Baabda	M	ML	VL	Btekhney	L	L	VL
Btibyat	VL	L	VL	Bzbedine	L	VL	VL	Chbeniyeh	VL	L	VL
Chiyah	M	ML	L	Chmeisset Baabda	VL	L	VL	Chouit	L	L	VL
Deir El-harf	L	L	VL	Deir Khouna	L	L	VL	Dlaybeh	L	VL	VL
Falougha	L	L	VL	Furn El-Chebbak	M	ML	VL	Hadath Beyrouth	M	ML	VL
Halaliyeh Baabda	L	L	VL	Hammana	L	L	VL	Haret El Sett	L	L	VL
Haret Hamze	L	L	VL	Haret Hreik	M	ML	VL	Hasbaiya El-Metn	L	VL	VL
Jouar El-Hoz	L	VL	VL	Jouret Arsoun	L	VL	VL	Kfar Chima	M	ML	VL
Kfar Selouane	L	L	VL	Khalouat Baabda	L	L	VL	Kneisset Baabda	L	L	VL
Laylakeh	M	ML	VL	Louayzeh Baabda	ML	L	VL	Merdache	M	ML	VL
Mzairaa Baabda	L	L	VL	Ouadi Chahrour El Ol	ML	L	VL	Ouadi Chahrour El So	M	ML	VL
Qalaa Baabda	L	L	VL	Qhraybe Baabda	VL	L	VL	Qobbayaa	VL	L	VL
Qornayel	L	VL	VL	Qortada	M	L	VL	Qrayeh Baabda	VL	L	VL
Qsaibeh Baabda	M	ML	VL	Qtale Baabda	VL	L	VL	Ras El Metn	L	L	VL
Ras El-Haref	L	L	VL	Rouayset El-Ballout	L	L	VL	Salima Baabda	L	VL	VL
Tahouitat El Ghadir	M	ML	VL	Tarchich	VL	VL	VL	Zandouqa	M	L	VL

## Aley

Municipality	16-Jan	17-Jan	18-Jan	Municipality	16-Jan	17-Jan	18-Jan	Municipality	16-Jan	17-Jan	18-Jan
Abey	M	L	VL	Aghmid	VL	L	VL	Ain Dara	L	L	VL
Ain Drafil	M	ML	VL	Ain El Halazoun	L	ML	VL	Ain El-Rmmaneh	L	L	VL
Ain Jedideh	L	ML	VL	Ain Ksour	M	L	VL	Ain Onoub	M	ML	VL
Ain Traz	L	L	VL	Ainab	M	ML	VL	Aley	L	ML	VL
Aramoun	M	ML	VL	Aytat	M	ML	VL	Azouniyeh	VL	L	VL
Baawerta	M	L	VL	Badghan Oua Wadi Bad	L	L	VL	Bassatine	M	ML	VL
Bayssour	ML	ML	VL	Bchamoun	M	ML	VL	Bdadoun	L	L	VL
Behouara	L	L	VL	Bennay	ML	L	VL	Bhamdoun El-Dayaa	L	ML	VL
Bhamdoun El-Mhatta	L	ML	VL	Bkhechthey	L	ML	VL	Bleibel	M	ML	VL
Bmaknine	L	ML	VL	Bmehray	L	L	VL	Bouzrid	L	L	VL
Bserrine	L	ML	VL	Bsous	L	L	VL	Btalloun	L	ML	VL
Btater	L	ML	VL	Chanay	L	ML	VL	Charoun	L	L	VL
Chartoun	L	L	VL	Chemlane	M	ML	VL	Choueifat El-Aamrous	M	ML	VL
Choueifat El-Oumara	M	ML	VL	Choueifat El-Quoubbe	M	ML	VL	Dakkoun	ML	L	VL
Deir Qoubel	M	ML	VL	Dfoun	M	ML	VL	Douair El Remmaneh	L	L	VL
Ghaboun	L	L	VL	Habramoun	L	L	VL	Homs Oua Hama	L	ML	VL
Houmal	M	ML	VL	Jisr El Qadi	L	L	VL	Kehaleh	L	L	VL
Keyfoun	M	ML	VL	Kfar Aamey	L	L	VL	Kommatyeh	L	L	VL
Maasrati	L	L	VL	Majdel Baana	L	L	VL	Mansourieh et Ain El	L	ML	VL
Mazraat El-Nahr	L	L	VL	Mchakhte	VL	L	VL	Mecherfeh	L	L	VL
Mejdlaya	L	L	VL	Mrayjat	L	L	VL	Ramliyah	L	L	VL
Rechmaya	L	L	VL	Rejmeh	L	L	VL	Remhala	ML	L	VL
Rouayset El Neemane	L	L	VL	Saoufar	L	L	VL	Selfaya	L	L	VL
Sirhmoul	M	ML	VL	Souq El Ghareb	ML	L	VL	Taazanieh	L	ML	VL

## Kesrouane

Municipality	16-Jan	17-Jan	18-Jan	Municipality	16-Jan	17-Jan	18-Jan	Municipality	16-Jan	17-Jan	18-Jan
Achkout	VL	VL	VL	Adma Oua Dafneh	ML	L	VL	Ain Ed-Delbe Kesroua	VL	VL	VL
Ain El-Rihane	L	L	VL	Aintoura Kesrouane	L	L	VL	Ajaltoun	VL	VL	VL
Akaybeh Kesrouane	ML	ML	VL	Aramoun Kesrouane	VL	VL	VL	Azra ouel Ozor	VL	VL	VL
Ballouneh	L	VL	VL	Batha	L	VL	VL	Bekaatat Achkout	VL	VL	VL
Bekaatat Kanaan	VL	VL	VL	Bizhel	VL	VL	VL	Bouar	L	L	VL
Bqaatouta	VL	VL	VL	Bqaq Ed-Dine	L	ML	VL	Bzommar	VL	VL	VL
Chahtoul	VL	VL	VL	Chnaniir	L	VL	VL	Chouan	VL	VL	VL
Daraya Kesrouane	VL	VL	VL	Darououn	L	L	VL	Deir Baqlouch	L	L	VL
Diebta	VL	VL	VL	Eghbeh	VL	VL	VL	Faraya	VL	VL	VL
Fatka	L	L	VL	Feytroun	VL	VL	VL	Ghazir	L	L	VL
Ghbaleh Kesrouane	VL	VL	VL	Ghedrass	VL	VL	VL	Ghosta	VL	VL	VL
Ghyneh	VL	VL	VL	Harharaya w Kattine	VL	VL	VL	Harissa Kesrouane	L	L	VL
Hayata	VL	VL	VL	Hosein	VL	VL	VL	Hrajel	VL	VL	VL
Jdeideh Ghazir	VL	VL	VL	Jeita	ML	L	VL	Jounieh Ghadir	ML	L	VL
Jounieh Haret Sakhr	ML	ML	VL	Jounieh Salel Alma	L	L	VL	Jounieh Sarba	ML	ML	VL
Jouret Bedrane	VL	VL	VL	Jouret Mhad	VL	VL	VL	Jouret Termos	VL	VL	VL
Kfar Debiane	VL	VL	VL	Kfar Tay Kesrouane	VL	VL	VL	Kfar Yassine	ML	ML	VL
Kfour Kesrouane	VL	VL	VL	Kharayeb Nahr Ibrahi	L	L	VL	Klayaat Kesrouane	VL	VL	VL
Maarab	VL	VL	VL	Maaysra Kesrouane	VL	VL	VL	Mayrouba	VL	VL	VL
Mazraat Er-Ras	L	L	VL	Mazraat Mrah El-Mir	VL	VL	VL	Mchaa El Ftouh	VL	L	VL
Mchaa Faraya	VL	L	VL	Mchaa Kfar Dibiane	VL	L	VL	Mghaer	VL	VL	VL
Mradiyah	VL	VL	VL	Nahr Ed-Dahab	VL	VL	VL	Nammoura Kesrouane	L	L	VL
Ouata El Jaouz	VL	VL	VL	Ouata Sillam	ML	ML	VL	Raachine	VL	VL	VL
Rayfoun	VL	VL	VL	Safra Kesrouane	ML	ML	VL	Shayle Kesrouane	L	L	VL
Tabarja	ML	L	VL	Yahchouch	VL	VL	VL	Zaaytreh	VL	VL	VL
Zeytoun	L	L	VL	Zouk Mikael	ML	ML	VL	Zouk Mosbeh	ML	ML	VL

## Baalbek\_Hermel

### Baalbek

Municipality	16-Jan	17-Jan	18-Jan	Municipality	16-Jan	17-Jan	18-Jan	Municipality	16-Jan	17-Jan	18-Jan
Aadous	L	L	L	Aamchki	L	VL	VL	Aarsal	L	VL	VL
Ain Baalbek	ML	L	VL	Ain Bourday	L	L	VL	Ain El-Benye	L	VL	VL
Ain El-Jaouz Baalbek	L	VL	VL	Ain El-Siya Chadoura	L	VL	VL	Al Khodr Baalbek	L	VL	VL
Al Nabi Chit	L	VL	VL	Aynata Baalbek	L	L	L	Baalbek	L	L	L
Bachwat	VL	L	L	Barqa	VL	L	L	Bednayel Baalbak	L	L	L
Beit Chama	L	L	L	Bijjaje	M	L	VL	Bouday	L	L	L
Brital	L	L	L	Btadi	L	L	L	Chaat	L	L	L
Chaibe	L	VL	VL	Chlifa	L	L	L	Chmestar	VL	L	L
Dar El-Oussa	VL	L	L	Deir El-Ahmar	L	L	L	Deir Mar Maroun Baal	ML	ML	L
Douris	L	L	L	Fakiha	ML	L	L	Hadath Baalbek	L	L	L
Ham	L	VL	VL	Haour Taala	L	VL	VL	Hizzine	L	L	L
Hlebta	L	L	L	Hosh Barada	L	L	L	Hosh El Dahab	L	L	L
Hosh El Snid	L	L	L	Hosh El-Nabi	L	L	L	Hosh El-Rafiq	L	L	L
Hosh Tal Safiya	L	L	L	Hrebta	L	L	L	laat	L	L	L



Jebaa	VL	L	L	Jenta	L	VL	VL	Kfar Dabach	L	L	L
Kfar Dane	L	L	L	Khraibeh El-Hermel	ML	L	VL	Khreibet Baalbek	L	L	VL
Kneisset Baalbek	L	L	L	Labueh	M	L	VL	Maarboun	L	VL	VL
Majdaloun	L	L	L	Maqneh	L	L	L	Mazraat Beit Mcheik	L	ML	L
Misraya	L	L	L	Moqraq	M	L	VL	Nabha El-Damdoum	L	L	L
Nabi Chbay	L	VL	VL	Nabi Osman	M	L	VL	Nahleh baalbek	L	VL	VL
Ouadi El-Oss	L	L	L	Qaa Baayoun	M	L	L	Qaa Jouar Maqiye	M	ML	L
Qaa Ouadi El-Khanzir	M	ML	L	Qah Baalbek	M	L	L	Qarha Baalbek	L	L	L
Qsarnaba	L	L	L	Ram Baalbek	L	L	L	Ras Baalbek El Sahl	ML	L	VL
Ras Baalbek El-Charq	ML	L	VL	Riha	L	L	L	Saaide	L	L	L
Sbouba	M	L	L	Seriine El-Tahta	L	L	L	Slouqi	L	L	L
Taiba Baalbek	L	L	L	Talia	L	L	L	Taraiya	L	L	L
Temnin El Fawqa	L	L	L	Temnin El-Tahta	L	L	L	Tfail	L	VL	VL
Yahfoufa	L	L	VL	Yammouneh	L	L	L	Younine	L	L	VL
Zboud	M	L	VL								

## Hermel

Municipality	16-Jan	17-Jan	18-Jan	Municipality	16-Jan	17-Jan	18-Jan	Municipality	16-Jan	17-Jan	18-Jan
Charbine El-Hermel	L	VL	VL	Hermel Jbab	L	L	VL	Hermel	ML	ML	L
Maaysra El-Hermel	ML	ML	VL	Michaa Mrajhine	L	VL	VL	Ouadi Faara	L	L	L
Ras Baalbek - Ouadi	M	ML	L	Ras Baalbek El Gharb	ML	L	L	Zighrine	L	L	VL

## Akkar

### Akkar

Municipality	16-Jan	17-Jan	18-Jan	Municipality	16-Jan	17-Jan	18-Jan	Municipality	16-Jan	17-Jan	18-Jan
Aain Tinta	M	ML	L	Aaiyat	M	ML	VL	Aakkar El-Aatiqa	ML	L	VL
Aamar Akkar	M	M	L	Aamar El Baykat	M	M	L	Aamayer	ML	ML	L
Aamriyet Akkar	M	ML	L	Aandqet	ML	L	L	Aarmeh	M	M	L
Aarqa	M	M	L	Aawaynat	M	L	L	Aayoun Akkar	ML	L	VL
Abboudiye	MH	M	ML	Ain El-Zeit	M	ML	L	Ain Yaaqoub	L	L	VL
Akroum	ML	L	L	Aridet Cheikh Zennad	MH	M	M	Baldehy w Mazraat Bal	M	M	ML
Barcha	M	M	ML	Bardeh	M	ML	L	Bebnine	M	L	L
Beino	M	ML	L	Beit Ayoub	M	VL	VL	Beit El-Haouch	M	L	L
Beit Mellat	M	ML	L	Beit Younes	ML	VL	VL	Berbara Akkar	M	ML	L
Berqayel	M	L	L	Bezbina	L	VL	VL	Bireh Akkar	M	ML	L
Borj	M	ML	VL	Bqerezla	M	L	L	Bzal	M	L	L
Chane	ML	VL	L	Chaqdouf	M	L	VL	Charbila	M	M	ML
Cheikh Mohammad	M	M	ML	Cheikh Taba Es-Sahl	M	M	ML	Cheikh Taba	M	ML	L
Cheikh Zennad	M	M	M	Cheikhlar	ML	L	L	Chir Hmairine	M	M	ML
Daghle	M	ML	L	Dahr Laissine	M	ML	L	Darine	M	M	ML
Dawra	M	L	L	Dawsa w Baghdadi	M	ML	L	Dayret Nahr El-Kabir	M	M	L
Deir Dalloum	M	M	L	Deir Jennine	M	ML	L	Denbou	M	VL	L
Dibbabiyyeh	M	ML	L	Douair Aadwiyeh	M	ML	L	Fassikine	M	ML	L
Fnaydek	L	VL	VL	Fraydes Akkar	M	L	L	Ghazayle	M	M	ML
Habchit	ML	VL	VL	Hakour	M	ML	L	Halba	M	M	L

Haouchab	M	M	ML	Hayssat	M	M	M	Haytla	M	M	ML
Hayzouq	M	M	ML	Hedd	M	M	ML	Hmaira Aakkar	M	L	L
Hmaiss Aakkar	M	M	ML	Hnaider	ML	M	L	Hokr Ed-Dahri	MH	M	M
Hokr Etti	M	M	ML	Hokr Jouret Srar	MH	M	ML	Houaich	M	VL	L
Hrar	M	VL	L	Idbil	M	ML	L	Ilal	M	L	L
Janine	MH	M	ML	Jdeidet El-Joumeh	M	M	L	Jdeidet El-Kaiteh	M	L	L
Jebrayel	M	L	L	Kafr	M	L	VL	Kafr	M	ML	L
Karm Asfour	M	L	L	Kfar Melki Aakkar	M	M	M	Kfar Noun	M	ML	L
Kfarharra	M	M	ML	Khalsa	M	ML	L	Kharnoubet Aakkar	MH	M	ML
Khirbet Daoud Aakkar	M	ML	L	Khirbet El Remmane	ML	L	L	Khirbet Shar	M	ML	L
Khoreybet El-Jindi	M	M	ML	Khreibet Aakkar	M	VL	L	Kneisset Aakkar	M	M	M
Kneisset Hnaider	ML	M	L	Knisse	M	M	ML	Kroum El-Aarab	M	M	ML
Kwachra	M	ML	L	Kweykhat	M	M	ML	Machta Hammoud	M	ML	L
Majdala	M	L	L	Majdel Akkar	M	L	L	Mar Touma	M	L	L
Marlaya Melhem	M	M	L	Mashha	M	M	L	Massoudiye	M	M	M
Mazraat Beit Ghattas	M	L	L	Mazraat En-Nahriye	ML	L	L	Mechmech	L	VL	VL
Memneh	L	VL	VL	Mhammara	M	L	L	Mighraq Aakkar	M	M	M
Minyara	M	M	L	Moqayteh	M	M	M	Mounjez	M	ML	L
Msalla	M	ML	L	Mzeihmeh	M	M	ML	Nfaisch	M	M	L
Noura Et-Tahta	M	ML	L	Ouadi El-Haour	M	M	ML	Ouadi El-Jamous	M	L	L
Ouyoun El-Ghizlane	M	L	L	Qaabarine	M	M	M	Qabaait	M	L	VL
Qachlaq	M	M	ML	Qantara Aakkar	M	L	L	Qarha Aakkar	M	M	L
Qarqaf	M	L	L	Qboula	M	L	VL	Qleiaat Aakkar	M	M	M
Qloud El-Baqie	M	L	L	Qobaiyat Aakkar	ML	L	L	Qobbat Chamrat	M	M	L
Qorayat	M	VL	VL	Qornet Aakkar	L	VL	VL	Qsair Aakkar	M	ML	L
Rahbe	M	VL	L	Rihaniyet Aakkar	M	M	ML	Rmah	M	L	L
Rmoul	M	M	M	Saadine	M	M	ML	Sadaqa	M	VL	L
Saidnaya	M	M	ML	Sammouniye	M	M	M	Sayssouq	M	L	L
Semmaqiye	MH	M	M	Semmaqli	MH	M	L	Sfinet El-Dreib	M	M	L
Sfinet El-Qaitaa	M	L	L	Sindyanet Zeidane	M	L	L	Souaisset Aakkar	M	M	ML
Srar	M	M	ML	Tal Abbas El Gharby	M	M	ML	Tal Abbas El-Charqy	M	M	ML
Tal Biret	M	M	M	Tal Hmayra	M	M	ML	Tal Maayan Tal Kiri	M	M	M
Tal Sibel	M	M	M	Tallet Chattaha	M	ML	VL	Tikrit	M	L	VL
Tleil	M	M	ML	Tshea	L	VL	VL	Zawarib	M	ML	VL
Zouq El Hosniyeh	M	L	L	Zouq El-Haddara	M	L	L	Zouq El-Hbalsa	M	L	L
Zouq El-Moqachrine	M	L	L								

## Sud

### Sour

Municipality	16-Jan	17-Jan	18-Jan	Municipality	16-Jan	17-Jan	18-Jan	Municipality	16-Jan	17-Jan	18-Jan
Aaiyeh	M	M	VL	Aalma El-Chaab	M	M	VL	Aaytit	M	M	VL
Abbassiyeh Sour	M	ML	L	Abou Chech	M	M	VL	Ain Abou Abdallah	M	ML	L
Ain Baal	M	M	VL	Arzoun	M	M	L	Aziyeh	M	ML	VL
Baflaya	M	M	L	Barich	M	ML	L	Batouliyeh	M	M	VL
Bayad	M	M	VL	Bazouriyeh	M	M	L	Bediass	M	ML	VL



Bestiyat	M	ML	L	Borj El Chemali	M	ML	L	Borj En-Naqoura	M	M	VL
Borj Rahhal	M	ML	L	Boustane	M	M	VL	Btaychiyeh	M	M	VL
Chaaitiye	M	M	VL	Chameh	M	ML	VL	Chehabiye	ML	M	L
Chehour	ML	ML	L	Chihine	M	M	VL	Debaal Sour	M	M	L
Deir Amess	M	ML	VL	Deir Kifa	M	M	L	Deir Qanoun El-Ain	M	M	VL
Deir Qanoun El-Naher	M	ML	L	Derdghaiya	M	M	L	Dhayra	M	M	VL
Halloussiyeh	M	ML	L	Hamoul	M	M	VL	Hanaouey	M	M	VL
Henniye	M	M	VL	Hmairi Sour	M	ML	VL	Iskandarouna Sour	M	ML	VL
Jbal El Botom	M	ML	VL	Jebbin	M	M	VL	Jennata	M	ML	L
Jijim	M	M	VL	Jouaiya	M	M	L	Kneisset Sour	M	M	VL
Maarake	M	ML	L	Maaroub	M	ML	L	Majadel	M	M	L
Majdalzoun	M	ML	VL	Mansouri Sour	M	M	VL	Marnba	ML	ML	L
Marouahine	M	ML	VL	Mazraat El-Zalloutiy	M	M	VL	Mazraat Mechref	M	M	VL
Mazraat Tayr Semhat	L	L	L	Mheilib	M	ML	L	Neffakhiyeh	M	M	L
Niha Sour	M	M	L	Ouadi Jilo	M	M	L	Qana	M	M	VL
Qolaileh Sour	M	M	VL	Rechknany	M	M	VL	Rmadiyeh	M	M	VL
Selha Sour	M	M	L	Siddiqine	M	M	VL	Sour	M	M	L
Srifa	M	M	L	Tayr Debbe	M	ML	L	Tayr Felsay	M	ML	VL
Tayr Harfa	M	M	VL	Touayri	ML	ML	L	Toura	M	ML	L
Yanouh Sour	M	ML	VL	Yarine	M	M	VL	Zebqine	M	L	VL

## Saida

Municipality	16-Jan	17-Jan	18-Jan	Municipality	16-Jan	17-Jan	18-Jan	Municipality	16-Jan	17-Jan	18-Jan
Aanqoun	ML	ML	VL	Aaqtanit	ML	ML	L	Aarab Ej-Jall	ML	ML	VL
Aarab Tabbaya	ML	ML	VL	Abra Saida	M	M	L	Adloun	M	M	L
Adousiyeh	M	M	L	Ain-El-Deleb	M	M	L	Arzai	M	ML	L
Babliyah	M	M	L	Barty	L	L	VL	Bissariyeh	M	M	L
Bnaafoul	ML	M	VL	Bqosta	M	M	L	Bramiy	M	M	L
Daoudiyeh	M	M	L	Dareb El-Sim	ML	ML	VL	Erkay	ML	ML	VL
Ghassanieh	M	M	L	Ghazieh	M	M	L	Hajjeh	ML	ML	VL
Haret Saida	M	M	L	Hartiyeh	M	M	L	Hlaliye Saida	M	M	L
Insariyat	M	M	L	Jazira Saida	M	ML	L	Kafar Bit	ML	ML	VL
Kaoutariyet El-Siyad	L	M	L	Kfar Chellal	L	ML	VL	Kfar Hatta Saida	ML	ML	VL
Kfar Milke Saida	L	ML	VL	Khartoum	L	M	L	Khaziz	ML	ML	VL
Khirbet Ed-Douair Sa	M	M	L	Khirbet El-Bassal	M	M	L	Khrayeb Saida	M	M	L
Loubieh	M	M	L	Maghdouche	ML	ML	VL	Majdelyoun	M	M	L
Matariyet El-Choumar	M	ML	L	Matayriyeh	ML	M	VL	Mazraat 'Mseileh	M	M	L
Mazraat 'Snaiber	M	M	L	Mazraat Aarab Soukka	ML	ML	VL	Mazraat Deir Taqla	M	M	VL
Mazraat El Yahoudiye	M	M	L	Mazraat El-Housseini	M	M	L	Mazraat El-Mhaydaleh	M	M	L
Mazraat El-Ouasta	M	M	L	Mazraat Jamjim	M	M	L	Mazraat Kaoutariyet	M	M	L
Mazraat Kfar Badda	M	M	L	Mazraat Oussamiyat	M	M	L	Mazraat Sari	M	M	L
Mazraat Sinai	ML	M	L	Meemariyeh	ML	M	L	Merouaniyeh	ML	M	L
Miyeh ou Miyeh	M	M	L	Najjariyeh	M	M	L	Qaaqiyat El-Snaouba	M	M	L
Qnarit	ML	ML	L	Qraiye Saida	M	M	L	Saida Ed-Dekermane	M	M	L
Saida El-Oustani	M	M	L	Saida El-Qadimeh	M	M	L	Saida Kefraya	M	M	L
Saksakiyeh	M	M	L	Salhieh Saida	M	M	L	Sarafand	M	M	L

Sfenta	L	L	VL	Tafahta	M	M	L	Tanbourit	ML	M	VL
Tebna	M	M	L	Zaghdraiya	ML	ML	VL	Zeita	ML	ML	VL
Zrariyeh	M	M	L								

## Jezzine

Municipality	16-Jan	17-Jan	18-Jan	Municipality	16-Jan	17-Jan	18-Jan	Municipality	16-Jan	17-Jan	18-Jan
Ain El-Mir (El Estab)	ML	ML	VL	Anane	L	L	VL	Aramta	L	L	VL
Ariya	L	L	VL	Aychiyeh	ML	L	VL	Azour	L	L	VL
Baba	L	L	VL	Bayssour Jezzine	M	ML	VL	Benoueteh Jezzine	L	L	VL
Bhannine	L	L	VL	Bisri	L	L	VL	Bkassine	L	L	VL
Bouslaya	L	L	VL	Btedine El-Leqech	L	L	VL	Chbail	L	L	VL
Chouliq Jezzine	M	M	L	Dahr Ed-Deir	L	L	VL	Deir El Qattine	L	L	VL
Demachqiyeh	M	M	VL	Ghabbatiyeh	L	L	VL	Harf Jezzine	L	L	VL
Hassaniyeh	ML	ML	VL	Haytouleh	L	L	VL	Haytura	L	L	VL
Hidab	L	L	VL	Homsiyeh	L	L	VL	Jabal Toura	L	L	VL
Jarmaq	M	ML	VL	Jensnaya	M	M	VL	Jernaya	L	L	VL
Jezzine	L	L	VL	Karkha	M	ML	L	Kfar Falous	L	L	VL
Kfar Houna	L	L	VL	Kfar Jarrah	M	M	L	Lebaa	M	M	L
Louayzet Jezzine	L	L	VL	Machmouche	L	L	VL	Mahmoudiyeh Jezzine	M	ML	VL
Maknounye Jezzine	L	L	VL	Maraat Ouazaiyeh	ML	L	VL	Mazraat Daraya	L	L	VL
Mazraat El-Aarqoub	ML	L	VL	Mazraat El-Mathane	L	VL	VL	Mazraat El-Rahbane	L	L	VL
Mazraat Khallet Khaz	L	L	VL	Mazraat Louzid (Loua	L	L	VL	Mazraat Qrouh	ML	L	VL
Mazraat Tamra	M	M	VL	Mazraat Zighrine Jez	ML	L	VL	Mazraat	L	L	VL
Mharbiyeh	ML	ML	VL	Midane Jezzine	L	L	VL	Mjeydel Jezzine	ML	M	VL
Mlikh	L	L	VL	Mrah El-Hbasse	M	ML	L	Ouadi Baanqoudaine	M	ML	L
Ouadi El-Laymoun	L	ML	VL	Ouardiyeh	L	L	VL	Qabaa Jezzine	L	L	VL
Qatrani	L	L	VL	Qaytouleh	L	L	VL	Qtaleh Jezzine	L	L	VL
Rihane Jezzine	ML	ML	VL	Rimat	L	L	VL	Roum	L	L	VL
Roummanet	L	L	VL	Sabbah	L	L	VL	Saydoun	L	L	VL
Sfaray	L	L	VL	Snaya	L	L	VL	Sojoud	ML	ML	VL
Srayri	ML	L	VL	Taaid	L	L	VL	Wadi Jezzine	L	L	VL
Zhalta	L	L	VL								

## Bekaa

### West Bekaa

Municipality	16-Jan	17-Jan	18-Jan	Municipality	16-Jan	17-Jan	18-Jan	Municipality	16-Jan	17-Jan	18-Jan
Aammiq BG	L	L	VL	Ain El Tineh BG	L	L	VL	Ain Zebdeh	L	L	VL
Ana	L	L	VL	Aytanit	L	L	VL	Baaloul BG	L	L	VL
Bab Mareh	L	L	VL	Chouberqiye Aammiq	L	L	VL	Dakoue	L	ML	VL
Deir Ain El-Jaouze	L	L	VL	Deir Tahniche	L	L	VL	Ghaza	L	L	VL
Harime El-Soughra	L	L	VL	Hoch Harimeh	L	L	VL	Jazira BG	L	L	VL
Jib Jennine	L	ML	VL	Kamed-El-Laouz	ML	ML	VL	Kefraya BG	VL	L	VL
Khiara El Atika	L	L	VL	Khiara	L	L	VL	Khirbet Qanafar	L	L	VL
Lala	L	L	VL	Lebbaya BG	L	L	VL	Loussa	ML	L	VL
Machghara	L	L	VL	Manara (Hammara) BG	L	L	VL	Mansoura BG	L	L	VL



Marej BG	L	L	VL	Maydoun	ML	L	VL	Ouaqf BG	L	L	VL
Qaraaoun	L	L	VL	Qelya	L	L	VL	Raouda (Istabel)	L	L	VL
Saghbine	L	L	VL	Sohmor	L	L	VL	Soltan Yacoub el Ara	L	ML	VL
Souairy	L	L	VL	Sultan Yaacoub	L	L	VL	Tal Znoub	L	L	VL
Yehmor BG	L	L	VL	Zilaya	L	L	VL				

## Zahle

Municipality	16-Jan	17-Jan	18-Jan	Municipality	16-Jan	17-Jan	18-Jan	Municipality	16-Jan	17-Jan	18-Jan
Aanjar (Haouch Mouss)	L	L	VL	Ablah	L	L	L	Ain Kfarzabad	L	VL	VL
Ali-El-Nahri	L	ML	L	Bar Elias	L	L	VL	Bouarej	L	ML	VL
Cheberqiyet Tabet	L	L	VL	Chtaura	L	L	VL	Deir El Ghazal	L	VL	VL
Delhamiyet Zahle	L	L	VL	Ferzol	L	L	L	Haouch El-Ghanam	L	ML	L
Haouch Es-Siyadeh	L	L	VL	Haouch Hala	L	L	L	Haouch Mandara	L	L	VL
Haouch Qayssar	L	L	VL	Hezerta	VL	L	L	Hosh Moussa	L	L	VL
Jdita	L	L	VL	Kfarzabad	L	L	VL	Ksara	L	L	VL
Majdel Aanjar	L	L	VL	Makssi	L	L	VL	Massa	L	L	L
Mazraat Er-Remtaniye	L	L	VL	Mrayjat Zahle	L	L	VL	Mzaraa Zahle	L	L	VL
Nabi Ayla	L	L	L	Nasriyet Rizk	L	L	L	Nasriyet Zahle	L	L	VL
Niha Zahle	L	L	L	Ouadi Ed-Deloum	L	L	VL	Ouadi El-Arayech	L	L	L
Qaa El Rim	L	L	L	Qab Elias	L	L	VL	Qousaya	L	L	VL
Rhit	L	L	VL	Riyak	L	L	L	Saadnayel	L	L	VL
Taal El-Akhdar	L	L	VL	Taalbeya	L	L	VL	Taanayel	L	L	VL
Talamara	L	ML	L	Tcheflik Edde Haouch	L	ML	VL	Tcheflik Qiqano	L	L	VL
Terbol Zahle	L	VL	VL	Touaite Zahle	L	L	L	Zahle Aradi	L	L	L
Zahle El-Berbara	VL	L	L	Zahle El-Maallaqa	VL	L	L	Zahle El-Midane	VL	L	L
Zahle Er-Rassiyeh	VL	L	L	Zahle Haouch El-Ouma	L	L	VL	Zahle Haouch El-Ouma	L	L	VL
Zahle Haouch Ez-Zara	VL	L	L	Zahle Maallaqa Aradi	L	L	L	Zahle Mar Antonios	VL	L	L
Zahle Mar Elias	VL	L	L	Zahle Mar Gerios	VL	L	L	Zahle Saydet En-Naja	VL	L	L
Zebdoul	L	L	VL								

## Rachaiya

Municipality	16-Jan	17-Jan	18-Jan	Municipality	16-Jan	17-Jan	18-Jan	Municipality	16-Jan	17-Jan	18-Jan
Ain Arab Rachaiya	ML	L	VL	Ain Ata	L	L	VL	Ain Harche	L	L	VL
Aqabe Rachaya	L	L	VL	Ayha	L	L	VL	Ayta El Fokhar	L	L	L
Bakifa Rachaya	L	L	VL	Bakka	M	L	VL	Beit Lahya	L	L	VL
Bireh Rachaiya	ML	ML	VL	Daheer El Ahmar	ML	L	VL	Deir El-Achayer	L	L	VL
Heloua Rachaiya	L	VL	VL	Hoch El Qannabeh Rac	L	L	VL	Kaoukaba Bou Arab	L	L	VL
Kfar Danis	M	L	VL	Kfar Mechki	L	L	VL	Kfar Qouq	ML	L	VL
Kherbet Rouha	M	L	VL	Majdel Balhiss	L	L	VL	Mdoukha	M	L	L
Mhaydseh Rachaiya	ML	L	VL	Nabi Safa	L	L	VL	Rachaiya	L	L	VL
Rafid Rachaiya	ML	ML	VL	Selsata (Mazraat Dei	L	VL	VL	Tannoura	L	L	VL
Yanta	ML	L	VL								

## Beyrouth

### Beyrouth

Municipality	16-Jan	17-Jan	18-Jan	Municipality	16-Jan	17-Jan	18-Jan	Municipality	16-Jan	17-Jan	18-Jan
--------------	--------	--------	--------	--------------	--------	--------	--------	--------------	--------	--------	--------

Achrafieh	M	ML	L	Ain el-Mreisse	M	ML	VL	Bachoura	M	ML	VL
Beirut Central Distr	M	ML	VL	Marfai	M	ML	VL	Mazraa	M	ML	L
Medaouar	M	ML	L	Minet el-Hosn	M	ML	VL	Mwssaitbeh	M	ML	L
Ras Beirut	M	ML	L	Rmeil	M	ML	VL	Saifi	M	ML	VL
Zqaq el-Blat	M	ML	VL								