

Lebanon Fire Risk Bulletin



CIVIL DEDEFENCE

Refer to cadast table condition.

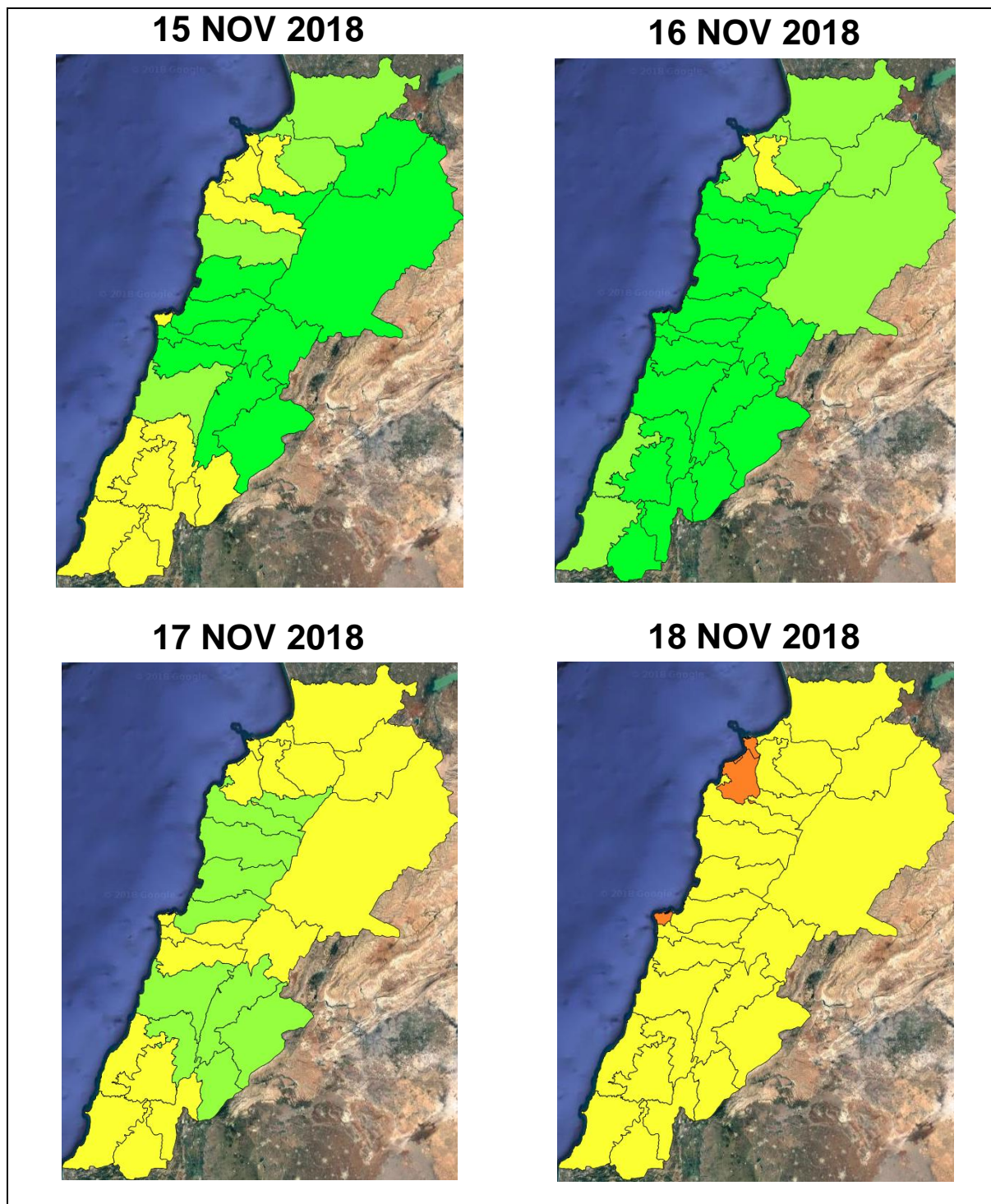
Please note that the indicated temperature is at 2 meters height from the ground.

General description of potential fire risk situation

Symbol	Level of risk	Meaning and actions
VL	Very low	Very low fire risk. Controlled burning operations can be hardly executed due to high fuel moisture content. Normally wildfires self-extinguish.
L	Low	Low fire risk. Controlled burning operations can be executed with a reasonable degree of safety.
ML	Medium low	Medium-low fire risk. Controlled burning operations can be executed in safety conditions. All the fires need to be extinguished.
M	Medium	Medium fire risk. Controlled burning operations would be avoided. All the fires need to be very well extinguished.
M	Medium high	Controlled burning is not recommended. Open flame will start fires. Cured grasslands and forest litter will burn readily. Spread is moderate in forests and fast in exposed areas. Patrolling and monitoring is suggested. Fight fires with direct attack and all available resources.
H	High	Ignition can occur easily with fast spread in grass, shrubs and forests. Fires will be very hot with crowning and short to medium spotting. Direct attack on the head may not be possible requiring indirect methods on flanks. Patrolling and monitoring the territory is highly suggested.
E	Extreme	Ignition can occur also from sparks. Fires will be extremely hot with fast rate of spread. Control may not be possible during day due to long range spotting and crowning. Suppression forces should limit efforts to limiting lateral spread. Damage potential total. Patrolling and monitoring the territory is highly suggested.

Beirut, 16 November 2018

FIRE RISK INDEX

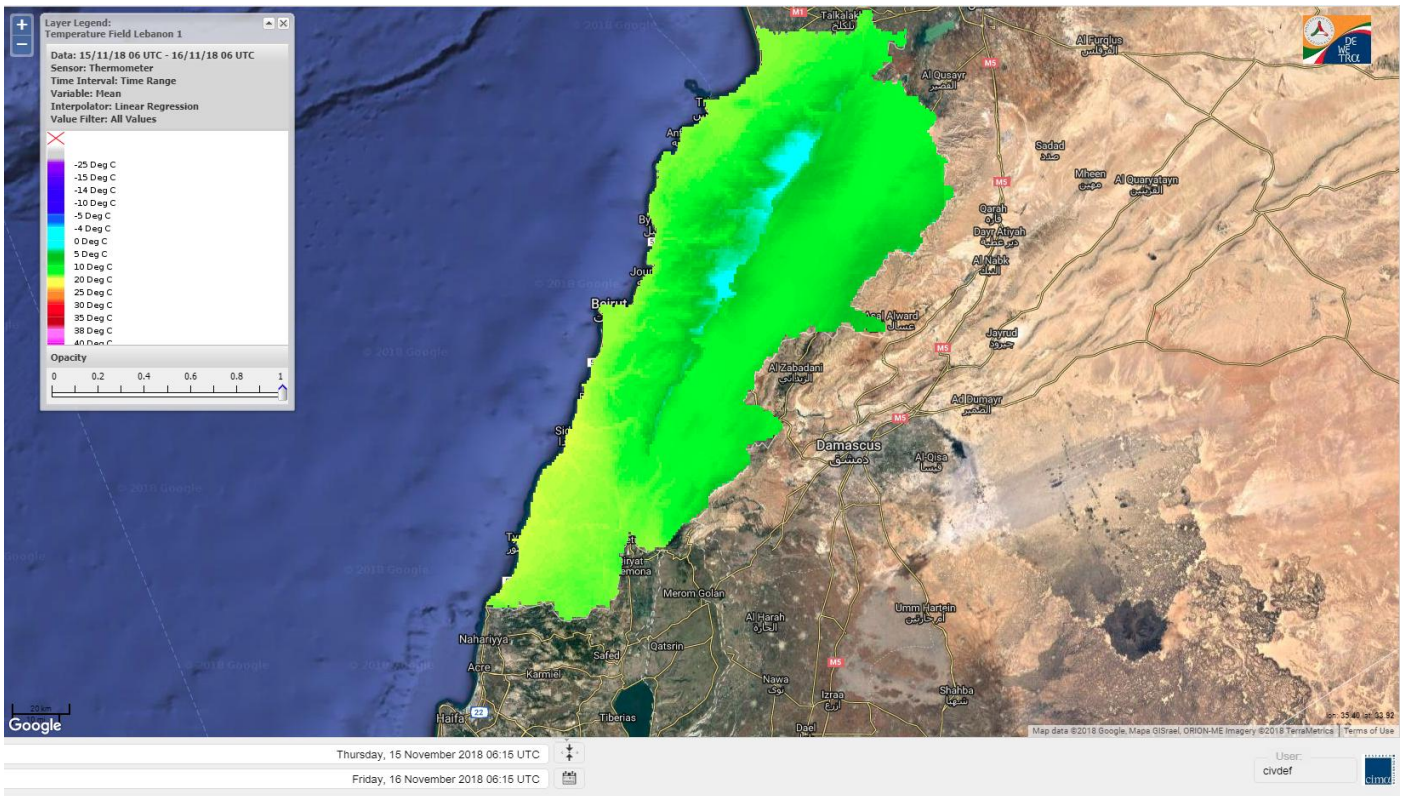


Layer Legend:
Lebanon Wildfire Risk Index 1

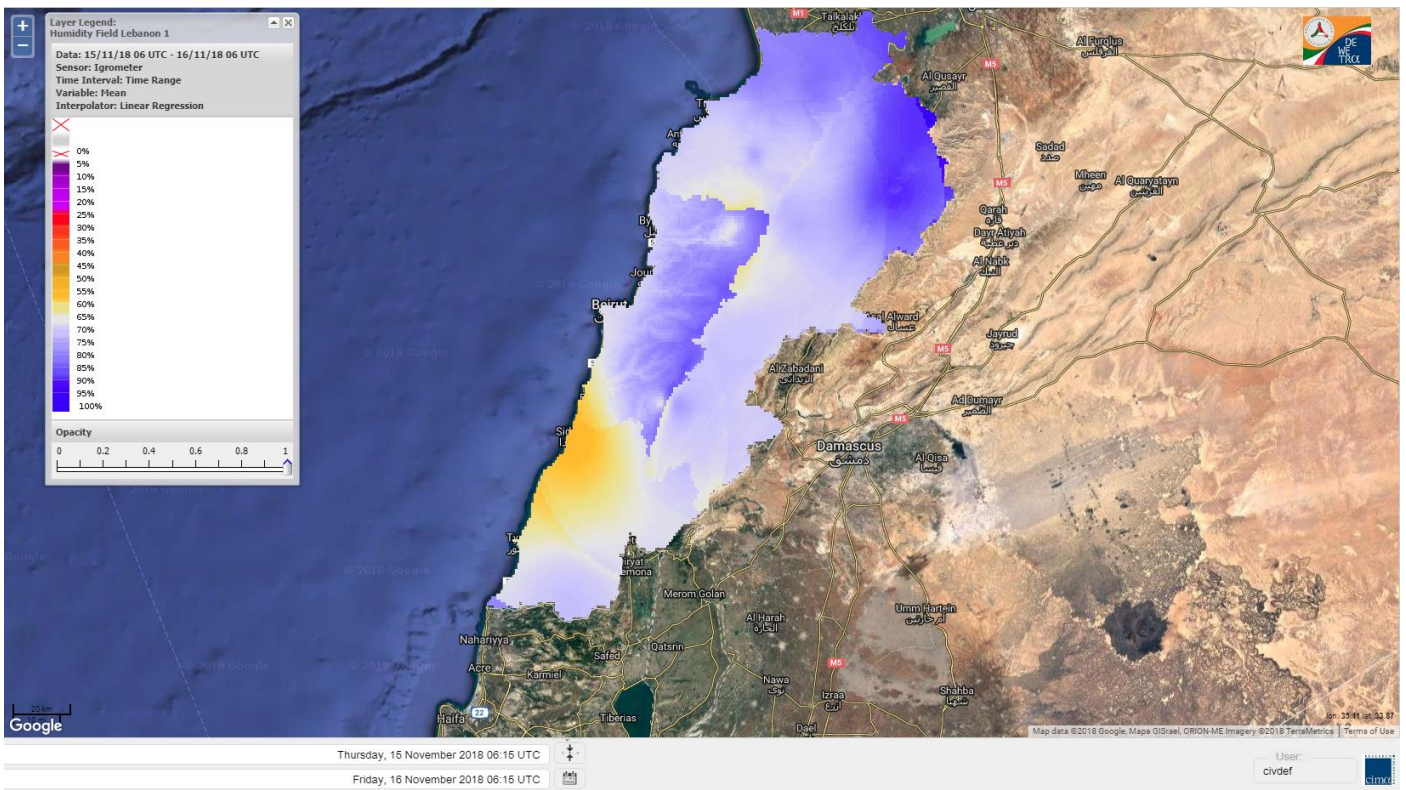
Data: Run: 16/11/2018 00:00. Forecast for 16
Model: RISICO for the Republic of Lebanon
Variable: Fire Weather Index
Spatial Resolution: Caza

- VERY LOW
- LOW
- MEDIUM-LOW
- MEDIUM
- MEDIUM-HIGH
- HIGH
- EXTREME

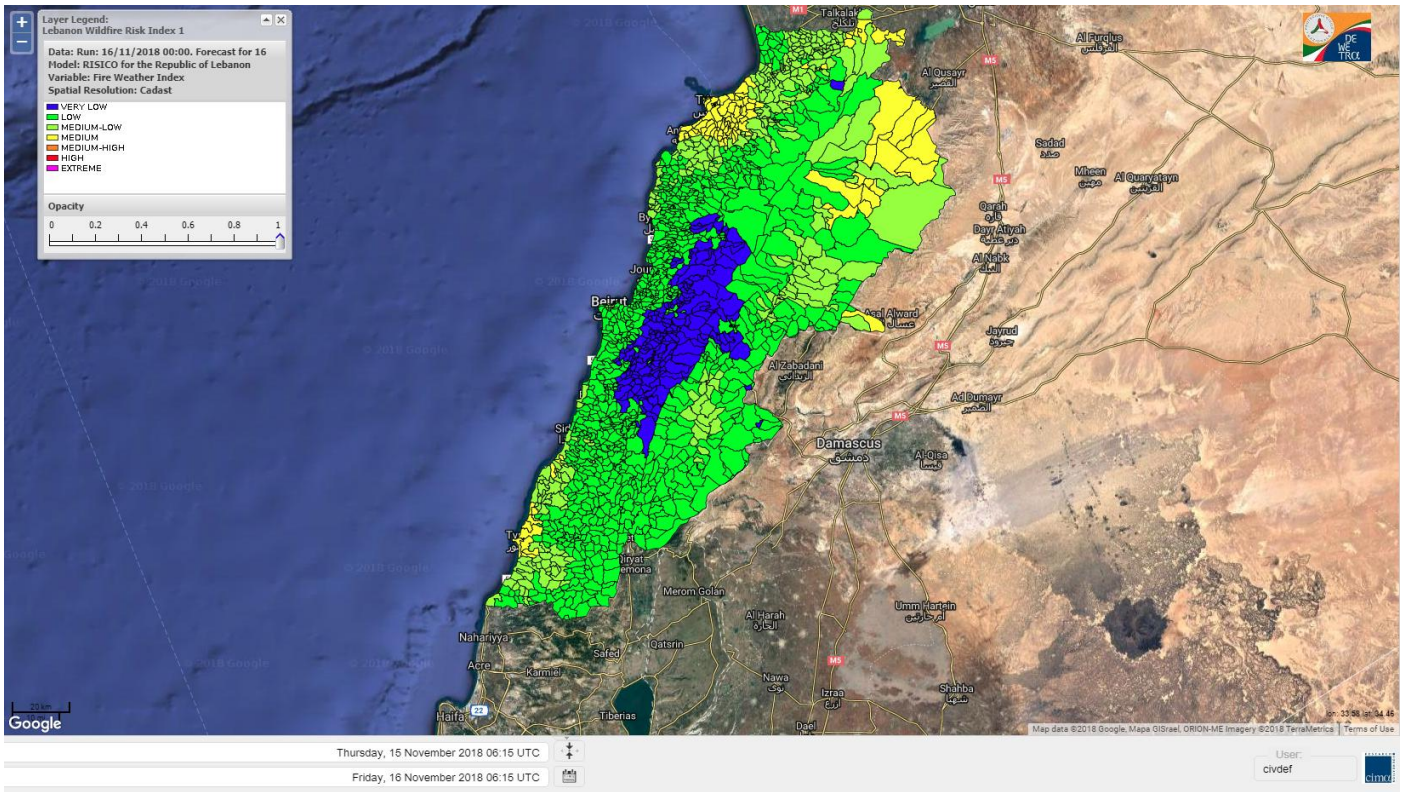
Lebanon temperature for Lebanon 16 NOV 2018



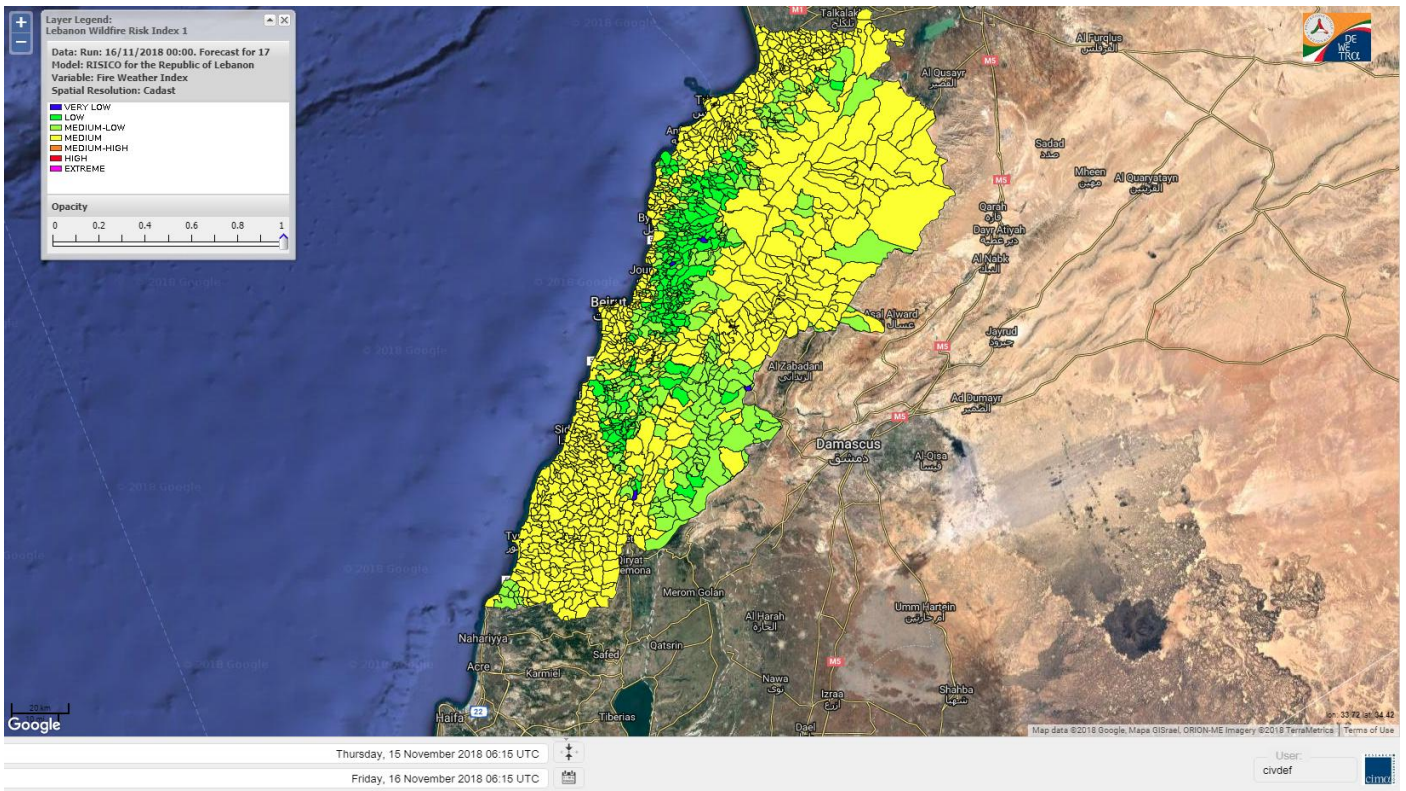
Lebanon humidity for Lebanon 16 NOV 2018



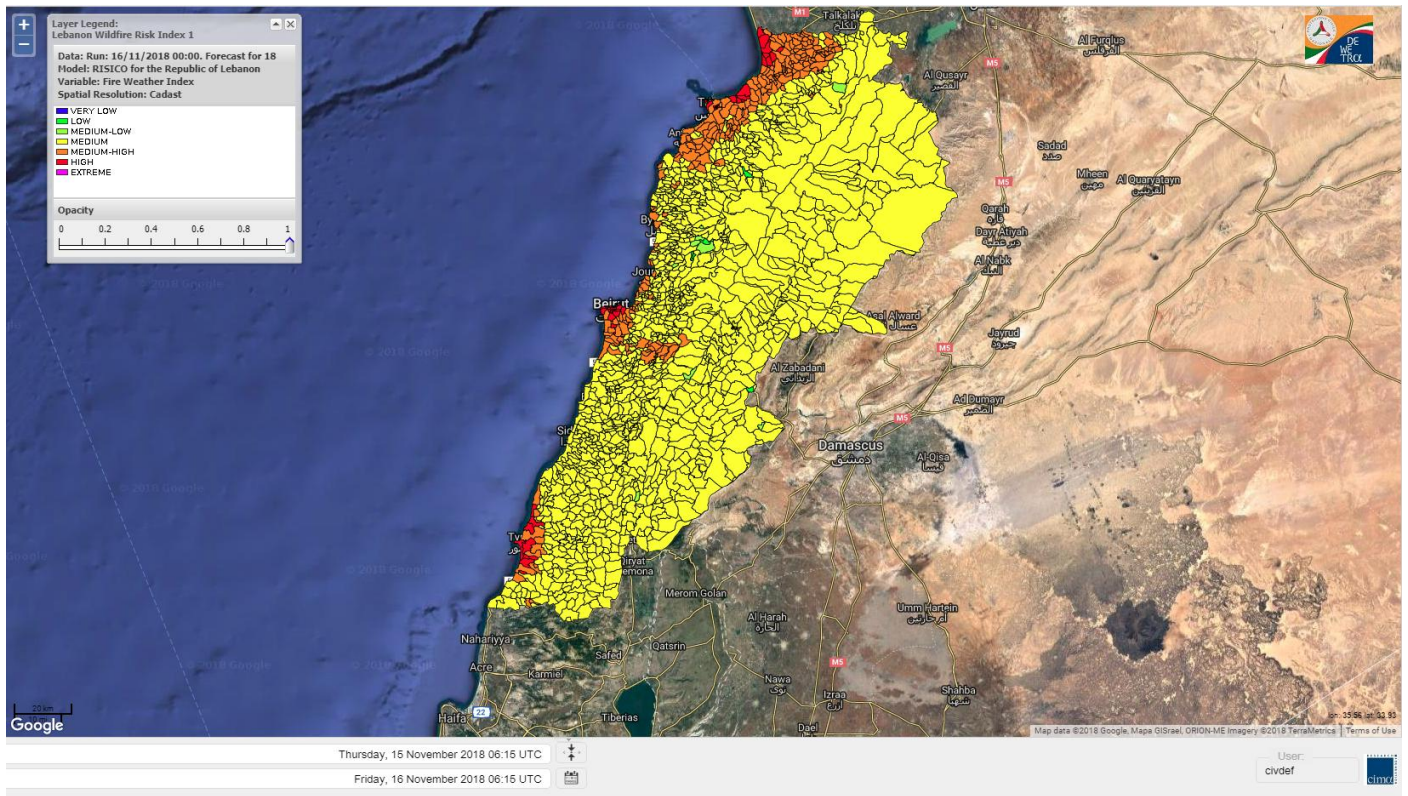
Lebanon for 16 NOV 2018



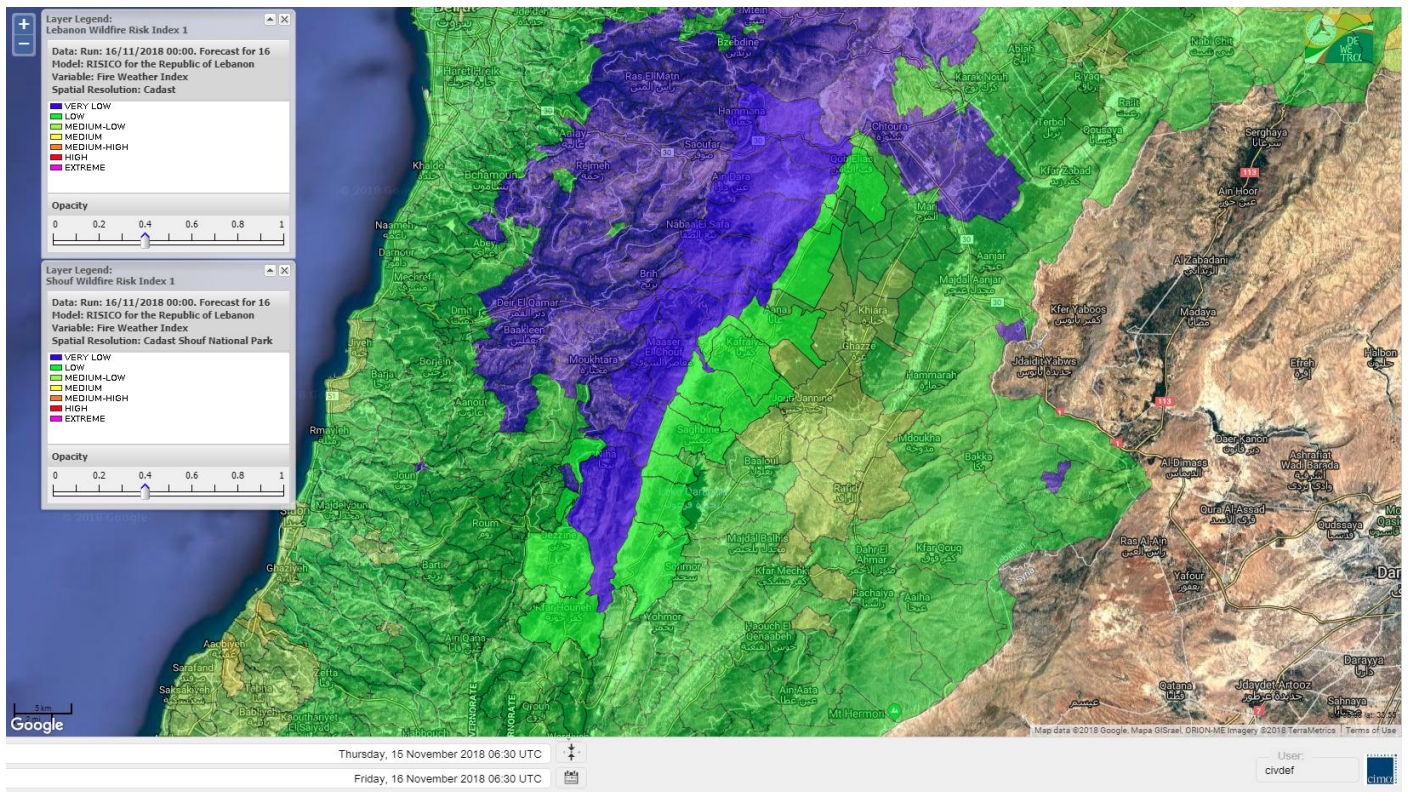
Lebanon for 17 NOV 2018



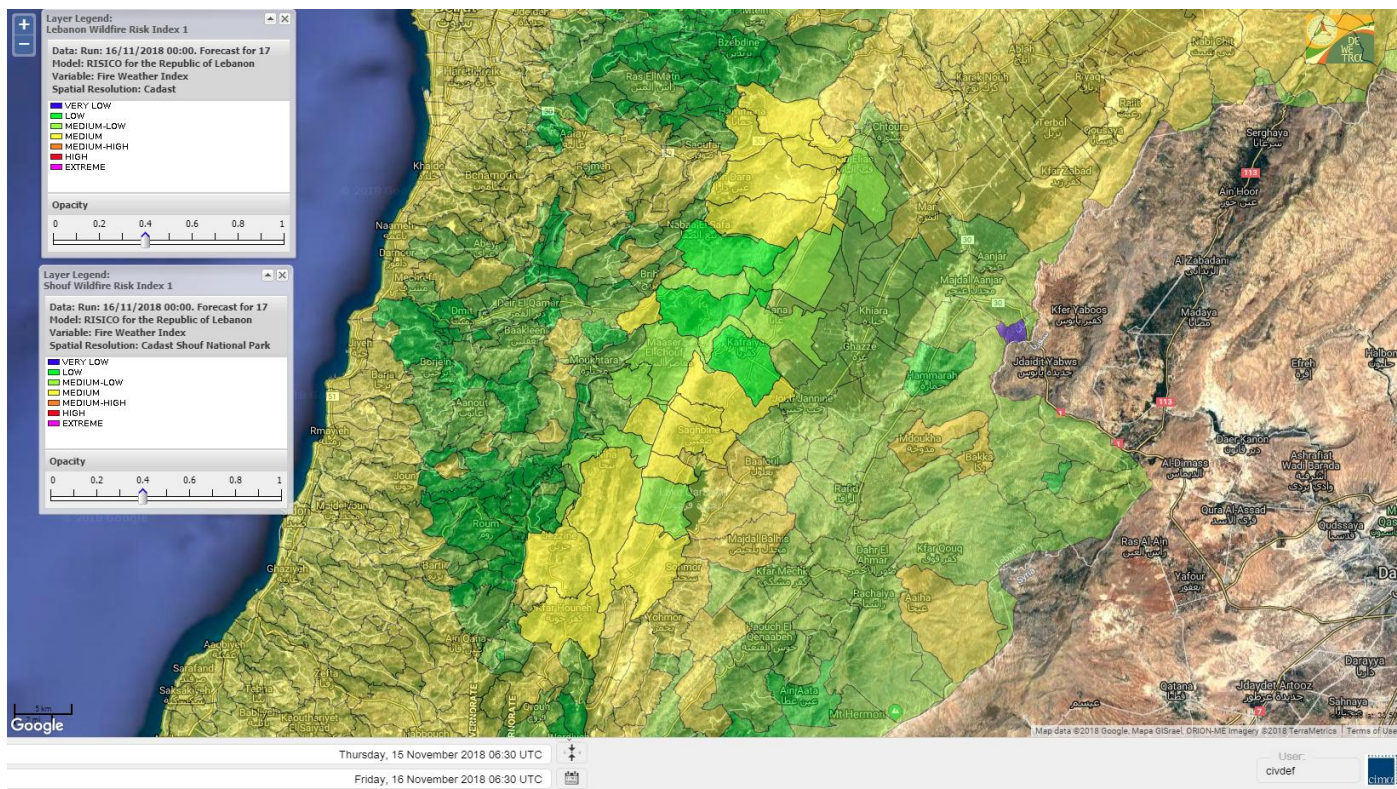
Lebanon for 18 NOV 2018



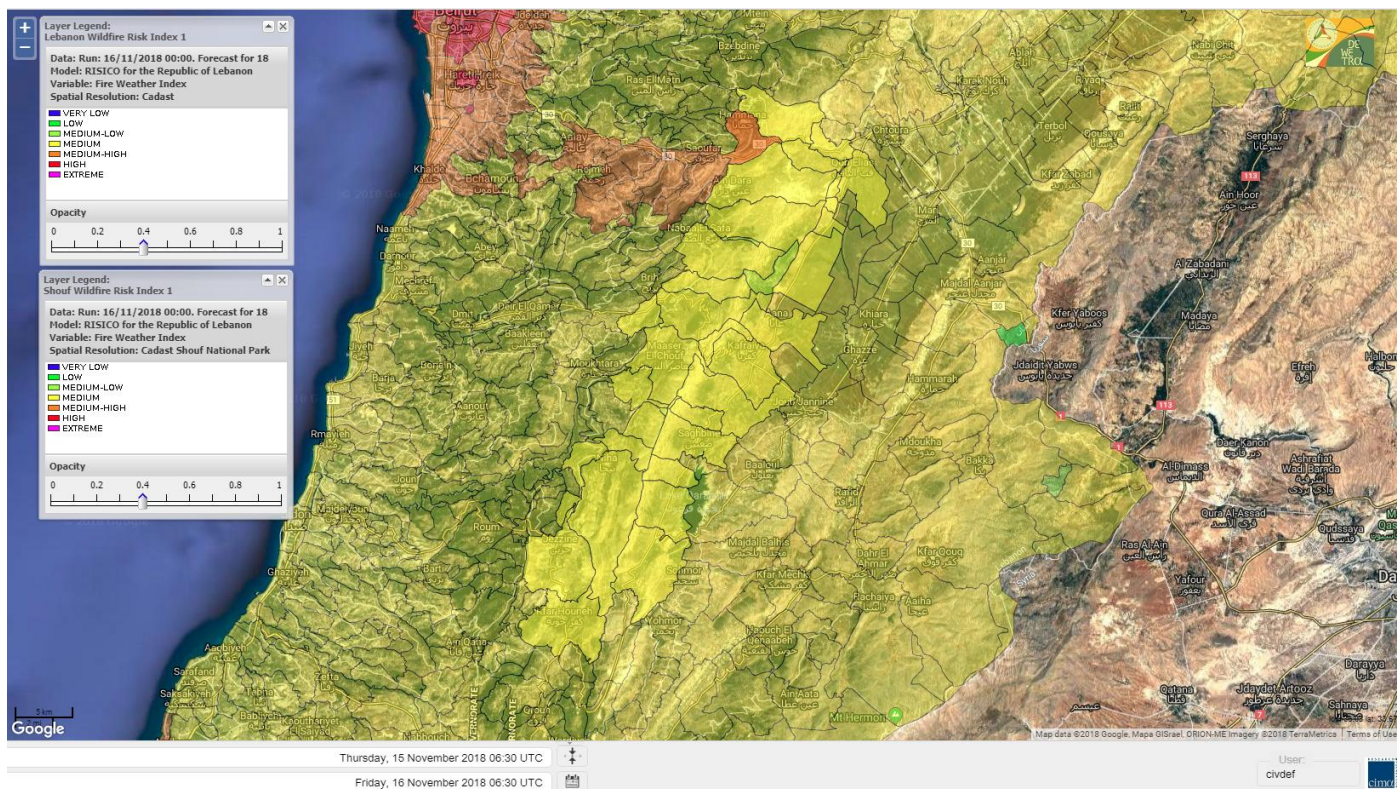
Shouf Biosphere Reserve Forecast for 16 NOV 2018



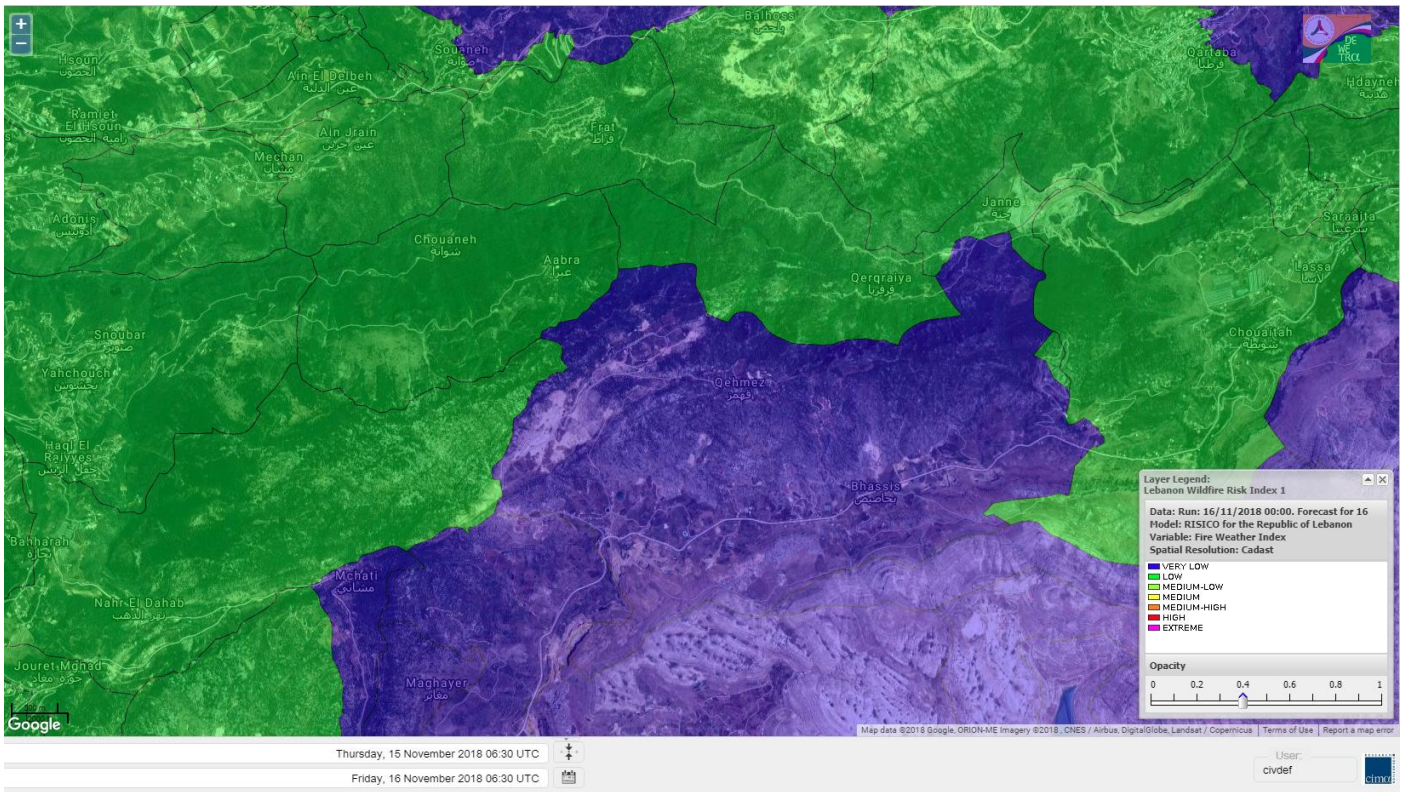
Shouf Biosphere Reserve Forecast for 17 NOV 2018



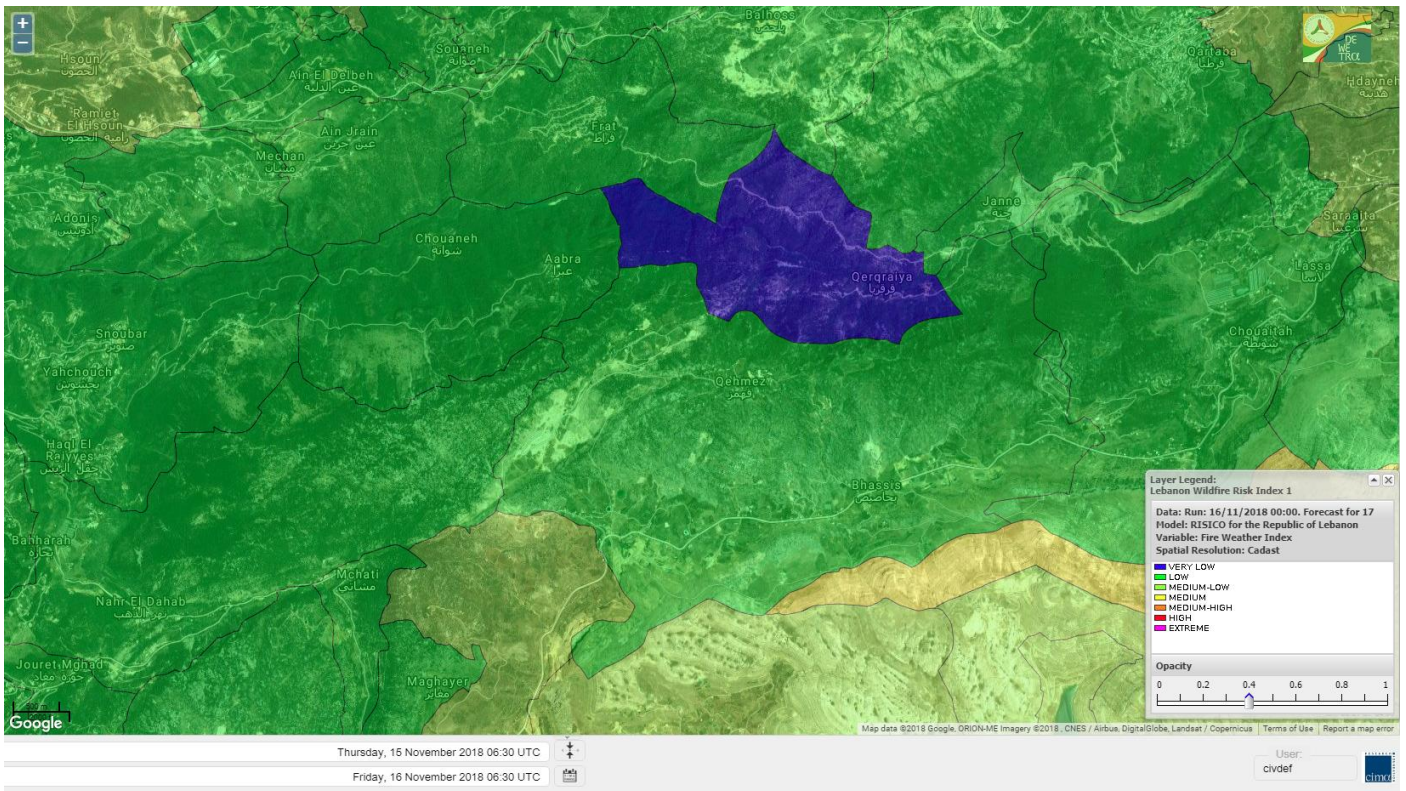
Shouf Biosphere Reserve Forecast for 18 NOV 2018



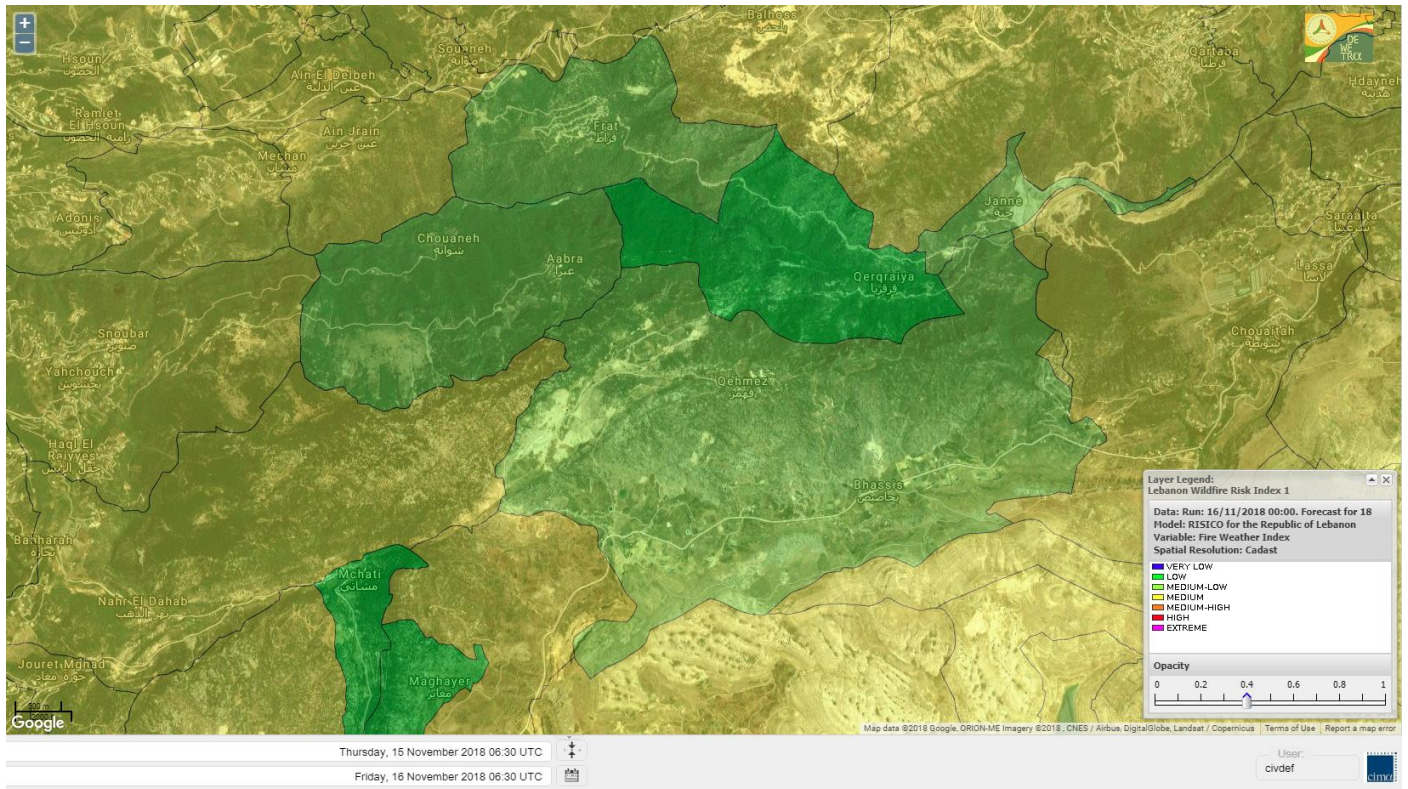
Jabal Moussa Reserve Forecast for 16 NOV 2018



Jabal Moussa Reserve Forecast for 17 NOV 2018



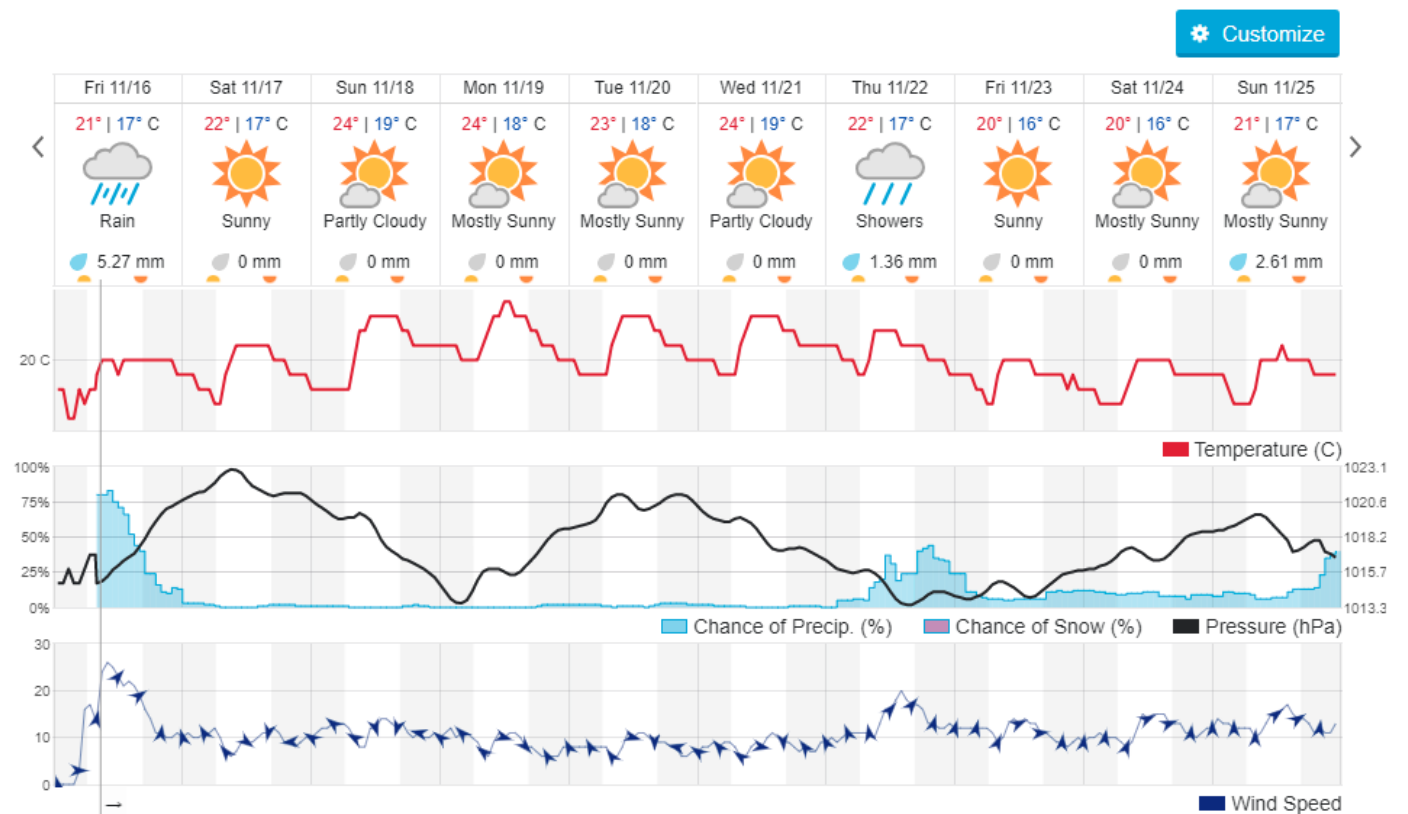
Jabal Moussa Reserve Forecast for 18 NOV 2018



Beirut, Lebanon

17° ACHRAFIEH, RIZK STATION | REPORT | CHANGE

TODAY HOURLY **10-DAY** CALENDAR HISTORY WUNDERMAP



Nord

Koura

Municipality	16-Nov	17-Nov	18-Nov	Municipality	16-Nov	17-Nov	18-Nov	Municipality	16-Nov	17-Nov	18-Nov
Aaba	ML	M	MH	Afsaddiq	ML	M	MH	Ain Ekrine	L	M	MH
Amioun	ML	M	MH	Anfeh	M	M	MH	Badbhoun	ML	M	MH
Barghoun	ML	M	MH	Barsa	M	M	MH	Batroumine	M	M	MH
Bdebba	M	M	MH	Bechmizine	ML	M	MH	Bednayet El-Koura	L	ML	M
Bhabbouch El-Koura	ML	M	M	Bkeftine	M	M	MH	Bnehran	ML	ML	M
Bqaiia El-Koura	M	M	MH	Bsarma	ML	M	M	Btaaboura	ML	M	MH
Bttram	ML	M	MH	Btouratij	M	M	MH	Bziza	ML	M	M
Dar Beehtar	ML	M	MH	Dar Chmezzine	ML	M	MH	Deddeh	M	M	MH
Deir El-Balamand	M	M	M	Fih	ML	M	MH	Hraiche	M	M	MH
Ijdaabrine	L	ML	M	Kaftoun	ML	M	M	Kefraya El-Koura	ML	M	MH
Kfarakka	ML	M	M	Kfarhata	L	ML	M	Kfarhazir	ML	M	MH
Kfarkahel	M	M	MH	Kfarsaroun	ML	M	M	Kosba	ML	M	M
Mejdel el-Koura	L	M	M	Nakhle	M	M	MH	Qalhat	M	M	M
Ras Masqa	M	M	MH	Rechdibbine	ML	M	MH	Zakroun	M	M	MH
Zgharta El-Mtaouile	ML	L	M								

Bcharre

Municipality	16-Nov	17-Nov	18-Nov	Municipality	16-Nov	17-Nov	18-Nov	Municipality	16-Nov	17-Nov	18-Nov
Aabdine	L	ML	M	Bane	L	M	M	Barhelioun	L	ML	M
Bazouone	L	ML	M	Becharre	L	M	M	Beit Menzer	L	ML	M
Billa	L	ML	M	Blaouza	L	M	M	Bqaa Kafra	L	M	M
Bqerqacha	L	M	M	Breissat	L	ML	M	Dimane	L	ML	M
Hadath El Jobbeh	L	ML	M	Hadchit	L	ML	M	Hasroun	L	ML	M
Mazraat Aassaf	L	L	M	Mazraat Bani Saab	L	ML	M	Mchaa El-Jobbeh	L	M	M
Metrit	ML	ML	M	Moghr El-Ahoual	L	ML	M	Ouadi Qannoubine	L	L	L
Qanat	L	L	M	Qnayouer	L	L	M	Tourza	L	ML	M

Batroun

Municipality	16-Nov	17-Nov	18-Nov	Municipality	16-Nov	17-Nov	18-Nov	Municipality	16-Nov	17-Nov	18-Nov
Aabrine	L	L	M	Aalali	L	L	M	Aartziz	L	L	M
Abdelli	L	L	M	Ajdabra	L	ML	M	Assia	L	L	M
Basbina	L	M	M	Batroun	ML	M	MH	Bcheleh	L	L	M
Bechtoudar	L	L	M	Beit Chlala	L	L	M	Beit Kassab	L	L	M
Bijdarfil	L	M	M	Bqesmaya	ML	ML	M	Chatine	L	L	M
Chebtein	L	ML	M	Chekka	ML	M	MH	Daael	L	L	M
Dahr Abi Yaghi	L	L	M	Daraya El-Batroun	ML	M	M	Deir Billa	L	L	M
Deir Kfifane	L	M	M	Deir Mar Youhanna EL	L	L	M	Deir Mar Youssef Jra	L	ML	M
Douma	L	L	M	Douq	L	ML	M	Eddeh El-Batroun	L	M	M
Ftihat El-Batroun	L	L	M	Ghouma	L	M	M	Hadtoun	L	L	M
Hamat	L	L	M	Harbouna	L	L	M	Hardine	L	L	M
Helta	L	L	M	Hery	ML	M	MH	Jebbla	L	L	M
Jrabta El-Batroun	L	M	M	Jrane El-Batroun	ML	M	MH	Kfar Aabida	ML	M	M
Kfar Halda	L	L	M	Kfarb Shlaimane	L	L	M	Kfarhatna	L	L	M
Kfarhay	ML	M	M	Kfarhelos	L	L	M	Kfifane	ML	M	MH

Kfour El Arabi	L	L	M	Koubba	ML	ML	M	Kour	L	M	M
Mar Mama	L	L	M	Masrah	L	L	M	Mehmarch	L	ML	M
Mrah Chdid	L	ML	M	Mrah El Ziyat	L	ML	M	Mrah El-Hajj	L	L	ML
Nahle El-Batroun	L	L	M	Niha El-Batroun	L	ML	M	Ouahj El-Hajjar	L	L	M
Ouata Houb	L	L	M	Qatnaaoun	L	L	M	Racha	L	ML	M
Rachana	L	M	M	Rachkida	L	L	M	Ram El-Batroun	L	L	M
Ras Nabhach	L	L	M	Selaata	ML	ML	MH	Sghar	L	M	M
Smar Jbayl	L	M	M	Sourat El-Batroun	L	L	M	Tannourine El-Faouqa	L	M	M
Tannourine Et-Tahta	L	L	M	Thoum	ML	M	M	Toula El-Batroun	L	ML	M
Zan	L	ML	M								

Zgharta

Municipality	16-Nov	17-Nov	18-Nov	Municipality	16-Nov	17-Nov	18-Nov	Municipality	16-Nov	17-Nov	18-Nov
Aachach	M	M	MH	Aalma	M	M	MH	Aarde	M	M	M
Aintourine	L	M	M	Arabet Qozhaya	L	L	M	Arde	M	M	MH
Arjis	M	M	M	Asnoun	M	M	MH	Ayto	L	ML	M
Basloukit	L	M	M	Bchannine	M	M	M	Besebeel	M	M	MH
Bhairret Toula	L	ML	M	Bnachee	ML	M	M	Boussit	M	M	MH
Danha	M	M	MH	Daraiya Zgharta	M	M	M	Deir Jdeide	M	M	MH
Ehden	L	M	M	Halan	M	M	MH	Hariq Zgharta	M	M	MH
Houakir	M	M	M	Hraiqis	ML	M	H	Iaal	M	M	M
Ijbaa	L	M	M	Karm Saddeh	L	L	M	Kfarchakhna	M	M	MH
Kfardlaqous	M	M	MH	Kfarfou	ML	M	M	Kfarhata Zgharta	M	M	MH
Kfarhoura	M	M	M	Kfarsghab	L	M	M	Kfaryachit	M	M	MH
Kfarzaina	M	M	MH	Khaldiye	M	M	MH	Mazraat Ajbeaa	M	M	MH
Mazraat Et-Teffah	L	ML	M	Mazraat Jneid	M	M	MH	Mejdlaya Zgharta	M	M	MH
Merh Kfarsghab	M	M	M	Miryata	M	M	MH	Miziara	ML	ML	M
Mzraat Kefraya	M	M	MH	Qorah Bach	M	M	MH	Rachiine	M	M	MH
Ras Kifa	L	ML	M	Sakhra	M	M	M	Sebhel Zgharta	L	M	M
Serhel	L	L	M	Tallet Zgharta	M	M	M	Toula Zgharta	L	ML	M
Zgharta	M	M	MH								

Minieh-Denniye

Municipality	16-Nov	17-Nov	18-Nov	Municipality	16-Nov	17-Nov	18-Nov	Municipality	16-Nov	17-Nov	18-Nov
Aasaymout	ML	M	M	Aaymar	ML	M	M	Aazki	M	M	M
Ain El-Tineh-Miniyeh	L	ML	M	Assoun	ML	ML	M	Bakhaaoun	ML	ML	M
Bchennata	L	M	M	Bechehhara	ML	M	M	Beddawi	M	M	MH
Behouaita	L	ML	M	Beit El Foqss	ML	ML	M	Beit Haouik	M	M	M
Beit Zoud	ML	M	M	Bekaasafrine	L	M	M	Borj El Yahoudiyeh	M	M	MH
Bqarsouna	L	ML	M	Btermaz	ML	ML	M	Debaael	ML	M	M
Deir Ammar	M	M	H	Deir Nbouh	M	M	M	Haouaret-Miniyeh	ML	ML	M
Haql el Azimeh	ML	ML	M	Harf El Siyad	L	L	M	Hazmiye-Miniyeh	ML	ML	M
Izal	ML	M	M	Jarjour	ML	ML	M	Jayroun	L	ML	M
Kahf El-Malloul	ML	ML	M	Karm El-Moher	ML	M	M	Kfar Binine	L	M	M
Kfarchalane	ML	ML	M	Kfarhabou	M	M	M	Kharroub-Miniyeh	ML	M	M
Mazraat El-Kreme	ML	ML	M	Mazraat Ketrane	ML	ML	M	Merkebtta	ML	M	MH
Minyeh	M	M	MH	Mrah El Sfirat	L	ML	M	Mrah Sraj	ML	ML	M
Mrebbine	L	M	M	Nabi Youcheaa	M	M	MH	Nemrine	ML	ML	M

Qarhaiya	M	M	M	Qarne	L	M	M	Qarsita	L	ML	M
Qattineh-Miniyeh	ML	ML	M	Qemmamine	L	ML	M	Qraine	ML	ML	M
Raouda-Aadoua	ML	M	MH	Rihaniyet-Miniyeh	ML	M	MH	Sfireh	L	ML	M
Sir Ed-Danniyeh	ML	ML	M	Tarane	L	ML	M	Terbol-Miniyeh	M	M	MH
Zaghartaghriine	M	M	M	Zouq Bhannine	M	M	MH				

Nabatiye

Nabatiye

Municipality	16-Nov	17-Nov	18-Nov	Municipality	16-Nov	17-Nov	18-Nov	Municipality	16-Nov	17-Nov	18-Nov
Aabba	L	M	M	Aazzi	L	M	M	Adchit El-Chqif	L	M	M
Ain Bou Swar	L	M	M	Ain Kana	L	M	M	Ali El-Taher	L	M	M
Ansar	ML	M	M	Arab Salim	L	M	M	Arnoun	L	M	M
Bfaroue	L	M	M	Breyqaah	L	M	M	Charqiyeh	L	M	M
Choukine	L	M	M	Deir El Zahrani	L	M	M	Doueir El-Nabatiyeh	L	M	M
Habbouch El-Nabatiye	L	M	M	Hamra El-Nabatiyeh	L	M	M	Harouf El-Nabatiyeh	L	M	M
Hmaile	L	M	M	Houmin El Faouqa	L	M	M	Houmin El Tahta	L	M	M
Jarjough	L	M	M	Jbaah El-Nabatiyeh	L	ML	M	Jebchit	L	M	M
Kfar Djal El-Nabatiy	L	M	M	Kfar Remmane	L	M	M	Kfar Sir	L	M	M
Kfar Tebnit	L	M	M	Kfarfila	L	M	M	Kfour El-Nabatieh	L	M	M
Mayfadoun	L	M	M	Mazraat Bsaffour	L	M	M	Mazraat Chalbaal	L	M	M
Mazraat Dmoul	L	M	M	Mazraat El Khreibeh	L	M	M	Mazraat El-Bayad El-	L	M	M
Mazraat Kfarjaouz	L	M	M	Mazraat Qalaat Meiss	ML	M	M	Nabatiyeh El-Fawka	L	M	M
Nabatiyeh Et-Tahta	L	M	M	Namiriyeh	L	M	M	Qaaqaaiyet El Jisr	L	M	M
Qossaibeh El-Nabatiy	L	M	M	Roumine	L	M	M	Sarba El-Nabatieh	L	M	M
Sir El-Gharbiyeh	L	M	M	Toul	L	M	M	Yehmor El-Nabatiyeh	L	M	M
Zaoutar El Charkiyeh	L	M	M	Zaoutar El-Gharbiyeh	L	M	M	Zebdine El-Nabatiyeh	L	M	M
Zefta	L	M	M								

Hasbaiya

Municipality	16-Nov	17-Nov	18-Nov	Municipality	16-Nov	17-Nov	18-Nov	Municipality	16-Nov	17-Nov	18-Nov
Aain Jarfa	L	ML	M	Abou Qamha	L	ML	M	Ain Qania	L	ML	M
Bourghos	L	M	M	Chebaa	L	ML	M	Chouaya Hasbaya	L	ML	M
Dellafeh	L	M	M	Fardiss Hasbaiya	L	ML	M	Hasbaya	L	ML	M
Hbariyeh	L	ML	M	Kaoukaba Hasbaiya	L	M	M	Kfar Chouba	L	ML	M
Kfar Hamam	L	ML	M	Kfeir El-Zait	L	ML	M	Khalwat Hasbaya	L	L	M
Khreibet Hasbaiya	L	M	M	Majidiyeh Hasbaiya	L	M	M	Marj Ez-Zhour (Haouc	L	ML	M
Meri	L	M	M	Mimass	L	M	M	Rachaiya El-Fokhar	L	ML	M
Salaiyeb	L	M	M								

Marjayoun

Municipality	16-Nov	17-Nov	18-Nov	Municipality	16-Nov	17-Nov	18-Nov	Municipality	16-Nov	17-Nov	18-Nov
Aalmane Marjaayoun	L	M	M	Aamra	L	M	M	Adayseh Marjaayoun	L	M	M
Adchit El-Koussair	L	M	M	Ain Aarab Marjaayoun	L	M	M	Bani Haiyann	L	M	M
Blatt Marjaayoun	L	M	M	Blida	L	M	M	Borj El-Moulouk	L	M	M
Boueyda Marjaayoun	L	M	M	Deir Mimass	L	M	M	Deir Siriane	L	M	M
Dibbine	L	M	M	Ebel El Saqi	L	M	M	Houla	L	M	M
Houra	L	M	M	Kfar Kila	L	M	M	Khiam Marjaayoun	L	M	M

Klayaa	L	M	M	Majdel Selem	L	M	M	Marjaayoun	L	M	M
Markaba	L	M	M	Mays El-Jabal	L	M	M	Mazraat Doumiat	L	M	M
Mazraat Sarada	L	M	M	Mhaibib	L	M	M	Qabrikha	L	M	M
Qantara	L	M	M	Rab El-Thalathine	L	M	M	Saouaneh Marjayoun	L	M	M
Talloussa	L	M	M	Taybeh Matjaayoun	L	M	M	Touline	L	M	M

Bent Jbail

Municipality	16-Nov	17-Nov	18-Nov	Municipality	16-Nov	17-Nov	18-Nov	Municipality	16-Nov	17-Nov	18-Nov
Ain-Ebel	L	M	M	Aitaroun	L	M	M	Aynata Bint Jbeil	L	M	M
Ayta El-Chaeb	L	M	M	Ayta El-Jabal	L	M	M	Beit Lif	L	M	M
Beit Yahoun	L	M	M	Bint Jbeil	L	M	M	Borj Qalaway	L	M	M
Braachit	L	M	M	Chakra	L	M	M	Debel	L	M	M
Deir Antar	ML	M	M	Froun	L	M	M	Ghandouriyeh Bint Jb	L	M	M
Hanine	L	M	M	Hariss	L	M	M	Hdatha	L	M	M
Jmeyjmech	L	M	M	Kafra Bint Jbeil	ML	M	M	Kfar Dounine	L	M	M
Khirbet Selm	L	M	M	Kounine	L	M	M	Maroun El Ras	L	M	M
Qalaway	L	M	M	Qaouzah	L	M	M	Qatmoun	L	M	M
Ramya Bint Jbeil	L	M	M	Rchaf	L	M	M	Rmeich	L	M	M
Safad Al Battikh	L	M	M	Salhaneh	L	M	M	Serbine	ML	M	M
Sultanieh Bint Jbeil	L	M	M	Tibnine	L	M	M	Tiri	L	M	M
Yaroun	L	M	M	Yater	ML	M	M				

Mont Liban

Jbail

Municipality	16-Nov	17-Nov	18-Nov	Municipality	16-Nov	17-Nov	18-Nov	Municipality	16-Nov	17-Nov	18-Nov
Aabeydat	L	ML	M	Aalita	L	L	M	Aamchit	ML	M	MH
Aarab El-Lahib	L	ML	M	Aarasta	VL	L	M	Adonis Jbeil	L	L	M
Afqa Jbeil	VL	L	M	Ain El Delbeh Jbeil	L	L	M	Ain El-Ghouayba	L	L	M
Ain Jrain	L	L	M	Ain Kfah	L	M	M	Almat El Chemaliyat	VL	L	M
Almat El-Jenoubiya	VL	L	M	Aqoura	L	M	M	Bayzoun	L	L	M
Bchille Jbeil	L	L	M	Bechtida	L	L	M	Behdaydat	L	ML	M
Beit Habbaq	L	M	M	Bejjeh	L	M	M	Bekhaaz	ML	M	M
Berbara Jbeil	ML	M	M	Bintael	L	L	M	Birket Hjoula	L	L	M
Blatt Jbeil	L	ML	M	Boulhos	L	L	M	Breyj Jbeil	L	L	M
Chamat	L	M	M	Chikhane	ML	M	M	Chmout	L	ML	M
Eddeh Jbeil	L	M	M	Ehmej	VL	L	M	Fatre	L	L	M
Ferhet	L	ML	M	Fghal	L	ML	M	Frat	L	L	ML
Ghabat	L	ML	M	Ghalboun	L	M	M	Gharzouz	L	M	M
Ghofrine	L	M	M	Habil	L	L	M	Halate	L	M	M
Haqel	L	ML	M	Hbaline	L	M	M	Hboub	L	ML	M
Hdeine	L	ML	M	Hema Er-Rehban	L	M	M	Hema Mar Maroun Aann	VL	ML	M
Hjoula	L	L	M	Hosrayel	ML	M	M	Hsarat	L	M	M
Hsoun	L	ML	M	Jaj	L	L	M	Janne	L	L	ML
Jbeil	L	M	MH	Jeddeyeh Jbeil	ML	M	MH	Jlisse	L	L	M
Jouret El-Qattine	L	L	M	Kfar Baal Annaya	L	L	M	Kfar Kidde	ML	M	M
Kfar Kouas	L	L	M	Kfar Mashoun	L	M	MH	Kfoun	L	L	M

Kharbe Jbeil	L	M	M	Laqlouq	L	M	M	Lassa	L	L	M
Lehfed	L	L	M	Maad	L	M	M	Mar Sarkis	VL	ML	M
Mastita	L	M	M	Mayfouq	L	L	M	Mazraat El Siyad	VL	ML	M
Mazraat El-Maaden	VL	L	ML	Mechane	L	L	M	Mechmech Jbeil	L	L	M
Mehrin	L	M	M	Mejdel El-Akoura	VL	ML	M	Mghayreh Jbeil	VL	ML	M
Mounsef	ML	M	M	Nahr Ibrahim	L	M	MH	Qahmez	VL	L	ML
Qartaba	L	L	M	Qartaboun	L	M	MH	Qattara Jbeil	L	L	M
Qorqraya	L	VL	L	Ramout	L	M	M	Ras Osta	L	L	M
Rihane Jbeil	ML	M	MH	Sakiet El-Khayt	L	ML	M	Saqi Richmaya	L	L	M
Sebrine	L	L	M	Seraita	L	ML	M	Souane Jbeil	L	L	M
Tadmor	VL	ML	M	Tartej	L	ML	M	Torzaiya	L	L	M
Yanouh Jbeil	VL	ML	M	Zibdine Jbeil	L	L	M				

El Metn

Municipality	16-Nov	17-Nov	18-Nov	Municipality	16-Nov	17-Nov	18-Nov	Municipality	16-Nov	17-Nov	18-Nov
Aain El-Qabu	VL	L	M	Aain El-Qach	VL	L	M	Aain El-Teffaha	L	ML	M
Aain el-Safsaf El-M	VL	L	M	Abou Mizane	L	L	M	Ain Aar	L	M	M
Ain Alaq	L	ML	M	Ain El-Kharroube	L	ML	M	Ain El-Sendianeh	VL	L	M
Ain El-Zeitoune	VL	L	M	Ain Saadeh	L	ML	M	Aintoura El-Matn	VL	M	M
Amaret Chalhoub	L	M	MH	Antelias	L	M	MH	Atchaneh	L	L	M
Ayroun	VL	L	M	Baabdat	VL	L	M	Baouchariyeh	L	M	MH
Baskinta	VL	ML	M	Beit Chabab	L	L	M	Beit El-Chaar	L	M	MH
Beit El-Kekko	L	M	MH	Beit Mery	L	ML	M	Bhersaf	L	L	M
Bikfaya	L	L	M	Biyakout	L	M	MH	Bnabil	VL	L	M
Bourj Hammoud	L	M	MH	Bqennaya	L	M	M	Broummana El-Matn	VL	ML	M
Bsalim	L	M	M	Bsifrine	L	L	M	Btegrine	VL	L	M
Chaouiye	L	M	M	Chouaya El-Matn	L	ML	M	Choueir	VL	L	M
Chrine	L	L	M	Dahr El Sawan El-Mat	L	L	M	Daychouniyeh	L	M	M
Dbayeh	L	M	MH	Deir Chamra	L	L	M	Deir Mar Abda el Mch	L	ML	M
Deir Mar Roukouz	L	M	MH	Deir Tamiche	L	ML	M	Dik El-Mehdi	L	M	M
Dikwaneh	L	M	MH	Douar El-Matn	VL	L	M	Fanar	L	M	M
Fraike	L	ML	M	Haret El-Ballaneh	L	M	M	Hbous	L	M	M
Himlaya	L	L	M	Jal El Did	L	M	MH	Jdeideh El-Metn	L	M	MH
Jouar El-Matn	L	L	M	Jouret El-Ballout	L	L	M	Kaaqour	L	L	M
Kfar Aaqab	VL	L	M	Kfertay El-Matn	VL	L	M	Khenchara	VL	L	M
Khillet El-Mtain	L	L	M	Konnabat Broummana	L	ML	M	Konnabat Salima	L	L	M
Machraah El-Matn	VL	L	M	Majdel Tarchich	VL	M	M	Majzoub	L	M	M
Mansouriyeh El-Metn	L	M	MH	Mar Boutros Karm Et-	L	L	M	Mar Chaya et Mzekke	L	ML	M
Mar Moussa Ed-Douar	VL	L	M	Marjaba	VL	L	M	Masqa	VL	L	M
Mayasse	L	L	M	Mazraat Deir Aoukar	L	M	M	Mazraat El-Hadirat	L	M	M
Mazraat Yachouh	L	M	MH	Mchikha	L	ML	M	Menqlet Mezher	L	M	M
Mhaydseh Matn	L	L	M	Mkalles	L	M	MH	Mrouj	VL	M	M
Mtain	VL	ML	M	Mtayleb	L	M	M	Nabay	L	L	M
Naccache	L	M	M	Ouadi Chahine	L	L	M	Ouadi El-Karm El-Mat	VL	L	M
Ouata El-Mrouj	VL	L	M	Ouyoun El-Matn	VL	L	M	Qornet Chehwan	L	M	M
Qornet El-Hamra	L	ML	M	Roumieh	L	ML	M	Sfeilet Bikfaya	L	L	M
Sinn El-Fil	L	M	MH	Zabbougha	VL	L	M	Zalqa	L	M	MH

Zarououn	VL	L	M	Zekrite	L	ML	M	Zighrine El-Matn	L	L	M
Zouk El-Khrab	L	M	MH								

Chouf

Municipality	16-Nov	17-Nov	18-Nov	Municipality	16-Nov	17-Nov	18-Nov	Municipality	16-Nov	17-Nov	18-Nov
Aalmane El-Chouf	L	M	M	Aammqi El-Chouf	VL	L	M	Ain Ouzein	VL	L	M
Ain Qani	VL	ML	M	Ain Zhalta	VL	L	M	Ainbal	VL	L	M
Amateur	L	L	M	Anout	L	ML	M	Atrine	VL	ML	M
Baadarane	VL	ML	M	Baaqline	VL	ML	M	Baasir	L	M	M
Barja	L	M	M	Barouk	VL	L	M	Bater	L	ML	M
Batloun	VL	M	M	Bayqoun	L	M	M	Bchetfine	VL	ML	M
Beiteddine	VL	L	M	Benouati Ech-Chouf	L	ML	M	Berjein	L	ML	M
Bireh et Mtalleh	VL	ML	M	Biret El-Chouf	VL	M	M	Bkechtine Ouel Mchei	L	L	M
Bkifa El-Chouf	L	M	M	Botme	VL	ML	M	Bqaiaa Ech-Chouf	L	L	M
Bsaba El-Chouf	L	ML	M	Chammis El-Chouf	L	M	M	Chehim	L	ML	M
Chemaarine	L	L	M	Chourit	VL	L	M	Daher El-Chouf	L	M	M
Dalhoun	L	M	M	Damour	L	M	M	Daraya El-Chouf	L	L	M
Deir El-Moukhalles	L	L	M	Deir Baba	L	ML	M	Deir Dourit	VL	ML	M
Deir El-Qamar	VL	ML	M	Deir Kouche	VL	L	M	Dibbieh	L	L	M
Dmit	L	L	M	Fouara Jaafar	VL	L	M	Fraidis El-Chouf	VL	ML	M
Ghabet Jaafar	L	ML	M	Gharife	VL	L	M	Haret Jandal	VL	ML	M
Hasrout	L	ML	M	Jadra	ML	M	M	Jahlieh	L	ML	M
Jbeih El-Chouf	VL	ML	M	Jdeidet El-Chouf	VL	ML	M	Jiyeh	ML	M	M
Jleilyeh	L	M	M	Jmailiyeh	L	M	M	Joun	L	M	M
Kahlounie El-Chouf	VL	M	M	Ketermaya	L	M	M	Kfar Faqoud	VL	ML	M
Kfar Hamal	VL	M	M	Kfar Him	L	ML	M	Kfar Katra	VL	ML	M
Kfar Niss	VL	M	M	Kfar hay	VL	ML	M	Kfarnabrakh	VL	ML	M
Khirbet Bisri	L	L	M	Knayse El-Chouf	VL	L	M	Maaniyeh	L	M	M
Maasser Beiteddine	VL	ML	M	Maasser El-Chouf	VL	ML	M	Majdalouna	L	M	M
Majdel El-Meouch	VL	ML	M	Mazboud	L	ML	M	Mazmoura	L	ML	M
Mazraat El Chouf	L	ML	M	Mazraat El Daher	L	L	M	Mazraat El-Douair	VL	L	M
Mechref	L	ML	M	Mghairie	L	M	M	Mghayrie El-Chouf	L	L	M
Moukhtara	VL	ML	M	Mrusti	VL	M	M	Mtolle	L	ML	M
Naameh	L	M	M	Niha El-Chouf	VL	M	M	Ouadi Abou Yousef	L	L	M
Ouadi Ed-Deir	L	ML	M	Ouadi El-Sit	VL	ML	M	Ouadi bnehlay	L	L	M
Qraibeh	VL	ML	M	Qreiaa	L	L	M	Rmayle El-Chouf	L	M	M
Semqaniyeh	VL	M	M	Sibline	L	M	M	Sirjbeil	L	ML	M
Warhanieh	VL	M	M	Werdaniyeh	L	M	M	Zaarourieh	L	ML	M

Baabda

Municipality	16-Nov	17-Nov	18-Nov	Municipality	16-Nov	17-Nov	18-Nov	Municipality	16-Nov	17-Nov	18-Nov
Abadiyeh	VL	ML	M	Ain Mouaffaq	VL	ML	M	Araiya	L	ML	M
Arbaniyeh	VL	L	M	Arsoun	VL	L	M	Baabda	L	M	MH
Baalchmey	VL	M	M	Bmaryam	VL	L	M	Bourj El-Brajneh	L	M	MH
Boutchay	L	M	MH	Bsaba Baabda	L	M	MH	Btekhney	VL	L	M
Btibyat	VL	L	M	Bzabdine	VL	L	M	Chbeniyeh	VL	ML	M
Chiyah	L	M	MH	Chmeisset Baabda	VL	L	M	Chouit	L	L	M
Deir El-harf	VL	L	M	Deir Khouna	VL	M	M	Dlaybeh	L	L	M

Falougha	VL	M	M	Furn El-Chebbak	L	M	MH	Hadath Beyrouth	L	M	MH
Halaliyeh Baabda	VL	L	M	Hammana	VL	M	MH	Haret El Sett	L	ML	M
Haret Hamze	VL	ML	M	Haret Hreik	L	M	MH	Hasbaiya El-Metn	L	L	M
Jouar El-Hoz	VL	L	M	Jouret Arsoun	VL	L	M	Kfar Chima	L	M	MH
Kfar Selouane	VL	ML	M	Khalouat Baabda	VL	M	M	Kneisset Baabda	VL	L	M
Laylakeh	L	M	MH	Louayzeh Baabda	L	M	M	Merdache	L	M	MH
Mzairaa Baabda	VL	L	M	Ouadi Chahrour El Ol	L	M	M	Ouadi Chahrour El So	L	M	M
Qalaa Baabda	VL	L	M	Qhraybe Baabda	VL	L	M	Qobbayaa	VL	ML	M
Qornayel	VL	L	M	Qortada	VL	L	M	Qrayeh Baabda	VL	ML	M
Qsaibeh Baabda	VL	L	M	Qtale Baabda	VL	L	M	Ras El Metn	VL	ML	M
Ras El-Haref	VL	M	M	Rouayset El-Ballout	VL	ML	M	Salima Baabda	VL	L	M
Tahouitat El Ghadir	L	M	MH	Tarchich	VL	ML	M	Zandouqa	VL	L	M

Aley

Municipality	16-Nov	17-Nov	18-Nov	Municipality	16-Nov	17-Nov	18-Nov	Municipality	16-Nov	17-Nov	18-Nov
Abey	L	ML	M	Aghmid	VL	ML	M	Ain Dara	VL	M	M
Ain Drafil	L	M	M	Ain El Halazoun	VL	M	MH	Ain El-Rmmaneh	VL	L	M
Ain Jedideh	VL	M	MH	Ain Ksour	VL	M	M	Ain Onoub	L	M	M
Ain Traz	VL	L	M	Ainab	VL	M	M	Aley	VL	M	MH
Aramoun	L	M	M	Aytat	L	M	MH	Azouniyeh	VL	ML	MH
Baawerta	L	ML	M	Badghan Oua Wadi Bad	VL	M	MH	Bassatine	VL	M	M
Bayssour	VL	M	M	Bchamoun	L	M	MH	Bdadoun	L	ML	M
Behouara	VL	M	M	Bennay	L	ML	M	Bhamdoun El-Dayaa	VL	M	MH
Bhamdoun El-Mhatta	VL	M	MH	Bkhechthey	VL	M	MH	Bleibel	L	M	M
Bmaknine	L	M	MH	Bmehray	VL	M	M	Bouzrid	VL	L	M
Bserrine	VL	M	MH	Bsous	L	L	M	Btalloun	VL	M	MH
Btater	VL	M	MH	Chanay	VL	M	MH	Charoun	VL	M	MH
Chartoun	VL	L	M	Chemlane	VL	M	M	Choueifat El-Aamrous	L	M	MH
Choueifat El-Oumara	L	M	MH	Choueifat El-Quoubbe	L	M	MH	Dakkoun	L	ML	M
Deir Qoubel	L	M	M	Dfoun	L	M	M	Douair El Remmaneh	VL	L	M
Ghaboun	L	M	M	Habramoun	VL	L	M	Homs Oua Hama	VL	M	M
Houmal	L	M	M	Jisr El Qadi	VL	ML	M	Kehaleh	L	L	M
Keyfoun	VL	M	MH	Kfar Aamey	VL	M	M	Kommatyeh	VL	M	M
Maasrati	L	M	M	Majdel Baana	VL	M	MH	Mansourieh et Ain El	VL	M	MH
Mazraat El-Nahr	VL	ML	M	Mchakhte	VL	L	M	Mecherfeh	VL	M	M
Mejdlaya	VL	ML	M	Mrayjat	VL	ML	M	Ramliyah	VL	ML	M
Rechmaya	VL	M	M	Rejmeh	VL	ML	M	Remhala	L	M	M
Rouayset El Neemane	VL	M	M	Saoufar	VL	M	MH	Selfaya	VL	L	M
Sirhmoul	L	M	M	Souq El Ghareb	VL	M	M	Taazanieh	VL	M	MH

Kesrouane

Municipality	16-Nov	17-Nov	18-Nov	Municipality	16-Nov	17-Nov	18-Nov	Municipality	16-Nov	17-Nov	18-Nov
Achkout	L	L	M	Adma Oua Dafneh	L	M	M	Ain Ed-Delbe Kesroua	VL	L	L
Ain El-Rihane	L	ML	M	Aintoura Kesrouane	L	M	M	Ajaltoun	L	L	M
Akaybeh Kesrouane	L	M	MH	Aramoun Kesrouane	L	L	M	Azra ouel Ozor	L	L	M
Ballouneh	L	L	M	Batha	L	L	M	Bekaatat Achkout	L	ML	M
Bekaatat Kanaan	VL	L	M	Bizhel	L	L	M	Bouar	L	M	M
Bqaatouta	VL	ML	M	Bqaq Ed-Dine	L	M	M	Bzommar	L	L	M

Chahtoul	L	L	M	Chnaniir	L	L	M	Chouan	L	L	ML
Daraya Kesrouane	L	L	M	Darououn	L	L	M	Deir Baqlouch	L	L	M
Dlebta	L	L	M	Eghbeh	VL	VL	ML	Faraya	VL	ML	M
Fatka	L	ML	M	Feytroun	VL	L	M	Ghazir	L	ML	M
Ghbaleh Kesrouane	L	L	M	Ghedrass	L	L	M	Ghosta	L	L	M
Ghynéh	L	ML	M	Harharaya w Kattine	L	L	M	Harissa Kesrouane	L	L	M
Hayata	VL	L	M	Hosein	L	L	M	Hrajel	VL	ML	M
Jdeideh Ghazir	L	L	M	Jeita	L	M	M	Jounieh Ghadir	L	M	M
Jounieh Haret Sakhr	L	M	MH	Jounieh Salel Alma	L	M	M	Jounieh Sarba	L	M	MH
Jouret Bedrane	L	L	M	Jouret Mhad	L	L	M	Jouret Termos	L	ML	M
Kfar Debiane	VL	L	M	Kfar Tay Kesrouane	VL	L	M	Kfar Yassine	L	M	MH
Kfour Kesrouane	L	L	M	Kharayeb Nahr Ibrahi	L	ML	M	Klayaat Kesrouane	VL	L	M
Maarab	L	L	M	Maaysra Kesrouane	L	L	M	Mayrouba	VL	ML	M
Mazraat Er-Ras	L	M	M	Mazraat Mrah El-Mir	VL	L	M	Mchaa El Ftouh	VL	M	M
Mchaa Faraya	VL	ML	M	Mchaa Kfar Dibiane	VL	M	M	Mghaer	VL	L	L
Mradiyeh	L	L	M	Nahr Ed-Dahab	L	L	M	Nammoura Kesrouane	L	L	M
Ouata El Jaouz	L	L	M	Ouata Sillam	L	M	MH	Raachine	VL	L	M
Rayfoun	L	L	M	Safra Kesrouane	L	M	M	Shayle Kesrouane	L	ML	M
Tabarja	L	M	M	Yahchouch	L	L	M	Zaaytreh	L	L	M
Zeytoun	L	ML	M	Zouk Mikael	L	M	MH	Zouk Mosbeh	L	M	MH

Baalbek_Hermel

Baalbek

Municipality	16- Nov	17- Nov	18- Nov	Municipality	16- Nov	17- Nov	18- Nov	Municipality	16- Nov	17- Nov	18- Nov
Aadous	ML	M	M	Aamchki	ML	M	M	Aarsal	ML	M	M
Ain Baalbek	ML	M	M	Ain Bourday	ML	M	M	Ain El-Benye	L	M	M
Ain El-Jaouz Baalbek	ML	ML	M	Ain El-Siya Chadoura	L	M	M	Al Khodr Baalbek	ML	M	M
Al Nabi Chit	L	M	M	Aynata Baalbek	L	M	M	Baalbek	ML	M	M
Bachwat	L	ML	M	Barqa	L	ML	M	Bednayel Baalbak	L	M	M
Beit Chama	ML	M	M	Bijjaje	M	M	M	Bouday	L	M	M
Brital	ML	M	M	Btadi	L	ML	M	Chaat	M	M	M
Chaibe	L	M	M	Chlifa	ML	M	M	Chmestar	L	M	M
Dar El-Oussa	L	ML	M	Deir El-Ahmar	L	M	M	Deir Mar Maroun Baal	M	M	M
Douris	ML	M	M	Fakiha	ML	M	M	Hadath Baalbek	L	M	M
Ham	L	M	M	Haour Taala	ML	M	M	Hizzine	ML	M	M
Hlebta	L	M	M	Hosh Barada	ML	M	M	Hosh El Dahab	ML	M	M
Hosh El Snid	ML	M	M	Hosh El-Nabi	ML	M	M	Hosh El-Rafiq	ML	M	M
Hosh Tal Safiya	ML	M	M	Hrebta	M	M	M	laat	ML	M	M
Jebaa	L	M	M	Jenta	L	M	M	Kfar Dabach	L	M	M
Kfar Dane	ML	M	M	Khraibeh El-Hermel	ML	M	M	Khreibet Baalbek	L	M	M
Kneisset Baalbek	ML	M	M	Labueh	M	M	M	Maarboun	L	M	M
Majdaloun	ML	M	M	Maqneh	L	M	M	Mazraat Beit Mcheik	L	M	M
Misraya	ML	M	M	Moqraq	M	M	M	Nabha El-Damdoum	L	M	M
Nabi Chbay	ML	M	M	Nabi Osman	M	M	M	Nahleh baalbek	L	ML	M
Ouadi El-Oss	L	M	M	Qaa Baayoun	M	M	M	Qaa Jouar Maqiye	M	M	M
Qaa Ouadi El-Khanzir	M	M	M	Qah Baalbek	M	M	M	Qarha Baalbek	M	M	M

Qsarnaba	ML	M	M	Ram Baalbek	ML	M	M	Ras Baalbek El Sahl	M	M	M
Ras Baalbek El-Charq	M	M	M	Riha	ML	M	M	Saaide	ML	M	M
Sboubba	M	M	M	Seriine El-Tahta	L	M	M	Slouqi	L	M	M
Taiba Baalbek	ML	M	M	Talia	ML	M	M	Taraiya	L	M	M
Temnin El Fawqa	L	M	M	Temnin El-Tahta	ML	M	M	Tfail	M	M	M
Yahfoufa	L	M	M	Yammouneh	L	M	M	Younine	L	M	M
Zboud	M	M	M								

Hermel

Municipality	16-Nov	17-Nov	18-Nov	Municipality	16-Nov	17-Nov	18-Nov	Municipality	16-Nov	17-Nov	18-Nov
Charbine El-Hermel	L	ML	M	Hermel Jbab	ML	M	M	Hermel	M	M	M
Maaysra El-Hermel	ML	M	M	Michaa Mrjhine	L	M	M	Ouadi Faara	L	M	M
Ras Baalbek - Ouadi	M	M	M	Ras Baalbek El Gharb	ML	M	M	Zighrine	ML	M	M

Akkar

Akkar

Municipality	16-Nov	17-Nov	18-Nov	Municipality	16-Nov	17-Nov	18-Nov	Municipality	16-Nov	17-Nov	18-Nov
Aain Tinta	ML	M	MH	Aaiyat	M	M	M	Aakkar El-Aatiqa	L	ML	M
Aamar Akkar	ML	M	MH	Aamar El Baykat	ML	M	MH	Aamayer	M	M	M
Aamriyet Akkar	ML	M	MH	Aandqet	ML	M	M	Aarmeh	ML	M	M
Aarqa	L	M	MH	Aawaynat	M	M	M	Aayoun Akkar	ML	M	M
Abboudiye	L	M	MH	Ain El-Zeit	ML	M	MH	Ain Yaaqoub	ML	M	M
Akroum	ML	M	M	Aridet Cheikh Zennad	L	M	H	Baldeb w Mazraat Bal	L	M	MH
Barcha	ML	M	MH	Bardeh	ML	M	M	Bebnine	ML	M	MH
Beino	ML	M	MH	Beit Ayoub	ML	M	MH	Beit El-Haouch	ML	M	MH
Beit Mellat	ML	M	MH	Beit Younes	L	ML	M	Berbara Akkar	ML	M	MH
Berqayel	ML	M	MH	Bezbina	L	ML	M	Bireh Akkar	ML	M	MH
Borj	ML	M	MH	Bqerezla	ML	M	MH	Bzal	ML	ML	M
Chane	L	ML	M	Chaqdouf	ML	M	MH	Charbila	ML	M	MH
Cheikh Mohammad	ML	M	MH	Cheikh Taba Es-Sahl	L	M	MH	Cheikh Taba	ML	M	MH
Cheikh Zennad	L	M	MH	Cheikhlar	M	M	M	Chir Hmairine	ML	M	MH
Daghle	ML	M	MH	Dahr Laissine	M	M	MH	Darine	ML	M	MH
Dawra	ML	M	M	Dawsa w Baghdadi	ML	M	M	Dayret Nahr El-Kabir	ML	M	M
Deir Dalloum	ML	M	MH	Deir Jennine	ML	M	MH	Denbou	ML	ML	M
Dibbabiyyeh	ML	M	MH	Douair Aadwiyeh	ML	M	MH	Fassikine	ML	M	MH
Fnaydek	L	ML	M	Fraydes Akkar	ML	M	M	Ghazayle	ML	M	MH
Habchit	L	ML	M	Hakour	ML	M	MH	Halba	ML	M	MH
Haouchab	ML	M	MH	Hayssat	L	M	MH	Haytla	ML	M	MH
Hayzouq	L	M	MH	Hedd	ML	M	MH	Hmaira Akkar	ML	M	MH
Hmaiss Akkar	ML	M	MH	Hnaider	M	M	M	Hokr Ed-Dahri	L	M	MH
Hokr Etti	ML	M	MH	Hokr Jouret Srar	L	M	MH	Houaich	ML	M	M
Hrar	ML	M	M	Idbil	ML	M	MH	Ilal	ML	M	MH
Janine	ML	M	MH	Jdeidet El-Joumeh	ML	M	MH	Jdeidet El-Kaiteh	ML	M	MH
Jebayel	ML	M	MH	Kafr	L	ML	M	Kafr	ML	M	MH
Karm Asfour	ML	M	MH	Kfar Melki Akkar	L	M	MH	Kfar Noun	ML	M	M
Kfarharra	ML	M	MH	Khalsa	M	M	M	Kharnoubet Akkar	ML	M	MH

Khirbet Daoud Aakkar	ML	M	MH	Khirbet El Remmane	M	M	M	Khirbet Shar	ML	M	MH
Khoreybet El-Jindi	ML	M	MH	Khreibet Aakkar	ML	M	M	Kneisset Aakkar	L	M	MH
Kneisset Hnaider	M	M	M	Knisse	ML	M	MH	Kroum El-Aarab	ML	M	MH
Kwachra	ML	M	MH	Kweykhat	ML	M	MH	Machta Hammoud	M	M	M
Majdala	ML	M	MH	Majdel Akkar	ML	M	MH	Mar Touma	ML	M	MH
Marlaya Melhem	ML	M	MH	Mashha	ML	M	MH	Massouidiye	L	M	MH
Mazraat Beit Ghattas	ML	M	MH	Mazraat En-Nahriye	M	M	M	Mechmech	L	M	M
Memneh	L	L	M	Mhammara	ML	M	MH	Mighraq Aakkar	L	M	MH
Minyara	ML	M	MH	Moqayteh	L	M	MH	Mounjez	ML	M	M
Msalla	ML	M	MH	Mzeihmeh	ML	M	MH	Nfaiseh	ML	M	MH
Noura Et-Tahta	ML	M	M	Ouadi El-Haour	ML	M	MH	Ouadi El-Jamous	ML	M	MH
Ouyoun El-Ghizlane	ML	M	MH	Qaabarine	L	M	MH	Qabaait	ML	ML	M
Qachlaq	ML	M	MH	Qantara Aakkar	ML	M	MH	Qarha Aakkar	M	M	M
Qarqaf	ML	M	MH	Qboula	ML	M	MH	Qleiaat Aakkar	L	M	MH
Qloud El-Baqie	ML	M	MH	Qobaiyat Aakkar	ML	ML	M	Qobbat Chamrat	ML	M	MH
Qorayat	L	ML	M	Qornet Aakkar	L	M	M	Qsair Aakkar	ML	M	M
Rahbe	ML	M	M	Rihaniyet Aakkar	ML	M	MH	Rmah	ML	M	M
Rmoul	L	M	MH	Saadine	ML	M	MH	Sadaqa	ML	M	MH
Saidnaya	ML	M	MH	Sammouniye	L	M	MH	Saysouq	ML	M	MH
Semmaqiye	L	M	MH	Semmaqli	L	M	MH	Sfinet El-Dreib	ML	M	MH
Sfinet El-Qaitaa	ML	M	M	Sindyanet Zeidane	ML	M	M	Souaisset Aakkar	L	M	MH
Srar	ML	M	MH	Tal Abbas El Gharby	L	M	MH	Tal Abbas El-Charqy	L	M	MH
Tal Biret	L	M	MH	Tal Hmayra	ML	M	MH	Tal Maayan Tal Kiri	L	M	MH
Tal Sibel	L	M	MH	Tallet Chattaha	M	M	MH	Tikrit	ML	M	M
Tleil	ML	M	MH	Tshea	L	ML	M	Zawarib	ML	M	MH
Zouq El Hosniyeh	ML	M	MH	Zouq El-Haddara	ML	M	MH	Zouq El-Hbalsa	ML	M	MH
Zouq El-Mogachrine	ML	M	MH								

Sud

Sour

Municipality	16-Nov	17-Nov	18-Nov	Municipality	16-Nov	17-Nov	18-Nov	Municipality	16-Nov	17-Nov	18-Nov
Aaiyeh	ML	M	M	Aalma El-Chaab	L	ML	M	Aaytit	ML	M	M
Abbassiyeh Sour	M	M	MH	Abou Chech	L	ML	M	Ain Abou Abdallah	M	M	H
Ain Baal	M	M	MH	Arzoun	L	M	M	Aziyeh	ML	M	M
Baflaya	L	M	M	Barich	L	M	M	Batouliyah	M	M	H
Bayad	ML	M	M	Bazouriyeh	ML	M	MH	Bediass	L	M	M
Bestiyat	L	M	M	Borj El Chemali	M	M	H	Borj En-Naqoura	ML	M	M
Borj Rahhal	L	M	M	Boustane	L	M	M	Btaychiyeh	L	ML	M
Chaaitiye	ML	M	MH	Chameh	ML	ML	M	Chehabiye	L	M	M
Chehour	L	M	M	Chihine	L	M	M	Debaal Sour	L	M	M
Deir Amess	ML	M	M	Deir Kifa	L	M	M	Deir Qanoun El-Ain	ML	M	H
Deir Qanoun El-Naher	L	M	M	Derdghaiya	L	M	M	Dhayra	L	ML	M
Halloussiyeh	L	M	M	Hamoul	L	ML	M	Hanaouey	ML	M	M
Henniye	ML	M	H	Hmairi Sour	L	M	M	Iskandarouna Sour	ML	ML	M
Jbal El Botom	ML	M	M	Jebbin	ML	M	M	Jennata	L	M	M
Jijim	L	ML	M	Jouaiya	ML	M	M	Kneisset Sour	ML	M	MH

Maarake	L	M	M	Maaroub	L	M	M	Majadel	ML	M	M
Majdalzoun	ML	M	M	Mansouri Sour	ML	M	MH	Marnba	L	M	M
Marouahine	L	M	M	Mazraat El-Zalloutiy	ML	M	MH	Mazraat Mechref	ML	M	M
Mazraat Tayr Semhat	L	M	M	Mheilib	M	M	H	Neffakhiyeh	L	M	M
Niha Sour	L	M	M	Ouadi Jilo	ML	M	M	Qana	ML	M	M
Qolaileh Sour	ML	M	MH	Rechknanay	ML	M	M	Rmadiyah	ML	M	M
Selha Sour	L	M	M	Siddiqine	ML	M	M	Sour	M	M	H
Srifa	L	M	M	Tayr Debbe	L	M	MH	Tayr Felsay	L	M	M
Tayr Harfa	ML	M	M	Touayri	L	M	M	Toura	L	M	M
Yanouh Sour	L	M	M	Yarine	ML	M	MH	Zebqine	L	M	M

Saida

Municipality	16-Nov	17-Nov	18-Nov	Municipality	16-Nov	17-Nov	18-Nov	Municipality	16-Nov	17-Nov	18-Nov
Aanqoun	L	M	M	Aaqtanit	L	M	M	Aarab Ej-Jall	ML	M	M
Aarab Tabbaya	L	M	M	Abra Saida	L	M	M	Adloun	ML	M	MH
Adousiyeh	ML	M	M	Ain-El-Deleb	L	M	M	Arzai	L	M	M
Babliyah	ML	M	M	Barty	L	M	M	Bissariyeh	M	M	M
Bnaafoul	L	M	M	Bqosta	L	M	M	Bramiy	L	M	M
Daoudiyeh	ML	M	M	Dareb El-Sim	L	M	M	Erkay	L	M	M
Ghassanieh	ML	M	M	Ghazieh	ML	M	M	Hajjeh	L	M	M
Haret Saida	L	M	M	Hartiyeh	ML	M	M	Hlaliye Saida	L	M	M
Insariyat	ML	M	M	Jazira Saida	M	M	MH	Kafar Bit	L	M	M
Kaoutariyet El-Siyad	L	M	M	Kfar Chellal	L	M	M	Kfar Hatta Saida	L	M	M
Kfar Milke Saida	L	M	M	Khartoum	L	M	M	Khaziz	L	M	M
Khirbet Ed-Douair Sa	ML	M	M	Khirbet El-Bassal	ML	M	M	Khrayeb Saida	ML	M	M
Loubieh	ML	M	M	Maghdouche	L	M	M	Majdelyoun	L	M	M
Matariyet El-Choumar	L	M	M	Matayriyeh	L	M	M	Mazraat 'Mseileh	ML	M	M
Mazraat 'Snaiber	M	M	M	Mazraat Aarab Soukka	ML	M	M	Mazraat Deir Taqla	ML	M	M
Mazraat El Yahouidiye	M	M	H	Mazraat El-Housseini	M	M	M	Mazraat El-Mhaydaleh	ML	M	M
Mazraat El-Ouasta	M	M	MH	Mazraat Jamjim	ML	M	M	Mazraat Kaoutariyet	ML	M	M
Mazraat Kfar Badda	ML	M	M	Mazraat Oussamiyat	ML	M	M	Mazraat Sari	ML	M	M
Mazraat Sinai	ML	M	M	Meemariyeh	L	M	M	Merouaniyeh	ML	M	M
Miyeh ou Miyeh	ML	M	M	Najjariyeh	M	M	M	Qaaqaiyat El-Snaouba	ML	M	M
Qnarit	L	M	M	Qraiye Saida	L	M	M	Saida Ed-Dekermane	ML	M	M
Saida El-Oustani	L	M	M	Saida El-Qadimeh	L	M	M	Saida Kefraya	L	M	M
Saksakiyeh	ML	M	M	Salhie Saida	L	M	M	Sarafand	ML	M	M
Sfenta	L	ML	M	Tafahta	ML	M	M	Tanbourit	L	M	M
Tebna	ML	M	M	Zaghdraiya	L	M	M	Zeita	L	M	M
Zrariyeh	L	M	M								

Jezzine

Municipality	16-Nov	17-Nov	18-Nov	Municipality	16-Nov	17-Nov	18-Nov	Municipality	16-Nov	17-Nov	18-Nov
Ain El-Mir (El Estab)	L	M	M	Anane	L	L	M	Aramta	L	M	M
Ariya	L	ML	M	Aychiyeh	L	ML	M	Azour	L	L	M
Baba	L	L	M	Bayssour Jezzine	ML	M	M	Benoueteh Jezzine	L	ML	M
Bhannine	VL	ML	M	Bisri	L	L	M	Bkassine	L	L	M
Bouslaya	L	L	M	Btedine El-Leqech	L	L	M	Chbail	L	L	M
Choualiq Jezzine	L	M	M	Dahr Ed-Deir	L	ML	M	Deir El Qattine	L	ML	M

Demachqiyeh	L	M	M	Ghabbatiyeh	L	L	M	Harf Jezzine	L	L	M
Hassaniyeh	L	M	M	Haytouleh	L	M	M	Haytura	L	L	M
Hidab	L	ML	M	Homsiyeh	L	L	M	Jabal Toura	L	M	M
Jarmaq	L	M	M	Jensnaya	ML	M	M	Jernaya	L	M	M
Jezzine	L	M	M	Karkha	L	M	M	Kfar Falous	L	M	M
Kfar Houna	L	M	M	Kfar Jarrah	L	M	M	Lebaa	L	M	M
Louayzet Jezzine	L	ML	M	Machmouche	L	L	M	Mahmoudiyeh Jezzine	L	M	M
Maknounye Jezzine	L	L	M	Maraat Ouazaiyeh	L	ML	M	Mazraat Daraya	L	ML	M
Mazraat El-Aarqoub	L	ML	M	Mazraat El-Mathane	L	L	M	Mazraat El-Rahbane	L	ML	M
Mazraat Khallet Khaz	L	ML	M	Mazraat Louzid (Loua	L	L	M	Mazraat Qrouh	L	ML	M
Mazraat Tamra	L	M	M	Mazraat Zighrine Jez	L	M	M	Mazraat	L	ML	M
Mharbiyeh	ML	M	M	Midane Jezzine	L	L	M	Mjeydel Jezzine	L	M	M
Mlikh	L	ML	M	Mrah El-Hbasse	L	M	M	Ouadi Baanqoudaine	ML	M	M
Ouadi El-Laymoun	L	M	M	Ouardiyeh	L	VL	ML	Qabaa Jezzine	L	L	M
Qatrani	L	ML	M	Qaytouleh	L	L	M	Qtaleh Jezzine	L	L	M
Rihane Jezzine	L	M	M	Rimat	L	ML	M	Roum	L	L	M
Roummanet	L	M	M	Sabbah	L	L	M	Saydoun	L	ML	M
Sfaray	L	L	M	Snaya	L	L	M	Sojoud	L	M	M
Srayri	L	M	M	Taaid	L	L	M	Wadi Jezzine	L	L	M
Zhalta	L	L	M								

Bekaa

West Bekaa

Municipality	16-Nov	17-Nov	18-Nov	Municipality	16-Nov	17-Nov	18-Nov	Municipality	16-Nov	17-Nov	18-Nov
Aammiq BG	L	ML	M	Ain El Tineh BG	L	M	M	Ain Zebdeh	L	M	M
Ana	L	ML	M	Aytanit	L	ML	M	Baaloul BG	L	M	M
Bab Mareh	L	M	M	Chouberqiye Aammiq	ML	ML	M	Dakoue	L	ML	M
Deir Ain El-Jaouze	L	M	M	Deir Tahniche	L	ML	M	Ghaza	ML	ML	M
Harime El-Soughra	L	ML	M	Hoch Harimeh	ML	ML	M	Jazira BG	L	ML	M
Jib Jennine	ML	ML	M	Kamed-El-Laouz	ML	ML	M	Kefraya BG	L	L	M
Khiara El Atika	ML	ML	M	Khiara	ML	ML	M	Khirbet Qanafar	L	M	M
Lala	ML	ML	M	Lebbaya BG	L	M	M	Loussa	L	M	M
Machghara	L	M	M	Manara (Hammara) BG	L	L	M	Mansoura BG	ML	ML	M
Marej BG	L	M	M	Maydoun	L	M	M	Ouaqf BG	L	ML	M
Qaraaoun	L	M	M	Qelya	L	M	M	Raouda (Istabel)	L	M	M
Saghbine	L	M	M	Sohmor	L	M	M	Soltan Yacoub el Ara	L	ML	M
Souairy	L	ML	M	Sultan Yaacoub	L	ML	M	Tal Znoun	ML	ML	M
Yehmor BG	L	M	M	Zilaya	L	ML	M				

Zahle

Municipality	16-Nov	17-Nov	18-Nov	Municipality	16-Nov	17-Nov	18-Nov	Municipality	16-Nov	17-Nov	18-Nov
Aanjar (Haouch Mouss	L	ML	M	Ablah	L	M	M	Ain Kfarzabad	L	M	M
Ali-El-Nahri	ML	M	M	Bar Elias	VL	M	M	Bouarej	VL	M	M
Cheberqiyet Tabet	VL	M	M	Chtaura	VL	ML	M	Deir El Ghazal	L	M	M
Delhamiyet Zahle	L	M	M	Ferzol	L	M	M	Haouch El-Ghanam	ML	M	M
Haouch Es-Siyadeh	L	ML	M	Haouch Hala	L	M	M	Haouch Mandara	L	ML	M

Haouch Qayssar	L	ML	M	Hezerta	VL	M	M	Hosh Moussa	L	M	M
Jdita	VL	ML	M	Kfarzabad	L	M	M	Ksara	VL	M	M
Majdel Aanjar	L	ML	M	Makssi	L	ML	M	Massa	L	M	M
Mazraat Er-Remtaniye	VL	M	M	Mrayjat Zahle	VL	M	M	Mzaraa Zahle	L	M	M
Nabi Ayla	L	M	M	Nasriyet Rizk	L	M	M	Nasriyet Zahle	L	ML	M
Niha Zahle	L	M	M	Ouadi Ed-Deloum	VL	M	M	Ouadi El-Arayech	VL	M	M
Qaa El Rim	VL	M	M	Qab Elias	L	ML	M	Qousaya	L	M	M
Rhit	L	M	M	Riyak	L	M	M	Saadnayel	VL	M	M
Taal El-Akhdar	L	ML	M	Taalbeya	VL	M	M	Taanayel	VL	M	M
Talamara	L	M	M	Tcheflik Edde Haouch	L	M	M	Tcheflik Qiqano	L	ML	M
Terbol Zahle	L	M	M	Touaite Zahle	VL	M	M	Zahle Aradi	L	M	M
Zahle El-Berbara	L	M	M	Zahle El-Maallaqa	L	M	M	Zahle El-Midane	L	M	M
Zahle Er-Rassiyeh	L	M	M	Zahle Haouch El-Ouma	VL	M	M	Zahle Haouch El-Ouma	L	M	M
Zahle Haouch Ez-Zara	L	M	M	Zahle Maallaqa Aradi	L	M	M	Zahle Mar Antonios	L	M	M
Zahle Mar Elias	L	M	M	Zahle Mar Gerios	L	M	M	Zahle Saydet En-Naja	L	M	M
Zebdoul	VL	ML	M								

Rachaiya

Municipality	16-Nov	17-Nov	18-Nov	Municipality	16-Nov	17-Nov	18-Nov	Municipality	16-Nov	17-Nov	18-Nov
Ain Arab Rachaiya	L	ML	M	Ain Ata	L	L	M	Ain Harche	L	ML	M
Aqabe Rachaya	ML	ML	M	Ayha	L	M	M	Ayta El Fokhar	L	ML	M
Bakifa Rachaya	L	ML	M	Bakka	L	M	M	Beit Lahya	ML	ML	M
Bireh Rachaiya	ML	ML	M	Daher El Ahmar	L	ML	M	Deir El-Achayer	L	ML	M
Heloua Rachaiya	L	ML	M	Hoch El Qannabeh Rac	L	ML	M	Kaoukaba Bou Arab	ML	ML	M
Kfar Danis	L	ML	M	Kfar Mechki	L	ML	M	Kfar Qouq	L	ML	M
Kherbet Rouha	ML	ML	M	Majdel Balhiss	L	M	M	Mdoukha	L	M	M
Mhaydseh Rachaiya	ML	ML	M	Nabi Safa	L	ML	M	Rachaiya	L	ML	M
Rafid Rachaiya	ML	ML	M	Selsata (Mazraat Dei	VL	L	ML	Tannoura	L	ML	M
Yanta	L	ML	M								

Beyrouth

Beyrouth

Municipality	16-Nov	17-Nov	18-Nov	Municipality	16-Nov	17-Nov	18-Nov	Municipality	16-Nov	17-Nov	18-Nov
Achrafieh	L	M	MH	Ain el-Mreisse	L	M	H	Bachoura	L	M	MH
Beirut Central Distr	ML	M	MH	Marfai	ML	M	MH	Mazraa	L	M	MH
Medaouar	L	M	MH	Minet el-Hosn	ML	M	MH	Mwssaitbeh	L	M	MH
Ras Beirut	L	M	H	Rmeil	L	M	MH	Saifi	ML	M	MH
Zqaq el-Blat	L	M	MH								