

Lebanon Fire Risk Bulletin



CIVIL DEDEFENCE

Refer to cadast table condition.

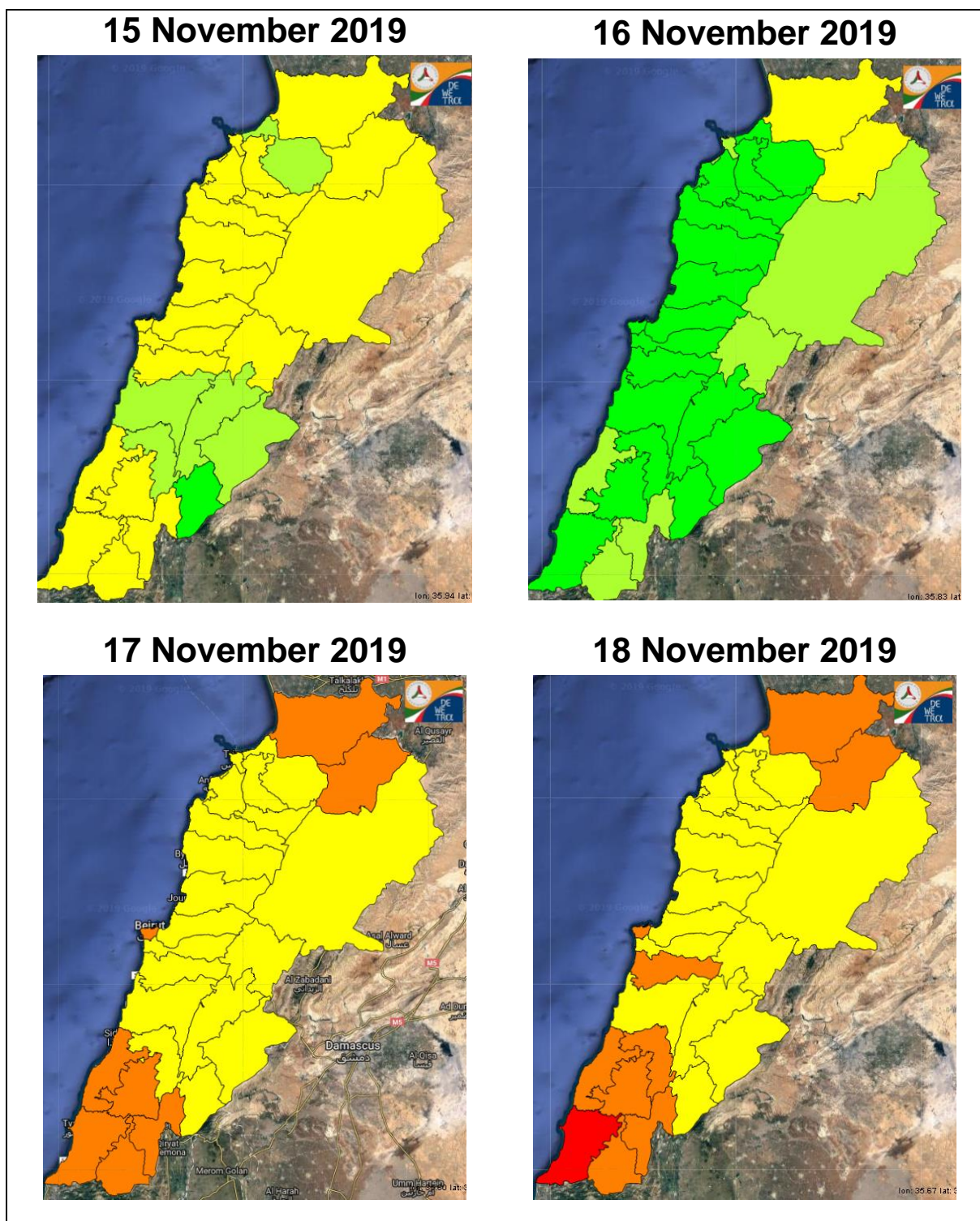
Please note that the indicated temperature is at 2 meters height from the ground.

General description of potential fire risk situation

Symbol	Level of risk	Meaning and actions
VL	Very low	Very low fire risk. Controlled burning operations can be hardly executed due to high fuel moisture content. Normally wildfires self-extinguish.
L	Low	Low fire risk. Controlled burning operations can be executed with a reasonable degree of safety.
ML	Medium low	Medium-low fire risk. Controlled burning operations can be executed in safety conditions. All the fires need to be extinguished.
M	Medium	Medium fire risk. Controlled burning operations would be avoided. All the fires need to be very well extinguished.
M	Medium high	Controlled burning is not recommended. Open flame will start fires. Cured grasslands and forest litter will burn readily. Spread is moderate in forests and fast in exposed areas. Patrolling and monitoring is suggested. Fight fires with direct attack and all available resources.
H	High	Ignition can occur easily with fast spread in grass, shrubs and forests. Fires will be very hot with crowning and short to medium spotting. Direct attack on the head may not be possible requiring indirect methods on flanks. Patrolling and monitoring the territory is highly suggested.
E	Extreme	Ignition can occur also from sparks. Fires will be extremely hot with fast rate of spread. Control may not be possible during day due to long range spotting and crowning. Suppression forces should limit efforts to limiting lateral spread. Damage potential total. Patrolling and monitoring the territory is highly suggested.

Beirut, 16 November 2019

FIRE RISK INDEX

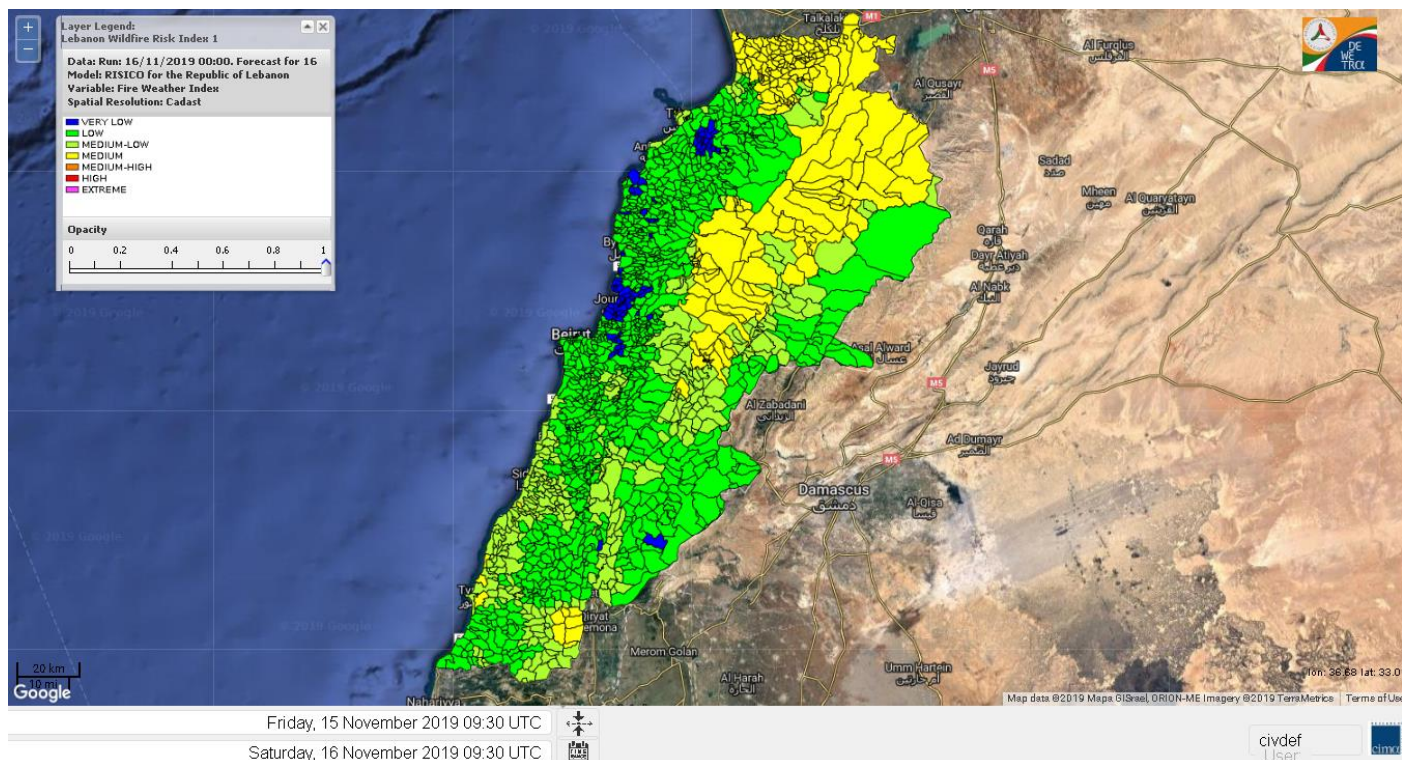


Layer Legend:
Lebanon Wildfire Risk Index 1

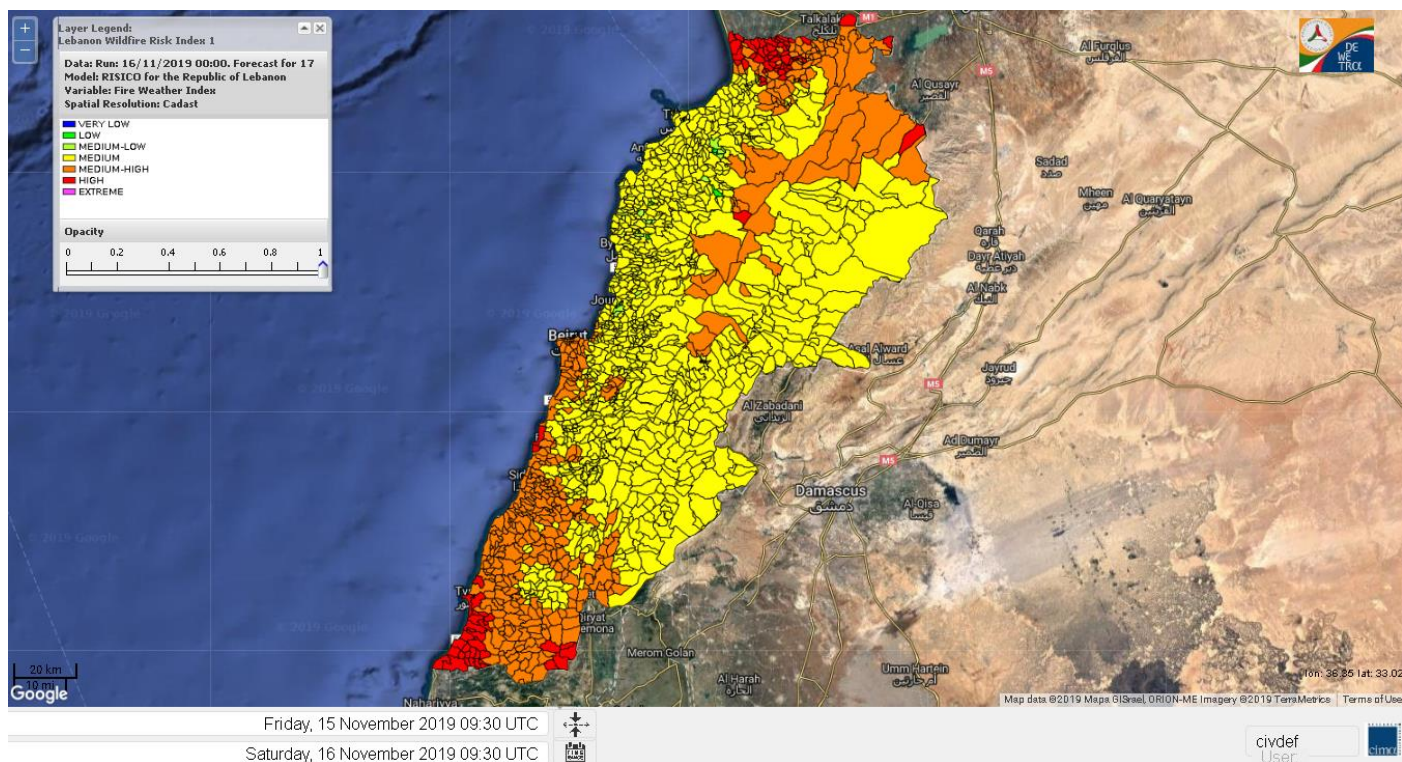
Data: Run: 16/11/2019 00:00. Forecast for 16
Model: RISICO for the Republic of Lebanon
Variable: Fire Weather Index
Spatial Resolution: Caza

- VERY LOW
- LOW
- MEDIUM-LOW
- MEDIUM
- MEDIUM-HIGH
- HIGH
- EXTREME

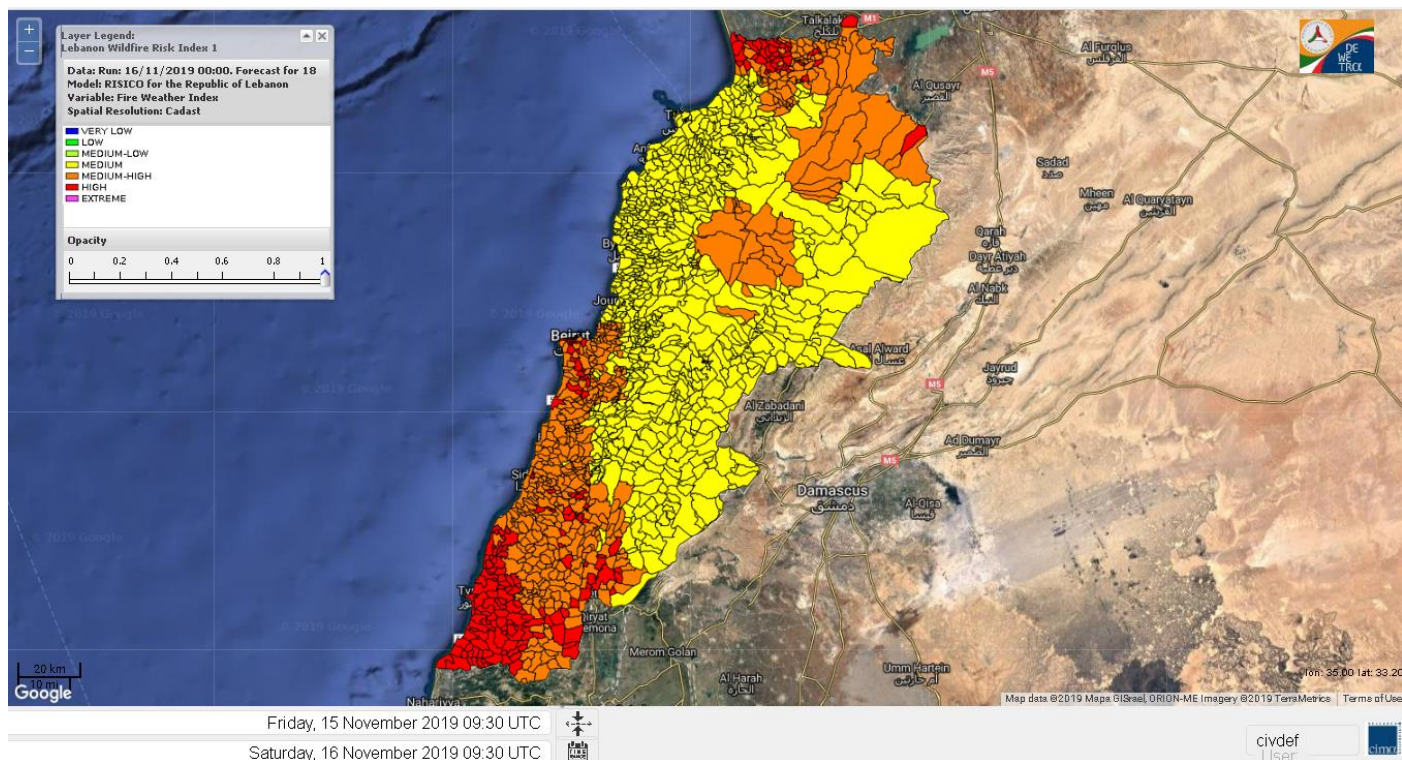
Lebanon for 16 November 2019



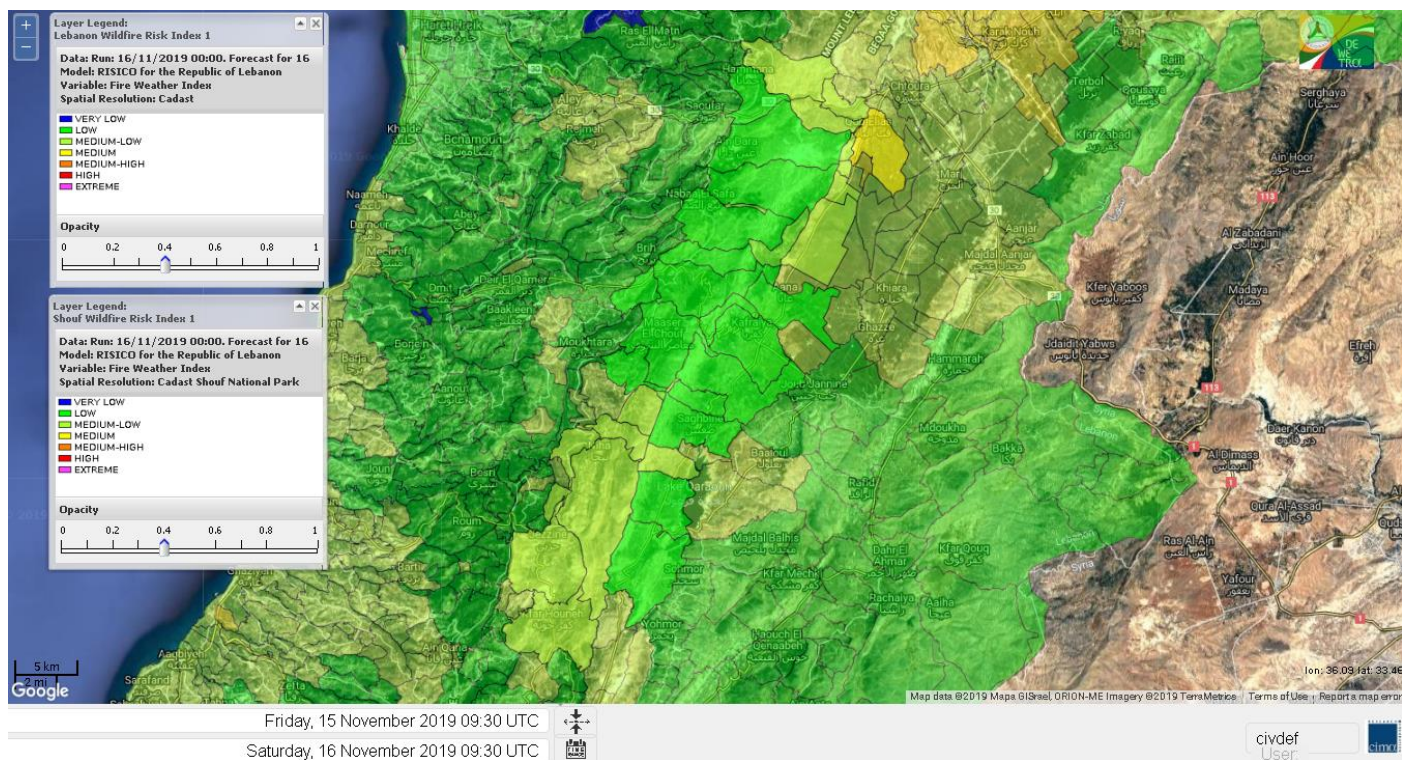
Lebanon for 17 November 2019



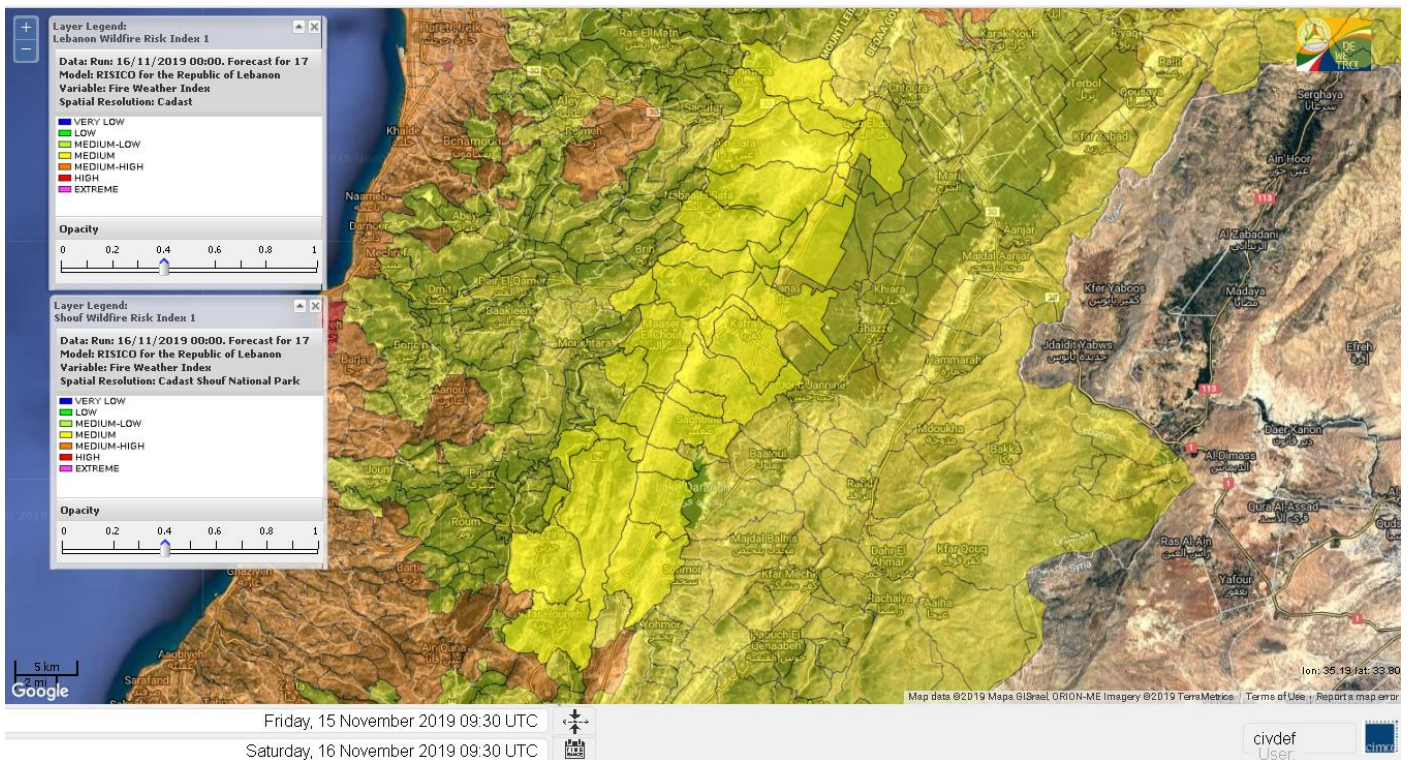
Lebanon for 18 November 2019



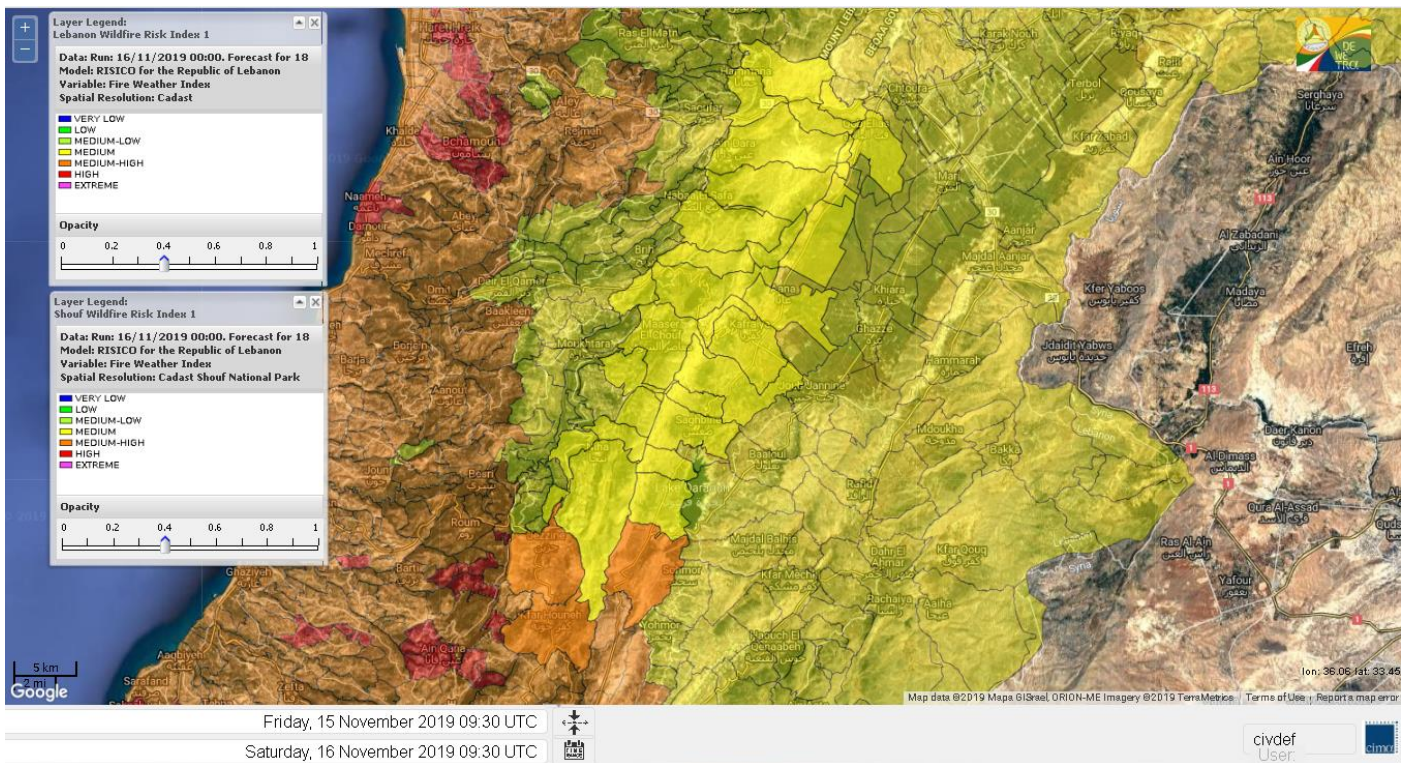
Shouf Biosphere Reserve Forecast for 16 November 2019



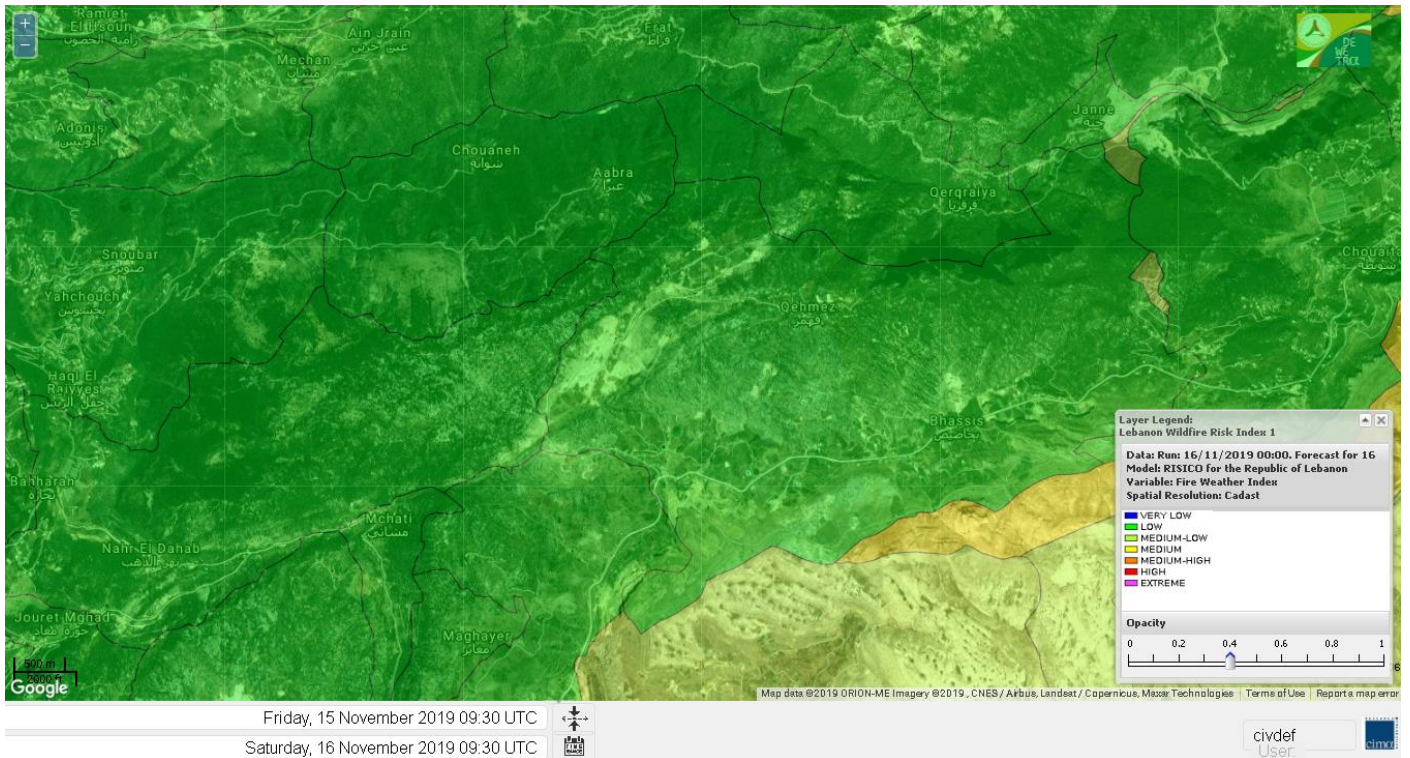
Shouf Biosphere Reserve Forecast for 17 November 2019



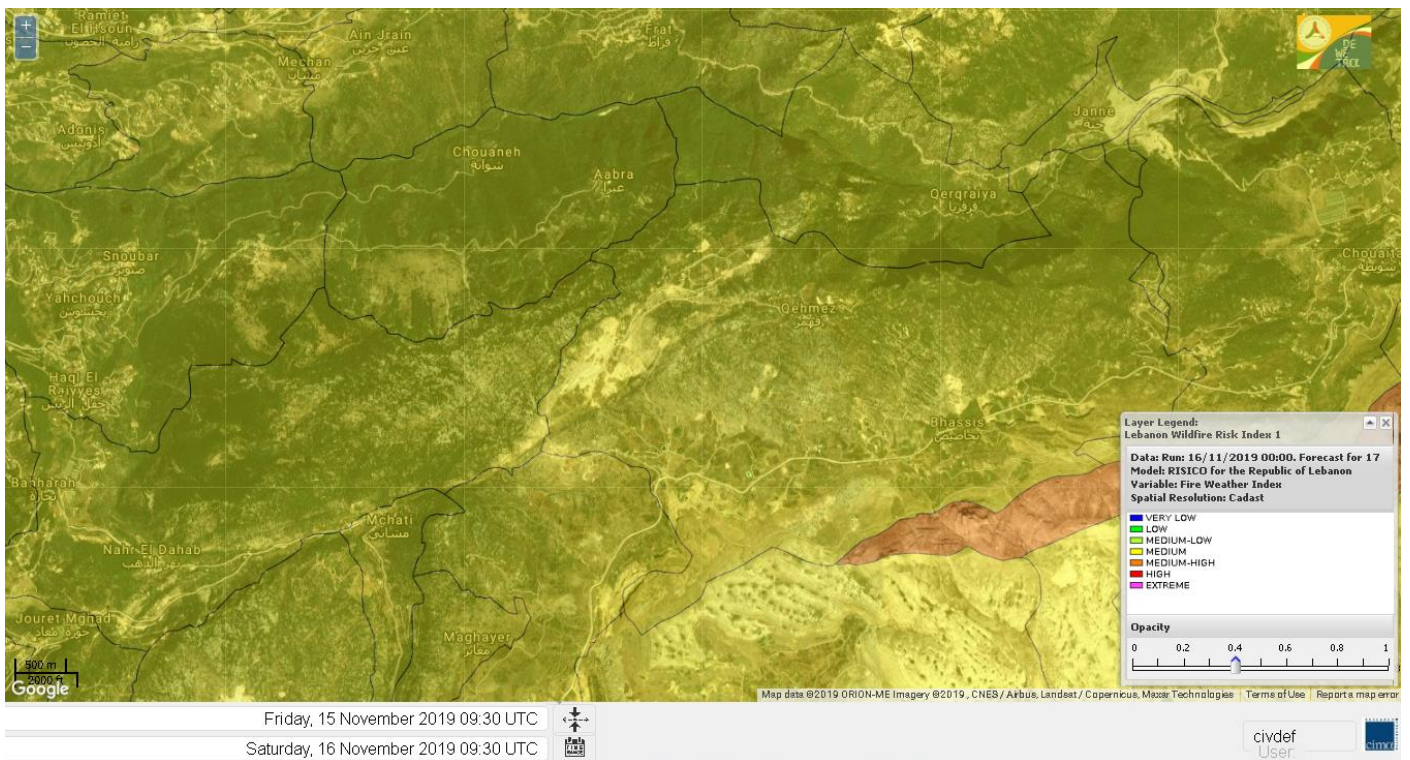
Shouf Biosphere Reserve Forecast for 18 November 2019



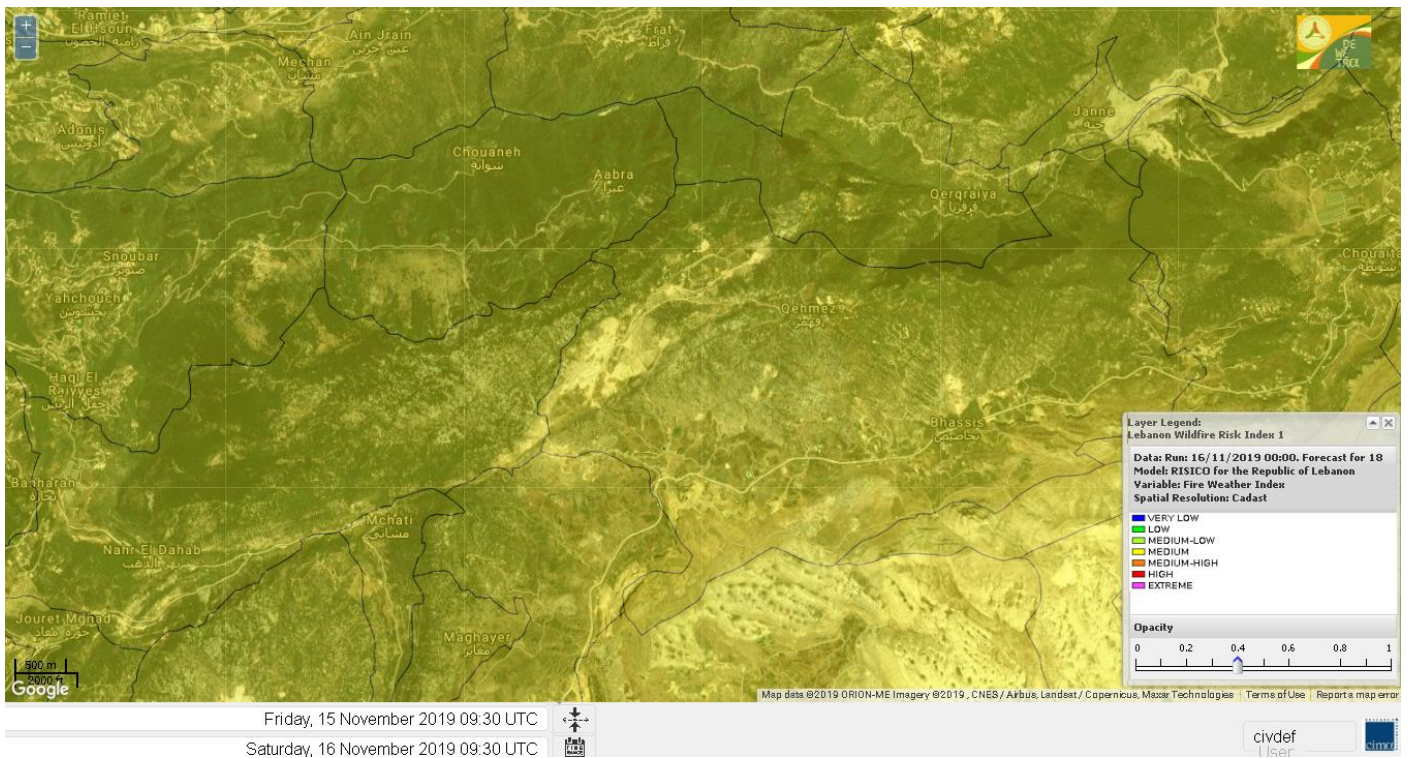
Jabal Moussa Reserve Forecast for 16 November 2019



Jabal Moussa Reserve Forecast for 17 November 2019



Jabal Moussa Reserve Forecast for 18 November 2019

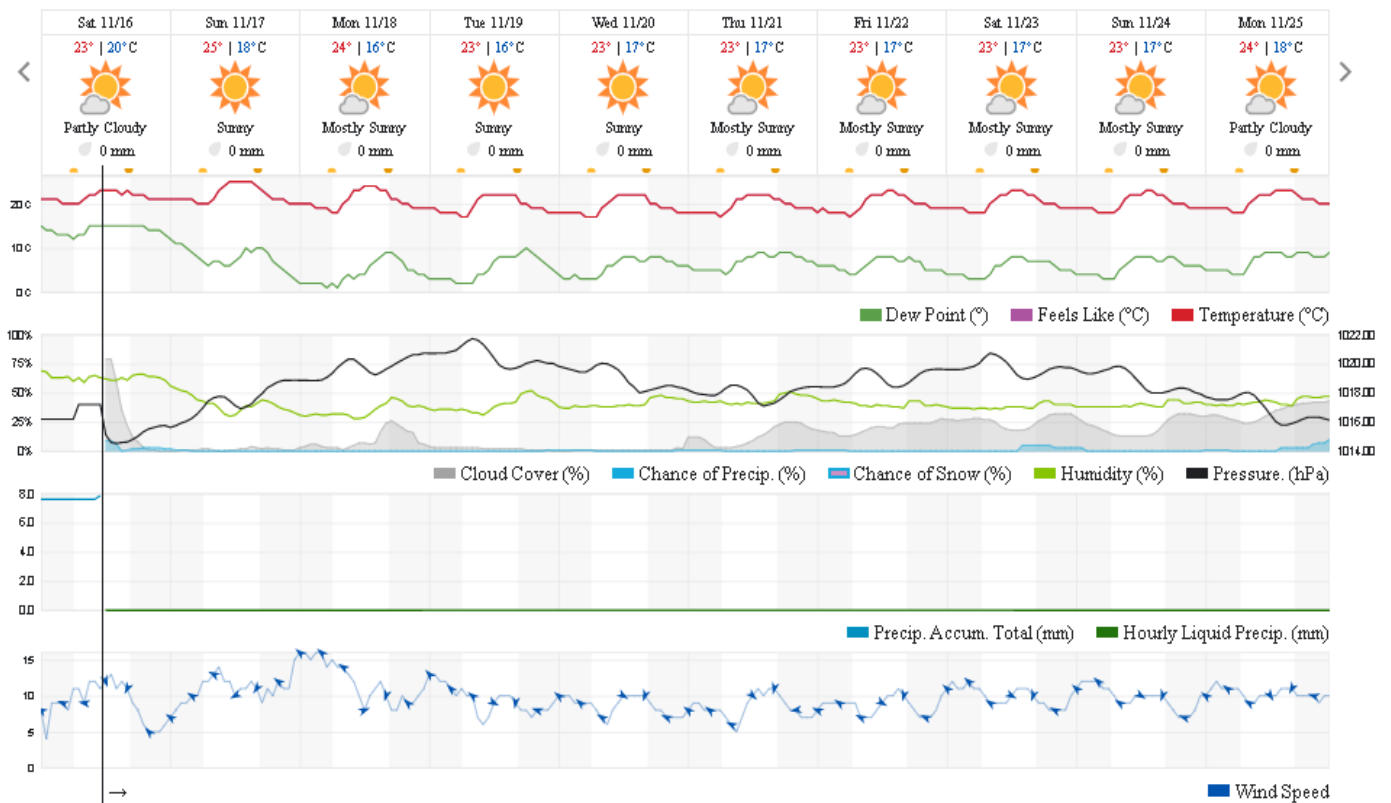


Beirut, Beirut Governorate, Lebanon 10-Day Weather Forecast

22° ACHRAFIEH,RIZK STATION | CHANGE

TODAY HOURLY **10-DAY** CALENDAR HISTORY WUNDERMAP

Customize



Nord

Koura

Municipality	16-Nov	17-Nov	18-Nov	Municipality	16-Nov	17-Nov	18-Nov	Municipality	16-Nov	17-Nov	18-Nov
Aaba	L	M	M	Afsaddiq	L	M	M	Ain Ekriane	L	M	M
Amioun	L	M	M	Anfeh	L	M	M	Badbhoun	L	M	M
Barghoun	L	M	M	Barsa	L	M	M	Batroumine	L	M	M
Bdebba	L	M	M	Bechmizzine	L	M	M	Bednayet El-Koura	L	M	M
Bhabbouch El-Koura	L	M	M	Bkeftine	L	M	M	Bnehran	L	M	M
Bqaiia El-Koura	L	M	M	Bsarma	L	M	M	Btaaboura	L	M	M
Bttram	L	M	M	Btouratij	L	M	M	Bziza	L	M	M
Dar Beechtar	L	M	M	Dar Chmezzine	L	M	M	Deddeh	L	M	M
Deir El-Balamand	L	M	M	Fih	L	M	M	Hraiche	ML	M	M
Ijdaabrine	L	M	M	Kaftoun	L	M	M	Kefraya El-Koura	L	M	M
Kfarakka	L	M	M	Kfarhata	L	M	M	Kfarhazir	L	M	M
Kfarkahel	L	M	M	Kfarsaroun	L	M	M	Kosba	L	M	M
Mejdel el-Koura	L	M	M	Nakhle	L	M	M	Qalhat	L	M	M
Ras Masqa	L	M	M	Rechdibbine	L	M	M	Zakroun	L	M	M
Zgharta El-Mtaouile	L	M	M								

Bcharre

Municipality	16-Nov	17-Nov	18-Nov	Municipality	16-Nov	17-Nov	18-Nov	Municipality	16-Nov	17-Nov	18-Nov
Aabdine	L	M	M	Bane	L	M	M	Barhelioun	L	M	M
Bazooune	M	MH	MH	Becharre	L	MH	M	Beit Menzer	L	M	M
Billa	L	M	M	Blaouza	L	M	M	Bqaa Kafra	M	MH	MH
Bqerqacha	M	MH	MH	Breissat	L	M	M	Dimane	ML	M	M
Hadath El Jobbeh	L	M	M	Hadchit	L	M	M	Hasroun	M	M	MH
Mazraat Aassaf	L	M	M	Mazraat Bani Saab	L	M	M	Mchaa El-Jobbeh	M	H	MH
Metrit	L	M	M	Moghr El-Ahoual	L	M	M	Ouadi Qannoubine	L	L	M
Qanat	L	M	M	Qnayouer	L	M	M	Tourza	L	M	M

Batroun

Municipality	16-Nov	17-Nov	18-Nov	Municipality	16-Nov	17-Nov	18-Nov	Municipality	16-Nov	17-Nov	18-Nov
Aabrine	VL	M	M	Aalali	L	M	M	Aartziz	VL	L	M
Abdelli	VL	ML	M	Ajdabra	L	M	M	Assia	L	M	M
Basbina	L	M	M	Batroun	L	M	M	Bcheleh	L	M	M
Bechtoudar	L	M	M	Beit Chlala	L	M	M	Beit Kassab	L	M	M
Bijdarfil	L	M	M	Bqesmaya	L	M	M	Chatine	L	M	M
Chebtin	L	M	M	Chekka	L	M	M	Daael	L	M	M
Dahr Abi Yaghi	VL	ML	M	Daraya El-Batroun	L	M	M	Deir Billa	L	M	M
Deir Kfifane	L	M	M	Deir Mar Youhanna EL	L	M	M	Deir Mar Youssef Jra	L	M	M
Douma	L	M	M	Douq	L	M	M	Eddeh El-Batroun	L	M	M
Ftahat El-Batroun	L	M	M	Ghouma	L	M	M	Hadtoun	L	M	M
Hamat	VL	M	M	Harbouna	VL	ML	M	Hardine	L	M	M
Helta	L	M	M	Hery	L	M	M	Jebbla	L	M	M
Jrabta El-Batroun	L	M	M	Jrane El-Batroun	L	M	M	Kfar Aabida	L	M	M
Kfar Halda	L	M	M	Kfarb Shlaimane	L	M	M	Kfarhatna	L	ML	M
Kfarhay	L	M	M	Kfarhelos	VL	M	M	Kfifane	L	M	M

Kfour El Arabi	L	M	M	Koubba	L	M	M	Kour	L	M	M
Mar Mama	VL	ML	M	Masrah	VL	ML	M	Mehmarch	L	M	M
Mrah Chdid	L	M	M	Mrah El Ziyat	L	M	M	Mrah El-Hajj	L	M	M
Nahle El-Batroun	L	M	M	Niha El-Batroun	L	M	M	Ouahj El-Hajjar	L	M	M
Ouata Houb	L	M	M	Qatnaaoun	L	M	M	Racha	L	M	M
Rachana	L	M	M	Rachkida	L	M	M	Ram El-Batroun	L	M	M
Ras Nahhach	VL	M	M	Selaata	L	M	M	Sghar	L	M	M
Smar Jbayl	L	M	M	Sourat El-Batroun	L	M	M	Tannourine El-Faouqa	M	M	MH
Tannourine Et-Tahta	L	M	M	Thoum	L	M	M	Toula El-Batroun	L	M	M
Zan	L	M	M								

Zgharta

Municipality	16-Nov	17-Nov	18-Nov	Municipality	16-Nov	17-Nov	18-Nov	Municipality	16-Nov	17-Nov	18-Nov
Aachach	L	M	M	Aalma	L	M	M	Aarde	VL	M	M
Aintourine	L	M	M	Arabet Qozhaya	L	M	M	Arde	VL	M	M
Arjis	L	M	M	Asnoun	VL	M	M	Ayto	L	M	M
Basloukit	L	M	M	Bchannine	L	M	M	Besebeel	VL	M	M
Bhairret Toula	L	M	M	Bnachee	L	M	M	Boussit	L	M	M
Danha	L	M	M	Daraiya Zgharta	L	M	M	Deir Jdeide	VL	M	M
Ehden	L	M	M	Halan	L	M	M	Hariq Zgharta	VL	M	M
Houakir	VL	ML	M	Hraiqis	L	M	M	laal	VL	M	M
Ijbaa	L	M	M	Karm Saddeh	L	M	M	Kfarchakhna	L	M	M
Kfardlaqous	VL	M	M	Kfarfou	L	M	M	Kfarhata Zgharta	VL	M	M
Kfarhoura	VL	M	M	Kfarsghab	L	M	M	Kfaryachit	VL	M	M
Kfarzaina	VL	M	M	Khaldiye	VL	M	M	Mazraat Ajbeaa	VL	M	M
Mazraat Et-Teffah	L	M	M	Mazraat Jneid	VL	M	M	Mejdlaya Zgharta	L	M	M
Merh Kfarsghab	L	M	M	Miryata	L	M	M	Miziara	L	M	M
Mzraat Kefraya	L	M	M	Qorah Bach	VL	M	M	Rachiine	VL	M	M
Ras Kifa	L	M	M	Sakhra	VL	M	M	Sebhel Zgharta	L	M	M
Serhel	L	ML	M	Tallet Zgharta	VL	M	M	Toula Zgharta	L	M	M
Zgharta	VL	M	M								

Minieh-Denniye

Municipality	16-Nov	17-Nov	18-Nov	Municipality	16-Nov	17-Nov	18-Nov	Municipality	16-Nov	17-Nov	18-Nov
Aasaymout	L	M	M	Aaymar	L	M	M	Aazki	L	M	M
Ain El-Tineh-Miniyeh	L	M	M	Assoun	L	M	M	Bakhaaoun	L	M	M
Bchennata	L	MH	M	Bechehhara	VL	L	M	Beddawi	L	M	M
Behouaita	L	M	M	Beit El Foqss	L	M	M	Beit Haouik	L	M	M
Beit Zoud	L	M	M	Bekaasafrine	L	MH	M	Borj El Yahoudiyeh	L	M	M
Bqarsouna	L	M	M	Btermaz	L	M	M	Debaael	L	M	M
Deir Ammar	ML	M	M	Deir Nbouh	L	ML	M	Haouaret-Miniyeh	L	M	M
Haql el Azimeh	L	M	M	Harf El Siyad	L	M	M	Hazmiye-Miniyeh	L	M	M
Izal	L	M	M	Jarjour	VL	L	ML	Jayroun	L	M	M
Kahf El-Malloul	L	ML	M	Karm El-Moher	L	M	M	Kfar Binine	L	M	M
Kfarchalane	L	M	M	Kfarhabou	L	M	M	Kharroub-Miniyeh	L	M	M
Mazraat El-Kreme	VL	ML	M	Mazraat Ketrane	L	M	M	Merkebtta	L	M	M
Minyeh	L	M	M	Mrah El Sfirat	L	M	M	Mrah Sraj	L	M	M
Mrebbine	L	M	M	Nabi Youcheaa	L	M	M	Nemrine	L	M	M

Qarhaiya	L	M	M	Qarne	L	M	M	Qarsita	L	M	M
Qattineh-Miniyeh	L	M	M	Qemmamine	L	M	M	Qraine	L	M	M
Raouda-Aadoua	L	M	M	Rihaniyet-Miniyeh	ML	M	M	Sfireh	L	M	M
Sir Ed-Danniyeh	L	M	M	Tarane	L	M	M	Terbol-Miniyeh	L	M	M
Zaghartaghriine	L	ML	M	Zouq Bhannine	L	M	M				

Nabatiye

Nabatiye

Municipality	16-Nov	17-Nov	18-Nov	Municipality	16-Nov	17-Nov	18-Nov	Municipality	16-Nov	17-Nov	18-Nov
Aabba	L	MH	MH	Aazzi	L	MH	MH	Adchit El-Chqif	L	M	MH
Ain Bou Swar	ML	MH	MH	Ain Kana	ML	MH	MH	Ali El-Taher	L	M	MH
Ansar	ML	MH	MH	Arab Salim	L	M	MH	Arnoun	L	M	MH
Bfaroue	L	M	MH	Breyqaah	L	M	MH	Charqiyeh	L	MH	MH
Choukine	L	MH	MH	Deir El Zahrani	L	MH	MH	Doueir El-Nabatiyeh	L	MH	MH
Habbouch El-Nabatiye	L	MH	MH	Hamra El-Nabatiyeh	L	MH	MH	Harouf El-Nabatiyeh	L	MH	MH
Hmaile	L	M	MH	Houmin El Faouqa	ML	MH	MH	Houmin El Tahta	ML	MH	MH
Jarjough	L	M	MH	Jbaah El-Nabatiyeh	L	MH	MH	Jebchit	L	MH	MH
Kfar Djal El-Nabatiy	L	M	MH	Kfar Remmane	L	M	MH	Kfar Sir	L	M	MH
Kfar Tebnit	L	MH	MH	Kfarfila	ML	MH	MH	Kfour El-Nabatieh	L	MH	MH
Mayfadoun	L	MH	MH	Mazraat Bsaffour	L	M	MH	Mazraat Chalbaal	L	M	MH
Mazraat Dmoul	L	MH	MH	Mazraat El Khreibeh	ML	MH	MH	Mazraat El-Bayad El-	L	MH	MH
Mazraat Kfarjaouz	L	MH	MH	Mazraat Qalaat Meiss	L	MH	MH	Nabatiyeh El-Fawka	L	MH	MH
Nabatiyeh Et-Tahta	L	MH	MH	Namiriyeh	L	MH	MH	Qaaqaaiyet El Jisr	L	M	MH
Qossaibeh El-Nabatiy	L	M	MH	Roumine	L	MH	MH	Sarba El-Nabatieh	ML	MH	MH
Sir El-Gharbiyeh	L	MH	MH	Toul	L	MH	MH	Yehmor El-Nabatiyeh	L	MH	MH
Zaoutar El Charkiyeh	L	MH	MH	Zaoutar El-Gharbiyeh	L	M	MH	Zebdine El-Nabatiyeh	L	MH	MH
Zefta	L	MH	MH								

Hasbaiya

Municipality	16-Nov	17-Nov	18-Nov	Municipality	16-Nov	17-Nov	18-Nov	Municipality	16-Nov	17-Nov	18-Nov
Ain Jarfa	L	M	M	Abou Qamha	L	M	MH	Ain Qania	L	M	M
Bourghos	ML	MH	MH	Chebaa	L	M	M	Chouaya Hasbaya	L	M	M
Dellafeh	ML	MH	MH	Fardiss Hasbaiya	L	M	MH	Hasbaya	L	M	M
Hbariyeh	L	M	M	Kaoukaba Hasbaiya	ML	MH	MH	Kfar Chouba	L	M	MH
Kfar Hamam	L	M	MH	Kfeir El-Zait	L	M	M	Khalwat Hasbaya	VL	M	M
Khreibet Hasbaiya	ML	MH	MH	Majdiyeh Hasbaiya	ML	MH	MH	Marj Ez-Zhour (Haouc	L	M	M
Meri	ML	MH	MH	Mimass	L	M	M	Rachaiya El-Fokhar	L	M	MH
Salaiyeb	ML	MH	H								

Marjayoun

Municipality	16-Nov	17-Nov	18-Nov	Municipality	16-Nov	17-Nov	18-Nov	Municipality	16-Nov	17-Nov	18-Nov
Aalmane Marjaayoun	L	M	MH	Aamra	ML	MH	MH	Adayseh Marjaayoun	ML	MH	MH
Adchit El-Koussair	L	M	MH	Ain Aarab Marjaayoun	ML	MH	MH	Bani Haiyann	ML	M	MH
Blatt Marjaayoun	ML	MH	MH	Blida	ML	H	MH	Borj El-Moulouk	ML	MH	MH
Boueyda Marjaayoun	L	M	MH	Deir Mimass	L	M	MH	Deir Siriane	L	M	MH
Dibbine	ML	MH	MH	Ebel El Saqi	ML	MH	MH	Houla	M	MH	MH
Houra	L	MH	MH	Kfar Kila	L	MH	MH	Khiam Marjaayoun	ML	MH	MH

Klayaa	L	MH	MH	Majdel Selem	M	MH	H	Marjaayoun	ML	MH	MH
Markaba	M	MH	MH	Mays El-Jabal	M	MH	MH	Mazraat Doumiat	L	MH	MH
Mazraat Sarada	ML	MH	MH	Mhaibib	M	H	MH	Qabrikha	ML	M	MH
Qantara	L	M	MH	Rab El-Thalathine	ML	MH	H	Saouaneh Marjayoun	ML	MH	MH
Talloussa	M	MH	MH	Taybeh Matjaayoun	L	MH	MH	Touline	L	M	MH

Bent Jbail

Municipality	16-Nov	17-Nov	18-Nov	Municipality	16-Nov	17-Nov	18-Nov	Municipality	16-Nov	17-Nov	18-Nov
Ain-Ebel	ML	MH	MH	Aitaroun	ML	H	MH	Aynata Bint Jbeil	ML	MH	MH
Ayta El-Chaeb	L	MH	MH	Ayta El-Jabal	ML	MH	MH	Beit Lif	L	MH	H
Beit Yahoun	ML	MH	MH	Bint Jbeil	ML	MH	MH	Borj Qalaway	L	M	MH
Braachit	ML	MH	MH	Chakra	M	MH	MH	Debel	L	MH	MH
Deir Antar	ML	MH	H	Froun	L	M	MH	Ghandouriyeh Bint Jb	L	M	MH
Hanine	ML	MH	MH	Hariss	ML	MH	H	Hdatha	ML	MH	MH
Jmeymeh	ML	MH	MH	Kafra Bint Jbeil	L	MH	H	Kfar Dounine	ML	MH	MH
Khirbet Selm	ML	MH	H	Kounine	ML	H	MH	Maroun El Ras	ML	H	MH
Qalaway	L	MH	MH	Qaouzah	L	MH	MH	Qatmoun	ML	MH	MH
Ramya Bint Jbeil	L	MH	MH	Rchaf	L	MH	H	Rmeich	ML	MH	MH
Safad Al Battikh	ML	MH	MH	Salhaneh	L	MH	H	Serbine	ML	MH	H
Sultanieh Bint Jbeil	ML	MH	MH	Tibnine	ML	MH	MH	Tiri	L	MH	MH
Yaroun	ML	MH	MH	Yater	L	MH	H				

Mont Liban

Jbail

Municipality	16-Nov	17-Nov	18-Nov	Municipality	16-Nov	17-Nov	18-Nov	Municipality	16-Nov	17-Nov	18-Nov
Aabeydat	L	M	M	Aalita	L	M	M	Aamchit	L	M	M
Aarab El-Lahib	ML	M	MH	Aarasta	M	M	MH	Adonis Jbeil	L	M	M
Afqa Jbeil	M	M	M	Ain El Delbeh Jbeil	L	M	M	Ain El-Ghouayba	L	M	M
Ain Jrain	L	M	M	Ain Kfah	L	M	M	Almat El Chemaliyat	L	M	M
Almat El-Jenoubiya	L	M	M	Aqoura	M	MH	MH	Bayzoun	L	M	M
Bchille Jbeil	L	M	M	Bechtlida	L	M	M	Behdaydat	L	M	M
Beit Habbaq	L	M	M	Bejjeh	L	M	M	Bekhaaz	L	M	M
Berbara Jbeil	L	M	M	Bintael	L	M	M	Birket Hjoula	L	M	M
Blatt Jbeil	L	M	M	Boulhos	L	M	M	Breyj Jbeil	L	M	M
Chamat	L	M	M	Chikhane	L	M	M	Chmout	L	M	M
Eddeh Jbeil	L	M	M	Ehmej	L	M	M	Fatre	L	M	M
Ferhet	L	M	M	Fghal	VL	ML	M	Frat	L	M	M
Ghabat	M	M	MH	Ghalboun	L	M	M	Gharzouz	L	M	M
Ghofrine	L	M	M	Habil	VL	L	M	Halate	L	M	M
Haqel	L	M	M	Hbaline	L	M	M	Hboub	L	M	M
Hdeine	M	M	M	Hema Er-Rehban	ML	M	M	Hema Mar Maroun Aann	ML	M	M
Hjoula	L	M	M	Hosrayel	L	M	M	Hsarat	L	M	M
Hsoun	L	M	M	Jaj	L	M	M	Janne	L	M	M
Jbeil	L	M	M	Jeddeyl Jbeil	L	M	M	Jlisse	L	M	M
Jouret El-Qattine	L	M	M	Kfar Baal Annaya	L	M	M	Kfar Kidde	L	M	M
Kfar Kouas	L	M	M	Kfar Mashoun	L	M	M	Kfoun	L	ML	M

Kharbe Jbeil	L	M	M	Laqlouq	ML	M	M	Lassa	L	M	M
Lehfed	L	M	M	Maad	L	M	M	Mar Sarkis	ML	M	M
Mastita	VL	M	M	Mayfouq	L	M	M	Mazraat El Siyad	ML	M	M
Mazraat El-Maaden	L	M	M	Mechane	L	M	M	Mechmech Jbeil	L	M	M
Mehrin	ML	M	M	Mejdel El-Akoura	M	M	M	Mghayreh Jbeil	M	M	M
Mounsef	L	M	M	Nahr Ibrahim	VL	M	M	Qahmez	L	M	M
Qartaba	L	M	M	Qartaboun	VL	M	M	Qattara Jbeil	L	M	M
Qorqraya	L	M	M	Ramout	L	M	M	Ras Osta	L	M	M
Rihane Jbeil	L	M	M	Sakiet El-Khayt	L	M	M	Saqi Richmaya	L	M	M
Sebrine	L	M	M	Seraita	M	M	M	Souane Jbeil	L	M	M
Tadmor	M	M	M	Tartej	L	M	M	Torzaiya	L	M	M
Yanouh Jbeil	M	M	MH	Zibdine Jbeil	L	M	M				

El Metn

Municipality	16-Nov	17-Nov	18-Nov	Municipality	16-Nov	17-Nov	18-Nov	Municipality	16-Nov	17-Nov	18-Nov
Aain El-Qabu	L	M	M	Aain El-Qach	L	M	M	Aain El-Teffaha	L	M	M
Aain el-Safssaf El-M	L	M	M	Abou Mizane	L	M	M	Ain Aar	L	M	MH
Ain Alaq	L	M	MH	Ain El-Kharroube	L	M	M	Ain El-Sendiane	L	M	M
Ain El-Zeitoune	L	M	M	Ain Saadeh	L	M	MH	Aintoura El-Matn	ML	M	M
Amaret Chalhoub	L	MH	MH	Antelias	L	MH	MH	Atchaneh	VL	M	MH
Ayroun	L	M	M	Baabdat	L	M	M	Baouchariyeh	L	MH	MH
Baskinta	ML	M	M	Beit Chabab	L	M	M	Beit El-Chaar	L	M	MH
Beit El-Kekko	L	MH	MH	Beit Mery	L	M	MH	Bhersaf	L	M	M
Bikfaya	L	M	M	Biyakout	L	M	MH	Bnabil	L	M	M
Bourj Hammoud	L	MH	MH	Bqennaya	L	M	M	Broummana El-Matn	L	M	MH
Bsalim	L	M	MH	Bsifrine	L	M	M	Bteghrine	L	M	M
Chaouiye	L	M	MH	Chouaya El-Matn	L	M	M	Choueir	L	M	M
Chrine	L	M	M	Dahr El Sawan El-Mat	L	M	M	Daychouniyeh	L	M	MH
Dbayeh	L	MH	MH	Deir Chamra	L	M	M	Deir Mar Abda el Mch	L	M	MH
Deir Mar Roukouz	L	M	MH	Deir Tamiche	L	M	MH	Dik El-Mehdi	L	M	MH
Dikwaneh	L	MH	MH	Douar El-Matn	L	M	M	Fanar	L	M	MH
Fraike	L	M	M	Haret El-Ballaneh	L	M	MH	Hbous	L	M	MH
Himlaya	L	M	M	Jal El Did	L	MH	MH	Jdeideh El-Metn	L	M	MH
Jouar El-Matn	L	M	M	Jouret El-Ballout	VL	M	MH	Kaaqour	L	M	M
Kfar Aaqab	L	M	M	Kfertay El-Matn	L	M	M	Khenchara	L	M	M
Khillet El-Mtain	L	M	M	Konnabat Broummana	L	M	MH	Konnabat Salima	L	M	M
Machraah El-Matn	L	M	M	Majdel Tarchich	ML	M	M	Majzoub	L	M	MH
Mansouriyeh El-Metn	L	M	MH	Mar Boutros Karm Et-	L	M	M	Mar Chaya et Mzekke	VL	M	MH
Mar Moussa Ed-Douar	L	M	M	Marjaba	L	M	M	Masqa	VL	M	MH
Mayasse	L	M	M	Mazraat Deir Aoukar	L	M	MH	Mazraat El-Hadirat	L	M	MH
Mazraat Yachouh	L	M	MH	Mchikha	L	M	M	Menqlet Mezher	L	M	MH
Mhaydseh Matn	L	M	M	Mkalles	L	MH	MH	Mrouj	ML	M	M
Mtain	ML	M	M	Mtayleb	L	M	MH	Nabay	VL	M	MH
Naccache	L	M	MH	Ouadi Chahine	L	M	M	Ouadi El-Karm El-Mat	L	M	M
Ouata El-Mrouj	L	M	M	Ouyoun El-Matn	VL	M	M	Qornet Chehwan	L	M	MH
Qornet El-Hamra	L	M	MH	Roumieh	L	M	MH	Sfeilet Bikfaya	L	M	M
Sinn El-Fil	L	MH	MH	Zabbougha	VL	M	M	Zalqa	L	MH	MH

Zarouon	L	M	M	Zekrite	L	M	MH	Zighrine El-Matn	L	M	M
Zouk El-Khrab	L	M	M								

Chouf

Municipality	16-Nov	17-Nov	18-Nov	Municipality	16-Nov	17-Nov	18-Nov	Municipality	16-Nov	17-Nov	18-Nov
Aalmane El-Chouf	ML	MH	MH	Aammq El-Chouf	L	M	M	Ain Ouzein	L	M	M
Ain Qani	L	M	M	Ain Zhalta	L	M	M	Ainbal	L	M	MH
Amatour	L	M	M	Anout	L	MH	MH	Atrine	L	M	M
Baadarane	ML	M	M	Baaqline	L	M	MH	Baasir	ML	MH	MH
Barja	ML	MH	MH	Barouk	L	M	M	Bater	ML	M	M
Batloun	L	M	M	Bayqoun	ML	M	M	Bchetfine	L	M	MH
Beiteddine	L	M	M	Benouati Ech-Chouf	L	M	MH	Berjein	L	M	MH
Bireh et Mtalleh	L	M	M	Biret El-Chouf	L	M	M	Bkechtine Ouel Mchei	L	M	MH
Bkifa El-Chouf	L	M	MH	Botme	L	M	M	Bqaiaa Ech-Chouf	L	M	MH
Bsaba El-Chouf	L	M	MH	Chammis El-Chouf	ML	MH	MH	Chehim	L	M	MH
Chemaarine	L	M	MH	Chourit	L	M	M	Daher El-Chouf	L	M	MH
Dalhoun	L	M	MH	Damour	ML	MH	MH	Daraya El-Chouf	L	M	MH
Deir El-Moukhalles	L	M	MH	Deir Baba	L	M	MH	Deir Dourit	L	M	MH
Deir El-Qamar	L	M	M	Deir Kouche	L	M	M	Dibbieh	L	M	MH
Dmit	L	M	MH	Fouara Jaafar	L	M	M	Fraidis El-Chouf	L	M	M
Ghabet Jaafar	L	M	MH	Gharife	L	M	MH	Haret Jandal	ML	M	M
Hasrout	L	MH	MH	Jadra	ML	H	MH	Jahlieh	L	M	MH
Jbeih El-Chouf	ML	M	M	Jdeidet El-Chouf	L	M	M	Jiyeh	ML	H	MH
Jleilyeh	L	MH	MH	Jmailiyeh	L	MH	MH	Joun	L	M	MH
Kahlounie El-Chouf	ML	M	M	Ketermaya	ML	MH	MH	Kfar Faqoud	L	M	MH
Kfar Hamal	ML	M	M	Kfar Him	L	M	MH	Kfar Katra	L	M	M
Kfar Niss	L	M	M	Kfar hay	L	M	MH	Kfarnabrakh	L	M	M
Khirbet Bisri	L	M	MH	Knayse El-Chouf	L	M	M	Maaniyeh	ML	MH	MH
Maasser Beiteddine	L	M	M	Maasser El-Chouf	L	M	M	Majdalouna	L	MH	MH
Majdel El-Meouch	L	M	M	Mazboud	L	MH	MH	Mazmoura	L	MH	MH
Mazraat El Chouf	L	M	M	Mazraat El Daher	L	M	MH	Mazraat El-Douair	L	M	M
Mechref	L	M	MH	Mghairie	ML	MH	MH	Mghayrie El-Chouf	L	M	MH
Moukhtara	L	M	M	Mrusti	ML	M	M	Mtolle	L	MH	MH
Naameh	ML	MH	H	Niha El-Chouf	ML	M	M	Ouadi Abou Youssef	VL	M	MH
Ouadi Ed-Deir	ML	M	MH	Ouadi El-Sit	L	M	M	Ouadi bnehlay	L	M	MH
Qraibeh	L	M	M	Qreiaa	L	M	M	Rmayle El-Chouf	ML	MH	MH
Semqaniyeh	ML	M	M	Sibline	ML	MH	MH	Sirjbeil	L	M	MH
Warhanieh	L	M	M	Werdaniyeh	ML	MH	MH	Zaarourieh	L	MH	MH

Baabda

Municipality	16-Nov	17-Nov	18-Nov	Municipality	16-Nov	17-Nov	18-Nov	Municipality	16-Nov	17-Nov	18-Nov
Abadiyeh	L	M	M	Ain Mouaffaq	L	M	MH	Araiya	L	M	MH
Arbaniyeh	L	M	M	Arsoun	L	M	M	Baabda	L	MH	MH
Baalchmey	ML	M	MH	Bmaryam	L	M	M	Bourj El-Brajneh	L	MH	MH
Boutchay	L	MH	MH	Bsaba Baabda	L	MH	MH	Btekhney	L	M	M
Btibyat	L	M	M	Bzebdine	L	M	M	Chbeniyeh	L	M	M
Chiyah	L	MH	MH	Chmeisset Baabda	L	M	M	Chouit	L	M	MH
Deir El-harf	L	M	M	Deir Khouna	L	M	M	Dlaybeh	L	M	M

Falougha	ML	M	M	Furn El-Chebbak	L	MH	MH	Hadath Beyrouth	L	MH	MH
Halaliyeh Baabda	L	M	MH	Hammana	L	M	M	Haret El Sett	L	M	MH
Haret Hamze	L	M	MH	Haret Hreik	L	MH	MH	Hasbaiya El-Metn	L	M	M
Jouar El-Hoz	L	M	M	Jouret Arsoun	L	M	M	Kfar Chima	L	MH	H
Kfar Selouane	ML	M	M	Khalouat Baabda	L	M	M	Kneisset Baabda	L	M	M
Laylakeh	L	MH	MH	Louayzeh Baabda	L	M	MH	Merdache	L	MH	MH
Mzairaa Baabda	L	M	MH	Ouadi Chahrour El Ol	L	M	MH	Ouadi Chahrour El So	L	M	MH
Qalaa Baabda	L	M	M	Qhraybe Baabda	L	M	M	Qobbayaa	L	M	M
Qornayel	L	M	M	Qortada	VL	M	M	Qrayeh Baabda	L	M	M
Qsaibeh Baabda	VL	M	MH	Qtale Baabda	L	M	M	Ras El Metn	L	M	M
Ras El-Haref	L	M	M	Rouayset El-Ballout	L	M	MH	Salima Baabda	L	M	M
Tahouitat El Ghadir	L	MH	MH	Tarchich	ML	M	M	Zandouqa	VL	M	M

Aley

Municipality	16-Nov	17-Nov	18-Nov	Municipality	16-Nov	17-Nov	18-Nov	Municipality	16-Nov	17-Nov	18-Nov
Abey	L	M	MH	Aghmid	L	M	M	Ain Dara	L	M	M
Ain Drafil	L	M	MH	Ain El Halazoun	L	M	MH	Ain El-Rmmaneh	L	M	M
Ain Jedideh	ML	MH	MH	Ain Ksour	L	M	MH	Ain Onoub	L	M	MH
Ain Traz	L	M	M	Ainab	L	MH	MH	Aley	ML	M	MH
Aramoun	L	MH	MH	Aytat	L	MH	MH	Azouniyeh	L	M	M
Baawerta	L	M	MH	Badghan Oua Wadi Bad	L	M	M	Bassatine	L	MH	MH
Bayssour	L	M	MH	Bchamoun	L	MH	MH	Bdadoun	L	M	MH
Behouara	L	M	MH	Bennay	L	M	MH	Bhamdoun El-Dayaa	ML	MH	MH
Bhamdoun El-Mhatta	ML	MH	MH	Bkhechthey	ML	MH	MH	Bleibel	L	M	MH
Bmakine	ML	MH	MH	Bmehray	L	M	M	Bouzrid	L	M	MH
Bserrine	ML	M	MH	Bsous	L	M	M	Btalloun	ML	MH	MH
Btater	ML	MH	MH	Chanay	ML	MH	MH	Charoun	L	M	M
Chartoun	L	M	MH	Chemlane	L	M	MH	Chouefat El-Aamrous	L	MH	MH
Chouefat El-Oumara	L	MH	MH	Chouefat El-Quoubbe	L	MH	MH	Dakkoun	L	MH	MH
Deir Qoubel	L	MH	MH	Dfoun	ML	MH	MH	Douair El Remmaneh	L	M	MH
Ghaboun	L	M	MH	Habramoun	L	M	MH	Homs Oua Hama	L	M	MH
Houmal	L	M	MH	Jisr El Qadi	L	M	MH	Kehaleh	L	M	M
Keyfoun	L	MH	MH	Kfar Aamey	L	M	MH	Kommatyeh	L	M	MH
Maasrati	L	M	MH	Majdel Baana	L	M	M	Mansourieh et Ain El	ML	MH	MH
Mazraat El-Nahr	L	M	MH	Mchakhte	L	M	M	Mecherfeh	L	M	MH
Mejdlaya	L	M	MH	Mrayjat	L	M	M	Ramliyah	L	M	M
Rechmaya	L	M	M	Rejmeh	L	M	MH	Remhala	L	M	MH
Rouaysset El Neemane	L	M	MH	Saoufar	L	M	M	Selfaya	L	M	M
Sirhmoul	L	M	MH	Souq El Ghareb	L	M	MH	Taazanieh	ML	MH	MH

Kesrouane

Municipality	16-Nov	17-Nov	18-Nov	Municipality	16-Nov	17-Nov	18-Nov	Municipality	16-Nov	17-Nov	18-Nov
Achkout	L	M	M	Adma Oua Dafneh	VL	M	M	Ain Ed-Delbe Kesroua	L	M	M
Ain El-Rihane	VL	ML	M	Aintoura Kesrouane	VL	M	M	Ajaltoun	L	M	M
Akaybeh Kesrouane	L	M	M	Aramoun Kesrouane	L	M	M	Azra ouel Ozor	L	M	M
Ballouneh	L	M	M	Batha	VL	ML	M	Bekaatat Achkout	L	M	M
Bekaatat Kanaan	L	M	M	Bizhel	L	M	M	Bouar	VL	M	M
Bqaatouta	ML	M	M	Bqaq Ed-Dine	VL	ML	M	Bzommar	L	M	M

Chahtoul	L	M	M	Chnaniir	VL	M	M	Chouan	L	M	M
Daraya Kesrouane	L	M	M	Darououn	VL	ML	M	Deir Baqlouch	VL	L	M
Dlebta	VL	M	M	Eghbeh	VL	ML	M	Faraya	ML	M	M
Fatka	L	M	M	Feytroun	L	M	M	Ghazir	VL	M	M
Ghbaleh Kesrouane	L	M	M	Ghedrass	L	M	M	Ghosta	VL	M	M
Ghynéh	L	M	M	Harharaya w Kattine	L	M	M	Harissa Kesrouane	VL	L	M
Hayata	VL	M	M	Hosein	L	M	M	Hrajel	ML	M	M
Jdeideh Ghazir	L	M	M	Jeita	VL	M	M	Jounieh Ghadir	VL	M	M
Jounieh Haret Sakhr	VL	M	M	Jounieh Salel Alma	VL	M	M	Jounieh Sarba	VL	M	M
Jouret Bedrane	L	M	M	Jouret Mhad	L	M	M	Jouret Termos	L	M	M
Kfar Debiane	L	M	M	Kfar Tay Kesrouane	L	M	M	Kfar Yassine	VL	M	M
Kfour Kesrouane	L	M	M	Kharayeb Nahr Ibrahi	L	M	M	Klayaat Kesrouane	L	M	M
Maarab	VL	M	M	Maaysra Kesrouane	L	M	M	Mayrouba	L	M	M
Mazraat Er-Ras	VL	M	M	Mazraat Mrah El-Mir	VL	M	M	Mchaa El Ftouh	M	MH	M
Mchaa Faraya	ML	M	M	Mchaa Kfar Dibiane	M	M	M	Mghaer	L	M	M
Mradiyah	L	M	M	Nahr Ed-Dahab	L	M	M	Nammoura Kesrouane	L	M	M
Ouata El Jaouz	L	M	M	Ouata Sillam	VL	M	M	Raachine	VL	M	M
Rayfoun	L	M	M	Safra Kesrouane	VL	M	M	Shayle Kesrouane	VL	M	M
Tabarja	VL	M	M	Yahchouch	L	M	M	Zaaytreh	L	M	M
Zeytoun	L	M	M	Zouk Mikael	VL	M	M	Zouk Mosbeh	VL	M	M

Baalbek_Hermel

Baalbek

Municipality	16-Nov	17-Nov	18-Nov	Municipality	16-Nov	17-Nov	18-Nov	Municipality	16-Nov	17-Nov	18-Nov
Aadous	ML	M	M	Aamchki	L	M	M	Aarsal	L	M	M
Ain Baalbek	ML	M	M	Ain Bourday	ML	M	M	Ain El-Benye	L	M	M
Ain El-Jaouz Baalbek	L	M	M	Ain El-Siya Chadoura	L	M	M	Al Khodr Baalbek	L	M	M
Al Nabi Chit	ML	M	M	Aynata Baalbek	M	MH	MH	Baalbek	ML	M	M
Bachwat	M	M	MH	Barqa	M	M	MH	Bednayel Baalbak	M	MH	M
Beit Chama	ML	M	M	Bijjaje	M	M	M	Bouday	M	M	MH
Brital	L	M	M	Btadi	ML	M	MH	Chaat	M	M	M
Chaibe	L	M	M	Chlifa	ML	MH	MH	Chmestar	M	M	MH
Dar El-Oussa	M	M	MH	Deir El-Ahmar	ML	M	MH	Deir Mar Maroun Baal	M	MH	MH
Douris	ML	M	M	Fakiha	M	M	M	Hadath Baalbek	M	M	M
Ham	L	M	M	Haour Taala	L	M	M	Hizzine	ML	M	M
Hlebta	M	M	MH	Hosh Barada	ML	M	M	Hosh El Dahab	ML	M	M
Hosh El Snid	ML	M	M	Hosh El-Nabi	ML	M	M	Hosh El-Rafiq	ML	M	M
Hosh Tal Safiya	ML	M	M	Hrebta	M	M	M	laat	M	M	MH
Jebaa	M	MH	MH	Jenta	L	M	M	Kfar Dabach	ML	M	M
Kfar Dane	M	M	M	Khraibeh El-Hermel	M	M	M	Khreibet Baalbek	L	M	M
Kneisset Baalbek	M	M	M	Labueh	M	M	M	Maarboun	L	M	M
Majdaloun	ML	M	M	Maqneh	M	M	M	Mazraat Beit Mcheik	M	MH	MH
Misraya	ML	M	M	Moqraq	M	M	M	Nabha El-Damdoum	M	M	M
Nabi Chbay	L	M	M	Nabi Osman	ML	M	M	Nahleh baalbek	L	M	M
Ouadi El-Oss	M	M	MH	Qaa Baayoun	M	MH	MH	Qaa Jouar Maqiye	M	MH	MH
Qaa Ouadi El-Khanzir	M	MH	MH	Qah Baalbek	M	M	MH	Qarha Baalbek	M	M	M

Qsarnaba	ML	M	M	Ram Baalbek	M	M	M	Ras Baalbek El Sahl	M	M	M
Ras Baalbek El-Charq	M	M	M	Riha	M	M	M	Saaide	ML	M	M
Sbouba	M	M	M	Seriine El-Tahta	ML	M	M	Slouqi	M	M	M
Taiba Baalbek	ML	M	M	Talia	ML	M	M	Taraiya	M	M	M
Temnin El Fawqa	ML	M	M	Temnin El-Tahta	ML	M	M	Tfail	L	M	M
Yahfoufa	ML	M	M	Yammouneh	M	MH	MH	Younine	ML	M	M
Zboud	M	M	M								

Hermel

Municipality	16- Nov	17- Nov	18- Nov	Municipality	16- Nov	17- Nov	18- Nov	Municipality	16- Nov	17- Nov	18- Nov
Charbine El-Hermel	M	MH	MH	Hermel Jbab	M	MH	MH	Hermel	M	MH	MH
Maaysra El-Hermel	M	M	MH	Michaa Mrajhine	M	M	MH	Ouadi Faara	M	M	MH
Ras Baalbek - Ouadi	M	MH	M	Ras Baalbek El Gharb	M	MH	MH	Zighrine	M	MH	MH

Akkar

Akkar

Municipality	16- Nov	17- Nov	18- Nov	Municipality	16- Nov	17- Nov	18- Nov	Municipality	16- Nov	17- Nov	18- Nov
Aain Tinta	M	MH	MH	Aaiyat	M	MH	MH	Aakkar El-Aatiqa	M	M	MH
Aamar Akkar	L	M	M	Aamar El Baykat	M	MH	MH	Aamayer	M	MH	MH
Aamriyet Akkar	M	MH	MH	Aandqet	M	MH	MH	Aarmeh	M	H	MH
Aarqa	M	M	M	Aawaynat	M	MH	MH	Aayoun Akkar	M	MH	MH
Abboudiye	M	H	MH	Ain El-Zeit	M	MH	MH	Ain Yaaqoub	M	MH	MH
Akroum	M	MH	MH	Aridet Cheikh Zennad	M	H	H	Baldech w Mazraat Bal	M	MH	MH
Barcha	M	H	MH	Bardeh	M	MH	MH	Bebnine	ML	M	M
Beino	M	MH	MH	Beit Ayoub	M	MH	MH	Beit El-Haouch	ML	M	M
Beit Mellat	M	MH	MH	Beit Younes	M	M	MH	Berbara Akkar	M	MH	MH
Berqayel	L	M	M	Bezbina	ML	M	M	Bireh Akkar	M	MH	MH
Borj	M	H	MH	Bqerezla	M	M	M	Bzal	L	M	M
Chane	M	MH	MH	Chaqdouf	M	H	H	Charbila	M	MH	MH
Cheikh Mohammad	M	MH	MH	Cheikh Taba Es-Sahl	M	MH	MH	Cheikh Taba	M	H	MH
Cheikh Zennad	M	H	MH	Cheikhlar	M	MH	MH	Chir Hmairine	M	H	H
Daghle	M	MH	MH	Dahr Laissine	M	MH	MH	Darine	M	MH	MH
Dawra	M	MH	MH	Dawsa w Baghdadi	M	MH	MH	Dayret Nahr El-Kabir	M	H	MH
Deir Dalloum	L	M	M	Deir Jennine	M	MH	MH	Denbou	M	MH	MH
Dibbabiye	M	H	MH	Douair Aadwiyeh	M	MH	MH	Fassikine	M	MH	MH
Fnaydek	ML	M	M	Fraydes Akkar	M	MH	MH	Ghazayle	M	MH	MH
Habchit	M	MH	MH	Hakour	L	M	M	Halba	M	MH	MH
Haouchab	M	H	H	Hayssat	M	MH	MH	Haytla	M	MH	MH
Hayzouq	M	MH	MH	Hedd	M	H	MH	Hmaira Akkar	L	M	M
Hmaiss Akkar	M	MH	MH	Hnaider	M	MH	MH	Hokr Ed-Dahri	M	H	MH
Hokr Etti	M	MH	MH	Hokr Jouret Srar	M	H	H	Houaich	M	MH	MH
Hrar	M	MH	MH	Idbil	M	MH	MH	Ilal	M	MH	MH
Janine	M	H	MH	Jdeidet El-Joumeh	M	MH	MH	Jdeidet El-Kaiteh	L	M	M
Jebayel	M	MH	MH	Kafr	L	M	M	Kafr	M	MH	MH
Karm Asfour	M	M	M	Kfar Melki Akkar	M	MH	MH	Kfar Noun	M	MH	MH
Kfarharra	M	MH	MH	Khalsa	M	MH	MH	Kharnoubet Akkar	M	H	MH

Khirbet Daoud Aakkar	M	MH	MH	Khirbet El Remmane	M	MH	MH	Khirbet Shar	M	MH	MH
Khoreybet El-Jindi	M	MH	MH	Khreibet Aakkar	M	MH	MH	Kneisset Aakkar	M	MH	MH
Kneisset Hnaider	M	MH	MH	Knisse	M	MH	MH	Kroum El-Aarab	M	MH	MH
Kwachra	M	MH	MH	Kweykhata	M	H	H	Machta Hammoud	M	MH	MH
Majdala	L	M	M	Majdel Akkar	M	MH	MH	Mar Touma	L	M	M
Marlaya Melhem	ML	M	M	Mashha	M	MH	MH	Massoudiye	M	H	MH
Mazraat Beit Ghattas	ML	M	M	Mazraat En-Nahriye	M	MH	MH	Mechmech	ML	M	M
Memneh	L	M	M	Mhammara	ML	M	M	Mighraq Aakkar	M	MH	MH
Minyara	M	M	M	Moqayteh	M	MH	MH	Mounjez	M	MH	MH
Msalla	M	MH	MH	Mzeihmeh	M	MH	MH	Nfaisch	M	MH	MH
Noura Et-Tahta	M	MH	MH	Ouadi El-Haour	M	MH	MH	Ouadi El-Jamous	ML	M	M
Ouyoun El-Ghizlane	L	M	M	Qaabarine	M	MH	MH	Qabaait	M	M	M
Qachlaq	M	MH	MH	Qantara Aakkar	M	MH	MH	Qarha Aakkar	M	H	MH
Qarqaf	L	M	M	Qboula	M	MH	MH	Qleiaat Aakkar	M	MH	MH
Qloud El-Baqie	ML	M	M	Qobaiyat Aakkar	M	MH	MH	Qobbat Chamrat	ML	M	M
Qorayat	M	M	MH	Qornet Aakkar	M	MH	MH	Qsair Aakkar	M	MH	MH
Rahbe	M	MH	MH	Rihaniyet Aakkar	M	MH	MH	Rmah	M	MH	MH
Rmoul	M	MH	MH	Saadine	M	MH	MH	Sadaqa	M	MH	MH
Saidnaya	M	MH	MH	Sammouniye	M	MH	MH	Saysouq	M	M	M
Semmaqiye	M	H	MH	Semmaqli	M	M	M	Sfinet El-Dreib	M	MH	MH
Sfinet El-Qaitaa	L	M	M	Sindyanet Zeidane	M	MH	MH	Souaisset Aakkar	M	MH	MH
Srar	M	MH	MH	Tal Abbas El Gharby	M	MH	MH	Tal Abbas El-Chargy	M	MH	MH
Tal Biret	M	H	MH	Tal Hmayra	M	H	MH	Tal Maayan Tal Kiri	M	MH	MH
Tal Sibel	M	MH	MH	Tallet Chattaha	M	MH	MH	Tikrit	M	MH	MH
Tleil	M	MH	MH	Tshea	ML	M	M	Zawarib	M	MH	MH
Zouq El Hosniyeh	L	M	M	Zouq El-Haddara	ML	M	M	Zouq El-Hbalsa	L	M	M
Zouq El-Moqachrine	L	M	M								

Sud

Sour

Municipality	16-Nov	17-Nov	18-Nov	Municipality	16-Nov	17-Nov	18-Nov	Municipality	16-Nov	17-Nov	18-Nov
Aaiyeh	L	MH	H	Aalma El-Chaab	L	H	H	Aaytit	L	MH	H
Abbassiyeh Sour	ML	MH	H	Abou Chech	L	H	H	Ain Abou Abdallah	ML	MH	H
Ain Baal	L	MH	H	Arzoun	L	M	MH	Aziyeh	L	H	H
Baflaya	L	MH	MH	Barich	ML	MH	MH	Batouliyeh	L	H	H
Bayad	L	MH	H	Bazouriyeh	ML	MH	H	Bediass	L	MH	MH
Bestiyat	ML	MH	MH	Borj El Chemali	M	H	H	Borj En-Naqoura	L	H	H
Borj Rahhal	ML	MH	MH	Boustane	ML	H	H	Btaychiyeh	L	H	H
Chaaitiye	L	H	H	Chameh	L	H	H	Chehabiye	ML	MH	MH
Chehour	L	M	MH	Chihine	L	H	H	Debaal Sour	ML	MH	MH
Deir Amess	L	MH	H	Deir Kifa	L	MH	MH	Deir Qanoun El-Ain	L	H	H
Deir Qanoun El-Naher	L	MH	MH	Derdghaiya	L	M	MH	Dhayra	L	H	H
Halloussiyeh	ML	MH	MH	Hamoul	L	H	H	Hanaouey	L	H	H
Henniye	L	H	H	Hmairi Sour	L	M	MH	Iskandarouna Sour	L	H	H
Jbal El Botom	L	MH	H	Jebbin	ML	H	H	Jennata	ML	MH	H
Jijim	L	H	H	Jouaiya	L	MH	H	Kneisset Sour	L	H	H

Maarake	ML	MH	MH	Maaroub	ML	MH	H	Majadel	ML	MH	H
Majdalzoun	L	H	H	Mansouri Sour	L	H	H	Marnba	L	M	MH
Marouahine	L	MH	H	Mazraat El-Zalloutiy	ML	H	H	Mazraat Mechref	L	MH	H
Mazraat Tayr Semhat	L	M	MH	Mheilib	M	H	H	Neffakhiyeh	L	M	MH
Niha Sour	L	M	MH	Ouadi Jilo	L	MH	MH	Qana	L	MH	H
Qolaileh Sour	L	H	H	Rechknany	L	MH	H	Rmadiyeh	L	MH	H
Selha Sour	L	M	MH	Siddiqine	L	MH	H	Sour	ML	H	H
Srifa	L	M	MH	Tayr Debbe	ML	MH	H	Tayr Felsay	L	MH	MH
Tayr Harfa	ML	H	H	Touayri	L	M	MH	Toura	ML	MH	MH
Yanouh Sour	ML	MH	MH	Yarine	ML	H	H	Zebqine	L	MH	H

Saida

Municipality	16-Nov	17-Nov	18-Nov	Municipality	16-Nov	17-Nov	18-Nov	Municipality	16-Nov	17-Nov	18-Nov
Aanqoun	ML	MH	MH	Aaqtanit	ML	MH	MH	Aarab Ej-Jall	ML	MH	MH
Aarab Tabbaya	ML	MH	MH	Abra Saida	ML	MH	MH	Adloun	ML	MH	MH
Adousiyeh	ML	MH	MH	Ain-El-Deleb	ML	MH	MH	Arzai	ML	MH	MH
Babliyah	ML	MH	MH	Barty	ML	MH	MH	Bissariyeh	ML	MH	MH
Bnaafoul	ML	MH	MH	Bqosta	ML	MH	MH	Bramiy	ML	MH	H
Daoudiyeh	ML	MH	MH	Dareb El-Sim	ML	MH	MH	Erkay	ML	MH	MH
Ghassanieh	ML	MH	MH	Ghazieh	ML	MH	MH	Hajjeh	ML	MH	MH
Haret Saida	ML	MH	MH	Hartiyeh	ML	MH	MH	Hlaliye Saida	ML	MH	MH
Insariyat	ML	MH	MH	Jazira Saida	ML	MH	H	Kafar Bit	ML	MH	MH
Kaoutariyet El-Siyad	L	MH	MH	Kfar Chellal	ML	MH	MH	Kfar Hatta Saida	ML	MH	MH
Kfar Milke Saida	ML	MH	MH	Khartoum	L	MH	MH	Khaziz	ML	MH	MH
Khirbet Ed-Douair Sa	ML	MH	MH	Khirbet El-Bassal	ML	MH	MH	Khrayeb Saida	ML	MH	MH
Loubieh	ML	MH	MH	Maghdouche	ML	MH	MH	Majdelyoun	ML	MH	MH
Matariyet El-Choumar	ML	MH	H	Matayriyeh	ML	MH	MH	Mazraat 'Mseileh	ML	MH	MH
Mazraat 'Snaiber	ML	MH	MH	Mazraat Aarab Soukka	ML	MH	MH	Mazraat Deir Taqla	ML	MH	MH
Mazraat El Yahoudiye	M	MH	MH	Mazraat El-Housseini	M	MH	MH	Mazraat El-Mhaydaleh	ML	MH	MH
Mazraat El-Ouasta	ML	MH	MH	Mazraat Jamjim	ML	MH	H	Mazraat Kaoutariyet	ML	MH	H
Mazraat Kfar Badda	ML	MH	H	Mazraat Oussamiyat	ML	MH	MH	Mazraat Sari	ML	MH	MH
Mazraat Sinai	L	MH	MH	Meemariyeh	ML	MH	MH	Merouaniyeh	ML	MH	MH
Miyeh ou Miyeh	ML	MH	MH	Najjariyeh	ML	MH	MH	Qaaqaiyat El-Snaouba	ML	MH	MH
Qnarit	ML	MH	MH	Qraiye Saida	ML	MH	MH	Saida Ed-Dekermane	ML	MH	MH
Saida El-Oustani	ML	MH	MH	Saida El-Qadimeh	ML	MH	MH	Saida Kefraya	ML	MH	MH
Saksakiyeh	ML	MH	MH	Salhie Saida	ML	MH	MH	Sarafand	ML	MH	MH
Sfenta	L	MH	MH	Tafahta	L	MH	MH	Tanbourit	ML	MH	MH
Tebna	ML	MH	MH	Zaghdraiya	L	MH	MH	Zeita	ML	MH	MH
Zrariyeh	ML	MH	MH								

Jezzine

Municipality	16-Nov	17-Nov	18-Nov	Municipality	16-Nov	17-Nov	18-Nov	Municipality	16-Nov	17-Nov	18-Nov
Ain El-Mir (El Estab	ML	MH	MH	Anane	L	M	MH	Aramta	ML	MH	MH
Ariya	ML	M	M	Aychiyeh	L	M	MH	Azour	L	M	MH
Baba	L	M	MH	Bayssour Jezzine	ML	MH	MH	Benoueteh Jezzine	ML	M	M
Bhannine	ML	M	M	Bisri	L	M	MH	Bkassine	L	M	M
Bouslaya	L	M	MH	Btedine El-Leqech	L	M	MH	Chbail	L	M	M
Choualiq Jezzine	ML	MH	MH	Dahr Ed-Deir	L	M	MH	Deir El Qattine	L	M	MH

Demachqiyeh	L	MH	MH	Ghabbatiyeh	L	M	M	Harf Jezzine	L	M	MH
Hassaniyeh	ML	MH	MH	Haytouleh	ML	MH	MH	Haytura	L	M	MH
Hidab	ML	M	MH	Homsiyeh	L	M	MH	Jabal Toura	ML	MH	MH
Jarmaq	L	M	MH	Jensnaya	ML	MH	MH	Jernaya	ML	MH	MH
Jezzine	ML	M	MH	Karkha	L	M	MH	Kfar Falous	ML	MH	MH
Kfar Houna	ML	M	MH	Kfar Jarrah	ML	MH	MH	Lebaa	ML	MH	MH
Louayzet Jezzine	L	MH	MH	Machmouche	L	M	M	Mahmoudiyeh Jezzine	L	M	MH
Maknounye Jezzine	L	M	MH	Maraat Ouazaiyeh	L	M	MH	Mazraat Daraya	L	M	MH
Mazraat El-Aarqoub	L	M	MH	Mazraat El-Mathane	L	M	MH	Mazraat El-Rahbane	L	M	MH
Mazraat Khallet Khaz	L	M	MH	Mazraat Louzid (Loua	L	M	MH	Mazraat Qrouh	ML	M	MH
Mazraat Tamra	L	MH	MH	Mazraat Zighrine Jez	L	M	MH	Mazraat	L	M	H
Mharbiyeh	ML	MH	MH	Midane Jezzine	L	M	M	Mjeydel Jezzine	ML	MH	MH
Mlikh	L	MH	MH	Mrach El-Hbasse	ML	MH	MH	Ouadi Baanqoudaine	ML	MH	MH
Ouadi El-Laymoun	ML	MH	MH	Ouardiyeh	VL	M	M	Qabaa Jezzine	L	M	MH
Qatrani	L	M	MH	Qaytouleh	L	M	MH	Qtaleh Jezzine	L	M	MH
Rihane Jezzine	L	M	MH	Rimat	L	M	MH	Roum	L	M	MH
Roummanet	ML	MH	MH	Sabbah	L	M	M	Saydoun	L	M	MH
Sfaray	L	M	MH	Snaya	L	M	H	Sojoud	L	M	MH
Srayri	ML	M	MH	Taaïd	L	M	MH	Wadi Jezzine	L	M	M
Zhalta	L	MH	MH								

Bekaa

West Bekaa

Municipality	16-Nov	17-Nov	18-Nov	Municipality	16-Nov	17-Nov	18-Nov	Municipality	16-Nov	17-Nov	18-Nov
Aammiq BG	ML	M	M	Ain El Tineh BG	ML	M	MH	Ain Zebdeh	L	M	M
Ana	L	M	M	Aytanit	L	M	M	Baaloul BG	ML	M	M
Bab Mareh	ML	M	M	Chouberqiye Aammiq	ML	M	M	Dakoue	ML	M	M
Deir Ain El-Jaouze	ML	M	M	Deir Tahniche	ML	M	M	Ghaza	ML	M	M
Harime El-Soughra	ML	M	M	Hoch Harimeh	ML	M	M	Jazira BG	ML	M	M
Jib Jennine	L	M	M	Kamed-El-Laouz	L	M	M	Kefraya BG	L	M	M
Khiara El Atika	ML	M	M	Khiara	ML	M	M	Khirbet Qanafar	L	M	M
Lala	L	M	M	Lebbaya BG	L	M	M	Loussa	ML	M	MH
Machghara	L	M	MH	Manara (Hammar) BG	L	M	M	Mansoura BG	ML	M	M
Marej BG	ML	M	M	Maydoun	ML	MH	MH	Ouaqf BG	ML	M	M
Qaraaoun	ML	M	M	Qelya	L	M	MH	Raouda (Istabel)	ML	M	M
Saghbine	L	M	M	Sohmor	L	M	M	Soltan Yacoub el Ara	ML	M	M
Souairy	ML	M	M	Sultan Yaacoub	ML	M	M	Tal Znoun	ML	M	M
Yehmor BG	L	M	M	Zilaya	L	M	M				

Zahle

Municipality	16-Nov	17-Nov	18-Nov	Municipality	16-Nov	17-Nov	18-Nov	Municipality	16-Nov	17-Nov	18-Nov
Aanjar (Haouch Mouss	ML	M	M	Ablah	M	M	M	Ain Kfarzabad	L	M	M
Ali-El-Nahri	ML	M	M	Bar Elias	ML	M	M	Bouarej	ML	M	M
Cheberqiyet Tabet	ML	M	M	Chtaura	ML	M	M	Deir El Ghazal	L	M	M
Delhamiyet Zahle	ML	M	M	Ferzol	M	M	M	Haouch El-Ghanam	ML	M	M
Haouch Es-Siyadeh	M	M	M	Haouch Hala	L	M	M	Haouch Mandara	ML	M	M

Haouch Qayssar	ML	M	M	Hezerta	M	MH	M	Hosh Moussa	L	M	M
Jdita	ML	M	M	Kfarzabad	L	M	M	Ksara	ML	M	M
Majdel Aanjar	ML	M	M	Makssi	ML	M	M	Massa	L	M	M
Mazraat Er-Remtaniye	ML	M	M	Mrayjat Zahle	ML	M	M	Mzaraa Zahle	ML	M	M
Nabi Ayla	M	M	M	Nasriyet Rizk	ML	M	M	Nasriyet Zahle	ML	M	M
Niha Zahle	M	M	M	Ouadi Ed-Deloum	ML	M	M	Ouadi El-Arayech	M	MH	M
Qaa El Rim	M	MH	M	Qab Elias	M	M	M	Qousaya	L	M	M
Rhit	L	M	M	Riyak	ML	M	M	Saadnayel	ML	M	M
Taal El-Akhdar	ML	M	M	Taalbeya	ML	M	M	Taanayel	ML	M	M
Talamara	ML	M	M	Tcheflik Edde Haouch	ML	M	M	Tcheflik Qiqano	ML	M	M
Terbol Zahle	L	M	M	Touaite Zahle	ML	M	M	Zahle Aradi	M	M	M
Zahle El-Berbara	M	MH	M	Zahle El-Maallaqa	M	M	M	Zahle El-Midane	M	MH	M
Zahle Er-Rassiye	M	MH	M	Zahle Haouch El-Ouma	ML	M	M	Zahle Haouch El-Ouma	ML	M	M
Zahle Haouch Ez-Zara	M	M	M	Zahle Maalqa Aradi	M	M	M	Zahle Mar Antonios	M	MH	M
Zahle Mar Elias	ML	M	M	Zahle Mar Gerios	ML	M	M	Zahle Saydet En-Naja	M	M	M
Zebdoul	ML	M	M								

Rachaiya

Municipality	16-Nov	17-Nov	18-Nov	Municipality	16-Nov	17-Nov	18-Nov	Municipality	16-Nov	17-Nov	18-Nov
Ain Arab Rachaiya	L	M	M	Ain Ata	L	M	M	Ain Harche	L	M	M
Aqabe Rachaya	L	M	M	Ayha	L	M	M	Ayta El Fokhar	L	M	M
Bakifa Rachaya	L	M	M	Bakka	L	M	M	Beit Lahya	L	M	M
Bireh Rachaiya	L	M	M	Daher El Ahmar	L	M	M	Deir El-Achayer	L	M	M
Heloua Rachaiya	L	M	M	Hoch El Qannabeh Rac	L	M	M	Kaoukaba Bou Arab	L	M	M
Kfar Danis	L	M	M	Kfar Mechki	L	M	M	Kfar Qouq	L	M	M
Kherbet Rouha	L	M	M	Majdel Balhiss	L	M	M	Mdoukha	L	M	M
Mhaydseh Rachaiya	L	M	M	Nabi Safa	L	M	M	Rachaiya	L	M	M
Rafid Rachaiya	L	M	M	Selsata (Mazraat Dei	L	M	M	Tannoura	L	M	M
Yanta	L	M	M								

Beyrouth

Beyrouth

Municipality	16-Nov	17-Nov	18-Nov	Municipality	16-Nov	17-Nov	18-Nov	Municipality	16-Nov	17-Nov	18-Nov
Achrafieh	L	MH	MH	Ain el-Mreisse	L	MH	H	Bachoura	L	MH	MH
Beirut Central Distr	L	MH	MH	Marfai	L	MH	MH	Mazraa	L	MH	MH
Medaouar	L	MH	MH	Minet el-Hosn	L	MH	MH	Mwssaitbeh	L	MH	MH
Ras Beirut	L	MH	MH	Rmeil	L	MH	MH	Saifi	L	MH	MH
Zqaq el-Blat	L	MH	MH								