

Lebanon Fire Risk Bulletin



CIVIL DEDEFENCE

Refer to cadast table condition.

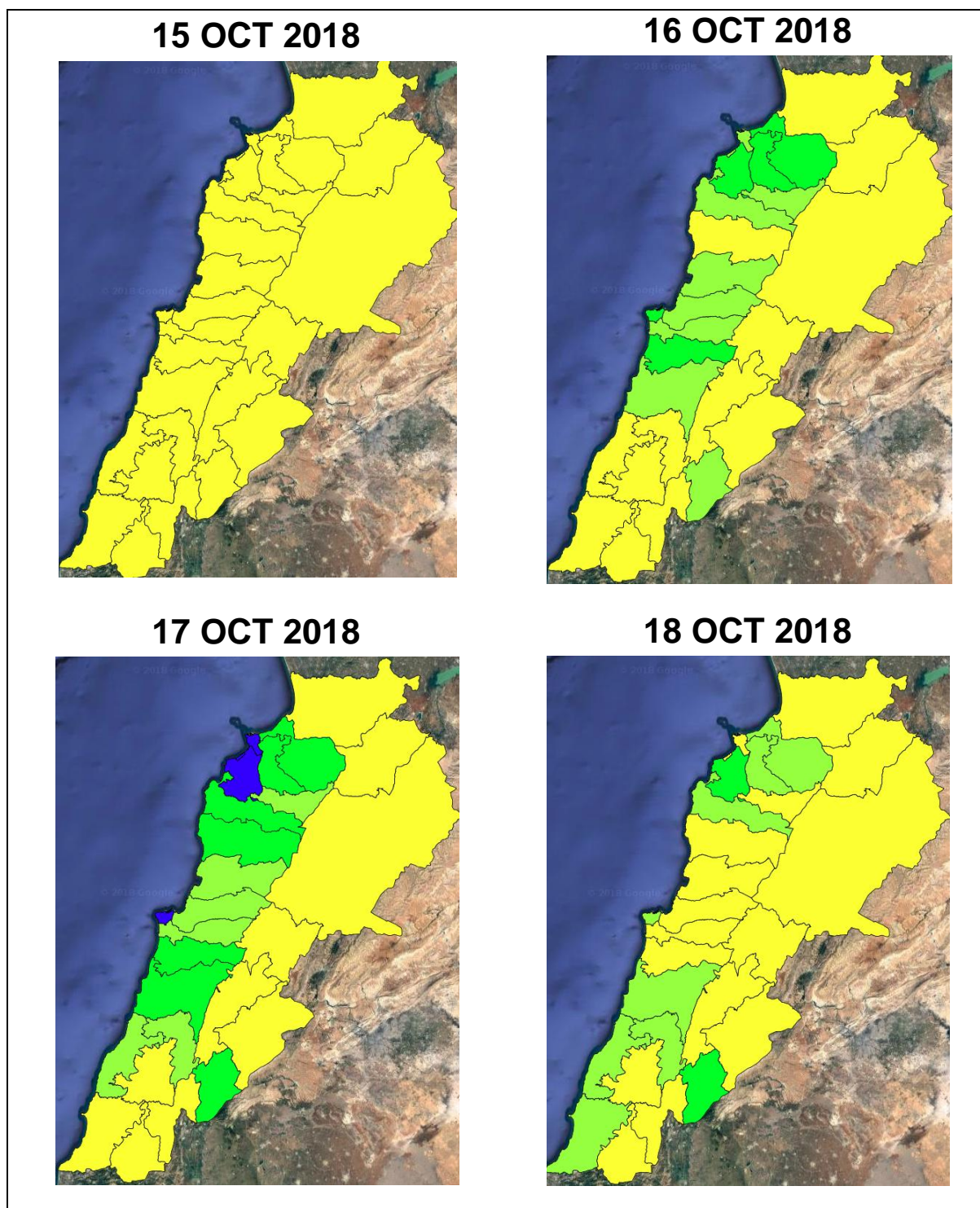
Please note that the indicated temperature is at 2 meters height from the ground.

General description of potential fire risk situation

Symbol	Level of risk	Meaning and actions
VL	Very low	Very low fire risk. Controlled burning operations can be hardly executed due to high fuel moisture content. Normally wildfires self-extinguish.
L	Low	Low fire risk. Controlled burning operations can be executed with a reasonable degree of safety.
ML	Medium low	Medium-low fire risk. Controlled burning operations can be executed in safety conditions. All the fires need to be extinguished.
M	Medium	Medium fire risk. Controlled burning operations would be avoided. All the fires need to be very well extinguished.
M	Medium high	Controlled burning is not recommended. Open flame will start fires. Cured grasslands and forest litter will burn readily. Spread is moderate in forests and fast in exposed areas. Patrolling and monitoring is suggested. Fight fires with direct attack and all available resources.
H	High	Ignition can occur easily with fast spread in grass, shrubs and forests. Fires will be very hot with crowning and short to medium spotting. Direct attack on the head may not be possible requiring indirect methods on flanks. Patrolling and monitoring the territory is highly suggested.
E	Extreme	Ignition can occur also from sparks. Fires will be extremely hot with fast rate of spread. Control may not be possible during day due to long range spotting and crowning. Suppression forces should limit efforts to limiting lateral spread. Damage potential total. Patrolling and monitoring the territory is highly suggested.

Beirut, 16 October 2018

FIRE RISK INDEX

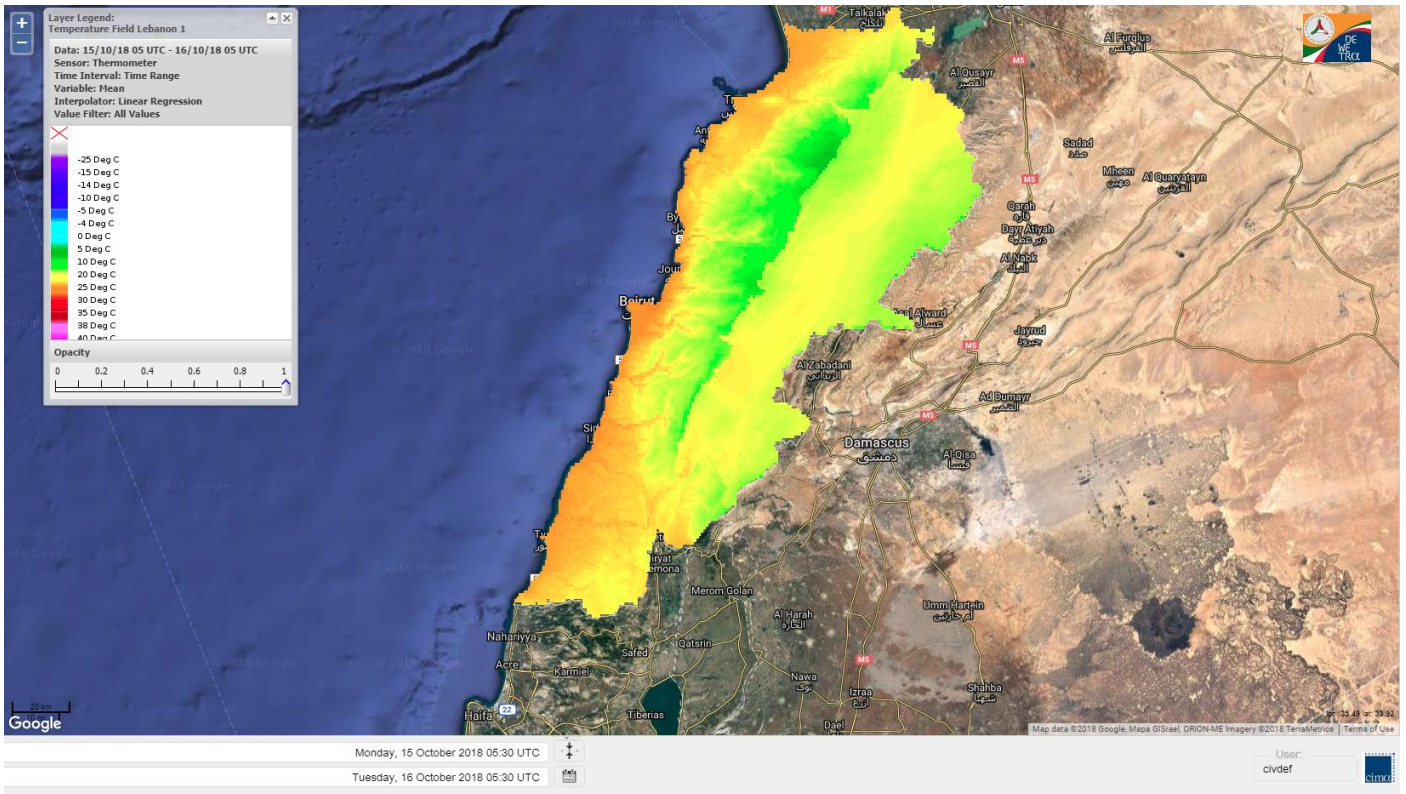


Layer Legend:
Lebanon Wildfire Risk Index 1

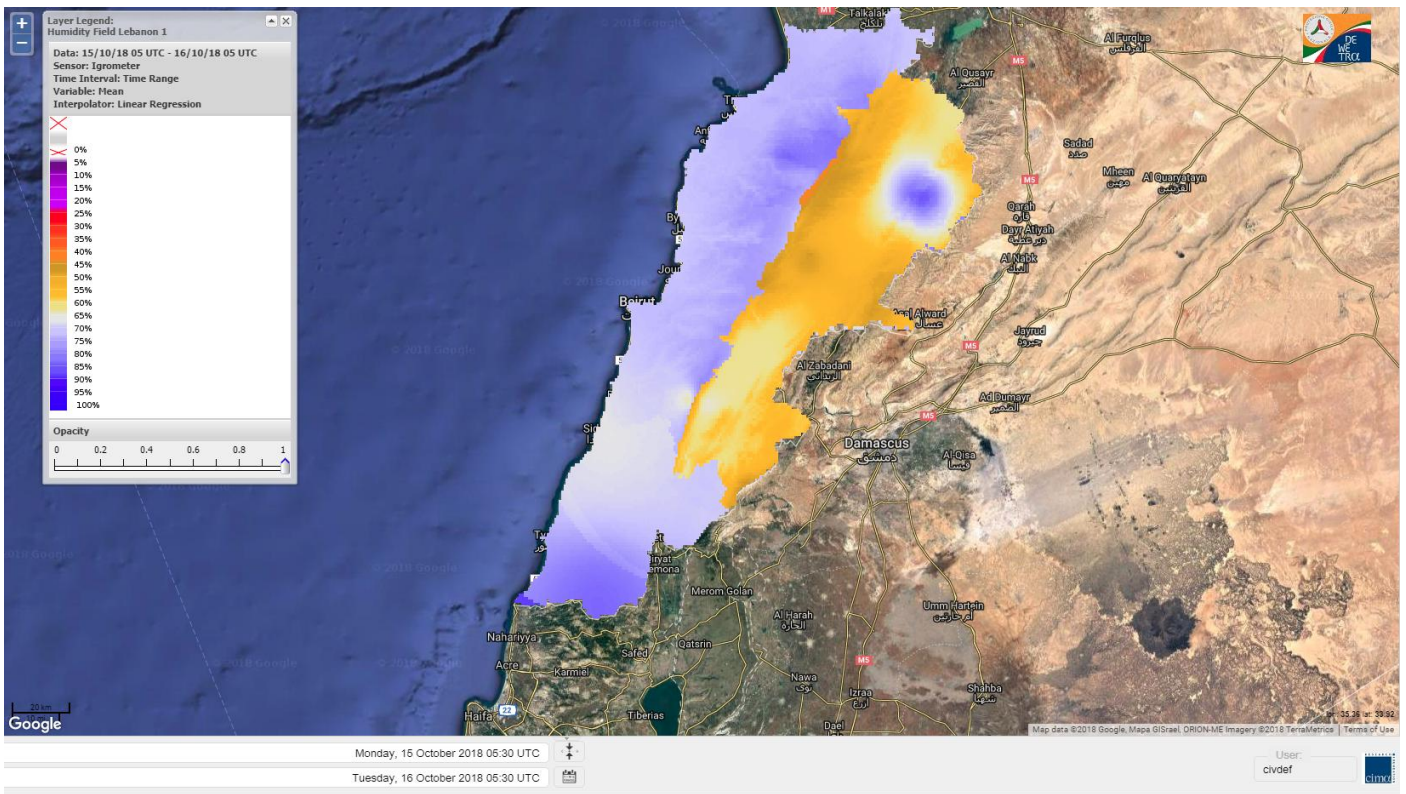
Data: Run: 16/10/2018 00:00. Forecast for 16
Model: RISICO for the Republic of Lebanon
Variable: Fire Weather Index
Spatial Resolution: Caza

- VERY LOW
- LOW
- MEDIUM-LOW
- MEDIUM
- MEDIUM-HIGH
- HIGH
- EXTREME

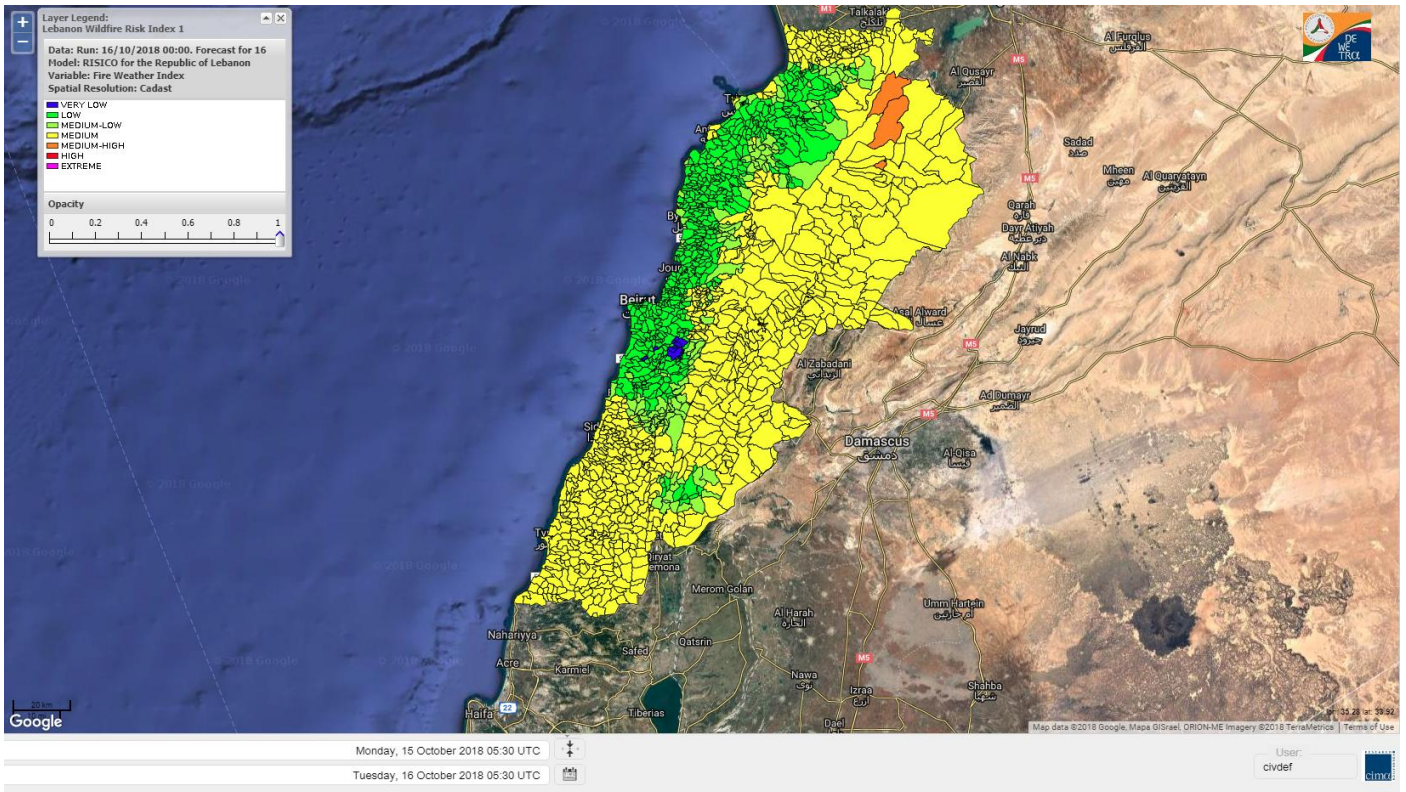
Lebanon temperature for Lebanon 16 OCT 2018



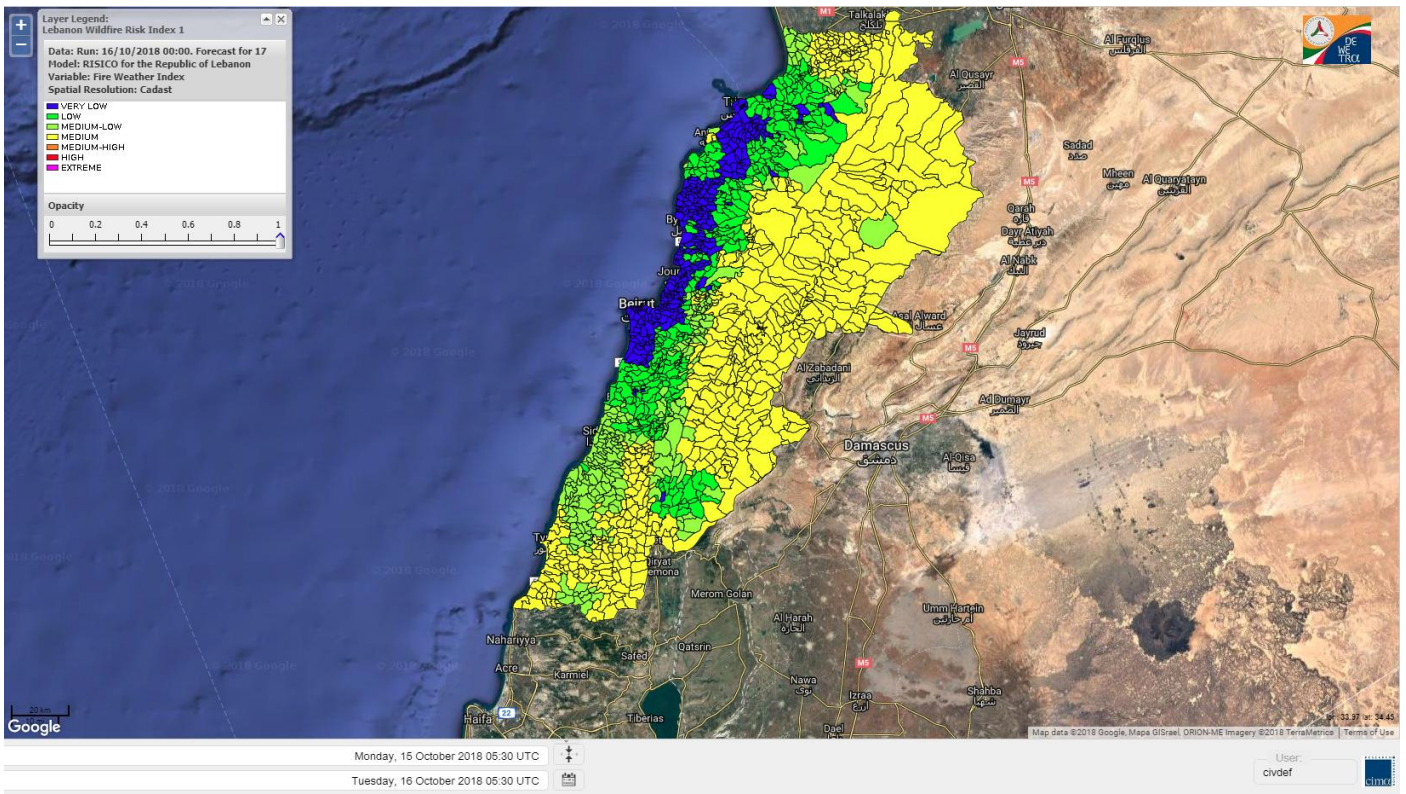
Lebanon humidity for Lebanon 16 OCT 2018



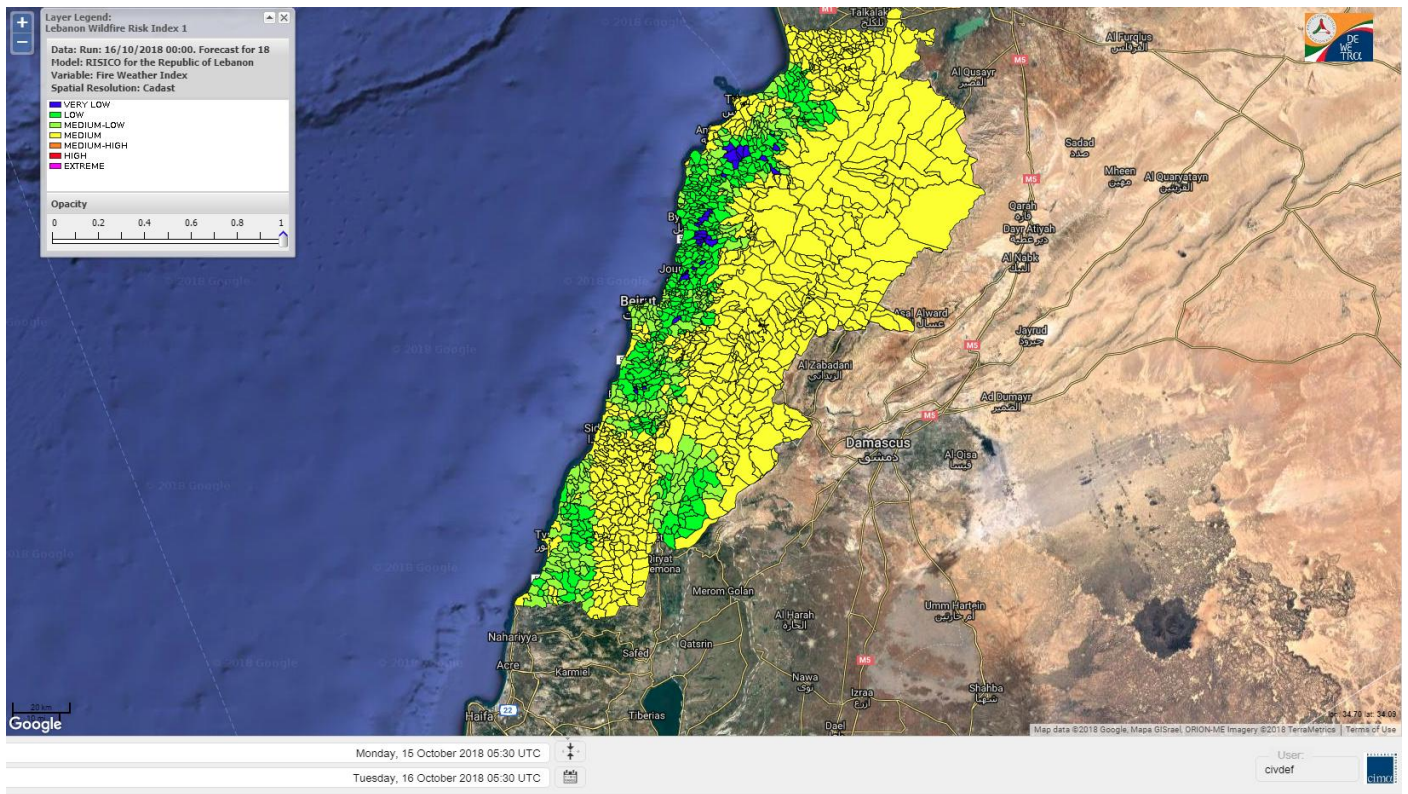
Lebanon for 16 OCT 2018



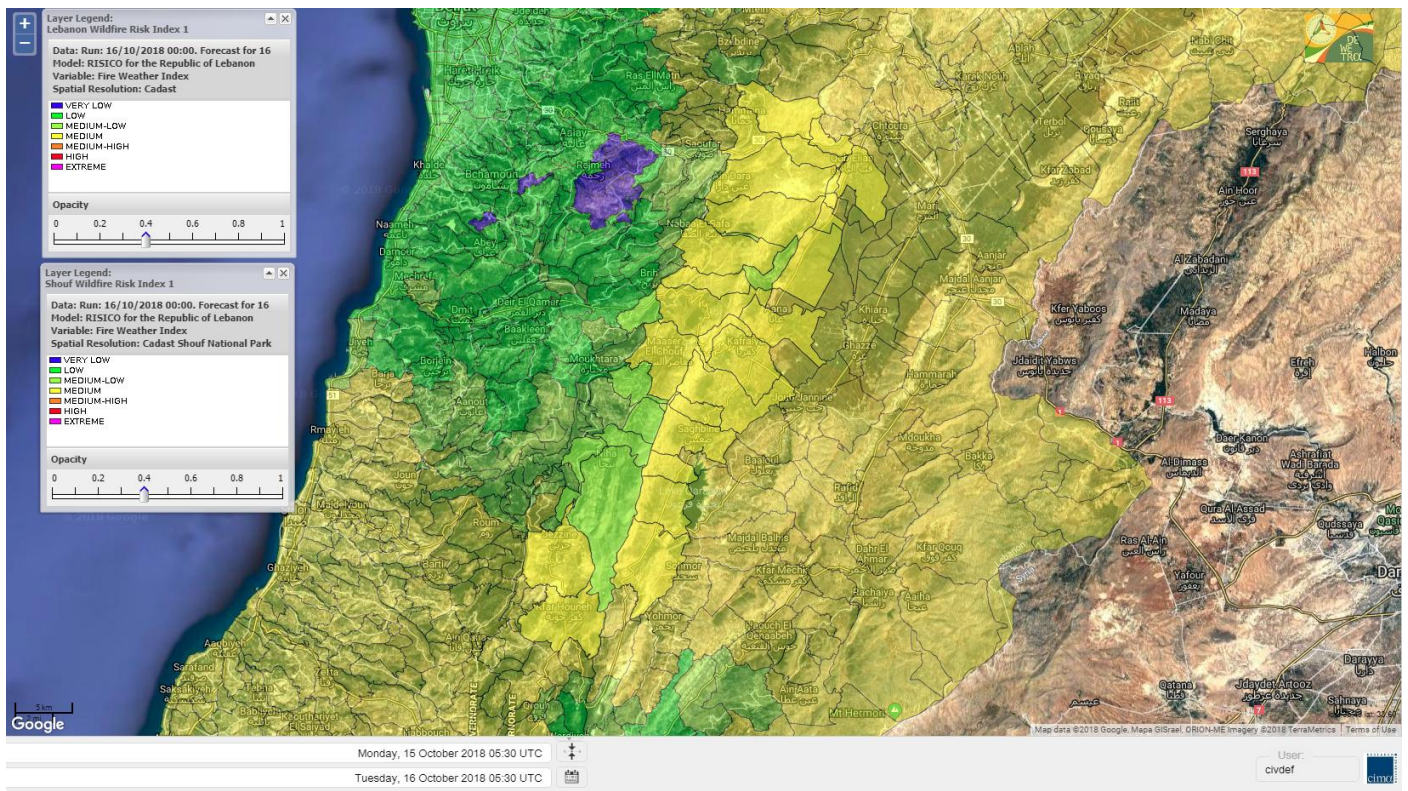
Lebanon for 17 OCT 2018



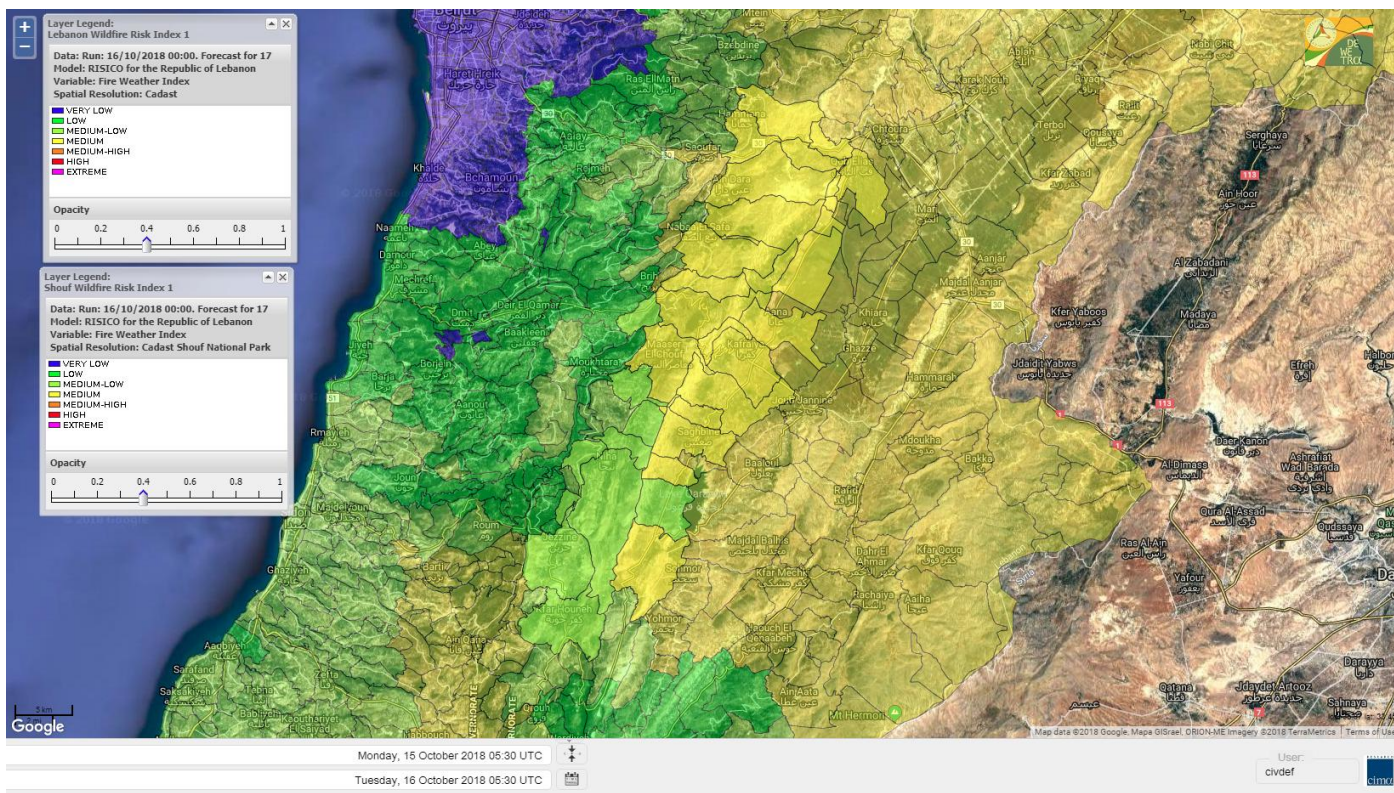
Lebanon for 18 OCT 2018



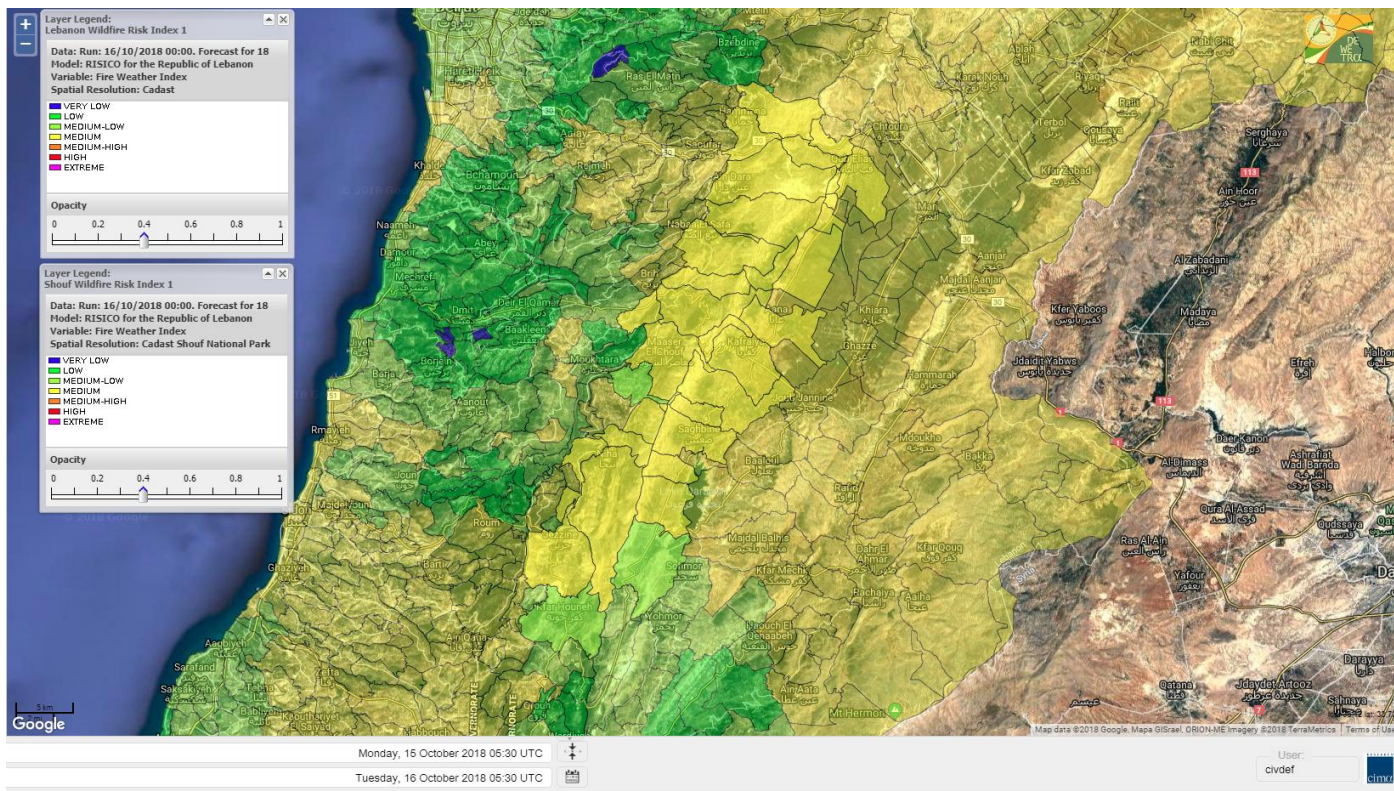
Shouf Biosphere Reserve Forecast for 16 OCT 2018



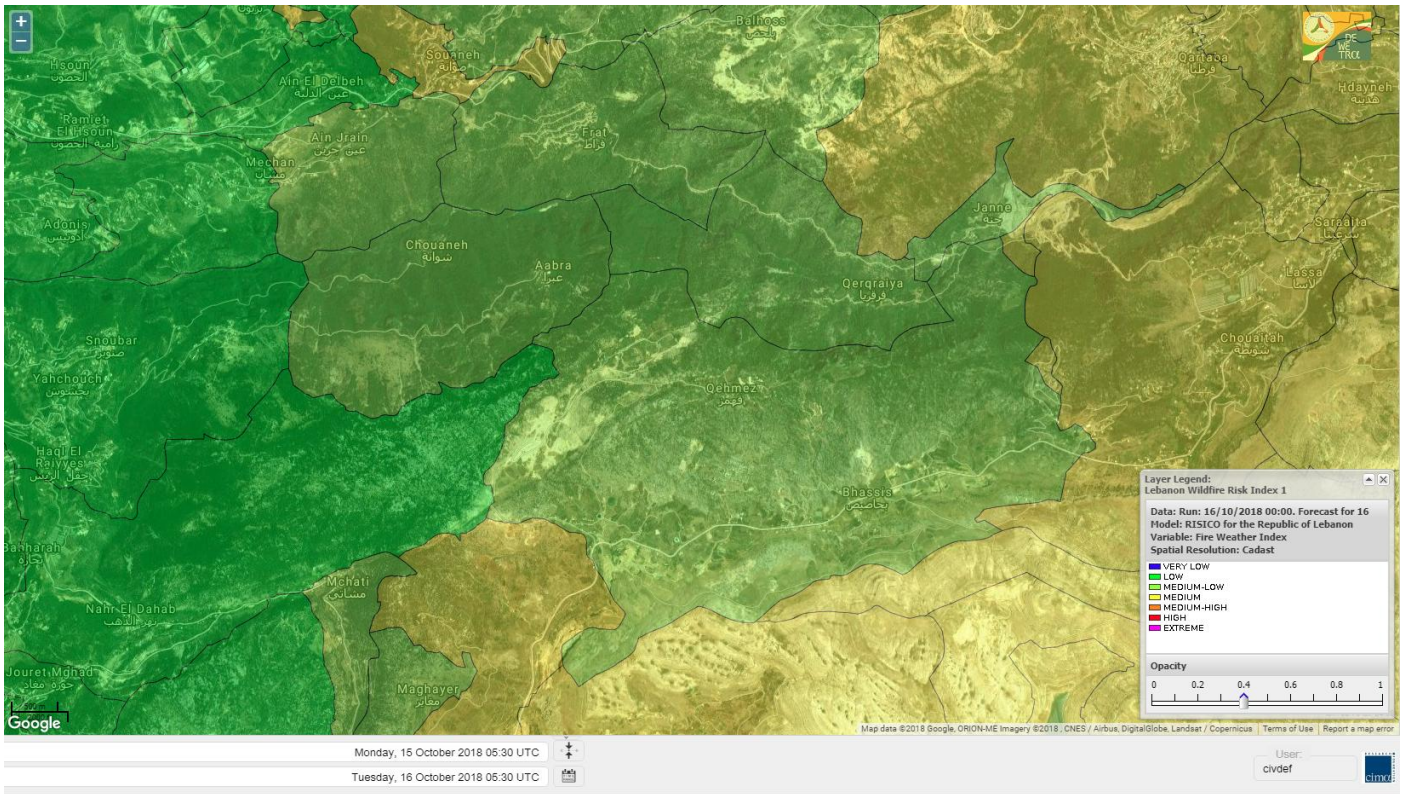
Shouf Biosphere Reserve Forecast for 17 OCT 2018



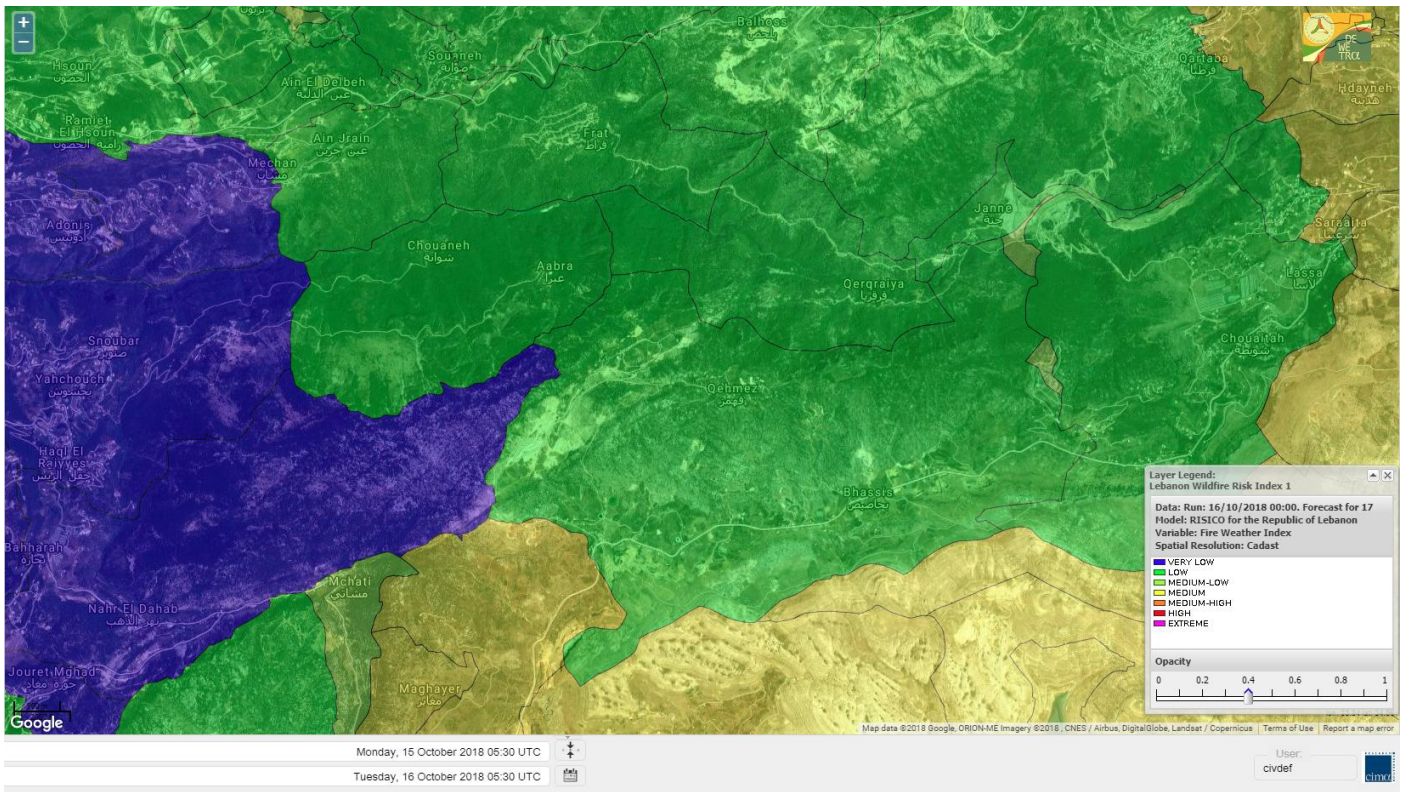
Shouf Biosphere Reserve Forecast for 18 OCT 2018



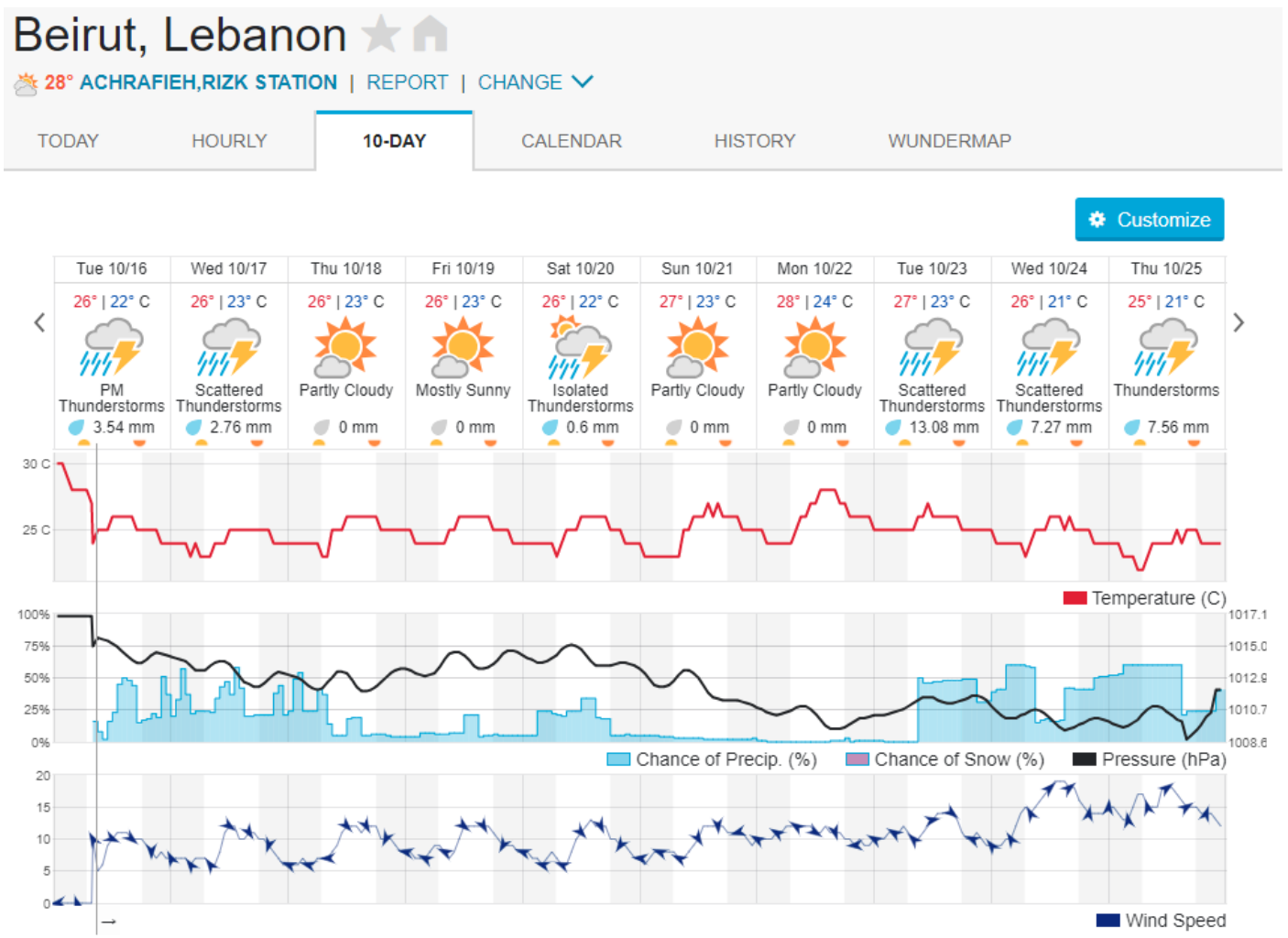
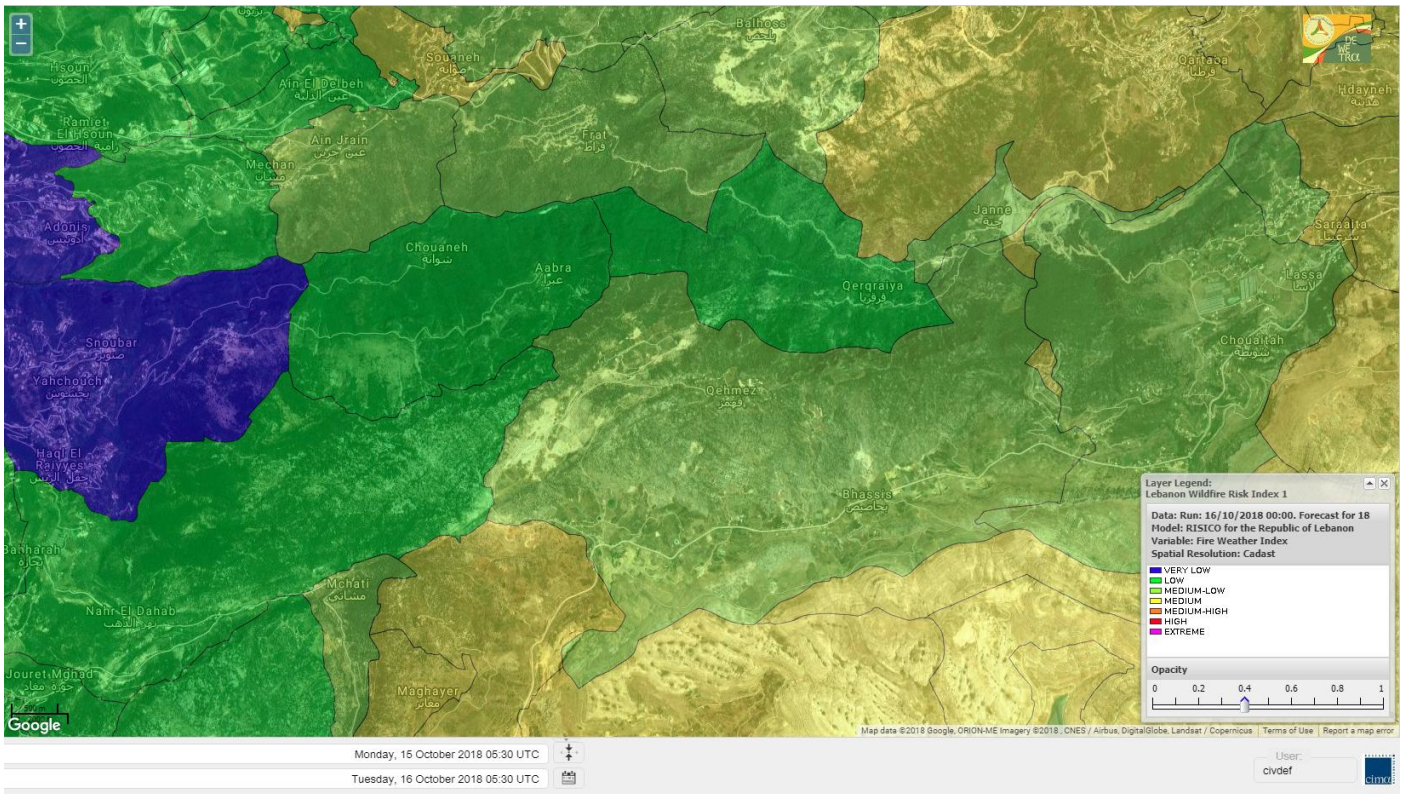
Jabal Moussa Reserve Forecast for 16 OCT 2018



Jabal Moussa Reserve Forecast for 17 OCT 2018



Jabal Moussa Reserve Forecast for 18 OCT 2018



Nord

Koura

Municipality	16-Oct	17-Oct	18-Oct	Municipality	16-Oct	17-Oct	18-Oct	Municipality	16-Oct	17-Oct	18-Oct
Aaba	L	VL	L	Afsaddiq	L	VL	L	Ain Ekrine	L	VL	L
Amioun	L	VL	VL	Anfeh	M	M	M	Badbhoun	L	L	ML
Barghoun	L	L	ML	Barsa	L	VL	M	Batroumine	L	VL	M
Bdebba	L	VL	ML	Bechmizine	L	VL	VL	Bednayel El-Koura	L	L	ML
Bhabbouch El-Koura	L	VL	L	Bkeftine	L	VL	M	Bnehran	L	VL	L
Bqaiaa El-Koura	L	VL	ML	Bsarma	L	VL	L	Btaaboura	ML	L	ML
Bterram	L	VL	L	Btouratij	L	VL	M	Bziza	L	VL	VL
Dar Beehtar	L	VL	L	Dar Chmezzine	L	VL	L	Deddeh	L	VL	M
Deir El-Balamand	L	VL	L	Fih	L	VL	ML	Hraiche	M	ML	M
Ijdaabrine	L	L	ML	Kaftoun	L	VL	L	Kefraya El-Koura	L	L	ML
Kfarakka	L	VL	VL	Kfarhata	L	L	ML	Kfarhazir	L	L	ML
Kfarkahel	L	VL	ML	Kfarsaroun	L	VL	VL	Kosba	L	VL	VL
Mejdel el-Koura	L	VL	L	Nakhle	L	VL	M	Qalhat	L	VL	ML
Ras Masqa	L	VL	M	Rechdibbine	ML	VL	L	Zakroun	M	M	M
Zgharta El-Mtaouile	L	VL	L								

Bcharre

Municipality	16-Oct	17-Oct	18-Oct	Municipality	16-Oct	17-Oct	18-Oct	Municipality	16-Oct	17-Oct	18-Oct
Aabdine	ML	L	L	Bane	L	L	ML	Barhelioun	ML	L	L
Bazouone	L	M	M	Becharre	ML	ML	M	Beit Menzer	ML	L	L
Billa	ML	L	L	Blaouza	ML	L	L	Bqaa Kafra	L	M	M
Bqerqacha	L	M	M	Breissat	M	M	M	Dimane	M	ML	M
Hadath El Jobbeh	M	ML	M	Hadchit	L	L	ML	Hasroun	ML	M	M
Mazraat Aassaf	L	L	L	Mazraat Bani Saab	M	ML	M	Mchaa El-Jobbeh	M	M	M
Metrit	L	VL	L	Moghr El-Ahoual	ML	L	L	Ouadi Qannoubine	L	VL	VL
Qanat	M	L	ML	Qnayouer	ML	L	L	Tourza	ML	L	L

Batroun

Municipality	16-Oct	17-Oct	18-Oct	Municipality	16-Oct	17-Oct	18-Oct	Municipality	16-Oct	17-Oct	18-Oct
Aabrine	L	L	L	Aalali	L	L	ML	Aartiz	L	VL	L
Abdelli	L	VL	L	Ajdabra	L	VL	L	Assia	L	L	ML
Basbina	L	VL	ML	Batroun	L	L	ML	Bcheleh	L	L	ML
Bechtoudar	L	L	L	Beit Chlala	L	L	ML	Beit Kassab	L	VL	L
Bijdarfil	L	L	ML	Bqesmaya	L	L	L	Chatine	M	M	M
Chebtein	L	VL	L	Chekka	L	L	M	Daael	L	L	L
Dahr Abi Yaghi	L	VL	L	Daraya El-Batroun	L	VL	L	Deir Billa	L	VL	L
Deir Kfifane	L	VL	L	Deir Mar Youhanna EL	L	L	L	Deir Mar Youssef Jra	L	VL	L
Douma	ML	L	M	Douq	L	VL	L	Eddeh El-Batroun	L	VL	L
Ftahat El-Batroun	L	VL	L	Ghouma	L	VL	L	Hadtoun	L	L	ML
Hamat	L	L	L	Harbouna	L	VL	L	Hardine	ML	L	L
Helta	L	VL	L	Hery	L	L	M	Jebila	L	VL	VL
Jrabta El-Batroun	L	VL	L	Jrane El-Batroun	L	VL	L	Kfar Aabida	L	VL	L
Kfar Halda	L	L	L	Kfarb Shlaimane	L	VL	L	Kfarhatna	L	VL	L
Kfarhay	L	L	ML	Kfarhelos	L	L	L	Kfifane	L	VL	L

Kfour El Arabi	M	ML	M	Koubba	ML	L	ML	Kour	L	VL	L
Mar Mama	L	VL	L	Masrah	L	VL	L	Mehmarch	L	L	M
Mrah Chdid	L	VL	L	Mrah El Ziyat	L	VL	L	Mrah El-Hajj	L	VL	L
Nahle El-Batroun	L	L	ML	Niha El-Batroun	M	M	M	Ouahj El-Hajjar	L	L	L
Ouata Houb	M	M	M	Qatnaaoun	L	L	L	Racha	L	L	ML
Rachana	L	VL	L	Rachkida	L	L	L	Ram El-Batroun	L	L	L
Ras Nabhach	L	L	L	Selaata	ML	ML	M	Sghar	L	VL	L
Smar Jbayl	L	VL	L	Sourat El-Batroun	L	VL	L	Tannourine El-Faouqa	M	M	M
Tannourine Et-Tahta	M	M	M	Thoum	L	VL	L	Toula El-Batroun	L	VL	L
Zan	L	VL	L								

Zgharta

Municipality	16-Oct	17-Oct	18-Oct	Municipality	16-Oct	17-Oct	18-Oct	Municipality	16-Oct	17-Oct	18-Oct
Aachach	L	L	M	Aalma	L	L	M	Aarde	L	VL	ML
Aintourine	ML	L	L	Arabet Qozhaya	ML	L	L	Arde	L	L	ML
Arjis	M	L	L	Asnoun	L	VL	ML	Ayto	ML	L	L
Basloukit	L	L	M	Bchannine	L	VL	L	Besebeel	L	VL	ML
Bhairret Toula	L	L	ML	Bnachee	ML	L	L	Boussit	L	L	M
Danha	L	L	M	Daraiya Zgharta	ML	L	L	Deir Jdeide	L	VL	ML
Ehden	L	L	M	Halan	L	L	M	Hariq Zgharta	L	VL	ML
Houakir	L	VL	L	Hraiqis	M	L	ML	Iaal	L	VL	ML
Ijbaa	ML	L	L	Karm Saddeh	ML	L	L	Kfarchakhna	L	VL	ML
Kfardlaqous	L	VL	ML	Kfarfou	ML	L	L	Kfarhata Zgharta	L	VL	ML
Kfarhoura	L	VL	ML	Kfarsghab	L	L	M	Kfaryachit	L	VL	ML
Kfarzaina	L	VL	ML	Khaldiye	L	VL	ML	Mazraat Ajbeaa	L	VL	ML
Mazraat Et-Teffah	ML	L	VL	Mazraat Jneid	L	VL	ML	Mejdlaia Zgharta	L	L	M
Merh Kfarsghab	L	L	L	Miryata	L	L	M	Miziara	ML	L	L
Mzraat Kefraya	ML	L	M	Qorah Bach	L	VL	ML	Rachiine	L	VL	M
Ras Kifa	ML	L	L	Sakhra	L	VL	ML	Sebhel Zgharta	ML	L	L
Serhel	ML	L	VL	Tallet Zgharta	L	VL	ML	Toula Zgharta	L	L	L
Zgharta	L	VL	ML								

Minieh-Denniye

Municipality	16-Oct	17-Oct	18-Oct	Municipality	16-Oct	17-Oct	18-Oct	Municipality	16-Oct	17-Oct	18-Oct
Aasaymout	ML	VL	L	Aaymar	L	L	ML	Aazki	L	L	M
Ain El-Tineh-Miniyeh	L	L	L	Assoun	L	L	ML	Bakhaaoun	L	L	ML
Bchennata	L	ML	M	Bechehara	L	VL	L	Beddawi	ML	L	M
Behouaita	L	L	L	Beit El Foqss	L	L	L	Beit Haouik	ML	L	ML
Beit Zoud	L	L	L	Bekaasafrine	L	L	M	Borj El Yahoudiyeh	M	L	ML
Bgarsouna	L	L	L	Btermaz	L	VL	L	Debaael	ML	L	L
Deir Ammar	M	L	ML	Deir Nbouh	L	L	ML	Haouaret-Miniyeh	ML	L	ML
Haql el Azimeh	L	L	L	Harf El Siyad	L	L	L	Hazmiye-Miniyeh	L	L	L
Izal	L	L	ML	Jarjour	L	VL	VL	Jayroun	L	L	L
Kahf El-Malloul	L	L	L	Karm El-Moher	L	L	ML	Kfar Binine	L	L	L
Kfarchalane	L	L	ML	Kfarhabou	L	L	ML	Kharroub-Miniyeh	L	L	M
Mazraat El-Kreme	L	VL	L	Mazraat Ketrane	L	L	ML	Merkebta	ML	L	L
Minyeh	M	VL	ML	Mrah El Sfirat	L	VL	L	Mrah Sraj	L	L	L
Mrebbine	ML	L	M	Nabi Youcheaa	M	VL	ML	Nemrine	L	L	ML

Qarhaiya	ML	L	ML	Qarne	L	VL	L	Qarsita	L	L	L
Qattineh-Miniyeh	L	VL	L	Qemmamine	L	VL	L	Qraine	L	L	L
Raouda-Aadoua	L	L	L	Rihaniyet-Miniyeh	L	L	L	Sfireh	L	L	L
Sir Ed-Danniyeh	L	L	L	Tarane	L	VL	L	Terbol-Miniyeh	ML	L	M
Zaghartaghriine	L	L	ML	Zouq Bhannine	ML	L	ML				

Nabatiye

Nabatiye

Municipality	16-Oct	17-Oct	18-Oct	Municipality	16-Oct	17-Oct	18-Oct	Municipality	16-Oct	17-Oct	18-Oct
Aabba	M	ML	M	Aazzi	M	ML	M	Adchit El-Chqif	M	M	M
Ain Bou Swar	M	M	M	Ain Kana	M	M	M	Ali El-TaHER	M	M	M
Ansar	M	ML	ML	Arab Salim	M	M	M	Arnoun	M	M	M
Bfaroue	M	ML	M	Breyqaah	M	M	M	Charqiyeh	M	ML	M
Choukine	M	M	M	Deir El Zahrani	M	ML	M	Doueur El-Nabatiyeh	M	ML	M
Habbouch El-Nabatiye	M	M	M	Hamra El-Nabatiyeh	M	M	M	Harouf El-Nabatiyeh	M	ML	M
Hmaile	M	M	M	Houmin El Faouqa	M	M	M	Houmin El Tahta	M	ML	M
Jarjough	M	M	M	Jbaah El-Nabatiyeh	M	M	M	Jebchit	M	ML	M
Kfar Djal El-Nabatiy	M	M	M	Kfar Remmane	M	M	M	Kfar Sir	M	M	M
Kfar Tebnit	M	M	M	Kfarfila	M	M	M	Kfour El-Nabatieh	M	ML	M
Mayfadoun	M	M	M	Mazraat Bsaffour	M	ML	M	Mazraat Chalbaal	M	ML	M
Mazraat Dmoul	M	M	M	Mazraat El Khreibeh	M	M	M	Mazraat El-Bayad El-	M	M	M
Mazraat Kfarjaouz	M	M	M	Mazraat Qalaat Meiss	M	ML	M	Nabatiyeh El-Fawka	M	M	M
Nabatiyeh Et-Tahta	M	M	M	Namiriyeh	M	ML	M	Qaaqaaiyet El Jisr	M	M	M
Qossaibeh El-Nabatiy	M	M	M	Roumine	M	ML	M	Sarba El-Nabatieh	M	M	M
Sir El-Gharbiyeh	M	ML	ML	Toul	M	ML	M	Yehmor El-Nabatiyeh	M	M	M
Zaoutar El Charqiyeh	M	M	M	Zaoutar El-Gharbiyeh	M	M	M	Zebdine El-Nabatiyeh	M	M	M
Zefta	M	ML	M								

Hasbaiya

Municipality	16-Oct	17-Oct	18-Oct	Municipality	16-Oct	17-Oct	18-Oct	Municipality	16-Oct	17-Oct	18-Oct
Aain Jarfa	L	L	L	Abou Qamha	L	L	L	Ain Qania	L	L	L
Bourghos	ML	L	ML	Chebaa	M	M	M	Chouaya Hasbaya	ML	L	ML
Dellafeh	ML	L	ML	Fardiss Hasbaiya	L	L	L	Hasbaya	L	L	L
Hbariyeh	ML	L	L	Kaoukaba Hasbaiya	L	L	ML	Kfar Chouba	M	ML	L
Kfar Hamam	M	ML	L	Kfeir El-Zait	ML	L	L	Khalwat Hasbaya	M	ML	ML
Khreibet Hasbaiya	M	ML	L	Majidiyeh Hasbaiya	M	ML	L	Marj Ez-Zhour (Haouc	M	M	ML
Meri	M	ML	L	Mimass	ML	L	L	Rachaiya El-Fokhar	ML	L	L
Salaiyeb	M	M	L								

Marjayoun

Municipality	16-Oct	17-Oct	18-Oct	Municipality	16-Oct	17-Oct	18-Oct	Municipality	16-Oct	17-Oct	18-Oct
Aalmane Marjaayoun	M	M	M	Aamra	M	M	L	Adayseh Marjaayoun	M	M	M
Adchit El-Koussair	M	M	M	Ain Aarab Marjaayoun	M	M	L	Bani Haiyann	M	M	M
Blatt Marjaayoun	ML	L	ML	Blida	M	M	M	Borj El-Moulouk	M	M	ML
Boueyda Marjaayoun	ML	L	ML	Deir Mimass	M	M	M	Deir Siriane	M	M	M
Dibbine	ML	L	ML	Ebel El Saqi	ML	L	ML	Houla	M	M	M
Houra	M	M	M	Kfar Kila	M	M	M	Khiam Marjaayoun	M	M	L

Klayaa	M	M	ML	Majdel Selem	M	M	M	Marjaayoun	ML	L	ML
Markaba	M	M	M	Mays El-Jabal	M	M	M	Mazraat Doumiat	M	M	M
Mazraat Sarada	M	M	L	Mhaibib	M	M	M	Qabrikha	M	M	M
Qantara	M	M	M	Rab El-Thalathine	M	M	M	Saouaneh Marjayoun	M	M	M
Talloussa	M	M	M	Taybeh Matjaayoun	M	M	M	Touline	M	M	M

Bent Jbail

Municipality	16-Oct	17-Oct	18-Oct	Municipality	16-Oct	17-Oct	18-Oct	Municipality	16-Oct	17-Oct	18-Oct
Ain-Ebel	M	M	M	Aitaroun	M	M	M	Aynata Bint Jbeil	M	M	M
Ayta El-Chaeb	M	ML	ML	Ayta El-Jabal	M	M	M	Beit Lif	M	ML	ML
Beit Yahoun	M	M	M	Bint Jbeil	M	M	M	Borj Qalaway	M	M	M
Braachit	M	M	M	Chakra	M	M	M	Debel	M	ML	M
Deir Antar	M	M	M	Froun	M	M	M	Ghandouriyeh Bint Jb	M	M	M
Hanine	M	M	M	Hariss	M	M	M	Hdatha	M	M	M
Jmeyjme	M	M	M	Kafra Bint Jbeil	M	M	L	Kfar Dounine	M	M	M
Khirbet Selm	M	M	M	Kounine	M	M	M	Maroun El Ras	M	M	M
Qalaway	M	M	M	Qaouzah	M	ML	L	Qatmoun	M	M	M
Ramya Bint Jbeil	M	ML	ML	Rchaf	M	ML	M	Rmeich	M	M	M
Safad Al Battikh	M	M	M	Salhaneh	M	ML	L	Serbine	M	M	M
Sultanieh Bint Jbeil	M	M	M	Tibnine	M	M	M	Tiri	M	M	M
Yaroun	M	M	M	Yater	M	ML	ML				

Mont Liban

Jbail

Municipality	16-Oct	17-Oct	18-Oct	Municipality	16-Oct	17-Oct	18-Oct	Municipality	16-Oct	17-Oct	18-Oct
Aabeydat	L	VL	L	Aalita	L	VL	VL	Aamchit	ML	VL	L
Aarab El-Lahib	M	M	M	Aarasta	M	M	M	Adonis Jbeil	L	VL	VL
Afqa Jbeil	M	M	M	Ain El Delbeh Jbeil	L	L	L	Ain El-Ghouayba	M	L	ML
Ain Jrain	ML	L	ML	Ain Kfah	L	VL	L	Almat El Chemaliyat	ML	L	ML
Almat El-Jenoubiya	ML	L	ML	Aqoura	M	M	M	Bayzoun	L	L	L
Bchille Jbeil	L	VL	L	Bechtida	L	VL	VL	Behdaydat	L	VL	L
Beit Habbaq	L	VL	L	Bejjeh	L	VL	L	Bekhaaz	L	VL	L
Berbara Jbeil	ML	VL	ML	Bintael	L	VL	L	Birket Hjoula	L	VL	VL
Blatt Jbeil	L	L	L	Boulhos	ML	L	ML	Breyj Jbeil	L	VL	VL
Chamat	L	VL	L	Chikhane	L	VL	ML	Chmout	L	VL	L
Eddeh Jbeil	L	VL	L	Ehmej	M	L	M	Fatre	L	VL	VL
Ferhet	L	L	L	Fghal	L	VL	L	Frat	ML	L	ML
Ghabat	M	M	M	Ghalboun	L	VL	L	Gharzouz	L	VL	L
Ghofrine	L	VL	L	Habil	L	VL	VL	Halate	L	VL	L
Haqel	L	VL	L	Hbaline	L	VL	L	Hboub	L	L	L
Hdeine	M	M	M	Hema Er-Rehban	M	ML	M	Hema Mar Maroun Aann	ML	ML	M
Hjoula	L	VL	L	Hosrayel	L	VL	L	Hsarat	L	VL	L
Hsoun	L	L	L	Jaj	L	L	M	Janne	ML	L	ML
Jbeil	ML	VL	L	Jeddeyel Jbeil	L	VL	ML	Jlisse	L	VL	VL
Jouret El-Qattine	L	L	L	Kfar Baal Annaya	L	VL	L	Kfar Kidde	L	VL	L
Kfar Kouas	L	VL	L	Kfar Mashoun	L	VL	L	Kfoun	L	VL	L

Kharbe Jbeil	L	VL	L	Laqlouq	M	M	M	Lassa	M	L	ML
Lehfed	L	L	L	Maad	L	VL	L	Mar Sarkis	M	M	M
Mastita	ML	VL	L	Mayfouq	L	L	L	Mazraat El Siyad	M	M	M
Mazraat El-Maaden	ML	L	ML	Mechane	L	VL	L	Mechmech Jbeil	ML	L	L
Mehrin	L	L	L	Mejdel El-Akoura	M	M	M	Mghayreh Jbeil	M	M	M
Mounsef	L	VL	ML	Nahr Ibrahim	ML	VL	L	Qahmez	ML	L	ML
Qartaba	M	L	M	Qartaboun	ML	VL	L	Qattara Jbeil	L	VL	L
Qorqraya	ML	L	L	Ramout	L	VL	L	Ras Osta	L	VL	L
Rihane Jbeil	ML	VL	ML	Sakiet El-Khayt	L	VL	L	Saqi Richmaya	L	L	ML
Sebrine	L	VL	L	Seraita	M	M	M	Souane Jbeil	M	L	M
Tadmor	M	M	M	Tartej	L	L	M	Torzaiya	L	L	L
Yanouh Jbeil	M	M	M	Zibidine Jbeil	L	VL	VL				

El Metn

Municipality	16-Oct	17-Oct	18-Oct	Municipality	16-Oct	17-Oct	18-Oct	Municipality	16-Oct	17-Oct	18-Oct
Aain El-Qabu	M	M	M	Aain El-Qach	M	M	ML	Aain El-Teffaha	M	M	ML
Aain el-Safssaf El-M	M	ML	L	Abou Mizane	M	M	ML	Ain Aar	L	VL	ML
Ain Alaq	L	VL	L	Ain El-Kharroube	M	M	ML	Ain El-Sendianeh	ML	ML	ML
Ain El-Zeitoune	ML	ML	L	Ain Saadeh	L	VL	L	Aintoura El-Matn	M	M	M
Amaret Chalhoub	L	VL	ML	Antelias	L	VL	ML	Atchaneh	L	VL	L
Ayroun	ML	M	ML	Baabdat	M	ML	L	Baouchariyeh	L	VL	ML
Baskinta	M	M	M	Beit Chabab	M	ML	ML	Beit El-Chaar	L	VL	ML
Beit El-Kekko	L	VL	ML	Beit Mery	L	VL	L	Bhersaf	ML	L	L
Bikfaya	M	M	ML	Biyakout	L	VL	ML	Bnabil	ML	ML	ML
Bourj Hammoud	L	VL	ML	Bqennaya	L	VL	L	Broummana El-Matn	L	VL	L
Bsalim	L	VL	L	Bsifrine	M	ML	L	Bteghrine	M	M	M
Chaouiye	L	L	L	Chouaya El-Matn	M	M	ML	Choueir	M	ML	ML
Chrine	M	ML	L	Dahr El Sawan El-Mat	L	L	L	Daychouniyeh	L	L	ML
Dbayeh	L	VL	ML	Deir Chamra	ML	L	L	Deir Mar Abda el Mch	L	VL	L
Deir Mar Roukouz	L	VL	ML	Deir Tamiche	L	VL	L	Dik El-Mehdi	L	VL	L
Dikwaneh	L	VL	ML	Douar El-Matn	M	ML	ML	Fanar	L	VL	L
Fraike	L	VL	L	Haret El-Ballaneh	L	VL	L	Hbous	L	VL	L
Himlaya	M	ML	ML	Jal El Did	L	VL	ML	Jdeideh El-Metn	L	VL	ML
Jouar El-Matn	M	ML	L	Jouret El-Ballout	L	VL	L	Kaaqour	M	ML	ML
Kfar Aaqab	ML	ML	L	Kfertay El-Matn	ML	ML	M	Khenchara	ML	ML	ML
Khillat El-Mtain	M	ML	L	Konnabat Broummana	L	VL	L	Konnabat Salima	M	ML	L
Machraah El-Matn	M	M	M	Majdel Tarchich	M	M	M	Majzoub	L	VL	ML
Mansouriyeh El-Metn	L	VL	ML	Mar Boutros Karm Et-	M	ML	L	Mar Chaya et Mzekke	L	VL	L
Mar Moussa Ed-Douar	M	ML	L	Marjaba	M	M	M	Masqa	L	VL	L
Mayasse	M	ML	ML	Mazraat Deir Aoukar	L	VL	ML	Mazraat El-Hadirat	L	VL	L
Mazraat Yachouh	L	VL	ML	Mchikha	M	M	ML	Menqlet Mezher	L	VL	ML
Mhaydseh Matn	M	M	ML	Mkalles	L	VL	ML	Mrouj	M	M	M
Mtain	M	M	M	Mtayleb	L	VL	L	Nabay	L	VL	L
Naccache	L	VL	ML	Ouadi Chahine	M	ML	L	Ouadi El-Karm El-Mat	L	L	L
Ouata El-Mrouj	ML	M	ML	Ouyoun El-Matn	L	VL	L	Qornet Chehwan	L	VL	L
Qornet El-Hamra	L	VL	L	Roumieh	L	VL	L	Sfeilet Bikfaya	M	ML	L
Sinn El-Fil	L	VL	ML	Zabbougha	L	VL	L	Zalqa	L	VL	ML

Zarououn	ML	ML	ML	Zekrite	L	VL	L	Zighrine El-Matn	M	M	ML
Zouk El-Khrab	L	VL	L								

Chouf

Municipality	16-Oct	17-Oct	18-Oct	Municipality	16-Oct	17-Oct	18-Oct	Municipality	16-Oct	17-Oct	18-Oct
Aalmane El-Chouf	M	ML	ML	Aammiq El-Chouf	L	L	L	Ain Ouzein	ML	L	L
Ain Qani	L	L	ML	Ain Zhalta	M	M	M	Ainbal	L	L	L
Amateur	ML	L	ML	Anout	ML	L	ML	Atrine	L	L	ML
Baadarane	ML	ML	M	Baaqline	L	L	L	Baasir	L	L	ML
Barja	M	L	ML	Barouk	M	M	M	Bater	ML	ML	M
Batloun	ML	ML	M	Bayqoun	ML	ML	M	Bchetfine	L	L	L
Beiteddine	L	L	L	Benouati Ech-Chouf	L	L	L	Berjein	L	L	L
Bireh et Mtalleh	L	L	M	Biret El-Chouf	L	ML	M	Bkechtine Ouel Mchei	L	VL	VL
Bkifa El-Chouf	ML	ML	ML	Botme	ML	L	L	Bqaiaa Ech-Chouf	L	L	L
Bsaba El-Chouf	ML	L	ML	Chammis El-Chouf	M	ML	ML	Chehim	ML	L	ML
Chemaarine	L	VL	L	Chourit	L	L	L	Daher El-Chouf	L	L	L
Dalhoun	M	L	ML	Damour	L	L	L	Daraya El-Chouf	ML	L	L
Deir El-Moukhalles	M	L	L	Deir Baba	L	L	L	Deir Dourit	L	L	L
Deir El-Qamar	L	L	L	Deir Kouche	L	L	L	Dibbieh	L	L	L
Dmit	L	L	L	Fouara Jaafar	L	L	ML	Fraidis El-Chouf	M	M	M
Ghabet Jaafar	L	L	L	Gharife	L	L	ML	Haret Jandal	ML	ML	M
Hasrout	L	L	ML	Jadra	M	ML	M	Jahlieh	L	L	L
Jbeih El-Chouf	ML	ML	M	Jdeidet El-Chouf	L	L	ML	Jiyeh	ML	L	ML
Jleilyeh	ML	L	ML	Jmailiyeh	M	ML	ML	Joun	M	L	ML
Kahlounie El-Chouf	L	ML	M	Ketermaya	M	ML	M	Kfar Faqoud	L	L	L
Kfar Hamal	L	L	ML	Kfar Him	L	L	L	Kfar Katra	ML	L	L
Kfar Niss	L	L	ML	Kfar hay	L	L	ML	Kfarnabrakh	L	L	ML
Khirbet Bisri	ML	L	L	Knayse El-Chouf	ML	L	L	Maaniyeh	M	ML	ML
Maasser Beiteddine	L	L	ML	Maasser El-Chouf	M	M	M	Majdalouna	M	ML	ML
Majdel El-Meouch	L	L	ML	Mazboud	ML	ML	M	Mazmoura	ML	L	ML
Mazraat El Chouf	ML	ML	ML	Mazraat El Daher	ML	L	L	Mazraat El-Douair	ML	L	L
Mechref	ML	L	L	Mghairie	M	ML	M	Mghayrie El-Chouf	ML	L	L
Moukhtara	L	L	ML	Mrusti	ML	ML	M	Mtolle	L	L	M
Naameh	L	L	ML	Niha El-Chouf	ML	ML	M	Ouadi Abou Youssef	L	VL	VL
Ouadi Ed-Deir	L	L	L	Ouadi El-Sit	L	L	ML	Ouadi bnehlay	L	VL	VL
Qraibeh	ML	ML	ML	Qreiaa	M	L	L	Rmayle El-Chouf	M	ML	M
Semqaniyeh	L	ML	M	Sibline	M	ML	M	Sirjbeil	L	L	L
Warhanieh	ML	M	M	Werdaniyeh	M	ML	M	Zaarourieh	ML	L	ML

Baabda

Municipality	16-Oct	17-Oct	18-Oct	Municipality	16-Oct	17-Oct	18-Oct	Municipality	16-Oct	17-Oct	18-Oct
Abadiyeh	L	L	ML	Ain Mouaffaq	L	L	ML	Araiya	L	L	L
Arbaniyeh	M	ML	L	Arsoun	M	ML	ML	Baabda	L	VL	ML
Baalchmey	L	L	M	Bmaryam	M	ML	M	Bourj El-Brajneh	L	VL	M
Boutchay	L	VL	L	Bsaba Baabda	L	VL	ML	Btekhney	M	ML	M
Btibyat	M	ML	M	Bzbedine	M	ML	L	Chbeniyeh	M	ML	M
Chiyah	L	VL	ML	Chmeisset Baabda	M	ML	M	Chouit	L	L	L
Deir El-harf	M	ML	ML	Deir Khouna	ML	ML	M	Dlaybeh	M	ML	L

Falougha	M	M	M	Furn El-Chebbak	L	VL	ML	Hadath Beyrouth	L	VL	M
Halaliyeh Baabda	L	L	L	Hammana	M	M	M	Haret El Sett	L	L	L
Haret Hamze	L	L	M	Haret Hreik	L	VL	ML	Hasbaiya El-Metn	M	ML	L
Jouar El-Hoz	M	M	M	Jouret Arsoun	ML	ML	L	Kfar Chima	L	VL	M
Kfar Selouane	M	M	M	Khalouat Baabda	M	ML	M	Kneisset Baabda	ML	L	L
Laylakeh	L	VL	M	Louayzeh Baabda	L	L	ML	Merdache	L	VL	ML
Mzairaa Baabda	L	L	L	Ouadi Chahrour El Ol	L	L	ML	Ouadi Chahrour El So	L	VL	L
Qalaa Baabda	M	ML	M	Qhraybe Baabda	M	ML	M	Qobbayaa	M	ML	M
Qornayel	ML	ML	L	Qortada	L	VL	VL	Qrayeh Baabda	M	ML	M
Qsaibeh Baabda	L	VL	L	Qtale Baabda	M	ML	M	Ras El Metn	L	L	ML
Ras El-Haref	M	ML	M	Rouayset El-Ballout	L	L	L	Salima Baabda	M	ML	ML
Tahouitat El Ghadir	L	VL	M	Tarchich	M	M	M	Zandouqa	L	VL	VL

Aley

Municipality	16-Oct	17-Oct	18-Oct	Municipality	16-Oct	17-Oct	18-Oct	Municipality	16-Oct	17-Oct	18-Oct
Abey	L	L	L	Aghmid	ML	ML	M	Ain Dara	M	M	M
Ain Drafil	L	VL	L	Ain El Halazoun	VL	L	M	Ain El-Rmmaneh	L	L	L
Ain Jedideh	VL	L	M	Ain Ksour	L	VL	L	Ain Onoub	L	VL	L
Ain Traz	L	L	ML	Ainab	L	VL	L	Aley	L	L	M
Aramoun	L	VL	L	Aytat	L	VL	ML	Azouniyeh	ML	M	M
Baawerta	L	L	L	Badghan Oua Wadi Bad	ML	ML	M	Bassatine	VL	VL	ML
Bayssour	L	L	ML	Bchamoun	L	VL	L	Bdadoun	L	L	L
Behouara	L	L	ML	Bennay	L	L	L	Bhamdoun El-Dayaa	VL	ML	M
Bhamdoun El-Mhatta	L	ML	M	Bkhechtey	VL	L	M	Bleibel	L	VL	L
Bmakine	L	L	M	Bmehray	M	M	M	Bouzrid	L	VL	L
Bserrine	VL	ML	M	Bsous	L	L	L	Btalloun	VL	ML	M
Btater	VL	L	M	Chanay	L	ML	M	Charoun	ML	M	M
Chartoun	L	L	L	Chemlane	L	VL	L	Choueifat El-Aamrous	L	VL	M
Choueifat El-Oumara	L	VL	ML	Choueifat El-Quoubbe	L	VL	M	Dakkoun	L	L	L
Deir Qoubel	L	VL	L	Dfoun	L	L	ML	Douair El Remmaneh	L	L	L
Ghaboun	L	L	ML	Habramoun	L	L	L	Homs Oua Hama	VL	L	M
Houmal	L	VL	L	Jisr El Qadi	L	L	L	Kehaleh	L	L	L
Keyfoun	VL	L	M	Kfar Aamey	L	L	ML	Kommatyeh	L	L	ML
Maasrati	L	L	ML	Majdel Baana	ML	ML	M	Mansourieh et Ain El	VL	ML	M
Mazraat El-Nahr	L	L	ML	Mchakhte	ML	ML	M	Mecherfeh	L	L	M
Mejdlaya	L	L	ML	Mrayjat	ML	M	M	Ramliyah	L	L	ML
Rechmaya	L	L	ML	Rejmeh	L	L	ML	Remhala	L	L	L
Rouaysset El Neemane	L	L	ML	Saoufar	ML	M	M	Selfaya	ML	L	L
Sirhmoul	L	VL	L	Souq El Ghareb	L	L	ML	Taazanieh	VL	ML	M

Kesrouane

Municipality	16-Oct	17-Oct	18-Oct	Municipality	16-Oct	17-Oct	18-Oct	Municipality	16-Oct	17-Oct	18-Oct
Achkout	L	L	L	Adma Oua Dafneh	L	VL	L	Ain Ed-Delbe Kesroua	ML	ML	ML
Ain El-Rihane	L	VL	L	Aintoura Kesrouane	L	VL	L	Ajaltoun	L	L	L
Akaybeh Kesrouane	ML	VL	L	Aramoun Kesrouane	L	VL	L	Azra ouel Ozor	L	VL	VL
Ballouneh	L	L	L	Batha	L	VL	VL	Bekaatat Achkout	L	L	L
Bekaatat Kanaan	L	L	ML	Bizhel	L	VL	VL	Bouar	L	VL	L
Bqaatouta	M	M	M	Bqaq Ed-Dine	ML	VL	L	Bzommar	L	L	L

Chahtoul	L	L	L	Chnaniir	L	VL	L	Chouan	ML	L	L
Daraya Kesrouane	L	VL	L	Darououn	L	VL	VL	Deir Baqlouch	L	VL	VL
Dlebta	L	VL	L	Eghbeh	L	VL	VL	Faraya	M	M	M
Fatka	L	L	L	Feytroun	L	L	L	Ghazir	L	VL	L
Ghbaleh Kesrouane	L	VL	L	Ghedrass	L	VL	L	Ghosta	L	VL	L
Ghynéh	L	L	L	Harharaya w Kattine	L	L	L	Harissa Kesrouane	L	VL	VL
Hayata	L	VL	L	Hosein	L	VL	L	Hrajel	M	M	M
Jdeideh Ghazir	L	L	L	Jeita	L	VL	L	Jounieh Ghadir	L	VL	L
Jounieh Haret Sakhr	L	VL	L	Jounieh Salel Alma	L	VL	L	Jounieh Sarba	L	VL	L
Jouret Bedrane	L	VL	L	Jouret Mhad	L	VL	L	Jouret Termos	L	L	L
Kfar Debiane	ML	ML	M	Kfar Tay Kesrouane	L	L	L	Kfar Yassine	L	VL	L
Kfour Kesrouane	L	L	L	Kharayeb Nahr Ibrahi	L	VL	VL	Klayaat Kesrouane	L	VL	L
Maarab	L	VL	VL	Maaysra Kesrouane	L	VL	L	Mayrouba	M	M	M
Mazraat Er-Ras	L	VL	L	Mazraat Mrah El-Mir	L	VL	L	Mchaa El Ftouh	M	M	M
Mchaa Faraya	M	M	M	Mchaa Kfar Dibiane	M	M	M	Mghaer	ML	M	M
Mradiyah	L	VL	VL	Nahr Ed-Dahab	L	VL	L	Nammoura Kesrouane	L	VL	L
Ouata El Jaouz	L	L	L	Ouata Sillam	L	VL	L	Raachine	L	VL	L
Rayfoun	L	L	L	Safra Kesrouane	L	VL	L	Shayle Kesrouane	L	VL	L
Tabarja	L	VL	L	Yahchouch	L	VL	VL	Zaaytreh	L	VL	VL
Zeytoun	L	L	L	Zouk Mikael	L	VL	L	Zouk Mosbeh	L	VL	L

Baalbek_Hermel

Baalbek

Municipality	16-Oct	17-Oct	18-Oct	Municipality	16-Oct	17-Oct	18-Oct	Municipality	16-Oct	17-Oct	18-Oct
Aadous	M	M	M	Aamchki	M	M	M	Aarsal	M	M	M
Ain Baalbek	M	M	M	Ain Bourday	M	M	M	Ain El-Benye	M	M	M
Ain El-Jaouz Baalbek	M	M	M	Ain El-Siya Chadoura	M	M	M	Al Khodr Baalbek	M	M	M
Al Nabi Chit	M	M	M	Aynata Baalbek	M	M	M	Baalbek	M	M	M
Bachwat	M	M	M	Barqa	M	M	M	Bednayel Baalbak	M	M	M
Beit Chama	M	M	M	Bijjaje	M	M	M	Bouday	M	M	M
Brital	M	M	M	Btadi	M	M	M	Chaat	M	M	M
Chaibe	M	M	M	Chlifa	M	M	M	Chmestar	M	M	M
Dar El-Oussa	M	M	M	Deir El-Ahmar	M	M	M	Deir Mar Maroun Baal	M	M	M
Douris	M	M	M	Fakiha	M	M	M	Hadath Baalbek	M	M	M
Ham	M	M	M	Haour Taala	M	M	M	Hizzine	M	M	M
Hlebta	M	M	M	Hosh Barada	M	M	M	Hosh El Dahab	M	M	M
Hosh El Snid	M	M	M	Hosh El-Nabi	M	M	M	Hosh El-Rafiq	M	M	M
Hosh Tal Safiya	M	M	M	Hrebta	M	M	M	laat	M	M	M
Jebaa	M	M	M	Jenta	M	M	M	Kfar Dabach	M	M	M
Kfar Dane	M	M	M	Khraibeh El-Hermel	M	M	M	Khreibet Baalbek	M	M	M
Kneisset Baalbek	M	M	M	Labueh	M	M	M	Maarboun	M	M	M
Majdaloun	M	M	M	Maqneh	M	M	M	Mazraat Beit Mcheik	M	M	M
Misraya	M	M	M	Mograq	M	M	M	Nabha El-Damdoum	M	M	M
Nabi Chbay	M	M	M	Nabi Osman	M	M	M	Nahleh baalbek	M	M	M
Ouadi El-Oss	M	M	M	Qaa Baayoun	M	M	M	Qaa Jouar Maqiye	M	M	M
Qaa Ouadi El-Khanzir	M	M	M	Qah Baalbek	M	M	M	Qarha Baalbek	M	M	M

Qsarnaba	M	M	M	Ram Baalbek	M	M	M	Ras Baalbek El Sahl	M	M	M
Ras Baalbek El-Charq	M	M	M	Riha	M	M	M	Saaide	M	M	M
Sbouba	M	M	M	Seriine El-Tahta	M	M	M	Slouqi	M	M	M
Taiba Baalbek	M	M	M	Talia	M	M	M	Taraiya	M	M	M
Temnin El Fawqa	M	M	M	Temnin El-Tahta	M	M	M	Tfail	M	M	M
Yahfoufa	M	M	M	Yammouneh	M	M	M	Younine	M	ML	M
Zboud	M	M	M								

Hermel

Municipality	16-Oct	17-Oct	18-Oct	Municipality	16-Oct	17-Oct	18-Oct	Municipality	16-Oct	17-Oct	18-Oct
Charbine El-Hermel	MH	M	M	Hermel Jbab	M	M	M	Hermel	M	M	M
Maaysra El-Hermel	MH	M	M	Michaa Mrajhine	M	M	M	Ouadi Faara	M	M	M
Ras Baalbek - Ouadi	M	M	M	Ras Baalbek El Gharb	M	M	M	Zighrine	MH	M	M

Akkar

Akkar

Municipality	16-Oct	17-Oct	18-Oct	Municipality	16-Oct	17-Oct	18-Oct	Municipality	16-Oct	17-Oct	18-Oct
Aain Tinta	M	M	M	Aaiyat	ML	M	M	Aakkar El-Aatiqa	ML	M	M
Aamar Akkar	L	L	L	Aamar El Baykat	M	M	M	Aamayer	M	M	M
Aamriyet Akkar	M	M	M	Aandqet	M	M	M	Aarmeh	M	M	M
Aarqa	M	L	M	Aawaynat	M	M	M	Aayoun Akkar	ML	M	M
Abboudiye	M	M	M	Ain El-Zeit	M	M	M	Ain Yaaqoub	L	M	M
Akroum	M	M	M	Aridet Cheikh Zennad	M	ML	M	Baldeh w Mazraat Bal	M	M	M
Barcha	M	M	M	Bardeh	M	M	M	Bebnine	L	L	L
Beino	M	M	M	Beit Ayoub	L	M	M	Beit El-Haouch	L	L	L
Beit Mellat	ML	M	M	Beit Younes	L	ML	M	Berbara Akkar	M	M	M
Berqayel	L	L	L	Bezbina	ML	ML	M	Bireh Akkar	M	M	M
Borj	ML	M	M	Bqerezla	L	L	M	Bzal	L	L	L
Chane	L	L	M	Chaqdouf	ML	M	M	Charbila	M	M	M
Cheikh Mohammad	M	M	M	Cheikh Taba Es-Sahl	M	ML	M	Cheikh Taba	L	M	M
Cheikh Zennad	M	ML	M	Cheikhlar	M	M	M	Chir Hmairine	M	M	M
Daghle	M	M	M	Dahr Laissine	ML	M	M	Darine	M	M	M
Dawra	M	M	M	Dawsa w Baghdadi	M	M	M	Dayret Nahr El-Kabir	M	M	M
Deir Dalloum	L	L	L	Deir Jennine	M	M	M	Denbou	L	L	M
Dibbabiyyeh	M	M	M	Douair Aadwiyeh	M	M	M	Fassikine	M	M	M
Fnaydek	M	ML	M	Fraydes Akkar	M	M	M	Ghazayle	M	M	M
Habchit	L	L	M	Hakour	L	L	L	Halba	M	M	M
Haouchab	M	M	M	Hayssat	M	ML	M	Haytla	M	M	M
Hayzouq	M	M	M	Hedd	M	M	M	Hmaira Akkar	L	L	L
Hmaiss Akkar	M	M	M	Hnaider	M	M	M	Hokr Ed-Dahri	M	ML	M
Hokr Etti	M	M	M	Hokr Jouret Srar	M	M	M	Houaich	L	ML	M
Hrar	L	ML	M	Idbil	ML	ML	M	Ilal	ML	M	M
Janine	M	M	M	Jdeidet El-Joumeh	ML	ML	M	Jdeidet El-Kaiteh	L	L	L
Jebayel	ML	M	M	Kafr	L	VL	L	Kafr	M	M	M
Karm Asfour	L	ML	M	Kfar Melki Akkar	M	ML	M	Kfar Noun	M	M	M
Kfarharra	M	M	M	Khalsa	M	M	M	Kharnoubet Akkar	M	M	M

Khirbet Daoud Aakkar	M	M	M	Khirbet El Remmane	M	M	M	Khirbet Shar	M	M	M
Khoreybet El-Jindi	M	M	M	Khreibet Aakkar	L	ML	M	Kneisset Aakkar	M	ML	M
Kneisset Hnaider	M	M	M	Knisse	M	M	M	Kroum El-Aarab	M	M	M
Kwachra	M	M	M	Kweykhat	M	M	M	Machta Hammoud	M	M	M
Majdala	L	L	L	Majdel Akkar	M	M	M	Mar Touma	L	L	L
Marlaya Melhem	ML	L	ML	Mashha	M	M	M	Massoudiye	M	ML	M
Mazraat Beit Ghattas	L	L	L	Mazraat En-Nahriye	M	M	M	Mechmech	M	L	M
Memneh	ML	L	M	Mhammara	L	L	ML	Mighraq Aakkar	M	ML	M
Minyara	ML	L	ML	Moqayteh	M	ML	M	Mounjez	M	M	M
Msalla	M	M	M	Mzeihmeh	M	M	M	Nfaiseh	M	M	M
Noura Et-Tahta	M	M	M	Ouadi El-Haour	M	M	M	Ouadi El-Jamous	L	L	L
Ouyoun El-Ghizlane	L	L	L	Qaabarine	M	ML	M	Qabaait	L	L	M
Qachlaq	M	M	M	Qantara Aakkar	ML	M	M	Qarha Aakkar	M	M	M
Qarqaf	L	L	L	Qboula	ML	M	M	Qleiaat Aakkar	M	ML	M
Qloud El-Baqie	L	L	L	Qobaiyat Aakkar	M	M	M	Qobbat Chamrat	ML	L	ML
Qorayat	L	ML	M	Qornet Aakkar	ML	M	M	Qsair Aakkar	M	M	M
Rahbe	ML	ML	M	Rihaniyet Aakkar	M	M	M	Rmah	M	M	M
Rmoul	M	ML	M	Saadine	M	M	M	Sadaqa	L	M	M
Saidnaya	M	M	M	Sammouniye	M	ML	M	Sayssouq	ML	L	ML
Semmaqiye	M	ML	M	Semmaqli	M	L	M	Sfinet El-Dreib	M	M	M
Sfinet El-Qaitaa	L	L	L	Sindyanet Zeidane	M	M	M	Souaisset Aakkar	M	M	M
Srar	M	M	M	Tal Abbas El Gharby	M	M	M	Tal Abbas El-Charqy	M	M	M
Tal Biret	M	ML	M	Tal Hmayra	M	M	M	Tal Maayan Tal Kiri	M	ML	M
Tal Sibel	M	ML	M	Tallet Chattaha	ML	M	M	Tikrit	ML	M	M
Tleil	M	M	M	Tshea	ML	ML	M	Zawarib	L	M	M
Zouq El Hosniyeh	L	L	L	Zouq El-Haddara	L	L	L	Zouq El-Hbalsa	L	L	L
Zouq El-Moqachrine	L	L	L								

Sud

Sour

Municipality	16-Oct	17-Oct	18-Oct	Municipality	16-Oct	17-Oct	18-Oct	Municipality	16-Oct	17-Oct	18-Oct
Aaiyeh	M	M	ML	Aalma El-Chaab	M	M	ML	Aaytit	M	M	ML
Abbassiyeh Sour	M	M	ML	Abou Chech	M	M	ML	Ain Abou Abdallah	M	M	ML
Ain Baal	M	M	ML	Arzoun	M	M	M	Aziyeh	M	M	L
Baflaya	M	M	M	Barich	M	ML	L	Batouliyah	M	M	ML
Bayad	M	M	ML	Bazouriyeh	M	M	ML	Bediass	M	ML	L
Bestiyat	M	ML	L	Borj El Chemali	M	M	M	Borj En-Naqoura	M	M	M
Borj Rahhal	M	ML	L	Boustane	M	M	ML	Btaychiyah	M	M	ML
Chaaitiye	M	M	ML	Chameh	M	M	ML	Chehabiye	M	M	M
Chehour	M	ML	M	Chihine	M	ML	ML	Debaal Sour	M	ML	L
Deir Amess	M	M	L	Deir Kifa	M	M	M	Deir Qanoun El-Ain	M	M	ML
Deir Qanoun El-Naher	M	ML	L	Derdghaiya	M	M	M	Dhayra	M	M	ML
Halloussiyeh	M	ML	L	Hamoul	M	M	ML	Hanaouey	M	M	ML
Henniye	M	M	ML	Hmairi Sour	M	ML	L	Iskandarouna Sour	M	M	L
Jbal El Botom	M	M	L	Jebbin	M	M	M	Jennata	M	ML	L
Jijim	M	M	L	Jouaiya	M	M	ML	Kneisset Sour	M	M	ML

Maarake	M	ML	L	Maaroub	M	ML	L	Majadel	M	M	M
Majdalzoun	M	M	ML	Mansouri Sour	M	M	ML	Marnba	M	ML	M
Marouahine	M	ML	L	Mazraat El-Zalloutiy	M	M	ML	Mazraat Mechref	M	M	ML
Mazraat Tayr Semhat	M	ML	M	Mheilib	M	M	M	Neffakhiyeh	M	M	M
Niha Sour	M	M	M	Ouadi Jilo	M	ML	L	Qana	M	M	ML
Qolaileh Sour	M	M	ML	Rechknayan	M	M	ML	Rmadiyah	M	M	ML
Selha Sour	M	M	M	Siddiqine	M	M	ML	Sour	M	M	M
Srifa	M	M	M	Tayr Debbe	M	ML	L	Tayr Felsay	M	ML	L
Tayr Harfa	M	M	M	Touayri	M	ML	M	Toura	M	ML	L
Yanouh Sour	M	ML	L	Yarine	M	M	M	Zebqine	M	ML	L

Saida

Municipality	16-Oct	17-Oct	18-Oct	Municipality	16-Oct	17-Oct	18-Oct	Municipality	16-Oct	17-Oct	18-Oct
Aanqoun	M	ML	M	Aaqtanit	M	ML	M	Aarab Ej-Jall	M	ML	M
Aarab Tabbaya	M	ML	M	Abra Saida	M	ML	M	Adloun	M	ML	L
Adousiyeh	M	L	ML	Ain-El-Deleb	M	ML	M	Arzai	M	ML	L
Babliyah	M	ML	ML	Barty	M	M	M	Bissariyeh	M	ML	ML
Bnaafoul	M	ML	M	Bqosta	M	ML	M	Bramiy	M	ML	ML
Daoudiyeh	M	ML	ML	Dareb El-Sim	M	ML	M	Erkay	M	ML	M
Ghassanieh	M	ML	M	Ghazieh	M	ML	M	Hajjeh	M	ML	M
Haret Saida	M	ML	M	Hartiyeh	M	ML	ML	Hlaliye Saida	M	ML	M
Insariyat	M	ML	ML	Jazira Saida	M	M	ML	Kafar Bit	M	M	M
Kaoutariyet El-Siyad	M	ML	M	Kfar Chellal	M	M	M	Kfar Hatta Saida	M	ML	M
Kfar Milke Saida	M	M	M	Khartoum	M	ML	M	Khaziz	M	ML	M
Khirbet Ed-Douair Sa	M	ML	ML	Khirbet El-Bassal	M	ML	M	Khrayeb Saida	M	ML	L
Loubieh	M	ML	ML	Maghdouche	M	ML	M	Majdelyoun	M	ML	M
Matariyet El-Choumar	M	ML	L	Matayriyeh	M	ML	M	Mazraat 'Mseileh	M	ML	ML
Mazraat 'Snaiber	M	ML	ML	Mazraat Aarab Soukka	M	ML	M	Mazraat Deir Taqla	M	ML	L
Mazraat El Yahoudiye	M	M	ML	Mazraat El-Housseini	M	ML	ML	Mazraat El-Mhaydaleh	M	ML	ML
Mazraat El-Ouasta	M	M	L	Mazraat Jamjim	M	ML	L	Mazraat Kaoutariyet	M	ML	ML
Mazraat Kfar Badda	M	ML	ML	Mazraat Oussamiyat	M	ML	M	Mazraat Sari	M	ML	ML
Mazraat Sinai	M	ML	M	Meemariyeh	M	ML	M	Merouaniyeh	M	ML	M
Miyeh ou Miyeh	M	ML	M	Najjariyeh	M	ML	ML	Qaaqaiyat El-Snaouba	M	ML	ML
Qnarit	M	ML	M	Qraiye Saida	M	ML	M	Saida Ed-Dekermane	M	ML	M
Saida El-Oustani	M	ML	M	Saida El-Qadimeh	M	ML	M	Saida Kefraya	M	ML	ML
Saksakiyeh	M	ML	ML	Salhigh Saida	M	ML	ML	Sarafand	M	ML	ML
Sfenta	M	M	M	Tafahta	M	ML	M	Tanbourit	M	ML	M
Tebna	M	ML	ML	Zaghdraiya	M	ML	M	Zeita	M	ML	M
Zrariyeh	M	ML	L								

Jezzine

Municipality	16-Oct	17-Oct	18-Oct	Municipality	16-Oct	17-Oct	18-Oct	Municipality	16-Oct	17-Oct	18-Oct
Ain El-Mir (El Estab	M	M	M	Anane	M	L	L	Aramta	M	ML	ML
Ariya	ML	ML	M	Aychiyeh	M	ML	ML	Azour	ML	L	L
Baba	ML	L	L	Bayssour Jezzine	M	ML	M	Benoueteh Jezzine	ML	L	M
Bhannine	ML	ML	M	Bisri	ML	L	L	Bkassine	M	L	M
Bouslaya	M	M	M	Btedine El-Leqech	ML	L	L	Chbail	L	L	L
Choualiq Jezzine	M	ML	ML	Dahr Ed-Deir	M	M	M	Deir El Qattine	M	M	M

Demachqiyeh	M	M	M	Ghabbatiyeh	ML	L	M	Harf Jezzine	ML	L	L
Hassaniyeh	M	ML	M	Haytouleh	M	M	M	Haytura	M	M	M
Hidab	M	M	M	Homsiyeh	ML	L	ML	Jabal Toura	M	ML	ML
Jarmaq	M	M	M	Jensnaya	M	ML	M	Jernaya	M	M	M
Jezzine	M	ML	M	Karkha	M	ML	ML	Kfar Falous	M	ML	M
Kfar Houna	M	ML	ML	Kfar Jarrah	M	ML	M	Lebaa	M	ML	M
Louayzet Jezzine	M	M	M	Machmouche	M	L	ML	Mahmoudiyeh Jezzine	M	M	M
Maknounye Jezzine	M	M	M	Maraat Ouazaiyeh	ML	L	L	Mazraat Daraya	M	ML	ML
Mazraat El-Aarqoub	M	M	M	Mazraat El-Mathane	M	L	L	Mazraat El-Rahbane	M	M	M
Mazraat Khallet Khaz	ML	L	L	Mazraat Louzid (Loua	L	L	L	Mazraat Qrouh	ML	L	L
Mazraat Tamra	M	M	M	Mazraat Zighrine Jez	M	M	M	Mazraat	M	M	M
Mharbiyeh	M	ML	M	Midane Jezzine	ML	L	ML	Mjeydel Jezzine	M	ML	M
Mlikh	M	M	M	Mrah El-Hbasse	M	ML	M	Ouadi Baanqoudaine	M	ML	M
Ouadi El-Laymoun	M	M	M	Ouardiyeh	L	VL	L	Qabaa Jezzine	M	M	M
Qatrani	ML	L	L	Qaytouleh	M	M	M	Qtaleh Jezzine	ML	L	L
Rihane Jezzine	M	ML	M	Rimat	M	M	M	Roum	M	ML	M
Roummanet	M	M	M	Sabbah	ML	L	ML	Saydoun	M	M	M
Sfaray	M	ML	ML	Snaya	M	M	M	Sojoud	M	M	M
Srayri	ML	L	ML	Taaid	ML	L	ML	Wadi Jezzine	ML	L	ML
Zhalta	M	M	M								

Bekaa

West Bekaa

Municipality	16-Oct	17-Oct	18-Oct	Municipality	16-Oct	17-Oct	18-Oct	Municipality	16-Oct	17-Oct	18-Oct
Aammiq BG	M	M	M	Ain El Tineh BG	M	ML	ML	Ain Zebdeh	M	M	M
Ana	M	M	M	Aytanit	M	ML	M	Baaloul BG	M	M	M
Bab Mareh	M	M	M	Chouberqiye Aammiq	M	M	M	Dakoue	M	M	M
Deir Ain El-Jaouze	M	M	M	Deir Tahniche	M	M	M	Ghaza	M	M	M
Harime El-Soughra	M	M	M	Hoch Harimeh	M	M	M	Jazira BG	M	M	M
Jib Jennine	M	M	M	Kamed-El-Laouz	M	M	M	Kefraya BG	M	M	M
Khiara El Atika	M	M	M	Khiara	M	M	M	Khirbet Qanafar	M	M	M
Lala	M	M	M	Lebbaya BG	M	M	ML	Loussa	M	ML	ML
Machghara	M	M	ML	Manara (Hammara) BG	M	M	M	Mansoura BG	M	M	M
Marej BG	M	M	M	Maydoun	M	ML	ML	Ouaqf BG	M	M	M
Qaraaoun	M	M	M	Qelya	M	L	ML	Raouda (Istabel)	M	M	M
Saghbine	M	M	M	Sohmor	M	M	ML	Soltan Yacoub el Ara	M	M	M
Souairy	M	M	M	Sultan Yaacoub	M	M	M	Tal Znoub	M	M	M
Yehmor BG	M	M	ML	Zilaya	M	M	ML				

Zahle

Municipality	16-Oct	17-Oct	18-Oct	Municipality	16-Oct	17-Oct	18-Oct	Municipality	16-Oct	17-Oct	18-Oct
Aanjar (Haouch Mouss	M	M	M	Ablah	M	M	M	Ain Kfarzabad	M	M	M
Ali-El-Nahri	M	M	M	Bar Elias	M	M	M	Bouarej	M	M	M
Cheberqiyet Tabet	M	M	M	Chtaura	M	M	M	Deir El Ghazal	M	M	M
Delhamiyet Zahle	M	M	M	Ferzol	M	M	M	Haouch El-Ghanam	M	M	M
Haouch Es-Siyadeh	M	M	M	Haouch Hala	M	M	M	Haouch Mandara	M	M	M

Haouch Qayssar	M	M	M	Hezerta	M	M	M	Hosh Moussa	M	M	M
Jdita	M	M	M	Kfarzabad	M	M	M	Ksara	M	M	M
Majdel Aanjar	M	M	M	Makssi	M	M	M	Massa	M	M	M
Mazraat Er-Remtaniye	M	M	M	Mrayjat Zahle	M	M	M	Mzaraa Zahle	M	M	M
Nabi Ayla	M	M	M	Nasriyet Rizk	M	M	M	Nasriyet Zahle	M	M	M
Niha Zahle	M	M	M	Ouadi Ed-Deloum	M	M	M	Ouadi El-Arayech	M	M	M
Qaa El Rim	M	M	M	Qab Elias	M	M	M	Qousaya	M	M	M
Rhit	M	M	M	Riyak	M	M	M	Saadnayel	M	M	M
Taal El-Akhdar	M	M	M	Taalbeya	M	M	M	Taanayel	M	M	M
Talamara	M	M	M	Tcheflik Edde Haouch	M	M	M	Tcheflik Qiqano	M	M	M
Terbol Zahle	M	M	M	Touaite Zahle	M	M	M	Zahle Aradi	M	M	M
Zahle El-Berbara	M	M	M	Zahle El-Maallaqa	M	M	M	Zahle El-Midane	M	M	M
Zahle Er-Rassiye	M	M	M	Zahle Haouch El-Ouma	M	M	M	Zahle Haouch El-Ouma	M	M	M
Zahle Haouch Ez-Zara	M	M	M	Zahle Maalaqa Aradi	M	M	M	Zahle Mar Antonios	M	M	M
Zahle Mar Elias	M	M	M	Zahle Mar Gerios	M	M	M	Zahle Saydet En-Naja	M	M	M
Zebdoul	M	M	M								

Rachaiya

Municipality	16-Oct	17-Oct	18-Oct	Municipality	16-Oct	17-Oct	18-Oct	Municipality	16-Oct	17-Oct	18-Oct
Ain Arab Rachaiya	M	M	M	Ain Ata	M	M	M	Ain Harche	M	M	M
Aqabe Rachaya	M	M	M	Ayha	M	M	M	Ayta El Fokhar	M	M	M
Bakifa Rachaya	M	M	M	Bakka	M	M	M	Beit Lahya	M	M	M
Bireh Rachaiya	M	M	M	Daher El Ahmar	M	M	M	Deir El-Achayer	M	M	M
Heloua Rachaiya	M	M	M	Hoch El Qannabeh Rac	M	M	M	Kaoukaba Bou Arab	M	M	M
Kfar Danis	M	M	M	Kfar Mechki	M	M	M	Kfar Qouq	M	M	M
Kherbet Rouha	M	M	M	Majdel Balhiss	M	M	M	Mdoukha	M	M	M
Mhaydseh Rachaiya	M	M	M	Nabi Safa	M	M	ML	Rachaiya	M	M	M
Rafid Rachaiya	M	M	M	Selsata (Mazraat Dei	M	M	M	Tannoura	M	M	M
Yanta	M	M	M								

Beyrouth

Beyrouth

Municipality	16-Oct	17-Oct	18-Oct	Municipality	16-Oct	17-Oct	18-Oct	Municipality	16-Oct	17-Oct	18-Oct
Achrafieh	L	VL	ML	Ain el-Mreisse	L	VL	ML	Bachoura	L	VL	ML
Beirut Central Distr	L	VL	ML	Marfai	L	VL	ML	Mazraa	L	VL	ML
Medaouar	L	VL	ML	Minet el-Hosn	L	VL	ML	Mwssaitbeh	L	VL	ML
Ras Beirut	L	VL	ML	Rmeil	L	VL	ML	Saifi	L	VL	ML
Zqaq el-Blat	L	VL	ML								