

# Lebanon Fire Risk Bulletin



CIVIL DEDEFENCE

**Refer to cadast table condition.**

**Please note that the indicated temperature is at 2 meters height from the ground.**

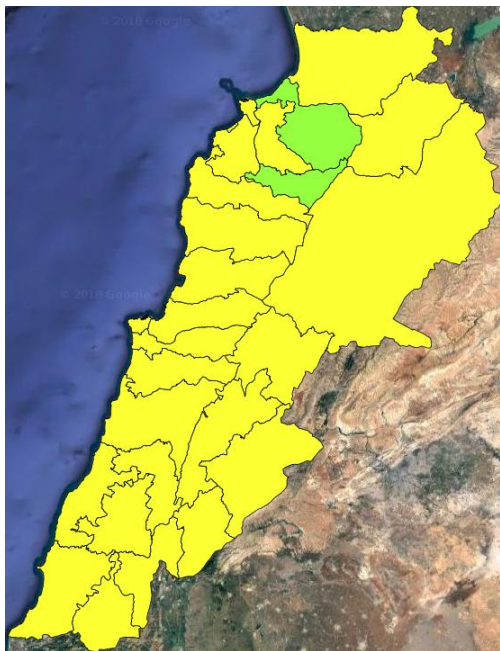
General description of potential fire risk situation

Symbol	Level of risk	Meaning and actions
VL	<b>Very low</b>	Very low fire risk. Controlled burning operations can be hardly executed due to high fuel moisture content. Normally wildfires self-extinguish.
L	<b>Low</b>	Low fire risk. Controlled burning operations can be executed with a reasonable degree of safety.
ML	<b>Medium low</b>	Medium-low fire risk. Controlled burning operations can be executed in safety conditions. All the fires need to be extinguished.
M	<b>Medium</b>	Medium fire risk. Controlled burning operations would be avoided. All the fires need to be very well extinguished.
M	<b>Medium high</b>	Controlled burning is not recommended. Open flame will start fires. Cured grasslands and forest litter will burn readily. Spread is moderate in forests and fast in exposed areas. Patrolling and monitoring is suggested. Fight fires with direct attack and all available resources.
H	<b>High</b>	Ignition can occur easily with fast spread in grass, shrubs and forests. Fires will be very hot with crowning and short to medium spotting. Direct attack on the head may not be possible requiring indirect methods on flanks. Patrolling and monitoring the territory is highly suggested.
E	<b>Extreme</b>	Ignition can occur also from sparks. Fires will be extremely hot with fast rate of spread. Control may not be possible during day due to long range spotting and crowning. Suppression forces should limit efforts to limiting lateral spread. Damage potential total. Patrolling and monitoring the territory is highly suggested.

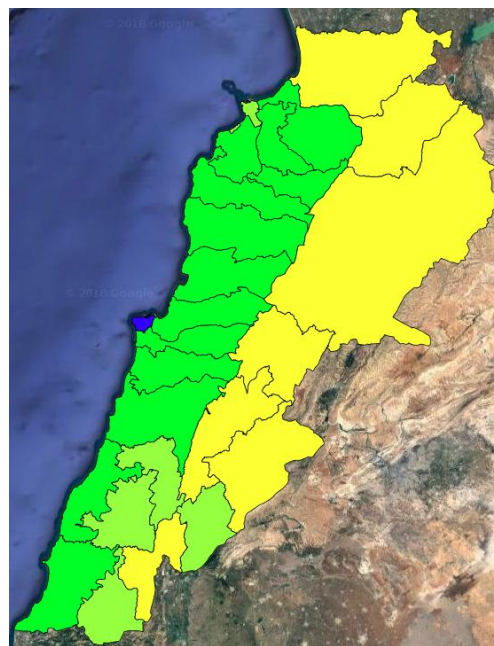
**Beirut, 17 October 2018**

# FIRE RISK INDEX

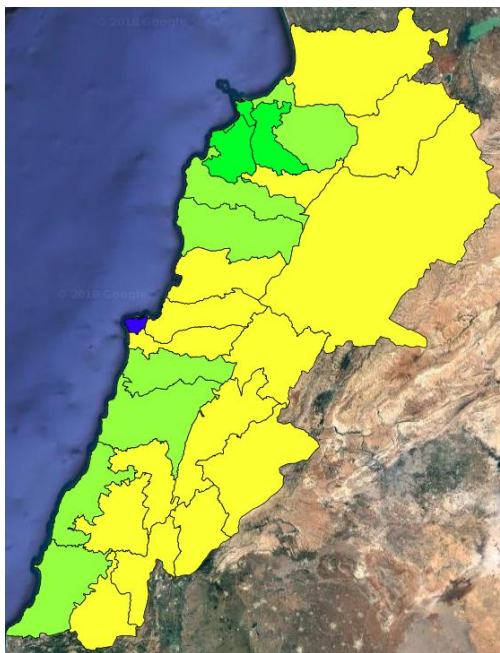
16 OCT 2018



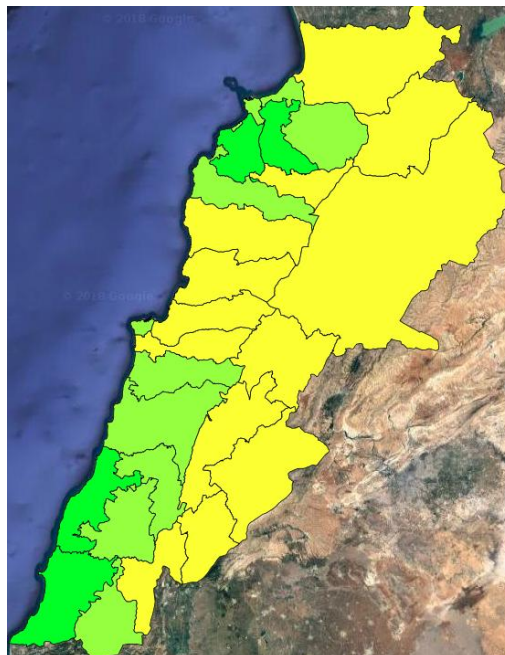
17 OCT 2018



18 OCT 2018



19 OCT 2018



**Layer Legend:**

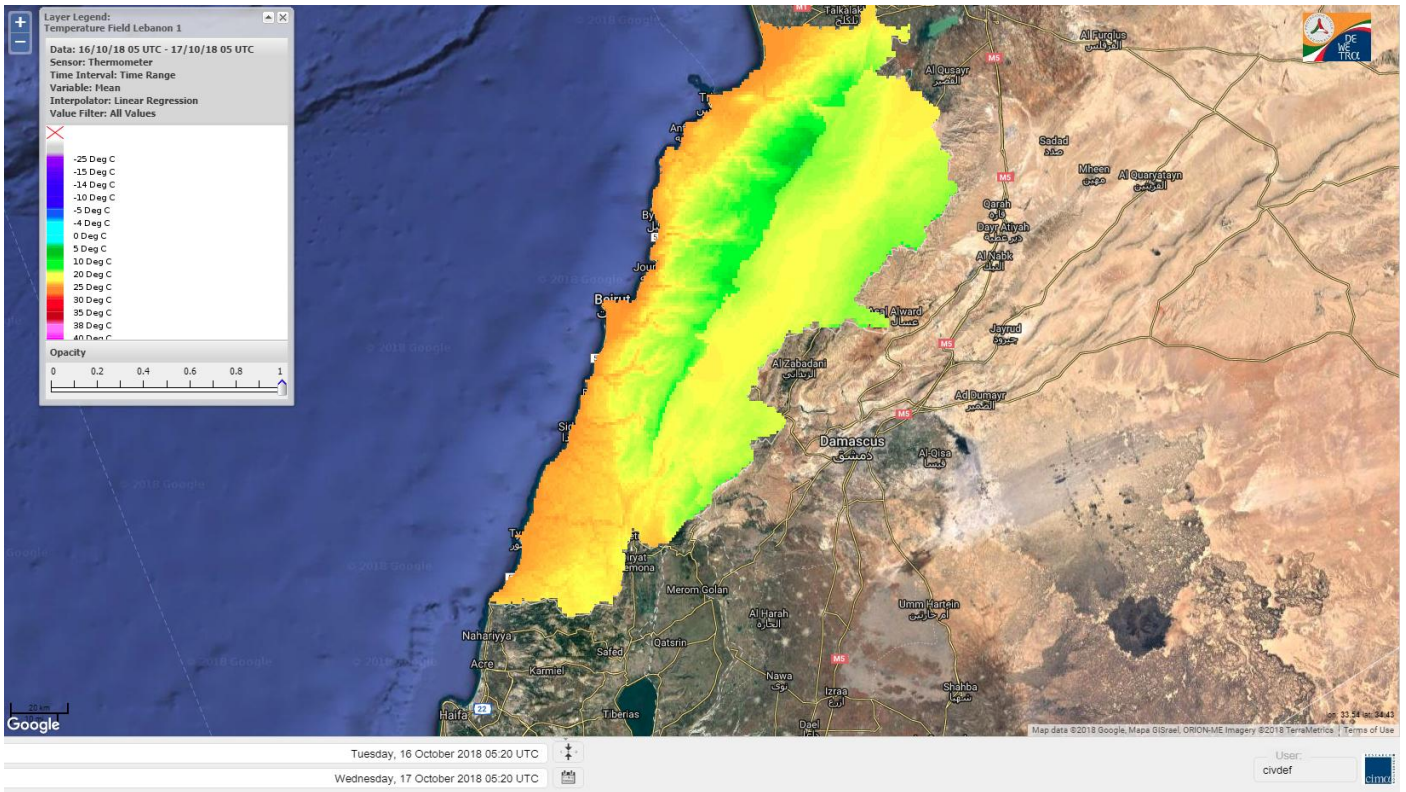
**Lebanon Wildfire Risk Index 1**

Data: Run: 17/10/2018 00:00. Forecast for 17  
Model: RISICO for the Republic of Lebanon  
Variable: Fire Weather Index  
Spatial Resolution: Caza

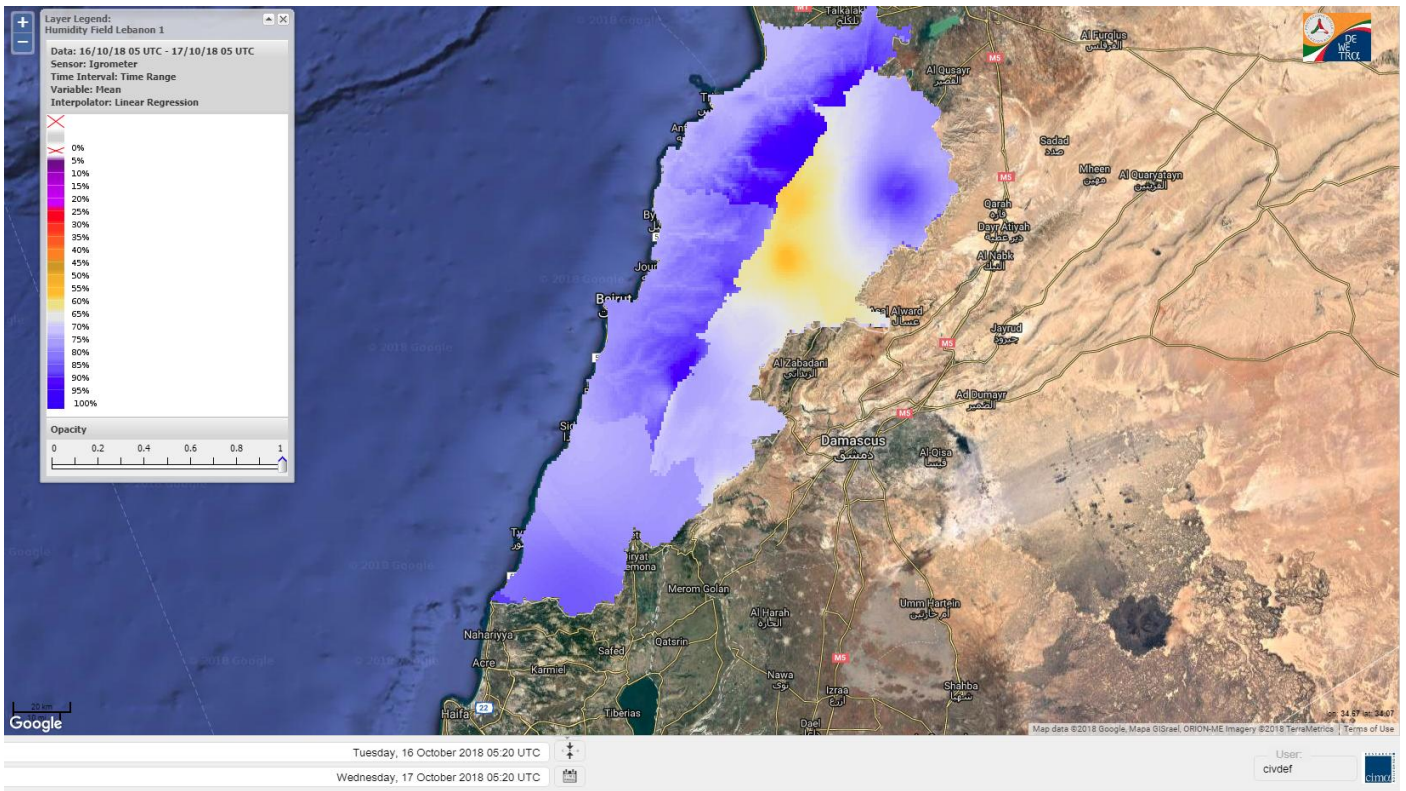
- VERY LOW
- LOW
- MEDIUM-LOW
- MEDIUM
- MEDIUM-HIGH
- HIGH
- EXTREME



# Lebanon temperature for Lebanon 17 OCT 2018

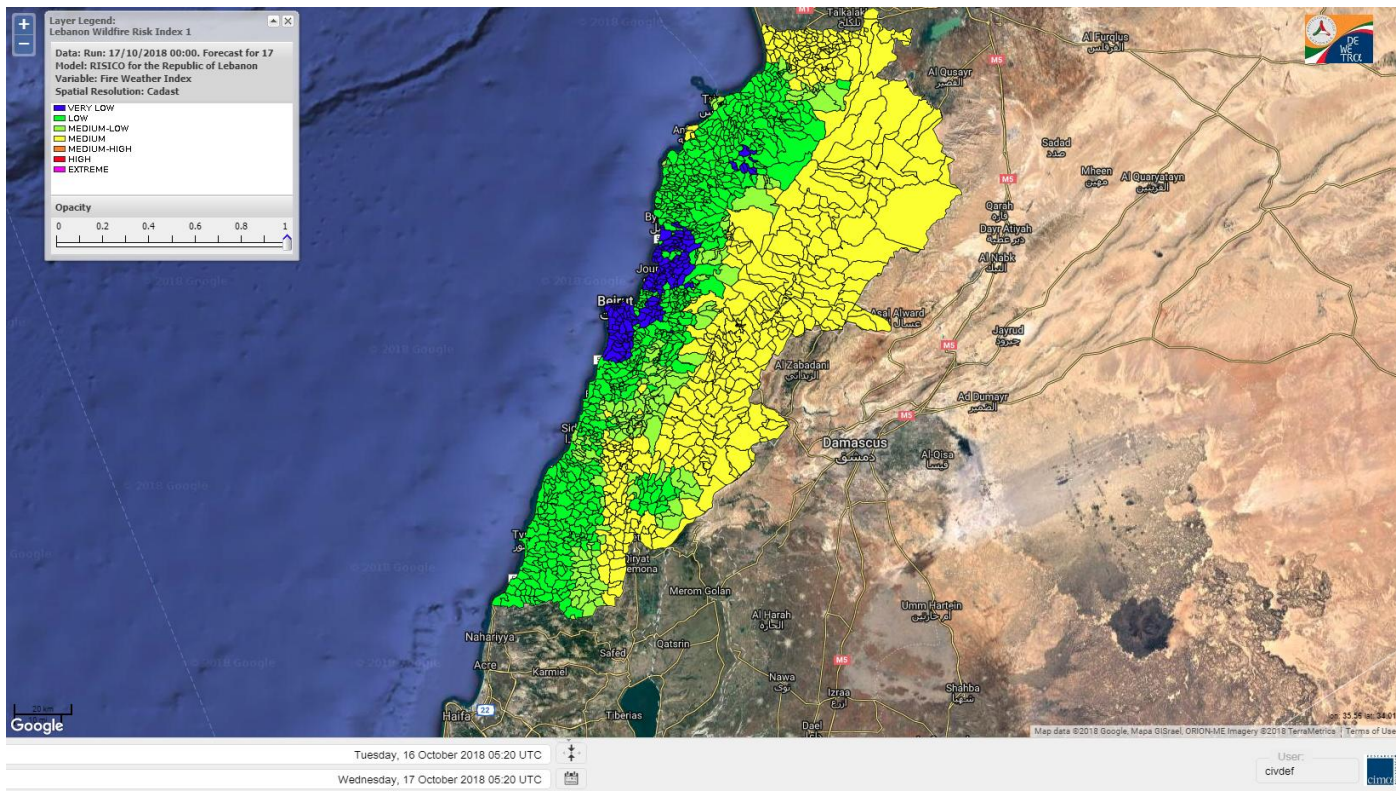


# Lebanon humidity for Lebanon 17 OCT 2018

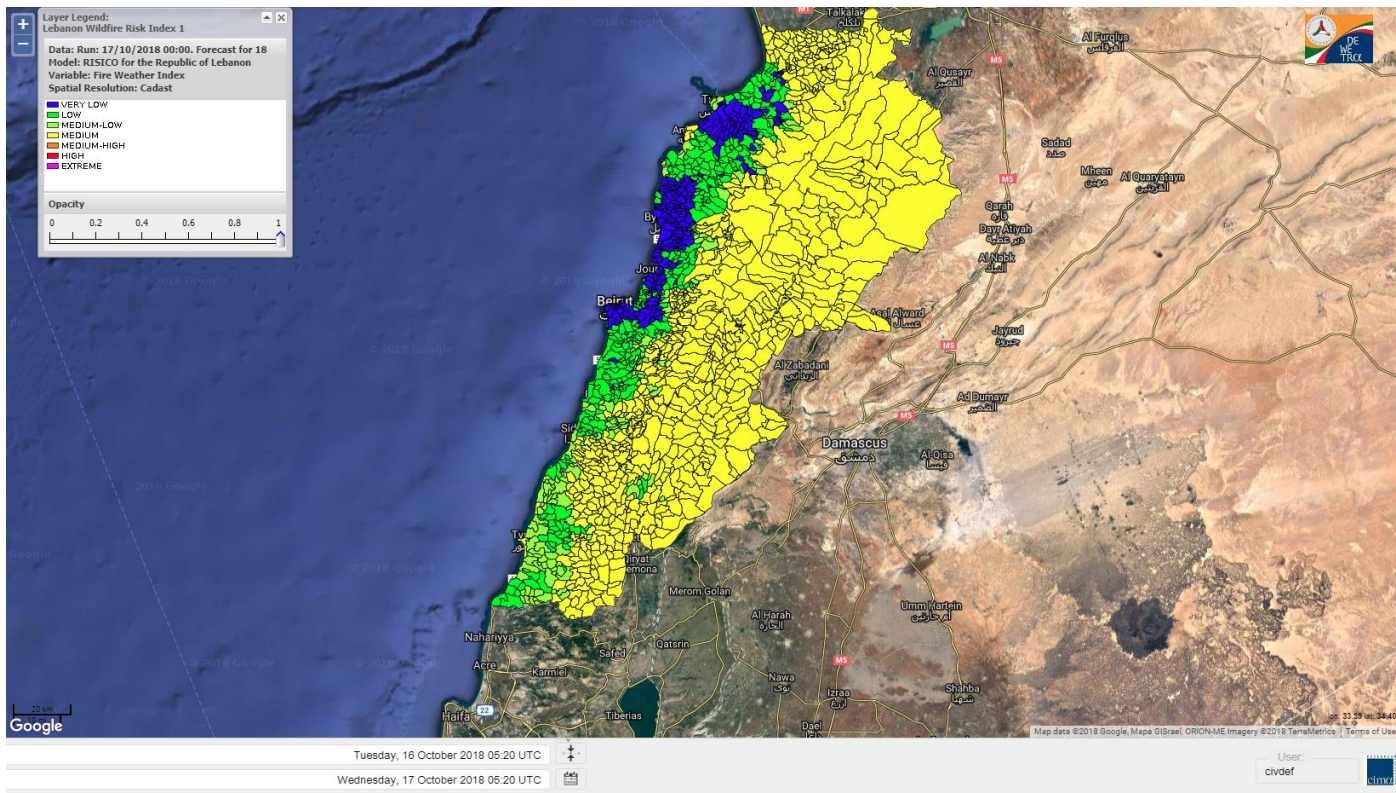




# Lebanon for 17 OCT 2018

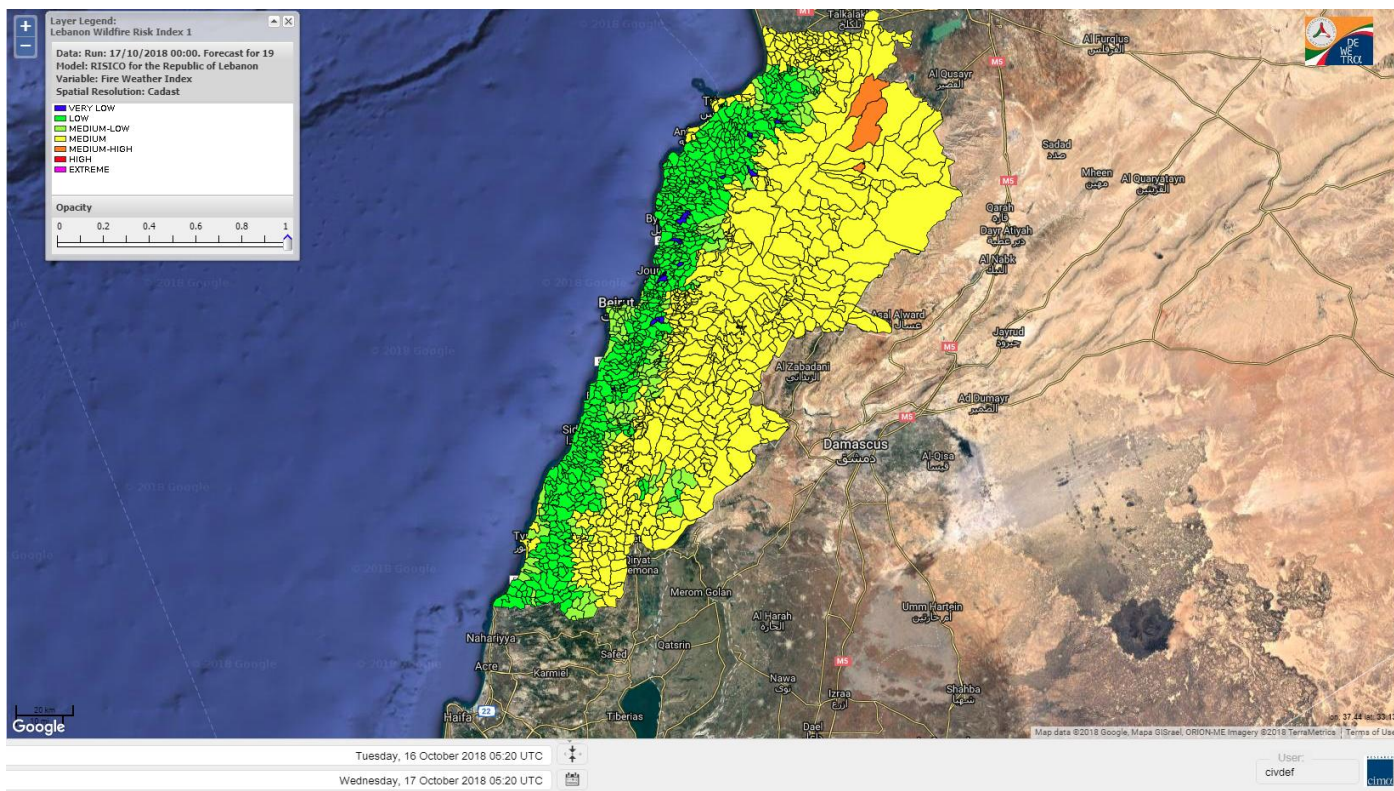


# Lebanon for 18 OCT 2018

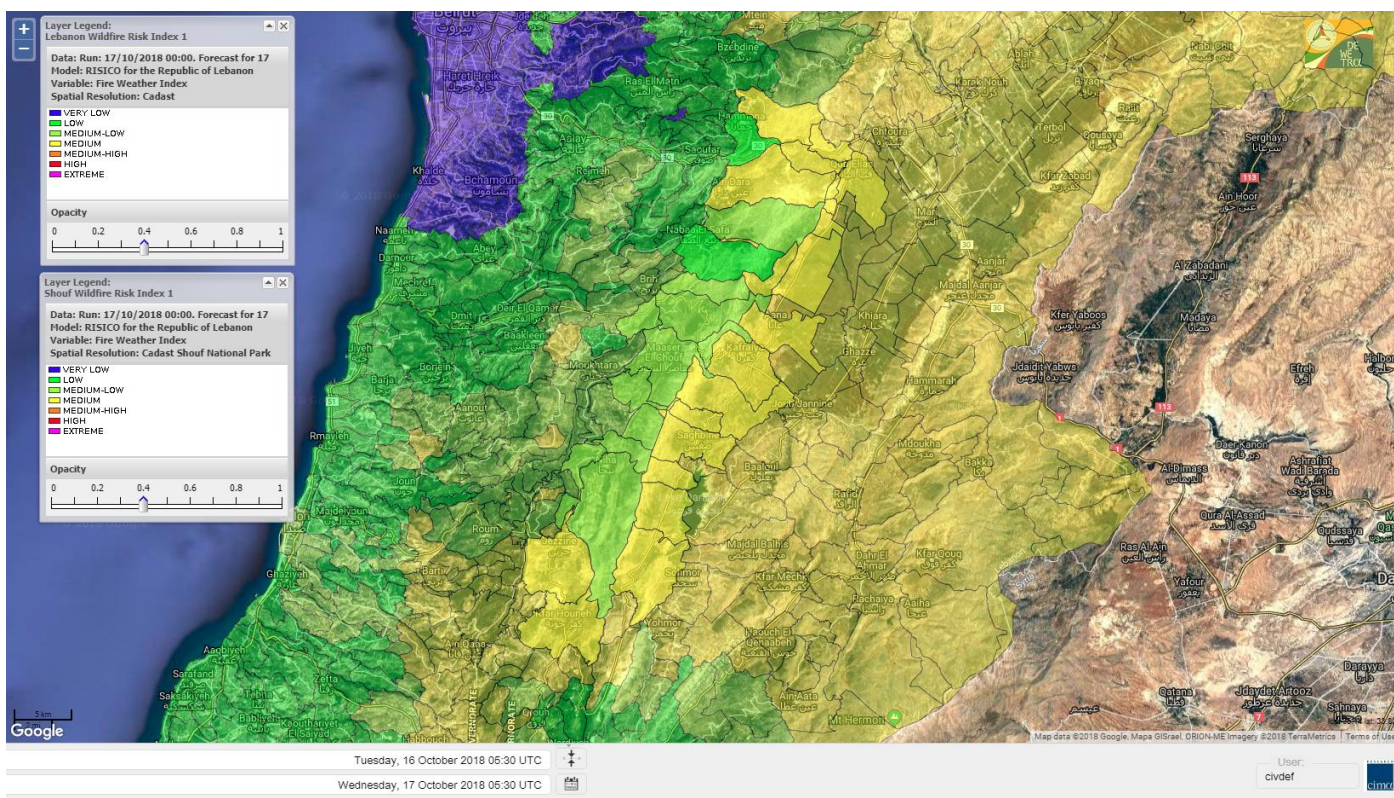




# Lebanon for 19 OCT 2018

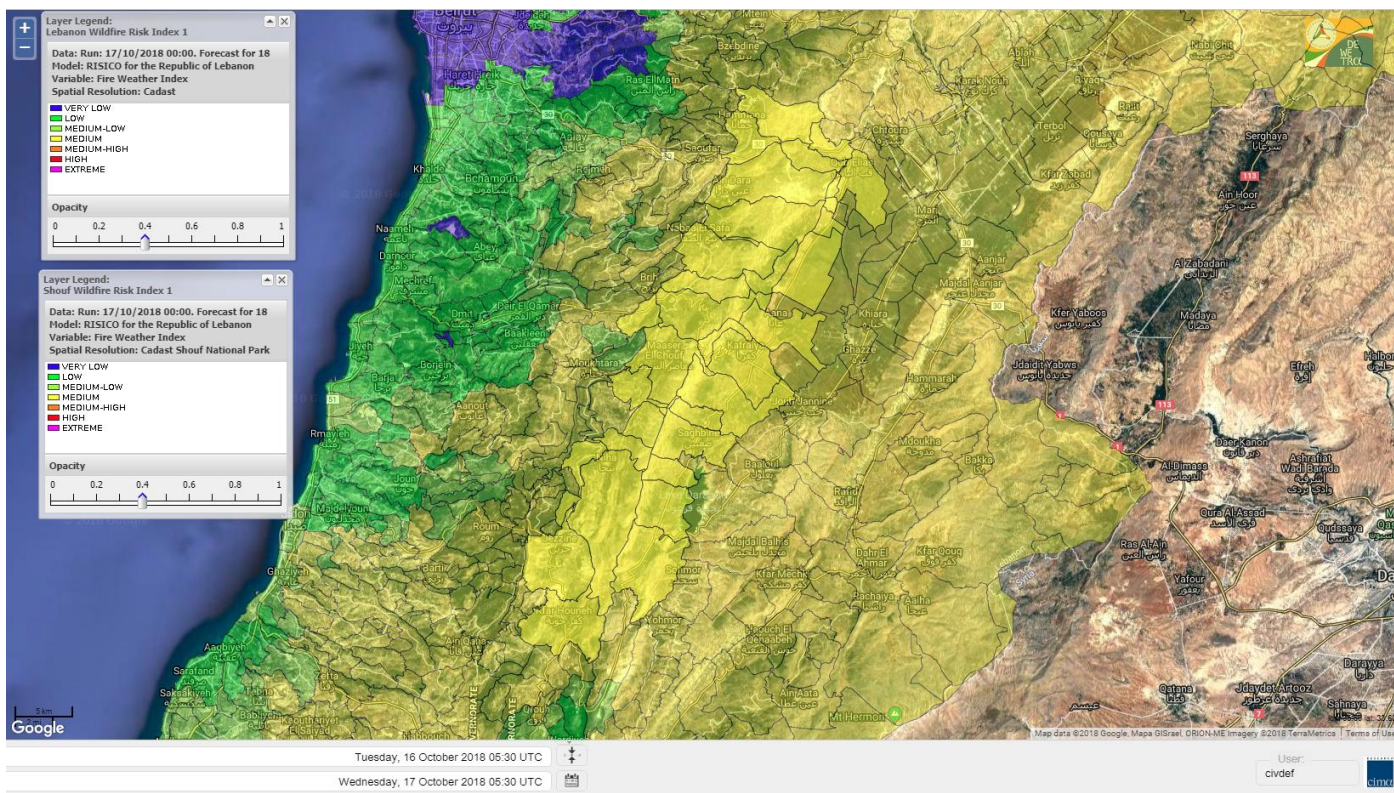


# Shouf Biosphere Reserve Forecast for 17 OCT 2018

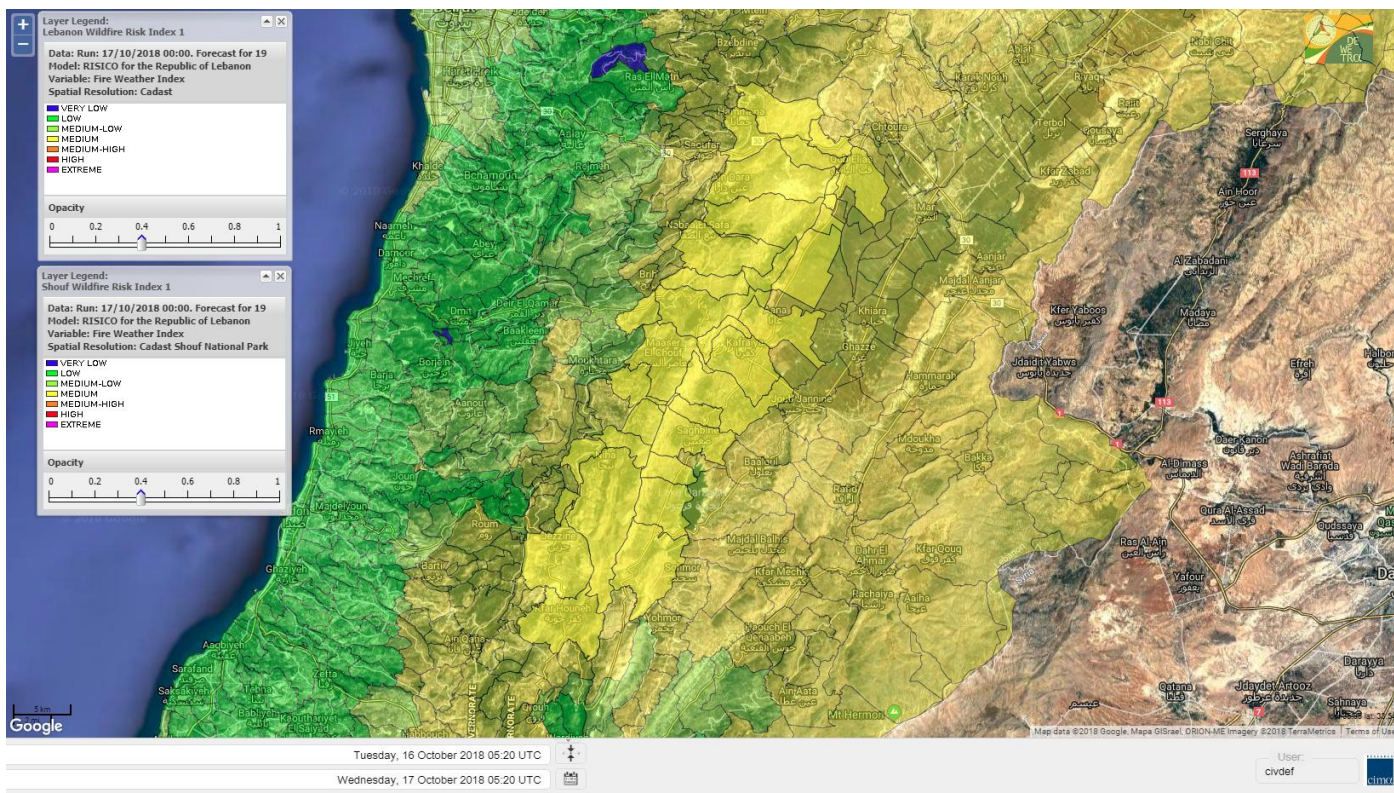




# Shouf Biosphere Reserve Forecast for 18 OCT 2018

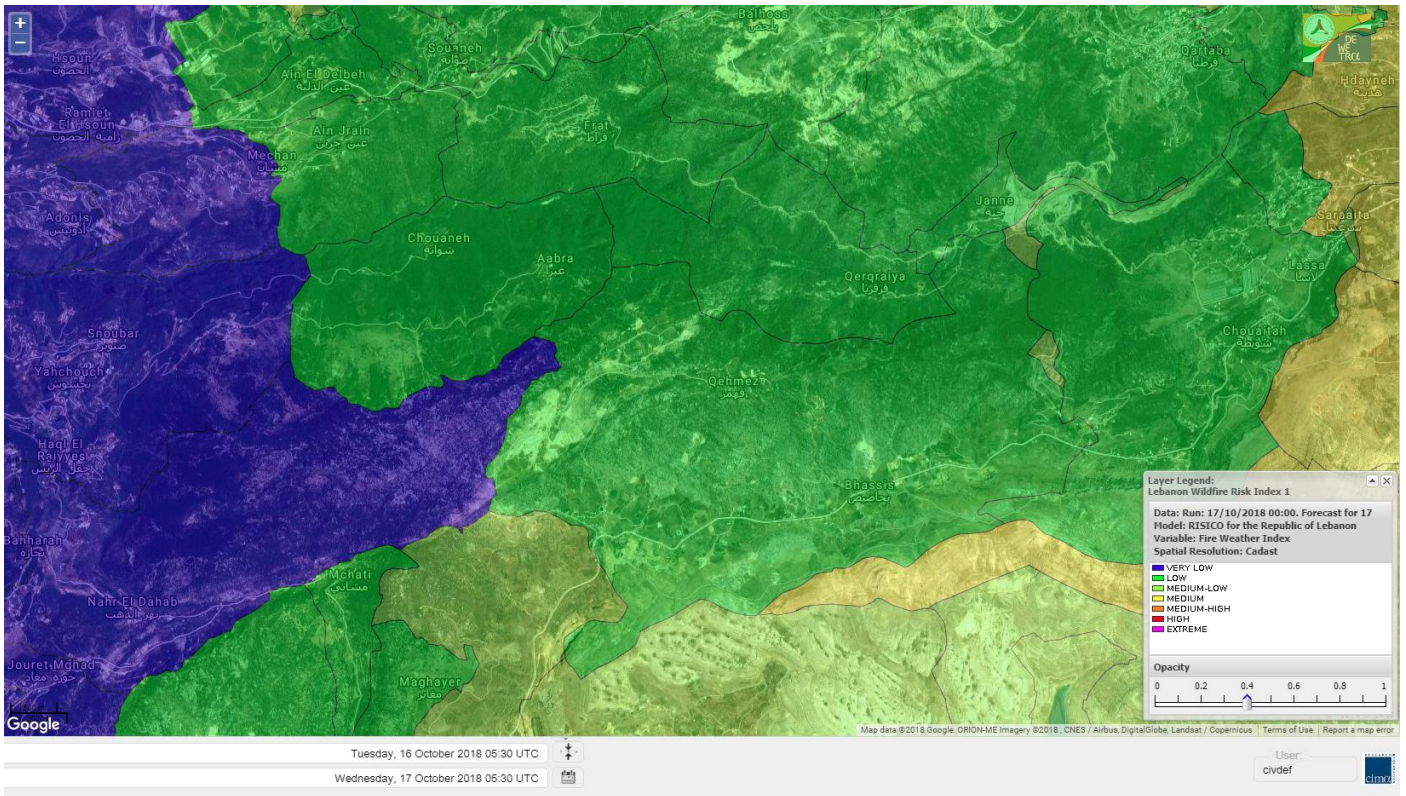


# Shouf Biosphere Reserve Forecast for 19 OCT 2018

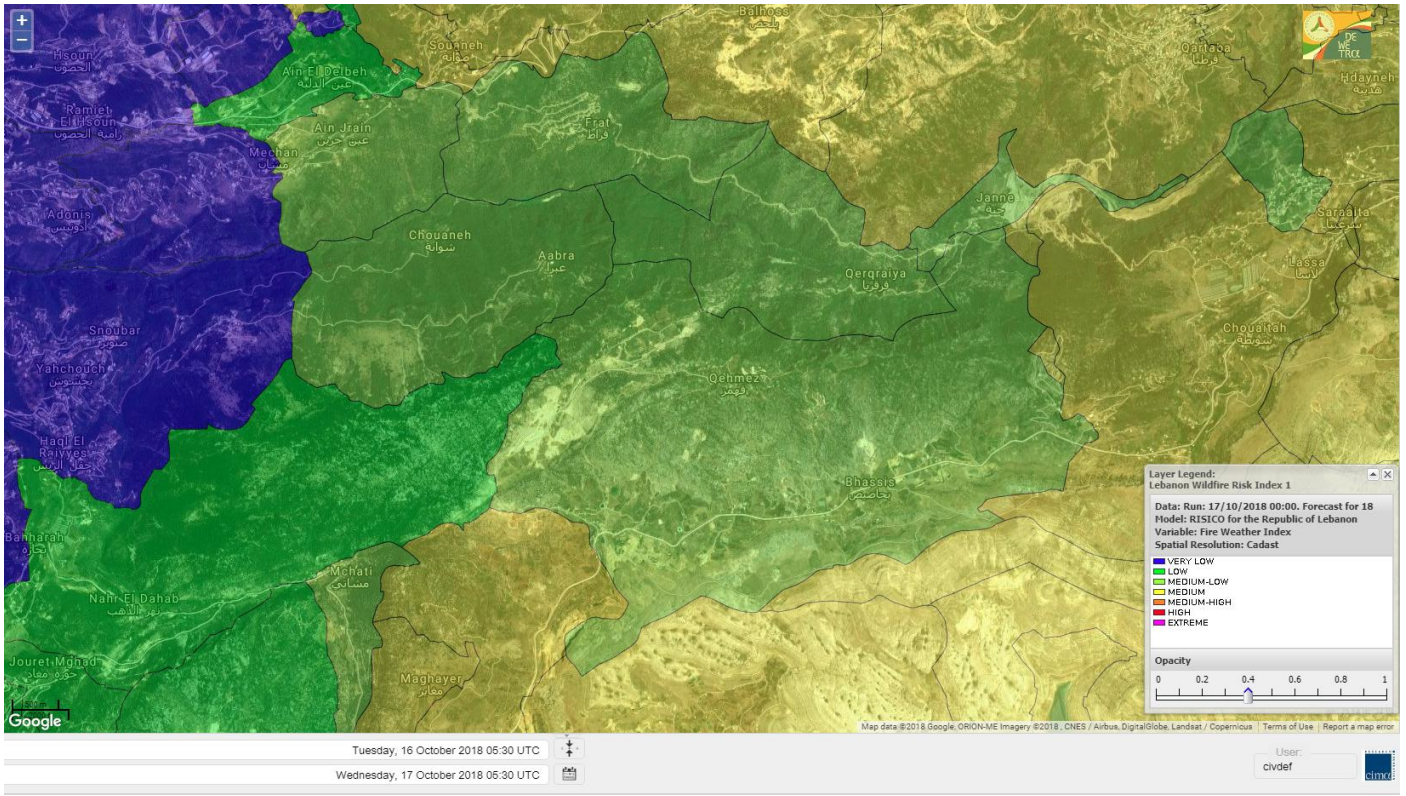




# Jabal Moussa Reserve Forecast for 17 OCT 2018

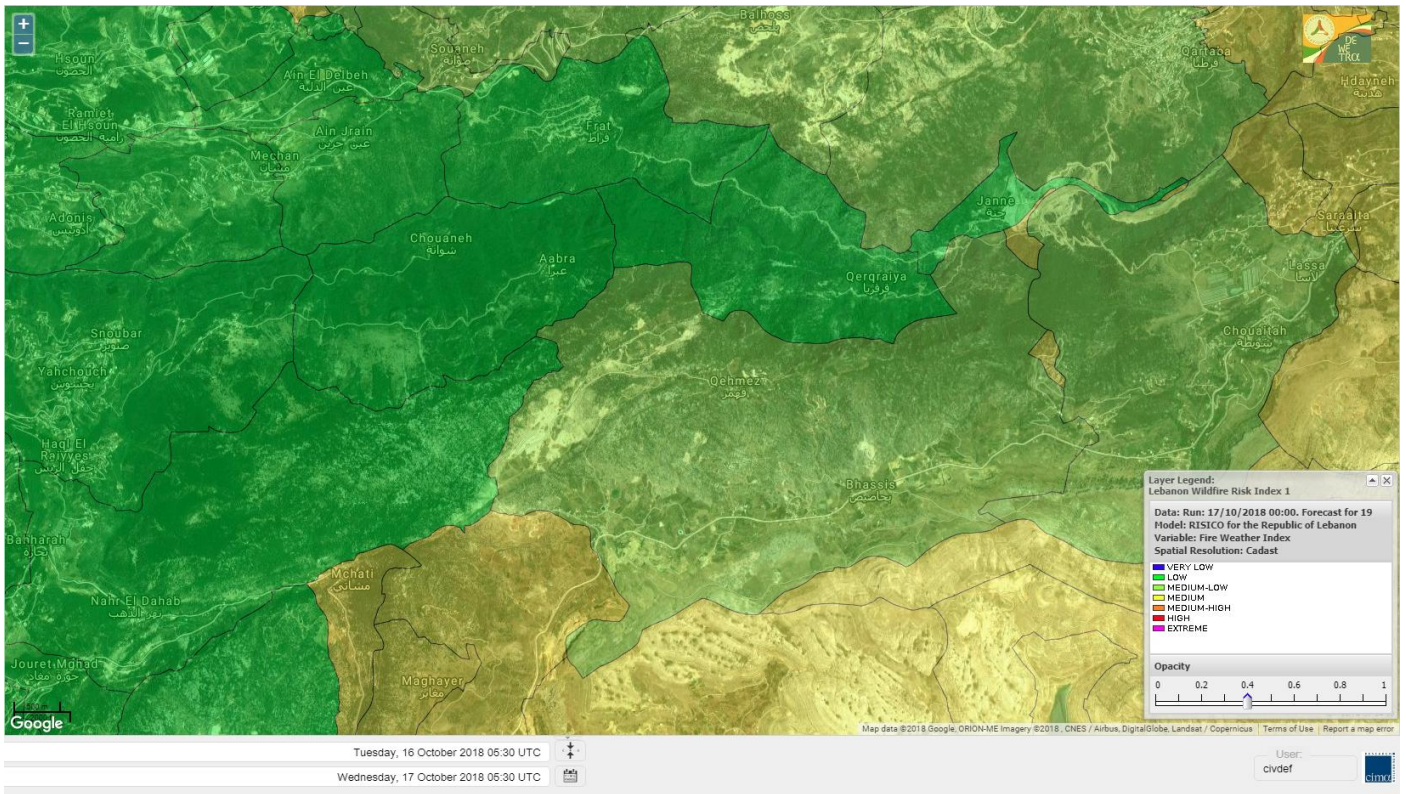


# Jabal Moussa Reserve Forecast for 18 OCT 2018





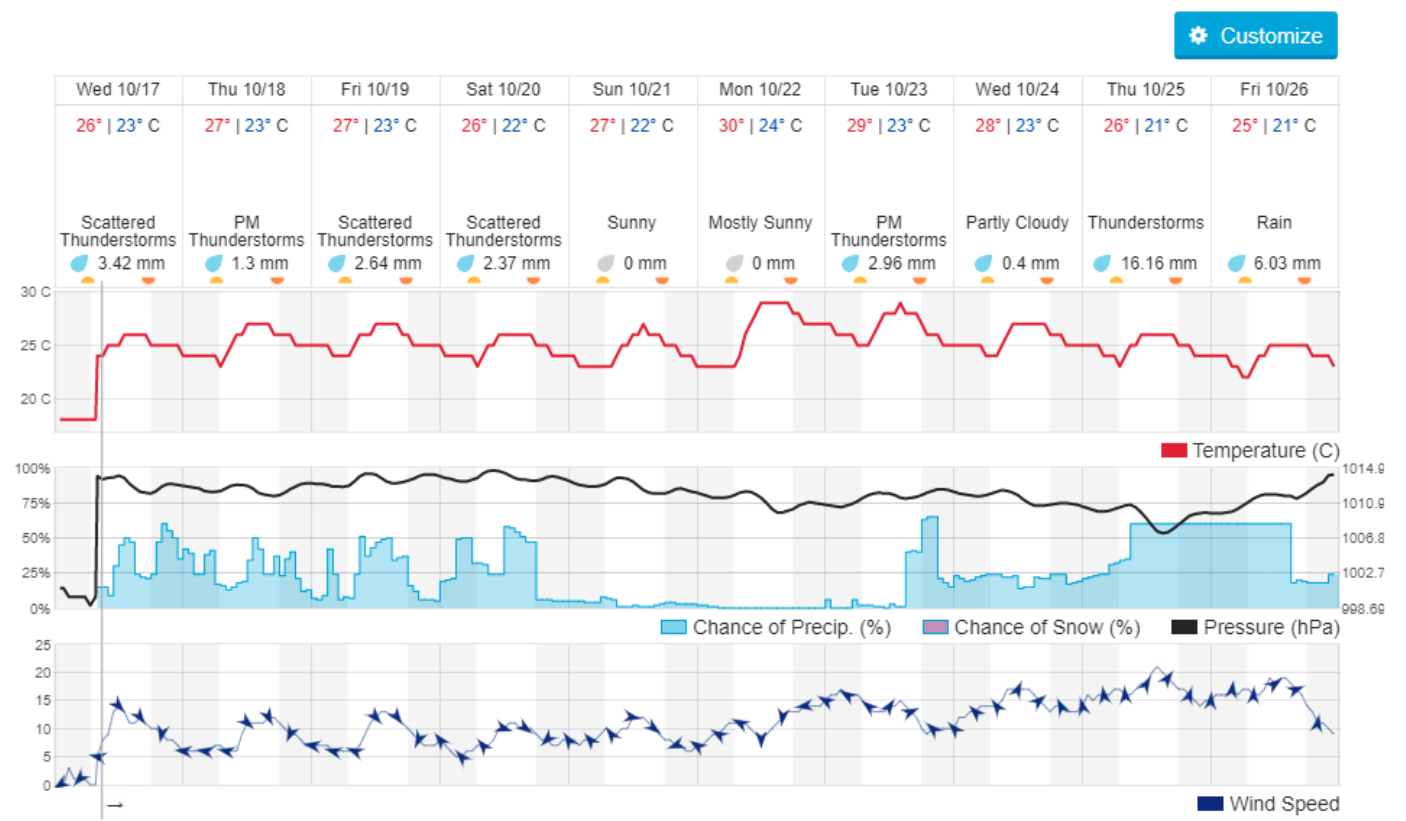
# Jabal Moussa Reserve Forecast for 19 OCT 2018



## Beirut, Lebanon ★ 🏠

🌤️ 20° BROUMANA STATION | [REPORT](#) | [CHANGE](#) ▾

TODAY HOURLY **10-DAY** CALENDAR HISTORY WUNDERMAP





## Nord

### Koura

Municipality	17-Oct	18-Oct	19-Oct	Municipality	17-Oct	18-Oct	19-Oct	Municipality	17-Oct	18-Oct	19-Oct
Aaba	L	VL	L	Afsaddiq	L	L	L	Ain Ekrine	L	L	L
Amioun	L	L	L	Anfeh	M	M	M	Badbhoun	L	L	L
Barghoun	L	L	L	Barsa	L	VL	L	Batroumine	L	VL	L
Bdebba	L	VL	L	Bechmizine	L	L	L	Bednayel El-Koura	L	L	L
Bhabbouch El-Koura	L	L	L	Bkeftine	L	VL	L	Bnehran	L	L	L
Bqaiaa El-Koura	L	VL	L	Bsarma	L	VL	L	Btaaboura	L	L	L
Bterram	L	L	L	Btouratij	L	VL	L	Bziza	L	L	L
Dar Beehtar	L	L	L	Dar Chmezzine	L	L	L	Deddeh	L	VL	L
Deir El-Balamand	L	VL	L	Fih	L	L	L	Hraiche	M	M	M
Ijdaabrine	L	L	L	Kaftoun	L	L	L	Kefraya El-Koura	L	ML	L
Kfarakka	L	VL	L	Kfarhata	L	L	L	Kfarhazir	L	L	L
Kfarkahel	L	VL	L	Kfarsaroun	L	L	L	Kosba	L	L	L
Mejdel el-Koura	L	L	L	Nakhle	L	VL	L	Qalhat	L	L	L
Ras Masqa	L	VL	L	Rechdibbine	L	L	L	Zakroun	M	M	M
Zgharta El-Mtaouile	L	L	L								

### Bcharre

Municipality	17-Oct	18-Oct	19-Oct	Municipality	17-Oct	18-Oct	19-Oct	Municipality	17-Oct	18-Oct	19-Oct
Aabdine	VL	L	L	Bane	L	ML	ML	Barhelioun	L	L	L
Bazouone	ML	M	M	Becharre	L	M	M	Beit Menzer	VL	L	L
Billa	VL	L	L	Blaouza	VL	L	L	Bqaa Kafra	ML	M	M
Bqerqacha	ML	M	M	Breissat	L	M	M	Dimane	L	M	M
Hadath El Jobbeh	L	M	ML	Hadchit	L	ML	M	Hasroun	ML	M	M
Mazraat Aassaf	L	L	L	Mazraat Bani Saab	L	M	ML	Mchaa El-Jobbeh	M	M	M
Metrit	L	L	L	Moghr El-Ahoual	L	L	L	Ouadi Qannoubine	VL	VL	VL
Qanat	L	ML	L	Qnayouer	VL	VL	L	Tourza	L	L	L

### Batroun

Municipality	17-Oct	18-Oct	19-Oct	Municipality	17-Oct	18-Oct	19-Oct	Municipality	17-Oct	18-Oct	19-Oct
Aabrine	L	L	L	Aalali	L	L	L	Aartiz	L	VL	VL
Abdelli	L	VL	L	Ajdabra	L	L	L	Assia	L	L	L
Basbina	L	L	L	Batroun	L	ML	L	Bcheleh	L	L	L
Bechtoudar	L	L	L	Beit Chlala	L	L	L	Beit Kassab	L	VL	VL
Bijdarfil	L	L	L	Bqesmaya	L	L	L	Chatine	L	M	M
Chebtein	L	VL	L	Chekka	L	ML	L	Daael	L	L	L
Dahr Abi Yaghi	L	VL	L	Daraya El-Batroun	L	VL	L	Deir Billa	L	L	L
Deir Kfifane	L	VL	L	Deir Mar Youhanna EL	L	L	L	Deir Mar Youssef Jra	L	VL	L
Douma	L	ML	L	Douq	L	VL	L	Eddeh El-Batroun	L	VL	L
Ftihat El-Batroun	L	VL	L	Ghouma	L	VL	L	Hadtoun	L	L	L
Hamat	L	L	L	Harbouna	L	VL	L	Hardine	L	L	L
Helta	L	L	L	Hery	L	ML	L	Jebila	L	VL	L
Jrabta El-Batroun	L	VL	L	Jrane El-Batroun	L	VL	L	Kfar Aabida	L	VL	L
Kfar Halda	L	L	L	Kfarb Shlaimane	L	L	L	Kfarhatna	L	VL	L
Kfarhay	L	L	L	Kfarhelos	L	L	L	Kfifane	L	VL	L



Kfour El Arabi	L	M	M	Koubba	ML	ML	L	Kour	L	VL	L
Mar Mama	L	VL	L	Masrah	L	VL	L	Mehmarch	L	L	L
Mrah Chdid	L	VL	L	Mrah El Ziyat	L	VL	L	Mrah El-Hajj	L	L	L
Nahle El-Batroun	L	L	L	Niha El-Batroun	L	M	M	Ouajh El-Hajjar	L	L	L
Ouata Houb	L	M	M	Qatnaaoun	L	L	L	Racha	L	L	L
Rachana	L	VL	L	Rachkida	L	L	L	Ram El-Batroun	L	L	L
Ras Nabhach	L	L	L	Selaata	ML	ML	L	Sghar	L	VL	L
Smar Jbayl	L	VL	L	Sourat El-Batroun	L	L	L	Tannourine El-Faouqa	ML	M	M
Tannourine Et-Tahta	L	M	M	Thoum	L	VL	L	Toula El-Batroun	L	VL	L
Zan	L	VL	L								

## Zgharta

Municipality	17-Oct	18-Oct	19-Oct	Municipality	17-Oct	18-Oct	19-Oct	Municipality	17-Oct	18-Oct	19-Oct
Aachach	L	VL	L	Aalma	L	VL	L	Aarde	L	VL	L
Aintourine	VL	L	L	Arabet Qozhaya	L	L	L	Arde	L	VL	L
Arjis	L	L	L	Asnoun	L	VL	L	Ayto	VL	L	L
Basloukit	L	M	M	Bchannine	L	VL	L	Besebeel	L	VL	L
Bhairret Toula	L	M	M	Bnachee	L	L	L	Boussit	L	L	ML
Danha	L	VL	L	Daraiya Zgharta	L	L	L	Deir Jdeide	L	VL	L
Ehden	L	M	M	Halan	L	L	ML	Hariq Zgharta	L	VL	L
Houakir	L	VL	L	Hraiqis	L	L	M	Iaal	L	VL	L
Ijbaa	VL	L	L	Karm Saddeh	L	L	L	Kfarchakhna	L	VL	L
Kfardlaqous	L	VL	L	Kfarfou	L	L	L	Kfarhata Zgharta	L	VL	L
Kfarhoura	L	VL	L	Kfarsghab	L	M	M	Kfaryachit	L	VL	L
Kfarzaina	L	VL	L	Khaldiye	L	VL	L	Mazraat Ajbeaa	L	VL	L
Mazraat Et-Teffah	L	VL	L	Mazraat Jneid	L	VL	L	Mejdlaiya Zgharta	L	VL	L
Merh Kfarsghab	L	VL	L	Miryata	L	VL	L	Miziara	L	L	L
Mzraat Kefraya	L	L	ML	Qorah Bach	L	VL	L	Rachiine	L	VL	L
Ras Kifa	L	L	L	Sakhra	L	VL	L	Sebhel Zgharta	L	L	L
Serhel	L	VL	L	Tallet Zgharta	L	VL	L	Toula Zgharta	L	L	ML
Zgharta	L	VL	L								

## Minieh-Denniye

Municipality	17-Oct	18-Oct	19-Oct	Municipality	17-Oct	18-Oct	19-Oct	Municipality	17-Oct	18-Oct	19-Oct
Aasaymout	L	M	ML	Aaymar	L	L	ML	Aazki	L	L	ML
Ain El-Tineh-Miniyeh	L	VL	L	Assoun	L	L	L	Bakhaaoun	L	L	L
Bchennata	L	M	M	Bechehhara	L	VL	VL	Beddawi	L	L	M
Behouaita	L	ML	ML	Beit El Foqss	L	L	L	Beit Haouik	M	M	ML
Beit Zoud	L	L	L	Bekaasafrine	L	M	M	Borj El Yahoudiyeh	L	L	M
Bqarsouna	L	L	L	Btermaz	L	VL	L	Debaael	L	ML	L
Deir Ammar	L	L	M	Deir Nbouh	L	VL	L	Haouaret-Miniyeh	L	M	ML
Haql el Azimeh	L	VL	L	Harf El Siyad	L	VL	L	Hazmiye-Miniyeh	L	VL	L
Izal	L	L	L	Jarjour	L	VL	VL	Jayroun	L	M	ML
Kahf El-Malloul	L	VL	L	Karm El-Moher	L	L	L	Kfar Binine	L	M	ML
Kfarchalane	L	L	ML	Kfarhabou	L	VL	L	Kharroub-Miniyeh	L	L	ML
Mazraat El-Kreme	L	VL	L	Mazraat Ketrane	L	L	L	Merkebta	L	L	ML
Minyeh	L	L	M	Mrah El Sfirat	L	VL	L	Mrah Sraj	L	VL	L
Mrebbine	L	M	M	Nabi Youcheaa	L	L	M	Nemrine	L	ML	L



Qarhaiya	M	M	ML	Qarne	L	M	ML	Qarsita	L	ML	L
Qattineh-Miniyeh	L	VL	VL	Qemmamine	L	M	ML	Qraine	L	VL	L
Raouda-Aadoua	L	VL	L	Rihaniyet-Miniyeh	L	L	L	Sfireh	L	L	L
Sir Ed-Danniyeh	L	VL	L	Tarane	L	VL	L	Terbol-Miniyeh	L	L	M
Zaghartaghriine	L	VL	L	Zouq Bhannine	L	L	ML				

## Nabatiye

### Nabatiye

Municipality	17-Oct	18-Oct	19-Oct	Municipality	17-Oct	18-Oct	19-Oct	Municipality	17-Oct	18-Oct	19-Oct
Aabba	L	M	L	Aazzi	L	M	L	Adchit El-Chqif	L	M	M
Ain Bou Swar	M	M	M	Ain Kana	M	M	M	Ali El-TaHER	M	M	M
Ansar	L	ML	L	Arab Salim	M	M	M	Arnoun	M	M	M
Bfaroue	L	M	L	Breyqaah	L	M	M	Charqiyeh	L	M	L
Choukine	L	M	ML	Deir El Zahrani	ML	M	ML	Doueur El-Nabatiyeh	L	M	L
Habbouch El-Nabatiye	M	M	M	Hamra El-Nabatiyeh	M	M	M	Harouf El-Nabatiyeh	L	M	L
Hmaile	ML	M	M	Houmin El Faouqa	M	M	M	Houmin El Tahta	L	M	L
Jarjough	M	M	M	Jbaah El-Nabatiyeh	M	M	M	Jebchit	L	M	L
Kfar Djal El-Nabatiy	L	M	M	Kfar Remmane	M	M	M	Kfar Sir	L	M	M
Kfar Tebnit	M	M	M	Kfarfila	M	M	M	Kfour El-Nabatieh	L	M	ML
Mayfadoun	M	M	M	Mazraat Bsaffour	L	M	L	Mazraat Chalbaal	L	M	L
Mazraat Dmoul	L	M	L	Mazraat El Khreibeh	ML	M	ML	Mazraat El-Bayad El-	M	M	M
Mazraat Kfarjaouz	M	M	M	Mazraat Qalaat Meiss	L	ML	L	Nabatiyeh El-Fawka	M	M	M
Nabatiyeh Et-Tahta	M	M	M	Namiriyyeh	L	M	L	Qaaqaaiyet El Jisr	L	M	M
Qossaibeh El-Nabatiy	L	M	M	Roumine	L	M	L	Sarba El-Nabatieh	M	M	M
Sir El-Gharbiyeh	L	ML	ML	Toul	L	M	L	Yehmor El-Nabatiyeh	M	M	M
Zaoutar El Charqiyeh	M	M	M	Zaoutar El-Gharbiyeh	L	M	M	Zebdine El-Nabatiyeh	ML	M	ML
Zefta	L	M	L								

### Hasbaiya

Municipality	17-Oct	18-Oct	19-Oct	Municipality	17-Oct	18-Oct	19-Oct	Municipality	17-Oct	18-Oct	19-Oct
Aain Jarfa	L	M	L	Abou Qamha	L	ML	ML	Ain Qania	L	M	L
Bourghos	L	M	ML	Chebaa	M	M	M	Chouaya Hasbaya	ML	M	M
Dellafeh	L	M	M	Fardiss Hasbaiya	L	M	ML	Hasbaya	L	M	ML
Hbariyeh	ML	M	ML	Kaoukaba Hasbaiya	L	M	M	Kfar Chouba	ML	M	M
Kfar Hamam	ML	M	M	Kfeir El-Zait	ML	M	ML	Khalwat Hasbaya	ML	M	M
Khreibet Hasbaiya	ML	M	M	Majidiyeh Hasbaiya	M	M	M	Marj Ez-Zhour (Haouc	M	M	M
Meri	ML	M	M	Mimass	ML	M	ML	Rachaiya El-Fokhar	L	M	ML
Salaiyeb	M	M	M								

### Marjayoun

Municipality	17-Oct	18-Oct	19-Oct	Municipality	17-Oct	18-Oct	19-Oct	Municipality	17-Oct	18-Oct	19-Oct
Aalmane Marjaayoun	ML	M	M	Aamra	M	M	M	Adayseh Marjaayoun	M	M	M
Adchit El-Koussair	M	M	M	Ain Aarab Marjaayoun	M	M	M	Bani Haiyann	M	M	M
Blatt Marjaayoun	L	M	M	Blida	M	M	M	Borj El-Moulouk	M	M	M
Boueyda Marjaayoun	L	M	M	Deir Mimass	M	M	M	Deir Siriane	M	M	M
Dibbine	L	M	M	Ebel El Saqi	L	M	M	Houla	M	M	M
Houra	M	M	M	Kfar Kila	M	M	M	Khiam Marjaayoun	M	M	M



Klayaa	M	M	M	Majdel Selem	M	M	M	Marjaayoun	L	M	M
Markaba	M	M	M	Mays El-Jabal	M	M	M	Mazraat Doumiat	M	M	M
Mazraat Sarada	M	M	M	Mhaibib	M	M	M	Qabrikha	M	M	M
Qantara	ML	M	M	Rab El-Thalathine	M	M	M	Saouaneh Marjayoun	ML	M	M
Talloussa	M	M	M	Taybeh Matjaayoun	M	M	M	Touline	L	M	M

## Bent Jbail

Municipality	17-Oct	18-Oct	19-Oct	Municipality	17-Oct	18-Oct	19-Oct	Municipality	17-Oct	18-Oct	19-Oct
Ain-Ebel	ML	M	ML	Aitaroun	M	M	M	Aynata Bint Jbeil	ML	M	M
Ayta El-Chaeb	L	M	L	Ayta El-Jabal	ML	M	M	Beit Lif	L	ML	L
Beit Yahoun	ML	M	M	Bint Jbeil	ML	M	ML	Borj Qalaway	ML	M	M
Braachit	ML	M	M	Chakra	M	M	M	Debel	ML	M	L
Deir Antar	ML	M	M	Froun	L	M	M	Ghandouriyeh Bint Jb	L	M	M
Hanine	ML	M	ML	Hariss	ML	M	M	Hdatha	ML	M	M
Jmeyjme	ML	M	M	Kafra Bint Jbeil	L	ML	L	Kfar Dounine	ML	M	M
Khirbet Selm	ML	M	M	Kounine	ML	M	M	Maroun El Ras	ML	M	M
Qalaway	ML	M	M	Qaouzah	L	ML	L	Qatmoun	ML	M	ML
Ramya Bint Jbeil	L	M	L	Rchaf	L	M	L	Rmeich	L	M	ML
Safad Al Battikh	ML	M	M	Salhaneh	L	ML	L	Serbine	L	M	ML
Sultanieh Bint Jbeil	ML	M	M	Tibnine	ML	M	M	Tiri	ML	M	ML
Yaroun	ML	M	ML	Yater	L	M	L				

## Mont Liban

### Jbail

Municipality	17-Oct	18-Oct	19-Oct	Municipality	17-Oct	18-Oct	19-Oct	Municipality	17-Oct	18-Oct	19-Oct
Aabeydat	L	VL	L	Aalita	L	VL	L	Aamchit	L	VL	L
Aarab El-Lahib	ML	M	M	Aarasta	M	M	M	Adonis Jbeil	VL	VL	L
Afqa Jbeil	M	M	M	Ain El Delbeh Jbeil	L	L	L	Ain El-Ghouayba	L	ML	M
Ain Jrain	L	ML	L	Ain Kfah	L	VL	L	Almat El Chemaliyat	L	M	ML
Almat El-Jenoubiya	L	M	ML	Aqoura	M	M	M	Bayzoun	L	VL	L
Bchille Jbeil	L	VL	L	Bechtida	L	VL	VL	Behdaydat	L	VL	L
Beit Habbaq	L	VL	L	Bejjeh	L	VL	L	Bekhaaz	L	VL	L
Berbara Jbeil	L	L	L	Bintael	L	VL	L	Birket Hjoula	L	VL	VL
Blatt Jbeil	L	VL	L	Boulhos	L	M	ML	Breyj Jbeil	VL	VL	L
Chamat	L	VL	L	Chikhane	L	VL	L	Chmout	L	VL	L
Eddeh Jbeil	L	VL	L	Ehmej	L	M	ML	Fatre	VL	VL	L
Ferhet	L	L	ML	Fghal	L	VL	L	Frat	L	ML	L
Ghabat	M	M	M	Ghalboun	L	VL	L	Gharzouz	L	VL	L
Ghofrine	L	VL	L	Habil	L	VL	VL	Halate	VL	VL	L
Haqel	L	VL	L	Hbaline	L	VL	L	Hboub	L	VL	L
Hdeine	M	M	M	Hema Er-Rehban	L	M	M	Hema Mar Maroun Aann	L	M	M
Hjoula	L	VL	L	Hosrayel	L	VL	L	Hsarat	L	VL	L
Hsoun	VL	VL	L	Jaj	L	L	L	Janne	L	ML	L
Jbeil	L	VL	L	Jeddeyel Jbeil	L	VL	L	Jlisse	VL	VL	L
Jouret El-Qattine	VL	VL	L	Kfar Baal Annaya	L	VL	L	Kfar Kidde	L	VL	L
Kfar Kouas	L	VL	L	Kfar Mashoun	L	VL	L	Kfoun	L	VL	L



Kharbe Jbeil	L	VL	L	Laqlouq	ML	M	M	Lassa	L	M	ML
Lehfed	L	L	L	Maad	L	VL	L	Mar Sarkis	L	M	M
Mastita	VL	VL	L	Mayfouq	L	L	L	Mazraat El Siyad	ML	M	M
Mazraat El-Maaden	L	ML	ML	Mechane	VL	VL	L	Mechmech Jbeil	L	L	L
Mehrin	L	VL	L	Mejdel El-Akoura	M	M	M	Mghayreh Jbeil	M	M	M
Mounsef	L	L	L	Nahr Ibrahim	L	VL	L	Qahmez	L	ML	ML
Qartaba	L	M	ML	Qartaboun	VL	VL	L	Qattara Jbeil	L	L	L
Qorqraya	L	ML	L	Ramout	L	VL	L	Ras Osta	L	VL	L
Rihane Jbeil	L	VL	L	Sakiet El-Khayt	L	VL	L	Saqi Richmaya	L	L	L
Sebrine	VL	VL	L	Seraita	M	M	M	Souane Jbeil	L	M	ML
Tadmor	M	M	M	Tartej	L	L	L	Torzaiya	L	L	L
Yanouh Jbeil	M	M	M	Zibidine Jbeil	VL	VL	L				

## El Metn

Municipality	17-Oct	18-Oct	19-Oct	Municipality	17-Oct	18-Oct	19-Oct	Municipality	17-Oct	18-Oct	19-Oct
Aain El-Qabu	L	M	M	Aain El-Qach	L	M	M	Aain El-Teffaha	L	M	M
Aain el-Safssaf El-M	L	M	M	Abou Mizane	L	M	M	Ain Aar	L	L	L
Ain Alaq	L	L	L	Ain El-Kharroube	L	M	M	Ain El-Sendianeh	L	M	M
Ain El-Zeitoune	L	M	M	Ain Saadeh	VL	VL	L	Aintoura El-Matn	ML	M	M
Amaret Chalhoub	L	L	ML	Antelias	L	L	ML	Atchaneh	VL	VL	L
Ayroun	L	M	M	Baabdat	L	ML	M	Baouchariyeh	VL	VL	ML
Baskinta	L	M	M	Beit Chabab	L	ML	M	Beit El-Chaar	L	L	L
Beit El-Kekko	L	L	ML	Beit Mery	VL	VL	L	Bhersaf	L	ML	ML
Bikfaya	L	M	M	Biyakout	L	L	L	Bnabil	L	M	M
Bourj Hammoud	VL	VL	ML	Bqennaya	L	VL	L	Broummana El-Matn	VL	VL	L
Bsalim	VL	VL	L	Bsifrine	L	M	M	Bteghrine	L	M	M
Chaouiye	L	L	L	Chouaya El-Matn	L	M	M	Choueir	L	M	M
Chrine	L	M	M	Dahr El Sawan El-Mat	L	L	ML	Daychouniyeh	L	L	L
Dbayeh	L	L	ML	Deir Chamra	L	L	L	Deir Mar Abda el Mch	VL	VL	L
Deir Mar Roukouz	VL	VL	L	Deir Tamiche	VL	VL	L	Dik El-Mehdi	L	VL	L
Dikwaneh	VL	VL	ML	Douar El-Matn	L	M	M	Fanar	L	VL	L
Fraike	VL	L	L	Haret El-Ballaneh	L	L	L	Hbous	L	L	L
Himlaya	L	M	M	Jal El Did	L	L	ML	Jdeideh El-Metn	L	L	L
Jouar El-Matn	L	M	M	Jouret El-Ballout	VL	VL	L	Kaaqour	L	M	M
Kfar Aaqab	L	M	M	Kfertay El-Matn	L	M	M	Khenchara	L	M	M
Khillat El-Mtain	L	M	M	Konnabat Broummana	VL	VL	L	Konnabat Salima	L	M	M
Machraah El-Matn	ML	M	M	Majdel Tarchich	ML	M	M	Majzoub	L	L	L
Mansouriyeh El-Metn	VL	L	L	Mar Boutros Karm Et-	L	M	M	Mar Chaya et Mzekke	VL	VL	L
Mar Moussa Ed-Douar	L	M	M	Marjaba	ML	M	M	Masqa	VL	VL	L
Mayasse	L	M	M	Mazraat Deir Aoukar	L	L	L	Mazraat El-Hadirat	L	VL	L
Mazraat Yachouh	L	L	L	Mchikha	ML	M	M	Menqlet Mezher	L	L	L
Mhaydseh Matn	L	M	M	Mkalles	VL	VL	L	Mrouj	M	M	M
Mtain	M	M	M	Mtayleb	L	L	L	Nabay	VL	VL	L
Naccache	L	L	L	Ouadi Chahine	L	M	M	Ouadi El-Karm El-Mat	VL	L	L
Ouata El-Mrouj	L	M	M	Ouyoun El-Matn	VL	VL	L	Qornet Chehwan	VL	VL	L
Qornet El-Hamra	VL	VL	L	Roumieh	VL	VL	L	Sfeilet Bikfaya	L	ML	M
Sinn El-Fil	VL	VL	ML	Zabbougha	VL	L	L	Zalqa	L	L	ML



Zarououn	L	M	M	Zekrite	VL	VL	L	Zighrine El-Matn	L	M	M
Zouk El-Khrab	VL	L	L								

## Chouf

Municipality	17-Oct	18-Oct	19-Oct	Municipality	17-Oct	18-Oct	19-Oct	Municipality	17-Oct	18-Oct	19-Oct
Aalmane El-Chouf	L	L	L	Aammiq El-Chouf	L	ML	ML	Ain Ouzein	L	ML	ML
Ain Qani	ML	M	ML	Ain Zhalta	L	M	M	Ainbal	L	L	L
Amatour	ML	M	M	Anout	ML	M	ML	Atrine	ML	M	ML
Baadarane	ML	M	M	Baaqline	L	L	L	Baasir	L	L	L
Barja	L	L	L	Barouk	ML	M	M	Bater	ML	M	M
Batloun	ML	M	M	Bayqoun	M	M	M	Bchetfine	L	L	L
Beiteddine	ML	ML	ML	Benouati Ech-Chouf	L	L	L	Berjein	L	L	L
Bireh et Mtalleh	ML	M	M	Biret El-Chouf	ML	M	M	Bkechtine Ouel Mchei	L	L	L
Bkifa El-Chouf	ML	ML	ML	Botme	ML	ML	ML	Bqaiaa Ech-Chouf	L	L	L
Bsaba El-Chouf	ML	M	ML	Chammis El-Chouf	ML	ML	L	Chehim	ML	ML	ML
Chemaarine	L	L	L	Chourit	L	ML	ML	Daher El-Chouf	L	L	L
Dalhoun	ML	ML	L	Damour	L	L	L	Daraya El-Chouf	L	L	L
Deir El-Moukhalles	L	ML	L	Deir Baba	L	L	L	Deir Dourit	L	L	L
Deir El-Qamar	L	L	L	Deir Kouche	L	ML	L	Dibbieh	L	L	L
Dmit	L	L	L	Fouara Jaafar	L	M	ML	Fraidis El-Chouf	ML	M	M
Ghabet Jaafar	L	L	L	Gharife	ML	M	ML	Haret Jandal	ML	M	M
Hasrout	ML	M	ML	Jadra	L	ML	L	Jahlieh	L	L	L
Jbeih El-Chouf	ML	M	M	Jdeidet El-Chouf	ML	M	ML	Jiyeh	L	L	L
Jleilyeh	ML	M	ML	Jmailiyeh	L	L	L	Joun	L	L	L
Kahlounie El-Chouf	ML	M	M	Ketermaya	L	L	L	Kfar Faqoud	L	L	L
Kfar Hamal	ML	ML	ML	Kfar Him	L	L	L	Kfar Katra	L	ML	ML
Kfar Niss	ML	M	ML	Kfar hay	L	ML	ML	Kfarnabrakh	ML	M	ML
Khirbet Bisri	ML	ML	L	Knayse El-Chouf	L	ML	ML	Maaniyeh	L	L	L
Maasser Beiteddine	ML	M	ML	Maasser El-Chouf	ML	M	M	Majdalouna	L	L	L
Majdel El-Meouch	ML	M	ML	Mazboud	M	M	ML	Mazmoura	ML	M	ML
Mazraat El Chouf	ML	M	M	Mazraat El Daher	ML	ML	ML	Mazraat El-Douair	L	ML	ML
Mechref	L	L	L	Mghairie	ML	ML	L	Mghayrie El-Chouf	L	L	L
Moukhtara	ML	M	ML	Mrusti	ML	M	M	Mtolle	ML	M	ML
Naameh	L	L	L	Niha El-Chouf	ML	M	M	Ouadi Abou Youssef	L	VL	VL
Ouadi Ed-Deir	L	L	L	Ouadi El-Sit	L	M	ML	Ouadi bnehlay	L	L	L
Qraibeh	ML	M	M	Qreiaa	L	L	L	Rmayle El-Chouf	L	L	L
Semqaniyeh	M	M	M	Sibline	L	ML	L	Sirjbeil	L	L	L
Warhanieh	ML	M	M	Werdaniyeh	L	L	L	Zaarourieh	ML	M	ML

## Baabda

Municipality	17-Oct	18-Oct	19-Oct	Municipality	17-Oct	18-Oct	19-Oct	Municipality	17-Oct	18-Oct	19-Oct
Abadiyeh	L	L	L	Ain Mouaffaq	L	L	L	Araiya	L	L	L
Arbaniyeh	L	ML	M	Arsoun	L	M	M	Baabda	VL	L	L
Baalchmey	L	ML	L	Bmaryam	L	M	M	Bourj El-Brajneh	VL	L	ML
Boutchay	VL	L	L	Bsaba Baabda	VL	L	L	Btekhney	L	M	M
Btibyat	L	M	M	Bzbeddine	L	M	M	Chbeniyeh	L	M	M
Chiyah	VL	VL	ML	Chmeisset Baabda	VL	ML	M	Chouit	L	L	L
Deir El-harf	L	M	M	Deir Khouna	L	ML	M	Dlaybeh	L	M	M

Falougha	M	M	M	Furn El-Chebbak	VL	VL	ML	Hadath Beyrouth	VL	L	ML
Halaliyeh Baabda	L	L	L	Hammana	L	M	M	Haret El Sett	L	L	L
Haret Hamze	L	ML	ML	Haret Hreik	VL	VL	ML	Hasbaiya El-Metn	L	M	M
Jouar El-Hoz	L	M	M	Jouret Arsoun	L	M	M	Kfar Chima	VL	L	ML
Kfar Selouane	ML	M	M	Khalouat Baabda	L	M	M	Kneisset Baabda	L	L	ML
Laylakeh	VL	L	ML	Louayzeh Baabda	L	L	L	Merdache	VL	L	L
Mzairaa Baabda	L	L	L	Ouadi Chahrour El Ol	L	L	L	Ouadi Chahrour El So	VL	L	L
Qalaa Baabda	L	M	M	Qhraybe Baabda	L	M	M	Qobbayaa	L	M	M
Qornayel	L	M	M	Qortada	VL	VL	VL	Qrayeh Baabda	L	M	M
Qsaibeh Baabda	VL	VL	VL	Qtale Baabda	L	M	M	Ras El Metn	L	L	L
Ras El-Haref	L	M	M	Rouayset El-Ballout	L	L	L	Salima Baabda	L	M	M
Tahouitat El Ghadir	VL	L	ML	Tarchich	ML	M	M	Zandouqa	VL	VL	VL

## Aley

Municipality	17-Oct	18-Oct	19-Oct	Municipality	17-Oct	18-Oct	19-Oct	Municipality	17-Oct	18-Oct	19-Oct
Abey	L	L	L	Aghmid	L	M	M	Ain Dara	M	M	M
Ain Drafil	VL	VL	L	Ain El Halazoun	L	ML	ML	Ain El-Rmmaneh	L	L	L
Ain Jedideh	L	ML	ML	Ain Ksour	L	L	L	Ain Onoub	VL	L	L
Ain Traz	L	M	ML	Ainab	VL	L	L	Aley	L	ML	L
Aramoun	VL	L	L	Aytat	VL	L	L	Azouniyeh	L	M	M
Baawerta	L	L	L	Badghan Oua Wadi Bad	L	M	M	Bassatine	VL	L	L
Bayssour	L	L	L	Bchamoun	VL	L	L	Bdadoun	L	L	L
Behouara	L	ML	L	Bennay	L	L	L	Bhamdoun El-Dayaa	ML	M	ML
Bhamdoun El-Mhatta	L	M	ML	Bkhechtey	L	ML	L	Bleibel	VL	L	L
Bmakine	L	ML	L	Bmehray	ML	M	M	Bouzrid	L	ML	L
Bserrine	ML	ML	ML	Bsous	L	L	L	Btalloun	ML	M	ML
Btater	ML	M	ML	Chanay	L	M	ML	Charoun	L	M	M
Chartoun	L	L	L	Chemlane	VL	L	L	Choueifat El-Aamrous	VL	L	ML
Choueifat El-Oumara	VL	L	L	Choueifat El-Quoubbe	VL	L	ML	Dakkoun	L	L	L
Deir Qoubel	VL	L	L	Dfoun	L	L	L	Douair El Remmaneh	L	L	L
Ghaboun	L	ML	L	Habramoun	L	L	L	Homs Oua Hama	L	ML	L
Houmal	VL	L	L	Jisr El Qadi	L	L	L	Kehaleh	L	L	L
Keyfoun	L	ML	L	Kfar Aamey	L	ML	L	Kommatyeh	L	ML	L
Maasrati	L	ML	ML	Majdel Baana	L	M	M	Mansourieh et Ain El	ML	M	ML
Mazraat El-Nahr	L	ML	L	Mchakhte	L	M	M	Mecherfeh	L	M	ML
Mejdlaya	L	ML	L	Mrayjat	L	M	M	Ramliyah	L	ML	ML
Rechmaya	ML	M	ML	Rejmeh	L	ML	L	Remhala	L	L	L
Rouaysset El Neemane	L	ML	L	Saoufar	L	M	M	Selfaya	L	ML	ML
Sirhmoul	VL	L	L	Souq El Ghareb	L	ML	L	Taazanieh	ML	M	ML

## Kesrouane

Municipality	17-Oct	18-Oct	19-Oct	Municipality	17-Oct	18-Oct	19-Oct	Municipality	17-Oct	18-Oct	19-Oct
Achkout	VL	L	L	Adma Oua Dafneh	VL	VL	L	Ain Ed-Delbe Kesroua	L	ML	M
Ain El-Rihane	VL	VL	L	Aintoura Kesrouane	VL	VL	L	Ajaltoun	VL	L	L
Akaybeh Kesrouane	VL	VL	L	Aramoun Kesrouane	VL	L	L	Azra ouel Ozor	VL	VL	L
Ballouneh	L	L	L	Batha	VL	VL	VL	Bekaatat Achkout	VL	L	L
Bekaatat Kanaan	L	ML	ML	Bizhel	VL	VL	VL	Bouar	VL	VL	L
Bqaatouta	ML	M	M	Bqaq Ed-Dine	VL	VL	L	Bzommar	VL	L	L



Chahtoul	VL	L	L	Chnaniir	VL	VL	L	Chouan	L	ML	L
Daraya Kesrouane	VL	L	L	Darououn	VL	VL	VL	Deir Baqlouch	VL	VL	VL
Dlebta	VL	VL	L	Eghbeh	VL	VL	VL	Faraya	ML	M	M
Fatka	L	L	L	Feytroun	VL	L	L	Ghazir	VL	VL	L
Ghbaleh Kesrouane	VL	VL	L	Ghedrass	VL	VL	L	Ghosta	VL	L	L
Ghynéh	L	L	L	Harharaya w Kattine	VL	L	L	Harissa Kesrouane	VL	VL	VL
Hayata	VL	L	L	Hosein	VL	VL	L	Hrajel	ML	M	M
Jdeideh Ghazir	VL	L	L	Jeita	VL	VL	L	Jounieh Ghadir	VL	VL	L
Jounieh Haret Sakhr	VL	VL	L	Jounieh Salel Alma	VL	VL	L	Jounieh Sarba	VL	VL	L
Jouret Bedrane	VL	VL	L	Jouret Mhad	VL	L	L	Jouret Termos	L	L	L
Kfar Debiane	L	M	M	Kfar Tay Kesrouane	L	L	L	Kfar Yassine	VL	VL	L
Kfour Kesrouane	L	L	L	Kharayeb Nahr Ibrahi	VL	VL	L	Klayaat Kesrouane	VL	L	L
Maarab	VL	VL	L	Maaysra Kesrouane	VL	VL	L	Mayrouba	ML	M	M
Mazraat Er-Ras	VL	VL	L	Mazraat Mrah El-Mir	VL	VL	L	Mchaa El Ftouh	M	M	M
Mchaa Faraya	ML	M	M	Mchaa Kfar Dibiane	ML	M	M	Mghaer	L	M	M
Mradiyah	VL	VL	VL	Nahr Ed-Dahab	VL	L	L	Nammoura Kesrouane	VL	VL	L
Ouata El Jaouz	L	L	L	Ouata Sillam	VL	VL	L	Raachine	VL	L	L
Rayfoun	VL	L	L	Safra Kesrouane	VL	VL	L	Shayle Kesrouane	VL	VL	L
Tabarja	VL	VL	L	Yahchouch	VL	VL	L	Zaaytreh	VL	VL	L
Zeytoun	VL	VL	L	Zouk Mikael	VL	VL	L	Zouk Mosbeh	VL	VL	L

## Baalbek\_Hermel

### Baalbek

Municipality	17- Oct	18- Oct	19- Oct	Municipality	17- Oct	18- Oct	19- Oct	Municipality	17- Oct	18- Oct	19- Oct
Aadous	M	M	M	Aamchki	M	M	M	Aarsal	M	M	M
Ain Baalbek	M	M	M	Ain Bourday	M	M	M	Ain El-Benye	M	M	M
Ain El-Jaouz Baalbek	M	M	M	Ain El-Siya Chadoura	M	M	M	Al Khodr Baalbek	M	M	M
Al Nabi Chit	M	M	M	Aynata Baalbek	M	M	M	Baalbek	M	M	M
Bachwat	M	M	M	Barqa	M	M	M	Bednayel Baalbak	M	M	M
Beit Chama	M	M	M	Bijjaje	M	M	M	Bouday	M	M	M
Brital	M	M	M	Btadi	M	M	M	Chaat	M	M	M
Chaibe	M	M	M	Chlifa	M	M	M	Chmestar	M	M	M
Dar El-Oussa	M	M	M	Deir El-Ahmar	M	M	M	Deir Mar Maroun Baal	M	M	M
Douris	M	M	M	Fakiha	M	M	M	Hadath Baalbek	M	M	M
Ham	M	M	M	Haour Taala	M	M	M	Hizzine	M	M	M
Hlebta	M	M	M	Hosh Barada	M	M	M	Hosh El Dahab	M	M	M
Hosh El Snid	M	M	M	Hosh El-Nabi	M	M	M	Hosh El-Rafiq	M	M	M
Hosh Tal Safiya	M	M	M	Hrebta	M	M	M	laat	M	M	M
Jebaa	M	M	M	Jenta	M	M	M	Kfar Dabach	M	M	M
Kfar Dane	M	M	M	Khraibeh El-Hermel	M	M	M	Khreibet Baalbek	M	M	M
Kneisset Baalbek	M	M	M	Labueh	M	M	M	Maarboun	M	M	M
Majdaloun	M	M	M	Maqneh	M	M	M	Mazraat Beit Mcheik	M	M	M
Misraya	M	M	M	Mograq	M	M	M	Nabha El-Damdoum	M	M	M
Nabi Chbay	M	M	M	Nabi Osman	M	M	M	Nahleh baalbek	M	M	M
Ouadi El-Oss	M	M	M	Qaa Baayoun	M	M	M	Qaa Jouar Maqiye	M	M	M
Qaa Ouadi El-Khanzir	M	M	M	Qah Baalbek	M	M	M	Qarha Baalbek	M	M	M

Qsarnaba	M	M	M	Ram Baalbek	M	M	M	Ras Baalbek El Sahl	M	M	M
Ras Baalbek El-Charq	M	M	M	Riha	M	M	M	Saaide	M	M	M
Sboubba	M	M	M	Seriine El-Tahta	M	M	M	Slouqi	M	M	M
Taiba Baalbek	M	M	M	Talia	M	M	M	Taraiya	M	M	M
Temnin El Fawqa	M	M	M	Temnin El-Tahta	M	M	M	Tfail	M	M	M
Yahfoufa	M	M	M	Yammouneh	M	M	M	Younine	M	M	M
Zboud	M	M	M								

## Hermel

Municipality	17-Oct	18-Oct	19-Oct	Municipality	17-Oct	18-Oct	19-Oct	Municipality	17-Oct	18-Oct	19-Oct
Charbine El-Hermel	M	M	MH	Hermel Jbab	M	M	M	Hermel	M	M	M
Maaysra El-Hermel	M	M	MH	Michaa Mrajhine	M	M	M	Ouadi Faara	M	M	M
Ras Baalbek - Ouadi	M	M	M	Ras Baalbek El Gharb	M	M	M	Zighrine	M	M	MH

## Akkar

### Akkar

Municipality	17-Oct	18-Oct	19-Oct	Municipality	17-Oct	18-Oct	19-Oct	Municipality	17-Oct	18-Oct	19-Oct
Aain Tinta	M	M	M	Aaiyat	M	M	M	Aakkar El-Aatiqa	M	M	M
Aamar Akkar	L	L	L	Aamar El Baykat	M	M	M	Aamayer	M	M	M
Aamriyet Akkar	M	M	M	Aandqet	M	M	M	Aarmeh	M	M	M
Aarqa	ML	M	M	Aawaynat	M	M	M	Aayoun Akkar	M	M	M
Abboudiye	M	M	M	Ain El-Zeit	M	M	M	Ain Yaaqoub	M	M	M
Akroum	M	M	M	Aridet Cheikh Zennad	M	M	M	Baldeh w Mazraat Bal	M	M	M
Barcha	M	M	M	Bardeh	M	M	M	Bebnine	L	L	L
Beino	M	M	M	Beit Ayoub	ML	M	ML	Beit El-Haouch	L	L	L
Beit Mellat	M	M	M	Beit Younes	ML	M	L	Berbara Akkar	M	M	M
Berqayel	L	L	L	Bezbina	M	M	M	Bireh Akkar	M	M	M
Borj	M	M	M	Bqerezla	ML	M	L	Bzal	L	L	L
Chane	ML	M	L	Chaqdouf	M	M	M	Charbila	M	M	M
Cheikh Mohammad	M	M	M	Cheikh Taba Es-Sahl	M	M	M	Cheikh Taba	M	M	L
Cheikh Zennad	M	M	M	Cheikhlar	M	M	M	Chir Hmairine	M	M	M
Daghle	M	M	M	Dahr Laissine	M	M	ML	Darine	M	M	M
Dawra	M	M	M	Dawsa w Baghdadi	M	M	M	Dayret Nahr El-Kabir	M	M	M
Deir Dalloum	L	L	L	Deir Jennine	M	M	M	Denbou	M	M	L
Dibbabiyyeh	M	M	M	Douair Aadwiyeh	M	M	M	Fassikine	M	M	M
Fnaydek	ML	M	M	Fraydes Akkar	M	M	M	Ghazayle	M	M	M
Habchit	ML	M	L	Hakour	L	L	L	Halba	M	M	M
Haouchab	M	M	M	Hayssat	M	M	M	Haytla	M	M	M
Hayzouq	M	M	M	Hedd	M	M	M	Hmaira Akkar	L	VL	L
Hmaiss Akkar	M	M	M	Hnaider	M	M	M	Hokr Ed-Dahri	M	M	M
Hokr Etti	M	M	M	Hokr Jouret Srar	M	M	M	Houaich	M	M	ML
Hrar	ML	M	ML	Idbil	M	M	ML	Ilal	M	M	ML
Janine	M	M	M	Jdeidet El-Joumeh	M	M	ML	Jdeidet El-Kaiteh	L	VL	L
Jebayel	M	M	ML	Kafr	L	VL	L	Kafr	M	M	M
Karm Asfour	ML	M	L	Kfar Melki Akkar	M	M	M	Kfar Noun	M	M	M
Kfarharra	M	M	M	Khalsa	M	M	M	Kharnoubet Akkar	M	M	M



Khirbet Daoud Aakkar	M	M	M	Khirbet El Remmane	M	M	M	Khirbet Shar	M	M	M
Khoreybet El-Jindi	M	M	M	Khreibet Aakkar	ML	M	ML	Kneisset Aakkar	M	M	M
Kneisset Hnaider	M	M	M	Knisse	M	M	M	Kroum El-Aarab	M	M	M
Kwachra	M	M	M	Kweykhat	M	M	M	Machta Hammoud	M	M	M
Majdala	L	L	L	Majdel Akkar	M	M	M	Mar Touma	L	VL	L
Marlaya Melhem	L	L	L	Mashha	M	M	M	Massoudiye	M	M	M
Mazraat Beit Ghattas	L	L	L	Mazraat En-Nahriye	M	M	M	Mechmech	ML	M	M
Memneh	M	M	M	Mhammara	L	L	L	Mighraq Aakkar	M	M	M
Minyara	L	ML	L	Moqayteh	M	M	M	Mounjez	M	M	M
Msalla	M	M	M	Mzeihmeh	M	M	M	Nfaiseh	M	M	M
Noura Et-Tahta	M	M	M	Ouadi El-Haour	M	M	M	Ouadi El-Jamous	L	L	L
Ouyoun El-Ghizlane	L	VL	L	Qaabarine	M	M	M	Qabaait	ML	M	L
Qachlaq	M	M	M	Qantara Aakkar	M	M	ML	Qarha Aakkar	M	M	M
Qarqaf	L	L	L	Qboula	M	M	M	Qleiaat Aakkar	M	M	M
Qloud El-Baqie	L	L	L	Qobaiyat Aakkar	M	M	M	Qobbat Chamrat	L	L	ML
Qorayat	ML	M	L	Qornet Aakkar	ML	M	M	Qsair Aakkar	M	M	M
Rahbe	M	M	ML	Rihaniyet Aakkar	M	M	M	Rmah	M	M	M
Rmoul	M	M	M	Saadine	M	M	M	Sadaqa	ML	M	ML
Saidnaya	M	M	M	Sammouniye	M	M	M	Sayssouq	L	ML	L
Semmaqiye	M	M	M	Semmaqli	ML	ML	ML	Sfinet El-Dreib	M	M	M
Sfinet El-Qaitaa	L	L	L	Sindyanet Zeidane	M	M	M	Souaisset Aakkar	M	M	M
Srar	M	M	M	Tal Abbas El Gharby	M	M	M	Tal Abbas El-Charqy	M	M	M
Tal Biret	M	M	M	Tal Hmayra	M	M	M	Tal Maayan Tal Kiri	M	M	M
Tal Sibel	M	M	M	Tallet Chattaha	M	M	M	Tikrit	M	M	ML
Tleil	M	M	M	Tshea	M	M	M	Zawarib	M	M	L
Zouq El Hosniyeh	L	VL	L	Zouq El-Haddara	L	L	L	Zouq El-Hbalsa	L	VL	L
Zouq El-Mogachrine	L	VL	L								

## Sud

### Sour

Municipality	17-Oct	18-Oct	19-Oct	Municipality	17-Oct	18-Oct	19-Oct	Municipality	17-Oct	18-Oct	19-Oct
Aaiyeh	L	ML	L	Aalma El-Chaab	L	L	L	Aaytit	L	ML	L
Abbassiyeh Sour	L	ML	ML	Abou Chech	L	ML	L	Ain Abou Abdallah	L	ML	ML
Ain Baal	L	ML	L	Arzoun	L	M	M	Aziyeh	L	L	L
Baflaya	L	ML	M	Barich	L	L	L	Batouliyah	L	ML	L
Bayad	L	ML	L	Bazouriyeh	L	ML	L	Bediass	L	L	L
Bestiyat	L	L	L	Borj El Chemali	L	ML	M	Borj En-Naqoura	L	L	L
Borj Rahhal	L	L	L	Boustane	L	ML	L	Btaychiyah	L	ML	L
Chaaitiye	L	ML	L	Chameh	L	L	L	Chehabiye	ML	M	M
Chehour	L	L	ML	Chihine	L	ML	L	Debaal Sour	L	L	L
Deir Amess	L	L	L	Deir Kifa	L	M	M	Deir Qanoun El-Ain	L	ML	ML
Deir Qanoun El-Naher	L	L	L	Derdghaiya	L	M	M	Dhayra	L	ML	L
Halloussiyeh	L	L	L	Hamoul	L	L	L	Hanaouey	L	ML	L
Henniye	L	ML	ML	Hmairi Sour	L	L	L	Iskandarouna Sour	L	L	L
Jbal El Botom	L	ML	L	Jebbin	L	ML	ML	Jennata	L	L	L
Jijim	L	L	L	Jouaiya	L	ML	L	Kneisset Sour	L	ML	L

Maarake	L	L	L	Maaroub	L	L	L	Majadel	L	M	ML
Majdalzoun	L	L	L	Mansouri Sour	L	ML	ML	Marnba	L	L	ML
Marouahine	L	ML	L	Mazraat El-Zalloutiy	L	M	L	Mazraat Mechref	L	M	L
Mazraat Tayr Semhat	L	L	ML	Mheilib	L	ML	M	Neffakhiyeh	L	M	M
Niha Sour	L	M	M	Ouadi Jilo	L	L	L	Qana	L	ML	L
Qolaileh Sour	L	ML	ML	Rechknayanay	L	ML	L	Rmadiyah	L	ML	L
Selha Sour	L	M	M	Siddiqine	L	ML	L	Sour	L	M	M
Srifa	L	M	M	Tayr Debbe	L	L	L	Tayr Felsay	L	L	L
Tayr Harfa	L	ML	L	Touayri	L	ML	ML	Toura	L	L	L
Yanouh Sour	L	L	L	Yarine	L	ML	ML	Zebqine	L	L	L

## Saida

Municipality	17-Oct	18-Oct	19-Oct	Municipality	17-Oct	18-Oct	19-Oct	Municipality	17-Oct	18-Oct	19-Oct
Aanqoun	ML	M	L	Aaqtanit	ML	M	L	Aarab Ej-Jall	ML	M	L
Aarab Tabbaya	ML	M	L	Abra Saida	L	L	L	Adloun	L	ML	ML
Adousiyeh	L	L	L	Ain-El-Deleb	L	ML	L	Arzai	L	L	L
Babliyah	L	ML	L	Barty	M	M	M	Bissariyeh	L	L	L
Bnaafoul	ML	M	L	Bqosta	L	L	L	Bramiy	L	L	L
Daoudiyeh	L	ML	L	Dareb El-Sim	ML	M	L	Erkay	L	M	L
Ghassanieh	L	M	L	Ghazieh	L	ML	L	Hajjeh	L	M	L
Haret Saida	L	L	L	Hartiyeh	L	ML	L	Hlaliye Saida	L	L	L
Insariyat	L	ML	L	Jazira Saida	L	L	L	Kafar Bit	ML	M	ML
Kaoutariyet El-Siyad	L	M	L	Kfar Chellal	M	M	M	Kfar Hatta Saida	L	M	L
Kfar Milke Saida	M	M	M	Khartoum	L	M	L	Khaziz	L	M	L
Khirbet Ed-Douair Sa	L	ML	L	Khirbet El-Bassal	L	ML	L	Khrayeb Saida	L	L	L
Loubieh	L	ML	L	Maghdouche	ML	M	L	Majdelyoun	L	L	L
Matariyet El-Choumar	L	L	L	Matayriyeh	L	M	L	Mazraat 'Mseileh	L	L	L
Mazraat 'Snaiber	L	L	L	Mazraat Aarab Soukka	ML	M	L	Mazraat Deir Taqla	L	ML	L
Mazraat El Yahoudiye	L	M	M	Mazraat El-Housseini	L	L	L	Mazraat El-Mhaydaleh	L	ML	L
Mazraat El-Ouasta	L	ML	ML	Mazraat Jamjim	L	ML	L	Mazraat Kaoutariyet	L	ML	L
Mazraat Kfar Badda	L	ML	L	Mazraat Oussamiyat	L	ML	L	Mazraat Sari	L	ML	L
Mazraat Sinai	L	M	L	Meemariyeh	L	ML	L	Merouaniyeh	L	ML	L
Miyeh ou Miyeh	ML	M	L	Najjariyeh	L	L	L	Qaaqaiyat El-Snaouba	L	ML	L
Qnarit	ML	M	L	Qraiye Saida	ML	M	L	Saida Ed-Dekermane	ML	ML	L
Saida El-Oustani	L	L	L	Saida El-Qadimeh	ML	ML	L	Saida Kefraya	L	L	L
Saksakiyeh	L	ML	L	Salhigh Saida	L	L	L	Sarafand	L	L	L
Sfenta	M	M	M	Tafahta	L	M	L	Tanbourit	L	M	L
Tebna	L	ML	L	Zaghdraiya	L	ML	L	Zeita	ML	M	L
Zrariyeh	L	L	L								

## Jezzine

Municipality	17-Oct	18-Oct	19-Oct	Municipality	17-Oct	18-Oct	19-Oct	Municipality	17-Oct	18-Oct	19-Oct
Ain El-Mir (El Estab)	ML	M	ML	Anane	ML	ML	L	Aramta	M	M	M
Ariya	ML	M	M	Aychiyeh	ML	ML	M	Azour	ML	M	L
Baba	ML	M	L	Bayssour Jezzine	L	M	L	Benoueteh Jezzine	M	M	M
Bhannine	ML	M	M	Bisri	ML	ML	L	Bkassine	ML	M	M
Bouslaya	M	M	M	Btedine El-Leqech	ML	M	L	Chbail	L	L	L
Choualiq Jezzine	L	L	L	Dahr Ed-Deir	M	M	M	Deir El Qattine	M	M	M



Demachqiyeh	M	M	M	Ghabbatiyeh	ML	M	M	Harf Jezzine	ML	M	ML
Hassaniyeh	L	M	L	Haytouleh	M	M	M	Haytura	M	M	M
Hidab	M	M	M	Homsiyeh	ML	M	ML	Jabal Toura	M	M	M
Jarmaq	M	M	M	Jensnaya	L	M	L	Jernaya	M	M	M
Jezzine	M	M	M	Karkha	L	L	L	Kfar Falous	M	M	ML
Kfar Houna	M	M	M	Kfar Jarrah	L	ML	L	Lebaa	L	ML	L
Louayzet Jezzine	M	M	M	Machmouche	ML	M	M	Mahmoudiyeh Jezzine	M	M	M
Maknounye Jezzine	M	M	M	Maraat Ouazaiyeh	L	ML	ML	Mazraat Daraya	M	M	M
Mazraat El-Aarqoub	M	ML	M	Mazraat El-Mathane	ML	ML	L	Mazraat El-Rahbane	M	M	M
Mazraat Khallet Khaz	L	ML	L	Mazraat Louzid (Loua	L	L	L	Mazraat Qrouh	L	M	ML
Mazraat Tamra	M	M	M	Mazraat Zighrine Jez	M	ML	M	Mazraat	M	M	M
Mharbiyeh	ML	M	L	Midane Jezzine	ML	M	M	Mjeydel Jezzine	L	M	L
Mliikh	M	M	M	Mrah El-Hbasse	ML	ML	L	Ouadi Baanqoudaine	ML	M	L
Ouadi El-Laymoun	M	M	ML	Ouardiyeh	L	L	L	Qabaa Jezzine	M	M	M
Qatrani	L	ML	ML	Qaytouleh	M	M	M	Qtaleh Jezzine	L	ML	L
Rihane Jezzine	ML	M	M	Rimat	M	M	M	Roum	ML	M	M
Roummanet	M	M	M	Sabbah	ML	M	M	Saydoun	M	M	M
Sfaray	ML	ML	ML	Snaya	M	M	M	Sojoud	M	M	M
Srayri	L	ML	ML	Taaid	M	M	ML	Wadi Jezzine	M	M	M
Zhalta	M	M	M								

## Bekaa

### West Bekaa

Municipality	17-Oct	18-Oct	19-Oct	Municipality	17-Oct	18-Oct	19-Oct	Municipality	17-Oct	18-Oct	19-Oct
Aammiq BG	M	M	M	Ain El Tineh BG	M	M	M	Ain Zebdeh	M	M	M
Ana	M	M	M	Aytanit	M	M	M	Baaloul BG	M	M	M
Bab Mareh	M	M	M	Chouberqiye Aammiq	M	M	M	Dakoue	M	M	M
Deir Ain El-Jaouze	M	M	M	Deir Tahniche	M	M	M	Ghaza	M	M	M
Harime El-Soughra	M	M	M	Hoch Harimeh	M	M	M	Jazira BG	M	M	M
Jib Jennine	M	M	M	Kamed-El-Laouz	M	M	M	Kefraya BG	M	M	M
Khiara El Atika	M	M	M	Khiara	M	M	M	Khirbet Qanafar	M	M	M
Lala	M	M	M	Lebbaya BG	M	M	M	Loussa	ML	M	ML
Machghara	M	M	M	Manara (Hammara) BG	M	M	M	Mansoura BG	M	M	M
Marej BG	M	M	M	Maydoun	M	M	M	Ouaqf BG	M	M	M
Qaraaoun	M	M	M	Qelya	ML	M	M	Raouda (Istabel)	M	M	M
Saghbine	M	M	M	Sohmor	M	M	M	Soltan Yacoub el Ara	M	M	M
Souairy	M	M	M	Sultan Yaacoub	M	M	M	Tal Znouh	M	M	M
Yehmor BG	M	M	M	Zilaya	M	M	M				

### Zahle

Municipality	17-Oct	18-Oct	19-Oct	Municipality	17-Oct	18-Oct	19-Oct	Municipality	17-Oct	18-Oct	19-Oct
Aanjar (Haouch Mouss	M	M	M	Ablah	M	M	M	Ain Kfarzabad	M	M	M
Ali-El-Nahri	M	M	M	Bar Elias	M	M	M	Bouarej	M	M	M
Cheberqiyet Tabet	M	M	M	Chtaura	M	M	M	Deir El Ghazal	M	M	M
Delhamiyet Zahle	M	M	M	Ferzol	M	M	M	Haouch El-Ghanam	M	M	M
Haouch Es-Siyadeh	M	M	M	Haouch Hala	M	M	M	Haouch Mandara	M	M	M

Haouch Qayssar	M	M	M	Hezerta	M	M	M	Hosh Moussa	M	M	M
Jdita	M	M	M	Kfarzabad	M	M	M	Ksara	M	M	M
Majdel Aanjar	M	M	M	Makssi	M	M	M	Massa	M	M	M
Mazraat Er-Remtaniye	M	M	M	Mrayjat Zahle	M	M	M	Mzaraa Zahle	M	M	M
Nabi Ayla	M	M	M	Nasriyet Rizk	M	M	M	Nasriyet Zahle	M	M	M
Niha Zahle	M	M	M	Ouadi Ed-Deloum	M	M	M	Ouadi El-Arayech	M	M	M
Qaa El Rim	M	M	M	Qab Elias	M	M	M	Qousaya	M	M	M
Rhit	M	M	M	Riyak	M	M	M	Saadnayel	M	M	M
Taal El-Akhdar	M	M	M	Taalbeya	M	M	M	Taanayel	M	M	M
Talamara	M	M	M	Tcheflik Edde Haouch	M	M	M	Tcheflik Qiqano	M	M	M
Terbol Zahle	M	M	M	Touaite Zahle	M	M	M	Zahle Aradi	M	M	M
Zahle El-Berbara	M	M	M	Zahle El-Maallaqa	M	M	M	Zahle El-Midane	M	M	M
Zahle Er-Rassiye	M	M	M	Zahle Haouch El-Ouma	M	M	M	Zahle Haouch El-Ouma	M	M	M
Zahle Haouch Ez-Zara	M	M	M	Zahle Maalaqa Aradi	M	M	M	Zahle Mar Antonios	M	M	M
Zahle Mar Elias	M	M	M	Zahle Mar Gerios	M	M	M	Zahle Saydet En-Naja	M	M	M
Zebdoul	M	M	M								

## Rachaiya

Municipality	17-Oct	18-Oct	19-Oct	Municipality	17-Oct	18-Oct	19-Oct	Municipality	17-Oct	18-Oct	19-Oct
Ain Arab Rachaiya	M	M	M	Ain Ata	M	M	M	Ain Harche	M	M	M
Aqabe Rachaya	M	M	M	Ayha	M	M	M	Ayta El Fokhar	M	M	M
Bakifa Rachaya	M	M	M	Bakka	M	M	M	Beit Lahya	M	M	M
Bireh Rachaiya	M	M	M	Daher El Ahmar	M	M	M	Deir El-Achayer	M	M	M
Heloua Rachaiya	M	M	M	Hoch El Qannabeh Rac	M	M	M	Kaoukaba Bou Arab	M	M	M
Kfar Danis	M	M	M	Kfar Mechki	M	M	M	Kfar Qouq	M	M	M
Kherbet Rouha	M	M	M	Majdel Balhiss	M	M	M	Mdoukha	M	M	M
Mhaydseh Rachaiya	M	M	M	Nabi Safa	M	M	M	Rachaiya	M	M	M
Rafid Rachaiya	M	M	M	Selsata (Mazraat Dei	M	M	M	Tannoura	M	M	M
Yanta	M	M	M								

## Beyrouth

### Beyrouth

Municipality	17-Oct	18-Oct	19-Oct	Municipality	17-Oct	18-Oct	19-Oct	Municipality	17-Oct	18-Oct	19-Oct
Achrafieh	VL	VL	ML	Ain el-Mreisse	VL	VL	ML	Bachoura	VL	VL	ML
Beirut Central Distr	VL	VL	ML	Marfai	VL	VL	ML	Mazraa	VL	VL	ML
Medaouar	VL	VL	ML	Minet el-Hosn	VL	VL	ML	Mwssaitbeh	VL	VL	ML
Ras Beirut	VL	VL	ML	Rmeil	VL	VL	ML	Saifi	VL	VL	ML
Zqaq el-Blat	VL	VL	ML								