

# Lebanon Fire Risk Bulletin



CIVIL DEDEFENCE

**Refer to cadast table condition.**

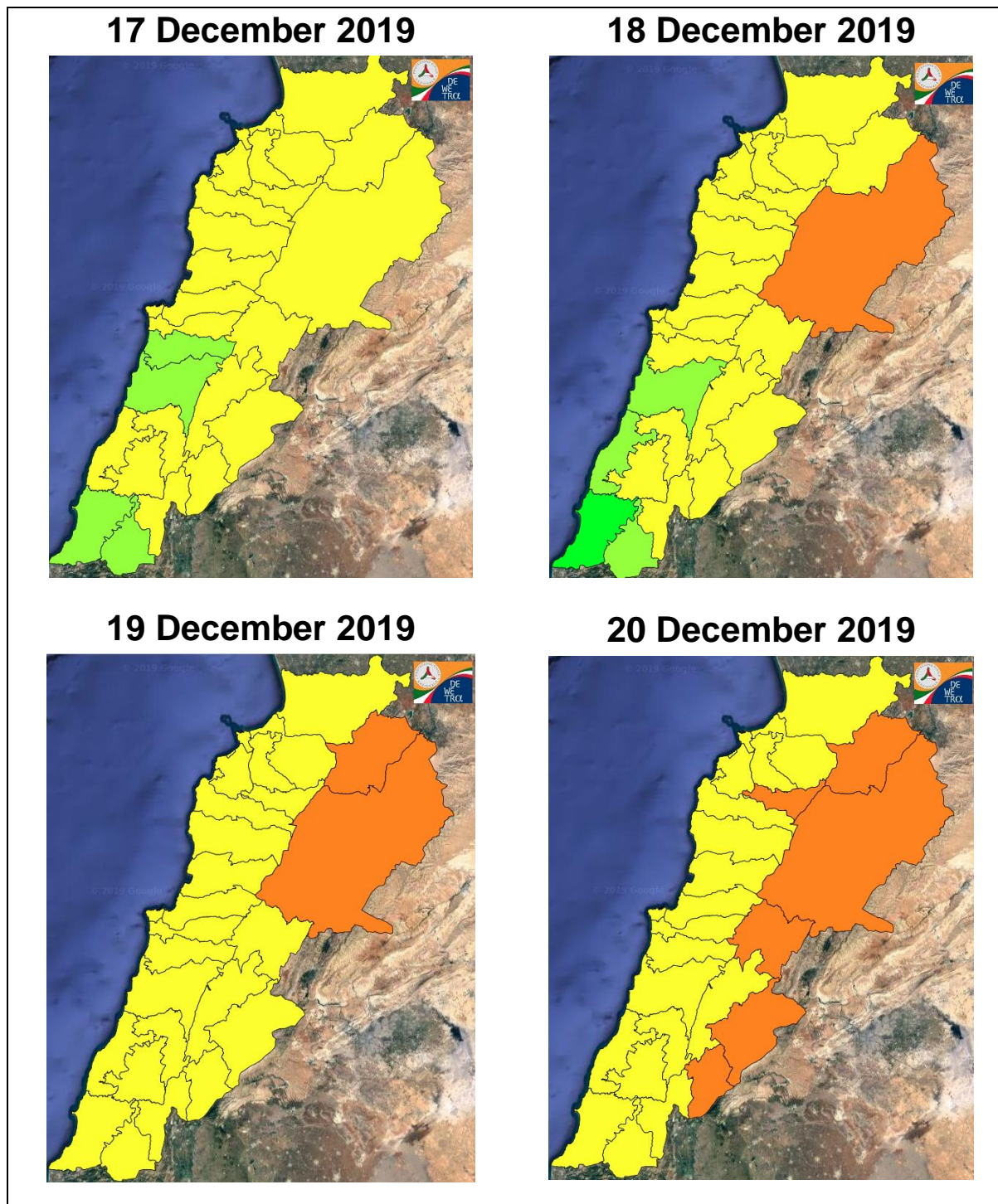
**Please note that the indicated temperature is at 2 meters height from the ground.**

General description of potential fire risk situation

Symbol	Level of risk	Meaning and actions
VL	Very low	Very low fire risk. Controlled burning operations can be hardly executed due to high fuel moisture content. Normally wildfires self-extinguish.
L	Low	Low fire risk. Controlled burning operations can be executed with a reasonable degree of safety.
ML	Medium low	Medium-low fire risk. Controlled burning operations can be executed in safety conditions. All the fires need to be extinguished.
M	Medium	Medium fire risk. Controlled burning operations would be avoided. All the fires need to be very well extinguished.
M	Medium high	Controlled burning is not recommended. Open flame will start fires. Cured grasslands and forest litter will burn readily. Spread is moderate in forests and fast in exposed areas. Patrolling and monitoring is suggested. Fight fires with direct attack and all available resources.
H	High	Ignition can occur easily with fast spread in grass, shrubs and forests. Fires will be very hot with crowning and short to medium spotting. Direct attack on the head may not be possible requiring indirect methods on flanks. Patrolling and monitoring the territory is highly suggested.
E	Extreme	Ignition can occur also from sparks. Fires will be extremely hot with fast rate of spread. Control may not be possible during day due to long range spotting and crowning. Suppression forces should limit efforts to limiting lateral spread. Damage potential total. Patrolling and monitoring the territory is highly suggested.

**Beirut, 18 December 2019**

# FIRE RISK INDEX



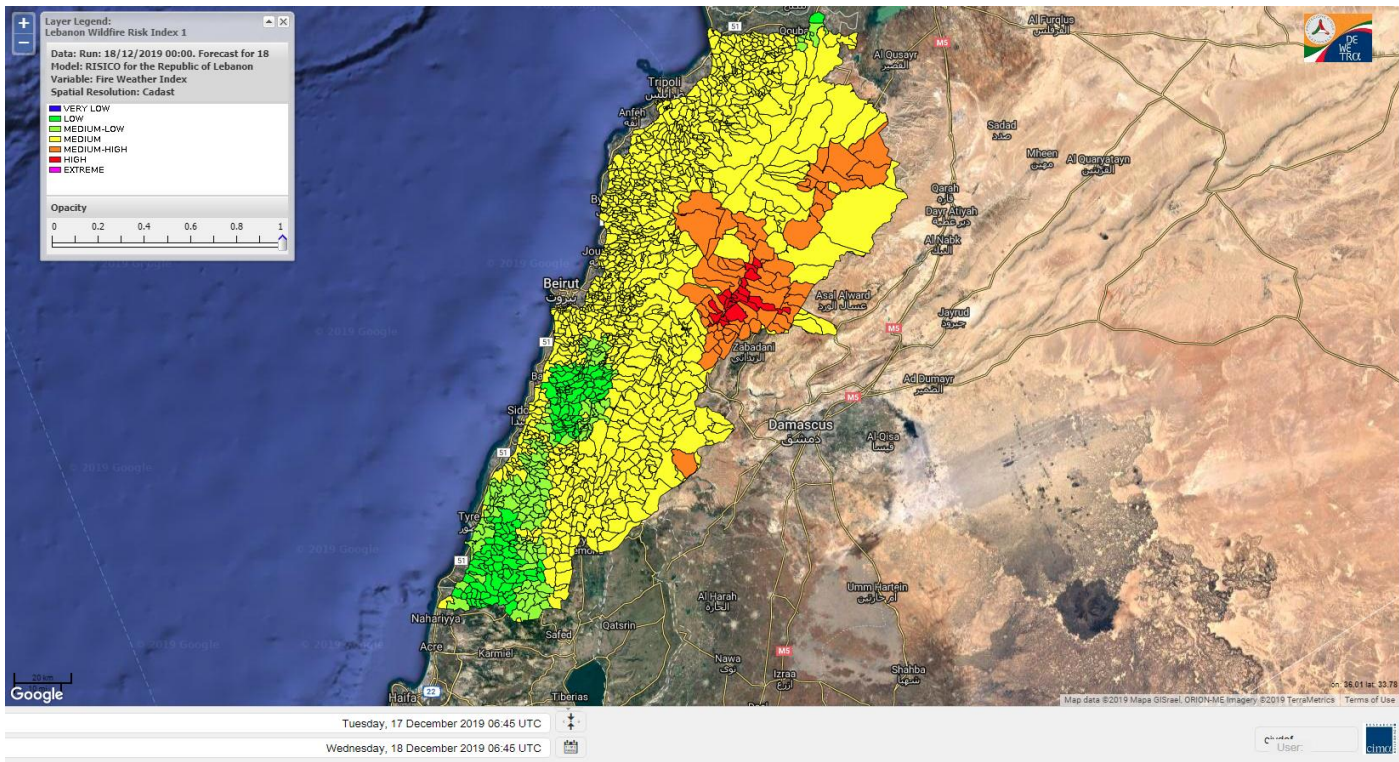
**Layer Legend:**  
Lebanon Wildfire Risk Index 1

Data: Run: 18/12/2019 00:00. Forecast for 18  
Model: RISICO for the Republic of Lebanon  
Variable: Fire Weather Index  
Spatial Resolution: Caza

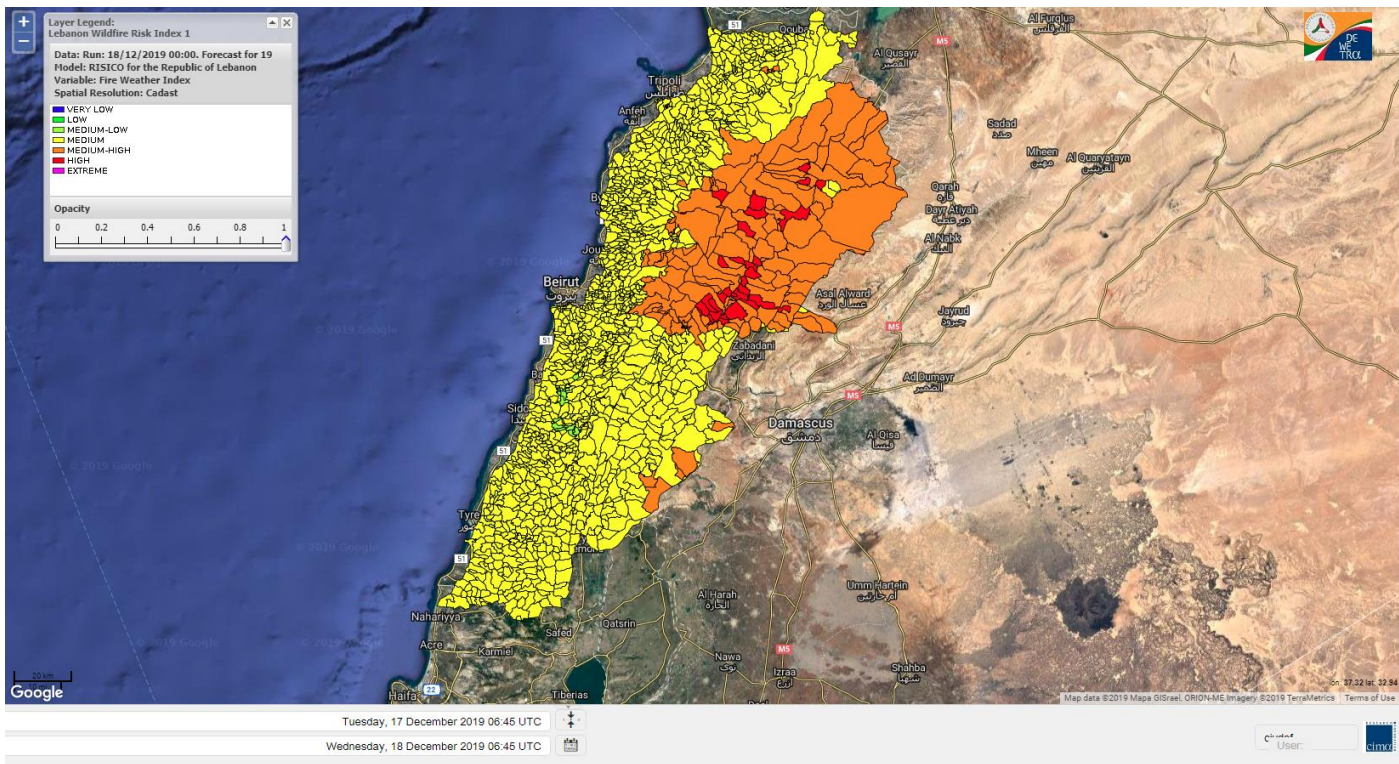
- VERY LOW
- LOW
- MEDIUM-LOW
- MEDIUM
- MEDIUM-HIGH
- HIGH
- EXTREME



# Lebanon for 18 December 2019

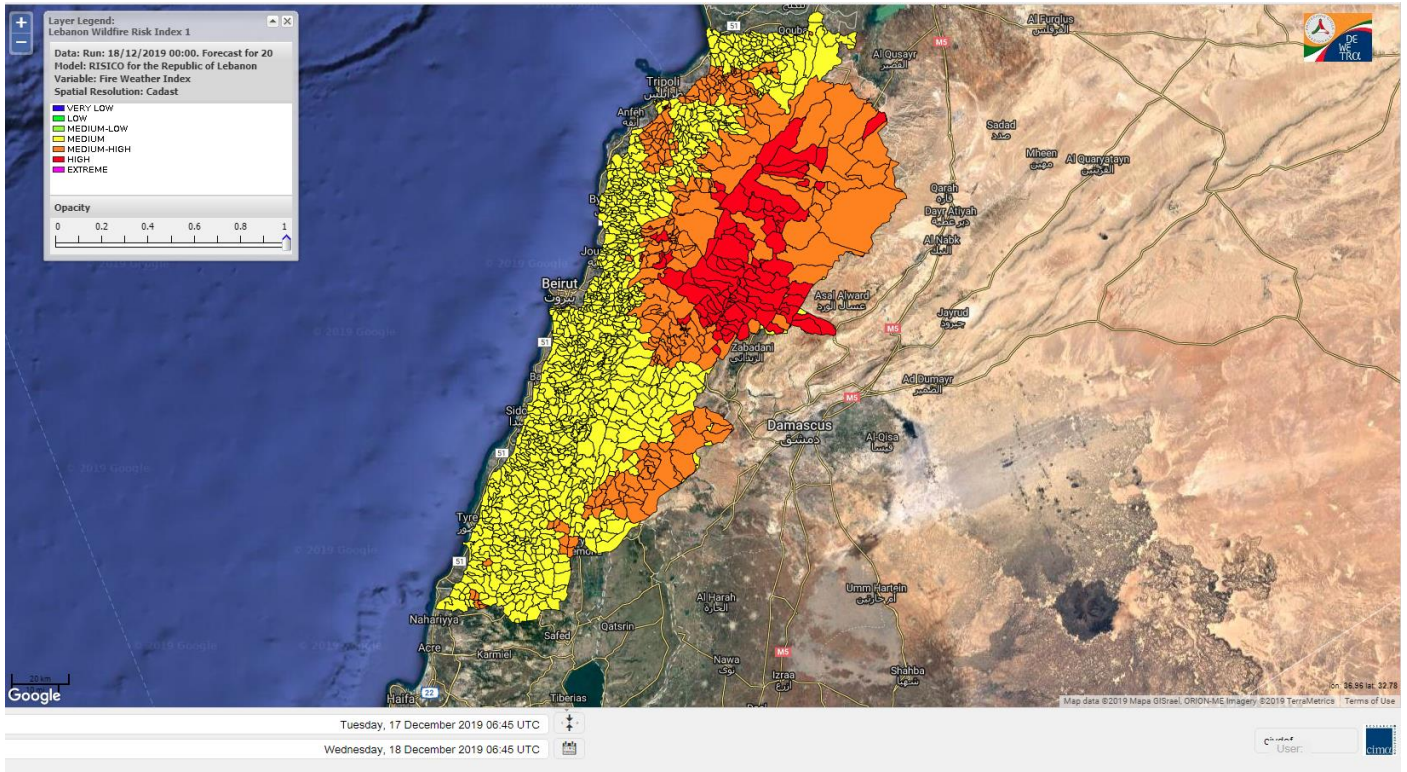


# Lebanon for 19 December 2019

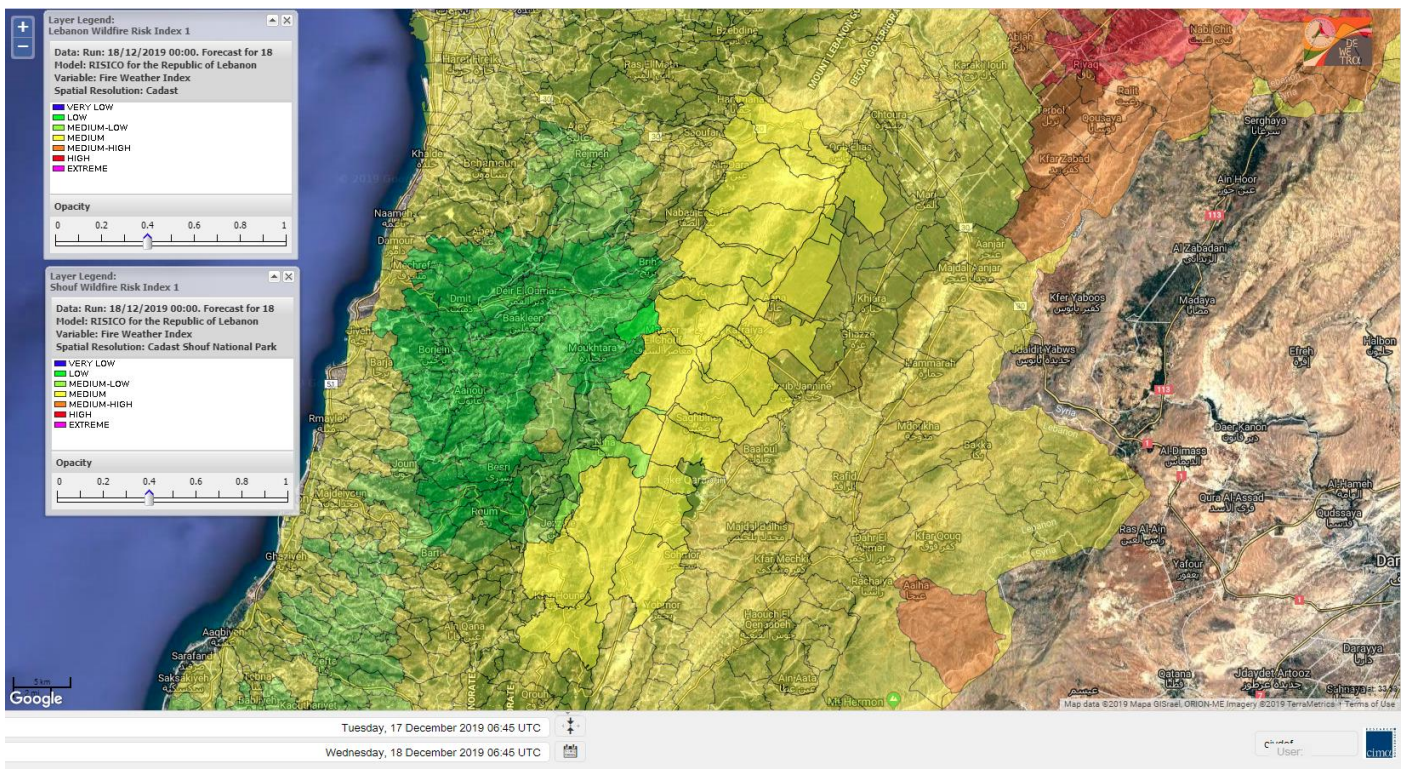




# Lebanon for 20 December 2019

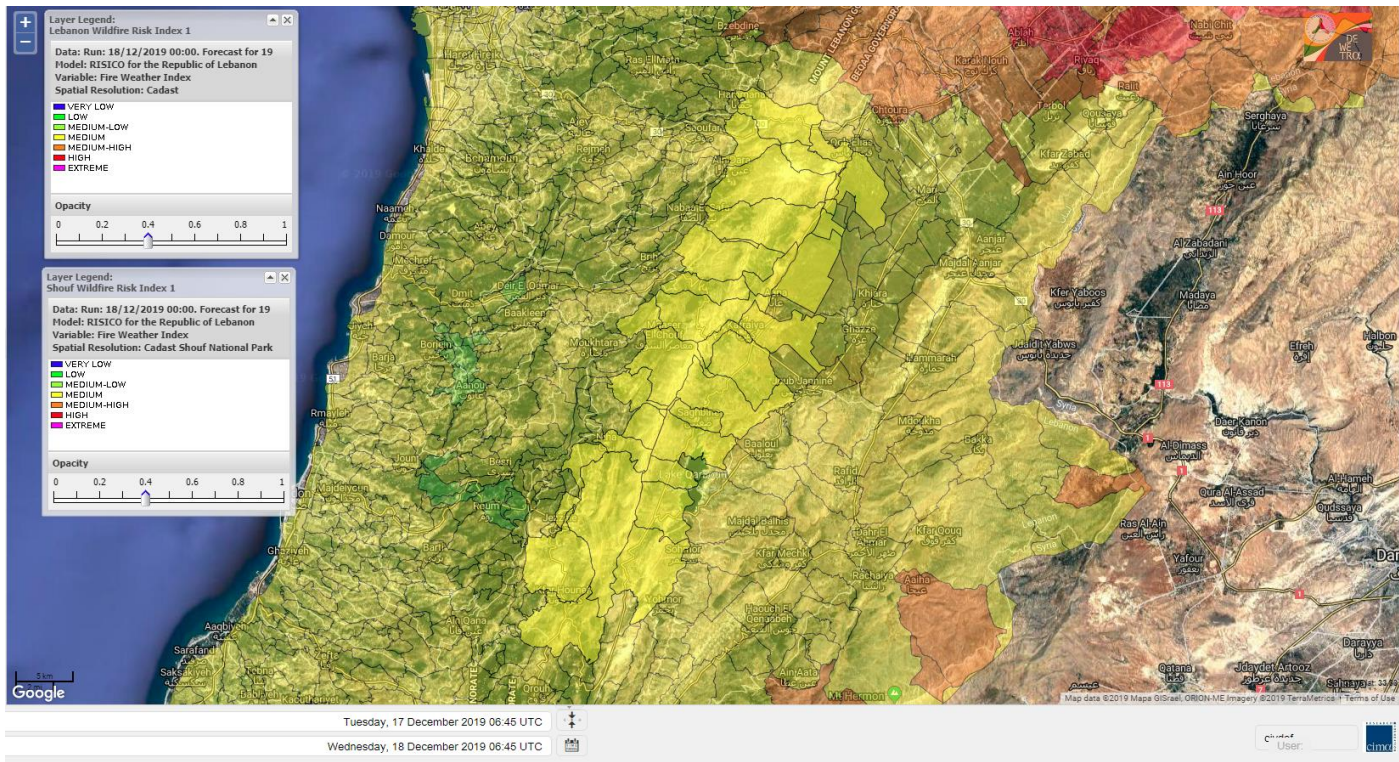


# Shouf Biosphere Reserve Forecast for 18 December 2019

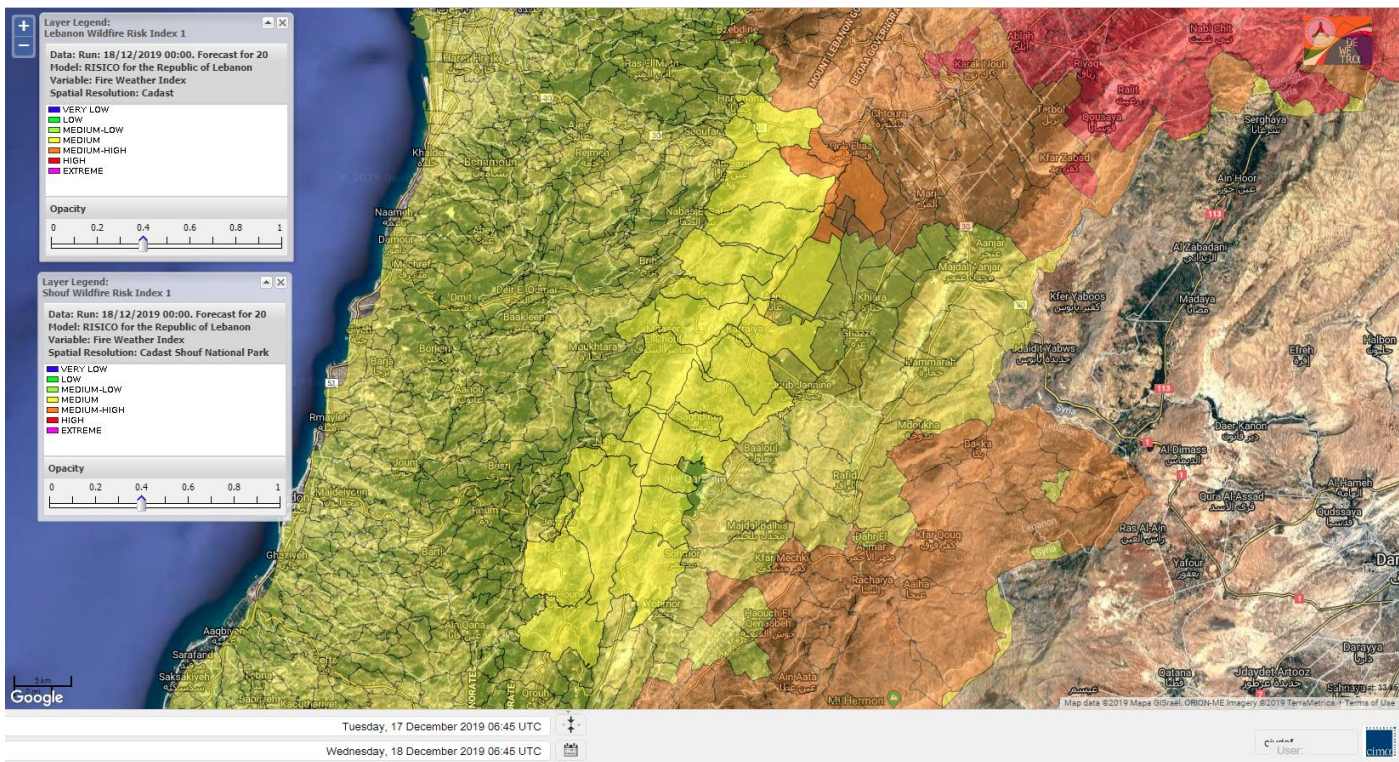




# Shouf Biosphere Reserve Forecast for 19 December 2019

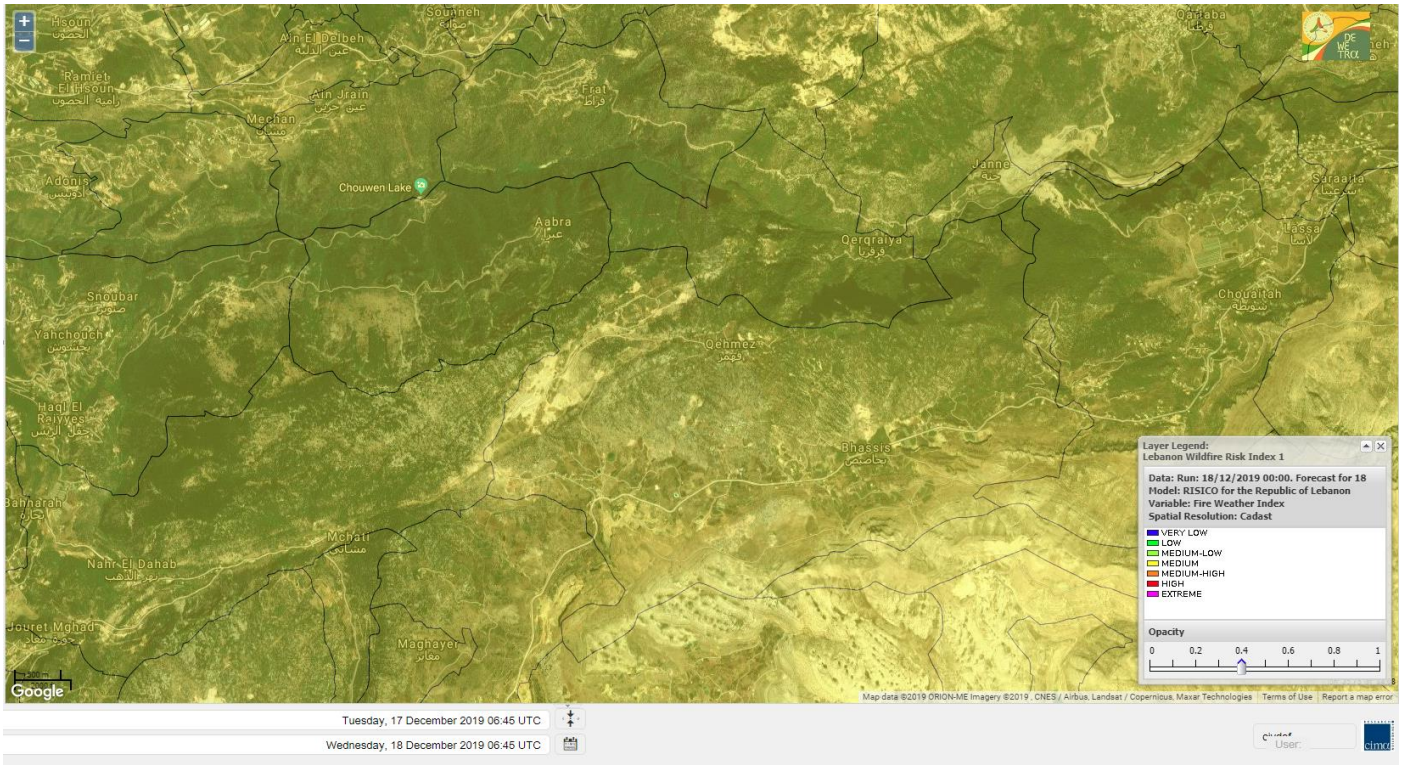


# Shouf Biosphere Reserve Forecast for 20 December 2019

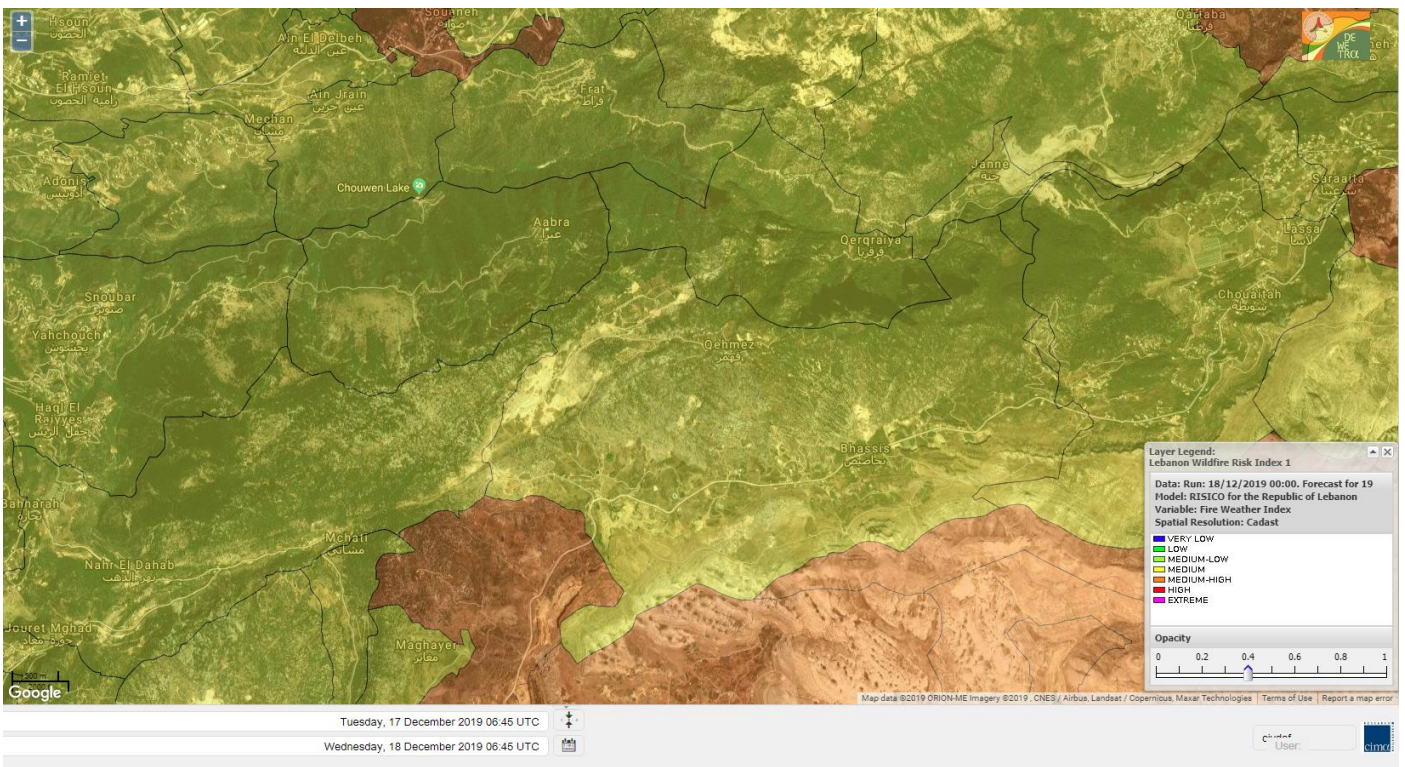




# Jabal Moussa Reserve Forecast for 18 December 2019

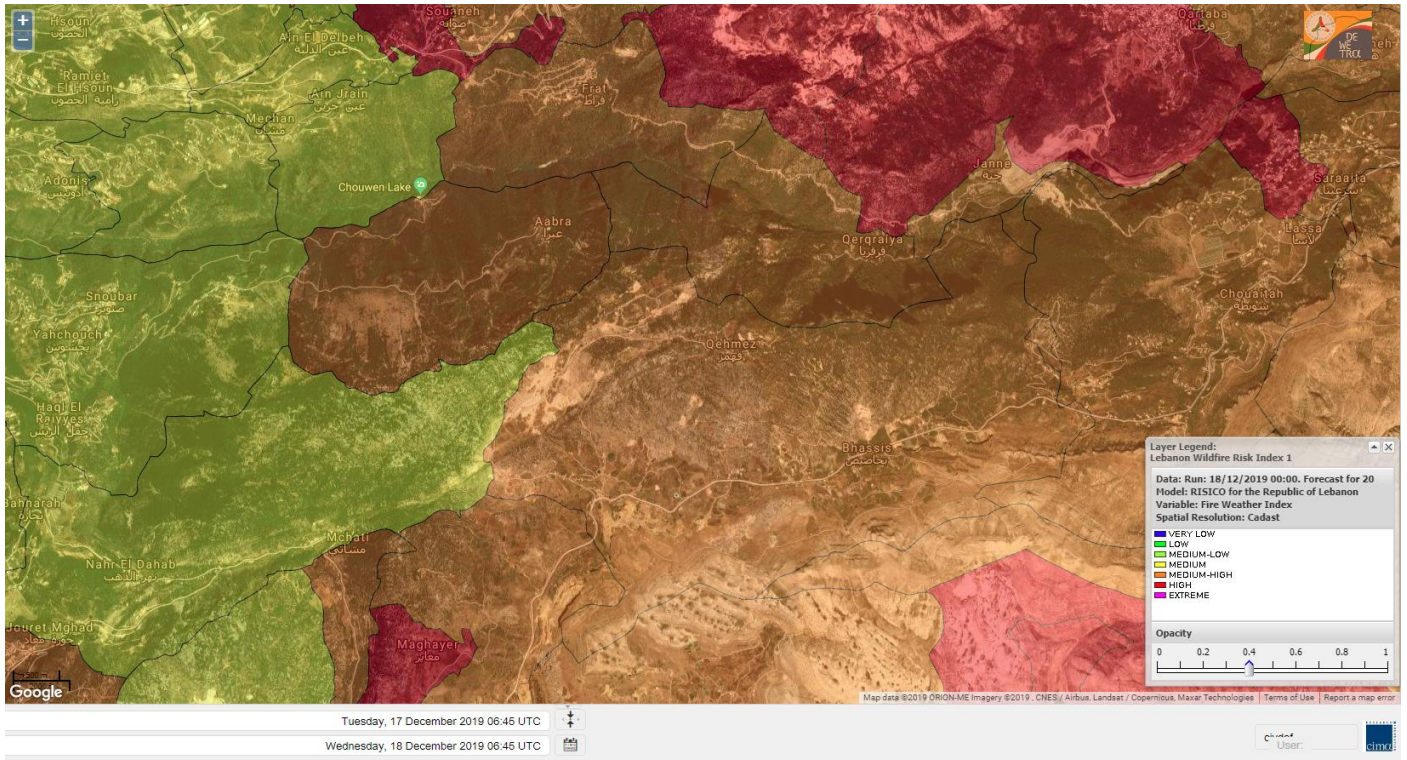


# Jabal Moussa Reserve Forecast for 19 December 2019





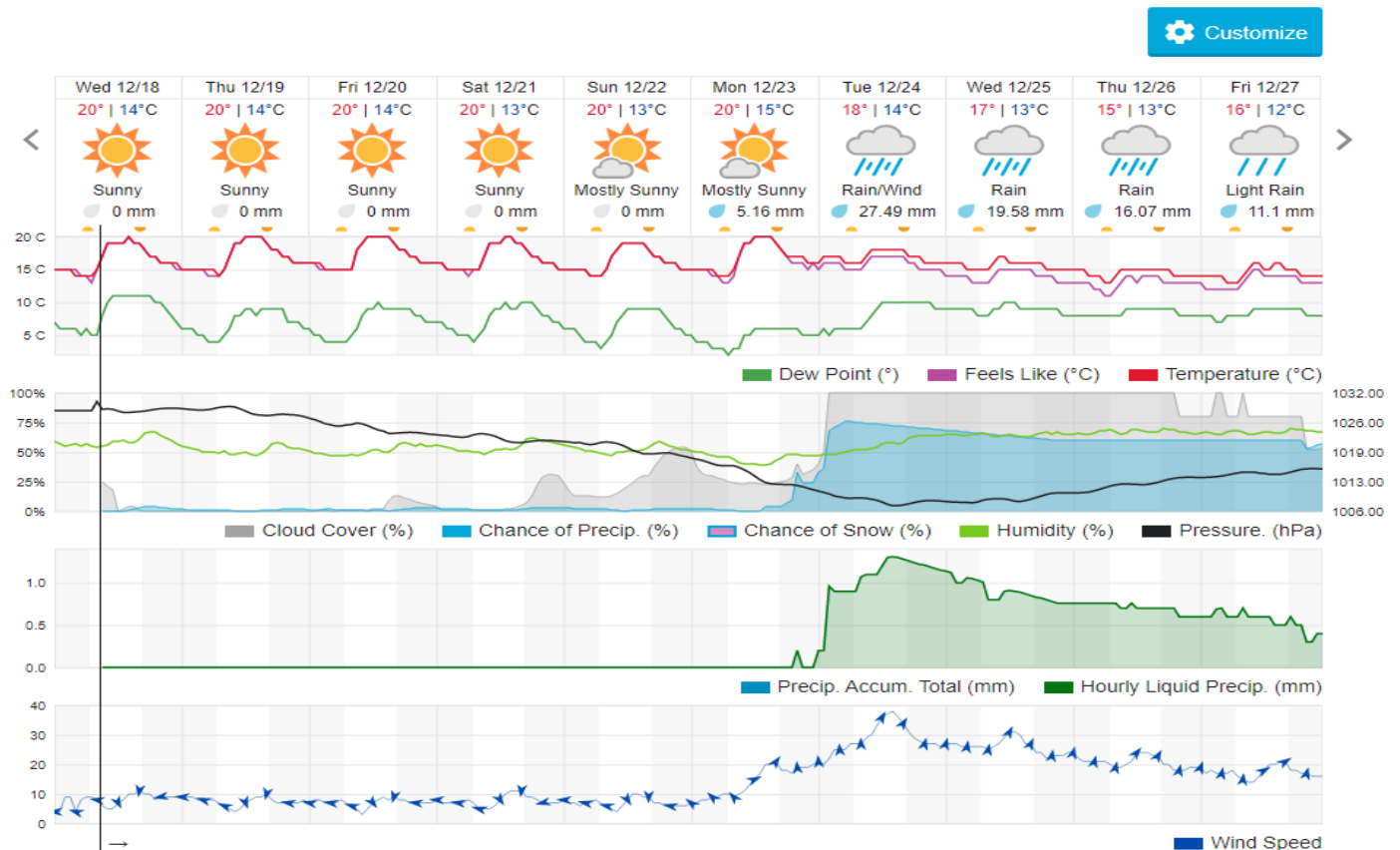
# Jabal Moussa Reserve Forecast for 20 December 2019



## Beirut, Beirut Governorate, Lebanon 10-Day Weather Forecast

16° ACHRAFIEH, RIZK STATION | CHANGE

TODAY HOURLY 10-DAY CALENDAR HISTORY WUNDERMAP



## Nord

### Koura

Municipality	18-Dec	19-Dec	20-Dec	Municipality	18-Dec	19-Dec	20-Dec	Municipality	18-Dec	19-Dec	20-Dec
Aaba	M	M	MH	Afsaddiq	M	M	MH	Ain Ekrine	M	M	MH
Amioun	M	M	MH	Anfeh	M	M	M	Badbhoun	M	M	M
Barghoun	M	M	M	Barsa	M	M	MH	Batroumine	M	M	MH
Bdebba	M	M	MH	Bechmizine	M	M	MH	Bednayel El-Koura	M	M	M
Bhabbouch El-Koura	M	M	M	Bkeftine	M	M	MH	Bnehran	M	M	M
Bqaiia El-Koura	M	M	MH	Bsarma	M	M	MH	Btaaboura	M	M	M
Bterram	M	M	MH	Btouratij	M	M	MH	Bziza	M	M	MH
Dar Beechtar	M	M	MH	Dar Chmezzine	M	M	MH	Deddeh	M	M	MH
Deir El-Balamand	M	M	MH	Fih	M	M	MH	Hraiche	M	M	M
Ijdaabrine	M	M	M	Kaftoun	M	M	M	Kefraya El-Koura	M	M	M
Kfarakka	M	M	MH	Kfarhata	M	M	M	Kfarhazir	M	M	M
Kfarkahel	M	M	MH	Kfarsaroun	M	M	MH	Kosba	M	M	MH
Mejdel el-Koura	M	M	M	Nakhle	M	M	MH	Qalhat	M	M	MH
Ras Masqa	M	M	MH	Rechdibbine	M	M	MH	Zakroun	M	M	M
Zgharta El-Mtaouile	M	M	M								

### Bcharre

Municipality	18-Dec	19-Dec	20-Dec	Municipality	18-Dec	19-Dec	20-Dec	Municipality	18-Dec	19-Dec	20-Dec
Aabdine	M	M	M	Bane	M	M	MH	Barhelioun	M	M	M
Bazooune	M	MH	MH	Becharre	M	MH	MH	Beit Menzer	M	M	M
Billa	M	M	M	Blaouza	M	M	M	Bqaa Kafra	M	MH	MH
Bqerqacha	M	MH	MH	Breissat	M	M	MH	Dimane	M	M	MH
Hadath El Jobbeh	M	M	MH	Hadchit	M	M	M	Hasroun	M	MH	MH
Mazraat Aassaf	M	M	M	Mazraat Bani Saab	M	M	MH	Mchaa El-Jobbeh	M	H	H
Metrit	M	M	M	Moghr El-Ahoual	M	M	M	Ouadi Qannoubine	M	M	M
Qanat	M	M	M	Qnayouer	M	M	M	Tourza	M	M	M

### Batroun

Municipality	18-Dec	19-Dec	20-Dec	Municipality	18-Dec	19-Dec	20-Dec	Municipality	18-Dec	19-Dec	20-Dec
Aabrine	M	M	M	Aalali	M	M	M	Aartz	M	M	M
Abdelli	M	M	M	Ajdabra	M	M	M	Assia	M	M	M
Basbina	M	M	M	Batroun	M	M	M	Bcheleh	M	M	M
Bechtoudar	M	M	M	Beit Chlala	M	M	M	Beit Kassab	M	M	M
Bijdarfil	M	M	M	Bqesmaya	M	M	M	Chatine	M	M	MH
Chebtin	M	M	M	Chekka	M	M	M	Daael	M	M	M
Dahr Abi Yaghi	M	M	M	Daraya El-Batroun	M	M	M	Deir Billa	M	M	M
Deir Kfifane	M	M	M	Deir Mar Youhanna EL	M	M	M	Deir Mar Youssef Jra	M	M	M
Douma	M	M	M	Douq	M	M	M	Eddeh El-Batroun	M	M	M
Ftahat El-Batroun	M	M	M	Ghouma	M	M	M	Hadtoun	M	M	M
Hamat	M	M	M	Harbouna	M	M	M	Hardine	M	M	M
Helta	M	M	M	Hery	M	M	M	Jebbla	M	M	M
Jrabta El-Batroun	M	M	M	Jrane El-Batroun	M	M	M	Kfar Aabida	M	M	M
Kfar Halda	M	M	M	Kfarb Shlaimane	M	M	M	Kfarhatna	M	M	M



Kfarhay	M	M	M	Kfarhelos	M	M	M	Kfifane	M	M	M
Kfour El Arabi	M	M	MH	Koubba	M	M	M	Kour	M	M	M
Mar Mama	M	M	M	Masrah	M	M	M	Mehmarch	M	M	M
Mrah Chdid	M	M	M	Mrah El Ziyat	M	M	M	Mrah El-Hajj	M	M	M
Nahle El-Batroun	M	M	M	Niha El-Batroun	M	MH	MH	Oujh El-Hajjar	M	M	M
Ouata Houb	M	M	MH	Qatnaaoun	M	M	M	Racha	M	M	M
Rachana	M	M	M	Rachkida	M	M	M	Ram El-Batroun	M	M	M
Ras Nahhach	M	M	M	Selaata	M	M	M	Sghar	M	M	M
Smar Jbayl	M	M	M	Sourat El-Batroun	M	M	M	Tannourine El-Faouqa	MH	MH	MH
Tannourine Et-Tahta	M	M	MH	Thoum	M	M	M	Toula El-Batroun	M	M	M
Zan	M	M	M								

## Zgharta

Municipality	18-Dec	19-Dec	20-Dec	Municipality	18-Dec	19-Dec	20-Dec	Municipality	18-Dec	19-Dec	20-Dec
Aachach	M	M	M	Aalma	M	M	M	Aarde	M	M	M
Aintourine	M	M	M	Arabet Qozhaya	M	M	M	Arde	M	M	M
Arjis	M	M	MH	Asnoun	M	M	M	Ayto	M	M	M
Basloukit	M	M	MH	Bchannine	M	M	M	Besebeel	M	M	M
Bhairet Toula	M	M	MH	Bnachee	M	M	M	Boussit	M	M	M
Danha	M	M	M	Daraiya Zgharta	M	M	MH	Deir Jdeide	M	M	M
Ehden	M	M	MH	Halan	M	M	M	Hariq Zgharta	M	M	M
Houakir	M	M	M	Hraiqis	M	M	MH	Iaal	M	M	M
Ijbaa	M	M	M	Karm Saddeh	M	M	M	Kfarchakhna	M	M	MH
Kfardlaqous	M	M	M	Kfarfou	M	M	MH	Kfarhata Zgharta	M	M	M
Kfarhoura	M	M	M	Kfarsghab	M	M	MH	Kfaryachit	M	M	M
Kfarzaina	M	M	M	Khaldiye	M	M	M	Mazraat Ajbeaa	M	M	M
Mazraat Et-Teffah	M	M	M	Mazraat Jneid	M	M	M	Mejdlaya Zgharta	M	M	M
Merh Kfarsghab	M	M	M	Miryata	M	M	M	Miziara	M	M	M
Mzraat Kefraya	M	M	M	Qorah Bach	M	M	M	Rachiine	M	M	M
Ras Kifa	M	M	M	Sakhra	M	M	M	Sebhel Zgharta	M	M	M
Serhel	M	M	M	Tallet Zgharta	M	M	M	Toula Zgharta	M	M	M
Zgharta	M	M	M								

## Minieh-Denniye

Municipality	18-Dec	19-Dec	20-Dec	Municipality	18-Dec	19-Dec	20-Dec	Municipality	18-Dec	19-Dec	20-Dec
Aasaymout	M	M	M	Aaymar	M	M	M	Aazki	M	M	M
Ain El-Tineh-Miniyeh	M	M	M	Assoun	M	M	M	Bakhaaoun	M	M	M
Bchennata	M	M	MH	Bechehhara	M	M	M	Beddawi	M	M	M
Behouaita	M	M	M	Beit El Foqss	M	M	M	Beit Haouik	M	M	MH
Beit Zoud	M	M	M	Bekaasafrine	M	MH	MH	Borj El Yahoudiyeh	M	M	MH
Bqarsouna	M	M	M	Btermaz	M	M	M	Debaael	M	M	M
Deir Ammar	M	M	MH	Deir Nbouh	M	M	M	Haouaret-Miniyeh	M	M	M
Haql el Azimeh	M	M	M	Harf El Siyad	M	M	M	Hazmiye-Miniyeh	M	M	M
Izal	M	M	M	Jarjour	M	M	M	Jayroun	M	M	MH
Kahf El-Malloul	M	M	M	Karm El-Moher	M	M	M	Kfar Binine	M	M	MH
Kfarchalane	M	M	M	Kfarhabou	M	M	M	Kharroub-Miniyeh	M	M	M
Mazraat El-Kreme	M	M	M	Mazraat Ketrane	M	M	M	Merkebta	M	M	MH



Minyeh	M	M	MH	Mrah El Sfirat	M	M	M	Mrah Sraj	M	M	M
Mrebbine	M	M	MH	Nabi Youcheaa	M	M	MH	Nemrine	M	M	M
Qarhaiya	M	M	MH	Qarne	M	M	MH	Qarsita	M	M	M
Qattineh-Miniyeh	M	M	M	Qemmamine	M	M	MH	Qraine	M	M	M
Raouda-Aadoua	M	M	MH	Rihaniyet-Miniyeh	M	M	MH	Sfireh	M	M	M
Sir Ed-Danniyeh	M	M	M	Tarane	M	M	M	Terbol-Miniyeh	M	M	M
Zaghartaghriine	M	M	M	Zouq Bhannine	M	M	MH				

## Nabatiye

### Nabatiye

Municipality	18-Dec	19-Dec	20-Dec	Municipality	18-Dec	19-Dec	20-Dec	Municipality	18-Dec	19-Dec	20-Dec
Aabba	ML	M	M	Aazzi	ML	M	M	Adchit El-Chqif	ML	M	M
Ain Bou Swar	M	M	M	Ain Kana	M	M	M	Ali El-Taher	M	M	M
Ansar	ML	M	M	Arab Salim	M	M	M	Arnoun	M	M	M
Bfaroue	ML	M	M	Breyqaah	ML	M	M	Charqiyeh	ML	M	M
Choukine	ML	M	M	Deir El Zahrani	ML	M	M	Doueir El-Nabatiyeh	ML	M	M
Habbouch El-Nabatiye	M	M	M	Hamra El-Nabatiyeh	M	M	MH	Harouf El-Nabatiyeh	ML	M	M
Hmaile	M	M	M	Houmin El Faouqa	M	M	M	Houmin El Tahta	ML	M	M
Jarjough	M	M	M	Jbaah El-Nabatiyeh	M	M	M	Jebchit	ML	M	M
Kfar Djal El-Nabatiy	ML	M	M	Kfar Remmane	M	M	M	Kfar Sir	ML	M	M
Kfar Tebnit	M	M	M	Kfarfila	M	M	M	Kfour El-Nabatieh	ML	M	M
Mayfadoun	M	M	M	Mazraat Bsaffour	ML	M	M	Mazraat Chalbaal	ML	M	M
Mazraat Dmoul	ML	M	M	Mazraat El Khreibeh	M	M	M	Mazraat El-Bayad El-	M	M	M
Mazraat Kfarjaouz	M	M	M	Mazraat Qalaat Meiss	ML	M	M	Nabatiyeh El-Fawka	M	M	M
Nabatiyeh Et-Tahta	M	M	M	Namiriyeh	ML	M	M	Qaaqaiyet El Jisr	ML	M	M
Qossaibeh El-Nabatiy	ML	M	M	Roumine	ML	M	M	Sarba El-Nabatieh	M	M	M
Sir El-Gharbiyeh	L	M	M	Toul	ML	M	M	Yehmor El-Nabatiyeh	M	M	MH
Zaoutar El Charkiyeh	M	M	MH	Zaoutar El-Gharbiyeh	M	M	M	Zebdine El-Nabatiyeh	M	M	M
Zefta	ML	M	M								

### Hasbaiya

Municipality	18-Dec	19-Dec	20-Dec	Municipality	18-Dec	19-Dec	20-Dec	Municipality	18-Dec	19-Dec	20-Dec
Aain Jarfa	M	M	MH	Abou Qamha	M	M	MH	Ain Qania	M	M	MH
Bourghos	M	M	MH	Chebaa	M	M	MH	Chouaya Hasbaya	M	M	MH
Dellafeh	M	M	MH	Fardiss Hasbaiya	M	M	MH	Hasbaya	M	M	MH
Hbariyeh	M	M	MH	Kaoukaba Hasbaiya	M	M	MH	Kfar Chouba	M	M	M
Kfar Hamam	M	M	M	Kfeir El-Zait	M	M	MH	Khalwat Hasbaya	M	M	MH
Khreibet Hasbaiya	M	M	M	Majidiyeh Hasbaiya	M	M	M	Marj Ez-Zhour (Haouc	M	M	M
Meri	M	M	M	Mimass	M	M	MH	Rachaiya El-Fokhar	M	M	M
Salaiyeb	M	M	M								

### Marjayoun

Municipality	18-Dec	19-Dec	20-Dec	Municipality	18-Dec	19-Dec	20-Dec	Municipality	18-Dec	19-Dec	20-Dec
Aalmane Marjaayoun	M	M	M	Aamra	M	M	M	Adayseh Marjaayoun	M	M	MH
Adchit El-Koussair	M	M	M	Ain Aarab Marjaayoun	M	M	M	Bani Haiyann	M	M	M
Blatt Marjaayoun	M	M	MH	Blida	M	M	M	Borj El-Moulouk	M	M	M



Boueyda Marjaayoun	M	M	M	Deir Mimass	M	M	M	Deir Siriane	M	M	M
Dibbine	M	M	MH	Ebel El Saqi	M	M	MH	Houla	M	M	M
Houra	M	M	M	Kfar Kila	M	M	MH	Khiam Marjaayoun	M	M	M
Klayaa	M	M	M	Majdel Selem	M	M	M	Marjaayoun	M	M	MH
Markaba	M	M	M	Mays El-Jabal	M	M	M	Mazraat Doumiat	M	M	M
Mazraat Sarada	M	M	M	Mhaibib	M	M	M	Qabrikha	M	M	M
Qantara	M	M	M	Rab El-Thalathine	M	M	MH	Saouaneh Marjayoun	ML	M	M
Talloussa	M	M	M	Taybeh Matjaayoun	M	M	MH	Touline	ML	M	M

## Bent Jbail

Municipality	18-Dec	19-Dec	20-Dec	Municipality	18-Dec	19-Dec	20-Dec	Municipality	18-Dec	19-Dec	20-Dec
Ain-Ebel	ML	M	M	Aitaroun	M	M	M	Aynata Bint Jbeil	ML	M	M
Ayta El-Chaeb	L	M	M	Ayta El-Jabal	L	M	M	Beit Lif	L	M	M
Beit Yahoun	ML	M	M	Bint Jbeil	ML	M	M	Borj Qalaway	ML	M	M
Braachit	L	M	M	Chakra	M	M	M	Debel	ML	M	M
Deir Antar	L	M	M	Froun	M	M	M	Ghandouriyeh Bint Jb	ML	M	M
Hanine	ML	M	M	Hariss	L	M	M	Hdatha	ML	M	M
Jmeyjmeh	L	M	M	Kafra Bint Jbeil	L	M	M	Kfar Dounine	ML	M	M
Khirbet Selm	ML	M	M	Kounine	ML	M	M	Maroun El Ras	ML	M	M
Qalaway	ML	M	M	Qaouzah	L	M	M	Qatmoun	M	M	M
Ramya Bint Jbeil	L	M	M	Rchaf	ML	M	M	Rmeich	ML	M	M
Safad Al Battikh	L	M	M	Salhaneh	L	M	M	Serbine	L	M	M
Sultanieh Bint Jbeil	ML	M	M	Tibnine	L	M	M	Tiri	ML	M	M
Yaroun	ML	M	M	Yater	L	M	M				

## Mont Liban

### Jbail

Municipality	18-Dec	19-Dec	20-Dec	Municipality	18-Dec	19-Dec	20-Dec	Municipality	18-Dec	19-Dec	20-Dec
Aabeydat	M	M	M	Aalita	M	M	M	Aamchit	M	M	M
Aarab El-Lahib	MH	MH	MH	Aarasta	M	M	MH	Adonis Jbeil	M	M	M
Afqa Jbeil	M	M	MH	Ain El Delbeh Jbeil	M	M	M	Ain El-Ghouayba	M	M	MH
Ain Jrain	M	M	M	Ain Kfah	M	M	M	Almat El Chemaliyat	M	M	MH
Almat El-Jenoubiya	M	M	MH	Aqoura	MH	MH	MH	Bayzoun	M	M	M
Bchille Jbeil	M	M	M	Bechtlida	M	M	M	Behdaydat	M	M	M
Beit Habbaq	M	M	M	Bejjeh	M	M	M	Bekhaaz	M	M	M
Berbara Jbeil	M	M	M	Bintael	M	M	M	Birket Hjoula	M	M	M
Blatt Jbeil	M	M	M	Boulhos	M	M	MH	Breyj Jbeil	M	M	M
Chamat	M	M	M	Chikhane	M	M	M	Chmout	M	M	M
Eddeh Jbeil	M	M	M	Ehmej	M	M	MH	Fatre	M	M	M
Ferhet	M	M	M	Fghal	M	M	M	Frat	M	M	MH
Ghabat	M	MH	MH	Ghalboun	M	M	M	Gharzouz	M	M	M
Ghofrine	M	M	M	Habil	M	M	M	Halate	M	M	M
Haqel	M	M	M	Hbaline	M	M	M	Hboub	M	M	M
Hdeine	M	M	MH	Hema Er-Rehban	M	M	MH	Hema Mar Maroun Aann	M	MH	MH
Hjoula	M	M	M	Hosrayel	M	M	M	Hsarat	M	M	M



Hsoun	M	M	M	Jaj	M	M	M	Janne	M	M	MH
Jbeil	M	M	M	Jeddeyl Jbeil	M	M	M	Jlisse	M	M	M
Jouret El-Qattine	M	M	M	Kfar Baal Annaya	M	M	M	Kfar Kidde	M	M	M
Kfar Kouas	M	M	M	Kfar Mashoun	M	M	M	Kfoun	M	M	M
Kharbe Jbeil	M	M	M	Laqlouq	M	MH	MH	Lassa	M	M	MH
Lehfed	M	M	M	Maad	M	M	M	Mar Sarkis	M	MH	MH
Mastita	M	M	M	Mayfouq	M	M	M	Mazraat El Siyad	M	MH	MH
Mazraat El-Maaden	M	M	MH	Mechane	M	M	M	Mechmech Jbeil	M	M	M
Mehrin	M	M	M	Mejdel El-Akoura	M	M	MH	Mghayreh Jbeil	M	M	MH
Mounsef	M	M	M	Nahr Ibrahim	M	M	M	Qahmez	M	M	MH
Qartaba	M	M	MH	Qartaboun	M	M	M	Qattara Jbeil	M	M	M
Qorqraya	M	M	MH	Ramout	M	M	M	Ras Osta	M	M	M
Rihane Jbeil	M	M	M	Sakiet El-Khayt	M	M	M	Saqi Richmaya	M	M	M
Sebrine	M	M	M	Seraita	M	M	MH	Souane Jbeil	M	MH	MH
Tadmor	M	MH	MH	Tartej	M	M	M	Torzaiya	M	M	M
Yanouh Jbeil	M	MH	MH	Zibdine Jbeil	M	M	M				

## El Metn

Municipality	18-Dec	19-Dec	20-Dec	Municipality	18-Dec	19-Dec	20-Dec	Municipality	18-Dec	19-Dec	20-Dec
Aain El-Qabu	M	M	M	Aain El-Qach	M	M	M	Aain El-Teffaha	M	M	M
Aain el-Safsaf El-M	M	M	M	Abou Mizane	M	M	M	Ain Aar	M	M	M
Ain Alaq	M	M	M	Ain El-Kharroube	M	M	M	Ain El-Sendianeh	M	M	M
Ain El-Zeitoune	M	M	M	Ain Saadeh	M	M	M	Aintoura El-Matn	M	MH	MH
Amaret Chalhoub	M	M	M	Antelias	M	M	M	Atchaneh	M	M	M
Ayroun	M	M	M	Baabdat	M	M	M	Baouchariyeh	M	M	M
Baskinta	M	MH	MH	Beit Chabab	M	M	M	Beit El-Chaar	M	M	M
Beit El-Kekko	M	M	M	Beit Mery	M	M	M	Bhersaf	M	M	M
Bikfaya	M	M	M	Biyakout	M	M	M	Bnabil	M	M	M
Bourj Hammoud	M	M	M	Bqennaya	M	M	M	Broummana El-Matn	M	M	M
Bsalim	M	M	M	Bsifrine	M	M	M	Bteghrine	M	M	M
Chaouiye	M	M	M	Chouaya El-Matn	M	M	M	Choueir	M	M	M
Chrine	M	M	M	Dahr El Sawan El-Mat	M	M	M	Daychouniyeh	M	M	M
Dbayeh	M	M	M	Deir Chamra	M	M	M	Deir Mar Abda el Mch	M	M	M
Deir Mar Roukouz	M	M	M	Deir Tamiche	M	M	M	Dik El-Mehdi	M	M	M
Dikwaneh	M	M	M	Douar El-Matn	M	M	M	Fanar	M	M	M
Fraike	M	M	M	Haret El-Ballaneh	M	M	M	Hbous	M	M	M
Himlaya	M	M	M	Jal El Did	M	M	M	Jdeideh El-Metn	M	M	M
Jouar El-Matn	M	M	M	Jouret El-Ballout	M	M	M	Kaaqour	M	M	M
Kfar Aaqab	M	M	M	Kfertay El-Matn	M	M	MH	Khenchara	M	M	M
Khillet El-Mtain	M	M	M	Konnabat Broummana	M	M	M	Konnabat Salima	M	M	M
Machraah El-Matn	M	M	M	Majdel Tarchich	M	MH	MH	Majzoub	M	M	M
Mansouriyeh El-Metn	M	M	M	Mar Boutros Karm Et-	M	M	M	Mar Chaya et Mzekke	M	M	M
Mar Moussa Ed-Douar	M	M	M	Marjaba	M	M	M	Masqa	M	M	M
Mayasse	M	M	M	Mazraat Deir Aoukar	M	M	M	Mazraat El-Hadirat	M	M	M
Mazraat Yachouh	M	M	M	Mchikha	M	M	M	Menqlet Mezher	M	M	M
Mhayseh Matn	M	M	M	Mkalles	M	M	M	Mrouj	M	M	M

Mtain	M	MH	MH	Mtayleb	M	M	M	Nabay	M	M	M
Naccache	M	M	M	Ouadi Chahine	M	M	M	Ouadi El-Karm El-Mat	M	M	M
Ouata El-Mrouj	M	M	M	Ouyoun El-Matn	M	M	M	Qornet Chehwan	M	M	M
Qornet El-Hamra	M	M	M	Roumieh	M	M	M	Sfeilet Bikfaya	M	M	M
Sinn El-Fil	M	M	M	Zabbougha	M	M	M	Zalqa	M	M	M
Zarououn	M	M	M	Zekrite	M	M	M	Zighrine El-Matn	M	M	M
Zouk El-Khrab	M	M	M								

## Chouf

Municipality	18-Dec	19-Dec	20-Dec	Municipality	18-Dec	19-Dec	20-Dec	Municipality	18-Dec	19-Dec	20-Dec
Aalmane El-Chouf	M	M	M	Aammq El-Chouf	L	M	M	Ain Ouzein	L	M	M
Ain Qani	L	M	M	Ain Zhalta	M	M	M	Ainbal	L	M	M
Amatour	ML	M	M	Anout	L	M	M	Atrine	L	M	M
Baadarane	ML	M	M	Baaqline	L	M	M	Baasir	M	M	M
Barja	M	M	M	Barouk	M	M	M	Bater	ML	M	M
Batloun	L	M	M	Bayqoun	M	M	M	Bchetfine	L	ML	M
Beiteddine	L	M	M	Benouati Ech-Chouf	L	ML	M	Berjein	L	M	M
Bireh et Mtalleh	L	M	M	Biret El-Chouf	L	M	M	Bkechtine Ouel Mchei	L	ML	M
Bkifa El-Chouf	L	M	M	Botme	L	M	M	Bqaiaa Ech-Chouf	L	ML	M
Bsaba El-Chouf	L	M	M	Chammis El-Chouf	ML	M	M	Chehim	L	M	M
Chemaarine	L	ML	M	Chourit	L	M	M	Daher El-Chouf	M	M	M
Dalhoun	ML	M	M	Damour	M	M	M	Daraya El-Chouf	L	ML	M
Deir El-Moukhalles	L	ML	M	Deir Baba	L	M	M	Deir Dourit	L	M	M
Deir El-Qamar	L	M	M	Deir Kouche	L	M	M	Dibbieh	L	M	M
Dmit	L	M	M	Fouara Jaafar	L	M	M	Fraidis El-Chouf	M	M	M
Ghabet Jaafar	L	M	M	Gharife	L	M	M	Haret Jandal	ML	M	M
Hasrout	L	M	M	Jadra	M	M	M	Jahlieh	L	ML	M
Jbeih El-Chouf	ML	M	M	Jdeidet El-Chouf	L	M	M	Jiyeh	M	M	M
Jleiliyeh	L	M	M	Jmailiyeh	M	M	M	Joun	ML	M	M
Kahlounie El-Chouf	ML	M	M	Ketermaya	M	M	M	Kfar Faqoud	L	M	M
Kfar Hamal	L	M	M	Kfar Him	L	M	M	Kfar Katra	L	M	M
Kfar Niss	L	M	M	Kfar hay	ML	M	M	Kfarnabrakh	L	M	M
Khirbet Bisri	L	M	M	Knayse El-Chouf	L	M	M	Maaniyeh	M	M	M
Maasser Beiteddine	L	M	M	Maasser El-Chouf	M	M	M	Majdalouna	M	M	M
Majdel El-Meouch	L	M	M	Mazboud	L	M	M	Mazmoura	L	M	M
Mazraat El Chouf	ML	M	M	Mazraat El Daher	L	M	M	Mazraat El-Douair	L	M	M
Mechref	L	M	M	Mghairie	ML	M	M	Mghayrie El-Chouf	L	M	M
Moukhtara	L	M	M	Mrusti	M	M	M	Mtolle	L	M	M
Naameh	M	M	M	Niha El-Chouf	M	M	M	Ouadi Abou Youssef	L	ML	M
Ouadi Ed-Deir	L	ML	M	Ouadi El-Sit	L	M	M	Ouadi bnehlay	L	ML	M
Qraibeh	ML	M	M	Qreiaa	L	ML	M	Rmayle El-Chouf	M	M	M
Semqaniyeh	L	M	M	Sibline	M	M	M	Sirjbeil	L	M	M
Warhanieh	ML	M	M	Werdaniyeh	M	M	M	Zaarourieh	L	M	M

## Baabda

Municipality	18-Dec	19-Dec	20-Dec	Municipality	18-Dec	19-Dec	20-Dec	Municipality	18-Dec	19-Dec	20-Dec
Abadiyeh	M	M	M	Ain Mouaffaq	ML	M	M	Araiya	M	M	M



Arbaniyeh	M	M	M	Arsoun	M	M	M	Baabda	M	M	M
Baalchmey	ML	M	M	Bmaryam	M	M	M	Bourj El-Brajneh	M	M	M
Boutchay	M	M	M	Bsaba Baabda	M	M	M	Btekhney	M	M	M
Btibyat	M	M	M	Bzebdine	M	M	M	Chbeniyeh	M	M	M
Chiyah	M	M	M	Chmeisset Baabda	M	M	M	Chouit	M	M	M
Deir El-harf	M	M	M	Deir Khouna	M	M	M	Dlaybeh	M	M	M
Falougha	M	M	M	Furn El-Chebbak	M	M	M	Hadath Beyrouth	M	M	M
Halaliyeh Baabda	M	M	M	Hammana	M	M	M	Haret El Sett	M	M	M
Haret Hamze	M	M	M	Haret Hreik	M	M	M	Hasbaiya El-Metn	M	M	M
Jouar El-Hoz	M	M	M	Jouret Arsoun	M	M	M	Kfar Chima	M	M	M
Kfar Selouane	M	M	MH	Khalouat Baabda	M	M	M	Kneisset Baabda	M	M	M
Laylakeh	M	M	M	Louayzeh Baabda	M	M	M	Merdache	M	M	M
Mzairaa Baabda	M	M	M	Ouadi Chahrour El OI	M	M	M	Ouadi Chahrour El So	M	M	M
Qalaa Baabda	M	M	M	Qhraybe Baabda	M	M	M	Qobbayaa	M	M	M
Qornayel	M	M	M	Qortada	M	M	M	Qrayeh Baabda	M	M	M
Qsaibeh Baabda	M	M	M	Qtale Baabda	M	M	M	Ras El Metn	M	M	M
Ras El-Haref	M	M	M	Rouayset El-Ballout	ML	M	M	Salima Baabda	M	M	M
Tahouitat El Ghadir	M	M	M	Tarchich	M	MH	MH	Zandouqa	M	M	M

## Aley

Municipality	18-Dec	19-Dec	20-Dec	Municipality	18-Dec	19-Dec	20-Dec	Municipality	18-Dec	19-Dec	20-Dec
Abey	L	M	M	Aghmid	M	M	M	Ain Dara	M	M	M
Ain Drafil	M	M	M	Ain El Halazoun	ML	M	M	Ain El-Rmmaneh	ML	M	M
Ain Jedideh	ML	M	M	Ain Ksour	ML	M	M	Ain Onoub	M	M	M
Ain Traz	L	M	M	Ainab	M	M	M	Aley	ML	M	M
Aramoun	M	M	M	Aytat	M	M	M	Azouniyeh	M	M	M
Baawerta	L	M	M	Badghan Oua Wadi Bad	M	M	M	Bassatine	M	M	M
Bayssour	M	M	M	Bchamoun	M	M	M	Bdadoun	M	M	M
Behouara	ML	M	M	Bennay	L	M	M	Bhamdoun El-Dayaa	ML	M	M
Bhamdoun El-Mhatta	M	M	M	Bkhechtey	ML	M	M	Bleibel	M	M	M
Bmakine	ML	M	M	Bmehray	M	M	M	Bouzrid	L	M	M
Bserrine	ML	M	M	Bsous	ML	M	M	Btalloun	ML	M	M
Btater	ML	M	M	Chanay	M	M	M	Charoun	M	M	M
Chartoun	ML	M	M	Chemlane	M	M	M	Chouefat El-Aamrous	M	M	M
Chouefat El-Oumara	M	M	M	Chouefat El-Quoubbe	M	M	M	Dakkoun	L	M	M
Deir Qoubel	M	M	M	Dfoun	ML	M	M	Douair El Remmaneh	M	M	M
Ghaboun	ML	M	M	Habramoun	ML	M	M	Homs Oua Hama	M	M	M
Houmal	M	M	M	Jisr El Qadi	L	M	M	Kehaleh	ML	M	M
Keyfoun	M	M	M	Kfar Aamey	ML	M	M	Kommatyeh	ML	M	M
Maasrati	ML	M	M	Majdel Baana	M	M	M	Mansourieh et Ain El	ML	M	M
Mazraat El-Nahr	M	M	M	Mchakhte	M	M	M	Mecherfeh	M	M	M
Mejdlaya	M	M	M	Mrayjat	M	M	M	Ramiyeh	ML	M	M
Rechmaya	L	M	M	Rejmeh	ML	M	M	Remhala	L	M	M
Rouayset El Neemane	ML	M	M	Saoufar	M	M	M	Selfaya	L	M	M
Sirhmoul	M	M	M	Souq El Ghareb	ML	M	M	Taazanieh	ML	M	M

## Kesrouane

Municipality	18-Dec	19-Dec	20-Dec	Municipality	18-Dec	19-Dec	20-Dec	Municipality	18-Dec	19-Dec	20-Dec
Achkout	M	M	M	Adma Oua Dafneh	M	M	M	Ain Ed-Delbe Kesroua	M	M	MH
Ain El-Rihane	M	M	M	Aintoura Kesrouane	M	M	M	Ajaltoun	M	M	M
Akaybeh Kesrouane	M	M	M	Aramoun Kesrouane	M	M	M	Azra ouel Ozor	M	M	M
Ballouneh	M	M	M	Batha	M	M	M	Bekaatat Achkout	M	M	M
Bekaatat Kanaan	M	M	M	Bizhel	M	M	M	Bouar	M	M	M
Bqaatouta	M	MH	MH	Bqaq Ed-Dine	M	M	M	Bzommar	M	M	M
Chahtoul	M	M	MH	Chnaniir	M	M	M	Chouan	M	M	MH
Daraya Kesrouane	M	M	M	Daroun	M	M	M	Deir Baqlouch	M	M	M
Diebta	M	M	M	Eghbeh	M	M	M	Faraya	M	MH	MH
Fatka	M	M	M	Feytroun	M	M	M	Ghazir	M	M	M
Ghbaleh Kesrouane	M	M	M	Ghedrass	M	M	M	Ghosta	M	M	M
Ghyneh	M	M	M	Harharaya w Kattine	M	M	M	Harissa Kesrouane	M	M	M
Hayata	M	M	M	Hosein	M	M	M	Hrajel	M	MH	MH
Jdeideh Ghazir	M	M	M	Jeita	M	M	M	Jounieh Ghadir	M	M	M
Jounieh Haret Sakhr	M	M	M	Jounieh Salel Alma	M	M	M	Jounieh Sarba	M	M	M
Jouret Bedrane	M	M	M	Jouret Mhad	M	M	MH	Jouret Termos	M	M	M
Kfar Debiane	M	M	MH	Kfar Tay Kesrouane	M	M	M	Kfar Yassine	M	M	M
Kfour Kesrouane	M	M	M	Kharayeb Nahr Ibrahi	M	M	M	Klayaat Kesrouane	M	M	M
Maarab	M	M	M	Maaysra Kesrouane	M	M	M	Mayrouba	M	MH	MH
Mazraat Er-Ras	M	M	M	Mazraat Mrah El-Mir	M	M	M	Mchaa El Ftouh	M	MH	MH
Mchaa Faraya	M	MH	MH	Mchaa Kfar Dibiane	M	MH	MH	Mghaer	M	M	MH
Mradiyah	M	M	M	Nahr Ed-Dahab	M	M	M	Nammoura Kesrouane	M	M	M
Ouata El Jaouz	M	M	M	Ouata Sillam	M	M	M	Raachine	M	M	M
Rayfoun	M	M	M	Safra Kesrouane	M	M	M	Shayle Kesrouane	M	M	M
Tabarja	M	M	M	Yahchouch	M	M	M	Zaaytreh	M	M	M
Zeytoun	M	M	M	Zouk Mikael	M	M	M	Zouk Mosbeh	M	M	M

## Baalbek\_Hermel

### Baalbek

Municipality	18-Dec	19-Dec	20-Dec	Municipality	18-Dec	19-Dec	20-Dec	Municipality	18-Dec	19-Dec	20-Dec
Aadous	MH	MH	MH	Aamchki	M	MH	MH	Aarsal	M	MH	MH
Ain Baalbek	M	M	MH	Ain Bourday	MH	MH	MH	Ain El-Benye	MH	MH	MH
Ain El-Jaouz Baalbek	M	MH	H	Ain El-Siya Chadoura	MH	MH	MH	Al Khodr Baalbek	H	H	H
Al Nabi Chit	MH	MH	MH	Aynata Baalbek	M	MH	MH	Baalbek	MH	MH	MH
Bachwat	M	MH	MH	Barqa	M	MH	MH	Bednayel Baalbak	MH	MH	MH
Beit Chama	MH	MH	MH	Bijjaje	MH	MH	MH	Bouday	M	MH	H
Brital	MH	MH	MH	Btadi	MH	H	H	Chaat	M	MH	MH
Chaibe	MH	MH	MH	Chlifa	MH	MH	MH	Chmestar	MH	MH	MH
Dar El-Oussa	M	MH	MH	Deir El-Ahmar	MH	MH	MH	Deir Mar Maroun Baal	M	MH	MH
Douris	MH	MH	MH	Fakiha	MH	MH	MH	Hadath Baalbek	MH	MH	H
Ham	MH	MH	MH	Haour Taala	MH	MH	MH	Hizzine	MH	MH	MH
Hlebta	M	MH	H	Hosh Barada	H	H	H	Hosh El Dahab	MH	MH	MH
Hosh El Snid	MH	MH	MH	Hosh El-Nabi	MH	MH	MH	Hosh El-Rafiq	MH	MH	MH
Hosh Tal Safiya	MH	MH	MH	Hrebta	M	MH	MH	laat	MH	MH	MH



Jebaa	MH	MH	MH	Jenta	MH	MH	MH	Kfar Dabach	MH	MH	MH
Kfar Dane	MH	MH	MH	Khraibeh El-Hermel	MH	MH	MH	Khreibet Baalbek	MH	MH	H
Kneisset Baalbek	M	MH	MH	Labueh	MH	MH	MH	Maarboun	MH	MH	MH
Majdaloun	MH	MH	MH	Maqneh	M	MH	MH	Mazraat Beit Mcheik	MH	MH	H
Misraya	H	MH	H	Moqraq	MH	MH	MH	Nabha El-Damdoum	M	MH	MH
Nabi Chbay	MH	MH	MH	Nabi Osman	MH	M	MH	Nahleh baalbek	M	MH	MH
Ouadi El-Oss	M	MH	MH	Qaa Baayoun	MH	MH	MH	Qaa Jouar Maqiye	M	MH	MH
Qaa Ouadi El-Khanzir	M	MH	MH	Qah Baalbek	MH	MH	MH	Qarha Baalbek	M	MH	MH
Qsarnaba	MH	MH	MH	Ram Baalbek	M	MH	MH	Ras Baalbek El Sahl	MH	MH	MH
Ras Baalbek El-Charq	MH	MH	MH	Riha	M	MH	MH	Saaide	MH	MH	MH
Sbouba	MH	MH	MH	Seriine El-Tahta	H	H	H	Slouqi	M	MH	MH
Taiba Baalbek	MH	MH	MH	Talia	MH	MH	MH	Taraiya	MH	MH	MH
Temnin El-Fawqa	MH	H	H	Temnin El-Tahta	H	H	H	Tfail	M	MH	MH
Yahfoufa	MH	MH	MH	Yammouneh	MH	MH	MH	Younine	MH	MH	MH
Zboud	MH	MH	MH								

## Hermel

Municipality	18-Dec	19-Dec	20-Dec	Municipality	18-Dec	19-Dec	20-Dec	Municipality	18-Dec	19-Dec	20-Dec
Charbine El-Hermel	M	M	MH	Hermel Jbab	M	MH	MH	Hermel	M	MH	MH
Maaysra El-Hermel	M	MH	MH	Michaa Mrajhine	M	M	MH	Ouadi Faara	M	MH	H
Ras Baalbek - Ouadi	MH	MH	MH	Ras Baalbek El Gharb	M	MH	H	Zighrine	M	MH	MH

## Akkar

### Akkar

Municipality	18-Dec	19-Dec	20-Dec	Municipality	18-Dec	19-Dec	20-Dec	Municipality	18-Dec	19-Dec	20-Dec
Aain Tinta	M	M	M	Aaiyat	M	MH	MH	Aakkar El-Aatiga	M	M	M
Aamar Akkar	M	M	MH	Aamar El Baykat	M	M	M	Aamayer	M	M	M
Aamriyet Akkar	M	M	M	Aandqet	M	M	M	Aarmeh	M	M	M
Aarqa	M	M	M	Aawaynat	ML	M	M	Aayoun Akkar	M	MH	MH
Abboudiye	M	M	M	Ain El-Zeit	M	M	M	Ain Yaaqoub	M	M	MH
Akroum	M	M	M	Aridet Cheikh Zennad	M	M	M	Baldehy w Mazraat Bal	M	M	M
Barcha	M	M	M	Bardeh	M	M	M	Bebnine	M	M	MH
Beino	M	M	MH	Beit Ayoub	M	M	MH	Beit El-Haouch	M	M	MH
Beit Mellat	M	MH	MH	Beit Younes	M	M	M	Berbara Akkar	M	M	M
Berqayel	M	M	MH	Bezbinia	M	M	M	Bireh Akkar	M	M	M
Borj	M	MH	MH	Bqerezla	M	M	MH	Bzal	M	M	MH
Chane	M	M	MH	Chaqdouf	M	MH	MH	Charbila	M	M	M
Cheikh Mohammad	M	M	M	Cheikh Taba Es-Sahl	M	M	M	Cheikh Taba	M	M	MH
Cheikh Zennad	M	M	M	Cheikhlar	ML	M	M	Chir Hmairine	M	M	M
Daghle	M	M	M	Dahr Laissine	M	M	MH	Darine	M	M	M
Dawra	M	M	M	Dawsa w Baghdadadi	M	M	M	Dayret Nahr El-Kabir	L	M	M
Deir Dalloum	M	M	MH	Deir Jennine	M	M	M	Denbou	M	M	MH
Dibbbiyeh	M	M	M	Douair Aadwiyeh	M	M	M	Fassikine	M	M	M
Fnaydek	M	M	M	Fraydes Akkar	M	M	M	Ghazayle	M	M	M
Habchit	M	M	MH	Hakour	M	M	MH	Halba	M	M	M

Haouchab	M	M	M	Hayssat	M	M	M	Haytla	M	M	M
Hayzouq	M	M	M	Hedd	M	M	M	Hmaira Aakkar	M	M	MH
Hmaiss Aakkar	M	M	M	Hnaider	M	M	M	Hokr Ed-Dahri	M	M	M
Hokr Etti	M	M	M	Hokr Jouret Srar	M	M	M	Houaich	M	M	MH
Hrar	M	M	MH	Idbil	M	M	MH	Ilal	M	M	MH
Janine	M	M	M	Jdeidet El-JoumeH	M	M	MH	Jdeidet El-Kaiteh	M	M	MH
Jebrayel	M	M	MH	Kafr	M	M	M	Kafr	M	M	M
Karm Asfour	M	M	MH	Kfar Melki Aakkar	M	M	M	Kfar Noun	M	M	M
Kfarharra	M	M	M	Khalsa	ML	M	MH	Kharnoubet Aakkar	M	M	M
Khirbet Daoud Aakkar	M	M	M	Khirbet El Remmane	ML	M	M	Khirbet Shar	M	M	M
Khoreybet El-Jindi	M	M	M	Khreibet Aakkar	M	M	MH	Kneisset Aakkar	M	M	M
Kneisset Hnaider	M	M	M	Knisse	M	M	M	Kroum El-Aarab	M	M	M
Kwachra	M	M	M	Kweykhata	M	M	M	Machta Hammoud	ML	M	M
Majdala	M	M	MH	Majdel Akkar	M	M	M	Mar Touma	M	M	MH
Marlaya Melhem	M	M	MH	Mashha	M	M	M	Massoudiye	M	M	M
Mazraat Beit Ghattas	M	M	MH	Mazraat En-Nahriye	ML	M	M	Mechmech	M	M	MH
Memneh	M	M	M	Mhammara	M	M	MH	Mighraq Aakkar	M	M	M
Minyara	M	M	MH	Moqayteh	M	M	M	Mounjez	M	M	M
Msalla	M	M	M	Mzeihmeh	M	M	M	Nfaiseh	M	M	M
Noura Et-Tahta	M	M	M	Ouadi El-Haour	M	M	M	Ouadi El-Jamous	M	M	MH
Ouyoun El-Ghizlane	M	M	MH	Qaabarine	M	M	M	Qabaait	M	M	MH
Qachlaq	M	M	M	Qantara Aakkar	M	M	MH	Qarha Aakkar	M	M	M
Qarqaf	M	M	MH	Qboula	M	MH	MH	Qleiaat Aakkar	M	M	M
Qloud El-Baqie	M	M	MH	Qobaiyat Aakkar	M	M	M	Qobbat Chamrat	M	M	MH
Qorayat	M	M	M	Qornet Aakkar	M	M	M	Qsair Aakkar	M	M	M
Rahbe	M	M	M	Rihaniyet Aakkar	M	M	M	Rmah	M	M	M
Rmoul	M	M	M	Saadine	M	M	M	Sadaqa	M	M	M
Saidnaya	M	M	M	Sammouniye	M	M	M	Sayssoouq	M	M	MH
Semmaqiye	M	M	M	Semmaqli	M	M	M	Sfinet El-Dreib	M	M	M
Sfinet El-Qaitaa	M	M	M	Sindyanet Zeidane	M	M	M	Souaisset Aakkar	M	M	M
Srar	M	M	M	Tal Abbas El Gharby	M	M	M	Tal Abbas El-Charqy	M	M	M
Tal Biret	M	M	M	Tal Hmayra	M	M	M	Tal Maayan Tal Kiri	M	M	M
Tal Sibel	M	M	M	Tallet Chattaha	M	MH	MH	Tikrit	M	M	M
Tleil	M	M	M	Tshea	M	M	M	Zawarib	M	M	MH
Zouq El Hosniyeh	M	M	MH	Zouq El-Haddara	M	M	MH	Zouq El-Hbalsa	M	M	MH
Zouq El-Moqachrine	M	M	MH								

## Sud

### Sour

Municipality	18-Dec	19-Dec	20-Dec	Municipality	18-Dec	19-Dec	20-Dec	Municipality	18-Dec	19-Dec	20-Dec
Aaiyeh	L	M	M	Aalma El-Chaab	ML	M	M	Aaytit	L	M	M
Abbassiyeh Sour	ML	M	M	Abou Chech	L	M	M	Ain Abou Abdallah	ML	M	M
Ain Baal	L	M	M	Arzoun	ML	M	M	Aziyeh	ML	M	M
Baflaya	ML	M	M	Barich	L	M	M	Batouliyeh	L	M	M
Bayad	L	M	M	Bazouriyeh	L	M	M	Bediass	L	M	M



Bestiyat	L	M	M	Borj El Chemali	ML	M	M	Borj En-Naqoura	M	M	M
Borj Rahhal	L	M	M	Boustane	L	M	MH	Btaychih	L	M	M
Chaaitiye	L	M	M	Chameh	L	M	M	Chehabiye	ML	M	M
Chehour	M	M	M	Chihine	L	M	M	Debaal Sour	L	M	M
Deir Amess	L	M	M	Deir Kifa	ML	M	M	Deir Qanoun El-Ain	L	M	M
Deir Qanoun El-Naher	L	M	M	Derdghaiya	ML	M	M	Dhayra	L	M	M
Halloussiyeh	L	M	M	Hamoul	L	M	M	Hanaouey	L	M	MH
Henniye	L	M	M	Hmairi Sour	L	M	M	Iskandarouna Sour	ML	M	M
Jbal El Botom	L	M	M	Jebbin	L	M	MH	Jennata	L	M	M
Jijim	L	M	M	Jouaiya	L	M	M	Kneisset Sour	L	M	M
Maarake	L	M	M	Maaroub	L	M	M	Majadel	L	M	M
Majdalzoun	L	M	M	Mansouri Sour	L	M	M	Marnba	M	M	M
Marouahine	L	M	M	Mazraat El-Zalloutiy	L	M	MH	Mazraat Mechref	L	M	M
Mazraat Tayr Semhat	M	M	M	Mheilib	ML	M	M	Neffakhiyeh	ML	M	M
Niha Sour	ML	M	M	Ouadi Jilo	L	M	M	Qana	L	M	M
Qolaileh Sour	L	M	M	Rechknany	L	M	M	Rmadiyah	L	M	M
Selha Sour	ML	M	M	Siddiqine	L	M	M	Sour	ML	M	M
Srifa	M	M	M	Tayr Debbe	L	M	M	Tayr Felsay	L	M	M
Tayr Harfa	L	M	MH	Touayri	M	M	M	Toura	L	M	M
Yanouh Sour	L	M	M	Yarine	L	M	MH	Zebqine	L	M	M

## Saida

Municipality	18-Dec	19-Dec	20-Dec	Municipality	18-Dec	19-Dec	20-Dec	Municipality	18-Dec	19-Dec	20-Dec
Aanqoun	ML	M	M	Aaqtanit	ML	M	M	Aarab Ej-Jall	ML	M	M
Aarab Tabbaya	ML	M	M	Abra Saida	M	M	M	Adloun	ML	M	M
Adousiyeh	M	M	M	Ain-El-Deleb	M	M	M	Arzai	L	M	M
Babliyah	ML	M	M	Barty	M	M	M	Bissariyeh	M	M	M
Bnaafoul	ML	M	M	Bqosta	M	M	M	Bramiy --	M	M	M
Daoudiyeh	ML	M	M	Dareb El-Sim	M	M	M	Erkay	ML	M	M
Ghassanieh	ML	M	M	Ghazieh	M	M	M	Hajjeh	ML	M	M
Haret Saida	M	M	M	Hartiyeh	ML	M	M	Hlaliye Saida	M	M	M
Insariyat	ML	M	M	Jazira Saida	ML	M	M	Kafar Bit	M	M	M
Kaoutariyet El-Siyad	ML	M	M	Kfar Chellal	M	M	M	Kfar Hatta Saida	ML	M	M
Kfar Milke Saida	M	M	M	Khartoum	ML	M	M	Khaziz	ML	M	M
Khirbet Ed-Douair Sa	ML	M	M	Khirbet El-Bassal	M	M	M	Khrayeb Saida	ML	M	M
Loubieh	ML	M	M	Maghdouche	M	M	M	Majdelyoun	M	M	M
Matariyet El-Choumar	L	M	M	Matayriyeh	M	M	M	Mazraat 'Mseileh	M	M	M
Mazraat 'Snaiber	M	M	M	Mazraat Aarab Soukka	ML	M	M	Mazraat Deir Taqla	ML	M	M
Mazraat El Yahoudiye	M	M	M	Mazraat El-Housseini	M	M	M	Mazraat El-Mhaydaleh	ML	M	M
Mazraat El-Ouasta	ML	M	M	Mazraat Jamjim	ML	M	M	Mazraat Kaoutariyet	ML	M	M
Mazraat Kfar Badda	ML	M	M	Mazraat Oussamiyat	ML	M	M	Mazraat Sari	ML	M	M
Mazraat Sinai	ML	M	M	Meemariyeh	M	M	M	Merouaniyeh	M	M	M
Miyeh ou Miyeh	ML	M	M	Najjariyeh	M	M	M	Qaaqiyat El-Snaouba	ML	M	M
Qnarit	ML	M	M	Qraiye Saida	ML	M	M	Saida Ed-Dekermane	M	M	M
Saida El-Oustani	M	M	M	Saida El-Qadimeh	M	M	M	Saida Kefraya	M	M	M
Saksakiyeh	ML	M	M	Salhieh Saida	M	M	M	Sarafand	M	M	M

Sfenta	M	M	M	Tafahta	ML	M	M	Tanbourit	M	M	M
Tebna	M	M	M	Zaghdraiya	M	M	M	Zeita	ML	M	M
Zrariyeh	L	M	M								

## Jezzine

Municipality	18-Dec	19-Dec	20-Dec	Municipality	18-Dec	19-Dec	20-Dec	Municipality	18-Dec	19-Dec	20-Dec
Ain El-Mir (El Estab)	M	M	M	Anane	L	M	M	Aramta	M	M	M
Ariya	ML	M	M	Aychiyeh	M	M	M	Azour	L	ML	M
Baba	L	ML	M	Baysour Jezzine	ML	M	M	Benoueteh Jezzine	ML	M	M
Bhannine	ML	M	M	Bisri	L	ML	M	Bkassine	ML	M	M
Bouslaya	M	M	M	Btedine El-Leqech	L	ML	M	Chbail	M	M	M
Choualiq Jezzine	M	M	M	Dahr Ed-Deir	M	M	M	Deir El Qattine	M	M	M
Demachqiyeh	M	M	M	Ghabbatiyeh	ML	M	M	Harf Jezzine	L	M	M
Hassaniyeh	M	M	M	Haytouleh	M	M	M	Haytura	M	M	M
Hidab	M	M	M	Homsiyeh	ML	M	M	Jabal Toura	M	M	M
Jarmaq	M	M	M	Jensnaya	ML	M	M	Jernaya	M	M	M
Jezzine	M	M	M	Karkha	M	M	M	Kfar Falous	ML	M	M
Kfar Houna	M	M	M	Kfar Jarrah	M	M	M	Lebaa	M	M	M
Louayzet Jezzine	M	M	M	Machmouche	ML	M	M	Mahmoudiyeh Jezzine	M	M	M
Maknounye Jezzine	M	M	M	Maraat Ouazaiyeh	M	M	M	Mazraat Daraya	M	M	M
Mazraat El-Aarqoub	M	M	M	Mazraat El-Mathane	L	ML	M	Mazraat El-Rahbane	M	M	M
Mazraat Khallet Khaz	M	M	M	Mazraat Louzid (Loua	M	M	M	Mazraat Qrouh	M	M	M
Mazraat Tamra	M	M	M	Mazraat Zighrine Jez	M	M	M	Mazraat	M	M	M
Mharbiyeh	ML	M	M	Midane Jezzine	ML	M	M	Mjeydel Jezzine	ML	M	M
Mlikh	M	M	M	Mrah El-Hbasse	ML	M	M	Ouadi Baanqoudaine	ML	M	M
Ouadi El-Laymoun	M	M	M	Ouardiyeh	M	M	M	Qabaa Jezzine	M	M	M
Qatrani	M	M	M	Qaytouleh	M	M	M	Qtaleh Jezzine	L	ML	M
Rihane Jezzine	M	M	M	Rimat	M	M	M	Roum	ML	M	M
Roummanet	M	M	M	Sabbah	ML	M	M	Saydoun	M	M	M
Sfaray	L	M	M	Snaya	M	M	M	Sojoud	M	M	M
Srayri	M	M	M	Taaid	L	ML	M	Wadi Jezzine	ML	M	M
Zhalta	M	M	M								

## Bekaa

### West Bekaa

Municipality	18-Dec	19-Dec	20-Dec	Municipality	18-Dec	19-Dec	20-Dec	Municipality	18-Dec	19-Dec	20-Dec
Aammiq BG	M	M	M	Ain El Tineh BG	M	M	M	Ain Zebdeh	M	M	M
Ana	M	M	M	Aytanit	M	M	M	Baaloul BG	M	M	M
Bab Mareh	M	M	M	Chouberqiye Aammiq	M	M	M	Dakoue	M	M	M
Deir Ain El-Jaouze	M	M	M	Deir Tahniche	M	M	M	Ghaza	M	M	M
Harime El-Soughra	M	M	M	Hoch Harimeh	M	M	M	Jazira BG	M	M	M
Jib Jennine	M	M	M	Kamed-El-Laouz	M	M	M	Kefraya BG	M	M	M
Khiara El Atika	M	M	M	Khiara	M	M	M	Khirbet Qanafar	M	M	M
Lala	M	M	M	Lebbaya BG	M	M	M	Loussa	M	M	M
Machghara	M	M	M	Manara (Hammara) BG	M	M	M	Mansoura BG	M	M	M

Marej BG	M	M	MH	Maydoun	M	M	M	Ouaqf BG	M	M	M
Qaraaoun	M	M	M	Qelya	M	M	MH	Raouda (Istabel)	M	M	M
Saghbine	M	M	M	Sohmor	M	M	M	Soltan Yaacoub el Ara	M	M	M
Souairy	M	M	M	Sultan Yaacoub	M	M	M	Tal Znoun	M	M	M
Yehmor BG	M	M	M	Zilaya	M	M	M				

## Zahle

Municipality	18-Dec	19-Dec	20-Dec	Municipality	18-Dec	19-Dec	20-Dec	Municipality	18-Dec	19-Dec	20-Dec
Aanjar (Haouch Mouss)	M	M	M	Ablah	MH	MH	MH	Ain Kfarzabad	MH	M	MH
Ali-El-Nahri	MH	MH	MH	Bar Elias	M	M	MH	Bouarej	M	M	MH
Cheberqiyet Tabet	M	M	MH	Chtaura	M	M	MH	Deir El Ghazal	MH	M	MH
Delhamiyet Zahle	M	M	MH	Ferzol	M	MH	MH	Haouch El-Ghanam	MH	MH	MH
Haouch Es-Siyadeh	M	M	MH	Haouch Hala	MH	MH	MH	Haouch Mandara	M	M	MH
Haouch Qayssar	M	M	MH	Hezerta	M	MH	MH	Hosh Moussa	MH	M	MH
Jdita	M	M	MH	Kfarzabad	MH	M	MH	Ksara	M	M	MH
Majdel Aanjar	M	M	M	Makssi	M	M	MH	Massa	MH	MH	MH
Mazraat Er-Remtaniye	M	M	MH	Mrayjat Zahle	M	M	MH	Mzaraa Zahle	M	M	MH
Nabi Ayla	MH	MH	MH	Nasriyet Rizk	MH	MH	MH	Nasriyet Zahle	M	M	MH
Niha Zahle	MH	MH	MH	Ouadi Ed-Deloum	M	M	MH	Ouadi El-Arayech	M	MH	MH
Qaa El Rim	M	MH	MH	Qab Elias	M	M	MH	Qousaya	MH	M	MH
Rhit	MH	M	MH	Riyak	MH	MH	MH	Saadnayel	M	M	MH
Taal El-Akhdar	M	M	M	Taalbeya	M	M	MH	Taanayel	M	M	MH
Talamara	MH	MH	MH	Tcheflik Edde Haouch	M	M	MH	Tcheflik Qiqano	M	M	MH
Terbol Zahle	MH	M	MH	Touaite Zahle	M	MH	MH	Zahle Aradi	M	MH	MH
Zahle El-Berbara	M	MH	MH	Zahle El-Maallaqa	M	MH	MH	Zahle El-Midane	M	MH	MH
Zahle Er-Rassiyeh	M	MH	H	Zahle Haouch El-Ouma	M	M	MH	Zahle Haouch El-Ouma	M	M	MH
Zahle Haouch Ez-Zara	M	MH	MH	Zahle Maalaqa Aradi	M	MH	MH	Zahle Mar Antonios	M	MH	MH
Zahle Mar Elias	M	M	MH	Zahle Mar Gerios	M	M	MH	Zahle Saydet En-Naja	M	MH	MH
Zebdoul	M	M	M								

## Rachaiya

Municipality	18-Dec	19-Dec	20-Dec	Municipality	18-Dec	19-Dec	20-Dec	Municipality	18-Dec	19-Dec	20-Dec
Ain Arab Rachaiya	M	M	MH	Ain Ata	M	MH	MH	Ain Harche	M	M	MH
Aqabe Rachaya	M	M	MH	Ayha	MH	MH	MH	Ayta El Fokhar	M	M	M
Bakifa Rachaya	M	M	MH	Bakka	M	M	MH	Beit Lahya	M	M	MH
Bireh Rachaiya	M	M	M	Daher El Ahmar	M	M	MH	Deir El-Achayer	M	M	MH
Heloua Rachaiya	M	M	MH	Hoch El Qannabeh Rac	M	M	MH	Kaoukaba Bou Arab	M	M	MH
Kfar Danis	M	M	M	Kfar Mechki	M	M	MH	Kfar Qouq	M	M	MH
Kherbet Rouha	M	M	M	Majdel Balhiss	M	M	M	Mdoukha	M	M	MH
Mhaydseh Rachaiya	M	M	M	Nabi Safa	M	M	M	Rachaiya	M	M	MH
Rafid Rachaiya	M	M	M	Selsata (Mazraat Dei	M	M	M	Tannoura	M	M	MH
Yanta	M	M	MH								

## Beyrouth

### Beyrouth

Municipality	18-Dec	19-Dec	20-Dec	Municipality	18-Dec	19-Dec	20-Dec	Municipality	18-Dec	19-Dec	20-Dec
--------------	--------	--------	--------	--------------	--------	--------	--------	--------------	--------	--------	--------



Achrafieh	M	M	M	Ain el-Mreisse	M	M	M	Bachoura	M	M	M
Beirut Central Distr	M	M	M	Marfai	M	M	M	Mazraa	M	M	M
Medaouar	M	M	M	Minet el-Hosn	M	M	M	Mwssaitbeh	M	M	M
Ras Beirut	M	M	M	Rmeil	M	M	M	Saifi	M	M	M
Zqaq el-Blat	M	M	M								