

# Lebanon Fire Risk Bulletin



CIVIL DEDEFENCE

**Refer to cadast table condition.**

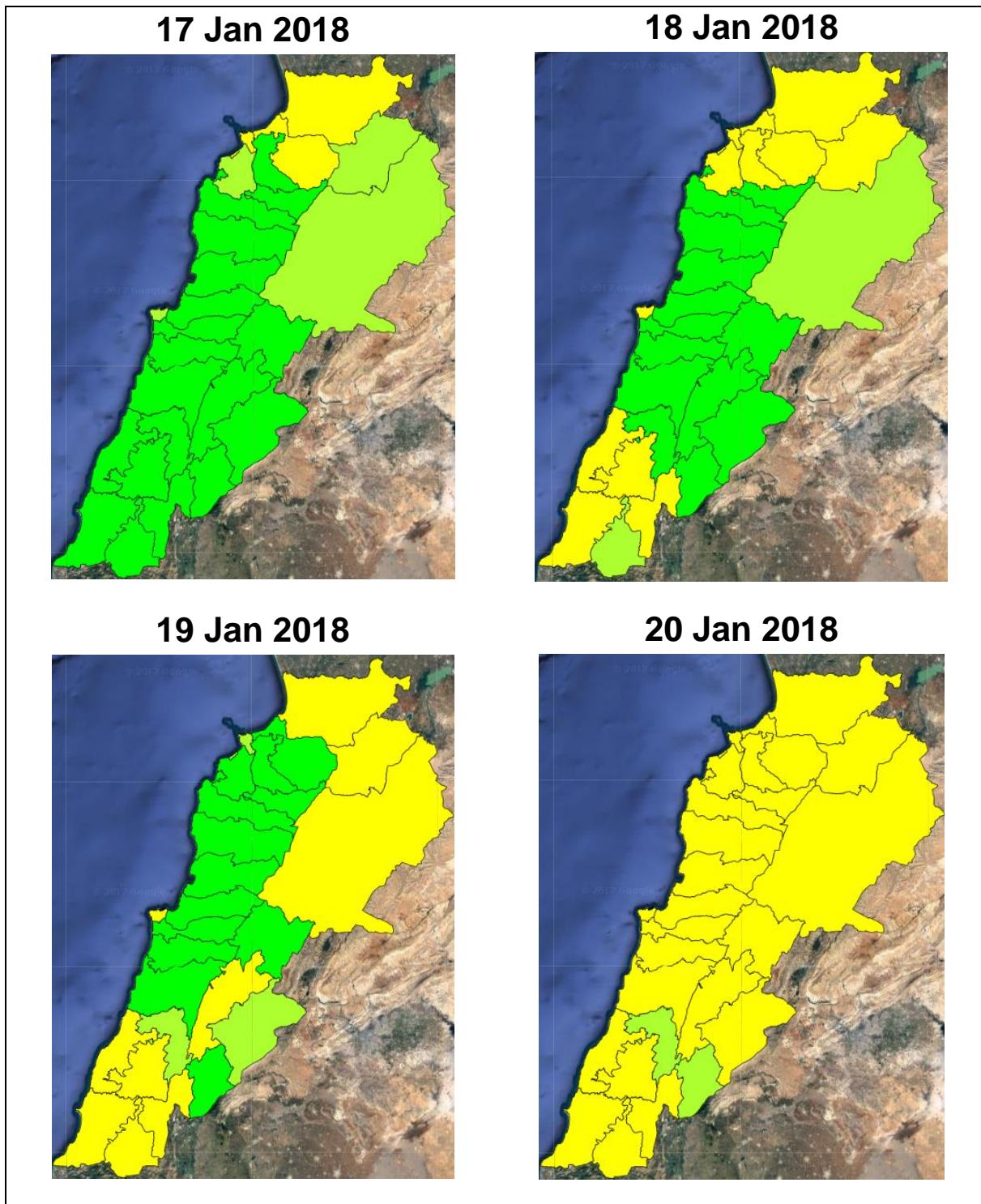
**Please note that the indicated temperature is at 2 meters height from the ground.**

General description of potential fire risk situation

Symbol	Level of risk	Meaning and actions
VL	Very low	Very low fire risk. Controlled burning operations can be hardly executed due to high fuel moisture content. Normally wildfires self-extinguish.
L	Low	Low fire risk. Controlled burning operations can be executed with a reasonable degree of safety.
ML	Medium low	Medium-low fire risk. Controlled burning operations can be executed in safety conditions. All the fires need to be extinguished.
M	Medium	Medium fire risk. Controlled burning operations would be avoided. All the fires need to be very well extinguished.
M	Medium high	Controlled burning is not recommended. Open flame will start fires. Cured grasslands and forest litter will burn readily. Spread is moderate in forests and fast in exposed areas. Patrolling and monitoring is suggested. Fight fires with direct attack and all available resources.
H	High	Ignition can occur easily with fast spread in grass, shrubs and forests. Fires will be very hot with crowning and short to medium spotting. Direct attack on the head may not be possible requiring indirect methods on flanks. Patrolling and monitoring the territory is highly suggested.
E	Extreme	Ignition can occur also from sparks. Fires will be extremely hot with fast rate of spread. Control may not be possible during day due to long range spotting and crowning. Suppression forces should limit efforts to limiting lateral spread. Damage potential total. Patrolling and monitoring the territory is highly suggested.

**Beirut, 18 January 2018**

# FIRE RISK INDEX

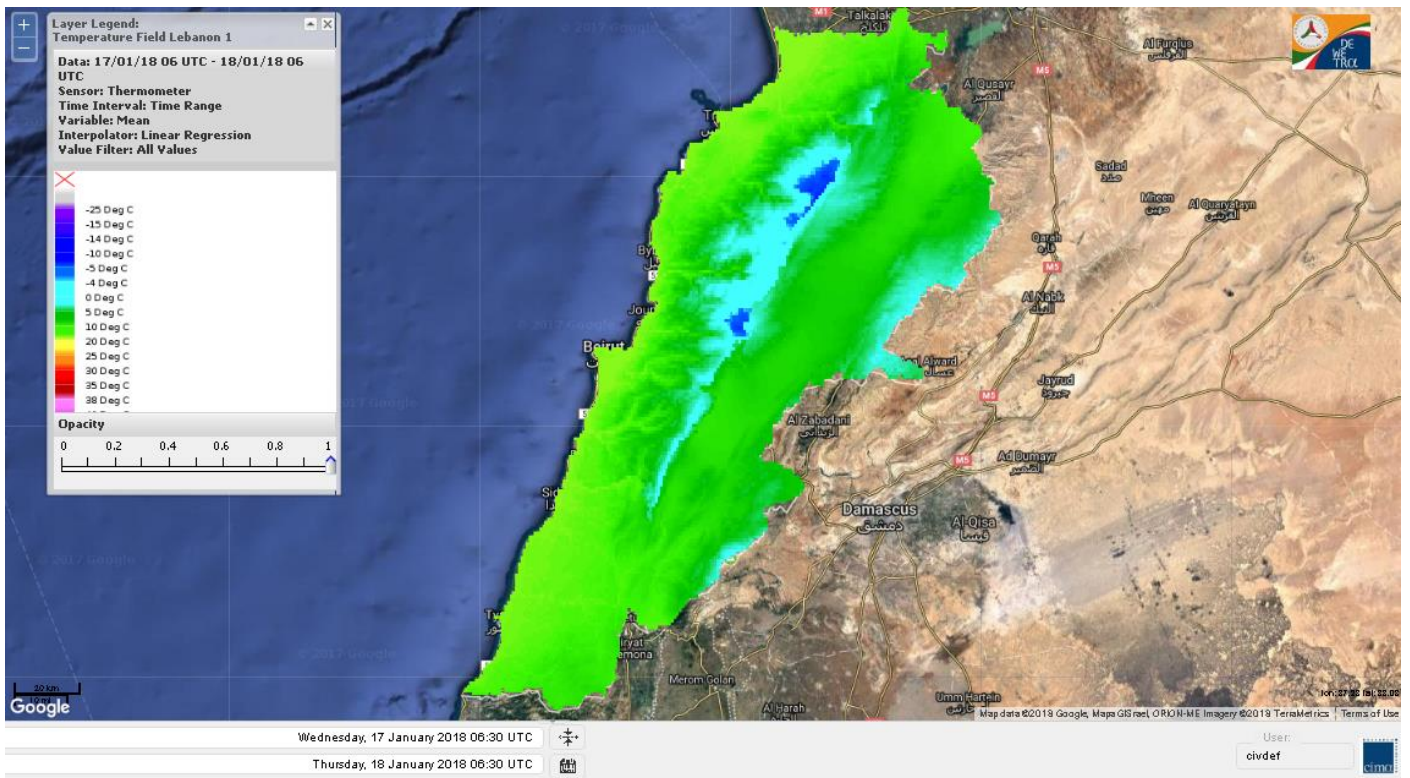


Layer Legend:  
Lebanon Wildfire Risk Index 1

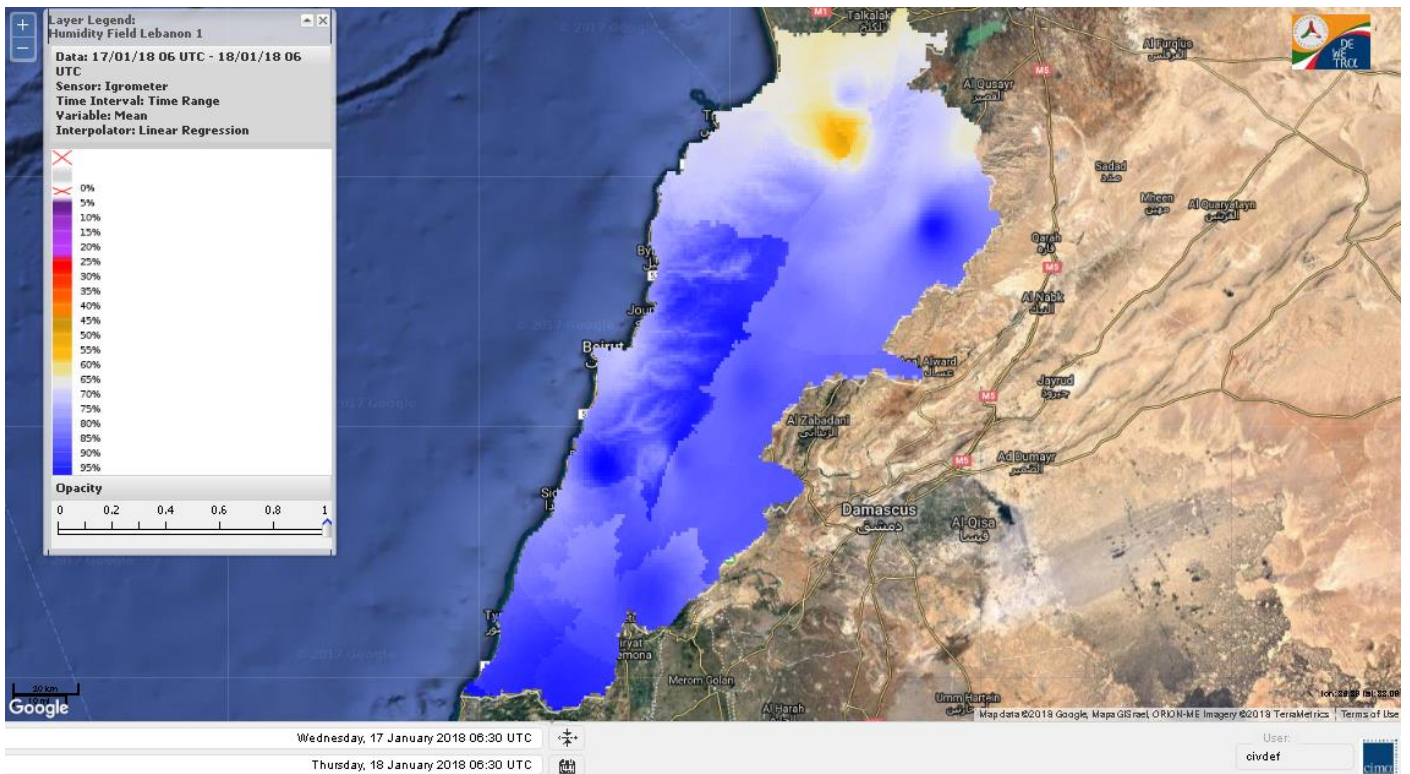
Data: Run: 18/01/2018 00:00. Forecast for 18  
Model: RISICO for the Republic of Lebanon  
Variable: Fire Weather Index  
Spatial Resolution: Caza

- VERY LOW
- LOW
- MEDIUM-LOW
- MEDIUM
- MEDIUM-HIGH
- HIGH
- EXTREME

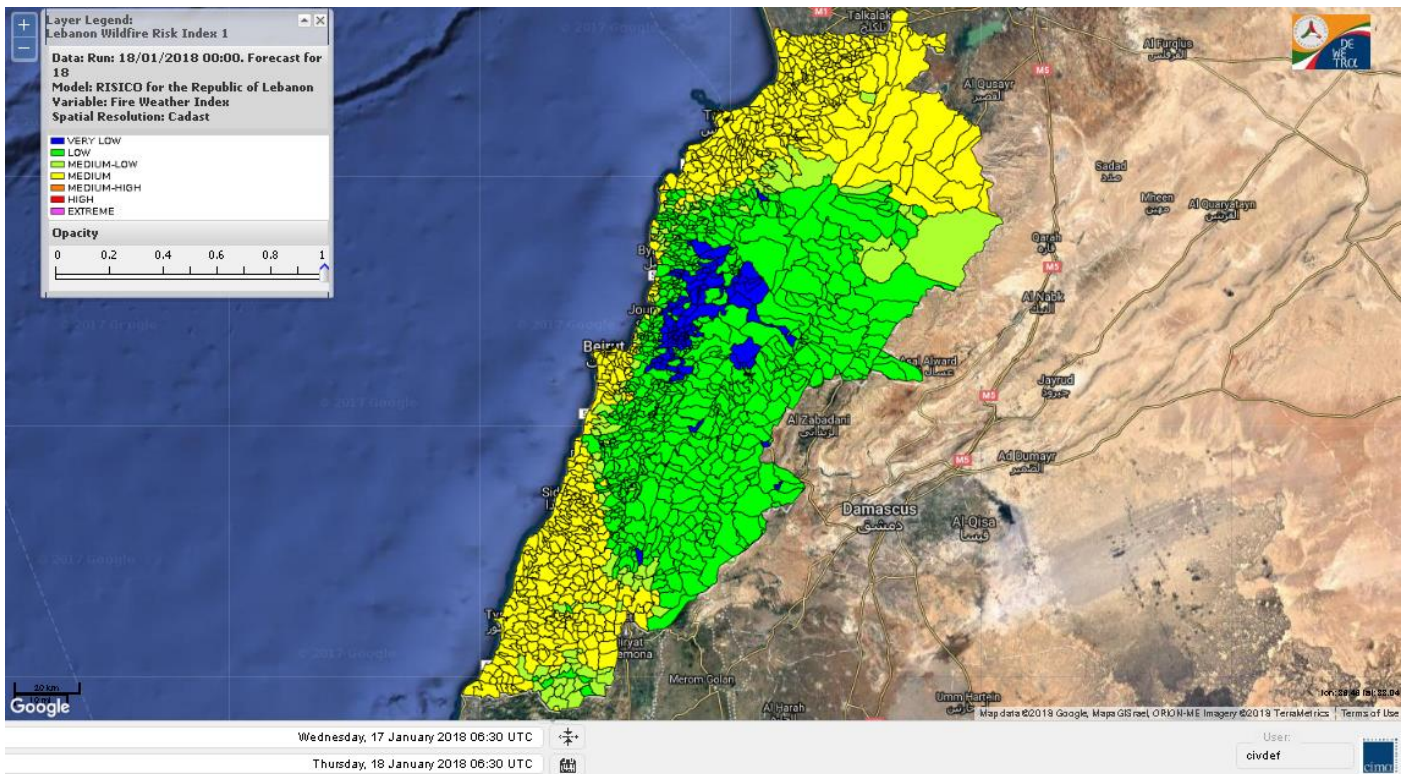
# Lebanon temperature for Lebanon 18 Jan 2018



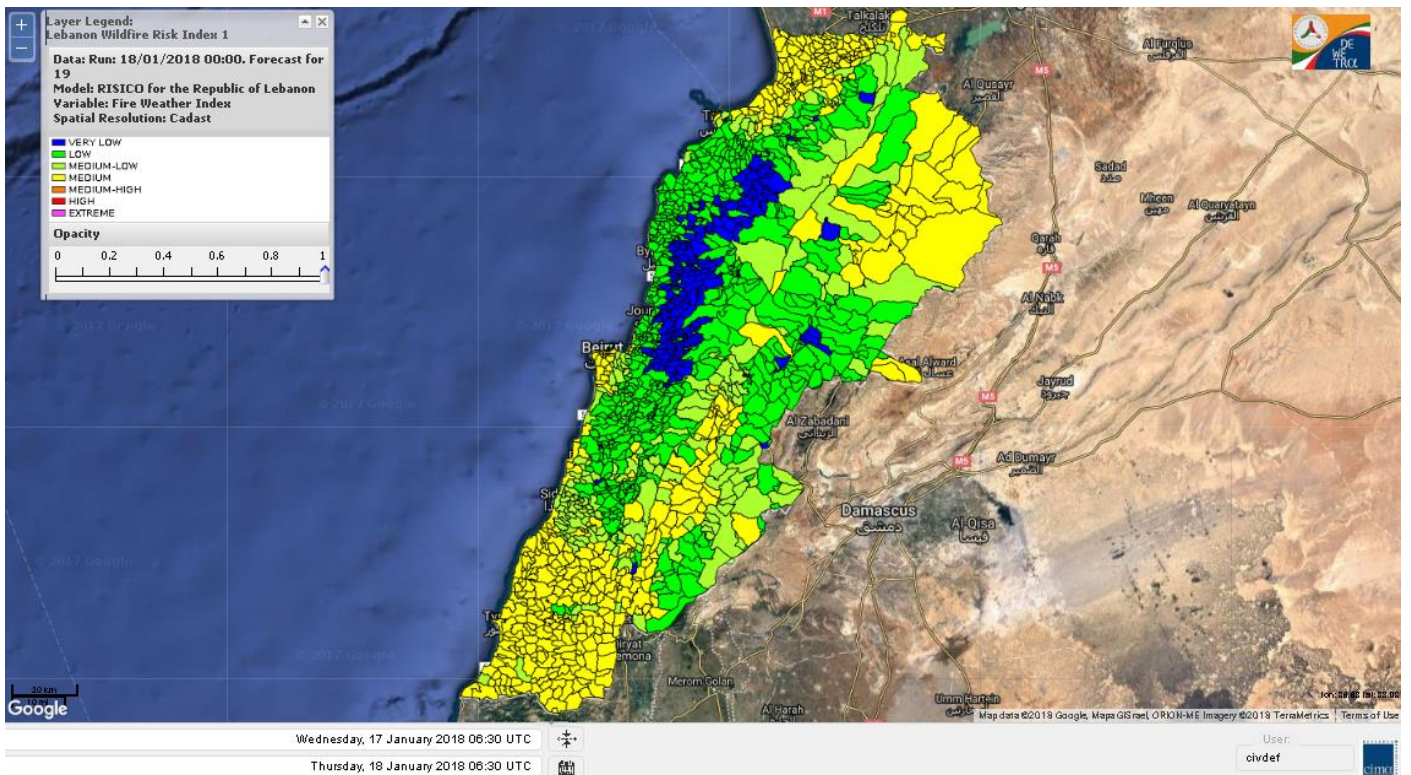
# Lebanon humidity for Lebanon 18 Jan 2018



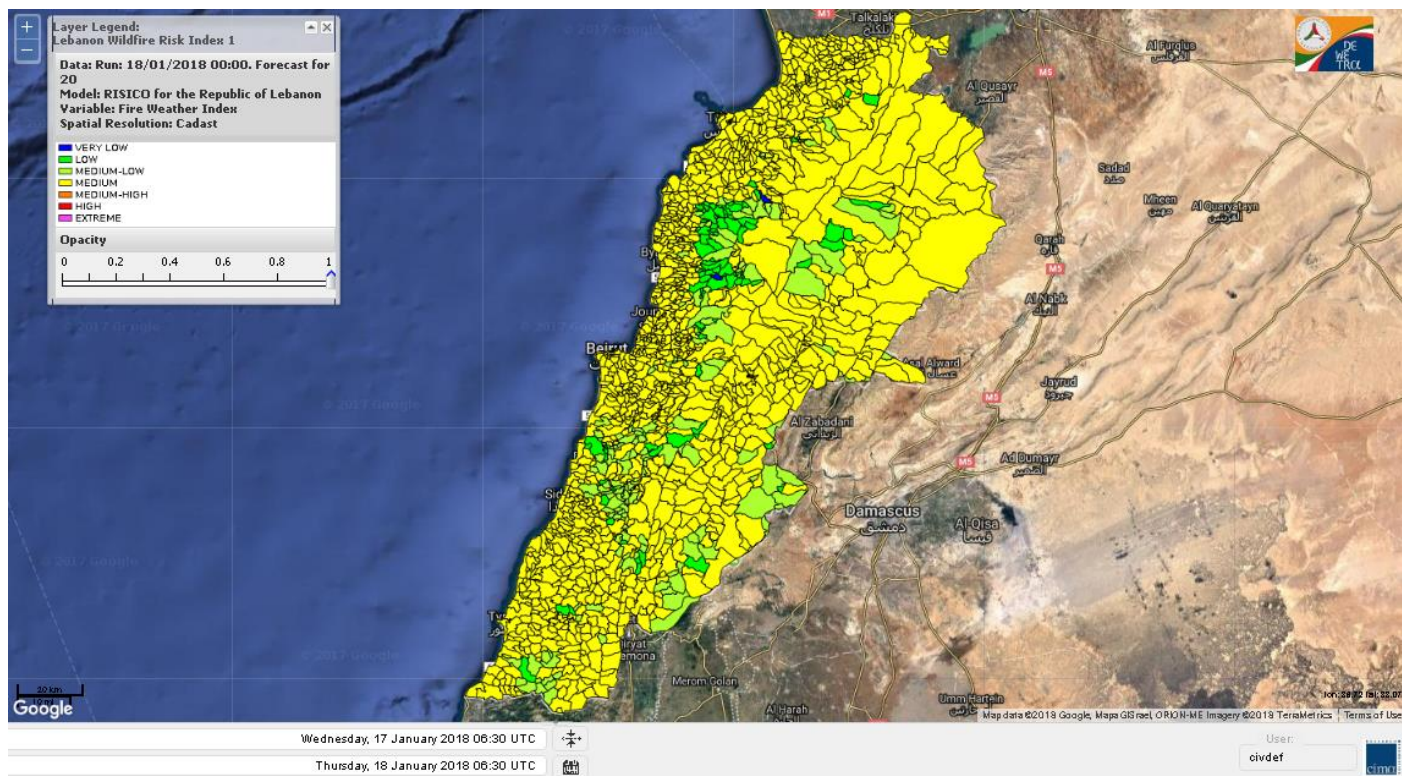
# Lebanon for 18 Jan 2018



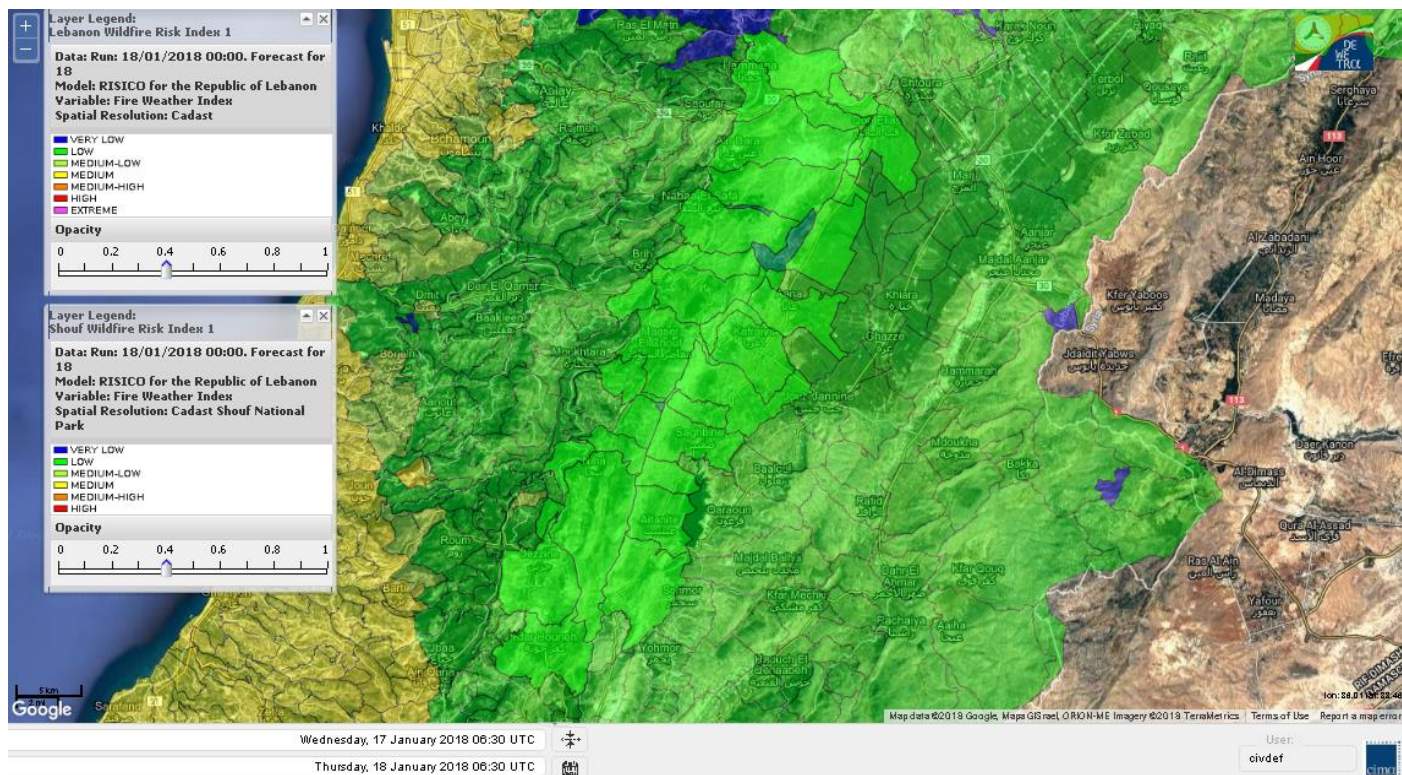
# Lebanon for 19 Jan 2018



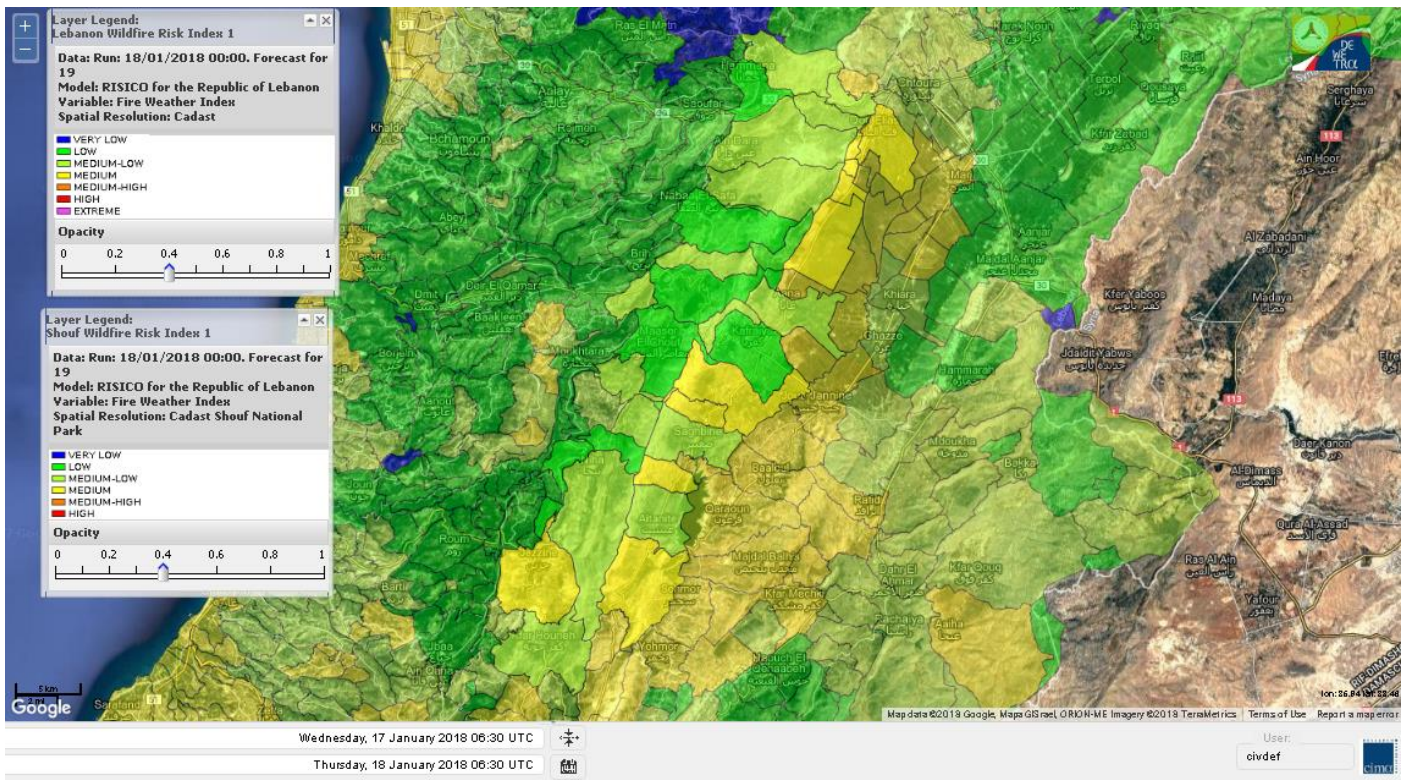
# Lebanon for 20 Jan 2018



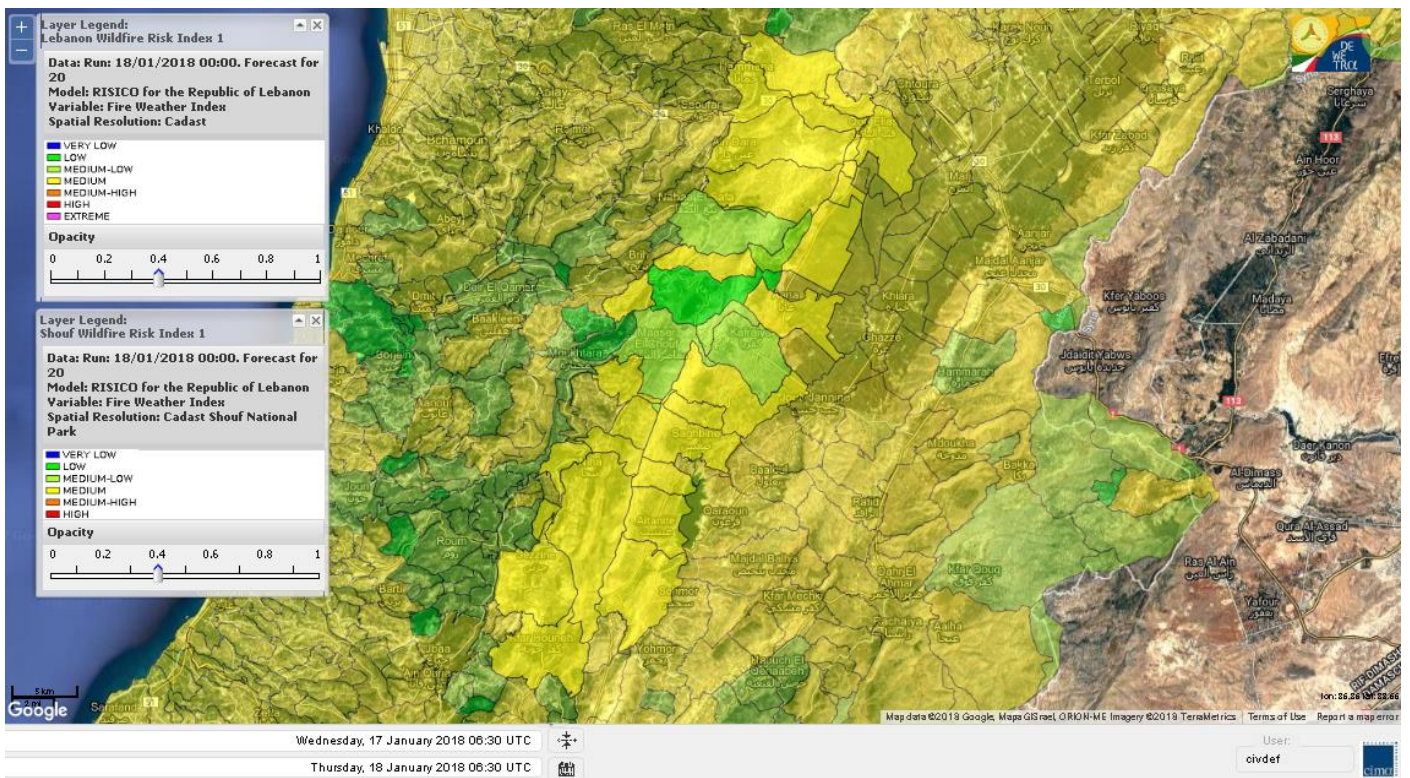
# Shouf Biosphere Reserve Forecast for 18 Jan 2018



# Shouf Biosphere Reserve Forecast for 19 Jan 2018



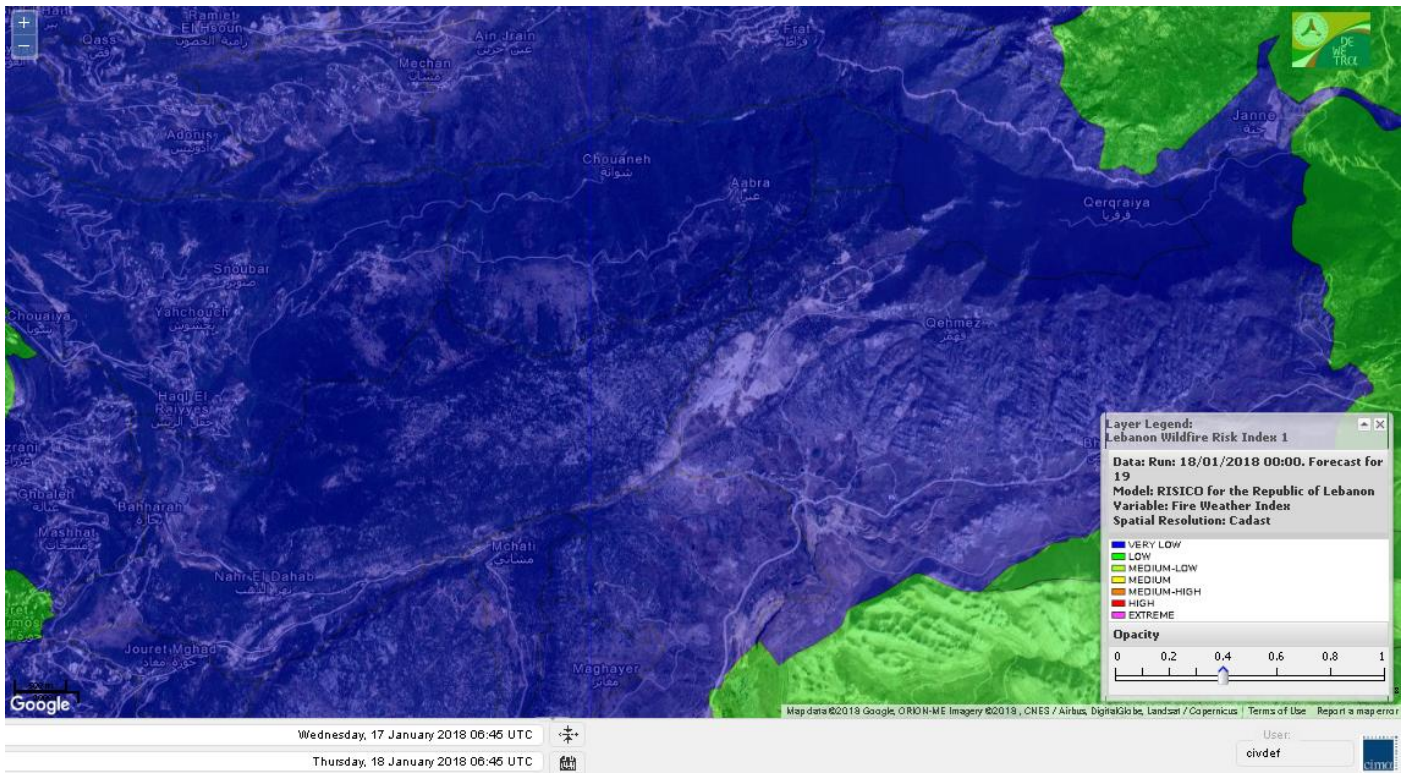
# Shouf Biosphere Reserve Forecast for 20 Jan 2018



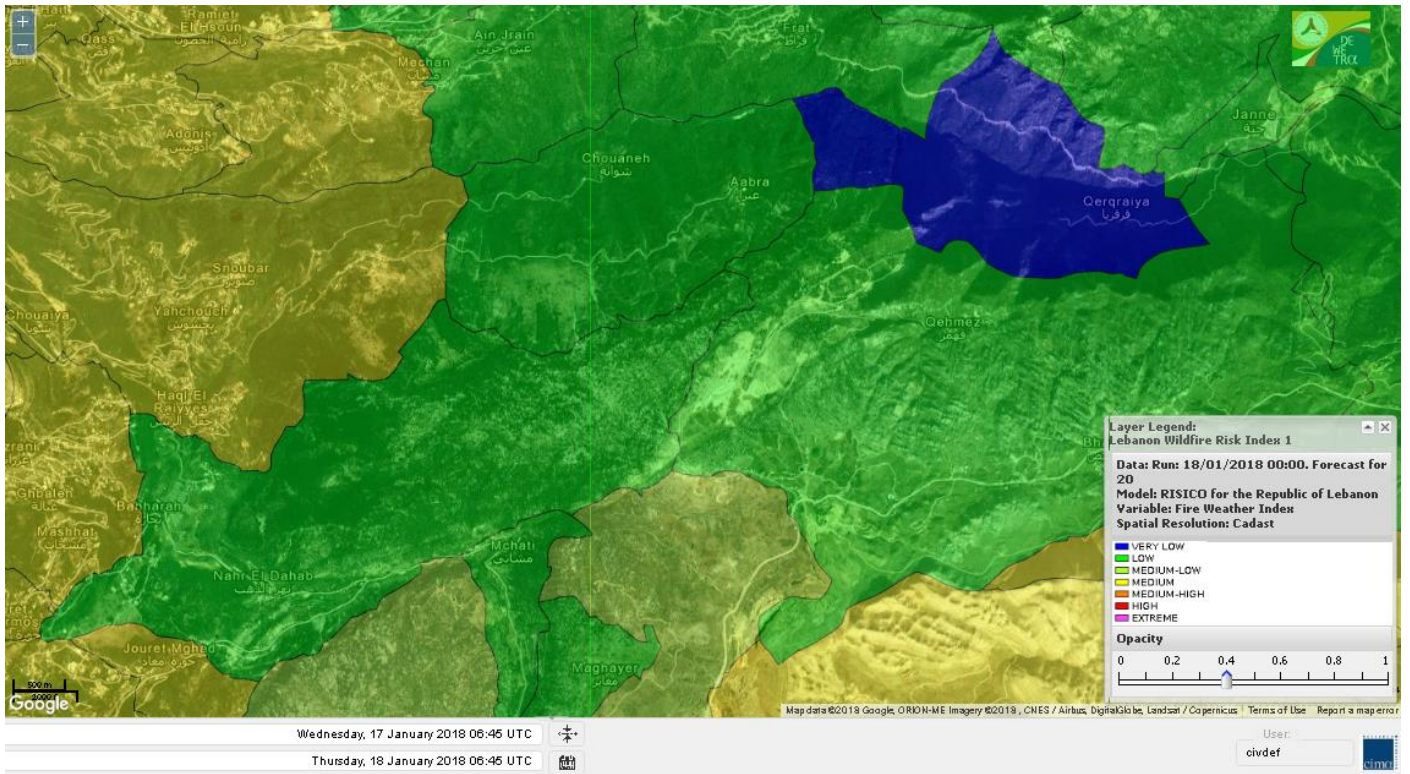
# Jabal Moussa Reserve Forecast for 18 Jan 2018



# Jabal Moussa Reserve Forecast for 19 Jan 2018



# Jabal Moussa Reserve Forecast for 20 Jan 2018





## Nord

### Koura

Municipality	18-Jan	19-Jan	20-Jan	Municipality	18-Jan	19-Jan	20-Jan	Municipality	18-Jan	19-Jan	20-Jan
Aaba	M	L	M	Afsaddiq	M	L	M	Ain Ekriane	M	L	M
Amioun	M	L	M	Anfeh	M	ML	M	Badbhoun	M	L	M
Barghoun	M	L	M	Barsa	M	L	M	Batroumine	M	L	M
Bdebba	M	L	M	Bechmizine	M	L	M	Bednaye El-Koura	M	L	M
Bhabbouch El-Koura	M	L	M	Bkeftine	M	L	M	Bnehran	ML	L	M
Bqaiia El-Koura	M	L	M	Bsarma	M	L	M	Btaaboura	M	L	M
Bterram	M	L	M	Btouratij	M	L	M	Bziza	M	L	M
Dar Beechtar	M	L	M	Dar Chmezzine	M	L	M	Deddeh	M	L	M
Deir El-Balamand	M	L	M	Fih	M	L	M	Hraiche	M	L	M
Ijdaabrine	ML	L	M	Kaftoun	M	L	M	Kefraya El-Koura	M	L	M
Kfarakka	M	L	M	Kfarhata	M	L	M	Kfarhazir	M	L	M
Kfarkahel	M	L	M	Kfarsaroun	M	L	M	Kosba	M	L	M
Mejdel el-Koura	ML	L	M	Nakhle	M	L	M	Qalhat	M	L	M
Ras Masqa	M	L	M	Rechdibbine	M	L	M	Zakroun	M	L	M
Zgharta El-Mtaouile	L	L	ML								

### Bcharre

Municipality	18-Jan	19-Jan	20-Jan	Municipality	18-Jan	19-Jan	20-Jan	Municipality	18-Jan	19-Jan	20-Jan
Aabdine	ML	L	M	Bane	ML	VL	M	Barhelioun	L	L	M
Bazouone	L	L	M	Becharre	L	ML	M	Beit Menzer	L	VL	M
Billa	L	VL	M	Blaouza	L	VL	M	Bqaa Kafra	L	L	M
Bqerqacha	L	L	M	Breissat	L	VL	ML	Dimane	L	VL	ML
Hadath El Jobbeh	L	VL	ML	Hadchit	L	VL	M	Hasroun	L	L	ML
Mazraat Aassaf	L	VL	L	Mazraat Bani Saab	L	VL	L	Mchaa El-Jobbeh	L	L	M
Metrit	ML	L	M	Moghr El-Ahoual	M	L	M	Ouadi Qannoubine	VL	VL	VL
Qanat	L	VL	ML	Qnayer	L	VL	L	Tourza	ML	VL	M

### Batroun

Municipality	18-Jan	19-Jan	20-Jan	Municipality	18-Jan	19-Jan	20-Jan	Municipality	18-Jan	19-Jan	20-Jan
Aabrine	L	L	M	Aalali	L	L	L	Aartiz	L	VL	ML
Abdelli	L	VL	M	Ajdabra	L	L	M	Assia	L	L	L
Basbina	M	L	M	Batroun	M	L	M	Bcheleh	L	VL	L
Bechtoudar	L	L	L	Beit Chlala	L	VL	L	Beit Kassab	L	VL	L
Bijdarfil	M	L	M	Bqesmaya	ML	L	M	Chatine	L	VL	L
Chebtin	L	VL	M	Chekka	M	L	M	Daael	ML	L	L
Dahr Abi Yaghi	L	VL	M	Daraya El-Batroun	ML	L	M	Deir Billa	L	VL	ML
Deir Kfifane	ML	L	M	Deir Mar Youhanna EL	L	VL	L	Deir Mar Youssef Jra	L	L	M
Douma	L	VL	L	Douq	L	VL	M	Eddeh El-Batroun	ML	L	M
Ftahat El-Batroun	L	VL	L	Ghouma	L	L	M	Hadtoun	L	VL	L
Hamat	M	L	M	Harbouna	L	VL	M	Hardine	L	VL	L
Helta	L	VL	L	Hery	M	L	M	Jebbla	L	VL	L
Jrabta El-Batroun	L	L	M	Jrane El-Batroun	ML	L	M	Kfar Aabida	ML	L	M
Kfar Halda	L	VL	L	Kfarb Shlaimane	L	VL	L	Kfarhatna	L	VL	M
Kfarhay	M	L	M	Kfarhelos	L	L	M	Kfifane	ML	L	M

Kfour El Arabi	L	L	ML	Koubba	ML	L	M	Kour	ML	L	M
Mar Mama	L	VL	L	Masrah	L	VL	M	Mehmarch	L	L	ML
Mrah Chdid	L	L	M	Mrah El Ziyat	L	L	M	Mrah El-Hajj	L	VL	L
Nahle El-Batroun	L	VL	L	Niha El-Batroun	ML	VL	ML	Ouajh El-Hajjar	M	L	M
Ouata Houb	L	VL	L	Qatnaaoun	L	L	M	Racha	L	L	ML
Rachana	L	L	M	Rachkida	L	L	M	Ram El-Batroun	L	VL	L
Ras Nahhach	M	L	M	Selaata	M	L	M	Sghar	L	L	M
Smar Jbayl	L	L	M	Sourat El-Batroun	ML	L	L	Tannourine El-Faouqa	L	L	M
Tannourine Et-Tahta	L	VL	L	Thoum	L	L	M	Toula El-Batroun	L	L	M
Zan	ML	L	ML								

## Zgharta

Municipality	18-Jan	19-Jan	20-Jan	Municipality	18-Jan	19-Jan	20-Jan	Municipality	18-Jan	19-Jan	20-Jan
Aachach	M	M	M	Aalma	M	ML	M	Aarde	M	L	M
Aintourine	M	VL	M	Arabet Qozhaya	ML	VL	M	Arde	M	ML	M
Arjis	M	L	M	Asnoun	M	L	M	Ayto	M	VL	M
Basloukit	M	VL	M	Bchannine	M	L	M	Besebeel	M	L	M
Bhairret Toula	L	VL	M	Bnachee	M	L	M	Boussit	M	ML	M
Danha	M	L	M	Daraiya Zgharta	M	L	M	Deir Jdeide	M	L	M
Ehden	ML	VL	M	Halan	M	M	M	Hariq Zgharta	M	L	M
Houakir	M	L	M	Hraiqis	M	ML	M	laal	M	L	M
Ijbaa	M	VL	M	Karm Saddeh	M	VL	M	Kfarchakhna	M	L	M
Kfardlaqous	M	ML	M	Kfarfou	M	L	M	Kfarhata Zgharta	M	L	M
Kfarhoura	M	L	M	Kfarsghab	ML	VL	M	Kfaryachit	M	L	M
Kfarzaina	M	L	M	Khaldiye	M	L	M	Mazraat Ajbeaa	M	L	M
Mazraat Et-Teffah	ML	VL	M	Mazraat Jneid	M	L	M	Mejdlaiya Zgharta	M	ML	M
Merh Kfarsghab	M	L	M	Miryata	M	M	M	Miziara	M	VL	M
Mzraat Kefraya	M	M	M	Qorah Bach	M	L	M	Rachiine	M	ML	M
Ras Kifa	M	L	M	Sakhra	M	L	M	Sebhel Zgharta	M	VL	M
Serhel	L	VL	L	Tallet Zgharta	M	L	M	Toula Zgharta	ML	VL	M
Zgharta	M	L	M								

## Minieh-Denniye

Municipality	18-Jan	19-Jan	20-Jan	Municipality	18-Jan	19-Jan	20-Jan	Municipality	18-Jan	19-Jan	20-Jan
Aasaymout	M	VL	ML	Aaymar	M	L	M	Aazki	M	ML	M
Ain El-Tineh-Miniyeh	M	L	M	Assoun	M	L	M	Bakhaaoun	M	L	M
Bchennata	ML	L	M	Bechehhara	M	L	ML	Beddawi	M	M	M
Behouaita	ML	VL	M	Beit El Foqss	M	L	M	Beit Haouik	M	M	M
Beit Zoud	M	L	M	Bekaasafrine	ML	ML	M	Borj El Yahoudiyeh	M	M	M
Bqarsouna	M	L	M	Btermaz	M	L	M	Debaael	M	L	M
Deir Ammar	M	M	M	Deir Nbouh	M	L	M	Haouaret-Miniyeh	M	ML	M
Haql el Azimeh	M	L	M	Harf El Siyad	M	L	ML	Hazmiye-Miniyeh	M	L	M
Izal	M	L	M	Jarjour	L	VL	L	Jayroun	M	L	M
Kahf El-Malloul	M	L	M	Karm El-Moher	M	L	M	Kfar Binine	M	L	M
Kfarchalane	M	ML	M	Kfarhabou	M	ML	M	Kharroub-Miniyeh	M	L	M
Mazraat El-Kreme	ML	VL	ML	Mazraat Ketrane	M	L	M	Merkebta	M	M	M
Minyeh	M	M	M	Mrah El Sfirat	ML	L	ML	Mrah Sraj	M	L	M
Mrebbine	M	ML	M	Nabi Youcheaa	M	M	M	Nemrine	M	L	M

Qarhaiya	M	ML	M	Qarne	M	L	ML	Qarsita	M	L	ML
Qattineh-Miniyeh	M	VL	L	Qemmamine	M	L	ML	Qraine	M	L	ML
Raouda-Aadoua	M	M	M	Rihaniyet-Miniyeh	M	M	M	Sfireh	M	L	M
Sir Ed-Danniyeh	M	L	M	Tarane	M	L	M	Terbol-Miniyeh	M	M	M
Zaghartaghriine	M	L	M	Zouq Bhannine	M	M	M				

## Nabatiye

### Nabatiye

Municipality	18-Jan	19-Jan	20-Jan	Municipality	18-Jan	19-Jan	20-Jan	Municipality	18-Jan	19-Jan	20-Jan
Aabba	M	M	M	Aazzi	M	ML	M	Adchit El-Chqif	M	M	M
Ain Bou Swar	L	ML	M	Ain Kana	M	ML	M	Ali El-TaHER	ML	M	M
Ansar	M	M	M	Arab Salim	M	M	M	Arnoun	M	M	M
Bfaroue	M	ML	M	Breyqaah	M	M	M	Charqiyeh	M	M	M
Choukine	M	M	M	Deir El Zahrani	M	M	M	Doueur El-Nabatiyeh	M	M	M
Habbouch El-Nabatiye	M	M	M	Hamra El-Nabatiyeh	M	M	M	Harouf El-Nabatiyeh	M	M	M
Hmaile	M	M	M	Houmin El Faouqa	M	M	M	Houmin El Tahta	M	M	M
Jarjough	L	ML	M	Jbaah El-Nabatiyeh	L	L	M	Jebchit	M	M	M
Kfar Djal El-Nabatiy	M	M	M	Kfar Remmane	ML	M	M	Kfar Sir	M	M	M
Kfar Tebnit	M	M	M	Kfarfila	M	ML	M	Kfour El-Nabatieh	M	M	M
Mayfadoun	M	M	M	Mazraat Bsaffour	M	M	M	Mazraat Chalbaal	M	M	M
Mazraat Dmoul	M	M	M	Mazraat El Khreibeh	M	M	M	Mazraat El-Bayad El-	M	M	M
Mazraat Kfarjaouz	M	M	M	Mazraat Qalaat Meiss	M	M	M	Nabatiyeh El-Fawka	M	M	M
Nabatiyeh Et-Tahta	M	M	M	Namiriyyeh	M	M	M	Qaaqaaiyet El Jisr	M	M	M
Qossaibeh El-Nabatiy	M	M	M	Roumine	M	ML	M	Sarba El-Nabatieh	M	ML	M
Sir El-Gharbiyeh	M	M	M	Toul	M	M	M	Yehmor El-Nabatiyeh	M	M	M
Zaoutar El Charkiyeh	M	M	M	Zaoutar El-Gharbiyeh	M	M	M	Zebdine El-Nabatiyeh	M	M	M
Zefta	M	M	M								

### Hasbaiya

Municipality	18-Jan	19-Jan	20-Jan	Municipality	18-Jan	19-Jan	20-Jan	Municipality	18-Jan	19-Jan	20-Jan
Ain Jarfa	L	L	ML	Abou Qamha	L	ML	M	Ain Qania	L	L	ML
Bourghos	L	M	M	Chebaa	L	L	M	Chouaya Hasbaya	L	L	M
Dellafeh	L	M	M	Fardiss Hasbaiya	L	ML	M	Hasbaya	L	L	M
Hbariyeh	L	L	ML	Kaoukaba Hasbaiya	ML	M	M	Kfar Chouba	L	L	ML
Kfar Hamam	L	L	ML	Kfeir El-Zait	L	L	ML	Khalwat Hasbaya	L	L	L
Khreibet Hasbaiya	M	M	M	Majidiyeh Hasbaiya	ML	M	M	Marj Ez-Zhour (Haouc	L	L	ML
Meri	M	M	M	Mimass	L	ML	M	Rachaiya El-Fokhar	L	L	ML
Salaiyeb	M	M	M								

### Marjayoun

Municipality	18-Jan	19-Jan	20-Jan	Municipality	18-Jan	19-Jan	20-Jan	Municipality	18-Jan	19-Jan	20-Jan
Aalmane Marjaayoun	ML	ML	ML	Aamra	M	ML	M	Adayseh Marjaayoun	M	M	M
Adchit El-Koussair	M	M	M	Ain Arab Marjaayoun	M	M	M	Bani Haiyann	M	M	M
Blatt Marjaayoun	ML	M	M	Blida	ML	M	M	Borj El-Moulouk	M	M	M
Boueyda Marjaayoun	ML	M	M	Deir Mimass	ML	ML	M	Deir Siriane	ML	M	M
Dibbine	ML	M	M	Ebel El Saqi	ML	M	M	Houla	M	M	M
Houra	M	M	M	Kfar Kila	M	M	M	Khiam Marjaayoun	M	M	M

Klayaa	M	M	M	Majdel Selem	M	M	M	Marjaayoun	ML	M	M
Markaba	M	M	M	Mays El-Jabal	M	M	M	Mazraat Doumiat	ML	M	M
Mazraat Sarada	M	M	M	Mhaibib	ML	M	M	Qabrikha	M	M	M
Qantara	M	M	M	Rab El-Thalathine	M	M	M	Saouaneh Marjayoun	M	M	M
Talloussa	M	M	ML	Taybeh Matjaayoun	M	M	M	Touline	M	M	ML

## Bent Jbail

Municipality	18-Jan	19-Jan	20-Jan	Municipality	18-Jan	19-Jan	20-Jan	Municipality	18-Jan	19-Jan	20-Jan
Ain-Ebel	ML	M	M	Aitaroun	ML	M	M	Aynata Bint Jbeil	L	M	M
Ayta El-Chaeb	ML	M	ML	Ayta El-Jabal	ML	M	M	Beit Lif	ML	M	ML
Beit Yahoun	ML	M	M	Bint Jbeil	ML	M	M	Borj Qalaway	M	M	M
Braachit	M	M	M	Chakra	M	M	M	Debel	ML	M	M
Deir Antar	M	M	M	Froun	M	ML	M	Ghandouriyeh Bint Jb	M	M	M
Hanine	ML	M	M	Hariss	M	M	M	Hdatha	ML	M	M
Jmeymeh	M	M	M	Kafra Bint Jbeil	M	M	ML	Kfar Dounine	M	M	M
Khirbet Selm	M	M	M	Kounine	ML	M	M	Maroun El Ras	L	M	M
Qalaway	M	M	M	Qaouzah	L	M	ML	Qatmoun	M	M	M
Ramya Bint Jbeil	ML	M	ML	Rchaf	ML	M	ML	Rmeich	ML	M	M
Safad Al Battikh	ML	M	M	Salhaneh	L	M	ML	Serbine	M	M	M
Sultanieh Bint Jbeil	M	M	M	Tibnine	ML	M	M	Tiri	L	M	M
Yaroun	ML	M	M	Yater	ML	M	M				

## Mont Liban

### Jbail

Municipality	18-Jan	19-Jan	20-Jan	Municipality	18-Jan	19-Jan	20-Jan	Municipality	18-Jan	19-Jan	20-Jan
Aabeydat	L	L	M	Aalita	L	VL	M	Aamchit	M	L	M
Aarab El-Lahib	L	L	M	Aarasta	VL	VL	L	Adonis Jbeil	VL	VL	M
Afqa Jbeil	VL	L	L	Ain El Delbeh Jbeil	L	VL	L	Ain El-Ghouyba	L	L	L
Ain Jrain	VL	VL	L	Ain Kfah	ML	L	M	Almat El Chemaliyat	L	VL	L
Almat El-Jenoubiya	VL	VL	L	Aqoura	L	ML	M	Bayzoun	L	VL	ML
Bchille Jbeil	L	VL	M	Bechtida	L	VL	ML	Behdaydat	L	VL	M
Beit Habbaq	L	L	M	Bejjeh	L	L	M	Bekhaaz	L	L	M
Berbara Jbeil	M	L	M	Bintael	L	VL	M	Birket Hjoula	L	VL	M
Blatt Jbeil	L	L	M	Boulhos	VL	VL	L	Breyj Jbeil	L	VL	M
Chamat	ML	L	M	Chikhane	ML	L	M	Chmout	L	L	M
Eddeh Jbeil	ML	L	M	Ehmej	VL	L	ML	Fatre	VL	VL	M
Ferhet	L	L	M	Fghal	L	L	M	Frat	VL	VL	L
Ghabat	L	L	ML	Ghalboun	L	L	M	Gharzouz	ML	L	M
Ghofrine	ML	L	M	Habil	VL	VL	ML	Halate	L	L	M
Haqel	L	VL	M	Hbaline	L	L	M	Hboub	L	L	M
Hdeine	L	L	ML	Hema Er-Rehban	VL	L	M	Hema Mar Maroun Aann	VL	L	M
Hjoula	L	VL	M	Hosrayel	ML	L	M	Hsarat	L	L	M
Hsoun	L	VL	M	Jaj	L	L	ML	Janne	VL	VL	L
Jbeil	M	L	M	Jeddeyel Jbeil	ML	L	M	Jlisse	L	VL	M
Jouret El-Qattine	L	L	M	Kfar Baal Annaya	L	VL	M	Kfar Kidde	L	L	M
Kfar Kouas	L	VL	M	Kfar Mashoun	ML	L	M	Kfoun	L	VL	M

Kharbe Jbeil	L	L	M	Laqlouq	L	L	M	Lassa	L	L	L
Lehfed	L	VL	L	Maad	L	L	M	Mar Sarkis	L	L	M
Mastita	M	L	M	Mayfouq	L	VL	L	Mazraat El Siyad	L	L	M
Mazraat El-Maaden	VL	VL	L	Mechane	L	VL	M	Mechmech Jbeil	VL	VL	L
Mehrin	ML	L	M	Mejdel El-Akoura	VL	L	ML	Mghayreh Jbeil	L	L	ML
Mounsef	ML	L	M	Nahr Ibrahim	M	L	M	Qahmez	VL	VL	L
Qartaba	L	L	L	Qartaboun	M	L	M	Qattara Jbeil	L	VL	L
Qorqraya	VL	VL	VL	Ramout	L	L	M	Ras Osta	L	VL	M
Rihane Jbeil	M	L	M	Sakiet El-Khayt	L	VL	M	Saqi Richmaya	L	L	L
Sebrine	L	VL	M	Seraita	L	L	L	Souane Jbeil	L	L	L
Tadmor	L	L	ML	Tartej	L	VL	ML	Torzaiya	L	VL	M
Yanouh Jbeil	L	L	ML	Zibidine Jbeil	L	VL	M				

## El Metn

Municipality	18-Jan	19-Jan	20-Jan	Municipality	18-Jan	19-Jan	20-Jan	Municipality	18-Jan	19-Jan	20-Jan
Aain El-Qabu	VL	VL	L	Aain El-Qach	VL	L	M	Aain El-Teffaha	VL	VL	M
Aain el-Safssaf El-M	VL	VL	M	Abou Mizane	VL	VL	M	Ain Aar	L	L	M
Ain Alaq	L	L	M	Ain El-Kharroube	VL	VL	M	Ain El-Sendiane	L	VL	M
Ain El-Zeitoune	VL	VL	M	Ain Saadeh	ML	L	M	Aintoura El-Matn	L	L	M
Amaret Chalhoub	M	ML	M	Antelias	M	ML	M	Atchaneh	L	L	M
Ayroun	L	VL	M	Baabdat	VL	VL	M	Baouchariyeh	M	ML	M
Baskinta	L	L	ML	Beit Chabab	VL	VL	M	Beit El-Char	L	L	M
Beit El-Kekko	L	L	M	Beit Mery	L	L	M	Bhersaf	VL	VL	M
Bikfaya	VL	VL	M	Biyakout	M	L	M	Bnabil	L	VL	M
Bourj Hammoud	M	ML	M	Bqennaya	M	L	M	Broummana El-Matn	L	L	M
Bsalim	L	L	M	Bsifrine	VL	VL	ML	Bteghrine	L	VL	ML
Chaouiye	L	L	M	Chouaya El-Matn	VL	L	M	Choueir	VL	VL	M
Chrine	VL	VL	M	Dahr El Sawan El-Mat	L	VL	M	Daychouniyeh	M	ML	M
Dbayeh	M	ML	M	Deir Chamra	VL	VL	M	Deir Mar Abda el Mch	L	L	M
Deir Mar Roukouz	M	ML	M	Deir Tamiche	L	L	M	Dik El-Mehdi	L	L	M
Dikwaneh	M	ML	M	Douar El-Matn	L	VL	M	Fanar	M	L	M
Fraike	L	L	M	Haret El-Ballaneh	L	L	M	Hbous	L	L	M
Himlaya	VL	VL	M	Jal El Did	M	M	M	Jdeideh El-Metn	M	ML	M
Jouar El-Matn	VL	VL	M	Jouret El-Ballout	L	VL	M	Kaaqour	L	VL	M
Kfar Aaqab	VL	VL	M	Kfertay El-Matn	VL	VL	L	Khenchara	VL	VL	M
Khillet El-Mtain	VL	VL	M	Konnabat Broummana	L	L	M	Konnabat Salima	VL	VL	ML
Machraah El-Matn	L	L	ML	Majdel Tarchich	L	ML	M	Majzoub	ML	L	M
Mansouriyeh El-Metn	M	ML	M	Mar Boutros Karm Et-	VL	VL	M	Mar Chaya et Mzekke	L	VL	M
Mar Moussa Ed-Douar	VL	VL	M	Marjaba	L	VL	M	Masqa	VL	VL	M
Mayasse	VL	VL	M	Mazraat Deir Aoukar	L	L	M	Mazraat El-Hadirat	L	L	M
Mazraat Yachouh	L	L	M	Mchikha	L	L	M	Menqlet Mezher	L	L	M
Mhaydseh Matn	VL	VL	M	Mkalles	M	ML	M	Mrouj	L	L	M
Mtain	L	L	M	Mtayleb	L	L	M	Nabay	L	VL	M
Naccache	ML	L	M	Ouadi Chahine	VL	VL	M	Ouadi El-Karm El-Mat	VL	VL	ML
Ouata El-Mrouj	L	L	M	Ouyoun El-Matn	VL	VL	M	Qornet Chehwan	L	L	M
Qornet El-Hamra	L	L	M	Roumieh	L	L	M	Sfeilet Bikfaya	VL	VL	M
Sinn El-Fil	M	ML	M	Zabbougha	VL	VL	M	Zalqa	M	ML	M

Zarouon	L	VL	M	Zekrite	L	L	M	Zighrine El-Matn	VL	VL	M
Zouk El-Khrab	ML	L	M								

## Chouf

Municipality	18-Jan	19-Jan	20-Jan	Municipality	18-Jan	19-Jan	20-Jan	Municipality	18-Jan	19-Jan	20-Jan
Aalmane El-Chouf	M	ML	M	Aammq El-Chouf	L	L	ML	Ain Ouzein	L	L	L
Ain Qani	L	L	ML	Ain Zhalta	L	L	ML	Ainbal	L	L	ML
Amatour	L	L	ML	Anout	L	L	M	Atrine	L	L	ML
Baadarane	L	ML	M	Baaqline	L	L	M	Baasir	M	M	M
Barja	M	ML	M	Barouk	L	L	L	Bater	L	L	M
Batloun	L	ML	M	Bayqoun	L	M	M	Bchetfine	L	L	M
Beiteddine	L	L	ML	Benouati Ech-Chouf	L	L	ML	Berjein	ML	L	ML
Bireh et Mtalleh	L	L	M	Biret El-Chouf	L	L	M	Bkechtine Ouel Mchei	L	L	L
Bkifa El-Chouf	M	L	ML	Botme	L	L	L	Bqaiaa Ech-Chouf	L	L	ML
Bsaba El-Chouf	L	ML	M	Chammis El-Chouf	M	ML	M	Chehim	ML	L	ML
Chemaarine	L	L	L	Chourit	L	L	ML	Daher El-Chouf	ML	L	L
Dalhoun	ML	L	ML	Damour	M	M	M	Daraya El-Chouf	L	L	ML
Deir El-Moukhalles	L	L	ML	Deir Baba	L	L	M	Deir Dourit	L	L	ML
Deir El-Qamar	L	L	ML	Deir Kouche	L	L	ML	Dibbieh	L	L	L
Dmit	L	L	M	Fouara Jaafar	L	L	M	Fraidis El-Chouf	L	ML	M
Ghabet Jaafar	L	L	M	Gharife	L	L	ML	Haret Jandal	L	L	M
Hasrout	L	ML	M	Jadra	M	M	M	Jahlieh	L	L	ML
Jbeih El-Chouf	L	L	M	Jdeidet El-Chouf	L	ML	ML	Jiyeh	M	M	M
Jleilyeh	L	ML	M	Jmailiyeh	M	ML	M	Joun	M	L	ML
Kahlounie El-Chouf	L	M	M	Ketermaya	M	ML	M	Kfar Faqoud	L	L	ML
Kfar Hamal	L	ML	M	Kfar Him	L	L	M	Kfar Katra	L	L	ML
Kfar Niss	L	L	M	Kfar hay	L	L	M	Kfarnabrakh	L	L	M
Khirbet Bisri	L	L	ML	Knayse El-Chouf	L	L	ML	Maaniyeh	M	ML	M
Maasser Beiteddine	L	L	ML	Maasser El-Chouf	L	L	ML	Majdalouna	M	ML	M
Majdel El-Meouch	L	L	ML	Mazboud	ML	ML	M	Mazmoura	ML	L	M
Mazraat El Chouf	L	ML	M	Mazraat El Daher	L	L	ML	Mazraat El-Douair	L	L	L
Mechref	ML	L	ML	Mghairie	M	ML	M	Mghayrie El-Chouf	L	L	ML
Moukhtara	L	L	ML	Mrusti	L	ML	M	Mtolle	L	ML	M
Naameh	M	ML	M	Niha El-Chouf	L	ML	M	Ouadi Abou Youssef	VL	VL	L
Ouadi Ed-Deir	L	ML	M	Ouadi El-Sit	L	L	M	Ouadi bnehlay	L	L	ML
Qraibeh	L	ML	M	Qreiaa	L	VL	L	Rmayle El-Chouf	M	M	M
Semqaniyeh	L	M	M	Sibline	M	M	M	Sirjbeil	ML	L	M
Warhanieh	L	L	M	Werdaniyeh	M	ML	M	Zaarourieh	L	L	M

## Baabda

Municipality	18-Jan	19-Jan	20-Jan	Municipality	18-Jan	19-Jan	20-Jan	Municipality	18-Jan	19-Jan	20-Jan
Abadiyeh	L	L	M	Ain Mouaffaq	L	L	M	Araiya	L	L	M
Arbaniyeh	VL	VL	ML	Arsoun	VL	VL	M	Baabda	M	ML	M
Baalchmey	L	L	M	Bmaryam	L	L	M	Bourj El-Brajneh	M	M	M
Boutchay	M	L	M	Bsaba Baabda	M	ML	M	Btekhney	VL	VL	M
Btibyat	VL	VL	M	Bzbeddine	L	VL	M	Chbeniyeh	L	L	M
Chiyah	M	M	M	Chmeisset Baabda	VL	VL	M	Chouit	L	L	M
Deir El-harf	L	VL	M	Deir Khouna	L	L	M	Dlaybeh	VL	VL	ML

Falougha	L	ML	M	Furn El-Chebbak	M	ML	M	Hadath Beyrouth	M	ML	M
Halaliyeh Baabda	L	L	M	Hammana	L	L	M	Haret El Sett	L	L	M
Haret Hamze	L	L	M	Haret Hreik	M	M	M	Hasbaiya El-Metn	VL	VL	ML
Jouar El-Hoz	L	L	L	Jouret Arsoun	VL	VL	M	Kfar Chima	M	ML	M
Kfar Selouane	L	L	ML	Khalouat Baabda	L	L	M	Kneisset Baabda	VL	VL	M
Laylakeh	M	M	M	Louayzeh Baabda	M	L	M	Merdache	M	ML	M
Mzairaa Baabda	L	L	M	Ouadi Chahrour El Ol	M	L	M	Ouadi Chahrour El So	ML	L	M
Qalaa Baabda	L	L	M	Qhraybe Baabda	L	L	M	Qobbayaa	L	L	M
Qornayel	VL	VL	M	Qortada	VL	VL	ML	Qrayeh Baabda	L	L	M
Qsaibeh Baabda	VL	VL	M	Qtale Baabda	L	VL	M	Ras El Metn	L	L	M
Ras El-Haref	L	L	M	Rouayset El-Ballout	L	L	M	Salima Baabda	L	VL	M
Tahouitat El Ghadir	M	M	M	Tarchich	L	L	ML	Zandouqa	VL	VL	ML

## Aley

Municipality	18-Jan	19-Jan	20-Jan	Municipality	18-Jan	19-Jan	20-Jan	Municipality	18-Jan	19-Jan	20-Jan
Abey	L	L	M	Aghmid	L	L	M	Ain Dara	L	ML	M
Ain Drafil	L	L	M	Ain El Halazoun	L	L	M	Ain El-Rmmaneh	L	L	M
Ain Jedideh	L	L	M	Ain Ksour	L	L	M	Ain Onoub	ML	L	M
Ain Traz	L	L	M	Ainab	L	L	M	Aley	L	L	M
Aramoun	ML	L	M	Aytat	M	L	M	Azouniyeh	L	L	M
Baawerta	ML	L	ML	Badghan Oua Wadi Bad	L	L	M	Bassatine	L	L	M
Bayssour	L	L	M	Bchamoun	M	L	M	Bdadoun	L	L	M
Behouara	L	L	M	Bennay	L	L	M	Bhamdoun El-Dayaa	L	L	M
Bhamdoun El-Mhatta	L	L	M	Bkhechey	L	L	M	Bleibel	ML	L	M
Bmakine	M	ML	M	Bmhay	L	ML	M	Bouzrid	L	L	M
Bserrine	L	L	M	Bsous	L	L	M	Btalloun	L	L	M
Btater	L	L	M	Chanay	L	L	M	Charoun	L	L	M
Chartoun	L	L	M	Chemlane	L	L	M	Choueifat El-Aamrous	M	M	M
Choueifat El-Oumara	M	ML	M	Choueifat El-Quoubbe	M	ML	M	Dakkoun	ML	L	M
Deir Qoubel	M	L	M	Dfoun	L	ML	M	Douair El Remmaneh	L	L	M
Ghaboun	L	L	M	Habramoun	L	L	M	Homs Oua Hama	L	L	M
Houmal	ML	L	M	Jisr El Qadi	L	L	M	Kehaleh	L	L	M
Keyfoun	ML	ML	M	Kfar Aamey	L	L	M	Kommatyeh	ML	L	M
Maasrati	L	L	M	Majdel Baana	L	L	M	Mansourieh et Ain El	L	L	M
Mazraat El-Nahr	L	L	M	Mchakhte	L	L	M	Mecherfeh	L	L	M
Mejdlaya	L	L	M	Mrayjat	L	L	M	Ramliyah	L	L	M
Rechmaya	L	L	M	Rejmeh	L	L	M	Remhala	L	L	M
Rouaysset El Neemane	L	L	M	Saoufar	L	L	M	Selfaya	L	L	ML
Sirhmoul	L	L	M	Souq El Ghareb	M	L	M	Taazanieh	L	L	M

## Kesrouane

Municipality	18-Jan	19-Jan	20-Jan	Municipality	18-Jan	19-Jan	20-Jan	Municipality	18-Jan	19-Jan	20-Jan
Achkout	VL	VL	M	Adma Oua Dafneh	ML	L	M	Ain Ed-Delbe Kesroua	VL	VL	L
Ain El-Rihane	L	L	M	Aintoura Kesrouane	L	L	M	Ajaltoun	VL	VL	M
Akaybeh Kesrouane	M	L	M	Aramoun Kesrouane	L	VL	M	Azra ouel Ozor	L	VL	M
Ballouneh	VL	VL	M	Batha	VL	VL	M	Bekaatat Achkout	L	VL	M
Bekaatat Kanaan	L	VL	L	Bizhel	VL	VL	M	Bouar	M	L	M
Bqaatouta	L	VL	ML	Bqaq Ed-Dine	M	L	M	Bzommar	L	VL	M

Chahtoul	L	VL	M	Chnaniir	L	VL	M	Chouan	VL	VL	L
Daraya Kesrouane	VL	VL	M	Darououn	L	VL	M	Deir Baqlouch	L	VL	M
Dlebta	VL	VL	M	Eghbeh	VL	VL	ML	Faraya	L	L	M
Fatka	L	L	M	Feytroun	VL	VL	M	Ghazir	L	L	M
Ghbaleh Kesrouane	L	VL	M	Ghedrass	L	VL	M	Ghosta	VL	VL	M
Ghynéh	L	L	M	Harharaya w Kattine	L	VL	M	Harissa Kesrouane	L	VL	M
Hayata	VL	VL	M	Hosein	L	VL	M	Hrajel	L	L	M
Jdeideh Ghazir	L	VL	M	Jeita	L	L	M	Jounieh Ghadir	L	L	M
Jounieh Haret Sakhr	ML	L	M	Jounieh Salel Alma	ML	L	M	Jounieh Sarba	M	L	M
Jouret Bedrane	L	L	M	Jouret Mhad	VL	VL	M	Jouret Termos	L	L	M
Kfar Debiane	VL	L	ML	Kfar Tay Kesrouane	VL	VL	ML	Kfar Yassine	M	L	M
Kfour Kesrouane	L	VL	M	Kharayeb Nahr Ibrahi	L	L	M	Klayaat Kesrouane	VL	VL	M
Maarab	VL	VL	M	Maaysra Kesrouane	L	L	M	Mayrouba	VL	VL	ML
Mazraat Er-Ras	L	L	M	Mazraat Mrah El-Mir	VL	VL	M	Mchaa El Ftouh	VL	L	M
Mchaa Faraya	VL	L	M	Mchaa Kfar Dibiane	VL	L	M	Mghaer	VL	VL	L
Mradiyah	VL	VL	M	Nahr Ed-Dahab	VL	VL	L	Nammoura Kesrouane	L	VL	M
Ouata El Jaouz	VL	VL	ML	Ouata Sillam	M	L	M	Raachine	VL	VL	M
Rayfoun	L	VL	M	Safra Kesrouane	M	L	M	Shayle Kesrouane	L	L	M
Tabarja	ML	L	M	Yahchouch	VL	VL	M	Zaaytreh	L	VL	M
Zeytoun	L	L	M	Zouk Mikael	L	L	M	Zouk Mosbeh	L	L	M

## Baalbek\_Hermel

### Baalbek

Municipality	18-Jan	19-Jan	20-Jan	Municipality	18-Jan	19-Jan	20-Jan	Municipality	18-Jan	19-Jan	20-Jan
Aadous	L	L	M	Aamchki	L	L	M	Aarsal	ML	M	M
Ain Baalbek	L	M	M	Ain Bourday	L	L	M	Ain El-Benye	L	L	M
Ain El-Jaouz Baalbek	L	M	M	Ain El-Siya Chadoura	L	ML	M	Al Khodr Baalbek	L	VL	ML
Al Nabi Chit	L	L	M	Aynata Baalbek	L	M	M	Baalbek	L	L	M
Bachwat	L	L	L	Barqa	L	VL	L	Bednayel Baalbak	L	M	M
Beit Chama	VL	L	M	Bijjaje	ML	M	M	Bouday	L	L	ML
Brital	L	L	M	Btadi	L	L	ML	Chaat	ML	M	M
Chaibe	L	L	M	Chlifa	L	ML	M	Chmestar	L	L	M
Dar El-Oussa	L	L	L	Deir El-Ahmar	L	L	ML	Deir Mar Maroun Baal	M	ML	M
Douris	L	L	M	Fakiha	M	M	M	Hadath Baalbek	L	L	M
Ham	L	ML	M	Haour Taala	L	L	M	Hizzine	L	L	M
Hlebta	L	L	M	Hosh Barada	L	L	M	Hosh El Dahab	L	ML	M
Hosh El Snid	VL	VL	M	Hosh El-Nabi	VL	VL	M	Hosh El-Rafiq	L	L	M
Hosh Tal Safiya	L	L	M	Hrebta	L	M	ML	laat	L	ML	M
Jebaa	L	L	M	Jenta	L	L	M	Kfar Dabach	VL	L	M
Kfar Dane	L	L	M	Khraibeh El-Hermel	L	M	ML	Khreibet Baalbek	L	L	M
Kneisset Baalbek	L	ML	M	Labueh	L	M	M	Maarboun	L	L	M
Majdaloun	L	L	M	Maqneh	L	M	M	Mazraat Beit Mcheik	L	M	M
Misraya	L	L	M	Moqraq	L	M	M	Nabha El-Damdoum	L	ML	M
Nabi Chbay	L	L	M	Nabi Osman	ML	M	M	Nahleh baalbek	L	ML	M
Ouadi El-Oss	L	L	L	Qaa Baayoun	M	M	M	Qaa Jouar Maqiye	M	M	M
Qaa Ouadi El-Khanzir	M	M	M	Qah Baalbek	M	M	M	Qarha Baalbek	L	L	ML



Qsarnaba	L	L	M	Ram Baalbek	L	L	L	Ras Baalbek El Sahl	M	M	M
Ras Baalbek El-Charq	M	M	M	Riha	L	M	M	Saaide	L	L	M
Sbouba	L	M	ML	Seriine El-Tahta	L	L	M	Slouqi	VL	ML	M
Taiba Baalbek	L	L	M	Talia	L	VL	M	Taraiya	L	L	M
Temnin El Fawqa	L	L	M	Temnin El-Tahta	L	VL	M	Tfail	L	M	M
Yahfoufa	L	L	M	Yammouneh	L	ML	ML	Younine	ML	M	M
Zboud	L	M	M								

## Hermel

Municipality	18-Jan	19-Jan	20-Jan	Municipality	18-Jan	19-Jan	20-Jan	Municipality	18-Jan	19-Jan	20-Jan
Charbine El-Hermel	M	L	M	Hermel Jbab	M	M	M	Hermel	M	M	M
Maaysra El-Hermel	L	L	M	Michaa Mrajhine	M	ML	M	Ouadi Faara	ML	L	M
Ras Baalbek - Ouadi	M	M	M	Ras Baalbek El Gharb	M	ML	M	Zighrine	M	L	M

## Akkar

### Akkar

Municipality	18-Jan	19-Jan	20-Jan	Municipality	18-Jan	19-Jan	20-Jan	Municipality	18-Jan	19-Jan	20-Jan
Aain Tinta	M	M	M	Aaiyat	M	M	M	Aakkar El-Aatiqa	M	L	M
Aamar Akkar	M	M	M	Aamar El Baykat	M	M	M	Aamayer	M	M	M
Aamriyet Akkar	M	M	M	Aandqet	M	ML	M	Aarmeh	M	ML	M
Aarqa	M	M	M	Aawaynat	M	M	M	Aayoun Akkar	M	ML	M
Abboudiye	M	M	M	Ain El-Zeit	M	M	M	Ain Yaaqoub	M	L	M
Akroum	M	ML	M	Aridet Cheikh Zennad	M	M	M	Baldeh w Mazraat Bal	M	M	M
Barcha	M	M	M	Bardeh	M	M	M	Bebnine	M	M	M
Beino	M	ML	M	Beit Ayoub	M	M	M	Beit El-Haouch	M	M	M
Beit Mellat	M	M	M	Beit Younes	M	ML	M	Berbara Akkar	M	M	M
Berqayel	M	M	M	Bezbina	M	L	M	Bireh Akkar	M	M	M
Borj	M	ML	M	Bqerezla	M	M	M	Bzal	M	L	M
Chane	M	L	M	Chaqdouf	M	ML	M	Charbila	M	M	M
Cheikh Mohammad	M	M	M	Cheikh Taba Es-Sahl	M	M	M	Cheikh Taba	M	M	M
Cheikh Zennad	M	M	M	Cheikhlar	M	M	M	Chir Hmairine	M	M	M
Daghle	M	M	M	Dahr Laissine	M	M	M	Darine	M	M	M
Dawra	M	L	M	Dawsa w Baghdadi	M	M	M	Dayret Nahr El-Kabir	M	M	M
Deir Dalloum	M	M	M	Deir Jennine	M	M	M	Denbou	M	ML	M
Dibbabiyyeh	M	M	M	Douair Aadwiyeh	M	M	M	Fassikine	M	M	M
Fnaydek	M	L	M	Fraydes Akkar	M	M	M	Ghazayle	M	M	M
Habchit	M	L	M	Hakour	M	M	M	Halba	M	M	M
Haouchab	M	M	M	Hayssat	M	M	M	Haytla	M	M	M
Hayzouq	M	ML	M	Hedd	M	M	M	Hmaira Akkar	M	M	M
Hmaiss Akkar	M	M	M	Hnaider	M	M	M	Hokr Ed-Dahri	M	M	M
Hokr Etti	M	M	M	Hokr Jouret Srar	M	M	M	Houaich	M	ML	M
Hrar	M	M	M	Idbil	M	ML	M	Ilal	M	M	M
Janine	M	M	M	Jdeidet El-Joumeh	M	M	M	Jdeidet El-Kaiteh	M	M	M
Jebraïel	M	M	M	Kafr	L	VL	M	Kafr	M	M	M
Karm Asfour	M	M	M	Kfar Melki Akkar	M	M	M	Kfar Noun	M	ML	M
Kfarharra	M	M	M	Khalsa	M	M	M	Kharnoubet Akkar	M	M	M

Khirbet Daoud Aakkar	M	M	M	Khirbet El Remmane	M	M	M	Khirbet Shar	M	M	M
Khoreybet El-Jindi	M	M	M	Khreibet Aakkar	M	M	M	Kneisset Aakkar	M	M	M
Kneisset Hnaider	M	M	M	Knisse	M	M	M	Kroum El-Aarab	M	M	M
Kwachra	M	M	M	Kweykhat	M	M	M	Machta Hammoud	M	M	M
Majdala	M	M	M	Majdel Akkar	M	M	M	Mar Touma	M	M	M
Marlaya Melhem	M	M	M	Mashha	M	M	M	Massoudiye	M	M	M
Mazraat Beit Ghattas	M	M	M	Mazraat En-Nahriye	M	ML	M	Mechmech	M	L	M
Memneh	M	L	L	Mhammara	M	M	M	Mighraq Aakkar	M	M	M
Minyara	M	M	M	Moqayteh	M	M	M	Mounjez	M	M	M
Msalla	M	M	M	Mzeihmeh	M	M	M	Nfaiseh	M	ML	M
Noura Et-Tahta	M	M	M	Ouadi El-Haour	M	M	M	Ouadi El-Jamous	M	M	M
Ouyoun El-Ghizlane	M	M	M	Qaabarine	M	M	M	Qabaait	M	L	M
Qachlaq	M	M	M	Qantara Aakkar	M	M	M	Qarha Aakkar	M	M	M
Qarqaf	M	M	M	Qboula	M	M	M	Qleiaat Aakkar	M	M	M
Qloud El-Baqie	M	M	M	Qobaiyat Aakkar	M	ML	M	Qobbat Chamrat	M	M	M
Qorayat	M	ML	M	Qornet Aakkar	M	ML	M	Qsair Aakkar	M	M	M
Rahbe	M	M	M	Rihaniyet Aakkar	M	M	M	Rmah	M	M	M
Rmoul	M	M	M	Saadine	M	M	M	Sadaqa	M	M	M
Saidnaya	M	M	M	Sammouniye	M	M	M	Sayssouq	M	M	M
Semmaqiye	M	M	M	Semmaqli	M	M	M	Sfinet El-Dreib	M	M	M
Sfinet El-Qaitaa	M	ML	M	Sindyanet Zeidane	M	ML	M	Souaisset Aakkar	M	M	M
Srar	M	M	M	Tal Abbas El Gharby	M	M	M	Tal Abbas El-Chargy	M	M	M
Tal Biret	M	M	M	Tal Hmayra	M	M	M	Tal Maayan Tal Kiri	M	M	M
Tal Sibel	M	M	M	Tallet Chattaha	M	M	M	Tikrit	M	M	M
Tleil	M	M	M	Tshea	M	L	M	Zawarib	M	M	M
Zouq El Hosniyeh	M	ML	M	Zouq El-Haddara	M	M	M	Zouq El-Hbalsa	M	M	M
Zouq El-Moqachrine	M	M	M								

## Sud

### Sour

Municipality	18-Jan	19-Jan	20-Jan	Municipality	18-Jan	19-Jan	20-Jan	Municipality	18-Jan	19-Jan	20-Jan
Aaiyeh	M	M	M	Aalma El-Chaab	M	M	M	Aaytit	M	M	M
Abbassiyeh Sour	M	M	M	Abou Chech	M	M	M	Ain Abou Abdallah	M	M	M
Ain Baal	M	M	M	Arzoun	M	M	M	Aziyeh	M	M	ML
Baflaya	M	M	M	Barich	M	M	M	Batouliyeh	M	M	M
Bayad	M	M	M	Bazouriyeh	M	M	M	Bediass	M	M	M
Bestiyat	M	M	M	Borj El Chemali	M	M	M	Borj En-Naqoura	M	M	M
Borj Rahhal	M	M	M	Boustane	M	M	M	Btaychiyeh	M	M	M
Chaaitiye	M	M	M	Chameh	M	M	M	Chehabiye	M	M	M
Chehour	ML	L	L	Chihine	M	M	ML	Debaal Sour	M	M	M
Deir Amess	M	M	ML	Deir Kifa	M	M	M	Deir Qanoun El-Ain	M	M	M
Deir Qanoun El-Naher	M	M	M	Derdghaiya	M	M	M	Dhayra	M	M	M
Halloussiyeh	M	M	M	Hamoul	M	ML	M	Hanaouey	M	M	M
Henniye	M	M	M	Hmairi Sour	M	M	M	Iskandarouna Sour	M	M	M
Jbal El Botom	M	M	ML	Jebbin	M	M	M	Jennata	M	M	M
Jijim	M	M	M	Jouaiya	M	M	M	Kneisset Sour	M	M	M

Maarake	M	M	M	Maaroub	M	M	M	Majadel	M	M	M
Majdalzoun	M	M	M	Mansouri Sour	M	M	M	Marnba	ML	L	ML
Marouahine	M	M	ML	Mazraat El-Zalloutiy	M	M	M	Mazraat Mechref	M	M	M
Mazraat Tayr Semhat	L	L	L	Mheilib	M	M	M	Neffakhiyeh	M	M	M
Niha Sour	M	M	M	Ouadi Jilo	M	M	M	Qana	M	M	M
Qolaileh Sour	M	M	M	Rechknany	M	M	ML	Rmadiyah	M	M	M
Selha Sour	M	M	M	Siddiqine	M	M	M	Sour	M	M	M
Srifa	M	M	M	Tayr Debbe	M	M	M	Tayr Felsay	M	M	M
Tayr Harfa	M	M	M	Touayri	M	ML	ML	Toura	M	M	M
Yanouh Sour	M	M	M	Yarine	M	M	M	Zebqine	ML	ML	L

## Saida

Municipality	18-Jan	19-Jan	20-Jan	Municipality	18-Jan	19-Jan	20-Jan	Municipality	18-Jan	19-Jan	20-Jan
Aanqoun	M	ML	M	Aaqtanit	M	ML	M	Aarab Ej-Jall	M	M	M
Aarab Tabbaya	M	M	M	Abra Saida	M	ML	M	Adloun	M	M	M
Adousiyeh	M	M	M	Ain-El-Deleb	M	ML	M	Arzai	M	M	M
Babliyah	M	M	M	Barty	M	ML	M	Bissariyeh	M	M	M
Bnaafoul	M	ML	M	Bqosta	M	ML	M	Bramiy	M	ML	M
Daoudiyeh	M	M	M	Dareb El-Sim	M	ML	M	Erkay	M	ML	M
Ghassanieh	M	M	M	Ghazieh	M	M	M	Hajjeh	M	ML	M
Haret Saida	M	ML	M	Hartiyeh	M	M	M	Hlaliye Saida	M	ML	M
Insariyat	M	M	M	Jazira Saida	M	M	M	Kafar Bit	M	M	M
Kaoutariyet El-Siyad	M	M	M	Kfar Chellal	M	ML	M	Kfar Hatta Saida	M	ML	M
Kfar Milke Saida	M	M	M	Khartoum	M	M	M	Khaziz	M	ML	M
Khirbet Ed-Douair Sa	M	M	M	Khirbet El-Bassal	M	M	M	Khrayeb Saida	M	M	M
Loubieh	M	M	M	Maghdouche	M	ML	M	Majdelyoun	M	ML	M
Matariyet El-Choumar	M	M	M	Matayriyeh	M	ML	M	Mazraat 'Mseileh	M	M	M
Mazraat 'Snaiber	M	M	M	Mazraat Aarab Soukka	M	M	M	Mazraat Deir Taqla	M	M	M
Mazraat El Yahoudiye	M	M	M	Mazraat El-Housseini	M	M	M	Mazraat El-Mhaydaleh	M	M	M
Mazraat El-Ouasta	M	M	M	Mazraat Jamjim	M	M	M	Mazraat Kaoutariyet	M	M	M
Mazraat Kfar Badda	M	M	M	Mazraat Oussamiyat	M	M	M	Mazraat Sari	M	M	M
Mazraat Sinai	M	M	M	Meemariyeh	M	M	M	Merouaniyeh	M	M	M
Miyeh ou Miyeh	M	ML	M	Najjariyeh	M	M	M	Qaaqiyat El-Snaouba	M	M	M
Qnarit	M	ML	M	Qraiye Saida	M	ML	M	Saida Ed-Dekermane	M	ML	M
Saida El-Oustani	M	ML	M	Saida El-Qadimeh	M	ML	M	Saida Kefraya	M	L	M
Saksakiyeh	M	M	M	Salhie Saida	M	ML	M	Sarafand	M	M	M
Sfenta	M	L	M	Tafahta	M	M	M	Tanbourit	M	ML	M
Tebna	M	M	M	Zaghdraiya	M	ML	M	Zeita	M	ML	M
Zrariyeh	M	M	M								

## Jezzine

Municipality	18-Jan	19-Jan	20-Jan	Municipality	18-Jan	19-Jan	20-Jan	Municipality	18-Jan	19-Jan	20-Jan
Ain El-Mir (El Estab	M	ML	M	Anane	ML	L	ML	Aramta	L	M	M
Ariya	L	L	M	Aychiyeh	L	ML	ML	Azour	L	L	ML
Baba	L	L	ML	Bayssour Jezzine	M	ML	M	Benoueteh Jezzine	ML	L	M
Bhannine	L	L	M	Bisri	L	L	ML	Bkassine	L	L	ML
Bouslaya	L	L	L	Btedine El-Leqech	L	L	ML	Chbail	VL	L	L
Choualiq Jezzine	M	ML	M	Dahr Ed-Deir	M	L	ML	Deir El Qattine	L	L	ML

Demachqiyeh	ML	M	M	Ghabbatiyeh	L	L	M	Harf Jezzine	L	L	ML
Hassaniyeh	M	ML	M	Haytouleh	M	ML	M	Haytura	L	L	ML
Hidab	L	ML	ML	Homsiyeh	L	L	ML	Jabal Toura	L	ML	M
Jarmaq	L	M	M	Jensnaya	M	ML	M	Jernaya	M	ML	M
Jezzine	L	M	M	Karkha	M	L	ML	Kfar Falous	M	ML	M
Kfar Houna	L	ML	M	Kfar Jarrah	M	ML	M	Lebaa	M	ML	M
Louayzet Jezzine	L	ML	ML	Machmouche	L	L	ML	Mahmoudiyeh Jezzine	ML	M	M
Maknounye Jezzine	L	L	ML	Maraat Ouzaïyeh	L	M	M	Mazraat Daraya	L	ML	ML
Mazraat El-Aarqoub	L	L	ML	Mazraat El-Mathane	L	L	L	Mazraat El-Rahbane	L	L	ML
Mazraat Khallet Khaz	L	ML	ML	Mazraat Louzid (Loua	L	L	L	Mazraat Qrouh	L	M	M
Mazraat Tamra	ML	M	M	Mazraat Zighrine Jez	L	ML	ML	Mazraat	L	L	L
Mharbiyeh	M	ML	M	Midane Jezzine	L	L	ML	Mjeydel Jezzine	M	ML	M
Mlikh	L	ML	ML	Mrah El-Hbasse	M	ML	M	Ouadi Baanqoudaine	M	ML	M
Ouadi El-Laymoun	M	ML	M	Ouardiyeh	L	VL	L	Qabaa Jezzine	L	L	ML
Qatrani	L	ML	ML	Qaytouleh	L	L	ML	Qtaleh Jezzine	L	L	ML
Rihane Jezzine	L	M	M	Rimat	ML	L	ML	Roum	L	L	ML
Roummanet	L	ML	M	Sabbah	L	L	ML	Saydoun	L	L	ML
Sfaray	ML	L	L	Snaya	L	L	ML	Sojoud	L	ML	ML
Srayri	L	M	M	Taaid	L	L	ML	Wadi Jezzine	L	L	ML
Zhalta	L	L	ML								

## Bekaa

### West Bekaa

Municipality	18-Jan	19-Jan	20-Jan	Municipality	18-Jan	19-Jan	20-Jan	Municipality	18-Jan	19-Jan	20-Jan
Aammiq BG	L	M	M	Ain El Tineh BG	L	M	M	Ain Zebdeh	L	M	M
Ana	L	ML	M	Aytanit	L	ML	M	Baaloul BG	L	M	M
Bab Mareh	L	M	M	Chouberqiye Aammiq	L	M	M	Dakoue	L	L	M
Deir Ain El-Jaouze	L	M	M	Deir Tahniche	L	M	M	Ghaza	L	ML	M
Harime El-Soughra	L	M	M	Hoch Harimeh	L	M	M	Jazira BG	L	M	M
Jib Jennine	L	M	M	Kamed-El-Laouz	L	ML	M	Kefraya BG	L	L	ML
Khiara El Atika	L	ML	M	Khiara	L	ML	M	Khirbet Qanafar	L	M	M
Lala	L	M	M	Lebbaya BG	L	M	M	Loussa	L	M	M
Machghara	L	M	M	Manara (Hammara) BG	L	L	ML	Mansoura BG	L	M	M
Marej BG	L	M	M	Maydoun	L	M	M	Ouaqf BG	L	M	M
Qaraaoun	L	M	M	Qelya	L	ML	M	Raouda (Istabel)	L	L	M
Saghbine	L	ML	M	Sohmor	L	M	M	Soltan Yacoub el Ara	L	L	M
Souairy	L	ML	M	Sultan Yaacoub	L	L	M	Tal Znoun	L	M	M
Yehmor BG	L	M	M	Zilaya	L	L	ML				

### Zahle

Municipality	18-Jan	19-Jan	20-Jan	Municipality	18-Jan	19-Jan	20-Jan	Municipality	18-Jan	19-Jan	20-Jan
Aanjar (Haouch Mouss	L	L	M	Ablah	L	L	M	Ain Kfarzabad	L	L	M
Ali-El-Nahri	L	L	M	Bar Elias	L	L	M	Bouarej	L	M	M
Cheberqiyet Tabet	L	M	M	Chtaura	L	ML	M	Deir El Ghazal	L	L	M
Delhamiyet Zahle	L	L	M	Ferzol	L	L	M	Haouch El-Ghanam	L	L	M
Haouch Es-Siyadeh	L	M	M	Haouch Hala	L	L	M	Haouch Mandara	L	M	M

Haouch Qayssar	L	M	M	Hezerta	VL	ML	M	Hosh Moussa	L	L	M
Jdita	L	ML	M	Kfarzabad	L	L	M	Ksara	L	L	M
Majdel Aanjar	L	L	M	Makssi	L	ML	M	Massa	L	L	M
Mazraat Er-Remtaniye	L	ML	M	Mrayjat Zahle	L	ML	M	Mzaraa Zahle	L	M	M
Nabi Ayla	L	L	M	Nasriyet Rizk	L	L	M	Nasriyet Zahle	L	M	M
Niha Zahle	L	L	M	Ouadi Ed-Deloum	L	ML	M	Ouadi El-Arayech	VL	L	M
Qaa El Rim	VL	ML	M	Qab Elias	L	M	M	Qousaya	L	L	M
Rhit	L	L	M	Riyak	L	L	M	Saadnayel	L	ML	M
Taal El-Akhdar	L	M	M	Taalbeya	L	ML	M	Taanayel	L	ML	M
Talamara	L	VL	M	Tcheflik Edde Haouch	L	M	M	Tcheflik Qiqano	L	M	M
Terbol Zahle	L	L	M	Touaite Zahle	L	ML	M	Zahle Aradi	L	ML	M
Zahle El-Berbara	VL	L	M	Zahle El-Maallaqa	L	L	M	Zahle El-Midane	VL	L	M
Zahle Er-Rassiye	VL	L	M	Zahle Haouch El-Ouma	L	L	M	Zahle Haouch El-Ouma	L	L	M
Zahle Haouch Ez-Zara	L	L	M	Zahle Maalaga Aradi	L	L	M	Zahle Mar Antonios	VL	L	M
Zahle Mar Elias	L	L	M	Zahle Mar Gerios	L	L	M	Zahle Saydet En-Naja	VL	L	M
Zebdoul	L	ML	M								

## Rachaiya

Municipality	18-Jan	19-Jan	20-Jan	Municipality	18-Jan	19-Jan	20-Jan	Municipality	18-Jan	19-Jan	20-Jan
Ain Arab Rachaiya	L	ML	M	Ain Ata	L	L	ML	Ain Harche	L	L	M
Aqabe Rachaya	L	ML	M	Ayha	L	M	M	Ayta El Fokhar	L	ML	M
Bakifa Rachaya	L	ML	M	Bakka	L	ML	M	Beit Lahya	L	ML	M
Bireh Rachaiya	L	ML	M	Daher El Ahmar	L	ML	M	Deir El-Achayer	L	ML	ML
Heloua Rachaiya	L	ML	ML	Hoch El Qannabeh Rac	L	L	ML	Kaoukaba Bou Arab	L	M	M
Kfar Danis	L	ML	M	Kfar Mechki	L	M	M	Kfar Qouq	L	ML	ML
Kherbet Rouha	L	ML	M	Majdel Balhiss	L	M	M	Mdoukha	L	ML	M
Mhaydseh Rachaiya	L	M	M	Nabi Safa	L	ML	M	Rachaiya	L	ML	M
Rafid Rachaiya	L	M	M	Selsata (Mazraat Dei	VL	L	L	Tannoura	L	ML	M
Yanta	L	L	ML								

## Beyrouth

### Beyrouth

Municipality	18-Jan	19-Jan	20-Jan	Municipality	18-Jan	19-Jan	20-Jan	Municipality	18-Jan	19-Jan	20-Jan
Achrafieh	M	M	M	Ain el-Mreisse	M	M	M	Bachoura	M	M	M
Beirut Central Distr	M	M	M	Marfai	M	M	M	Mazraa	M	M	M
Medaouar	M	M	M	Minet el-Hosn	M	M	M	Mwssaitbeh	M	M	M
Ras Beirut	M	M	M	Rmeil	M	ML	M	Saifi	M	M	M
Zqaq el-Blat	M	M	M								