

# Lebanon Fire Risk Bulletin



CIVIL DEDEFENCE

*Refer to cadast condition.*

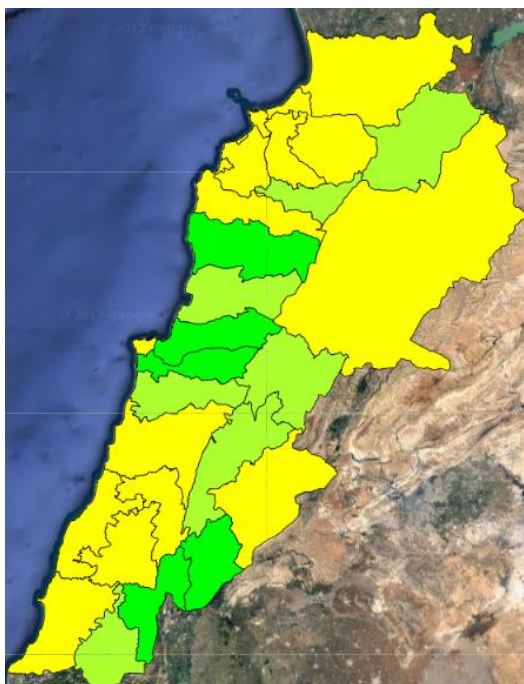
*General description of potential fire risk situation*

Symbol	Level of risk	Meaning and actions
VL	<b>Very low</b>	Very low fire risk. Controlled burning operations can be hardly executed due to high fuel moisture content. Normally wildfires self-extinguish.
L	<b>Low</b>	Low fire risk. Controlled burning operations can be executed with a reasonable degree of safety.
ML	<b>Medium low</b>	Medium-low fire risk. Controlled burning operations can be executed in safety conditions. All the fires need to be extinguished.
M	<b>Medium</b>	Medium fire risk. Controlled burning operations would be avoided. All the fires need to be very well extinguished.
M	<b>Medium high</b>	Controlled burning is not recommended. Open flame will start fires. Cured grasslands and forest litter will burn readily. Spread is moderate in forests and fast in exposed areas. Patrolling and monitoring is suggested. Fight fires with direct attack and all available resources.
H	<b>High</b>	Ignition can occur easily with fast spread in grass, shrubs and forests. Fires will be very hot with crowning and short to medium spotting. Direct attack on the head may not be possible requiring indirect methods on flanks. Patrolling and monitoring the territory is highly suggested.
E	<b>Extreme</b>	Ignition can occur also from sparks. Fires will be extremely hot with fast rate of spread. Control may not be possible during day due to long range spotting and crowning. Suppression forces should limit efforts to limiting lateral spread. Damage potential total. Patrolling and monitoring the territory is highly suggested.

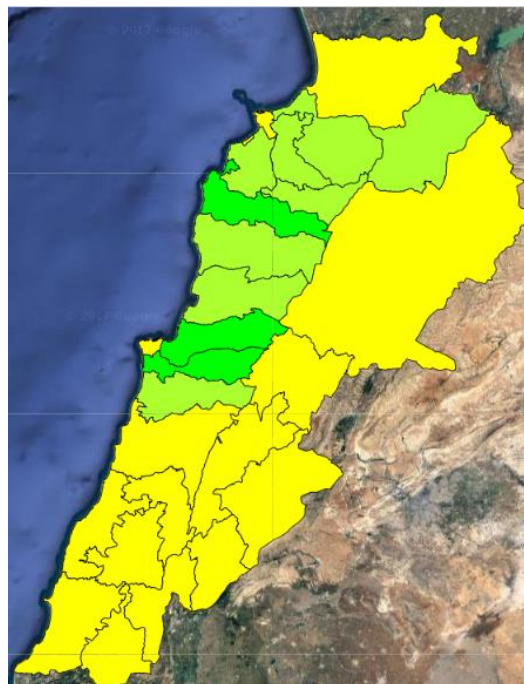
**Beirut, 18 March 2017**

# FIRE RISK INDEX

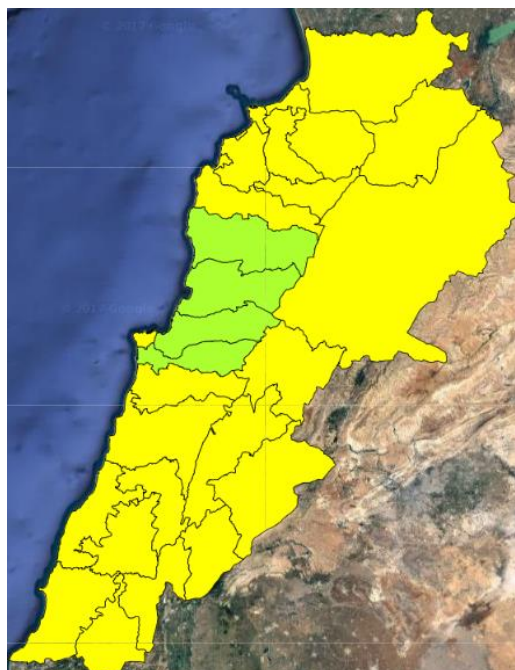
17 Mars 2017



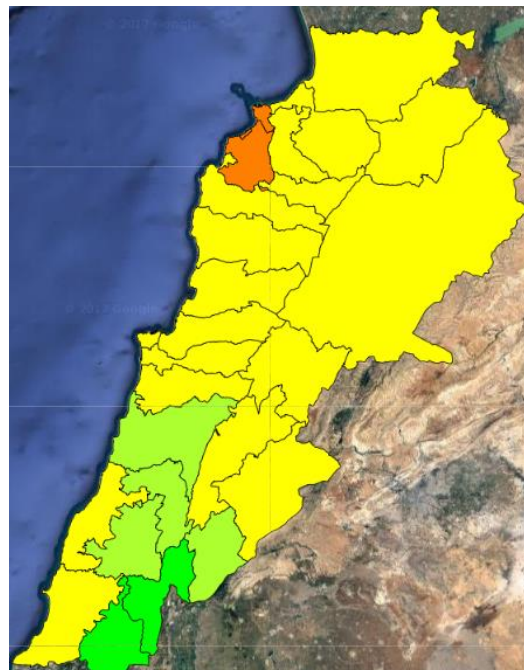
18 Mars 2017



19 Mars 2017



20 Mars 2017



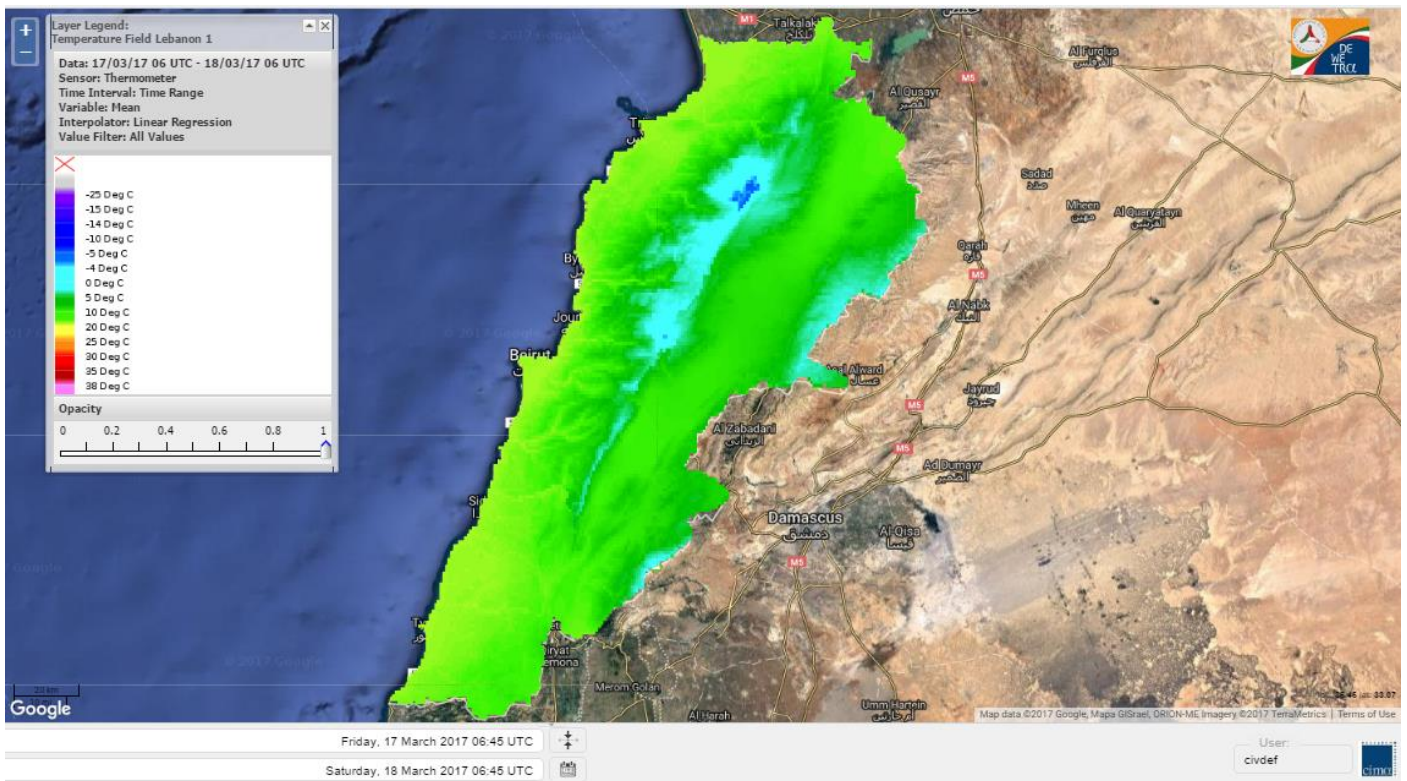
Layer Legend:  
Lebanon Wildfire Risk Index 1

Data: Run: 18/03/2017 00:00. Forecast for 18  
Model: RISICO for the Republic of Lebanon  
Variable: Fire Weather Index  
Spatial Resolution: Caza

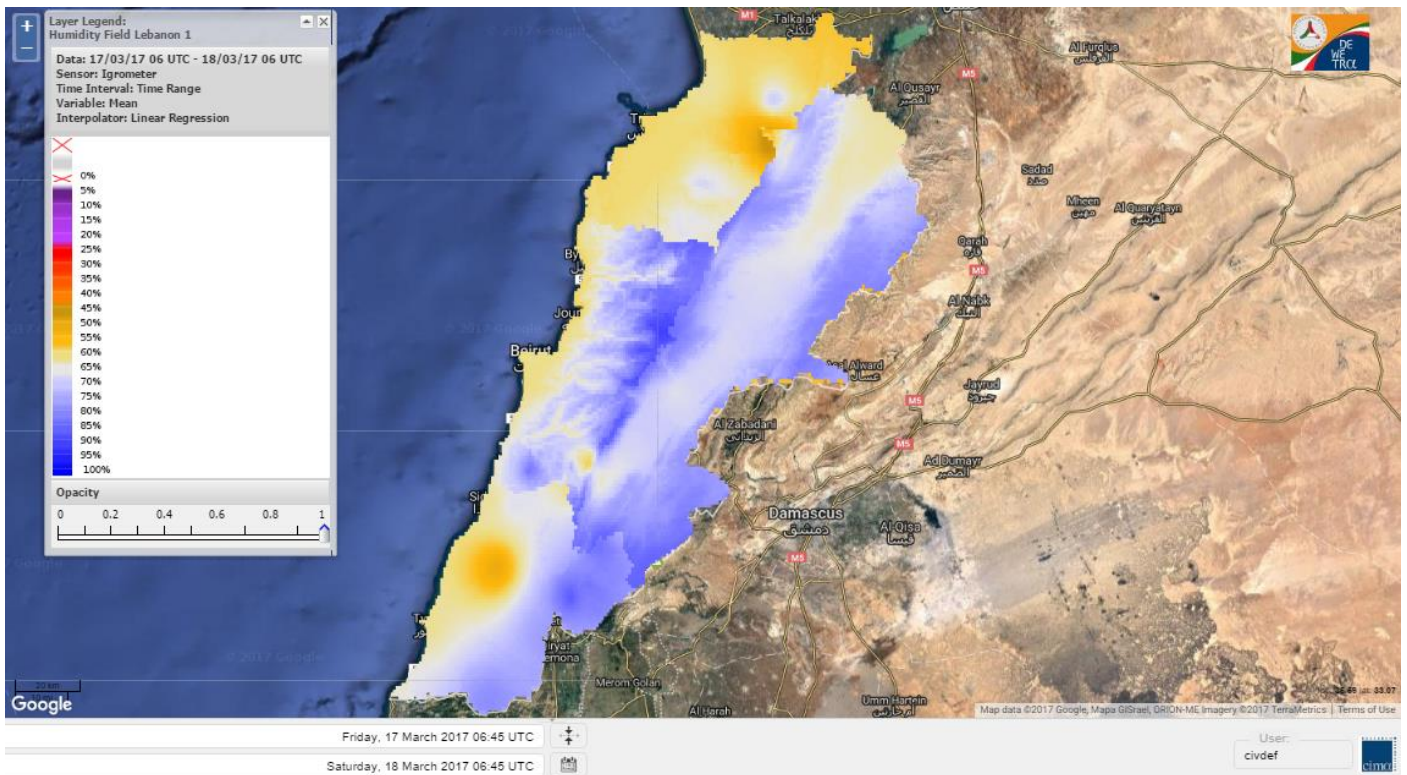
- VERY LOW
- LOW
- MEDIUM-LOW
- MEDIUM
- MEDIUM-HIGH
- HIGH
- EXTREME



# Lebanon temperature for 18 Mars 2017

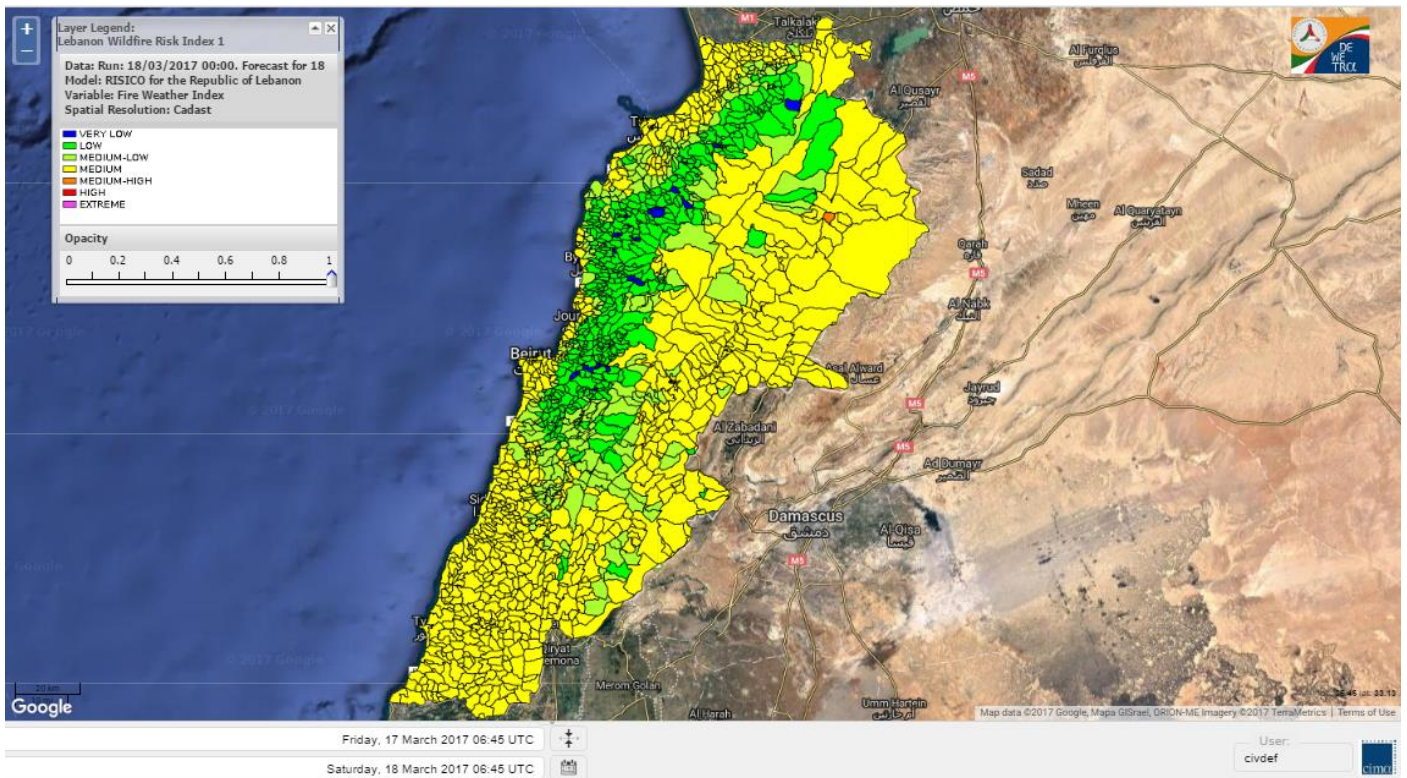


# Lebanon humidity for 18 Mars 2017

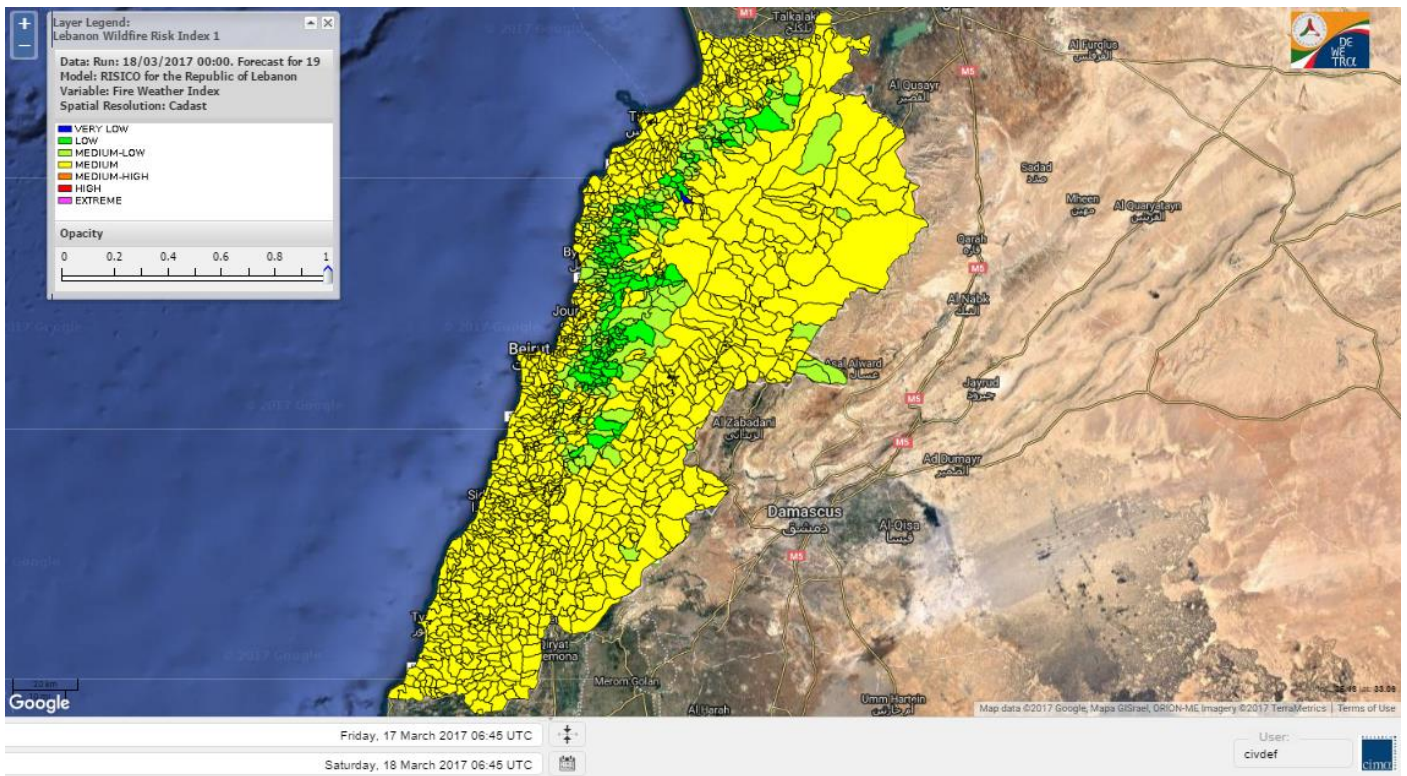




# Lebanon for 18 Mars 2017

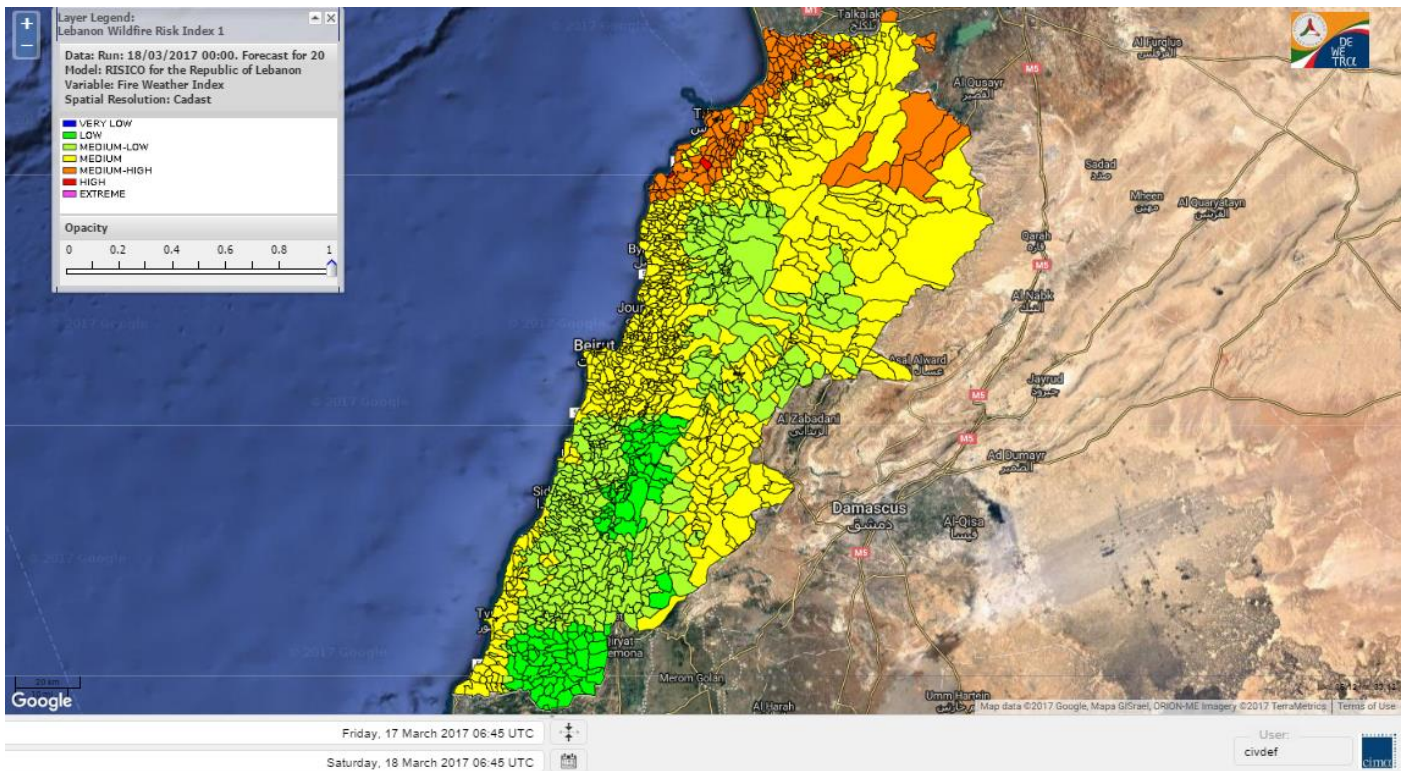


# Lebanon for 19 Mars 2017

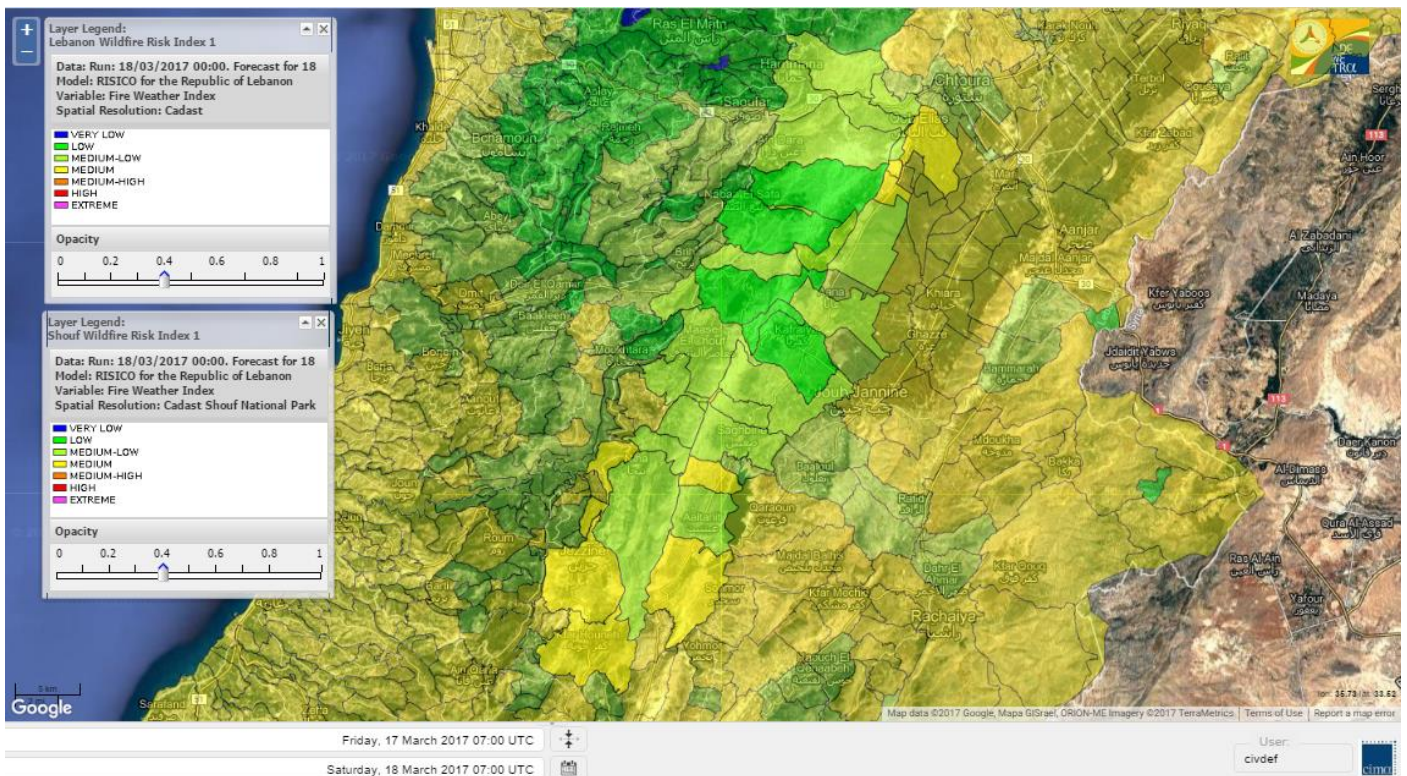




# Lebanon for 20 Mars 2017

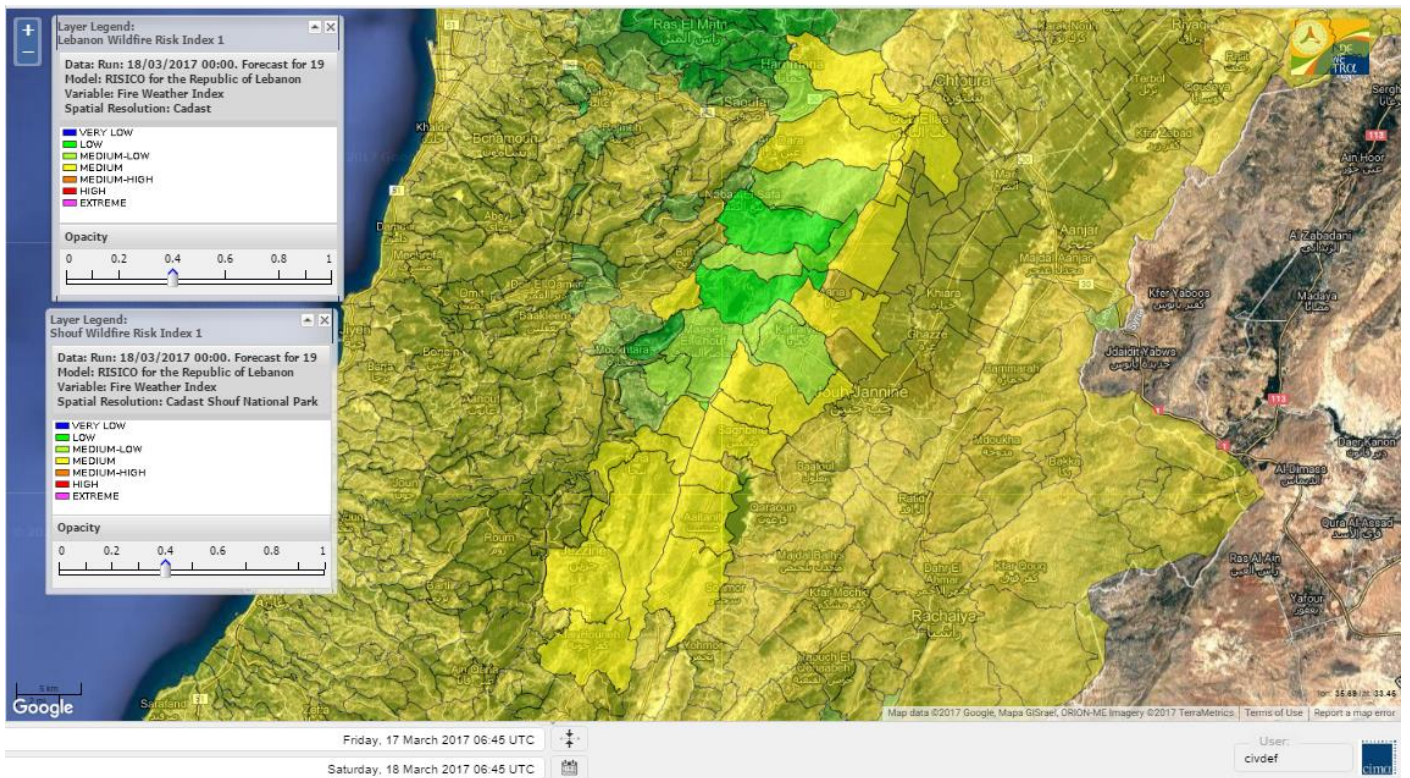


# Shouf Biosphere Reserve Forecast for 18 Mars 2017

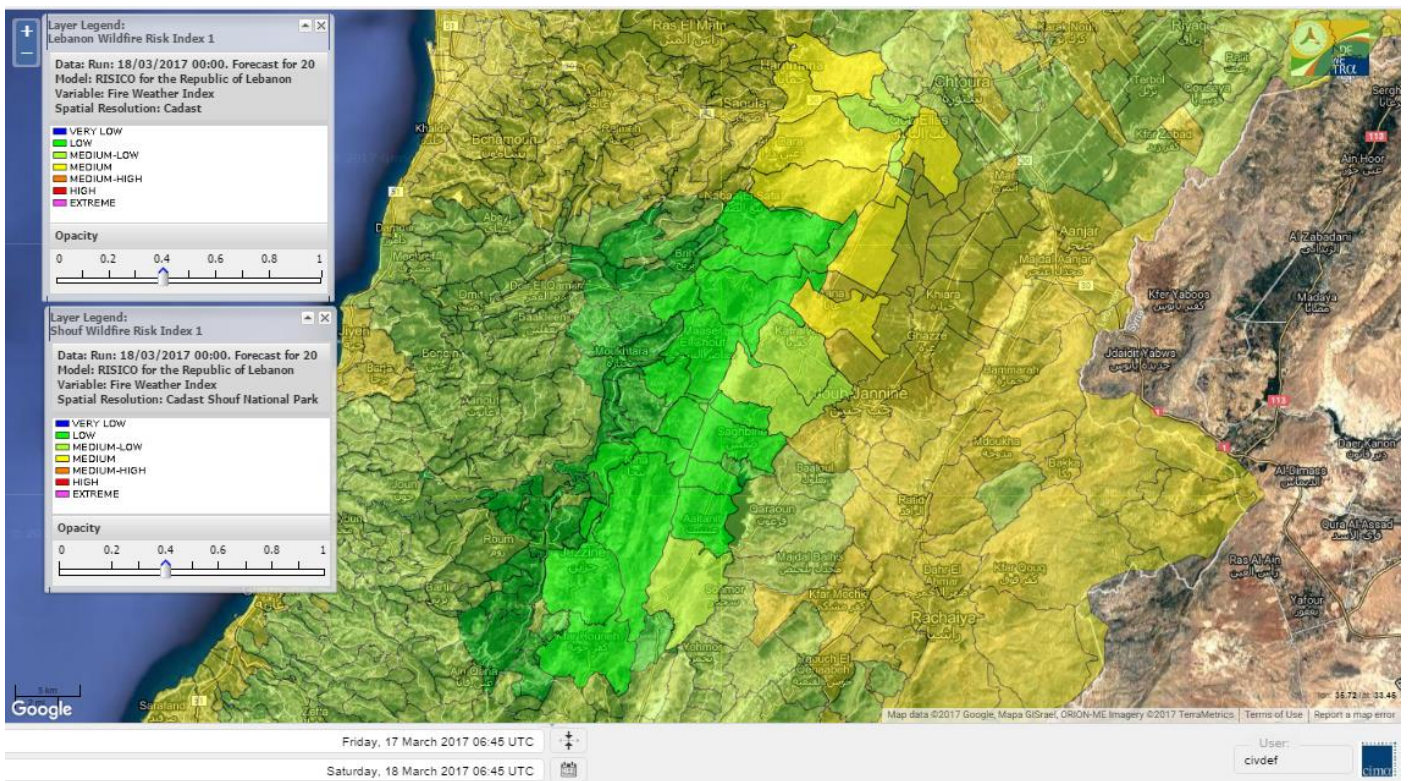




# Shouf Biosphere Reserve Forecast for 19 Mars 2017

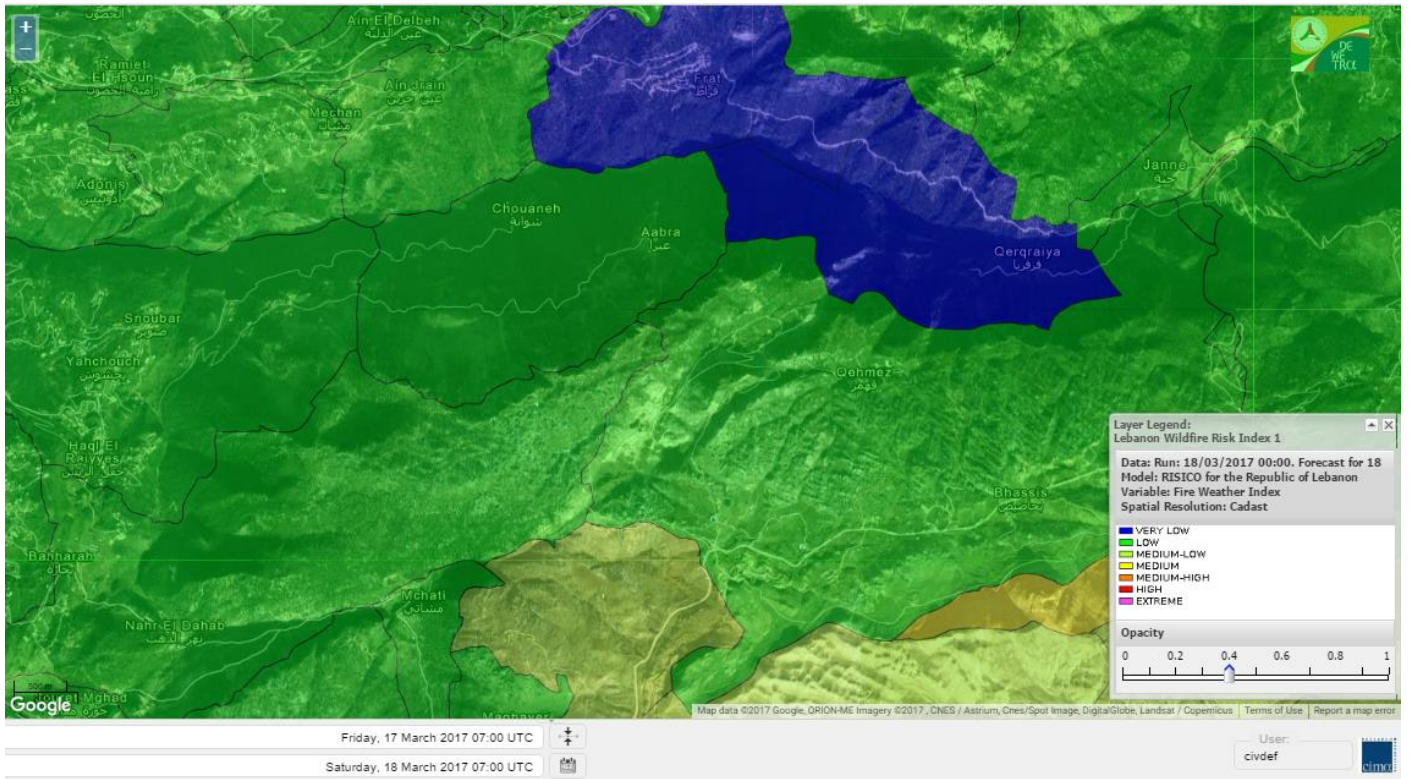


# Shouf Biosphere Reserve Forecast for 20 Mars 2017





## Jabal Moussa Reserve Forecast for 18 Mars 2017

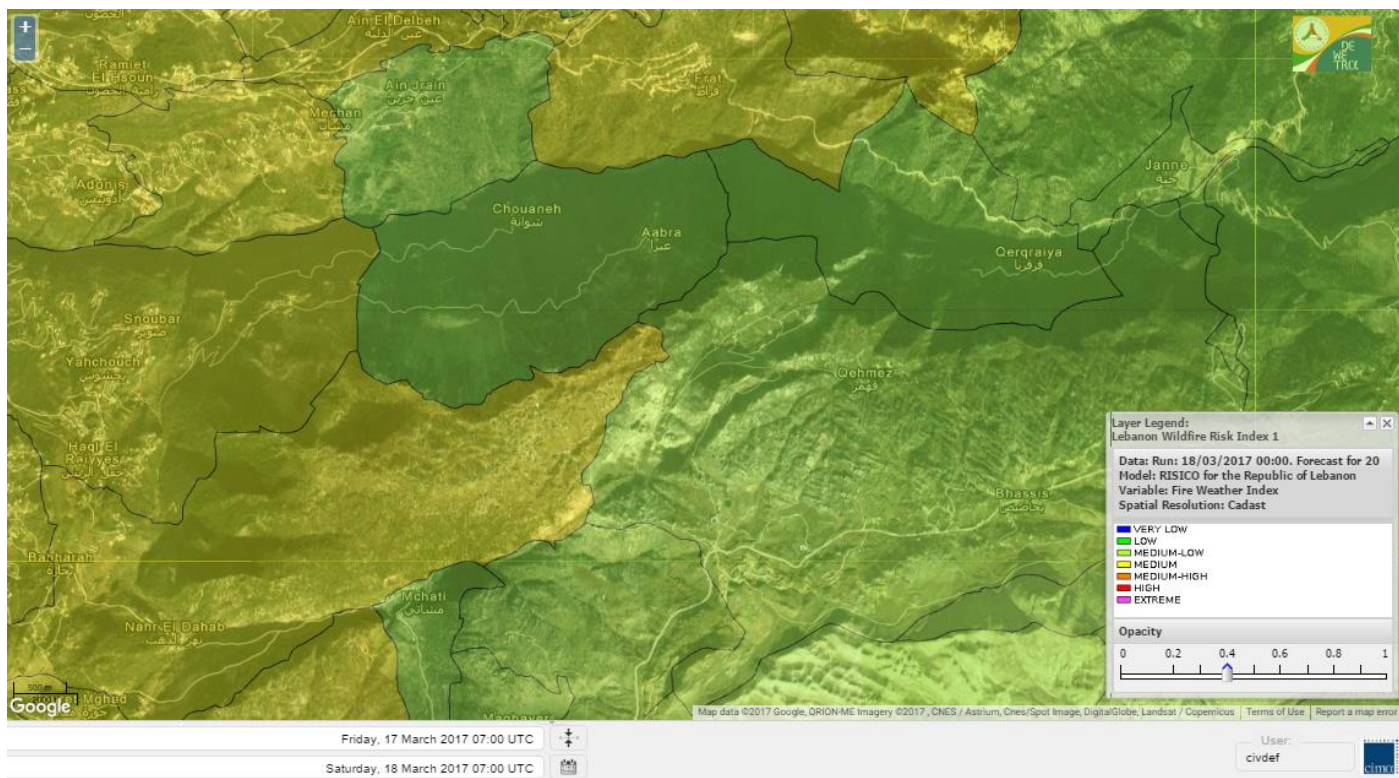


## Jabal Moussa Reserve Forecast for 19 Mars 2017





# Jabal Moussa Reserve Forecast for 20 Mars 2017





## Nord

### Koura

Municipality	18-Mar	19-Mar	20-Mar	Municipality	18-Mar	19-Mar	20-Mar	Municipality	18-Mar	19-Mar	20-Mar
Aaba	M	M	MH	Afsaddiq	ML	M	MH	Ain Ekriane	L	M	M
Amioun	ML	M	MH	Anfeh	M	M	MH	Badbhoun	M	M	M
Barghoun	M	M	M	Barsa	ML	M	MH	Batroumine	ML	M	MH
Bdebba	ML	M	MH	Bechmizzine	ML	M	MH	Bednaye El-Koura	ML	M	MH
Bhabbouch El-Koura	L	M	M	Bkeftine	ML	M	MH	Bnehran	L	ML	M
Bqaiia El-Koura	M	M	MH	Bsarma	M	M	MH	Btaaboura	ML	M	M
Bttram	ML	M	H	Btouratij	M	M	MH	Bziza	L	M	MH
Dar Beehtar	L	M	M	Dar Chmezzine	M	M	M	Deddeh	ML	M	M
Deir El-Balamand	L	M	M	Fih	ML	M	MH	Hraiche	M	M	MH
Ijdaabrine	ML	M	MH	Kaftoun	L	M	M	Kefraya El-Koura	M	M	MH
Kfarakka	ML	M	MH	Kfarhata	ML	M	MH	Kfarhazir	M	M	MH
Kfarkahel	M	M	MH	Kfarsaroun	L	M	MH	Kosba	ML	M	MH
Mejdel el-Koura	L	ML	M	Nakhle	ML	M	MH	Qalhat	L	M	M
Ras Masqa	M	M	MH	Rechdibbine	L	M	M	Zakroun	ML	M	M
Zgharta El-Mtaouile	L	L	M								

### Bcharre

Municipality	18-Mar	19-Mar	20-Mar	Municipality	18-Mar	19-Mar	20-Mar	Municipality	18-Mar	19-Mar	20-Mar
Aabdine	L	ML	M	Bane	ML	M	M	Barhelioun	L	ML	M
Bazouone	ML	M	ML	Becharre	M	M	M	Beit Menzer	L	M	M
Billa	L	M	M	Blaouza	ML	M	M	Bqaa Kafra	ML	M	ML
Bqerqacha	ML	M	ML	Breissat	ML	M	ML	Dimane	L	M	ML
Hadath El Jobbeh	L	M	ML	Hadchit	L	M	M	Hasroun	L	M	ML
Mazraat Aassaf	VL	L	M	Mazraat Bani Saab	L	ML	M	Mchaa El-Jobbeh	M	M	ML
Metrit	L	ML	M	Moghr El-Ahoual	L	ML	M	Ouadi Qannoubine	VL	VL	M
Qanat	L	M	M	Qnayouer	L	L	M	Tourza	L	ML	M

### Batroun

Municipality	18-Mar	19-Mar	20-Mar	Municipality	18-Mar	19-Mar	20-Mar	Municipality	18-Mar	19-Mar	20-Mar
Aabrine	L	M	MH	Aalali	L	ML	ML	Aartiz	L	L	M
Abdelli	L	ML	M	Ajdabra	L	ML	M	Assia	L	L	ML
Basbina	ML	M	M	Batroun	ML	M	MH	Bcheleh	L	ML	ML
Bechtoudar	L	L	ML	Beit Chlala	L	L	ML	Beit Kassab	VL	L	M
Bijdarfil	ML	M	M	Bqesmaya	L	ML	M	Chatine	L	ML	ML
Chebtin	L	L	M	Chekka	M	M	MH	Daael	L	L	ML
Dahr Abi Yaghi	L	L	M	Daraya El-Batroun	L	M	M	Deir Billa	L	L	M
Deir Kfifane	ML	M	M	Deir Mar Youhanna EL	L	L	M	Deir Mar Youssef Jra	L	ML	M
Douma	L	ML	ML	Douq	L	L	M	Eddeh El-Batroun	L	M	M
Ftahat El-Batroun	L	L	M	Ghouma	L	M	M	Hadtoun	L	ML	ML
Hamat	ML	M	MH	Harbouna	L	L	M	Hardine	VL	L	ML
Helta	L	L	M	Hery	M	M	MH	Jebbla	L	L	M
Jrabta El-Batroun	L	ML	M	Jrane El-Batroun	ML	M	M	Kfar Aabida	L	M	M
Kfar Halda	L	L	M	Kfarb Shlaimane	VL	L	M	Kfarhatna	L	L	M
Kfarhay	L	M	M	Kfarhelos	L	M	MH	Kfifane	ML	M	M



Kfour El Arabi	L	ML	ML	Koubba	ML	M	MH	Kour	L	ML	M
Mar Mama	VL	L	M	Masrah	VL	L	M	Mehmarch	L	ML	ML
Mrah Chdid	L	M	M	Mrah El Ziyat	L	M	M	Mrah El-Hajj	VL	L	M
Nahle El-Batroun	L	ML	M	Niha El-Batroun	L	M	ML	Ouajh El-Hajjar	ML	M	MH
Ouata Houb	L	ML	ML	Qatnaaoun	ML	M	MH	Racha	L	ML	ML
Rachana	L	M	M	Rachkida	ML	M	MH	Ram El-Batroun	L	L	ML
Ras Nahhach	ML	M	MH	Selaata	ML	M	MH	Sghar	L	ML	M
Smar Jbayl	L	M	M	Sourat El-Batroun	L	L	M	Tannourine El-Faouqa	ML	M	ML
Tannourine Et-Tahta	L	L	ML	Thoum	ML	M	M	Toula El-Batroun	L	ML	M
Zan	L	ML	M								

## Zgharta

Municipality	18-Mar	19-Mar	20-Mar	Municipality	18-Mar	19-Mar	20-Mar	Municipality	18-Mar	19-Mar	20-Mar
Aachach	M	M	MH	Aalma	M	M	M	Aarde	ML	M	MH
Aintourine	L	M	M	Arabet Qozhaya	L	L	M	Arde	M	M	MH
Arjis	M	M	MH	Asnoun	ML	M	MH	Ayto	L	L	M
Basloukit	ML	M	M	Bchannine	M	M	MH	Besebeel	M	M	MH
Bhairret Toula	L	ML	M	Bnachee	ML	M	M	Boussit	M	M	M
Danha	ML	M	M	Daraiya Zgharta	M	M	MH	Deir Jdeide	ML	M	MH
Ehden	ML	M	M	Halan	M	M	MH	Hariq Zgharta	ML	M	MH
Houakir	L	ML	M	Hraiqis	ML	M	M	laal	ML	M	M
Ijbaa	L	ML	M	Karm Saddeh	L	L	M	Kfarchakhna	M	M	MH
Kfardlaqous	ML	M	MH	Kfarfou	ML	M	MH	Kfarhata Zgharta	ML	M	MH
Kfarhoura	ML	M	MH	Kfarsghab	ML	M	M	Kfaryachit	M	M	MH
Kfarzaina	M	M	MH	Khaldiye	ML	M	MH	Mazraat Ajbeaa	ML	M	MH
Mazraat Et-Teffah	L	ML	M	Mazraat Jneid	ML	M	MH	Mejdlaia Zgharta	M	M	MH
Merh Kfarsghab	L	M	M	Miryata	M	M	MH	Miziara	L	ML	M
Mzraat Kefraya	M	M	MH	Qorah Bach	ML	M	MH	Rachiine	ML	M	MH
Ras Kifa	ML	M	M	Sakhra	L	M	M	Sebhel Zgharta	L	M	M
Serhel	VL	L	M	Tallet Zgharta	ML	M	M	Toula Zgharta	L	ML	M
Zgharta	ML	M	MH								

## Minieh-Denniye

Municipality	18-Mar	19-Mar	20-Mar	Municipality	18-Mar	19-Mar	20-Mar	Municipality	18-Mar	19-Mar	20-Mar
Aasaymout	L	L	M	Aaymar	L	L	M	Aazki	ML	M	M
Ain El-Tineh-Miniyeh	L	ML	M	Assoun	L	ML	M	Bakhaaoun	L	ML	M
Bchennata	ML	M	M	Bechehhara	L	L	M	Beddawi	M	M	MH
Behouaita	L	ML	M	Beit El Foqss	L	ML	M	Beit Haouik	M	M	M
Beit Zoud	L	ML	M	Bekaasafrine	M	M	M	Borj El Yahoudiyeh	M	M	M
Bqarsouna	L	ML	M	Btermaz	L	ML	M	Debaael	L	L	M
Deir Ammar	M	M	M	Deir Nbouh	L	ML	M	Haouaret-Miniyeh	L	ML	M
Haql el Azimeh	L	L	M	Harf El Siyad	L	L	M	Hazmiye-Miniyeh	L	L	M
Izal	L	ML	M	Jarjour	VL	L	M	Jayroun	L	ML	M
Kahf El-Malloul	L	L	M	Karm El-Moher	L	ML	M	Kfar Binine	L	ML	M
Kfarchalane	ML	ML	M	Kfarhabou	ML	M	M	Kharroub-Miniyeh	ML	M	M
Mazraat El-Kreme	L	L	M	Mazraat Ketrane	L	L	M	Merkebtta	M	M	MH
Minyeh	M	M	MH	Mrah El Sfirat	L	L	M	Mrah Sraj	L	ML	M
Mrebbine	M	M	M	Nabi Youcheaa	M	M	M	Nemrine	L	M	M



Qarhaiya	L	ML	M	Qarne	L	L	M	Qarsita	L	L	M
Qattineh-Miniyeh	VL	L	M	Qemmamine	L	ML	M	Qraine	L	L	M
Raouda-Aadoua	M	M	MH	Rihaniyet-Miniyeh	M	M	MH	Sfireh	L	L	M
Sir Ed-Danniyeh	L	L	M	Tarane	L	ML	M	Terbol-Miniyeh	M	M	M
Zaghartaghriane	L	ML	M	Zouq Bhannine	M	M	MH				

## Nabatiye

### Nabatiye

Municipality	18-Mar	19-Mar	20-Mar	Municipality	18-Mar	19-Mar	20-Mar	Municipality	18-Mar	19-Mar	20-Mar
Aabba	M	M	ML	Aazzi	M	M	ML	Adchit El-Chqif	M	M	ML
Ain Bou Swar	M	M	L	Ain Kana	M	M	ML	Ali El-Taher	M	M	ML
Ansar	M	M	ML	Arab Salim	M	M	ML	Arnoun	M	M	ML
Bfaroue	M	M	ML	Breyqaah	M	M	ML	Charqiyeh	M	M	ML
Choukine	M	M	ML	Deir El Zahrani	M	M	ML	Doueir El-Nabatiyeh	M	M	ML
Habbouch El-Nabatiye	M	M	ML	Hamra El-Nabatiyeh	M	M	ML	Harouf El-Nabatiyeh	M	M	ML
Hmaile	M	M	ML	Houmin El Faouqa	M	M	ML	Houmin El Tahta	M	M	ML
Jarjough	M	M	ML	Jbaah El-Nabatiyeh	M	M	L	Jebchit	M	M	ML
Kfar Djal El-Nabatiy	M	M	ML	Kfar Remmane	M	M	ML	Kfar Sir	M	M	ML
Kfar Tebnit	M	M	ML	Kfarfila	M	M	ML	Kfour El-Nabatieh	M	M	ML
Mayfadoun	M	M	ML	Mazraat Bsaffour	M	M	ML	Mazraat Chalbaal	M	M	ML
Mazraat Dmoul	M	M	M	Mazraat El Khreibeh	M	M	ML	Mazraat El-Bayad El-	M	M	ML
Mazraat Kfarjaouz	M	M	ML	Mazraat Qalaat Meiss	M	M	M	Nabatiyeh El-Fawka	M	M	ML
Nabatiyeh Et-Tahta	M	M	ML	Namiriyeh	M	M	ML	Qaaqaaiyet El Jisr	M	M	ML
Qossaibeh El-Nabatiy	M	M	ML	Roumine	M	M	ML	Sarba El-Nabatieh	M	M	ML
Sir El-Gharbiyeh	M	M	ML	Toul	M	M	ML	Yehmor El-Nabatiyeh	M	M	ML
Zaoutar El Charkiyeh	M	M	ML	Zaoutar El-Gharbiyeh	M	M	ML	Zebdine El-Nabatiyeh	M	M	ML
Zefta	M	M	ML								

### Hasbaiya

Municipality	18-Mar	19-Mar	20-Mar	Municipality	18-Mar	19-Mar	20-Mar	Municipality	18-Mar	19-Mar	20-Mar
Aain Jarfa	M	M	ML	Abou Qamha	M	M	ML	Ain Qania	ML	M	ML
Bourghos	M	M	ML	Chebaa	M	M	ML	Chouaya Hasbaya	ML	M	ML
Dellafeh	M	M	ML	Fardiss Hasbaiya	M	M	ML	Hasbaya	M	M	ML
Hbariyeh	ML	M	L	Kaoukaba Hasbaiya	M	M	ML	Kfar Chouba	ML	M	L
Kfar Hamam	M	M	ML	Kfeir El-Zait	ML	M	ML	Khalwat Hasbaya	L	M	ML
Khreibet Hasbaiya	M	M	ML	Majidiyeh Hasbaiya	M	M	ML	Marj Ez-Zhour (Haouc	ML	M	ML
Meri	M	M	ML	Mimass	M	M	ML	Rachaiya El-Fokhar	M	M	ML
Salaiyeb	M	M	ML								

### Marjayoun

Municipality	18-Mar	19-Mar	20-Mar	Municipality	18-Mar	19-Mar	20-Mar	Municipality	18-Mar	19-Mar	20-Mar
Aalmane Marjaayoun	M	M	ML	Aamra	M	M	ML	Adayseh Marjaayoun	M	M	L
Adchit El-Koussair	M	M	ML	Ain Aarab Marjaayoun	M	M	ML	Bani Haiyann	M	M	L
Blatt Marjaayoun	M	M	ML	Blida	M	M	L	Borj El-Moulouk	M	M	ML
Boueyda Marjaayoun	M	M	ML	Deir Mimass	M	M	ML	Deir Siriane	M	M	ML
Dibbine	M	M	ML	Ebel El Saqi	M	M	ML	Houla	M	M	L
Houra	M	M	ML	Kfar Kila	M	M	ML	Khiam Marjaayoun	M	M	ML



Klayaa	M	M	ML	Majdel Selem	M	M	L	Marjaayoun	M	M	ML
Markaba	M	M	L	Mays El-Jabal	M	M	L	Mazraat Doumiat	M	M	ML
Mazraat Sarada	M	M	ML	Mhaibib	M	M	L	Qabrikha	M	M	L
Qantara	M	M	ML	Rab El-Thalathine	M	M	ML	Saouaneh Marjayoun	M	M	L
Talloussa	M	M	L	Taybeh Matjaayoun	M	M	ML	Touline	M	M	L

## Bent Jbail

Municipality	18-Mar	19-Mar	20-Mar	Municipality	18-Mar	19-Mar	20-Mar	Municipality	18-Mar	19-Mar	20-Mar
Ain-Ebel	M	M	L	Aitaroun	M	M	L	Aynata Bint Jbeil	M	M	L
Ayta El-Chaeb	M	M	L	Ayta El-Jabal	M	M	L	Beit Lif	M	M	L
Beit Yahoun	M	M	L	Bint Jbeil	M	M	L	Borj Qalaway	M	M	M
Braachit	M	M	L	Chakra	M	M	L	Debel	M	M	L
Deir Antar	M	M	L	Froun	M	M	ML	Ghandouriyeh Bint Jb	M	M	ML
Hanine	M	M	L	Hariss	M	M	L	Hdatha	M	M	L
Jmeyjmech	M	M	L	Kafra Bint Jbeil	M	M	L	Kfar Dounine	M	M	L
Khirbet Selm	M	M	L	Kounine	M	M	L	Maroun El Ras	M	M	L
Qalaway	M	M	ML	Qaouzah	M	M	L	Qatmoun	M	M	L
Ramya Bint Jbeil	M	M	L	Rchaf	M	M	L	Rmeich	M	M	L
Safad Al Battikh	M	M	L	Salhaneh	M	M	L	Serbine	M	M	L
Sultanieh Bint Jbeil	M	M	L	Tibnine	M	M	L	Tiri	M	M	L
Yaroun	M	M	L	Yater	M	M	L				

## Mont Liban

### Jbail

Municipality	18-Mar	19-Mar	20-Mar	Municipality	18-Mar	19-Mar	20-Mar	Municipality	18-Mar	19-Mar	20-Mar
Aabeydat	L	L	M	Aalita	L	ML	M	Aamchit	M	M	M
Aarab El-Lahib	ML	M	ML	Aarasta	L	L	ML	Adonis Jbeil	L	L	M
Afqa Jbeil	L	L	ML	Ain El Delbeh Jbeil	L	ML	M	Ain El-Ghouayba	L	L	ML
Ain Jrain	L	L	ML	Ain Kfah	L	M	M	Almat El Chemaliyat	L	ML	M
Almat El-Jenoubiya	L	ML	ML	Aqoura	M	M	ML	Bayzoun	L	ML	M
Bchille Jbeil	L	L	M	Bechtlida	L	L	M	Behdaydat	L	ML	M
Beit Habbaq	L	M	M	Bejjeh	L	ML	M	Bekhaaz	ML	ML	M
Berbara Jbeil	M	M	M	Bintael	L	L	M	Birket Hjoula	L	L	M
Blatt Jbeil	L	ML	M	Boulhos	L	ML	M	Breyj Jbeil	L	L	M
Chamat	ML	M	M	Chikhane	ML	M	M	Chmout	L	ML	M
Eddeh Jbeil	ML	M	M	Ehmej	L	M	ML	Fatre	L	ML	M
Ferhet	L	ML	M	Fghal	L	ML	M	Frat	VL	L	M
Ghabat	L	L	ML	Ghalboun	L	ML	M	Gharzouz	ML	M	M
Ghofrine	ML	M	M	Habil	VL	L	M	Halate	ML	ML	M
Haqel	L	L	M	Hbaline	L	M	M	Hboub	L	ML	M
Hdeine	ML	M	ML	Hema Er-Rehban	M	M	ML	Hema Mar Maroun Aann	ML	M	ML
Hjoula	L	L	M	Hosrayel	ML	M	M	Hsarat	L	M	M
Hsoun	L	ML	M	Jaj	L	M	ML	Janne	L	L	ML
Jbeil	M	M	M	Jeddeyel Jbeil	M	M	M	Jlisse	L	L	M
Jouret El-Qattine	L	L	M	Kfar Baal Annaya	L	L	M	Kfar Kidde	ML	M	M
Kfar Kouas	L	L	M	Kfar Mashoun	ML	M	M	Kfoun	L	L	M

Kharbe Jbeil	L	ML	M	Laqlouq	M	M	ML	Lassa	L	L	ML
Lehfed	L	L	ML	Maad	L	M	M	Mar Sarkis	M	M	ML
Mastita	M	M	M	Mayfouq	L	L	ML	Mazraat El Siyad	M	M	ML
Mazraat El-Maaden	L	L	M	Mechane	L	L	M	Mechmech Jbeil	L	L	ML
Mehrin	ML	ML	M	Mejdel El-Akoura	ML	L	ML	Mghayreh Jbeil	ML	M	ML
Mounsef	M	M	M	Nahr Ibrahim	M	M	M	Qahmez	L	L	ML
Qartaba	L	M	ML	Qartaboun	M	M	M	Qattara Jbeil	VL	L	ML
Qorqraya	VL	L	ML	Ramout	L	ML	M	Ras Osta	L	L	M
Rihane Jbeil	M	M	M	Sakiet El-Khayt	L	ML	M	Saqi Richmaya	L	ML	ML
Sebrine	L	L	M	Seraita	L	ML	ML	Souane Jbeil	L	ML	M
Tadmor	ML	M	ML	Tartej	L	M	ML	Torzaiya	L	ML	M
Yanouh Jbeil	ML	ML	ML	Zibdine Jbeil	L	ML	M				

## El Metn

Municipality	18-Mar	19-Mar	20-Mar	Municipality	18-Mar	19-Mar	20-Mar	Municipality	18-Mar	19-Mar	20-Mar
Aain El-Qabu	L	L	ML	Aain El-Qach	L	ML	M	Aain El-Teffaha	L	ML	M
Aain el-Safsaf El-M	L	L	M	Abou Mizane	L	ML	M	Ain Aar	ML	M	M
Ain Alaq	L	ML	M	Ain El-Kharroube	L	ML	M	Ain El-Sendiane	L	L	M
Ain El-Zeitoune	L	L	M	Ain Saadeh	L	M	M	Aintoura El-Matn	ML	M	ML
Amaret Chalhoub	M	M	M	Antelias	M	M	M	Atchaneh	L	ML	M
Ayroun	L	L	M	Baabdat	L	L	M	Baouchariyeh	M	M	M
Baskinta	L	L	ML	Beit Chabab	L	ML	M	Beit El-Charar	ML	M	M
Beit El-Kekko	ML	M	M	Beit Mery	L	ML	M	Bhersaf	L	L	M
Bikfaya	L	ML	M	Biyakout	ML	M	M	Bnabil	L	L	M
Bourj Hammoud	M	M	M	Bqennaya	ML	M	M	Broummana El-Matn	L	ML	M
Bsalim	L	M	M	Bsifrine	VL	L	M	Bteghrine	L	L	M
Chaouiye	L	ML	M	Chouaya El-Matn	L	ML	M	Choueir	L	L	M
Chrine	L	L	M	Dahr El Sawan El-Mat	L	ML	M	Daychouniyeh	ML	M	M
Dbayeh	M	M	M	Deir Chamra	L	L	M	Deir Mar Abda el Mch	L	M	M
Deir Mar Roukouz	M	M	M	Deir Tamiche	L	M	M	Dik El-Mehdi	ML	M	M
Dikwaneh	M	M	M	Douar El-Matn	L	L	M	Fanar	M	M	M
Fraike	L	ML	M	Haret El-Ballaneh	ML	M	M	Hbous	ML	M	M
Himlaya	L	ML	M	Jal El Did	M	M	M	Jdeideh El-Metn	M	M	M
Jouar El-Matn	L	L	M	Jouret El-Ballout	L	ML	M	Kaaqour	L	L	M
Kfar Aaqab	L	L	M	Kfertay El-Matn	L	ML	ML	Khenchara	L	L	M
Khillet El-Mtain	L	L	M	Konnabat Broummana	L	ML	M	Konnabat Salima	VL	L	M
Machraah El-Matn	L	L	ML	Majdel Tarchich	M	M	ML	Majzoub	ML	M	M
Mansouriyeh El-Metn	M	M	M	Mar Boutros Karm Et-	L	L	M	Mar Chaya et Mzekke	L	ML	M
Mar Moussa Ed-Douar	L	L	M	Marjaba	L	L	ML	Masqa	L	ML	M
Mayasse	L	ML	M	Mazraat Deir Aoukar	ML	M	M	Mazraat El-Hadirat	ML	M	M
Mazraat Yachouh	ML	M	M	Mchikha	L	ML	M	Menqlet Mezher	ML	M	M
Mhaydseh Matn	L	ML	M	Mkalles	M	M	M	Mrouj	ML	M	ML
Mtain	M	ML	M	Mtayleb	ML	M	M	Nabay	L	M	M
Naccache	ML	M	M	Ouadi Chahine	L	L	M	Ouadi El-Karm El-Mat	L	L	M
Ouata El-Mrouj	L	L	M	Ouyoun El-Matn	VL	L	M	Qornet Chehwan	L	M	M
Qornet El-Hamra	L	M	M	Roumieh	L	M	M	Sfeilet Bikfaya	L	L	M
Sinn El-Fil	M	M	M	Zabbougha	L	L	M	Zalqa	M	M	M



Zarououn	L	L	M	Zekrite	L	M	M	Zighrine El-Matn	L	ML	M
Zouk El-Khrab	M	M	M								

## Chouf

Municipality	18-Mar	19-Mar	20-Mar	Municipality	18-Mar	19-Mar	20-Mar	Municipality	18-Mar	19-Mar	20-Mar
Aalmane El-Chouf	M	M	ML	Aammq El-Chouf	L	ML	L	Ain Ouzein	L	ML	L
Ain Qani	ML	ML	L	Ain Zhalta	L	L	L	Ainbal	ML	M	ML
Amatour	ML	M	L	Anout	M	M	ML	Atrine	ML	M	ML
Baadarane	M	ML	L	Baaqline	ML	M	ML	Baasir	M	M	M
Barja	M	M	M	Barouk	L	L	L	Bater	M	M	L
Batloun	ML	M	L	Bayqoun	M	M	ML	Bchetfine	L	M	ML
Beiteddine	L	ML	ML	Benouati Ech-Chouf	ML	M	ML	Berjein	M	M	ML
Bireh et Mtalleh	ML	M	L	Biret El-Chouf	ML	M	L	Bkechtine Ouel Mchei	ML	M	ML
Bkifa El-Chouf	M	M	ML	Botme	L	L	L	Bqaiaa Ech-Chouf	M	M	ML
Bsaba El-Chouf	ML	M	ML	Chammis El-Chouf	M	M	M	Chehim	M	M	ML
Chemaarine	ML	M	ML	Chourit	L	ML	L	Daher El-Chouf	M	M	ML
Dalhoun	M	M	ML	Damour	M	M	ML	Daraya El-Chouf	M	M	ML
Deir El-Moukhalles	M	M	ML	Deir Baba	M	M	ML	Deir Dourit	ML	M	ML
Deir El-Qamar	ML	M	ML	Deir Kouche	L	M	ML	Dibbieh	ML	M	ML
Dmit	M	M	ML	Fouara Jaafar	L	M	ML	Fraidis El-Chouf	ML	ML	L
Ghabet Jaafar	M	M	ML	Gharife	ML	M	ML	Haret Jandal	M	M	L
Hasrout	M	M	ML	Jadra	M	M	ML	Jahlieh	M	M	ML
Jbeih El-Chouf	ML	M	L	Jdeidet El-Chouf	ML	ML	L	Jiyeh	M	M	M
Jleilyeh	M	M	ML	Jmailiyeh	M	M	ML	Joun	M	M	ML
Kahlounie El-Chouf	M	M	L	Ketermaya	M	M	ML	Kfar Faqoud	ML	M	ML
Kfar Hamal	ML	M	M	Kfar Him	M	M	ML	Kfar Katra	L	ML	L
Kfar Niss	ML	M	ML	Kfar hay	ML	M	ML	Kfarnabrakh	ML	M	L
Khirbet Bisri	ML	M	ML	Knayse El-Chouf	L	M	ML	Maaniyeh	M	M	ML
Maasser Beiteddine	ML	ML	L	Maasser El-Chouf	ML	ML	L	Majdalouna	M	M	ML
Majdel El-Meouch	ML	M	L	Mazboud	M	M	ML	Mazmoura	M	M	ML
Mazraat El Chouf	ML	M	ML	Mazraat El Daher	ML	M	ML	Mazraat El-Douair	L	ML	L
Mechref	M	M	ML	Mghairie	M	M	ML	Mghayrie El-Chouf	M	M	ML
Moukhtara	ML	ML	L	Mrusti	ML	M	L	Mtolle	M	M	ML
Naameh	M	M	M	Niha El-Chouf	ML	M	L	Ouadi Abou Youssef	ML	M	ML
Ouadi Ed-Deir	M	M	ML	Ouadi El-Sit	ML	M	ML	Ouadi bnehlay	ML	M	ML
Qraibeh	ML	ML	L	Qreiaa	ML	M	ML	Rmayle El-Chouf	M	M	ML
Semqaniyeh	M	M	L	Sibline	M	M	ML	Sirjbeil	M	M	ML
Warhanieh	ML	ML	L	Werdaniyeh	M	M	ML	Zaarourieh	M	M	ML

## Baabda

Municipality	18-Mar	19-Mar	20-Mar	Municipality	18-Mar	19-Mar	20-Mar	Municipality	18-Mar	19-Mar	20-Mar
Abadiyeh	L	ML	M	Ain Mouaffaq	L	M	M	Araiya	L	M	M
Arbaniyeh	VL	L	M	Arsoun	L	L	M	Baabda	M	M	M
Baalchmey	L	M	M	Bmaryam	L	L	M	Bourj El-Brajneh	M	M	M
Boutchay	ML	M	M	Bsaba Baabda	ML	M	M	Btekhney	L	L	M
Btibyat	L	L	M	Bzebdine	L	L	M	Chbeniyeh	L	ML	M
Chiyah	M	M	M	Chmeisset Baabda	VL	L	M	Chouit	L	ML	M
Deir El-harf	L	L	M	Deir Khouna	L	L	M	Dlaybeh	VL	L	M

Falougha	ML	M	M	Furn El-Chebbak	M	M	M	Hadath Beyrouth	M	M	M
Halaliyeh Baabda	L	ML	M	Hammana	ML	ML	M	Haret El Sett	L	M	M
Haret Hamze	L	L	M	Haret Hreik	M	M	M	Hasbaiya El-Metn	VL	L	M
Jouar El-Hoz	L	L	ML	Jouret Arsoun	L	L	M	Kfar Chima	ML	M	M
Kfar Selouane	L	ML	ML	Khalouat Baabda	L	ML	M	Kneisset Baabda	L	L	M
Laylakeh	M	M	M	Louayzeh Baabda	ML	M	M	Merdache	ML	M	M
Mzairaa Baabda	L	L	M	Ouadi Chahrour El Ol	L	M	M	Ouadi Chahrour El So	L	M	M
Qalaa Baabda	L	L	M	Qhraybe Baabda	L	L	M	Qobbayaa	L	ML	M
Qornayel	L	L	M	Qortada	VL	L	M	Qrayeh Baabda	L	ML	M
Qsaibeh Baabda	L	ML	M	Qtale Baabda	L	L	M	Ras El Metn	L	L	M
Ras El-Haref	L	ML	M	Rouayset El-Ballout	L	ML	M	Salima Baabda	L	L	M
Tahouitat El Ghadir	M	M	M	Tarchich	ML	ML	ML	Zandouqa	VL	L	M

## Aley

Municipality	18-Mar	19-Mar	20-Mar	Municipality	18-Mar	19-Mar	20-Mar	Municipality	18-Mar	19-Mar	20-Mar
Abey	ML	M	ML	Aghmid	L	ML	M	Ain Dara	ML	M	M
Ain Drafil	ML	M	M	Ain El Halazoun	ML	M	M	Ain El-Rmmaneh	L	L	M
Ain Jedideh	L	M	M	Ain Ksour	L	M	ML	Ain Onoub	L	M	M
Ain Traz	L	M	ML	Ainab	L	M	M	Aley	L	M	M
Aramoun	ML	M	M	Aytat	L	M	M	Azouniyeh	ML	ML	M
Baawerta	ML	M	ML	Badghan Oua Wadi Bad	ML	M	M	Bassatine	ML	M	M
Bayssour	L	M	M	Bchamoun	ML	M	M	Bdadoun	L	M	M
Behouara	L	ML	M	Bennay	L	M	ML	Bhamdoun El-Dayaa	L	M	M
Bhamdoun El-Mhatta	ML	M	M	Bkhechtey	L	M	M	Bleibel	L	M	M
Bmakine	ML	M	M	Bmehray	L	ML	M	Bouzrid	L	M	ML
Bserrine	ML	M	M	Bsous	L	ML	M	Btalloun	L	M	M
Btater	ML	M	M	Chanay	ML	M	M	Charoun	ML	M	M
Chartoun	L	M	M	Chemlane	L	M	M	Chouefat El-Aamrous	M	M	M
Chouefat El-Oumara	M	M	M	Chouefat El-Quoubbe	M	M	M	Dakkoun	ML	M	ML
Deir Qoubel	ML	M	M	Dfoun	ML	M	M	Douair El Remmaneh	L	ML	M
Ghaboun	L	ML	M	Habramoun	L	ML	M	Homs Oua Hama	ML	M	M
Houmal	L	M	M	Jisr El Qadi	L	M	ML	Kehaleh	L	ML	M
Keyfoun	L	M	M	Kfar Aamey	L	M	M	Kommatyeh	L	M	M
Maasrati	ML	M	M	Majdel Baana	ML	M	M	Mansourieh et Ain El	L	M	M
Mazraat El-Nahr	L	ML	M	Mchakhte	L	L	M	Mecherfeh	ML	M	M
Mejdaya	L	M	M	Mrayjat	ML	M	ML	Ramliyah	L	ML	ML
Rechmaya	ML	M	ML	Rejmeh	L	ML	M	Remhala	L	M	M
Rouaysset El Neemane	ML	M	M	Saoufar	ML	M	M	Selfaya	L	M	ML
Sirhmoul	L	M	M	Souq El Ghareb	L	M	M	Taazanieh	L	M	M

## Kesrouane

Municipality	18-Mar	19-Mar	20-Mar	Municipality	18-Mar	19-Mar	20-Mar	Municipality	18-Mar	19-Mar	20-Mar
Achkout	L	ML	M	Adma Oua Dafneh	M	M	M	Ain Ed-Delbe Kesroua	L	L	ML
Ain El-Rihane	L	M	M	Aintoura Kesrouane	ML	M	M	Ajaltoun	L	ML	M
Akaybeh Kesrouane	M	M	M	Aramoun Kesrouane	ML	M	M	Azra ouel Ozor	L	ML	M
Ballouneh	L	ML	M	Batha	L	M	M	Bekaatat Achkout	L	ML	M
Bekaatat Kanaan	L	L	M	Bizhel	L	ML	M	Bouar	M	M	M
Bqaatouta	L	ML	ML	Bqaq Ed-Dine	M	M	M	Bzommar	L	M	M



Chahtoul	L	ML	M	Chnaniir	M	M	M	Chouan	L	L	ML
Daraya Kesrouane	L	ML	M	Daroun	L	M	M	Deir Baqlouch	L	M	M
Dlebta	ML	M	M	Eghbeh	L	L	M	Faraya	ML	ML	ML
Fatka	M	M	M	Feytroun	L	L	M	Ghazir	M	M	M
Ghbaleh Kesrouane	L	ML	M	Ghedrass	L	ML	M	Ghosta	L	M	M
Ghynéh	L	M	M	Harharaya w Kattine	ML	M	M	Harissa Kesrouane	ML	M	M
Hayata	L	ML	M	Hosein	L	L	M	Hrajel	ML	M	ML
Jdeideh Ghazir	M	M	M	Jeita	L	M	M	Jounieh Ghadir	ML	M	M
Jounieh Haret Sakhr	M	M	M	Jounieh Salel Alma	M	M	M	Jounieh Sarba	M	M	M
Jouret Bedrane	L	ML	M	Jouret Mhad	L	ML	M	Jouret Termos	L	ML	M
Kfar Debiane	L	ML	M	Kfar Tay Kesrouane	L	L	M	Kfar Yassine	M	M	M
Kfour Kesrouane	ML	M	M	Kharayeb Nahr Ibrahi	L	ML	M	Klayaat Kesrouane	L	L	M
Maarab	ML	M	M	Maaysra Kesrouane	L	ML	M	Mayrouba	ML	M	ML
Mazraat Er-Ras	ML	M	M	Mazraat Mrah El-Mir	L	ML	M	Mchaa El Ftouh	M	ML	ML
Mchaa Faraya	ML	ML	ML	Mchaa Kfar Dibiane	M	ML	ML	Mghaer	L	L	ML
Mradiyah	L	ML	M	Nahr Ed-Dahab	L	L	M	Nammoura Kesrouane	L	M	M
Ouata El Jaouz	L	L	M	Ouata Sillam	M	M	M	Raachine	L	L	M
Rayfoun	L	ML	M	Safra Kesrouane	M	M	M	Shayle Kesrouane	L	ML	M
Tabarja	M	M	M	Yahchouch	L	L	M	Zaaytreh	L	ML	M
Zeytoun	L	M	M	Zouk Mikael	M	M	M	Zouk Mosbeh	M	M	M

## Baalbek\_Hermel

### Baalbek

Municipality	18-Mar	19-Mar	20-Mar	Municipality	18-Mar	19-Mar	20-Mar	Municipality	18-Mar	19-Mar	20-Mar
Aadous	M	M	ML	Aamchki	M	M	M	Aarsal	M	M	M
Ain Baalbek	M	ML	M	Ain Bourday	M	M	ML	Ain El-Benye	M	M	M
Ain El-Jaouz Baalbek	M	ML	M	Ain El-Siya Chadoura	M	ML	M	Al Khodr Baalbek	M	M	M
Al Nabi Chit	M	M	M	Aynata Baalbek	M	M	M	Baalbek	M	M	ML
Bachwat	ML	M	M	Barqa	L	M	M	Bednayel Baalbak	M	M	ML
Beit Chama	M	M	M	Bijjaje	MH	M	M	Bouday	ML	M	M
Brital	M	M	M	Btadi	M	M	M	Chaat	M	M	M
Chaibe	M	M	M	Chlifa	M	M	M	Chmestar	M	M	M
Dar El-Oussa	ML	M	M	Deir El-Ahmar	M	M	M	Deir Mar Maroun Baal	M	M	MH
Douris	M	M	ML	Fakiha	M	M	M	Hadath Baalbek	M	M	M
Ham	M	M	ML	Haour Taala	M	M	M	Hizzine	M	M	M
Hlebta	ML	M	M	Hosh Barada	M	M	ML	Hosh El Dahab	M	M	ML
Hosh El Snid	M	M	M	Hosh El-Nabi	M	M	M	Hosh El-Rafiq	M	M	M
Hosh Tal Safiya	M	M	ML	Hrebta	M	M	M	laat	M	M	ML
Jebaa	M	M	ML	Jenta	M	M	ML	Kfar Dabach	M	M	M
Kfar Dane	M	M	ML	Khraibeh El-Hermel	M	M	M	Khreibet Baalbek	M	M	M
Kneisset Baalbek	M	M	ML	Labueh	M	M	M	Maarboun	M	M	M
Majdaloun	M	M	ML	Maqneh	M	M	ML	Mazraat Beit Mcheik	M	M	ML
Misraya	M	M	M	Moqraq	M	M	M	Nabha El-Damdoum	M	M	M
Nabi Chbay	M	M	ML	Nabi Osman	M	M	M	Nahleh baalbek	M	M	M
Ouadi El-Oss	ML	M	M	Qaa Baayoun	M	M	M	Qaa Jouar Maqiye	M	M	MH
Qaa Ouadi El-Khanzir	M	M	MH	Qah Baalbek	M	M	MH	Qarha Baalbek	M	M	M

Qsarnaba	M	M	M	Ram Baalbek	M	M	M	Ras Baalbek El Sahl	M	M	MH
Ras Baalbek El-Charq	M	M	M	Riha	M	M	M	Saaide	M	M	ML
Sbouba	M	M	M	Seriine El-Tahta	M	M	ML	Slouqi	M	M	ML
Taiba Baalbek	M	M	ML	Talia	M	M	M	Taraiya	M	M	ML
Temnin El Fawqa	M	M	M	Temnin El-Tahta	M	M	M	Tfail	M	ML	M
Yahfoufa	M	M	ML	Yammouneh	M	M	M	Younine	M	M	M
Zboud	M	M	M								

## Hermel

Municipality	18-Mar	19-Mar	20-Mar	Municipality	18-Mar	19-Mar	20-Mar	Municipality	18-Mar	19-Mar	20-Mar
Charbine El-Hermel	L	M	M	Hermel Jbab	M	M	MH	Hermel	M	M	MH
Maaysra El-Hermel	L	M	M	Michaa Mrajhine	ML	M	M	Ouadi Faara	L	M	M
Ras Baalbek - Ouadi	M	M	MH	Ras Baalbek El Gharb	ML	M	MH	Zighrine	L	ML	M

## Akkar

### Akkar

Municipality	18-Mar	19-Mar	20-Mar	Municipality	18-Mar	19-Mar	20-Mar	Municipality	18-Mar	19-Mar	20-Mar
Aain Tinta	M	M	MH	Aaiyat	L	M	M	Aakkar El-Aatiqa	L	ML	M
Aamar Akkar	M	M	MH	Aamar El Baykat	M	M	MH	Aamayer	M	M	M
Aamriyet Akkar	M	M	MH	Aandqet	M	M	M	Aarmeh	ML	M	M
Aarqa	M	M	MH	Aawaynat	M	M	M	Aayoun Akkar	L	M	M
Abboudiye	M	M	MH	Ain El-Zeit	M	M	MH	Ain Yaaqoub	L	M	M
Akroum	M	M	M	Aridet Cheikh Zennad	M	M	MH	Baldeh w Mazraat Bal	ML	M	M
Barcha	M	M	MH	Bardeh	M	M	M	Bebnine	M	M	MH
Beino	L	M	M	Beit Ayoub	L	M	MH	Beit El-Haouch	M	M	M
Beit Mellat	ML	M	MH	Beit Younes	L	ML	M	Berbara Akkar	ML	M	MH
Berqayel	M	M	M	Bezbina	L	ML	M	Bireh Akkar	M	M	M
Borj	L	M	MH	Bqerezla	ML	M	M	Bzal	L	ML	M
Chane	L	ML	M	Chaqdouf	L	M	M	Charbila	ML	M	M
Cheikh Mohammad	ML	M	M	Cheikh Taba Es-Sahl	M	M	MH	Cheikh Taba	ML	M	M
Cheikh Zennad	M	M	MH	Cheikhlar	M	M	M	Chir Hmairine	M	M	MH
Daghle	ML	M	M	Dahr Laissine	ML	M	MH	Darine	M	M	MH
Dawra	L	M	M	Dawsa w Baghdadi	M	M	MH	Dayret Nahr El-Kabir	M	M	MH
Deir Dalloum	M	M	MH	Deir Jennine	ML	M	M	Denbou	L	M	M
Dibbbiyeh	M	M	M	Douair Aadwiyeh	ML	M	MH	Fassikine	ML	M	M
Fnaydek	L	ML	M	Fraydes Akkar	ML	M	M	Ghazayle	M	M	M
Habchit	L	ML	M	Hakour	M	M	M	Halba	M	M	MH
Haouchab	M	M	M	Hayssat	M	M	MH	Haytla	M	M	M
Hayzouq	L	M	M	Hedd	ML	M	M	Hmaira Akkar	ML	M	M
Hmaiss Akkar	ML	M	MH	Hnaider	M	M	MH	Hokr Ed-Dahri	M	M	MH
Hokr Etti	ML	M	M	Hokr Jouret Srar	M	M	MH	Houaich	L	M	M
Hrar	L	M	M	Idbil	ML	M	M	llat	ML	M	MH
Janine	M	M	MH	Jdeidet El-Joumeh	M	M	MH	Jdeidet El-Kaiteh	M	M	M
Jebraiel	ML	M	M	Kafr	L	ML	M	Kafr	M	M	MH
Karm Asfour	ML	M	M	Kfar Melki Akkar	M	M	MH	Kfar Noun	ML	M	M
Kfarharra	ML	M	MH	Khalsa	M	M	M	Kharnoubet Akkar	M	M	M



Khirbet Daoud Aakkar	M	M	M	Khirbet El Remmane	M	M	M	Khirbet Shar	ML	M	MH
Khoreybet El-Jindi	M	M	MH	Khreibet Aakkar	L	M	M	Kneisset Aakkar	M	M	MH
Kneisset Hnaider	M	M	MH	Knisse	ML	M	MH	Kroum El-Aarab	ML	M	M
Kwachra	M	M	MH	Kweykhata	M	M	MH	Machta Hammoud	M	M	M
Majdala	M	M	M	Majdel Akkar	ML	M	M	Mar Touma	M	M	MH
Marlaya Melhem	M	M	MH	Mashha	ML	M	M	Massoudiye	M	M	MH
Mazraat Beit Ghattas	M	M	M	Mazraat En-Nahriye	M	M	M	Mechmech	L	L	M
Memneh	L	L	M	Mhammara	M	M	MH	Mighraq Aakkar	M	M	MH
Minyara	M	M	MH	Moqayteh	M	M	MH	Mounjez	ML	M	M
Msalla	M	M	MH	Mzeihmeh	M	M	MH	Nfaiseh	ML	M	M
Noura Et-Tahta	M	M	M	Ouadi El-Haour	M	M	MH	Ouadi El-Jamous	M	M	MH
Ouyoun El-Ghizlane	M	M	MH	Qaabarine	M	M	MH	Qabaait	L	ML	M
Qachlaq	M	M	M	Qantara Aakkar	M	M	M	Qarha Aakkar	M	M	MH
Qarqaf	M	M	MH	Qboula	ML	M	MH	Qleiaat Aakkar	M	M	MH
Qloud El-Baqie	ML	M	M	Qobaiyat Aakkar	ML	M	M	Qobbat Chamrat	M	M	MH
Qorayat	L	ML	M	Qornet Aakkar	L	M	M	Qsair Aakkar	M	M	M
Rahbe	L	M	M	Rihaniyet Aakkar	ML	M	M	Rmah	M	M	M
Rmoul	M	M	MH	Saadine	M	M	MH	Sadaqa	L	M	M
Saidnaya	M	M	M	Sammouniye	M	M	MH	Saysouq	ML	M	M
Semmaqiye	M	M	MH	Semmaqli	M	M	MH	Sfinet El-Dreib	ML	M	MH
Sfinet El-Qaitaa	ML	M	M	Sindyant Zeidane	L	M	M	Souaisset Aakkar	ML	M	M
Srar	M	M	M	Tal Abbas El Gharby	M	M	MH	Tal Abbas El-Charqy	M	M	MH
Tal Biret	M	M	MH	Tal Hmayra	M	M	MH	Tal Maayan Tal Kiri	M	M	MH
Tal Sibel	M	M	MH	Tallet Chattaha	ML	M	MH	Tikrit	L	M	M
Tleil	M	M	M	Tshea	L	ML	M	Zawarib	ML	M	M
Zouq El Hosniyeh	M	M	M	Zouq El-Haddara	M	M	M	Zouq El-Hbalsa	M	M	M
Zouq El-Moqachrine	M	M	MH								

## Sud

### Sour

Municipality	18-Mar	19-Mar	20-Mar	Municipality	18-Mar	19-Mar	20-Mar	Municipality	18-Mar	19-Mar	20-Mar
Aaiyeh	M	M	L	Aalma El-Chaab	M	M	M	Aaytit	M	M	L
Abbassiyeh Sour	M	M	M	Abou Chech	M	M	M	Ain Abou Abdallah	M	M	M
Ain Baal	M	M	M	Arzoun	M	M	ML	Aziyeh	M	M	M
Baflaya	M	M	ML	Barich	M	M	ML	Batouliyah	M	M	M
Bayad	M	M	L	Bazouriyeh	M	M	ML	Bediass	M	M	ML
Bestiyat	M	M	ML	Borj El Chemali	M	M	M	Borj En-Naqoura	M	M	M
Borj Rahhal	M	M	M	Boustane	M	M	ML	Btaychiyeh	M	M	M
Chaaitiye	M	M	ML	Chameh	M	M	M	Chehabiye	M	M	L
Chehour	M	M	ML	Chihine	M	M	ML	Debaal Sour	M	M	ML
Deir Amess	M	M	L	Deir Kifa	M	M	ML	Deir Qanoun El-Ain	M	M	M
Deir Qanoun El-Naher	M	M	ML	Derdghaiya	M	M	ML	Dhayra	M	M	M
Halloussiyeh	M	M	ML	Hamoul	M	M	M	Hanaouey	M	M	L
Henniye	M	M	M	Hmairi Sour	M	M	ML	Iskandarouna Sour	M	M	M
Jbal El Botom	M	M	L	Jebbin	M	M	M	Jennata	M	M	ML
Jijim	M	M	M	Jouaiya	M	M	L	Kneisset Sour	M	M	L

Maarake	M	M	ML	Maaroub	M	M	ML	Majadel	M	M	L
Majdalzoun	M	M	M	Mansouri Sour	M	M	M	Marnba	M	M	ML
Marouahine	M	M	L	Mazraat El-Zalloutiy	M	M	M	Mazraat Mechref	M	M	L
Mazraat Tayr Semhat	M	M	ML	Mheilib	M	M	M	Neffakhiyeh	M	M	ML
Niha Sour	M	M	ML	Ouadi Jilo	M	M	ML	Qana	M	M	L
Qolaileh Sour	M	M	M	Rechknayan	M	M	L	Rmadiyah	M	M	L
Selha Sour	M	M	ML	Siddiqine	M	M	L	Sour	M	M	M
Srifa	M	M	ML	Tayr Debbe	M	M	M	Tayr Felsay	M	M	ML
Tayr Harfa	M	M	M	Touayri	M	M	ML	Toura	M	M	ML
Yanouh Sour	M	M	ML	Yarine	M	M	M	Zebqine	M	M	L

## Saida

Municipality	18-Mar	19-Mar	20-Mar	Municipality	18-Mar	19-Mar	20-Mar	Municipality	18-Mar	19-Mar	20-Mar
Aanqoun	M	M	ML	Aaqtanit	M	M	ML	Aarab Ej-Jall	M	M	ML
Aarab Tabbaya	M	M	ML	Abra Saida	M	M	ML	Adloun	M	M	M
Adousiyeh	M	M	M	Ain-El-Deleb	M	M	ML	Arzai	M	M	M
Babliyah	M	M	ML	Barty	M	M	ML	Bissariyeh	M	M	M
Bnaafoul	M	M	ML	Bqosta	M	M	ML	Bramiy	M	M	ML
Daoudiyeh	M	M	ML	Dareb El-Sim	M	M	ML	Erkay	M	M	ML
Ghassanieh	M	M	M	Ghazieh	M	M	M	Hajjeh	M	M	ML
Haret Saida	M	M	ML	Hartiyeh	M	M	M	Hlaliye Saida	M	M	ML
Insariyat	M	M	M	Jazira Saida	M	M	M	Kafar Bit	M	M	ML
Kaoutariyet El-Siyad	M	M	M	Kfar Chellal	M	M	ML	Kfar Hatta Saida	M	M	ML
Kfar Milke Saida	M	M	ML	Khartoum	M	M	M	Khaziz	M	M	ML
Khirbet Ed-Douair Sa	M	M	ML	Khirbet El-Bassal	M	M	ML	Khrayeb Saida	M	M	M
Loubieh	M	M	M	Maghdouche	M	M	ML	Majdelyoun	M	M	ML
Matariyet El-Choumar	M	M	M	Matayriyeh	M	M	M	Mazraat 'Mseileh	M	M	M
Mazraat 'Snaiber	M	M	M	Mazraat Aarab Soukka	M	M	ML	Mazraat Deir Taqla	M	M	ML
Mazraat El Yahoudiye	M	M	M	Mazraat El-Housseini	M	M	ML	Mazraat El-Mhaydaleh	M	M	M
Mazraat El-Ouasta	M	M	M	Mazraat Jamjim	M	M	M	Mazraat Kaoutariyet	M	M	M
Mazraat Kfar Badda	M	M	M	Mazraat Oussamiyat	M	M	M	Mazraat Sari	M	M	M
Mazraat Sinai	M	M	ML	Meemariyeh	M	M	ML	Merouaniyeh	M	M	ML
Miyeh ou Miyeh	M	M	ML	Najjariyeh	M	M	M	Qaaqaiyat El-Snaouba	M	M	ML
Qnarit	M	M	ML	Qraie Saida	M	M	ML	Saida Ed-Dekermane	M	M	ML
Saida El-Oustani	M	M	ML	Saida El-Qadimeh	M	M	ML	Saida Kefraya	M	M	ML
Saksakiyeh	M	M	M	Salhie Saida	M	M	ML	Sarafand	M	M	M
Sfenta	M	M	ML	Tafahta	M	M	ML	Tanbourit	M	M	ML
Tebna	M	M	ML	Zaghdraiya	M	M	ML	Zeita	M	M	ML
Zrariyeh	M	M	ML								

## Jezzine

Municipality	18-Mar	19-Mar	20-Mar	Municipality	18-Mar	19-Mar	20-Mar	Municipality	18-Mar	19-Mar	20-Mar
Ain El-Mir (El Estab	M	M	ML	Anane	M	M	ML	Aramta	M	M	ML
Ariya	M	M	L	Aychiyeh	M	M	ML	Azour	ML	M	L
Baba	ML	M	L	Bayssour Jezzine	M	M	ML	Benoueteh Jezzine	M	M	ML
Bhannine	M	M	L	Bisri	ML	M	L	Bkassine	ML	M	L
Bouslaya	ML	M	L	Btedine El-Leqech	ML	M	L	Chbail	L	M	L
Choualiq Jezzine	M	M	ML	Dahr Ed-Deir	ML	M	ML	Deir El Qattine	ML	M	L

Demachqiyeh	M	M	ML	Ghabbatiyeh	M	M	L	Harf Jezzine	ML	M	L
Hassaniyeh	M	M	ML	Haytouleh	M	M	ML	Haytura	M	M	L
Hidab	M	M	ML	Homsiyeh	M	M	L	Jabal Toura	M	M	L
Jarmaq	M	M	ML	Jensnaya	M	M	ML	Jernaya	M	M	ML
Jezzine	M	M	L	Karkha	M	M	ML	Kfar Falous	M	M	ML
Kfar Houna	M	M	L	Kfar Jarrah	M	M	ML	Lebaa	M	M	ML
Louayzet Jezzine	M	M	ML	Machmouche	ML	M	L	Mahmoudiyeh Jezzine	M	M	ML
Maknounye Jezzine	ML	M	L	Maraat Ouazaiyeh	M	M	ML	Mazraat Daraya	ML	M	ML
Mazraat El-Aarqoub	ML	M	ML	Mazraat El-Mathane	ML	M	L	Mazraat El-Rahbane	ML	M	L
Mazraat Khallet Khaz	M	M	ML	Mazraat Louzid (Loua	L	M	ML	Mazraat Qrouh	M	M	ML
Mazraat Tamra	M	M	ML	Mazraat Zighrine Jez	M	M	ML	Mazraat	ML	M	ML
Mharbiyeh	M	M	ML	Midane Jezzine	ML	M	ML	Mjeydel Jezzine	M	M	ML
Mlikh	ML	M	L	Mrah El-Hbasse	M	M	ML	Ouadi Baanqoudaine	M	M	ML
Ouadi El-Laymoun	M	M	ML	Ouardiyeh	L	M	ML	Qabaa Jezzine	ML	M	L
Qatrani	ML	M	ML	Qaytouleh	ML	M	L	Qtaleh Jezzine	ML	M	ML
Rihane Jezzine	M	M	ML	Rimat	ML	M	ML	Roum	M	M	ML
Roummanet	M	M	ML	Sabbah	ML	M	L	Saydoun	ML	M	ML
Sfaray	M	M	ML	Snaya	M	M	L	Sojoud	M	M	ML
Srayri	M	M	ML	Taaid	ML	M	ML	Wadi Jezzine	ML	M	L
Zhalta	M	M	L								

## Bekaa

### West Bekaa

Municipality	18-Mar	19-Mar	20-Mar	Municipality	18-Mar	19-Mar	20-Mar	Municipality	18-Mar	19-Mar	20-Mar
Aammiq BG	ML	M	M	Ain El Tineh BG	M	M	L	Ain Zebdeh	ML	M	L
Ana	ML	M	M	Aytanit	ML	M	L	Baaloul BG	ML	M	ML
Bab Mareh	M	M	L	Chouberqiye Aammiq	M	M	M	Dakoue	M	M	M
Deir Ain El-Jaouze	ML	M	L	Deir Tahniche	ML	M	M	Ghaza	M	M	M
Harime El-Soughra	M	M	M	Hoch Harimeh	M	M	M	Jazira BG	M	M	M
Jib Jennine	M	M	M	Kamed-El-Laouz	M	M	M	Kefraya BG	L	ML	ML
Khiara El Atika	M	M	M	Khiara	M	M	M	Khirbet Qanafar	ML	M	ML
Lala	ML	M	M	Lebbaya BG	M	M	ML	Loussa	M	M	ML
Machghara	M	M	ML	Manara (Hammar) BG	ML	M	M	Mansoura BG	M	M	M
Marej BG	M	M	M	Maydoun	M	M	ML	Ouaqf BG	M	M	M
Qaraaoun	M	M	ML	Qelya	M	M	ML	Raouda (Istabel)	M	M	M
Saghbine	ML	M	L	Sohmor	M	M	ML	Soltan Yacoub el Ara	M	M	M
Souairy	ML	M	M	Sultan Yaacoub	M	M	M	Tal Znoub	ML	M	M
Yehmor BG	M	M	ML	Zilaya	ML	M	ML				

### Zahle

Municipality	18-Mar	19-Mar	20-Mar	Municipality	18-Mar	19-Mar	20-Mar	Municipality	18-Mar	19-Mar	20-Mar
Aanjar (Haouch Mouss	M	M	M	Ablah	M	M	M	Ain Kfarzabad	M	M	M
Ali-El-Nahri	M	M	ML	Bar Elias	M	M	ML	Bouarej	ML	M	ML
Cheberqiyet Tabet	ML	M	ML	Chtaura	ML	M	ML	Deir El Ghazal	ML	M	ML
Delhamiyet Zahle	M	M	ML	Ferzol	M	M	M	Haouch El-Ghanam	M	M	ML
Haouch Es-Siyadeh	M	M	M	Haouch Hala	M	M	ML	Haouch Mandara	M	M	ML



Haouch Qayssar	M	M	ML	Hezerta	M	M	ML	Hosh Moussa	M	M	ML
Jdita	ML	M	ML	Kfarzabad	M	M	ML	Ksara	M	M	ML
Majdel Aanjar	M	M	M	Makssi	ML	M	ML	Massa	M	M	ML
Mazraat Er-Remtaniye	M	M	ML	Mrayjat Zahle	ML	M	ML	Mzaraa Zahle	M	M	ML
Nabi Ayla	M	M	M	Nasriyet Rizk	M	M	ML	Nasriyet Zahle	M	M	M
Niha Zahle	M	M	M	Ouadi Ed-Deloum	ML	M	ML	Ouadi El-Arayech	ML	M	M
Qaa El Rim	M	M	ML	Qab Elias	M	M	M	Qousaya	M	M	ML
Rhit	M	M	ML	Riyak	M	M	ML	Saadnayel	M	M	ML
Taal El-Akhdar	M	M	M	Taalbeya	ML	M	M	Taanayel	M	M	ML
Talamara	M	M	ML	Tcheflik Edde Haouch	M	M	M	Tcheflik Qiqano	M	M	M
Terbol Zahle	M	M	ML	Touaite Zahle	M	M	ML	Zahle Aradi	M	M	M
Zahle El-Berbara	ML	M	ML	Zahle El-Maallaqa	ML	M	ML	Zahle El-Midane	ML	M	ML
Zahle Er-Rassiye	ML	M	ML	Zahle Haouch El-Ouma	M	M	ML	Zahle Haouch El-Ouma	M	M	M
Zahle Haouch Ez-Zara	ML	M	ML	Zahle Maalaaqa Aradi	M	M	M	Zahle Mar Antonios	ML	M	ML
Zahle Mar Elias	ML	M	M	Zahle Mar Gerios	ML	M	M	Zahle Saydet En-Naja	ML	M	M
Zebdoul	ML	M	ML								

## Rachaiya

Municipality	18-Mar	19-Mar	20-Mar	Municipality	18-Mar	19-Mar	20-Mar	Municipality	18-Mar	19-Mar	20-Mar
Ain Arab Rachaiya	M	M	ML	Ain Ata	ML	ML	M	Ain Harche	M	M	ML
Aqabe Rachaya	M	M	M	Ayha	M	M	M	Ayta El Fokhar	M	M	M
Bakifa Rachaya	M	M	M	Bakka	M	M	M	Beit Lahya	M	M	M
Bireh Rachaiya	M	M	M	Daher El Ahmar	ML	M	M	Deir El-Achayer	M	M	M
Heloua Rachaiya	M	M	M	Hoch El Qannabeh Rac	ML	M	M	Kaoukaba Bou Arab	M	M	M
Kfar Danis	ML	M	M	Kfar Mechki	M	M	M	Kfar Qouq	M	M	M
Kherbet Rouha	M	M	M	Majdel Balhiss	M	M	ML	Mdoukha	M	M	M
Mhaydseh Rachaiya	ML	M	M	Nabi Safa	M	M	ML	Rachaiya	M	M	M
Rafid Rachaiya	ML	M	M	Selsata (Mazraat Dei	L	M	M	Tannoura	M	M	ML
Yanta	M	M	M								

## Beyrouth

### Beyrouth

Municipality	18-Mar	19-Mar	20-Mar	Municipality	18-Mar	19-Mar	20-Mar	Municipality	18-Mar	19-Mar	20-Mar
Achrafieh	M	M	M	Ain el-Mreisse	M	M	M	Bachoura	M	M	M
Beirut Central Distr	M	M	M	Marfai	M	M	M	Mazraa	M	M	M
Medaouar	M	M	M	Minet el-Hosn	M	M	M	Mwssaitbeh	M	M	M
Ras Beirut	M	M	M	Rmeil	M	M	M	Saifi	M	M	M
Zqaq el-Blat	M	M	M								



## نشرة الطقس الصادرة عن دائرة التقديرات في مصلحة الأرصاد الجوية

**النشرة: المسائية**

**الجمعة: ١٧ آذار ٢٠١٧**

**الحالة العامة:** طقس مستقر نسبياً يسيطر على الحوض الشرقي للمتوسط حتى صباح يوم الاثنين حيث يتقلب تدريجياً.  
**الطقس المتوقع في لبنان:**

**السبت:** غائم جزئياً بسحب متوسطة مع ارتفاع ملموس بدرجات الحرارة خاصة في الداخل وعلى المرتفعات كما تنشط الرياح أحياناً.  
**الأحد:** غائم جزئياً مع انخفاض تدريجي وملموس بدرجات الحرارة خاصة في الداخل وعلى المرتفعات، كما يتكون الضباب على المرتفعات اعتباراً من بعد الظهر وتنشط الرياح اعتباراً من المساء.  
**الاثنين:** غائم جزئياً الى غائم أحياناً دون تعديل يذكر على درجات الحرارة ورياح ناشطة وتساقط أمطار متفرقة أحياناً كما تتساقط الثلوج بشكل متفرق اعتباراً من ارتفاع ١٦٠٠ متر وما فوق.

الأحد		السبت		الجمعة		درجات الحرارة المتوقعة	
١٧/١٣	١٨/١١	١٩/١٢	١٩/١٠	١٧/١٢	١٧/١٠	صور	الساحل
١٧/١٣		١٨/١٣		١٧/١٣		بيروت	
١٨/١١		١٩/١٠		١٧/١٠		طرابلس	
١٠/٤	١١/٤	١٥/٥	١٥/٥	١٠/٥	١٠/٤	بيصور	الجبال
١١/٤		١٤/٥		٨/٤		قرطبا	
٧/١		١١/١-		٦/١-		الأرز	
١٠/٧	١١/٧	١٦/٧	١٧/٧	١١/٦	١١/٦	القرعون	الداخل
١١/٨		١٧/٨		١١/٧		مرجعيون	
١١/٨		١٧/٧		١١/٦		زحلة	

**الرياح السطحية:** شمالية الى شمالية شرقية، سرعتها بين ١٥ و ٤٠ كلم/س.

**الانقشاع:** جيد اجمالاً

**الرطوبة النسبية على الساحل:** بين ٥٠ و ٨٠ %.

**حال البحر:** متوسط ارتفاع الموج الى مائج .

**الضغط الجوي:** ١٠٠٩ HPA

**ساعة شروق الشمس:** ٥:٤٥

**حرارة سطح الماء:** ١٧°م.

**أي ما يعادل:** ٧٥٧ ملم زئبق

**ساعة غروب الشمس:** ١٧:٤٨