

# Lebanon Fire Risk Bulletin



CIVIL DEDEFENCE

**Refer to cadast table condition.**

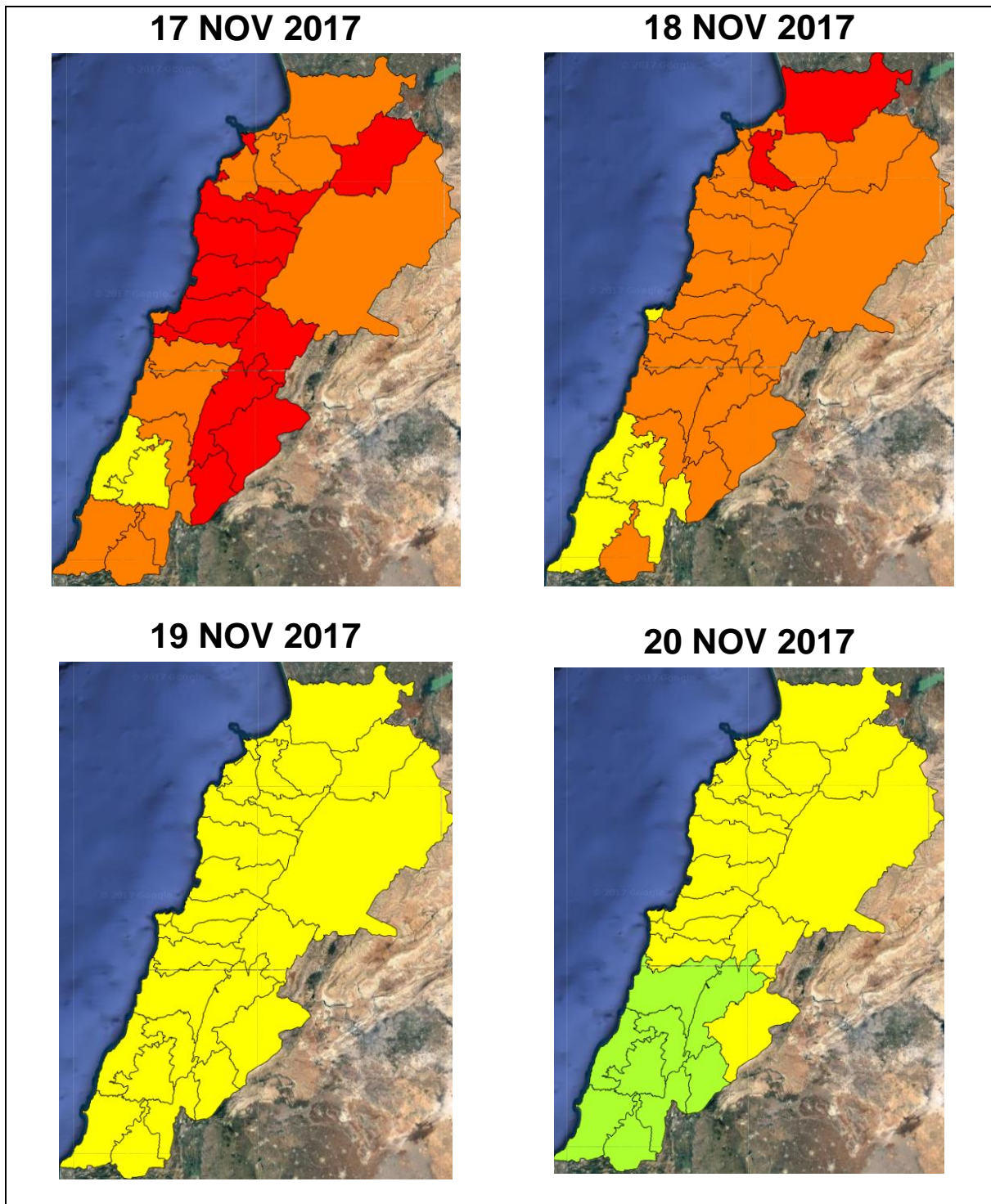
**Please note that the indicated temperature is at 2 meters height from the ground.**

*General description of potential fire risk situation*

Symbol	Level of risk	Meaning and actions
VL	<b>Very low</b>	Very low fire risk. Controlled burning operations can be hardly executed due to high fuel moisture content. Normally wildfires self-extinguish.
L	<b>Low</b>	Low fire risk. Controlled burning operations can be executed with a reasonable degree of safety.
ML	<b>Medium low</b>	Medium-low fire risk. Controlled burning operations can be executed in safety conditions. All the fires need to be extinguished.
M	<b>Medium</b>	Medium fire risk. Controlled burning operations would be avoided. All the fires need to be very well extinguished.
M	<b>Medium high</b>	Controlled burning is not recommended. Open flame will start fires. Cured grasslands and forest litter will burn readily. Spread is moderate in forests and fast in exposed areas. Patrolling and monitoring is suggested. Fight fires with direct attack and all available resources.
H	<b>High</b>	Ignition can occur easily with fast spread in grass, shrubs and forests. Fires will be very hot with crowning and short to medium spotting. Direct attack on the head may not be possible requiring indirect methods on flanks. Patrolling and monitoring the territory is highly suggested.
E	<b>Extreme</b>	Ignition can occur also from sparks. Fires will be extremely hot with fast rate of spread. Control may not be possible during day due to long range spotting and crowning. Suppression forces should limit efforts to limiting lateral spread. Damage potential total. Patrolling and monitoring the territory is highly suggested.

**Beirut, 18 November 2017**

# FIRE RISK INDEX

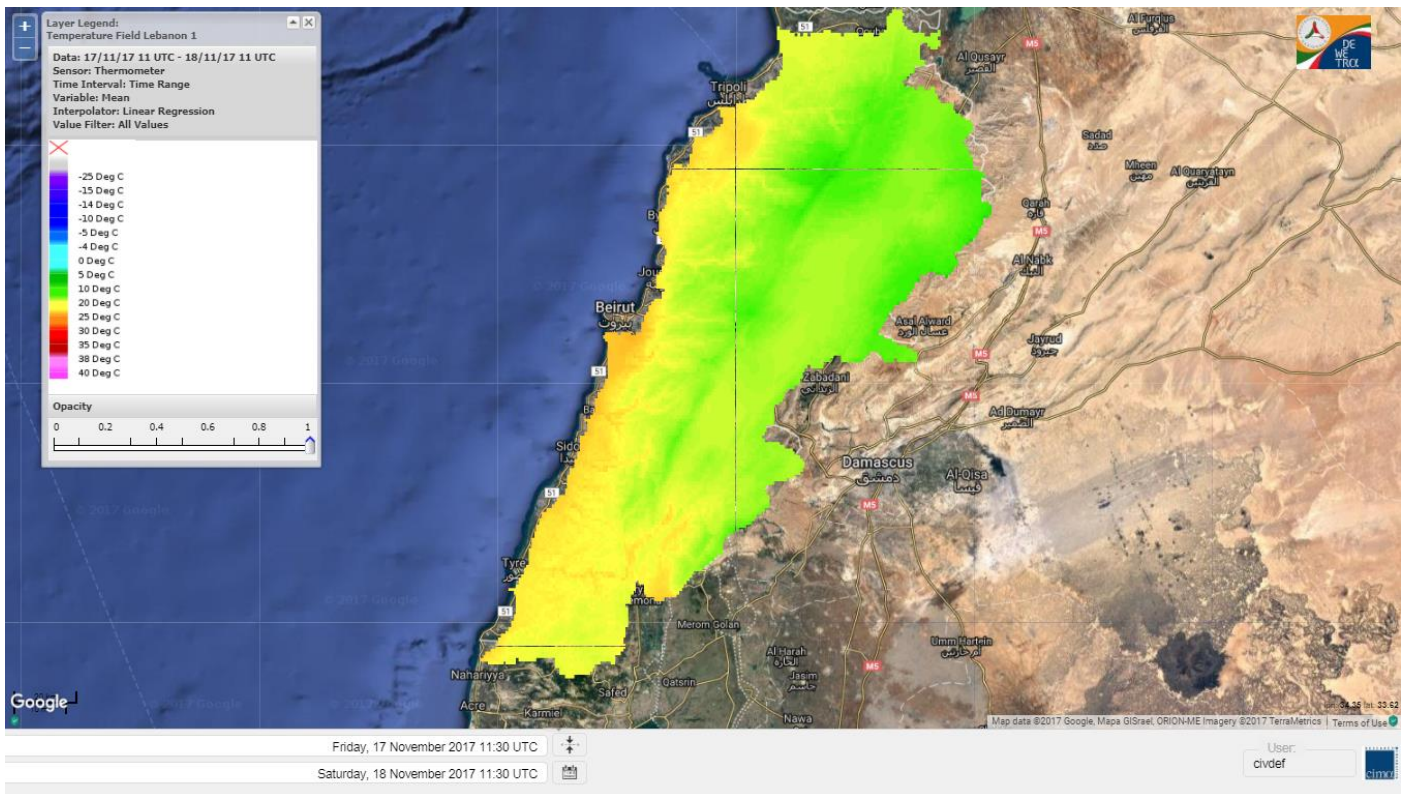


Layer Legend:  
Lebanon Wildfire Risk Index 1

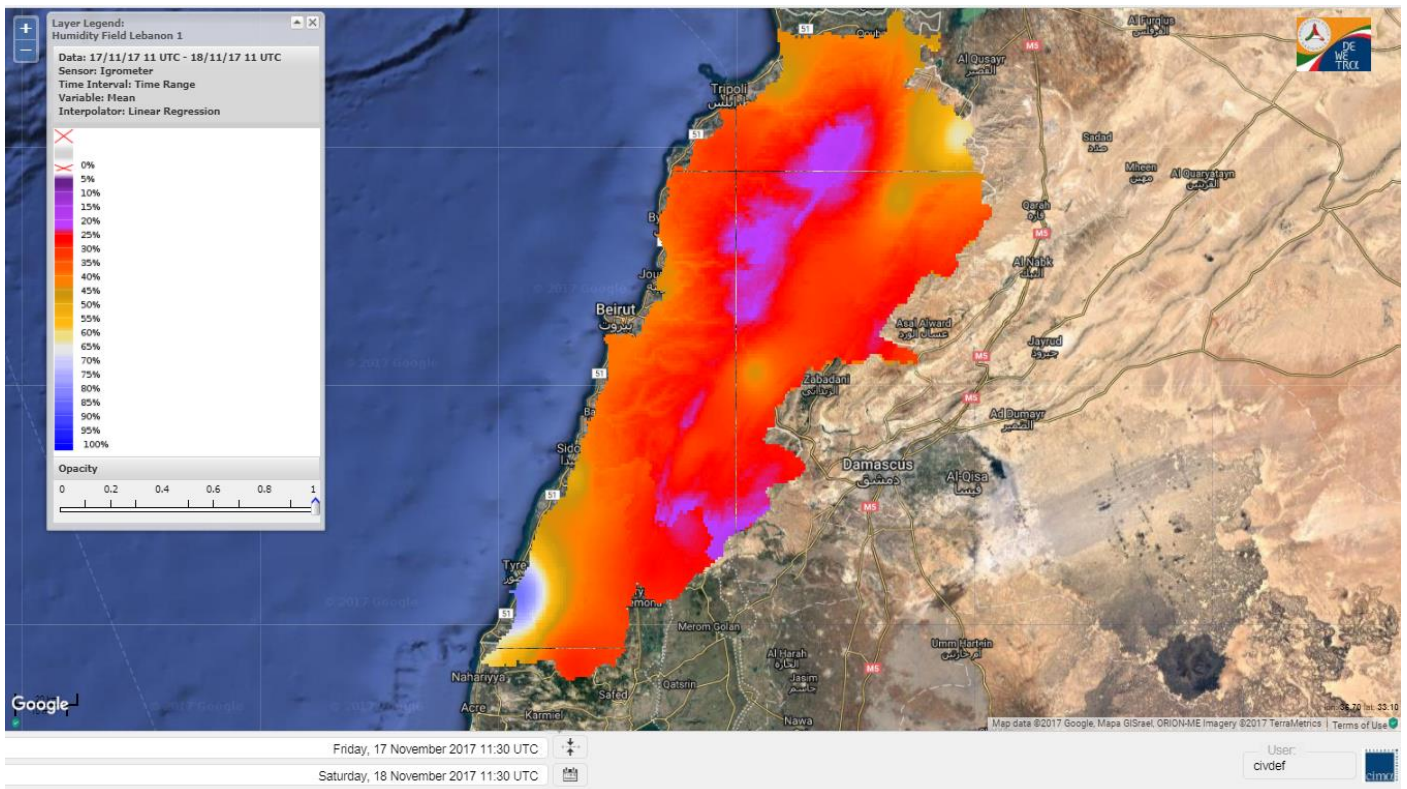
Data: Run: 18/11/2017 00:00. Forecast for 18  
Model: RISICO for the Republic of Lebanon  
Variable: Fire Weather Index  
Spatial Resolution: Caza

- VERY LOW
- LOW
- MEDIUM-LOW
- MEDIUM
- MEDIUM-HIGH
- HIGH
- EXTREME

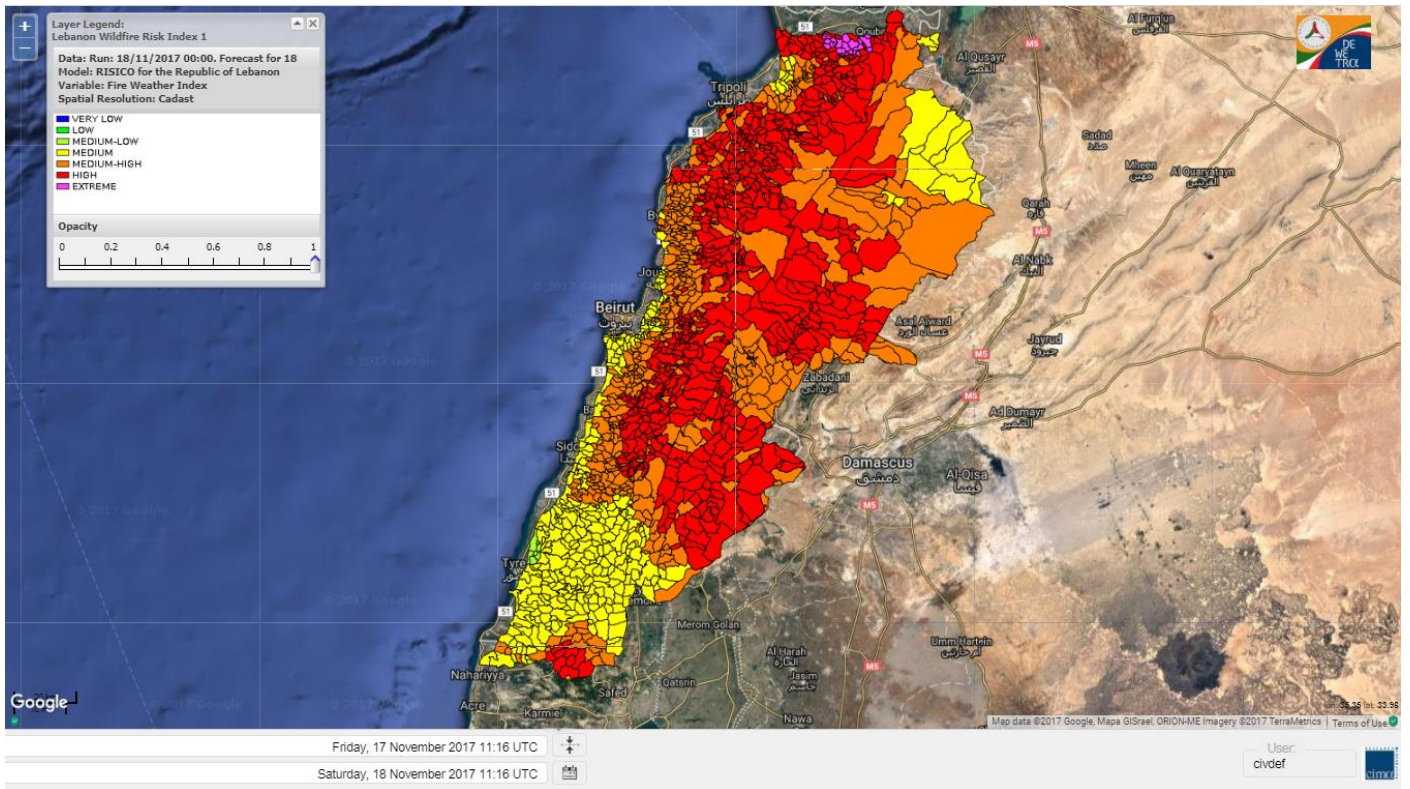
# Lebanon temperature for 18 NOV 2017



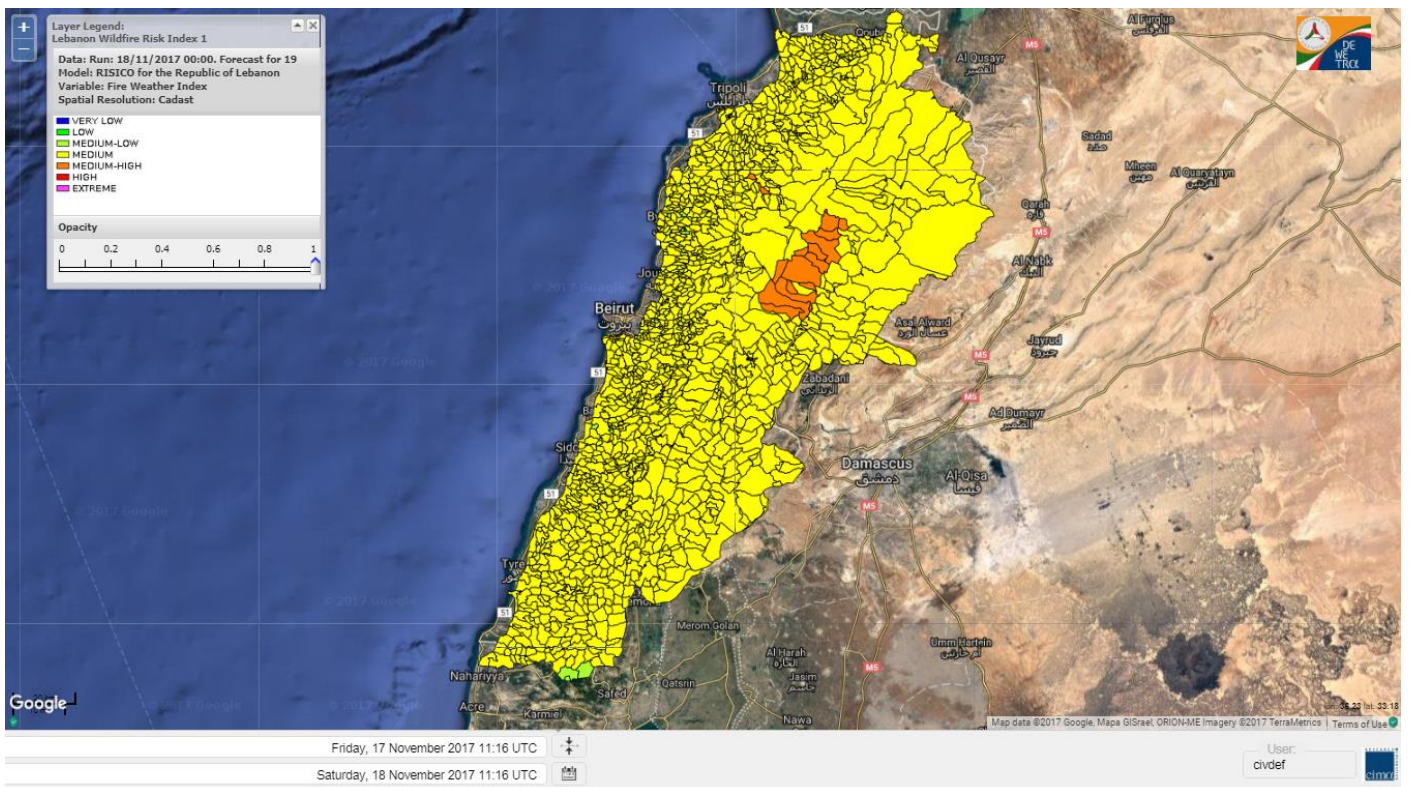
# Lebanon humidity for 18 NOV 2017



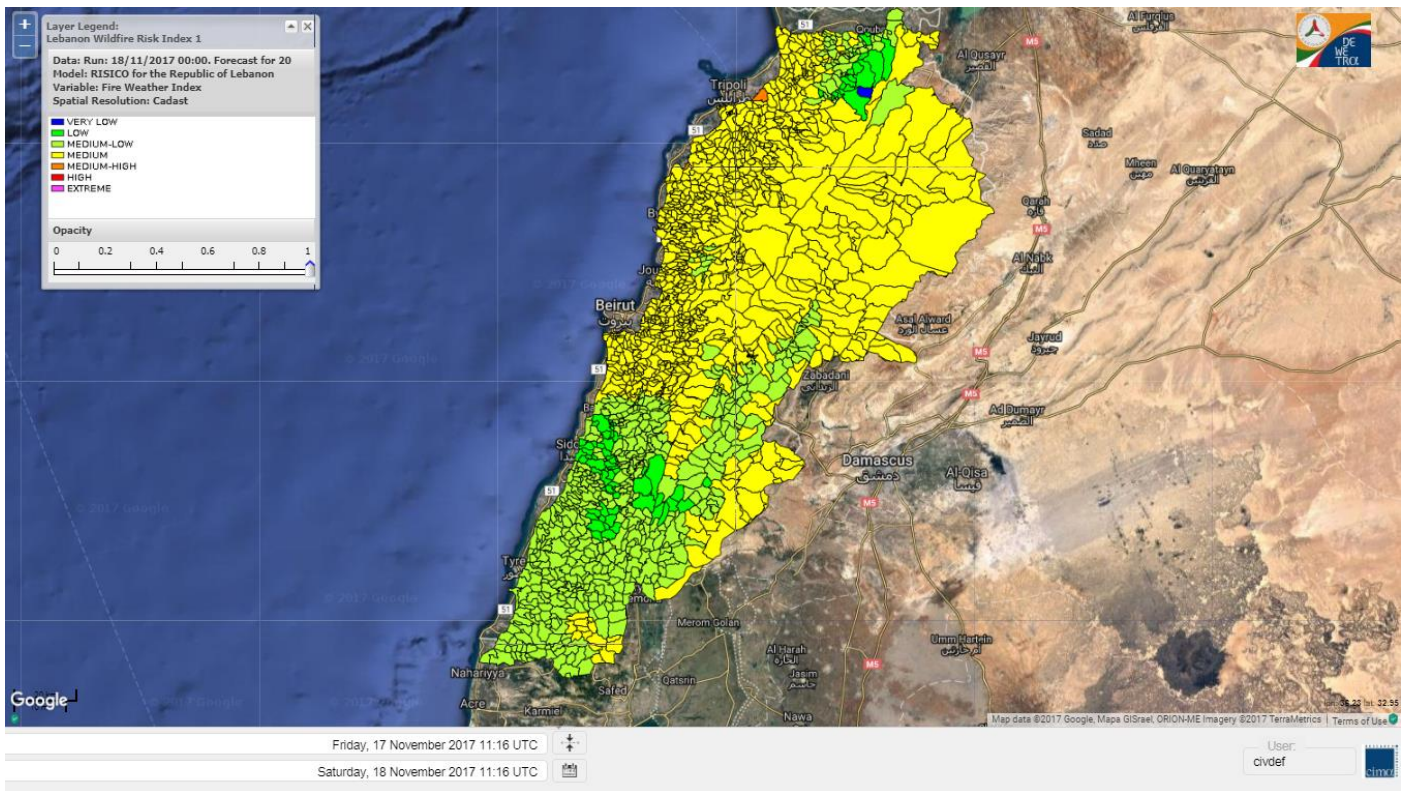
# Lebanon for 18 NOV 2017



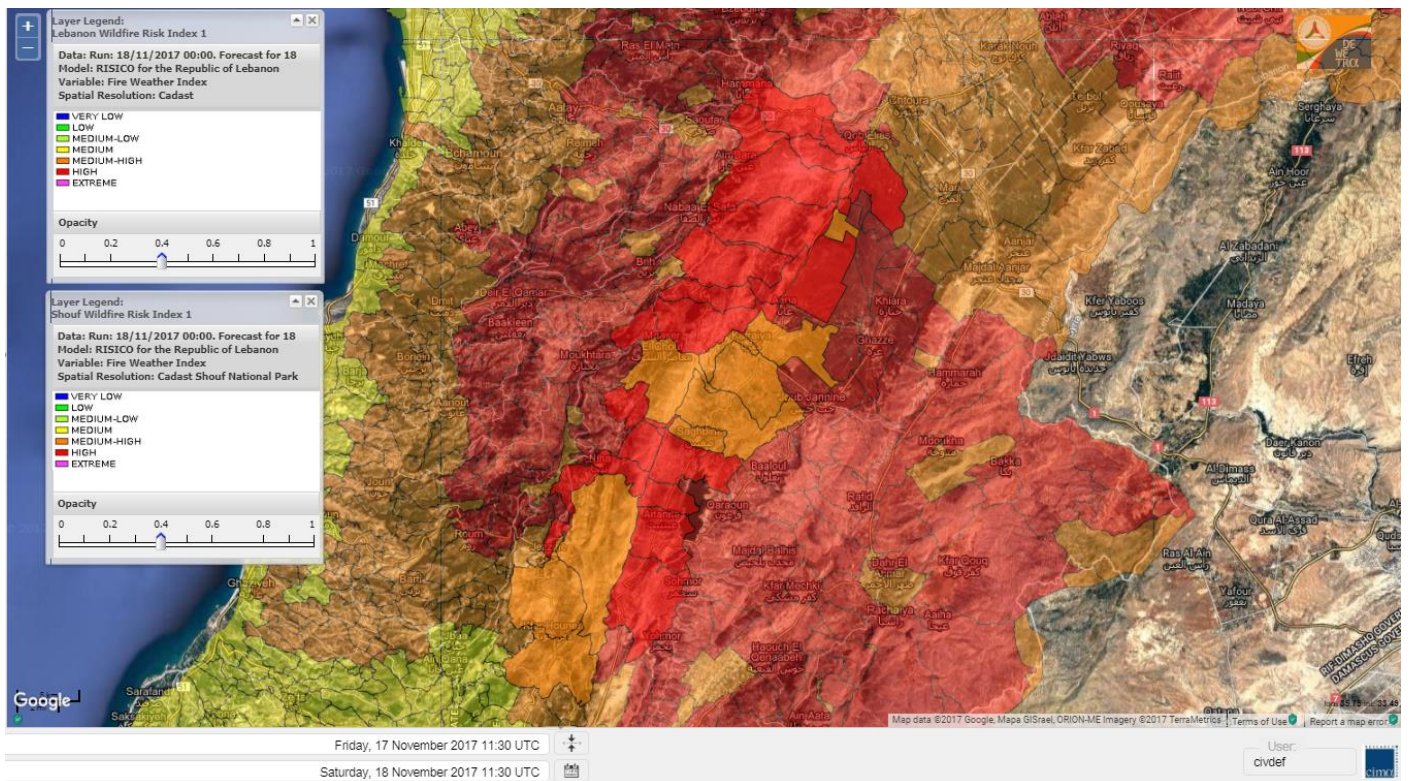
# Lebanon for 19 NOV 2017



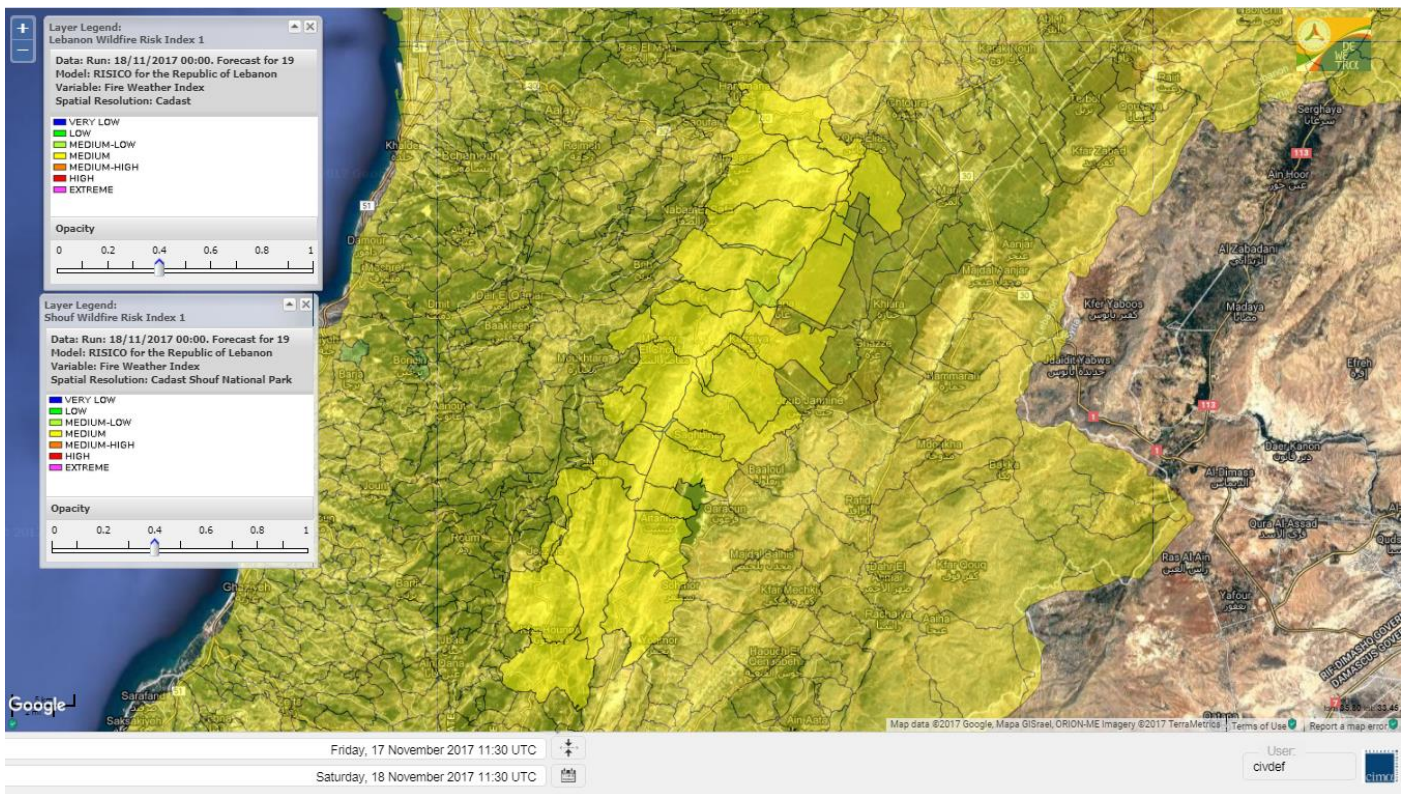
# Lebanon for 20 NOV 2017



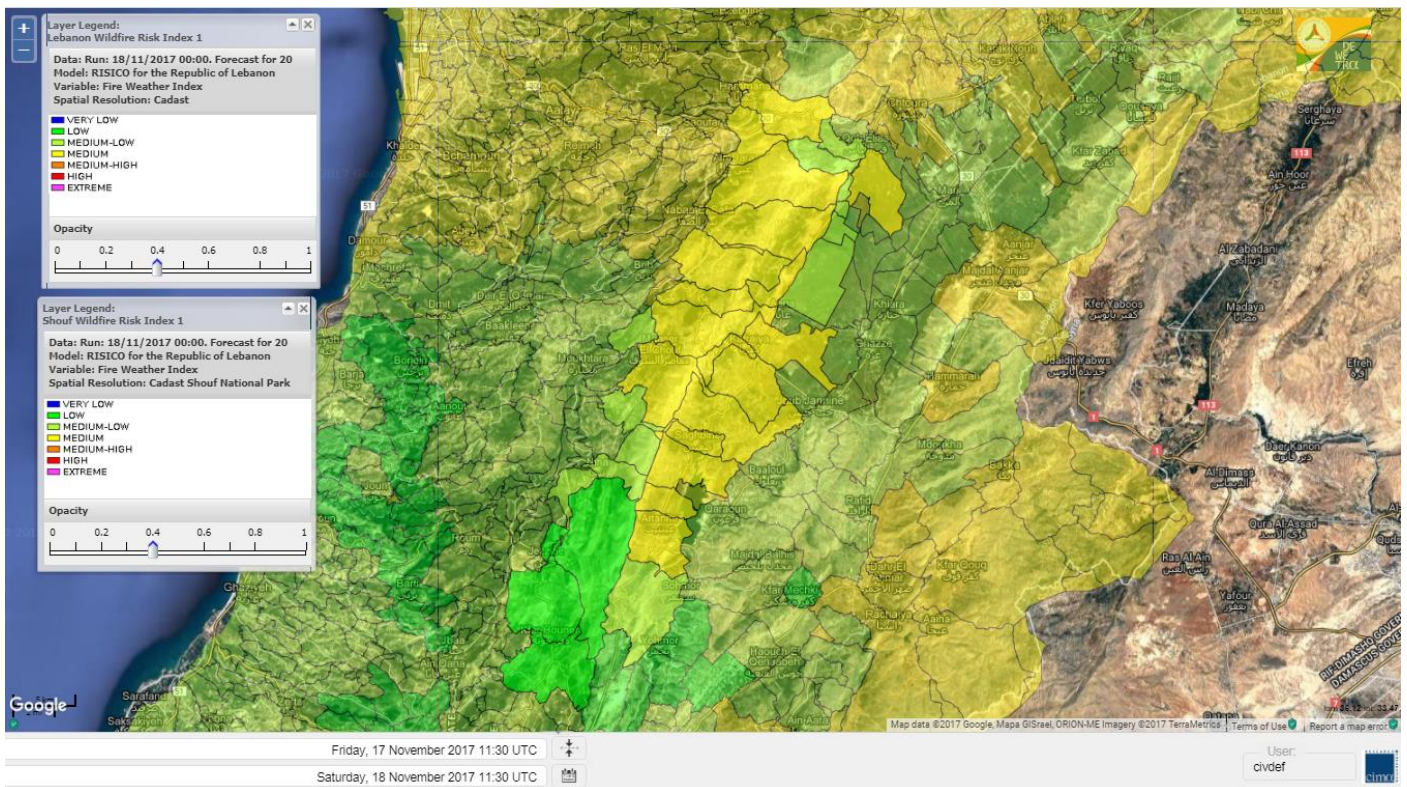
# Shouf Biosphere Reserve Forecast for 18 NOV 2017



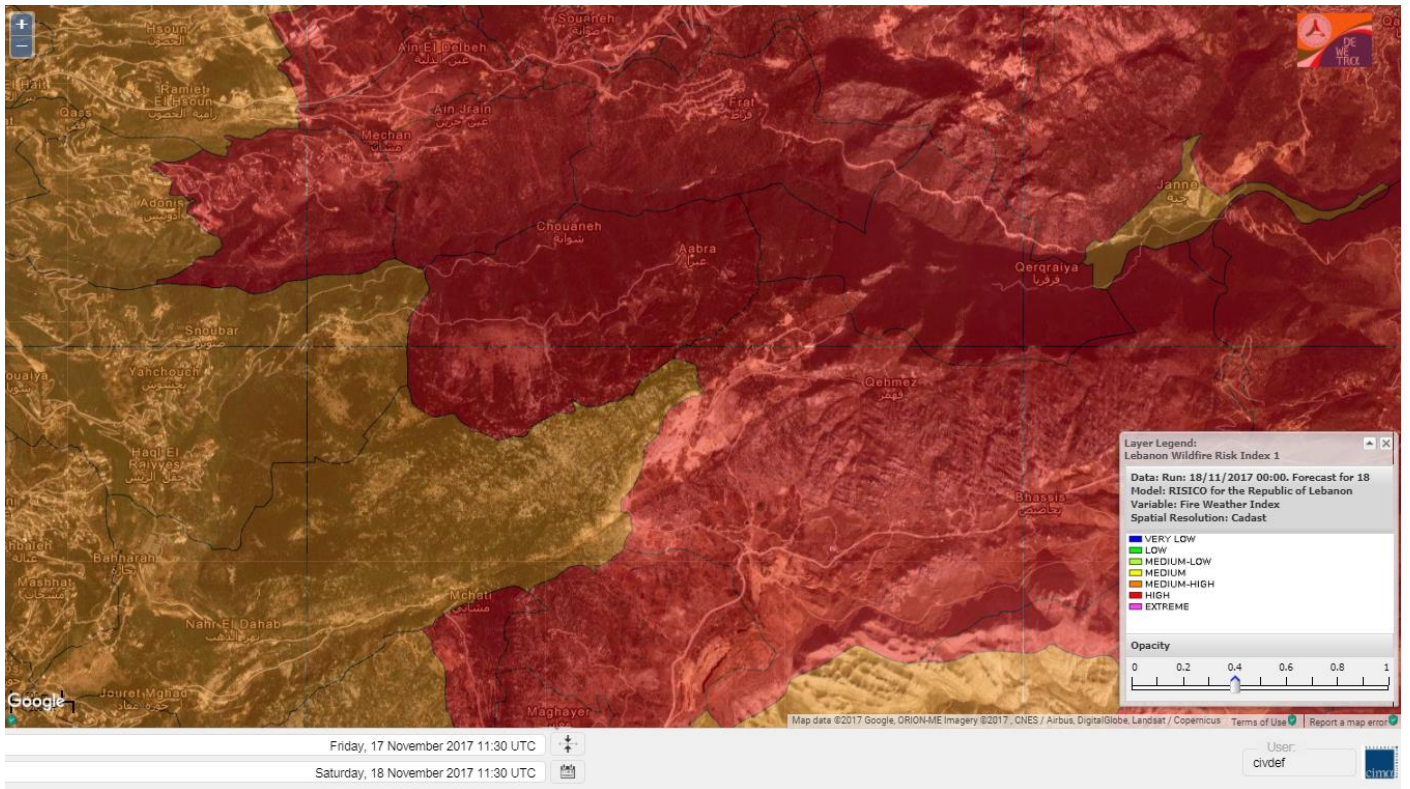
# Shouf Biosphere Reserve Forecast for 19 NOV 2017



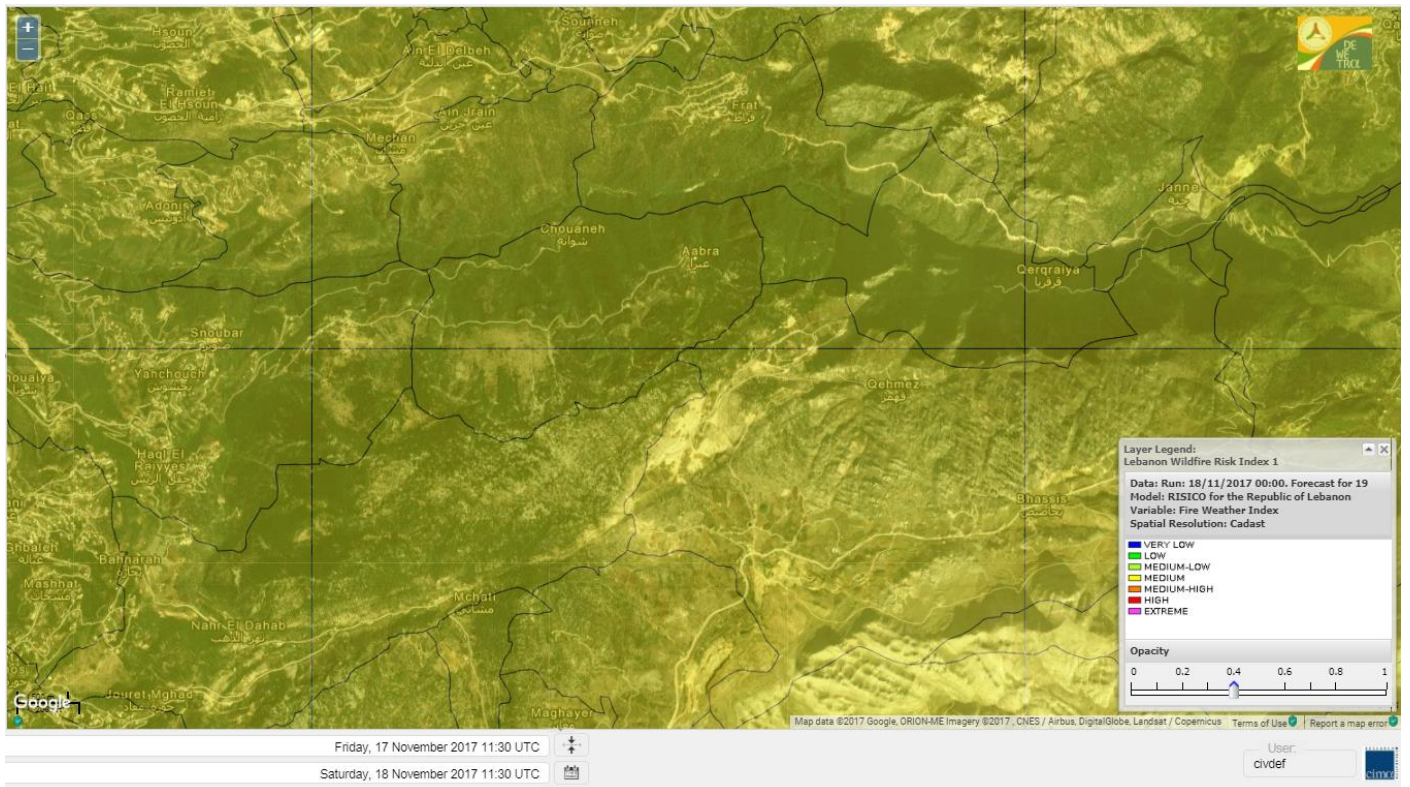
# Shouf Biosphere Reserve Forecast for 20 NOV 2017



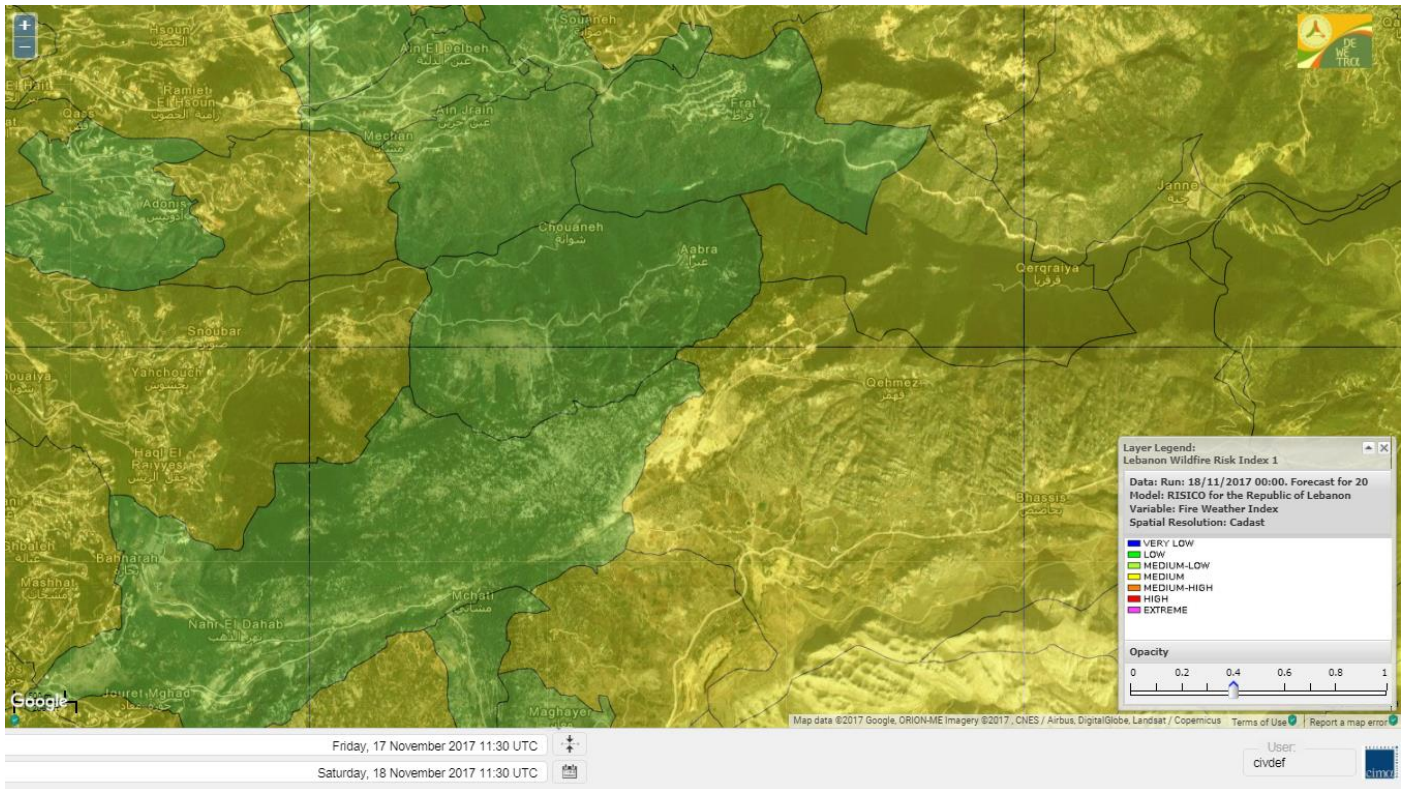
# Jabal Moussa Reserve Forecast for 18 NOV 2017



# Jabal Moussa Reserve Forecast for 19 NOV 2017



# Jabal Moussa Reserve Forecast for 20 NOV 2017





## Nord

### Koura

Municipality	18-Nov	19-Nov	20-Nov	Municipality	18-Nov	19-Nov	20-Nov	Municipality	18-Nov	19-Nov	20-Nov
Aaba	MH	M	M	Afsaddiq	MH	M	M	Ain Ekriane	MH	M	M
Amioun	MH	M	M	Anfeh	MH	M	M	Badbhoun	MH	M	M
Barghoun	MH	M	M	Barsa	H	M	M	Batroumine	MH	M	M
Bdebba	MH	M	M	Bechmizine	MH	M	M	Bednayet El-Koura	H	M	M
Bhabbouch El-Koura	MH	M	M	Bkeftine	H	M	M	Bnehran	MH	M	M
Bqaiia El-Koura	MH	M	M	Bsarma	MH	M	M	Btaaboura	MH	M	M
Bterram	MH	M	M	Btouratij	MH	M	M	Bziza	MH	M	M
Dar Beechtar	H	M	M	Dar Chmezzine	MH	M	M	Deddeh	H	M	M
Deir El-Balamand	MH	M	M	Fih	H	M	M	Hraiche	MH	M	M
Ijdaabrine	MH	M	M	Kaftoun	MH	M	M	Kefraya El-Koura	MH	M	M
Kfarakka	MH	M	M	Kfarhata	MH	M	M	Kfarhazir	MH	M	M
Kfarkahel	MH	M	M	Kfarsaroun	MH	M	M	Kosba	MH	M	M
Mejdel el-Koura	H	M	M	Nakhle	MH	M	M	Qalhat	MH	M	M
Ras Masqa	MH	M	M	Rechdibbine	MH	M	M	Zakroun	MH	M	M
Zgharta El-Mtaouile	MH	M	M								

### Bcharre

Municipality	18-Nov	19-Nov	20-Nov	Municipality	18-Nov	19-Nov	20-Nov	Municipality	18-Nov	19-Nov	20-Nov
Aabdine	MH	M	M	Bane	H	M	M	Barhelioun	MH	M	M
Bazouone	MH	M	M	Becharre	MH	M	M	Beit Menzer	MH	M	M
Billa	MH	M	M	Blaouza	H	M	M	Bqaa Kafra	MH	M	M
Bqerqacha	MH	M	M	Breissat	MH	M	M	Dimane	MH	M	M
Hadath El Jobbeh	MH	M	M	Hadchit	MH	M	M	Hasroun	MH	M	M
Mazraat Aassaf	MH	M	M	Mazraat Bani Saab	MH	M	M	Mchaa El-Jobbeh	H	M	M
Metrit	MH	M	M	Moghr El-Ahoual	MH	M	M	Ouadi Qannoubine	MH	MH	M
Qanat	MH	M	M	Qnayouer	MH	M	M	Tourza	MH	M	M

### Batroun

Municipality	18-Nov	19-Nov	20-Nov	Municipality	18-Nov	19-Nov	20-Nov	Municipality	18-Nov	19-Nov	20-Nov
Aabrine	MH	M	M	Aalali	H	M	M	Aartziz	MH	M	M
Abdelli	MH	M	M	Ajdabra	MH	M	M	Assia	MH	M	M
Basbina	MH	M	M	Batroun	MH	M	M	Bcheleh	MH	M	M
Bechtoudar	MH	M	M	Beit Chlala	MH	M	M	Beit Kassab	MH	M	M
Bijdarfil	MH	M	M	Bqesmaya	MH	M	M	Chatine	MH	M	M
Chebtin	H	M	M	Chekka	MH	M	M	Daael	MH	M	M
Dahr Abi Yaghi	MH	M	M	Daraya El-Batroun	MH	M	M	Deir Billa	MH	M	M
Deir Kfifane	MH	M	M	Deir Mar Youhanna EL	H	M	M	Deir Mar Youssef Jra	MH	M	M
Douma	MH	M	M	Douq	MH	M	M	Eddeh El-Batroun	MH	M	M
Ftatah El-Batroun	MH	M	M	Ghouma	MH	M	M	Hadatoun	H	M	M
Hamat	MH	M	M	Harbouna	MH	M	M	Hardine	MH	M	M
Helta	MH	M	M	Hery	MH	M	MH	Jebbla	MH	M	M
Jrabta El-Batroun	MH	ML	M	Jrane El-Batroun	MH	M	M	Kfar Aabida	MH	M	M
Kfar Halda	MH	M	M	Kfarb Shlaimane	MH	M	M	Kfarhatna	MH	M	M
Kfarhay	MH	M	M	Kfarhelos	MH	M	M	Kfifane	MH	M	M

Kfour El Arabi	H	M	M	Koubba	MH	M	M	Kour	MH	M	M
Mar Mama	MH	M	M	Masrah	H	M	M	Mehmarch	MH	M	M
Mrah Chdid	MH	M	M	Mrah El Ziyat	MH	M	M	Mrah El-Hajj	MH	M	M
Nahle El-Batroun	MH	M	M	Niha El-Batroun	MH	M	M	Ouahj El-Hajjar	MH	M	M
Ouata Houb	MH	M	M	Qatnaaoun	MH	M	M	Racha	MH	M	M
Rachana	MH	M	M	Rachkida	MH	M	M	Ram El-Batroun	MH	M	M
Ras Nakhach	MH	M	M	Selaata	MH	M	M	Sghar	MH	M	M
Smar Jbayl	MH	M	M	Sourat El-Batroun	MH	M	M	Tannourine El-Faouqa	MH	M	M
Tannourine Et-Tahta	MH	M	M	Thoum	MH	M	M	Toula El-Batroun	MH	M	M
Zan	MH	M	M								

## Zgharta

Municipality	18-Nov	19-Nov	20-Nov	Municipality	18-Nov	19-Nov	20-Nov	Municipality	18-Nov	19-Nov	20-Nov
Aachach	MH	M	M	Aalma	MH	M	M	Aarde	MH	M	M
Aintourine	H	M	M	Arabet Qozhaya	H	M	M	Arde	H	M	M
Arjis	MH	M	M	Asnoun	MH	M	M	Ayto	MH	M	M
Basloukit	MH	M	M	Bchannine	MH	M	M	Besebeel	MH	M	M
Bhairret Toula	MH	M	M	Bnachee	MH	M	M	Boussit	H	M	M
Danha	MH	M	M	Daraiya Zgharta	H	M	M	Deir Jdeide	H	M	M
Ehden	MH	M	M	Halan	MH	M	M	Hariq Zgharta	H	M	M
Houakir	MH	M	M	Hraiqis	H	M	M	laal	MH	M	M
Ijbaa	MH	M	M	Karm Saddeh	MH	M	M	Kfarchakhna	H	M	M
Kfardlaqous	MH	M	M	Kfarfou	H	M	M	Kfarhata Zgharta	MH	M	M
Kfarhoura	MH	M	M	Kfarsghab	MH	M	M	Kfaryachit	MH	M	M
Kfarzaina	MH	M	M	Khaldiye	MH	M	M	Mazraat Ajbeaa	MH	M	M
Mazraat Et-Teffah	MH	M	M	Mazraat Jneid	MH	M	M	Mejdlaiya Zgharta	MH	M	M
Merh Kfarsghab	MH	M	M	Miryata	MH	M	M	Miziara	MH	M	M
Mzraat Kefraya	MH	M	M	Qorah Bach	MH	M	M	Rachiine	MH	M	M
Ras Kifa	MH	M	M	Sakhra	MH	M	M	Sebhel Zgharta	MH	M	M
Serhel	MH	MH	M	Tallet Zgharta	MH	M	M	Toula Zgharta	MH	M	M
Zgharta	MH	M	M								

## Minieh-Denniye

Municipality	18-Nov	19-Nov	20-Nov	Municipality	18-Nov	19-Nov	20-Nov	Municipality	18-Nov	19-Nov	20-Nov
Aasaymout	MH	M	M	Aaymar	MH	M	M	Aazki	MH	M	M
Ain El-Tineh-Miniyeh	MH	M	M	Assoun	MH	M	M	Bakhaaoun	MH	M	M
Bchennata	MH	M	M	Bechehhara	MH	M	M	Beddawi	MH	M	M
Behouaita	MH	M	M	Beit El Foqss	MH	M	M	Beit Haouik	MH	M	M
Beit Zoud	MH	M	M	Bekaasafrine	MH	M	M	Borj El Yahoudiyeh	MH	M	M
Bqarsouna	MH	M	M	Btermaz	MH	M	M	Debaael	MH	M	M
Deir Ammar	H	M	M	Deir Nbouh	H	M	M	Haouaret-Miniyeh	H	M	M
Haql el Azimeh	MH	M	M	Harf El Siyad	MH	M	M	Hazmiye-Miniyeh	MH	M	M
Izal	MH	M	M	Jarjour	MH	M	M	Jayroun	MH	M	M
Kahf El-Malloul	MH	M	M	Karm El-Moher	MH	M	M	Kfar Binine	MH	M	M
Kfarchalane	MH	M	M	Kfarhabou	MH	M	M	Kharroub-Miniyeh	MH	M	M
Mazraat El-Kreme	MH	M	M	Mazraat Ketrane	H	M	M	Merkebeta	MH	M	M
Minyeh	MH	M	MH	Mrah El Sfirat	MH	M	M	Mrah Sraj	MH	M	M
Mrebbine	H	M	M	Nabi Youcheaa	MH	M	M	Nemrine	MH	M	M

Qarhaiya	MH	M	M	Qarne	MH	M	M	Qarsita	MH	M	M
Qattineh-Miniyeh	MH	M	M	Qemmamine	MH	M	M	Qraine	MH	M	M
Raouda-Aadoua	MH	M	M	Rihaniyet-Miniyeh	M	M	M	Sfireh	MH	M	M
Sir Ed-Danniyeh	MH	M	M	Tarane	MH	M	M	Terbol-Miniyeh	MH	M	M
Zaghartaghriane	MH	M	M	Zouq Bhannine	MH	M	M				

## Nabatiye

### Nabatiye

Municipality	18-Nov	19-Nov	20-Nov	Municipality	18-Nov	19-Nov	20-Nov	Municipality	18-Nov	19-Nov	20-Nov
Aabba	M	M	ML	Aazzi	M	M	L	Adchit El-Chqif	M	M	ML
Ain Bou Swar	M	M	ML	Ain Kana	M	M	L	Ali El-Taher	M	M	ML
Ansar	M	M	ML	Arab Salim	M	M	L	Arnoun	M	M	ML
Bfaroue	M	M	ML	Breyqaah	M	M	ML	Charqiyeh	M	M	ML
Choukine	M	M	ML	Deir El Zahrani	M	M	L	Doueir El-Nabatiyeh	M	M	ML
Habbouch El-Nabatiye	M	M	L	Hamra El-Nabatiyeh	M	M	ML	Harouf El-Nabatiyeh	M	M	ML
Hmaile	M	M	L	Houmin El Faouqa	M	M	L	Houmin El Tahta	M	M	ML
Jarjough	M	M	ML	Jbaah El-Nabatiyeh	M	M	ML	Jebchit	M	M	ML
Kfar Djal El-Nabatiy	M	M	ML	Kfar Remmane	M	M	ML	Kfar Sir	M	M	ML
Kfar Tebnit	M	M	ML	Kfarfila	M	M	ML	Kfour El-Nabatieh	M	M	L
Mayfadoun	M	M	ML	Mazraat Bsaffour	M	M	ML	Mazraat Chalbaal	M	M	ML
Mazraat Dmoul	M	M	ML	Mazraat El Khreibeh	M	M	ML	Mazraat El-Bayad El-	M	M	L
Mazraat Kfarjaouz	M	M	ML	Mazraat Qalaat Meiss	M	M	ML	Nabatiyeh El-Fawka	M	M	ML
Nabatiyeh Et-Tahta	M	M	ML	Namiriyeh	M	M	ML	Qaaqaaiyet El Jisr	M	M	ML
Qossaibeh El-Nabatiy	M	M	ML	Roumine	M	M	L	Sarba El-Nabatieh	M	M	L
Sir El-Gharbiyeh	M	M	ML	Toul	M	M	ML	Yehmor El-Nabatiyeh	M	M	ML
Zaoutar El Charkiyeh	M	M	ML	Zaoutar El-Gharbiyeh	M	M	ML	Zebdine El-Nabatiyeh	M	M	ML
Zefta	M	M	ML								

### Hasbaiya

Municipality	18-Nov	19-Nov	20-Nov	Municipality	18-Nov	19-Nov	20-Nov	Municipality	18-Nov	19-Nov	20-Nov
Ain Jarfa	MH	M	ML	Abou Qamha	MH	M	ML	Ain Qania	MH	M	ML
Bourghos	MH	M	ML	Chebaa	MH	M	M	Chouaya Hasbaya	H	M	ML
Dellafeh	MH	M	ML	Fardiss Hasbaiya	MH	M	ML	Hasbaya	MH	M	ML
Hbariyeh	MH	M	ML	Kaoukaba Hasbaiya	MH	M	ML	Kfar Chouba	M	M	ML
Kfar Hamam	MH	M	ML	Kfeir El-Zait	MH	M	M	Khalwat Hasbaya	MH	M	M
Khreibet Hasbaiya	MH	M	ML	Majdiyeh Hasbaiya	M	M	ML	Marj Ez-Zhour (Haouc	MH	M	ML
Meri	M	M	ML	Mimass	MH	M	ML	Rachaiya El-Fokhar	MH	M	ML
Salaiyeb	M	M	ML								

### Marjayoun

Municipality	18-Nov	19-Nov	20-Nov	Municipality	18-Nov	19-Nov	20-Nov	Municipality	18-Nov	19-Nov	20-Nov
Aalmane Marjaayoun	M	M	ML	Aamra	M	M	ML	Adayseh Marjaayoun	M	M	ML
Adchit El-Koussair	M	M	ML	Ain Aarab Marjaayoun	M	M	ML	Bani Haiyann	M	M	ML
Blatt Marjaayoun	MH	M	ML	Blida	M	M	M	Borj El-Moulouk	M	M	ML
Boueyda Marjaayoun	M	M	ML	Deir Mimass	M	M	ML	Deir Siriane	M	M	ML
Dibbine	MH	M	ML	Ebel El Saqi	MH	M	ML	Houla	M	M	ML
Houra	M	M	ML	Kfar Kila	M	M	ML	Khiam Marjaayoun	M	M	ML

Klayaa	M	M	ML	Majdel Selem	M	M	ML	Marjaayoun	M	M	ML
Markaba	M	M	ML	Mays El-Jabal	M	M	ML	Mazraat Doumiat	M	M	ML
Mazraat Sarada	M	M	ML	Mhaibib	M	M	M	Qabrikha	M	M	ML
Qantara	M	M	ML	Rab El-Thalathine	M	M	ML	Saouaneh Marjayoun	M	M	ML
Talloussa	M	M	ML	Taybeh Matjaayoun	M	M	ML	Touline	M	M	ML

## Bent Jbail

Municipality	18-Nov	19-Nov	20-Nov	Municipality	18-Nov	19-Nov	20-Nov	Municipality	18-Nov	19-Nov	20-Nov
Ain-Ebel	H	M	ML	Aitaroun	MH	M	M	Aynata Bint Jbeil	MH	M	M
Ayta El-Chaeb	H	M	ML	Ayta El-Jabal	MH	M	M	Beit Lif	H	M	ML
Beit Yahoun	MH	M	M	Bint Jbeil	MH	M	ML	Borj Qalaway	M	M	ML
Braachit	M	M	M	Chakra	M	M	ML	Debel	H	M	ML
Deir Antar	M	M	ML	Froun	M	M	ML	Ghandouriyeh Bint Jb	M	M	ML
Hanine	H	M	ML	Hariss	MH	M	M	Hdatha	MH	M	M
Jmeymeh	M	M	ML	Kafra Bint Jbeil	M	M	ML	Kfar Dounine	M	M	ML
Khirbet Selm	M	M	ML	Kounine	MH	M	M	Maroun El Ras	MH	M	M
Qalaway	M	M	ML	Qaouzah	H	M	ML	Qatmoun	MH	ML	ML
Ramya Bint Jbeil	H	M	ML	Rchaf	H	M	ML	Rmeich	H	ML	ML
Safad Al Battikh	M	M	M	Salhaneh	MH	M	ML	Serbine	MH	M	ML
Sultanieh Bint Jbeil	M	M	M	Tibnine	MH	M	M	Tiri	MH	M	ML
Yaroun	H	ML	ML	Yater	MH	M	ML				

## Mont Liban

### Jbail

Municipality	18-Nov	19-Nov	20-Nov	Municipality	18-Nov	19-Nov	20-Nov	Municipality	18-Nov	19-Nov	20-Nov
Aabeydat	MH	M	M	Aalita	MH	M	M	Aamchit	M	M	M
Aarab El-Lahib	MH	M	M	Aarasta	MH	M	M	Adonis Jbeil	MH	M	ML
Afqa Jbeil	MH	M	M	Ain El Delbeh Jbeil	MH	M	ML	Ain El-Ghouayba	MH	M	M
Ain Jrain	MH	M	ML	Ain Kfah	MH	M	M	Almat El Chemaliyat	MH	M	ML
Almat El-Jenoubiya	MH	M	M	Aqoura	MH	M	M	Bayzoun	MH	M	ML
Bchille Jbeil	MH	M	M	Bechtlida	MH	M	M	Behdaydat	MH	M	M
Beit Habbaq	MH	M	M	Bejjeh	MH	M	M	Bekhaaz	MH	M	M
Berbara Jbeil	M	M	M	Bintael	MH	M	M	Birket Hjoula	MH	M	M
Blatt Jbeil	MH	M	M	Boulhos	MH	M	M	Breyj Jbeil	MH	M	M
Chamat	MH	M	M	Chikhane	MH	M	M	Chmout	MH	ML	M
Eddeh Jbeil	MH	M	M	Ehmej	MH	M	M	Fatre	MH	M	M
Ferhet	MH	M	M	Fghal	MH	M	M	Frat	H	M	ML
Ghabat	H	M	M	Ghalboun	MH	M	M	Gharzouz	MH	M	M
Ghofrine	MH	M	M	Habil	MH	M	M	Halate	MH	M	M
Haqel	MH	M	M	Hbaline	MH	M	M	Hboub	MH	M	M
Hdeine	MH	M	M	Hema Er-Rehban	MH	M	M	Hema Mar Maroun Aann	MH	M	M
Hjoula	MH	M	M	Hosrayel	MH	M	M	Hsarat	MH	M	M
Hsoun	MH	M	M	Jaj	MH	M	M	Janne	MH	M	M
Jbeil	M	M	M	Jeddeyl Jbeil	MH	M	M	Jlisse	MH	M	M
Jouret El-Qattine	MH	M	M	Kfar Baal Annaya	MH	M	M	Kfar Kidde	MH	M	M
Kfar Kouas	MH	M	M	Kfar Mashoun	MH	M	M	Kfoun	MH	ML	M

Kharbe Jbeil	MH	M	M	Laqlouq	MH	M	M	Lassa	H	M	M
Lehfed	H	M	M	Maad	MH	M	M	Mar Sarkis	MH	M	M
Mastita	M	M	M	Mayfouq	MH	M	M	Mazraat El Siyad	MH	M	M
Mazraat El-Maaden	MH	M	ML	Mechane	MH	M	M	Mechmech Jbeil	H	M	M
Mehrin	MH	M	M	Mejdel El-Akoura	MH	M	M	Mghayreh Jbeil	H	M	M
Mounsef	MH	M	M	Nahr Ibrahim	M	M	M	Qahmez	MH	M	M
Qartaba	MH	M	M	Qartaboun	M	M	M	Qattara Jbeil	MH	M	M
Qorqraya	MH	M	M	Ramout	MH	M	M	Ras Osta	MH	M	M
Rihane Jbeil	MH	M	M	Sakiet El-Khayt	MH	ML	M	Saqi Richmaya	H	M	M
Sebrine	MH	M	M	Seraita	MH	M	M	Souane Jbeil	MH	M	ML
Tadmor	MH	M	M	Tartej	MH	M	M	Torzaiya	MH	M	M
Yanouh Jbeil	MH	M	M	Zibidine Jbeil	MH	M	M				

## El Metn

Municipality	18-Nov	19-Nov	20-Nov	Municipality	18-Nov	19-Nov	20-Nov	Municipality	18-Nov	19-Nov	20-Nov
Aain El-Qabu	MH	M	M	Aain El-Qach	MH	M	M	Aain El-Teffaha	MH	M	M
Aain el-Safssaf El-M	MH	M	M	Abou Mizane	MH	M	M	Ain Aar	M	M	M
Ain Alaq	MH	M	M	Ain El-Kharroube	MH	M	M	Ain El-Sendianeh	MH	M	M
Ain El-Zeitoune	MH	M	M	Ain Saadeh	MH	M	M	Aintoura El-Matn	MH	M	M
Amaret Chalhoub	M	M	M	Antelias	M	M	M	Atchaneh	MH	M	M
Ayroun	MH	M	M	Baabdat	MH	M	M	Baouchariyeh	M	M	M
Baskinta	MH	M	M	Beit Chabab	MH	M	M	Beit El-Chaar	M	M	M
Beit El-Kekko	M	M	M	Beit Mery	MH	M	M	Bhersaf	MH	M	M
Bikfaya	MH	M	M	Biyakout	MH	M	M	Bnabil	MH	M	M
Bourj Hammoud	M	M	M	Bqennaya	M	M	M	Broummana El-Matn	MH	M	M
Bsalim	MH	M	M	Bsifrine	H	M	M	Bteghrine	MH	M	M
Chaouiye	MH	M	M	Chouaya El-Matn	MH	M	M	Choueir	H	M	M
Chrine	MH	M	M	Dahr El Sawan El-Mat	MH	M	M	Daychouniyeh	MH	M	M
Dbayeh	M	M	M	Deir Chamra	MH	M	M	Deir Mar Abda el Mch	MH	ML	M
Deir Mar Roukouz	MH	M	M	Deir Tamiche	MH	M	M	Dik El-Mehdi	M	M	M
Dikwaneh	M	M	M	Douar El-Matn	MH	M	M	Fanar	MH	M	M
Fraike	MH	M	M	Haret El-Ballaneh	M	M	M	Hbous	M	M	M
Himlaya	MH	M	M	Jal El Did	M	M	M	Jdeideh El-Metn	M	M	M
Jouar El-Matn	MH	M	M	Jouret El-Ballout	MH	M	M	Kaaqour	H	M	M
Kfar Aaqab	MH	M	M	Kfertay El-Matn	MH	M	M	Khenchara	MH	M	M
Khillet El-Mtain	H	M	M	Konnabat Broummana	MH	M	M	Konnabat Salima	MH	M	M
Machraah El-Matn	MH	M	M	Majdel Tarchich	MH	M	M	Majzoub	M	M	M
Mansouriyeh El-Metn	MH	M	M	Mar Boutros Karm Et-	MH	M	M	Mar Chaya et Mzekke	MH	M	M
Mar Moussa Ed-Douar	MH	M	M	Marjaba	MH	M	M	Masqa	MH	M	M
Mayasse	H	M	M	Mazraat Deir Aoukar	M	M	M	Mazraat El-Hadirat	M	M	M
Mazraat Yachouh	M	M	M	Mchikha	H	M	M	Menqlet Mezher	M	M	M
Mhaydseh Matn	MH	M	M	Mkalles	MH	M	M	Mrouj	H	M	M
Mtain	MH	M	M	Mtayleb	M	M	M	Nabay	MH	M	M
Naccache	M	M	M	Ouadi Chahine	MH	M	M	Ouadi El-Karm El-Mat	MH	M	M
Ouata El-Mrouj	MH	M	M	Ouyoun El-Matn	MH	M	M	Qornet Chehwan	M	M	M
Qornet El-Hamra	MH	M	M	Roumieh	MH	M	M	Sfeilet Bikfaya	H	M	M
Sinn El-Fil	M	M	M	Zabbougha	MH	M	M	Zalqa	M	M	M

Zarouon	H	M	M	Zekrite	MH	M	M	Zighrine El-Matn	H	M	M
Zouk El-Khrab	M	M	M								

## Chouf

Municipality	18- Nov	19- Nov	20- Nov	Municipality	18- Nov	19- Nov	20- Nov	Municipality	18- Nov	19- Nov	20- Nov
Aalmane El-Chouf	M	M	L	Aammq El-Chouf	MH	M	ML	Ain Ouzein	MH	M	ML
Ain Qani	MH	M	ML	Ain Zhalta	MH	M	M	Ainbal	MH	M	ML
Amatour	MH	M	ML	Anout	MH	M	ML	Atrine	H	M	ML
Baadarane	MH	M	ML	Baaqline	MH	M	ML	Baasir	M	M	ML
Barja	M	M	ML	Barouk	MH	M	M	Bater	MH	M	ML
Batloun	H	M	ML	Bayqoun	MH	M	ML	Bchetfine	MH	M	ML
Beiteddine	H	M	ML	Benouati Ech-Chouf	MH	M	ML	Berjein	MH	M	L
Bireh et Mtalleh	MH	M	ML	Biret El-Chouf	H	M	ML	Bkechtine Ouel Mchei	MH	ML	L
Bkifa El-Chouf	MH	M	L	Botme	MH	M	ML	Bqaiaa Ech-Chouf	MH	M	L
Bsaba El-Chouf	MH	M	ML	Chammis El-Chouf	MH	M	ML	Chehim	MH	M	L
Chemaarine	MH	M	L	Chourit	MH	M	ML	Daher El-Chouf	MH	ML	L
Dalhoun	MH	M	L	Damour	M	M	ML	Daraya El-Chouf	MH	M	L
Deir El-Moukhalles	MH	M	L	Deir Baba	MH	M	ML	Deir Dourit	H	M	ML
Deir El-Qamar	MH	M	ML	Deir Kouche	MH	M	ML	Dibbieh	MH	M	L
Dmit	MH	M	ML	Fouara Jaafar	H	M	ML	Fraidis El-Chouf	MH	M	M
Ghabet Jaafar	MH	M	ML	Gharife	H	M	ML	Haret Jandal	MH	M	ML
Hasrout	MH	M	ML	Jadra	M	M	L	Jahlieh	MH	M	ML
Jbeih El-Chouf	H	M	ML	Jdeidet El-Chouf	MH	M	ML	Jiyeh	M	M	ML
Jleilyeh	H	M	ML	Jmailiyeh	MH	M	L	Joun	MH	M	L
Kahlounie El-Chouf	MH	M	ML	Ketermaya	MH	M	ML	Kfar Faqoud	MH	M	ML
Kfar Hamal	MH	M	ML	Kfar Him	MH	M	ML	Kfar Katra	MH	M	ML
Kfar Niss	MH	M	ML	Kfar hay	MH	M	ML	Kfarnabrakh	MH	M	ML
Khirbet Bisri	MH	M	ML	Knayse El-Chouf	H	M	ML	Maaniyeh	MH	M	L
Maasser Beiteddine	MH	M	ML	Maasser El-Chouf	MH	M	M	Majdalouna	MH	M	L
Majdel El-Meouch	MH	M	ML	Mazboud	MH	M	L	Mazmoura	MH	M	L
Mazraat El Chouf	H	M	ML	Mazraat El Daher	MH	M	ML	Mazraat El-Douair	MH	M	ML
Mechref	MH	M	ML	Mghairie	MH	M	ML	Mghayrie El-Chouf	MH	M	L
Moukhtara	H	M	ML	Mrusti	MH	M	ML	Mtolle	MH	M	ML
Naameh	M	M	M	Niha El-Chouf	MH	M	L	Ouadi Abou Youssef	MH	ML	L
Ouadi Ed-Deir	MH	M	ML	Ouadi El-Sit	MH	M	ML	Ouadi bnehlay	MH	M	ML
Qraibeh	H	M	ML	Qreiaa	MH	M	L	Rmayle El-Chouf	M	M	L
Semqaniyeh	H	M	ML	Sibline	M	M	L	Sirjbeil	MH	M	ML
Warhanieh	MH	M	M	Werdaniyeh	M	M	L	Zaarourieh	MH	M	ML

## Baabda

Municipality	18- Nov	19- Nov	20- Nov	Municipality	18- Nov	19- Nov	20- Nov	Municipality	18- Nov	19- Nov	20- Nov
Abadiyeh	MH	M	M	Ain Mouaffaq	MH	M	M	Araiya	MH	M	M
Arbaniyeh	MH	M	M	Arsoun	MH	M	M	Baabda	MH	M	M
Baalchmey	MH	M	M	Bmaryam	MH	M	M	Bourj El-Brajneh	M	M	M
Boutchay	MH	M	M	Bsaba Baabda	MH	M	M	Btekhney	H	M	M
Btibyat	MH	M	M	Bzebdine	MH	M	M	Chbeniyeh	H	M	M
Chiyah	M	M	M	Chmeisset Baabda	MH	M	M	Chouit	MH	M	M
Deir El-harf	MH	M	M	Deir Khouna	MH	M	M	Dlaybeh	MH	M	M

Falougha	MH	M	M	Furn El-Chebbak	M	M	M	Hadath Beyrouth	M	M	M
Halaliyeh Baabda	MH	M	M	Hammana	MH	M	M	Haret El Sett	MH	M	M
Haret Hamze	MH	M	M	Haret Hreik	M	M	M	Hasbaiya El-Metn	H	M	M
Jouar El-Hoz	MH	M	M	Jouret Arsoun	MH	M	M	Kfar Chima	MH	M	M
Kfar Selouane	MH	M	ML	Khalouat Baabda	MH	M	M	Kneisset Baabda	MH	M	M
Laylakeh	M	M	M	Louayzeh Baabda	MH	M	M	Merdache	MH	M	M
Mzairaa Baabda	H	M	M	Ouadi Chahrour El Ol	MH	M	M	Ouadi Chahrour El So	MH	M	M
Qalaa Baabda	H	M	M	Qhraybe Baabda	MH	M	M	Qobbayaa	MH	M	M
Qornayel	MH	M	M	Qortada	MH	M	M	Qrayeh Baabda	MH	M	M
Qsaibeh Baabda	H	M	M	Qtale Baabda	MH	M	M	Ras El Metn	MH	M	M
Ras El-Haref	MH	M	M	Rouayset El-Ballout	MH	M	M	Salima Baabda	MH	M	M
Tahouitat El Ghadir	M	M	M	Tarchich	H	M	M	Zandouqa	MH	M	M

## Aley

Municipality	18-Nov	19-Nov	20-Nov	Municipality	18-Nov	19-Nov	20-Nov	Municipality	18-Nov	19-Nov	20-Nov
Abey	MH	M	ML	Aghmid	MH	M	M	Ain Dara	MH	M	M
Ain Drafil	MH	M	M	Ain El Halazoun	MH	M	M	Ain El-Rmmaneh	MH	M	M
Ain Jedideh	MH	M	M	Ain Ksour	MH	M	M	Ain Onoub	MH	M	M
Ain Traz	MH	M	ML	Ainab	MH	M	M	Aley	MH	M	M
Aramoun	MH	M	M	Aytat	MH	M	M	Azouniyeh	MH	M	M
Baawerta	MH	M	ML	Badghan Oua Wadi Bad	MH	M	M	Bassatine	MH	M	M
Bayssour	MH	M	M	Bchamoun	MH	M	M	Bdadoun	MH	M	M
Behouara	MH	M	M	Bennay	MH	M	ML	Bhamdoun El-Dayaa	MH	M	M
Bhamdoun El-Mhatta	MH	M	M	Bkhechthey	MH	M	M	Bleibel	MH	M	M
Bmakine	MH	M	M	Bmehray	MH	M	M	Bouzrid	MH	M	ML
Bserrine	MH	M	M	Bsous	MH	M	M	Btalloun	MH	M	M
Btater	MH	M	M	Chanay	MH	M	M	Charoun	MH	M	M
Chartoun	H	M	ML	Chemlane	MH	M	M	Chouefat El-Aamrous	M	M	M
Chouefat El-Oumara	MH	M	M	Chouefat El-Quoubbe	M	M	M	Dakkoun	MH	M	ML
Deir Qoubel	MH	M	M	Dfoun	H	M	M	Douair El Remmaneh	MH	M	M
Ghaboun	MH	M	M	Habramoun	MH	M	M	Homs Oua Hama	MH	M	M
Houmal	MH	M	M	Jisr El Qadi	MH	M	ML	Kehaleh	MH	M	M
Keyfoun	MH	M	M	Kfar Aamey	MH	M	M	Kommatyeh	MH	M	M
Maasrati	MH	M	M	Majdel Baana	MH	M	M	Mansourieh et Ain El	MH	M	M
Mazraat El-Nahr	MH	M	M	Mchakhte	MH	M	M	Mecherfeh	MH	M	M
Mejdlaya	MH	M	M	Mrayjat	MH	M	M	Ramliyah	MH	M	M
Rechmaya	H	M	ML	Rejmeh	MH	M	M	Remhala	MH	M	M
Rouaysset El Neemane	H	M	M	Saoufar	H	M	M	Selfaya	MH	M	ML
Sirhmoul	MH	M	M	Souq El Ghareb	MH	M	M	Taazanieh	MH	M	M

## Kesrouane

Municipality	18-Nov	19-Nov	20-Nov	Municipality	18-Nov	19-Nov	20-Nov	Municipality	18-Nov	19-Nov	20-Nov
Achkout	MH	M	M	Adma Oua Dafneh	M	M	M	Ain Ed-Delbe Kesroua	MH	M	ML
Ain El-Rihane	MH	M	M	Aintoura Kesrouane	M	M	M	Ajaltoun	MH	M	M
Akaybeh Kesrouane	M	M	M	Aramoun Kesrouane	MH	M	M	Azra ouel Ozor	MH	M	M
Ballouneh	MH	M	M	Batha	MH	M	M	Bekaatat Achkout	MH	M	M
Bekaatat Kanaan	MH	M	M	Bizhel	MH	M	M	Bouar	M	M	M
Bqaatouta	MH	M	M	Bqaq Ed-Dine	M	M	M	Bzommar	MH	M	M

Chahtoul	MH	M	M	Chnaniir	MH	M	M	Chouan	MH	M	ML
Daraya Kesrouane	MH	M	M	Darououn	MH	M	M	Deir Baqlouch	MH	M	M
Dlebta	MH	M	M	Eghbeh	MH	M	M	Faraya	MH	M	M
Fatka	MH	M	M	Feytroun	MH	M	M	Ghazir	MH	M	M
Ghbaleh Kesrouane	MH	M	M	Ghedrass	MH	M	M	Ghosta	MH	M	M
Ghyneh	MH	M	M	Harharaya w Kattine	MH	M	M	Harissa Kesrouane	MH	ML	M
Hayata	MH	M	M	Hosein	MH	M	M	Hrajel	MH	M	M
Jdeideh Ghazir	MH	M	M	Jeita	MH	M	M	Jounieh Ghadir	M	M	M
Jounieh Haret Sakhr	M	M	M	Jounieh Salel Alma	M	M	M	Jounieh Sarba	M	M	M
Jouret Bedrane	MH	M	M	Jouret Mhad	MH	M	M	Jouret Termos	MH	M	M
Kfar Debiane	MH	M	M	Kfar Tay Kesrouane	H	M	M	Kfar Yassine	M	M	M
Kfour Kesrouane	MH	M	M	Kharayeb Nahr Ibrahi	MH	M	M	Klayaat Kesrouane	MH	M	M
Maarab	MH	M	M	Maaysra Kesrouane	MH	M	M	Mayrouba	MH	M	M
Mazraat Er-Ras	M	M	M	Mazraat Mrah El-Mir	MH	M	M	Mchaa El Ftouh	MH	M	M
Mchaa Faraya	MH	M	M	Mchaa Kfar Dibiane	MH	M	M	Mghaer	MH	M	ML
Mradiyah	MH	M	M	Nahr Ed-Dahab	MH	M	ML	Nammoura Kesrouane	MH	M	M
Ouata El Jaouz	MH	M	M	Ouata Sillam	M	M	M	Raachine	MH	M	M
Rayfoun	MH	M	M	Safra Kesrouane	M	M	M	Shayle Kesrouane	MH	M	M
Tabarja	M	M	M	Yahchouch	MH	M	M	Zaaytreh	MH	M	M
Zeytoun	MH	M	M	Zouk Mikael	M	M	M	Zouk Mosbeh	M	M	M

## Baalbek\_Hermel

### Baalbek

Municipality	18-Nov	19-Nov	20-Nov	Municipality	18-Nov	19-Nov	20-Nov	Municipality	18-Nov	19-Nov	20-Nov
Aadous	MH	M	M	Aamchki	MH	M	M	Aarsal	MH	M	M
Ain Baalbek	MH	M	M	Ain Bourday	MH	M	M	Ain El-Benye	MH	M	M
Ain El-Jaouz Baalbek	MH	M	M	Ain El-Siya Chadoura	MH	M	M	Al Khodr Baalbek	H	M	M
Al Nabi Chit	MH	M	M	Aynata Baalbek	MH	M	M	Baalbek	MH	M	M
Bachwat	MH	MH	M	Barqa	MH	MH	M	Bednayel Baalbak	MH	M	M
Beit Chama	MH	M	M	Bijjaje	M	M	M	Bouday	H	MH	M
Brital	MH	M	M	Btadi	H	MH	M	Chaat	MH	M	M
Chaibe	MH	M	M	Chlifa	MH	MH	M	Chmestar	MH	MH	M
Dar El-Oussa	MH	MH	M	Deir El-Ahmar	MH	MH	M	Deir Mar Maroun Baal	M	M	M
Douris	MH	M	M	Fakiha	MH	M	M	Hadath Baalbek	H	MH	M
Ham	MH	M	M	Haour Taala	MH	M	M	Hizzine	MH	M	ML
Hlebta	MH	M	M	Hosh Barada	H	M	M	Hosh El Dahab	MH	M	M
Hosh El Snid	MH	M	ML	Hosh El-Nabi	MH	M	ML	Hosh El-Rafiq	MH	M	ML
Hosh Tal Safiya	MH	M	M	Hrebta	MH	M	M	laat	MH	M	M
Jebaa	MH	MH	M	Jenta	MH	M	M	Kfar Dabach	MH	M	M
Kfar Dane	MH	M	M	Khraibeh El-Hermel	MH	M	M	Khreibet Baalbek	MH	M	M
Kneisset Baalbek	MH	M	M	Labueh	MH	M	M	Maarboun	MH	M	M
Majdaloun	MH	M	M	Maqneh	MH	M	M	Mazraat Beit Mcheik	H	MH	M
Misraya	H	M	ML	Moqraq	MH	M	M	Nabha El-Damdoum	MH	M	M
Nabi Chbay	MH	M	M	Nabi Osman	MH	M	M	Nahleh baalbek	MH	M	M
Ouadi El-Oss	MH	M	M	Qaa Baayoun	M	M	M	Qaa Jouar Maqiye	M	M	M
Qaa Ouadi El-Khanzir	M	M	M	Qah Baalbek	M	M	M	Qarha Baalbek	MH	M	M



Qsarnaba	MH	M	M	Ram Baalbek	MH	MH	M	Ras Baalbek El Sahl	M	M	M
Ras Baalbek El-Charq	M	M	M	Riha	MH	M	M	Saaide	MH	MH	M
Sbouba	MH	M	M	Seriine El-Tahta	H	M	ML	Slouqi	MH	M	M
Taiba Baalbek	MH	M	M	Talia	MH	M	ML	Taraiya	MH	MH	M
Temnin El Fawqa	H	M	M	Temnin El-Tahta	H	M	ML	Tfail	MH	M	M
Yahfoufa	MH	M	M	Yammouneh	MH	M	M	Younine	MH	M	M
Zboud	M	M	M								

## Hermel

Municipality	18-Nov	19-Nov	20-Nov	Municipality	18-Nov	19-Nov	20-Nov	Municipality	18-Nov	19-Nov	20-Nov
Charbine El-Hermel	MH	M	ML	Hermel Jbab	H	M	M	Hermel	M	M	M
Maaysra El-Hermel	MH	M	M	Michaa Mrajhine	MH	M	M	Ouadi Faara	H	M	M
Ras Baalbek - Ouadi	MH	M	M	Ras Baalbek El Gharb	H	M	M	Zighrine	MH	M	M

## Akkar

### Akkar

Municipality	18-Nov	19-Nov	20-Nov	Municipality	18-Nov	19-Nov	20-Nov	Municipality	18-Nov	19-Nov	20-Nov
Aain Tinta	E	M	ML	Aaiyat	MH	M	L	Aakkar El-Aatiqa	H	M	L
Aamar Akkar	M	M	M	Aamar El Baykat	E	M	M	Aamayer	MH	M	M
Aamriyet Akkar	E	M	ML	Aandqet	H	M	L	Aarmeh	H	M	ML
Aarqa	MH	M	M	Aawaynat	H	M	ML	Aayoun Akkar	MH	M	ML
Abboudiye	E	M	ML	Ain El-Zeit	E	M	ML	Ain Yaaqoub	MH	M	L
Akroum	MH	M	M	Aridet Cheikh Zennad	H	M	M	Baldeh w Mazraat Bal	MH	M	ML
Barcha	E	M	ML	Bardeh	E	M	ML	Bebnine	M	M	M
Beino	MH	M	ML	Beit Ayoub	MH	M	ML	Beit El-Haouch	MH	M	M
Beit Mellat	MH	M	ML	Beit Younes	MH	M	L	Berbara Akkar	MH	M	ML
Berqayel	MH	M	M	Bezbina	MH	M	L	Bireh Akkar	H	M	ML
Borj	H	M	ML	Bqerezla	MH	M	M	Bzal	MH	M	M
Chane	MH	M	L	Chaqdouf	H	M	L	Charbila	H	M	ML
Cheikh Mohammad	MH	M	M	Cheikh Taba Es-Sahl	MH	M	M	Cheikh Taba	MH	M	M
Cheikh Zennad	H	M	M	Cheikhlar	H	M	ML	Chir Hmairine	H	M	M
Daghle	H	M	L	Dahr Laissine	MH	M	M	Darine	H	M	M
Dawra	MH	M	L	Dawsa w Baghdadi	E	M	ML	Dayret Nahr El-Kabir	H	M	ML
Deir Dalloum	M	M	M	Deir Jennine	MH	M	ML	Denbou	MH	M	M
Dibbbiyeh	H	M	M	Douair Aadwiyeh	H	M	M	Fassikine	H	M	ML
Fnaydek	MH	M	L	Fraydes Akkar	E	M	ML	Ghazayle	H	M	M
Habchit	MH	M	ML	Hakour	MH	M	M	Halba	MH	M	M
Haouchab	H	M	M	Hayssat	H	M	M	Haytla	E	M	ML
Hayzouq	MH	M	ML	Hedd	H	M	ML	Hmaira Akkar	MH	M	M
Hmaiss Akkar	MH	M	M	Hnaider	M	M	M	Hokr Ed-Dahri	H	M	M
Hokr Etti	MH	M	M	Hokr Jouret Srar	H	M	M	Houaich	MH	M	ML
Hrar	MH	M	M	Idbil	MH	M	M	Ilal	MH	M	M
Janine	H	M	M	Jdeidet El-Joumeh	MH	M	M	Jdeidet El-Kaiteh	MH	M	M
Jebayel	H	M	ML	Kafr	MH	M	M	Kafr	E	M	ML
Karm Asfour	MH	M	M	Kfar Melki Akkar	M	M	M	Kfar Noun	E	M	L
Kfarharra	MH	M	M	Khalsa	H	M	ML	Kharnoubet Akkar	E	M	ML

Khirbet Daoud Aakkar	E	M	ML	Khirbet El Remmane	H	M	ML	Khirbet Shar	H	M	ML
Khoreybet El-Jindi	MH	M	M	Khreibet Aakkar	MH	M	ML	Kneisset Aakkar	H	M	M
Kneisset Hnaider	M	M	M	Knisse	MH	M	M	Kroum El-Aarab	MH	M	M
Kwachra	E	M	M	Kweykhath	H	M	M	Machta Hammoud	H	M	ML
Majdala	MH	M	M	Majdel Akkar	MH	M	ML	Mar Touma	MH	M	M
Marlaya Melhem	M	M	M	Mashha	MH	M	M	Massoudiye	H	M	M
Mazraat Beit Ghattas	MH	M	M	Mazraat En-Nahriye	H	M	ML	Mechmech	H	M	M
Memneh	H	M	L	Mhammara	M	M	M	Mighraq Aakkar	H	M	M
Minyara	MH	M	M	Moqayteh	MH	M	M	Mounjez	E	M	L
Msalla	E	M	M	Mzeihmeh	E	M	ML	Nfaisheh	MH	M	M
Noura Et-Tahta	E	M	ML	Ouadi El-Haour	E	M	ML	Ouadi El-Jamous	M	M	M
Ouyoun El-Ghizlane	MH	M	M	Qaabarine	M	M	M	Qabaait	MH	M	M
Qachlaq	E	M	ML	Qantara Aakkar	MH	M	M	Qarha Aakkar	M	M	M
Qarqaf	MH	M	M	Qboula	MH	M	ML	Qleiaat Aakkar	H	M	M
Qloud El-Baqie	MH	M	M	Qobaiyat Aakkar	H	M	L	Qobbat Chamrat	M	M	M
Qorayat	MH	M	L	Qornet Aakkar	MH	M	L	Qsair Aakkar	H	M	ML
Rahbe	MH	M	ML	Rihaniyet Aakkar	H	M	ML	Rmah	H	M	ML
Rmoul	M	M	M	Saadine	H	M	M	Sadaqa	H	M	ML
Saidnaya	H	M	ML	Sammouniye	MH	M	M	Sayssoouq	MH	M	M
Semmaqiye	H	M	M	Semmaqli	M	M	M	Sfinet El-Dreib	H	M	M
Sfinet El-Qaitaa	MH	M	M	Sindyanet Zeidane	H	M	L	Souaisset Aakkar	MH	M	ML
Srar	E	M	ML	Tal Abbas El Gharby	H	M	M	Tal Abbas El-Chargy	H	M	M
Tal Biret	H	M	M	Tal Hmayra	H	M	M	Tal Maayan Tal Kiri	H	M	M
Tal Sibel	M	M	M	Tallet Chattaha	MH	M	ML	Tikrit	MH	M	ML
Tleil	H	M	ML	Tshea	MH	M	L	Zawarib	MH	M	M
Zouq El Hosniyeh	MH	M	M	Zouq El-Haddara	MH	M	M	Zouq El-Hbalsa	MH	M	M
Zouq El-Moqachrine	MH	M	M								

## Sud

### Sour

Municipality	18-Nov	19-Nov	20-Nov	Municipality	18-Nov	19-Nov	20-Nov	Municipality	18-Nov	19-Nov	20-Nov
Aaiyeh	M	M	ML	Aalma El-Chaab	M	M	ML	Aaytit	M	M	ML
Abbassiyeh Sour	M	M	ML	Abou Chech	M	M	ML	Ain Abou Abdallah	M	M	ML
Ain Baal	M	M	ML	Arzoun	M	M	ML	Aziyeh	M	M	ML
Baflaya	M	M	ML	Barich	M	M	ML	Batouliyeh	M	M	ML
Bayad	M	M	ML	Bazouriyeh	M	M	ML	Bediass	M	M	ML
Bestiyat	M	M	ML	Borj El Chemali	M	M	ML	Borj En-Naqoura	M	M	ML
Borj Rahhal	M	M	ML	Boustane	M	M	ML	Btaychiyeh	M	M	ML
Chaaitiye	M	M	ML	Chameh	M	M	ML	Chehabiye	M	M	ML
Chehour	M	M	ML	Chihine	M	M	ML	Debaal Sour	M	M	ML
Deir Amess	M	M	ML	Deir Kifa	M	M	ML	Deir Qanoun El-Ain	M	M	ML
Deir Qanoun El-Naher	M	M	ML	Derdghaiya	M	M	ML	Dhayra	MH	M	ML
Halloussiyeh	M	M	ML	Hamoul	MH	M	ML	Hanaouey	M	M	ML
Henniye	M	M	ML	Hmairi Sour	M	M	ML	Iskandarouna Sour	M	M	ML
Jbal El Botom	M	M	ML	Jebbin	M	M	ML	Jennata	M	M	ML
Jijim	MH	M	ML	Jouaiya	M	M	ML	Kneisset Sour	M	M	ML

Maarake	M	M	ML	Maaroub	M	M	ML	Majadel	M	M	ML
Majdalzoun	M	M	ML	Mansouri Sour	M	M	ML	Marnba	M	M	ML
Marouahine	MH	M	ML	Mazraat El-Zalloutiy	M	M	ML	Mazraat Mechref	M	M	ML
Mazraat Tayr Semhat	M	M	ML	Mheilib	M	M	ML	Neffakhiyeh	M	M	ML
Niha Sour	M	M	ML	Ouadi Jilo	M	M	ML	Qana	M	M	ML
Qolaileh Sour	M	M	ML	Rechknany	M	M	ML	Rmadiyeh	M	M	ML
Selha Sour	M	M	ML	Siddiqine	M	M	ML	Sour	M	M	ML
Srifa	M	M	ML	Tayr Debbe	M	M	ML	Tayr Felsay	M	M	ML
Tayr Harfa	M	M	ML	Touayri	M	M	ML	Toura	M	M	ML
Yanouh Sour	M	M	ML	Yarine	M	M	ML	Zebqine	M	M	ML

## Saida

Municipality	18-Nov	19-Nov	20-Nov	Municipality	18-Nov	19-Nov	20-Nov	Municipality	18-Nov	19-Nov	20-Nov
Aanqoun	MH	M	ML	Aaqtanit	M	M	ML	Aarab Ej-Jall	M	M	ML
Aarab Tabbaya	M	M	ML	Abra Saida	M	M	ML	Adloun	ML	M	ML
Adousiyeh	M	M	ML	Ain-El-Deleb	MH	M	ML	Arzai	M	M	ML
Babliyah	M	M	ML	Barty	MH	M	L	Bissariyeh	M	M	ML
Bnaafoul	M	M	ML	Bqosta	M	M	ML	Bramiy	MH	M	ML
Daoudiyeh	M	M	ML	Dareb El-Sim	MH	M	ML	Erkay	M	M	ML
Ghassanieh	M	M	ML	Ghazieh	M	M	ML	Hajjeh	M	M	ML
Haret Saida	M	M	ML	Hartiyeh	ML	M	ML	Hlaliye Saida	M	M	ML
Insariyat	M	M	ML	Jazira Saida	M	M	ML	Kafar Bit	MH	M	ML
Kaoutariyet El-Siyad	M	M	ML	Kfar Chellal	MH	M	ML	Kfar Hatta Saida	MH	M	ML
Kfar Milke Saida	MH	M	ML	Khartoum	M	M	ML	Khaziz	M	M	ML
Khirbet Ed-Douair Sa	M	M	ML	Khirbet El-Bassal	M	M	ML	Khrayeb Saida	M	M	ML
Loubieh	M	M	ML	Maghdouche	MH	M	ML	Majdelyoun	M	M	ML
Matariyet El-Choumar	M	M	ML	Matayriyeh	MH	M	ML	Mazraat 'Mseileh	M	M	ML
Mazraat 'Snaiber	M	M	ML	Mazraat Aarab Soukka	M	M	ML	Mazraat Deir Taqla	M	M	ML
Mazraat El Yahoudiye	ML	M	ML	Mazraat El-Housseini	M	M	ML	Mazraat El-Mhaydaleh	M	M	ML
Mazraat El-Ouasta	ML	M	ML	Mazraat Jamjim	ML	M	ML	Mazraat Kaoutariyet	M	M	ML
Mazraat Kfar Badda	ML	M	ML	Mazraat Oussamiyat	M	M	ML	Mazraat Sari	ML	M	ML
Mazraat Sinai	M	M	ML	Meemariyeh	M	M	ML	Merouaniyeh	M	M	ML
Miyeh ou Miyeh	MH	M	ML	Najjariyeh	M	M	ML	Qaaqiyat El-Snaouba	M	M	ML
Qnarit	MH	M	ML	Qraiye Saida	M	M	ML	Saida Ed-Dekermane	M	M	ML
Saida El-Oustani	M	M	ML	Saida El-Qadimeh	M	M	ML	Saida Kefraya	MH	M	ML
Saksakiyeh	M	M	ML	Salhie Saida	MH	M	ML	Sarafand	M	M	ML
Sfenta	MH	M	L	Tafahta	M	M	ML	Tanbourit	MH	M	ML
Tebna	M	M	ML	Zaghdraiya	M	M	ML	Zeita	MH	M	ML
Zrariyeh	M	M	ML								

## Jezzine

Municipality	18-Nov	19-Nov	20-Nov	Municipality	18-Nov	19-Nov	20-Nov	Municipality	18-Nov	19-Nov	20-Nov
Ain El-Mir (El Estab	MH	M	ML	Anane	MH	M	L	Aramta	MH	M	ML
Ariya	MH	M	L	Aychiyeh	M	M	ML	Azour	MH	M	ML
Baba	MH	M	ML	Baysour Jezzine	MH	M	ML	Benoueteh Jezzine	MH	M	ML
Bhannine	H	M	ML	Bisri	MH	M	ML	Bkassine	MH	M	ML
Bouslaya	M	M	L	Btedine El-Leqech	MH	M	ML	Chbail	M	M	ML
Choualiq Jezzine	MH	M	ML	Dahr Ed-Deir	MH	M	L	Deir El Qattine	MH	M	ML

Demachqiyeh	M	M	ML	Ghabbatiyeh	MH	M	ML	Harf Jezzine	H	M	ML
Hassaniyeh	MH	M	ML	Haytouleh	MH	M	L	Haytura	MH	M	ML
Hidab	MH	M	ML	Homsiyeh	MH	M	ML	Jabal Toura	MH	M	ML
Jarmaq	M	M	ML	Jensnaya	MH	M	ML	Jernaya	M	M	ML
Jezzine	MH	M	L	Karkha	MH	M	L	Kfar Falous	MH	M	L
Kfar Houna	MH	M	L	Kfar Jarrah	MH	M	ML	Lebaa	MH	M	ML
Louayzet Jezzine	M	M	ML	Machmouche	MH	M	ML	Mahmoudiyeh Jezzine	M	M	ML
Maknounye Jezzine	MH	M	ML	Maraat Ouazaiyeh	M	M	ML	Mazraat Daraya	MH	M	ML
Mazraat El-Aarqoub	M	M	ML	Mazraat El-Mathane	MH	M	ML	Mazraat El-Rahbane	M	M	ML
Mazraat Khallet Khaz	M	M	ML	Mazraat Louzid (Loua	M	M	ML	Mazraat Qrouh	MH	M	ML
Mazraat Tamra	M	M	ML	Mazraat Zighrine Jez	M	M	ML	Mazraat	M	M	ML
Mharbiyeh	MH	M	ML	Midane Jezzine	MH	M	ML	Mjeydel Jezzine	MH	M	ML
Mlikh	M	M	ML	Mrah El-Hbasse	MH	M	ML	Ouadi Baanqoudaine	MH	M	ML
Ouadi El-Laymoun	MH	M	ML	Ouardiyeh	M	M	ML	Qabaa Jezzine	MH	M	ML
Qatrani	MH	M	ML	Qaytouleh	MH	M	ML	Qtaleh Jezzine	MH	M	L
Rihane Jezzine	M	M	ML	Rimat	MH	M	L	Roum	MH	M	ML
Roummanet	MH	M	ML	Sabbah	H	M	ML	Saydoun	MH	M	ML
Sfaray	MH	M	L	Snaya	MH	M	ML	Sojoud	M	M	ML
Srayri	MH	M	ML	Taaid	MH	M	ML	Wadi Jezzine	MH	M	ML
Zhalta	MH	M	ML								

## Bekaa

### West Bekaa

Municipality	18-Nov	19-Nov	20-Nov	Municipality	18-Nov	19-Nov	20-Nov	Municipality	18-Nov	19-Nov	20-Nov
Aammiq BG	MH	M	ML	Ain El Tineh BG	H	M	L	Ain Zebdeh	MH	M	M
Ana	MH	M	M	Aytanit	MH	M	M	Baaloul BG	MH	M	ML
Bab Mareh	MH	M	M	Chouberqiye Aammiq	MH	M	ML	Dakoue	MH	M	ML
Deir Ain El-Jaouze	MH	M	M	Deir Tahniche	MH	M	ML	Ghaza	H	M	ML
Harime El-Soughra	MH	M	ML	Hoch Harimeh	MH	M	ML	Jazira BG	MH	M	ML
Jib Jennine	MH	M	ML	Kamed-El-Laouz	MH	M	ML	Kefraya BG	MH	M	M
Khiara El Atika	MH	M	ML	Khiara	MH	M	ML	Khirbet Qanafar	MH	M	M
Lala	MH	M	ML	Lebbaya BG	MH	M	L	Loussa	MH	M	L
Machghara	H	M	ML	Manara (Hammar) BG	H	M	M	Mansoura BG	MH	M	ML
Marej BG	MH	M	ML	Maydoun	MH	M	L	Ouaqf BG	MH	M	ML
Qaraaoun	MH	M	ML	Qelya	H	M	ML	Raouda (Istabel)	MH	M	ML
Saghbine	MH	M	M	Sohmor	MH	M	L	Soltan Yacoub el Ara	MH	M	ML
Souairy	MH	M	ML	Sultan Yaacoub	H	M	ML	Tal Znoub	H	M	ML
Yehmor BG	MH	M	L	Zilaya	MH	M	ML				

### Zahle

Municipality	18-Nov	19-Nov	20-Nov	Municipality	18-Nov	19-Nov	20-Nov	Municipality	18-Nov	19-Nov	20-Nov
Aanjar (Haouch Mouss	MH	M	M	Ablah	MH	M	ML	Ain Kfarzabad	MH	M	ML
Ali-El-Nahri	MH	M	ML	Bar Elias	MH	M	ML	Bouarej	MH	M	ML
Cheberqiyet Tabet	MH	M	ML	Chtaura	MH	M	ML	Deir El Ghazal	MH	M	M
Delhamiyet Zahle	MH	M	ML	Ferzol	MH	M	M	Haouch El-Ghanam	MH	M	ML
Haouch Es-Siyadeh	MH	M	ML	Haouch Hala	MH	M	ML	Haouch Mandara	MH	M	ML

Haouch Qayssar	MH	M	ML	Hezerta	MH	M	M	Hosh Moussa	MH	M	ML
Jdita	MH	M	M	Kfarzabad	MH	M	ML	Ksara	MH	M	ML
Majdel Aanjar	MH	M	M	Makssi	MH	M	ML	Massa	MH	M	ML
Mazraat Er-Remtaniye	MH	M	M	Mrayjat Zahle	H	M	ML	Mzaraa Zahle	MH	M	ML
Nabi Ayla	MH	M	M	Nasriyet Rizk	MH	M	ML	Nasriyet Zahle	MH	M	ML
Niha Zahle	MH	M	M	Ouadi Ed-Deloum	MH	M	ML	Ouadi El-Arayech	MH	M	M
Qaa El Rim	MH	M	M	Qab Elias	MH	M	M	Qousaya	MH	M	M
Rhit	MH	M	ML	Riyak	MH	M	ML	Saadnayel	MH	M	ML
Taal El-Akhdar	MH	M	ML	Taalbeya	MH	M	M	Taanayel	MH	M	ML
Talamara	MH	M	ML	Tcheflik Edde Haouch	MH	M	ML	Tcheflik Qiqano	MH	M	ML
Terbol Zahle	MH	M	ML	Touaite Zahle	MH	M	M	Zahle Aradi	MH	M	M
Zahle El-Berbara	MH	M	ML	Zahle El-Maallaqa	MH	M	ML	Zahle El-Midane	MH	M	ML
Zahle Er-Rassiye	MH	M	ML	Zahle Haouch El-Ouma	MH	M	ML	Zahle Haouch El-Ouma	MH	M	ML
Zahle Haouch Ez-Zara	MH	M	ML	Zahle Maalqa Aradi	MH	M	M	Zahle Mar Antonios	MH	M	ML
Zahle Mar Elias	MH	M	M	Zahle Mar Gerios	MH	M	M	Zahle Saydet En-Naja	MH	M	M
Zebdoul	MH	M	M								

## Rachaiya

Municipality	18-Nov	19-Nov	20-Nov	Municipality	18-Nov	19-Nov	20-Nov	Municipality	18-Nov	19-Nov	20-Nov
Ain Arab Rachaiya	MH	M	M	Ain Ata	MH	M	M	Ain Harche	MH	M	ML
Aqabe Rachaya	H	M	ML	Ayha	MH	M	M	Ayta El Fokhar	MH	M	ML
Bakifa Rachaya	MH	M	ML	Bakka	H	M	M	Beit Lahya	MH	M	ML
Bireh Rachaiya	MH	M	ML	Daher El Ahmar	MH	M	M	Deir El-Achayer	MH	M	M
Heloua Rachaiya	MH	M	M	Hoch El Qannabeh Rac	H	M	ML	Kaoukaba Bou Arab	MH	M	L
Kfar Danis	MH	M	M	Kfar Mechki	MH	M	ML	Kfar Qouq	MH	M	M
Kherbet Rouha	H	M	M	Majdel Balhiss	MH	M	ML	Mdoukha	MH	M	ML
Mhaydseh Rachaiya	MH	M	ML	Nabi Safa	MH	M	ML	Rachaiya	MH	M	M
Rafid Rachaiya	MH	M	ML	Selsata (Mazraat Dei	MH	M	M	Tannoura	MH	M	ML
Yanta	MH	M	M								

## Beyrouth

### Beyrouth

Municipality	18-Nov	19-Nov	20-Nov	Municipality	18-Nov	19-Nov	20-Nov	Municipality	18-Nov	19-Nov	20-Nov
Achrafieh	M	M	M	Ain el-Mreisse	M	M	M	Bachoura	M	M	M
Beirut Central Distr	M	M	M	Marfai	M	M	M	Mazraa	M	M	M
Medaouar	M	M	M	Minet el-Hosn	M	M	M	Mwssaitbeh	M	M	M
Ras Beirut	M	M	M	Rmeil	M	M	M	Saifi	M	M	M
Zqaq el-Blat	M	M	M								