

# Lebanon Fire Risk Bulletin



CIVIL DEDEFENCE

**Refer to cadast table condition.**

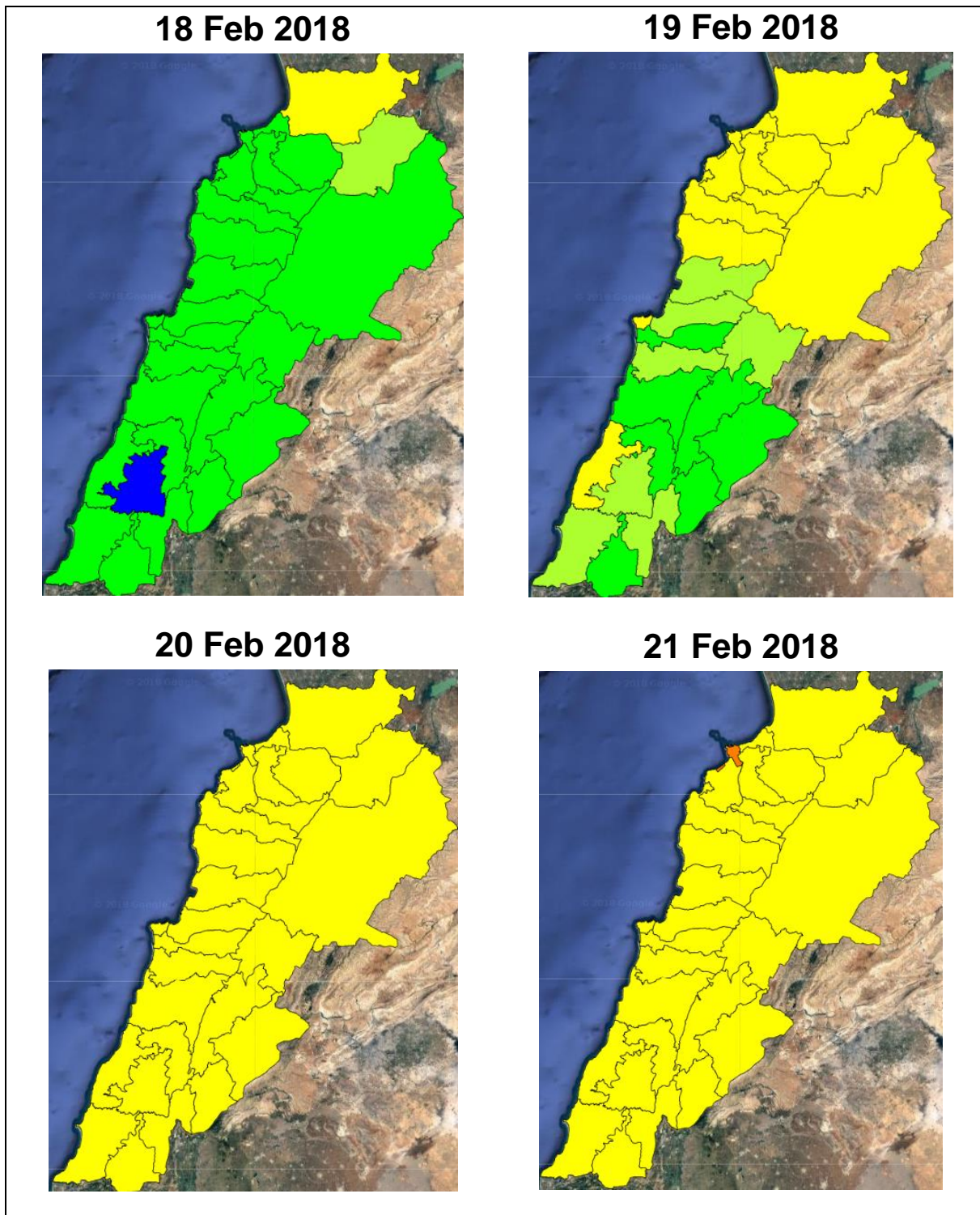
**Please note that the indicated temperature is at 2 meters height from the ground.**

General description of potential fire risk situation

Symbol	Level of risk	Meaning and actions
VL	Very low	Very low fire risk. Controlled burning operations can be hardly executed due to high fuel moisture content. Normally wildfires self-extinguish.
L	Low	Low fire risk. Controlled burning operations can be executed with a reasonable degree of safety.
ML	Medium low	Medium-low fire risk. Controlled burning operations can be executed in safety conditions. All the fires need to be extinguished.
M	Medium	Medium fire risk. Controlled burning operations would be avoided. All the fires need to be very well extinguished.
M	Medium high	Controlled burning is not recommended. Open flame will start fires. Cured grasslands and forest litter will burn readily. Spread is moderate in forests and fast in exposed areas. Patrolling and monitoring is suggested. Fight fires with direct attack and all available resources.
H	High	Ignition can occur easily with fast spread in grass, shrubs and forests. Fires will be very hot with crowning and short to medium spotting. Direct attack on the head may not be possible requiring indirect methods on flanks. Patrolling and monitoring the territory is highly suggested.
E	Extreme	Ignition can occur also from sparks. Fires will be extremely hot with fast rate of spread. Control may not be possible during day due to long range spotting and crowning. Suppression forces should limit efforts to limiting lateral spread. Damage potential total. Patrolling and monitoring the territory is highly suggested.

**Beirut, 19 February 2018**

# FIRE RISK INDEX

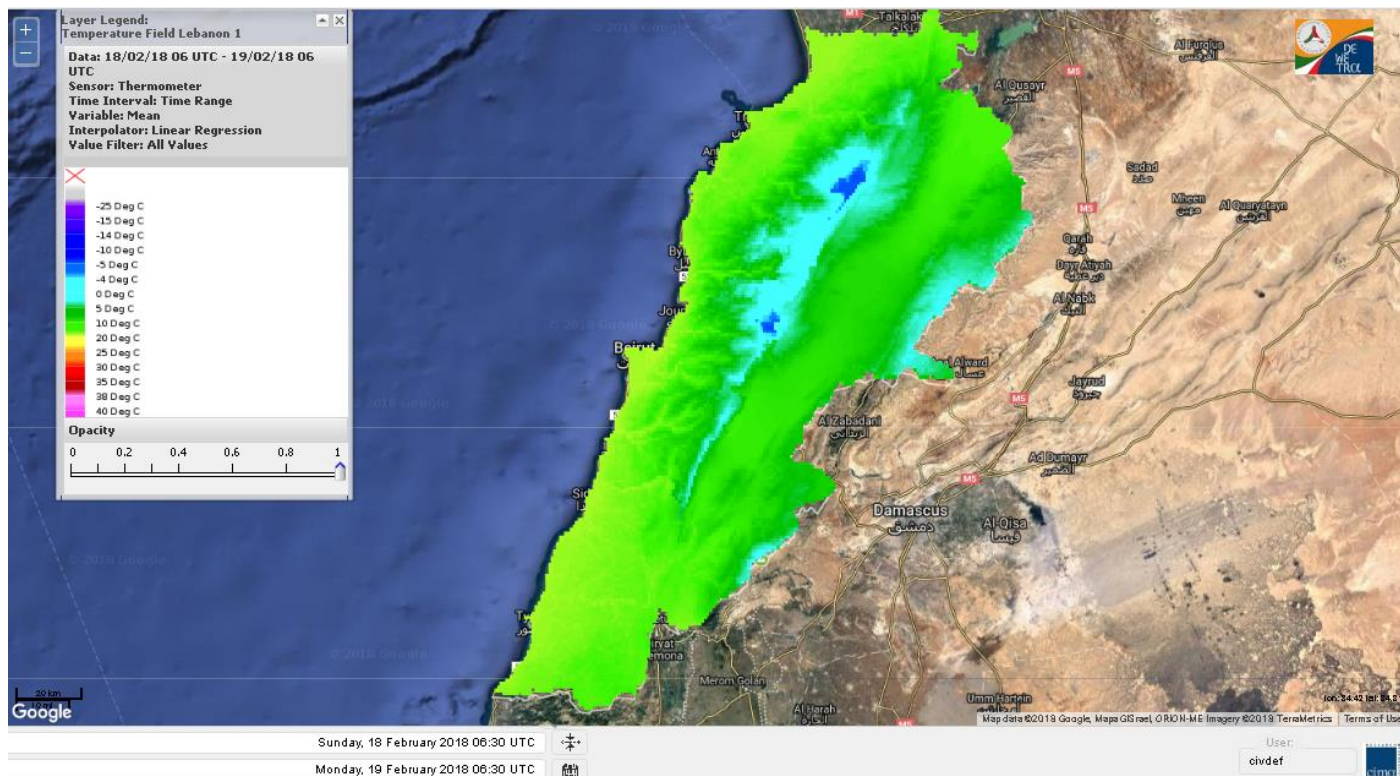


Layer Legend:  
Lebanon Wildfire Risk Index 1

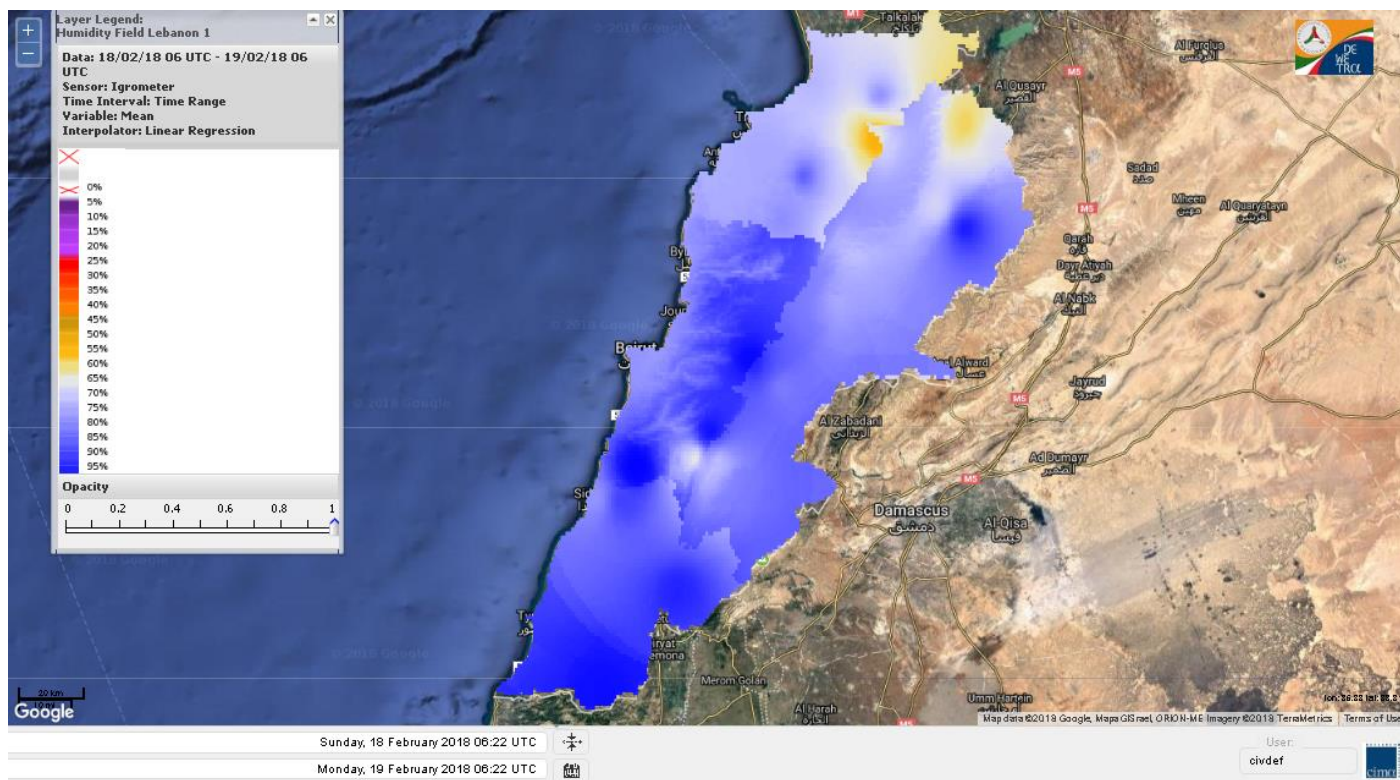
Data: Run: 19/02/2018 00:00. Forecast for 19  
Model: RISICO for the Republic of Lebanon  
Variable: Fire Weather Index  
Spatial Resolution: Caza

- VERY LOW
- LOW
- MEDIUM-LOW
- MEDIUM
- MEDIUM-HIGH
- HIGH
- EXTREME

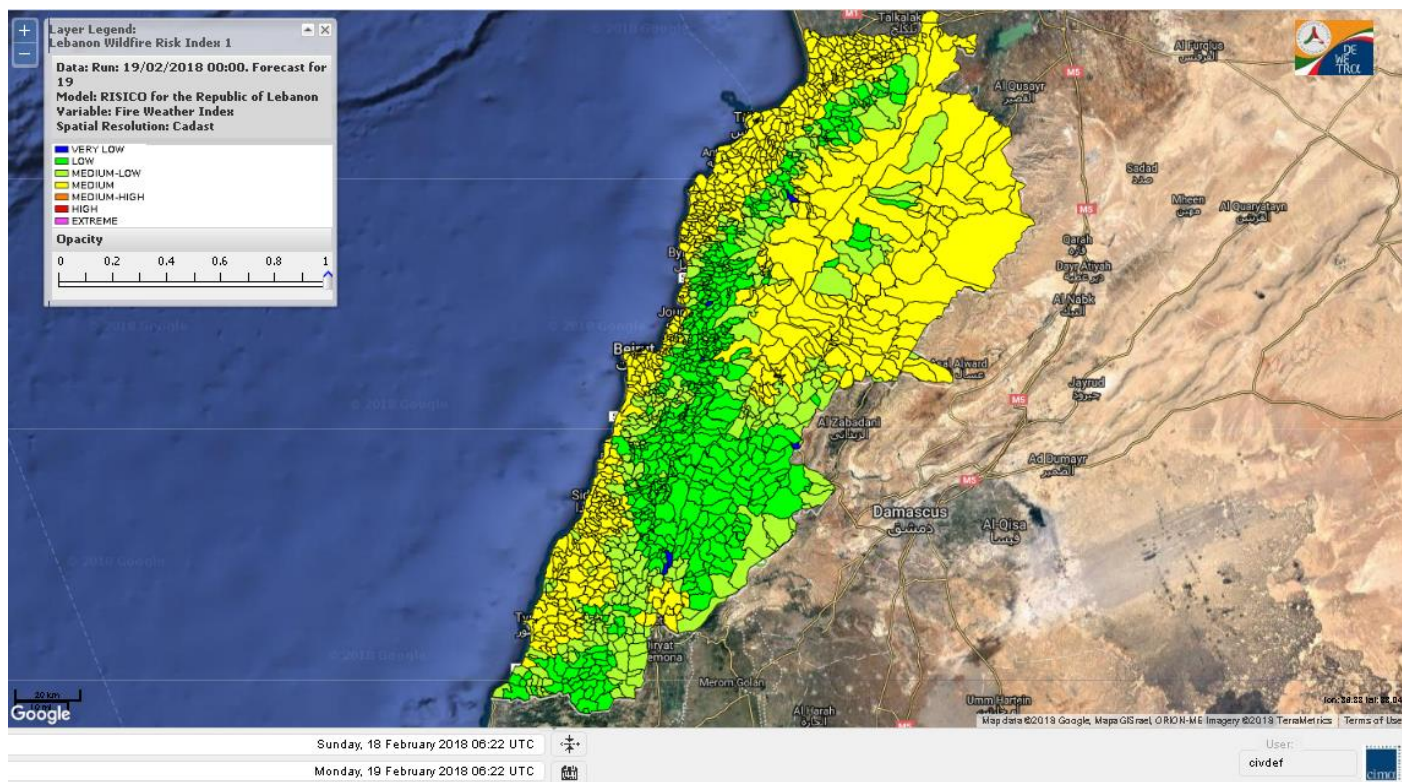
# Lebanon temperature for Lebanon 19 Feb 2018



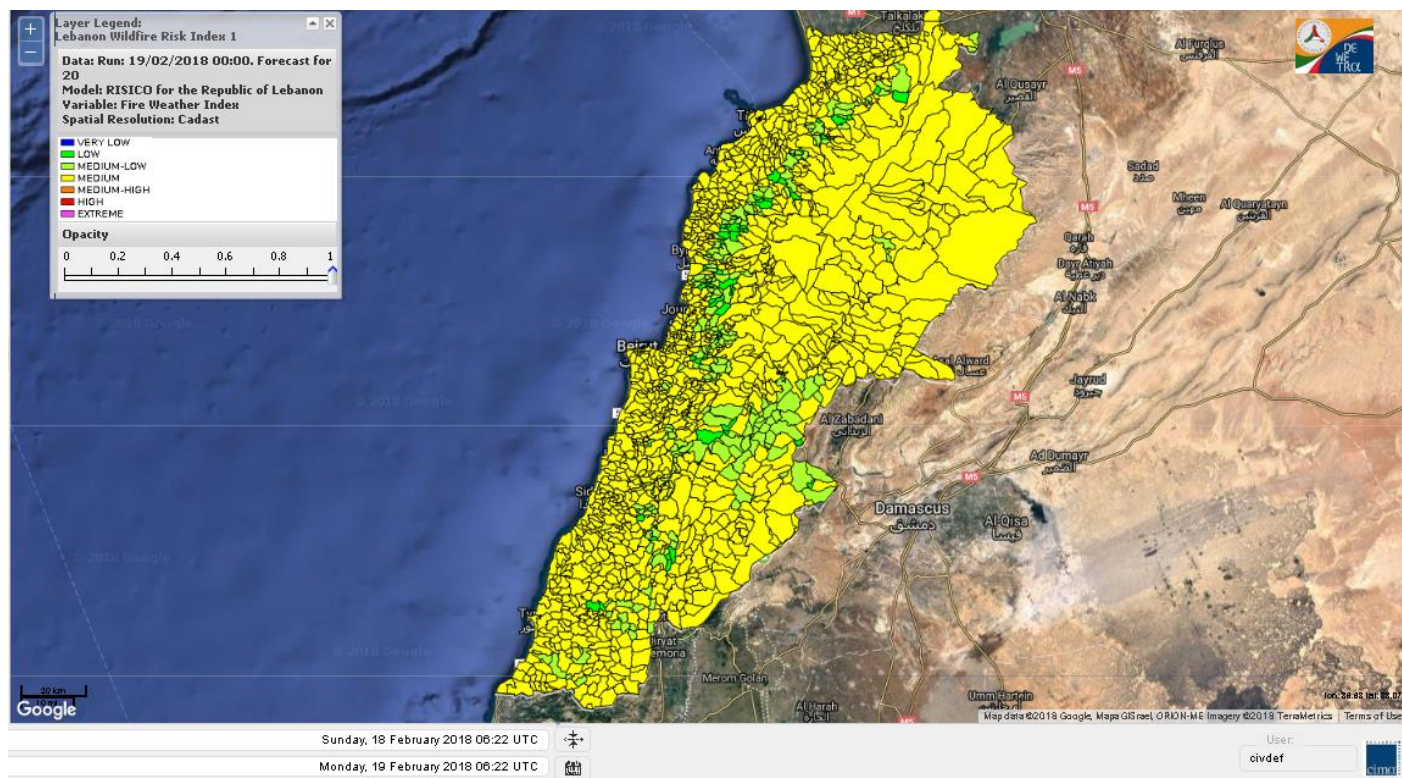
# Lebanon humidity for Lebanon 19 Feb 2018



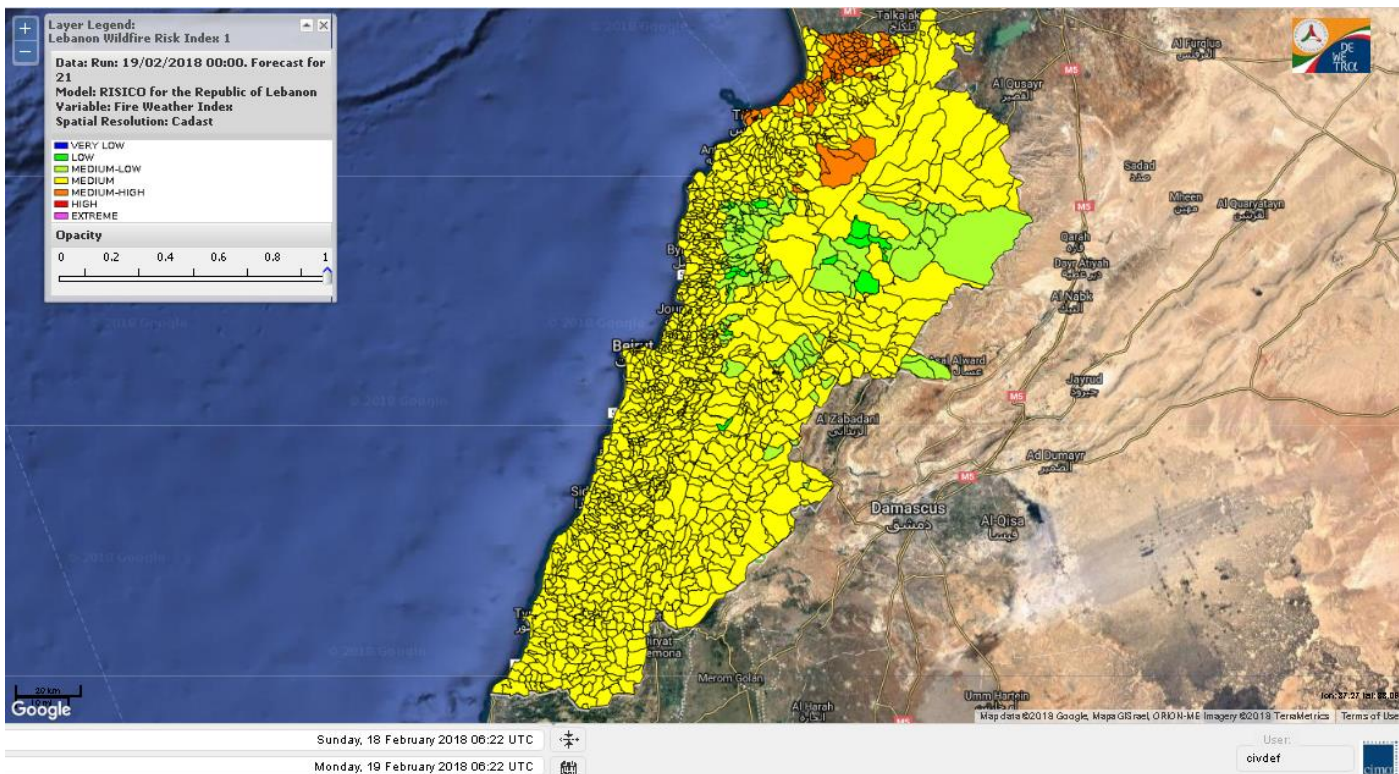
# Lebanon for 19 Feb 2018



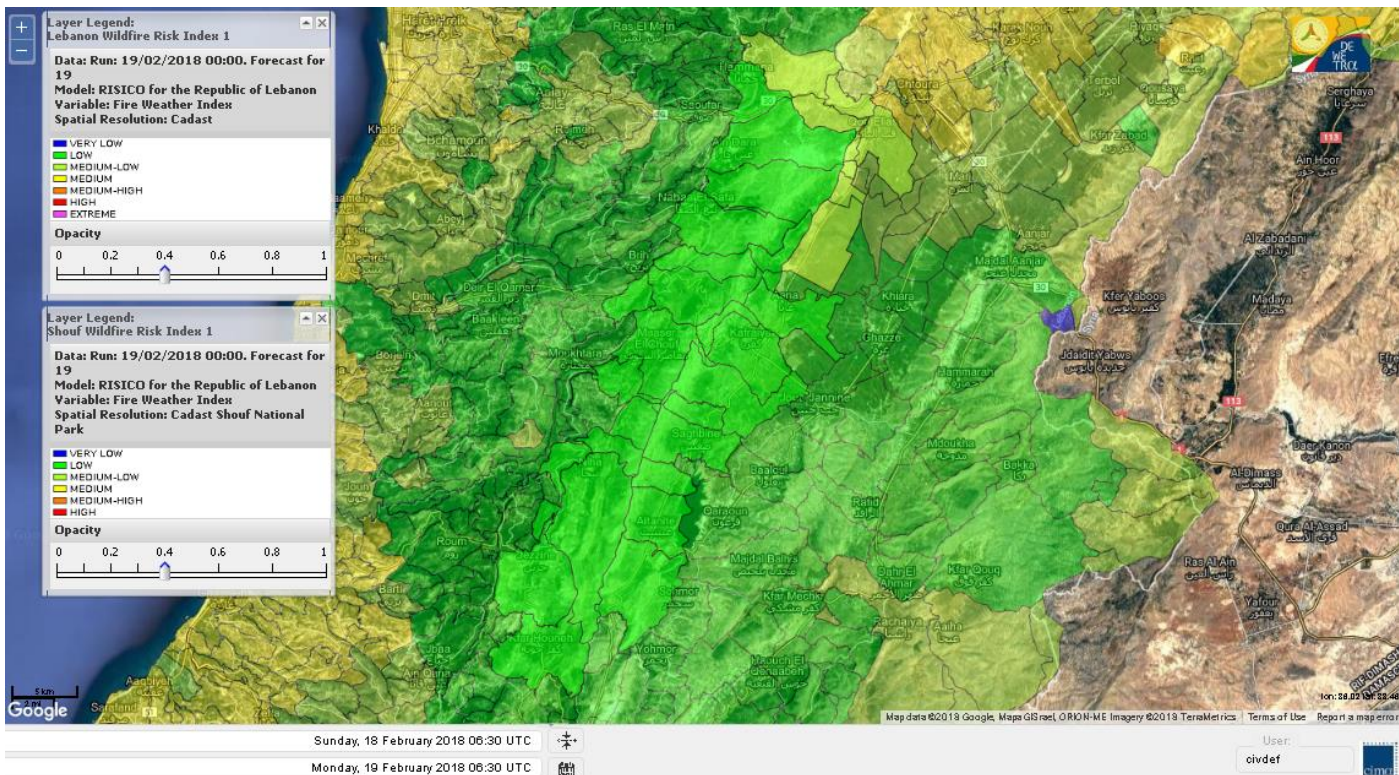
# Lebanon for 20 Feb 2018



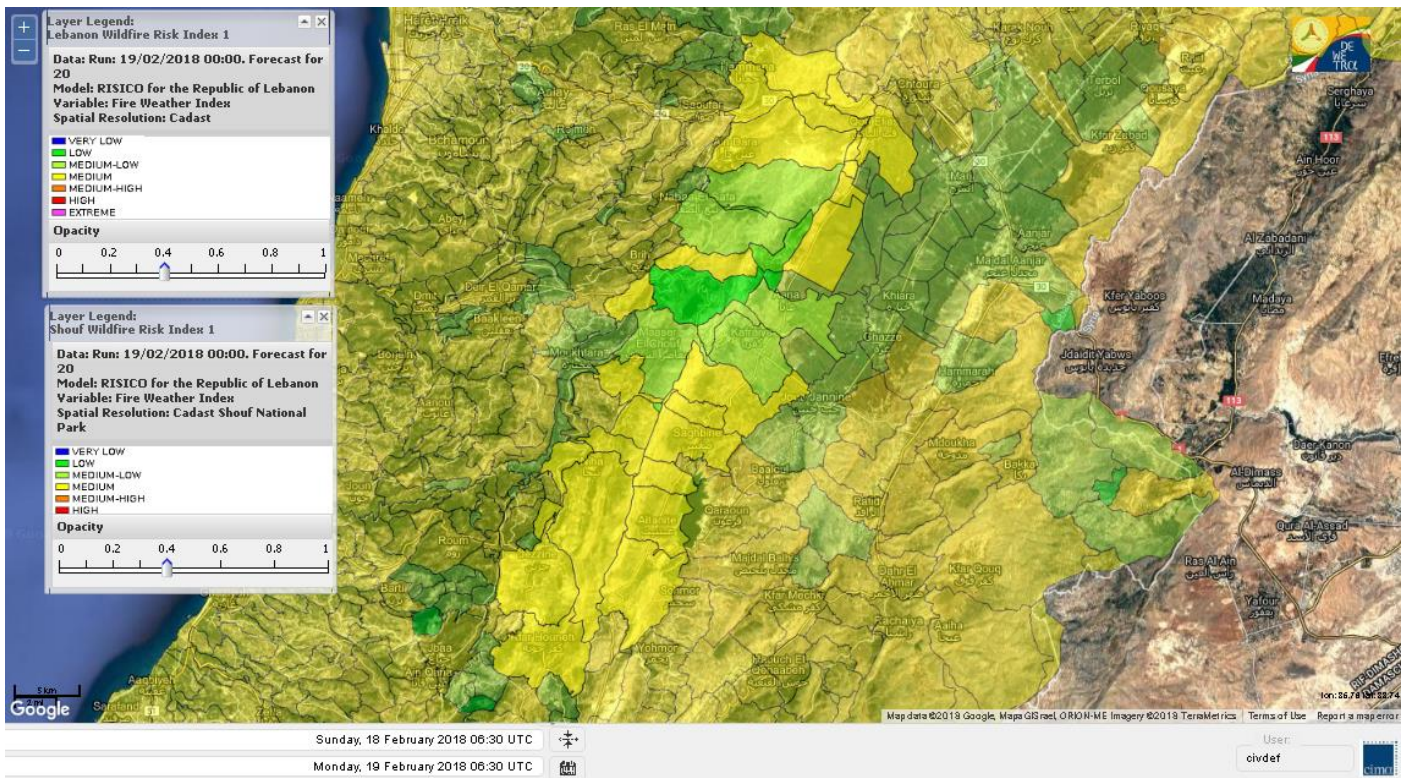
# Lebanon for 21 Feb 2018



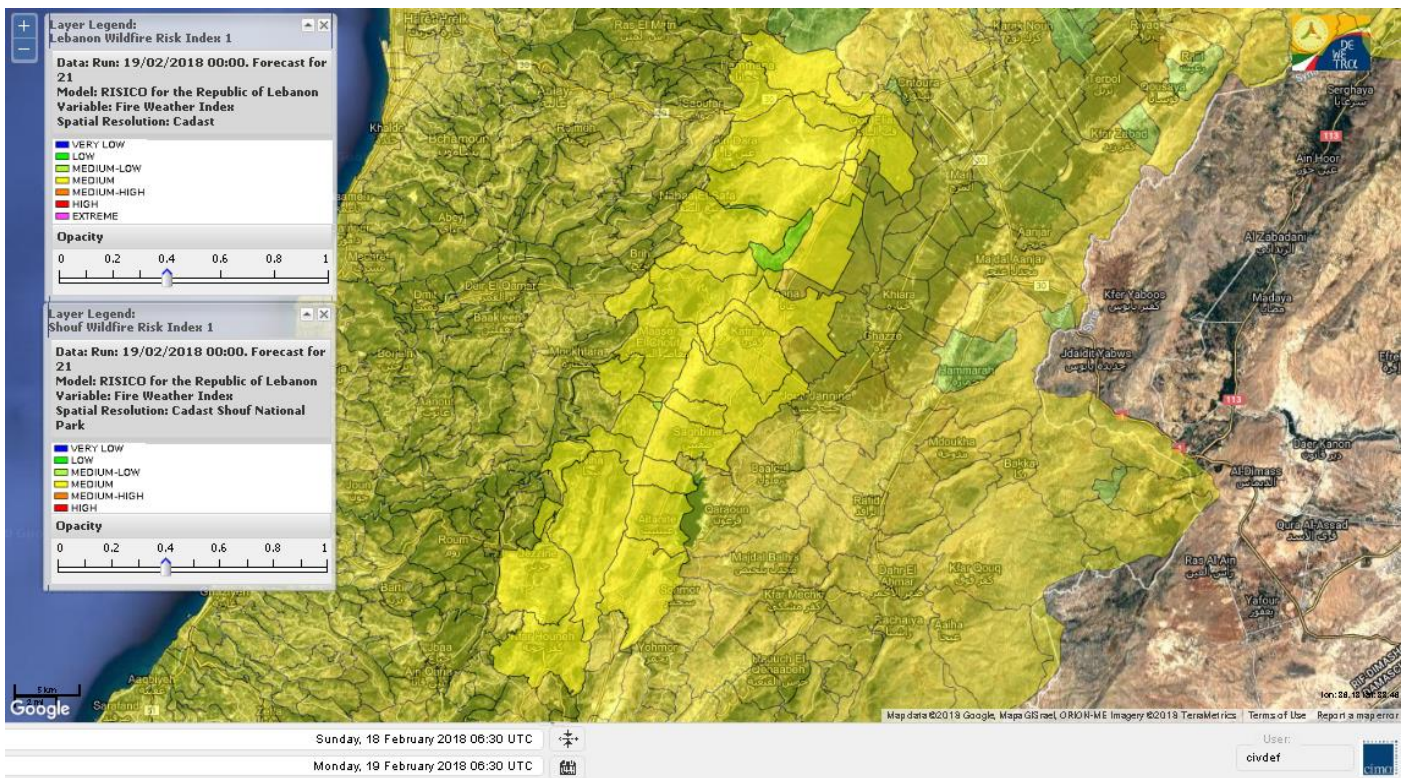
# Shouf Biosphere Reserve Forecast for 19 Feb 2018



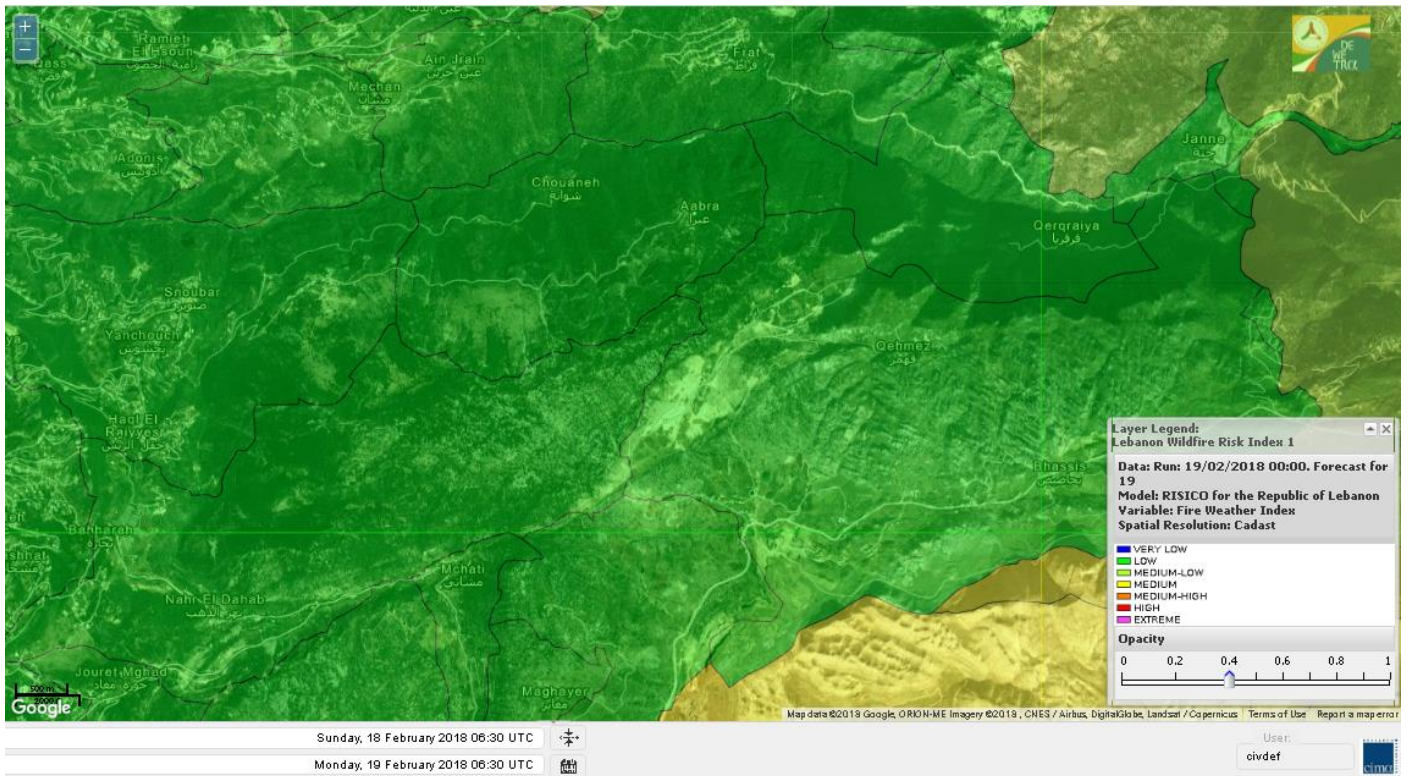
# Shouf Biosphere Reserve Forecast for 20 Feb 2018



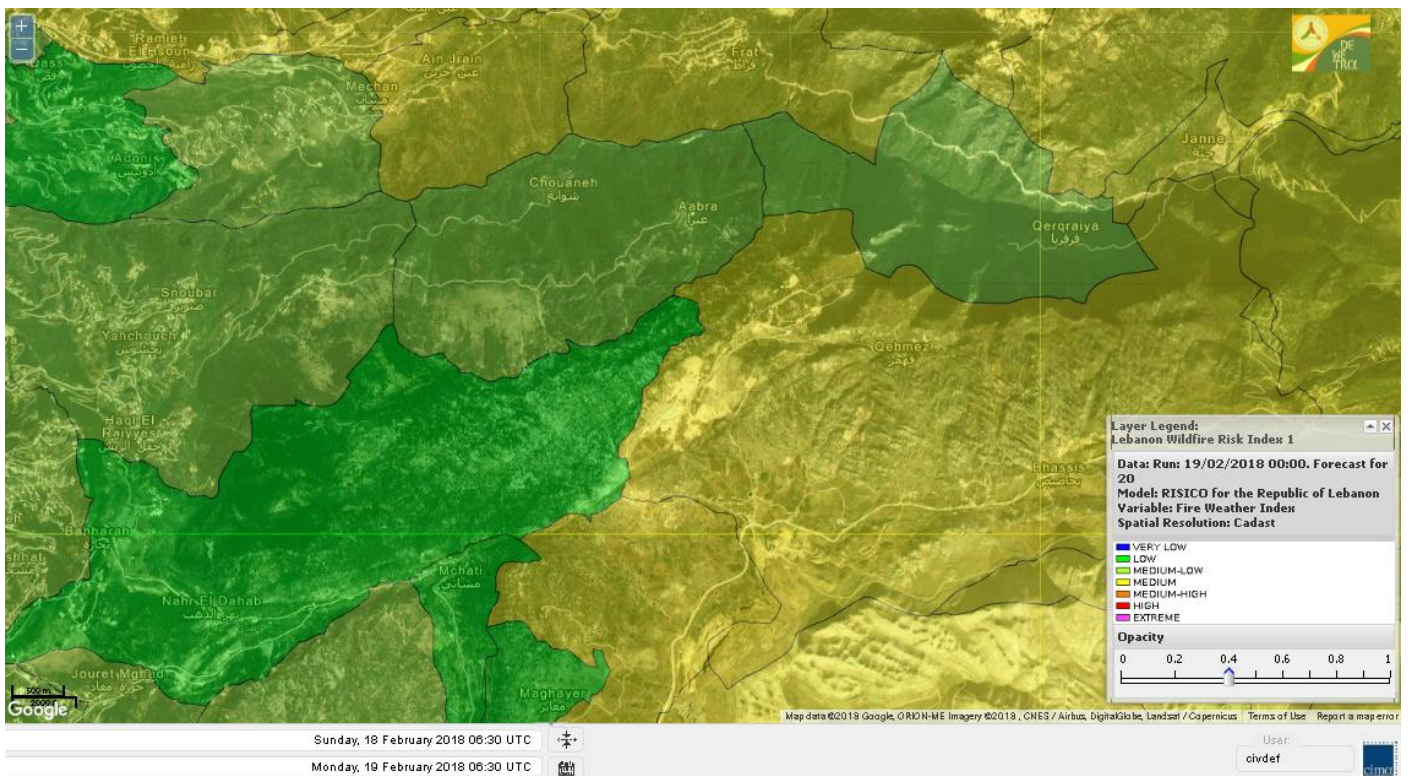
# Shouf Biosphere Reserve Forecast for 21 Feb 2018



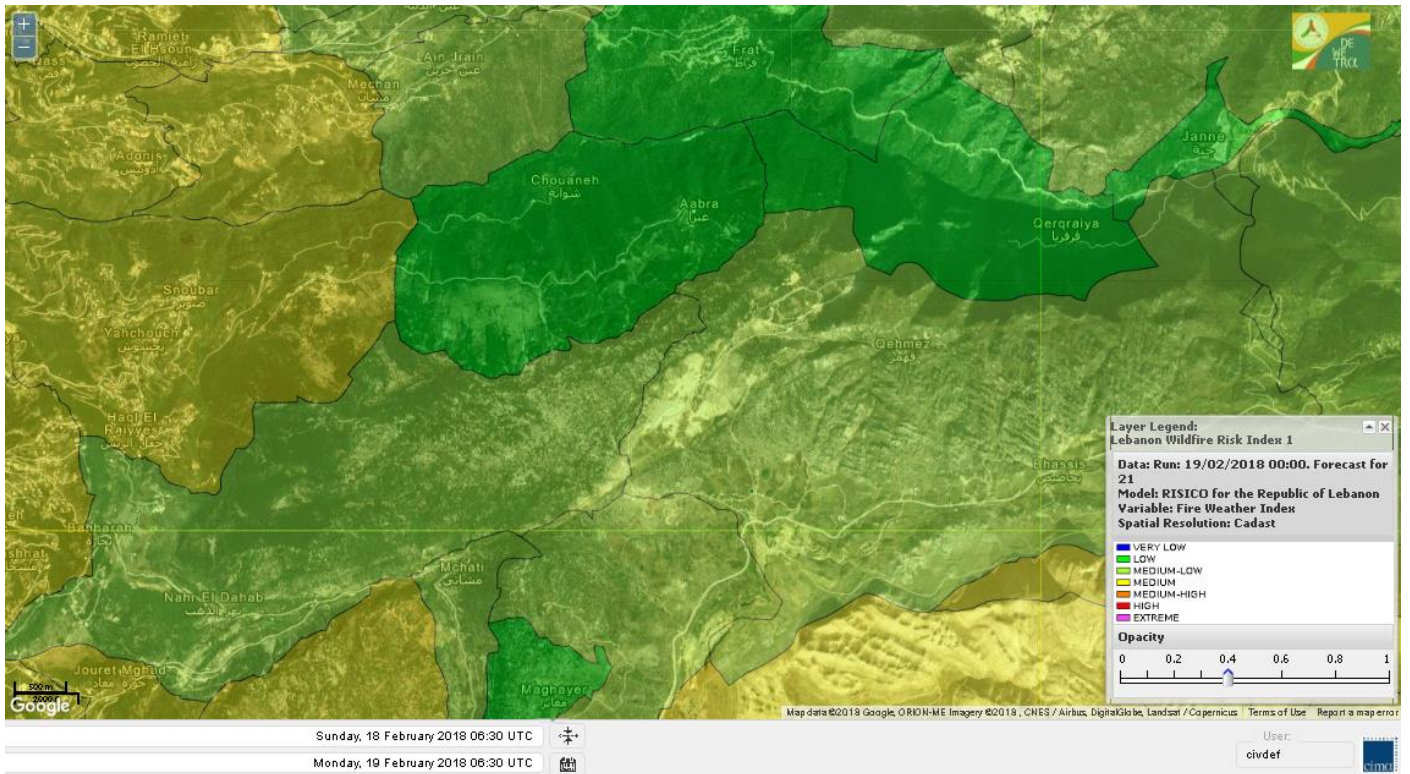
## Jabal Moussa Reserve Forecast for 19 Feb 2018



## Jabal Moussa Reserve Forecast for 20 Feb 2018



# Jabal Moussa Reserve Forecast for 21 Feb 2018





## Nord

### Koura

Municipality	19-Feb	20-Feb	21-Feb	Municipality	19-Feb	20-Feb	21-Feb	Municipality	19-Feb	20-Feb	21-Feb
Aaba	M	M	M	Afsaddiq	M	M	M	Ain Ekriane	M	M	M
Amioun	M	M	M	Anfeh	M	M	M	Badbhoun	M	M	M
Barghoun	M	M	M	Barsa	M	M	M	Batroumine	M	M	M
Bdebba	M	M	M	Bechmizine	M	M	M	Bednaye El-Koura	M	M	M
Bhabbouch El-Koura	M	M	M	Bkeftine	M	M	M	Bnehran	ML	ML	M
Bqaiia El-Koura	M	M	M	Bsarma	M	M	M	Btaaboura	M	M	M
Bttram	M	M	M	Btouratij	M	M	M	Bziza	M	M	M
Dar Beechtar	M	M	M	Dar Chmezzine	M	M	M	Deddeh	M	M	M
Deir El-Balamand	M	M	M	Fih	M	M	M	Hraiche	M	M	M
Ijdaabrine	M	M	M	Kaftoun	M	M	M	Kefraya El-Koura	M	M	M
Kfarakka	M	M	M	Kfarhata	M	M	M	Kfarhazir	M	M	M
Kfarkahel	M	M	M	Kfarsaroun	M	M	M	Kosba	M	M	M
Mejdel el-Koura	M	M	M	Nakhle	M	M	M	Qalhat	M	M	M
Ras Masqa	M	M	M	Rechdibbine	M	M	M	Zakroun	M	M	M
Zgharta El-Mtaouile	L	L	M								

### Bcharre

Municipality	19-Feb	20-Feb	21-Feb	Municipality	19-Feb	20-Feb	21-Feb	Municipality	19-Feb	20-Feb	21-Feb
Aabdine	ML	M	M	Bane	M	M	MH	Barhelioun	L	ML	M
Bazooune	M	M	M	Becharre	M	M	M	Beit Menzer	ML	M	M
Billa	ML	M	M	Blaouza	M	M	M	Bqaa Kafra	M	M	M
Bqerqacha	M	M	M	Breissat	M	M	ML	Dimane	M	M	ML
Hadath El Jobbeh	ML	M	ML	Hadchit	M	M	M	Hasroun	M	M	M
Mazraat Aassaf	L	L	ML	Mazraat Bani Saab	ML	M	ML	Mchaa El-Jobbeh	M	M	M
Metrit	ML	ML	M	Moghr El-Ahoual	ML	M	M	Ouadi Qannoubine	VL	L	ML
Qanat	ML	M	M	Qnayer	L	ML	M	Tourza	ML	M	M

### Batroun

Municipality	19-Feb	20-Feb	21-Feb	Municipality	19-Feb	20-Feb	21-Feb	Municipality	19-Feb	20-Feb	21-Feb
Aabrine	M	M	M	Aalali	ML	ML	ML	Aartiz	M	M	ML
Abdelli	M	M	M	Ajdabra	M	M	M	Assia	M	ML	ML
Basbina	M	M	M	Batroun	M	M	M	Bcheleh	ML	M	ML
Bechtoudar	ML	ML	ML	Beit Chlala	L	ML	ML	Beit Kassab	L	L	ML
Bijdarfil	M	M	M	Bqesmaya	M	M	M	Chatine	ML	M	ML
Chebtin	ML	ML	M	Chekka	M	M	M	Daael	M	M	ML
Dahr Abi Yaghi	M	M	M	Daraya El-Batroun	M	M	M	Deir Billa	L	ML	M
Deir Kfifane	M	M	M	Deir Mar Youhanna EL	L	ML	L	Deir Mar Youssef Jra	M	M	M
Douma	ML	M	ML	Douq	ML	ML	M	Eddeh El-Batroun	M	M	M
Ftihat El-Batroun	M	M	L	Ghouma	M	M	M	Hadtoun	ML	ML	ML
Hamat	M	M	M	Harbouna	M	M	M	Hardine	L	L	L
Helta	M	M	L	Hery	M	M	M	Jebbla	M	M	M
Jrabta El-Batroun	M	M	M	Jrane El-Batroun	M	M	M	Kfar Aabida	M	M	M
Kfar Halda	L	ML	ML	Kfarb Shlaimane	M	M	L	Kfarhatna	M	M	M
Kfarhay	M	M	M	Kfarhelos	M	M	M	Kfifane	M	M	M

Kfour El Arabi	ML	M	ML	Koubba	M	M	M	Kour	M	M	M
Mar Mama	L	L	ML	Masrah	L	L	M	Mehmarch	ML	ML	ML
Mrah Chdid	M	M	M	Mrah El Ziyat	M	M	M	Mrah El-Hajj	ML	L	L
Nahle El-Batroun	ML	ML	L	Niha El-Batroun	ML	M	ML	Ouajh El-Hajjar	M	M	M
Ouata Houb	ML	M	ML	Qatnaaoun	M	M	M	Racha	ML	ML	ML
Rachana	M	M	M	Rachkida	M	M	M	Ram El-Batroun	ML	L	ML
Ras Nahhach	M	M	M	Selaata	M	M	M	Sghar	M	M	M
Smar Jbayl	M	M	M	Sourat El-Batroun	M	M	ML	Tannourine El-Faouqa	M	M	M
Tannourine Et-Tahta	L	M	ML	Thoum	M	M	M	Toula El-Batroun	M	M	M
Zan	M	M	ML								

## Zgharta

Municipality	19-Feb	20-Feb	21-Feb	Municipality	19-Feb	20-Feb	21-Feb	Municipality	19-Feb	20-Feb	21-Feb
Aachach	M	M	M	Aalma	M	M	M	Aarde	M	M	M
Aintourine	ML	M	M	Arabet Qozhaya	L	ML	M	Arde	M	M	M
Arjis	M	M	M	Asnoun	M	M	M	Ayto	L	ML	M
Basloukit	M	M	MH	Bchannine	M	M	M	Besebeel	M	M	M
Bhairret Toula	ML	M	MH	Bnachee	M	M	M	Boussit	M	M	M
Danha	M	M	M	Daraiya Zgharta	M	M	M	Deir Jdeide	M	M	M
Ehden	M	M	M	Halan	M	M	M	Hariq Zgharta	M	M	M
Houakir	ML	M	M	Hraiqis	M	M	M	laal	M	M	M
Ijbaa	ML	M	M	Karm Saddeh	L	L	M	Kfarchakhna	M	M	M
Kfardlaqous	M	M	M	Kfarfou	M	M	M	Kfarhata Zgharta	M	M	M
Kfarhoura	M	M	M	Kfarsghab	M	M	M	Kfaryachit	M	M	M
Kfarzaina	M	M	M	Khaldiye	M	M	M	Mazraat Ajbeaa	M	M	M
Mazraat Et-Teffah	L	M	M	Mazraat Jneid	M	M	M	Mejdlaiya Zgharta	M	M	M
Merh Kfarsghab	M	M	M	Miryata	M	M	M	Miziara	L	ML	M
Mzraat Kefraya	M	M	MH	Qorah Bach	M	M	M	Rachiine	M	M	M
Ras Kifa	M	M	M	Sakhra	M	M	M	Sebhel Zgharta	ML	M	M
Serhel	L	L	M	Tallet Zgharta	M	M	M	Toula Zgharta	ML	M	M
Zgharta	M	M	M								

## Minieh-Denniye

Municipality	19-Feb	20-Feb	21-Feb	Municipality	19-Feb	20-Feb	21-Feb	Municipality	19-Feb	20-Feb	21-Feb
Aasaymout	L	L	M	Aaymar	ML	ML	M	Aazki	M	M	M
Ain El-Tineh-Miniyeh	L	M	M	Assoun	ML	ML	M	Bakhaaoun	ML	ML	M
Bchennata	M	M	M	Bechehhara	L	ML	M	Beddawi	M	M	MH
Behouaita	ML	M	M	Beit El Foqss	ML	M	M	Beit Haouik	ML	M	M
Beit Zoud	ML	M	M	Bekaasafrine	M	M	MH	Borj El Yahoudiyeh	M	M	M
Bqarsouna	ML	M	M	Btermaz	L	M	M	Debaael	L	L	M
Deir Ammar	M	M	M	Deir Nbouh	ML	M	M	Haouaret-Miniyeh	L	ML	M
Haql el Azimeh	L	L	M	Harf El Siyad	L	L	M	Hazmiye-Miniyeh	L	M	M
Izal	ML	M	M	Jarjour	L	L	M	Jayroun	L	M	M
Kahf El-Malloul	L	ML	M	Karm El-Moher	ML	M	M	Kfar Binine	ML	M	M
Kfarchalane	ML	ML	M	Kfarhabou	M	M	M	Kharroub-Miniyeh	M	M	M
Mazraat El-Kreme	L	L	M	Mazraat Ketrane	ML	ML	M	Merkebta	M	M	M
Minyeh	M	M	MH	Mrah El Sfirat	L	M	M	Mrah Sraj	L	ML	M
Mrebbine	M	M	MH	Nabi Youcheaa	M	M	M	Nemrine	M	M	M

Qarhaiya	L	ML	M	Qarne	L	M	M	Qarsita	L	M	M
Qattineh-Miniyeh	L	L	M	Qemmamine	ML	M	M	Qraine	L	ML	M
Raouda-Aadoua	M	M	M	Rihaniyet-Miniyeh	M	M	MH	Sfireh	L	M	M
Sir Ed-Danniyeh	L	ML	M	Tarane	L	M	M	Terbol-Miniyeh	M	M	M
Zaghartaghriane	ML	ML	M	Zouq Bhannine	M	M	MH				

## Nabatiye

### Nabatiye

Municipality	19-Feb	20-Feb	21-Feb	Municipality	19-Feb	20-Feb	21-Feb	Municipality	19-Feb	20-Feb	21-Feb
Aabba	M	M	M	Aazzi	ML	M	M	Adchit El-Chqif	M	M	M
Ain Bou Swar	L	M	M	Ain Kana	ML	M	M	Ali El-TaHER	ML	ML	M
Ansar	M	M	M	Arab Salim	ML	M	M	Arnoun	ML	ML	M
Bfaroue	ML	M	M	Breyqaah	M	M	M	Charqiyeh	M	M	M
Choukine	ML	M	M	Deir El Zahrani	ML	M	M	Doueir El-Nabatiyeh	M	M	M
Habbouch El-Nabatiye	ML	M	M	Hamra El-Nabatiyeh	ML	M	M	Harouf El-Nabatiyeh	M	M	M
Hmaile	ML	M	M	Houmin El Faouqa	ML	M	M	Houmin El Tahta	M	M	M
Jarjough	L	M	M	Jbaah El-Nabatiyeh	L	M	M	Jebchit	M	M	M
Kfar Djal El-Nabatiy	M	M	M	Kfar Remmane	ML	M	M	Kfar Sir	M	M	M
Kfar Tebnit	ML	M	M	Kfarfila	ML	M	M	Kfour El-Nabatieh	ML	M	M
Mayfadoun	ML	M	M	Mazraat Bsaffour	ML	M	M	Mazraat Chalbaal	M	M	M
Mazraat Dmoul	M	M	M	Mazraat El Khreibeh	M	M	M	Mazraat El-Bayad El-	ML	M	M
Mazraat Kfarjaouz	ML	M	M	Mazraat Qalaat Meiss	M	M	M	Nabatiyeh El-Fawka	ML	M	M
Nabatiyeh Et-Tahta	ML	M	M	Namiriyyeh	M	M	M	Qaaqaaiyet El Jisr	ML	M	M
Qossaibeh El-Nabatiy	M	M	M	Roumine	ML	M	M	Sarba El-Nabatieh	ML	M	M
Sir El-Gharbiyeh	M	M	M	Toul	ML	M	M	Yehmor El-Nabatiyeh	ML	M	M
Zaoutar El Charkiyeh	ML	M	M	Zaoutar El-Gharbiyeh	ML	M	M	Zebdine El-Nabatiyeh	ML	M	M
Zefta	M	M	M								

### Hasbaiya

Municipality	19-Feb	20-Feb	21-Feb	Municipality	19-Feb	20-Feb	21-Feb	Municipality	19-Feb	20-Feb	21-Feb
Ain Jarfa	L	M	M	Abou Qamha	L	M	M	Ain Qania	L	M	M
Bourghos	ML	M	M	Chebaa	ML	M	M	Chouaya Hasbaya	L	M	M
Dellafeh	L	M	M	Fardiss Hasbaiya	L	M	M	Hasbaya	L	M	M
Hbariyeh	L	M	M	Kaoukaba Hasbaiya	ML	M	M	Kfar Chouba	L	M	M
Kfar Hamam	L	M	M	Kfeir El-Zait	L	M	M	Khalwat Hasbaya	L	M	M
Khreibet Hasbaiya	M	M	M	Majidiyeh Hasbaiya	ML	M	M	Marj Ez-Zhour (Haouc	L	M	M
Meri	M	M	M	Mimass	L	M	M	Rachaiya El-Fokhar	L	M	M
Salaiyeb	M	M	M								

### Marjayoun

Municipality	19-Feb	20-Feb	21-Feb	Municipality	19-Feb	20-Feb	21-Feb	Municipality	19-Feb	20-Feb	21-Feb
Aalmane Marjaayoun	L	ML	M	Aamra	M	M	M	Adayseh Marjaayoun	ML	ML	M
Adchit El-Koussair	ML	M	M	Ain Arab Marjaayoun	M	M	M	Bani Haiyann	ML	ML	M
Blatt Marjaayoun	ML	M	M	Blida	ML	M	M	Borj El-Moulouk	M	M	M
Boueyda Marjaayoun	ML	M	M	Deir Mimass	ML	ML	M	Deir Siriane	L	ML	M
Dibbine	ML	M	M	Ebel El Saqi	ML	M	M	Houla	ML	M	M
Houra	ML	M	M	Kfar Kila	M	M	M	Khiam Marjaayoun	M	M	M

Klayaa	M	M	M	Majdel Selem	ML	M	M	Marjaayoun	M	M	M
Markaba	ML	M	M	Mays El-Jabal	ML	M	M	Mazraat Doumiat	M	M	M
Mazraat Sarada	M	M	M	Mhaibib	ML	M	M	Qabrikha	L	ML	M
Qantara	L	ML	M	Rab El-Thalathine	ML	M	M	Saouaneh Marjayoun	ML	M	M
Talloussa	ML	ML	M	Taybeh Matjaayoun	M	M	M	Touline	L	ML	M

## Bent Jbail

Municipality	19-Feb	20-Feb	21-Feb	Municipality	19-Feb	20-Feb	21-Feb	Municipality	19-Feb	20-Feb	21-Feb
Ain-Ebel	L	M	M	Aitaroun	ML	M	M	Aynata Bint Jbeil	ML	M	M
Ayta El-Chaeb	L	M	M	Ayta El-Jabal	L	M	M	Beit Lif	L	M	M
Beit Yahoun	L	M	M	Bint Jbeil	L	M	M	Borj Qalaway	ML	M	M
Braachit	L	M	M	Chakra	ML	M	M	Debel	L	M	M
Deir Antar	ML	M	M	Froun	ML	M	M	Ghandouriyeh Bint Jb	ML	M	M
Hanine	L	M	M	Hariss	L	M	M	Hdatha	L	M	M
Jmeyjmech	ML	M	M	Kafra Bint Jbeil	L	ML	M	Kfar Dounine	ML	M	M
Khirbet Selm	ML	M	M	Kounine	ML	M	M	Maroun El Ras	ML	M	M
Qalaway	ML	M	M	Qaouzah	L	ML	M	Qatmoun	L	M	M
Ramya Bint Jbeil	L	M	M	Rchaf	L	M	M	Rmeich	L	M	M
Safad Al Battikh	L	M	M	Salhaneh	L	ML	M	Serbine	L	M	M
Sultanieh Bint Jbeil	L	M	M	Tibnine	L	M	M	Tiri	L	M	M
Yaroun	L	M	M	Yater	L	M	M				

## Mont Liban

### Jbail

Municipality	19-Feb	20-Feb	21-Feb	Municipality	19-Feb	20-Feb	21-Feb	Municipality	19-Feb	20-Feb	21-Feb
Aabeydat	M	ML	M	Aalita	L	L	M	Aamchit	M	M	M
Aarab El-Lahib	M	M	M	Aarasta	L	M	ML	Adonis Jbeil	L	L	M
Afqa Jbeil	ML	M	ML	Ain El Delbeh Jbeil	L	M	ML	Ain El-Ghouyba	ML	M	ML
Ain Jrain	L	M	ML	Ain Kfah	M	M	M	Almat El Chemaliyat	L	M	ML
Almat El-Jenoubiya	L	M	ML	Aqoura	M	M	M	Bayzoun	L	M	ML
Bchille Jbeil	L	M	M	Bechtida	L	ML	M	Behdaydat	ML	M	M
Beit Habbaq	M	M	M	Bejjeh	M	M	M	Bekhaaz	M	M	M
Berbara Jbeil	M	M	M	Bintael	ML	M	M	Birket Hjoula	L	ML	M
Blatt Jbeil	ML	M	M	Boulhos	L	M	ML	Breyj Jbeil	L	ML	M
Chamat	M	M	M	Chikhane	M	M	M	Chmout	M	M	M
Eddeh Jbeil	M	M	M	Ehmej	ML	M	ML	Fatre	L	ML	M
Ferhet	ML	M	M	Fghal	M	M	M	Frat	L	M	L
Ghabat	ML	M	M	Ghalboun	M	M	M	Gharzouz	M	M	M
Ghofrine	M	M	M	Habil	L	L	M	Halate	ML	M	M
Haqel	ML	L	M	Hbaline	M	M	M	Hboub	ML	M	M
Hdeine	M	M	M	Hema Er-Rehban	M	M	M	Hema Mar Maroun Aann	M	M	M
Hjoula	L	ML	M	Hosrayel	M	M	M	Hsarat	M	M	M
Hsoun	L	M	M	Jaj	ML	M	ML	Janne	L	M	L
Jbeil	M	M	M	Jeddeyel Jbeil	M	M	M	Jlisse	L	ML	M
Jouret El-Qattine	L	M	M	Kfar Baal Annaya	L	ML	M	Kfar Kidde	M	M	M
Kfar Kouas	L	ML	M	Kfar Mashoun	M	M	M	Kfoun	ML	M	M

Kharbe Jbeil	M	ML	M	Laqlouq	M	M	M	Lassa	ML	M	ML
Lehfed	L	L	ML	Maad	M	M	M	Mar Sarkis	M	M	M
Mastita	M	M	M	Mayfouq	L	L	ML	Mazraat El Siyad	M	M	M
Mazraat El-Maaden	L	M	L	Mechane	L	ML	M	Mechmech Jbeil	L	ML	ML
Mehrin	M	M	M	Mejdel El-Akoura	M	M	ML	Mghayreh Jbeil	M	M	M
Mounsef	M	M	M	Nahr Ibrahim	M	M	M	Qahmez	L	M	ML
Qartaba	ML	M	ML	Qartaboun	M	M	M	Qattara Jbeil	L	L	L
Qorqraya	L	ML	L	Ramout	M	M	M	Ras Osta	L	ML	M
Rihane Jbeil	M	M	M	Sakiet El-Khayt	M	M	M	Saqi Richmaya	ML	M	ML
Sebrine	L	ML	M	Seraita	ML	M	M	Souane Jbeil	ML	M	ML
Tadmor	M	M	M	Tartej	ML	M	ML	Torzaiya	L	M	ML
Yanouh Jbeil	ML	M	ML	Zibidine Jbeil	L	ML	M				

## El Metn

Municipality	19-Feb	20-Feb	21-Feb	Municipality	19-Feb	20-Feb	21-Feb	Municipality	19-Feb	20-Feb	21-Feb
Aain El-Qabu	L	ML	L	Aain El-Qach	L	M	M	Aain El-Teffaha	ML	ML	M
Aain el-Safssaf El-M	L	ML	M	Abou Mizane	L	ML	M	Ain Aar	M	M	M
Ain Alaq	L	M	M	Ain El-Kharroube	ML	M	M	Ain El-Sendiane	L	M	M
Ain El-Zeitoune	L	ML	M	Ain Saadeh	ML	M	M	Aintoura El-Matn	L	M	M
Amaret Chalhoub	M	M	M	Antelias	M	M	M	Atchaneh	L	M	M
Ayroun	L	M	M	Baabdat	L	ML	M	Baouchariyeh	M	M	M
Baskinta	ML	M	M	Beit Chabab	L	M	M	Beit El-Char	M	M	M
Beit El-Kekko	M	M	M	Beit Mery	L	M	M	Bhersaf	L	M	M
Bikfaya	L	M	M	Biyakout	M	M	M	Bnabil	L	M	M
Bourj Hammoud	M	M	M	Bqennaya	ML	M	M	Broummana El-Matn	L	M	M
Bsalim	ML	M	M	Bsifrine	L	ML	M	Bteghrine	L	ML	ML
Chaouiye	ML	M	M	Chouaya El-Matn	L	ML	M	Choueir	L	ML	M
Chrine	L	L	M	Dahr El Sawan El-Mat	L	M	M	Daychouniyeh	M	M	M
Dbayeh	M	M	M	Deir Chamra	L	ML	ML	Deir Mar Abda el Mch	ML	M	M
Deir Mar Roukouz	M	M	M	Deir Tamiche	ML	M	M	Dik El-Mehdi	M	M	M
Dikwaneh	M	M	M	Douar El-Matn	L	ML	M	Fanar	M	M	M
Fraike	L	M	M	Haret El-Ballaneh	M	M	M	Hbous	ML	M	M
Himlaya	L	M	M	Jal El Did	M	M	M	Jdeideh El-Metn	M	M	M
Jouar El-Matn	L	L	M	Jouret El-Ballout	L	M	M	Kaaqour	L	M	M
Kfar Aaqab	L	ML	M	Kfertay El-Matn	L	M	ML	Khenchara	L	ML	M
Khillet El-Mtain	L	ML	M	Konnabat Broummana	L	M	M	Konnabat Salima	VL	L	M
Machraah El-Matn	L	M	ML	Majdel Tarchich	ML	M	M	Majzoub	M	M	M
Mansouriyeh El-Metn	M	M	M	Mar Boutros Karm Et-	L	M	M	Mar Chaya et Mzekke	L	M	M
Mar Moussa Ed-Douar	L	ML	M	Marjaba	L	ML	ML	Masqa	L	M	M
Mayasse	L	M	M	Mazraat Deir Aoukar	M	M	M	Mazraat El-Hadirat	M	M	M
Mazraat Yachouh	M	M	M	Mchikha	L	M	M	Menqlet Mezher	M	M	M
Mhaydseh Matn	L	M	M	Mkalles	M	M	M	Mrouj	L	M	M
Mtain	M	M	M	Mtayleb	M	M	M	Nabay	L	M	M
Naccache	M	M	M	Ouadi Chahine	L	M	M	Ouadi El-Karm El-Mat	L	M	ML
Ouata El-Mrouj	L	M	M	Ouyoun El-Matn	L	L	M	Qornet Chehwan	ML	M	M
Qornet El-Hamra	ML	M	M	Roumieh	L	M	M	Sfeilet Bikfaya	L	ML	M
Sinn El-Fil	M	M	M	Zabbougha	L	ML	M	Zalqa	M	M	M

Zarouon	L	M	M	Zekrite	ML	M	M	Zighrine El-Matn	L	ML	M
Zouk El-Khrab	M	M	M								

## Chouf

Municipality	19-Feb	20-Feb	21-Feb	Municipality	19-Feb	20-Feb	21-Feb	Municipality	19-Feb	20-Feb	21-Feb
Aalmane El-Chouf	M	M	M	Aammq El-Chouf	L	ML	M	Ain Ouzein	L	L	M
Ain Qani	L	ML	M	Ain Zhalta	L	ML	M	Ainbal	L	M	M
Amatour	L	ML	M	Anout	ML	M	M	Atrine	L	M	M
Baadarane	L	M	M	Baaqline	L	M	M	Baasir	M	M	M
Barja	M	M	M	Barouk	L	L	M	Bater	L	M	M
Batloun	L	M	M	Bayqoun	ML	M	M	Bchetfine	L	M	M
Beiteddine	L	ML	M	Benouati Ech-Chouf	ML	M	M	Berjein	ML	M	M
Bireh et Mtalleh	L	M	M	Biret El-Chouf	L	M	M	Bkechtine Ouel Mchei	L	M	M
Bkifa El-Chouf	ML	M	M	Botme	L	ML	M	Bqaiaa Ech-Chouf	ML	M	M
Bsaba El-Chouf	L	M	M	Chammis El-Chouf	M	M	M	Chehim	ML	M	M
Chemaarine	L	M	M	Chourit	L	ML	M	Daher El-Chouf	ML	M	M
Dalhoun	ML	M	M	Damour	M	M	M	Daraya El-Chouf	L	M	M
Deir El-Moukhalles	L	M	M	Deir Baba	L	M	M	Deir Dourit	L	ML	M
Deir El-Qamar	L	M	M	Deir Kouche	L	M	M	Dibbieh	L	M	M
Dmit	ML	M	M	Fouara Jaafar	L	M	M	Fraidis El-Chouf	L	M	M
Ghabet Jaafar	L	M	M	Gharife	L	M	M	Haret Jandal	L	M	M
Hasrout	L	M	M	Jadra	M	M	M	Jahlieh	L	M	M
Jbeih El-Chouf	L	M	M	Jdeidet El-Chouf	L	ML	M	Jiyeh	M	M	M
Jleilyeh	L	M	M	Jmailiyeh	M	M	M	Joun	ML	M	M
Kahlounie El-Chouf	L	M	M	Ketermaya	M	M	M	Kfar Faqoud	L	M	M
Kfar Hamal	ML	M	M	Kfar Him	ML	M	M	Kfar Katra	L	ML	M
Kfar Niss	L	M	M	Kfar hay	L	M	M	Kfarnabrakh	L	M	M
Khirbet Bisri	L	ML	M	Knayse El-Chouf	L	M	M	Maaniyeh	ML	M	M
Maasser Beiteddine	L	ML	M	Maasser El-Chouf	L	ML	M	Majdalouna	ML	M	M
Majdel El-Meouch	L	M	M	Mazboud	ML	M	M	Mazmoura	ML	M	M
Mazraat El Chouf	L	M	M	Mazraat El Daher	L	M	M	Mazraat El-Douair	L	ML	M
Mechref	ML	M	M	Mghairie	M	M	M	Mghayrie El-Chouf	ML	M	M
Moukhtara	L	ML	M	Mrusti	L	M	M	Mtolle	L	M	M
Naameh	M	M	M	Niha El-Chouf	L	M	M	Ouadi Abou Youssef	L	M	M
Ouadi Ed-Deir	ML	M	M	Ouadi El-Sit	L	M	M	Ouadi bnehlay	L	ML	M
Qraibeh	L	M	M	Qreiaa	L	M	M	Rmayle El-Chouf	M	M	M
Semqaniyeh	L	M	M	Sibline	M	M	M	Sirjbeil	ML	M	M
Warhanieh	L	M	M	Werdaniyeh	M	M	M	Zaarourieh	ML	M	M

## Baabda

Municipality	19-Feb	20-Feb	21-Feb	Municipality	19-Feb	20-Feb	21-Feb	Municipality	19-Feb	20-Feb	21-Feb
Abadiyeh	ML	M	M	Ain Mouaffaq	L	M	M	Araiya	L	M	M
Arbaniyeh	L	L	M	Arsoun	L	ML	M	Baabda	M	M	M
Baalchmey	ML	M	M	Bmaryam	L	ML	M	Bourj El-Brajneh	M	M	M
Boutchay	M	M	M	Bsaba Baabda	M	M	M	Btekhney	L	ML	M
Btibyat	L	ML	M	Bzbeddine	L	ML	M	Chbeniyeh	L	M	M
Chiyah	M	M	M	Chmeisset Baabda	L	ML	M	Chouit	L	M	M
Deir El-harf	L	M	M	Deir Khouna	L	M	M	Dlaybeh	L	ML	M

Falougha	ML	M	M	Furn El-Chebbak	M	M	M	Hadath Beyrouth	M	M	M
Halaliyeh Baabda	L	M	M	Hammana	L	M	M	Haret El Sett	ML	M	M
Haret Hamze	L	M	M	Haret Hreik	M	M	M	Hasbaiya El-Metn	L	ML	M
Jouar El-Hoz	L	ML	ML	Jouret Arsoun	L	ML	M	Kfar Chima	M	M	M
Kfar Selouane	L	M	ML	Khalouat Baabda	L	M	M	Kneisset Baabda	L	ML	M
Laylakeh	M	M	M	Louayzeh Baabda	M	M	M	Merdache	M	M	M
Mzairaa Baabda	L	M	M	Ouadi Chahrour El Ol	ML	M	M	Ouadi Chahrour El So	ML	M	M
Qalaa Baabda	L	ML	M	Qhraybe Baabda	L	ML	M	Qobbayaa	L	M	M
Qornayel	L	ML	M	Qortada	L	ML	M	Qrayeh Baabda	L	ML	M
Qsaibeh Baabda	L	M	M	Qtale Baabda	L	M	M	Ras El Metn	L	M	M
Ras El-Haref	L	M	M	Rouayset El-Ballout	L	M	M	Salima Baabda	L	M	M
Tahouitat El Ghadir	M	M	M	Tarchich	ML	M	M	Zandouqa	L	M	M

## Aley

Municipality	19-Feb	20-Feb	21-Feb	Municipality	19-Feb	20-Feb	21-Feb	Municipality	19-Feb	20-Feb	21-Feb
Abey	ML	M	M	Aghmid	L	ML	M	Ain Dara	L	M	M
Ain Drafil	ML	M	M	Ain El Halazoun	L	M	M	Ain El-Rmmaneh	L	ML	M
Ain Jedideh	ML	M	M	Ain Ksour	ML	M	M	Ain Onoub	ML	M	M
Ain Traz	L	M	M	Ainab	L	M	M	Aley	ML	M	M
Aramoun	M	M	M	Aytat	ML	M	M	Azouniyeh	L	M	M
Baawerta	ML	M	M	Badghan Oua Wadi Bad	L	M	M	Bassatine	ML	M	M
Bayssour	ML	M	M	Bchamoun	ML	M	M	Bdadoun	L	M	M
Behouara	ML	ML	M	Bennay	ML	M	M	Bhamdoun El-Dayaa	ML	M	M
Bhamdoun El-Mhatta	ML	M	M	Bkhechtey	ML	M	M	Bleibel	ML	M	M
Bmakine	M	M	M	Bmhay	L	ML	M	Bouzrid	L	M	M
Bserrine	L	M	M	Bsous	L	ML	M	Btalloun	ML	M	M
Btater	L	M	M	Chanay	ML	M	M	Charoun	L	M	M
Chartoun	L	M	M	Chemlane	ML	M	M	Chouifat El-Aamrous	M	M	M
Chouifat El-Oumara	M	M	M	Chouifat El-Quoubbe	M	M	M	Dakkoun	ML	M	M
Deir Qoubel	ML	M	M	Dfoun	ML	M	M	Douair El Remmaneh	L	M	M
Ghaboun	ML	M	M	Habramoun	L	ML	M	Homs Oua Hama	L	M	M
Houmal	ML	M	M	Jisr El Qadi	ML	M	M	Kehaleh	L	ML	M
Keyfoun	M	M	M	Kfar Aamey	L	M	M	Kommatyeh	ML	M	M
Maasrati	L	M	M	Majdel Baana	L	M	M	Mansourieh et Ain El	ML	M	M
Mazraat El-Nahr	L	M	M	Mchakhte	L	ML	M	Mecherfeh	L	M	M
Mejdaya	ML	M	M	Mrayjat	L	M	M	Ramliyah	L	M	M
Rechmaya	L	M	M	Rejmeh	L	ML	M	Remhala	ML	M	M
Rouaysset El Neemane	L	M	M	Saoufar	L	M	M	Selfaya	L	M	M
Sirhmoul	ML	M	M	Souq El Ghareb	ML	M	M	Taazanieh	ML	M	M

## Kesrouane

Municipality	19-Feb	20-Feb	21-Feb	Municipality	19-Feb	20-Feb	21-Feb	Municipality	19-Feb	20-Feb	21-Feb
Achkout	L	ML	M	Adma Oua Dafneh	M	M	M	Ain Ed-Delbe Kesroua	L	L	ML
Ain El-Rihane	L	M	M	Aintoura Kesrouane	ML	M	M	Ajaltoun	L	ML	M
Akaybeh Kesrouane	M	M	M	Aramoun Kesrouane	L	M	M	Azra ouel Ozor	L	ML	M
Ballouneh	L	ML	M	Batha	L	M	M	Bekaatat Achkout	L	ML	M
Bekaatat Kanaan	L	M	ML	Bizhel	L	M	M	Bouar	M	M	M
Bqaatouta	L	M	ML	Bqaq Ed-Dine	M	M	M	Bzommar	L	M	M

Chahtoul	L	ML	M	Chnaniir	L	M	M	Chouan	L	ML	L
Daraya Kesrouane	L	ML	M	Darououn	L	M	M	Deir Baqlouch	L	M	M
Dlebta	L	M	M	Eghbeh	VL	L	M	Faraya	M	M	M
Fatka	ML	M	M	Feytroun	L	L	M	Ghazir	ML	M	M
Ghbaleh Kesrouane	L	ML	M	Ghedrass	L	L	M	Ghosta	L	M	M
Ghynéh	L	ML	M	Harharaya w Kattine	L	ML	M	Harissa Kesrouane	ML	M	M
Hayata	L	ML	M	Hosein	L	L	ML	Hrajel	M	M	M
Jdeideh Ghazir	L	M	M	Jeita	ML	M	M	Jounieh Ghadir	M	M	M
Jounieh Haret Sakhr	M	M	M	Jounieh Salel Alma	M	M	M	Jounieh Sarba	M	M	M
Jouret Bedrane	L	ML	M	Jouret Mhad	L	ML	M	Jouret Termos	L	ML	M
Kfar Debiane	ML	M	M	Kfar Tay Kesrouane	L	ML	M	Kfar Yassine	M	M	M
Kfour Kesrouane	L	M	M	Kharayeb Nahr Ibrahi	ML	M	M	Klayaat Kesrouane	L	ML	M
Maarab	L	M	M	Maaysra Kesrouane	L	ML	M	Mayrouba	L	M	ML
Mazraat Er-Ras	M	M	M	Mazraat Mrah El-Mir	L	M	M	Mchaa El Ftouh	M	M	M
Mchaa Faraya	M	M	M	Mchaa Kfar Dibiane	M	M	M	Mghaer	L	L	L
Mradiyah	L	M	M	Nahr Ed-Dahab	L	L	ML	Nammoura Kesrouane	L	ML	M
Ouata El Jaouz	L	ML	M	Ouata Sillam	M	M	M	Raachine	L	L	M
Rayfoun	L	M	M	Safra Kesrouane	M	M	M	Shayle Kesrouane	L	M	M
Tabarja	M	M	M	Yahchouch	L	ML	M	Zaaytreh	L	ML	M
Zeytoun	ML	ML	M	Zouk Mikael	M	M	M	Zouk Mosbeh	M	M	M

## Baalbek\_Hermel

### Baalbek

Municipality	19-Feb	20-Feb	21-Feb	Municipality	19-Feb	20-Feb	21-Feb	Municipality	19-Feb	20-Feb	21-Feb
Aadous	M	M	M	Aamchki	M	M	M	Aarsal	M	M	ML
Ain Baalbek	M	M	ML	Ain Bourday	M	M	M	Ain El-Benye	M	M	M
Ain El-Jaouz Baalbek	M	M	ML	Ain El-Siya Chadoura	M	M	M	Al Khodr Baalbek	M	M	ML
Al Nabi Chit	M	M	M	Aynata Baalbek	M	M	M	Baalbek	M	M	M
Bachwat	L	M	L	Barqa	L	M	L	Bednayel Baalbak	M	M	M
Beit Chama	M	M	ML	Bijjaje	M	M	ML	Bouday	ML	M	ML
Brital	M	M	M	Btadi	ML	M	ML	Chaat	M	M	ML
Chaibe	M	M	M	Chlifa	M	M	ML	Chmestar	M	M	M
Dar El-Oussa	L	M	L	Deir El-Ahmar	ML	M	ML	Deir Mar Maroun Baal	M	M	M
Douris	M	M	M	Fakiha	M	M	M	Hadath Baalbek	M	M	M
Ham	M	M	M	Haour Taala	M	M	M	Hizzine	M	M	M
Hlebta	ML	M	M	Hosh Barada	M	M	M	Hosh El Dahab	M	M	ML
Hosh El Snid	M	M	M	Hosh El-Nabi	M	M	M	Hosh El-Rafiq	M	M	M
Hosh Tal Safiya	M	M	M	Hrebta	M	M	ML	laat	M	M	L
Jebaa	M	M	M	Jenta	M	M	M	Kfar Dabach	M	M	M
Kfar Dane	M	M	M	Khraibeh El-Hermel	M	M	ML	Khreibet Baalbek	M	M	M
Kneisset Baalbek	ML	M	M	Labueh	M	M	ML	Maarboun	M	M	M
Majdaloun	M	M	M	Maqneh	M	M	M	Mazraat Beit Mcheik	M	M	M
Misraya	M	M	M	Moqraq	M	M	ML	Nabha El-Damdoum	M	M	M
Nabi Chbay	M	M	M	Nabi Osman	M	M	ML	Nahleh baalbek	M	M	M
Ouadi El-Oss	L	M	M	Qaa Baayoun	M	M	M	Qaa Jouar Maqiye	M	M	M
Qaa Ouadi El-Khanzir	M	M	M	Qah Baalbek	M	M	M	Qarha Baalbek	ML	M	M



Qsarnaba	M	M	ML	Ram Baalbek	ML	M	ML	Ras Baalbek El Sahl	M	M	M
Ras Baalbek El-Charq	M	M	M	Riha	ML	ML	L	Saaide	M	M	M
Sbouba	M	M	ML	Seriine El-Tahta	M	M	M	Slouqi	M	M	M
Taiba Baalbek	M	M	M	Talia	M	M	M	Taraiya	M	M	M
Temnin El Fawqa	M	M	ML	Temnin El-Tahta	ML	M	ML	Tfail	M	M	ML
Yahfoufa	M	M	M	Yammouneh	M	M	ML	Younine	M	M	ML
Zboud	M	M	M								

## Hermel

Municipality	19-Feb	20-Feb	21-Feb	Municipality	19-Feb	20-Feb	21-Feb	Municipality	19-Feb	20-Feb	21-Feb
Charbine El-Hermel	M	M	M	Hermel Jbab	M	M	M	Hermel	M	M	M
Maaysra El-Hermel	M	M	M	Michaa Mrajhine	M	M	M	Ouadi Faara	ML	M	M
Ras Baalbek - Ouadi	M	M	M	Ras Baalbek El Gharb	M	M	M	Zighrine	ML	M	M

## Akkar

### Akkar

Municipality	19-Feb	20-Feb	21-Feb	Municipality	19-Feb	20-Feb	21-Feb	Municipality	19-Feb	20-Feb	21-Feb
Aain Tinta	M	M	MH	Aaiyat	ML	M	M	Aakkar El-Aatiqa	L	ML	M
Aamar Akkar	M	M	M	Aamar El Baykat	M	M	MH	Aamayer	M	M	M
Aamriyet Akkar	M	M	MH	Aandqet	M	M	M	Aarmeh	M	M	M
Aarqa	M	M	MH	Aawaynat	M	M	M	Aayoun Akkar	M	M	M
Abboudiye	M	M	M	Ain El-Zeit	M	M	MH	Ain Yaaqoub	ML	M	M
Akroum	M	M	M	Aridet Cheikh Zennad	M	M	M	Baldeh w Mazraat Bal	M	M	MH
Barcha	M	M	MH	Bardeh	M	M	M	Bebnine	M	M	MH
Beino	M	M	M	Beit Ayoub	ML	M	MH	Beit El-Haouch	M	M	MH
Beit Mellat	M	M	MH	Beit Younes	L	ML	M	Berbara Akkar	M	M	MH
Berqayel	M	M	MH	Bezbina	L	ML	M	Bireh Akkar	M	M	MH
Borj	M	M	MH	Bqerezla	M	M	M	Bzal	L	ML	M
Chane	L	M	M	Chaqdouf	ML	M	MH	Charbila	M	M	MH
Cheikh Mohammad	M	M	MH	Cheikh Taba Es-Sahl	M	M	MH	Cheikh Taba	M	M	MH
Cheikh Zennad	M	M	M	Cheikhlar	M	M	M	Chir Hmairine	M	M	MH
Daghle	M	M	MH	Dahr Laissine	M	M	MH	Darine	M	M	MH
Dawra	ML	M	M	Dawsa w Baghdadi	M	M	M	Dayret Nahr El-Kabir	M	M	M
Deir Dalloum	M	M	MH	Deir Jennine	M	M	MH	Denbou	ML	M	M
Dibbabiyyeh	M	M	MH	Douair Aadwiyeh	M	M	MH	Fassikine	M	M	MH
Fnaydek	ML	M	M	Fraydes Akkar	M	M	M	Ghazayle	M	M	MH
Habchit	L	ML	M	Hakour	M	M	M	Halba	M	M	MH
Haouchab	M	M	MH	Hayssat	M	M	MH	Haytla	M	M	MH
Hayzouq	M	M	M	Hedd	M	M	MH	Hmaira Akkar	M	M	M
Hmaiss Akkar	M	M	MH	Hnaider	M	M	M	Hokr Ed-Dahri	M	M	M
Hokr Etti	M	M	MH	Hokr Jouret Srar	M	M	MH	Houaich	ML	M	M
Hrar	ML	M	M	Idbil	M	M	M	llat	M	M	M
Janine	M	M	MH	Jdeidet El-Joumeh	M	M	MH	Jdeidet El-Kaiteh	M	M	MH
Jebroyel	ML	M	M	Kafr	M	M	M	Kafr	M	M	MH
Karm Asfour	M	M	M	Kfar Melki Akkar	M	M	M	Kfar Noun	M	M	M
Kfarharra	M	M	MH	Khalsa	M	M	M	Kharnoubet Akkar	M	M	MH

Khirbet Daoud Aakkar	M	M	MH	Khirbet El Remmane	M	M	M	Khirbet Shar	M	M	MH
Khoreybet El-Jindi	M	M	MH	Khreibet Aakkar	L	M	MH	Kneisset Aakkar	M	M	M
Kneisset Hnaider	M	ML	M	Knisse	M	M	MH	Kroum El-Aarab	M	M	MH
Kwachra	M	M	MH	Kweykhat	M	M	MH	Machta Hammoud	M	M	M
Majdala	M	M	MH	Majdel Akkar	M	M	MH	Mar Touma	M	M	MH
Marlaya Melhem	M	M	M	Mashha	M	M	MH	Massoudiye	M	M	MH
Mazraat Beit Ghattas	M	M	M	Mazraat En-Nahriye	M	M	M	Mechmech	ML	M	M
Memneh	L	L	M	Mhammara	M	M	MH	Mighraq Aakkar	M	M	M
Minyara	M	M	MH	Moqayteh	M	M	M	Mounjez	M	M	M
Msalla	M	M	MH	Mzeihmeh	M	M	MH	Nfaiseh	M	M	MH
Noura Et-Tahta	M	M	M	Ouadi El-Haour	M	M	MH	Ouadi El-Jamous	M	M	MH
Ouyoun El-Ghizlane	M	M	M	Qaabarine	M	M	M	Qabaait	L	ML	M
Qachlaq	M	M	MH	Qantara Aakkar	M	M	MH	Qarha Aakkar	M	ML	M
Qarqaf	M	M	MH	Qboula	M	M	MH	Qleiaat Aakkar	M	M	M
Qloud El-Baqie	M	M	M	Qobaiyat Aakkar	ML	M	M	Qobbat Chamrat	M	M	M
Qorayat	L	ML	M	Qornet Aakkar	L	M	M	Qsair Aakkar	M	M	MH
Rahbe	L	M	M	Rihaniyet Aakkar	M	M	MH	Rmah	M	M	M
Rmoul	M	M	M	Saadine	M	M	MH	Sadaqa	ML	M	M
Saidnaya	M	M	MH	Sammouniye	M	M	MH	Sayssouq	M	M	M
Semmaqiye	M	M	M	Semmaqli	M	M	M	Sfinet El-Dreib	M	M	MH
Sfinet El-Qaitaa	M	M	M	Sindyanet Zeidane	M	M	M	Souaisset Aakkar	M	M	MH
Srar	M	M	MH	Tal Abbas El Gharby	M	M	MH	Tal Abbas El-Chargy	M	M	MH
Tal Biret	M	M	MH	Tal Hmayra	M	M	MH	Tal Maayan Tal Kiri	M	M	M
Tal Sibel	M	M	M	Tallet Chattaha	M	M	MH	Tikrit	ML	M	M
Tleil	M	M	MH	Tshea	L	ML	M	Zawarib	M	M	MH
Zouq El Hosniyeh	M	M	M	Zouq El-Haddara	M	M	MH	Zouq El-Hbalsa	M	M	M
Zouq El-Moqachrine	M	M	M								

## Sud

### Sour

Municipality	19-Feb	20-Feb	21-Feb	Municipality	19-Feb	20-Feb	21-Feb	Municipality	19-Feb	20-Feb	21-Feb
Aaiyeh	ML	M	M	Aalma El-Chaab	L	M	M	Aaytit	M	M	M
Abbassiyeh Sour	M	M	M	Abou Chech	ML	M	M	Ain Abou Abdallah	M	M	M
Ain Baal	M	M	M	Arzoun	ML	M	M	Aziyeh	L	ML	M
Baflaya	ML	M	M	Barich	M	M	M	Batouliyeh	M	M	M
Bayad	ML	M	M	Bazouriyeh	M	M	M	Bediass	M	M	M
Bestiyat	M	M	M	Borj El Chemali	M	M	M	Borj En-Naqoura	ML	M	M
Borj Rahhal	M	M	M	Boustane	ML	M	M	Btaychiyeh	ML	M	M
Chaaitiye	M	M	M	Chameh	L	M	M	Chehabiye	ML	M	M
Chehour	L	L	M	Chihine	ML	M	M	Debaal Sour	M	M	M
Deir Amess	L	ML	M	Deir Kifa	ML	M	M	Deir Qanoun El-Ain	M	M	M
Deir Qanoun El-Naher	M	M	M	Derdghaiya	ML	M	M	Dhayra	L	M	M
Halloussiyeh	M	M	M	Hamoul	L	M	M	Hanaouey	M	M	M
Henniye	M	M	M	Hmairi Sour	ML	M	M	Iskandarouna Sour	ML	M	M
Jbal El Botom	L	M	M	Jebbin	ML	M	M	Jennata	M	M	M
Jijim	L	M	M	Jouaiya	M	M	M	Kneisset Sour	M	M	M

Maarake	M	M	M	Maaroub	M	M	M	Majadel	ML	M	M
Majdalzoun	ML	M	M	Mansouri Sour	M	M	M	Marnba	L	ML	M
Marouahine	L	M	M	Mazraat El-Zalloutiy	ML	M	M	Mazraat Mechref	ML	M	M
Mazraat Tayr Semhat	L	L	M	Mheilib	M	M	M	Neffakhiyeh	ML	M	M
Niha Sour	ML	M	M	Ouadi Jilo	M	M	M	Qana	ML	M	M
Qolaileh Sour	ML	M	M	Rechknany	ML	M	M	Rmadiyah	M	M	M
Selha Sour	ML	M	M	Siddiqine	ML	M	M	Sour	M	M	M
Srifa	ML	M	M	Tayr Debbe	M	M	M	Tayr Felsay	ML	M	M
Tayr Harfa	ML	M	M	Touayri	L	ML	M	Toura	M	M	M
Yanouh Sour	M	M	M	Yarine	ML	M	M	Zebqine	L	ML	M

## Saida

Municipality	19-Feb	20-Feb	21-Feb	Municipality	19-Feb	20-Feb	21-Feb	Municipality	19-Feb	20-Feb	21-Feb
Aanqoun	M	M	M	Aaqtanit	M	M	M	Aarab Ej-Jall	M	M	M
Aarab Tabbaya	M	M	M	Abra Saida	M	M	M	Adloun	M	M	M
Adousiyeh	ML	M	M	Ain-El-Deleb	M	M	M	Arzai	M	M	M
Babliyah	M	M	M	Barty	ML	M	M	Bissariyeh	M	M	M
Bnaafoul	M	M	M	Bqosta	M	M	M	Bramiy	M	M	M
Daoudiyeh	M	M	M	Dareb El-Sim	M	M	M	Erkay	M	M	M
Ghassanieh	M	M	M	Ghazieh	M	M	M	Hajjeh	M	M	M
Haret Saida	M	M	M	Hartiyeh	M	M	M	Hlaliye Saida	M	M	M
Insariyat	M	M	M	Jazira Saida	M	M	M	Kafar Bit	M	M	M
Kaoutariyet El-Siyad	M	M	M	Kfar Chellal	M	M	M	Kfar Hatta Saida	M	M	M
Kfar Milke Saida	M	M	M	Khartoum	M	M	M	Khaziz	M	M	M
Khirbet Ed-Douair Sa	M	M	M	Khirbet El-Bassal	M	M	M	Khrayeb Saida	M	M	M
Loubieh	M	M	M	Maghdouche	M	M	M	Majdelyoun	M	M	M
Matariyet El-Choumar	M	M	M	Matayriyeh	M	M	M	Mazraat 'Mseileh	M	M	M
Mazraat 'Snaiber	M	M	M	Mazraat Aarab Soukka	M	M	M	Mazraat Deir Taqla	M	M	M
Mazraat El Yahoudiye	ML	M	M	Mazraat El-Housseini	M	M	M	Mazraat El-Mhaydaleh	M	M	M
Mazraat El-Ouasta	ML	M	M	Mazraat Jamjim	ML	M	M	Mazraat Kaoutariyet	M	M	M
Mazraat Kfar Badda	M	M	M	Mazraat Oussamiyat	M	M	M	Mazraat Sari	M	M	M
Mazraat Sinai	M	M	M	Meemariyeh	M	M	M	Merouaniyeh	M	M	M
Miyeh ou Miyeh	M	M	M	Najjariyeh	M	M	M	Qaaqiyat El-Snaouba	M	M	M
Qnarit	M	M	M	Qraiye Saida	M	M	M	Saida Ed-Dekermane	M	M	M
Saida El-Oustani	M	M	M	Saida El-Qadimeh	M	M	M	Saida Kefraya	M	M	M
Saksakiyeh	M	M	M	Salhie Saida	M	M	M	Sarafand	M	M	M
Sfenta	ML	M	M	Tafahta	M	M	M	Tanbourit	M	M	M
Tebna	M	M	M	Zaghdraiya	M	M	M	Zeita	M	M	M
Zrariyeh	M	M	M								

## Jezzine

Municipality	19-Feb	20-Feb	21-Feb	Municipality	19-Feb	20-Feb	21-Feb	Municipality	19-Feb	20-Feb	21-Feb
Ain El-Mir (El Estab	M	M	M	Anane	L	M	M	Aramta	L	M	M
Ariya	L	M	M	Aychiyeh	L	ML	M	Azour	L	M	M
Baba	L	ML	M	Bayssour Jezzine	M	M	M	Benoueteh Jezzine	L	M	M
Bhannine	L	M	M	Bisri	L	M	M	Bkassine	L	M	M
Bouslaya	L	L	M	Btedine El-Leqech	L	M	M	Chbail	VL	L	M
Choualiq Jezzine	M	M	M	Dahr Ed-Deir	L	ML	M	Deir El Qattine	L	ML	M

Demachqiyeh	ML	M	M	Ghabbatiyeh	L	M	M	Harf Jezzine	L	M	M
Hassaniyeh	M	M	M	Haytouleh	ML	M	M	Haytura	L	ML	M
Hidab	L	ML	M	Homsiyeh	L	M	M	Jabal Toura	L	M	M
Jarmaq	ML	M	M	Jensnaya	M	M	M	Jernaya	M	M	M
Jezzine	L	M	M	Karkha	ML	M	M	Kfar Falous	M	M	M
Kfar Houna	L	M	M	Kfar Jarrah	M	M	M	Lebaa	M	M	M
Louayzet Jezzine	L	ML	M	Machmouche	L	ML	M	Mahmoudiyeh Jezzine	ML	M	M
Maknounye Jezzine	L	ML	M	Maraat Ouzaïyeh	ML	M	M	Mazraat Daraya	L	ML	M
Mazraat El-Aarqoub	L	ML	M	Mazraat El-Mathane	L	M	M	Mazraat El-Rahbane	L	ML	M
Mazraat Khallet Khaz	L	ML	M	Mazraat Louzid (Loua	L	L	M	Mazraat Qrouh	L	M	M
Mazraat Tamra	M	M	M	Mazraat Zighrine Jez	L	ML	M	Mazraat	L	L	M
Mharbiyeh	M	M	M	Midane Jezzine	L	M	M	Mjeydel Jezzine	M	M	M
Mlikh	L	ML	M	Mrah El-Hbasse	M	M	M	Ouadi Baanqoudaine	M	M	M
Ouadi El-Laymoun	M	M	M	Ouardiyeh	VL	L	M	Qabaa Jezzine	L	M	M
Qatrani	L	ML	M	Qaytouleh	L	M	M	Qtaleh Jezzine	L	M	M
Rihane Jezzine	L	M	M	Rimat	L	ML	M	Roum	L	M	M
Roummanet	L	M	M	Sabbah	L	M	M	Saydoun	L	ML	M
Sfaray	L	M	M	Snaya	L	ML	M	Sojoud	L	ML	M
Srayri	L	M	M	Taaid	L	M	M	Wadi Jezzine	L	ML	M
Zhalta	L	M	M								

## Bekaa

### West Bekaa

Municipality	19-Feb	20-Feb	21-Feb	Municipality	19-Feb	20-Feb	21-Feb	Municipality	19-Feb	20-Feb	21-Feb
Aammiq BG	ML	M	M	Ain El Tineh BG	L	M	M	Ain Zebdeh	L	M	M
Ana	L	ML	M	Aytanit	L	M	M	Baaloul BG	L	M	M
Bab Mareh	L	M	M	Chouberqiye Aammiq	L	ML	M	Dakoue	L	ML	M
Deir Ain El-Jaouze	L	M	M	Deir Tahniche	L	ML	M	Ghaza	L	ML	M
Harime El-Soughra	ML	ML	M	Hoch Harimeh	L	ML	M	Jazira BG	ML	ML	M
Jib Jennine	L	ML	M	Kamed-El-Laouz	L	M	M	Kefraya BG	L	ML	M
Khiara El Atika	L	ML	M	Khiara	L	ML	M	Khirbet Qanafar	L	M	M
Lala	L	ML	M	Lebbaya BG	L	M	M	Loussa	L	M	M
Machghara	L	M	M	Manara (Hammara) BG	L	ML	ML	Mansoura BG	L	ML	M
Marej BG	ML	ML	M	Maydoun	L	M	M	Ouaqf BG	ML	ML	M
Qaraaoun	L	M	M	Qelya	L	M	M	Raouda (Istabel)	ML	ML	M
Saghbine	L	M	M	Sohmor	L	M	M	Soltan Yacoub el Ara	L	ML	M
Souairy	L	M	M	Sultan Yaacoub	L	M	M	Tal Znoun	L	ML	M
Yehmor BG	L	M	M	Zilaya	L	M	M				

### Zahle

Municipality	19-Feb	20-Feb	21-Feb	Municipality	19-Feb	20-Feb	21-Feb	Municipality	19-Feb	20-Feb	21-Feb
Aanjar (Haouch Mouss)	ML	ML	M	Ablah	M	M	ML	Ain Kfarzabad	L	ML	ML
Ali-El-Nahri	ML	M	M	Bar Elias	ML	ML	M	Bouarej	ML	M	M
Cheberqiyet Tabet	ML	ML	M	Chtaura	M	M	M	Deir El Ghazal	ML	M	ML
Delhamiyet Zahle	ML	ML	M	Ferzol	M	M	ML	Haouch El-Ghanam	ML	M	M
Haouch Es-Siyadeh	ML	ML	M	Haouch Hala	ML	M	M	Haouch Mandara	ML	ML	M

Haouch Qayssar	ML	ML	M	Hezerta	M	M	M	Hosh Moussa	ML	ML	M
Jdita	M	M	M	Kfarzabad	ML	M	M	Ksara	ML	ML	M
Majdel Aanjar	L	ML	M	Makssi	M	M	M	Massa	M	M	M
Mazraat Er-Remtaniye	ML	M	M	Mrayjat Zahle	ML	M	M	Mzaraa Zahle	ML	M	M
Nabi Ayla	M	M	ML	Nasriyet Rizk	ML	M	M	Nasriyet Zahle	ML	ML	M
Niha Zahle	M	M	ML	Ouadi Ed-Deloum	ML	M	M	Ouadi El-Arayech	M	M	ML
Qaa El Rim	M	M	M	Qab Elias	ML	M	M	Qousaya	ML	M	M
Rhit	M	M	M	Riyak	ML	M	M	Saadnayel	M	M	M
Taal El-Akhdar	ML	ML	M	Taalbeya	M	M	M	Taanayel	M	M	M
Talamara	ML	M	M	Tcheflik Edde Haouch	ML	M	M	Tcheflik Qiqano	ML	ML	M
Terbol Zahle	ML	ML	M	Touaite Zahle	M	M	M	Zahle Aradi	M	M	M
Zahle El-Berbara	M	M	M	Zahle El-Maallaqa	M	M	M	Zahle El-Midane	M	M	M
Zahle Er-Rassiye	M	M	M	Zahle Haouch El-Ouma	ML	ML	M	Zahle Haouch El-Ouma	ML	ML	M
Zahle Haouch Ez-Zara	M	M	M	Zahle Maalaga Aradi	M	M	M	Zahle Mar Antonios	M	M	M
Zahle Mar Elias	M	M	M	Zahle Mar Gerios	M	M	M	Zahle Saydet En-Naja	M	M	M
Zebdoul	ML	M	ML								

## Rachaiya

Municipality	19-Feb	20-Feb	21-Feb	Municipality	19-Feb	20-Feb	21-Feb	Municipality	19-Feb	20-Feb	21-Feb
Ain Arab Rachaiya	L	M	M	Ain Ata	L	M	M	Ain Harche	L	M	M
Aqabe Rachaya	L	M	M	Ayha	ML	M	M	Ayta El Fokhar	L	M	M
Bakifa Rachaya	L	M	M	Bakka	L	M	M	Beit Lahya	L	M	M
Bireh Rachaiya	L	M	M	Daher El Ahmar	L	M	M	Deir El-Achayer	ML	ML	M
Heloua Rachaiya	ML	ML	M	Hoch El Qannabeh Rac	L	M	M	Kaoukaba Bou Arab	L	ML	M
Kfar Danis	L	M	M	Kfar Mechki	L	M	M	Kfar Qouq	L	M	M
Kherbet Rouha	L	M	M	Majdel Balhiss	L	M	M	Mdoukha	L	M	M
Mhaydseh Rachaiya	L	ML	M	Nabi Safa	L	M	M	Rachaiya	ML	M	M
Rafid Rachaiya	L	M	M	Selsata (Mazraat Dei	L	L	ML	Tannoura	L	M	M
Yanta	L	ML	M								

## Beyrouth

### Beyrouth

Municipality	19-Feb	20-Feb	21-Feb	Municipality	19-Feb	20-Feb	21-Feb	Municipality	19-Feb	20-Feb	21-Feb
Achrafieh	M	M	M	Ain el-Mreisse	M	M	M	Bachoura	M	M	M
Beirut Central Distr	M	M	M	Marfai	M	M	M	Mazraa	M	M	M
Medaouar	M	M	M	Minet el-Hosn	M	M	M	Mwssaitbeh	M	M	M
Ras Beirut	M	M	M	Rmeil	M	M	M	Saifi	M	M	M
Zqaq el-Blat	M	M	M								