

Lebanon Fire Risk Bulletin



CIVIL DEDEFENCE

Refer to cadast table condition.

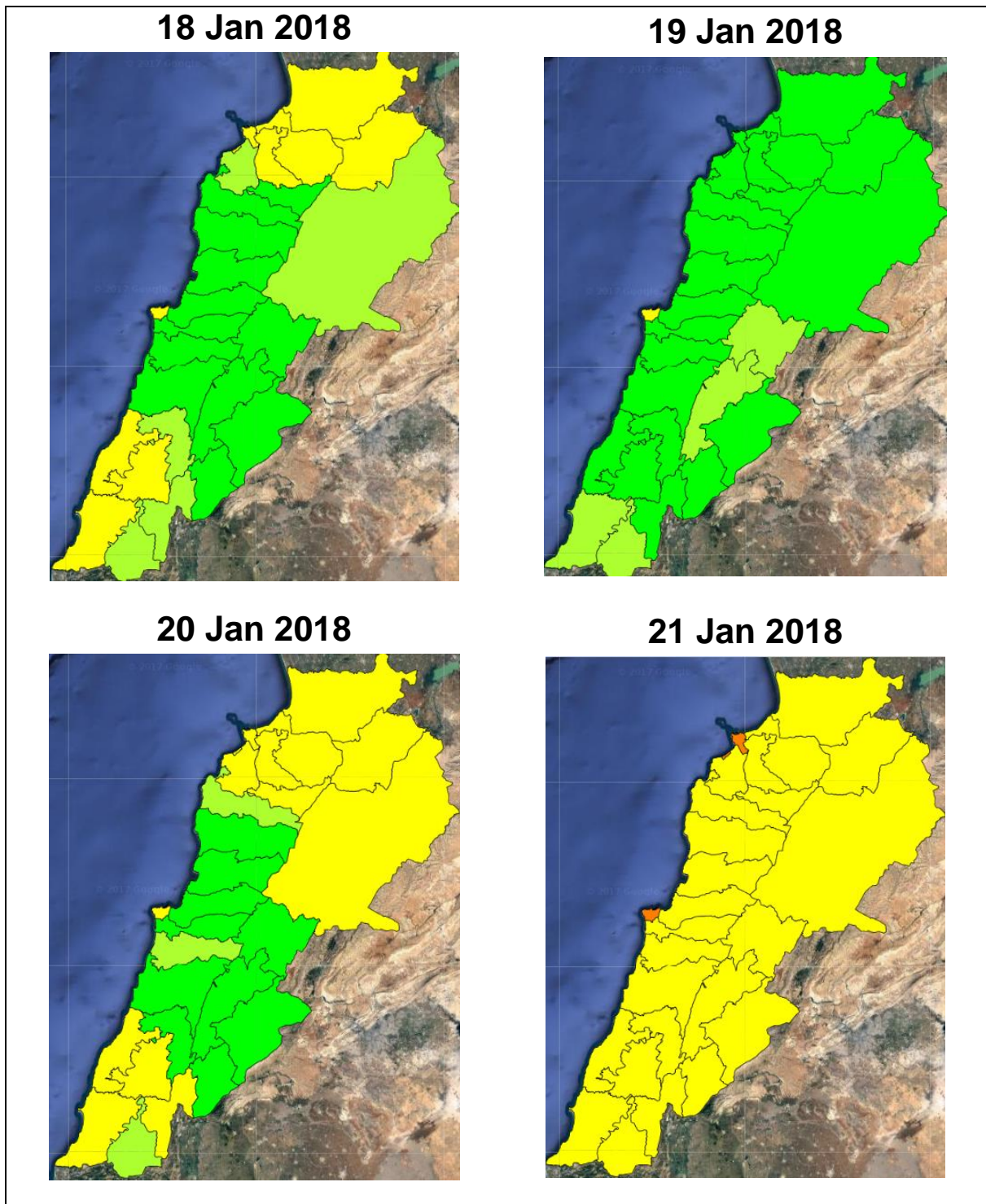
Please note that the indicated temperature is at 2 meters height from the ground.

General description of potential fire risk situation

Symbol	Level of risk	Meaning and actions
VL	Very low	Very low fire risk. Controlled burning operations can be hardly executed due to high fuel moisture content. Normally wildfires self-extinguish.
L	Low	Low fire risk. Controlled burning operations can be executed with a reasonable degree of safety.
ML	Medium low	Medium-low fire risk. Controlled burning operations can be executed in safety conditions. All the fires need to be extinguished.
M	Medium	Medium fire risk. Controlled burning operations would be avoided. All the fires need to be very well extinguished.
M	Medium high	Controlled burning is not recommended. Open flame will start fires. Cured grasslands and forest litter will burn readily. Spread is moderate in forests and fast in exposed areas. Patrolling and monitoring is suggested. Fight fires with direct attack and all available resources.
H	High	Ignition can occur easily with fast spread in grass, shrubs and forests. Fires will be very hot with crowning and short to medium spotting. Direct attack on the head may not be possible requiring indirect methods on flanks. Patrolling and monitoring the territory is highly suggested.
E	Extreme	Ignition can occur also from sparks. Fires will be extremely hot with fast rate of spread. Control may not be possible during day due to long range spotting and crowning. Suppression forces should limit efforts to limiting lateral spread. Damage potential total. Patrolling and monitoring the territory is highly suggested.

Beirut, 19 January 2018

FIRE RISK INDEX

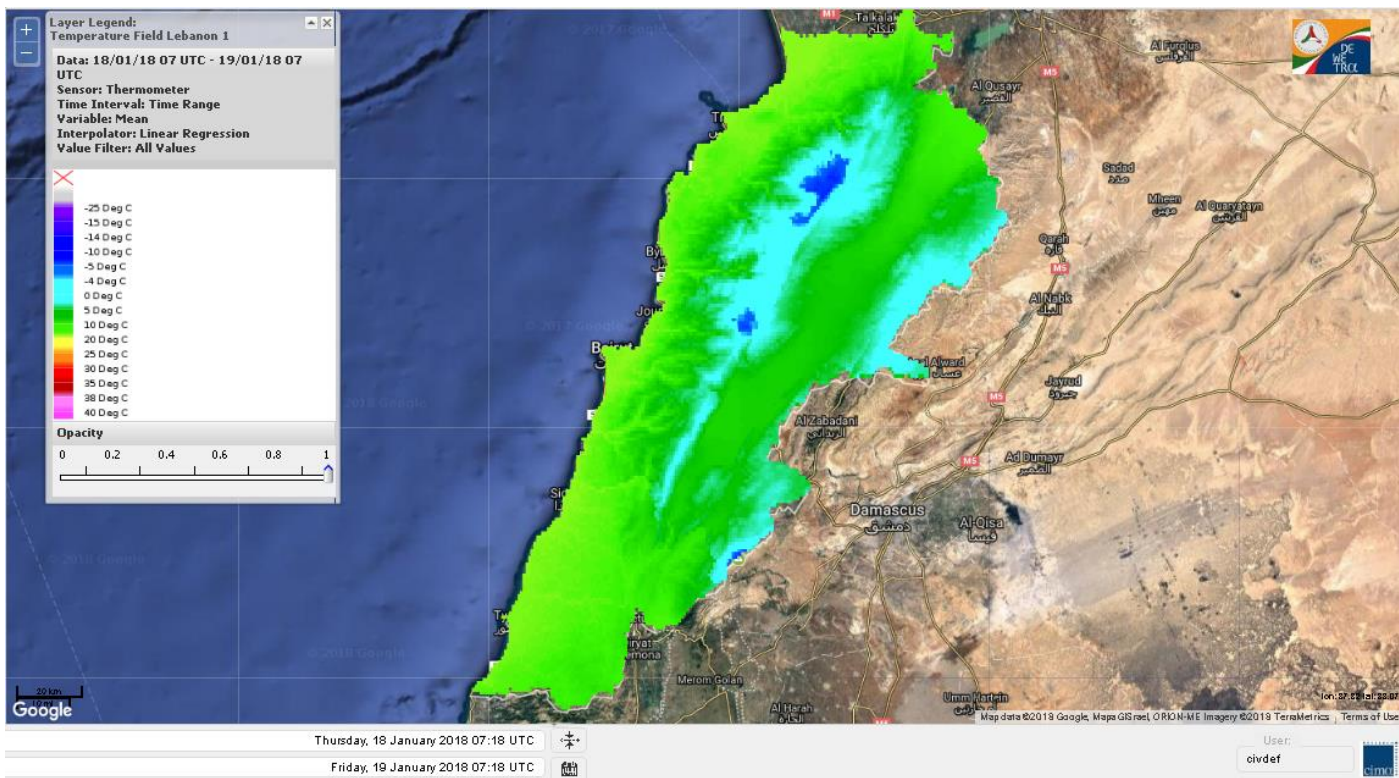


Layer Legend:
Lebanon Wildfire Risk Index 1

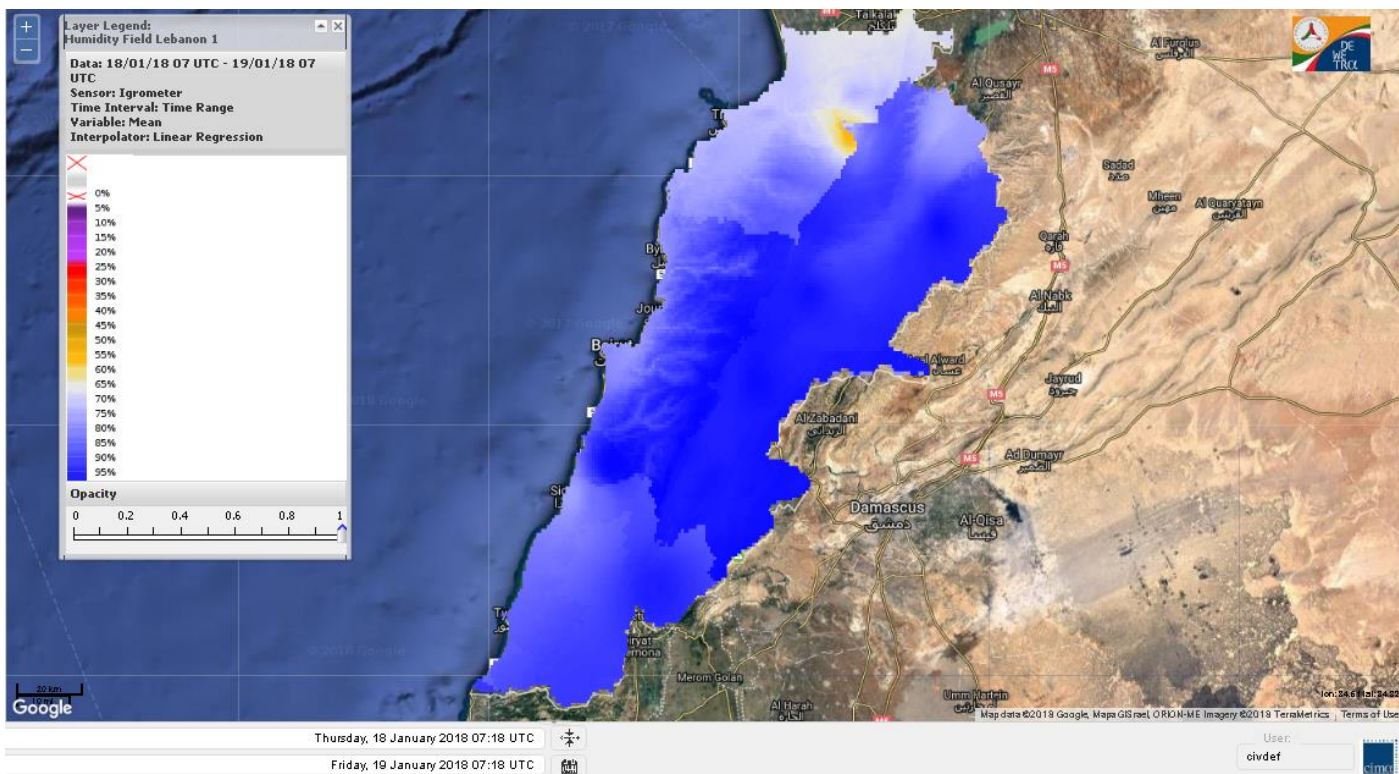
Data: Run: 19/01/2018 00:00. Forecast for 19
Model: RISICO for the Republic of Lebanon
Variable: Fire Weather Index
Spatial Resolution: Caza

- VERY LOW
- LOW
- MEDIUM-LOW
- MEDIUM
- MEDIUM-HIGH
- HIGH
- EXTREME

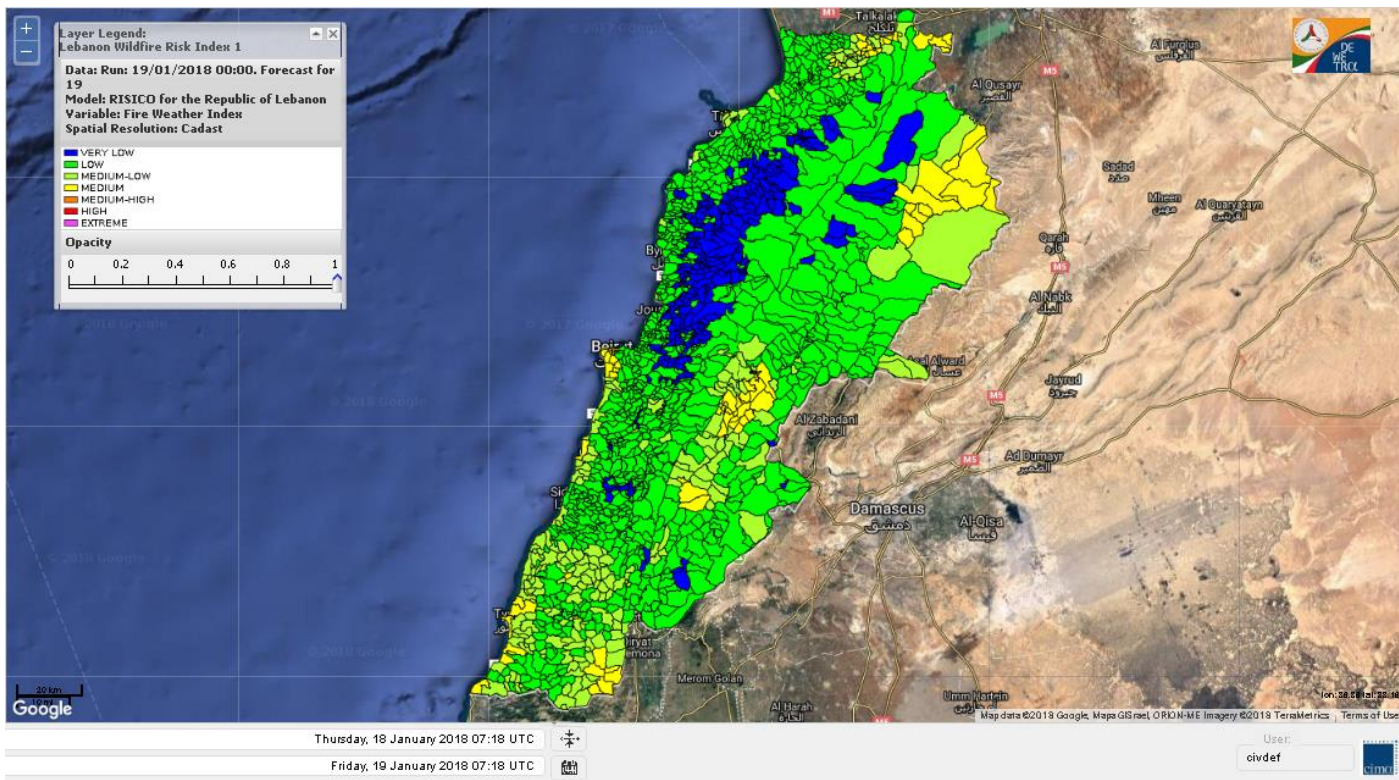
Lebanon temperature for Lebanon 19 Jan 2018



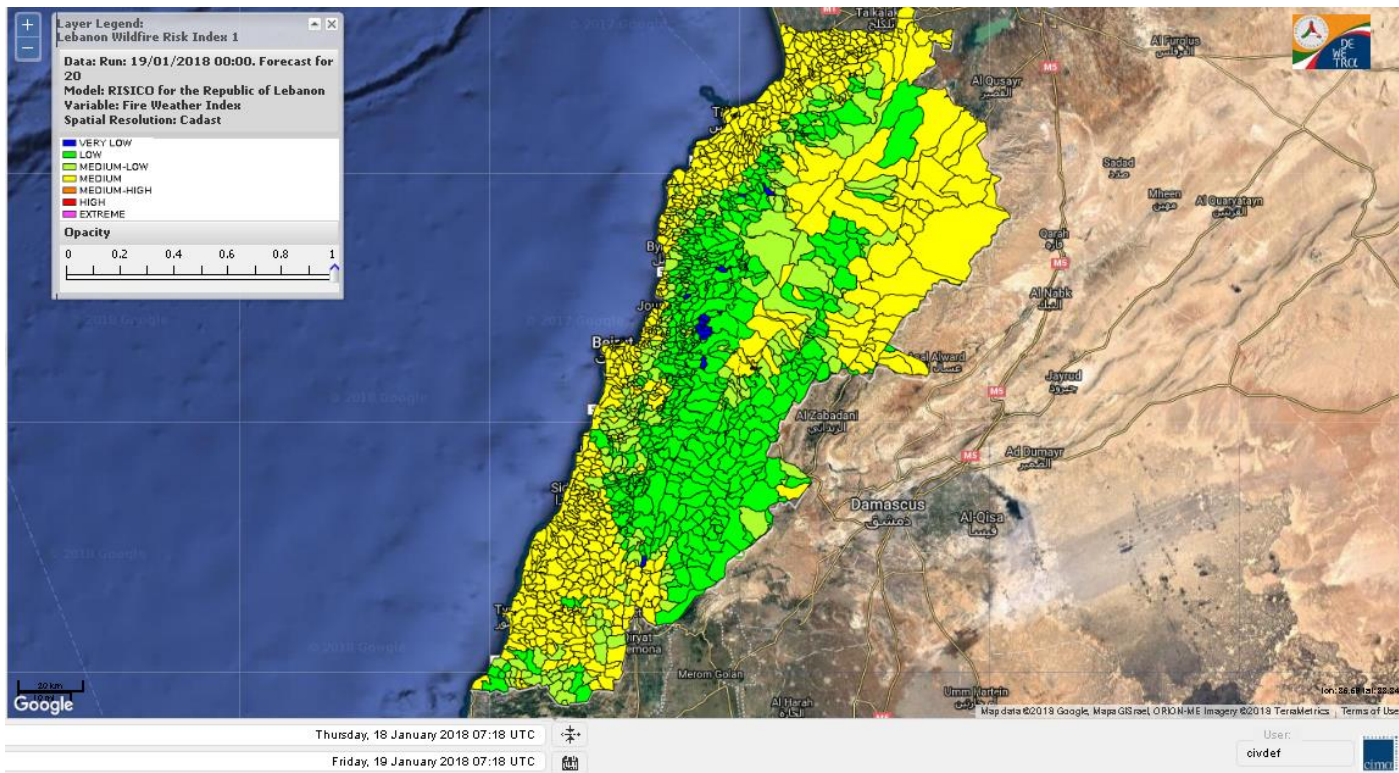
Lebanon humidity for Lebanon 19 Jan 2018



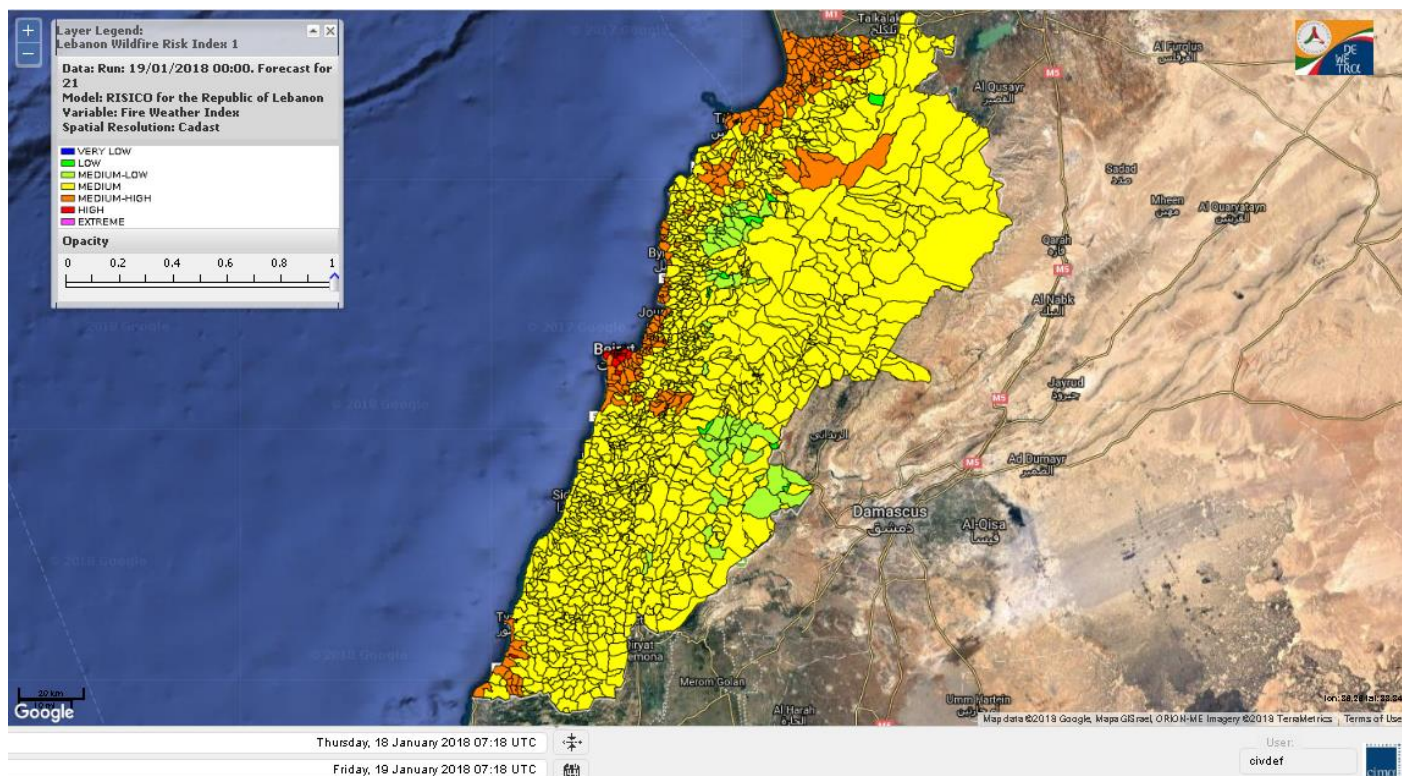
Lebanon for 19 Jan 2018



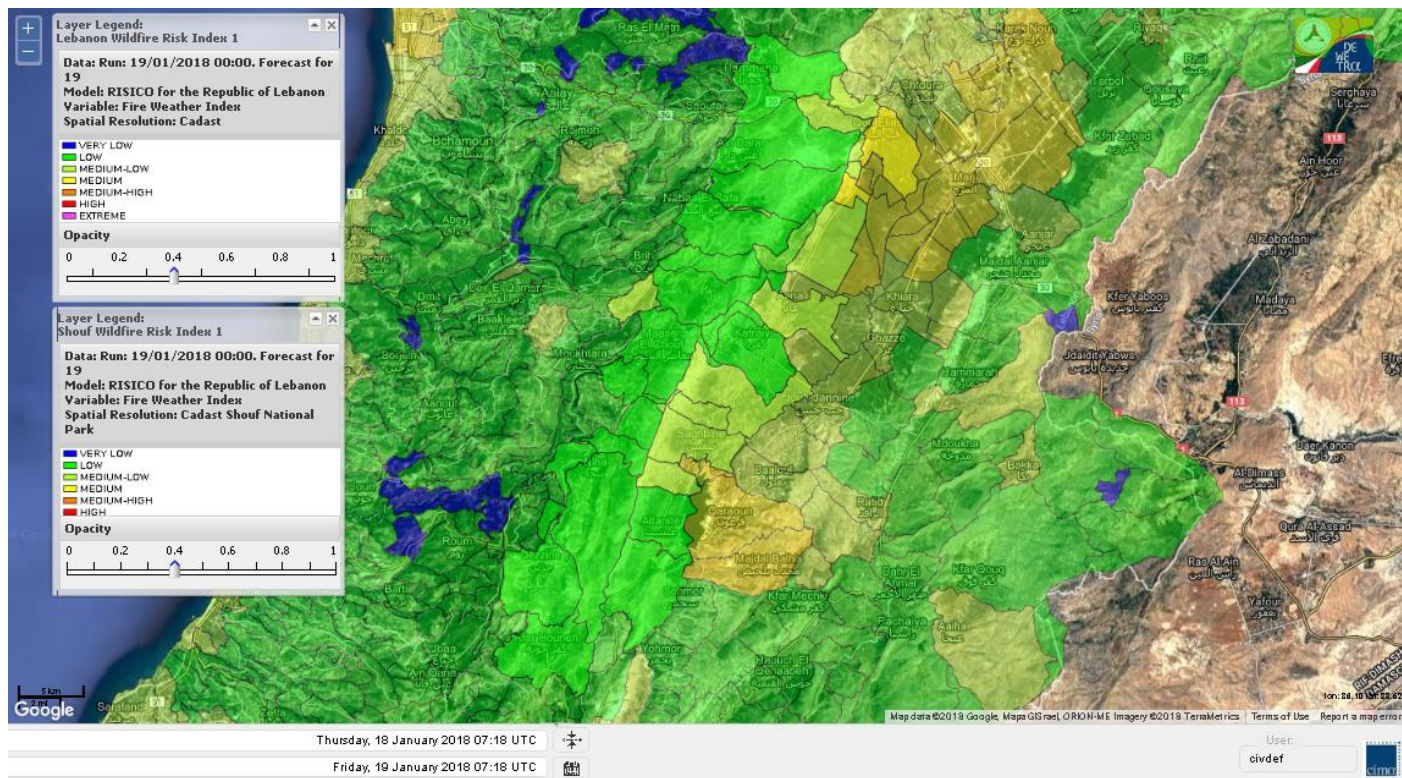
Lebanon for 20 2018



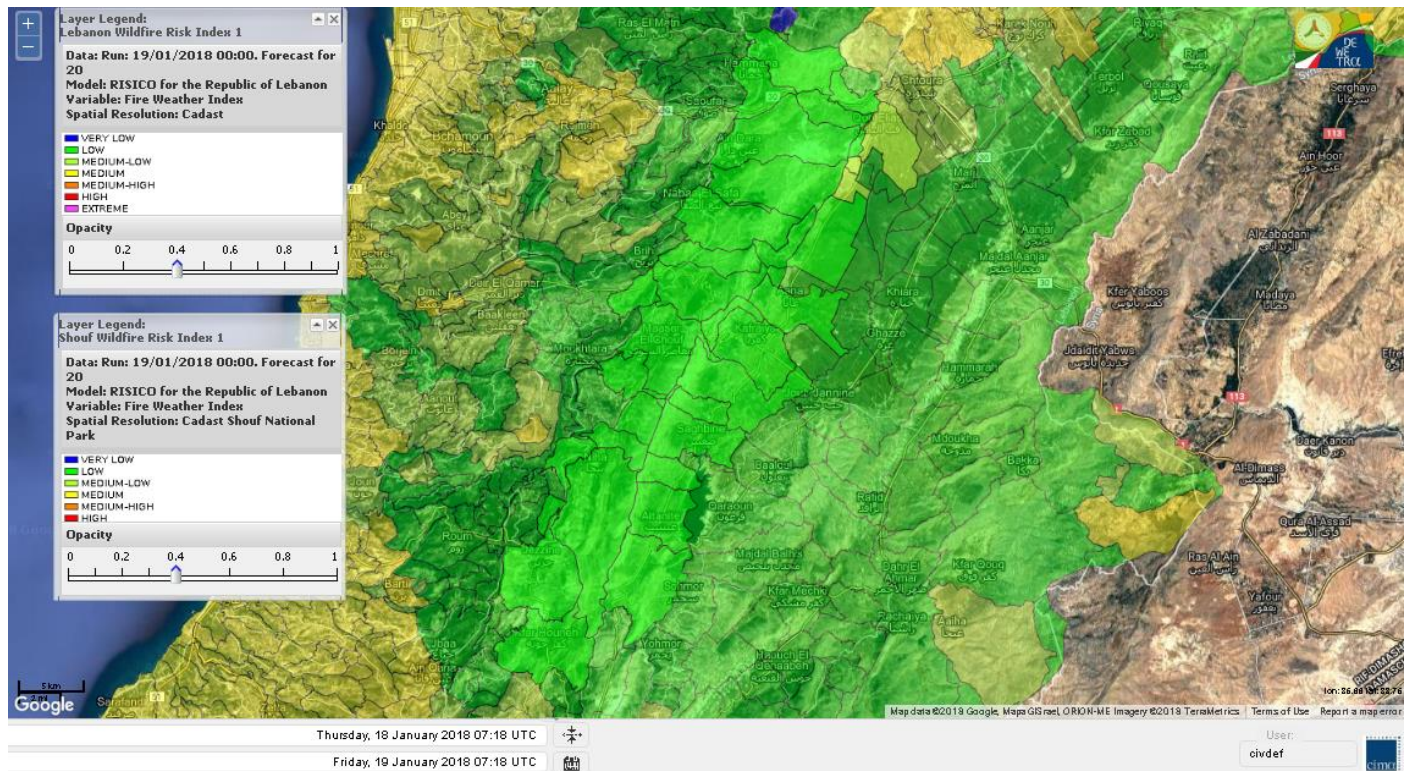
Lebanon for 21 Jan 2018



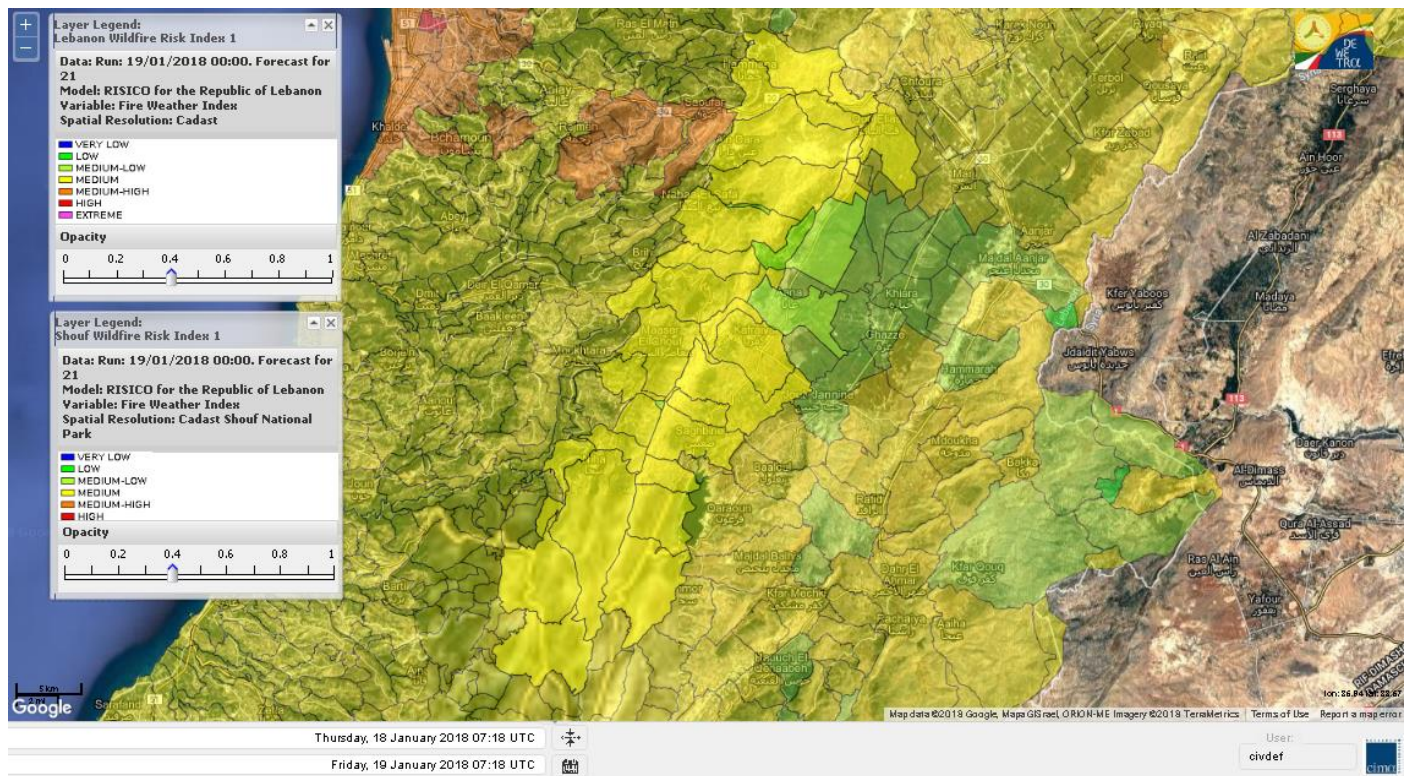
Shouf Biosphere Reserve Forecast for 19 Jan 2018



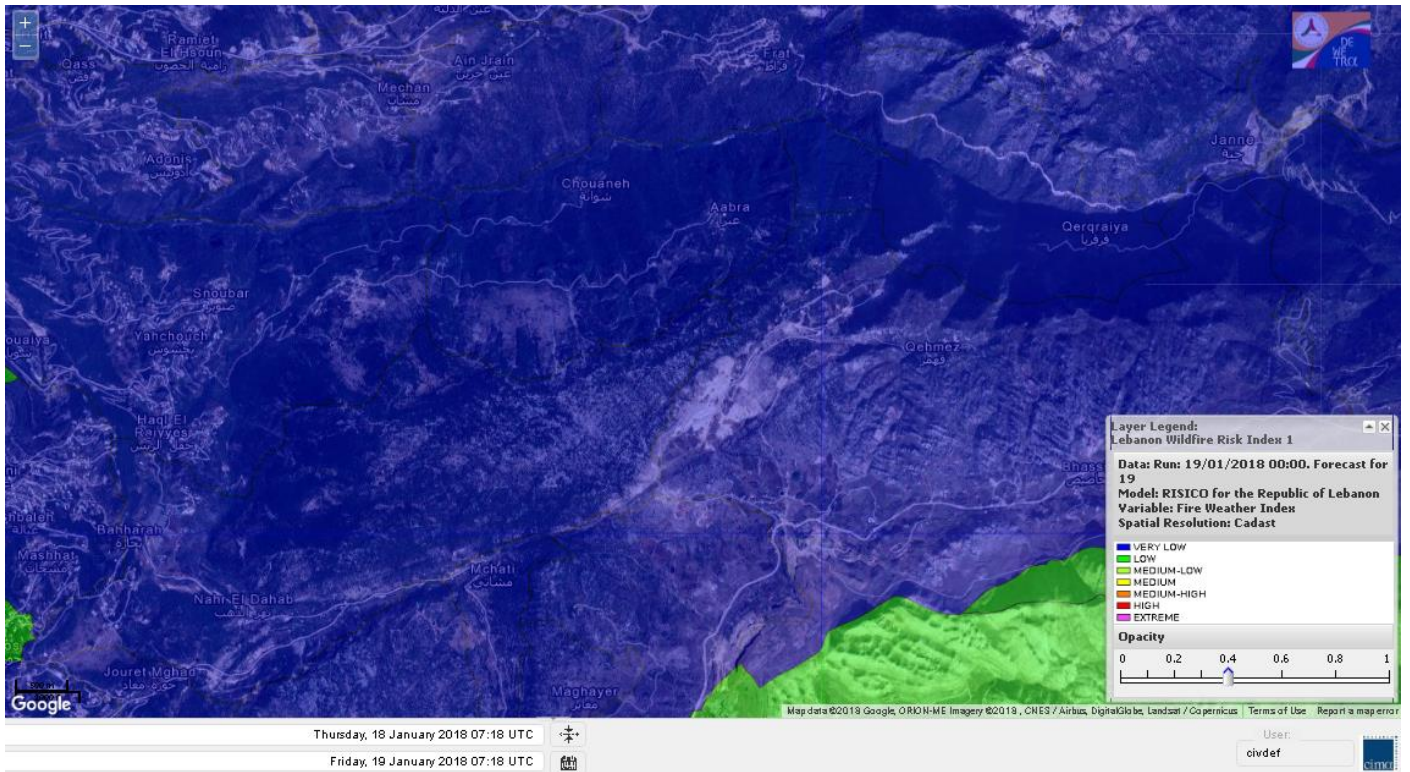
Shouf Biosphere Reserve Forecast for 20 Jan 2018



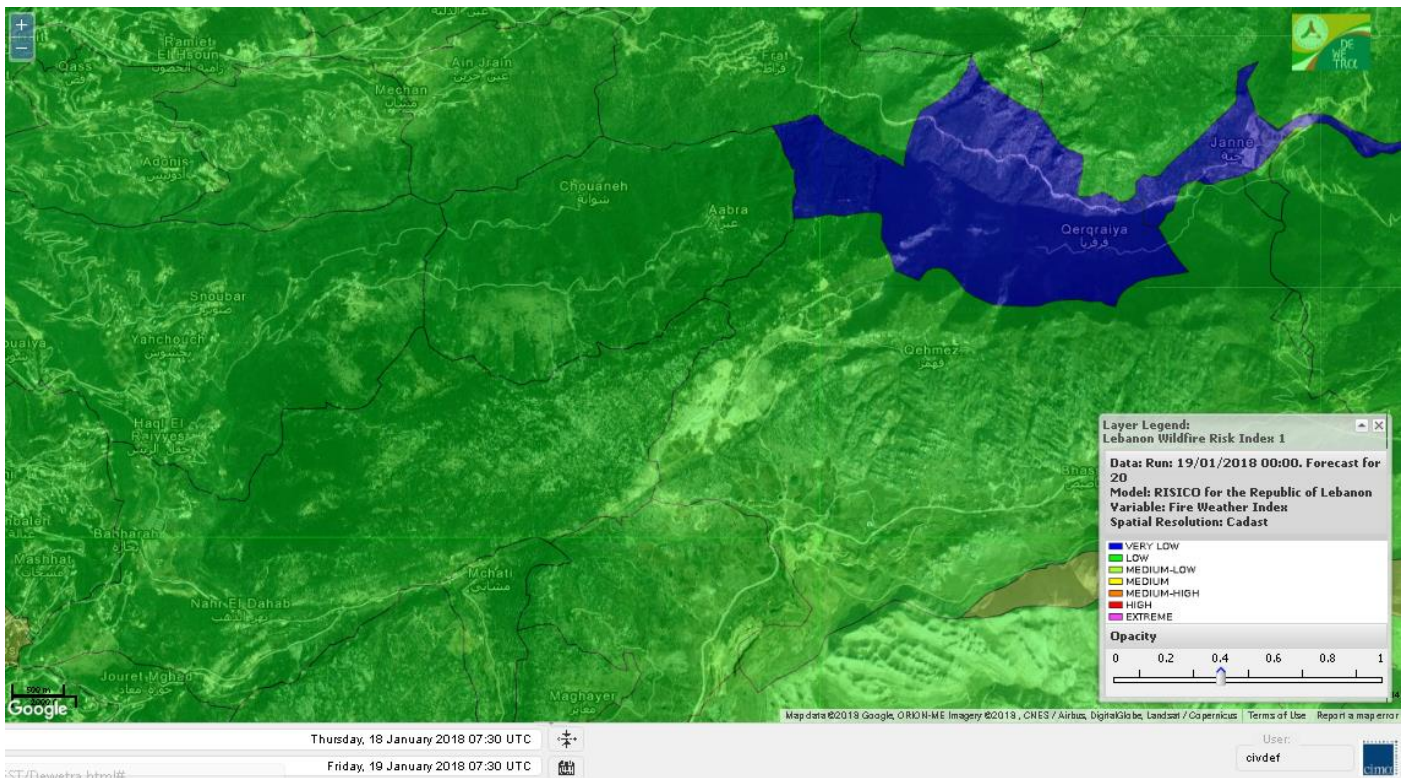
Shouf Biosphere Reserve Forecast for 21 Jan 2018



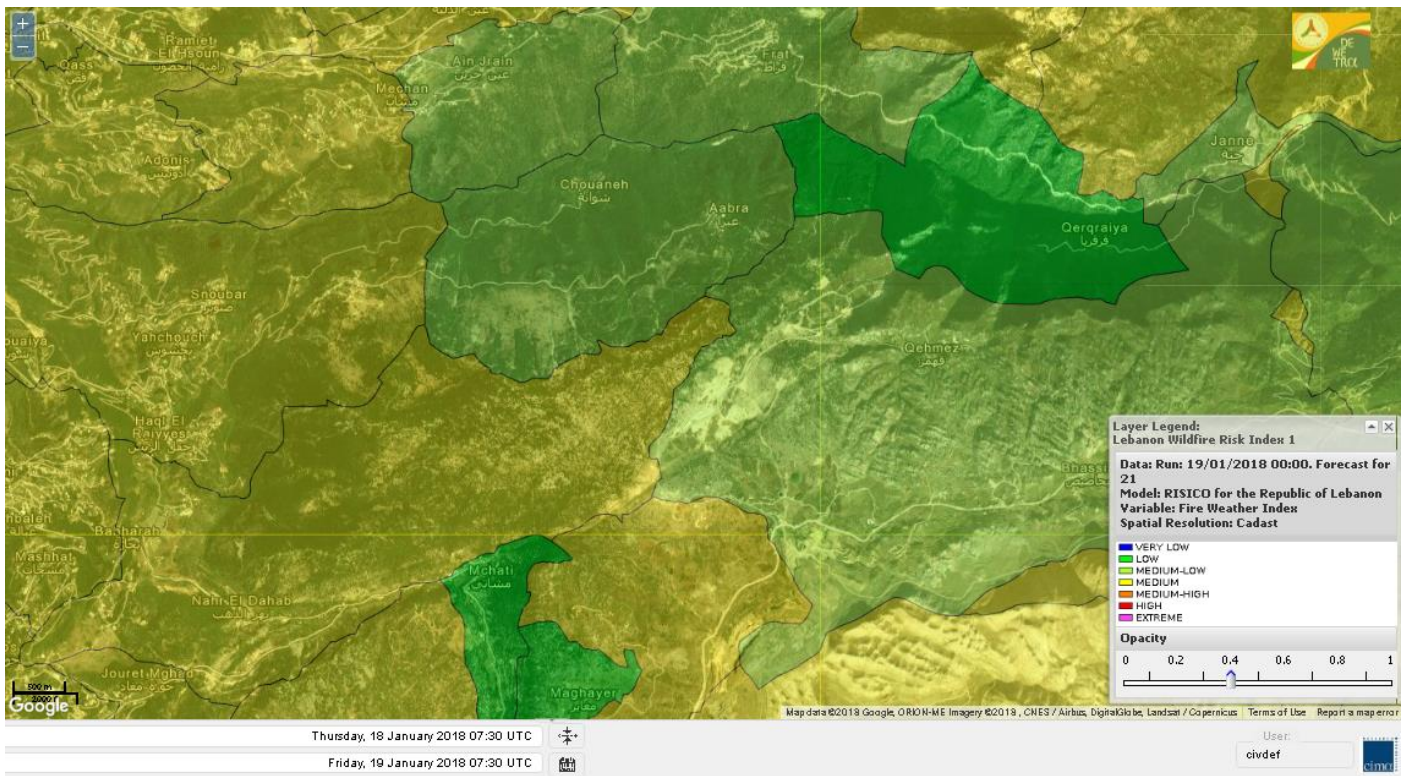
Jabal Moussa Reserve Forecast for 19 Jan 2018



Jabal Moussa Reserve Forecast for 20 Jan 2018



Jabal Moussa Reserve Forecast for 21 Jan 2018



Nord

Koura

Municipality	19-Jan	20-Jan	21-Jan	Municipality	19-Jan	20-Jan	21-Jan	Municipality	19-Jan	20-Jan	21-Jan
Aaba	L	M	MH	Afsaddiq	L	M	MH	Ain Ekrine	L	M	MH
Amioun	L	M	MH	Anfeh	ML	M	M	Badbhoun	L	M	MH
Barghoun	L	M	M	Barsa	L	M	M	Batroumine	L	M	M
Bdebba	L	M	M	Bechmizine	L	M	MH	Bednayel El-Koura	L	M	M
Bhabbouch El-Koura	L	M	M	Bkeftine	L	M	M	Bnehran	VL	ML	M
Bqaiia El-Koura	L	M	M	Bsarma	L	M	M	Btaaboura	L	M	M
Bterram	L	M	MH	Btouratij	L	M	MH	Bziza	L	M	M
Dar Beechtar	L	M	MH	Dar Chmezzine	L	M	MH	Deddeh	L	M	M
Deir El-Balamand	L	M	M	Fih	L	M	M	Hraiche	L	M	M
Ijdaabrine	L	M	M	Kaftoun	L	M	M	Kefraya El-Koura	L	M	M
Kfarakka	VL	M	M	Kfarhata	L	M	M	Kfarhazir	L	M	MH
Kfarkahel	L	M	M	Kfarsaroun	L	M	M	Kosba	L	M	M
Mejdel el-Koura	L	ML	M	Nakhle	L	M	M	Qalhat	L	M	M
Ras Masqa	L	M	M	Rechdibbine	L	M	MH	Zakroun	L	M	M
Zgharta El-Mtaouile	VL	L	M								

Bcharre

Municipality	19-Jan	20-Jan	21-Jan	Municipality	19-Jan	20-Jan	21-Jan	Municipality	19-Jan	20-Jan	21-Jan
Aabdine	VL	ML	M	Bane	VL	ML	MH	Barhelioun	VL	L	M
Bazouone	VL	ML	M	Becharre	L	M	M	Beit Menzer	VL	L	M
Billa	VL	L	M	Blaouza	VL	ML	M	Bqaa Kafra	VL	M	M
Bqerqacha	L	ML	M	Breissat	VL	ML	M	Dimane	VL	ML	M
Hadath El Jobbeh	VL	L	ML	Hadchit	VL	ML	M	Hasroun	VL	ML	M
Mazraat Aassaf	VL	VL	ML	Mazraat Bani Saab	VL	L	M	Mchaa El-Jobbeh	L	M	M
Metrit	VL	ML	M	Moghr El-Ahoual	L	ML	M	Ouadi Qannoubine	VL	VL	L
Qanat	VL	L	M	Qnayer	VL	L	M	Tourza	VL	L	M

Batroun

Municipality	19-Jan	20-Jan	21-Jan	Municipality	19-Jan	20-Jan	21-Jan	Municipality	19-Jan	20-Jan	21-Jan
Aabrine	VL	M	M	Aalali	L	ML	ML	Aartiz	VL	ML	M
Abdelli	VL	ML	M	Ajdabra	L	M	M	Assia	VL	ML	M
Basbina	L	M	M	Batroun	L	M	M	Bcheleh	VL	L	ML
Bechtoudar	VL	L	ML	Beit Chlala	VL	L	ML	Beit Kassab	VL	L	ML
Bijdarfil	L	M	M	Bqesmaya	VL	ML	M	Chatine	VL	L	ML
Chebtin	VL	L	M	Chekka	L	M	M	Daael	L	ML	M
Dahr Abi Yaghi	VL	ML	M	Daraya El-Batroun	L	M	M	Deir Billa	VL	L	M
Deir Kfifane	L	M	M	Deir Mar Youhanna EL	VL	L	ML	Deir Mar Youssef Jra	VL	ML	M
Douma	VL	L	ML	Douq	VL	L	M	Eddeh El-Batroun	L	M	M
Ftahat El-Batroun	VL	ML	M	Ghouma	L	ML	M	Hadtoun	VL	L	ML
Hamat	L	M	M	Harbouna	VL	L	M	Hardine	VL	L	ML
Helta	VL	ML	M	Hery	ML	M	M	Jebbla	VL	ML	M
Jrabta El-Batroun	L	ML	M	Jrane El-Batroun	L	M	MH	Kfar Aabida	L	M	M
Kfar Halda	VL	L	ML	Kfarb Shlaimane	VL	ML	M	Kfarhatna	VL	ML	M
Kfarhay	L	M	M	Kfarhelos	VL	ML	M	Kfifane	L	M	MH

Kfour El Arabi	VL	ML	ML	Koubba	L	M	M	Kour	L	M	M
Mar Mama	VL	L	ML	Masrah	VL	L	M	Mehmarch	L	ML	M
Mrah Chdid	L	M	M	Mrah El Ziyat	VL	M	M	Mrah El-Hajj	VL	L	ML
Nahle El-Batroun	VL	ML	M	Niha El-Batroun	VL	L	M	Ouajh El-Hajjar	L	M	M
Ouata Houb	VL	L	ML	Qatnaaoun	L	M	M	Racha	L	ML	M
Rachana	L	ML	M	Rachkida	L	M	M	Ram El-Batroun	VL	L	ML
Ras Nahhach	L	M	M	Selaata	L	M	M	Sghar	L	ML	M
Smar Jbayl	L	M	M	Sourat El-Batroun	VL	ML	M	Tannourine El-Faouqa	L	ML	M
Tannourine Et-Tahta	VL	L	L	Thoum	L	M	M	Toula El-Batroun	VL	ML	M
Zan	VL	ML	M								

Zgharta

Municipality	19-Jan	20-Jan	21-Jan	Municipality	19-Jan	20-Jan	21-Jan	Municipality	19-Jan	20-Jan	21-Jan
Aachach	L	M	MH	Aalma	L	M	MH	Aarde	L	M	M
Aintourine	VL	ML	M	Arabet Qozhaya	VL	L	M	Arde	L	M	M
Arjis	VL	M	M	Asnoun	L	M	M	Ayto	VL	L	M
Basloukit	VL	ML	MH	Bchannine	L	M	M	Besebeel	L	M	M
Bhairret Toula	VL	L	M	Bnachee	VL	M	M	Boussit	L	M	MH
Danha	L	M	M	Daraiya Zgharta	VL	M	M	Deir Jdeide	L	M	M
Ehden	VL	ML	M	Halan	L	M	MH	Hariq Zgharta	L	M	M
Houakir	L	ML	M	Hraiqis	L	M	MH	laal	L	M	M
Ijbaa	VL	ML	M	Karm Saddeh	VL	L	M	Kfarchakhna	L	M	M
Kfardlaqous	L	M	M	Kfarfou	L	M	M	Kfarhata Zgharta	L	M	M
Kfarhoura	L	M	M	Kfarsghab	VL	ML	M	Kfaryachit	L	M	M
Kfarzaina	L	M	M	Khaldiye	L	M	M	Mazraat Ajbeaa	L	M	M
Mazraat Et-Teffah	VL	L	M	Mazraat Jneid	VL	M	M	Mejdlaiya Zgharta	L	M	MH
Merh Kfarsghab	VL	M	M	Miryata	L	M	MH	Miziara	VL	L	M
Mzraat Kefraya	L	M	MH	Qorah Bach	L	M	M	Rachiine	L	M	MH
Ras Kifa	L	M	M	Sakhra	L	M	M	Sebhel Zgharta	VL	ML	M
Serhel	VL	L	M	Tallet Zgharta	L	M	M	Toula Zgharta	VL	L	M
Zgharta	L	M	M								

Minieh-Denniye

Municipality	19-Jan	20-Jan	21-Jan	Municipality	19-Jan	20-Jan	21-Jan	Municipality	19-Jan	20-Jan	21-Jan
Aasaymout	VL	L	M	Aaymar	L	ML	M	Aazki	L	M	M
Ain El-Tineh-Miniyeh	VL	L	M	Assoun	VL	ML	M	Bakhaaoun	L	ML	M
Bchennata	VL	M	MH	Bechehhara	VL	L	M	Beddawi	ML	M	MH
Behouaita	VL	L	M	Beit El Foqss	VL	L	M	Beit Haouik	L	M	M
Beit Zoud	L	L	M	Bekaasafrine	L	M	MH	Borj El Yahoudiyeh	L	M	MH
Bqarsouna	VL	L	M	Btermaz	L	L	M	Debaael	L	L	M
Deir Ammar	L	M	MH	Deir Nbouh	L	ML	M	Haouaret-Miniyeh	L	ML	M
Haql el Azimeh	VL	L	M	Harf El Siyad	L	L	M	Hazmiye-Miniyeh	VL	L	M
Izal	L	ML	M	Jarjour	VL	L	M	Jayroun	VL	L	M
Kahf El-Malloul	L	L	M	Karm El-Moher	VL	ML	M	Kfar Binine	L	L	M
Kfarchalane	L	ML	M	Kfarhabou	L	M	M	Kharroub-Miniyeh	L	ML	M
Mazraat El-Kreme	VL	L	M	Mazraat Ketrane	VL	L	M	Merkebta	L	M	MH
Minyeh	L	M	MH	Mrah El Sfirat	VL	L	M	Mrah Sraj	L	L	M
Mrebbine	L	ML	M	Nabi Youcheaa	L	M	MH	Nemrine	VL	ML	M

Qarhaiya	L	ML	M	Qarne	VL	L	M	Qarsita	VL	L	M
Qattineh-Miniyeh	VL	L	M	Qemmamine	VL	L	M	Qraïne	VL	L	M
Raouda-Aadoua	L	M	M	Rihaniyet-Miniyeh	L	M	MH	Sfireh	VL	L	M
Sir Ed-Danniyeh	VL	L	M	Tarane	VL	L	M	Terbol-Miniyeh	L	M	MH
Zaghartaghriine	L	ML	M	Zouq Bhannine	ML	M	MH				

Nabatiye

Nabatiye

Municipality	19-Jan	20-Jan	21-Jan	Municipality	19-Jan	20-Jan	21-Jan	Municipality	19-Jan	20-Jan	21-Jan
Aabba	ML	M	M	Aazzi	L	M	M	Adchit El-Chqif	ML	M	M
Ain Bou Swar	L	L	M	Ain Kana	L	M	M	Ali El-TaHER	L	ML	M
Ansar	L	M	M	Arab Salim	L	M	M	Arnoun	L	ML	M
Bfaroue	L	M	M	Breyqaah	L	M	M	Charqiyeh	ML	M	M
Choukine	ML	M	M	Deir El Zahrani	ML	M	M	Doueir El-Nabatiyeh	ML	M	M
Habbouch El-Nabatiye	ML	M	M	Hamra El-Nabatiyeh	ML	M	M	Harouf El-Nabatiyeh	ML	M	M
Hmaile	L	M	M	Houmin El Faouqa	L	M	M	Houmin El Tahta	L	M	M
Jarjough	L	ML	M	Jbaah El-Nabatiyeh	L	L	M	Jebchit	ML	M	M
Kfar Djal El-Nabatiy	ML	M	M	Kfar Remmane	L	M	M	Kfar Sir	ML	M	M
Kfar Tebnit	ML	M	M	Kfarfila	L	M	M	Kfour El-Nabatieh	ML	M	M
Mayfadoun	ML	M	M	Mazraat Bsaffour	L	M	M	Mazraat Chalbaal	ML	M	M
Mazraat Dmoul	M	M	M	Mazraat El Khreibeh	L	M	M	Mazraat El-Bayad El-	ML	M	M
Mazraat Kfarjaouz	ML	M	M	Mazraat Qalaat Meiss	ML	M	M	Nabatiyeh El-Fawka	ML	M	M
Nabatiyeh Et-Tahta	ML	M	M	Namiriyyeh	ML	M	M	Qaaqaaiyet El Jisr	L	M	M
Qossaibeh El-Nabatiy	ML	M	M	Roumine	L	M	M	Sarba El-Nabatieh	L	M	M
Sir El-Gharbiyeh	L	M	M	Toul	ML	M	M	Yehmor El-Nabatiyeh	L	M	M
Zaoutar El Charkiyeh	ML	M	M	Zaoutar El-Gharbiyeh	ML	M	M	Zebdine El-Nabatiyeh	ML	M	M
Zefta	L	M	M								

Hasbaiya

Municipality	19-Jan	20-Jan	21-Jan	Municipality	19-Jan	20-Jan	21-Jan	Municipality	19-Jan	20-Jan	21-Jan
Ain Jarfa	VL	L	M	Abou Qamha	L	ML	M	Ain Qania	VL	L	M
Bourghos	ML	ML	M	Chebaa	L	L	M	Chouaya Hasbaya	L	L	M
Dellafeh	ML	ML	M	Fardiss Hasbaiya	L	ML	M	Hasbaya	L	L	M
Hbariyeh	VL	L	M	Kaoukaba Hasbaiya	L	M	M	Kfar Chouba	L	L	M
Kfar Hamam	L	L	M	Kfeir El-Zait	L	L	M	Khalwat Hasbaya	L	L	M
Khreibet Hasbaiya	L	ML	M	Majidiyeh Hasbaiya	L	ML	M	Marj Ez-Zhour (Haouc	L	L	M
Meri	L	M	M	Mimass	L	L	M	Rachaiya El-Fokhar	L	ML	M
Salaiyeb	L	M	M								

Marjayoun

Municipality	19-Jan	20-Jan	21-Jan	Municipality	19-Jan	20-Jan	21-Jan	Municipality	19-Jan	20-Jan	21-Jan
Aalmane Marjaayoun	L	ML	M	Aamra	L	M	M	Adayseh Marjaayoun	ML	M	M
Adchit El-Koussair	ML	M	M	Ain Arab Marjaayoun	L	M	M	Bani Haiyann	L	ML	M
Blatt Marjaayoun	L	M	M	Blida	M	M	M	Borj El-Moulouk	L	M	M
Boueyda Marjaayoun	L	M	M	Deir Mimass	L	ML	M	Deir Siriane	L	ML	M
Dibbine	L	M	M	Ebel El Saqi	L	M	M	Houla	ML	ML	M
Houra	L	M	M	Kfar Kila	L	M	M	Khiam Marjaayoun	L	M	M

Klayaa	L	M	M	Majdel Selem	ML	ML	M	Marjaayoun	L	M	M
Markaba	ML	M	M	Mays El-Jabal	ML	M	M	Mazraat Doumiat	ML	M	M
Mazraat Sarada	L	M	M	Mhaibib	M	M	M	Qabrikha	L	ML	M
Qantara	L	ML	M	Rab El-Thalathine	ML	M	M	Saouaneh Marjayoun	ML	M	M
Talloussa	L	ML	M	Taybeh Matjaayoun	ML	M	M	Touline	L	ML	M

Bent Jbail

Municipality	19-Jan	20-Jan	21-Jan	Municipality	19-Jan	20-Jan	21-Jan	Municipality	19-Jan	20-Jan	21-Jan
Ain-Ebel	ML	L	M	Aitaroun	M	M	M	Aynata Bint Jbeil	ML	M	M
Ayta El-Chaeb	L	ML	M	Ayta El-Jabal	ML	M	M	Beit Lif	L	ML	M
Beit Yahoun	ML	M	M	Bint Jbeil	ML	ML	M	Borj Qalaway	ML	M	M
Braachit	ML	M	M	Chakra	M	ML	M	Debel	L	ML	M
Deir Antar	ML	M	M	Froun	L	M	M	Ghandouriyeh Bint Jb	L	M	M
Hanine	ML	ML	M	Hariss	ML	M	M	Hdatha	ML	M	M
Jmeymeh	ML	M	M	Kafra Bint Jbeil	L	ML	M	Kfar Dounine	ML	M	M
Khirbet Selm	L	M	M	Kounine	M	M	M	Maroun El Ras	M	M	M
Qalaway	ML	M	M	Qaouzah	L	ML	M	Qatmoun	ML	ML	M
Ramya Bint Jbeil	L	ML	M	Rchaf	L	ML	M	Rmeich	ML	ML	M
Safad Al Battikh	ML	M	M	Salhaneh	L	ML	M	Serbine	L	M	M
Sultanieh Bint Jbeil	ML	M	M	Tibnine	L	M	M	Tiri	ML	L	M
Yaroun	ML	L	M	Yater	L	M	M				

Mont Liban

Jbail

Municipality	19-Jan	20-Jan	21-Jan	Municipality	19-Jan	20-Jan	21-Jan	Municipality	19-Jan	20-Jan	21-Jan
Aabeydat	VL	L	M	Aalita	VL	L	M	Aamchit	L	M	MH
Aarab El-Lahib	L	L	M	Aarasta	VL	VL	M	Adonis Jbeil	VL	L	M
Afqa Jbeil	L	L	ML	Ain El Delbeh Jbeil	VL	L	M	Ain El-Ghouyba	VL	L	ML
Ain Jrain	VL	L	ML	Ain Kfah	L	M	M	Almat El Chemaliyat	VL	L	M
Almat El-Jenoubiya	VL	L	M	Aqoura	L	ML	M	Bayzoun	VL	L	M
Bchille Jbeil	L	L	M	Bechtida	VL	L	M	Behdaydat	L	ML	M
Beit Habbaq	L	ML	M	Bejjeh	L	ML	M	Bekhaaz	L	M	M
Berbara Jbeil	ML	M	MH	Bintael	L	L	M	Birket Hjoula	VL	L	M
Blatt Jbeil	L	ML	M	Boulhos	VL	L	M	Breyj Jbeil	VL	L	M
Chamat	L	M	M	Chikhane	L	M	M	Chmout	VL	ML	M
Eddeh Jbeil	L	M	M	Ehmej	VL	L	M	Fatre	VL	L	M
Ferhet	VL	ML	M	Fghal	L	M	M	Frat	VL	L	ML
Ghabat	VL	L	M	Ghalboun	L	ML	M	Gharzouz	L	M	M
Ghofrine	L	M	M	Habil	VL	L	M	Halate	L	ML	M
Haqel	VL	L	M	Hbaline	L	ML	M	Hboub	L	ML	M
Hdeine	L	L	M	Hema Er-Rehban	VL	L	M	Hema Mar Maroun Aann	VL	L	M
Hjoula	VL	L	M	Hosrayel	L	M	M	Hsarat	L	ML	M
Hsoun	VL	L	M	Jaj	VL	L	ML	Janne	VL	VL	ML
Jbeil	L	M	MH	Jeddeyel Jbeil	L	M	MH	Jlisse	VL	L	M
Jouret El-Qattine	L	L	M	Kfar Baal Annaya	VL	L	M	Kfar Kidde	L	M	M
Kfar Kouas	L	L	M	Kfar Mashoun	L	M	MH	Kfoun	VL	L	M

Kharbe Jbeil	L	ML	M	Laqlouq	VL	L	M	Lassa	VL	L	ML
Lehfed	VL	L	ML	Maad	L	M	M	Mar Sarkis	L	L	M
Mastita	L	M	MH	Mayfouq	VL	L	ML	Mazraat El Siyad	VL	L	M
Mazraat El-Maaden	VL	L	M	Mechane	VL	L	M	Mechmech Jbeil	VL	L	ML
Mehrin	L	ML	M	Mejdel El-Akoura	L	L	M	Mghayreh Jbeil	VL	L	M
Mounsef	L	M	MH	Nahr Ibrahim	L	M	MH	Qahmez	VL	L	ML
Qartaba	VL	L	M	Qartaboun	L	M	MH	Qattara Jbeil	VL	L	ML
Qorqraya	VL	VL	L	Ramout	L	ML	M	Ras Osta	L	L	M
Rihane Jbeil	L	M	MH	Sakiet El-Khayt	VL	ML	M	Saqi Richmaya	VL	L	ML
Sebrine	L	L	M	Seraita	VL	L	M	Souane Jbeil	VL	L	M
Tadmor	VL	L	M	Tartej	VL	ML	ML	Torzaiya	VL	L	M
Yanouh Jbeil	VL	L	M	Zibidine Jbeil	VL	L	M				

El Metn

Municipality	19-Jan	20-Jan	21-Jan	Municipality	19-Jan	20-Jan	21-Jan	Municipality	19-Jan	20-Jan	21-Jan
Aain El-Qabu	VL	VL	ML	Aain El-Qach	L	L	M	Aain El-Teffaha	L	ML	M
Aain el-Safsaf El-M	VL	L	M	Abou Mizane	L	ML	M	Ain Aar	L	M	MH
Ain Alaq	L	ML	M	Ain El-Kharroube	L	ML	M	Ain El-Sendiane	L	L	M
Ain El-Zeitoune	L	L	M	Ain Saadeh	L	ML	M	Aintoura El-Matn	L	L	M
Amaret Chalhoub	L	M	MH	Antelias	L	M	MH	Atchaneh	L	ML	M
Ayroun	L	L	M	Baabdat	L	L	M	Baouchariyeh	L	M	MH
Baskinta	L	L	M	Beit Chabab	VL	L	M	Beit El-Charar	L	M	MH
Beit El-Kekko	L	M	MH	Beit Mery	L	ML	M	Bhersaf	VL	L	M
Bikfaya	VL	L	M	Biyakout	L	M	MH	Bnabil	L	L	M
Bourj Hammoud	L	M	MH	Bqennaya	L	ML	M	Broummana El-Matn	L	ML	M
Bsalim	L	ML	MH	Bsifrine	VL	L	M	Bteghrine	VL	VL	M
Chaouiye	L	ML	M	Chouaya El-Matn	L	ML	M	Choueir	VL	L	M
Chrine	VL	L	M	Dahr El Sawan El-Mat	L	L	M	Daychouniyeh	L	M	MH
Dbayeh	L	M	MH	Deir Chamra	VL	L	M	Deir Mar Abda el Mch	L	ML	M
Deir Mar Roukouz	L	M	MH	Deir Tamiche	L	ML	M	Dik El-Mehdi	L	M	MH
Dikwaneh	L	M	MH	Douar El-Matn	L	L	M	Fanar	L	M	MH
Fraike	L	L	M	Haret El-Ballaneh	L	M	MH	Hbous	L	M	MH
Himlaya	VL	L	M	Jal El Did	L	M	MH	Jdeideh El-Metn	L	M	MH
Jouar El-Matn	VL	L	M	Jouret El-Ballout	VL	ML	M	Kaaqour	L	L	M
Kfar Aaqab	VL	VL	M	Kfertay El-Matn	VL	VL	M	Khenchara	VL	L	M
Khillet El-Mtain	L	L	M	Konnabat Broummana	L	ML	M	Konnabat Salima	VL	L	M
Machraah El-Matn	VL	VL	M	Majdel Tarchich	ML	ML	M	Majzoub	L	M	MH
Mansouriyeh El-Metn	L	M	MH	Mar Boutros Karm Et-	VL	L	M	Mar Chaya et Mzekke	VL	ML	M
Mar Moussa Ed-Douar	L	L	M	Marjaba	VL	VL	M	Masqa	VL	L	M
Mayasse	VL	L	M	Mazraat Deir Aoukar	L	M	MH	Mazraat El-Hadirat	L	M	MH
Mazraat Yachouh	L	M	MH	Mchikha	L	L	M	Menqlet Mezher	L	M	MH
Mhaydseh Matn	VL	L	M	Mkalles	L	M	MH	Mrouj	L	L	M
Mtain	L	L	M	Mtayleb	L	M	MH	Nabay	VL	ML	M
Naccache	L	M	MH	Ouadi Chahine	VL	L	M	Ouadi El-Karm El-Mat	VL	VL	M
Ouata El-Mrouj	L	L	M	Ouyoun El-Matn	VL	L	M	Qornet Chehwan	L	M	MH
Qornet El-Hamra	L	ML	M	Roumieh	L	ML	M	Sfeilet Bikfaya	VL	L	M
Sinn El-Fil	L	M	MH	Zabbougha	VL	L	M	Zalqa	L	M	MH

Zarouon	VL	L	M	Zekrite	L	ML	M	Zighrine El-Matn	L	ML	M
Zouk El-Khrab	L	M	MH								

Chouf

Municipality	19-Jan	20-Jan	21-Jan	Municipality	19-Jan	20-Jan	21-Jan	Municipality	19-Jan	20-Jan	21-Jan
Aalmane El-Chouf	ML	M	M	Aammq El-Chouf	L	L	M	Ain Ouzein	L	L	M
Ain Qani	L	L	M	Ain Zhalta	L	L	M	Ainbal	L	L	M
Amatour	L	L	M	Anout	L	ML	M	Atrine	L	ML	M
Baadarane	L	L	M	Baaqline	L	ML	M	Baasir	ML	M	M
Barja	ML	M	M	Barouk	L	L	M	Bater	L	L	M
Batloun	ML	L	M	Bayqoun	L	M	M	Bchetfine	L	ML	M
Beiteddine	L	L	M	Benouati Ech-Chouf	L	ML	M	Berjein	L	ML	M
Bireh et Mtalleh	L	L	M	Biret El-Chouf	L	ML	M	Bkechtine Ouel Mchei	VL	L	M
Bkifa El-Chouf	L	ML	M	Botme	L	L	M	Bqaiaa Ech-Chouf	L	ML	M
Bsaba El-Chouf	L	ML	M	Chammis El-Chouf	L	M	M	Chehim	L	ML	M
Chemaarine	L	L	M	Chourit	L	L	M	Daher El-Chouf	L	L	M
Dalhoun	L	M	M	Damour	ML	M	M	Daraya El-Chouf	L	L	M
Deir El-Moukhalles	VL	L	M	Deir Baba	L	ML	M	Deir Dourit	L	ML	M
Deir El-Qamar	L	ML	M	Deir Kouche	L	ML	M	Dibbieh	L	L	M
Dmit	L	ML	M	Fouara Jaafar	L	L	M	Fraidis El-Chouf	L	L	M
Ghabet Jaafar	L	ML	M	Gharife	L	L	M	Haret Jandal	L	L	M
Hasrout	L	ML	M	Jadra	ML	M	M	Jahlieh	L	ML	M
Jbeih El-Chouf	L	L	M	Jdeidet El-Chouf	L	L	M	Jiyeh	M	M	M
Jleilyeh	L	ML	M	Jmailiyeh	ML	M	M	Joun	L	ML	M
Kahlounie El-Chouf	L	L	M	Ketermaya	L	M	M	Kfar Faqoud	L	ML	M
Kfar Hamal	ML	M	M	Kfar Him	L	M	M	Kfar Katra	L	L	M
Kfar Niss	L	L	M	Kfar hay	L	ML	M	Kfarnabrakh	L	L	M
Khirbet Bisri	L	L	M	Knayse El-Chouf	VL	L	M	Maaniyeh	L	M	M
Maasser Beiteddine	L	L	M	Maasser El-Chouf	L	L	M	Majdalouna	L	M	M
Majdel El-Meouch	L	ML	M	Mazboud	L	M	M	Mazmoura	L	ML	M
Mazraat El Chouf	L	ML	M	Mazraat El Daher	L	L	M	Mazraat El-Douair	L	L	M
Mechref	L	ML	M	Mghairie	L	M	M	Mghayrie El-Chouf	L	ML	M
Moukhtara	L	L	M	Mrusti	L	L	M	Mtolle	L	ML	M
Naameh	ML	M	M	Niha El-Chouf	L	L	M	Ouadi Abou Youssef	VL	L	M
Ouadi Ed-Deir	L	M	M	Ouadi El-Sit	L	L	M	Ouadi bnehlay	L	ML	M
Qraibeh	L	L	M	Qreiaa	VL	L	M	Rmayle El-Chouf	ML	M	M
Semqaniyeh	ML	L	M	Sibline	ML	M	M	Sirjbeil	L	M	M
Warhanieh	L	L	M	Werdaniyeh	ML	M	M	Zaarourieh	L	ML	M

Baabda

Municipality	19-Jan	20-Jan	21-Jan	Municipality	19-Jan	20-Jan	21-Jan	Municipality	19-Jan	20-Jan	21-Jan
Abadiyeh	L	ML	M	Ain Mouaffaq	L	ML	M	Araiya	L	ML	M
Arbaniyeh	VL	L	M	Arsoun	VL	L	M	Baabda	L	M	MH
Baalchmey	L	M	M	Bmaryam	L	L	M	Bourj El-Brajneh	M	M	MH
Boutchay	L	M	M	Bsaba Baabda	L	M	MH	Btekhney	VL	L	M
Btibyat	VL	L	M	Bzbeddine	L	L	M	Chbeniyeh	L	L	M
Chiyah	M	M	MH	Chmeisset Baabda	VL	L	M	Chouit	VL	L	M
Deir El-harf	L	L	M	Deir Khouna	L	L	M	Dlaybeh	VL	L	M

Falougha	L	L	M	Furn El-Chebbak	L	M	MH	Hadath Beyrouth	L	M	MH
Halaliyeh Baabda	VL	L	M	Hammana	L	L	M	Haret El Sett	L	ML	M
Haret Hamze	L	L	M	Haret Hreik	M	M	MH	Hasbaiya El-Metn	VL	L	M
Jouar El-Hoz	L	VL	ML	Jouret Arsoun	L	L	M	Kfar Chima	L	M	MH
Kfar Selouane	L	L	M	Khalouat Baabda	L	L	M	Kneisset Baabda	VL	L	M
Laylakeh	ML	M	MH	Louayzeh Baabda	L	M	MH	Merdache	L	M	MH
Mzairaa Baabda	VL	L	M	Ouadi Chahrour El Ol	L	M	M	Ouadi Chahrour El So	L	ML	M
Qalaa Baabda	VL	L	M	Qhraybe Baabda	L	L	M	Qobbayaa	L	L	M
Qornayel	L	L	M	Qortada	VL	L	M	Qrayeh Baabda	L	L	M
Qsaibeh Baabda	VL	L	M	Qtale Baabda	VL	L	M	Ras El Metn	L	L	M
Ras El-Haref	L	L	M	Rouayset El-Ballout	L	L	M	Salima Baabda	VL	L	M
Tahouitat El Ghadir	ML	M	MH	Tarchich	L	L	M	Zandouqa	VL	L	M

Aley

Municipality	19-Jan	20-Jan	21-Jan	Municipality	19-Jan	20-Jan	21-Jan	Municipality	19-Jan	20-Jan	21-Jan
Abey	L	ML	M	Aghmid	L	L	M	Ain Dara	L	L	M
Ain Drafil	L	ML	M	Ain El Halazoun	L	ML	MH	Ain El-Rmmaneh	VL	L	M
Ain Jedideh	L	M	MH	Ain Ksour	L	ML	M	Ain Onoub	L	ML	M
Ain Traz	L	ML	M	Ainab	L	ML	M	Aley	L	M	M
Aramoun	L	M	M	Aytat	L	M	MH	Azouniyeh	L	L	M
Baawerta	L	ML	M	Badghan Oua Wadi Bad	L	L	M	Bassatine	L	ML	M
Bayssour	L	ML	M	Bchamoun	L	M	MH	Bdadoun	L	ML	M
Behouara	L	ML	M	Bennay	L	ML	M	Bhamdoun El-Dayaa	L	M	MH
Bhamdoun El-Mhatta	L	ML	MH	Bkhechtey	L	M	MH	Bleibel	L	ML	M
Bmakine	L	M	MH	Bmehray	L	L	M	Bouzrid	VL	L	M
Bserrine	ML	ML	MH	Bsous	L	L	M	Btalloun	L	M	MH
Btater	ML	M	MH	Chanay	L	ML	MH	Charoun	L	L	MH
Chartoun	L	L	M	Chemlane	L	ML	M	Choueifat El-Aamrous	ML	M	MH
Choueifat El-Oumara	ML	M	MH	Choueifat El-Quoubbe	ML	M	MH	Dakkoun	L	M	M
Deir Qoubel	L	M	M	Dfoun	L	M	M	Douair El Remmaneh	VL	L	M
Ghaboun	L	ML	M	Habramoun	L	L	M	Homs Oua Hama	L	ML	M
Houmal	L	ML	M	Jisr El Qadi	L	ML	M	Kehaleh	L	L	M
Keyfoun	L	M	MH	Kfar Aamey	L	ML	M	Kommatyeh	L	M	M
Maasrati	L	ML	M	Majdel Baana	L	L	MH	Mansourieh et Ain El	ML	M	MH
Mazraat El-Nahr	L	L	M	Mchakhte	L	L	M	Mecherfeh	L	L	M
Mejdlaya	L	ML	M	Mrayjat	L	L	M	Ramliyah	L	L	M
Rechmaya	L	ML	M	Rejmeh	L	ML	M	Remhala	L	ML	M
Rouaysset El Neemane	L	ML	M	Saoufar	L	L	MH	Selfaya	VL	ML	M
Sirhmoul	L	ML	M	Souq El Ghareb	L	M	MH	Taazanieh	L	M	MH

Kesrouane

Municipality	19-Jan	20-Jan	21-Jan	Municipality	19-Jan	20-Jan	21-Jan	Municipality	19-Jan	20-Jan	21-Jan
Achkout	VL	L	M	Adma Oua Dafneh	L	M	MH	Ain Ed-Delbe Kesroua	VL	L	L
Ain El-Rihane	L	ML	M	Aintoura Kesrouane	L	M	MH	Ajaltoun	VL	L	M
Akaybeh Kesrouane	L	M	MH	Aramoun Kesrouane	VL	L	M	Azra ouel Ozor	VL	L	M
Ballouneh	VL	L	M	Batha	VL	L	M	Bekaatat Achkout	L	L	M
Bekaatat Kanaan	VL	VL	ML	Bizhel	VL	L	M	Bouar	L	M	MH
Bqaatouta	VL	L	M	Bqaq Ed-Dine	L	M	MH	Bzommar	L	L	M

Chahtoul	VL	L	M	Chnaniir	VL	L	M	Chouan	VL	L	ML
Daraya Kesrouane	VL	L	M	Darououn	VL	L	M	Deir Baqlouch	VL	ML	M
Dlebta	VL	L	M	Eghbeh	VL	VL	M	Faraya	L	L	M
Fatka	L	ML	M	Feytroun	VL	L	M	Ghazir	L	ML	M
Ghbaleh Kesrouane	VL	L	M	Ghedrass	VL	L	M	Ghosta	VL	L	M
Ghyneh	L	ML	M	Harharaya w Kattine	VL	L	M	Harissa Kesrouane	VL	ML	M
Hayata	VL	L	M	Hosein	VL	L	M	Hrajel	L	L	M
Jdeideh Ghazir	VL	L	M	Jeita	L	ML	M	Jounieh Ghadir	L	M	MH
Jounieh Haret Sakhr	L	M	MH	Jounieh Salel Alma	L	M	MH	Jounieh Sarba	L	M	MH
Jouret Bedrane	L	L	M	Jouret Mhad	VL	L	M	Jouret Termos	L	ML	M
Kfar Debiane	VL	L	M	Kfar Tay Kesrouane	VL	VL	M	Kfar Yassine	L	M	MH
Kfour Kesrouane	L	L	M	Kharayeb Nahr Ibrahi	L	ML	M	Klayaat Kesrouane	VL	L	M
Maarab	VL	L	M	Maaysra Kesrouane	L	L	M	Mayrouba	VL	L	M
Mazraat Er-Ras	L	M	MH	Mazraat Mrah El-Mir	VL	L	M	Mchaa El Ftouh	L	ML	M
Mchaa Faraya	L	L	M	Mchaa Kfar Dibiane	L	L	M	Mghaer	VL	L	L
Mradiyah	VL	L	M	Nahr Ed-Dahab	VL	L	M	Nammoura Kesrouane	L	L	M
Ouata El Jaouz	VL	L	M	Ouata Sillam	ML	M	MH	Raachine	VL	L	M
Rayfoun	VL	L	M	Safra Kesrouane	L	M	MH	Shayle Kesrouane	L	ML	M
Tabarja	L	M	MH	Yahchouch	VL	L	M	Zaaytreh	VL	L	M
Zeytoun	L	ML	M	Zouk Mikael	L	M	MH	Zouk Mosbeh	L	M	MH

Baalbek_Hermel

Baalbek

Municipality	19-Jan	20-Jan	21-Jan	Municipality	19-Jan	20-Jan	21-Jan	Municipality	19-Jan	20-Jan	21-Jan
Aadous	L	ML	M	Aamchki	L	M	M	Aarsal	ML	M	M
Ain Baalbek	M	M	M	Ain Bourday	L	M	M	Ain El-Benye	L	M	M
Ain El-Jaouz Baalbek	ML	M	M	Ain El-Siya Chadoura	L	M	M	Al Khodr Baalbek	L	ML	M
Al Nabi Chit	L	ML	M	Aynata Baalbek	L	M	M	Baalbek	L	M	M
Bachwat	VL	L	M	Barqa	VL	L	M	Bednayel Baalbak	L	M	M
Beit Chama	L	M	M	Bijjaje	M	M	M	Bouday	L	ML	M
Brital	L	M	M	Btadi	L	L	M	Chaat	L	ML	M
Chaibe	L	M	M	Chlifa	L	ML	M	Chmestar	L	M	M
Dar El-Oussa	VL	L	M	Deir El-Ahmar	L	L	M	Deir Mar Maroun Baal	L	M	M
Douris	L	ML	M	Fakiha	M	M	M	Hadath Baalbek	L	L	M
Ham	L	M	M	Haour Taala	L	M	M	Hizzine	L	L	M
Hlebta	VL	ML	M	Hosh Barada	L	L	M	Hosh El Dahab	L	ML	M
Hosh El Snid	L	L	M	Hosh El-Nabi	L	L	M	Hosh El-Rafiq	L	ML	M
Hosh Tal Safiya	L	ML	M	Hrebta	L	M	M	laat	L	L	M
Jebaa	L	M	M	Jenta	L	L	M	Kfar Dabach	L	ML	M
Kfar Dane	L	L	M	Khraibeh El-Hermel	L	M	M	Khreibet Baalbek	L	M	M
Kneisset Baalbek	L	L	M	Labueh	M	M	M	Maarboun	L	M	M
Majdaloun	L	L	M	Maqneh	L	M	M	Mazraat Beit Mcheik	L	M	M
Misraya	L	L	M	Moqraq	M	M	M	Nabha El-Damdoum	L	M	M
Nabi Chbay	L	M	M	Nabi Osman	M	M	M	Nahleh baalbek	L	M	M
Ouadi El-Oss	VL	L	M	Qaa Baayoun	M	M	M	Qaa Jouar Maqiye	M	M	M
Qaa Ouadi El-Khanzir	ML	M	M	Qah Baalbek	M	M	M	Qarha Baalbek	L	L	M

Qsarnaba	L	ML	M	Ram Baalbek	VL	L	M	Ras Baalbek El Sahl	M	M	M
Ras Baalbek El-Charq	M	M	M	Riha	L	L	M	Saaide	L	L	M
Sbouba	L	M	M	Seriine El-Tahta	L	L	M	Slouqi	L	M	M
Taiba Baalbek	L	M	M	Talia	L	L	M	Taraiya	L	ML	M
Temnin El Fawqa	L	ML	M	Temnin El-Tahta	L	L	M	Tfail	ML	M	M
Yahfoufa	L	ML	M	Yammouneh	L	ML	M	Younine	ML	M	M
Zboud	L	M	M								

Hermel

Municipality	19-Jan	20-Jan	21-Jan	Municipality	19-Jan	20-Jan	21-Jan	Municipality	19-Jan	20-Jan	21-Jan
Charbine El-Hermel	L	L	M	Hermel Jbab	L	M	MH	Hermel	L	M	M
Maaysra El-Hermel	VL	ML	M	Michaa Mrajhine	L	ML	M	Ouadi Faara	VL	ML	M
Ras Baalbek - Ouadi	ML	M	M	Ras Baalbek El Gharb	L	M	M	Zighrine	VL	L	M

Akkar

Akkar

Municipality	19-Jan	20-Jan	21-Jan	Municipality	19-Jan	20-Jan	21-Jan	Municipality	19-Jan	20-Jan	21-Jan
Aain Tinta	ML	M	MH	Aaiyat	ML	M	M	Aakkar El-Aatiqa	L	ML	M
Aamar Akkar	L	M	MH	Aamar El Baykat	L	M	MH	Aamayer	M	M	M
Aamriyet Akkar	M	M	MH	Aandqet	L	M	M	Aarmeh	L	M	M
Aarqa	L	M	MH	Aawaynat	M	M	M	Aayoun Akkar	L	M	M
Abboudiye	L	M	M	Ain El-Zeit	M	M	MH	Ain Yaaqoub	L	ML	M
Akroum	L	M	M	Aridet Cheikh Zennad	L	M	MH	Baldeh w Mazraat Bal	ML	M	MH
Barcha	L	M	MH	Bardeh	M	M	M	Bebnine	L	M	MH
Beino	ML	M	M	Beit Ayoub	L	M	MH	Beit El-Haouch	L	M	MH
Beit Mellat	ML	M	MH	Beit Younes	L	ML	M	Berbara Akkar	ML	M	MH
Berqayel	L	M	MH	Bezbina	L	L	M	Bireh Akkar	M	M	MH
Borj	ML	M	MH	Bqerezla	L	M	MH	Bzal	L	ML	M
Chane	L	ML	M	Chaqdouf	ML	M	MH	Charbila	ML	M	MH
Cheikh Mohammad	L	M	MH	Cheikh Taba Es-Sahl	L	M	MH	Cheikh Taba	L	M	MH
Cheikh Zennad	L	M	MH	Cheikhlar	M	M	M	Chir Hmairine	L	M	MH
Daghle	ML	M	MH	Dahr Laissine	ML	M	MH	Darine	L	M	MH
Dawra	L	M	M	Dawsa w Baghdadi	ML	M	M	Dayret Nahr El-Kabir	L	M	M
Deir Dalloum	L	M	MH	Deir Jennine	ML	M	MH	Denbou	L	ML	M
Dibbabiyyeh	M	M	MH	Douair Aadwiyeh	ML	M	MH	Fassikine	ML	M	MH
Fnaydek	L	ML	M	Fraydes Akkar	ML	M	M	Ghazayle	L	M	MH
Habchit	L	L	M	Hakour	L	M	MH	Halba	L	M	MH
Haouchab	L	M	MH	Hayssat	L	M	MH	Haytla	L	M	MH
Hayzouq	L	M	M	Hedd	ML	M	MH	Hmaira Akkar	L	M	M
Hmaiss Akkar	M	M	MH	Hnaider	M	M	M	Hokr Ed-Dahri	L	M	MH
Hokr Etti	L	M	MH	Hokr Jouret Srar	L	M	MH	Houaich	L	ML	M
Hrar	L	ML	M	Idbil	L	M	M	llat	L	M	MH
Janine	L	M	MH	Jdeidet El-Joumeh	L	M	MH	Jdeidet El-Kaiteh	L	M	MH
Jebroyel	L	M	M	Kafr	VL	ML	M	Kafr	M	M	MH
Karm Asfour	L	M	MH	Kfar Melki Akkar	L	M	MH	Kfar Noun	ML	M	M
Kfarharra	M	M	MH	Khalsa	M	M	M	Kharnoubet Akkar	L	M	MH

Khirbet Daoud Aakkar	M	M	MH	Khirbet El Remmane	M	M	M	Khirbet Shar	ML	M	MH
Khoreybet El-Jindi	L	M	MH	Khreibet Aakkar	L	M	M	Kneisset Aakkar	L	M	MH
Kneisset Hnaider	M	M	M	Knisse	ML	M	MH	Kroum El-Aarab	L	M	MH
Kwachra	M	M	MH	Kweykhat	L	M	MH	Machta Hammoud	ML	M	M
Majdala	L	M	MH	Majdel Akkar	ML	M	MH	Mar Touma	L	M	MH
Marlaya Melhem	L	M	MH	Mashha	L	M	MH	Massoudiye	L	M	MH
Mazraat Beit Ghattas	L	M	MH	Mazraat En-Nahriye	ML	M	M	Mechmech	L	L	M
Memneh	L	L	M	Mhammara	L	M	MH	Mighraq Aakkar	L	M	MH
Minyara	L	M	MH	Moqayteh	L	M	MH	Mounjez	ML	M	M
Msalla	ML	M	MH	Mzeihmeh	L	M	MH	Nfaiseh	L	M	MH
Noura Et-Tahta	ML	M	M	Ouadi El-Haour	L	M	MH	Ouadi El-Jamous	L	M	MH
Ouyoun El-Ghizlane	L	M	M	Qaabarine	L	M	MH	Qabaait	L	ML	M
Qachlaq	L	M	MH	Qantara Aakkar	L	M	MH	Qarha Aakkar	M	M	M
Qarqaf	L	M	MH	Qboula	ML	M	MH	Qleiaat Aakkar	L	M	MH
Qloud El-Baqie	L	M	MH	Qobaiyat Aakkar	L	M	M	Qobbat Chamrat	L	M	MH
Qorayat	L	ML	M	Qornet Aakkar	L	M	M	Qsair Aakkar	M	M	M
Rahbe	L	M	M	Rihaniyet Aakkar	ML	M	MH	Rmah	M	M	M
Rmoul	L	M	MH	Saadine	L	M	MH	Sadaqa	L	M	M
Saidnaya	ML	M	MH	Sammouniye	L	M	MH	Sayssoq	L	M	MH
Semmaqiye	L	M	MH	Semmaqli	L	M	MH	Sfinet El-Dreib	ML	M	MH
Sfinet El-Qaitaa	L	M	M	Sindyanet Zeidane	L	M	M	Souaisset Aakkar	ML	M	MH
Srar	L	M	MH	Tal Abbas El Gharby	L	M	MH	Tal Abbas El-Chargy	L	M	MH
Tal Biret	L	M	MH	Tal Hmayra	L	M	MH	Tal Maayan Tal Kiri	L	M	MH
Tal Sibel	L	M	MH	Tallet Chattaha	ML	M	MH	Tikrit	L	M	M
Tleil	ML	M	MH	Tshea	L	L	M	Zawarib	L	M	MH
Zouq El Hosniyeh	L	M	M	Zouq El-Haddara	L	M	MH	Zouq El-Hbalsa	L	M	MH
Zouq El-Moqachrine	L	M	MH								

Sud

Sour

Municipality	19-Jan	20-Jan	21-Jan	Municipality	19-Jan	20-Jan	21-Jan	Municipality	19-Jan	20-Jan	21-Jan
Aaiyeh	ML	M	M	Aalma El-Chaab	ML	L	M	Aaytit	L	M	M
Abbassiyeh Sour	M	M	M	Abou Chech	ML	ML	MH	Ain Abou Abdallah	ML	M	M
Ain Baal	ML	M	M	Arzoun	L	M	M	Aziyeh	L	L	M
Baflaya	ML	M	M	Barich	L	M	M	Batouliyeh	ML	M	M
Bayad	L	M	M	Bazouriyeh	ML	M	M	Bediass	L	M	M
Bestiyat	L	M	M	Borj El Chemali	ML	M	M	Borj En-Naqoura	M	M	MH
Borj Rahhal	M	M	M	Boustane	L	M	M	Btaychiyeh	ML	ML	MH
Chaaitiye	ML	M	M	Chameh	L	L	MH	Chehabiye	L	M	M
Chehour	L	L	M	Chihine	L	ML	M	Debaal Sour	L	M	M
Deir Amess	L	ML	M	Deir Kifa	ML	M	M	Deir Qanoun El-Ain	ML	M	MH
Deir Qanoun El-Naher	L	M	M	Derdghaiya	L	M	M	Dhayra	L	ML	MH
Halloussiyeh	L	M	M	Hamoul	L	L	M	Hanaouey	ML	M	M
Henniye	M	M	H	Hmairi Sour	L	M	M	Iskandarouna Sour	ML	ML	MH
Jbal El Botom	L	ML	M	Jebbin	ML	M	MH	Jennata	ML	M	M
Jijim	L	L	M	Jouaiya	L	M	M	Kneisset Sour	ML	M	M

Maarake	L	M	M	Maaroub	ML	M	M	Majadel	L	M	M
Majdalzoun	L	ML	M	Mansouri Sour	M	M	MH	Marnba	L	L	M
Marouahine	L	ML	M	Mazraat El-Zalloutiy	ML	M	M	Mazraat Mechref	ML	M	M
Mazraat Tayr Semhat	L	L	M	Mheilib	M	M	M	Neffakhiyeh	ML	M	M
Niha Sour	ML	M	M	Ouadi Jilo	L	M	M	Qana	L	M	M
Qolaileh Sour	M	M	MH	Rechknay	L	M	M	Rmadiyah	ML	M	M
Selha Sour	L	M	M	Siddiqine	ML	M	M	Sour	M	M	MH
Srifa	L	M	M	Tayr Debbe	ML	M	M	Tayr Felsay	L	M	M
Tayr Harfa	ML	ML	MH	Touayri	L	ML	M	Toura	ML	M	M
Yanouh Sour	L	M	M	Yarine	ML	M	MH	Zebqine	L	L	M

Saida

Municipality	19-Jan	20-Jan	21-Jan	Municipality	19-Jan	20-Jan	21-Jan	Municipality	19-Jan	20-Jan	21-Jan
Aanqoun	L	M	M	Aaqtanit	L	M	M	Aarab Ej-Jall	L	M	M
Aarab Tabbaya	L	M	M	Abra Saida	L	M	M	Adloun	ML	M	M
Adousiyeh	L	M	M	Ain-El-Deleb	L	M	M	Arzai	ML	M	M
Babliyah	ML	M	M	Barty	L	M	M	Bissariyeh	ML	M	M
Bnaafoul	L	M	M	Bqosta	L	M	M	Bramiy	L	M	M
Daoudiyeh	ML	M	M	Dareb El-Sim	L	M	M	Erkay	L	M	M
Ghassanieh	ML	M	M	Ghazieh	ML	M	M	Hajjeh	L	M	M
Haret Saida	L	M	M	Hartiyeh	ML	M	M	Hlaliye Saida	L	M	M
Insariyat	ML	M	M	Jazira Saida	M	M	M	Kafar Bit	L	M	M
Kaoutariyet El-Siyad	ML	M	M	Kfar Chellal	L	M	M	Kfar Hatta Saida	L	M	M
Kfar Milke Saida	L	M	M	Khartoum	ML	M	M	Khaziz	L	M	M
Khirbet Ed-Douair Sa	L	M	M	Khirbet El-Bassal	L	M	M	Khrayeb Saida	ML	M	M
Loubieh	ML	M	M	Maghdouche	L	M	M	Majdelyoun	L	M	M
Matariyet El-Choumar	ML	M	M	Matayriyeh	L	M	M	Mazraat 'Mseileh	L	M	M
Mazraat 'Snaiber	L	M	M	Mazraat Aarab Soukka	L	M	M	Mazraat Deir Taqla	L	M	M
Mazraat El Yahoudiye	ML	M	M	Mazraat El-Housseini	ML	M	M	Mazraat El-Mhaydaleh	ML	M	M
Mazraat El-Ouasta	ML	M	M	Mazraat Jamjim	ML	M	M	Mazraat Kaoutariyet	L	M	M
Mazraat Kfar Badda	ML	M	M	Mazraat Oussamiyat	ML	M	M	Mazraat Sari	ML	M	M
Mazraat Sinai	ML	M	M	Meemariyeh	L	M	M	Merouaniyeh	L	M	M
Miyeh ou Miyeh	L	M	M	Najjariyeh	L	M	M	Qaaqiyat El-Snaouba	ML	M	M
Qnarit	L	M	M	Qraiye Saida	L	M	M	Saida Ed-Dekermane	L	M	M
Saida El-Oustani	L	M	M	Saida El-Qadimeh	ML	M	M	Saida Kefraya	L	M	M
Saksakiyeh	ML	M	M	Salhie Saida	L	M	M	Sarafand	ML	M	M
Sfenta	L	ML	M	Tafahta	ML	M	M	Tanbourit	L	M	M
Tebna	L	M	M	Zaghdraiya	L	M	M	Zeita	L	M	M
Zrariyeh	L	M	M								

Jezzine

Municipality	19-Jan	20-Jan	21-Jan	Municipality	19-Jan	20-Jan	21-Jan	Municipality	19-Jan	20-Jan	21-Jan
Ain El-Mir (El Estab	L	M	M	Anane	L	L	M	Aramta	L	ML	M
Ariya	L	L	M	Aychiyeh	L	ML	M	Azour	L	L	M
Baba	L	L	M	Bayssour Jezzine	L	M	M	Benoueteh Jezzine	L	L	M
Bhannine	L	L	M	Bisri	VL	L	M	Bkassine	L	L	M
Bouslaya	L	L	M	Btedine El-Leqech	VL	L	M	Chbail	VL	L	ML
Choualiq Jezzine	L	M	M	Dahr Ed-Deir	L	L	M	Deir El Qattine	L	L	M

Demachqiyeh	ML	M	M	Ghabbatiyeh	L	L	M	Harf Jezzine	VL	L	M
Hassaniyeh	L	M	M	Haytouleh	L	ML	M	Haytura	L	L	M
Hidab	L	L	M	Homsiyeh	L	L	M	Jabal Toura	L	L	M
Jarmaq	L	M	M	Jensnaya	L	M	M	Jernaya	L	M	M
Jezzine	L	L	M	Karkha	L	ML	M	Kfar Falous	L	M	M
Kfar Houna	L	L	M	Kfar Jarrah	L	M	M	Lebaa	L	M	M
Louayzet Jezzine	L	L	M	Machmouche	L	L	M	Mahmoudiyeh Jezzine	ML	M	M
Maknounye Jezzine	L	L	M	Maraat Ouzaïyeh	L	ML	M	Mazraat Daraya	L	L	M
Mazraat El-Aarqoub	L	L	M	Mazraat El-Mathane	VL	L	M	Mazraat El-Rahbane	L	L	M
Mazraat Khallet Khaz	L	L	M	Mazraat Louzid (Loua	L	L	M	Mazraat Qrouh	L	ML	M
Mazraat Tamra	ML	M	M	Mazraat Zighrine Jez	L	L	M	Mazraat	L	L	M
Mharbiyeh	L	M	M	Midane Jezzine	L	L	M	Mjeydel Jezzine	L	M	M
Mlikh	L	L	M	Mrah El-Hbasse	L	M	M	Ouadi Baanqoudaine	L	M	M
Ouadi El-Laymoun	L	M	M	Ouardiyeh	VL	VL	ML	Qabaa Jezzine	L	L	M
Qatrani	L	L	M	Qaytouleh	L	L	M	Qtaleh Jezzine	VL	L	M
Rihane Jezzine	L	ML	M	Rimat	L	L	M	Roum	L	L	M
Roummanet	L	L	M	Sabbah	L	L	M	Saydoun	L	L	M
Sfaray	VL	L	M	Snaya	L	L	M	Sojoud	L	L	M
Srayri	ML	L	M	Taaid	L	L	M	Wadi Jezzine	L	L	M
Zhalta	L	L	M								

Bekaa

West Bekaa

Municipality	19-Jan	20-Jan	21-Jan	Municipality	19-Jan	20-Jan	21-Jan	Municipality	19-Jan	20-Jan	21-Jan
Aammiq BG	ML	L	ML	Ain El Tineh BG	L	L	M	Ain Zebdeh	ML	L	M
Ana	ML	L	ML	Aytanit	L	L	M	Baaloul BG	ML	L	M
Bab Mareh	ML	L	M	Chouberqiye Aammiq	M	L	ML	Dakoue	ML	L	ML
Deir Ain El-Jaouze	M	L	M	Deir Tahniche	ML	L	ML	Ghaza	ML	L	ML
Harime El-Soughra	M	L	ML	Hoch Harimeh	M	L	ML	Jazira BG	M	L	ML
Jib Jennine	ML	L	ML	Kamed-El-Laouz	L	L	M	Kefraya BG	L	L	M
Khiara El Atika	ML	L	ML	Khiara	ML	L	ML	Khirbet Qanafar	ML	L	M
Lala	ML	L	M	Lebbaya BG	L	L	M	Loussa	ML	L	M
Machghara	L	L	M	Manara (Hammara) BG	L	L	ML	Mansoura BG	ML	L	ML
Marej BG	M	L	M	Maydoun	L	L	M	Ouaqf BG	M	L	ML
Qaraaoun	M	L	M	Qelya	L	ML	M	Raouda (Istabel)	M	L	M
Saghbine	ML	L	M	Sohmor	L	L	M	Soltan Yacoub el Ara	ML	L	ML
Souairy	L	L	M	Sultan Yaacoub	L	L	M	Tal Znoun	ML	L	ML
Yehmor BG	L	L	M	Zilaya	L	L	M				

Zahle

Municipality	19-Jan	20-Jan	21-Jan	Municipality	19-Jan	20-Jan	21-Jan	Municipality	19-Jan	20-Jan	21-Jan
Aanjar (Haouch Mouss	ML	L	M	Ablah	L	ML	M	Ain Kfarzabad	L	L	M
Ali-El-Nahri	L	L	M	Bar Elias	M	L	M	Bouarej	ML	L	M
Cheberqiyet Tabet	M	ML	M	Chtaura	ML	ML	M	Deir El Ghazal	L	L	M
Delhamiyet Zahle	ML	L	M	Ferzol	L	M	M	Haouch El-Ghanam	ML	L	M
Haouch Es-Siyadeh	M	L	M	Haouch Hala	L	L	M	Haouch Mandara	M	ML	M

Haouch Qayssar	M	L	M	Hezerta	ML	M	M	Hosh Moussa	L	L	M
Jdita	ML	ML	M	Kfarzabad	L	L	M	Ksara	M	L	M
Majdel Aanjar	L	L	ML	Makssi	ML	ML	M	Massa	L	L	M
Mazraat Er-Remtaniye	ML	ML	M	Mrayjat Zahle	ML	L	M	Mzaraa Zahle	ML	ML	M
Nabi Ayla	L	ML	M	Nasriyet Rizk	L	L	M	Nasriyet Zahle	M	L	M
Niha Zahle	L	ML	M	Ouadi Ed-Deloum	ML	L	M	Ouadi El-Arayech	L	M	M
Qaa El Rim	ML	M	M	Qab Elias	M	ML	M	Qousaya	L	L	M
Rhit	L	L	M	Riyak	ML	L	M	Saadnayel	M	L	M
Taal El-Akhdar	M	L	ML	Taalbeya	ML	ML	M	Taanayel	M	ML	M
Talamara	ML	L	M	Tcheflik Edde Haouch	M	ML	M	Tcheflik Qiqano	M	L	M
Terbol Zahle	L	L	M	Touaite Zahle	ML	M	M	Zahle Aradi	ML	M	M
Zahle El-Berbara	ML	M	M	Zahle El-Maallaqa	M	ML	M	Zahle El-Midane	ML	M	M
Zahle Er-Rassiye	ML	M	M	Zahle Haouch El-Ouma	M	L	M	Zahle Haouch El-Ouma	M	L	M
Zahle Haouch Ez-Zara	ML	M	M	Zahle Maalaga Aradi	M	ML	M	Zahle Mar Antonios	ML	M	M
Zahle Mar Elias	ML	M	M	Zahle Mar Gerios	ML	M	M	Zahle Saydet En-Naja	L	M	M
Zebdoul	ML	ML	M								

Rachaiya

Municipality	19-Jan	20-Jan	21-Jan	Municipality	19-Jan	20-Jan	21-Jan	Municipality	19-Jan	20-Jan	21-Jan
Ain Arab Rachaiya	L	L	M	Ain Ata	L	L	ML	Ain Harche	L	L	M
Aqabe Rachaya	L	L	M	Ayha	ML	ML	M	Ayta El Fokhar	ML	L	M
Bakifa Rachaya	L	L	M	Bakka	ML	L	M	Beit Lahya	L	L	M
Bireh Rachaiya	L	L	M	Daher El Ahmar	L	L	M	Deir El-Achayer	L	M	ML
Heloua Rachaiya	L	ML	ML	Hoch El Qannabeh Rac	L	L	ML	Kaoukaba Bou Arab	ML	L	ML
Kfar Danis	L	L	M	Kfar Mechki	L	L	M	Kfar Qouq	L	L	ML
Kherbet Rouha	L	L	M	Majdel Balhiss	M	L	M	Mdoukha	L	L	M
Mhaydseh Rachaiya	ML	L	ML	Nabi Safa	L	L	M	Rachaiya	L	L	M
Rafid Rachaiya	ML	L	M	Selsata (Mazraat Dei	VL	ML	L	Tannoura	L	L	M
Yanta	L	L	ML								

Beyrouth

Beyrouth

Municipality	19-Jan	20-Jan	21-Jan	Municipality	19-Jan	20-Jan	21-Jan	Municipality	19-Jan	20-Jan	21-Jan
Achrafieh	L	M	MH	Ain el-Mreisse	M	M	H	Bachoura	M	M	MH
Beirut Central Distr	M	M	MH	Marfai	M	M	MH	Mazraa	M	M	MH
Medaouar	L	M	MH	Minet el-Hosn	M	M	MH	Mwssaitbeh	M	M	MH
Ras Beirut	M	M	H	Rmeil	L	M	MH	Saifi	M	M	MH
Zqaq el-Blat	M	M	MH								