

Lebanon Fire Risk Bulletin



CIVIL DEDEFENCE

Refer to cadast table condition.

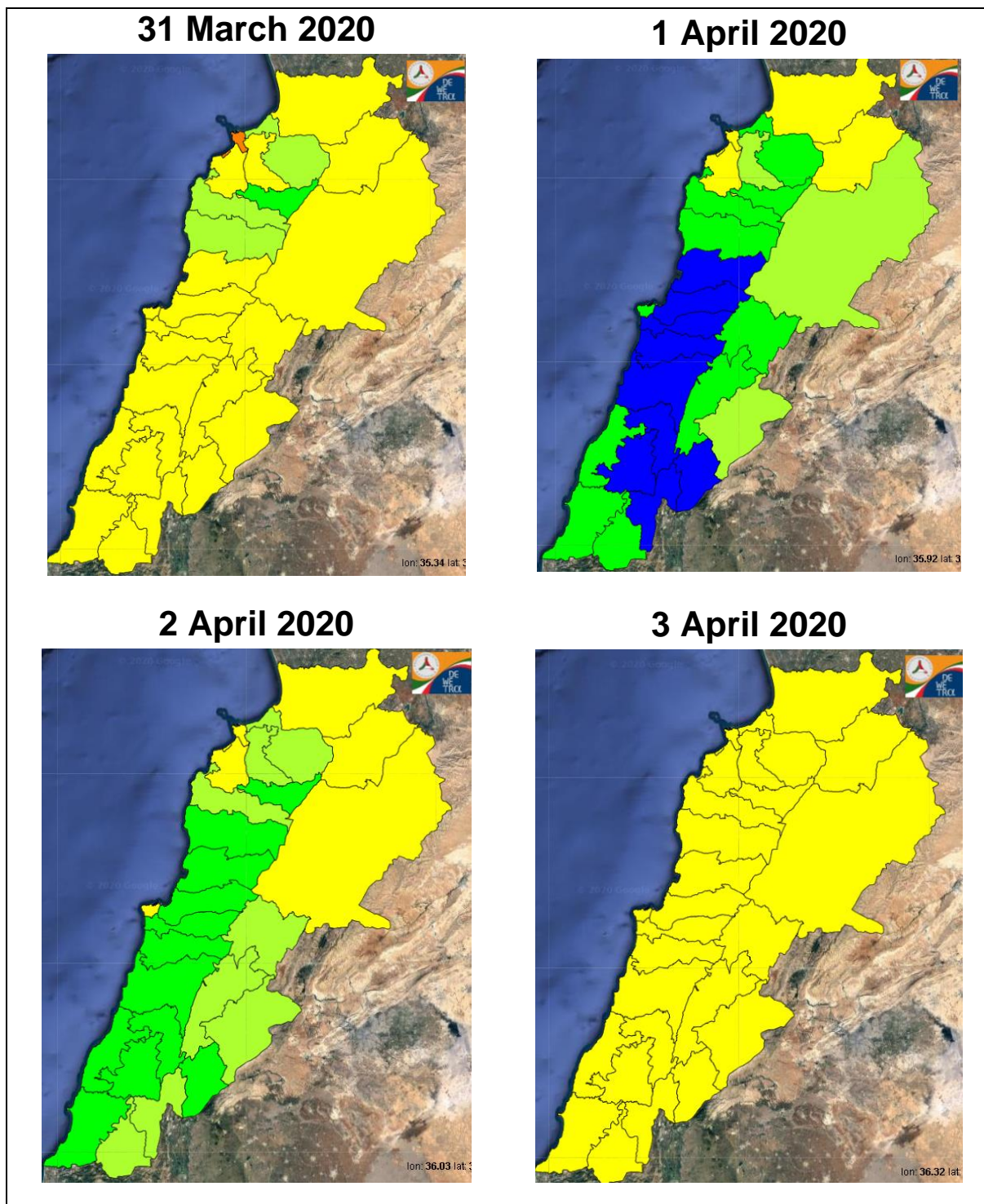
Please note that the indicated temperature is at 2 meters height from the ground.

General description of potential fire risk situation

Symbol	Level of risk	Meaning and actions
VL	Very low	Very low fire risk. Controlled burning operations can be hardly executed due to high fuel moisture content. Normally wildfires self-extinguish.
L	Low	Low fire risk. Controlled burning operations can be executed with a reasonable degree of safety.
ML	Medium low	Medium-low fire risk. Controlled burning operations can be executed in safety conditions. All the fires need to be extinguished.
M	Medium	Medium fire risk. Controlled burning operations would be avoided. All the fires need to be very well extinguished.
M	Medium high	Controlled burning is not recommended. Open flame will start fires. Cured grasslands and forest litter will burn readily. Spread is moderate in forests and fast in exposed areas. Patrolling and monitoring is suggested. Fight fires with direct attack and all available resources.
H	High	Ignition can occur easily with fast spread in grass, shrubs and forests. Fires will be very hot with crowning and short to medium spotting. Direct attack on the head may not be possible requiring indirect methods on flanks. Patrolling and monitoring the territory is highly suggested.
E	Extreme	Ignition can occur also from sparks. Fires will be extremely hot with fast rate of spread. Control may not be possible during day due to long range spotting and crowning. Suppression forces should limit efforts to limiting lateral spread. Damage potential total. Patrolling and monitoring the territory is highly suggested.

Beirut, 1 April 2020

FIRE RISK INDEX

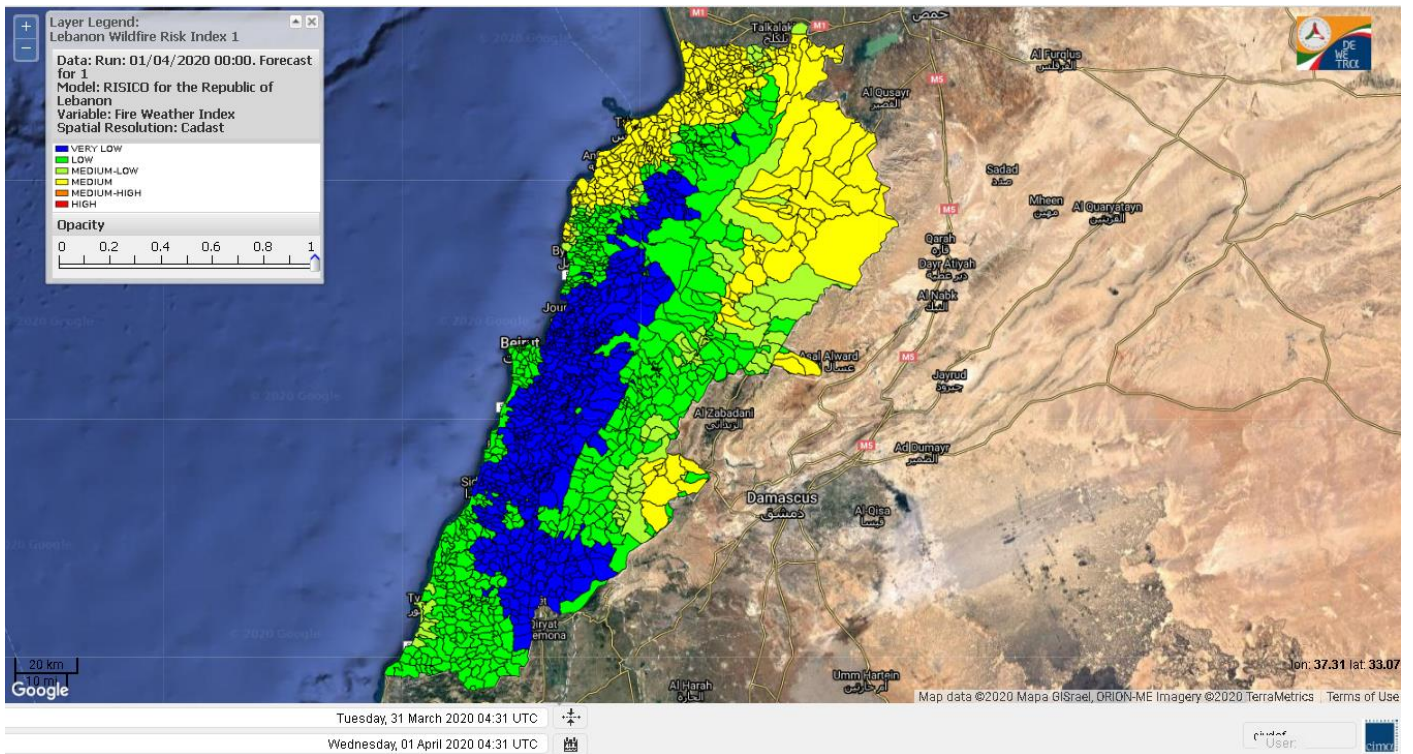


Layer Legend: Lebanon Wildfire Risk Index 1

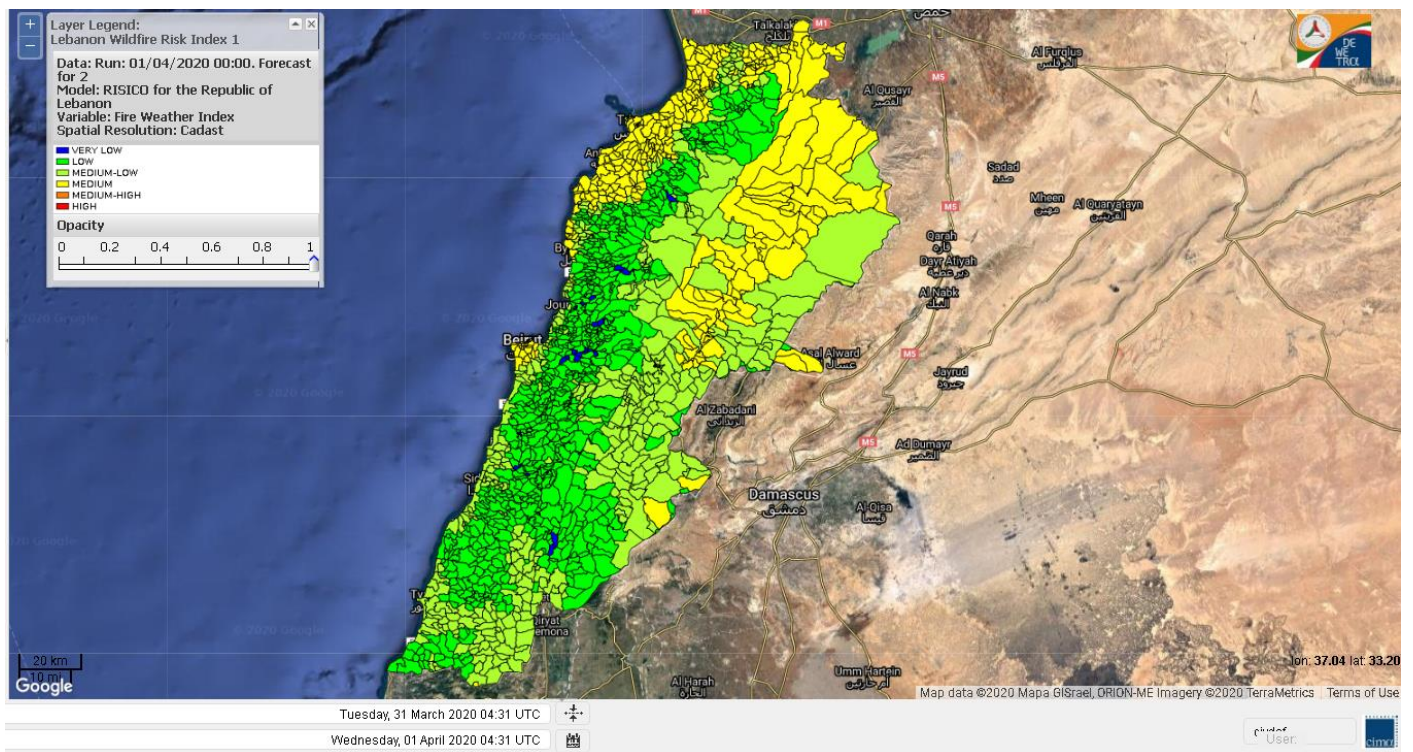
Data: Run: 01/04/2020 00:00. Forecast for 1
Model: RISICO for the Republic of Lebanon
Variable: Fire Weather Index
Spatial Resolution: Caza

- VERY LOW
- LOW
- MEDIUM-LOW
- MEDIUM
- MEDIUM-HIGH
- HIGH
- EXTREME

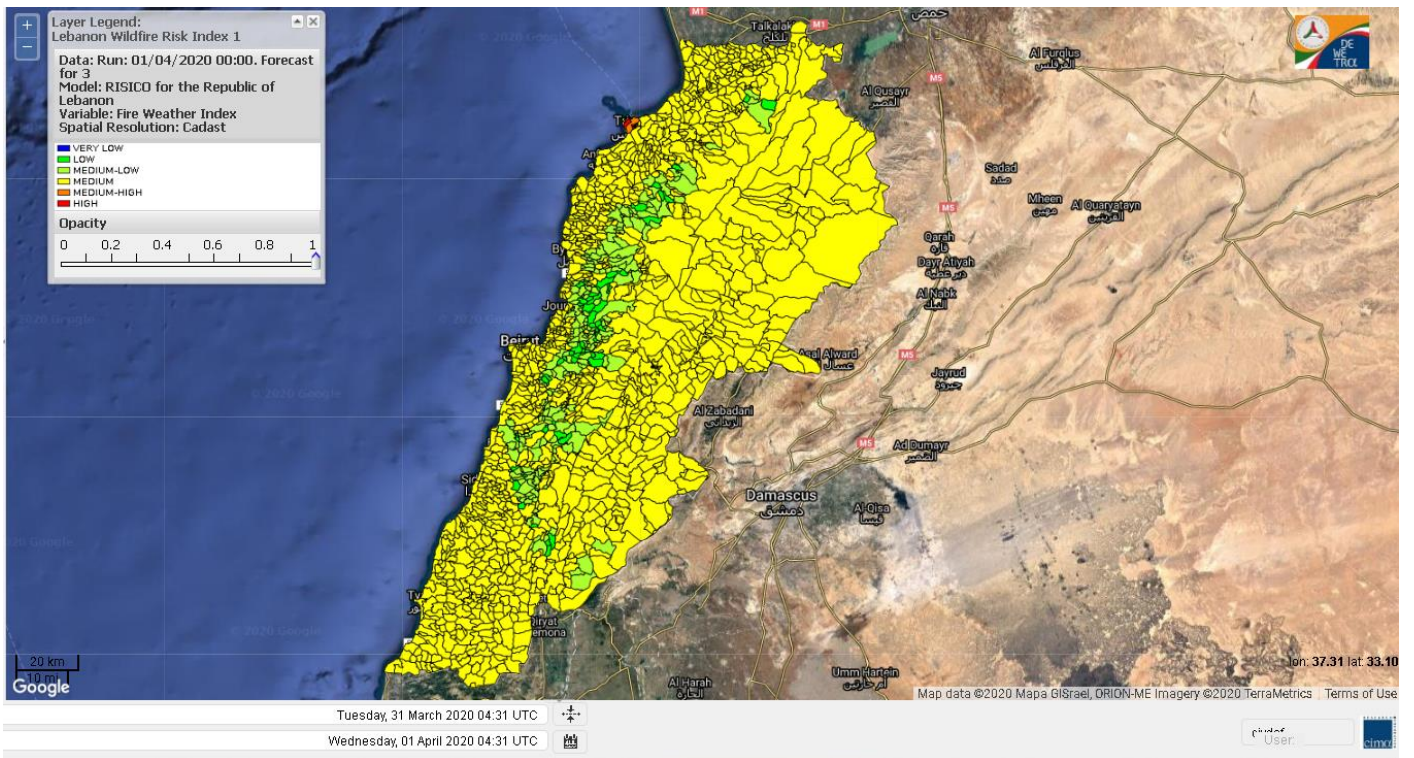
Lebanon for 1 April 2020



Lebanon for 2 April 2020



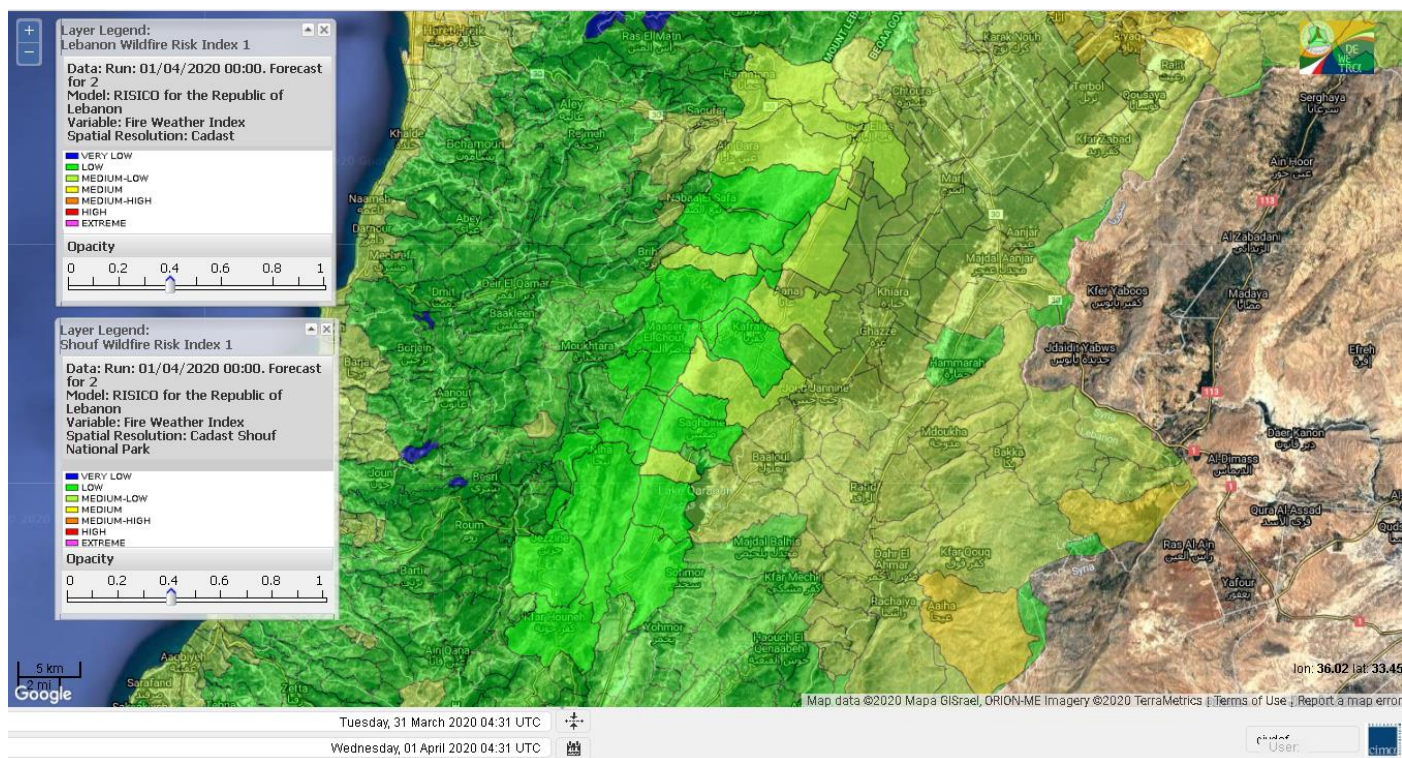
Lebanon for 3 April 2020



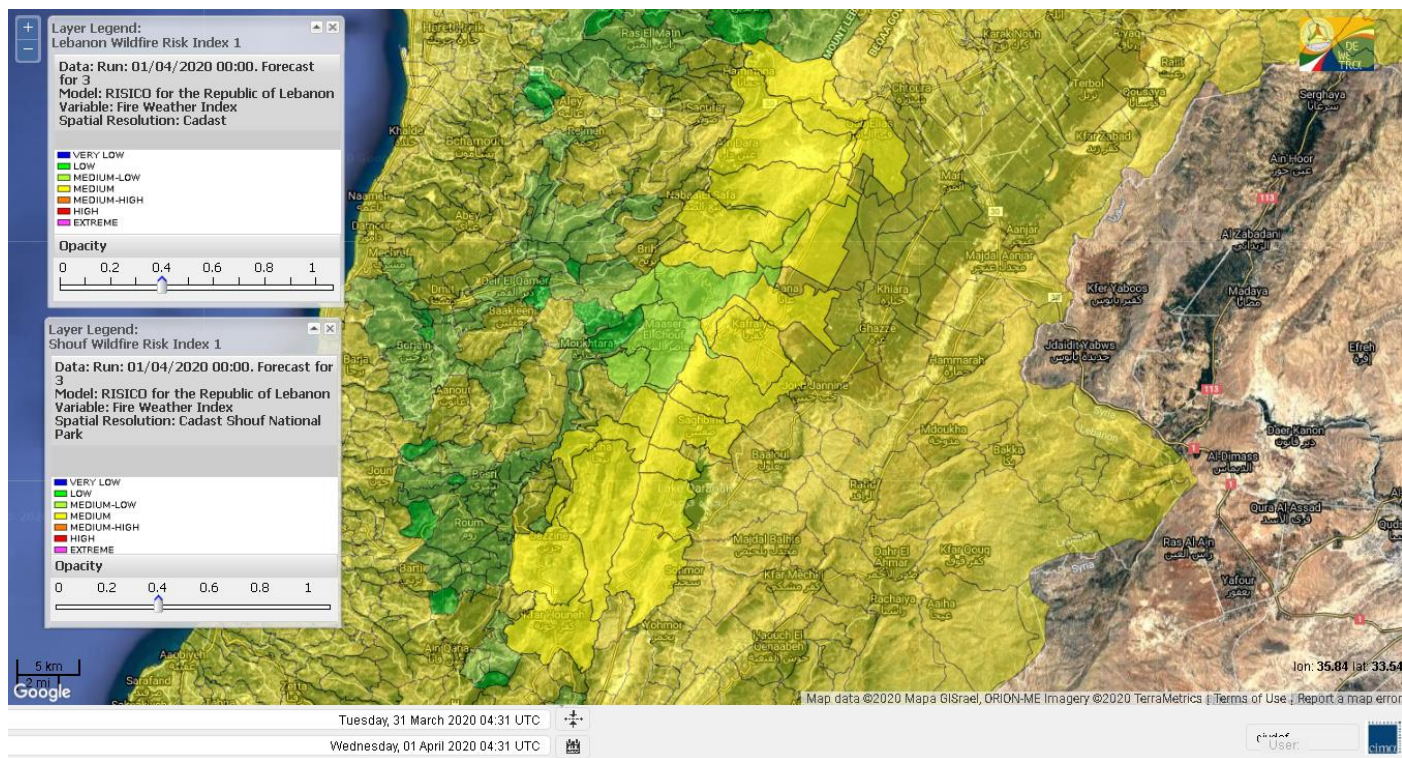
Shouf Biosphere Reserve Forecast for 1 April 2020



Shouf Biosphere Reserve Forecast for 2 April 2020



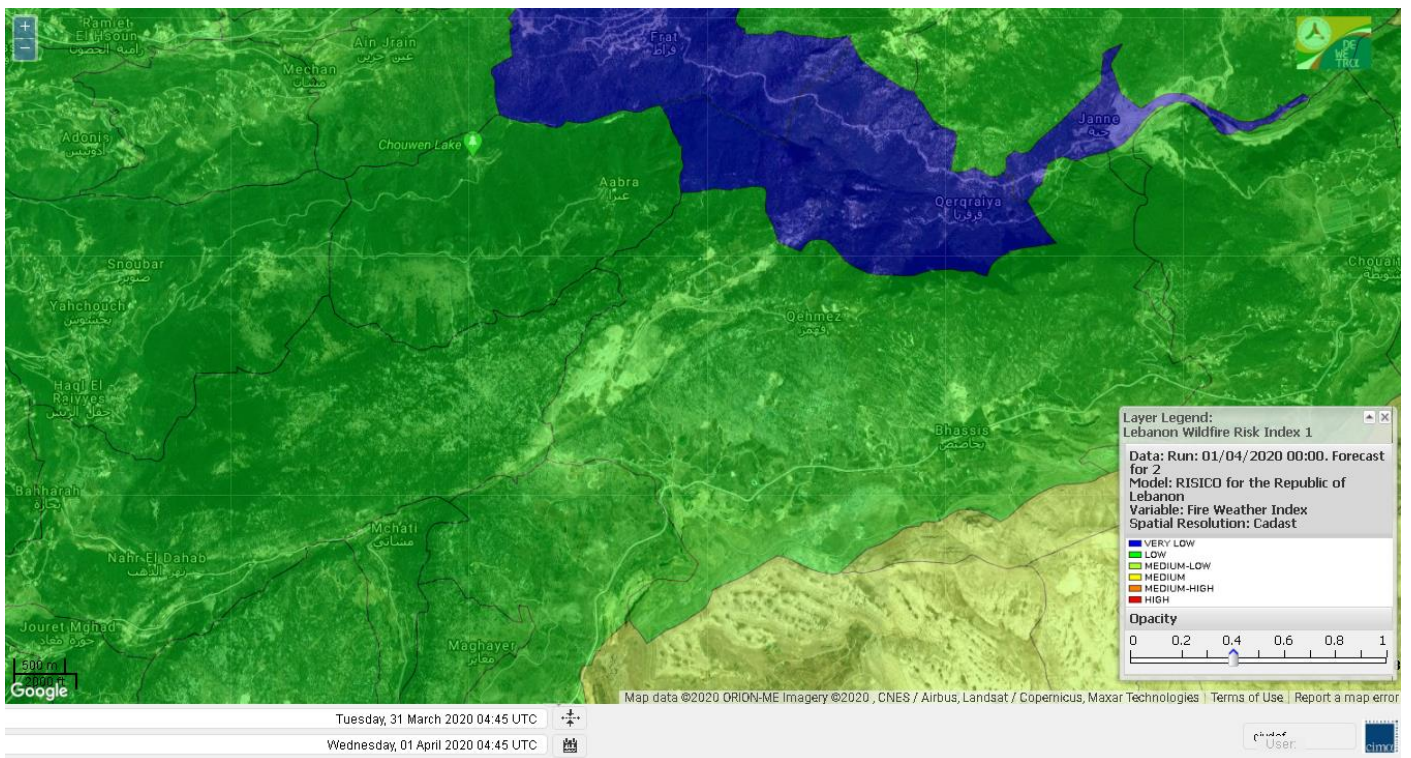
Shouf Biosphere Reserve Forecast for 3 April 2020



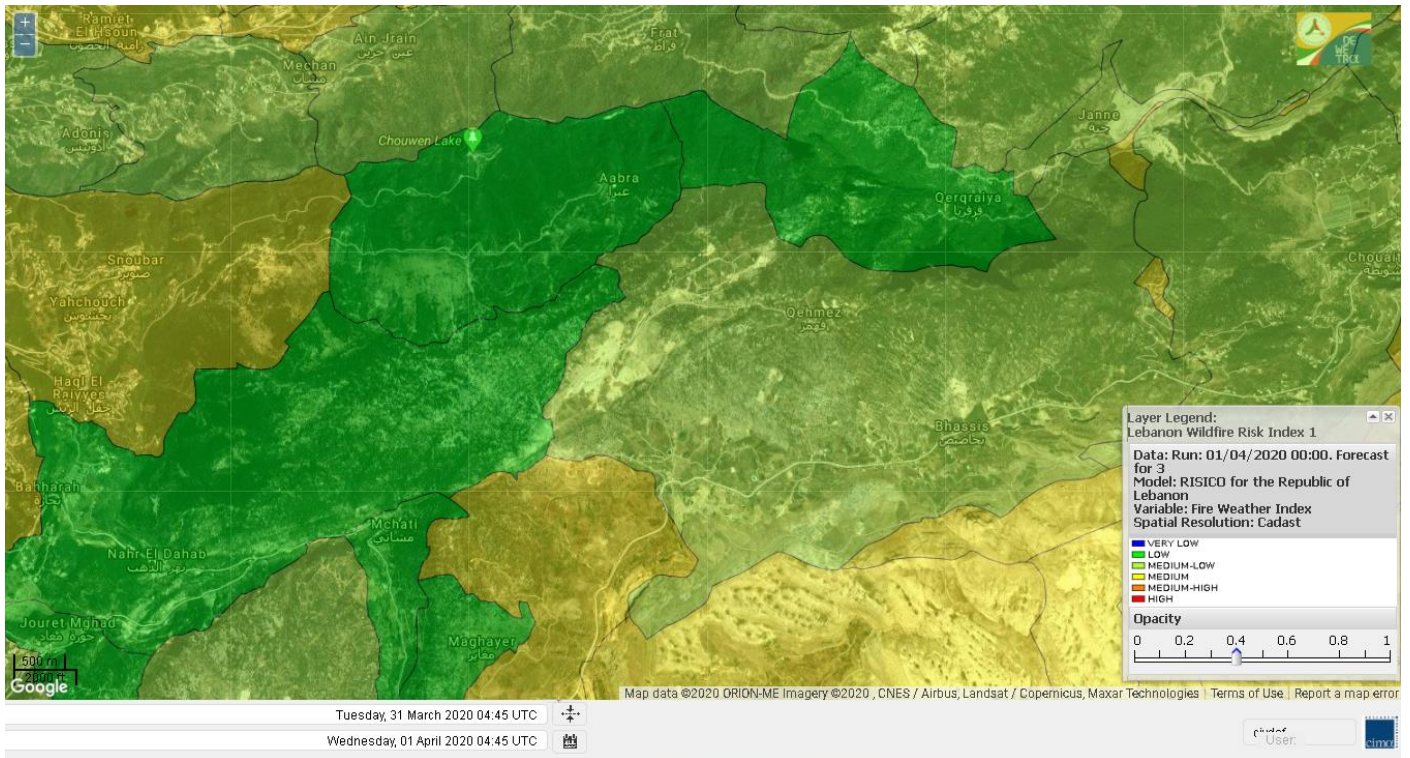
Jabal Moussa Reserve Forecast for 1 April 2020



Jabal Moussa Reserve Forecast for 2 April 2020



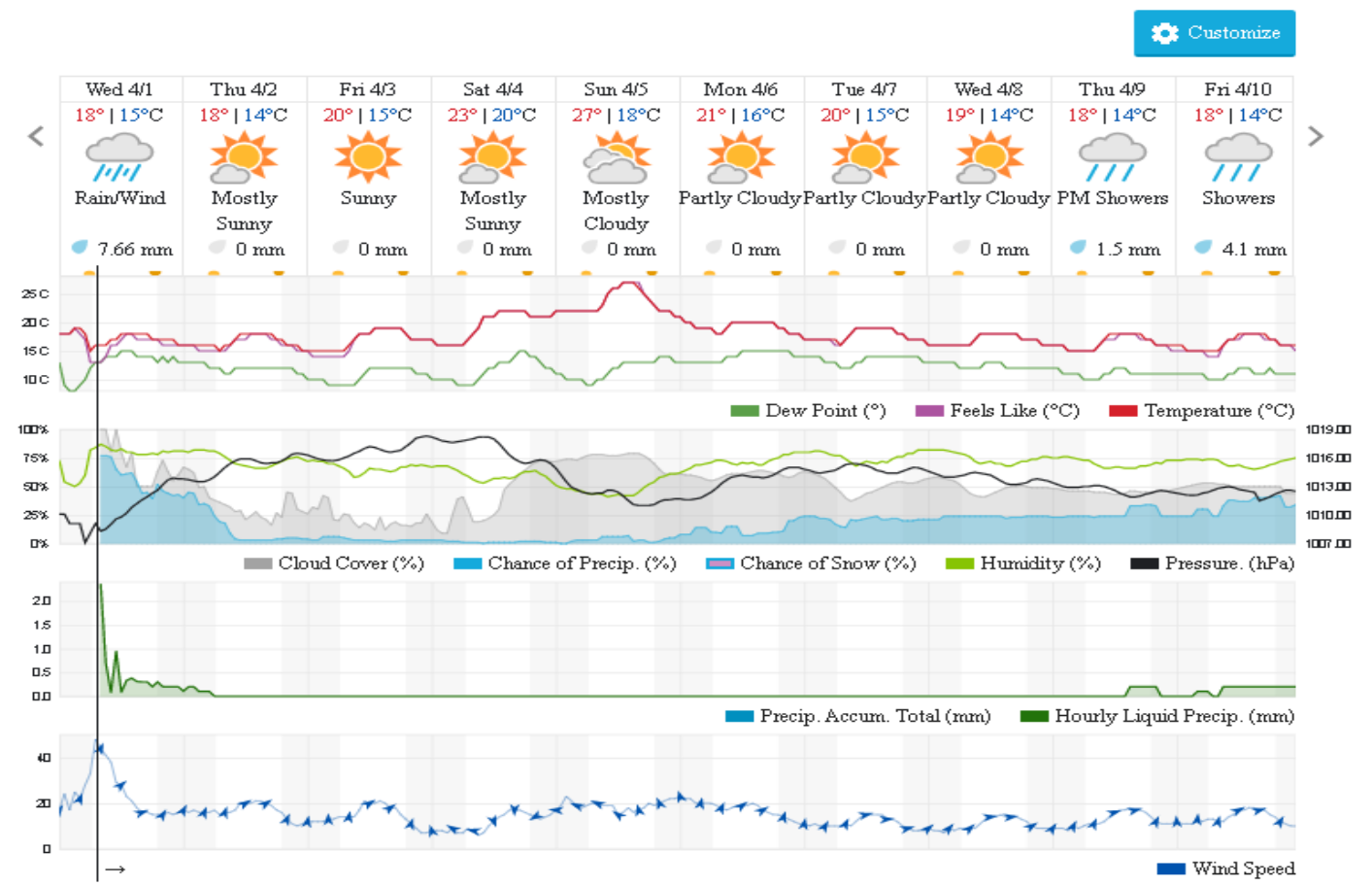
Jabal Moussa Reserve Forecast for 3 April 2020



Beirut, Beirut Governorate, Lebanon 10-Day Weather Forecast

15° ACHRAFIEH, RIZK STATION | CHANGE

TODAY HOURLY **10-DAY** CALENDAR HISTORY WUNDERMAP



Nord

Koura

Municipality	01-Apr	02-Apr	03-Apr	Municipality	01-Apr	02-Apr	03-Apr	Municipality	01-Apr	02-Apr	03-Apr
Aaba	M	M	M	Afsaddiq	M	M	M	Ain Ekrine	M	M	M
Amioun	M	M	M	Anfeh	M	M	M	Badbhoun	M	M	M
Barghoun	M	M	M	Barsa	M	M	M	Batroumine	M	M	M
Bdebba	M	M	M	Bechmizine	M	M	M	Bednaye El-Koura	M	M	M
Bhabbouch El-Koura	M	M	M	Bkeftine	M	M	M	Bnehran	ML	M	M
Bqaiia El-Koura	M	M	M	Bsarma	M	M	M	Btaaboura	M	M	M
Bttram	M	M	M	Btouratij	M	M	M	Bziza	M	M	M
Dar Beechtar	M	M	M	Dar Chmezzine	M	M	M	Deddeh	M	M	M
Deir El-Balamand	M	M	M	Fih	M	M	M	Hraiche	M	M	M
Ijdaabrine	M	M	M	Kaftoun	M	M	M	Kefraya El-Koura	M	M	M
Kfarakka	M	M	M	Kfarhata	M	M	M	Kfarhazir	M	M	M
Kfarkahel	M	M	M	Kfarsaroun	M	M	M	Kosba	M	M	M
Mejdel el-Koura	M	M	M	Nakhle	M	M	M	Qalhat	M	M	M
Ras Masqa	M	M	M	Rechdibbine	ML	M	M	Zakroun	M	M	M
Zgharta El-Mtaouile	ML	M	M								

Bcharre

Municipality	01-Apr	02-Apr	03-Apr	Municipality	01-Apr	02-Apr	03-Apr	Municipality	01-Apr	02-Apr	03-Apr
Aabdine	VL	L	M	Bane	VL	L	M	Barhelioun	L	L	ML
Bazooune	VL	ML	M	Becharre	L	ML	M	Beit Menzer	VL	L	M
Billa	VL	L	ML	Blaouza	VL	ML	M	Bqaa Kafra	VL	ML	M
Bqerqacha	VL	ML	M	Breissat	VL	L	ML	Dimane	VL	L	M
Hadath El Jobbeh	VL	L	ML	Hadchit	VL	L	ML	Hasroun	VL	ML	M
Mazraat Aassaf	L	L	ML	Mazraat Bani Saab	VL	L	ML	Mchaa El-Jobbeh	VL	ML	M
Metrit	M	M	M	Moghr El-Ahoual	VL	L	M	Ouadi Qannoubine	VL	VL	L
Qanat	VL	L	ML	Qnayer	VL	L	L	Tourza	VL	L	ML

Batroun

Municipality	01-Apr	02-Apr	03-Apr	Municipality	01-Apr	02-Apr	03-Apr	Municipality	01-Apr	02-Apr	03-Apr
Aabrine	M	M	M	Aalali	VL	L	ML	Aartiz	L	ML	M
Abdelli	L	L	M	Ajdabra	ML	ML	M	Assia	L	L	ML
Basbina	ML	M	M	Batroun	M	M	M	Bcheleh	VL	L	ML
Bechtoudar	L	L	ML	Beit Chlala	L	L	ML	Beit Kassab	L	ML	M
Bijdarfil	M	M	M	Bqesmaya	M	M	M	Chatine	VL	L	ML
Chebtin	L	L	M	Chekka	M	M	M	Daael	L	L	ML
Dahr Abi Yaghi	L	L	M	Daraya El-Batroun	L	ML	M	Deir Billa	ML	ML	M
Deir Kfifane	L	ML	M	Deir Mar Youhanna EL	VL	L	ML	Deir Mar Youssef Jra	L	L	M
Douma	VL	L	ML	Douq	L	L	M	Eddeh El-Batroun	L	ML	M
Ftihat El-Batroun	L	L	M	Ghouma	L	L	M	Hadtoun	VL	L	ML
Hamat	M	M	M	Harbouna	L	L	M	Hardine	VL	L	L
Helta	L	L	M	Hery	M	M	M	Jebba	L	ML	M
Jrabta El-Batroun	L	L	M	Jrane El-Batroun	ML	ML	M	Kfar Aabida	ML	M	M
Kfar Halda	L	L	ML	Kfarb Shlaimane	L	L	ML	Kfarhatna	L	ML	M
Kfarhay	M	M	M	Kfarhelos	M	M	M	Kfifane	ML	M	M

Kfour El Arabi	VL	L	ML	Koubba	M	M	M	Kour	L	ML	M
Mar Mama	L	L	M	Masrah	L	L	M	Mehmarch	L	L	M
Mrah Chdid	L	L	M	Mrah El Ziyat	L	ML	M	Mrah El-Hajj	VL	L	ML
Nahle El-Batroun	VL	L	ML	Niha El-Batroun	VL	L	ML	Oujah El-Hajjar	M	M	M
Ouata Houb	VL	L	ML	Qatnaaoun	M	M	M	Racha	L	L	M
Rachana	L	L	M	Rachkida	M	M	M	Ram El-Batroun	VL	L	ML
Ras Nahhach	M	M	M	Selaata	M	M	M	Sghar	L	L	M
Smar Jbayl	L	L	M	Sourat El-Batroun	L	L	M	Tannourine El-Faouqa	L	ML	M
Tannourine Et-Tahta	VL	L	L	Thoum	ML	ML	M	Toula El-Batroun	L	L	M
Zan	L	L	M								

Zgharta

Municipality	01-Apr	02-Apr	03-Apr	Municipality	01-Apr	02-Apr	03-Apr	Municipality	01-Apr	02-Apr	03-Apr
Aachach	M	M	M	Aalma	M	M	M	Aarde	M	M	M
Aintourine	VL	L	M	Arabet Qozhaya	VL	L	ML	Arde	M	M	M
Arjis	L	ML	M	Asnoun	M	M	M	Ayto	VL	L	ML
Basloukit	VL	L	ML	Bchannine	M	M	M	Besebeel	M	M	M
Bhairret Toula	VL	L	L	Bnachee	L	ML	M	Boussit	M	M	M
Danha	M	M	M	Daraiya Zgharta	L	M	M	Deir Jdeide	M	M	M
Ehden	VL	L	ML	Halan	M	M	M	Hariq Zgharta	M	M	M
Houakir	M	M	M	Hraiqis	M	M	M	laal	M	M	M
Ijbaa	VL	L	M	Karm Saddeh	VL	L	ML	Kfarchakhna	M	M	M
Kfardlaqous	M	M	M	Kfarfou	L	ML	M	Kfarhata Zgharta	M	M	M
Kfarhoura	M	M	M	Kfarsghab	VL	L	M	Kfaryachit	M	M	M
Kfarzaina	M	M	M	Khaldiye	M	M	M	Mazraat Ajbeaa	M	M	M
Mazraat Et-Teffah	VL	L	M	Mazraat Jneid	M	M	M	Mejdlaiya Zgharta	M	M	M
Merh Kfarsghab	ML	ML	M	Miryata	M	M	M	Miziara	L	L	M
Mzraat Kefraya	M	M	M	Qorah Bach	M	M	M	Rachiine	M	M	M
Ras Kifa	L	ML	M	Sakhra	M	M	M	Sebhel Zgharta	VL	L	M
Serhel	VL	L	L	Tallet Zgharta	M	M	M	Toula Zgharta	VL	L	ML
Zgharta	M	M	M								

Minieh-Denniye

Municipality	01-Apr	02-Apr	03-Apr	Municipality	01-Apr	02-Apr	03-Apr	Municipality	01-Apr	02-Apr	03-Apr
Aasaymout	L	L	M	Aaymar	L	L	M	Aazki	L	ML	M
Ain El-Tineh-Miniyeh	L	L	M	Assoun	L	L	M	Bakhaaoun	L	L	M
Bchennata	L	L	ML	Bechehhara	M	M	M	Beddawi	M	M	M
Behouaita	L	L	L	Beit El Foqss	L	L	M	Beit Haouik	L	ML	M
Beit Zoud	L	L	M	Bekaasafrine	L	ML	M	Borj El Yahoudiyeh	M	M	M
Bqarsouna	L	L	M	Btermaz	L	L	M	Debaael	L	L	M
Deir Ammar	M	M	M	Deir Nbouh	M	M	M	Haouaret-Miniyeh	L	L	M
Haql el Azimeh	L	L	M	Harf El Siyad	L	L	ML	Hazmiye-Miniyeh	L	L	M
Izal	L	ML	M	Jarjour	M	M	M	Jayroun	L	L	M
Kahf El-Malloul	ML	ML	M	Karm El-Moher	L	L	M	Kfar Binine	L	L	M
Kfarchalane	L	L	M	Kfarhabou	ML	ML	M	Kharroub-Miniyeh	L	L	M
Mazraat El-Kreme	ML	ML	M	Mazraat Ketrane	L	L	M	Merkebta	M	M	M
Minyeh	M	M	M	Mrah El Sfirat	L	L	M	Mrah Sraj	L	L	M
Mrebbine	L	L	M	Nabi Youcheaa	M	M	M	Nemrine	L	L	M

Qarhaiya	ML	L	M	Qarne	L	L	M	Qarsita	L	L	ML
Qattineh-Miniyeh	L	L	M	Qemmamine	VL	L	M	Graine	L	L	M
Raouda-Aadoua	M	M	M	Rihaniyet-Miniyeh	M	M	M	Sfireh	L	L	M
Sir Ed-Danniyeh	L	L	M	Tarane	L	L	M	Terbol-Miniyeh	M	M	M
Zaghartaghriine	M	M	M	Zouq Bhannine	M	M	M				

Nabatiye

Nabatiye

Municipality	01-Apr	02-Apr	03-Apr	Municipality	01-Apr	02-Apr	03-Apr	Municipality	01-Apr	02-Apr	03-Apr
Aabba	VL	L	M	Aazzi	VL	L	M	Adchit El-Chqif	VL	L	M
Ain Bou Swar	VL	L	M	Ain Kana	L	L	M	Ali El-Taher	VL	L	M
Ansar	L	L	M	Arab Salim	VL	ML	M	Arnoun	VL	ML	M
Bfaroue	L	L	M	Breyqaah	L	L	M	Chargiyeh	VL	L	M
Choukine	VL	L	M	Deir El Zahrani	VL	L	M	Doueir El-Nabatiyeh	VL	L	M
Habbouch El-Nabatiye	VL	ML	M	Hamra El-Nabatiyeh	VL	ML	M	Harouf El-Nabatiyeh	VL	L	M
Hmaile	VL	L	M	Houmin El Faouqa	VL	ML	M	Houmin El Tahta	VL	L	M
Jarjough	VL	L	M	Jbaah El-Nabatiyeh	VL	L	M	Jebchit	VL	L	M
Kfar Djal El-Nabatiy	L	L	M	Kfar Remmane	VL	ML	M	Kfar Sir	L	L	M
Kfar Tebnit	VL	ML	M	Kfarfila	L	L	M	Kfour El-Nabatieh	VL	L	M
Mayfadoun	VL	ML	M	Mazraat Bsaffour	VL	L	M	Mazraat Chalbaal	VL	L	M
Mazraat Dmoul	VL	L	M	Mazraat El Khreibeh	L	L	M	Mazraat El-Bayad El-	VL	ML	M
Mazraat Kfarjaouz	VL	ML	M	Mazraat Qalaat Meiss	L	L	M	Nabatiyeh El-Fawka	VL	ML	M
Nabatiyeh Et-Tahta	VL	ML	M	Namiriyyeh	VL	L	M	Qaaqaaiyet El Jisr	L	L	M
Qossaibeh El-Nabatiy	L	L	M	Roumine	VL	L	M	Sarba El-Nabatieh	L	L	M
Sir El-Gharbiyeh	L	L	M	Toul	VL	L	M	Yehmor El-Nabatiyeh	VL	ML	M
Zaoutar El Charkiyeh	VL	ML	M	Zaoutar El-Gharbiyeh	L	L	M	Zebdine El-Nabatiyeh	VL	ML	M
Zefta	L	L	M								

Hasbaiya

Municipality	01-Apr	02-Apr	03-Apr	Municipality	01-Apr	02-Apr	03-Apr	Municipality	01-Apr	02-Apr	03-Apr
Ain Jarfa	VL	L	M	Abou Qamha	VL	L	M	Ain Qania	VL	L	M
Bourghos	VL	L	M	Chebaa	VL	L	M	Chouaya Hasbaya	VL	L	M
Dellafeh	VL	L	M	Fardiss Hasbaiya	VL	L	M	Hasbaya	VL	L	M
Hbariyeh	VL	L	ML	Kaoukaba Hasbaiya	VL	L	M	Kfar Chouba	VL	L	ML
Kfar Hamam	VL	L	ML	Kfeir El-Zait	L	L	M	Khalwat Hasbaya	VL	L	ML
Khreibet Hasbaiya	VL	L	M	Majidiyeh Hasbaiya	VL	L	M	Marj Ez-Zhour (Haouc	L	L	M
Meri	VL	L	M	Mimass	L	L	M	Rachaiya El-Fokhar	VL	L	M
Salaiyeb	VL	ML	M								

Marjayoun

Municipality	01-Apr	02-Apr	03-Apr	Municipality	01-Apr	02-Apr	03-Apr	Municipality	01-Apr	02-Apr	03-Apr
Aalmane Marjaayoun	VL	L	M	Aamra	VL	ML	M	Adayseh Marjaayoun	VL	ML	M
Adchit El-Koussair	VL	ML	M	Ain Aarab Marjaayoun	VL	ML	M	Bani Haiyann	VL	ML	M
Blatt Marjaayoun	VL	L	M	Blida	L	ML	M	Borj El-Moulouk	VL	ML	M
Boueyda Marjaayoun	VL	L	M	Deir Mimass	VL	L	M	Deir Siriane	VL	ML	M
Dibbine	VL	L	M	Ebel El Saqi	VL	L	M	Houla	VL	ML	M
Houra	VL	ML	M	Kfar Kila	VL	ML	M	Khiam Marjaayoun	VL	ML	M

Klayaa	VL	ML	M	Majdel Selem	L	ML	M	Marjaayoun	VL	L	M
Markaba	VL	ML	M	Mays El-Jabal	VL	ML	M	Mazraat Doumiat	VL	ML	M
Mazraat Sarada	VL	ML	M	Mhaibib	L	ML	M	Qabrikha	VL	L	M
Qantara	VL	L	M	Rab El-Thalathine	VL	ML	M	Saouaneh Marjayoun	L	ML	M
Talloussa	VL	ML	M	Taybeh Matjaayoun	VL	ML	M	Touline	L	L	M

Bent Jbail

Municipality	01-Apr	02-Apr	03-Apr	Municipality	01-Apr	02-Apr	03-Apr	Municipality	01-Apr	02-Apr	03-Apr
Ain-Ebel	L	ML	M	Aitaroun	L	ML	M	Aynata Bint Jbeil	L	ML	M
Ayta El-Chaeb	L	L	M	Ayta El-Jabal	L	ML	M	Beit Lif	L	L	M
Beit Yahoun	L	ML	M	Bint Jbeil	L	ML	M	Borj Qalaway	L	L	M
Braachit	L	ML	M	Chakra	L	ML	M	Debel	L	ML	M
Deir Antar	L	ML	M	Froun	L	L	M	Ghandouriyeh Bint Jb	L	L	M
Hanine	L	ML	M	Hariss	L	ML	M	Hdatha	L	ML	M
Jmeymeh	L	ML	M	Kafra Bint Jbeil	L	L	M	Kfar Dounine	L	ML	M
Khirbet Selm	L	ML	M	Kounine	L	ML	M	Maroun El Ras	L	ML	M
Qalaway	L	ML	M	Qaouzah	L	L	M	Qatmoun	L	M	M
Ramya Bint Jbeil	L	L	M	Rchaf	L	ML	M	Rmeich	L	ML	M
Safad Al Battikh	L	ML	M	Salhaneh	L	L	M	Serbine	L	ML	M
Sultanieh Bint Jbeil	L	ML	M	Tibnine	L	ML	M	Tiri	L	ML	M
Yaroun	L	ML	M	Yater	L	ML	M				

Mont Liban

Jbail

Municipality	01-Apr	02-Apr	03-Apr	Municipality	01-Apr	02-Apr	03-Apr	Municipality	01-Apr	02-Apr	03-Apr
Aabeydat	L	L	M	Aalita	L	L	ML	Aamchit	ML	M	M
Aarab El-Lahib	VL	ML	M	Aarasta	VL	L	M	Adonis Jbeil	L	L	ML
Afqa Jbeil	VL	L	M	Ain El Delbeh Jbeil	VL	L	M	Ain El-Ghouyba	VL	L	ML
Ain Jrain	VL	L	ML	Ain Kfah	L	ML	M	Almat El Chemaliyat	VL	L	ML
Almat El-Jenoubiya	VL	L	ML	Aqoura	L	ML	M	Bayzoun	L	L	M
Bchille Jbeil	L	L	ML	Bechtida	L	L	ML	Behdaydat	L	L	M
Beit Habbaq	L	ML	M	Bejjeh	L	L	M	Bekhaaz	ML	ML	M
Berbara Jbeil	M	M	M	Bintael	L	L	M	Birket Hjoula	L	L	M
Blatt Jbeil	L	L	M	Boulhos	VL	L	ML	Breyj Jbeil	L	L	ML
Chamat	L	ML	M	Chikhane	M	M	M	Chmout	L	L	M
Eddeh Jbeil	L	ML	M	Ehmej	VL	L	ML	Fatre	L	L	ML
Ferhet	L	L	M	Fghal	L	L	M	Frat	VL	VL	ML
Ghabat	VL	L	M	Ghalboun	L	ML	M	Gharzouz	ML	ML	M
Ghofrine	ML	ML	M	Habil	L	L	M	Halate	L	L	M
Haqel	L	L	M	Hbaline	L	ML	M	Hboub	L	L	M
Hdeine	VL	ML	M	Hema Er-Rehban	L	ML	M	Hema Mar Maroun Aann	VL	ML	M
Hjoula	L	L	ML	Hosrayel	ML	M	M	Hsarat	L	ML	M
Hsoun	L	L	M	Jaj	L	L	M	Janne	VL	VL	ML
Jbeil	L	M	M	Jeddeyel Jbeil	M	M	M	Jlisse	L	L	ML
Jouret El-Qattine	L	L	ML	Kfar Baal Annaya	L	L	ML	Kfar Kidde	M	M	M
Kfar Kouas	L	L	ML	Kfar Mashoun	L	ML	M	Kfoun	L	L	M

Kharbe Jbeil	L	ML	M	Laqlouq	VL	ML	M	Lassa	VL	L	ML
Lehfed	VL	L	ML	Maad	L	ML	M	Mar Sarkis	VL	ML	M
Mastita	L	ML	M	Mayfouq	L	L	ML	Mazraat El Siyad	VL	ML	M
Mazraat El-Maaden	VL	L	ML	Mechane	L	L	ML	Mechmech Jbeil	L	L	ML
Mehrin	L	ML	M	Mejdel El-Akoura	VL	L	M	Mghayreh Jbeil	VL	ML	M
Mounsef	M	M	M	Nahr Ibrahim	L	ML	M	Qahmez	VL	L	ML
Qartaba	VL	L	ML	Qartaboun	L	M	M	Qattara Jbeil	VL	L	ML
Qorqraya	VL	VL	L	Ramout	L	ML	M	Ras Osta	L	L	ML
Rihane Jbeil	M	M	M	Sakiet El-Khayt	L	L	M	Saqi Richmaya	VL	L	ML
Sebrine	L	L	ML	Seraita	VL	L	M	Souane Jbeil	VL	L	M
Tadmor	VL	ML	M	Tartej	VL	L	M	Torzaiya	L	L	M
Yanouh Jbeil	VL	L	M	Zibidine Jbeil	L	L	ML				

El Metn

Municipality	01-Apr	02-Apr	03-Apr	Municipality	01-Apr	02-Apr	03-Apr	Municipality	01-Apr	02-Apr	03-Apr
Aain El-Qabu	VL	L	ML	Aain El-Qach	VL	L	ML	Aain El-Teffaha	VL	L	ML
Aain el-Safssaf El-M	VL	L	L	Abou Mizane	VL	L	ML	Ain Aar	VL	L	M
Ain Alaq	VL	L	M	Ain El-Kharroube	VL	L	M	Ain El-Sendiane	VL	L	ML
Ain El-Zeitoune	VL	L	ML	Ain Saadeh	VL	L	M	Aintoura El-Matn	VL	L	M
Amaret Chalhoub	VL	ML	M	Antelias	VL	ML	M	Atchaneh	VL	L	ML
Ayroun	VL	L	ML	Baabdat	VL	L	L	Baouchariyeh	L	ML	M
Baskinta	VL	L	M	Beit Chabab	VL	L	ML	Beit El-Char	VL	ML	M
Beit El-Kekko	VL	ML	M	Beit Mery	VL	L	ML	Bhersaf	VL	L	ML
Bikfaya	VL	L	ML	Biyakout	VL	ML	M	Bnabil	VL	L	ML
Bourj Hammoud	L	M	M	Bqennaya	VL	L	ML	Broummana El-Matn	VL	L	ML
Bsalim	VL	L	M	Bsifrine	VL	VL	L	Bteghrine	VL	L	ML
Chaouiye	VL	L	M	Chouaya El-Matn	VL	L	ML	Choueir	VL	L	ML
Chrine	VL	L	L	Dahr El Sawan El-Mat	VL	L	ML	Daychouniyeh	VL	L	M
Dbayeh	VL	ML	M	Deir Chamra	VL	VL	L	Deir Mar Abda el Mch	VL	L	M
Deir Mar Roukouz	L	ML	M	Deir Tamiche	VL	L	M	Dik El-Mehdi	VL	L	M
Dikwaneh	L	M	M	Douar El-Matn	VL	L	ML	Fanar	VL	L	M
Fraike	VL	L	ML	Haret El-Ballaneh	VL	L	M	Hbous	VL	L	M
Himlaya	VL	L	ML	Jal El Did	VL	ML	M	Jdeideh El-Metn	VL	ML	M
Jouar El-Matn	VL	L	L	Jouret El-Ballout	VL	L	M	Kaaqour	VL	L	ML
Kfar Aaqab	VL	L	L	Kfertay El-Matn	VL	L	M	Khenchara	VL	L	ML
Khillet El-Mtain	VL	L	ML	Konnabat Broummana	VL	L	M	Konnabat Salima	VL	VL	L
Machraah El-Matn	VL	L	ML	Majdel Tarchich	VL	L	M	Majzoub	VL	L	M
Mansouriyeh El-Metn	VL	ML	M	Mar Boutros Karm Et-	VL	L	ML	Mar Chaya et Mzekke	VL	L	M
Mar Moussa Ed-Douar	VL	L	L	Marjaba	VL	L	ML	Masqa	VL	L	ML
Mayasse	VL	L	ML	Mazraat Deir Aoukar	VL	L	M	Mazraat El-Hadirat	VL	L	M
Mazraat Yachouh	VL	ML	M	Mchikha	VL	L	ML	Menqlet Mezher	VL	L	M
Mhaydseh Matn	VL	L	ML	Mkalles	L	ML	M	Mrouj	VL	L	M
Mtain	L	L	M	Mtayleb	VL	L	M	Nabay	VL	L	M
Naccache	VL	L	M	Ouadi Chahine	VL	VL	ML	Ouadi El-Karm El-Mat	VL	L	ML
Ouata El-Mrouj	VL	L	M	Ouyoun El-Matn	VL	VL	L	Qornet Chehwan	VL	L	M
Qornet El-Hamra	VL	L	M	Roumieh	VL	L	M	Sfeilet Bikfaya	VL	L	ML
Sinn El-Fil	L	M	M	Zabbougha	VL	VL	L	Zalqa	VL	ML	M

Zarouon	VL	L	ML	Zekrite	VL	L	M	Zighrine El-Matn	VL	L	ML
Zouk El-Khrab	VL	ML	M								

Chouf

Municipality	01-Apr	02-Apr	03-Apr	Municipality	01-Apr	02-Apr	03-Apr	Municipality	01-Apr	02-Apr	03-Apr
Aalmane El-Chouf	VL	ML	M	Aammq El-Chouf	VL	L	ML	Ain Ouzein	VL	L	L
Ain Qani	VL	L	ML	Ain Zhalta	VL	L	M	Ainbal	VL	L	ML
Amatour	VL	L	ML	Anout	VL	L	M	Atrine	VL	L	ML
Baadarane	VL	L	M	Baaqline	VL	L	M	Baasir	L	ML	M
Barja	L	ML	M	Barouk	VL	L	ML	Bater	VL	L	M
Batloun	VL	L	ML	Bayqoun	VL	ML	M	Bchetfine	VL	L	M
Beiteddine	VL	L	L	Benouati Ech-Chouf	VL	L	ML	Berjein	VL	L	ML
Bireh et Mtalleh	VL	L	M	Biret El-Chouf	VL	L	M	Bkechtine Ouel Mchei	VL	L	L
Bkifa El-Chouf	VL	L	ML	Botme	VL	L	L	Bqaiaa Ech-Chouf	VL	L	ML
Bsaba El-Chouf	VL	L	M	Chammis El-Chouf	L	ML	M	Chehim	VL	L	ML
Chemaarine	VL	L	ML	Chourit	VL	L	ML	Daher El-Chouf	L	L	M
Dalhoun	VL	L	M	Damour	L	ML	M	Daraya El-Chouf	VL	L	ML
Deir El-Moukhalles	VL	L	ML	Deir Baba	VL	L	M	Deir Dourit	VL	L	ML
Deir El-Qamar	VL	L	ML	Deir Kouche	VL	L	ML	Dibbieh	VL	L	ML
Dmit	VL	L	M	Fouara Jaafar	VL	L	ML	Fraidis El-Chouf	VL	ML	M
Ghabet Jaafar	VL	L	M	Gharife	VL	L	ML	Haret Jandal	VL	L	M
Hasrout	VL	L	M	Jadra	L	ML	M	Jahlieh	VL	L	ML
Jbeih El-Chouf	VL	L	M	Jdeidet El-Chouf	VL	L	ML	Jiyeh	L	ML	M
Jleilyeh	VL	L	M	Jmailiyeh	VL	ML	M	Joun	VL	L	M
Kahlounie El-Chouf	VL	L	M	Ketermaya	VL	ML	M	Kfar Faqoud	VL	L	M
Kfar Hamal	VL	L	M	Kfar Him	VL	L	M	Kfar Katra	VL	L	ML
Kfar Niss	VL	L	M	Kfar hay	VL	L	ML	Kfarnabrakh	VL	L	ML
Khirbet Bisri	VL	L	ML	Knayse El-Chouf	VL	L	ML	Maaniyeh	L	ML	M
Maasser Beiteddine	VL	L	ML	Maasser El-Chouf	VL	L	ML	Majdalouna	VL	ML	M
Majdel El-Meouch	VL	L	ML	Mazboud	VL	L	M	Mazmoura	VL	L	M
Mazraat El Chouf	VL	L	M	Mazraat El Daher	VL	L	ML	Mazraat El-Douair	VL	L	L
Mechref	VL	L	ML	Mghairie	VL	ML	M	Mghayrie El-Chouf	VL	L	ML
Moukhtara	VL	L	ML	Mrusti	VL	L	M	Mtolle	VL	L	M
Naameh	L	ML	M	Niha El-Chouf	VL	L	M	Ouadi Abou Youssef	VL	VL	L
Ouadi Ed-Deir	VL	L	M	Ouadi El-Sit	VL	L	M	Ouadi bnehlay	VL	L	ML
Qraibeh	VL	L	ML	Qreiaa	VL	VL	L	Rmayle El-Chouf	VL	ML	M
Semqaniyeh	VL	L	M	Sibline	L	ML	M	Sirjbeil	VL	L	M
Warhanieh	VL	ML	M	Werdaniyeh	VL	ML	M	Zaarourieh	VL	L	M

Baabda

Municipality	01-Apr	02-Apr	03-Apr	Municipality	01-Apr	02-Apr	03-Apr	Municipality	01-Apr	02-Apr	03-Apr
Abadiyeh	VL	L	ML	Ain Mouaffaq	VL	L	ML	Araiya	VL	L	ML
Arbaniyeh	VL	VL	L	Arsoun	VL	L	ML	Baabda	L	ML	M
Baalchmey	VL	L	M	Bmaryam	VL	L	M	Bourj El-Brajneh	L	ML	M
Boutchay	L	L	M	Bsaba Baabda	VL	L	M	Btekhney	VL	L	M
Btibyat	VL	L	M	Bzbeddine	VL	L	L	Chbeniyeh	VL	L	M
Chiyah	L	M	M	Chmeisset Baabda	VL	L	ML	Chouit	VL	L	ML
Deir El-harf	VL	L	ML	Deir Khouna	VL	L	M	Dlaybeh	VL	VL	L

Falougha	VL	ML	M	Furn El-Chebbak	L	M	M	Hadath Beyrouth	L	ML	M
Halaliyeh Baabda	VL	L	ML	Hammana	VL	ML	M	Haret El Sett	VL	L	ML
Haret Hamze	VL	L	M	Haret Hreik	L	M	M	Hasbaiya El-Metn	VL	VL	L
Jouar El-Hoz	VL	L	ML	Jouret Arsoun	VL	L	L	Kfar Chima	L	ML	M
Kfar Selouane	VL	L	ML	Khalouat Baabda	VL	L	M	Kneisset Baabda	VL	VL	L
Laylakeh	L	ML	M	Louayzeh Baabda	VL	L	M	Merdache	VL	ML	M
Mzairaa Baabda	VL	L	ML	Ouadi Chahrour El Ol	VL	L	M	Ouadi Chahrour El So	VL	L	M
Qalaa Baabda	VL	L	M	Qhraybe Baabda	VL	L	M	Qobbayaa	VL	L	M
Qornayel	VL	L	L	Qortada	VL	VL	L	Qrayeh Baabda	VL	L	M
Qsaibeh Baabda	VL	L	ML	Qtale Baabda	VL	L	M	Ras El Metn	VL	L	ML
Ras El-Haref	VL	L	M	Rouayset El-Ballout	VL	L	ML	Salima Baabda	VL	L	ML
Tahouitat El Ghadir	L	ML	M	Tarchich	VL	L	M	Zandouqa	VL	VL	L

Aley

Municipality	01-Apr	02-Apr	03-Apr	Municipality	01-Apr	02-Apr	03-Apr	Municipality	01-Apr	02-Apr	03-Apr
Abey	VL	L	M	Aghmid	VL	L	M	Ain Dara	VL	ML	M
Ain Drafil	VL	L	M	Ain El Halazoun	VL	L	M	Ain El-Rmmaneh	VL	L	L
Ain Jedideh	VL	L	M	Ain Ksour	VL	L	M	Ain Onoub	VL	L	M
Ain Traz	VL	L	ML	Ainab	VL	L	M	Aley	VL	L	M
Aramoun	VL	L	M	Aytat	VL	ML	M	Azouniyeh	VL	ML	M
Baawerta	VL	L	M	Badghan Oua Wadi Bad	VL	ML	M	Bassatine	VL	L	M
Bayssour	VL	L	M	Bchamoun	VL	L	M	Bdadoun	VL	L	ML
Behouara	VL	L	ML	Bennay	VL	L	M	Bhamdoun El-Dayaa	VL	L	M
Bhamdoun El-Mhatta	VL	ML	M	Bkhechey	VL	L	M	Bleibel	VL	L	M
Bmakine	VL	L	M	Bmehray	VL	L	M	Bouzrid	VL	L	ML
Bserrine	VL	L	M	Bsous	VL	L	L	Btalloun	VL	L	M
Btater	VL	L	M	Chanay	VL	ML	M	Charoun	VL	ML	M
Chartoun	VL	L	ML	Chemlane	VL	L	M	Choueifat El-Aamrous	L	ML	M
Choueifat El-Oumara	L	ML	M	Choueifat El-Quoubbe	L	ML	M	Dakkoun	VL	L	M
Deir Qoubel	VL	L	M	Dfoun	VL	L	M	Douair El Remmaneh	VL	L	ML
Ghaboun	VL	L	ML	Habramoun	VL	L	ML	Homs Oua Hama	VL	L	M
Houmal	VL	L	M	Jisr El Qadi	VL	L	M	Kehaleh	VL	L	L
Keyfoun	VL	L	M	Kfar Aamey	VL	L	M	Kommatyeh	VL	L	ML
Maasrati	VL	L	M	Majdel Baana	VL	ML	M	Mansourieh et Ain El	VL	L	M
Mazraat El-Nahr	VL	L	ML	Mchakhte	VL	L	M	Mecherfeh	VL	L	M
Mejdlaya	VL	L	ML	Mrayjat	L	ML	M	Ramliyah	VL	L	ML
Rechmaya	VL	L	ML	Rejmeh	VL	L	ML	Remhala	VL	L	M
Rouaysset El Neemane	VL	L	M	Saoufar	VL	ML	M	Selfaya	VL	L	ML
Sirhmoul	VL	L	M	Souq El Ghareb	VL	L	M	Taazanieh	VL	L	M

Kesrouane

Municipality	01-Apr	02-Apr	03-Apr	Municipality	01-Apr	02-Apr	03-Apr	Municipality	01-Apr	02-Apr	03-Apr
Achkout	VL	L	L	Adma Oua Dafneh	VL	L	M	Ain Ed-Delbe Kesroua	VL	L	L
Ain El-Rihane	VL	L	M	Aintoura Kesrouane	VL	L	M	Ajaltoun	VL	L	ML
Akaybeh Kesrouane	L	M	M	Aramoun Kesrouane	VL	L	ML	Azra ouel Ozor	L	L	M
Ballouneh	VL	L	ML	Batha	VL	VL	ML	Bekaatat Achkout	VL	L	ML
Bekaatat Kanaan	VL	L	ML	Bizhel	VL	L	M	Bouar	L	ML	M
Bqaatouta	VL	L	M	Bqaq Ed-Dine	L	ML	M	Bzommar	VL	L	ML

Chahtoul	VL	L	ML	Chnaniir	VL	L	ML	Chouan	VL	L	L
Daraya Kesrouane	VL	L	ML	Darououn	VL	L	ML	Deir Baqlouch	VL	L	M
Dlebta	VL	L	L	Eghbeh	VL	VL	L	Faraya	VL	ML	M
Fatka	VL	L	ML	Feytroun	VL	L	L	Ghazir	VL	L	ML
Ghbaleh Kesrouane	L	L	M	Ghedrass	VL	L	L	Ghosta	VL	L	ML
Ghyneh	VL	L	ML	Harharaya w Kattine	VL	L	ML	Harissa Kesrouane	VL	L	M
Hayata	VL	L	L	Hosein	VL	L	ML	Hrajel	VL	ML	M
Jdeideh Ghazir	VL	L	ML	Jeita	VL	L	M	Jounieh Ghadir	VL	L	M
Jounieh Haret Sakhr	VL	ML	M	Jounieh Salel Alma	VL	L	M	Jounieh Sarba	VL	ML	M
Jouret Bedrane	L	L	M	Jouret Mhad	VL	L	L	Jouret Termos	VL	L	M
Kfar Debiane	VL	L	ML	Kfar Tay Kesrouane	VL	VL	ML	Kfar Yassine	VL	ML	M
Kfour Kesrouane	VL	L	ML	Kharayeb Nahr Ibrahi	L	L	M	Klayaat Kesrouane	VL	L	L
Maarab	VL	VL	L	Maaysra Kesrouane	L	L	M	Mayrouba	VL	L	M
Mazraat Er-Ras	VL	L	M	Mazraat Mrah El-Mir	VL	L	ML	Mchaa El Ftouh	VL	ML	M
Mchaa Faraya	VL	ML	M	Mchaa Kfar Dibiane	VL	ML	M	Mghaer	VL	L	L
Mradiyah	VL	L	M	Nahr Ed-Dahab	VL	L	L	Nammoura Kesrouane	L	L	ML
Ouata El Jaouz	VL	L	ML	Ouata Sillam	VL	ML	M	Raachine	VL	L	L
Rayfoun	VL	L	ML	Safra Kesrouane	L	ML	M	Shayle Kesrouane	VL	L	M
Tabarja	L	L	M	Yahchouch	L	L	M	Zaaytreh	L	L	M
Zeytoun	L	L	M	Zouk Mikael	VL	ML	M	Zouk Mosbeh	VL	ML	M

Baalbek_Hermel

Baalbek

Municipality	01-Apr	02-Apr	03-Apr	Municipality	01-Apr	02-Apr	03-Apr	Municipality	01-Apr	02-Apr	03-Apr
Aadous	M	M	M	Aamchki	ML	ML	M	Aarsal	M	ML	M
Ain Baalbek	M	M	M	Ain Bourday	ML	ML	M	Ain El-Benye	ML	ML	M
Ain El-Jaouz Baalbek	M	M	M	Ain El-Siya Chadoura	L	ML	M	Al Khodr Baalbek	L	ML	M
Al Nabi Chit	L	ML	M	Aynata Baalbek	L	ML	M	Baalbek	ML	ML	M
Bachwat	L	ML	M	Barqa	L	ML	M	Bednayeel Baalbak	L	ML	M
Beit Chama	ML	M	M	Bijjaje	M	M	M	Bouday	L	ML	M
Brital	ML	ML	M	Btadi	ML	M	M	Chaat	M	M	M
Chaibe	ML	ML	M	Chlifa	ML	M	M	Chmestar	L	M	M
Dar El-Oussa	L	ML	M	Deir El-Ahmar	ML	M	M	Deir Mar Maroun Baal	M	M	M
Douris	ML	M	M	Fakiha	M	M	M	Hadath Baalbek	L	M	M
Ham	ML	ML	M	Haour Taala	L	ML	M	Hizzine	M	M	M
Hlebta	ML	M	M	Hosh Barada	M	M	M	Hosh El Dahab	M	M	M
Hosh El Snid	L	ML	M	Hosh El-Nabi	L	M	M	Hosh El-Rafiq	ML	M	M
Hosh Tal Safiya	M	M	M	Hrebta	M	M	M	laat	M	M	M
Jebaa	L	M	M	Jenta	L	ML	M	Kfar Dabach	ML	M	M
Kfar Dane	L	M	M	Khraibeh El-Hermel	M	M	M	Khreibet Baalbek	L	ML	M
Kneisset Baalbek	M	M	M	Labueh	M	M	M	Maarboun	ML	ML	M
Majdaloun	M	M	M	Maqneh	M	M	M	Mazraat Beit Mcheik	L	M	M
Misraya	ML	M	M	Moqraq	M	M	M	Nabha El-Damdoum	ML	M	M
Nabi Chbay	L	ML	M	Nabi Osman	M	M	M	Nahleh baalbek	ML	ML	M
Ouadi El-Oss	M	M	M	Qaa Baayoun	M	ML	M	Qaa Jouar Maqiye	M	M	M
Qaa Ouadi El-Khanzir	M	M	M	Qah Baalbek	M	M	M	Qarha Baalbek	M	M	M

Qsarnaba	ML	M	M	Ram Baalbek	M	M	M	Ras Baalbek El Sahl	M	M	M
Ras Baalbek El-Charq	M	M	M	Riha	M	M	M	Saaide	ML	M	M
Sbouba	M	M	M	Seriine El-Tahta	L	M	M	Slouqi	L	ML	M
Taiba Baalbek	M	M	M	Talia	ML	M	M	Taraiya	L	M	M
Temnin El Fawqa	ML	M	M	Temnin El-Tahta	ML	M	M	Tfail	M	M	M
Yahfoufa	L	ML	M	Yammouneh	L	M	M	Younine	M	M	M
Zboud	M	M	M								

Hermel

Municipality	01-Apr	02-Apr	03-Apr	Municipality	01-Apr	02-Apr	03-Apr	Municipality	01-Apr	02-Apr	03-Apr
Charbine El-Hermel	M	M	M	Hermel Jbab	ML	M	M	Hermel	M	M	M
Maaysra El-Hermel	M	M	M	Michaa Mrajhine	L	L	M	Ouadi Faara	M	M	M
Ras Baalbek - Ouadi	M	M	M	Ras Baalbek El Gharb	M	M	M	Zighrine	M	M	M

Akkar

Akkar

Municipality	01-Apr	02-Apr	03-Apr	Municipality	01-Apr	02-Apr	03-Apr	Municipality	01-Apr	02-Apr	03-Apr
Aain Tinta	M	M	M	Aaiyat	M	ML	M	Aakkar El-Aatiqa	L	L	M
Aamar Akkar	M	M	M	Aamar El Baykat	M	M	M	Aamayer	M	M	M
Aamriyet Akkar	M	M	M	Aandqet	M	M	M	Aarmeh	M	ML	M
Aarqa	M	M	M	Aawaynat	M	M	M	Aayoun Akkar	M	M	M
Abboudiye	M	ML	M	Ain El-Zeit	ML	M	M	Ain Yaaqoub	ML	L	M
Akroum	M	M	M	Aridet Cheikh Zennad	M	M	M	Baldeh w Mazraat Bal	M	ML	M
Barcha	M	ML	M	Bardeh	M	M	M	Bebnine	M	M	M
Beino	M	M	M	Beit Ayoub	M	L	M	Beit El-Haouch	M	M	M
Beit Mellat	M	M	M	Beit Younes	M	L	M	Berbara Akkar	M	M	M
Berqayel	M	M	M	Bezbina	L	L	ML	Bireh Akkar	ML	M	M
Borj	M	M	M	Bqerezla	M	ML	M	Bzal	M	M	M
Chane	M	L	M	Chaqdouf	M	M	M	Charbila	M	ML	M
Cheikh Mohammad	M	ML	M	Cheikh Taba Es-Sahl	M	M	M	Cheikh Taba	M	ML	M
Cheikh Zennad	M	M	M	Cheikhlar	M	M	M	Chir Hmairine	M	M	M
Daghle	M	M	M	Dahr Laissine	M	ML	M	Darine	M	M	M
Dawra	M	ML	M	Dawsa w Baghdadi	ML	M	M	Dayret Nahr El-Kabir	ML	M	M
Deir Dalloum	M	M	M	Deir Jennine	M	M	M	Denbou	M	L	M
Dibbabiyyeh	ML	M	M	Douair Aadwiyeh	M	M	M	Fassikine	M	M	M
Fnaydek	L	L	ML	Fraydes Akkar	ML	M	M	Ghazayle	M	ML	M
Habchit	M	L	M	Hakour	M	M	M	Halba	M	M	M
Haouchab	M	ML	M	Hayssat	M	M	M	Haytla	M	ML	M
Hayzouq	M	ML	M	Hedd	M	ML	M	Hmaira Akkar	M	M	M
Hmaiss Akkar	M	ML	M	Hnaider	M	M	M	Hokr Ed-Dahri	M	M	M
Hokr Etti	M	ML	M	Hokr Jouret Srar	M	ML	M	Houaich	M	L	M
Hrar	M	L	M	Idbil	M	L	M	Ilal	M	L	M
Janine	M	ML	M	Jdeidet El-JoumeH	M	M	M	Jdeidet El-Kaiteh	M	M	M
Jebayel	M	ML	M	Kafr	L	L	M	Kafr	ML	M	M
Karm Asfour	M	ML	M	Kfar Melki Akkar	M	M	M	Kfar Noun	ML	ML	M
Kfarharra	M	M	M	Khalsa	M	M	M	Kharnoubet Akkar	M	ML	M

Khirbet Daoud Aakkar	ML	M	M	Khirbet El Remmane	M	M	M	Khirbet Shar	M	M	M
Khoreybet El-Jindi	M	ML	M	Khreibet Aakkar	M	L	M	Kneisset Aakkar	M	M	M
Kneisset Hnaider	M	M	M	Knisse	M	M	M	Kroum El-Aarab	M	L	M
Kwachra	ML	M	M	Kweykhat	M	M	M	Machta Hammoud	M	M	M
Majdala	M	M	M	Majdel Akkar	ML	M	M	Mar Touma	M	M	M
Marlaya Melhem	M	M	M	Mashha	M	ML	M	Massoudiye	M	M	M
Mazraat Beit Ghattas	M	M	M	Mazraat En-Nahriye	M	M	M	Mechmech	L	L	M
Memneh	L	L	L	Mhammara	M	M	M	Mighraq Aakkar	M	M	M
Minyara	M	M	M	Moqayteh	M	M	M	Mounjez	M	M	M
Msalla	M	M	M	Mzeihmeh	M	M	M	Nfaiseh	M	L	M
Noura Et-Tahta	ML	M	M	Ouadi El-Haour	M	M	M	Ouadi El-Jamous	M	M	M
Ouyoun El-Ghizlane	M	M	M	Qaabarine	M	M	M	Qabaait	M	ML	M
Qachlaq	M	ML	M	Qantara Aakkar	M	L	M	Qarha Aakkar	M	M	M
Qarqaf	M	M	M	Qboula	M	M	M	Qleiaat Aakkar	M	M	M
Qloud El-Baqie	M	M	M	Qobaiyat Aakkar	M	M	M	Qobbat Chamrat	M	M	M
Qorayat	M	L	M	Qornet Aakkar	M	L	M	Qsair Aakkar	ML	M	M
Rahbe	M	L	M	Rihaniyet Aakkar	M	ML	M	Rmah	M	M	M
Rmoul	M	M	M	Saadine	M	M	M	Sadaqa	M	L	M
Saidnaya	M	ML	M	Sammouniye	M	M	M	Sayssouq	M	ML	M
Semmaqiye	M	M	M	Semmaqli	M	M	M	Sfinet El-Dreib	M	M	M
Sfinet El-Qaitaa	M	M	M	Sindyanet Zeidane	M	M	M	Souaisset Aakkar	M	ML	M
Srar	M	ML	M	Tal Abbas El Gharby	M	M	M	Tal Abbas El-Chargy	M	M	M
Tal Biret	M	M	M	Tal Hmayra	M	M	M	Tal Maayan Tal Kiri	M	M	M
Tal Sibel	M	M	M	Tallet Chattaha	M	M	M	Tikrit	M	L	M
Tleil	M	ML	M	Tshea	L	L	ML	Zawarib	M	ML	M
Zouq El Hosniyeh	M	M	M	Zouq El-Haddara	M	M	M	Zouq El-Hbalsa	M	M	M
Zouq El-Moqachrine	M	M	M								

Sud

Sour

Municipality	01-Apr	02-Apr	03-Apr	Municipality	01-Apr	02-Apr	03-Apr	Municipality	01-Apr	02-Apr	03-Apr
Aaiyeh	L	ML	M	Aalma El-Chaab	L	L	M	Aaytit	L	ML	M
Abbassiyeh Sour	L	ML	M	Abou Chech	L	L	M	Ain Abou Abdallah	L	ML	M
Ain Baal	L	ML	M	Arzoun	L	L	M	Aziyeh	L	L	M
Baflaya	L	L	M	Barich	L	L	M	Batouliyeh	ML	ML	M
Bayad	L	ML	M	Bazouriyeh	L	ML	M	Bediass	L	L	M
Bestiyat	L	L	M	Borj El Chemali	ML	ML	M	Borj En-Naqoura	L	L	M
Borj Rahhal	L	L	M	Boustane	L	ML	M	Btaychiyeh	L	L	M
Chaaitiye	L	ML	M	Chameh	L	L	M	Chehabiye	L	ML	M
Chehour	L	L	M	Chihine	L	L	M	Debaal Sour	L	L	M
Deir Amess	L	L	M	Deir Kifa	L	ML	M	Deir Qanoun El-Ain	ML	ML	M
Deir Qanoun El-Naher	L	L	M	Derdghaiya	L	L	M	Dhayra	L	L	M
Halloussiyeh	L	L	M	Hamoul	L	L	M	Hanaouey	L	ML	M
Henniye	ML	ML	M	Hmairi Sour	L	L	M	Iskandarouna Sour	L	L	M
Jbal El Botom	L	L	M	Jebbin	L	ML	M	Jennata	L	L	M
Jijim	L	L	M	Jouaiya	L	ML	M	Kneisset Sour	L	ML	M

Maarake	L	L	M	Maaroub	L	L	M	Majadel	L	ML	M
Majdalzoun	L	L	M	Mansouri Sour	ML	ML	M	Marnba	VL	L	M
Marouahine	L	L	M	Mazraat El-Zalloutiy	L	ML	M	Mazraat Mechref	L	ML	M
Mazraat Tayr Semhat	VL	L	M	Mheilib	ML	ML	M	Neffakhiyeh	L	L	M
Niha Sour	L	L	M	Ouadi Jilo	L	ML	M	Qana	L	ML	M
Qolaileh Sour	ML	ML	M	Rechknany	L	L	M	Rmadiyah	L	ML	M
Selha Sour	L	L	M	Siddiqine	L	ML	M	Sour	ML	ML	M
Srifa	L	L	M	Tayr Debbe	L	L	M	Tayr Felsay	L	L	M
Tayr Harfa	L	L	M	Touayri	L	L	M	Toura	L	L	M
Yanouh Sour	L	L	M	Yarine	L	ML	M	Zebqine	L	L	M

Saida

Municipality	01-Apr	02-Apr	03-Apr	Municipality	01-Apr	02-Apr	03-Apr	Municipality	01-Apr	02-Apr	03-Apr
Aanqoun	VL	L	M	Aaqtanit	VL	L	M	Aarab Ej-Jall	VL	ML	M
Aarab Tabbaya	VL	ML	M	Abra Saida	VL	ML	M	Adloun	L	L	M
Adousiyeh	L	ML	M	Ain-El-Deleb	L	L	M	Arzai	L	L	M
Babliyah	L	L	M	Barty	VL	L	M	Bissariyeh	L	ML	M
Bnaafoul	VL	L	M	Bqosta	VL	ML	M	Bramiy	VL	ML	M
Daoudiyeh	L	L	M	Dareb El-Sim	L	L	M	Erkay	VL	L	M
Ghassanieh	L	L	M	Ghazieh	L	ML	M	Hajjeh	VL	L	M
Haret Saida	VL	ML	M	Hartiyeh	L	L	M	Hlaliye Saida	VL	ML	M
Insariyat	L	L	M	Jazira Saida	L	ML	M	Kafar Bit	VL	L	M
Kaoutariyet El-Siyad	VL	L	M	Kfar Chellal	L	L	M	Kfar Hatta Saida	VL	L	M
Kfar Milke Saida	L	L	M	Khartoum	VL	L	M	Khaziz	VL	L	M
Khirbet Ed-Douair Sa	L	L	M	Khirbet El-Bassal	L	ML	M	Khrayeb Saida	L	L	M
Loubieh	L	L	M	Maghdouche	L	L	M	Majdelyoun	VL	ML	M
Matariyet El-Choumar	L	L	M	Matayriyeh	L	L	M	Mazraat 'Mseileh	L	ML	M
Mazraat 'Snaiber	L	ML	M	Mazraat Aarab Soukka	VL	ML	M	Mazraat Deir Taqla	L	L	M
Mazraat El Yahoudiye	L	ML	M	Mazraat El-Housseini	L	ML	M	Mazraat El-Mhaydaleh	L	L	M
Mazraat El-Ouasta	L	ML	M	Mazraat Jamjim	L	L	M	Mazraat Kaoutariyet	L	L	M
Mazraat Kfar Badda	L	L	M	Mazraat Oussamiyat	L	L	M	Mazraat Sari	L	L	M
Mazraat Sinai	L	L	M	Meemariyeh	L	L	M	Merouaniyeh	L	L	M
Miyeh ou Miyeh	VL	L	M	Najjariyeh	L	ML	M	Qaaqaiyat El-Snaouba	L	L	M
Qnarit	VL	L	M	Qraiye Saida	VL	L	M	Saida Ed-Dekermane	VL	ML	M
Saida El-Oustani	VL	ML	M	Saida El-Qadimeh	VL	ML	M	Saida Kefraya	VL	ML	M
Saksakiyeh	L	L	M	Salhie Saida	VL	ML	M	Sarafand	L	ML	M
Sfenta	L	L	M	Tafahta	L	L	M	Tanbourit	L	L	M
Tebna	L	L	M	Zaghdraiya	L	L	M	Zeita	VL	L	M
Zrariyeh	L	L	M								

Jezzine

Municipality	01-Apr	02-Apr	03-Apr	Municipality	01-Apr	02-Apr	03-Apr	Municipality	01-Apr	02-Apr	03-Apr
Ain El-Mir (El Estab	VL	L	M	Anane	VL	L	ML	Aramta	L	L	M
Ariya	VL	L	M	Aychiyeh	VL	L	ML	Azour	VL	L	ML
Baba	VL	L	ML	Bayssour Jezzine	VL	L	M	Benoueteh Jezzine	VL	L	M
Bhannine	VL	L	M	Bisri	VL	L	ML	Bkassine	VL	L	M
Bouslaya	VL	L	L	Btedine El-Leqech	VL	L	ML	Chbail	VL	VL	L
Choualiq Jezzine	VL	ML	M	Dahr Ed-Deir	VL	L	ML	Deir El Qattine	VL	L	ML

Demachqiyeh	VL	ML	M	Ghabbatiyeh	VL	L	M	Harf Jezzine	VL	L	ML
Hassaniyeh	VL	L	M	Haytouleh	L	L	M	Haytura	VL	L	ML
Hidab	L	L	ML	Homsiyeh	VL	L	ML	Jabal Toura	L	L	M
Jarmaq	VL	ML	M	Jensnaya	L	L	M	Jernaya	L	L	M
Jezzine	VL	L	M	Karkha	VL	L	M	Kfar Falous	VL	L	M
Kfar Houna	L	L	M	Kfar Jarrah	VL	ML	M	Lebaa	VL	ML	M
Louayzet Jezzine	VL	L	ML	Machmouche	VL	L	ML	Mahmoudiyeh Jezzine	VL	ML	M
Maknounye Jezzine	VL	L	ML	Maraat Ouzaïyeh	VL	L	M	Mazraat Daraya	L	L	M
Mazraat El-Aarqoub	VL	L	ML	Mazraat El-Mathane	VL	VL	L	Mazraat El-Rahbane	VL	L	ML
Mazraat Khallet Khaz	VL	L	ML	Mazraat Louzid (Loua	VL	L	L	Mazraat Qrouh	VL	L	M
Mazraat Tamra	VL	ML	M	Mazraat Zighrine Jez	VL	L	ML	Mazraat	VL	L	L
Mharbiyeh	VL	L	M	Midane Jezzine	VL	L	ML	Mjeydel Jezzine	VL	L	M
Mlikh	VL	L	ML	Mrah El-Hbasse	VL	ML	M	Ouadi Baanquodaine	VL	L	M
Ouadi El-Laymoun	VL	L	M	Ouardiyeh	VL	VL	L	Qabaa Jezzine	VL	L	ML
Qatrani	L	L	ML	Qaytouleh	VL	L	ML	Qtaleh Jezzine	VL	L	ML
Rihane Jezzine	VL	L	M	Rimat	VL	L	ML	Roum	VL	L	ML
Roummanet	VL	L	M	Sabbah	VL	L	ML	Saydoun	VL	L	ML
Sfaray	VL	L	L	Snaya	VL	L	ML	Sojoud	VL	L	M
Srayri	VL	L	M	Taaid	VL	L	ML	Wadi Jezzine	VL	L	ML
Zhalta	VL	L	M								

Bekaa

West Bekaa

Municipality	01-Apr	02-Apr	03-Apr	Municipality	01-Apr	02-Apr	03-Apr	Municipality	01-Apr	02-Apr	03-Apr
Aammiq BG	L	ML	M	Ain El Tineh BG	L	L	M	Ain Zebdeh	L	L	M
Ana	L	ML	M	Aytanit	L	L	M	Baaloul BG	L	ML	M
Bab Mareh	L	ML	M	Chouberqiye Aammiq	L	ML	M	Dakoue	ML	ML	M
Deir Ain El-Jaouze	L	L	M	Deir Tahniche	L	ML	M	Ghaza	L	ML	M
Harime El-Soughra	L	ML	M	Hoch Harimeh	L	ML	M	Jazira BG	L	ML	M
Jib Jennine	L	ML	M	Kamed-El-Laouz	L	ML	M	Kefraya BG	VL	L	M
Khiara El Atika	L	ML	M	Khiara	L	ML	M	Khirbet Qanafar	L	ML	M
Lala	L	ML	M	Lebbaya BG	L	L	M	Loussa	L	L	M
Machghara	L	L	M	Manara (Hammara) BG	L	L	M	Mansoura BG	L	ML	M
Marej BG	L	ML	M	Maydoun	L	L	M	Ouaqf BG	L	ML	M
Qaraaoun	L	ML	M	Qelya	L	L	M	Raouda (Istabel)	L	ML	M
Saghbine	L	L	M	Sohmor	L	L	M	Soltan Yacoub el Ara	ML	ML	M
Souairy	ML	ML	M	Sultan Yaacoub	L	ML	M	Tal Znoun	L	ML	M
Yehmor BG	L	L	M	Zilaya	L	L	M				

Zahle

Municipality	01-Apr	02-Apr	03-Apr	Municipality	01-Apr	02-Apr	03-Apr	Municipality	01-Apr	02-Apr	03-Apr
Aanjar (Haouch Mouss	L	ML	M	Ablah	ML	M	M	Ain Kfarzabad	L	ML	M
Ali-El-Nahri	ML	M	M	Bar Elias	L	ML	M	Bouarej	VL	ML	M
Cheberqiyet Tabet	L	ML	M	Chtaura	L	ML	M	Deir El Ghazal	L	ML	M
Delhamiyet Zahle	L	ML	M	Ferzol	L	ML	M	Haouch El-Ghanam	ML	M	M
Haouch Es-Siyadeh	L	ML	M	Haouch Hala	L	M	M	Haouch Mandara	L	ML	M

Haouch Qayssar	L	ML	M	Hezerta	L	ML	M	Hosh Moussa	L	ML	M
Jdita	L	ML	M	Kfarzabad	L	ML	M	Ksara	L	ML	M
Majdel Aanjar	ML	ML	M	Makssi	L	ML	M	Massa	L	M	M
Mazraat Er-Remtaniye	L	ML	M	Mrayjat Zahle	VL	ML	M	Mzaraa Zahle	VL	ML	M
Nabi Ayla	L	ML	M	Nasriyet Rizk	L	ML	M	Nasriyet Zahle	L	ML	M
Niha Zahle	L	ML	M	Ouadi Ed-Deloum	VL	ML	M	Ouadi El-Arayech	L	ML	M
Qaa El Rim	L	ML	M	Qab Elias	L	ML	M	Qousaya	L	ML	M
Rhit	L	ML	M	Riyak	L	M	M	Saadnayel	L	ML	M
Taal El-Akhdar	L	ML	M	Taalbeya	L	ML	M	Taanayel	L	ML	M
Talamara	ML	M	M	Tcheflik Edde Haouch	L	ML	M	Tcheflik Qiqano	L	ML	M
Terbol Zahle	L	ML	M	Touaite Zahle	L	L	M	Zahle Aradi	L	ML	M
Zahle El-Berbara	L	ML	M	Zahle El-Maallaqa	L	ML	M	Zahle El-Midane	L	ML	M
Zahle Er-Rassiye	L	ML	M	Zahle Haouch El-Ouma	L	ML	M	Zahle Haouch El-Ouma	L	ML	M
Zahle Haouch Ez-Zara	L	ML	M	Zahle Maalaga Aradi	L	ML	M	Zahle Mar Antonios	L	ML	M
Zahle Mar Elias	L	ML	M	Zahle Mar Gerios	L	ML	M	Zahle Saydet En-Naja	L	ML	M
Zebdoul	VL	ML	M								

Rachaiya

Municipality	01-Apr	02-Apr	03-Apr	Municipality	01-Apr	02-Apr	03-Apr	Municipality	01-Apr	02-Apr	03-Apr
Ain Arab Rachaiya	M	ML	M	Ain Ata	L	L	M	Ain Harche	L	L	M
Aqabe Rachaya	ML	ML	M	Ayha	M	M	M	Ayta El Fokhar	ML	ML	M
Bakifa Rachaya	ML	ML	M	Bakka	M	ML	M	Beit Lahya	ML	ML	M
Bireh Rachaiya	ML	ML	M	Daheer El Ahmar	ML	ML	M	Deir El-Achayer	M	M	M
Heloua Rachaiya	M	ML	M	Hoch El Qannabeh Rac	L	L	M	Kaoukaba Bou Arab	ML	ML	M
Kfar Danis	ML	ML	M	Kfar Mechki	L	L	M	Kfar Qouq	M	ML	M
Kherbet Rouha	ML	ML	M	Majdel Balhiss	L	L	M	Mdoukha	M	ML	M
Mhaydseh Rachaiya	ML	ML	M	Nabi Safa	L	L	M	Rachaiya	ML	ML	M
Rafid Rachaiya	ML	ML	M	Selsata (Mazraat Dei	ML	ML	M	Tannoura	ML	ML	M
Yanta	M	ML	M								

Beyrouth

Beyrouth

Municipality	01-Apr	02-Apr	03-Apr	Municipality	01-Apr	02-Apr	03-Apr	Municipality	01-Apr	02-Apr	03-Apr
Achrafieh	L	M	M	Ain el-Mreisse	L	M	M	Bachoura	L	M	M
Beirut Central Distr	L	M	M	Marfai	L	M	M	Mazraa	L	M	M
Medaouar	L	M	M	Minet el-Hosn	L	M	M	Mwssaitbeh	L	M	M
Ras Beirut	L	M	M	Rmeil	L	M	M	Saifi	L	M	M
Zqaq el-Blat	L	M	M								