

Lebanon Fire Risk Bulletin



CIVIL DEDEFENCE

Refer to cadast table condition.

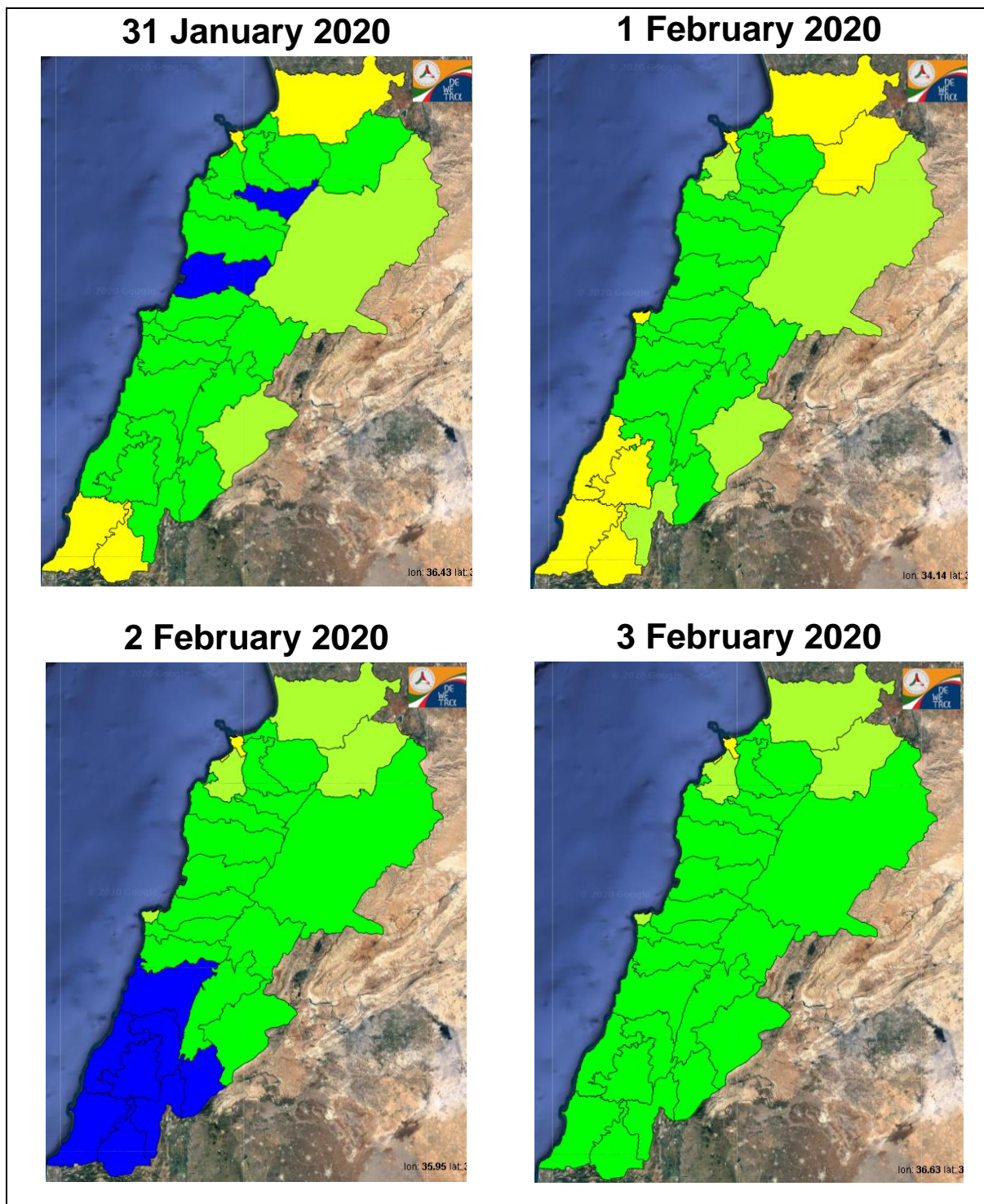
Please note that the indicated temperature is at 2 meters height from the ground.

General description of potential fire risk situation

Symbol	Level of risk	Meaning and actions
VL	Very low	Very low fire risk. Controlled burning operations can be hardly executed due to high fuel moisture content. Normally wildfires self-extinguish.
L	Low	Low fire risk. Controlled burning operations can be executed with a reasonable degree of safety.
ML	Medium low	Medium-low fire risk. Controlled burning operations can be executed in safety conditions. All the fires need to be extinguished.
M	Medium	Medium fire risk. Controlled burning operations would be avoided. All the fires need to be very well extinguished.
M	Medium high	Controlled burning is not recommended. Open flame will start fires. Cured grasslands and forest litter will burn readily. Spread is moderate in forests and fast in exposed areas. Patrolling and monitoring is suggested. Fight fires with direct attack and all available resources.
H	High	Ignition can occur easily with fast spread in grass, shrubs and forests. Fires will be very hot with crowning and short to medium spotting. Direct attack on the head may not be possible requiring indirect methods on flanks. Patrolling and monitoring the territory is highly suggested.
E	Extreme	Ignition can occur also from sparks. Fires will be extremely hot with fast rate of spread. Control may not be possible during day due to long range spotting and crowning. Suppression forces should limit efforts to limiting lateral spread. Damage potential total. Patrolling and monitoring the territory is highly suggested.

Beirut, 1 February 2020

FIRE RISK INDEX

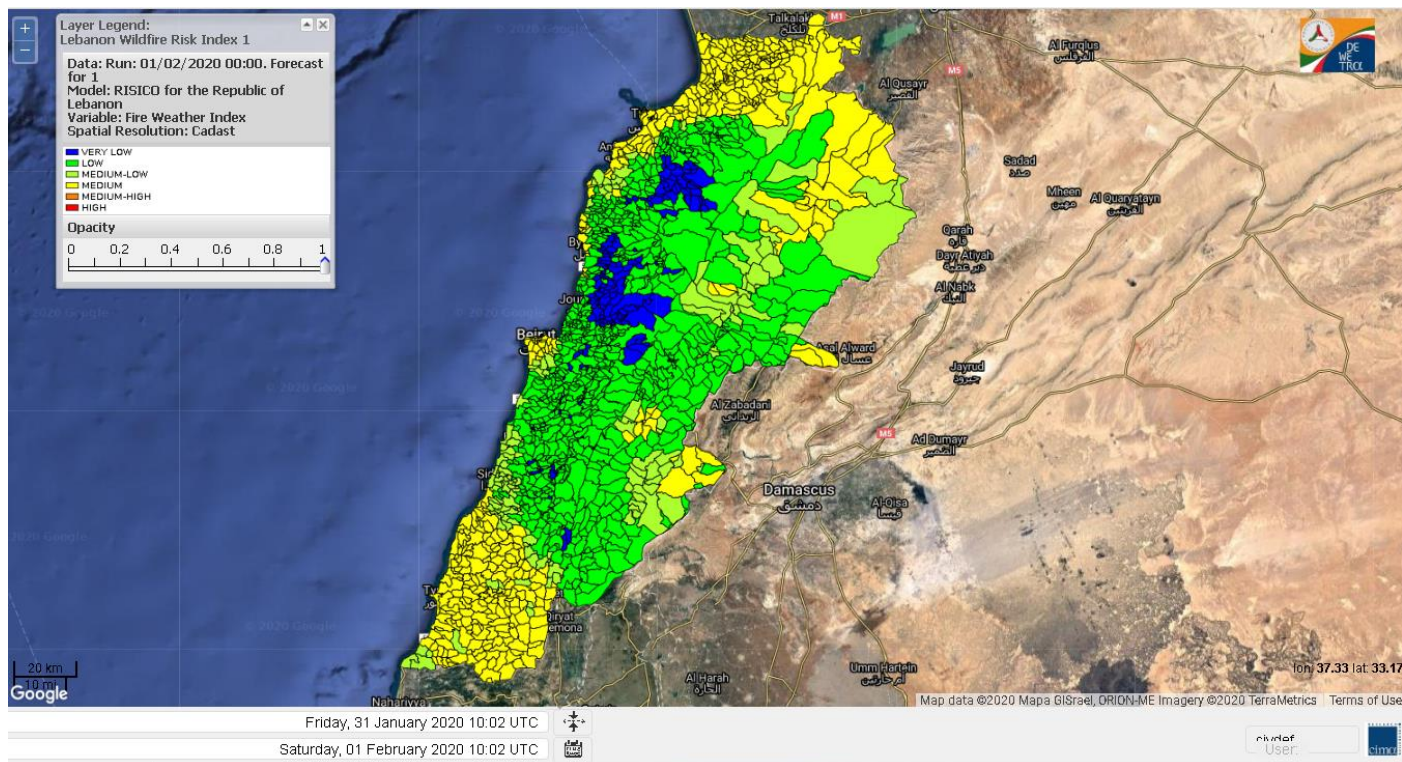


Layer Legend:
Lebanon Wildfire Risk Index 1

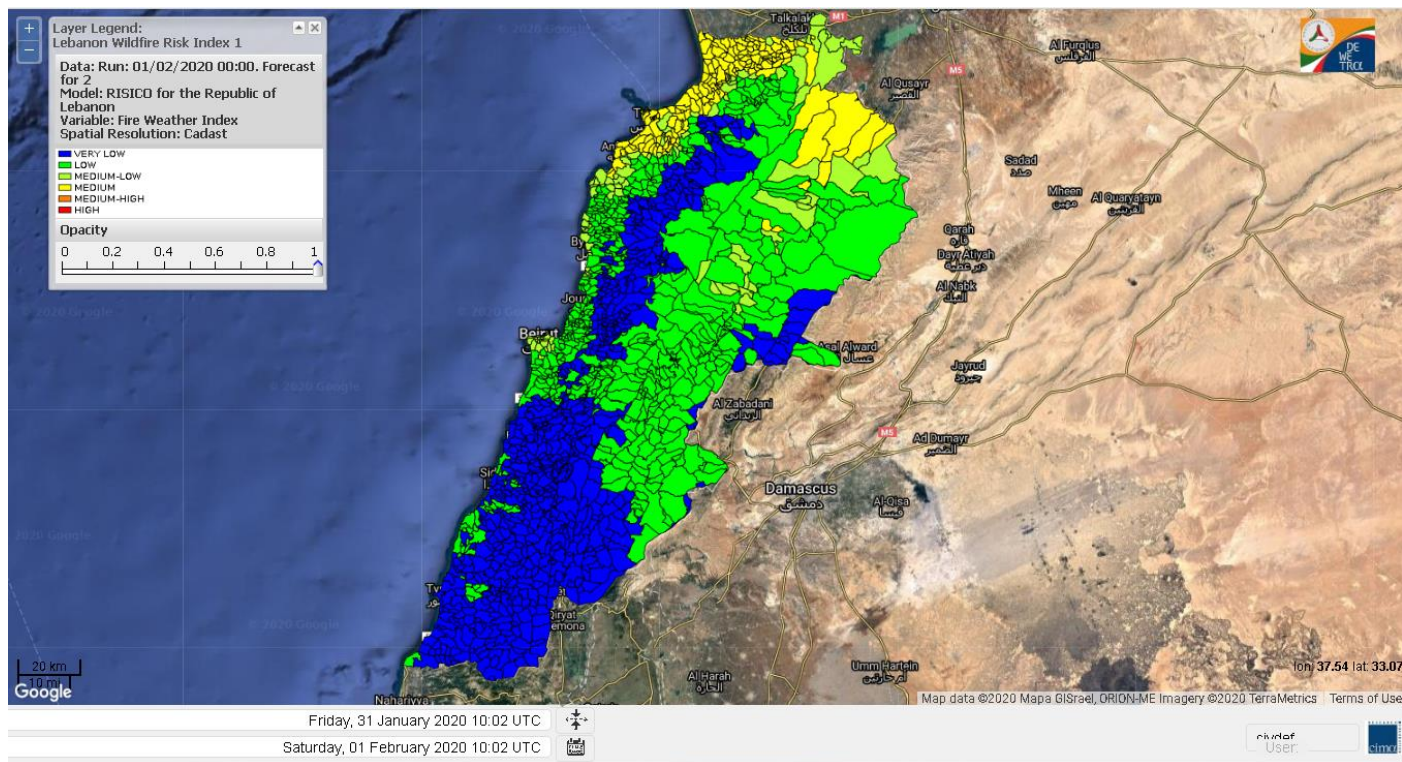
Data: Run: 01/02/2020 00:00. Forecast for 1
Model: RISICO for the Republic of Lebanon
Variable: Fire Weather Index
Spatial Resolution: Caza

- VERY LOW
- LOW
- MEDIUM-LOW
- MEDIUM
- MEDIUM-HIGH
- HIGH

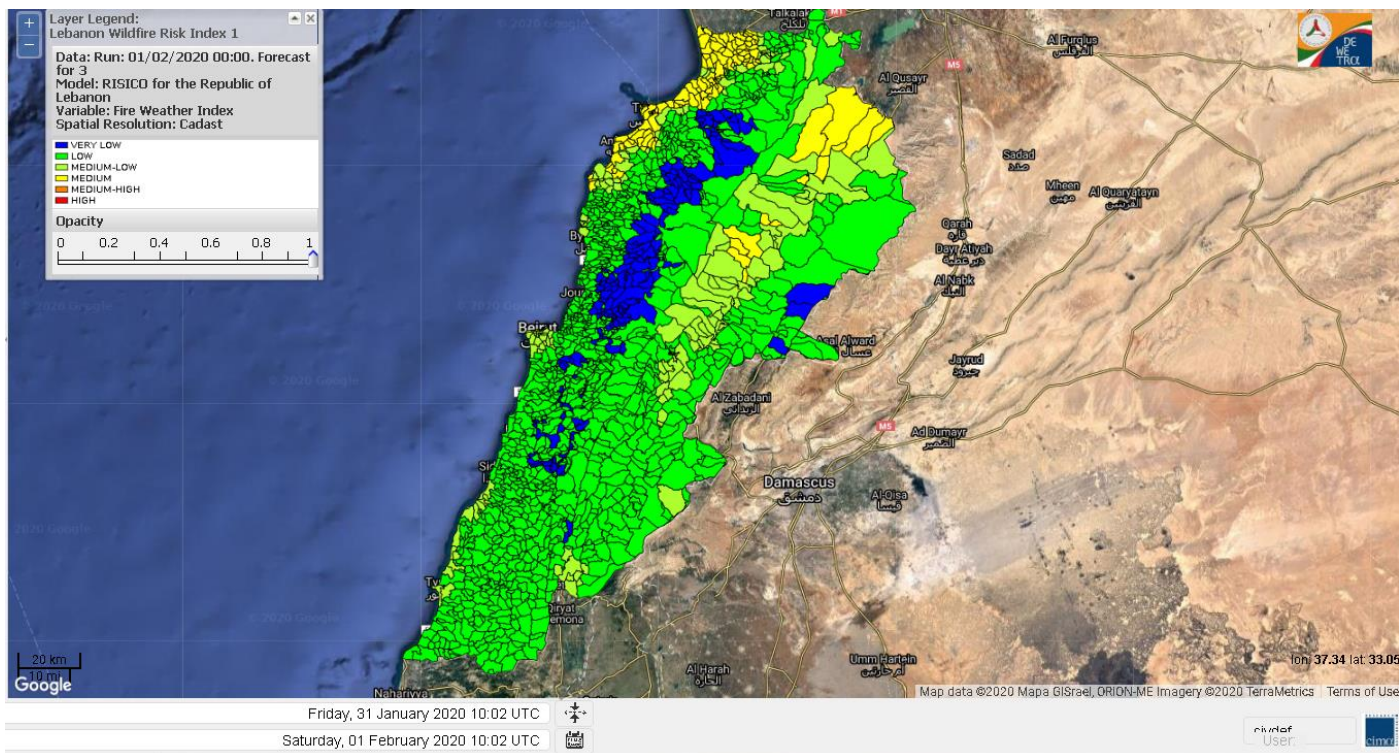
Lebanon for 1 February 2020



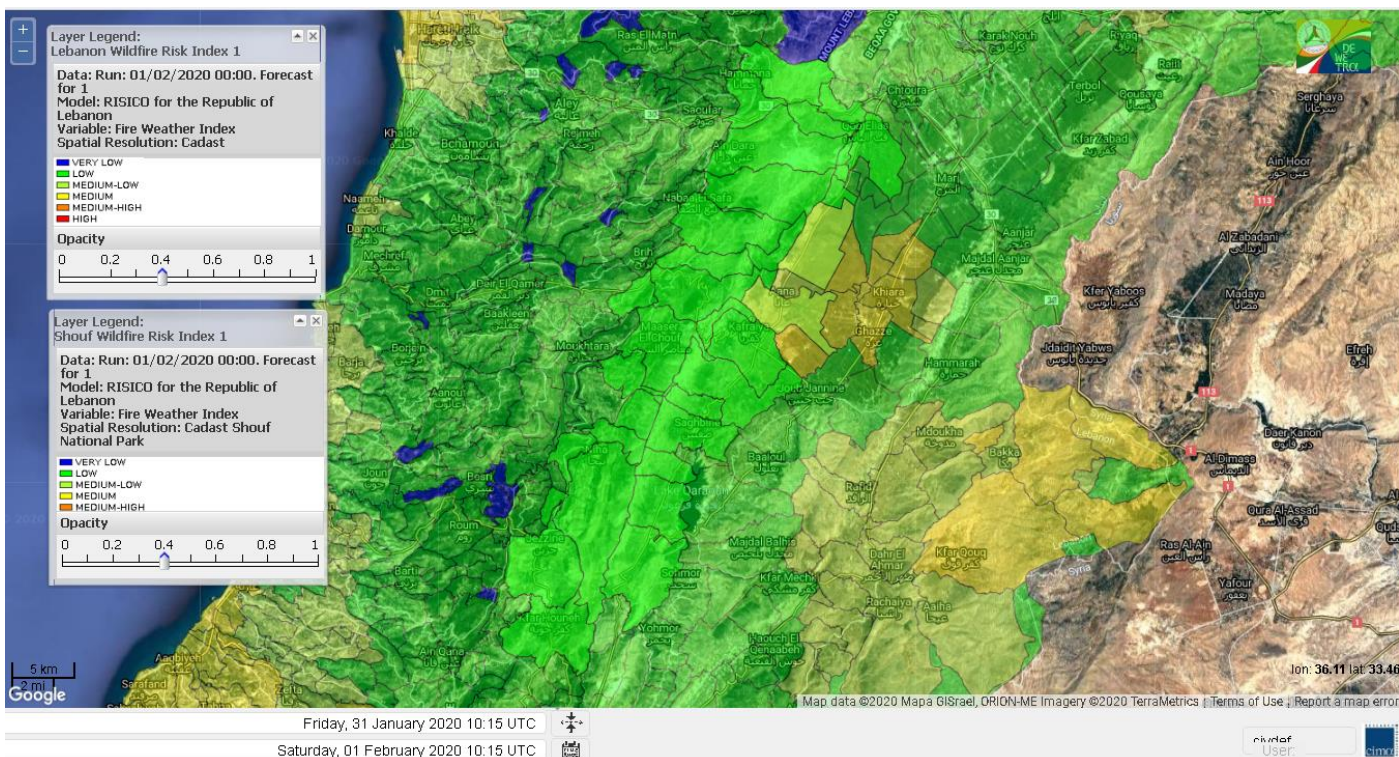
Lebanon for 2 February 2020



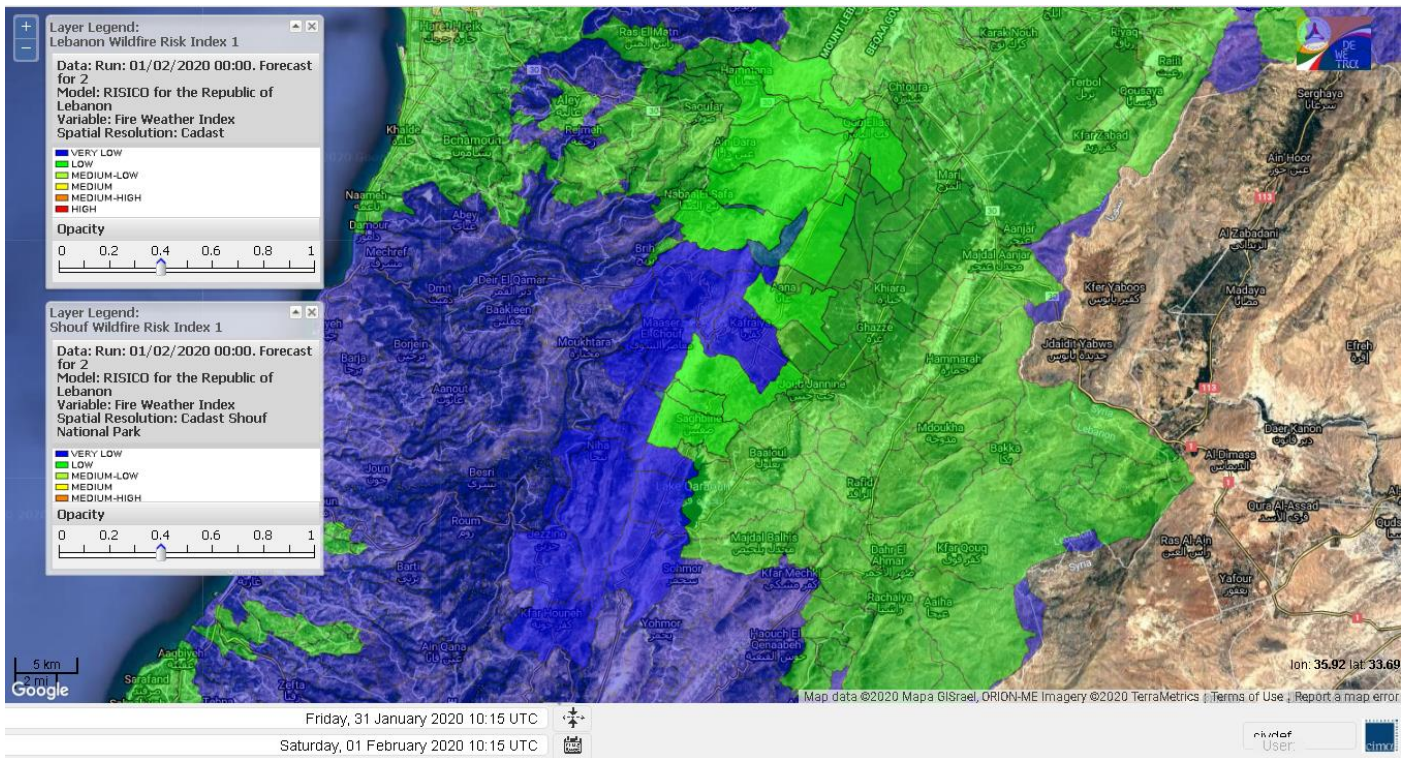
Lebanon for 3 February 2020



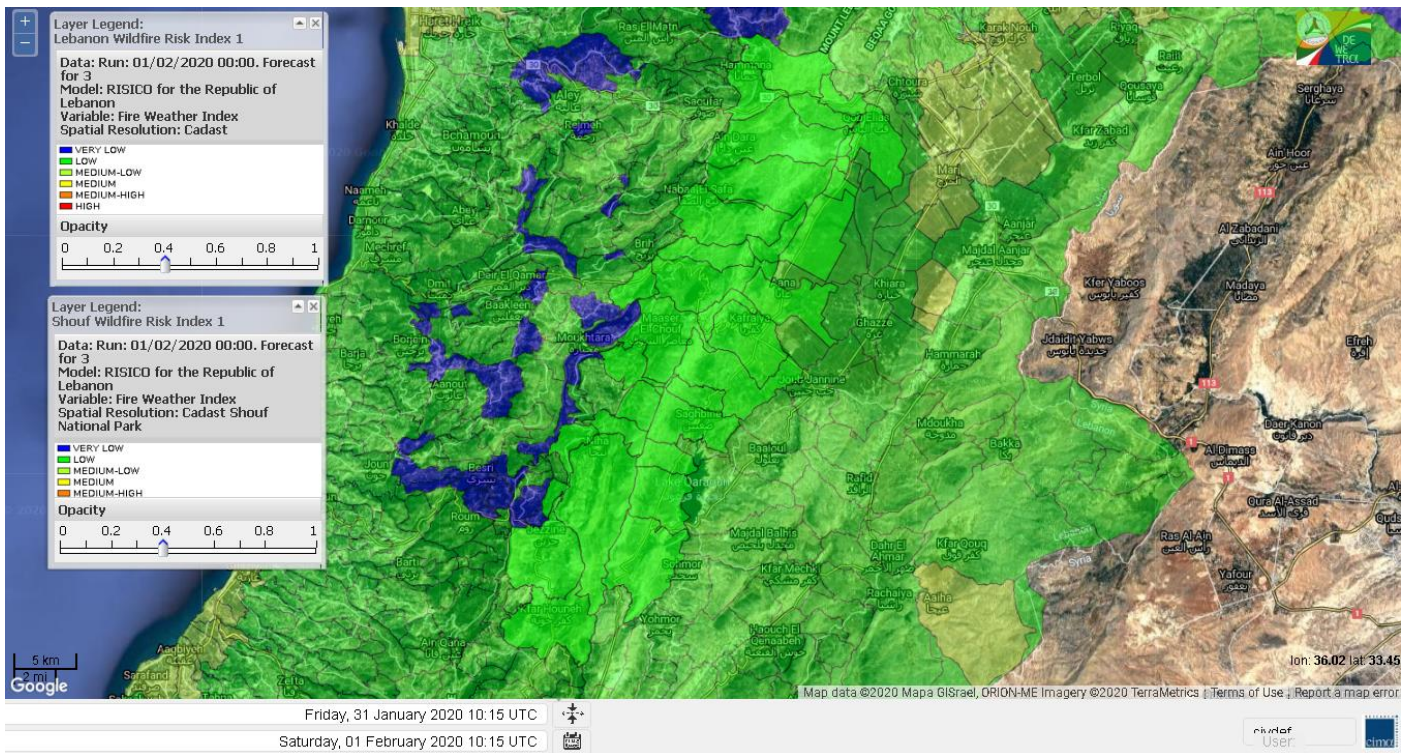
Shouf Biosphere Reserve Forecast for 1 February 2020



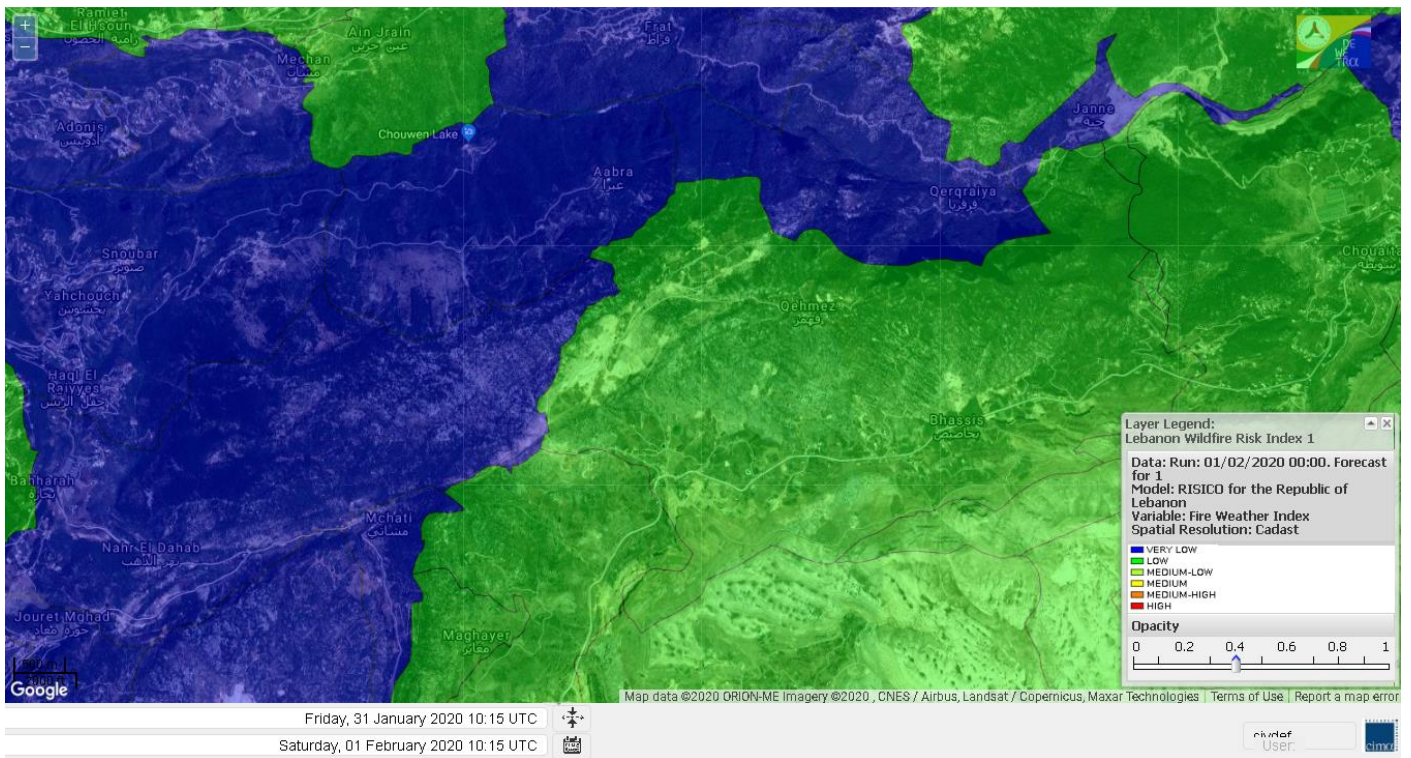
Shouf Biosphere Reserve Forecast for 2 February 2020



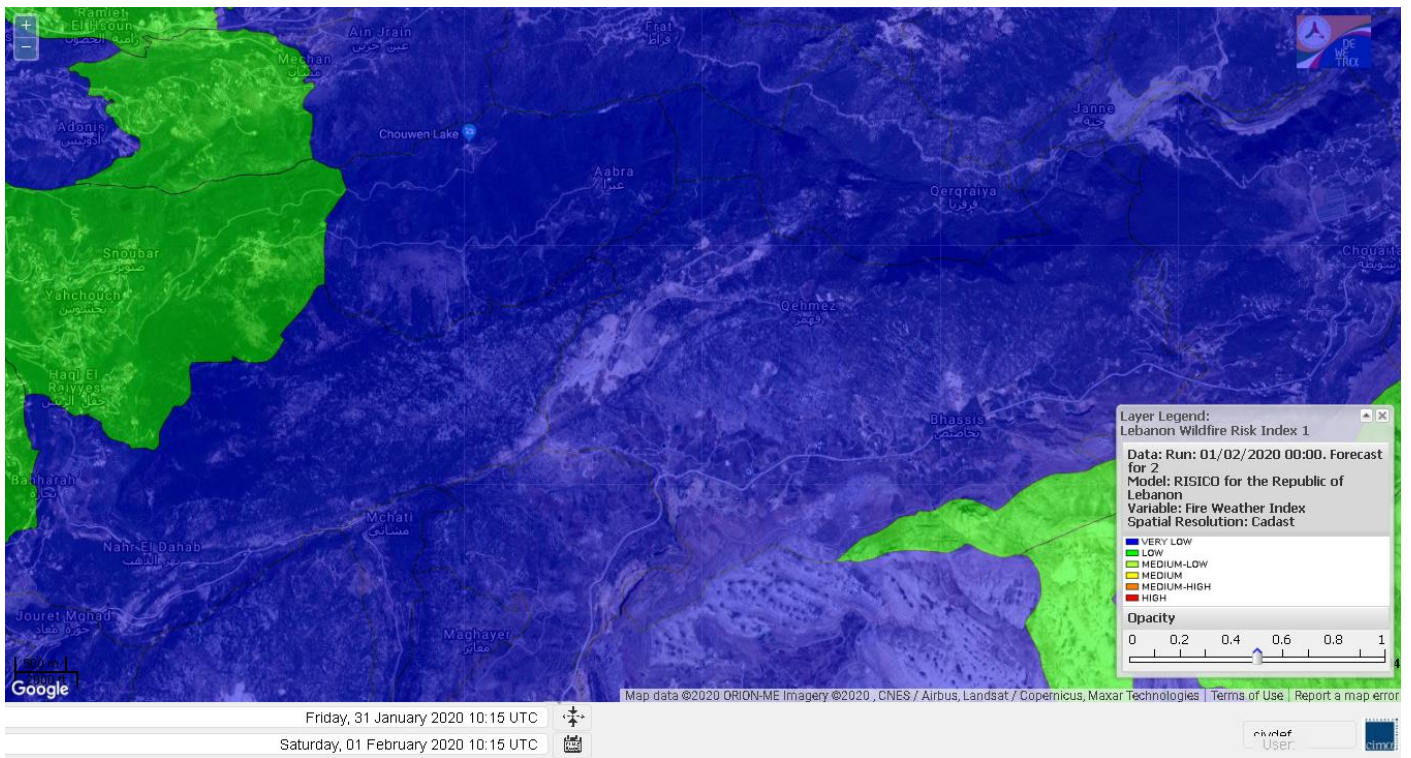
Shouf Biosphere Reserve Forecast for 3 February 2020



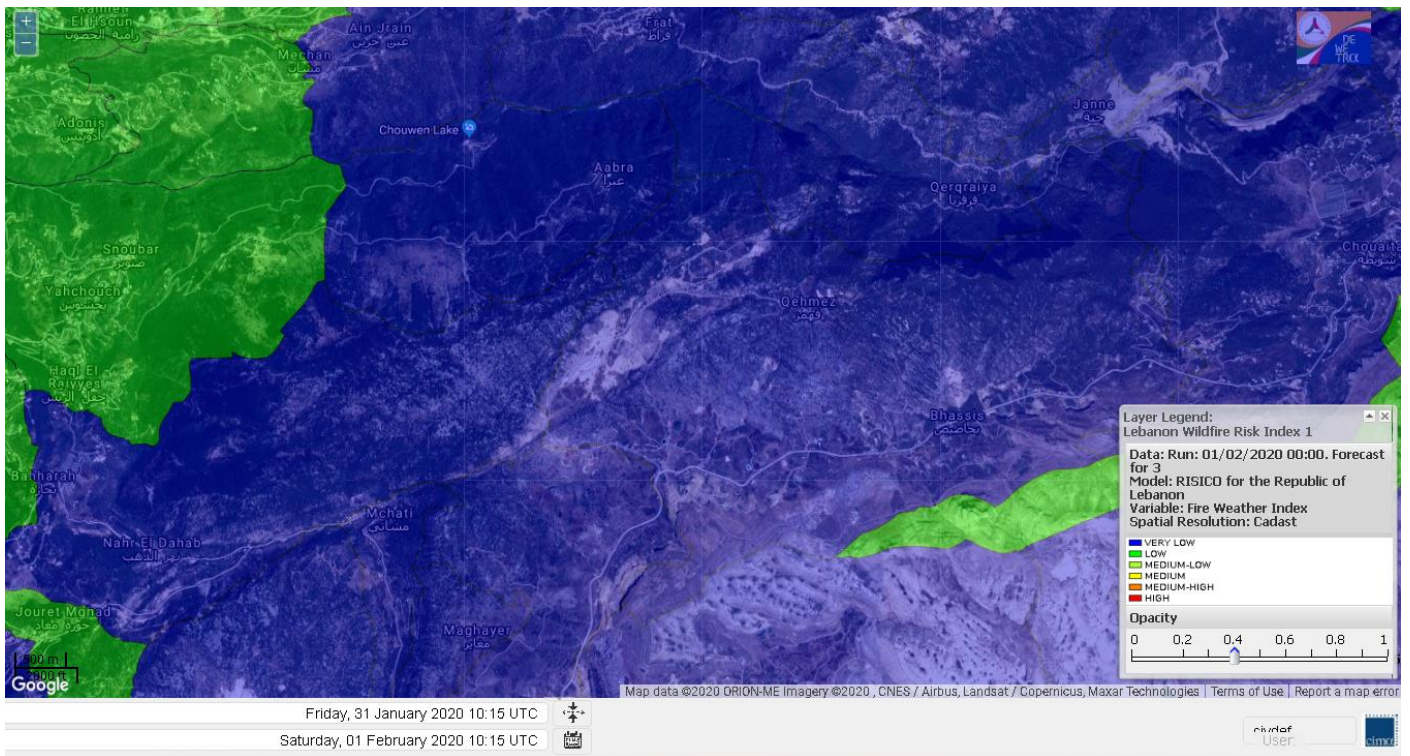
Jabal Moussa Reserve Forecast for 1 February 2020



Jabal Moussa Reserve Forecast for 2 February 2020



Jabal Moussa Reserve Forecast for 3 February 2020

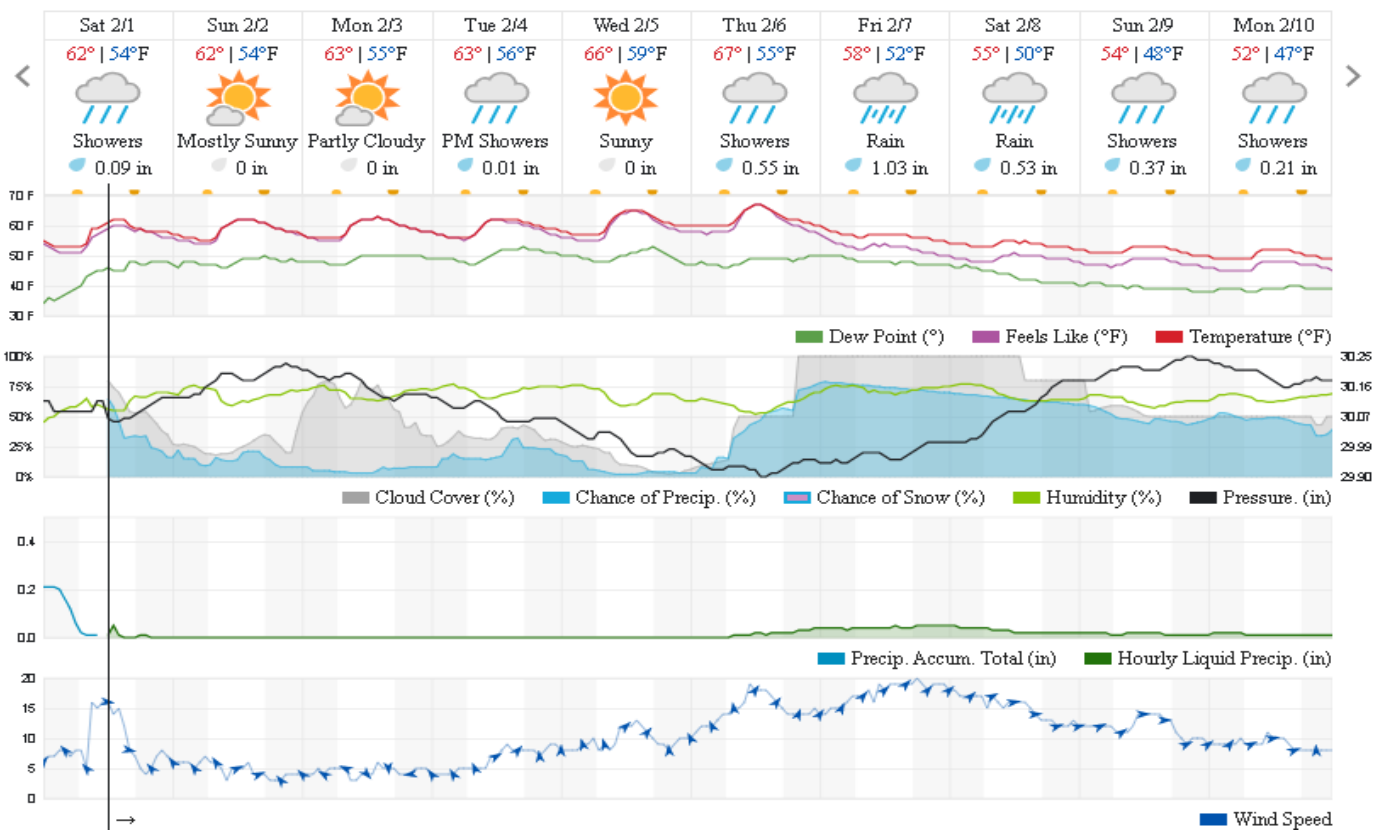


Beirut, Beirut Governorate, Lebanon 10-Day Weather Forecast

61° ACHRAFIEH,RIZK STATION | CHANGE

TODAY HOURLY **10-DAY** CALENDAR HISTORY WUNDERMAP

Customize



Nord

Koura

Municipality	01-Feb	02-Feb	03-Feb	Municipality	01-Feb	02-Feb	03-Feb	Municipality	01-Feb	02-Feb	03-Feb
Aaba	ML	ML	ML	Afsaddiq	L	L	L	Ain Ekrine	L	L	L
Amioun	L	L	L	Anfeh	M	M	M	Badbhoun	M	ML	ML
Barghoun	M	ML	ML	Barsa	M	M	M	Batroumine	M	M	M
Bdebba	M	M	M	Bechmizine	L	L	L	Bednaye El-Koura	ML	ML	M
Bhabbouch El-Koura	L	L	L	Bkeftine	ML	M	ML	Bnehran	L	L	L
Bqaiia El-Koura	M	M	M	Bsarma	L	L	L	Btaaboura	ML	ML	ML
Bttram	L	L	L	Btouratij	M	M	M	Bziza	L	L	L
Dar Beehtar	L	L	L	Dar Chmezzine	L	L	L	Deddeh	M	M	M
Deir El-Balamand	M	M	M	Fih	ML	ML	ML	Hraiche	M	M	M
Ijdaabrine	ML	ML	ML	Kaftoun	L	L	L	Kefraya El-Koura	M	M	M
Kfarakka	L	L	L	Kfarhata	ML	ML	M	Kfarhazir	ML	ML	ML
Kfarkahel	M	M	M	Kfarsaroun	L	L	L	Kosba	L	L	L
Mejdel el-Koura	L	L	L	Nakhle	M	M	M	Qalhat	M	M	M
Ras Masqa	M	M	M	Rechdibbine	L	L	L	Zakroun	M	M	M
Zgharta El-Mtaouile	L	L	L								

Bcharre

Municipality	01-Feb	02-Feb	03-Feb	Municipality	01-Feb	02-Feb	03-Feb	Municipality	01-Feb	02-Feb	03-Feb
Aabdine	VL	VL	VL	Bane	VL	VL	VL	Barhelioun	VL	VL	L
Bazooune	VL	L	L	Becharre	L	L	L	Beit Menzer	VL	VL	VL
Billa	VL	VL	VL	Blaouza	VL	VL	VL	Bqaa Kafra	VL	L	L
Bqerqacha	VL	L	L	Breissat	VL	VL	VL	Dimane	VL	VL	VL
Hadath El Jobbeh	L	VL	VL	Hadchit	VL	VL	VL	Hasroun	VL	VL	VL
Mazraat Aassaf	VL	VL	VL	Mazraat Bani Saab	VL	VL	VL	Mchaa El-Jobbeh	VL	L	L
Metrit	L	L	L	Moghr El-Ahoual	VL	VL	VL	Ouadi Qannoubine	VL	VL	VL
Qanat	VL	VL	VL	Qnayer	VL	VL	VL	Tourza	VL	VL	VL

Batroun

Municipality	01-Feb	02-Feb	03-Feb	Municipality	01-Feb	02-Feb	03-Feb	Municipality	01-Feb	02-Feb	03-Feb
Aabrine	ML	L	ML	Aalali	L	VL	L	Aartiz	L	L	L
Abdelli	L	L	L	Ajdabra	L	L	L	Assia	L	VL	L
Basbina	L	L	L	Batroun	M	ML	M	Bcheleh	L	VL	VL
Bechtoudar	L	VL	VL	Beit Chlala	L	VL	VL	Beit Kassab	VL	L	L
Bijdarfil	ML	ML	ML	Bqesmaya	L	L	L	Chatine	L	VL	VL
Chebtin	L	L	L	Chekka	M	M	M	Daael	VL	VL	L
Dahr Abi Yaghi	L	L	L	Daraya El-Batroun	L	L	L	Deir Billa	L	L	L
Deir Kfifane	L	L	L	Deir Mar Youhanna EL	L	VL	VL	Deir Mar Youssef Jra	L	L	L
Douma	L	VL	VL	Douq	L	L	L	Eddeh El-Batroun	L	L	L
Ftahat El-Batroun	L	L	L	Ghouma	L	L	L	Hadtoun	L	VL	VL
Hamat	ML	ML	ML	Harbouna	L	L	L	Hardine	VL	VL	VL
Helta	VL	VL	VL	Hery	M	M	M	Jebba	L	L	L
Jrabta El-Batroun	L	L	L	Jrane El-Batroun	L	L	L	Kfar Aabida	ML	L	L
Kfar Halda	VL	VL	VL	Kfarb Shlaimane	VL	VL	VL	Kfarhatna	L	L	L
Kfarhay	M	ML	ML	Kfarhelos	L	L	ML	Kfifane	L	L	L

Kfour El Arabi	L	VL	VL	Koubba	M	ML	M	Kour	L	L	L
Mar Mama	L	L	L	Masrah	L	L	L	Mehmarch	L	L	L
Mrah Chdid	L	L	L	Mrah El Ziyat	L	L	L	Mrah El-Hajj	L	VL	VL
Nahle El-Batroun	L	VL	VL	Niha El-Batroun	L	VL	VL	Ouahj El-Hajjar	ML	ML	ML
Ouata Houb	L	VL	VL	Qatnaaoun	ML	ML	ML	Racha	L	VL	VL
Rachana	L	L	L	Rachkida	ML	ML	ML	Ram El-Batroun	L	VL	VL
Ras Nahhach	ML	ML	ML	Selaata	M	ML	M	Sghar	L	L	L
Smar Jbayl	L	L	L	Sourat El-Batroun	L	L	L	Tannourine El-Faouqa	L	L	L
Tannourine Et-Tahta	VL	VL	VL	Thoum	ML	L	L	Toula El-Batroun	L	L	L
Zan	L	L	L								

Zgharta

Municipality	01-Feb	02-Feb	03-Feb	Municipality	01-Feb	02-Feb	03-Feb	Municipality	01-Feb	02-Feb	03-Feb
Aachach	ML	M	L	Aalma	M	M	L	Aarde	L	ML	L
Aintourine	VL	VL	VL	Arabet Qozhaya	VL	VL	VL	Arde	L	M	L
Arjis	VL	L	L	Asnoun	L	M	L	Ayto	VL	VL	VL
Basloukit	VL	VL	VL	Bchannine	L	ML	L	Besebeel	L	M	L
Bhairret Toula	VL	VL	VL	Bnachee	VL	L	L	Boussit	M	M	ML
Danha	L	ML	L	Daraiya Zgharta	L	L	L	Deir Jdeide	L	M	L
Ehden	VL	VL	VL	Halan	M	L	L	Hariq Zgharta	L	M	L
Houakir	L	L	L	Hraiqis	M	M	M	laal	L	ML	L
Ijbaa	VL	VL	VL	Karm Saddeh	VL	VL	VL	Kfarchakhna	L	M	ML
Kfardlaqous	L	M	L	Kfarfou	VL	VL	VL	Kfarhata Zgharta	L	M	L
Kfarhoura	L	ML	L	Kfarsghab	VL	VL	VL	Kfaryachit	L	ML	L
Kfarzaina	L	M	L	Khaldiye	L	M	L	Mazraat Ajbeaa	L	M	L
Mazraat Et-Teffah	VL	VL	VL	Mazraat Jneid	VL	M	L	Mejdlaiya Zgharta	M	ML	ML
Merh Kfarsghab	L	L	L	Miryata	ML	ML	L	Miziara	L	L	L
Mzraat Kefraya	M	ML	L	Qorah Bach	L	M	L	Rachiine	L	M	L
Ras Kifa	L	L	L	Sakhra	L	ML	L	Sebhel Zgharta	VL	VL	VL
Serhel	VL	VL	VL	Tallet Zgharta	L	ML	L	Toula Zgharta	VL	VL	VL
Zgharta	L	M	L								

Minieh-Denniye

Municipality	01-Feb	02-Feb	03-Feb	Municipality	01-Feb	02-Feb	03-Feb	Municipality	01-Feb	02-Feb	03-Feb
Aasaymout	ML	L	L	Aaymar	L	VL	L	Aazki	ML	VL	VL
Ain El-Tineh-Miniyeh	L	VL	VL	Assoun	L	VL	VL	Bakhaaoun	L	VL	VL
Bchennata	L	VL	VL	Bechehhara	L	L	L	Beddawi	M	M	M
Behouaita	L	VL	VL	Beit El Foqss	L	VL	VL	Beit Haouik	L	VL	VL
Beit Zoud	L	VL	VL	Bekaasafrine	L	VL	VL	Borj El Yahoudiyeh	M	M	M
Bqarsouna	L	VL	VL	Btermaz	L	VL	VL	Debaael	L	VL	VL
Deir Ammar	M	M	M	Deir Nbouh	L	L	L	Haouaret-Miniyeh	L	VL	VL
Haql el Azimeh	L	VL	VL	Harf El Siyad	L	VL	VL	Hazmiye-Miniyeh	L	VL	VL
Izal	L	L	L	Jarjour	VL	L	L	Jayroun	L	VL	VL
Kahf El-Malloul	L	L	L	Karm El-Moher	L	VL	L	Kfar Binine	L	VL	VL
Kfarchalane	L	VL	VL	Kfarhabou	L	L	L	Kharroub-Miniyeh	L	VL	VL
Mazraat El-Kreme	L	L	L	Mazraat Ketrane	L	VL	VL	Merkebta	M	M	M
Minyeh	M	M	M	Mrah El Sfirat	L	VL	VL	Mrah Sraj	L	VL	VL
Mrebbine	L	L	L	Nabi Youcheaa	M	M	M	Nemrine	L	VL	VL

Qarhaiya	M	L	L	Qarne	L	L	L	Qarsita	L	VL	VL
Qattineh-Miniyeh	L	VL	VL	Qemmamine	L	VL	VL	Qraine	L	VL	VL
Raouda-Aadoua	M	M	M	Rihaniyet-Miniyeh	M	M	M	Sfireh	L	VL	VL
Sir Ed-Danniyeh	L	VL	VL	Tarane	L	VL	VL	Terbol-Miniyeh	M	M	ML
Zaghartaghriane	L	L	L	Zouq Bhannine	M	M	M				

Nabatiye

Nabatiye

Municipality	01-Feb	02-Feb	03-Feb	Municipality	01-Feb	02-Feb	03-Feb	Municipality	01-Feb	02-Feb	03-Feb
Aabba	M	VL	L	Aazzi	ML	VL	L	Adchit El-Chqif	M	VL	L
Ain Bou Swar	L	VL	L	Ain Kana	L	VL	L	Ali El-TaHER	L	VL	L
Ansar	M	VL	L	Arab Salim	L	VL	L	Arnoun	M	VL	L
Bfaroue	ML	VL	L	Breyqaah	M	VL	L	Chargiyeh	M	VL	L
Choukine	M	VL	L	Deir El Zahrani	M	VL	L	Doueir El-Nabatiyeh	M	VL	L
Habbouch El-Nabatiye	ML	VL	L	Hamra El-Nabatiyeh	M	VL	L	Harouf El-Nabatiyeh	M	VL	L
Hmaile	L	VL	L	Houmin El Faouqa	L	VL	L	Houmin El Tahta	ML	VL	L
Jarjough	L	VL	L	Jbaah El-Nabatiyeh	L	VL	L	Jebchit	M	VL	L
Kfar Djal El-Nabatiy	M	VL	L	Kfar Remmane	L	VL	L	Kfar Sir	M	VL	L
Kfar Tebnit	ML	VL	L	Kfarfila	L	VL	L	Kfour El-Nabatieh	M	VL	L
Mayfadoun	M	VL	L	Mazraat Bsaffour	M	VL	L	Mazraat Chalbaal	M	VL	L
Mazraat Dmoul	M	VL	L	Mazraat El Khreibeh	ML	VL	L	Mazraat El-Bayad El-	ML	VL	L
Mazraat Kfarjaouz	ML	VL	L	Mazraat Qalaat Meiss	M	VL	L	Nabatiyeh El-Fawka	ML	VL	L
Nabatiyeh Et-Tahta	ML	VL	L	Namiriyyeh	M	VL	L	Qaaqaaiyet El Jisr	M	VL	L
Qossaibeh El-Nabatiy	M	VL	L	Roumine	L	VL	L	Sarba El-Nabatieh	L	VL	L
Sir El-Gharbiyeh	M	VL	L	Toul	M	VL	L	Yehmor El-Nabatiyeh	M	VL	L
Zaoutar El Charkiyeh	M	VL	L	Zaoutar El-Gharbiyeh	M	VL	L	Zebdine El-Nabatiyeh	M	VL	L
Zefta	ML	VL	L								

Hasbaiya

Municipality	01-Feb	02-Feb	03-Feb	Municipality	01-Feb	02-Feb	03-Feb	Municipality	01-Feb	02-Feb	03-Feb
Ain Jarfa	L	VL	L	Abou Qamha	L	VL	L	Ain Qania	L	VL	L
Bourghos	L	VL	L	Chebaa	L	VL	L	Chouaya Hasbaya	L	VL	L
Dellafeh	L	VL	L	Fardiss Hasbaiya	L	VL	L	Hasbaya	L	VL	L
Hbariyeh	L	VL	L	Kaoukaba Hasbaiya	L	VL	L	Kfar Chouba	L	VL	L
Kfar Hamam	L	VL	L	Kfeir El-Zait	L	VL	L	Khalwat Hasbaya	L	VL	L
Khreibet Hasbaiya	L	VL	L	Majidiyeh Hasbaiya	L	VL	L	Marj Ez-Zhour (Haouc	L	VL	L
Meri	L	VL	ML	Mimass	L	VL	L	Rachaiya El-Fokhar	L	VL	L
Salaiyeb	L	VL	ML								

Marjayoun

Municipality	01-Feb	02-Feb	03-Feb	Municipality	01-Feb	02-Feb	03-Feb	Municipality	01-Feb	02-Feb	03-Feb
Aalmane Marjaayoun	ML	VL	L	Aamra	L	VL	ML	Adayseh Marjaayoun	M	VL	L
Adchit El-Koussair	M	VL	L	Ain Aarab Marjaayoun	L	VL	ML	Bani Haiyann	ML	VL	L
Blatt Marjaayoun	L	VL	L	Blida	M	VL	L	Borj El-Moulouk	ML	VL	ML
Boueyda Marjaayoun	L	VL	L	Deir Mimass	ML	VL	L	Deir Siriane	M	VL	L
Dibbine	L	VL	L	Ebel El Saqi	L	VL	L	Houla	M	VL	L
Houra	M	VL	L	Kfar Kila	M	VL	L	Khiam Marjaayoun	L	VL	ML

Klayaa	ML	VL	L	Majdel Selem	M	VL	L	Marjaayoun	L	VL	ML
Markaba	M	VL	L	Mays El-Jabal	M	VL	L	Mazraat Doumiat	ML	VL	L
Mazraat Sarada	L	VL	ML	Mhaibib	M	VL	L	Qabrikha	M	VL	L
Qantara	M	VL	L	Rab El-Thalathine	M	VL	L	Saouaneh Marjayoun	M	VL	L
Talloussa	ML	VL	L	Taybeh Matjaayoun	M	VL	L	Touline	M	VL	L

Bent Jbail

Municipality	01-Feb	02-Feb	03-Feb	Municipality	01-Feb	02-Feb	03-Feb	Municipality	01-Feb	02-Feb	03-Feb
Ain-Ebel	M	VL	L	Aitaroun	M	VL	L	Aynata Bint Jbeil	M	VL	L
Ayta El-Chaeb	M	VL	L	Ayta El-Jabal	M	VL	L	Beit Lif	M	VL	L
Beit Yahoun	M	VL	L	Bint Jbeil	M	VL	L	Borj Qalaway	M	VL	L
Braachit	M	VL	L	Chakra	M	VL	L	Debel	M	VL	L
Deir Antar	M	VL	L	Froun	M	VL	L	Ghandouriyeh Bint Jb	M	VL	L
Hanine	M	VL	L	Hariss	M	VL	L	Hdatha	M	VL	L
Jmeymeh	M	VL	L	Kafra Bint Jbeil	M	VL	L	Kfar Dounine	M	VL	L
Khirbet Selm	M	VL	L	Kounine	M	VL	L	Maroun El Ras	M	VL	L
Qalaway	M	VL	L	Qaouzah	M	VL	L	Qatmoun	M	VL	L
Ramya Bint Jbeil	M	VL	L	Rchaf	M	VL	L	Rmeich	M	VL	L
Safad Al Battikh	M	VL	L	Salhaneh	M	VL	L	Serbine	M	VL	L
Sultanieh Bint Jbeil	M	VL	L	Tibnine	M	VL	L	Tiri	M	VL	L
Yaroun	M	VL	L	Yater	M	VL	L				

Mont Liban

Jbail

Municipality	01-Feb	02-Feb	03-Feb	Municipality	01-Feb	02-Feb	03-Feb	Municipality	01-Feb	02-Feb	03-Feb
Aabeydat	L	L	L	Aalita	VL	VL	L	Aamchit	M	ML	ML
Aarab El-Lahib	L	VL	VL	Aarasta	L	VL	VL	Adonis Jbeil	VL	VL	L
Afqa Jbeil	VL	VL	VL	Ain El Delbeh Jbeil	L	VL	L	Ain El-Ghouyba	VL	VL	VL
Ain Jrain	L	VL	VL	Ain Kfah	L	L	L	Almat El Chemaliyat	L	VL	VL
Almat El-Jenoubiya	L	VL	VL	Aqoura	L	L	L	Bayzoun	L	L	L
Bchille Jbeil	VL	L	L	Bechtlida	VL	VL	L	Behdaydat	L	L	L
Beit Habbaq	L	L	L	Bejjeh	L	L	L	Bekhaaz	L	L	L
Berbara Jbeil	M	ML	L	Bintael	L	L	L	Birket Hjoula	VL	L	L
Blatt Jbeil	L	L	L	Boulhos	VL	VL	VL	Breyj Jbeil	VL	VL	L
Chamat	L	L	L	Chikhane	M	ML	ML	Chmout	L	L	L
Eddeh Jbeil	L	L	L	Ehmej	L	VL	VL	Fatre	VL	VL	L
Ferhet	L	L	L	Fghal	L	L	L	Frat	VL	VL	VL
Ghabat	L	VL	L	Ghalboun	L	L	L	Gharzouz	L	L	L
Ghofrine	L	L	L	Habil	VL	L	L	Halate	L	L	L
Haqel	L	L	L	Hbaline	L	L	L	Hboub	L	L	L
Hdeine	L	VL	L	Hema Er-Rehban	L	VL	VL	Hema Mar Maroun Aann	L	VL	VL
Hjoula	VL	L	L	Hosrayel	ML	L	L	Hsarat	L	L	L
Hsoun	L	L	L	Jaj	L	VL	VL	Janne	VL	VL	VL
Jbeil	M	ML	L	Jeddeyel Jbeil	M	ML	ML	Jlisse	VL	VL	L
Jouret El-Qattine	VL	L	L	Kfar Baal Annaya	L	VL	L	Kfar Kidde	ML	L	L
Kfar Kouas	VL	L	L	Kfar Mashoun	L	L	L	Kfoun	L	L	L

Kharbe Jbeil	L	L	L	Laqlouq	L	VL	L	Lassa	L	VL	VL
Lehfed	L	VL	L	Maad	L	L	L	Mar Sarkis	L	VL	VL
Mastita	M	ML	L	Mayfouq	L	VL	L	Mazraat El Siyad	L	VL	VL
Mazraat El-Maaden	VL	VL	VL	Mechane	VL	L	L	Mechmech Jbeil	L	VL	L
Mehrin	L	L	L	Mejdel El-Akoura	L	VL	L	Mghayreh Jbeil	L	VL	L
Mounsef	M	ML	ML	Nahr Ibrahim	M	ML	L	Qahmez	L	VL	VL
Qartaba	L	VL	VL	Qartaboun	M	ML	ML	Qattara Jbeil	L	VL	VL
Qorqraya	VL	VL	VL	Ramout	L	L	L	Ras Osta	VL	L	L
Rihane Jbeil	M	ML	ML	Sakiet El-Khayt	L	L	L	Saqi Richmaya	L	VL	VL
Sebrine	VL	L	L	Seraita	L	VL	L	Souane Jbeil	L	VL	VL
Tadmor	L	VL	L	Tartej	L	VL	VL	Torzaiya	L	L	L
Yanouh Jbeil	L	VL	L	Zibidine Jbeil	VL	VL	L				

El Metn

Municipality	01-Feb	02-Feb	03-Feb	Municipality	01-Feb	02-Feb	03-Feb	Municipality	01-Feb	02-Feb	03-Feb
Aain El-Qabu	VL	VL	VL	Aain El-Qach	L	VL	L	Aain El-Teffaha	VL	VL	VL
Aain el-Safssaf El-M	L	VL	VL	Abou Mizane	VL	VL	VL	Ain Aar	L	L	L
Ain Alaq	L	L	L	Ain El-Kharroube	VL	VL	L	Ain El-Sendiane	L	VL	L
Ain El-Zeitoune	L	VL	VL	Ain Saadeh	L	L	L	Aintoura El-Matn	VL	L	L
Amaret Chalhoub	ML	L	L	Antelias	L	L	L	Atchaneh	L	L	L
Ayroun	L	VL	L	Baabdat	L	VL	L	Baouchariyeh	M	L	L
Baskinta	VL	VL	VL	Beit Chabab	L	VL	L	Beit El-Chaar	L	L	L
Beit El-Kekko	L	L	L	Beit Mery	L	L	L	Bhersaf	L	VL	L
Bikfaya	L	VL	L	Biyakout	L	L	L	Bnabil	L	VL	L
Bourj Hammoud	M	ML	ML	Bqennaya	L	L	L	Broummana El-Matn	L	L	L
Bsalim	L	L	L	Bsifrine	L	VL	VL	Bteghrine	L	VL	VL
Chaouiye	L	L	L	Chouaya El-Matn	L	VL	L	Choueir	L	VL	VL
Chrine	VL	VL	VL	Dahr El Sawan El-Mat	L	L	L	Daychouniyeh	L	L	L
Dbayeh	L	L	L	Deir Chamra	VL	VL	VL	Deir Mar Abda el Mch	L	L	L
Deir Mar Roukouz	ML	L	L	Deir Tamiche	L	L	L	Dik El-Mehdi	L	L	L
Dikwaneh	M	ML	ML	Douar El-Matn	L	VL	L	Fanar	L	L	L
Fraike	L	L	L	Haret El-Ballaneh	L	L	L	Hbous	L	L	L
Himlaya	VL	VL	VL	Jal El Did	L	L	L	Jdeideh El-Metn	ML	L	L
Jouar El-Matn	L	VL	VL	Jouret El-Ballout	L	L	L	Kaaqour	L	VL	L
Kfar Aaqab	VL	VL	VL	Kfertay El-Matn	VL	VL	VL	Khenchara	L	VL	VL
Khillet El-Mtain	L	VL	L	Konnabat Broummana	L	L	L	Konnabat Salima	L	VL	VL
Machraah El-Matn	VL	VL	VL	Majdel Tarchich	VL	L	L	Majzoub	L	L	L
Mansouriyeh El-Metn	L	L	L	Mar Boutros Karm Et-	VL	VL	VL	Mar Chaya et Mzekke	L	L	L
Mar Moussa Ed-Douar	L	VL	VL	Marjaba	L	VL	VL	Masqa	L	L	L
Mayasse	VL	VL	VL	Mazraat Deir Aoukar	L	L	L	Mazraat El-Hadirat	L	L	L
Mazraat Yachouh	L	L	L	Mchikha	L	VL	L	Menqlet Mezher	L	L	L
Mhaydseh Matn	L	VL	L	Mkalles	M	L	ML	Mrouj	L	L	L
Mtain	L	L	L	Mtayleb	L	L	L	Nabay	L	L	L
Naccache	L	L	L	Ouadi Chahine	VL	VL	VL	Ouadi El-Karm El-Mat	VL	VL	VL
Ouata El-Mrouj	L	VL	VL	Ouyoun El-Matn	VL	VL	L	Qornet Chehwan	L	L	L
Qornet El-Hamra	L	L	L	Roumieh	L	L	L	Sfeilet Bikfaya	VL	VL	VL
Sinn El-Fil	M	ML	ML	Zabbougha	VL	VL	VL	Zalqa	L	L	L

Zarouon	L	VL	L	Zekrite	L	L	L	Zighrine El-Matn	L	VL	L
Zouk El-Khrab	L	L	L								

Chouf

Municipality	01-Feb	02-Feb	03-Feb	Municipality	01-Feb	02-Feb	03-Feb	Municipality	01-Feb	02-Feb	03-Feb
Aalmane El-Chouf	ML	VL	L	Aammq El-Chouf	L	VL	VL	Ain Ouzein	L	VL	VL
Ain Qani	L	VL	VL	Ain Zhalta	L	L	L	Ainbal	L	VL	L
Amatour	L	VL	VL	Anout	L	VL	L	Atrine	L	VL	VL
Baadarane	L	VL	L	Baaqline	L	VL	L	Baasir	ML	VL	L
Barja	ML	VL	L	Barouk	L	VL	L	Bater	L	VL	L
Batloun	L	VL	L	Bayqoun	L	VL	L	Bchetfine	L	VL	L
Beiteddine	L	VL	VL	Benouati Ech-Chouf	L	VL	L	Berjein	L	VL	L
Bireh et Mtalleh	L	VL	L	Biret El-Chouf	L	VL	L	Bkechtine Ouel Mchei	L	VL	VL
Bkifa El-Chouf	L	VL	L	Botme	L	VL	VL	Bqaiaa Ech-Chouf	L	VL	L
Bsaba El-Chouf	L	VL	L	Chammis El-Chouf	L	VL	L	Chehim	L	VL	L
Chemaarine	L	VL	VL	Chourit	VL	VL	VL	Daher El-Chouf	L	VL	L
Dalhoun	L	VL	L	Damour	L	VL	L	Daraya El-Chouf	L	VL	VL
Deir El-Moukhalles	L	VL	VL	Deir Baba	L	VL	L	Deir Dourit	L	VL	L
Deir El-Qamar	L	VL	L	Deir Kouche	L	VL	L	Dibbieh	L	VL	L
Dmit	L	VL	L	Fouara Jaafar	L	VL	VL	Fraidis El-Chouf	L	VL	L
Ghabet Jaafar	L	VL	L	Gharife	L	VL	VL	Haret Jandal	L	VL	L
Hasrout	L	VL	L	Jadra	ML	VL	L	Jahlieh	L	VL	L
Jbeih El-Chouf	L	VL	L	Jdeidet El-Chouf	L	VL	L	Jiyeh	ML	VL	L
Jleilyeh	L	VL	L	Jmailiyeh	L	VL	L	Joun	L	VL	L
Kahlounie El-Chouf	L	VL	L	Ketermaya	ML	VL	L	Kfar Faqoud	L	VL	L
Kfar Hamal	L	VL	L	Kfar Him	L	VL	L	Kfar Katra	L	VL	L
Kfar Niss	L	VL	L	Kfar hay	L	VL	VL	Kfarnabrakh	L	VL	L
Khirbet Bisri	L	VL	L	Knayse El-Chouf	VL	VL	VL	Maaniyeh	L	VL	L
Maasser Beiteddine	L	VL	L	Maasser El-Chouf	L	VL	L	Majdalouna	L	VL	L
Majdel El-Meouch	L	VL	L	Mazboud	L	VL	L	Mazmoura	L	VL	L
Mazraat El Chouf	L	VL	L	Mazraat El Daher	L	VL	L	Mazraat El-Douair	VL	VL	VL
Mechref	L	VL	L	Mghairie	L	VL	L	Mghayrie El-Chouf	L	VL	L
Moukhtara	L	VL	L	Mrusti	L	VL	L	Mtolle	L	VL	L
Naameh	ML	L	L	Niha El-Chouf	L	VL	L	Ouadi Abou Youssef	VL	VL	VL
Ouadi Ed-Deir	L	VL	L	Ouadi El-Sit	L	VL	L	Ouadi bnehlay	L	VL	VL
Qraibeh	L	VL	L	Qreiaa	VL	VL	VL	Rmayle El-Chouf	ML	VL	L
Semqaniyeh	L	VL	L	Sibline	ML	VL	L	Sirjbeil	L	VL	L
Warhanieh	L	L	L	Werdaniyeh	ML	VL	L	Zaarourieh	L	VL	L

Baabda

Municipality	01-Feb	02-Feb	03-Feb	Municipality	01-Feb	02-Feb	03-Feb	Municipality	01-Feb	02-Feb	03-Feb
Abadiyeh	L	VL	VL	Ain Mouaffaq	L	VL	VL	Araiya	L	VL	VL
Arbaniyeh	L	VL	VL	Arsoun	L	VL	L	Baabda	ML	L	L
Baalchmey	L	VL	L	Bmaryam	L	L	L	Bourj El-Brajneh	ML	L	L
Boutchay	L	L	L	Bsaba Baabda	L	L	L	Btekhney	L	L	L
Btibyat	L	L	L	Bzbeddine	L	VL	L	Chbeniyeh	L	L	L
Chiyah	M	L	ML	Chmeisset Baabda	L	VL	L	Chouit	VL	VL	VL
Deir El-harf	L	VL	L	Deir Khouna	L	L	L	Dlaybeh	L	VL	VL

Falougha	L	L	L	Furn El-Chebbak	M	ML	ML	Hadath Beyrouth	ML	L	L
Halaliyeh Baabda	VL	VL	VL	Hammana	L	L	L	Haret El Sett	L	VL	VL
Haret Hamze	L	L	L	Haret Hreik	M	ML	ML	Hasbaiya El-Metn	L	VL	VL
Jouar El-Hoz	L	VL	VL	Jouret Arsoun	L	VL	L	Kfar Chima	ML	L	L
Kfar Selouane	VL	L	L	Khalouat Baabda	L	L	L	Kneisset Baabda	L	VL	L
Laylakeh	ML	L	L	Louayzeh Baabda	L	L	L	Merdache	L	L	L
Mzairaa Baabda	VL	VL	L	Ouadi Chahrour El Ol	L	L	L	Ouadi Chahrour El So	L	L	L
Qalaa Baabda	L	L	L	Qhraybe Baabda	L	L	L	Qobbayaa	L	L	L
Qornayel	L	VL	VL	Qortada	VL	VL	L	Qrayeh Baabda	L	L	L
Qsaibeh Baabda	VL	VL	L	Qtale Baabda	L	L	L	Ras El Metn	L	L	L
Ras El-Haref	L	L	L	Rouayset El-Ballout	L	VL	VL	Salima Baabda	L	VL	L
Tahouitat El Ghadir	ML	L	L	Tarchich	VL	L	L	Zandouqa	VL	VL	L

Aley

Municipality	01-Feb	02-Feb	03-Feb	Municipality	01-Feb	02-Feb	03-Feb	Municipality	01-Feb	02-Feb	03-Feb
Abey	L	VL	L	Aghmid	L	L	L	Ain Dara	L	L	L
Ain Drafil	L	VL	L	Ain El Halazoun	L	L	L	Ain El-Rmmaneh	VL	VL	VL
Ain Jedideh	L	VL	L	Ain Ksour	L	VL	L	Ain Onoub	L	L	L
Ain Traz	L	VL	L	Ainab	L	L	L	Aley	L	L	L
Aramoun	L	L	L	Aytat	L	L	L	Azouniyeh	L	L	L
Baawerta	L	VL	L	Badghan Oua Wadi Bad	L	L	L	Bassatine	L	L	L
Bayssour	L	L	L	Bchamoun	L	L	L	Bdadoun	L	VL	L
Behouara	L	VL	L	Bennay	L	VL	L	Bhamdoun El-Dayaa	L	L	L
Bhamdoun El-Mhatta	L	L	L	Bkhechey	L	VL	L	Bleibel	L	L	L
Bmakine	L	L	L	Bmehray	L	L	L	Bouzrid	VL	VL	VL
Bserrine	L	L	L	Bsous	L	VL	VL	Btalloun	L	L	L
Btater	L	L	L	Chanay	L	L	L	Charoun	L	L	L
Chartoun	L	VL	L	Chemlane	L	L	L	Chouifat El-Aamrous	ML	L	L
Chouifat El-Oumara	L	L	L	Chouifat El-Quoubbe	L	L	L	Dakkoun	L	VL	L
Deir Qoubel	L	L	L	Dfoun	L	L	L	Douair El Remmaneh	VL	VL	VL
Ghaboun	L	VL	L	Habramoun	L	VL	VL	Homs Oua Hama	L	L	L
Houmal	L	L	L	Jisr El Qadi	L	VL	L	Kehaleh	L	VL	VL
Keyfoun	L	L	L	Kfar Aamey	L	L	L	Kommatyeh	L	VL	L
Maasrati	L	VL	L	Majdel Baana	L	L	L	Mansourieh et Ain El	L	L	L
Mazraat El-Nahr	L	VL	L	Mchakhte	L	L	L	Mecherfeh	L	L	L
Mejdaya	L	VL	VL	Mrayjat	L	L	L	Ramliyah	L	VL	L
Rechmaya	L	VL	L	Rejmeh	L	VL	VL	Remhala	L	L	L
Rouaysset El Neemane	L	L	L	Saoufar	L	L	L	Selfaya	L	VL	VL
Sirhmoul	L	L	L	Souq El Ghareb	L	VL	L	Taazanieh	L	VL	L

Kesrouane

Municipality	01-Feb	02-Feb	03-Feb	Municipality	01-Feb	02-Feb	03-Feb	Municipality	01-Feb	02-Feb	03-Feb
Achkout	VL	VL	VL	Adma Oua Dafneh	L	L	L	Ain Ed-Delbe Kesroua	VL	VL	VL
Ain El-Rihane	L	L	L	Aintoura Kesrouane	L	L	L	Ajaltoun	VL	VL	VL
Akaybeh Kesrouane	M	ML	ML	Aramoun Kesrouane	VL	VL	VL	Azra ouel Ozor	VL	VL	L
Ballouneh	VL	VL	VL	Batha	VL	VL	L	Bekaatat Achkout	VL	VL	VL
Bekaatat Kanaan	VL	VL	VL	Bizhel	VL	L	L	Bouar	L	L	L
Bqaatouta	VL	VL	VL	Bqaq Ed-Dine	ML	ML	L	Bzommar	VL	VL	VL

Chahtoul	VL	VL	VL	Chnaniir	VL	L	L	Chouan	VL	VL	VL
Daraya Kesrouane	VL	VL	VL	Darououn	L	L	L	Deir Baqlouch	VL	L	L
Dlebta	VL	VL	VL	Eghbeh	VL	VL	VL	Faraya	L	VL	VL
Fatka	L	L	L	Feytroun	VL	VL	VL	Ghazir	L	L	L
Ghbaleh Kesrouane	L	L	L	Ghedrass	VL	VL	L	Ghosta	VL	VL	L
Ghynéh	L	VL	VL	Harharaya w Kattine	VL	VL	VL	Harissa Kesrouane	L	L	L
Hayata	VL	VL	VL	Hosein	VL	VL	VL	Hrajel	L	VL	VL
Jdeideh Ghazir	VL	VL	VL	Jeita	L	L	L	Jounieh Ghadir	L	L	L
Jounieh Haret Sakhr	L	L	L	Jounieh Salel Alma	L	L	L	Jounieh Sarba	L	L	L
Jouret Bedrane	L	L	L	Jouret Mhad	VL	VL	VL	Jouret Termos	VL	VL	L
Kfar Debiane	VL	VL	VL	Kfar Tay Kesrouane	VL	VL	VL	Kfar Yassine	L	L	L
Kfour Kesrouane	VL	VL	VL	Kharayeb Nahr Ibrahi	L	L	L	Klayaat Kesrouane	VL	VL	VL
Maarab	VL	VL	VL	Maaysra Kesrouane	L	L	L	Mayrouba	L	VL	VL
Mazraat Er-Ras	L	L	L	Mazraat Mrah El-Mir	VL	VL	VL	Mchaa El Ftouh	L	L	L
Mchaa Faraya	L	VL	VL	Mchaa Kfar Dibiane	VL	VL	L	Mghaer	L	VL	VL
Mradiyah	VL	L	L	Nahr Ed-Dahab	VL	VL	VL	Nammoura Kesrouane	L	L	L
Ouata El Jaouz	VL	VL	VL	Ouata Sillam	L	L	L	Raachine	VL	VL	VL
Rayfoun	VL	VL	VL	Safra Kesrouane	L	L	L	Shayle Kesrouane	L	L	L
Tabarja	L	L	L	Yahchouch	VL	L	L	Zaaytreh	L	VL	L
Zeytoun	L	L	L	Zouk Mikael	L	L	L	Zouk Mosbeh	L	L	L

Baalbek_Hermel

Baalbek

Municipality	01-Feb	02-Feb	03-Feb	Municipality	01-Feb	02-Feb	03-Feb	Municipality	01-Feb	02-Feb	03-Feb
Aadous	ML	L	ML	Aamchki	L	VL	VL	Aarsal	ML	L	L
Ain Baalbek	ML	L	L	Ain Bourday	L	VL	VL	Ain El-Benye	L	VL	VL
Ain El-Jaouz Baalbek	M	L	VL	Ain El-Siya Chadoura	L	VL	VL	Al Khodr Baalbek	L	VL	L
Al Nabi Chit	L	VL	L	Aynata Baalbek	L	L	L	Baalbek	L	L	L
Bachwat	L	L	L	Barqa	L	L	L	Bednayel Baalbak	L	L	ML
Beit Chama	L	L	ML	Bijjaje	M	L	ML	Bouday	L	L	ML
Brital	L	L	L	Btadi	L	ML	M	Chaat	M	L	ML
Chaibe	ML	VL	VL	Chlifa	ML	ML	M	Chmestar	ML	L	ML
Dar El-Oussa	L	L	ML	Deir El-Ahmar	ML	L	M	Deir Mar Maroun Baal	M	M	M
Douris	L	L	L	Fakiha	M	L	ML	Hadath Baalbek	ML	L	ML
Ham	L	VL	VL	Haour Taala	L	VL	L	Hizzine	ML	ML	ML
Hlebta	L	L	L	Hosh Barada	ML	ML	ML	Hosh El Dahab	ML	ML	M
Hosh El Snid	L	L	L	Hosh El-Nabi	L	L	L	Hosh El-Rafiq	L	L	ML
Hosh Tal Safiya	ML	ML	ML	Hrebta	M	ML	ML	laat	ML	L	ML
Jebaa	M	ML	ML	Jenta	L	VL	L	Kfar Dabach	ML	L	ML
Kfar Dane	M	ML	ML	Khraibeh El-Hermel	M	ML	ML	Khreibet Baalbek	L	VL	L
Kneisset Baalbek	ML	L	ML	Labueh	M	L	L	Maarboun	L	VL	VL
Majdaloun	ML	ML	ML	Maqneh	ML	L	ML	Mazraat Beit Mcheik	ML	ML	ML
Misraya	L	L	ML	Moqraq	M	L	L	Nabha El-Damdoum	ML	L	ML
Nabi Chbay	L	VL	VL	Nabi Osman	M	L	L	Nahleh baalbek	L	L	L
Ouadi El-Oss	L	L	L	Qaa Baayoun	M	ML	ML	Qaa Jouar Maqiye	M	M	M
Qaa Ouadi El-Khanzir	M	M	M	Qah Baalbek	M	ML	ML	Qarha Baalbek	M	M	M

Qsarnaba	L	L	ML	Ram Baalbek	M	M	M	Ras Baalbek El Sahl	M	ML	ML
Ras Baalbek El-Charq	ML	L	L	Riha	ML	ML	ML	Saaide	M	ML	ML
Sbouba	M	ML	ML	Seriine El-Tahta	L	L	L	Slouqi	L	L	L
Taiba Baalbek	ML	L	L	Talia	ML	L	L	Taraiya	ML	L	ML
Temnin El Fawqa	L	L	ML	Temnin El-Tahta	L	L	ML	Tfail	M	L	L
Yahfoufa	L	L	L	Yammouneh	L	L	ML	Younine	L	L	L
Zboud	M	ML	ML								

Hermel

Municipality	01-Feb	02-Feb	03-Feb	Municipality	01-Feb	02-Feb	03-Feb	Municipality	01-Feb	02-Feb	03-Feb
Charbine El-Hermel	M	M	ML	Hermel Jbab	L	L	L	Hermel	M	M	M
Maaysra El-Hermel	M	M	M	Michaa Mrajhine	ML	L	L	Ouadi Faara	L	L	L
Ras Baalbek - Ouadi	M	M	M	Ras Baalbek El Gharb	ML	ML	ML	Zighrine	L	M	M

Akkar

Akkar

Municipality	01-Feb	02-Feb	03-Feb	Municipality	01-Feb	02-Feb	03-Feb	Municipality	01-Feb	02-Feb	03-Feb
Aain Tinta	M	M	ML	Aaiyat	M	L	L	Aakkar El-Aatiqa	M	L	L
Aamar Akkar	M	M	ML	Aamar El Baykat	M	M	ML	Aamayer	M	ML	ML
Aamriyet Akkar	M	M	L	Aandqet	M	M	ML	Aarmeh	M	M	ML
Aarqa	M	M	M	Aawaynat	M	ML	L	Aayoun Akkar	M	L	L
Abboudiye	M	M	M	Ain El-Zeit	M	M	L	Ain Yaaqoub	M	L	L
Akroum	M	ML	L	Aridet Cheikh Zennad	M	M	M	Baldeh w Mazraat Bal	M	M	M
Barcha	M	M	M	Bardeh	M	M	L	Bebnine	M	M	M
Beino	M	M	ML	Beit Ayoub	M	L	L	Beit El-Haouch	M	M	M
Beit Mellat	M	L	L	Beit Younes	M	L	L	Berbara Akkar	M	M	ML
Berqayel	M	M	M	Bezbina	M	L	L	Bireh Akkar	M	M	L
Borj	M	L	L	Bqerezla	M	ML	ML	Bzal	M	L	L
Chane	M	L	L	Chaqdouf	M	L	L	Charbila	M	M	M
Cheikh Mohammad	M	M	M	Cheikh Taba Es-Sahl	M	M	M	Cheikh Taba	M	ML	L
Cheikh Zennad	M	M	M	Cheikhlar	M	M	L	Chir Hmairine	M	M	M
Daghle	M	M	ML	Dahr Laissine	M	ML	L	Darine	M	M	M
Dawra	M	ML	ML	Dawsa w Baghdadi	M	M	L	Dayret Nahr El-Kabir	M	ML	L
Deir Dalloum	M	M	M	Deir Jennine	M	M	ML	Denbou	M	L	L
Dibbabiyyeh	M	M	L	Douair Aadwiyeh	M	M	ML	Fassikine	M	M	ML
Fnaydek	M	L	L	Fraydes Akkar	M	M	L	Ghazayle	M	M	M
Habchit	M	L	L	Hakour	M	M	M	Halba	M	M	M
Haouchab	M	M	M	Hayssat	M	M	M	Haytla	M	M	M
Hayzouq	M	M	M	Hedd	M	M	M	Hmaira Akkar	M	M	M
Hmaiss Akkar	M	M	M	Hnaider	M	ML	L	Hokr Ed-Dahri	M	M	M
Hokr Etti	M	M	M	Hokr Jouret Srar	M	M	M	Houaich	M	L	L
Hrar	M	L	L	Idbil	M	L	L	Ilal	M	L	L
Janine	M	M	M	Jdeidet El-Joumeh	M	ML	ML	Jdeidet El-Kaiteh	M	M	M
Jebayel	M	L	L	Kafr	L	L	L	Kafr	M	M	L
Karm Asfour	M	ML	L	Kfar Melki Akkar	M	M	M	Kfar Noun	M	ML	L
Kfarharra	M	M	M	Khalsa	M	M	L	Kharnoubet Akkar	M	M	M

Khirbet Daoud Aakkar	M	M	L	Khirbet El Remmane	M	ML	L	Khirbet Shar	M	M	ML
Khoreybet El-Jindi	M	M	M	Khreibet Aakkar	M	L	L	Kneisset Aakkar	M	M	M
Kneisset Hnaider	M	ML	L	Knisse	M	M	M	Kroum El-Aarab	M	M	M
Kwachra	M	M	L	Kweykhat	M	M	M	Machta Hammoud	M	ML	L
Majdala	M	M	M	Majdel Akkar	M	M	L	Mar Touma	M	M	M
Marlaya Melhem	M	M	ML	Mashha	M	ML	ML	Massoudiye	M	M	M
Mazraat Beit Ghattas	M	M	ML	Mazraat En-Nahriye	M	ML	L	Mechmech	M	L	L
Memneh	M	L	L	Mhammara	M	M	M	Mighraq Aakkar	M	M	M
Minyara	M	M	ML	Moqayteh	M	M	M	Mounjez	M	M	L
Msalla	M	M	ML	Mzeihmeh	M	M	M	Nfaiseh	M	M	ML
Noura Et-Tahta	M	ML	L	Ouadi El-Haour	M	M	M	Ouadi El-Jamous	M	M	M
Ouyoun El-Ghizlane	M	M	M	Qaabarine	M	M	M	Qabaait	M	L	L
Qachlaq	M	M	M	Qantara Aakkar	M	ML	L	Qarha Aakkar	M	ML	L
Qarqaf	M	M	M	Qboula	M	L	L	Qleiaat Aakkar	M	M	M
Qloud El-Baqie	M	M	ML	Qobaiyat Aakkar	M	ML	L	Qobbat Chamrat	M	M	ML
Qorayat	M	L	L	Qornet Aakkar	M	L	L	Qsair Aakkar	M	M	L
Rahbe	M	L	L	Rihaniyet Aakkar	M	M	M	Rmah	M	M	L
Rmoul	M	M	M	Saadine	M	M	M	Sadaqa	M	L	L
Saidnaya	M	M	M	Sammouniye	M	M	M	Sayssouq	M	ML	ML
Semmaqiye	M	M	M	Semmaqli	M	M	ML	Sfinet El-Dreib	M	M	ML
Sfinet El-Qaitaa	M	ML	L	Sindyanet Zeidane	M	M	ML	Souaisset Aakkar	M	M	M
Srar	M	M	M	Tal Abbas El Gharby	M	M	M	Tal Abbas El-Chargy	M	M	M
Tal Biret	M	M	M	Tal Hmayra	M	M	M	Tal Maayan Tal Kiri	M	M	M
Tal Sibel	M	M	M	Tallet Chattaha	M	L	ML	Tikrit	M	L	L
Tleil	M	M	M	Tshea	M	L	L	Zawarib	M	ML	L
Zouq El Hosniyeh	M	M	M	Zouq El-Haddara	M	M	M	Zouq El-Hbalsa	M	M	M
Zouq El-Moqachrine	M	M	M								

Sud

Sour

Municipality	01-Feb	02-Feb	03-Feb	Municipality	01-Feb	02-Feb	03-Feb	Municipality	01-Feb	02-Feb	03-Feb
Aaiyeh	M	VL	L	Aalma El-Chaab	ML	VL	L	Aaytit	M	VL	L
Abbassiyeh Sour	M	VL	L	Abou Chech	M	VL	L	Ain Abou Abdallah	M	VL	ML
Ain Baal	M	VL	L	Arzoun	M	VL	L	Aziyeh	M	VL	L
Baflaya	M	VL	L	Barich	M	VL	L	Batouliyah	M	VL	L
Bayad	M	VL	L	Bazouriyeh	M	VL	L	Bediass	M	VL	L
Bestiyat	M	VL	L	Borj El Chemali	M	VL	ML	Borj En-Naqoura	ML	L	L
Borj Rahhal	M	VL	L	Boustane	M	VL	L	Btaychiyeh	M	VL	L
Chaaitiye	M	VL	L	Chameh	M	VL	L	Chehabiye	M	VL	L
Chehour	ML	VL	L	Chihine	M	VL	L	Debaal Sour	M	VL	L
Deir Amess	M	VL	L	Deir Kifa	M	VL	L	Deir Qanoun El-Ain	M	VL	L
Deir Qanoun El-Naher	M	VL	L	Derdghaiya	M	VL	L	Dhayra	M	VL	L
Halloussiyeh	M	VL	L	Hamoul	ML	VL	L	Hanaouey	M	VL	L
Henniye	M	VL	L	Hmairi Sour	M	VL	L	Iskandarouna Sour	M	VL	L
Jbal El Botom	M	VL	L	Jebbin	M	VL	L	Jennata	M	VL	L
Jijim	ML	VL	L	Jouaiya	M	VL	L	Kneisset Sour	M	VL	L

Maarake	M	VL	L	Maaroub	M	VL	L	Majadel	M	VL	L
Majdalzoun	M	VL	L	Mansouri Sour	M	VL	L	Marnba	M	VL	L
Marouahine	M	VL	L	Mazraat El-Zalloutiy	M	VL	L	Mazraat Mechref	M	VL	L
Mazraat Tayr Semhat	ML	VL	L	Mheilib	M	VL	ML	Neffakhiyeh	M	VL	L
Niha Sour	M	VL	L	Ouadi Jilo	M	VL	L	Qana	M	VL	L
Qolaileh Sour	M	VL	L	Rechknany	M	VL	L	Rmadiyah	M	VL	L
Selha Sour	M	VL	L	Siddiqine	M	VL	L	Sour	M	VL	ML
Srifa	M	VL	L	Tayr Debbe	M	VL	L	Tayr Felsay	M	VL	L
Tayr Harfa	M	VL	L	Touayri	M	VL	L	Toura	M	VL	L
Yanouh Sour	M	VL	L	Yarine	M	VL	L	Zebqine	ML	VL	L

Saida

Municipality	01-Feb	02-Feb	03-Feb	Municipality	01-Feb	02-Feb	03-Feb	Municipality	01-Feb	02-Feb	03-Feb
Aanqoun	ML	VL	L	Aaqtanit	ML	VL	L	Aarab Ej-Jall	ML	VL	L
Aarab Tabbaya	ML	VL	L	Abra Saida	ML	VL	L	Adloun	M	L	ML
Adousiyeh	M	VL	ML	Ain-El-Deleb	ML	VL	L	Arzai	M	VL	L
Babliyah	M	VL	L	Barty	L	VL	L	Bissariyeh	M	VL	ML
Bnaafoul	ML	VL	L	Bqosta	ML	VL	L	Bramiy	ML	VL	L
Daoudiyeh	M	VL	L	Dareb El-Sim	ML	VL	L	Erkay	ML	VL	L
Ghassanieh	M	VL	L	Ghazieh	M	VL	ML	Hajjeh	ML	VL	L
Haret Saida	ML	VL	L	Hartiyeh	M	VL	L	Hlaliye Saida	ML	VL	L
Insariyat	M	VL	L	Jazira Saida	M	VL	L	Kafar Bit	L	VL	L
Kaoutariyet El-Siyad	M	VL	L	Kfar Chellal	L	VL	L	Kfar Hatta Saida	L	VL	L
Kfar Milke Saida	L	VL	L	Khartoum	M	VL	L	Khaziz	ML	VL	L
Khirbet Ed-Douair Sa	M	VL	L	Khirbet El-Bassal	M	VL	L	Khrayeb Saida	M	VL	L
Loubieh	M	VL	L	Maghdouche	L	VL	L	Majdelyoun	ML	VL	L
Matariyet El-Choumar	M	VL	L	Matayriyeh	L	VL	L	Mazraat 'Mseileh	M	VL	ML
Mazraat 'Snaiber	M	VL	ML	Mazraat Aarab Soukka	ML	VL	L	Mazraat Deir Taqla	M	VL	L
Mazraat El Yahoudiye	M	VL	ML	Mazraat El-Housseini	M	VL	ML	Mazraat El-Mhaydaleh	M	VL	L
Mazraat El-Ouasta	M	VL	ML	Mazraat Jamjim	M	VL	L	Mazraat Kaoutariyet	M	VL	L
Mazraat Kfar Badda	M	VL	L	Mazraat Oussamiyat	M	VL	L	Mazraat Sari	M	VL	L
Mazraat Sinai	M	VL	L	Meemariyeh	ML	VL	L	Merouaniyeh	M	VL	L
Miyeh ou Miyeh	ML	VL	L	Najjariyeh	M	VL	ML	Qaaqaiyat El-Snaouba	M	VL	L
Qnarit	ML	VL	L	Qraiye Saida	ML	VL	L	Saida Ed-Dekermane	ML	VL	L
Saida El-Oustani	ML	VL	L	Saida El-Qadimeh	ML	VL	L	Saida Kefraya	L	VL	L
Saksakiyeh	M	VL	L	Salhie Saida	ML	VL	L	Sarafand	M	VL	ML
Sfenta	L	VL	L	Tafahta	M	VL	L	Tanbourit	L	VL	L
Tebna	M	VL	L	Zaghdraiya	L	VL	L	Zeita	ML	VL	L
Zrariyeh	M	VL	L								

Jezzine

Municipality	01-Feb	02-Feb	03-Feb	Municipality	01-Feb	02-Feb	03-Feb	Municipality	01-Feb	02-Feb	03-Feb
Ain El-Mir (El Estab	L	VL	L	Anane	L	VL	L	Aramta	L	VL	L
Ariya	L	VL	L	Aychiyeh	L	VL	L	Azour	L	VL	VL
Baba	L	VL	VL	Bayssour Jezzine	ML	VL	L	Benoueteh Jezzine	L	VL	L
Bhannine	L	VL	L	Bisri	L	VL	VL	Bkassine	L	VL	VL
Bouslaya	L	VL	L	Btedine El-Leqech	VL	VL	VL	Chbail	VL	VL	VL
Choualiq Jezzine	ML	VL	L	Dahr Ed-Deir	L	VL	L	Deir El Qattine	L	VL	L

Demachqiyeh	ML	VL	L	Ghabbatiyeh	L	VL	L	Harf Jezzine	VL	VL	VL
Hassaniyeh	L	VL	L	Haytouleh	L	VL	L	Haytura	L	VL	L
Hidab	L	VL	L	Homsiyeh	L	VL	L	Jabal Toura	L	VL	L
Jarmaq	L	VL	L	Jensnaya	ML	VL	L	Jernaya	L	VL	L
Jezzine	L	VL	L	Karkha	L	VL	L	Kfar Falous	L	VL	L
Kfar Houna	L	VL	L	Kfar Jarrah	ML	VL	L	Lebaa	ML	VL	L
Louayzet Jezzine	L	VL	L	Machmouche	L	VL	VL	Mahmoudiyeh Jezzine	L	VL	L
Maknounye Jezzine	L	VL	L	Maraat Ouzaïyeh	L	VL	L	Mazraat Daraya	L	VL	L
Mazraat El-Aarqoub	L	VL	L	Mazraat El-Mathane	VL	VL	VL	Mazraat El-Rahbane	L	VL	L
Mazraat Khallet Khaz	L	VL	L	Mazraat Louzid (Loua	VL	VL	L	Mazraat Qrouh	L	VL	L
Mazraat Tamra	ML	VL	L	Mazraat Zighrine Jez	L	VL	L	Mazraat	L	VL	L
Mharbiyeh	ML	VL	L	Midane Jezzine	L	VL	L	Mjeydel Jezzine	ML	VL	L
Mlikh	L	VL	L	Mrah El-Hbasse	L	VL	L	Ouadi Baanqoudaine	ML	VL	L
Ouadi El-Laymoun	L	VL	L	Ouardiyeh	VL	VL	VL	Qabaa Jezzine	L	VL	L
Qatrani	L	VL	L	Qaytouleh	L	VL	L	Qtaleh Jezzine	VL	VL	VL
Rihane Jezzine	L	VL	L	Rimat	L	VL	L	Roum	L	VL	L
Roummanet	L	VL	L	Sabbah	L	VL	L	Saydoun	L	VL	L
Sfaray	L	VL	L	Snaya	L	VL	L	Sojoud	L	VL	L
Srayri	L	VL	L	Taaid	L	VL	VL	Wadi Jezzine	L	VL	VL
Zhalta	VL	VL	L								

Bekaa

West Bekaa

Municipality	01-Feb	02-Feb	03-Feb	Municipality	01-Feb	02-Feb	03-Feb	Municipality	01-Feb	02-Feb	03-Feb
Aammiq BG	ML	L	L	Ain El Tineh BG	L	VL	L	Ain Zebdeh	L	L	L
Ana	ML	L	L	Aytanit	L	VL	L	Baaloul BG	L	L	L
Bab Mareh	L	VL	L	Chouberqiye Aammiq	M	L	L	Dakoue	ML	L	ML
Deir Ain El-Jaouze	L	L	L	Deir Tahniche	ML	L	L	Ghaza	M	L	L
Harime El-Soughra	L	L	ML	Hoch Harimeh	M	L	L	Jazira BG	M	L	L
Jib Jennine	L	L	L	Kamed-El-Laouz	L	L	L	Kefraya BG	L	VL	L
Khiara El Atika	M	L	L	Khiara	M	L	L	Khirbet Qanafar	L	L	L
Lala	L	L	L	Lebbaya BG	L	VL	L	Loussa	L	VL	L
Machghara	L	VL	L	Manara (Hammara) BG	L	L	L	Mansoura BG	M	L	L
Marej BG	L	L	ML	Maydoun	L	VL	L	Ouaqf BG	L	L	L
Qaraaoun	L	L	L	Qelya	L	VL	L	Raouda (Istabel)	L	L	ML
Saghbine	L	L	L	Sohmor	L	VL	L	Soltan Yacoub el Ara	ML	L	ML
Souairy	L	L	L	Sultan Yaacoub	L	L	L	Tal Znoun	M	L	L
Yehmor BG	L	VL	L	Zilaya	L	VL	L				

Zahle

Municipality	01-Feb	02-Feb	03-Feb	Municipality	01-Feb	02-Feb	03-Feb	Municipality	01-Feb	02-Feb	03-Feb
Aanjar (Haouch Mouss	L	L	L	Ablah	L	L	ML	Ain Kfarzabad	L	L	L
Ali-El-Nahri	ML	L	ML	Bar Elias	L	L	ML	Bouarej	L	L	L
Cheberqiyet Tabet	L	L	ML	Chtaura	L	L	L	Deir El Ghazal	L	L	L
Delhamiyet Zahle	L	L	L	Ferzol	L	L	L	Haouch El-Ghanam	ML	L	ML
Haouch Es-Siyadeh	L	L	L	Haouch Hala	L	L	L	Haouch Mandara	L	L	L

Haouch Qayssar	L	L	L	Hezerta	L	L	L	Hosh Moussa	L	L	L
Jdita	L	L	L	Kfarzabad	L	L	L	Ksara	L	L	ML
Majdel Aanjar	L	L	L	Makssi	L	L	L	Massa	L	L	L
Mazraat Er-Remtaniye	L	L	L	Mrayjat Zahle	L	L	L	Mzaraa Zahle	L	L	L
Nabi Ayla	L	L	ML	Nasriyet Rizk	L	L	L	Nasriyet Zahle	L	L	L
Niha Zahle	L	L	ML	Ouadi Ed-Deloum	L	L	L	Ouadi El-Arayech	L	L	L
Qaa El Rim	L	L	ML	Qab Elias	L	L	L	Qousaya	L	L	L
Rhit	L	L	L	Riyak	L	L	L	Saadnayel	L	L	ML
Taal El-Akhdar	L	L	L	Taalbeya	L	L	ML	Taanayel	L	L	ML
Talamara	ML	L	ML	Tcheflik Edde Haouch	L	L	L	Tcheflik Qiqano	L	L	L
Terbol Zahle	L	L	L	Touaite Zahle	L	L	L	Zahle Aradi	L	L	L
Zahle El-Berbara	L	L	ML	Zahle El-Maallaqa	L	L	ML	Zahle El-Midane	L	L	ML
Zahle Er-Rassiye	L	L	ML	Zahle Haouch El-Ouma	L	L	ML	Zahle Haouch El-Ouma	L	L	ML
Zahle Haouch Ez-Zara	L	L	ML	Zahle Maalaga Aradi	L	L	ML	Zahle Mar Antonios	L	L	ML
Zahle Mar Elias	L	L	ML	Zahle Mar Gerios	L	L	ML	Zahle Saydet En-Naja	L	L	ML
Zebdoul	L	L	L								

Rachaiya

Municipality	01-Feb	02-Feb	03-Feb	Municipality	01-Feb	02-Feb	03-Feb	Municipality	01-Feb	02-Feb	03-Feb
Ain Arab Rachaiya	ML	L	L	Ain Ata	L	VL	L	Ain Harche	ML	L	L
Aqabe Rachaya	ML	L	L	Ayha	ML	L	ML	Ayta El Fokhar	L	L	L
Bakifa Rachaya	ML	L	L	Bakka	ML	L	L	Beit Lahya	ML	L	L
Bireh Rachaiya	ML	L	L	Daheer El Ahmar	ML	L	L	Deir El-Achayer	M	L	L
Heloua Rachaiya	M	L	L	Hoch El Qannabeh Rac	L	VL	L	Kaoukaba Bou Arab	ML	L	L
Kfar Danis	ML	L	L	Kfar Mechki	L	VL	L	Kfar Qouq	M	L	L
Kherbet Rouha	ML	L	L	Majdel Balhiss	L	L	L	Mdoukha	ML	L	L
Mhaydseh Rachaiya	ML	L	L	Nabi Safa	L	VL	L	Rachaiya	ML	L	L
Rafid Rachaiya	ML	L	L	Selsata (Mazraat Dei	ML	L	L	Tannoura	ML	L	L
Yanta	M	L	L								

Beyrouth

Beyrouth

Municipality	01-Feb	02-Feb	03-Feb	Municipality	01-Feb	02-Feb	03-Feb	Municipality	01-Feb	02-Feb	03-Feb
Achrafieh	M	ML	ML	Ain el-Mreisse	M	ML	ML	Bachoura	M	ML	ML
Beirut Central Distr	M	ML	ML	Marfai	M	ML	ML	Mazraa	M	ML	ML
Medaouar	M	ML	ML	Minet el-Hosn	M	ML	ML	Mwssaitbeh	M	ML	ML
Ras Beirut	M	ML	ML	Rmeil	M	ML	ML	Saifi	M	ML	ML
Zqaq el-Blat	M	ML	ML								