

Lebanon Fire Risk Bulletin



CIVIL DEDEFENCE

Refer to cadast table condition.

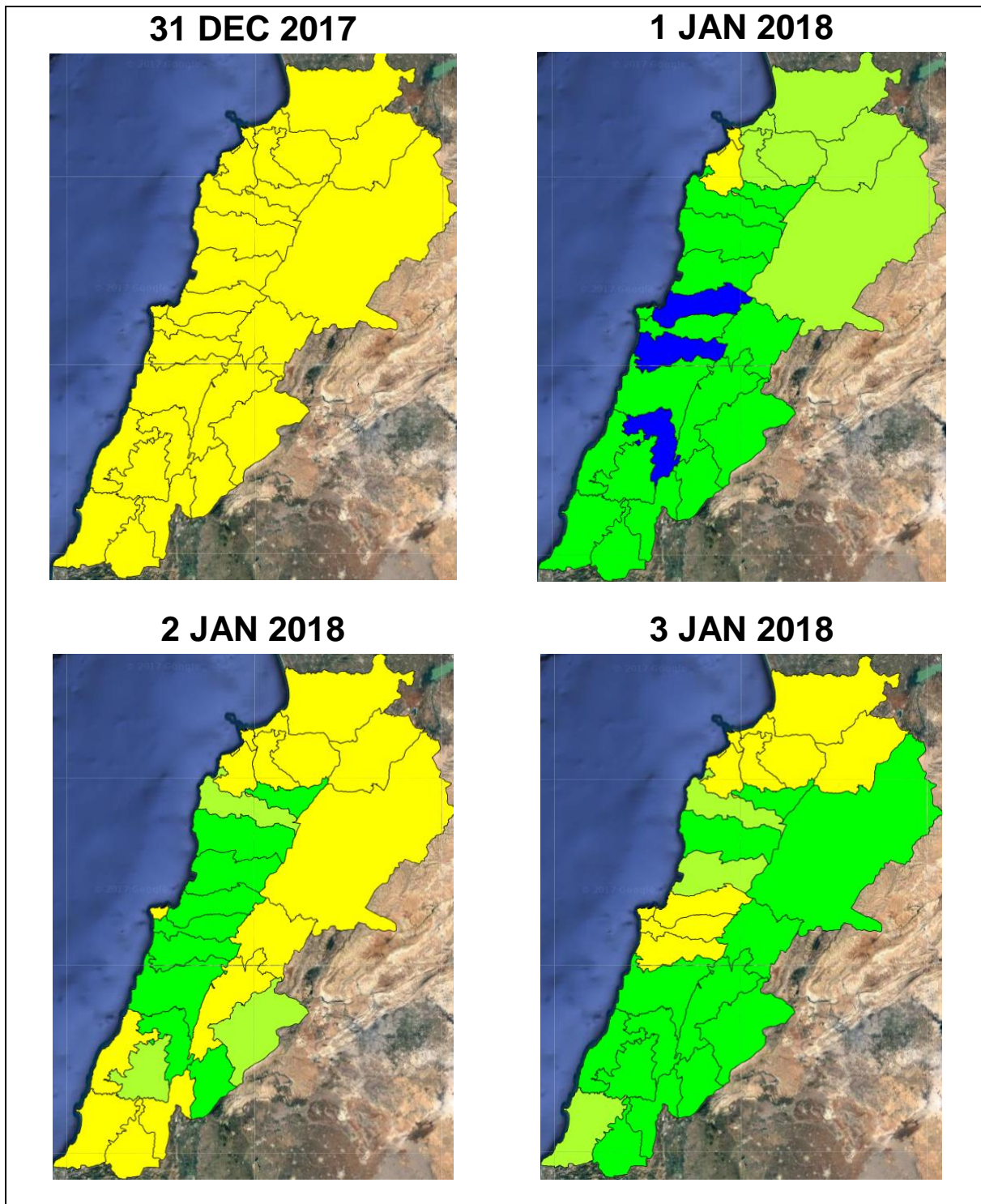
Please note that the indicated temperature is at 2 meters height from the ground.

General description of potential fire risk situation

Symbol	Level of risk	Meaning and actions
VL	Very low	Very low fire risk. Controlled burning operations can be hardly executed due to high fuel moisture content. Normally wildfires self-extinguish.
L	Low	Low fire risk. Controlled burning operations can be executed with a reasonable degree of safety.
ML	Medium low	Medium-low fire risk. Controlled burning operations can be executed in safety conditions. All the fires need to be extinguished.
M	Medium	Medium fire risk. Controlled burning operations would be avoided. All the fires need to be very well extinguished.
MH	Medium high	Controlled burning is not recommended. Open flame will start fires. Cured grasslands and forest litter will burn readily. Spread is moderate in forests and fast in exposed areas. Patrolling and monitoring is suggested. Fight fires with direct attack and all available resources.
H	High	Ignition can occur easily with fast spread in grass, shrubs and forests. Fires will be very hot with crowning and short to medium spotting. Direct attack on the head may not be possible requiring indirect methods on flanks. Patrolling and monitoring the territory is highly suggested.
E	Extreme	Ignition can occur also from sparks. Fires will be extremely hot with fast rate of spread. Control may not be possible during day due to long range spotting and crowning. Suppression forces should limit efforts to limiting lateral spread. Damage potential total. Patrolling and monitoring the territory is highly suggested.

Beirut, 1 January 2018

FIRE RISK INDEX

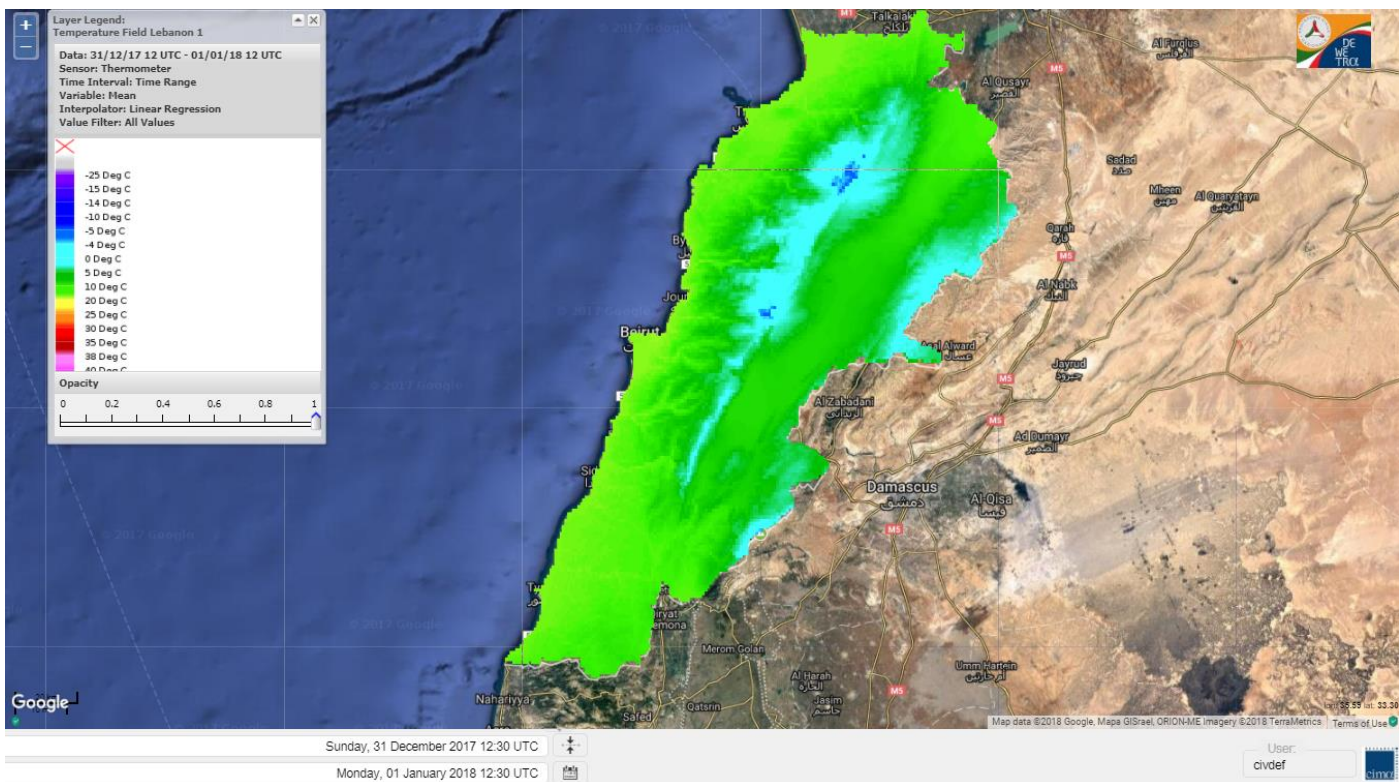


Layer Legend:
Lebanon Wildfire Risk Index 1

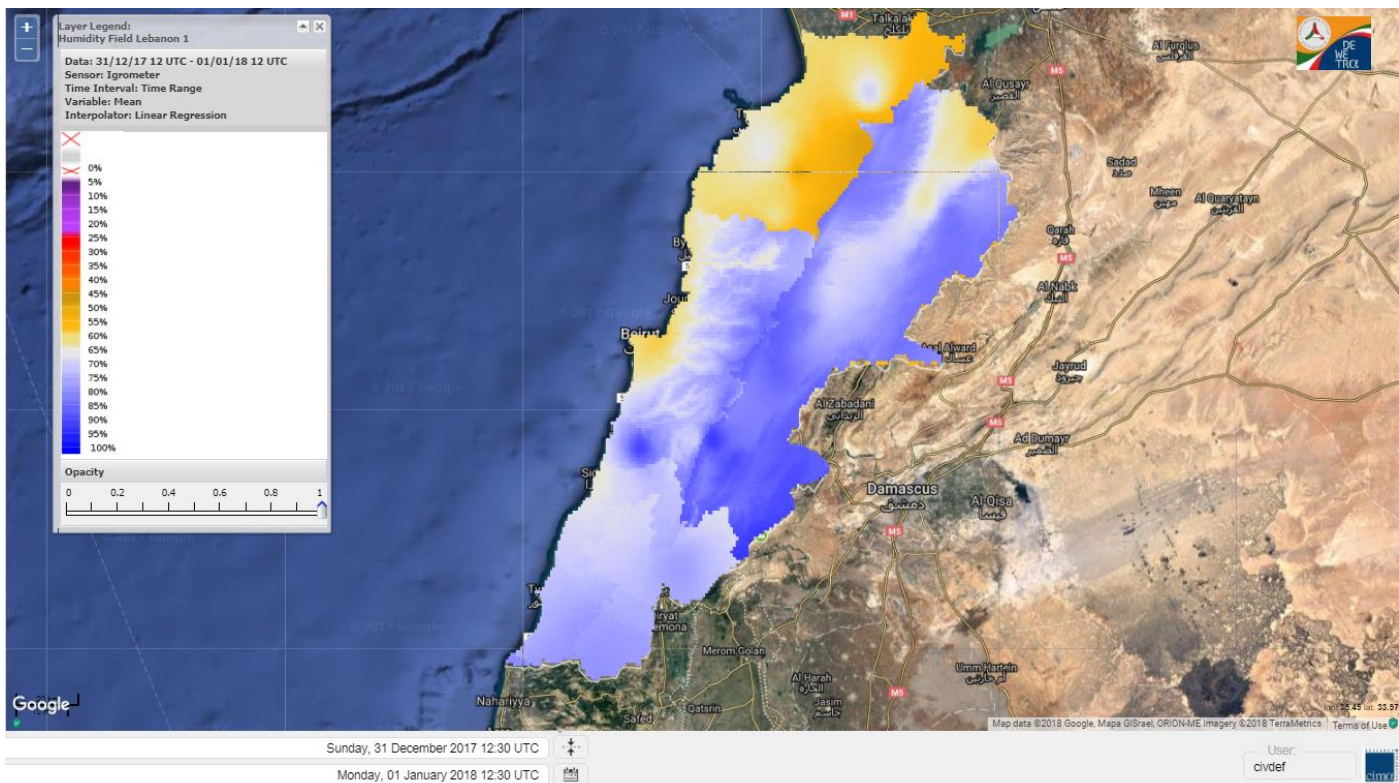
Data: Run: 01/01/2018 00:00. Forecast for 1
Model: RISICO for the Republic of Lebanon
Variable: Fire Weather Index
Spatial Resolution: Caza

- VERY LOW
- LOW
- MEDIUM-LOW
- MEDIUM
- MEDIUM-HIGH
- HIGH
- EXTREME

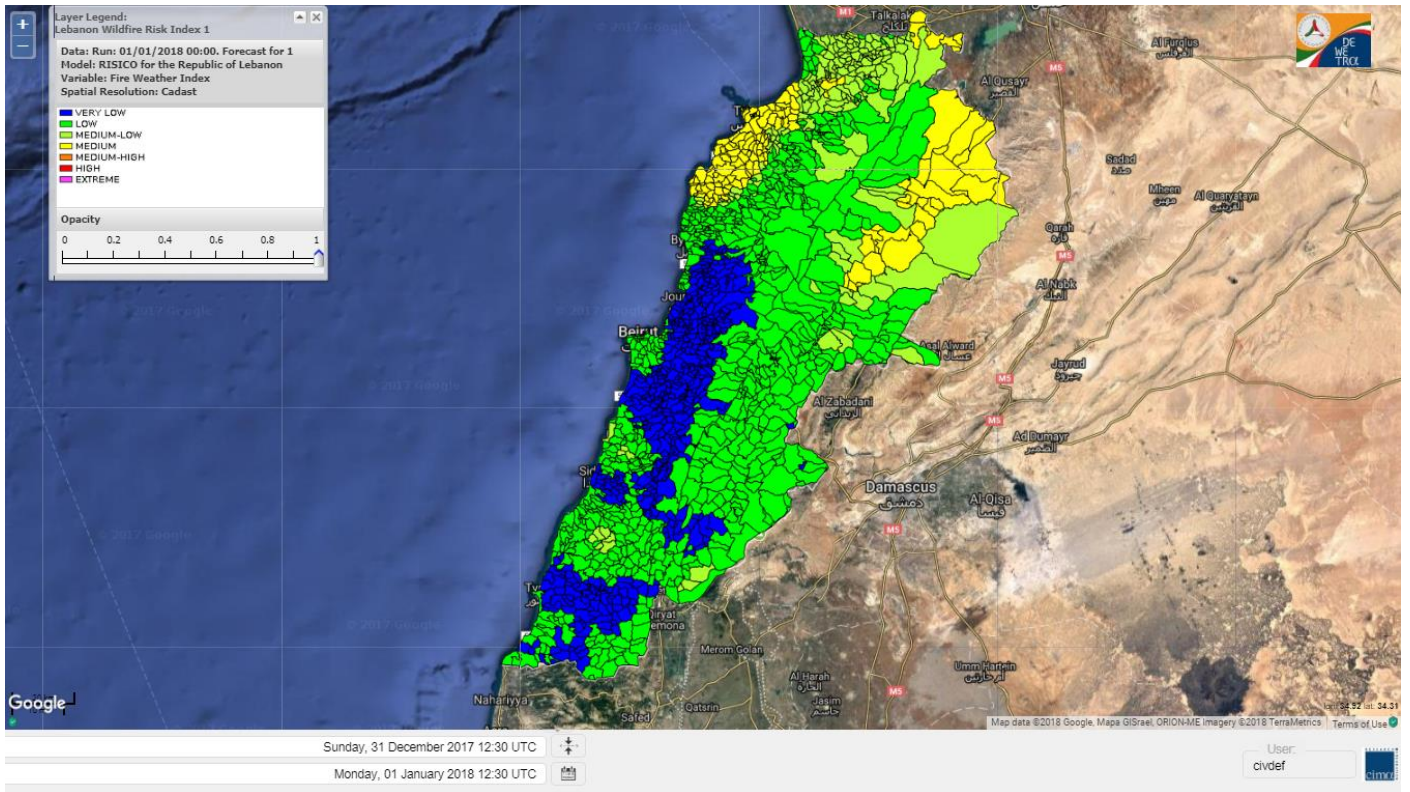
Lebanon temperature for 1 JAN 2018



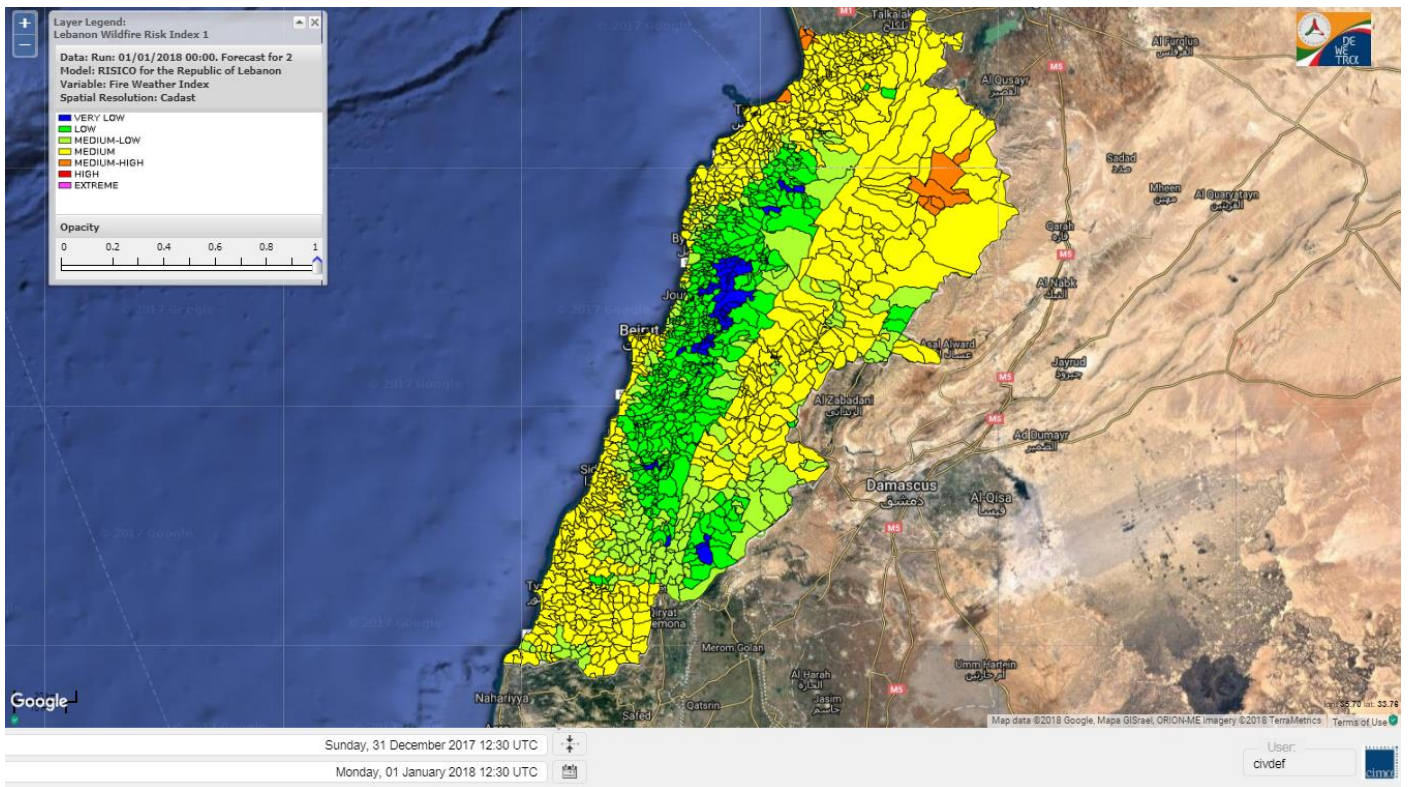
Lebanon humidity for 1 JAN 2018



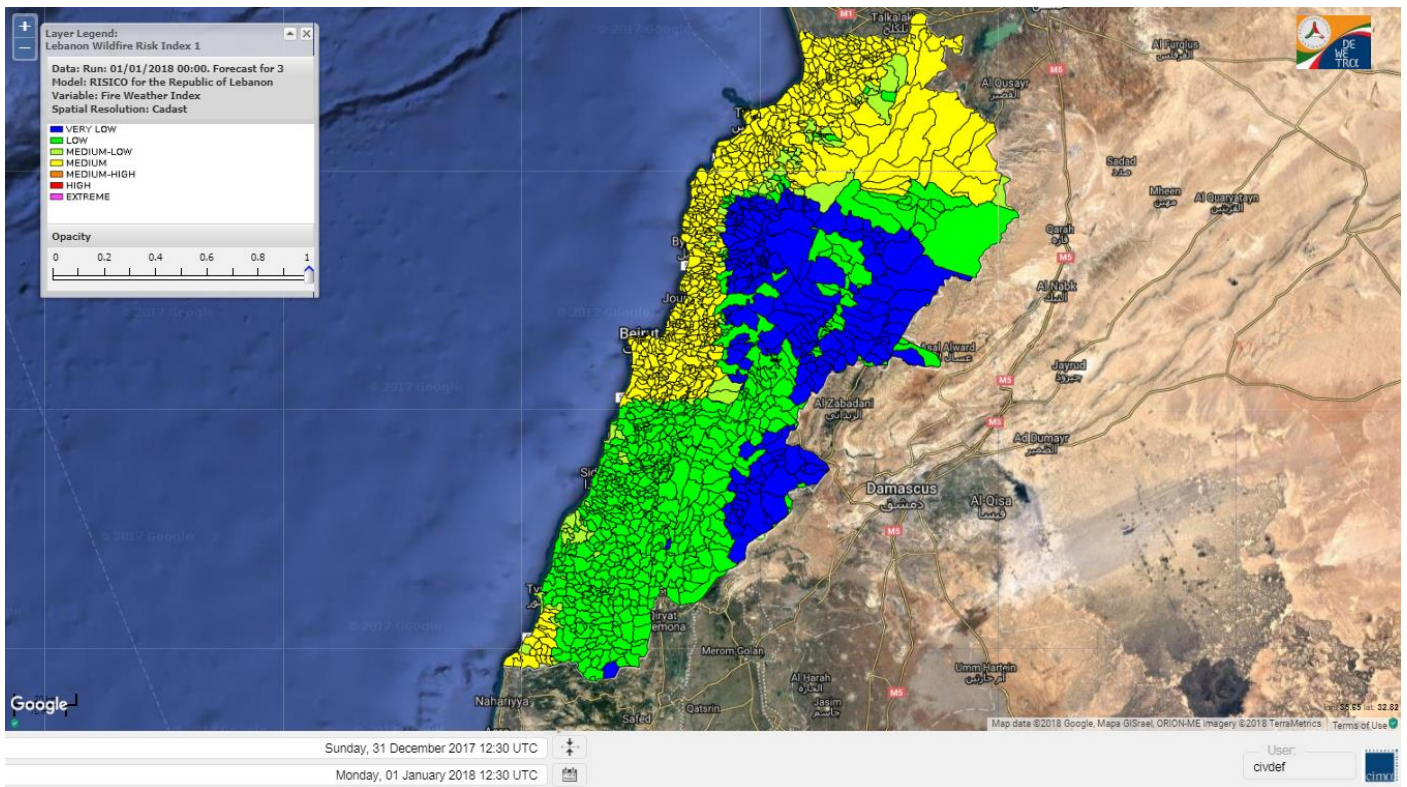
Lebanon for 1 JAN 2018



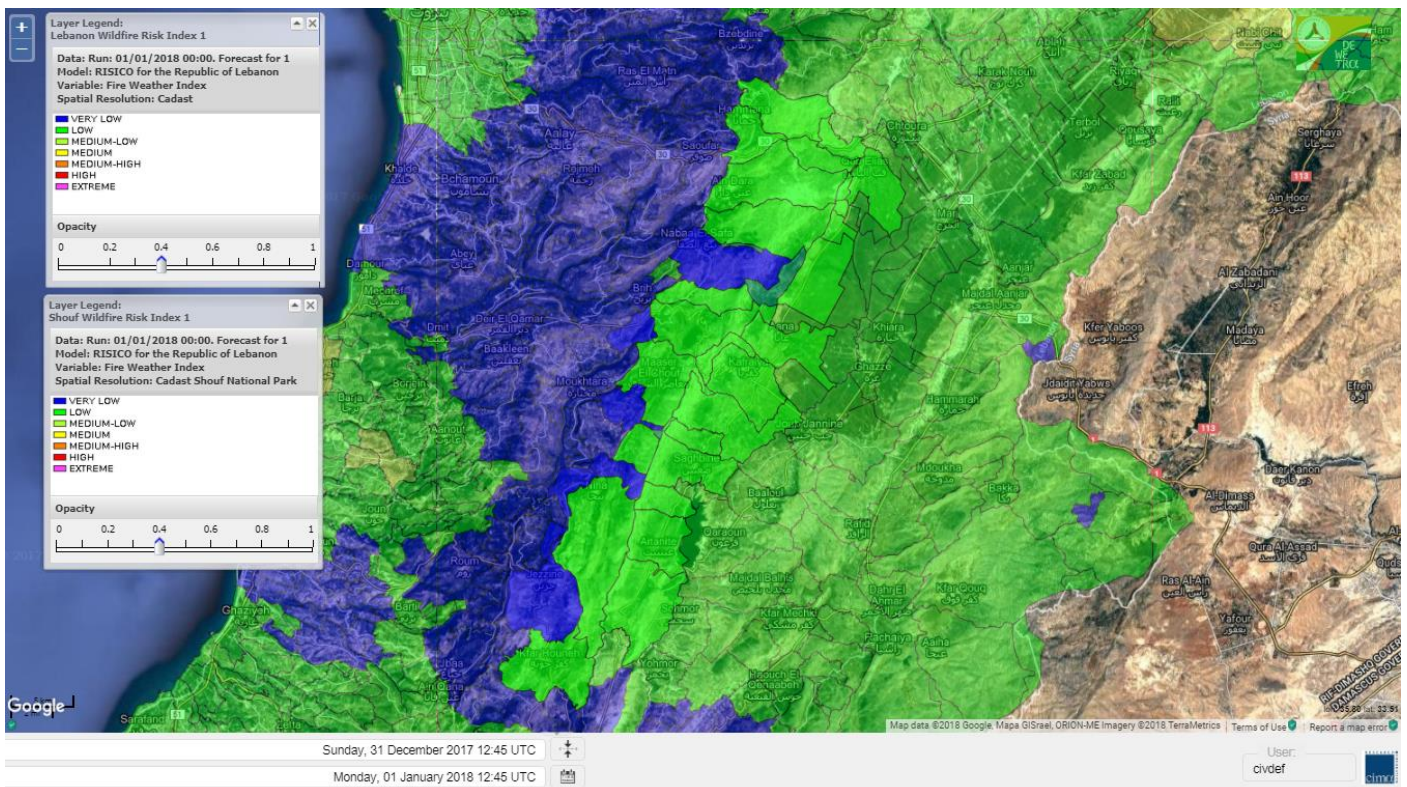
Lebanon for 2 JAN 2018



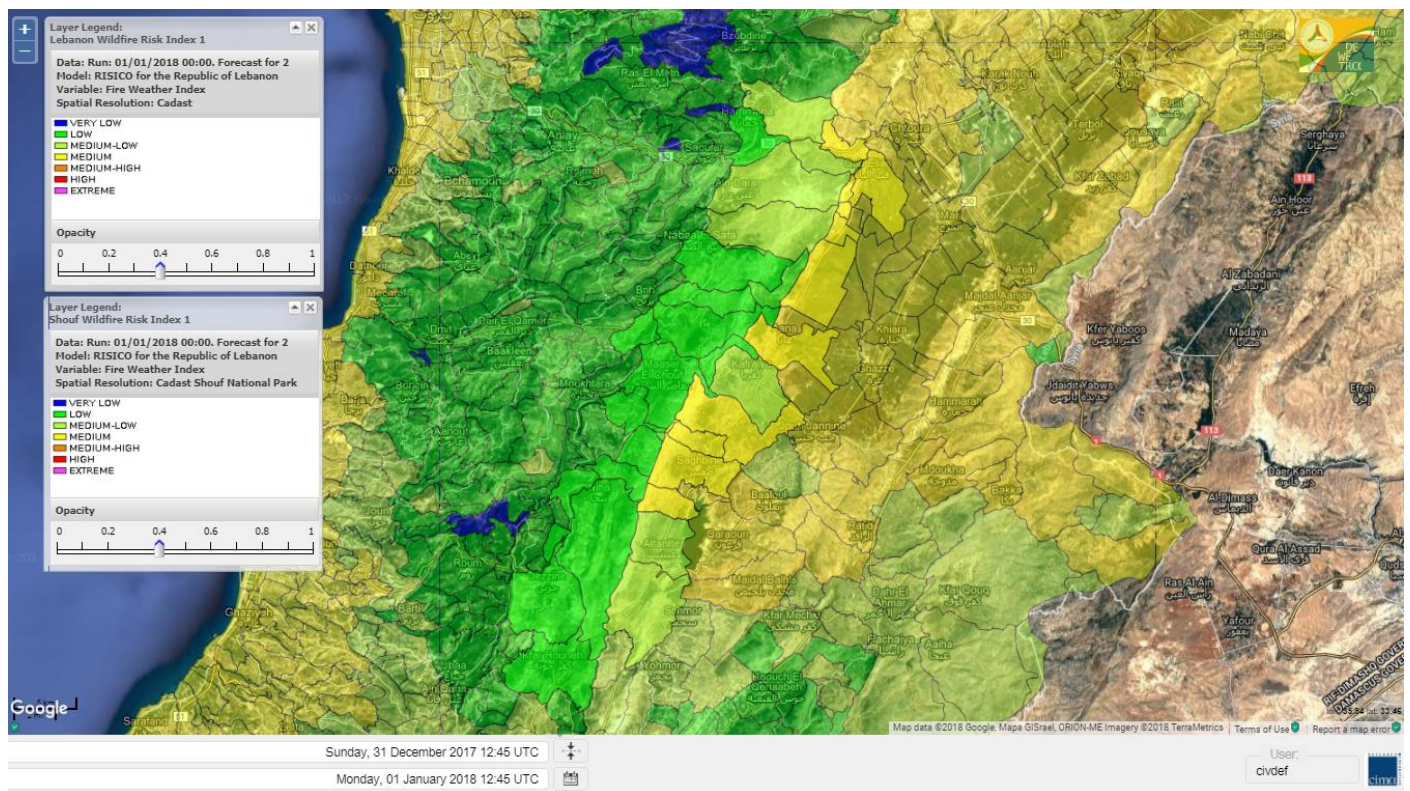
Lebanon for 3 JAN 2018



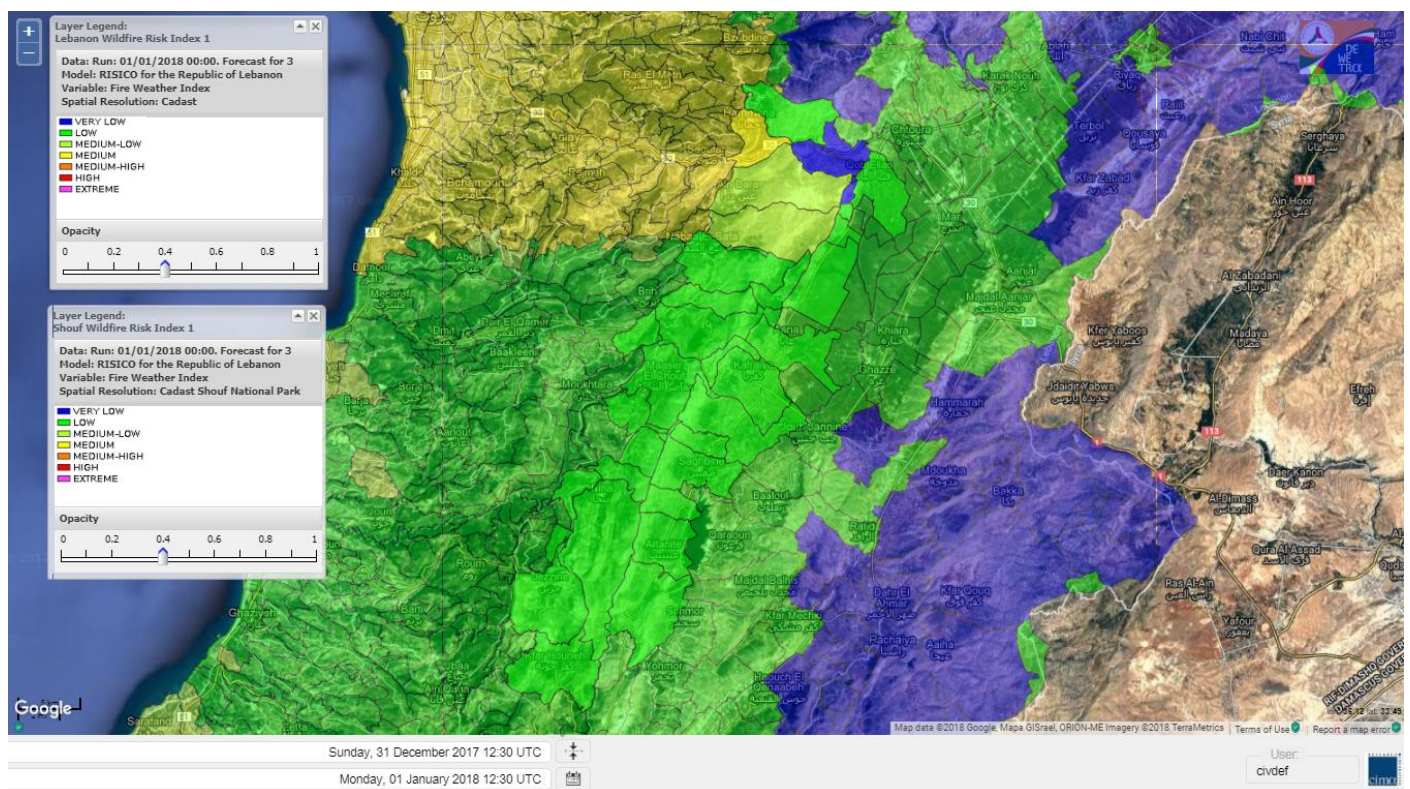
Shouf Biosphere Reserve Forecast for 1 JAN 2018



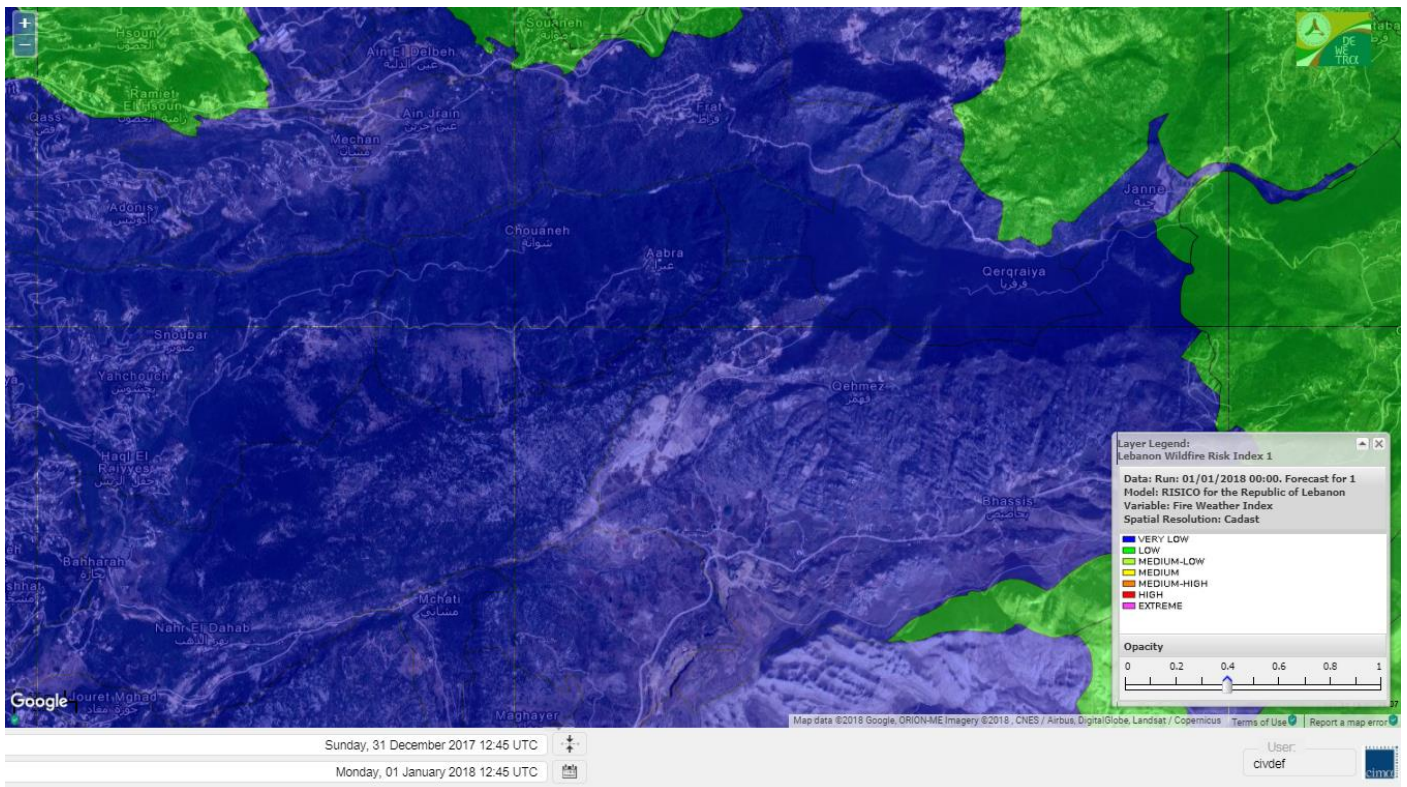
Shouf Biosphere Reserve Forecast for 2 JAN 2018



Shouf Biosphere Reserve Forecast for 3 JAN 2018



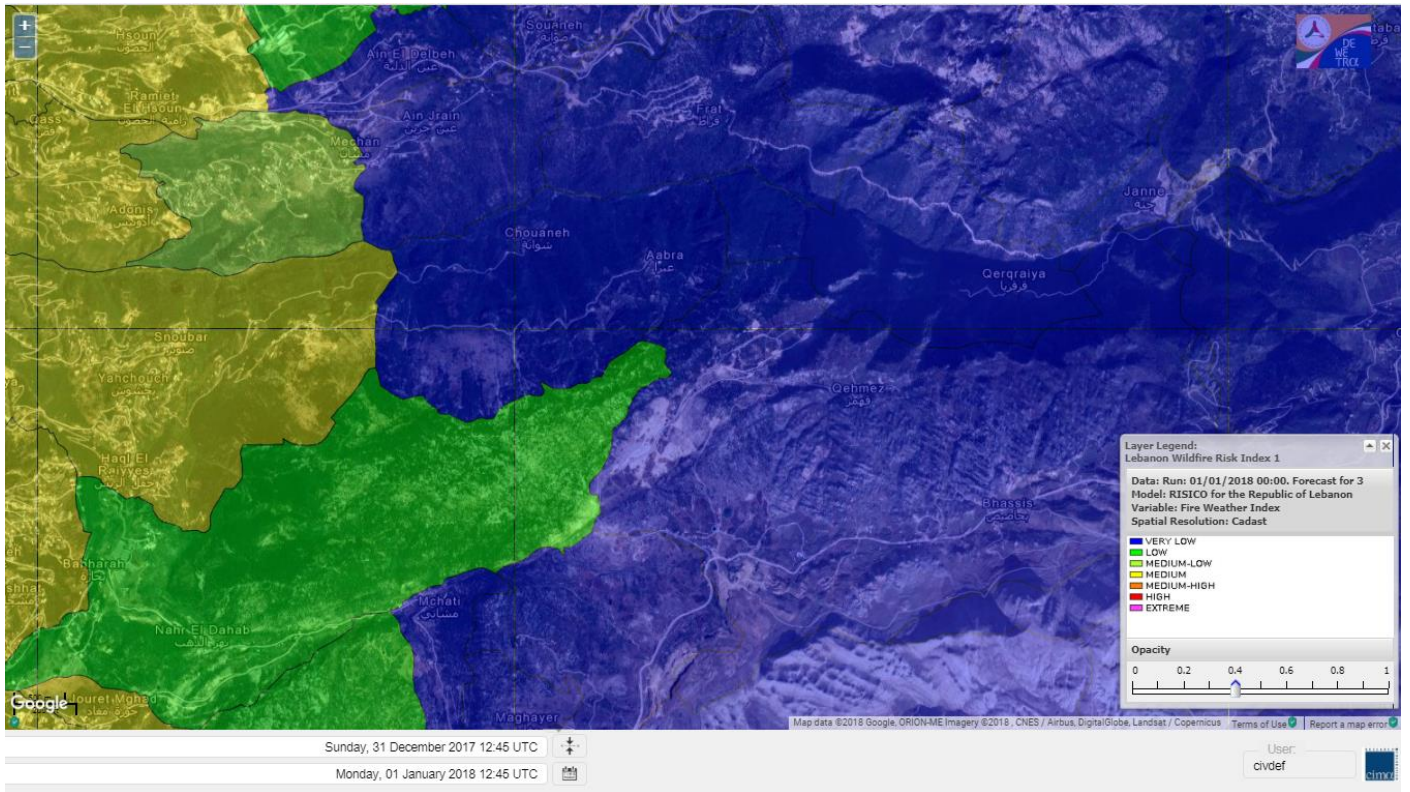
Jabal Moussa Reserve Forecast for 1 JAN 2018



Jabal Moussa Reserve Forecast for 2 JAN 2018



Jabal Moussa Reserve Forecast for 3 JAN 2018



Nord

Koura

Municipality	01-Jan	02-Jan	03-Jan	Municipality	01-Jan	02-Jan	03-Jan	Municipality	01-Jan	02-Jan	03-Jan
Aaba	M	M	M	Afsaddiq	M	M	M	Ain Ekriane	L	M	M
Amioun	M	M	M	Anfeh	M	M	M	Badbhoun	M	M	M
Barghoun	M	M	M	Barsa	M	M	M	Batroumine	M	M	M
Bdebba	M	M	M	Bechmizine	M	M	M	Bednaye El-Koura	M	M	M
Bhabbouch El-Koura	ML	ML	M	Bkeftine	M	M	M	Bnehran	ML	ML	ML
Bqaiia El-Koura	M	M	M	Bsarma	M	M	M	Btaaboura	M	M	M
Bterram	M	M	M	Btouratij	M	M	M	Bziza	M	M	M
Dar Beechtar	M	M	M	Dar Chmezzine	M	M	M	Deddeh	M	M	M
Deir El-Balamand	M	M	M	Fih	M	M	M	Hraiche	M	M	M
Ijdaabrine	M	M	M	Kaftoun	M	M	M	Kefraya El-Koura	M	M	M
Kfarakka	M	M	M	Kfarhata	M	M	M	Kfarhazir	M	M	M
Kfarkahel	M	M	M	Kfarsaroun	M	M	M	Kosba	M	M	M
Mejdel el-Koura	ML	M	ML	Nakhle	M	M	M	Qalhat	M	M	M
Ras Masqa	M	M	M	Rechdibbine	ML	M	M	Zakroun	M	M	M
Zgharta El-Mtaouile	L	L	L								

Bcharre

Municipality	01-Jan	02-Jan	03-Jan	Municipality	01-Jan	02-Jan	03-Jan	Municipality	01-Jan	02-Jan	03-Jan
Aabdine	L	L	ML	Bane	L	L	M	Barhelioun	L	L	ML
Bazouone	L	L	VL	Becharre	L	ML	ML	Beit Menzer	L	L	ML
Billa	L	L	ML	Blaouza	L	L	M	Bqaa Kafra	L	L	VL
Bqerqacha	L	L	VL	Breissat	L	L	VL	Dimane	L	L	VL
Hadath El Jobbeh	L	L	VL	Hadchit	L	VL	ML	Hasroun	L	L	VL
Mazraat Aassaf	L	L	L	Mazraat Bani Saab	L	L	L	Mchaa El-Jobbeh	L	L	VL
Metrit	L	L	ML	Moghr El-Ahoual	L	ML	M	Ouadi Qannoubine	L	VL	VL
Qanat	L	L	L	Qnayer	L	VL	L	Tourza	L	L	ML

Batroun

Municipality	01-Jan	02-Jan	03-Jan	Municipality	01-Jan	02-Jan	03-Jan	Municipality	01-Jan	02-Jan	03-Jan
Aabrine	M	M	M	Aalali	L	L	VL	Aartiz	ML	M	ML
Abdelli	L	ML	M	Ajdabra	M	M	M	Assia	L	ML	VL
Basbina	M	M	M	Batroun	M	M	M	Bcheleh	L	L	VL
Bechtoudar	L	ML	VL	Beit Chlala	L	L	VL	Beit Kassab	ML	L	VL
Bijdarfil	M	M	M	Bqesmaya	M	M	M	Chatine	L	L	VL
Chebtin	L	L	ML	Chekka	M	M	M	Daael	ML	M	VL
Dahr Abi Yaghi	L	ML	M	Daraya El-Batroun	ML	ML	M	Deir Billa	L	L	L
Deir Kfifane	M	M	M	Deir Mar Youhanna EL	L	L	VL	Deir Mar Youssef Jra	L	ML	M
Douma	L	L	VL	Douq	L	L	M	Eddeh El-Batroun	ML	M	M
Ftihat El-Batroun	ML	M	L	Ghouma	L	ML	M	Hadtown	L	L	VL
Hamat	M	M	M	Harbouna	M	M	M	Hardine	L	L	VL
Helta	ML	M	L	Hery	M	M	M	Jebbla	ML	M	L
Jrabta El-Batroun	L	ML	M	Jrane El-Batroun	M	M	M	Kfar Aabida	L	M	M
Kfar Halda	L	L	VL	Kfarb Shlaimane	ML	ML	L	Kfarhatna	ML	M	M
Kfarhay	M	M	M	Kfarhelos	M	M	M	Kfifane	M	M	M

Kfour El Arabi	L	L	VL	Koubba	M	M	M	Kour	M	M	M
Mar Mama	L	L	L	Masrah	L	L	M	Mehmarch	L	L	VL
Mrah Chdid	ML	M	M	Mrah El Ziyat	M	M	M	Mrah El-Hajj	L	L	VL
Nahle El-Batroun	L	L	VL	Niha El-Batroun	L	L	VL	Ouajh El-Hajjar	M	M	M
Ouata Houb	L	L	VL	Qatnaaoun	M	M	M	Racha	L	L	VL
Rachana	L	ML	M	Rachkida	M	M	M	Ram El-Batroun	L	L	VL
Ras Nahhach	M	M	M	Selaata	M	M	M	Sghar	L	ML	M
Smar Jbayl	ML	M	M	Sourat El-Batroun	M	M	L	Tannourine El-Faouqa	L	L	VL
Tannourine Et-Tahta	L	VL	VL	Thoum	L	M	M	Toula El-Batroun	L	ML	M
Zan	ML	M	L								

Zgharta

Municipality	01-Jan	02-Jan	03-Jan	Municipality	01-Jan	02-Jan	03-Jan	Municipality	01-Jan	02-Jan	03-Jan
Aachach	M	M	M	Aalma	M	M	M	Aarde	M	M	M
Aintourine	L	ML	M	Arabet Qozhaya	L	L	L	Arde	M	M	M
Arjis	M	M	M	Asnoun	ML	M	M	Ayto	L	L	ML
Basloukit	L	L	M	Bchannine	M	M	M	Besebeel	M	M	M
Bhairret Toula	L	L	ML	Bnachee	L	ML	M	Boussit	M	M	M
Danha	ML	M	M	Daraiya Zgharta	M	M	M	Deir Jdeide	ML	M	M
Ehden	L	L	M	Halan	M	M	M	Hariq Zgharta	ML	M	M
Houakir	L	ML	M	Hraiqis	ML	M	M	laal	ML	M	M
Ijbaa	L	L	M	Karm Saddeh	L	L	ML	Kfarchakhna	M	M	M
Kfardlaqous	ML	M	M	Kfarfou	M	M	M	Kfarhata Zgharta	ML	M	M
Kfarhoura	M	M	M	Kfarsghab	L	L	M	Kfaryachit	ML	M	M
Kfarzaina	M	M	M	Khaldiye	ML	M	M	Mazraat Ajbeaa	M	M	M
Mazraat Et-Teffah	L	L	M	Mazraat Jneid	ML	M	M	Mejdlaiya Zgharta	M	M	M
Merh Kfarsghab	L	ML	M	Miryata	M	M	M	Miziara	L	L	ML
Mzraat Kefraya	M	M	M	Qorah Bach	ML	M	M	Rachiine	ML	M	M
Ras Kifa	ML	ML	M	Sakhra	ML	M	M	Sebhel Zgharta	L	L	M
Serhel	L	L	L	Tallet Zgharta	M	M	M	Toula Zgharta	L	L	ML
Zgharta	ML	M	M								

Minieh-Denniye

Municipality	01-Jan	02-Jan	03-Jan	Municipality	01-Jan	02-Jan	03-Jan	Municipality	01-Jan	02-Jan	03-Jan
Aasaymout	L	M	M	Aaymar	L	M	ML	Aazki	ML	M	M
Ain El-Tineh-Miniyeh	L	ML	L	Assoun	L	M	ML	Bakhaaoun	ML	M	ML
Bchennata	L	L	M	Bechehhara	L	L	ML	Beddawi	M	M	M
Behouaita	L	L	ML	Beit El Foqss	L	ML	ML	Beit Haouik	ML	M	M
Beit Zoud	L	M	M	Bekaasafrine	ML	ML	M	Borj El Yahoudiyeh	M	M	M
Bqarsouna	L	ML	ML	Btermaz	L	M	M	Debaael	L	M	M
Deir Ammar	M	M	M	Deir Nbouh	L	ML	M	Haouaret-Miniyeh	L	M	M
Haql el Azimeh	L	M	ML	Harf El Siyad	L	M	ML	Hazmiye-Miniyeh	L	ML	L
Izal	L	M	M	Jarjour	L	L	ML	Jayroun	L	M	M
Kahf El-Malloul	L	L	ML	Karm El-Moher	L	M	M	Kfar Binine	L	M	M
Kfarchalane	ML	M	ML	Kfarhabou	M	M	M	Kharroub-Miniyeh	ML	M	M
Mazraat El-Kreme	L	L	ML	Mazraat Ketrane	L	M	ML	Merkebta	M	M	M
Minyeh	M	MH	M	Mrah El Sfirat	L	L	ML	Mrah Sraj	L	M	M
Mrebbine	ML	M	M	Nabi Youcheaa	M	M	M	Nemrine	L	ML	ML

Qarhaiya	ML	M	M	Qarne	L	M	M	Qarsita	L	ML	L
Qattineh-Miniyeh	L	ML	L	Qemmamine	L	M	M	Qraine	L	ML	ML
Raouda-Aadoua	ML	M	M	Rihaniyet-Miniyeh	ML	M	M	Sfireh	L	M	ML
Sir Ed-Danniyeh	L	M	ML	Tarane	L	M	M	Terbol-Miniyeh	M	M	M
Zaghartaghriane	L	ML	M	Zouq Bhannine	M	M	M				

Nabatiye

Nabatiye

Municipality	01-Jan	02-Jan	03-Jan	Municipality	01-Jan	02-Jan	03-Jan	Municipality	01-Jan	02-Jan	03-Jan
Aabba	L	ML	L	Aazzi	L	ML	L	Adchit El-Chqif	L	M	L
Ain Bou Swar	VL	L	L	Ain Kana	L	ML	L	Ali El-Taher	L	ML	L
Ansar	L	M	L	Arab Salim	L	ML	L	Arnoun	L	ML	L
Bfaroue	L	ML	L	Breyqaah	L	M	L	Charqiyeh	ML	M	L
Choukine	L	ML	L	Deir El Zahrani	L	ML	L	Doueir El-Nabatiyeh	ML	ML	L
Habbouch El-Nabatiye	L	ML	L	Hamra El-Nabatiyeh	L	M	L	Harouf El-Nabatiyeh	L	ML	L
Hmaile	L	ML	L	Houmin El Faouqa	L	ML	L	Houmin El Tahta	L	M	L
Jarjough	L	ML	L	Jbaah El-Nabatiyeh	VL	L	L	Jebchit	L	ML	L
Kfar Djal El-Nabatiy	L	ML	L	Kfar Remmane	L	ML	L	Kfar Sir	L	M	L
Kfar Tebnit	L	ML	L	Kfarfila	L	ML	L	Kfour El-Nabatieh	L	ML	L
Mayfadoun	L	ML	L	Mazraat Bsaffour	L	ML	L	Mazraat Chalbaal	ML	ML	L
Mazraat Dmoul	L	M	ML	Mazraat El Khreibeh	L	ML	L	Mazraat El-Bayad El-	L	ML	L
Mazraat Kfarjaouz	L	ML	L	Mazraat Qalaat Meiss	L	M	L	Nabatiyeh El-Fawka	L	ML	L
Nabatiyeh Et-Tahta	L	ML	L	Namiriyyeh	ML	M	L	Qaaqaaiyet El Jisr	L	M	L
Qossaibeh El-Nabatiy	L	M	L	Roumine	L	M	L	Sarba El-Nabatieh	L	ML	L
Sir El-Gharbiyeh	L	M	L	Toul	L	ML	L	Yehmor El-Nabatiyeh	L	ML	L
Zaoutar El Charkiyeh	L	M	L	Zaoutar El-Gharbiyeh	L	M	L	Zebdine El-Nabatiyeh	L	ML	L
Zefta	L	M	L								

Hasbaiya

Municipality	01-Jan	02-Jan	03-Jan	Municipality	01-Jan	02-Jan	03-Jan	Municipality	01-Jan	02-Jan	03-Jan
Ain Jarfa	VL	VL	L	Abou Qamha	L	L	L	Ain Qania	VL	VL	L
Bourghos	VL	ML	L	Chebaa	L	L	L	Chouaya Hasbaya	L	L	L
Dellafeh	VL	ML	L	Fardiss Hasbaiya	VL	L	L	Hasbaya	VL	L	L
Hbariyeh	L	VL	L	Kaoukaba Hasbaiya	L	ML	L	Kfar Chouba	ML	L	L
Kfar Hamam	L	L	L	Kfeir El-Zait	VL	L	L	Khalwat Hasbaya	L	L	L
Khreibet Hasbaiya	L	ML	L	Majidiyeh Hasbaiya	ML	L	L	Marj Ez-Zhour (Haouc	L	L	L
Meri	L	ML	L	Mimass	VL	L	L	Rachaiya El-Fokhar	L	L	L
Salaiyeb	ML	ML	L								

Marjayoun

Municipality	01-Jan	02-Jan	03-Jan	Municipality	01-Jan	02-Jan	03-Jan	Municipality	01-Jan	02-Jan	03-Jan
Aalmane Marjaayoun	VL	ML	L	Aamra	L	ML	L	Adayseh Marjaayoun	L	M	L
Adchit El-Koussair	VL	M	L	Ain Arab Marjaayoun	L	ML	L	Bani Haiyann	VL	M	L
Blatt Marjaayoun	L	ML	L	Blida	L	M	L	Borj El-Moulouk	L	ML	L
Boueyda Marjaayoun	L	ML	L	Deir Mimass	L	L	L	Deir Siriane	VL	ML	L
Dibbine	L	ML	L	Ebel El Saqi	L	ML	L	Houla	L	M	L
Houra	VL	ML	L	Kfar Kila	VL	M	L	Khiam Marjaayoun	L	ML	L

Klayaa	L	ML	L	Majdel Selem	VL	M	L	Marjaayoun	L	ML	L
Markaba	L	M	L	Mays El-Jabal	L	M	L	Mazraat Doumiat	L	ML	L
Mazraat Sarada	L	ML	L	Mhaibib	L	M	L	Qabrikha	VL	M	L
Qantara	VL	M	L	Rab El-Thalathine	L	M	L	Saouaneh Marjayoun	VL	M	L
Talloussa	VL	M	L	Taybeh Matjaayoun	VL	M	L	Touline	VL	M	L

Bent Jbail

Municipality	01-Jan	02-Jan	03-Jan	Municipality	01-Jan	02-Jan	03-Jan	Municipality	01-Jan	02-Jan	03-Jan
Ain-Ebel	L	M	L	Aitaroun	L	M	L	Aynata Bint Jbeil	L	M	VL
Ayta El-Chaeb	VL	ML	L	Ayta El-Jabal	VL	M	L	Beit Lif	VL	ML	L
Beit Yahoun	L	M	L	Bint Jbeil	L	M	L	Borj Qalaway	VL	M	L
Braachit	VL	M	L	Chakra	L	M	L	Debel	L	M	L
Deir Antar	VL	M	L	Froun	L	ML	L	Ghandouriyeh Bint Jb	VL	M	L
Hanine	L	M	L	Hariss	L	M	L	Hdatha	L	M	L
Jmeymeh	VL	M	L	Kafra Bint Jbeil	VL	M	L	Kfar Dounine	VL	M	L
Khirbet Selm	VL	M	L	Kounine	L	M	L	Maroun El Ras	L	M	L
Qalaway	VL	M	L	Qaouzah	VL	ML	L	Qatmoun	L	M	L
Ramya Bint Jbeil	VL	ML	L	Rchaf	L	M	L	Rmeich	L	M	L
Safad Al Battikh	VL	M	L	Salhaneh	VL	ML	L	Serbine	L	M	L
Sultanieh Bint Jbeil	VL	M	L	Tibnine	VL	M	L	Tiri	L	M	L
Yaroun	L	M	VL	Yater	VL	M	L				

Mont Liban

Jbail

Municipality	01-Jan	02-Jan	03-Jan	Municipality	01-Jan	02-Jan	03-Jan	Municipality	01-Jan	02-Jan	03-Jan
Aabeydat	L	ML	M	Aalita	VL	L	M	Aamchit	L	M	M
Aarab El-Lahib	L	L	VL	Aarasta	L	VL	VL	Adonis Jbeil	VL	L	M
Afqa Jbeil	L	L	VL	Ain El Delbeh Jbeil	VL	L	VL	Ain El-Ghouyba	L	L	VL
Ain Jrain	VL	VL	VL	Ain Kfah	L	ML	M	Almat El Chemaliyat	VL	L	VL
Almat El-Jenoubiya	L	L	VL	Aqoura	L	ML	VL	Bayzoun	VL	L	L
Bchille Jbeil	VL	L	M	Bechtida	VL	L	ML	Behdaydat	L	L	M
Beit Habbaq	L	ML	M	Bejjeh	L	ML	M	Bekhaaz	L	ML	M
Berbara Jbeil	L	M	M	Bintael	L	L	M	Birket Hjoula	L	L	M
Blatt Jbeil	L	L	M	Boulhos	VL	L	VL	Breyj Jbeil	VL	L	M
Chamat	L	M	M	Chikhane	L	M	M	Chmout	L	ML	M
Eddeh Jbeil	L	ML	M	Ehmej	L	L	VL	Fatre	VL	L	M
Ferhet	L	L	L	Fghal	L	ML	M	Frat	VL	VL	VL
Ghabat	L	L	VL	Ghalboun	L	ML	M	Gharzouz	L	M	M
Ghofrine	L	ML	M	Habil	L	L	ML	Halate	L	ML	M
Haqel	L	L	ML	Hbaline	L	ML	M	Hboub	L	L	M
Hdeine	L	L	VL	Hema Er-Rehban	L	L	VL	Hema Mar Maroun Aann	L	L	VL
Hjoula	L	L	M	Hosrayel	L	M	M	Hsarat	L	ML	M
Hsoun	L	L	M	Jaj	L	L	VL	Janne	VL	VL	VL
Jbeil	L	M	M	Jeddeyel Jbeil	L	M	M	Jlisse	VL	L	M
Jouret El-Qattine	VL	L	M	Kfar Baal Annaya	VL	L	ML	Kfar Kidde	L	M	M
Kfar Kouas	L	L	M	Kfar Mashoun	L	ML	M	Kfoun	L	L	M

Kharbe Jbeil	L	L	M	Laqlouq	L	L	VL	Lassa	L	L	VL
Lehfed	L	L	VL	Maad	L	M	M	Mar Sarkis	L	L	VL
Mastita	L	M	M	Mayfouq	L	L	VL	Mazraat El Siyad	L	L	VL
Mazraat El-Maaden	L	L	VL	Mechane	VL	VL	ML	Mechmech Jbeil	L	L	VL
Mehrin	L	ML	M	Mejdel El-Akoura	L	L	VL	Mghayreh Jbeil	L	L	VL
Mounsef	L	M	M	Nahr Ibrahim	L	M	M	Qahmez	VL	VL	VL
Qartaba	L	L	VL	Qartaboun	L	M	M	Qattara Jbeil	L	L	VL
Qorqraya	VL	VL	VL	Ramout	L	ML	M	Ras Osta	VL	L	M
Rihane Jbeil	L	M	M	Sakiet El-Khayt	L	ML	M	Saqi Richmaya	L	L	VL
Sebrine	VL	L	M	Seraita	L	L	VL	Souane Jbeil	L	L	VL
Tadmor	L	L	VL	Tartej	L	L	VL	Torzaiya	VL	L	L
Yanouh Jbeil	L	L	VL	Zibidine Jbeil	VL	L	M				

El Metn

Municipality	01-Jan	02-Jan	03-Jan	Municipality	01-Jan	02-Jan	03-Jan	Municipality	01-Jan	02-Jan	03-Jan
Aain El-Qabu	VL	VL	VL	Aain El-Qach	VL	L	M	Aain El-Teffaha	VL	L	M
Aain el-Safssaf El-M	VL	L	M	Abou Mizane	VL	L	M	Ain Aar	VL	ML	M
Ain Alaq	VL	L	M	Ain El-Kharroube	VL	L	M	Ain El-Sendiane	VL	L	M
Ain El-Zeitoune	VL	L	M	Ain Saadeh	VL	L	M	Aintoura El-Matn	L	L	VL
Amaret Chalhoub	L	M	M	Antelias	L	ML	M	Atchaneh	VL	L	M
Ayroun	VL	L	M	Baabdat	VL	L	M	Baouchariyeh	L	M	M
Baskinta	VL	L	VL	Beit Chabab	VL	L	M	Beit El-Charar	VL	ML	M
Beit El-Kekko	VL	ML	M	Beit Mery	VL	L	M	Bhersaf	VL	L	M
Bikfaya	VL	L	M	Biyakout	L	ML	M	Bnabil	VL	L	M
Bourj Hammoud	L	M	M	Bqennaya	L	L	M	Broummana El-Matn	VL	L	M
Bsalim	VL	L	M	Bsifrine	VL	VL	M	Bteghrine	VL	VL	L
Chaouiye	VL	L	M	Chouaya El-Matn	VL	L	M	Choueir	VL	L	M
Chrine	VL	L	M	Dahr El Sawan El-Mat	VL	L	M	Daychouniyeh	VL	M	M
Dbayeh	L	ML	M	Deir Chamra	VL	VL	M	Deir Mar Abda el Mch	VL	L	M
Deir Mar Roukouz	L	M	M	Deir Tamiche	VL	L	M	Dik El-Mehdi	VL	L	M
Dikwaneh	L	M	M	Douar El-Matn	VL	L	M	Fanar	L	ML	M
Fraike	VL	L	M	Haret El-Ballaneh	VL	L	M	Hbous	VL	ML	M
Himlaya	VL	L	M	Jal El Did	L	M	M	Jdeideh El-Metn	L	M	M
Jouar El-Matn	VL	L	M	Jouret El-Ballout	VL	L	M	Kaaqour	VL	VL	M
Kfar Aaqab	VL	VL	ML	Kfertay El-Matn	VL	VL	VL	Khenchara	VL	L	M
Khillet El-Mtain	VL	L	M	Konnabat Broummana	VL	L	M	Konnabat Salima	VL	VL	M
Machraah El-Matn	VL	VL	L	Majdel Tarchich	L	ML	VL	Majzoub	VL	L	M
Mansouriyeh El-Metn	L	M	M	Mar Boutros Karm Et-	VL	L	M	Mar Chaya et Mzekke	VL	L	M
Mar Moussa Ed-Douar	VL	L	M	Marjaba	VL	VL	L	Masqa	VL	L	M
Mayasse	VL	L	M	Mazraat Deir Aoukar	VL	ML	M	Mazraat El-Hadirat	VL	L	M
Mazraat Yachouh	VL	ML	M	Mchikha	VL	L	M	Menqlet Mezher	VL	ML	M
Mhaydseh Matn	VL	L	M	Mkalles	L	M	M	Mrouj	VL	L	L
Mtain	L	L	L	Mtaylor	VL	L	M	Nabay	VL	L	M
Naccache	VL	ML	M	Ouadi Chahine	VL	L	M	Ouadi El-Karm El-Mat	VL	VL	L
Ouata El-Mrouj	VL	VL	M	Ouyoun El-Matn	VL	L	M	Qornet Chehwan	VL	L	M
Qornet El-Hamra	VL	L	M	Roumieh	VL	L	M	Sfeilet Bikfaya	VL	L	M
Sinn El-Fil	L	M	M	Zabbougha	VL	VL	M	Zalqa	L	M	M

Zarouon	VL	VL	M	Zekrite	VL	L	M	Zighrine El-Matn	VL	L	M
Zouk El-Khrab	VL	ML	M								

Chouf

Municipality	01-Jan	02-Jan	03-Jan	Municipality	01-Jan	02-Jan	03-Jan	Municipality	01-Jan	02-Jan	03-Jan
Aalmane El-Chouf	L	M	L	Aammq El-Chouf	VL	L	L	Ain Ouzein	VL	L	L
Ain Qani	VL	L	L	Ain Zhalta	VL	L	L	Ainbal	VL	L	L
Amatour	VL	L	L	Anout	L	L	L	Atrine	VL	L	L
Baadarane	VL	L	L	Baaqline	VL	L	L	Baasir	L	M	ML
Barja	L	M	L	Barouk	L	L	L	Bater	VL	L	L
Batloun	VL	L	L	Bayqoun	VL	ML	L	Bchetfine	VL	L	L
Beiteddine	VL	L	L	Benouati Ech-Chouf	VL	L	L	Berjein	L	L	L
Bireh et Mtalleh	VL	L	L	Biret El-Chouf	VL	L	L	Bkechtine Ouel Mchei	L	L	L
Bkifa El-Chouf	L	ML	L	Botme	VL	L	L	Bqaiaa Ech-Chouf	L	L	L
Bsaba El-Chouf	L	L	L	Chammis El-Chouf	L	ML	L	Chehim	L	L	L
Chemaarine	VL	L	L	Chourit	VL	L	L	Daher El-Chouf	L	L	L
Dalhoun	ML	ML	L	Damour	L	M	L	Daraya El-Chouf	L	L	L
Deir El-Moukhalles	L	L	L	Deir Baba	VL	L	L	Deir Dourit	VL	L	L
Deir El-Qamar	VL	L	L	Deir Kouche	VL	L	L	Dibbieh	L	L	L
Dmit	VL	L	L	Fouara Jaafar	VL	L	L	Fraidis El-Chouf	L	L	L
Ghabet Jaafar	VL	L	L	Gharife	VL	L	L	Haret Jandal	VL	L	L
Hasrout	L	L	L	Jadra	L	M	L	Jahlieh	L	L	L
Jbeih El-Chouf	VL	L	L	Jdeidet El-Chouf	VL	L	L	Jiyeh	ML	M	ML
Jleilyeh	L	L	L	Jmailiyeh	L	M	L	Joun	L	ML	L
Kahlounie El-Chouf	VL	L	L	Ketermaya	ML	ML	ML	Kfar Faqoud	VL	L	L
Kfar Hamal	VL	ML	L	Kfar Him	VL	L	L	Kfar Katra	VL	L	L
Kfar Niss	VL	L	L	Kfar hay	VL	L	L	Kfarnabrakh	VL	L	L
Khirbet Bisri	L	L	L	Knayse El-Chouf	VL	L	L	Maaniyeh	L	ML	L
Maasser Beiteddine	VL	L	L	Maasser El-Chouf	L	L	L	Majdalouna	L	ML	L
Majdel El-Meouch	VL	L	L	Mazboud	ML	ML	L	Mazmoura	L	L	L
Mazraat El Chouf	VL	L	L	Mazraat El Daher	L	L	L	Mazraat El-Douair	VL	L	L
Mechref	L	L	L	Mghairie	L	ML	ML	Mghayrie El-Chouf	VL	L	L
Moukhtara	VL	L	L	Mrusti	L	L	L	Mtolle	L	L	L
Naameh	VL	M	M	Niha El-Chouf	L	L	L	Ouadi Abou Youssef	VL	VL	L
Ouadi Ed-Deir	VL	L	L	Ouadi El-Sit	VL	L	L	Ouadi bnehlay	VL	L	L
Qraibeh	VL	L	L	Qreiaa	L	L	L	Rmayle El-Chouf	L	M	L
Semqaniyeh	VL	L	L	Sibline	L	M	L	Sirjbeil	L	L	L
Warhanieh	VL	L	L	Werdaniyeh	L	M	L	Zaarourieh	L	L	L

Baabda

Municipality	01-Jan	02-Jan	03-Jan	Municipality	01-Jan	02-Jan	03-Jan	Municipality	01-Jan	02-Jan	03-Jan
Abadiyeh	VL	L	M	Ain Mouaffaq	VL	L	M	Araiya	VL	L	M
Arbaniyeh	VL	VL	M	Arsoun	VL	VL	M	Baabda	L	ML	M
Baalchmey	VL	L	M	Bmaryam	VL	VL	M	Bourj El-Brajneh	L	M	M
Boutchay	VL	L	M	Bsaba Baabda	VL	ML	M	Btekhney	VL	L	M
Btibyat	VL	L	M	Bzbeddine	VL	L	M	Chbeniyeh	VL	L	M
Chiyah	L	M	M	Chmeisset Baabda	VL	L	M	Chouit	VL	L	M
Deir El-harf	VL	L	M	Deir Khouna	VL	L	M	Dlaybeh	VL	VL	M

Falougha	L	ML	L	Furn El-Chebbak	L	M	M	Hadath Beyrouth	L	ML	M
Halaliyeh Baabda	VL	L	M	Hammana	L	L	M	Haret El Sett	VL	L	M
Haret Hamze	VL	L	M	Haret Hreik	L	M	M	Hasbaiya El-Metn	VL	VL	M
Jouar El-Hoz	VL	L	L	Jouret Arsoun	VL	L	M	Kfar Chima	L	ML	M
Kfar Selouane	L	L	VL	Khalouat Baabda	L	L	M	Kneisset Baabda	VL	VL	M
Laylakeh	L	ML	M	Louayzeh Baabda	L	L	M	Merdache	VL	ML	M
Mzairaa Baabda	VL	L	M	Ouadi Chahrour El Ol	VL	L	M	Ouadi Chahrour El So	VL	L	M
Qalaa Baabda	VL	L	M	Qhraybe Baabda	VL	L	M	Qobbayaa	VL	L	M
Qornayel	VL	L	M	Qortada	VL	VL	M	Qrayeh Baabda	VL	VL	M
Qsaibeh Baabda	VL	L	M	Qtale Baabda	VL	L	M	Ras El Metn	VL	L	M
Ras El-Haref	VL	L	M	Rouayset El-Ballout	VL	L	M	Salima Baabda	VL	VL	M
Tahouitat El Ghadir	L	M	M	Tarchich	L	ML	VL	Zandouqa	VL	VL	M

Aley

Municipality	01-Jan	02-Jan	03-Jan	Municipality	01-Jan	02-Jan	03-Jan	Municipality	01-Jan	02-Jan	03-Jan
Abey	VL	L	L	Aghmid	VL	L	M	Ain Dara	L	ML	ML
Ain Drafil	VL	L	M	Ain El Halazoun	VL	L	M	Ain El-Rmmaneh	VL	L	M
Ain Jedideh	VL	L	M	Ain Ksour	VL	L	ML	Ain Onoub	VL	L	M
Ain Traz	VL	L	L	Ainab	VL	L	M	Aley	VL	L	M
Aramoun	VL	ML	M	Aytat	VL	L	M	Azouniyeh	VL	L	M
Baawerta	VL	ML	L	Badghan Oua Wadi Bad	VL	L	M	Bassatine	VL	L	M
Bayssour	VL	L	M	Bchamoun	VL	ML	M	Bdadoun	VL	L	M
Behouara	VL	L	M	Bennay	VL	L	L	Bhamdoun El-Dayaa	VL	L	M
Bhamdoun El-Mhatta	VL	L	M	Bkhechtey	VL	L	M	Bleibel	VL	L	M
Bmakine	VL	ML	M	Bmhay	L	ML	ML	Bouzrid	VL	L	L
Bserrine	VL	L	M	Bsous	VL	L	M	Btalloun	VL	ML	M
Btater	VL	L	M	Chanay	VL	L	M	Charoun	VL	L	M
Chartoun	VL	L	M	Chemlane	VL	L	M	Choueifat El-Aamrous	L	M	M
Choueifat El-Oumara	VL	M	M	Choueifat El-Quoubbe	VL	M	M	Dakkoun	VL	L	L
Deir Qoubel	VL	L	M	Dfoun	VL	L	M	Douair El Remmaneh	VL	L	M
Ghaboun	VL	L	M	Habramoun	VL	L	M	Homs Oua Hama	VL	L	M
Houmal	VL	L	M	Jisr El Qadi	VL	L	L	Kehaleh	VL	L	M
Keyfoun	VL	ML	M	Kfar Aamey	VL	L	M	Kommatyeh	VL	L	M
Maasrati	VL	L	M	Majdel Baana	VL	L	M	Mansourieh et Ain El	VL	L	M
Mazraat El-Nahr	VL	L	M	Mchakhte	VL	L	M	Mecherfeh	VL	L	M
Mejdaya	VL	L	M	Mrayjat	VL	L	L	Ramliyah	VL	L	ML
Rechmaya	VL	L	L	Rejmeh	VL	L	M	Remhala	VL	L	ML
Rouaysset El Neemane	VL	L	M	Saoufar	VL	L	M	Selfaya	VL	L	L
Sirhmoul	VL	L	M	Souq El Ghareb	VL	L	M	Taazanieh	VL	L	M

Kesrouane

Municipality	01-Jan	02-Jan	03-Jan	Municipality	01-Jan	02-Jan	03-Jan	Municipality	01-Jan	02-Jan	03-Jan
Achkout	VL	L	M	Adma Oua Dafneh	L	ML	M	Ain Ed-Delbe Kesroua	VL	VL	VL
Ain El-Rihane	VL	L	M	Aintoura Kesrouane	VL	L	M	Ajaltoun	VL	L	M
Akaybeh Kesrouane	L	M	M	Aramoun Kesrouane	VL	L	M	Azra ouel Ozor	VL	L	M
Ballouneh	VL	L	M	Batha	VL	VL	M	Bekaatat Achkout	VL	L	M
Bekaatat Kanaan	VL	VL	VL	Bizhel	VL	L	M	Bouar	L	ML	M
Bqaatouta	VL	VL	VL	Bqaq Ed-Dine	L	ML	M	Bzommar	VL	L	M

Chahtoul	VL	L	M	Chnaniir	VL	L	M	Chouan	VL	VL	VL
Daraya Kesrouane	VL	L	M	Darououn	VL	L	M	Deir Baqlouch	VL	L	M
Dlebta	VL	VL	M	Eghbeh	VL	VL	ML	Faraya	VL	L	VL
Fatka	VL	L	M	Feytroun	VL	VL	M	Ghazir	VL	L	M
Ghbaleh Kesrouane	VL	L	M	Ghedrass	VL	L	M	Ghosta	VL	L	M
Ghyneh	VL	L	M	Harharaya w Kattine	VL	L	M	Harissa Kesrouane	VL	L	M
Hayata	VL	VL	M	Hosein	VL	L	M	Hrajel	VL	L	VL
Jdeideh Ghazir	VL	L	M	Jeita	VL	L	M	Jounieh Ghadir	VL	L	M
Jounieh Haret Sakhr	VL	ML	M	Jounieh Salel Alma	VL	L	M	Jounieh Sarba	VL	ML	M
Jouret Bedrane	VL	L	M	Jouret Mhad	VL	L	M	Jouret Termos	VL	L	M
Kfar Debiane	VL	VL	L	Kfar Tay Kesrouane	VL	VL	L	Kfar Yassine	L	ML	M
Kfour Kesrouane	VL	L	M	Kharayeb Nahr Ibrahi	VL	L	M	Klayaat Kesrouane	VL	L	M
Maarab	VL	VL	M	Maaysra Kesrouane	VL	L	M	Mayrouba	VL	VL	VL
Mazraat Er-Ras	VL	L	M	Mazraat Mrah El-Mir	VL	L	M	Mchaa El Ftouh	L	ML	VL
Mchaa Faraya	L	L	VL	Mchaa Kfar Dibiane	L	L	VL	Mghaer	VL	VL	VL
Mradiyah	VL	L	M	Nahr Ed-Dahab	VL	VL	L	Nammoura Kesrouane	VL	L	M
Ouata El Jaouz	VL	VL	L	Ouata Sillam	L	ML	M	Raachine	VL	VL	M
Rayfoun	VL	L	M	Safra Kesrouane	L	M	M	Shayle Kesrouane	VL	L	M
Tabarja	L	ML	M	Yahchouch	VL	VL	M	Zaaytreh	VL	L	M
Zeytoun	VL	L	M	Zouk Mikael	VL	ML	M	Zouk Mosbeh	VL	ML	M

Baalbek_Hermel

Baalbek

Municipality	01-Jan	02-Jan	03-Jan	Municipality	01-Jan	02-Jan	03-Jan	Municipality	01-Jan	02-Jan	03-Jan
Aadous	M	M	VL	Aamchki	L	ML	VL	Aarsal	ML	M	L
Ain Baalbek	M	MH	L	Ain Bourday	L	ML	VL	Ain El-Benye	L	ML	VL
Ain El-Jaouz Baalbek	ML	M	VL	Ain El-Siya Chadoura	L	L	VL	Al Khodr Baalbek	ML	M	VL
Al Nabi Chit	ML	M	VL	Aynata Baalbek	L	M	VL	Baalbek	ML	M	VL
Bachwat	L	M	VL	Barqa	L	M	VL	Bednayel Baalbak	L	M	VL
Beit Chama	L	M	VL	Bijjaje	M	MH	L	Bouday	L	M	VL
Brital	L	M	VL	Btadi	ML	M	L	Chaat	M	M	VL
Chaibe	L	L	VL	Chlifa	ML	M	L	Chmestar	L	M	VL
Dar El-Oussa	L	M	L	Deir El-Ahmar	ML	M	L	Deir Mar Maroun Baal	M	M	M
Douris	ML	M	VL	Fakiha	M	MH	L	Hadath Baalbek	L	ML	VL
Ham	L	ML	VL	Haour Taala	L	M	VL	Hizzine	L	ML	VL
Hlebta	ML	M	M	Hosh Barada	ML	M	VL	Hosh El Dahab	M	M	VL
Hosh El Snid	L	ML	VL	Hosh El-Nabi	L	ML	VL	Hosh El-Rafiq	L	M	VL
Hosh Tal Safiya	M	M	VL	Hrebta	ML	M	L	laat	M	M	VL
Jebaa	ML	M	VL	Jenta	L	M	VL	Kfar Dabach	L	M	VL
Kfar Dane	L	ML	L	Khraibeh El-Hermel	M	M	L	Khreibet Baalbek	L	M	VL
Kneisset Baalbek	M	M	VL	Labueh	M	M	L	Maarboun	L	ML	VL
Majdaloun	ML	M	VL	Maqneh	M	M	VL	Mazraat Beit Mcheik	L	M	VL
Misraya	L	M	VL	Moqraq	M	M	L	Nabha El-Damdoum	L	M	L
Nabi Chbay	L	L	VL	Nabi Osman	M	MH	L	Nahleh baalbek	ML	M	VL
Ouadi El-Oss	ML	M	L	Qaa Baayoun	M	M	M	Qaa Jouar Maqiye	M	M	M
Qaa Ouadi El-Khanzir	M	M	M	Qah Baalbek	M	MH	M	Qarha Baalbek	M	M	VL

Qsarnaba	L	M	VL	Ram Baalbek	L	M	VL	Ras Baalbek El Sahl	M	MH	M
Ras Baalbek El-Charq	M	M	M	Riha	M	M	VL	Saaide	L	ML	L
Sbouba	M	M	L	Seriine El-Tahta	ML	M	VL	Slouqi	L	M	VL
Taiba Baalbek	L	M	VL	Talia	L	ML	VL	Taraiya	L	M	VL
Temnin El Fawqa	L	M	VL	Temnin El-Tahta	L	M	VL	Tfail	L	M	VL
Yahfoufa	L	M	VL	Yammouneh	L	M	L	Younine	M	M	VL
Zboud	M	M	L								

Hermel

Municipality	01-Jan	02-Jan	03-Jan	Municipality	01-Jan	02-Jan	03-Jan	Municipality	01-Jan	02-Jan	03-Jan
Charbine El-Hermel	L	M	M	Hermel Jbab	L	M	M	Hermel	M	M	M
Maaysra El-Hermel	M	M	M	Michaa Mrajhine	L	M	M	Ouadi Faara	L	M	M
Ras Baalbek - Ouadi	M	M	M	Ras Baalbek El Gharb	L	M	M	Zighrine	L	M	M

Akkar

Akkar

Municipality	01-Jan	02-Jan	03-Jan	Municipality	01-Jan	02-Jan	03-Jan	Municipality	01-Jan	02-Jan	03-Jan
Aain Tinta	ML	M	M	Aaiyat	ML	M	M	Aakkar El-Aatiqa	ML	M	ML
Aamar Akkar	ML	M	M	Aamar El Baykat	ML	M	M	Aamayer	M	M	M
Aamriyet Akkar	ML	M	M	Aandqet	ML	M	M	Aarmeh	L	M	M
Aarqa	ML	M	M	Aawaynat	ML	M	M	Aayoun Akkar	ML	M	M
Abboudiye	ML	M	M	Ain El-Zeit	ML	M	M	Ain Yaaqoub	ML	M	M
Akroum	ML	M	M	Aridet Cheikh Zennad	L	MH	M	Baldeh w Mazraat Bal	ML	M	M
Barcha	ML	M	M	Bardeh	ML	M	M	Bebnine	ML	M	M
Beino	ML	M	M	Beit Ayoub	ML	M	M	Beit El-Haouch	ML	M	M
Beit Mellat	ML	M	M	Beit Younes	L	M	ML	Berbara Akkar	ML	M	M
Berqayel	ML	M	M	Bezbina	L	M	ML	Bireh Akkar	ML	M	M
Borj	ML	M	M	Bqerezla	M	M	M	Bzal	ML	M	M
Chane	ML	M	M	Chaqdouf	ML	M	M	Charbila	ML	M	M
Cheikh Mohammad	ML	M	M	Cheikh Taba Es-Sahl	ML	M	M	Cheikh Taba	ML	M	M
Cheikh Zennad	L	MH	M	Cheikhlar	ML	M	M	Chir Hmairine	ML	M	M
Daghle	ML	M	M	Dahr Laissine	ML	M	M	Darine	ML	M	M
Dawra	ML	M	M	Dawsa w Baghdadi	ML	M	M	Dayret Nahr El-Kabir	M	M	M
Deir Dalloum	ML	M	M	Deir Jennine	ML	M	M	Denbou	ML	M	M
Dibbabiyyeh	ML	M	M	Douair Aadwiyeh	ML	M	M	Fassikine	ML	M	M
Fnaydek	ML	M	ML	Fraydes Akkar	L	M	M	Ghazayle	ML	M	M
Habchit	ML	M	M	Hakour	M	M	M	Halba	ML	M	M
Haouchab	ML	M	M	Hayssat	ML	M	M	Haytla	ML	M	M
Hayzouq	ML	M	M	Hedd	ML	M	M	Hmaira Akkar	ML	M	M
Hmaiss Akkar	ML	M	M	Hnaider	M	M	M	Hokr Ed-Dahri	L	MH	M
Hokr Etti	ML	M	M	Hokr Jouret Srar	ML	M	M	Houaich	ML	M	M
Hrar	ML	M	M	Idbil	ML	M	M	llat	M	M	M
Janine	ML	M	M	Jdeidet El-Joumeh	ML	M	M	Jdeidet El-Kaiteh	ML	M	M
Jebraïel	ML	M	M	Kafr	L	L	M	Kafr	ML	M	M
Karm Asfour	M	M	M	Kfar Melki Akkar	L	M	M	Kfar Noun	L	M	M
Kfarharra	ML	M	M	Khalsa	ML	M	M	Kharnoubet Akkar	ML	M	M

Khirbet Daoud Aakkar	ML	M	M	Khirbet El Remmane	ML	M	M	Khirbet Shar	ML	M	M
Khoreybet El-Jindi	ML	M	M	Khreibet Aakkar	ML	M	M	Kneisset Aakkar	L	MH	M
Kneisset Hnaider	M	M	M	Knisse	ML	M	M	Kroum El-Aarab	ML	M	M
Kwachra	ML	M	M	Kweykhat	ML	M	M	Machta Hammoud	M	M	M
Majdala	ML	M	M	Majdel Akkar	ML	M	M	Mar Touma	ML	M	M
Marlaya Melhem	L	M	M	Mashha	ML	M	M	Massoudiye	ML	M	M
Mazraat Beit Ghattas	M	M	M	Mazraat En-Nahriye	ML	M	M	Mechmech	L	M	M
Memneh	L	L	L	Mhammara	M	M	M	Mighraq Aakkar	L	MH	M
Minyara	ML	M	M	Moqayteh	L	M	M	Mounjez	ML	M	M
Msalla	ML	M	M	Mzeihmeh	ML	M	M	Nfaiseh	ML	M	M
Noura Et-Tahta	ML	M	M	Ouadi El-Haour	ML	M	M	Ouadi El-Jamous	ML	M	M
Ouyoun El-Ghizlane	ML	M	M	Qaabarine	L	M	M	Qabaait	ML	M	M
Qachlaq	ML	M	M	Qantara Aakkar	M	M	M	Qarha Aakkar	M	M	M
Qarqaf	ML	M	M	Qboula	ML	M	M	Qleiaat Aakkar	L	M	M
Qloud El-Baqie	M	M	M	Qobaiyat Aakkar	ML	M	ML	Qobbat Chamrat	L	M	M
Qorayat	L	M	ML	Qornet Aakkar	ML	M	M	Qsair Aakkar	ML	M	M
Rahbe	ML	M	M	Rihaniyet Aakkar	ML	M	M	Rmah	ML	M	M
Rmoul	L	M	M	Saadine	ML	M	M	Sadaqa	ML	M	M
Saidnaya	ML	M	M	Sammouniye	ML	M	M	Sayssoq	M	M	M
Semmaqiye	L	MH	M	Semmaqli	L	M	M	Sfinet El-Dreib	ML	M	M
Sfinet El-Qaitaa	ML	M	M	Sindyanet Zeidane	ML	M	M	Souaisset Aakkar	ML	M	M
Srar	ML	M	M	Tal Abbas El Gharby	ML	M	M	Tal Abbas El-Chargy	ML	M	M
Tal Biret	ML	M	M	Tal Hmayra	ML	M	M	Tal Maayan Tal Kiri	L	M	M
Tal Sibel	L	M	M	Tallet Chattaha	ML	M	M	Tikrit	ML	M	M
Tleil	ML	M	M	Tshea	L	M	ML	Zawarib	ML	M	M
Zouq El Hosniyeh	ML	M	M	Zouq El-Haddara	ML	M	M	Zouq El-Hbalsa	ML	M	M
Zouq El-Moqachrine	ML	M	M								

Sud

Sour

Municipality	01-Jan	02-Jan	03-Jan	Municipality	01-Jan	02-Jan	03-Jan	Municipality	01-Jan	02-Jan	03-Jan
Aaiyeh	L	M	L	Aalma El-Chaab	L	M	M	Aaytit	VL	M	L
Abbassiyeh Sour	VL	M	L	Abou Chech	L	M	M	Ain Abou Abdallah	VL	M	L
Ain Baal	VL	M	ML	Arzoun	VL	M	L	Aziyeh	L	M	M
Baflaya	VL	M	L	Barich	VL	M	L	Batouliyeh	VL	M	M
Bayad	VL	M	L	Bazouriyeh	VL	M	L	Bediass	VL	M	L
Bestiyat	VL	M	L	Borj El Chemali	VL	M	L	Borj En-Naqoura	L	M	M
Borj Rahhal	VL	M	ML	Boustane	VL	M	ML	Btaychiyeh	L	M	M
Chaaitiye	L	M	ML	Chameh	VL	M	M	Chehabiye	VL	M	L
Chehour	VL	L	L	Chihine	VL	ML	L	Debaal Sour	VL	M	L
Deir Amess	VL	M	L	Deir Kifa	VL	M	L	Deir Qanoun El-Ain	L	M	M
Deir Qanoun El-Naher	VL	M	L	Derdghaiya	VL	M	L	Dhayra	VL	ML	M
Halloussiyeh	VL	M	L	Hamoul	VL	ML	ML	Hanaouey	L	M	L
Henniye	L	M	M	Hmairi Sour	VL	M	L	Iskandarouna Sour	L	M	M
Jbal El Botom	L	M	L	Jebbin	L	M	M	Jennata	VL	M	L
Jijim	VL	ML	M	Jouaiya	VL	M	L	Kneisset Sour	L	M	L

Maarake	VL	M	L	Maaroub	VL	M	L	Majadel	VL	M	L
Majdalzoun	L	M	M	Mansouri Sour	L	M	M	Marnba	L	L	L
Marouahine	VL	ML	L	Mazraat El-Zalloutiy	L	M	M	Mazraat Mechref	VL	M	L
Mazraat Tayr Semhat	VL	L	L	Mheilib	VL	M	L	Neffakhiyeh	VL	M	L
Niha Sour	VL	M	L	Ouadi Jilo	VL	M	L	Qana	L	M	L
Qolaileh Sour	L	M	M	Rechknay	VL	M	L	Rmadiyah	L	M	L
Selha Sour	VL	M	L	Siddiqine	VL	M	L	Sour	L	M	ML
Srifa	VL	M	L	Tayr Debbe	VL	M	L	Tayr Felsay	L	M	L
Tayr Harfa	L	M	M	Touayri	VL	ML	L	Toura	VL	M	L
Yanouh Sour	VL	M	L	Yarine	L	M	M	Zebqine	VL	ML	L

Saida

Municipality	01-Jan	02-Jan	03-Jan	Municipality	01-Jan	02-Jan	03-Jan	Municipality	01-Jan	02-Jan	03-Jan
Aanqoun	VL	M	L	Aaqtanit	L	M	L	Aarab Ej-Jall	L	ML	L
Aarab Tabbaya	L	M	L	Abra Saida	L	M	L	Adloun	L	M	L
Adousiyeh	L	M	L	Ain-El-Deleb	VL	M	L	Arzai	VL	M	L
Babliyah	L	M	ML	Barty	L	ML	L	Bissariyeh	L	M	ML
Bnaafoul	L	M	L	Bqosta	L	M	L	Bramiy	VL	M	L
Daoudiyeh	L	M	ML	Dareb El-Sim	VL	M	L	Erkay	L	M	L
Ghassanieh	L	M	ML	Ghazieh	L	M	L	Hajjeh	L	M	L
Haret Saida	VL	M	L	Hartiyeh	L	M	L	Hlaliye Saida	VL	M	L
Insariyat	L	M	ML	Jazira Saida	VL	M	L	Kafar Bit	VL	ML	L
Kaoutariyet El-Siyad	ML	M	L	Kfar Chellal	VL	ML	L	Kfar Hatta Saida	VL	ML	L
Kfar Milke Saida	L	ML	L	Khartoum	ML	M	L	Khaziz	L	M	L
Khirbet Ed-Douair Sa	L	M	L	Khirbet El-Bassal	L	M	L	Khrayeb Saida	L	M	L
Loubieh	L	M	ML	Maghdouche	L	M	L	Majdelyoun	VL	M	L
Matariyet El-Choumar	L	M	L	Matayriyeh	L	M	L	Mazraat 'Mseileh	L	M	L
Mazraat 'Snaiber	L	M	L	Mazraat Aarab Soukka	L	ML	L	Mazraat Deir Taqla	L	M	L
Mazraat El Yahoudiye	L	M	L	Mazraat El-Housseini	L	M	ML	Mazraat El-Mhaydaleh	L	M	L
Mazraat El-Ouasta	VL	M	L	Mazraat Jamjim	VL	M	L	Mazraat Kaoutariyet	L	M	L
Mazraat Kfar Badda	L	M	L	Mazraat Oussamiyat	L	M	L	Mazraat Sari	L	M	L
Mazraat Sinai	L	M	L	Meemariyeh	L	M	L	Merouaniyeh	L	M	L
Miyeh ou Miyeh	VL	M	L	Najjariyeh	L	M	L	Qaaqiyat El-Snaouba	L	M	ML
Qnarit	L	M	L	Qraiye Saida	VL	M	L	Saida Ed-Dekermane	VL	M	L
Saida El-Oustani	VL	M	L	Saida El-Qadimeh	VL	M	L	Saida Kefraya	VL	ML	L
Saksakiyeh	L	M	ML	Salhie Saida	L	M	L	Sarafand	L	M	ML
Sfenta	L	L	L	Tafahta	L	M	L	Tanbourit	VL	M	L
Tebna	L	M	L	Zaghdraiya	VL	M	L	Zeita	VL	M	L
Zrariyeh	L	M	L								

Jezzine

Municipality	01-Jan	02-Jan	03-Jan	Municipality	01-Jan	02-Jan	03-Jan	Municipality	01-Jan	02-Jan	03-Jan
Ain El-Mir (El Estab	VL	M	L	Anane	L	L	L	Aramta	VL	ML	L
Ariya	VL	L	L	Aychiyeh	L	L	L	Azour	VL	L	L
Baba	VL	L	L	Bayssour Jezzine	VL	M	L	Benoueteh Jezzine	VL	L	L
Bhannine	VL	L	L	Bisri	L	VL	L	Bkassine	VL	L	L
Bouslaya	VL	L	L	Btedine El-Leqech	VL	L	L	Chbail	VL	L	L
Choualiq Jezzine	VL	ML	L	Dahr Ed-Deir	L	L	L	Deir El Qattine	VL	L	L

Demachqiyeh	L	ML	L	Ghabbatiyeh	VL	L	L	Harf Jezzine	VL	VL	L
Hassaniyeh	VL	ML	L	Haytouleh	VL	L	L	Haytura	VL	L	L
Hidab	L	L	L	Homsiyeh	VL	L	L	Jabal Toura	VL	L	L
Jarmaq	L	ML	L	Jensnaya	VL	M	L	Jernaya	L	ML	L
Jezzine	VL	L	L	Karkha	VL	ML	L	Kfar Falous	L	ML	L
Kfar Houna	L	L	L	Kfar Jarrah	VL	M	L	Lebaa	VL	M	L
Louayzet Jezzine	VL	L	L	Machmouche	VL	VL	L	Mahmoudiyeh Jezzine	L	ML	L
Maknounye Jezzine	VL	L	L	Maraat Ouzaïyeh	L	ML	L	Mazraat Daraya	VL	L	L
Mazraat El-Aarqoub	L	L	L	Mazraat El-Mathane	L	VL	L	Mazraat El-Rahbane	VL	L	L
Mazraat Khallet Khaz	VL	L	L	Mazraat Louzid (Loua	VL	L	L	Mazraat Qrouh	L	ML	L
Mazraat Tamra	L	ML	L	Mazraat Zighrine Jez	L	L	L	Mazraat	VL	L	L
Mharbiyeh	VL	M	L	Midane Jezzine	VL	L	L	Mjeydel Jezzine	VL	M	L
Mlikh	VL	L	L	Mrah El-Hbasse	L	M	L	Ouadi Baanqoudaine	VL	M	L
Ouadi El-Laymoun	VL	ML	L	Ouardiyeh	VL	VL	VL	Qabaa Jezzine	VL	L	L
Qatrani	VL	L	L	Qaytouleh	VL	L	L	Qtaleh Jezzine	L	L	L
Rihane Jezzine	L	ML	L	Rimat	VL	L	L	Roum	VL	L	L
Roummanet	VL	L	L	Sabbah	VL	L	L	Saydoun	L	L	L
Sfaray	VL	L	L	Snaya	VL	L	L	Sojoud	L	L	L
Srayri	VL	ML	L	Taaid	L	VL	L	Wadi Jezzine	VL	L	L
Zhalta	VL	L	L								

Bekaa

West Bekaa

Municipality	01-Jan	02-Jan	03-Jan	Municipality	01-Jan	02-Jan	03-Jan	Municipality	01-Jan	02-Jan	03-Jan
Aammiq BG	L	M	L	Ain El Tineh BG	L	ML	L	Ain Zebdeh	L	M	L
Ana	L	M	L	Aytanit	L	ML	L	Baaloul BG	L	M	L
Bab Mareh	L	M	L	Chouberqiye Aammiq	L	M	L	Dakoue	L	M	L
Deir Ain El-Jaouze	L	M	L	Deir Tahniche	L	M	L	Ghaza	L	M	L
Harime El-Soughra	L	M	L	Hoch Harimeh	L	M	L	Jazira BG	L	M	L
Jib Jennine	L	M	L	Kamed-El-Laouz	L	M	VL	Kefraya BG	L	ML	L
Khiara El Atika	L	M	L	Khiara	L	M	L	Khirbet Qanafar	L	M	L
Lala	L	ML	L	Lebbaya BG	L	ML	L	Loussa	L	ML	L
Machghara	L	ML	L	Manara (Hammara) BG	L	M	VL	Mansoura BG	L	M	L
Marej BG	L	M	L	Maydoun	VL	ML	L	Ouaqf BG	L	M	L
Qaraaoun	L	M	L	Qelya	VL	ML	L	Raouda (Istabel)	L	M	L
Saghbine	L	M	L	Sohmor	L	ML	L	Soltan Yacoub el Ara	L	M	L
Souairy	L	M	L	Sultan Yaacoub	L	M	L	Tal Znoun	L	M	L
Yehmor BG	L	ML	L	Zilaya	VL	L	L				

Zahle

Municipality	01-Jan	02-Jan	03-Jan	Municipality	01-Jan	02-Jan	03-Jan	Municipality	01-Jan	02-Jan	03-Jan
Aanjar (Haouch Mouss	L	M	L	Ablah	L	M	VL	Ain Kfarzabad	L	M	VL
Ali-El-Nahri	L	M	VL	Bar Elias	L	M	L	Bouarej	L	M	L
Cheberqiyet Tabet	L	M	L	Chtaura	L	M	L	Deir El Ghazal	L	ML	VL
Delhamiyet Zahle	L	M	L	Ferzol	L	M	L	Haouch El-Ghanam	L	M	VL
Haouch Es-Siyadeh	L	M	L	Haouch Hala	L	M	VL	Haouch Mandara	L	M	L

Haouch Qayssar	L	M	L	Hezerta	L	M	VL	Hosh Moussa	L	M	VL
Jdita	L	M	L	Kfarzabad	L	M	VL	Ksara	VL	ML	L
Majdel Aanjar	L	M	L	Makssi	L	M	L	Massa	L	M	VL
Mazraat Er-Remtaniye	L	M	VL	Mrayjat Zahle	L	M	VL	Mzaraa Zahle	L	M	VL
Nabi Ayla	L	M	VL	Nasriyet Rizk	L	M	VL	Nasriyet Zahle	L	M	L
Niha Zahle	L	M	VL	Ouadi Ed-Deloum	L	ML	VL	Ouadi El-Arayech	L	M	VL
Qaa El Rim	L	M	VL	Qab Elias	L	M	L	Qousaya	L	M	VL
Rhit	L	M	VL	Riyak	L	M	VL	Saadnayel	L	M	L
Taal El-Akhdar	L	M	L	Taalbeya	L	M	L	Taanayel	L	M	L
Talamara	L	M	VL	Tcheflik Edde Haouch	L	M	L	Tcheflik Qiqano	L	M	L
Terbol Zahle	L	M	VL	Touaite Zahle	L	M	L	Zahle Aradi	L	M	L
Zahle El-Berbara	L	M	VL	Zahle El-Maallaqa	L	M	L	Zahle El-Midane	L	M	VL
Zahle Er-Rassiye	L	M	VL	Zahle Haouch El-Ouma	L	ML	L	Zahle Haouch El-Ouma	L	ML	L
Zahle Haouch Ez-Zara	L	M	VL	Zahle Maalaga Aradi	L	M	L	Zahle Mar Antonios	L	M	VL
Zahle Mar Elias	L	M	L	Zahle Mar Gerios	L	M	L	Zahle Saydet En-Naja	L	M	VL
Zebdoul	L	M	L								

Rachaiya

Municipality	01-Jan	02-Jan	03-Jan	Municipality	01-Jan	02-Jan	03-Jan	Municipality	01-Jan	02-Jan	03-Jan
Ain Arab Rachaiya	L	ML	VL	Ain Ata	L	L	VL	Ain Harche	L	L	VL
Aqabe Rachaya	L	ML	VL	Ayha	L	ML	VL	Ayta El Fokhar	L	M	VL
Bakifa Rachaya	L	L	VL	Bakka	L	M	VL	Beit Lahya	L	ML	VL
Bireh Rachaiya	L	M	L	Daheer El Ahmar	L	ML	VL	Deir El-Achayer	L	M	VL
Heloua Rachaiya	L	M	VL	Hoch El Qannabeh Rac	L	L	VL	Kaoukaba Bou Arab	L	ML	VL
Kfar Danis	L	ML	VL	Kfar Mechki	L	ML	L	Kfar Qouq	L	ML	VL
Kherbet Rouha	L	ML	VL	Majdel Balhiss	L	M	L	Mdoukha	L	M	VL
Mhaydseh Rachaiya	L	M	VL	Nabi Safa	L	L	L	Rachaiya	L	ML	VL
Rafid Rachaiya	L	M	L	Selsata (Mazraat Dei	VL	ML	VL	Tannoura	L	ML	VL
Yanta	L	M	VL								

Beyrouth

Beyrouth

Municipality	01-Jan	02-Jan	03-Jan	Municipality	01-Jan	02-Jan	03-Jan	Municipality	01-Jan	02-Jan	03-Jan
Achrafieh	L	M	M	Ain el-Mreisse	L	M	M	Bachoura	L	M	M
Beirut Central Distr	L	M	M	Marfai	L	M	M	Mazraa	L	M	M
Medaouar	L	M	M	Minet el-Hosn	L	M	M	Mwssaitbeh	L	M	M
Ras Beirut	L	M	M	Rmeil	L	M	M	Saifi	L	M	M
Zqaq el-Blat	L	M	M								