

Lebanon Fire Risk Bulletin



CIVIL DEDEFENCE

Refer to cadast table condition.

Please note that the indicated temperature is at 2 meters height from the ground.

General description of potential fire risk situation

Symbol	Level of risk	Meaning and actions
VL	Very low	Very low fire risk. Controlled burning operations can be hardly executed due to high fuel moisture content. Normally wildfires self-extinguish.
L	Low	Low fire risk. Controlled burning operations can be executed with a reasonable degree of safety.
ML	Medium low	Medium-low fire risk. Controlled burning operations can be executed in safety conditions. All the fires need to be extinguished.
M	Medium	Medium fire risk. Controlled burning operations would be avoided. All the fires need to be very well extinguished.
M	Medium high	Controlled burning is not recommended. Open flame will start fires. Cured grasslands and forest litter will burn readily. Spread is moderate in forests and fast in exposed areas. Patrolling and monitoring is suggested. Fight fires with direct attack and all available resources.
H	High	Ignition can occur easily with fast spread in grass, shrubs and forests. Fires will be very hot with crowning and short to medium spotting. Direct attack on the head may not be possible requiring indirect methods on flanks. Patrolling and monitoring the territory is highly suggested.
E	Extreme	Ignition can occur also from sparks. Fires will be extremely hot with fast rate of spread. Control may not be possible during day due to long range spotting and crowning. Suppression forces should limit efforts to limiting lateral spread. Damage potential total. Patrolling and monitoring the territory is highly suggested.

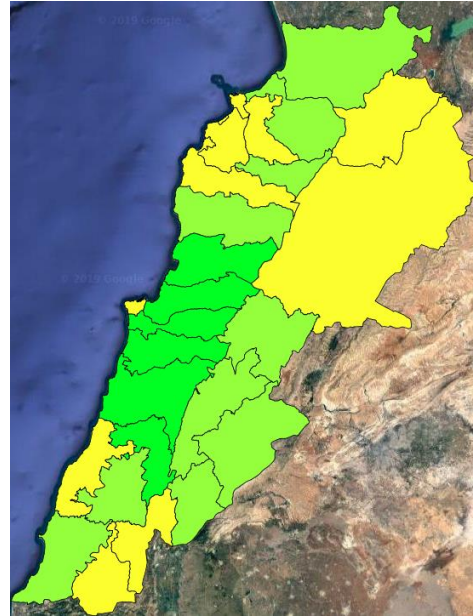
Beirut, 1 November 2019

FIRE RISK INDEX

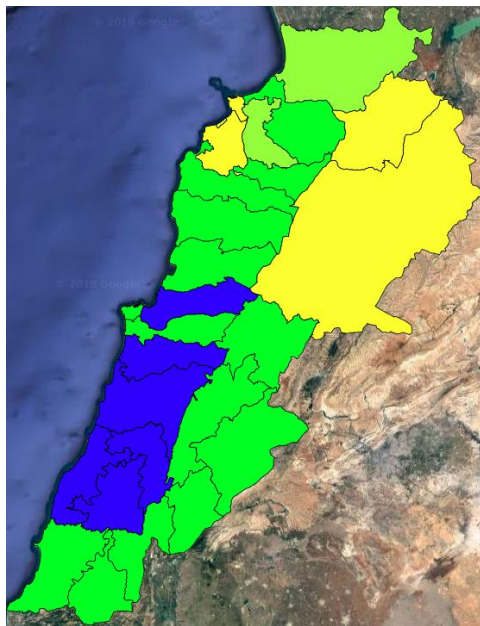
31 October 2019



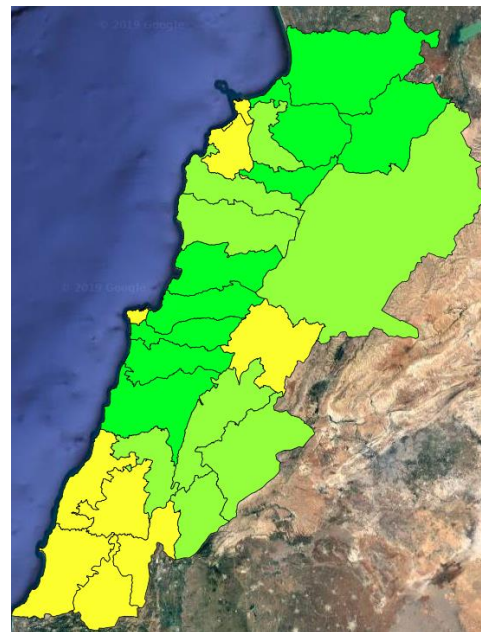
1 November 2019



2 November 2019



3 November 2019

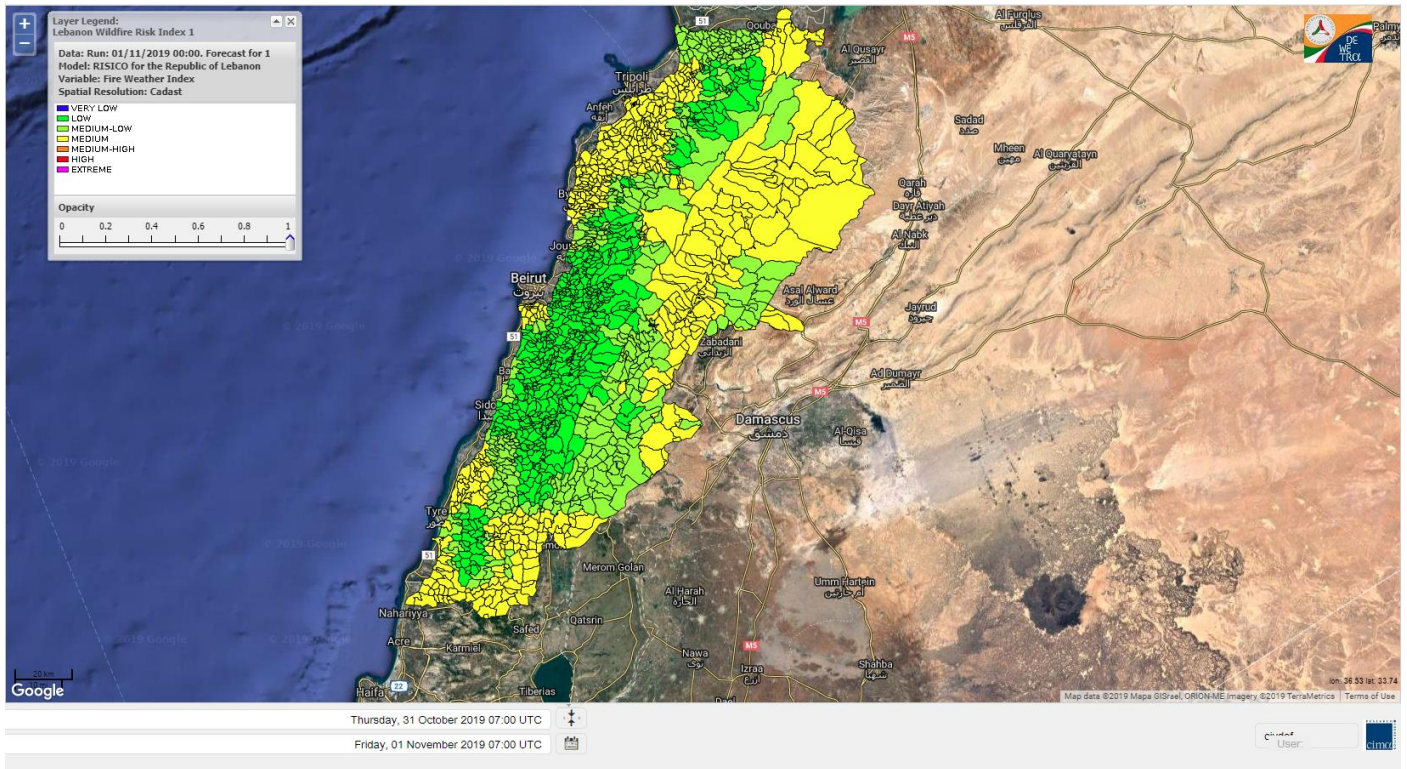


Layer Legend:
Lebanon Wildfire Risk Index 1

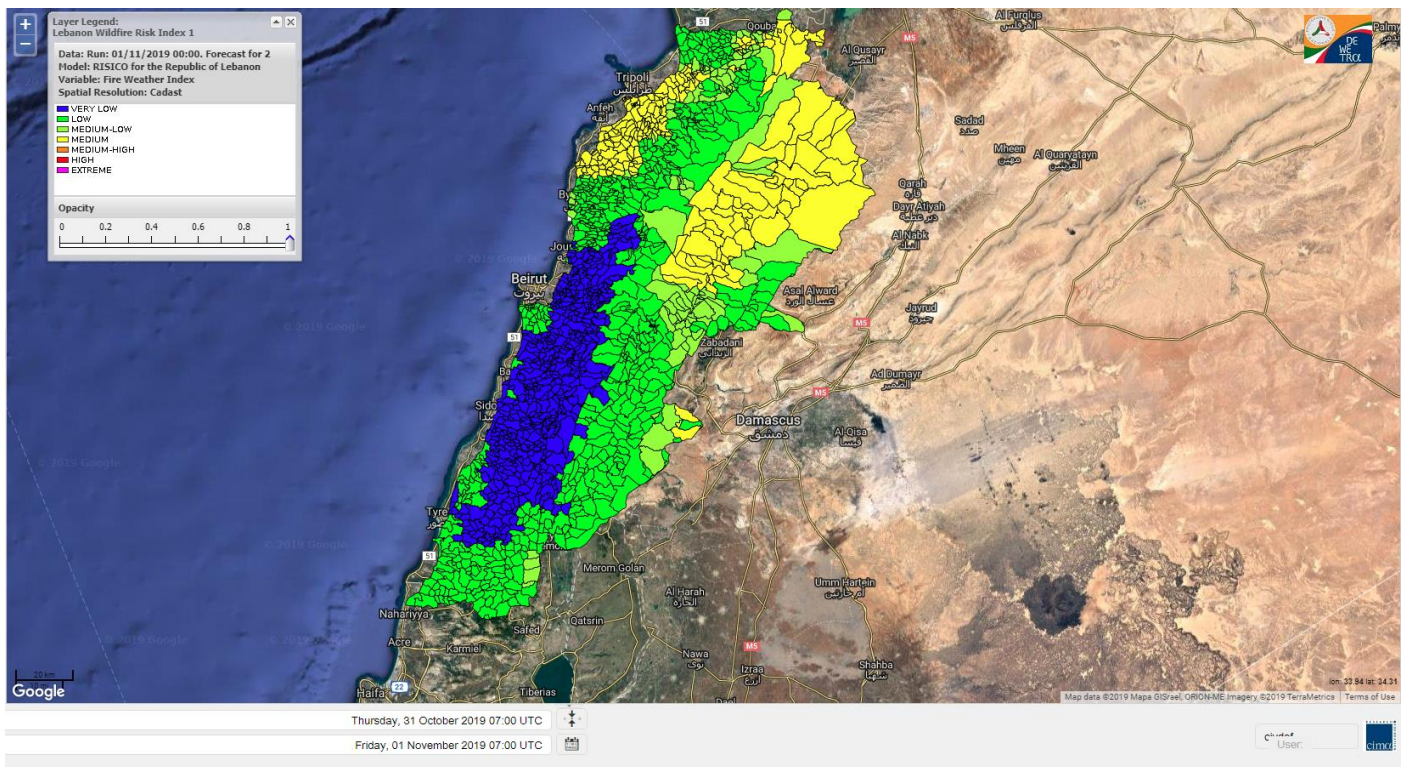
Data: Run: 01/11/2019 00:00. Forecast for 1
Model: RISICO for the Republic of Lebanon
Variable: Fire Weather Index
Spatial Resolution: Caza

- VERY LOW
- LOW
- MEDIUM-LOW
- MEDIUM
- MEDIUM-HIGH
- HIGH
- EXTREME

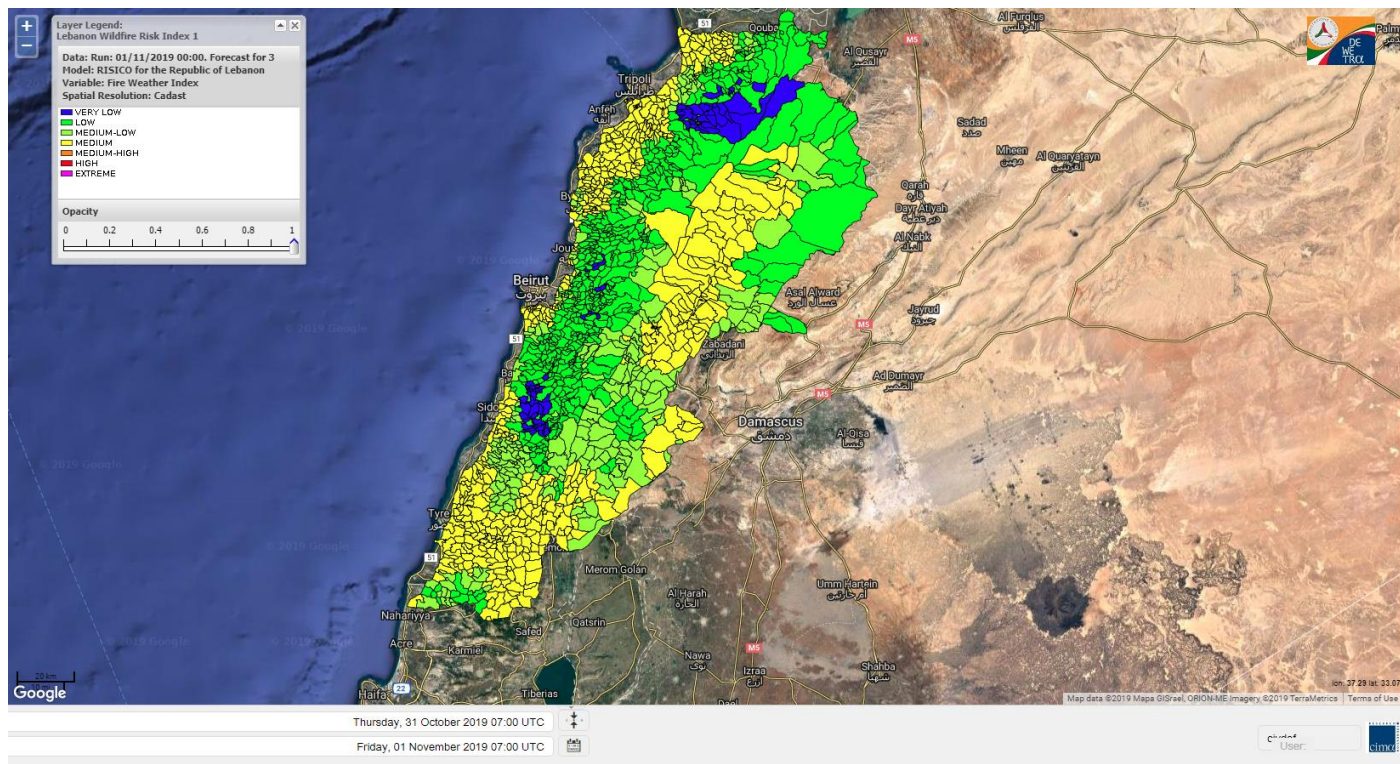
Lebanon for 1 November 2019



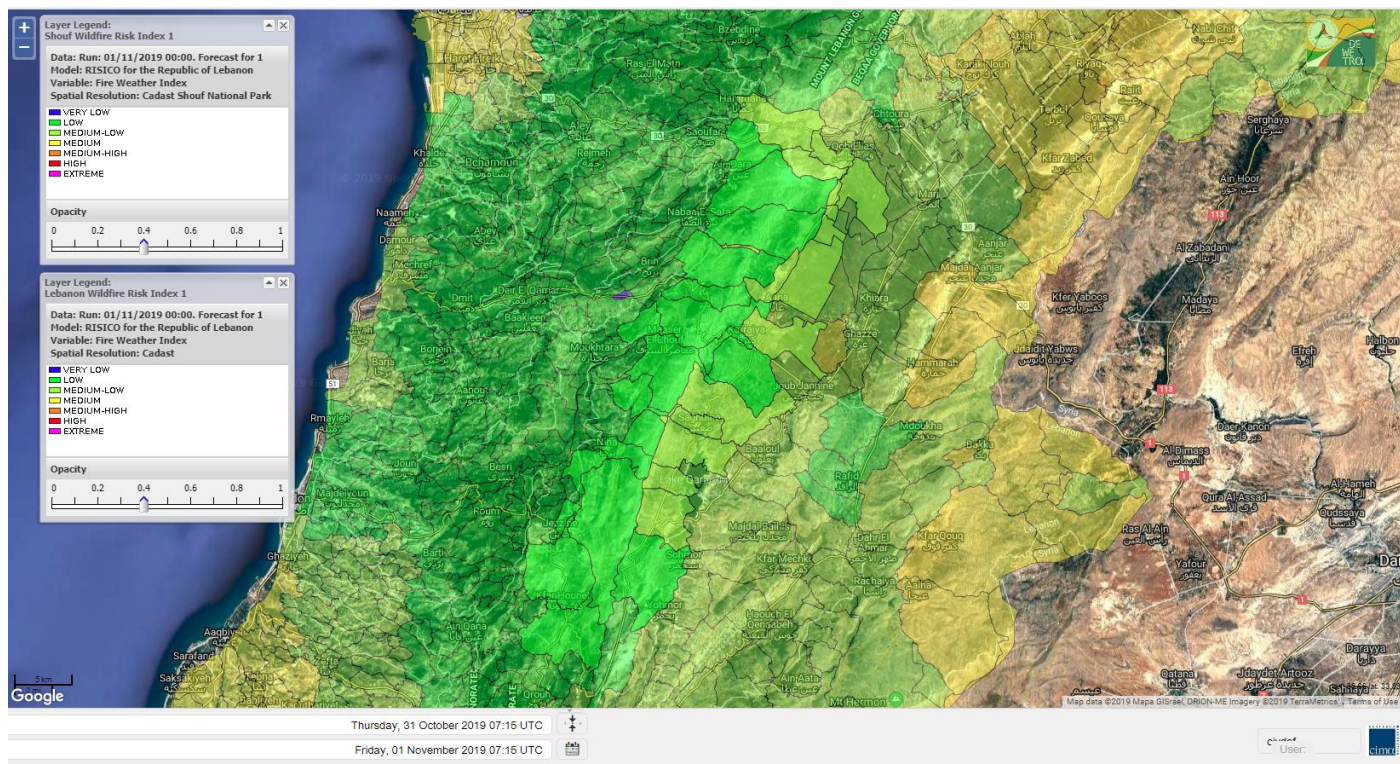
Lebanon for 2 November 2019



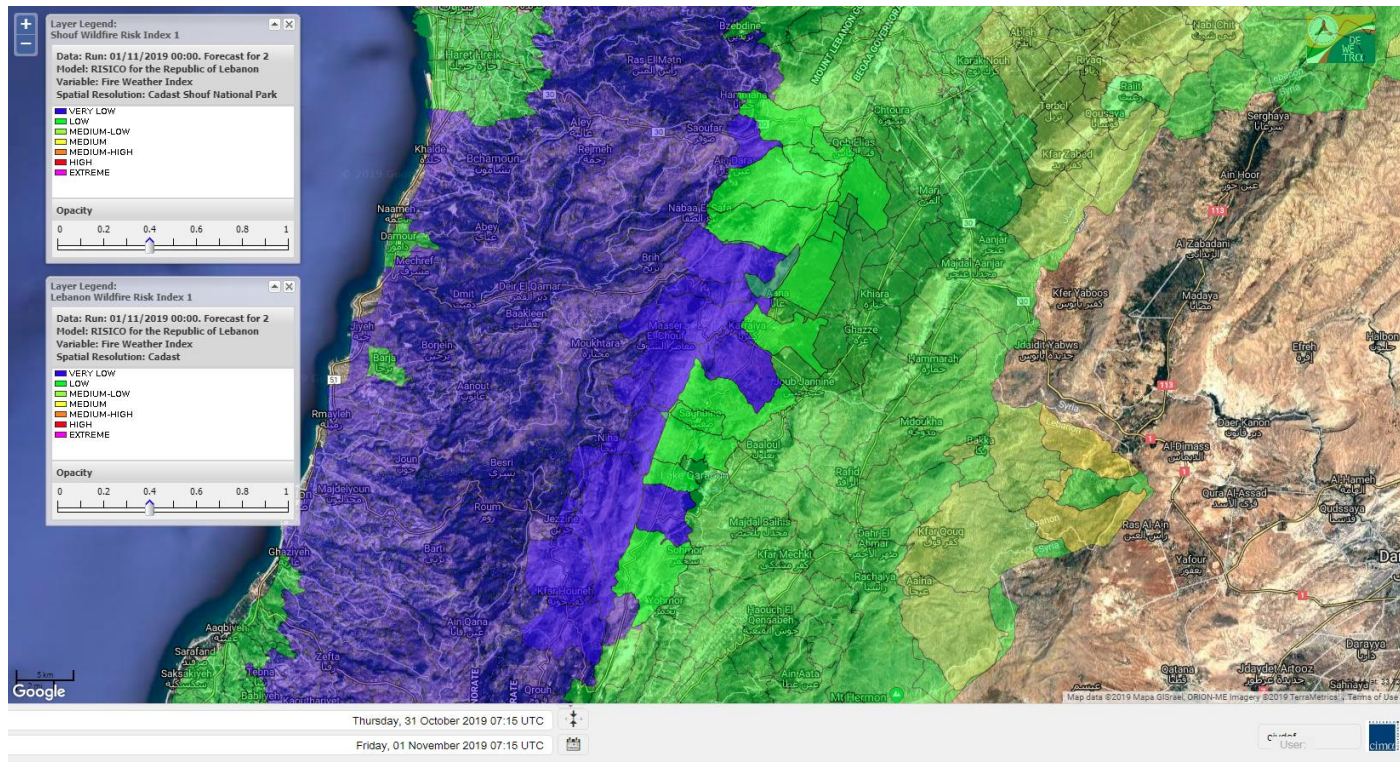
Lebanon for 3 November 2019



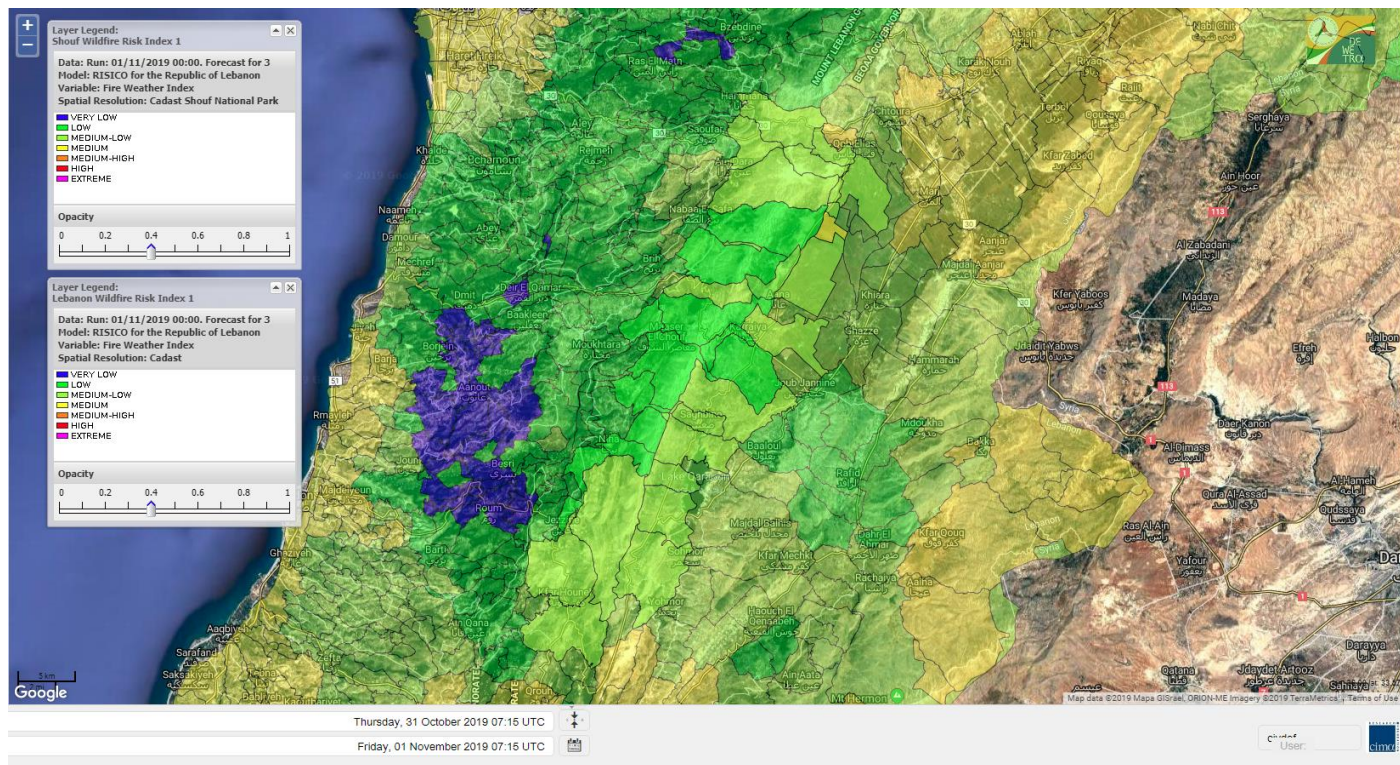
Shouf Biosphere Reserve Forecast for 1 November 2019



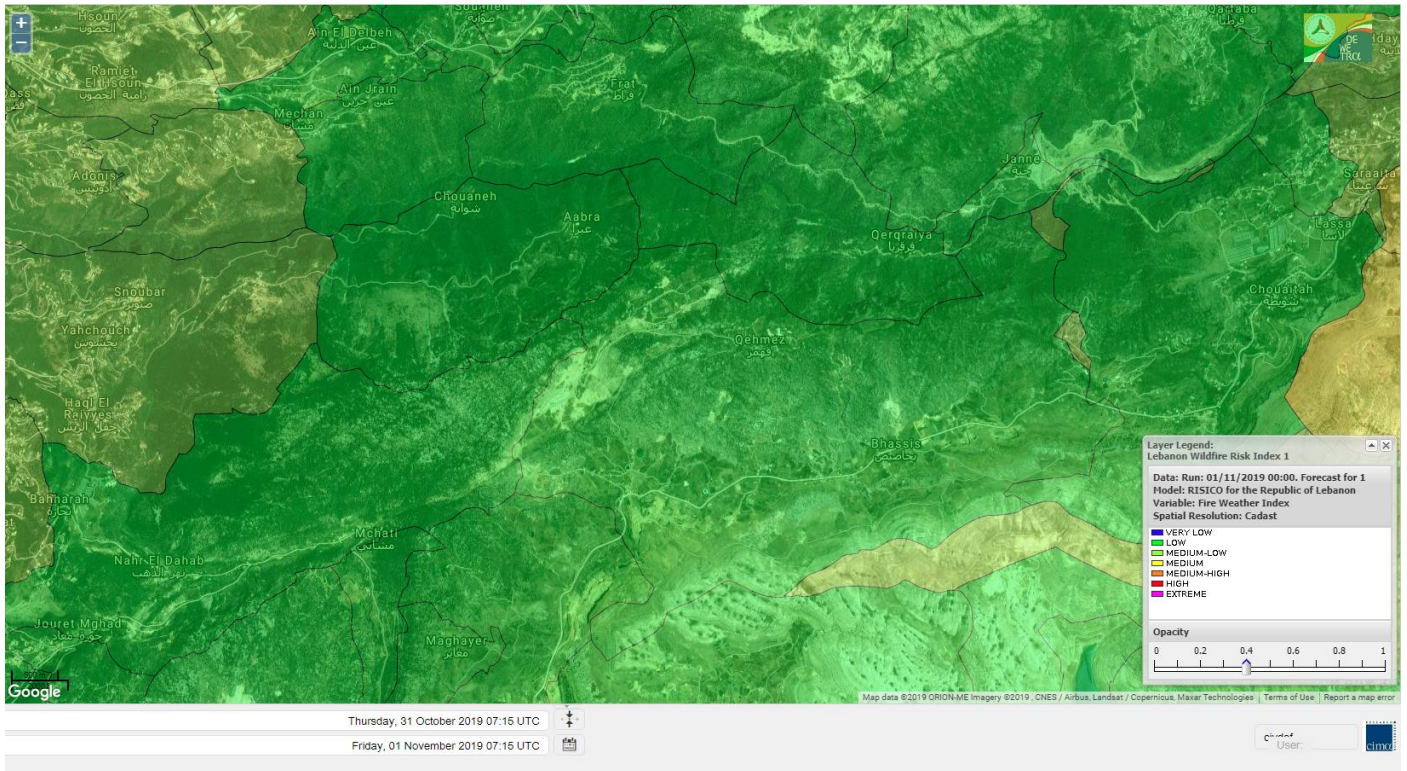
Shouf Biosphere Reserve Forecast for 2 November 2019



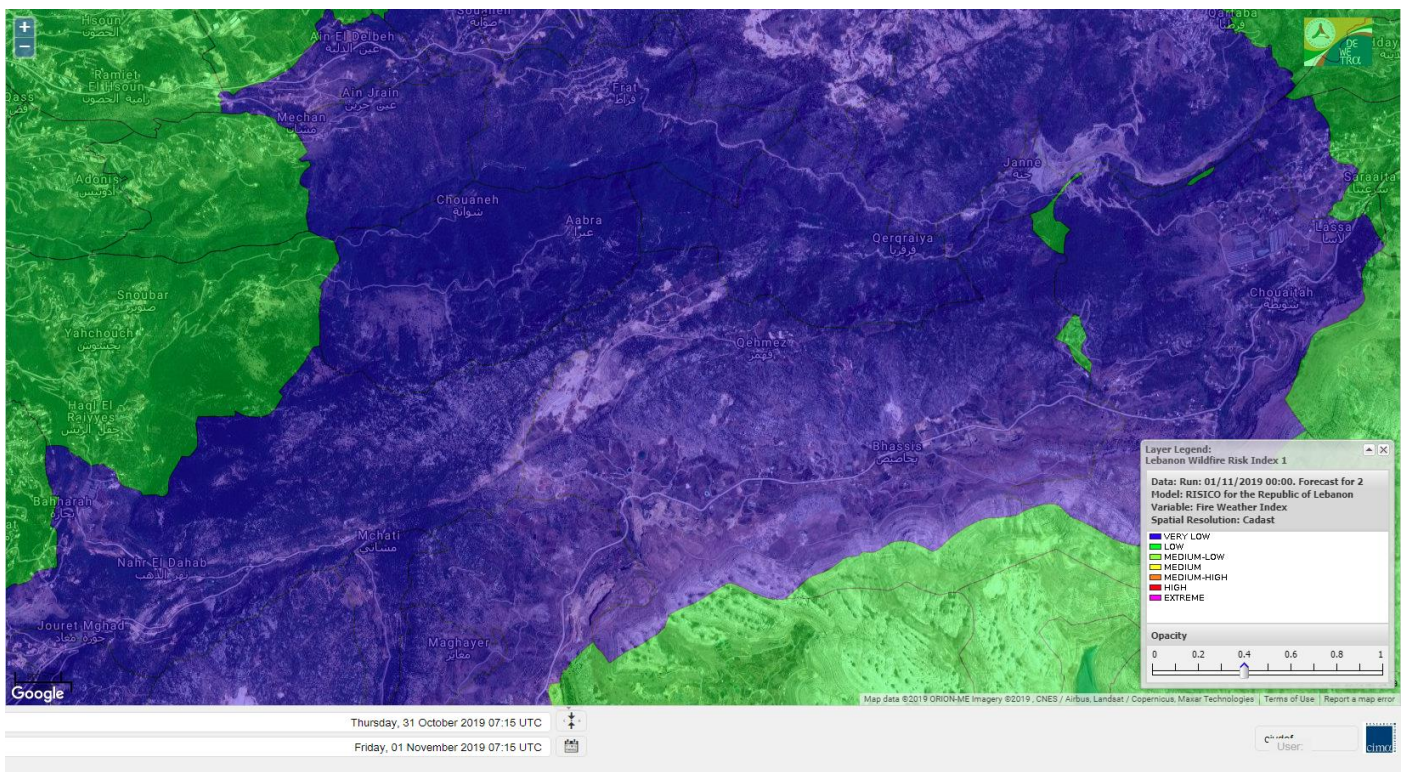
Shouf Biosphere Reserve Forecast for 3 November 2019



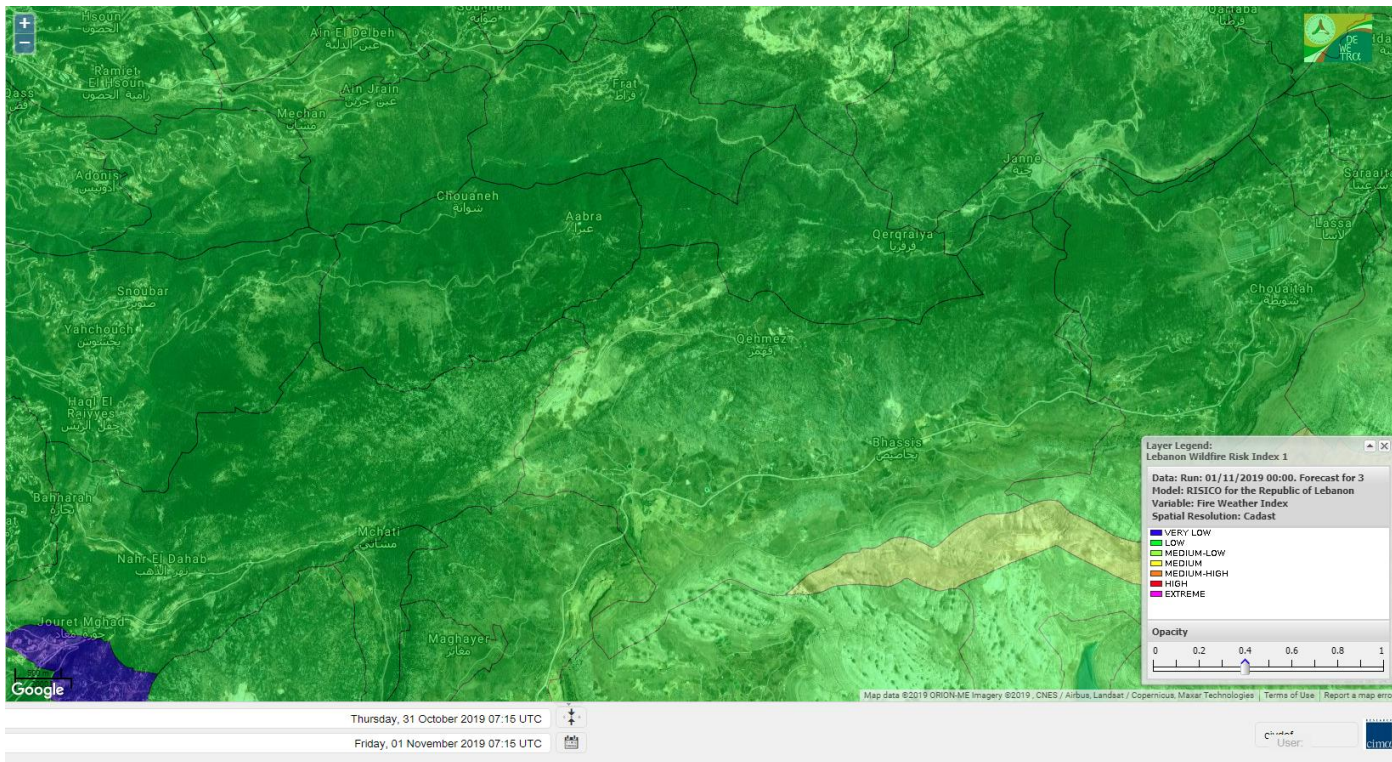
Jabal Moussa Reserve Forecast for 1 November 2019



Jabal Moussa Reserve Forecast for 2 November 2019



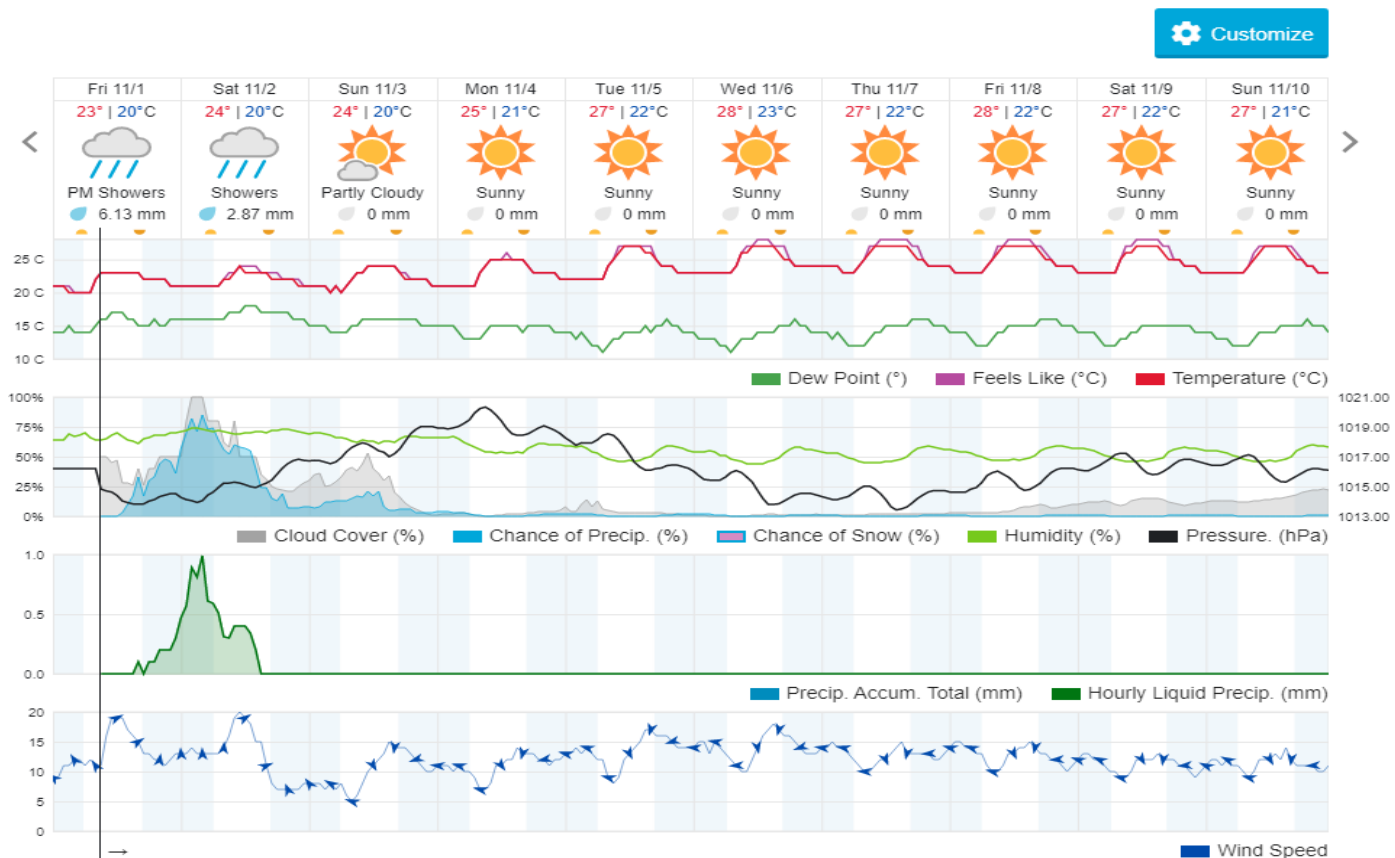
Jabal Moussa Reserve Forecast for 3 November 2019



Beirut, Beirut Governorate, Lebanon 10-Day Weather Forecast

23° ACHRAFIEH, RIZK STATION | CHANGE

TODAY HOURLY 10-DAY CALENDAR HISTORY WUNDERMAP



Nord

Koura

Municipality	01-Nov	02-Nov	03-Nov	Municipality	01-Nov	02-Nov	03-Nov	Municipality	01-Nov	02-Nov	03-Nov
Aaba	M	M	M	Afsaddiq	M	M	M	Ain Ekrine	M	M	M
Amioun	M	M	M	Anfeh	M	M	M	Badbhoun	M	M	M
Barghoun	M	M	M	Barsa	M	M	M	Batroumine	M	M	M
Bdebba	M	M	M	Bechmizine	M	M	M	Bednayet El-Koura	M	M	M
Bhabbouch El-Koura	M	M	M	Bkeftine	M	M	M	Bnehran	M	M	M
Bqaiia El-Koura	M	M	M	Bsarma	M	M	M	Btaaboura	M	M	M
Bttram	M	M	M	Btouratij	M	M	M	Bziza	M	M	M
Dar Beechtar	M	M	M	Dar Chmezzine	M	M	M	Deddeh	M	M	M
Deir El-Balamand	M	M	M	Fih	M	M	M	Hraiche	M	M	M
Ijdaabrine	M	M	M	Kaftoun	M	M	M	Kefraya El-Koura	M	M	M
Kfarakka	M	M	M	Kfarhata	M	M	M	Kfarhazir	M	M	M
Kfarkahel	M	M	M	Kfarsaroun	M	M	M	Kosba	M	M	M
Mejdel el-Koura	M	M	M	Nakhle	M	M	M	Qalhat	M	M	M
Ras Masqa	M	M	M	Rechdibbine	M	M	M	Zakroun	M	M	M
Zgharta El-Mtaouile	M	M	M								

Bcharre

Municipality	01-Nov	02-Nov	03-Nov	Municipality	01-Nov	02-Nov	03-Nov	Municipality	01-Nov	02-Nov	03-Nov
Aabdine	M	L	L	Bane	ML	L	L	Barhelioun	M	L	L
Bazooune	M	ML	ML	Becharre	ML	L	L	Beit Menzer	M	L	L
Billa	M	L	L	Blaouza	M	L	L	Bqaa Kafra	M	ML	ML
Bqerqacha	M	ML	ML	Breissat	ML	L	L	Dimane	ML	L	L
Hadath El Jobbeh	ML	L	L	Hadchit	L	L	L	Hasroun	M	ML	ML
Mazraat Aassaf	M	L	L	Mazraat Bani Saab	ML	L	L	Mchaa El-Jobbeh	M	ML	ML
Metrit	M	M	M	Moghr El-Ahoual	M	L	L	Ouadi Qannoubine	M	L	L
Qanat	ML	L	L	Qnayouer	M	L	L	Tourza	M	L	L

Batroun

Municipality	01-Nov	02-Nov	03-Nov	Municipality	01-Nov	02-Nov	03-Nov	Municipality	01-Nov	02-Nov	03-Nov
Aabrine	M	M	M	Aalali	ML	L	L	Aartz	M	L	M
Abdelli	M	L	M	Ajdabra	M	ML	M	Assia	ML	L	L
Basbina	M	L	M	Batroun	M	M	M	Bcheleh	ML	L	L
Bechtoudar	L	L	L	Beit Chlala	L	L	L	Beit Kassab	M	ML	ML
Bijdarfil	M	M	M	Bqesmaya	M	M	M	Chatine	ML	L	L
Chebtin	M	L	M	Chekka	M	M	M	Daael	ML	L	L
Dahr Abi Yaghi	M	L	M	Daraya El-Batroun	M	L	M	Deir Billa	M	ML	M
Deir Kfifane	M	L	M	Deir Mar Youhanna EL	L	L	L	Deir Mar Youssef Jra	M	L	M
Douma	ML	L	L	Douq	M	L	M	Eddeh El-Batroun	M	L	M
Ftahat El-Batroun	M	L	ML	Ghouma	M	L	M	Hadtoun	L	L	L
Hamat	M	M	M	Harbouna	M	L	M	Hardine	ML	L	L
Helta	ML	L	L	Hery	M	M	M	Jebbla	M	ML	ML
Jrabta El-Batroun	M	L	M	Jrane El-Batroun	M	L	M	Kfar Aabida	M	L	M
Kfar Halda	L	L	L	Kfarb Shlaimane	L	L	L	Kfarhatna	M	L	M

Kfarhay	M	M	M	Kfarhelos	M	M	M	Kfifane	M	L	M
Kfour El Arabi	ML	L	L	Koubba	M	M	M	Kour	M	L	M
Mar Mama	M	L	M	Masrah	M	L	M	Mehmarch	ML	L	ML
Mrah Chdid	M	L	M	Mrah El Ziyat	M	L	M	Mrah El-Hajj	L	L	L
Nahle El-Batroun	ML	L	L	Niha El-Batroun	ML	L	L	Oujh El-Hajjar	M	M	M
Ouata Houb	ML	L	L	Qatnaaoun	M	M	M	Racha	ML	L	ML
Rachana	M	L	M	Rachkida	M	M	M	Ram El-Batroun	L	L	L
Ras Nahhach	M	M	M	Selaata	M	M	M	Sghar	M	L	M
Smar Jbayl	M	L	M	Sourat El-Batroun	M	L	M	Tannourine El-Faouqa	ML	L	L
Tannourine Et-Tahta	ML	L	L	Thoum	M	L	ML	Toula El-Batroun	M	L	M
Zan	M	L	ML								

Zgharta

Municipality	01-Nov	02-Nov	03-Nov	Municipality	01-Nov	02-Nov	03-Nov	Municipality	01-Nov	02-Nov	03-Nov
Aachach	M	M	M	Aalma	M	M	M	Aarde	M	M	M
Aintourine	M	L	L	Arabet Qozhaya	M	L	L	Arde	M	M	M
Arjis	M	L	L	Asnoun	M	M	M	Ayto	M	L	L
Basloukit	ML	L	L	Bchannine	M	M	M	Besebeel	M	M	M
Bhairet Toula	L	L	VL	Bnachee	M	L	L	Boussit	M	M	M
Danha	M	M	M	Daraiya Zgharta	M	L	ML	Deir Jdeide	M	M	M
Ehden	L	L	L	Halan	M	ML	ML	Hariq Zgharta	M	M	M
Houakir	M	M	M	Hraiqis	M	M	M	Iaal	M	M	M
Ijbaa	M	L	L	Karm Saddeh	M	L	L	Kfarchakhna	M	M	M
Kfardlaqous	M	M	M	Kfarfou	M	L	L	Kfarhata Zgharta	M	M	M
Kfarhoura	M	M	M	Kfarsghab	ML	L	L	Kfaryachit	M	M	M
Kfarzaina	M	M	M	Khaldiye	M	M	M	Mazraat Ajbeaa	M	M	M
Mazraat Et-Teffah	M	L	L	Mazraat Jneid	M	M	M	Mejdlaiya Zgharta	M	M	M
Merh Kfarsghab	M	ML	ML	Miryata	M	M	M	Miziara	M	L	L
Mzraat Kefraya	M	ML	ML	Qorah Bach	M	M	M	Rachiine	M	M	M
Ras Kifa	M	L	L	Sakhra	M	M	M	Sebhel Zgharta	M	L	L
Serhel	M	L	L	Tallet Zgharta	M	M	M	Toula Zgharta	ML	L	L
Zgharta	M	M	M								

Minieh-Denniye

Municipality	01-Nov	02-Nov	03-Nov	Municipality	01-Nov	02-Nov	03-Nov	Municipality	01-Nov	02-Nov	03-Nov
Aasaymout	L	L	VL	Aaymar	ML	L	L	Aazki	ML	L	VL
Ain El-Tineh-Miniyeh	L	L	VL	Assoun	ML	L	VL	Bakhaaoun	ML	L	VL
Bchennata	L	L	L	Bechehhara	M	M	M	Beddawi	M	M	M
Behouaita	ML	L	L	Beit El Foqss	L	L	VL	Beit Haouik	L	L	VL
Beit Zoud	ML	L	VL	Bekaasafrine	ML	L	L	Borj El Yahoudiyeh	M	M	M
Bqarsouna	L	L	VL	Btermaz	L	L	VL	Debaael	L	L	VL
Deir Ammar	M	M	M	Deir Nbouh	M	M	M	Haouaret-Miniyeh	L	L	VL
Haql el Azimeh	L	L	VL	Harf El Siyad	L	L	VL	Hazmiye-Miniyeh	L	L	VL
Izal	ML	L	L	Jarjour	M	M	M	Jayroun	L	L	VL
Kahf El-Malloul	M	ML	ML	Karm El-Moher	ML	L	L	Kfar Binine	L	L	VL
Kfarchalane	ML	L	VL	Kfarhabou	M	ML	L	Kharroub-Miniyeh	ML	L	VL
Mazraat El-Kreme	M	ML	ML	Mazraat Ketrane	ML	L	VL	Merkebt	M	M	M

Minyeh	M	M	M	Mrah El Sfirat	L	L	VL	Mrah Sraj	L	L	VL
Mrebbine	L	L	VL	Nabi Youcheaa	M	M	M	Nemrine	L	L	VL
Qarhaiya	L	L	VL	Qarne	L	L	VL	Qarsita	L	L	VL
Qattineh-Miniyeh	L	L	VL	Qemmamine	L	L	VL	Qraine	L	L	VL
Raouda-Aadoua	M	M	ML	Rihaniyet-Miniyeh	M	M	ML	Sfireh	L	L	VL
Sir Ed-Danniyeh	L	L	VL	Tarane	L	L	VL	Terbol-Miniyeh	M	M	M
Zaghartaghriine	M	M	M	Zouq Bhannine	M	M	M				

Nabatiye

Nabatiye

Municipality	01-Nov	02-Nov	03-Nov	Municipality	01-Nov	02-Nov	03-Nov	Municipality	01-Nov	02-Nov	03-Nov
Aabba	ML	VL	ML	Aazzi	ML	VL	ML	Adchit El-Chqif	ML	VL	M
Ain Bou Swar	L	VL	ML	Ain Kana	L	VL	ML	Ali El-Taher	L	VL	M
Ansar	M	L	M	Arab Salim	L	VL	M	Arnoun	M	L	M
Bfaroue	ML	VL	ML	Breyqaah	ML	VL	M	Charqiyeh	ML	VL	ML
Choukine	ML	VL	M	Deir El Zahrani	ML	VL	ML	Doueir El-Nabatiyeh	ML	VL	ML
Habbouch El-Nabatiye	L	VL	M	Hamra El-Nabatiyeh	M	L	M	Harouf El-Nabatiyeh	ML	VL	ML
Hmaile	ML	VL	ML	Houmin El Faouqa	L	VL	M	Houmin El Tahta	ML	VL	ML
Jarjough	L	VL	ML	Jbaah El-Nabatiyeh	L	VL	L	Jebchit	ML	VL	ML
Kfar Djal El-Nabatiy	ML	VL	M	Kfar Remmane	L	VL	M	Kfar Sir	M	VL	M
Kfar Tebnit	ML	L	M	Kfarfila	L	VL	ML	Kfour El-Nabatieh	ML	VL	ML
Mayfadoun	M	L	M	Mazraat Bsaffour	ML	VL	ML	Mazraat Chalbaal	ML	VL	ML
Mazraat Dmoul	ML	VL	ML	Mazraat El Khreibeh	ML	VL	ML	Mazraat El-Bayad El-	L	VL	M
Mazraat Kfarjaouz	L	VL	M	Mazraat Qalaat Meiss	M	VL	M	Nabatiyeh El-Fawka	ML	L	M
Nabatiyeh Et-Tahta	L	VL	M	Namiriyeh	ML	VL	ML	Qaaqaiyet El Jisr	M	VL	M
Qossaibeh El-Nabatiy	ML	VL	M	Roumine	ML	VL	ML	Sarba El-Nabatieh	L	VL	ML
Sir El-Gharbiyeh	L	VL	M	Toul	ML	VL	ML	Yehmor El-Nabatiyeh	M	L	M
Zaoutar El Charkiyeh	M	L	M	Zaoutar El-Gharbiyeh	M	VL	M	Zebdine El-Nabatiyeh	ML	VL	M
Zefta	ML	VL	ML								

Hasbaiya

Municipality	01-Nov	02-Nov	03-Nov	Municipality	01-Nov	02-Nov	03-Nov	Municipality	01-Nov	02-Nov	03-Nov
Aain Jarfa	ML	L	M	Abou Qamha	ML	L	ML	Ain Qania	ML	L	M
Bourghos	ML	L	M	Chebaa	ML	L	M	Chouaya Hasbaya	ML	L	M
Dellafeh	ML	L	M	Fardiss Hasbaiya	ML	L	M	Hasbaya	ML	L	M
Hbariyeh	ML	L	ML	Kaoukaba Hasbaiya	ML	L	M	Kfar Chouba	M	L	ML
Kfar Hamam	M	L	ML	Kfeir El-Zait	ML	L	ML	Khalwat Hasbaya	ML	L	ML
Khreibet Hasbaiya	M	L	M	Majidiyeh Hasbaiya	M	L	M	Marj Ez-Zhour (Haouc	ML	L	L
Meri	M	L	M	Mimass	ML	L	M	Rachaiya El-Fokhar	ML	L	ML
Salaiyeb	M	VL	M								

Marjayoun

Municipality	01-Nov	02-Nov	03-Nov	Municipality	01-Nov	02-Nov	03-Nov	Municipality	01-Nov	02-Nov	03-Nov
Aalmane Marjaayoun	M	VL	M	Aamra	M	L	M	Adayseh Marjaayoun	M	L	M
Adchit El-Koussair	M	L	M	Ain Aarab Marjaayoun	M	VL	M	Bani Haiyann	M	L	M
Blatt Marjaayoun	ML	L	M	Blida	M	L	M	Borj El-Moulouk	M	L	M

Boueyda Marjaayoun	ML	VL	M	Deir Mimass	M	L	M	Deir Siriane	M	L	M
Dibbine	ML	L	M	Ebel El Saqi	ML	VL	M	Houla	M	ML	M
Houra	M	L	M	Kfar Kila	M	L	M	Khiam Marjaayoun	M	L	M
Klayaa	M	L	M	Majdel Selem	M	L	M	Marjaayoun	ML	VL	M
Markaba	M	ML	M	Mays El-Jabal	M	ML	M	Mazraat Doumiat	ML	L	M
Mazraat Sarada	M	VL	M	Mhaibib	M	ML	M	Qabrikha	M	L	M
Qantara	M	L	M	Rab El-Thalathine	M	L	M	Saouaneh Marjayoun	ML	L	M
Talloussa	M	L	M	Taybeh Matjaayoun	M	L	M	Touline	M	L	M

Bent Jbail

Municipality	01-Nov	02-Nov	03-Nov	Municipality	01-Nov	02-Nov	03-Nov	Municipality	01-Nov	02-Nov	03-Nov
Ain-Ebel	M	L	M	Aitaroun	M	L	M	Aynata Bint Jbeil	M	L	M
Ayta El-Chaeb	M	L	L	Ayta El-Jabal	M	L	M	Beit Lif	M	L	L
Beit Yahoun	M	L	M	Bint Jbeil	M	L	M	Borj Qalaway	M	VL	M
Braachit	ML	L	M	Chakra	M	L	M	Debel	M	L	M
Deir Antar	ML	L	M	Froun	M	VL	M	Ghandouriyeh Bint Jb	M	VL	M
Hanine	M	L	M	Hariss	ML	L	M	Hdatha	M	L	M
Jmeyjmeh	ML	L	M	Kafra Bint Jbeil	ML	L	ML	Kfar Dounine	M	L	M
Khirbet Selm	M	L	M	Kounine	M	L	M	Maroun El Ras	M	L	M
Qalaway	M	L	M	Qaouzah	M	L	L	Qatmoun	M	L	M
Ramya Bint Jbeil	M	L	L	Rchaf	M	L	ML	Rmeich	M	L	M
Safad Al Battikh	M	L	M	Salhaneh	M	L	L	Serbine	ML	L	M
Sultanieh Bint Jbeil	ML	L	M	Tibnine	M	L	M	Tiri	M	L	M
Yaroun	M	L	M	Yater	ML	L	ML				

Mont Liban

Jbail

Municipality	01-Nov	02-Nov	03-Nov	Municipality	01-Nov	02-Nov	03-Nov	Municipality	01-Nov	02-Nov	03-Nov
Aabeydat	M	L	M	Aalita	L	L	L	Aamchit	M	ML	M
Aarab El-Lahib	ML	L	L	Aarasta	M	L	L	Adonis Jbeil	ML	L	L
Afqa Jbeil	ML	L	L	Ain El Delbeh Jbeil	L	VL	L	Ain El-Ghouayba	L	VL	L
Ain Jrain	L	VL	L	Ain Kfah	M	L	M	Almat El Chemaliyat	L	VL	L
Almat El-Jenoubiya	L	VL	L	Aqoura	M	ML	M	Bayzoun	ML	L	L
Bchille Jbeil	ML	L	L	Bechtlida	L	L	L	Behdaydat	M	L	ML
Beit Habbaq	M	L	M	Bejjeh	M	L	M	Bekhaaz	M	L	ML
Berbara Jbeil	M	ML	M	Bintael	ML	L	L	Birket Hjoula	ML	L	L
Blatt Jbeil	ML	L	L	Boulhos	L	VL	L	Breyj Jbeil	L	L	L
Chamat	M	L	M	Chikhane	M	ML	ML	Chmout	M	L	ML
Eddeh Jbeil	M	L	ML	Ehmej	L	VL	L	Fatre	ML	L	L
Ferhet	L	L	L	Fghal	M	L	ML	Frat	L	VL	L
Ghabat	M	L	L	Ghalboun	M	L	M	Gharzouz	M	L	M
Ghofrine	M	L	M	Habil	M	L	ML	Halate	ML	L	ML
Haqel	M	L	M	Hbaline	M	L	M	Hboub	ML	L	L
Hdeine	ML	L	L	Hema Er-Rehban	ML	L	ML	Hema Mar Maroun Aann	L	VL	L
Hjoula	L	L	L	Hosrayel	M	L	ML	Hsarat	M	L	M

Hsoun	ML	L	L	Jaj	ML	L	ML	Janne	L	VL	L
Jbeil	M	L	M	Jeddeyl Jbeil	M	ML	M	Jlisse	L	L	L
Jouret El-Qattine	L	L	L	Kfar Baal Annaya	ML	L	L	Kfar Kidde	M	L	ML
Kfar Kouas	L	L	L	Kfar Mashoun	M	L	M	Kfoun	M	L	M
Kharbe Jbeil	M	L	M	Laqlouq	ML	L	ML	Lassa	L	VL	L
Lehfed	ML	L	L	Maad	M	L	M	Mar Sarkis	L	L	L
Mastita	M	VL	M	Mayfouq	ML	L	L	Mazraat El Siyad	ML	L	L
Mazraat El-Maaden	L	VL	L	Mechane	ML	L	L	Mechmech Jbeil	L	L	L
Mehrin	ML	L	L	Mejdel El-Akoura	M	L	L	Mghayreh Jbeil	M	L	ML
Mounsef	M	ML	ML	Nahr Ibrahim	M	VL	M	Qahmez	L	VL	L
Qartaba	L	VL	L	Qartaboun	M	L	M	Qattara Jbeil	L	L	L
Qorqraya	L	VL	L	Ramout	M	L	M	Ras Osta	L	L	L
Rihane Jbeil	M	L	M	Sakiet El-Khayt	M	L	M	Saqi Richmaya	L	L	L
Sebrine	L	L	L	Seraita	ML	L	L	Souane Jbeil	L	VL	L
Tadmor	M	L	ML	Tartej	ML	L	ML	Torzaiya	ML	L	L
Yanouh Jbeil	M	L	L	Zibdine Jbeil	ML	L	L				

El Metn

Municipality	01-Nov	02-Nov	03-Nov	Municipality	01-Nov	02-Nov	03-Nov	Municipality	01-Nov	02-Nov	03-Nov
Aain El-Qabu	L	VL	L	Aain El-Qach	L	VL	L	Aain El-Teffaha	L	VL	L
Aain el-Safssaf El-M	L	VL	L	Abou Mizane	L	VL	L	Ain Aar	L	VL	ML
Ain Alaq	L	VL	L	Ain El-Kharroube	L	VL	L	Ain El-Sendianeh	L	VL	L
Ain El-Zeitoune	L	VL	L	Ain Saadeh	L	VL	L	Aintoura El-Matn	L	L	L
Amaret Chalhoub	L	VL	M	Antelias	L	VL	M	Atchaneh	L	VL	L
Ayroun	L	VL	L	Baabdat	L	VL	L	Baouchariyeh	M	L	M
Baskinta	L	L	L	Beit Chabab	L	VL	L	Beit El-Chaar	L	VL	ML
Beit El-Kekko	L	VL	M	Beit Mery	L	VL	L	Bhersaf	L	VL	L
Bikfaya	L	VL	L	Biyakout	L	VL	M	Bnabil	L	VL	L
Bourj Hammoud	M	L	M	Bqennaya	L	VL	ML	Broummana El-Matn	L	VL	L
Bsalim	L	VL	L	Bsifrine	L	VL	VL	Bteghrine	L	VL	L
Chaouiye	L	VL	L	Chouaya El-Matn	L	VL	L	Choueir	L	VL	L
Chrine	L	VL	L	Dahr El Sawan El-Mat	L	VL	L	Daychouniyeh	L	VL	L
Dbayeh	L	VL	M	Deir Chamra	L	VL	VL	Deir Mar Abda el Mch	L	VL	L
Deir Mar Roukouz	M	L	M	Deir Tamiche	L	VL	L	Dik El-Mehdi	L	VL	ML
Dikwaneh	M	L	M	Douar El-Matn	L	VL	L	Fanar	L	VL	ML
Fraike	L	VL	L	Haret El-Ballaneh	L	VL	ML	Hbous	L	VL	ML
Himlaya	L	VL	L	Jal El Did	L	VL	M	Jdeideh El-Metn	L	L	M
Jouar El-Matn	L	VL	L	Jouret El-Ballout	L	VL	L	Kaaqour	L	VL	L
Kfar Aaqab	L	VL	L	Kfertay El-Matn	L	VL	L	Khenchara	L	VL	L
Khillet El-Mtain	L	VL	L	Konnabat Broummana	L	VL	L	Konnabat Salima	L	VL	VL
Machraah El-Matn	L	VL	L	Majdel Tarchich	L	L	L	Majzoub	L	VL	ML
Mansouriyeh El-Metn	ML	L	M	Mar Boutros Karm Et-	L	VL	L	Mar Chaya et Mzekke	L	VL	L
Mar Moussa Ed-Douar	L	VL	L	Marjaba	L	VL	L	Masqa	L	VL	L
Mayasse	L	VL	L	Mazraat Deir Aoukar	L	VL	ML	Mazraat El-Hadirat	L	VL	ML
Mazraat Yachouh	L	VL	ML	Mchikha	L	VL	L	Menqlet Mezher	L	VL	ML
Mhayseh Matn	L	VL	L	Mkalles	M	L	M	Mrourj	L	VL	L

Mtain	L	L	L	Mtayleb	L	VL	ML	Nabay	L	VL	L
Naccache	L	VL	ML	Ouadi Chahine	L	VL	L	Ouadi El-Karm El-Mat	L	VL	L
Ouata El-Mrouj	L	VL	L	Ouyoun El-Matn	L	VL	L	Qornet Chehwan	L	VL	L
Qornet El-Hamra	L	VL	L	Roumieh	L	VL	L	Sfeilet Bikfaya	L	VL	L
Sinn El-Fil	M	L	M	Zabbougha	L	VL	VL	Zalqa	L	VL	M
Zarououn	L	VL	L	Zekrite	L	VL	L	Zighrine El-Matn	L	VL	L
Zouk El-Khrab	L	VL	ML								

Chouf

Municipality	01-Nov	02-Nov	03-Nov	Municipality	01-Nov	02-Nov	03-Nov	Municipality	01-Nov	02-Nov	03-Nov
Aalmane El-Chouf	L	VL	M	Aammq El-Chouf	L	VL	L	Ain Ouzein	L	VL	L
Ain Qani	L	VL	L	Ain Zhalta	L	VL	L	Ainbal	L	VL	VL
Amatour	L	VL	L	Anout	L	VL	VL	Atrine	L	VL	L
Baadarane	L	VL	L	Baaqline	L	VL	L	Baasir	ML	L	M
Barja	ML	VL	M	Barouk	L	VL	L	Bater	L	VL	L
Batloun	L	VL	L	Bayqoun	L	VL	ML	Bchetfine	L	VL	VL
Beiteddine	L	VL	L	Benouati Ech-Chouf	L	VL	VL	Berjein	L	VL	VL
Bireh et Mtalleh	L	VL	L	Biret El-Chouf	L	VL	L	Bkechtine Ouel Mchei	L	VL	VL
Bkifa El-Chouf	L	VL	L	Botme	L	VL	L	Bqaiaa Ech-Chouf	L	VL	VL
Bsaba El-Chouf	L	VL	L	Chammis El-Chouf	L	VL	ML	Chehim	L	VL	VL
Chemaarine	L	VL	VL	Chourit	L	VL	L	Daher El-Chouf	L	VL	L
Dalhoun	L	VL	L	Damour	ML	VL	ML	Daraya El-Chouf	L	VL	VL
Deir El-Moukhalles	L	VL	VL	Deir Baba	L	VL	L	Deir Dourit	L	VL	VL
Deir El-Qamar	L	VL	L	Deir Kouche	L	VL	L	Dibbieh	L	VL	L
Dmit	L	VL	VL	Fouara Jaafar	VL	VL	L	Fraidis El-Chouf	L	VL	ML
Ghabet Jaafar	L	VL	VL	Gharife	L	VL	VL	Haret Jandal	L	VL	L
Hasrout	L	VL	VL	Jadra	L	VL	M	Jahlieh	L	VL	VL
Jbeih El-Chouf	L	VL	L	Jdeidet El-Chouf	L	VL	L	Jiyeh	ML	VL	M
Jleilyeh	L	VL	L	Jmailiyeh	L	VL	ML	Joun	L	VL	L
Kahlounie El-Chouf	L	VL	L	Ketermaya	L	VL	ML	Kfar Faqoud	L	VL	L
Kfar Hamal	L	VL	L	Kfar Him	L	VL	VL	Kfar Katra	L	VL	L
Kfar Niss	L	VL	L	Kfar hay	L	VL	L	Kfarnabrakh	L	VL	L
Khirbet Bisri	L	VL	VL	Knayse El-Chouf	VL	VL	L	Maaniyeh	L	VL	ML
Maasser Beiteddine	L	VL	L	Maasser El-Chouf	L	VL	L	Majdalouna	L	VL	ML
Majdel El-Meouch	L	VL	L	Mazboud	L	VL	VL	Mazmoura	L	VL	VL
Mazraat El Chouf	L	VL	L	Mazraat El Daher	L	VL	VL	Mazraat El-Douair	L	VL	L
Mechref	L	VL	L	Mghairie	L	VL	ML	Mghayrie El-Chouf	L	VL	L
Moukhtara	L	VL	L	Mrusti	L	VL	L	Mtolle	L	VL	VL
Naameh	ML	L	ML	Niha El-Chouf	L	VL	ML	Ouadi Abou Youssef	L	VL	VL
Ouadi Ed-Deir	L	VL	VL	Ouadi El-Sit	L	VL	L	Ouadi bnehlav	L	VL	VL
Qraibeh	L	VL	L	Qreiaa	L	VL	VL	Rmayle El-Chouf	L	VL	M
Semqaniyeh	L	VL	L	Sibline	L	VL	M	Sirjbeil	L	VL	VL
Warhanieh	L	VL	ML	Werdaniyeh	L	VL	M	Zaarourieh	L	VL	VL

Baabda

Municipality	01-Nov	02-Nov	03-Nov	Municipality	01-Nov	02-Nov	03-Nov	Municipality	01-Nov	02-Nov	03-Nov
Abadiyeh	L	VL	L	Ain Mouaffaq	L	VL	L	Araiya	L	VL	L

Arbaniyeh	L	VL	VL	Arsoun	L	VL	L	Baabda	ML	L	ML
Baalchmey	L	VL	L	Bmaryam	L	VL	L	Bourj El-Brajneh	L	L	ML
Boutchay	L	VL	L	Bsaba Baabda	L	VL	L	Btekhney	L	VL	L
Btibyat	L	VL	L	Bzebdine	L	VL	L	Chbeniyeh	L	VL	L
Chiyah	M	L	M	Chmeisset Baabda	L	VL	L	Chouit	L	VL	L
Deir El-harf	L	VL	L	Deir Khouna	L	VL	L	Dlaybeh	L	VL	L
Falougha	ML	L	ML	Furn El-Chebbak	M	L	M	Hadath Beyrouth	ML	L	ML
Halaliyeh Baabda	L	VL	L	Hammana	L	VL	ML	Haret El Sett	L	VL	L
Haret Hamze	L	VL	L	Haret Hreik	M	L	M	Hasbaiya El-Metn	L	VL	VL
Jouar El-Hoz	L	VL	L	Jouret Arsoun	L	VL	L	Kfar Chima	L	VL	L
Kfar Selouane	L	L	L	Khalouat Baabda	L	VL	ML	Kneisset Baabda	L	VL	L
Laylakeh	L	VL	ML	Louayzeh Baabda	L	VL	L	Merdache	L	VL	L
Mzairaa Baabda	L	VL	L	Ouadi Chahrour El OI	L	VL	L	Ouadi Chahrour El So	L	VL	L
Qalaa Baabda	L	VL	L	Qhraybe Baabda	L	VL	L	Qobbayaa	L	VL	L
Qornayel	L	VL	L	Qortada	L	VL	L	Qrayeh Baabda	L	VL	L
Qsaibeh Baabda	L	VL	L	Qtale Baabda	L	VL	L	Ras El Metn	L	VL	L
Ras El-Haref	L	VL	L	Rouayset El-Ballout	L	VL	L	Salima Baabda	L	VL	L
Tahouitat El Ghadir	L	VL	ML	Tarchich	L	L	L	Zandouqa	L	VL	L

Aley

Municipality	01-Nov	02-Nov	03-Nov	Municipality	01-Nov	02-Nov	03-Nov	Municipality	01-Nov	02-Nov	03-Nov
Abey	L	VL	L	Aghmid	L	VL	L	Ain Dara	L	L	ML
Ain Drafil	L	VL	L	Ain El Halazoun	L	VL	L	Ain El-Rmmaneh	L	VL	L
Ain Jedideh	L	VL	L	Ain Ksour	L	VL	L	Ain Onoub	L	VL	L
Ain Traz	L	VL	L	Ainab	L	VL	L	Aley	L	VL	L
Aramoun	L	VL	L	Aytat	L	VL	L	Azouniyeh	L	VL	ML
Baawerta	L	VL	L	Badghan Oua Wadi Bad	L	VL	ML	Bassatine	L	VL	L
Bayssour	L	VL	L	Bchamoun	L	VL	L	Bdadoun	L	VL	L
Behouara	L	VL	L	Bennay	L	VL	L	Bhamdoun El-Dayaa	L	VL	L
Bhamdoun El-Mhatta	L	VL	L	Bkhechtey	L	VL	L	Bleibel	L	VL	L
Bmakine	L	VL	L	Bmehray	L	L	L	Bouzrid	L	VL	VL
Bserrine	L	VL	L	Bsous	L	VL	L	Btalloun	L	VL	L
Btater	L	VL	L	Chanay	L	VL	L	Charoun	L	VL	ML
Chartoun	L	VL	L	Chemlane	L	VL	L	Choueifat El-Aamrous	L	VL	ML
Choueifat El-Oumara	L	VL	L	Choueifat El-Quoubbe	L	VL	L	Dakkoun	L	VL	L
Deir Qoubel	L	VL	L	Dfoun	L	VL	L	Douair El Remmaneh	L	VL	L
Ghaboun	L	VL	L	Habramoun	L	VL	L	Homs Oua Hama	L	VL	L
Houmal	L	VL	L	Jisr El Qadi	L	VL	L	Kehaleh	L	VL	L
Keyfoun	L	VL	L	Kfar Aamey	L	VL	L	Kommatyeh	L	VL	L
Maasrati	L	VL	L	Majdel Baana	L	VL	ML	Mansourieh et Ain El	L	VL	L
Mazraat El-Nahr	L	VL	L	Mchakhte	L	VL	L	Mecherfeh	L	VL	L
Mejdlaya	L	VL	L	Mrayjat	L	VL	ML	Ramiyeh	L	VL	L
Rechmaya	L	VL	L	Rejmeh	L	VL	L	Remhala	L	VL	L
Rouayset El Neemane	L	VL	L	Saoufar	L	VL	ML	Selfaya	VL	VL	L
Sirhmoul	L	VL	L	Souq El Ghareb	L	VL	L	Taazanieh	L	VL	L

Kesrouane

Municipality	01-Nov	02-Nov	03-Nov	Municipality	01-Nov	02-Nov	03-Nov	Municipality	01-Nov	02-Nov	03-Nov
Achkout	L	VL	L	Adma Oua Dafneh	L	VL	ML	Ain Ed-Delbe Kesroua	L	VL	L
Ain El-Rihane	L	VL	L	Aintoura Kesrouane	L	VL	ML	Ajaltoun	L	VL	L
Akaybeh Kesrouane	M	L	M	Aramoun Kesrouane	L	VL	L	Azra ouel Ozor	ML	L	L
Ballouneh	L	VL	L	Batha	L	VL	L	Bekaatat Achkout	L	VL	L
Bekaatat Kanaan	L	VL	L	Bizhel	ML	L	L	Bouar	ML	VL	ML
Bqaatouta	L	VL	L	Bqaq Ed-Dine	M	VL	M	Bzommar	L	VL	L
Chahtoul	L	VL	L	Chnaniir	L	VL	L	Chouan	L	VL	L
Daraya Kesrouane	L	VL	L	Darououn	L	VL	L	Deir Baqlouch	L	VL	L
Diebta	L	VL	L	Eghbeh	L	VL	VL	Faraya	L	L	L
Fatka	L	VL	L	Feytroun	L	VL	L	Ghazir	L	VL	L
Ghbaleh Kesrouane	ML	L	L	Ghedrass	L	VL	L	Ghosta	L	VL	L
Ghyneh	L	VL	L	Harharaya w Kattine	L	VL	L	Harissa Kesrouane	L	VL	L
Hayata	L	VL	L	Hosein	L	VL	L	Hrajel	L	L	L
Jdeideh Ghazir	L	VL	L	Jeita	L	VL	L	Jounieh Ghadir	L	VL	ML
Jounieh Haret Sakhr	L	VL	M	Jounieh Salel Alma	L	VL	ML	Jounieh Sarba	L	VL	M
Jouret Bedrane	ML	L	L	Jouret Mhad	L	VL	VL	Jouret Termos	L	VL	L
Kfar Debiane	L	VL	L	Kfar Tay Kesrouane	L	VL	VL	Kfar Yassine	L	VL	M
Kfour Kesrouane	L	VL	L	Kharayeb Nahr Ibrahi	M	VL	L	Klayaat Kesrouane	L	VL	L
Maarab	L	VL	VL	Maaysra Kesrouane	ML	L	L	Mayrouba	L	VL	L
Mazraat Er-Ras	L	VL	ML	Mazraat Mrah El-Mir	L	VL	L	Mchaa El Ftouh	ML	L	ML
Mchaa Faraya	L	L	L	Mchaa Kfar Dibiane	ML	L	ML	Mghaer	L	VL	L
Mradiyah	ML	L	L	Nahr Ed-Dahab	L	VL	L	Nammoura Kesrouane	ML	L	L
Ouata El Jaouz	L	VL	L	Ouata Sillam	L	VL	M	Raachine	L	VL	VL
Rayfoun	L	VL	L	Safra Kesrouane	L	VL	ML	Shayle Kesrouane	L	VL	L
Tabarja	L	VL	ML	Yahchouch	ML	L	L	Zaaytreh	ML	L	L
Zeytoun	ML	L	L	Zouk Mikael	L	VL	M	Zouk Mosbeh	L	VL	M

Baalbek_Hermel

Baalbek

Municipality	01-Nov	02-Nov	03-Nov	Municipality	01-Nov	02-Nov	03-Nov	Municipality	01-Nov	02-Nov	03-Nov
Aadous	M	M	M	Aamchki	ML	L	L	Aarsal	M	M	L
Ain Baalbek	M	M	L	Ain Bourday	ML	ML	L	Ain El-Benye	ML	L	ML
Ain El-Jaouz Baalbek	M	L	L	Ain El-Siya Chadoura	ML	L	L	Al Khodr Baalbek	M	ML	M
Al Nabi Chit	M	ML	M	Aynata Baalbek	M	M	M	Baalbek	ML	ML	L
Bachwat	M	M	M	Barqa	M	M	M	Bednayel Baalbak	M	ML	M
Beit Chama	M	ML	M	Bijjaje	M	M	M	Bouday	M	M	M
Brital	ML	L	ML	Btadi	M	M	M	Chaat	M	M	M
Chaibe	ML	L	ML	Chlifa	M	M	M	Chmestar	M	M	M
Dar El-Oussa	M	M	M	Deir El-Ahmar	M	M	M	Deir Mar Maroun Baal	M	M	L
Douris	M	M	M	Fakiha	M	M	ML	Hadath Baalbek	M	M	M
Ham	ML	L	ML	Haour Taala	ML	L	ML	Hizzine	M	M	M
Hlebta	M	ML	L	Hosh Barada	M	M	M	Hosh El Dahab	M	M	M
Hosh El Snid	M	ML	M	Hosh El-Nabi	M	ML	M	Hosh El-Rafiq	M	ML	M
Hosh Tal Safiya	M	M	M	Hrebta	M	M	M	laat	M	M	M

Jebaa	M	M	M	Jenta	ML	L	ML	Kfar Dabach	M	ML	M
Kfar Dane	M	M	M	Khraibeh El-Hermel	M	M	M	Khreibet Baalbek	ML	L	ML
Kneisset Baalbek	M	M	M	Labueh	M	M	M	Maarboun	ML	L	ML
Majdaloun	M	M	M	Maqneh	M	M	M	Mazraat Beit Mcheik	M	M	M
Misraya	M	ML	M	Moqraq	M	M	M	Nabha El-Damdoum	M	M	M
Nabi Chbay	ML	L	ML	Nabi Osman	M	M	ML	Nahleh baalbek	M	ML	L
Ouadi El-Oss	M	M	ML	Qaa Baayoun	M	M	L	Qaa Jouar Maqiye	M	M	L
Qaa Ouadi El-Khanzir	M	M	L	Qah Baalbek	M	M	ML	Qarha Baalbek	M	M	M
Qsarnaba	M	ML	M	Ram Baalbek	M	M	M	Ras Baalbek El Sahl	M	M	ML
Ras Baalbek El-Charq	M	M	L	Riha	M	M	M	Saaide	M	M	M
Sbouba	M	M	M	Seriine El-Tahta	M	ML	M	Slouqi	M	ML	M
Taiba Baalbek	M	M	M	Talia	M	M	M	Taraiya	M	M	M
Temnin El Fawqa	M	ML	M	Temnin El-Tahta	M	ML	M	Tfail	M	ML	L
Yahfoufa	ML	L	ML	Yammouneh	M	M	M	Younine	M	M	ML
Zboud	M	M	M								

Hermel

Municipality	01-Nov	02-Nov	03-Nov	Municipality	01-Nov	02-Nov	03-Nov	Municipality	01-Nov	02-Nov	03-Nov
Charbine El-Hermel	ML	ML	VL	Hermel Jbab	M	ML	L	Hermel	M	M	L
Maaysra El-Hermel	M	M	M	Michaa Mrajhine	ML	L	VL	Ouadi Faara	M	ML	L
Ras Baalbek - Ouadi	M	M	M	Ras Baalbek El Gharb	M	M	M	Zighrine	ML	M	L

Akkar

Akkar

Municipality	01-Nov	02-Nov	03-Nov	Municipality	01-Nov	02-Nov	03-Nov	Municipality	01-Nov	02-Nov	03-Nov
Aain Tinta	ML	M	L	Aaiyat	L	ML	L	Aakkar El-Aatiga	L	L	L
Aamar Akkar	M	M	ML	Aamar El Baykat	ML	ML	ML	Aamayer	M	M	L
Aamriyet Akkar	ML	M	ML	Aandqet	M	M	L	Aarmeh	ML	L	ML
Aarqa	M	ML	M	Aawaynat	M	M	L	Aayoun Akkar	L	M	L
Abboudiye	ML	VL	M	Ain El-Zeit	ML	M	ML	Ain Yaaqoub	L	L	L
Akroum	M	M	L	Aridet Cheikh Zennad	ML	L	M	Baldehy w Mazraat Bal	ML	L	M
Barcha	ML	L	M	Bardeh	ML	M	L	Bebnine	M	M	ML
Beino	ML	ML	L	Beit Ayoub	ML	ML	L	Beit El-Haouch	M	M	ML
Beit Mellat	L	M	L	Beit Younes	L	L	VL	Berbara Akkar	ML	M	L
Berqayel	M	M	ML	Bezbinia	L	L	L	Bireh Akkar	ML	ML	L
Borj	L	M	L	Bqerezla	ML	M	L	Bzal	M	ML	L
Chane	L	L	VL	Chaqdouf	L	ML	L	Charbila	ML	L	M
Cheikh Mohammad	ML	L	M	Cheikh Taba Es-Sahl	ML	L	M	Cheikh Taba	L	ML	L
Cheikh Zennad	ML	L	M	Cheikhlar	M	M	L	Chir Hmairine	ML	L	M
Daghle	ML	ML	L	Dahr Laissine	L	ML	L	Darine	ML	L	M
Dawra	L	L	L	Dawsa w Baghdadi	ML	M	L	Dayret Nahr El-Kabir	M	ML	L
Deir Dalloum	M	M	ML	Deir Jennine	ML	ML	L	Denbou	L	L	L
Dibbbiyeh	ML	ML	ML	Douair Aadwiyeh	ML	M	L	Fassikine	ML	ML	L
Fnaydek	L	L	L	Fraydes Akkar	ML	ML	L	Ghazayle	ML	L	M
Habchit	L	L	VL	Hakour	M	M	ML	Halba	ML	L	ML

Haouchab	ML	L	M	Hayssat	ML	L	M	Haytla	ML	L	M
Hayzouq	ML	L	M	Hedd	ML	L	M	Hmaira Aakkar	M	M	ML
Hmaiss Aakkar	ML	L	M	Hnaider	M	M	L	Hokr Ed-Dahri	ML	L	M
Hokr Etti	ML	L	M	Hokr Jouret Srar	ML	L	M	Houaich	L	ML	L
Hrar	ML	ML	L	Idbil	L	ML	L	Ilal	L	ML	L
Janine	ML	L	M	Jdeidet El-Joumeh	ML	ML	L	Jdeidet El-Kaiteh	M	M	ML
Jebrayel	ML	ML	L	Kafr	M	L	M	Kafr	ML	M	ML
Karm Asfour	ML	ML	L	Kfar Melki Aakkar	ML	L	M	Kfar Noun	ML	ML	L
Kfarharra	ML	L	M	Khalsa	M	M	L	Kharnoubet Aakkar	ML	L	M
Khirbet Daoud Aakkar	ML	ML	ML	Khirbet El Remmane	M	ML	L	Khirbet Shar	ML	M	L
Khoreybet El-Jindi	ML	L	M	Khreibet Aakkar	ML	ML	L	Kneisset Aakkar	ML	L	M
Kneisset Hnaider	M	M	L	Knisse	ML	L	M	Kroum El-Aarab	ML	L	M
Kwachra	ML	M	ML	Kweykhath	ML	L	M	Machta Hammoud	M	M	L
Majdala	M	M	ML	Majdel Akkar	ML	ML	ML	Mar Touma	M	M	ML
Marlaya Melhem	M	M	ML	Mashha	L	L	L	Massoudiye	ML	L	M
Mazraat Beit Ghattas	M	M	M	Mazraat En-Nahriye	M	M	L	Mechmech	L	L	VL
Memneh	L	L	VL	Mhammara	M	M	M	Mighraq Aakkar	ML	L	M
Minyara	M	ML	ML	Moqayteh	ML	L	M	Mounjez	ML	ML	L
Msalla	ML	ML	ML	Mzeihmeh	ML	L	M	Nfaisch	ML	L	ML
Noura Et-Tahta	ML	ML	L	Ouadi El-Haour	ML	L	M	Ouadi El-Jamous	M	M	ML
Ouyoun El-Ghizlane	M	M	ML	Qaabarine	ML	L	M	Qabaait	ML	ML	L
Qachlaq	ML	L	M	Qantara Aakkar	L	ML	L	Qarha Aakkar	M	M	L
Qarqaf	M	M	ML	Qboula	L	M	L	Qleiaat Aakkar	ML	L	M
Qloud El-Baqie	M	M	ML	Qobaiyat Aakkar	M	ML	L	Qobbat Chamrat	M	ML	M
Qorayat	L	ML	VL	Qornet Aakkar	L	ML	L	Qsair Aakkar	ML	ML	L
Rahbe	ML	ML	L	Rihaniyet Aakkar	ML	L	M	Rmah	M	M	L
Rmoul	ML	L	M	Saadine	ML	L	M	Sadaqa	ML	ML	L
Saidnaya	ML	L	M	Sammouniye	ML	L	M	Sayssouq	M	ML	ML
Semmaqiye	ML	L	M	Semmaqli	M	ML	M	Sfinet El-Dreib	ML	L	ML
Sfinet El-Qaitaa	M	ML	L	Sindyanet Zeidane	ML	ML	L	Souaisset Aakkar	ML	L	M
Srar	ML	L	M	Tal Abbas El Gharby	ML	L	M	Tal Abbas El-Charqy	ML	L	M
Tal Biret	ML	L	M	Tal Hmayra	ML	L	M	Tal Maayan Tal Kiri	ML	L	M
Tal Sibel	ML	L	M	Tallet Chattaha	ML	ML	L	Tikrit	L	ML	L
Tleil	ML	L	M	Tshea	L	L	L	Zawarib	L	ML	L
Zouq El Hosniyeh	M	M	ML	Zouq El-Haddara	M	M	ML	Zouq El-Hbalsa	M	M	ML
Zouq El-Moqachrine	M	M	ML								

Sud

Sour

Municipality	01- Nov	02- Nov	03- Nov	Municipality	01- Nov	02- Nov	03- Nov	Municipality	01- Nov	02- Nov	03- Nov
Aaiyeh	L	L	M	Aalma El-Chaab	M	L	ML	Aaytit	L	L	M
Abbassiyeh Sour	ML	L	M	Abou Chech	M	L	ML	Ain Abou Abdallah	ML	L	M
Ain Baal	ML	L	M	Arzoun	M	VL	M	Aziyeh	M	L	ML
Baflaya	ML	VL	M	Barich	L	VL	M	Batouliyeh	M	L	M
Bayad	L	L	M	Bazouriyeh	ML	L	M	Bediass	L	VL	M

Bestiyat	L	VL	M	Borj El Chemali	M	L	M	Borj En-Naqoura	M	L	M
Borj Rahhal	L	VL	M	Boustane	M	L	ML	Btaychih	M	L	L
Chaaitiye	ML	L	M	Chameh	M	L	L	Chehabiye	M	L	M
Chehour	M	VL	M	Chihine	M	L	L	Debaal Sour	L	L	M
Deir Amess	L	L	ML	Deir Kifa	M	L	M	Deir Qanoun El-Ain	M	L	M
Deir Qanoun El-Naher	L	VL	M	Derdghaiya	ML	VL	M	Dhayra	M	L	ML
Halloussiyeh	L	VL	M	Hamoul	M	L	L	Hanaouey	L	L	M
Henniye	M	L	M	Hmairi Sour	L	VL	M	Iskandarouna Sour	M	L	ML
Jbal El Botom	L	L	ML	Jebbin	M	L	ML	Jennata	L	VL	M
Jijim	M	L	L	Jouaiya	L	L	M	Kneisset Sour	M	L	M
Maarake	L	VL	M	Maaroub	L	VL	M	Majadel	L	L	M
Majdalzoun	M	L	ML	Mansouri Sour	M	L	M	Marnba	M	VL	M
Marouahine	M	L	L	Mazraat El-Zalloutiy	M	L	ML	Mazraat Mechref	L	L	M
Mazraat Tayr Semhat	M	VL	M	Mheilib	M	L	M	Neffakhiyeh	M	VL	M
Niha Sour	M	VL	M	Ouadi Jilo	L	L	M	Qana	L	L	M
Qolaileh Sour	M	L	M	Rechknany	L	L	ML	Rmadiyah	L	L	M
Selha Sour	M	VL	M	Siddiqine	L	L	M	Sour	M	L	M
Srifa	M	VL	M	Tayr Debbe	L	VL	M	Tayr Felsay	L	VL	M
Tayr Harfa	M	L	ML	Touayri	M	VL	M	Toura	L	VL	M
Yanouh Sour	L	VL	M	Yarine	M	L	ML	Zebqine	M	L	L

Saida

Municipality	01-Nov	02-Nov	03-Nov	Municipality	01-Nov	02-Nov	03-Nov	Municipality	01-Nov	02-Nov	03-Nov
Aanqoun	ML	VL	ML	Aaqtanit	ML	VL	ML	Aarab Ej-Jall	ML	VL	ML
Aarab Tabbaya	ML	VL	ML	Abra Saida	L	VL	M	Adloun	M	VL	M
Adousiyeh	M	L	M	Ain-El-Deleb	ML	VL	ML	Arzai	L	VL	M
Babliyah	M	L	M	Barty	L	VL	ML	Bissariyeh	M	L	M
Bnaafoul	ML	VL	ML	Bqosta	L	VL	M	Bramiy	L	VL	M
Daoudiyeh	M	L	M	Dareb El-Sim	ML	VL	ML	Erkay	ML	VL	ML
Ghassanieh	M	L	M	Ghazieh	M	L	M	Hajjeh	ML	VL	ML
Haret Saida	L	VL	M	Hartiyeh	M	L	M	Hlaliye Saida	L	VL	M
Insariyat	M	L	M	Jazira Saida	ML	L	M	Kafar Bit	ML	VL	ML
Kaoutariyet El-Siyad	ML	VL	ML	Kfar Chellal	L	VL	ML	Kfar Hatta Saida	ML	VL	ML
Kfar Milke Saida	L	VL	ML	Khartoum	M	VL	M	Khaziz	ML	VL	ML
Khirbet Ed-Douair Sa	M	L	M	Khirbet El-Bassal	M	L	M	Khrayeb Saida	ML	VL	M
Loubieh	M	L	M	Maghdouche	ML	VL	ML	Majdelyoun	L	VL	M
Matariyet El-Choumar	L	VL	M	Matayriyeh	ML	VL	ML	Mazraat 'Mseileh	M	L	M
Mazraat 'Snaiber	M	L	M	Mazraat Aarab Soukka	ML	VL	ML	Mazraat Deir Taqla	M	VL	M
Mazraat El Yahoudiye	M	VL	M	Mazraat El-Housseini	M	L	M	Mazraat El-Mhaydaleh	M	L	M
Mazraat El-Ouasta	M	VL	M	Mazraat Jamjim	M	L	M	Mazraat Kaoutariyet	M	L	M
Mazraat Kfar Badda	M	L	M	Mazraat Oussamiyat	M	L	M	Mazraat Sari	M	L	M
Mazraat Sinai	M	VL	M	Meemariyeh	M	VL	ML	Merouaniyeh	M	VL	M
Miyeh ou Miyeh	ML	VL	ML	Najjariyeh	M	L	M	Qaaqiyat El-Snaouba	M	L	M
Qnarit	ML	VL	ML	Qraiye Saida	ML	VL	ML	Saida Ed-Dekermane	ML	VL	M
Saida El-Oustani	L	VL	M	Saida El-Qadimeh	L	VL	M	Saida Kefraya	L	VL	ML
Saksakiyeh	M	L	M	Salhieh Saida	L	VL	M	Sarafand	M	L	M

Sfenta	L	VL	L	Tafahta	M	VL	M	Tanbourit	ML	VL	ML
Tebna	M	L	M	Zaghdraiya	ML	VL	ML	Zeita	ML	VL	ML
Zrariyeh	L	VL	M								

Jezzine

Municipality	01-Nov	02-Nov	03-Nov	Municipality	01-Nov	02-Nov	03-Nov	Municipality	01-Nov	02-Nov	03-Nov
Ain El-Mir (El Estab)	ML	VL	ML	Anane	L	VL	VL	Aramta	L	VL	ML
Ariya	L	VL	L	Aychiyeh	L	VL	ML	Azour	L	VL	VL
Baba	L	VL	VL	Bayssour Jezzine	ML	VL	ML	Benoueteh Jezzine	L	VL	L
Bhannine	L	VL	L	Bisri	L	VL	VL	Bkassine	L	VL	L
Bouslaya	L	VL	L	Btedine El-Leqech	L	VL	VL	Chbail	ML	VL	L
Choualiq Jezzine	L	VL	M	Dahr Ed-Deir	L	VL	L	Deir El Qattine	L	VL	L
Demachqiyeh	L	VL	M	Ghabbatiyeh	L	VL	L	Harf Jezzine	L	VL	VL
Hassaniyeh	ML	VL	ML	Haytouleh	L	VL	ML	Haytura	L	VL	L
Hidab	L	VL	L	Homsiyeh	L	VL	L	Jabal Toura	L	VL	ML
Jarmaq	L	VL	M	Jensnaya	ML	VL	ML	Jernaya	L	VL	ML
Jezzine	L	VL	ML	Karkha	L	VL	ML	Kfar Falous	L	VL	L
Kfar Houna	L	VL	ML	Kfar Jarrah	ML	VL	M	Lebaa	ML	VL	M
Louayzet Jezzine	L	VL	L	Machmouche	L	VL	L	Mahmoudiyeh Jezzine	L	VL	M
Maknounye Jezzine	L	VL	L	Maraat Ouazaiyeh	ML	VL	M	Mazraat Daraya	L	VL	ML
Mazraat El-Aarqoub	L	VL	ML	Mazraat El-Mathane	L	VL	VL	Mazraat El-Rahbane	L	VL	L
Mazraat Khallet Khaz	ML	VL	ML	Mazraat Louzid (Loua	ML	VL	L	Mazraat Qrouh	ML	VL	M
Mazraat Tamra	L	VL	M	Mazraat Zighrine Jez	L	VL	ML	Mazraat	L	VL	L
Mharbiyeh	ML	VL	ML	Midane Jezzine	L	VL	L	Mjeydel Jezzine	ML	VL	ML
Mlikh	L	VL	L	Mrah El-Hbasse	L	VL	ML	Ouadi Baanqoudaine	ML	VL	ML
Ouadi El-Laymoun	ML	VL	ML	Ouardiyeh	ML	VL	L	Qabaa Jezzine	L	VL	L
Qatrani	ML	L	ML	Qaytouleh	L	VL	L	Qtaleh Jezzine	L	VL	VL
Rihane Jezzine	L	VL	M	Rimat	L	VL	L	Roum	L	VL	L
Roummanet	L	VL	ML	Sabbah	L	VL	L	Saydoun	L	VL	L
Sfaray	L	VL	L	Snaya	L	VL	L	Sojoud	L	VL	M
Srayri	ML	L	M	Taaid	L	VL	VL	Wadi Jezzine	L	VL	L
Zhalta	L	VL	L								

Bekaa

West Bekaa

Municipality	01-Nov	02-Nov	03-Nov	Municipality	01-Nov	02-Nov	03-Nov	Municipality	01-Nov	02-Nov	03-Nov
Aammiq BG	ML	L	ML	Ain El Tineh BG	L	VL	ML	Ain Zebdeh	ML	L	ML
Ana	ML	L	ML	Aytanit	ML	VL	ML	Baaloul BG	ML	L	ML
Bab Mareh	ML	L	ML	Chouberqiye Aammiq	ML	L	ML	Dakoue	ML	L	ML
Deir Ain El-Jaouze	ML	L	ML	Deir Tahniche	ML	L	ML	Ghaza	ML	L	ML
Harime El-Soughra	ML	L	ML	Hoch Harimeh	ML	L	ML	Jazira BG	ML	L	ML
Jib Jennine	ML	L	L	Kamed-El-Laouz	L	L	L	Kefraya BG	L	VL	L
Khiara El Atika	ML	L	ML	Khiara	ML	L	ML	Khirbet Qanafar	ML	L	ML
Lala	ML	L	L	Lebbaya BG	ML	L	ML	Loussa	ML	L	M
Machghara	L	L	ML	Manara (Hammara) BG	M	L	ML	Mansoura BG	M	L	ML

Marej BG	ML	L	M	Maydoun	L	L	M	Ouaqf BG	ML	L	ML
Qaraaoun	ML	L	ML	Qelya	ML	L	M	Raouda (Istabel)	ML	L	M
Saghbine	ML	L	ML	Sohmor	ML	L	ML	Soltan Yacoub el Ara	ML	L	ML
Souairy	M	L	ML	Sultan Yaacoub	ML	L	ML	Tal Znoub	ML	L	ML
Yehmor BG	ML	L	ML	Zilaya	ML	L	ML				

Zahle

Municipality	01-Nov	02-Nov	03-Nov	Municipality	01-Nov	02-Nov	03-Nov	Municipality	01-Nov	02-Nov	03-Nov
Aanjar (Haouch Mouss)	ML	L	M	Ablah	M	ML	M	Ain Kfarzabad	M	ML	M
Ali-El-Nahri	M	ML	M	Bar Elias	ML	L	M	Bouarej	ML	L	M
Cheberqiyet Tabet	ML	L	M	Chtaura	ML	L	ML	Deir El Ghazal	M	ML	M
Delhamiyet Zahle	M	L	M	Ferzol	M	ML	M	Haouch El-Ghanam	M	ML	M
Haouch Es-Siyadeh	ML	L	ML	Haouch Hala	M	ML	M	Haouch Mandara	ML	L	ML
Haouch Qayssar	ML	L	ML	Hezerta	ML	L	ML	Hosh Moussa	M	ML	M
Jdita	ML	L	ML	Kfarzabad	M	ML	M	Ksara	ML	L	M
Majdel Aanjar	M	L	ML	Makssi	ML	L	ML	Massa	M	L	M
Mazraat Er-Remtaniye	ML	L	ML	Mrayjat Zahle	ML	L	ML	Mzaraa Zahle	ML	L	ML
Nabi Ayla	M	ML	M	Nasriyet Rizk	M	ML	M	Nasriyet Zahle	ML	L	ML
Niha Zahle	M	ML	M	Ouadi Ed-Deloum	ML	L	ML	Ouadi El-Arayech	M	L	ML
Qaa El Rim	ML	L	ML	Qab Elias	ML	L	ML	Qousaya	M	ML	M
Rhit	M	L	M	Riyak	M	ML	M	Saadnayel	ML	L	M
Taal El-Akhdar	ML	L	ML	Taalbeya	ML	L	M	Taanayel	ML	L	M
Talamara	M	ML	M	Tcheflik Edde Haouch	ML	L	M	Tcheflik Qiqano	ML	L	ML
Terbol Zahle	M	ML	M	Touaite Zahle	L	L	ML	Zahle Aradi	ML	L	M
Zahle El-Berbara	ML	L	ML	Zahle El-Maallaqa	ML	L	M	Zahle El-Midane	ML	L	M
Zahle Er-Rassiyeh	ML	L	ML	Zahle Haouch El-Ouma	ML	L	M	Zahle Haouch El-Ouma	ML	L	M
Zahle Haouch Ez-Zara	ML	L	M	Zahle Maalaqa Aradi	M	L	M	Zahle Mar Antonios	ML	L	ML
Zahle Mar Elias	ML	L	M	Zahle Mar Gerios	ML	L	M	Zahle Saydet En-Naja	M	L	M
Zebdoul	ML	L	ML								

Rachaiya

Municipality	01-Nov	02-Nov	03-Nov	Municipality	01-Nov	02-Nov	03-Nov	Municipality	01-Nov	02-Nov	03-Nov
Ain Arab Rachaiya	ML	L	ML	Ain Ata	ML	L	ML	Ain Harche	ML	L	ML
Aqabe Rachaya	ML	L	ML	Ayha	M	ML	M	Ayta El Fokhar	ML	L	ML
Bakifa Rachaya	ML	L	ML	Bakka	ML	L	ML	Beit Lahya	ML	L	ML
Bireh Rachaiya	L	L	L	Daher El Ahmar	ML	L	ML	Deir El-Achayer	M	M	M
Heloua Rachaiya	M	M	M	Hoch El Qannabeh Rac	ML	L	L	Kaoukaba Bou Arab	ML	L	ML
Kfar Danis	ML	L	L	Kfar Mechki	ML	L	ML	Kfar Qouq	M	ML	M
Kherbet Rouha	ML	L	L	Majdel Balhiss	ML	L	ML	Mdoukha	ML	L	ML
Mhaydseh Rachaiya	ML	L	L	Nabi Safa	ML	L	ML	Rachaiya	ML	L	ML
Rafid Rachaiya	L	L	L	Selsata (Mazraat Dei	M	M	M	Tannoura	ML	L	ML
Yanta	M	ML	M								

Beyrouth

Beyrouth

Municipality	01-Nov	02-Nov	03-Nov	Municipality	01-Nov	02-Nov	03-Nov	Municipality	01-Nov	02-Nov	03-Nov
--------------	--------	--------	--------	--------------	--------	--------	--------	--------------	--------	--------	--------

Achrafieh	M	L	M	Ain el-Mreisse	M	L	M	Bachoura	M	L	M
Beirut Central Distr	M	L	M	Marfai	M	L	M	Mazraa	M	L	M
Medaouar	M	L	M	Minet el-Hosn	M	L	M	Mwssaitbeh	M	L	M
Ras Beirut	M	L	M	Rmeil	M	L	M	Saifi	M	L	M
Zqaq el-Blat	M	L	M								