

# Lebanon Fire Risk Bulletin



CIVIL DEDEFENCE

**Refer to cadast table condition.**

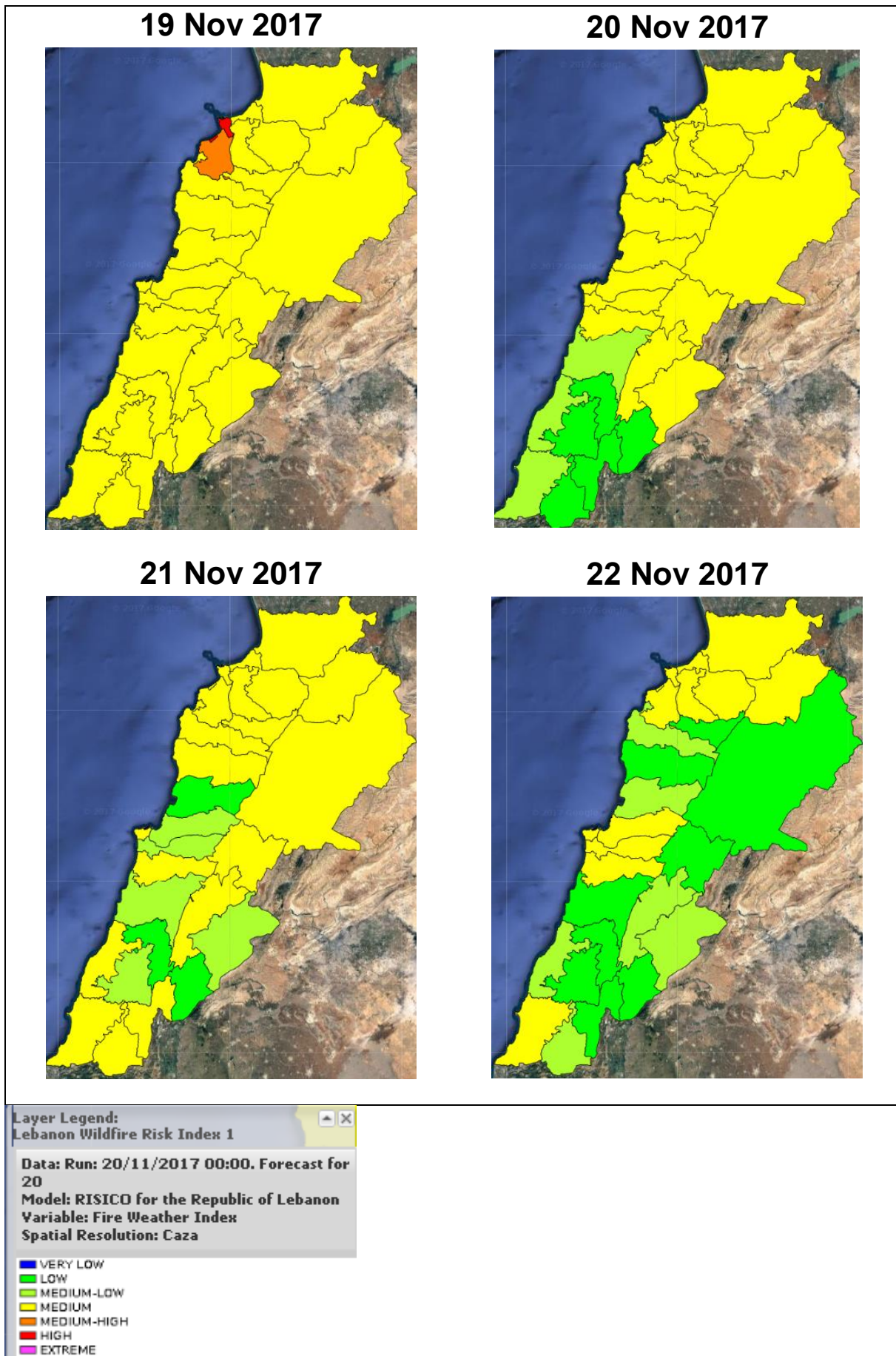
**Please note that the indicated temperature is at 2 meters height from the ground.**

General description of potential fire risk situation

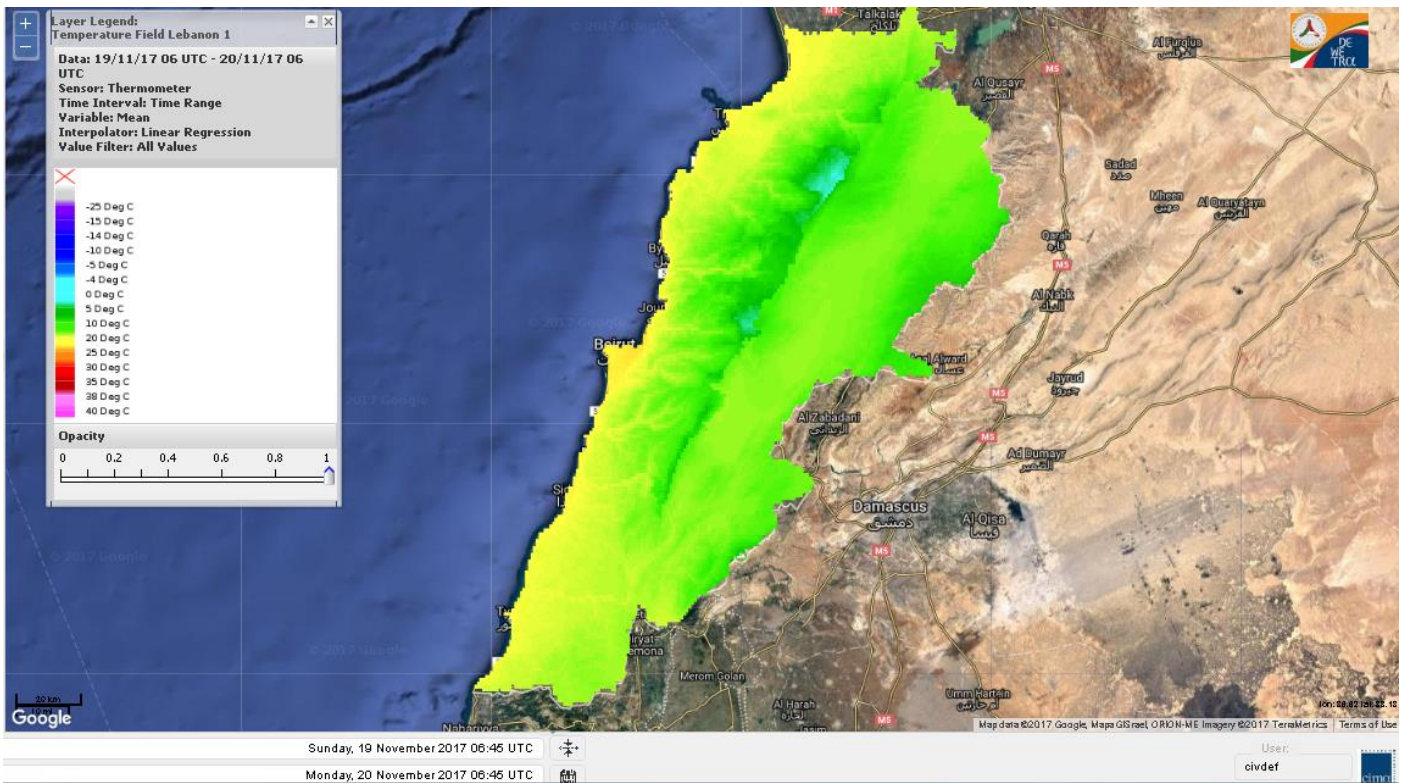
Symbol	Level of risk	Meaning and actions
VL	Very low	Very low fire risk. Controlled burning operations can be hardly executed due to high fuel moisture content. Normally wildfires self-extinguish.
L	Low	Low fire risk. Controlled burning operations can be executed with a reasonable degree of safety.
ML	Medium low	Medium-low fire risk. Controlled burning operations can be executed in safety conditions. All the fires need to be extinguished.
M	Medium	Medium fire risk. Controlled burning operations would be avoided. All the fires need to be very well extinguished.
M	Medium high	Controlled burning is not recommended. Open flame will start fires. Cured grasslands and forest litter will burn readily. Spread is moderate in forests and fast in exposed areas. Patrolling and monitoring is suggested. Fight fires with direct attack and all available resources.
H	High	Ignition can occur easily with fast spread in grass, shrubs and forests. Fires will be very hot with crowning and short to medium spotting. Direct attack on the head may not be possible requiring indirect methods on flanks. Patrolling and monitoring the territory is highly suggested.
E	Extreme	Ignition can occur also from sparks. Fires will be extremely hot with fast rate of spread. Control may not be possible during day due to long range spotting and crowning. Suppression forces should limit efforts to limiting lateral spread. Damage potential total. Patrolling and monitoring the territory is highly suggested.

**Beirut, 20 November 2017**

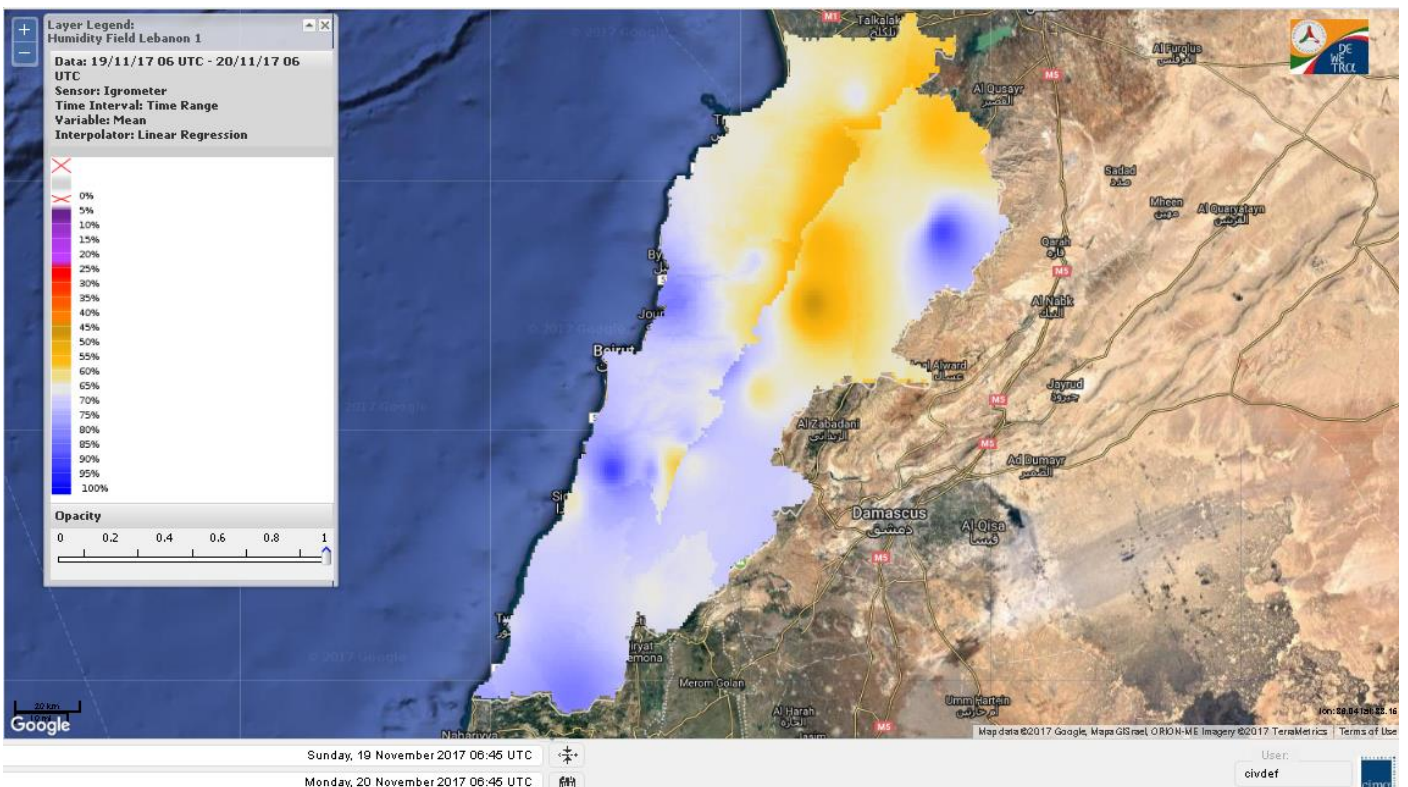
# FIRE RISK INDEX



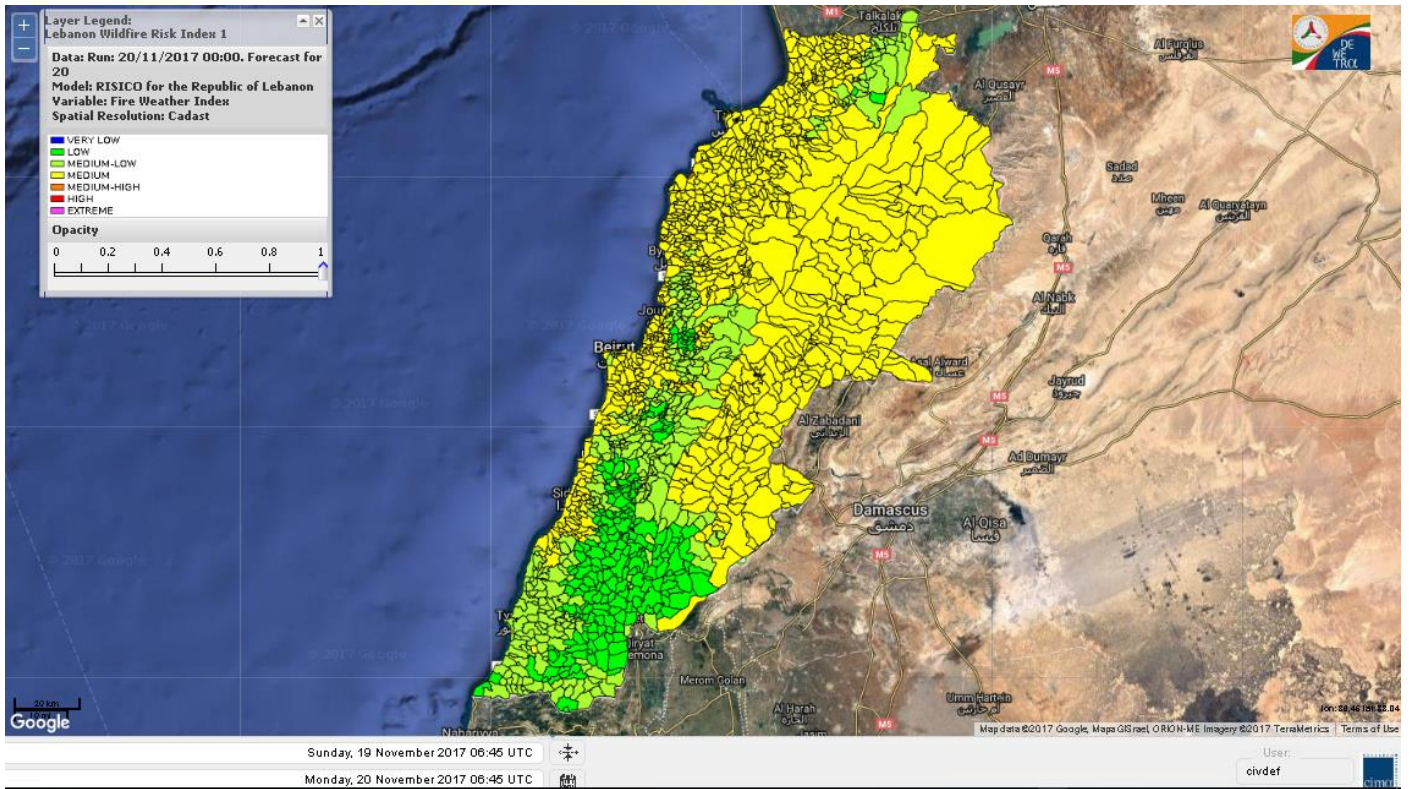
# Lebanon temperature for Lebanon for 20 Nov 2017



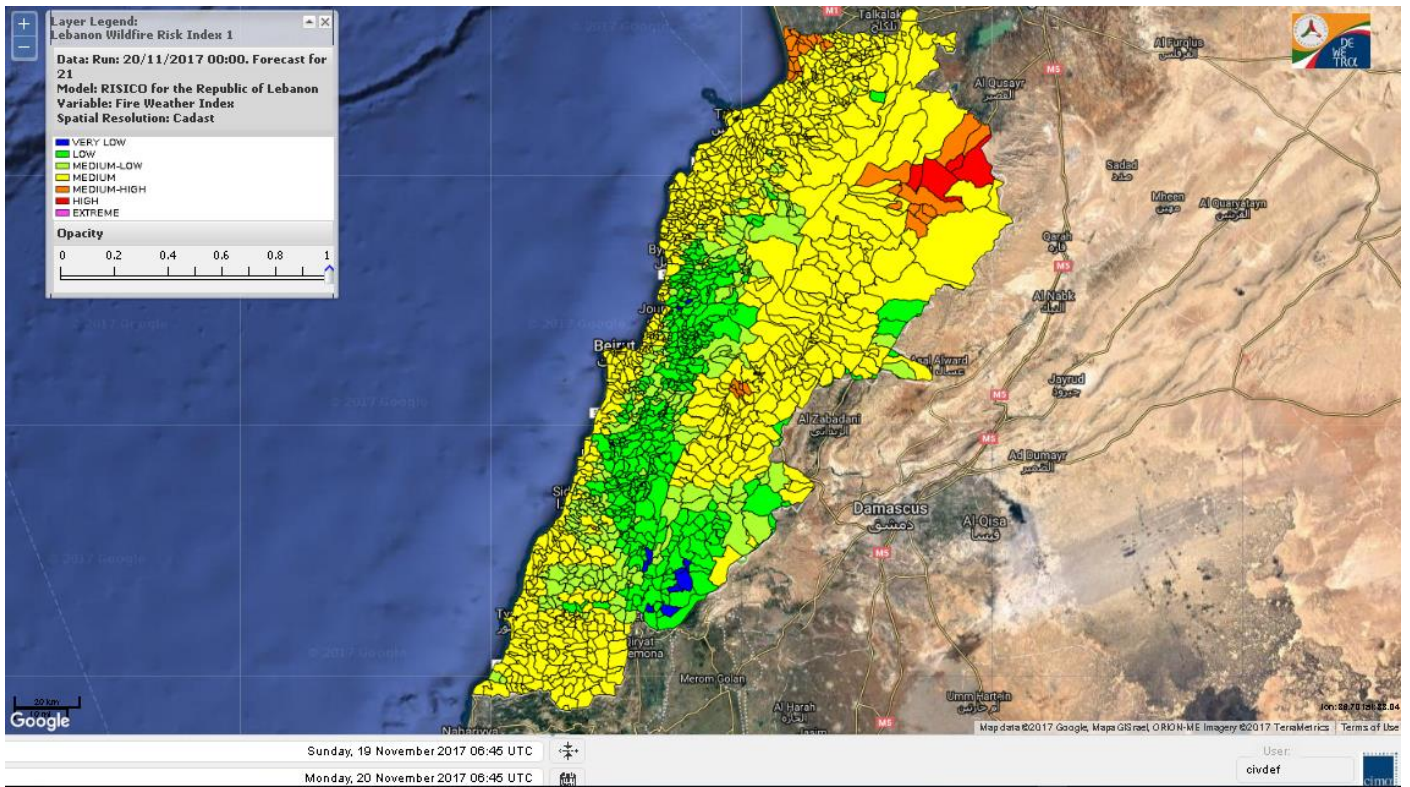
# Lebanon humidity for Lebanon for 20 Nov 2017



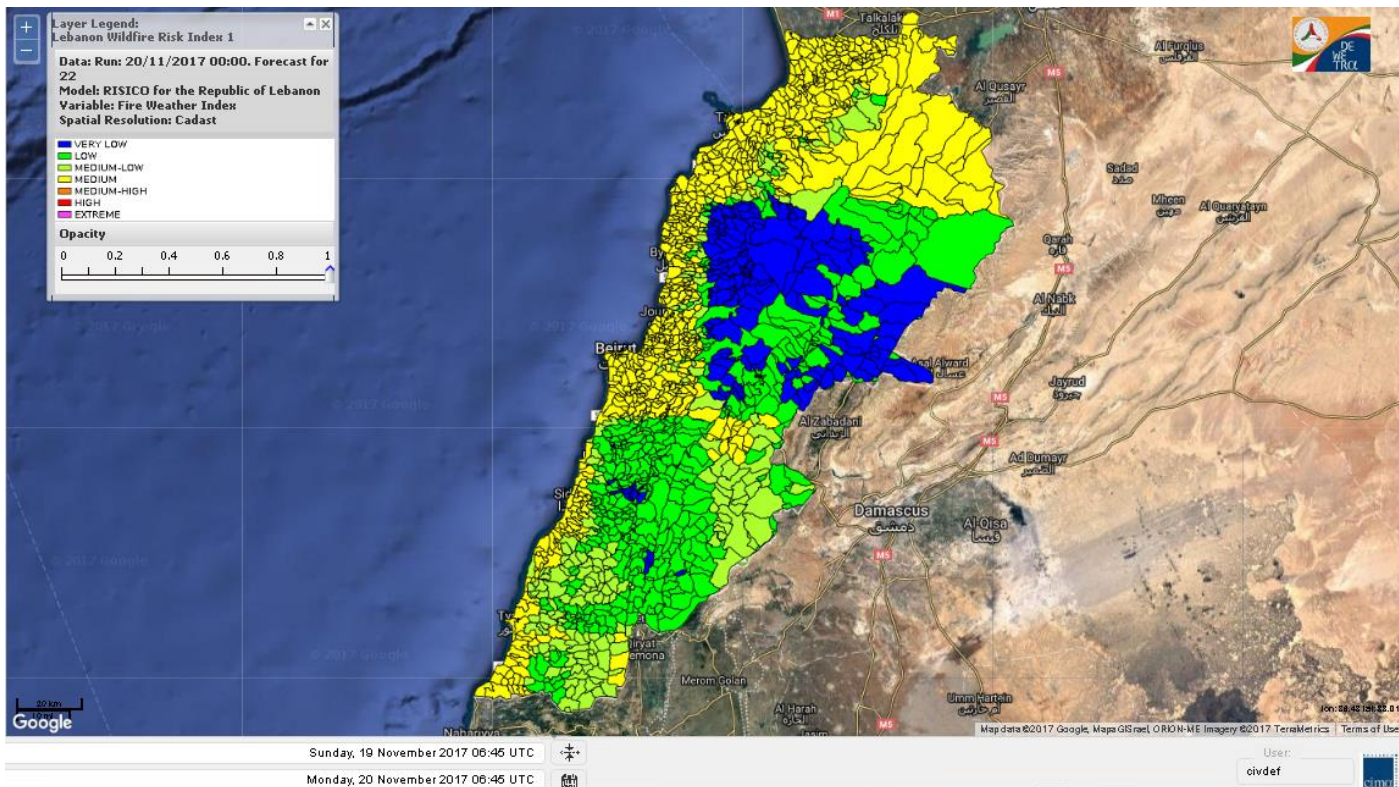
# Lebanon for 20 Nov 2017



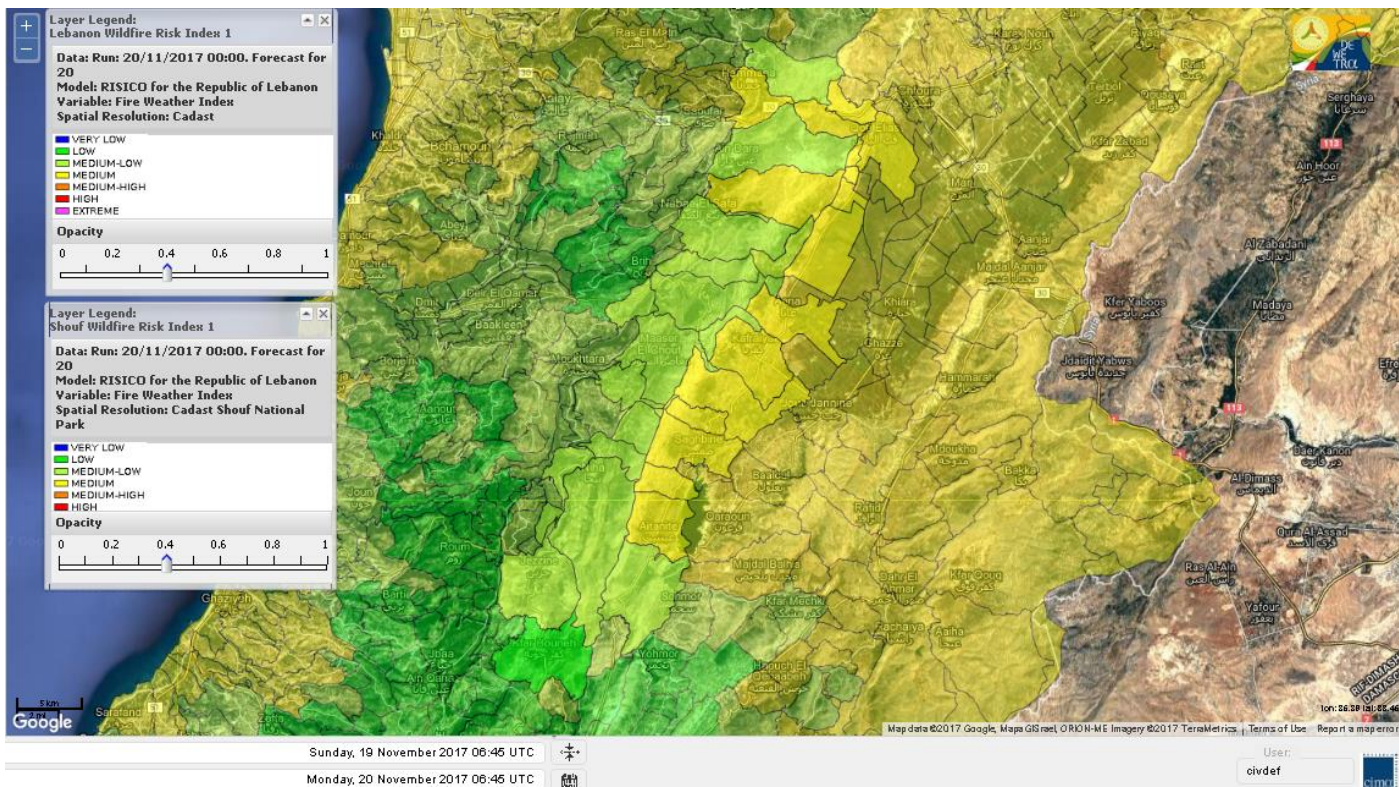
# Lebanon for 21 Nov 2017



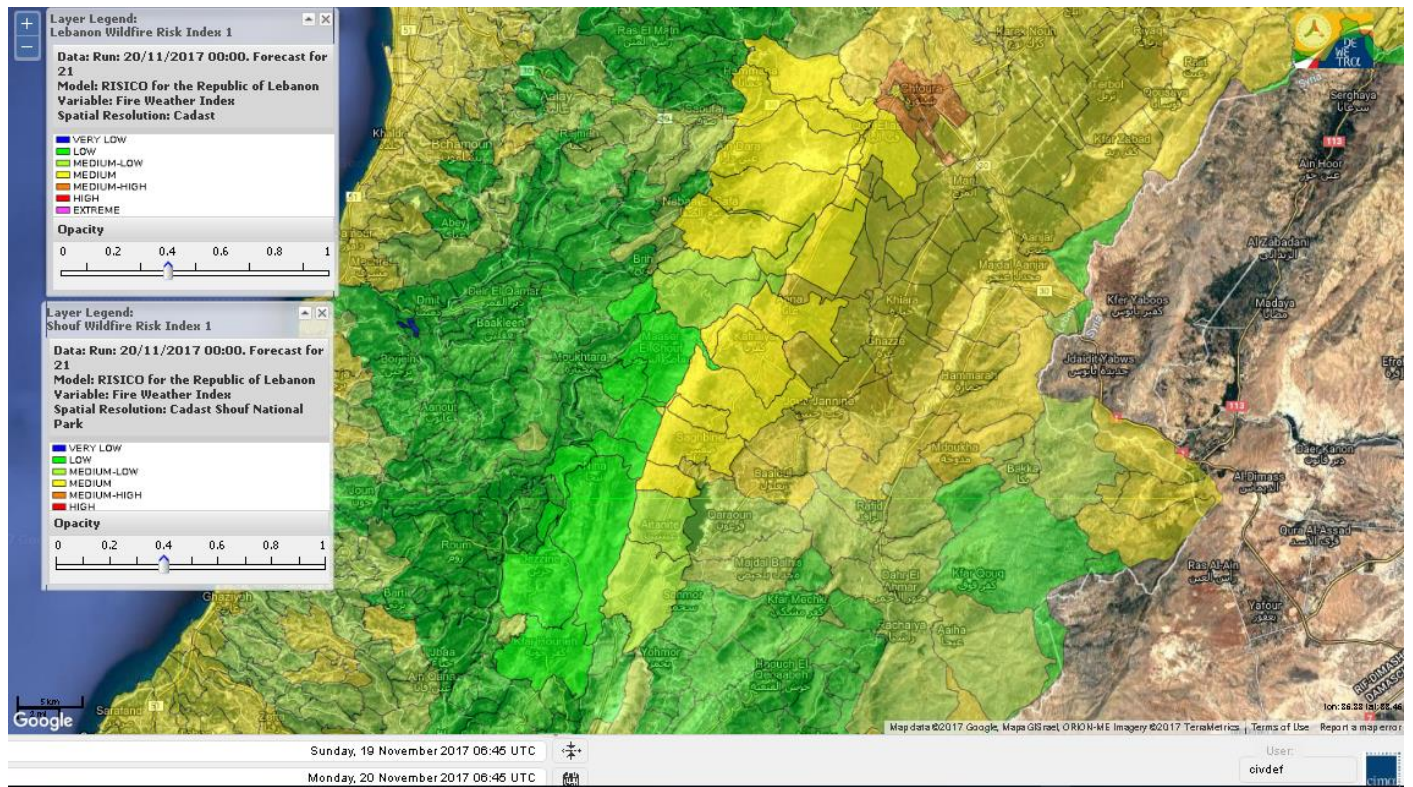
# Lebanon for 22 Nov 2017



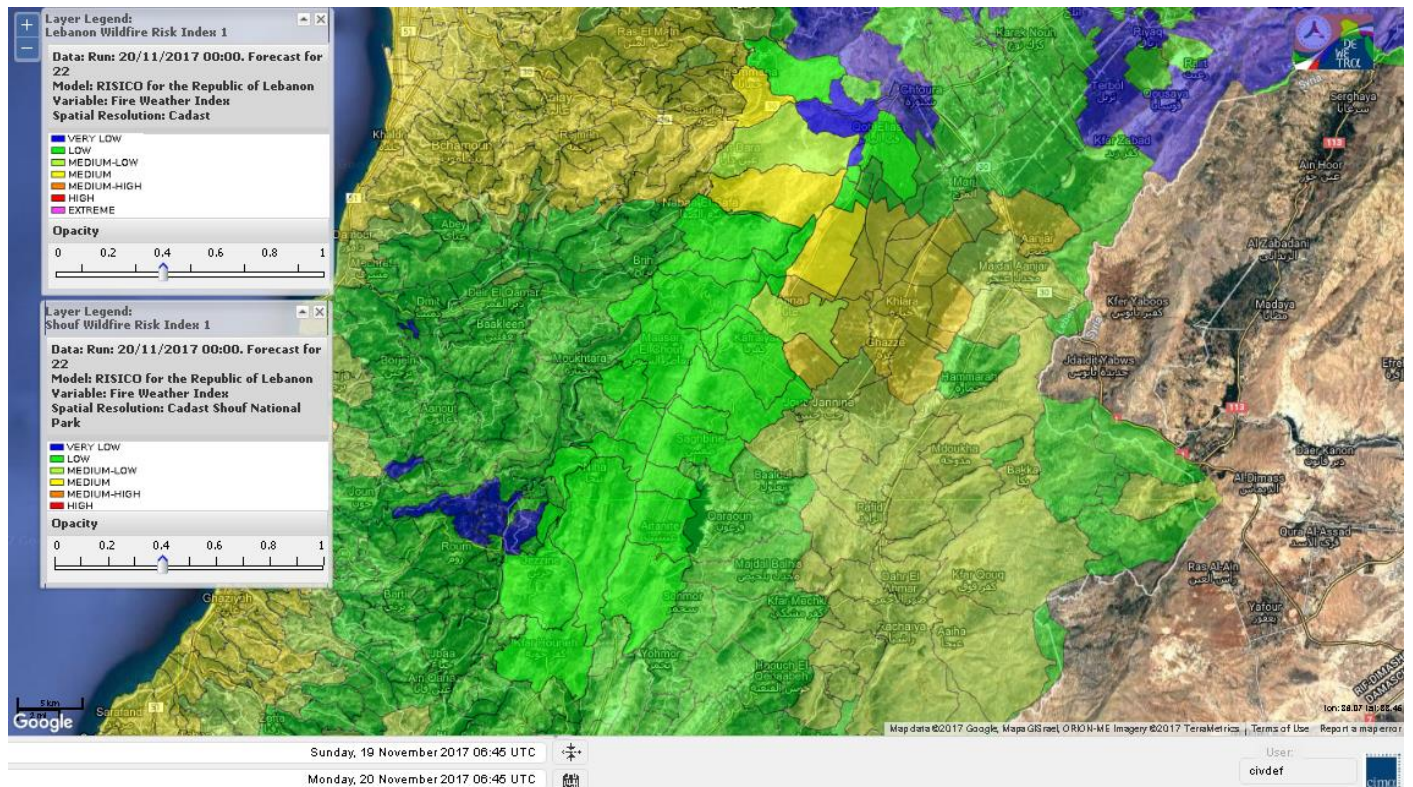
# Shouf Biosphere Reserve Forecast for 20 Nov 2017



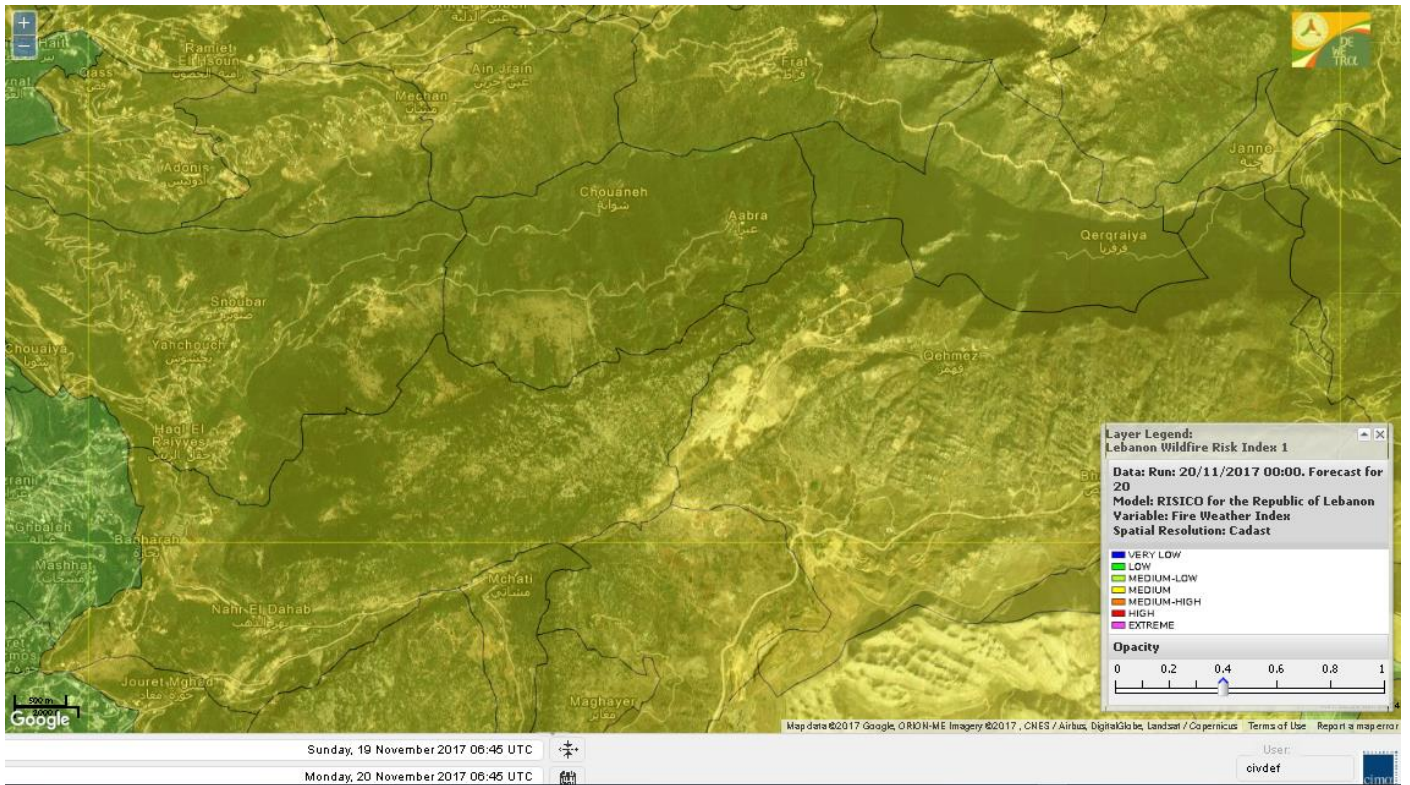
# Shouf Biosphere Reserve Forecast for 21 Nov 2017



# Shouf Biosphere Reserve Forecast for 22 Nov 2017



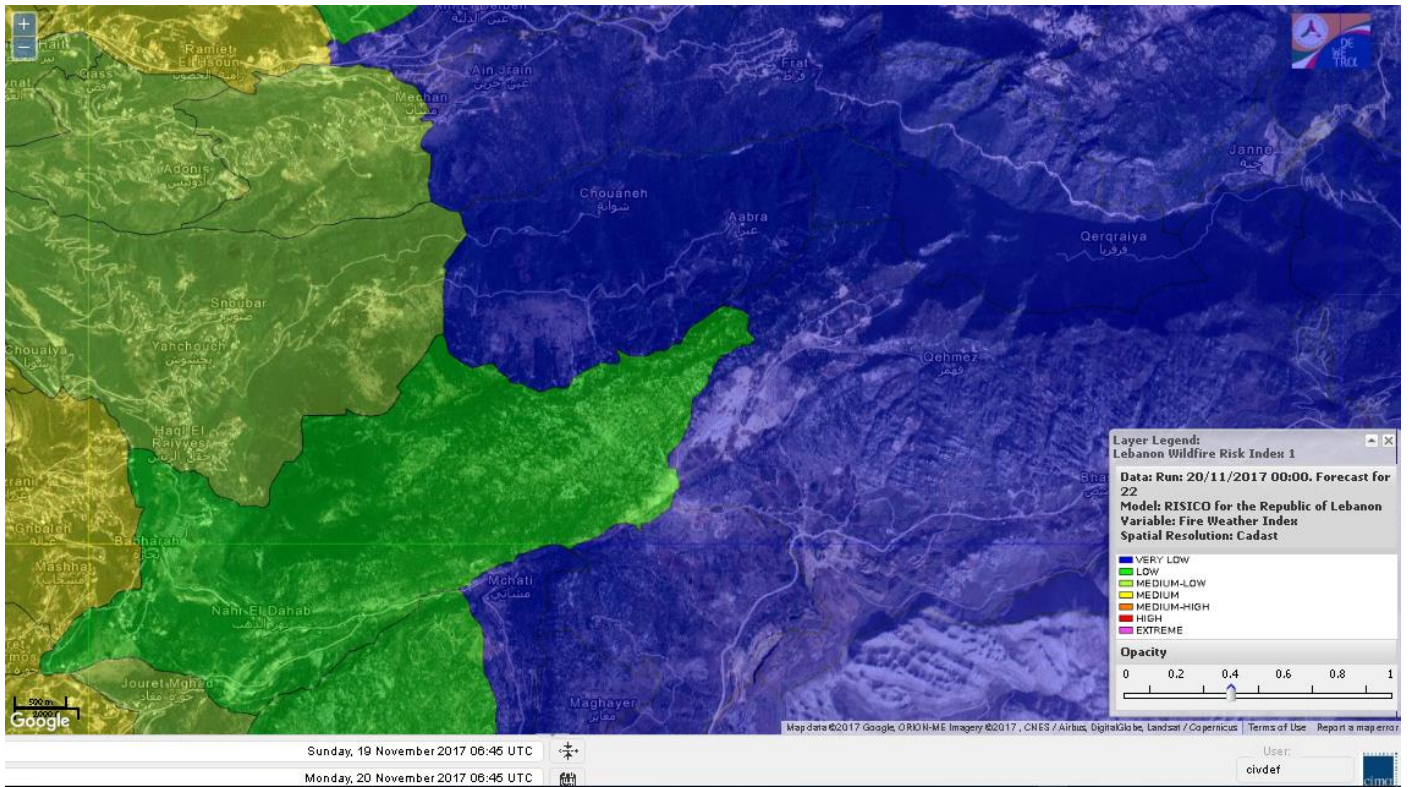
## Jabal Moussa Reserve Forecast for 20 Nov 2017



## Jabal Moussa Reserve Forecast for 21 Nov 2017



# Jabal Moussa Reserve Forecast for 22 Nov 2017





## Nord

### Koura

Municipality	20-Nov	21-Nov	22-Nov	Municipality	20-Nov	21-Nov	22-Nov	Municipality	20-Nov	21-Nov	22-Nov
Aaba	M	M	M	Afsaddiq	M	M	M	Ain Ekriane	M	M	M
Amioun	M	M	M	Anfeh	M	M	M	Badbhoun	M	M	M
Barghoun	M	M	M	Barsa	M	M	M	Batroumine	M	M	M
Bdebba	M	M	M	Bechmizzine	M	M	M	Bednayet El-Koura	M	M	M
Bhabbouch El-Koura	M	M	M	Bkeftine	M	M	M	Bnehran	M	M	M
Bqaiia El-Koura	M	M	M	Bsarma	M	M	M	Btaaboura	M	M	M
Bterram	M	M	M	Btouratij	M	M	M	Bziza	M	M	M
Dar Beechtar	M	M	M	Dar Chmezzine	M	M	M	Deddeh	M	M	M
Deir El-Balamand	M	M	M	Fih	M	M	M	Hraiche	M	M	M
Ijdaabrine	M	M	M	Kaftoun	M	M	M	Kefraya El-Koura	M	M	M
Kfarakka	M	M	M	Kfarhata	M	M	M	Kfarhazir	M	M	M
Kfarkahel	M	M	M	Kfarsaroun	M	M	M	Kosba	M	M	M
Mejdel el-Koura	M	M	M	Nakhle	M	M	M	Qalhat	M	M	M
Ras Masqa	M	M	M	Rechdibbine	M	M	M	Zakroun	M	M	M
Zgharta El-Mtaouile	M	M	L								

### Bcharre

Municipality	20-Nov	21-Nov	22-Nov	Municipality	20-Nov	21-Nov	22-Nov	Municipality	20-Nov	21-Nov	22-Nov
Aabdine	M	M	M	Bane	M	M	M	Barhelioun	M	M	ML
Bazouone	M	ML	VL	Becharre	M	M	ML	Beit Menzer	M	M	ML
Billa	M	M	ML	Blaouza	M	ML	M	Bqaa Kafra	M	ML	VL
Bqerqacha	M	ML	VL	Breissat	M	M	VL	Dimane	M	M	VL
Hadath El Jobbeh	M	M	L	Hadchit	M	ML	ML	Hasroun	M	ML	VL
Mazraat Aassaf	M	L	VL	Mazraat Bani Saab	M	M	VL	Mchaa El-Jobbeh	M	ML	VL
Metrit	M	M	ML	Moghr El-Ahoual	M	M	M	Ouadi Qannoubine	M	L	VL
Qanat	M	M	L	Qnayouer	M	ML	L	Tourza	M	M	ML

### Batroun

Municipality	20-Nov	21-Nov	22-Nov	Municipality	20-Nov	21-Nov	22-Nov	Municipality	20-Nov	21-Nov	22-Nov
Aabrine	M	M	M	Aalali	M	M	VL	Aartziz	M	M	L
Abdelli	M	M	M	Ajdabra	M	M	M	Assia	M	M	VL
Basbina	M	M	M	Batroun	M	M	M	Bcheleh	M	ML	VL
Bechtoudar	M	M	VL	Beit Chlala	M	M	VL	Beit Kassab	M	ML	VL
Bijdarfil	M	M	M	Bqesmaya	M	M	ML	Chatine	M	ML	VL
Chebtin	M	M	ML	Chekka	M	M	M	Daael	M	M	VL
Dahr Abi Yaghi	M	M	M	Daraya El-Batroun	M	M	M	Deir Billa	M	M	L
Deir Kfifane	M	M	M	Deir Mar Youhanna EL	M	M	VL	Deir Mar Youssef Jra	M	M	M
Douma	M	ML	VL	Douq	M	M	M	Eddeh El-Batroun	M	M	M
Ftihat El-Batroun	M	M	VL	Ghouma	M	M	M	Hadtoun	M	M	VL
Hamat	M	M	M	Harbouna	M	M	M	Hardine	M	ML	VL
Helta	M	M	VL	Hery	MH	M	M	Jebbla	M	M	L
Jrabta El-Batroun	M	M	M	Jrane El-Batroun	M	M	M	Kfar Aabida	M	M	M
Kfar Halda	M	ML	VL	Kfarb Shlaimane	M	M	VL	Kfarhatna	M	M	M
Kfarhay	M	M	M	Kfarhelos	M	M	M	Kfifane	M	M	M

Kfour El Arabi	M	M	VL	Koubba	M	M	M	Kour	M	M	M
Mar Mama	M	ML	L	Masrah	M	ML	ML	Mehmarch	M	M	VL
Mrah Chdid	M	M	M	Mrah El Ziyat	M	M	M	Mrah El-Hajj	M	M	VL
Nahle El-Batroun	M	M	VL	Niha El-Batroun	M	M	VL	Ouahj El-Hajjar	M	M	M
Ouata Houb	M	L	VL	Qatnaaoun	M	M	M	Racha	M	M	VL
Rachana	M	M	M	Rachkida	M	M	M	Ram El-Batroun	M	M	VL
Ras Nahhach	M	M	M	Selaata	M	M	M	Sghar	M	M	M
Smar Jbayl	M	M	M	Sourat El-Batroun	M	M	L	Tannourine El-Faouqa	M	ML	VL
Tannourine Et-Tahta	M	L	VL	Thoum	M	M	M	Toula El-Batroun	M	M	M
Zan	M	M	L								

## Zgharta

Municipality	20-Nov	21-Nov	22-Nov	Municipality	20-Nov	21-Nov	22-Nov	Municipality	20-Nov	21-Nov	22-Nov
Aachach	M	M	M	Aalma	M	M	M	Aarde	M	M	M
Aintourine	M	M	M	Arabet Qozhaya	M	ML	L	Arde	M	M	M
Arjis	M	M	M	Asnoun	M	M	M	Ayto	M	M	ML
Basloukit	M	M	M	Bchannine	M	M	M	Besebeel	M	M	M
Bhairret Toula	M	ML	ML	Bnachee	M	M	M	Boussit	M	M	M
Danha	M	M	M	Daraiya Zgharta	M	M	M	Deir Jdeide	M	M	M
Ehden	M	M	M	Halan	M	M	M	Hariq Zgharta	M	M	ML
Houakir	M	M	ML	Hraiqis	M	M	M	laal	M	M	ML
Ijbaa	M	M	M	Karm Saddeh	M	M	ML	Kfarchakhna	M	M	M
Kfardlaqous	M	M	M	Kfarfou	M	M	M	Kfarhata Zgharta	M	M	M
Kfarhoura	M	M	M	Kfarsghab	M	M	M	Kfaryachit	M	M	M
Kfarzaina	M	M	M	Khaldiye	M	M	ML	Mazraat Ajbeaa	M	M	M
Mazraat Et-Teffah	M	ML	L	Mazraat Jneid	M	M	ML	Mejdlayia Zgharta	M	M	M
Merh Kfarsghab	M	M	ML	Miryata	M	M	M	Miziara	M	M	ML
Mzraat Kefraya	M	M	M	Qorah Bach	M	M	M	Rachiine	M	M	M
Ras Kifa	M	M	M	Sakhra	M	M	ML	Sebhel Zgharta	M	M	M
Serhel	M	ML	L	Tallet Zgharta	M	M	M	Toula Zgharta	M	ML	ML
Zgharta	M	M	M								

## Minieh-Denniye

Municipality	20-Nov	21-Nov	22-Nov	Municipality	20-Nov	21-Nov	22-Nov	Municipality	20-Nov	21-Nov	22-Nov
Aasaymout	ML	M	ML	Aaymar	M	M	M	Aazki	M	M	M
Ain El-Tineh-Miniyeh	M	M	ML	Assoun	M	M	M	Bakhaaoun	M	M	M
Bchennata	M	M	M	Bechehhara	M	ML	L	Beddawi	M	M	M
Behouaita	M	M	ML	Beit El Foqss	M	M	M	Beit Haouik	M	M	M
Beit Zoud	M	M	M	Bekaasafrine	M	M	M	Borj El Yahoudiyeh	M	M	M
Bqarsouna	M	M	ML	Btermaz	M	M	M	Debaael	ML	M	M
Deir Ammar	M	M	M	Deir Nbouh	M	M	ML	Haouaret-Miniyeh	ML	M	M
Haql el Azimeh	M	M	M	Harf El Siyad	M	M	ML	Hazmiye-Miniyeh	M	M	ML
Izal	M	M	M	Jarjour	M	L	L	Jayroun	M	M	ML
Kahf El-Malloul	M	M	ML	Karm El-Moher	M	M	M	Kfar Binine	M	M	M
Kfarchalane	M	M	M	Kfarhabou	M	M	M	Kharroub-Miniyeh	M	M	M
Mazraat El-Kreme	M	ML	L	Mazraat Ketrane	M	M	M	Merkebeta	M	M	M
Minyeh	M	M	M	Mrah El Sfirat	ML	M	ML	Mrah Sraj	M	M	M
Mrebbine	M	M	M	Nabi Youcheaa	M	M	M	Nemrine	M	M	M

Qarhaiya	ML	M	M	Qarne	M	M	ML	Qarsita	M	M	ML
Qattineh-Miniyeh	M	M	L	Qemmamine	M	M	ML	Qraine	M	M	ML
Raouda-Aadoua	M	M	M	Rihaniyet-Miniyeh	M	M	M	Sfireh	ML	M	M
Sir Ed-Danniyeh	M	M	ML	Tarane	M	M	M	Terbol-Miniyeh	M	M	M
Zaghartaghriane	M	M	M	Zouq Bhannine	M	M	M				

## Nabatiye

### Nabatiye

Municipality	20-Nov	21-Nov	22-Nov	Municipality	20-Nov	21-Nov	22-Nov	Municipality	20-Nov	21-Nov	22-Nov
Aabba	L	ML	L	Aazzi	L	ML	L	Adchit El-Chqif	L	ML	ML
Ain Bou Swar	L	L	L	Ain Kana	L	ML	L	Ali El-Taher	L	ML	L
Ansar	ML	ML	ML	Arab Salim	L	ML	L	Arnoun	L	L	L
Bfaroue	L	ML	L	Breyqaah	L	ML	L	Charqiyeh	L	M	ML
Choukine	L	ML	ML	Deir El Zahrani	L	M	ML	Doueir El-Nabatiyeh	L	ML	ML
Habbouch El-Nabatiye	L	M	ML	Hamra El-Nabatiyeh	L	M	ML	Harouf El-Nabatiyeh	L	ML	ML
Hmaile	L	ML	L	Houmin El Faouqa	L	ML	ML	Houmin El Tahta	M	M	ML
Jarjough	L	L	L	Jbaah El-Nabatiyeh	L	L	L	Jebchit	L	ML	ML
Kfar Djal El-Nabatiy	L	ML	ML	Kfar Remmane	L	ML	L	Kfar Sir	ML	M	ML
Kfar Tebnit	L	ML	ML	Kfarfila	L	ML	L	Kfour El-Nabatieh	L	M	ML
Mayfadoun	L	ML	ML	Mazraat Bsaffour	L	ML	L	Mazraat Chalbaal	L	ML	L
Mazraat Dmoul	ML	ML	ML	Mazraat El Khreibeh	L	M	L	Mazraat El-Bayad El-	L	M	ML
Mazraat Kfarjaouz	L	ML	ML	Mazraat Qalaat Meiss	L	ML	L	Nabatiyeh El-Fawka	L	ML	ML
Nabatiyeh Et-Tahta	L	ML	ML	Namiriyeh	L	M	ML	Qaaqaaiyet El Jisr	L	M	ML
Qossaibeh El-Nabatiy	L	M	ML	Roumine	ML	ML	L	Sarba El-Nabatieh	L	ML	L
Sir El-Gharbiyeh	ML	M	ML	Toul	L	ML	ML	Yehmor El-Nabatiyeh	L	ML	L
Zaoutar El Charkiyeh	L	M	ML	Zaoutar El-Gharbiyeh	L	M	ML	Zebdine El-Nabatiyeh	L	ML	ML
Zefta	L	M	L								

### Hasbaiya

Municipality	20-Nov	21-Nov	22-Nov	Municipality	20-Nov	21-Nov	22-Nov	Municipality	20-Nov	21-Nov	22-Nov
Ain Jarfa	L	VL	VL	Abou Qamha	L	L	L	Ain Qania	L	VL	L
Bourghos	L	ML	L	Chebaa	L	L	L	Chouaya Hasbaya	L	L	L
Dellafeh	L	L	L	Fardiss Hasbaiya	L	L	L	Hasbaya	L	L	L
Hbariyeh	L	VL	L	Kaoukaba Hasbaiya	L	L	L	Kfar Chouba	L	L	L
Kfar Hamam	L	VL	L	Kfeir El-Zait	ML	L	L	Khalwat Hasbaya	ML	L	L
Khreibet Hasbaiya	L	L	L	Majidiyeh Hasbaiya	L	VL	L	Marj Ez-Zhour (Haouc	M	L	L
Meri	L	L	L	Mimass	L	L	L	Rachaiya El-Fokhar	L	L	L
Salaiyeb	L	L	L								

### Marjayoun

Municipality	20-Nov	21-Nov	22-Nov	Municipality	20-Nov	21-Nov	22-Nov	Municipality	20-Nov	21-Nov	22-Nov
Aalmane Marjaayoun	L	L	L	Aamra	ML	L	L	Adayseh Marjaayoun	ML	M	ML
Adchit El-Koussair	L	M	L	Ain Aarab Marjaayoun	L	VL	L	Bani Haiyann	L	M	L
Blatt Marjaayoun	L	L	L	Blida	ML	M	M	Borj El-Moulouk	L	L	L
Boueyda Marjaayoun	L	ML	L	Deir Mimass	L	L	L	Deir Siriane	L	ML	L
Dibbine	L	L	L	Ebel El Saqi	L	L	L	Houla	L	M	ML
Houra	L	L	L	Kfar Kila	L	ML	L	Khiam Marjaayoun	L	L	L

Klayaa	L	L	L	Majdel Selem	L	M	ML	Marjaayoun	L	L	L
Markaba	L	M	M	Mays El-Jabal	L	M	M	Mazraat Doumiat	ML	ML	ML
Mazraat Sarada	L	VL	L	Mhaibib	L	M	ML	Qabrikha	L	M	L
Qantara	L	M	L	Rab El-Thalathine	L	M	ML	Saouaneh Marjayoun	L	M	ML
Talloussa	L	M	ML	Taybeh Matjaayoun	L	ML	L	Touline	L	M	L

## Bent Jbail

Municipality	20-Nov	21-Nov	22-Nov	Municipality	20-Nov	21-Nov	22-Nov	Municipality	20-Nov	21-Nov	22-Nov
Ain-Ebel	ML	M	ML	Aitaroun	ML	M	ML	Aynata Bint Jbeil	ML	M	ML
Ayta El-Chaeb	ML	M	L	Ayta El-Jabal	ML	M	ML	Beit Lif	L	M	L
Beit Yahoun	ML	M	ML	Bint Jbeil	ML	M	ML	Borj Qalaway	ML	M	L
Braachit	L	M	ML	Chakra	L	M	ML	Debel	ML	M	ML
Deir Antar	L	M	ML	Froun	L	M	L	Ghandouriyeh Bint Jb	L	M	L
Hanine	ML	M	ML	Hariss	L	M	ML	Hdatha	L	M	ML
Jmeymeh	L	M	ML	Kafra Bint Jbeil	L	M	L	Kfar Dounine	L	M	ML
Khirbet Selm	L	M	ML	Kounine	ML	M	ML	Maroun El Ras	ML	M	ML
Qalaway	L	M	L	Qaouzah	ML	M	L	Qatmoun	L	M	ML
Ramya Bint Jbeil	ML	M	L	Rchaf	L	M	L	Rmeich	L	M	ML
Safad Al Battikh	L	M	ML	Salhaneh	L	M	L	Serbine	L	M	ML
Sultanieh Bint Jbeil	L	M	ML	Tibnine	L	M	ML	Tiri	L	M	ML
Yaroun	ML	M	ML	Yater	L	M	ML				

## Mont Liban

### Jbail

Municipality	20-Nov	21-Nov	22-Nov	Municipality	20-Nov	21-Nov	22-Nov	Municipality	20-Nov	21-Nov	22-Nov
Aabeydat	M	M	M	Aalita	M	L	M	Aamchit	M	M	M
Aarab El-Lahib	M	ML	VL	Aarasta	M	L	VL	Adonis Jbeil	M	L	ML
Afqa Jbeil	M	M	VL	Ain El Delbeh Jbeil	M	L	VL	Ain El-Ghouayba	M	ML	VL
Ain Jrain	M	L	VL	Ain Kfah	M	M	M	Almat El Chemaliyat	M	ML	VL
Almat El-Jenoubiya	M	L	VL	Aqoura	M	M	VL	Bayzoun	M	ML	L
Bchille Jbeil	M	L	M	Bechtlida	ML	L	L	Behdaydat	M	M	M
Beit Habbaq	M	M	M	Bejjeh	M	M	M	Bekhaaz	M	M	M
Berbara Jbeil	M	M	M	Bintael	M	ML	M	Birket Hjoula	M	L	ML
Blatt Jbeil	M	M	M	Boulhos	M	L	VL	Breyj Jbeil	M	L	ML
Chamat	M	M	M	Chikhane	M	M	M	Chmout	M	M	M
Eddeh Jbeil	M	M	M	Ehmej	M	ML	VL	Fatre	ML	L	ML
Ferhet	M	M	L	Fghal	M	M	M	Frat	M	L	VL
Ghabat	M	ML	VL	Ghalboun	M	M	M	Gharzouz	M	M	M
Ghofrine	M	M	M	Habil	M	L	L	Halate	M	M	M
Haqel	M	ML	ML	Hbaline	M	M	M	Hboub	M	M	M
Hdeine	M	ML	VL	Hema Er-Rehban	M	ML	VL	Hema Mar Maroun Aann	M	ML	VL
Hjoula	M	L	ML	Hosrayel	M	M	M	Hsarat	M	M	M
Hsoun	M	ML	M	Jaj	M	ML	VL	Janne	M	L	VL
Jbeil	M	M	M	Jeddeyl Jbeil	M	M	M	Jlisse	M	L	ML
Jouret El-Qattine	M	L	M	Kfar Baal Annaya	M	L	L	Kfar Kidde	M	M	M
Kfar Kouas	M	ML	M	Kfar Mashoun	M	M	M	Kfoun	M	M	M

Kharbe Jbeil	M	M	M	Laqlouq	M	ML	VL	Lassa	M	ML	VL
Lehfed	M	M	VL	Maad	M	M	M	Mar Sarkis	M	ML	VL
Mastita	M	M	M	Mayfouq	M	M	VL	Mazraat El Siyad	M	ML	VL
Mazraat El-Maaden	M	L	VL	Mechane	M	L	ML	Mechmech Jbeil	M	ML	VL
Mehrin	M	M	M	Mejdel El-Akoura	M	ML	VL	Mghayreh Jbeil	M	ML	VL
Mounsef	M	M	M	Nahr Ibrahim	M	M	M	Qahmez	M	L	VL
Qartaba	M	L	VL	Qartaboun	M	M	M	Qattara Jbeil	M	ML	VL
Qorqraya	M	L	VL	Ramout	M	M	M	Ras Osta	M	L	M
Rihane Jbeil	M	M	M	Sakiet El-Khayt	M	M	M	Saqi Richmaya	M	M	VL
Sebrine	M	L	M	Seraita	M	ML	VL	Souane Jbeil	M	ML	VL
Tadmor	M	ML	VL	Tartej	M	ML	VL	Torzaiya	M	ML	L
Yanouh Jbeil	M	ML	VL	Zibidine Jbeil	M	L	M				

## El Metn

Municipality	20-Nov	21-Nov	22-Nov	Municipality	20-Nov	21-Nov	22-Nov	Municipality	20-Nov	21-Nov	22-Nov
Aain El-Qabu	M	L	VL	Aain El-Qach	L	L	M	Aain El-Teffaha	L	L	M
Aain el-Safsaf El-M	L	L	M	Abou Mizane	L	L	M	Ain Aar	M	M	M
Ain Alaq	ML	ML	M	Ain El-Kharroube	L	L	M	Ain El-Sendianeh	L	L	M
Ain El-Zeitoune	M	L	M	Ain Saadeh	M	ML	M	Aintoura El-Matn	ML	ML	VL
Amaret Chalhoub	M	M	M	Antelias	M	M	M	Atchaneh	M	L	M
Ayroun	L	L	M	Baabdat	ML	L	M	Baouchariyeh	M	M	M
Baskinta	ML	L	VL	Beit Chabab	L	L	M	Beit El-Chaar	M	M	M
Beit El-Kekko	M	M	M	Beit Mery	M	ML	M	Bhersaf	ML	L	M
Bikfaya	L	L	M	Biyakout	M	M	M	Bnabil	M	L	M
Bourj Hammoud	M	M	M	Bqennaya	M	M	M	Broummana El-Matn	M	M	M
Bsalim	M	M	M	Bsifrine	ML	L	ML	Bteghrine	M	L	L
Chaouiye	ML	ML	M	Chouaya El-Matn	L	L	M	Choueir	L	L	M
Chrine	ML	L	ML	Dahr El Sawan El-Mat	ML	L	M	Daychouniyeh	M	M	M
Dbayeh	M	M	M	Deir Chamra	L	L	ML	Deir Mar Abda el Mch	M	ML	M
Deir Mar Roukouz	M	M	M	Deir Tamiche	M	M	M	Dik El-Mehdi	M	M	M
Dikwaneh	M	M	M	Douar El-Matn	L	L	M	Fanar	M	M	M
Fraike	ML	L	M	Haret El-Ballaneh	M	M	M	Hbous	M	M	M
Himlaya	L	L	M	Jal El Did	M	M	M	Jdeideh El-Metn	M	M	M
Jouar El-Matn	ML	L	M	Jouret El-Ballout	M	ML	M	Kaaqour	ML	L	M
Kfar Aaqab	M	L	ML	Kfertay El-Matn	M	L	VL	Khenchara	M	L	M
Khillet El-Mtain	ML	L	M	Konnabat Broummana	M	ML	M	Konnabat Salima	ML	L	L
Machraah El-Matn	M	L	L	Majdel Tarchich	ML	ML	VL	Majzoub	M	M	M
Mansouriyeh El-Metn	M	M	M	Mar Boutros Karm Et-	L	L	M	Mar Chaya et Mzekke	M	ML	M
Mar Moussa Ed-Douar	ML	L	M	Marjaba	M	L	L	Masqa	M	ML	M
Mayasse	L	L	M	Mazraat Deir Aoukar	M	M	M	Mazraat El-Hadirat	M	M	M
Mazraat Yachouh	M	M	M	Mchikha	M	L	M	Menqlet Mezher	M	M	M
Mhaydseh Matn	L	L	M	Mkalles	M	M	M	Mrouj	ML	L	L
Mtain	ML	ML	L	Mtayleb	M	M	M	Nabay	M	ML	M
Naccache	M	M	M	Ouadi Chahine	L	L	M	Ouadi El-Karm El-Mat	M	L	L
Ouata El-Mrouj	M	L	M	Ouyoun El-Matn	M	L	ML	Qornet Chehwan	M	M	M
Qornet El-Hamra	M	ML	M	Roumieh	M	ML	M	Sfeilet Bikfaya	L	L	M
Sinn El-Fil	M	M	M	Zabbougha	M	L	ML	Zalqa	M	M	M

Zarouon	ML	L	M	Zekrite	M	ML	M	Zighrine El-Matn	L	L	M
Zouk El-Khrab	M	M	M								

## Chouf

Municipality	20-Nov	21-Nov	22-Nov	Municipality	20-Nov	21-Nov	22-Nov	Municipality	20-Nov	21-Nov	22-Nov
Aalmane El-Chouf	M	M	M	Aammiq El-Chouf	ML	L	L	Ain Ouzein	ML	L	L
Ain Qani	ML	L	L	Ain Zhalta	ML	M	L	Ainbal	ML	L	L
Amatour	ML	L	L	Anout	L	L	L	Atrine	ML	L	L
Baadarane	ML	L	L	Baaqline	ML	L	L	Baasir	ML	M	ML
Barja	M	M	ML	Barouk	ML	ML	L	Bater	ML	L	L
Batloun	ML	L	L	Bayqoun	ML	ML	L	Bchetfine	ML	L	L
Beiteddine	ML	L	L	Benouati Ech-Chouf	ML	L	L	Berjein	ML	L	L
Bireh et Mtalleh	L	L	L	Biret El-Chouf	L	ML	L	Bkechtine Ouel Mchei	ML	L	L
Bkifa El-Chouf	ML	L	L	Botme	ML	L	L	Bqaiaa Ech-Chouf	ML	L	L
Bsaba El-Chouf	L	L	L	Chammis El-Chouf	ML	ML	ML	Chehim	L	L	L
Chemaarine	ML	L	L	Chourit	L	L	L	Daher El-Chouf	ML	ML	L
Dalhoun	L	ML	L	Damour	M	M	ML	Daraya El-Chouf	L	L	L
Deir El-Moukhalles	L	L	L	Deir Baba	ML	L	L	Deir Dourit	ML	L	L
Deir El-Qamar	ML	L	L	Deir Kouche	ML	L	L	Dibbieh	ML	L	L
Dmit	ML	L	L	Fouara Jaafar	L	L	L	Fraidis El-Chouf	ML	ML	L
Ghabet Jaafar	ML	L	L	Gharife	L	L	L	Haret Jandal	ML	L	L
Hasrout	ML	L	L	Jadra	M	M	M	Jahlieh	ML	L	L
Jbeih El-Chouf	ML	L	L	Jdeidet El-Chouf	ML	L	L	Jiyeh	M	M	M
Jleilyeh	ML	L	L	Jmailiyeh	M	M	ML	Joun	ML	L	L
Kahlounie El-Chouf	ML	L	L	Ketermaya	ML	M	ML	Kfar Faqoud	ML	L	L
Kfar Hamal	ML	L	ML	Kfar Him	ML	L	L	Kfar Katra	ML	L	L
Kfar Niss	L	L	L	Kfar hay	L	L	L	Kfarnabrakh	L	L	L
Khirbet Bisri	L	L	L	Knayse El-Chouf	ML	L	L	Maaniyeh	ML	ML	L
Maasser Beiteddine	ML	L	L	Maasser El-Chouf	ML	L	L	Majdalouna	ML	ML	L
Majdel El-Meouch	L	L	L	Mazboud	L	ML	L	Mazmoura	L	L	L
Mazraat El Chouf	ML	L	L	Mazraat El Daher	L	L	L	Mazraat El-Douair	ML	L	L
Mechref	ML	M	L	Mghairie	ML	ML	ML	Mghayrie El-Chouf	ML	L	L
Moukhtara	ML	L	L	Mrusti	ML	L	L	Mtolle	ML	L	L
Naameh	M	M	M	Niha El-Chouf	ML	L	L	Ouadi Abou Youssef	ML	VL	VL
Ouadi Ed-Deir	ML	L	L	Ouadi El-Sit	L	L	L	Ouadi bnehlay	ML	L	L
Qraibeh	ML	L	L	Qreiaa	L	L	VL	Rmayle El-Chouf	M	M	M
Semqaniyeh	ML	L	L	Sibline	M	M	M	Sirjbeil	ML	L	L
Warhanieh	ML	ML	L	Werdaniyeh	M	M	M	Zaarourieh	ML	L	L

## Baabda

Municipality	20-Nov	21-Nov	22-Nov	Municipality	20-Nov	21-Nov	22-Nov	Municipality	20-Nov	21-Nov	22-Nov
Abadiyeh	M	ML	M	Ain Mouaffaq	ML	L	M	Araiya	M	L	M
Arbaniyeh	ML	L	ML	Arsoun	ML	L	M	Baabda	M	M	M
Baalchmey	ML	L	M	Bmaryam	M	L	M	Bourj El-Brajneh	M	M	M
Boutchay	M	ML	M	Bsaba Baabda	M	M	M	Btekhney	ML	L	M
Btibyat	ML	L	ML	Bzebdine	ML	L	M	Chbeniyeh	M	L	M
Chiyah	M	M	M	Chmeisset Baabda	M	L	ML	Chouit	ML	L	M
Deir El-harf	ML	L	M	Deir Khouna	M	L	M	Dlaybeh	ML	L	ML

Falougha	ML	M	L	Furn El-Chebbak	M	M	M	Hadath Beyrouth	M	M	M
Halaliyeh Baabda	ML	L	M	Hammana	M	M	M	Haret El Sett	M	ML	M
Haret Hamze	M	L	M	Haret Hreik	M	M	M	Hasbaiya El-Metn	ML	L	ML
Jouar El-Hoz	M	L	L	Jouret Arsoun	ML	L	M	Kfar Chima	M	M	M
Kfar Selouane	ML	ML	VL	Khalouat Baabda	ML	ML	M	Kneisset Baabda	ML	L	ML
Laylakeh	M	M	M	Louayzeh Baabda	M	M	M	Merdache	M	M	M
Mzairaa Baabda	ML	L	M	Ouadi Chahrour El Ol	M	M	M	Ouadi Chahrour El So	M	ML	M
Qalaa Baabda	ML	L	M	Qhraybe Baabda	M	L	M	Qobbayaa	M	L	M
Qornayel	ML	L	ML	Qortada	M	L	ML	Qrayeh Baabda	ML	L	M
Qsaibeh Baabda	M	ML	M	Qtale Baabda	M	L	M	Ras El Metn	M	L	M
Ras El-Haref	M	L	M	Rouayset El-Ballout	ML	L	M	Salima Baabda	ML	L	M
Tahouitat El Ghadir	M	M	M	Tarchich	ML	ML	VL	Zandouqa	M	L	ML

## Aley

Municipality	20-Nov	21-Nov	22-Nov	Municipality	20-Nov	21-Nov	22-Nov	Municipality	20-Nov	21-Nov	22-Nov
Abey	ML	L	L	Aghmid	ML	L	M	Ain Dara	ML	M	ML
Ain Drafil	ML	ML	M	Ain El Halazoun	ML	ML	M	Ain El-Rmmaneh	ML	L	M
Ain Jedideh	ML	ML	M	Ain Ksour	ML	L	ML	Ain Onoub	M	ML	M
Ain Traz	ML	L	L	Ainab	ML	L	M	Aley	ML	ML	M
Aramoun	M	M	M	Aytat	M	ML	M	Azouniyeh	ML	ML	M
Baawerta	M	M	ML	Badghan Oua Wadi Bad	ML	ML	M	Bassatine	ML	L	M
Bayssour	M	ML	M	Bchamoun	M	M	M	Bdadoun	M	ML	M
Behouara	ML	L	M	Bennay	ML	ML	L	Bhamdoun El-Dayaa	ML	ML	M
Bhamdoun El-Mhatta	ML	ML	M	Bkhechthey	ML	L	M	Bleibel	M	ML	M
Bmakine	M	ML	M	Bmehray	M	M	M	Bouzrid	ML	L	L
Bserrine	L	ML	M	Bsous	M	L	M	Btalloun	ML	ML	M
Btater	L	L	M	Chanay	ML	ML	M	Charoun	ML	ML	M
Chartoun	L	L	ML	Chemlane	M	L	M	Choueifat El-Aamrous	M	M	M
Choueifat El-Oumara	M	M	M	Choueifat El-Quoubbe	M	M	M	Dakkoun	M	ML	L
Deir Qoubel	M	M	M	Dfoun	ML	ML	M	Douair El Remmaneh	ML	L	M
Ghaboun	ML	L	M	Habramoun	L	L	M	Homs Oua Hama	L	L	M
Houmal	M	ML	M	Jisr El Qadi	ML	ML	L	Kehaleh	M	L	M
Keyfoun	M	M	M	Kfar Aamey	ML	L	M	Kommatyeh	M	ML	M
Maasrati	L	L	M	Majdel Baana	ML	ML	M	Mansourieh et Ain El	ML	ML	M
Mazraat El-Nahr	L	L	M	Mchakhte	ML	L	M	Mecherfeh	ML	L	M
Mejdaya	ML	L	M	Mrayjat	ML	ML	L	Ramliyah	ML	L	L
Rechmaya	ML	L	L	Rejmeh	ML	L	M	Remhala	ML	ML	ML
Rouaysset El Neemane	L	L	M	Saoufar	ML	ML	M	Selfaya	ML	L	L
Sirhmoul	M	L	M	Souq El Ghareb	M	M	M	Taazanieh	ML	ML	M

## Kesrouane

Municipality	20-Nov	21-Nov	22-Nov	Municipality	20-Nov	21-Nov	22-Nov	Municipality	20-Nov	21-Nov	22-Nov
Achkout	ML	L	M	Adma Oua Dafneh	M	M	M	Ain Ed-Delbe Kesroua	M	L	VL
Ain El-Rihane	M	ML	M	Aintoura Kesrouane	M	M	M	Ajaltoun	ML	L	M
Akaybeh Kesrouane	M	M	M	Aramoun Kesrouane	ML	L	M	Azra ouel Ozor	ML	L	M
Ballouneh	L	L	M	Batha	L	L	ML	Bekaatat Achkout	ML	L	M
Bekaatat Kanaan	M	L	VL	Bizhel	ML	L	ML	Bouar	M	M	M
Bqaatouta	M	L	VL	Bqaq Ed-Dine	M	M	M	Bzommar	ML	L	M

Chahtoul	ML	L	M	Chnaniir	ML	L	ML	Chouan	M	L	VL
Daraya Kesrouane	L	L	M	Darououn	ML	L	M	Deir Baqlouch	ML	L	M
Dlebta	ML	L	ML	Eghbeh	ML	VL	L	Faraya	ML	L	VL
Fatka	ML	ML	M	Feytroun	M	L	ML	Ghazir	M	L	M
Ghbaleh Kesrouane	ML	L	M	Ghedrass	ML	L	M	Ghosta	ML	L	M
Ghynéh	ML	ML	M	Harharaya w Kattine	ML	L	M	Harissa Kesrouane	M	L	M
Hayata	ML	L	ML	Hosein	ML	L	M	Hrajel	M	ML	VL
Jdeideh Ghazir	ML	L	M	Jeita	M	ML	M	Jounieh Ghadir	M	M	M
Jounieh Haret Sakhr	M	M	M	Jounieh Salel Alma	M	M	M	Jounieh Sarba	M	M	M
Jouret Bedrane	ML	L	M	Jouret Mhad	M	L	ML	Jouret Termos	ML	ML	M
Kfar Debiane	ML	L	L	Kfar Tay Kesrouane	M	L	L	Kfar Yassine	M	M	M
Kfour Kesrouane	ML	L	M	Kharayeb Nahr Ibrahi	M	L	M	Klayaat Kesrouane	ML	L	M
Maarab	ML	VL	L	Maaysra Kesrouane	ML	L	M	Mayrouba	M	L	VL
Mazraat Er-Ras	M	M	M	Mazraat Mrah El-Mir	ML	L	ML	Mchaa El Ftouh	M	M	VL
Mchaa Faraya	M	ML	VL	Mchaa Kfar Dibiane	ML	L	VL	Mghaer	M	L	VL
Mradiyah	ML	L	ML	Nahr Ed-Dahab	M	L	L	Nammoura Kesrouane	ML	L	M
Ouata El Jaouz	M	L	L	Ouata Sillam	M	M	M	Raachine	ML	L	ML
Rayfoun	ML	L	M	Safra Kesrouane	M	M	M	Shayle Kesrouane	ML	L	M
Tabarja	M	M	M	Yahchouch	M	L	ML	Zaaytreh	ML	L	M
Zeytoun	ML	L	M	Zouk Mikael	M	M	M	Zouk Mosbeh	M	M	M

## Baalbek\_Hermel

### Baalbek

Municipality	20-Nov	21-Nov	22-Nov	Municipality	20-Nov	21-Nov	22-Nov	Municipality	20-Nov	21-Nov	22-Nov
Aadous	M	M	VL	Aamchki	M	L	VL	Aarsal	M	M	L
Ain Baalbek	M	MH	L	Ain Bourday	M	M	VL	Ain El-Benye	M	M	VL
Ain El-Jaouz Baalbek	M	ML	VL	Ain El-Siya Chadoura	M	L	VL	Al Khodr Baalbek	M	M	VL
Al Nabi Chit	M	M	VL	Aynata Baalbek	M	M	VL	Baalbek	M	M	VL
Bachwat	M	M	VL	Barqa	M	M	VL	Bednayel Baalbak	M	M	L
Beit Chama	M	M	L	Bijjaje	M	MH	L	Bouday	M	M	VL
Brital	M	M	VL	Btadi	M	M	VL	Chaat	M	M	L
Chaibe	M	ML	VL	Chlifa	M	M	L	Chmestar	M	M	L
Dar El-Oussa	M	M	VL	Deir El-Ahmar	M	M	VL	Deir Mar Maroun Baal	M	M	M
Douris	M	M	VL	Fakiha	M	MH	M	Hadath Baalbek	M	M	VL
Ham	M	M	VL	Haour Taala	M	M	VL	Hizzine	M	M	VL
Hlebta	M	M	M	Hosh Barada	M	M	L	Hosh El Dahab	M	M	VL
Hosh El Snid	M	M	VL	Hosh El-Nabi	M	M	VL	Hosh El-Rafiq	M	M	L
Hosh Tal Safiya	M	M	VL	Hrebta	M	M	L	laat	M	M	VL
Jebaa	M	M	VL	Jenta	M	M	VL	Kfar Dabach	M	M	L
Kfar Dane	M	M	L	Khraibeh El-Hermel	M	MH	L	Khreibet Baalbek	M	M	VL
Kneisset Baalbek	M	M	VL	Labueh	M	MH	L	Maarboun	M	M	VL
Majdaloun	M	M	VL	Maqneh	M	M	VL	Mazraat Beit Mcheik	M	M	VL
Misraya	M	M	VL	Moqraq	M	M	L	Nabha El-Damdoum	M	M	L
Nabi Chbay	M	M	VL	Nabi Osman	M	MH	L	Nahleh baalbek	M	M	VL
Ouadi El-Oss	M	M	L	Qaa Baayoun	M	H	M	Qaa Jouar Maqiye	M	MH	M
Qaa Ouadi El-Khanzir	M	MH	M	Qah Baalbek	M	H	M	Qarha Baalbek	M	M	VL



Qsarnaba	M	M	L	Ram Baalbek	M	M	VL	Ras Baalbek El Sahl	M	H	M
Ras Baalbek El-Charq	M	M	M	Riha	M	M	VL	Saaide	M	M	L
Sbouba	M	M	L	Seriine El-Tahta	M	M	VL	Slouqi	M	M	L
Taiba Baalbek	M	M	VL	Talia	M	M	VL	Taraiya	M	M	L
Temnin El Fawqa	M	M	L	Temnin El-Tahta	M	M	VL	Tfail	M	M	VL
Yahfoufa	M	M	VL	Yammouneh	M	M	VL	Younine	M	M	L
Zboud	M	M	L								

## Hermel

Municipality	20-Nov	21-Nov	22-Nov	Municipality	20-Nov	21-Nov	22-Nov	Municipality	20-Nov	21-Nov	22-Nov
Charbine El-Hermel	ML	M	M	Hermel Jbab	M	M	M	Hermel	M	M	M
Maaysra El-Hermel	M	MH	M	Michaa Mrajhine	M	M	M	Ouadi Faara	M	M	M
Ras Baalbek - Ouadi	M	H	M	Ras Baalbek El Gharb	M	MH	M	Zighrine	M	M	M

## Akkar

### Akkar

Municipality	20-Nov	21-Nov	22-Nov	Municipality	20-Nov	21-Nov	22-Nov	Municipality	20-Nov	21-Nov	22-Nov
Aain Tinta	M	M	M	Aaiyat	ML	M	M	Aakkar El-Aatiqa	ML	M	M
Aamar Akkar	M	MH	M	Aamar El Baykat	M	M	M	Aamayer	M	M	M
Aamriyet Akkar	ML	M	M	Aandqet	ML	M	M	Aarmeh	M	M	M
Aarqa	M	M	M	Aawaynat	ML	M	M	Aayoun Akkar	M	M	M
Abboudiye	M	M	M	Ain El-Zeit	M	M	M	Ain Yaaqoub	ML	M	M
Akroum	M	M	M	Aridet Cheikh Zennad	M	MH	M	Baldeh w Mazraat Bal	M	M	M
Barcha	M	M	M	Bardeh	ML	M	M	Bebnine	M	M	M
Beino	M	M	M	Beit Ayoub	ML	M	M	Beit El-Haouch	M	M	M
Beit Mellat	M	M	M	Beit Younes	ML	M	ML	Berbara Akkar	M	M	M
Berqayel	M	M	M	Bezbina	ML	M	ML	Bireh Akkar	ML	M	M
Borj	ML	M	M	Bqerezla	M	M	M	Bzal	M	M	M
Chane	M	M	M	Chaqdouf	ML	M	M	Charbila	M	M	M
Cheikh Mohammad	M	M	M	Cheikh Taba Es-Sahl	M	M	M	Cheikh Taba	M	M	M
Cheikh Zennad	M	MH	M	Cheikhlar	ML	M	M	Chir Hmairine	M	M	M
Daghle	ML	M	M	Dahr Laissine	M	M	M	Darine	M	MH	M
Dawra	ML	M	M	Dawsa w Baghdadi	M	M	M	Dayret Nahr El-Kabir	ML	M	M
Deir Dalloum	M	M	M	Deir Jennine	M	M	M	Denbou	M	M	M
Dibbbiyeh	M	M	M	Douair Aadwiyeh	M	M	M	Fassikine	ML	M	M
Fnaydek	ML	M	ML	Fraydes Akkar	ML	M	M	Ghazayle	M	M	M
Habchit	M	M	M	Hakour	M	M	M	Halba	M	M	M
Haouchab	M	M	M	Hayssat	M	M	M	Haytla	M	M	M
Hayzouq	M	M	M	Hedd	M	M	M	Hmaira Akkar	M	M	M
Hmaiss Akkar	M	M	M	Hnaider	M	M	M	Hokr Ed-Dahri	M	MH	M
Hokr Etti	M	M	M	Hokr Jouret Srar	M	M	M	Houaich	M	M	M
Hrar	M	M	M	Idbil	M	M	M	Ilal	M	M	M
Janine	M	M	M	Jdeidet El-Joumeh	M	M	M	Jdeidet El-Kaiteh	M	M	M
Jebroyel	M	M	M	Kafr	M	M	M	Kafr	ML	M	M
Karm Asfour	M	M	M	Kfar Melki Akkar	M	MH	M	Kfar Noun	ML	M	M
Kfarharra	M	M	M	Khalsa	ML	M	M	Kharnoubet Akkar	M	M	M

Khirbet Daoud Aakkar	ML	M	M	Khirbet El Remmane	ML	M	M	Khirbet Shar	ML	M	M
Khoreybet El-Jindi	M	M	M	Khreibet Aakkar	ML	M	M	Kneisset Aakkar	M	MH	M
Kneisset Hnaider	M	M	M	Knisse	M	M	M	Kroum El-Aarab	M	M	M
Kwachra	M	M	M	Kweykhat	M	M	M	Machta Hammoud	ML	M	M
Majdala	M	M	M	Majdel Akkar	ML	M	M	Mar Touma	M	M	M
Marlaya Melhem	M	MH	M	Mashha	M	M	M	Massoudiye	M	MH	M
Mazraat Beit Ghattas	M	M	M	Mazraat En-Nahriye	ML	M	M	Mechmech	M	M	ML
Memneh	L	ML	L	Mhammara	M	M	M	Mighraq Aakkar	M	MH	M
Minyara	M	M	M	Moqayteh	M	MH	M	Mounjez	ML	M	M
Msalla	M	M	M	Mzeihmeh	M	M	M	Nfaisch	M	M	M
Noura Et-Tahta	M	M	M	Ouadi El-Haour	M	M	M	Ouadi El-Jamous	M	M	M
Ouyoun El-Ghizlane	M	M	M	Qaabarine	M	M	M	Qabaait	M	M	M
Qachlaq	M	M	M	Qantara Aakkar	M	M	M	Qarha Aakkar	M	M	M
Qarqaf	M	M	M	Qboula	M	M	M	Qleiaat Aakkar	M	MH	M
Qloud El-Baqie	M	M	M	Qobaiyat Aakkar	ML	M	M	Qobbat Chamrat	M	MH	M
Qorayat	ML	M	M	Qornet Aakkar	ML	M	M	Qsair Aakkar	ML	M	M
Rahbe	ML	M	M	Rihaniyet Aakkar	M	M	M	Rmah	ML	M	M
Rmoul	M	MH	M	Saadine	M	MH	M	Sadaqa	ML	M	M
Saidnaya	M	M	M	Sammouniye	M	M	M	Sayssoq	M	M	M
Semmaqiye	M	MH	M	Semmaqli	M	MH	M	Sfinet El-Dreib	M	M	M
Sfinet El-Qaitaa	M	M	M	Sindyanet Zeidane	ML	M	M	Souaisset Aakkar	M	M	M
Srar	M	M	M	Tal Abbas El Gharby	M	M	M	Tal Abbas El-Chargy	M	M	M
Tal Biret	M	MH	M	Tal Hmayra	M	MH	M	Tal Maayan Tal Kiri	M	MH	M
Tal Sibel	M	MH	M	Tallet Chattaha	M	M	M	Tikrit	M	M	M
Tleil	M	M	M	Tshea	ML	M	ML	Zawarib	M	M	M
Zouq El Hosniyeh	M	M	M	Zouq El-Haddara	M	M	M	Zouq El-Hbalsa	M	M	M
Zouq El-Moqachrine	M	M	M								

## Sud

### Sour

Municipality	20-Nov	21-Nov	22-Nov	Municipality	20-Nov	21-Nov	22-Nov	Municipality	20-Nov	21-Nov	22-Nov
Aaiyeh	ML	M	ML	Aalma El-Chaab	ML	M	M	Aaytit	ML	M	M
Abbassiyeh Sour	ML	M	M	Abou Chech	ML	M	M	Ain Abou Abdallah	ML	M	M
Ain Baal	ML	M	M	Arzoun	L	M	ML	Aziyeh	ML	M	M
Baflaya	ML	M	L	Barich	ML	M	ML	Batouliyeh	ML	M	M
Bayad	L	M	ML	Bazouriyeh	ML	M	ML	Bediass	ML	ML	L
Bestiyat	ML	M	ML	Borj El Chemali	ML	M	M	Borj En-Naqoura	L	M	M
Borj Rahhal	ML	M	ML	Boustane	ML	M	M	Btaychiyeh	ML	M	M
Chaaitiye	ML	M	M	Chameh	ML	M	M	Chehabiye	ML	M	ML
Chehour	L	L	L	Chihine	ML	M	ML	Debaal Sour	ML	M	ML
Deir Amess	L	M	L	Deir Kifa	ML	M	L	Deir Qanoun El-Ain	ML	M	M
Deir Qanoun El-Naher	ML	ML	L	Derdghaiya	ML	M	L	Dhayra	ML	M	M
Halloussiyeh	ML	ML	ML	Hamoul	L	ML	M	Hanaouey	ML	M	M
Henniye	ML	M	M	Hmairi Sour	L	ML	L	Iskandarouna Sour	ML	M	M
Jbal El Botom	ML	M	L	Jebbin	ML	M	M	Jennata	ML	M	ML
Jijim	ML	ML	M	Jouaiya	ML	M	M	Kneisset Sour	ML	M	ML

Maarake	ML	M	ML	Maaroub	ML	M	ML	Majadel	ML	M	M
Majdalzoun	ML	M	M	Mansouri Sour	ML	M	M	Marnba	L	L	L
Marouahine	ML	M	L	Mazraat El-Zalloutiy	ML	M	M	Mazraat Mechref	ML	M	ML
Mazraat Tayr Semhat	L	L	L	Mheilib	ML	M	M	Neffakhiyeh	ML	M	L
Niha Sour	ML	M	L	Ouadi Jilo	ML	M	ML	Qana	ML	M	ML
Qolaileh Sour	ML	M	M	Rechknany	L	M	L	Rmadiyeh	M	M	ML
Selha Sour	ML	M	L	Siddiqine	ML	M	ML	Sour	ML	M	M
Srifa	L	M	L	Tayr Debbe	ML	M	ML	Tayr Felsay	ML	ML	L
Tayr Harfa	ML	M	M	Touayri	L	ML	L	Toura	ML	ML	ML
Yanouh Sour	ML	M	ML	Yarine	ML	M	M	Zebqine	L	M	L

## Saida

Municipality	20-Nov	21-Nov	22-Nov	Municipality	20-Nov	21-Nov	22-Nov	Municipality	20-Nov	21-Nov	22-Nov
Aanqoun	M	M	ML	Aaqtanit	M	ML	M	Aarab Ej-Jall	L	M	L
Aarab Tabbaya	ML	M	L	Abra Saida	M	M	M	Adloun	ML	M	ML
Adousiyeh	M	M	M	Ain-El-Deleb	M	ML	M	Arzai	ML	M	ML
Babliyah	M	M	M	Barty	L	L	L	Bissariyeh	M	M	M
Bnaafoul	M	ML	M	Bqosta	M	ML	M	Bramiy	ML	ML	M
Daoudiyeh	M	M	M	Dareb El-Sim	M	ML	M	Erkay	M	ML	ML
Ghassanieh	ML	M	ML	Ghazieh	M	M	M	Hajjeh	M	ML	M
Haret Saida	M	M	M	Hartiyeh	ML	M	M	Hlaliye Saida	M	ML	M
Insariyat	ML	M	M	Jazira Saida	ML	M	ML	Kafar Bit	L	ML	L
Kaoutariyet El-Siyad	ML	M	ML	Kfar Chellal	L	ML	L	Kfar Hatta Saida	L	ML	L
Kfar Milke Saida	L	M	L	Khartoum	ML	M	ML	Khaziz	M	ML	M
Khirbet Ed-Douair Sa	ML	M	M	Khirbet El-Bassal	M	M	M	Khrayeb Saida	ML	M	ML
Loubieh	ML	M	M	Maghdouche	M	ML	M	Majdelyoun	M	M	M
Matariyet El-Choumar	ML	M	ML	Matayriyeh	M	ML	M	Mazraat 'Mseileh	M	M	M
Mazraat 'Snaiber	M	M	M	Mazraat Aarab Soukka	L	M	L	Mazraat Deir Taqla	ML	M	M
Mazraat El Yahoudiye	ML	M	M	Mazraat El-Housseini	M	M	M	Mazraat El-Mhaydaleh	ML	M	ML
Mazraat El-Ouasta	ML	M	ML	Mazraat Jamjim	ML	M	ML	Mazraat Kaoutariyet	ML	ML	ML
Mazraat Kfar Badda	ML	M	M	Mazraat Oussamiyat	ML	M	ML	Mazraat Sari	ML	M	M
Mazraat Sinai	ML	ML	ML	Meemariyeh	M	ML	M	Merouaniyeh	ML	M	ML
Miyeh ou Miyeh	M	ML	M	Najjariyeh	M	M	M	Qaaqiyat El-Snaouba	M	M	M
Qnarit	M	ML	M	Qraiye Saida	M	ML	M	Saida Ed-Dekermane	M	M	M
Saida El-Oustani	M	M	M	Saida El-Qadimeh	M	M	M	Saida Kefraya	ML	L	L
Saksakiyeh	ML	M	M	Salhie Saida	M	ML	M	Sarafand	M	M	M
Sfenta	L	L	L	Tafahta	ML	M	ML	Tanbourit	M	ML	M
Tebna	ML	M	M	Zaghdraiya	ML	ML	ML	Zeita	M	ML	M
Zrariyeh	ML	ML	ML								

## Jezzine

Municipality	20-Nov	21-Nov	22-Nov	Municipality	20-Nov	21-Nov	22-Nov	Municipality	20-Nov	21-Nov	22-Nov
Ain El-Mir (El Estab	ML	ML	L	Anane	L	L	L	Aramta	L	L	L
Ariya	ML	L	L	Aychiyeh	L	L	L	Azour	L	L	VL
Baba	L	L	VL	Bayssour Jezzine	ML	ML	L	Benoueteh Jezzine	ML	L	L
Bhannine	ML	L	L	Bisri	L	L	VL	Bkassine	ML	L	VL
Bouslaya	L	L	L	Btedine El-Leqech	L	L	VL	Chbail	ML	VL	VL
Choualiq Jezzine	ML	ML	L	Dahr Ed-Deir	L	L	L	Deir El Qattine	L	L	L

Demachqiyeh	ML	ML	L	Ghabbatiyeh	ML	L	L	Harf Jezzine	L	L	VL
Hassaniyeh	L	ML	L	Haytouleh	L	L	L	Haytura	L	L	L
Hidab	L	L	L	Homsiyeh	L	L	L	Jabal Toura	L	ML	L
Jarmaq	L	ML	L	Jensnaya	ML	ML	ML	Jernaya	L	ML	L
Jezzine	ML	L	L	Karkha	ML	L	L	Kfar Falous	ML	ML	L
Kfar Houna	L	L	L	Kfar Jarrah	M	M	M	Lebaa	ML	ML	L
Louayzet Jezzine	L	L	L	Machmouche	L	L	VL	Mahmoudiyeh Jezzine	L	ML	L
Maknounye Jezzine	L	L	L	Maraat Ouazaiyeh	L	L	L	Mazraat Daraya	ML	L	L
Mazraat El-Aarqoub	L	L	L	Mazraat El-Mathane	L	L	VL	Mazraat El-Rahbane	L	L	L
Mazraat Khallet Khaz	L	L	L	Mazraat Louzid (Loua	L	L	VL	Mazraat Qrouh	L	L	L
Mazraat Tamra	ML	ML	ML	Mazraat Zighrine Jez	L	L	L	Mazraat	L	L	L
Mharbiyeh	ML	ML	L	Midane Jezzine	L	L	L	Mjeydel Jezzine	ML	ML	ML
Mlikh	L	L	L	Mrach El-Hbasse	ML	ML	L	Ouadi Baanqoudaine	ML	ML	L
Ouadi El-Laymoun	L	ML	L	Ouardiyeh	L	VL	VL	Qabaa Jezzine	L	L	L
Qatrani	L	L	L	Qaytouleh	L	L	L	Qtaleh Jezzine	L	L	VL
Rihane Jezzine	L	L	L	Rimat	ML	L	L	Roum	L	L	L
Roummanet	L	L	L	Sabbah	L	L	L	Saydoun	L	L	L
Sfaray	L	L	L	Snaya	L	L	L	Sojoud	L	L	L
Srayri	L	ML	L	Taaïd	L	L	VL	Wadi Jezzine	ML	L	L
Zhalta	L	L	L								

## Bekaa

### West Bekaa

Municipality	20-Nov	21-Nov	22-Nov	Municipality	20-Nov	21-Nov	22-Nov	Municipality	20-Nov	21-Nov	22-Nov
Aammiq BG	M	M	M	Ain El Tineh BG	ML	L	L	Ain Zebdeh	M	M	L
Ana	M	M	ML	Aytanit	M	ML	L	Baaloul BG	M	M	L
Bab Mareh	M	M	L	Chouberqiye Aammiq	M	M	M	Dakoue	M	M	M
Deir Ain El-Jaouze	M	M	L	Deir Tahniche	M	M	M	Ghaza	M	M	M
Harime El-Soughra	M	M	M	Hoch Harimeh	M	M	M	Jazira BG	M	M	M
Jib Jennine	M	M	ML	Kamed-El-Laouz	M	M	ML	Kefraya BG	M	M	L
Khiara El Atika	M	M	M	Khiara	M	M	M	Khirbet Qanafar	M	M	L
Lala	M	M	ML	Lebbaya BG	L	L	L	Loussa	L	ML	L
Machghara	ML	ML	L	Manara (Hammar) BG	M	M	L	Mansoura BG	M	M	M
Marej BG	M	M	L	Maydoun	L	L	L	Ouaqf BG	M	M	M
Qaraaoun	M	ML	L	Qelya	L	L	L	Raouda (Istabel)	M	M	ML
Saghbine	M	M	L	Sohmor	ML	L	L	Soltan Yacoub el Ara	M	M	M
Souairy	M	M	ML	Sultan Yaacoub	M	M	M	Tal Znoub	M	M	M
Yehmor BG	L	L	L	Zilaya	L	L	L				

### Zahle

Municipality	20-Nov	21-Nov	22-Nov	Municipality	20-Nov	21-Nov	22-Nov	Municipality	20-Nov	21-Nov	22-Nov
Aanjar (Haouch Mouss	M	M	M	Ablah	M	M	VL	Ain Kfarzabad	M	M	VL
Ali-El-Nahri	M	M	VL	Bar Elias	M	M	L	Bouarej	M	M	VL
Cheberqiyet Tabet	M	MH	L	Chtaura	M	MH	VL	Deir El Ghazal	M	M	VL
Delhamiyet Zahle	M	M	L	Ferzol	M	M	L	Haouch El-Ghanam	M	M	VL
Haouch Es-Siyadeh	M	M	L	Haouch Hala	M	M	VL	Haouch Mandara	M	M	L

Haouch Qayssar	M	M	L	Hezerta	M	ML	VL	Hosh Moussa	M	M	VL
Jdita	M	MH	VL	Kfarzabad	M	M	L	Ksara	M	M	L
Majdel Aanjar	M	M	ML	Makssi	M	MH	VL	Massa	M	M	VL
Mazraat Er-Remtaniye	M	M	VL	Mrayjat Zahle	M	M	VL	Mzaraa Zahle	M	M	L
Nabi Ayla	M	M	VL	Nasriyet Rizk	M	M	VL	Nasriyet Zahle	M	M	L
Niha Zahle	M	M	L	Ouadi Ed-Deloum	M	M	VL	Ouadi El-Arayech	M	M	VL
Qaa El Rim	M	M	VL	Qab Elias	M	M	L	Qousaya	M	M	VL
Rhit	M	M	VL	Riyak	M	M	VL	Saadnayel	M	M	L
Taal El-Akhdar	M	M	M	Taalbeya	M	MH	L	Taanayel	M	M	L
Talamara	M	M	VL	Tcheflik Edde Haouch	M	M	L	Tcheflik Qiqano	M	M	L
Terbol Zahle	M	M	VL	Touaite Zahle	M	M	VL	Zahle Aradi	M	M	L
Zahle El-Berbara	M	M	VL	Zahle El-Maallaqa	M	M	VL	Zahle El-Midane	M	M	VL
Zahle Er-Rassiye	M	M	VL	Zahle Haouch El-Ouma	M	M	L	Zahle Haouch El-Ouma	M	M	L
Zahle Haouch Ez-Zara	M	M	VL	Zahle Maalqa Aradi	M	M	L	Zahle Mar Antonios	M	M	VL
Zahle Mar Elias	M	M	VL	Zahle Mar Gerios	M	M	VL	Zahle Saydet En-Naja	M	M	VL
Zebdoul	M	M	VL								

## Rachaiya

Municipality	20-Nov	21-Nov	22-Nov	Municipality	20-Nov	21-Nov	22-Nov	Municipality	20-Nov	21-Nov	22-Nov
Ain Arab Rachaiya	M	L	ML	Ain Ata	M	L	L	Ain Harche	ML	L	ML
Aqabe Rachaya	M	L	ML	Ayha	M	ML	ML	Ayta El Fokhar	M	M	ML
Bakifa Rachaya	M	L	ML	Bakka	M	ML	ML	Beit Lahya	M	L	ML
Bireh Rachaiya	M	M	ML	Daher El Ahmar	M	ML	ML	Deir El-Achayer	M	M	L
Heloua Rachaiya	M	M	L	Hoch El Qannabeh Rac	M	L	L	Kaoukaba Bou Arab	M	L	ML
Kfar Danis	M	ML	ML	Kfar Mechki	ML	L	L	Kfar Qouq	M	L	ML
Kherbet Rouha	M	ML	ML	Majdel Balhiss	M	ML	L	Mdoukha	M	M	ML
Mhaydseh Rachaiya	M	ML	ML	Nabi Safa	ML	L	L	Rachaiya	M	ML	ML
Rafid Rachaiya	M	ML	ML	Selsata (Mazraat Dei	M	M	L	Tannoura	ML	L	ML
Yanta	M	ML	L								

## Beyrouth

### Beyrouth

Municipality	20-Nov	21-Nov	22-Nov	Municipality	20-Nov	21-Nov	22-Nov	Municipality	20-Nov	21-Nov	22-Nov
Achrafieh	M	M	M	Ain el-Mreisse	M	M	M	Bachoura	ML	M	M
Beirut Central Distr	M	M	M	Marfai	M	M	M	Mazraa	M	M	M
Medaouar	M	M	M	Minet el-Hosn	M	M	M	Mwssaitbeh	ML	M	M
Ras Beirut	M	M	M	Rmeil	M	M	M	Saifi	M	M	M
Zqaq el-Blat	ML	M	M								