

# Lebanon Fire Risk Bulletin



CIVIL DEDEFENCE

**Refer to cadast table condition.**

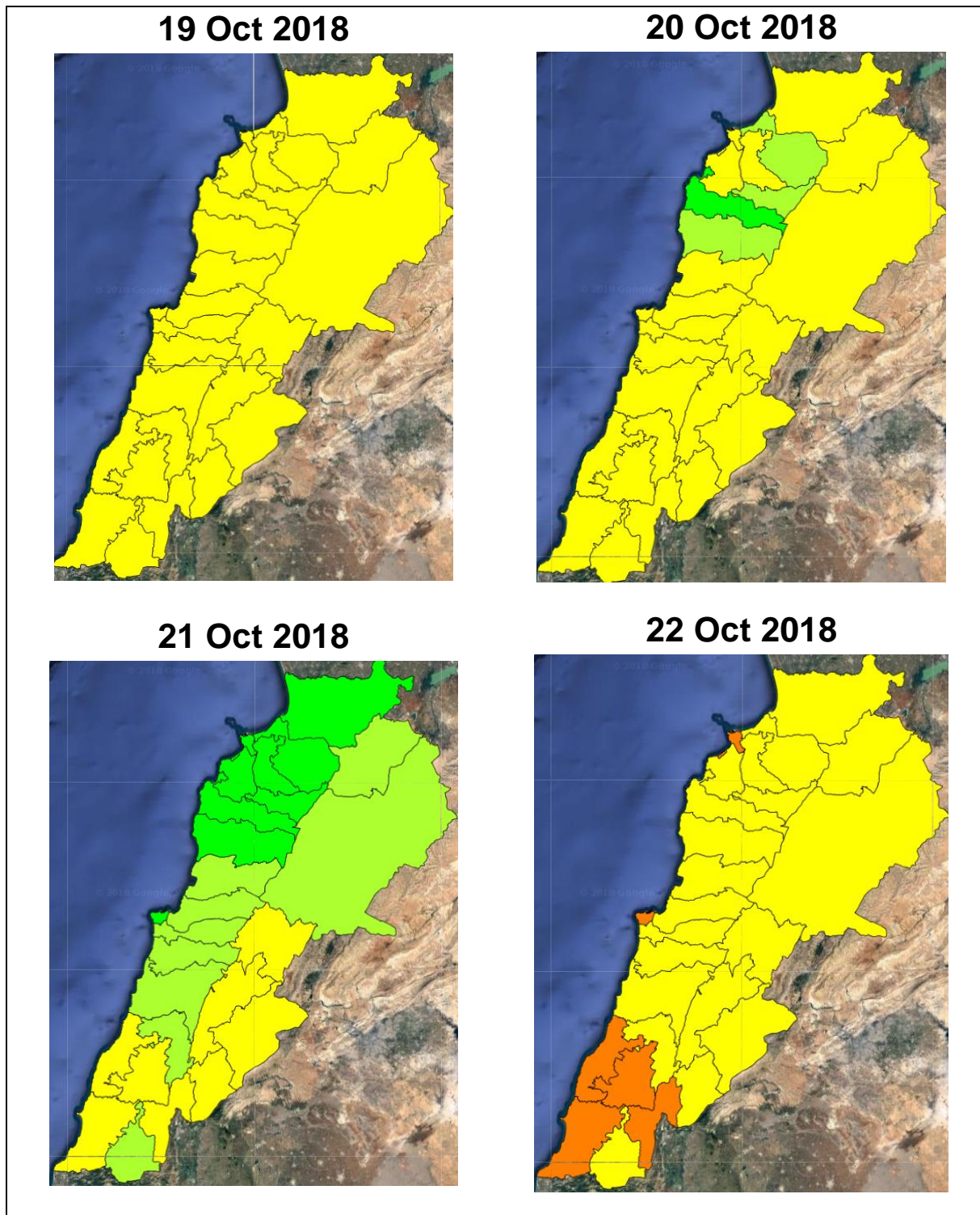
**Please note that the indicated temperature is at 2 meters height from the ground.**

General description of potential fire risk situation

Symbol	Level of risk	Meaning and actions
VL	Very low	Very low fire risk. Controlled burning operations can be hardly executed due to high fuel moisture content. Normally wildfires self-extinguish.
L	Low	Low fire risk. Controlled burning operations can be executed with a reasonable degree of safety.
ML	Medium low	Medium-low fire risk. Controlled burning operations can be executed in safety conditions. All the fires need to be extinguished.
M	Medium	Medium fire risk. Controlled burning operations would be avoided. All the fires need to be very well extinguished.
MH	Medium high	Controlled burning is not recommended. Open flame will start fires. Cured grasslands and forest litter will burn readily. Spread is moderate in forests and fast in exposed areas. Patrolling and monitoring is suggested. Fight fires with direct attack and all available resources.
H	High	Ignition can occur easily with fast spread in grass, shrubs and forests. Fires will be very hot with crowning and short to medium spotting. Direct attack on the head may not be possible requiring indirect methods on flanks. Patrolling and monitoring the territory is highly suggested.
E	Extreme	Ignition can occur also from sparks. Fires will be extremely hot with fast rate of spread. Control may not be possible during day due to long range spotting and crowning. Suppression forces should limit efforts to limiting lateral spread. Damage potential total. Patrolling and monitoring the territory is highly suggested.

**Beirut, 20 October 2018**

# FIRE RISK INDEX



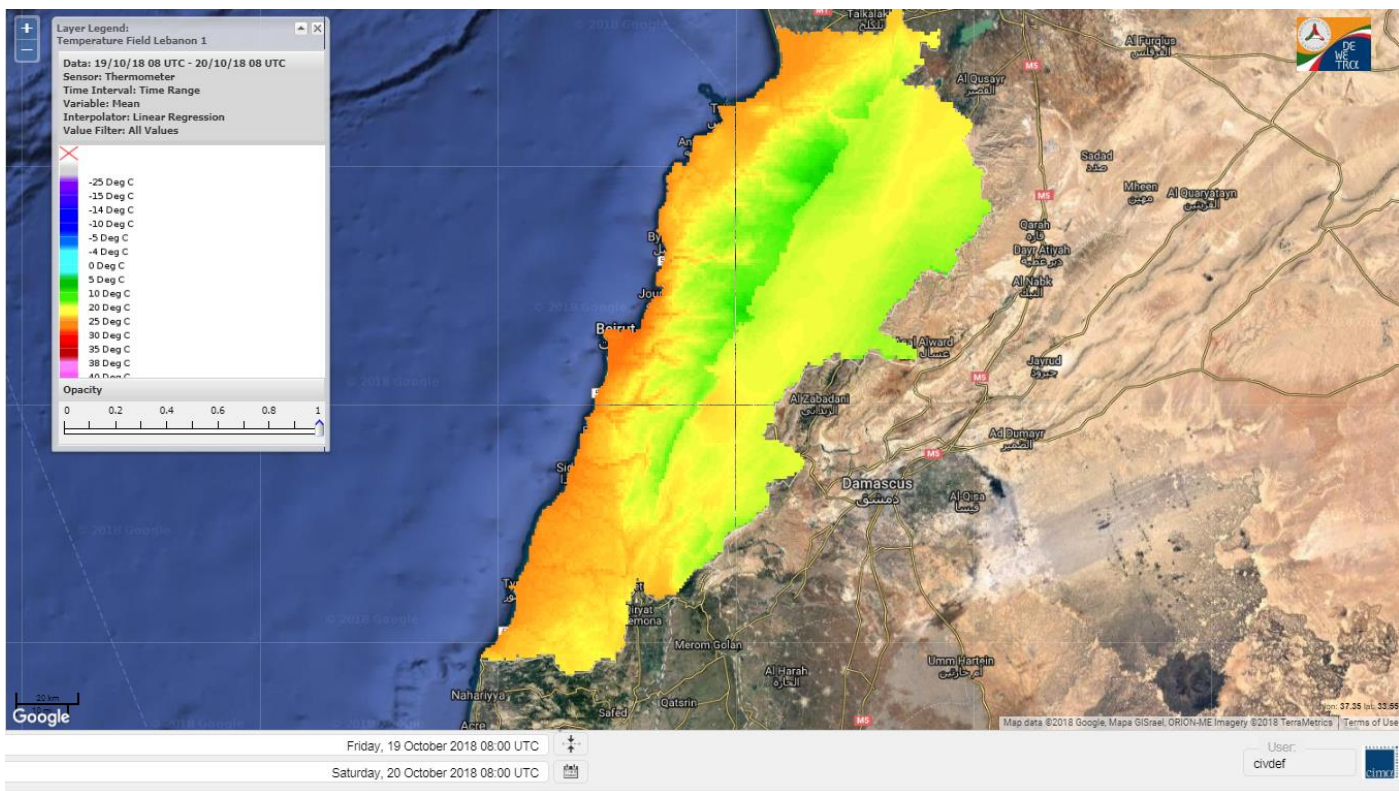
Layer Legend:  
Lebanon Wildfire Risk Index 1

Data: Run: 20/10/2018 00:00. Forecast for 20  
Model: RISICO for the Republic of Lebanon  
Variable: Fire Weather Index  
Spatial Resolution: Caza

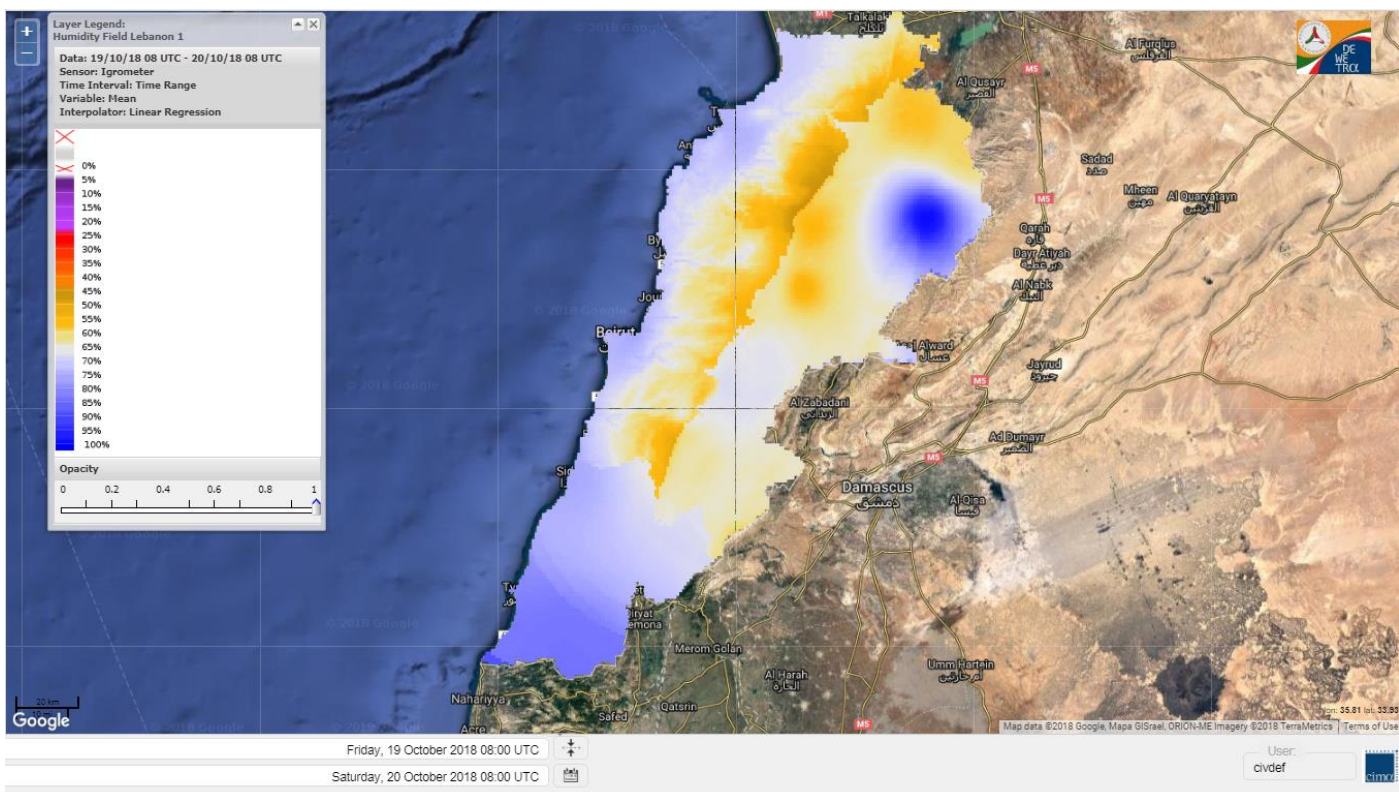
- VERY LOW
- LOW
- MEDIUM-LOW
- MEDIUM
- MEDIUM-HIGH
- HIGH
- EXTREME



# Lebanon temperature for 20 Oct 2018

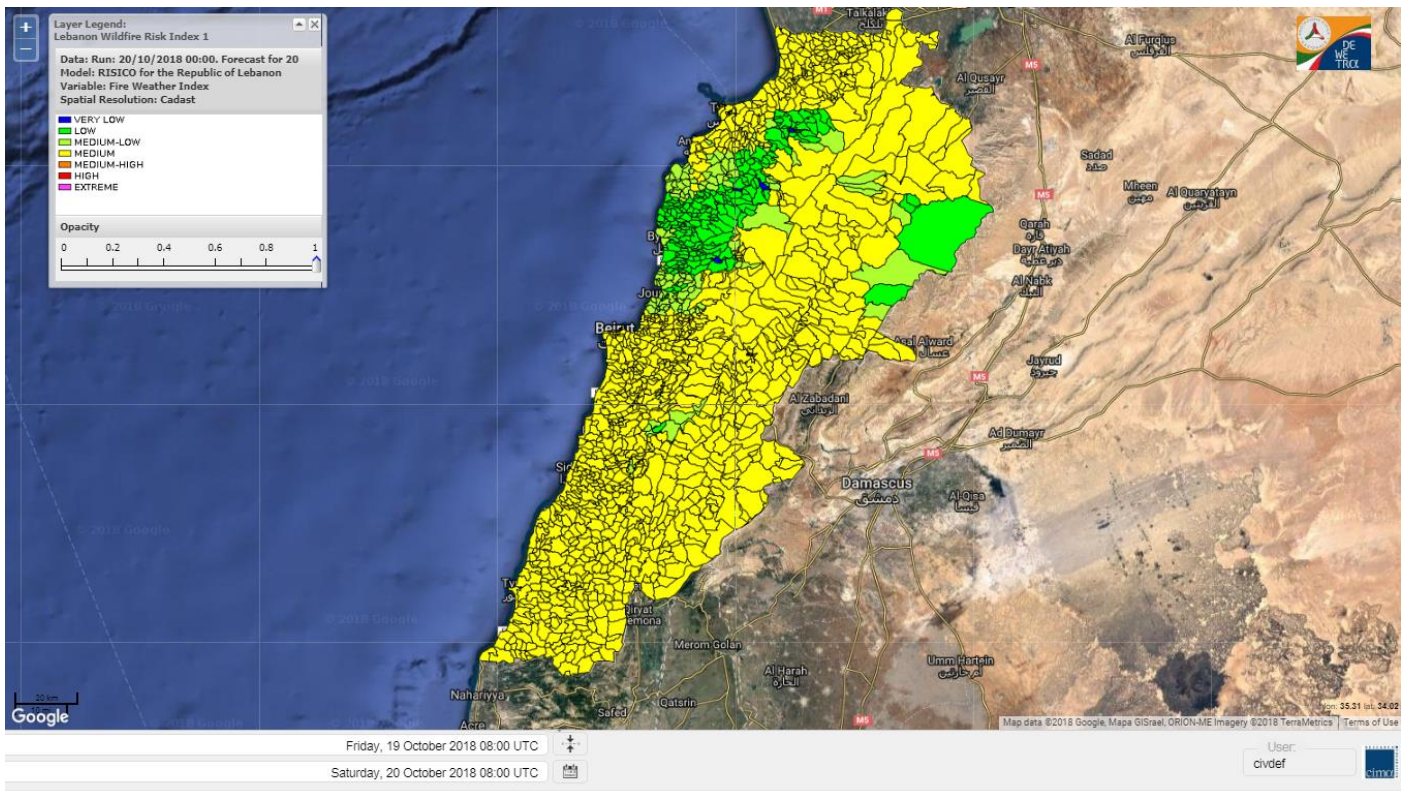


# Lebanon humidity for 20 Oct 2018

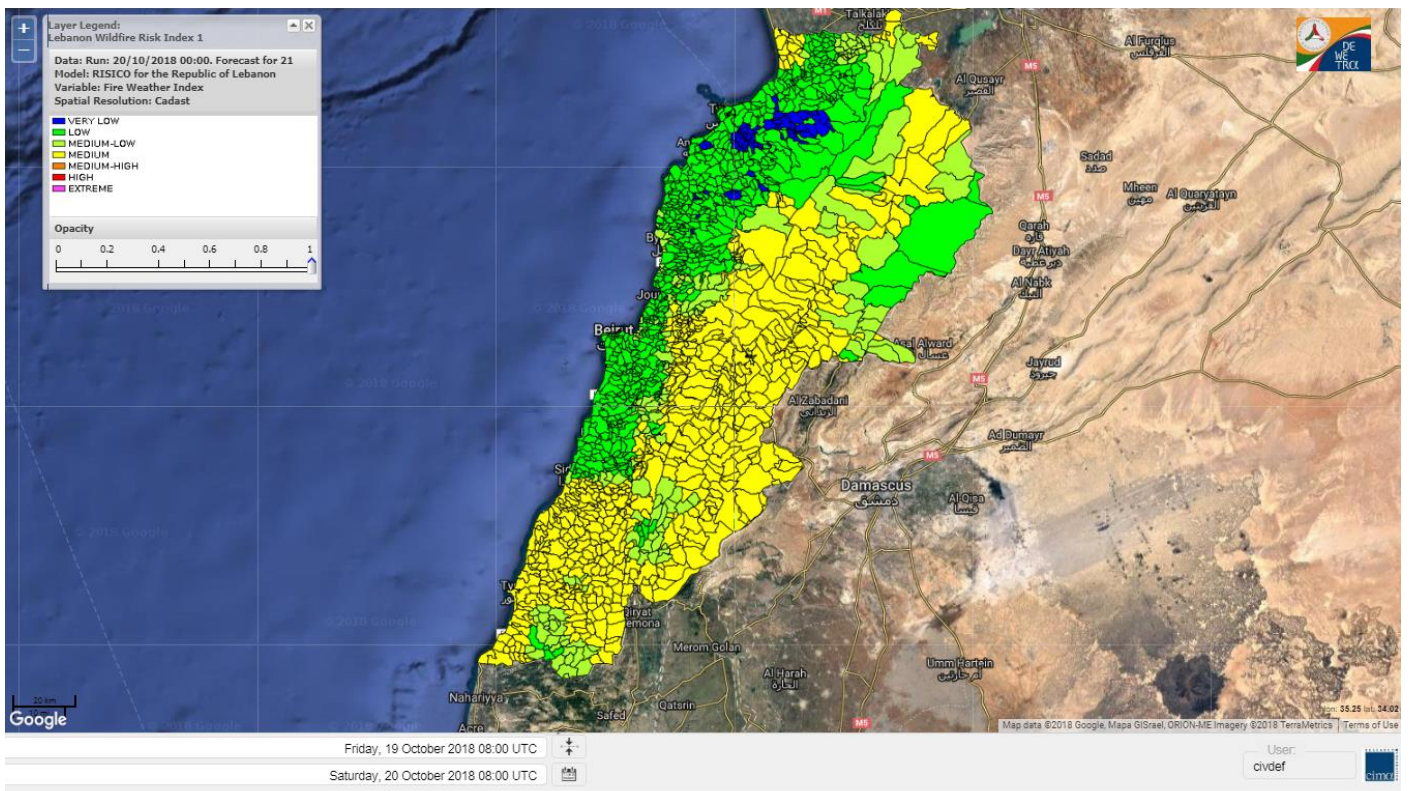




# Lebanon for 20 Oct 2018

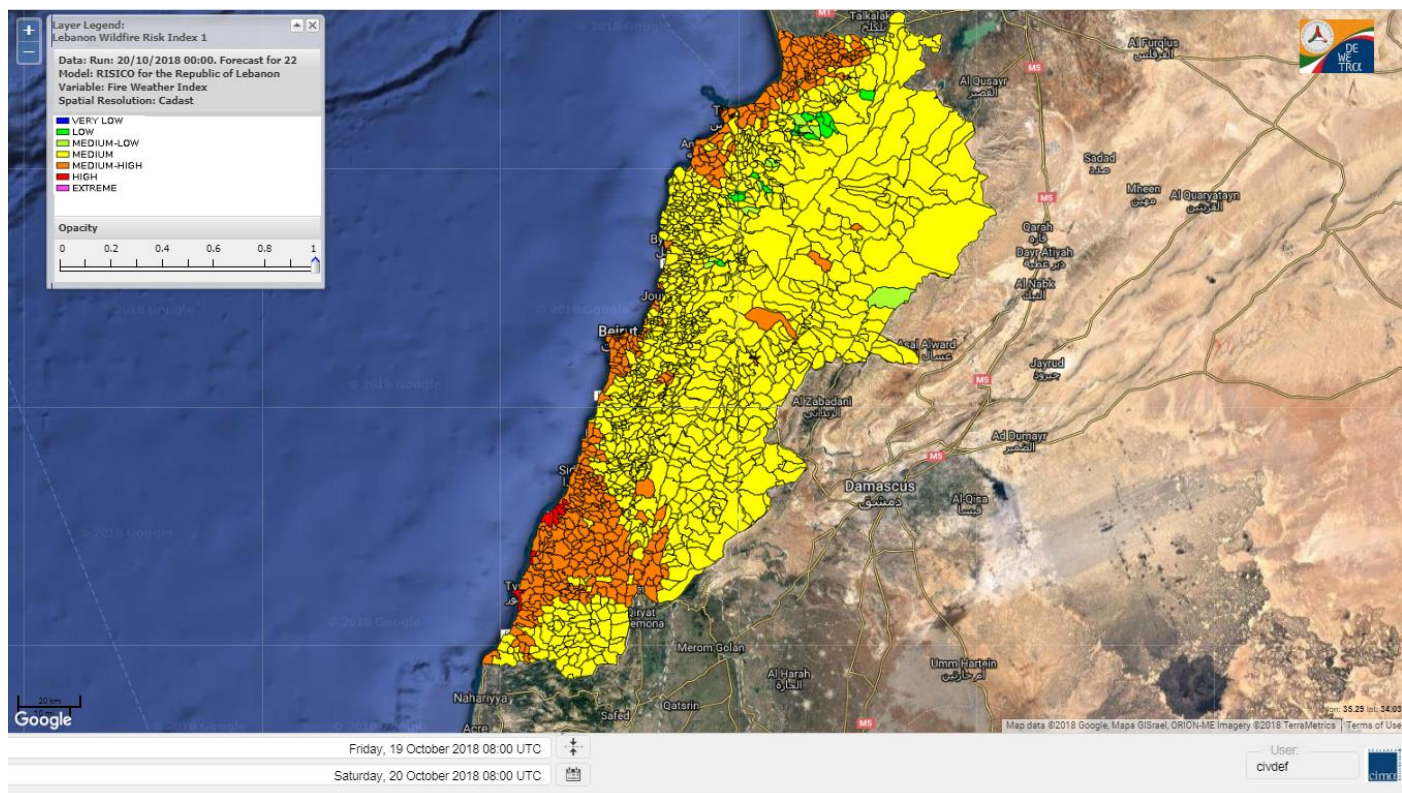


# Lebanon for 21 Oct 2018

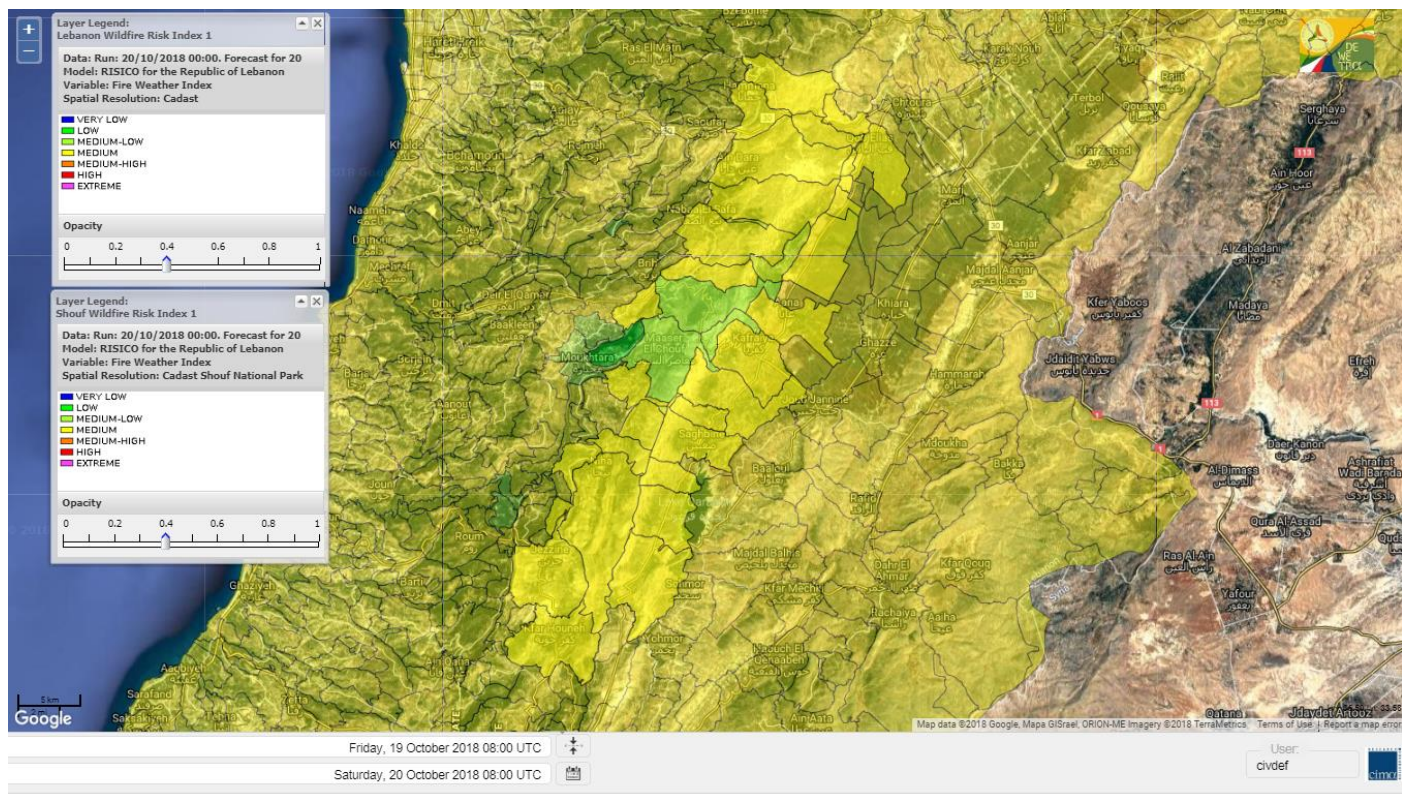




# Lebanon for 22 Oct 2018

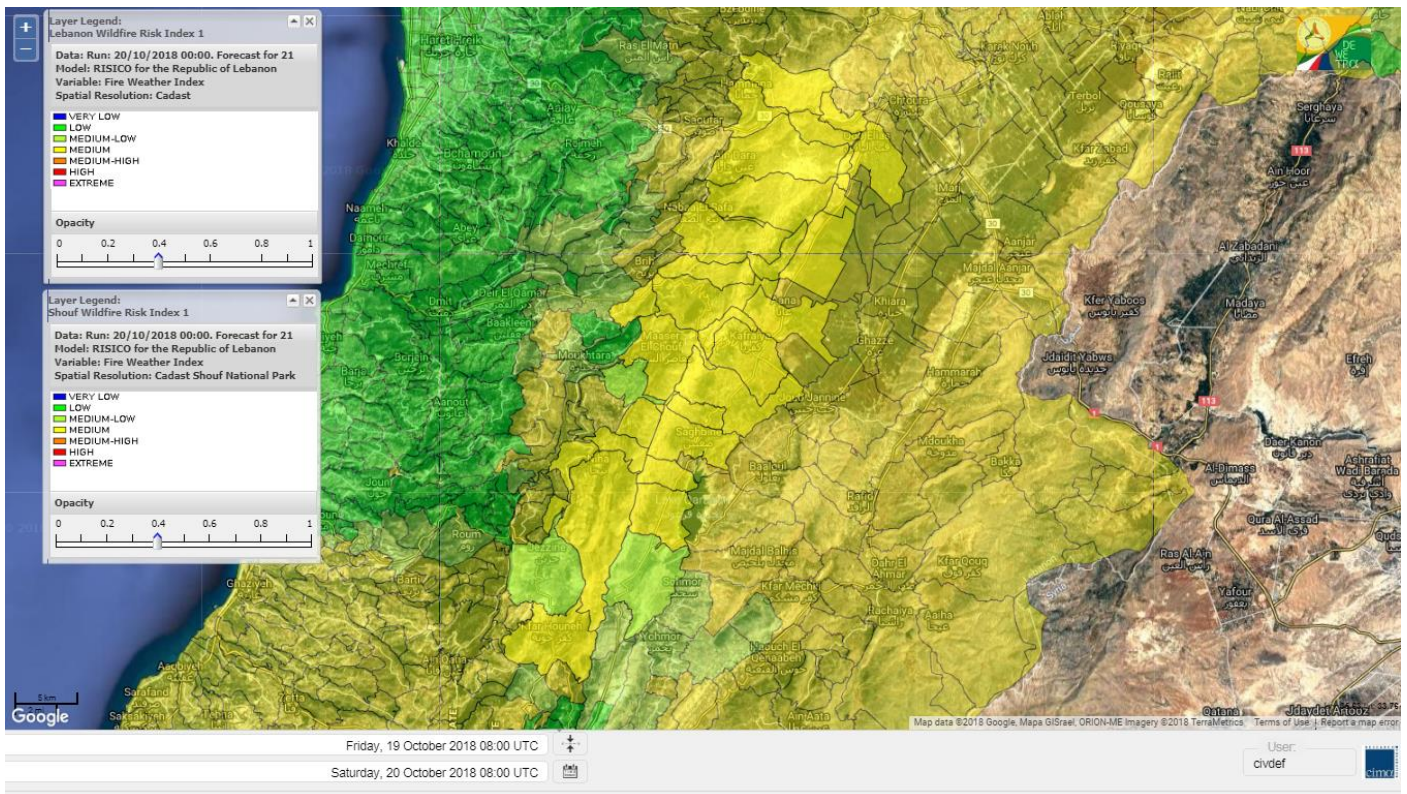


# Shouf Biosphere Reserve Forecast for 20 Oct 2018

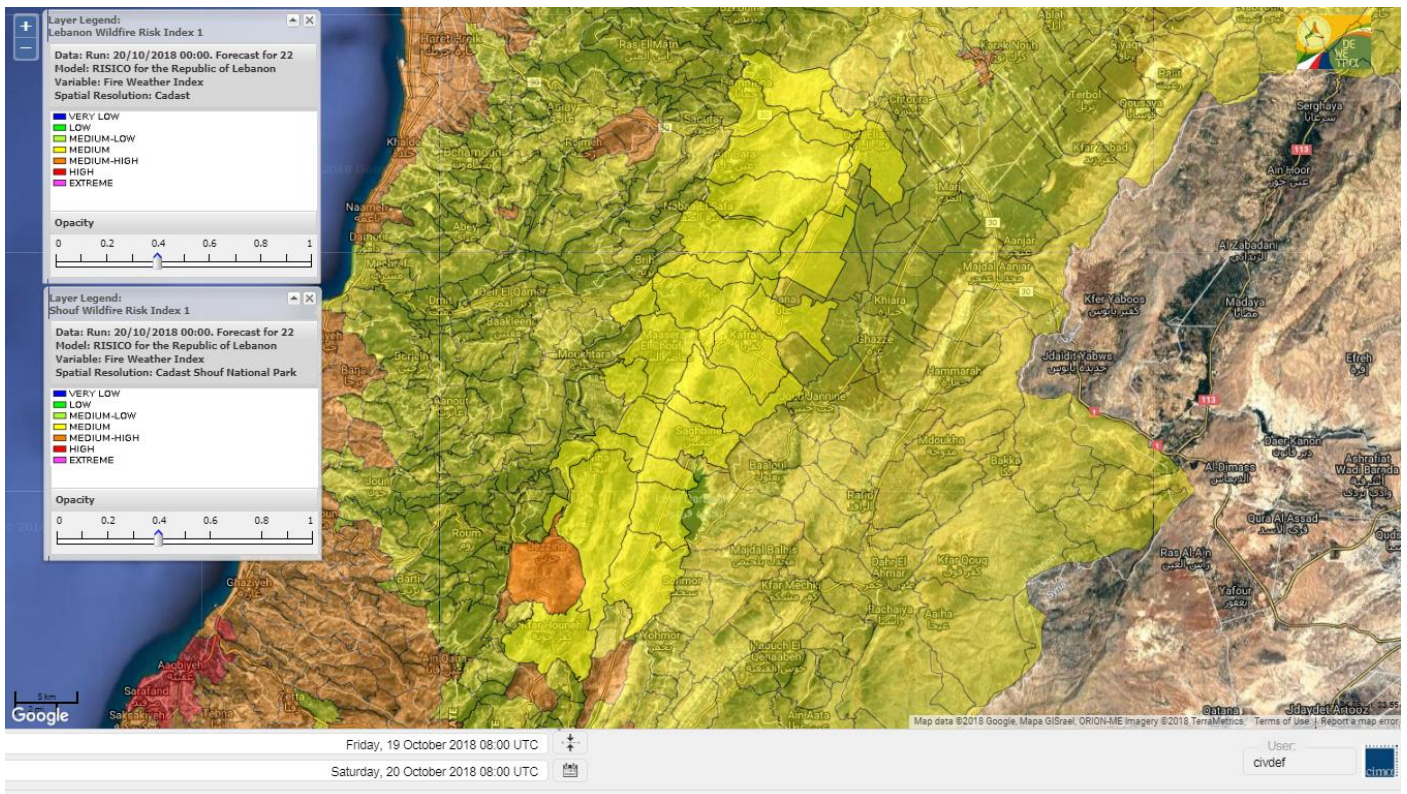




# Shouf Biosphere Reserve Forecast for 21 Oct 2018

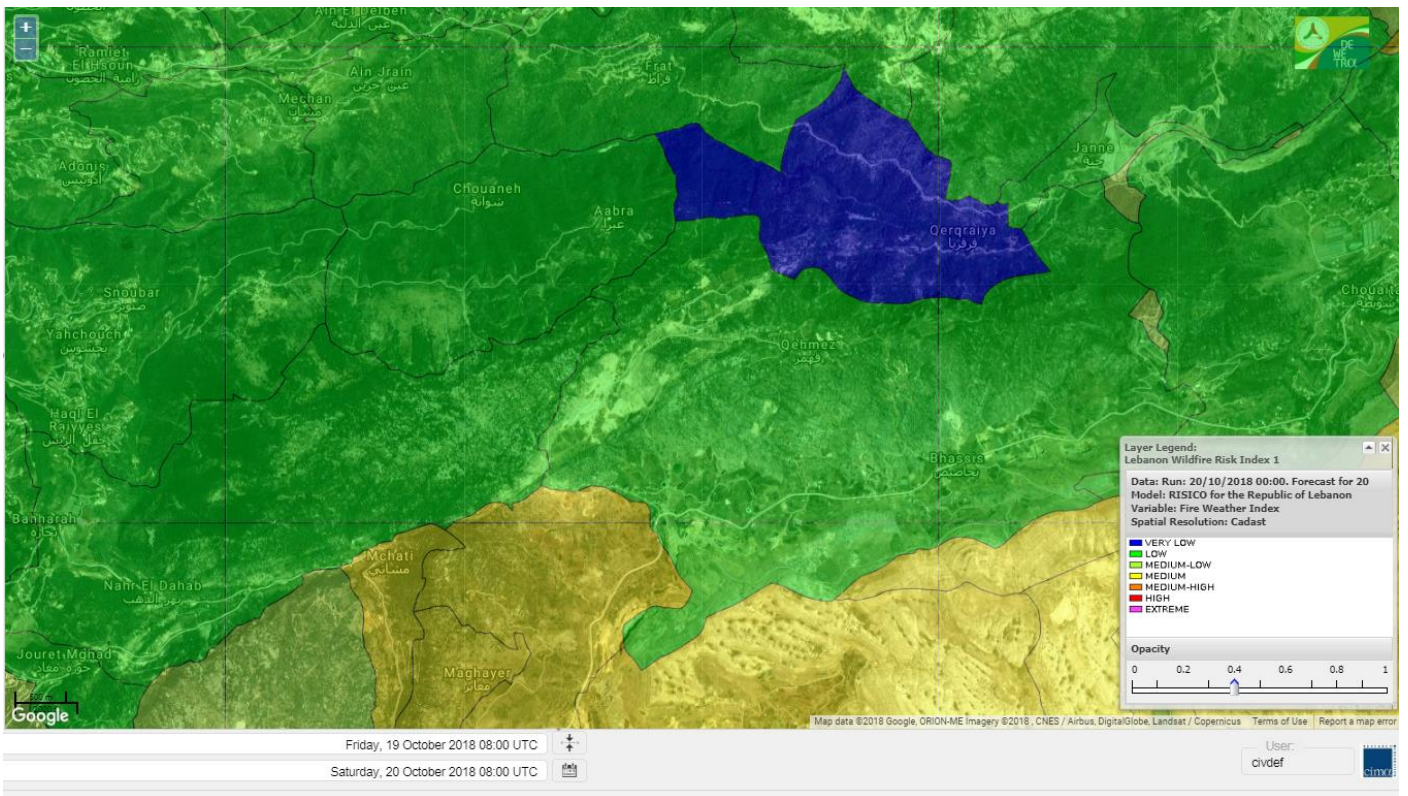


# Shouf Biosphere Reserve Forecast for 22 Oct 2018

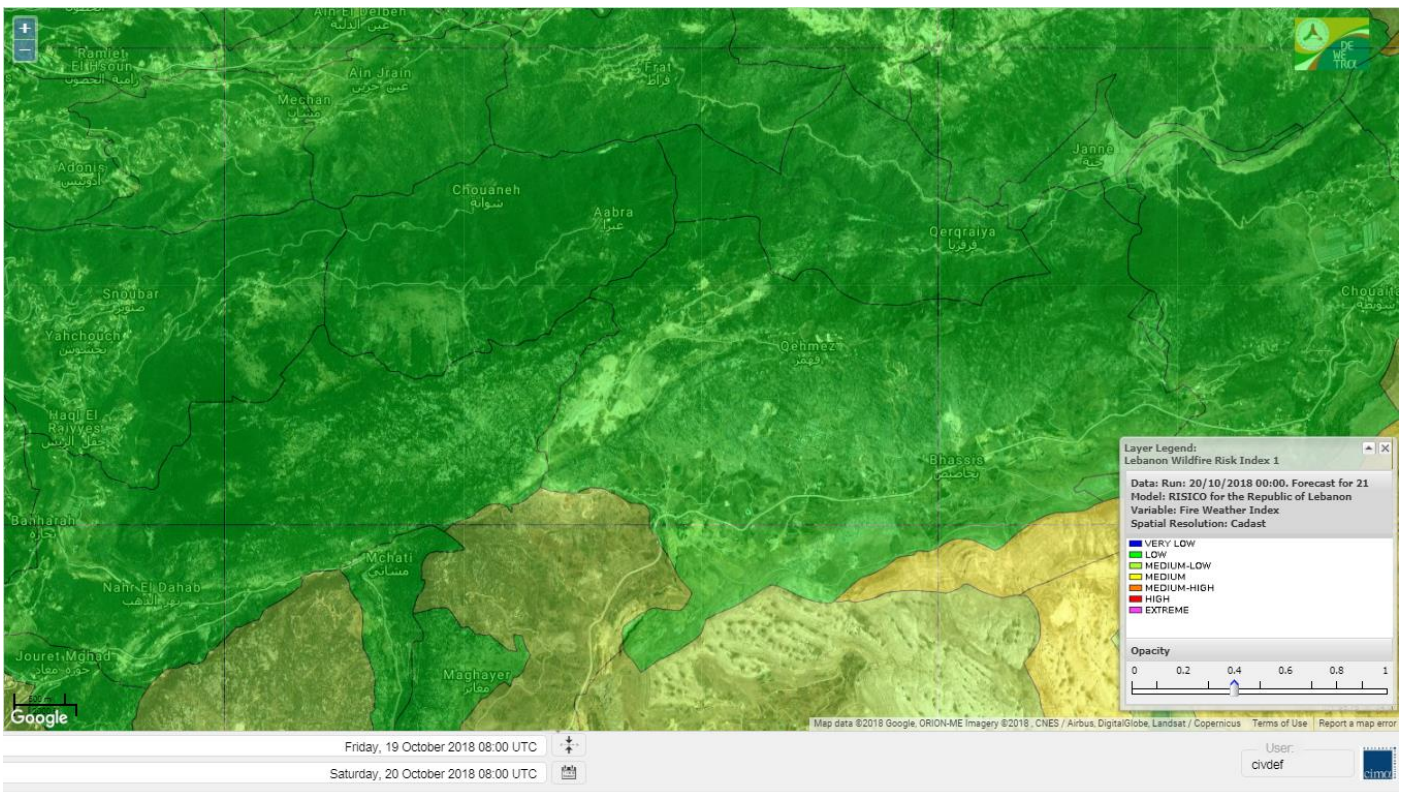




## Jabal Moussa Reserve Forecast for 20 Oct 2018

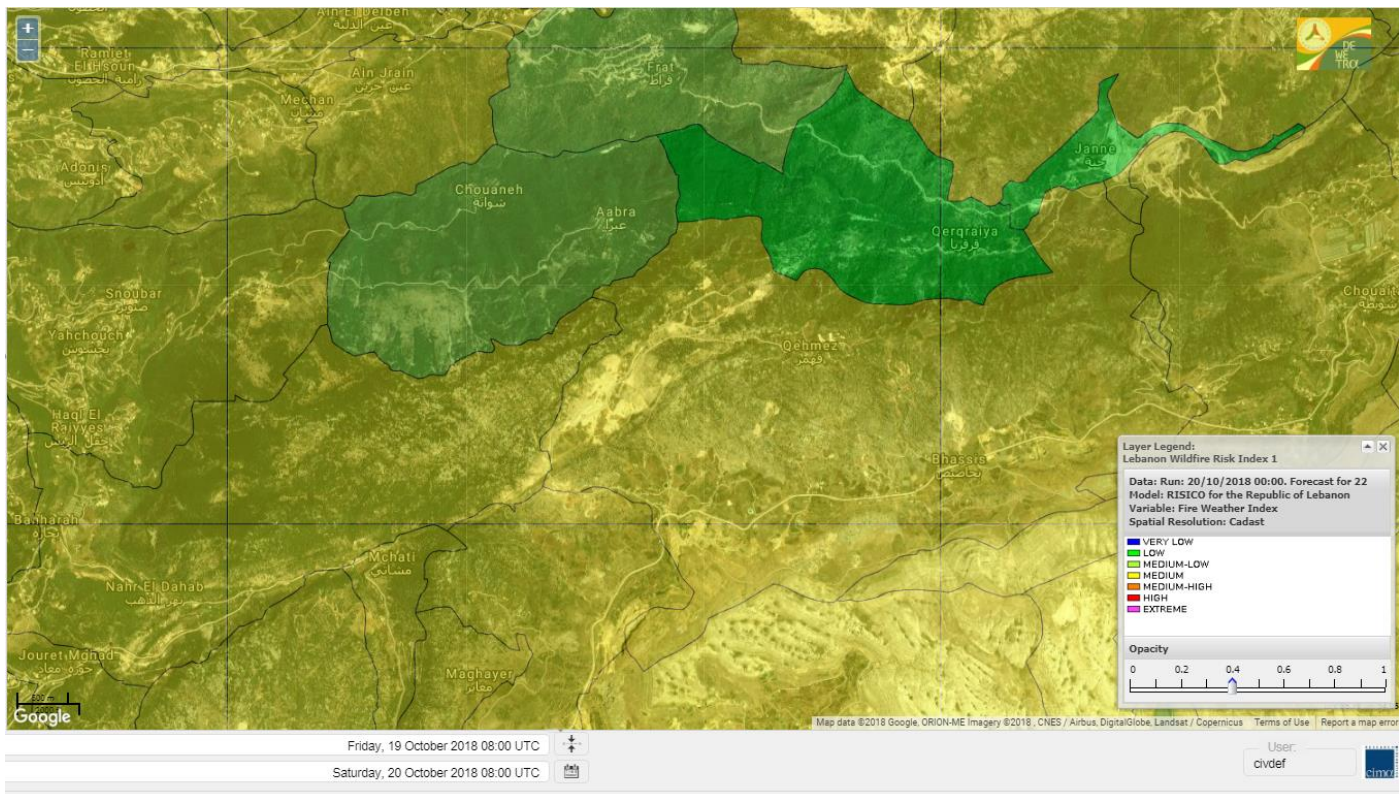


## Jabal Moussa Reserve Forecast for 21 Oct 2018





# Jabal Moussa Reserve Forecast for 22 Oct 2018

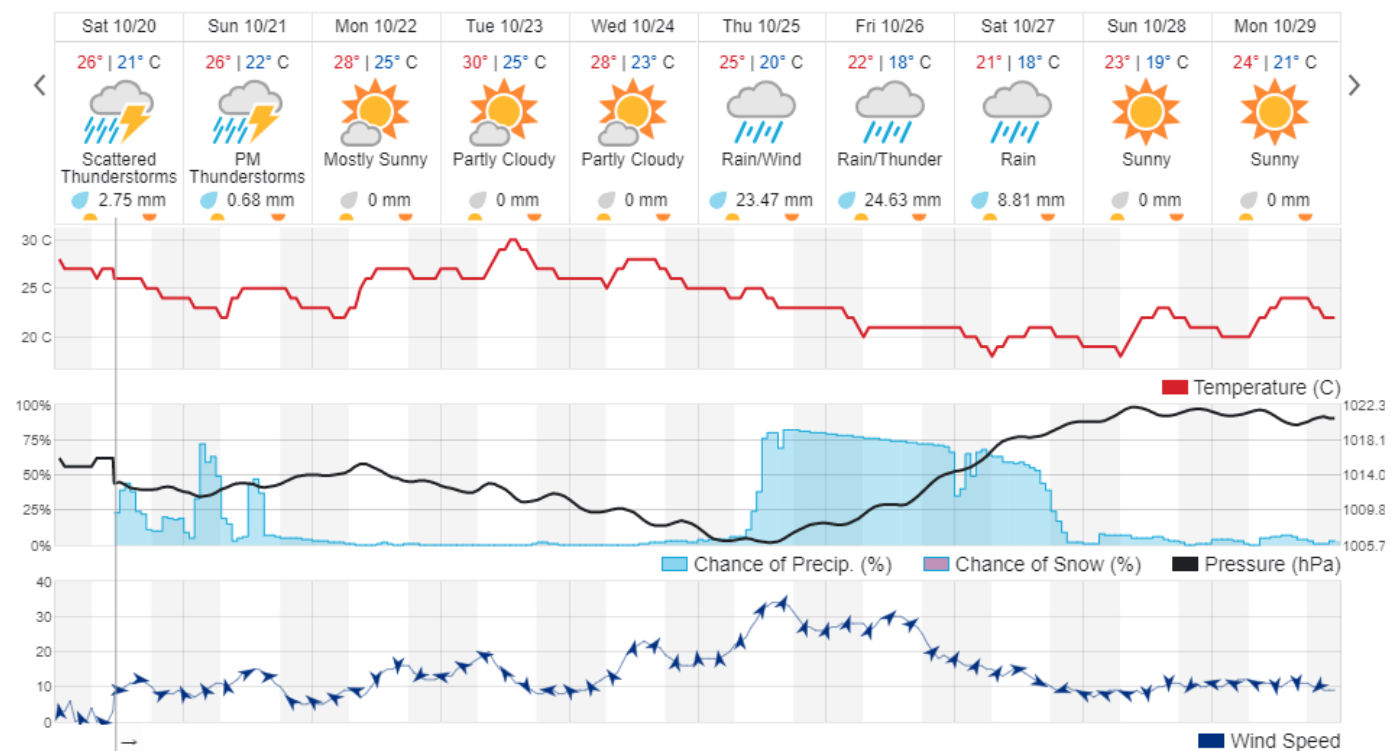


## Beirut, Lebanon

28° ACHRAFIEH, RIZK STATION | REPORT | CHANGE

TODAY HOURLY 10-DAY CALENDAR HISTORY WUNDERMAP

Customize





## Nord

### Koura

Municipality	20-Oct	21-Oct	22-Oct	Municipality	20-Oct	21-Oct	22-Oct	Municipality	20-Oct	21-Oct	22-Oct
Aaba	M	L	MH	Afsaddiq	ML	L	MH	Ain Ekrine	ML	L	MH
Amioun	ML	L	MH	Anfeh	M	L	MH	Badbhoun	M	L	MH
Barghoun	M	L	MH	Barsa	M	L	M	Batroumine	M	L	MH
Bdebba	M	L	M	Bechmizine	ML	L	MH	Bednaye El-Koura	ML	L	M
Bhabbouch El-Koura	ML	L	M	Bkeftine	M	VL	M	Bnehran	L	L	M
Bqaiia El-Koura	M	VL	M	Bsarma	ML	L	M	Btaaboura	M	L	M
Bterram	ML	L	MH	Btouratij	M	L	MH	Bziza	ML	L	M
Dar Beehtar	ML	L	MH	Dar Chmezzine	ML	L	MH	Deddeh	M	L	MH
Deir El-Balamand	ML	VL	M	Fih	M	L	MH	Hraiche	M	L	MH
Ijdaabrine	ML	L	M	Kaftoun	ML	L	M	Kefraya El-Koura	ML	L	M
Kfarakka	ML	L	M	Kfarhata	M	L	M	Kfarhazir	M	L	MH
Kfarkahel	M	L	MH	Kfarsaroun	ML	L	M	Kosba	ML	L	M
Mejdel el-Koura	L	L	M	Nakhle	M	L	M	Qalhat	M	VL	M
Ras Masqa	M	L	MH	Rechdibbine	ML	L	M	Zakroun	M	L	MH
Zgharta El-Mtaouile	L	L	M								

### Bcharre

Municipality	20-Oct	21-Oct	22-Oct	Municipality	20-Oct	21-Oct	22-Oct	Municipality	20-Oct	21-Oct	22-Oct
Aabdine	L	L	M	Bane	ML	L	M	Barhelioun	L	L	M
Bazouone	M	M	M	Becharre	M	L	M	Beit Menzer	L	L	M
Billa	L	L	M	Blaouza	L	L	M	Bqaa Kafra	M	M	M
Bqerqacha	M	M	M	Breissat	L	L	M	Dimane	L	L	M
Hadath El Jobbeh	L	L	M	Hadchit	ML	L	M	Hasroun	M	M	M
Mazraat Aassaf	VL	VL	L	Mazraat Bani Saab	L	L	M	Mchaa El-Jobbeh	M	M	M
Metrit	ML	L	M	Moghr El-Ahoual	L	L	M	Ouadi Qannoubine	VL	VL	L
Qanat	L	L	M	Qnayer	L	L	ML	Tourza	L	L	M

### Batroun

Municipality	20-Oct	21-Oct	22-Oct	Municipality	20-Oct	21-Oct	22-Oct	Municipality	20-Oct	21-Oct	22-Oct
Aabrine	ML	L	M	Aalali	L	L	M	Aartiz	L	VL	M
Abdelli	L	L	M	Ajdabra	ML	L	M	Assia	L	L	M
Basbina	ML	L	M	Batroun	ML	L	M	Bcheleh	L	L	M
Bechtoudar	L	L	M	Beit Chlala	L	L	M	Beit Kassab	L	VL	ML
Bijdarfil	ML	L	M	Bqesmaya	ML	L	M	Chatine	L	L	M
Chebtin	L	L	M	Chekka	M	L	MH	Daael	L	L	M
Dahr Abi Yaghi	L	L	M	Daraya El-Batroun	L	L	M	Deir Billa	L	L	M
Deir Kfifane	L	L	M	Deir Mar Youhanna EL	L	L	M	Deir Mar Youssef Jra	L	L	M
Douma	L	L	M	Douq	L	L	M	Eddeh El-Batroun	ML	L	M
Ftahat El-Batroun	L	VL	M	Ghouma	L	L	M	Hadtoun	L	L	M
Hamat	ML	L	M	Harbouna	ML	VL	M	Hardine	L	VL	L
Helta	L	L	M	Hery	ML	L	MH	Jebbla	L	VL	M
Jrabta El-Batroun	L	L	M	Jrane El-Batroun	ML	L	M	Kfar Aabida	L	L	M
Kfar Halda	L	L	M	Kfarb Shlaimane	L	L	M	Kfarhatna	L	VL	M
Kfarhay	M	L	M	Kfarhelos	ML	L	M	Kfifane	ML	L	M



Kfour El Arabi	L	L	M	Koubba	ML	L	M	Kour	ML	L	M
Mar Mama	L	VL	M	Masrah	L	L	M	Mehmarch	L	L	M
Mrah Chdid	L	L	M	Mrah El Ziyat	L	L	M	Mrah El-Hajj	L	L	M
Nahle El-Batroun	L	L	M	Niha El-Batroun	L	L	M	Ouajh El-Hajjar	ML	L	M
Ouata Houb	L	L	M	Qatnaaoun	ML	L	M	Racha	L	L	M
Rachana	L	L	M	Rachkida	ML	L	M	Ram El-Batroun	L	L	M
Ras Nahhach	ML	L	M	Selaata	ML	L	M	Sghar	L	L	M
Smar Jbayl	L	L	M	Sourat El-Batroun	L	L	M	Tannourine El-Faouqa	ML	ML	M
Tannourine Et-Tahta	L	L	ML	Thoum	L	L	M	Toula El-Batroun	L	L	M
Zan	L	L	M								

## Zgharta

Municipality	20-Oct	21-Oct	22-Oct	Municipality	20-Oct	21-Oct	22-Oct	Municipality	20-Oct	21-Oct	22-Oct
Aachach	M	L	MH	Aalma	M	L	MH	Aarde	M	VL	M
Aintourine	L	L	M	Arabet Qozhaya	L	L	M	Arde	M	L	M
Arjis	L	L	M	Asnoun	ML	VL	M	Ayto	L	L	M
Basloukit	M	L	M	Bchannine	M	L	M	Besebeel	M	VL	M
Bhairret Toula	ML	L	L	Bnachee	L	L	M	Boussit	M	L	MH
Danha	M	L	M	Daraiya Zgharta	L	L	M	Deir Jdeide	M	VL	M
Ehden	M	L	M	Halan	M	L	M	Hariq Zgharta	ML	VL	M
Houakir	M	VL	M	Hraiqis	M	L	MH	laal	ML	VL	M
Ijbaa	L	L	M	Karm Saddeh	L	L	M	Kfarchakhna	M	VL	M
Kfardlaqous	M	VL	M	Kfarfou	L	L	M	Kfarhata Zgharta	M	VL	M
Kfarhoura	M	VL	M	Kfarsghab	ML	L	M	Kfaryachit	ML	VL	M
Kfarzaina	M	VL	M	Khaldiye	M	VL	M	Mazraat Ajbeaa	M	VL	M
Mazraat Et-Teffah	L	L	ML	Mazraat Jneid	ML	VL	M	Mejdlaiya Zgharta	M	L	MH
Merh Kfarsghab	ML	L	M	Miryata	M	L	MH	Miziara	L	L	M
Mzraat Kefraya	M	L	M	Qorah Bach	M	VL	M	Rachiine	M	VL	MH
Ras Kifa	L	L	M	Sakhra	M	VL	M	Sebhel Zgharta	L	L	M
Serhel	L	VL	L	Tallet Zgharta	M	VL	M	Toula Zgharta	L	L	ML
Zgharta	M	VL	M								

## Minieh-Denniye

Municipality	20-Oct	21-Oct	22-Oct	Municipality	20-Oct	21-Oct	22-Oct	Municipality	20-Oct	21-Oct	22-Oct
Aasaymout	L	VL	L	Aaymar	L	L	M	Aazki	L	VL	M
Ain El-Tineh-Miniyeh	L	VL	M	Assoun	L	L	M	Bakhaaoun	L	VL	M
Bchennata	M	L	M	Bechehhara	ML	VL	M	Beddawi	M	L	MH
Behouaita	L	L	M	Beit El Foqss	L	VL	M	Beit Haouik	L	VL	M
Beit Zoud	L	VL	M	Bekaasafrine	M	L	M	Borj El Yahoudiyeh	M	L	MH
Bqarsouna	L	VL	M	Btermaz	L	VL	ML	Debaael	L	VL	L
Deir Ammar	M	L	MH	Deir Nbouh	M	L	M	Haouaret-Miniyeh	L	L	M
Haql el Azimeh	L	VL	ML	Harf El Siyad	L	VL	ML	Hazmiye-Miniyeh	L	VL	ML
Izal	L	L	M	Jarjour	ML	VL	M	Jayroun	L	VL	L
Kahf El-Malloul	ML	L	M	Karm El-Moher	L	L	M	Kfar Binine	L	VL	ML
Kfarchalane	L	VL	M	Kfarhabou	ML	VL	M	Kharroub-Miniyeh	L	L	M
Mazraat El-Kreme	L	VL	M	Mazraat Ketrane	L	VL	M	Merkebta	M	L	MH
Minyeh	M	L	MH	Mrah El Sfirat	L	VL	L	Mrah Sraj	L	VL	M
Mrebbine	ML	L	M	Nabi Youcheaa	M	L	MH	Nemrine	L	L	M



Qarhaiya	L	VL	M	Qarne	L	VL	L	Qarsita	L	VL	L
Qattineh-Miniyeh	VL	VL	L	Qemmamine	L	VL	L	Qraine	L	VL	ML
Raouda-Aadoua	M	VL	M	Rihaniyet-Miniyeh	M	L	MH	Sfireh	L	VL	ML
Sir Ed-Danniyeh	L	VL	M	Tarane	L	VL	L	Terbol-Miniyeh	M	L	MH
Zaghartaghriane	M	L	M	Zouq Bhannine	M	L	MH				

## Nabatiye

### Nabatiye

Municipality	20-Oct	21-Oct	22-Oct	Municipality	20-Oct	21-Oct	22-Oct	Municipality	20-Oct	21-Oct	22-Oct
Aabba	M	M	MH	Aazzi	M	M	MH	Adchit El-Chqif	M	M	MH
Ain Bou Swar	M	M	MH	Ain Kana	M	M	MH	Ali El-TaHER	M	M	MH
Ansar	M	M	MH	Arab Salim	M	M	MH	Arnoun	M	M	MH
Bfaroue	M	M	M	Breyqaah	M	M	MH	Charqiyeh	M	M	MH
Choukine	M	M	MH	Deir El Zahrani	M	M	MH	Doueir El-Nabatiyeh	M	M	MH
Habbouch El-Nabatiye	M	M	MH	Hamra El-Nabatiyeh	M	M	MH	Harouf El-Nabatiyeh	M	M	MH
Hmaile	M	M	MH	Houmin El Faouqa	M	M	MH	Houmin El Tahta	M	M	MH
Jarjough	M	M	M	Jbaah El-Nabatiyeh	M	M	M	Jebchit	M	M	MH
Kfar Djal El-Nabatiy	M	M	MH	Kfar Remmane	M	M	MH	Kfar Sir	M	M	MH
Kfar Tebnit	M	M	MH	Kfarfila	M	M	MH	Kfour El-Nabatieh	M	M	MH
Mayfadoun	M	M	MH	Mazraat Bsaffour	M	M	MH	Mazraat Chalbaal	M	M	MH
Mazraat Dmoul	M	M	MH	Mazraat El Khreibeh	M	M	MH	Mazraat El-Bayad El-	M	M	MH
Mazraat Kfarjaouz	M	M	MH	Mazraat Qalaat Meiss	M	M	MH	Nabatiyeh El-Fawka	M	M	MH
Nabatiyeh Et-Tahta	M	M	MH	Namiriyyeh	M	M	MH	Qaaqaaiyet El Jisr	M	M	MH
Qossaibeh El-Nabatiy	M	M	MH	Roumine	M	M	MH	Sarba El-Nabatieh	M	M	MH
Sir El-Gharbiyeh	M	M	MH	Toul	M	M	MH	Yehmor El-Nabatiyeh	M	M	MH
Zaoutar El Charkiyeh	M	M	MH	Zaoutar El-Gharbiyeh	M	M	MH	Zebdine El-Nabatiyeh	M	M	MH
Zefta	M	M	MH								

### Hasbaiya

Municipality	20-Oct	21-Oct	22-Oct	Municipality	20-Oct	21-Oct	22-Oct	Municipality	20-Oct	21-Oct	22-Oct
Ain Jarfa	M	M	M	Abou Qamha	M	ML	M	Ain Qania	M	M	M
Bourghos	M	ML	MH	Chebaa	M	M	M	Chouaya Hasbaya	M	M	M
Dellafeh	M	ML	MH	Fardiss Hasbaiya	M	ML	M	Hasbaya	M	M	M
Hbariyeh	M	M	M	Kaoukaba Hasbaiya	M	ML	MH	Kfar Chouba	M	M	M
Kfar Hamam	M	M	M	Kfeir El-Zait	M	M	M	Khalwat Hasbaya	M	M	M
Khreibet Hasbaiya	M	M	MH	Majidiyeh Hasbaiya	M	M	M	Marj Ez-Zhour (Haouc	M	M	M
Meri	M	M	MH	Mimass	M	M	M	Rachaiya El-Fokhar	M	ML	M
Salaiyeb	M	M	MH								

### Marjayoun

Municipality	20-Oct	21-Oct	22-Oct	Municipality	20-Oct	21-Oct	22-Oct	Municipality	20-Oct	21-Oct	22-Oct
Aalmane Marjaayoun	M	M	M	Aamra	M	M	MH	Adayseh Marjaayoun	M	M	MH
Adchit El-Koussair	M	M	MH	Ain Arab Marjaayoun	M	M	MH	Bani Haiyann	M	M	M
Blatt Marjaayoun	M	ML	MH	Blida	M	M	M	Borj El-Moulouk	M	M	MH
Boueyda Marjaayoun	M	ML	M	Deir Mimass	M	M	M	Deir Siriane	M	M	MH
Dibbine	M	ML	MH	Ebel El Saqi	M	ML	MH	Houla	M	M	M
Houra	M	M	MH	Kfar Kila	M	M	MH	Khiam Marjaayoun	M	M	MH



Klayaa	M	M	MH	Majdel Selem	M	M	M	Marjaayoun	M	ML	MH
Markaba	M	M	M	Mays El-Jabal	M	M	M	Mazraat Doumiat	M	M	MH
Mazraat Sarada	M	M	MH	Mhaibib	M	M	M	Qabrikha	M	M	M
Qantara	M	M	MH	Rab El-Thalathine	M	M	MH	Saouaneh Marjayoun	M	M	M
Talloussa	M	M	M	Taybeh Matjaayoun	M	M	MH	Touline	M	M	M

## Bent Jbail

Municipality	20-Oct	21-Oct	22-Oct	Municipality	20-Oct	21-Oct	22-Oct	Municipality	20-Oct	21-Oct	22-Oct
Ain-Ebel	M	ML	M	Aitaroun	M	M	M	Aynata Bint Jbeil	M	ML	M
Ayta El-Chaeb	M	ML	M	Ayta El-Jabal	M	M	M	Beit Lif	M	ML	M
Beit Yahoun	M	M	M	Bint Jbeil	M	ML	M	Borj Qalaway	M	M	MH
Braachit	M	M	M	Chakra	M	M	M	Debel	M	ML	M
Deir Antar	M	M	M	Froun	M	M	MH	Ghandouriyeh Bint Jb	M	M	MH
Hanine	M	ML	M	Hariss	M	M	M	Hdatha	M	M	M
Jmeymeh	M	M	M	Kafra Bint Jbeil	M	ML	M	Kfar Dounine	M	M	M
Khirbet Selm	M	M	M	Kounine	M	M	M	Maroun El Ras	M	M	M
Qalaway	M	M	MH	Qaouzah	M	L	M	Qatmoun	M	ML	M
Ramya Bint Jbeil	M	L	M	Rchaf	M	ML	M	Rmeich	M	ML	M
Safad Al Battikh	M	M	M	Salhaneh	M	L	M	Serbine	M	ML	M
Sultanieh Bint Jbeil	M	M	M	Tibnine	M	M	M	Tiri	M	ML	M
Yaroun	M	ML	M	Yater	M	ML	M				

## Mont Liban

### Jbail

Municipality	20-Oct	21-Oct	22-Oct	Municipality	20-Oct	21-Oct	22-Oct	Municipality	20-Oct	21-Oct	22-Oct
Aabeydat	L	L	M	Aalita	L	L	M	Aamchit	ML	ML	M
Aarab El-Lahib	L	L	M	Aarasta	M	ML	M	Adonis Jbeil	L	L	M
Afqa Jbeil	ML	ML	M	Ain El Delbeh Jbeil	L	L	M	Ain El-Ghouyba	L	L	M
Ain Jrain	L	L	M	Ain Kfah	L	L	M	Almat El Chemaliyat	L	L	M
Almat El-Jenoubiya	L	L	M	Aqoura	M	M	M	Bayzoun	L	L	M
Bchille Jbeil	L	L	M	Bechtida	L	L	M	Behdaydat	L	L	M
Beit Habbaq	L	L	M	Bejjeh	L	L	M	Bekhaaz	L	L	M
Berbara Jbeil	L	ML	M	Bintael	L	L	M	Birket Hjoula	L	L	M
Blatt Jbeil	L	L	M	Boulhos	L	L	M	Breyj Jbeil	L	L	M
Chamat	L	L	M	Chikhane	L	L	M	Chmout	L	L	M
Eddeh Jbeil	L	ML	M	Ehmej	L	L	M	Fatre	L	L	M
Ferhet	L	L	M	Fghal	L	L	M	Frat	L	L	ML
Ghabat	M	M	M	Ghalboun	L	L	M	Gharzouz	L	L	M
Ghofrine	L	L	M	Habil	L	VL	M	Halate	L	L	M
Haqel	L	L	M	Hbaline	L	L	M	Hboub	L	L	M
Hdeine	M	M	M	Hema Er-Rehban	ML	ML	M	Hema Mar Maroun Aann	L	ML	M
Hjoula	L	L	M	Hosrayel	L	L	M	Hsarat	L	L	M
Hsoun	L	L	M	Jaj	L	L	M	Janne	L	L	L
Jbeil	ML	ML	MH	Jeddeyel Jbeil	L	L	M	Jlisse	L	L	M
Jouret El-Qattine	L	L	M	Kfar Baal Annaya	L	L	M	Kfar Kidde	L	L	M
Kfar Kouas	L	L	M	Kfar Mashoun	L	L	M	Kfoun	L	L	M

Kharbe Jbeil	L	L	M	Laqlouq	M	M	M	Lassa	L	L	M
Lehfed	L	L	M	Maad	L	L	M	Mar Sarkis	ML	ML	M
Mastita	L	ML	M	Mayfouq	L	L	M	Mazraat El Siyad	ML	M	M
Mazraat El-Maaden	VL	L	ML	Mechane	L	L	M	Mechmech Jbeil	L	L	M
Mehrin	L	ML	M	Mejdel El-Akoura	M	M	M	Mghayreh Jbeil	M	M	M
Mounsef	L	L	M	Nahr Ibrahim	ML	ML	M	Qahmez	L	L	M
Qartaba	L	L	M	Qartaboun	ML	M	MH	Qattara Jbeil	L	L	M
Qorqraya	VL	L	L	Ramout	L	L	M	Ras Osta	L	L	M
Rihane Jbeil	L	ML	M	Sakiet El-Khayt	L	L	M	Saqi Richmaya	L	L	M
Sebrine	L	L	M	Seraita	M	M	M	Souane Jbeil	L	L	M
Tadmor	M	M	M	Tartej	L	L	M	Torzaiya	L	L	M
Yanouh Jbeil	M	M	M	Zibidine Jbeil	L	L	M				

## El Metn

Municipality	20-Oct	21-Oct	22-Oct	Municipality	20-Oct	21-Oct	22-Oct	Municipality	20-Oct	21-Oct	22-Oct
Aain El-Qabu	M	M	M	Aain El-Qach	M	M	M	Aain El-Teffaha	M	M	M
Aain el-Safsaf El-M	M	M	M	Abou Mizane	M	M	M	Ain Aar	M	L	M
Ain Alaq	M	L	M	Ain El-Kharroube	M	M	M	Ain El-Sendiane	M	M	M
Ain El-Zeitoune	M	M	M	Ain Saadeh	M	L	M	Aintoura El-Matn	M	M	M
Amaret Chalhoub	M	ML	MH	Antelias	M	ML	MH	Atchaneh	M	L	M
Ayroun	M	M	M	Baabdat	M	M	M	Baouchariyeh	M	L	MH
Baskinta	M	M	M	Beit Chabab	M	M	M	Beit El-Charar	M	ML	M
Beit El-Kekko	M	ML	MH	Beit Mery	M	L	M	Bhersaf	M	M	M
Bikfaya	M	M	M	Biyakout	M	ML	MH	Bnabil	M	M	M
Bourj Hammoud	M	L	MH	Bqennaya	M	L	M	Broummana El-Matn	M	L	M
Bsalim	M	L	M	Bsifrine	M	M	M	Bteghrine	M	M	M
Chaouiye	M	ML	M	Chouaya El-Matn	M	M	M	Choueir	M	M	M
Chrine	M	M	M	Dahr El Sawan El-Mat	M	ML	M	Daychouniyeh	M	L	M
Dbayeh	M	ML	MH	Deir Chamra	ML	ML	M	Deir Mar Abda el Mch	M	L	M
Deir Mar Roukouz	M	L	MH	Deir Tamiche	M	L	M	Dik El-Mehdi	M	L	M
Dikwaneh	M	L	MH	Douar El-Matn	M	M	M	Fanar	M	L	M
Fraike	M	L	M	Haret El-Ballaneh	M	L	M	Hbous	M	L	M
Himlaya	M	M	M	Jal El Did	M	ML	MH	Jdeideh El-Metn	M	ML	MH
Jouar El-Matn	M	M	M	Jouret El-Ballout	M	L	M	Kaaqour	M	M	M
Kfar Aaqab	M	M	M	Kfertay El-Matn	M	ML	M	Khenchara	M	M	M
Khillet El-Mtain	M	M	M	Konnabat Broummana	M	L	M	Konnabat Salima	M	M	M
Machraah El-Matn	M	M	M	Majdel Tarchich	M	M	M	Majzoub	M	L	M
Mansouriyeh El-Metn	M	L	MH	Mar Boutros Karm Et-	M	M	M	Mar Chaya et Mzekke	M	L	M
Mar Moussa Ed-Douar	M	M	M	Marjaba	M	M	M	Masqa	M	L	M
Mayasse	M	M	M	Mazraat Deir Aoukar	M	L	M	Mazraat El-Hadirat	M	L	M
Mazraat Yachouh	M	ML	MH	Mchikha	M	M	M	Menqlet Mezher	M	L	M
Mhaydseh Matn	M	M	M	Mkalles	M	L	MH	Mrouj	M	M	M
Mtain	M	M	M	Mtayleb	M	L	M	Nabay	M	L	M
Naccache	M	L	M	Ouadi Chahine	M	M	M	Ouadi El-Karm El-Mat	ML	ML	M
Ouata El-Mrouj	M	M	M	Ouyoun El-Matn	M	L	M	Qornet Chehwan	M	L	M
Qornet El-Hamra	M	L	M	Roumieh	M	L	M	Sfeilet Bikfaya	M	M	M
Sinn El-Fil	M	L	MH	Zabbougha	ML	ML	M	Zalqa	M	ML	MH



Zarouon	M	M	M	Zekrite	M	L	M	Zighrine El-Matn	M	M	M
Zouk El-Khrab	M	L	M								

## Chouf

Municipality	20-Oct	21-Oct	22-Oct	Municipality	20-Oct	21-Oct	22-Oct	Municipality	20-Oct	21-Oct	22-Oct
Aalmane El-Chouf	M	L	MH	Aammq El-Chouf	M	ML	M	Ain Ouzein	ML	L	M
Ain Qani	ML	ML	M	Ain Zhalta	M	M	M	Ainbal	M	L	M
Amatour	M	M	M	Anout	M	L	M	Atrine	M	ML	M
Baadarane	M	M	M	Baaqline	M	L	M	Baasir	M	L	MH
Barja	M	L	MH	Barouk	ML	M	M	Bater	M	M	M
Batloun	M	M	M	Bayqoun	M	M	M	Bchetfine	M	L	M
Beiteddine	M	ML	M	Benouati Ech-Chouf	M	L	M	Berjein	M	L	M
Bireh et Mtalleh	M	M	M	Biret El-Chouf	M	M	M	Bkechtine Ouel Mchei	M	L	M
Bkifa El-Chouf	M	L	M	Botme	L	L	M	Bqaiaa Ech-Chouf	M	L	M
Bsaba El-Chouf	M	L	M	Chammis El-Chouf	M	L	M	Chehim	M	L	M
Chemaarine	M	L	M	Chourit	ML	L	M	Daher El-Chouf	M	L	M
Dalhoun	M	L	M	Damour	M	L	M	Daraya El-Chouf	M	L	M
Deir El-Moukhalles	M	L	M	Deir Baba	M	L	M	Deir Dourit	M	L	M
Deir El-Qamar	M	L	M	Deir Kouche	M	L	M	Dibbieh	M	L	M
Dmit	M	L	M	Fouara Jaafar	M	ML	M	Fraidis El-Chouf	M	M	M
Ghabet Jaafar	M	L	M	Gharife	M	L	M	Haret Jandal	M	M	M
Hasrout	M	L	M	Jadra	M	L	MH	Jahlieh	M	L	M
Jbeih El-Chouf	M	M	M	Jdeidet El-Chouf	ML	ML	M	Jiyeh	M	L	MH
Jleilyeh	M	L	M	Jmailiyeh	M	L	M	Joun	M	L	M
Kahlounie El-Chouf	M	M	M	Ketermaya	M	L	MH	Kfar Faqoud	M	L	M
Kfar Hamal	M	ML	M	Kfar Him	M	L	M	Kfar Katra	M	ML	M
Kfar Niss	M	ML	M	Kfar hay	M	L	M	Kfarnabrakh	M	ML	M
Khirbet Bisri	M	L	M	Knayse El-Chouf	M	ML	M	Maaniyeh	M	L	M
Maasser Beiteddine	M	ML	M	Maasser El-Chouf	ML	M	M	Majdalouna	M	L	M
Majdel El-Meouch	M	ML	M	Mazboud	M	L	M	Mazmoura	M	L	M
Mazraat El Chouf	M	M	M	Mazraat El Daher	M	L	M	Mazraat El-Douair	ML	L	M
Mechref	M	L	M	Mghairie	M	L	MH	Mghayrie El-Chouf	M	L	M
Moukhtara	ML	ML	M	Mrusti	M	M	M	Mtolle	M	L	M
Naameh	M	L	MH	Niha El-Chouf	M	M	M	Ouadi Abou Youssef	M	L	M
Ouadi Ed-Deir	M	L	M	Ouadi El-Sit	M	ML	M	Ouadi bnehlay	M	L	M
Qraibeh	M	ML	M	Qreiaa	M	L	M	Rmayle El-Chouf	M	L	MH
Semqaniyeh	M	M	M	Sibline	M	L	MH	Sirjbeil	M	L	M
Warhanieh	M	M	M	Werdaniyeh	M	L	MH	Zaarourieh	M	L	M

## Baabda

Municipality	20-Oct	21-Oct	22-Oct	Municipality	20-Oct	21-Oct	22-Oct	Municipality	20-Oct	21-Oct	22-Oct
Abadiyeh	M	L	M	Ain Mouaffaq	M	L	M	Araiya	M	L	M
Arbaniyeh	M	M	M	Arsoun	M	M	M	Baabda	M	L	M
Baalchmey	M	L	M	Bmaryam	M	M	M	Bourj El-Brajneh	M	L	MH
Boutchay	M	L	MH	Bsaba Baabda	M	L	M	Btekhney	M	M	M
Btibyat	M	M	M	Bzbeddine	M	M	M	Chbeniyeh	M	M	M
Chiyah	M	L	MH	Chmeisset Baabda	M	M	M	Chouit	M	L	M
Deir El-harf	M	M	M	Deir Khouna	M	ML	M	Dlaybeh	M	M	M

Falougha	M	M	M	Furn El-Chebbak	M	L	MH	Hadath Beyrouth	M	L	MH
Halaliyeh Baabda	M	L	M	Hammana	M	M	M	Haret El Sett	M	L	M
Haret Hamze	M	ML	M	Haret Hreik	M	L	MH	Hasbaiya El-Metn	M	M	M
Jouar El-Hoz	M	M	M	Jouret Arsoun	M	M	M	Kfar Chima	M	L	MH
Kfar Selouane	M	M	M	Khalouat Baabda	M	M	M	Kneisset Baabda	M	ML	M
Laylakeh	M	L	MH	Louayzeh Baabda	M	L	M	Merdache	M	L	MH
Mzairaa Baabda	M	L	M	Ouadi Chahrour El Ol	M	L	M	Ouadi Chahrour El So	M	L	M
Qalaa Baabda	M	M	M	Qhraybe Baabda	M	M	M	Qobbayaa	M	M	M
Qornayel	M	M	M	Qortada	M	L	M	Qrayeh Baabda	M	M	M
Qsaibeh Baabda	M	L	M	Qtale Baabda	M	M	M	Ras El Metn	M	ML	M
Ras El-Haref	M	M	M	Rouayset El-Ballout	M	L	M	Salima Baabda	M	M	M
Tahouitat El Ghadir	M	L	MH	Tarchich	M	M	M	Zandouqa	M	L	M

## Aley

Municipality	20-Oct	21-Oct	22-Oct	Municipality	20-Oct	21-Oct	22-Oct	Municipality	20-Oct	21-Oct	22-Oct
Abey	M	L	M	Aghmid	M	M	M	Ain Dara	M	M	M
Ain Drafil	M	L	M	Ain El Halazoun	M	L	M	Ain El-Rmmaneh	M	L	M
Ain Jedideh	M	L	M	Ain Ksour	M	L	M	Ain Onoub	M	L	M
Ain Traz	M	ML	M	Ainab	M	L	M	Aley	M	L	M
Aramoun	M	L	M	Aytat	M	L	M	Azouniyeh	M	M	M
Baawerta	M	L	M	Badghan Oua Wadi Bad	M	M	M	Bassatine	M	L	M
Bayssour	M	L	M	Bchamoun	M	L	M	Bdadoun	M	L	M
Behouara	M	L	M	Bennay	M	L	M	Bhamdoun El-Dayaa	M	L	MH
Bhamdoun El-Mhatta	M	ML	MH	Bkhechtey	M	L	M	Bleibel	M	L	M
Bmakine	M	L	M	Bmehray	M	M	M	Bouzrid	M	L	M
Bserrine	M	L	M	Bsous	M	L	M	Btalloun	M	L	MH
Btater	M	L	M	Chanay	M	ML	MH	Charoun	M	M	M
Chartoun	M	L	M	Chemlane	M	L	M	Choueifat El-Aamrous	M	L	MH
Choueifat El-Oumara	M	L	MH	Choueifat El-Quoubbe	M	L	MH	Dakkoun	M	L	M
Deir Qoubel	M	L	M	Dfoun	M	L	MH	Douair El Remmaneh	M	L	M
Ghaboun	M	L	M	Habramoun	M	L	M	Homs Oua Hama	M	L	M
Houmal	M	L	M	Jisr El Qadi	M	L	M	Kehaleh	M	L	M
Keyfoun	M	L	M	Kfar Aamey	M	L	M	Kommatyeh	M	L	M
Maasrati	M	L	M	Majdel Baana	M	M	M	Mansourieh et Ain El	M	L	M
Mazraat El-Nahr	M	L	M	Mchakhte	M	M	M	Mecherfeh	M	ML	M
Mejdlaya	M	L	M	Mrayjat	M	M	M	Ramliyah	M	ML	M
Rechmaya	M	ML	M	Rejmeh	M	L	M	Remhala	M	L	M
Rouaysset El Neemane	M	L	M	Saoufar	M	M	M	Selfaya	M	ML	M
Sirhmoul	M	L	M	Souq El Ghareb	M	L	M	Taazanieh	M	L	MH

## Kesrouane

Municipality	20-Oct	21-Oct	22-Oct	Municipality	20-Oct	21-Oct	22-Oct	Municipality	20-Oct	21-Oct	22-Oct
Achkout	ML	L	M	Adma Oua Dafneh	ML	L	M	Ain Ed-Delbe Kesroua	M	L	M
Ain El-Rihane	L	L	M	Aintoura Kesrouane	ML	L	M	Ajaltoun	ML	M	M
Akaybeh Kesrouane	ML	ML	MH	Aramoun Kesrouane	ML	ML	M	Azra ouel Ozor	L	L	M
Ballouneh	M	ML	M	Batha	ML	L	M	Bekaatat Achkout	ML	ML	M
Bekaatat Kanaan	ML	ML	M	Bizhel	L	L	M	Bouar	ML	L	M
Bqaatouta	M	ML	M	Bqaq Ed-Dine	ML	ML	M	Bzommar	ML	ML	M



Chahtoul	L	ML	M	Chnaniir	L	L	M	Chouan	L	L	ML
Daraya Kesrouane	ML	ML	M	Darououn	ML	L	M	Deir Baqlouch	L	L	M
Dlebta	L	L	M	Eghbeh	L	L	M	Faraya	M	ML	M
Fatka	ML	L	M	Feytroun	ML	L	M	Ghazir	ML	L	M
Ghbaleh Kesrouane	L	L	M	Ghedrass	L	L	M	Ghosta	ML	ML	M
Ghynéh	ML	ML	M	Harharaya w Kattine	ML	ML	M	Harissa Kesrouane	L	L	M
Hayata	ML	L	M	Hosein	L	L	M	Hrajel	M	ML	M
Jdeideh Ghazir	ML	ML	M	Jeita	ML	L	M	Jounieh Ghadir	ML	L	M
Jounieh Haret Sakhr	ML	L	M	Jounieh Salel Alma	ML	L	M	Jounieh Sarba	ML	L	MH
Jouret Bedrane	L	L	M	Jouret Mhad	L	L	M	Jouret Termos	ML	ML	M
Kfar Debiane	M	ML	M	Kfar Tay Kesrouane	ML	L	M	Kfar Yassine	ML	L	MH
Kfour Kesrouane	ML	ML	M	Kharayeb Nahr Ibrahi	L	L	M	Klayaat Kesrouane	ML	ML	M
Maarab	L	L	M	Maaysra Kesrouane	L	L	M	Mayrouba	M	ML	M
Mazraat Er-Ras	ML	L	M	Mazraat Mrah El-Mir	ML	ML	M	Mchaa El Ftouh	M	M	M
Mchaa Faraya	M	M	M	Mchaa Kfar Dibiane	M	M	M	Mghaer	M	L	M
Mradiyah	L	L	M	Nahr Ed-Dahab	L	L	M	Nammoura Kesrouane	L	L	M
Ouata El Jaouz	ML	ML	M	Ouata Sillam	ML	L	MH	Raachine	ML	L	M
Rayfoun	ML	ML	M	Safra Kesrouane	ML	L	M	Shayle Kesrouane	ML	L	M
Tabarja	ML	L	M	Yahchouch	L	L	M	Zaaytreh	L	L	M
Zeytoun	L	L	M	Zouk Mikael	ML	L	MH	Zouk Mosbeh	ML	L	M

## Baalbek\_Hermel

### Baalbek

Municipality	20-Oct	21-Oct	22-Oct	Municipality	20-Oct	21-Oct	22-Oct	Municipality	20-Oct	21-Oct	22-Oct
Aadous	M	M	M	Aamchki	M	L	ML	Aarsal	L	L	M
Ain Baalbek	L	L	M	Ain Bourday	M	ML	M	Ain El-Benye	M	ML	M
Ain El-Jaouz Baalbek	M	ML	M	Ain El-Siya Chadoura	M	ML	M	Al Khodr Baalbek	M	M	M
Al Nabi Chit	M	M	M	Aynata Baalbek	M	M	M	Baalbek	M	ML	M
Bachwat	M	ML	M	Barqa	M	ML	M	Bednayel Baalbak	M	M	MH
Beit Chama	M	M	M	Bijjaje	M	M	M	Bouday	M	M	M
Brital	M	ML	M	Btadi	M	M	M	Chaat	M	M	M
Chaibe	M	ML	M	Chlifa	M	M	MH	Chmestar	M	M	M
Dar El-Oussa	M	M	M	Deir El-Ahmar	M	M	M	Deir Mar Maroun Baal	M	M	M
Douris	M	M	M	Fakiha	M	M	M	Hadath Baalbek	M	M	M
Ham	M	ML	M	Haour Taala	M	M	M	Hizzine	M	M	M
Hlebta	M	L	M	Hosh Barada	M	M	M	Hosh El Dahab	M	M	M
Hosh El Snid	M	M	M	Hosh El-Nabi	M	M	M	Hosh El-Rafiq	M	M	M
Hosh Tal Safiya	M	M	M	Hrebta	M	M	M	laat	M	M	M
Jebaa	M	M	M	Jenta	M	M	M	Kfar Dabach	M	M	M
Kfar Dane	M	M	M	Khraibeh El-Hermel	M	M	M	Khreibet Baalbek	M	M	M
Kneisset Baalbek	M	M	M	Labueh	ML	M	M	Maarboun	M	L	M
Majdaloun	M	M	M	Maqneh	M	M	M	Mazraat Beit Mcheik	M	M	M
Misraya	M	M	M	Moqraq	M	M	M	Nabha El-Damdoum	M	ML	M
Nabi Chbay	M	ML	M	Nabi Osman	L	ML	M	Nahleh baalbek	M	L	M
Ouadi El-Oss	ML	ML	M	Qaa Baayoun	M	ML	M	Qaa Jouar Maqiye	M	M	M
Qaa Ouadi El-Khanzir	M	M	M	Qah Baalbek	M	M	M	Qarha Baalbek	M	M	MH

Qsarnaba	M	M	M	Ram Baalbek	M	M	M	Ras Baalbek El Sahl	M	M	M
Ras Baalbek El-Charq	M	ML	M	Riha	M	M	M	Saaide	M	M	M
Sbouba	M	M	M	Seriine El-Tahta	M	M	M	Slouqi	M	M	M
Taiba Baalbek	M	M	M	Talia	M	M	M	Taraiya	M	M	M
Temnin El Fawqa	M	M	M	Temnin El-Tahta	M	M	M	Tfail	M	ML	M
Yahfoufa	M	M	M	Yammouneh	M	M	M	Younine	M	ML	M
Zboud	M	M	M								

## Hermel

Municipality	20-Oct	21-Oct	22-Oct	Municipality	20-Oct	21-Oct	22-Oct	Municipality	20-Oct	21-Oct	22-Oct
Charbine El-Hermel	M	L	M	Hermel Jbab	M	L	M	Hermel	M	M	M
Maaysra El-Hermel	M	ML	M	Michaa Mrajhine	M	L	M	Ouadi Faara	M	L	M
Ras Baalbek - Ouadi	M	M	M	Ras Baalbek El Gharb	M	ML	M	Zighrine	M	ML	M

## Akkar

### Akkar

Municipality	20-Oct	21-Oct	22-Oct	Municipality	20-Oct	21-Oct	22-Oct	Municipality	20-Oct	21-Oct	22-Oct
Aain Tinta	M	ML	MH	Aaiyat	M	L	M	Aakkar El-Aatiqa	M	L	M
Aamar Akkar	M	L	MH	Aamar El Baykat	M	ML	MH	Aamayer	M	ML	M
Aamriyet Akkar	M	ML	MH	Aandqet	M	ML	M	Aarmeh	M	L	M
Aarqa	M	L	MH	Aawaynat	M	M	M	Aayoun Akkar	M	L	M
Abboudiye	M	L	MH	Ain El-Zeit	M	ML	MH	Ain Yaaqoub	M	L	M
Akroum	M	ML	M	Aridet Cheikh Zennad	M	M	MH	Baldeh w Mazraat Bal	M	L	MH
Barcha	M	L	MH	Bardeh	M	ML	M	Bebnine	M	L	MH
Beino	M	L	M	Beit Ayoub	M	L	MH	Beit El-Haouch	M	L	MH
Beit Mellat	M	L	MH	Beit Younes	M	L	M	Berbara Akkar	M	ML	MH
Berqayel	M	L	MH	Bezbina	M	L	M	Bireh Akkar	M	ML	MH
Borj	M	L	MH	Bqerezla	M	L	MH	Bzal	M	L	M
Chane	M	L	M	Chaqdouf	M	L	M	Charbila	M	L	MH
Cheikh Mohammad	M	L	MH	Cheikh Taba Es-Sahl	M	ML	MH	Cheikh Taba	M	L	MH
Cheikh Zennad	M	M	MH	Cheikhlar	M	M	M	Chir Hmairine	M	L	MH
Daghle	M	ML	MH	Dahr Laissine	M	L	MH	Darine	M	L	MH
Dawra	M	L	M	Dawsa w Baghdadi	M	ML	M	Dayret Nahr El-Kabir	M	M	M
Deir Dalloum	M	L	MH	Deir Jennine	M	ML	MH	Denbou	M	L	M
Dibbabiyyeh	M	ML	MH	Douair Aadwiyeh	M	ML	MH	Fassikine	M	ML	MH
Fnaydek	M	L	M	Fraydes Akkar	M	ML	M	Ghazayle	M	L	MH
Habchit	M	L	M	Hakour	M	L	MH	Halba	M	L	MH
Haouchab	M	L	MH	Hayssat	M	M	MH	Haytla	M	L	MH
Hayzouq	M	L	M	Hedd	M	L	MH	Hmaira Akkar	M	L	M
Hmaiss Akkar	M	L	MH	Hnaider	M	M	M	Hokr Ed-Dahri	M	M	MH
Hokr Etti	M	L	MH	Hokr Jouret Srar	M	L	MH	Houaich	M	L	M
Hrar	M	L	M	Idbil	M	L	M	Ilal	M	L	MH
Janine	M	L	MH	Jdeidet El-Joumeh	M	L	MH	Jdeidet El-Kaiteh	M	L	M
Jebroyel	M	L	M	Kafr	L	L	M	Kafr	M	ML	MH
Karm Asfour	M	L	MH	Kfar Melki Akkar	M	M	MH	Kfar Noun	M	L	M
Kfarharra	M	L	MH	Khalsa	M	M	M	Kharnoubet Akkar	M	L	MH



Khirbet Daoud Aakkar	M	ML	MH	Khirbet El Remmane	M	M	M	Khirbet Shar	M	ML	MH
Khoreybet El-Jindi	M	L	MH	Khreibet Aakkar	M	L	M	Kneisset Aakkar	M	M	MH
Kneisset Hnaider	M	M	M	Knisse	M	L	MH	Kroum El-Aarab	M	L	MH
Kwachra	M	ML	MH	Kweykhat	M	L	MH	Machta Hammoud	M	M	M
Majdala	M	L	MH	Majdel Akkar	M	ML	MH	Mar Touma	M	L	MH
Marlaya Melhem	M	L	MH	Mashha	M	L	MH	Massoudiye	M	M	MH
Mazraat Beit Ghattas	M	L	MH	Mazraat En-Nahriye	M	ML	M	Mechmech	M	L	M
Memneh	M	L	ML	Mhammara	M	L	MH	Mighraq Aakkar	M	M	MH
Minyara	M	L	MH	Moqayteh	M	M	MH	Mounjez	M	ML	M
Msalla	M	ML	MH	Mzeihmeh	M	L	MH	Nfaiseh	M	L	MH
Noura Et-Tahta	M	ML	M	Ouadi El-Haour	M	L	MH	Ouadi El-Jamous	M	L	MH
Ouyoun El-Ghizlane	M	L	M	Qaabarine	M	M	MH	Qabaait	M	L	M
Qachlaq	M	L	MH	Qantara Aakkar	M	L	MH	Qarha Aakkar	M	M	M
Qarqaf	M	L	MH	Qboula	M	L	MH	Qleiaat Aakkar	M	M	MH
Qloud El-Baqie	M	L	MH	Qobaiyat Aakkar	M	ML	M	Qobbat Chamrat	M	L	MH
Qorayat	M	L	M	Qornet Aakkar	M	L	M	Qsair Aakkar	M	ML	M
Rahbe	M	L	M	Rihaniyet Aakkar	M	L	MH	Rmah	M	ML	M
Rmoul	M	M	MH	Saadine	M	L	MH	Sadaqa	M	L	M
Saidnaya	M	L	MH	Sammouniye	M	M	MH	Saysouq	M	L	M
Semmaqiye	M	M	MH	Semmaqli	M	L	MH	Sfinet El-Dreib	M	L	MH
Sfinet El-Qaitaa	M	L	M	Sindyanet Zeidane	M	L	M	Souaisset Aakkar	M	L	MH
Srar	M	L	MH	Tal Abbas El Gharby	M	ML	MH	Tal Abbas El-Chargy	M	L	MH
Tal Biret	M	M	MH	Tal Hmayra	M	L	MH	Tal Maayan Tal Kiri	M	M	MH
Tal Sibel	M	M	MH	Tallet Chattaha	M	L	MH	Tikrit	M	L	M
Tleil	M	L	MH	Tshea	M	L	M	Zawarib	M	L	M
Zouq El Hosniyeh	M	L	M	Zouq El-Haddara	M	L	MH	Zouq El-Hbalsa	M	L	M
Zouq El-Moqachrine	M	L	M								

## Sud

### Sour

Municipality	20-Oct	21-Oct	22-Oct	Municipality	20-Oct	21-Oct	22-Oct	Municipality	20-Oct	21-Oct	22-Oct
Aaiyeh	M	ML	M	Aalma El-Chaab	M	M	M	Aaytit	M	ML	M
Abbassiyeh Sour	M	M	MH	Abou Chech	M	M	M	Ain Abou Abdallah	M	M	MH
Ain Baal	M	M	MH	Arzoun	M	M	MH	Aziyeh	M	M	M
Baflaya	M	M	MH	Barich	M	M	MH	Batouliyeh	M	M	MH
Bayad	M	ML	M	Bazouriyeh	M	M	MH	Bediass	M	M	MH
Bestiyat	M	M	MH	Borj El Chemali	M	M	MH	Borj En-Naqoura	M	M	MH
Borj Rahhal	M	M	MH	Boustane	M	M	M	Btaychiyeh	M	M	M
Chaaitiye	M	M	MH	Chameh	M	M	MH	Chehabiye	M	M	M
Chehour	M	ML	M	Chihine	M	ML	M	Debaal Sour	M	M	MH
Deir Amess	M	ML	M	Deir Kifa	M	M	MH	Deir Qanoun El-Ain	M	M	MH
Deir Qanoun El-Naher	M	M	MH	Derdghaiya	M	M	MH	Dhayra	M	M	M
Halloussiyeh	M	M	MH	Hamoul	M	M	M	Hanaouey	M	ML	MH
Henniye	M	M	MH	Hmairi Sour	M	M	MH	Iskandarouna Sour	M	M	M
Jbal El Botom	M	ML	M	Jebbin	M	M	MH	Jennata	M	M	MH
Jijim	M	M	M	Jouaiya	M	M	M	Kneisset Sour	M	M	MH

Maarake	M	M	MH	Maaroub	M	M	MH	Majadel	M	M	M
Majdalzoun	M	M	MH	Mansouri Sour	M	M	MH	Marnba	M	ML	M
Marouahine	M	ML	M	Mazraat El-Zalloutiy	M	M	MH	Mazraat Mechref	M	ML	M
Mazraat Tayr Semhat	M	ML	M	Mheilb	M	M	MH	Neffakhiyeh	M	M	MH
Niha Sour	M	M	MH	Ouadi Jilo	M	M	MH	Qana	M	ML	M
Qolaileh Sour	M	M	MH	Rechknany	M	ML	M	Rmadiyah	M	ML	M
Selha Sour	M	M	MH	Siddiqine	M	ML	M	Sour	M	M	H
Srifa	M	M	MH	Tayr Debbe	M	M	MH	Tayr Felsay	M	M	MH
Tayr Harfa	M	M	MH	Touayri	M	ML	M	Toura	M	M	MH
Yanouh Sour	M	M	MH	Yarine	M	M	MH	Zebqine	M	L	M

## Saida

Municipality	20-Oct	21-Oct	22-Oct	Municipality	20-Oct	21-Oct	22-Oct	Municipality	20-Oct	21-Oct	22-Oct
Aanqoun	M	M	MH	Aaqtanit	M	M	MH	Aarab Ej-Jall	M	M	MH
Aarab Tabbaya	M	M	MH	Abra Saida	M	L	MH	Adloun	M	M	MH
Adousiyeh	M	M	H	Ain-El-Deleb	M	M	MH	Arzai	M	M	MH
Babliyah	M	M	MH	Barty	M	M	M	Bissariyeh	M	M	H
Bnaafoul	M	M	MH	Bqosta	M	L	MH	Bramiy	M	L	MH
Daoudiyeh	M	M	MH	Dareb El-Sim	M	M	MH	Erkay	M	M	MH
Ghassanieh	M	M	MH	Ghazieh	M	M	MH	Hajjeh	M	M	MH
Haret Saida	M	L	MH	Hartiyeh	M	M	MH	Hlaliye Saida	M	L	MH
Insariyat	M	M	MH	Jazira Saida	M	M	MH	Kafar Bit	M	M	MH
Kaoutariyet El-Siyad	M	M	MH	Kfar Chellal	M	M	MH	Kfar Hatta Saida	M	M	MH
Kfar Milke Saida	M	M	MH	Khartoum	M	M	MH	Khaziz	M	M	MH
Khirbet Ed-Douair Sa	M	M	MH	Khirbet El-Bassal	M	M	MH	Khrayeb Saida	M	M	MH
Loubieh	M	M	MH	Maghdouche	M	M	MH	Majdelyoun	M	L	MH
Matariyet El-Choumar	M	M	MH	Matayriyeh	M	M	MH	Mazraat 'Mseileh	M	M	MH
Mazraat 'Snaiber	M	M	MH	Mazraat Aarab Soukka	M	M	MH	Mazraat Deir Taqla	M	M	MH
Mazraat El Yahoudiye	M	M	H	Mazraat El-Housseini	M	M	H	Mazraat El-Mhaydaleh	M	M	MH
Mazraat El-Ouasta	M	M	MH	Mazraat Jamjim	M	M	MH	Mazraat Kaoutariyet	M	M	MH
Mazraat Kfar Badda	M	M	MH	Mazraat Oussamiyat	M	M	MH	Mazraat Sari	M	M	MH
Mazraat Sinai	M	M	MH	Meemariyeh	M	M	MH	Merouaniyeh	M	M	MH
Miyeh ou Miyeh	M	M	MH	Najjariyeh	M	M	H	Qaaqiyat El-Snaouba	M	M	MH
Qnarit	M	M	MH	Qraiye Saida	M	M	MH	Saida Ed-Dekermane	M	ML	MH
Saida El-Oustani	M	L	MH	Saida El-Qadimeh	M	L	MH	Saida Kefraya	M	L	M
Saksakiyeh	M	M	MH	Salhie Saida	M	L	MH	Sarafand	M	M	H
Sfenta	M	M	M	Tafahta	M	M	MH	Tanbourit	M	M	MH
Tebna	M	M	MH	Zaghdraiya	M	M	MH	Zeita	M	M	MH
Zrariyeh	M	M	MH								

## Jezzine

Municipality	20-Oct	21-Oct	22-Oct	Municipality	20-Oct	21-Oct	22-Oct	Municipality	20-Oct	21-Oct	22-Oct
Ain El-Mir (El Estab	M	M	MH	Anane	M	L	M	Aramta	M	ML	MH
Ariya	M	M	M	Aychiyeh	M	ML	M	Azour	M	L	M
Baba	M	L	M	Bayssour Jezzine	M	M	MH	Benoueteh Jezzine	M	M	M
Bhannine	M	M	M	Bisri	M	L	M	Bkassine	M	M	M
Bouslaya	M	M	M	Btedine El-Leqech	ML	L	M	Chbail	M	L	M
Choualiq Jezzine	M	L	MH	Dahr Ed-Deir	M	M	M	Deir El Qattine	M	M	M

Demachqiyeh	M	M	MH	Ghabbatiyeh	M	M	M	Harf Jezzine	ML	L	M
Hassaniyeh	M	M	MH	Haytouleh	M	M	M	Haytura	M	M	M
Hidab	M	M	M	Homsiyeh	M	L	M	Jabal Toura	M	M	M
Jarmaq	M	M	MH	Jensnaya	M	M	MH	Jernaya	M	M	MH
Jezzine	M	ML	MH	Karkha	M	L	M	Kfar Falous	M	ML	M
Kfar Houna	M	M	M	Kfar Jarrah	M	ML	MH	Lebaa	M	ML	MH
Louayzet Jezzine	M	M	M	Machmouche	M	M	M	Mahmoudiyeh Jezzine	M	M	MH
Maknounye Jezzine	M	M	M	Maraat Ouzaïyeh	M	ML	M	Mazraat Daraya	M	ML	M
Mazraat El-Aarqoub	M	M	M	Mazraat El-Mathane	M	L	M	Mazraat El-Rahbane	M	M	M
Mazraat Khallet Khaz	M	L	M	Mazraat Louzid (Loua	M	L	M	Mazraat Qrouh	M	L	M
Mazraat Tamra	M	M	MH	Mazraat Zighrine Jez	M	M	M	Mazraat	M	M	M
Mharbiyeh	M	M	MH	Midane Jezzine	M	ML	M	Mjeydel Jezzine	M	M	MH
Mlikh	M	M	M	Mrah El-Hbasse	M	ML	MH	Ouadi Baanqoudaine	M	M	MH
Ouadi El-Laymoun	M	M	MH	Ouardiyeh	M	L	M	Qabaa Jezzine	M	M	M
Qatrani	M	L	M	Qaytouleh	M	M	M	Qtaleh Jezzine	M	L	M
Rihane Jezzine	M	M	M	Rimat	M	M	M	Roum	M	ML	M
Roummanet	M	M	MH	Sabbah	M	M	M	Saydoun	M	M	M
Sfaray	M	L	M	Snaya	M	M	M	Sojoud	M	M	M
Srayri	M	L	M	Taaid	M	L	M	Wadi Jezzine	M	M	M
Zhalta	M	M	M								

## Bekaa

### West Bekaa

Municipality	20-Oct	21-Oct	22-Oct	Municipality	20-Oct	21-Oct	22-Oct	Municipality	20-Oct	21-Oct	22-Oct
Aammiq BG	M	M	M	Ain El Tineh BG	M	ML	M	Ain Zebdeh	M	M	M
Ana	M	M	M	Aytanit	M	M	M	Baaloul BG	M	M	M
Bab Mareh	M	M	M	Chouberqiye Aammiq	M	M	M	Dakoue	M	M	M
Deir Ain El-Jaouze	M	M	M	Deir Tahniche	M	M	M	Ghaza	M	M	M
Harime El-Soughra	M	M	M	Hoch Harimeh	M	M	M	Jazira BG	M	M	M
Jib Jennine	M	M	M	Kamed-El-Laouz	M	M	M	Kefraya BG	M	M	M
Khiara El Atika	M	M	M	Khiara	M	M	M	Khirbet Qanafar	M	M	M
Lala	M	M	M	Lebbaya BG	M	ML	M	Loussa	M	ML	M
Machghara	M	M	M	Manara (Hammara) BG	M	M	M	Mansoura BG	M	M	M
Marej BG	M	M	M	Maydoun	M	ML	MH	Ouaqf BG	M	M	M
Qaraaoun	M	M	M	Qelya	M	ML	M	Raouda (Istabel)	M	M	M
Saghbine	M	M	M	Sohmor	M	ML	M	Soltan Yacoub el Ara	M	M	M
Souairy	M	M	M	Sultan Yaacoub	M	M	M	Tal Znoun	M	M	M
Yehmor BG	M	ML	M	Zilaya	M	M	M				

### Zahle

Municipality	20-Oct	21-Oct	22-Oct	Municipality	20-Oct	21-Oct	22-Oct	Municipality	20-Oct	21-Oct	22-Oct
Aanjar (Haouch Mouss	M	M	M	Ablah	M	M	M	Ain Kfarzabad	M	M	M
Ali-El-Nahri	M	M	M	Bar Elias	M	M	M	Bouarej	M	M	M
Cheberqiyet Tabet	M	M	M	Chtaura	M	M	M	Deir El Ghazal	M	M	M
Delhamiyet Zahle	M	M	M	Ferzol	M	M	M	Haouch El-Ghanam	M	M	M
Haouch Es-Siyadeh	M	M	M	Haouch Hala	M	M	M	Haouch Mandara	M	M	M



Haouch Qayssar	M	M	M	Hezerta	M	M	M	Hosh Moussa	M	M	M
Jdita	M	M	M	Kfarzabad	M	M	M	Ksara	M	M	M
Majdel Aanjar	M	M	M	Makssi	M	M	M	Massa	M	M	M
Mazraat Er-Remtaniye	M	M	M	Mrayjat Zahle	M	M	M	Mzaraa Zahle	M	M	M
Nabi Ayla	M	M	M	Nasriyet Rizk	M	M	M	Nasriyet Zahle	M	M	M
Niha Zahle	M	M	M	Ouadi Ed-Deloum	M	M	M	Ouadi El-Arayech	M	M	M
Qaa El Rim	M	M	M	Qab Elias	M	M	M	Qousaya	M	M	M
Rhit	M	M	M	Riyak	M	M	M	Saadnayel	M	M	M
Taal El-Akhdar	M	M	M	Taalbeya	M	M	M	Taanayel	M	M	M
Talamara	M	M	M	Tcheflik Edde Haouch	M	M	M	Tcheflik Qiqano	M	M	M
Terbol Zahle	M	M	M	Touaite Zahle	M	M	M	Zahle Aradi	M	M	M
Zahle El-Berbara	M	M	M	Zahle El-Maallaqa	M	M	MH	Zahle El-Midane	M	M	MH
Zahle Er-Rassiye	M	M	M	Zahle Haouch El-Ouma	M	M	M	Zahle Haouch El-Ouma	M	M	MH
Zahle Haouch Ez-Zara	M	M	MH	Zahle Maalaga Aradi	M	M	M	Zahle Mar Antonios	M	M	M
Zahle Mar Elias	M	M	MH	Zahle Mar Gerios	M	M	MH	Zahle Saydet En-Naja	M	M	MH
Zebdoul	M	M	M								

## Rachaiya

Municipality	20-Oct	21-Oct	22-Oct	Municipality	20-Oct	21-Oct	22-Oct	Municipality	20-Oct	21-Oct	22-Oct
Ain Arab Rachaiya	M	M	M	Ain Ata	M	M	M	Ain Harche	M	M	M
Aqabe Rachaya	M	M	M	Ayha	M	M	M	Ayta El Fokhar	M	M	M
Bakifa Rachaya	M	M	M	Bakka	M	M	M	Beit Lahya	M	M	M
Bireh Rachaiya	M	M	M	Daheer El Ahmar	M	M	M	Deir El-Achayer	M	M	M
Heloua Rachaiya	M	M	M	Hoch El Qannabeh Rac	M	M	M	Kaoukaba Bou Arab	M	M	M
Kfar Danis	M	M	M	Kfar Mechki	M	M	M	Kfar Qouq	M	M	M
Kherbet Rouha	M	M	M	Majdel Balhiss	M	M	M	Mdoukha	M	M	M
Mhaydseh Rachaiya	M	M	M	Nabi Safa	M	ML	M	Rachaiya	M	M	M
Rafid Rachaiya	M	M	M	Selsata (Mazraat Dei	M	M	M	Tannoura	M	M	M
Yanta	M	M	M								

## Beyrouth

### Beyrouth

Municipality	20-Oct	21-Oct	22-Oct	Municipality	20-Oct	21-Oct	22-Oct	Municipality	20-Oct	21-Oct	22-Oct
Achrafieh	M	L	MH	Ain el-Mreisse	M	L	MH	Bachoura	M	L	MH
Beirut Central Distr	M	L	MH	Marfai	M	L	MH	Mazraa	M	L	MH
Medaouar	M	L	MH	Minet el-Hosn	M	L	MH	Mwssaitbeh	M	L	MH
Ras Beirut	M	L	MH	Rmeil	M	L	MH	Saifi	M	L	MH
Zqaq el-Blat	M	L	MH								