

# Lebanon Fire Risk Bulletin



CIVIL DEDEFENCE

**Refer to cadast table condition.**

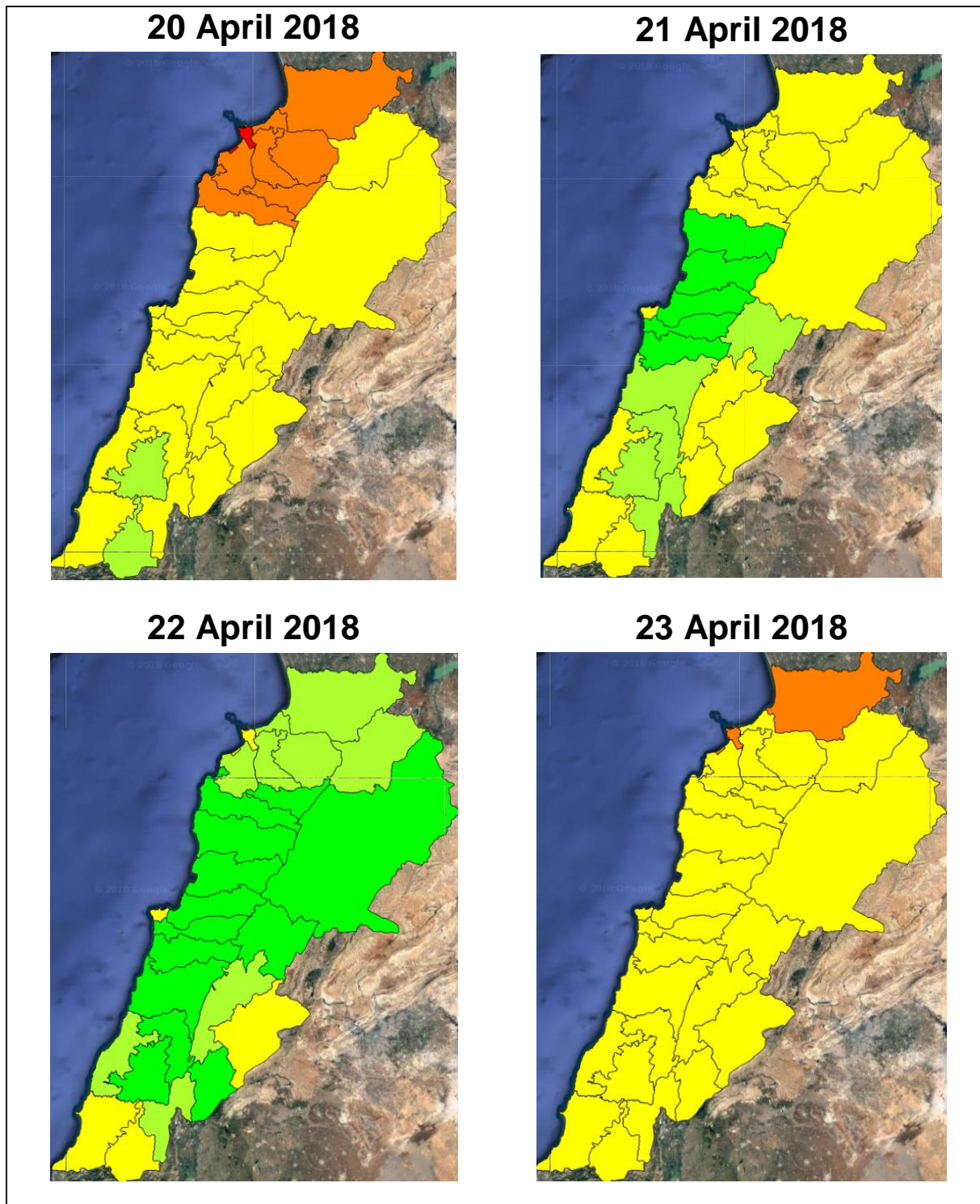
**Please note that the indicated temperature is at 2 meters height from the ground.**

General description of potential fire risk situation

Symbol	Level of risk	Meaning and actions
VL	Very low	Very low fire risk. Controlled burning operations can be hardly executed due to high fuel moisture content. Normally wildfires self-extinguish.
L	Low	Low fire risk. Controlled burning operations can be executed with a reasonable degree of safety.
ML	Medium low	Medium-low fire risk. Controlled burning operations can be executed in safety conditions. All the fires need to be extinguished.
M	Medium	Medium fire risk. Controlled burning operations would be avoided. All the fires need to be very well extinguished.
M	Medium high	Controlled burning is not recommended. Open flame will start fires. Cured grasslands and forest litter will burn readily. Spread is moderate in forests and fast in exposed areas. Patrolling and monitoring is suggested. Fight fires with direct attack and all available resources.
H	High	Ignition can occur easily with fast spread in grass, shrubs and forests. Fires will be very hot with crowning and short to medium spotting. Direct attack on the head may not be possible requiring indirect methods on flanks. Patrolling and monitoring the territory is highly suggested.
E	Extreme	Ignition can occur also from sparks. Fires will be extremely hot with fast rate of spread. Control may not be possible during day due to long range spotting and crowning. Suppression forces should limit efforts to limiting lateral spread. Damage potential total. Patrolling and monitoring the territory is highly suggested.

**Beirut, 21 April 2018**

# FIRE RISK INDEX



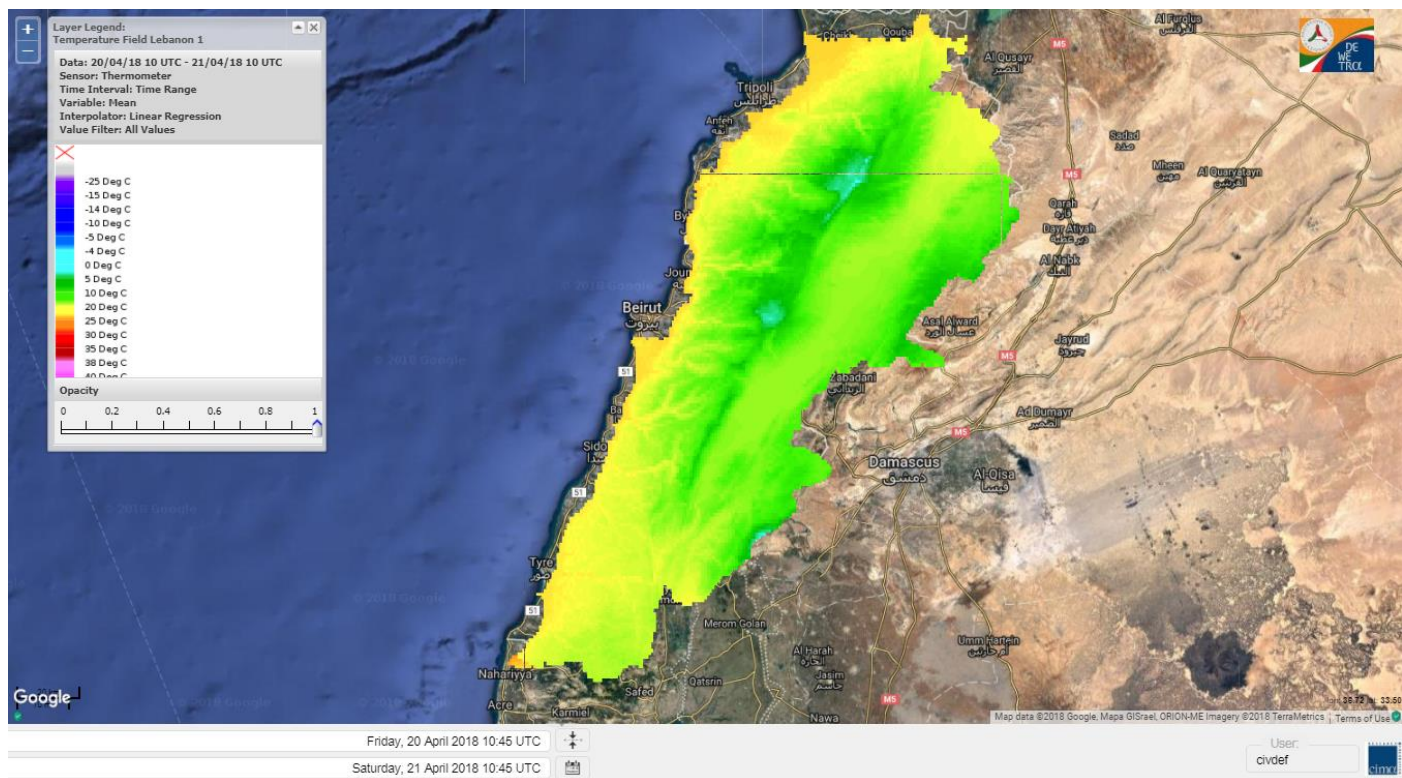
Layer Legend:  
Lebanon Wildfire Risk Index 1

Data: Run: 21/04/2018 00:00. Forecast for 21  
Model: RISICO for the Republic of Lebanon  
Variable: Fire Weather Index  
Spatial Resolution: Caza

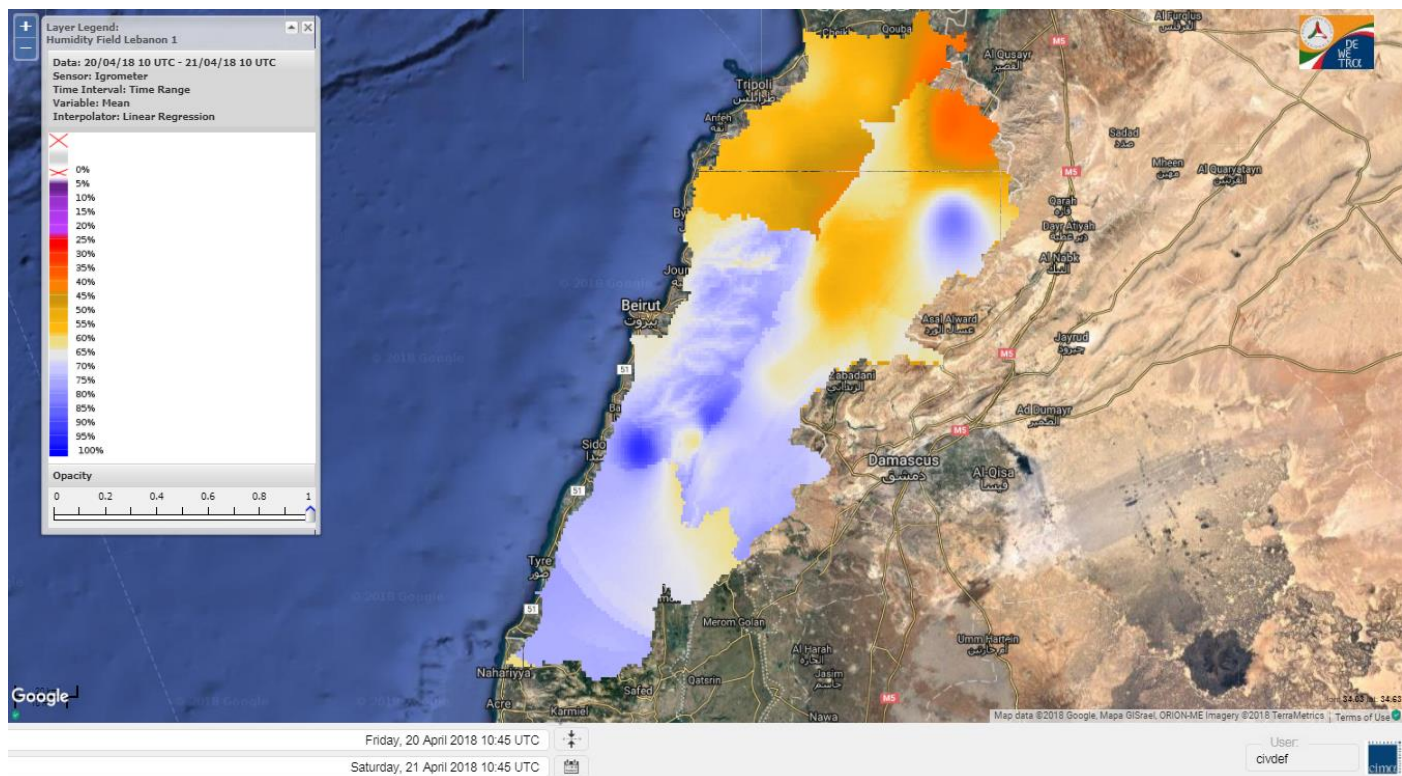
- VERY LOW
- LOW
- MEDIUM-LOW
- MEDIUM
- MEDIUM-HIGH
- HIGH
- EXTREME



# Lebanon temperature for 21 April 2018

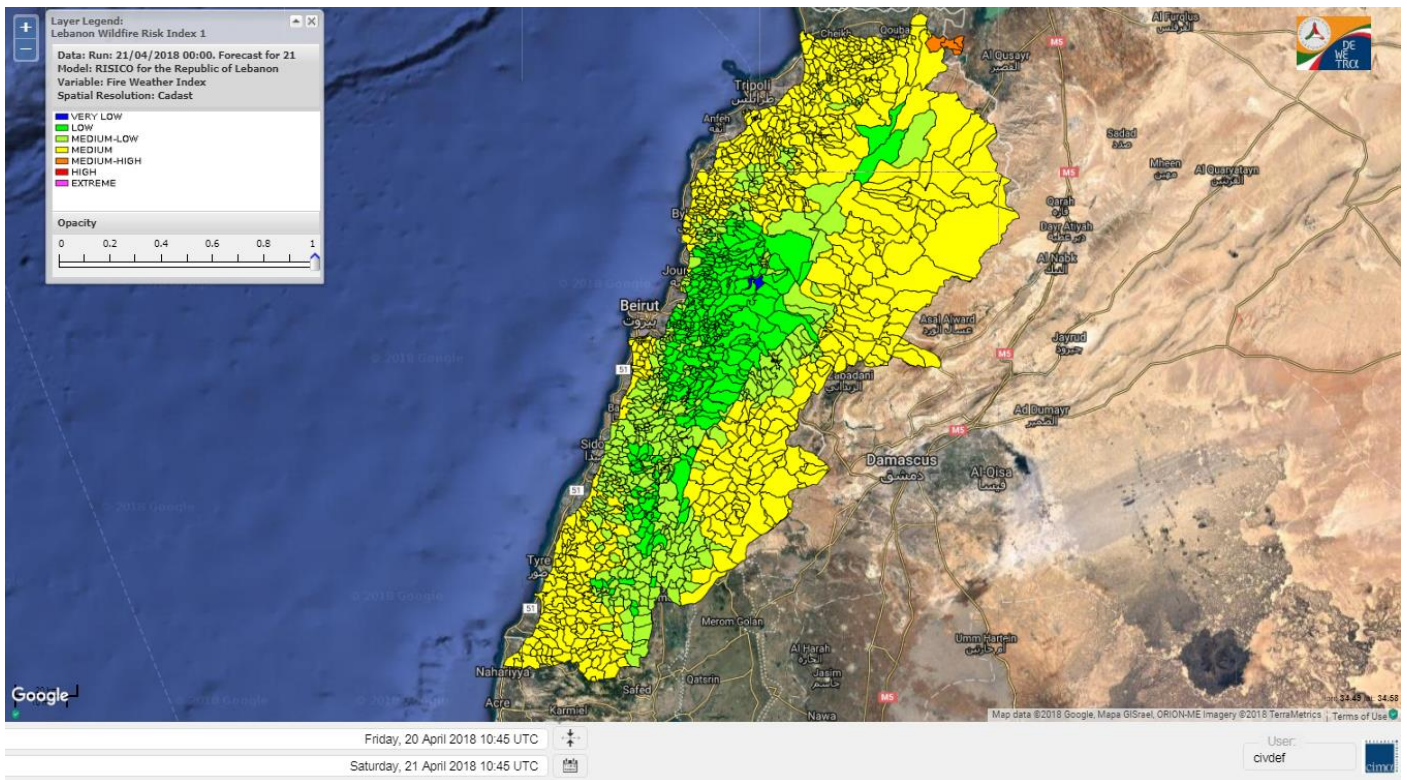


# Lebanon humidity for 21 April 2018

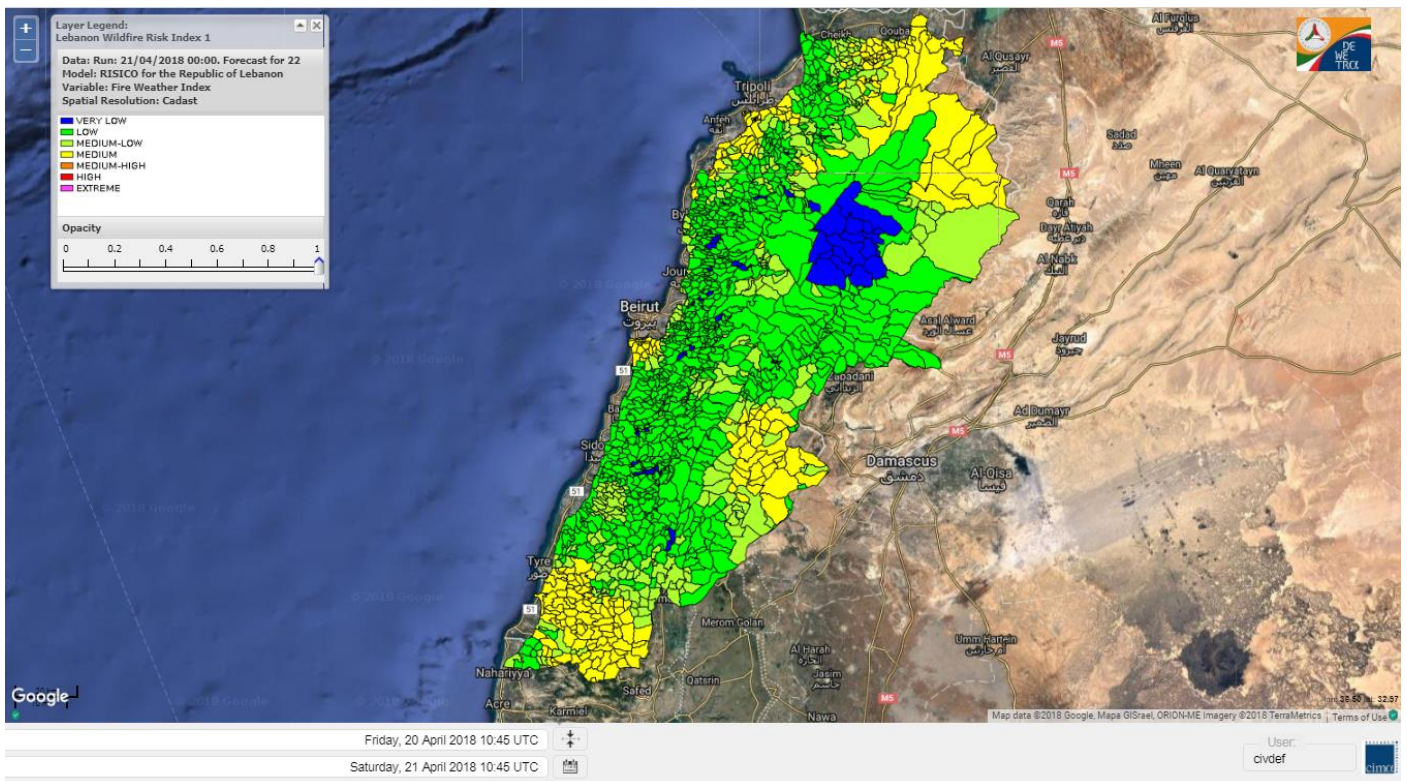




# Lebanon for 21 April 2018

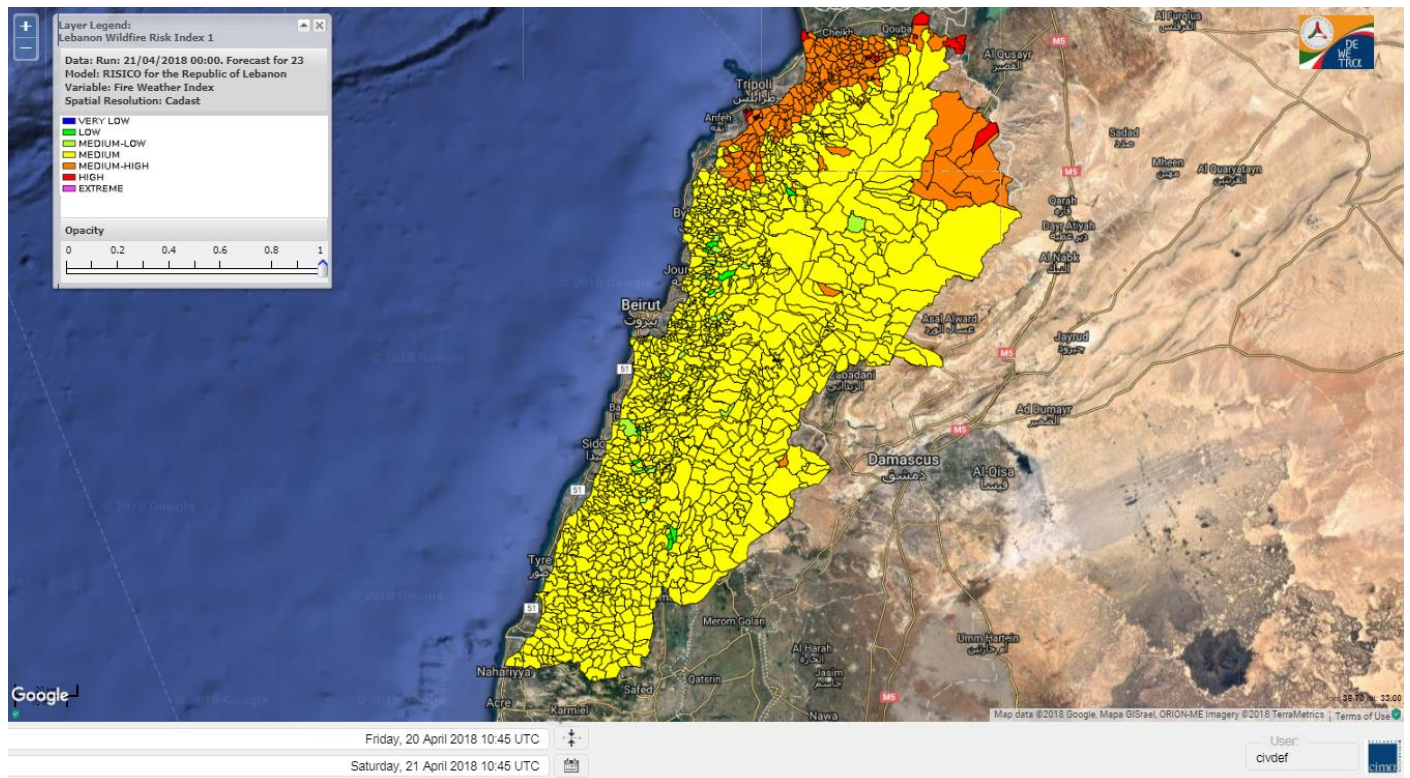


# Lebanon for 22 April 2018

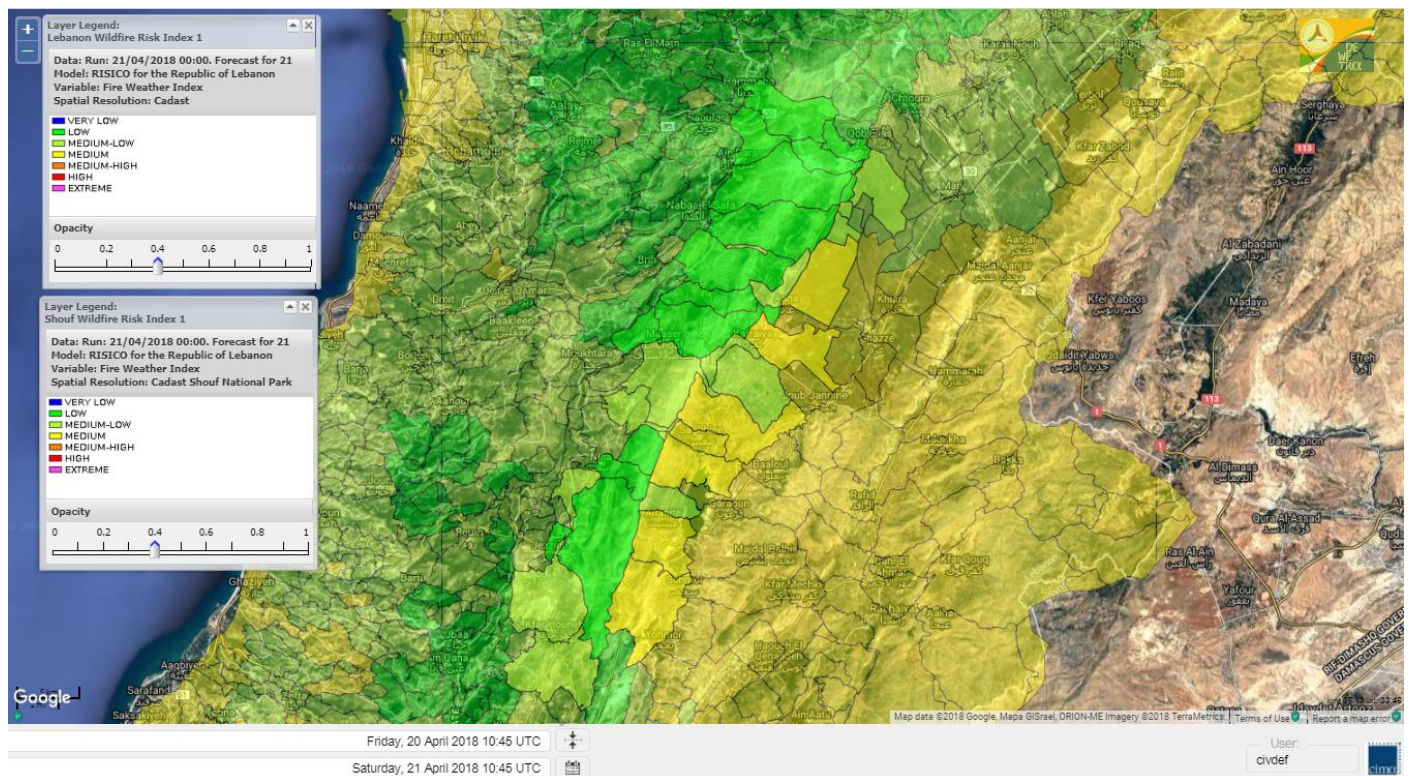




# Lebanon for 23 April 2018

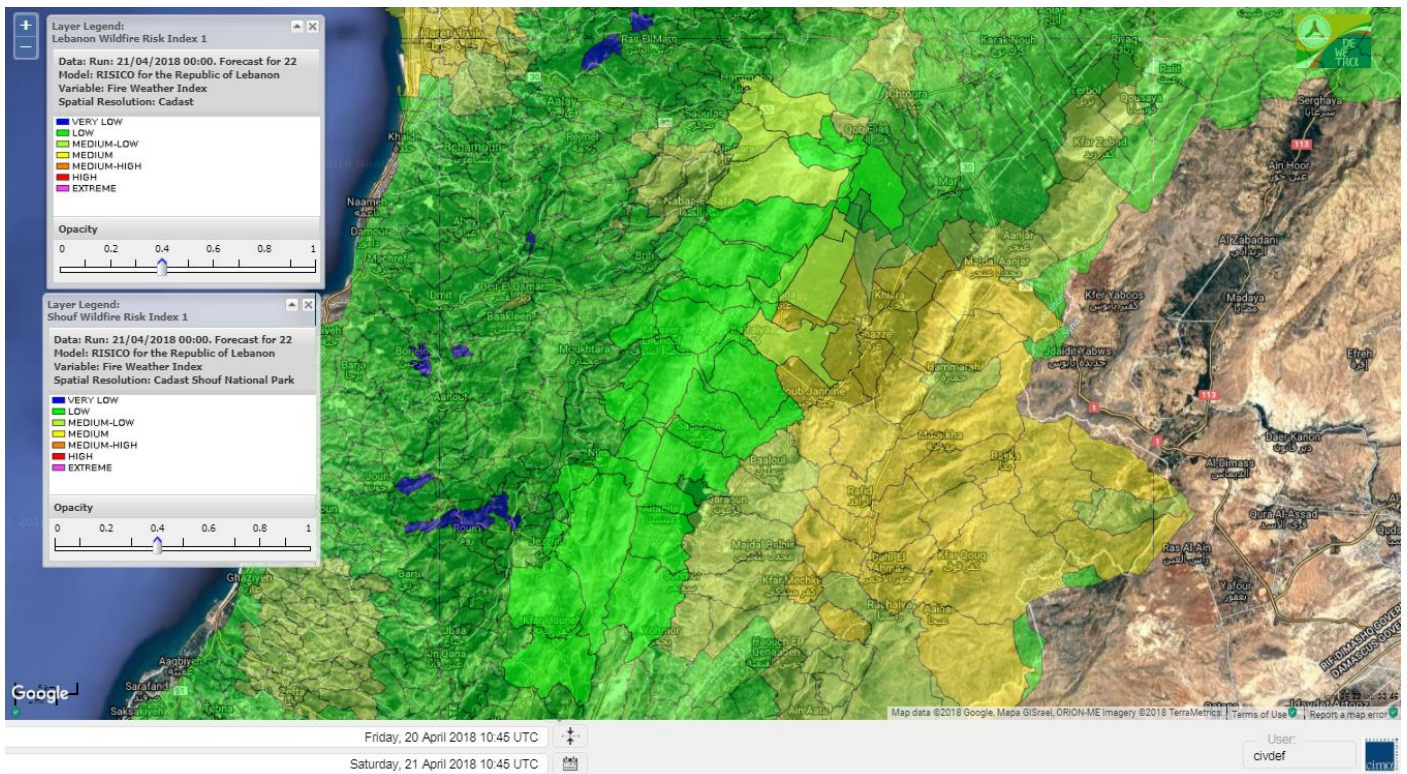


# Shouf Biosphere Reserve Forecast for 21 April 2018

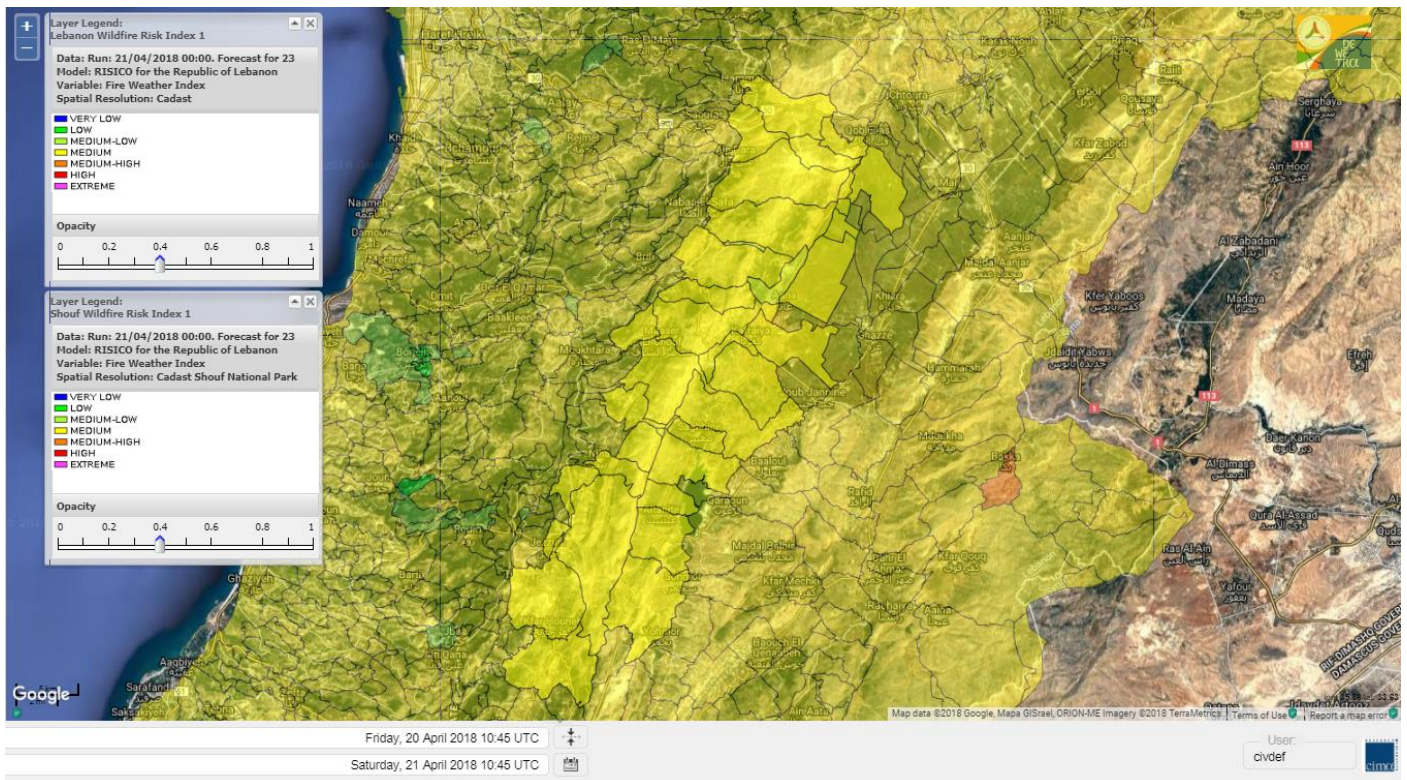




# Shouf Biosphere Reserve Forecast for 22 April 2018

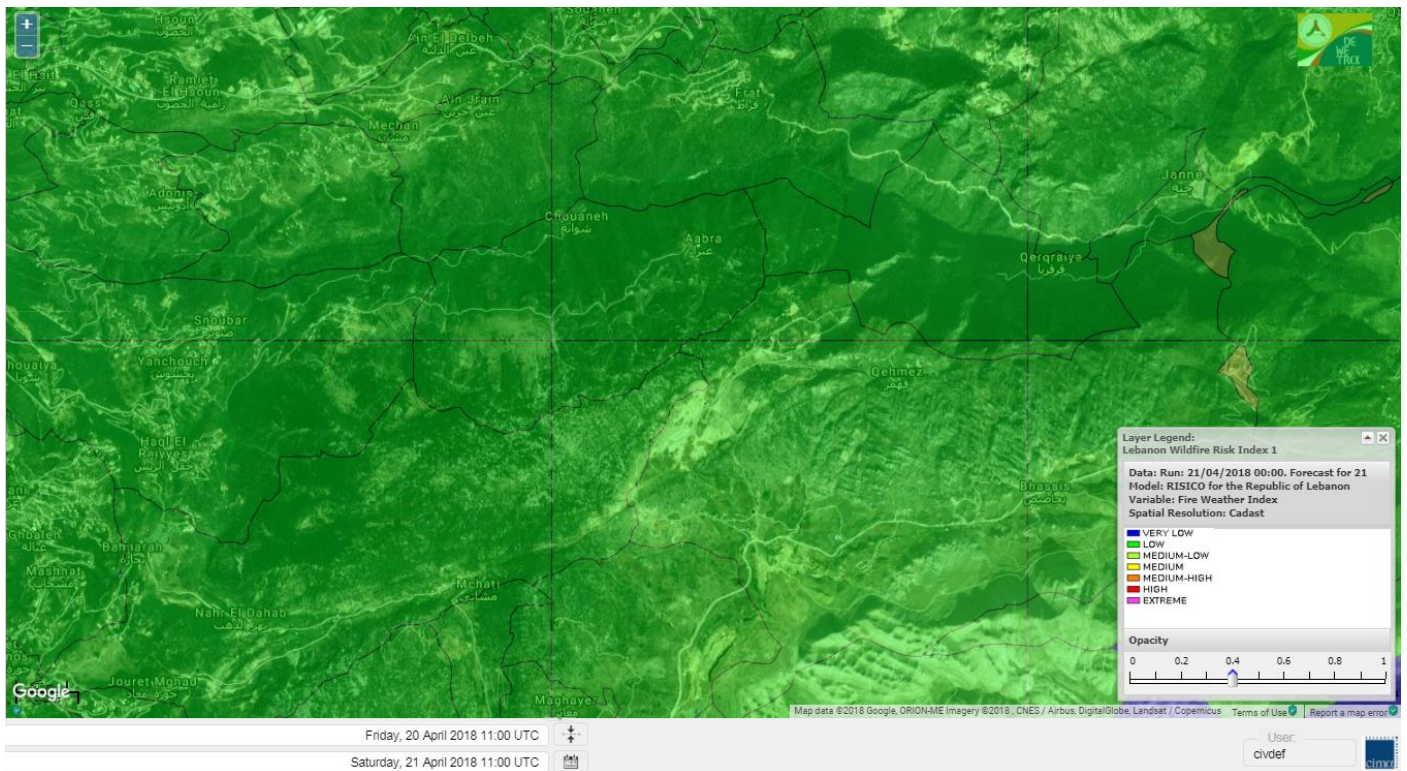


# Shouf Biosphere Reserve Forecast for 23 April 2018

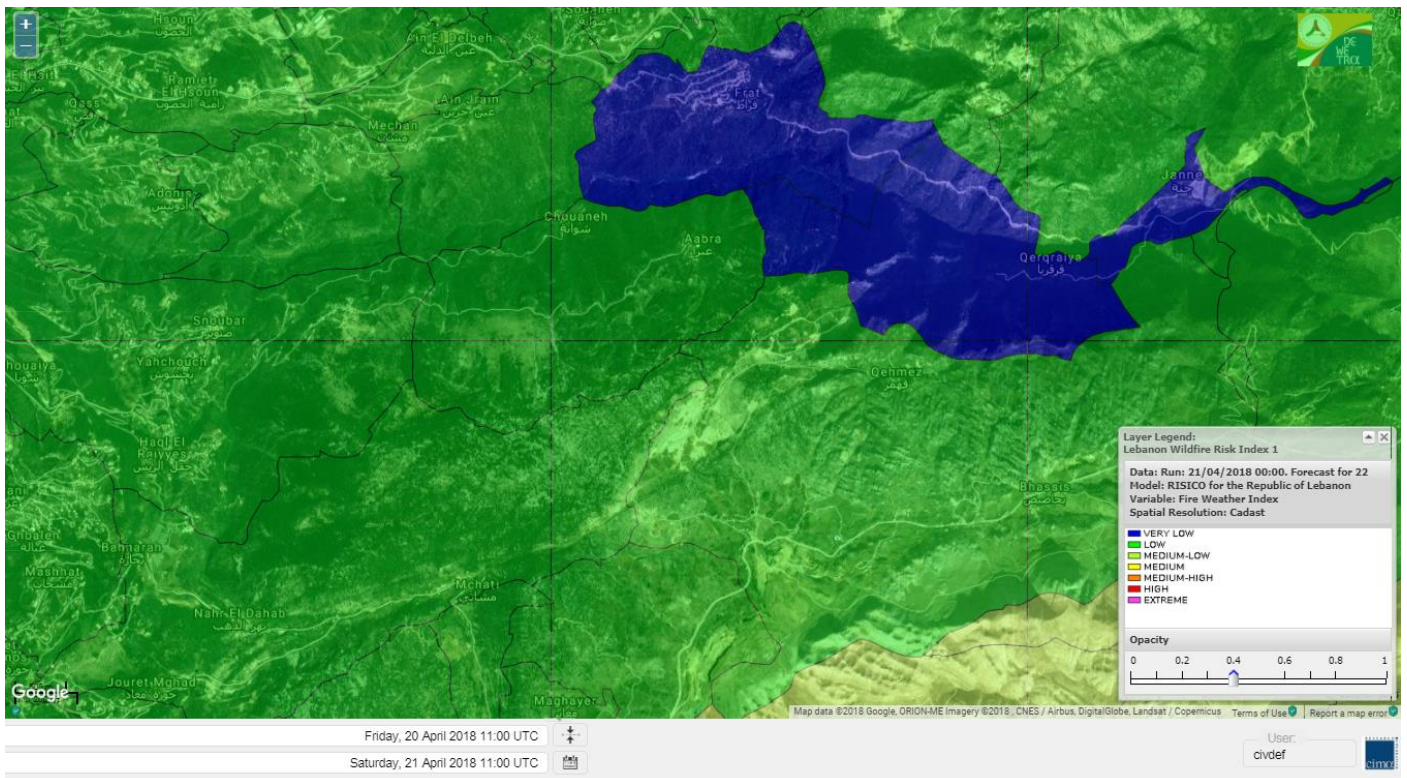




# Jabal Moussa Reserve Forecast for 21 April 2018

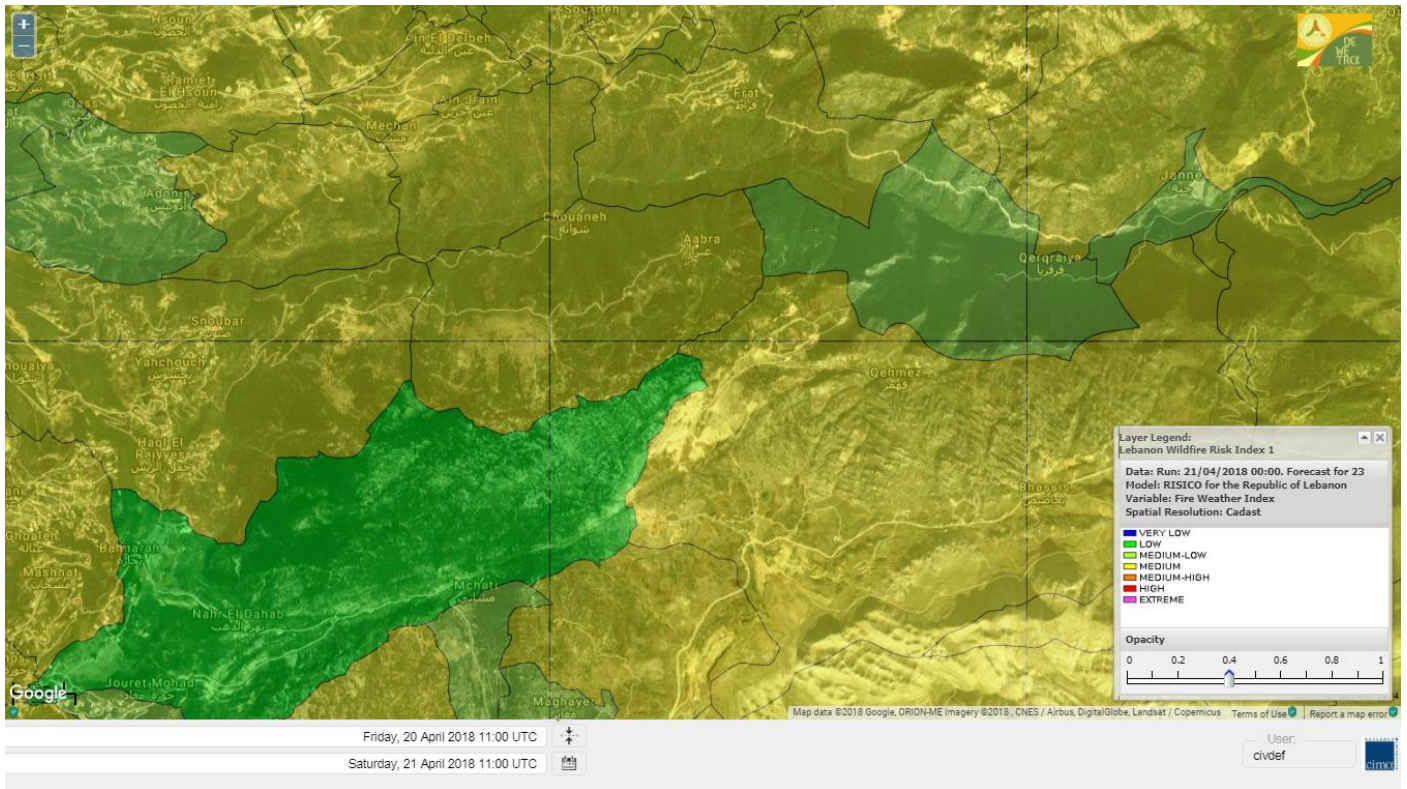


# Jabal Moussa Reserve Forecast for 22 April 2018





# Jabal Moussa Reserve Forecast for 23 April 2018





## Nord

### Koura

Municipality	21-Apr	22-Apr	23-Apr	Municipality	21-Apr	22-Apr	23-Apr	Municipality	21-Apr	22-Apr	23-Apr
Aaba	M	ML	MH	Afsaddiq	M	L	MH	Ain Ekryne	ML	L	MH
Amioun	ML	L	MH	Anfeh	M	M	M	Badbhoun	M	ML	MH
Barghoun	M	ML	MH	Barsa	M	M	MH	Batroumine	M	M	MH
Bdebba	M	M	MH	Bechmizzine	M	L	MH	Bednaye El-Koura	M	ML	M
Bhabbouch El-Koura	ML	L	M	Bkeftine	M	ML	MH	Bnehran	ML	L	M
Bqaiia El-Koura	M	M	MH	Bsarma	M	L	MH	Btaaboura	M	ML	MH
Bterram	M	L	MH	Btouratij	M	M	MH	Bziza	ML	L	MH
Dar Beechtar	ML	L	MH	Dar Chmezzine	M	L	MH	Deddeh	M	M	MH
Deir El-Balamand	M	ML	M	Fih	M	M	MH	Hraiche	M	M	MH
Ijdaabrine	M	ML	M	Kaftoun	M	ML	M	Kefraya El-Koura	M	M	M
Kfarakka	ML	L	M	Kfarhata	M	L	M	Kfarhazir	M	ML	MH
Kfarkahel	M	M	MH	Kfarsaroun	ML	L	MH	Kosba	ML	L	MH
Mejdel el-Koura	M	L	M	Nakhle	M	M	MH	Qalhat	M	ML	M
Ras Masqa	M	M	MH	Rechdibbine	ML	ML	MH	Zakroun	M	M	MH
Zgharta El-Mtaouile	M	L	M								

### Bcharre

Municipality	21-Apr	22-Apr	23-Apr	Municipality	21-Apr	22-Apr	23-Apr	Municipality	21-Apr	22-Apr	23-Apr
Aabdine	M	ML	M	Bane	M	ML	M	Barhelioun	M	L	M
Bazouone	M	L	M	Becharre	ML	L	M	Beit Menzer	M	L	M
Billa	M	ML	M	Blaouza	M	ML	MH	Bqaa Kafra	M	VL	M
Bqerqacha	M	L	M	Breissat	M	L	M	Dimane	M	L	M
Hadath El Jobbeh	M	L	M	Hadchit	M	ML	M	Hasroun	M	L	M
Mazraat Aassaf	M	VL	ML	Mazraat Bani Saab	M	L	M	Mchaa El-Jobbeh	ML	VL	M
Metrit	ML	L	M	Moghr El-Ahoual	M	ML	M	Ouadi Qannoubine	M	VL	L
Qanat	M	L	M	Qnayer	M	L	M	Tourza	M	L	M

### Batroun

Municipality	21-Apr	22-Apr	23-Apr	Municipality	21-Apr	22-Apr	23-Apr	Municipality	21-Apr	22-Apr	23-Apr
Aabrine	M	L	M	Aalali	ML	L	M	Aartiz	M	VL	M
Abdelli	M	L	M	Ajdabra	M	L	M	Assia	ML	L	M
Basbina	M	ML	M	Batroun	M	M	M	Bcheleh	ML	L	M
Bechtoudar	ML	L	M	Beit Chlala	M	L	M	Beit Kassab	M	VL	ML
Bijdarfil	M	ML	M	Bqesmaya	M	L	M	Chatine	M	L	M
Chebtin	M	L	M	Chekka	M	M	M	Daael	M	L	M
Dahr Abi Yaghi	ML	L	M	Daraya El-Batroun	M	L	M	Deir Billa	M	L	M
Deir Kfifane	M	L	M	Deir Mar Youhanna EL	ML	L	M	Deir Mar Youssef Jra	M	L	M
Douma	M	L	M	Douq	M	L	M	Eddeh El-Batroun	M	L	M
Ftihat El-Batroun	M	L	M	Ghouma	M	L	M	Hadtoun	ML	L	M
Hamat	M	L	M	Harbouna	M	L	M	Hardine	M	L	M
Helta	M	L	M	Hery	M	M	M	Jebbla	M	L	M
Jrabta El-Batroun	M	L	M	Jrane El-Batroun	M	L	M	Kfar Aabida	M	L	M
Kfar Halda	M	L	M	Kfarb Shlaimane	ML	L	ML	Kfarhatna	M	L	M
Kfarhay	M	ML	M	Kfarhelos	M	L	M	Kfifane	M	L	M



Kfour El Arabi	M	L	M	Koubba	M	ML	M	Kour	M	L	M
Mar Mama	ML	L	M	Masrah	ML	L	M	Mehmarch	ML	L	M
Mrah Chdid	M	L	M	Mrah El Ziyat	M	L	M	Mrah El-Hajj	ML	L	ML
Nahle El-Batroun	ML	L	M	Niha El-Batroun	M	L	M	Ouajh El-Hajjar	M	L	M
Ouata Houb	M	L	M	Qatnaaoun	M	L	M	Racha	ML	L	M
Rachana	M	L	M	Rachkida	M	L	M	Ram El-Batroun	L	L	M
Ras Nahhach	M	L	M	Selaata	M	M	M	Sghar	ML	L	M
Smar Jbayl	M	L	M	Sourat El-Batroun	M	L	M	Tannourine El-Faouqa	ML	L	M
Tannourine Et-Tahta	M	L	M	Thoum	M	L	M	Toula El-Batroun	M	L	M
Zan	M	L	M								

## Zgharta

Municipality	21-Apr	22-Apr	23-Apr	Municipality	21-Apr	22-Apr	23-Apr	Municipality	21-Apr	22-Apr	23-Apr
Aachach	M	ML	MH	Aalma	M	ML	MH	Aarde	M	L	M
Aintourine	M	ML	M	Arabet Qozhaya	M	L	M	Arde	M	L	MH
Arjis	M	L	M	Asnoun	M	L	M	Ayto	M	L	M
Basloukit	M	M	M	Bchannine	M	ML	MH	Besebeel	M	L	M
Bhairret Toula	M	ML	M	Bnachee	M	ML	M	Boussit	M	M	MH
Danha	M	ML	MH	Daraiya Zgharta	M	L	M	Deir Jdeide	M	L	M
Ehden	M	ML	M	Halan	M	M	MH	Hariq Zgharta	M	L	M
Houakir	M	L	M	Hraiqis	ML	M	MH	laal	M	L	M
Ijbaa	ML	L	M	Karm Saddeh	M	L	M	Kfarchakhna	M	ML	M
Kfardlaqous	M	L	MH	Kfarfou	M	ML	M	Kfarhata Zgharta	M	L	MH
Kfarhoura	M	L	M	Kfarsghab	M	ML	M	Kfaryachit	M	L	M
Kfarzaina	M	L	M	Khaldiye	M	L	M	Mazraat Ajbeaa	M	L	M
Mazraat Et-Teffah	ML	L	M	Mazraat Jneid	M	L	M	Mejdlaiya Zgharta	M	ML	MH
Merh Kfarsghab	M	L	M	Miryata	M	ML	MH	Miziara	ML	L	M
Mzraat Kefraya	M	M	MH	Qorah Bach	M	L	M	Rachiine	M	L	MH
Ras Kifa	ML	ML	M	Sakhra	ML	L	M	Sebhel Zgharta	M	ML	M
Serhel	M	L	M	Tallet Zgharta	M	L	M	Toula Zgharta	M	L	M
Zgharta	M	L	MH								

## Minieh-Denniye

Municipality	21-Apr	22-Apr	23-Apr	Municipality	21-Apr	22-Apr	23-Apr	Municipality	21-Apr	22-Apr	23-Apr
Aasaymout	M	L	M	Aaymar	M	ML	M	Aazki	M	ML	M
Ain El-Tineh-Miniyeh	M	L	M	Assoun	M	ML	M	Bakhaaoun	M	ML	M
Bchennata	M	M	M	Bechehhara	ML	L	M	Beddawi	M	M	MH
Behouaita	M	ML	M	Beit El Foqss	M	L	M	Beit Haouik	M	ML	M
Beit Zoud	M	L	M	Bekaasafrine	M	L	M	Borj El Yahoudiyeh	M	M	MH
Bqarsouna	M	L	M	Btermaz	M	L	M	Debaael	M	L	M
Deir Ammar	M	M	MH	Deir Nbouh	M	L	M	Haouaret-Miniyeh	M	ML	M
Haql el Azimeh	M	L	M	Harf El Siyad	M	L	M	Hazmiye-Miniyeh	M	L	M
Izal	M	ML	M	Jarjour	ML	VL	M	Jayroun	M	L	M
Kahf El-Malloul	ML	L	M	Karm El-Moher	M	ML	M	Kfar Binine	M	ML	M
Kfarchalane	M	ML	M	Kfarhabou	M	ML	M	Kharroub-Miniyeh	M	ML	M
Mazraat El-Kreme	ML	L	M	Mazraat Ketrane	ML	L	M	Merkebta	M	L	MH
Minyeh	M	M	MH	Mrah El Sfirat	M	L	M	Mrah Sraj	M	L	M
Mrebbine	M	ML	M	Nabi Youcheaa	M	M	MH	Nemrine	M	ML	M



Qarhaiya	M	ML	M	Qarne	M	L	M	Qarsita	M	L	M
Qattineh-Miniyeh	M	L	M	Qemmamine	M	L	M	Qraine	M	L	M
Raouda-Aadoua	M	L	MH	Rihaniyet-Miniyeh	M	L	MH	Sfireh	M	L	M
Sir Ed-Danniyeh	M	L	M	Tarane	M	L	M	Terbol-Miniyeh	M	M	MH
Zaghartaghriane	ML	L	M	Zouq Bhannine	M	ML	MH				

## Nabatiye

### Nabatiye

Municipality	21-Apr	22-Apr	23-Apr	Municipality	21-Apr	22-Apr	23-Apr	Municipality	21-Apr	22-Apr	23-Apr
Aabba	M	ML	M	Aazzi	ML	L	M	Adchit El-Chqif	M	ML	M
Ain Bou Swar	L	L	M	Ain Kana	L	L	M	Ali El-TaHER	L	L	M
Ansar	M	L	M	Arab Salim	L	L	M	Arnoun	ML	L	M
Bfaroue	M	L	M	Breyqaah	M	ML	M	Charqiyeh	M	L	M
Choukine	M	ML	M	Deir El Zahrani	M	L	M	Doueir El-Nabatiyeh	M	ML	M
Habbouch El-Nabatiye	ML	L	M	Hamra El-Nabatiyeh	ML	ML	M	Harouf El-Nabatiyeh	M	L	M
Hmaile	ML	L	M	Houmin El Faouqa	ML	L	M	Houmin El Tahta	M	ML	M
Jarjough	L	L	M	Jbaah El-Nabatiyeh	L	L	M	Jebchit	ML	L	M
Kfar Djal El-Nabatiy	M	ML	M	Kfar Remmane	L	L	M	Kfar Sir	ML	ML	M
Kfar Tebnit	ML	ML	M	Kfarfila	L	L	M	Kfour El-Nabatieh	ML	L	M
Mayfadoun	ML	ML	M	Mazraat Bsaffour	ML	L	M	Mazraat Chalbaal	ML	L	M
Mazraat Dmoul	M	ML	M	Mazraat El Khreibeh	ML	ML	M	Mazraat El-Bayad El-	ML	L	M
Mazraat Kfarjaouz	ML	ML	M	Mazraat Qalaat Meiss	M	L	M	Nabatiyeh El-Fawka	ML	L	M
Nabatiyeh Et-Tahta	ML	L	M	Namiriyyeh	ML	L	M	Qaaqaaiyet El Jisr	ML	ML	M
Qossaibeh El-Nabatiy	M	ML	M	Roumine	ML	ML	M	Sarba El-Nabatieh	L	L	M
Sir El-Gharbiyeh	M	M	M	Toul	ML	L	M	Yehmor El-Nabatiyeh	ML	ML	M
Zaoutar El Charkiyeh	ML	ML	M	Zaoutar El-Gharbiyeh	ML	ML	M	Zebdine El-Nabatiyeh	ML	L	M
Zefta	M	L	M								

### Hasbaiya

Municipality	21-Apr	22-Apr	23-Apr	Municipality	21-Apr	22-Apr	23-Apr	Municipality	21-Apr	22-Apr	23-Apr
Ain Jarfa	ML	L	M	Abou Qamha	ML	L	M	Ain Qania	ML	L	M
Bourghos	ML	ML	M	Chebaa	M	L	M	Chouaya Hasbaya	ML	L	M
Dellafeh	ML	L	M	Fardiss Hasbaiya	ML	L	M	Hasbaya	ML	L	M
Hbariyeh	ML	L	M	Kaoukaba Hasbaiya	ML	L	M	Kfar Chouba	M	L	M
Kfar Hamam	ML	L	M	Kfeir El-Zait	M	L	M	Khalwat Hasbaya	M	L	M
Khreibet Hasbaiya	ML	ML	M	Majidiyeh Hasbaiya	ML	ML	M	Marj Ez-Zhour (Haouc	M	L	M
Meri	ML	ML	M	Mimass	M	L	M	Rachaiya El-Fokhar	ML	L	M
Salaiyeb	ML	ML	M								

### Marjayoun

Municipality	21-Apr	22-Apr	23-Apr	Municipality	21-Apr	22-Apr	23-Apr	Municipality	21-Apr	22-Apr	23-Apr
Aalmane Marjaayoun	L	L	M	Aamra	ML	ML	M	Adayseh Marjaayoun	ML	ML	M
Adchit El-Koussair	ML	ML	M	Ain Arab Marjaayoun	ML	ML	M	Bani Haiyann	L	ML	M
Blatt Marjaayoun	ML	L	M	Blida	ML	M	M	Borj El-Moulouk	ML	ML	M
Boueyda Marjaayoun	ML	L	M	Deir Mimass	L	L	M	Deir Siriane	ML	L	M
Dibbine	ML	L	M	Ebel El Saqi	ML	L	M	Houla	ML	ML	M
Houra	ML	ML	M	Kfar Kila	ML	ML	M	Khiam Marjaayoun	ML	ML	M



Klayaa	ML	ML	M	Majdel Selem	ML	M	M	Marjaayoun	ML	ML	M
Markaba	ML	ML	M	Mays El-Jabal	ML	M	M	Mazraat Doumiat	ML	ML	M
Mazraat Sarada	ML	ML	M	Mhaibib	ML	M	M	Qabrikha	ML	M	M
Qantara	ML	ML	M	Rab El-Thalathine	ML	ML	M	Saouaneh Marjayoun	M	M	M
Talloussa	L	ML	M	Taybeh Matjaayoun	ML	ML	M	Touline	ML	M	M

## Bent Jbail

Municipality	21-Apr	22-Apr	23-Apr	Municipality	21-Apr	22-Apr	23-Apr	Municipality	21-Apr	22-Apr	23-Apr
Ain-Ebel	M	M	M	Aitaroun	ML	M	M	Aynata Bint Jbeil	M	M	M
Ayta El-Chaeb	M	M	M	Ayta El-Jabal	M	M	M	Beit Lif	M	ML	M
Beit Yahoun	M	M	M	Bint Jbeil	M	M	M	Borj Qalaway	ML	M	M
Braachit	M	M	M	Chakra	ML	M	M	Debel	M	M	M
Deir Antar	M	M	M	Froun	ML	ML	M	Ghandouriyeh Bint Jb	ML	ML	M
Hanine	M	M	M	Hariss	M	M	M	Hdatha	M	M	M
Jmeymeh	M	M	M	Kafra Bint Jbeil	M	M	M	Kfar Dounine	M	M	M
Khirbet Selm	ML	M	M	Kounine	M	M	M	Maroun El Ras	M	M	M
Qalaway	ML	M	M	Qaouzah	M	M	M	Qatmoun	M	M	M
Ramya Bint Jbeil	M	M	M	Rchaf	M	M	M	Rmeich	M	M	M
Safad Al Battikh	M	M	M	Salhaneh	M	ML	M	Serbine	M	M	M
Sultanieh Bint Jbeil	M	M	M	Tibnine	ML	M	M	Tiri	M	M	M
Yaroun	M	M	M	Yater	M	M	M				

## Mont Liban

### Jbail

Municipality	21-Apr	22-Apr	23-Apr	Municipality	21-Apr	22-Apr	23-Apr	Municipality	21-Apr	22-Apr	23-Apr
Aabeydat	ML	L	M	Aalita	L	L	ML	Aamchit	M	ML	M
Aarab El-Lahib	L	ML	M	Aarasta	ML	L	M	Adonis Jbeil	L	L	ML
Afqa Jbeil	ML	L	M	Ain El Delbeh Jbeil	L	L	M	Ain El-Ghouyba	L	L	M
Ain Jrain	L	L	M	Ain Kfah	ML	L	M	Almat El Chemaliyat	L	L	M
Almat El-Jenoubiya	L	L	M	Aqoura	L	L	M	Bayzoun	L	L	M
Bchille Jbeil	L	L	M	Bechtida	L	VL	L	Behdaydat	ML	L	M
Beit Habbaq	ML	L	M	Bejjeh	ML	L	M	Bekhaaz	M	L	M
Berbara Jbeil	M	ML	M	Bintael	ML	L	M	Birket Hjoula	ML	VL	ML
Blatt Jbeil	L	L	M	Boulhos	L	L	M	Breyj Jbeil	L	L	L
Chamat	M	L	M	Chikhane	M	ML	M	Chmout	ML	L	M
Eddeh Jbeil	M	L	M	Ehmej	L	L	M	Fatre	L	L	ML
Ferhet	L	L	M	Fghal	M	L	M	Frat	L	VL	M
Ghabat	ML	ML	M	Ghalboun	ML	L	M	Gharzouz	ML	L	M
Ghofrine	M	ML	M	Habil	ML	VL	ML	Halate	ML	L	M
Haqel	ML	L	M	Hbaline	ML	L	M	Hboub	ML	L	M
Hdeine	ML	ML	M	Hema Er-Rehban	L	ML	M	Hema Mar Maroun Aann	L	ML	M
Hjoula	L	L	M	Hosrayel	M	L	M	Hsarat	ML	L	M
Hsoun	L	L	M	Jaj	L	L	M	Janne	L	VL	ML
Jbeil	M	ML	M	Jeddeyel Jbeil	M	L	M	Jlisse	L	L	L
Jouret El-Qattine	L	L	M	Kfar Baal Annaya	L	L	M	Kfar Kidde	M	L	M
Kfar Kouas	L	L	M	Kfar Mashoun	ML	L	M	Kfoun	L	L	M

Kharbe Jbeil	ML	L	M	Laqlouq	L	M	M	Lassa	L	L	M
Lehfed	L	L	M	Maad	M	L	M	Mar Sarkis	L	ML	M
Mastita	ML	ML	M	Mayfouq	L	L	M	Mazraat El Siyad	L	ML	M
Mazraat El-Maaden	L	L	M	Mechane	L	L	M	Mechmech Jbeil	L	L	M
Mehrin	L	L	M	Mejdel El-Akoura	L	ML	M	Mghayreh Jbeil	ML	ML	M
Mounsef	M	ML	M	Nahr Ibrahim	M	ML	M	Qahmez	L	L	M
Qartaba	L	L	M	Qartaboun	ML	ML	M	Qattara Jbeil	L	L	M
Qorqraya	L	VL	ML	Ramout	ML	L	M	Ras Osta	L	L	ML
Rihane Jbeil	M	ML	M	Sakiet El-Khayt	ML	L	M	Saqi Richmaya	L	L	M
Sebrine	L	L	ML	Seraita	ML	ML	M	Souane Jbeil	L	L	M
Tadmor	ML	ML	M	Tartej	L	L	M	Torzaiya	L	L	M
Yanouh Jbeil	ML	ML	M	Zibidine Jbeil	L	L	M				

## El Metn

Municipality	21-Apr	22-Apr	23-Apr	Municipality	21-Apr	22-Apr	23-Apr	Municipality	21-Apr	22-Apr	23-Apr
Aain El-Qabu	L	L	M	Aain El-Qach	L	L	M	Aain El-Teffaha	L	L	M
Aain el-Safssaf El-M	L	L	M	Abou Mizane	L	L	M	Ain Aar	ML	L	M
Ain Alaq	L	L	M	Ain El-Kharroube	L	L	M	Ain El-Sendiane	L	L	M
Ain El-Zeitoune	L	L	M	Ain Saadeh	L	L	M	Aintoura El-Matn	L	ML	M
Amaret Chalhoub	ML	ML	M	Antelias	ML	ML	M	Atchaneh	L	L	M
Ayroun	L	L	M	Baabdat	ML	L	M	Baouchariyeh	ML	M	M
Baskinta	L	L	M	Beit Chabab	L	L	M	Beit El-Chaar	L	L	M
Beit El-Kekko	ML	ML	M	Beit Mery	L	L	M	Bhersaf	L	L	M
Bikfaya	L	L	M	Biyakout	ML	L	M	Bnabil	L	L	M
Bourj Hammoud	M	M	M	Bqennaya	ML	L	M	Broummana El-Matn	ML	L	M
Bsalim	L	L	M	Bsifrine	L	L	M	Bteghrine	L	L	M
Chaouiye	L	L	M	Chouaya El-Matn	L	L	M	Choueir	L	L	M
Chrine	L	L	M	Dahr El Sawan El-Mat	L	L	M	Daychouniyeh	L	L	M
Dbayeh	L	ML	M	Deir Chamra	L	L	ML	Deir Mar Abda el Mch	L	L	M
Deir Mar Roukouz	ML	ML	M	Deir Tamiche	L	L	M	Dik El-Mehdi	L	L	M
Dikwaneh	M	M	M	Douar El-Matn	L	L	M	Fanar	ML	L	M
Fraike	L	L	M	Haret El-Ballaneh	L	L	M	Hbous	L	L	M
Himlaya	L	L	M	Jal El Did	ML	ML	M	Jdeideh El-Metn	ML	ML	M
Jouar El-Matn	L	L	M	Jouret El-Ballout	L	L	M	Kaaqour	L	L	M
Kfar Aaqab	L	L	M	Kfertay El-Matn	L	L	M	Khenchara	L	L	M
Khillet El-Mtain	ML	L	M	Konnabat Broummana	L	L	M	Konnabat Salima	L	L	M
Machraah El-Matn	L	L	M	Majdel Tarchich	L	ML	M	Majzoub	ML	L	M
Mansouriyeh El-Metn	ML	ML	M	Mar Boutros Karm Et-	L	L	M	Mar Chaya et Mzekke	L	L	M
Mar Moussa Ed-Douar	L	L	M	Marjaba	L	L	M	Masqa	L	L	M
Mayasse	L	L	M	Mazraat Deir Aoukar	L	L	M	Mazraat El-Hadirat	L	L	M
Mazraat Yachouh	L	L	M	Mchikha	L	L	M	Menqlet Mezher	ML	L	M
Mhaydseh Matn	L	L	M	Mkalles	ML	M	M	Mrouj	L	ML	M
Mtain	L	L	M	Mtayleb	L	L	M	Nabay	L	L	M
Naccache	ML	L	M	Ouadi Chahine	L	L	M	Ouadi El-Karm El-Mat	L	L	M
Ouata El-Mrouj	L	L	M	Ouyoun El-Matn	L	VL	M	Qornet Chehwan	L	L	M
Qornet El-Hamra	L	L	M	Roumieh	L	L	M	Sfeilet Bikfaya	L	L	M
Sinn El-Fil	M	M	M	Zabbougha	L	VL	ML	Zalqa	ML	L	M



Zarouon	L	L	M	Zekrite	L	L	M	Zighrine El-Matn	L	L	M
Zouk El-Khrab	L	ML	M								

## Chouf

Municipality	21-Apr	22-Apr	23-Apr	Municipality	21-Apr	22-Apr	23-Apr	Municipality	21-Apr	22-Apr	23-Apr
Aalmane El-Chouf	ML	L	M	Aammq El-Chouf	ML	L	M	Ain Ouzein	ML	L	M
Ain Qani	ML	L	M	Ain Zhalta	L	L	M	Ainbal	ML	L	M
Amatour	ML	L	M	Anout	L	L	M	Atrine	ML	L	M
Baadarane	ML	L	M	Baaqline	ML	L	M	Baasir	ML	L	M
Barja	ML	L	M	Barouk	L	L	M	Bater	ML	L	M
Batloun	L	L	M	Bayqoun	ML	L	M	Bchetfine	ML	L	M
Beiteddine	ML	L	M	Benouati Ech-Chouf	ML	L	M	Berjein	ML	L	M
Bireh et Mtalleh	L	L	M	Biret El-Chouf	ML	L	M	Bkechtine Ouel Mchei	ML	VL	L
Bkifa El-Chouf	L	L	M	Botme	ML	L	M	Bqaiaa Ech-Chouf	ML	L	M
Bsaba El-Chouf	L	L	M	Chammis El-Chouf	ML	L	M	Chehim	L	L	M
Chemaarine	ML	L	ML	Chourit	ML	L	M	Daher El-Chouf	ML	L	M
Dalhoun	ML	L	M	Damour	M	L	M	Daraya El-Chouf	ML	L	M
Deir El-Moukhalles	L	L	ML	Deir Baba	ML	L	M	Deir Dourit	ML	L	M
Deir El-Qamar	ML	L	M	Deir Kouche	ML	L	M	Dibbieh	ML	L	ML
Dmit	ML	L	M	Fouara Jaafar	L	L	M	Fraidis El-Chouf	L	L	M
Ghabet Jaafar	ML	L	M	Gharife	ML	L	M	Haret Jandal	ML	L	M
Hasrout	L	L	M	Jadra	ML	L	M	Jahlieh	ML	L	M
Jbeih El-Chouf	L	L	M	Jdeidet El-Chouf	ML	L	M	Jiyeh	ML	L	M
Jleilyeh	L	L	M	Jmailiyeh	ML	L	M	Joun	ML	L	M
Kahlounie El-Chouf	ML	L	M	Ketermaya	ML	L	M	Kfar Faqoud	ML	L	M
Kfar Hamal	L	ML	M	Kfar Him	ML	L	M	Kfar Katra	ML	L	M
Kfar Niss	L	L	M	Kfar hay	ML	L	M	Kfarnabrakh	L	L	M
Khirbet Bisri	L	L	M	Knayse El-Chouf	ML	L	M	Maaniyeh	ML	L	M
Maasser Beiteddine	ML	L	M	Maasser El-Chouf	ML	L	M	Majdalouna	ML	L	M
Majdel El-Meouch	ML	L	M	Mazboud	L	L	M	Mazmoura	L	L	M
Mazraat El Chouf	ML	L	M	Mazraat El Daher	ML	L	M	Mazraat El-Douair	ML	L	ML
Mechref	ML	L	M	Mghairie	ML	L	M	Mghayrie El-Chouf	ML	L	M
Moukhtara	ML	L	M	Mrusti	L	L	M	Mtolle	ML	L	M
Naameh	M	L	M	Niha El-Chouf	L	L	M	Ouadi Abou Youssef	ML	VL	L
Ouadi Ed-Deir	ML	L	M	Ouadi El-Sit	ML	L	M	Ouadi bnehlay	ML	VL	ML
Qraibeh	ML	L	M	Qreiaa	L	VL	L	Rmayle El-Chouf	ML	L	M
Semqaniyeh	ML	L	M	Sibline	ML	L	M	Sirjbeil	ML	L	M
Warhanieh	L	L	M	Werdaniyeh	ML	L	M	Zaarourieh	L	L	M

## Baabda

Municipality	21-Apr	22-Apr	23-Apr	Municipality	21-Apr	22-Apr	23-Apr	Municipality	21-Apr	22-Apr	23-Apr
Abadiyeh	L	L	M	Ain Mouaffaq	ML	L	M	Araiya	L	L	M
Arbaniyeh	L	L	M	Arsoun	L	L	M	Baabda	ML	ML	M
Baalchmey	L	L	M	Bmaryam	L	L	M	Bourj El-Brajneh	M	L	M
Boutchay	ML	L	M	Bsaba Baabda	ML	L	M	Btekhney	L	L	M
Btibyat	ML	L	M	Bzbeddine	L	L	M	Chbeniyeh	L	L	M
Chiyah	M	M	M	Chmeisset Baabda	L	L	M	Chouit	L	L	M
Deir El-harf	L	L	M	Deir Khouna	L	L	M	Dlaybeh	L	L	M

Falougha	L	ML	M	Furn El-Chebbak	M	M	M	Hadath Beyrouth	M	ML	M
Halaliyeh Baabda	ML	L	M	Hammana	L	ML	M	Haret El Sett	ML	L	M
Haret Hamze	L	L	M	Haret Hreik	M	M	M	Hasbaiya El-Metn	L	L	M
Jouar El-Hoz	L	L	M	Jouret Arsoun	L	L	M	Kfar Chima	M	L	M
Kfar Selouane	L	L	M	Khalouat Baabda	L	ML	M	Kneisset Baabda	L	L	M
Laylakeh	M	L	M	Louayzeh Baabda	ML	L	M	Merdache	ML	L	M
Mzairaa Baabda	ML	L	M	Ouadi Chahrour El Ol	ML	L	M	Ouadi Chahrour El So	ML	L	M
Qalaa Baabda	L	L	M	Qhraybe Baabda	L	L	M	Qobbayaa	L	L	M
Qornayel	L	L	M	Qortada	L	VL	ML	Qrayeh Baabda	L	L	M
Qsaibeh Baabda	L	L	M	Qtale Baabda	L	L	M	Ras El Metn	L	L	M
Ras El-Haref	L	ML	M	Rouayset El-Ballout	L	L	M	Salima Baabda	L	L	M
Tahouitat El Ghadir	M	L	M	Tarchich	L	L	M	Zandouqa	L	VL	ML

## Aley

Municipality	21-Apr	22-Apr	23-Apr	Municipality	21-Apr	22-Apr	23-Apr	Municipality	21-Apr	22-Apr	23-Apr
Abey	ML	L	M	Aghmid	L	L	M	Ain Dara	L	ML	M
Ain Drafil	ML	L	M	Ain El Halazoun	L	L	M	Ain El-Rmmaneh	L	L	ML
Ain Jedideh	ML	L	M	Ain Ksour	ML	L	M	Ain Onoub	ML	L	M
Ain Traz	ML	L	M	Ainab	ML	L	M	Aley	L	L	M
Aramoun	ML	L	M	Aytat	ML	L	M	Azouniyeh	L	ML	M
Baawerta	ML	L	M	Badghan Oua Wadi Bad	L	ML	M	Bassatine	ML	L	M
Bayssour	ML	L	M	Bchamoun	ML	L	M	Bdadoun	ML	L	M
Behouara	L	L	M	Bennay	M	L	M	Bhamdoun El-Dayaa	L	L	M
Bhamdoun El-Mhatta	L	ML	M	Bkhechthey	L	L	M	Bleibel	ML	L	M
Bmakine	L	L	M	Bmehray	L	L	M	Bouzrid	ML	VL	M
Bserrine	ML	ML	M	Bsous	L	L	ML	Btalloun	L	L	M
Btater	L	L	M	Chanay	L	ML	M	Charoun	L	ML	M
Chartoun	L	L	M	Chemlane	ML	L	M	Choueifat El-Aamrous	M	L	M
Choueifat El-Oumara	M	L	M	Choueifat El-Quoubbe	M	L	M	Dakkoun	ML	L	M
Deir Qoubel	ML	L	M	Dfoun	ML	L	M	Douair El Remmaneh	L	L	M
Ghaboun	L	L	M	Habramoun	ML	L	M	Homs Oua Hama	L	L	M
Houmal	ML	L	M	Jisr El Qadi	ML	L	M	Kehaleh	L	L	M
Keyfoun	ML	L	M	Kfar Aamey	L	L	M	Kommatyeh	L	L	M
Maasrati	ML	L	M	Majdel Baana	L	ML	M	Mansourieh et Ain El	L	L	M
Mazraat El-Nahr	ML	L	M	Mchakhte	L	L	M	Mecherfeh	L	L	M
Mejdlaya	ML	L	M	Mrayjat	ML	L	M	Ramliyah	L	L	M
Rechmaya	ML	L	M	Rejmeh	L	L	M	Remhala	ML	L	M
Rouaysset El Neemane	L	L	M	Saoufar	L	ML	M	Selfaya	ML	L	M
Sirhmoul	ML	L	M	Souq El Ghareb	ML	L	M	Taazanieh	L	L	M

## Kesrouane

Municipality	21-Apr	22-Apr	23-Apr	Municipality	21-Apr	22-Apr	23-Apr	Municipality	21-Apr	22-Apr	23-Apr
Achkout	L	L	M	Adma Oua Dafneh	L	L	M	Ain Ed-Delbe Kesroua	L	L	ML
Ain El-Rihane	L	L	M	Aintoura Kesrouane	L	L	M	Ajaltoun	L	L	M
Akaybeh Kesrouane	ML	ML	M	Aramoun Kesrouane	L	L	M	Azra ouel Ozor	L	L	M
Ballouneh	L	L	M	Batha	L	VL	M	Bekaatat Achkout	L	L	M
Bekaatat Kanaan	L	L	M	Bizhel	L	L	M	Bouar	ML	L	M
Bqaatouta	L	L	M	Bqaq Ed-Dine	ML	L	M	Bzommar	L	L	M



Chahtoul	L	L	M	Chnaniir	L	L	M	Chouan	L	L	M
Daraya Kesrouane	L	L	M	Darououn	L	L	M	Deir Baqlouch	L	L	M
Dlebta	L	L	M	Eghbeh	L	VL	L	Faraya	L	ML	M
Fatka	L	L	M	Feytroun	L	L	M	Ghazir	L	L	M
Ghbaleh Kesrouane	L	L	M	Ghedrass	L	L	ML	Ghosta	L	L	M
Ghynéh	L	L	M	Harharaya w Kattine	L	L	M	Harissa Kesrouane	L	L	M
Hayata	L	L	M	Hosein	L	L	ML	Hrajel	L	ML	M
Jdeideh Ghazir	L	L	M	Jeita	L	L	M	Jounieh Ghadir	ML	L	M
Jounieh Haret Sakhr	L	ML	M	Jounieh Salel Alma	L	L	M	Jounieh Sarba	ML	ML	M
Jouret Bedrane	L	L	M	Jouret Mhad	L	L	ML	Jouret Termos	L	L	M
Kfar Debiane	L	L	M	Kfar Tay Kesrouane	L	VL	ML	Kfar Yassine	ML	ML	M
Kfour Kesrouane	L	L	M	Kharayeb Nahr Ibrahi	ML	L	M	Klayaat Kesrouane	L	L	M
Maarab	L	VL	ML	Maaysra Kesrouane	L	L	M	Mayrouba	L	L	M
Mazraat Er-Ras	L	ML	M	Mazraat Mrah El-Mir	L	L	M	Mchaa El Ftouh	L	ML	M
Mchaa Faraya	VL	ML	M	Mchaa Kfar Dibiane	L	L	M	Mghaer	L	L	ML
Mradiyah	L	VL	M	Nahr Ed-Dahab	L	L	L	Nammoura Kesrouane	L	L	M
Ouata El Jaouz	L	L	M	Ouata Sillam	M	ML	M	Raachine	L	L	ML
Rayfoun	L	L	M	Safra Kesrouane	ML	L	M	Shayle Kesrouane	L	L	M
Tabarja	ML	L	M	Yahchouch	L	L	M	Zaaytreh	L	L	M
Zeytoun	L	L	M	Zouk Mikael	L	ML	M	Zouk Mosbeh	L	ML	M

### Baalbek\_Hermel

#### Baalbek

Municipality	21-Apr	22-Apr	23-Apr	Municipality	21-Apr	22-Apr	23-Apr	Municipality	21-Apr	22-Apr	23-Apr
Aadous	M	L	M	Aamchki	M	L	M	Aarsal	M	ML	M
Ain Baalbek	M	ML	M	Ain Bourday	M	L	M	Ain El-Benye	M	L	M
Ain El-Jaouz Baalbek	M	L	M	Ain El-Siya Chadoura	M	L	M	Al Khodr Baalbek	M	L	M
Al Nabi Chit	M	L	M	Aynata Baalbek	ML	VL	M	Baalbek	M	L	M
Bachwat	M	VL	M	Barqa	M	VL	ML	Bednayel Baalbak	L	L	M
Beit Chama	ML	L	M	Bijjaje	M	ML	M	Bouday	M	VL	M
Brital	M	L	M	Btadi	M	VL	M	Chaat	M	L	M
Chaibe	M	L	M	Chlifa	M	VL	M	Chmestar	ML	L	M
Dar El-Oussa	M	VL	M	Deir El-Ahmar	M	VL	M	Deir Mar Maroun Baal	M	M	MH
Douris	M	L	M	Fakiha	M	M	MH	Hadath Baalbek	M	L	M
Ham	M	L	M	Haour Taala	M	L	M	Hizzine	M	L	M
Hlebta	M	L	M	Hosh Barada	M	L	M	Hosh El Dahab	M	L	M
Hosh El Snid	M	L	M	Hosh El-Nabi	M	L	M	Hosh El-Rafiq	M	L	M
Hosh Tal Safiya	M	L	M	Hrebta	M	L	M	laat	M	VL	M
Jebaa	ML	ML	M	Jenta	M	L	M	Kfar Dabach	ML	L	M
Kfar Dane	M	L	MH	Khraibeh El-Hermel	M	ML	M	Khreibet Baalbek	M	L	M
Kneisset Baalbek	M	VL	M	Labueh	M	ML	M	Maarboun	M	L	M
Majdaloun	M	L	M	Maqneh	M	VL	M	Mazraat Beit Mcheik	L	L	M
Misraya	M	L	M	Moqraq	M	ML	M	Nabha El-Damdoum	M	VL	M
Nabi Chbay	M	L	M	Nabi Osman	M	ML	M	Nahleh baalbek	M	L	M
Ouadi El-Oss	M	L	M	Qaa Baayoun	M	M	MH	Qaa Jouar Maqiye	M	M	MH
Qaa Ouadi El-Khanzir	M	M	MH	Qah Baalbek	M	M	MH	Qarha Baalbek	M	VL	M

Qsarnaba	ML	L	M	Ram Baalbek	M	VL	M	Ras Baalbek El Sahl	M	M	MH
Ras Baalbek El-Charq	M	M	MH	Riha	M	VL	M	Saaide	M	L	M
Sbouba	M	L	M	Seriine El-Tahta	M	L	M	Slouqi	L	L	M
Taiba Baalbek	M	L	M	Talia	M	L	M	Taraiya	ML	L	M
Temnin El Fawqa	ML	L	M	Temnin El-Tahta	ML	L	M	Tfail	M	L	M
Yahfoufa	M	L	M	Yammouneh	ML	VL	M	Younine	M	ML	M
Zboud	M	ML	M								

## Hermel

Municipality	21-Apr	22-Apr	23-Apr	Municipality	21-Apr	22-Apr	23-Apr	Municipality	21-Apr	22-Apr	23-Apr
Charbine El-Hermel	M	M	M	Hermel Jbab	L	L	M	Hermel	M	M	MH
Maaysra El-Hermel	M	L	M	Michaa Mrajhine	L	M	M	Ouadi Faara	M	L	M
Ras Baalbek - Ouadi	M	M	MH	Ras Baalbek El Gharb	M	L	M	Zighrine	ML	L	M

## Akkar

### Akkar

Municipality	21-Apr	22-Apr	23-Apr	Municipality	21-Apr	22-Apr	23-Apr	Municipality	21-Apr	22-Apr	23-Apr
Aain Tinta	M	M	MH	Aaiyat	M	M	MH	Aakkar El-Aatiqa	M	M	M
Aamar Akkar	M	L	MH	Aamar El Baykat	M	M	MH	Aamayer	MH	M	MH
Aamriyet Akkar	M	M	MH	Aandqet	M	M	M	Aarmeh	M	ML	M
Aarqa	M	L	MH	Aawaynat	M	M	MH	Aayoun Akkar	M	M	MH
Abboudiye	M	L	MH	Ain El-Zeit	M	M	MH	Ain Yaaqoub	M	M	MH
Akroum	M	M	M	Aridet Cheikh Zennad	M	L	H	Baldeh w Mazraat Bal	M	ML	MH
Barcha	M	ML	MH	Bardeh	M	M	MH	Bebnine	M	L	MH
Beino	M	ML	MH	Beit Ayoub	M	M	MH	Beit El-Haouch	M	L	MH
Beit Mellat	M	M	MH	Beit Younes	ML	L	M	Berbara Akkar	M	M	MH
Berqayel	M	L	MH	Bezgina	M	ML	M	Bireh Akkar	M	M	MH
Borj	M	M	H	Bqerezla	M	L	MH	Bzal	M	L	M
Chane	M	L	M	Chaqdouf	M	M	H	Charbila	M	ML	MH
Cheikh Mohammad	M	ML	MH	Cheikh Taba Es-Sahl	M	L	MH	Cheikh Taba	M	L	MH
Cheikh Zennad	M	L	MH	Cheikhlar	M	M	MH	Chir Hmairine	M	ML	MH
Daghle	M	M	MH	Dahr Laissine	M	ML	MH	Darine	M	ML	MH
Dawra	M	ML	M	Dawsa w Baghdadi	M	M	MH	Dayret Nahr El-Kabir	M	M	MH
Deir Dalloum	M	L	MH	Deir Jennine	M	M	MH	Denbou	M	L	M
Dibbabiyyeh	M	M	MH	Douair Aadwiyeh	M	M	MH	Fassikine	M	M	MH
Fnaydek	M	M	M	Fraydes Akkar	M	M	M	Ghazayle	M	ML	MH
Habchit	ML	L	M	Hakour	M	L	MH	Halba	M	ML	MH
Haouchab	M	ML	MH	Hayssat	M	L	MH	Haytla	M	ML	MH
Hayzouq	M	L	MH	Hedd	M	ML	MH	Hmaira Akkar	M	L	MH
Hmaiss Akkar	M	M	MH	Hnaider	MH	M	H	Hokr Ed-Dahri	M	L	MH
Hokr Etti	M	M	MH	Hokr Jouret Srar	M	L	MH	Houaich	M	ML	M
Hrar	M	ML	M	Idbil	M	L	MH	Ilal	M	M	MH
Janine	M	ML	MH	Jdeidet El-Joumeh	M	L	MH	Jdeidet El-Kaiteh	M	L	MH
Jebrayel	M	ML	MH	Kafr	ML	L	M	Kafr	M	M	MH
Karm Asfour	ML	L	MH	Kfar Melki Akkar	M	L	MH	Kfar Noun	M	ML	M
Kfarharra	M	ML	MH	Khalsa	M	M	MH	Kharnoubet Akkar	M	ML	MH



Khirbet Daoud Aakkar	M	M	MH	Khirbet El Remmane	M	M	MH	Khirbet Shar	M	M	MH
Khoreybet El-Jindi	M	ML	MH	Khreibet Aakkar	ML	ML	MH	Kneisset Aakkar	M	L	MH
Kneisset Hnaider	MH	M	H	Knisse	M	ML	MH	Kroum El-Aarab	M	ML	MH
Kwachra	M	M	MH	Kweykhat	M	ML	MH	Machta Hammoud	M	M	MH
Majdala	M	L	MH	Majdel Akkar	M	M	MH	Mar Touma	M	L	MH
Marlaya Melhem	M	L	MH	Mashha	M	L	MH	Massoudiye	M	L	MH
Mazraat Beit Ghattas	ML	ML	MH	Mazraat En-Nahriye	M	M	MH	Mechmech	M	ML	M
Memneh	M	L	M	Mhammara	M	L	MH	Mighraq Aakkar	M	L	MH
Minyara	M	L	MH	Moqayteh	M	L	MH	Mounjez	M	M	M
Msalla	M	M	MH	Mzeihmeh	M	ML	MH	Nfaiseh	M	ML	MH
Noura Et-Tahta	M	M	MH	Ouadi El-Haour	M	ML	MH	Ouadi El-Jamous	M	L	MH
Ouyoun El-Ghizlane	M	L	MH	Qaabarine	M	L	MH	Qabaait	M	L	M
Qachlaq	M	ML	MH	Qantara Aakkar	M	ML	MH	Qarha Aakkar	MH	M	H
Qarqaf	M	L	MH	Qboula	M	M	MH	Qleiaat Aakkar	M	L	MH
Qloud El-Baqie	ML	L	MH	Qobaiyat Aakkar	M	M	M	Qobbat Chamrat	M	L	MH
Qorayat	ML	ML	M	Qornet Aakkar	M	M	MH	Qsair Aakkar	M	M	MH
Rahbe	M	ML	M	Rihaniyet Aakkar	M	ML	MH	Rmah	M	M	MH
Rmoul	M	L	MH	Saadine	M	ML	MH	Sadaqa	M	M	MH
Saidnaya	M	ML	MH	Sammouniye	M	L	MH	Sayssouq	ML	ML	MH
Semmaqiye	M	L	MH	Semmaqli	M	L	MH	Sfinet El-Dreib	M	M	MH
Sfinet El-Qaitaa	M	L	M	Sindyanet Zeidane	M	ML	M	Souaisset Aakkar	M	ML	MH
Srar	M	M	MH	Tal Abbas El Gharby	M	ML	MH	Tal Abbas El-Chargy	M	L	MH
Tal Biret	M	L	MH	Tal Hmayra	M	ML	MH	Tal Maayan Tal Kiri	M	L	MH
Tal Sibel	M	L	MH	Tallet Chattaha	M	M	MH	Tikrit	M	M	MH
Tleil	M	M	MH	Tshea	M	M	M	Zawarib	M	L	MH
Zouq El Hosniyeh	ML	L	MH	Zouq El-Haddara	M	L	MH	Zouq El-Hbalsa	ML	L	MH
Zouq El-Moqachrine	M	L	MH								

## Sud

### Sour

Municipality	21-Apr	22-Apr	23-Apr	Municipality	21-Apr	22-Apr	23-Apr	Municipality	21-Apr	22-Apr	23-Apr
Aaiyeh	M	M	M	Aalma El-Chaab	M	L	M	Aaytit	M	M	M
Abbassiyeh Sour	M	M	M	Abou Chech	M	ML	M	Ain Abou Abdallah	M	M	M
Ain Baal	M	M	M	Arzoun	ML	ML	M	Aziyeh	M	L	M
Baflaya	M	M	M	Barich	M	M	M	Batouliyeh	M	M	M
Bayad	M	M	M	Bazouriyeh	M	M	M	Bediass	M	M	M
Bestiyat	M	M	M	Borj El Chemali	M	M	M	Borj En-Naqoura	M	ML	M
Borj Rahhal	M	M	M	Boustane	M	M	M	Btaychiyeh	M	ML	M
Chaaitiye	M	M	M	Chameh	M	L	M	Chehabiye	M	M	M
Chehour	L	L	M	Chihine	M	ML	M	Debaal Sour	M	M	M
Deir Amess	M	M	M	Deir Kifa	ML	M	M	Deir Qanoun El-Ain	M	M	M
Deir Qanoun El-Naher	M	M	M	Derdghaiya	ML	ML	M	Dhayra	M	ML	M
Halloussiyeh	M	M	M	Hamoul	M	L	M	Hanaouey	M	M	M
Henniye	M	ML	M	Hmairi Sour	M	M	M	Iskandarouna Sour	M	L	M
Jbal El Botom	M	M	M	Jebbin	M	M	M	Jennata	M	M	M
Jijim	M	L	M	Jouaiya	M	M	M	Kneisset Sour	M	M	M

Maarake	M	M	M	Maaroub	M	M	M	Majadel	M	M	M
Majdalzoun	M	M	M	Mansouri Sour	M	M	M	Marnba	L	L	M
Marouahine	M	M	M	Mazraat El-Zalloutiy	M	M	M	Mazraat Mechref	M	M	M
Mazraat Tayr Semhat	L	L	M	Mheilib	M	M	M	Neffakhiyeh	ML	ML	M
Niha Sour	ML	ML	M	Ouadi Jilo	M	M	M	Qana	M	M	M
Qolaileh Sour	M	ML	M	Rechknany	M	M	M	Rmadiyah	M	M	M
Selha Sour	ML	ML	M	Siddiqine	M	M	M	Sour	M	M	M
Srifa	ML	ML	M	Tayr Debbe	M	M	M	Tayr Felsay	M	M	M
Tayr Harfa	M	M	M	Touayri	L	L	M	Toura	M	M	M
Yanouh Sour	M	M	M	Yarine	M	M	M	Zebqine	M	ML	M

## Saida

Municipality	21-Apr	22-Apr	23-Apr	Municipality	21-Apr	22-Apr	23-Apr	Municipality	21-Apr	22-Apr	23-Apr
Aanqoun	M	ML	M	Aaqtanit	ML	ML	M	Aarab Ej-Jall	M	ML	M
Aarab Tabbaya	ML	ML	M	Abra Saida	ML	L	M	Adloun	M	L	M
Adousiyeh	M	L	M	Ain-El-Deleb	ML	ML	M	Arzai	M	M	M
Babliyah	M	L	M	Barty	L	L	M	Bissariyeh	M	L	M
Bnaafoul	ML	ML	M	Bqosta	ML	L	M	Bramiy	ML	L	M
Daoudiyeh	M	L	M	Dareb El-Sim	ML	ML	M	Erkay	ML	ML	M
Ghassanieh	M	ML	M	Ghazieh	M	L	M	Hajjeh	ML	ML	M
Haret Saida	ML	L	M	Hartiyeh	M	L	M	Hlaliye Saida	ML	L	M
Insariyat	M	L	M	Jazira Saida	M	M	M	Kafar Bit	ML	ML	M
Kaoutariyet El-Siyad	M	ML	M	Kfar Chellal	ML	L	M	Kfar Hatta Saida	ML	ML	M
Kfar Milke Saida	ML	L	M	Khartoum	M	ML	M	Khaziz	ML	ML	M
Khirbet Ed-Douair Sa	M	L	M	Khirbet El-Bassal	ML	ML	M	Khrayeb Saida	M	ML	M
Loubieh	M	L	M	Maghdouche	M	ML	M	Majdelyoun	ML	L	M
Matariyet El-Choumar	M	M	M	Matayriyeh	ML	ML	M	Mazraat 'Mseileh	M	L	M
Mazraat 'Snaiber	M	L	M	Mazraat Aarab Soukka	M	ML	M	Mazraat Deir Taqla	M	L	M
Mazraat El Yahoudiye	M	ML	M	Mazraat El-Housseini	M	L	M	Mazraat El-Mhaydaleh	M	ML	M
Mazraat El-Ouasta	M	ML	M	Mazraat Jamjim	M	L	M	Mazraat Kaoutariyet	M	L	M
Mazraat Kfar Badda	M	L	M	Mazraat Oussamiyat	M	ML	M	Mazraat Sari	M	L	M
Mazraat Sinai	M	L	M	Meemariyeh	ML	ML	M	Merouaniyeh	ML	L	M
Miyeh ou Miyeh	ML	ML	M	Najjariyeh	M	L	M	Qaaqiyat El-Snaouba	M	L	M
Qnarit	ML	ML	M	Qraiye Saida	ML	ML	M	Saida Ed-Dekermane	M	L	M
Saida El-Oustani	M	L	M	Saida El-Qadimeh	M	L	M	Saida Kefraya	ML	L	M
Saksakiyeh	M	L	M	Salhieh Saida	ML	L	M	Sarafand	M	L	M
Sfenta	ML	L	M	Tafahta	M	L	M	Tanbourit	ML	ML	M
Tebna	M	L	M	Zaghdraiya	ML	ML	M	Zeita	ML	ML	M
Zrariyeh	M	M	M								

## Jezzine

Municipality	21-Apr	22-Apr	23-Apr	Municipality	21-Apr	22-Apr	23-Apr	Municipality	21-Apr	22-Apr	23-Apr
Ain El-Mir (El Estab	ML	ML	M	Anane	ML	L	M	Aramta	ML	L	M
Ariya	L	L	M	Aychiyeh	L	L	M	Azour	ML	L	M
Baba	L	L	M	Bayssour Jezzine	ML	ML	M	Benoueteh Jezzine	ML	L	M
Bhannine	ML	L	M	Bisri	ML	VL	ML	Bkassine	ML	L	M
Bouslaya	L	L	ML	Btedine El-Leqech	L	L	M	Chbail	ML	VL	L
Choualiq Jezzine	ML	L	M	Dahr Ed-Deir	ML	L	M	Deir El Qattine	ML	L	M

Demachqiyeh	ML	ML	M	Ghabbatiyeh	ML	L	M	Harf Jezzine	ML	VL	M
Hassaniyeh	ML	ML	M	Haytouleh	ML	L	M	Haytura	L	L	M
Hidab	ML	L	M	Homsiyeh	L	L	M	Jabal Toura	ML	L	M
Jarmaq	L	L	M	Jensnaya	ML	ML	M	Jernaya	L	L	M
Jezzine	ML	L	M	Karkha	ML	L	M	Kfar Falous	ML	L	M
Kfar Houna	ML	L	M	Kfar Jarrah	M	ML	M	Lebaa	ML	L	M
Louayzet Jezzine	L	L	M	Machmouche	ML	L	ML	Mahmoudiyeh Jezzine	ML	ML	M
Maknounye Jezzine	ML	L	M	Maraat Ouzaïyeh	ML	L	M	Mazraat Daraya	ML	L	M
Mazraat El-Aarqoub	L	L	M	Mazraat El-Mathane	ML	VL	ML	Mazraat El-Rahbane	L	L	M
Mazraat Khallet Khaz	ML	L	M	Mazraat Louzid (Loua	ML	L	L	Mazraat Qrouh	ML	L	M
Mazraat Tamra	ML	ML	M	Mazraat Zighrine Jez	L	L	M	Mazraat	L	L	M
Mharbiyeh	M	ML	M	Midane Jezzine	ML	L	M	Mjeydel Jezzine	ML	ML	M
Mlikh	L	L	M	Mrah El-Hbasse	ML	L	M	Ouadi Baanqoudaine	ML	ML	M
Ouadi El-Laymoun	ML	L	M	Ouardiyeh	ML	VL	L	Qabaa Jezzine	L	L	M
Qatrani	ML	L	M	Qaytouleh	L	L	M	Qtaleh Jezzine	L	VL	ML
Rihane Jezzine	ML	L	M	Rimat	L	L	M	Roum	ML	L	M
Roummanet	L	L	M	Sabbah	ML	L	M	Saydoun	ML	L	M
Sfaray	ML	L	M	Snaya	L	L	M	Sojoud	L	L	M
Srayri	ML	L	M	Taaid	L	VL	ML	Wadi Jezzine	ML	L	M
Zhalta	L	L	M								

## Bekaa

### West Bekaa

Municipality	21-Apr	22-Apr	23-Apr	Municipality	21-Apr	22-Apr	23-Apr	Municipality	21-Apr	22-Apr	23-Apr
Aammiq BG	M	ML	M	Ain El Tineh BG	L	L	M	Ain Zebdeh	M	L	M
Ana	M	ML	M	Aytanit	M	L	M	Baaloul BG	M	ML	M
Bab Mareh	ML	L	M	Chouberqiye Aammiq	M	M	M	Dakoue	M	M	M
Deir Ain El-Jaouze	M	L	M	Deir Tahniche	M	M	M	Ghaza	M	M	M
Harime El-Soughra	M	M	M	Hoch Harimeh	M	M	M	Jazira BG	M	M	M
Jib Jennine	M	M	M	Kamed-El-Laouz	M	M	M	Kefraya BG	ML	L	M
Khiara El Atika	M	M	M	Khiara	M	M	M	Khirbet Qanafar	M	L	M
Lala	M	ML	M	Lebbaya BG	M	L	M	Loussa	ML	L	M
Machghara	M	L	M	Manara (Hammara) BG	M	ML	M	Mansoura BG	M	M	M
Marej BG	ML	L	M	Maydoun	L	L	M	Ouaqf BG	ML	ML	M
Qaraaoun	M	ML	M	Qelya	ML	L	M	Raouda (Istabel)	M	ML	M
Saghbine	M	L	M	Sohmor	M	ML	M	Soltan Yacoub el Ara	M	M	M
Souairy	M	M	M	Sultan Yaacoub	M	M	M	Tal Znoun	M	M	M
Yehmor BG	M	L	M	Zilaya	M	L	M				

### Zahle

Municipality	21-Apr	22-Apr	23-Apr	Municipality	21-Apr	22-Apr	23-Apr	Municipality	21-Apr	22-Apr	23-Apr
Aanjar (Haouch Mouss	M	ML	M	Ablah	ML	L	M	Ain Kfarzabad	M	L	M
Ali-El-Nahri	ML	L	M	Bar Elias	ML	L	M	Bouarej	L	ML	M
Cheberqiyet Tabet	ML	L	M	Chtaura	ML	L	M	Deir El Ghazal	M	L	M
Delhamiyet Zahle	M	L	M	Ferzol	ML	L	M	Haouch El-Ghanam	ML	L	M
Haouch Es-Siyadeh	ML	L	M	Haouch Hala	M	L	M	Haouch Mandara	ML	L	M



Haouch Qayssar	ML	L	M	Hezerta	L	L	M	Hosh Moussa	M	ML	M
Jdita	ML	L	M	Kfarzabad	M	ML	M	Ksara	ML	L	M
Majdel Aanjar	M	M	M	Makssi	ML	L	M	Massa	M	L	M
Mazraat Er-Remtaniye	L	L	M	Mrayjat Zahle	L	L	M	Mzaraa Zahle	ML	L	M
Nabi Ayla	ML	L	M	Nasriyet Rizk	M	L	M	Nasriyet Zahle	ML	L	M
Niha Zahle	ML	L	M	Ouadi Ed-Deloum	L	L	M	Ouadi El-Arayech	ML	L	M
Qaa El Rim	L	L	M	Qab Elias	ML	L	M	Qousaya	M	L	M
Rhit	M	L	M	Riyak	ML	L	M	Saadnayel	ML	L	M
Taal El-Akhdar	M	ML	M	Taalbeya	ML	L	M	Taanayel	ML	L	M
Talamara	ML	L	M	Tcheflik Edde Haouch	ML	ML	M	Tcheflik Qiqano	ML	L	M
Terbol Zahle	M	ML	M	Touaite Zahle	L	ML	M	Zahle Aradi	ML	L	M
Zahle El-Berbara	ML	L	M	Zahle El-Maallaqa	ML	L	M	Zahle El-Midane	ML	L	M
Zahle Er-Rassiye	ML	L	M	Zahle Haouch El-Ouma	ML	L	M	Zahle Haouch El-Ouma	ML	L	M
Zahle Haouch Ez-Zara	ML	L	M	Zahle Maalaga Aradi	ML	L	M	Zahle Mar Antonios	ML	L	M
Zahle Mar Elias	ML	L	M	Zahle Mar Gerios	ML	L	M	Zahle Saydet En-Naja	ML	L	M
Zebdoul	ML	L	M								

## Rachaiya

Municipality	21-Apr	22-Apr	23-Apr	Municipality	21-Apr	22-Apr	23-Apr	Municipality	21-Apr	22-Apr	23-Apr
Ain Arab Rachaiya	M	M	M	Ain Ata	M	ML	M	Ain Harche	M	ML	M
Aqabe Rachaya	M	M	M	Ayha	M	M	M	Ayta El Fokhar	M	M	M
Bakifa Rachaya	M	ML	M	Bakka	M	M	MH	Beit Lahya	M	ML	M
Bireh Rachaiya	M	M	M	Daheer El Ahmar	M	M	M	Deir El-Achayer	M	M	M
Heloua Rachaiya	M	M	M	Hoch El Qannabeh Rac	M	ML	M	Kaoukaba Bou Arab	M	M	M
Kfar Danis	M	M	M	Kfar Mechki	M	ML	M	Kfar Qouq	M	M	M
Kherbet Rouha	M	M	M	Majdel Balhiss	M	ML	M	Mdoukha	M	M	M
Mhaydseh Rachaiya	M	M	M	Nabi Safa	M	L	M	Rachaiya	M	ML	M
Rafid Rachaiya	M	M	M	Selsata (Mazraat Dei	M	ML	M	Tannoura	M	ML	M
Yanta	M	M	M								

## Beyrouth

### Beyrouth

Municipality	21-Apr	22-Apr	23-Apr	Municipality	21-Apr	22-Apr	23-Apr	Municipality	21-Apr	22-Apr	23-Apr
Achrafieh	M	M	M	Ain el-Mreisse	ML	M	M	Bachoura	M	M	M
Beirut Central Distr	M	M	M	Marfai	M	M	M	Mazraa	M	M	M
Medaouar	M	M	M	Minet el-Hosn	M	M	M	Mwssaitbeh	M	M	M
Ras Beirut	M	M	M	Rmeil	M	M	M	Saifi	M	M	M
Zqaq el-Blat	M	M	M								