

Lebanon Fire Risk Bulletin



CIVIL DEDEFENCE

Refer to cadast table condition.

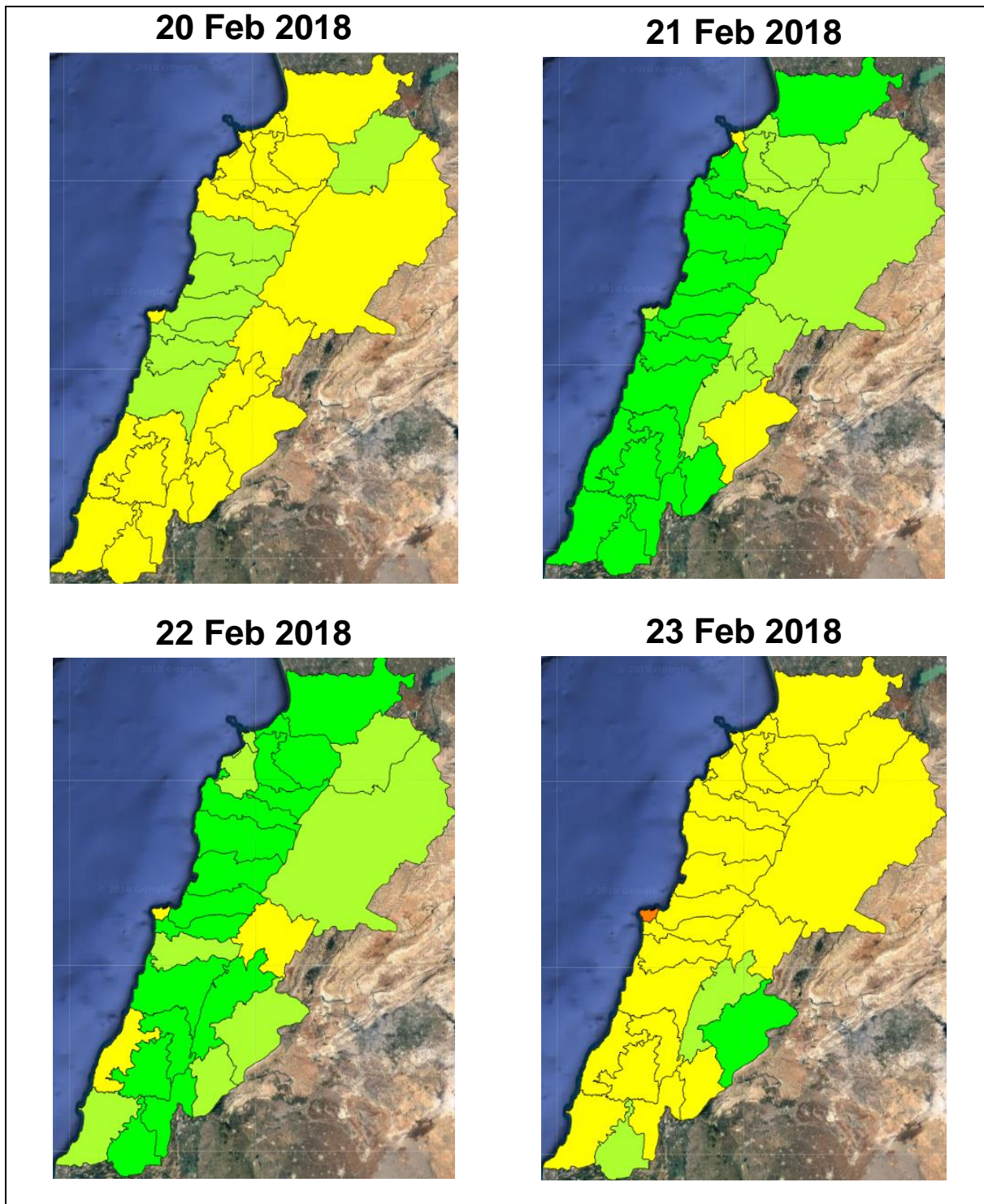
Please note that the indicated temperature is at 2 meters height from the ground.

General description of potential fire risk situation

Symbol	Level of risk	Meaning and actions
VL	Very low	Very low fire risk. Controlled burning operations can be hardly executed due to high fuel moisture content. Normally wildfires self-extinguish.
L	Low	Low fire risk. Controlled burning operations can be executed with a reasonable degree of safety.
ML	Medium low	Medium-low fire risk. Controlled burning operations can be executed in safety conditions. All the fires need to be extinguished.
M	Medium	Medium fire risk. Controlled burning operations would be avoided. All the fires need to be very well extinguished.
M	Medium high	Controlled burning is not recommended. Open flame will start fires. Cured grasslands and forest litter will burn readily. Spread is moderate in forests and fast in exposed areas. Patrolling and monitoring is suggested. Fight fires with direct attack and all available resources.
H	High	Ignition can occur easily with fast spread in grass, shrubs and forests. Fires will be very hot with crowning and short to medium spotting. Direct attack on the head may not be possible requiring indirect methods on flanks. Patrolling and monitoring the territory is highly suggested.
E	Extreme	Ignition can occur also from sparks. Fires will be extremely hot with fast rate of spread. Control may not be possible during day due to long range spotting and crowning. Suppression forces should limit efforts to limiting lateral spread. Damage potential total. Patrolling and monitoring the territory is highly suggested.

Beirut, 21 February 2018

FIRE RISK INDEX

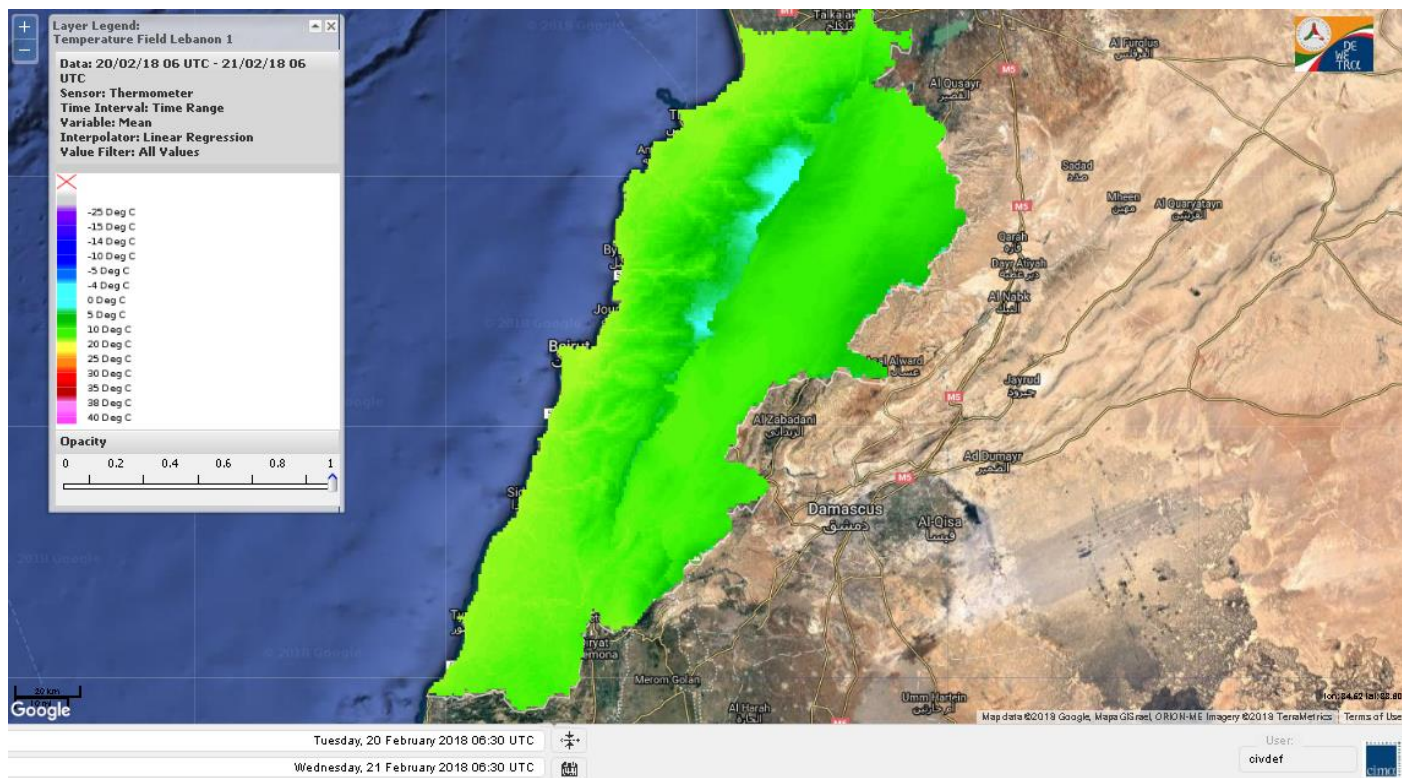


Layer Legend:
Lebanon Wildfire Risk Index 1

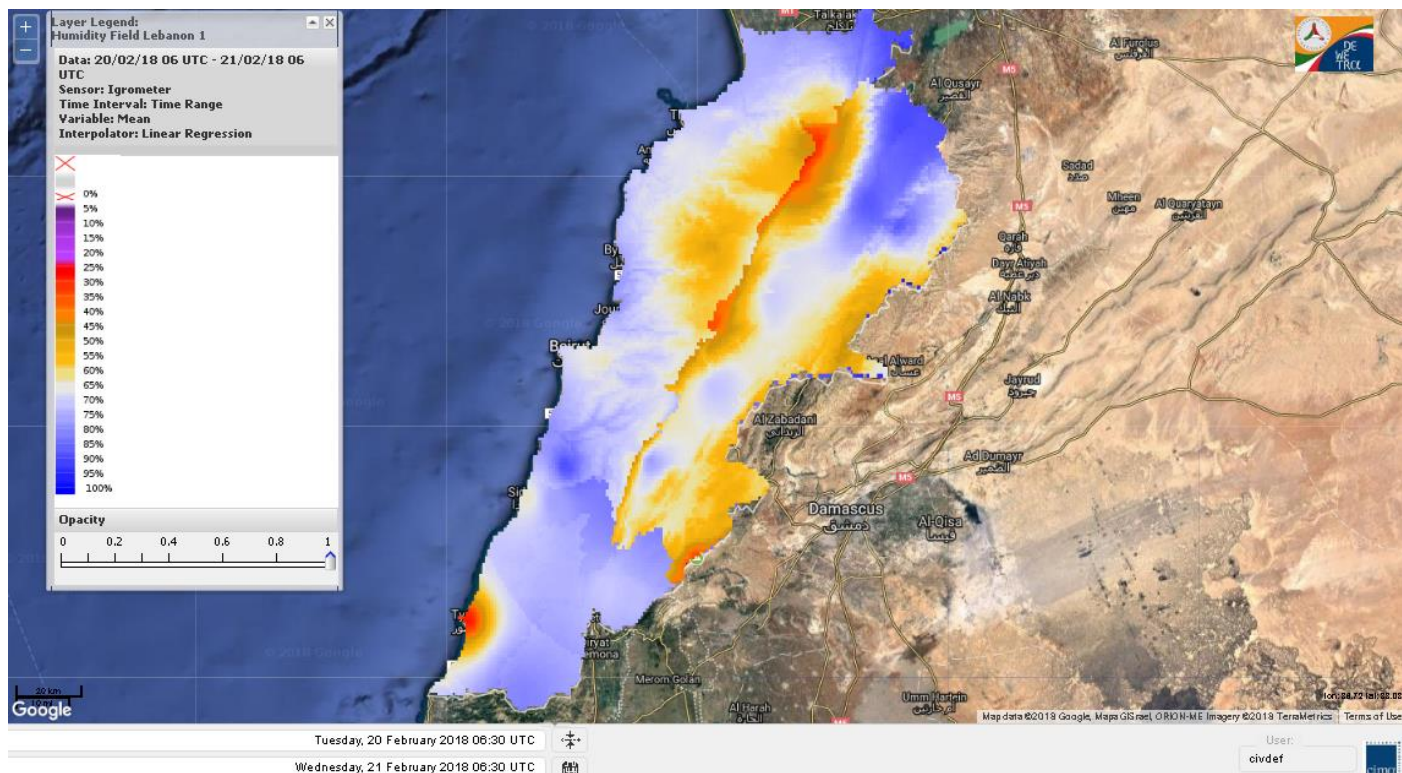
Data: Run: 21/02/2018 00:00. Forecast for 21
Model: RISICO for the Republic of Lebanon
Variable: Fire Weather Index
Spatial Resolution: Caza

- VERY LOW
- LOW
- MEDIUM-LOW
- MEDIUM
- MEDIUM-HIGH
- HIGH
- EXTREME

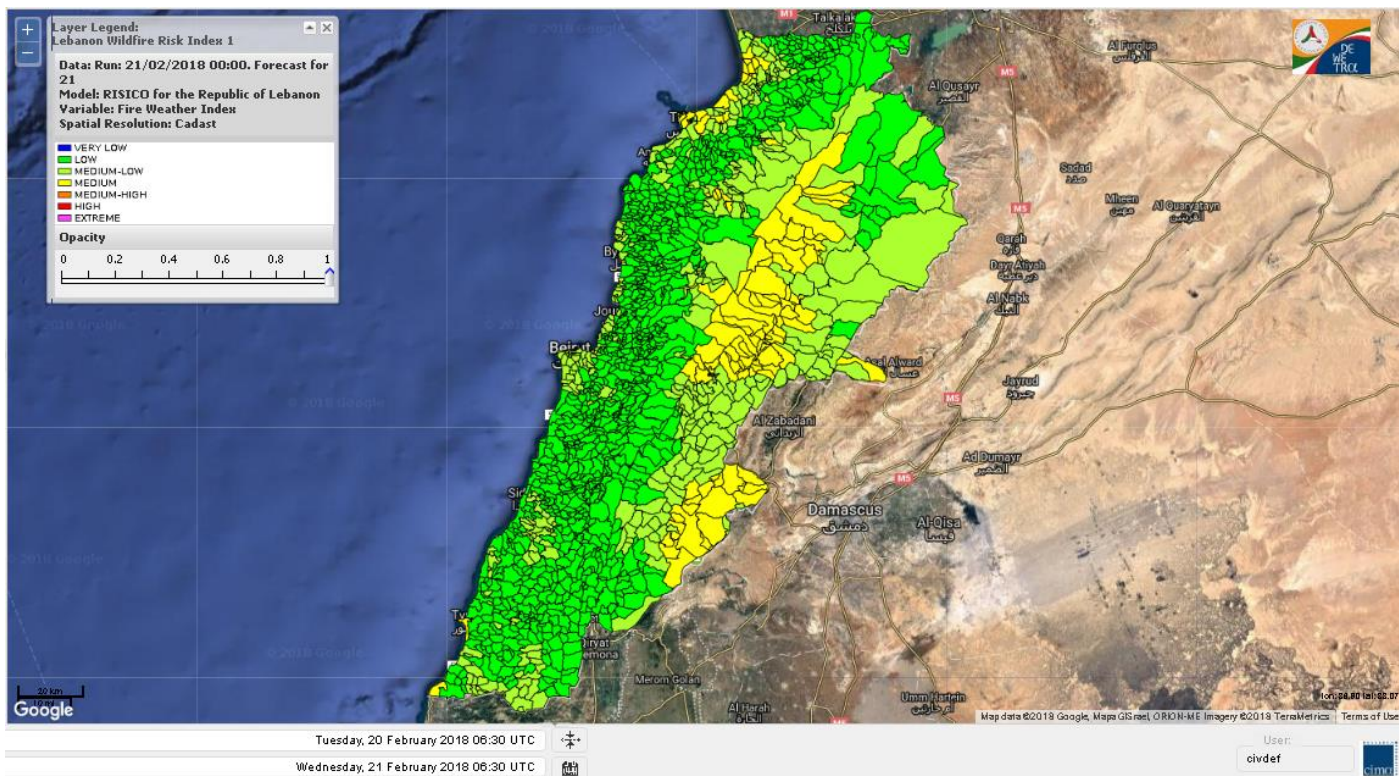
Lebanon temperature for Lebanon 21 Feb 2018



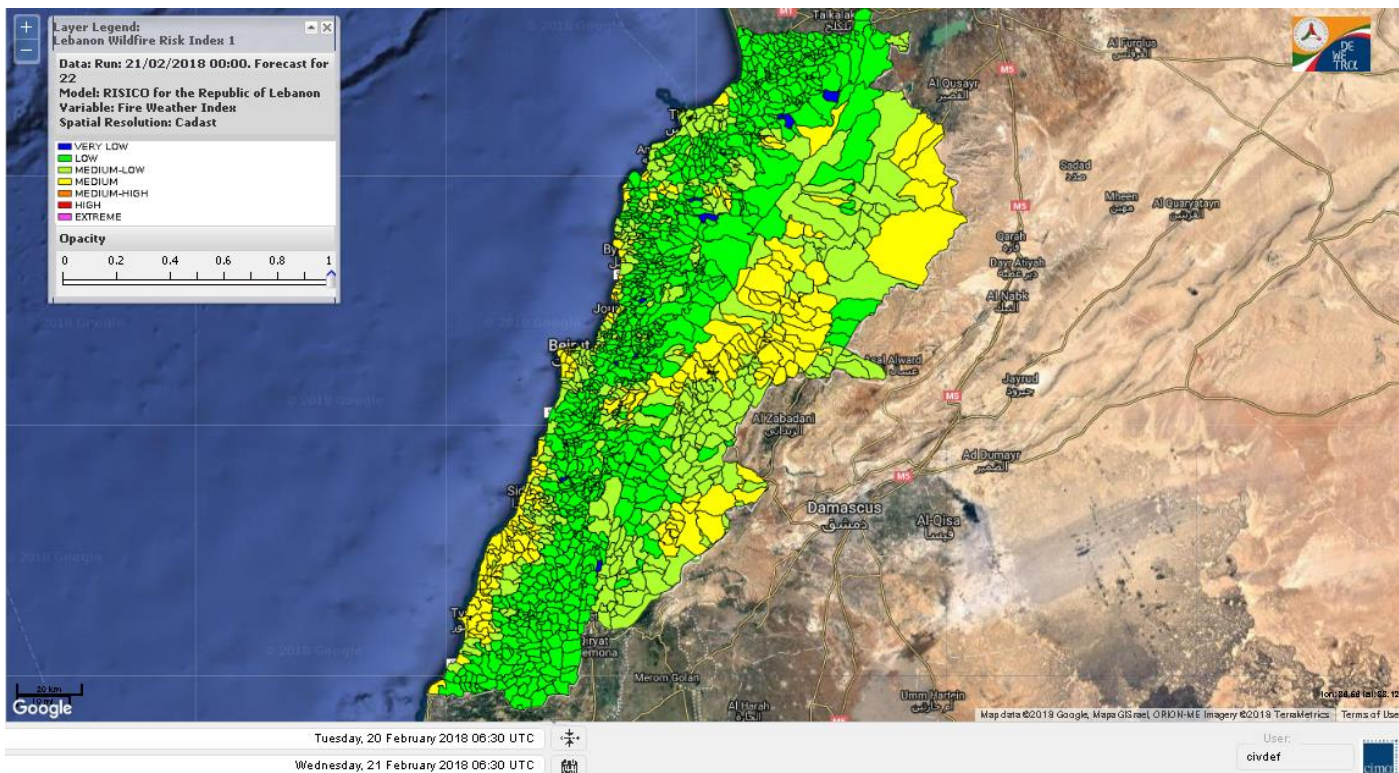
Lebanon humidity for Lebanon 21 Feb 2018



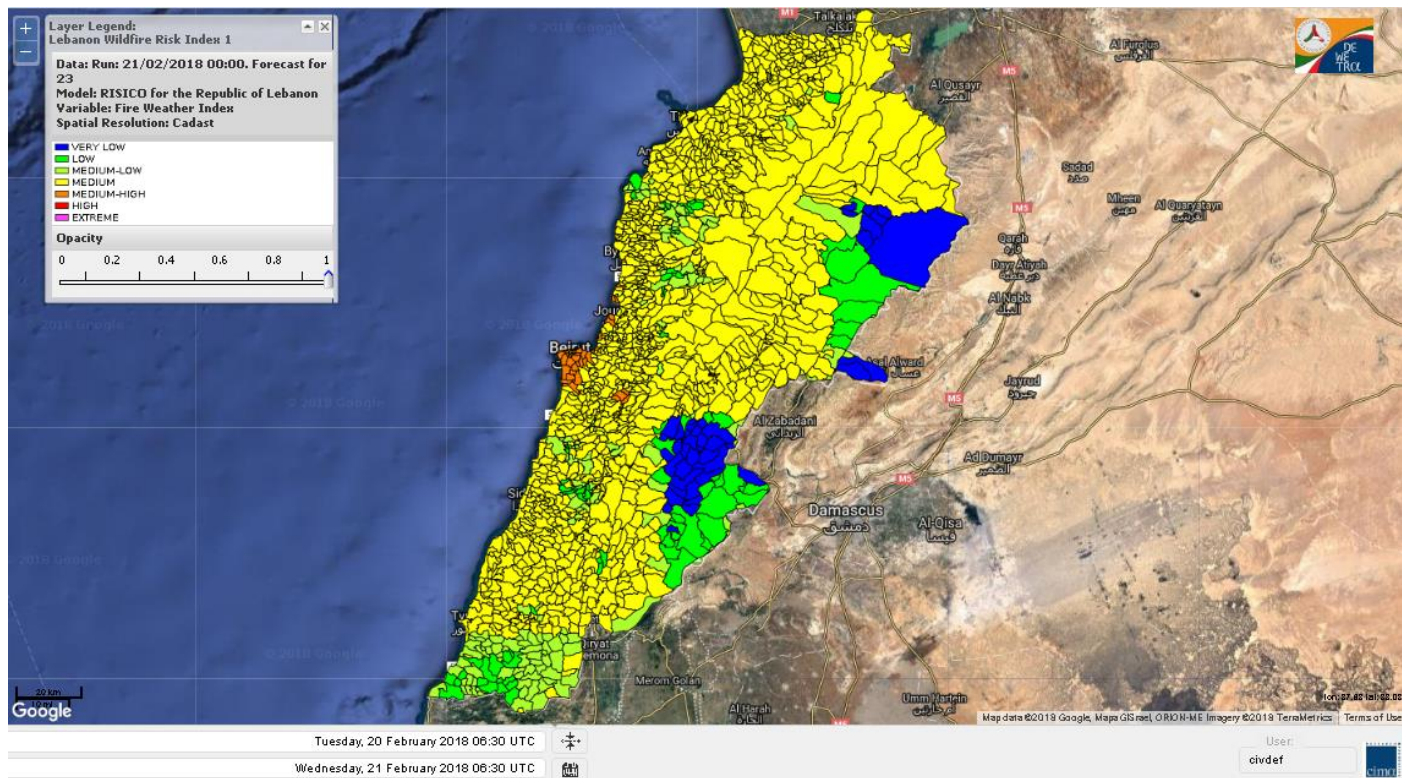
Lebanon for 21 Feb 2018



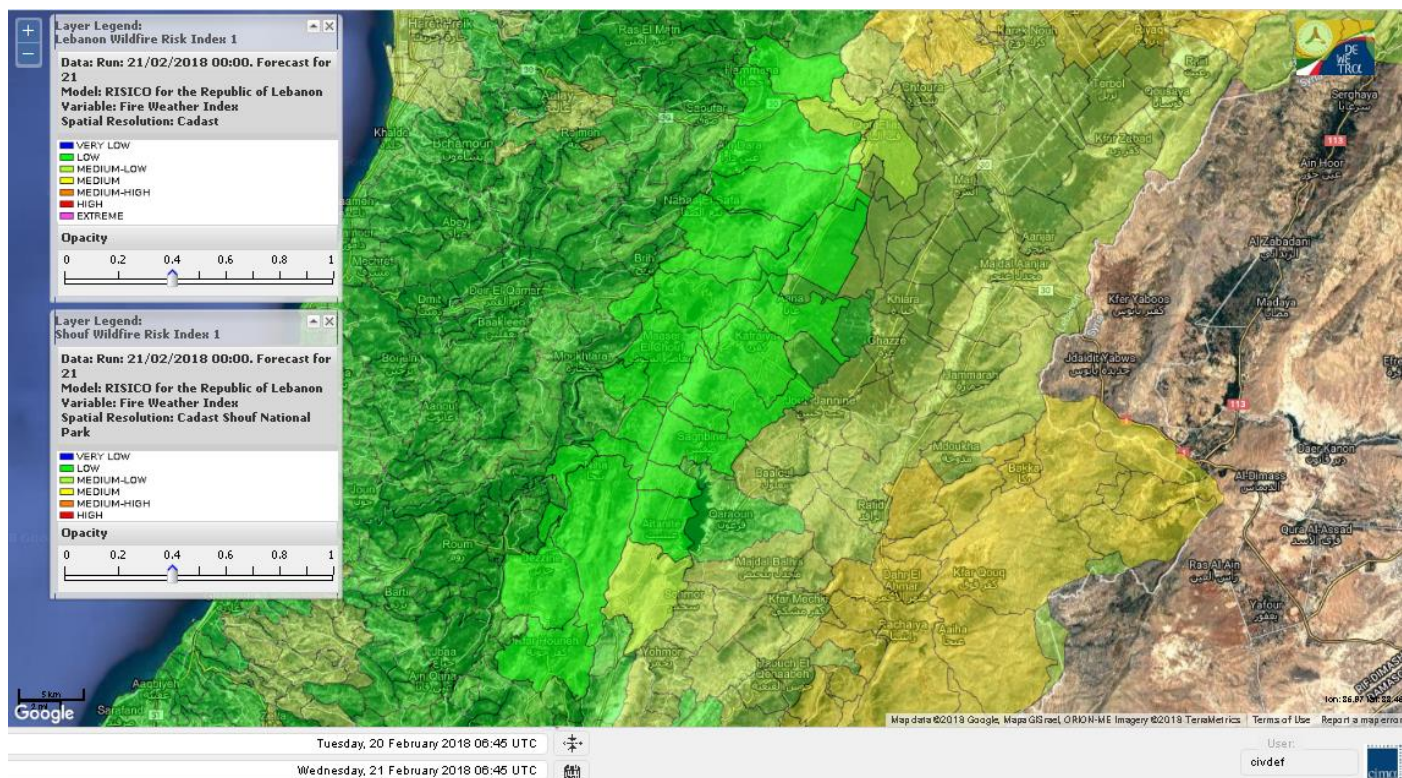
Lebanon for 22 Feb 2018



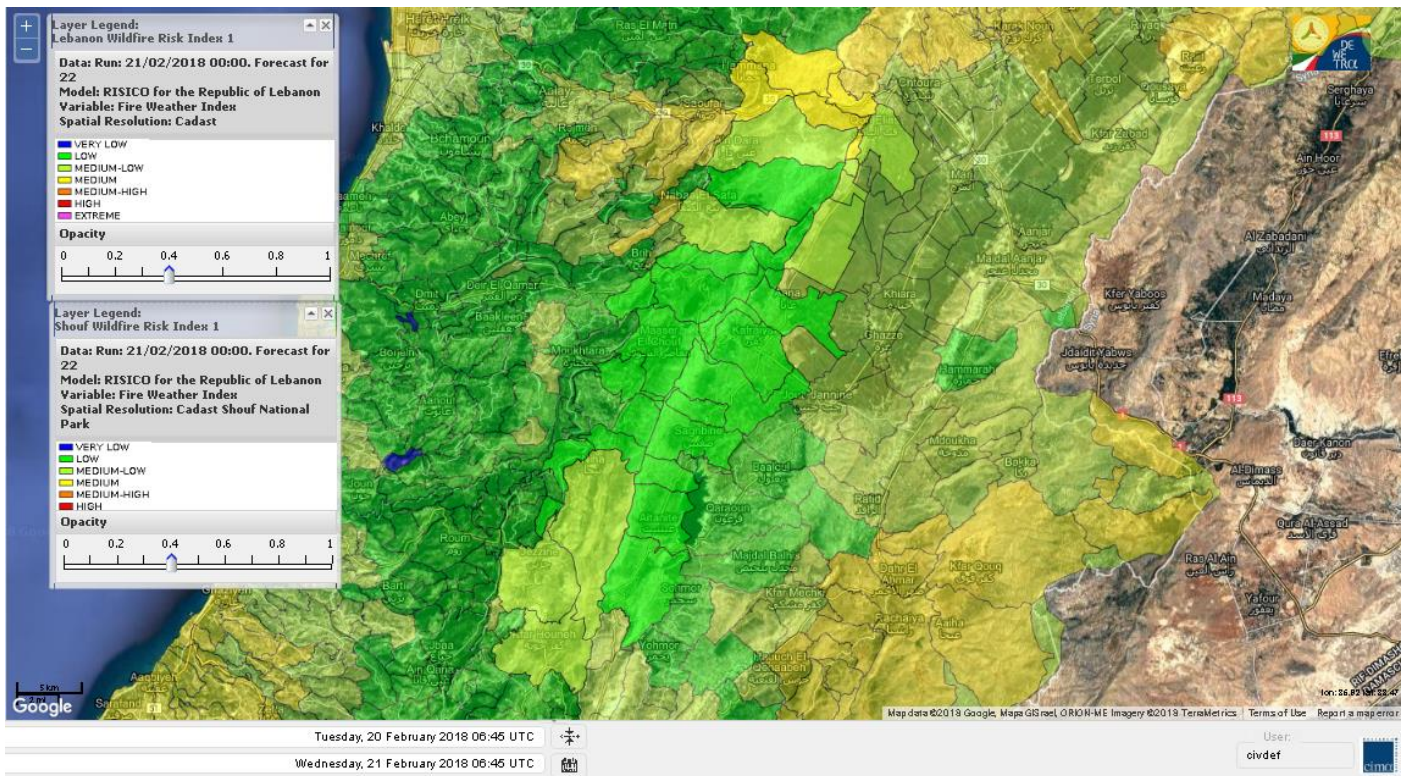
Lebanon for 23 Feb 2018



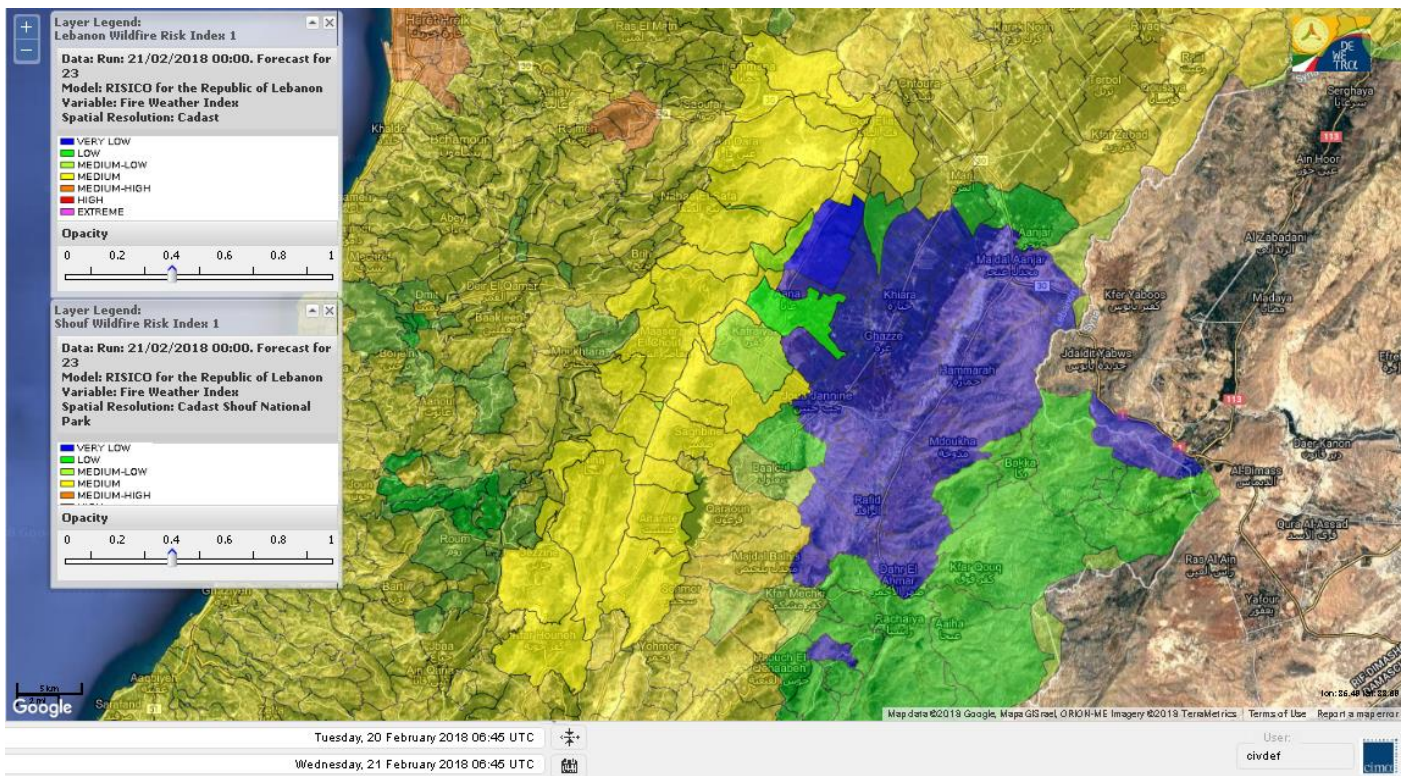
Shouf Biosphere Reserve Forecast for 21 Feb 2018



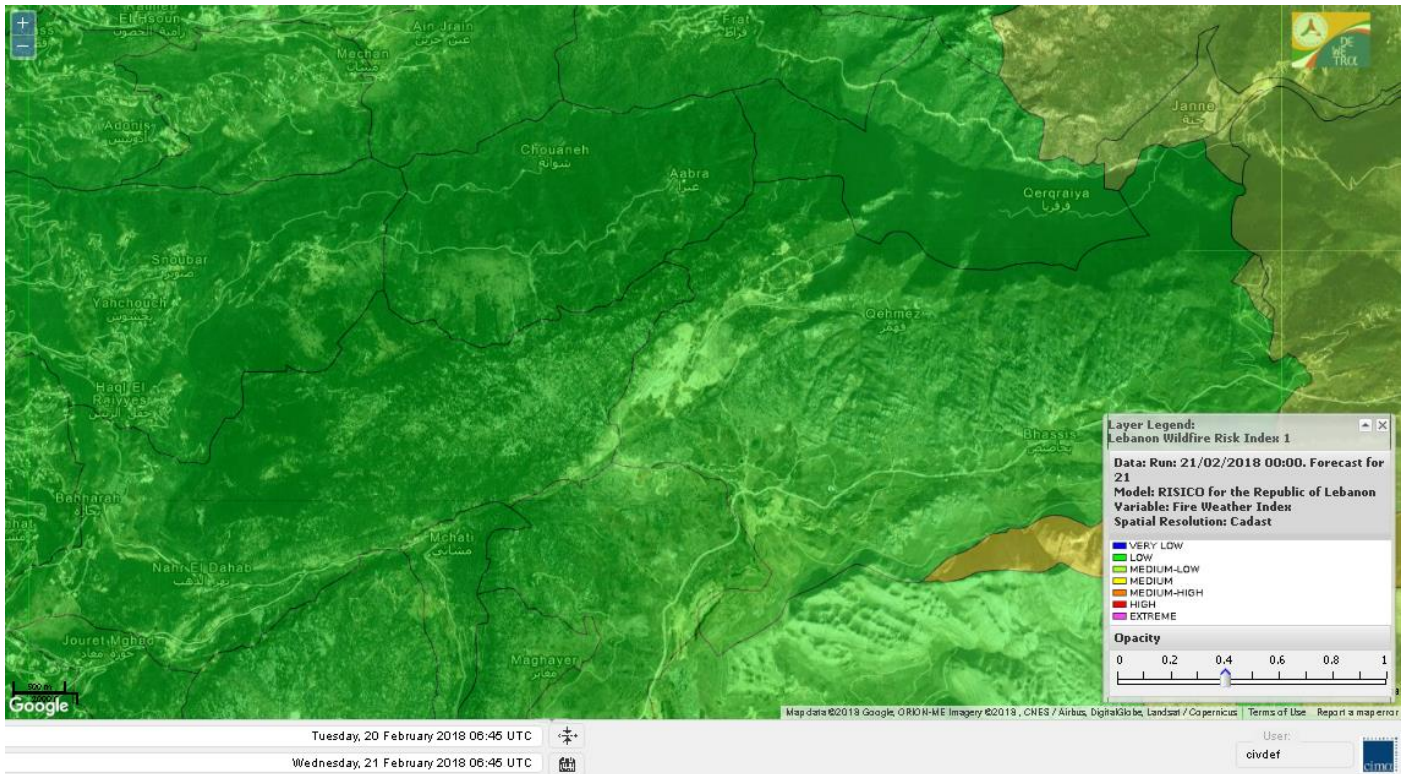
Shouf Biosphere Reserve Forecast for 22 Feb 2018



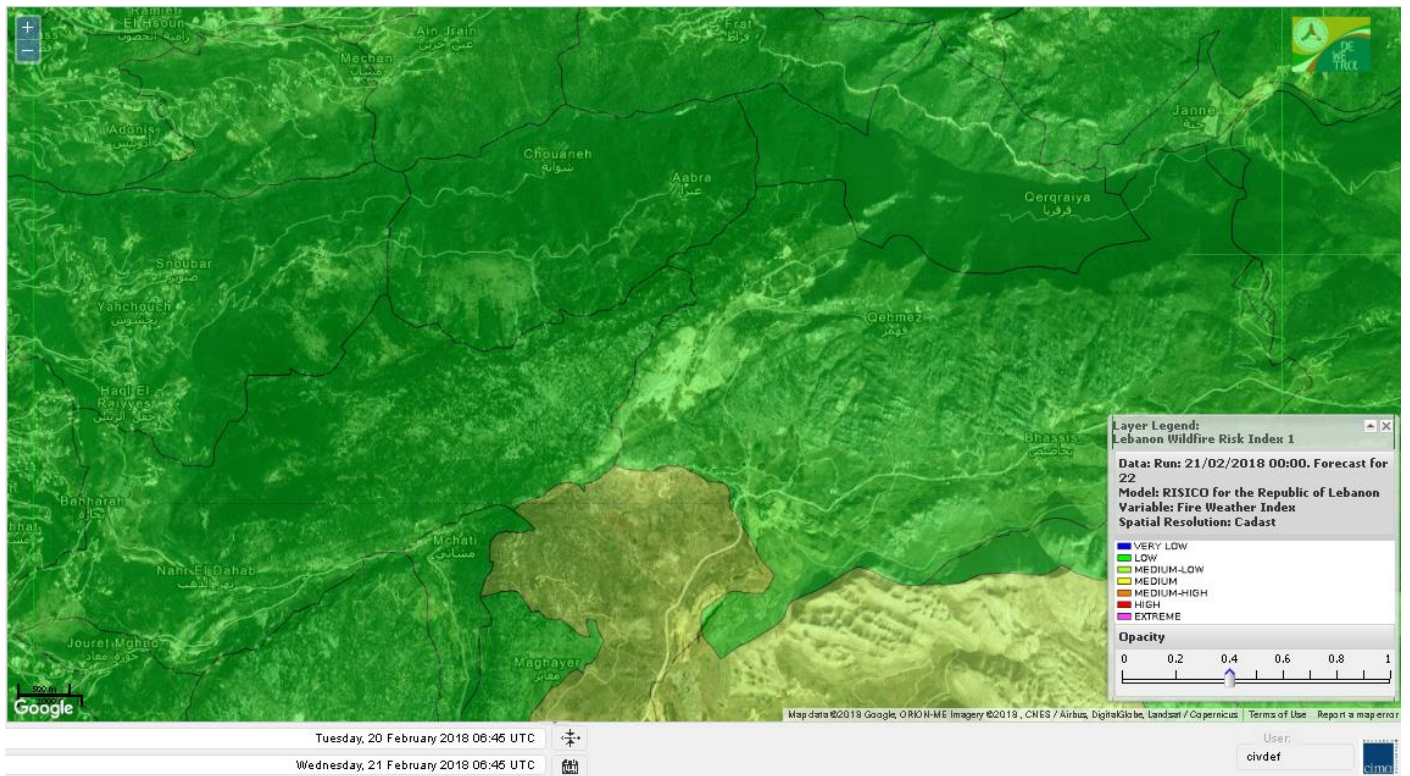
Shouf Biosphere Reserve Forecast for 23 Feb 2018



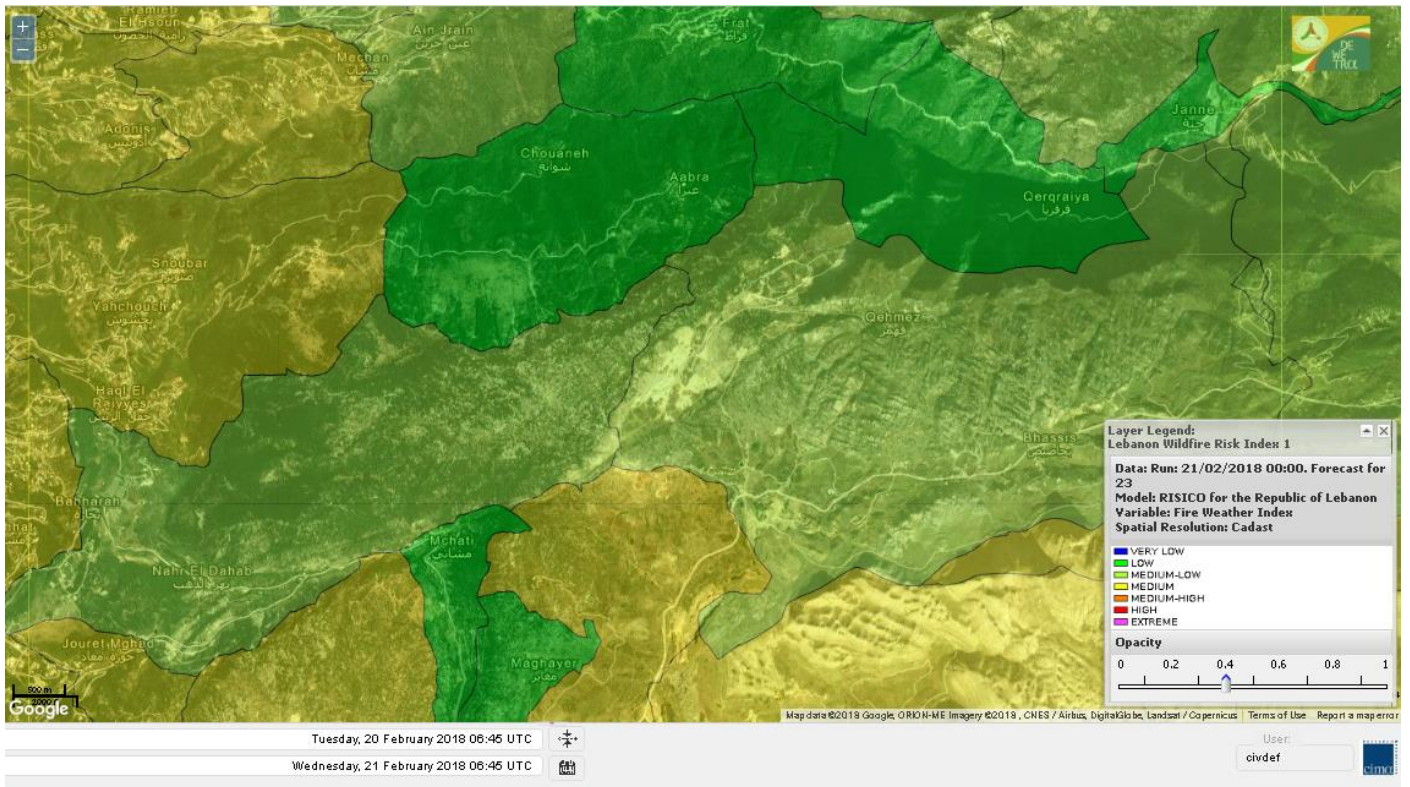
Jabal Moussa Reserve Forecast for 21 Feb 2018



Jabal Moussa Reserve Forecast for 22 Feb 2018



Jabal Moussa Reserve Forecast for 23 Feb 2018



Nord

Koura

Municipality	21-Feb	22-Feb	23-Feb	Municipality	21-Feb	22-Feb	23-Feb	Municipality	21-Feb	22-Feb	23-Feb
Aaba	L	L	M	Afsaddiq	ML	ML	M	Ain Ekryne	ML	ML	M
Amioun	L	L	M	Anfeh	ML	ML	M	Badbhoun	ML	ML	M
Barghoun	L	L	M	Barsa	L	L	M	Batroumine	L	L	M
Bdebba	L	L	M	Bechmizine	L	L	M	Bednayel El-Koura	L	ML	ML
Bhabbouch El-Koura	L	L	M	Bkeftine	L	L	M	Bnehran	L	L	M
Bqaiia El-Koura	L	L	M	Bsarma	L	L	M	Btaaboura	L	M	M
Bttram	L	L	M	Btouratij	ML	ML	M	Bziza	L	ML	M
Dar Beehtar	L	M	M	Dar Chmezzine	ML	ML	M	Deddeh	ML	L	M
Deir El-Balamand	L	L	M	Fih	ML	ML	M	Hraiche	ML	ML	M
Ijdaabrine	L	ML	ML	Kaftoun	L	M	M	Kefraya El-Koura	L	M	M
Kfarakka	L	L	M	Kfarhata	L	L	M	Kfarhazir	ML	ML	M
Kfarkahel	L	L	M	Kfarsaroun	L	L	M	Kosba	L	L	M
Mejdel el-Koura	L	ML	M	Nakhle	L	L	M	Qalhat	L	L	M
Ras Masqa	ML	ML	M	Rechdibbine	ML	ML	M	Zakroun	L	L	M
Zgharta El-Mtaouile	L	L	M								

Bcharre

Municipality	21-Feb	22-Feb	23-Feb	Municipality	21-Feb	22-Feb	23-Feb	Municipality	21-Feb	22-Feb	23-Feb
Aabdine	ML	ML	M	Bane	ML	L	M	Barhelioun	L	L	M
Bazooune	ML	L	M	Becharre	ML	L	M	Beit Menzer	M	M	M
Billa	M	M	M	Blaouza	ML	M	M	Bqaa Kafra	L	L	M
Bqerqacha	ML	L	M	Breissat	M	M	M	Dimane	M	M	M
Hadath El Jobbeh	ML	ML	M	Hadchit	ML	L	M	Hasroun	ML	L	M
Mazraat Aassaf	L	VL	L	Mazraat Bani Saab	ML	ML	M	Mchaa El-Jobbeh	L	L	M
Metrit	L	L	M	Moghr El-Ahoual	L	L	M	Ouadi Qannoubine	M	M	M
Qanat	ML	ML	M	Qnayer	M	M	M	Tourza	ML	ML	M

Batroun

Municipality	21-Feb	22-Feb	23-Feb	Municipality	21-Feb	22-Feb	23-Feb	Municipality	21-Feb	22-Feb	23-Feb
Aabrine	L	L	ML	Aalali	L	L	M	Aartiz	L	L	M
Abdelli	L	L	M	Ajdabra	L	L	M	Assia	L	L	ML
Basbina	L	ML	M	Batroun	L	M	M	Bcheleh	L	L	ML
Bechtoudar	L	L	ML	Beit Chlala	L	L	ML	Beit Kassab	L	VL	L
Bijdarfil	L	ML	M	Bqesmaya	L	L	M	Chatine	L	L	ML
Chebtin	L	L	M	Chekka	L	ML	M	Daael	L	L	ML
Dahr Abi Yaghi	L	L	M	Daraya El-Batroun	L	ML	M	Deir Billa	L	L	M
Deir Kfifane	L	ML	M	Deir Mar Youhanna EL	L	L	L	Deir Mar Youssef Jra	L	L	M
Douma	L	L	M	Douq	L	L	M	Eddeh El-Batroun	L	L	M
Ftihat El-Batroun	L	L	L	Ghouma	L	L	M	Hadtoun	L	L	ML
Hamat	L	L	L	Harbouna	L	L	M	Hardine	L	L	L
Helta	L	L	L	Hery	L	M	M	Jebbla	L	L	ML
Jrabta El-Batroun	L	L	M	Jrane El-Batroun	L	ML	M	Kfar Aabida	L	ML	M
Kfar Halda	L	L	L	Kfar Shlaimane	L	L	L	Kfarhatna	L	L	M
Kfarhay	L	M	M	Kfarhelos	L	L	L	Kfifane	L	ML	M

Kfour El Arabi	L	L	M	Koubba	L	ML	ML	Kour	L	ML	M
Mar Mama	L	L	ML	Masrah	L	L	M	Mehmarch	L	ML	M
Mrah Chdid	L	L	M	Mrah El Ziyat	L	L	M	Mrah El-Hajj	L	L	L
Nahle El-Batroun	L	ML	ML	Niha El-Batroun	ML	ML	M	Ouajh El-Hajjar	L	L	ML
Ouata Houb	L	L	ML	Qatnaaoun	L	L	ML	Racha	L	ML	M
Rachana	L	L	M	Rachkida	L	L	ML	Ram El-Batroun	L	L	ML
Ras Nahhach	L	L	ML	Selaata	L	M	ML	Sghar	L	L	M
Smar Jbayl	L	L	M	Sourat El-Batroun	L	L	ML	Tannourine El-Faouqa	L	L	M
Tannourine Et-Tahta	L	VL	ML	Thoum	L	L	M	Toula El-Batroun	L	L	M
Zan	L	ML	M								

Zgharta

Municipality	21-Feb	22-Feb	23-Feb	Municipality	21-Feb	22-Feb	23-Feb	Municipality	21-Feb	22-Feb	23-Feb
Aachach	ML	ML	M	Aalma	ML	ML	M	Aarde	ML	ML	M
Aintourine	ML	L	M	Arabet Qozhaya	ML	ML	M	Arde	ML	ML	M
Arjis	L	L	M	Asnoun	L	L	M	Ayto	L	L	M
Basloukit	ML	ML	M	Bchannine	L	L	M	Besebeel	L	L	M
Bhairret Toula	M	M	M	Bnachee	L	L	M	Boussit	M	ML	M
Danha	L	L	M	Daraiya Zgharta	L	L	M	Deir Jdeide	L	L	M
Ehden	ML	ML	M	Halan	ML	ML	M	Hariq Zgharta	L	L	M
Houakir	L	L	M	Hraiqis	ML	ML	M	laal	L	L	M
Ijbaa	L	L	M	Karm Saddeh	L	L	M	Kfarchakhna	L	L	M
Kfardlaqous	L	L	M	Kfarfou	L	L	M	Kfarhata Zgharta	L	L	M
Kfarhoura	L	L	M	Kfarsghab	ML	L	M	Kfaryachit	L	L	M
Kfarzaina	L	L	M	Khaldiye	L	L	M	Mazraat Ajbeaa	L	L	M
Mazraat Et-Teffah	L	L	M	Mazraat Jneid	L	L	M	Mejdlaiya Zgharta	M	ML	M
Merh Kfarsghab	L	L	M	Miryata	ML	ML	M	Miziara	L	L	M
Mzraat Kefraya	ML	L	M	Qorah Bach	L	L	M	Rachiine	L	L	M
Ras Kifa	L	L	M	Sakhra	L	L	M	Sebhel Zgharta	L	L	M
Serhel	L	L	M	Tallet Zgharta	L	L	M	Toula Zgharta	ML	ML	M
Zgharta	L	L	M								

Minieh-Denniye

Municipality	21-Feb	22-Feb	23-Feb	Municipality	21-Feb	22-Feb	23-Feb	Municipality	21-Feb	22-Feb	23-Feb
Aasaymout	L	VL	ML	Aaymar	L	L	M	Aazki	L	L	M
Ain El-Tineh-Miniyeh	M	M	M	Assoun	L	L	M	Bakhaaoun	L	L	M
Bchennata	ML	ML	M	Bechehhara	L	L	M	Beddawi	M	ML	M
Behouaita	ML	ML	M	Beit El Foqss	M	M	M	Beit Haouik	L	L	M
Beit Zoud	L	L	M	Bekaasafrine	ML	L	M	Borj El Yahoudiyeh	ML	ML	M
Bqarsouna	ML	ML	M	Btermaz	L	L	M	Debaael	L	L	M
Deir Ammar	ML	ML	M	Deir Nbouh	L	L	M	Haouaret-Miniyeh	L	L	M
Haql el Azimeh	L	L	M	Harf El Siyad	L	L	M	Hazmiye-Miniyeh	M	ML	M
Izal	L	L	M	Jarjour	L	VL	ML	Jayroun	ML	L	M
Kahf El-Malloul	L	L	M	Karm El-Moher	L	L	M	Kfar Binine	ML	ML	M
Kfarchalane	L	L	M	Kfarhabou	L	L	M	Kharroub-Miniyeh	L	L	M
Mazraat El-Kreme	L	L	M	Mazraat Ketrane	L	L	M	Merkebta	ML	L	M
Minyeh	M	M	M	Mrah El Sfirat	ML	L	M	Mrah Sraj	L	L	M
Mrebbine	ML	ML	M	Nabi Youcheaa	ML	ML	M	Nemrine	ML	M	M

Qarhaiya	L	L	M	Qarne	L	VL	ML	Qarsita	M	M	M
Qattineh-Miniyeh	L	L	M	Qemmamine	ML	L	M	Qraine	L	L	M
Raouda-Aadoua	ML	L	M	Rihaniyet-Miniyeh	ML	L	M	Sfireh	ML	ML	M
Sir Ed-Danniyeh	L	L	M	Tarane	L	L	M	Terbol-Miniyeh	M	ML	M
Zaghartaghriane	L	L	M	Zouq Bhannine	M	ML	M				

Nabatiye

Nabatiye

Municipality	21-Feb	22-Feb	23-Feb	Municipality	21-Feb	22-Feb	23-Feb	Municipality	21-Feb	22-Feb	23-Feb
Aabba	L	L	M	Aazzi	ML	ML	M	Adchit El-Chqif	L	L	M
Ain Bou Swar	L	L	M	Ain Kana	L	L	M	Ali El-Taher	L	L	M
Ansar	L	ML	M	Arab Salim	L	L	M	Arnoun	L	L	M
Bfaroue	L	ML	M	Breyqaah	L	L	M	Charqiyeh	L	ML	M
Choukine	L	L	M	Deir El Zahrani	ML	L	M	Doueir El-Nabatiyeh	L	L	M
Habbouch El-Nabatiye	L	L	M	Hamra El-Nabatiyeh	L	L	M	Harouf El-Nabatiyeh	L	L	M
Hmaile	L	L	M	Houmin El Faouqa	L	L	M	Houmin El Tahta	ML	ML	M
Jarjough	L	L	M	Jbaah El-Nabatiyeh	L	L	M	Jebchit	L	L	M
Kfar Djal El-Nabatiy	L	L	M	Kfar Remmane	L	L	M	Kfar Sir	L	L	M
Kfar Tebnit	L	L	M	Kfarfila	L	L	M	Kfour El-Nabatieh	L	L	M
Mayfadoun	L	L	M	Mazraat Bsaffour	L	L	M	Mazraat Chalbaal	L	L	M
Mazraat Dmoul	L	L	M	Mazraat El Khreibeh	ML	ML	M	Mazraat El-Bayad El-	L	L	M
Mazraat Kfarjaouz	L	L	M	Mazraat Qalaat Meiss	L	ML	M	Nabatiyeh El-Fawka	L	L	M
Nabatiyeh Et-Tahta	L	L	M	Namiriyyeh	ML	M	M	Qaaqaaiyet El Jisr	L	L	M
Qossaibeh El-Nabatiy	L	L	M	Roumine	L	ML	M	Sarba El-Nabatieh	L	L	M
Sir El-Gharbiyeh	L	L	M	Toul	L	L	M	Yehmor El-Nabatiyeh	L	L	M
Zaoutar El Charkiyeh	L	L	M	Zaoutar El-Gharbiyeh	L	L	M	Zebdine El-Nabatiyeh	L	L	M
Zefta	ML	M	M								

Hasbaiya

Municipality	21-Feb	22-Feb	23-Feb	Municipality	21-Feb	22-Feb	23-Feb	Municipality	21-Feb	22-Feb	23-Feb
Ain Jarfa	L	L	M	Abou Qamha	L	ML	M	Ain Qania	L	L	M
Bourghos	L	ML	M	Chebaa	L	ML	M	Chouaya Hasbaya	L	ML	M
Dellafeh	L	ML	M	Fardiss Hasbaiya	L	ML	M	Hasbaya	L	ML	M
Hbariyeh	L	ML	M	Kaoukaba Hasbaiya	L	ML	M	Kfar Chouba	L	ML	M
Kfar Hamam	L	ML	M	Kfeir El-Zait	ML	L	M	Khalwat Hasbaya	ML	ML	ML
Khreibet Hasbaiya	L	ML	M	Majidiyeh Hasbaiya	L	ML	M	Marj Ez-Zhour (Haouc	ML	ML	M
Meri	L	ML	M	Mimass	L	ML	M	Rachaiya El-Fokhar	L	L	M
Salaiyeb	L	ML	M								

Marjayoun

Municipality	21-Feb	22-Feb	23-Feb	Municipality	21-Feb	22-Feb	23-Feb	Municipality	21-Feb	22-Feb	23-Feb
Aalmane Marjaayoun	L	L	M	Aamra	L	ML	M	Adayseh Marjaayoun	L	L	M
Adchit El-Koussair	L	L	M	Ain Arab Marjaayoun	L	ML	M	Bani Haiyann	L	L	ML
Blatt Marjaayoun	L	ML	M	Blida	L	L	ML	Borj El-Moulouk	L	L	M
Boueyda Marjaayoun	L	L	M	Deir Mimass	L	L	M	Deir Siriane	L	L	M
Dibbine	L	ML	M	Ebel El Saqi	L	ML	M	Houla	L	L	ML
Houra	L	L	M	Kfar Kila	L	L	M	Khiam Marjaayoun	L	ML	M

Klayaa	L	L	M	Majdel Selem	L	L	ML	Marjaayoun	L	ML	M
Markaba	L	L	ML	Mays El-Jabal	L	L	M	Mazraat Doumiat	L	L	M
Mazraat Sarada	L	ML	M	Mhaibib	L	L	M	Qabrikha	L	L	M
Qantara	L	L	M	Rab El-Thalathine	L	L	M	Saouaneh Marjayoun	L	L	ML
Talloussa	L	L	ML	Taybeh Matjaayoun	L	L	M	Touline	L	L	M

Bent Jbail

Municipality	21-Feb	22-Feb	23-Feb	Municipality	21-Feb	22-Feb	23-Feb	Municipality	21-Feb	22-Feb	23-Feb
Ain-Ebel	ML	L	ML	Aitaroun	L	L	ML	Aynata Bint Jbeil	L	L	ML
Ayta El-Chaeb	ML	L	L	Ayta El-Jabal	ML	L	ML	Beit Lif	L	L	L
Beit Yahoun	ML	L	ML	Bint Jbeil	L	L	ML	Borj Qalaway	L	L	M
Braachit	L	L	ML	Chakra	L	L	ML	Debel	ML	L	ML
Deir Antar	L	L	ML	Froun	L	L	M	Ghandouriyeh Bint Jb	L	L	M
Hanine	ML	L	ML	Hariss	ML	L	ML	Hdatha	L	L	ML
Jmeymeh	L	L	ML	Kafra Bint Jbeil	L	L	L	Kfar Dounine	L	L	ML
Khirbet Selm	L	L	ML	Kounine	L	L	ML	Maroun El Ras	L	L	M
Qalaway	L	L	M	Qaouzah	L	L	L	Qatmoun	ML	L	M
Ramya Bint Jbeil	ML	L	L	Rchaf	ML	L	ML	Rmeich	ML	L	ML
Safad Al Battikh	L	L	ML	Salhaneh	L	L	L	Serbine	L	L	ML
Sultanieh Bint Jbeil	ML	L	ML	Tibnine	ML	L	ML	Tiri	ML	L	ML
Yaroun	ML	L	ML	Yater	L	L	ML				

Mont Liban

Jbail

Municipality	21-Feb	22-Feb	23-Feb	Municipality	21-Feb	22-Feb	23-Feb	Municipality	21-Feb	22-Feb	23-Feb
Aabeydat	L	L	M	Aalita	L	L	M	Aamchit	ML	M	M
Aarab El-Lahib	ML	L	M	Aarasta	ML	L	ML	Adonis Jbeil	L	L	M
Afqa Jbeil	ML	L	ML	Ain El Delbeh Jbeil	L	L	ML	Ain El-Ghouyba	ML	L	ML
Ain Jrain	L	L	ML	Ain Kfah	L	ML	M	Almat El Chemaliyat	L	L	M
Almat El-Jenoubiya	L	L	M	Aqoura	ML	L	M	Bayzoun	L	L	M
Bchille Jbeil	L	L	M	Bechtida	L	L	M	Behdaydat	L	ML	M
Beit Habbaq	L	ML	M	Bejjeh	L	L	M	Bekhaaz	L	L	M
Berbara Jbeil	ML	ML	M	Bintael	L	L	M	Birket Hjoula	L	L	M
Blatt Jbeil	L	ML	M	Boulhos	L	L	ML	Breyj Jbeil	L	L	M
Chamat	L	ML	M	Chikhane	ML	ML	M	Chmout	L	L	M
Eddeh Jbeil	L	ML	M	Ehmej	L	L	M	Fatre	L	L	M
Ferhet	ML	ML	M	Fghal	L	L	M	Frat	L	L	L
Ghabat	ML	L	M	Ghalboun	L	L	M	Gharzouz	L	ML	M
Ghofrine	L	ML	M	Habil	L	L	M	Halate	L	ML	M
Haqel	L	L	M	Hbaline	L	ML	M	Hboub	L	ML	M
Hdeine	ML	L	M	Hema Er-Rehban	L	ML	M	Hema Mar Maroun Aann	L	ML	M
Hjoula	L	L	M	Hosrayel	ML	ML	M	Hsarat	L	ML	M
Hsoun	L	L	M	Jaj	L	L	ML	Janne	ML	L	L
Jbeil	ML	M	M	Jeddeyel Jbeil	ML	ML	M	Jlisse	L	L	M
Jouret El-Qattine	L	L	M	Kfar Baal Annaya	L	L	M	Kfar Kidde	ML	L	M
Kfar Kouas	L	L	M	Kfar Mashoun	ML	M	M	Kfoun	L	L	M

Kharbe Jbeil	L	ML	M	Laqlouq	L	ML	M	Lassa	ML	L	ML
Lehfed	L	L	ML	Maad	L	ML	M	Mar Sarkis	L	ML	M
Mastita	ML	M	M	Mayfouq	L	L	ML	Mazraat El Siyad	L	ML	M
Mazraat El-Maaden	L	L	ML	Mechane	L	L	M	Mechmech Jbeil	L	L	M
Mehrin	L	ML	M	Mejdel El-Akoura	ML	L	M	Mghayreh Jbeil	L	L	M
Mounsef	ML	ML	M	Nahr Ibrahim	ML	M	M	Qahmez	L	L	ML
Qartaba	ML	L	ML	Qartaboun	ML	M	MH	Qattara Jbeil	L	L	L
Qorqraya	L	L	L	Ramout	L	ML	M	Ras Osta	L	L	M
Rihane Jbeil	ML	ML	M	Sakiet El-Khayt	L	L	M	Saqi Richmaya	L	L	M
Sebrine	L	L	M	Seraita	ML	L	M	Souane Jbeil	L	L	M
Tadmor	L	ML	M	Tartej	L	L	M	Torzaiya	L	L	M
Yanouh Jbeil	L	L	M	Zibidine Jbeil	L	L	M				

El Metn

Municipality	21-Feb	22-Feb	23-Feb	Municipality	21-Feb	22-Feb	23-Feb	Municipality	21-Feb	22-Feb	23-Feb
Aain El-Qabu	L	L	L	Aain El-Qach	L	L	M	Aain El-Teffaha	L	ML	M
Aain el-Safssaf El-M	L	L	M	Abou Mizane	L	L	M	Ain Aar	ML	ML	M
Ain Alaq	L	L	M	Ain El-Kharroube	L	ML	M	Ain El-Sendiane	L	L	M
Ain El-Zeitoune	L	L	M	Ain Saadeh	L	L	M	Aintoura El-Matn	L	ML	M
Amaret Chalhoub	ML	ML	MH	Antelias	ML	ML	M	Atchaneh	L	L	M
Ayroun	L	L	M	Baabdat	L	L	M	Baouchariyeh	ML	ML	MH
Baskinta	L	L	M	Beit Chabab	L	L	M	Beit El-Char	ML	ML	M
Beit El-Kekko	ML	ML	MH	Beit Mery	L	L	M	Bhersaf	L	L	M
Bikfaya	L	L	M	Biyakout	ML	ML	M	Bnabil	L	L	M
Bourj Hammoud	ML	ML	MH	Bqennaya	L	L	M	Broummana El-Matn	L	L	M
Bsalim	L	L	M	Bsifrine	L	L	M	Bteghrine	L	L	M
Chaouiye	L	L	M	Chouaya El-Matn	L	ML	M	Choueir	L	L	M
Chrine	L	L	M	Dahr El Sawan El-Mat	L	L	M	Daychouniyeh	L	ML	M
Dbayeh	ML	ML	MH	Deir Chamra	L	L	M	Deir Mar Abda el Mch	L	L	M
Deir Mar Roukouz	ML	ML	M	Deir Tamiche	L	L	M	Dik El-Mehdi	L	L	M
Dikwaneh	ML	ML	MH	Douar El-Matn	L	L	M	Fanar	L	L	M
Fraike	L	L	M	Haret El-Ballaneh	L	L	M	Hbous	ML	ML	M
Himlaya	L	L	M	Jal El Did	ML	M	MH	Jdeideh El-Metn	ML	ML	M
Jouar El-Matn	L	L	M	Jouret El-Ballout	L	L	M	Kaaqour	L	L	M
Kfar Aaqab	L	L	M	Kfertay El-Matn	L	L	ML	Khenchara	L	L	M
Khillet El-Mtain	L	L	M	Konnabat Broummana	L	L	M	Konnabat Salima	L	VL	M
Machraah El-Matn	L	L	ML	Majdel Tarchich	ML	M	M	Majzoub	L	L	M
Mansouriyeh El-Metn	ML	ML	M	Mar Boutros Karm Et-	L	L	M	Mar Chaya et Mzekke	L	L	M
Mar Moussa Ed-Douar	L	L	M	Marjaba	L	L	M	Masqa	L	L	M
Mayasse	L	L	M	Mazraat Deir Aoukar	L	ML	M	Mazraat El-Hadirat	L	L	M
Mazraat Yachouh	ML	ML	M	Mchikha	L	L	M	Menqlet Mezher	L	ML	M
Mhaydseh Matn	L	L	M	Mkalles	ML	ML	M	Mrouj	L	L	M
Mtain	L	L	M	Mtayleb	L	L	M	Nabay	L	L	M
Naccache	L	ML	M	Ouadi Chahine	L	L	M	Ouadi El-Karm El-Mat	L	L	M
Ouata El-Mrouj	L	L	M	Ouyoun El-Matn	L	L	M	Qornet Chehwan	L	L	M
Qornet El-Hamra	L	L	M	Roumieh	L	L	M	Sfeilet Bikfaya	L	L	M
Sinn El-Fil	ML	ML	MH	Zabbougha	L	L	M	Zalqa	ML	ML	M

Zarouon	L	L	M	Zekrite	L	L	M	Zighrine El-Matn	L	ML	M
Zouk El-Khrab	ML	ML	M								

Chouf

Municipality	21-Feb	22-Feb	23-Feb	Municipality	21-Feb	22-Feb	23-Feb	Municipality	21-Feb	22-Feb	23-Feb
Aalmane El-Chouf	L	ML	M	Aammq El-Chouf	L	L	M	Ain Ouzein	L	L	ML
Ain Qani	L	L	M	Ain Zhalta	L	ML	M	Ainbal	L	L	ML
Amatour	L	L	M	Anout	L	L	M	Atrine	L	L	M
Baadarane	L	L	M	Baaqline	L	L	M	Baasir	L	ML	M
Barja	L	ML	M	Barouk	L	L	M	Bater	L	L	M
Batloun	L	L	M	Bayqoun	L	ML	M	Bchetfine	L	L	M
Beiteddine	L	L	M	Benouati Ech-Chouf	L	L	ML	Berjein	L	L	M
Bireh et Mtalleh	L	L	M	Biret El-Chouf	L	M	M	Bkechtine Ouel Mchei	L	L	L
Bkifa El-Chouf	L	L	M	Botme	L	L	ML	Bqaiaa Ech-Chouf	L	L	ML
Bsaba El-Chouf	L	L	M	Chammis El-Chouf	L	L	M	Chehim	L	L	M
Chemaarine	L	L	L	Chourit	L	L	M	Daher El-Chouf	L	L	M
Dalhoun	L	L	M	Damour	L	ML	M	Daraya El-Chouf	L	L	ML
Deir El-Moukhalles	L	L	L	Deir Baba	L	L	M	Deir Dourit	L	L	M
Deir El-Qamar	L	L	M	Deir Kouche	L	L	M	Dibbieh	L	L	ML
Dmit	L	L	ML	Fouara Jaafar	L	L	M	Fraidis El-Chouf	L	L	M
Ghabet Jaafar	L	L	M	Gharife	L	L	ML	Haret Jandal	L	L	M
Hasrout	L	L	M	Jadra	L	M	M	Jahlieh	L	L	M
Jbeih El-Chouf	L	L	M	Jdeidet El-Chouf	L	L	M	Jiyeh	L	M	M
Jleilyeh	L	L	M	Jmailiyeh	L	ML	M	Joun	L	L	M
Kahlounie El-Chouf	L	ML	M	Ketermaya	L	ML	M	Kfar Faqoud	L	L	M
Kfar Hamal	L	ML	M	Kfar Him	L	L	M	Kfar Katra	L	L	M
Kfar Niss	L	ML	M	Kfar hay	L	L	M	Kfarnabrakh	L	L	M
Khirbet Bisri	L	L	ML	Knayse El-Chouf	L	L	ML	Maaniyeh	L	L	M
Maasser Beiteddine	L	L	M	Maasser El-Chouf	L	L	M	Majdalouna	L	L	M
Majdel El-Meouch	L	ML	M	Mazboud	L	L	M	Mazmoura	L	L	M
Mazraat El Chouf	L	L	M	Mazraat El Daher	L	L	ML	Mazraat El-Douair	L	L	ML
Mechref	L	L	M	Mghairie	L	ML	M	Mghayrie El-Chouf	L	L	ML
Moukhtara	L	L	M	Mrusti	L	L	M	Mtolle	L	L	M
Naameh	L	L	M	Niha El-Chouf	L	ML	M	Ouadi Abou Youssef	L	VL	L
Ouadi Ed-Deir	L	L	M	Ouadi El-Sit	L	L	M	Ouadi bnehlay	L	L	ML
Qraibeh	L	L	M	Qreiaa	L	VL	L	Rmayle El-Chouf	L	M	M
Semqaniyeh	L	ML	M	Sibline	L	M	M	Sirjbeil	L	L	M
Warhanieh	L	ML	M	Werdaniyeh	L	M	M	Zaarourieh	L	L	M

Baabda

Municipality	21-Feb	22-Feb	23-Feb	Municipality	21-Feb	22-Feb	23-Feb	Municipality	21-Feb	22-Feb	23-Feb
Abadiyeh	L	L	M	Ain Mouaffaq	L	L	M	Araiya	L	L	M
Arbaniyeh	L	L	M	Arsoun	L	L	M	Baabda	L	ML	M
Baalchmey	L	ML	M	Bmaryam	L	L	M	Bourj El-Brajneh	ML	M	MH
Boutchay	L	L	M	Bsaba Baabda	L	ML	M	Btekhney	L	L	M
Btibyat	L	L	M	Bzbeddine	L	L	M	Chbeniyeh	L	ML	M
Chiyah	ML	M	MH	Chmeisset Baabda	L	L	M	Chouit	L	L	M
Deir El-harf	L	L	M	Deir Khouna	L	L	M	Dlaybeh	L	L	M

Falougha	L	M	M	Furn El-Chebbak	ML	ML	MH	Hadath Beyrouth	ML	ML	MH
Halaliyeh Baabda	L	L	M	Hammana	L	M	M	Haret El Sett	L	L	M
Haret Hamze	L	L	M	Haret Hreik	ML	M	MH	Hasbaiya El-Metn	L	L	M
Jouar El-Hoz	L	L	ML	Jouret Arsoun	L	L	M	Kfar Chima	ML	ML	M
Kfar Selouane	L	L	M	Khalouat Baabda	L	ML	M	Kneisset Baabda	L	L	M
Laylakeh	ML	ML	MH	Louayzeh Baabda	L	L	M	Merdache	ML	ML	M
Mzairaa Baabda	L	L	M	Ouadi Chahrour El Ol	L	L	M	Ouadi Chahrour El So	L	L	M
Qalaa Baabda	L	L	M	Qhraybe Baabda	L	L	M	Qobbayaa	L	ML	M
Qornayel	L	L	M	Qortada	L	L	M	Qrayeh Baabda	L	ML	M
Qsaibeh Baabda	L	L	M	Qtale Baabda	L	L	M	Ras El Metn	L	L	M
Ras El-Haref	L	ML	M	Rouayset El-Ballout	L	L	M	Salima Baabda	L	L	M
Tahouitat El Ghadir	ML	ML	MH	Tarchich	L	ML	M	Zandouqa	L	VL	M

Aley

Municipality	21-Feb	22-Feb	23-Feb	Municipality	21-Feb	22-Feb	23-Feb	Municipality	21-Feb	22-Feb	23-Feb
Abey	L	L	M	Aghmid	L	L	M	Ain Dara	L	ML	M
Ain Drafil	L	L	M	Ain El Halazoun	L	ML	M	Ain El-Rmmaneh	L	L	M
Ain Jedideh	ML	ML	M	Ain Ksour	L	L	M	Ain Onoub	L	L	M
Ain Traz	L	L	M	Ainab	L	L	M	Aley	ML	ML	M
Aramoun	L	L	M	Aytat	L	L	M	Azouniyeh	L	M	M
Baawerta	L	L	M	Badghan Oua Wadi Bad	L	M	M	Bassatine	L	L	M
Bayssour	L	L	M	Bchamoun	L	L	M	Bdadoun	L	L	M
Behouara	L	L	M	Bennay	L	L	M	Bhamdoun El-Dayaa	L	ML	MH
Bhamdoun El-Mhatta	L	M	MH	Bkhechtey	ML	ML	M	Bleibel	L	L	M
Bmakine	ML	ML	M	Bmehray	L	L	M	Bouzrid	L	L	ML
Bserrine	L	ML	M	Bsous	L	L	M	Btalloun	L	ML	MH
Btater	L	M	M	Chanay	L	M	MH	Charoun	L	M	M
Chartoun	L	L	M	Chemlane	L	L	M	Choueifat El-Aamrous	ML	ML	MH
Choueifat El-Oumara	ML	ML	M	Choueifat El-Quoubbe	L	ML	M	Dakkoun	L	L	M
Deir Qoubel	L	L	M	Dfoun	L	L	M	Douair El Remmaneh	L	L	M
Ghaboun	L	L	M	Habramoun	L	L	M	Homs Oua Hama	L	L	M
Houmal	L	L	M	Jisr El Qadi	L	L	M	Kehaleh	L	L	M
Keyfoun	ML	ML	M	Kfar Aamey	L	ML	M	Kommatyeh	L	L	M
Maasrati	L	ML	M	Majdel Baana	L	M	M	Mansourieh et Ain El	L	M	M
Mazraat El-Nahr	L	L	M	Mchakhte	L	L	M	Mecherfeh	L	ML	M
Mejdlaya	L	L	M	Mrayjat	L	M	M	Ramliyah	L	L	M
Rechmaya	L	ML	M	Rejmeh	L	L	M	Remhala	L	L	M
Rouaysset El Neemane	L	ML	M	Saoufar	L	M	M	Selfaya	L	L	ML
Sirhmoul	L	L	M	Souq El Ghareb	L	L	M	Taazanieh	ML	ML	M

Kesrouane

Municipality	21-Feb	22-Feb	23-Feb	Municipality	21-Feb	22-Feb	23-Feb	Municipality	21-Feb	22-Feb	23-Feb
Achkout	L	L	M	Adma Oua Dafneh	L	ML	M	Ain Ed-Delbe Kesroua	L	L	L
Ain El-Rihane	L	L	M	Aintoura Kesrouane	L	L	M	Ajaltoun	L	L	M
Akaybeh Kesrouane	ML	M	MH	Aramoun Kesrouane	L	L	M	Azra ouel Ozor	L	L	M
Ballouneh	L	L	M	Batha	L	L	M	Bekaatat Achkout	L	ML	M
Bekaatat Kanaan	L	L	ML	Bizhel	L	L	M	Bouar	ML	ML	M
Bqaatouta	L	L	M	Bqaq Ed-Dine	ML	ML	M	Bzommar	L	L	M

Chahtoul	L	L	M	Chnaniir	L	L	M	Chouan	L	L	L
Daraya Kesrouane	L	L	M	Darououn	L	L	M	Deir Baqlouch	L	L	M
Dlebta	L	L	M	Eghbeh	L	VL	ML	Faraya	L	L	M
Fatka	L	L	M	Feytroun	L	L	M	Ghazir	L	L	M
Ghbaleh Kesrouane	L	L	M	Ghedrass	L	L	M	Ghosta	L	L	M
Ghynéh	L	L	M	Harharaya w Kattine	L	L	M	Harissa Kesrouane	L	L	M
Hayata	L	L	M	Hosein	L	L	M	Hrajel	L	ML	M
Jdeideh Ghazir	L	L	M	Jeita	L	L	M	Jounieh Ghadir	L	ML	M
Jounieh Haret Sakhr	ML	M	M	Jounieh Salel Alma	L	ML	M	Jounieh Sarba	ML	M	MH
Jouret Bedrane	L	L	M	Jouret Mhad	L	L	M	Jouret Termos	L	L	M
Kfar Debiane	L	L	M	Kfar Tay Kesrouane	L	L	M	Kfar Yassine	ML	M	MH
Kfour Kesrouane	L	L	M	Kharayeb Nahr Ibrahi	L	L	M	Klayaat Kesrouane	L	L	M
Maarab	L	L	M	Maaysra Kesrouane	L	L	M	Mayrouba	L	ML	M
Mazraat Er-Ras	L	L	M	Mazraat Mrah El-Mir	L	L	M	Mchaa El Ftouh	M	L	M
Mchaa Faraya	ML	L	M	Mchaa Kfar Dibiane	ML	L	M	Mghaer	L	L	L
Mradiyah	L	L	M	Nahr Ed-Dahab	L	L	ML	Nammoura Kesrouane	L	L	M
Ouata El Jaouz	L	L	M	Ouata Sillam	ML	M	MH	Raachine	L	L	M
Rayfoun	L	L	M	Safra Kesrouane	ML	M	M	Shayle Kesrouane	L	L	M
Tabarja	ML	M	M	Yahchouch	L	L	M	Zaaytreh	L	L	M
Zeytoun	L	L	M	Zouk Mikael	ML	M	MH	Zouk Mosbeh	ML	ML	M

Baalbek_Hermel

Baalbek

Municipality	21-Feb	22-Feb	23-Feb	Municipality	21-Feb	22-Feb	23-Feb	Municipality	21-Feb	22-Feb	23-Feb
Aadous	M	M	M	Aamchki	ML	L	L	Aarsal	ML	M	VL
Ain Baalbek	L	ML	VL	Ain Bourday	ML	M	M	Ain El-Benye	ML	ML	ML
Ain El-Jaouz Baalbek	ML	ML	VL	Ain El-Siya Chadoura	L	L	L	Al Khodr Baalbek	ML	M	M
Al Nabi Chit	M	M	M	Aynata Baalbek	M	L	M	Baalbek	ML	M	M
Bachwat	M	ML	M	Barqa	M	M	M	Bednayel Baalbak	M	M	M
Beit Chama	M	M	M	Bijjaje	L	ML	VL	Bouday	M	M	M
Brital	ML	M	M	Btadi	M	M	M	Chaat	ML	ML	L
Chaibe	ML	L	L	Chlifa	ML	M	M	Chmestar	M	M	M
Dar El-Oussa	M	M	M	Deir El-Ahmar	M	M	M	Deir Mar Maroun Baal	L	ML	M
Douris	M	M	M	Fakiha	L	ML	M	Hadath Baalbek	M	M	M
Ham	ML	ML	M	Haour Taala	ML	M	M	Hizzine	M	ML	M
Hlebta	M	ML	M	Hosh Barada	M	M	M	Hosh El Dahab	M	ML	M
Hosh El Snid	M	M	M	Hosh El-Nabi	M	M	M	Hosh El-Rafiq	M	M	M
Hosh Tal Safiya	M	M	M	Hrebta	ML	ML	ML	laat	ML	ML	M
Jebaa	M	M	M	Jenta	ML	M	M	Kfar Dabach	M	M	M
Kfar Dane	M	M	M	Khraibeh El-Hermel	L	L	VL	Khreibet Baalbek	ML	M	M
Kneisset Baalbek	M	ML	M	Labueh	L	ML	VL	Maarboun	ML	ML	M
Majdaloun	M	M	M	Maqneh	ML	M	M	Mazraat Beit Mcheik	M	M	M
Misraya	M	M	M	Moqraq	L	ML	VL	Nabha El-Damdoum	M	ML	M
Nabi Chbay	ML	ML	M	Nabi Osman	L	ML	VL	Nahleh baalbek	ML	ML	L
Ouadi El-Oss	M	M	M	Qaa Baayoun	L	M	M	Qaa Jouar Maqiye	L	M	M
Qaa Ouadi El-Khanzir	ML	M	M	Qah Baalbek	L	M	M	Qarha Baalbek	M	M	M

Qsarnaba	M	M	M	Ram Baalbek	M	M	M	Ras Baalbek El Sahl	L	ML	M
Ras Baalbek El-Charq	ML	M	M	Riha	M	ML	M	Saaide	M	M	M
Sbouba	L	L	VL	Seriine El-Tahta	M	M	M	Slouqi	M	ML	M
Taiba Baalbek	M	M	M	Talia	M	M	M	Taraiya	M	ML	M
Temnin El Fawqa	M	M	M	Temnin El-Tahta	M	ML	M	Tfail	M	ML	VL
Yahfoufa	ML	M	M	Yammouneh	M	ML	M	Younine	ML	ML	L
Zboud	L	ML	L								

Hermel

Municipality	21-Feb	22-Feb	23-Feb	Municipality	21-Feb	22-Feb	23-Feb	Municipality	21-Feb	22-Feb	23-Feb
Charbine El-Hermel	ML	L	M	Hermel Jbab	M	ML	M	Hermel	L	ML	M
Maaysra El-Hermel	ML	L	M	Michaa Mrajhine	ML	M	M	Ouadi Faara	M	ML	M
Ras Baalbek - Ouadi	L	ML	M	Ras Baalbek El Gharb	ML	L	M	Zighrine	L	L	M

Akkar

Akkar

Municipality	21-Feb	22-Feb	23-Feb	Municipality	21-Feb	22-Feb	23-Feb	Municipality	21-Feb	22-Feb	23-Feb
Aain Tinta	L	L	M	Aaiyat	L	L	M	Aakkar El-Aatiqa	L	L	M
Aamar Akkar	M	L	M	Aamar El Baykat	L	L	M	Aamayer	L	L	M
Aamriyet Akkar	L	L	M	Aandqet	L	L	M	Aarmeh	L	L	M
Aarqa	ML	L	M	Aawaynat	L	L	M	Aayoun Akkar	L	L	M
Abboudiye	L	L	M	Ain El-Zeit	L	L	M	Ain Yaaqoub	L	L	M
Akroum	L	L	M	Aridet Cheikh Zennad	ML	L	M	Baldeh w Mazraat Bal	L	L	M
Barcha	L	L	M	Bardeh	L	L	M	Bebnine	ML	L	M
Beino	L	L	M	Beit Ayoub	L	L	M	Beit El-Haouch	ML	L	M
Beit Mellat	L	L	M	Beit Younes	L	L	M	Berbara Akkar	L	L	M
Berqayel	ML	L	M	Bezbinda	L	L	M	Bireh Akkar	L	L	M
Borj	L	L	M	Bqerezla	L	L	M	Bzal	L	L	M
Chane	L	L	M	Chaqdouf	L	L	M	Charbila	L	L	M
Cheikh Mohammad	ML	L	M	Cheikh Taba Es-Sahl	ML	L	M	Cheikh Taba	ML	L	M
Cheikh Zennad	ML	L	M	Cheikhlar	L	L	M	Chir Hmairine	L	L	M
Daghle	L	L	M	Dahr Laissine	L	L	M	Darine	L	L	M
Dawra	L	L	M	Dawsa w Baghdadi	L	L	M	Dayret Nahr El-Kabir	L	L	M
Deir Dalloum	ML	L	M	Deir Jennine	L	L	M	Denbou	L	L	M
Dibbabiyyeh	L	L	M	Douair Aadwiyeh	L	L	M	Fassikine	L	L	M
Fnaydek	L	L	M	Fraydes Akkar	L	L	M	Ghazayle	L	L	M
Habchit	L	L	M	Hakour	ML	L	M	Halba	ML	L	M
Haouchab	ML	L	M	Hayssat	ML	L	M	Haytla	L	L	M
Hayzouq	ML	L	M	Hedd	L	L	M	Hmaira Akkar	L	L	M
Hmaiss Akkar	L	L	M	Hnaider	L	ML	M	Hokr Ed-Dahri	ML	L	M
Hokr Etti	ML	L	M	Hokr Jouret Srar	L	L	M	Houaich	L	L	M
Hrar	L	L	M	Idbil	ML	L	M	Ilal	L	L	M
Janine	L	L	M	Jdeidet El-Joumech	ML	L	M	Jdeidet El-Kaiteh	L	L	M
Jebraïel	L	L	M	Kafr	L	ML	M	Kafr	L	L	M
Karm Asfour	L	L	M	Kfar Melki Akkar	M	L	M	Kfar Noun	L	L	M
Kfarharra	L	L	M	Khalsa	L	L	M	Kharnoubet Akkar	L	L	M

Khirbet Daoud Aakkar	L	L	M	Khirbet El Remmane	L	L	M	Khirbet Shar	L	L	M
Khoreybet El-Jindi	ML	L	M	Khreibet Aakkar	L	L	M	Kneisset Aakkar	ML	L	M
Kneisset Hnaider	L	ML	M	Knisse	L	L	M	Kroum El-Aarab	ML	L	M
Kwachra	L	L	M	Kweykhat	ML	L	M	Machta Hammoud	L	L	M
Majdala	ML	L	M	Majdel Akkar	L	L	M	Mar Touma	ML	L	M
Marlaya Melhem	M	L	M	Mashha	ML	L	M	Massoudiye	ML	L	M
Mazraat Beit Ghattas	L	L	M	Mazraat En-Nahriye	L	L	M	Mechmech	L	L	M
Memneh	L	L	ML	Mhammara	ML	L	M	Mighraq Aakkar	ML	L	M
Minyara	ML	L	M	Moqayteh	M	L	M	Mounjez	L	L	M
Msalla	L	L	M	Mzeihmeh	L	L	M	Nfaiseh	ML	L	M
Noura Et-Tahta	L	L	M	Ouadi El-Haour	L	L	M	Ouadi El-Jamous	ML	L	M
Ouyoun El-Ghizlane	ML	L	M	Qaabarine	M	L	M	Qabaait	L	L	M
Qachlaq	L	L	M	Qantara Aakkar	L	L	M	Qarha Aakkar	L	ML	M
Qarqaf	ML	L	M	Qboula	L	L	M	Qleiaat Aakkar	M	L	M
Qloud El-Baqie	L	L	M	Qobaiyat Aakkar	L	L	M	Qobbat Chamrat	M	L	M
Qorayat	L	L	M	Qornet Aakkar	L	L	M	Qsair Aakkar	L	L	M
Rahbe	L	L	M	Rihaniyet Aakkar	L	L	M	Rmah	L	L	M
Rmoul	M	L	M	Saadine	L	L	M	Sadaqa	L	L	M
Saidnaya	L	L	M	Sammouniye	M	L	M	Saysouq	ML	L	M
Semmaqiye	ML	L	M	Semmaqli	M	L	M	Sfinet El-Dreib	L	L	M
Sfinet El-Qaitaa	L	L	M	Sindyanet Zeidane	L	L	M	Souaisset Aakkar	ML	L	M
Srar	L	L	M	Tal Abbas El Gharby	ML	L	M	Tal Abbas El-Chargy	ML	L	M
Tal Biret	L	L	M	Tal Hmayra	L	L	M	Tal Maayan Tal Kiri	ML	L	M
Tal Sibel	M	L	M	Tallet Chattaha	L	L	M	Tikrit	L	L	M
Tleil	L	L	M	Tshea	L	L	M	Zawarib	ML	L	M
Zouq El Hosniyeh	ML	L	M	Zouq El-Haddara	ML	L	M	Zouq El-Hbalsa	ML	L	M
Zouq El-Moqachrine	ML	L	M								

Sud

Sour

Municipality	21-Feb	22-Feb	23-Feb	Municipality	21-Feb	22-Feb	23-Feb	Municipality	21-Feb	22-Feb	23-Feb
Aaiyeh	L	L	ML	Aalma El-Chaab	L	L	L	Aaytit	L	ML	ML
Abbassiyeh Sour	L	M	M	Abou Chech	L	L	ML	Ain Abou Abdallah	L	M	M
Ain Baal	L	M	ML	Arzoun	L	L	M	Aziyeh	L	L	L
Baflaya	L	L	M	Barich	ML	L	M	Batouliyeh	L	M	ML
Bayad	L	L	ML	Bazouriyeh	L	M	M	Bediass	L	L	M
Bestiyat	L	L	M	Borj El Chemali	L	M	M	Borj En-Naqoura	M	M	ML
Borj Rahhal	ML	M	M	Boustane	ML	L	ML	Btaychiyeh	L	L	ML
Chaaitiye	L	L	ML	Chameh	L	L	L	Chehabiye	L	L	ML
Chehour	L	L	ML	Chihine	ML	L	L	Debaal Sour	L	L	M
Deir Amess	L	L	L	Deir Kifa	L	L	M	Deir Qanoun El-Ain	L	ML	ML
Deir Qanoun El-Naher	L	L	M	Derdghaiya	L	L	M	Dhayra	ML	L	ML
Halloussiyeh	L	L	M	Hamoul	L	L	L	Hanaouey	L	M	ML
Henniye	ML	ML	M	Hmairi Sour	L	L	M	Iskandarouna Sour	L	ML	ML
Jbal El Botom	L	L	L	Jebbin	ML	L	ML	Jennata	L	ML	M
Jijim	L	L	L	Jouaiya	L	L	M	Kneisset Sour	L	ML	ML

Maarake	L	L	M	Maaroub	L	ML	M	Majadel	L	L	ML
Majdalzoun	ML	L	ML	Mansouri Sour	ML	M	ML	Marnba	L	L	ML
Marouahine	ML	L	L	Mazraat El-Zalloutiy	ML	L	ML	Mazraat Mechref	L	L	ML
Mazraat Tayr Semhat	L	L	L	Mheilib	L	M	M	Neffakhiyeh	L	L	M
Niha Sour	L	L	M	Ouadi Jilo	L	ML	M	Qana	L	L	ML
Qolaileh Sour	ML	ML	ML	Rechknany	L	L	L	Rmadiyah	L	ML	ML
Selha Sour	L	L	M	Siddiqine	L	L	ML	Sour	M	M	M
Srifa	L	L	M	Tayr Debbe	L	M	M	Tayr Felsay	L	L	M
Tayr Harfa	ML	L	ML	Touayri	L	L	ML	Toura	L	ML	M
Yanouh Sour	ML	L	M	Yarine	ML	L	ML	Zebqine	L	L	L

Saida

Municipality	21-Feb	22-Feb	23-Feb	Municipality	21-Feb	22-Feb	23-Feb	Municipality	21-Feb	22-Feb	23-Feb
Aanqoun	ML	ML	M	Aaqtanit	ML	M	M	Aarab Ej-Jall	ML	ML	M
Aarab Tabbaya	ML	ML	M	Abra Saida	ML	M	M	Adloun	L	M	M
Adousiyeh	L	M	M	Ain-El-Deleb	L	ML	M	Arzai	L	ML	M
Babliyah	L	M	M	Barty	L	L	M	Bissariyeh	L	M	M
Bnaafoul	ML	M	M	Bqosta	L	M	M	Bramiy	L	ML	M
Daoudiyeh	L	M	M	Dareb El-Sim	L	ML	M	Erkay	ML	M	M
Ghassanieh	L	M	M	Ghazieh	L	M	M	Hajjeh	ML	ML	M
Haret Saida	ML	M	M	Hartiyeh	ML	M	M	Hlaliye Saida	ML	M	M
Insariyat	ML	M	M	Jazira Saida	L	M	M	Kafar Bit	ML	ML	M
Kaoutariyet El-Siyad	ML	M	M	Kfar Chellal	L	L	M	Kfar Hatta Saida	ML	ML	M
Kfar Milke Saida	L	ML	M	Khartoum	L	ML	M	Khaziz	ML	M	M
Khirbet Ed-Douair Sa	L	M	M	Khirbet El-Bassal	L	M	M	Khrayeb Saida	L	M	M
Loubieh	ML	M	M	Maghdouche	L	ML	M	Majdelyoun	ML	M	M
Matariyet El-Choumar	ML	M	M	Matayriyeh	L	ML	M	Mazraat 'Mseileh	L	M	M
Mazraat 'Snaiber	L	M	M	Mazraat Aarab Soukka	ML	ML	M	Mazraat Deir Taqla	L	ML	M
Mazraat El Yahoudiye	L	M	M	Mazraat El-Housseini	L	M	M	Mazraat El-Mhaydaleh	L	M	M
Mazraat El-Ouasta	L	M	M	Mazraat Jamjim	L	M	M	Mazraat Kaoutariyet	L	M	M
Mazraat Kfar Badda	L	M	M	Mazraat Oussamiyat	L	M	M	Mazraat Sari	L	M	M
Mazraat Sinai	L	ML	M	Meemariyeh	L	ML	M	Merouaniyeh	L	M	M
Miyeh ou Miyeh	L	M	M	Najjariyeh	L	M	M	Qaaqiyat El-Snaouba	L	M	M
Qnarit	ML	M	M	Qraiye Saida	ML	M	M	Saida Ed-Dekermane	L	M	M
Saida El-Oustani	L	M	M	Saida El-Qadimeh	ML	M	M	Saida Kefraya	L	ML	M
Saksakiyeh	ML	M	M	Salhie Saida	L	ML	M	Sarafand	L	M	M
Sfenta	L	L	M	Tafahta	L	M	M	Tanbourit	L	ML	M
Tebna	L	M	M	Zaghdraiya	L	ML	M	Zeita	ML	ML	M
Zrariyeh	L	ML	M								

Jezzine

Municipality	21-Feb	22-Feb	23-Feb	Municipality	21-Feb	22-Feb	23-Feb	Municipality	21-Feb	22-Feb	23-Feb
Ain El-Mir (El Estab	L	ML	M	Anane	L	L	ML	Aramta	L	L	M
Ariya	L	L	M	Aychiyeh	L	L	M	Azour	L	L	L
Baba	L	L	ML	Bayssour Jezzine	ML	ML	M	Benoueteh Jezzine	L	L	M
Bhannine	L	L	M	Bisri	L	L	L	Bkassine	L	L	ML
Bouslaya	L	L	ML	Btedine El-Leqech	L	L	L	Chbail	L	L	L
Choualiq Jezzine	L	ML	M	Dahr Ed-Deir	L	L	M	Deir El Qattine	L	L	ML

Demachqiyeh	L	L	M	Ghabbatiyeh	L	L	M	Harf Jezzine	L	L	L
Hassaniyeh	L	L	M	Haytouleh	L	L	M	Haytura	L	L	M
Hidab	L	L	M	Homsiyeh	L	L	ML	Jabal Toura	L	L	M
Jarmaq	L	L	M	Jensnaya	L	ML	M	Jernaya	L	L	M
Jezzine	L	ML	M	Karkha	L	L	M	Kfar Falous	L	L	M
Kfar Houna	L	ML	M	Kfar Jarrah	L	M	M	Lebaa	L	ML	M
Louayzet Jezzine	L	L	M	Machmouche	L	L	ML	Mahmoudiyeh Jezzine	L	L	M
Maknounye Jezzine	L	L	M	Maraat Ouazaiyeh	L	L	M	Mazraat Daraya	L	L	M
Mazraat El-Aarqoub	L	L	M	Mazraat El-Mathane	L	L	L	Mazraat El-Rahbane	L	L	M
Mazraat Khallet Khaz	L	L	M	Mazraat Louzid (Loua	L	L	L	Mazraat Qrouh	L	L	M
Mazraat Tamra	L	L	M	Mazraat Zighrine Jez	L	L	M	Mazraat	L	L	M
Mharbiyeh	L	ML	M	Midane Jezzine	L	L	ML	Mjeydel Jezzine	ML	ML	M
Mlikh	L	L	M	Mrah El-Hbasse	L	ML	M	Ouadi Baanquodaine	L	ML	M
Ouadi El-Laymoun	L	ML	M	Ouardiyeh	L	VL	L	Qabaa Jezzine	L	L	ML
Qatrani	L	L	M	Qaytouleh	L	L	ML	Qtaleh Jezzine	L	L	L
Rihane Jezzine	L	L	M	Rimat	L	L	M	Roum	L	L	ML
Roummanet	L	ML	M	Sabbah	L	L	ML	Saydoun	L	L	M
Sfaray	L	L	M	Snaya	L	L	ML	Sojoud	L	L	M
Srayri	L	ML	M	Taaid	L	L	ML	Wadi Jezzine	L	L	ML
Zhalta	L	L	M								

Bekaa

West Bekaa

Municipality	21-Feb	22-Feb	23-Feb	Municipality	21-Feb	22-Feb	23-Feb	Municipality	21-Feb	22-Feb	23-Feb
Aammiq BG	L	ML	VL	Ain El Tineh BG	L	ML	M	Ain Zebdeh	L	L	M
Ana	L	L	L	Aytanit	L	L	M	Baaloul BG	ML	L	ML
Bab Mareh	L	L	M	Chouberqiye Aammiq	ML	ML	VL	Dakoue	ML	ML	VL
Deir Ain El-Jaouze	L	L	M	Deir Tahniche	L	ML	VL	Ghaza	ML	ML	VL
Harime El-Soughra	ML	ML	VL	Hoch Harimeh	ML	ML	VL	Jazira BG	ML	ML	VL
Jib Jennine	ML	ML	VL	Kamed-El-Laouz	ML	ML	VL	Kefraya BG	L	L	ML
Khiara El Atika	ML	ML	VL	Khiara	ML	ML	VL	Khirbet Qanafar	L	L	M
Lala	ML	L	L	Lebbaya BG	ML	L	M	Loussa	ML	ML	M
Machghara	ML	L	M	Manara (Hammara) BG	ML	L	VL	Mansoura BG	L	ML	VL
Marej BG	ML	ML	M	Maydoun	L	ML	M	Ouaqf BG	ML	ML	VL
Qaraaoun	L	L	M	Qelya	ML	ML	M	Raouda (Istabel)	ML	ML	L
Saghbine	L	L	M	Sohmor	ML	L	M	Soltan Yacoub el Ara	ML	ML	VL
Souairy	ML	ML	VL	Sultan Yaacoub	ML	ML	VL	Tal Znoun	L	ML	VL
Yehmor BG	ML	L	M	Zilaya	ML	ML	M				

Zahle

Municipality	21-Feb	22-Feb	23-Feb	Municipality	21-Feb	22-Feb	23-Feb	Municipality	21-Feb	22-Feb	23-Feb
Aanjar (Haouch Mouss)	ML	ML	L	Ablah	M	M	M	Ain Kfarzabad	ML	ML	M
Ali-El-Nahri	M	ML	M	Bar Elias	ML	ML	M	Bouarej	ML	M	M
Cheberqiyet Tabet	ML	ML	M	Chtaura	ML	ML	M	Deir El Ghazal	ML	M	M
Delhamiyet Zahle	ML	ML	M	Ferzol	M	M	M	Haouch El-Ghanam	M	ML	M
Haouch Es-Siyadeh	ML	ML	M	Haouch Hala	M	ML	M	Haouch Mandara	ML	ML	M

Haouch Qayssar	ML	ML	M	Hezerta	M	M	M	Hosh Moussa	ML	ML	M
Jdita	ML	ML	M	Kfarzabad	ML	ML	M	Ksara	ML	ML	M
Majdel Aanjar	ML	ML	VL	Makssi	ML	ML	M	Massa	M	M	M
Mazraat Er-Remtaniye	ML	M	M	Mrayjat Zahle	ML	M	M	Mzaraa Zahle	L	ML	M
Nabi Ayla	M	M	M	Nasriyet Rizk	M	M	M	Nasriyet Zahle	ML	ML	ML
Niha Zahle	M	M	M	Ouadi Ed-Deloum	ML	M	M	Ouadi El-Arayech	M	M	M
Qaa El Rim	M	M	M	Qab Elias	ML	ML	M	Qousaya	ML	ML	M
Rhit	ML	M	M	Riyak	M	ML	M	Saadnayel	ML	ML	M
Taal El-Akhdar	ML	ML	L	Taalbeya	ML	ML	M	Taanayel	ML	ML	M
Talamara	M	ML	M	Tcheflik Edde Haouch	L	ML	M	Tcheflik Qiqano	ML	ML	M
Terbol Zahle	ML	ML	M	Touaite Zahle	M	M	M	Zahle Aradi	M	M	M
Zahle El-Berbara	M	M	M	Zahle El-Maallaqa	ML	M	M	Zahle El-Midane	M	M	M
Zahle Er-Rassiye	M	M	M	Zahle Haouch El-Ouma	ML	ML	M	Zahle Haouch El-Ouma	ML	ML	M
Zahle Haouch Ez-Zara	M	M	M	Zahle Maalaga Aradi	ML	M	M	Zahle Mar Antonios	M	M	M
Zahle Mar Elias	M	M	M	Zahle Mar Gerios	ML	M	M	Zahle Saydet En-Naja	M	M	M
Zebdoul	ML	ML	M								

Rachaiya

Municipality	21-Feb	22-Feb	23-Feb	Municipality	21-Feb	22-Feb	23-Feb	Municipality	21-Feb	22-Feb	23-Feb
Ain Arab Rachaiya	M	ML	L	Ain Ata	M	M	L	Ain Harche	M	M	L
Aqabe Rachaya	M	M	L	Ayha	M	M	L	Ayta El Fokhar	ML	ML	VL
Bakifa Rachaya	M	M	L	Bakka	M	ML	L	Beit Lahya	ML	M	VL
Bireh Rachaiya	ML	ML	VL	Daher El Ahmar	M	M	VL	Deir El-Achayer	M	M	L
Heloua Rachaiya	M	M	VL	Hoch El Qannabeh Rac	ML	M	L	Kaoukaba Bou Arab	ML	ML	VL
Kfar Danis	M	M	VL	Kfar Mechki	ML	ML	ML	Kfar Qouq	M	M	L
Kherbet Rouha	M	ML	VL	Majdel Balhiss	ML	L	M	Mdoukha	ML	ML	VL
Mhaydseh Rachaiya	ML	L	VL	Nabi Safa	ML	ML	M	Rachaiya	M	M	L
Rafid Rachaiya	ML	ML	VL	Selsata (Mazraat Dei	M	M	L	Tannoura	M	M	L
Yanta	M	ML	L								

Beyrouth

Beyrouth

Municipality	21-Feb	22-Feb	23-Feb	Municipality	21-Feb	22-Feb	23-Feb	Municipality	21-Feb	22-Feb	23-Feb
Achrafieh	ML	ML	MH	Ain el-Mreisse	ML	M	MH	Bachoura	ML	M	MH
Beirut Central Distr	ML	M	MH	Marfai	ML	M	MH	Mazraa	ML	M	MH
Medaouar	ML	ML	MH	Minet el-Hosn	ML	M	MH	Mwssaitbeh	ML	M	MH
Ras Beirut	ML	M	MH	Rmeil	ML	ML	MH	Saifi	ML	M	MH
Zqaq el-Blat	ML	M	MH								