

Lebanon Fire Risk Bulletin



CIVIL DEDEFENCE

Refer to cadast table condition.

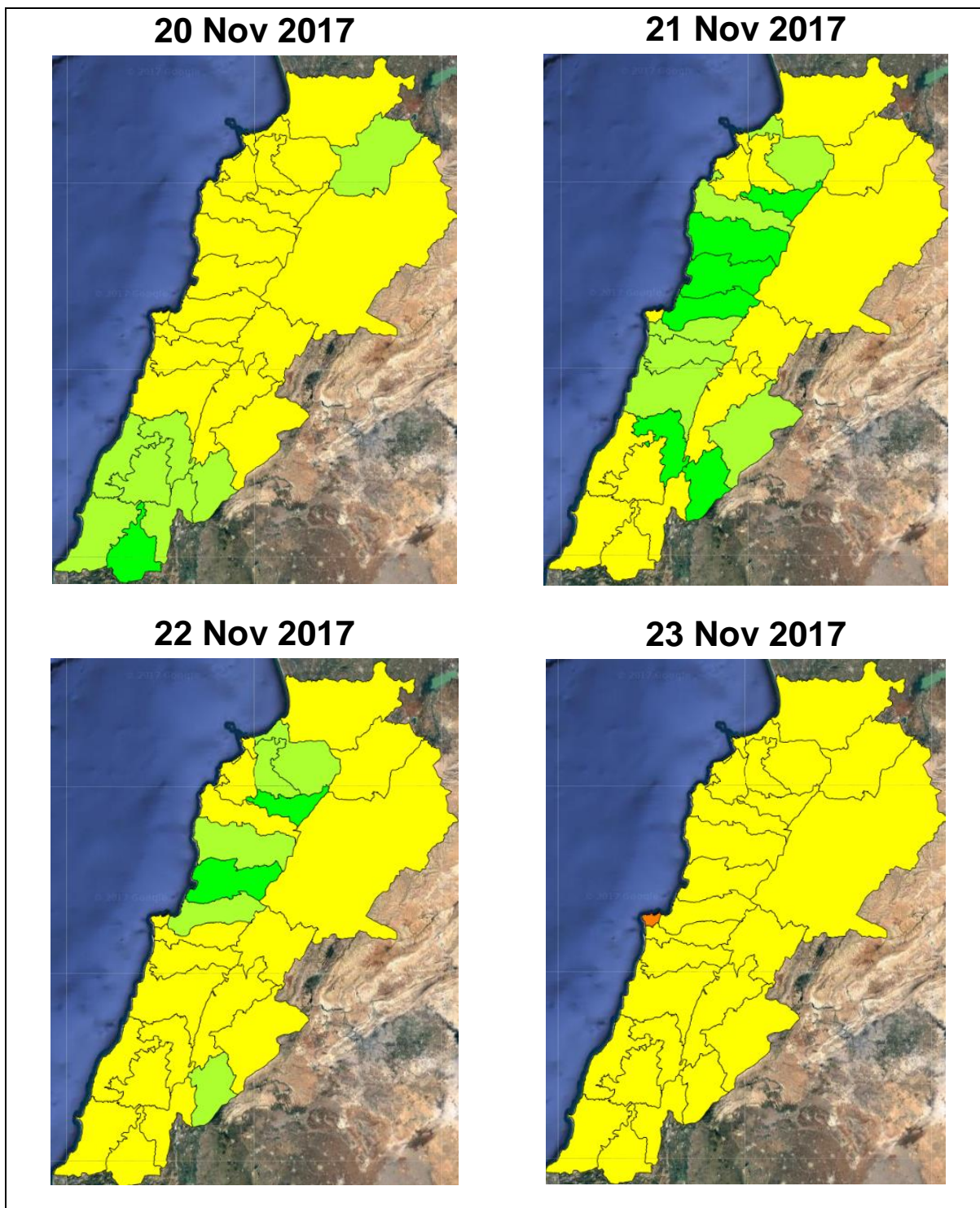
Please note that the indicated temperature is at 2 meters height from the ground.

General description of potential fire risk situation

Symbol	Level of risk	Meaning and actions
VL	Very low	Very low fire risk. Controlled burning operations can be hardly executed due to high fuel moisture content. Normally wildfires self-extinguish.
L	Low	Low fire risk. Controlled burning operations can be executed with a reasonable degree of safety.
ML	Medium low	Medium-low fire risk. Controlled burning operations can be executed in safety conditions. All the fires need to be extinguished.
M	Medium	Medium fire risk. Controlled burning operations would be avoided. All the fires need to be very well extinguished.
M	Medium high	Controlled burning is not recommended. Open flame will start fires. Cured grasslands and forest litter will burn readily. Spread is moderate in forests and fast in exposed areas. Patrolling and monitoring is suggested. Fight fires with direct attack and all available resources.
H	High	Ignition can occur easily with fast spread in grass, shrubs and forests. Fires will be very hot with crowning and short to medium spotting. Direct attack on the head may not be possible requiring indirect methods on flanks. Patrolling and monitoring the territory is highly suggested.
E	Extreme	Ignition can occur also from sparks. Fires will be extremely hot with fast rate of spread. Control may not be possible during day due to long range spotting and crowning. Suppression forces should limit efforts to limiting lateral spread. Damage potential total. Patrolling and monitoring the territory is highly suggested.

Beirut, 21 November 2017

FIRE RISK INDEX

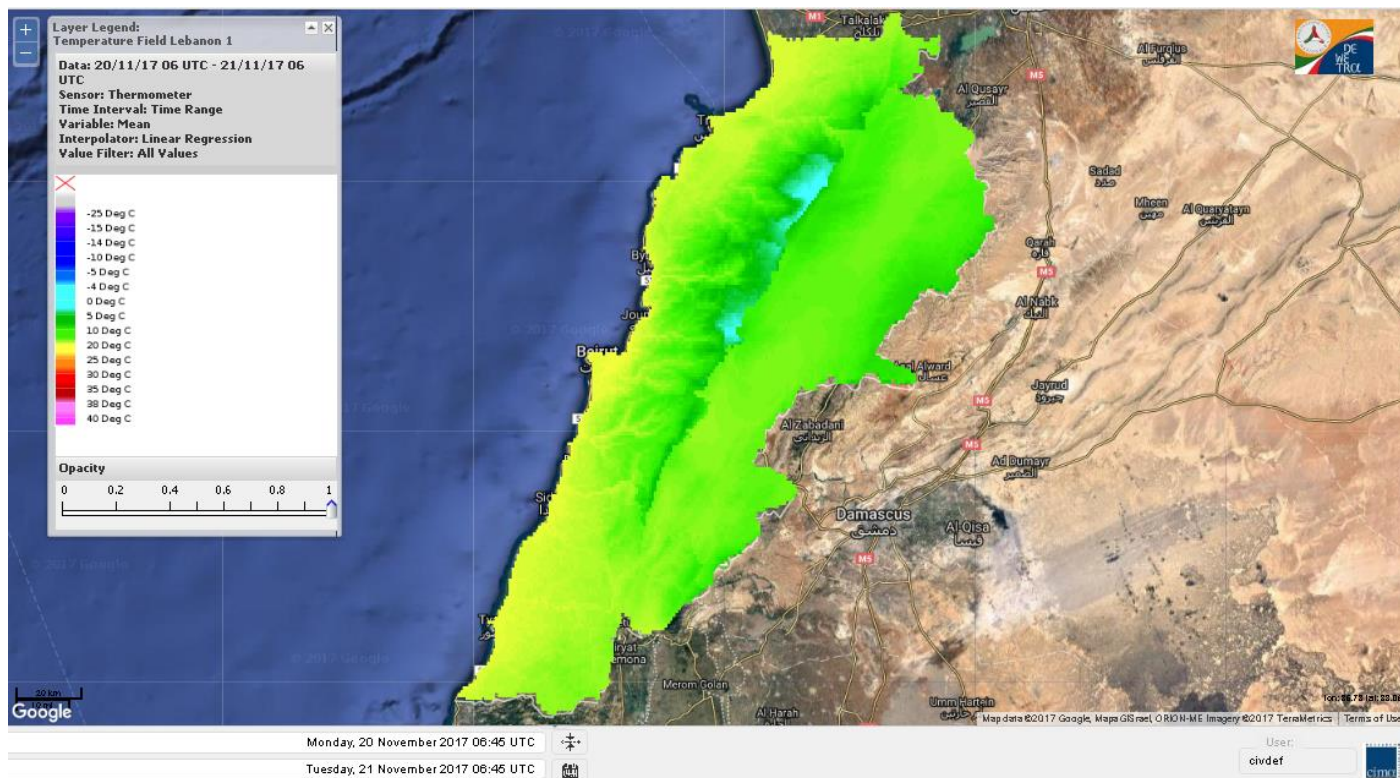


Layer Legend:
Lebanon Wildfire Risk Index 1

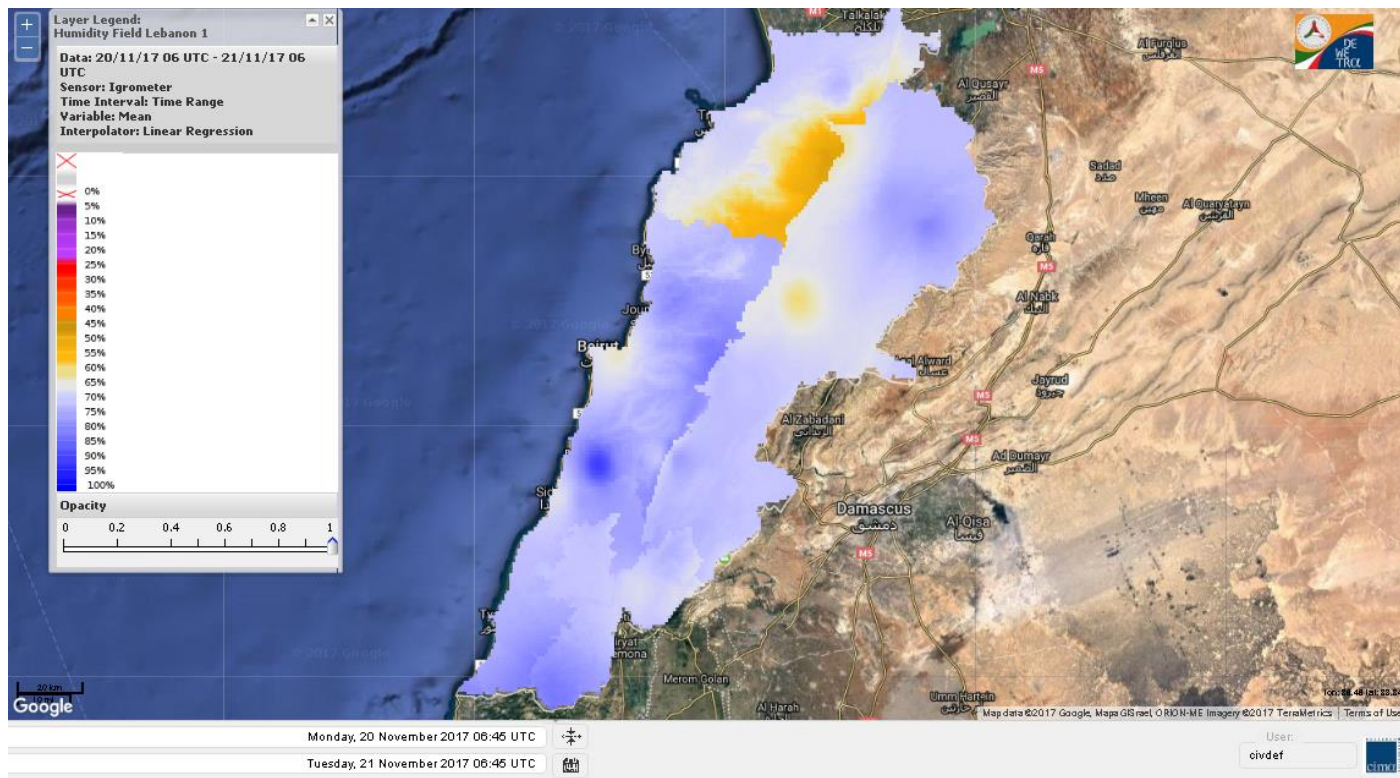
Data: Run: 21/11/2017 00:00. Forecast for 21
Model: RISICO for the Republic of Lebanon
Variable: Fire Weather Index
Spatial Resolution: Caza

- VERY LOW
- LOW
- MEDIUM-LOW
- MEDIUM
- MEDIUM-HIGH
- HIGH
- EXTREME

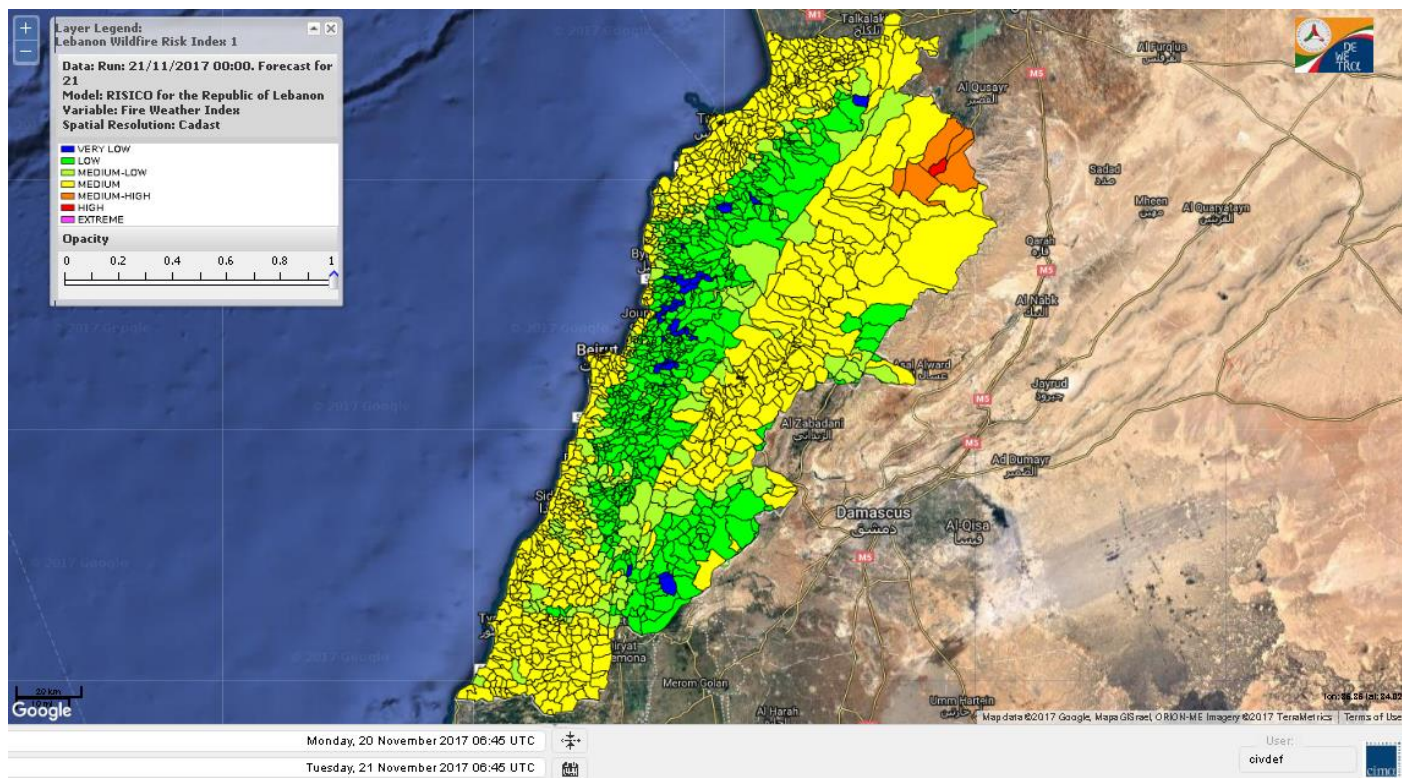
Lebanon temperature for Lebanon for 21 Nov 2017



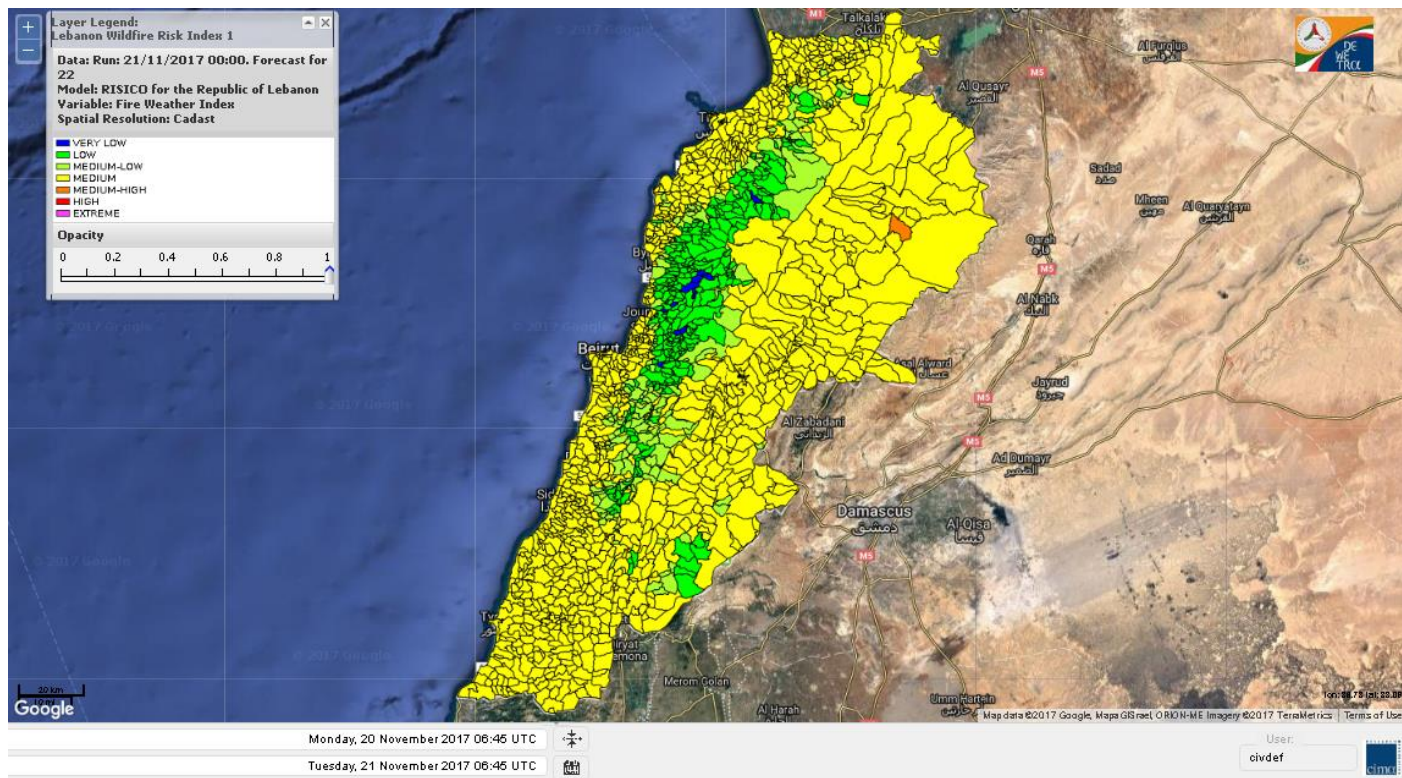
Lebanon humidity for Lebanon for 21 Nov 2017



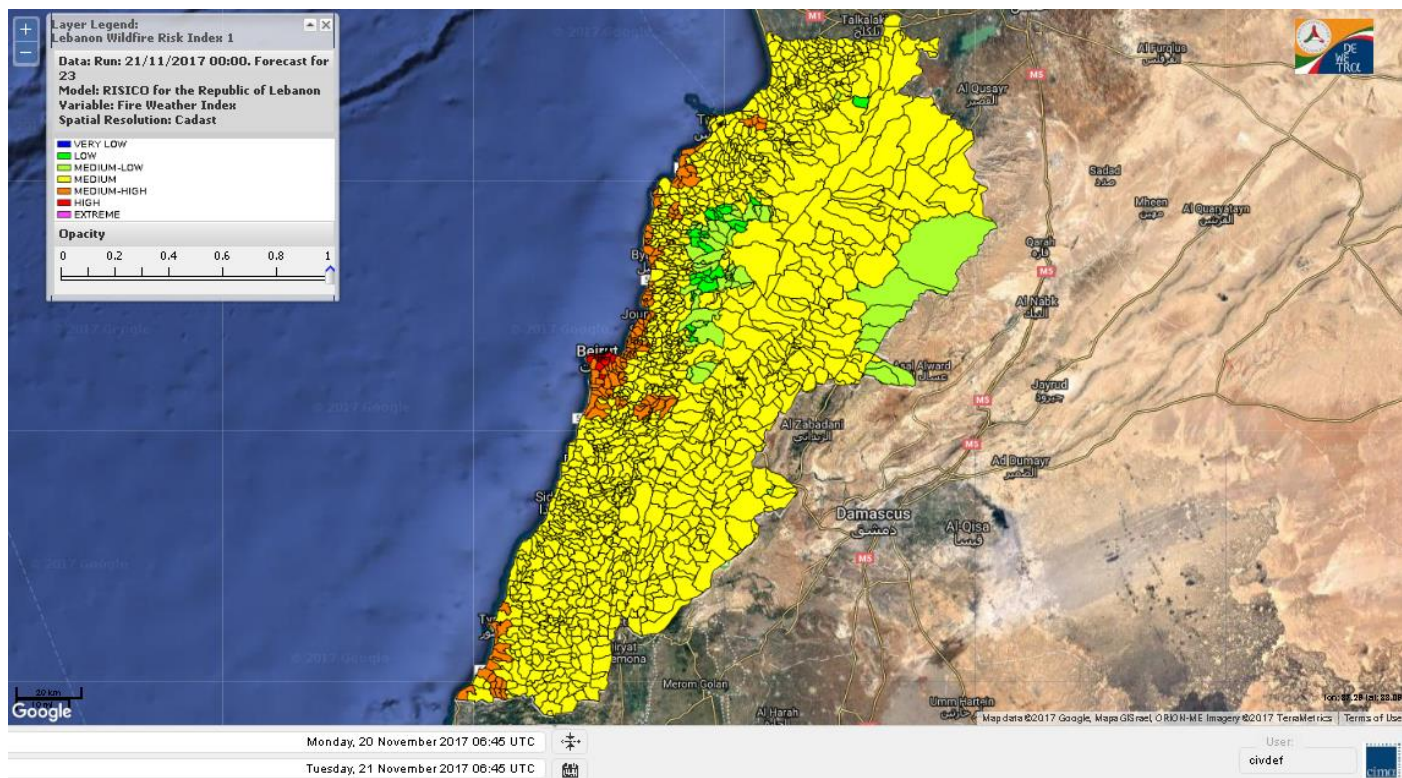
Lebanon for 21 Nov 2017



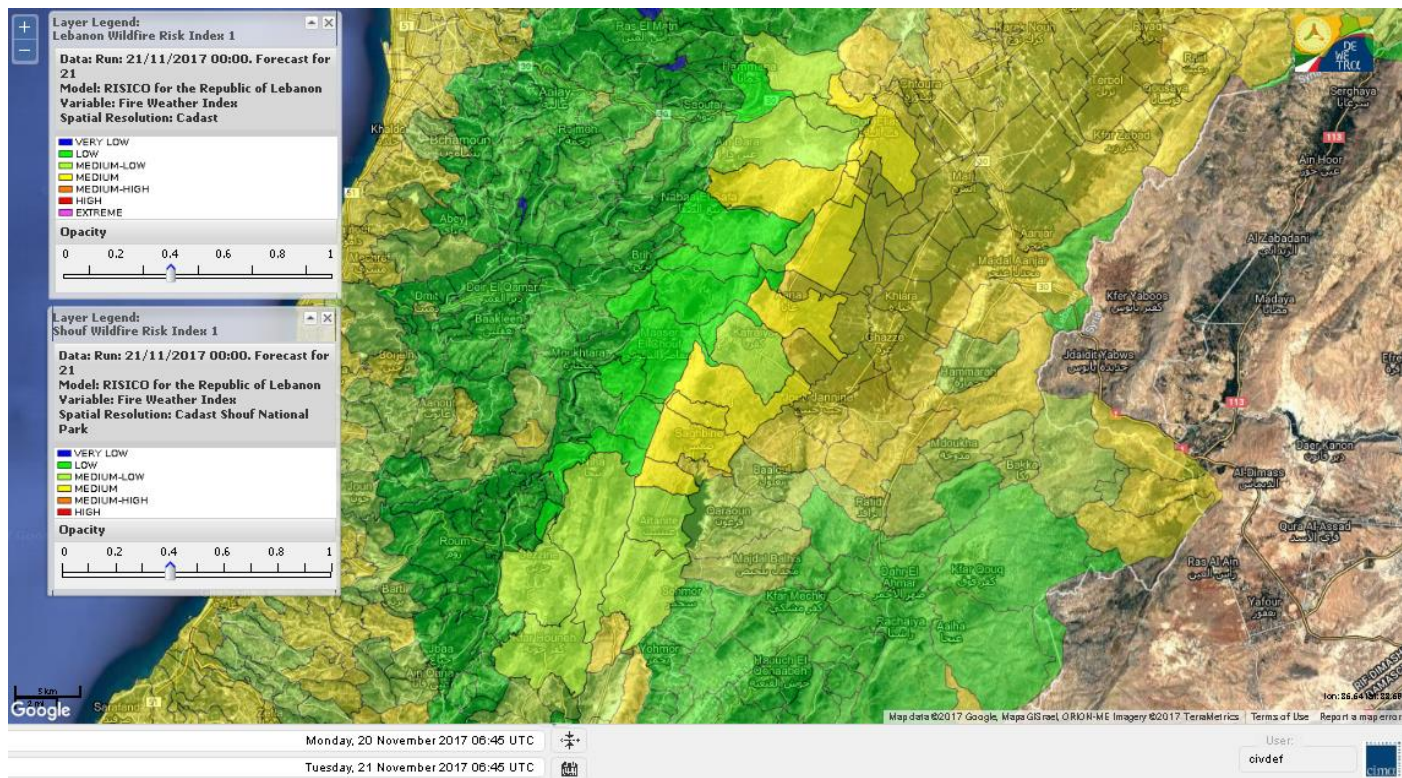
Lebanon for 22 Nov 2017



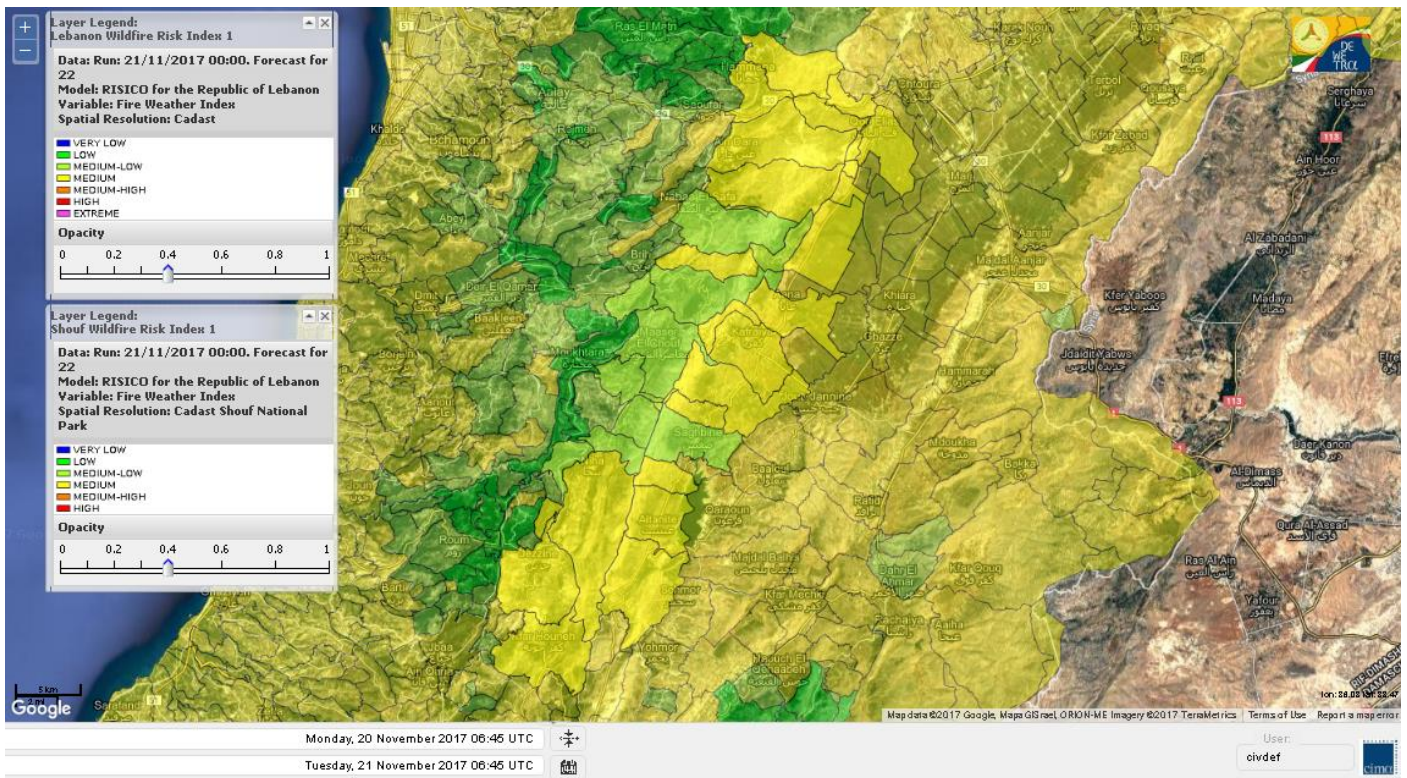
Lebanon for 23 Nov 2017



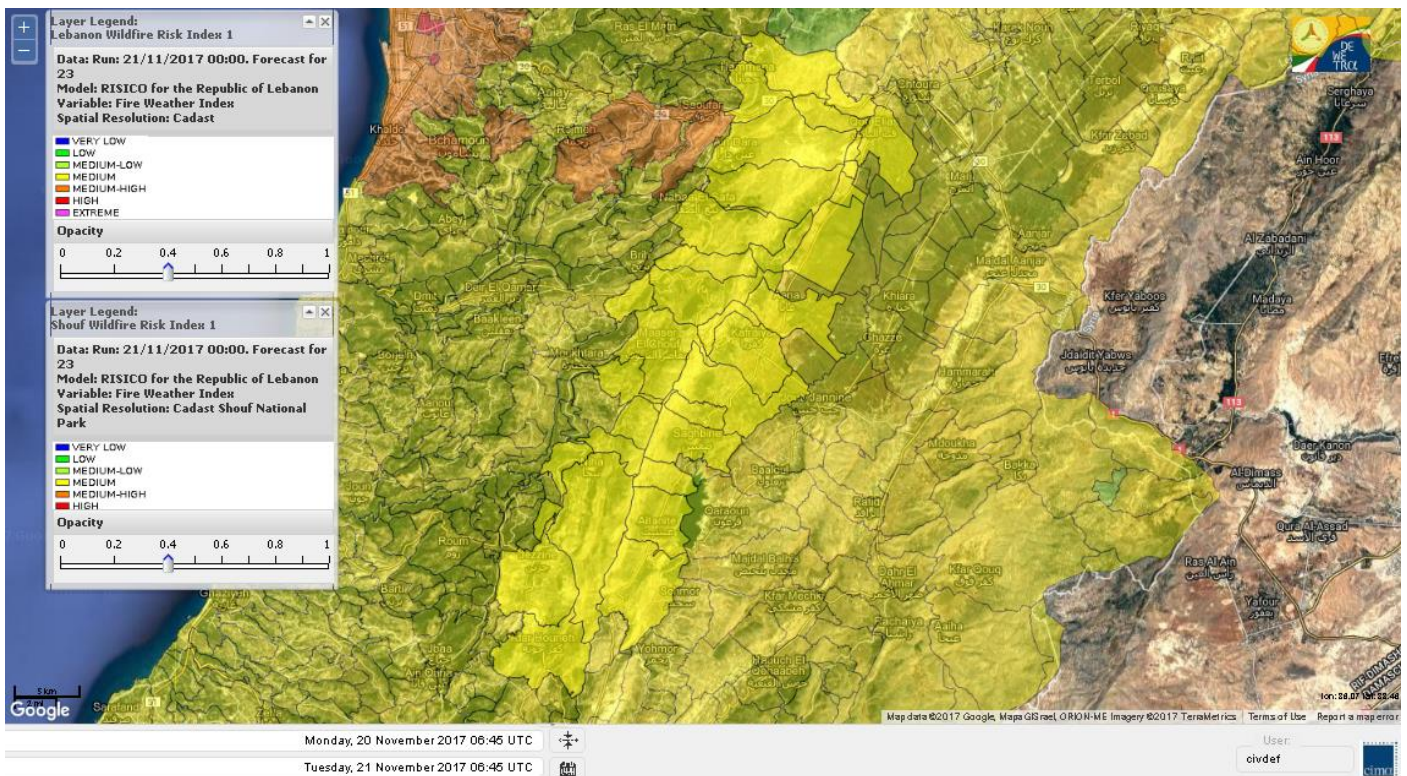
Shouf Biosphere Reserve Forecast for 21 Nov 2017



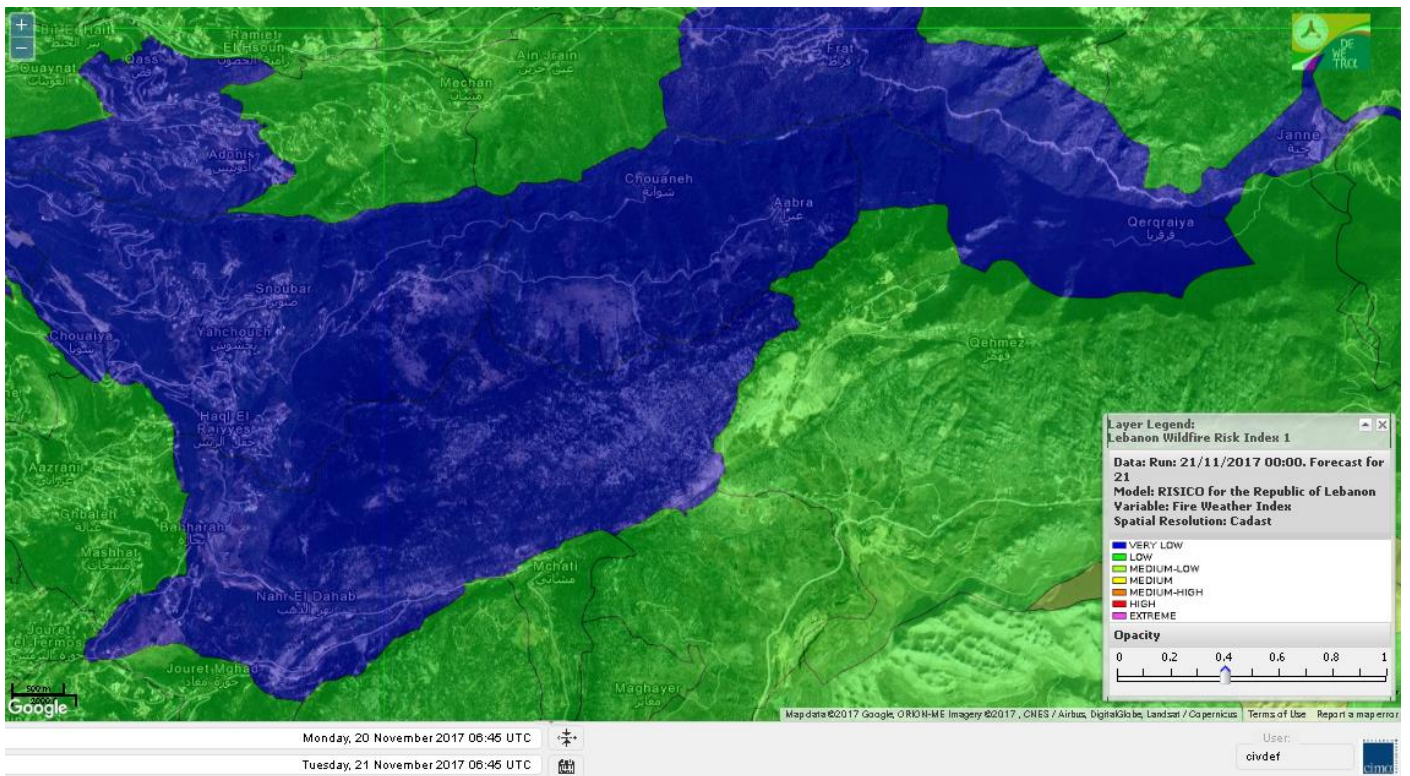
Shouf Biosphere Reserve Forecast for 22 Nov 2017



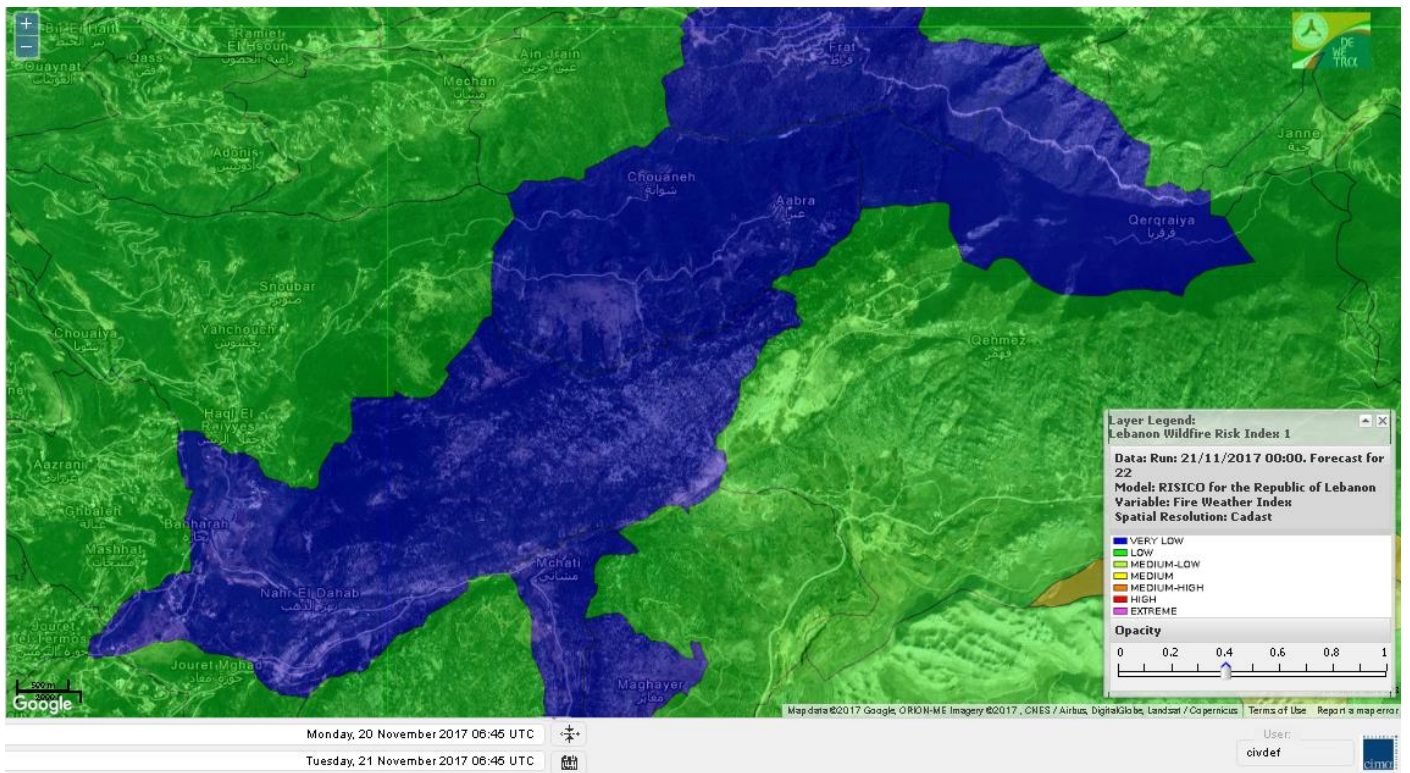
Shouf Biosphere Reserve Forecast for 23 Nov 2017



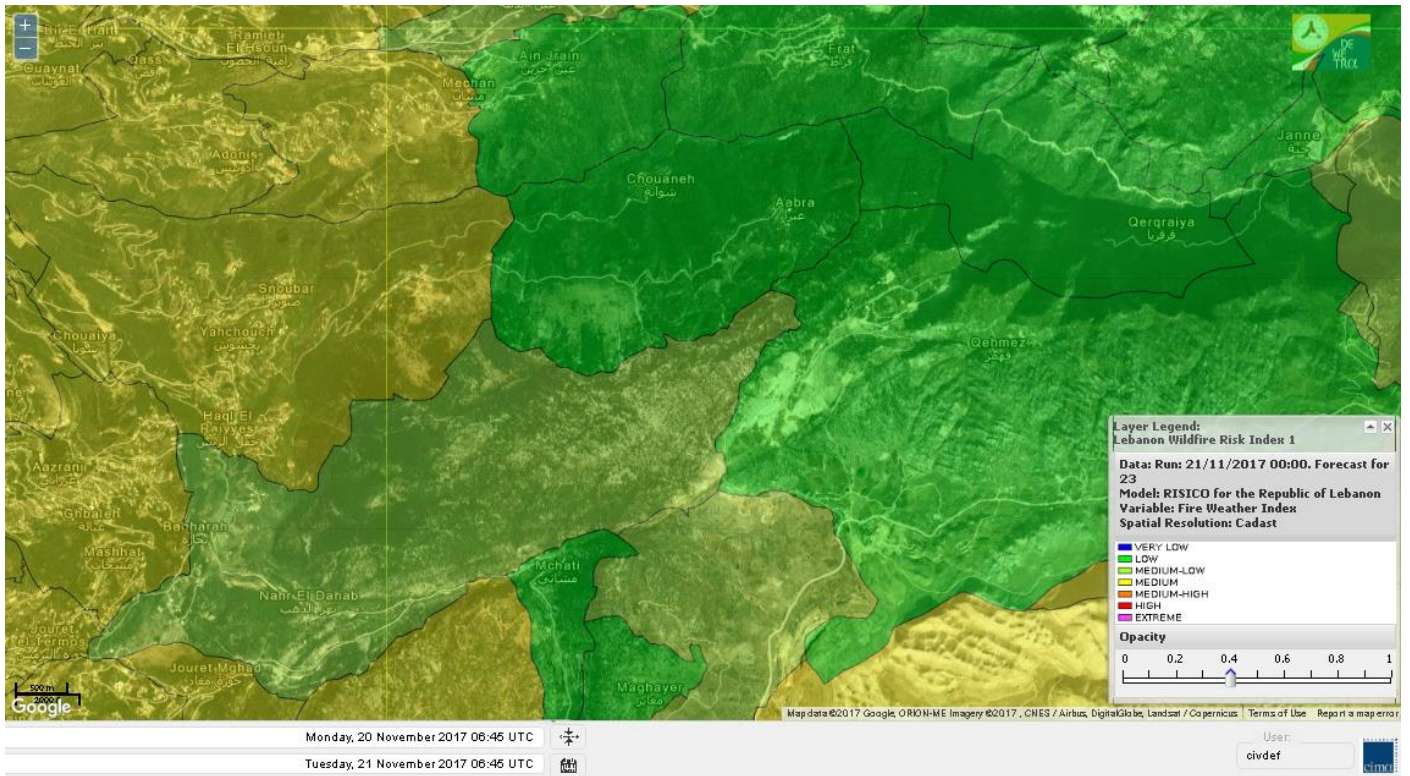
Jabal Moussa Reserve Forecast for 21 Nov 2017



Jabal Moussa Reserve Forecast for 22 Nov 2017



Jabal Moussa Reserve Forecast for 23 Nov 2017



Nord

Koura

Municipality	21-Nov	22-Nov	23-Nov	Municipality	21-Nov	22-Nov	23-Nov	Municipality	21-Nov	22-Nov	23-Nov
Aaba	M	M	M	Afsaddiq	M	M	M	Ain Ekrine	M	M	M
Amioun	M	M	M	Anfeh	M	M	MH	Badbhoun	M	M	MH
Barghoun	M	M	MH	Barsa	M	M	M	Batroumine	M	M	M
Bdebba	M	M	M	Bechmizine	M	M	M	Bednayet El-Koura	M	M	MH
Bhabbouch El-Koura	M	M	M	Bkeftine	M	M	M	Bnehran	M	M	M
Bqaiia El-Koura	M	M	M	Bsarma	M	M	M	Btaaboura	M	M	M
Bttram	M	M	M	Btouratij	M	M	M	Bziza	M	M	M
Dar Beechtar	M	M	M	Dar Chmezzine	M	M	M	Deddeh	M	M	M
Deir El-Balamand	M	M	M	Fih	M	M	M	Hraiche	M	M	MH
Ijdaabrine	M	M	M	Kaftoun	M	M	M	Kefraya El-Koura	M	M	MH
Kfarakka	M	M	M	Kfarhata	M	M	M	Kfarhazir	M	M	MH
Kfarkahel	M	M	M	Kfarsaroun	M	M	M	Kosba	M	M	M
Mejdel el-Koura	M	M	M	Nakhle	M	M	M	Qalhat	M	M	M
Ras Masqa	M	M	M	Rechdibbine	M	M	M	Zakroun	M	M	M
Zgharta El-Mtaouile	L	L	M								

Bcharre

Municipality	21-Nov	22-Nov	23-Nov	Municipality	21-Nov	22-Nov	23-Nov	Municipality	21-Nov	22-Nov	23-Nov
Aabdine	L	ML	M	Bane	L	L	M	Barhelioun	L	L	M
Bazouone	L	L	ML	Becharre	L	ML	M	Beit Menzer	L	L	M
Billa	L	L	M	Blaouza	L	L	M	Bqaa Kafra	ML	L	M
Bqerqacha	L	L	M	Breissat	L	L	ML	Dimane	L	L	ML
Hadath El Jobbeh	L	L	ML	Hadchit	L	L	M	Hasroun	L	L	ML
Mazraat Aassaf	VL	L	L	Mazraat Bani Saab	L	L	ML	Mchaa El-Jobbeh	L	M	M
Metrit	L	ML	M	Moghr El-Ahoual	M	M	M	Ouadi Qannoubine	VL	VL	L
Qanat	L	L	M	Qnayouer	L	L	M	Tourza	L	L	M

Batroun

Municipality	21-Nov	22-Nov	23-Nov	Municipality	21-Nov	22-Nov	23-Nov	Municipality	21-Nov	22-Nov	23-Nov
Aabrine	M	M	M	Aalali	L	L	ML	Aartziz	L	ML	M
Abdelli	L	ML	M	Ajdabra	ML	ML	M	Assia	ML	ML	M
Basbina	M	M	MH	Batroun	M	M	MH	Bcheleh	L	L	ML
Bechtoudar	L	L	L	Beit Chlala	L	L	L	Beit Kassab	VL	L	L
Bijdarfil	M	M	MH	Bqesmaya	M	M	M	Chatine	L	L	ML
Chebtin	ML	ML	M	Chekka	M	M	MH	Daael	ML	M	M
Dahr Abi Yaghi	L	L	M	Daraya El-Batroun	M	M	MH	Deir Billa	L	L	M
Deir Kfifane	M	M	MH	Deir Mar Youhanna EL	L	L	L	Deir Mar Youssef Jra	L	ML	M
Douma	L	L	ML	Douq	L	L	M	Eddeh El-Batroun	M	M	M
Ftihat El-Batroun	ML	ML	M	Ghouma	M	M	M	Hadtoun	L	L	ML
Hamat	M	M	M	Harbouna	L	ML	M	Hardine	VL	L	L
Helta	ML	ML	M	Hery	M	M	MH	Jebbla	ML	ML	M
Jrabta El-Batroun	L	M	M	Jrane El-Batroun	M	M	MH	Kfar Aabida	M	M	M
Kfar Halda	L	L	L	Kfarb Shlaimane	L	ML	M	Kfarhatna	ML	ML	M
Kfarhay	M	M	M	Kfarhelos	ML	ML	M	Kfifane	M	M	MH

Kfour El Arabi	L	L	ML	Koubba	M	M	MH	Kour	M	M	M
Mar Mama	L	L	L	Masrah	L	L	M	Mehmarch	L	L	ML
Mrah Chdid	M	M	M	Mrah El Ziyat	M	M	M	Mrah El-Hajj	L	L	ML
Nahle El-Batroun	L	ML	ML	Niha El-Batroun	L	L	ML	Ouahj El-Hajjar	M	M	M
Ouata Houb	L	L	L	Qatnaaoun	M	M	M	Racha	L	L	ML
Rachana	M	M	M	Rachkida	M	M	M	Ram El-Batroun	L	L	L
Ras Nahhach	M	M	M	Selaata	M	M	MH	Sghar	L	M	M
Smar Jbayl	M	M	M	Sourat El-Batroun	ML	ML	M	Tannourine El-Faouqa	L	M	M
Tannourine Et-Tahta	L	L	L	Thoum	M	M	M	Toula El-Batroun	L	ML	M
Zan	M	ML	M								

Zgharta

Municipality	21-Nov	22-Nov	23-Nov	Municipality	21-Nov	22-Nov	23-Nov	Municipality	21-Nov	22-Nov	23-Nov
Aachach	M	M	M	Aalma	M	M	M	Aarde	M	M	M
Aintourine	L	ML	M	Arabet Qozhaya	L	L	M	Arde	M	M	M
Arjis	M	M	M	Asnoun	M	M	M	Ayto	L	L	M
Basloukit	L	L	M	Bchannine	M	M	M	Besebeel	M	M	M
Bhairret Toula	L	L	M	Bnachee	M	ML	M	Boussit	M	M	MH
Danha	M	M	M	Daraiya Zgharta	M	M	M	Deir Jdeide	M	M	M
Ehden	L	L	M	Halan	M	M	MH	Hariq Zgharta	M	M	M
Houakir	M	ML	M	Hraiqis	M	M	M	laal	M	M	M
Ijbaa	L	L	M	Karm Saddeh	L	L	M	Kfarchakhna	M	M	M
Kfardlaqous	M	M	M	Kfarfou	M	M	M	Kfarhata Zgharta	M	M	M
Kfarhoura	M	M	M	Kfarsghab	L	L	M	Kfaryachit	M	M	M
Kfarzaina	M	M	M	Khaldiye	M	M	M	Mazraat Ajbeaa	M	M	M
Mazraat Et-Teffah	L	L	M	Mazraat Jneid	M	M	M	Mejdlaya Zgharta	M	M	M
Merh Kfarsghab	M	M	M	Miryata	M	M	M	Miziara	ML	ML	M
Mzraat Kefraya	M	M	MH	Qorah Bach	M	M	M	Rachiine	M	M	M
Ras Kifa	M	M	M	Sakhra	M	M	M	Sebhel Zgharta	L	L	M
Serhel	L	L	M	Tallet Zgharta	M	M	M	Toula Zgharta	L	L	M
Zgharta	M	M	M								

Minieh-Denniye

Municipality	21-Nov	22-Nov	23-Nov	Municipality	21-Nov	22-Nov	23-Nov	Municipality	21-Nov	22-Nov	23-Nov
Aasaymout	L	L	M	Aaymar	L	L	M	Aazki	M	M	M
Ain El-Tineh-Miniyeh	L	L	M	Assoun	L	ML	M	Bakhaaoun	M	M	M
Bchennata	L	L	M	Bechehhara	L	L	M	Beddawi	M	M	M
Behouaita	L	L	M	Beit El Foqss	L	ML	M	Beit Haouik	M	M	M
Beit Zoud	M	M	M	Bekaasafrine	L	ML	M	Borj El Yahoudiyeh	M	M	M
Bqarsouna	L	L	M	Btermaz	ML	ML	M	Debaael	L	ML	M
Deir Ammar	M	M	M	Deir Nbouh	M	M	M	Haouaret-Miniyeh	M	M	M
Haql el Azimeh	ML	ML	M	Harf El Siyad	ML	L	M	Hazmiye-Miniyeh	L	L	M
Izal	ML	ML	M	Jarjour	L	L	M	Jayroun	L	M	M
Kahf El-Malloul	ML	ML	M	Karm El-Moher	L	L	M	Kfar Binine	ML	ML	M
Kfarchalane	M	M	M	Kfarhabou	M	M	M	Kharroub-Miniyeh	M	M	M
Mazraat El-Kreme	L	L	M	Mazraat Ketrane	L	L	M	Merkebtta	M	M	M
Minyeh	M	M	M	Mrah El Sfirat	L	L	M	Mrah Sraj	M	ML	M
Mrebbine	L	M	M	Nabi Youcheaa	M	M	M	Nemrine	L	ML	M

Qarhaiya	M	M	M	Qarne	L	M	M	Qarsita	L	L	M
Qattineh-Miniyeh	L	L	M	Qemmamine	L	M	M	Qraine	L	L	M
Raouda-Aadoua	M	M	M	Rihaniyet-Miniyeh	M	M	M	Sfireh	L	ML	M
Sir Ed-Danniyeh	L	L	M	Tarane	L	ML	M	Terbol-Miniyeh	M	M	MH
Zaghartaghriane	M	ML	M	Zouq Bhannine	M	M	M				

Nabatiye

Nabatiye

Municipality	21-Nov	22-Nov	23-Nov	Municipality	21-Nov	22-Nov	23-Nov	Municipality	21-Nov	22-Nov	23-Nov
Aabba	M	M	M	Aazzi	ML	M	M	Adchit El-Chqif	M	M	M
Ain Bou Swar	L	M	M	Ain Kana	ML	M	M	Ali El-Taher	ML	M	M
Ansar	M	M	M	Arab Salim	ML	M	M	Arnoun	ML	M	M
Bfaroue	ML	M	M	Breyqaah	M	M	M	Charqiyeh	M	M	M
Choukine	M	M	M	Deir El Zahrani	M	M	M	Doueir El-Nabatiyeh	M	M	M
Habbouch El-Nabatiye	M	M	M	Hamra El-Nabatiyeh	M	M	M	Harouf El-Nabatiyeh	M	M	M
Hmaile	M	M	M	Houmin El Faouqa	M	M	M	Houmin El Tahta	M	M	M
Jarjough	L	M	M	Jbaah El-Nabatiyeh	L	M	M	Jebchit	M	M	M
Kfar Djal El-Nabatiy	M	M	M	Kfar Remmane	ML	M	M	Kfar Sir	M	M	M
Kfar Tebnit	M	M	M	Kfarfila	ML	M	M	Kfour El-Nabatieh	M	M	M
Mayfadoun	M	M	M	Mazraat Bsaffour	M	M	M	Mazraat Chalbaal	M	M	M
Mazraat Dmoul	M	M	M	Mazraat El Khreibeh	M	M	M	Mazraat El-Bayad El-	M	M	M
Mazraat Kfarjaouz	M	M	M	Mazraat Qalaat Meiss	M	M	M	Nabatiyeh El-Fawka	M	M	M
Nabatiyeh Et-Tahta	M	M	M	Namiriyeh	M	M	M	Qaaqaaiyet El Jisr	M	M	M
Qossaibeh El-Nabatiy	M	M	M	Roumine	M	M	M	Sarba El-Nabatieh	ML	M	M
Sir El-Gharbiyeh	M	M	M	Toul	M	M	M	Yehmor El-Nabatiyeh	ML	M	M
Zaoutar El Charkiyeh	M	M	M	Zaoutar El-Gharbiyeh	M	M	M	Zebdine El-Nabatiyeh	M	M	M
Zefta	M	M	M								

Hasbaiya

Municipality	21-Nov	22-Nov	23-Nov	Municipality	21-Nov	22-Nov	23-Nov	Municipality	21-Nov	22-Nov	23-Nov
Ain Jarfa	VL	ML	M	Abou Qamha	L	M	M	Ain Qania	L	ML	M
Bourghos	ML	M	M	Chebaa	L	L	M	Chouaya Hasbaya	L	L	M
Dellafeh	ML	M	M	Fardiss Hasbaiya	L	M	M	Hasbaya	L	M	M
Hbariyeh	VL	ML	M	Kaoukaba Hasbaiya	L	M	M	Kfar Chouba	L	M	M
Kfar Hamam	L	ML	M	Kfeir El-Zait	L	L	M	Khalwat Hasbaya	L	L	M
Khreibet Hasbaiya	L	M	M	Majidiyeh Hasbaiya	L	M	M	Marj Ez-Zhour (Haouc	L	ML	M
Meri	L	M	M	Mimass	L	M	M	Rachaiya El-Fokhar	L	ML	M
Salaiyeb	L	M	M								

Marjayoun

Municipality	21-Nov	22-Nov	23-Nov	Municipality	21-Nov	22-Nov	23-Nov	Municipality	21-Nov	22-Nov	23-Nov
Aalmane Marjaayoun	ML	M	M	Aamra	L	M	M	Adayseh Marjaayoun	M	M	M
Adchit El-Koussair	M	M	M	Ain Aarab Marjaayoun	L	M	M	Bani Haiyann	M	M	M
Blatt Marjaayoun	L	M	M	Blida	M	M	M	Borj El-Moulouk	ML	M	M
Boueyda Marjaayoun	ML	M	M	Deir Mimass	L	M	M	Deir Siriane	ML	M	M
Dibbine	L	M	M	Ebel El Saqi	L	M	M	Houla	M	M	M
Houra	L	M	M	Kfar Kila	ML	M	M	Khiam Marjaayoun	L	M	M

Klayaa	ML	M	M	Majdel Selem	M	M	M	Marjaayoun	ML	M	M
Markaba	M	M	M	Mays El-Jabal	M	M	M	Mazraat Doumiat	M	M	M
Mazraat Sarada	L	M	M	Mhaibib	M	M	M	Qabrikha	M	M	M
Qantara	M	M	M	Rab El-Thalathine	M	M	M	Saouaneh Marjayoun	M	M	M
Talloussa	M	M	M	Taybeh Matjaayoun	ML	M	M	Touline	M	M	M

Bent Jbail

Municipality	21-Nov	22-Nov	23-Nov	Municipality	21-Nov	22-Nov	23-Nov	Municipality	21-Nov	22-Nov	23-Nov
Ain-Ebel	M	M	M	Aitaroun	M	M	M	Aynata Bint Jbeil	M	M	M
Ayta El-Chaeb	M	M	M	Ayta El-Jabal	M	M	M	Beit Lif	M	M	M
Beit Yahoun	M	M	M	Bint Jbeil	M	M	M	Borj Qalaway	M	M	M
Braachit	M	M	M	Chakra	M	M	M	Debel	M	M	M
Deir Antar	M	M	M	Froun	ML	M	M	Ghandouriyeh Bint Jb	M	M	M
Hanine	M	M	M	Hariss	M	M	M	Hdatha	M	M	M
Jmeymeh	M	M	M	Kafra Bint Jbeil	M	M	M	Kfar Dounine	M	M	M
Khirbet Selm	M	M	M	Kounine	M	M	M	Maroun El Ras	M	M	M
Qalaway	M	M	M	Qaouzah	M	M	M	Qatmoun	M	M	M
Ramya Bint Jbeil	M	M	M	Rchaf	M	M	M	Rmeich	M	M	M
Safad Al Battikh	M	M	M	Salhaneh	M	M	M	Serbine	M	M	M
Sultanieh Bint Jbeil	M	M	M	Tibnine	M	M	M	Tiri	M	M	M
Yaroun	M	M	M	Yater	M	M	M				

Mont Liban

Jbail

Municipality	21-Nov	22-Nov	23-Nov	Municipality	21-Nov	22-Nov	23-Nov	Municipality	21-Nov	22-Nov	23-Nov
Aabeydat	L	L	M	Aalita	L	L	M	Aamchit	M	M	MH
Aarab El-Lahib	L	ML	M	Aarasta	L	L	L	Adonis Jbeil	VL	L	M
Afqa Jbeil	L	L	ML	Ain El Delbeh Jbeil	L	L	ML	Ain El-Ghouayba	L	L	L
Ain Jrain	L	L	L	Ain Kfah	L	M	M	Almat El Chemaliyat	L	L	ML
Almat El-Jenoubiya	L	L	ML	Aqoura	ML	M	M	Bayzoun	L	L	M
Bchille Jbeil	L	L	M	Bechtlida	L	L	M	Behdaydat	L	ML	M
Beit Habbaq	L	M	M	Bejjeh	L	M	M	Bekhaaz	ML	M	M
Berbara Jbeil	M	M	MH	Bintael	L	L	M	Birket Hjoula	L	L	M
Blatt Jbeil	ML	ML	M	Boulhos	L	L	L	Breyj Jbeil	L	L	M
Chamat	ML	M	MH	Chikhane	M	M	M	Chmout	L	ML	M
Eddeh Jbeil	ML	M	MH	Ehmej	L	L	ML	Fatre	L	L	M
Ferhet	L	L	M	Fghal	L	L	M	Frat	VL	VL	L
Ghabat	L	L	ML	Ghalboun	L	M	M	Gharzouz	ML	M	M
Ghofrine	ML	M	M	Habil	VL	L	M	Halate	ML	ML	M
Haqel	L	L	M	Hbaline	ML	M	M	Hboub	ML	ML	M
Hdeine	L	L	ML	Hema Er-Rehban	L	ML	M	Hema Mar Maroun Aann	L	L	M
Hjoula	L	L	M	Hosrayel	M	M	M	Hsarat	L	M	M
Hsoun	L	L	M	Jaj	L	L	ML	Janne	VL	L	L
Jbeil	M	M	MH	Jeddeyl Jbeil	M	M	MH	Jlisse	L	L	M
Jouret El-Qattine	L	L	M	Kfar Baal Annaya	L	L	M	Kfar Kidde	M	ML	M
Kfar Kouas	L	L	M	Kfar Mashoun	ML	M	MH	Kfoun	L	L	M

Kharbe Jbeil	L	L	M	Laqlouq	L	L	M	Lassa	L	L	ML
Lehfed	L	L	L	Maad	ML	M	M	Mar Sarkis	L	L	M
Mastita	M	M	MH	Mayfouq	L	L	L	Mazraat El Siyad	L	L	M
Mazraat El-Maaden	L	L	ML	Mechane	L	L	M	Mechmech Jbeil	L	L	ML
Mehrin	ML	ML	MH	Mejdel El-Akoura	L	ML	ML	Mghayreh Jbeil	L	L	ML
Mounsef	M	M	MH	Nahr Ibrahim	M	M	MH	Qahmez	L	L	L
Qartaba	L	L	L	Qartaboun	M	M	MH	Qattara Jbeil	L	L	L
Qorqraya	VL	VL	L	Ramout	L	M	M	Ras Osta	L	L	M
Rihane Jbeil	M	M	MH	Sakiet El-Khayt	L	ML	M	Saqi Richmaya	L	L	L
Sebrine	L	L	M	Seraita	L	L	ML	Souane Jbeil	L	L	M
Tadmor	L	L	ML	Tartej	L	L	ML	Torzaiya	L	L	M
Yanouh Jbeil	L	ML	ML	Zibdine Jbeil	L	L	M				

El Metn

Municipality	21-Nov	22-Nov	23-Nov	Municipality	21-Nov	22-Nov	23-Nov	Municipality	21-Nov	22-Nov	23-Nov
Aain El-Qabu	VL	L	L	Aain El-Qach	L	L	M	Aain El-Teffaha	L	L	M
Aain el-Safsaf El-M	L	L	M	Abou Mizane	L	L	M	Ain Aar	L	M	MH
Ain Alaq	L	ML	M	Ain El-Kharroube	L	L	M	Ain El-Sendianeh	L	L	M
Ain El-Zeitoune	L	L	M	Ain Saadeh	ML	M	M	Aintoura El-Matn	L	ML	M
Amaret Chalhoub	M	M	MH	Antelias	M	M	MH	Atchaneh	L	M	M
Ayroun	L	L	M	Baabdat	L	L	M	Baouchariyeh	M	M	MH
Baskinta	L	L	ML	Beit Chabab	L	L	M	Beit El-Chaar	ML	M	MH
Beit El-Kekko	ML	M	MH	Beit Mery	L	M	M	Bhersaf	L	L	M
Bikfaya	L	L	M	Biyakout	M	M	MH	Bnabil	L	L	M
Bourj Hammoud	M	M	MH	Bqennaya	L	M	MH	Broummana El-Matn	L	M	M
Bsalim	L	M	MH	Bsifrine	VL	L	M	Bteghrine	L	L	ML
Chaouiye	L	ML	M	Chouaya El-Matn	L	L	M	Choueir	L	L	M
Chrine	L	L	M	Dahr El Sawan El-Mat	L	L	M	Daychouniyeh	M	M	MH
Dbayeh	M	M	MH	Deir Chamra	VL	VL	M	Deir Mar Abda el Mch	L	M	M
Deir Mar Roukouz	M	M	MH	Deir Tamiche	L	M	M	Dik El-Mehdi	L	M	MH
Dikwaneh	M	M	MH	Douar El-Matn	L	L	M	Fanar	M	M	MH
Fraike	L	L	M	Haret El-Ballaneh	ML	M	MH	Hbous	ML	M	MH
Himlaya	L	L	M	Jal El Did	M	M	MH	Jdeideh El-Metn	M	M	MH
Jouar El-Matn	L	L	M	Jouret El-Ballout	L	M	M	Kaaqour	L	L	M
Kfar Aaqab	L	L	M	Kfertay El-Matn	L	L	L	Khenchara	L	L	M
Khillet El-Mtain	L	L	M	Konnabat Broummana	L	M	M	Konnabat Salima	VL	L	M
Machraah El-Matn	L	L	ML	Majdel Tarchich	L	M	M	Majzoub	ML	M	MH
Mansouriyeh El-Metn	M	M	MH	Mar Boutros Karm Et-	VL	L	M	Mar Chaya et Mzekke	L	M	M
Mar Moussa Ed-Douar	L	L	M	Marjaba	L	L	M	Masqa	L	ML	M
Mayasse	L	L	M	Mazraat Deir Aoukar	ML	M	MH	Mazraat El-Hadirat	ML	M	MH
Mazraat Yachouh	ML	M	MH	Mchikha	L	ML	M	Menqlet Mezher	ML	M	MH
Mhaydseh Matn	L	L	M	Mkalles	M	M	MH	Mrouj	L	L	M
Mtain	L	ML	M	Mtayleb	L	M	MH	Nabay	L	M	M
Naccache	ML	M	MH	Ouadi Chahine	L	L	M	Ouadi El-Karm El-Mat	VL	L	M
Ouata El-Mrouj	L	L	M	Ouyoun El-Matn	L	L	M	Qornet Chehwan	L	M	MH
Qornet El-Hamra	L	M	M	Roumieh	L	M	M	Sfeilet Bikfaya	L	L	M
Sinn El-Fil	M	M	MH	Zabbougha	VL	VL	M	Zalqa	M	M	MH

Zarouon	L	L	M	Zekrite	L	M	M	Zighrine El-Matn	L	L	M
Zouk El-Khrab	ML	M	MH								

Chouf

Municipality	21- Nov	22- Nov	23- Nov	Municipality	21- Nov	22- Nov	23- Nov	Municipality	21- Nov	22- Nov	23- Nov
Aalmane El-Chouf	M	M	M	Aammiq El-Chouf	L	L	M	Ain Ouzein	L	L	M
Ain Qani	L	L	M	Ain Zhalta	L	ML	M	Ainbal	L	ML	M
Amatour	L	L	M	Anout	ML	M	M	Atrine	L	ML	M
Baadarane	L	ML	M	Baaqline	L	M	M	Baasir	M	M	M
Barja	M	M	M	Barouk	L	ML	M	Bater	L	ML	M
Batloun	L	ML	M	Bayqoun	M	M	M	Bchetfine	L	ML	M
Beiteddine	L	ML	M	Benouati Ech-Chouf	L	ML	M	Berjein	M	M	M
Bireh et Mtalleh	L	ML	M	Biret El-Chouf	L	M	M	Bkechtine Ouel Mchei	L	M	M
Bkifa El-Chouf	L	M	M	Botme	L	L	M	Bqaiaa Ech-Chouf	L	M	M
Bsaba El-Chouf	ML	M	M	Chammis El-Chouf	ML	M	M	Chehim	ML	M	M
Chemaarine	L	M	M	Chourit	L	L	M	Daher El-Chouf	M	M	M
Dalhoun	ML	M	M	Damour	M	M	M	Daraya El-Chouf	L	M	M
Deir El-Moukhalles	L	ML	M	Deir Baba	L	M	M	Deir Dourit	L	ML	M
Deir El-Qamar	L	ML	M	Deir Kouche	L	L	M	Dibbieh	ML	M	M
Dmit	L	M	M	Fouara Jaafar	L	L	M	Fraidis El-Chouf	L	M	M
Ghabet Jaafar	L	M	M	Gharife	L	ML	M	Haret Jandal	L	L	M
Hasrout	M	M	M	Jadra	M	M	M	Jahlieh	L	M	M
Jbeih El-Chouf	L	ML	M	Jdeidet El-Chouf	L	ML	M	Jiyeh	M	M	M
Jleilyeh	ML	M	M	Jmailiyeh	M	M	M	Joun	ML	M	M
Kahlounie El-Chouf	L	M	M	Ketermaya	M	M	M	Kfar Faqoud	L	ML	M
Kfar Hamal	L	M	M	Kfar Him	L	M	M	Kfar Katra	L	L	M
Kfar Niss	L	ML	M	Kfar hay	L	L	M	Kfarnabrakh	L	ML	M
Khirbet Bisri	L	ML	M	Knayse El-Chouf	L	L	M	Maaniyeh	ML	M	M
Maasser Beiteddine	L	L	M	Maasser El-Chouf	L	ML	M	Majdalouna	ML	M	M
Majdel El-Meouch	L	ML	M	Mazboud	ML	M	M	Mazmoura	L	M	M
Mazraat El Chouf	ML	ML	M	Mazraat El Daher	ML	ML	M	Mazraat El-Douair	L	L	M
Mechref	M	M	M	Mghairie	ML	M	M	Mghayrie El-Chouf	L	M	M
Moukhtara	L	L	M	Mrusti	L	ML	M	Mtolle	M	M	M
Naameh	M	M	M	Niha El-Chouf	ML	M	M	Ouadi Abou Youssef	L	ML	M
Ouadi Ed-Deir	L	M	M	Ouadi El-Sit	L	ML	M	Ouadi bnehlay	L	ML	M
Qraibeh	L	ML	M	Qreiaa	L	M	M	Rmayle El-Chouf	M	M	M
Semqaniyeh	L	ML	M	Sibline	M	M	M	Sirjbeil	ML	M	M
Warhanieh	L	ML	M	Werdaniyeh	M	M	M	Zaarourieh	ML	M	M

Baabda

Municipality	21- Nov	22- Nov	23- Nov	Municipality	21- Nov	22- Nov	23- Nov	Municipality	21- Nov	22- Nov	23- Nov
Abadiyeh	L	ML	M	Ain Mouaffaq	L	L	M	Araiya	L	ML	M
Arbaniyeh	VL	VL	M	Arsoun	L	L	M	Baabda	M	M	MH
Baalchmey	L	ML	M	Bmaryam	L	L	M	Bourj El-Brajneh	M	M	MH
Boutchay	L	M	MH	Bsaba Baabda	L	M	MH	Btekhney	L	L	M
Btibyat	L	L	M	Bzebdine	L	L	M	Chbeniyeh	L	ML	M
Chiyah	M	M	MH	Chmeisset Baabda	VL	L	M	Chouit	L	L	M
Deir El-harf	L	L	M	Deir Khouna	L	ML	M	Dlaybeh	VL	L	M

Falougha	ML	M	M	Furn El-Chebbak	M	M	MH	Hadath Beyrouth	M	M	MH
Halaliyeh Baabda	L	L	M	Hammana	L	M	M	Haret El Sett	L	M	M
Haret Hamze	L	L	M	Haret Hreik	M	M	MH	Hasbaiya El-Metn	VL	L	M
Jouar El-Hoz	L	L	ML	Jouret Arsoun	L	L	M	Kfar Chima	L	M	MH
Kfar Selouane	L	ML	ML	Khalouat Baabda	L	ML	M	Kneisset Baabda	VL	L	M
Laylakeh	M	M	MH	Louayzeh Baabda	M	M	MH	Merdache	L	M	MH
Mzairaa Baabda	L	L	M	Ouadi Chahrour El Ol	L	M	M	Ouadi Chahrour El So	L	M	M
Qalaa Baabda	L	L	M	Qhraybe Baabda	L	L	M	Qobbayaa	L	L	M
Qornayel	L	L	M	Qortada	L	L	M	Qrayeh Baabda	L	L	M
Qsaibeh Baabda	L	ML	M	Qtale Baabda	L	L	M	Ras El Metn	L	L	M
Ras El-Haref	L	ML	M	Rouayset El-Ballout	L	L	M	Salima Baabda	VL	L	M
Tahouitat El Ghadir	M	M	MH	Tarchich	L	M	ML	Zandouqa	L	L	M

Aley

Municipality	21-Nov	22-Nov	23-Nov	Municipality	21-Nov	22-Nov	23-Nov	Municipality	21-Nov	22-Nov	23-Nov
Abey	L	ML	M	Aghmid	L	ML	M	Ain Dara	ML	M	M
Ain Drafil	ML	M	M	Ain El Halazoun	L	ML	M	Ain El-Rmmaneh	L	L	M
Ain Jedideh	ML	ML	M	Ain Ksour	L	ML	M	Ain Onoub	L	M	M
Ain Traz	L	ML	M	Ainab	L	ML	M	Aley	L	ML	M
Aramoun	M	M	MH	Aytat	L	M	MH	Azouniyeh	L	ML	M
Baawerta	M	M	M	Badghan Oua Wadi Bad	L	ML	M	Bassatine	L	ML	M
Bayssour	L	M	M	Bchamoun	ML	M	MH	Bdadoun	L	M	M
Behouara	L	ML	M	Bennay	L	ML	M	Bhamdoun El-Dayaa	L	ML	MH
Bhamdoun El-Mhatta	L	ML	MH	Bkhechthey	L	ML	M	Bleibel	L	M	M
Bmakine	L	M	MH	Bmehray	M	M	M	Bouzrid	VL	L	M
Bserrine	L	ML	MH	Bsous	L	ML	M	Btalloun	L	ML	MH
Btater	L	ML	MH	Chanay	ML	M	MH	Charoun	L	M	MH
Chartoun	L	L	M	Chemlane	L	M	M	Choueifat El-Aamrous	M	M	MH
Choueifat El-Oumara	M	M	MH	Choueifat El-Quoubbe	M	M	MH	Dakkoun	ML	M	M
Deir Qoubel	ML	M	M	Dfoun	L	M	M	Douair El Remmaneh	L	L	M
Ghaboun	L	ML	M	Habramoun	L	L	M	Homs Oua Hama	L	L	M
Houmal	L	M	M	Jisr El Qadi	L	ML	M	Kehaleh	L	L	M
Keyfoun	L	M	MH	Kfar Aamey	L	L	M	Kommatyeh	L	M	M
Maasrati	L	ML	M	Majdel Baana	L	ML	MH	Mansourieh et Ain El	L	ML	MH
Mazraat El-Nahr	L	L	M	Mchakhte	L	M	M	Mecherfeh	L	ML	M
Mejdaya	L	ML	M	Mrayjat	L	M	M	Ramliyah	L	L	M
Rechmaya	L	ML	M	Rejmeh	L	L	M	Remhala	L	ML	M
Rouaysset El Neemane	L	ML	M	Saoufar	L	ML	MH	Selfaya	L	L	M
Sirhmoul	L	ML	M	Souq El Ghareb	L	M	MH	Taazanieh	L	ML	MH

Kesrouane

Municipality	21-Nov	22-Nov	23-Nov	Municipality	21-Nov	22-Nov	23-Nov	Municipality	21-Nov	22-Nov	23-Nov
Achkout	L	L	M	Adma Oua Dafneh	M	M	MH	Ain Ed-Delbe Kesroua	L	VL	L
Ain El-Rihane	L	ML	M	Aintoura Kesrouane	M	M	MH	Ajaltoun	L	L	M
Akaybeh Kesrouane	M	M	MH	Aramoun Kesrouane	L	L	M	Azra ouel Ozor	L	L	M
Ballouneh	L	L	M	Batha	VL	L	M	Bekaatat Achkout	L	L	M
Bekaatat Kanaan	L	L	L	Bizhel	VL	L	M	Bouar	M	ML	MH
Bqaatouta	L	L	ML	Bqaq Ed-Dine	M	M	M	Bzommar	L	L	M

Chahtoul	L	L	M	Chnaniir	L	L	M	Chouan	VL	VL	L
Daraya Kesrouane	L	L	M	Darououn	L	L	M	Deir Baqlouch	L	L	M
Dlebta	VL	L	M	Eghbeh	VL	VL	M	Faraya	L	L	M
Fatka	L	L	M	Feytroun	L	L	M	Ghazir	L	ML	M
Ghbaleh Kesrouane	L	L	M	Ghedrass	L	L	M	Ghosta	VL	L	M
Ghynéh	L	L	M	Harharaya w Kattine	L	L	M	Harissa Kesrouane	L	ML	M
Hayata	VL	L	M	Hosein	L	L	M	Hrajel	L	L	M
Jdeideh Ghazir	L	L	M	Jeita	L	M	M	Jounieh Ghadir	M	M	MH
Jounieh Haret Sakhr	M	M	MH	Jounieh Salel Alma	M	M	MH	Jounieh Sarba	M	M	MH
Jouret Bedrane	L	L	M	Jouret Mhad	L	L	M	Jouret Termos	L	L	M
Kfar Debiane	L	L	ML	Kfar Tay Kesrouane	VL	VL	M	Kfar Yassine	M	M	MH
Kfour Kesrouane	L	L	M	Kharayeb Nahr Ibrahi	L	L	M	Klayaat Kesrouane	VL	L	M
Maarab	VL	VL	M	Maaysra Kesrouane	L	L	M	Mayrouba	L	L	ML
Mazraat Er-Ras	L	M	MH	Mazraat Mrah El-Mir	VL	L	M	Mchaa El Ftouh	ML	M	M
Mchaa Faraya	ML	ML	M	Mchaa Kfar Dibiane	L	ML	M	Mghaer	L	VL	L
Mradiyah	VL	L	M	Nahr Ed-Dahab	VL	VL	ML	Nammoura Kesrouane	L	L	M
Ouata El Jaouz	L	L	M	Ouata Sillam	M	M	MH	Raachine	VL	L	M
Rayfoun	L	L	M	Safra Kesrouane	M	M	MH	Shayle Kesrouane	L	ML	M
Tabarja	M	M	MH	Yahchouch	VL	L	M	Zaaytreh	L	L	M
Zeytoun	L	L	M	Zouk Mikael	M	M	MH	Zouk Mosbeh	M	M	MH

Baalbek_Hermel

Baalbek

Municipality	21-Nov	22-Nov	23-Nov	Municipality	21-Nov	22-Nov	23-Nov	Municipality	21-Nov	22-Nov	23-Nov
Aadous	M	M	M	Aamchki	L	M	ML	Aarsal	M	M	ML
Ain Baalbek	M	M	M	Ain Bourday	L	M	M	Ain El-Benye	ML	M	M
Ain El-Jaouz Baalbek	ML	M	ML	Ain El-Siya Chadoura	L	M	ML	Al Khodr Baalbek	M	M	M
Al Nabi Chit	M	M	M	Aynata Baalbek	ML	M	M	Baalbek	M	M	M
Bachwat	M	M	M	Barqa	M	M	M	Bednayel Baalbak	M	M	M
Beit Chama	M	M	M	Bijjaje	M	M	M	Bouday	M	M	M
Brital	M	M	M	Btadi	M	M	M	Chaat	M	M	M
Chaibe	L	M	ML	Chlifa	M	M	M	Chmestar	M	M	M
Dar El-Oussa	M	M	M	Deir El-Ahmar	M	M	M	Deir Mar Maroun Baal	M	M	M
Douris	M	M	M	Fakiha	M	M	M	Hadath Baalbek	M	M	M
Ham	ML	M	M	Haour Taala	M	M	M	Hizzine	M	M	M
Hlebta	M	M	M	Hosh Barada	M	M	M	Hosh El Dahab	M	M	M
Hosh El Snid	M	M	M	Hosh El-Nabi	M	M	M	Hosh El-Rafiq	M	M	M
Hosh Tal Safiya	M	M	M	Hrebta	M	M	M	laat	M	M	M
Jebaa	M	M	M	Jenta	M	M	M	Kfar Dabach	M	M	M
Kfar Dane	M	M	M	Khraibeh El-Hermel	M	M	M	Khreibet Baalbek	ML	M	M
Kneisset Baalbek	M	M	M	Labueh	M	MH	M	Maarboun	ML	M	M
Majdaloun	M	M	M	Maqneh	M	M	M	Mazraat Beit Mcheik	M	M	M
Misraya	M	M	M	Moqraq	M	M	M	Nabha El-Damdoum	M	M	M
Nabi Chbay	L	M	M	Nabi Osman	M	M	M	Nahleh baalbek	M	M	ML
Ouadi El-Oss	M	M	M	Qaa Baayoun	MH	M	M	Qaa Jouar Maqiye	MH	M	M
Qaa Ouadi El-Khanzir	MH	M	M	Qah Baalbek	H	M	M	Qarha Baalbek	M	M	M

Qsarnaba	M	M	M	Ram Baalbek	M	M	M	Ras Baalbek El Sahl	MH	M	M
Ras Baalbek El-Charq	M	M	M	Riha	M	M	M	Saaide	M	M	M
Sbouba	M	M	M	Seriine El-Tahta	M	M	M	Slouqi	ML	M	M
Taiba Baalbek	M	M	M	Talia	M	M	M	Taraiya	M	M	M
Temnin El Fawqa	M	M	M	Temnin El-Tahta	M	M	M	Tfail	M	M	ML
Yahfoufa	M	M	M	Yammouneh	M	M	M	Younine	M	M	M
Zboud	M	M	M								

Hermel

Municipality	21- Nov	22- Nov	23- Nov	Municipality	21- Nov	22- Nov	23- Nov	Municipality	21- Nov	22- Nov	23- Nov
Charbine El-Hermel	ML	M	M	Hermel Jbab	M	M	M	Hermel	M	M	M
Maaysra El-Hermel	M	M	M	Michaa Mrajhine	ML	M	M	Ouadi Faara	M	M	M
Ras Baalbek - Ouadi	MH	M	M	Ras Baalbek El Gharb	M	M	M	Zighrine	M	M	M

Akkar

Akkar

Municipality	21- Nov	22- Nov	23- Nov	Municipality	21- Nov	22- Nov	23- Nov	Municipality	21- Nov	22- Nov	23- Nov
Aain Tinta	M	M	M	Aaiyat	M	M	M	Aakkar El-Aatiqa	ML	M	M
Aamar Akkar	M	M	M	Aamar El Baykat	M	M	M	Aamayer	M	M	M
Aamriyet Akkar	M	M	M	Aandqet	M	M	M	Aarmeh	M	ML	M
Aarqa	M	M	M	Aawaynat	M	M	M	Aayoun Akkar	M	ML	M
Abboudiye	M	M	M	Ain El-Zeit	M	M	M	Ain Yaaqoub	M	M	M
Akroum	M	M	M	Aridet Cheikh Zennad	M	M	M	Baldeh w Mazraat Bal	M	M	M
Barcha	M	M	M	Bardeh	M	M	M	Bebnine	M	M	M
Beino	M	M	M	Beit Ayoub	M	M	M	Beit El-Haouch	M	M	M
Beit Mellat	M	M	M	Beit Younes	M	ML	M	Berbara Akkar	M	M	M
Berqayel	M	M	M	Bezbina	ML	ML	M	Bireh Akkar	M	M	M
Borj	M	M	M	Bqerezla	M	ML	M	Bzal	M	ML	M
Chane	M	ML	M	Chaqdouf	M	M	M	Charbila	M	M	M
Cheikh Mohammad	M	M	M	Cheikh Taba Es-Sahl	M	M	M	Cheikh Taba	M	M	M
Cheikh Zennad	M	M	M	Cheikhlar	M	M	M	Chir Hmairine	M	M	M
Daghle	M	M	M	Dahr Laissine	M	M	M	Darine	M	M	M
Dawra	M	M	M	Dawsa w Baghdadi	M	M	M	Dayret Nahr El-Kabir	M	M	M
Deir Dalloum	M	M	M	Deir Jennine	M	M	M	Denbou	M	L	M
Dibbabiyyeh	M	M	M	Douair Aadwiyeh	M	M	M	Fassikine	M	M	M
Fnaydek	L	M	M	Fraydes Akkar	M	M	M	Ghazayle	M	M	M
Habchit	ML	L	M	Hakour	M	M	M	Halba	M	M	M
Haouchab	M	M	M	Hayssat	M	M	M	Haytla	M	M	M
Hayzouq	M	ML	M	Hedd	M	M	M	Hmaira Akkar	M	L	M
Hmaiss Akkar	M	M	M	Hnaider	M	M	M	Hokr Ed-Dahri	M	M	M
Hokr Etti	M	M	M	Hokr Jouret Srar	M	M	M	Houaich	M	ML	M
Hrar	M	M	M	Idbil	M	M	M	Ilal	M	M	M
Janine	M	M	M	Jdeidet El-Joumeh	M	M	M	Jdeidet El-Kaiteh	M	M	M
Jebayel	M	M	M	Kafr	L	ML	M	Kafr	M	M	M
Karm Asfour	M	M	M	Kfar Melki Akkar	M	M	M	Kfar Noun	M	ML	M
Kfarharra	M	M	M	Khalsa	M	M	M	Kharnoubet Akkar	M	M	M

Khirbet Daoud Aakkar	M	M	M	Khirbet El Remmane	M	M	M	Khirbet Shar	M	M	M
Khoreybet El-Jindi	M	M	M	Khreibet Aakkar	M	M	M	Kneisset Aakkar	M	M	M
Kneisset Hnaider	M	M	M	Knisse	M	M	M	Kroum El-Aarab	M	M	M
Kwachra	M	M	M	Kweykhath	M	M	M	Machta Hammoud	M	M	M
Majdala	M	M	M	Majdel Akkar	M	M	M	Mar Touma	M	M	M
Marlaya Melhem	M	M	M	Mashha	M	M	M	Massoudiye	M	M	M
Mazraat Beit Ghattas	M	M	MH	Mazraat En-Nahriye	M	M	M	Mechmech	L	M	M
Memneh	L	L	ML	Mhammara	M	M	M	Mighraq Aakkar	M	M	M
Minyara	M	M	M	Moqayteh	M	M	M	Mounjez	M	M	M
Msalla	M	M	M	Mzeihmeh	M	M	M	Nfaisheh	M	M	M
Noura Et-Tahta	M	M	M	Ouadi El-Haour	M	M	M	Ouadi El-Jamous	M	M	M
Ouyoun El-Ghizlane	M	M	M	Qaabarine	M	M	M	Qabaait	M	M	M
Qachlaq	M	M	M	Qantara Aakkar	M	M	M	Qarha Aakkar	M	M	M
Qarqaf	M	M	M	Qboula	M	M	M	Qleiaat Aakkar	M	M	M
Qloud El-Baqie	M	ML	M	Qobaiyat Aakkar	M	M	M	Qobbat Chamrat	M	M	M
Qorayat	M	ML	M	Qornet Aakkar	M	M	M	Qsair Aakkar	M	M	M
Rahbe	M	M	M	Rihaniyet Aakkar	M	M	M	Rmah	M	M	M
Rmoul	M	M	M	Saadine	M	M	M	Sadaqa	M	M	M
Saidnaya	M	M	M	Sammouniye	M	M	M	Sayssoq	M	ML	M
Semmaqiye	M	M	M	Semmaqli	M	M	M	Sfinet El-Dreib	M	M	M
Sfinet El-Qaitaa	M	M	M	Sindyanet Zeidane	M	M	M	Souaisset Aakkar	M	M	M
Srar	M	M	M	Tal Abbas El Gharby	M	M	M	Tal Abbas El-Chargy	M	M	M
Tal Biret	M	M	M	Tal Hmayra	M	M	M	Tal Maayan Tal Kiri	M	M	M
Tal Sibel	M	M	M	Tallet Chattaha	M	M	M	Tikrit	M	M	M
Tleil	M	M	M	Tshea	L	ML	M	Zawarib	M	M	M
Zouq El Hosniyeh	M	M	M	Zouq El-Haddara	M	M	M	Zouq El-Hbalsa	M	L	M
Zouq El-Moqachrine	M	M	M								

Sud

Sour

Municipality	21-Nov	22-Nov	23-Nov	Municipality	21-Nov	22-Nov	23-Nov	Municipality	21-Nov	22-Nov	23-Nov
Aaiyeh	M	M	M	Aalma El-Chaab	M	M	M	Aaytit	M	M	M
Abbassiyeh Sour	M	M	M	Abou Chech	M	M	MH	Ain Abou Abdallah	M	M	M
Ain Baal	M	M	M	Arzoun	M	M	M	Aziyeh	M	M	M
Baflaya	M	M	M	Barich	M	M	M	Batouliyeh	M	M	M
Bayad	M	M	M	Bazouriyeh	M	M	M	Bediass	ML	M	M
Bestiyat	M	M	M	Borj El Chemali	M	M	MH	Borj En-Naqoura	M	M	MH
Borj Rahhal	M	M	M	Boustane	M	M	M	Btaychiyeh	M	M	MH
Chaaitiye	M	M	M	Chameh	M	M	MH	Chehabiye	M	M	M
Chehour	L	M	M	Chihine	M	M	M	Debaal Sour	M	M	M
Deir Amess	M	M	M	Deir Kifa	M	M	M	Deir Qanoun El-Ain	M	M	MH
Deir Qanoun El-Naher	ML	M	M	Derdghaiya	M	M	M	Dhayra	M	M	MH
Halloussiyeh	ML	M	M	Hamoul	ML	M	M	Hanaouey	M	M	M
Henniye	M	M	MH	Hmairi Sour	ML	M	M	Iskandarouna Sour	M	M	MH
Jbal El Botom	M	M	M	Jebbin	M	M	MH	Jennata	M	M	M
Jijim	M	M	M	Jouaiya	M	M	M	Kneisset Sour	M	M	M

Maarake	M	M	M	Maaroub	M	M	M	Majadel	M	M	M
Majdalzoun	M	M	M	Mansouri Sour	M	M	MH	Marnba	L	M	M
Marouahine	M	M	M	Mazraat El-Zalloutiy	M	M	M	Mazraat Mechref	M	M	M
Mazraat Tayr Semhat	L	M	M	Mheilib	M	M	MH	Neffakhiyeh	M	M	M
Niha Sour	M	M	M	Ouadi Jilo	M	M	M	Qana	M	M	M
Qolaileh Sour	M	M	MH	Rechknany	M	M	M	Rmadiyeh	M	M	M
Selha Sour	M	M	M	Siddiqine	M	M	M	Sour	M	M	MH
Srifa	ML	M	M	Tayr Debbe	M	M	M	Tayr Felsay	ML	M	M
Tayr Harfa	M	M	MH	Touayri	ML	M	M	Toura	M	M	M
Yanouh Sour	M	M	M	Yarine	M	M	MH	Zebqine	ML	M	M

Saida

Municipality	21-Nov	22-Nov	23-Nov	Municipality	21-Nov	22-Nov	23-Nov	Municipality	21-Nov	22-Nov	23-Nov
Aanqoun	M	M	M	Aaqtanit	ML	M	M	Aarab Ej-Jall	M	M	M
Aarab Tabbaya	M	M	M	Abra Saida	M	M	M	Adloun	M	M	M
Adousiyeh	M	M	M	Ain-El-Deleb	M	M	M	Arzai	M	M	M
Babliyah	M	M	M	Barty	ML	M	M	Bissariyeh	M	M	M
Bnaafoul	ML	M	M	Bqosta	M	M	M	Bramiy	M	M	M
Daoudiyeh	M	M	M	Dareb El-Sim	M	M	M	Erkay	ML	M	M
Ghassanieh	M	M	M	Ghazieh	M	M	M	Hajeh	ML	M	M
Haret Saida	M	M	M	Hartiyeh	M	M	M	Hlaliye Saida	M	M	M
Insariyat	M	M	M	Jazira Saida	M	M	M	Kafar Bit	M	M	M
Kaoutariyet El-Siyad	M	M	M	Kfar Chellal	ML	M	M	Kfar Hatta Saida	M	M	M
Kfar Milke Saida	M	M	M	Khartoum	M	M	M	Khaziz	ML	M	M
Khirbet Ed-Douair Sa	M	M	M	Khirbet El-Bassal	M	M	M	Khrayeb Saida	M	M	M
Loubieh	M	M	M	Maghdouche	M	M	M	Majdelyoun	M	M	M
Matariyet El-Choumar	M	M	M	Matayriyeh	ML	M	M	Mazraat 'Mseileh	M	M	M
Mazraat 'Snaiber	M	M	M	Mazraat Aarab Soukka	M	M	M	Mazraat Deir Taqla	M	M	M
Mazraat El Yahoudiye	M	M	M	Mazraat El-Housseini	M	M	M	Mazraat El-Mhaydaleh	M	M	M
Mazraat El-Ouasta	M	M	M	Mazraat Jamjim	M	M	M	Mazraat Kaoutariyet	M	M	M
Mazraat Kfar Badda	M	M	M	Mazraat Oussamiyat	M	M	M	Mazraat Sari	M	M	M
Mazraat Sinai	M	M	M	Meemariyeh	ML	M	M	Merouaniyeh	M	M	M
Miyeh ou Miyeh	M	M	M	Najjariyeh	M	M	M	Qaaqiyat El-Snaouba	M	M	M
Qnarit	ML	M	M	Qraiye Saida	M	M	M	Saida Ed-Dekermane	M	M	M
Saida El-Oustani	M	M	M	Saida El-Qadimeh	M	M	M	Saida Kefraya	M	M	M
Saksakiyeh	M	M	M	Salhie Saida	M	M	M	Sarafand	M	M	M
Sfenta	ML	M	M	Tafahta	M	M	M	Tanbourit	M	M	M
Tebna	M	M	M	Zaghdraiya	M	M	M	Zeita	ML	M	M
Zrariyeh	ML	M	M								

Jezzine

Municipality	21-Nov	22-Nov	23-Nov	Municipality	21-Nov	22-Nov	23-Nov	Municipality	21-Nov	22-Nov	23-Nov
Ain El-Mir (El Estab	M	M	M	Anane	L	ML	M	Aramta	ML	M	M
Ariya	L	M	M	Aychiyeh	L	M	M	Azour	L	L	M
Baba	L	L	M	Baysour Jezzine	M	M	M	Benoueteh Jezzine	L	M	M
Bhannine	L	ML	M	Bisri	L	L	M	Bkassine	L	L	M
Bouslaya	L	ML	M	Btedine El-Leqech	L	L	M	Chbail	L	L	M
Choualiq Jezzine	M	M	M	Dahr Ed-Deir	L	M	M	Deir El Qattine	L	L	M

Demachqiyeh	M	M	M	Ghabbatiyeh	L	ML	M	Harf Jezzine	L	L	M
Hassaniyeh	ML	M	M	Haytouleh	ML	M	M	Haytura	L	ML	M
Hidab	L	M	M	Homsiyeh	L	L	M	Jabal Toura	L	M	M
Jarmaq	ML	M	M	Jensnaya	M	M	M	Jernaya	ML	M	M
Jezzine	ML	M	M	Karkha	ML	M	M	Kfar Falous	ML	M	M
Kfar Houna	ML	M	M	Kfar Jarrah	M	M	M	Lebaa	M	M	M
Louayzet Jezzine	L	M	M	Machmouche	L	L	M	Mahmoudiyeh Jezzine	M	M	M
Maknounye Jezzine	L	L	M	Maraat Ouazaiyeh	ML	M	M	Mazraat Daraya	ML	M	M
Mazraat El-Aarqoub	L	ML	M	Mazraat El-Mathane	L	L	M	Mazraat El-Rahbane	L	ML	M
Mazraat Khallet Khaz	L	M	M	Mazraat Louzid (Loua	L	L	M	Mazraat Qrouh	L	M	M
Mazraat Tamra	M	M	M	Mazraat Zighrine Jez	L	M	M	Mazraat	L	ML	M
Mharbiyeh	M	M	M	Midane Jezzine	L	ML	M	Mjeydel Jezzine	M	M	M
Mlikh	L	M	M	Mrach El-Hbasse	M	M	M	Ouadi Baanqoudaine	M	M	M
Ouadi El-Laymoun	ML	M	M	Ouardiyeh	VL	L	M	Qabaa Jezzine	L	L	M
Qatrani	L	M	M	Qaytouleh	L	L	M	Qtaleh Jezzine	L	ML	M
Rihane Jezzine	ML	M	M	Rimat	L	ML	M	Roum	L	ML	M
Roummanet	L	M	M	Sabbah	L	ML	M	Saydoun	L	ML	M
Sfaray	L	ML	M	Snaya	L	ML	M	Sojoud	L	M	M
Srayri	ML	M	M	Taaid	L	ML	M	Wadi Jezzine	L	ML	M
Zhalta	L	ML	M								

Bekaa

West Bekaa

Municipality	21-Nov	22-Nov	23-Nov	Municipality	21-Nov	22-Nov	23-Nov	Municipality	21-Nov	22-Nov	23-Nov
Aammiq BG	M	M	M	Ain El Tineh BG	M	M	M	Ain Zebdeh	M	M	M
Ana	M	M	M	Aytanit	ML	M	M	Baaloul BG	ML	M	M
Bab Mareh	M	M	M	Chouberqiye Aammiq	M	M	M	Dakoue	M	M	M
Deir Ain El-Jaouze	M	M	M	Deir Tahniche	M	M	M	Ghaza	M	M	M
Harime El-Soughra	M	M	M	Hoch Harimeh	M	M	M	Jazira BG	M	M	M
Jib Jennine	M	M	M	Kamed-El-Laouz	M	M	M	Kefraya BG	ML	M	M
Khiara El Atika	M	M	M	Khiara	M	M	M	Khirbet Qanafar	M	M	M
Lala	M	M	M	Lebbaya BG	L	M	M	Loussa	M	M	M
Machghara	ML	M	M	Manara (Hammar) BG	ML	M	M	Mansoura BG	M	M	M
Marej BG	M	M	M	Maydoun	ML	M	M	Ouaqf BG	M	M	M
Qaraaoun	ML	M	M	Qelya	L	M	M	Raouda (Istabel)	M	M	M
Saghbine	M	ML	M	Sohmor	L	M	M	Soltan Yacoub el Ara	M	M	M
Souairy	M	M	M	Sultan Yaacoub	M	M	M	Tal Znoub	M	M	M
Yehmor BG	L	M	M	Zilaya	L	ML	M				

Zahle

Municipality	21-Nov	22-Nov	23-Nov	Municipality	21-Nov	22-Nov	23-Nov	Municipality	21-Nov	22-Nov	23-Nov
Aanjar (Haouch Mouss	M	M	M	Ablah	M	M	M	Ain Kfarzabad	M	M	M
Ali-El-Nahri	M	M	M	Bar Elias	M	M	M	Bouarej	M	M	M
Cheberqiyet Tabet	M	M	M	Chtaura	M	M	M	Deir El Ghazal	M	M	M
Delhamiyet Zahle	M	M	M	Ferzol	M	M	M	Haouch El-Ghanam	M	M	M
Haouch Es-Siyadeh	M	M	M	Haouch Hala	M	M	M	Haouch Mandara	M	M	M

Haouch Qayssar	M	M	M	Hezerta	ML	M	M	Hosh Moussa	M	M	M
Jdita	M	M	M	Kfarzabad	M	M	M	Ksara	M	M	M
Majdel Aanjar	M	M	M	Makssi	M	M	M	Massa	M	M	M
Mazraat Er-Remtaniye	M	M	M	Mrayjat Zahle	M	M	M	Mzaraa Zahle	M	M	M
Nabi Ayla	M	M	M	Nasriyet Rizk	M	M	M	Nasriyet Zahle	M	M	M
Niha Zahle	M	M	M	Ouadi Ed-Deloum	ML	M	M	Ouadi El-Arayech	M	M	M
Qaa El Rim	M	M	M	Qab Elias	M	M	M	Qousaya	M	M	M
Rhit	M	M	M	Riyak	M	M	M	Saadnayel	M	M	M
Taal El-Akhdar	M	M	M	Taalbeya	M	M	M	Taanayel	M	M	M
Talamara	M	M	M	Tcheflik Edde Haouch	M	M	M	Tcheflik Qiqano	M	M	M
Terbol Zahle	M	M	M	Touaite Zahle	ML	M	M	Zahle Aradi	M	M	M
Zahle El-Berbara	M	M	M	Zahle El-Maallaqa	M	M	M	Zahle El-Midane	M	M	M
Zahle Er-Rassiye	M	M	M	Zahle Haouch El-Ouma	M	M	M	Zahle Haouch El-Ouma	M	M	M
Zahle Haouch Ez-Zara	M	M	M	Zahle Maalqa Aradi	M	M	M	Zahle Mar Antonios	M	M	M
Zahle Mar Elias	M	M	M	Zahle Mar Gerios	M	M	M	Zahle Saydet En-Naja	M	M	M
Zebdoul	M	M	M								

Rachaiya

Municipality	21-Nov	22-Nov	23-Nov	Municipality	21-Nov	22-Nov	23-Nov	Municipality	21-Nov	22-Nov	23-Nov
Ain Arab Rachaiya	L	M	M	Ain Ata	L	L	M	Ain Harche	L	L	M
Aqabe Rachaya	L	M	M	Ayha	L	M	M	Ayta El Fokhar	M	M	M
Bakifa Rachaya	L	M	M	Bakka	ML	M	M	Beit Lahya	L	M	M
Bireh Rachaiya	M	M	M	Daher El Ahmar	L	ML	M	Deir El-Achayer	M	M	M
Heloua Rachaiya	M	M	M	Hoch El Qannabeh Rac	L	M	M	Kaoukaba Bou Arab	L	M	M
Kfar Danis	L	ML	M	Kfar Mechki	L	M	M	Kfar Qouq	L	M	M
Kherbet Rouha	ML	M	M	Majdel Balhiss	ML	M	M	Mdoukha	ML	M	M
Mhaydseh Rachaiya	L	M	M	Nabi Safa	L	M	M	Rachaiya	L	M	M
Rafid Rachaiya	ML	M	M	Selsata (Mazraat Dei	ML	M	ML	Tannoura	L	M	M
Yanta	ML	M	M								

Beyrouth

Beyrouth

Municipality	21-Nov	22-Nov	23-Nov	Municipality	21-Nov	22-Nov	23-Nov	Municipality	21-Nov	22-Nov	23-Nov
Achrafieh	M	M	MH	Ain el-Mreisse	MH	M	H	Bachoura	M	M	MH
Beirut Central Distr	MH	M	MH	Marfai	M	M	MH	Mazraa	M	M	MH
Medaouar	M	M	MH	Minet el-Hosn	MH	M	MH	Mwssaitbeh	M	M	MH
Ras Beirut	M	M	H	Rmeil	M	M	MH	Saifi	M	M	MH
Zqaq el-Blat	M	M	MH								