

Lebanon Fire Risk Bulletin



CIVIL DEDEFENCE

Refer to cadast table condition.

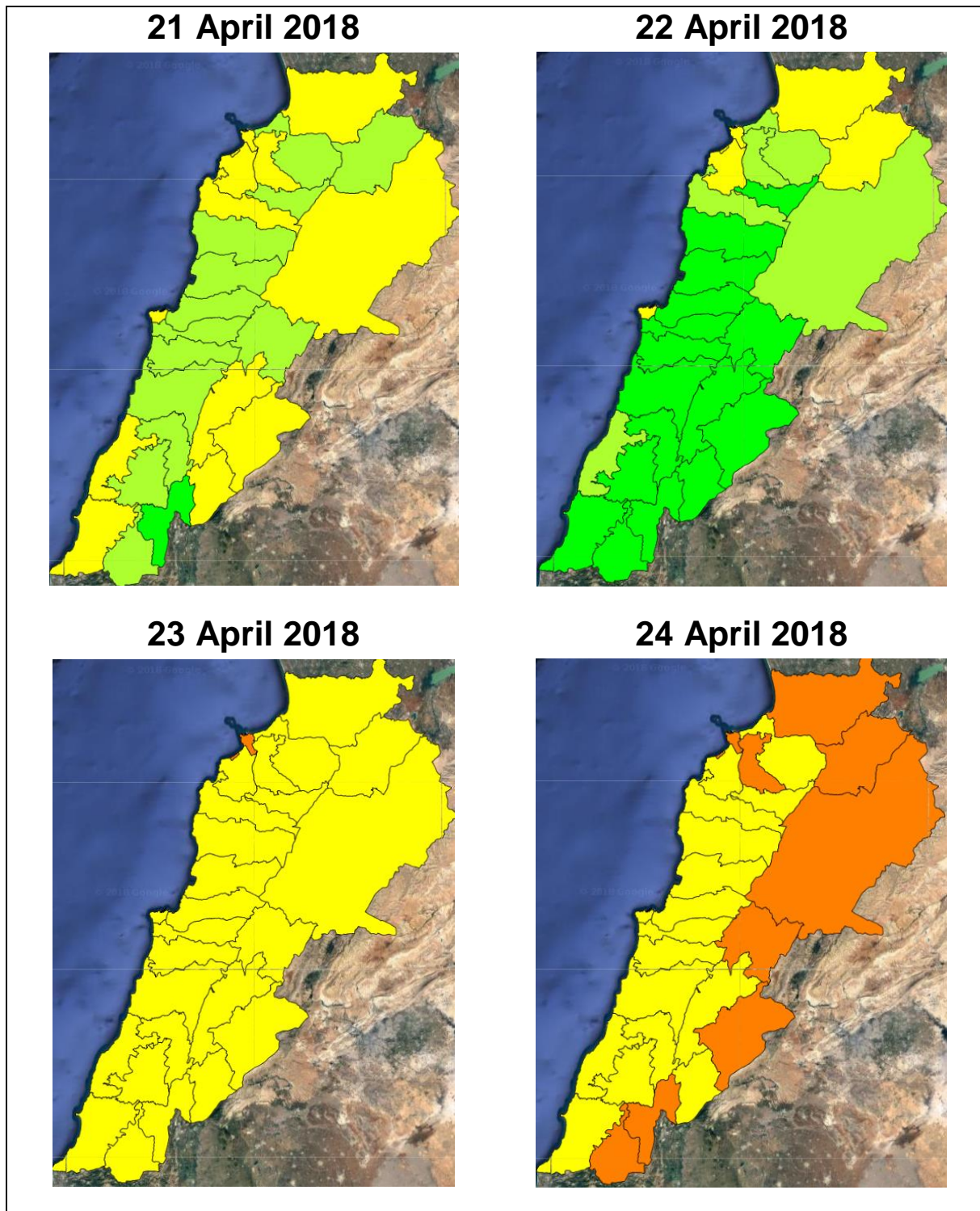
Please note that the indicated temperature is at 2 meters height from the ground.

General description of potential fire risk situation

Symbol	Level of risk	Meaning and actions
VL	Very low	Very low fire risk. Controlled burning operations can be hardly executed due to high fuel moisture content. Normally wildfires self-extinguish.
L	Low	Low fire risk. Controlled burning operations can be executed with a reasonable degree of safety.
ML	Medium low	Medium-low fire risk. Controlled burning operations can be executed in safety conditions. All the fires need to be extinguished.
M	Medium	Medium fire risk. Controlled burning operations would be avoided. All the fires need to be very well extinguished.
M	Medium high	Controlled burning is not recommended. Open flame will start fires. Cured grasslands and forest litter will burn readily. Spread is moderate in forests and fast in exposed areas. Patrolling and monitoring is suggested. Fight fires with direct attack and all available resources.
H	High	Ignition can occur easily with fast spread in grass, shrubs and forests. Fires will be very hot with crowning and short to medium spotting. Direct attack on the head may not be possible requiring indirect methods on flanks. Patrolling and monitoring the territory is highly suggested.
E	Extreme	Ignition can occur also from sparks. Fires will be extremely hot with fast rate of spread. Control may not be possible during day due to long range spotting and crowning. Suppression forces should limit efforts to limiting lateral spread. Damage potential total. Patrolling and monitoring the territory is highly suggested.

Beirut, 22 April 2018

FIRE RISK INDEX

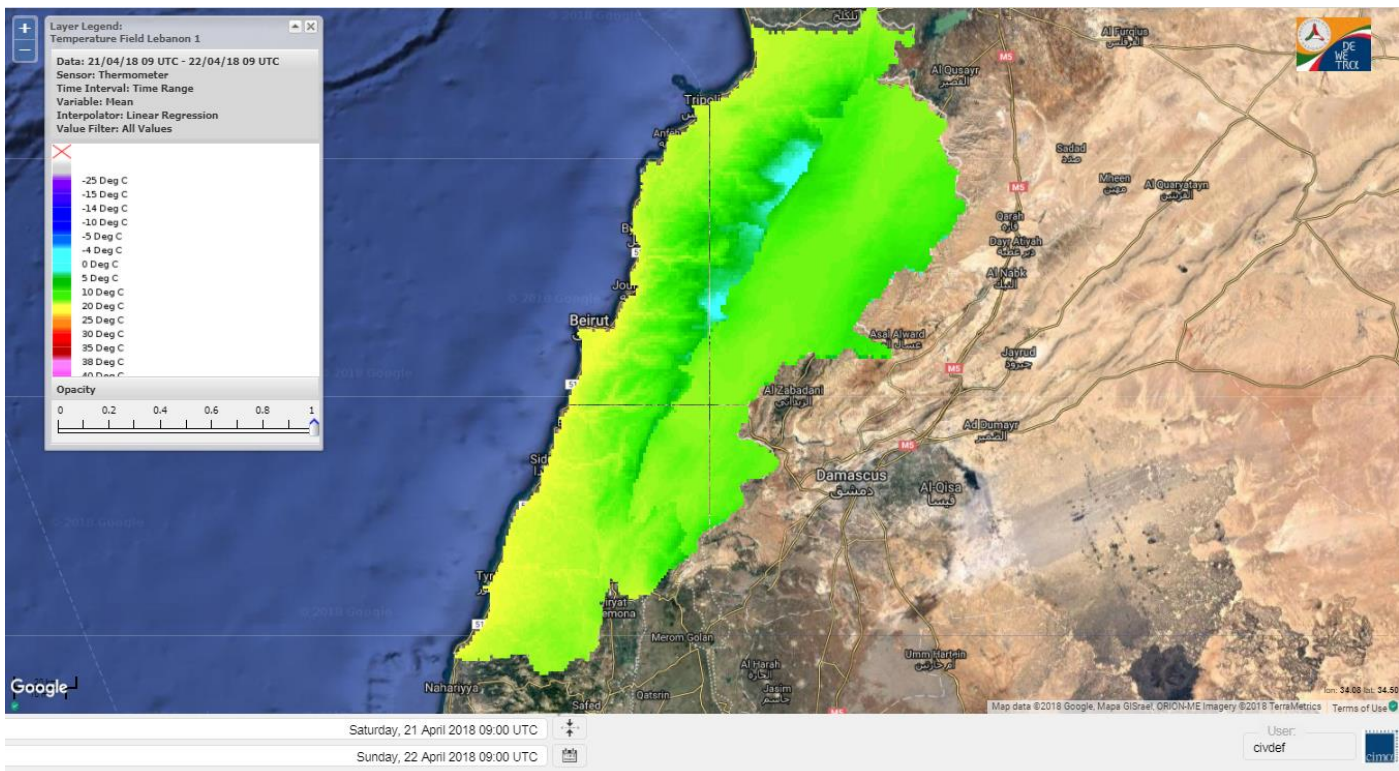


Layer Legend:
Lebanon Wildfire Risk Index 1

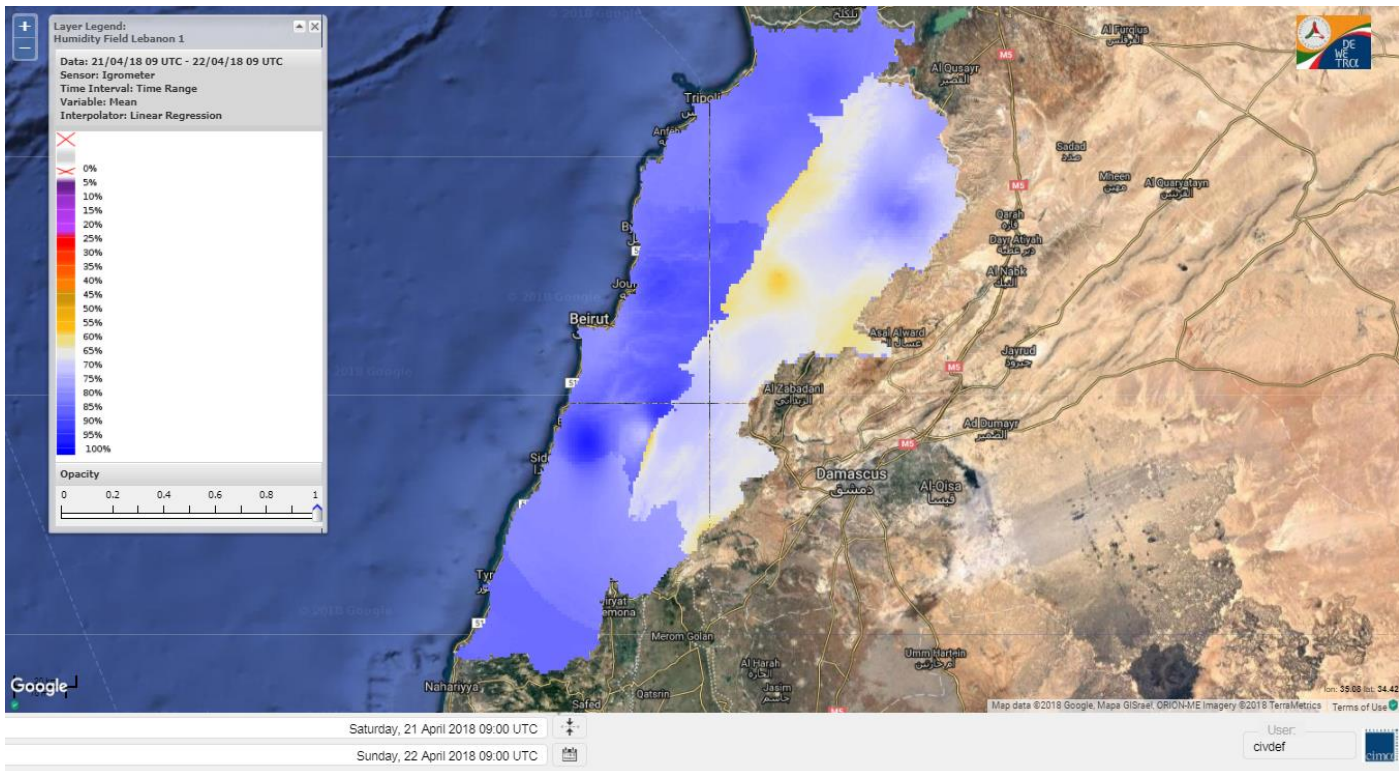
Data: Run: 22/04/2018 00:00. Forecast for 22
Model: RISICO for the Republic of Lebanon
Variable: Fire Weather Index
Spatial Resolution: Caza

- VERY LOW
- LOW
- MEDIUM-LOW
- MEDIUM
- MEDIUM-HIGH
- HIGH
- EXTREME

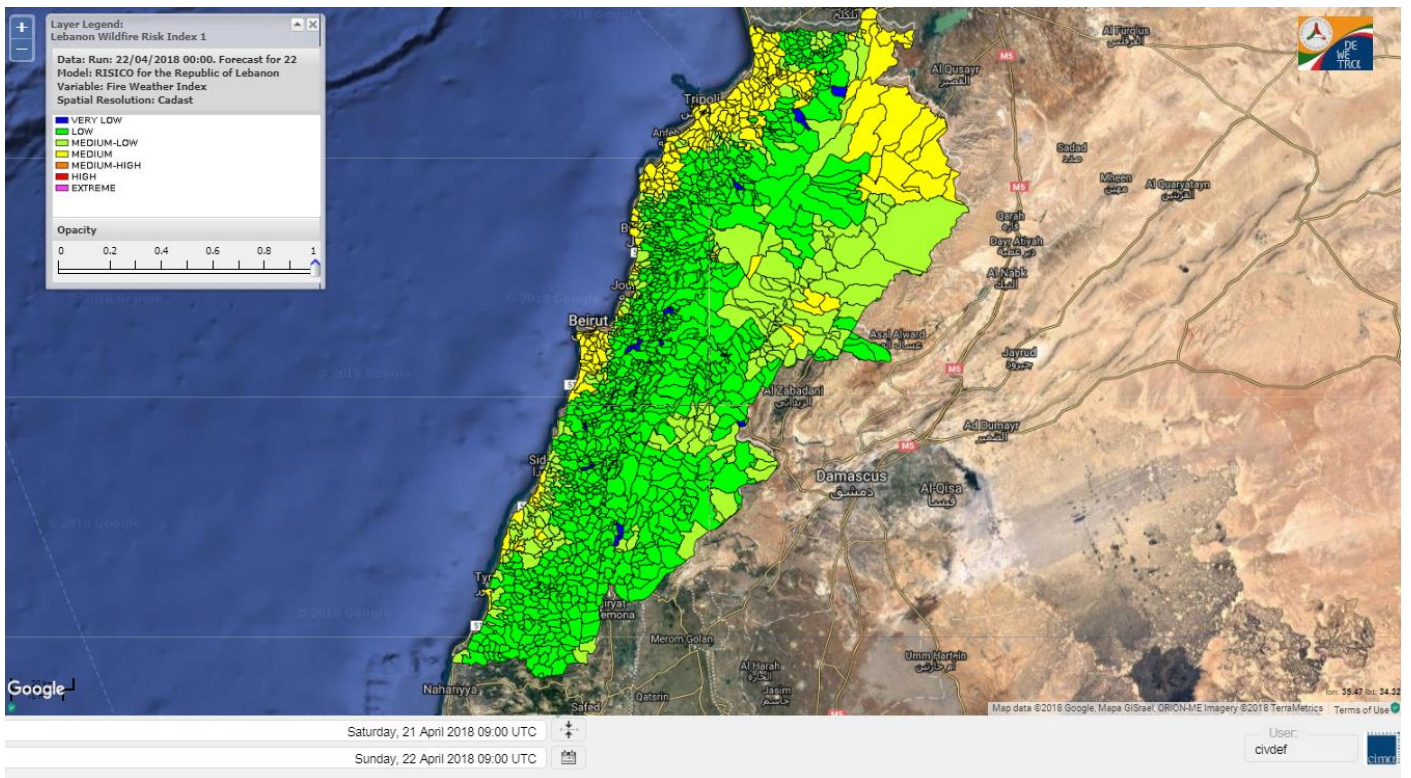
Lebanon temperature for 22 April 2018



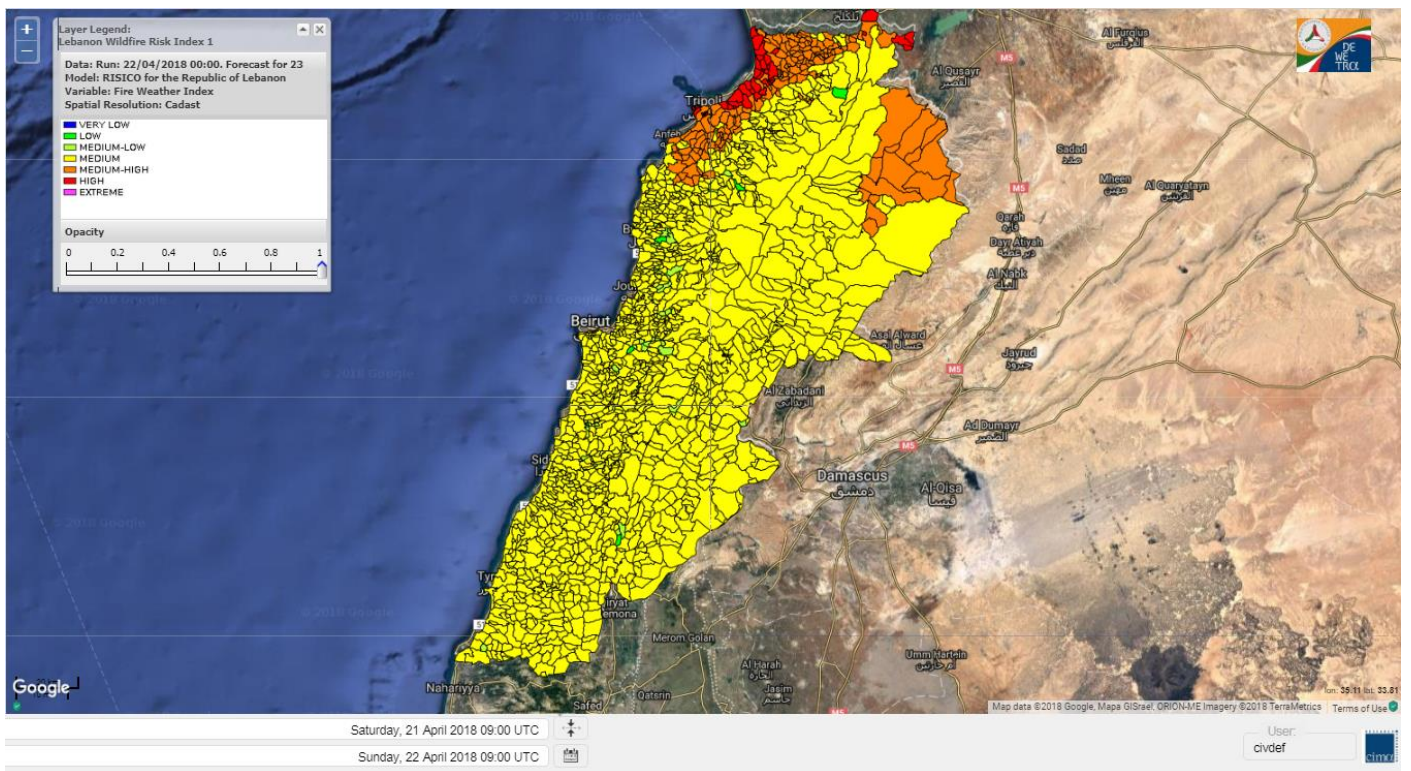
Lebanon humidity for 22 April 2018



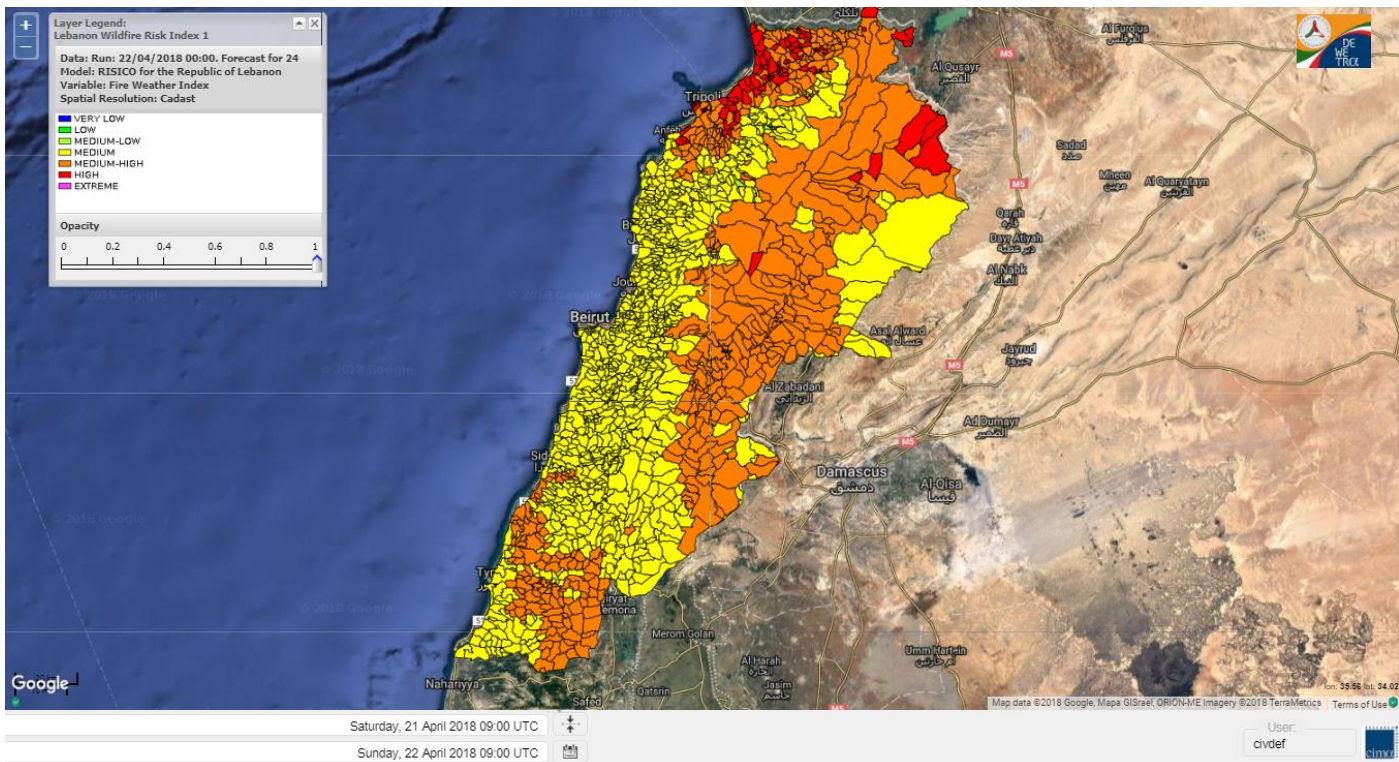
Lebanon for 22 April 2018



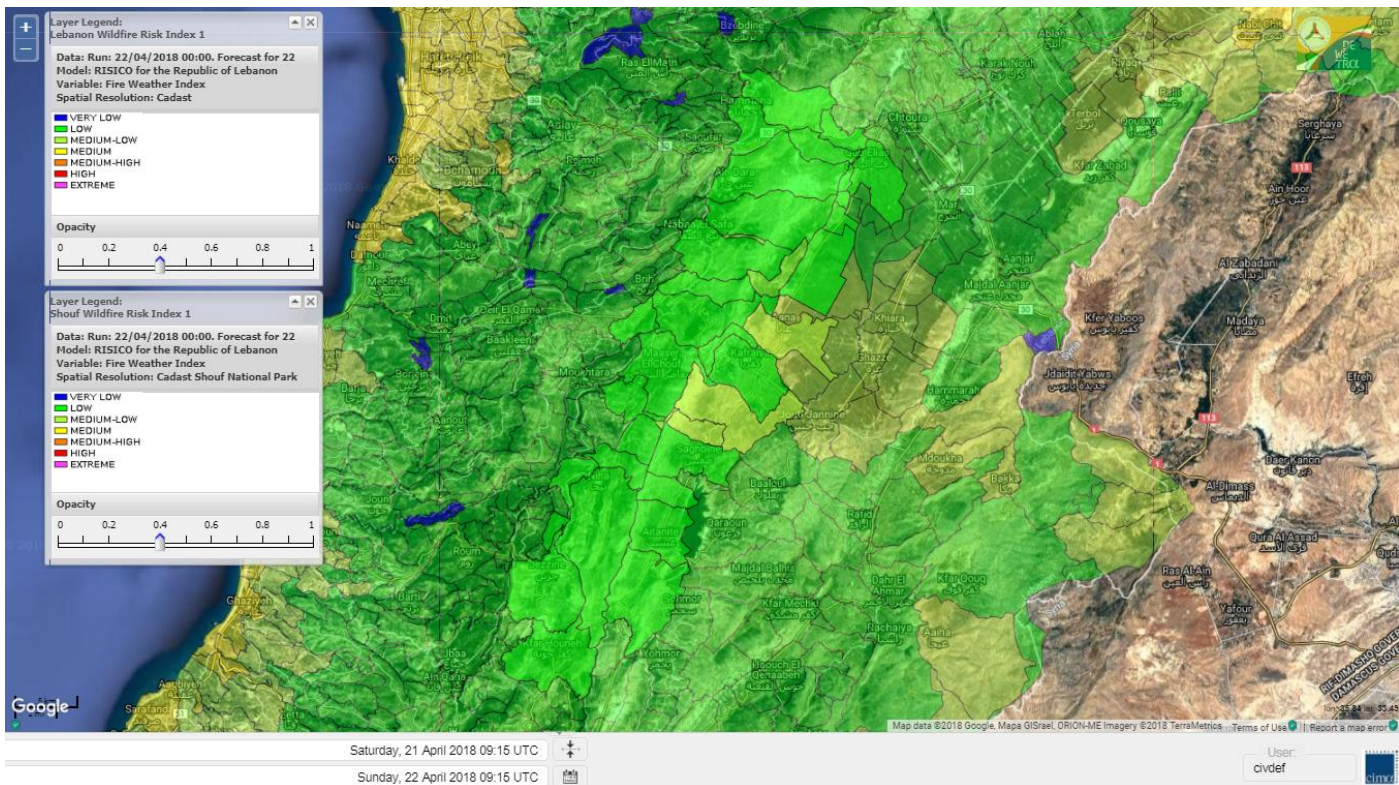
Lebanon for 23 April 2018



Lebanon for 24 April 2018



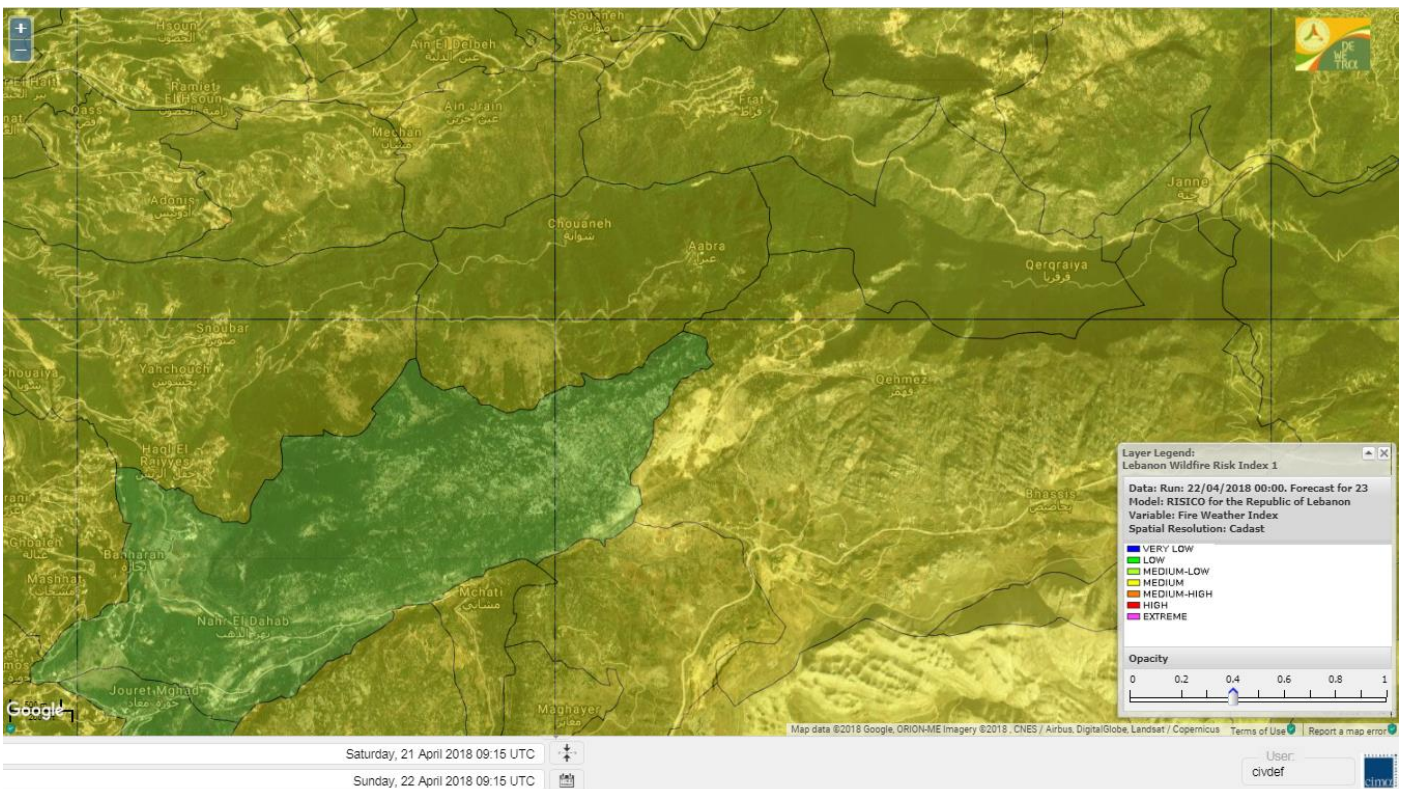
Shouf Biosphere Reserve Forecast for 22 April 2018



Jabal Moussa Reserve Forecast for 22 April 2018



Jabal Moussa Reserve Forecast for 23 April 2018



Jabal Moussa Reserve Forecast for 24 April 2018



Nord

Koura

Municipality	22-Apr	23-Apr	24-Apr	Municipality	22-Apr	23-Apr	24-Apr	Municipality	22-Apr	23-Apr	24-Apr
Aaba	ML	MH	MH	Afsaddiq	L	MH	MH	Ain Ekrine	L	MH	MH
Amioun	L	MH	MH	Anfeh	M	M	M	Badbhoun	M	MH	MH
Barghoun	M	MH	M	Barsa	M	MH	MH	Batroumine	M	MH	MH
Bdebba	M	MH	MH	Bechmizine	L	MH	MH	Bednaye El-Koura	M	M	M
Bhabbouch El-Koura	L	M	M	Bkeftine	M	MH	MH	Bnehran	L	M	M
Bqaiia El-Koura	M	MH	MH	Bsarma	L	MH	M	Btaaboura	M	MH	MH
Bterram	L	MH	MH	Btouratij	M	MH	MH	Bziza	L	MH	M
Dar Beechtar	L	MH	MH	Dar Chmezzine	L	MH	MH	Deddeh	M	MH	MH
Deir El-Balamand	ML	M	MH	Fih	M	MH	MH	Hraiche	M	MH	M
Ijdaabrine	M	M	M	Kaftoun	ML	M	M	Kefraya El-Koura	M	M	M
Kfarakka	L	M	M	Kfarhata	M	M	M	Kfarhazir	M	MH	M
Kfarkahel	M	MH	MH	Kfarsaroun	L	MH	M	Kosba	L	M	M
Mejdel el-Koura	L	M	M	Nakhle	M	MH	MH	Qalhat	ML	M	MH
Ras Masqa	M	MH	MH	Rechdibbine	L	MH	MH	Zakroun	M	MH	M
Zgharta El-Mtaouile	L	M	M								

Bcharre

Municipality	22-Apr	23-Apr	24-Apr	Municipality	22-Apr	23-Apr	24-Apr	Municipality	22-Apr	23-Apr	24-Apr
Aabdine	L	M	M	Bane	L	M	MH	Barhelioun	L	M	M
Bazooune	L	M	M	Becharre	L	M	MH	Beit Menzer	L	M	M
Billa	L	M	M	Blaouza	L	M	MH	Bqaa Kafra	L	M	MH
Bqerqacha	L	M	M	Breissat	L	M	M	Dimane	L	M	M
Hadath El Jobbeh	L	M	M	Hadchit	L	M	M	Hasroun	L	M	M
Mazraat Aassaf	L	ML	M	Mazraat Bani Saab	L	M	M	Mchaa El-Jobbeh	ML	M	MH
Metrit	L	M	M	Moghr El-Ahoual	L	M	M	Ouadi Qannoubine	VL	L	ML
Qanat	L	M	M	Qnayer	L	M	M	Tourza	L	M	M

Batroun

Municipality	22-Apr	23-Apr	24-Apr	Municipality	22-Apr	23-Apr	24-Apr	Municipality	22-Apr	23-Apr	24-Apr
Aabrine	M	M	M	Aalali	L	M	M	Aartiz	L	M	M
Abdelli	L	M	M	Ajdabra	M	M	M	Assia	L	M	M
Basbina	M	M	M	Batroun	M	M	M	Bcheleh	L	M	M
Bechtoudar	L	M	M	Beit Chlala	L	M	M	Beit Kassab	L	M	M
Bijdarfil	M	M	M	Bqesmaya	M	M	M	Chatine	L	M	M
Chebtin	L	M	M	Chekka	M	M	M	Daael	L	M	M
Dahr Abi Yaghi	L	M	M	Daraya El-Batroun	ML	M	M	Deir Billa	L	M	M
Deir Kfifane	ML	M	M	Deir Mar Youhanna EL	L	M	M	Deir Mar Youssef Jra	L	M	M
Douma	L	M	M	Douq	L	M	M	Eddeh El-Batroun	ML	M	M
Ftihat El-Batroun	L	M	M	Ghouma	L	M	M	Hadtoun	L	M	M
Hamat	M	M	M	Harbouna	L	M	M	Hardine	L	M	M
Helta	L	M	M	Hery	M	M	M	Jebbla	L	M	M
Jrabta El-Batroun	ML	M	M	Jrane El-Batroun	ML	M	M	Kfar Aabida	ML	M	M
Kfar Halda	L	M	M	Kfarb Shlaimane	L	M	M	Kfarhatna	L	M	M
Kfarhay	M	M	M	Kfarhelos	M	M	M	Kfifane	ML	M	M

Kfour El Arabi	L	M	M	Koubba	M	M	M	Kour	ML	M	M
Mar Mama	L	M	M	Masrah	L	M	M	Mehmarch	L	M	M
Mrah Chdid	L	M	M	Mrah El Ziyat	ML	M	M	Mrah El-Hajj	L	M	M
Nahle El-Batroun	L	M	M	Niha El-Batroun	L	M	M	Ouajh El-Hajjar	M	M	M
Ouata Houb	L	M	M	Qatnaaoun	M	M	M	Racha	L	M	M
Rachana	L	M	M	Rachkida	M	M	M	Ram El-Batroun	L	M	M
Ras Nahhach	M	M	M	Selaata	M	M	M	Sghar	L	M	M
Smar Jbayl	ML	M	M	Sourat El-Batroun	L	M	M	Tannourine El-Faouqa	L	M	MH
Tannourine Et-Tahta	L	M	M	Thoum	ML	M	M	Toula El-Batroun	L	M	M
Zan	L	M	M								

Zgharta

Municipality	22-Apr	23-Apr	24-Apr	Municipality	22-Apr	23-Apr	24-Apr	Municipality	22-Apr	23-Apr	24-Apr
Aachach	M	MH	MH	Aalma	M	MH	MH	Aarde	M	M	MH
Aintourine	L	M	M	Arabet Qozhaya	L	M	M	Arde	M	MH	MH
Arjis	L	M	MH	Asnoun	ML	MH	MH	Ayto	L	M	M
Basloukit	L	M	MH	Bchannine	ML	M	MH	Besebeel	ML	MH	MH
Bhairret Toula	L	M	M	Bnachee	L	M	MH	Boussit	M	MH	H
Danha	M	MH	MH	Daraiya Zgharta	L	M	MH	Deir Jdeide	ML	MH	MH
Ehden	L	M	M	Halan	M	MH	MH	Hariq Zgharta	ML	MH	H
Houakir	L	M	MH	Hraiqis	M	H	H	laal	ML	M	MH
Ijbaa	L	M	M	Karm Saddeh	L	M	M	Kfarchakhna	M	MH	MH
Kfardlaqous	M	MH	MH	Kfarfou	L	M	MH	Kfarhata Zgharta	M	MH	MH
Kfarhoura	ML	M	MH	Kfarsghab	L	M	MH	Kfaryachit	L	MH	MH
Kfarzaina	ML	MH	MH	Khaldiye	ML	MH	MH	Mazraat Ajbeaa	ML	MH	MH
Mazraat Et-Teffah	L	M	M	Mazraat Jneid	L	M	MH	Mejdlaiya Zgharta	M	MH	MH
Merh Kfarsghab	L	M	MH	Miryata	M	MH	MH	Miziara	L	M	M
Mzraat Kefraya	M	MH	MH	Qorah Bach	ML	MH	MH	Rachiine	M	MH	MH
Ras Kifa	L	M	M	Sakhra	ML	M	MH	Sebhel Zgharta	L	M	M
Serhel	L	ML	M	Tallet Zgharta	ML	M	MH	Toula Zgharta	L	M	M
Zgharta	M	MH	MH								

Minieh-Denniye

Municipality	22-Apr	23-Apr	24-Apr	Municipality	22-Apr	23-Apr	24-Apr	Municipality	22-Apr	23-Apr	24-Apr
Aasaymout	L	M	M	Aaymar	M	M	M	Aazki	M	M	M
Ain El-Tineh-Miniyeh	L	M	M	Assoun	M	M	M	Bakhaaoun	M	M	M
Bchennata	L	M	M	Bechehhara	L	M	M	Beddawi	M	MH	MH
Behouaita	L	M	M	Beit El Foqss	L	M	M	Beit Haouik	L	M	M
Beit Zoud	ML	M	M	Bekaasafrine	L	M	MH	Borj El Yahoudiyeh	M	MH	MH
Bqarsouna	L	M	M	Btermaz	L	M	M	Debaael	L	M	M
Deir Ammar	M	H	H	Deir Nbouh	ML	M	MH	Haouaret-Miniyeh	L	M	M
Haql el Azimeh	L	M	M	Harf El Siyad	L	M	M	Hazmiye-Miniyeh	L	M	M
Izal	M	M	M	Jarjour	L	M	M	Jayroun	L	M	M
Kahf El-Malloul	L	M	M	Karm El-Moher	ML	M	M	Kfar Binine	L	M	M
Kfarchalane	M	M	M	Kfarhabou	M	M	M	Kharroub-Miniyeh	M	M	M
Mazraat El-Kreme	L	M	M	Mazraat Ketrane	M	M	M	Merkebta	M	MH	MH
Minyeh	M	MH	MH	Mrah El Sfirat	L	M	M	Mrah Sraj	L	M	M
Mrebbine	L	M	M	Nabi Youcheaa	M	MH	MH	Nemrine	L	M	M

Qarhaiya	L	M	M	Qarne	VL	M	M	Qarsita	L	M	M
Qattineh-Miniyeh	L	M	ML	Qemmamine	VL	M	M	Qraine	L	M	M
Raouda-Aadoua	M	MH	MH	Rihaniyet-Miniyeh	M	H	H	Sfireh	L	M	M
Sir Ed-Danniyeh	L	M	M	Tarane	L	M	M	Terbol-Miniyeh	M	MH	MH
Zaghartaghriane	M	M	M	Zouq Bhannine	M	MH	MH				

Nabatiye

Nabatiye

Municipality	22-Apr	23-Apr	24-Apr	Municipality	22-Apr	23-Apr	24-Apr	Municipality	22-Apr	23-Apr	24-Apr
Aabba	L	M	M	Aazzi	L	M	M	Adchit El-Chqif	L	M	MH
Ain Bou Swar	L	M	M	Ain Kana	L	M	M	Ali El-TaHER	L	M	M
Ansar	ML	M	MH	Arab Salim	L	M	M	Arnoun	L	M	MH
Bfaroue	L	M	M	Breyqaah	L	M	MH	Charqiyeh	ML	M	M
Choukine	L	M	MH	Deir El Zahrani	L	M	M	Doueir El-Nabatiyeh	ML	M	M
Habbouch El-Nabatiye	L	M	M	Hamra El-Nabatiyeh	L	M	MH	Harouf El-Nabatiyeh	L	M	M
Hmaile	L	M	M	Houmin El Faouqa	L	M	M	Houmin El Tahta	L	M	M
Jarjough	L	M	M	Jbaah El-Nabatiyeh	L	M	M	Jebchit	L	M	M
Kfar Djal El-Nabatiy	ML	M	MH	Kfar Remmane	L	M	M	Kfar Sir	L	M	MH
Kfar Tebnit	L	M	MH	Kfarfila	L	M	M	Kfour El-Nabatieh	L	M	M
Mayfadoun	L	M	MH	Mazraat Bsaffour	ML	M	M	Mazraat Chalbaal	ML	M	M
Mazraat Dmoul	ML	M	MH	Mazraat El Khreibeh	L	M	M	Mazraat El-Bayad El-	L	M	M
Mazraat Kfarjaouz	L	M	M	Mazraat Qalaat Meiss	ML	M	M	Nabatiyeh El-Fawka	L	M	M
Nabatiyeh Et-Tahta	L	M	M	Namiriyyeh	ML	M	M	Qaaqaaiyet El Jisr	L	M	MH
Qossaibeh El-Nabatiy	L	M	MH	Roumine	L	M	M	Sarba El-Nabatieh	L	M	M
Sir El-Gharbiyeh	L	M	MH	Toul	ML	M	M	Yehmor El-Nabatiyeh	L	M	MH
Zaoutar El Charkiyeh	L	M	MH	Zaoutar El-Gharbiyeh	L	M	MH	Zebdine El-Nabatiyeh	L	M	M
Zefta	L	M	M								

Hasbaiya

Municipality	22-Apr	23-Apr	24-Apr	Municipality	22-Apr	23-Apr	24-Apr	Municipality	22-Apr	23-Apr	24-Apr
Ain Jarfa	L	M	M	Abou Qamha	L	M	M	Ain Qania	L	M	M
Bourghos	L	M	MH	Chebaa	L	M	M	Chouaya Hasbaya	L	M	M
Dellafeh	ML	M	M	Fardiss Hasbaiya	L	M	M	Hasbaya	L	M	M
Hbariyeh	L	M	M	Kaoukaba Hasbaiya	ML	M	M	Kfar Chouba	L	M	M
Kfar Hamam	L	M	M	Kfeir El-Zait	L	M	M	Khalwat Hasbaya	L	M	M
Khreibet Hasbaiya	L	M	M	Majidiyeh Hasbaiya	L	M	M	Marj Ez-Zhour (Haouc	L	M	M
Meri	L	M	M	Mimass	L	M	M	Rachaiya El-Fokhar	L	M	M
Salaiyeb	L	M	M								

Marjayoun

Municipality	22-Apr	23-Apr	24-Apr	Municipality	22-Apr	23-Apr	24-Apr	Municipality	22-Apr	23-Apr	24-Apr
Aalmane Marjaayoun	L	M	M	Aamra	L	M	M	Adayseh Marjaayoun	L	M	MH
Adchit El-Koussair	L	M	MH	Ain Arab Marjaayoun	L	M	M	Bani Haiyann	L	M	MH
Blatt Marjaayoun	ML	M	M	Blida	ML	M	MH	Borj El-Moulouk	L	M	M
Boueyda Marjaayoun	L	M	M	Deir Mimass	L	M	M	Deir Siriane	L	M	MH
Dibbine	ML	M	M	Ebel El Saqi	L	M	M	Houla	L	M	MH
Houra	L	M	M	Kfar Kila	L	M	MH	Khiam Marjaayoun	L	M	M

Klayaa	L	M	M	Majdel Selem	L	M	MH	Marjaayoun	L	M	M
Markaba	L	M	MH	Mays El-Jabal	L	M	MH	Mazraat Doumiat	L	M	MH
Mazraat Sarada	L	M	M	Mhaibib	L	M	MH	Qabrikha	L	M	M
Qantara	L	M	MH	Rab El-Thalathine	L	M	MH	Saouaneh Marjayoun	L	M	MH
Talloussa	L	M	MH	Taybeh Matjaayoun	L	M	MH	Touline	L	M	M

Bent Jbail

Municipality	22-Apr	23-Apr	24-Apr	Municipality	22-Apr	23-Apr	24-Apr	Municipality	22-Apr	23-Apr	24-Apr
Ain-Ebel	L	M	MH	Aitaroun	ML	M	MH	Aynata Bint Jbeil	L	M	MH
Ayta El-Chaeb	L	M	M	Ayta El-Jabal	L	M	MH	Beit Lif	L	M	M
Beit Yahoun	L	M	MH	Bint Jbeil	L	M	MH	Borj Qalaway	L	M	MH
Braachit	L	M	MH	Chakra	L	M	MH	Debel	L	M	MH
Deir Antar	L	M	MH	Froun	L	M	M	Ghandouriyeh Bint Jb	L	M	MH
Hanine	L	M	MH	Hariss	L	M	MH	Hdatha	L	M	MH
Jmeymeh	L	M	MH	Kafra Bint Jbeil	L	M	M	Kfar Dounine	L	M	MH
Khirbet Selm	L	M	MH	Kounine	L	M	MH	Maroun El Ras	L	M	MH
Qalaway	L	M	MH	Qaouzah	L	M	M	Qatmoun	L	M	MH
Ramya Bint Jbeil	L	M	M	Rchaf	L	M	M	Rmeich	L	M	MH
Safad Al Battikh	L	M	MH	Salhaneh	L	M	M	Serbine	L	M	MH
Sultanieh Bint Jbeil	L	M	MH	Tibnine	L	M	MH	Tiri	L	M	MH
Yaroun	L	M	MH	Yater	L	M	M				

Mont Liban

Jbail

Municipality	22-Apr	23-Apr	24-Apr	Municipality	22-Apr	23-Apr	24-Apr	Municipality	22-Apr	23-Apr	24-Apr
Aabeydat	L	M	M	Aalita	L	M	M	Aamchit	M	M	M
Aarab El-Lahib	ML	M	MH	Aarasta	ML	M	M	Adonis Jbeil	L	M	M
Afqa Jbeil	L	M	M	Ain El Delbeh Jbeil	L	M	M	Ain El-Ghouyba	L	M	M
Ain Jrain	L	M	M	Ain Kfah	L	M	M	Almat El Chemaliyat	L	M	M
Almat El-Jenoubiya	L	M	M	Aqoura	ML	M	MH	Bayzoun	L	M	M
Bchille Jbeil	L	M	M	Bechtida	L	L	M	Behdaydat	L	M	M
Beit Habbaq	L	M	M	Bejjeh	L	M	M	Bekhaaz	ML	M	M
Berbara Jbeil	M	M	M	Bintael	L	M	M	Birket Hjoula	L	ML	M
Blatt Jbeil	L	M	M	Boulhos	L	M	M	Breyj Jbeil	L	ML	M
Chamat	L	M	M	Chikhane	M	M	M	Chmout	L	M	M
Eddeh Jbeil	ML	M	M	Ehmej	L	M	M	Fatre	L	M	M
Ferhet	L	M	M	Fghal	L	M	M	Frat	L	M	M
Ghabat	ML	M	MH	Ghalboun	L	M	M	Gharzouz	L	M	M
Ghofrine	ML	M	M	Habil	L	ML	M	Halate	ML	M	M
Haqel	L	M	M	Hbaline	ML	M	M	Hboub	L	M	M
Hdeine	ML	M	MH	Hema Er-Rehban	L	M	MH	Hema Mar Maroun Aann	L	M	MH
Hjoula	L	ML	M	Hosrayel	ML	M	M	Hsarat	ML	M	M
Hsoun	L	M	M	Jaj	L	M	M	Janne	L	M	M
Jbeil	M	M	M	Jeddeyel Jbeil	M	M	M	Jlisse	L	ML	M
Jouret El-Qattine	L	M	M	Kfar Baal Annaya	L	M	M	Kfar Kidde	ML	M	M
Kfar Kouas	L	M	M	Kfar Mashoun	L	M	M	Kfoun	L	M	M

Kharbe Jbeil	L	M	M	Laqlouq	ML	M	MH	Lassa	L	M	M
Lehfed	L	M	M	Maad	L	M	M	Mar Sarkis	L	M	MH
Mastita	M	M	M	Mayfouq	L	M	M	Mazraat El Siyad	L	M	MH
Mazraat El-Maaden	L	M	M	Mechane	L	M	M	Mechmech Jbeil	L	M	M
Mehrin	L	M	M	Mejdel El-Akoura	ML	M	M	Mghayreh Jbeil	ML	M	MH
Mounsef	M	M	M	Nahr Ibrahim	M	M	M	Qahmez	L	M	M
Qartaba	L	M	M	Qartaboun	M	M	M	Qattara Jbeil	L	M	M
Qorqraya	L	M	M	Ramout	L	M	M	Ras Osta	L	M	M
Rihane Jbeil	M	M	M	Sakiet El-Khayt	L	M	M	Saqi Richmaya	L	M	M
Sebrine	L	M	M	Seraita	ML	M	M	Souane Jbeil	L	M	M
Tadmor	ML	M	MH	Tartej	L	M	M	Torzaiya	L	M	M
Yanouh Jbeil	M	M	MH	Zibidine Jbeil	L	M	M				

El Metn

Municipality	22-Apr	23-Apr	24-Apr	Municipality	22-Apr	23-Apr	24-Apr	Municipality	22-Apr	23-Apr	24-Apr
Aain El-Qabu	L	M	M	Aain El-Qach	L	M	M	Aain El-Teffaha	L	M	M
Aain el-Safssaf El-M	L	M	M	Abou Mizane	L	M	M	Ain Aar	L	M	M
Ain Alaq	L	M	M	Ain El-Kharroube	L	M	M	Ain El-Sendiane	L	M	M
Ain El-Zeitoune	L	M	M	Ain Saadeh	L	M	M	Aintoura El-Matn	L	M	MH
Amaret Chalhoub	ML	M	M	Antelias	ML	M	M	Atchaneh	L	M	M
Ayroun	L	M	M	Baabdat	L	M	M	Baouchariyeh	M	M	M
Baskinta	L	M	M	Beit Chabab	L	M	M	Beit El-Chaar	L	M	M
Beit El-Kekko	L	M	M	Beit Mery	L	M	M	Bhersaf	L	M	M
Bikfaya	L	M	M	Biyakout	L	M	M	Bnabil	L	M	M
Bourj Hammoud	M	M	M	Bqennaya	L	M	M	Broummana El-Matn	L	M	M
Bsalim	L	M	M	Bsifrine	L	ML	M	Bteghrine	L	M	M
Chaouiye	L	M	M	Chouaya El-Matn	L	M	M	Choueir	L	M	M
Chrine	L	M	M	Dahr El Sawan El-Mat	L	M	M	Daychouniyeh	ML	M	M
Dbayeh	ML	M	M	Deir Chamra	L	ML	M	Deir Mar Abda el Mch	L	M	M
Deir Mar Roukouz	M	M	M	Deir Tamiche	L	M	M	Dik El-Mehdi	L	M	M
Dikwaneh	M	M	M	Douar El-Matn	L	M	M	Fanar	L	M	M
Fraike	L	M	M	Haret El-Ballaneh	ML	M	M	Hbous	L	M	M
Himlaya	L	M	M	Jal El Did	ML	M	M	Jdeideh El-Metn	ML	M	M
Jouar El-Matn	L	M	M	Jouret El-Ballout	L	M	M	Kaaqour	L	M	M
Kfar Aaqab	L	M	M	Kfertay El-Matn	L	M	M	Khenchara	L	M	M
Khillet El-Mtain	L	M	M	Konnabat Broummana	L	M	M	Konnabat Salima	L	ML	M
Machraah El-Matn	L	M	M	Majdel Tarchich	L	M	MH	Majzoub	ML	M	M
Mansouriyeh El-Metn	ML	M	M	Mar Boutros Karm Et-	L	M	M	Mar Chaya et Mzekke	L	M	M
Mar Moussa Ed-Douar	L	M	M	Marjaba	L	M	M	Masqa	L	M	M
Mayasse	L	M	M	Mazraat Deir Aoukar	L	M	M	Mazraat El-Hadirat	L	M	M
Mazraat Yachouh	L	M	M	Mchikha	L	M	M	Menqlet Mezher	ML	M	M
Mhaydseh Matn	L	M	M	Mkalles	M	M	M	Mrouj	L	M	M
Mtain	L	M	MH	Mtaylor	L	M	M	Nabay	L	M	M
Naccache	L	M	M	Ouadi Chahine	L	M	M	Ouadi El-Karm El-Mat	VL	M	M
Ouata El-Mrouj	L	M	M	Ouyoun El-Matn	VL	ML	M	Qornet Chehwan	L	M	M
Qornet El-Hamra	L	M	M	Roumieh	L	M	M	Sfeilet Bikfaya	L	M	M
Sinn El-Fil	M	M	M	Zabbougha	VL	ML	M	Zalqa	ML	M	M

Zarouon	L	M	M	Zekrite	L	M	M	Zighrine El-Matn	L	M	M
Zouk El-Khrab	M	M	M								

Chouf

Municipality	22-Apr	23-Apr	24-Apr	Municipality	22-Apr	23-Apr	24-Apr	Municipality	22-Apr	23-Apr	24-Apr
Aalmane El-Chouf	ML	M	M	Aammq El-Chouf	L	M	M	Ain Ouzein	L	M	M
Ain Qani	L	M	M	Ain Zhalta	L	M	M	Ainbal	L	M	M
Amatour	L	M	M	Anout	L	M	M	Atrine	L	M	M
Baadarane	L	M	M	Baaqline	L	M	M	Baasir	ML	M	M
Barja	L	M	M	Barouk	L	M	M	Bater	L	M	M
Batloun	L	M	M	Bayqoun	L	M	M	Bchetfine	L	M	M
Beiteddine	L	M	M	Benouati Ech-Chouf	L	M	M	Berjein	L	M	M
Bireh et Mtalleh	L	M	M	Biret El-Chouf	L	M	M	Bkechtine Ouel Mchei	VL	ML	M
Bkifa El-Chouf	L	M	M	Botme	L	M	M	Bqaiaa Ech-Chouf	L	M	M
Bsaba El-Chouf	L	M	M	Chammis El-Chouf	L	M	M	Chehim	L	M	M
Chemaarine	L	ML	M	Chourit	L	M	M	Daher El-Chouf	L	M	M
Dalhoun	L	M	M	Damour	L	M	M	Daraya El-Chouf	L	M	M
Deir El-Moukhalles	L	M	M	Deir Baba	L	M	M	Deir Dourit	L	M	M
Deir El-Qamar	L	M	M	Deir Kouche	L	M	M	Dibbieh	L	M	M
Dmit	L	M	M	Fouara Jaafar	VL	M	M	Fraidis El-Chouf	L	M	M
Ghabet Jaafar	L	M	M	Gharife	L	M	M	Haret Jandal	L	M	M
Hasrout	L	M	M	Jadra	L	M	M	Jahlieh	L	M	M
Jbeih El-Chouf	L	M	M	Jdeidet El-Chouf	L	M	M	Jiyeh	ML	M	M
Jleilyeh	L	M	M	Jmailiyeh	L	M	M	Joun	L	M	M
Kahlounie El-Chouf	L	M	M	Ketermaya	L	M	M	Kfar Faqoud	L	M	M
Kfar Hamal	L	M	M	Kfar Him	L	M	M	Kfar Katra	L	M	M
Kfar Niss	L	M	M	Kfar hay	L	M	M	Kfarnabrakh	L	M	M
Khirbet Bisri	L	M	M	Knayse El-Chouf	VL	ML	M	Maaniyeh	L	M	M
Maasser Beiteddine	L	M	M	Maasser El-Chouf	L	M	M	Majdalouna	L	M	M
Majdel El-Meouch	L	M	M	Mazboud	L	M	M	Mazmoura	L	M	M
Mazraat El Chouf	L	M	M	Mazraat El Daher	L	M	M	Mazraat El-Douair	L	ML	M
Mechref	L	M	M	Mghairie	L	M	M	Mghayrie El-Chouf	L	M	M
Moukhtara	L	M	M	Mrusti	L	M	M	Mtolle	L	M	M
Naameh	M	M	M	Niha El-Chouf	L	M	M	Ouadi Abou Youssef	VL	L	M
Ouadi Ed-Deir	L	M	M	Ouadi El-Sit	L	M	M	Ouadi bnehlay	L	ML	M
Qraibeh	L	M	M	Qreiaa	L	ML	M	Rmayle El-Chouf	ML	M	M
Semqaniyeh	L	M	M	Sibline	L	M	M	Sirjbeil	L	M	M
Warhanieh	L	M	M	Werdaniyeh	L	M	M	Zaarourieh	L	M	M

Baabda

Municipality	22-Apr	23-Apr	24-Apr	Municipality	22-Apr	23-Apr	24-Apr	Municipality	22-Apr	23-Apr	24-Apr
Abadiyeh	L	M	M	Ain Mouaffaq	L	M	M	Araiya	L	M	M
Arbaniyeh	L	ML	M	Arsoun	L	M	M	Baabda	M	M	M
Baalchmey	L	M	M	Bmaryam	L	M	M	Bourj El-Brajneh	M	M	M
Boutchay	M	M	M	Bsaba Baabda	M	M	M	Btekhney	L	M	M
Btibyat	L	M	M	Bzbeddine	L	M	M	Chbeniyeh	L	M	M
Chiyah	M	M	M	Chmeisset Baabda	VL	M	M	Chouit	L	M	M
Deir El-harf	L	M	M	Deir Khouna	L	M	M	Dlaybeh	L	M	M

Falougha	L	M	MH	Furn El-Chebbak	M	M	M	Hadath Beyrouth	M	M	M
Halaliyeh Baabda	L	M	M	Hammana	L	M	M	Haret El Sett	L	M	M
Haret Hamze	L	M	M	Haret Hreik	M	M	M	Hasbaiya El-Metn	VL	ML	M
Jouar El-Hoz	L	M	M	Jouret Arsoun	L	M	M	Kfar Chima	M	M	M
Kfar Selouane	L	M	M	Khalouat Baabda	L	M	M	Kneisset Baabda	L	ML	M
Laylakeh	M	M	M	Louayzeh Baabda	ML	M	M	Merdache	M	M	M
Mzairaa Baabda	L	M	M	Ouadi Chahrour El Ol	ML	M	M	Ouadi Chahrour El So	ML	M	M
Qalaa Baabda	L	M	M	Qhraybe Baabda	L	M	M	Qobbayaa	L	M	M
Qornayel	L	ML	M	Qortada	VL	L	M	Qrayeh Baabda	L	M	M
Qsaibeh Baabda	VL	M	M	Qtale Baabda	L	M	M	Ras El Metn	L	M	M
Ras El-Haref	L	M	M	Rouayset El-Ballout	L	M	M	Salima Baabda	L	M	M
Tahouitat El Ghadir	M	M	M	Tarchich	L	M	M	Zandouqa	VL	ML	M

Aley

Municipality	22-Apr	23-Apr	24-Apr	Municipality	22-Apr	23-Apr	24-Apr	Municipality	22-Apr	23-Apr	24-Apr
Abey	L	M	M	Aghmid	L	M	M	Ain Dara	L	M	M
Ain Drafil	L	M	M	Ain El Halazoun	L	M	M	Ain El-Rmmaneh	L	ML	M
Ain Jedideh	L	M	M	Ain Ksour	L	M	M	Ain Onoub	ML	M	M
Ain Traz	L	M	M	Ainab	L	M	M	Aley	L	M	M
Aramoun	M	M	M	Aytat	M	M	M	Azouniyeh	L	M	M
Baawerta	L	M	M	Badghan Oua Wadi Bad	L	M	M	Bassatine	ML	M	M
Bayssour	L	M	M	Bchamoun	ML	M	M	Bdadoun	L	M	M
Behouara	L	M	M	Bennay	L	M	M	Bhamdoun El-Dayaa	L	M	M
Bhamdoun El-Mhatta	L	M	M	Bkhechey	L	M	M	Bleibel	L	M	M
Bmakine	L	M	M	Bmehray	L	M	M	Bouzrid	VL	ML	M
Bserrine	L	M	M	Bsous	L	ML	M	Btalloun	L	M	M
Btater	L	M	M	Chanay	L	M	M	Charoun	L	M	M
Chartoun	L	M	M	Chemlane	L	M	M	Choueifat El-Aamrous	M	M	M
Choueifat El-Oumara	M	M	M	Choueifat El-Quoubbe	M	M	M	Dakkoun	L	M	M
Deir Qoubel	ML	M	M	Dfoun	ML	M	M	Douair El Remmaneh	VL	M	M
Ghaboun	L	M	M	Habramoun	L	M	M	Homs Oua Hama	L	M	M
Houmal	ML	M	M	Jisr El Qadi	L	M	M	Kehaleh	L	M	M
Keyfoun	ML	M	M	Kfar Aamey	L	M	M	Kommatyeh	L	M	M
Maasrati	L	M	M	Majdel Baana	L	M	M	Mansourieh et Ain El	L	M	M
Mazraat El-Nahr	L	M	M	Mchakhte	L	M	M	Mecherfeh	L	M	M
Mejdlaya	L	M	M	Mrayjat	L	M	M	Ramliyah	L	M	M
Rechmaya	L	M	M	Rejmeh	L	M	M	Remhala	L	M	M
Rouaysset El Neemane	L	M	M	Saoufar	L	M	M	Selfaya	L	M	M
Sirhmoul	L	M	M	Souq El Ghareb	L	M	M	Taazanieh	L	M	M

Kesrouane

Municipality	22-Apr	23-Apr	24-Apr	Municipality	22-Apr	23-Apr	24-Apr	Municipality	22-Apr	23-Apr	24-Apr
Achkout	L	M	M	Adma Oua Dafneh	ML	M	M	Ain Ed-Delbe Kesroua	L	M	M
Ain El-Rihane	L	M	M	Aintoura Kesrouane	L	M	M	Ajaltoun	L	M	M
Akaybeh Kesrouane	M	M	M	Aramoun Kesrouane	L	M	M	Azra ouel Ozor	L	M	M
Ballouneh	L	M	M	Batha	L	M	M	Bekaatat Achkout	L	M	M
Bekaatat Kanaan	L	M	M	Bizhel	L	M	M	Bouar	M	M	M
Bqaatouta	L	M	M	Bqaq Ed-Dine	M	M	M	Bzommar	L	M	M

Chahtoul	L	M	M	Chnaniir	L	M	M	Chouan	L	M	M
Daraya Kesrouane	L	M	M	Darououn	L	M	M	Deir Baqlouch	L	M	M
Dlebta	L	M	M	Eghbeh	L	ML	M	Faraya	L	M	MH
Fatka	L	M	M	Feytroun	L	M	M	Ghazir	ML	M	M
Ghbaleh Kesrouane	L	M	M	Ghedrass	L	M	M	Ghosta	L	M	M
Ghynéh	L	M	M	Harharaya w Kattine	L	M	M	Harissa Kesrouane	L	M	M
Hayata	L	M	M	Hosein	L	ML	ML	Hrajel	L	M	MH
Jdeideh Ghazir	L	M	M	Jeita	L	M	M	Jounieh Ghadir	L	M	M
Jounieh Haret Sakhr	ML	M	M	Jounieh Salel Alma	ML	M	M	Jounieh Sarba	ML	M	M
Jouret Bedrane	L	M	M	Jouret Mhad	L	ML	M	Jouret Termos	L	M	M
Kfar Debiane	L	M	M	Kfar Tay Kesrouane	VL	ML	M	Kfar Yassine	M	M	M
Kfour Kesrouane	L	M	M	Kharayeb Nahr Ibrahi	ML	M	M	Klayaat Kesrouane	L	M	M
Maarab	L	M	M	Maaysra Kesrouane	ML	M	M	Mayrouba	L	M	M
Mazraat Er-Ras	ML	M	M	Mazraat Mrah El-Mir	L	M	M	Mchaa El Ftouh	L	M	MH
Mchaa Faraya	L	M	MH	Mchaa Kfar Dibiane	L	M	MH	Mghaer	L	M	M
Mradiyah	L	M	M	Nahr Ed-Dahab	L	ML	M	Nammoura Kesrouane	L	M	M
Ouata El Jaouz	L	M	M	Ouata Sillam	ML	M	M	Raachine	L	ML	M
Rayfoun	L	M	M	Safra Kesrouane	ML	M	M	Shayle Kesrouane	L	M	M
Tabarja	ML	M	M	Yahchouch	L	M	M	Zaaytreh	L	M	M
Zeytoun	ML	M	M	Zouk Mikael	ML	M	M	Zouk Mosbeh	ML	M	M

Baalbek_Hermel

Baalbek

Municipality	22-Apr	23-Apr	24-Apr	Municipality	22-Apr	23-Apr	24-Apr	Municipality	22-Apr	23-Apr	24-Apr
Aadous	ML	M	MH	Aamchki	ML	M	M	Aarsal	ML	M	M
Ain Baalbek	ML	M	M	Ain Bourday	M	M	MH	Ain El-Benye	ML	M	MH
Ain El-Jaouz Baalbek	L	M	M	Ain El-Siya Chadoura	ML	M	M	Al Khodr Baalbek	M	M	MH
Al Nabi Chit	M	M	MH	Aynata Baalbek	L	M	MH	Baalbek	ML	M	MH
Bachwat	L	M	M	Barqa	L	M	M	Bednayel Baalbak	ML	M	MH
Beit Chama	ML	M	MH	Bijjaje	ML	MH	MH	Bouday	ML	M	MH
Brital	ML	M	MH	Btadi	ML	M	MH	Chaat	ML	M	MH
Chaibe	L	M	M	Chlifa	L	M	MH	Chmestar	ML	M	MH
Dar El-Oussa	ML	M	MH	Deir El-Ahmar	L	M	MH	Deir Mar Maroun Baal	M	MH	MH
Douris	M	M	MH	Fakiha	M	MH	MH	Hadath Baalbek	ML	M	MH
Ham	ML	M	MH	Haour Taala	ML	M	MH	Hizzine	ML	M	MH
Hlebta	L	M	MH	Hosh Barada	ML	M	MH	Hosh El Dahab	ML	M	MH
Hosh El Snid	ML	M	MH	Hosh El-Nabi	ML	M	MH	Hosh El-Rafiq	ML	M	MH
Hosh Tal Safiya	ML	M	MH	Hrebta	L	M	MH	laat	ML	M	MH
Jebaa	ML	M	MH	Jenta	ML	M	MH	Kfar Dabach	ML	M	MH
Kfar Dane	ML	M	MH	Khraibeh El-Hermel	L	M	MH	Khreibet Baalbek	ML	M	MH
Kneisset Baalbek	ML	M	MH	Labueh	ML	MH	MH	Maarboun	L	M	MH
Majdaloun	ML	M	MH	Maqneh	ML	M	MH	Mazraat Beit Mcheik	M	M	H
Misraya	ML	M	MH	Moqraq	ML	MH	MH	Nabha El-Damdoum	L	M	MH
Nabi Chbay	L	M	MH	Nabi Osman	ML	M	M	Nahleh baalbek	ML	M	M
Ouadi El-Oss	L	M	MH	Qaa Baayoun	M	MH	MH	Qaa Jouar Maqiye	M	MH	MH
Qaa Ouadi El-Khanzir	M	MH	MH	Qah Baalbek	M	MH	MH	Qarha Baalbek	ML	M	MH

Qsarnaba	L	M	MH	Ram Baalbek	ML	M	MH	Ras Baalbek El Sahl	M	MH	MH
Ras Baalbek El-Charq	M	MH	MH	Riha	ML	M	MH	Saaide	ML	M	MH
Sbouba	L	M	MH	Seriine El-Tahta	ML	M	MH	Slouqi	ML	M	MH
Taiba Baalbek	M	M	MH	Talia	ML	M	MH	Taraiya	ML	M	MH
Temnin El Fawqa	L	M	MH	Temnin El-Tahta	L	M	MH	Tfail	L	M	M
Yahfoufa	ML	M	MH	Yammouneh	ML	M	MH	Younine	ML	M	M
Zboud	M	MH	MH								

Hermel

Municipality	22-Apr	23-Apr	24-Apr	Municipality	22-Apr	23-Apr	24-Apr	Municipality	22-Apr	23-Apr	24-Apr
Charbine El-Hermel	M	M	MH	Hermel Jbab	ML	M	MH	Hermel	M	MH	MH
Maaysra El-Hermel	L	M	MH	Michaa Mrajhine	ML	M	MH	Ouadi Faara	L	M	MH
Ras Baalbek - Ouadi	M	MH	MH	Ras Baalbek El Gharb	L	M	MH	Zighrine	M	M	MH

Akkar

Akkar

Municipality	22-Apr	23-Apr	24-Apr	Municipality	22-Apr	23-Apr	24-Apr	Municipality	22-Apr	23-Apr	24-Apr
Aain Tinta	L	MH	MH	Aaiyat	ML	M	MH	Aakkar El-Aatiqa	L	M	M
Aamar Akkar	M	MH	MH	Aamar El Baykat	ML	MH	MH	Aamayer	M	MH	MH
Aamriyet Akkar	L	MH	MH	Aandqet	ML	M	MH	Aarmeh	L	M	MH
Aarqa	M	MH	MH	Aawaynat	ML	MH	MH	Aayoun Akkar	ML	MH	MH
Abboudiye	L	MH	MH	Ain El-Zeit	ML	MH	MH	Ain Yaaqoub	L	M	MH
Akroum	M	M	MH	Aridet Cheikh Zennad	M	H	H	Baldeh w Mazraat Bal	L	MH	MH
Barcha	L	MH	MH	Bardeh	L	MH	MH	Bebnine	M	MH	MH
Beino	L	M	MH	Beit Ayoub	M	MH	MH	Beit El-Haouch	M	H	H
Beit Mellat	M	MH	MH	Beit Younes	M	M	M	Berbara Akkar	L	MH	MH
Berqayel	M	MH	MH	Bezbina	L	M	M	Bireh Akkar	L	MH	MH
Borj	ML	MH	H	Bqerezla	M	MH	MH	Bzal	M	M	MH
Chane	ML	M	MH	Chaqdouf	ML	MH	H	Charbila	L	MH	MH
Cheikh Mohammad	L	MH	MH	Cheikh Taba Es-Sahl	M	MH	MH	Cheikh Taba	M	MH	H
Cheikh Zennad	M	MH	MH	Cheikhlar	M	MH	MH	Chir Hmairine	L	MH	MH
Daghle	L	MH	MH	Dahr Laissine	M	MH	MH	Darine	L	MH	MH
Dawra	L	M	MH	Dawsa w Baghdadi	ML	MH	MH	Dayret Nahr El-Kabir	M	H	MH
Deir Dalloum	M	MH	MH	Deir Jennine	L	MH	MH	Denbou	ML	M	MH
Dibbabiyyeh	ML	MH	MH	Douair Aadwiyeh	L	MH	MH	Fassikine	L	MH	MH
Fnaydek	L	M	M	Fraydes Akkar	L	M	MH	Ghazayle	L	MH	MH
Habchit	L	M	M	Hakour	M	MH	MH	Halba	ML	MH	MH
Haouchab	L	MH	H	Hayssat	M	MH	MH	Haytla	L	MH	MH
Hayzouq	L	MH	MH	Hedd	L	MH	MH	Hmaira Akkar	M	MH	MH
Hmaiss Akkar	L	MH	MH	Hnaider	M	H	H	Hokr Ed-Dahri	M	MH	MH
Hokr Etti	L	MH	MH	Hokr Jouret Srar	L	MH	MH	Houaich	M	M	MH
Hrar	M	M	MH	Idbil	M	MH	MH	Ilal	M	MH	MH
Janine	L	MH	MH	Jdeidet El-Joumeh	M	MH	H	Jdeidet El-Kaiteh	M	MH	MH
Jebraïel	M	MH	MH	Kafr	L	M	M	Kafr	L	MH	MH
Karm Asfour	M	MH	MH	Kfar Melki Akkar	M	MH	MH	Kfar Noun	L	M	MH
Kfarharra	L	MH	MH	Khalsa	M	H	MH	Kharnoubet Akkar	L	MH	MH

Khirbet Daoud Aakkar	L	MH	MH	Khirbet El Remmane	M	MH	MH	Khirbet Shar	L	MH	MH
Khoreybet El-Jindi	L	MH	MH	Khreibet Aakkar	M	MH	MH	Kneisset Aakkar	M	MH	MH
Kneisset Hnaider	M	H	MH	Knisse	L	MH	MH	Kroum El-Aarab	L	MH	MH
Kwachra	ML	MH	MH	Kweykhat	L	MH	MH	Machta Hammoud	M	MH	MH
Majdala	M	MH	MH	Majdel Akkar	L	MH	MH	Mar Touma	M	MH	MH
Marlaya Melhem	M	MH	MH	Mashha	ML	MH	MH	Massoudiye	M	MH	MH
Mazraat Beit Ghattas	M	MH	MH	Mazraat En-Nahriye	ML	MH	MH	Mechmech	L	M	M
Memneh	L	M	M	Mhammara	M	MH	MH	Mighraq Aakkar	M	MH	MH
Minyara	M	MH	MH	Moqayteh	M	MH	MH	Mounjez	L	M	MH
Msalla	ML	MH	MH	Mzeihmeh	L	MH	MH	Nfaiseh	ML	MH	MH
Noura Et-Tahta	ML	M	MH	Ouadi El-Haour	L	MH	MH	Ouadi El-Jamous	M	MH	MH
Ouyoun El-Ghizlane	M	MH	MH	Qaabarine	M	MH	MH	Qabaait	L	M	MH
Qachlaq	L	MH	MH	Qantara Aakkar	M	MH	MH	Qarha Aakkar	M	H	MH
Qarqaf	M	MH	MH	Qboula	ML	MH	MH	Qleiaat Aakkar	M	MH	MH
Qloud El-Baqie	M	MH	MH	Qobaiyat Aakkar	ML	M	MH	Qobbat Chamrat	M	MH	MH
Qorayat	M	M	M	Qornet Aakkar	ML	M	MH	Qsair Aakkar	L	MH	MH
Rahbe	M	M	MH	Rihaniyet Aakkar	L	MH	MH	Rmah	ML	MH	MH
Rmoul	M	MH	MH	Saadine	L	MH	MH	Sadaqa	M	MH	MH
Saidnaya	L	MH	MH	Sammouniye	M	MH	MH	Sayssoq	M	MH	MH
Semmaqiye	M	MH	MH	Semmaqli	M	MH	MH	Sfinet El-Dreib	L	MH	MH
Sfinet El-Qaitaa	M	M	M	Sindyanet Zeidane	L	M	MH	Souaisset Aakkar	L	MH	MH
Srar	L	MH	MH	Tal Abbas El Gharby	M	MH	MH	Tal Abbas El-Chargy	L	MH	MH
Tal Biret	M	MH	MH	Tal Hmayra	L	MH	MH	Tal Maayan Tal Kiri	M	MH	MH
Tal Sibel	M	MH	MH	Tallet Chattaha	M	MH	MH	Tikrit	M	M	MH
Tleil	L	MH	MH	Tshea	L	M	M	Zawarib	M	MH	MH
Zouq El Hosniyeh	M	MH	MH	Zouq El-Haddara	M	MH	MH	Zouq El-Hbalsa	M	MH	MH
Zouq El-Moqachrine	M	H	H								

Sud

Sour

Municipality	22-Apr	23-Apr	24-Apr	Municipality	22-Apr	23-Apr	24-Apr	Municipality	22-Apr	23-Apr	24-Apr
Aaiyeh	L	M	MH	Aalma El-Chaab	L	M	M	Aaytit	L	M	MH
Abbassiyeh Sour	L	M	M	Abou Chech	L	M	M	Ain Abou Abdallah	L	M	M
Ain Baal	L	M	M	Arzoun	L	M	MH	Aziyeh	L	M	M
Baflaya	L	M	MH	Barich	L	M	MH	Batouliyeh	ML	M	M
Bayad	L	M	MH	Bazouriyeh	L	M	M	Bediass	L	M	M
Bestiyat	L	M	MH	Borj El Chemali	ML	M	M	Borj En-Naqoura	ML	M	M
Borj Rahhal	L	M	MH	Boustane	L	M	M	Btaychiyeh	L	M	M
Chaaitiye	L	M	M	Chameh	L	M	M	Chehabiye	L	M	MH
Chehour	L	M	M	Chihine	L	M	M	Debaal Sour	L	M	MH
Deir Amess	L	M	M	Deir Kifa	L	M	MH	Deir Qanoun El-Ain	ML	M	M
Deir Qanoun El-Naher	L	M	MH	Derdghaiya	L	M	MH	Dhayra	L	M	M
Halloussiyeh	L	M	MH	Hamoul	L	M	M	Hanaouey	L	M	MH
Henniye	ML	M	M	Hmairi Sour	L	M	M	Iskandarouna Sour	L	M	M
Jbal El Botom	L	M	M	Jebbin	L	M	M	Jennata	L	M	MH
Jijim	L	ML	M	Jouaiya	L	M	MH	Kneisset Sour	ML	M	MH

Maarake	L	M	MH	Maaroub	L	M	MH	Majadel	L	M	MH
Majdalzoun	L	M	M	Mansouri Sour	L	M	M	Marnba	L	M	M
Marouahine	L	M	M	Mazraat El-Zalloutiy	L	M	M	Mazraat Mechref	L	M	MH
Mazraat Tayr Semhat	L	M	M	Mheilb	ML	M	M	Neffakhiyeh	L	M	MH
Niha Sour	L	M	MH	Ouadi Jilo	L	M	MH	Qana	L	M	MH
Qolaileh Sour	L	M	M	Rechknay	L	M	M	Rmadiyah	L	M	MH
Selha Sour	L	M	MH	Siddiqine	L	M	MH	Sour	M	M	M
Srifa	L	M	M	Tayr Debbe	L	M	MH	Tayr Felsay	L	M	M
Tayr Harfa	L	M	M	Touayri	L	M	M	Toura	L	M	MH
Yanouh Sour	L	M	MH	Yarine	L	M	M	Zebqine	L	M	M

Saida

Municipality	22-Apr	23-Apr	24-Apr	Municipality	22-Apr	23-Apr	24-Apr	Municipality	22-Apr	23-Apr	24-Apr
Aanqoun	L	M	M	Aaqtanit	ML	M	M	Aarab Ej-Jall	L	M	M
Aarab Tabbaya	L	M	M	Abra Saida	ML	M	M	Adloun	M	M	M
Adousiyeh	ML	M	M	Ain-El-Deleb	ML	M	MH	Arzai	L	M	MH
Babliyah	ML	M	MH	Barty	L	M	M	Bissariyeh	ML	M	MH
Bnaafoul	ML	M	M	Bqosta	ML	M	M	Bramiy	ML	M	M
Daoudiyeh	ML	M	MH	Dareb El-Sim	ML	M	MH	Erkay	L	M	M
Ghassanieh	M	M	MH	Ghazieh	M	M	MH	Hajjeh	ML	M	M
Haret Saida	ML	M	M	Hartiyeh	ML	M	MH	Hlaliye Saida	ML	M	M
Insariyat	ML	M	MH	Jazira Saida	L	M	M	Kafar Bit	L	M	M
Kaoutariyet El-Siyad	ML	M	M	Kfar Chellal	L	M	M	Kfar Hatta Saida	L	M	M
Kfar Milke Saida	L	M	M	Khartoum	M	M	MH	Khaziz	L	M	M
Khirbet Ed-Douair Sa	ML	M	MH	Khirbet El-Bassal	ML	M	M	Khrayeb Saida	L	M	MH
Loubieh	ML	M	MH	Maghdouche	ML	M	M	Majdelyoun	ML	M	M
Matariyet El-Choumar	L	M	MH	Matayriyeh	ML	M	M	Mazraat 'Mseileh	M	M	MH
Mazraat 'Snaiber	M	M	MH	Mazraat Aarab Soukka	L	M	M	Mazraat Deir Taqla	ML	M	M
Mazraat El Yahoudiye	M	M	M	Mazraat El-Housseini	M	M	MH	Mazraat El-Mhaydaleh	M	M	MH
Mazraat El-Ouasta	ML	M	M	Mazraat Jamjim	ML	M	M	Mazraat Kaoutariyet	M	M	MH
Mazraat Kfar Badda	ML	M	MH	Mazraat Oussamiyat	M	M	MH	Mazraat Sari	ML	M	MH
Mazraat Sinai	ML	M	MH	Meemariyeh	ML	M	M	Merouaniyeh	ML	M	M
Miyeh ou Miyeh	ML	M	MH	Najjariyeh	M	M	MH	Qaaqiyat El-Snaouba	ML	M	MH
Qnarit	ML	M	M	Qraiye Saida	ML	M	MH	Saida Ed-Dekermane	M	M	M
Saida El-Oustani	ML	M	M	Saida El-Qadimeh	ML	M	M	Saida Kefraya	L	M	M
Saksakiyeh	ML	M	MH	Salhie Saida	L	M	M	Sarafand	M	M	MH
Sfenta	L	M	M	Tafahta	ML	M	MH	Tanbourit	L	M	M
Tebna	ML	M	M	Zaghdraiya	L	M	M	Zeita	ML	M	M
Zrariyeh	ML	M	MH								

Jezzine

Municipality	22-Apr	23-Apr	24-Apr	Municipality	22-Apr	23-Apr	24-Apr	Municipality	22-Apr	23-Apr	24-Apr
Ain El-Mir (El Estab	L	M	MH	Anane	L	M	M	Aramta	L	M	M
Ariya	L	M	M	Aychiyeh	L	M	M	Azour	L	M	M
Baba	L	M	M	Bayssour Jezzine	L	M	MH	Benoueteh Jezzine	L	M	M
Bhannine	L	M	M	Bisri	L	M	M	Bkassine	L	M	M
Bouslaya	L	M	M	Btedine El-Leqech	L	M	M	Chbail	VL	ML	M
Choualiq Jezzine	L	M	M	Dahr Ed-Deir	L	M	M	Deir El Qattine	L	M	M

Demachqiyeh	L	M	M	Ghabbatiyeh	L	M	M	Harf Jezzine	L	M	M
Hassaniyeh	L	M	M	Haytouleh	L	M	M	Haytura	L	M	M
Hidab	L	M	M	Homsiyeh	L	M	M	Jabal Toura	L	M	M
Jarmaq	L	M	M	Jensnaya	L	M	MH	Jernaya	L	M	M
Jezzine	L	M	M	Karkha	L	M	M	Kfar Falous	L	M	M
Kfar Houna	L	M	M	Kfar Jarrah	ML	M	MH	Lebaa	L	M	MH
Louayzet Jezzine	L	M	M	Machmouche	L	M	M	Mahmoudiyeh Jezzine	L	M	M
Maknounye Jezzine	L	M	M	Maraat Ouzaïyeh	L	M	M	Mazraat Daraya	L	M	M
Mazraat El-Aarqoub	L	M	M	Mazraat El-Mathane	VL	ML	M	Mazraat El-Rahbane	L	M	M
Mazraat Khallet Khaz	L	M	M	Mazraat Louzid (Loua	L	ML	M	Mazraat Qrouh	L	M	M
Mazraat Tamra	L	M	M	Mazraat Zighrine Jez	L	M	M	Mazraat	L	M	M
Mharbiyeh	ML	M	M	Midane Jezzine	L	M	M	Mjeydel Jezzine	L	M	M
Mlikh	L	M	M	Mrah El-Hbasse	L	M	M	Ouadi Baanquodaine	ML	M	MH
Ouadi El-Laymoun	L	M	M	Ouardiyeh	VL	L	M	Qabaa Jezzine	L	M	M
Qatrani	L	M	M	Qaytouleh	L	M	M	Qtaleh Jezzine	VL	M	M
Rihane Jezzine	L	M	M	Rimat	L	M	M	Roum	L	M	M
Roummanet	L	M	M	Sabbah	L	M	M	Saydoun	L	M	M
Sfaray	L	M	M	Snaya	L	M	M	Sojoud	L	M	M
Srayri	L	M	M	Taaid	L	M	M	Wadi Jezzine	L	M	M
Zhalta	L	M	M								

Bekaa

West Bekaa

Municipality	22-Apr	23-Apr	24-Apr	Municipality	22-Apr	23-Apr	24-Apr	Municipality	22-Apr	23-Apr	24-Apr
Aammiq BG	L	M	MH	Ain El Tineh BG	L	M	M	Ain Zebdeh	ML	M	M
Ana	ML	M	M	Aytanit	L	M	M	Baaloul BG	L	M	MH
Bab Mareh	L	M	M	Chouberqiye Aammiq	ML	M	MH	Dakoue	ML	M	MH
Deir Ain El-Jaouze	L	M	M	Deir Tahniche	ML	M	MH	Ghaza	ML	M	MH
Harime El-Soughra	L	M	MH	Hoch Harimeh	ML	M	MH	Jazira BG	ML	M	MH
Jib Jennine	ML	M	MH	Kamed-El-Laouz	ML	M	MH	Kefraya BG	L	M	M
Khiara El Atika	ML	M	MH	Khiara	ML	M	MH	Khirbet Qanafar	ML	M	M
Lala	L	M	MH	Lebbaya BG	L	M	M	Loussa	L	M	M
Machghara	L	M	M	Manara (Hammara) BG	L	M	M	Mansoura BG	ML	M	MH
Marej BG	L	M	MH	Maydoun	L	M	M	Ouaqf BG	L	M	MH
Qaraaoun	L	M	M	Qelya	L	M	M	Raouda (Istabel)	L	M	MH
Saghbine	L	M	M	Sohmor	L	M	M	Soltan Yacoub el Ara	ML	M	MH
Souairy	L	M	MH	Sultan Yaacoub	ML	M	MH	Tal Znoub	ML	M	MH
Yehmor BG	L	M	M	Zilaya	L	M	M				

Zahle

Municipality	22-Apr	23-Apr	24-Apr	Municipality	22-Apr	23-Apr	24-Apr	Municipality	22-Apr	23-Apr	24-Apr
Aanjar (Haouch Mouss	L	M	MH	Ablah	L	M	MH	Ain Kfarzabad	L	M	MH
Ali-El-Nahri	ML	M	MH	Bar Elias	L	M	MH	Bouarej	L	M	MH
Cheberqiyet Tabet	L	M	MH	Chtaura	L	M	MH	Deir El Ghazal	L	M	MH
Delhamiyet Zahle	L	M	MH	Ferzol	L	M	MH	Haouch El-Ghanam	ML	M	MH
Haouch Es-Siyadeh	L	M	MH	Haouch Hala	ML	M	MH	Haouch Mandara	L	M	MH

Haouch Qayssar	L	M	MH	Hezerta	L	M	MH	Hosh Moussa	ML	M	MH
Jdita	L	M	MH	Kfarzabad	L	M	MH	Ksara	L	M	MH
Majdel Aanjar	L	M	MH	Makssi	L	M	MH	Massa	ML	M	MH
Mazraat Er-Remtaniye	L	M	MH	Mrayjat Zahle	L	M	MH	Mzaraa Zahle	L	M	MH
Nabi Ayla	L	M	MH	Nasriyet Rizk	ML	M	MH	Nasriyet Zahle	L	M	MH
Niha Zahle	L	M	MH	Ouadi Ed-Deloum	L	M	MH	Ouadi El-Arayech	L	M	MH
Qaa El Rim	L	M	MH	Qab Elias	L	M	MH	Qousaya	L	M	MH
Rhit	ML	M	MH	Riyak	ML	M	MH	Saadnayel	L	M	MH
Taal El-Akhdar	L	M	MH	Taalbeya	L	M	MH	Taanayel	L	M	MH
Talamara	ML	M	MH	Tcheflik Edde Haouch	L	M	MH	Tcheflik Qiqano	L	M	MH
Terbol Zahle	ML	M	MH	Touaite Zahle	L	M	MH	Zahle Aradi	L	M	MH
Zahle El-Berbara	L	M	MH	Zahle El-Maallaqa	L	M	MH	Zahle El-Midane	L	M	MH
Zahle Er-Rassiye	L	M	MH	Zahle Haouch El-Ouma	L	M	MH	Zahle Haouch El-Ouma	L	M	MH
Zahle Haouch Ez-Zara	L	M	MH	Zahle Maalaga Aradi	L	M	MH	Zahle Mar Antonios	L	M	MH
Zahle Mar Elias	L	M	MH	Zahle Mar Gerios	L	M	MH	Zahle Saydet En-Naja	L	M	MH
Zebdoul	L	M	M								

Rachaiya

Municipality	22-Apr	23-Apr	24-Apr	Municipality	22-Apr	23-Apr	24-Apr	Municipality	22-Apr	23-Apr	24-Apr
Ain Arab Rachaiya	L	M	MH	Ain Ata	L	M	M	Ain Harche	L	M	M
Aqabe Rachaya	L	M	MH	Ayha	ML	M	MH	Ayta El Fokhar	ML	M	MH
Bakifa Rachaya	L	M	MH	Bakka	ML	M	MH	Beit Lahya	L	M	MH
Bireh Rachaiya	L	M	MH	Daheer El Ahmar	L	M	MH	Deir El-Achayer	ML	M	MH
Heloua Rachaiya	ML	M	M	Hoch El Qannabeh Rac	L	M	M	Kaoukaba Bou Arab	L	M	MH
Kfar Danis	L	M	MH	Kfar Mechki	L	M	M	Kfar Qouq	L	M	MH
Kherbet Rouha	L	M	MH	Majdel Balhiss	L	M	M	Mdoukha	ML	M	MH
Mhaydseh Rachaiya	L	M	MH	Nabi Safa	L	M	M	Rachaiya	L	M	MH
Rafid Rachaiya	L	M	MH	Selsata (Mazraat Dei	L	M	M	Tannoura	L	M	MH
Yanta	L	M	M								

Beyrouth

Beyrouth

Municipality	22-Apr	23-Apr	24-Apr	Municipality	22-Apr	23-Apr	24-Apr	Municipality	22-Apr	23-Apr	24-Apr
Achrafieh	M	M	M	Ain el-Mreisse	M	M	M	Bachoura	M	M	M
Beirut Central Distr	M	M	M	Marfai	M	M	M	Mazraa	M	M	M
Medaouar	M	M	M	Minet el-Hosn	M	M	M	Mwssaitbeh	M	M	M
Ras Beirut	M	M	M	Rmeil	M	M	M	Saifi	M	M	M
Zqaq el-Blat	M	M	M								