

Lebanon Fire Risk Bulletin



CIVIL DEDEFENCE

Refer to cadast table condition.

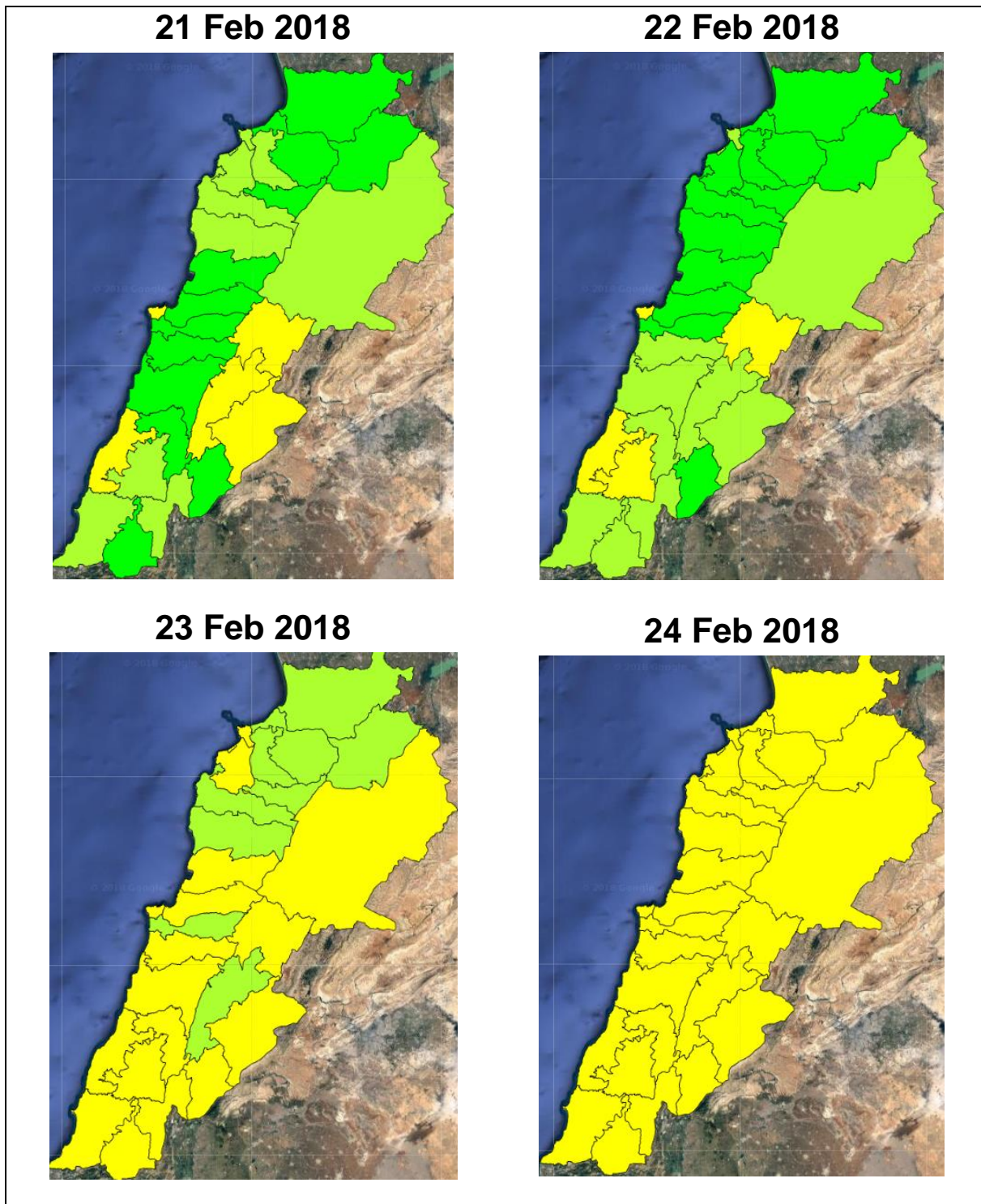
Please note that the indicated temperature is at 2 meters height from the ground.

General description of potential fire risk situation

Symbol	Level of risk	Meaning and actions
VL	Very low	Very low fire risk. Controlled burning operations can be hardly executed due to high fuel moisture content. Normally wildfires self-extinguish.
L	Low	Low fire risk. Controlled burning operations can be executed with a reasonable degree of safety.
ML	Medium low	Medium-low fire risk. Controlled burning operations can be executed in safety conditions. All the fires need to be extinguished.
M	Medium	Medium fire risk. Controlled burning operations would be avoided. All the fires need to be very well extinguished.
M	Medium high	Controlled burning is not recommended. Open flame will start fires. Cured grasslands and forest litter will burn readily. Spread is moderate in forests and fast in exposed areas. Patrolling and monitoring is suggested. Fight fires with direct attack and all available resources.
H	High	Ignition can occur easily with fast spread in grass, shrubs and forests. Fires will be very hot with crowning and short to medium spotting. Direct attack on the head may not be possible requiring indirect methods on flanks. Patrolling and monitoring the territory is highly suggested.
E	Extreme	Ignition can occur also from sparks. Fires will be extremely hot with fast rate of spread. Control may not be possible during day due to long range spotting and crowning. Suppression forces should limit efforts to limiting lateral spread. Damage potential total. Patrolling and monitoring the territory is highly suggested.

Beirut, 22 February 2018

FIRE RISK INDEX

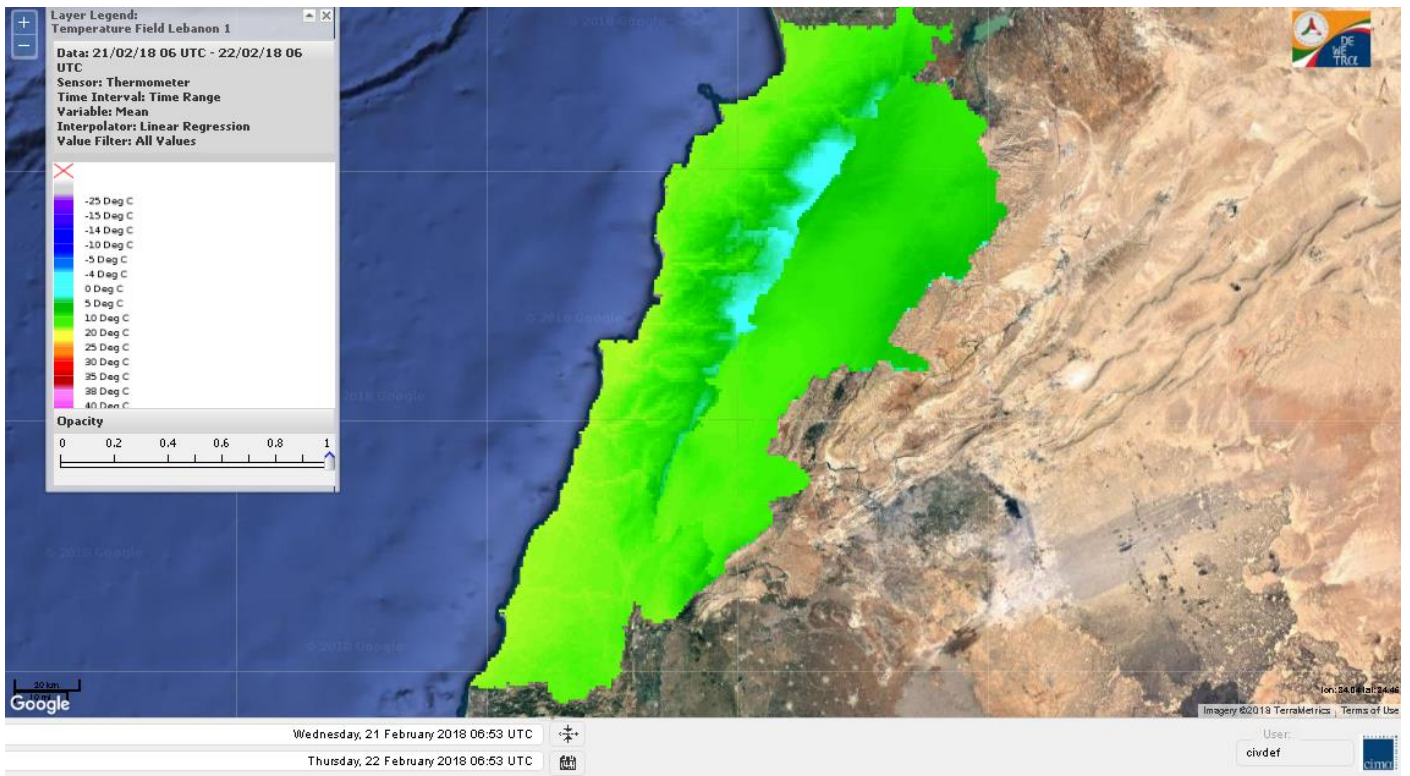


Layer Legend:
Lebanon Wildfire Risk Index 1

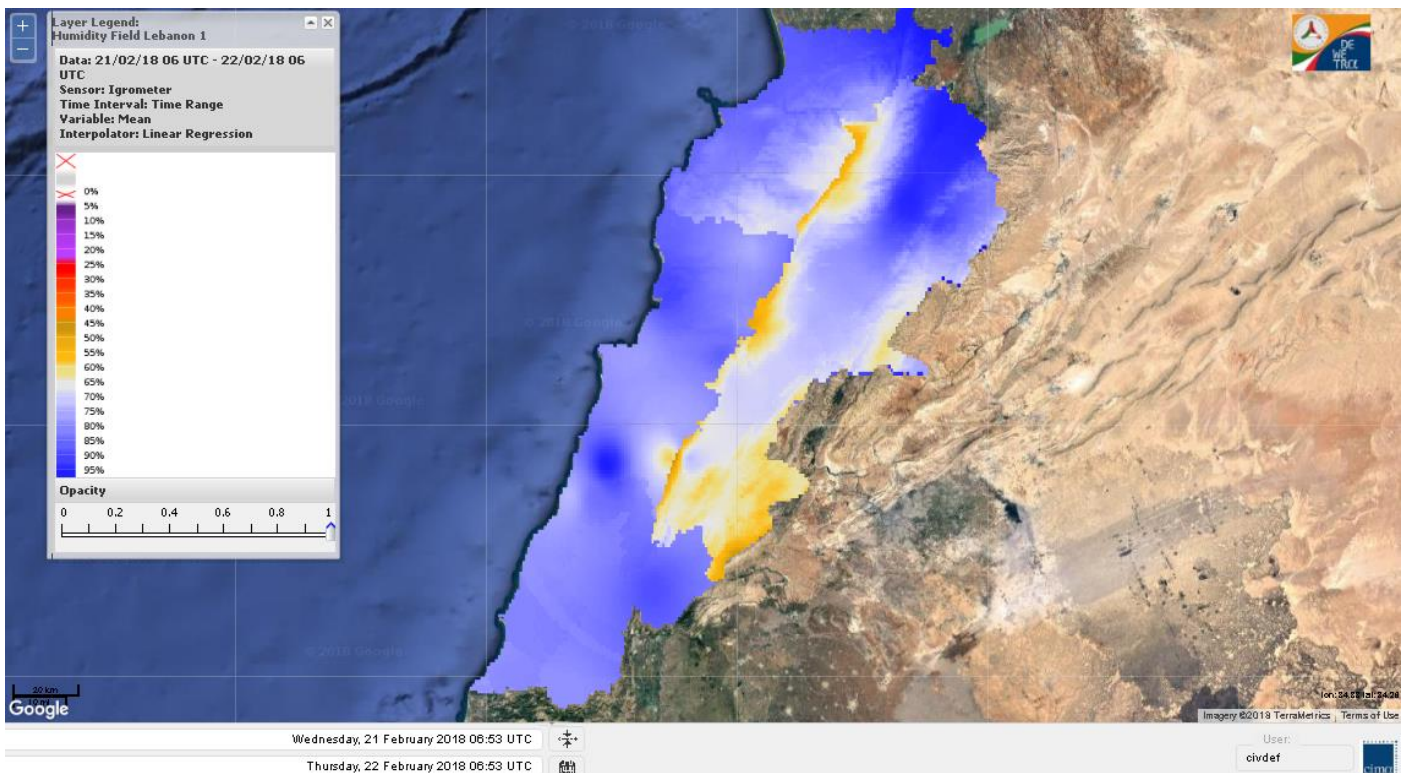
Data: Run: 22/02/2018 00:00. Forecast for 22
Model: RISICO for the Republic of Lebanon
Variable: Fire Weather Index
Spatial Resolution: Caza

- VERY LOW
- LOW
- MEDIUM-LOW
- MEDIUM
- MEDIUM-HIGH
- HIGH
- EXTREME

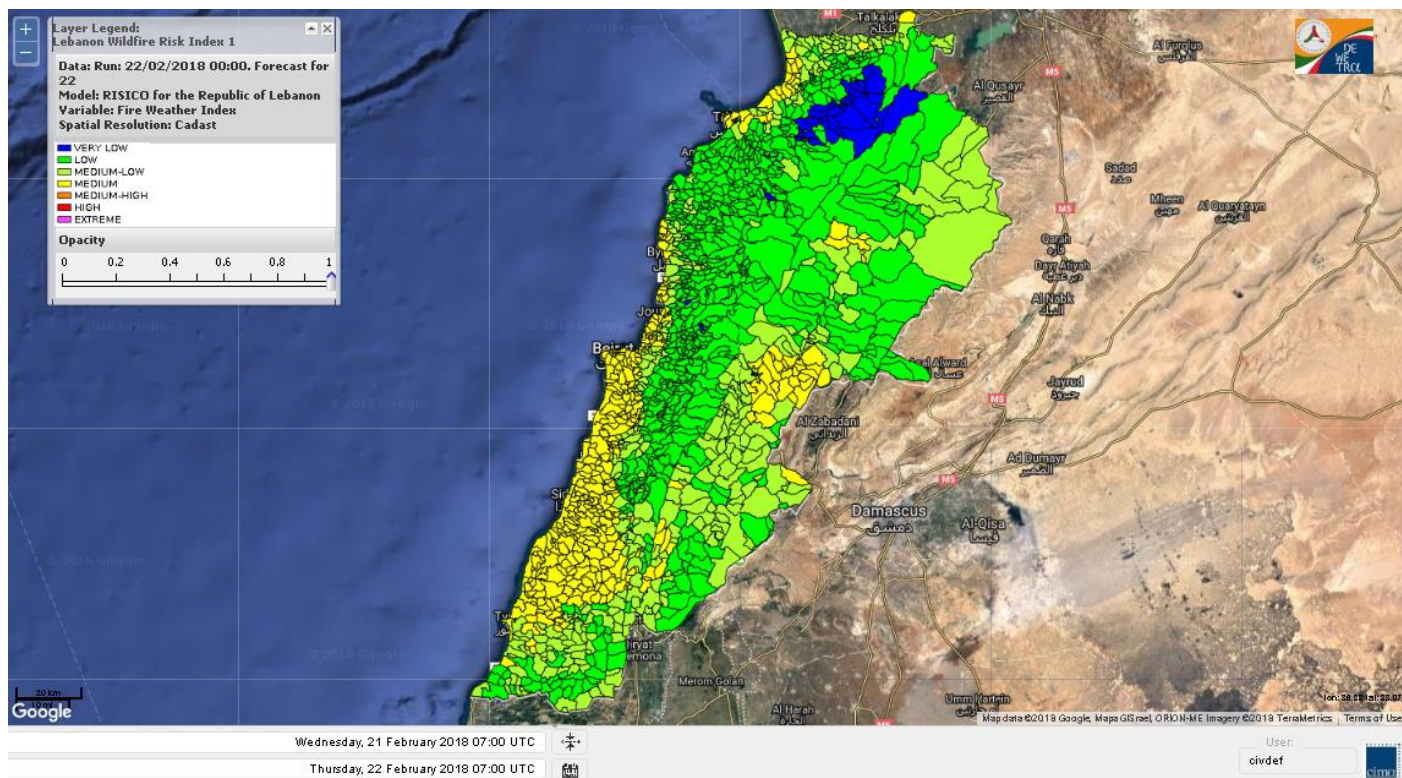
Lebanon temperature for Lebanon 22 Feb 2018



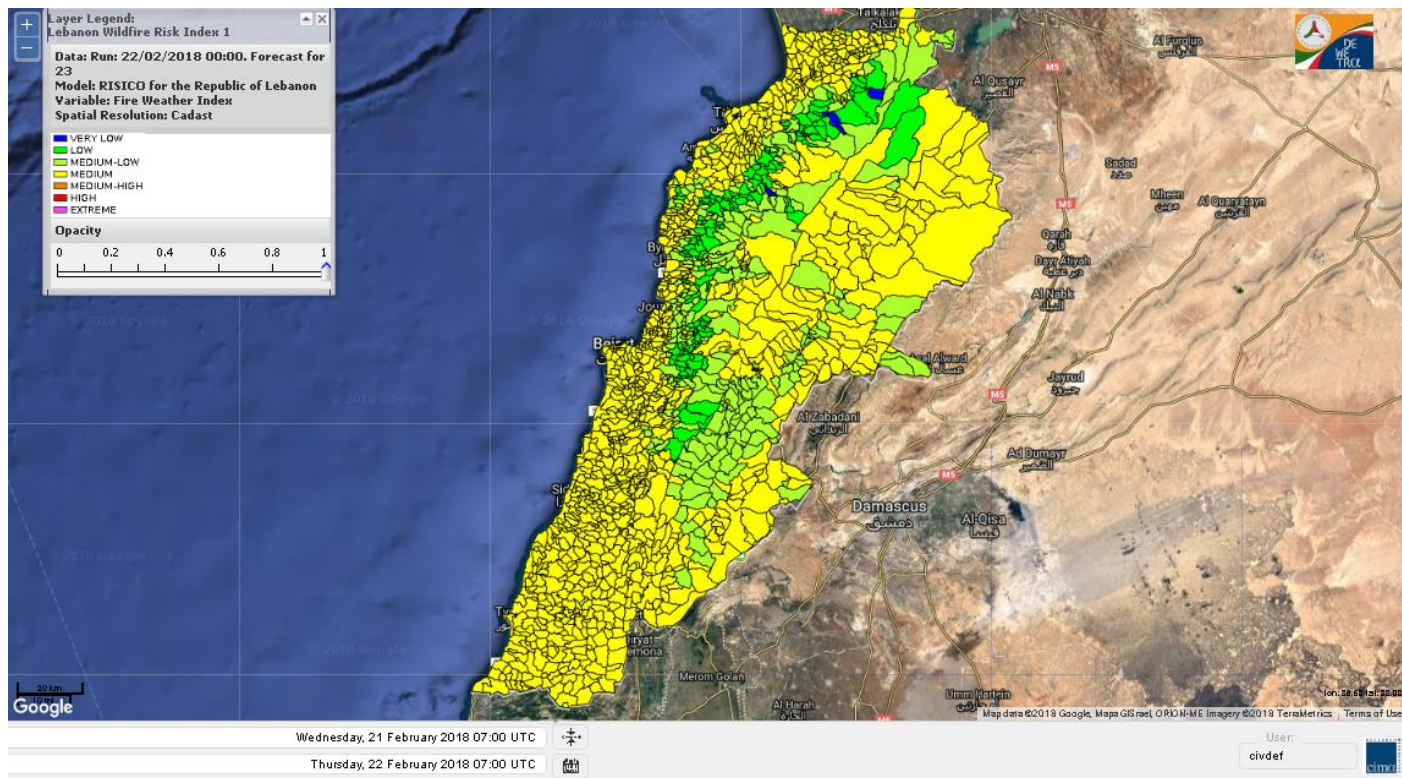
Lebanon humidity for Lebanon 22 Feb 2018



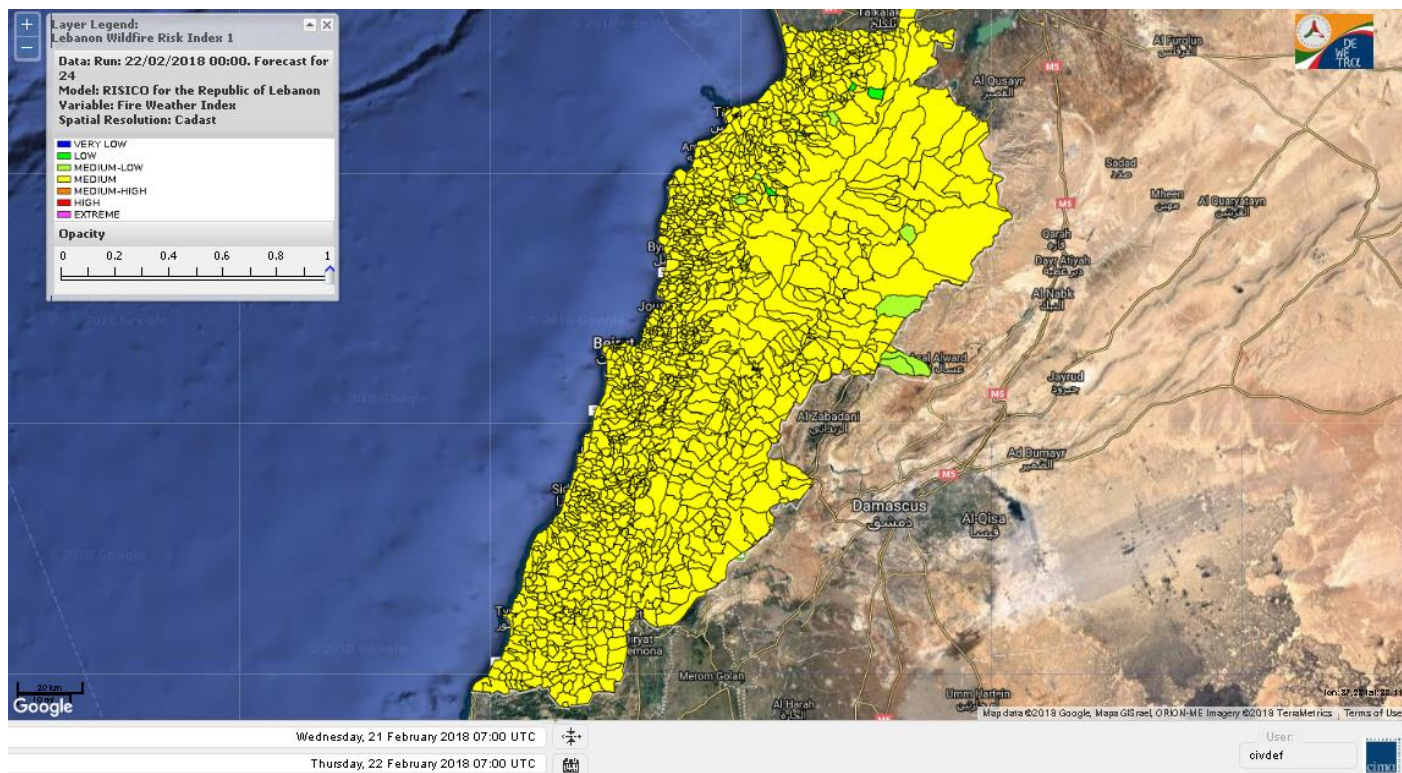
Lebanon for 22 Feb 2018



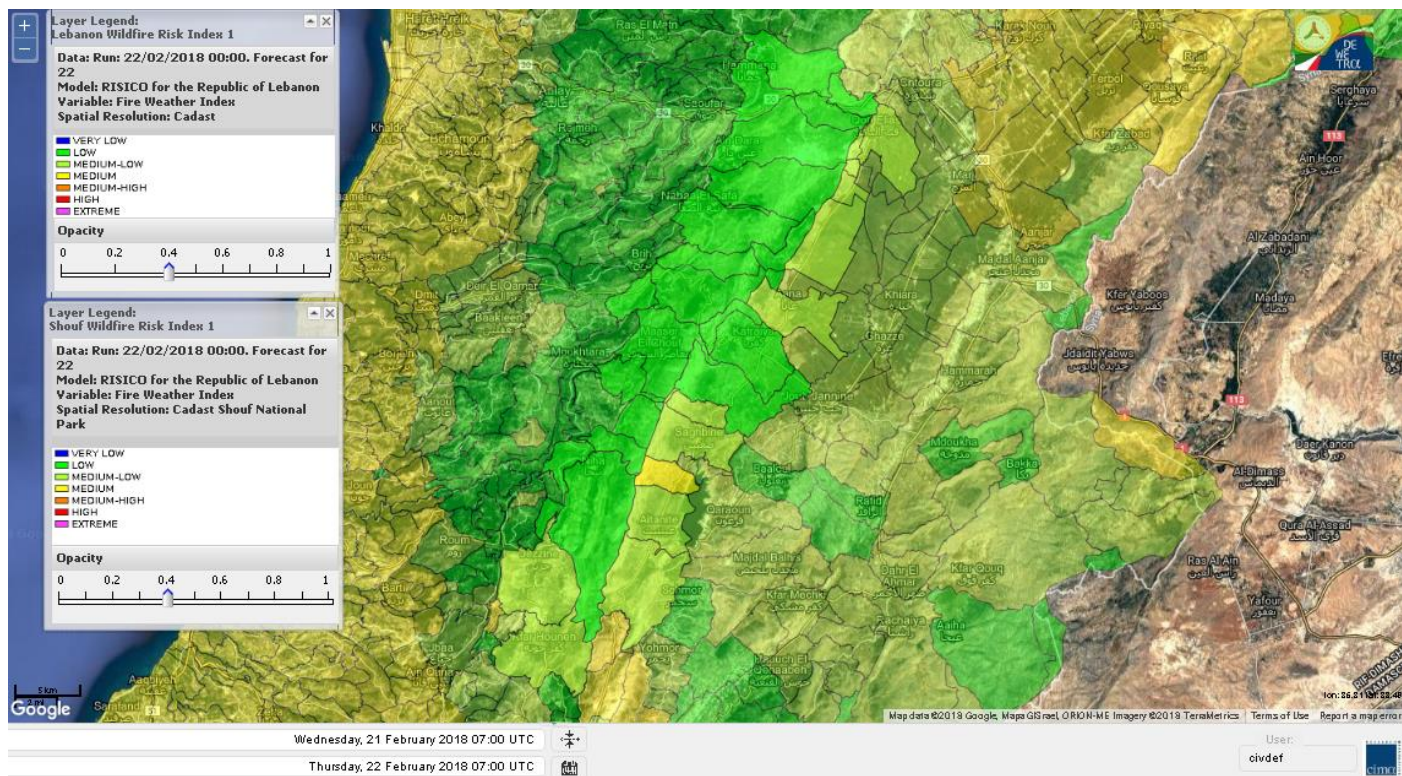
Lebanon for 23 Feb 2018



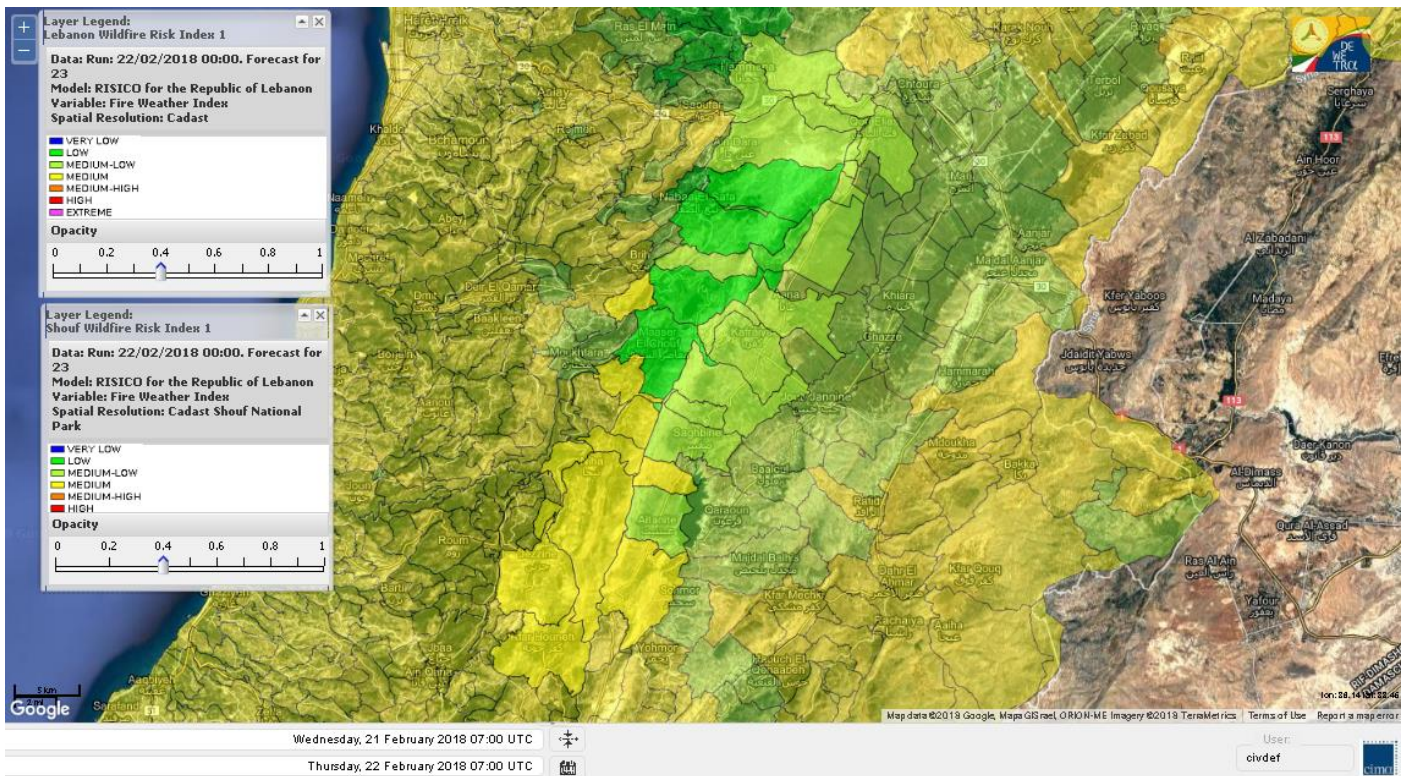
Lebanon for 24 Feb 2018



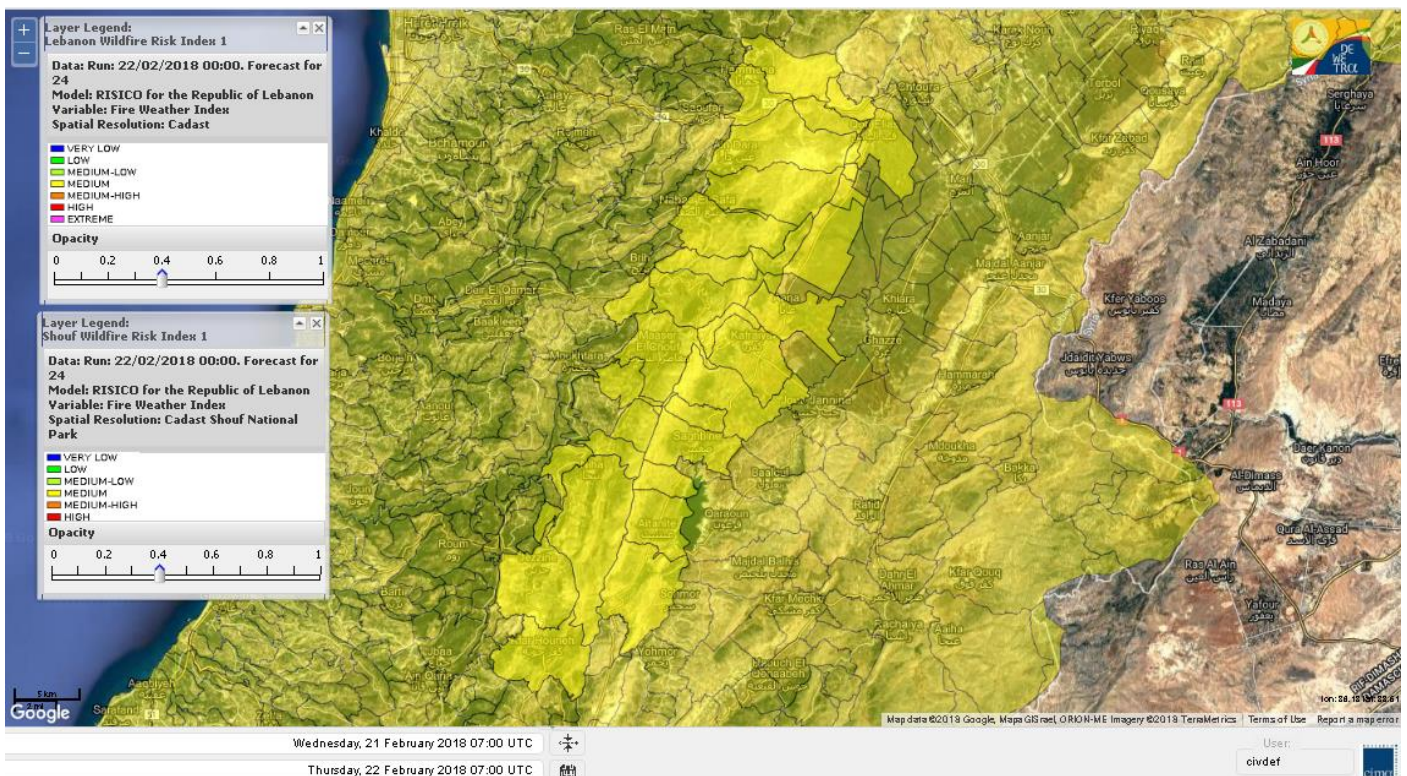
Shouf Biosphere Reserve Forecast for 22 Feb 2018



Shouf Biosphere Reserve Forecast for 23 Feb 2018



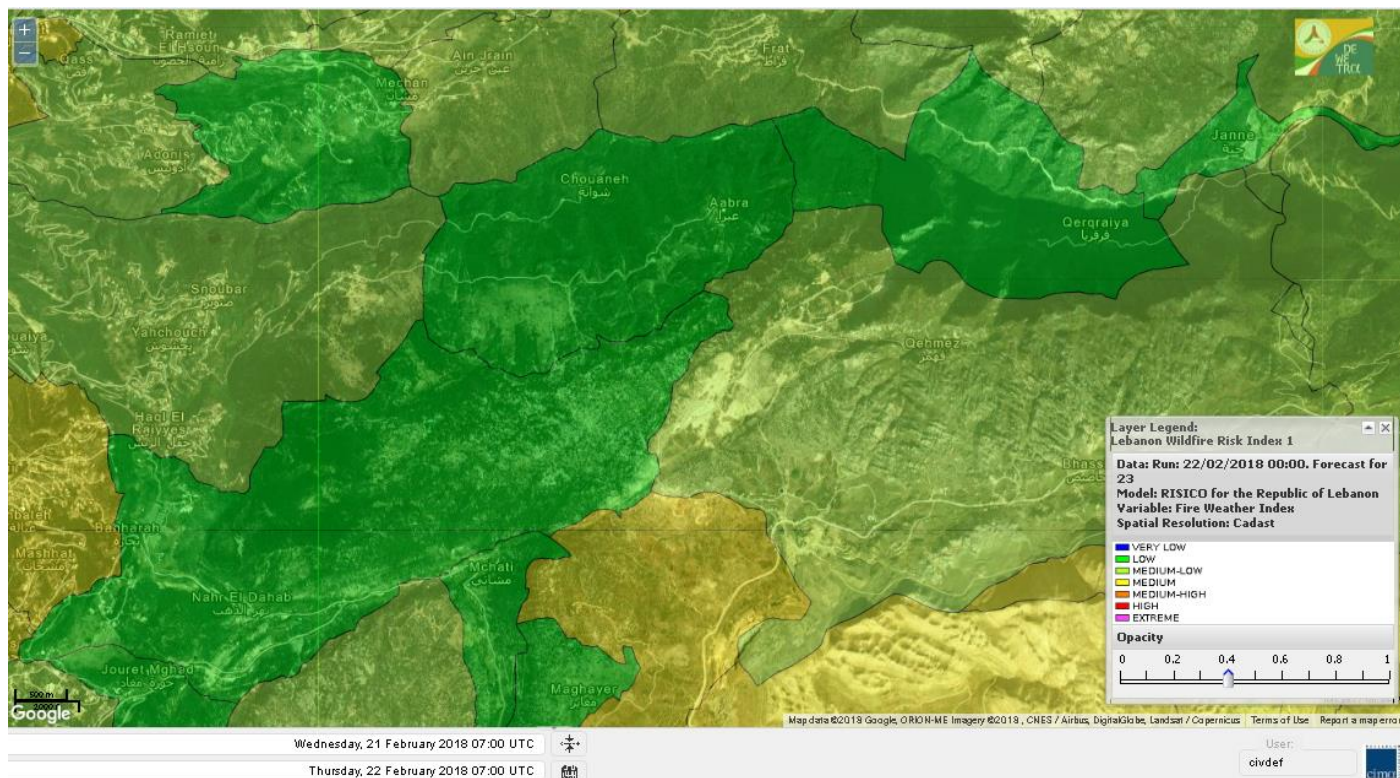
Shouf Biosphere Reserve Forecast for 24 Feb 2018



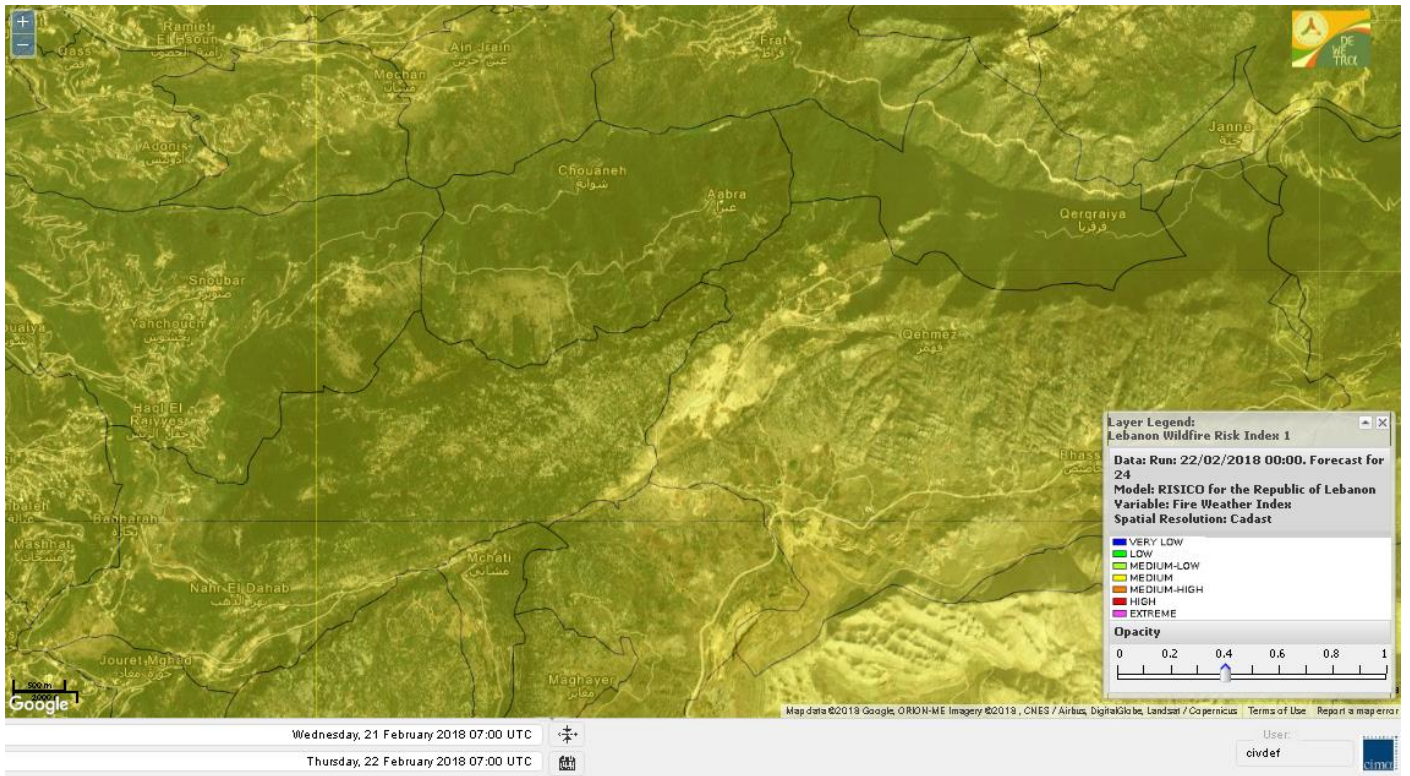
Jabal Moussa Reserve Forecast for 22 Feb 2018



Jabal Moussa Reserve Forecast for 23 Feb 2018



Jabal Moussa Reserve Forecast for 24 Feb 2018



Nord

Koura

Municipality	22-Feb	23-Feb	24-Feb	Municipality	22-Feb	23-Feb	24-Feb	Municipality	22-Feb	23-Feb	24-Feb
Aaba	L	M	M	Afsaddiq	L	M	M	Ain Ekryne	L	M	M
Amioun	L	M	M	Anfeh	L	M	M	Badbhoun	L	M	M
Barghoun	L	M	M	Barsa	L	M	M	Batroumine	L	M	M
Bdebba	L	M	M	Bechmizine	L	M	M	Bednaye El-Koura	L	M	M
Bhabbouch El-Koura	L	M	M	Bkeftine	L	M	M	Bnehran	L	ML	M
Bqaiia El-Koura	L	M	M	Bsarma	L	M	M	Btaaboura	L	M	M
Bterram	L	M	M	Btouratij	L	M	M	Bziza	L	M	M
Dar Beechtar	L	M	M	Dar Chmezzine	L	M	M	Deddeh	L	M	M
Deir El-Balamand	L	ML	M	Fih	L	M	M	Hraiche	L	M	M
Ijdaabrine	L	ML	M	Kaftoun	L	M	M	Kefraya El-Koura	ML	M	M
Kfarakka	L	M	M	Kfarhata	L	ML	M	Kfarhazir	L	M	M
Kfarkahel	L	M	M	Kfarsaroun	L	M	M	Kosba	L	M	M
Mejdel el-Koura	L	ML	M	Nakhle	L	M	M	Qalhat	L	ML	M
Ras Masqa	L	M	M	Rechdibbine	L	M	M	Zakroun	L	M	M
Zgharta El-Mtaouile	L	L	M								

Bcharre

Municipality	22-Feb	23-Feb	24-Feb	Municipality	22-Feb	23-Feb	24-Feb	Municipality	22-Feb	23-Feb	24-Feb
Aabdine	L	ML	M	Bane	L	M	M	Barhelioun	L	L	M
Bazouone	L	ML	M	Becharre	L	ML	M	Beit Menzer	L	ML	M
Billa	L	ML	M	Blaouza	L	M	M	Bqaa Kafra	L	ML	M
Bqerqacha	L	L	M	Breissat	L	ML	M	Dimane	L	ML	M
Hadath El Jobbeh	L	ML	M	Hadchit	L	ML	M	Hasroun	L	ML	M
Mazraat Aassaf	L	L	ML	Mazraat Bani Saab	L	L	M	Mchaa El-Jobbeh	L	L	M
Metrit	L	ML	M	Moghr El-Ahoual	L	ML	M	Ouadi Qannoubine	VL	VL	L
Qanat	L	L	M	Qnayer	L	L	M	Tourza	L	L	M

Batroun

Municipality	22-Feb	23-Feb	24-Feb	Municipality	22-Feb	23-Feb	24-Feb	Municipality	22-Feb	23-Feb	24-Feb
Aabrine	L	ML	M	Aalali	L	ML	M	Aartiz	L	L	M
Abdelli	L	M	M	Ajdabra	L	L	M	Assia	L	L	M
Basbina	ML	M	M	Batroun	ML	M	M	Bcheleh	L	ML	M
Bechtoudar	L	L	M	Beit Chlala	L	L	M	Beit Kassab	L	L	ML
Bijdarfil	ML	M	M	Bqesmaya	L	L	M	Chatine	L	ML	M
Chebtin	L	ML	M	Chekka	L	M	M	Daael	L	L	M
Dahr Abi Yaghi	L	M	M	Daraya El-Batroun	ML	M	M	Deir Billa	L	L	M
Deir Kfifane	ML	M	M	Deir Mar Youhanna EL	L	L	M	Deir Mar Youssef Jra	L	M	M
Douma	L	ML	M	Douq	L	L	M	Eddeh El-Batroun	L	ML	M
Ftihat El-Batroun	L	L	M	Ghouma	L	M	M	Hadtoun	L	ML	M
Hamat	L	M	M	Harbouna	L	L	M	Hardine	L	L	ML
Helta	L	L	M	Hery	ML	M	M	Jebbla	L	L	M
Jrabta El-Batroun	L	M	M	Jrane El-Batroun	ML	M	M	Kfar Aabida	L	ML	M
Kfar Halda	L	L	M	Kfar Shlaimane	L	L	M	Kfarhatna	L	L	M
Kfarhay	L	M	M	Kfarhelos	L	L	M	Kfifane	ML	M	M

Kfour El Arabi	L	ML	M	Koubba	ML	M	M	Kour	L	ML	M
Mar Mama	L	L	M	Masrah	L	L	M	Mehmarch	L	ML	M
Mrah Chdid	L	ML	M	Mrah El Ziyat	L	M	M	Mrah El-Hajj	L	L	M
Nahle El-Batroun	L	ML	M	Niha El-Batroun	L	ML	M	Ouajh El-Hajjar	L	ML	M
Ouata Houb	ML	M	M	Qatnaaoun	L	ML	M	Racha	L	ML	M
Rachana	L	M	M	Rachkida	L	ML	M	Ram El-Batroun	L	L	M
Ras Nahhach	L	M	M	Selaata	ML	M	M	Sghar	L	M	M
Smar Jbayl	L	ML	M	Sourat El-Batroun	L	L	M	Tannourine El-Faouqa	L	ML	M
Tannourine Et-Tahta	L	ML	M	Thoum	ML	M	M	Toula El-Batroun	L	M	M
Zan	L	ML	M								

Zgharta

Municipality	22-Feb	23-Feb	24-Feb	Municipality	22-Feb	23-Feb	24-Feb	Municipality	22-Feb	23-Feb	24-Feb
Aachach	ML	M	M	Aalma	L	M	M	Aarde	L	M	M
Aintourine	L	ML	M	Arabet Qozhaya	L	L	M	Arde	L	M	M
Arjis	L	M	M	Asnoun	L	M	M	Ayto	L	L	M
Basloukit	L	M	M	Bchannine	L	M	M	Besebeel	L	M	M
Bhairret Toula	L	M	M	Bnachee	L	ML	M	Boussit	M	M	M
Danha	L	M	M	Daraiya Zgharta	L	M	M	Deir Jdeide	L	M	M
Ehden	L	M	M	Halan	ML	M	M	Hariq Zgharta	L	M	M
Houakir	L	ML	M	Hraiqis	ML	M	M	laal	L	M	M
Ijbaa	L	L	M	Karm Saddeh	L	L	M	Kfarchakhna	L	M	M
Kfardlaqous	L	M	M	Kfarfou	L	M	M	Kfarhata Zgharta	L	M	M
Kfarhoura	L	M	M	Kfarsghab	L	ML	M	Kfaryachit	L	M	M
Kfarzaina	L	M	M	Khaldiye	L	M	M	Mazraat Ajbeaa	L	M	M
Mazraat Et-Teffah	L	L	M	Mazraat Jneid	L	M	M	Mejdlaiya Zgharta	M	M	M
Merh Kfarsghab	L	ML	M	Miryata	ML	M	M	Miziara	L	L	M
Mzraat Kefraya	ML	M	M	Qorah Bach	L	M	M	Rachiine	L	M	M
Ras Kifa	L	M	M	Sakhra	L	M	M	Sebhel Zgharta	L	L	M
Serhel	L	L	ML	Tallet Zgharta	L	M	M	Toula Zgharta	L	L	M
Zgharta	L	M	M								

Minieh-Denniye

Municipality	22-Feb	23-Feb	24-Feb	Municipality	22-Feb	23-Feb	24-Feb	Municipality	22-Feb	23-Feb	24-Feb
Aasaymout	VL	VL	ML	Aaymar	L	ML	M	Aazki	L	M	M
Ain El-Tineh-Miniyeh	L	L	M	Assoun	L	ML	M	Bakhaaoun	L	ML	M
Bchennata	ML	M	M	Bechehhara	L	L	M	Beddawi	M	M	M
Behouaita	L	ML	M	Beit El Foqss	L	L	M	Beit Haouik	L	ML	M
Beit Zoud	L	L	M	Bekaasafrine	L	M	M	Borj El Yahoudiyeh	ML	M	M
Bqarsouna	L	L	M	Btermaz	VL	L	M	Debaael	VL	L	M
Deir Ammar	ML	M	M	Deir Nbouh	L	ML	M	Haouaret-Miniyeh	L	L	M
Haql el Azimeh	VL	L	M	Harf El Siyad	L	L	ML	Hazmiye-Miniyeh	L	L	M
Izal	L	ML	M	Jarjour	VL	L	M	Jayroun	VL	L	M
Kahf El-Malloul	L	L	M	Karm El-Moher	L	ML	M	Kfar Binine	L	L	M
Kfarchalane	L	ML	M	Kfarhabou	L	M	M	Kharroub-Miniyeh	L	ML	M
Mazraat El-Kreme	L	L	M	Mazraat Ketrane	L	L	M	Merkebta	ML	M	M
Minyeh	M	M	M	Mrah El Sfirat	VL	L	M	Mrah Sraj	L	L	M
Mrebbine	L	ML	M	Nabi Youcheaa	ML	M	M	Nemrine	L	ML	M

Qarhaiya	VL	L	M	Qarne	VL	VL	ML	Qarsita	VL	L	M
Qattineh-Miniyeh	VL	L	ML	Qemmamine	VL	VL	M	Qraine	VL	L	M
Raouda-Aadoua	L	M	M	Rihaniyet-Miniyeh	M	M	M	Sfireh	VL	L	M
Sir Ed-Danniyeh	L	L	M	Tarane	VL	L	M	Terbol-Miniyeh	M	M	M
Zaghartaghriane	L	ML	M	Zouq Bhannine	M	M	M				

Nabatiye

Nabatiye

Municipality	22-Feb	23-Feb	24-Feb	Municipality	22-Feb	23-Feb	24-Feb	Municipality	22-Feb	23-Feb	24-Feb
Aabba	M	M	M	Aazzi	M	M	M	Adchit El-Chqif	M	M	M
Ain Bou Swar	M	M	M	Ain Kana	M	M	M	Ali El-TaHER	ML	M	M
Ansar	M	M	M	Arab Salim	M	M	M	Arnoun	ML	M	M
Bfaroue	M	M	M	Breyqaah	M	M	M	Charqiyeh	M	M	M
Choukine	M	M	M	Deir El Zahrani	M	M	M	Doueir El-Nabatiyeh	M	M	M
Habbouch El-Nabatiye	M	M	M	Hamra El-Nabatiyeh	M	M	M	Harouf El-Nabatiyeh	M	M	M
Hmaile	M	M	M	Houmin El Faouqa	M	M	M	Houmin El Tahta	M	M	M
Jarjough	M	M	M	Jbaah El-Nabatiyeh	ML	M	M	Jebchit	M	M	M
Kfar Djal El-Nabatiy	M	M	M	Kfar Remmane	M	M	M	Kfar Sir	M	M	M
Kfar Tebnit	M	M	M	Kfarfila	M	M	M	Kfour El-Nabatieh	M	M	M
Mayfadoun	M	M	M	Mazraat Bsaffour	M	M	M	Mazraat Chalbaal	M	M	M
Mazraat Dmoul	M	M	M	Mazraat El Khreibeh	M	M	M	Mazraat El-Bayad El-	M	M	M
Mazraat Kfarjaouz	M	M	M	Mazraat Qalaat Meiss	M	M	M	Nabatiyeh El-Fawka	M	M	M
Nabatiyeh Et-Tahta	M	M	M	Namiriyyeh	M	M	M	Qaaqaaiyet El Jisr	M	M	M
Qossaibeh El-Nabatiy	M	M	M	Roumine	M	M	M	Sarba El-Nabatieh	M	M	M
Sir El-Gharbiyeh	M	M	M	Toul	M	M	M	Yehmor El-Nabatiyeh	ML	M	M
Zaoutar El Charkiyeh	M	M	M	Zaoutar El-Gharbiyeh	M	M	M	Zebdine El-Nabatiyeh	M	M	M
Zefta	M	M	M								

Hasbaiya

Municipality	22-Feb	23-Feb	24-Feb	Municipality	22-Feb	23-Feb	24-Feb	Municipality	22-Feb	23-Feb	24-Feb
Ain Jarfa	L	M	M	Abou Qamha	ML	M	M	Ain Qania	L	M	M
Bourghos	ML	M	M	Chebaa	L	M	M	Chouaya Hasbaya	L	M	M
Dellafeh	ML	M	M	Fardiss Hasbaiya	ML	M	M	Hasbaya	L	M	M
Hbariyeh	L	ML	M	Kaoukaba Hasbaiya	M	M	M	Kfar Chouba	L	M	M
Kfar Hamam	L	M	M	Kfeir El-Zait	L	ML	M	Khalwat Hasbaya	L	ML	M
Khreibet Hasbaiya	ML	M	M	Majidiyeh Hasbaiya	L	M	M	Marj Ez-Zhour (Haouc	L	ML	M
Meri	ML	M	M	Mimass	L	M	M	Rachaiya El-Fokhar	L	M	M
Salaiyeb	ML	M	M								

Marjayoun

Municipality	22-Feb	23-Feb	24-Feb	Municipality	22-Feb	23-Feb	24-Feb	Municipality	22-Feb	23-Feb	24-Feb
Aalmane Marjaayoun	L	M	M	Aamra	ML	M	M	Adayseh Marjaayoun	ML	M	M
Adchit El-Koussair	ML	M	M	Ain Arab Marjaayoun	ML	M	M	Bani Haiyann	L	M	M
Blatt Marjaayoun	M	M	M	Blida	ML	M	M	Borj El-Moulouk	ML	M	M
Boueyda Marjaayoun	ML	M	M	Deir Mimass	L	M	M	Deir Siriane	ML	M	M
Dibbine	M	M	M	Ebel El Saqi	ML	M	M	Houla	L	M	M
Houra	ML	M	M	Kfar Kila	ML	M	M	Khiam Marjaayoun	ML	M	M

Klayaa	ML	M	M	Majdel Selem	L	M	M	Marjaayoun	M	M	M
Markaba	ML	M	M	Mays El-Jabal	L	M	M	Mazraat Doumiat	M	M	M
Mazraat Sarada	ML	M	M	Mhaibib	ML	M	M	Qabrikha	L	M	M
Qantara	L	M	M	Rab El-Thalathine	ML	M	M	Saouaneh Marjayoun	ML	M	M
Talloussa	L	M	M	Taybeh Matjaayoun	ML	M	M	Touline	L	M	M

Bent Jbail

Municipality	22-Feb	23-Feb	24-Feb	Municipality	22-Feb	23-Feb	24-Feb	Municipality	22-Feb	23-Feb	24-Feb
Ain-Ebel	L	M	M	Aitaroun	ML	M	M	Aynata Bint Jbeil	L	M	M
Ayta El-Chaeb	L	M	M	Ayta El-Jabal	ML	M	M	Beit Lif	L	M	M
Beit Yahoun	ML	M	M	Bint Jbeil	L	M	M	Borj Qalaway	ML	M	M
Braachit	L	M	M	Chakra	L	M	M	Debel	L	M	M
Deir Antar	ML	M	M	Froun	ML	M	M	Ghandouriyeh Bint Jb	ML	M	M
Hanine	L	M	M	Hariss	ML	M	M	Hdatha	ML	M	M
Jmeymeh	ML	M	M	Kafra Bint Jbeil	L	M	M	Kfar Dounine	ML	M	M
Khirbet Selm	ML	M	M	Kounine	L	M	M	Maroun El Ras	ML	M	M
Qalaway	ML	M	M	Qaouzah	L	M	M	Qatmoun	ML	M	M
Ramya Bint Jbeil	L	M	M	Rchaf	L	M	M	Rmeich	ML	M	M
Safad Al Battikh	ML	M	M	Salhaneh	L	M	M	Serbine	ML	M	M
Sultanieh Bint Jbeil	ML	M	M	Tibnine	ML	M	M	Tiri	L	M	M
Yaroun	ML	M	M	Yater	ML	M	M				

Mont Liban

Jbail

Municipality	22-Feb	23-Feb	24-Feb	Municipality	22-Feb	23-Feb	24-Feb	Municipality	22-Feb	23-Feb	24-Feb
Aabeydat	L	ML	M	Aalita	L	ML	M	Aamchit	M	M	M
Aarab El-Lahib	L	M	M	Aarasta	L	ML	M	Adonis Jbeil	L	ML	M
Afqa Jbeil	L	ML	M	Ain El Delbeh Jbeil	L	ML	M	Ain El-Ghouyba	L	ML	M
Ain Jrain	L	ML	M	Ain Kfah	ML	M	M	Almat El Chemaliyat	L	ML	M
Almat El-Jenoubiya	L	ML	M	Aqoura	L	M	M	Bayzoun	ML	ML	M
Bchille Jbeil	ML	ML	M	Bechtida	L	L	M	Behdaydat	L	ML	M
Beit Habbaq	ML	M	M	Bejjeh	L	M	M	Bekhaaz	ML	M	M
Berbara Jbeil	M	M	M	Bintael	L	ML	M	Birket Hjoula	L	L	M
Blatt Jbeil	ML	ML	M	Boulhos	L	ML	M	Breyj Jbeil	L	L	M
Chamat	ML	M	M	Chikhane	M	M	M	Chmout	L	M	M
Eddeh Jbeil	ML	M	M	Ehmej	L	ML	M	Fatre	L	M	M
Ferhet	ML	M	M	Fghal	L	M	M	Frat	L	ML	M
Ghabat	L	M	M	Ghalboun	L	M	M	Gharzouz	ML	M	M
Ghofrine	ML	M	M	Habil	L	L	M	Halate	ML	M	M
Haqel	L	L	M	Hbaline	ML	M	M	Hboub	ML	ML	M
Hdeine	L	M	M	Hema Er-Rehban	L	M	M	Hema Mar Maroun Aann	L	M	M
Hjoula	L	L	M	Hosrayel	M	M	M	Hsarat	ML	M	M
Hsoun	ML	ML	M	Jaj	L	ML	M	Janne	L	L	M
Jbeil	M	M	M	Jeddeyel Jbeil	M	M	M	Jlisse	L	L	M
Jouret El-Qattine	ML	ML	M	Kfar Baal Annaya	L	L	M	Kfar Kidde	ML	M	M
Kfar Kouas	ML	L	M	Kfar Mashoun	ML	M	M	Kfoun	L	ML	M

Kharbe Jbeil	L	ML	M	Laqlouq	L	M	M	Lassa	L	ML	M
Lehfed	L	L	M	Maad	ML	M	M	Mar Sarkis	L	M	M
Mastita	M	M	M	Mayfouq	L	L	M	Mazraat El Siyad	L	M	M
Mazraat El-Maaden	L	ML	M	Mechane	L	L	M	Mechmech Jbeil	L	L	M
Mehrin	ML	M	M	Mejdel El-Akoura	L	ML	M	Mghayreh Jbeil	L	M	M
Mounsef	M	M	M	Nahr Ibrahim	M	M	M	Qahmez	L	ML	M
Qartaba	L	ML	M	Qartaboun	M	M	M	Qattara Jbeil	L	L	M
Qorqraya	L	L	M	Ramout	ML	M	M	Ras Osta	L	L	M
Rihane Jbeil	M	M	M	Sakiet El-Khayt	L	M	M	Saqi Richmaya	L	ML	M
Sebrine	ML	L	M	Seraita	L	ML	M	Souane Jbeil	ML	M	M
Tadmor	L	M	M	Tartej	L	ML	M	Torzaiya	L	ML	M
Yanouh Jbeil	L	M	M	Zibidine Jbeil	ML	ML	M				

El Metn

Municipality	22-Feb	23-Feb	24-Feb	Municipality	22-Feb	23-Feb	24-Feb	Municipality	22-Feb	23-Feb	24-Feb
Aain El-Qabu	L	L	M	Aain El-Qach	L	ML	M	Aain El-Teffaha	L	ML	M
Aain el-Safssaf El-M	L	L	M	Abou Mizane	L	ML	M	Ain Aar	M	M	M
Ain Alaq	ML	M	M	Ain El-Kharroube	L	M	M	Ain El-Sendiane	L	ML	M
Ain El-Zeitoune	L	L	M	Ain Saadeh	ML	M	M	Aintoura El-Matn	L	M	M
Amaret Chalhoub	M	M	M	Antelias	M	M	M	Atchaneh	ML	M	M
Ayroun	L	ML	M	Baabdat	L	L	M	Baouchariyeh	M	M	M
Baskinta	L	ML	M	Beit Chabab	L	ML	M	Beit El-Chaar	M	M	M
Beit El-Kekko	M	M	M	Beit Mery	ML	M	M	Bhersaf	L	ML	M
Bikfaya	L	ML	M	Biyakout	M	M	M	Bnabil	L	L	M
Bourj Hammoud	M	M	M	Bqennaya	M	M	M	Broummana El-Matn	ML	M	M
Bsalim	ML	M	M	Bsifrine	L	L	M	Bteghrine	L	L	M
Chaouiye	ML	M	M	Chouaya El-Matn	L	ML	M	Choueir	L	ML	M
Chrine	L	L	M	Dahr El Sawan El-Mat	L	ML	M	Daychouniyeh	M	M	M
Dbayeh	M	M	M	Deir Chamra	L	L	M	Deir Mar Abda el Mch	ML	M	M
Deir Mar Roukouz	M	M	M	Deir Tamiche	ML	M	M	Dik El-Mehdi	M	M	M
Dikwaneh	M	M	M	Douar El-Matn	L	ML	M	Fanar	M	M	M
Fraike	ML	M	M	Haret El-Ballaneh	M	M	M	Hbous	M	M	M
Himlaya	L	ML	M	Jal El Did	M	M	M	Jdeideh El-Metn	M	M	M
Jouar El-Matn	L	L	M	Jouret El-Ballout	ML	M	M	Kaaqour	L	L	M
Kfar Aaqab	L	L	M	Kfertay El-Matn	L	ML	M	Khenchara	L	L	M
Khillet El-Mtain	L	L	M	Konnabat Broummana	ML	M	M	Konnabat Salima	L	L	M
Machraah El-Matn	L	L	M	Majdel Tarchich	L	M	M	Majzoub	ML	M	M
Mansouriyeh El-Metn	M	M	M	Mar Boutros Karm Et-	L	ML	M	Mar Chaya et Mzekke	ML	M	M
Mar Moussa Ed-Douar	L	L	M	Marjaba	L	ML	M	Masqa	L	M	M
Mayasse	L	ML	M	Mazraat Deir Aoukar	M	M	M	Mazraat El-Hadirat	M	M	M
Mazraat Yachouh	M	M	M	Mchikha	L	ML	M	Menqlet Mezher	M	M	M
Mhaydseh Matn	L	ML	M	Mkalles	M	M	M	Mrouj	L	M	M
Mtain	L	M	M	Mtaylor	M	M	M	Nabay	ML	M	M
Naccache	M	M	M	Ouadi Chahine	L	ML	M	Ouadi El-Karm El-Mat	VL	L	M
Ouata El-Mrouj	L	ML	M	Ouyoun El-Matn	L	ML	M	Qornet Chehwan	M	M	M
Qornet El-Hamra	ML	M	M	Roumieh	ML	M	M	Sfeilet Bikfaya	L	ML	M
Sinn El-Fil	M	M	M	Zabbougha	L	L	M	Zalqa	M	M	M

Zarouon	L	L	M	Zekrite	ML	M	M	Zighrine El-Matn	L	ML	M
Zouk El-Khrab	M	M	M								

Chouf

Municipality	22-Feb	23-Feb	24-Feb	Municipality	22-Feb	23-Feb	24-Feb	Municipality	22-Feb	23-Feb	24-Feb
Aalmane El-Chouf	M	M	M	Aammq El-Chouf	L	M	M	Ain Ouzein	L	L	M
Ain Qani	L	ML	M	Ain Zhalta	L	L	M	Ainbal	L	M	M
Amatour	L	M	M	Anout	ML	M	M	Atrine	ML	M	M
Baadarane	L	M	M	Baaqline	ML	M	M	Baasir	M	M	M
Barja	M	M	M	Barouk	L	L	M	Bater	L	M	M
Batloun	L	M	M	Bayqoun	ML	M	M	Bchetfine	ML	M	M
Beiteddine	ML	M	M	Benouati Ech-Chouf	M	M	M	Berjein	M	M	M
Bireh et Mtalleh	L	M	M	Biret El-Chouf	L	M	M	Bkechtine Ouel Mchei	M	M	M
Bkifa El-Chouf	M	M	M	Botme	L	ML	M	Bqaiaa Ech-Chouf	M	M	M
Bsaba El-Chouf	L	M	M	Chammis El-Chouf	M	M	M	Chehim	M	M	M
Chemaarine	M	M	M	Chourit	L	ML	M	Daher El-Chouf	M	M	M
Dalhoun	M	M	M	Damour	M	M	M	Daraya El-Chouf	ML	M	M
Deir El-Moukhalles	M	M	M	Deir Baba	ML	M	M	Deir Dourit	ML	M	M
Deir El-Qamar	ML	M	M	Deir Kouche	ML	M	M	Dibbieh	M	M	M
Dmit	M	M	M	Fouara Jaafar	L	M	M	Fraidis El-Chouf	L	ML	M
Ghabet Jaafar	ML	M	M	Gharife	L	M	M	Haret Jandal	L	M	M
Hasrout	L	M	M	Jadra	M	M	M	Jahlieh	M	M	M
Jbeih El-Chouf	L	M	M	Jdeidet El-Chouf	L	ML	M	Jiyeh	M	M	M
Jleilyeh	L	M	M	Jmailiyeh	M	M	M	Joun	M	M	M
Kahlounie El-Chouf	L	M	M	Ketermaya	M	M	M	Kfar Faqoud	ML	M	M
Kfar Hamal	M	M	M	Kfar Him	ML	M	M	Kfar Katra	L	ML	M
Kfar Niss	L	M	M	Kfar hay	L	M	M	Kfarnabrakh	L	M	M
Khirbet Bisri	L	M	M	Knayse El-Chouf	ML	M	M	Maaniyeh	M	M	M
Maasser Beiteddine	L	ML	M	Maasser El-Chouf	L	L	M	Majdalouna	M	M	M
Majdel El-Meouch	L	M	M	Mazboud	M	M	M	Mazmoura	M	M	M
Mazraat El Chouf	L	M	M	Mazraat El Daher	L	M	M	Mazraat El-Douair	L	ML	M
Mechref	M	M	M	Mghairie	M	M	M	Mghayrie El-Chouf	M	M	M
Moukhtara	L	ML	M	Mrusti	L	M	M	Mtolle	L	M	M
Naameh	M	M	M	Niha El-Chouf	L	M	M	Ouadi Abou Youssef	M	M	M
Ouadi Ed-Deir	ML	M	M	Ouadi El-Sit	L	M	M	Ouadi bnehlay	ML	M	M
Qraibeh	L	M	M	Qreiaa	M	M	M	Rmayle El-Chouf	M	M	M
Semqaniyeh	ML	M	M	Sibline	M	M	M	Sirjbeil	M	M	M
Warhanieh	L	ML	M	Werdaniyeh	M	M	M	Zaarourieh	ML	M	M

Baabda

Municipality	22-Feb	23-Feb	24-Feb	Municipality	22-Feb	23-Feb	24-Feb	Municipality	22-Feb	23-Feb	24-Feb
Abadiyeh	L	M	M	Ain Mouaffaq	L	M	M	Araiya	ML	M	M
Arbaniyeh	L	L	M	Arsoun	L	L	M	Baabda	M	M	M
Baalchmey	L	M	M	Bmaryam	L	L	M	Bourj El-Brajneh	M	M	M
Boutchay	M	M	M	Bsaba Baabda	M	M	M	Btekhney	L	L	M
Btibyat	L	L	M	Bzbeddine	L	L	M	Chbeniyeh	L	ML	M
Chiyah	M	M	M	Chmeisset Baabda	L	L	M	Chouit	L	M	M
Deir El-harf	L	L	M	Deir Khouna	L	ML	M	Dlaybeh	L	L	M

Falougha	L	ML	M	Furn El-Chebbak	M	M	M	Hadath Beyrouth	M	M	M
Halaliyeh Baabda	L	ML	M	Hammana	L	ML	M	Haret El Sett	M	M	M
Haret Hamze	L	ML	M	Haret Hreik	M	M	M	Hasbaiya El-Metn	L	L	M
Jouar El-Hoz	L	L	M	Jouret Arsoun	L	L	M	Kfar Chima	M	M	M
Kfar Selouane	L	ML	M	Khalouat Baabda	L	ML	M	Kneisset Baabda	L	L	M
Laylakeh	M	M	M	Louayzeh Baabda	M	M	M	Merdache	M	M	M
Mzairaa Baabda	L	ML	M	Ouadi Chahrour El Ol	M	M	M	Ouadi Chahrour El So	M	M	M
Qalaa Baabda	L	L	M	Qhraybe Baabda	L	L	M	Qobbayaa	L	ML	M
Qornayel	L	L	M	Qortada	L	M	M	Qrayeh Baabda	L	ML	M
Qsaibeh Baabda	L	M	M	Qtale Baabda	L	L	M	Ras El Metn	L	ML	M
Ras El-Haref	L	ML	M	Rouayset El-Ballout	L	M	M	Salima Baabda	L	L	M
Tahouitat El Ghadir	M	M	M	Tarchich	L	ML	M	Zandouqa	L	M	M

Aley

Municipality	22-Feb	23-Feb	24-Feb	Municipality	22-Feb	23-Feb	24-Feb	Municipality	22-Feb	23-Feb	24-Feb
Abey	M	M	M	Aghmid	L	L	M	Ain Dara	L	ML	M
Ain Drafil	M	M	M	Ain El Halazoun	L	M	M	Ain El-Rmmaneh	L	ML	M
Ain Jedideh	L	M	M	Ain Ksour	M	M	M	Ain Onoub	M	M	M
Ain Traz	ML	M	M	Ainab	M	M	M	Aley	L	M	M
Aramoun	M	M	M	Aytat	M	M	M	Azouniyeh	L	ML	M
Baawerta	M	M	M	Badghan Oua Wadi Bad	L	ML	M	Bassatine	M	M	M
Bayssour	M	M	M	Bchamoun	M	M	M	Bdadoun	ML	M	M
Behouara	L	M	M	Bennay	M	M	M	Bhamdoun El-Dayaa	L	M	M
Bhamdoun El-Mhatta	L	M	M	Bkhechey	L	M	M	Bleibel	M	M	M
Bmakine	M	M	M	Bmhay	L	L	M	Bouzrid	ML	M	M
Bserrine	L	M	M	Bsous	ML	M	M	Btalloun	L	M	M
Btater	L	M	M	Chanay	L	M	M	Charoun	L	M	M
Chartoun	ML	M	M	Chemlane	M	M	M	Chouifat El-Aamrous	M	M	M
Chouifat El-Oumara	M	M	M	Chouifat El-Quoubbe	M	M	M	Dakkoun	M	M	M
Deir Qoubel	M	M	M	Dfoun	M	M	M	Douair El Remmaneh	ML	M	M
Ghaboun	L	M	M	Habramoun	L	ML	M	Homs Oua Hama	L	M	M
Houmal	M	M	M	Jisr El Qadi	M	M	M	Kehaleh	ML	M	M
Keyfoun	M	M	M	Kfar Aamey	L	M	M	Kommatyeh	M	M	M
Maasrati	L	M	M	Majdel Baana	L	M	M	Mansourieh et Ain El	L	M	M
Mazraat El-Nahr	L	ML	M	Mchakhte	L	L	M	Mecherfeh	L	M	M
Mejdlaya	M	M	M	Mrayjat	L	ML	M	Ramliyah	L	ML	M
Rechmaya	L	M	M	Rejmeh	L	ML	M	Remhala	M	M	M
Rouaysset El Neemane	L	M	M	Saoufar	L	M	M	Selfaya	M	M	M
Sirhmoul	M	M	M	Souq El Ghareb	M	M	M	Taazanieh	L	M	M

Kesrouane

Municipality	22-Feb	23-Feb	24-Feb	Municipality	22-Feb	23-Feb	24-Feb	Municipality	22-Feb	23-Feb	24-Feb
Achkout	L	ML	M	Adma Oua Dafneh	M	M	M	Ain Ed-Delbe Kesroua	L	L	M
Ain El-Rihane	ML	M	M	Aintoura Kesrouane	M	M	M	Ajaltoun	L	ML	M
Akaybeh Kesrouane	M	M	M	Aramoun Kesrouane	L	ML	M	Azra ouel Ozor	L	M	M
Ballouneh	L	ML	M	Batha	L	ML	M	Bekaatat Achkout	L	ML	M
Bekaatat Kanaan	L	L	M	Bizhel	L	M	M	Bouar	M	M	M
Bqaatouta	L	M	M	Bqaq Ed-Dine	M	M	M	Bzommar	L	M	M

Chahtoul	L	ML	M	Chnaniir	L	ML	M	Chouan	L	L	M
Daraya Kesrouane	L	ML	M	Darououn	M	M	M	Deir Baqlouch	M	M	M
Dlebta	L	ML	M	Eghbeh	VL	L	M	Faraya	L	M	M
Fatka	ML	M	M	Feytroun	L	L	M	Ghazir	ML	M	M
Ghbaleh Kesrouane	L	M	M	Ghedrass	L	ML	M	Ghosta	L	ML	M
Ghynéh	L	M	M	Harharaya w Kattine	L	ML	M	Harissa Kesrouane	M	M	M
Hayata	L	ML	M	Hosein	L	L	M	Hrajel	L	M	M
Jdeideh Ghazir	L	ML	M	Jeita	ML	M	M	Jounieh Ghadir	M	M	M
Jounieh Haret Sakhr	M	M	M	Jounieh Salel Alma	M	M	M	Jounieh Sarba	M	M	M
Jouret Bedrane	L	M	M	Jouret Mhad	L	L	M	Jouret Termos	L	M	M
Kfar Debiane	L	ML	M	Kfar Tay Kesrouane	VL	L	M	Kfar Yassine	M	M	M
Kfour Kesrouane	L	M	M	Kharayeb Nahr Ibrahi	ML	M	M	Klayaat Kesrouane	L	ML	M
Maarab	L	ML	M	Maaysra Kesrouane	ML	M	M	Mayrouba	L	M	M
Mazraat Er-Ras	M	M	M	Mazraat Mrah El-Mir	L	ML	M	Mchaa El Ftouh	L	M	M
Mchaa Faraya	L	M	M	Mchaa Kfar Dibiane	L	M	M	Mghaer	L	L	M
Mradiyah	L	M	M	Nahr Ed-Dahab	L	L	M	Nammoura Kesrouane	ML	M	M
Ouata El Jaouz	L	ML	M	Ouata Sillam	M	M	M	Raachine	L	L	M
Rayfoun	L	ML	M	Safra Kesrouane	M	M	M	Shayle Kesrouane	ML	M	M
Tabarja	M	M	M	Yahchouch	L	ML	M	Zaaytreh	L	M	M
Zeytoun	ML	M	M	Zouk Mikael	M	M	M	Zouk Mosbeh	M	M	M

Baalbek_Hermel

Baalbek

Municipality	22-Feb	23-Feb	24-Feb	Municipality	22-Feb	23-Feb	24-Feb	Municipality	22-Feb	23-Feb	24-Feb
Aadous	L	ML	M	Aamchki	L	ML	ML	Aarsal	ML	M	M
Ain Baalbek	ML	M	M	Ain Bourday	L	M	M	Ain El-Benye	L	M	M
Ain El-Jaouz Baalbek	L	ML	ML	Ain El-Siya Chadoura	L	ML	M	Al Khodr Baalbek	L	M	M
Al Nabi Chit	ML	M	M	Aynata Baalbek	L	M	M	Baalbek	L	M	M
Bachwat	M	M	M	Barqa	M	M	M	Bednayel Baalbak	ML	M	M
Beit Chama	L	M	M	Bijjaje	L	M	M	Bouday	L	ML	M
Brital	L	M	M	Btadi	L	M	M	Chaat	ML	M	M
Chaibe	L	M	M	Chlifa	L	M	M	Chmestar	L	M	M
Dar El-Oussa	ML	M	M	Deir El-Ahmar	ML	M	M	Deir Mar Maroun Baal	L	M	M
Douris	ML	ML	M	Fakiha	ML	M	M	Hadath Baalbek	L	M	M
Ham	L	M	M	Haour Taala	L	M	M	Hizzine	L	M	M
Hlebta	L	M	M	Hosh Barada	L	M	M	Hosh El Dahab	ML	M	M
Hosh El Snid	ML	ML	M	Hosh El-Nabi	ML	ML	M	Hosh El-Rafiq	ML	ML	M
Hosh Tal Safiya	L	ML	M	Hrebta	L	M	M	laat	ML	M	M
Jebaa	L	M	M	Jenta	M	M	M	Kfar Dabach	ML	ML	M
Kfar Dane	L	M	M	Khraibeh El-Hermel	L	M	M	Khreibet Baalbek	ML	M	M
Kneisset Baalbek	ML	M	M	Labueh	L	M	M	Maarboun	L	M	M
Majdaloun	L	ML	M	Maqneh	L	M	M	Mazraat Beit Mcheik	ML	M	M
Misraya	ML	ML	M	Moqraq	ML	M	ML	Nabha El-Damdoum	L	M	M
Nabi Chbay	L	M	M	Nabi Osman	L	M	M	Nahleh baalbek	L	M	M
Ouadi El-Oss	L	M	M	Qaa Baayoun	ML	M	M	Qaa Jouar Maqiye	ML	M	M
Qaa Ouadi El-Khanzir	ML	M	M	Qah Baalbek	ML	M	M	Qarha Baalbek	M	M	M

Qsarnaba	ML	M	M	Ram Baalbek	ML	M	M	Ras Baalbek El Sahl	ML	M	M
Ras Baalbek El-Charq	ML	M	M	Riha	M	M	M	Saaide	L	M	M
Sbouba	L	M	M	Seriine El-Tahta	M	M	M	Slouqi	ML	M	M
Taiba Baalbek	L	M	M	Talia	ML	ML	M	Taraiya	L	M	M
Temnin El Fawqa	ML	M	M	Temnin El-Tahta	M	ML	M	Tfail	L	ML	ML
Yahfoufa	ML	M	M	Yammouneh	L	M	M	Younine	L	M	M
Zboud	L	M	M								

Hermel

Municipality	22-Feb	23-Feb	24-Feb	Municipality	22-Feb	23-Feb	24-Feb	Municipality	22-Feb	23-Feb	24-Feb
Charbine El-Hermel	VL	L	M	Hermel Jbab	L	M	M	Hermel	L	M	M
Maaysra El-Hermel	L	ML	M	Michaa Mrajhine	VL	ML	M	Ouadi Faara	L	M	M
Ras Baalbek - Ouadi	L	M	M	Ras Baalbek El Gharb	L	ML	M	Zighrine	L	L	M

Akkar

Akkar

Municipality	22-Feb	23-Feb	24-Feb	Municipality	22-Feb	23-Feb	24-Feb	Municipality	22-Feb	23-Feb	24-Feb
Aain Tinta	L	M	M	Aaiyat	L	M	M	Aakkar El-Aatiqa	VL	L	M
Aamar Akkar	M	M	M	Aamar El Baykat	ML	M	M	Aamayer	L	M	M
Aamriyet Akkar	ML	M	M	Aandqet	L	ML	M	Aarmeh	ML	ML	M
Aarqa	ML	M	M	Aawaynat	ML	M	M	Aayoun Akkar	L	M	M
Abboudiye	ML	M	M	Ain El-Zeit	L	M	M	Ain Yaaqoub	VL	L	M
Akroum	L	ML	M	Aridet Cheikh Zennad	ML	M	M	Baldeh w Mazraat Bal	L	M	M
Barcha	ML	M	M	Bardeh	ML	M	M	Bebnine	M	M	M
Beino	L	M	M	Beit Ayoub	VL	M	M	Beit El-Haouch	ML	M	M
Beit Mellat	L	M	M	Beit Younes	VL	ML	M	Berbara Akkar	L	M	M
Berqayel	ML	M	M	Bezbina	VL	L	M	Bireh Akkar	L	M	M
Borj	L	M	M	Bqerezla	L	M	M	Bzal	L	ML	M
Chane	L	L	M	Chaqdouf	VL	M	M	Charbila	L	M	M
Cheikh Mohammad	ML	M	M	Cheikh Taba Es-Sahl	ML	M	M	Cheikh Taba	L	M	M
Cheikh Zennad	ML	M	M	Cheikhlar	ML	M	M	Chir Hmairine	ML	M	M
Daghle	L	M	M	Dahr Laissine	L	M	M	Darine	ML	M	M
Dawra	VL	ML	M	Dawsa w Baghdadi	ML	M	M	Dayret Nahr El-Kabir	M	M	M
Deir Dalloum	M	M	M	Deir Jennine	L	M	M	Denbou	L	ML	M
Dibbabiye	ML	M	M	Douair Aadwiyeh	L	M	M	Fassikine	L	M	M
Fnaydek	VL	L	M	Fraydes Akkar	ML	M	M	Ghazayle	ML	M	M
Habchit	VL	L	M	Hakour	L	M	M	Halba	ML	M	M
Haouchab	ML	M	M	Hayssat	L	M	M	Haytla	ML	M	M
Hayzouq	L	M	M	Hedd	L	M	M	Hmaira Akkar	L	M	M
Hmaiss Akkar	L	M	M	Hnaider	ML	ML	M	Hokr Ed-Dahri	ML	M	M
Hokr Etti	ML	M	M	Hokr Jouret Srar	ML	M	M	Houaich	L	ML	M
Hrar	VL	ML	M	Idbil	L	M	M	llat	L	M	M
Janine	ML	M	M	Jdeidet El-Joumeh	L	M	M	Jdeidet El-Kaiteh	L	M	M
Jebroyel	L	M	M	Kafr	L	M	M	Kafr	L	M	M
Karm Asfour	L	M	M	Kfar Melki Akkar	M	M	M	Kfar Noun	ML	ML	M
Kfarharra	L	M	M	Khalsa	ML	M	M	Kharnoubet Akkar	ML	M	M

Khirbet Daoud Aakkar	L	M	M	Khirbet El Remmane	ML	M	M	Khirbet Shar	L	M	M
Khoreybet El-Jindi	ML	M	M	Khreibet Aakkar	VL	M	M	Kneisset Aakkar	ML	M	M
Kneisset Hnaider	ML	ML	M	Knisse	L	M	M	Kroum El-Aarab	ML	M	M
Kwachra	M	M	M	Kweykhat	L	M	M	Machta Hammoud	ML	M	M
Majdala	ML	M	M	Majdel Akkar	L	M	M	Mar Touma	ML	M	M
Marlaya Melhem	M	M	M	Mashha	L	M	M	Massoudiye	ML	M	M
Mazraat Beit Ghattas	L	M	M	Mazraat En-Nahriye	L	M	M	Mechmech	VL	L	M
Memneh	VL	L	L	Mhammara	M	M	M	Mighraq Aakkar	ML	M	M
Minyara	L	M	M	Moqayteh	M	M	M	Mounjez	ML	M	M
Msalla	ML	M	M	Mzeihmeh	ML	M	M	Nfaiseh	ML	M	M
Noura Et-Tahta	ML	M	M	Ouadi El-Haour	ML	M	M	Ouadi El-Jamous	M	M	M
Ouyoun El-Ghizlane	ML	M	M	Qaabarine	M	M	M	Qabaait	VL	L	M
Qachlaq	ML	M	M	Qantara Aakkar	L	M	M	Qarha Aakkar	ML	ML	M
Qarqaf	ML	M	M	Qboula	L	M	M	Qleiaat Aakkar	M	M	M
Qloud El-Baqie	L	M	M	Qobaiyat Aakkar	L	ML	M	Qobbat Chamrat	M	M	M
Qorayat	VL	ML	M	Qornet Aakkar	VL	M	M	Qsair Aakkar	ML	M	M
Rahbe	L	M	M	Rihaniyet Aakkar	L	M	M	Rmah	ML	M	M
Rmoul	M	M	M	Saadine	ML	M	M	Sadaqa	VL	M	M
Saidnaya	L	M	M	Sammouniye	ML	M	M	Saysouq	L	M	M
Semmaqiye	ML	M	M	Semmaqli	M	M	M	Sfinet El-Dreib	L	M	M
Sfinet El-Qaitaa	L	ML	M	Sindyanet Zeidane	L	ML	M	Souaisset Aakkar	L	M	M
Srar	ML	M	M	Tal Abbas El Gharby	ML	M	M	Tal Abbas El-Chargy	L	M	M
Tal Biret	ML	M	M	Tal Hmayra	ML	M	M	Tal Maayan Tal Kiri	ML	M	M
Tal Sibel	M	M	M	Tallet Chattaha	L	M	M	Tikrit	VL	M	M
Tleil	ML	M	M	Tshea	VL	L	M	Zawarib	L	M	M
Zouq El Hosniyeh	L	M	M	Zouq El-Haddara	ML	M	M	Zouq El-Hbalsa	L	M	M
Zouq El-Moqachrine	ML	M	M								

Sud

Sour

Municipality	22-Feb	23-Feb	24-Feb	Municipality	22-Feb	23-Feb	24-Feb	Municipality	22-Feb	23-Feb	24-Feb
Aaiyeh	ML	M	M	Aalma El-Chaab	L	M	M	Aaytit	ML	M	M
Abbassiyeh Sour	M	M	M	Abou Chech	ML	M	M	Ain Abou Abdallah	M	M	M
Ain Baal	ML	M	M	Arzoun	M	M	M	Aziyeh	L	M	M
Baflaya	M	M	M	Barich	M	M	M	Batouliyeh	ML	M	M
Bayad	ML	M	M	Bazouriyeh	M	M	M	Bediass	M	M	M
Bestiyat	M	M	M	Borj El Chemali	ML	M	M	Borj En-Naqoura	ML	M	M
Borj Rahhal	M	M	M	Boustane	ML	M	M	Btaychiyeh	ML	M	M
Chaaitiye	ML	M	M	Chameh	L	M	M	Chehabiye	ML	M	M
Chehour	L	M	M	Chihine	L	M	M	Debaal Sour	M	M	M
Deir Amess	L	M	M	Deir Kifa	ML	M	M	Deir Qanoun El-Ain	ML	M	M
Deir Qanoun El-Naher	M	M	M	Derdghaiya	ML	M	M	Dhayra	L	M	M
Halloussiyeh	M	M	M	Hamoul	L	M	M	Hanaouey	M	M	M
Henniye	M	M	M	Hmairi Sour	M	M	M	Iskandarouna Sour	L	M	M
Jbal El Botom	ML	M	M	Jebbin	ML	M	M	Jennata	M	M	M
Jijim	L	M	M	Jouaiya	ML	M	M	Kneisset Sour	ML	M	M

Maarake	M	M	M	Maaroub	M	M	M	Majadel	ML	M	M
Majdalzoun	ML	M	M	Mansouri Sour	M	M	M	Marnba	ML	M	M
Marouahine	L	M	M	Mazraat El-Zalloutiy	ML	M	M	Mazraat Mechref	ML	M	M
Mazraat Tayr Semhat	L	M	M	Mheilib	M	M	M	Neffakhiyeh	ML	M	M
Niha Sour	ML	M	M	Ouadi Jilo	M	M	M	Qana	ML	M	M
Qolaileh Sour	ML	M	M	Rechknany	ML	M	M	Rmadiyah	M	M	M
Selha Sour	ML	M	M	Siddiqine	ML	M	M	Sour	M	M	M
Srifa	ML	M	M	Tayr Debbe	M	M	M	Tayr Felsay	M	M	M
Tayr Harfa	ML	M	M	Touayri	L	M	M	Toura	M	M	M
Yanouh Sour	ML	M	M	Yarine	ML	M	M	Zebqine	L	M	M

Saida

Municipality	22-Feb	23-Feb	24-Feb	Municipality	22-Feb	23-Feb	24-Feb	Municipality	22-Feb	23-Feb	24-Feb
Aanqoun	M	M	M	Aaqtanit	M	M	M	Aarab Ej-Jall	M	M	M
Aarab Tabbaya	M	M	M	Abra Saida	M	M	M	Adloun	M	M	M
Adousiyeh	M	M	M	Ain-El-Deleb	M	M	M	Arzai	M	M	M
Babliyah	M	M	M	Barty	M	M	M	Bissariyeh	M	M	M
Bnaafoul	M	M	M	Bqosta	M	M	M	Bramiy	M	M	M
Daoudiyeh	M	M	M	Dareb El-Sim	M	M	M	Erkay	M	M	M
Ghassanieh	M	M	M	Ghazieh	M	M	M	Hajjeh	M	M	M
Haret Saida	M	M	M	Hartiyeh	M	M	M	Hlaliye Saida	M	M	M
Insariyat	M	M	M	Jazira Saida	M	M	M	Kafar Bit	M	M	M
Kaoutariyet El-Siyad	M	M	M	Kfar Chellal	M	M	M	Kfar Hatta Saida	M	M	M
Kfar Milke Saida	M	M	M	Khartoum	M	M	M	Khaziz	M	M	M
Khirbet Ed-Douair Sa	M	M	M	Khirbet El-Bassal	M	M	M	Khrayeb Saida	M	M	M
Loubieh	M	M	M	Maghdouche	M	M	M	Majdelyoun	M	M	M
Matariyet El-Choumar	M	M	M	Matayriyeh	M	M	M	Mazraat 'Mseileh	M	M	M
Mazraat 'Snaiber	M	M	M	Mazraat Aarab Soukka	M	M	M	Mazraat Deir Taqla	M	M	M
Mazraat El Yahoudiye	M	M	M	Mazraat El-Housseini	M	M	M	Mazraat El-Mhaydaleh	M	M	M
Mazraat El-Ouasta	M	M	M	Mazraat Jamjim	M	M	M	Mazraat Kaoutariyet	M	M	M
Mazraat Kfar Badda	M	M	M	Mazraat Oussamiyat	M	M	M	Mazraat Sari	M	M	M
Mazraat Sinai	M	M	M	Meemariyeh	M	M	M	Merouaniyeh	M	M	M
Miyeh ou Miyeh	M	M	M	Najjariyeh	M	M	M	Qaaqiyat El-Snaouba	M	M	M
Qnarit	M	M	M	Qraiye Saida	M	M	M	Saida Ed-Dekermane	M	M	M
Saida El-Oustani	M	M	M	Saida El-Qadimeh	M	M	M	Saida Kefraya	M	M	M
Saksakiyeh	M	M	M	Salhieh Saida	M	M	M	Sarafand	M	M	M
Sfenta	M	M	M	Tafahta	M	M	M	Tanbourit	M	M	M
Tebna	M	M	M	Zaghdraiya	M	M	M	Zeita	M	M	M
Zrariyeh	M	M	M								

Jezzine

Municipality	22-Feb	23-Feb	24-Feb	Municipality	22-Feb	23-Feb	24-Feb	Municipality	22-Feb	23-Feb	24-Feb
Ain El-Mir (El Estab	M	M	M	Anane	M	M	M	Aramta	ML	M	M
Ariya	L	M	M	Aychiyeh	ML	M	M	Azour	L	M	M
Baba	L	M	M	Bayssour Jezzine	M	M	M	Benoueteh Jezzine	ML	M	M
Bhannine	L	M	M	Bisri	L	M	M	Bkassine	L	M	M
Bouslaya	M	M	M	Btedine El-Leqech	L	M	M	Chbail	L	M	M
Choualiq Jezzine	M	M	M	Dahr Ed-Deir	M	M	M	Deir El Qattine	L	M	M

Demachqiyeh	M	M	M	Ghabbatiyeh	L	M	M	Harf Jezzine	L	M	M
Hassaniyeh	M	M	M	Haytouleh	M	M	M	Haytura	ML	M	M
Hidab	ML	M	M	Homsiyeh	L	M	M	Jabal Toura	ML	M	M
Jarmaq	M	M	M	Jensnaya	M	M	M	Jernaya	M	M	M
Jezzine	ML	M	M	Karkha	M	M	M	Kfar Falous	M	M	M
Kfar Houna	ML	M	M	Kfar Jarrah	M	M	M	Lebaa	M	M	M
Louayzet Jezzine	ML	M	M	Machmouche	L	M	M	Mahmoudiyeh Jezzine	M	M	M
Maknounye Jezzine	L	M	M	Maraat Ouzaïyeh	M	M	M	Mazraat Daraya	L	M	M
Mazraat El-Aarqoub	ML	M	M	Mazraat El-Mathane	L	M	M	Mazraat El-Rahbane	L	M	M
Mazraat Khallet Khaz	ML	M	M	Mazraat Louzid (Loua	L	M	M	Mazraat Qrouh	M	M	M
Mazraat Tamra	M	M	M	Mazraat Zighrine Jez	ML	M	M	Mazraat	ML	M	M
Mharbiyeh	M	M	M	Midane Jezzine	L	M	M	Mjeydel Jezzine	M	M	M
Mlikh	ML	M	M	Mrah El-Hbasse	M	M	M	Ouadi Baanquodaine	M	M	M
Ouadi El-Laymoun	M	M	M	Ouardiyeh	L	M	M	Qabaa Jezzine	L	M	M
Qatrani	L	M	M	Qaytouleh	L	M	M	Qtaleh Jezzine	M	M	M
Rihane Jezzine	ML	M	M	Rimat	M	M	M	Roum	ML	M	M
Roummanet	M	M	M	Sabbah	L	M	M	Saydoun	M	M	M
Sfaray	M	M	M	Snaya	ML	M	M	Sojoud	ML	M	M
Srayri	ML	M	M	Taaid	L	M	M	Wadi Jezzine	L	M	M
Zhalta	ML	M	M								

Bekaa

West Bekaa

Municipality	22-Feb	23-Feb	24-Feb	Municipality	22-Feb	23-Feb	24-Feb	Municipality	22-Feb	23-Feb	24-Feb
Aammiq BG	ML	ML	M	Ain El Tineh BG	M	M	M	Ain Zebdeh	ML	ML	M
Ana	ML	ML	M	Aytanit	ML	ML	M	Baaloul BG	L	ML	M
Bab Mareh	M	M	M	Chouberqiye Aammiq	ML	ML	M	Dakoue	ML	ML	M
Deir Ain El-Jaouze	ML	ML	M	Deir Tahniche	ML	ML	M	Ghaza	ML	ML	M
Harime El-Soughra	ML	ML	M	Hoch Harimeh	ML	ML	M	Jazira BG	ML	ML	M
Jib Jennine	ML	ML	M	Kamed-El-Laouz	ML	ML	M	Kefraya BG	L	ML	M
Khiara El Atika	ML	ML	M	Khiara	ML	ML	M	Khirbet Qanafar	L	ML	M
Lala	ML	ML	M	Lebbaya BG	L	ML	M	Loussa	M	M	M
Machghara	ML	M	M	Manara (Hammara) BG	ML	ML	M	Mansoura BG	ML	ML	M
Marej BG	ML	ML	M	Maydoun	M	M	M	Ouaqf BG	ML	ML	M
Qaraaoun	ML	ML	M	Qelya	M	M	M	Raouda (Istabel)	M	ML	M
Saghbine	ML	ML	M	Sohmor	L	ML	M	Soltan Yacoub el Ara	ML	ML	M
Souairy	ML	ML	M	Sultan Yaacoub	ML	ML	M	Tal Znoub	ML	ML	M
Yehmor BG	ML	M	M	Zilaya	ML	M	M				

Zahle

Municipality	22-Feb	23-Feb	24-Feb	Municipality	22-Feb	23-Feb	24-Feb	Municipality	22-Feb	23-Feb	24-Feb
Aanjar (Haouch Mouss	M	ML	M	Ablah	M	M	M	Ain Kfarzabad	M	M	M
Ali-El-Nahri	M	ML	M	Bar Elias	M	ML	M	Bouarej	ML	ML	M
Cheberqiyet Tabet	ML	ML	M	Chtaura	ML	ML	M	Deir El Ghazal	M	M	M
Delhamiyet Zahle	M	ML	M	Ferzol	M	M	M	Haouch El-Ghanam	M	ML	M
Haouch Es-Siyadeh	ML	ML	M	Haouch Hala	M	ML	M	Haouch Mandara	ML	ML	M

Haouch Qayssar	ML	ML	M	Hezerta	ML	M	M	Hosh Moussa	M	ML	M
Jdita	ML	ML	M	Kfarzabad	ML	M	M	Ksara	M	ML	M
Majdel Aanjar	ML	ML	M	Makssi	ML	ML	M	Massa	M	M	M
Mazraat Er-Remtaniye	ML	M	M	Mrayjat Zahle	L	ML	M	Mzaraa Zahle	ML	ML	M
Nabi Ayla	M	M	M	Nasriyet Rizk	M	M	M	Nasriyet Zahle	ML	ML	M
Niha Zahle	M	M	M	Ouadi Ed-Deloum	L	ML	M	Ouadi El-Arayech	M	M	M
Qaa El Rim	ML	M	M	Qab Elias	ML	ML	M	Qousaya	M	M	M
Rhit	M	M	M	Riyak	M	ML	M	Saadnayel	M	ML	M
Taal El-Akhdar	ML	ML	M	Taalbeya	ML	ML	M	Taanayel	ML	ML	M
Talamara	M	ML	M	Tcheflik Edde Haouch	ML	ML	M	Tcheflik Qiqano	ML	ML	M
Terbol Zahle	M	ML	M	Touaite Zahle	ML	M	M	Zahle Aradi	ML	M	M
Zahle El-Berbara	M	M	M	Zahle El-Maallaqa	M	M	M	Zahle El-Midane	M	M	M
Zahle Er-Rassiye	M	M	M	Zahle Haouch El-Ouma	M	ML	M	Zahle Haouch El-Ouma	M	ML	M
Zahle Haouch Ez-Zara	M	M	M	Zahle Maalaga Aradi	M	M	M	Zahle Mar Antonios	M	M	M
Zahle Mar Elias	M	M	M	Zahle Mar Gerios	M	M	M	Zahle Saydet En-Naja	M	M	M
Zebdoul	ML	ML	M								

Rachaiya

Municipality	22-Feb	23-Feb	24-Feb	Municipality	22-Feb	23-Feb	24-Feb	Municipality	22-Feb	23-Feb	24-Feb
Ain Arab Rachaiya	ML	M	M	Ain Ata	L	M	M	Ain Harche	ML	M	M
Aqabe Rachaya	ML	M	M	Ayha	L	M	M	Ayta El Fokhar	ML	M	M
Bakifa Rachaya	ML	M	M	Bakka	L	M	M	Beit Lahya	ML	M	M
Bireh Rachaiya	ML	ML	M	Daher El Ahmar	ML	M	M	Deir El-Achayer	ML	ML	M
Heloua Rachaiya	M	M	M	Hoch El Qannabeh Rac	ML	M	M	Kaoukaba Bou Arab	ML	ML	M
Kfar Danis	ML	M	M	Kfar Mechki	ML	M	M	Kfar Qouq	ML	M	M
Kherbet Rouha	ML	M	M	Majdel Balhiss	ML	ML	M	Mdoukha	L	M	M
Mhaydseh Rachaiya	L	ML	M	Nabi Safa	ML	M	M	Rachaiya	ML	M	M
Rafid Rachaiya	L	M	M	Selsata (Mazraat Dei	ML	ML	M	Tannoura	ML	M	M
Yanta	ML	M	M								

Beyrouth

Beyrouth

Municipality	22-Feb	23-Feb	24-Feb	Municipality	22-Feb	23-Feb	24-Feb	Municipality	22-Feb	23-Feb	24-Feb
Achrafieh	M	M	M	Ain el-Mreisse	M	M	M	Bachoura	M	M	M
Beirut Central Distr	M	M	M	Marfai	M	M	M	Mazraa	M	M	M
Medaouar	M	M	M	Minet el-Hosn	M	M	M	Mwssaitbeh	M	M	M
Ras Beirut	M	M	M	Rmeil	M	M	M	Saifi	M	M	M
Zqaq el-Blat	M	M	M								