

Lebanon Fire Risk Bulletin



CIVIL DEDEFENCE

Refer to cadast table condition.

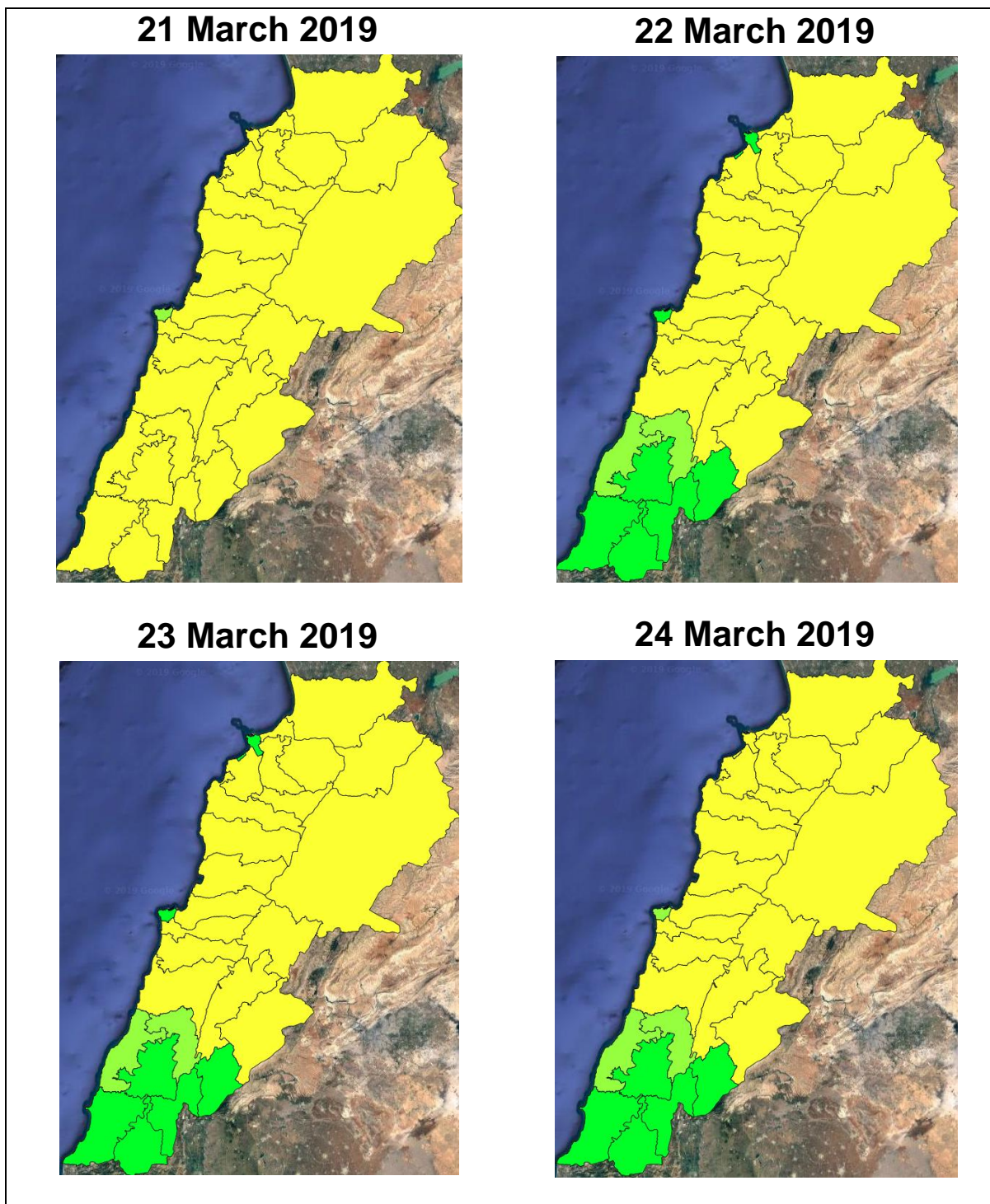
Please note that the indicated temperature is at 2 meters height from the ground.

General description of potential fire risk situation

Symbol	Level of risk	Meaning and actions
VL	Very low	Very low fire risk. Controlled burning operations can be hardly executed due to high fuel moisture content. Normally wildfires self-extinguish.
L	Low	Low fire risk. Controlled burning operations can be executed with a reasonable degree of safety.
ML	Medium low	Medium-low fire risk. Controlled burning operations can be executed in safety conditions. All the fires need to be extinguished.
M	Medium	Medium fire risk. Controlled burning operations would be avoided. All the fires need to be very well extinguished.
M	Medium high	Controlled burning is not recommended. Open flame will start fires. Cured grasslands and forest litter will burn readily. Spread is moderate in forests and fast in exposed areas. Patrolling and monitoring is suggested. Fight fires with direct attack and all available resources.
H	High	Ignition can occur easily with fast spread in grass, shrubs and forests. Fires will be very hot with crowning and short to medium spotting. Direct attack on the head may not be possible requiring indirect methods on flanks. Patrolling and monitoring the territory is highly suggested.
E	Extreme	Ignition can occur also from sparks. Fires will be extremely hot with fast rate of spread. Control may not be possible during day due to long range spotting and crowning. Suppression forces should limit efforts to limiting lateral spread. Damage potential total. Patrolling and monitoring the territory is highly suggested.

Beirut, 22 March 2019

FIRE RISK INDEX

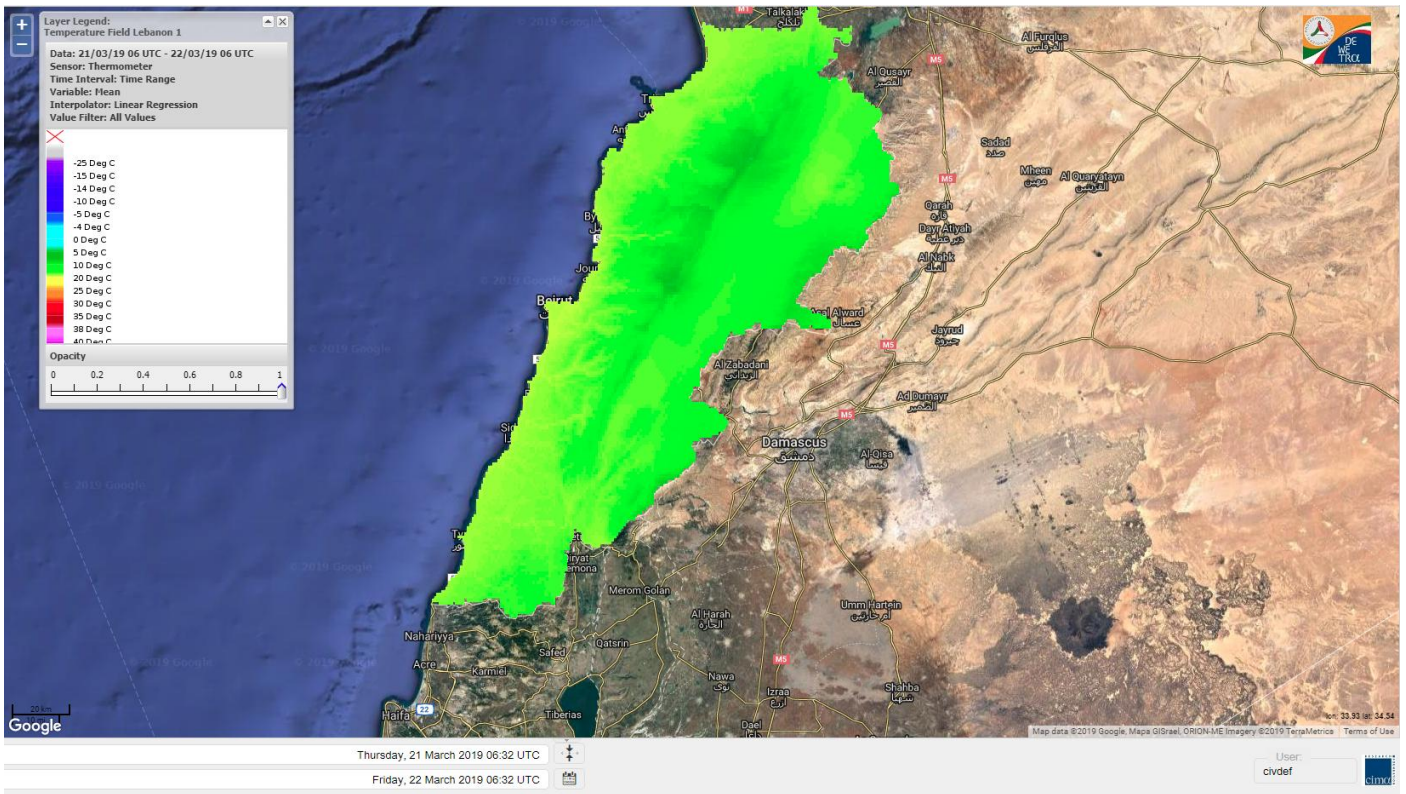


Layer Legend:
Lebanon Wildfire Risk Index 1

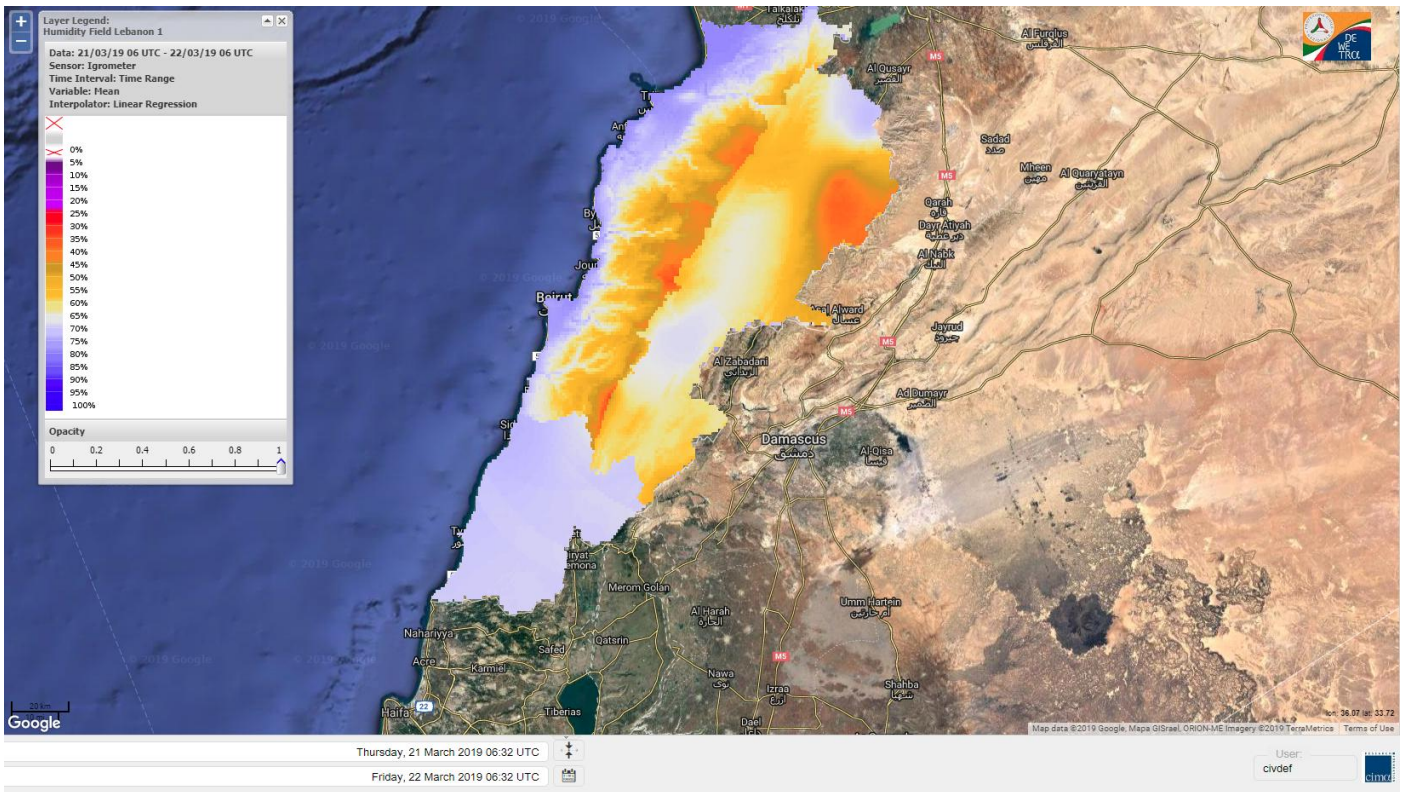
Data: Run: 22/03/2019 00:00. Forecast for 22
Model: RISICO for the Republic of Lebanon
Variable: Fire Weather Index
Spatial Resolution: Caza

- VERY LOW
- LOW
- MEDIUM-LOW
- MEDIUM
- MEDIUM-HIGH
- HIGH
- EXTREME

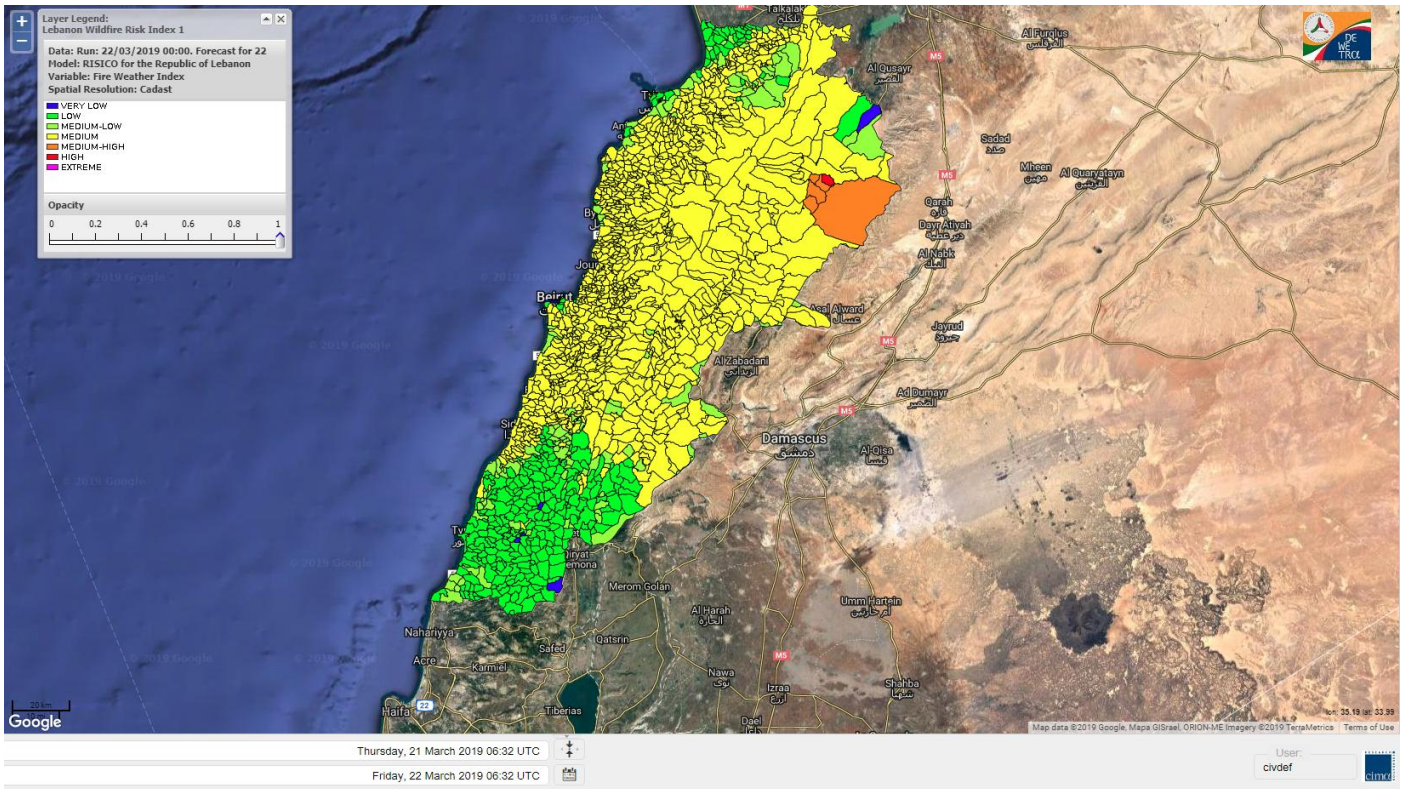
Lebanon temperature for Lebanon 22 March 2019



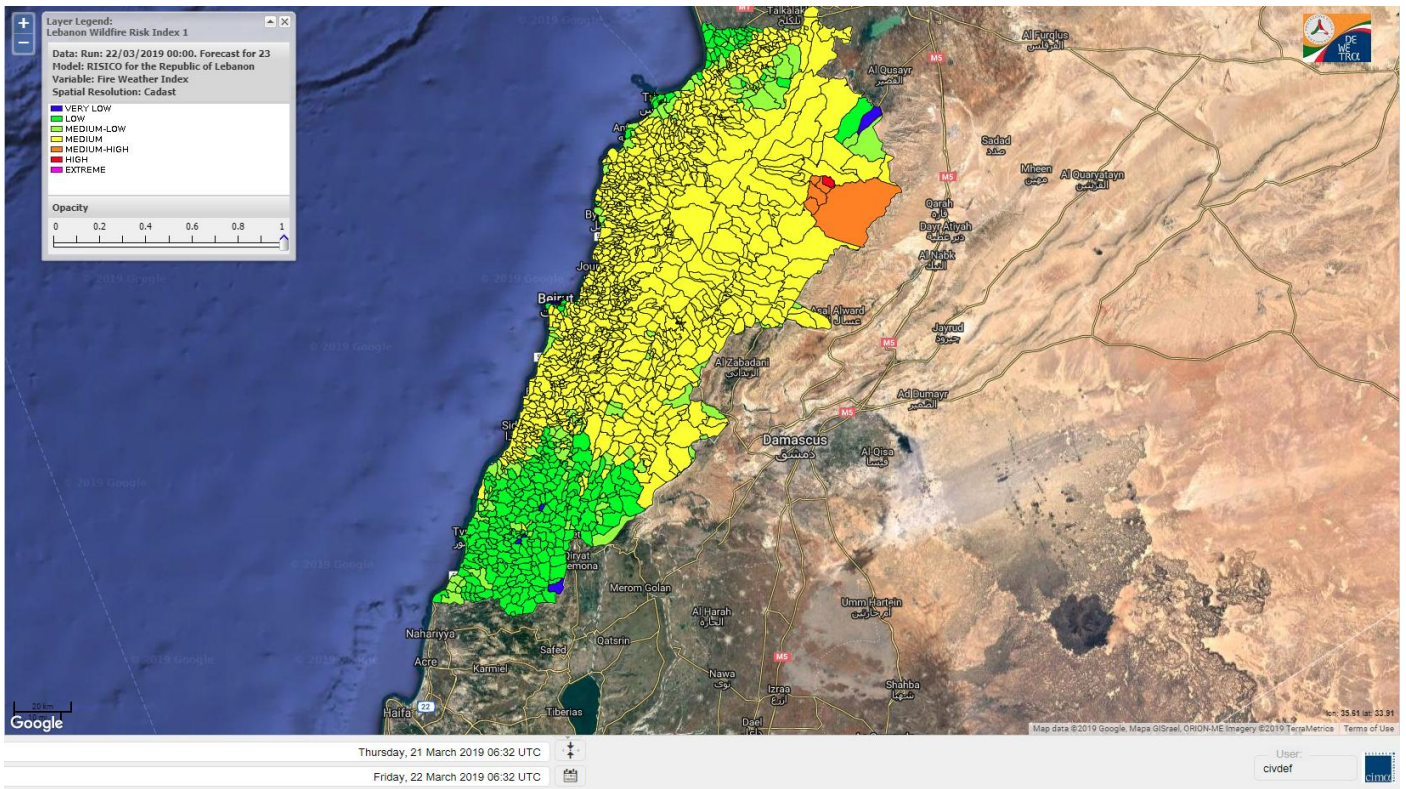
Lebanon humidity for Lebanon 22 March 2019



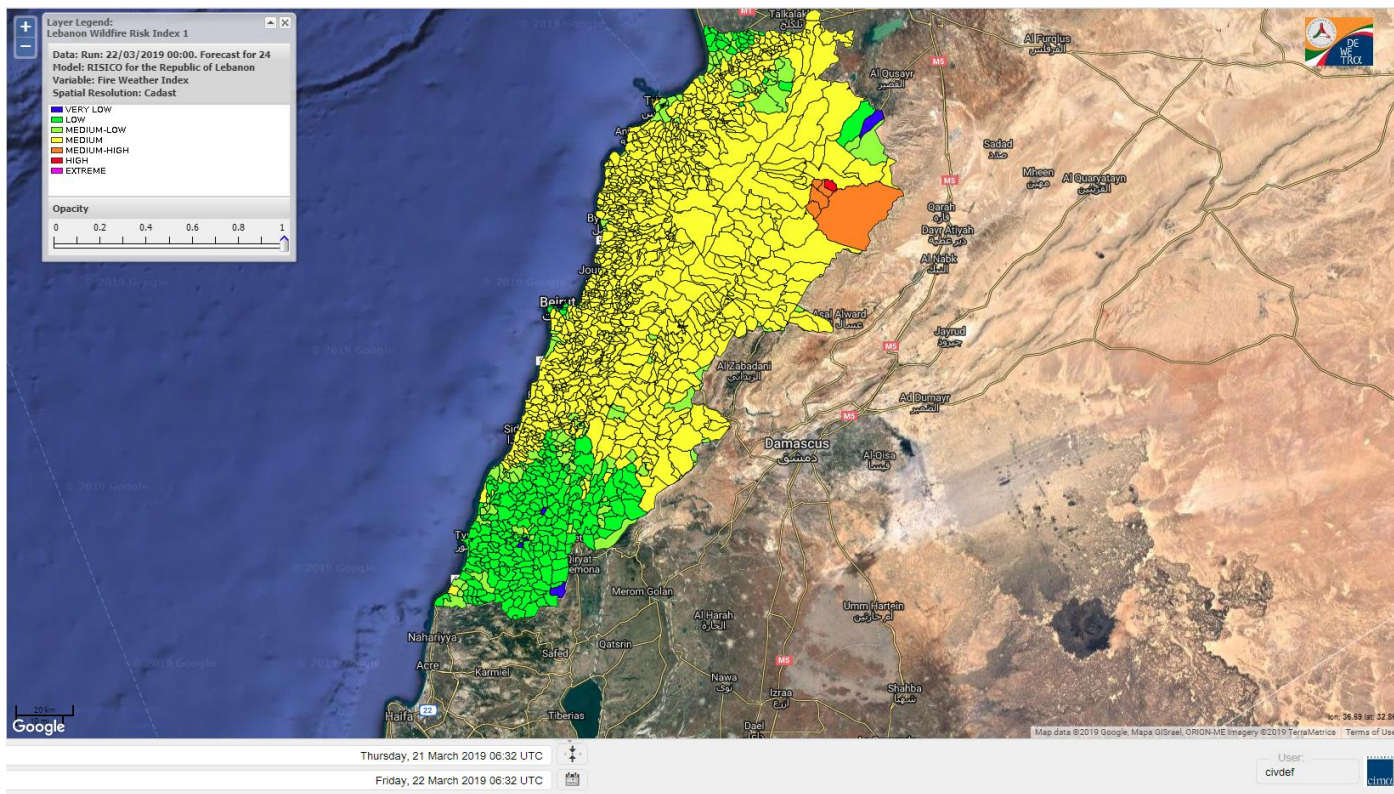
Lebanon for 22 March 2019



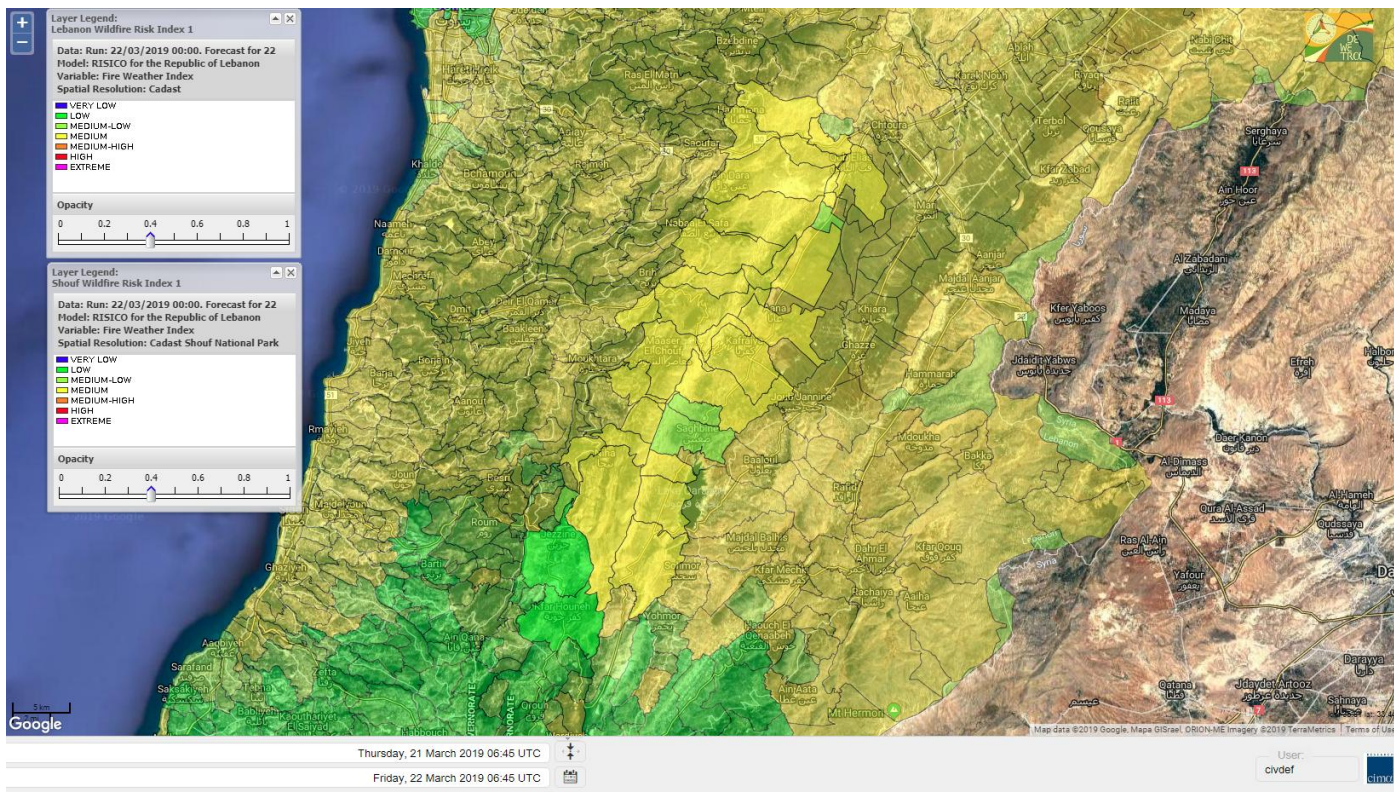
Lebanon for 23 March 2019



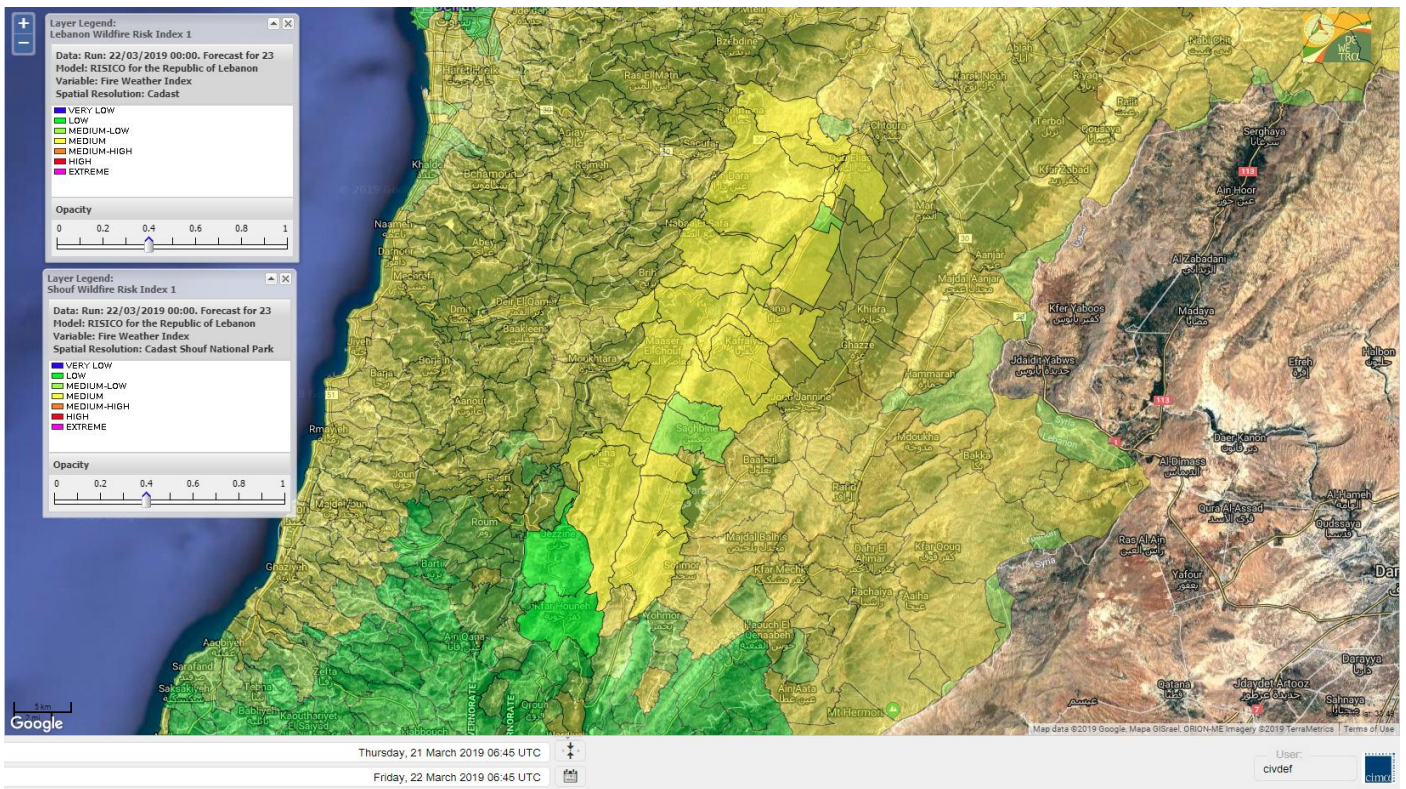
Lebanon for 24 March 2019



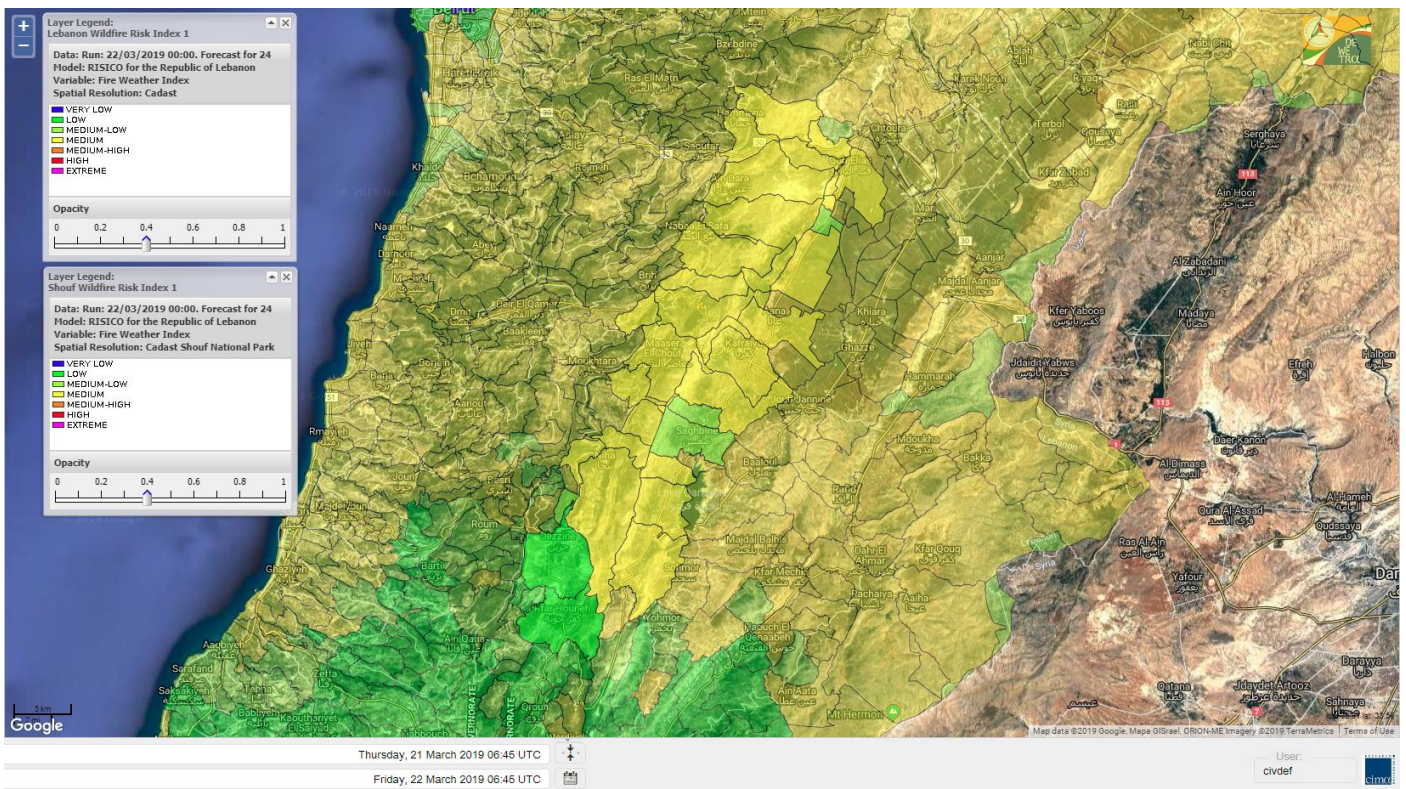
Shouf Biosphere Reserve Forecast for 22 March 2019



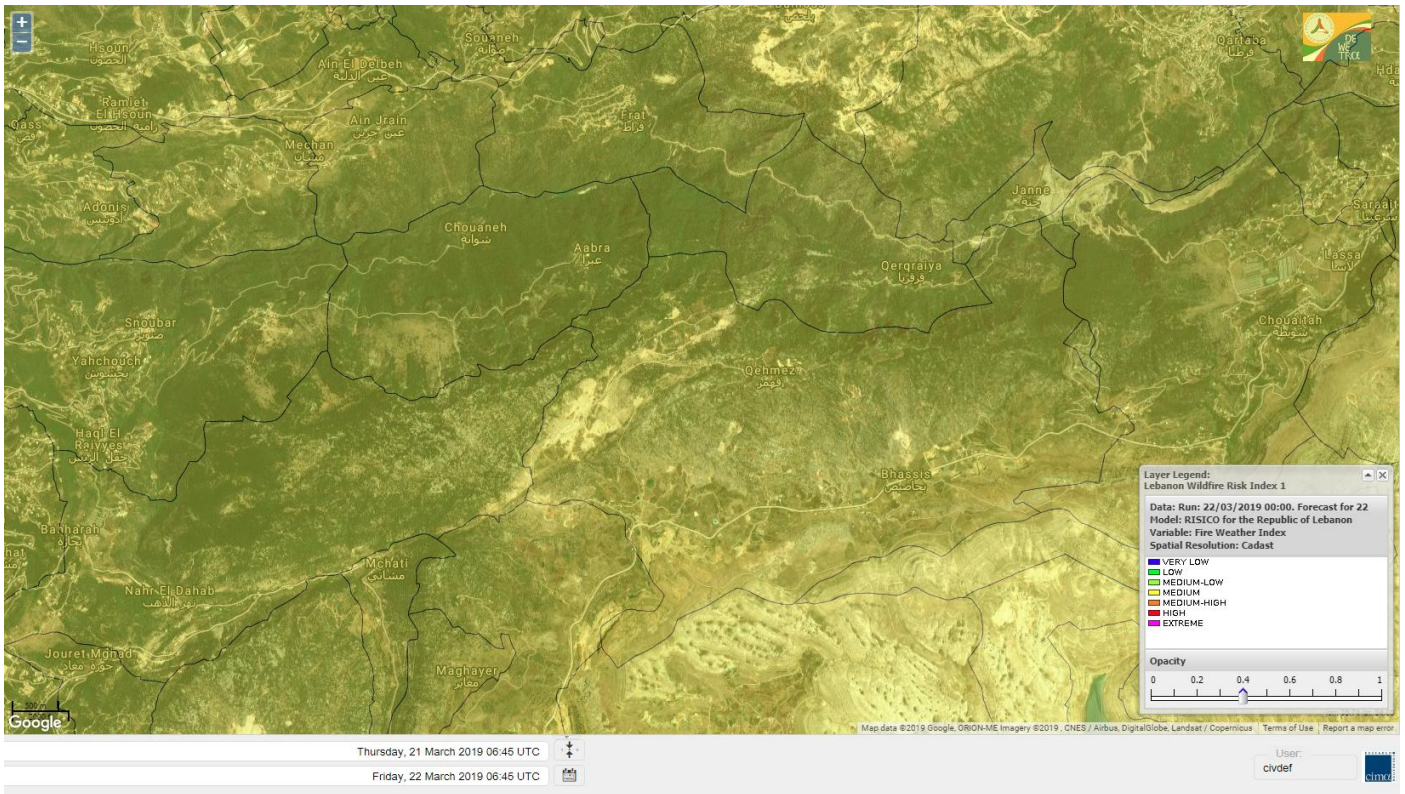
Shouf Biosphere Reserve Forecast for 23 March 2019



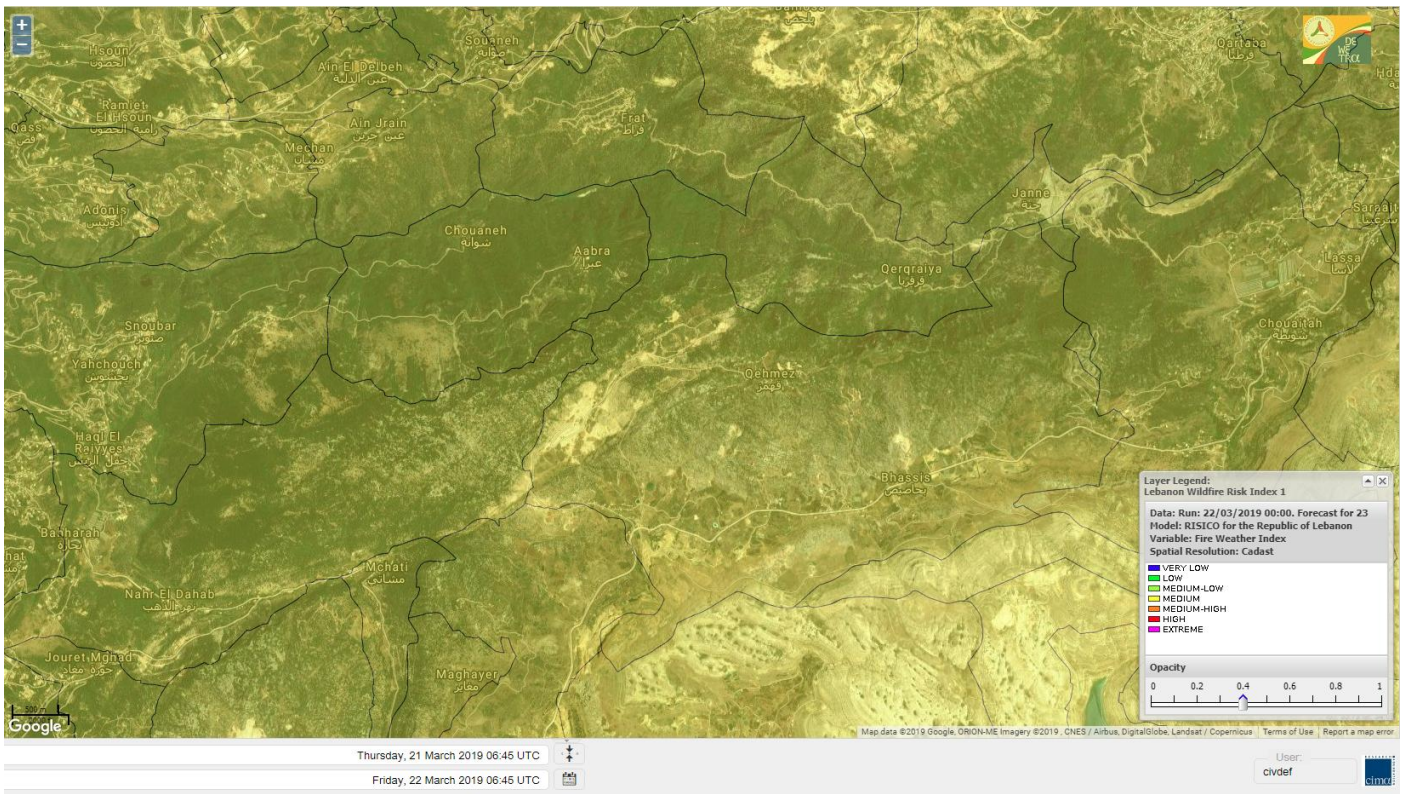
Shouf Biosphere Reserve Forecast for 24 March 2019



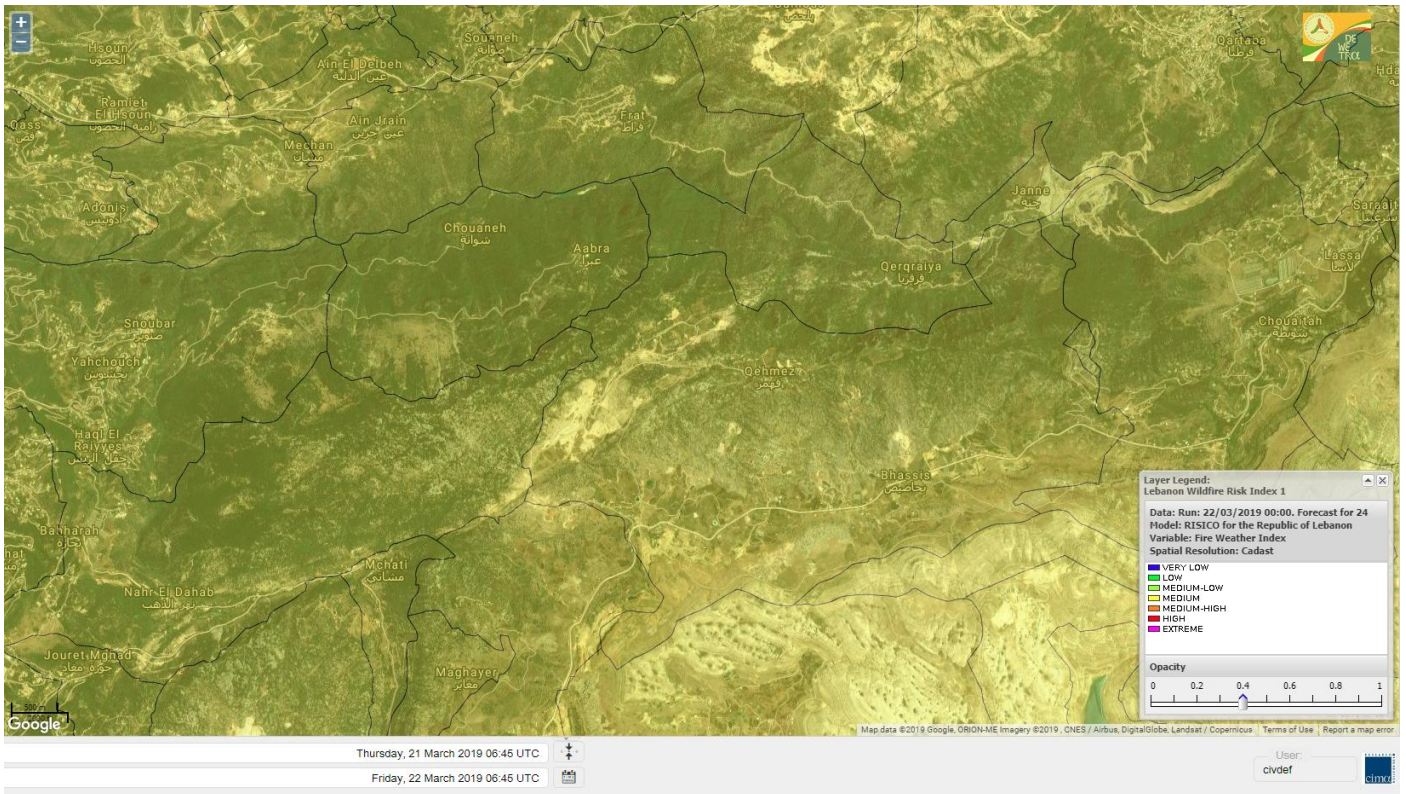
Jabal Moussa Reserve Forecast for 22 March 2019



Jabal Moussa Reserve Forecast for 23 March 2019



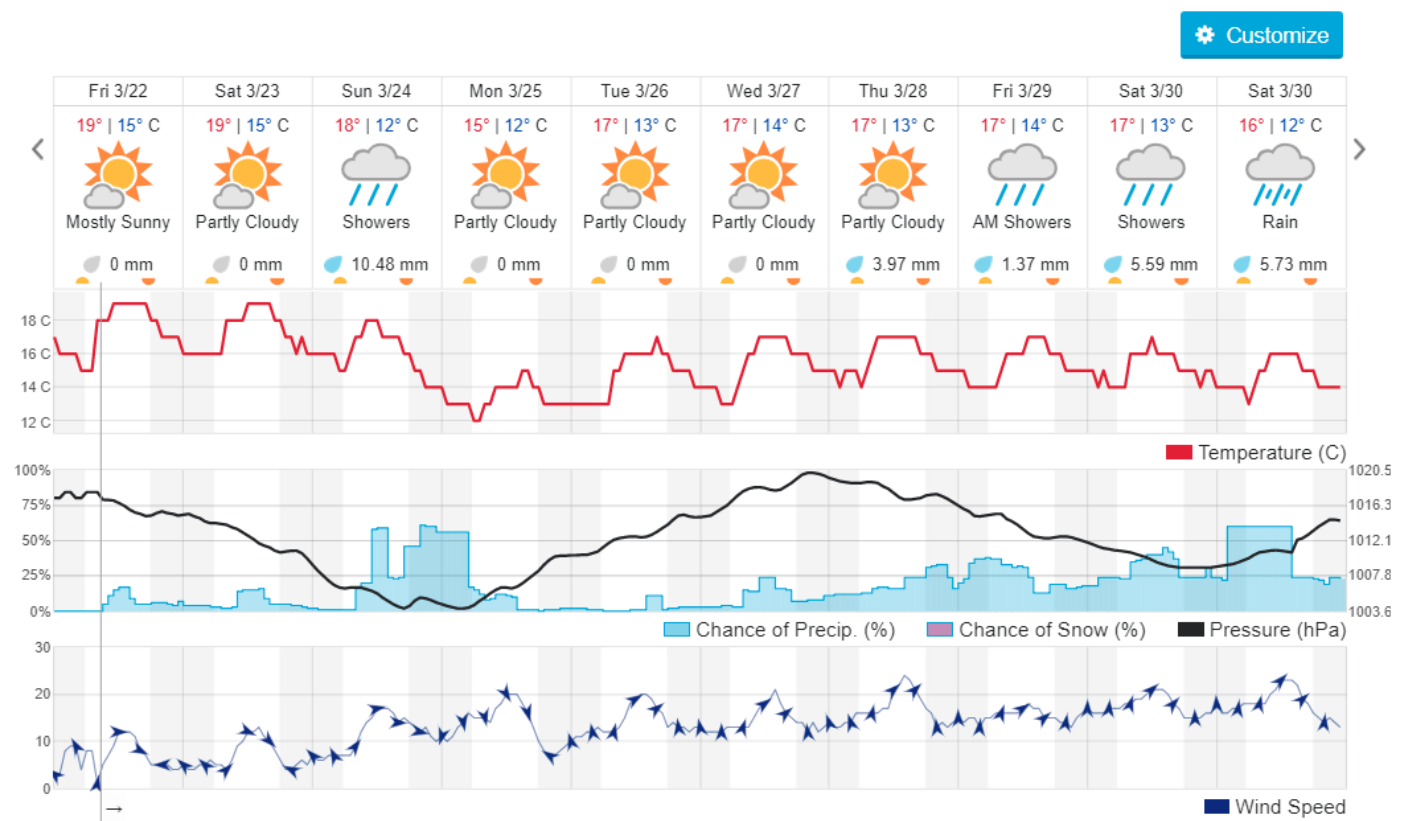
Jabal Moussa Reserve Forecast for 24 March 2019



Beirut, LB ★ 🏠

🌤️ 18° ACHRAFIEH, RIZK STATION | CHANGE ▾

TODAY HOURLY **10-DAY** CALENDAR HISTORY WUNDERMAP



Nord

Koura

Municipality	22-Mar	23-Mar	24-Mar	Municipality	22-Mar	23-Mar	24-Mar	Municipality	22-Mar	23-Mar	24-Mar
Aaba	M	M	M	Afsaddiq	M	M	M	Ain Ekrine	M	M	M
Amioun	M	M	M	Anfeh	L	L	M	Badbhoun	M	M	M
Barghoun	M	M	M	Barsa	M	M	M	Batroumine	M	M	M
Bdebba	M	M	M	Bechmizzine	M	M	M	Bednayel El-Koura	M	M	M
Bhabbouch El-Koura	M	M	M	Bkeftine	M	M	M	Bnehran	M	M	M
Bqaiaa El-Koura	M	M	M	Bsarma	M	M	M	Btaaboura	M	M	M
Bterram	M	M	M	Btouratij	M	M	M	Bziza	M	M	M
Dar Beehtar	M	M	M	Dar Chmezzine	M	M	M	Deddeh	M	M	M
Deir El-Balamand	M	M	M	Fih	M	M	M	Hraiche	ML	ML	M
Ijdaabrine	M	M	M	Kaftoun	M	M	M	Kefraya El-Koura	M	M	M
Kfarakka	M	M	M	Kfarhata	M	M	M	Kfarhazir	M	M	M
Kfarkahel	M	M	M	Kfarsaroun	M	M	M	Kosba	M	M	M
Mejdel el-Koura	M	M	M	Nakhle	M	M	M	Qalhat	M	M	M
Ras Masqa	ML	ML	ML	Rechdibbine	M	M	M	Zakroun	ML	ML	M
Zgharta El-Mtaouile	M	M	M								

Bcharre

Municipality	22-Mar	23-Mar	24-Mar	Municipality	22-Mar	23-Mar	24-Mar	Municipality	22-Mar	23-Mar	24-Mar
Aabdine	M	M	M	Bane	M	M	M	Barhelioun	M	M	M
Bazouone	M	M	M	Becharre	M	M	M	Beit Menzer	M	M	M
Billa	M	M	M	Blaouza	M	M	M	Bqaa Kafra	M	M	M
Bqerqacha	M	M	M	Breissat	M	M	M	Dimane	M	M	M
Hadath El Jobbeh	M	M	M	Hadchit	M	M	M	Hasroun	M	M	M
Mazraat Aassaf	M	M	M	Mazraat Bani Saab	M	M	M	Mchaa El-Jobbeh	M	M	M
Metrit	M	M	M	Moghr El-Ahoual	M	M	M	Ouadi Qannoubine	M	M	M
Qanat	M	M	M	Qnayouer	M	M	M	Tourza	M	M	M

Batroun

Municipality	22-Mar	23-Mar	24-Mar	Municipality	22-Mar	23-Mar	24-Mar	Municipality	22-Mar	23-Mar	24-Mar
Aabrine	M	M	M	Aalali	M	M	M	Aartiz	M	M	M
Abdelli	M	M	M	Ajdabra	M	M	M	Assia	M	M	M
Basbina	M	M	M	Batroun	ML	ML	M	Bcheleh	M	M	M
Bechtoudar	M	M	M	Beit Chlala	M	M	M	Beit Kassab	M	M	M
Bijdarfil	M	M	M	Bqesmaya	M	M	M	Chatine	M	M	M
Chebtin	M	M	M	Chekka	ML	ML	M	Daael	M	M	M
Dahr Abi Yaghi	M	M	M	Daraya El-Batroun	M	M	M	Deir Billa	M	M	M
Deir Kfifane	M	M	M	Deir Mar Youhanna EL	M	M	M	Deir Mar Youssef Jra	M	M	M
Douma	M	M	M	Douq	M	M	M	Eddeh El-Batroun	M	M	M
Ftihat El-Batroun	M	M	M	Ghouma	M	M	M	Hadtoun	M	M	M
Hamat	M	M	M	Harbouna	M	M	M	Hardine	M	M	M
Helta	M	M	M	Hery	ML	ML	ML	Jebila	M	M	M
Jrabta El-Batroun	M	M	M	Jrane El-Batroun	M	M	M	Kfar Aabida	M	M	M
Kfar Halda	M	M	M	Kfarb Shlaimane	M	M	M	Kfarhatna	M	M	M
Kfarhay	M	M	M	Kfarhelos	M	M	M	Kfifane	M	M	M

Kfour El Arabi	M	M	M	Koubba	ML	ML	ML	Kour	M	M	M
Mar Mama	M	M	M	Masrah	M	M	M	Mehmarch	M	M	M
Mrah Chdid	M	M	M	Mrah El Ziyat	M	M	M	Mrah El-Hajj	M	M	M
Nahle El-Batroun	M	M	M	Niha El-Batroun	M	M	M	Oujah El-Hajjar	M	M	M
Ouata Houb	M	M	M	Qatnaaoun	M	M	M	Racha	M	M	M
Rachana	M	M	M	Rachkida	M	M	M	Ram El-Batroun	M	M	M
Ras Nahhach	M	M	M	Selaata	M	M	M	Sghar	M	M	M
Smar Jbayl	M	M	M	Sourat El-Batroun	M	M	M	Tannourine El-Faouqa	M	M	M
Tannourine Et-Tahta	M	M	M	Thoum	M	M	M	Toula El-Batroun	M	M	M
Zan	M	M	M								

Zgharta

Municipality	22-Mar	23-Mar	24-Mar	Municipality	22-Mar	23-Mar	24-Mar	Municipality	22-Mar	23-Mar	24-Mar
Aachach	M	M	M	Aalma	M	M	M	Aarde	M	M	M
Aintourine	M	M	M	Arabet Qozhaya	M	M	M	Arde	M	M	M
Arjis	M	M	M	Asnoun	M	M	M	Ayto	M	M	M
Basloukit	M	M	M	Bchannine	M	M	M	Besebeel	M	M	M
Bhairat Toula	M	M	M	Bnachee	M	M	M	Boussit	M	M	M
Danha	M	M	M	Daraiya Zgharta	M	M	M	Deir Jdeide	M	M	M
Ehden	M	M	M	Halan	M	M	M	Hariq Zgharta	M	M	M
Houakir	M	M	M	Hraiqis	M	M	M	laal	M	M	M
Ijbaa	M	M	M	Karm Saddeh	M	M	M	Kfarchakhna	M	M	M
Kfardlaqous	M	M	M	Kfarfou	M	M	M	Kfarhata Zgharta	M	M	M
Kfarhoura	M	M	M	Kfarsghab	M	M	M	Kfaryachit	M	M	M
Kfarzaina	M	M	M	Khaldiye	M	M	M	Mazraat Ajbeaa	M	M	M
Mazraat Et-Teffah	M	M	M	Mazraat Jneid	M	M	M	Mejdlaia Zgharta	ML	ML	M
Merh Kfarsghab	M	M	M	Miryata	M	M	M	Miziara	M	M	M
Mzraat Kefraya	M	M	M	Qorah Bach	M	M	M	Rachiine	M	M	M
Ras Kifa	M	M	M	Sakhra	M	M	M	Sebhel Zgharta	M	M	M
Serhel	M	M	M	Tallet Zgharta	M	M	M	Toula Zgharta	M	M	M
Zgharta	ML	ML	ML								

Minieh-Denniye

Municipality	22-Mar	23-Mar	24-Mar	Municipality	22-Mar	23-Mar	24-Mar	Municipality	22-Mar	23-Mar	24-Mar
Aasaymout	L	L	L	Aaymar	M	M	M	Aazki	M	M	M
Ain El-Tineh-Miniyeh	M	M	M	Assoun	M	M	M	Bakhaaoun	M	M	M
Bchennata	M	M	M	Bechehara	M	M	M	Beddawi	L	L	ML
Behouaita	M	M	M	Beit El Foqss	M	M	M	Beit Haouik	M	M	M
Beit Zoud	M	M	M	Bekaasafrine	M	M	M	Borj El Yahoudiyeh	M	M	M
Bqarsouna	M	M	M	Btermaz	M	M	M	Debaael	M	M	M
Deir Ammar	ML	ML	ML	Deir Nbough	M	M	M	Haouaret-Miniyeh	M	M	M
Haql el Azimeh	M	M	M	Harf El Siyad	M	M	M	Hazmiye-Miniyeh	M	M	M
Izal	M	M	M	Jarjour	M	M	M	Jayroun	M	M	M
Kahf El-Malloul	M	M	M	Karm El-Moher	M	M	M	Kfar Binine	M	M	M
Kfarchalane	M	M	M	Kfarhabou	M	M	M	Kharroub-Miniyeh	M	M	M
Mazraat El-Kreme	M	M	M	Mazraat Ketrane	M	M	M	Merkebta	M	M	M
Minyeh	ML	ML	M	Mrah El Sfirat	M	M	M	Mrah Sraj	M	M	M
Mrebbine	M	M	M	Nabi Youcheaa	M	M	M	Nemrine	M	M	M

Qarhaiya	M	M	M	Qarne	ML	ML	M	Qarsita	M	M	M
Qattineh-Miniyeh	M	M	M	Qemmamine	M	M	M	Qraine	M	M	M
Raouda-Aadoua	M	M	M	Rihaniyet-Miniyeh	M	M	M	Sfireh	M	M	M
Sir Ed-Danniyeh	M	M	M	Tarane	M	M	M	Terbol-Miniyeh	M	M	M
Zaghartaghrine	M	M	M	Zouq Bhannine	ML	ML	M				

Nabatiye

Nabatiye

Municipality	22-Mar	23-Mar	24-Mar	Municipality	22-Mar	23-Mar	24-Mar	Municipality	22-Mar	23-Mar	24-Mar
Aabba	L	L	L	Aazzi	L	L	L	Adchit El-Chqif	L	L	L
Ain Bou Swar	L	L	L	Ain Kana	L	L	L	Ali El-TaHER	L	L	L
Ansar	L	L	L	Arab Salim	L	L	L	Arnoun	L	L	L
Bfaroue	L	L	L	Breyqaah	L	L	L	Charqiyeh	L	L	L
Choukine	VL	VL	VL	Deir El Zahrani	L	L	L	Doueir El-Nabatiyeh	L	L	L
Habbouch El-Nabatiye	L	L	L	Hamra El-Nabatiyeh	L	L	L	Harouf El-Nabatiyeh	L	L	L
Hmaile	L	L	L	Houmin El Faouqa	L	L	L	Houmin El Tahta	L	L	L
Jarjough	L	L	L	Jbaah El-Nabatiyeh	ML	ML	ML	Jebchit	L	L	L
Kfar Djal El-Nabatiy	L	L	L	Kfar Remmane	L	L	L	Kfar Sir	L	L	L
Kfar Tebnit	L	L	L	Kfarfila	L	L	L	Kfour El-Nabatieh	L	L	L
Mayfadoun	L	L	L	Mazraat Bsaffour	L	L	L	Mazraat Chalbaal	L	L	L
Mazraat Dmoul	L	L	L	Mazraat El Khreibeh	L	L	L	Mazraat El-Bayad El-	L	L	L
Mazraat Kfarjaouz	L	L	L	Mazraat Qalaat Meiss	L	L	L	Nabatiyeh El-Fawka	L	L	L
Nabatiyeh Et-Tahta	L	L	L	Namiriyeh	L	L	L	Qaaqaaiyet El Jisr	L	L	L
Qossabeh El-Nabatiy	L	L	L	Roumine	L	L	L	Sarba El-Nabatieh	L	L	L
Sir El-Gharbiyeh	L	L	L	Toul	L	L	L	Yehmor El-Nabatiyeh	L	L	L
Zaoutar El Charkiyeh	L	L	L	Zaoutar El-Gharbiyeh	L	L	L	Zebdine El-Nabatiyeh	L	L	L
Zefta	L	L	L								

Hasbaiya

Municipality	22-Mar	23-Mar	24-Mar	Municipality	22-Mar	23-Mar	24-Mar	Municipality	22-Mar	23-Mar	24-Mar
Aain Jarfa	L	L	L	Abou Qamha	ML	ML	ML	Ain Qania	L	L	L
Bourghos	L	L	L	Chebaa	L	L	L	Chouaya Hasbaya	L	L	L
Dellafeh	L	L	L	Fardiss Hasbaiya	L	L	L	Hasbaya	L	L	L
Hbariyeh	L	L	L	Kaoukaba Hasbaiya	L	L	L	Kfar Chouba	L	L	L
Kfar Hamam	L	L	L	Kfeir El-Zait	L	L	L	Khalwat Hasbaya	L	L	L
Khreibet Hasbaiya	ML	ML	ML	Majidiyeh Hasbaiya	L	L	L	Marj Ez-Zhour (Haouc	L	L	L
Meri	ML	ML	ML	Mimass	L	L	L	Rachaiya El-Fokhar	ML	ML	ML
Salaiyeb	VL	VL	VL								

Marjayoun

Municipality	22-Mar	23-Mar	24-Mar	Municipality	22-Mar	23-Mar	24-Mar	Municipality	22-Mar	23-Mar	24-Mar
Aalmane Marjaayoun	L	L	L	Aamra	L	L	L	Adayseh Marjaayoun	L	L	L
Adchit El-Koussair	L	L	L	Ain Aarab Marjaayoun	L	L	L	Bani Haiyann	L	L	L
Blatt Marjaayoun	L	L	L	Blida	VL	VL	VL	Borj El-Moulouk	L	L	L
Boueyda Marjaayoun	L	L	L	Deir Mimass	ML	ML	ML	Deir Siriane	L	L	L
Dibbine	L	L	L	Ebel El Saqi	L	L	L	Houla	L	L	L
Houra	ML	ML	ML	Kfar Kila	L	L	L	Khiam Marjaayoun	L	L	L

Klayaa	L	L	L	Majdel Selem	L	L	L	Marjaayoun	L	L	L
Markaba	L	L	L	Mays El-Jabal	VL	VL	VL	Mazraat Doumiat	L	L	L
Mazraat Sarada	VL	VL	VL	Mhaibib	L	L	L	Qabriqha	L	L	L
Qantara	L	L	L	Rab El-Thalathine	L	L	L	Saouaneh Marjayoun	L	L	L
Talloussa	L	L	L	Taybeh Matjaayoun	L	L	L	Touline	L	L	L

Bent Jbail

Municipality	22-Mar	23-Mar	24-Mar	Municipality	22-Mar	23-Mar	24-Mar	Municipality	22-Mar	23-Mar	24-Mar
Ain-Ebel	L	L	L	Aitaroun	L	L	L	Aynata Bint Jbeil	VL	VL	VL
Ayta El-Chaeb	L	L	L	Ayta El-Jabal	L	L	L	Beit Lif	L	L	L
Beit Yahoun	L	L	L	Bint Jbeil	L	L	L	Borj Qalaway	L	L	L
Braachit	L	L	L	Chakra	L	L	L	Debel	L	L	L
Deir Antar	VL	VL	VL	Froun	L	L	L	Ghandouriyeh Bint Jb	L	L	L
Hanine	L	L	L	Hariss	L	L	L	Hdatha	L	L	L
Jmeymeh	L	L	L	Kafra Bint Jbeil	L	L	L	Kfar Dounine	L	L	L
Khirbet Selm	L	L	L	Kounine	L	L	L	Maroun El Ras	VL	VL	VL
Qalaway	L	L	L	Qaouzah	L	L	L	Qatmoun	VL	VL	VL
Ramya Bint Jbeil	L	L	L	Rchaf	L	L	L	Rmeich	L	L	L
Safad Al Battikh	VL	VL	VL	Salhaneh	L	L	L	Serbine	L	L	L
Sultanieh Bint Jbeil	L	L	L	Tibnine	L	L	L	Tiri	L	L	L
Yaroun	L	L	L	Yater	L	L	L				

Mont Liban

Jbail

Municipality	22-Mar	23-Mar	24-Mar	Municipality	22-Mar	23-Mar	24-Mar	Municipality	22-Mar	23-Mar	24-Mar
Aabeydat	M	M	M	Aalita	M	M	M	Aamchit	ML	ML	M
Aarab El-Lahib	M	M	M	Aarasta	M	M	M	Adonis Jbeil	M	M	M
Afqa Jbeil	M	M	M	Ain El Delbeh Jbeil	M	M	M	Ain El-Ghouayba	M	M	M
Ain Jrain	M	M	M	Ain Kfah	M	M	M	Almat El Chemaliyat	M	M	M
Almat El-Jenoubiya	M	M	M	Aqoura	M	M	M	Bayzoun	M	M	M
Bchille Jbeil	M	M	M	Bechtida	M	M	M	Behdaydat	M	M	M
Beit Habbaq	M	M	M	Bejjeh	M	M	M	Bekhaaz	M	M	M
Berbara Jbeil	M	M	M	Bintael	M	M	M	Birket Hjoula	M	M	M
Blatt Jbeil	M	M	M	Boulhos	M	M	M	Breyj Jbeil	M	M	M
Chamat	M	M	M	Chikhane	M	M	M	Chmout	M	M	M
Eddeh Jbeil	M	M	M	Ehmej	M	M	M	Fatre	M	M	M
Ferhet	M	M	M	Fghal	M	M	M	Frat	M	M	M
Ghabat	M	M	M	Ghalboun	M	M	M	Gharzouz	M	M	M
Ghofrine	M	M	M	Habil	M	M	M	Halate	M	M	M
Haqel	M	M	M	Hbaline	M	M	M	Hboub	M	M	M
Hdeine	M	M	M	Hema Er-Rehban	M	M	M	Hema Mar Maroun Aann	M	M	M
Hjoula	M	M	M	Hosrayel	M	M	M	Hsarat	M	M	M
Hsoun	M	M	M	Jaj	M	M	M	Janne	M	M	M
Jbeil	ML	ML	ML	Jeddeyl Jbeil	M	M	M	Jlisse	M	M	M
Jouret El-Qattine	M	M	M	Kfar Baal Annaya	M	M	M	Kfar Kidde	M	M	M
Kfar Kouas	M	M	M	Kfar Mashoun	M	M	M	Kfoun	M	M	M

Kharbe Jbeil	M	M	M	Laqlouq	M	M	M	Lassa	M	M	M
Lehfed	M	M	M	Maad	M	M	M	Mar Sarkis	M	M	M
Mastita	ML	ML	ML	Mayfouq	M	M	M	Mazraat El Siyad	M	M	M
Mazraat El-Maaden	M	M	M	Mechane	M	M	M	Mechmech Jbeil	M	M	M
Mehrin	M	M	M	Mejdel El-Akoura	M	M	M	Mghayreh Jbeil	M	M	M
Mounsef	M	M	M	Nahr Ibrahim	M	M	M	Qahmez	M	M	M
Qartaba	M	M	M	Qartaboun	ML	ML	ML	Qattara Jbeil	M	M	M
Qorqraya	M	M	M	Ramout	M	M	M	Ras Osta	M	M	M
Rihane Jbeil	L	L	ML	Sakiet El-Khayt	M	M	M	Saqi Richmaya	M	M	M
Sebrine	M	M	M	Seraita	M	M	M	Souane Jbeil	M	M	M
Tadmor	M	M	M	Tartej	M	M	M	Torzaiya	M	M	M
Yanouh Jbeil	M	M	M	Zibdine Jbeil	M	M	M				

El Metn

Municipality	22-Mar	23-Mar	24-Mar	Municipality	22-Mar	23-Mar	24-Mar	Municipality	22-Mar	23-Mar	24-Mar
Aain El-Qabu	M	M	M	Aain El-Qach	M	M	M	Aain El-Teffaha	M	M	M
Aain el-Safssaf El-M	M	M	M	Abou Mizane	M	M	M	Ain Aar	M	M	M
Ain Alaq	M	M	M	Ain El-Kharroube	M	M	M	Ain El-Sendianeh	M	M	M
Ain El-Zeitoune	M	M	M	Ain Saadeh	M	M	M	Aintoura El-Matn	M	M	M
Amaret Chalhoub	L	L	L	Antelias	M	M	M	Atchaneh	M	M	M
Ayroun	M	M	M	Baabdat	M	M	M	Baouchariyeh	M	M	M
Baskinta	M	M	M	Beit Chabab	M	M	M	Beit El-Chaar	M	M	M
Beit El-Kekko	M	M	M	Beit Mery	M	M	M	Bhersaf	M	M	M
Bikfaya	M	M	M	Biyakout	M	M	M	Bnabil	M	M	M
Bourj Hammoud	M	M	M	Bqennaya	M	M	M	Broummana El-Matn	M	M	M
Bsalim	M	M	M	Bsifrine	M	M	M	Bteghrine	M	M	M
Chaouiye	M	M	M	Chouaya El-Matn	M	M	M	Choueir	M	M	M
Chrine	M	M	M	Dahr El Sawan El-Mat	M	M	M	Daychouniyeh	M	M	M
Dbayeh	M	M	M	Deir Chamra	M	M	M	Deir Mar Abda el Mch	M	M	M
Deir Mar Roukouz	M	M	M	Deir Tamiche	M	M	M	Dik El-Mehdi	M	M	M
Dikwaneh	M	M	M	Douar El-Matn	M	M	M	Fanar	M	M	M
Fraike	M	M	M	Haret El-Ballaneh	M	M	M	Hbous	M	M	M
Himlaya	M	M	M	Jal El Did	M	M	M	Jdeideh El-Metn	M	M	M
Jouar El-Matn	M	M	M	Jouret El-Ballout	M	M	M	Kaaqour	M	M	M
Kfar Aaqab	M	M	M	Kfertay El-Matn	M	M	M	Khenchara	M	M	M
Khillet El-Mtain	M	M	M	Konnabat Broummana	M	M	M	Konnabat Salima	M	M	M
Machraah El-Matn	M	M	M	Majdel Tarchich	M	M	M	Majzoub	M	M	M
Mansouriyeh El-Metn	M	M	M	Mar Boutros Karm Et-	M	M	M	Mar Chaya et Mzekke	M	M	M
Mar Moussa Ed-Douar	M	M	M	Marjaba	M	M	M	Masqa	M	M	M
Mayasse	M	M	M	Mazraat Deir Aoukar	M	M	M	Mazraat El-Hadirat	M	M	M
Mazraat Yachouh	M	M	M	Mchikha	M	M	M	Menqlet Mezher	M	M	M
Mhaydseh Matn	M	M	M	Mkalles	M	M	M	Mrouj	M	M	M
Mtain	M	M	M	Mtayleb	M	M	M	Nabay	M	M	M
Naccache	M	M	M	Ouadi Chahine	M	M	M	Ouadi El-Karm El-Mat	M	M	M
Ouata El-Mrouj	M	M	M	Ouyoun El-Matn	M	M	M	Qornet Chehwan	M	M	M
Qornet El-Hamra	M	M	M	Roumieh	M	M	M	Sfeilet Bikfaya	M	M	M
Sinn El-Fil	ML	ML	ML	Zabbougha	M	M	M	Zalqa	ML	ML	ML

Zarououn	M	M	M	Zekrite	M	M	M	Zighrine El-Matn	M	M	M
Zouk El-Khrab	M	M	M								

Chouf

Municipality	22-Mar	23-Mar	24-Mar	Municipality	22-Mar	23-Mar	24-Mar	Municipality	22-Mar	23-Mar	24-Mar
Aalmane El-Chouf	M	M	M	Aammq El-Chouf	M	M	M	Ain Ouzein	M	M	M
Ain Qani	M	M	M	Ain Zhalta	M	M	M	Ainbal	M	M	M
Amatour	M	M	M	Anout	M	M	M	Atrine	M	M	M
Baadarane	M	M	M	Baaqline	M	M	M	Baasir	M	M	M
Barja	M	M	M	Barouk	M	M	M	Bater	M	M	M
Batloun	M	M	M	Bayqoun	M	M	M	Bchetfine	M	M	M
Beiteddine	M	M	M	Benouati Ech-Chouf	M	M	M	Berjein	M	M	M
Bireh et Mtalleh	M	M	M	Biret El-Chouf	M	M	M	Bkechtine Ouel Mchei	M	M	M
Bkifa El-Chouf	M	M	M	Botme	M	M	M	Bqaiaa Ech-Chouf	M	M	M
Bsaba El-Chouf	ML	ML	ML	Chammis El-Chouf	M	M	M	Chehim	M	M	M
Chemaarine	M	M	M	Chourit	M	M	M	Daher El-Chouf	M	M	M
Dalhoun	M	M	M	Damour	M	M	M	Daraya El-Chouf	M	M	M
Deir El-Moukhalles	M	M	M	Deir Baba	M	M	M	Deir Dourit	M	M	M
Deir El-Qamar	M	M	M	Deir Kouche	M	M	M	Dibbieh	M	M	M
Dmit	M	M	M	Fouara Jaafar	M	M	M	Fraidis El-Chouf	M	M	M
Ghabet Jaafar	M	M	M	Gharife	M	M	M	Haret Jandal	M	M	M
Hasrout	M	M	M	Jadra	M	M	M	Jahlieh	M	M	M
Jbeih El-Chouf	M	M	M	Jdeidet El-Chouf	M	M	M	Jiyeh	M	M	M
Jleilyeh	M	M	M	Jmailiyeh	M	M	M	Joun	M	M	M
Kahlounie El-Chouf	M	M	M	Ketermaya	M	M	M	Kfar Faqoud	M	M	M
Kfar Hamal	M	M	M	Kfar Him	M	M	M	Kfar Katra	M	M	M
Kfar Niss	M	M	M	Kfar hay	M	M	M	Kfarnabrakh	M	M	M
Khirbet Bisri	M	M	M	Knayse El-Chouf	M	M	M	Maaniyeh	M	M	M
Maasser Beiteddine	M	M	M	Maasser El-Chouf	M	M	M	Majdalouna	M	M	M
Majdel El-Meouch	M	M	M	Mazboud	M	M	M	Mazmoura	M	M	M
Mazraat El Chouf	M	M	M	Mazraat El Daher	M	M	M	Mazraat El-Douair	M	M	M
Mechref	M	M	M	Mghairie	M	M	M	Mghayrie El-Chouf	M	M	M
Moukhtara	M	M	M	Mrusti	M	M	M	Mtolle	M	M	M
Naameh	M	M	M	Niha El-Chouf	M	M	M	Ouadi Abou Yousef	M	M	M
Ouadi Ed-Deir	M	M	M	Ouadi El-Sit	M	M	M	Ouadi bnehlay	M	M	M
Qraibeh	M	M	M	Qreiaa	M	M	M	Rmayle El-Chouf	M	M	M
Semqaniyeh	M	M	M	Sibline	M	M	M	Sirjbeil	M	M	M
Warhanieh	M	M	M	Werdaniyeh	M	M	M	Zaarourieh	M	M	M

Baabda

Municipality	22-Mar	23-Mar	24-Mar	Municipality	22-Mar	23-Mar	24-Mar	Municipality	22-Mar	23-Mar	24-Mar
Abadiyeh	M	M	M	Ain Mouaffaq	M	M	M	Araiya	M	M	M
Arbaniyeh	M	M	M	Arsoun	M	M	M	Baabda	M	M	M
Baalchmey	M	M	M	Bmaryam	M	M	M	Bourj El-Brajneh	M	M	M
Boutchay	M	M	M	Bsaba Baabda	M	M	M	Btekhney	M	M	M
Btibyat	M	M	M	Bzebdine	M	M	M	Chbeniyeh	M	M	M
Chiyah	M	M	M	Chmeisset Baabda	M	M	M	Chouit	M	M	M
Deir El-harf	M	M	M	Deir Khouna	M	M	M	Dlaybeh	M	M	M

Falougha	M	M	M	Furn El-Chebbak	ML	ML	ML	Hadath Beyrouth	M	M	M
Halaliyeh Baabda	M	M	M	Hammana	M	M	M	Haret El Sett	M	M	M
Haret Hamze	M	M	M	Haret Hreik	M	M	M	Hasbaiya El-Metn	M	M	M
Jouar El-Hoz	M	M	M	Jouret Arsoun	M	M	M	Kfar Chima	M	M	M
Kfar Selouane	M	M	M	Khalouat Baabda	M	M	M	Kneisset Baabda	M	M	M
Laylakeh	M	M	M	Louayzeh Baabda	M	M	M	Merdache	M	M	M
Mzairaa Baabda	M	M	M	Ouadi Chahrour El Ol	M	M	M	Ouadi Chahrour El So	M	M	M
Qalaa Baabda	M	M	M	Qhraybe Baabda	M	M	M	Qobbayaa	M	M	M
Qornayel	M	M	M	Qortada	M	M	M	Qrayeh Baabda	M	M	M
Qsaibeh Baabda	M	M	M	Qtale Baabda	M	M	M	Ras El Metn	M	M	M
Ras El-Haref	M	M	M	Rouayset El-Ballout	M	M	M	Salima Baabda	M	M	M
Tahouitat El Ghadir	ML	ML	ML	Tarchich	M	M	M	Zandouqa	M	M	M

Aley

Municipality	22-Mar	23-Mar	24-Mar	Municipality	22-Mar	23-Mar	24-Mar	Municipality	22-Mar	23-Mar	24-Mar
Abey	M	M	M	Aghmid	M	M	M	Ain Dara	M	M	M
Ain Drafil	M	M	M	Ain El Halazoun	M	M	M	Ain El-Rmmaneh	M	M	M
Ain Jedideh	M	M	M	Ain Ksour	M	M	M	Ain Onoub	M	M	M
Ain Traz	M	M	M	Ainab	M	M	M	Aley	M	M	M
Aramoun	M	M	M	Aytat	M	M	M	Azouniyeh	M	M	M
Baawerta	M	M	M	Badghan Oua Wadi Bad	M	M	M	Bassatine	M	M	M
Bayssour	M	M	M	Bchamoun	M	M	M	Bdadoun	M	M	M
Behouara	M	M	M	Bennay	M	M	M	Bhamdoun El-Dayaa	M	M	M
Bhamdoun El-Mhatta	M	M	M	Bkhechthey	M	M	M	Bleibel	M	M	M
Bmakine	M	M	M	Bmehray	M	M	M	Bouzrid	M	M	M
Bserrine	M	M	M	Bsous	M	M	M	Btalloun	M	M	M
Btater	M	M	M	Chanay	M	M	M	Charoun	M	M	M
Chartoun	M	M	M	Chemlane	M	M	M	Chouefat El-Aamrous	M	M	M
Chouefat El-Oumara	ML	ML	ML	Chouefat El-Quoubbe	ML	ML	ML	Dakkoun	M	M	M
Deir Qoubel	M	M	M	Dfoun	M	M	M	Douair El Remmaneh	M	M	M
Ghaboun	M	M	M	Habramoun	M	M	M	Homs Oua Hama	M	M	M
Houmal	M	M	M	Jisr El Qadi	M	M	M	Kehaleh	M	M	M
Keyfoun	M	M	M	Kfar Aamey	M	M	M	Kommatyeh	M	M	M
Maasrati	M	M	M	Majdel Baana	M	M	M	Mansourieh et Ain El	M	M	M
Mazraat El-Nahr	M	M	M	Mchakhte	M	M	M	Mecherfeh	M	M	M
Mejdaya	M	M	M	Mrayjat	M	M	M	Ramliyah	M	M	M
Rechmaya	M	M	M	Rejmeh	M	M	M	Remhala	M	M	M
Rouaysset El Neemane	M	M	M	Saoufar	M	M	M	Selfaya	M	M	M
Sirhmoul	M	M	M	Souq El Ghareb	M	M	M	Taazanieh	M	M	M

Kesrouane

Municipality	22-Mar	23-Mar	24-Mar	Municipality	22-Mar	23-Mar	24-Mar	Municipality	22-Mar	23-Mar	24-Mar
Achkout	M	M	M	Adma Oua Dafneh	M	M	M	Ain Ed-Delbe Kesroua	M	M	M
Ain El-Rihane	M	M	M	Aintoura Kesrouane	M	M	M	Ajaltoun	M	M	M
Akaybeh Kesrouane	M	M	M	Aramoun Kesrouane	M	M	M	Azra ouel Ozor	M	M	M
Ballouneh	M	M	M	Batha	M	M	M	Bekaatat Achkout	M	M	M
Bekaatat Kanaan	M	M	M	Bizhel	M	M	M	Bouar	M	M	M
Bqaatouta	M	M	M	Bqaq Ed-Dine	M	M	M	Bzommar	M	M	M

Chahtoul	M	M	M	Chnaniir	M	M	M	Chouan	M	M	M
Daraya Kesrouane	M	M	M	Darououn	M	M	M	Deir Baqlouch	M	M	M
Dlebta	M	M	M	Eghbeh	M	M	M	Faraya	M	M	M
Fatka	M	M	M	Feytroun	M	M	M	Ghazir	M	M	M
Ghbaleh Kesrouane	M	M	M	Ghedrass	M	M	M	Ghosta	M	M	M
Ghynéh	M	M	M	Harharaya w Kattine	M	M	M	Harissa Kesrouane	M	M	M
Hayata	M	M	M	Hosein	M	M	M	Hrajel	M	M	M
Jdeideh Ghazir	M	M	M	Jeita	M	M	M	Jounieh Ghadir	M	M	M
Jounieh Haret Sakhr	M	M	M	Jounieh Salel Alma	M	M	M	Jounieh Sarba	M	M	M
Jouret Bedrane	M	M	M	Jouret Mhad	M	M	M	Jouret Termos	M	M	M
Kfar Debiane	M	M	M	Kfar Tay Kesrouane	M	M	M	Kfar Yassine	M	M	M
Kfour Kesrouane	M	M	M	Kharayeb Nahr Ibrahi	M	M	M	Klayaat Kesrouane	M	M	M
Maarab	M	M	M	Maaysra Kesrouane	M	M	M	Mayrouba	M	M	M
Mazraat Er-Ras	M	M	M	Mazraat Mrah El-Mir	M	M	M	Mchaa El Ftouh	M	M	M
Mchaa Faraya	M	M	M	Mchaa Kfar Dibiane	M	M	M	Mghaer	M	M	M
Mradiyeh	M	M	M	Nahr Ed-Dahab	M	M	M	Nammoura Kesrouane	M	M	M
Ouata El Jaouz	M	M	M	Ouata Sillam	M	M	M	Raachine	M	M	M
Rayfoun	M	M	M	Safra Kesrouane	M	M	M	Shayle Kesrouane	M	M	M
Tabarja	M	M	M	Yahchouch	M	M	M	Zaaytreh	M	M	M
Zeytoun	M	M	M	Zouk Mikael	M	M	M	Zouk Mosbeh	M	M	M

Baalbek_Hermel

Baalbek

Municipality	22-Mar	23-Mar	24-Mar	Municipality	22-Mar	23-Mar	24-Mar	Municipality	22-Mar	23-Mar	24-Mar
Aadous	M	M	M	Aamchki	M	M	M	Aarsal	MH	MH	MH
Ain Baalbek	MH	MH	MH	Ain Bourday	M	M	M	Ain El-Benye	M	M	M
Ain El-Jaouz Baalbek	M	M	M	Ain El-Siya Chadoura	M	M	M	Al Khodr Baalbek	M	M	M
Al Nabi Chit	M	M	M	Aynata Baalbek	M	M	M	Baalbek	M	M	M
Bachwat	M	M	M	Barqa	M	M	M	Bednayel Baalbak	M	M	M
Beit Chama	M	M	M	Bijjaje	MH	MH	MH	Bouday	M	M	M
Brital	M	M	M	Btadi	M	M	M	Chaat	M	M	M
Chaibe	M	M	M	Chlifa	M	M	M	Chmestar	M	M	M
Dar El-Oussa	M	M	M	Deir El-Ahmar	M	M	M	Deir Mar Maroun Baal	M	M	M
Douris	M	M	M	Fakiha	M	M	M	Hadath Baalbek	M	M	M
Ham	M	M	M	Haour Taala	M	M	M	Hizzine	M	M	M
Hlebta	M	M	M	Hosh Barada	M	M	M	Hosh El Dahab	M	M	M
Hosh El Snid	M	M	M	Hosh El-Nabi	M	M	M	Hosh El-Rafiq	M	M	M
Hosh Tal Safiya	M	M	M	Hrebta	M	M	M	laat	M	M	M
Jebaa	M	M	M	Jenta	M	M	M	Kfar Dabach	M	M	M
Kfar Dane	M	M	M	Khraibeh El-Hermel	M	M	M	Khreibet Baalbek	M	M	M
Kneisset Baalbek	M	M	M	Labueh	MH	MH	MH	Maarboun	M	M	M
Majdaloun	M	M	M	Maqneh	M	M	M	Mazraat Beit Mcheik	M	M	M
Misraya	M	M	M	Mograq	MH	MH	MH	Nabha El-Damdoum	M	M	M
Nabi Chbay	M	M	M	Nabi Osman	MH	MH	MH	Nahleh baalbek	M	M	M
Ouadi El-Oss	M	M	M	Qaa Baayoun	ML	ML	ML	Qaa Jouar Maqiye	VL	VL	VL
Qaa Ouadi El-Khanzir	L	L	L	Qah Baalbek	ML	ML	ML	Qarha Baalbek	M	M	M

Qsarnaba	M	M	M	Ram Baalbek	M	M	M	Ras Baalbek El Sahl	M	M	M
Ras Baalbek El-Charq	M	M	M	Riha	M	M	M	Saaide	M	M	M
Sboubba	M	M	M	Seriine El-Tahta	M	M	M	Slouqi	M	M	M
Taiba Baalbek	M	M	M	Talia	M	M	M	Taraiya	M	M	M
Temnin El Fawqa	M	M	M	Temnin El-Tahta	M	M	M	Tfail	M	M	M
Yahfoufa	M	M	M	Yammouneh	M	M	M	Younine	M	M	M
Zboud	M	M	M								

Hermel

Municipality	22-Mar	23-Mar	24-Mar	Municipality	22-Mar	23-Mar	24-Mar	Municipality	22-Mar	23-Mar	24-Mar
Charbine El-Hermel	M	M	M	Hermel Jbab	M	M	M	Hermel	M	M	M
Maaysra El-Hermel	M	M	M	Michaa Mrajhine	M	M	M	Ouadi Faara	M	M	M
Ras Baalbek - Ouadi	M	M	M	Ras Baalbek El Gharb	M	M	M	Zighrine	M	M	M

Akkar

Akkar

Municipality	22-Mar	23-Mar	24-Mar	Municipality	22-Mar	23-Mar	24-Mar	Municipality	22-Mar	23-Mar	24-Mar
Aain Tinta	M	M	M	Aaiyat	M	M	M	Aakkar El-Aatiqa	ML	ML	ML
Aamar Akkar	ML	ML	ML	Aamar El Baykat	M	M	M	Aamayer	M	M	M
Aamriyet Akkar	M	M	M	Aandqet	M	M	M	Aarmeh	L	L	L
Aarqa	ML	ML	M	Aawaynat	M	M	M	Aayoun Akkar	M	M	M
Abboudiye	L	L	L	Ain El-Zeit	M	M	M	Ain Yaaqoub	ML	ML	ML
Akroum	M	M	M	Aridet Cheikh Zennad	L	L	L	Baldeh w Mazraat Bal	M	M	M
Barcha	L	L	L	Bardeh	M	M	M	Bebnine	M	M	M
Beino	M	M	M	Beit Ayoub	M	M	M	Beit El-Haouch	M	M	M
Beit Mellat	M	M	M	Beit Younes	ML	ML	ML	Berbara Akkar	M	M	M
Berqayel	M	M	M	Bezbina	ML	ML	ML	Bireh Akkar	M	M	M
Borj	M	M	M	Bqerezla	M	M	M	Bzal	M	M	M
Chane	L	L	ML	Chaqdouf	M	M	M	Charbila	M	M	M
Cheikh Mohammad	M	M	M	Cheikh Taba Es-Sahl	M	M	M	Cheikh Taba	M	M	M
Cheikh Zennad	L	L	L	Cheikhlar	M	M	M	Chir Hmairine	VL	VL	L
Daghle	M	M	M	Dahr Laissine	M	M	M	Darine	VL	VL	L
Dawra	ML	ML	ML	Dawsa w Baghdadadi	M	M	M	Dayret Nahr El-Kabir	M	M	M
Deir Dalloum	M	M	M	Deir Jennine	M	M	M	Denbou	ML	ML	ML
Dibbabiyyeh	M	M	M	Douair Aadwiyeh	M	M	M	Fassikine	M	M	M
Fnaydek	ML	ML	ML	Fraydes Akkar	M	M	M	Ghazayle	L	L	L
Habchit	ML	ML	ML	Hakour	M	M	M	Halba	M	M	M
Haouchab	L	L	L	Hayssat	ML	ML	ML	Haytla	L	L	L
Hayzouq	M	M	M	Hedd	M	M	M	Hmaira Akkar	M	M	M
Hmaiss Akkar	M	M	M	Hnaider	M	M	M	Hokr Ed-Dahri	L	L	L
Hokr Etti	M	M	M	Hokr Jouret Srar	VL	VL	L	Houaich	ML	ML	ML
Hrar	ML	ML	M	Idbil	M	M	M	Ilal	M	M	M
Janine	L	L	ML	Jdeidet El-Joumeh	M	M	M	Jdeidet El-Kaiteh	M	M	M
Jebayel	M	M	M	Kafr	M	M	M	Kafr	M	M	M
Karm Asfour	M	M	M	Kfar Melki Akkar	L	L	ML	Kfar Noun	ML	ML	ML
Kfarharra	M	M	M	Khalsa	M	M	M	Kharnoubet Akkar	L	L	L

Khirbet Daoud Aakkar	M	M	M	Khirbet El Remmane	M	M	M	Khirbet Shar	M	M	M
Khoreybet El-Jindi	M	M	M	Khreibet Aakkar	M	M	M	Kneisset Aakkar	L	L	L
Kneisset Hnaider	M	M	M	Knisse	M	M	M	Kroum El-Aarab	M	M	M
Kwachra	M	M	M	Kweykhata	L	L	ML	Machta Hammoud	M	M	M
Majdala	M	M	M	Majdel Akkar	M	M	M	Mar Touma	M	M	M
Marlaya Melhem	ML	ML	ML	Mashha	M	M	M	Massoudiye	L	L	L
Mazraat Beit Ghattas	M	M	M	Mazraat En-Nahriye	M	M	M	Mechmech	ML	ML	ML
Memneh	L	L	L	Mhammara	L	L	ML	Mighraq Aakkar	L	L	L
Minyara	M	M	M	Mogayteh	L	L	ML	Mounjez	M	M	M
Msalla	M	M	M	Mzeihmeh	M	M	M	Nfaiseh	M	M	M
Noura Et-Tahta	ML	M	M	Ouadi El-Haour	M	M	M	Ouadi El-Jamous	M	M	M
Ouyoun El-Ghizlane	M	M	M	Qaabarine	L	L	ML	Qabaait	M	M	M
Qachlaq	M	M	M	Qantara Aakkar	M	M	M	Qarha Aakkar	M	M	M
Qarqaf	M	M	M	Qboula	M	M	M	Qleiaat Aakkar	L	L	L
Qloud El-Baqie	M	M	M	Qobaiyat Aakkar	ML	ML	M	Qobbat Chamrat	L	L	ML
Qorayat	ML	ML	ML	Qornet Aakkar	M	M	M	Qsair Aakkar	M	M	M
Rahbe	M	M	M	Rihaniyet Aakkar	ML	ML	ML	Rmah	M	M	M
Rmoul	ML	ML	ML	Saadine	L	L	L	Sadaqa	M	M	M
Saidnaya	M	M	M	Sammouniye	L	L	ML	Sayssouq	M	M	M
Semmaqiye	L	L	L	Semmaqli	L	L	L	Sfinet El-Dreib	M	M	M
Sfinet El-Qaitaa	M	M	M	Sindyanet Zeidane	ML	M	M	Souaisset Aakkar	M	M	M
Srar	L	L	L	Tal Abbas El Gharby	L	L	L	Tal Abbas El-Charqy	ML	ML	ML
Tal Biret	L	L	ML	Tal Hmayra	L	L	L	Tal Maayan Tal Kiri	L	L	L
Tal Sibel	L	L	L	Tallet Chattaha	M	M	M	Tikrit	M	M	M
Tleil	M	M	M	Tshea	ML	ML	ML	Zawarib	M	M	M
Zouq El Hosniyeh	M	M	M	Zouq El-Haddara	M	M	M	Zouq El-Hbalsa	M	M	M
Zouq El-Mogachrine	M	M	M								

Sud

Sour

Municipality	22-Mar	23-Mar	24-Mar	Municipality	22-Mar	23-Mar	24-Mar	Municipality	22-Mar	23-Mar	24-Mar
Aaiyeh	L	L	L	Aalma El-Chaab	ML	ML	ML	Aaytit	VL	VL	VL
Abbassiyeeh Sour	L	L	L	Abou Chech	L	L	L	Ain Abou Abdallah	ML	ML	ML
Ain Baal	VL	VL	VL	Arzoun	L	L	L	Aziyeh	ML	ML	ML
Baflaya	L	L	L	Barich	VL	VL	VL	Batouliyah	VL	VL	VL
Bayad	L	L	L	Bazouriyeh	L	L	L	Bediass	L	L	L
Bestiyat	L	L	L	Borj El Chemali	L	L	L	Borj En-Naqoura	L	L	L
Borj Rahhal	L	L	L	Boustane	L	L	L	Btaychiyah	L	L	L
Chaaitiye	L	L	L	Chameh	ML	ML	ML	Chehabiye	VL	VL	VL
Chehour	ML	ML	ML	Chihine	L	L	L	Debaal Sour	VL	VL	VL
Deir Amess	L	L	L	Deir Kifa	L	L	L	Deir Qanoun El-Ain	VL	VL	VL
Deir Qanoun El-Naher	L	L	L	Derdghaiya	L	L	L	Dhayra	L	L	L
Halloussiyeh	L	L	L	Hamoul	ML	ML	M	Hanaouey	VL	VL	VL
Henniye	L	L	L	Hmairi Sour	L	L	L	Iskandarouna Sour	ML	ML	ML
Jbal El Botom	L	L	L	Jebbin	L	L	L	Jennata	L	L	L
Jijim	ML	ML	ML	Jouaiya	L	L	L	Kneisset Sour	VL	VL	VL

Maarake	L	L	L	Maaroub	VL	VL	VL	Majadel	VL	VL	VL
Majdalzoun	L	L	L	Mansouri Sour	L	L	L	Marnba	ML	ML	ML
Marouahine	L	L	L	Mazraat El-Zalloutiy	L	L	L	Mazraat Mechref	L	L	L
Mazraat Tayr Semhat	M	M	M	Mheilib	L	L	L	Neffakhiyeh	VL	VL	VL
Niha Sour	VL	VL	VL	Ouadi Jilo	VL	VL	VL	Qana	VL	VL	VL
Qolaileh Sour	L	L	L	Rechknayan	L	L	L	Rmadiyah	VL	VL	VL
Selha Sour	VL	VL	VL	Siddiqine	VL	VL	VL	Sour	L	L	L
Srifa	L	L	L	Tayr Debbe	VL	VL	VL	Tayr Felsay	L	L	L
Tayr Harfa	L	L	L	Touayri	ML	ML	ML	Toura	L	L	L
Yanouh Sour	VL	VL	VL	Yarine	L	L	L	Zebqine	ML	ML	ML

Saida

Municipality	22-Mar	23-Mar	24-Mar	Municipality	22-Mar	23-Mar	24-Mar	Municipality	22-Mar	23-Mar	24-Mar
Aanqoun	ML	ML	ML	Aaqtanit	M	M	M	Aarab Ej-Jall	L	L	L
Aarab Tabbaya	L	L	L	Abra Saida	M	M	M	Adloun	M	M	M
Adousiyeh	M	M	M	Ain-El-Deleb	M	M	M	Arzai	L	L	L
Babliyah	L	L	L	Barty	L	L	L	Bissariyeh	ML	ML	ML
Bnaafoul	M	M	M	Bqosta	M	M	M	Bramiy --	M	M	M
Daoudiyeh	L	L	L	Dareb El-Sim	M	M	M	Erkay	L	L	L
Ghassanieh	L	L	L	Ghazieh	M	M	M	Hajjeh	ML	ML	ML
Haret Saida	M	M	M	Hartiyeh	ML	ML	ML	Hlaliye Saida	M	M	M
Insariyat	L	L	L	Jazira Saida	L	L	L	Kafar Bit	L	L	L
Kaoutariyet El-Siyad	L	L	L	Kfar Chellal	ML	ML	ML	Kfar Hatta Saida	L	L	L
Kfar Milke Saida	L	L	L	Khartoum	L	L	L	Khaziz	ML	ML	ML
Khirbet Ed-Douair Sa	ML	ML	ML	Khirbet El-Bassal	M	M	M	Khrayeb Saida	ML	ML	ML
Loubieh	L	L	L	Maghdouche	M	M	M	Majdelyoun	M	M	M
Matariyet El-Choumar	L	L	L	Matayriyeh	M	M	M	Mazraat 'Mseileh	M	M	M
Mazraat 'Snaiber	M	M	M	Mazraat Aarab Soukka	L	L	L	Mazraat Deir Taqla	M	M	M
Mazraat El Yahouidiye	L	L	L	Mazraat El-Housseini	M	M	M	Mazraat El-Mhaydaleh	L	L	L
Mazraat El-Ouasta	ML	ML	ML	Mazraat Jamjim	ML	ML	ML	Mazraat Kaoutariyet	L	L	L
Mazraat Kfar Badda	ML	ML	ML	Mazraat Oussamiyat	L	L	L	Mazraat Sari	ML	ML	ML
Mazraat Sinai	L	L	L	Meemariyeh	M	M	M	Merouaniyeh	ML	ML	ML
Miyeh ou Miyeh	M	M	M	Najjariyeh	M	M	M	Qaaqaiyat El-Snaouba	ML	ML	ML
Qnarit	M	M	M	Qraiye Saida	M	M	M	Saida Ed-Dekermane	M	M	M
Saida El-Oustani	M	M	M	Saida El-Qadimeh	M	M	M	Saida Kefraya	M	M	M
Saksakiyeh	L	L	L	Salhieh Saida	M	M	M	Sarafand	ML	ML	ML
Sfenta	ML	ML	ML	Tafahta	L	L	ML	Tanbourit	M	M	M
Tebna	ML	ML	ML	Zaghdraiya	M	M	M	Zeita	M	M	M
Zrariyeh	L	L	L								

Jezzine

Municipality	22-Mar	23-Mar	24-Mar	Municipality	22-Mar	23-Mar	24-Mar	Municipality	22-Mar	23-Mar	24-Mar
Ain El-Mir (El Estab)	L	L	L	Anane	ML	ML	ML	Aramta	L	L	L
Ariya	ML	ML	ML	Aychiyeh	L	L	L	Azour	M	M	M
Baba	M	M	M	Bayssour Jezzine	M	M	M	Benoueteh Jezzine	ML	ML	ML
Bhannine	M	M	M	Bisri	M	M	M	Bkassine	M	M	M
Bouslaya	ML	ML	ML	Btedine El-Leqech	M	M	M	Chbail	M	M	M
Choualiq Jezzine	M	M	M	Dahr Ed-Deir	ML	ML	ML	Deir El Qattine	ML	ML	ML

Demachqiyeh	L	L	L	Ghabbatiyeh	ML	ML	ML	Harf Jezzine	M	M	M
Hassaniyeh	ML	ML	ML	Haytouleh	L	L	L	Haytura	ML	ML	ML
Hidab	ML	ML	ML	Homsiyeh	ML	ML	ML	Jabal Toura	L	L	L
Jarmaq	L	L	L	Jensnaya	M	M	M	Jernaya	L	L	L
Jezzine	L	L	L	Karkha	M	M	M	Kfar Falous	L	L	L
Kfar Houna	L	L	L	Kfar Jarrah	M	M	M	Lebaa	M	M	M
Louayzet Jezzine	L	L	L	Machmouche	M	M	M	Mahmoudiyeh Jezzine	L	L	L
Maknounye Jezzine	ML	ML	ML	Maraat Ouazaiyeh	L	L	L	Mazraat Daraya	L	L	L
Mazraat El-Aarqoub	ML	ML	ML	Mazraat El-Mathane	M	M	M	Mazraat El-Rahbane	ML	ML	ML
Mazraat Khallet Khaz	ML	ML	ML	Mazraat Louzid (Loua	M	M	M	Mazraat Qrouh	L	L	L
Mazraat Tamra	L	L	L	Mazraat Zighrine Jez	L	L	L	Mazraat	ML	ML	ML
Mharbiyeh	M	M	M	Midane Jezzine	ML	ML	ML	Mjeydel Jezzine	M	M	M
Mlikh	ML	ML	ML	Mrah El-Hbasse	ML	ML	ML	Ouadi Baanqoudaine	M	M	M
Ouadi El-Laymoun	L	L	L	Ouardiyeh	M	M	M	Qabaa Jezzine	ML	ML	ML
Qatrani	ML	ML	ML	Qaytouleh	ML	ML	ML	Qtaleh Jezzine	M	M	M
Rihane Jezzine	L	L	L	Rimat	ML	ML	ML	Roum	ML	ML	ML
Roummanet	L	L	L	Sabbah	ML	ML	ML	Saydoun	ML	ML	ML
Sfaray	ML	ML	ML	Snaya	M	M	M	Sojoud	ML	ML	ML
Srayri	L	L	L	Taaïd	M	M	M	Wadi Jezzine	ML	ML	ML
Zhalta	ML	ML	ML								

Bekaa

West Bekaa

Municipality	22-Mar	23-Mar	24-Mar	Municipality	22-Mar	23-Mar	24-Mar	Municipality	22-Mar	23-Mar	24-Mar
Aammiq BG	M	M	M	Ain El Tineh BG	M	M	M	Ain Zebdeh	ML	ML	ML
Ana	M	M	M	Aytanit	M	M	M	Baaloul BG	M	M	M
Bab Mareh	M	M	M	Chouberqiye Aammiq	M	M	M	Dakoue	M	M	M
Deir Ain El-Jaouze	M	M	M	Deir Tahniche	M	M	M	Ghaza	M	M	M
Harime El-Soughra	M	M	M	Hoch Harimeh	M	M	M	Jazira BG	M	M	M
Jib Jennine	M	M	M	Kamed-El-Laouz	M	M	M	Kefraya BG	M	M	M
Khiara El Atika	M	M	M	Khiara	M	M	M	Khirbet Qanafar	M	M	M
Lala	M	M	M	Lebbaya BG	M	M	M	Loussa	L	L	L
Machghara	M	M	M	Manara (Hammara) BG	M	M	M	Mansoura BG	M	M	M
Marej BG	M	M	M	Maydoun	ML	ML	ML	Ouaqf BG	M	M	M
Qaraaoun	M	M	M	Qelya	M	M	M	Raouda (Istabel)	M	M	M
Saghbine	ML	ML	ML	Sohmor	M	M	M	Soltan Yacoub el Ara	M	M	M
Souairy	M	M	M	Sultan Yaacoub	M	M	M	Tal Znouh	M	M	M
Yehmor BG	ML	ML	ML	Zilaya	ML	ML	ML				

Zahle

Municipality	22-Mar	23-Mar	24-Mar	Municipality	22-Mar	23-Mar	24-Mar	Municipality	22-Mar	23-Mar	24-Mar
Aanjar (Haouch Mouss	M	M	M	Ablah	M	M	M	Ain Kfarzabad	M	M	M
Ali-El-Nahri	M	M	M	Bar Elias	M	M	M	Bouarej	ML	ML	ML
Cheberqiyet Tabet	M	M	M	Chtaura	M	M	M	Deir El Ghazal	M	M	M
Delhamiyet Zahle	M	M	M	Ferzol	M	M	M	Haouch El-Ghanam	M	M	M
Haouch Es-Siyadeh	M	M	M	Haouch Hala	M	M	M	Haouch Mandara	M	M	M

Haouch Qayssar	M	M	M	Hezerta	M	M	M	Hosh Moussa	M	M	M
Jdita	M	M	M	Kfarzabad	M	M	M	Ksara	M	M	M
Majdel Aanjar	M	M	M	Makssi	M	M	M	Massa	M	M	M
Mazraat Er-Remtaniye	M	M	M	Mrayjat Zahle	M	M	M	Mzaraa Zahle	M	M	M
Nabi Ayla	M	M	M	Nasriyet Rizk	M	M	M	Nasriyet Zahle	M	M	M
Niha Zahle	M	M	M	Ouadi Ed-Deloum	M	M	M	Ouadi El-Arayech	M	M	M
Qaa El Rim	M	M	M	Qab Elias	M	M	M	Qousaya	M	M	M
Rhit	M	M	M	Riyak	M	M	M	Saadnayel	M	M	M
Taal El-Akhdar	M	M	M	Taalbeya	M	M	M	Taanayel	M	M	M
Talamara	M	M	M	Tcheflik Edde Haouch	ML	ML	ML	Tcheflik Qiqano	M	M	M
Terbol Zahle	M	M	M	Touaite Zahle	M	M	M	Zahle Aradi	M	M	M
Zahle El-Berbara	M	M	M	Zahle El-Maallaqa	M	M	M	Zahle El-Midane	M	M	M
Zahle Er-Rassiye	M	M	M	Zahle Haouch El-Ouma	M	M	M	Zahle Haouch El-Ouma	M	M	M
Zahle Haouch Ez-Zara	M	M	M	Zahle Maalaqa Aradi	M	M	M	Zahle Mar Antonios	M	M	M
Zahle Mar Elias	M	M	M	Zahle Mar Gerios	M	M	M	Zahle Saydet En-Naja	M	M	M
Zebdoul	M	M	M								

Rachaiya

Municipality	22-Mar	23-Mar	24-Mar	Municipality	22-Mar	23-Mar	24-Mar	Municipality	22-Mar	23-Mar	24-Mar
Ain Arab Rachaiya	M	M	M	Ain Ata	M	M	M	Ain Harche	ML	ML	ML
Aqabe Rachaya	M	M	M	Ayha	M	M	M	Ayta El Fokhar	ML	ML	ML
Bakifa Rachaya	M	M	M	Bakka	M	M	M	Beit Lahya	M	M	M
Bireh Rachaiya	M	M	M	Daher El Ahmar	M	M	M	Deir El-Achayer	M	M	M
Heloua Rachaiya	ML	ML	M	Hoch El Qannabeh Rac	M	M	M	Kaoukaba Bou Arab	M	M	M
Kfar Danis	M	M	M	Kfar Mechki	M	M	M	Kfar Qouq	M	M	M
Kherbet Rouha	M	M	M	Majdel Balhiss	M	M	M	Mdoukha	M	M	M
Mhaydseh Rachaiya	M	M	M	Nabi Safa	ML	ML	ML	Rachaiya	M	M	M
Rafid Rachaiya	M	M	M	Selsata (Mazraat Dei	M	M	M	Tannoura	M	M	M
Yanta	M	M	M								

Beyrouth

Beyrouth

Municipality	22-Mar	23-Mar	24-Mar	Municipality	22-Mar	23-Mar	24-Mar	Municipality	22-Mar	23-Mar	24-Mar
Achrafieh	L	L	L	Ain el-Mreisse	VL	VL	L	Bachoura	M	M	M
Beirut Central Distr	VL	VL	VL	Marfai	VL	VL	VL	Mazraa	M	M	M
Medaouar	L	L	L	Minet el-Hosn	VL	VL	L	Mwssaitbeh	M	M	M
Ras Beirut	L	L	L	Rmeil	L	L	L	Saifi	L	L	L
Zqaq el-Blat	L	L	L								